

SNYDER BROS.

44th Annual BULL SALE

Saturday • MARCH 13, 2010 • 1 p.m. MST
Ogallala Livestock, Ogallala, NE



LOT 63

SNYDER BROS.

44TH ANNUAL Production Sale

Saturday • **MARCH 13, 2010** • 1 p.m. MST
Ogallala Livestock, Ogallala, NE

103 HEAD SELL

15 2-year-old Bulls • 88 Yearling Bulls

SALE DAY PHONES:

Ogallala Livestock (308) 284-2071
Ken Snyder (308) 289-3130
Bruce Snyder (308) 289-4389

AUCTIONEER:

Dean Schow

ASSOCIATION REPRESENTATIVES:

John Schurr - Director,
American Angus Association
Matt Printz - Regional Manager,
American Angus Association
Craig Dethlefs - President,
Nebraska Angus Association
Suzy Hebbert - Secretary-Manager,
Nebraska Angus Association

LIVESTOCK PUBLICATION REPRESENTATIVES:

Matt Printz - *Angus Journal*
Rod Swafford - *High Plains Journal*

Buyers unable to attend the sale may sent their bids to the Auctioneer or Representatives.

INSPECTION OF CATTLE:

The cattle will be available for inspection Friday, March 13, 2009 at Ogallala. Prior to the sale they can be seen at the ranch.

SALE LOCATION:

The sale will be held at the Ogallala Livestock Auction Market in Ogallala, NE.

TERMS AND CONDITIONS:

Satisfaction Guarantee

TRUCKING:

Truckers believed to be reliable will be available to assist you in shipping your purchases.

LIVESTOCK MORTALITY INSURANCE:

A representative from American Live Stock Insurance Company will be available to assist you with mortality insurance for your purchases.

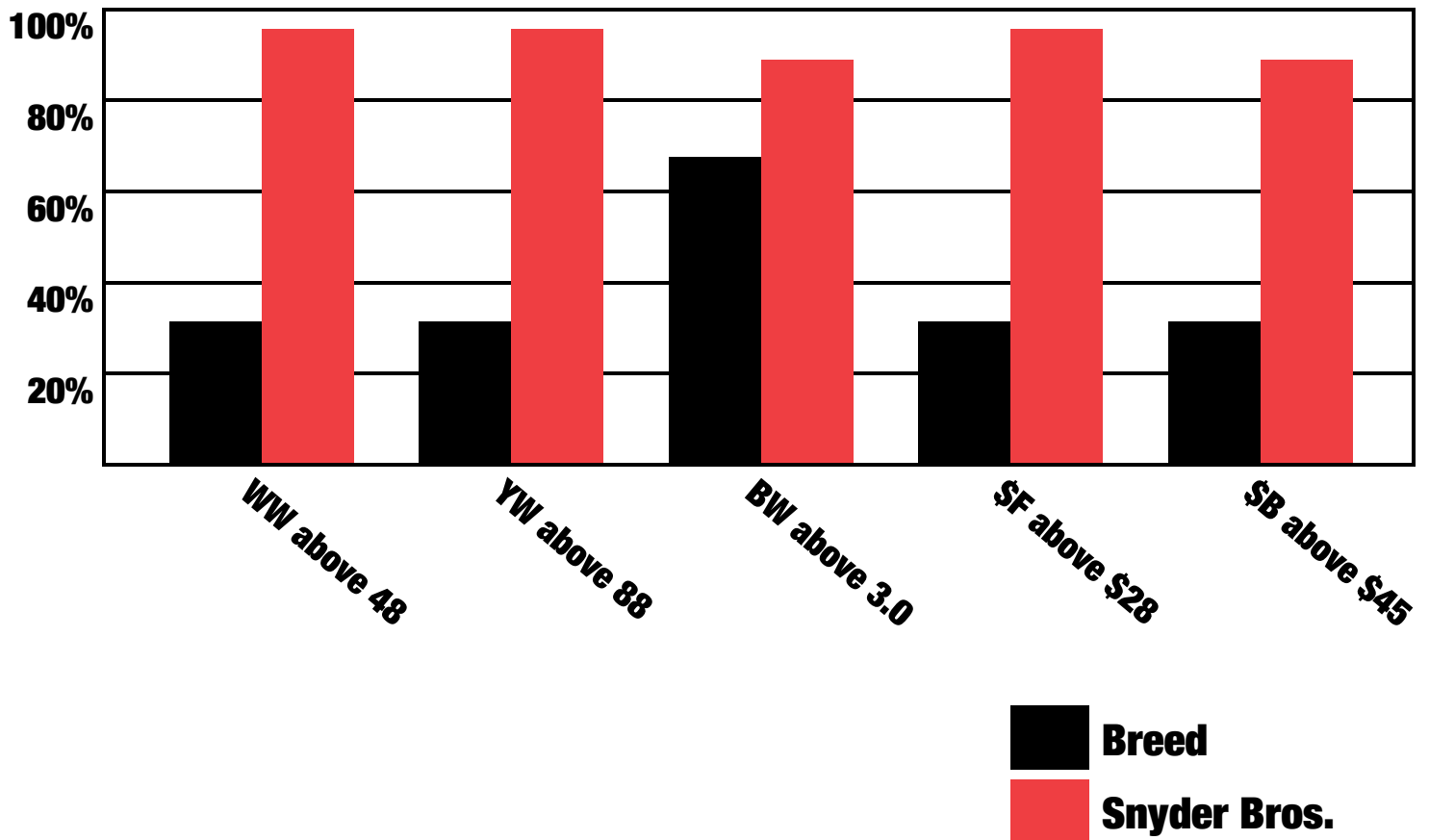
FOOD AND REFRESHMENTS:

Will be available sale day.

Snyder Bros.

1505 Road East 120 • Paxton, NE 69155
Bruce Snyder (308) 239-4640 or (308) 289-4389
Don Eakins (308) 239-4611
Ken Snyder (308) 239-4274, (866) 663-1162
or cell (308) 289-3130
www.angusjournal.com/snyderbros

SNYDER BROS.



- 55% of the offering in the top 10% for Yearling
- 70% of the offering in the top 20% for Weaning
- 75% of the offering in the top 20% for Marbling
- 73% of the offering in the top 20% for Ribeye

Welcome to Snyder Bros. 44th Annual Bull Sale

While some change is constant, many things in the cattle business remain as true today as when we sold our first bulls nearly 50 years ago. Cattle still sell by the pound, cows still have to thrive on grass, and the success of the beef industry ultimately depends on the satisfactory eating experience of our beef consumers.

Generations of ultrasound and carcass measurement, hundreds of thousands of individual performance weights, widespread use of AI sires compared against each other in many herds and computer analysis to make sense of it all have worked together to make our genetic progress more rapid and our results more accurate by many times than they were a few years ago. Our ability to measure our progress and to predict the genetic ability of our bulls to produce that progress has been one of the big changes in the past 50 years.

You can study the information presented in this catalog and buy bulls to meet your goals with greater confidence than ever before. We pick proven AI sires with high accuracy EPDs to meet our long time goal of improving growth and carcass traits while maintaining calving ease and moderate mature size. Proven sires, cows from proven sires and large contemporary groups combine to give our EPDs greater accuracy than most. The EPDs presented here already include each bull's individual data for yearling weigh and ultrasound measurements. The bulls have already passed a breeding soundness and semen exam and are free from Curly calf and Hydrocephalus either by pedigree or by test.

We continue to offer the same "full satisfaction" guarantee that we've used for years. If you are not satisfied with the bull through the first breeding season, we will offer either a replacement of equal quality or credit for the next sale. The guarantee does not cover mortality and we ask to be notified by the end of the first breeding season or no later than Sept. 1st.

The bulls will be delivered for free within 300 miles or you can haul them yourself for a \$50/hd credit. Alternatively, we can winter the bulls for \$2.00/hd/day until you pick them up.

As you search for cattle that will make your herd more profitable, we hope you'll consider our program. Your calls for more information are always welcome and we look forward to seeing you on sale day.

Snyder Bros.

1505 Road East 120 • Paxton, NE 69155
www.angusjournal.com/snyderbros

Bruce Snyder
(308) 239-4640
(308) 289-4389

Don Eakins
(308) 239-4611

Ken Snyder
(308) 239-4274
(866) 663-1162
Cell (308) 289-3130

SNYDER BROS.

TWO-YEAR-OLD ANGUS BULLS

This group of bulls includes bulls that we used in our registered breeding program or on our commercial cow herd and bulls that were too young to offer in last year's sale. Each two-year old has been Trich and BVD tested and is negative.



Lot 1

1 Plattermere YG A058-B08

Calved: 02/01/2008

Bull 16374450

Tattoo: A058

#GAR Precision 1680 [AMC-NHC]
+GAR Yield Grade [AMF-NHF]
+13724351 +GAR Ext 4526 [AMF]

#Tehama Bando 155 [AMF-NHF]
9J9 GAR 856 [NHF]
#N Bar Emulation EXT [AMF-NHF]
+GAR 6807 Traveler 93 [AMF-NHF]

MARB	SW
+63	+22.85
RE	SF
+31	+44.39
FAT	SB
+014	+66.22

#B/R Destination 727-928 [AMF-NHF]
Plattermere Queenie 798
15785897 Plattermere Queenie 716

#B/R Destination 727 [AMF-NHF]
B/R Blackcap Empress 558 [AMF]
#Bon View New Design 1407 [AMF-NHF]
Plattermere Queenie 423

BEPD	WEPD	YEPD	Milk	BW	ADJ 365
+2.4	+53	+106	+20	82	1196



Lot 2

2 Plattermere 458 E598-B08

Calved: 01/29/2008

Bull 16372457

Tattoo: E598

#Bon View New Design 1407 [AMF-NHF]
Sitz New Design 458N [AMF-NHF]
14474596 Sitz Ellunas Elite 3308

#B/R New Design 036 [AMF-NHF]
Bon View Pride 664
#Sitz Traveler 9929
#Sitz Ellunas Elite 2872

MARB	SW
+60	+28.90
RE	SF
+27	+48.31
FAT	SB
+008	+64.05

#B/R Destination 727-928 [AMF-NHF]
ADA of Plattermere 262
16033858 ADA of Plattermere 238

#B/R Destination 727 [AMF-NHF]
B/R Blackcap Empress 558 [AMF]
#Connealy Forefront [AMF-NHF]
#Ada of Plattermere 172

BEPD	WEPD	YEPD	Milk	BW	ADJ 365
+1.2	+59	+112	+29	70	1230

3 Plattermere IF 1808-B08

Calved: 02/01/2008

Bull 16372482

Tattoo: 1808

#SAF Focus of ER [AMF-NHF]
Mytty In Focus [AMF-NHF-RDF]
13880818 Mytty Countess 906

#SAF Fame [AMF-NHF]
GDAR Forever Lady 246
#Sitz Alliance 6595 [AMF-NHF]
Baldrige Countess 357

MARB	SW
+41	+30.46
RE	SF
+21	+36.91
FAT	SB
+035	+45.92

#Connealy Freightliner [AMF-NHF]
Plattermere Queen W 669
15119102 #Plattermere Queen W 526

#Bon View Bando 598 [AMF]
Joana Erica of Conanga
#Schurrtop Supreme
Plattermere Queen W 407

BEPD	WEPD	YEPD	Milk	BW	ADJ 365
+2	+56	+100	+22	83	1188

4 Plattermere OB E898-B08

Calved: 01/13/2008

Bull 16372503

Tattoo: E898

#SS Traveler 6807 T510 [AMF-NHF]
#SS Objective T510 OT26 [AMF-NHF]
#13776378 SS Miss Rita R011 7R8 [AMF-NHF]

#DHD Traveler 6807 [AMF-NHF]
#SS Miss Hi Spade A114
SS Rito Rito R76 R011
SS Miss Ultress U56

MARB	SW
+52	+30.21
RE	SF
+08	+48.79
FAT	SB
-006	+54.57

#WCC Special Design L309 [AMF-NHF]
Blackbird of Plattermere 407
15789051 #Blackbird of Plattermere 359

#Bon View New Design 878 [AMF-NHF]
N Bar Primrose 2424
Plattermere 5175 E630-B00
#Blackbird of Plattermere 309

BEPD	WEPD	YEPD	Milk	BW	ADJ 365
+1.4	+63	+114	+25	77	1210



Lot 5

5 Plattermere OB E238-B08

Calved: 01/13/2008

Bull 16372502

Tattoo: E238

#SS Traveler 6807 T510 [AMF-NHF]
#SS Objective T510 OT26 [AMF-NHF]
#13776378 SS Miss Rita R011 7R8 [AMF-NHF]

#DHD Traveler 6807 [AMF-NHF]
#SS Miss Hi Spade A114
SS Rito Rito R76 R011
SS Miss Ultress U56

MARB	SW
+56	+30.88
RE	SF
+22	+44.69
FAT	SB
-003	+53.02

#Bon View New Design 1407 [AMF-NHF]
Plattermere Queen W 800
15785963 Plattermere Queen W 739

#B/R New Design 036 [AMF-NHF]
Bon View Pride 664
#Hyline Right Time 338 [AMF-NHF]
Plattermere Queen W 474

BEPD	WEPD	YEPD	Milk	BW	ADJ 365
+6	+60	+109	+27	76	1195

SNYDER BROS.

6 Plattermere Pre H698-B08

Calved: 01/11/2008

Bull 16537291

Tattoo: H698

#GAR Precision 1680 [AMC-NHC]
+E&B 1680 Precision 1023 [NHC-AMF]
 +13913492 E&b 6807 Lady Traveler 61

#Tehama Bando 155 [AMF-NHF]
 9J9 GAR 856 [NHF]
 #DHD Traveler 6807 [AMF-NHF]
 Lady 963 Dividend 404

MARB	SW
+58	+28.64
RE	SF
+46	+44.45
FAT	SB
+0.19	+66.08

#Bon View New Design 1407 [AMF-NHF]
Martha of Plattermere 380
 15786041 Martha of Plattermere 313

#B/R New Design 036 [AMF-NHF]
 Bon View Pride 664
 #SAF Focus of ER [AMF-NHF]
 #Martha of Plattermere 273

BE PD	WE PD	YE PD	Milk	BW	ADJ 365
+1.3	+58	+108	+24	81	1360

7 Plattermere Pre H678-B08

Calved: 01/10/2008

Bull 16537290

Tattoo: H678

#GAR Precision 1680 [AMC-NHC]
+E&B 1680 Precision 1023 [NHC-AMF]
 +13913492 E&b 6807 Lady Traveler 61

#Tehama Bando 155 [AMF-NHF]
 9J9 GAR 856 [NHF]
 #DHD Traveler 6807 [AMF-NHF]
 Lady 963 Dividend 404

MARB	SW
+92	+28.68
RE	SF
+59	+36.68
FAT	SB
+0.21	+72.45

#B/R Destination 727-928 [AMF-NHF]
Martha of Plattermere 378
 15786039 Martha of Plattermere 350

#B/R Destination 727 [AMF-NHF]
 B/R Blackcap Empress 558 [AMF]
 #Bon View New Design 1407 [AMF-NHF]
 #Martha of Plattermere 311

BE PD	WE PD	YE PD	Milk	BW	ADJ 365
+7	+54	+99	+21	75	1166

8 Plattermere Pre 6458-B08

Calved: 03/08/2008

Bull 16537289

Tattoo: 6458

#GAR Precision 1680 [AMC-NHC]
+E&B 1680 Precision 1023 [NHC-AMF]
 +13913492 E&b 6807 Lady Traveler 61

#Tehama Bando 155 [AMF-NHF]
 9J9 GAR 856 [NHF]
 #DHD Traveler 6807 [AMF-NHF]
 Lady 963 Dividend 404

MARB	SW
+36	+26.86
RE	SF
+54	+35.03
FAT	SB
+0.09	+58.14

#+Boyd New Day 8005 [AMF-NHF]
Plattermere Queenie 765
 15394443 #Plattermere Queenie 618

#AAR New Trend
 SVF Forever Lady 57D
 #GAR 6807 Traveler 4144 [AMF-NHF]
 #Plattermere Queenie 550

BE PD	WE PD	YE PD	Milk	BW	ADJ 365
+1.7	+53	+97	+19	83	



Lot 9

9 Plattermere 338-2 9608-B08

Calved: 04/18/2008

Bull 16535298

Tattoo: 9608

Plattermere 338 C784-B04
Plattermere 338-1 R936-B06
 16068700 ADA of Plattermere 217

#Hyline Right Time 338 [AMF-NHF]
 #Plattermere Queenie 611
 #+SAF 598 Bando 5175 [AMF]
 Ada of Plattermere 168

MARB	SW
+32	+28.28
RE	SF
+14	+32.78
FAT	SB
+0.15	+46.60

#Connealy Lead On [AMF-NHF]
Barbara of Plattermere 321
 15785879 Barbara of Plattermere 307

#Connealy Leadtime [AMF-NHF]
 Eligence Plus of Conanga
 #Hyline Right Time 338 [AMF-NHF]
 Barbara of Plattermere 268

BE PD	WE PD	YE PD	Milk	BW	ADJ 365
+8	+51	+94	+22	80	1003

10 Plattermere 338-2 A708-b08

Calved: 03/02/2008

Bull 16535299

Tattoo: A708

Plattermere 338 T073-B03
Plattermere 338-1 R755-B05
 16107893 Mary Ann of Plattermere 148

#Hyline Right Time 338 [AMF-NHF]
 #Martha of Plattermere 294
 #Connealy Forefront [AMF-NHF]
 #Mary Ann of Plattermere 121

MARB	SW
+27	+20.06
RE	SF
-05	+34.12
FAT	SB
+0.19	+38.59

#JD Daigger 901 [AMF-NHF]
Erica Lady of Plattermere 226
 15785931 Erica Lady of Plattermere 183

#Sitz Alliance 6595 [AMF-NHF]
 JD Queen Eisa 7021
 #TC Stockman 365
 Erica Lady of Plattermere 124

BE PD	WE PD	YE PD	Milk	BW	ADJ 365
+3.1	+45	+93	+21	88	1100

11 9508-B08

Calved: 02/01/2008

Tattoo: 9508

KG Dakota [NHC-AMF]
Martha of Plattermere 367 [NHF]
 15785873 #Martha of Plattermere 307

#CA Future Direction 5321 [AMC-NHC]
 #New Trend 315 KG3
 #B/R New Design 036 [AMF-NHF]
 Martha of Plattermere 256

MARB	SW
+52	+29.72
RE	SF
+42	+31.15
FAT	SB
+0.10	+55.93

#SS Traveler 6807 T510 [AMF-NHF]
#SS Objective T510 0T26 [AMF-NHF]
 #13776378 SS Miss Rita R011 7R8 [AMF-NHF]

#DHD Traveler 6807 [AMF-NHF]
 #SS Miss Hi Spade A114
 SS Rito Rito R76 R011
 SS Miss Ultrass U56

BE PD	WE PD	YE PD	Milk	BW	ADJ 365
+0	+50	+92	+26	72	1130



Lot 12

12 Plattermere BN-1 4808-B08

Calved: 04/10/2008

Bull 16535296

Tattoo: 4808

#Baldridge Nebraska 901 [AMF-NHF]
Plattermere BN 6176-B06
 16095097 Plattermere Queenie 761

#SAF Focus of ER [AMF-NHF]
 Baldridge Flossie 367
 #JD Daigger 901 [AMF-NHF]
 #Plattermere Queenie 598

MARB	SW
+22	+25.52
RE	SF
+09	+29.70
FAT	SB
+0.13	+35.83

Connealy Acclaim
#Plattermere Queen W 704
 #15119199 #Plattermere Queen W 552

#SAF Fame [AMF-NHF]
 Prides Venture of Conanga 62
 Plattermere Database [AMF-NHF]
 Plattermere Queen W 508

BE PD	WE PD	YE PD	Milk	BW	ADJ 365
+1.1	+46	+89	+20	85	1070

13 Plattermere BN-1 6438-B08

Calved: 03/04/2008

Bull 16535297

Tattoo: 6438

#Baldridge Nebraska 901 [AMF-NHF]
Plattermere BN 6176-B06
 16095097 Plattermere Queenie 761

#SAF Focus of ER [AMF-NHF]
 Baldridge Flossie 367
 #JD Daigger 901 [AMF-NHF]
 #Plattermere Queenie 598

MARB	SW
+39	+25.12
RE	SF
+16	+27.50
FAT	SB
-0.09	+40.91

#Connealy Lead On [AMF-NHF]
Plattermere Queenie 764
 15394441 Plattermere Queenie 594

#Connealy Leadtime [AMF-NHF]
 Eligence Plus of Conanga
 #SAF Focus of ER [AMF-NHF]
 Plattermere Queenie 509

BE PD	WE PD	YE PD	Milk	BW	ADJ 365
+1.0	+44	+86	+20	82	1048

SNYDER BROS.

14 Plattermere BP 2968-B08

Calved: 02/08/2008

Bull 16535294

Tattoo: 2968

#Bon View New Design 1407 [AMF-NHF] #B/R New Design 036 [AMF-NHF]
Riverbend Blueprint L24 [AMF-NHF] Bon View Pride 664
 14181726 #+Rocky Mt Lucy 057 #+VDAR Lucys Boy [AMF-NHF]
 +FSHK Lucy 326

MARB	SW
+38	+30.41
RE	SF
+04	+21.51
FAT	SB
+002	+35.04

#SAF Focus of ER [AMF-NHF] #SAF Fame [AMF-NHF]
ADA of Plattermere 239 GDAR Forever Lady 246
 15119897 Ada of Plattermere 180 #Minerts Fortune 2000 [AMF-NHF]
 Ada of Plattermere 173

BE PD	WE PD	YE PD	Milk	BW	ADJ 365
+6	+47	+81	+26	76	991

15 Plattermere BP 4238-B08

Calved: 03/02/2008

Bull 16535295

Tattoo: 4238

#Bon View New Design 1407 [AMF-NHF] #B/R New Design 036 [AMF-NHF]
Riverbend Blueprint L24 [AMF-NHF] Bon View Pride 664
 14181726 #+Rocky Mt Lucy 057 #+VDAR Lucys Boy [AMF-NHF]
 +FSHK Lucy 326

MARB	SW
+24	+25.31
RE	SF
-12	+22.25
FAT	SB
+020	+28.15

Plattermere AL N380-B00 #Sitz Alliance 6595 [AMF-NHF]
Blackbird of Plattermere 380 Plattermere Queenie 500
 15119166 Blackbird of Plattermere 301 #N Bar Emulation EXT [AMF-NHF]
 Blackbird of Plattermere 281

BE PD	WE PD	YE PD	Milk	BW	ADJ 365
+2.9	+45	+81	+27	91	1050



S S Objective T510 OT26 - Sire of Lots 16-31

Ref Sire A S S Objective T510 OT26

Calved: 4/25/2004

Bull 13776378

Tattoo: 0B

#D H D Traveler 6807 #Q A S Traveler 23-4
#S S Traveler 6807 T510 #Bemindful Maid D H D 0807
 #12502030 #S S Miss Hi Spade A114 #Hoff Hi Spade S C 491
 S S Miss Rito OH3 5H9

SW
+40.73
SF
+57.45
SG
+41.87
SB
+62.08

S S Rito Rito R76 R011 S S Rito Rito R76
S S Miss Rita R011 7R8 S S Miss Hoss H83
 12958951 S S Miss Ultress U56 #+O S U 6T6 Ultra
 #S S Miss Rito Rito R76 R96

GED Acc	BW Acc	WW Acc	YW Acc	YH Acc	SC Acc	CEM Acc	Milk Acc	MkH MkD	MW Acc	MH Acc	SEN
+11	+1.1	+71	+125	+5	+11	+8	+29	256	+79	+7	-10.63
.93	.97	.96	.95	.96	.95	.77	.83	833	.77	.77	
Cwt Acc	Mrb Acc	RE Acc	Fat Acc	Carc Grp Prog	Usnd Grp Prog						
+2	+69	+41	-0.28	22	3525						
.69	.73	.71	.68	77	10407						

- Combines Growth, Calving Ease, Carcass Value, and Maternal traits.
- Excels for both beef value and maternal performance
- #1 for \$B among high accuracy bulls with a minimum .95 YW accuracy
- Daughters are deep ribbed and nice uddered with excellent teat size
- This sire group includes some of the most heavily muscled Objective sons to be found anywhere



Lot 16



Lot 17

16 Plattermere Ob K559-B09

Calved: 01/18/2009

Bull 16522797

Tattoo: K559

#SS Traveler 6807 T510 [AMF-NHF] #DHD Traveler 6807 [AMF-NHF]
#SS Objective T510 OT26 [AMF-NHF] #SS Miss Hi Spade A114
 #13776378 SS Miss Rita R011 7R8 [AMF-NHF] SS Rito Rito R76 R011
 SS Miss Ultress U56

MARB	SW
+39	+28.72
RE	SF
+43	+54.06
FAT	SB
-015	+60.28

+Rito 2V1 of 2536 1407 [AMC-NHF] #Bon View New Design 1407 [AMF-NHF]
ADA of Plattermere 268 [AMC] GAR Precision 2536 [AMC-NHF]
 16274864 ADA of Plattermere 238 #Connealy Forefront [AMF-NHF]
 #Ada of Plattermere 172

BE PD	WE PD	YE PD	Milk	BW	ADJ 365
I+2.2	I+66	I+120	I+25	90	1369

17 Plattermere OB K959-B09

Calved: 02/19/2009

Bull 16427333

Tattoo: K959

#SS Traveler 6807 T510 [AMF-NHF] #DHD Traveler 6807 [AMF-NHF]
#SS Objective T510 OT26 [AMF-NHF] #SS Miss Hi Spade A114
 #13776378 SS Miss Rita R011 7R8 [AMF-NHF] SS Rito Rito R76 R011
 SS Miss Ultress U56

MARB	SW
+69	+27.38
RE	SF
+42	+50.05
FAT	SB
-005	+65.39

Riverbend Blueprint L24 [AMF-NHF] #Bon View New Design 1407 [AMF-NHF]
Plattermere Queenie 842 #+Rocky Mt Lucy 057
 15791953 #Plattermere Queenie 727 Plattermere Database [AMF-NHF]
 Plattermere Queenie 551

BE PD	WE PD	YE PD	Milk	BW	ADJ 365
+2.1	+60	I+114	+29	92	1225

SNYDER BROS.



Lot 20

18 Plattermere OB K839-B09

Calved: 01/15/2009

Bull 16427329

Tattoo: K839

#SS Traveler 6807 T510 [AMF-NHF] #DHD Traveler 6807 [AMF-NHF]
 #SS Objective T510 OT26 [AMF-NHF] #SS Miss Hi Spade A114
 #13776378 SS Miss Rita R011 7R8 [AMF-NHF] SS Rito Rito R76 R011
 SS Miss Ultress U56

#TC Freedom 104 [AMF-NHF] #Connealy Forefront [AMF-NHF]
Dolly of Plattermere 375 #TC Ruby 9095
 16274869 Dolly of Plattermere 327 #SAF Focus of ER [AMF-NHF]
 Dolly of Plattermere 270

MARB	SW
+53	+28.32
RE	SF
+26	+50.12
FAT	SB
-.034	+61.71

BEPD	WEPD	YEPD	Milk	BW	ADJ 365
+2.9	+65	I+116	+28	90	1256

20 Plattermere OB J579-B09

Calved: 01/14/2009

Bull 16427321

Tattoo: J579

#SS Traveler 6807 T510 [AMF-NHF] #DHD Traveler 6807 [AMF-NHF]
 #SS Objective T510 OT26 [AMF-NHF] #SS Miss Hi Spade A114
 #13776378 SS Miss Rita R011 7R8 [AMF-NHF] SS Rito Rito R76 R011
 SS Miss Ultress U56

#+SAF Strategy 9015 [AMF-NHF] #SAF Focus of ER [AMF-NHF]
Plattermere Queen W 847 +SAF Royal Queen 5084
 16277523 Plattermere Queen W 761 Ironwood New Level [AMF-NHF]
 Plattermere Queen W 669

MARB	SW
+40	+31.25
RE	SF
+20	+49.87
FAT	SB
-.014	+55.04

BEPD	WEPD	YEPD	Milk	BW	ADJ 365
+0	+63	I+115	+25	78	1215



Lot 19

19 Plattermere OB K899-B09

Calved: 01/20/2009

Bull 16427331

Tattoo: K899

#SS Traveler 6807 T510 [AMF-NHF] #DHD Traveler 6807 [AMF-NHF]
 #SS Objective T510 OT26 [AMF-NHF] #SS Miss Hi Spade A114
 #13776378 SS Miss Rita R011 7R8 [AMF-NHF] SS Rito Rito R76 R011
 SS Miss Ultress U56

#Bon View New Design 1407 [AMF-NHF] #B/R New Design 036 [AMF-NHF]
Plattermere Queenie 868 Bon View Pride 664
 16272833 Plattermere Queenie 788 #Nichols Extra H6 [AMF-NHF]
 Plattermere Queenie 669

MARB	SW
+54	+29.51
RE	SF
+21	+48.79
FAT	SB
-.014	+56.66

BEPD	WEPD	YEPD	Milk	BW	ADJ 365
+2.1	+63	I+114	+30	84	1222

21 Plattermere OB K099-B09

Calved: 01/24/2009

Bull 16427325

Tattoo: K099

#SS Traveler 6807 T510 [AMF-NHF] #DHD Traveler 6807 [AMF-NHF]
 #SS Objective T510 OT26 [AMF-NHF] #SS Miss Hi Spade A114
 #13776378 SS Miss Rita R011 7R8 [AMF-NHF] SS Rito Rito R76 R011
 SS Miss Ultress U56

#SAV 8180 Traveler 004 [AMF-NHF-RDF] #Sitz Traveler 8180 [AMF-NHF]
Martha of Plattermere 388 +Boyd Forever Lady 8003
 16272809 Martha of Plattermere 357 #+Boyd New Day 8005 [AMF-NHF]
 Martha of Plattermere 308

MARB	SW
+32	+29.41
RE	SF
+28	+52.05
FAT	SB
+.013	+52.64

BEPD	WEPD	YEPD	Milk	BW	ADJ 365
+1.5	+63	I+117	+27	79	1274

22 Plattermere OB J879-B09

Calved: 01/23/2009

Bull 16427323

Tattoo: J879

#SS Traveler 6807 T510 [AMF-NHF] #DHD Traveler 6807 [AMF-NHF]
 #SS Objective T510 OT26 [AMF-NHF] #SS Miss Hi Spade A114
 #13776378 SS Miss Rita R011 7R8 [AMF-NHF] SS Rito Rito R76 R011
 SS Miss Ultress U56

Mytty In Focus [AMF-NHF-RDF] #SAF Focus of ER [AMF-NHF]
Plattermere Queenie 861 Mytty Countess 906
 16272799 Plattermere Queenie 805 #Bon View New Design 1407 [AMF-NHF]
 #Plattermere Queenie 667

MARB	SW
+61	+32.40
RE	SF
+31	+47.30
FAT	SB
-.005	+56.39

BEPD	WEPD	YEPD	Milk	BW	ADJ 365
+5	+64	I+113	+27	78	1227

SNYDER BROS.



Lot 23

23 Plattermere OB J869-B09

Calved: 01/20/2009 Bull 16427322 Tattoo: J869

#SS Traveler 6807 T510 [AMF-NHF]	#DHD Traveler 6807 [AMF-NHF]		
#SS Objective T510 OT26 [AMF-NHF]	#SS Miss Hi Spade A114		
#13776378 SS Miss Rita R011 7R8 [AMF-NHF]	SS Rito Rito R76 R011		
	SS Miss Ultress U56		
		MARB	SW
		+0.66	+30.74
		RE	SF
		+0.24	+44.76
		FAT	SB
		-0.008	+59.01
#+SAF Strategy 9015 [AMF-NHF]	#SAF Focus of ER [AMF-NHF]		
Martha of Plattermere 387	+SAF Royal Queen 5084		
16277525 Martha of Plattermere 365	#Perry Power Design 715 [AMF-NHF]		
	Martha of Plattermere 351		
		BEPD	WEPD
		+2.3	+65
		YEPD	I+111
		Milk	+25
		BW	86
		ADJ 365	1185

24 Plattermere OB J569-B09

Calved: 01/16/2009 Bull 16425848 Tattoo: J569

#SS Traveler 6807 T510 [AMF-NHF]	#DHD Traveler 6807 [AMF-NHF]		
#SS Objective T510 OT26 [AMF-NHF]	#SS Miss Hi Spade A114		
#13776378 SS Miss Rita R011 7R8 [AMF-NHF]	SS Rito Rito R76 R011		
	SS Miss Ultress U56		
		MARB	SW
		+0.47	+27.11
		RE	SF
		+0.40	+44.86
		FAT	SB
		+0.007	+53.79
Mytty In Focus [AMF-NHF-RDF]	#SAF Focus of ER [AMF-NHF]		
ADA of Plattermere 265	Mytty Countess 906		
16272780 ADA of Plattermere 241	#Milcreek Diversity [AMF-NHF]		
	ADA of Plattermere 194		
		BEPD	WEPD
		+1.8	+57
		YEPD	I+108
		Milk	+24
		BW	79
		ADJ 365	1170



Lot 25

25 Plattermere OB K659-B09

Calved: 01/21/2009 Bull 16427328 Tattoo: K659

#SS Traveler 6807 T510 [AMF-NHF]	#DHD Traveler 6807 [AMF-NHF]		
#SS Objective T510 OT26 [AMF-NHF]	#SS Miss Hi Spade A114		
#13776378 SS Miss Rita R011 7R8 [AMF-NHF]	SS Rito Rito R76 R011		
	SS Miss Ultress U56		
		MARB	SW
		+0.38	+26.62
		RE	SF
		+0.16	+42.51
		FAT	SB
		+0.009	+46.48
Riverbend Blueprint L24 [AMF-NHF]	#Bon View New Design 1407 [AMF-NHF]		
Plattermere Queenie 841	#+Rocky Mt Lucy 057		
15791952 Plattermere Queenie 661	#Connealy Freightliner [AMF-NHF]		
	Plattermere Queenie 490		
		BEPD	WEPD
		+2.0	+55
		YEPD	I+105
		Milk	+26
		BW	84
		ADJ 365	1167

26 Plattermere OB K849-B09

Calved: 01/20/2009 Bull 16427330 Tattoo: K849

#SS Traveler 6807 T510 [AMF-NHF]	#DHD Traveler 6807 [AMF-NHF]		
#SS Objective T510 OT26 [AMF-NHF]	#SS Miss Hi Spade A114		
#13776378 SS Miss Rita R011 7R8 [AMF-NHF]	SS Rito Rito R76 R011		
	SS Miss Ultress U56		
		MARB	SW
		+0.44	+25.25
		RE	SF
		+0.27	+41.87
		FAT	SB
		-0.031	+50.98
#Connealy Lead On [AMF-NHF]	#Connealy Leadtime [AMF-NHF]		
Plattermere Queen W 868	Eligence Plus of Conanga		
16272831 Plattermere Queen W 569	#Connealy Forefront [AMF-NHF]		
	#Plattermere Queen W 238		
		BEPD	WEPD
		+2.4	+54
		YEPD	I+104
		Milk	+25
		BW	84
		ADJ 365	1165

27 Plattermere OB J959-B09

Calved: 01/21/2009 Bull 16427324 Tattoo: J959

#SS Traveler 6807 T510 [AMF-NHF]	#DHD Traveler 6807 [AMF-NHF]		
#SS Objective T510 OT26 [AMF-NHF]	#SS Miss Hi Spade A114		
#13776378 SS Miss Rita R011 7R8 [AMF-NHF]	SS Rito Rito R76 R011		
	SS Miss Ultress U56		
		MARB	SW
		+0.37	+31.82
		RE	SF
		+0.24	+44.11
		FAT	SB
		+0.017	+47.28
#SAV 8180 Traveler 004 [AMF-NHF-RDF]	#Sitz Traveler 8180 [AMF-NHF]		
Plattermere Daisy 345	+Boyd Forever Lady 8003		
16272803 Plattermere Daisy 299	#TC Freedom 104 [AMF-NHF]		
	#Plattermere Daisy 207		
		BEPD	WEPD
		+1.6	+64
		YEPD	I+110
		Milk	+25
		BW	79
		ADJ 365	1145

28 Plattermere OB K949-B09

Calved: 02/11/2009 Bull 16427332 Tattoo: K949

#SS Traveler 6807 T510 [AMF-NHF]	#DHD Traveler 6807 [AMF-NHF]		
#SS Objective T510 OT26 [AMF-NHF]	#SS Miss Hi Spade A114		
#13776378 SS Miss Rita R011 7R8 [AMF-NHF]	SS Rito Rito R76 R011		
	SS Miss Ultress U56		
		MARB	SW
		+0.46	+26.92
		RE	SF
		+0.34	+45.17
		FAT	SB
		-0.016	+55.01
#+SAF Strategy 9015 [AMF-NHF]	#SAF Focus of ER [AMF-NHF]		
Plattermere Daisy 353	+SAF Royal Queen 5084		
16277528 Plattermere Daisy 250	#Connealy Freightliner [AMF-NHF]		
	#Plattermere Daisy 214		
		BEPD	WEPD
		+3.6	+64
		YEPD	I+111
		Milk	+23
		BW	94
		ADJ 365	1142

29 Plattermere OB L559-B09

Calved: 01/24/2009 Bull 16427334 Tattoo: L559

#SS Traveler 6807 T510 [AMF-NHF]	#DHD Traveler 6807 [AMF-NHF]		
#SS Objective T510 OT26 [AMF-NHF]	#SS Miss Hi Spade A114		
#13776378 SS Miss Rita R011 7R8 [AMF-NHF]	SS Rito Rito R76 R011		
	SS Miss Ultress U56		
		MARB	SW
		+0.42	+23.51
		RE	SF
		+0.31	+45.28
		FAT	SB
		+0.001	+52.43
#SAV 8180 Traveler 004 [AMF-NHF-RDF]	#Sitz Traveler 8180 [AMF-NHF]		
Plattermere Queenie 873	+Boyd Forever Lady 8003		
16272854 Plattermere Queenie 742	#Connealy Forefront [AMF-NHF]		
	Plattermere Queenie 635		
		BEPD	WEPD
		+3.0	+56
		YEPD	I+108
		Milk	+22
		BW	87
		ADJ 365	1109

30 Plattermere OB K149-B09

Calved: 02/26/2009 Bull 16427326 Tattoo: K149

#SS Traveler 6807 T510 [AMF-NHF]	#DHD Traveler 6807 [AMF-NHF]		
#SS Objective T510 OT26 [AMF-NHF]	#SS Miss Hi Spade A114		
#13776378 SS Miss Rita R011 7R8 [AMF-NHF]	SS Rito Rito R76 R011		
	SS Miss Ultress U56		
		MARB	SW
		+0.52	+28.03
		RE	SF
		+0.15	+44.69
		FAT	SB
		-0.015	+52.23
Mytty In Focus [AMF-NHF-RDF]	#SAF Focus of ER [AMF-NHF]		
Plattermere Queen W 859	Mytty Countess 906		
16272812 Plattermere Queen W 784	#+WCC Special Design L309 [AMF-NHF]		
	Plattermere Queen W 417		
		BEPD	WEPD
		+2.2	+60
		YEPD	I+109
		Milk	+24
		BW	87
		ADJ 365	1153

SNYDER BROS.

31 Plattermere OB K409-B09

Calved: 01/27/2009

Bull 16427327

Tattoo: K409

#SS Traveler 6807 T510 [AMF-NHF] #DHD Traveler 6807 [AMF-NHF]
 #SS Objective T510 OT26 [AMF-NHF] #SS Miss Hi Spade A114
 #13776378 SS Miss Rita R011 7R8 [AMF-NHF] SS Rito Rito R76 R011
 SS Miss Ultress U56

#GAR Retail Product [AMF-NHF] #GAR Precision 1680 [AMC-NHC]
Blackbird of Plattermere 450 +GAR Ext 4927
 16274858 Blackbird of Plattermere 382 Plattermere Database [AMF-NHF]
 Blackbird of Plattermere 364

MARB	SW
+60	+27.32
RE	SF
+34	+35.43
FAT	SB
-.002	+51.29

BEPD	WEPD	YEPD	Milk	BW	ADJ 365
+1.7	+52	I+97	+24	81	1054



Lot 32

33 Plattermere T 9699-B09

Calved: 02/11/2009

Bull 16522795

Tattoo: 9699

#Bon View New Design 208 [AMF-NHF] #B/R New Design 036 [AMF-NHF]
TC Total 410 [AMF-NHF] #Bon View Erica 443
 14844711 +TC Erica Eileen 2047 [NHC-AMF] #Twin Valley Precision E161 [NHC-AMF-RDF]
 #+TC Erica Eileen 5116

#Hyline Right Time 338 [AMF-NHF] #+Leachman Right Time
Plattermere Reva 162 Hyline Pride 265
 15791925 Plattermere Reva 134 Plattermere 3T A086 B96
 Plattermere Reva 102

MARB	SW
+36	+28.60
RE	SF
+27	+35.03
FAT	SB
+0.08	+50.89

BEPD	WEPD	YEPD	Milk	BW	ADJ 365
I+1.5	I+53	I+97	I+25	83	1117



Lot 34

32 Plattermere T 4599-B09

Calved: 02/03/2009

Bull 16427211

Tattoo: 4599

#Bon View New Design 208 [AMF-NHF] #B/R New Design 036 [AMF-NHF]
TC Total 410 [AMF-NHF] #Bon View Erica 443
 14844711 +TC Erica Eileen 2047 [NHC-AMF] #Twin Valley Precision E161 [NHC-AMF-RDF]
 #+TC Erica Eileen 5116

Plattermere FC 1271-B01 #SAF Focus of ER [AMF-NHF]
Plattermere Queen W 665 Erica Lady of Plattermere 137
 15119188 Plattermere Queen W 386 #Minerts Fortune 2000 [AMF-NHF]
 Plattermere Queen W 331

MARB	SW
+40	+27.50
RE	SF
+22	+38.98
FAT	SB
+0.01	+52.91

BEPD	WEPD	YEPD	Milk	BW	ADJ 365
+2.2	+56	I+102	+24	99	1148

34 Plattermere T 3309-B09

Calved: 02/13/2009

Bull 16427204

Tattoo: 3309

#Bon View New Design 208 [AMF-NHF] #B/R New Design 036 [AMF-NHF]
TC Total 410 [AMF-NHF] #Bon View Erica 443
 14844711 +TC Erica Eileen 2047 [NHC-AMF] #Twin Valley Precision E161 [NHC-AMF-RDF]
 #+TC Erica Eileen 5116

#Connealy Freightliner [AMF-NHF] #Bon View Bando 598 [AMF]
Barbara of Plattermere 303 [AMF] Joana Erica of Conanga
 15119141 Barbara of Plattermere 264 #Sitz Alliance 6595 [AMF-NHF]
 Barbara of Plattermere 249

MARB	SW
+32	+28.83
RE	SF
+39	+44.93
FAT	SB
+0.24	+53.04

BEPD	WEPD	YEPD	Milk	BW	ADJ 365
+2.4	+62	I+110	+25	97	1193



TC Total 410 - Sire of Lots 32-55

Ref Sire B TC Total 410

Calved: 1/16/2004

Bull 14844711AMF

Tattoo: 410

#B/R New Design 036 #V D A R New Trend 315
Bon View New Design 208 B/R Blackcap Empress 76
 #13044574AMF #Bon View Erica 443 #N Bar Emulation EXT
 #Bon View Erica 1380

#Twin Valley Precision E161 #G A R Precision 1680
TC Erica Eileen 2047 + W C C Blackcap C9
 +14270867 #+TC Erica Eileen 5116 T C Erica Eileen 6006

SW
+33.27
SF
+61.93
SG
+36.34
SB
+74.81

CED Acc	BW Acc	WW Acc	YW Acc	YH Acc	SC Acc	CEM Acc	Milk Acc	MKR MKD	MW Acc	MH Acc	SEN
+2	+3.6	+71	+129	+6	+44	+8	+30	109	+33	+5	-14.35
.83	.96	.94	.91	.92	.91	.60	.68	220	.46	.44	
Cwt Acc	Mrb Acc	RE Acc	Fat Acc	Carc Grp Pct	Usnd Grp Pct						
+27	+64	+57	-.003	8	1455						
.50	.57	.59	.51	22	3693						

- Marbling in the top 10% and Rib eye in the top 3% The number 4 bull in the breed for \$Beef
- He excels in weaning and yearling weight
- Daughters are Extra Feminine with supper udders

SNYDER BROS.



Lot 38

35 Plattermere T J479-B09

Calved: 01/31/2009 Bull 16427222 Tattoo: J479

#Bon View New Design 208 [AMF-NHF]	#B/R New Design 036 [AMF-NHF]		
14844711 +TC Erica Eileen 2047 [NHC-AMF]	#Bon View Erica 443		
	#Twin Valley Precision E161 [NHC-AMF-RDF]		
	#+TC Erica Eileen 5116		
	#SAF Focus of ER [AMF-NHF]		
	+SAF Royal Queen 5084		
	#Schurrtop Supreme		
	Dolly of Plattermere 200		

MARB	SW
+0.69	+26.71
RE	SF
+0.35	+42.99
FAT	SB
+0.006	+64.63

BEPD	WEPD	YEPD	Milk	BW	ADJ 365
+2.5	+59	I+107	+21	89	1162

38 Plattermere T 4579-B09

Calved: 02/13/2009 Bull 16427210 Tattoo: 4579

#Bon View New Design 208 [AMF-NHF]	#B/R New Design 036 [AMF-NHF]		
14844711 +TC Erica Eileen 2047 [NHC-AMF]	#Bon View Erica 443		
	#Twin Valley Precision E161 [NHC-AMF-RDF]		
	#+TC Erica Eileen 5116		
	#E&b 1483 Scotchman 543		
	#Ada of Plattermere 189		
	#GDAR Traveler 044 [AMF-NHF]		
	#Plattermere Queen W 168		

MARB	SW
+0.27	+24.60
RE	SF
+0.42	+37.31
FAT	SB
+0.007	+49.19

BEPD	WEPD	YEPD	Milk	BW	ADJ 365
+3.7	+55	I+100	+26	98	1194

36 Plattermere T A699-B09

Calved: 02/08/2009 Bull 16427221 Tattoo: A699

#Bon View New Design 208 [AMF-NHF]	#B/R New Design 036 [AMF-NHF]		
14844711 +TC Erica Eileen 2047 [NHC-AMF]	#Bon View Erica 443		
	#Twin Valley Precision E161 [NHC-AMF-RDF]		
	#+TC Erica Eileen 5116		
	Plattermere Database [AMF-NHF]		
	#Plattermere Queen W 557		
	#Dalebanks Extender 6012 [AMF-NHF]		
	Plattermere Queen W 404		

MARB	SW
+0.30	+26.99
RE	SF
+0.30	+42.17
FAT	SB
-0.012	+52.96

BEPD	WEPD	YEPD	Milk	BW	ADJ 365
+3.4	+61	I+107	+25	100	1174

39 Plattermere T 6789-B09

Calved: 02/19/2009 Bull 16427215 Tattoo: 6789

#Bon View New Design 208 [AMF-NHF]	#B/R New Design 036 [AMF-NHF]		
14844711 +TC Erica Eileen 2047 [NHC-AMF]	#Bon View Erica 443		
	#Twin Valley Precision E161 [NHC-AMF-RDF]		
	#+TC Erica Eileen 5116		
	#HARB High Plains 975 JH [AMF-NHF]		
	#Sitz Alliance 6595 [AMF-NHF]		
	Juanada Erica 9024 HARB		
	+RA Current Trend		
	Plattermere Queen W 230		

MARB	SW
+0.42	+26.77
RE	SF
+0.35	+34.41
FAT	SB
-0.005	+53.69

BEPD	WEPD	YEPD	Milk	BW	ADJ 365
+2.6	+52	I+96	+32	100	1094

37 Plattermere T 8309-B09

Calved: 02/15/2009 Bull 16427217 Tattoo: 8309

#Bon View New Design 208 [AMF-NHF]	#B/R New Design 036 [AMF-NHF]		
14844711 +TC Erica Eileen 2047 [NHC-AMF]	#Bon View Erica 443		
	#Twin Valley Precision E161 [NHC-AMF-RDF]		
	#+TC Erica Eileen 5116		
	Plattermere FL H642-B02		
	#Connealy Freightliner [AMF-NHF]		
	Plattermere Queenie 431		
	#Connealy Dateline		
	Plattermere Daisy 133		

MARB	SW
+0.41	+27.32
RE	SF
+0.15	+41.29
FAT	SB
+0.004	+53.95

BEPD	WEPD	YEPD	Milk	BW	ADJ 365
+2.4	+58	I+105	+23	100	1148

40 Plattermere T 6749-B09

Calved: 02/08/2009 Bull 16427214 Tattoo: 6749

#Bon View New Design 208 [AMF-NHF]	#B/R New Design 036 [AMF-NHF]		
14844711 +TC Erica Eileen 2047 [NHC-AMF]	#Bon View Erica 443		
	#Twin Valley Precision E161 [NHC-AMF-RDF]		
	#+TC Erica Eileen 5116		
	#BCC Bushwacker 41-93 [AMF-NHF]		
	#Paramont Ambush 2172 [AMF-NHF]		
	RC Anita T Bando 918903		
	#Connealy Dateline		
	Plattermere Queen W 415		

MARB	SW
+0.33	+31.25
RE	SF
+0.33	+40.48
FAT	SB
-0.004	+53.51

BEPD	WEPD	YEPD	Milk	BW	ADJ 365
+1.2	+60	I+105	+25	82	1191

SNYDER BROS.



Lot 41

41 Plattermere T 3719-B09

Calved: 02/14/2009 Bull 16427206 Tattoo: 3719

#Bon View New Design 208 [AMF-NHF] #B/R New Design 036 [AMF-NHF]
 #Bon View Erica 443
 #Twin Valley Precision E161 [NHC-AMF-RDF]
 #+TC Erica Eileen 5116

TC Total 410 [AMF-NHF]
 14844711 +TC Erica Eileen 2047 [NHC-AMF]

#Sitz Alliance 6595 [AMF-NHF] #Sitz Traveler 8180 [AMF-NHF]
 #Sitz Barbaramere Jet 2698
 Plattermere KR E188 B98
 Plattermere Queenie 457

MARB	SW
+34	+27.38
RE	SF
+24	+42.11
FAT	SB
+022	+48.95

BEFD	WEPD	YEPD	Milk	BW	ADJ 365
+1.8	+56	I+105	+24	91	1172

42 Plattermere T 6229-B09

Calved: 02/03/2009 Bull 16522793 Tattoo: 6229

#Bon View New Design 208 [AMF-NHF] #B/R New Design 036 [AMF-NHF]
 #Bon View Erica 443
 #Twin Valley Precision E161 [NHC-AMF-RDF]
 #+TC Erica Eileen 5116

TC Total 410 [AMF-NHF]
 14844711 +TC Erica Eileen 2047 [NHC-AMF]

#TC Freedom 104 [AMF-NHF] #Connealy Forefront [AMF-NHF]
 #TC Ruby 9095
 #Sitz Alliance 6595 [AMF-NHF]
 Plattermere Queen W 372

MARB	SW
+19	+28.53
RE	SF
+30	+39.85
FAT	SB
+016	+46.29

BEFD	WEPD	YEPD	Milk	BW	ADJ 365
I+2.3	I+59	I+104	I+23	92	1173

43 Plattermere T 4539-B09

Calved: 03/04/2009 Bull 16427209 Tattoo: 4539

#Bon View New Design 208 [AMF-NHF] #B/R New Design 036 [AMF-NHF]
 #Bon View Erica 443
 #Twin Valley Precision E161 [NHC-AMF-RDF]
 #+TC Erica Eileen 5116

TC Total 410 [AMF-NHF]
 14844711 +TC Erica Eileen 2047 [NHC-AMF]

Plattermere AL N380-B00 #Sitz Alliance 6595 [AMF-NHF]
 Plattermere Queen W 701 Plattermere Queenie 500
 15119183 Plattermere Queen W 376 #+Woodhill Triple Threat [AMF]
 Plattermere Queen W 173

MARB	SW
+33	+29.18
RE	SF
+34	+36.68
FAT	SB
+020	+49.53

BEFD	WEPD	YEPD	Milk	BW	ADJ 365
+1.2	+54	I+99	+26	91	1146

44 Plattermere T 4729-B09

Calved: 02/11/2009 Bull 16427212 Tattoo: 4729

#Bon View New Design 208 [AMF-NHF] #B/R New Design 036 [AMF-NHF]
 #Bon View Erica 443
 #Twin Valley Precision E161 [NHC-AMF-RDF]
 #+TC Erica Eileen 5116

TC Total 410 [AMF-NHF]
 14844711 +TC Erica Eileen 2047 [NHC-AMF]

Plattermere FC J901-B01 #SAF Focus of ER [AMF-NHF]
 Plattermere Queenie 749 Plattermere Queenie 433
 15393757 Plattermere Queenie 500 Plattermere Ta 8556 B96
 Plattermere Queenie 447

MARB	SW
+41	+25.56
RE	SF
+29	+36.91
FAT	SB
-019	+56.19

BEFD	WEPD	YEPD	Milk	BW	ADJ 365
+3.5	+56	I+100	+25	99	1125

45 Plattermere T 4959-B09

Calved: 02/18/2009 Bull 16427213 Tattoo: 4959

#Bon View New Design 208 [AMF-NHF] #B/R New Design 036 [AMF-NHF]
 #Bon View Erica 443
 #Twin Valley Precision E161 [NHC-AMF-RDF]
 #+TC Erica Eileen 5116

TC Total 410 [AMF-NHF]
 14844711 +TC Erica Eileen 2047 [NHC-AMF]

Plattermere Database [AMF-NHF] #Connealy Dateline
 Plattermere Queen W 746 #Plattermere Reva 109
 15534957 Plattermere Queen W 745 #SAF Focus of ER [AMF-NHF]
 Plattermere Queen W 471

MARB	SW
+38	+25.97
RE	SF
+45	+34.97
FAT	SB
+003	+53.95

BEFD	WEPD	YEPD	Milk	BW	ADJ 365
+1.1	+48	I+95	+24	91	1062



Lot 45

SNYDER BROS.

46 Plattermere T 9929-B09

Calved: 02/13/2009 Bull 16427219 Tattoo: 9929

#Bon View New Design 208 [AMF-NHF] #B/R New Design 036 [AMF-NHF]
 TC Total 410 [AMF-NHF] #Bon View Erica 443
 14844711 +TC Erica Eileen 2047 [NHC-AMF] #Twin Valley Precision E161 [NHC-AMF-RDF]
 #+TC Erica Eileen 5116

#JD Daigger 901 [AMF-NHF] #Sitz Alliance 6595 [AMF-NHF]
 Plattermere Queenie 795 JD Queen Eisa 7021
 15785895 Plattermere Queenie 570 #SAF Fame [AMF-NHF]
 Plattermere Queenie 489

MARB	SW
+56	+25.72
RE	SF
+10	+44.45
FAT	SB
+013	+54.81

BE PD	WE PD	YE PD	Milk	BW	ADJ 365
+2.8	+58	I+108	+24	95	1178

49 Plattermere T A309-B09

Calved: 02/26/2009 Bull 16427220 Tattoo: A309

#Bon View New Design 208 [AMF-NHF] #B/R New Design 036 [AMF-NHF]
 TC Total 410 [AMF-NHF] #Bon View Erica 443
 14844711 +TC Erica Eileen 2047 [NHC-AMF] #Twin Valley Precision E161 [NHC-AMF-RDF]
 #+TC Erica Eileen 5116

#Hyline Right Time 338 [AMF-NHF] #+Leachman Right Time
 Plattermere Queen W 781 Hyline Pride 265
 15791933 Plattermere Queen W 554 Plattermere 3T E176 B96
 Plattermere Queen W 205

MARB	SW
+46	+28.92
RE	SF
+43	+37.54
FAT	SB
+014	+57.36

BE PD	WE PD	YE PD	Milk	BW	ADJ 365
+2.0	+57	I+101	+24	89	1123

47 Plattermere T 4239-B09

Calved: 02/11/2009 Bull 16427207 Tattoo: 4239

#Bon View New Design 208 [AMF-NHF] #B/R New Design 036 [AMF-NHF]
 TC Total 410 [AMF-NHF] #Bon View Erica 443
 14844711 +TC Erica Eileen 2047 [NHC-AMF] #Twin Valley Precision E161 [NHC-AMF-RDF]
 #+TC Erica Eileen 5116

Plattermere AL N380-B00 #Sitz Alliance 6595 [AMF-NHF]
 Blackbird of Plattermere 380 Plattermere Queenie 500
 15119166 Blackbird of Plattermere 301 #N Bar Emulation EXT [AMF-NHF]
 Blackbird of Plattermere 281

MARB	SW
+33	+30.63
RE	SF
+10	+32.45
FAT	SB
+002	+45.79

BE PD	WE PD	YE PD	Milk	BW	ADJ 365
+2.1	+57	I+96	+26	90	1149

50 Plattermere T 6639-B09

Calved: 02/15/2009 Bull 16522794 Tattoo: 6639

#Bon View New Design 208 [AMF-NHF] #B/R New Design 036 [AMF-NHF]
 TC Total 410 [AMF-NHF] #Bon View Erica 443
 14844711 +TC Erica Eileen 2047 [NHC-AMF] #Twin Valley Precision E161 [NHC-AMF-RDF]
 #+TC Erica Eileen 5116

#Connealy Lead On [AMF-NHF] #Connealy Leadtime [AMF-NHF]
 Mary Ann of Plattermere 155 Eligence Plus of Conanga
 15394447 Mary Ann of Plattermere 145 #Connealy Dateline
 #Mary Ann of Plattermere 121

MARB	SW
+53	+23.08
RE	SF
+48	+45.04
FAT	SB
-013	+63.88

BE PD	WE PD	YE PD	Milk	BW	ADJ 365
I+2.8	I+54	I+107	I+23	97	1272



Lot 48

48 Plattermere T R989-B09

Calved: 02/13/2009 Bull 16427223 Tattoo: R989

#Bon View New Design 208 [AMF-NHF] #B/R New Design 036 [AMF-NHF]
 TC Total 410 [AMF-NHF] #Bon View Erica 443
 14844711 +TC Erica Eileen 2047 [NHC-AMF] #Twin Valley Precision E161 [NHC-AMF-RDF]
 #+TC Erica Eileen 5116

#Dalebanks Extender 6012 #N Bar Emulation EXT [AMF-NHF]
 Plattermere Queen W 595 Princess 4007 of Dalebanks
 14700290 Plattermere Queen W 470 #E&b 1483 Scotchman 543
 Plattermere Queen W 394

MARB	SW
+39	+27.69
RE	SF
+07	+36.28
FAT	SB
-003	+48.36

BE PD	WE PD	YE PD	Milk	BW	ADJ 365
+2.4	+55	I+99	+26	89	1126

51 Plattermere T 9359-B09

Calved: 02/03/2009 Bull 16427218 Tattoo: 9359

#Bon View New Design 208 [AMF-NHF] #B/R New Design 036 [AMF-NHF]
 TC Total 410 [AMF-NHF] #Bon View Erica 443
 14844711 +TC Erica Eileen 2047 [NHC-AMF] #Twin Valley Precision E161 [NHC-AMF-RDF]
 #+TC Erica Eileen 5116

#TC Freedom 104 [AMF-NHF] #Connealy Forefront [AMF-NHF]
 Plattermere Queen W 765 #TC Ruby 9095
 15786275 Plattermere Queen W 469 Plattermere Ext J278 B98
 Plattermere Queen W 369

MARB	SW
+21	+25.81
RE	SF
+26	+36.68
FAT	SB
+010	+44.98

BE PD	WE PD	YE PD	Milk	BW	ADJ 365
+2.8	+54	I+99	+24	89	1123



SNYDER BROS.

Thanks
For Coming!

SNYDER BROS.



Lot 52

52 Plattermere T 6999-B09

Calved: 02/07/2009 Bull 16427216 Tattoo: 6999

#Bon View New Design 208 [AMF-NHF] #B/R New Design 036 [AMF-NHF]
 #Bon View Erica 443
 14844711 +TC Erica Eileen 2047 [NHC-AMF] #Twin Valley Precision E161 [NHC-AMF-RDF]
 #+TC Erica Eileen 5116

#Hyline Right Time 338 [AMF-NHF] #+Leachman Right Time
 Hyline Pride 265
Blackbird of Plattermere 387
 15395273 Blackbird of Plattermere 341 Plattermere 3T E176 B96
 Blackbird of Plattermere 281

MARB	SW
+34	+27.21
RE	SF
+38	+37.31
FAT	SB
+002	+53.89

BE PD	WE PD	YE PD	Milk	BW	ADJ 365
+2.4	+55	I+100	+25	88	1116

55 Plattermere T 3629-B09

Calved: 03/03/2009 Bull 16427205 Tattoo: 3629

#Bon View New Design 208 [AMF-NHF] #B/R New Design 036 [AMF-NHF]
 #Bon View Erica 443
 14844711 +TC Erica Eileen 2047 [NHC-AMF] #Twin Valley Precision E161 [NHC-AMF-RDF]
 #+TC Erica Eileen 5116

#SAF Focus of ER [AMF-NHF] #SAF Fame [AMF-NHF]
 #SAF Fame [AMF-NHF] GDAR Forever Lady 246
Plattermere Queen W 688
 15119910 #Plattermere Queen W 298 #Minerts Fortune 2000 [AMF-NHF]
 #Plattermere Queen W 208

MARB	SW
+41	+23.47
RE	SF
+24	+33.39
FAT	SB
-008	+48.55

BE PD	WE PD	YE PD	Milk	BW	ADJ 365
+3.9	+52	I+95	+25	96	1029

53 Plattermere T 4479-B09

Calved: 02/22/2009 Bull 16427208 Tattoo: 4479

#Bon View New Design 208 [AMF-NHF] #B/R New Design 036 [AMF-NHF]
 #Bon View Erica 443
 14844711 +TC Erica Eileen 2047 [NHC-AMF] #Twin Valley Precision E161 [NHC-AMF-RDF]
 #+TC Erica Eileen 5116

Plattermere EB T061-B01
Plattermere Rosa 332
 15119180 Plattermere Rose 237
 #E&b 1483 Scotchman 543
 #Ada of Plattermere 189
 #TC Dividend 963 [AMF-NHF-RDF]
 Plattermere Rosa 206

MARB	SW
+41	+27.90
RE	SF
+30	+36.68
FAT	SB
+015	+52.39

BE PD	WE PD	YE PD	Milk	BW	ADJ 365
+2.1	+54	I+99	+28	94	1087



Lot 56

54 Plattermere T 2969-B09

Calved: 02/11/2009 Bull 16427203 Tattoo: 2969

#Bon View New Design 208 [AMF-NHF] #B/R New Design 036 [AMF-NHF]
 #Bon View Erica 443
 14844711 +TC Erica Eileen 2047 [NHC-AMF] #Twin Valley Precision E161 [NHC-AMF-RDF]
 #+TC Erica Eileen 5116

#SAF Focus of ER [AMF-NHF]
ADA of Plattermere 239
 15119897 Ada of Plattermere 180
 #SAF Fame [AMF-NHF] GDAR Forever Lady 246
 #Minerts Fortune 2000 [AMF-NHF]
 Ada of Plattermere 173

MARB	SW
+47	+25.74
RE	SF
+30	+32.32
FAT	SB
-003	+51.75

BE PD	WE PD	YE PD	Milk	BW	ADJ 365
+1.6	+47	I+92	+25	90	1061

56 Plattermere PRD H089-B09

Calved: 02/11/2009 Bull 16538323 Tattoo: H089

#B/R New Design 036 [AMF-NHF] #VDAR New Trend 315 [AMF-NHF]
 B/R Blackcap Empress 76
#GAR Predestined [AMF-NHF]
 #13395344 #+GAR Ext 4206 #N Bar Emulation EXT [AMF-NHF]
 +GAR 6807 Traveler 1432

#SS Objective T510 OT26 [AMF-NHF] #SS Traveler 6807 T510 [AMF-NHF]
 #SS Miss Rita R011 7R8 [AMF-NHF]
Plattermere Queenie 821
 15786011 Plattermere Queenie 594 #SAF Focus of ER [AMF-NHF]
 Plattermere Queenie 509

MARB	SW
+98	+26.26
RE	SF
+52	+40.42
FAT	SB
+009	+69.58

BE PD	WE PD	YE PD	Milk	BW	ADJ 365
+2.4	+55	I+103	+25	87	1242

SNYDER BROS.

57 Plattermere PRD E499-B09

Calved: 02/03/2009

Bull 16538321

Tattoo: E499

#B/R New Design 036 [AMF-NHF]
#GAR Predestined [AMF-NHF]
#13395344 #+GAR Ext 4206

#VDAR New Trend 315 [AMF-NHF]
B/R Blackcap Empress 76
#N Bar Emulation EXT [AMF-NHF]
+GAR 6807 Traveler 1432

MARB	SW
+86	+26.10
RE	SF
+41	+38.34
FAT	SB
+042	+65.41

#B/R Destination 727-928 [AMF-NHF]
Blackbird of Plattermere 404
15785978 Blackbird of Plattermere 363

#B/R Destination 727 [AMF-NHF]
B/R Blackcap Empress 558 [AMF]
#SAF Focus of ER [AMF-NHF]
Blackbird of Plattermere 338

BE PD	WE PD	YE PD	Milk	BW	ADJ 365
+2.6	+55	I+101	+23	87	1214

59 Plattermere PRD H709-B09

Calved: 02/01/2009

Bull 16538324

Tattoo: H709

#B/R New Design 036 [AMF-NHF]
#GAR Predestined [AMF-NHF]
#13395344 #+GAR Ext 4206

#VDAR New Trend 315 [AMF-NHF]
B/R Blackcap Empress 76
#N Bar Emulation EXT [AMF-NHF]
+GAR 6807 Traveler 1432

MARB	SW
+94	+27.25
RE	SF
+44	+36.85
FAT	SB
+010	+65.55

#SS Objective T510 0T26 [AMF-NHF]
Dolly of Plattermere 364
15786042 Dolly of Plattermere 284

#SS Traveler 6807 T510 [AMF-NHF]
SS Miss Rita R011 7R8 [AMF-NHF]
#SAF Focus of ER [AMF-NHF]
Dolly of Plattermere 230

BE PD	WE PD	YE PD	Milk	BW	ADJ 365
+1.0	+51	I+98	+24	77	1185

58 Plattermere PRD 6869-B09

Calved: 02/14/2009

Bull 16538320

Tattoo: 6869

#B/R New Design 036 [AMF-NHF]
#GAR Predestined [AMF-NHF]
#13395344 #+GAR Ext 4206

#VDAR New Trend 315 [AMF-NHF]
B/R Blackcap Empress 76
#N Bar Emulation EXT [AMF-NHF]
+GAR 6807 Traveler 1432

MARB	SW
+57	+26.85
RE	SF
+41	+37.14
FAT	SB
+025	+61.84

#Hyline Right Time 338 [AMF-NHF]
#Plattermere Daisy 298
#15395272 Plattermere Daisy 216

#+Leachman Right Time
Hyline Pride 265
#Millcreek Diversity [AMF-NHF]
#Plattermere Daisy 198

BE PD	WE PD	YE PD	Milk	BW	ADJ 365
+3.6	+58	I+101	+28	94	1224



Lot 58



G A R Predestined - Sire of Lots 56-59

Ref Sire C G A R Predestined

Calved: 8/16/1999

Bull #13395344

Tattoo: 5899

#V D A R New Trend 315
#11418151 B/R Blackcap Empress 76

A R New Trend
#V D A R Lucy 704
#K&K Top Gun
+QLC A70 Blkcp Empress E43T

SW
+37.39
SF
+37.08
SG
+38.13
SB
+68.66

#N Bar Emulation EXT
#+12716727 +G A R 6807 Traveler 1432

#Emulation N Bar 5522
N Bar Primrose 2424
#D H D Traveler 6807
G A R 9J9 57

CED Acc	BW Acc	WW Acc	YW Acc	YH Acc	SC Acc	CEM Acc	Milk Acc	MkH MkD	MW Acc	MH Acc	SEN
+7	+4.1	+53	+99	+0	+31	+6	+28	345	+13	+2	+5.24
.84	.97	.96	.94	.96	.95	.80	.85	1135	.81	.81	

Cwt Acc	Mrb Acc	RE Acc	Fat Acc	Care Grp Prog	Usnd Grp Prog
+24	+1.06	+58	+0.48	48	4471
.82	.84	.82	.81	270	12581

- One of the top bulls in the breed for Marbling and \$B
- A leading sire for conformation



SNYDER BROS.
Thanks
For Coming!



Lot 60

60 Plattermere BT E609-B09

Calved: 02/02/2009 Bull 16448999 Tattoo: E609

#CA Future Direction 5321 [AMC-NHC] #GAR Precision 1680 [AMC-NHC]
 +BT Crossover 758N [AMC-NHC] CA Miss Power Fix 308 [AMF]
 +14509685 BT Royal Pride 237G #+OSU 6T6 Ultra
 BT Royal Pride 326A

#+WCC Special Design L309 [AMF-NHF] #Bon View New Design 878 [AMF-NHF]
Dolly of Plattermere 361 N Bar Primrose 2424
 15789045 #Dolly of Plattermere 291 #SA Neutron 377 [AMF-NHF]
 Dolly of Plattermere 208

MARB	SW
+45	+24.45
RE	SF
+36	+42.75
FAT	SB
+013	+60.34

BEPD	WEPD	YEPD	Milk	BW	ADJ 365
+3.6	+57	I+106	+27	98	1293



Lot 63

61 Plattermere BT 9029-B09

Calved: 02/11/2009 Bull 16448986 Tattoo: 9029

#CA Future Direction 5321 [AMC-NHC] #GAR Precision 1680 [AMC-NHC]
 +BT Crossover 758N [AMC-NHC] CA Miss Power Fix 308 [AMF]
 +14509685 BT Royal Pride 237G #+OSU 6T6 Ultra
 BT Royal Pride 326A

#B/R Destination 727-928 [AMF-NHF] #B/R Destination 727 [AMF-NHF]
Plattermere Reva 161 B/R Blackcap Empress 558 [AMF]
 15785846 Plattermere Reva 155 #Bon View New Design 1407 [AMF-NHF]
 Plattermere Reva 129

MARB	SW
+79	+27.15
RE	SF
+50	+41.87
FAT	SB
+022	+69.77

BEPD	WEPD	YEPD	Milk	BW	ADJ 365
+1.8	+54	I+104	+30	90	1264

63 Plattermere BT H689-B09

Calved: 02/02/2009 Bull 16449008 Tattoo: H689

#CA Future Direction 5321 [AMC-NHC] #GAR Precision 1680 [AMC-NHC]
 +BT Crossover 758N [AMC-NHC] CA Miss Power Fix 308 [AMF]
 +14509685 BT Royal Pride 237G #+OSU 6T6 Ultra
 BT Royal Pride 326A

#B/R Destination 727-928 [AMF-NHF] #B/R Destination 727 [AMF-NHF]
Martha of Plattermere 379 B/R Blackcap Empress 558 [AMF]
 15786040 Martha of Plattermere 350 #Bon View New Design 1407 [AMF-NHF]
 #Martha of Plattermere 311

MARB	SW
+66	+26.83
RE	SF
+51	+36.45
FAT	SB
+010	+66.36

BEPD	WEPD	YEPD	Milk	BW	ADJ 365
+2.2	+52	I+98	+30	93	1201

62 Plattermere BT E879-B09

Calved: 02/01/2009 Bull 16449005 Tattoo: E879

#CA Future Direction 5321 [AMC-NHC] #GAR Precision 1680 [AMC-NHC]
 +BT Crossover 758N [AMC-NHC] CA Miss Power Fix 308 [AMF]
 +14509685 BT Royal Pride 237G #+OSU 6T6 Ultra
 BT Royal Pride 326A

#+WCC Special Design L309 [AMF-NHF] #Bon View New Design 878 [AMF-NHF]
Plattermere Daisy 328 N Bar Primrose 2424
 15789049 Plattermere Daisy 251 Plattermere CD J549-B99
 Plattermere Daisy 99

MARB	SW
+45	+28.16
RE	SF
+31	+35.03
FAT	SB
+016	+56.13

BEPD	WEPD	YEPD	Milk	BW	ADJ 365
+1.8	+53	I+97	+26	85	1257

64 Plattermere BT 9919-B09

Calved: 02/26/2009 Bull 16448997 Tattoo: 9919

#CA Future Direction 5321 [AMC-NHC] #GAR Precision 1680 [AMC-NHC]
 +BT Crossover 758N [AMC-NHC] CA Miss Power Fix 308 [AMF]
 +14509685 BT Royal Pride 237G #+OSU 6T6 Ultra
 BT Royal Pride 326A

#Bon View New Design 1407 [AMF-NHF] #B/R New Design 036 [AMF-NHF]
Plattermere Queenie 794 Bon View Pride 664
 15785894 #Plattermere Queenie 621 #Plowman 1627 of Millbrae SAR [AMF-NHF]
 Plattermere Queenie 453

MARB	SW
+67	+28.42
RE	SF
+17	+33.56
FAT	SB
+039	+53.90

BEPD	WEPD	YEPD	Milk	BW	ADJ 365
+4	+49	I+94	+29	81	1162

SNYDER BROS.

65 Plattermere BT 9839-B09

Calved: 02/06/2009

Bull 16448995

Tattoo: 9839

#CA Future Direction 5321 [AMC-NHC] #GAR Precision 1680 [AMC-NHC]
 +BT Crossover 758N [AMC-NHC] CA Miss Power Fix 308 [AMF]
 +14509685 BT Royal Pride 237G #+OSU 6T6 Ultra
 BT Royal Pride 326A

MARB	SW
+54	+30.90
RE	SF
+39	+30.38
FAT	SB
+016	+54.07

#Bon View New Design 1407 [AMF-NHF] #B/R New Design 036 [AMF-NHF]
 Plattermere Queen W 773 Bon View Pride 664
 15785889 Plattermere Queen W 516 #SAF Focus of ER [AMF-NHF]
 Plattermere Queen W 403

BEPD	WEPD	YEPD	Milk	BW	ADJ 365
+4	+52	I+92	+27	89	1148

67 Plattermere BT J969-B09

Calved: 01/20/2009

Bull 16449010

Tattoo: J969

#CA Future Direction 5321 [AMC-NHC] #GAR Precision 1680 [AMC-NHC]
 +BT Crossover 758N [AMC-NHC] CA Miss Power Fix 308 [AMF]
 +14509685 BT Royal Pride 237G #+OSU 6T6 Ultra
 BT Royal Pride 326A

MARB	SW
+58	+29.02
RE	SF
+53	+30.38
FAT	SB
-002	+62.47

#+SAF Strategy 9015 [AMF-NHF] #SAF Focus of ER [AMF-NHF]
 Blackbird of Plattermere 418 [NHF] +SAF Royal Queen 5084
 16277526 Blackbird of Plattermere 398 [NHF] KG Dakota [NHC-AMF]
 Blackbird of Plattermere 361

BEPD	WEPD	YEPD	Milk	BW	ADJ 365
+1.8	+52	I+92	+26	83	1145

66 Plattermere BT 9599-B09

Calved: 02/08/2009

Bull 16448991

Tattoo: 9599

#CA Future Direction 5321 [AMC-NHC] #GAR Precision 1680 [AMC-NHC]
 +BT Crossover 758N [AMC-NHC] CA Miss Power Fix 308 [AMF]
 +14509685 BT Royal Pride 237G #+OSU 6T6 Ultra
 BT Royal Pride 326A

MARB	SW
+16	+34.98
RE	SF
+54	+29.22
FAT	SB
-008	+47.60

#Hyline Right Time 338 [AMF-NHF] #+Leachman Right Time
 ADA of Plattermere 254 Hyline Pride 265
 15791924 ADA of Plattermere 221 #Connealy Forefront [AMF-NHF]
 ADA of Plattermere 180

BEPD	WEPD	YEPD	Milk	BW	ADJ 365
-1.8	+55	I+92	+27	71	1147

68 Plattermere BT 9309-B09

Calved: 02/04/2009

Bull 16448989

Tattoo: 9309

#CA Future Direction 5321 [AMC-NHC] #GAR Precision 1680 [AMC-NHC]
 +BT Crossover 758N [AMC-NHC] CA Miss Power Fix 308 [AMF]
 +14509685 BT Royal Pride 237G #+OSU 6T6 Ultra
 BT Royal Pride 326A

MARB	SW
+73	+28.76
RE	SF
+41	+30.54
FAT	SB
+026	+57.82

#Bon View New Design 1407 [AMF-NHF] #B/R New Design 036 [AMF-NHF]
 Barbara of Plattermere 318 Bon View Pride 664
 15785862 Barbara of Plattermere 286 #+BT Ultravox 297E [AMF-NHF]
 Barbara of Plattermere 246

BEPD	WEPD	YEPD	Milk	BW	ADJ 365
+6	+49	I+91	+26	89	1132



Lot 66



BT Crossover 758N - Sire of Lots 60-70

Ref Sire D BT Crossover 758N

Calved: 3/14/2003

Bull +14509685

Tattoo: 758N

#G A R Precision 1680 #Tehama Bando 155
 #C A Future Direction 5321 9J9 G A R 856
 #12493607 C A Miss Power Fix 308 #+ S A F Power Fix
 C A Lady Eight 1015

#+ O S U 6T6 Ultra #S S Traveler 6T6
 BT Royal Pride 237G + D F Empress 6079
 12917705 BT Royal Pride 326A #+ Brost Power Drive
 Beartooth Pride 34Y

SW
+34.39
SF
+34.02
SG
+38.10
SB
+67.39

GED Acc	BW Acc	WW Acc	YW Acc	YH Acc	SC Acc	CEM Acc	Milk Acc	MkH MkD	MW Acc	MH Acc	SEN
+48	+7	+53	+96	+1	-.32	+9	+31	41	+13	+2	-7.31
.84	.95	.92	.85	.80	.83	.53	.63	144	.32	.31	

Cwt Acc	Mrb Acc	RE Acc	Fat Acc	Carc Grp Carc Prog	Usnd Grp Usnd Pq
+23	+64	+69	-001	10	415
.51	.57	.59	.52	23	1227

- National Western Stock Show Grand Champion
- Passes great conformation to his sons and daughters
- Combines calving ease, carcass traits, and growth
- In the top 25 sires for \$Beef

SNYDER BROS.

69 Plattermere BT 9659-B09

Calved: 02/11/2009 Bull 16448993 Tattoo: 9659

#CA Future Direction 5321 [AMC-NHC] #GAR Precision 1680 [AMC-NHC]
 +BT Crossover 758N [AMC-NHC] CA Miss Power Fix 308 [AMF]
 +14509685 BT Royal Pride 237G #+OSU 6T6 Ultra
 BT Royal Pride 326A

MARB	SW
+62	+28.79
RE	SF
+27	+28.93
FAT	SB
+013	+56.81

#Perry Power Design 715 [AMF-NHF] #B/R New Design 036 [AMF-NHF]
Blackbird of Plattermere 396 #EP Maximum Lady 221
 15785884 #Blackbird of Plattermere 359 Plattermere 5175 E630-B00
 #Blackbird of Plattermere 309

BE PD	WE PD	YE PD	Milk	BW	ADJ 365
+3	+48	I+89	+25	86	1104



Lot 72

70 Plattermere BT E749-B09

Calved: 02/03/2009 Bull 16449002 Tattoo: E749

#CA Future Direction 5321 [AMC-NHC] #GAR Precision 1680 [AMC-NHC]
 +BT Crossover 758N [AMC-NHC] CA Miss Power Fix 308 [AMF]
 +14509685 BT Royal Pride 237G #+OSU 6T6 Ultra
 BT Royal Pride 326A

MARB	SW
+63	+30.17
RE	SF
+46	+31.99
FAT	SB
+024	+58.46

#Hyline Right Time 338 [AMF-NHF] #+Leachman Right Time
College Queen Plattermere 63 Hyline Pride 265
 15791938 College Queen Plattermere 56 #Connealy Forefront [AMF-NHF]
 College Queen Plattermere 52

BE PD	WE PD	YE PD	Milk	BW	ADJ 365
I+9	I+53	I+94	I+25	82	1067

72 Plattermere 50 L019-B09

Calved: 01/14/2009 Bull 16432069 Tattoo: L019

#B/R New Design 036 [AMF-NHF] #VDAR New Trend 315 [AMF-NHF]
 +GAR New Design 5050 [AMF-NHF] B/R Blackcap Empress 76
 +13728513 GAR Precision 706 [NHC-AMF] #GAR Precision 1680 [AMC-NHC]
 +GAR Ext 2114

MARB	SW
+63	+22.80
RE	SF
+40	+42.04
FAT	SB
+023	+61.31

#+Boyd New Day 8005 [AMF-NHF] #AAR New Trend
Martha of Plattermere 392 SVF Forever Lady 57D
 16272837 Martha of Plattermere 360 Mill Coulee 6807-423 [AMF-NHF]
 #Martha of Plattermere 307

BE PD	WE PD	YE PD	Milk	BW	ADJ 365
+2.8	+51	I+103	+26	85	1194

71 Plattermere 50 K159-B09

Calved: 01/15/2009 Bull 16432068 Tattoo: K159

#B/R New Design 036 [AMF-NHF] #VDAR New Trend 315 [AMF-NHF]
 +GAR New Design 5050 [AMF-NHF] B/R Blackcap Empress 76
 +13728513 GAR Precision 706 [NHC-AMF] #GAR Precision 1680 [AMC-NHC]
 +GAR Ext 2114

MARB	SW
+34	+28.52
RE	SF
+36	+42.51
FAT	SB
+015	+53.99

#+Boyd New Day 8005 [AMF-NHF] #AAR New Trend
Martha of Plattermere 389 SVF Forever Lady 57D
 16272813 Martha of Plattermere 359 Mill Coulee 6807-423 [AMF-NHF]
 Martha of Plattermere 320

BE PD	WE PD	YE PD	Milk	BW	ADJ 365
+8	+55	I+105	+27	75	1206

73 Plattermere 50 L469-B09

Calved: 01/25/2009 Bull 16432070 Tattoo: L469

#B/R New Design 036 [AMF-NHF] #VDAR New Trend 315 [AMF-NHF]
 +GAR New Design 5050 [AMF-NHF] B/R Blackcap Empress 76
 +13728513 GAR Precision 706 [NHC-AMF] #GAR Precision 1680 [AMC-NHC]
 +GAR Ext 2114

MARB	SW
+74	+27.68
RE	SF
+48	+38.74
FAT	SB
+003	+62.11

#SS Objective T510 OT26 [AMF-NHF] #SS Traveler 6807 T510 [AMF-NHF]
Plattermere Reva 172 SS Miss Rita R011 7R8 [AMF-NHF]
 15786083 Plattermere Reva 144 #RP 3RD Bushwacker
 Plattermere Reva 106

BE PD	WE PD	YE PD	Milk	BW	ADJ 365
+1.9	+54	I+101	+28	84	1102



G A R New Design 5050 - Sire of Lots 71-75

Ref Sire E G A R New Design 5050

Calved: 8/9/2003 Bull +13728513 Tattoo: 5050

#V D A R New Trend 315 #A A R New Trend
#B/R New Design 036 #V D A R Lucy 704
 #11418151 B/R Blackcap Empress 76 #K&K Top Gun
 +QLC A70 Blkcp Empress E43T

SW
+34.25
SF
+46.76
SG
+37.03
SB
+69.33

#G A R Precision 1680 #Tehama Bando 155
G A R Precision 706 9J9 G A R 856
 12716497 +G A R Ext 2114 #N Bar Emulation EXT
 #G A R Scotch Cap 867

CED Acc	BW Acc	WW Acc	YW Acc	YH Acc	SC Acc	CEM Acc	Milk Acc	MkH MkD	MW Acc	MH Acc	SEN
+8	+1.0	+55	+109	+3	-.27	+7	+35	64	+56	+8	-12.66
.81	.94	.91	.86	.90	.88	.59	.68	190	.62	.62	
Cwt Acc	Mrb Acc	RE Acc	Fat Acc	Care Grp Care Prog	Usnd Crp						
+23	+79	+59	+029	2	599						
.33	.42	.49	.38	3	1549						

- One of the Most Complete Performance Bulls in the Breed
- Balances CED, Growth, Carcass Merit and Maternal traits
- Great disposition

SNYDER BROS.



Lot 76

74 Plattermere 50 L509-B09

Calved: 02/08/2009

Bull 16432071

Tattoo: L509

#B/R New Design 036 [AMF-NHF] #VDAR New Trend 315 [AMF-NHF]
+GAR New Design 5050 [AMF-NHF] B/R Blackcap Empress 76
 +13728513 GAR Precision 706 [NHC-AMF] #GAR Precision 1680 [AMC-NHC]
 +GAR Ext 2114

#+SAF Strategy 9015 [AMF-NHF] #SAF Focus of ER [AMF-NHF]
Plattermere Queen W 876 +SAF Royal Queen 5084
 16277530 Plattermere Queen W 585 #Dalebanks Extender 6012 [AMF-NHF]
 Plattermere Queen W 404

MARB	SW
+48	+26.07
RE	SF
+28	+34.97
FAT	SB
+014	+52.92

BE PD	WE PD	YE PD	Milk	BW	ADJ 365
+1.0	+48	I+95	+24	77	1100



Lot 75

75 Plattermere 50 L889-B09

Calved: 01/20/2009

Bull 16432072

Tattoo: L889

#B/R New Design 036 [AMF-NHF] #VDAR New Trend 315 [AMF-NHF]
+GAR New Design 5050 [AMF-NHF] B/R Blackcap Empress 76
 +13728513 GAR Precision 706 [NHC-AMF] #GAR Precision 1680 [AMC-NHC]
 +GAR Ext 2114

Mytty In Focus [AMF-NHF-RDF] #SAF Focus of ER [AMF-NHF]
Plattermere Queenie 862 Mytty Countess 906
 16272863 Plattermere Queenie 798 #B/R Destination 727-928 [AMF-NHF]
 Plattermere Queenie 716

MARB	SW
+96	+28.10
RE	SF
+37	+41.87
FAT	SB
+042	+64.64

BE PD	WE PD	YE PD	Milk	BW	ADJ 365
+1.2	+54	I+104	+30	78	1181

76 Plattermere IF J669-B09

Calved: 01/16/2009

Bull 16427289

Tattoo: J669

#SAF Focus of ER [AMF-NHF] #SAF Fame [AMF-NHF]
Mytty In Focus [AMF-NHF-RDF] GDAR Forever Lady 246
 13880818 Mytty Countess 906 #Sitz Alliance 6595 [AMF-NHF]
 Baldrige Countess 357

#SS Objective T510 OT26 [AMF-NHF] #SS Traveler 6807 T510 [AMF-NHF]
Plattermere Queen W 849 SS Miss Rita R011 7R8 [AMF-NHF]
 16272785 Plattermere Queen W 771 #Bon View New Design 1407 [AMF-NHF]
 Plattermere Queen W 512

MARB	SW
+61	+31.51
RE	SF
+21	+35.43
FAT	SB
+007	+46.76

BE PD	WE PD	YE PD	Milk	BW	ADJ 365
-2.6	+52	I+97	+24	63	1163

77 Plattermere IF K539-B09

Calved: 01/17/2009

Bull 16427292

Tattoo: K539

#SAF Focus of ER [AMF-NHF] #SAF Fame [AMF-NHF]
Mytty In Focus [AMF-NHF-RDF] GDAR Forever Lady 246
 13880818 Mytty Countess 906 #Sitz Alliance 6595 [AMF-NHF]
 Baldrige Countess 357

Riverbend Blueprint L24 [AMF-NHF] #Bon View New Design 1407 [AMF-NHF]
Dolly of Plattermere 373 #+Rocky Mt Lucy 057
 16274862 Dolly of Plattermere 326 #Millcreek Diversity [AMF-NHF]
 Dolly of Plattermere 272

MARB	SW
+65	+25.45
RE	SF
+18	+43.98
FAT	SB
+025	+57.51

BE PD	WE PD	YE PD	Milk	BW	ADJ 365
+2.0	+54	I+106	+25	95	1262



SNYDER BROS.

44th Annual BULL SALE

Saturday • MARCH 13, 2010 • 1 p.m. MST

SNYDER BROS.



Lot 80

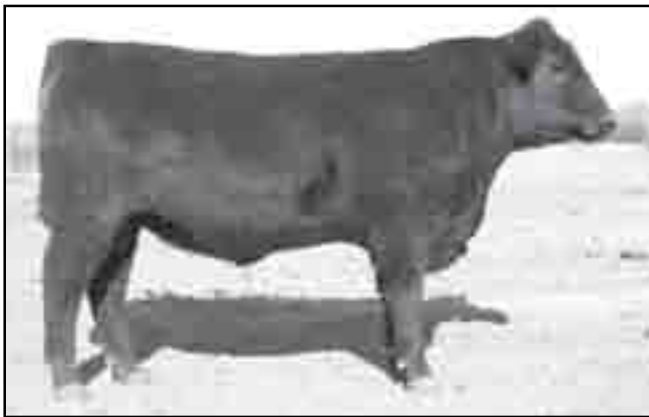
80 Plattermere IF L809-B09
 Calved: 01/22/2009 Bull 16427302 Tattoo: L809

#SAF Focus of ER [AMF-NHF] #SAF Fame [AMF-NHF]
Mytty In Focus [AMF-NHF-RDF] GDAR Forever Lady 246
 13880818 Mytty Countess 906 #Sitz Alliance 6595 [AMF-NHF]
 Baldrige Countess 357

MARB	SW
+37	+29.37
RE	SF
+16	+31.15
FAT	SB
+002	+47.09

Plattermere 338 F055-B05 #Hyline Right Time 338 [AMF-NHF]
 16272860 **Martha of Plattermere 395** [AMF] Plattermere Queenie 619
 #Dalebanks Extender 6012 [AMF-NHF]
 Martha of Plattermere 232

BE PD	WE PD	YE PD	Milk	BW	ADJ 365
+2	+50	I+92	+25	79	1208



Lot 78

81 Plattermere IF K799-B09
 Calved: 01/21/2009 Bull 16427295 Tattoo: K799

#SAF Focus of ER [AMF-NHF] #SAF Fame [AMF-NHF]
Mytty In Focus [AMF-NHF-RDF] GDAR Forever Lady 246
 13880818 Mytty Countess 906 #Sitz Alliance 6595 [AMF-NHF]
 Baldrige Countess 357

MARB	SW
+59	+30.26
RE	SF
+05	+36.45
FAT	SB
+012	+48.65

#Connealy Lead On [AMF-NHF] #Connealy Leadtime [AMF-NHF]
Plattermere Daisy 336 Eligence Plus of Conanga
 15786081 Plattermere Daisy 276 #Bon View New Design 1407 [AMF-NHF]
 Plattermere Daisy 233

BE PD	WE PD	YE PD	Milk	BW	ADJ 365
-1.1	+52	I+98	+26	72	1174

78 Plattermere IF K059-B09
 Calved: 01/18/2009 Bull 16427291 Tattoo: K059

#SAF Focus of ER [AMF-NHF] #SAF Fame [AMF-NHF]
Mytty In Focus [AMF-NHF-RDF] GDAR Forever Lady 246
 13880818 Mytty Countess 906 #Sitz Alliance 6595 [AMF-NHF]
 Baldrige Countess 357

MARB	SW
+43	+30.21
RE	SF
+09	+38.34
FAT	SB
+019	+46.86

#GAR Retail Product [AMF-NHF] #GAR Precision 1680 [AMC-NHC]
Plattermere Queenie 863 +GAR Ext 4927
 16274852 Plattermere Queenie 775 Plattermere FC T062-B02
 Plattermere Queenie 605

BE PD	WE PD	YE PD	Milk	BW	ADJ 365
+2	+55	I+101	+26	79	1226

82 Plattermere IF K689-B09
 Calved: 01/23/2009 Bull 16427294 Tattoo: K689

#SAF Focus of ER [AMF-NHF] #SAF Fame [AMF-NHF]
Mytty In Focus [AMF-NHF-RDF] GDAR Forever Lady 246
 13880818 Mytty Countess 906 #Sitz Alliance 6595 [AMF-NHF]
 Baldrige Countess 357

MARB	SW
+41	+31.46
RE	SF
-01	+35.89
FAT	SB
+047	+40.64

#GAR Retail Product [AMF-NHF] #GAR Precision 1680 [AMC-NHC]
Martha of Plattermere 391 +GAR Ext 4927
 16274865 #Martha of Plattermere 342 Plattermere UV 5992-B02
 Martha of Plattermere 317

BE PD	WE PD	YE PD	Milk	BW	ADJ 365
+1	+56	I+99	+25	75	1193

79 Plattermere IF L879-B09
 Calved: 01/22/2009 Bull 16427303 Tattoo: L879

#SAF Focus of ER [AMF-NHF] #SAF Fame [AMF-NHF]
Mytty In Focus [AMF-NHF-RDF] GDAR Forever Lady 246
 13880818 Mytty Countess 906 #Sitz Alliance 6595 [AMF-NHF]
 Baldrige Countess 357

MARB	SW
+58	+34.88
RE	SF
+07	+37.78
FAT	SB
+003	+46.27

#SS Objective T510 OT26 [AMF-NHF] #SS Traveler 6807 T510 [AMF-NHF]
Plattermere Queenie 856 SS Miss Rita R011 7R8 [AMF-NHF]
 16272775 Plattermere Queenie 795 #JD Daigger 901 [AMF-NHF]
 Plattermere Queenie 570

BE PD	WE PD	YE PD	Milk	BW	ADJ 365
-2.5	+59	I+102	+25	65	1202

83 Plattermere IF L389-B09
 Calved: 01/25/2009 Bull 16427301 Tattoo: L389

#SAF Focus of ER [AMF-NHF] #SAF Fame [AMF-NHF]
Mytty In Focus [AMF-NHF-RDF] GDAR Forever Lady 246
 13880818 Mytty Countess 906 #Sitz Alliance 6595 [AMF-NHF]
 Baldrige Countess 357

MARB	SW
+41	+27.09
RE	SF
+16	+34.18
FAT	SB
+028	+46.74

#GAR Retail Product [AMF-NHF] #GAR Precision 1680 [AMC-NHC]
Plattermere Queenie 871 +GAR Ext 4927
 16274876 Plattermere Queenie 731 #Millcreek Diversity [AMF-NHF]
 Plattermere Queenie 554

BE PD	WE PD	YE PD	Milk	BW	ADJ 365
+1.2	+50	I+95	+23	79	1163

SNYDER BROS.



Mytty In Focus—Sire of Lots 76-91

Ref Sire **F** **Mytty In Focus**

Calved: 2/18/2001

Bull 13880818

Tattoo: 109

#S A F Fame
#12618076 G D A R Forever Lady 246

#Minerts Fortune 2000
#+S A F Royal Lass 1027
#Transformer 100 E A R
+G D A R Forever Lady 718

#Sitz Alliance 6595

#Sitz Traveler 8180
#Sitz Barbaramere Jet 2698
#Bon View Emulation Ext 473
Baldrige Countess 235

Mytty Countess 906
13457755 Baldrige Countess 357

SW
+38.43
SF
+37.71
SG
+30.21
SB
+44.55

CED Acc	BW Acc	WW Acc	YW Acc	YH Acc	SC Acc	CEM Acc	Milk Acc	MkH MkD	MW Acc	MH Acc	SEN
+14	-1.3	+54	+100	-1	+1.73	+12	+25	651	+48	+4	+67
.96	.98	.97	.96	.96	.96	.86	.90	2266	.83	.83	

Cwt Acc	Mrb Acc	RE Acc	Fat Acc	Carc Grp	Usnd Grp
+2	+62	+01	+026	33	4798
.69	.72	.71	.68	78	14331

- Number 1 for registrations in 2008 and again in 2009
- Big time calving ease and growth combination based on nearly 30,000 calves in 2,000 plus herds
- Calves are wide based, square and correct with added thickness - Ranks in the top 10 for both Muscle (+1.2) and Capacity (+2.2) on the latest GTS Evaluation with 201 progeny evaluated
- Progeny also excel for Docility & SC EPD



Lot 86

84 Plattermere IF K869-B09

Calved: 01/20/2009

Bull 16427296

Tattoo: K869

#SAF Focus of ER [AMF-NHF]
Mytty In Focus [AMF-NHF-RDF]
13880818 Mytty Countess 906

#SAF Fame [AMF-NHF]
GDAR Forever Lady 246
#Sitz Alliance 6595 [AMF-NHF]
Baldrige Countess 357

#Connealy Lead On [AMF-NHF]
Plattermere Daisy 352
16272832 #Plattermere Daisy 275

#Connealy Leadtime [AMF-NHF]
Eligence Plus of Conanga
#Bon View New Design 1407 [AMF-NHF]
Plattermere Daisy 232

MARB	SW
+54	+29.57
RE	SF
+11	+33.17
FAT	SB
-014	+47.64

BEPD	WEPD	YEPD	Milk	BW	ADJ 365
-5	+50	I+94	+26	76	1158

86 Plattermere IFK019-B09

Calved: 01/25/2009

Bull 16427290

Tattoo: K019

#SAF Focus of ER [AMF-NHF]
Mytty In Focus [AMF-NHF-RDF]
13880818 Mytty Countess 906

#SAF Fame [AMF-NHF]
GDAR Forever Lady 246
#Sitz Alliance 6595 [AMF-NHF]
Baldrige Countess 357

#SS Objective T510 0T26 [AMF-NHF]
Plattermere Queen W 856
16272805 Plattermere Queen W 788

#SS Traveler 6807 T510 [AMF-NHF]
SS Miss Rita R011 7R8 [AMF-NHF]
#B/R Destination 727-928 [AMF-NHF]
Plattermere Queen W 589

MARB	SW
+67	+29.60
RE	SF
+21	+36.68
FAT	SB
+024	+51.40

BEPD	WEPD	YEPD	Milk	BW	ADJ 365
+6	+54	I+99	+25	75	1137

85 Plattermere IF L059-B09

Calved: 01/23/2009

Bull 16427299

Tattoo: L059

#SAF Focus of ER [AMF-NHF]
Mytty In Focus [AMF-NHF-RDF]
13880818 Mytty Countess 906

#SAF Fame [AMF-NHF]
GDAR Forever Lady 246
#Sitz Alliance 6595 [AMF-NHF]
Baldrige Countess 357

#Bon View New Design 1407 [AMF-NHF]
Martha of Plattermere 393
16272840 #Martha of Plattermere 327

#B/R New Design 036 [AMF-NHF]
Bon View Pride 664
Plattermere 5175 L610-B00
#Martha of Plattermere 288

MARB	SW
+76	+26.90
RE	SF
-08	+29.09
FAT	SB
+027	+44.67

BEPD	WEPD	YEPD	Milk	BW	ADJ 365
+7	+45	I+88	+27	75	1111

87 Plattermere IF K909-B09

Calved: 01/25/2009

Bull 16427297

Tattoo: K909

#SAF Focus of ER [AMF-NHF]
Mytty In Focus [AMF-NHF-RDF]
13880818 Mytty Countess 906

#SAF Fame [AMF-NHF]
GDAR Forever Lady 246
#Sitz Alliance 6595 [AMF-NHF]
Baldrige Countess 357

#Connealy Lead On [AMF-NHF]
Erica Lady of Plattermere 240
15786082 Erica Lady of Plattermere 193

#Connealy Leadtime [AMF-NHF]
Eligence Plus of Conanga
#+BT Ultravox 297E [AMF-NHF]
Erica Lady of Plattermere 85

MARB	SW
+45	+27.02
RE	SF
+11	+29.93
FAT	SB
+017	+41.04

BEPD	WEPD	YEPD	Milk	BW	ADJ 365
+1.4	+48	I+90	+23	87	1108

88 Plattermere IF L039-B09

Calved: 01/14/2009

Bull 16427298

Tattoo: L039

#SAF Focus of ER [AMF-NHF]
Mytty In Focus [AMF-NHF-RDF]
 13880818 Mytty Countess 906

#SAF Fame [AMF-NHF]
 GDAR Forever Lady 246
 #Sitz Alliance 6595 [AMF-NHF]
 Baldrige Countess 357

MARB	SW
+49	+28.82
RE	SF
+10	+33.62
FAT	SB
+036	+42.93

#SAV 8180 Traveler 004 [AMF-NHF-RDF]
Plattermere Queenie 870
 16272839 Plattermere Queenie 766

#Sitz Traveler 8180 [AMF-NHF]
 +Boyd Forever Lady 8003
 #+Boyd New Day 8005 [AMF-NHF]
 #Plattermere Queenie 618

BEPD	WEPD	YEPD	Milk	BW	ADJ 365
+1.8	+54	I+96	+24	84	1100



Lot 92

89 Plattermere IF K649-B09

Calved: 01/22/2009

Bull 16427293

Tattoo: K649

#SAF Focus of ER [AMF-NHF]
Mytty In Focus [AMF-NHF-RDF]
 13880818 Mytty Countess 906

#SAF Fame [AMF-NHF]
 GDAR Forever Lady 246
 #Sitz Alliance 6595 [AMF-NHF]
 Baldrige Countess 357

MARB	SW
+51	+29.57
RE	SF
+09	+29.16
FAT	SB
+018	+43.87

+Rito 2V1 of 2536 1407 [AMC-NHF]
Plattermere Queenie 867 [AMF]
 16340921 Plattermere Queenie 739

#Bon View New Design 1407 [AMF-NHF]
 GAR Precision 2536 [AMC-NHF]
 Plattermere FC N381-B01
 #Plattermere Queenie 486

BEPD	WEPD	YEPD	Milk	BW	ADJ 365
-5	+50	I+90	+20	71	1046

90 Plattermere IF L189-B09

Calved: 01/23/2009

Bull 16427300

Tattoo: L189

#SAF Focus of ER [AMF-NHF]
Mytty In Focus [AMF-NHF-RDF]
 13880818 Mytty Countess 906

#SAF Fame [AMF-NHF]
 GDAR Forever Lady 246
 #Sitz Alliance 6595 [AMF-NHF]
 Baldrige Countess 357

MARB	SW
+49	+31.37
RE	SF
+15	+27.94
FAT	SB
+033	+41.26

#+Boyd New Day 8005 [AMF-NHF]
Dolly of Plattermere 377
 16272846 Dolly of Plattermere 289

#AAR New Trend
 SVF Forever Lady 57D
 #Bon View New Design 1407 [AMF-NHF]
 Dolly of Plattermere 206

BEPD	WEPD	YEPD	Milk	BW	ADJ 365
-2.7	+48	I+88	+23	62	1046

91 Plattermere If A139-b09

Calved: 02/10/2009

Bull 16522796

Tattoo: A139

#SAF Focus of ER [AMF-NHF]
Mytty In Focus [AMF-NHF-RDF]
 13880818 Mytty Countess 906

#SAF Fame [AMF-NHF]
 GDAR Forever Lady 246
 #Sitz Alliance 6595 [AMF-NHF]
 Baldrige Countess 357

MARB	SW
+65	+25.80
RE	SF
-.29	+26.51
FAT	SB
+016	+36.04

#JD Daigger 901 [AMF-NHF]
Plattermere Queenie 800
 15785901 Plattermere Queenie 710 [NHF]

#Sitz Alliance 6595 [AMF-NHF]
 JD Queen Eisa 7021
 #Twin Valley Precision E161 [NHC-AMF-RDF]
 Plattermere Queenie 633

BEPD	WEPD	YEPD	Milk	BW	ADJ 365
I+1.1	I+44	I+85	I+22	90	1144

92 Plattermere 205 J749-B09

Calved: 01/23/2009

Bull 16427144

Tattoo: J749

#Nichols Extra H6 [AMF-NHF]
#Nichols Extra K205 [AMF-NHF]
 #13752642 Nichols Black Heiress F346

#N Bar Emulation EXT [AMF-NHF]
 Nichols Eileen May F261
 +Nichols Heavy Duty D20
 Nichols Black Heiress B3

MARB	SW
+16	+24.80
RE	SF
+16	+52.05
FAT	SB
-.029	+49.12

#SS Objective T510 0T26 [AMF-NHF]
Dolly of Plattermere 371
 16272791 Dolly of Plattermere 357

#SS Traveler 6807 T510 [AMF-NHF]
 SS Miss Rita R011 7R8 [AMF-NHF]
 Plattermere 602 C533-B03
 Dolly of Plattermere 280

BEPD	WEPD	YEPD	Milk	BW	ADJ 365
+3.7	+63	I+117	+27	97	1317

93 Plattermere 205 K079-B09

Calved: 01/20/2009

Bull 16427147

Tattoo: K079

#Nichols Extra H6 [AMF-NHF]
#Nichols Extra K205 [AMF-NHF]
 #13752642 Nichols Black Heiress F346

#N Bar Emulation EXT [AMF-NHF]
 Nichols Eileen May F261
 +Nichols Heavy Duty D20
 Nichols Black Heiress B3

MARB	SW
+30	+27.77
RE	SF
+26	+44.22
FAT	SB
+0	+50.88

#Connealy Lead On [AMF-NHF]
Plattermere Daisy 346 [AMF]
 16272808 Plattermere Daisy 301 [AMF]

#Connealy Leadtime [AMF-NHF]
 Eligence Plus of Conanga
 Plattermere UV 5992-B02
 Plattermere Daisy 217

BEPD	WEPD	YEPD	Milk	BW	ADJ 365
+1.3	+56	I+107	+25	81	1263



Nichols Extra K205 - Sire of Lots 92-96

Ref Sire G Nichols Extra K205

Calved: 4/2/2000

Bull #13752642

Tattoo: K205

#N Bar Emulation EXT
Nichols Extra H6
 #13207590 Nichols Eileen May F261

#Emulation N Bar 5522
 N Bar Primrose 2424
 Nichols Black Ink D220
 Nichols Eileen May B241

SW
+32.27
SF
+46.34
SG
+19.98
SB
+46.07

+ Nichols Heavy Duty D20
Nichols Black Heiress F346
 12701216 Nichols Black Heiress B3

#Nichols Heavy Duty X100
 Nichols Heiress A221
 #Nichols Formula U193
 #Nichols Black Heiress Z28

CEP Acc	BW Acc	WW Acc	YW Acc	YH Acc	SC Acc	CEM Acc	Milk Acc	MkH MkD	MW Acc	MH Acc	SF
+8	+1.9	+56	+109	+4	+84	+8	+24	43	+20	+3	-2.31
.76	.95	.92	.87	.88	.86	.62	.72	234	.57	.58	

Cwt Acc	Mrb Acc	RE Acc	Fat Acc	Care Grp Prog	Usnd Grp Prog
+13	+19	+24	-.002	5	368
.39	.49	.53	.43	9	1142

- Excels in calving ease
- Excels in Yearling growth
- Excels in Conformation

SNYDER BROS.

94 Plattermere 205 J799-B09

Calved: 01/20/2009

Bull 16427145

Tattoo: J799

#Nichols Extra H6 [AMF-NHF]
#Nichols Extra K205 [AMF-NHF]
#13752642 Nichols Black Heiress F346

#N Bar Emulation EXT [AMF-NHF]
Nichols Eileen May F261
+Nichols Heavy Duty D20
Nichols Black Heiress B3

#Bon View New Design 1407 [AMF-NHF]
Plattermere Queen W 852
16272794 Plattermere Queen W 758

#B/R New Design 036 [AMF-NHF]
Bon View Pride 664
#Connealy Lead On [AMF-NHF]
Plattermere Queen W 701

MARB	SW
+37	+27.72
RE	SF
+18	+38.51
FAT	SB
-.003	+48.45

BE PD	WE PD	YE PD	Milk	BW	ADJ 365
+1.1	+52	I+100	+27	80	1174

96 Plattermere 205 K999-B09

Calved: 01/20/2009

Bull 16427148

Tattoo: K999

#Nichols Extra H6 [AMF-NHF]
#Nichols Extra K205 [AMF-NHF]
#13752642 Nichols Black Heiress F346

#N Bar Emulation EXT [AMF-NHF]
Nichols Eileen May F261
+Nichols Heavy Duty D20
Nichols Black Heiress B3

#GAR Retail Product [AMF-NHF]
Plattermere Queen W 871
16274872 Plattermere Queen W 741

#GAR Precision 1680 [AMC-NHC]
+GAR Ext 4927
Mill Coulee 6807-423 [AMF-NHF]
Plattermere Queen W 489

MARB	SW
+23	+20.86
RE	SF
+19	+35.59
FAT	SB
-.007	+42.51

BE PD	WE PD	YE PD	Milk	BW	ADJ 365
+3.5	+49	I+96	+20	90	1094



Lot 95



SNYDER BROS. 44th Annual BULL SALE

Saturday • MARCH 13, 2010 • 1p.m. MST

95 Plattermere 205 K049-B09

Calved: 01/20/2009

Bull 16427146

Tattoo: K049

#Nichols Extra H6 [AMF-NHF]
#Nichols Extra K205 [AMF-NHF]
#13752642 Nichols Black Heiress F346

#N Bar Emulation EXT [AMF-NHF]
Nichols Eileen May F261
+Nichols Heavy Duty D20
Nichols Black Heiress B3

#GAR Retail Product [AMF-NHF]
Plattermere Queen W 834
15787550 Plattermere Queen W 725

#GAR Precision 1680 [AMC-NHC]
+GAR Ext 4927
#+Boyd New Day 8005 [AMF-NHF]
Plattermere Queen W 527

MARB	SW
+16	+23.60
RE	SF
+23	+33.95
FAT	SB
-.008	+39.60

BE PD	WE PD	YE PD	Milk	BW	ADJ 365
+2.5	+48	I+94	+23	83	1072

97 Plattermere MH K989-B09

Calved: 01/22/2009

Bull 16448988

Tattoo: K989

#Bon View New Design 1407 [AMF-NHF]
Riverbend Mile High 3718 [AMC-NHF]
14512407 #+GAR Precision 1919 [AMC-NHF]

#B/R New Design 036 [AMF-NHF]
Bon View Pride 664
#GAR Precision 1680 [AMC-NHC]
+GAR Ext 544 [AMF-NHF]

#SS Objective T510 0T26 [AMF-NHF]
Dolly of Plattermere 376
16272835 Dolly of Plattermere 356

#SS Traveler 6807 T510 [AMF-NHF]
SS Miss Rita R011 7R8 [AMF-NHF]
Plattermere 99 G443-B03
Dolly of Plattermere 300

MARB	SW
+60	+31.48
RE	SF
+49	+39.21
FAT	SB
-.003	+64.38

BE PD	WE PD	YE PD	Milk	BW	ADJ 365
+1.1	+58	I+103	+33	80	1241



Riverbend Mile High 3718 – Sire of Lots 97-99

Ref Sire H Riverbend Mile High 3718

Calved: 8/18/2003

Bull 14512407

Tattoo: 3718

#B/R New Design 036
Bon View New Design 1407
#12783540AMF Bon View Pride 664

#V D A R New Trend 315
B/R Blackcap Empress 76
#+ G A R Sleep Easy 1009
Bon View Pride 1551

#G A R Precision 1680
G A R Precision 1919
#+13397341 +G A R Ext 544

#Tehama Bando 155
9J9 G A R 856
#N Bar Emulation EXT
+G A R Scotch Cap 309

SW
+26.98
SF
+33.95
SG
+36.93
SB
+69.97

GED Acc	BW Acc	WW Acc	YW Acc	YH Acc	SC Acc	CEM Acc	Milk Acc	MkH Acc	MW Acc	MH Acc	SEN
+6	+2.2	+48	+94	+0	+41	+11	+36	53	+57	+8	-14.07
.82	.93	.90	.85	.87	.87	.60	.66	192	.51	.52	
Cwt Acc	Mrb Acc	RE Acc	Fat Acc	Carc Grp Prog	Usnd Grp Prog						
+30	+77	+56	+012	6	647						
.63	.67	.66	.62	51	1576						

- Great Marbling
- Outstanding Rib eye area

- Moderate calving ease
- Good growth

SNYDER BROS.



Lot 98

98 Plattermere MH K499-B09

Calved: 02/11/2009

Bull 16448985

Tattoo: K499

#Bon View New Design 1407 [AMF-NHF] #B/R New Design 036 [AMF-NHF]
Riverbend Mile High 3718 [AMC-NHF] Bon View Pride 664
 14512407 #+GAR Precision 1919 [AMC-NHF] #GAR Precision 1680 [AMC-NHC]
 #TC Freedom 104 [AMF-NHF] #Connealy Forefront [AMF-NHF]
Erica Lady of Plattermere 248 #TC Ruby 9095
 16274860 Erica Lady of Plattermere 188 #SA Neutron 377 [AMF-NHF]
 Erica Lady of Plattermere 125

MARB	SW
+38	+25.73
RE	SF
+34	+33.95
FAT	SB
+014	+54.19

BE PD	WE PD	YE PD	Milk	BW	ADJ 365
+1.8	+48	I+94	+27	90	1123

101 Plattermere CL-1 E969-B09

Calved: 03/26/2009

Bull 16538322

Tattoo: E969

#Connealy Lead On [AMF-NHF] #Connealy Leadtime [AMF-NHF]
Plattermere CL 4157-B07 Eligence Plus of Conanga
 16071252 Plattermere Daisy 289 #Bon View New Design 1407 [AMF-NHF]
 Plattermere Daisy 182
 #B/R Destination 727-928 [AMF-NHF] #B/R Destination 727 [AMF-NHF]
Plattermere Rosa 356 B/R Blackcap Empress 558 [AMF]
 15786001 Plattermere Rosa 314 Plattermere ND E800-B00
 Plattermere Rosa 285

MARB	SW
I+51	+28.75
RE	SF
I+44	+34.18
FAT	SB
I-001	+59.86

BE PD	WE PD	YE PD	Milk	BW	ADJ 365
+0.2	+50	+95	+27	75	

99 Plattermere MH L439-B09

Calved: 01/28/2009

Bull 16545091

Tattoo: L439

#Bon View New Design 1407 [AMF-NHF] #B/R New Design 036 [AMF-NHF]
Riverbend Mile High 3718 [AMC-NHF] Bon View Pride 664
 14512407 #+GAR Precision 1919 [AMC-NHF] #GAR Precision 1680 [AMC-NHC]
 #GAR Retail Product [AMF-NHF] #GAR Precision 1680 [AMC-NHC]
Plattermere Queen W 875 +GAR Ext 544 [AMF-NHF]
 16274877 Plattermere Queen W 728 +GAR Ext 4927
 Plattermere ND 471-B01
 Plattermere Queen W 546

MARB	SW
+52	+28.12
RE	SF
+57	+27.12
FAT	SB
+008	+59.12

BE PD	WE PD	YE PD	Milk	BW	ADJ 365
+0.2	+45	I+86	+28	70	1057

102 Plattermere 2V1-1 5409-B09

Calved: 04/04/2009

Bull 16425845

Tattoo: 5409

+Rito 2V1 of 2536 1407 [AMC-NHF] #Bon View New Design 1407 [AMF-NHF]
Plattermere 2V1 4597-B07 [AMC] GAR Precision 2536 [AMC-NHF]
 16072319 Plattermere Queen W 665 Plattermere FC 1271-B01
 Plattermere Queen W 386
 Mill Coulee 6807-423 [AMF-NHF] #DHD Traveler 6807 [AMF-NHF]
Erica Lady of Plattermere 214 #+Mill Coulee Barbara L NT 217
 15395264 Erica Lady of Plattermere 184 Plattermere 5175 E820-B00
 Erica Lady of Plattermere 110

MARB	SW
I+29	+24.94
RE	SF
I+18	+33.23
FAT	SB
I+031	+43.20

BE PD	WE PD	YE PD	Milk	BW	ADJ 365
+3.3	+55	+96	+18	95	

100 Plattermere Fa 6499-B09

Calved: 02/03/2009

Bull 16538319

Tattoo: 6499

#Sitz Traveler 8180 [AMF-NHF] #GDAR Traveler 71 [AMF-NHF]
SAV Final Answer 0035 [AMF-NHF] Sitz Everelda Entense 1137
 13592905 SAV Emulous 8145 #Bon View Bando 598 [AMF]
 SAV Sky Emulous 2124
 #+Boyd New Day 8005 [AMF-NHF] #AAR New Trend
Barbara of Plattermere 313 SVF Forever Lady 57D
 15394445 Barbara of Plattermere 291 Plattermere ND 340-B00
 Barbara of Plattermere 282

MARB	SW
+21	+28.32
RE	SF
+39	+43.40
FAT	SB
+032	+48.63

BE PD	WE PD	YE PD	Milk	BW	ADJ 365
+1.6	+58	I+107	+23	98	1241

103 Plattermere Pre-1 A359-B09

Calved: 03/19/2009

Bull 16425847

Tattoo: A359

+E&B 1680 Precision 1023 [NHC-AMF] #GAR Precision 1680 [AMC-NHC]
Plattermere Pre 9257-B07 E&b 6807 Lady Traveler 61
 16071255 Plattermere Queen W 764 #B/R Destination 727-928 [AMF-NHF]
 Plattermere Queen W 573
 #B/R Destination 727-928 [AMF-NHF] #B/R Destination 727 [AMF-NHF]
Plattermere Rosa 347 B/R Blackcap Empress 558 [AMF]
 15785911 Plattermere Rosa 330 Plattermere AL N380-B00
 Plattermere Rosa 267

MARB	SW
I+47	+26.55
RE	SF
I+33	+26.96
FAT	SB
I+024	+55.03

BE PD	WE PD	YE PD	Milk	BW	ADJ 365
+1.9	+48	+87	+21	87	

NOTES

Carcass EPDs are now updated weekly. EPDs through out the catalog were accurate 2/9/2010. Carcass EPDs in the following chart were accurate 2/2/2010.
Updated EPDs can be viewed online at www.angus.org.

SNYDER BROS.

Color Key for percentile comparison to current sires: 1-10% Red • 11-15% Yellow • 16-25% Blue

Tattoo	Lot #	SIRE	BDATE	BWT	Adj. YWT	BW	Wn	Milk	YW	Marb	Rea	Fat	\$W	\$F	\$B
A058-B08	1	YG	2/1/2008	82	1,196	+ 2.4	+ 53	+ 20	+ 106	0.62	0.31	0.014	22.85	44.39	65.96
E598-B08	2	458	1/29/2008	70	1,230	+ 1.2	+ 59	+ 29	+ 112	0.59	0.27	0.009	28.90	48.31	63.65
1808-B08	3	IF	2/1/2008	83	1,188	+ 0.2	+ 56	+ 22	+ 100	0.40	0.22	0.035	30.46	36.91	46.77
E898-B08	4	OB	1/13/2008	77	1,210	+ 1.4	+ 63	+ 25	+ 114	0.52	0.12	-0.006	30.21	48.79	57.50
E238-B08	5	OB	1/13/2008	76	1,195	+ 0.6	+ 60	+ 27	+ 109	0.56	0.26	-0.004	30.88	44.69	56.32
H698-B08	6	PRE	1/11/2008	81	1,360	+ 1.3	+ 58	+ 24	+ 108	0.58	0.46	0.018	28.64	44.45	66.21
H678-B08	7	PRE	1/10/2008	75	1,166	+ 0.7	+ 54	+ 21	+ 99	0.92	0.59	0.021	28.68	36.68	72.45
6458-B08	8	PRE	3/8/2008	83	1,069	+ 1.7	+ 53	+ 19	+ 97	0.36	0.54	0.009	26.86	35.03	58.14
9608-B08	9	R936-B06	4/18/2008	80	1,003	+ 0.8	+ 51	+ 22	+ 94	0.32	0.13	0.015	28.28	32.78	45.82
A708-B08	10	R755-B05	3/2/2008	88	1,100	+ 3.1	+ 45	+ 21	+ 93	0.27	-0.06	0.019	20.06	34.12	38.46
9508-B08	11	OB	2/1/2008	72	1,130	0	+ 50	+ 26	+ 92	0.52	0.42	0.010	29.72	31.15	55.93
4808-B08	12	6176-B06	4/10/2008	85	1,070	+ 1.1	+ 46	+ 20	+ 89	0.22	0.09	0.013	25.52	29.70	35.83
6438-B08	13	6176-B06	3/4/2008	82	1,048	+ 1.0	+ 44	+ 20	+ 86	0.39	0.16	-0.009	25.12	27.50	40.91
2968-B08	14	BP	2/8/2008	76	991	+ 0.6	+ 47	+ 26	+ 81	0.39	0.04	0.002	30.41	21.51	35.36
4238-B08	15	BP	3/2/2008	91	1,050	+ 2.9	+ 45	+ 27	+ 81	0.24	-0.11	0.020	25.31	22.25	28.33
K559-B09	16	OB	1/18/2009	90	1,369	+ 2.2	+ 66	+ 25	+ 120	0.41	0.42	-0.013	28.72	54.06	61.19
K959-B09	17	OB	2/19/2009	92	1,225	+ 2.1	+ 60	+ 29	+ 114	0.68	0.43	-0.004	27.38	50.05	65.85
K839-B09	18	OB	1/15/2009	90	1,256	+ 2.9	+ 65	+ 28	+ 116	0.52	0.28	-0.030	28.32	50.12	62.80
K899-B09	19	OB	1/20/2009	84	1,222	+ 2.1	+ 63	+ 30	+ 114	0.56	0.23	-0.013	29.51	48.79	58.15
J579-B09	20	OB	1/14/2009	78	1,215	0	+ 63	+ 25	+ 115	0.42	0.22	-0.010	31.25	49.87	56.83
K099-B09	21	OB	1/24/2009	79	1,274	+ 1.5	+ 63	+ 27	+ 117	0.34	0.30	0.015	29.41	52.05	55.58
J879-B09	22	OB	1/23/2009	78	1,227	+ 0.5	+ 64	+ 27	+ 113	0.61	0.31	-0.005	32.40	47.30	57.81
J869-B09	23	OB	1/20/2009	86	1,185	+ 2.3	+ 65	+ 25	+ 111	0.65	0.24	-0.009	30.74	44.76	58.84
J569-B09	24	OB	1/16/2009	79	1,170	+ 1.8	+ 57	+ 24	+ 108	0.47	0.39	0.006	27.11	44.86	53.02
K659-B09	25	OB	1/21/2009	84	1,167	+ 2.0	+ 55	+ 26	+ 105	0.39	0.16	0.009	26.62	42.51	45.96
K849-B09	26	OB	1/20/2009	84	1,165	+ 2.4	+ 54	+ 25	+ 104	0.45	0.26	-0.030	25.25	41.87	48.80
J959-B09	27	OB	1/21/2009	79	1,145	+ 1.6	+ 64	+ 25	+ 110	0.37	0.23	0.015	31.82	44.11	46.56
K949-B09	28	OB	2/11/2009	94	1,142	+ 3.6	+ 64	+ 23	+ 111	0.46	0.31	-0.015	26.92	45.17	51.70
L559-B09	29	OB	1/24/2009	87	1,109	+ 3.0	+ 56	+ 22	+ 108	0.41	0.28	0.004	23.51	45.28	48.72
K149-B09	30	OB	2/26/2009	87	1,153	+ 2.2	+ 60	+ 24	+ 109	0.53	0.14	-0.013	28.03	44.69	50.79
K409-B09	31	OB	1/27/2009	81	1,054	+ 1.7	+ 52	+ 24	+ 97	0.59	0.33	-0.002	27.32	35.43	46.76
4599-B09	32	T	2/3/2009	99	1,148	+ 2.2	+ 56	+ 24	+ 102	0.42	0.23	0.002	27.50	38.98	53.71
9699-B09	33	T	2/11/2009	83	1,117	+ 1.5	+ 53	+ 25	+ 97	0.35	0.25	0.007	28.60	35.03	48.64
3309-B09	34	T	2/13/2009	97	1,193	+ 2.4	+ 62	+ 25	+ 110	0.33	0.40	0.024	28.83	44.93	54.36
J479-B09	35	T	1/31/2009	89	1,162	+ 2.5	+ 59	+ 21	+ 107	0.66	0.34	0.005	26.71	42.99	64.52
A699-B09	36	T	2/8/2009	100	1,174	+ 3.4	+ 61	+ 25	+ 107	0.30	0.31	-0.012	26.99	42.17	53.71
8309-B09	37	T	2/15/2009	100	1,148	+ 2.4	+ 58	+ 23	+ 105	0.41	0.16	0.005	27.32	41.29	54.58
4579-B09	38	T	2/13/2009	98	1,194	+ 3.7	+ 55	+ 26	+ 100	0.26	0.42	0.006	24.60	37.31	49.98
6789-B09	39	T	2/19/2009	100	1,094	+ 2.6	+ 52	+ 32	+ 96	0.41	0.33	-0.002	26.77	34.41	51.17
6749-B09	40	T	2/8/2009	82	1,191	+ 1.2	+ 60	+ 25	+ 105	0.33	0.35	-0.005	31.25	40.48	55.08
3719-B09	41	T	2/14/2009	91	1,172	+ 1.8	+ 56	+ 24	+ 105	0.35	0.25	0.022	27.38	42.11	50.52
6229-B09	42	T	2/3/2009	92	1,173	+ 2.3	+ 59	+ 23	+ 104	0.21	0.29	0.015	28.53	39.85	46.44
4539-B09	43	T	3/4/2009	91	1,146	+ 1.2	+ 54	+ 26	+ 99	0.33	0.33	0.017	29.18	36.68	50.06
4729-B09	44	T	2/11/2009	99	1,125	+ 3.5	+ 56	+ 25	+ 100	0.41	0.28	-0.018	25.56	36.91	55.63
4959-B09	45	T	2/18/2009	91	1,062	+ 1.1	+ 48	+ 24	+ 95	0.39	0.43	0.004	25.97	34.97	52.35
9929-B09	46	T	2/13/2009	95	1,178	+ 2.8	+ 58	+ 24	+ 108	0.55	0.12	0.011	25.72	44.45	55.66
4239-B09	47	T	2/11/2009	90	1,149	+ 2.1	+ 57	+ 26	+ 96	0.34	0.12	0.003	30.63	32.45	46.72
R989-B09	48	T	2/13/2009	89	1,126	+ 2.4	+ 55	+ 26	+ 99	0.36	0.09	-0.003	27.69	36.28	47.55
A309-B09	49	T	2/26/2009	89	1,123	+ 2.0	+ 57	+ 24	+ 101	0.45	0.40	0.012	28.92	37.54	55.51
6639-B09	50	T	2/15/2009	97	1,272	+ 2.8	+ 54	+ 23	+ 107	0.51	0.48	-0.013	23.08	45.04	65.13
9359-B09	51	T	2/3/2009	89	1,123	+ 2.8	+ 54	+ 24	+ 99	0.23	0.25	0.011	25.81	36.68	44.55
6999-B09	52	T	2/7/2009	88	1,116	+ 2.4	+ 55	+ 25	+ 100	0.34	0.37	0.003	27.21	37.31	52.68

SNYDER BROS.

Color Key for percentile comparison to current sires: 1-10% Red • 11-15% Yellow • 16-25% Blue

Tattoo	Lot #	SIRE	BDATE	BWT	Adj. YWT	BW	Wn	Milk	YW	Marb	Rea	Fat	\$W	\$F	\$B
4479-B09	53	T	2/22/2009	94	1,087	+ 2.1	+ 54	+ 28	I + 99	0.39	0.28	0.013	27.90	36.68	49.41
2969-B09	54	T	2/11/2009	90	1,061	+ 1.6	+ 47	+ 25	I + 92	0.47	0.29	-0.002	25.74	32.32	50.20
3629-B09	55	T	3/3/2009	96	1,029	+ 3.9	+ 52	+ 25	I + 95	0.42	0.20	-0.006	23.47	33.39	43.62
H089-B09	56	PRD	2/11/2009	87	1,242	+ 2.4	+ 55	+ 25	I + 103	0.97	0.54	0.010	26.26	40.42	71.47
E499-B09	57	PRD	2/3/2009	87	1,214	+ 2.6	+ 55	+ 23	I + 101	0.85	0.43	0.040	26.10	38.34	66.40
6869-B09	58	PRD	2/14/2009	94	1,224	+ 3.6	+ 58	+ 28	I + 101	0.58	0.41	0.028	26.85	37.14	62.63
H709-B09	59	PRD	2/1/2009	77	1,185	+ 1.0	+ 51	+ 24	I + 98	0.92	0.45	0.011	27.25	36.85	65.73
E609-B09	60	BT	2/2/2009	98	1,293	+ 3.6	+ 57	+ 27	I + 106	0.46	0.40	0.011	24.45	42.75	62.71
9029-B09	61	BT	2/11/2009	90	1,264	+ 1.8	+ 54	+ 30	I + 104	0.77	0.52	0.022	27.15	41.87	70.77
E879-B09	62	BT	2/1/2009	85	1,257	+ 1.8	+ 53	+ 26	I + 97	0.46	0.35	0.013	28.16	35.03	59.78
H689-B09	63	BT	2/2/2009	93	1,201	+ 2.2	+ 52	+ 30	I + 98	0.67	0.51	0.010	26.83	36.45	66.63
9919-B09	64	BT	2/26/2009	81	1,162	+ 0.4	+ 49	+ 29	I + 94	0.67	0.18	0.037	28.42	33.56	54.95
9839-B09	65	BT	2/6/2009	89	1,148	+ 0.4	+ 52	+ 27	I + 92	0.55	0.41	0.012	30.90	30.38	55.78
9599-B09	66	BT	2/8/2009	71	1,147	-1.8	+ 55	+ 27	I + 92	0.18	0.52	-0.006	34.98	29.22	46.90
J969-B09	67	BT	1/20/2009	83	1,145	+ 1.8	+ 52	+ 26	I + 92	0.58	0.52	-0.001	29.02	30.38	62.23
9309-B09	68	BT	2/4/2009	89	1,132	+ 0.6	+ 49	+ 26	I + 91	0.72	0.41	0.025	28.76	30.54	58.48
9659-B09	69	BT	2/11/2009	86	1,104	+ 0.3	+ 48	+ 25	I + 89	0.61	0.28	0.011	28.79	28.93	56.53
E749-B09	70	BT	2/3/2009	82	1,067	I + 0.9	I + 53	I + 25	I + 94	0.59	0.47	0.024	30.17	31.99	58.24
K159-B09	71	50	1/15/2009	75	1,206	+ 0.8	+ 55	+ 27	I + 105	0.36	0.38	0.017	28.52	42.51	55.56
L019-B09	72	50	1/14/2009	85	1,194	+ 2.8	+ 51	+ 26	I + 103	0.59	0.40	0.023	22.80	42.04	58.73
L469-B09	73	50	1/25/2009	84	1,102	+ 1.9	+ 54	+ 28	I + 101	0.73	0.44	0.003	27.68	38.74	57.18
L509-B09	74	50	2/8/2009	77	1,100	+ 1.0	+ 48	+ 24	I + 95	0.48	0.27	0.013	26.07	34.97	51.30
L889-B09	75	50	1/20/2009	78	1,181	+ 1.2	+ 54	+ 30	I + 104	0.93	0.36	0.041	28.10	41.87	64.24
J669-B09	76	IF	1/16/2009	63	1,163	-2.6	+ 52	+ 24	I + 97	0.60	0.19	0.005	31.51	35.43	44.81
K539-B09	77	IF	1/17/2009	95	1,262	+ 2.0	+ 54	+ 25	I + 106	0.62	0.19	0.024	25.45	43.98	59.54
K059-B09	78	IF	1/18/2009	79	1,226	+ 0.2	+ 55	+ 26	I + 101	0.42	0.10	0.018	30.21	38.34	46.08
L879-B09	79	IF	1/22/2009	65	1,202	-2.5	+ 59	+ 25	I + 102	0.35	0.02	0.008	34.88	37.78	39.64
L809-B09	80	IF	1/22/2009	79	1,208	+ 0.2	+ 50	+ 25	I + 92	0.36	0.15	0.003	29.37	31.15	47.69
K799-B09	81	IF	1/21/2009	72	1,174	-1.1	+ 52	+ 26	I + 98	0.59	0.06	0.010	30.26	36.45	49.85
K689-B09	82	IF	1/23/2009	75	1,193	+ 0.1	+ 56	+ 25	I + 99	0.41	0.00	0.041	31.46	35.89	41.09
L389-B09	83	IF	1/25/2009	79	1,163	+ 1.2	+ 50	+ 23	I + 95	0.42	0.17	0.026	27.09	34.18	47.83
K869-B09	84	IF	1/20/2009	76	1,158	-0.5	+ 50	+ 26	I + 94	0.55	0.11	-0.011	29.57	33.17	48.47
L059-B09	85	IF	1/23/2009	75	1,111	+ 0.7	+ 45	+ 27	I + 88	0.72	-0.08	0.024	26.90	29.09	42.78
K019-B09	86	IF	1/25/2009	75	1,137	+ 0.6	+ 54	+ 25	I + 99	0.66	0.20	0.022	29.60	36.68	49.10
K909-B09	87	IF	1/25/2009	87	1,108	+ 1.4	+ 48	+ 23	I + 90	0.45	0.10	0.016	27.02	29.93	39.40
L039-B09	88	IF	1/14/2009	84	1,100	+ 1.8	+ 54	+ 24	I + 96	0.47	0.06	0.037	28.82	33.62	36.29
K649-B09	89	IF	1/22/2009	71	1,046	-0.5	+ 50	+ 20	I + 90	0.52	0.07	0.019	29.57	29.16	39.72
L189-B09	90	IF	1/23/2009	62	1,046	-2.7	+ 48	+ 23	I + 88	0.49	0.12	0.031	31.37	27.94	37.06
A139-B09	91	IF	2/10/2009	90	1,144	I + 1.1	I + 44	I + 22	I + 85	0.62	-0.27	0.014	25.80	26.51	35.90
J749-B09	92	205	1/23/2009	97	1,317	+ 3.7	+ 63	+ 27	I + 117	0.19	0.19	-0.027	24.80	52.05	51.83
K079-B09	93	205	1/20/2009	81	1,263	+ 1.3	+ 56	+ 25	I + 107	0.31	0.27	-0.003	27.77	44.22	53.69
J799-B09	94	205	1/20/2009	80	1,174	+ 1.1	+ 52	+ 27	I + 100	0.38	0.18	-0.003	27.72	38.51	48.85
K049-B09	95	205	1/20/2009	83	1,072	+ 2.5	+ 48	+ 23	I + 94	0.18	0.22	-0.007	23.60	33.95	37.29
K999-B09	96	205	1/20/2009	90	1,094	+ 3.5	+ 49	+ 20	I + 96	0.24	0.16	-0.005	20.86	35.59	39.46
K989-B09	97	MH	1/22/2009	80	1,241	+ 1.1	+ 58	+ 33	I + 103	0.59	0.49	-0.003	31.48	39.21	65.08
K499-B09	98	MH	2/11/2009	90	1,123	+ 1.8	+ 48	+ 27	I + 94	0.38	0.34	0.011	25.73	33.95	53.65
L439-B09	99	MH	1/28/2009	70	1,057	+ 2.2	+ 45	+ 28	I + 86	0.52	0.57	0.008	28.12	27.12	59.12
6499-B09	100	FA	2/3/2009	98	1,241	+ 1.6	+ 58	+ 23	I + 107	0.21	0.41	0.033	28.32	43.40	50.53
E969-B09	101	4157-B07	3/26/2009	75	N/A	+ 0.2	+ 50	+ 27	+ 95	0.51	0.44	-0.001	28.75	34.18	59.86
5409-B09	102	4597-B07	4/4/2009	95	N/A	+ 3.3	+ 55	+ 18	+ 96	0.29	0.18	0.031	24.94	33.23	43.20
A359-B09	103	9257-B07	3/19/2009	87	N/A	+ 1.9	+ 48	+ 21	+ 87	0.46	0.31	0.026	26.55	26.96	53.03

SNYDER BROS.

44th Annual **BULL SALE**

Saturday • **MARCH 13, 2010** • 1p.m. MST
Ogallala Livestock, Ogallala, NE



Snyder Bros.

1505 Road East 120
Paxton, NE 69155

Presorted
Standard
Permit No. 10
Ogallala, NE