

SNYDER BROS.

42nd Annual BULL SALE

Saturday • MARCH 8, 2008 • 1p.m. MST

Ogallala Livestock, Ogallala, NE



LOT 23

**42ND
ANNUAL**

SNYDER BROS.

Production Sale

Saturday • MARCH 8, 2008 • 1 p.m. MST
Ogallala Livestock, Ogallala, NE

140 HEAD SELL

20 2-year-old Bulls • 120 Yearling Bulls

SALE DAY PHONES:

Ogallala Livestock (308) 284-2071
Ken Snyder (308) 289-3130
Bruce Snyder (308) 289-4389

AUCTIONEER:

Dean Schow

ASSOCIATION REPRESENTATIVES:

John Schurr - Director,
American Angus Association
Matt Printz - Regional Manager,
American Angus Association
Craig Dethlefs - President,
Nebraska Angus Association
Suzy Hebbert - Secretary-Manager,
Nebraska Angus Association

LIVESTOCK PUBLICATION REPRESENTATIVES:

Matt Printz - *Angus Journal*
Jim Gies - *Western Livestock Journal*
Rod Swafford - *High Plains Journal*
Gelen Gerdes - *Nebraska Farmer*

Buyers unable to attend the sale may send their bids to the Auctioneer or Representatives.

INSPECTION OF CATTLE:

The cattle will be available for inspection Friday, March 10, 2006 at Ogallala. Prior to the sale they can be seen at the ranch.

SALE LOCATION:

The sale will be held at the Ogallala Livestock Auction Market in Ogallala, NE.

TERMS AND CONDITIONS:

Satisfaction Guarantee

TRUCKING:

Truckers believed to be reliable will be available to assist you in shipping your purchases.

LIVESTOCK MORTALITY INSURANCE:

A representative from American Live Stock Insurance Company will be available to assist you with mortality insurance for your purchases.

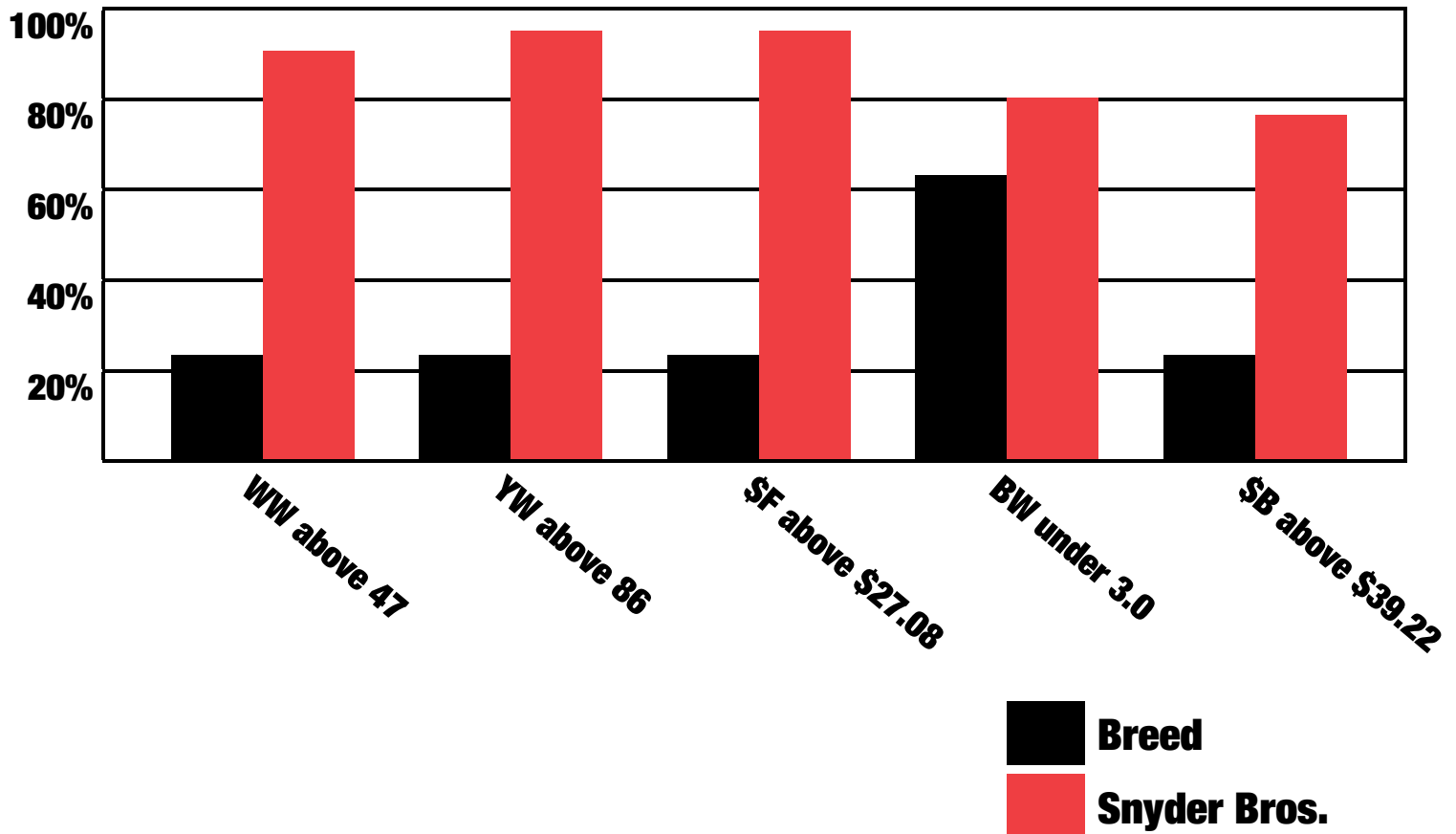
FOOD AND REFRESHMENTS:

Will be available sale day.

Snyder Bros.

1505 Road East 120 • Paxton, NE 69155
Bruce Snyder (308) 239-4640 or (308) 289-4389
Don Eakins (308) 239-4611
Ken Snyder (308) 239-4274, (866) 663-1162
or cell (308) 289-3130
Cheramie Viator, consultant, (979) 777 9419
www.angusjournal.com/snyderbros

SNYDER BROS.



- 96% of offering in the top 25% for \$Feedlot
- 50% of offering in the top 10% for \$Feedlot
- 90% of the offering in the top 25% for Weaning Wt.
- 96% of the offering in the top 25% for Yearling Wt.
- 80% of offering under 3.0 for Birth

Welcome to Snyder Bros. 42nd Annual Bull Sale

The bulls we're offering are the result of our long term commitment to breed and develop bulls that will have a positive economic impact on our customer's herds. Our primary selection pressure is to increase efficiency of the cow herd. To that end we have refused to compromise on calving-ease and moderate cow size. Our grass and cornstalk feed base doesn't lend itself to oversize cows. With our own commercial cow herd we have no intention of watching cows calve and assume you don't either. While we have made significant improvement in carcass genetics we've done it without sacrificing fertility or performance.

For generations we have used primarily high accuracy, proven A.I. sires and generated large groups of contemporaries so that the resulting accuracy of our EPDs is excellent. You can buy these bulls with confidence that they are represented accurately and honestly. You don't do business with people for 40 years by disappointing them. The bulls are covered by our first season full satisfaction guarantee. If for any reason you are unhappy with your bull we will replace him or issue credit to be used at another sale. This is not a mortality policy.

All of the EPDs in this catalog are based on information that includes adjusted yearling weights and ultrasound scans. The actual scan data will be available sale day in addition to EPDs reported. Check out the last page of the catalog. We have prepared a chart for you that color codes the top EPDs so that, at a glance, you can find the bulls that are suited for you.

We will deliver bulls within the state or to certain locations in adjoining states for free or take \$35 off if you pick them up. We will be happy to winter the yearling bulls for \$2.00/head/day but delivery of wintered bulls will be the responsibility of the buyer.

On sale day, Snyder Bros. will announce a few bulls that we are keeping a one-third semen interest in. In those cases the buyer gets full possession and full salvage value but we retain the right to collect semen at the convenience of the buyer. Revenue from any semen sales will be shared in proportion to ownership.

Snyder Bros.

1505 Road East 120 • Paxton, NE 69155
www.angusjournal.com/snyderbros

Bruce Snyder
(308) 239-4640
(308) 289-4389

Don Eakins
(308) 239-4611
Cheremie Viator, consultant
(979) 777 9419

Ken Snyder
(308) 239-4274
(866) 663-1162
Cell (308) 289-3130

SNYDER BROS.

TWO-YEAR-OLD ANGUS BULLS

This is an excellent set of rugged two-year olds bulls. They represent many of the best of our 2006 bull calf crop. Each of these bulls was used in our purebred breeding program demonstrating how much we value them. Every two-year old has been Trich and BVD rested and is negative. These bulls surpass the high standards SnyderBros. demands in its breeding program.

1 Calved: 3/23/2006 Tattoo: R936-B06

Hyline Right Time 338 #+Leachman Right Time
Plattmereg 338 C784-B04 Hyline Pride 265
 15074647 #Plattmereg Queenie 611 #B/R New Design 036
 #Plattmereg Queenie 487

#+S A F 598 Bando 5175 #Bon View Bando 598
ADA of Plattmereg 217 +S A F Royal Lass 1002
 14702433 Ada of Plattmereg 168 #+Woodhill Triple Threat
 Ada of Plattmereg 145

%IMF	SW
+ 0.16	30.28
UREA	SF
+ 0.06	38.45
UFAT	SB
+ 0.051	33.55

BEPD	WEPD	YEPD	Milk	BW	ADJ 365
+ 2.2	+ 57	+ 101	+ 25	79	1,223



Lot 2

2 Calved: 2/20/2006 Tattoo: R326-B06

#Bon View New Design 878 #B/R New Design 036
+W C C Special Design L309 Bon View Gammer 85
 +13846942 N Bar Primrose 2424 #Emulation 31
 Primrose N Bar 9962

#S A Neutron 377 #+S A F Neutron
Plattmereg Queen W 570 #S A Queen Susan 102
 14700268 Plattmereg Queen W 288 #Bon View Bando 598
 Plattmereg Queen W 173

%IMF	SW
+ 0.22	26.92
UREA	SF
+ 0.14	37.40
UFAT	SB
+ 0.017	42.75

BEPD	WEPD	YEPD	Milk	BW	ADJ 365
+ 3.1	+ 57	+ 100	+ 19	87	1,174

3 Calved: 2/2/2006 Tattoo: 2636-B06

#Vermilion Dateline 7078 #Connealy Dateline
Sitz Tradition RLS 8702 #Vermilion Blackbird 5044
 14093248 +R L S Eisa Evergreen 5018 #Sitz Alliance 6595
 R L S Eisa Evergreen 1078

#Bon View New Design 1407 #B/R New Design 036
Plattmereg Daisy 277 Bon View Pride 664
 15119126 Plattmereg Daisy 206 #S A F Fame
 Plattmereg Daisy 139

%IMF	SW
+ 0.02	25.24
UREA	SF
+ 0.54	37.57
UFAT	SB
-0.001	39.48

BEPD	WEPD	YEPD	Milk	BW	ADJ 365
+ 2.7	+ 54	+ 99	+ 17	92	1,294

4 Calved: 1/23/2006 Tattoo: 6456-B06

#S A F Focus of E R #S A F Fame
#Baldrige Nebraska 901 G D A R Forever Lady 246
 #13412671 Baldrige Flossie 367 #Bon View Emulation Ext 473
 Baldrige Flossie 65

#+Boyd New Day 8005 #A A R New Trend
Plattmereg Queenie 765 S V F Forever Lady 57D
 15394443 #Plattmereg Queenie 618 G A R 6807 Traveler 4144
 #Plattmereg Queenie 550

%IMF	SW
+ 0.13	20.17
UREA	SF
+ 0.21	38.32
UFAT	SB
+ 0.011	38.74

BEPD	WEPD	YEPD	Milk	BW	ADJ 365
+ 3.0	+ 47	+ 97	+ 17	89	1,226

5 Calved: 2/5/2006 Tattoo: 3956-B06

#B/R Destination 727 #G A R Traveler 1489
B/R Destination 727-928 B/R Ruby of Tiffany 5113
 13286246 B/R Blackcap Empress 558 #Bon View Bando 598
 B/R Blackcap Empress 76

#Bon View New Design 1407 #B/R New Design 036
Plattmereg Queenie 716 Bon View Pride 664
 14742350 Plattmereg Queenie 423 #Minerts Fortune 2000
 Plattmereg Queenie 404

%IMF	SW
+ 0.54	24.44
UREA	SF
+ 0.24	36.06
UFAT	SB
+ 0.016	51.80

BEPD	WEPD	YEPD	Milk	BW	ADJ 365
+ 3.3	+ 50	+ 96	+ 25	90	1,200

6 Calved: 3/14/2006 Tattoo: 3006-B06

Mill Coulee 6807-423 #D H D Traveler 6807
Plattmereg Mc R884-B04 #+Mill Coulee Barbara L NT 217
 15047693 Plattmereg Queen W 573 #Sitz Alliance 6595
 #Plattmereg Queen W 319

#Bon View New Design 1407 #B/R New Design 036
Plattmereg Daisy 280 Bon View Pride 664
 15119133 Plattmereg Daisy 209 Woodland Extra 526
 Plattmereg Daisy 96

%IMF	SW
+ 0.32	27.19
UREA	SF
+ 0.31	35.42
UFAT	SB
-0.006	48.93

BEPD	WEPD	YEPD	Milk	BW	ADJ 365
+ 1.0	+ 49	+ 95	+ 21	83	1,255

7 Calved: 1/31/2006 Tattoo: 1766-B06

#Vermilion Dateline 7078 #Connealy Dateline
Sitz Tradition RLS 8702 #Vermilion Blackbird 5044
 14093248 +R L S Eisa Evergreen 5018 #Sitz Alliance 6595
 R L S Eisa Evergreen 1078

#Connealy Forefront #Connealy Frontline
Plattmereg Queenie 722 Eileen Heartland Conanga6443
 15122485 Plattmereg Queenie 631 Woodland Extra 526
 Plattmereg Queenie 417

%IMF	SW
-0.10	23.05
UREA	SF
+ 0.34	32.77
UFAT	SB
0	31.28

BEPD	WEPD	YEPD	Milk	BW	ADJ 365
+ 3.7	+ 53	+ 94	+ 15	95	1,130

8 Calved: 1/23/2006 Tattoo: R226-B06

#S A F Focus of E R #S A F Fame
S A F Strategy 9015 G D A R Forever Lady 246
 13334022 +S A F Royal Queen 5084 #Bon View Bando 598
 S A F Royal Queen 9022

Plattmereg Database #Connealy Dateline
Plattmereg Queen W 583 #Plattmereg Reva 109
 14699375 Plattmereg Queen W 379 #G D A R Traveler 044
 Plattmereg Queen W 301

%IMF	SW
+ 0.38	26.50
UREA	SF
+ 0.13	33.11
UFAT	SB
+ 0.016	45.29

BEPD	WEPD	YEPD	Milk	BW	ADJ 365
-0.3	+ 47	+ 92	+ 17	71	1,166



Lot 4

SNYDER BROS.

9

Calved: 2/21/2006

Tattoo: 2816-B06

#B/R New Design 036
Bon View New Design 1407
12783540 Bon View Pride 664

#V D A R New Trend 315
B/R Blackcap Empress 76
#+G A R Sleep Easy 1009
#Bon View Pride 1551

#Millcreek Diversity
Plattermere Queen W 679
15119893 Plattermere Queen W 502

#+G A R Sleep Easy 1009
Millcreek Travel Lass
Plattermere Ext J278 B98
Plattermere Queen W 387

%IMF	SW
+ 0.16	22.29
UREA	SF
+ 0.17	32.88
UFAT	SB
-0.001	40.88

BE PD	WE PD	YE PD	Milk	BW	ADJ 365
+ 3.5	+ 45	+ 91	+ 27	102	1,193

10

Calved: 1/20/2006

Tattoo: 6176-B06

#S A F Focus of E R
#Baldrige Nebraska 901
#13412671 Baldrige Flossie 367

#S A F Fame
G D A R Forever Lady 246
#Bon View Emulation Ext 473
Baldrige Flossie 65

J D Daigger 901
Plattermere Queenie 761
15394433 #Plattermere Queenie 598

#Sitz Alliance 6595
J D Queen Eisa 7021
#Connealy Dateline
Plattermere Queenie 495

%IMF	SW
+ 0.28	25.51
UREA	SF
+ 0.09	31.85
UFAT	SB
+ 0.009	40.10

BE PD	WE PD	YE PD	Milk	BW	ADJ 365
+ 0.2	+ 45	+ 90	+ 18	76	1,252

11

Calved: 1/30/2006

Tattoo: 4416-B06

#+Leachman Right Time
Hyline Right Time 338
13058662 Hyline Pride 265

#N Bar Emulation EXT
Leachman Erica 0025
+Hyline S V F Traveler 0115
Hyline Pride 870

Plattermere Gar V031-B01
Plattermere Queen W 698
15119177 Plattermere Queen W 482

G A R 6807 Traveler 4144
#Plattermere Queenie 552
#B/R New Design 036
Plattermere Queen W 284

%IMF	SW
+ 0.02	26.93
UREA	SF
+ 0.20	30.26
UFAT	SB
0	34.03

BE PD	WE PD	YE PD	Milk	BW	ADJ 365
+ 2.6	+ 49	+ 90	+ 25	90	1,211



Lot 12

12

Calved: 2/26/2006

Tattoo: C416-B06

#Connealy Forefront
TC Freedom 104
13977765 #T C Ruby 9095

#Connealy Frontline
Eileen Heartland Conanga6443
#TC Stockman 365
#+TC Ruby 4068

#S A F Focus of E R
Plattermere Queen W 515
14042228 Plattermere Queen W 416

#S A F Fame
G D A R Forever Lady 246
#Connealy Dateline
Plattermere Queen W 363

%IMF	SW
-0.08	27.73
UREA	SF
+ 0.15	29.46
UFAT	SB
-0.006	30.99

BE PD	WE PD	YE PD	Milk	BW	ADJ 365
+ 2.9	+ 51	+ 90	+ 25	97	1,172

13

Calved: 1/29/2006

Tattoo: 4536-B06

#Vermilion Dateline 7078
Sitz Tradition RLS 8702
14093248 +R L S Eisa Evergreen 5018

#Connealy Dateline
#Vermilion Blackbird 5044
#Sitz Alliance 6595
R L S Eisa Evergreen 1078

Plattermere AL N380-B00
Plattermere Queen W 701
15119183 Plattermere Queen W 376

#Sitz Alliance 6595
Plattermere Queenie 500
#+Woodhill Triple Threat
Plattermere Queen W 173

%IMF	SW
-0.16	27.82
UREA	SF
+ 0.37	29.23
UFAT	SB
+ 0.001	27.20

BE PD	WE PD	YE PD	Milk	BW	ADJ 365
+ 1.1	+ 49	+ 89	+ 18	78	1,228



Lot 14

14

Calved: 1/18/2006

Tattoo: 6796-B06

#S A F Focus of E R
#Baldrige Nebraska 901
#13412671 Baldrige Flossie 367

#S A F Fame
G D A R Forever Lady 246
#Bon View Emulation Ext 473
Baldrige Flossie 65

#R P 3RD Bushwacker
PAM of Plattermere 75
15394453 PAM of Plattermere 65

#B C C Bushwacker 41-93
L B Queen of Spades
#Plovman 1627 of Millbrae SAR
Pam of Plattermere 47

%IMF	SW
+ 0.18	26.30
UREA	SF
+ 0.32	29.23
UFAT	SB
+ 0.024	37.86

BE PD	WE PD	YE PD	Milk	BW	ADJ 365
+ 2.2	+ 49	+ 89	+ 19	89	1,199

15

Calved: 2/9/2006

Tattoo: C386-B06

#Connealy Leadtime
Connealy Lead On
13447282 Eligence Plus of Conanga

#Connealy Dateline
#Ruths Rona of Conanga
#TC Dividend 963
Eura Cap of Conanga

#R P 3RD Bushwacker
#Blackbird of Plattermere 336
#14043362 Blackbird of Plattermere 328

#B C C Bushwacker 41-93
L B Queen of Spades
#+Leachman Right Time
Blackbird of Plattermere 252

%IMF	SW
-1-0.02	25.12
UREA	SF
+ 1+ 0.26	31.44
UFAT	SB
-1-0.008	36.16

BE PD	WE PD	YE PD	Milk	BW	ADJ 365
+ 2.4	+ 45	+ 89	+ 27	93	1,206

16

Calved: 1/28/2006

Tattoo: 4366-B06

#+Leachman Right Time
Hyline Right Time 338
13058662 Hyline Pride 265

#N Bar Emulation EXT
Leachman Erica 0025
+Hyline S V F Traveler 0115
Hyline Pride 870

#S A F Focus of E R
Erica Lady of Plattermere 210
15119919 Erica Lady of Plattermere 137

#S A F Fame
G D A R Forever Lady 246
#+Woodhill Triple Threat
Erica Lady of Plattermere 48

%IMF	SW
+ 0.04	25.57
UREA	SF
0.11	30.42
UFAT	SB
+ 0.004	32.66

BE PD	WE PD	YE PD	Milk	BW	ADJ 365
+ 2.1	+ 46	+ 89	+ 23	77	1,150

17

Calved: 2/9/2006

Tattoo: C166-B06

#B/R New Design 036
Bon View New Design 1407
12783540 Bon View Pride 664

#V D A R New Trend 315
B/R Blackcap Empress 76
#+G A R Sleep Easy 1009
#Bon View Pride 1551

#S A F Focus of E R
#Martha of Plattermere 311
#14042219 Martha of Plattermere 297

#S A F Fame
G D A R Forever Lady 246
Plattermere Ext E527 B97
Martha of Plattermere 257

%IMF	SW
+ 1+ 0.65	31.27
UREA	SF
+ 1+ 0.02	28.78
UFAT	SB
+ 1+ 0.017	47.05

BE PD	WE PD	YE PD	Milk	BW	ADJ 365
+ 0.4	+ 49	+ 88	+ 29	83	1,193

• This bull has a tremendous IMF EPD and ratioed 176 for IMF.

18

Calved: 2/8/2006

Tattoo: U896-B06

#Connealy Leadtime
Connealy Lead On
13447282 Eligence Plus of Conanga

#Connealy Dateline
#Ruths Rona of Conanga
#TC Dividend 963
Eura Cap of Conanga

Plattermere 5175 E820-B00
Plattermere Daisy 240
14699391 Plattermere Daisy 168

#+S A F 598 Bando 5175
Barbara of Plattermere 232
#Bon View Bando 598
Plattermere Daisy 110

%IMF	SW
-0.01	22.23
UREA	SF
+ 0.19	29.80
UFAT	SB
-0.017	34.37

BE PD	WE PD	YE PD	Milk	BW	ADJ 365
+ 3.2	+ 45	+ 88	+ 21	90	1,104

SNYDER BROS.

19

Calved: 1/30/2006

Tattoo: C716-B06

TC Freedom 104
13977765 #T C Ruby 9095

#Connealy Forefront
#Connealy Frontline
Eileen Heartland Conanga6443
#TC Stockman 365
#+TC Ruby 4068

Plattemere Queenie 609
14042248 Plattemere Queenie 426

#S A F Focus of E R
#S A F Fame
G D A R Forever Lady 246
#N Bar Emulation EXT
Plattemere Queenie 402

%IMF	SW
1 + 0.02	29.81
UREA	SF
1 + 0.22	28.38
UFAT	SB
1 + 0.005	33.51

BEPD	WEPD	YEPD	Milk	BW	ADJ 365
+ 1.7	+ 50	1 + 88	+ 26	85	1,117

20

Calved: 1/31/2006

Tattoo: 4896-B06

Hyline Right Time 338
13058662 Hyline Pride 265

#+Leachman Right Time
#N Bar Emulation EXT
Leachman Erica 0025
+Hyline S V F Traveler 0115
Hyline Pride 870

Dolly of Plattemere 332
15119202 #Dolly of Plattemere 223

Plattemere AL N380-B00
#Sitz Alliance 6595
Plattemere Queenie 500
#+Leachman Right Time
Dolly of Plattemere 163

%IMF	SW
+ 0.09	24.19
UREA	SF
+ 0.23	24.35
UFAT	SB
+ 0.001	34.86

BEPD	WEPD	YEPD	Milk	BW	ADJ 365
+ 3.9	+ 46	+ 83	+ 26	95	1,135

21

Calved: 3/3/2006

Tattoo: C836-B06

TC Freedom 104
13977765 #T C Ruby 9095

#Connealy Forefront
#Connealy Frontline
Eileen Heartland Conanga6443
#TC Stockman 365
#+TC Ruby 4068

Plattemere Queen W 527
14042255 Plattemere Queen W 315

#S A F Focus of E R
#S A F Fame
G D A R Forever Lady 246
#Minerts Fortune 2000
Plattemere Queen W 245

%IMF	SW
-0.02	30.78
UREA	SF
+ 0.09	23.57
UFAT	SB
+ 0.019	27.35

BEPD	WEPD	YEPD	Milk	BW	ADJ 365
+ 1.5	+ 48	+ 83	+ 26	85	1,102

22

Calved: 2/2/2006

Tattoo: 3056-B06

Bon View New Design 1407
12783540 Bon View Pride 664

#B/R New Design 036
#V D A R New Trend 315
B/R Blackcap Empress 76
#+G A R Sleep Easy 1009
#Bon View Pride 1551

Dolly of Plattemere 324
15119135 Dolly of Plattemere 274

Plattemere Database
#Connealy Dateline
#Plattemere Reva 109
Plattemere Ext 1 7028 B98
Dolly of Plattemere 230

%IMF	SW
+ 0.52	24.95
UREA	SF
+ 0.42	21.84
UFAT	SB
0	47.26

BEPD	WEPD	YEPD	Milk	BW	ADJ 365
+ 0.9	+ 37	+ 77	+ 26	83	1,085

• Lot 22 ratioed 170 for IMF



S S Objective T510 OT26 - Sire of Lots 23-44



Lot 23

23

Calved: 1/7/2007

Tattoo: A997-B07

S S Objective T510 OT26
13776378 S S Miss Rita R011 7R8

#S S Traveler 6807 T510
#D H D Traveler 6807
#S S Miss Hi Spade A114
S S Rito Rito R76 R011
S S Miss Ultress U56

Dolly of Plattemere 358
15785946 Dolly of Plattemere 294

Plattemere 602 C533-B03
#Basin Max 602C
Blackbird of Plattemere 342
#S A F Focus of E R
Dolly of Plattemere 230

%IMF	SW
1 + 0.36	30.72
UREA	SF
1 + 0.52	49.83
UFAT	SB
1 - 0.012	57.37

BEPD	WEPD	YEPD	Milk	BW	ADJ 365
-0.6	+ 58	1 + 112	+ 23	65	1,315

• Lot 23 is unmatched for His EPDs. He is in the top 1% for Beef Value, top 2% for Feedlot Value and Yearling Weight. He is in the top 10% for 7 of the 10 EPDs we report in this catalog and in the top 15% for 2 more. He turned in the 4th highest Adjusted Yearling Weight in the sale and has tremendous eye appeal. He is the most complete bull we have ever raised. Lot 23 is out of a 2 year old dam that posted individual ratios of 110 for IMF and 105 for REA.

Ref Sire
A

S S Objective T510 OT26

Calved: 4/25/2004

Bull 13776378

Tattoo: 0B

#D H D Traveler 6807
#Q A S Traveler 23-4
#Bemindful Maid D H D 0807
#S S Traveler 6807 T510
#12502030 #S S Miss Hi Spade A114
#Hoff Hi Spade S C 491
S S Miss Rito 0H3 5H9

S S Rito Rito R76 R011
#S S Miss Rita R011 7R8
S S Rito Rito R76
S S Miss Hoss H83
12958951 S S Miss Ultress U56
#+0 S U 6T6 Ultra
#S S Miss Rito Rito R76 R96

SW	+38.28
SF	+59.77
SG	+29.04
SB	+62.06

CEP Acc	BW Acc	WW Acc	YW Acc	YH Acc	SC Acc	CEM Acc	Milk Acc	MkH MkD	MW Acc	MH Acc	SEN
+11	+1.0	+71	+126	+4	-.09	+9	+24	38	+63	+4	-8.18
.87	.95	.95	.92	.91	.89	.50	.84	107	.50	.50	

Cwt Acc	Mrb Acc	RE Acc	Fat Acc	Grp Prog	%IMF Acc	RE Acc	Fat Acc	Grp Prog
+10	+.36	+.26	-.029	11	+.56	+.51	+.008	526
.55	.59	.53	.51	54	.93	.93	.93	1423

• Objective ranks number 8 in the breed for Beef Value or \$B. Of the top 20 Beef value bulls he is 2nd in birth weight EPD and 2nd in Yearling weight EPD. He has a modest mature weight of 2075. His daughters have good udders and small tits. He may be one of the great sires of the breed.

• Every bull in this extraordinary sire group is in the top 10% for Yearling EPD, all but one are in the top 10% for Weaning EPD, and most are below 2.0 for Birth EPD. All of them are in the top 10% for Feedlot Value, all but one are in the top 10% for Beef Value, and all are in the top 25% for Weaning Value.

24

Calved: 1/16/2007

Tattoo: 9107-B07

S S Objective T510 OT26
13776378 S S Miss Rita R011 7R8

#S S Traveler 6807 T510
#D H D Traveler 6807
#S S Miss Hi Spade A114
S S Rito Rito R76 R011
S S Miss Ultress U56

Martha of Plattemere 366
15785852 Martha of Plattemere 353

B/R Destination 727-928
#B/R Destination 727
B/R Blackcap Empress 558
#Dalebanks Extender 6012
Martha of Plattemere 232

%IMF	SW
1 + 0.37	33.28
UREA	SF
1 + 0.31	45.98
UFAT	SB
1 + 0.006	52.81

BEPD	WEPD	YEPD	Milk	BW	ADJ 365
+ 0.8	+ 62	1 + 110	+ 25	74	1,178

SNYDER BROS.

25

Calved: 1/18/2007

Tattoo: 9717-B07

#S S Traveler 6807 T510
S S Objective T510 0T26
 13776378 S S Miss Rita R011 7R8

#D H D Traveler 6807
 #S S Miss Hi Spade A114
 S S Rito Rito R76 R011
 S S Miss Ultress U56

%IMF	SW
I + 0.46	28.44
UREA	SF
I + 0.30	46.40
UFAT	SB
I + 0.014	53.74

#Bon View New Design 1407
Martha of Plattemere 371
 15785886 Martha of Plattemere 316

#B/R New Design 036
 Bon View Pride 664
 #Plowman 1627 of Millbrae SAR
 Martha of Plattemere 269

BEPD	WEPD	YEPD	Milk	BW	ADJ 365
+ 2.9	+ 61	I + 110	+ 23	89	1,232

• Lot 25's Weaning, Yearling, Feedlot Value and Beef Value are all in the top 2% of the breed.



Lot 26

26

Calved: 2/6/2007

Tattoo: A517-B07

#S S Traveler 6807 T510
S S Objective T510 0T26
 13776378 S S Miss Rita R011 7R8

#D H D Traveler 6807
 #S S Miss Hi Spade A114
 S S Rito Rito R76 R011
 S S Miss Ultress U56

%IMF	SW
I + 0.45	27.11
UREA	SF
I + 0.55	44.42
UFAT	SB
I + 0.008	56.48

#Bon View New Design 1407
College Queen Plattemere 62
 15785918 #College Queen Plattemere 55

#B/R New Design 036
 Bon View Pride 664
 #B/R New Design 036
 College Queen Plattemere 46

BEPD	WEPD	YEPD	Milk	BW	ADJ 365
+ 3.6	+ 58	I + 107	+ 29	89	1,204

27

Calved: 1/17/2007

Tattoo: A357-B07

#S S Traveler 6807 T510
S S Objective T510 0T26
 13776378 S S Miss Rita R011 7R8

#D H D Traveler 6807
 #S S Miss Hi Spade A114
 S S Rito Rito R76 R011
 S S Miss Ultress U56

%IMF	SW
I + 0.46	32.04
UREA	SF
I + 0.31	44.66
UFAT	SB
I + 0.011	54.04

B/R Destination 727-928
Plattemere Rosa 347
 15785911 Plattemere Rosa 330

#B/R Destination 727
 B/R Blackcap Empress 558
 Plattemere AL N380-B00
 Plattemere Rosa 267

BEPD	WEPD	YEPD	Milk	BW	ADJ 365
+ 1.0	+ 60	I + 108	+ 24	74	1,204

• Lot 27 shows EPDs among the best in the sale for both Weaning and Yearling Weight.

28

Calved: 3/3/2007

Tattoo: 3917-B07

#S S Traveler 6807 T510
S S Objective T510 0T26
 13776378 S S Miss Rita R011 7R8

#D H D Traveler 6807
 #S S Miss Hi Spade A114
 S S Rito Rito R76 R011
 S S Miss Ultress U56

%IMF	SW
I + 0.36	27.54
UREA	SF
I + 0.27	42.93
UFAT	SB
I - 0.010	53.09

#Millcreek Diversity
Dolly of Plattemere 329
 15119915 Dolly of Plattemere 240

#+G A R Sleep Easy 1009
 Millcreek Travel Lass
 #Connealy Dateline
 Dolly of Plattemere 205

BEPD	WEPD	YEPD	Milk	BW	ADJ 365
+ 2.8	+ 59	I + 106	+ 20	85	1,112

29

Calved: 1/17/2007

Tattoo: 9497-B07

#S S Traveler 6807 T510
S S Objective T510 0T26
 13776378 S S Miss Rita R011 7R8

#D H D Traveler 6807
 #S S Miss Hi Spade A114
 S S Rito Rito R76 R011
 S S Miss Ultress U56

%IMF	SW
I + 0.24	31.55
UREA	SF
I + 0.28	49.66
UFAT	SB
I + 0.005	48.60

Hyline Right Time 338
Plattemere Queenie 787
 15791923 Plattemere Queenie 676

#+Leachman Right Time
 Hyline Pride 265
 #Connealy Forefront
 Plattemere Queenie 576

BEPD	WEPD	YEPD	Milk	BW	ADJ 365
+ 0.7	+ 61	I + 113	+ 24	74	1,350

• This attractive bull has the highest Adjusted Yearling Weight and the Highest Yearling Weight EPD in the sale. He combines exceptional growth with a low Birth EPD.

30

Calved: 1/22/2007

Tattoo: 9557-B07

#S S Traveler 6807 T510
S S Objective T510 0T26
 13776378 S S Miss Rita R011 7R8

#D H D Traveler 6807
 #S S Miss Hi Spade A114
 S S Rito Rito R76 R011
 S S Miss Ultress U56

%IMF	SW
I + 0.69	28.71
UREA	SF
I + 0.38	43.28
UFAT	SB
I + 0.005	59.11

#Bon View New Design 1407
Plattemere Queenie 789
 15785876 Plattemere Queenie 658

#B/R New Design 036
 Bon View Pride 664
 #Connealy Freightliner
 #Plattemere Queenie 443

BEPD	WEPD	YEPD	Milk	BW	ADJ 365
0	+ 53	I + 104	+ 22	69	1,141

31

Calved: 2/3/2007

Tattoo: 8867-B07

#S S Traveler 6807 T510
S S Objective T510 0T26
 13776378 S S Miss Rita R011 7R8

#D H D Traveler 6807
 #S S Miss Hi Spade A114
 S S Rito Rito R76 R011
 S S Miss Ultress U56

%IMF	SW
I + 0.26	32.41
UREA	SF
I + 0.24	40.80
UFAT	SB
I - 0.005	48.58

Ironwood New Level
Plattemere Daisy 308
 15785835 Plattemere Daisy 273

Ironwood New Design 022 701
 Wardens Blackcap 6148 6309
 #Connealy Forefront
 Plattemere Daisy 229

BEPD	WEPD	YEPD	Milk	BW	ADJ 365
+ 1.1	+ 59	I + 104	+ 24	77	1,159

32

Calved: 1/15/2007

Tattoo: E747-B07

#S S Traveler 6807 T510
S S Objective T510 0T26
 13776378 S S Miss Rita R011 7R8

#D H D Traveler 6807
 #S S Miss Hi Spade A114
 S S Rito Rito R76 R011
 S S Miss Ultress U56

%IMF	SW
I + 0.29	33.05
UREA	SF
I + 0.41	43.83
UFAT	SB
I + 0.018	48.56

Hyline Right Time 338
College Queen Plattemere 63
 15791938 College Queen Plattemere 56

#+Leachman Right Time
 Hyline Pride 265
 #Connealy Forefront
 College Queen Plattemere 52

BEPD	WEPD	YEPD	Milk	BW	ADJ 365
+ 1.1	+ 62	I + 108	+ 23	77	1,210

• He is in a tie for the highest Weaning Weight EPD in the sale.

33

Calved: 1/14/2007

Tattoo: 9287-B07

#S S Traveler 6807 T510
S S Objective T510 0T26
 13776378 S S Miss Rita R011 7R8

#D H D Traveler 6807
 #S S Miss Hi Spade A114
 S S Rito Rito R76 R011
 S S Miss Ultress U56

%IMF	SW
I + 0.45	27.49
UREA	SF
I + 0.36	43.70
UFAT	SB
I + 0.014	52.18

TC Freedom 104
Plattemere Queenie 786
 15786274 #Plattemere Queenie 566

#Connealy Forefront
 #T C Ruby 9095
 #Sitz Alliance 6595
 Plattemere Queenie 429

BEPD	WEPD	YEPD	Milk	BW	ADJ 365
+ 1.1	+ 52	I + 104	+ 24	72	1,208

34

Calved: 1/20/2007

Tattoo: 8977-B07

#S S Traveler 6807 T510
S S Objective T510 0T26
 13776378 S S Miss Rita R011 7R8

#D H D Traveler 6807
 #S S Miss Hi Spade A114
 S S Rito Rito R76 R011
 S S Miss Ultress U56

%IMF	SW
I + 0.35	31.06
UREA	SF
I + 0.32	40.98
UFAT	SB
I + 0.004	50.77

Ironwood New Level
Plattemere Rosa 343
 15785843 Plattemere Rosa 327

Ironwood New Design 022 701
 Wardens Blackcap 6148 6309
 #S A F Focus of E R
 Plattemere Rosa 275

BEPD	WEPD	YEPD	Milk	BW	ADJ 365
+ 0.9	+ 56	I + 103	+ 25	72	1,147



Lot 29

SNYDER BROS.



Lot 35

35

Calved: 2/5/2007

Tattoo: 9857-B07

#S S Traveler 6807 T510
S S Objective T510 0T26
 13776378 S S Miss Rita R011 7R8

#D H D Traveler 6807
 #S S Miss Hi Spade A114
 S S Rito Rito R76 R011
 S S Miss Ultrass U56

J D Daigger 901
Plattemere Queen W 775
 15785890 Plattemere Queen W 696

#Sitz Alliance 6595
 J D Queen Eisa 7021
 #Bon View New Design 1407
 Plattemere Queen W 477

%IMF	SW
I + 0.43	34.07
UREA	SF
I + 0.27	42.93
UFAT	SB
I + 0.006	52.43

BEPD	WEPD	YEPD	Milk	BW	ADJ 365
-0.5	+ 59	I + 106	+ 27	71	1,224

• He has a fantastic combination of growth, calving ease and IMF.

36

Calved: 2/14/2007

Tattoo: 9647-B07

#S S Traveler 6807 T510
S S Objective T510 0T26
 13776378 S S Miss Rita R011 7R8

#D H D Traveler 6807
 #S S Miss Hi Spade A114
 S S Rito Rito R76 R011
 S S Miss Ultrass U56

J D Daigger 901
Dolly of Plattemere 353
 15785883 #Dolly of Plattemere 271

#Sitz Alliance 6595
 J D Queen Eisa 7021
 +R A Current Trend
 #Dolly of Plattemere 226

%IMF	SW
I + 0.37	31.72
UREA	SF
I + 0.42	40.98
UFAT	SB
I + 0.009	50.95

BEPD	WEPD	YEPD	Milk	BW	ADJ 365
+ 0.9	+ 56	I + 103	+ 28	75	1,193

37

Calved: 2/9/2007

Tattoo: 9677-B07

#S S Traveler 6807 T510
S S Objective T510 0T26
 13776378 S S Miss Rita R011 7R8

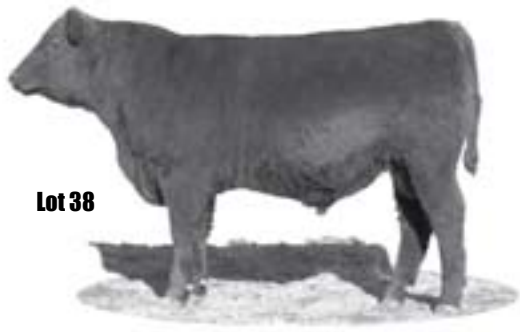
#D H D Traveler 6807
 #S S Miss Hi Spade A114
 S S Rito Rito R76 R011
 S S Miss Ultrass U56

Plattemere 338 T073-B03
Martha of Plattemere 370
 15872747 Martha of Plattemere 308

Hyline Right Time 338
 #Martha of Plattemere 294
 Plattemere 3T E176 B96
 Martha of Plattemere 276

%IMF	SW
I + 0.26	29.00
UREA	SF
I + 0.27	39.92
UFAT	SB
I - 0.003	48.29

BEPD	WEPD	YEPD	Milk	BW	ADJ 365
I + 1.8	I + 56	I + 102	I + 21	81	1,127



Lot 38

38

Calved: 2/2/2007

Bull 15896070

Tattoo: 9937-B07

#S S Traveler 6807 T510
S S Objective T510 0T26
 13776378 S S Miss Rita R011 7R8

#D H D Traveler 6807
 #S S Miss Hi Spade A114
 S S Rito Rito R76 R011
 S S Miss Ultrass U56

Hyline Right Time 338
Plattemere Queenie 796
 15791930 Plattemere Queenie 654

#+Leachman Right Time
 Hyline Pride 265
 #S A F Focus of E R
 #Plattemere Queenie 420

%IMF	SW
I + 0.20	30.83
UREA	SF
I + 0.34	39.92
UFAT	SB
I + 0.007	45.63

BEPD	WEPD	YEPD	Milk	BW	ADJ 365
+ 0.9	+ 56	I + 102	+ 23	72	1,096

39

Calved: 2/6/2007

Tattoo: 9697-B07

#S S Traveler 6807 T510
S S Objective T510 0T26
 13776378 S S Miss Rita R011 7R8

#D H D Traveler 6807
 #S S Miss Hi Spade A114
 S S Rito Rito R76 R011
 S S Miss Ultrass U56

Hyline Right Time 338
Plattemere Reva 162
 15791925 Plattemere Reva 134

#+Leachman Right Time
 Hyline Pride 265
 Plattemere 3T A086 B96
 Plattemere Reva 102

%IMF	SW
I + 0.33	29.53
UREA	SF
I + 0.28	38.22
UFAT	SB
I + 0.003	48.71

BEPD	WEPD	YEPD	Milk	BW	ADJ 365
+ 1.9	+ 55	I + 100	+ 24	80	1,121

40

Calved: 2/10/2007

Tattoo: 9837-B07

#S S Traveler 6807 T510
S S Objective T510 0T26
 13776378 S S Miss Rita R011 7R8

#D H D Traveler 6807
 #S S Miss Hi Spade A114
 S S Rito Rito R76 R011
 S S Miss Ultrass U56

#Bon View New Design 1407
Plattemere Queen W 773
 15785889 Plattemere Queen W 516

#B/R New Design 036
 Bon View Pride 664
 #S A F Focus of E R
 Plattemere Queen W 403

%IMF	SW
I + 0.44	34.17
UREA	SF
I + 0.39	39.10
UFAT	SB
I + 0.004	53.57

BEPD	WEPD	YEPD	Milk	BW	ADJ 365
-0.6	+ 58	I + 102	+ 25	66	1,117

41

Calved: 1/13/2007

Tattoo: A147-B07

#S S Traveler 6807 T510
S S Objective T510 0T26
 13776378 S S Miss Rita R011 7R8

#D H D Traveler 6807
 #S S Miss Hi Spade A114
 S S Rito Rito R76 R011
 S S Miss Ultrass U56

Plattemere 338 T073-B03
Plattemere Queenie 801
 15872749 #Plattemere Queenie 592

Hyline Right Time 338
 #Martha of Plattemere 294
 #E&b 1483 Scotchman 543
 Plattemere Queenie 526

%IMF	SW
I + 0.50	
UREA	SF
I + 0.25	
UFAT	SB
I + 0.002	

BEPD	WEPD	YEPD	Milk	BW	ADJ 365
S +1.0	+ 71	+ 126	+ 24	52	1,249
D I + 1.6	I + 51	I + 101	I + 26		

• This is a big framed, rugged bull with one of the heaviest Adjusted Yearling Weights in the sale. Lot 41 had a 157 IMF ratio. He was a twin.

42

Calved: 2/8/2007

Tattoo: 9877-B07

#S S Traveler 6807 T510
S S Objective T510 0T26
 13776378 S S Miss Rita R011 7R8

#D H D Traveler 6807
 #S S Miss Hi Spade A114
 S S Rito Rito R76 R011
 S S Miss Ultrass U56

#Bon View New Design 1407
Plattemere Queen W 776
 15785892 Plattemere Queen W 702

#B/R New Design 036
 Bon View Pride 664
 Plattemere EB T061-B01
 Plattemere Queen W 383

%IMF	SW
I + 0.42	31.88
UREA	SF
I + 0.35	37.98
UFAT	SB
I + 0.003	51.63

BEPD	WEPD	YEPD	Milk	BW	ADJ 365
-1.0	+ 53	I + 99	+ 25	68	1,158

43

Calved: 1/22/2007

Tattoo: A267-B07

#S S Traveler 6807 T510
S S Objective T510 0T26
 13776378 S S Miss Rita R011 7R8

#D H D Traveler 6807
 #S S Miss Hi Spade A114
 S S Rito Rito R76 R011
 S S Miss Ultrass U56

TC Freedom 104
Mary Ann of Plattemere 159
 15786280 Mary Ann of Plattemere 145

#Connealy Forefront
 #T C Ruby 9095
 #Connealy Dateline
 #Mary Ann of Plattemere 121

%IMF	SW
I + 0.17	28.91
UREA	SF
I + 0.31	40.80
UFAT	SB
I + 0.008	44.43

BEPD	WEPD	YEPD	Milk	BW	ADJ 365
+ 3.1	+ 59	I + 104	+ 25	87	1,141

44

Calved: 1/21/2007

Tattoo: A767-B07

#S S Traveler 6807 T510
S S Objective T510 0T26
 13776378 S S Miss Rita R011 7R8

#D H D Traveler 6807
 #S S Miss Hi Spade A114
 S S Rito Rito R76 R011
 S S Miss Ultrass U56

Plattemere 99 G443-B03
Plattemere Queenie 807
 15785936 Plattemere Queenie 656

Plattemere Database
 #Plattemere Queen W 557
 #S A F Focus of E R
 Plattemere Queenie 426

%IMF	SW
I + 0.52	26.25
UREA	SF
I + 0.23	41.39
UFAT	SB
I + 0.011	54.11

BEPD	WEPD	YEPD	Milk	BW	ADJ 365
+ 2.5	+ 55	I + 103	+ 20	81	1,216

SNYDER BROS.



Mytty In Focus—Sire of Lots 45-58

Ref Sire
B

Mytty In Focus

Calved: 2/18/2005

Bull 13880818

Tattoo: IF

#S A F Fame
#S A F Focus of E R
#12618076 G D A R Forever Lady 246

#Minerts Fortune 2000
#+S A F Royal Lass 1027
#Transformer 100 E A R
+G D A R Forever Lady 718

#Sitz Alliance 6595

#Sitz Traveler 8180
#Sitz Barbaramere Jet 2698
#Bon View Emulation Ext 473
Baldrige Countess 235

Mytty Countess 906
13457755 Baldrige Countess 357

SW
+34.95
SF
+37.57
SG
+18.38
SB
+44.33

CEB Acc	BW Acc	WW Acc	YW Acc	YH Acc	SC Acc	CEM Acc	Milk Acc	Mk-H MkD	MW Acc	MH Acc	SEN
+12	-1.6	+54	+99	-2	+1.71	+13	+32	6			-10.83
.92	.97	.97	.94	.91	.91	.32	.72	33			
Cwt Acc	Mrb Acc	RE Acc	Fat Acc	Grp Prog	%IMF Acc	RE Acc	Fat Acc	Grp Prog			
+9	+.25	+.33	+.035	18	+.33	+.48	+.040	858			
.60	.63	.58	.56	70	.94	.94	.94	2350			

• One of the most sought after sires in the breed. His calves are wide based, square and correct with added thickness. Infocus is a bull that will add fleshing ability while ranking in the top 15% of the breed for IMF and the top 20% for URE.



Lot 45

48

Calved: 1/13/2007

Tattoo: A407-B07

#S A F Focus of E R
Mytty In Focus
13880818 Mytty Countess 906

#S A F Fame
G D A R Forever Lady 246
#Sitz Alliance 6595
Baldrige Countess 357

#Bon View New Design 1407

#B/R New Design 036

Erica Lady of Plattemere 241
15874454 Erica Lady of Plattemere 211

Bon View Pride 664
Plattemere MD P161-B01
Erica Lady of Plattemere 130

%IMF	SW
1 + 0.17	28.71
UREA	SF
1 + 0.57	39.20
UFAT	SB
1 + 0.023	42.86

BE PD	WE PD	YE PD	Milk	BW	ADJ 365
1 + 0.6	1 + 50	1 + 99	1 + 27	77	1,244

• Lot 48 has the 2nd biggest Rib Eye we scanned this year.



Lot 49

45

Calved: 1/12/2007

Bull 15896071

Tattoo: 9997-B07

#S A F Focus of E R
Mytty In Focus
13880818 Mytty Countess 906

#S A F Fame
G D A R Forever Lady 246
#Sitz Alliance 6595
Baldrige Countess 357

TC Freedom 104

#Connealy Forefront

Plattemere Queenie 797
15786279 Plattemere Queenie 655

#T C Ruby 9095
Plattemere WE L650-B00
Plattemere Queenie 423

%IMF	SW
1 + 0.21	30.42
UREA	SF
1 + 0.16	37.57
UFAT	SB
1 + 0.013	41.47

BE PD	WE PD	YE PD	Milk	BW	ADJ 365
+ 1.8	+ 54	1 + 99	+ 29	80	1,235

46

Calved: 2/3/2007

Tattoo: 8747-B07

#S A F Focus of E R
Mytty In Focus
13880818 Mytty Countess 906

#S A F Fame
G D A R Forever Lady 246
#Sitz Alliance 6595
Baldrige Countess 357

J D Daigger 901

#Sitz Alliance 6595

Plattemere Daisy 307
15785826 Plattemere Daisy 280

J D Queen Eisa 7021
#Bon View New Design 1407
Plattemere Daisy 209

%IMF	SW
1 + 0.47	29.32
UREA	SF
1 + 0.33	35.89
UFAT	SB
1 + 0.020	49.21

BE PD	WE PD	YE PD	Milk	BW	ADJ 365
+ 2.5	+ 53	1 + 97	+ 32	87	1,198

47

Calved: 1/15/2007

Tattoo: 9617-B07

#S A F Focus of E R
Mytty In Focus
13880818 Mytty Countess 906

#S A F Fame
G D A R Forever Lady 246
#Sitz Alliance 6595
Baldrige Countess 357

#Connealy Freightliner

#Bon View Bando 598

Martha of Plattemere 368
15785880 #Martha of Plattemere 321

Joana Erica of Conanga
Plattemere 3T A086 B96
Martha of Plattemere 277

%IMF	SW
1 + 0.15	28.86
UREA	SF
1 + 0.22	37.51
UFAT	SB
1 + 0.041	35.72

BE PD	WE PD	YE PD	Milk	BW	ADJ 365
+ 0.3	+ 49	1 + 97	+ 27	71	1,176

49

Calved: 2/3/2007

Tattoo: 6367-B07

#S A F Focus of E R
Mytty In Focus
13880818 Mytty Countess 906

#S A F Fame
G D A R Forever Lady 246
#Sitz Alliance 6595
Baldrige Countess 357

Hylne Right Time 338

#+Leachman Right Time

Plattemere Daisy 296
15395268 Plattemere Daisy 234

Hylne Pride 265
#PLOWMAN 1627 of Millbrae SAR
Plattemere Daisy 167

%IMF	SW
1 + 0.36	29.36
UREA	SF
1 + 0.41	40.09
UFAT	SB
1 + 0.031	46.50

BE PD	WE PD	YE PD	Milk	BW	ADJ 365
+ 1.3	+ 53	1 + 101	+ 26	84	1,293

• This bull ratioed 128 for IMF and 108 for REA. His dam's progeny ratio is YR 2 @ 105.

50

Calved: 1/12/2007

Tattoo: A417-B07

#S A F Focus of E R
Mytty In Focus
13880818 Mytty Countess 906

#S A F Fame
G D A R Forever Lady 246
#Sitz Alliance 6595
Baldrige Countess 357

Plattemere BND V933-B03

#+Boyd New Day 8005

Dolly of Plattemere 355
15785913 Dolly of Plattemere 329

Plattemere Queenie 570
#Millcreek Diversity
Dolly of Plattemere 240

%IMF	SW
1 + 0.13	26.32
UREA	SF
1 + 0.27	37.34
UFAT	SB
1 + 0.013	40.12

BE PD	WE PD	YE PD	Milk	BW	ADJ 365
+ 2.7	+ 52	1 + 98	+ 24	85	1,179

SNYDER BROS.

51

Calved: 1/25/2007

Tattoo: A527-B07

#S A F Focus of E R
Mytty In Focus
 13880818 Mytty Countess 906

#S A F Fame
 G D A R Forever Lady 246
 #Sitz Alliance 6595
 Baldrige Countess 357

%IMF	SW
I + 0.21	31.45
UREA	SF
I + 0.05	36.93
UFAT	SB
I + 0.019	39.99

Plattemere BND V933-B03

Plattemere Daisy 318
 15785919 Plattemere Daisy 281

#+Boyd New Day 8005
 Plattemere Queenie 570
 Plattemere AL N380-B00
 #Plattemere Daisy 198

BEPD	WEPD	YEPD	Milk	BW	ADJ 365
+ 0.5	+ 53	I + 98	+ 28	76	1,253

52

Calved: 1/23/2007

Tattoo: A577-B07

#S A F Focus of E R
Mytty In Focus
 13880818 Mytty Countess 906

#S A F Fame
 G D A R Forever Lady 246
 #Sitz Alliance 6595
 Baldrige Countess 357

%IMF	SW
I + 0.06	30.08
UREA	SF
I + 0.40	32.94
UFAT	SB
I + 0.024	37.22

#Perry Power Design 715

Plattemere Queen W 786
 15785924 Plattemere Queen W 464

#B/R New Design 036
 #E P Maximum Lady 221
 #+S A F 598 Bando 5175
 Plattemere Queen W 408

BEPD	WEPD	YEPD	Milk	BW	ADJ 365
+ 0.5	+ 50	I + 93	+ 25	73	1,133



Lot 53

53

Calved: 1/17/2007

Tattoo: A757-B07

#S A F Focus of E R
Mytty In Focus
 13880818 Mytty Countess 906

#S A F Fame
 G D A R Forever Lady 246
 #Sitz Alliance 6595
 Baldrige Countess 357

%IMF	SW
I + 0.31	29.62
UREA	SF
I + 0.28	41.56
UFAT	SB
I + 0.037	42.86

#Connealy Freightliner

Plattemere Queen W 789
 15785935 Plattemere Queen W 579

#Bon View Bando 598
 Joana Erica of Conanga
 Plattemere 5175 E630-B00
 Plattemere Queen W 360

BEPD	WEPD	YEPD	Milk	BW	ADJ 365
0	+ 52	I + 102	+ 26	72	1,272

• Lot 53 ratioed 124 for IMF and 106 for REA.

54

Calved: 1/23/2007

Tattoo: A597-B07

#S A F Focus of E R
Mytty In Focus
 13880818 Mytty Countess 906

#S A F Fame
 G D A R Forever Lady 246
 #Sitz Alliance 6595
 Baldrige Countess 357

%IMF	SW
I + 0.37	31.34
UREA	SF
I + 0.46	32.71
UFAT	SB
I + 0.055	42.24

#Bon View New Design 1407

PAM of Plattemere 79
 15785925 PAM of Plattemere 65

#B/R New Design 036
 Bon View Pride 664
 #Plowman 1627 of Millbrae SAR
 Pam of Plattemere 47

BEPD	WEPD	YEPD	Milk	BW	ADJ 365
-1.4	+ 48	I + 92	+ 28	71	1,220

• Here is a great low birth weight bull that is in the top 15% for Feedlot Value.



55

Calved: 1/18/2007

Tattoo: A617-B07

#S A F Focus of E R
Mytty In Focus
 13880818 Mytty Countess 906

#S A F Fame
 G D A R Forever Lady 246
 #Sitz Alliance 6595
 Baldrige Countess 357

%IMF	SW
I + 0.39	31.38
UREA	SF
I + 0.34	35.01
UFAT	SB
I + 0.017	48.03

#Bon View New Design 1407

Erica Lady of Plattemere 224
 15785926 Erica Lady of Plattemere 180

#B/R New Design 036
 Bon View Pride 664
 #B/R New Design 036
 Erica Lady of Plattemere 118

BEPD	WEPD	YEPD	Milk	BW	ADJ 365
-0.4	+ 50	I + 95	+ 30	69	1,227



Lot 56

56

Calved: 1/15/2007

Tattoo: A707-B07

#S A F Focus of E R
Mytty In Focus
 13880818 Mytty Countess 906

#S A F Fame
 G D A R Forever Lady 246
 #Sitz Alliance 6595
 Baldrige Countess 357

%IMF	SW
I + 0.24	29.13
UREA	SF
I + 0.23	26.91
UFAT	SB
I + 0.021	38.30

J D Daigger 901

Erica Lady of Plattemere 226
 15785931 Erica Lady of Plattemere 183

#Sitz Alliance 6595
 J D Queen Eisa 7021
 #TC Stockman 365
 Erica Lady of Plattemere 124

BEPD	WEPD	YEPD	Milk	BW	ADJ 365
-1.5	+ 42	I + 84	+ 27	65	1,183

• This bull combines great conformation with exceptional calving ease.

57

Calved: 1/18/2007

Tattoo: A687-B07

#S A F Focus of E R
Mytty In Focus
 13880818 Mytty Countess 906

#S A F Fame
 G D A R Forever Lady 246
 #Sitz Alliance 6595
 Baldrige Countess 357

%IMF	SW
I + 0.11	32.04
UREA	SF
I + 0.37	35.48
UFAT	SB
I + 0.019	38.94

Hyline Right Time 338

Barbara of Plattemere 324
 15791936 Barbara of Plattemere 268

#+Leachman Right Time
 Hyline Pride 265
 Plattemere 3T E176 B96
 Barbara of Plattemere 242

BEPD	WEPD	YEPD	Milk	BW	ADJ 365
+ 0.7	+ 54	I + 97	+ 27	71	1,164

58

Calved: 2/2/2007

Tattoo: A627-B07

#S A F Focus of E R
Mytty In Focus
 13880818 Mytty Countess 906

#S A F Fame
 G D A R Forever Lady 246
 #Sitz Alliance 6595
 Baldrige Countess 357

%IMF	SW
I + 0.14	28.79
UREA	SF
I + 0.23	30.26
UFAT	SB
I + 0.033	34.69

Plattemere 99 G443-B03

Erica Lady of Plattemere 225
 15785927 Erica Lady of Plattemere 184

Plattemere Database
 #Plattemere Queen W 557
 Plattemere 5175 E820-B00
 Erica Lady of Plattemere 110

BEPD	WEPD	YEPD	Milk	BW	ADJ 365
+ 1.7	+ 49	I + 90	+ 25	83	1,141

SNYDER BROS.

Thanks
For Coming!

SNYDER BROS.



S A F Strategy 9015—Sire of Lots 59-75

Ref Sire
C

S A F Strategy 9015

Calved: 1/6/2003

Bull 13334022

Tattoo: STR

#S A F Fame
#S A F Focus of E R
13334022 G D A R Forever Lady 246

#Minerts Fortune 2000
#+S A F Royal Lass 1027
#Transformer 100 E A R
+G D A R Forever Lady 718

#Bon View Bando 598
#S A F Royal Queen 5084
+12326215 S A F Royal Queen 9022

#Tehama Bando 155
#Bon View Dora 56
#Traveler 1148 G D A R
+S A F Royal Queen 7001

SW
+39.56
SF
+43.59
SG
+22.56
SB
+51.46

CED Acc	BW Acc	WW Acc	YW Acc	YH Acc	SC Acc	CEM Acc	Milk Acc	MkH MkD	MW Acc	MH Acc	SEN
+5	+2.3	+60	+107	+5	+96	+12	+20	255	+24	+6	+7.30
.88	.96	.95	.94	.88	.88	.75	.93	658	.69	.69	
Cwt Acc	Mrb Acc	RE Acc	Fat Acc	Grp Prog	%IMF Acc	RE Acc	Fat Acc	Grp Prog			
+10	-.29	+.15	-.014	13	+.42	+.25	+.017	604			
.49	.52	.46	.44	35	.92	.92	.92	1231			

• Strategy is a well tried and tested curve bender bull, a bull with a huge spread between birth and Yearling EPDs, (2.5 to 107). He ranks among the 20 bulls in the breed for \$W and in the top 3% for \$B. His bull calves show a lot of muscle and power.

59

Calved: 1/5/2007

Tattoo: 8607-B07

#S A F Focus of E R
#S A F Strategy 9015
13334022 +S A F Royal Queen 5084

#S A F Fame
G D A R Forever Lady 246
#Bon View Bando 598
S A F Royal Queen 9022

#Perry Power Design 715
#Plattmereg Queen W 749
15785817 Plattmereg Queen W 675

#B/R New Design 036
#E P Maximum Lady 221
#Connealy Forefront
Plattmereg Queen W 506

%IMF	SW
I + 0.12	30.42
UREA	SF
I + 0.14	41.22
UFAT	SB
I + 0.011	41.61

BEPD	WEPD	YEPD	Milk	BW	ADJ 365
+ 1.5	+ 58	I + 104	+ 21	78	1,308

• This is a tremendously thick, high volume bull packed with muscle.



Lot 60

60

Calved: 1/25/2007

Tattoo: 9207-B07

#S A F Focus of E R
#S A F Strategy 9015
13334022 +S A F Royal Queen 5084

#S A F Fame
G D A R Forever Lady 246
#Bon View Bando 598
S A F Royal Queen 9022

#Bon View New Design 1407
#ADA of Plattmereg 252
15785856 ADA of Plattmereg 237

#B/R New Design 036
Bon View Pride 664
#Connealy Freightliner
ADA of Plattmereg 215

%IMF	SW
I + 0.45	28.79
UREA	SF
I + 0.24	32.71
UFAT	SB
I + 0.020	47.28

BEPD	WEPD	YEPD	Milk	BW	ADJ 365
+ 0.1	+ 48	I + 92	+ 23	74	1,208

61

Calved: 1/11/2007

Tattoo: 9137-B07

#S A F Focus of E R
#S A F Strategy 9015
13334022 +S A F Royal Queen 5084

#S A F Fame
G D A R Forever Lady 246
#Bon View Bando 598
S A F Royal Queen 9022

#Bon View New Design 1407
#Dolly of Plattmereg 352
15785853 Dolly of Plattmereg 324

#B/R New Design 036
Bon View Pride 664
Plattmereg Database
Dolly of Plattmereg 274

%IMF	SW
I + 0.40	32.68
UREA	SF
I + 0.55	39.92
UFAT	SB
I + 0.014	52.44

BEPD	WEPD	YEPD	Milk	BW	ADJ 365
-0.5	+ 56	I + 102	+ 25	66	1,293

• This great bull ranks in the top 2% for \$B, the top 3% for \$W, the top 5% for \$F and YR and the top 10% for BW. He is a strong topped bull with lots of length. His dam has an IMF ratio of 124 and an REA ratio of 119. His Granddam's progeny ratios are IMF 2 @ 147 and REA 2 @ 110. He has the highest Adjusted Weaning Weight in the sale

62

Calved: 1/20/2007

Tattoo: 9277-B07

#S A F Focus of E R
#S A F Strategy 9015
13334022 +S A F Royal Queen 5084

#S A F Fame
G D A R Forever Lady 246
#Bon View Bando 598
S A F Royal Queen 9022

KG Dakota
#Plattmereg Rosa 345
15785861 Plattmereg Rosa 297

#C A Future Direction 5321
#New Trend 315 K G 3
G A R 6807 Traveler 4144
Plattmereg Rosa 281

%IMF	SW
I + 0.29	25.56
UREA	SF
I + 0.35	36.76
UFAT	SB
I + 0.026	45.62

BEPD	WEPD	YEPD	Milk	BW	ADJ 365
+ 4.1	+ 56	I + 99	+ 23	92	1,248



Lot 63

63

Calved: 2/10/2007

Tattoo: 3987-B07

#S A F Focus of E R
#S A F Strategy 9015
13334022 +S A F Royal Queen 5084

#S A F Fame
G D A R Forever Lady 246
#Bon View Bando 598
S A F Royal Queen 9022

#+Boyd New Day 8005
#Barbara of Plattmereg 306
15119153 Barbara of Plattmereg 282

#A A R New Trend
S V F Forever Lady 57D
#B/R New Design 036
Barbara of Plattmereg 251

%IMF	SW
I + 0.15	25.89
UREA	SF
I + 0.46	43.28
UFAT	SB
I + 0.006	45.62

BEPD	WEPD	YEPD	Milk	BW	ADJ 365
+ 2.0	+ 53	I + 104	+ 21	81	1,229

64

Calved: 2/28/2007

Tattoo: 1817-B07

#S A F Focus of E R
#S A F Strategy 9015
13334022 +S A F Royal Queen 5084

#S A F Fame
G D A R Forever Lady 246
#Bon View Bando 598
S A F Royal Queen 9022

#Connealy Forefront
#Plattmereg Queenie 723
15122486 Plattmereg Queenie 619

#Connealy Frontline
Eileen Heartland Conanga6443
Plattmereg 3T A086 B96
#Plattmereg Queenie 437

%IMF	SW
I + 0.11	26.68
UREA	SF
I + 0.30	33.81
UFAT	SB
I + 0.001	40.00

BEPD	WEPD	YEPD	Milk	BW	ADJ 365
I + 2.4	I + 53	I + 95	I + 18	64	1,170

SNYDER BROS.

65

Calved: 3/5/2007

Tattoo: 4227-B07

#S A F Focus of E R
S A F Strategy 9015
 13334022 +S A F Royal Queen 5084

#S A F Fame
 G D A R Forever Lady 246
 #Bon View Bando 598
 S A F Royal Queen 9022

Plattemere AL N380-B00

Plattemere Daisy 281
 15119165 #Plattemere Daisy 198

#Sitz Alliance 6595
 Plattemere Queenie 500
 #Connealy Dateline
 Plattemere Daisy 138

%IMF	SW
I + 0.06	26.36
UREA	SF
I + 0.14	32.14
UFAT	SB
I + 0.018	33.74

BE PD	WE PD	YE PD	Milk	BW	ADJ 365
+ 3.1	+ 52	I + 93	+ 22	92	1,208

66

Calved: 1/18/2007

Tattoo: 8767-B07

#S A F Focus of E R
S A F Strategy 9015
 13334022 +S A F Royal Queen 5084

#S A F Fame
 G D A R Forever Lady 246
 #Bon View Bando 598
 S A F Royal Queen 9022

Ironwood New Level

Barbara of Plattemere 316
 15785828 Barbara of Plattemere 300

Ironwood New Design 022 701
 Wardens Blackcap 6148 6309
 #Connealy Freightliner
 Barbara of Plattemere 266

%IMF	SW
I + 0.14	32.05
UREA	SF
I + 0.25	32.37
UFAT	SB
I + 0.017	39.48

BE PD	WE PD	YE PD	Milk	BW	ADJ 365
+ 1.1	+ 54	I + 94	+ 25	79	1,169



Lot 67

67

Calved: 1/17/2007

Bull 15896069

Tattoo: 9667-B07

#S A F Focus of E R
S A F Strategy 9015
 13334022 +S A F Royal Queen 5084

#S A F Fame
 G D A R Forever Lady 246
 #Bon View Bando 598
 S A F Royal Queen 9022

KG Dakota

Blackbird of Plattemere 397
 15785885 Blackbird of Plattemere 364

#C A Future Direction 5321
 #New Trend 315 K G 3
 #S A F Focus of E R
 Blackbird of Plattemere 339

%IMF	SW
I + 0.48	28.76
UREA	SF
I + 0.35	33.01
UFAT	SB
I + 0.028	49.31

BE PD	WE PD	YE PD	Milk	BW	ADJ 365
+ 2.7	+ 55	I + 95	+ 22	81	1,174

68

Calved: 1/21/2007

Tattoo: 9117-B07

#S A F Focus of E R
S A F Strategy 9015
 13334022 +S A F Royal Queen 5084

#S A F Fame
 G D A R Forever Lady 246
 #Bon View Bando 598
 S A F Royal Queen 9022

Nichols Extra H6

Plattemere Daisy 338
 15786520 Plattemere Daisy 275

#N Bar Emulation EXT
 Nichols Eileen May F261
 #Bon View New Design 1407
 Plattemere Daisy 232

%IMF	SW
I + 0.13	28.16
UREA	SF
I + 0.05	36.53
UFAT	SB
I + 0.003	40.61

BE PD	WE PD	YE PD	Milk	BW	ADJ 365
I + 2.5	I + 54	I + 98	I + 24	82	1,104

69

Calved: 1/12/2007

Tattoo: 9127-B07

#S A F Focus of E R
S A F Strategy 9015
 13334022 +S A F Royal Queen 5084

#S A F Fame
 G D A R Forever Lady 246
 #Bon View Bando 598
 S A F Royal Queen 9022

Nichols Extra H6

Plattemere Daisy 310
 15790264 Plattemere Daisy 277

#N Bar Emulation EXT
 Nichols Eileen May F261
 #Bon View New Design 1407
 Plattemere Daisy 206

%IMF	SW
I + 0.19	29.22
UREA	SF
I + 0.29	35.65
UFAT	SB
I + 0.018	41.81

BE PD	WE PD	YE PD	Milk	BW	ADJ 365
+ 0.4	+ 51	I + 96	+ 22	70	1,170

70

Calved: 1/15/2007

Tattoo: 9217-B07

#S A F Focus of E R
S A F Strategy 9015
 13334022 +S A F Royal Queen 5084

#S A F Fame
 G D A R Forever Lady 246
 #Bon View Bando 598
 S A F Royal Queen 9022

#Perry Power Design 715

Plattemere Queen W 763
 15785857 Plattemere Queen W 452

#B/R New Design 036
 #E P Maximum Lady 221
 #Sitz Alliance 6595
 Plattemere Queen W 372

%IMF	SW
I + 0.16	27.39
UREA	SF
I + 0.14	30.65
UFAT	SB
I + 0.007	39.56

BE PD	WE PD	YE PD	Milk	BW	ADJ 365
+ 1.2	+ 48	I + 90	+ 20	78	1,133

71

Calved: 2/4/2007

Tattoo: R247-B07

#S A F Focus of E R
S A F Strategy 9015
 13334022 +S A F Royal Queen 5084

#S A F Fame
 G D A R Forever Lady 246
 #Bon View Bando 598
 S A F Royal Queen 9022

#Dalebanks Extender 6012

Barbara of Plattemere 290
 14700264 Barbara of Plattemere 272

#N Bar Emulation EXT
 Princess 4007 of Dalebanks
 #B/R New Design 036
 Barbara of Plattemere 244

%IMF	SW
I + 0.23	30.15
UREA	SF
I + 0.33	33.81
UFAT	SB
I + 0.031	41.31

BE PD	WE PD	YE PD	Milk	BW	ADJ 365
+ 0.9	+ 53	I + 95	+ 21	79	1,124

72

Calved: 1/19/2007

Tattoo: 9437-B07

#S A F Focus of E R
S A F Strategy 9015
 13334022 +S A F Royal Queen 5084

#S A F Fame
 G D A R Forever Lady 246
 #Bon View Bando 598
 S A F Royal Queen 9022

#Perry Power Design 715

Barbara of Plattemere 320
 15785870 Barbara of Plattemere 266

#B/R New Design 036
 #E P Maximum Lady 221
 +R A Current Trend
 #Barbara of Plattemere 250

%IMF	SW
I + 0.17	29.64
UREA	SF
I + 0.47	34.21
UFAT	SB
I - 0.001	44.97

BE PD	WE PD	YE PD	Milk	BW	ADJ 365
+ 1.0	+ 52	I + 95	+ 22	76	1,152

73

Calved: 1/22/2007

Tattoo: 9807-B07

#S A F Focus of E R
S A F Strategy 9015
 13334022 +S A F Royal Queen 5084

#S A F Fame
 G D A R Forever Lady 246
 #Bon View Bando 598
 S A F Royal Queen 9022

KG Dakota

Blackbird of Plattemere 399
 15785888 Blackbird of Plattemere 335

#C A Future Direction 5321
 #New Trend 315 K G 3
 #S A F Fame
 Blackbird of Plattemere 319

%IMF	SW
I + 0.38	23.97
UREA	SF
I + 0.35	26.58
UFAT	SB
I + 0.017	45.37

BE PD	WE PD	YE PD	Milk	BW	ADJ 365
+ 3.2	+ 48	I + 86	+ 18	88	1,178

74

Calved: 2/2/2007

Tattoo: A457-B07

#S A F Focus of E R
S A F Strategy 9015
 13334022 +S A F Royal Queen 5084

#S A F Fame
 G D A R Forever Lady 246
 #Bon View Bando 598
 S A F Royal Queen 9022

#Connealy Freightliner

Plattemere Queen W 836
 15871069 Plattemere Queen W 456

#Bon View Bando 598
 Joana Erica of Conanga
 #G A R Commitment
 #Plattemere Queen W 168

%IMF	SW
I + 0.16	23.89
UREA	SF
I + 0.07	34.44
UFAT	SB
I + 0.014	38.79

BE PD	WE PD	YE PD	Milk	BW	ADJ 365
I + 4.2	I + 54	I + 96	I + 20	92	1,162

75

Calved: 3/3/2007

Tattoo: Y027-B07

#S A F Focus of E R
S A F Strategy 9015
 13334022 +S A F Royal Queen 5084

#S A F Fame
 G D A R Forever Lady 246
 #Bon View Bando 598
 S A F Royal Queen 9022

Plattemere ND E800-B00

Plattemere Queen W 597
 14699395 Plattemere Queen W 478

#B/R New Design 036
 #Plattemere Daisy 136
 #G A R Commitment
 Plattemere Queen W 213

%IMF	SW
I + 0.26	28.45
UREA	SF
I + 0.47	32.14
UFAT	SB
I + 0.007	45.84

BE PD	WE PD	YE PD	Milk	BW	ADJ 365
+ 1.8	+ 52	I + 93	+ 20	85	1,199

SNYDER BROS.



G A R Retail Product - Sire of Lots 76-91

Ref Sire
D

G A R Retail Product

Calved: 8/14/2003

Bull 13395329

Tattoo: RP

#G A R Precision 1680 #11520398	9J9 G A R 856	#Tehama Bando 155	#Band 234 of Ideal 3163 Tehama Blackcap G373 #Rito 9J9 of B156 7T26 Blackbird G A R 833	SW +34.49 SF +33.51 SG +30.12 SB +57.75
+G A R Ext 4927 +12925987		G A R Traveler 641	#N Bar Emulation EXT #Emulation N Bar 5522 N Bar Primrose 2424 #Q A S Traveler 23-4 +G A R Scotch Cap 150	

CEW Acc	BW Acc	WW Acc	YW Acc	YH Acc	SC Acc	CEM Acc	Milk Acc	MkH MkD	MW Acc	MH Acc	SEN
+5	+2.6	+46	+92	+1	+87	+7	+27	223	+20	+4	+4.97
.89	.97	.97	.96	.95	.94	.74	.94	655	.80	.80	
Cwt Acc	Mrb Acc	RE Acc	Fat Acc	Grp Prog	%IMF Acc	RE Acc	Fat Acc	Grp Prog			
+20	+29	+57	-.008	34	+52	+64	+0.003	2057			
.65	.68	.63	.61	106	.96	.96	.96	5642			

• Retail Product is in the top 30 Angus sires for \$Beef EPD and in the top 3% for \$Grid EPD. His calves are thick, structurally correct cattle. His daughters are moderate sized with great udders.

76

Calved: 2/24/2007

Tattoo: 5117-B07

#G A R Precision 1680 #13395329	+G A R Ext 4927	#Tehama Bando 155 9J9 G A R 856 #N Bar Emulation EXT G A R Traveler 641	#S A F Fame Prides Venture of Conanga 62 Plattemere Database Plattemere Queen W 379	%IMF I + 0.30 UREA I + 0.44 UFAT I + 0.007	SW 21.03 SF 41.73 SB 49.57
Connealy Acclaim Plattemere Queen W 716 15394406		Plattemere Queen W 583			

BEPD	WEPD	YEPD	Milk	BW	ADJ 365
+ 2.9	+ 49	I + 101	+ 18	88	1,253



Lot 77

79

Calved: 1/31/2007

Tattoo: 6227-B07

#G A R Precision 1680 #13395329	+G A R Ext 4927	#Tehama Bando 155 9J9 G A R 856 #N Bar Emulation EXT G A R Traveler 641	#Connealy Forefront #T C Ruby 9095 #Sitz Alliance 6595 Plattemere Queen W 372	%IMF I + 0.20 UREA I + 0.36 UFAT I + 0.007	SW 26.67 SF 33.51 SB 43.11
TC Freedom 104 Plattemere Queen W 727 15394437		Plattemere Queen W 452			

BEPD	WEPD	YEPD	Milk	BW	ADJ 365
+ 0.8	+ 46	I + 92	+ 23	75	1,191



Lot 80

77

Calved: 2/4/2007

Tattoo: 6397-B07

#G A R Precision 1680 #13395329	+G A R Ext 4927	#Tehama Bando 155 9J9 G A R 856 #N Bar Emulation EXT G A R Traveler 641	#Sitz Alliance 6595 Juanada Erica 9024 H A R B #Connealy Dateline Erica Lady of Plattemere 105	%IMF I + 0.10 UREA I + 0.54 UFAT I + 0.004	SW 25.66 SF 36.46 SB 42.08
H A R B High Plains 975 JH Erica Lady of Plattemere 195 14718819		Erica Lady of Plattemere 144			

BEPD	WEPD	YEPD	Milk	BW	ADJ 365
+ 2.5	+ 49	I + 96	+ 26	87	1,329



80

Calved: 3/8/2007

Tattoo: 3237-B07

#G A R Precision 1680 #13395329	+G A R Ext 4927	#Tehama Bando 155 9J9 G A R 856 #N Bar Emulation EXT G A R Traveler 641	#Bon View New Design 1407 #B/R New Design 036 Bon View Pride 664 #S A F Focus of E R Plattemere Reva 106	%IMF I + 0.46 UREA I + 0.19 UFAT I + 0.004	SW 24.29 SF 38.15 SB 52.40
Plattemere Reva 155 15119140		Plattemere Reva 129			

BEPD	WEPD	YEPD	Milk	BW	ADJ 365
+ 3.5	+ 50	I + 98	+ 29	95	1,302

• Lot 80 has the third highest Adjusted Weaning Weight in the sale and the seventh best Adjusted Yearling Weight.

78

Calved: 2/4/2007

Tattoo: 5407-B07

#G A R Precision 1680 #13395329	+G A R Ext 4927	#Tehama Bando 155 9J9 G A R 856 #N Bar Emulation EXT G A R Traveler 641	#D H D Traveler 6807 #+Mill Coulee Barbara L NT 217 Plattemere 5175 E820-B00 Erica Lady of Plattemere 110	%IMF I + 0.18 UREA I + 0.38 UFAT I + 0.009	SW 27.80 SF 35.25 SB 43.28
Mill Coulee 6807-423 Erica Lady of Plattemere 214 15395264		Erica Lady of Plattemere 184			

BEPD	WEPD	YEPD	Milk	BW	ADJ 365
+ 2.0	+ 52	I + 96	+ 22	81	1,189

81

Calved: 1/31/2007

Tattoo: 4977-B07

#G A R Precision 1680 #13395329	+G A R Ext 4927	#Tehama Bando 155 9J9 G A R 856 #N Bar Emulation EXT G A R Traveler 641	#S A F Fame Prides Venture of Conanga 62 Plattemere ND 340-B00 Erica Lady of Plattemere 163	%IMF I + 0.22 UREA I + 0.66 UFAT I - 0.006	SW 26.80 SF 37.10 SB 48.94
Connealy Acclaim Erica Lady of Plattemere 190 15394401		Erica Lady of Plattemere 184			

BEPD	WEPD	YEPD	Milk	BW	ADJ 365
+ 1.5	+ 50	I + 97	+ 21	77	1,232

SNYDER BROS.

82

Calved: 2/12/2007

Tattoo: 6497-B07

#G A R Precision 1680
G A R Retail Product
 13395329 +G A R Ext 4927

#Tehama Bando 155
 9J9 G A R 856
 #N Bar Emulation EXT
 G A R Traveler 641

%IMF	SW
I + 0.20	25.80
UREA	SF
I + 0.73	36.29
UFAT	SB
I + 0.005	47.43

#+Boyd New Day 8005

#A A R New Trend
 S V F Forever Lady 57D
 Plattermere ND 340-B00
 Barbara of Plattermere 282

Barbara of Plattermere 313

15394445 Barbara of Plattermere 291

BEPD	WEPD	YEPD	Milk	BW	ADJ 365
+ 3.2	+ 52	I + 97	+ 25	89	1,192

• This bull posts the highest REA EPD is the sale at .73



Lot 83

83

Calved: 2/19/2007

Tattoo: 5317-B07

#G A R Precision 1680
G A R Retail Product
 13395329 +G A R Ext 4927

#Tehama Bando 155
 9J9 G A R 856
 #N Bar Emulation EXT
 G A R Traveler 641

%IMF	SW
I + 0.13	23.95
UREA	SF
I + 0.55	37.74
UFAT	SB
I - 0.005	45.57

#+Boyd New Day 8005

#A A R New Trend
 S V F Forever Lady 57D
 #S A F Focus of E R
 Plattermere Rosa 291

Plattermere Rosa 335

15394410 Plattermere Rosa 317

BEPD	WEPD	YEPD	Milk	BW	ADJ 365
+ 3.8	+ 51	I + 98	+ 27	90	1,228

84

Calved: 2/5/2007

Tattoo: 6907-B07

#G A R Precision 1680
G A R Retail Product
 13395329 +G A R Ext 4927

#Tehama Bando 155
 9J9 G A R 856
 #N Bar Emulation EXT
 G A R Traveler 641

%IMF	SW
I + 0.25	27.76
UREA	SF
I + 0.43	32.31
UFAT	SB
I + 0.006	46.19

Plattermere Database

#Connealy Dateline
 #Plattermere Reva 109
 #+B T Ultravox 297E
 Plattermere Queenie 511

Plattermere Queenie 768

15393779 #Plattermere Queenie 667

BEPD	WEPD	YEPD	Milk	BW	ADJ 365
+ 1.8	+ 49	I + 92	+ 24	86	1,184

85

Calved: 2/2/2007

Tattoo: 5017-B07

#G A R Precision 1680
G A R Retail Product
 13395329 +G A R Ext 4927

#Tehama Bando 155
 9J9 G A R 856
 #N Bar Emulation EXT
 G A R Traveler 641

%IMF	SW
I + 0.46	26.84
UREA	SF
I + 0.56	30.82
UFAT	SB
I - 0.001	51.94

J D Daigger 901

#Sitz Alliance 6595
 J D Queen Eisa 7021
 #Bon View New Design 1407
 Dolly of Plattermere 206

Dolly of Plattermere 339

15393759 Dolly of Plattermere 289

BEPD	WEPD	YEPD	Milk	BW	ADJ 365
+ 1.6	+ 45	I + 89	+ 27	77	1,193

86

Calved: 3/3/2007

Tattoo: 7567-B07

#G A R Precision 1680
G A R Retail Product
 13395329 +G A R Ext 4927

#Tehama Bando 155
 9J9 G A R 856
 #N Bar Emulation EXT
 G A R Traveler 641

%IMF	SW
I + 0.30	29.36
UREA	SF
I + 0.27	29.23
UFAT	SB
I + 0.008	44.08

Plattermere UV 5992-B02

#+B T Ultravox 297E
 Plattermere Daisy 105
 #R P 3RD Bushwacker
 Blackbird of Plattermere 328

Blackbird of Plattermere 388

15399159 #Blackbird of Plattermere 336

BEPD	WEPD	YEPD	Milk	BW	ADJ 365
+ 1.4	+ 49	I + 89	+ 24	83	1,151



Lot 87

87

Calved: 2/3/2007

Tattoo: 8497-B07

#G A R Precision 1680
G A R Retail Product
 13395329 +G A R Ext 4927

#Tehama Bando 155
 9J9 G A R 856
 #N Bar Emulation EXT
 G A R Traveler 641

%IMF	SW
I + 0.16	25.31
UREA	SF
I + 0.68	32.08
UFAT	SB
I - 0.002	45.01

#B C C Bushwacker 41-93

#Paramont Ambush 2172
 R C Anita T Bando 918903
 #N Bar Emulation EXT
 Plattermere Queenie 471

Plattermere Queenie 776

15393797 Plattermere Queenie 532

BEPD	WEPD	YEPD	Milk	BW	ADJ 365
+ 2.3	+ 47	I + 91	+ 23	82	1,207

88

Calved: 2/4/2007

Tattoo: 6637-B07

#G A R Precision 1680
G A R Retail Product
 13395329 +G A R Ext 4927

#Tehama Bando 155
 9J9 G A R 856
 #N Bar Emulation EXT
 G A R Traveler 641

%IMF	SW
I + 0.17	26.24
UREA	SF
I + 0.58	29.17
UFAT	SB
I + 0.003	43.47

Connealy Lead On

#Connealy Leadtime
 Eligence Plus of Conanga
 #Connealy Dateline
 #Mary Ann of Plattermere 121

Mary Ann of Plattermere 155

15394447 Mary Ann of Plattermere 145

BEPD	WEPD	YEPD	Milk	BW	ADJ 365
+ 1.2	+ 44	I + 87	+ 23	80	1,132



Lot 89

89

Calved: 2/3/2007

Tattoo: 6597-B07

#G A R Precision 1680
G A R Retail Product
 13395329 +G A R Ext 4927

#Tehama Bando 155
 9J9 G A R 856
 #N Bar Emulation EXT
 G A R Traveler 641

%IMF	SW
I + 0.33	22.37
UREA	SF
I + 0.37	29.01
UFAT	SB
I - 0.009	47.88

Mill Coulee 6807-423

#D H D Traveler 6807
 #+Mill Coulee Barbara L NT 217
 Woodland Extra 526
 Plattermere Daisy 96

Plattermere Daisy 302

15411120 Plattermere Daisy 209

BEPD	WEPD	YEPD	Milk	BW	ADJ 365
+ 3.0	+ 47	I + 88	+ 16	85	1,100

90

Calved: 2/6/2007

Tattoo: 5527-B07

#G A R Precision 1680
G A R Retail Product
 13395329 +G A R Ext 4927

#Tehama Bando 155
 9J9 G A R 856
 #N Bar Emulation EXT
 G A R Traveler 641

%IMF	SW
I + 0.21	28.03
UREA	SF
I + 0.56	27.99
UFAT	SB
I + 0.003	44.21

Plattermere Database

#Connealy Dateline
 #Plattermere Reva 109
 Plattermere AL N170-B00
 Ada of Plattermere 188

ADA of Plattermere 246

15393767 ADA of Plattermere 222

BEPD	WEPD	YEPD	Milk	BW	ADJ 365
+ 1.9	+ 47	I + 87	+ 26	86	1,138

SNYDER BROS.

91

Calved: 2/19/2007

Tattoo: 5627-B07

#G A R Precision 1680
G A R Retail Product
 13395329 +G A R Ext 4927

#Tehama Bando 155
 9J9 G A R 856
 #N Bar Emulation EXT
 G A R Traveler 641

Plattemere Database

Plattemere Queenie 756
 15393768 #Plattemere Queenie 516

#Connealy Dateline
 #Plattemere Reva 109
 #Sitz Alliance 6595
 Plattemere Queenie 413

%IMF	SW
I + 0.28	26.14
UREA	SF
I + 0.42	28.78
UFAT	SB
I + 0.004	45.42

BEPD	WEPD	YEPD	Milk	BW	ADJ 365
+ 2.0	+ 45	I + 87	+ 25	84	1,110



SNYDER BROS.

42nd Annual BULL SALE

Saturday • MARCH 8, 2008 • 1 p.m. MST

Ref Sire
E

E&B 1680 Precision 1023

Calved: 2/1/2005

Bull 13913492

Tattoo: PRE

#G A R Precision 1680
 #11520398 9J9 G A R 856

#Band 234 of Ideal 3163
 Tehama Blackcap G373
 #Rito 9J9 of B156 7T26
 Blackbird G A R 833

#D H D Traveler 6807
E&B 6807 Lady Traveler 61
 12622123 Lady 963 Dividend 404

#Q A S Traveler 23-4
 #Bemindful Maid D H D 0807
 #TC Dividend 963
 Lady Traveler B169

SW
+34.43
SF
+31.51
SG
+31.01
SB
+56.53

CED Acc	BW Acc	WW Acc	YW Acc	YH Acc	SC Acc	CEM Acc	Milk Acc	MkH	MW Acc	MH Acc	SEN
+10	+0	+51	+92	-.2	-1.19	+12	+19	4	+14	+1	+6.52
.75	.91	.91	.85	.85	.81	.35	.66	25	.53	.55	
Cwt Acc	Mrb Acc	RE Acc	Fat Acc	Grp Prog	%IMF Acc	RE Acc	Fat Acc	Grp Prog			
I+12	I+.20	I+.33	I-.011		+52	+70	-.007	103			
.05	.05	.05	.05		.87	.87	.87	470			

• Precision 1023 is one of only three sires on the main report that ranks in the top 1% of the breed for both \$Weaning and \$Beef. He is a remarkable bull that ranks higher for \$B than Future Direction with significantly more performance. It appears that his daughters will be moderate framed mature cows.



E&B 1680 Precision 1023 – Sire of Lots 92-99



Lot 92

92

Calved: 1/20/2007

Tattoo: 9257-B07

#G A R Precision 1680
E&B 1680 Precision 1023
 13913492 E&B 6807 Lady Traveler 61

#Tehama Bando 155
 9J9 G A R 856
 #D H D Traveler 6807
 Lady 963 Dividend 404

B/R Destination 727-928

Plattemere Queen W 764
 15785860 Plattemere Queen W 573

#B/R Destination 727
 B/R Blackcap Empress 558
 #Sitz Alliance 6595
 #Plattemere Queen W 319

%IMF	SW
I + 0.45	30.54
UREA	SF
I + 0.39	31.74
UFAT	SB
I + 0.004	51.45

BEPD	WEPD	YEPD	Milk	BW	ADJ 365
+ 1.7	+ 53	I + 93	+ 24	85	1,263

94

Calved: 1/8/2007

Tattoo: 8897-B07

#G A R Precision 1680
E&B 1680 Precision 1023
 13913492 E&B 6807 Lady Traveler 61

#Tehama Bando 155
 9J9 G A R 856
 #D H D Traveler 6807
 Lady 963 Dividend 404

#Bon View New Design 1407
Plattemere Queen W 757
 15785838 Plattemere Queen W 668

#B/R New Design 036
 Bon View Pride 664
 Plattemere Gar V031-B01
 Plattemere Queen W 310

%IMF	SW
I + 0.41	30.89
UREA	SF
I + 0.48	29.01
UFAT	SB
0	50.01

BEPD	WEPD	YEPD	Milk	BW	ADJ 365
-2.1	+ 47	I + 88	+ 22	60	1,177

• This bull combines the lightest Birth EPD with a 50+ \$B

93

Calved: 1/17/2007

Tattoo: 8827-B07

#G A R Precision 1680
E&B 1680 Precision 1023
 13913492 E&B 6807 Lady Traveler 61

#Tehama Bando 155
 9J9 G A R 856
 #D H D Traveler 6807
 Lady 963 Dividend 404

J D Daigger 901

Plattemere Queenie 781
 15785833 Plattemere Queenie 726

#Sitz Alliance 6595
 J D Queen Eisa 7021
 #Bon View New Design 1407
 Plattemere Queenie 642

%IMF	SW
I + 0.34	28.89
UREA	SF
I + 0.20	27.99
UFAT	SB
I - 0.008	46.21

BEPD	WEPD	YEPD	Milk	BW	ADJ 365
+ 1.0	+ 47	I + 87	+ 24	77	1,146

95

Calved: 1/16/2007

Tattoo: 8927-B07

#G A R Precision 1680
E&B 1680 Precision 1023
 13913492 E&B 6807 Lady Traveler 61

#Tehama Bando 155
 9J9 G A R 856
 #D H D Traveler 6807
 Lady 963 Dividend 404

#Bon View New Design 1407
Erica Lady of Plattemere 220
 15785841 Erica Lady of Plattemere 210

#B/R New Design 036
 Bon View Pride 664
 #S A F Focus of E R
 Erica Lady of Plattemere 137

%IMF	SW
I + 0.50	28.96
UREA	SF
I + 0.38	27.60
UFAT	SB
I + 0.006	50.73

BEPD	WEPD	YEPD	Milk	BW	ADJ 365
+ 1.1	+ 48	I + 87	+ 22	74	1,129

SNYDER BROS.

96

Calved: 1/11/2007

Tattoo: 8727-B07

#G A R Precision 1680
E&B 1680 Precision 1023
 13913492 E&b 6807 Lady Traveler 61

#Tehama Bando 155
 9J9 G A R 856
 #D H D Traveler 6807
 Lady 963 Dividend 404

#Bon View New Design 1407
Plattemere Queen W 752
 15785824 Plattemere Queen W 654

#B/R New Design 036
 Bon View Pride 664
 #Basin Max 602C
 #Plattemere Queen W 518

%IMF	SW
I + 0.55	30.49
UREA	SF
I + 0.56	37.34
UFAT	SB
I + 0.002	57.62

BEPD	WEPD	YEPD	Milk	BW	ADJ 365
-0.5	+ 52	I + 98	+ 23	74	1,314

97

Calved: 1/22/2007

Tattoo: 9467-B07

#G A R Precision 1680
E&B 1680 Precision 1023
 13913492 E&b 6807 Lady Traveler 61

#Tehama Bando 155
 9J9 G A R 856
 #D H D Traveler 6807
 Lady 963 Dividend 404

#Bon View New Design 1407
Plattemere Queen W 770
 15785872 #Plattemere Queen W 501

#B/R New Design 036
 Bon View Pride 664
 Plattemere 3T A086 B96
 #Plattemere Queen W 238

%IMF	SW
I + 0.61	26.79
UREA	SF
I + 0.62	26.75
UFAT	SB
I + 0.015	53.56

BEPD	WEPD	YEPD	Milk	BW	ADJ 365
+ 1.7	+ 45	I + 85	+ 23	85	1,183

98

Calved: 2/6/2007

Tattoo: 9567-B07

#G A R Precision 1680
E&B 1680 Precision 1023
 13913492 E&b 6807 Lady Traveler 61

#Tehama Bando 155
 9J9 G A R 856
 #D H D Traveler 6807
 Lady 963 Dividend 404

#Bon View New Design 1407
Plattemere Queenie 790
 15785877 Plattemere Queenie 639

#B/R New Design 036
 Bon View Pride 664
 #S A F Focus of E R
 Plattemere Queenie 451

%IMF	SW
I + 0.33	25.67
UREA	SF
I + 0.17	27.53
UFAT	SB
I - 0.005	44.45

BEPD	WEPD	YEPD	Milk	BW	ADJ 365
+ 0.7	+ 43	I + 85	+ 20	70	1,137

99

Calved: 1/13/2007

Tattoo: 9627-B07

#G A R Precision 1680
E&B 1680 Precision 1023
 13913492 E&b 6807 Lady Traveler 61

#Tehama Bando 155
 9J9 G A R 856
 #D H D Traveler 6807
 Lady 963 Dividend 404

#Bon View New Design 1407
Martha of Plattemere 369
 15785881 #Martha of Plattemere 311

#B/R New Design 036
 Bon View Pride 664
 #S A F Focus of E R
 Martha of Plattemere 297

%IMF	SW
I + 0.65	33.28
UREA	SF
I + 0.49	26.19
UFAT	SB
I + 0.001	55.52

BEPD	WEPD	YEPD	Milk	BW	ADJ 365
-1.9	+ 49	I + 86	+ 24	62	1,176

• Lot 99 combines top 1% SB and top 1% IMF with a top 2% Birth EPD.



Connealy Lead On - Sire of Lots 100-108

Ref Sire
F

Connealy Lead On

Calved: 4/13/2003

Bull 13447282

Tattoo: CL

#Connealy Dateline
#Connealy Leadtime
 #12893612 #Ruths Rona of Conanga

#D H D Traveler 6807
 #Eila Eila of Conanga
 #Hoff Hi Flyer S C 7134
 #Rona Ruth of Conanga

#TC Dividend 963
Eligence Plus of Conanga
 12015495 Eura Cap of Conanga

#+Leachman Prompter
 T C Erica Eileen 6006
 #O A S Traveler 23-4
 Euratala of Conanga

SW
+38.74
SF
+39.44
SG
+18.58
SB
+45.79

CED	BW	WW	YW	YH	SC	CEM	Milk	MkD	MW	MH	SEN
Acc	Acc	Acc	Acc	Acc	Acc	Acc	Acc	Acc	Acc	Acc	Acc
+4	+2.2	+52	+100	+4	+70	+3	+31	602	+29	+3	-.20
.92	.97	.97	.97	.95	.95	.84	.96	1840	.81	.81	
Cwt	Mrb	RE	Fat	Grp	%IMF	RE	Fat	Grp			
Acc	Acc	Acc	Acc	Prog	Acc	Acc	Acc	Prog			
+11	+.23	+.24	-.043	14	+.02	+.45	-.017	2744			
.56	.59	.54	.52	54	.97	.97	.97	7230			

• Lead On is one of only 10 'Time Tested' curve benders that combines a +2.5 to +100 spread with at least .90 accuracy. He is a medium framed, powerfully made bull that transmits tremendous muscle. He is in the top 1% for SW, Top 5% for SF and Top 10% for SB. His daughters are moderate framed with added thickness and good udder quality

100

Calved: 2/12/2007

Tattoo: U307-B07

#Connealy Leadtime
Connealy Lead On
 13447282 Eligence Plus of Conanga

#Connealy Dateline
 #Ruths Rona of Conanga
 #TC Dividend 963
 Eura Cap of Conanga

#Bon View New Design 1407
Dolly of Plattemere 293
 14702442 Dolly of Plattemere 227

#B/R New Design 036
 Bon View Pride 664
 #G T Maximum
 #Dolly of Plattemere 190

%IMF	SW
I + 0.22	29.62
UREA	SF
I + 0.36	34.61
UFAT	SB
0	45.84

BEPD	WEPD	YEPD	Milk	BW	ADJ 365
+ 1.8	+ 51	I + 95	+ 30	83	1,213

102

Calved: 2/13/2007

Tattoo: 3657-B07

#Connealy Leadtime
Connealy Lead On
 13447282 Eligence Plus of Conanga

#Connealy Dateline
 #Ruths Rona of Conanga
 #TC Dividend 963
 Eura Cap of Conanga

#Millcreek Diversity
Erica Lady of Plattemere 207
 15119911 Erica Lady of Plattemere 127

#+G A R Sleep Easy 1009
 Millcreek Travel Lass
 Plattemere Di 7374 B94
 Erica Lady of Plattemere 110

%IMF	SW
I + 0.01	21.92
UREA	SF
I + 0.32	36.70
UFAT	SB
I - 0.012	39.95

BEPD	WEPD	YEPD	Milk	BW	ADJ 365
+ 4.4	+ 51	I + 97	+ 23	93	1,204

101

Calved: 2/10/2007

Tattoo: 4157-B07

#Connealy Leadtime
Connealy Lead On
 13447282 Eligence Plus of Conanga

#Connealy Dateline
 #Ruths Rona of Conanga
 #TC Dividend 963
 Eura Cap of Conanga

#Bon View New Design 1407
Plattemere Daisy 289
 15394398 Plattemere Daisy 182

#B/R New Design 036
 Bon View Pride 664
 #Sitz Alliance 6595
 Plattemere Daisy 168

%IMF	SW
I + 0.20	25.84
UREA	SF
I + 0.62	39.85
UFAT	SB
I - 0.010	49.01

BEPD	WEPD	YEPD	Milk	BW	ADJ 365
+ 3.0	+ 51	I + 100	+ 31	92	1,330

• Lot 101 is a tremendously well balanced bull with lots of muscular expression. He has the biggest Rib Eye and the second highest Adjusted Yearling Weight in the sale. His Rib Eye Area Ratio is 122. Lot 101's dam's progeny record is Wr 2 @ 109 and Yr 2@108.

SNYDER BROS.

103

Calved: 2/3/2007

Tattoo: 6727-B07

Connealy Lead On
13447282 Eligence Plus of Conanga

#Connealy Dateline
#Ruths Rona of Conanga
#TC Dividend 963
Eura Cap of Conanga

#Dalebanks Extender 6012
Plattemere Queen W 731
15394451 #Plattemere Queen W 495

#N Bar Emulation EXT
Princess 4007 of Dalebanks
#Alberda Traveler 416
Plattemere Queen W 354

%IMF	SW
1 + 0.16	30.43
UREA	SF
1 + 0.32	36.29
UFAT	SB
1 - 0.007	43.85

BE PD	WE PD	YE PD	Milk	BW	ADJ 365
+ 1.3	+ 52	1 + 97	+ 29	82	1,203

104

Calved: 2/1/2007

Tattoo: 4617-B07

Connealy Lead On
13447282 Eligence Plus of Conanga

#Connealy Dateline
#Ruths Rona of Conanga
#TC Dividend 963
Eura Cap of Conanga

Plattemere EXT-1 E521-B01
Plattemere Queen W 667
15119190 Plattemere Queen W 450

Plattemere Ext K059-B99
#Plattemere Queen W 279
#B/R New Design 036
Plattemere Queen W 376

%IMF	SW
1 - 0.08	32.86
UREA	SF
1 + 0.50	33.81
UFAT	SB
1 - 0.008	43.91

BE PD	WE PD	YE PD	Milk	BW	ADJ 365
- 0.3	+ 53	1 + 95	+ 27	70	1,120



Lot 105

105

Calved: 2/3/2007

Tattoo: 2327-B07

Connealy Lead On
13447282 Eligence Plus of Conanga

#Connealy Dateline
#Ruths Rona of Conanga
#TC Dividend 963
Eura Cap of Conanga

#Bon View New Design 1407
Blackbird of Plattemere 377
15119115 Blackbird of Plattemere 347

#B/R New Design 036
Bon View Pride 664
#Schurrtop Supreme
#Blackbird of Plattemere 309

%IMF	SW
1 + 0.04	29.82
UREA	SF
1 + 0.43	37.74
UFAT	SB
0	41.08

BE PD	WE PD	YE PD	Milk	BW	ADJ 365
+ 0.9	+ 51	1 + 98	+ 29	76	1,275

106

Calved: 2/20/2007

Tattoo: 5617-B07

Connealy Lead On
13447282 Eligence Plus of Conanga

#Connealy Dateline
#Ruths Rona of Conanga
#TC Dividend 963
Eura Cap of Conanga

Connealy Acclaim
Plattemere Queen W 722
15394419 #Plattemere Queen W 251

#S A F Fame
Prides Venture of Conanga 62
#Hoff Northlander S C 6029
Plattemere Queen W 220

%IMF	SW
1 - 0.08	26.06
UREA	SF
1 + 0.17	31.45
UFAT	SB
1 - 0.004	30.00

BE PD	WE PD	YE PD	Milk	BW	ADJ 365
+ 1.4	+ 46	1 + 90	+ 21	78	1,117

107

Calved: 2/5/2007

Tattoo: 6607-B07

Connealy Lead On
13447282 Eligence Plus of Conanga

#Connealy Dateline
#Ruths Rona of Conanga
#TC Dividend 963
Eura Cap of Conanga

#Bon View New Design 1407
Plattemere Rosa 313
14702406 Plattemere Rosa 284

#B/R New Design 036
Bon View Pride 664
#S A F Fame
Plattemere Rosa 266

%IMF	SW
1 + 0.26	30.73
UREA	SF
1 + 0.21	30.88
UFAT	SB
1 - 0.013	45.83

BE PD	WE PD	YE PD	Milk	BW	ADJ 365
+ 1.1	+ 50	1 + 91	+ 28	79	1,138

108

Calved: 2/16/2007

Tattoo: 7987-B07

Connealy Lead On
13447282 Eligence Plus of Conanga

#Connealy Dateline
#Ruths Rona of Conanga
#TC Dividend 963
Eura Cap of Conanga

Plattemere UV 5992-B02
Plattemere Queenie 778
15434021 Plattemere Queenie 643

##B T Ultravox 297E
Plattemere Daisy 105
Plattemere 3T A086 B96
Plattemere Queenie 422

%IMF	SW
1 - 0.03	28.14
UREA	SF
1 - 0.04	29.01
UFAT	SB
1 - 0.005	29.89

BE PD	WE PD	YE PD	Milk	BW	ADJ 365
1 + 1.2	1 + 47	1 + 88	1 + 23	75	1,081



Rito 2V1 of 2536 1407 - Sire of Lots 109-116

Ref Sire
G

Rito 2V1 of 2536 1407

Calved: 4/5/2006

Bull 14088249

Tattoo: 2V1

#B/R New Design 036
Bon View New Design 1407
12783540 Bon View Pride 664

#V D A R New Trend 315
B/R Blackcap Empress 76
##G A R Sleep Easy 1009
#Bon View Pride 1551

#G A R Precision 1680
G A R Precision 2536
12716656 +G A R Ext 2104

#Tehama Bando 155
9J9 G A R 856
#N Bar Emulation EXT
#G A R Scotch Cap 867

SW
+27.44
SF
+52.95
SG
+26.83
SB
+58.03

CED	BW	WW	YW	YH	SC	CEM	Milk	MkH	MW	MH	SEN
+2	+3.9	+61	+116	+4	+75	+6	+28	45	+76	+6	-11.00
.78	.95	.95	.91	.88	.86	.48	.82	83	.37	.34	
Cwt	Mrb	RE	Fat	Grp	%IMF	RE	Fat	Grp			
Acc	Acc	Acc	Acc	Prog	Acc	Acc	Acc	Prog			
+2	+4.45	+25	+0.07	4	+5.0	+6.0	+0.16	764			
.20	.22	.19	.18	4	.93	.93	.93	1560			

• 2V1 delivers tremendous carcass genetics along with, high growth, milk, and reasonable birth weight. He's a high-6 frame bull with extra length and good depth of body. 2V1 is a maternal brother to Grid Maker, Rito 111, and Rito Plus among others.

SNYDER BROS.

109

Calved: 2/14/2007

Tattoo: 3107-B07

Bon View New Design 1407 #B/R New Design 036
Rito 2V1 of 2536 1407 Bon View Pride 664
 14088249 G A R Precision 2536 #G A R Precision 1680
 +G A R Ext 2104

#S A F Focus of E R #S A F Fame
ADA of Plattemere 240 G D A R Forever Lady 246
 15119899 Ada of Plattemere 177 Plattemere Triple Dimension
 Ada of Plattemere 158

%IMF	SW
I + 0.36	25.85
UREA	SF
I + 0.26	44.18
UFAT	SB
I + 0.017	48.68

BEPD	WEPD	YEPD	Milk	BW	ADJ 365
+ 2.9	+ 56	I + 106	+ 22	89	1,255

110

Calved: 2/5/2007

Tattoo: U207-B07

Bon View New Design 1407 #B/R New Design 036
Rito 2V1 of 2536 1407 Bon View Pride 664
 14088249 G A R Precision 2536 #G A R Precision 1680
 +G A R Ext 2104

#+B T Ultravox 297E #+O S U 6T6 Ultra
Barbara of Plattemere 286 Finks Vixon 788
 14700299 Barbara of Plattemere 246 #+Woodhill Triple Threat
 Barbara of Plattemere 233

%IMF	SW
I + 0.64	26.08
UREA	SF
I + 0.54	38.62
UFAT	SB
I + 0.021	56.30

BEPD	WEPD	YEPD	Milk	BW	ADJ 365
+ 2.5	+ 54	I + 100	+ 19	88	1,174



Lot 111

111

Calved: 2/13/2007

Tattoo: U357-B07

Bon View New Design 1407 #B/R New Design 036
Rito 2V1 of 2536 1407 Bon View Pride 664
 14088249 G A R Precision 2536 #G A R Precision 1680
 +G A R Ext 2104

Plattemere ND E800-B00 #B/R New Design 036
Plattemere Queenie 674 #Plattemere Daisy 136
 14699380 Plattemere Queenie 574 Plattemere 3T A086 B96
 Plattemere Queenie 417

%IMF	SW
I + 0.26	25.97
UREA	SF
I + 0.69	36.29
UFAT	SB
I + 0.011	48.73

BEPD	WEPD	YEPD	Milk	BW	ADJ 365
+ 3.0	+ 52	I + 97	+ 24	86	1,137

• This bull has the 2nd high REA EPD in the sale.

112

Calved: 2/15/2007

Tattoo: 4587-B07

Bon View New Design 1407 #B/R New Design 036
Rito 2V1 of 2536 1407 Bon View Pride 664
 14088249 G A R Precision 2536 #G A R Precision 1680
 +G A R Ext 2104

Plattemere FC N381-B01 #S A F Focus of E R
Blackbird of Plattemere 376 Plattemere Queenie 500
 15119187 Blackbird of Plattemere 324 #N Bar Emulation EXT
 Blackbird of Plattemere 299

%IMF	SW
I + 0.38	28.41
UREA	SF
I + 0.30	40.16
UFAT	SB
I + 0.031	47.72

BEPD	WEPD	YEPD	Milk	BW	ADJ 365
+ 2.9	+ 58	I + 103	+ 23	89	1,219

113

Calved: 3/4/2007

Tattoo: U757-B07

Bon View New Design 1407 #B/R New Design 036
Rito 2V1 of 2536 1407 Bon View Pride 664
 14088249 G A R Precision 2536 #G A R Precision 1680
 +G A R Ext 2104

Plattemere 5175 E630-B00 #+S A F 598 Bando 5175
Plattemere Queen W 579 #Plattemere Queenie 420
 14699386 Plattemere Queen W 360 #N Bar Emulation EXT
 #Plattemere Queen W 168

%IMF	SW
I + 0.45	25.75
UREA	SF
I + 0.12	36.06
UFAT	SB
I + 0.011	48.99

BEPD	WEPD	YEPD	Milk	BW	ADJ 365
+ 2.3	+ 50	I + 96	+ 22	79	1,115



Lot 114

114

Calved: 2/9/2007

Tattoo: 2967-B07

Bon View New Design 1407 #B/R New Design 036
Rito 2V1 of 2536 1407 Bon View Pride 664
 14088249 G A R Precision 2536 #G A R Precision 1680
 +G A R Ext 2104

#S A F Focus of E R #S A F Fame
ADA of Plattemere 239 G D A R Forever Lady 246
 15119897 Ada of Plattemere 180 #Minerts Fortune 2000
 Ada of Plattemere 173

%IMF	SW
I + 0.25	30.30
UREA	SF
I + 0.44	32.94
UFAT	SB
I + 0.018	43.46

BEPD	WEPD	YEPD	Milk	BW	ADJ 365
0	+ 50	I + 93	+ 24	70	1,155

115

Calved: 2/16/2007

Tattoo: 7697-B07

Bon View New Design 1407 #B/R New Design 036
Rito 2V1 of 2536 1407 Bon View Pride 664
 14088249 G A R Precision 2536 #G A R Precision 1680
 +G A R Ext 2104

Plattemere ND 471-B01 #B/R New Design 036
Plattemere Queenie 773 Plattemere Queenie 456
 15393785 Plattemere Queenie 568 Woodland Extra 526
 Plattemere Queenie 421

%IMF	SW
I + 0.34	24.68
UREA	SF
I + 0.26	34.38
UFAT	SB
I + 0.005	47.55

BEPD	WEPD	YEPD	Milk	BW	ADJ 365
+ 2.6	+ 49	I + 94	+ 21	85	1,123

116

Calved: 2/8/2007

Tattoo: 3087-B07

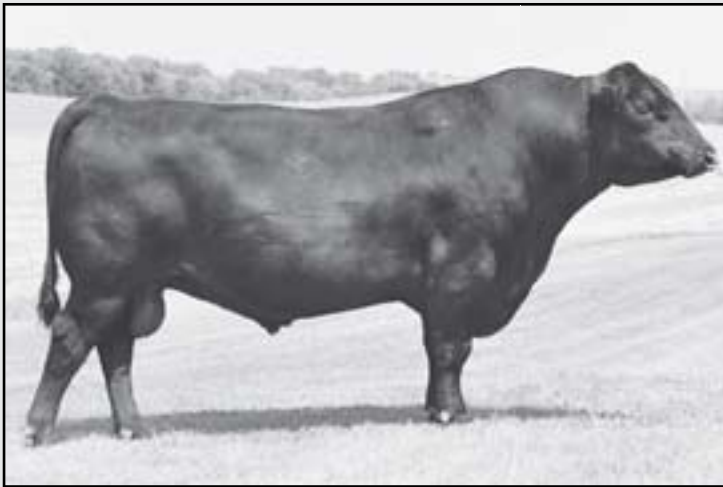
Bon View New Design 1407 #B/R New Design 036
Rito 2V1 of 2536 1407 Bon View Pride 664
 14088249 G A R Precision 2536 #G A R Precision 1680
 +G A R Ext 2104

#S A Neutron 377 #+S A F Neutron
Dolly of Plattemere 325 #S A Queen Susan 102
 15119137 Dolly of Plattemere 186 #TC Dividend 963
 Dolly of Plattemere 163

%IMF	SW
I + 0.16	22.25
UREA	SF
I + 0.33	35.25
UFAT	SB
I + 0.008	42.25

BEPD	WEPD	YEPD	Milk	BW	ADJ 365
+ 4.3	+ 52	I + 96	+ 20	97	1,116

SNYDER BROS.



B/R Destination 727-928 – Sire of Lots 117-126

Ref Sire
H

B/R Destination 727-928

Calved: 1/22/2003

Bull 13286246

Tattoo: 928

#G A R Traveler 1489
#B/R Destination 727
#12784697 B/R Ruby of Tiffany 5113

#Q A S Traveler 23-4
G A R Bando 237
#B/R New Design 036
B/R Ruby of Tiffany 155

#Bon View Bando 598

#Tehama Bando 155

B/R Blackcap Empress 558
12370174 B/R Blackcap Empress 76

#Bon View Dora 56
#K&K Top Gun
+QLC A70 Blkcp Empress E43T

SW
+39.27
SF
+46.99
SG
+27.53
SB
+59.09

CED Acc	BW Acc	WW Acc	YW Acc	YH Acc	SC Acc	CEM Acc	Milk Acc	MkD	MW Acc	MH Acc	SEN
+6	+3.0	+57	+109	+5	+07	+6	+28	143	+15	+7	+1.64
.77	.94	.94	.92	.88	.87	.67	.91	381	.64	.64	
Cwt Acc	Mrb Acc	RE Acc	Fat Acc	Grp Prog	%IMF Acc	RE Acc	Fat Acc	Grp Prog			
+18	+.42	+.33	+0	8	+.55	+.35	+0.16	794			
.60	.63	.57	.55	67	.93	.93	.93	1642			

• Destination excels in the \$value traits. He is in the top 20 bulls for \$B, the top 1% for \$W, the top 2% for \$F, and the top 5% for \$G. That makes him a great sire whether his calves are sold at weaning, through the feedlot, or priced on the grid.

117

Calved: 2/7/2007

Tattoo: U047-B07

#B/R Destination 727
B/R Destination 727-928
13286246 B/R Blackcap Empress 558

#G A R Traveler 1489
B/R Ruby of Tiffany 5113
#Bon View Bando 598
B/R Blackcap Empress 76

%IMF	SW
1 + 0.39	25.35
UREA	SF
1 + 0.32	40.67
UFAT	SB
1 + 0.008	51.23

Plattemere Database

#Connealy Dateline
#Plattemere Reva 109
#+Woodhill Triple Threat
Plattemere Queen W 292

Plattemere Queen W 577
14699377 Plattemere Queen W 348

BEPD	WEPD	YEPD	Milk	BW	ADJ 365
+ 1.4	+ 49	1 + 100	+ 21	84	1,210



Lot 118

120

Calved: 2/24/2007

Tattoo: 3057-B07

#B/R Destination 727
B/R Destination 727-928
13286246 B/R Blackcap Empress 558

#G A R Traveler 1489
B/R Ruby of Tiffany 5113
#Bon View Bando 598
B/R Blackcap Empress 76

%IMF	SW
1 + 0.37	27.01
UREA	SF
1 + 0.57	34.14
UFAT	SB
1 + 0.036	47.16

Plattemere Database

#Connealy Dateline
#Plattemere Reva 109
Plattemere Ext 1 7028 B98
Dolly of Plattemere 230

Dolly of Plattemere 324
15119135 Dolly of Plattemere 274

BEPD	WEPD	YEPD	Milk	BW	ADJ 365
+ 0.9	+ 47	1 + 93	+ 23	80	1,191



Lot 121

118

Calved: 2/6/2007

Tattoo: 3957-B07

#B/R Destination 727
B/R Destination 727-928
13286246 B/R Blackcap Empress 558

#G A R Traveler 1489
B/R Ruby of Tiffany 5113
#Bon View Bando 598
B/R Blackcap Empress 76

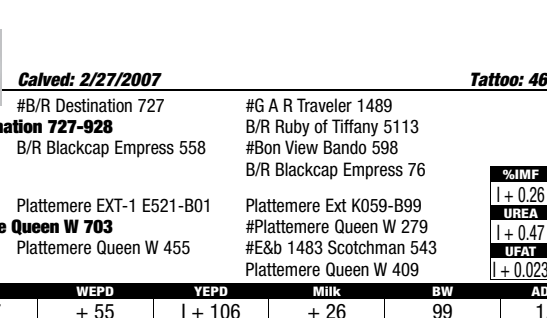
%IMF	SW
1 + 0.51	22.25
UREA	SF
1 + 0.29	39.85
UFAT	SB
1 + 0.039	49.84

#Bon View New Design 1407

#B/R New Design 036
Bon View Pride 664
#Minerts Fortune 2000
Plattemere Queenie 404

Plattemere Queenie 716
14742350 Plattemere Queenie 423

BEPD	WEPD	YEPD	Milk	BW	ADJ 365
+ 4.1	+ 51	1 + 100	+ 25	95	1,255



121

Calved: 2/1/2007

Tattoo: Y387-B07

#B/R Destination 727
B/R Destination 727-928
13286246 B/R Blackcap Empress 558

#G A R Traveler 1489
B/R Ruby of Tiffany 5113
#Bon View Bando 598
B/R Blackcap Empress 76

%IMF	SW
1 + 0.28	23.77
UREA	SF
1 + 0.17	35.65
UFAT	SB
1 + 0.017	44.84

#+B T Ultravox 297E

#+O S U 6T6 Ultra
Finks Vixon 788
#Connealy Dateline
Plattemere Queenie 453

#Plattemere Queenie 667
#14700318 Plattemere Queenie 511

BEPD	WEPD	YEPD	Milk	BW	ADJ 365
+ 3.7	+ 51	1 + 96	+ 23	90	1,103

119

Calved: 2/27/2007

Tattoo: 4687-B07

#B/R Destination 727
B/R Destination 727-928
13286246 B/R Blackcap Empress 558

#G A R Traveler 1489
B/R Ruby of Tiffany 5113
#Bon View Bando 598
B/R Blackcap Empress 76

%IMF	SW
1 + 0.26	22.22
UREA	SF
1 + 0.47	44.59
UFAT	SB
1 + 0.023	47.56

Plattemere EXT-1 E521-B01

Plattemere Ext K059-B99
#Plattemere Queen W 279
#E&b 1483 Scotchman 543
Plattemere Queen W 409

Plattemere Queen W 703
15119194 Plattemere Queen W 455

BEPD	WEPD	YEPD	Milk	BW	ADJ 365
+ 4.7	+ 55	1 + 106	+ 26	99	1,279

122

Calved: 2/24/2007

Tattoo: 6187-B07

#B/R Destination 727
B/R Destination 727-928
13286246 B/R Blackcap Empress 558

#G A R Traveler 1489
B/R Ruby of Tiffany 5113
#Bon View Bando 598
B/R Blackcap Empress 76

%IMF	SW
1 + 0.23	22.99
UREA	SF
1 + 0.06	39.03
UFAT	SB
1 - 0.003	45.75

#Bon View New Design 1407

#B/R New Design 036
Bon View Pride 664
Plattemere 3T A086 B96
#Plattemere Queenie 356

Plattemere Queenie 762
15394434 #Plattemere Queenie 623

BEPD	WEPD	YEPD	Milk	BW	ADJ 365
+ 4.7	+ 53	1 + 100	+ 28	98	1,212

SNYDER BROS.



Lot 123

123

Calved: 2/3/2007

Tattoo: U067-B07

#B/R Destination 727
B/R Destination 727-928
 13286246 B/R Blackcap Empress 558

#G A R Traveler 1489
 B/R Ruby of Tiffany 5113
 #Bon View Bando 598
 B/R Blackcap Empress 76

#P 3RD Bushwacker
Blackbird of Plattermere 361
 14700294 Blackbird of Plattermere 327

#B C C Bushwacker 41-93
 L B Queen of Spades
 #B/R New Design 036
 #Blackbird of Plattermere 309

%IMF	SW
I + 0.35	27.72
UREA	SF
I + 0.57	35.65
UFAT	SB
I + 0.012	51.25

BEPD	WEPD	YEPD	Milk	BW	ADJ 365
+ 2.2	+ 51	I + 96	+ 26	83	1,231

124

Calved: 1/25/2007

Tattoo: G667-B07

#B/R Destination 727
B/R Destination 727-928
 13286246 B/R Blackcap Empress 558

#G A R Traveler 1489
 B/R Ruby of Tiffany 5113
 #Bon View Bando 598
 B/R Blackcap Empress 76

#S A F Focus of E R
Blackbird of Plattermere 364
 14700207 Blackbird of Plattermere 339

#S A F Fame
 G D A R Forever Lady 246
 #+S A F 598 Bando 5175
 #Blackbird of Plattermere 309

%IMF	SW
I + 0.78	26.21
UREA	SF
I + 0.20	36.46
UFAT	SB
I + 0.023	55.32

BEPD	WEPD	YEPD	Milk	BW	ADJ 365
+ 2.0	+ 49	I + 96	+ 24	79	1,144

• Lot 124 posts the highest IMF Score. His IMF ratio is an impressive 174.



Lot 125

125

Calved: 2/18/2007

Tattoo: U087-B07

#B/R Destination 727
B/R Destination 727-928
 13286246 B/R Blackcap Empress 558

#G A R Traveler 1489
 B/R Ruby of Tiffany 5113
 #Bon View Bando 598
 B/R Blackcap Empress 76

#S A F Focus of E R
Blackbird of Plattermere 363
 14702436 Blackbird of Plattermere 338

#S A F Fame
 G D A R Forever Lady 246
 Plattermere Ext J278 B98
 Blackbird of Plattermere 330

%IMF	SW
I + 0.60	25.54
UREA	SF
I + 0.21	35.18
UFAT	SB
I + 0.039	49.30

BEPD	WEPD	YEPD	Milk	BW	ADJ 365
+ 1.9	+ 47	I + 94	+ 24	88	1,187

126

Calved: 2/10/2007

Tattoo: U657-B07

#B/R Destination 727
B/R Destination 727-928
 13286246 B/R Blackcap Empress 558

#G A R Traveler 1489
 B/R Ruby of Tiffany 5113
 #Bon View Bando 598
 B/R Blackcap Empress 76

Plattermere 5175 E630-B00
#Blackbird of Plattermere 359
 #14699384 #Blackbird of Plattermere 309

#+S A F 598 Bando 5175
 #Plattermere Queenie 420
 #N Bar Emulation EXT
 Blackbird of Plattermere 293

%IMF	SW
I + 0.55	27.24
UREA	SF
I + 0.15	34.38
UFAT	SB
I + 0.021	50.32

BEPD	WEPD	YEPD	Milk	BW	ADJ 365
+ 1.9	+ 49	I + 94	+ 25	83	1,186



Riverbend Blueprint L24 - Sire of Lots 127-132

Ref Sire

Riverbend Blueprint L24

Calved: 2/6/2006

Bull 14181726

Tattoo: BP

#B/R New Design 036
Bon View New Design 1407
 12783540 Bon View Pride 664

#V D A R New Trend 315
 B/R Blackcap Empress 76
 #+G A R Sleep Easy 1009
 #Bon View Pride 1551

#+V D A R Lucys Boy
#+Rocky Mt Lucy 057
 #+13633210 +FSHK Lucy 326

#Traveler 1148 G D A R
 +V D A R Pine Drive Lucy 5
 #Traveler 124 G D A R
 +V D A R Pine Drive Lucy 7

SW
+24.35
SF
+51.71
SG
+19.00
SB
+50.72

CED	BW	WW	YW	YH	SC	CEM	Milk	MkH	MW	MH	SEN
+5	+4.2	+51	+111	+0	+10	+3	+32	7	+32	+4	-10.65
.68	.85	.85	.80	.56	.60	.37	.66	33	.35	.37	
Cwt	Mrb	RE	Fat	Grp	%IMF	RE	Fat	Grp			
I + 1	I + .37	I + .18	I + .024		+ .34	+ .03	- .005	44			
.05	.05	.05	.05		.81	.81	.81	221			

• Blueprint is a powerful high performance son of 1407. His calves have the right conformation. He is in the top 1% for SF and Top 3% for SB.

127

Calved: 2/6/2007

Tattoo: R267-B07

Bon View New Design 1407
Riverbend Blueprint L24
 14181726 #+Rocky Mt Lucy 057

#B/R New Design 036
 Bon View Pride 664
 #+V D A R Lucys Boy
 +FSHK Lucy 326

#Connealy Forefront
ADA of Plattermere 218
 14700265 #Ada of Plattermere 172

#Connealy Frontline
 Eileen Heartland Conanga6443
 Plattermere DHD 7434 B94
 #Ada of Plattermere 147

%IMF	SW
I + 0.11	19.19
UREA	SF
I + 0.30	45.60
UFAT	SB
I - 0.013	44.83

BEPD	WEPD	YEPD	Milk	BW	ADJ 365
+ 4.6	+ 50	I + 105	+ 26	102	1,265

• This is a really strong topped bull with lots of meat. He is a bull with real eye appeal. His dam has a progeny record of 2 IMF @ 122 and 2 REA @ 111. His Granddam posts progeny ratios BW 8 @ 101, WN 8 @ 106, and YR & @ 106



Lot 127

SNYDER BROS.



Lot 130

128 Calved: 1/31/2007 Tattoo: 2167-B07

Bon View New Design 1407 #B/R New Design 036
 Riverbend Blueprint L24 Bon View Pride 664
 14181726 #+Rocky Mt Lucy 057 #+V D A R Lucys Boy
 +FSHK Lucy 326

%IMF	SW
1 + 0.34	26.78
UREA	SF
1 + 0.08	40.67
UFAT	SB
1 + 0.003	47.93

#S A F Focus of E R #S A F Fame
 Plattemere Queenie 724 G D A R Forever Lady 246
 15119891 #Plattemere Queenie 618 G A R 6807 Traveler 4144
 #Plattemere Queenie 550

BEPD	WEPD	YEPD	Milk	BW	ADJ 365
+ 1.5	+ 49	1 + 100	+ 27	79	1,116

129 Calved: 1/31/2007 Tattoo: 1797-B07

Bon View New Design 1407 #B/R New Design 036
 Riverbend Blueprint L24 Bon View Pride 664
 14181726 #+Rocky Mt Lucy 057 #+V D A R Lucys Boy
 +FSHK Lucy 326

%IMF	SW
1 + 0.28	23.43
UREA	SF
1 + 0.03	38.15
UFAT	SB
1 + 0.008	44.04

#Basin Max 602C #G T Maximum
 Plattemere Queen W 654 #Basin Eline Erica 315U
 14742862 #Plattemere Queen W 518 #S A F Focus of E R
 Plattemere Queen W 438

BEPD	WEPD	YEPD	Milk	BW	ADJ 365
+ 3.5	+ 50	1 + 98	+ 25	89	1,118

130 Calved: 3/2/2007 Tattoo: 3717-B07

Bon View New Design 1407 #B/R New Design 036
 Riverbend Blueprint L24 Bon View Pride 664
 14181726 #+Rocky Mt Lucy 057 #+V D A R Lucys Boy
 +FSHK Lucy 326

%IMF	SW
1 + 0.24	23.37
UREA	SF
1 - 0.01	41.08
UFAT	SB
1 + 0.010	42.58

#Sitz Alliance 6595 #Sitz Traveler 8180
 Plattemere Queenie 735 #Sitz Barbaramere Jet 2698
 15119149 Plattemere Queenie 576 Plattemere KR E188 B98
 Plattemere Queenie 457

BEPD	WEPD	YEPD	Milk	BW	ADJ 365
+ 2.7	+ 48	1 + 100	+ 26	88	1,274

131 Calved: 2/6/2007 Tattoo: 4537-B07

Bon View New Design 1407 #B/R New Design 036
 Riverbend Blueprint L24 Bon View Pride 664
 14181726 #+Rocky Mt Lucy 057 #+V D A R Lucys Boy
 +FSHK Lucy 326

%IMF	SW
1 + 0.19	24.16
UREA	SF
1 + 0.13	31.61
UFAT	SB
1 + 0.010	38.62

Plattemere AL N380-B00 #Sitz Alliance 6595
 Plattemere Queen W 701 Plattemere Queenie 500
 15119183 Plattemere Queen W 376 #+Woodhill Triple Threat
 Plattemere Queen W 173

BEPD	WEPD	YEPD	Milk	BW	ADJ 365
+ 2.2	+ 43	1 + 89	+ 27	85	1,117

132 Calved: 2/10/2007 Tattoo: U737-B07

Bon View New Design 1407 #B/R New Design 036
 Riverbend Blueprint L24 Bon View Pride 664
 14181726 #+Rocky Mt Lucy 057 #+V D A R Lucys Boy
 +FSHK Lucy 326

%IMF	SW
1 + 0.26	21.52
UREA	SF
1 + 0.23	32.64
UFAT	SB
1 + 0.019	41.26

Plattemere Database #Connealy Dateline
 Plattemere Queen W 589 #Plattemere Reva 109
 14699385 Plattemere Queen W 420 #Sitz Alliance 6595
 Plattemere Queen W 347

BEPD	WEPD	YEPD	Milk	BW	ADJ 365
+ 3.1	+ 43	1 + 90	+ 25	93	1,106



Bon View New Design 1407 - Sire of Lots 133-135

Ref Sire
Bon View New Design 1407
 Calved: 2/23/2001 Bull 12783540 Tattoo: 1407

#V D A R New Trend 315 #A A R New Trend
 #B/R New Design 036 #V D A R Lucy 704
 #11418151 B/R Blackcap Empress 76 #K&K Top Gun
 +QLC A70 Bilkcp Empress E43T

SW
+32.89
SF
+31.22
SG
+31.07
SB
+50.51

#+G A R Sleep Easy 1009 #Tehama Bando 155
 Bon View Pride 664 Blackclass G A R 103
 12139985 #Bon View Pride 1551 Bon View Paragon 2108
 Bon View Pride 639

CED Acc	BW Acc	VV Acc	YW Acc	YH Acc	SC Acc	CEM Acc	Milk Acc	MkH Acc	MW Acc	MH Acc	SEN
+11	+0	+44	+89	+5	+08	+11	+34	1738	+45	+7	-6.32
.95	.98	.98	.97	.97	.97	.92	.97	7706	.92	.92	

Cwt Acc	Mrb Acc	RE Acc	Fat Acc	Grp Prog	%IMF Acc	RE Acc	Fat Acc	Grp Prog
-2	+55	+24	+017	18	+58	+45	+016	6934
.47	.50	.45	.43	31	.98	.98	.98	19479

- We have used 1407 for many years and he remains a great sire.
- 1407 was the 1st angus sire that excelled in IMF, REA and performance which made him a leading \$B sire. He is still the Top 3% for \$B. In addition he is an excellent calving ease bull. His daughters have performed well in our herd. He sets the standard by which we measure other sires.

SNYDER BROS.



Lot 133

134

Calved: 2/24/2007

Tattoo: 6347-B07

#B/R New Design 036 #V D A R New Trend 315
Bon View New Design 1407 B/R Blackcap Empress 76
 12783540 Bon View Pride 664 #+G A R Sleep Easy 1009
 #Bon View Pride 1551

%IMF	SW
I + 0.41	28.54
UREA	SF
I + 0.27	33.91
UFAT	SB
I + 0.020	46.89

BEPD	WEPD	YEPD	Milk	BW	ADJ 365
-0.7	+ 45	I + 92	+ 28	75	1,208

135

Calved: 2/8/2007

Tattoo: 9607-B07

#B/R New Design 036 #V D A R New Trend 315
Bon View New Design 1407 B/R Blackcap Empress 76
 12783540 Bon View Pride 664 #+G A R Sleep Easy 1009
 #Bon View Pride 1551

%IMF	SW
I + 0.50	28.77
UREA	SF
I + 0.47	36.63
UFAT	SB
I + 0.004	53.29

BEPD	WEPD	YEPD	Milk	BW	ADJ 365
-1.1	+ 46	I + 95	+ 28	65	1,193

133

Calved: 1/16/2007

Tattoo: 9757-B07

#B/R New Design 036 #V D A R New Trend 315
Bon View New Design 1407 B/R Blackcap Empress 76
 12783540 Bon View Pride 664 #+G A R Sleep Easy 1009
 #Bon View Pride 1551

%IMF	SW
I + 0.48	30.53
UREA	SF
I + 0.61	40.50
UFAT	SB
I + 0.015	53.51

BEPD	WEPD	YEPD	Milk	BW	ADJ 365
0	+ 52	I + 101	+ 29	68	1,282



TC Freedom 104 - Sire of Lots 136-142

Ref Sire **TC Freedom 104**
 Calved: 1/18/2005

Bull 13977765

Tattoo: FR

#Connealy Forefront #Connealy Dateline
 #13169229 Eileen Heartland Conanga6443 #Pleasant Pill of Conanga
 #Hoff Heartland S C 456
 Eileen May of Conanga

SW	+37.60
SF	+39.68
SC	+6.90
SB	+35.13

CED Acc	BW Acc	WW Acc	YW Acc	YH Acc	SC Acc	CEM Acc	Milk Acc	MkD	MW Acc	MH Acc	SEN
+6	+2.9	+54	+101	+4	+1.24	+8	+32	319	+22	+5	-2.36
.83	.96	.96	.95	.85	.88	.74	.94	778	.62	.60	
Cwt Acc	Mrb Acc	RE Acc	Fat Acc	Grp Prog	%IMF Acc	RE Acc	Fat Acc	Grp Prog			
+5	+0	+27	-.015	1	-.01	+23	+010	1055			
.08	.09	.08	.07	1	.94	.94	.94	2321			

• Freedom stamps and indelible pattern of structural correctness, thickness and balance on his sons. They are consistently the most attractive calves in the pen.

136

Calved: 2/4/2007

Tattoo: 1987-B07

#Connealy Forefront #Connealy Frontline
TC Freedom 104 Eileen Heartland Conanga6443
 13977765 #T C Ruby 9095 #TC Stockman 365
 #+TC Ruby 4068

%IMF	SW
I + 0.12	30.56
UREA	SF
I + 0.16	39.27
UFAT	SB
I + 0.013	39.58

BEPD	WEPD	YEPD	Milk	BW	ADJ 365
+ 1.6	+ 55	I + 101	+ 27	82	1,229

• Lot 136 is a real tank; a thick, deep, high volume power house.

138

Calved: 2/1/2007

Tattoo: 3937-B07

#Connealy Forefront #Connealy Frontline
TC Freedom 104 Eileen Heartland Conanga6443
 13977765 #T C Ruby 9095 #TC Stockman 365
 #+TC Ruby 4068

%IMF	SW
I - 0.08	29.17
UREA	SF
I + 0.20	33.41
UFAT	SB
I + 0.007	30.43

BEPD	WEPD	YEPD	Milk	BW	ADJ 365
+ 1.7	+ 54	I + 95	+ 19	80	1,107

137

Calved: 2/4/2007

Tattoo: R077-B07

#Connealy Forefront #Connealy Frontline
TC Freedom 104 Eileen Heartland Conanga6443
 13977765 #T C Ruby 9095 #TC Stockman 365
 #+TC Ruby 4068

%IMF	SW
I - 0.11	26.83
UREA	SF
I + 0.36	43.76
UFAT	SB
I - 0.008	35.79

BEPD	WEPD	YEPD	Milk	BW	ADJ 365
+ 2.9	+ 57	I + 106	+ 23	86	1,291

• Lot 137 is one of the most powerful bulls in the sale. He has lots of muscular expression, extra length and some extra frame. He is backed by a dam with a progeny ratio of WR 4 @ 102 and YR 4 @ 107



Lot 137

SNYDER BROS.

139

Calved: 2/11/2007

Tattoo: 4257-B07

#Connealy Forefront
TC Freedom 104
 1397765 #T C Ruby 9095

#Connealy Frontline
 Eileen Heartland Conanga6443
 #TC Stockman 365
 #+TC Ruby 4068

#Bon View New Design 1407
Plattemere Queen W 696
 15119168 Plattemere Queen W 477

#B/R New Design 036
 Bon View Pride 664
 Plattemere 3T K298 B98
 Plattemere Queen W 339

%IMF	SW
I + 0.08	27.76
UREA	SF
I + 0.20	32.54
UFAT	SB
I + 0.020	34.98

BE PD	WE PD	YE PD	Milk	BW	ADJ 365
+ 2.7	+ 51	I + 93	+ 27	95	1,217



Lot 140

140

Calved: 2/5/2007

Tattoo: R427-B07

#Connealy Forefront
TC Freedom 104
 1397765 #T C Ruby 9095

#Connealy Frontline
 Eileen Heartland Conanga6443
 #TC Stockman 365
 #+TC Ruby 4068

#Connealy Forefront
Barbara of Plattemere 285
 14700272 Barbara of Plattemere 212

#Connealy Frontline
 Eileen Heartland Conanga6443
 #TC Dividend 963
 Barbara of Plattemere 174

%IMF	SW
I + 0.04	28.21
UREA	SF
I + 0.07	31.51
UFAT	SB
I - 0.006	34.60

BE PD	WE PD	YE PD	Milk	BW	ADJ 365
+ 2.4	+ 51	I + 92	+ 25	90	1,126

141

Calved: 2/8/2007

Tattoo: 4147-B07

#Connealy Forefront
TC Freedom 104
 1397765 #T C Ruby 9095

#Connealy Frontline
 Eileen Heartland Conanga6443
 #TC Stockman 365
 #+TC Ruby 4068

#Bon View New Design 1407
Plattemere Queen W 693
 15119162 Plattemere Queen W 385

#B/R New Design 036
 Bon View Pride 664
 #G D A R Traveler 044
 Plattemere Queen W 311

%IMF	SW
I + 0.05	24.94
UREA	SF
I + 0.17	32.48
UFAT	SB
I + 0.012	34.51

BE PD	WE PD	YE PD	Milk	BW	ADJ 365
+ 2.6	+ 46	I + 91	+ 27	93	1,115

142

Calved: 3/7/2007

Tattoo: 7187-B07

#Connealy Forefront
TC Freedom 104
 1397765 #T C Ruby 9095

#Connealy Frontline
 Eileen Heartland Conanga6443
 #TC Stockman 365
 #+TC Ruby 4068

#Perry Power Design 715
Blackbird of Plattemere 372
 14708892 #Blackbird of Plattemere 294

#B/R New Design 036
 #E P Maximum Lady 221
 #G D A R Traveler 71
 Blackbird of Plattemere 252

%IMF	SW
I - 0.16	29.44
UREA	SF
I + 0.31	30.26
UFAT	SB
I + 0.015	27.29

BE PD	WE PD	YE PD	Milk	BW	ADJ 365
+ 1.8	+ 49	I + 90	+ 29	82	1,184

Ref Sire

Boyd New Day 8005

Calved: 1/2/2002

Bull 13050780

Tattoo: BND

#V D A R Shoshone 548
#A A R New Trend
 #9958634 Donna A A R 74

#Schearbrook Shoshone
 V D A R Polly 308
 #Candolier Forever 376
 Donna 244 G D A R

#+Leachman Right Time
S V F Forever Lady 57D
 12133159 +S V F Forever Lady 1128

#N Bar Emulation EXT
 Leachman Erica 0025
 #+Skarship Saratoga
 #Forever Lady 163 G D A R

SW
+32.32
SF
+45.01
SG
+10.69
SB
+41.35

CED Acc	BW Acc	WW Acc	YW Acc	YH Acc	SC Acc	CEM Acc	Milk Acc	MkH Acc	MW Acc	MH Acc	SEN
+10	+2.5	+54	+106	+4	+46	+5	+24	574	+59	+4	+16
.87	.97	.97	.96	.92	.92	.83	.96	1528	.82	.82	
Cwt Acc	Mrb Acc	RE Acc	Fat Acc	Grp Prog	%IMF Acc	RE Acc	Fat Acc	Grp Prog			
+17	-.03	+38	+.014	18	+.01	+.71	+.003	1772			
.51	.55	.49	.47	41	.96	.96	.96	4256			

• Boyd New Day is noted for his excellent daughters. They are well balanced, good uddered females that produce top performing calves. Boyd New Day calves are born easy, grow fast and perform exceptionally well in the feedlot. His Feedlot Value is in the Top 3%.



Boyd New Day 8005 - Sire of Lots 143-148

143

Calved: 1/24/2007

Bull 15896068

Tattoo: 5037-B07

#A A R New Trend
Boyd New Day 8005
 13050780 S V F Forever Lady 57D

#V D A R Shoshone 548
 Donna A A R 74
 #+Leachman Right Time
 +S V F Forever Lady 1128

#S A F Focus of E R
Erica Lady of Plattemere 213
 15409872 Erica Lady of Plattemere 188

#S A F Fame
 G D A R Forever Lady 246
 #S A Neutron 377
 Erica Lady of Plattemere 125

%IMF	SW
I + 0.13	28.38
UREA	SF
I + 0.48	39.27
UFAT	SB
I + 0.008	42.96

BE PD	WE PD	YE PD	Milk	BW	ADJ 365
+ 1.9	+ 55	I + 101	+ 21	80	1,202

• I could let his picture speak for itself but I won't. I don't want anyone to miss what a powerful bull he is. He's thick, he's deep, he's muscular, and well balanced. He ratios 116 for IMF and 109 for REA.



Lot 143

SNYDER BROS.

144

Calved: 2/18/2007

Tattoo: 5827-B07

#A A R New Trend
Boyd New Day 8005
 13050780 S V F Forever Lady 57D

#V D A R Shoshone 548
 Donna A A R 74
 #+Leachman Right Time
 +S V F Forever Lady 1128

TC Freedom 104
Dolly of Plattemere 342
 15393770 Dolly of Plattemere 277

#Connealy Forefront
 #T C Ruby 9095
 #S A F Focus of E R
 #Dolly of Plattemere 226

%IMF	SW
1-0.05	23.86
UREA	SF
1+ 0.37	39.03
UFAT	SB
1+ 0.008	35.39

BEPD	WEPD	YEPD	Milk	BW	ADJ 365
+ 3.9	+ 53	1+ 100	+ 24	89	1,235

145

Calved: 2/15/2007

Tattoo: G887-B07

#A A R New Trend
Boyd New Day 8005
 13050780 S V F Forever Lady 57D

#V D A R Shoshone 548
 Donna A A R 74
 #+Leachman Right Time
 +S V F Forever Lady 1128

#Connealy Forefront
Plattemere Queen W 604
 14700250 Plattemere Queen W 498

#Connealy Frontline
 Eileen Heartland Conanga6443
 #B/R New Design 036
 #Plattemere Queen W 319

%IMF	SW
1+ 0.27	28.16
UREA	SF
1+ 0.63	38.39
UFAT	SB
0	48.69

BEPD	WEPD	YEPD	Milk	BW	ADJ 365
+ 0.7	+ 52	1+ 99	+ 20	77	1,172

146

Calved: 2/28/2007

Tattoo: U037-B07

#A A R New Trend
Boyd New Day 8005
 13050780 S V F Forever Lady 57D

#V D A R Shoshone 548
 Donna A A R 74
 #+Leachman Right Time
 +S V F Forever Lady 1128

#Connealy Freightliner
ADA of Plattemere 216
 14700292 #Ada of Plattemere 153

#Bon View Bando 598
 Joana Erica of Conanga
 Plattemere Scotch Cap 9429
 #Ada of Plattemere 147

%IMF	SW
1-0.02	22.65
UREA	SF
1+ 0.48	31.68
UFAT	SB
1+ 0.013	33.31

BEPD	WEPD	YEPD	Milk	BW	ADJ 365
+ 4.0	+ 48	1+ 91	+ 24	100	1,213



SAV 8180 Traveler 004 - Sire of Lots 149-152

147

Calved: 2/7/2007

Tattoo: 5867-B07

#A A R New Trend
Boyd New Day 8005
 13050780 S V F Forever Lady 57D

#V D A R Shoshone 548
 Donna A A R 74
 #+Leachman Right Time
 +S V F Forever Lady 1128

Connealy Lead On
Plattemere Daisy 291
 15394424 Plattemere Daisy 205

#Connealy Leadtime
 Eligence Plus of Conanga
 #B/R New Design 036
 Plattemere Daisy 151

%IMF	SW
1+ 0.16	25.09
UREA	SF
1+ 0.64	37.51
UFAT	SB
1-0.013	47.02

BEPD	WEPD	YEPD	Milk	BW	ADJ 365
+ 2.4	+ 49	1+ 97	+ 24	83	1,199

148

Calved: 2/4/2007

Tattoo: 8027-B07

#A A R New Trend
Boyd New Day 8005
 13050780 S V F Forever Lady 57D

#V D A R Shoshone 548
 Donna A A R 74
 #+Leachman Right Time
 +S V F Forever Lady 1128

Plattemere FL L402-B02
Dolly of Plattemere 347
 15393796 Dolly of Plattemere 265

#Connealy Freightliner
 Plattemere Rosa 266
 Plattemere RT H378 B98
 Dolly of Plattemere 210

%IMF	SW
1+ 0.13	21.04
UREA	SF
1+ 0.29	34.61
UFAT	SB
1-0.005	41.78

BEPD	WEPD	YEPD	Milk	BW	ADJ 365
+ 4.5	+ 51	1+ 95	+ 19	92	1,173



Lot 146

Ref Sire
M

S A V 8180 Traveler 004

Calved: 1/1/2004

Bull 13512009

Tattoo: 004

#G D A R Traveler 71
#Sitz Traveler 8180
 #11367940 Sitz Everelda Entense 1137

#Traveler 1148 G D A R
 G D A R Miss Blackcap 567
 #G D A R Rainmaker 340
 Sitz Everelda Entense 2335

#A A R New Trend
+Boyd Forever Lady 8003
 +13050778 S V F Forever Lady 57D

#V D A R Shoshone 548
 Donna A A R 74
 #+Leachman Right Time
 +S V F Forever Lady 1128

SW
+32.10
SF
+43.35
SG
+4.30
SB
+34.59

CED Acc	BW Acc	WW Acc	YW Acc	YH Acc	SC Acc	CEM Acc	Milk Acc	MkH	MW Acc	MH Acc	SEN
+4	+3.4	+58	+106	+6	+99	+7	+21	198	+51	+6	+2.42
.91	.97	.97	.96	.93	.94	.76	.95	676	.63	.62	
Cwt Acc	Mrb Acc	RE Acc	Fat Acc	Grp Prog	%IMF Acc	RE Acc	Fat Acc	Grp Prog			
+15	+19	+22	+034	7	-14	+38	+013	2491			
.28	.31	.27	.25	9	.97	.97	.97	7447			

• SAV 8180 Traveler 004 is the breed's most popular performance sire leading the Angus breed for total annual registrations by a wide margin. He consistently stamps his progeny with length, thickness, muscle and breed-leading performance. His sons have dominated sales all across America including the world record-selling sire group of bulls. His daughters are moderate-framed, easy-fleshing, fertile females with superior udder quality and abundant milk

149

Calved: 1/30/2007

Tattoo: 6117-B07

#Sitz Traveler 8180
S A V 8180 Traveler 004
 13512009 +Boyd Forever Lady 8003

#G D A R Traveler 71
 Sitz Everelda Entense 1137
 #A A R New Trend
 S V F Forever Lady 57D

#+Boyd New Day 8005
Plattemere Daisy 293
 15394430 Plattemere Daisy 221

#A A R New Trend
 S V F Forever Lady 57D
 #Connealy Dateline
 Plattemere Daisy 140

%IMF	SW
1-0.06	28.18
UREA	SF
1+ 0.36	37.98
UFAT	SB
1+ 0.007	34.85

BEPD	WEPD	YEPD	Milk	BW	ADJ 365
+ 1.4	+ 53	1+ 99	+ 20	79	1,186

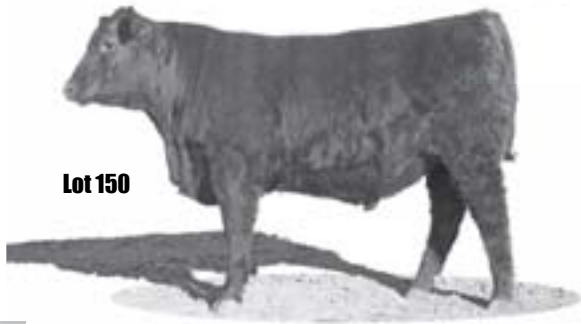


SNYDER BROS.
 42nd Annual
BULL SALE

Saturday • MARCH 8, 2008 • 1pm MST

SNYDER BROS.

Lot 150



150

Calved: 2/24/2007

Tattoo: 6797-B07

#Sitz Traveler 8180
S A V 8180 Traveler 004
 13512009 +Boyd Forever Lady 8003

#G D A R Traveler 71
 Sitz Everelda Entense 1137
 #A A R New Trend
 S V F Forever Lady 57D

#R P 3RD Bushwacker
PAM of Plattermere 75
 15394453 PAM of Plattermere 65

#B C C Bushwacker 41-93
 L B Queen of Spades
 #Plowman 1627 of Millbrae SAR
 Pam of Plattermere 47

%IMF	SW
1-0.07	26.49
UREA	SF
1+ 0.37	35.31
UFAT	SB
1+ 0.014	34.25

BEPD	WEPD	YEPD	Milk	BW	ADJ 365
+ 4.0	+ 57	1+ 98	+ 22	95	1,235

151

Calved: 2/3/2007

Tattoo: 7737-B07

#Sitz Traveler 8180
S A V 8180 Traveler 004
 13512009 +Boyd Forever Lady 8003

#G D A R Traveler 71
 Sitz Everelda Entense 1137
 #A A R New Trend
 S V F Forever Lady 57D

Plattermere AL L502-B02
Plattermere Daisy 300
 15393787 Plattermere Daisy 232

#Sitz Alliance 6595
 Ada of Plattermere 192
 #S A F Focus of E R
 Plattermere Daisy 188

%IMF	SW
1-0.03	27.46
UREA	SF
1+ 0.33	35.25
UFAT	SB
1+ 0.013	33.31

BEPD	WEPD	YEPD	Milk	BW	ADJ 365
+ 1.7	+ 54	1+ 96	+ 19	77	1,151

152

Calved: 3/3/2007

Tattoo: 6157-B07

#Sitz Traveler 8180
S A V 8180 Traveler 004
 13512009 +Boyd Forever Lady 8003

#G D A R Traveler 71
 Sitz Everelda Entense 1137
 #A A R New Trend
 S V F Forever Lady 57D

#Bon View New Design 1407
Martha of Plattermere 58
 15394431 Martha of Plattermere 300

#B/R New Design 036
 Bon View Pride 664
 #+S A F 598 Bando 5175
 Martha of Plattermere 241

%IMF	SW
1+ 0.11	21.20
UREA	SF
1+ 0.39	34.38
UFAT	SB
1+ 0.017	39.52

BEPD	WEPD	YEPD	Milk	BW	ADJ 365
+ 4.7	+ 49	1+ 94	+ 25	99	1,162

Color Key for percentile comparison to current sires: 1-10% Red • 11-15% Yellow • 16-25% Blue

Tattoo	Lot	Sire	Calved	BW	Adj. YW	BW	WW	Milk	YW	%IMF	REA	Fat	\$W	\$F	\$B
R936-B06	1	C784-B04	3/23/2006	79	1,223	+2.2	+57	+25	+101	+0.16	+0.06	+0.051	30.28	38.45	33.55
R326-B06	2	SD	2/20/2006	87	1,174	+3.1	+57	+19	+100	+0.22	+0.14	+0.017	26.92	37.40	42.75
2636-B06	3	TRA	2/2/2006	92	1,294	+2.7	+54	+17	+99	+0.02	+0.54	-0.001	25.24	37.57	39.48
6456-B06	4	BN	1/23/2006	89	1,226	+3.0	+47	+17	+97	+0.13	+0.21	+0.011	20.17	38.32	38.74
3956-B06	5	928	2/5/2006	90	1,200	+3.3	+50	+25	+96	+0.54	+0.24	+0.016	24.44	36.06	51.80
3006-B06	6	R884-B04	3/14/2006	83	1,255	+1.0	+49	+21	+95	+0.32	+0.31	-0.006	27.19	35.42	48.93
1766-B06	7	TRA	1/31/2006	95	1,130	+3.7	+53	+15	+94	-0.10	+0.34	0	23.05	32.77	31.28
R226-B06	8	STR	1/23/2006	71	1,166	-0.3	+47	+17	+92	+0.38	+0.13	+0.016	26.50	33.11	45.29
2816-B06	9	1407	2/21/2006	102	1,193	+3.5	+45	+27	+91	+0.16	+0.17	-0.001	22.29	32.88	40.88
6176-B06	10	BN	1/20/2006	76	1,252	+0.2	+45	+18	+90	+0.28	+0.09	+0.009	25.51	31.85	40.10
4416-B06	11	338	1/30/2006	90	1,211	+2.6	+49	+25	+90	+0.02	+0.20	0	26.93	30.26	34.03
C416-B06	12	FR	2/26/2006	97	1,172	+2.9	+51	+25	+90	-0.08	+0.15	-0.006	27.73	29.46	30.99
4536-B06	13	TRA	1/29/2006	78	1,228	+1.1	+49	+18	+89	-0.16	+0.37	+0.001	27.82	29.23	27.20
6796-B06	14	BN	1/18/2006	89	1,199	+2.2	+49	+19	+89	+0.18	+0.32	+0.024	26.30	29.23	37.86
C386-B06	15	CL	2/9/2006	93	1,206	+2.4	+45	+27	+89	-0.02	+0.26	-0.008	25.12	31.44	36.16
4366-B06	16	338	1/28/2006	77	1,150	+2.1	+46	+23	+89	+0.04	0.11	+0.004	25.57	30.42	32.66
C166-B06	17	1407	2/9/2006	83	1,193	+0.4	+49	+29	+88	+0.65	+0.02	+0.017	31.27	28.78	47.05
U896-B06	18	CL	2/8/2006	90	1,104	+3.2	+45	+21	+88	-0.01	+0.19	-0.017	22.23	29.80	34.37
C716-B06	19	FR	1/30/2006	85	1,117	+1.7	+50	+26	+88	+0.02	+0.22	+0.005	29.81	28.38	33.51
4896-B06	20	338	1/31/2006	95	1,135	+3.9	+46	+26	+83	+0.09	+0.23	+0.001	24.19	24.35	34.86
C836-B06	21	FR	3/3/2006	85	1,102	+1.5	+48	+26	+83	-0.02	+0.09	+0.019	30.78	23.57	27.35
3056-B06	22	1407	2/2/2006	83	1,085	+0.9	+37	+26	+77	+0.52	+0.42	0	24.95	21.84	47.26
A997-B07	23	OB	1/7/2007	65	1,315	-0.6	+58	+23	+112	+0.36	+0.52	-0.012	30.72	49.83	57.37
9107-B07	24	OB	1/16/2007	74	1,178	+0.8	+62	+25	+110	+0.37	+0.31	+0.006	33.28	45.98	52.81
9717-B07	25	OB	1/18/2007	89	1,232	+2.9	+61	+23	+110	+0.46	+0.30	+0.014	28.44	46.40	53.74
A517-B07	26	OB	2/6/2007	89	1,204	+3.6	+58	+29	+107	+0.45	+0.55	+0.006	27.11	44.42	56.48
A357-B07	27	OB	1/17/2007	74	1,204	+1.0	+60	+24	+108	+0.46	+0.31	+0.011	32.04	44.66	54.04
3917-B07	28	OB	3/3/2007	85	1,112	+2.8	+59	+20	+106	+0.36	+0.27	-0.010	27.54	42.93	53.09
9497-B07	29	OB	1/17/2007	74	1,350	+0.7	+61	+24	+113	+0.24	+0.28	+0.005	31.55	49.66	48.60
9557-B07	30	OB	1/22/2007	69	1,141	0	+53	+22	+104	+0.69	+0.38	+0.005	28.71	43.28	59.11
8867-B07	31	OB	2/3/2007	77	1,159	+1.1	+59	+24	+104	+0.26	+0.24	-0.005	32.41	40.80	48.58
E747-B07	32	OB	1/15/2007	77	1,210	+1.1	+62	+23	+108	+0.29	+0.41	+0.018	33.05	43.83	48.56
9287-B07	33	OB	1/14/2007	72	1,208	+1.1	+52	+24	+104	+0.45	+0.36	+0.014	27.49	43.70	52.18
8977-B07	34	OB	1/20/2007	72	1,147	+0.9	+56	+25	+103	+0.35	+0.32	+0.004	31.06	40.98	50.77
9857-B07	35	OB	2/5/2007	71	1,224	-0.5	+59	+27	+106	+0.43	+0.27	+0.006	34.07	42.93	52.43
9647-B07	36	OB	2/14/2007	75	1,193	+0.9	+56	+28	+103	+0.37	+0.42	+0.009	31.72	40.98	50.95
9677-B07	37	OB	2/9/2007	81	1,127	+1.8	+56	+21	+102	+0.26	+0.27	-0.003	29.00	39.92	48.29
9937-B07	38	OB	2/2/2007	72	1,096	+0.9	+56	+23	+102	+0.20	+0.34	+0.007	30.83	39.92	45.63
9697-B07	39	OB	2/6/2007	80	1,121	+1.9	+55	+24	+100	+0.33	+0.28	+0.003	29.53	38.22	48.71
9837-B07	40	OB	2/10/2007	66	1,117	-0.6	+58	+25	+102	+0.44	+0.39	+0.004	34.17	39.10	53.57
A147-B07	41	OB	1/13/2007	52	1,249					+0.50	+0.25	+0.002			
9877-B07	42	OB	2/8/2007	68	1,158	-1.0	+53	+25	+99	+0.42	+0.35	+0.003	31.88	37.98	51.63
A267-B07	43	OB	1/22/2007	87	1,141	+3.1	+59	+25	+104	+0.17	+0.31	+0.008	28.91	40.80	44.43
A767-B07	44	OB	1/21/2007	81	1,216	+2.5	+55	+20	+103	+0.52	+0.23	+0.011	26.25	41.39	54.11
9997-B07	45	IF	1/12/2007	80	1,235	+1.8	+54	+29	+99	+0.21	+0.16	+0.013	30.42	37.57	41.47
8747-B07	46	IF	2/3/2007	87	1,198	+2.5	+53	+32	+97	+0.47	+0.33	+0.020	29.33	35.89	49.21
9617-B07	47	IF	1/15/2007	71	1,176	+0.3	+49	+27	+97	+0.15	+0.22	+0.041	28.86	37.51	35.72
A407-B07	48	IF	1/13/2007	77	1,244	+0.6	+50	+27	+99	+0.17	+0.57	+0.023	28.71	39.20	42.86
6367-B07	49	IF	2/3/2007	84	1,293	+1.3	+53	+26	+101	+0.36	+0.41	+0.031	29.36	40.09	46.50
A417-B07	50	IF	1/12/2007	85	1,179	+2.7	+52	+24	+98	+0.13	+0.27	+0.013	26.32	37.34	40.12
A527-B07	51	IF	1/25/2007	76	1,253	+0.5	+53	+28	+98	+0.21	+0.05	+0.019	31.45	36.93	39.99
A577-B07	52	IF	1/23/2007	73	1,133	+0.5	+50	+25	+93	+0.06	+0.40	+0.024	30.08	32.94	37.22
A757-B07	53	IF	1/17/2007	72	1,272	0	+52	+26	+102	+0.31	+0.28	+0.037	29.62	41.56	42.86
A597-B07	54	IF	1/23/2007	71	1,220	-1.4	+48	+28	+92	+0.37	+0.46	+0.055	31.34	32.71	42.24
A617-B07	55	IF	1/18/2007	69	1,227	-0.4	+50	+30	+95	+0.39	+0.34	+0.017	31.38	35.01	48.03
A707-B07	56	IF	1/15/2007	65	1,183	-1.5	+42	+27	+84	+0.24	+0.23	+0.021	29.13	26.91	38.30
A687-B07	57	IF	1/18/2007	71	1,164	+0.7	+54	+27	+97	+0.11	+0.37	+0.019	32.04	35.48	38.94
A627-B07	58	IF	2/2/2007	83	1,141	+1.7	+49	+25	+90	+0.14	+0.23	+0.033	28.79	30.26	34.69

Color Key for percentile comparison to current sires: 1-10% Red • 11-15% Yellow • 16-25% Blue

Tattoo	Lot	Sire	Calved	BW	Adj. YW	BW	WW	Milk	YW	%IMF	REA	Fat	\$W	\$F	\$B
8607-B07	59	STR	1/5/2007	78	1,308	+1.5	+58	+21	I+104	I+0.12	I+0.14	I+0.011	30.42	41.22	41.61
9207-B07	60	STR	1/25/2007	74	1,208	+0.1	+48	+23	I+92	I+0.45	I+0.24	I+0.020	28.79	32.71	47.28
9137-B07	61	STR	1/11/2007	66	1,293	-0.5	+56	+25	I+102	I+0.40	I+0.55	I+0.014	32.68	39.92	52.44
9277-B07	62	STR	1/20/2007	92	1,248	+4.1	+56	+23	I+99	I+0.29	I+0.35	I+0.026	25.56	36.76	45.62
3987-B07	63	STR	2/10/2007	81	1,229	+2.0	+53	+21	I+104	I+0.15	I+0.46	I+0.006	25.89	43.28	45.62
1817-B07	64	STR	2/28/2007	64	1,170	I+2.4	I+53	I+18	I+95	I+0.11	I+0.30	I+0.001	26.68	33.81	40.00
4227-B07	65	STR	3/5/2007	92	1,208	+3.1	+52	+22	I+93	I+0.06	I+0.14	I+0.018	26.36	32.14	33.74
8767-B07	66	STR	1/18/2007	79	1,169	+1.1	+54	+25	I+94	I+0.14	I+0.25	I+0.017	32.05	32.37	39.48
9667-B07	67	STR	1/17/2007	81	1,174	+2.7	+55	+25	I+95	I+0.48	I+0.35	I+0.028	28.76	33.01	49.31
9117-B07	68	STR	1/21/2007	82	1,104	I+2.5	I+54	I+24	I+98	I+0.13	I+0.05	I+0.003	28.16	36.53	40.61
9127-B07	69	STR	1/12/2007	70	1,170	+0.4	+51	+22	I+96	I+0.19	I+0.29	I+0.018	29.22	35.65	41.81
9217-B07	70	STR	1/15/2007	78	1,133	+1.2	+48	+20	I+90	I+0.16	I+0.14	I+0.007	27.39	30.65	39.56
R247-B07	71	STR	2/4/2007	79	1,124	+0.9	+53	+21	I+95	I+0.23	I+0.33	I+0.031	30.15	33.81	41.31
9437-B07	72	STR	1/19/2007	76	1,152	+1.0	+52	+22	I+95	I+0.17	I+0.47	I+0.001	29.64	34.21	44.97
9807-B07	73	STR	1/22/2007	88	1,178	+3.2	+48	+18	I+86	I+0.38	I+0.35	I+0.017	23.97	26.58	45.37
A457-B07	74	STR	2/2/2007	92	1,162	I+4.2	I+54	I+20	I+96	I+0.16	I+0.07	I+0.014	23.89	34.44	38.79
Y027-B07	75	STR	3/3/2007	85	1,199	+1.8	+52	+20	I+93	I+0.26	I+0.47	I+0.007	28.45	32.14	45.84
5117-B07	76	RP	2/24/2007	88	1,253	+2.9	+49	+18	I+101	I+0.30	I+0.44	I+0.007	21.03	41.73	49.57
6397-B07	77	RP	2/4/2007	87	1,329	+2.5	+49	+26	I+96	I+0.10	I+0.54	I+0.004	25.66	36.46	42.08
5407-B07	78	RP	2/4/2007	81	1,189	+2.0	+52	+22	I+96	I+0.18	I+0.38	I+0.009	27.80	35.25	43.28
6227-B07	79	RP	1/31/2007	75	1,191	+0.8	+46	+23	I+92	I+0.20	I+0.36	I+0.007	26.67	33.51	43.11
3237-B07	80	RP	3/8/2007	95	1,302	+3.5	+50	+29	I+98	I+0.46	I+0.19	I+0.004	24.29	38.15	52.40
4977-B07	81	RP	1/31/2007	77	1,232	+1.5	+50	+21	I+97	I+0.22	I+0.66	I+0.006	26.80	37.10	48.94
6497-B07	82	RP	2/12/2007	89	1,192	+3.2	+52	+25	I+97	I+0.20	I+0.73	I+0.005	25.80	36.29	47.43
5317-B07	83	RP	2/19/2007	90	1,228	+3.8	+51	+27	I+98	I+0.13	I+0.55	I+0.005	23.95	37.74	45.57
6907-B07	84	RP	2/5/2007	86	1,184	+1.8	+49	+24	I+92	I+0.25	I+0.43	I+0.006	27.76	32.31	46.19
5017-B07	85	RP	2/2/2007	77	1,193	+1.6	+45	+27	I+89	I+0.46	I+0.56	I+0.001	26.84	30.82	51.94
7567-B07	86	RP	3/3/2007	83	1,151	+1.4	+49	+24	I+89	I+0.30	I+0.27	I+0.008	29.36	29.23	44.08
8497-B07	87	RP	2/3/2007	82	1,207	+2.3	+47	+23	I+91	I+0.16	I+0.68	I+0.002	25.31	32.08	45.01
6637-B07	88	RP	2/4/2007	80	1,132	+1.2	+44	+23	I+87	I+0.17	I+0.58	I+0.003	26.24	29.17	43.47
6597-B07	89	RP	2/3/2007	85	1,100	+3.0	+47	+16	I+88	I+0.33	I+0.37	I+0.009	22.37	29.01	47.88
5527-B07	90	RP	2/6/2007	86	1,138	+1.9	+47	+26	I+87	I+0.21	I+0.56	I+0.003	28.03	27.99	44.21
5627-B07	91	RP	2/19/2007	84	1,110	+2.0	+45	+25	I+87	I+0.28	I+0.42	I+0.004	26.14	28.78	45.42
9257-B07	92	PRE	1/20/2007	85	1,263	+1.7	+53	+24	I+93	I+0.45	I+0.39	I+0.004	30.54	31.74	51.45
8827-B07	93	PRE	1/17/2007	77	1,146	+1.0	+47	+24	I+87	I+0.34	I+0.20	I+0.008	28.89	27.99	46.21
8897-B07	94	PRE	1/8/2007	60	1,177	-2.1	+47	+22	I+88	I+0.41	I+0.48	0	30.89	29.01	50.01
8927-B07	95	PRE	1/16/2007	74	1,129	+1.1	+48	+22	I+87	I+0.50	I+0.38	I+0.006	28.96	27.60	50.73
8727-B07	96	PRE	1/11/2007	74	1,314	-0.5	+52	+23	I+98	I+0.55	I+0.56	I+0.002	30.49	37.34	57.62
9467-B07	97	PRE	1/22/2007	85	1,183	+1.7	+45	+23	I+85	I+0.61	I+0.62	I+0.015	26.79	26.75	53.56
9567-B07	98	PRE	2/6/2007	70	1,137	+0.7	+43	+20	I+85	I+0.33	I+0.17	I+0.005	25.67	27.53	44.45
9627-B07	99	PRE	1/13/2007	62	1,176	-1.9	+49	+24	I+86	I+0.65	I+0.49	I+0.001	33.28	26.19	55.52
U307-B07	100	CL	2/12/2007	83	1,213	+1.8	+51	+30	I+95	I+0.22	I+0.36	0	29.62	34.61	45.84
4157-B07	101	CL	2/10/2007	92	1,330	+3.0	+51	+31	I+100	I+0.20	I+0.62	I+0.010	25.84	39.85	49.01
3657-B07	102	CL	2/13/2007	93	1,204	+4.4	+51	+23	I+97	I+0.01	I+0.32	I+0.012	21.92	36.70	39.95
6727-B07	103	CL	2/3/2007	82	1,203	+1.3	+52	+29	I+97	I+0.16	I+0.32	I+0.007	30.43	36.29	43.85
4617-B07	104	CL	2/1/2007	70	1,120	-0.3	+53	+27	I+95	I+0.08	I+0.50	I+0.008	32.86	33.81	34.91
2327-B07	105	CL	2/3/2007	76	1,225	+0.9	+51	+29	I+98	I+0.04	I+0.43	0	29.82	37.74	41.08
5617-B07	106	CL	2/20/2007	78	1,117	+1.4	+46	+21	I+90	I+0.08	I+0.17	I+0.004	26.06	31.45	30.00
G607-B07	107	CL	2/5/2007	79	1,138	+1.1	+50	+28	I+91	I+0.26	I+0.21	I+0.013	30.73	30.88	45.83
7987-B07	108	CL	2/16/2007	75	1,081	I+1.2	I+47	I+23	I+88	I+0.03	I+0.04	I+0.005	28.14	29.01	29.89
3107-B07	109	2V1	2/14/2007	89	1,255	+2.9	+56	+22	I+106	I+0.36	I+0.26	I+0.017	25.85	44.18	48.68
U207-B07	110	2V1	2/5/2007	88	1,174	+2.5	+54	+19	I+100	I+0.64	I+0.54	I+0.021	26.08	38.62	56.30
U357-B07	111	2V1	2/13/2007	86	1,137	+3.0	+52	+24	I+97	I+0.26	I+0.69	I+0.011	25.97	36.29	48.73
4587-B07	112	2V1	2/15/2007	89	1,219	+2.9	+58	+23	I+103	I+0.38	I+0.30	I+0.031	28.41	40.16	47.72
U757-B07	113	2V1	3/4/2007	79	1,115	+2.3	+50	+22	I+96	I+0.45	I+0.12	I+0.011	25.75	36.06	48.99
2967-B07	114	2V1	2/9/2007	70	1,155	0	+50	+24	I+93	I+0.25	I+0.44	I+0.018	30.30	32.94	43.46
7697-B07	115	2V1	2/16/2007	85	1,123	+2.6	+49	+21	I+94	I+0.34	I+0.26	I+0.005	24.68	34.38	47.55
3087-B07	116	2V1	2/8/2007	97	1,116	+4.3	+52	+20	I+96	I+0.16	I+0.33	I+0.008	22.25	35.25	42.25
U047-B07	117	928	2/7/2007	84	1,210	+1.4	+49	+21	I+100	I+0.39	I+0.32	I+0.008	25.35	40.67	51.23
3957-B07	118	928	2/6/2007	95	1,255	+4.1	+51	+25	I+100	I+0.51	I+0.29	I+0.039	22.25	39.85	49.84
4687-B07	119	928	2/27/2007	99	1,279	+4.7	+55	+26	I+106	I+0.26	I+0.47	I+0.023	22.22	44.59	47.56
3057-B07	120	928	2/24/2007	80	1,191	+0.9	+47	+23	I+93	I+0.37	I+0.57	I+0.036	27.01	34.14	47.16
Y387-B07	121	928	2/1/2007	90	1,103	+3.7	+51	+23	I+96	I+0.28	I+0.17	I+0.017	23.77	35.65	44.84
6187-B07	122	928	2/24/2007	98	1,212	+4.7	+53	+28	I+100	I+0.23	I+0.06	I+0.003	22.99	39.03	45.75
U067-B07	123	928	2/3/2007	83	1,231	+2.2	+51	+26	I+96	I+0.35	I+0.57	I+0.012	27.72	35.65	51.25
G667-B07	124	928	1/25/2007	79	1,144	+2.0	+49	+24	I+96	I+0.78	I+0.20	I+0.023	26.21	36.46	55.32
U087-B07	125	928	2/18/2007	88	1,187	+1.9	+47	+24	I+94	I+0.60	I+0.21	I+0.039	25.54	35.18	49.30
U657-B07	126	928	2/10/2007	83	1,186	+1.9	+49	+25	I+94	I+0.55	I+0.15	I+0.021	27.24	34.38	50.32
R267-B07	127	BP	2/6/2007	102	1,265	+4.6	+50	+26	I+105	I+0.11	I+0.30	I+0.012	19.19	45.60	44.83
2167-B07	128	BP	1/31/2007	79	1,116	+1.5	+49	+27	I+100	I+0.34	I+0.08	I+0.003	26.78	40.67	47.93
1797-B07	129	BP	1/31/2007	89	1,118	+3.5	+50	+25	I+98	I+0.28	I+0.03	I+0.008	23.43	38.15	44.04
3717-B07	130	BP	3/2/2007	88	1,274	+2.7	+48	+26	I+100	I+0.24	I+0.01	I+0.010	23.37	41.08	42.58
4537-B07	131	BP	2/6/2007	85	1,117	+2.2	+43	+27	I+89	I+0.19	I+0.13	I+0.010	24.16	31.61	38.62
U737-B07	132	BP	2/10/2007	93	1,106	+3.1	+43	+25	I+90	I+0.26	I+0.23	I+0.019	21.52	32.64	41.26
9757-B07	133	1407	1/16/2007	68	1,282	0	+52	+29	I+101	I+0.48	I+0.61	I+0.015	30.53	40.50	53.51
6347-B07	134	1407	2/24/2007	75	1,208	-0.7	+45	+28	I+92	I+0.41	I+0.27	I+0.020	28.54	33.91	46.89
9607-B07	135	1407	2/8/2007	65	1,193	-1.1	+46	+28	I+95	I+0.50	I+0.47	I+0.004	28.77	36.63	53.29
1987-B07	136	FR	2/4/2007	82	1,229	+1.6	+55	+27	I+101	I+0.12	I+0.16	I+0.013	30.56	39.27	39.58
R077-B07	137	FR	2/4/2007	86	1,291	+2.9	+57	+23	I+106	I+0.11	I+0.36	I+0.008	26.83	43.76	35.79
3937-B07	138	FR	2/1/2007	80	1,107	+1.7	+54	+19</							

SNYDER BROS.

42nd Annual BULL SALE

Saturday • MARCH 8, 2008 • 1p.m. MST

Ogallala Livestock, Ogallala, NE



Snyder Bros.

1505 Road East 120
Paxton, NE 69155