

• TUCUMCARI •

BULL TEST

EST. 1961

New Sale Date

Saturday • **March 14, 2020** • 1 P.M.
Lunch at 11:30 A.M. – NMSU Ag Science Center



Performance Testing 137 Bulls!

5 Braunvieh – 6 Charolais – 13 Hereford – 95 Angus – 6 Red Angus – 7 Salers

tucbulltest.nmsu.edu

*Delivery
Available*



For More Information
Marcy Ward – Test Director
575-644-3379
maward@nmsu.edu

TUCUMCARI BULL TEST

EST. 1961

WELCOME TO THE 2020 TUCUMCARI BULL TEST AND SALE!

In 1961 the Tucumcari Bull Test was developed to identify superior sires and gather important performance data so the genetic base for New Mexico producers and beyond could be improved. The performance seen in the 2019 test has been exceptional, with a set of yearling bulls proving their true genetic potential. This group of cattle has even been out-producing bulls in similar tests across the country.

In 2015 a group of forward thinking and progressive cattle producers got together with the goal of taking the Tucumcari Bull Test to the next level.

The group invested in updating the pens and purchased the latest feed intake technology designed by GrowSafe Systems. The intent? To bring the idea of efficiency to the forefront in the genetic selection process.



Braunvieh5
Charolais6

In the offering!!!

Hereford13
Angus95

Red Angus6
Salers7

TOTAL.....137



Auctioneer
Howard McCall - 505-379-4333

SALE MANAGER Marcy Ward, NMSU, 575-644-3379

TERMS AND CONDITIONS Buyers: If you have the highest bid, you are obligated to complete the transaction. Bids are not retractable. Cattle will be sold FOB. A bid is valid until bulls are sold or auction closes. Submission of a higher bid by another party does not withdraw previous bids. Auctioneer shall be the sole judge in determining the winning bidder in the event of a tie bid. Cattle sold online will not leave the Tucumcari facility until payment has been received. For questions about the process visit <http://www.superiorlivestock.com/>

ANNOUNCEMENTS All bulls will be sold based on their video, shown during the auction. Announcements from the block take precedence over the printed material in this sale book.

HEALTH All bulls went through a comprehensive health management program. Bulls were treated for external parasites on 12/20/19, and internal parasites on 2/25/20. All bulls sold will have passed their breed soundness exam (2/25/20) and be guaranteed BVD and Trichomoniasis free.

DELIVERY, FREIGHT, AND GUARANTEE CONSIDERATIONS: All bull sales totaling \$10,000 or more per buyer will be delivered up to 300 miles free of charge. We guarantee no bull will cost more than \$200 per head for delivery within the 300-mile radius of the Tucumcari Bull Test station. Any additional transportation needs must be negotiated between the buyer and seller. To ensure the safe delivery of cattle, bulls must be transferred at appropriate facilities (sale barns, fair grounds, vet clinics, or at the ranch). If you would like your bulls delivered, please make arrangements at the sale office or call Marcy Ward at 575-644-3379.

All cattle sold are subject to federal and state inspection. Cattle that remain at the facility will be allowed a 7-day grace period. After 7 days, if

cattle are still housed at the station, the buyer will incur a \$10.00 per day yardage fee, to include feed and labor. Bull guarantees are offered by the individual seller. The Tucumcari Bull Test station is not liable for injury or death of the animal.

PREVIEW AND LUNCH

Bull Preview 10 a.m.
Lunch 12 p.m.
Sale 1 p.m.

SUPERIOR LIVESTOCK AUCTION

- PURCHASING ONLINE

Buyers: If you have the highest bid, you are obligated to complete the transaction. Bids are not retractable. Cattle will be sold FOB. A bid is valid until bulls are sold or auction closes. Submission of a higher bid by another party does not withdraw previous bids. Auctioneer shall be the sole judge in determining the winning bidder in the event of a tie bid. Cattle sold online will not leave the Tucumcari facility until payment has been received. For questions about the online bidding process visit <http://www.superiorlivestock.com/> or call 800-422-2117.

If you would like to place bids during the sale and are not present, phone bids will be taken by the test director at 575-644-3379. Previous arrangements should be made prior to sale time.

Payment for purchased lots shall be made directly to

Tucumcari Feed Efficiency Test, LLC.

Attn: John Heckendorn, 75 A Pueblo Rd.,
Moriarty, NM 87035. (505) 832-9364

For More Information Visit
tucbulltest.nmsu.edu

ANGUS MEDIA Visit the *Angus Journal* Web site, www.angus.org and view this sale book online. *References: American Angus Association®, AHIR®, AngusSource®, CAB®, Pathfinder®.* EPDs current as of Feb. 5, 2020. Updated EPDs can be viewed online at www.angus.org. The American Angus Association does not generate nor endorse \$C numerical ranks (versus percentile rankings) until \$C numerical ranks are officially released.

THE CONSIGNORS

ANGUS

AJH ANGUS

Ashley Hartzog Hawkins
Boniva, TX
806-470-1460

B4L ANGUS

Cody and Christi Drager
Muleshoe, TX
806-778-6166

CORNERSTONE RANCH INC.

Herefords and Angus
Leslie and Glenda Armstrong
Fort Sumner, NM
575-355-6621

FLYING W DIAMOND RANCH

Ed Tinsley
Capitan, NM
575-644-6396

HARTZOG ANGUS

Roy and Trudy Hartzog
Bovina, TX
806-825-2711

J-C ANGUS RANCH

John and Cathy Heckendorn
Moriarty, NM
505-832-9364

LUST ANGUS RANCH

Tim and Lea Lust
Abernathy, TX
806-438-2012

MEAD REGISTERED ANGUS

Regan and Melissa Mead
Hartley, TX
806-576-6523

P & D ANGUS

Patrick Sanchez
Belen, NM
505-385-2994

RIVERSIDE ANGUS

Alex and JoEllen Netherton
Las Animas, CO
719-456-0714

REYES CATTLE COMPANY

Jason Reyes
El Paso, TX
915-253-2883

SALAZAR RANCHES

Angus and Hereford
Miguel Salazar
Espanola, NM
505-949-0334

WALKER ANGUS

Donald Walker
Tucumcari, NM
575-403-9972

BRAUNVIEH

J-BAR BRAUNVIEH

John & Loretta Hall
Hedley, TX
806-930-2560

CHAROLAIS

GRAU CHAROLAIS

Lane Grau
Grady, NM
575-760-6336

NETHERTON CHAROLAIS

Corky Netherton
Las Animas, CO
719-456-0185

HEREFORD

ABERCROMBIE RANCH

Robert and Billie Abercrombie
Tucumcari, NM
575-576-2429

CORNERSTONE RANCH INC.

Herefords and Angus
Leslie and Glenda Armstrong
Fort Sumner, NM
575-355-6621

RED ANGUS

DUVALL RANCHES

Caleb Duvall
Lamar, CO
719-688-4646

TL CATTLE COMPANY

Lane Grau
Grady, NM
575-760-6336

SALERS

K4 CATTLE COMPANY

Chris Kalich
Hereford, TX
806-344-5037

TUCUMCARI BULL TEST EST. 1961

There has been significant and positive changes to the Tucumcari Bull Test this year! The addition of the GrowSafe® feed intake technology allows us to measure feed intake per individual bull. Additionally, this equipment helps us calculate Residual Feed Intake (RFI) efficiency for this set of bulls. Therefore, the structure of the test itself has changed.

CONTEMPORARY GROUPS

With the addition of the Growsafe® feeders and new pen configuration at the TFET test station, new ratio and indexing formulas have been put in place to best assess a bull's performance. For the 2019/2020 test, we evaluated 95 Angus, 10 Braunvieh, 13 Herefords, 6 Charolais, 6 Red Angus, and 7 Salers. Given the distribution across breeds within pens, the growth performance ratios are based WITHIN breed across the entire barn. Feed efficiency, however, is ratio'd within pen. The justification for this is weather.

Test Index = .35(ADG BREED Ratio) + .35(WDA BREED Ratio) + .3(Feed Efficiency PEN Ratio)
Only bulls testing in the top 85 percentile will be sold.

SALE ORDER

All bulls will be sold within their breed division based on test index ranking:
Charolais • Hereford • Angus • Red Angus • Braunvieh • Salers

PERFORMANCE DATA

Data, videos and bull information is also available on the Tucumcari Bull Test website and Superior Livestock. Please visit tucbulltest.nmsu.edu or superiorlivestock.com

GROWSAFE® TECHNOLOGY COMES TO THE TBT!

The Value of Efficiency

Both feed efficiency and RFI are approximately 35% heritable. The level of correlations between costs and RFI observed at the Tucumcari Feed Efficiency Test Station, indicate true savings potential from calves out of low RFI bulls. Therefore, selecting bulls with good efficiency numbers, should result in efficient calves, both in the feedyard and as replacements on the ranch.

After four years of data had been collected, feed cost (60 days on feed), and cost of gain (COG) were evaluated in yearling bulls. There is a significant relationship trend between RFI and COG and total feed cost. Cost of gain ranged from \$.58 for -3 RFI rated bulls to over \$.81 in bulls rating a +3. This translates to significant savings in feed costs. Negative rating RFI bulls saved producers on average \$60 per bull in feed over the 60-day feeding period. Results indicate the more negative the RFI, the more cost effective the animal is to feed. **RFI values for the 2020 bulls is available on the website (tucbulltest.nmsu.edu) or will be available sale day on the supplemental sheet.**



RFI Value	COG	60 d FEED
≤ -3.0	\$.58	\$276.49
0.0	\$.69	\$316.07
≥ +3.0	\$.81	\$346.42

ABOUT THE DATA!

This is a multi-breed sale. Therefore, it should be noted the Expected Progeny Data (EPDs) between breeds may carry the same categories (BW, WW, etc.) but the values are based on vastly differing information and references. Below is a brief description of some key EPDs and how they might compare between the breeds. Breed averages and values ranking in the top 10% from the 2019 breed summaries are included. Actual performance data and final ratios will be provided on the tucbulltest.nmsu.edu website and on sale day.

BREED	BREED AVERAGES					TOP 10% of BREED VALUES				
	CED	BW	WW	YW	Milk	CED	BW	WW	YW	Milk
ANGUS	+6	+1.2	+54	+96	+25	+13	-1.1	+71	+125	+32
BRAUNVIEH	+5.3	+2.9	+44	+68	+34	+8.2	+2.0	+53	+84	+41
HEREFORD	+2.0	+3.0	+52	+83	+24	+8.1	+0.7	+62	+99	+30
RED ANGUS	+12	-1.3	+58	+91	+22	+17	-4.0	+70	+113	+28
CHAROLAIS	+5.3	+.3	+30	+56	+10	+11	-2.5	+44	+80	+17
SALERS	+.04	+1.3	+43	+83	+19	+3.2	-0.9	+56	+103	+26

Calving Ease Direct (CED), is expressed as a difference in percentage of unassisted births, with a higher value indicating greater calving ease in first-calf heifers. It predicts the average difference in ease with which a sire's calves will be born when he is bred to first-calf heifers.

Birth Weight EPD (BW), expressed in pounds, is a predictor of a sire's ability to transmit birth weight to his progeny compared to that of other sires.

Weaning Weight EPD (WW), expressed in pounds, is a predictor of a sire's ability to transmit weaning growth to his progeny compared to that of other sires.

Yearling Weight EPD (YW), expressed in pounds, is a predictor of a sire's ability to transmit yearling growth to his progeny compared to that of other sires.

American Angus Association

PERCENTILE RANKINGS

All breed associations compile annual data to create breed average EPD values for each trait they measure. The average value effectively represents a percentile of 50%. A bull's EPD values are ranked within the range of EPD values of a particular trait and are expressed as a percentile. For example, if the breed average in the Angus breed for Weaning Weight (WW) is +54, and the individual bull's EPD for WW is +71, his ranking is in the top 10% of the breed. In the sale book you will find the percentile ranking below each presented EPD for each bull.

 This logo indicates that the bull has been DNA tested and carries a higher accuracy value.

ABERCROMBIE RANCH



Robert and Billie Abercrombie

P.O. Box 803 575-576-2429 home
 Tucumcari, NM 88401 575-403-8888 cell
 Email: abercrombieranch@yahoo.com

The 3T Cattle Co. was established in 1900 by Richard Abercrombie. His three sons added homesteads to the ranch in Quay County. In 1960, son Robert and his son Howard, bought a pen at the Tucumcari Bull Test when it started. Abercrombie Ranch has been using performance tested bulls on their cow herd ever since.

Howard's son Robert, and wife Billie, bought 40 registered Horned Herefords from the T4 Cattle Co. in 1985. Artificial insemination has kept them abreast of the leaders in the Hereford industry. Robert and Billie's two sons, Richard and Jake, were heavily involved in 4-H and FFA showing and judging Herefords. The boys have a good eye for cattle and supply a lot of brawn on the ranch and farm.

Temperament, eye pigment, feed efficiency, and udder size rank high in our bull selection. The bulls currently on feed at Tucumcari are some of the best we've raised - they will add width and length to any cow herd.

1-1 DOMINO HUTTON 1941

Birth Date: 4/5/2019 Bull 44086445 Tattoo: 1941

PCC 101Y HUTTON 6048 ET (DLFHYEFER) NJW 73S 980 HUTTON 109Z ET (DLFHYEFERMSUDR)
 43715504 BF BAR 1 TAINTED 101Y (DLFHYEFER)

GRP#		D				
RA MISS DOMINO 1102		TRL KG DOM TU77				
43253411		RA MISS MILE FIRE 07				
CE	BEPD	WEPD	YEPD	MM	MG	MCE
-0.5	74%	4.7	85%	52	51%	83
54%	23	57%	49	57%	1.5	56%
MCW	UDDR	TEAT	SC	BMI	BII	CHB
92	57%	1.2	41%	1.2	44%	0.4
94%	339	46%	399	50%	102	46%
BW	RATIO	ADJ. WW	RATIO	ADJ. YW	RATIO	
81	100	508	106	N/A	N/A	

1-3 DOMINO HUTTON 1928

Birth Date: 3/20/2019 Bull 44086435 Tattoo: 1928

PCC 101Y HUTTON 6048 ET (DLFHYEFER) NJW 73S 980 HUTTON 109Z ET (DLFHYEFERMSUDR)
 43715504 BF BAR 1 TAINTED 101Y (DLFHYEFER)

GRP#		D				
RA MISS CRUZAN DOMINO 09		TRL KG DOM TU77				
43028302		RA MISS CRUZAN MILE 9904				
CE	BEPD	WEPD	YEPD	MM	MG	MCE
-0.5	74%	4.3	79%	46	78%	76
75%	24	52%	47	69%	1.4	57%
MCW	UDDR	TEAT	SC	BMI	BII	CHB
82	35%	1.1	71%	1.1	71%	0.3
97%	330	52%	385	58%	104	39%
BW	RATIO	ADJ. WW	RATIO	ADJ. YW	RATIO	
80	97	501	98	N/A	N/A	

1-2 DOMINO HUTTON 1940

Birth Date: 4/11/2019 Bull 44086438 Tattoo: 1940

PCC 101Y HUTTON 6048 ET (DLFHYEFER) NJW 73S 980 HUTTON 109Z ET (DLFHYEFERMSUDR)
 43715504 BF BAR 1 TAINTED 101Y (DLFHYEFER)

GRP#		D				
RA MISS DOMINO TEAR 11		TRL KG DOM TU77				
43160032		RA MISS WANDA MILE				
CE	BEPD	WEPD	YEPD	MM	MG	MCE
-0.2	72%	4.5	82%	47	77%	75
77%	20	75%	44	80%	1.7	53%
MCW	UDDR	TEAT	SC	BMI	BII	CHB
83	37%	1.1	71%	1.1	71%	0.3
97%	319	58%	373	64%	103	40%
BW	RATIO	ADJ. WW	RATIO	ADJ. YW	RATIO	
81	100	448	103	N/A	N/A	

1-4 DUKE HUTTON 1933

Birth Date: 4/18/2019 Bull 44086443 Tattoo: 1933

PCC 101Y HUTTON 6055 ET (DLFHYEFER) NJW 73S 980 HUTTON 109Z ET (DLFHYEFERMSUDR)
 43715508 BF BAR 1 TAINTED 101Y (DLFHYEFER)

GRP#		D				
RA MISS ROCKY DUKE 23		TRL DOMINO DUKE TU47				
43160038		RA MISS 970 DOMINO MILE				
CE	BEPD	WEPD	YEPD	MM	MG	MCE
-0.1	71%	4.6	84%	52	55%	85
48%	22	68%	47	66%	2	49%
MCW	UDDR	TEAT	SC	BMI	BII	CHB
96	66%	1.1	71%	1	90%	0.7
70%	312	63%	369	66%	106	29%
BW	RATIO	ADJ. WW	RATIO	ADJ. YW	RATIO	
80	99	490	102	N/A	N/A	

1-5 DOMINO HUTTON 1904

Birth Date: 4/19/2019 Bull 44086448 Tattoo: 1904

PCC 101Y HUTTON 6048 ET (DLFHYFIEFIER) NJW 73S 980 HUTTON 109Z ET (DLFHYFIEFMSUDF)
43715504 BF BAR 1 TAINTED 101Y (DLFHYFIER)

GRP#
D

RA MISS DOMINO 1134 TRL KG DOM TU77
43253420 RA MISS STRAWBERRY TEAR 07

CE	BEPD	WEPD	YEPD	MM	MG	MCE
-0.7	76%	4.5	82%	50	64%	81
84	39%	1.1	71%	1.2	44%	0.3
MCW	UDDR	TEAT	SC	BMI	BII	CHB
84	39%	1.1	71%	1.2	44%	0.3
BW	RATIO	ADJ. WW	RATIO	ADJ. YW	RATIO	
81	100	489	102	N/A	N/A	

1-6 TEAR HUTTON 1912

Birth Date: 2/20/2019 Bull 44086432 Tattoo: 1912

PCC 101Y HUTTON 6048 ET (DLFHYFIEFIER) NJW 73S 980 HUTTON 109Z ET (DLFHYFIEFMSUDF)
43715504 BF BAR 1 TAINTED 101Y (DLFHYFIER)

GRP#
C

RA MISS HIGH TEAR 08 RA MILE HIGH FIRE 05
42963269 RA MISSY PACE MILE

CE	BEPD	WEPD	YEPD	MM	MG	MCE
-0.7	76%	4.7	85%	52	52%	79
94	61%	1.2	41%	1.2	44%	0.4
MCW	UDDR	TEAT	SC	BMI	BII	CHB
94	61%	1.2	41%	1.2	44%	0.4
BW	RATIO	ADJ. WW	RATIO	ADJ. YW	RATIO	
81	100	584	114	N/A	N/A	

VITAFERM®

VitaFerm® is a line of beef cattle nutrition supplements purposefully crafted to maximize energy and forage utilization at every stage. The products are formulated to ensure your herd is receiving optimal digestive health and nutrition at every stage of production resulting in

PERFORMANCE THAT PAYS



For more information, contact:

Flying U Cattle LLC • (575) 512-5587
1986 Billy The Kid Dr • Fort Sumner, NM 88119

VITAFERM PERFORMANCE THAT PAYS



TUCUMCARI RANCH SUPPLY GENERAL MERCANTILE STORE

WESTERN GEAR ★ GIFT ITEMS ★ HARDWARE
NEW MEXICO PRODUCTS ★ LIVESTOCK SUPPLIES

HOME OF WATSON'S B.B.Q. ★ BAKERY ★ MARKET

502 S LAKE STREET - 3 BLKS NORTH OF OLD RT 66

575-461-9620
www.tucrancsupply.com



ROADIES WELCOME
TRUCKER FRIENDLY



TUCUMCARI
BULL TEST
EST. 1961

CORNERSTONE RANCH INC.

Kevin and Renee Grant
Kyra and Justin Monzingo
Leslie and Glenda Armstrong
 575-355-6621
 cornerstone@plateautel.net
 cornerstoneranch.net



Cornerstone Ranch is a family owned and operated ranch located in Fort Sumner, New Mexico. One hundred seventy-five registered Hereford mother cows and 60 registered Angus cows provide the base for the select 40+ bulls that are sold annually. Of these bulls, a select group of Hereford and Angus have been taken to the Tucumcari Bull Test for the last several years. In 2014, Cornerstone Ranch had 3 of the 4 top indexing Hereford bulls as well as the Top Indexing Bull of the 2014 Test.

Although Cornerstone Ranch was formally organized and named in 2000, that was not the beginning of the cattle herds. LaMoyné Peters came from a long line of cattle ranchers. His great-grandmother and his grandmother both raised cattle in Lincoln County. When LaMoyné's father was orphaned at 13, he lost control of these cattle but maintained the Bar E X brand assigned to his grandmother around 1887. Seed stock for the present commercial Hereford herd was bought in 1924 by LaMoyné and Gilbert Peters. In 1934 the first registered Hereford bull was bought. It was the Grand Champion bull at the Eastern New Mexico State Fair Open Livestock Show shown by Shaddock's of Carlsbad, New Mexico. The price of this bull was equal to approximately the price of 12 calves. This bull was the beginning of selling bulls. Cornerstone Ranch's standards for selecting herd sires have not changed.

We are proud to be a part of this program to improve our cattle and provide a "cornerstone" for our buyers.

2-1 TRL Appearance 9550

Birth Date: 4-15-2019 Bull 19479070 Tattoo: 9550

FAR Appearance 31E *18890259
 *Fveys Appearance FAR Roxette 25A

GRP#	TRL Jan Structure YS34	QLC Structure 350R Jan	ANGUS
C	17169571		

CED	BEPD	WEPD	YEPD	RADG	SC	MILK	SEN
-6	95%	+3.8	95%	+56	45%	+102	40%
				+25	35%	+1.63	10%
				+22	70%	-25	90%
\$W	\$B	BW	RATIO	ADJ. WW	RATIO	ADJ. YW	RATIO
+42	80%	+132	45%	80	107	660	101
						N/A	N/A

• Sired by the Reserve Senior Division Bull at 2020 NWSS and 2019 American Royal. One of only 3 sons available in 2020. 9550 comes from strong lines on both sides. With good weaning and yearling numbers and moderate milk, he will be an asset in any breeding program! Selling half semen interest and full possession.

2-4 TRL WILDCAT SENSATION 9126

Birth Date: 2/16/2019 Bull P44084910 Tattoo: 9126

CHURCHILL WILDCAT 754E (DLF,HYF,IEF,MSUDF) 43802271
 C ETF WILDCAT 4248 ET (CHB,DLF,HYF,IEF) H SR KELSIE 2503 (DLF,HYF,IEF)

GRP#	TRL COWGIRL SENSATION 5202	UPS SENSATION 2012 (DLF,HYF,IEF)	
A	P43659451	TRL COWGIRL BRIDGER ZD43	

CE	BEPD	WEPD	YEPD	MM	MV	MCE
-3.7	92%	6.9	99%	80	1%	129
				34	4%	74
				1	1%	0.8
				1.1	24%	398
				14%	492	9%
				125	3%	
BW	RATIO	ADJ. WW	RATIO	ADJ. YW	RATIO	
90	110	824	128	N/A	N/A	

• This has been a favorite since birth! 9126 has shape and growth. He packed on the weight and was extremely efficient doing so. Out of Churchill Wildcat 754E and a Sensation 028x granddaughter. We are extremely happy with this mating. This is one of the best bulls we have ever raised. Selling half semen interest and full possession.

2-5 TRL TOP WILDCAT 9127

Birth Date: 2/24/2019 Bull P44084884 Tattoo: 9127

CHURCHILL WILDCAT 754E (DLF,HYF,IEF,MSUDF) 43802271
 C ETF WILDCAT 4248 ET (CHB,DLF,HYF,IEF) H SR KELSIE 2503 (DLF,HYF,IEF)

GRP#	TRL LADY TOP REDEEM 5131	CHURCHILL REDEEM 3191A ET (DLF,HYF,IEF)
B	43630360	TRL TOP ADV RA86

CE	BEPD	WEPD	YEPD	MM	MV	MCE
-1.3	80%	5.7	95%	61	15%	86
				25	44%	55
				2.3	26%	45%
MCW	UDDR	TEAT	SC	BMI	BII	CHB
118	97%	1.2	41%	1.3	20%	0.7
				70%	381	22%
				458	20%	105
				34%		
BW	RATIO	ADJ. WW	RATIO	ADJ. YW	RATIO	
77	94	694	107	N/A	N/A	

• A half-brother to 9126 and 9131. These bulls will put pounds on the ground!

2-6 TRL WILDCAT PROFILE 9131

Birth Date: 3/5/2019 Bull P44084958 Tattoo: 9131

CHURCHILL WILDCAT 754E (DLF,HYF,IEF,MSUDF) 43802271
 C ETF WILDCAT 4248 ET (CHB,DLF,HYF,IEF) H SR KELSIE 2503 (DLF,HYF,IEF)

GRP#	TRL MS PROFILE CALIBER 5053	SR CALIBER 1050X
A	43630348	TRL KG MS BLUE PROFILE WP07

CE	BEPD	WEPD	YEPD	MM	MV	MCE
-5.8	97%	7.5	100%	67	4%	106
				28	26%	61
				7%	2.1	48%
MCW	UDDR	TEAT	SC	BMI	BII	CHB
126	99%	1.2	41%	1.2	44%	0.7
				70%	377	24%
				456	21%	115
				11%		
BW	RATIO	ADJ. WW	RATIO	ADJ. YW	RATIO	
90	110	772	119	N/A	N/A	

• A half-brother to 9126 and 9127. These bulls will put pounds on the ground!

OUR BULLS ARE USABLE!

PRIVATE TREATY

HEREFORD BULLS • ANGUS BULLS • REPLACEMENT HEIFERS



BR KH FORT WORTH F021 ET

Reg #: 43940873

EPDs: BW: 4.2 WW: 64 YW: 110 Milk: 25



Semen available!
Contact us for details.

FAR APPEARANCE 31E

Reg #: 18890259

EPDs: BW: 4.0 WW: 71 YW: 127 Milk: 22

COME SEE US!
ROSWELL BULL SALE ~ ROSWELL, NM ~ MARCH 7, 2020
TUCUMCARI FEED EFFICIENCY TEST SALE
TUCUMCARI, NM ~ MARCH 14, 2020

Contact us!

Glenda & Leslie Armstrong

Kevin & Renee Grant - 575-355-6621
cornerstone@plateautel.net

Justin & Kyra Monzingo - 575-914-5579
monzingo_2016@yahoo.com



www.cornerstoneranch.net



2-7 TRL BIG HORN DOMINO 9052 (DLF,HYF,IEF,MSUDF)

Birth Date: 4/1/2019 Bull 44084953 Tattoo: 9052

CHURCHILL BIG HORN 7172E ET (DLF,HYF,IEF,MSUDF) 43801991
 HH ADVANCE 5044C ET (DLF,HYF,IEF,MSUDF) C MISS MILES 4161 (DLF,HYF,IEF,MSUDF)

GRP#		B											
TRL DOMINQUE DURANGO 5163 P43630366		SR DURANGO 2204 Z ET (DLF,HYF,IEF,MSUDF) TRL DOMINQUE PROFILE YP02											
CE	BEPD	WEPD	YEPD	MM	MV	MCE							
6.7	18%	3	50%	64	7%	97	17%	33	5%	65	2%	5.6	11%
MCW	UDDR	TEAT	SC	BMI	BII	CHB							
119	97%	1.3	16%	1.3	20%	1.4	6%	349	40%	439	29%	100	54%
BW	RATIO	ADJ. WW	RATIO	ADJ. YW	RATIO								
75	99	726	129	N/A	N/A								

Sired by Churchill Big Horn 7172E and a Durango daughter. Durango has always produced phenomenal females in our herd. Moderate birthweight and good growth.

2-8 TRL RANCHER 9108 (DLF,HYF,IEF,MSUDF)

Birth Date: 2/20/2019 Bull 44084903 Tattoo: 9108

UPS HANDSHAKE 4920 (DLF,HYF,IEF,MSUDF) P43575690
 NJW 98S 100W HANDSHAKE 83Y (CHB)(DLF,HYF,IEF,MSUDF) UPS MISS RIBSTONE 0586

GRP#		B											
TRL DOMINETT RANCHER BR24 43563462		CHURCHILL RANCHER 986W TRL DOMINETTE BRIDGER XB70											
CE	BEPD	WEPD	YEPD	MM	MV	MCE							
10.6	5%	2.2	32%	48	70%	88	39%	31	8%	56	24%	8.3	2%
MCW	UDDR	TEAT	SC	BMI	BII	CHB							
82	34%	1	91%	1.1	71%	1.2	16%	282	77%	349	75%	87	90%
BW	RATIO	ADJ. WW	RATIO	ADJ. YW	RATIO								
71	93	650	115	N/A	N/A								

This is one of the last Handshake sons that we will have available. Lower birthweight with good growth! Out of one of our top producing Rancher daughters.

B4L ANGUS



Cody and Christi Drager

523 CR 93
 Muleshoe, TX 79347

806-778-6166
 codydrager@hotmail.com

Cody and Christi Drager of B4L Angus run 80-100 Angus cows west of Muleshoe, Texas. B4L Angus originated in 2009 with the purchase of 10 embryo calves from a calf raiser after the owner dispersed. They expanded in 2013 with the purchase of the fall calving herd from Spruce Mountain. They have been a closed herd until 2017, with the exception of bull sales. They along with their two sons, Mason and Jackson, primarily utilize AI and ET in their breeding program. This allows them to use the best genetics available to build their herd as they see fit, which is as follows:

Here at B4L Angus we focus on performance related to the economical phases of cattle production. Primarily, cattle are worth the most at weaning and harvest. Therefore, we focus heavily on Weaning Weights and Carcass Weights in our herd. More pounds at these times equal more money in our pockets. Also, the largest input cost in any program is cow feed cost. Larger cows eat more feed. And so, we focus highly on \$EN and mature cow size as well. We also want our cattle to be nice to look at, so we select for phenotype when choosing whether a cow will be a donor, AI'd or a recipient. This allows us to produce stout, rugged bulls that have dimension and shape. B4L Angus strives to produce cattle that grow rapidly to an endpoint and shut down. We feel we are doing just that.

Cody and his family have developed a cow herd built for this part of the country.

* Guarantees and delivery negotiable by bull. Contact seller for more information.

4-1 B4L BULL 9217

Date of Birth: 2/2/2019 Bull Tattoo: 9217

WC MILESTONE 5223 P M865273
 WC BENELLI 2134 P ET WC LADY BLUE 0506 P

GRP#		B					
TT MISS BLYSS 4059 P F1187565		RT MR THOMAS 144/1 TT MISS KENEDY 146/1					
CE	BEPD	WEPD	YEPD	MILK	MCE	MTL	SC
N/A	N/A	N/A	N/A	N/A	N/A	N/A	N/A
BW	RATIO	ADJ. WW	RATIO				
81	N/A	N/A	N/A				

This bull's sire is WC Milestone 5223P and is out of a registered Charolais cow. We will get this bull registered if desired by the buyer.

T L CATTLE CO.



TL Red Water, sire to Red Angus bulls in the offering.

Colten and Lane Grau

Grady, NM
575-760-6336

Colten and Lane Grau started TL cattle 25 years ago and jointly own the TL connected brand. The brand is Lane's first and middle name initials. Starting with Angus and Angus-Maine crosses, they began selling excellent black bulls 23 years ago and continue to do so. They have used Hobart, Traveler, Tree Lane Maximillion, and Friction bloodline among other sires. These cattle have made nice, functional, powerful and well balanced bulls, females and show steers.

About 5 years ago they bought a set of Red Angus heifers and started raising Red Angus and Red Angus composite females and bulls to offer private treaty year round. The reds are also the kind you want to have on your ranch. They are deep, sound, fertile and thick. Also well balanced and docile. The 3 bulls at this year's test are 1/8 Maine Anjou X 7/8 Red Angus. Put one of these good bulls to work for your operation and reap the benefits of hybrid vigor on your cowherd. Lines mostly Cherokee Chief.

5-1 Commercial Red Angus

Birth Date: 4-26-2019 Bull Tattoo: 367

GRP#
B BW 78

- Out of the Red Angus Bull Cherokee Redwater. Nice made package whose progeny will excel.

5-3 Commercial Red Angus

Birth Date: 3-5-2019 Bull Tattoo: 151

GRP#
A BW 86

- Out of the Red Angus Bull Cherokee Redwater. Awesome dam and quality genetics here!

5-2 Commercial Red Angus

Birth Date: 3-20-2019 Bull Tattoo: 28

GRP#
B BW 82

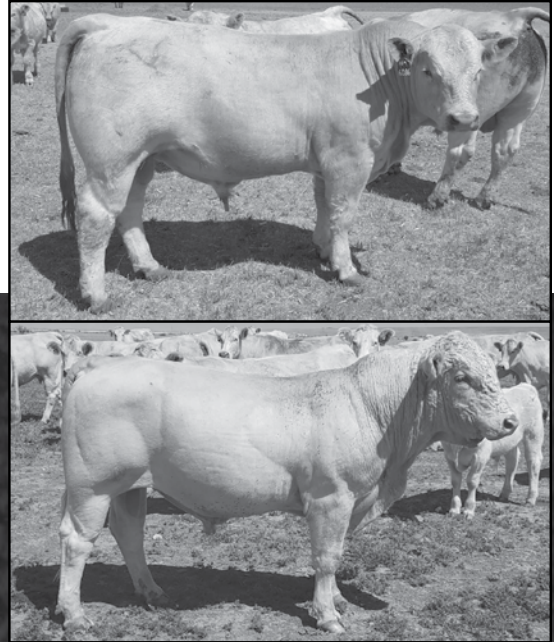
- Out of the Red Angus Bull Cherokee Redwater. Stylish and thick.



Wyatt Bishop, Assistant Test Manager

GRAU CHAROLAIS RANCH

Grau Charolais Ranch
 T. Lane and Cheryl Grau
 1680 CR 37
 Grady, NM 88120
 575-760-6336 cell
 575-357-2811 home
 tlgrau@hotmail.com



The family ranch was established in 1907 in Grady, New Mexico, and Charolais were introduced to the ranch in 1965. The Grau's are the longest continually tested ranch at the Tucumcari Bull Test. They have sold thousands of bulls and heifers all across the nation and into Mexico and Canada with great results. Furthermore, the Grau's have had great success at numerous major livestock shows in the U.S. and Canada with their cattle.

They breed for consistent uniform seedstock that will add hybrid-vigor to any herd. They also emphasize productivity, structural soundness, longevity, gain ability, and feed efficiency which will increase profits in the pasture or the feedlot.

Grau Charolais Ranch invites you to come look firsthand on the ranch and at the Tucumcari Bull Test. We welcome the opportunity to personally visit with you and discuss the needs of your breeding operation.

6-1 GCR SUPREME U33

Date of Birth: 3/9/2019 Bull M930685 Tattoo: U33

GRAU BIG TIME L56
M792068

GCR BATS SUPREME L87
GCR LADY LUCK 16X

GRP#													TSI		
A	GCR LADY SUPREME SMOKE 116 F1190527								TR SMOKEONTHETWATER ET GRAUS EASTLADY U53				183.96 90%		
CE	BEPD	WEPD	YEPD	MILK	MCE	MTL	SC								
1.4	85%	1.4	70%	23	85%	41	85%	8	65%	-1.7	100%	19	80%	0.7	65%
BW		RATIO		ADJ. WW		RATIO									
92		102		N/A		N/A									

- Leading the Charolais division in WDA, RFI, and feed efficiency. Thickness and style will be stamped on his calves.

6-3 GCR SUPREME U89

Date of Birth: 4/2/2019 Bull M930686 Tattoo: U89

TR DSUL MR TURTON 84D
EM885984

TR PZC MR TURTON 0794 ET
DSUL HOO DOO RENEE

GRP#													TSI		
B	GCR MISS SUPREME 376 F1222603								GCR SUPREME CHALLENGER 849 GCR MS L38				187.85 85%		
CE	BEPD	WEPD	YEPD	MILK	MCE	MTL	SC								
2.4	80%	2.2	85%	28	65%	46	75%	4	85%	3.2	80%	18	85%	0.3	100%
BW		RATIO		ADJ. WW		RATIO									
94		105		N/A		N/A									

- Grandsire is the famous Turton who was the national champion. This bull is balanced and thick.

6-2 GCR SUPREME U6

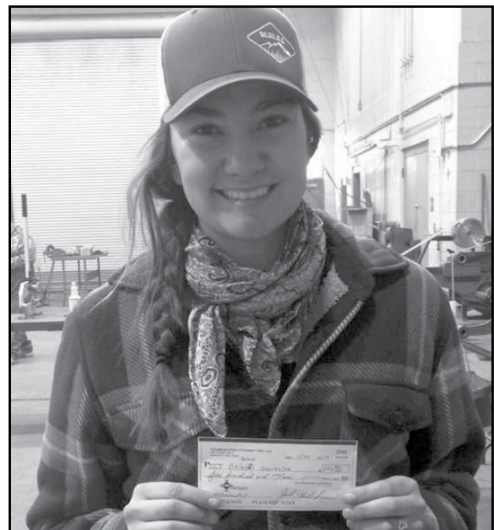
Date of Birth: 3/2/2019 Bull M930684 Tattoo: U6

GRAU BIG TIME L56
M792068

GCR BATS SUPREME L87
GCR LADY LUCK 16X

GRP#													TSI		
A	GRAU LADY L29 F1125087								GRAU THICK TOP X83 GRAUS LADY CEO U46				182.07 95%		
CE	BEPD	WEPD	YEPD	MILK	MCE	MTL	SC								
1.2	85%	0.4	50%	22	85%	37	90%	5	80%	1.0	90%	16	90%	0.5	90%
BW		RATIO		ADJ. WW		RATIO									
84		93		N/A		N/A									

- Nice made, stylish bull whose progeny will excel in hybrid vigor and pay-weight at weaning.



Delany Hope - 2019 TFET Scholarship Winner

J BAR BRAUNVIEH



John and Loretta Hall
 13675 FM 2471
 Hedley, TX 79327
 806-930-2560
 browncow3@powerc.net

J Bar Braunvieh was created in 1996 when the first AI calves were born. Braunvieh is one of the oldest pure breeds known to the industry originating from Switzerland. They were imported into the United States in the mid-1980's. They are adaptable to every environment, from Mexico to Canada. They are an excellent crossbreeding prospect for English cattle, adding hybrid vigor and improved yield grades to your steer calves and early maturing, fertile heifers that will make great cows.

7-3 JBB GRAHAM 908G

Birth Date: 1/5/2019 Bull PB96773 Tattoo: 908

MHF UNDAUNTED U820 ET
 PB64567

MHF RENOVATION R575 (NC) ET
 MISS PREMIUM PLUS PFI P434

GRP#
 B

JBB WILLOW 0470W
 PB82712

AAA WOODRING'S RANGER 11R
 JBB 4430P

CED	BEPD	WEPD	YEPD	CEM	MILK	MAT	
5.6	50%	3.3	65%	44	50%	61	
75%	0.4	70%	34	40%	56	45%	
BW		RATIO		ADJ. WW		RATIO	
85		100		670		101	

• Homozygous Black Homozygous Polled

7-5 JBB GENTLEMAN JACK 984G

Birth Date: 2/14/2019 Bull P97128 Tattoo: 984G

PFI BRAVEHEART B451
 PB86547

MR HLJ OCTANE
 PFI PELLAMERE Y110

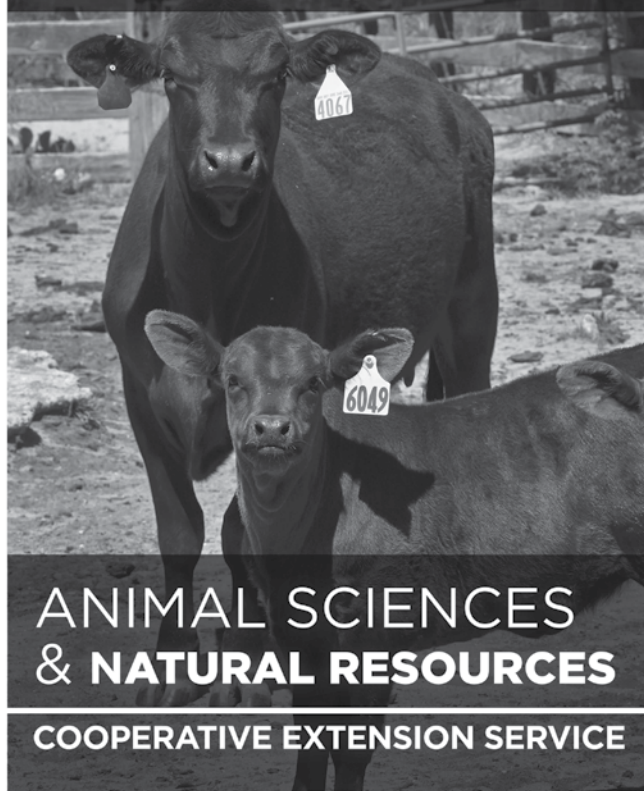
GRP#
 D

MISS CHEYENNE Y05
 OB78301

JMCB EL PRESIDENTE
 MISS CHEYENNE U14

CED	BEPD	WEPD	YEPD	CEM	MILK	MAT	
3.5	90%	5.1	95%	56	10%	79	
20%	0.6	55%	35	30%	63	10%	
BW		RATIO		ADJ. WW		RATIO	
88		104		541		103	

COLLEGE OF
**AGRICULTURAL, CONSUMER
 AND ENVIRONMENTAL SCIENCES**



**ANIMAL SCIENCES
 & NATURAL RESOURCES**

COOPERATIVE EXTENSION SERVICE



All About Discovery!™
New Mexico State University
aces.nmsu.edu/ces/animal

7-6 JBB GRAHAM 902G

Birth Date: 2/16/2019 Bull BC96779 Tattoo: 902G

JBB BADBOYS DAWSON 528C
PB89254

JBB RANGER'S BAD BOY 8422U
JBB YAMIN 2413Y

GRP#
B

JBB YARDLEY 1495Y
BC86000

JBB 6465S
JBB MS 9418 W

CED	BEPD	WEPD	YEPD	CEM	MILK	MAT							
5.9	40%	2.8	50%	48	25%	75	25%	0.2	80%	32	65%	57	35%
BW		RATIO		ADJ. WW		RATIO							
80		95		663		110							

• Homozygous Black Homozygous Polled

7-9 JBB THE GRADUATE 974G

Birth Date: 1/9/2019 Bull PB97145 Tattoo: 974

MAE TUITION C52 ET
OB89239

MR GOLDEN LINK 8143 ET
MISS LLB N52

GRP#
B

JBB MISS 9534
PB81862

JBB THE GENERAL R5456
JBB 5462R

CED	BEPD	WEPD	YEPD	CEM	MILK	MAT							
4.6	70%	4.0	80%	47	30%	74	30%	0.2	80%	31	75%	54	65%
BW		RATIO		ADJ. WW		RATIO							
89		*		543		96							

7-7 JBB GRAHAM 937G

Birth Date: 1/23/2019 Bull BC96746 Tattoo: 937G

MHF UNDAUNTED U820 ET
PB64567

MHF RENOVATION R575 (NC) ET
MISS PREMIUM PLUS PFI P434

GRP#
A

JBB BREANNA 456B
BC96731

IMF THREE BEARS 018U
JBB YADIRA 1402Y

CED	BEPD	WEPD	YEPD	CEM	MILK	MAT							
5.1	60%	3.3	65%	39	85%	52	95%	0.5	60%	34	40%	54	65%
BW		RATIO		ADJ. WW		RATIO							
88		*		746		114							

Welcome to the Tucumcari Bull Test and Sale

FNB New Mexico

Proudly financing

New Mexico Agriculture since 1964.



www.FNBNM.bank

MEMBER
FDIC

Angel Fire • Clayton • Logan • Raton • Santa Rosa • Tucumcari



HARTZOG ANGUS CATTLE



Roy and Trudy Hartzog

PO Box 102
Bovina, TX 79009
806-825-2711 Ranch
806-225-7230 Cell
806-225-7231 Cell
806-470-2508 Cell
arlo22@wtrt.net

The registered herd originated in 1949 with the purchase of six cows from the Dean of Agriculture at Texas Tech. From then, the herd has grown into a full-time enterprise and occupation. Roy and Trudy have been working together in this "joint venture" for over 30 years and have seen a lot of changes in Angus cattle over this timeframe.

One of the main attributes of the Angus breed is its ability to respond to various industry needs. For example, carcass quality and consumer preference was raised to a new level with the promotion of "Certified Angus Beef." Growth trait selection made gains possible that were previously unheard of for Angus cattle. Even measures of traits such as docility and maternal character have given breeders more opportunities to choose which animals will perform the best, in their own environment and situation.

As for Hartzog Angus Cattle's own herd goals, they strive to produce cattle that will fit into breeding programs which need good, solid replacements, from their own herd, while helping them achieve their own goals in their specific environment. As Roy's father always believed, "A person should always get the best bull they can afford in order to improve or enhance their own genetics. You don't have to make all the progress at once, but rather stay on a steady course of improvement."

This is the way to utilize the unique ability of the Angus breed to respond to your goals and needs. Roy and Trudy hope the seedstock from their herd will help you achieve your goals.

* Guarantees and delivery negotiable by bull. Contact seller for more information.

8-1 RWL&C 1336 the Answer G308

Birth Date: 2-22-2019 Bull 19588749 Tattoo: G308

2S Final Answer 60-1336
17579525

2S Final Answer 7392-933
DNT Stormy Lass 715

GRP#
A

RWL&C RGHT Answr Barbra Z542
17534980

#Connealy Right Answer 746
Wardens Barbara NL 0372



CED	BEPD	WEPD	YEPD	RADG	SC	MILK	SEN
+11 15%	+3 30%	+58 40%	+98 50%	+23 55%	+1.16 25%	+27 35%	-2 25%
\$W	\$B	BW	RATIO	ADJ. WW	RATIO	ADJ. YW	RATIO
+70 15%	+119 65%	78	99	N/A	N/A	N/A	N/A

- Low birthweight performance bull with good carcass. \$W top 15%, high WDA.

8-3 Alh 5G27 Weigh Up G144 [OHF]

Birth Date: 3-15-2019 Bull 19588751 Tattoo: G144

Weigh Up 5G27 of GAR
18162057

#Plattemere Weigh Up K360
#BLACKCAP 7G4 of GAR

GRP#
B

ALH U131 Amelia A688
17698197

AJ MYTTY IN Focus U131
ALH 365 Amelia 2312



CED	BEPD	WEPD	YEPD	RADG	SC	MILK	SEN
+0 90%	+2.9 85%	+57 40%	+98 50%	+1.19 85%	+0.91 40%	+1.8 95%	-15 65%
\$W	\$B	BW	RATIO	ADJ. WW	RATIO	ADJ. YW	RATIO
+45 75%	+98 90%	74	94	N/A	N/A	N/A	N/A

- For use on mature cows. Outcross pedigree with balanced EPDs.

8-2 Alh 5G27 Capitan G127 [DDF]

Birth Date: 3-1-2019 Bull 19588752 Tattoo: G127

Weigh Up 5G27 of GAR
18162057

#Plattemere Weigh Up K360
#BLACKCAP 7G4 of GAR

GRP#
A

Alh C171 Maxine A 530
17722251

CRT Capitan C171
ALH Midland Maxine U072



CED	BEPD	WEPD	YEPD	RADG	SC	MILK	SEN
-12 95%	+7.3 95%	+76 4%	+133 4%	+30 10%	+61 60%	+15 95%	-40 95%
\$W	\$B	BW	RATIO	ADJ. WW	RATIO	ADJ. YW	RATIO
+40 85%	+163 10%	95	120	N/A	N/A	N/A	N/A

- Actual 95 lb. birth weight-use on mature cows. Eight traits in top 10% of breed. High performance bull. FE 4.51, RFI -5.26.

8-5 RWL&C 1336 4P8 Answer G414

Birth Date: 3-10-2019 Bull 19588765 Tattoo: G414

2S Final Answer 60-1336
17579525

2S Final Answer 7392-933
DNT Stormy Lass 715

GRP#
A

RWL&C Daybreak WF Erica Y499
17129784

#MCC Daybreak
#Wardens Erica 4P8 5526 7333



CED	BEPD	WEPD	YEPD	RADG	SC	MILK	SEN
+10 20%	+7 40%	+64 20%	+105 35%	+23 55%	+0.92 40%	+1.6 95%	-15 65%
\$W	\$B	BW	RATIO	ADJ. WW	RATIO	ADJ. YW	RATIO
+58 40%	+141 35%	76	96	N/A	N/A	N/A	N/A

- Low birthweight performance bull, moderate milk with marbling and rib-eye top 25% of breed.

8-6 RWL&C E117 3624 Daybrk G137 [OHF]

Birth Date: 3-1-2019 Bull 19592123 Tattoo: G137

RWL&C 3624 Adv 349M E117 *Connealy Advance 3624
*19373704 RWL&C Y444 349M Queen C195

GRP#
A

RWL&C 0368 Daybrk Ebony A452 Ironwood Daybreak 7333 0368
17732511 BRN&C Bando Ebony 410



CED	BEPD	WEPD	YEPD	RADG	SC	MILK	SEN
-9	95%	+2.2	95%	+80	2%	+135	3%
				+28	15%	+1.89	3%
				+24	55%	-43	95%
\$W	\$B	BW	RATIO	ADJ. WW	RATIO	ADJ. YW	RATIO
+66	25%	+154	20%	N/A	N/A	N/A	N/A

- Recommended for cows. WW top 2%, YW top 4%, \$W, \$F, \$B add pounds to your calf crop.

8-11 RWL&C 1336 SF Prime Time G57

Birth Date: 2-9-2019 Bull 19588759 Tattoo: G576

2S Final Answer 60-1336 2S Final Answer 7392-933
17579525 DNT Stormy Lass 715

GRP#
A

Wardens Bluebird SF 1328 #GT Shear Force
16929889 Wardens Bluebird NDS 8507



CED	BEPD	WEPD	YEPD	RADG	SC	MILK	SEN
+2	85%	+1.4	55%	+48	75%	+78	85%
				+15	95%	+7.6	50%
				+32	10%	+7	10%
\$W	\$B	BW	RATIO	ADJ. WW	RATIO	ADJ. YW	RATIO
+66	25%	+79	95%	80	101	N/A	N/A

- Balanced traits, positive \$EN top 10%.

8-7 RWL&C Z831 Quay G500

Birth Date: 3-14-2019 Bull 19615401 Tattoo: G500

RWL&C Right Answer 7333 Z831 #Connealy Right Answer 746
17401746 #Wardens Erica 4P8 5526 7333

GRP#
A

RWL&C CMT Aberdeen Elle X106 #TC Aberdeen 759
16722687 RWL&C Commitment Elle S196



CED	BEPD	WEPD	YEPD	RADG	SC	MILK	SEN
+14	4%	-2.1	3%	+26	95%	+44	95%
				+14	95%	-57	95%
				+29	20%	+12	4%
\$W	\$B	BW	RATIO	ADJ. WW	RATIO	ADJ. YW	RATIO
+41	85%	+72	95%	77	97	N/A	N/A

- Low BW, balanced trait bull with WDA ratio of 115%.

8-12 RWL&C 5G27 Weigh Day G115 [OHF]

Birth Date: 2-23-2019 Bull 19588756 Tattoo: G115

Weigh Up 5G27 of GAR #Plattemere Weigh Up K360
18162057 #BLACKCAP 7G4 of GAR

GRP#
A

RWL&C Y444 Daybrk Free B461 RWL&C Day 6i6 Rito Y021
17905031 RWL&C Bando Freedom U003



CED	BEPD	WEPD	YEPD	RADG	SC	MILK	SEN
+1	90%	+2.7	80%	+56	45%	+89	65%
				+18	90%	+4.3	75%
				+19	90%	+1	20%
\$W	\$B	BW	RATIO	ADJ. WW	RATIO	ADJ. YW	RATIO
+52	55%	+122	65%	89	113	N/A	N/A

- Recommended for cows, moderate milk, \$EN top 20%, solid balanced traits.

8-9 RWL&C 1336 Doc Warden G410 [DDF]

Birth Date: 2-28-2019 Bull 19588754 Tattoo: G410

2S Final Answer 60-1336 2S Final Answer 7392-933
17579525 DNT Stormy Lass 715

GRP#
B

Wardens Erica 5313 9044 Ironwood Direction 43 5313
16521476 #Kapp Juana Erica T 661



CED	BEPD	WEPD	YEPD	RADG	SC	MILK	SEN
+5	60%	+2.3	75%	+49	70%	+87	70%
				+23	55%	+61	60%
				+25	50%	-9	45%
\$W	\$B	BW	RATIO	ADJ. WW	RATIO	ADJ. YW	RATIO
+48	70%	+143	30%	77	99	N/A	N/A

- Another son of top performing sire group. Balanced EPDs, backed by performance tested pedigree.

8-13 RWL&C 1336 Professional G314 [OHF]

Birth Date: 3-5-2019 Bull 19605969 Tattoo: G314

2S Final Answer 60-1336 2S Final Answer 7392-933
17579525 DNT Stormy Lass 715

GRP#
A

RWL&C 8134 4141 Barbara B342 TC One Way 8134
18024717 RWL&C 4141 Barbara X459



CED	BEPD	WEPD	YEPD	RADG	SC	MILK	SEN
+5	60%	+3.5	95%	+74	5%	+117	15%
				+24	45%	+8.8	45%
				+16	95%	-18	75%
\$W	\$B	BW	RATIO	ADJ. WW	RATIO	ADJ. YW	RATIO
+63	30%	+144	30%	73	100	N/A	N/A

- Recommended for cows, high performance bull, good carcass, high WDA.

8-10 RWL&C 1336 Lakino G316 [OHF]

Birth Date: 3-14-2019 Bull 19588750 Tattoo: G316

2S Final Answer 60-1336 2S Final Answer 7392-933
17579525 DNT Stormy Lass 715

GRP#
A

RWL&C Oneway DLR Lakina Z718 TC One Way 8134
17367986 RWL&C Nebraska Dollars U014



CED	BEPD	WEPD	YEPD	RADG	SC	MILK	SEN
+11	15%	+6.3	35%	+55	50%	+90	65%
				+20	80%	+8.6	45%
				+28	25%	-15	65%
\$W	\$B	BW	RATIO	ADJ. WW	RATIO	ADJ. YW	RATIO
+64	25%	+138	40%	79	100	N/A	N/A

- Low BW, double-digit CED, balanced traits, WDA 132% ratio.



Mateo Olivas - The newest addition to the bull test crew!

J-C Angus - Reference Sires 2020 calves



MGR Treasure 5017 – AI Sire:

Treasure has passed every test and now displays over 500 progeny records for birth weight. His abilities as a proven heifer bull in tandem with elite growth and carcass quality have been solidified in some of the breed's toughest contemporary groups. Treasure sired the top selling bull in Connealy's 2018 spring sale and is a consistent sire of daughters that are feminine and broody with exceptional foot quality. He has solidified his place in the industry and is a useful tool to moderate milk without sacrificing growth. Birth Wt: 75 lbs, Weaning Wt: 843 lbs, Yearling Wt: 1469 lbs, Yearling SC: 39.0 cm, Yearling Frame: 6.3

	CED	BW	WW	YW	SC	Milk	Marb	RE	\$W	\$F	\$G	\$B
EPD	11	-1.1	68	132	.92	12	1.16	.52	56	77	78	155
TOP	15%	10%	15%	10%	40%		3%				4%	20%



Jindra Acclaim – AI Sire

Acclaim was a featured and high selling bull at the 2015 Jindra Angus Bull Sale in Nebraska. He offers calving ease with exceptional performance and maternal strength. Nick Jindra describes him as, "long, thick, deep and just flat good. He's a favorite all of the way around." His first calf dam is a beautiful Impression daughter with a great udder. Acclaim is a free-moving, long-bodied, larger framed bull with elite growth. In addition to growth and carcass, he excels for heifer pregnancy and docility. Overall a complete package with the combination of phenotype and performance makes for an excellent outcross sire.

	CED	BW	WW	YW	SC	Milk	Marb	RE	\$W	\$F	\$G	\$B
EPD	6	0.9	72	146	.20	30	.62	.69	70	160	59	219
TOP			10%	2%			35%	25%	20%	1%	20%	1%



J-C Dinero 1738 – Natural Sire:

This Barstow Cash (pictured to left) son started life with a modest 68 lbs at birth and then posted a 105 WRTO and 107 YRTO with an adjusted 16.1 sq. Inch Rib Eye (ratio 111). He gained 4.73 (ratio 120) on 2017-18 test in Tucumcari and converted at 4.60 lbs of feed per lb of gain (ratio 121). He is a sensibly-sized bull that is massive in his design with incredible body volume and shape, thickness, and muscle mass throughout. He combines moderate calving ease with top 10% YW, \$F, and Scrotal, and top 15% WW and \$B.

	CED	BW	WW	YW	SC	Milk	Marb	RE	\$W	\$F	\$G	\$B
EPD	7	1.5	69	132	1.53	14	.62	.71	52	112	53	165
TOP			15%	10%	10%		35%	25%		10%	30%	15%



Connealy Armory 3941 – Natural Sire

This son of Armory (pictured to left) was one we selected at Connealy's sale in 2017. He combines exceptional calving ease (top 15%) with impressive growth (YW top 30%) along with moderate mature size and height.

	CED	BW	WW	YW	SC	Milk	Marb	RE	\$W	\$F	\$G	\$B
EPD	12	-1.1	61	111	-.73	26	.38	.48	70	69	41	110
TOP	15%	10%	30%	30%					20%			



J-C 10 Ply 1536– Natural Sire:

This A A R Ten X 7008 SA (pictured left) son combined a 62 lb BW out of a first calf heifer with a 102 WRTO and a 106 YRTO while posting a 4.82 ADG (ratio 115.6) on 2015-16 test at Tucumcari, converting 5.35 lbs of feed per lb of gain (Ratio 110.1) He was the second high gaining bull in group A. He is moderate framed at 5.3 and had a REA rto of 111. We are very excited about the feed efficiency and performance this bull carries in a moderate size with below average milk.

	CED	BW	WW	YW	SC	Milk	Marb	RE	\$W	\$F	\$G	\$B
EPD	9	.2	59	115	1.28	26	.66	.56	61	111	54	165
TOP	30%	30%	40%	25%	20%		30%	40%	40%	10%	30%	15%

J-C Ten Gauge 1647 – Natural Sire:

This "10X" (pictured above) son was a crowd favorite at the Tucumcari Bull Test Sale in 2017 and was retained as a herd sire. He is out of one of our best cows and performed extremely well on test in 2016-17. He started life with a modest 70# BW, and ended the test at 1,350 with a 16.2 Rib Eye, 4.11 marbling, and a 42 scrotal. He gained 4.50 (ratio 112), and was one of 2 bulls that converted less than 4 lbs of feed per lb of gain! (3.95 – ratio 130). He combines calving ease with top 20% growth, big scrotal, and solid carcass characteristics with a moderate 5.3 frame score.

	CED	BW	WW	YW	SC	Milk	Marb	RE	\$W	\$F	\$G	\$B
EPD	9	1.0	58	107	1.56	28	.84	.57	62	111	63	173
TOP	30%		40%	35%	10%		15%	40%	35%	10%	15%	10%

J-C ANGUS RANCH

John and Cathy Heckendorn

Sarah, Joshua, Caleb, Joe and
Rebecca Isbell
75 A Pueblo Rd N.
Moriarty, NM 87035
505-379-8212



We feel that as a registered breeder we have a responsibility to raise the most profitable cattle that we can for the commercial cattle industry. We believe that profitability starts with fertility. We weighed our cows after weaning in 2016, and our 4-year and older cows averaged 1,156 lbs. and 96% of them were bred.

The next most important trait for us is calving ease. We have found that calves that die at birth do not have very good weaning weights! ☺

Once that live calf is on the ground, we want it to grow rapidly and efficiently. We have been performance testing bulls at the NMSU Tucumcari bull test for over 35 years. It was often a humbling experience as we competed against other breeders. We have focused on rapid growth genetics (High Yearling EPD) without sacrificing calving ease (Low BW EPD) since 1980

In 1985 our pen of bulls at Tucumcari gained 3.25 lbs. per day and converted 8.28 lbs. of feed per lb. of gain. Our pen in 2003 gained 4.91 lbs. per day and converted 5.55 lbs. of feed per lb. of gain. In 2016 we had 6 bulls that were tested at Tucumcari utilizing the GrowSafe system to measure individual bull feed conversion, and they averaged converting 4.90 lbs. of feed per lb. of gain! Now that's progress!

Once these calves grow out, they need to provide value for both the packer and the consumer with high quality carcass characteristics for the benefit of the industry, and the females kept as replacements need to be moderate sized, efficient converters of grass to produce adequate milk to raise heavy, soggy calves and breed back every year.

This is why J-C Angus is utilizing bloodlines that excel in the traits of Fertility, Calving Ease, Rapid Growth, Feed Efficiency, and Carcass Quality.

We strive to do everything we can to improve our genetics and want our buyers to have confidence that our bulls come from the Southwest and have adapted and been selected for over 35 years to perform in our tough environment at 6,500 feet elevation. Our bulls have been developed on a high roughage diet designed to produce healthy bulls that are not over conditioned and that can adjust quickly to grass. They have been vaccinated at branding and at weaning with Bovishield Gold as well as a 7-way with Somnus and are also treated at weaning with a generic Ivermectin. They have been weighed by scale at birth, weaning and yearling. Many of our bulls have been performance tested against other breeders/bulls in an unbiased third party gain/efficiency test, measured for feed efficiency, and ultrasound measured for carcass quality. They have all been fertility tested, PiBVD tested, trich tested and are READY FOR WORK!

We pray that our cattle work as well for you as they have for us, and we greatly appreciate and thank past buyers who have invested in J-C Angus genetics.

9-1 J-C Treasure 1920

Birth Date: 2-14-2019 Bull 19534273 Tattoo: 1920

MGR Treasure #*VAR Discovery 2240
+*18156972 +*SJH Impression of 6108 1614

GRP#
A

J-C Norma's Answer 1648 Bluegrass Final Answer 309
18564795 J-C Norma 1106

ANGUS GS
Powered by MyGeni Discovery

CED	BEPD	WEPD	YEPD	RADG	SC	MILK	SEN
+10 20%	-6 15%	+66 20%	+126 10%	+32 2%	+58 65%	+22 70%	-8 40%
SW	SB	BW	RATIO	ADJ. WW	RATIO	ADJ. YW	RATIO
+70 15%	+147 25%	80	98	745	108	N/A	N/A

- Treasure son with excellent calving ease and negative BW EPD along with growth - top 10% YW and 25% Marbling. Dam WW 2/106, YW 1/102.

9-2 J-C Treasure 1971

Birth Date: 2-21-2019 Bull 19534283 Tattoo: 1971

MGR Treasure #*VAR Discovery 2240
+*18156972 +*SJH Impression of 6108 1614

GRP#
A

J-C Xtra Duty 1692 #*RB Tour Of Duty 177
18564856 J-C 10X Norma 1466

ANGUS GS
Powered by MyGeni Discovery

CED	BEPD	WEPD	YEPD	RADG	SC	MILK	SEN
+9 30%	+9 40%	+75 4%	+134 4%	+26 30%	+54 65%	+23 65%	-31 95%
SW	SB	BW	RATIO	ADJ. WW	RATIO	ADJ. YW	RATIO
+75 10%	+152 20%	80	98	754	109	N/A	N/A

- Treasure son with solid calving ease and top 4% WW and YW, 15% Marbling and RE. Young Tour of Duty dam has produced 2/106 WW.

9-3 J-C Treasure 1979

Birth Date: 2-13-2019 Bull 19534291 Tattoo: 1979

MGR Treasure #*VAR Discovery 2240
+*18156972 +*SJH Impression of 6108 1614

GRP#
A

J-C Dixie's Bruiser 1585 SAV Bruiser 9164
18231370 J-C Dixie 0928

ANGUS GS
Powered by MyGeni Discovery

CED	BEPD	WEPD	YEPD	RADG	SC	MILK	SEN
+15 2%	-2.1 3%	+68 15%	+122 10%	+28 15%	+52 70%	+26 40%	-22 85%
SW	SB	BW	RATIO	ADJ. WW	RATIO	ADJ. YW	RATIO
+77 10%	+138 40%	77	101	671	109	N/A	N/A

- Exceptional calving ease along with solid performance. Top 15% WW and YW. Young Bruiser dam has weaned 2 at 102.

9-4 J-C Treasure 1936

Birth Date: 2-12-2019 Bull 19534256 Tattoo: 1936

MGR Treasure #*VAR Discovery 2240
+*18156972 +*SJH Impression of 6108 1614

GRP#
A

J-C Julie 1562 EXAR Emblazon 1010B
18229476 J-C Julie 1236

ANGUS GS
Powered by MyGeni Discovery

CED	BEPD	WEPD	YEPD	RADG	SC	MILK	SEN
+16 1%	-2.3 3%	+63 25%	+119 15%	+26 30%	+50 70%	+18 95%	-6 35%
SW	SB	BW	RATIO	ADJ. WW	RATIO	ADJ. YW	RATIO
+64 25%	+124 60%	76	91	651	94	N/A	N/A

- Exceptional calving ease (top 1 and 2% of breed for CED and BW, respectively) along with solid performance. Top 25% WW and 10% YW. Top 30% Marbling.

9-6 J-C Treasure 1978

Birth Date: 2-16-2019 Bull 19534287 Tattoo: 1978

MGR Treasure #**VAR Discovery 2240
*18156972 *SJH Impression of 6108 1614

GRP# B J-C Rebecca 1724 *Styles Cash R400
18897473 J-C Beverly 1462

CED	BEPD	WEPD	YEPD	RADG	SC	MILK	SEN
+13 10%	-1.4 10%	+70 10%	+138 3%	+34 1%	+77 50%	+15 95%	-21 80%
\$W	\$B	BW	RATIO	ADJ. WW	RATIO	ADJ. YW	RATIO
+60 35%	+171 10%	60	88	664	107	N/A	N/A

- Great calving ease out of first calf Styles Cash heifer with 1/107 WW. Top 3% YW and top 10% \$B!

9-10 J-C Acclaim 1928

Birth Date: 2-21-2019 Bull 19534266 Tattoo: 1928

Jindra Acclaim *Jindra 3rd Dimension
*17972810 +Jindra Blackbird Lassy 1111

GRP# A J-C Brittany 1625 *EXAR Resistol 3710B
18564836 J-C Brittany 1138

CED	BEPD	WEPD	YEPD	RADG	SC	MILK	SEN
+7 45%	-8 15%	+57 40%	+116 20%	+33 1%	+2.15 1%	+33 10%	-17 70%
\$W	\$B	BW	RATIO	ADJ. WW	RATIO	ADJ. YW	RATIO
+69 20%	+184 2%	90	109	717	104	N/A	N/A

- Acclaim X Resistol daughter with 1/104 WW. Top 20% YW, 10% RE, 3% \$B.

9-11 J-C Ground Pounder 1917

Birth Date: 2-12-2019 Bull 19534245 Tattoo: 1917

Jindra Acclaim *Jindra 3rd Dimension
*17972810 +Jindra Blackbird Lassy 1111

GRP# A J-C Cathy 1448 J-C SS Objective 0852
17892948 J-C Cathy 0879

CED	BEPD	WEPD	YEPD	RADG	SC	MILK	SEN
+6 50%	+2.7 80%	+60 35%	+116 20%	+32 2%	-37 95%	+26 40%	-36 95%
\$W	\$B	BW	RATIO	ADJ. WW	RATIO	ADJ. YW	RATIO
+52 55%	+186 2%	96	113	733	106	N/A	N/A

- Heaviest actual weaning weight bull calf this year at 800 lbs. Top 20% YW, 25% Marbling, 2% \$B. Dam 3/101 WW, 2/105 YW. Use on cows only.

9-13 J-C Dinero 1977

Birth Date: 3-3-2019 Bull 19534274 Tattoo: 1977

J-C Dinero 1738 **Barstow Cash
18897428 J-C Joy 1547

GRP# A J-C Charlotte 1654 EXAR Emblazon 1010B
18564818 J-C Pride 0939

CED	BEPD	WEPD	YEPD	RADG	SC	MILK	SEN
+12 10%	+9 40%	+63 25%	+110 25%	+23 55%	+1.35 20%	+19 90%	-22 85%
\$W	\$B	BW	RATIO	ADJ. WW	RATIO	ADJ. YW	RATIO
+58 40%	+106 85%	82	100	766	111	N/A	N/A

- Heaviest adjusted WW bull calf this year at 766 lbs. Top 20% CED, WW and YW. Dam production 2/107 WW, 1/106 YW.

9-14 J-C Dinero 1901

Birth Date: 3-5-2019 Bull 19534250 Tattoo: 1901

J-C Dinero 1738 **Barstow Cash
18897428 J-C Joy 1547

GRP# A J-C Hannah 1483 EXAR Emblazon 1010B
17892995 J-C Beverly 1229

CED	BEPD	WEPD	YEPD	RADG	SC	MILK	SEN
+14 4%	-1.9 4%	+55 50%	+103 40%	+26 30%	+4.73 55%	+18 95%	-13 60%
\$W	\$B	BW	RATIO	ADJ. WW	RATIO	ADJ. YW	RATIO
+48 70%	N/A N/A	72	85	675	98	N/A	N/A

- Exceptional CED and BW. Top 4% of breed, along with solid growth with YW in top 40%.

9-15 J-C Dinero 1956

Birth Date: 3-28-2019 Bull 19534227 Tattoo: 1956

J-C Dinero 1738 **Barstow Cash
18897428 J-C Joy 1547

GRP# B J-C Katie 1362 EXAR Emblazon 1010B
17596099 J-C Katie 1120

CED	BEPD	WEPD	YEPD	RADG	SC	MILK	SEN
+8 35%	+1.9 65%	+59 35%	+113 20%	+24 45%	+9.3 40%	+10 95%	-20 80%
\$W	\$B	BW	RATIO	ADJ. WW	RATIO	ADJ. YW	RATIO
+35 90%	+112 75%	90	106	717	104	N/A	N/A

- Powerful Dinero son (Cash grandson). Use on cows to add performance. Top 25% WW and YW. Dam prod: 3/109 WW, 2/100 YW.

9-16 J-C Dinero 1967

Birth Date: 3-24-2019 Bull 19534275 Tattoo: 1967

J-C Dinero 1738 **Barstow Cash
18897428 J-C Joy 1547

GRP# A J-C Anna 1655 EXAR Emblazon 1010B
18564819 J-C April 1103

CED	BEPD	WEPD	YEPD	RADG	SC	MILK	SEN
+2 85%	+3.7 95%	+68 15%	+129 10%	+31 4%	+2.09 2%	+22 70%	-42 95%
\$W	\$B	BW	RATIO	ADJ. WW	RATIO	ADJ. YW	RATIO
+52 55%	+165 10%	90	109	743	108	N/A	N/A

- Powerful Dinero son (Cash grandson). Use on cows to add performance. Top 15% WW and YW. Dam prod: 2/104 WW.

9-17 J-C Dinero 1903

Birth Date: 3-5-2019 Bull 19534276 Tattoo: 1903

J-C Dinero 1738 **Barstow Cash
18897428 J-C Joy 1547

GRP# B J-C Renee 1656 RV BAR Explicit R343
18564861 #J-C Renee 1123

CED	BEPD	WEPD	YEPD	RADG	SC	MILK	SEN
+9 30%	+1 25%	+56 45%	+115 20%	+34 1%	+1.69 10%	+19 90%	-34 95%
\$W	\$B	BW	RATIO	ADJ. WW	RATIO	ADJ. YW	RATIO
+44 80%	+155 20%	82	100	669	97	N/A	N/A

- Dinero son with good calving ease and performance.

9-19 J-C Dinero 1957

Birth Date: 4-2-2019 Bull 19534272 Tattoo: 1957

J-C Dinero 1738 #*Barstow Cash
18897428 J-C Joy 1547

J-C Cathy's Generation 1644 *VAR Generation 2100
18564865 J-C SS Objective 1041

GRP#	CED	BEPD	WEPD	YEPD	RADG	SC	MILK	SEN
B	+9 30%	+7 40%	+61 30%	+113 20%	N/A N/A	N/A N/A	+17 95%	-12 55%
	\$W	\$B	BW	RATIO	ADJ. WW	RATIO	ADJ. YW	RATIO
	+48 70%	N/A N/A	80	98	688	100	N/A	N/A

• Dinero x Generation with top 25% WW and top 20% YW.

9-20 J-C Ten Gauge 1918

Birth Date: 3-2-2019 Bull 19534279 Tattoo: 1918

J-C Ten Gauge 1647 #*AAR Ten X 7008 SA
18564780 J-C Pendleton 1032

J-C Emma 1661 EXAR Emblazon 1010B
18564820 J-C Ruth 1485

GRP#	CED	BEPD	WEPD	YEPD	RADG	SC	MILK	SEN
C	+11 15%	+0 25%	+54 55%	+97 50%	N/A N/A	N/A N/A	+27 35%	-13 60%
	\$W	\$B	BW	RATIO	ADJ. WW	RATIO	ADJ. YW	RATIO
	+57 45%	N/A N/A	75	101	644	104	N/A	N/A

• Ten Gauge son with top 10% CED and top 25% BW. Dam Prod - 2/105 WW.

9-21 J-C Ten Gauge 1921

Birth Date: 4-12-2019 Bull 19534296 Tattoo: 1921

J-C Ten Gauge 1647 #*AAR Ten X 7008 SA
18564780 J-C Pendleton 1032

J-C Joy 0936 #*SS Objective T510 0T26
16418941 J-C Joy 0494

GRP#	CED	BEPD	WEPD	YEPD	RADG	SC	MILK	SEN
C	+7 45%	+1.7 60%	+60 35%	+107 30%	+1.27 20%	+1.02 35%	+25 50%	-20 80%
	\$W	\$B	BW	RATIO	ADJ. WW	RATIO	ADJ. YW	RATIO
	+58 40%	+150 25%	80	105	640	104	N/A	N/A

• Ten Gauge son with top 30% Marbling, top 20% \$B. Dam Prod - 7/102 WW, 5/105 YW.

9-23 J-C 10 Ply 1958

Birth Date: 3-1-2019 Bull 19534242 Tattoo: 1958

J-C 10 Ply 1536 #*AAR Ten X 7008 SA
18231508 J-C Ellie 1355

J-C Pendleton 1414 J-C SS Objective 0852
17892955 J-C Pendleton 1032

GRP#	CED	BEPD	WEPD	YEPD	RADG	SC	MILK	SEN
C	+11 15%	+0 25%	+58 40%	+110 25%	+1.27 20%	+1.18 25%	+26 40%	-26 90%
	\$W	\$B	BW	RATIO	ADJ. WW	RATIO	ADJ. YW	RATIO
	+57 45%	N/A N/A	75	97	667	108	N/A	N/A

• 10 Ply son with top 15% CED, 25% BW and YW. Dam prod: 3/104 WW, 2/110 YW.

9-24 J-C 10 Ply 1938

Birth Date: 3-24-2019 Bull 19534260 Tattoo: 1938

J-C 10 Ply 1536 #*AAR Ten X 7008 SA
18231508 J-C Ellie 1355

J-C Faye 1580 J-C SS Objective 0852
18229457 J-C Faye 0622

GRP#	CED	BEPD	WEPD	YEPD	RADG	SC	MILK	SEN
B	+11 15%	+2 30%	+55 50%	+101 45%	+1.24 45%	+1.14 30%	+25 50%	-16 65%
	\$W	\$B	BW	RATIO	ADJ. WW	RATIO	ADJ. YW	RATIO
	+54 50%	N/A N/A	78	103	680	110	N/A	N/A

• 10 Ply with top 15% CED, 30% BW. Dam Prod: 3/101 WW.

9-25 J-C 10 Ply 1972

Birth Date: 4-12-2019 Bull 19534222 Tattoo: 1972

J-C 10 Ply 1536 #*AAR Ten X 7008 SA
18231508 J-C Ellie 1355

J-C Joy 1214 B/R Future Direction 6171
#17301484 J-C Joy 0936

GRP#	CED	BEPD	WEPD	YEPD	RADG	SC	MILK	SEN
D	+8 35%	+1.0 45%	+67 15%	+113 20%	+2.3 55%	+1.25 20%	+28 25%	-25 90%
	\$W	\$B	BW	RATIO	ADJ. WW	RATIO	ADJ. YW	RATIO
	+74 10%	+144 30%	75	97	704	114	N/A	N/A

• 10 Ply with top 20% CED, 30% BW, 25% WW and 20% YW and \$B. Dam Prod: 6/107 WW, 4/102 YW.

9-27 J-C 10 Ply 1912

Birth Date: 3-1-2019 Bull 19534295 Tattoo: 1912

J-C 10 Ply 1536 #*AAR Ten X 7008 SA
18231508 J-C Ellie 1355

J-C Dixie 0928 #*SS Objective T510 0T26
16418939 J-C Dixie 0415

GRP#	CED	BEPD	WEPD	YEPD	RADG	SC	MILK	SEN
C	+8 35%	+6 35%	+51 65%	+99 45%	+1.24 45%	+1.98 35%	+26 40%	-22 85%
	\$W	\$B	BW	RATIO	ADJ. WW	RATIO	ADJ. YW	RATIO
	+49 65%	+140 35%	80	105	617	100	N/A	N/A

• 10 Ply with good calving ease and performance. Dam prod: 8/104 WW, 7/104 YW.

9-28 J-C Armored 1911

Birth Date: 3-1-2019 Bull 19534292 Tattoo: 1911

Connealy Armory 3941 #*Connealy Armory
*18538578 Black Chira of Conanga 3941

J-C Joy 1776 J-C Ten X 1412
18897486 #J-C Joy 0610

GRP#	CED	BEPD	WEPD	YEPD	RADG	SC	MILK	SEN
B	+6 50%	+2.2 70%	+66 20%	+117 15%	N/A N/A	N/A N/A	+26 40%	-17 70%
	\$W	\$B	BW	RATIO	ADJ. WW	RATIO	ADJ. YW	RATIO
	+62 30%	N/A N/A	80	114	706	114	N/A	N/A

• Armory from Connealy out of first calf heifer with top 15% WW and YW. Dam 1/114 WW.

9-29 J-C Armored 1907

Birth Date: 3-16-2019 Bull 19534293 Tattoo: 1907

Connealy Armory 3941 #*Connealy Armory
*18538578 Black Chira of Conanga 3941

J-C Rebecca 1780 #*VAR Discovery 2240
18897468 J-C Kassie 1324

GRP#	CED	BEPD	WEPD	YEPD	RADG	SC	MILK	SEN
D	+7 45%	+1.5 55%	+68 15%	+121 15%	+2.6 30%	+6.7 60%	+24 55%	-8 40%
	\$W	\$B	BW	RATIO	ADJ. WW	RATIO	ADJ. YW	RATIO
	+73 15%	+148 25%	77	110	658	106	N/A	N/A

• Armory from Connealy out of first calf Discovery heifer with top 20% WW and 15% YW. Dam 1/106 WW.

9-30 J-C Armored 1929

Birth Date: 3-22-2019 Bull 19534286 Tattoo: 1929

Connealy Armory 3941 #*Connealy Armory
*18538578 Black Chira of Conanga 3941

J-C Cathy 1721 +*Styles Cash R400
18897472 #J-C Pendleton's Lady 1024

GRP#	CED	BEPD	WEPD	YEPD	RADG	SC	MILK	SEN
D	+7 45%	+8 40%	+60 35%	+108 30%	N/A N/A	N/A N/A	+25 50%	-15 65%
	\$W	\$B	BW	RATIO	ADJ. WW	RATIO	ADJ. YW	RATIO
	+58 40%	N/A N/A	70	100	634	103	N/A	N/A

• Armory from Connealy out of first calf Styles Cash heifer with good calving ease and growth at top 30% YW. Dam prod: 1/103 WW.

Lust Angus



**GRYDER
GARRISON
LUST**

21" | 8 LBS, 3 OZ | 1-13-2020

WELCOMING THE
5TH GENERATION
TO LUST ANGUS

**HERE'S TO
MANY MORE!**

YOU'VE DONE THE WORK.

Get paid for it.

You've invested in good genetics.
You've kept all the records.

AngusLinkSM combines USDA Process Verified Programs with a Genetic Merit Scorecard that gives buyers confidence in your calves. From age and source verification to cattle care and handling, you choose which programs make the most sense for you.

**Group Age & Source • Angus-Sired Genetics
Non-Hormone Treated Cattle • NeverEver²
Cattle Care & Handling • Calf Management •
*Genetic Merit ScorecardSM**

**Optional, not part of the PVP claims*

Easy and affordable, our customer service representatives walk you through the process.

ANGUSLINKSM

VALUE ADDED PROGRAMS

Call us at 816-383-5100 to sign up or
visit AngusLink.com for more information.

LUST ANGUS

Tim, Lea and Dru Lust
 2946 IH 27
 Abernathy, TX 79311
 806-438-3127 Tim
 806-831-6777 Dru
 806-757-2116 Home
 lustangus@sptc.net



Lust Angus started in Lazbuddie, Texas as a part of Hinkson Angus which was founded by my grandfather, Frank Hinkson, Sr. in 1959. The registered herd was started in order to raise bulls for the family's commercial herd on a ranch on the Arizona-New Mexico border.

The ranch was rough, dry country, and these bulls needed to have a little more performance than what most breeders were raising at the time. The bulls had to travel long distances to breed cows, so they had to be sound on their feet and legs. The goal then is the same as the goal now: To raise Angus cattle that work for the commercial cattleman in a real world environment.

Today, Tim, Lea and Dru Lust run about 120 registered cows near Abernathy, Texas. My father Glenn, in "retirement" at 85, continues to take care of the cattle on a daily basis. We continue to focus on using the top AI bulls in the industry and embryo transfer to continue to improve our herd. We specialize in raising gentle, low birth weight cattle with as much muscle and carcass quality as we can get with moderate milk and good fleshing ability. For many years, Hinkson and Lust Angus had the top performing bulls at the Tucumcari bull test. Just as our family tested bulls 30 years ago to determine our top gaining genetics, we are excited to be back and testing our bulls for feed efficiency. We are honored to deliver bulls to ranches each year that we have been selling to for decades. We look forward to starting new relationships with new customers as well as our program continues to expand. We work hard to produce genetics that will help you increase the profitability of your herd.

* We have a 1 year feet and breeding guarantee on all of our bulls. Along with free delivery up to 350 miles.

10-1 Lust Payweight 919

Birth Date: 1-24-2019 Bull #*19431083 Tattoo: 919

Basin Payweight 1682 #*Basin Payweight 006S
 #*17038724 21AR O Lass 7017

GRP#
A

Lust Comrade 737 #*Connealy Comrade 1385
 #*18807759 Hinksons Beauty 13 300

ANGUSGS
Powered by Weigel Genetics

CED	BEPD	WEPD	YEPD	RADG	SC	MILK	SEN
+9	30%	+1.4	55%	+76	4%	+143	2%
+33	1%	+1.28	20%	+35	4%	-31	95%
\$W	\$B	BW	RATIO	ADJ. WW	RATIO	ADJ. YW	RATIO
+89	1%	+158	15%	78	100	642	100
						N/A	N/A

- Can't say enough about this bull. He was the high gaining bull at the 60-day mark with 4.95 ADG ratiored 150. He is an ET out of an ET donor that holds a weaning ratio of 1/106. He is the real deal.

10-2 Lust Payweight 969

Birth Date: 3-7-2019 Bull #*19431085 Tattoo: 969

Basin Payweight 1682 #*Basin Payweight 006S
 #*17038724 21AR O Lass 7017

GRP#
C

Lust Comrade 737 #*Connealy Comrade 1385
 #*18807759 Hinksons Beauty 13 300

ANGUSGS
Powered by Weigel Genetics

CED	BEPD	WEPD	YEPD	RADG	SC	MILK	SEN
+4	70%	+1.1	45%	+67	15%	+130	5%
+33	1%	+1.28	20%	+35	4%	-31	95%
\$W	\$B	BW	RATIO	ADJ. WW	RATIO	ADJ. YW	RATIO
+80	5%	+177	4%	79	100	602	100
						N/A	N/A

- Full sibling to the 10-1 bull that ranks in top 10% for YW, RADG, Doc, Milk, \$M, \$F, \$W and \$B. He is a rare combination of terminal and maternal.

10-3 Lust Payweight 916

Birth Date: 1-22-2019 Bull #*19449503 Tattoo: 916

Basin Payweight 1682 #*Basin Payweight 006S
 #*17038724 21AR O Lass 7017

GRP#
A

Weikers Blackbird 1W79 #Assman Midway T75N
 17221288 #NER Blackbird 4122

ANGUSGS
Powered by Weigel Genetics

CED	BEPD	WEPD	YEPD	RADG	SC	MILK	SEN
+2	85%	+2.3	75%	+74	5%	+132	4%
+30	10%	+4.8	70%	+37	2%	-30	95%
\$W	\$B	BW	RATIO	ADJ. WW	RATIO	ADJ. YW	RATIO
+88	2%	+168	10%	88	109	718	121
						N/A	N/A

- True power bull. Ratiored 121 at weaning along with a dam that has ratiored 5/111 at weaning along with 5 straight AI calves. Ratiored 135 for ADG at 60-day mark.

10-4 Lust Payweight 935 [DDC]

Birth Date: 1-31-2019 Bull #*19466083 Tattoo: 935

Basin Payweight 1682 #*Basin Payweight 006S
 #*17038724 21AR O Lass 7017

GRP#
B

Hinksons Pride T6280 KM Future Direction 744
 15742472 Hinksons Pride T04 4302

ANGUSGS
Powered by Weigel Genetics

CED	BEPD	WEPD	YEPD	RADG	SC	MILK	SEN
+10	20%	+6	35%	+71	10%	+121	15%
+23	55%	+5.7	65%	+33	10%	-29	95%
\$W	\$B	BW	RATIO	ADJ. WW	RATIO	ADJ. YW	RATIO
+85	2%	+148	25%	88	110	597	101
						N/A	N/A

- Half-brother to 10-1, 10-2 and 10-3 out of a 13-year-old cow who has been in the donor pen and is about to have her 11th natural calf. Ratiored 126 for ADG at 60-day mark.

10-5 Lust Sure Fire 957

Birth Date: 2-27-2019 Bull #*19430505 Tattoo: 957

GAR Sure Fire **17328461		**Connealy In Sure 8524 +Chair Rock 5050 GAR 8086					
GRP# A	Hinksons Lady Ida T2141 17474112	River Hills Upward X264 Hinksons Lady Ida T8355		ANGUSGS Powered by Ngage Genetics			
CED	BEPD	WEPD	YEPD	RADG	SC	MILK	SEN
+17 1%	-2.2 3%	+56 45%	+98 50%	+23 55%	+1.67 10%	+25 50%	+2 20%
\$W	\$B	BW	RATIO	ADJ. WW	RATIO	ADJ. YW	RATIO
+69 20%	+151 20%	80	100	662	100	N/A	N/A

• His donor dam had the test winner last year. Her 4 sons sold for an average of \$5,375. Lust Sure Fire 957 is a negative RFI maternal bull who's a calving-ease specialist with an added shot of IMF.

10-9 Lust 734 Comrade 953 [DDF]

Birth Date: 2-25-2019 Bull #19452532 Tattoo: 953

Lust Comrade 734 **18809826		**Connealy Comrade 1385 Hinksons Beauty 13 300					
GRP# A	Lust Rose 103 *17316014	TD Objective 654 Hinksons Pride T6280		ANGUSGS Powered by Ngage Genetics			
CED	BEPD	WEPD	YEPD	RADG	SC	MILK	SEN
+14 4%	-5 15%	+79 2%	+135 3%	+28 15%	+31 80%	+29 20%	-17 70%
\$W	\$B	BW	RATIO	ADJ. WW	RATIO	ADJ. YW	RATIO
+95 1%	+141 35%	82	101	656	111	N/A	N/A

• If you are looking for extreme growth in a calving-ease package, this is the bull for you. He ranks in the top 10% of the breed for 9 traits: CED, WW, YW, Doc, Angle, CW, \$M, \$F and \$W.

10-6 Lust Sure Fire 961

Birth Date: 3-3-2019 Bull #*19430506 Tattoo: 961

GAR Sure Fire **17328461		**Connealy In Sure 8524 +Chair Rock 5050 GAR 8086					
GRP# B	Hinksons Lady Ida T2141 17474112	River Hills Upward X264 Hinksons Lady Ida T8355		ANGUSGS Powered by Ngage Genetics			
CED	BEPD	WEPD	YEPD	RADG	SC	MILK	SEN
+10 20%	+6 35%	+67 15%	+115 20%	+26 30%	+1.55 10%	+27 35%	-18 75%
\$W	\$B	BW	RATIO	ADJ. WW	RATIO	ADJ. YW	RATIO
+76 10%	+156 15%	92	100	688	100	N/A	N/A

• Another son out of our Hinksons 2141 donor. He is a nice combination of growth and carcass who at the 60-day mark is ratioing 144 for ADG.

10-10 Lust Capitalist 316 972

Birth Date: 3-9-2019 Bull #19466144 Tattoo: 972

LD Capitalist 316 **17666102		**Connealy Capitalist 028 LD Dixie Erica 2053					
GRP# B	Lust 654 Objective 328 17816569	TD Objective 654 Lust 1407 Traveler 406		ANGUSGS Powered by Ngage Genetics			
CED	BEPD	WEPD	YEPD	RADG	SC	MILK	SEN
+12 10%	+1 25%	+69 15%	+127 10%	+29 10%	+70 55%	+38 2%	-33 95%
\$W	\$B	BW	RATIO	ADJ. WW	RATIO	ADJ. YW	RATIO
+86 2%	+164 10%	80	99	662	112	N/A	N/A

• This Capitalist 316 son is a very balanced heifer bull who is in the top 15% for CED, WW, YW and \$B. His dam has a weaning ratio of 3 for 110.

10-7 Lust Sure Fire 964

Birth Date: 3-4-2019 Bull #*19463813 Tattoo: 964

GAR Sure Fire **17328461		**Connealy In Sure 8524 +Chair Rock 5050 GAR 8086					
GRP# A	Hinksons Lady Ida T2141 17474112	River Hills Upward X264 Hinksons Beauty 11 135		ANGUSGS Powered by Ngage Genetics			
CED	BEPD	WEPD	YEPD	RADG	SC	MILK	SEN
+16 1%	-1.4 10%	+56 45%	+92 60%	+19 85%	+1.14 30%	+36 3%	-1 25%
\$W	\$B	BW	RATIO	ADJ. WW	RATIO	ADJ. YW	RATIO
+82 4%	+149 25%	91	100	653	100	N/A	N/A

• Full sibling to the 10-6 and 10-7 bulls. Solid heifer bull who is in the top 1% for \$M, should make you some quality replacement females.

10-11 Lust 403 Cash 960

Birth Date: 3-1-2019 Bull #19521216 Tattoo: 960

Bartels Cash 403 2002 18023196		**Barstow Cash Gina Ebony 2002 003 Bartels					
GRP# C	Hinksons Beauty 13 300 17729349	**KCF Bennett Absolute Hinksons Beauty 11 135		ANGUSGS Powered by Ngage Genetics			
CED	BEPD	WEPD	YEPD	RADG	SC	MILK	SEN
+14 4%	-6 15%	+69 15%	+127 10%	+30 10%	+98 35%	+22 70%	-25 90%
\$W	\$B	BW	RATIO	ADJ. WW	RATIO	ADJ. YW	RATIO
+70 15%	+141 35%	60	84	667	113	N/A	N/A

• Half-brother to the 10-8 bull who ranks in the top 15% of the breed for CED, BW, WW and YW. Ratioed 113 at weaning along with ratioing 126 for ADG at the 60-day mark.

10-8 Lust Complement 902

Birth Date: 1-14-2019 Bull #*19431049 Tattoo: 902

EF Complement 8088 **16198796		#Basin Franchise P142 +EF Everelda Entense 6117					
GRP# A	Hinksons Beauty 13 300 17729349	**KCF Bennett Absolute Hinksons Beauty 11 135		ANGUSGS Powered by Ngage Genetics			
CED	BEPD	WEPD	YEPD	RADG	SC	MILK	SEN
+6 50%	+1.0 45%	+74 5%	+129 10%	+28 15%	+1.27 20%	+35 4%	-31 95%
\$W	\$B	BW	RATIO	ADJ. WW	RATIO	ADJ. YW	RATIO
+90 1%	+137 40%	62	100	651	100	N/A	N/A

• Full sibling to the 2016 high gaining bull. His dam has sold 6 bulls through this test averaging over \$6,200. He also ratioed 134 for ADG at the 60-day mark.

10-12 Lust Resource 909

Birth Date: 1-19-2019 Bull #19448836 Tattoo: 909

SAV Resource 1441 **17016597		+Rito 707 of Ideal 3407 7075 *SAV Blackcap May 4136					
GRP# A	Hinksons Ann T481 *18060973	**KCF Bennett Absolute Hinksons Ann T963		ANGUSGS Powered by Ngage Genetics			
CED	BEPD	WEPD	YEPD	RADG	SC	MILK	SEN
-5 95%	+1.7 60%	+66 20%	+124 10%	+29 10%	+21 85%	+31 15%	-24 85%
\$W	\$B	BW	RATIO	ADJ. WW	RATIO	ADJ. YW	RATIO
+74 10%	+159 15%	82	101	629	106	N/A	N/A

• Another power bull who ranks in the top 15% of the breed for WW and YW along with being in the top 2% for REA. Dam has a weaning ratio of 4 for 102 and has stuck AI every time.

10-13 Lust Dash 922

Birth Date: 1-25-2019 Bull *19449430 Tattoo: 922

Sitz Dash 10277 #Sitz Upward 307R
 **15656868 +Sitz Everelda Entense 2665

GRP#
B

Lust Lady Bird 004 #BC 7022 Raven 7965
 16915700 Lust Grid Maker 301

ANGUSGS
Powered by Mygen Genetics

CED	BEPD	WEPD	YEPD	RADG	SC	MILK	SEN
+9 30%	+1.6 60%	+62 25%	+105 35%	+20 80%	+0.2 90%	+23 65%	-16 65%
\$W	\$B	BW	RATIO	ADJ. WW	RATIO	ADJ. YW	RATIO
+64 25%	+117 70%	76	94	527	89	N/A	N/A

• This Dash son is a balanced bull who ratioed 125 for ADG at the 60-day mark of the test.

10-17 Lust Bankroll 920

Birth Date: 1-24-2019 Bull 19448325 [DDF] Tattoo: 920

Barstow Bankroll B73 #*Barstow Cash
 *18036327 Barstow Miss Dianna Z25

GRP#
C

RWL&C 504 Celeste E429 Salazar Cowboy Logic 504
 19032962 RWL&C 5684 Celeste X429

ANGUSGS
Powered by Mygen Genetics

CED	BEPD	WEPD	YEPD	RADG	SC	MILK	SEN
+15 2%	-1.6 5%	+51 65%	+94 55%	+26 30%	+1.5 85%	+21 80%	-19 75%
\$W	\$B	BW	RATIO	ADJ. WW	RATIO	ADJ. YW	RATIO
+49 65%	+144 30%	62	86	565	95	N/A	N/A

• Sleep all night heifer bull.

10-14 Lust Resource 973

Birth Date: 3-8-2019 Bull *19459405 Tattoo: 973

SAV Resource 1441 +Rito 707 of Ideal 3407 7075
 #+*17016597 *SAV Blackcap May 4136

GRP#
A

Lust 654 Objective 325 TD Objective 654
 17816573 Lust Retail Product 726

ANGUSGS
Powered by Mygen Genetics

CED	BEPD	WEPD	YEPD	RADG	SC	MILK	SEN
+5 60%	+2.1 70%	+73 10%	+121 15%	+20 80%	+1.28 20%	+25 50%	-22 85%
\$W	\$B	BW	RATIO	ADJ. WW	RATIO	ADJ. YW	RATIO
+77 10%	+127 55%	80	99	659	111	N/A	N/A

• This is a well-designed, good Resource son whose dam has a weaning ratio of 3 for 106.

10-18 Lust 403 Cash 943

Birth Date: 2-13-2019 Bull *19474684 Tattoo: 943

Barstow Cash 403 2002 #*Barstow Cash
 18023196 Gina Ebony 2002 003 Barstow

GRP#
D

Lust 010 In Focus 411 Lust In Focus 010
 18493225 Lust In Focus 002

ANGUSGS
Powered by Mygen Genetics

CED	BEPD	WEPD	YEPD	RADG	SC	MILK	SEN
+11 15%	+2 30%	+60 35%	+109 30%	+24 45%	+1.21 25%	+22 70%	-9 45%
\$W	\$B	BW	RATIO	ADJ. WW	RATIO	ADJ. YW	RATIO
+62 30%	+108 80%	86	106	549	93	N/A	N/A

• Solid heifer bull who ranks in the top 30% of the breed for WW and YW.

10-15 Lust Resource 978

Birth Date: 3-14-2019 Bull *19466398 Tattoo: 978

SAV Resource 1441 +Rito 707 of Ideal 3407 7075
 #+*17016597 *SAV Blackcap May 4136

GRP#
B

Lust Predestined 824 #*GAR Predestined
 *16390273 Lust Expectation 103

ANGUSGS
Powered by Mygen Genetics

CED	BEPD	WEPD	YEPD	RADG	SC	MILK	SEN
+0 90%	+4.2 95%	+61 30%	+106 35%	+20 80%	+2.04 2%	+34 5%	-19 75%
\$W	\$B	BW	RATIO	ADJ. WW	RATIO	ADJ. YW	RATIO
+66 25%	+109 80%	94	117	669	113	N/A	N/A

• Resource son out of one of our top producing cows, year in and year out. He ratioed 128 for ADG at the 60-day mark.

10-19 Lust 701 Capitalist 983

Birth Date: 3-19-2019 Bull *19466401 Tattoo: 983

Lust Capitalist 701 #*Connealy Capitalist 028
 +*18807684 Hinksons Beauty 13 300

GRP#
B

Hinksons Eline 13 3118 River Hills Efficient W782
 17835364 Hinksons Eline 03 3112

ANGUSGS
Powered by Mygen Genetics

CED	BEPD	WEPD	YEPD	RADG	SC	MILK	SEN
+11 15%	+0 25%	+57 40%	+100 45%	+24 45%	+3.9 75%	+13 95%	-2 25%
\$W	\$B	BW	RATIO	ADJ. WW	RATIO	ADJ. YW	RATIO
+49 65%	+139 35%	86	106	564	95	N/A	N/A

• Solid heifer bull who is well designed and low milking.

10-16 Lust Bankroll 926

Birth Date: 1-26-2019 Bull *19448334 Tattoo: 926

Barstow Bankroll B73 #*Barstow Cash
 *18036327 Barstow Miss Dianna Z25

GRP#
B

Lust Capitlist 503 #*Connealy Capitalist 028
 *18212109 Hinksons Blackcap 13 3122

ANGUSGS
Powered by Mygen Genetics

CED	BEPD	WEPD	YEPD	RADG	SC	MILK	SEN
+14 4%	-1.7 5%	+54 55%	+101 45%	+24 45%	+1.57 10%	+23 65%	-14 60%
\$W	\$B	BW	RATIO	ADJ. WW	RATIO	ADJ. YW	RATIO
+58 40%	+127 55%	77	96	577	97	N/A	N/A

• Sleep all night heifer bull.

10-20 Lust 7024 Wave 932

Birth Date: 1-29-2019 Bull *19459406 Tattoo: 932

GAR Wave 7024 #*Gardens Wave
 +*17965515 +GAR Daybreak 3370

GRP#
C

Lust Comrade 726 #*Connealy Comrade 1385
 +*18809829 Hinksons Beauty 13 300

ANGUSGS
Powered by Mygen Genetics

CED	BEPD	WEPD	YEPD	RADG	SC	MILK	SEN
+13 10%	-2.5 2%	+45 80%	+91 65%	+27 20%	+8.9 45%	+34 5%	+3 15%
\$W	\$B	BW	RATIO	ADJ. WW	RATIO	ADJ. YW	RATIO
+65 25%	+172 10%	62	86	544	92	N/A	N/A

• Sleep all night heifer bull out of a full sister to 10-1's dam with added carcass quality. Negative RFI bull whose females will save you money for generations to come.

MEAD ANGUS

Regan and Melissa Mead

Hartley, TX

806-576-6523

melissa.mead@co.hartley.tx.us



Mead Angus is a family owned and operated Angus business, located in Hartley, Texas and San Jon, New Mexico. We continue to build on the Angus foundation that was started by Regan's parents, Bob and Joanne Mead, over 50 years ago.

We improve our herd every year to meet the needs of our customers, through AI and selection of cows and heifers to raise bulls and heifers that will work for you, here in our Southwest environment. We continue to keep low birth weights with fast growing, easy keeping calves that are raised in San Jon, New Mexico.

12-1 Meads upfront 839

Birth Date: 2-1-2019

[AMF-CAF-D2F-DDF-M1F-NHF-OHF-OSF-RDF]
Bull *19529775 Tattoo: M839

Meads Upfront 226
18732580

+*VAR Upfront 0392
Meads Bando Structure 142

GRP#
A

Meads Bando Structure 525
18239402

Meads Final Fortune 141
Meads Desert Bando 108

ANGUSGS
Powered by Neogen Zoetis

CED	BEPD	WEPD	YEPD	RADG	SC	MILK	SEN
+1 90%	+1.7 60%	+42 85%	+75 90%	+23 55%	+1.09 30%	+22 70%	-1 25%
\$W	\$B	BW	RATIO	ADJ. WW	RATIO	ADJ. YW	RATIO
+39 85%	+107 85%	68	101	642	91	N/A	N/A

12-2 Meads upfront 849

Birth Date: 2-2-2019

[AMF-CAF-D2F-DDF-M1F-NHF-OHF-OSF-RDF]
Bull 19529776 Tattoo: M849

Meads Upfront 226
18732580

+*VAR Upfront 0392
Meads Bando Structure 142

GRP#
A

Meads Windy Structure 505
18220183

Meads Final Fortune 141
Meads Windy Desert 213

ANGUSGS
Powered by Neogen Zoetis

CED	BEPD	WEPD	YEPD	RADG	SC	MILK	SEN
-5 95%	+4.7 95%	+77 3%	+129 10%	+30 10%	+95 40%	+20 85%	-32 95%
\$W	\$B	BW	RATIO	ADJ. WW	RATIO	ADJ. YW	RATIO
+62 30%	+165 10%	68	101	741	106	N/A	N/A



Driving the science of better breeding

There's little room for error in the cattle business. Producers need the most advanced information to make smart selection decisions, and Angus Genetics Inc. (AGI) provides it through genomic-enhanced expected progeny differences (GE-EPDs).

EPDs that traditionally contained all pedigree, performance and progeny information now also include results from available genomic, or DNA, tests. Breeders who use genomic technology give buyers access to AGI-generated GE-EPDs that provide:

- Increased predictability and decreased risk for young and unproven animals due to enhanced accuracy of EPDs
- Better characterization of genetics for difficult-to-measure performance traits (such as carcass traits, maternal traits and feed efficiency)
- The ability to make more rapid progress for traits that are important to you, due to:
 - more accurate selection
 - easier identification of genetic outliers
 - the ability to propagate young animals with confidence earlier in their lives

In fact, GE-EPDs on unproven animals have the same amount of accuracy as if they had recorded 8-33 calves, depending on the trait. That's valuable insight, offered regularly through the breed's weekly national cattle evaluation at www.angus.org.

How do you know if EPDs are genomic-enhanced?

Ask your breeder, refer to the registration paper, or look for the AGI GE-EPD logo, Angus GS™ powered by partner Neogen GeneSeek or the HD50k or i50k by partner Zoetis.



C & C DUVALL RANCHES

Caleb Duvall

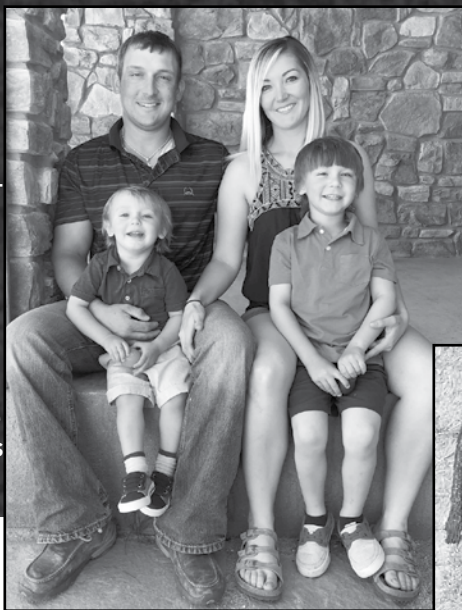
Lamar, CO

719-688-4646

<https://www.ccduvallranches.com/>

C & C DuVal Ranches is located in Southeastern Colorado. We started our registered Red Angus herd in 2014. Before that, we raised a commercial, crossbred cow herd since 2008 and sold out to get into the registered cow business. We currently have a growing herd of 40 registered Red Angus cows. We are looking to produce top quality bulls and replacement females.

Family has been a large part in growing our cattle. Caleb got his start on DuVal Ranches working and learning how to farm and ranch from multiple generations. The DuVals once had registered Polled Herefords, but now run a large commercial herd and operate a dryland farming operation south of Granada, Colorado. Chanelle's family raises both registered and commercial cattle. They spread from Arizona to Oklahoma. Her father, John Sutphin, III of Sutphin Cattle Company, helped the DuVals begin their registered business with a set of 10 Red Angus heifers.



13-1 DUV COLT G905

Birth Date: 01-17-2019

BULL 4113536

Tattoo: G905

DUVALL COLT C7211
3501552

C-BAR COLT 121Y
TKP BELLE 7211

GRP#
A

DUVAL MISS ROLLING DEEP C348
1750546

SPUR ROLLIN DEEP 2440A
SUTP MISS FULL THROTTLE 348

CED	BEPD	WEPD	YEPD	MM	CEM	MARB	YG
12	55%	-1.1	56%	54	69%	85	67%
23	57%	8	22%	0.28	78%	0.11	52%
CW	REA	BF	BW	WW			
26	27%	0.18	18%	0.04	81%	71	730

13-3 DUV DOMAIN G901

Birth Date: 01-06-2019

BULL 4113528

Tattoo: G901

3SCC DOMAIN A163
1619642

BECKTON DOMINOR T122 Z1
3SCC EUCLA X723

GRP#
A

RAISLAND REBELLA 467-123
1682459

SUNR GRAVITY FORCE 755W
RAISLAND REBELLA 123-870

CED	BEPD	WEPD	YEPD	MM	CEM	MARB	YG
16	9%	-3.3	14%	50	83%	84	71%
26	22%	7	63%	0.46	32%	0.18	91%
CW	REA	BF	BW	WW			
15	70%	-0.06	69%	0.05	97%	63	720

13-2 DUV DOMAIN G917

Birth Date: 02-21-2019

BULL 4113560

Tattoo: G917

3SCC DOMAIN A163
1619642

BECKTON DOMINOR T122 Z1
3SCC EUCLA X723

GRP#
B

RAISLAND REBELLA 470-162
1682460

LOOSLI HOBO 922
RAISLAND REBELLA 162-606

CED	BEPD	WEPD	YEPD	MM	CEM	MARB	YG
18	3%	-4.2	6%	51	80%	80	78%
27	16%	8	40%	0.47	30%	0.21	95%
CW	REA	BF	BW	WW			
16	68%	-0.13	84%	0.05	97%	64	N/A

13-4 DUV OLY G913

Birth Date: 02-04-2019

BULL 4113552

Tattoo: G913

BIEBER OLY Z260
1522535

VGW OLY 903
BIEBER TILLY 362W

GRP#
B

DUVALL'S MISS DENIRO D606
3548193

LEACHMAN DENIRO A090X
SUTP MISS IMPRESSIVE 3118

CED	BEPD	WEPD	YEPD	MM	CEM	MARB	YG
15	18%	-2.7	23%	54	69%	92	50%
29	6%	9	12%	0.28	78%	0.03	15%
CW	REA	BF	BW	WW			
21	49%	0.23	12%	0.02	46%	59	N/A

RIVERSIDE ANGUS



Alex and JoEllen Netherton
Sons: Cody and Evan
 11579 Co Rd. FF .75
 Las Animas, CO 81054
 719-980-5075 mobile
 719-456-0714 home
 719-456-0200 office
 alex_colo_75@yahoo.com
 http://www.Riversideangus.com

Located just 80 miles from Kansas and 100 miles from the Oklahoma state line, Riverside Angus is based at the confluence of the Arkansas and Purgatoire Rivers on the high plains of Colorado, where rain and grass are rarely abundant. Because our cattle are raised in this tough environment and are forced to get out and make their living off the land, we feel that they have the potential to maintain themselves well, if not thrive in almost any environment.

After raising commercial cattle since the early 1990's, in 2005 we bought our foundation 40 registered cows from the Larson program at Sharon Springs, Kansas after looking throughout the country for a set of uniform cows we could

buy that were based on good bloodlines that we thought would work in our area. Fifteen years later we have used AI extensively and Embryo Transfer on a limited basis, to try to develop a maternally based cow herd that produces calves that will gain and grade and make money in this business, where the profit margin seems to get thinned every year.

We very much appreciate your time and consideration in looking through our bulls and look forward to visiting with you the morning of the sale or anytime prior to sale day by calling 719-980-5075. Thank you and may God bless you and yours.

14-1 Riverside Steadfast G63 [AMF-CAF-DZF-DDF-MYF-NHF-OHF-OSF-RDF]

Birth Date: 3-12-2019 Bull 19453624 Tattoo: G63

LAR Steadfast 7184 +*Angus Hill Steadfast 854B
 19003300 LAR 449 Joanie 3186

GRP#
B

LAR K205 Blackcap 964 #Nichols Extra K205
 16549805 LAR Blackcap 6421

ANGUS GS
Powered by InVivo Genetics

CED	BEPD	WEPD	YEPD	RADG	SC	MILK	\$EN
+5 60%	+3 30%	+50 65%	+88 70%	+21 70%	+10 90%	+22 70%	+0 20%
\$W	\$B	BW	RATIO	ADJ. WW	RATIO	ADJ. YW	RATIO
+53 55%	+125 60%	70	97	728	106	N/A	N/A

- One of four bulls out of our walking sire LAR Steadfast 7184, who topped the Larson sale in 2018 at \$7,750. We think this young bull will be a cow maker, with a \$M value in the top 10% of the breed and a Heifer Pregnancy EPD in the top 3%.

14-4 Riverside Steadfast G5

Birth Date: 3-10-2019 Bull *19453619 Tattoo: G5

LAR Steadfast 7184 +*Angus Hill Steadfast 854B
 19003300 LAR 449 Joanie 3186

GRP#
B

Riverside Pride D39 Cole Creek Revival 100W
 18549237 +JSK Pride 318

ANGUS GS
Powered by InVivo Genetics

CED	BEPD	WEPD	YEPD	RADG	SC	MILK	\$EN
+7 45%	-1 25%	+56 45%	+95 55%	+19 85%	+68 60%	+35 4%	-12 55%
\$W	\$B	BW	RATIO	ADJ. WW	RATIO	ADJ. YW	RATIO
+75 10%	+109 80%	70	100	678	99	N/A	N/A

- This easy calving, moderate framed bull will make some heavy milking, good replacement females as he's in the top 4% of the breed for Milk and the top 15% of the breed for the \$M value at +71.

14-2 Riverside Steadfast G37

Birth Date: 3-4-2019 Bull 19453616 Tattoo: G37

LAR Steadfast 7184 +*Angus Hill Steadfast 854B
 19003300 LAR 449 Joanie 3186

GRP#
B

Riverside Rita B29 #SAV Pioneer 7301
 +17872307 +*Rita 3X29 of 2536 EXP

ANGUS GS
Powered by InVivo Genetics

CED	BEPD	WEPD	YEPD	RADG	SC	MILK	\$EN
+6 50%	+3 30%	+54 55%	+100 45%	+24 45%	+47 70%	+35 4%	-5 35%
\$W	\$B	BW	RATIO	ADJ. WW	RATIO	ADJ. YW	RATIO
+72 15%	+133 45%	70	96	667	97	N/A	N/A

- His dam is a product of our ET program and is one of three big broody flush sisters that resulted from a set of five embryos we bought from Leonard Newman's embryo production program in Indiana. This bull should be another maternal giant as his genomic profile indicates he will be at least in the top 5% for Milk, Heifer Pregnancy, and \$M.

14-5 Riverside Bronc G43 [OHP]

Birth Date: 3-3-2019 Bull 19454173 Tattoo: G43

Baldrige Bronc *EF Commando 1366
 +*18229425 *Baldrige Isabel Y69

GRP#
B

Lawson 485 Pride 6280 #*Connealy Union 215X
 18671176 Lawson 280 Pride Ranger Y110

ANGUS GS
Powered by InVivo Genetics

CED	BEPD	WEPD	YEPD	RADG	SC	MILK	\$EN
+9 30%	-1 25%	+67 15%	+118 15%	+25 35%	+1.01 35%	+27 35%	-21 80%
\$W	\$B	BW	RATIO	ADJ. WW	RATIO	ADJ. YW	RATIO
+72 15%	+112 75%	64	92	750	109	N/A	N/A

- This deep and square, moderate framed Bronc son brings a ton of calving ease and growth to the table as he's in the top 15% of the breed for both weaning and yearling weight. Couple that with his dam, whose blood traces to Connealy Consensus and OCC Echelon and he has the makings of being a real solid bull.

14-6 Riverside Treasure G45

Birth Date: 3-1-2019 Bull 19456293 Tattoo: G45

MGR Treasure #*VAR Discovery 2240
 +*18156972 +*SJH Impression of 6108 1614

GRP#
A

Lady Hans Thunder 0014 #Connealy Thunder
 16603174 Lady Hans Lead On 644

CED	BEPD	WEPD	YEPD	RADG	SC	MILK	SEN
+7 45%	+9 40%	+59 35%	+109 30%	+1.25 35%	+1.70 55%	+17 95%	-3 30%
SW	SB	BW	RATIO	ADJ. WW	RATIO	ADJ. YW	RATIO
+49 65%	+145 30%	74	101	709	104	N/A	N/A

• This is one of our smoothest, best made MGR Treasure calves and we thought enough of him to bring him for your consideration. MGR Treasure offspring have been in high demand and we used him again this fall and spring for his ability to produce easy calving, well-made calves that grow and finish like we hope they all will.

14-7 Riverside Blazer G69

Birth Date: 1-28-2019 Bull 19455244 Tattoo: G69 [DDF-OHF]

LD Emblazon 999 #+OCC Emblazon 854E
 *16665803 #+SH Forever Lady 3124 5118

GRP#
A

SandPoint Erica 6170 BA Ten X 1315
 18512183 SandPoint Erica 1058

ANGUS GS
 Parent of Angus Genetics

CED	BEPD	WEPD	YEPD	RADG	SC	MILK	SEN
+7 45%	+1.2 50%	+66 20%	+121 15%	+27 20%	+1.1 90%	+25 50%	-27 90%
SW	SB	BW	RATIO	ADJ. WW	RATIO	ADJ. YW	RATIO
+67 20%	+129 50%	75	107	740	108	N/A	N/A

• I thought long and hard about keeping this young stud to cover my heifers this year and would be interested in semen on him if you have him collected. He was a standout from birth and turned out even better than we could have hoped for. We picked up his dam at the Sandpoint Dispersal and think she could easily be the best cow we bought that day. Easy calving and a ton of growth as well as being dog gentle are just a few of the attributes this bull possesses.

NETHERTON CHAROLAIS

Dennis "Corky" Netherton

305 Vigil Ave.
 Las Animas, CO 81054
 719-980-0365 cell
 719-456-0185 home

Netherton Farms was founded in 1969, starting with just a handful of calves I bought from a neighbor. Almost 50 years later we run over 450 registered cows, about 250 Charolais and 200 Angus on just over 12,000 acres of grass in South-eastern Colorado.

We have searched endlessly over the years for cattle that are thick, correct and square, while still being easy keeping without the need for pampering and extra care. Because of the large pastures we run in, AI is not really feasible, but to combat that, we travel throughout the country looking for the best bulls we can find.

15-1 NCF LEDGER 93 P

Date of Birth: 3/1/2019 Bull M926344 Tattoo: 93

DC MR LEDGER C005 PLD LT LEDGER 0332 P
 M862444 DC MS DIABLO 1313 PLD

GRP#
A

NCF LADY MUSCAT 200 HAMM MOGO 64T ET TSI
 F1171204 NCF LADY CHROME 809 P N/A N/A

CE	BEPD	WEPD	YEPD	MILK	MCE	MTL	SC
4.9 60%	0.1 45%	24 80%	47 75%	5 80%	5.9 50%	17 90%	N/A N/A
BW	RATIO	ADJ. WW	RATIO	ADJ. YW	RATIO	ADJ. YW	RATIO
80	N/A	N/A	N/A	N/A	N/A	N/A	N/A

15-3 NCF LEDGER 930

Date of Birth: 3/4/2019 Bull M926346 Tattoo: 930

DC MR LEDGER C005 PLD LT LEDGER 0332 P
 M862444 DC MS DIABLO 1313 PLD

GRP#
A

NCF LADY LEGEND 2310 DC LEGEND JO 650 PLD TSI
 F1171193 NCF MS FASTRACK 6013P 202.66 N/A

CE	BEPD	WEPD	YEPD	MILK	MCE	MTL	SC
6.6 40%	-0.4 35%	30 55%	58 50%	6 80%	6.9 35%	21 75%	N/A N/A
BW	RATIO	ADJ. WW	RATIO	ADJ. YW	RATIO	ADJ. YW	RATIO
85	N/A	N/A	N/A	N/A	N/A	N/A	N/A

15-2 NCF LEDGER 920 P

Date of Birth: 2/28/2019 Bull M926345 Tattoo: 920

DC MR LEDGER C005 PLD LT LEDGER 0332 P
 M862444 DC MS DIABLO 1313 PLD

GRP#
A

NCF BLUE LADY 230 RAILE 4017 X195 TSI
 F1171203 NCF LADY LEGEND 803 P 207.79 N/A

CE	BEPD	WEPD	YEPD	MILK	MCE	MTL	SC
2.3 80%	1.7 75%	31 50%	64 35%	7 75%	4.7 65%	22 70%	N/A N/A
BW	RATIO	ADJ. WW	RATIO	ADJ. YW	RATIO	ADJ. YW	RATIO
82	N/A	N/A	N/A	N/A	N/A	N/A	N/A



NMSU Tucumcari Ag Science Center Crew

REYES CATTLE COMPANY

Jason and Justin Reyes
 1301 N. Oregon, Ste. 300
 El Paso, TX 79902
 915-253-2883
 reyesbuilt@gmail.com



Established in 2015, Reyes Cattle Co. is located in Anthony, New Mexico. Reyes Cattle is a family-owned and operated organization dedicated to registered Black Angus.

Our herd was hand selected from some of the top Angus breeders in the area. With our strong AI breeding program, our goals are to produce easy calving, high weaning and yearling weights, as well as docile Angus. In mid-2017 we took our program to the next level by starting our embryo transfer program and purchasing top embryos from Baldrige Bros. out of New Platte, Nebraska. We strive to improve the genetics of our herd in order to provide our customers with the most progressive genetics possible.

We are excited to be a part of the Tucumcari Bull Test. This gives us the opportunity to test our bulls alongside other great Angus producers. Customer satisfaction and long standing relationships is what Reyes Cattle Co. is all about.

16-1 3R Ramesses 1911

Birth Date: 4-8-2019 Bull 19498845 Tattoo: 1911

Springfield Ramesses 6124 +*Quaker Hill Rampage 0A36
 +*18746724 *Welytok Total 10 Erianna 3B2

GRP#	D
Mccall P472 Ef Imp 544	EF Impression 2648
18304269	PAR P472

ANGUSGS
Powered by Regen Genetics

CED	BEPD	WEPD	YEPD	RADG	SC	MILK	SEN
+11 15%	+5 35%	+73 10%	+136 3%	+33 1%	+1.61 10%	+19 90%	-37 95%
\$W	\$B	BW	RATIO	ADJ. WW	RATIO	ADJ. YW	RATIO
+65 25%	+160 15%	72	90	519	106	N/A	N/A

- AI bull to Springfield Ramesses 6124. A younger bull, but a good one with numbers to show. Great Calving Ease and will still put the weight on with his +73 WW and +136 YW.

16-3 3R Acclaim 1904

Birth Date: 1-17-2019 Bull +*19369637 Tattoo: 1904

Jindra Acclaim +*Jindra 3rd Dimension
 *17972810 +Jindra Blackbird Lassy 1111

GRP#	A
Mccall Blackbrd 020 2022 532	RAB JR Absolute 3211Z
18306375	MCCALL Blackbird Con020 2022

ANGUSGS
Powered by Regen Genetics

CED	BEPD	WEPD	YEPD	RADG	SC	MILK	SEN
+11 15%	-2.0 4%	+58 40%	+118 15%	+33 1%	-44 95%	+25 50%	-24 85%
\$W	\$B	BW	RATIO	ADJ. WW	RATIO	ADJ. YW	RATIO
+60 35%	+190 2%	88	100	649	100	N/A	N/A

- AI bull to the very popular Jindra Acclaim, and has the numbers to show it! Great Calving Ease and \$Beef, well balanced bull for any heard. Also, meets the CAB Target the Brand specs.

16-2 3R Ramesses 1907

Birth Date: 3-23-2019 Bull 19486983 Tattoo: 1907

Springfield Ramesses 6124 +*Quaker Hill Rampage 0A36
 +*18746724 *Welytok Total 10 Erianna 3B2

GRP#	D
Slash 3C 17X of R51	+Manzano Embazon 7146 ET
16707479	Manzano Echelon R51

ANGUSGS
Powered by Regen Genetics

CED	BEPD	WEPD	YEPD	RADG	SC	MILK	SEN
+10 20%	+9 40%	+66 20%	+119 15%	+28 15%	+77 50%	+26 40%	-26 90%
\$W	\$B	BW	RATIO	ADJ. WW	RATIO	ADJ. YW	RATIO
+70 15%	+143 30%	85	105	541	110	N/A	N/A

- AI bull to Springfield Ramesses. Good Calving Ease and will still put weight on your calves with his +66 WW and +119 YW ratio. Also, meets the CAB Target the Brand specs.

16-4 3R Arsenal 1901

Birth Date: 1-10-2019 Bull +*19369639 Tattoo: 1901

44 Arsenal 4W07 #*Baldrige Waylon W34
 +*17857587 *DZ ND 5050 0F15

GRP#	B
RB Blackcap 234	*B/R Future Direction 4268
*17466772	*RB Blackcap 822

ANGUSGS
Powered by Regen Genetics

CED	BEPD	WEPD	YEPD	RADG	SC	MILK	SEN
+4 70%	+3.1 90%	+72 10%	+126 10%	+32 2%	-1.07 95%	+9 95%	-12 55%
\$W	\$B	BW	RATIO	ADJ. WW	RATIO	ADJ. YW	RATIO
+50 65%	+221 1%	84	100	566	100	N/A	N/A

- ET bull, and son to 44 Farms 44 Arsenal 4W07. Top 10% or better in 10 of his EDPs. With an amazing 220 \$Beef, maybe the highest in the sale! Strong breeding in this bull! Also, meets the CAB Target the Brand specs.

SALAZAR RANCHES



Miguel Salazar

505-929-0334

salazar_ranches@yahoo.com

As a fourth generation cattle rancher, born and raised in Chili, New Mexico, I come from a commercial cattle background and wanted to blaze new trails by starting my own registered herd of Black Angus and Horned Hereford cattle. In 2003, Salazar Ranches purchased our first Angus from Stevenson Basin and High Valley Angus, and Herefords from OXO Herefords and West Star Herefords.

Since then, Salazar Ranches has increased herd size by utilizing AI and hopes to implement an embryo transfer program. There is a strong focus on maternal traits. One of the most important selling points of our herd is the powerful set of females we raise. It takes great cows to produce great bulls and replacement females.

Salazar Ranches is unique to most seedstock breeders in New Mexico, as we run cattle in high-altitude from May 15th through December 1st. Altitudes range from 6,000 to 10,500. In 2013 we started PAP testing bull and replacement females.

You are always welcome to come visit the Salazar Ranches operation, located in Northern New Mexico.

Over the last several years, we have participated in the Tucumcari Bull Test and Midland Bull Test in order to see how our genetics compare to other top breeders from around the western United States. Salazar Ranches is pleased with the results and are confident our livestock will perform in any environment, in both commercial and purebred operations.

* Guarantees and delivery negotiable by bull. Contact seller for more information.

17-1 Salazar Whitlock 914

Birth Date: 1-15-2019 Bull 1956395 Tattoo: 914

S Whitlock 179 #*S Chisum 6175
#*17007891 #S Pride Anna 709

GRP#
A

HV Miss Upshot 4167 #*EXAR Upshot 0562B
17966355 HV Miss Charli 0124



CED	BEPD	WEPD	YEPD	RADG	SC	MILK	SEN
+5 60%	+2.2 70%	+68 15%	+130 5%	+29 10%	+1.35 20%	+33 10%	-37 95%
\$W	\$B	BW	RATIO	ADJ. WW	RATIO	ADJ. YW	RATIO
+72 15%	+150 25%	74	95	679	117	N/A	N/A

- Ranking in the top 5% for yearling weight, and top 15% for weaning weight, he will generate big, eye appealing calves. Best to use on cows. PAP scores available sale day.

17-2 Salazar Megahit 911

Birth Date: 1-15-2019 Bull *19592719 Tattoo: 911

Jindra Megahit Hoff Blockbuster SC 929 1612
#*17731559 Hoff Sweetheart SC 216

GRP#
B

Salazar Blackcap Lucy 606 #Poss Total Impact 745
18506420 Salazar Lucy A05



CED	BEPD	WEPD	YEPD	RADG	SC	MILK	SEN
+10 20%	+9 40%	+76 4%	+130 5%	+29 10%	+1.08 30%	+20 85%	-38 95%
\$W	\$B	BW	RATIO	ADJ. WW	RATIO	ADJ. YW	RATIO
+71 15%	+152 20%	86	114	600	104	N/A	N/A

- The genetics this bull will bring to your herd will add pounds in the weaning pen. Best to be used on cows, this bull ranks in the top 10% for WW, RADG and YW. PAP scores available sale day.

17-3 Salazar Extra 929

Birth Date: 2-9-2019 Bull 19562875 Tattoo: 929

Circle L Extra D64 #*Circle L Extra 29w
18957256 Circle L Blackcap 947

GRP#
A

Salazar EZ Lady 122Y Stevenson Captain S184
16951452 Stevenson EZ Lady W29S



CED	BEPD	WEPD	YEPD	RADG	SC	MILK	SEN
+4 70%	+7 40%	+52 60%	+93 60%	+22 65%	+35 80%	+34 5%	-16 65%
\$W	\$B	BW	RATIO	ADJ. WW	RATIO	ADJ. YW	RATIO
+65 25%	+111 80%	83	106	663	115	N/A	N/A

- This bull is one of the top performing Angus on test this year. Gaining over 4 lbs./day he has a ADG ratio of 115. Very feed efficient, converting 4.77 lbs. per day and has an RFI value of -3.07. PAP scores available sale day.

17-4 SALAZAR SMALL TOWN KID 910

Birth Date: 1/15/2019 Bull 44095470 Tattoo: 910

KT SMALL TOWN KID 5051 (DLFHYFEFMSUDR) NJW 73S W18 HOMETOWN 10Y ET (SDDCHBILDFHYFEFMSUDR)
P43621413 KT MS 0124 TIMES A WASTIN 2086 (DDDDLDFHYFEF)

GRP#
B

SALAZAR DUSTY ROSE 413 HH ADVANCE 1098Y (DLFHYFEF)
43527087 WSR DOMINETTE 532R

CE	BEPD	WEPD	YEPD	MM	MV	MCE
4.7 31%	2.3 34%	55 38%	85 50%	30 14%	57 18%	1.6 55%
MCW	UDDR	TEAT	SC	BMI	BII	CHB
89 49%	1.5 7%	1.4 7%	0.9 46%	354 37%	432 32%	103 42%
BW	RATIO	ADJ. WW	RATIO	ADJ. YW	RATIO	RATIO
83	103	534	100	N/A	N/A	N/A

- This bull should cover a lot of country and add performance to his calves. He is also one of the top performing Herefords on test with a 121 ratio for average daily gain. PAP scores available sale day.

WALKER ANGUS

Donald and Donna Walker

7871 State Hwy 209
Tucumcari, NM 88401
575-403-9972
doncattle4@gmail.com



The Owen Ranch was started by my grandparents. Grandfather came to New Mexico from Ethridge, Tennessee. My grandmother came to New Mexico from Atoka, Oklahoma. My grandfather settled on the plains between Grady and Ragland, New Mexico.

My grandmother settled in Quay, New Mexico. They had my mother, Billie Louise Owen who stills resides on the ranch with my sister Linda Walker. My wife Donna, and I have been married for 36 years. We have two daughters Tonja and Lynette. We started raising registered Angus cattle in 2008.

18-1 WA Conntor

Birth Date: 2-27-2019 Bull 19578114 Tattoo: 902

EXAR Impression 3590B *17587187
+EXAR Impression 5231B
+*VAR Lucy 1121

GRP#	RWL&C Ab Prom Lass Y060 17722164		RWL&C Focus Aberdeen X091 RWL&C FD Prom Lass A027				
A							
CED	BEPD	WEPD	YEPD	RADG	SC	MILK	SEN
+14	+1	+32	+65	+20	+61	+26	+11
+7	+1.4	+43	+77	N/A	N/A	+25	-1
\$W	\$B	BW	RATIO	ADJ. WW	RATIO	ADJ. YW	RATIO
+38	+105						
+42	N/A						

18-4 WA New Conn 50 [DDP-OHP]

Birth Date: 2-22-2019 Bull 19578117 Tattoo: 903

EXAR Impression 3590B *17587187
+EXAR Impression 5231B
+*VAR Lucy 1121

GRP#	RWL&C 5050 Ideal A449 17732508		+*GAR 5050 New Design 6829 RWL&C Nebraska Ideal S156				
A							
CED	BEPD	WEPD	YEPD	RADG	SC	MILK	SEN
+14	+1	+32	+65	+20	+61	+26	+11
+9	+1.7	+43	+79	+24	+65	+24	+8
\$W	\$B	BW	RATIO	ADJ. WW	RATIO	ADJ. YW	RATIO
+38	+105						
+47	+138						

18-2 WA Clasday [DDP]

Birth Date: 2-20-2019 Bull 19578115 Tattoo: 920

EXAR Classen 9943B *17602836
+*EXAR Classen 1422B
EXAR Envious Blackbird 0227

GRP#	RWL&C Y011day Analyst A625 17732505		RWL&C Day Protege 004 Y011 RWL&C Day Analyst Anita Y007				
A							
CED	BEPD	WEPD	YEPD	RADG	SC	MILK	SEN
+8	+1.9	+52	+83	+19	-.03	+19	-4
+12	1.7	+47	+82	+25	+0.1	+26	-5
\$W	\$B	BW	RATIO	ADJ. WW	RATIO	ADJ. YW	RATIO
+49	+114						
+54	+148						

18-5 WA Conpro [DDP-OHP]

Birth Date: 2-26-2019 Bull 19578118 Tattoo: 928

EXAR Impression 3590B *17587187
+EXAR Impression 5231B
+*VAR Lucy 1121

GRP#	RWL&C Y011daybrk Abby A418 17732494		RWL&C Day Protege 004 Y011 RWL&C Aberdeen 759 Lady Y591				
A							
CED	BEPD	WEPD	YEPD	RADG	SC	MILK	SEN
+14	+1	+32	+65	+20	+61	+26	+11
+8	+1.9	+49	+85	N/A	N/A	+26	-7
\$W	\$B	BW	RATIO	ADJ. WW	RATIO	ADJ. YW	RATIO
+38	+105						
+51	N/A						

18-3 WA Concap Iron

Birth Date: 2-12-2019 Bull 19578116 Tattoo: 914

EXAR Impression 3590B *17587187
+EXAR Impression 5231B
+*VAR Lucy 1121

GRP#	RWL&C 0368day Loupes A460 17732516		Ironwood Daybreak 7333 0368 BRNJ Loupes Barbara 240				
A							
CED	BEPD	WEPD	YEPD	RADG	SC	MILK	SEN
+11	15%	+1	25%	+35	95%	+65	95%
				+20	80%	+66	60%
				+25	50%	+10	10%
\$W	\$B	BW	RATIO	ADJ. WW	RATIO	ADJ. YW	RATIO
+40	85%	+114	75%	N/A	N/A	N/A	N/A

18-6 WA Classess

Birth Date: 3-28-2019 Bull 19578119 Tattoo: 904

EXAR Classen 9943B *17602836
+*EXAR Classen 1422B
EXAR Envious Blackbird 0227

GRP#	RWL&C Abby Emme Lou Y122 17722181		RWL&C Focus Aberdeen X091 RWL&C S257FD Embi Lou U311				
B							
CED	BEPD	WEPD	YEPD	RADG	SC	MILK	SEN
+8	+1.9	+52	+83	+19	-.03	+19	-4
+8	+1.7	+40	+72	N/A	N/A	+24	+4
\$W	\$B	BW	RATIO	ADJ. WW	RATIO	ADJ. YW	RATIO
+49	+114						
+39	N/A						

18-7 WA Classen Man

Birth Date: 3-18-2019 Bull 19578120 Tattoo: 926

EXAR Classen 9943B +*EXAR Classen 1422B
 +*17602836 EXAR Envious Blackbird 0227

GRP#		B					
RWL&C 914MIF Designer A057 17843829		OCC Focus 914 RWL&C Designer 3394					
CED	BEPD	WEPD	YEPD	RADG	SC	MILK	SEN
+4	70%	+2.1	70%	+42	85%	+68	95%
\$W	\$B	BW	RATIO	ADJ. WW	RATIO	ADJ. YW	RATIO
+36	90%	+121	65%	N/A	N/A	N/A	N/A

18-9 WA Classen 50

Birth Date: 3-20-2019 Bull 19578122 Tattoo: 910

EXAR Classen 9943B +*EXAR Classen 1422B
 +*17602836 EXAR Envious Blackbird 0227

GRP#		B					
RWL&C S120 004 Barbra A647 17757722		+*GAR 5050 New Design 6829 RWL&C Barbara 642					
CED	BEPD	WEPD	YEPD	RADG	SC	MILK	SEN
+8	+1.9	+52	+83	+19	-.03	+19	-4
+9	-2	+36	+66	N/A	+72	+22	+4
\$W	\$B	BW	RATIO	ADJ. WW	RATIO	ADJ. YW	RATIO
+49	+114						
+34	+130						

18-8 WA Conn Ironcap

Birth Date: 2-17-2019 Bull 19578121 Tattoo: 908

EXAR Impression 3590B +*EXAR Impression 5231B
 *17587187 +*VAR Lucy 1121

GRP#		A					
RWL&C 0368 Daybrk Gal A455 17803584		Ironwood Daybreak 7333 0368 BRNJ Loupes Blackcap 430					
CED	BEPD	WEPD	YEPD	RADG	SC	MILK	SEN
+11	15%	+0	25%	+33	95%	+63	95%
+21	70%	+55	65%	+24	55%	+11	5%
\$W	\$B	BW	RATIO	ADJ. WW	RATIO	ADJ. YW	RATIO
+36	90%	+118	70%	N/A	N/A	N/A	N/A

FLYING W DIAMOND RANCH

REGISTERED BLACK ANGUS – BULLS & BRED HEIFERS FOR SALE
 FOR SALE VIA PRIVATE TREATY AT THE RANCH: CAPITAN, NEW MEXICO
 25 Registered Black Angus Bulls – Ready to go to work

Priced \$2,500-\$4,000

PLEASE VISIT OUR WEBSITE FOR EPDs & PRICES ON BULLS
www.flyingwdiamondranch.com

AVAILABLE AT THE
 TUCUMCARI SALE :

- AAA- 19403101
- AAA- 19468476
- AAA- 19427793



SIRES REPRESENTED

- Connealy Capitalist 028–
- KCF Bennett Citation
- 44 Bragging Rights 4372
- 44 Envision

CONTACT US

Owner - Ed Tinsley: 575-644-6396
 Ranch Manager - Teal Bennett: 806-672-5108
 Ranch Office: 575-354-0770

edtinsley@flyingwdiamond.net
 tealbennett@flyingwdiamond.net
 jessicabrown@flyingwdiamond.net

FLYING W DIAMOND RANCH



Ed Tinsley, Owner

575-644-6396

edtinsley@flyingwdiamond.net

Teal Bennett, Ranch Manager

806-672-5108

tealbennett@flyingwdiamond.net

Jessica Brown, Office Manager

575-354-0770

jessicabrown@flyingwdiamond.net

flyingwdiamondranch.com

The Flying W Diamond Ranch is owned by Ed & Meredith Tinsley, and has continuously been owned and operated by the Tinsley family for more than 62 years.

The ranch is located just north of Capitan, New Mexico, in the foothills and shadows of the Capitan Mountain Range. The terrain and altitudes range from 6,000 to 10,000 feet in elevation, encompassing rolling hills, steep mountain sides and Ponderosa pines.

This environment is an important factor in the conditioning of our calves, building strong muscle, good feet, correct bone structure and overall conformation of our calves. Our philosophy is committed to raising the best Registered Black Angus cattle, specifically bred, conditioned and ready to go to work in the rugged country of New Mexico, Colorado, Arizona, and West Texas.

Our focus on genetics produces EPDs that yield great results for our customers, combining low Birth Weights and high Calving Ease, with strong Weaning and Yearling Weights, as well as High Dollar Beef and good Carcass Qualities.

We built our initial genetics from 44 Farms, Cameron, Texas with these sires:

- 4 Bragging Rights 4372
- KCF Bennett Citation
- 44 Envision
- Connealy Capitalist 028
- VAR Discovery 2240
- 44 Download 5739

We have recently expanded our genetic base to include these sires:

- EXAR Monumental
- Bubs Southern Charm
- SydGen Enhance
- VAR Power Play
- Bar R Jet Black 5063
- VAR Foreman 3339
- Hoover Dam
- Connealy Emerald

We invite you to visit The Flying W Diamond Ranch anytime. We will also treat you to a great steak at K-BOB'S Steakhouse in Ruidoso as an added bonus to actually "taste" our partnership with 44 Farms on our Rib Eyes, New York Strips and Hamburgers!

19-3 FWD Jet Black Granite G069

Birth Date: 3-31-2019 Bull *19427793 Tattoo: G069

Bar R Jet Black 5063
*18389838

#*Connealy Black Granite
Bar R Iris Anita 0113

GRP#	C	
B3R Z135 Dutchess P061 8093 *17521598	#B3R P061 M048 Cafd M098 *B3R 8093 270 Erica 3179	ANGUS ^{GS} Proven by Angus Genetics

CED	BEPD	WEPD	YEPD	RADG	SC	MILK	SEN
+1 90%	+3.0 85%	+58 40%	+103 40%	+28 15%	+1.01 35%	+22 70%	-20 80%
\$W	\$B	BW	RATIO	ADJ. WW	RATIO	ADJ. YW	RATIO
+50 65%	+159 15%	73	100	604	94	N/A	N/A

- Rankings as compared to entire Angus breed: Top 15% \$Beef +159, Top 10% \$Feedlot Value +105. Sire: Bar R Jet Black 5063, Son of Connealy Black Granite. 2019 Sales: Daughters-\$60,000 heifer at Riverbend; \$49,000 and \$30,000 heifers at High Roller Angus; \$19,000 heifer at Angus of Clear Creek; \$15,000 at Double Creek Farms and Reverse Rocking R. Sons in 2019 sold for \$60,000 at 2019 Wilks Ranch Sale and \$35,000 at 44 Farms.

19-4 FWD Discovery G013

Birth Date: 2-23-2019 Bull *19468476 Tattoo: G013

VAR Discovery 2240
*17262835

#*AAR Ten X 7008 SA
*Deer Valley Rita 0308

GRP#	B	
PAR Primrose PTI 3702 17939511	#Poss Total Impact 745 +PAR RHCC Primrose 7002	ANGUS ^{GS} Proven by Angus Genetics

CED	BEPD	WEPD	YEPD	RADG	SC	MILK	SEN
+6 50%	+3 30%	+60 35%	+102 40%	+25 35%	+90 40%	+25 50%	-19 75%
\$W	\$B	BW	RATIO	ADJ. WW	RATIO	ADJ. YW	RATIO
+65 25%	+182 3%	60	82	618	96	N/A	N/A

- Rankings as compared to entire Angus breed: Top 3% \$Beef of +182, Top 2% Marbling, Top 30% Weaning Weight +60, Top 40% Yearling Weight +102. Great heifer and power bull traits. Dam FWD Primrose PTI 3702: One of our best cows-+162 Beef, Top 10%; Top 15% Marbling, Top 15-20% on Weaning and Yearling Weights. Sire: VAR Discovery 2240, Son of AAR Ten X. A rare genetic package with moderate birth, extreme growth, and elite carcass traits. Calves are topping sales across the country.

19-5 FWD Foreman Traveler G003

Birth Date: 1-30-2019 Bull *19403101 Tattoo: G003

VAR Foreman 3339
*17607585

#*AAR Ten X 7008 SA
*Sandpoint Blackbird 8809

GRP#	A	
FWD Prophet E018 *18790973	#*GAR Prophet *SS Black Erica A920	ANGUS ^{GS} Proven by Angus Genetics

CED	BEPD	WEPD	YEPD	RADG	SC	MILK	SEN
+6 50%	+2.6 80%	+82 1%	+138 3%	+25 35%	+72 55%	+18 95%	-26 90%
\$W	\$B	BW	RATIO	ADJ. WW	RATIO	ADJ. YW	RATIO
+74 10%	+163 10%	80	121	723	113	N/A	N/A

- Rankings as compared to entire Angus breed: Top 10% \$Beef of +163, Top 10% Marbling, Top 1% Weaning Weight +82, Top 3% Yearling Weight +138. Dam FWD Prophet E018: One of our top females-+128 Beef; Top 3% Marbling; Top 10% on Weaning and Yearling Weights. Sire: VAR Foreman 3339, son of AAR Ten X, adds depth and power, first daughters averaged \$20,000.



HOW TO PARTICIPATE AS AN ABSENTEE BUYER

We have made preparations to bid and buy livestock through Superior Productions' "Call or Click-To-Bid" service for those unable to attend in person on sale day. **Please note that all of the lots in the sale will also be available for viewing online prior to sale day at www.superiorlivestock.com.**

HERE'S HOW IT WORKS

Turn in Bids Over the Phone. This is our traditional method of buying livestock. To get started simply go online to www.superiorlivestock.com and click on the tab titled "Register for a Buyer Number". Select the registration form for Superior Productions and print the registration form, fill it out and fax it in to Superior Productions at (817) 378-3380 with a signature on it, or scan and email the form to info@superiorauction.com. You can also mail it in to the address provided on the form. Upon receipt of this information Superior will call you with a buyer's number and the bid line phone number that you will use on sale day to place bids over the phone.

Click-To-Bid. This is Superior's online bidding platform for cattle buying. **Please note that high speed internet is required – this is not for dial-up or satellite internet.** Registration is free, but you must become a member of www.superiorclicktobid.com to sign up. Becoming a member is easy - just go to the homepage of www.superiorclicktobid.com and follow the out-lined steps to get started. Input your information and select a username and password. You will receive an e-mail confirming you are a member. From that point forward you just have to sign in and select the sale you would like to register for and once approved you will receive an e-mail confirming which sale you are now registered for.

Viewing the Auction. There are 2 places to view the sale broadcast live on the internet: www.superiorlivestock.com or www.superiorclicktobid.com. Just go to the home page of either website and select the auction. If you just want to watch the auction on your computer, smartphone or tablet go to www.superiorlivestock.com, but if you want to bid over the computer you must go to www.superiorclicktobid.com. Remember you can call in to bid on the internet, but you must be a member of www.superiorclicktobid.com to "click-to-bid". Your computer must have Flash Media Player installed for this website to view the auction. If you have any questions, please call the Superior Productions office at 800-431-4452.

***If you plan to bid by phone through Superior Livestock or 'Click-to-Bid', you must register at www.superiorlivestock.com prior to bidding.**

K4 CATTLE COMPANY HEREFORD TEXAS

Chris Kalich
Hereford, TX
806-344-5037



We are Chris and Laurie Kahlich, owners and operators of K4 Cattle in Hereford, Texas. We were both raised in Hereford by parents that taught us to be honest and work hard. We've been married for 32 years and started it all on a wing and a prayer! The Lord has truly blessed us and our family. We have two sons that have been a true blessing, two wonderful daughters-in-law and two incredible granddaughters. We hope they all will be able to live the life of opportunity and success that we have.

The Saler Cow - There is not a better cow out there when it comes to breeding, calving, and leading a 600 lb. calf to the house all on her own year after year. In 1995 my wife and two sons left the big city and moved back to Hereford, Texas to own our own business, and get more involved in the cattle operation. My sons began showing steers to keep busy and out of trouble. Over the next ten years we raised a few and purchased a few really good calves, and had very good success in the show ring. Not to mention, a lot of good memories. In 2009 my Dad decided to retire from all three of his jobs leaving my wife and I with the cattle operation all to ourselves. Here we are today raising a nice group of Salers and Salers cross cows along with a few club calf makers in hopes our grandchildren will have a few good ones to drag in the ring as well.

20-1 CLK GRAND SLAM 901G

Date of Birth: 2/18/2019 Bull TP734182 Tattoo: 901G

CLK DRIVE TRAIN P714097 GGT P BK LEGACY 646A MAC BETHANY 32B

GRP#											
B											
RAO MISS EVA 19E P718306	WHR ZACH 48Z					RAO WANETT 40W					
BEPD	WEPD	YEPD	MILK	BW	WW						
2.0	70%	45	45%	80	55%	27	10%	57	628		

• This guy is sure to be a grand slam. He is out of our herd sire Drive Train, and a sure bet cow that was the reserve overall heifer at Denver in 2018. He has two flushmates showing and selling in Denver 2020. He is attractive, thick-made, moderate framed and sound. He is a pleasure to view from any angle. His mother is a new producer, but what we see from her, one can't go wrong.

20-2 CLK GUS 903G

Date of Birth: 2/24/2019 Bull TP733397 Tattoo: 903G

STP LMB DR JONES P715753 STP INDIANA JONES DJF MISS 201Z

GRP#											
RAO MISS EVA 19E P718306	WHR ZACH 48Z					RAO WANETT 40W					
BEPD	WEPD	YEPD	MILK	BW	WW						
3.1	85%	49	25%	88	40%	24	15%				

• 903G has herd sire written all over him. He is out of two now legendary individuals. STP LMB DR Jones who was the Champion Salers Bull in Denver 2018, and RAO Miss Eva who was the \$12,000 Reserve Division Heifer in 2018, and is the dam of the Reserve Grand Overall Heifer in Denver this year! Top that off with the numbers he has put up at this bull test, and you have an incredible individual that could improve the numbers in any cow herd. Don't miss out!

20-3 CLK GEAR HEAD

Date of Birth: 3/15/2019 Bull TP73426 Tattoo: 926G

CLK DRIVE TRAIN P714097 GGT P BK LEGACY 646A MAC BETHANY 32B

GRP#											
C											
CLK BRANDY P703351	MAC WHIRLWIND 21W					EASY UP					
BEPD	WEPD	YEPD	MILK	BW	WW						
1.9	65%	39	70%	72	80%	23	20%	84	665		

• Here is another calving-ease bull in a black package. "Gear Head" we call him. One can only guess how he got his name. A clean attractive bull out of a cow family that goes way back in our herd. Look for this bull to put some good footed, heavy milking heifers on the ground out of any breed of cows.

20-4 CLK GROUND HOG

Date of Birth: 4/5/2019 Bull TP733434 Tattoo: 951G

CLK DRIVE TRAIN P714097 GGT P BK LEGACY 646A MAC BETHANY 32B

GRP#											
C											
WF LADY INTREPID 66D P708977	OPP INTREPID OF 50K					WF LADY STETSON 54Y					
BEPD	WEPD	YEPD	MILK	BW	WW						
1.8	65%	43	50%	80	60%	26	10%	99	722		

• This young bull is nothing short of a meat maker. Deep bodied, thick made, easy moving, and very gentle, out of a young cow that put her first calf back into our herd. Ground Hog is his name, and he comes by it naturally. He is a ground pounding hog sure to add value to a calf crop of any type.

20-5 CLK GERONIMO

Date of Birth: 3/5/2019 Bull TP733420 Tattoo: 911G

CLK DRIVE TRAIN P714097 GGT P BK LEGACY 646A MAC BETHANY 32B

GRP#											
C											
CLK SUN & WIND P690720	MAC WHIRLWIND 21W					BK SUN					
BEPD	WEPD	YEPD	MILK	BW	WW						
1.5	55%	33	90%	63	90%	23	20%	72	573		

• Geronimo offers calving ease, and light birth weights while descending from one of our best producing cows. She has two daughters in our herd, one of them being the best producing red cow we have ever owned. Feel free to use this guy on heifers of any shape and size.

20-7 CLK GLADIATOR 915G

Date of Birth: 3/8/2019 Bull TP733399 Tattoo: 915G

STP LMB DR JONES P715753 STP INDIANA JONES DJF MISS 201Z

GRP#											
B											
RAO MISS EVA 193 P718306	WHR ZACH 48Z					RAO WANETT 40W					
BEPD	WEPD	YEPD	MILK	BW	WW						
3.1	90%	49	30%	88	40%	24	15%	103	648		

• Gladiator, what can we say about this guy? His mother, Miss Eva who is also the dam of 901G is just getting started in our herd and killing it to say the least. We are retaining a flushmate to this bull if that tells you anything, and we think they are both pretty special. This bull's sire was the overall champion bull in Denver 2018 raised by T-Bone Cattle Co. This guy will put the pounds on calves from any breed of cows out there!

PD ANGUS

Patrick Sanchez & Del Conroy

57 Jose I Garcia Rd.

Belen, NM 87002

505-385-2994

sanchezangus57@yahoo.com



Patrick and Theresa Sanchez and his brother, Del, and Frances Conroy began raising cattle over 20 years ago as a commercial producer, providing quality first-generation Black Baldy steers and heifers out of Belen and Los Lunas, New Mexico in Valencia County. Sanchez Brothers Cattle Company, also known as PD Angus, was established in 2016, raising registered, high-quality Black Angus cattle.

The goal of PD Angus as a seedstock producer is to raise cattle that are genetically sound, moderately framed, and easy calving. We desire for our cattle to grow rapidly and breed back with emphasis on feed-efficiency, with carcasses yielding tender, high-quality beef.

One of our Angus bulls will be tested at this year's 2019-2020 Tucumcari Bull Test. This bull was sired from a Sanchez Angus Bull, PS Emblazon 1478. 1478 was the high indexing bull in the 2015 Tucumcari Bull test where he had a final index of 120, a weaning weight of 829, and a yearling weight of 1,437. He was a member of the high gaining, high WDA, and Overall Index Sire Group. His first son tested was the high selling bull in the 2018 sale after posting a Birth Weight EPD of -0.7, and adjusted weaning weight of 848, and a yearling weight of 1,470.

As seedstock producers, we are dedicated to continuing the development of cattle that will thrive in the southwest climate. PD Angus has been blessed with the success of the cattle it has raised, we give thanks to its past, present, and future buyers.

21-1 PD Emblazon 10X 1903

Birth Date: 1-27-2019 Bull 19521655 Tattoo: 1903

PS Emblazon 1478 EXAR Emblazon 1010B
17893671 J-C Beverly 0882

GRP#
B

PS 10X Cathy 1415 #*AAR Ten X 7008 SA
17893683 J-C Cathy 0320

CED	BEPD	WEPD	YEPD	RADG	SC	MILK	SEN
+6 50%	+6 35%	+58 40%	+105 35%	N/A N/A	N/A N/A	+24 55%	-9 45%
\$W	\$B	BW	RATIO	ADJ. WW	RATIO	ADJ. YW	RATIO
+56 45%	N/A N/A	80	99	587	99	N/A	N/A

- Powerful son out of our great herd sire, PS Emblazon 1478, which was the high indexing bull in the 2015 test and half-brother to the high selling bull in 2018 at the TBT and sale. Adds thickness and depth. ADG over 4 lbs. last 60 days in this year's test.

ASHLEY J. HARTZOG

Early on in my childhood, my parents made an effort to involve me with the day-to-day activities of cattle ranching. I was along for the ride when they fed cake, built fence, and hauled cattle...not to mention the many, many 'pasture miles' of cow checking. I became friends with the animals my family cared for and developed a deep appreciation for livestock. One day, when I was five, my parents brought home an orphaned calf that was only a few days old. They gave her to me to raise as a bottle calf, and "Lady" became the first official member of my very own Angus herd.

As I grew up, I began to recognize the cattle my parents were raising were something special. Not only were Angus cattle considered "The Business Breed," but virtually everyone (even urban dwellers) had heard of Black Angus--an Angus steak was the best steak there was! I was proud to be a rancher's daughter.

In high school, I continued to help my parents on the ranch. Gathering and sorting bulls on a regular basis for private treaty buyers taught me a lot about handling livestock. I also came to appreciate the assistance of a good horse and dog. From time to time, cattle buyers from Mexico would come to the ranch, giving me the opportunity to charlar en español.

As time went on, I realized my parents and grandparents had invested a lot of time and care over the years, and that they had built a high-quality, yet functional, Angus herd. My family's selection over time for docility, calving ease, good mothering ability, feed efficiency, and structural soundness has created an Angus herd with a strong foundation. Their cattle not only have the polished look any good Angus should, but they also have backbone. They are well-suited to handle the various harsh weather conditions that are typical for Eastern New Mexico and the Texas Panhandle.

Today, I still have my Angus herd that was started by Lady. My herd is small, but they represent something that was started 60+ years ago by my family...the pursuit of progressive genetics paired with the idea that an animal should be well-suited for its environment.



22-1 Ajh Ideal Payweight G721 [OHF]

Birth Date: 3-28-2019 Bull 19586763 Tattoo: G721

Payweight 107S 6G29 of GAR #*Basin Payweight 107S
18550200 #Traveler Erica 1G57 of GAR

GRP#
A

RWL&C Y444DAY 349M Idea B451 RWL&C Day 6i6 Rito Y021
17905026 RWL&C 349M Ideal A001



CED	BEPD	WEPD	YEPD	RADG	SC	MILK	SEN
+9 30%	+6 35%	+57 40%	+103 40%	+27 20%	+31 80%	+35 4%	-15 65%
\$W	\$B	BW	RATIO	ADJ. WW	RATIO	ADJ. YW	RATIO
+72 15%	+156 15%	N/A	N/A	N/A	N/A	N/A	N/A

- Low BW performance bull, great WW and YW, good carcass qualities, \$W, \$F and \$B top 15%.

22-2 Ajh Z831 Blacksmith G744

Birth Date: 2-11-2019 Bull 19588766 Tattoo: G744

RWL&C Right Answer 7333 Z831 #Connealy Right Answer 746
17401746 #Wardens Erica 4P8 5526 7333

GRP#
B

RWL&C Y444 N193 Tequila B450 RWL&C Day 6i6 Rito Y021
17905025 RWL&C N193 Tequila U057



CED	BEPD	WEPD	YEPD	RADG	SC	MILK	SEN
+1 90%	+1.2 50%	+41 90%	+60 95%	+15 95%	+24 85%	+24 55%	+14 3%
\$W	\$B	BW	RATIO	ADJ. WW	RATIO	ADJ. YW	RATIO
+52 55%	+73 95%	N/A	N/A	N/A	N/A	N/A	N/A

- Balanced bull backed by five Pathfinders. \$EN top 3% of breed.



Marcy Ward
New Mexico State University
P.O. Box 30003, Dept. 3-1
Las Cruces, NM 88003

PSRT
FIRST CLASS
U.S. POSTAGE
PAID
St. Joseph, MO
Permit #2017



TUCUMCARI

BULL TEST

EST. 1961

New Sale Date

Saturday • **March 14, 2020** • 1 P.M.
Lunch at 11:30 A.M. – NMSU Ag Science Center

*Delivery
Available*

Performance Testing 137 Bulls!

5 Braunvieh – 6 Charolais – 13 Hereford – 95 Angus – 6 Red Angus – 7 Salers

tucbulltest.nmsu.edu