

TENNESSEE ANGUS

Beef Agribition

56th ANNUAL SHOW AND SALE

SHOW

Friday • March 8, 2019 • 3:00 p.m. (CST)

SALE

Saturday • March 9, 2019 • 1:00 p.m. (CST)

Sunday • March 10, 2019 • Junior Heifer & Steer Show 9:00 a.m. (CDT)

*Held at the James E. Ward Agricultural Center • Lebanon, TN
(Wilson County Fairgrounds)*

TENNESSEE ANGUS Beef Agribition

56th Annual Show and Sale

Held at the James E. Ward Agricultural Center • Lebanon, TN
(Wilson County Fairgrounds)

**Angus Show: Friday, March 8 at 3 p.m. / ANGUS SALE: Saturday, March 9 at 1 p.m. /
Junior Heifer and Steer Show: Sunday, March 10 at 9 a.m.**

SALE DAY PHONES: (816) 853-2697 Tom Burke
(931) 703-6661 Kenneth Armstrong

AUCTIONEER: Tommy Barnes • (334) 462-4004
TN License #5125 • TN Firm #4257

TENNESSEE ANGUS ASSOCIATION REPRESENTATIVES:

Vince Santini.....President
Jamie Smith Nicholson.....Vice President
Kenneth Armstrong.....Secretary/Treasurer

LIVESTOCK PUBLICATION REPRESENTATIVES:

Alex Tolbert.....Angus Journal
John Davis.....Special Assignment
Jack Hedrick.....Special Assignment

SALE MANAGER: American Hall of Fame (816) 532-0811
Tom Burke Kurt Schaff Jeremy Haag
(816) 853-2697 (816) 520-6447 (816) 516-1309

Buyers unable to attend the sale may send their bids to the Sale Managers, Regional Manager, Field Representatives or Auctioneer.

Sale Book prepared by the Sale Managers, TOM BURKE, KURT SCHAFF, and JEREMY HAAG,
AMERICAN ANGUS HALL OF FAME at the WORLD ANGUS HEADQUARTERS, Box 660, Smithville, MO 64089-0660. Phone: (816) 532-0811,
Fax (816) 532-0851.
E-Mail angushall@angushall.com. www.angushall.com



SALE CHAIRMAN: Kenneth Armstrong (931) 703-6661

ACCOMMODATIONS:

The Executive Inn, Lebanon, TN (by Cracker Barrel on 231) • (615) 444-0505
Hampton Inn, 1125 Loretto Rd, Lebanon, TN • (615) 444-3445
Quality Inn, 641 S. Cumberland St., Lebanon, TN • (615) 444-7020

***Note:** Be sure to reserve your rooms right away as there are a few other events going on in Lebanon the same weekend and some hotels are already booked up. Please CALL RIGHT AWAY!

PEN FEMALES: Lots designated "Pen Females" are females that may or may not enter the sale ring during the auction so be sure to look at these pen cattle before the sale.

SALE LOCATION: James E Ward Ag Center, 945 Baddour Pkwy East, Lebanon, TN (Exit 239B traveling east towards Knoxville on I-40 / Exit 239 traveling west towards Nashville on I-40.)

FAIRGROUND RULES TO ABIDE BY: Absolutely NO DOGS permitted on the James E. Ward Ag Center grounds. Trailers must be parked in designated areas. All parking rules must be obeyed.

HERD HEALTH: All cattle will be accompanied by a proper health certificate for immediate shipment.

TRUCKING: Truckers believed to be reliable will be available to assist you in shipping your purchases. Cattle must have travel arrangements at the conclusion of the sale.

TERMS AND CONDITIONS: Cattle will sell under the suggested Terms and Conditions of the American Angus Association (http://www.angus.org/Pub/suggested_sale_terms.pdf). **ALL CATTLE MUST BE PAID/SETTLED FOR THE DAY OF THE SALE UNLESS PRIOR ARRANGEMENTS HAVE BEEN MADE.**

LIABILITY: All persons attending this sale do so at their own risk, legal or otherwise, for their safety or for the behavior of the animals. The owners, sale management firm, and Sale Staff assume no liability for property or any accidents that may occur.

LIVESTOCK MORTALITY INSURANCE: To properly insure your investment, James F. Bessler, Inc., (815) 762-2641 will be available to assist you with mortality insurance coverage.

BREEDING INFORMATION: A supplemental sheet will be available sale day with complete and up to date calving information. Announcements from auction block regarding the cattle selling in this sale take precedence over information listed in this sale book. Up-to-date genetic recessive status can be viewed online at www.angus.org.

FOOD AND REFRESHMENTS: Will be available sale day.

LIVE INTERNET BIDDING AT www.cowbuyer.com



NOTE: At the 2019 TENNESSEE ANGUS ASSOCIATION JUNIOR PREVIEW there will be a class for heifers bought at the 2018 Tennessee Angus Agribition Sale - First Place will receive a \$300 premium!

FUNDING FOR THE ANGUS AGRIBITION SALE IS PROVIDED BY THE TENNESSEE DEPARTMENT OF AGRICULTURE. www.picktnproducts.org

SCHEDULE OF EVENTS

All events held at Wilson Co Fairgrounds/James E Ward Ag Center

March 8 (Fri) • Sale Show - 3:00 pm (CST)

TAA Annual Meeting & Banquet* - 6:30 pm

March 9 (Sat) • ANGUS SALE - 1:00 pm (CST)**

March 10 (Sun) • Junior Heifer and Steer Show - 9:00 am (CDT)

***Please RSVP Kenneth Armstrong at (931) 703-6661 or kbarmstrong@united.net by MARCH 6, 2019. Banquet: \$20 adult/\$10 junior.**

Visit the *Angus Journal* Website, www.angus.org, and view this sale book online. References: American Angus Association®, AHIR®, Angus Source®, CAB®, Pathfinder® EPDs current as of January 30, 2019. Updated EPDs can be viewed at www.angus.org.

COMMENTS FROM THE SALE MANAGER:

On behalf of the American Angus Hall of Fame, it is certainly a pleasure to be working on the 56th Annual Tennessee Angus Association Annual Show and Sale held in conjunction with the Tennessee Beef Agribition! We, at the Hall of Fame, are always pleased and excited to be working with this dedicated group of Angus breeders from across the state of Tennessee.

This year's offering is one of the deepest ever to be offered! What an excellent set of young show heifer prospects, a tremendous set of bred heifers and an elite set of cow/calf pairs from cattle that are represented by the breed's most elite AI sires and most prominent cow families in the industry.

If you have any questions, please feel free to contact us at the American Angus Hall of Fame at (816) 532-0811. We will see you at the Agribition!

Sincerely,



Tom Burke
(816) 853-2697



Kurt Schaff
(816) 520-6447



Jeremy Haag
(816) 516-1309

2019 TENNESSEE ANGUS AGRIBITION - FEMALES



GCC NEW GAME 5654C - Sire of Lot 1.



BALDRIDGE COMMAND C036 - Sire of Lot 3.

1 GAF Blackbird Lady 9228 [OSP]

Birth Date: 9-22-2018

Cow 19358914

Tattoo: 9228

GCC New Game 5654C
+*18324437 +*Duff NE 9375 Georgina 845

GAF Blackbird Lady 6215
18425664 +Lone Oaks Frontman Z141
GAF Blackbird Lady 1069

EXG RS First Rate S903 R3
Dameron Northern Miss 3114
+*Duff New Edition 6108
WK Georgina 9375
#*Kesslers Frontman R001
+Whitstone Blackbird W260
FFF Dynamic Design B11
FFF Blackbird D09

MARB
+23
RE
+52
SW
+36.38
SB
N/A

CED	BEPD	WEPD	YEPD	MILK
+1	+2.8	+50	+84	+19

- Owned by GladeRock Farms.
- HALTER BROKE.
- This tremendous heifer calf by GCC New Game 5654C has cow power written all over her.
- Study this heifer calf from the ground up and you won't be disappointed. She is big boned with tremendous hip, hind leg and rib shape. She comes at you in an extremely sound package.

2 GAF Stormy Night Lady 9218 [DDP-OHP]

Birth Date: 9-21-2018

Cow 19296025

Tattoo: 9218

Musgrave Sky High 1535 (ROF)
+*18194415 Flag Queen W 00649

GAF Stormy Night Lady 7615
18425663 +Lone Oaks Frontman Z141
GAF Stormy Night Lady

#*Connely Eaman 076E (ROF)
SAV Primrose 7861
#*SAV 004 Density 4336
Plattermere Queen W 660
#*Kesslers Frontman R001
+Whitstone Blackbird W260
#*Lemmon Newsline C804
GAF Fancy Design 1206

MARB
+66
RE
+64
SW
+55.04
SB
+171.17

CED	BEPD	WEPD	YEPD	MILK
+2	+2.4	+62	+113	+22

- Owned by GladeRock Farms.
- HALTER BROKE.
- From the day this calf was born out of our Stormy Night Lady cow family, we knew she was something special and we were right. Big-footed, soggy-middled, cool-fronted is the best way to describe this big time show heifer prospect.

3 7DF Miss Baldrige 830F

Birth Date: 9-16-2018

Cow Reg.No.Pdg.

Tattoo: 830F

Baldrige Command C036
*18219911 Baldrige Blackbird A030

Shady Brook Rita 6063
*18586918 +*Shady Brook Titan 1026
Shady Brook Rita 3005

#*EF Complement 8088
Riverbend Young Lucy W1470
#*Hoover Dam
Baldrige Blackbird X89
#*Soo Line Motive 9016
+Davis Rita 4001
#*Vin-Mar O'Reilly Factor
+Shady Brook Rita X285

\$ MARB	D MARB
+90	+27
RE	RE
+86	+37
SW	SW
+73.73	+35.21
SB	SB
+161.04	+86.48

CED	BEPD	WEPD	YEPD	MILK
+9	+2	+69	+126	+31
+14	-8	+41	+74	+21

- Owned by Tyler Davis.
- Birth weight: 58 lbs.
- This featured Rita female blends Baldrige Command C036 and the featured Rita family into a powerful genetic package.
- Dam is by Shady Brook Titan 1026 back to a grandam by Vin-Mar O'Reilly Factor.

4 Burks 553 Georgina 966F

Birth Date: 9-12-2018

Cow +19296938

Tattoo: 966F

HF Long Shot 71D (ROF)
*18610758 HF Evening Tinge 179Y

Johnson Georgina 553
+*18371709 +*Silveiras Style 9303
+*Champion Hill Georgina 8112

#*Barstow Cash
*BSF Princess EL Cap W2
HF Swagger 75W
HF Evening Tinge 55N
Gambles Hot Rod
+Silveiras Elba 2520
#*SAV Bismarck 5682 (ROF)
+*Champion Hill Georgina 6807

MARB
I+.50
RE
I+.33
SW
+57.73
SB
+90.97

CED	BEPD	WEPD	YEPD	MILK
I+.9	I+.7	I+.55	I+.94	I+.23

- Owned by Burks Cattle Co.
- HALTER BROKE. Birth weight: 72 lbs.
- A beautiful September show heifer prospect by HF Long Shot 71D back to a daughter of the ROV Show of the Year, Silveiras Style 9303, and the featured Champion Hill Georgina family.
- She is a low birth weight, high maternal female that reads with tremendous genetic potential and has the ability to compete at every level.
- View her photo and video on the "For Sale" page at www.burkscattle.com closer to sale day.



MUSGRAVE SKY HIGH 1535 - Sire of Lot 2.



BURKS 553 GEORGINA 966F - She sells as Lot 4.

2019 TENNESSEE ANGUS AGRIBITION - FEMALES



ECO LOMBARDI 1512 - Sire of Lots 5 and 6.



BT BEAUTY 732N - Grandam of Lot 7.

5 Powell Karama 8330
 Birth Date: 8-31-2018 Cow +*19197050 Tattoo: 8330

ECO Lombardi 1512	*VAR Discovery 2240 (RF)	#*AAR Ten X 7008 SA	MARB
+*18267894	+*RB Lady 7125-890-2170	+*Deer Valley Rita 0308	+97
		#GAR Objective 7125	RE
		*RB Lady Standard 305-890	+89
		#CRA Bextor 872 5205 608	SW
		+GAR Objective 1885	+100.46
		#Sitz Upward 307R	SB
		Williams Karama 969	+210.26

CED	BEPD	WEPD	YEPD	MILK
+6	+3.1	+99	+173	+40

- Owned by Powell Farms.
- Halter broke to tie out.
- A direct daughter of ECO Lombardi 1512 back to a daughter of GAR Prophet and the featured Karama family.
- This female ranks in the Top 1% for weaning, yearling, milk, carcass weight, SW and SB. She reads with a phenomenal set of numbers across the board and offers unlimited genetic value.

7 RX Beauty 179H
 Birth Date: 7-10-2018 Cow +*19325146 Tattoo: 179H

EXG RS First Rate S903 R3	#Exar Lutton 1831	#+Northern Improvement 4480 GF	MARB
15484543	Rafter S Blackcap P909	Exar Saras Dream 9809	I+10
		Exar Expand 1241	RE
		+JMS Blackcap JM86	I+29
		#*SAV Brilliance 8077	SW
		Dameron Northern Miss 3114	+42.05
		#+Leachman Right Time	SB
		VDAR Beauty 289	+99.53

CED	BEPD	WEPD	YEPD	MILK
I+1	I+2.3	I+53	I+91	I+17

- Owned by RX Angus.
- HALTER BROKE.
- A direct daughter of EXG RS First Rate S903 R3 who stems back to the famous Beauty family. Her dam was produced in the Dameron Angus program in Illinois and is a full sister to many champions. A full sister to this female was Res. Div. Champion at the 2017 Tennessee State Fair.
- She shows a lot of promise and she is a big-middled, big-boned, beautiful-patterned female.

6 Powell Erica 8303
 Birth Date: 7-23-2018 Cow +*19166833 Tattoo: 8303

ECO Lombardi 1512	*VAR Discovery 2240 (RF)	#*AAR Ten X 7008 SA	MARB
+*18267894	+*RB Lady 7125-890-2170	+*Deer Valley Rita 0308	+67
		#GAR Objective 7125	RE
		*RB Lady Standard 305-890	+84
		#CRA Bextor 872 5205 608	SW
		+GAR Objective 1885	+102.41
		#Sitz Upward 307R	SB
		Callaways Erica 1302	+182.60

CED	BEPD	WEPD	YEPD	MILK
+5	+2.9	+94	+157	+39

- Owned by Powell Farms.
- Halter broke to tie out.
- A 7/8 sister to Lot 5, this featured daughter of ECO Lombardi 1512 ranks in the Top 1% for weaning, yearling, milk, carcass weight, SW and in the Top 2% for SB.
- She stems back to the famous Erica cow family that has been a long time proven producing family in the Williams and Powell programs.

8 Woodlawn Rita 8144
 Birth Date: 7-4-2018 Cow +*19241292 Tattoo: 8144

Basin Payweight 1682	#*Basin Payweight 006S	#Vermilion Payweight J847	MARB
+*17038724	21AR O Lass 7017	+Basin Lucy 3829	+1.15
		#HARB Pendleton 765 JH	RE
		21AR O Lass F24A	+35
		#*AAR Ten X 7008 SA	SW
		+*Deer Valley Rita 0274	+83.66
		#+Rito 111 of 2536 Rito 616	SB
		+DRMCTR 2908s Design 2B02	+146.43

CED	BEPD	WEPD	YEPD	MILK
+11	-4	+67	+113	+33

- Owned by Woodlawn Farms.
- HALTER BROKE.
- A beautiful daughter of Basin Payweight 1682 back to the \$3 million plus producing DRMCTR 111 Rita 6108. This female ranks in the Top 1% for SW, Top 5% for marbling, Top 10% for weaning weight, Top 15% for yearling weight, Top 20% for SB.
- A full sister sold in the 2017 National Finals Angus Sale.

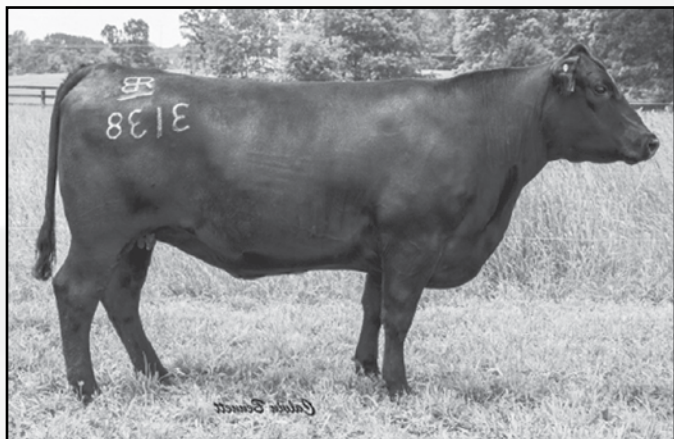


DRMCTR 111 RITA 6108 - Grandam of Lot 8.



WOODLAWN RITA 8144 - She sells as Lot 8.

2019 TENNESSEE ANGUS AGRIBITION - FEMALES



RB-GFC LADY UPSHOT 890-3138 - Grandam of Lot 9.



ROCK BOTTOM BLACKCAP 2196 - Maternal sister to Lot 11.

9 BSCC Exclusive 1870
 Birth Date: 6-27-2018 Cow +*19153324 Tattoo: 1870

MGR Treasure +*18156972	*VAR Discovery 2240 [PDF]	#AAR Ten X 7008 SA	MARB
	+*SJH Impression of 6108 1614	+*Deer Valley Rita 0308	+60
		#*Connealy Impression	RE
		#DRMCTR 111 Rita 6108	+82
ANGUS Powell Lady 6034 +*18429605	+*Quaker Hill Rampage 0A36 [PDF]	#MCC Daybreak	\$W
	+*QHF Blackcap 6E2 of 4V16 4355	+*QHF Blackcap 6E2 of 4V16 4355	+72.09
	+*RB-GFC Lady Upshot 890-3138	#EXAR Upshot 0562B	\$B
		*RB Lady Standard 305-890	+143.79
CED	BEPD	WEPD	MILK
+10	+8	+72	+25

- Owned by Blacksnake Cattle Company.
- HALTER BROKE. Birth weight: 73 lbs.
- This direct daughter of MGR Treasure stems back to a daughter of Quaker Hill Rampage 0A36 and the third-generation dam is the \$175,000 record-selling female in the National Western Stock Show Foundation Female Sale.
- She is a low birth weight, high-spread female that reads with tremendous numbers across the board. She ranks in the Top 2% of the breed for yearling weight EPD, Top 3% for \$W, Top 4% of the breed for weaning weight EPD and Top 20% for \$B.

10 Woodlawn Georgina 8141
 Birth Date: 6-12-2018 Cow +*19241291 Tattoo: 8141

SAC Conversation +*17808532	*Silveiras Conversion 8064	#*BT Crossover 758N	MARB
	+*Lafins Farrah 0252	+EXG Saras Dream S609 R3	+38
		#*SAV 004 Predominant 4438	RE
		Lafins Farrah 7215	+53
ANGUS Champion Hill Georgina 7968 +*16952664	#*SAV Iron Mountain 8066	#TIC Gridiron 258	\$W
	+Champion Hill Georgina 3694	SAV Madame Pride 3249	+52.30
		#Leachman Saugahatchee 3000C	\$B
		+CHAMPION HILL Georgina 2121	+99.95
CED	BEPD	WEPD	MILK
+7	+5	+48	+27

- Owned by Woodlawn Farms.
- HALTER BROKE.
- A tremendous show heifer prospect from the Georgina family by SAC Conversation back to a daughter of the \$75,000 Accelerated Genetics AI sire, SAV Iron Mountain 8066, back to the past National Western Stock Show Grand Champion, Champion Hill Georgina 2121.



WOODLAWN GEORGINA 8141 - She sells as Lot 10.

11 RBF Blackcap Princess 6418
 Birth Date: 6-4-2018 Cow 19340389 Tattoo: 6418

FCF Intuition 345 +*17660869	+*PVF Insight 0129	#*SAV Brilliance 8077	MARB
	+*ALL PVF Blackbird 645	+*PVF Missie 790	+1.02
		#Leachman Saugahatchee 3000C	RE
		PVF Blackbird 201	+1.76
Rock Bottom Blackcap 613 17849238	+Gambles Back Up 4530	Gambles Back Up	\$W
		Gambles Elbrea 1086	+35.99
		#*SAV Bismarck 5682 [PDF]	\$B
		+Pine Ridge Blackcap 750	+91.64
CED	BEPD	WEPD	MILK
+6	+1.7	+43	+21

- Owned by Rock Bottom Farm.
- Birth weight: 76 lbs. Weaning weight: 570 lbs.
- A direct daughter of FCF Intuition 345 back to a daughter of Gambles Back Up 4530 and the featured Blackcap family.
- This beautiful heifer calf reads with tremendous eye appeal, balance and quality. She is a maternal sister to the many time champion, Rock Bottom Blackcap 2196.

12 Powell Erica 8075
 Birth Date: 5-18-2018 Cow +*19122665 Tattoo: 8075

ECO Lombardi 1512 +*18267894	*VAR Discovery 2240 [PDF]	#AAR Ten X 7008 SA	MARB
	+*RB Lady 7125-890-2170	+*Deer Valley Rita 0308	+1.21
		#GAR Objective 7125	RE
		*RB Lady Standard 305-890	+78
ISOK Williams Prop Erica 255 110 +*17954291	#*GAR Prophet [PDF]	#CRA Bextor 872 5205 608	\$W
	*Williams Erica 812	+GAR Objective 1885	+108.52
		#Sitz Upward 307R	\$B
		Callaways Erica 1302	+199.95
CED	BEPD	WEPD	MILK
+7	+3.1	+98	+42

- Owned by Powell Farms.
- Halter broke for tie out.
- A featured Erica female with off-the-chart growth numbers, extremely high marbling and ranks in the Top 1% for weaning, yearling, carcass weight, \$W and \$B while ranking in the Top 3% of the breed for marbling EPD.
- She combines ECO Lombardi 1512 and GAR Profit into a powerful genetic package. This same family produced the \$50,000 top-selling female of the 2017 Powell Farms sale.



WILLIAMS PROP ERICA 255 110 - Dam of Lot 12.

2019 TENNESSEE ANGUS AGRIBITION - FEMALES



GAMBLES SAFE BET - His influence sells.



SYDGEN FOREVER LADY 0750 - Dam of Lot 19.

17 Miller FF Queen 3158

Birth Date: 3-15-2018

Cow 19336732

Tattoo: 3158

Gambles Safe Bet
Move 1603
17662516
Gambles Lass 604

MM Queen 3110
+17485612
HTC Queen 115

#Northern Improvement 4480 GF
+Gambles Lady 961
#Rito 3W3 of OJ2 Rito 9FB3
Yr 188W Lass 150B
Connealy Tobin
Becka Gala of Conanga 8281
#N Bar Emulation EXT
RHH Scotch Queen 889

\$ MARB	D MARB
I+.25	I+.29
RE	RE
I+.33	I+.53
\$W	\$W
+43.67	+42.76
\$B	\$B
+100.33	+95.40

CED	BEPD	WEPD	YEPD	MILK
I+2	I+2.0	I+49	I+84	I+23
I+8	I+4	I+42	I+74	I+20

- Owned by Miller Family Farms.
- This mid-March show heifer prospect by Gambles Safe Move 1603 stems back to a daughter of Connealy Confidence 0100 and the featured Queen family. She is a beautiful-patterned, deep, soggy, stout-made female that has the ability to compete at every level.

18 QVS Georgina 3248

Birth Date: 3-14-2018

Cow +19312040

Tattoo: 3248

PVF Insight 0129
+*16805884
+*PVF Missie 790

QVS BK Georgina 293
+17489879
+QVS Georgina 2031

#SAV Brilliance 8077
#SAV Bismarck 5682 (RF)
SAV Blackcap May 5270
#*PVF New Horizon 001
PVF Miss Raptor 024
#SAV Final Answer 0035 (RF)
SAV Blackbird 5297
#SAV Bismarck 5682 (RF)
+Champion Hill Georgina 1949

MARB
I-.08
RE
I+.97
\$W
+67.33
\$B
+118.58

CED	BEPD	WEPD	YEPD	MILK
I+7	I+1.9	I+65	I+109	I+24

- Owned by Quintin Smith Family Angus.
- HALTER BROKE.
- This featured heifer calf by PVF Insight 0129 stems back to a daughter of the \$60,000 SAV Pioneer 7301 and back to the third-generation dam, Champion Hill Georgina 1949, who was the Atlantic National Supreme Champion, the Atlantic National Junior Show Grand Champion, All-American Junior Show Supreme Champion, American Royal Grand Champion, North American Junior Show Grand Champion and the 2002 ROV Res. Show Heifer of the Year.



QVS GEORGINA 3248 - She sells as Lot 18.

19 ISA Forever Lady 833

Birth Date: 3-4-2018

Cow 19308766

Tattoo: 833

ISA Fast Track 507
18684712
ISA Lucy Z250

SydGen Forever Lady 0750
+*16790217
SydGen Forever Lady 4087

#Connealy Consensus 7229
Blue Lilly of Conanga 16
#Sitz Upward 307R
+*Basin Lucy 9672
#SS Objective T510 0T26
SydGen Gina 4235
#SydGen 1407 Corona 2016
+SAF Forever Lady 8292

MARB
I+.89
RE
I+.66
\$W
+59.66
\$B
+146.93

CED	BEPD	WEPD	YEPD	MILK
+7	+1.1	+58	+104	+31

- Owned by Indian Springs Angus.
- HALTER BROKE.
- Birth weight: 79 lbs. Adj. WW: 765 lbs.
- This direct daughter of ISA Fast Track 507 stems back to SydGen Forever Lady 0750 who is a maternal sister to SydGen CC&7, featured AI sire who has had tremendous success throughout the country.
- She has an individual weaning ratio of 106. This female ranks in the Top 10% of the breed for \$W, Top 20% for marbling and \$B.

20 3 Aces RBF Elba 2258 [OHP]

Birth Date: 2-25-2018

Cow 19183627

Tattoo: 2258

FCF Intuition 345
+17660869
+ALL PVF Blackbird 645

AML-RBF Elba 3235
+18209296
+Champion Hill Elba 5702

#SAV Brilliance 8077
+*PVF Missie 790
#Leachman Saugahatchee 3000C
PVF Blackbird 201
#Exar Lutton 1831
WK Winnie 7305
#SAV 8180 Traveler 004 (RF)
+Champion Hill Elba 3418

MARB
+14
RE
+93
\$W
+43.81
\$B
+113.88

CED	BEPD	WEPD	YEPD	MILK
+6	+3.4	+51	+91	+23

- Owned by Rock Bottom Farms.
- This beautiful Elba female is a late February show heifer prospect by FCF Intuition 345 back to a daughter of EXAR Spartan 6225 and the featured Champion Hill Elba family on the bottom side.
- This female stems back to the featured Elba 1094 who has generated more than \$1.25 million in progeny sales to date.



3 ACES RBF ELBA 2258 - She sells as Lot 20.

2019 TENNESSEE ANGUS AGRIBITION - FEMALES



RB LADY STANDARD 305-890 - Grandam of Lot 23.

23 Starnes Lady 8152

Birth Date: 2-18-2018		Cow +*19120872		Tattoo: 8152
KCF Bennett TheRock A473 *17849954 ANGUS RB-GFC Lady Upshot 890-3138 +*17579425	*KCF Bennett Southside	#Nichols Extra K205	MARB	
	+KCF Miss Protege W148	#KCF Miss 208 S11	+95	
		#*GAR-EGL Protege	RE	
		Breela of Conanga 3991	+89	
	#*EXAR Upshot 0562B	#Sitz Upward 307R	\$W	
	*RB Lady Standard 305-890	#*EXAR Barbara T020	+86.17	
		#LCC New Standard	\$B	
		*BA Lady 6807 305	+202.93	
CED	BEPD	WEPD	YEPD	MILK
+2	+4.6	+92	+153	+24

- Owned by Starnes Farms.
- SELLING 1/2 INTEREST WITH THE OPTION TO DOUBLE TO ACQUIRE FULL OWNERSHIP. If sold in her entirety, the seller retains one successful flush at seller's expense and buyer's convenience.
- HALTER BROKE.
- This featured female by KCF Bennett The Rock stems back to RB-GFC Lady Upshot 890-3138.
- Full sister to this female sold for \$22,000 in the Riley Brothers 2018 Fall Female Sale. A maternal sister, Powell Lady 7328, sold to Reverse Rock R of New Mexico and Mountain View Ranch of Tennessee for \$17,500 in the Powell Farms 2018 female sale; in the 2017 sale, Powell Lady 6374 sold to Five Star Angus for \$30,000 and another maternal sister sold for \$30,000 to Decades of Excellence Group of Tennessee.

24 Kingsway Miss Molly 446

Birth Date: 2-16-2018		Cow +19133348		Tattoo: 446
Silveiras Style 9303 +*16427563	Gambles Hot Rod	#Famous 7001	MARB	
	+Silveiras Elba 2520	+Champion Hill Lady 703	I+48	
		#*Twin Valley Precision E161 (RF)	RE	
		DAR Elba 55	I+18	
	Plainview Lutton E102	#Exar Lutton 1831	\$W	
Kingsway Miss Molly159	Plainview Pride C123	Advance Gt Er Dunn	+28.60	
16639161	Advance Miss Dunn 28U	Advance Miss Design 56M	\$B	
			+77.32	
CED	BEPD	WEPD	YEPD	MILK
I+6	I+2.5	I+38	I+63	I+20

- Owned by Short Farms.
- HALTER BROKE.
- An outstanding February heifer that stems from Silveiras Style 9303 back to a daughter of Plainview Lutton E102.
- She has tremendous eye appeal, balance and quality along with a beautiful hip and hind leg and comes at you in a sound package. An outstanding show heifer prospect.

25 ISA Evergreen 810

Birth Date: 2-10-2018		Cow 19308751		Tattoo: 810
Quaker Hill Rampage 0A36 (RF) +*16925771	#MCC Daybreak	#*Boyd New Day 8005	MARB	
	*QHF Blackcap 6E2 of 4V16 4355	#MCC Miss Focus 134	N/A	
		Ideal 4355 of 0T26 2440	RE	
		*QHF Blackcap 4V16 of 1H8	N/A	
	*Indian Springs Jack Daniel	#*SydGen 928 Destination 5420	\$W	
ISA Evergreen 514	SydGen Forever Lady 4087	#*Connealy Final Product	+65.76	
18818535	+Indian Springs EvergreenA330	Baldrige Evergreen R140	\$B	
			N/A	
CED	BEPD	WEPD	YEPD	MILK
+6	+2.8	+78	+133	+29

- Owned by Indian Springs Angus.
- HALTER BROKE.
- Birth weight: 75 lbs. Adj. WW: 841 lbs.
- A direct daughter of the ABS Global AI sire and the bull that led the breed for registrations, Quaker Hill Rampage 0A36. She stems from an extremely productive cow family and is an outstanding donor prospect with an outstanding performance and phenotype pedigree.
- She had an individual weaning ratio of 116.

26 G V F Pride 8075

Birth Date: 2-5-2018		Cow +*19148370		Tattoo: 8075
Plattmerr Weigh Up K360 (RF) *16692552	#Sitz Upward 307R	#*Connealy Onward	MARB	
	*Barbara of Plattmerr 337	Sitz Henrietta Pride 81M	+61	
		#GAR Retail Product	RE	
		Barbara of Plattmerr 311	+37	
	*TC Candid 161	*TC Forthright 9284	\$W	
GVF Pride 5103	#TC Lass 7002	#*SAV Final Answer 0035 (RF)	+82.77	
18139172	GVF Pride 2034	+GVF Pride 4223	\$B	
			+186.50	
CED	BEPD	WEPD	YEPD	MILK
+4	+2.3	+96	+170	+23

- Owned by Grassy Valley Farm.
- A direct daughter of Plattmerr Weigh Up K360 back to the featured Pride family.
- This female ranks in the Top 1% of the breed for weaning, yearling, carcass weight, \$W and in the Top 2% for \$Beef. She has a tremendous EPD profile and offers tremendous breeding potential.

21 Lakeside Abigaile F222

Birth Date: 2-22-2018		Cow 19332407		Tattoo: F222
Lakeside Safe Traveler 712 Lakeside Bet 0715 18175414	+Gambles Safe Bet	#Nichols Extra K205	MARB	
	+Gambles Lady 3089	#KCF Miss 208 S11	+95	
	+Gambles Shadoc 3050	#*GAR-EGL Protege	RE	
		Breela of Conanga 3991	+89	
	#*Coleman Regis 904 (RF)	#Sitz Upward 307R	\$W	
BFR Abigale 1605	#*SAV Final Answer 0035 (RF)	#*EXAR Barbara T020	+86.17	
18467639	+*Coleman Donna 714	#LCC New Standard	\$B	
	#BCC Bushwacker 41-93	*BA Lady 6807 305	+202.93	
	+SAV Abigale 9350			
CED	BEPD	WEPD	YEPD	MILK
-1	+4.0	+54	+86	+15
I+12	I-2	I+48	I+87	I+23

- Owned by Lakeside Angus.
- HALTER BROKE.
- This featured female by Lakeside Bet 0715 stems back to daughter of Coleman Regis 904, the featured Select Sires AI sire, back to the ever popular SAV Abigale 8213 Pathfinder and fourth-generation dam.
- This beautiful Abigale female reads with tremendous cow power, balance and quality.

22 Allison Emblynette 8603

Birth Date: 2-18-2018		Cow +*19173547		Tattoo: 8603
HA Cowboy Up 5405 *18286467	*HA Outside 3008	*KG Solution 0018	MARB	
	#*HA Blackcap Lady 1602	#*HA Ever Lady 1575	-02	
		#Sitz Upward 307R	RE	
		HA Blackcap Lady 5515	+40	
	#*SAV Angus Valley 1867 (RF)	#*SAV Iron Mountain 8066	\$W	
Champion Hill Emblynette8539	#*SAV May 2397	#*SAV Pioneer 7301	+53.97	
+*17690007	*Champion Hill Emblynette7459	+Champion Hill EMBLYNETTE6539	\$B	
			+105.54	
CED	BEPD	WEPD	YEPD	MILK
+3	+2.0	+60	+107	+21

- Owned by Allison Angus.
- HALTER BROKE.
- A direct daughter of the record-selling HA Cowboy Up 5405 back to the \$200,000 GENEX Beef AI sire, SAV Angus Valley 1867, and the featured Emblynette family.
- Fourth-generation dam is a maternal sister to SAV Emblynette 0429, SAV Emblynette 1182 and SAV Emblynette 3301 and her dam is a Pathfinder dam, SAV Emblynette 7319.



CHAMPION HILL EMBLYNETTE 7459 - Grandam of Lot 22.

2019 TENNESSEE ANGUS AGRIBITION - FEMALES



BON VIEW NEW DESIGN 878 - His influence sells.



B/R RUBY 1224 - Third-generation dam of Lot 29.

27 Miller FF Elela 018

Birth Date: 1-20-2018

Cow 19340359

Tattoo: 018

Gambles Safe Move 1603 17662516	+Gambles Safe Bet	#+Northern Improvement 4480 GF	\$ MARB	0 MARB
		+Gambles Lady 961	I+.25	+37
	Gambles Lass 604	#Rito 3W3 of 0J2 Rito 9FB3	RE	RE
		Yr 188W Lass 150B	I+.33	+24
RES Elela 551 878 5212 +15299790	#Bon View New Design 878	#B/R New Design 036	\$W	\$W
		Bon View Gammer 85	+43.67	+32.25
		RESB Eric 89 241 633	\$B	\$B
		SW Miss Elena E262	+100.33	+77.26
	Res Elela 262 633 551			

CED	BEPD	WEPD	YEPD	MILK
I+2	I+2.0	I+49	I+84	I+23
+5	+1.0	+34	+59	+28

- Owned by Miller Family Farms.
- A direct daughter of Gambles Safe Move 1603 back to a daughter of Bon View New Design 878 and the featured Elena family. She is a beautiful January show heifer prospect that has the ability to compete at every level.

28 RX Barbara 174H

Birth Date: 1-11-2018

Cow +19152788

Tattoo: 174H

Dameron First Class *16175085	EXG RS First Rate S903 R3	#Exar Lutton 1831	MARB
	Dameron Northern Miss 3114	Rafter S Blackcap P909	I+.38
		+Dameron PVF Raptor 702	RE
		##Dameron Miss 550	I+.44
DDA Barbara 1306 +17563880	+*Dameron First Impression	#SAV Brilliance 8077	\$W
		Dameron Northern Miss 3114	+38.93
	WCC Barbara M84	#Twin Valley Precision E161 [PDF]	\$B
		WCC Barbara H293	+107.00

CED	BEPD	WEPD	YEPD	MILK
I-3	I+4.7	I+54	I+88	I+23

- Owned by RX Angus.
- HALTER BROKE.
- Sired by the Triple Crown Winner and \$306,000 valued Dameron First Class, this female stems back to a dam who was the Tennessee Preview Show Grand Champion and Appalachian Fair Supreme Champion. Dam has produced many class winners at the North American as well as the Dixie National.
- This heifer is super deep bodied, big boned and docile.




DDA BARBARA 1306 - Dam of Lot 28.

29 C2 Ruby 314

Birth Date: 1-1-2018

Cow +*19033355

Tattoo: C314

MGR Treasure +*18156972	*VAR Discovery 2240 [RF]	#*AAR Ten X 7008 SA	MARB
	[RF]	+*Deer Valley Rita 0308	+82
 44 Ruby 4070 +*17750344	+*SJH Impression of 6108 1614	#*Connealy Impression	RE
		+DRMCTR 111 Rita 6108	+46
	#*Connealy Capitalist 028 [RF]	#*SAV Final Answer 0035 [RF]	\$W
		Prides Pita of Conanga 8821	+57.48
		+*Werner War Party 2417	\$B
	+*44 Ruby 546X	B/R Ruby 1224	+101.11

CED	BEPD	WEPD	YEPD	MILK
+14	-7	+54	+99	+20


- Owned by Cox & Collier Livestock.
- HALTER BROKE.
- This beautiful daughter of MGR Treasure stems back to a daughter of Connealy Capitalist 028 and the featured Ruby family.
- She is a high-marbling, high-maternal female that reads with tremendous spread from birth to yearling.

30 C2 Blackcap 141

Birth Date: 12-26-2017

Cow *19017767

Tattoo: C141

<div>TEX Playbook 5437</div> <div>+*18414912</div> <div></div> <div>CRR Blackcap D14</div> <div>18531453</div>	+*Basin Payweight 1682	#*Basin Payweight 006S	MARB
	+*Rita 1C43 of 9M26 Complete	21AR O Lass 7017	+49
		#*Summitcrest Complete 1P55	RE
		+*Rita 9M26 of Rita 5F56 Pred	+45
	*VAR Generation 2100	#*Connealy Consensus 7229	\$W
	WRAF May Blackcap 181	+*Sandpoint Blackbird 8809	+71.17
	#*SAV 004 Density 4336	\$B	
	#WRAF Primrose Blackcap 5981	+151.43	

CED	BEPD	WEPD	YEPD	MILK
+5	+1.1	+60	+112	+33

- Owned by Cox & Collier Livestock.
- HALTER BROKE.
- A daughter of Select Sires AI sire, TEX Playbook 5437, back to a daughter of VAR Generation 2100.
- She ranks in the Top 3% for \$W and Top 15% of the breed for yearling weight EPD, carcass weight EPD and \$B.



TEX PLAYBOOK 5437 - Sire of Lot 30.

2019 TENNESSEE ANGUS AGRIBITION - FEMALES



CONNELY IN FOCUS 4925 - His influence sells.



WOODLAWN NORTHERN MISS - She sells as Lot 33.

31 RTF Miss Renown 7004
 Birth Date: 12-17-2017 Cow 19289055 Tattoo: 7004

*SAV Renown 3439	+Rito 707 of Ideal 3407 7075	MARB
RTF Renown 5738	*SAV Blackcap May 4136	N/A
18551223	Top End Rita 245 of 2108	RE
	*GAR Ingenuity	N/A
	*GAR Predestined 2108	\$W
	*Connealy In Focus 4925	+52.90
RTF Miss in Focus 5862	*Mytty In Focus 207	\$B
18551636	Black Cana of Conanga 206	N/A
	*Woodhill Foresight	
	Deer Valley Empress 78131	

CED	BEPD	WEPD	YEPD	MILK
+9	+6	+56	+96	+26

- Owned by Red Tail Farm.
- HALTER BROKE.
- The combination of SAV Renown, Connealy In Focus and Woodhill Foresight blend for a three-generation pedigree of dominant sires. She is a low birth weight, high maternal female.

32 Cannon Ridge Royal Lass E58
 Birth Date: 12-3-2017 Cow *18988066 Tattoo: E58

*EF Commando 1366	*EF Complement 8088	MARB
Baldrige Bronc 18229425	Riverbend Young Lucy W1470	+88
	*Styles Upgrade J59	RE
ANGUS	+Baldrige Isabel T935	+46
CRR Royal Lass 6628	*AAR Ten X 7008 SA	\$W
+18391286	Basin Joy 6278	+60.69
	#EXAR 263C	\$B
	BR Royal Lass 19-132	+118.81

CED	BEPD	WEPD	YEPD	MILK
+11	-3	+57	+105	+30

- Owned by Cannon Ridge Ranch.
- PEN FEMALE.
- A direct daughter of Baldrige Bronc back to the featured Royal Lass family. Dam is a maternal sister to EXAR Denver 2002B.
- She stems back to a maternal sister to the \$202,000 BR Midland, BR Royal Lass 19-132.

33 Woodlawn Northern Miss 7243
 Birth Date: 11-12-2017 Cow +19135610 Tattoo: 7243

#+SAV Bismarck 5682	#*GAR Grid Maker	MARB
Bushs Unbelievable 423	SAV Abigale 0451	I+31
*16745888	Bushs Lit Up 706	RE
	Bushs Dakota Blackbird 4517	I+48
	EXG RS First Rate S903 R3	\$W
Dameron Northern Miss 2143	Rafter S Blackcap P909	+57.10
+17421345	Dameron PVF Raptor 702	\$B
	#+Dameron Miss 550	+138.40

CED	BEPD	WEPD	YEPD	MILK
I+7	I+2.5	I+63	I+104	I+22

- Owned by Woodlawn Farms.
- HALTER BROKE.
- This November senior yearling prospect is by Bushs Unbelievable 423 back to a full sister to the Triple Crown Winner and \$306,000 valued Dameron First Class. This heifer has been extremely competitive and won her class numerous times throughout her successful show career.
- She ranks in the Top 15% of the breed for weaning weight EPD, Top 20% for \$W and Top 25% for yearling weight EPD.

34 RX Beauty 170H
 Birth Date: 11-6-2017 Cow +19081402 Tattoo: 170H

#Exar Lutton 1831	#+Northern Improvement 4480 GF	MARB
EXG RS First Rate S903 R3	Exar Saras Dream 9809	I+10
15484543	Exar Expand 1241	RE
	+JMS Blackcap JM86	I+29
	*SAV Brilliance 8077	\$W
Dameron Beauty 3191	Dameron Northern Miss 3114	+42.05
+17799171	#+Leachman Right Time	\$B
	VDAR Beauty 289	+99.53

CED	BEPD	WEPD	YEPD	MILK
I+1	I+2.3	I+53	I+91	I+17

- Owned by Makayla Dockery.
- HALTER BROKE.
- A direct daughter of EXG RS First Rate S903 R3 back to a daughter of the Triple Crown Winner, Dameron First Impression, back to the ever popular BT Beauty 732N, a long-time, proven donor in the Dameron Angus program who has produced numerous national champions throughout the country.
- Bred to calve October 18, 2019, to SAC CONVERSATION. Examined Safe.



CANNON RIDGE ROYAL LASS E58 - She sells as Lot 32.



BT BEAUTY 732N - Grandam of Lot 34.

2019 TENNESSEE ANGUS AGRIBITION - FEMALES & BULLS



GAMBLES LADY 961 - Grandam of Lot 35.



S A V RENOWN 3439 - Sire of Lot 37.

35 RX Lady 747		Birth Date: 11-4-2017	Cow 19081400	Tattoo: 747
PVF Insight 0129 +*16805884	#*SAV Brilliance 8077	#*SAV Bismarck 5682 [RF]	MARB	
	+*PVF Missie 790	SAV Blackcap May 5270	N/A	
RX Lady 961 101H +17472932	Limestone Darkhorse U322	#*PVF New Horizon 001	RE	
	+Gambles Lady 961	PVF Miss Raptor 024	N/A	
		#BC 7022 Raven 7965	SW	
		PAF Tridge 5768	+36.64	
		#Famous 7001	\$B	
		+Champion Hill Lady 703	N/A	
CED	BEPD	WEPD	YEPD	MILK
+5	+2.4	+50	+91	+21

- Owned by RX Angus.
- HALTER BROKE.
- This female is sure to grab your attention, she is deep bodied, big boned and extremely nice fronted. She is a very docile female that will work for any age showing who wants to get her in the purple.
- Grandam, Gambles Lady 961, is a full sister to Gambles Hot Rod, the North American and Denver Champion who has produced numerous champions for the Gamble Angus program.

36 Triple S & S Rita 7301		Birth Date: 10-11-2017	Cow +*19068123	Tattoo: 7301
Quaker Hill Rampage 0A36 [RF] +*16925771	#MCC Daybreak	#*Boyd New Day 8005	MARB	
	+*QHF Blackcap 6E2 of 4V16 4355	MCC Miss Focus 134	+4.0	
Angus Hill SW Rita 629 +*17218488	#*Connealy Impression	Ideal 4355 of OT26 2440	RE	
	+DRMCTR 111 Rita 6108	*QHF Blackcap 4V16 of 1H8	+1.08	
		#Connealy Reflection	SW	
		Pearl Pammy of Conanga 194	+63.62	
		#*Rito 111 of 2536 Rito 616	\$B	
		+DRMCTR 2908s Design 2B02	+164.12	
CED	BEPD	WEPD	YEPD	MILK
+10	+2.0	+67	+116	+23

- Owned by Triple S&S Farm.
- HALTER BROKE.
- A featured Rita female by ABS Global AI sire, Quaker Hill Rampage 0A36, back to the \$3 million plus producing DRMCTR 111 Rita 6108. This female ranks in the Top 3% of the breed for ribeye area EPD, Top 10% for weaning, yearling weight, \$W and \$B.
- Bred to calve September 21, 2019, to EWA PEYTON 642. Examined Safe.



TRIPLE S&S RITA 7301 - She sells as Lot 36.

37 RTF Miss Renown 7854		Birth Date: 10-2-2017	Cow 19118940	Tattoo: 7854
SAV Renown 3439 +*17633839	+Rito 707 of Ideal 3407 7075	#RR Rito 707	MARB	
	*SAV Blackcap May 4136	Ideal 3407 of 1418 076	+28	
Ray Rita 9114 +16525447	#*Connealy Forward	#SAV 8180 Traveler 004 [RF]	RE	
	C&H Rita M218	#*SAV May 2397	+63	
		#*Connealy Onward	SW	
		Becky Lee of Conanga 74	+46.91	
		#SAF Focus of ER	\$B	
		EF Rita 0221	+114.79	
CED	BEPD	WEPD	YEPD	MILK
-1	+4.1	+63	+114	+25

- Owned by Red Tail Farm.
- HALTER BROKE.
- Direct daughter of SAV Renown 3439 back to the featured Rita family. She stems back to the \$150,000 EF Rita 0221.
- She is a female who ranks in the Top 15% of the breed for weaning and yearling EPD.
- Bred to calve October 28, 2019.

38 Point P Georgina 8117		Birth Date: 9-16-2017	Cow +*19124837	Tattoo: 8117
SAV Ten Speed 3022 +*17633563	#*AAR Ten X 7008 SA	#*Mytty In Focus [RF]	MARB	
	#SAV Madame Pride 1134	#AAR Lady Kelton 5551	+53	
Champion Hill Georgina 8016 +*17107984	#*SAV Bismarck 5682 [RF]	#*SAV Bismarck 5682 [RF]	RE	
	+Champion Hill Georgina 6704	SAV Madame Pride 9100	+76	
		#*GAR Grid Maker	SW	
		SAV Abigale 0451	+65.55	
		#SAV Net Worth 4200	\$B	
		+Champion Hill Georgina 5431	+168.99	
CED	BEPD	WEPD	YEPD	MILK
+8	+2.1	+67	+118	+27

- Owned by Point Pleasant Angus.
- HALTER BROKE.
- A tremendous success in the show ring last year including a Division Champion at the Appalachian State Fair.
- This featured female by SAV Ten Speed 3022 stems back to Champion Hill Georgina 8016, who is an elite donor female in the Leonard Newman program by the popular SAV Bismarck 5682 back to Champion Hill Georgina 6704, who is a maternal sister to the \$48,000 one-half interest feature through the 2010 Champion Hill spring sale.
- Bred to calve October 17, 2019, to DEER VALLEY GROWTH FUND. Examined Safe.



POINT P GEORGINA 8117 - She sells as Lot 38.

2019 TENNESSEE ANGUS AGRIBITION - FEMALES



S A V BISMARCK 5682 - His influence sells.



VAR INDEX 3282 - Sire of Lot 41.

39 C2 Forever Lady 213 [DDF-NHF]
 Birth Date: 9-15-2017 Cow *19006983 Tattoo: C213

#+SAV Bismarck 5682 [DF]	##*GAR Grid Maker	MARB
SKVF SkyView Bismarck 0381C	SAV Abigale 0451	+67
18414096 LWHF Miss Analyst 381W	KCF Bennett 208 S102	RE
	KCF Miss Analyst T387	+57
ANGUS	#B/R New Design 036	SW
SWF Lady 954	+GAR Blackclass K178	+45.43
16416456 SWF Forever Lady 854	+R&K SWF Ambush 331	\$B
	SWF Forever Lady 92	+136.08

CED	BEPD	WEPD	YEPD	MILK
+6	+2.6	+58	+99	+13

- Owned by Cox & Collier Livestock.
- HALTER BROKE.
- A beautiful Forever Lady female by SKVF SkyView Bismarck 0381C back to the featured Forever Lady family.
- Bred to calve September 28, 2019, to BOBCAT BLUE SKY (Sexed heifer). Examined Safe.

40 RX Joan 77
 Birth Date: 9-2-2017 Cow 19013648 Tattoo: 77

*Dameron First Class	EXG RS First Rate S903 R3	MARB
C&C McKinley 3000 EXAR	Dameron Northern Miss 3114	+61
+*17610661 +RAC Winnie 7456	#BR Midland	RE
	WK Winnie 7305	+55
	Gambles Hot Rod	SW
Banner Joan 1504	+Silveiras Elba 2520	+40.98
+*18093280 Craft Joan 816-006	##+SAV Bismarck 5682 [DF]	\$B
	+Craft Joan 5141-816	+110.39

CED	BEPD	WEPD	YEPD	MILK
+8	+2.2	+52	+93	+19

- Owned by Makayla Dockery.
- HALTER BROKE.
- A direct daughter of C&C McKinley 3000 EXAR back to a daughter of Silveiras Style 9303 and SAV Bismarck 5682.
- A beautiful senior yearling prospect.
- Bred to calve October 18, 2019, to SAC CONVERSATION. Examined Safe.



C&C MCKINLEY 3000 EXAR - Sire of Lot 40.

41 PV Erica 7711
 Birth Date: 8-18-2017 Cow *19105631 Tattoo: 7711

#+GAR Ingenuity	#+GAR New Design 5050	MARB
VAR INDEX 3282	GAR Objective 1067	+79
+*17513381	#*Connealy Onward	RE
	+Riverbend Blackbird 4301	+61
ISOK	#*Mytty In Focus [DF]	SW
#*AAR Ten X 7008 SA	#AAR Lady Kelton 5551	+53.39
EXAR Erica 4120	+EXAR Unstoppable 8011	\$B
17765256 EXAR Erica 0054	+Bohi Erica 6394	+115.37

CED	BEPD	WEPD	YEPD	MILK
+4	+1.4	+48	+86	+27

- Owned by Pleasant Valley Farms.
- A direct daughter of VAR Index 3282 back to the featured Erica family. This female is low birth weight, high maternal with high carcass genetics and ranks in the Top 35% of the breed for SW.
- Bred to calve August 27, 2019, to SYDGEN ENHANCE 5209. Examined Safe.

42 CRA Entella 7477 [DDP]
 Birth Date: 8-17-2017 Cow 18983864 Tattoo: 7477

*Sitz Top Game 561X	#+GDAR Game Day 449 [DF]	MARB
JMB Traction 292 [DF]	#Sitz Pride 88T	+63
*17262374	#+SAV 004 Predominant 4438	RE
	#BAR S Emulota 5426	+83
ISOK	#*Mytty In Focus [DF]	SW
#*AAR Ten X 7008 SA	#AAR Lady Kelton 5551	+62.68
CRA Entella 4717	#SS Objective T510 OT26	\$B
18036435 Springfield Entella 7176	+Springfield Entella 4080	+122.18

CED	BEPD	WEPD	YEPD	MILK
+11	-1.3	+61	+105	+25

- Owned by Cedar Ridge Angus.
- PEN FEMALE.
- A daughter of JMB Traction 292 back to a Ten X daughter and Objective granddaughter.
- Double-digit, calving-ease direct, negative birth and ranks in the Top 15% of the breed for ribeye area EPD and SW, Top 20% for weaning weight EPD, Top 25% for yearling weight EPD.
- Bred to calve August 15, 2019, to BASIN PAYWEIGHT 1682. Examined Safe.



JMB TRACTION 292 - Sire of Lot 42.

2019 TENNESSEE ANGUS AGRIBITION - FEMALES

45 CRA Empress 7452

Birth Date: 8-2-2017

Cow *18983665

Tattoo: 7452

KCF Bennett Absolute

*16430795

Thomas Miss Lucy 5152

ISOK

*AAR Ten X 7008 SA

BoBo Empress 4523

*17885166

*BoBo Blackcap Empress 1592

#Sitz Traveler 8180

SAV Emulous 8145

#Wulffs Ext 6106

Thomas Miss Lucy 3050

#Mytty In Focus

#AAR Lady Kelton 5551

*Connealy Consensus 7229

*Monarch Empress U382

MARB

+99

RE

+50

\$W

+60.99

\$B

+147.73

CED	BEPD	WEPD	YEPD	MILK
+15	-6	+65	+118	+21

- Owned by Cedar Ridge Angus.
- PEN FEMALE.
- This featured Empress female by KCF Bennett Absolute stems back to a Ten X daughter. She is negative birth, double-digit calving-ease direct, tremendous spread from birth to yearling and +1 on marbling ranking her in the Top 20% of the breed for \$B.
- Bred to calve August 8, 2019, to MEAD MAGNITUDE (18543414). Examined Safe.



GAFFNEY LADY 337 - Full sister to the dam of Lot 49.

46 Powell Erica 7065

Birth Date: 5-13-2017

Cow *18798544

Tattoo: 7065

ECO Lombardi 1512

*18267894

*RB Lady 7125-890-2170

ISOK

*GAR Prophet

Williams Prop Erica 255 902

*17954287

*Williams Erica 812

#AAR Ten X 7008 SA

*Deer Valley Rita 0308

#GAR Objective 7125

*RB Lady Standard 305-890

#CRA Bextor 872 5205 608

+GAR Objective 1885

#Sitz Upward 307R

Callaways Erica 1302

MARB

+1.16

RE

+70

\$W

+98.43

\$B

+183.19

CED	BEPD	WEPD	YEPD	MILK
+10	+7	+90	+149	+29

- Owned by Blacksnake Cattle Company.
- Birth weight: 85 lbs.
- Elite marbling female with a marbling score of 1.63. She ranks in the Top 1% for weaning, yearling, \$W EPDs, Top 2% for \$B, Top 3% for CW, and Top 4% for marbling.
- She stems from the featured and popular Erica female and foundation donor in the Powell Farms program and ECO Lombardi 1512. She is the only heifer in the Angus breed for her combination of CED, BW, YW, HP, milk, marbling, \$W and \$B.
- Bred to calve October 8, 2019, to EWA WESTPOINT 7258 (19054061). Examined Safe.

47 Allison Emblynette 7254

Birth Date: 4-30-2017

Cow *18925890

Tattoo: 7244

SAV Sensation 5615

*18258149

*SAV Blackcap May 4136

ISOK

*SAV Bismarck 5682

Champion Hill EMBLYNETTE6539

*16073776

*SAV Emblynette 7319

+Rito 707 of Ideal 3407 7075

SAV Madame Pride 0075

#SAV 8180 Traveler 004

#SAV May 2397

*GAR Grid Maker

SAV Abigale 0451

+SAV Ext Emulation 5040

Sav Emblynette Diamond 5369

MARB

+18

RE

+52

\$W

+38.90

\$B

+94.24

CED	BEPD	WEPD	YEPD	MILK
+6	+5	+50	+84	+14

- Owned by Allison Angus.
- HALTER BROKE.
- A direct daughter of the \$650,000 record-selling SAV Sensation 5615 back to the legendary SAV Emblynette 7319, a Pathfinder dam who went on to produce numerous top sellers in the Schaff Angus Valley program.
- Bred to calve September 1, 2019, to DEER VALLEY ALL IN. Examined Safe.

49 Teague Lady 7003

Birth Date: 1-15-2017

Cow *18985739

Tattoo: 7003

AAR Ten X 7008 SA

*15719841

#Mytty In Focus

#AAR Lady Kelton 5551

ISOK

*EXAR Upshot 0562B

RB-GFC Lady Upshot 890-3138

*17579425

*RB Lady Standard 305-890

#SAF Focus of ER

Mytty Countess 906

SAV Adaptor 2213

+HSAF Lady Kelton 504B

#Sitz Upward 307R

*EXAR Barbara T020

*LCC New Standard

*BA Lady 6807 305

MARB

+78

RE

+59

\$W

+83.04

\$B

+173.75

CED	BEPD	WEPD	YEPD	MILK
+7	+1.5	+79	+141	+27

- Owned by Mire Creek Farms.
- PEN FEMALE.
- A direct daughter of AAR Ten X 7008 SA back to RB-GFC Lady Upshot 890-3138 who is a full sister to the \$60,000 top-selling Gaffney Lady 337.
- This female ranks in the Top 1% of the breed for weaning, yearling, \$W, Top 5% for \$B and Top 10% for CW.
- Bred to calve October 16, 2019, to EWA PEYTON 642 (18675107). Examined Safe.

50 TAF Enchantress 6T17

Birth Date: 10-20-2016

Cow *18854937

Tattoo: 6T17

Connealy Capitalist 028

*16752262

#SAV Final Answer 0035

Prides Pita of Conanga 8821

ANGUS

#Connealy Reflection

TAF Enchantress 2T30

17516005

TAF Enchantress 7T17

#Sitz Traveler 8180

SAV Emulous 8145

#CRA Bextor 872 5205 608

Prides Trav of Conanga 6499

#Bon View New Design 878

Happy Grill of Conanga 6260

*HA Image Maker 0415

TAF Enchantress 5T4

MARB

+36

RE

+48

\$W

+62.91

\$B

+88.45

CED	BEPD	WEPD	YEPD	MILK
+13	-2	+54	+94	+32

- Owned by Turner Angus Farm.
- PEN PAIR.
- This is the first female we have ever offered out of our featured TAF Enchantress 2T30 who is a direct daughter of Connealy Capitalist 028 from a dam by Connealy Reflection.
- Her dam ratios 120 weaning and 116 yearling. She out of a highly productive cow family with over 50 years of breeding in our program.
- Sells with a bull calf at side (Lot 50A) born October 28, 2018, by DEER VALLEY OLD HICKORY (17873666). Birth weight: 68 lbs.



SAV SENSATION 5615 - Sire of Lot 47.




CONNELLY CAPITALIST 028 - Sire of Lot 50.

2019 TENNESSEE ANGUS AGRIBITION - FEMALES



SUNSET VALLEY LADY 4501 - The \$82,000 grandam of Lot 51.

	DMB Rosebud 296 [DDF]			
	Birth Date: 9-7-2016	Cow 18628058	Tattoo: 296	
Whitestone Intuition C106 17464137	*Musgrave Foundation [RE] #Boyd Chloe 0031	#Kesslers Frontman R001 MCATL Blackcap Juara 29-434 #SAV Pioneer 7301 Basin Chloe S217 #Sitz Upward 307R DMB Miss Directive 116 #+SAV 5175 Bando 0699 +Garrison 986 Ms Rita New Age	MARB I+.52 RE I+.49 SW +53.18 SB +139.88	
	DMB Mr Upward 111 DMB Miss Rosebud 4104 17985802	GARRISON Rita 646		
CED +7	BEPD +1.4	WEPD +60	YEPD +105	MILK +23

- Owned by DMB Angus.
- PEN PAIR.
- A beautiful cow/calf pair by Whitestone Intuition C106 back to the featured Rita family.
- This well-balanced, numbered female ranks in the Top 25% of the breed for SB, weaning and yearling and Top 30% for SW.
- Sells with a heifer calf at side (Lot 53A) born January 3, 2019, by ROCK RIDGE UPSHOT B99 (17909322).

51

KBF Forever Lady 1002

Birth Date: 10-15-2016

Cow *18875095

Tattoo: 1002

#Mytty In Focus [RE]

#AAR Lady Kelton 5551

*Plattermere Weigh Up K360 [RE]

+Sunset Valley Lady 4501

#SAF Focus of ER

Mytty Countess 906

SAV Adaptor 2213

+HSAF Lady Kelton 504B

#Sitz Upward 307R

#Barbara of Plattermere 337

#Bon View New Design 878

SVF Forever Lady 57D

MARB

+89

RE

+38

SW

+65.93

SB

+185.09

AAR Ten X 7008 SA

**15719841

Deer Valley Lady 4745

+18121581

CED

+3

BEPD

+2.6

WEPD

+69

YEPD


+116

MILK

+29

ISOK

- Owned by Kraus Angus Farm.
- PEN PAIR.
- This direct daughter of AAR Ten X 7008 SA stems back to the \$15,000 Deer Valley Lady 4745. This beautiful Ten X daughter is a first calf heifer who is beautiful uddered and ranks in the Top 1% of the breed for \$Beef, Top 10% for weaning and yearling weight EPDs.
- Grandam was the \$82,000 top-selling bred heifer of a Sunset Valley sale and stems back to the \$1.1 million proven producer, SVF Forever Lady 57D. Here is a tremendous pair.
- Sells with a heifer calf at side (Lot 51A) born October 30, 2018, by TEX PLAYBOOK 5437 (18414912). Tattoo 218. Birth weight: 68 lbs.
- Bred to calve September 27, 2019, to TEX PLAYBOOK 5437. Examined Safe.

<div><div>54</div><div>Williams Ram Skymere 259</div></div>					Birth Date: 9-1-2016		Cow *18596298		Tattoo: 6259	
<div>Quaker Hill Rampage 0A36 <small>RF</small></div> <div>+*16925771</div> <div></div> <div>Williams Skymere 816</div> <div>17518279</div>		#MCC Daybreak		#Boyd New Day 8005		MARB		+45		
		*QHF Blackcap 6E2 of 4V16 4355		Ideal 4355 of 0T26 2440		RE		+.91		
		#Sitz Upward 307R		*QHF Blackcap 4V16 of 1H8		SW		+60.21		
		Williams Skymere 9		#Connealy Onward		Sitz Henrietta Pride 81M		\$8		
				#SS Objective T510 0T26		Williams Skymere 151		+119.02		
CED		BEPD		WEPD		YEPD		MILK		
+8		+2.2		+58		+100		+29		

- Owned by Windy Hill Cattle.
- PEN PAIR.
- A direct daughter of the ABS Global AI sire, Quaker Hill Rampage 0A36, who offers a great amount of balance from any advantage point. This female stems seven generations deep of AI and Pathfinder sires descending back to the Jorgensen program and the famous RR Rito 707.
- She is a ribeye trait leader who ranks with EPDs in the Top 10% and a genomic rating of 2.
- Sells with a bull calf at side (Lot 54A) born October 20, 2018, by WILLIAMS PROPHET 834-170 (18435103). Tattoo 039. Birth weight: 63 lbs.
- Bred to calve November 16, 2019, to JINDRA ACCLAIM (17972810). Examined Safe.

<div>52</div> <div>Rainbow Petal 289</div>		Birth Date: 9-27-2016	Cow 18732432	Tattoo: 289
SAV Bismarck 5682 <small>PDF</small>	#+*GAR Grid Maker	#GDAR Traveler 044	MARB	N/A
#+15109865	SAV Abigale 0451	GAR Precision 2536	RE	N/A
Rainbow Petal 265	#*SAV Thunderbird 9061	#Schoenes Fix It 826	SW	+50.84
18062899	Rainbow Blackbird 209	SAV Abigale 6062	SB	N/A
		#*SAV Final Answer 0035 <small>PDF</small>		
		SAV Emblynette 7411		
		#+GAR New Design 5050		
		Ankony Blackbird R142		
CED	BEPD	WEPD	YEPD	MILK
+7	+1.5	+59	+99	+22

- Owned by Rainbow Angus Farms.
- Daughter of SAV Bismarck 5682 back to the Accelerated Genetics AI sire, SAV Thunderbird 9061.
- This is a low birth weight, high maternal female.
- Sells with a heifer calf at side (Lot 52A) born October 16, 2018, by DEER VALLEY TEN X (17598285). Tattoo 314.

55	W R F Pride of Conanga 639			
	Birth Date: 8-28-2016	Cow 19029694	Tattoo: 639	
VAR Discovery 2240 [RE] *17262835	#*AAR Ten X 7008 SA +*Deer Valley Rita 0308	#*Mytty In Focus [RE] #AAR Lady Kelton 5551 #Sitz Upward 307R *GAR Objective 2345 #*SAV Final Answer 0035 [RE] Happy Dell of Conanga 262 #Connealy Forefront Prides Venture of Conanga 62	MARB +.38 RE +.46 \$W +54.03 \$B +134.72	
ANGUS <small>POWERED BY HUNTER DONALDSON</small>	#Connealy Right Answer 746 WRF Pride of Conanga 411 +17926989	Prides of Conanga 64568		
CED	BEPD	WEPD	YEPD	MILK
+9	+6	+60	+112	+22

- Owned by White Ridge Farm.
- A direct daughter of VAR Discovery 2240 back to the featured Connealy Right Answer and the Pride of Conanga family.
- This female ranks in the Top 4% of the breed for yearling and in the Top 10% for weaning.
- Bred to calve May 26, 2019, to JINDRA ACCLAIM (17972810). Examined Safe.



QUAKER HILL RAMPAGE 0A36 - Sire of Lot 54.

56		BSCC Queen of the Fort 1622		
<i>Birth Date: 8-18-2016</i>		<i>Cow 18645768</i>		<i>Tattoo: 1622</i>
KCF Bennett Fortress <small>(M)</small> +*17259012	#*Connealy Consensus		#KMK Alliance 6595 I87	MARB
	*Thomas Patricia 9705		Blinda of Conanga 004	I+.64
			#SS Objective T510 0T26	RE
			+Thomas Patricia 71138	I+.51
			#+GAR New Design 5050	\$W
Black Creek Black Out M125			Black Creek Man Cypress 908	+61.84
Black Creek Bo Pepsi 1322			#+*Rito 112 of 2536 Rito 616	\$B
17663071			Black Creek Pepsi 1483 M802	+132.81
CED	BEPD	WEPD	YEPD	MILK
+2	+3.7	+70	+123	+29

- Owned by Blacksnake Cattle Company.
- Birth weight 80 lbs.
- A high growth Fortress heifer with a beautiful bull calf at side. Don't miss this outstanding KCF Bennett Fortress daughter back to a daughter of Black Creek Black Out.
- Sells with a bull calf at side (Lot 56A) born October 17, 2018, by EWA PEYTON 642. Reg. No. 19333377. Tattoo 1851.
- Bred to calve to EWA PEYTON 642 (18675107).

2019 TENNESSEE ANGUS AGRIBITION - FEMALES

57 Farmington Rita D153

Birth Date: 9-31-2015		Cow *18516117		Tattoo: D153	
#*SAV Priority 7283		#*SAV Final Answer 0035 [PDF]		MARB	
SAV Privilege 3030		#*SAV Blackcap May 5530		+19	
*17633557		+*SAV Blackcap May 1442		RE	
(ISOK)		+Rito 707 of Ideal 3407 7075		+35	
TRM Rita 153		#*SAV Bismarck 5682 [PDF]		SW	
+17107973		#*+GAR Grid Maker		+71.92	
		SAV Abigale 0451		\$B	
		#B/R New Design 323		+108.06	
		+GAR Ext 604			
CED	BEPD	WEPD	YEPD	MILK	
+7	+7	+64	+99	+24	

- Owned by Allison Angus.
- PEN PAIR.
- A direct daughter of the \$100,000 SAV Privilege 3030 back to a daughter of SAV Bismarck 5682.
- This featured Rita female stems back to a third-generation dam who is a full sister to the world record-valued GAR EXT 614.
- Bred to calve February 2019 to ALLISON 10XNATION 600 (18821698) or AHR 10X DESTINATION B46 (17756048). Examined Safe.



SLC LASSY PRIDE 523 - She sells as Lot 60.

58 ZWT Miss Wix 5701

Birth Date: 8-31-2015		Cow +*18260202		Tattoo: 5701	
#SAV Pioneer 7301		#*SAV Final Answer 0035 [PDF]		MARB	
Buford Oklahoma X239		SAV Blackbird 5297		-08	
*16701554		#Baldridge Nebraska 901		RE	
(HDSOK)		J Bar 7 Julie Jan 5406		+66	
Buford Miss Wix 170Y		#SAV 8180 Traveler 004 [PDF]		SW	
16967277		+MF Net Return 8197		+46.57	
		+SAV May 2436		\$B	
		#Rito 616 of 4B20 6807		+86.13	
		J Bar 7 Ms Julie Wix 997L			
CED	BEPD	WEPD	YEPD	MILK	
-4	+3.9	+62	+104	+16	

- Owned by Allison Angus.
- PEN PAIR.
- A direct daughter of Buford Oklahoma X239 back to a daughter of MF Net Return 8197 and the featured Miss Wix family. She ranks in the Top 10% for weaning, Top 15% for yearling.
- Sells with a heifer calf at side (Lot 58A) born December 6, 2018, by SAV RAINDANCE 6848 or Allison 10Xnation 600 (18821698) or AHR 10X Destination B46 (17756048). Will DNA test prior to sale.
- Bred to calve December 4, 2019, to TEX PLAYBOOK 5437. Examined Safe.

58B Allison Miss Wix 785

Birth Date: 12-11-2017		Cow *19170924		Tattoo: 785	
#*Connealy Onward		#Connealy Lead On		MARB	
ZWT Majestic 4116		Altune of Conanga 6104		+01	
*18038296		#Basin Rainmaker 654X		RE	
(ISOK)		+KMK Donna J311		+69	
ZWT Miss Wix 5701		#SAV Pioneer 7301		SW	
*18260202		J Bar 7 Elba 7297		+66.05	
		+MF Net Return 8197		\$B	
		J Bar 7 Miss Wix 7282		+120.77	
CED	BEPD	WEPD	YEPD	MILK	
-1	+3.5	+70	+117	+26	

- Owned by Allison Angus.
- HALTER BROKE.
- A direct daughter of ZWT Majestic 4116 back to the featured Miss Wix family.
- She ranks in the Top 5% of the breed for weaning, Top 10% for yearling and reads with phenomenal eye appeal, balance and quality.
- Bred to calve December 4, 2019, to TEX PLAYBOOK 5437. Examined Safe.

59 W R F Miss Investor 506

Birth Date: 3-12-2015		Cow 18368138		Tattoo: 506	
#*Mytty In Focus [PDF]		#SAF Focus of ER		MARB	
AAR Ten X 7008 SA		Mytty Countess 906		+62	
#15719841		SAV Adaptor 2213		RE	
(ANGUS)		+HSAF Lady Kelton 504B		+46	
WRF Miss Investor 627		#Sitz Traveler 8180		SW	
15546452		+Boyd Forever Lady 8003		+48.21	
		#*SAF 598 Bando 5175		\$B	
		WRF Miss Investor 06		+155.47	
CED	BEPD	WEPD	YEPD	MILK	
+6	+1.7	+58	+116	+25	

- Owned by White Ridge Farm.
- The combination of Ten X, 004 and 5175 blend for tremendous growth genetics. This well-balanced EPD female ranks in the Top 5% of the breed for weaning and yearling, Top 15% for \$W.
- Bred to calve February 13, 2019, to JINDRA ACCLAIM. Examined Safe.

60 SLC Lassy Pride 523 [OSF]

Birth Date: 1-10-2015		Cow 18288908		Tattoo: 523	
#*AAR Ten X 7008 SA		#*Mytty In Focus [PDF]		MARB	
VAR Discovery 2240 [PDF]		#AAR Lady Kelton 5551		+76	
*17262835		+*Deer Valley Rita 0308		RE	
(HDSOK)		#Sitz Upward 307R		+36	
SLC Lassy Pride 914		#*Rito 111 of 2536 Rito 616		SW	
16562283		#Rito 616 of 4B20 6807		+36.14	
		GAR Precision 2536		\$B	
		#Bon View New Design 1407 [PDF]		+138.05	
		Laura			
CED	BEPD	WEPD	YEPD	MILK	
+1	+3.0	+52	+102	+21	

- Owned by Banner Elite Genetics.
- PEN FEMALE.
- This beautiful daughter of VAR Discovery 2240 stems back to the featured daughter of Rito 111 of 2536 Rito 616. She is a beautiful-patterned, long-bodied, feminine-fronted, square-hipped, sound-structured female that offers unlimited genetic potential.
- Bred to calve January 26, 2019, to TEX PLAYBOOK 5437. Examined Safe.

61 B G S Rita 768

Birth Date: 12-5-2014		Cow 18062897		Tattoo: 768	
TC Right Answer 9165		#Connealy Right Answer 746		MARB	
GVF Answer 1122		#WK Miss Blackcap 5390		+36	
16895777		#Bon View New Design 878		RE	
		+GVF Evergreen 3011		+36	
		#SAV 8180 Traveler 004 [PDF]		SW	
BGS Rita 708		SAV Abigale 0451		+47.44	
17177170		#FAR Krugerrand 410H		\$B	
		+L&H Rita TRA 107		+118.78	
CED	BEPD	WEPD	YEPD	MILK	
+4	+2.5	+61	+110	+19	

- Owned by Rainbow Angus Farms.
- A featured Rita female that ranks in the Top 10% of the breed for yearling, Top 15% for weaning and blends TC Right Answer 9165 and the \$150,000 SAV Mandan 5664 into a powerful genetic package.
- Sells with a heifer calf at side (Lot 61A) born September 2, 2018, by BARSTOW BANKROLL B73 (18036327). Tattoo 847.
- Bred to calve August 20, 2019, to RB UPWARDS 1131-3268 (17987330). Examined Safe.

62 CRA Blackcap 4183 [DDP]

Birth Date: 11-25-2014		Cow 18036420		Tattoo: 4183	
#*SAV Bismarck 5682 [PDF]		#*+GAR Grid Maker		MARB	
SAV Brilliance 8077		SAV Abigale 0451		+52	
#16107774		#SAV 8180 Traveler 004 [PDF]		RE	
		+*SAV May 2420		+64	
		#*SAF Connection		SW	
		SyzGen Forever Lady 4087		+61.07	
		#*GAR Predestined		\$B	
		+Murcielago Blackcap 5228		+129.82	
CED	BEPD	WEPD	YEPD	MILK	
+7	+6	+56	+100	+27	

- Owned by Cedar Ridge Angus.
- PEN PAIR.
- A direct daughter of the \$67,500 ABS Global AI sire, SAV Brilliance 8077, back to the featured Blackcap family and a daughter of SyzGen CC&7.
- She ranks in the Top 10% of the breed for \$W, Top 20% for yearling weight and carcass weight EPDs, Top 25% of the breed for weaning weight EPD and \$B.
- Sells with a heifer calf at side (Lot 62A) born August 29, 2018, by HA COWBOY UP 5405. Reg. No. 19235849. Tattoo 8418.
- Bred to calve October 17, 2019, to DEER VALLEY GROWTH FUND. Examined Safe.

FEMALES



COLEMAN DONNA 6143 - Full sister to the grandam of Lot 63.

63 Rock Ridge Donna B92

Birth Date: 9-9-2014 Cow 18057367 Tattoo: B92

#*SAV Final Answer 0035	#Sitz Traveler 8180	MARB
Connealy Capitalist 028	SAV Emulous 8145	+29
**16752262	#CRA Bextor 872 5205 608	RE
	Prides Trav of Conanga 6499	+46
	#*Connealy Onward	SW
	Sitz Henrietta Pride 81M	+59.85
Coleman Donna 2270	#*Wulffs Ext 6106	\$B
17293138	+*MKM Donna J311	+100.05

CED	BEPD	WEPD	YEPD	MILK
+11	+4	+54	+94	+26

- Owned by Kraus Angus Farm.
- PEN PAIR.
- This featured Connealy Capitalist daughter is a calving-ease, low birth weight female that is moderate, deep and beautiful uddered. Her last calf crop was a bull that weaned off at 805 lbs. Her bull calf this year is out of Renown and looks tremendous. This female does an outstanding job of raising calves and will do someone a great job in their program.
- She stems back to the \$60,000 MKM Donna J311.
- Sells with a bull calf at side (Lot 63A) born November 3, 2018, by SAV RENOWN 3439 (17633839). Tattoo 160. Birth weight: 78 lbs.
- Bred to calve September 27, 2019, to BASIN PAYWEIGHT 1682 (17038724). Examined Safe.

64 CRA Rita wix 4960

Birth Date: 8-25-2014 Cow 18036440 Tattoo: 4960

##SAF Connection	##SVF Gdar 216 LTD	MARB
SydGen CC&7	+SAF Royal Queen 5084	+54
**15330743	#SydGen 1407 Corona 2016	RE
	+SAF Forever Lady 8292	+53
	#Sitz Traveler 8180	SW
Falls Creek Rita Wix 9602	+Boyd Forever Lady 8003	+56.22
16544267	##Boyd New Day 8005	\$B
	Garrison Ms Rita Wix Forte	+132.92

CED	BEPD	WEPD	YEPD	MILK
+7	+1.0	+48	+97	+34

- Owned by Cedar Ridge Angus.
- PEN PAIR.
- A direct daughter of SydGen CC&7 back to a daughter of SAV 8180 Traveler 004 and the featured Miss Wix family.
- Sells with a heifer calf at side (Lot 64A) born August 24, 2018, by DEER VALLEY BALANCE 6169. Reg. No. 19237508. Tattoo 8496.
- Bred to calve August 9, 2019, to BUBS SOUTHERN CHARM (17853196). Examined Safe.

65 Indian Springs Abigale B433

Birth Date: 2-13-2014 Cow +*17978733 Tattoo: B433

#*EXAR Upshot 0562B	#Sitz Upward 307R	MARB
EXAR Denver 2002B	#*EXAR Barbara T020	+48
*17160560	#EXAR 263C	RE
	BR Royal Lass 19-132	+47
ANGUS	#GAR Retail Product	SW
SAF Abigale 847	#GAR Precision 1680	+77.64
+*16333385	#*GAR Ext 4927	\$B
	##SAF 598 Bando 5175	+153.13
	SAV Abigale 9377	

CED	BEPD	WEPD	YEPD	MILK
+7	+2.6	+70	+122	+36

- Owned by Cox & Collier Livestock.
- This featured Abigale female by EXAR Denver 2002B stems back to a daughter of GAR Retail Product.
- She reads with tremendous growth without sacrificing maternal while ranking in the Top 1% of the breed for \$W and Top 10% for \$Beef.
- Sells with a heifer calf at side (Lot 65A) born December 14, 2018, by THREE TREES MEADOW BROOK. Tattoo C108.
- Bred to calve November 29, 2019, by VAR LEGEND 5019 (Sexed Heifer). Examined Safe.

BULLS



POINT P INSIGHT 8317 - He sells as Lot 67.

66 ISA Cowboy Up 811

Birth Date: 2-1-2018 Bull 19308752 Tattoo: 811

*HA Outside 3008	*KG Solution 0018	MARB
HA Cowboy Up 5405	#*HA Ever Lady 1575	N/A
*18286467	#*HA Blackcap Lady 1602	RE
	#Sitz Upward 307R	N/A
	HA Blackcap Lady 5515	SW
	#Connealy Reflection	+48.67
ISA Blackcap 610	#Hoff Rachel 8312 405	\$B
18825177	Indian Springs Blackcap B431	N/A
	+*EXAR Denver 2002B	
	+Indian Springs Blackcap 076	

CED	BEPD	WEPD	YEPD	MILK
+4	+3.7	+75	+134	+20

- Owned by Indian Springs Angus.
- HALTER BROKE.
- Birth weight: 73 lbs. Adj. WW: 853 lbs.
- A featured herd sire prospect by the record-selling HA Cowboy Up 5405 and the top bull in his contemporary group who ranks in the Top 4% of the breed for weaning, Top 3% for yearling and stems back to the featured Blackcap family.
- He had an individual weaning ratio of 105.

67 Point P Insight 8317

Birth Date: 9-20-2017 Bull 19079487 Tattoo: 8317

##SAV Brilliance 8077	##SAV Bismarck 5682	MARB
PVF Insight 0129	SAV Blackcap May 5270	+02
+*16805884	##*PVF New Horizon 001	RE
	PVF Miss Raptor 024	+1.00
	#BC Marathon 7022	SW
West Wind Primrose 1011	Thomas Blackbird 8164	+54.52
17116026	##*Woodhill Resolution	\$B
	Gambles Miss LBFB	+139.97

CED	BEPD	WEPD	YEPD	MILK
+2	+3.5	+66	+110	+18

- Owned by Point Pleasant Angus.
- HALTER BROKE.
- This bull was the Grand Champion Bull at the Tennessee Valley Fair, Champion Sr. Bull Calf at the Appalachian Fair, Res. Champion Sr. Bull Calf at the West Virginia State Fair, and Res. Champion Sr. Bull Calf at the Virginia Breeder's Show.
- He has a great phenotype with excellent numbers across the board. His grandam was a NAILE Bred & Owned Class Winner.

68 Lakeside Forever Style D124

Birth Date: 12-4-2016 Bull 18821761 Tattoo: D124

+*Silveiras Style 9303	Gambles Hot Rod	MARB
Lakeside Style 1102	+Silveiras Elba 2520	-05
+*18124559	##Lemmon Newsline C804	RE
	+PAF Focus	+30
	OCC Legend 616L	SW
Hodges Forever Lady 202	Gibbet Hill Mignonne E37	+33.19
+17234601	##AAR New Trend	\$B
	+TRA Forevermore 641	+51.74

CED	BEPD	WEPD	YEPD	MILK
+5	+1.1	+39	+65	+16

- Owned by Lakeside Angus.
- HALTER BROKE. HEIFER BULL.
- A direct son of Lakeside Style 1102 back to a daughter of the 2012 ROV Sire of the Year and Pathfinder sire, BC Lookout 7024, and the ever popular Forevermore 1022.
- Here is a powerful individual that reads with tremendous breeding potential.

PICK OF HEIFER CALVES, PREGNANCIES AND EMBRYOS



BAR R JET BLACK 5063 - Sire of Lot 69.

69 Pick of Heifer Calves

Due Date: September 2019

Bar R Jet Black 5063 *18389838	*Connealy Black Granite	#Connealy Consensus 7229	\$ MARB	D MARB	
		#Eura Elga of Conanga 9109	+62	+1.17	
	Bar R Iris Anita 0113	#Sitz Upward 307R	RE	RE	
		Bar R Anita 7081	+99	+1.03	
		#CRA Bextor 872 5205 608	\$W	\$W	
Deer Valley Blackbird 4765 +*18131016	#*GAR Prophet [PDF]	+GAR Objective 1885	+87.59	+76.47	
	+*VAR Blackbird 1218	+Summitcrest Complete 1P55 [PDF]	\$B	\$B	
		+*Sandpoint Blackbird 8809	+209.65	+202.31	
	CED	BEPD	WEPD	YEPD	MILK
	+11	+8	+89	+157	+24
	-2	+4.7	+90	+162	+27

- Owned by Stonewall Ridge Farm, LLC.
- SELLING PICK OF THREE HEIFER CALF CHOICES.**
- This special sale attraction is pick of three heifer calves after genomic testing due in September of 2019 by the high numbered, Bar R Jet Black, back to Deer Valley Blackbird 4765, who is a popular donor female in the Stonewall Ridge Farm program.
- Donor dam of this pick ranks in the Top 1% for weaning, yearling, ribeye area, carcass, \$W and \$B in the breed and in the Top 2% for marbling; she has a phenomenal set of numbers across the board and is a direct daughter of GAR Prophet back to the legendary Sandpoint Blackbird 8809.

70A C2 Rita Pregnancy

Due Date: 9-15-2019

Reg Recip #17307299

70B C2 Rita Embryos

4 Frozen Embryos

Deer Valley Wall Street +*18827829	+*Basin Payweight 1682	#*Basin Payweight 006S	\$ MARB	D MARB	
		21AR O Lass 7017	+1.05	+58	
	+*Deer Valley Rita 36113	*Plattmehere Weigh Up K360	RE	RE	
		+Deer Valley Rita 9457	+61	+1.04	
		*EXAR Upshot 0562B	\$W	\$W	
EXAR Rita 5993 +*18069311	*EXAR Denver 2002B	+Exar Royal Lass 1067	+84.45	+55.23	
		+*GAR New Design 5050	\$B	\$B	
	+*SJH 5050 of 6108 1061	+DRMCTR 111 Rita 6108	+192.43	+171.12	
S D	CED	BEPD	WEPD	YEPD	MILK
	+7	+1.4	+82	+152	+30
	+2	+3.1	+59	+116	+32

- Owned by Cox & Collier Livestock.
- These special sale attractions are out of EXAR Wall Street back to the featured Rita family and a donor dam by EXAR Denver 2002B back to the \$3 million plus producing DRMCTR 111 Rita 6108.
- Donor female ranks in the Top 1% of the breed for ribeye area EPD, Top 2% for \$BeeF, Top 3% for carcass weight Top 5% for yearling weight and Top 15% weaning weight.
- Lot 70A: Sells with a Registered Angus Recip #17307299. Tattoo 5993.
- Lot 70B: Guarantee of one pregnancy when input by a certified embryologist.



DEER VALLEY WALL STREET - Sire of Lots 70A and 70B.



SANDPOINT BLACKBIRD 8809 - Grandam of Lot 71.

71 Woodlawn Blackbird Pregnancy

Due Date: Fall 2019

Byergo Black Magic 3348 *17803074	*Silveiras Conversion 8064	#+BT Crossover 758N	\$ MARB	D MARB	
		+EXG Saras Dream S609 R3	+92	+58	
		Byergo Picasso	RE	RE	
	*Byergo Elia Cupcake 5900	+Byergo Miss Cupcake 3600	+1.22	+1.13	
		#CRA Bextor 872 5205 608	\$W	\$W	
VAR Blackbird 1273 +*17001849	#TC Aberdeen 759	#*TC Blackbird 4034	+87.32	+57.25	
		#*Connealy Onward	\$B	\$B	
	+*Sandpoint Blackbird 8809	+Riverbend Blackbird 4301	+249.19	+160.97	
	CED	BEPD	WEPD	YEPD	MILK
	+2	+3.4	+107	+194	+25
	+8	+2.1	+63	+110	+21

- Owned by Woodlawn Farms.
- This featured pregnancy by Byergo Black Magic 3348 stems back to the featured Blackbird family.
- Dam is by TC Aberdeen 759 back to the ever popular Sandpoint Blackbird 8809 and she ranks in the Top 1% of the breed for ribeye area EPD, Top 3% for \$BeeF, Top 4% for carcass weight and Top 10% for weaning and yearling EPDs.

72 Blacksnake Karama Embryos

Selling 4 Conventional Embryos

EWA Peyton 642 <small>[PDF]</small> *18675107	+*Quaker Hill Manning 4EX9 <small>[PDF]</small>	*EXAR Denver 2002B	\$ MARB	D MARB	
		+*Quaker Hill Blackcap 0A32	+1.37	+85	
	+*EWA 444 of 968 Progress	#*GAR Progress	RE	RE	
		+Edgewood Lady 968	+68	+66	
		*VAR Discovery 2240 <small>[PDF]</small>	\$W	\$W	
Powell Karama 7037 *+18774552	+*MGR Treasure <small>[PDF]</small>	+*SJH Impression of 6108 1614	+90.55	+87.24	
	+*Williams Prop Karama 200-117	#*GAR Prophet <small>[PDF]</small>	\$B	\$B	
		Williams Karama 159	+215.77	+185.83	
	CED	BEPD	WEPD	YEPD	MILK
	+13	+1.8	+96	+170	+32
D	+11	+9	+89	+160	+25

- Owned by Blacksnake Cattle Company.
- SELLING FOUR FROZEN EMBRYOS.**
- These featured frozen embryos are the powerful genetic combination of calving ease, growth and carcass traits that have produced breed-leading genomics and EPDs across the board.
- Don't miss this opportunity to go straight to the top with these Angus genetics.



WILLIAMS PROP KARAMA - Grandam of Lot 72.

2019 TENNESSEE ANGUS AGRIBITION - EMBRYOS



RITA 1198 OF 2536 RITO 616 - Grandam of Lot 73A.

73A Cannon Ridge Blackcap Embryos

Selling 4 Conventional Embryos

	*HA Outside 3008	*KG Solution 0018	\$ MARB	% MARB
HA Cowboy Up 5405		#*HA Ever Lady 1575	+24	+19
*18286467	#*HA Blackcap Lady 1602	#Sitz Upward 307R	RE	RE
		HA Blackcap Lady 5515	+69	+45
	#*SAV Bismarck 5682 [PROF]	#*GAR Grid Maker	\$W	\$W
Deer Valley Blackcap 0708		SAV Abigale 0451	+48.53	+42.23
*16870461	*Rita 1198 of 2536 Rito 616	#Rito 616 of 4B20 6807	\$B	\$B
		GAR Precision 2536	+165.15	+118.44

	CED	BEPD	WEPD	YEPD	MILK
\$	+8	+2.5	+76	+139	+10
D	+11	+5	+58	+102	+14

- Owned by Cannon Ridge Ranch.
- SELLING FOUR FROZEN EMBRYOS.**
- These featured frozen embryos by the record-selling HA Cowboy Up 5405 stem back to Deer Valley Blackcap 0708, a daughter of SAV Bismarck 5682 and the legendary Rita 1198 of 2536 Rito 616. Third-generation dam is the all-time high income-producing female of the breed.
- Guaranteed one pregnancy when input by a certified embryologist.

73B Cannon Ridge Ruby Embryos

Selling 4 Conventional Embryos

	*KCF Bennett Southside	#Nichols Extra K205	\$ MARB	% MARB
KCF Bennett TheRock A473		#KCF Miss 208 S11	+1.26	+91
*17849954	+KCF Miss Protege W148	#*GAR-EGL Protege	RE	RE
		Breela of Conanga 3991	+53	+82
	#*AAR Ten X 7008 SA	#*Mytty In Focus [PROF]	\$W	\$W
Deer Valley Ruby 5194		#AAR Lady Kelton 5551	+67.92	+66.40
*18191691	*44 Ruby 530X	#*Werner War Party 2417	\$B	\$B
		B/R Ruby 1224	+172.92	+154.98

	CED	BEPD	WEPD	YEPD	MILK
\$	+11	+1.7	+79	+141	+20
D	+3	+5	+60	+110	+29

- Owned by Cannon Ridge Ranch.
- SELLING FOUR FROZEN EMBRYOS.**
- These featured frozen embryos by KCF Bennett The Rock stem back to Deer Valley Ruby 5194, who is a direct daughter of AAR Ten X 7008 SA back to the legendary B/R Ruby 1224, a foundation Ruby female in the 44 Farms program.
- Donor dam ranks in the Top 5% of the breed for both \$W and \$B.
- Guaranteed one pregnancy when input by a certified embryologist.



B/R RUBY 1224 - Third-generation dam of Lot 73B.



QUAKER HILL BLACKCAP 0A32 - Grandam of Lot 74.

74 ISA Blackcap Embryos

Selling 4 IVF Embryos

	*VAR Generation 2100	#*Connealy Consensus 7229	\$ MARB	% MARB
VAR Heritage 5038		+*Sandpoint Blackbird 8809	+94	+22
*18066052	*SJH Complete of 6108 1564	#Summitcrest Complete 1P55 [PROF]	RE	RE
		+DRMCTR 111 Rita 6108	+1.09	+92
	*HA Cowboy Up 5405	*HA Outside 3008	\$W	\$W
Crazy K Blackcap 7555		#*HA Blackcap Lady 1602	+70.66	+58.94
*19078731	*Quaker Hill Blackcap 0A32	#MCC Daybreak	\$B	\$B
		+*QHF Blackcap 6E2 of 4V16 4355	+192.06	+136.80

	CED	BEPD	WEPD	YEPD	MILK
\$	+5	+1.6	+69	+125	+32
D	+12	+1.9	+70	+123	+19

- Owned by Indian Springs Angus.
- SELLING 4 IVF EMBRYOS.**
- These featured IVF embryos by VAR Heritage 5038 stem back to a daughter of the record-selling HA Cowboy Up 5405 and the full sister to the ABS Global AI sire the led the breed for registrations, Quaker Hill Rampage 0A36. Donor dam was the second top-selling heifer of a past Crazy K Ranch fall sale.
- Guarantee of two pregnancies when input by a certified embryologist.

75A PVF Henrietta Pride Embryos

Selling 5 Conventional Embryos

	*Basin Payweight 1682	#*Basin Payweight 006S	\$ MARB	% MARB
Deer Valley Wall Street [PROF]		21AR O Lass 7017	+1.05	+41
*18827829	*Deer Valley Rita 36113	*Plattmire Weigh Up K360 [PROF]	RE	RE
		+Deer Valley Rita 9457	+61	+84
	#*Connealy Confidence 0100	Connealy Tobin	\$W	\$W
PF 0100 Henrietta Pride 3509		Becka Gala of Conanga 8281	+84.45	+62.33
*17690840	*PF 5682 Henrietta Pride 0533	#*SAV Bismarck 5682 [PROF]	\$B	\$B
		+Sitz Henrietta Pride 643T	+192.43	+135.91

	CED	BEPD	WEPD	YEPD	MILK
\$	+7	+1.4	+82	+152	+30
D	+19	-3.2	+54	+97	+23

- Owned by Pleasant Valley Farms.
- SELLING FIVE FROZEN EMBRYOS.**
- These featured frozen embryos by Deer Valley Wall Street stem back to a daughter of Connealy Confidence 0100 and the \$390,000 record-selling Sitz Henrietta Pride 643T, who is a full sister to the \$85,000 GENEX Beef AI sire, Sitz Upward 307R.



SITZ HENRIETTA PRIDE 643T - Third-generation dam of Lot 75A.

2019 TENNESSEE ANGUS AGRIBITION - EMBRYOS

75B PVF Barbara Embryos

Selling 4 Conventional Embryos

	*GAR Sunrise [PDF]	#MCC Daybreak	\$ MARB	RE	RE
Thomas Edison 6764		*GAR Objective R227	+1.12	+97	
*18704096	*Thomas Primrose 41037	#AAR Ten X 7008 SA	+1.12	+84	
		Thomas Primrose 21128	\$W	\$W	
	*VAR Discovery 2240 [PDF]	#AAR Ten X 7008 SA	+75.92	+70.60	
PV Barbara 6713		*Deer Valley Rita 0308	\$B	\$B	
*18808270	*BoBo Barbara 3039	#Hoover Dam	+201.79	+167.33	
		#EXAR Barbara T020			

	CED	BEPD	WEPD	YEPD	MILK
S	+11	+1.0	+81	+137	+17
D	+1	+1.2	+65	+118	+28

- Owned by Pleasant Valley Farms.
- SELLING FOUR FROZEN EMBRYOS.**
- These featured frozen embryos by Thomas Edison stem back to a daughter of VAR Discovery 2240 and the featured Barbara family.
- Grandam is a maternal sister to EXAR Upshot 0562B and the dam of these embryos ranks in the Top 4% of the breed for \$W, Top 5% for \$B and Top 10% for weaning, yearling, marbling.



EXAR UPSHOT 0562B - Maternal brother to the grandam of Lot 75B.

75C PVF Rita Embryos

Selling 5 Conventional Embryos

	*VAR Discovery 2240 [PDF]	#AAR Ten X 7008 SA	\$ MARB	RE	RE
MGR Treasure [PDF]		*Deer Valley Rita 0308	+1.10	+80	
*18156972	*SJH Impression of 6108 1614	#Connealy Impression	+54	+63	
		+DRMCTR 111 Rita 6108	\$W	\$W	
	*EXAR Denver 2002B	#EXAR Upshot 0562B	+59.30	+56.50	
Deer Valley Rita 4812		+Exar Royal Lass 1067	\$B	\$B	
*18131172	+Deer Valley Rita 8517	#GAR Predestined	+149.06	+153.38	
		+GAR Ext 614			

	CED	BEPD	WEPD	YEPD	MILK
S	+12	-1.3	+70	+132	+14
D	+1	+4.0	+63	+109	+26

- Owned by Pleasant Valley Farms.
- SELLING FIVE FROZEN EMBRYOS.**
- These featured frozen embryos by MGR Treasure stem back to the featured EXAR Denver 2002B and the record-selling GAR EXT 614.



DRMCTR 111 RITA 6108 - Grandam of Lot 76A.

76A Woodlawn Rita Embryos

Selling 4 Conventional Embryos

	*Silveiras Conversion 8064	#BT Crossover 758N	\$ MARB	RE	RE
Byergo Black Magic 3348		+EXG Saras Dream S609 R3	+92	+86	
*17803074	*Byergo Elia Cupcake 5900	Byergo Picasso	+1.22	+76	
		+Byergo Miss Cupcake 3600	\$W	\$W	
	*Deer Valley All In [PDF]	#AAR Ten X 7008 SA	+87.32	+70.36	
FWY Rita 165 of 6108		*Deer Valley Rita 0274	\$B	\$B	
*18305063	+DRMCTR 111 Rita 6108	#Rito 111 of 2536 Rito 616	+249.19	+150.39	
		+DRMCTR 2908s Design 2B02			

	CED	BEPD	WEPD	YEPD	MILK
S	+2	+3.4	+107	+194	+25
D	+8	+1.1	+65	+120	+32

- Owned by Woodlawn Farms.
- SELLING FOUR FROZEN EMBRYOS.**
- These featured frozen embryos by Byergo Black Magic 3348 stem back to the legendary DRMCTR 111 Rita 6108, the \$3 million producer.
- Dam of these featured frozen embryos is the \$32,000 feature, FWY Rita 165 of 6108.



SAC CONVERSATION - Sire of Lot 76B.

76B Woodlawn Georgina Embryos

Selling 4 Sexed Heifer Embryos

Tattoo:

	*Silveiras Conversion 8064	#BT Crossover 758N	\$ MARB	RE	RE
SAC Conversation [PDF]		+EXG Saras Dream S609 R3	+47	+17	
*17808532	#Laffins Farrah 0252	#SAV 004 Predominant 4438	+95	+38	
		Laffins Farrah 7215	\$W	\$W	
	#SAV Bismarck 5682 [PDF]	#GAR Grid Maker	+43.12	+51.86	
Champion Hill Georgina 8198		SAV Abigale 0451	\$B	\$B	
*17219434	+Champion Hill Georgina 7751	#SAV Free Spirit 8164	+99.78	+109.29	
		+Champion Hill Georgina 6240			

	CED	BEPD	WEPD	YEPD	MILK
S	+2	+1.5	+41	+81	+27
D	+5	+1.3	+51	+94	+24

- Owned by Woodlawn Farms.
- SELLING FOUR SEXED HEIFER EMBRYOS.**
- These featured sexed heifer embryos by SAC Conversation stem back to Champion Hill Georgina 8198. Full sibs to these embryos include the 2018 Tennessee Preview Show Supreme Champion and Class Winner at the 2018 NAILE in both the Open and Junior Shows.

76C Woodlawn Georgina Embryos

Selling 6 Sexed Heifer Embryos

Tattoo:

	*Dameron First Class	EXG RS First Rate S903 R3	\$ MARB	RE	RE
SCC First-N-Goal GAF 114		Dameron Northern Miss 3114	+30	+17	
*17030115	+SCC Royal Blackbird 502	+Champion Hill Edition 2029	+55	+38	
		+Champion Hill Blackbird 1943	\$W	\$W	
	#SAV Bismarck 5682 [PDF]	#GAR Grid Maker	+49.68	+51.86	
Champion Hill Georgina 8198		SAV Abigale 0451	\$B	\$B	
*17219434	+Champion Hill Georgina 7751	#SAV Free Spirit 8164	+136.86	+109.29	
		+Champion Hill Georgina 6240			

	CED	BEPD	WEPD	YEPD	MILK
S	-6	+6.2	+66	+98	+25
D	+5	+1.3	+51	+94	+24

- Owned by Woodlawn Farms.
- SELLING SIX SEXED HEIFER EMBRYOS.**
- These featured sexed heifer embryos by the Select Sires Al sire, SCC First-N-Goal, stem back to the featured Champion Hill Georgina 8198, a direct daughter of SAV Bismarck 5682.
- These embryos are full sibs to the 2018 Tennessee Agribition Show Champion who sold for \$9,000.

TENNESSEE BEEF AGRIBITION

JUNIOR HEIFER & STEER SHOW

Sunday - March 10, 2019 - 9:00 a.m. CDT

An open to the world junior heifer and steer show will be held in conjunction with the 31st Annual Tennessee Beef Agribition. The Agribition is held at the James E. Ward Agricultural Center, 945 E. Baddour Parkway, Lebanon, TN 37087. The junior show will start with steers followed by heifers. Two rings of heifers will show at the same time, and breeds will not be rotated.

The rules for the event are as follows:

1. Breed association rules for junior shows will apply to each respective breed.
2. No pre-entry is required. Entry forms will be available Friday and Saturday.
3. Due to limited parking facilities, all trailers must be parked in the designated parking area. On Saturday, Junior cattle will be allowed in the stalls when sales are completed and sale cattle are removed.
4. All junior cattle should be on the grounds and processed by 5:00 p.m. on Saturday, March 9th. Heifers and steers will be processed Saturday from 2:00 until 5:00 p.m. CST. All heifers purchased from late afternoon sales should be entered ASAP.
5. **** There will be a \$20 per head entry fee at the 2019 event. **** All classes will be placed through fifth place, and premiums will be paid for 1st - 5th. The top five heifers and top five steers will pay \$300, \$200, \$150, \$100 and \$50.
6. Heifer and steer breed shows will be available for the following breeds: Angus, Charolais, Hereford/Polled Hereford, Limousin, Shorthorn and Simmental and AOB. Breed rotation will be Z to A (Simmental, Shorthorn...with Angus showing last). Any breed having a sale will qualify to have a junior breed show.
7. All other breeds (AOB), including commercial heifers and cross-bred steers, will compete in AOB classes. AOB heifers will show by weight.
8. Heifers eligible to show must be born on or after September 1, 2017. Heifer classes will be based on the futurity system and will be determined after all entries are made. Steers will show by breed with classes determined by weight.
9. Heifers (born on or after 09/01/17) purchased in any of the Agribition sales will be eligible to compete in the Junior Show. ****Check the respective breed catalog to see if percent age cattle show as AOB.****

Quintin Smith - Junior Show Contact
615-207-0830

Announcing the 31st Annual Tennessee Beef Agribition

March 8-10, 2019

James E. Ward Agricultural Center • Lebanon, TN

Show and Sale Schedule

Breed	Friday March 8 Show	Saturday March 9 Sale	Contact	Phone
Limousin	10:30 a.m.	10:30 a.m.	Randy Ratliff	615-330-2735
Simmental	12:00 p.m.	10:00 a.m.	Doug Parke	859-987-5758
Hereford Horned/Polled	12:30 p.m.	11:30 a.m.	Bobby Singleton	615-708-1034
Shorthorn	1:30 p.m.	1:00 p.m.	Mike Davis	615-202-7106
Angus	3:00 p.m.	1:00 p.m.	Kenneth Armstrong	931-703-6661
Charolais	3:00 p.m.	2:00 p.m.	Clifford Mitchell	405-246-6324

Sunday, March 10 • Agribition Junior Show

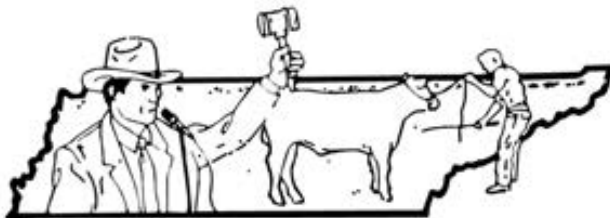
The 2019 Agribition will again feature one of the largest Trade Shows in the Southeast!

Barn Manager
ALAN PSOTA
125 Peyton Road
Lebanon, TN 37087
(931) 242-0179

President
MICHAEL BUTLER
1 065 Greenvale Road
Milton, TN 37118
(615) 351-1071

Vice President
MIKE WATKINS
2655A Beasley Bend Road
Lebanon, TN 37087
(615) 642-0976

Trade Show Manager
DIANE MAJOR
6851 Cainsville Road
Lebanon, TN 37090
(615) 286-2539



TENNESSEE BEEF AGRIBITION

Junior Show Contact
QUINTIN SMITH
5171 Cainsville Road
Lebanon, TN 37090
(615) 207-0830

James E. Ward Agricultural Center ~ 945 Baddour Parkway East ~ Lebanon, TN



*Official Sale Ring Sponsor
of The Tennessee Beef Agribition.*

A grayscale background image of a rural landscape. In the foreground, there is a grassy field with a wooden fence post and a wire fence. In the middle ground, there are some trees and a small building. In the background, there are mountains. The image is overlaid with horizontal lines for writing.

CONSIGNORS

Allison Angus

Martin (Marty) Allison
5726 Clydeton Road
Waverly, TN 3718
931-622-0794
allisonmw@aol.com
LOTS 22, 47, 57-58B

Banner Elite Genetics

Wayne Banner
1264 N Main St
Eagleville, TN 37060
615/351-4444
banco01@bellsouth.net
LOT 60

Blacksnake Cattle Company

Chad Lewis / Ricky Garrison
150 Lincoln Drive
Elizabethton, TN 37643
423/213-4643 Chad
423/213-6780 Ricky
chadkeithlewis@yahoo.com
garrisonricky@gmail.com
LOTS 9, 46, 56, 72

Burks Cattle Company

Bradon Burks
531 Rick Rd.
Park City, KY 42161
270/991-6398
endburks@hotmail.com
LOT 4

Cannon Ridge Ranch

Charles A. Cartwright
1953 Horse Mountain Rd
Shelbyville, TN 37160
972/832-0123
cacartwright@att.net
LOTS 32, 73A-73B

Cedar Ridge Angus

Ray Jordan
2602 Prospect Rd
Pulaski, TN 38478
256/508-2874
raycjordan@gmail.com
LOTS 42, 45, 62, 64

Cox & Collier Livestock

Rowdey Collier
413 Hardwick Dr
Knoxville, TN 37923
865/661-3479
cox13429@bellsouth.net
LOTS 16, 29-30, 39, 65, 70A-70B

Davis, Tyler

3300 Pace Rd
Clarksville, TN 37043
931/801-3308
davisfarms94@gmail.com
LOT 3

DMB Angus

Danny & Michael Brown
3235 Stone Dam Rd
Chuckey, TN 37616
865/789-9211
michael.brown@fbtbn.com
LOT 53

Dockery, Makayla

188 Green Way Rd
Limestone, TN 37681
423/948-0980
jdockery923@gmail.com
LOTS 34, 40

GladeRock Farms

Joshua Rollins
906 Wheel Rd
Shelbyville, TN 37160
931/580-5418
droll226@gmail.com
LOTS 1-2

Grassy Valley Farm

Dr. Lee Duckworth
103 McCall Ave
Greeneville, TN 37745
423/552-5405
dwanimalhospital@comcast.net
LOT 26

Hillview Farm

Jim Faulkner/Andrew Watts
9850 Lafayette Rd
Herndon, KY 42236
615/473-3759
hillviewfarm@bellsouth.net
LOT 15

Indian Springs Angus

Lester and Deana Hardaway
1476 Jim Jones Rd.
Duck River, TN 38454
931/729-2207 hm
931/619-8000 cell (best #)
Indian.springs.angus@gmail.com
LOTS 19, 25, 66, 74

Kraus Angus Farm

Dale & Josh Kraus
PO Box 1702
Dyersburg, TN 38025
731/676-2203 Josh
greenthumbawn@hotmail.com
LOTS 51, 63

Lakeside Angus

Peyton Williams
301 Emerald Chase Circle
Johnson City, TN 37615
423/676-6533
Klwilliams301@embarqmail.com
LOTS 21, 68

Miller Family Farms

Steve Miller Family, Owner
Chris Whitted Family, Owner
PO Box 56
Decatur, TN 37322
423/507-2322 Tyler
423/744-4205 Chris
cwhitted@southhydcyl.com
LOTS 17, 27

Mire Creek Farms

John Abe Teague
196 Shanks Road
Telford, TN 37690
423/360-3336
johnabe50@gmail.com
LOT 49

Pleasant Valley Farms

Nick Rippy
2395 Hwy 64 E
Shelbyville, TN 37160
615/812-8599
Nick.rippy@comcast.net
LOTS 41, 75A-75C

Point Pleasant Angus

Larry & Gail Shaver
Jen Friedel & Brad Shaver
1404 Big Hollow Rd
Blountville, TN 37617
423/341-2718
pointpleasantangus@gmail.com
LOTS 38, 67

Powell Farms

James J Powell
250 Urbana Rd
Limestone, TN 37681
423/257-3227
jamesjpowell@aol.com
LOTS 5-6, 12

Quintin Smith Family Angus

Quintin Smith
5171 Cainsville Rd
Lebanon, TN 37090
615/207-0830
quintinsmithfamilyangus@gmail.com
LOT 18

Rainbow Angus Farms

Homer Stout
Brian Stout
213 Crussell Dr
Piney Flats, TN 37686
423/335-5631 Homer
423/817-0821 Brian
LOTS 52, 61

Red Tail Farm

Rick Brogdon
382 Marlow Circle
Clinton, TN 37716
423/595-4301 Josh Cornelius
jcornelius@agcentral.coop
LOTS 31, 37

Rock Bottom Farms

Kent Green
5128 Rocky Mist Rd
Cosby, TN 37722
865/217-9553
865/640-8178 cell
rockbottomfarms@aol.com
LOTS 11, 20

RX Angus

Ken Harr / Michael Harr
1300 Harrtown Rd.
Blountville, TN 37617
423/306-2923 Ken
kdharr2000@yahoo.com
LOTS 7, 28, 35

Short Farms

Brett Short
264 Riggs Rd
Portland, TN 37148
615/517-2551
brettshort98@gmail.com
LOT 24

Southern Rhythm

Brian & Katie Bates
13895 Lebanon Rd
Old Hickory, TN 37138
309/525-1517
batescattle@yahoo.com
LOT 14

Starnes Farms

Marcus J. Starnes
77 Johnson Rd
Greeneville, TN 37743
423/329-7247
starnesmj@aol.com
LOT 23

Stonewall Ridge Farm, LLC

Gary Fayard 404/966-1166
Justin Legate, Gen. Mgr 931/224-9789
1724 Wartrace Pike
Shelbyville, TN 37160
jlegate11@gmail.com
LOT 69

Triple S & S Farm

Mike Southerland
128 Muddy Fork Rd
Jonesborough, TN 37659
423/426-2732
vols8098@yahoo.com
LOT 36

Turner Angus Farm

John Turner
297 Leighs Chapel Road
Covington, TN 38019
901/351-1355
turnerangusfarm@gmail.com
LOT 50

White Ridge Farm

Kevin White
269 Downey Rd
Chuckey, TN 37641
423/444-3857
whitek2131@yahoo.com
LOTS 55, 59

Windy Hill Cattle

Stephen Wilson
607 Hales Chapel Rd
Johnson City, TN 37615
423/677-1468
windyhillcattle@gmail.com
LOT 54

Woodlawn Farms

Mark Klepper
3125 Horton Hwy
Greeneville, TN 37745
423/823-0900
woodlawnfarms423@gmail.com
LOTS 8, 10, 13, 33, 71, 76A-76C



AMERICAN ANGUS HALL OF FAME
at the WORLD ANGUS HEADQUARTERS
Box 660, Smithville, MO 64089-0660.
Phone: (816) 532-0811
Fax: (816) 532-0851
E-mail angushall@angushall.com
www.angushall.com

PSRT
FIRST CLASS
U.S. POSTAGE
PAID
St. Joseph, MO
Permit #2017

TENNESSEE ANGUS

Beef Agribition

56th Annual Show and Sale

SHOW

Friday • March 8, 2019 • 3:00 p.m. (CST)

SALE

Saturday • March 9, 2019 • 1:00 p.m. (CST)

*Held at the James E. Ward Agricultural Center • Lebanon, TN
(Wilson County Fairgrounds)*