

Spring Cove Ranch & Sawtooth Cattle Co.



Angus since 1919

Joint Fall Production Sale



Guest consignments from: Triple L Angus Management

Saturday, October 25, 2008
1:00 p.m. MDT
at Spring Cove Ranch
Bliss, Idaho





Angus since 1919



Visit the *Angus Journal* Web site, www.angusjournal.com to view this sale book online.

References: American Angus Association®, AHIR®, AngusSource®, CAB®, Pathfinder®.

SALE DATE: Saturday, October 25
LUNCH SERVED AT 12:00 p.m.
SALE TIME IS 1:00 p.m.

SALE LOCATION: Spring Cove Ranch, Bliss, Idaho (Map on back of sale book)

Directions coming from the East on I-84: Take Exit 137 on Pioneer Rd. and travel west for 3 1/2 miles to Spring Cove Ranch bull sign. Turn right and drive one mile north to the sale barn on the right side of the road.

Directions coming from the West: Take Exit 129 and turn left. Go over overpass and make an abrupt right on Allen Rd. Travel east for five miles until you reach Spring Cove Rd. and the Spring Cove Ranch bull sign. Turn left at the bull sign and drive north one mile to the sale barn on the right side of the road.

LODGING:

Amber Inn Motel: (Bliss) (208) 352-4441
Y-INN Motel: (Bliss) (208) 352-4451
Billingsley Creek Lodge: (Hagerman) (208) 837-4822

TERMS AND CONDITIONS:

The cattle will sell under the terms of the American Angus Association. Except for those stated in the Terms and Conditions, there are no warranties, either expressed or implied, as to the merchantability or fitness for a particular purpose with respect to the cattle being sold in this auction. The warranties and guarantees set forth in the Terms and Conditions are in lieu of all other warranties, either expressed or implied, and the remedies provided therein shall be the sole and exclusive remedy of the buyer (or any party claiming through the buyer) or any breach of warranty or guarantee therein provided and all other obligations available at the clerk's office sale day.

Sale Day Phones:

Sale Barn: (208) 352-4254

Spring Cove Ranch,

Art Butler cell: (208) 280-1026

Sawtooth Cattle Co.,

Mike Patton cell: (208) 539-7498

Triple L Angus,

Randy Lancaster: (208) 731-1947

Josh Mavencamp: (208) 358-0057

Auctioneer: Trent Stewart

American Angus Association:

Rod Wesselman (509) 765-9219

Western Livestock Journal:

Jerry York (208) 863-1172

Western Livestock Reporter:

Gary Kendall (208) 858-2163

Ag Weekly: Jeff Thomas (406) 581-8859

INSPECTION & IDENTIFICATION OF CATTLE:

Sale cattle will be available for inspection at Sawtooth Cattle Co., in Gooding, Idaho; at Spring Cove Ranch in Bliss; and at TL Angus in Twin Falls prior to the sale date. All cattle will be at Spring Cove on Thursday, October 23. Buyers are invited to come early and view the cattle. Ear tags on all sale cattle will correspond to the lot numbers in the sale book.

HEALTH & FERTILITY: All females are official calfhood vaccinated for brucellosis. All bulls will have passed a semen test and will be Trich tagged by North Valley Vet Clinic and will sell with either a negative Trich test or a certificate of virginity.

DELIVERY OF SALE CATTLE: Delivery is provided for the purchase of bulls within a 250 mile radius of the sale site. Deliveries beyond 250 miles will be billed to the buyer not to exceed \$300. Delivery of females is the buyer's responsibility.



Mike & Julie Patton
 Alvin & Shirley Hill
 2343 South 1800 East • Gooding, ID 83330
 Phone (208) 934-4086
 Mike's Cell (208) 539-7498
 E-mail: bulls@scc.myrf.net

To Cattle Producers Everywhere,

Welcome to our 2008 Fall Female Production Sale. We thank you for taking time to study our sale book and for considering the females we are offering.

This year our consignment is headlined by some very outstanding, high-producing individuals that are not only maternally based females but also excel in carcass traits and the important \$Values as well. Lot 45, R216 is an outstanding 0H29 daughter and the dam of our high-selling female from our 2007 Female Sale last fall. We are only letting her go because of the success we have had with her in recovering a large quantity of quality embryos.

We are offering our best spring bred females that were our high ratioing ultrasound individuals along with a very powerful group of fall pairs. These are very impressive cows with calves at side sired by the leading carcass, maternal, growth and \$Value bulls in the breed. Bulls like B/R Ambush 28, TC Total 410, B/R 65R Genesis 340, BT Crossover 758N, Dr J Analyst M250 and Woodhill Foresight 54L just to name a few. Also, as a special attraction, we are offering the entire female crop of the 2007 calving season. These heifers represent the best of years of breeding and there are some outstanding individuals in this group that will be sure to make foundation females for many breeders. It will be an excellent opportunity to use these females as tools to put your programs in a solid position.

Of course, the fall pairs will be sold as open females with their calves at side and the yearlings will be open and ready to breed for fall calves, or you can hold them over for spring breeding if you prefer. Either way, you can still take advantage of this solid genetic base. We will have ultrasound data available on sale day.

As always, feel free to call me for details or stop by our ranch in Gooding and take a look before the sale. We look forward to seeing you at the sale on Saturday, October 25.

Mike Patton



Angus since 1919

Spring Cove Ranch
 The Butler Family
 269 East Spring Cove Rd.
 Bliss, ID 83314

Art & Stacy Butler • (208) 352-4332
 Daniel & Diana Butler • (208) 352-4374
 Fax (208) 352-1155
 E-mail: info@springcoveranch.com
 www.springcoveranch.com

Dear Friends and Customers,

Welcome to Spring Cove Ranch as we join the Patton family of Sawtooth Cattle Co. for our 3rd Annual Fall Production Sale. Spring Cove Ranch is celebrating our 89th year in the registered Angus business. Angus cattle bred and owned on the same ranch by the same family for 89 years. We strive to breed cattle that work in our rough arid environment yet excel in end product value. We are offering females that can produce cattle that realize these goals. The Genesis progeny and his service should be of particular interest because he rose to the No. 5 bull in the breed for Marbling and the No. 6 bull in the breed for \$B.

There are also many daughters of B/R Ambush 28 the No. 1 \$B and No. 2 Marbling bull of the breed. Of particular interest should be Lots 1 (a "28" daughter bred to Genesis) and Lot 123 (a Genesis daughter from a "28" dam).

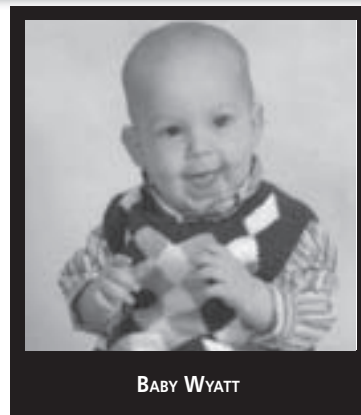
We welcome our guest consignment from Triple L Angus (Lots 123-142). Lot 123 is truly special; look her up on page 23.

All the heifer calves were selected off the top of our herds and most would be potential show heifers and foundation females.

Also for you commercial producers there are a few coming two-year-old bulls (Lot 143-156) ready to go to work this fall, a set of bred commercial cows (Lot 43) and a set of commercial heifer calves (Lot 44).

As we end this letter, we'd like you to keep in mind that this sale and the cattle programs featured in the sale are owned by longtime ranch families. Each unit of semen thawed, breeding decision and bale of hay made, photo taken, footnote written or blade of grass grown is done by a member of the Butler and Patton families. We are also our own "SALE MANAGERS." Please feel free to call us if you have any questions about the cattle or would like to come see them before the sale. We'll see you at 11:00 on Saturday, October 25, for a chuck wagon lunch.

Regards to the bunch, Art and Stacy Butler 208-352-4332.



BABY WYATT



PATTON FAMILY



JOSH & DENISE MAVENCAMP; SARAH, STACY & ART BUTLER



DANIEL, DIANA, DAVID, DALE & DEMSIE BUTLER

SPRING COVE BLOSSOM FAMILY



SPRING COVE BLOSSOM 701 - Lot 1



SPRING COVE BLOSSOM 611 - DAM OF LOT 2 AND GRANDAM OF LOT 1.

1 SPRING COVE BLOSSOM 701

Birth Date: 1-17-2007 Cow 15669186 Tattoo: 701

#Rockn D Ambush 1531 #Paramont Ambush 2172
 B/R Ambush 28 MS Blackcap Band of RD 1301
 +14188956 +B/R Ruby of Tiffany 8250 #N Bar Emulation EXT
 B/R Ruby of Tiffany 5113

#B/R New Frontier 095 #B/R New Design 036
 Spring Cove Blossom 578 White Fence Pride H1
 +15121793 Spring Cove Blossom 611 #DHD Traveler 6807
 Spring Cove Pioneer Pine 987

CW	+14
MARB	+74
RE	+29
FAT	+010

	CED	BEPD		WEPD		YEPD		MILK		
	+4	.29	+3.7	.34	+52	.25	+94	.25	+20	.15
\$W	+23.15	\$F	+32.38	\$G	+36.15	\$B	+59.26			

This broody, deep bred heifer stems from the historical, high-producing "Blossom" cow family and was the standout heifer in the 2007 calf crop. Her ratios speak for themselves: WR: 110, YR: 110, IMF: 115, Rib: 108. Her sire, Ambush 28 ranks in the top 10% of the breed for WEPD, the top 5% for YEPD and is the No. 1 bull in the entire breed for \$B at +76.09 and the No. 2 bull for Marbling EPD at +1.12. This young female combines the breed's best carcass and performance genetics with one of the most proven, productive and efficient Spring Cove cow families which traces back to cows born at the ranch in 1921. Her grandam, "611" sold in our 2006 sale at 10 years of age for \$8,000 to Butch Sampers of Red Oak, Iowa and is still in production there. "Blossom 701" sells bred to calve on February 1, 2009 to B/R 65R Genesis. The mating of this Ambush 28 daughter to "Genesis" will stack in the only two bulls in the breed who are +1.00 or more for Marbling and +70 or more for \$B.

- Spring Cove Ranch will retain an embryo interest in this lot.

2 SPRING COVE BLOSSOM 6148 804

Birth Date: 1-20-1998 Cow 13076097 Tattoo: 804

#Emulation N Bar 5522 #Emulation 31 (FX)
 Finks 5522-6148 Ankony 8F78 Lass 8F275
 #11060295 Finks Proud Formera 614 #AAR New Trend
 Finks Proud Formera 34

#DHD Traveler 6807 #QAS Traveler 23-4
 Spring Cove Blossom 611 #Bemindful Maid DHD 0807
 12588693 Spring Cove Pioneer Pine 987 Spring Cove Pioneer Pine 708
 Spring Cove Blossom 680

CW	+1
MARB	+41
RE	+12
FAT	+008

	CED	BEPD		WEPD		YEPD		MILK		
	+8	.34	+7	.45	+36	.34	+59	.33	+26	.35
\$W	+28.53	\$F	+5.19	\$G	+27.92	\$B	+34.14			

804 is another superior member of the Spring Cove Blossom family and is a direct daughter of the 611 cow out of the great Finks Emulation bred carcass sire "5522-6148" who is a brother to the infamous N Bar Emulation EXT. This beautiful female exemplifies the close to perfect Angus cow phenotype; deep, long, feminine, muscular and moderate. She posts progeny ratios of 7@96 BR, 7@107 WR, and 7@118 IMF. 804 sells bred to calve just after Christmas (12/26/08) to B/R 65R Genesis who is among the top five bulls in the breed for Marbling and \$B while posting Weaning and Yearling EPDs that are in the top 5%.



SPRING COVE BLOSSOM 6148 804 - Lot 2

A B/R 65R GENESIS

Birth Date: 1-21-2003 Bull 14385395 Tattoo: 340

#GAR Precision 1680 #Tehama Bando 155
 CA Future Direction 5321 9J9 GAR 856
 #12493607 CA Miss Power Fix 308 #+SAF Power Fix
 CA Lady Eight 1015

#B/R Destination 727 #GAR Traveler 1489
 B/R Blackcap Empress 127 B/R Ruby of Tiffany 5113
 13879676 #B/R Blackcap Empress 8183 #B/R New Design 323
 B/R Blackcap Empress 558

CW	+28
MARB	+1.02
RE	+37
FAT	+019

	BEPD	WEPD		YEPD		SC	MILK			
	+2.6	.79	+59	.69	+103	.63	-.05	.57	+27	.24
\$W	+29.18	\$F	+38.81	\$G	+37.59	\$B	+70.64			

Genesis was our \$11,000 choice of the 2004 Rishel Angus bull offering and is currently co-owned by Spring Cove Ranch and 44 Ankony Farms. Genesis' recent production data has earned him the rank of 6th highest \$B bull and the 5th highest Marbling bull in the entire breed.



B/R 65R GENESIS - SERVICE SIRE TO LOTS 1 AND 2.

SPRING COVE BRED FEMALES



SPRING COVE DIANA 233 - Lot 3

3 **SPRING COVE DIANA 233**
 Birth Date: 3-9-2002 Cow +14154170 Tattoo: 233

#Paramont Ambush 2172 #Bandolier Eston Durness 42B
 Rockn D Ambush 1531 EWS Miss Burgess 1720
 #12396365 MS Blackcap Band of RD 1301 #Tehama Bando 155
 Miss Blackcap of RD 1127

#VDAR Bando 97 #Tehama Bando 155
 Spring Cove Diana 97 999 VDAR Beauty 12
 13383761 #Spring Cove Diana 6148 625 #Finks 5522-6148
 #Spring Cove Diana 374

CW	-3
MARB	+.60
RE	+.04
FAT	-.020

CED	BEPD	WEPD	YEPD	MILK
+4	.26	+2.5	.38	+46
\$W	+23.59	SF	+21.88	\$G
				+35.96
				\$B
				+41.14

• 233 posts progeny ratios of 3@101 WR, 3@103 YR, 2@117 IMF and 2@105 Rib. Her dam, 999, was one of the high-selling cows in our 2006 sale going to Clare and Rosa Armstrong of Hansen, Idaho and is still in production there. 233 sells bred to calve March 1, 2009 to SydGen 928 Destination 5420.

4 **SPRING COVE MELODY 273**
 Birth Date: 3-20-2002 Cow +14485084 Tattoo: 273

#B/R New Design 036 #VDAR New Trend 315
 Bon View New Design 878 B/R Blackcap Empress 76
 #13062750 Bon View Gammer 85 #Bon View Bando 598
 Bon View Gammer 233

#GAR Commitment #DHD Traveler 6807
 Spring Cove Melody 717 #GAR Bando 102
 +12805209 #Spring Cove Melody 6148 529 #Finks 5522-6148
 Miss Independence of SCR 871

CW	+10
MARB	+.43
RE	+.17
FAT	+.021

CED	BEPD	WEPD	YEPD	MILK
+9	.25	+1.1	.32	+45
\$W	+29.20	SF	+22.25	\$G
				+25.99
				\$B
				+43.80

• Melody 273 is a unique low birth member of the Spring Cove Star cow family out of the highly proven maternal sire "878." Her great-grandam, "Miss Independence," was the all-time high revenue-producing cow at Spring Cove bringing in over \$250,000 from the sale of her progeny. 273 posts outstanding progeny ratios of 3@90 BR, 3@111 WR, 3@103 YR, 1@144 IMF and 1@116 Rib. She was AI bred on 5/13/08 to B/R 65R Genesis and pasture exposed to SydGen 928 Destination 5420 from 5/23/08 to 8/5/08 and is due to calve February 20, 2009.

5 **SPRING COVE QUEEN 412**
 Birth Date: 1-20-2004 Cow 14786209 Tattoo: 412

#B/R New Design 036 #VDAR New Trend 315
 Bon View New Design 878 B/R Blackcap Empress 76
 #13062750 Bon View Gammer 85 #Bon View Bando 598
 Bon View Gammer 233

#Basin Max 602C #GT Maximum
 Spring Cove Queen 215 #Basin Eline Erica 315U
 14154166 Spring Cove Sass Queen 243 (FR) #RR Traveler 5204
 Spring Cove Miss Pioneer 078

CW	+4
MARB	+.32
RE	-.03
FAT	+.030

CED	BEPD	WEPD	YEPD	MILK
+8	.31	+1.3	.39	+38
\$W	+23.85	SF	+22.94	\$G
				+19.39
				\$B
				+31.96

• Another efficient "878" daughter with an excellent phenotype and progeny ratios: 2@97 BR, 2@104 WR, 2@102 YR. She produces attractive, muscular bulls that are well received by our commercial cattlemen. Her 2007 bull is in production in Craig and Jean Spratling's herd in Star Valley, Nevada. She sells safe in calf to Spring Cove Just In Time 5925 due in mid-March.



SPRING COVE KINDNESS 514 - Lot 6

6 **SPRING COVE KINDNESS 514**
 Birth Date: 1-20-2005 Cow 15121778 Tattoo: 514

#+Leachman Right Time #N Bar Emulation EXT
 BT Right Time 24J Leachman Erica 0025
 +13360311 Sitz Everelda Entense 1905 #Traveler 124 GDAR
 #Sitz Everelda Entense 1791

Spring Cove Endurance 360 #Finks 5522-6148
 Spring Cove Kindness 075 #Spring Cove Rebecca 360
 13871203 Spring Cove ER Kindness 601 #+GAR Sleep Easy 1009
 +Spring Cove Kindness 420

CW	+8
MARB	+.28
RE	+.23
FAT	+.014

CED	BEPD	WEPD	YEPD	MILK
-2	.28	+4.9	.37	+49
\$W	+21.13	SF	+28.55	\$G
				+22.78
				\$B
				+40.27

• Here is a deep, broody, productive young cow with excellent progeny ratios: 2@99 BR, 2@105 WR, 1@105 YR, 1@120 IMF and 1@110 Rib. Her EPDs rank in the top 20% for \$B and the top 10% for WW and YW. She would be a good addition to anyone's herd. Safe in calf to Spring Cove On Time SB 100B, due in early April 2009.

7 **SPRING COVE BELLE 320**
 Birth Date: 2-16-2003 Cow 14462587 Tattoo: 320

#GT Maximum #Scotch Cap
 Basin Max 602C #GT Miss Traveler 58
 #11951654 #Basin Eline Erica 315U #GDAR Rainmaker 340
 Basin Eline Erica 1313

Spring Cove Endurance 360 #Finks 5522-6148
 Spring Cove Belle 827 #Spring Cove Rebecca 360
 #13252218 CCC Belle 71 #GDAR Traveler 71
 DF Belle

CW	+8
MARB	+.34
RE	+.04
FAT	+.012

CED	BEPD	WEPD	YEPD	MILK
+5	.31	+1.5	.41	+41
\$W	+22.80	SF	+24.72	\$G
				+22.62
				\$B
				+39.32

• This big, long, growthy cow has political connections in Boise. She produced a herd bull for Governor Risch. She posts two IMF ratios of 108 and two rib ratios of 105. She is sells AI bred to Spring Cove TL General 6338 due on February 11, 2009.

8 **SPRING COVE DIANA 544**
 Birth Date: 2-23-2005 Cow 15121764 Tattoo: 544

#SAF Focus of ER #SAF Fame
 Spring Cove Forecast 611A GDAR Forever Lady 246
 +14155516 Spring Cove Blossom 611 #DHD Traveler 6807
 Spring Cove Pioneer Pine 987

#SS Traveler 6T6 #QAS Traveler 23-4
 Spring Cove Diana 374 #SS Miss Power Play 4A4
 #11924040 #Spring Cove Queen 541 #Kadence Shoshone 520
 Bonds Queen of SCR 266

CW	+0
MARB	+.09
RE	+.05
FAT	+.007

CED	BEPD	WEPD	YEPD	MILK
+7	.25	-.3	.38	+36
\$W	+29.15	SF	+7.85	\$G
				+14.74
				\$B
				+20.32

• 544 is a productive young cow from the Diana's. Longevity is bred into this pedigree. Her first calf weaned a 107 ratio and posted a 108 yearling ratio. She sells safe in calf to Spring Cove Just In Time 5925 due in mid-March.

SPRING COVE BRED FEMALES



SERVICE SIRE TO LOTS 9-10 AND OTHERS.

SPRING COVE JUST IN TIME 925 - REFERENCE SIRE B

BEPD	WEPD	YEPD	SG	MILK
+1.7	.55	+52	.42	+81
.38	+.64	.45	+21	.21
\$W +31.97	\$F +19.66	\$G +26.23	\$B +41.89	

CW	+8
MARB	+.35
RE	+.35
FAT	+.019

9 WESTERN ROSE RACHEL B904

Birth Date: 10-12-1999 Cow +13535955 Tattoo: B904

B/R New Design 323 #11928774	#B/R New Design 036 B/R Ruby of Tiffany 155	#VDAR New Trend 315 B/R Blackcap Empress 76 VDAR Pine Drive 251 Tiffany BR	CW -8
Spring Cove Rachel 402 12123913	#+GAR Sleep Easy 1009 Spring Cove RR Carol 245	#Tehama Bando 155 Blacklass GAR 103 #RR Traveler 5204 Spring Cove Miss Spade 073	MARB +.49
			RE -.03
			FAT -.023

CED	BEPD	WEPD	YEPD	MILK
+10	.28	-1.0	.37	+32
.29	+.66	.26	+21	.34
\$W +23.92	\$F +12.88	\$G +33.28	\$B +30.84	

• This very attractive donor female provides you with a rare opportunity to add an own daughter of the deceased marbling and maternal sire B/R New Design 323 to your herd. She posts excellent progeny ratios of 4@94 BR, 4@105 WR, and 4@104 YR. B904 sells bred to calve in mid-April to Spring Cove Just In Time 925.

10 SPRING COVE DEMSIE 228

Birth Date: 2-28-2002 Cow 14153126 Tattoo: 228

SAF Durabull 7065 +12782172	#PAPA Durabull 9805 #Tehama Eisa Erica Y699	#Scotch Cap #Envious Blackbird DHD 3811 #Paramont Ambush 2172 #Tehama Eisa Erica W602	CW +0
Spring Cove Demsie 97 830 13116949	#+VDAR Bando 97 Spring Cove Demsie Ext 528	#Tehama Bando 155 VDAR Beauty 12 #N Bar Emulation EXT #Spring Cove Miss Pioneer 071	MARB +.33
			RE +.03
			FAT +.013

CED	BEPD	WEPD	YEPD	MILK
+6	.27	+1.5	.40	+46
.28	+.46	.28	+.76	.27
\$W +30.12	\$F +17.13	\$G +23.57	\$B +30.91	

• This high-producing Durabull 7065 "Ben" daughter posts outstanding progeny ratios of 4@100 BR, 4@108 WR, 4@105 YR, 3@106 IMF and 3@102 Rib. She ranks in the top 15% of the breed for WW. She was AI bred on 5/13/08 to B/R 65R Genesis and pasture exposed to Spring Cove Just In Time 925 from 5/23/08 to 8/5/08 and is due to calve in mid-March 2009.

11 SPRING COVE LAURA 225

Birth Date: 2-26-2002 Cow 14153123 Tattoo: 225

SAF Durabull 7065 +12782172	#PAPA Durabull 9805 #Tehama Eisa Erica Y699	#Scotch Cap #Envious Blackbird DHD 3811 #Paramont Ambush 2172 #Tehama Eisa Erica W602	CW -4
Spring Cove Laura 97 644 12588716	#+VDAR Bando 97 Spring Cove Laura 97 644 #Spring Cove Miss Pioneer 071	#Tehama Bando 155 VDAR Beauty 12 Spring Cove Pioneer Pine 708 Spring Cove Miss 792	MARB +.39
			RE +.19
			FAT +.016

CED	BEPD	WEPD	YEPD	MILK
+5	.28	+1.6	.41	+39
.29	+.68	.28	+21	.26
\$W +27.34	\$F +12.23	\$G +28.12	\$B +30.11	

• Another good "Ben" daughter posting progeny ratios of 3@96 BR, 3@100 WW, 3@100 YR, 2@115 IMF and 3@105 Rib. Sells due to calve in mid-March 2009 to Spring Cove Just In Time 5925.



SPRING COVE SILVER 227 - LOT 12

12 SPRING COVE SILVER 227

Birth Date: 2-28-2002 Cow 14153125 Tattoo: 227

SAF Durabull 7065 +12782172	#PAPA Durabull 9805 #Tehama Eisa Erica Y699	#Scotch Cap #Envious Blackbird DHD 3811 #Paramont Ambush 2172 #Tehama Eisa Erica W602	CW -3
Spring Cove Silver 97 828 13075893	#+VDAR Bando 97 Spring Cove Silver 244 (FR)	#Tehama Bando 155 VDAR Beauty 12 #RR Traveler 5204 Spring Cove Miss Esso 055	MARB +.47
			RE +.06
			FAT +.009

CED	BEPD	WEPD	YEPD	MILK
+7	.28	+.9	.41	+37
.29	+.37	.29	+.73	.28
\$W +22.26	\$F +17.59	\$G +29.77	\$B +34.00	

• Another "Ideal" phenotypic Angus female. This cow produces good looking, good scanning calves. Her grandam "244" produced the high-selling female in our 1994 sale, Spring Cove Ruby 403 who went to Edwards Angus for \$19,000. She posts an excellent progeny scan record of 3@110 for IMF and sells AI bred on 5/14/08 to Spring Cove TL General 6338 due to calve on February 20, 2009.

13 SPRING COVE MAGIC DLB 651

Birth Date: 2-24-2006 Cow 15537722 Tattoo: 651

B/R 65R Genesis 14385395	#CA Future Direction 5321 B/R Blackcap Empress 127	#GAR Precision 1680 CA Miss Power Fix 308 #B/R Destination 727 #B/R Blackcap Empress 8183	CW +10
Spring Cove Magic DB 324 14515663	+ER Focus K216 +PS Magic 303	#SAF Focus of ER +Sitz Everelda Entense 023 #GAR Commitment Ankony Ann 144T	MARB +.65
			RE +.10
			FAT +.01

CED	BEPD	WEPD	YEPD	MILK
+1	.25	+4.3	.35	+42
.25	+.81	.24	+23	.12
\$W +19.41	\$F +23.37	\$G +33.70	\$B +51.78	

• A good young Genesis daughter! Full sibling was one of the top-selling open heifers at the 2007 sale going to 7L Farms in MS. She sells pasture bred to SydGen 928 Destination 5420 due to calve in mid-February 2009.

14 SPRING COVE REBECCA 607

Birth Date: 1-29-2006 Cow 15535596 Tattoo: 607

Sitz Alliance 6595 #12310707	#Sitz Traveler 8180 #Sitz Barbaramere Jet 2698	#GDAR Traveler 71 Sitz Everelda Entense 1137 3 Bar Spike 1766 #Sitz Baramere Jet 155	CW -2
Spring Cove Rebecca 835 #13078156	#PAPA Durabull 9805 #Spring Cove Rebecca 802 501	#Scotch Cap #Envious Blackbird DHD 3811 #+VDAR New Trend 802 #Spring Cove Rebecca 360	MARB +.26
			RE -.11
			FAT +.049

CED	BEPD	WEPD	YEPD	MILK
+4	.29	+3.2	.36	+42
.27	+.76	.27	+.76	.28
\$W +25.27	\$F +18.59	\$G +14.47	\$B +20.01	

• This great "Alliance" daughter comes from the productive "Rebecca" cow family who produced the Accelerated Genetics sire Spring Cove Endurance 360. Her dam is still in production at 10 years of age in Leroy Tingstrom's herd in King Hill. She sells bred to calve in late March 2009 to SydGen 928 Destination 5420.

SPRING COVE BRED FEMALES



SERVICE SIRE TO LOTS 15-16 AND OTHERS.

SPRING COVE ON TIME SB 100B - REFERENCE SIRE C

CW	+7
MARB	+43
RE	+10
FAT	+037

BEPD		WEPD		YEPD		SC		MILK	
-1.1	.54	+45	.41	+78	.35	+1.23	.36	+27	.21
SW	+31.62	SF	+19.38	SG	+23.68	SB	+38.28		

15 SPRING COVE STAR 443

Birth Date: 2-20-2004 Cow 14783906 Tattoo: 443

ER Focus K216 #13626641	#SAF Focus of ER #Sitz Everelda Entense 023	#SAF Fame GDAR Forever Lady 246 #Traveler 124 GDAR Sitz Everelda Entense 1137	CW -1
Spring Cove Endurance 360 Spring Cove Star 905 #13378902	Spring Cove Star CB 761 (FR)	#Finks 5522-6148 #Spring Cove Rebecca 360 +Spring Cove Coyote Cowboy Spring Cove Star 441	MARB +38
			RE -10
			FAT +011

CED		BEPD		WEPD		YEPD		MILK	
+7	.29	+1.1	.39	+40	.28	+70	.28	+20	.26
SW	+26.97	SF	+13.71	SG	+24.01	SB	+29.65		

• The dam of this young cow is a Pathfinder daughter of "Endurance" and is still in production at 9 years of age. The paternal grandam of this calving ease "K216" daughter is the infamous Sitz Everelda Entense 023 cow. 443 sells due on March 25, 2009 to Spring Cove On Time SB 100B.

16 SPRING COVE STAR 3130 915

Birth Date: 2-15-1999 Cow 13378887 Tattoo: 915

Butchs Maximum 3130 12241684	#GT Maximum #Butchs Blabua 0113	#Scotch Cap #GT Miss Traveler 58 #QAS Traveler 23-4 Butchs Blabua G83	CW +10
Spring Cove Star 615 12591934	#Transformer 100 EAR Springcove MS RR Traveler143	#Rito 2100 GDAR Travelers Marias Je 489 #RR Traveler 5204 Spring Cove Scotch Cap 964	MARB +58
			RE -28
			FAT +033

CED		BEPD		WEPD		YEPD		MILK	
+9	.32	+9	.46	+31	.34	+64	.29	+13	.33
SW	+19.86	SF	+11.41	SG	+21.48	SB	+37.31		

• This productive cow traces to the Spring Cove Star cow family who produced both "Miss Independence" and "Prairie." She ranks in the top 3% of the breed for Marbling EPD and top 30% for \$EN at +14.63. She posts progeny ratios of 6@100 WR, 6@102 YR, and 2@109 IMF. Note her marbling EPD. She is due to calve in early March 2009 to Spring Cove On Time SB 100B.

17 SPRING COVE GEORGINA 044

Birth Date: 1-20-2002 Cow 14153104 Tattoo: 202

VDAR Bando 97 #12034780	#Tehama Bando 155 VDAR Beauty 12	#Band 234 of Ideal 3163 Tehama Blackcap G373 #Rito 2100 GDAR VDAR Beauty 892	CW -8
Spring Cove Idaho Traveler Spring Cove Georgina 044 13735223	Spring Cove Georgina 829	#California Traveler Spring Cove Violet Marie 622 (FR) Butchs Maximum 3130 Spring Cove Georgina 347	MARB +77
			RE -19
			FAT +040

CED		BEPD		WEPD		YEPD		MILK	
+9	.31	+0	.41	+34	.29	+67	.27	+19	.28
SW	+24.27	SF	+13.09	SG	+30.72	SB	+28.32		

• This is a good producing Bando 97 daughter. Note Bando 97 is now a PATHFINDER Sire! This cow's calves are always well accepted by our commercial bull customers. She posts progeny ratios of 5@97 BR, 5@100 WR, 5@103 YR and an outstanding 4@133 for IMF. Her Marbling EPD is in the top 1% of the breed and she is positive \$EN +8.82. She sells bred to calve in mid-March to SydGen 928 Destination 5420.



WESTERN ROSE BLACK ROSE R403 - LOT 18

18 WESTERN ROSE BLACK ROSE R403

Birth Date: 1-12-2004 Cow 14727639 Tattoo: R403

Summitcrest High Prime 0H29 #13122485	#Gardens Prime Time Summitcrest Missie 2F55	#RR Traveler 5204 #Green Garden Susie 1246 S1 #Finks 5522-6148 #Summitcrest Missie 1C24	CW -1
Western Rose Black Rose R125 +14152647	#B/R New Design 036 Dear Carol	#VDAR New Trend 315 B/R Blackcap Empress 76 #+GAR Sleep Easy 1009 +Dear Miss Performance 71C	MARB +78
			RE +22
			FAT -033

CED		BEPD		WEPD		YEPD		MILK	
+6	.30	+1.4	.37	+40	.27	+72	.26	+26	.27
SW	+27.31	SF	+15.56	SG	+42.46	SB	+48.43		

• Here is a real good looking "High Prime" daughter who raises excellent calves. Note her low birth EPD, high marbling and high \$B. She ranks in the top 1% of the breed for Marbling and \$G and the top 5% for \$B. She sells bred to calve March 20, 2009 to Spring Cove Just In Time 5925.

19 SPRING COVE PRIDE 407

Birth Date: 1-19-2004 Cow 14777970 Tattoo: 407

Summitcrest High Prime 0H29 #13122485	#Gardens Prime Time Summitcrest Missie 2F55	#RR Traveler 5204 #Green Garden Susie 1246 S1 #Finks 5522-6148 #Summitcrest Missie 1C24	CW -1
SAF Pride 7226 +12925367	#GT Expo SAF Pride 1006	#Scotch Cap #GT Pine Siskin #VDAR New Trend 315 SAF Pride 9045	MARB +75
			RE +28
			FAT -022

CED		BEPD		WEPD		YEPD		MILK	
+7	.30	+6	.38	+37	.28	+62	.28	+22	.27
SW	+28.12	SF	+7.51	SG	+41.68	SB	+46.15		

• Another low birth, high marbling "High Prime" daughter who posts two progeny IMF ratios of 110.
• She ranks in the top 1% for Marbling and \$G, the top 10% for \$B. She sells bred to calve on March 12, 2009 to Spring Cove Just In Time 5925.

20 SPRING COVE LIZA 432

Birth Date: 2-13-2004 Cow 14777974 Tattoo: 432

Rockn D Ambush 1531 #12396365	#Paramont Ambush 2172 MS Blackcap Band of RD 1301	#Bandolier Eston Durness 42B EWS Miss Burgess 1720 #Tehama Bando 155 Miss Blackcap of RD 1127	CW -3
Spring Cove Liza 146 13872528	#+VDAR Bando 97 #Spring Cove Liza 617	#Tehama Bando 155 VDAR Beauty 12 #+JR Juice 2005 Spring Cove Scotch Cap 967	MARB +56
			RE +25
			FAT -014

CED		BEPD		WEPD		YEPD		MILK	
+6	.30	+1.3	.39	+38	.28	+66	.27	+15	.26
SW	+25.03	SF	+10.76	SG	+36.63	SB	+39.46		

• This low birth, high \$EN +12.62 cow is the daughter of the donor Bando 97 daughter "146." Her grandam is still in production at Spring Cove at 12 years of age. Top 3% for Marbling and top 1% for \$G. This lot sells bred to calve in early April to Spring Cove Just In Time 5925.

SPRING COVE 3-YEAR-OLD COWS & BRED HEIFERS

21

SPRING COVE ALTA 610

Birth Date: 1-31-2006 Cow 15537720 Tattoo: 610

#+Leachman Right Time
Hyline Right Time 338
#13058662 Hyline Pride 265

#N Bar Emulation EXT
Leachman Erica 0025
+Hyline SVF Traveler 0115
Hyline Pride 870

Spring Cove Endurance 360
Spring Cove Alta 124
13872514 Spring Cove Alta 814

#Finks 5522-6148
#Spring Cove Rebecca 360
#California Traveler
Spring Cove Alta 6807 621

CW	+14
MARB	+29
RE	+08
FAT	+023

CED	BEPD	WEPD	YEPD	MILK
+7	.29	+1.6	.36	+49
+13	.29	-3	.35	+40
\$W	\$F	\$G	\$B	\$M
+26.69	+20.27	+28.91	+45.49	

• Good young two-year-old who weaned her first calf at 109 ratio. Her grandsire is the great maternal, range bull sire "Endurance." Ranks in the top 10% for WEPD and YEPD and top 20% for \$B. She should develop into a super female. Sells bred to calve in early April 2009 to Spring Cove Just In Time 5925.



SPRING COVE BLACKCAP 710 - Lot 26

22

BLKBD PROGRESS HOLIDAY 6030

Birth Date: 1-18-2006 Cow 15316207 Tattoo: 6030

#B/R New Design 036
B/R New Frontier 095
#+13588640 White Fence Pride H1

#VDAR New Trend 315
B/R Blackcap Empress 76
#Connealy Dateline
#Pleasant Pill of Conanga

#Northern Improvement 4480 GF
Blkbd Progress Holiday 3133
14409122 Bon View Blkbd Progress 645

#TC Stockman 365
Blackcap of RR 5367
#Bon View Bando 598
Bon View Blkbd Progress 268

CW	+9
MARB	+42
RE	-01
FAT	-028

CED	BEPD	WEPD	YEPD	MILK
+13	.29	-3	.35	+40
\$W	\$F	\$G	\$B	\$M
+26.69	+20.27	+28.91	+45.49	

• Nice two-year-old that Sarah and Josh purchased at the Holiday Ranch. She ranks in the top 15% for \$B and Marbling and sells bred to calve in early April 2009 to Spring Cove General 6338.

26

SPRING COVE BLACKCAP 710

Birth Date: 1-26-2007 Cow 15669193 Tattoo: 710

#Rockn D Ambush 1531
B/R Ambush 28
+14188956 +B/R Ruby of Tiffany 8250

#Paramont Ambush 2172
MS Blackcap Band of RD 1301
#N Bar Emulation EXT
B/R Ruby of Tiffany 5113

#Kahn Broadband RA 94L
ER Blackcap Bardolier R622
+15126159 ER Blackcap Bardolier 515

#Bon View Bando 598
+Shadybrook Ever Entense 491G
#Traveler 124 GDAR
#Sitz Blackcap Bardolier 356

CW	+20
MARB	+58
RE	+31
FAT	+024

CED	BEPD	WEPD	YEPD	MILK
+4	.27	+3.3	.34	+51
\$W	\$F	\$G	\$B	\$M
+21.39	+42.04	+29.92	+59.60	

• This bred heifer's dam came to us from Edwards Angus in Montana and just weaned her second calf at 113 ratio. This heifer posted ratio of 107 WR, 120 YR, 101 IMF and 109 Rib. Take note of her Marbling, Rib and \$B values. She ranks in the top 1% for \$B and YEPD, The top 4% for Marbling, the top 10% for Rib and the top 5% for WEPD. She sells bred to calve on April 1, 2009 to Spring Cove On Time SB 100B.

23

65R RACHEL 6144

Birth Date: 3-14-2006 Cow +15409059 Tattoo: 6144

Whitstone Precision H141
Koupals B&B Precision 0068
13601610 Koupal Blackcap 501

#GAR Precision 1680
+Rita 3X11 of Rita OFB4 Ext
#+OSU 6T6 Ultra
#Beefland Blackcap 3016

#B/R New Design 323
Western Rose Black Rose R452
14786211 +Western Rose Black Rose R265

#B/R New Design 036
B/R Ruby of Tiffany 155
RCF Max X77
+Western Rose Rachel B902

CW	+19
MARB	+47
RE	+51
FAT	+027

CED	BEPD	WEPD	YEPD	MILK
1+3	.05	+5.4	.34	+45
\$W	\$F	\$G	\$B	\$M
+16.28	+31.09	+29.37	+55.78	

• A royal carcass pedigree here with top 10% YEPD and Marbling. Top 1% Rib and \$B. Sells pasture exposed to Spring Cove General 6338 from 5/24/08 to 6/30/08, due to calve in April 2009.

27

SPRING COVE RACHEL 706

Birth Date: 1-21-2007 Cow 15669190 Tattoo: 706

#Rockn D Ambush 1531
B/R Ambush 28
+14188956 +B/R Ruby of Tiffany 8250

#Paramont Ambush 2172
MS Blackcap Band of RD 1301
#N Bar Emulation EXT
B/R Ruby of Tiffany 5113

#B/R New Frontier 095
Spring Cove Rachel 516
15126615 Cottonwood Rachel 61H

#B/R New Design 036
White Fence Pride H1
+Tehama Band 712
Cottonwood Rachel 73E

CW	+7
MARB	+65
RE	+30
FAT	-026

CED	BEPD	WEPD	YEPD	MILK
+5	.27	+2.6	.35	+45
\$W	\$F	\$G	\$B	\$M
+21.86	+26.13	+38.88	+54.95	

• Another top 1% \$B female with good, balanced growth numbers and a positive \$EN of +6.90. Sells bred to calve in mid-February 2009 to Spring Cove On Time SB 100B.

24

SPRING COVE CAROL 705

Birth Date: 1-21-2007 Cow 15669189 Tattoo: 705

#B/R New Design 036
Bon View New Design 878
#13062750 Bon View Gammer 85

#VDAR New Trend 315
B/R Blackcap Empress 76
#Bon View Bando 598
Bon View Gammer 233

Spring Cove Endurance 360
Spring Cove Carol 528
15121760 +Spring Cove Famous Carol 628

#Finks 5522-6148
#Spring Cove Rebecca 360
#SAF Fame
Spring Cove Miss Spade 073

CW	+9
MARB	+34
RE	+20
FAT	+026

CED	BEPD	WEPD	YEPD	MILK
+5	.29	+2.2	.35	+48
\$W	\$F	\$G	\$B	\$M
+27.68	+24.03	+22.88	+40.16	

• 705 has great balanced EPDs. Her dam is a young Endurance daughter who is well on her way to being a Pathfinder. 705 ranks in the Top 10% WEPD and top 15% YEPD. She sells bred to calve in mid-March 2009 to B/R Magnum 399-7186.

28

SPRING COVE STAR 718

Birth Date: 2-1-2007 Cow 15669211 Tattoo: 718

#Rockn D Ambush 1531
B/R Ambush 28
+14188956 +B/R Ruby of Tiffany 8250

#Paramont Ambush 2172
MS Blackcap Band of RD 1301
#N Bar Emulation EXT
B/R Ruby of Tiffany 5113

+ER Focus K216
Spring Cove Star 443
14783906 #Spring Cove Star 905

#SAF Focus of ER
+Sitz Everelda Entense 023
Spring Cove Endurance 360
Spring Cove Star CB 761 (FR)

CW	+7
MARB	+74
RE	+12
FAT	-011

CED	BEPD	WEPD	YEPD	MILK
+8	.27	+1.6	.35	+45
\$W	\$F	\$G	\$B	\$M
+25.17	+24.18	+37.57	+53.32	

• Another top 2% \$B and top 1% Marbling bred heifer with low birth, balanced growth and +5.77 \$EN. What more do you need? Her grandam is a Pathfinder Endurance daughter. AI Bred to B/R 65R Genesis due on January 28, 2009.

SPRING COVE BRED HEIFERS



SPRING COVE SARAH 723 - LOT 29

29 *SPRING COVE SARAH 723*
 Birth Date: 2-4-2007 Cow 15669215 Tattoo: 723

Ironwood New Design 022 701 #B/R New Design 036
 Ironwood New Level Wardsens Lady 022 5410
 13320150 Wardsens Blackcap 6148 6309 #Finks 5522-6148
 Wardsens Blackcap SC 025
 +Spring Cove Beef Producer (FR) #TC Stockman 365
 Spring Cove Sarah 331 #+Spring Cove Pretty 6807 640
 14462589 Spring Cove Famous Sarah 822 #SAF Fame
 Spring Cove Sleepy Sarah 605

CW	+2
MARB	+0.33
RE	+11
FAT	+0.016

CED	BEPD	WEPD	YEPD	MILK
+6	.28	+2.3	.35	+42
		.25	+80	.25
		+23		+19
\$W	+24.03	SF	+22.41	\$G
			+23.87	\$B
				+34.37

• 723 is a good young New Level daughter bred on 4/21/08 BR 65R Genesis due to calve on January 28, 2009.



SPRING COVE BLOSSOM 745 - LOT 32

32 *SPRING COVE BLOSSOM 745*
 Birth Date: 3-1-2007 Cow 15669234 Tattoo: 745

#SAF Focus of ER #SAF Fame
 Spring Cove Forecast 611A GDAR Forever Lady 246
 +14155516 Spring Cove Blossom 611 #DHD Traveler 6807
 Spring Cove Pioneer Pine 987
 Spring Cove Endurance 360 #Finks 5522-6148
 Spring Cove Blossom 413 #Spring Cove Rebecca 360
 14777596 Spring Cove Blossom 167 #+VDAR Bando 97
 Spring Cove Miss 823

CW	+3
MARB	+0.34
RE	+18
FAT	+0.009

CED	BEPD	WEPD	YEPD	MILK
+6	.25	+7	.35	+45
		.24	+80	.23
		+28		+13
\$W	+29.47	SF	+21.29	\$G
			+25.73	\$B
				+37.00

• This good looking double-bred Blossom heifer has excellent, balanced EPDs. She posted 104 IMF ratio and 105 rib ratio. Sells bred to calve February 10, 2009 to Spring Cove On Time SB 100B.

30 *SPRING COVE PRIDE 741*
 Birth Date: 2-27-2007 Cow 15669232 Tattoo: 741

B/R Destination 727-928 #B/R Destination 727
 B/R Destination 928-543 #B/R Blackcap Empress 558
 +15005259 B/R Lady Ida 721 #B/R New Design 323
 B/R Lady Ida 23
 #Summitcrest High Prime 0H29 #Gardens Prime Time
 Spring Cove Pride 407 Summitcrest Missie 2F55
 14777970 +SAF Pride 7226 #GT Expo
 SAF Pride 1006

CW	+6
MARB	+0.67
RE	+19
FAT	+0.002

CED	BEPD	WEPD	YEPD	MILK
+8	.22	+1.0	.32	+39
		.21	+69	.20
		+22		+12
\$W	+27.12	SF	+13.15	\$G
			+35.82	\$B
				+48.38

• Low birth, high IMF at 113 ratio. She's in the top 15% \$B and sells AI bred to B/R 65R Genesis due 1/28/09.

33 *SPRING COVE ELEANOR 740*
 Birth Date: 2-23-2007 Cow 15669231 Tattoo: 740

#SAF Focus of ER #SAF Fame
 Spring Cove Forecast 611A GDAR Forever Lady 246
 +14155516 Spring Cove Blossom 611 #DHD Traveler 6807
 Spring Cove Pioneer Pine 987
 #SAF Fame #Minerts Fortune 2000
 Spring Cove Eleanor 716 #+SAF Royal Lass 1027
 12805208 Spring Cove Eleanor CB 513 +Spring Cove Coyote Cowboy
 Spring Cove Eleanor 567

CW	-1
MARB	+0.28
RE	+0.02
FAT	+0.018

CED	BEPD	WEPD	YEPD	MILK
+8	.26	-0.6	.36	+37
		.26	+64	.25
		+20		+15
\$W	+28.18	SF	+9.30	\$G
			+21.39	\$B
				+26.15

• Another low birth Forecast daughter. Her dam is 11 years old and still in production at Spring Cove Ranch. This heifer is +8.81 \$EN and posted 127 IMF ratio. She sells bred to calve February 15, 2009 to Spring Cove On Time SB 100B.

31 *SPRING COVE REBECCA 739*
 Birth Date: 2-18-2007 Cow 15669230 Tattoo: 739

#SAF Focus of ER #SAF Fame
 Spring Cove Forecast 611A GDAR Forever Lady 246
 +14155516 Spring Cove Blossom 611 #DHD Traveler 6807
 Spring Cove Pioneer Pine 987
 FA WR Prime Design #B/R New Design 036
 Spring Cove Rebecca 471 GT Erica 222
 14777616 #Spring Cove Rebecca 360 #SS Traveler 6T6
 Spring Cove Ella 578

CW	+4
MARB	+0.19
RE	+29
FAT	-0.005

CED	BEPD	WEPD	YEPD	MILK
+5	.24	+1.4	.35	+46
		.25	+76	.24
		+27		+13
\$W	+30.57	SF	+17.13	\$G
			+22.42	\$B
				+33.78

• Nice low birth weight bred heifer from the cow family that produced "Endurance." Posted a 108 rib ratio.
 • Due to calve on January 29, 2009 to Spring Cove On Time SB 100B.

34 *SPRING COVE STAR 748*
 Birth Date: 3-21-2007 Cow 15985150 Tattoo: 748

#SAF Focus of ER #SAF Fame
 Spring Cove Forecast 611A GDAR Forever Lady 246
 +14155516 Spring Cove Blossom 611 #DHD Traveler 6807
 Spring Cove Pioneer Pine 987
 JD Daigger 901 #Sitz Alliance 6595
 Spring Cove Star 441 JD Queen Eisa 7021
 14783905 #Spring Cove Star 925 Spring Cove Endurance 360
 Spring Cove Scotch Cap 964

CW	-1
MARB	+0.38
RE	-0.07
FAT	-0.004

CED	BEPD	WEPD	YEPD	MILK
+9	.25	-0.4	.35	+46
		.25	+78	.24
		+29		+13
\$W	+31.95	SF	+19.02	\$G
			+26.17	\$B
				+32.91

• This "Star" heifer by Forecast should be an excellent cow. She posted a 115 IMF ratio and sells bred to calve in mid March to B/R Magnum 399-7186.

SPRING COVE HEIFER CALVES



SPRING COVE BLOSSOM 801 - LOT 35

35 SPRING COVE BLOSSOM 801

Birth Date: 1-20-2008 Cow 16109539 Tattoo: 801

#Basin Max 602C
21AR Coal Bank C014
14267926 #Leachman Lass 5014

#GT Maximum
#Basin Eline Erica 315U
#N Bar Emulation EXT
Leachman Lass 3056

B/R 65R Genesis
Spring Cove Blossom 657
15535624 Spring Cove Blossom 611

#CA Future Direction 5321
B/R Blackcap Empress 127
#DHD Traveler 6807
Spring Cove Pioneer Pine 987

CW	I+10
MARB	I+.31
RE	I+.10
FAT	I+.017

CED	BEPD		WEPD		YEPD		MILK		
I+5	.05	I+.9	.35	I+46	.33	I+84	.05	I+23	.12
\$W	+27.95	\$F	+24.78	\$G	+21.37	\$B	+39.81		

• Show heifer prospect. Thick, moderate, low birth, high weaning heifer from the Blossom tribe. Balanced EPDs with a 102 weaning ratio.



SPRING COVE BEAUTY 854 - LOT 36

36 SPRING COVE BEAUTY 854

Birth Date: 3-2-2008 Cow 16104447 Tattoo: 854

B/R Destination 727-928
B/R Destination 928-543
+15005259 B/R Lady Ida 721

#B/R Destination 727
B/R Blackcap Empress 558
#B/R New Design 323
B/R Lady Ida 23

FA WR Prime Design
Spring Cove Beauty 285
14484275 +Spring Cove Sleepybeauty 505

#B/R New Design 036
GT Erica 222
#+GAR Sleep Easy 1009
Miss Independence of SCR 871

CW	I+11
MARB	I+.39
RE	I+.23
FAT	I+.004

CED	BEPD		WEPD		YEPD		MILK		
I+4	.05	I+2.0	.27	I+49	.24	I+69	.05	I+25	.12
\$W	+33.32	\$F	+9.62	\$G	+27.14	\$B	+43.58		

• Here is an excellent, growthy heifer who posted an outstanding weaning ratio of 110 and would be a nice show heifer. She traces to the high-income Spring Cove Miss Independence 871.



SPRING COVE REBECCA 824 - LOT 37

37 SPRING COVE REBECCA 824

Birth Date: 2-5-2008 Cow 16105671 Tattoo: 824

#B/R New Design 036
Bon View New Design 878
#13062750 Bon View Gammer 85

#VDAR New Trend 315
B/R Blackcap Empress 76
#Bon View Bando 598
Bon View Gammer 233

FA WR Prime Design
Spring Cove Rebecca 471
14777616 #Spring Cove Rebecca 360

#B/R New Design 036
GT Erica 222
#SS Traveler 6T6
Spring Cove Ella 578

CW	I+8
MARB	I+.30
RE	I+.13
FAT	I+.013

CED	BEPD		WEPD		YEPD		MILK		
I+5	.05	I+.8	.38	I+43	.36	I+80	.05	I+28	.31
\$W	+27.94	\$F	+22.03	\$G	+22.27	\$B	+38.30		

• Juniors pay attention! Here's a great show heifer prospect. Excellent phenotype, balanced EPD package typical of "878." From the cow family that produced the great Accelerated Genetics herd sire "Spring Cove Endurance 360."

38 SPRING COVE SWEET SUE SB 815

Birth Date: 1-28-2008 Cow 16105669 Tattoo: 815

#B/R New Design 036
Bon View New Design 878
#13062750 Bon View Gammer 85

#VDAR New Trend 315
B/R Blackcap Empress 76
#Bon View Bando 598
Bon View Gammer 233

B/R 65R Genesis
Spring Cove Sweet Sue SB 661
15535628 Spring Cove Sweet Sue 306

#CA Future Direction 5321
B/R Blackcap Empress 127
#White Oak Precise 6002
Spring Cove Sweet Sue SB 100

CW	I+12
MARB	I+.57
RE	I+.14
FAT	I+.029

CED	BEPD		WEPD		YEPD		MILK		
I+7	.05	I+2.0	.36	I+48	.34	I+86	.05	I+28	.27
\$W	+27.93	\$F	+25.98	\$G	+28.23	\$B	+48.62		

• Another super "878" heifer that traces to Sarah's "100" cow by a Genesis daughter. Her dam "661" was the highest IMF heifer in the entire 2006 calf crop. Note her weaning ratio of 104.

39 SPRING COVE CAROL DMB 820

Birth Date: 1-31-2008 Cow 16109543 Tattoo: 820

#Basin Max 602C
21AR Coal Bank C014
14267926 #Leachman Lass 5014

#GT Maximum
#Basin Eline Erica 315U
#N Bar Emulation EXT
Leachman Lass 3056

Ironwood New Level
Spring Cove Carol DB 509
15121777 Spring Cove Carol 321

Ironwood New Design 022 701
Wardens Blackcap 6148 6309
#+VDAR Bando 97
+Spring Cove Famous Carol 628

CW	I+5
MARB	I+.30
RE	I+.05
FAT	I+.021

CED	BEPD		WEPD		YEPD		MILK		
I+8	.05	I+1.8	.36	I+41	.34	I+84	.05	I+23	.15
\$W	+23.12	\$F	+26.67	\$G	+19.39	\$B	+33.77		

• Another nice, balanced EPD heifer with calving ease and positive \$EN bred in.

SPRING COVE HEIFER CALVES AND COMMERCIAL COWS



SPRING COVE VIOLET SB 823 - Lot 40

42

SPRING COVE BLACKCAP 825

Birth Date: 2-5-2008 Cow 16109545 Tattoo: 825

SAV 8180 Traveler 004 (FR) #Sitz Traveler 8180
 Ankonian Werner Wild Fire 96 +Boyd Forever Lady 8003
 15373359 FSR Elba Special Design S406 +WCC Special Design L309
 WCC Elba M82

#High Valley 4C6 Ambush #Paramont Ambush 2172
 Sawtooth Miss Blackcap 87H High Valley Gloria 1Q2
 13263332 +Sawtooth Miss Blackcap 91F #N Bar Emulation EXT
 +SCC Miss Blackcap 6B

CW	I+16
MARB	I+.31
RE	I+.07
FAT	I+.044

CED	BEPD	WEPD	YEPD	MILK
I+4	.05	I+4.0	.23	I+56
.20	I+98	.05	I+25	.13
\$W	+25.09	\$F	+34.87	\$G
			+15.77	\$B
				+41.03

• Another good Wild Fire daughter from a super cow. Note her dam's production 8@111 WR, 4@109 YR, 4@118 IMF and 4@110 Rib. A maternal brother is working the Pete Mori herd of Tuscarora, Nevada.

40

SPRING COVE VIOLET SB 823

Birth Date: 2-3-2008 Cow 16109544 Tattoo: 823

SAV 8180 Traveler 004 (FR) #Sitz Traveler 8180
 Ankonian Werner Wild Fire 96 +Boyd Forever Lady 8003
 15373359 FSR Elba Special Design S406 +WCC Special Design L309
 WCC Elba M82

CW	I+19
MARB	I+.42
RE	I+.15
FAT	I+.063

#Hyline Right Time 338 #+Leachman Right Time
 Spring Cove Violet Marie 501 Hyline Pride 265
 +15191728 Spring Cove Sweet Sue SB 100 #+VDAR Bando 97
 Spring Cove Sweetie 914

CED	BEPD	WEPD	YEPD	MILK
I+6	.05	I+2.0	.19	I+58
.16	I+102	.05	I+28	.11
\$W	+29.92	\$F	+38.18	\$G
			+17.22	\$B
				+45.28

• WOW!! Junior's pay attention. Sarah wishes that she was still eligible to show this lovely bred and owned heifer who is one of the best ever raised at Spring Cove. She is in the top 3% for WEPD with a 105 ratio, the top 4% for YEPD and top 25% for \$B. Dam is a flush sister to the Morgan Ranch herd sire, Spring Cove On Time 100B.

43

5 HEAD OF SPRING COVE COMMERCIAL COWS AGES 2-4.

44

8 HEAD OF SPRING COVE COMMERCIAL HEIFER CALVES



SPRING COVE SWEET VIOLET 832 - Lot 41



ANKONIAN WERNER WILD FIRE 96 - REFERENCE SIRE D

41

SPRING COVE SWEET VIOLET 832

Birth Date: 2-9-2008 Cow 16104436 Tattoo: 832

#CA Future Direction 5321 #GAR Precision 1680
 B/R 65R Genesis CA Miss Power Fix 308
 14385395 B/R Blackcap Empress 127 #B/R Destination 727
 #B/R Blackcap Empress 8183

CW	I+17
MARB	I+.68
RE	I+.27
FAT	I+.014

#Hyline Right Time 338 #+Leachman Right Time
 Spring Cove Sweet Violet 500 Hyline Pride 265
 +15191727 Spring Cove Sweet Sue SB 100 #+VDAR Bando 97
 Spring Cove Sweetie 914

CED	BEPD	WEPD	YEPD	MILK
I+5	.05	I+2.6	.35	I+55
.33	I+96	.05	I+27	.12
\$W	+28.36	\$F	+33.23	\$G
			+33.64	\$B
				+59.29

• This fantastic Genesis heifer is out of a flush sister to the dam of Lot 40. She ranks in the top 10% WEPD and YEPD with a weaning ratio of 105. Her \$B and Marbling EPD is in the top 3%. Keep her and Lot 40 together for a super foundation set of females.

D

ANKONIAN WERNER WILD FIRE 96

Birth Date: 1-8-2006 Bull 15373359 Tattoo: 96

SAV 8180 Traveler 004 (FR) #Sitz Traveler 8180
 13512009 +Boyd Forever Lady 8003 #GDAR Traveler 71
 +WCC Special Design L309 Sitz Everelda Entense 1137
 FSR Elba Special Design S406 N Bar Primrose 2424
 14735651 WCC Elba M82 #AAR New Trend
 SVF Forever Lady 57D

#Bon View New Design 878
 #Twin Valley Precision E161 (FR)
 Forsythe Elba 2055

CW	+24
MARB	+38
RE	+09
FAT	+068

BEPD	WEPD	YEPD	SC	MILK
+2.5	.34	+66	.25	+116
.24	+67	.32	+28	.20
\$W	+32.22	\$F	+49.70	\$G
			+12.53	\$B
				+46.52

• Sire of Lots 40, 42, 125, 126, 128, & 129.
 • Wild Fire was the \$55,000 Reserve Champion Bull at the 2007 National Western, owned by 44 Ankony Farms and Werner Angus. He ranks in the top 1% of the breed for Weaning EPD.

SAWTOOTH SPRING BRED COWS



WESTERN ROSE BLACK ROSE R216 - LOT 45



SAWTOOTH REBECCA 6502 - LOT 47

45 WESTERN ROSE BLACK ROSE R216

Birth Date: 10-25-2002 Cow +14495177 Tattoo: R216

#Gardens Prime Time #RR Traveler 5204
Summitcrest High Prime 0H29 #Green Garden Susie 1246 S1
#13122485 Summitcrest Missie 2F55 #Finks 5522-6148
#Summitcrest Missie 1C24

#GT Expo
Western Rose Rachel B902
+13532748 Spring Cove Rachel 402

#Scotch Cap
#GT Pine Siskin
#+GAR Sleep Easy 1009
Spring Cove RR Carol 245

CW	-2
MARB	+0.78
RE	+0.13
FAT	-0.023

CED	BEPD		WEPD		YEPD		MILK	
+7	.25	+8	.32	+36	.25	+65	.21	+26
\$W	+27.11	\$F	+10.55	\$G	+40.82	\$B	+44.75	

• R216 is the dam of Sawtooth Rachel 6472, who was sired by Woodhill Foresight 54L. 6472 was our high-indexing heifer ratioing 176 for IMF and sold for \$10,000 to Steve Rose. R216 is bred back to Foresight for a 1/15/09 calf. Also included in this package will be one frozen embryo sired by Foresight and one frozen embryo by GAR Predestined. R216 has a progeny ratio for Weaning 2@106, Yearling 1@107 and %IMF is 1@108. Top 1% of the breed for Marbling.



SAWTOOTH ASHLEY 63S - LOT 46

46 SAWTOOTH ASHLEY 63S

Birth Date: 8-20-2006 Cow 15739730 Tattoo: 63S

#Bon View New Design 1407 #B/R New Design 036
Rito 2V1 of 2536 1407 Bon View Pride 664
+14088249 GAR Precision 2536 #GAR Precision 1680
+GAR EXT 2104

#B/R New Design 036 #VDAR New Trend 315
Davis Pride 1304 B/R Blackcap Empress 76
14020364 +Davis Pride 8290 #+VDAR Lucys Boy
VDAR Pride 5081

CW	+11
MARB	+0.87
RE	+0.14
FAT	+0.097

CED	BEPD		WEPD		YEPD		MILK	
+8	.29	+1.6	.35	+53	.27	+96	.26	+28
\$W	+29.16	\$F	+34.02	\$G	+23.51	\$B	+44.88	

• 63S is one of our high IMF heifers ratioing 167. 63S is in the top 1% of the breed for Marbling and top 10% of breed for Yearling EPD. The dam of 63S has a progeny ratio of 4@111 for Weaning, 4@108 Yearling, 2@137 %IMF.
• She is due to calve 1/9/09 to B/R Genesis.

47 SAWTOOTH REBECCA 6502

Birth Date: 8-31-2006 Cow 15496344 Tattoo: 6502

#CA Future Direction 5321 #GAR Precision 1680
B/R 65R Genesis CA Miss Power Fix 308
14385395 B/R Blackcap Empress 127 #B/R Destination 727
#B/R Blackcap Empress 8183

#SAF Fame #Minerts Fortune 2000
Spring Cove Rebecca 017 #+SAF Royal Lass 1027
13671646 #Spring Cove Rebecca 835 #PAPA Durabull 9805
#Spring Cove Rebecca 802 501

CW	+13
MARB	+0.74
RE	+0.19
FAT	+0.044

CED	BEPD		WEPD		YEPD		MILK	
+3	.26	+3.6	.36	+48	.26	+86	.24	+21
\$W	+23.27	\$F	+25.98	\$G	+30.69	\$B	+51.75	

• 6502 is another high ratioing IMF heifer with a 138 ratio sired by B/R Genesis, the popular carcass sire.
• She sells safe in calf to Mytty In Focus, due 1/10/09. Dam has a progeny ratio of 5@103 for Weaning and 3@103 for Yearling. 6502 is in the top 1% of the breed for Marbling EPD and top 10% for \$B.

48 SAWTOOTH BLACKCLASS 6461

Birth Date: 8-19-2006 Cow 15591257 Tattoo: 6461

#Bon View New Design 1407 #B/R New Design 036
EXAR New Look 2971 Bon View Pride 664
+14230122 N Bar Primrose 2424 #Emulation 31 (FX)
Primrose N Bar 9962

#Summitcrest High Prime 0H29 #Gardens Prime Time
Western Rose Black Rose R425 Summitcrest Missie 2F55
+14927829 +GAR New Design C49 #B/R New Design 036
+GAR Precision 303

CW	+14
MARB	+0.59
RE	+0.51
FAT	-0.012

CED	BEPD		WEPD		YEPD		MILK	
+3	.28	+3.7	.34	+47	.25	+91	.25	+24
\$W	+21.45	\$F	+31.32	\$G	+37.34	\$B	+60.44	

• 6461 had an individual IMF ratio of 128 and a ribeye ratio of 116. Her Marbling EPD puts her in the top 7%, while her Ribeye EPD places her in the top 2% of the breed. Her \$F and \$B values are also in the top 2% of the breed.
• She sells safe in calf pasture exposed to SLL Overload T18 from 4/15/08 to 6/2/08. Maternal sister sells as Lot 121.



SAWTOOTH FUTURE DIRECTION 15N

SAWTOOTH SPRING BRED COWS

49 SAWTOOTH PRECIOUS LADY 52S

Birth Date: 8-18-2006 Cow 15739719 Tattoo: 52S

#B/R New Design 323
B/R BAAR Fast Forward 1193
+14084552 HR Wendy 618

#B/R New Design 036
B/R Ruby of Tiffany 155
#Bon View Bando 598
+HR Wendy 402

CW	+15
MARB	+36
RE	+20
FAT	-.039

#B/R New Design 036
Sawtooth Precious Lady 18N
14678651 #PS Precious Lady 344

#VDAR New Trend 315
B/R Blackcap Empress 76
#Rockn D Ambush 1531
+PS Precious Traveler 126

CED	BEPD		WEPD		YEPD		MILK
+3	.26	+4.0	.35	+55	.26	+92	.25 +19 .18
\$W	+24.93	\$F	+29.22	\$G	+29.17	\$B	+52.30

- 52S is in the top 10% of the breed for \$B value. Dam has progeny ratios of 3@115 for Weaning and 2@105 Yearling.
- She sells safe in calf pasture exposed to SLL Overload T18 from 4/15/08 to 6/2/08.



RIVERBEND FOREVER LADY 4042 - LOT 53

50 SAWTOOTH PRIMROSE 67S

Birth Date: 8-21-2006 Cow 15739732 Tattoo: 67S

#GAR Precision 1680
CA Future Direction 5321
#12493607 CA Miss Power Fix 308

#Tehama Bando 155
9J9 GAR 856
#SAF Power Fix
CA Lady Eight 1015

CW	+10
MARB	+53
RE	+33
FAT	+0.21

#Connealy Dateline
Sawtooth Primrose 91K
13780154 Sawtooth Primrose 88H

#DHD Traveler 6807
#Eila Eila of Conanga
#Kruggerand of Donamere 490
+SCC Primrose 1E

CED	BEPD		WEPD		YEPD		MILK
+12	.30	+1.0	.36	+35	.27	+72	.27 +21 .21
\$W	+23.07	\$F	+17.38	\$G	+31.23	\$B	+48.11

- 67S had an individual IMF ratio of 125 and a Marbling EPD of +.53 which puts her in the top 10% of the breed for Marbling. An own daughter of the maternal and carcass sire, CA Future Direction 5321.
- She sells bred to BR Midland and is due 1/15/09. A maternal sister sells as Lot 75.

51 SAWTOOTH JEWEL 48S

Birth Date: 8-16-2006 Cow 15739715 Tattoo: 48S

#SAF Focus of ER
Mytty In Focus (FR)
13880818 Mytty Countess 906

#SAF Fame
GDAR Forever Lady 246
#Sitz Alliance 6595
Baldrige Countess 357

CW	+4
MARB	+52
RE	+08
FAT	+0.05

#B/R New Design 036
Sawtooth Jewel 39P
14987166 Sawtooth Dap Jewel 18J

#VDAR New Trend 315
B/R Blackcap Empress 76
#+VDAR Lucys Boy
C&D Jewel 6807-728

CED	BEPD		WEPD		YEPD		MILK
+11	.31	+3	.35	+50	.26	+90	.26 +26 .17
\$W	+30.06	\$F	+29.16	\$G	+30.62	\$B	+44.64

- Here is a calving ease pedigree with some maternal growth and carcass merit. 48S had an individual IMF ratio of 118. Dam has a progeny ratio of 2@110 Weaning and 2@102 Yearling.
- She sells due 1/4/09 to BR Midland, and was pasture exposed 1/4/08 to 5/6/08 to Sawtooth Future Direction 15N. Her dam sells as Lot 72.

52 SAWTOOTH SUE 119S

Birth Date: 9-18-2006 Cow 15739677 Tattoo: 119S

#CA Future Direction 5321
Sawtooth Future Directin 15N
14678648 Sawtooth Carol 78L

#GAR Precision 1680
CA Miss Power Fix 308
#B/R New Design 036
#+Sawtooth Famous Carol 81G

CW	+6
MARB	+26
RE	+06
FAT	+0.04

#TC Dividend 963 (FR)
4U Miss Dividend 383
12736544 4U Miss Queen of Spades 332

#+Leachman Prompter
TC Erica Eileen 6006
GPCC Hi Spade 036
Miches Big August Sky 159

CED	BEPD		WEPD		YEPD		MILK
+10	.24	-.4	.34	+33	.23	+66	.21 +16 .13
\$W	+23.31	\$F	+12.53	\$G	+21.16	\$B	+33.60

- She sells safe in calf to BR Midland, due 1/4/09.

53 RIVERBEND FOREVER LADY 4042

Birth Date: 1-13-2004 Cow +14679872 Tattoo: 4042

#Tehama Bando 155
GAR Precision 1680
#11520398 9J9 GAR 856

#Band 234 of Ideal 3163
Tehama Blackcap G373
#Rito 9J9 of B156 7T26
Blackbird GAR 833

CW	+30
MARB	+42
RE	+12
FAT	+0.26

#Sitz Traveler 8180
Baldrige Forever Lady 140H
+13117838 +GDAR SVF Forever Lady 146D

#GDAR Traveler 71
Sitz Everelda Entense 1137
#GT Maximum
+GDAR Forever Lady 718

CED	BEPD		WEPD		YEPD		MILK
+1.9	.05	+2.5	.26	+38	.24	+81	.21 +23 .27
\$W	+20.54	\$F	+24.88	\$G	+19.81	\$B	+50.90

- She is in the top 3% of the breed for \$B and has a progeny weaning ratio of 1@109. Forever Lady 4042 has an individual IMF ratio of 112 and is a daughter of the Riverbend donor, Forever Lady 140H.
- Sells due to Spring Cove General 6338 on 1/15/09. Daughter sells as Lot 114.

54 SAWTOOTH ELVIRA 77M

Birth Date: 9-11-2002 Cow #14367779 Tattoo: 77M

#VDAR New Trend 315
B/R New Design 036
#11418151 B/R Blackcap Empress 76

#AAR New Trend
#VDAR Lucy 704
#K&K Top Gun
+QLC A70 Blkcp Empress E43T

CW	+10
MARB	+41
RE	+06
FAT	+0.07

#RR Scotchcap 9440
Sawtooth Elvira 61H
13263313 +SCC Exquisite Lady 44E

#Scotch Cap
Blackcap of RR 5367
#Ginger Hill Duster 89
+LLB Exquisite Lady Et 202Y

CED	BEPD		WEPD		YEPD		MILK
+6	.27	+3.5	.34	+40	.31	+76	.30 +25 .32
\$W	+21.62	\$F	+19.32	\$G	+25.57	\$B	+42.90

- Top 10% for Marbling, top 15% for \$B. Progeny ratios for 77M are WW 4@108, YW 3@103, %IMF 3@111, Ribeye 3@104.
- She sells safe to Spring Cove General 6338 due 12/31/08. Maternal sister sells as Lot 79.

55 SAWTOOTH SONYA 46P

Birth Date: 8-30-2004 Cow 14987174 Tattoo: 46P

#SAF Fame
War Hall of Fame 8023
#13183408 War Bando 6143 598 7005

#Minerts Fortune 2000
#+SAF Royal Lass 1027
#Bon View Bando 598
War Voyager 7005 5110

CW	+7
MARB	+18
RE	+17
FAT	+0.00

#TC Dividend 963 (FR)
4U Miches Oh My TC Div 350
#12526586 4U Ext Lass 296

#+Leachman Prompter
TC Erica Eileen 6006
#N Bar Emulation EXT
4U Pine Drive Queen 196

CED	BEPD		WEPD		YEPD		MILK
-4	.31	+4.9	.39	+45	.29	+83	.27 +19 .27
\$W	+19.55	\$F	+24.18	\$G	+19.51	\$B	+35.27

- 46P has a progeny ratio of WW 2@105, YW 1@111, %IMF 1@103.
- Due 1/5/09 to Spring Cove General 6338.

SAWTOOTH FALL PAIRS

62

SAWTOOTH LISA 102R

Birth Date: 9-13-2005 Cow 15322254 Tattoo: 102R

Hoff Charger SC 242
Hoff Limited Edition SC 594
#13119152 Hoff Boss Lady SC 3V9

SAR Supercharger 8418
Hoff Miss Flyer SC E01
Hoff Trail Boss SC 929
#Hoff Starlette SC 441

CW	+18
MARB	+17
RE	+15
FAT	-020

#B/R New Design 036
Sawtooth Lisa 100L
14053812 Sawtooth Lisa 6A

#VDAR New Trend 315
B/R Blackcap Empress 76
+WK Classified
Sawtooth Lisa 67X

CED	BEPD		WEPD		YEPD		MILK	
+1	.28	+4.1	.38	+38	.28	+82	.26	+22
\$W	+16.44	\$F	+25.85	\$G	+18.87	\$B	+43.40	

- Top 10% of the breed for \$B, Top 20% WW, WW ratio 1@105.
- Sells with a heifer calf, Tattoo 69U, born 8/28/08, BW 90 sired by B/R Destination 727-928 the 19th highest \$B in the breed.

66

SAWTOOTH RITA 120P

Birth Date: 10-12-2004 Cow 14987147 Tattoo: 120P

#GAR Precision 1680
White Oak Precise 6002
#13205097 Stone Gate Jessie

#Tehama Bando 155
9J9 GAR 856
#Rito 2100 GDAR
Julagem of Craigie

CW	+12
MARB	+39
RE	+12
FAT	-024

#Twin Valley Precision E161 (FR)
Sawtooth Rita 140M
14367740 Clearwater Rita 015

#GAR Precision 1680
+WCC Blackcap C9 (R)
#B/R New Design 036
#GAR Sleep Easy 1315

CED	BEPD		WEPD		YEPD		MILK	
+7	.33	+3.0	.39	+33	.28	+76	.27	+23
\$W	+17.19	\$F	+21.91	\$G	+28.39	\$B	+47.77	

- She is in the top 20% for \$B. Progeny ratios of WW 2@108, YW 1@108.
- She sells with a bull calf at side, Tattoo 80U, born 8/30/08 BW 84. He is sired by Riverbend Mile High 3718.

63

SAWTOOTH LADY LASS 79M

Birth Date: 9-12-2002 Cow 14367780 Tattoo: 79M

#B/R New Design 036
Bon View New Design 878
#13062750 Bon View Gammer 85

#VDAR New Trend 315
B/R Blackcap Empress 76
#Bon View Bando 598
Bon View Gammer 233

CW	+0
MARB	+31
RE	-09
FAT	+001

#+HSAF Prompter Et
Sawtooth Lady Lass 109K
13780122 Sawtooth Lady Lass 105H

#+Leachman Prompter
#Graham Erica 137
#SAF Fame
SCC Lady Lass 65D

CED	BEPD		WEPD		YEPD		MILK	
+8	.33	+1.2	.42	+39	.31	+70	.29	+16
\$W	+25.00	\$F	+14.07	\$G	+22.65	\$B	+29.40	

- She sells with a heifer calf sired by Dr J Analyst M250, Tattoo 105U, born 9/7/08, BW 82. Daughters sell as Lot 64 and Lot 88.

67

SAWTOOTH LADY LASS 94P

Birth Date: 9-14-2004 Cow 14987209 Tattoo: 94P

#+SAF Neutron
SA Neutron 377
#12760345 #SA Queen Susan 102

#VDAR New Trend 315
SAF Duchess 9029
#+SAF Power Fix
SA Queen Susan 910

CW	+24
MARB	+05
RE	+28
FAT	+026

#OGL Battle Cry 427 128
Sawtooth Lady Lass 120 J
13512794 SCC Lady Lass 65D

#Nichols Eureka W57
#OGL Dusty Rose 128 902
+GF Renovator 0019
SCC Loggers Lady 53T

CED	BEPD		WEPD		YEPD		MILK	
-2	.30	+4.8	.39	+51	.29	+96	.27	+11
\$W	+16.41	\$F	+34.80	\$G	+9.12	\$B	+39.40	

- Top 10% YW.
- She sells with a heifer calf sired by B/R 65R Genesis 340 born 9/5/08, Tattoo 101U, BW 100. Daughter sells as Lot 103.

64

SAWTOOTH LADY LASS 22P

Birth Date: 8-25-2004 Cow 14987155 Tattoo: 22P

#SAF Focus of ER
SAF Strategy 9015
#+13334022 +SAF Royal Queen 5084

#SAF Fame
GDAR Forever Lady 246
#Bon View Bando 598
SAF Royal Queen 9022

CW	+6
MARB	+39
RE	+00
FAT	+002

#Bon View New Design 878
Sawtooth Lady Lass 79M
14367780 Sawtooth Lady Lass 109K

#B/R New Design 036
Bon View Gammer 85
#+HSAF Prompter Et
Sawtooth Lady Lass 105H

CED	BEPD		WEPD		YEPD		MILK	
+12	.33	-.3	.39	+50	.29	+88	.26	+16
\$W	+28.85	\$F	+27.18	\$G	+25.38	\$B	+40.90	

- She is in the top 10% of the breed for \$W, top 10% YW, top 6% WW.
- She sells with a heifer calf sired by BT Crossover 758N, Tattoo 74U, born 8/30/08, BW 80. Dam sells as Lot 63 and a maternal sister sells as Lot 88.

68

SAWTOOTH LADY LASS 96P

Birth Date: 9-15-2004 Cow 14987211 Tattoo: 96P

#Twin Valley Precision E161 (FR)
Sawtooth Zorro 22L
13837686 #SCC Becky 9F

#GAR Precision 1680
+WCC Blackcap C9 (R)
#GDAR Traveler 71
SCC Becky 9D

CW	+17
MARB	+32
RE	+21
FAT	+055

#Bon View New Design 878
Sawtooth Lady Lass 107L
14058274 Sawtooth Lady Lass 120 J

#B/R New Design 036
Bon View Gammer 85
#OGL Battle Cry 427 128
SCC Lady Lass 65D

CED	BEPD		WEPD		YEPD		MILK	
+9	.26	+8	.38	+46	.25	+85	.22	+29
\$W	+28.68	\$F	+25.76	\$G	+16.50	\$B	+40.46	

- She will calve by sale day due to Sawtooth Future Direction 15N. Progeny ratios of WW 2@100, YW 1@104.

65

SAWTOOTH MEGAN 17R

Birth Date: 8-14-2005 Cow 15322268 Tattoo: 17R

#+SAF 598 Bando 5175
Grandview Womack Security
+14108123 +Womacks Primrose Lucy 147

#Bon View Bando 598
+SAF Royal Lass 1002
#Leachman Saugahatchee 3000C
+Sister Sara

CW	+9
MARB	+11
RE	+19
FAT	+014

#GDAR Traveler 9161
4U Miches Ext Traveler 474
#13222786 4U Miss TM EXT 397

#DHD Traveler 6807
#GDAR Sapphire 728
#N Bar Emulation EXT
4U TM Sky Lady 285

CED	BEPD		WEPD		YEPD		MILK	
+4	.24	+2.7	.36	+42	.26	+78	.25	+26
\$W	+25.48	\$F	+20.49	\$G	+14.95	\$B	+31.59	

- She sells with a heifer calf, Tattoo 73U, born 8/29/08, BW 86. She is sired by the No. 6 \$B and the No. 5 Marbling bull in the breed, B/R Genesis 340.



SAWTOOTH MEGAN 17R - LOT 65

SAWTOOTH FALL PAIRS

69

SAWTOOTH BRITTANY 92R

Birth Date: 9-7-2005 Cow 15322333 Tattoo: 92R

Hoff Charger SC 242
Hoff Limited Edition SC 594
#13119152 Hoff Boss Lady SC 3V9

SAR Supercharger 8418
Hoff Miss Flyer SC E01
Hoff Trail Boss SC 929
#Hoff Starlette SC 441

CW	+21
MARB	+0.04
RE	
FAT	+0.27
	-0.10

#GAR Precision 1680
Blevins Class 776
+13345075 +Waldeck Royal Class 9049

#Tehama Bando 155
9J9 GAR 856
#Leachman Tonto
+Foxy Hill Royal Class 8010

CED	BEPD	WEPD	YEPD	MILK
+2	.28	+3.9	.37	+40
		.27	+80	.26
\$W	+16.16	SF	+23.15	\$G
			+13.27	\$B
				+39.26

• She sells with a bull calf, Tattoo 91U, born 9/3/08 sired by SAF Strategy 9015. BW 94.

73

SAWTOOTH MAELIE 45P

Birth Date: 8-30-2004 Cow 14987173 Tattoo: 45P

#+SAF 598 Bando 5175
Grandview Womack Security
+14108123 +Womacks Primrose Lucy 147

#Bon View Bando 598
+SAF Royal Lass 1002
#Leachman Saugahatchee 3000C
+Sister Sara

CW	+10
MARB	+0.05
RE	
FAT	+0.20
	+0.20

#GDAR Traveler 9161
4U Miches Max Traveler 476
13222788 4U Maxine 389

#DHD Traveler 6807
#GDAR Sapphire 728
#GT Maximum
4U TM Sky Lady 287

CED	BEPD	WEPD	YEPD	MILK
+8	.26	+1.9	.38	+44
		.27	+84	.26
\$W	+26.95	SF	+25.54	\$G
			+11.67	\$B
				+30.30

• Progeny ratios WW 2@106, YW 1@104, IMF 1@103.
• She sells with a heifer calf, Tattoo 118U, born 9/22/08 sired by B/R 65R Genesis 340.

70

SAWTOOTH 3172 FD 120R

Birth Date: 9-26-2005 Cow 15322633 Tattoo: 120R

#CA Future Direction 5321
Bear Mtn Future Direction
+14422114 Bear MTN Lady Eraline 302

#GAR Precision 1680
CA Miss Power Fix 308
#ONEills Duke
+Oneills Eraline 100

CW	+25
MARB	+0.47
RE	
FAT	+0.46
	-0.16

#Bon View New Design 208
Sawtooth Brittany 60M
14367770 +Blevins Class 776

#B/R New Design 036
#Bon View Erica 443
#GAR Precision 1680
+Waldeck Royal Class 9049

CED	BEPD	WEPD	YEPD	MILK
+0	.26	+4.8	.36	+41
		.25	+79	.23
\$W	+18.99	SF	+21.82	\$G
			+32.06	\$B
				+60.10

• Top 2% for \$B, top 4% Ribeye, top 5% Milk. Progeny WW ratio 1@105.
• Sells with a bull calf born 8/15/08, Tattoo 21U, sired by B/R Destination 727-928. BW 85.



SAWTOOTH CJP TRICIA 58R - Lot 74

71

CLIFFSIDES PRIDEMERE GAL 281

Birth Date: 4-1-2002 Cow +14311110 Tattoo: 281

#Paramont Ambush 2172
Rockn D Ambush 1531
#12396365 MS Blackcap Band of RD 1301

#Bandolier Eston Durness 42B
EWS Miss Burgess 1720
#Tehama Bando 155
Miss Blackcap of RD 1127

CW	+5
MARB	+0.30
RE	
FAT	+0.13
	-0.41

#GAR Precision 1680
Pridemere BAS 243
12392890 Pridemere BAS 225

#Tehama Bando 155
9J9 GAR 856
#DHD Traveler 6807
Pridemere BAS 172

CED	BEPD	WEPD	YEPD	MILK
+4	.25	+3.3	.29	+36
		.25	+70	.23
\$W	+16.18	SF	+15.15	\$G
			+27.95	\$B
				+39.90

• Top 2% for Fat, top 10% \$G and top 20% \$B.
• She sells with a bull calf, Tattoo 59U, born 8/25/08 sired by BR Ambush 28. BW 86.

74

SAWTOOTH CJP TRICIA 58R

Birth Date: 8-28-2005 Cow 15322303 Tattoo: 58R

#B/R New Design 036
B/R New Frontier 095
#+13588640 White Fence Pride H1

#VDAR New Trend 315
B/R Blackcap Empress 76
#Connealy Dateline
#Pleasant Pill of Conanga

CW	+0
MARB	+0.36
RE	
FAT	-0.13
	-0.25

#SAF Fame
Pascalar Lady Tricias Glory
13282452 Pascalar Lady Tricias Gift

#Minerts Fortune 2000
#+SAF Royal Lass 1027
#+GAR Sleep Easy 1009
KC Leading Lady 64 83

CED	BEPD	WEPD	YEPD	MILK
+7	.30	+2.1	.37	+41
		.27	+73	.26
\$W	+24.30	SF	+16.13	\$G
			+26.66	\$B
				+33.85

• Progeny ratio WW 1@101.
• She sells with a heifer calf, Tattoo 42U, born 8/21/08 by B/R Destination 727-928. BW 82.

72

SAWTOOTH JEWEL 39P

Birth Date: 8-29-2004 Cow 14987166 Tattoo: 39P

#VDAR New Trend 315
B/R New Design 036
#11418151 B/R Blackcap Empress 76

#AAR New Trend
#VDAR Lucy 704
#K&K Top Gun
+QLC A70 Blkcp Empress E43T

CW	+4
MARB	+0.49
RE	
FAT	+0.16
	-0.02

#+VDAR Lucys Boy
Sawtooth Dap Jewel 18J
13322155 C&D Jewel 6807-728

#Traveler 1148 GDAR
#VDAR Pine Drive Lucy 5
#DHD Traveler 6807
+VF 722 Landmark Freda 5127

CED	BEPD	WEPD	YEPD	MILK
+8	.32	+1.9	.39	+39
		.29	+76	.27
\$W	+24.27	SF	+19.69	\$G
			+31.46	\$B
				+43.40

• Progeny ratios of WW 2@110, YW 1@104, %IMF 1@118.
• She will calve by sale day to Spring Cove General 6338. Daughter sells as Lot 51.

75

SAWTOOTH PRIMROSE 77R

Birth Date: 9-3-2005 Cow 15322320 Tattoo: 77R

#+SVF GDAR 216 LTD
BSS Limited Design
+13313554 B/R Ruby of Tiffany 5113

#Traveler 124 GDAR
+GDAR Forever Lady 718
#B/R New Design 036
B/R Ruby of Tiffany 155

CW	+10
MARB	+0.37
RE	
FAT	+0.09
	+0.06

#Connealy Dateline
Sawtooth Primrose 91K
13780154 Sawtooth Primrose 88H

#DHD Traveler 6807
#Eila Eila of Conanga
#Krugerrand of Donamere 490
+SCC Primrose 1E

CED	BEPD	WEPD	YEPD	MILK
+11	.28	+2.0	.37	+36
		.27	+75	.26
\$W	+19.95	SF	+19.85	\$G
			+24.63	\$B
				+42.09

• She sells with a heifer calf, Tattoo 96U, born 9/4/08 sired by Rito 2V1 of 2536 1407. BW 75. Daughter sells as Lot 100 and a maternal sister sells as Lot 50.

SAWTOOTH FALL PAIRS



SAWTOOTH BESS 84R - Lot 76

76 SAWTOOTH BESS 84R

Birth Date: 9-5-2005 Cow 15322325 Tattoo: 84R

#+SVF GDAR 216 LTD #Traveler 124 GDAR
 BSS Limited Design #GDAR Forever Lady 718
 #12313554 B/R Ruby of Tiffany 5113 #B/R New Design 036
 B/R Ruby of Tiffany 155

#Lemmon Impact #Black Witch Corbinaire 95
 4U Bess LJ 429 #Lemmon Elga 3020
 #12995608 4U Miches Ext Lass 371 4U Miche Ext Big Sky 77
 Miches Big Sky Bess 141

CW	+9
MARB	+25
RE	+23
FAT	+000

CED	BEPD	WEPD	YEPD	MILK
+8	.28	+1.5	.38	+34
			.28	+63
			.25	+22
			.24	
\$W	+25.58	\$F	+9.45	\$G
			+22.86	\$B
				+37.53

- She sells with a bull calf, Tattoo 28U, born 8/17/08 by GAR Predestined. BW 82. Progeny ratio WW 1@107. Daughter sells as Lot 96.

77 SAWTOOTH GEORGINA 71R

Birth Date: 9-1-2005 Cow 15322315 Tattoo: 71R

#B/R New Design 036 #VDAR New Trend 315
 Lemmon Newline C804 B/R Blackcap Empress 76
 #13632776 White Fence Pride H1 #Connealy Dateline
 #Pleasant Pill of Conanga

#Twin Valley Precision E161 (FR) #GAR Precision 1680
 Sawtooth Georgina 175M +WCC Blackcap C9 (R)
 #14367758 WA Georgina 036 902 #B/R New Design 036
 +Garrison 791 MS Georgina6807

CW	+2
MARB	+17
RE	+21
FAT	-.026

CED	BEPD	WEPD	YEPD	MILK
+8	.30	+1.5	.36	+40
			.27	+76
			.25	+22
			.24	
\$W	+25.21	\$F	+19.32	\$G
			+22.73	\$B
				+32.61

- Progeny ratio WW 1@102.
- She sells with a bull calf, Tattoo 48U born 8/22/08 sired by BT Crossover 758N. BW 90. Maternal sister sells as Lot 117.

78 SAWTOOTH CAROL 24P

Birth Date: 8-25-2004 Cow 14987157 Tattoo: 24P

#+SAF 598 Bando 5175 #Bon View Bando 598
 Grandview Womack Security #SAF Royal Lass 1002
 #14108123 +Womacks Primrose Lucy 147 #Leachman Saughatchee 3000C
 +Sister Sara

#B/R New Design 036 #VDAR New Trend 315
 Sawtooth Carol 78L B/R Blackcap Empress 76
 #14053845 #+Sawtooth Famous Carol 81G #SAF Fame
 Spring Cove Miss Spade 073

CW	+9
MARB	+28
RE	+04
FAT	+003

CED	BEPD	WEPD	YEPD	MILK
+1	.26	+4.7	.39	+44
			.28	+85
			.26	+25
			.23	
\$W	+19.10	\$F	+26.51	\$G
			+21.41	\$B
				+39.33

- She sells with a heifer calf, Tattoo 93U, born 9/4/08 and sired by B/R 65R Genesis 340. BW 77. Daughter sells as Lot 119.

79 ROCK RIDGE ROSEBUD 428

Birth Date: 8-6-2004 Cow 14899105 Tattoo: 428

#DHD Traveler 6807 #QAS Traveler 23-4
 Rito 616 of 4B20 6807 #Bemindful Maid DHD 0807
 #12530601 +Rita 4B20 of 0FB1 Bando #Tehama Bando 155
 +Rita 0FB1 of 5H11 Fullback

#GAR Precision 1680 #Tehama Bando 155
 Caney Creek Precision 646 9J9 GAR 856
 13664272 CC CH Stacker Ambush 587 #CH Stacker 7040
 Misty Ambush Bando 540

CW	+10
MARB	+25
RE	+21
FAT	-.017

CED	BEPD	WEPD	YEPD	MILK
+11	.29	-.2	.35	+37
			.27	+75
			.20	+20
			.26	
\$W	+24.54	\$F	+19.48	\$G
			+24.05	\$B
				+41.42

- Progeny ratios WW 2@106, YW 1@101.
- Top 10% for BEPD, top 15% Fat and top 20% for \$G and \$B.
- She sells with a bull calf, Tattoo 64U, born 8/26/08 sired by Basin Franchise P182. BW 85.

80 SAWTOOTH BECKY 108L

Birth Date: 9-29-2001 Cow 14053818 Tattoo: 108L

#B/R New Design 036 #VDAR New Trend 315
 Bon View New Design 878 B/R Blackcap Empress 76
 #13062750 Bon View Gammer 85 #Bon View Bando 598
 Bon View Gammer 233

#GDAR Traveler 71 #Traveler 1148 GDAR
 Sawtooth Becky 123J GDAR Miss Blackcap 567
 #13512797 Sawtooth Becky 87G TCRSCC Northern Pacific
 SCC Becky 7E

CW	+9
MARB	+17
RE	-.04
FAT	+008

CED	BEPD	WEPD	YEPD	MILK
+10	.34	-.6	.43	+38
			.31	+75
			.30	+29
			.31	
\$W	+27.27	\$F	+19.11	\$G
			+15.06	\$B
				+31.38

- Progeny ratios WW 5@103, YW 4@107.
- She sells with a bull calf, Tattoo 94U, born 9/4/08 by BT Crossover 758N. BW 81. A daughter sells as Lot 115.

81 SILVER SHADOW ELEXUS B063

Birth Date: 12-14-2004 Cow 15117760 Tattoo: B063

#Twin Valley Precision E161 (FR) #GAR Precision 1680
 Silver Shadow Precision +WCC Blackcap C9 (R)
 13930467 +Silver Shadow Liberty 3 #Westwind Rito 8503 DJH 019
 Knapp Sweet Liberty

#VDAR New Trend 315 #AAR New Trend
 Silver Shadow Elexus S047 #VDAR Lucy 704
 #14008865 Silver Shadow Elexus S817 #VDAR New Trend 315
 Silver Shadow Elexus Ann

CW	+9
MARB	+07
RE	+01
FAT	+007

CED	BEPD	WEPD	YEPD	MILK
+3	.23	+3.4	.32	+42
			.24	+74
			.17	+17
			.15	
\$W	+21.98	\$F	+16.71	\$G
			+11.44	\$B
				+27.41

- She sells with a bull calf, Tattoo 61U, born 8/16/08 sired by TC Total 410. BW 83. A maternal sister sells as Lot 82.

82 SILVER SHADOW ELEXUS C27

Birth Date: 11-23-2005 Cow 15521249 Tattoo: C27

#Twin Valley Precision E161 (FR) #GAR Precision 1680
 Silver Shadow Precision +WCC Blackcap C9 (R)
 13930467 +Silver Shadow Liberty 3 #Westwind Rito 8503 DJH 019
 Knapp Sweet Liberty

#VDAR New Trend 315 #AAR New Trend
 Silver Shadow Elexus S047 #VDAR Lucy 704
 #14008865 Silver Shadow Elexus S817 #VDAR New Trend 315
 Silver Shadow Elexus Ann

CW	+9
MARB	+07
RE	+01
FAT	+007

CED	BEPD	WEPD	YEPD	MILK
+3	.23	+2.8	.32	+33
			.25	+67
			.21	+16
			.20	
\$W	+18.46	\$F	+13.45	\$G
			+11.44	\$B
				+26.71

- She sells with a heifer calf, Tattoo 46U, born 8/22/08 sired by TC Total 410. BW 77. A maternal sister sells as Lot 81.

SAWTOOTH FALL YEARLING HEIFERS



RIVERBEND FOREVER LADY T987 - LOT 83



SAWTOOTH CJP HEATHER 86T - LOT 86

83 RIVERBEND FOREVER LADY T987

Birth Date: 8-3-2007 Cow 15801987 Tattoo: T987

SS Objective T510 OT26
13776378 SS Miss Rita R011 7R8

#DHD Traveler 6807
#SS Miss Hi Spade A114
SS Rito Rito R76 R011
SS Miss Ultress U56

#Bon View New Design 878
Riverbend Forever Lady R386
14988160 +Whitstone Forever Lady R093

#B/R New Design 036
Bon View Gammer 85
#Rockn D Ambush 1531
+Toebben Forever Lady 150H

CW	I+14
MARB	I+.53
RE	I+.34
FAT	I+.007

CED	BEPD			WEPD		YEPD		MILK			
I+11	.05	+1.1	.23	+65	.26	I+111	.33	+29	.18		
\$W	+33.29		\$F	+44.76		\$G	+32.09		\$B	+58.56	

• Ok, study your lessons here!! T987 has a flawless pedigree and came here as a calf at the side of her dam from the 2007 Riverbend Ranch Female Sale. She is in the top 1% for Weaning Weight, top 1% for Yearling Weight, top 3% for Milk, top 11% for Marbling, top 1% for \$W, top 1% for \$F, top 5% for \$G, and top 3% for \$B. Dam has a progeny WW ratio of 1@124, YW 1@117.

84 SAWTOOTH SALLY JO 55T

Birth Date: 8-15-2007 Cow 16042320 Tattoo: 55T

#CA Future Direction 5321
Basin Franchise P142
14686137 Basin Chloe 812L

#GAR Precision 1680
CA Miss Power Fix 308
#Gardens Expedition
Basin Chloe 6198

#B/R New Design 036
Sawtooth Sally JO 88N
14678688 4U Miches Commitment 523

#VDAR New Trend 315
B/R Blackcap Empress 76
#GAR Commitment
#4U Miches Oh My TC Div 352

CW	I+12
MARB	I+.49
RE	I+.37
FAT	I+.006

CED	BEPD			WEPD		YEPD		MILK			
+11	.28	+3	.35	+40	.26	I+80	.34	+27	.11		
\$W	+26.13		\$F	+23.15		\$G	+31.67		\$B	+51.35	

• Top 15% Marbling, top 10% \$B. Dam's production WW 3@106, YW 3@107, %IMF 2@107, Ribeye 2@109.

85 SAWTOOTH CJP HEATHER 85T

Birth Date: 8-19-2007 Cow 16042337 Tattoo: 85T

#B/R New Design 036
Bon View New Design 878
#13062750 Bon View Gammer 85

#VDAR New Trend 315
B/R Blackcap Empress 76
#Bon View Bando 598
Bon View Gammer 233

#Summitcrest High Prime OH29
BT Blackcap Lady 956R
15206954 BT Blackcap Lady 1018N

#Gardens Prime Time
Summitcrest Missie 2F55
Sitz Traveler 10089
BT Blackcap Lady 361J

CW	I+3
MARB	I+.43
RE	I+.08
FAT	I-.001

CED	BEPD			WEPD		YEPD		MILK			
+6	.30	+2.1	.33	+46	.26	I+83	.33	+26	.20		
\$W	+26.94		\$F	+23.81		\$G	+28.64		\$B	+40.53	

• She has an individual WW ratio of 105 and YW ratio of 107. Dam has a progeny ratio of WW 1@105, YW 1@107.

86 SAWTOOTH CJP HEATHER 86T

Birth Date: 8-19-2007 Cow 16042338 Tattoo: 86T

Baldrige Kaboom K243 KCF
Connealy Thunder
15148659 #Parka of Conanga 241

#Jauer 353 Traveler 589 27
Pleasant of Conanga 736
#Bon View Bando 598
Partina of Conanga 6237

Sitz Traveler 10089
BT Blackcap Lady 1018N
14667302 BT Blackcap Lady 361J

#+Sitz Traveler 5556
Sitz Erica Everelda 1469
+BT Ultima 75E
BT Blackcap Lady 69E

CW	I+14
MARB	I+.17
RE	I+.13
FAT	I+.010

CED	BEPD			WEPD		YEPD		MILK			
+4	.22	+2.7	.34	+47	.23	I+92	.16	+14	.10		
\$W	+20.58		\$F	+32.32		\$G	+16.13		\$B	+39.23	

• She has an individual ratio WW 101, YW 102.



87 SAWTOOTH RITA 36T

Birth Date: 8-13-2007 Cow 16042309 Tattoo: 36T

Baldrige Kaboom K243 KCF
Connealy Thunder
15148659 #Parka of Conanga 241

#Jauer 353 Traveler 589 27
Pleasant of Conanga 736
#Bon View Bando 598
Partina of Conanga 6237

B/R Destination 727-928
Cliffsides Rita 6K20 of 928
+14974325 +Rita 6K20 of 2T6 EXT

#B/R Destination 727
B/R Blackcap Empress 558
#N Bar Emulation EXT
+Rita 2T6 of 5H11 Rito 149

CW	N/A
MARB	N/A
RE	N/A
FAT	N/A

CED	BEPD			WEPD		YEPD		MILK			
+5	.22	+1.9	.33	+57	.23	I+106	.15	+16	.11		
\$W	+25.50		\$F	+42.75		\$G	N/A		\$B	N/A	

• Top 4% of the breed for WW, top 2% YW. Individual WW ratio of 110, YW ratio 107.

SAWTOOTH FALL YEARLING HEIFERS

88 SAWTOOTH LADY LASS 19T

Birth Date: 8-9-2007 Cow 16042298 Tattoo: 19T

#PAPA Forte 1921 PAPA Optima 9818
Woodhill Foresight PAPA Envious Blackbird 8832
+13936986 Bon View Gammer 85 #Bon View Bando 598
Bon View Gammer 233

#Bon View New Design 878 #B/R New Design 036
Sawtooth Lady Lass 79M Bon View Gammer 85
14367780 Sawtooth Lady Lass 109K #+HSAF Prompter Et
Sawtooth Lady Lass 105H

CED	BEPD		WEPD		YEPD		MILK		
+7	.29	+2.2	.36	+52	.27	+1.89	.36	+22	.20
\$W	+28.37	\$F	+27.40	\$G	+26.13	\$B	+39.83		

• Individual WW ratio 102, YW ratio 99. Dam sells as Lot 63 and a maternal sister sells as Lot 64.

92 SAWTOOTH BLACKBIRD 132T

Birth Date: 9-8-2007 Cow 16042285 Tattoo: 132T

#PAPA Forte 1921 PAPA Optima 9818
Woodhill Foresight PAPA Envious Blackbird 8832
+13936986 Bon View Gammer 85 #Bon View Bando 598
Bon View Gammer 233

#Summitcrest High Prime 0H29 #Gardens Prime Time
BBF Blackbird 315 Summitcrest Missie 2F55
14469743 +Exar Blackbird 1864 #B/R New Design 323
WK Blackbird 7308

CED	BEPD		WEPD		YEPD		MILK		
+8	.28	+1.3	.33	+48	.25	+1.85	.34	+24	.19
\$W	+28.86	\$F	+25.00	\$G	+33.93	\$B	+46.11		

• Top 20% \$B, top 15% \$W. Dam's progeny ratios WW 2@104, YW 2@101.

89 SAWTOOTH ERICKA 26T

Birth Date: 8-10-2007 Cow 16042302 Tattoo: 26T

#PAPA Forte 1921 PAPA Optima 9818
Woodhill Foresight PAPA Envious Blackbird 8832
+13936986 Bon View Gammer 85 #Bon View Bando 598
Bon View Gammer 233

#Bon View New Design 1407 #B/R New Design 036
C&H Ericka 3018 Bon View Pride 664
+14551758 +LCC Bon View Erica LG951 #PAPA Forte 1921
Bon View Erica 2127

CED	BEPD		WEPD		YEPD		MILK		
+3	.28	+4.1	.33	+53	.25	+1.93	.34	+29	.19
\$W	+24.91	\$F	+30.99	\$G	+31.06	\$B	+43.64		

• Top 12% WW, top 15% YW. Individual WW ratio 113, YW ratio 104.

93 SAWTOOTH ROSEBUD 137T

Birth Date: 9-13-2007 Cow 16042287 Tattoo: 137T

#PAPA Forte 1921 PAPA Optima 9818
Woodhill Foresight PAPA Envious Blackbird 8832
+13936986 Bon View Gammer 85 #Bon View Bando 598
Bon View Gammer 233

#Rito 616 of 4B20 6807 #DHD Traveler 6807
Rock Ridge Rosebud 428 +Rita 4B20 of 0Fb1 Bando
14899105 Caney Creek Precision 646 #GAR Precision 1680
CC CH Stacker Ambush 587

CED	BEPD		WEPD		YEPD		MILK		
+8	.28	+1.9	.35	+48	.26	+1.90	.34	+24	.19
\$W	+26.27	\$F	+29.93	\$G	+26.88	\$B	+45.70		

• Individual WW ratio 101. Dam's progeny ratio WW 2@106, YW 2@101.

90 SAWTOOTH HAZEL 32T

Birth Date: 8-12-2007 Cow 16042305 Tattoo: 32T

#PAPA Forte 1921 PAPA Optima 9818
Woodhill Foresight PAPA Envious Blackbird 8832
+13936986 Bon View Gammer 85 #Bon View Bando 598
Bon View Gammer 233

#Bon View New Design 1407 #B/R New Design 036
Three Trees Hazel 1932 Bon View Pride 664
+14150697 VDAR Hazel 355 #Traveler 124 GDAR
VDAR Hazel 95

CED	BEPD		WEPD		YEPD		MILK		
+5	.28	+3.2	.34	+48	.26	+1.89	.34	+24	.20
\$W	+23.86	\$F	+28.93	\$G	+28.16	\$B	+43.96		

• These Foresight cattle really looked good for marbling as they went through the chute. This ultrasound data will be available at the sale. Combined with 1407 she is in the top 20% for Marbling. Dam's progeny ratio for %IMF is 1@126.



SAWTOOTH MAXINE 23T - Lot 94

91 SAWTOOTH EBONY 40T

Birth Date: 8-13-2007 Cow 16042311 Tattoo: 40T

#PAPA Forte 1921 PAPA Optima 9818
Woodhill Foresight PAPA Envious Blackbird 8832
+13936986 Bon View Gammer 85 #Bon View Bando 598
Bon View Gammer 233

#Bon View New Design 878 #B/R New Design 036
Sawtooth Ebony 125M Bon View Gammer 85
14367730 Sawtooth Ebony 90K #+HSAF Prompter Et
Sawtooth Ebony 93H

CED	BEPD		WEPD		YEPD		MILK		
+4	.29	+3.6	.35	+53	.26	+1.92	.36	+25	.20
\$W	+25.76	\$F	+29.99	\$G	+25.09	\$B	+42.18		

• Dam's progeny ratios WW 4@100, YW 4@98, %IMF 3@104.

94 SAWTOOTH MAXINE 23T

Birth Date: 8-10-2007 Cow 16042301 Tattoo: 23T

Ironwood New Design 022 701 #B/R New Design 036
Ironwood New Level Wardens Blackcap 6148 6309 Wardens Lady 022 5410
13320150 #Finks 5522-6148
Wardens Blackcap SC 025

Grandview Womack Direct #B/R New Design 036
Sawtooth Maxine 4P +Mengs Miss Skymere 78B
14987177 Sawtooth Maxine 75G #Rito 2RT2 of 0B5 RR Traveler
Sawtooth Maxine 32B

CED	BEPD		WEPD		YEPD		MILK		
+6	.29	+2.7	.35	+46	.26	+1.81	.34	+23	.20
\$W	+25.75	\$F	+21.88	\$G	+19.16	\$B	+41.01		

• Dam's progeny ratios WW 2@97, YW 2@99, %IMF 1@106, Ribeye 1@111.

SAWTOOTH FALL YEARLING HEIFERS

95 **SAWTOOTH RITA 29T**
 Birth Date: 8-11-2007 Cow 16043949 Tattoo: 29T

#Bon View New Design 208 #B/R New Design 036
 #Bon View Erica 443
 #Twin Valley Precision E161 (FR)
 #+TC Erica Eileen 5116

#B/R New Design 036 #VDAR New Trend 315
 B/R Blackcap Empress 76
 #+Ideal 692 of 9J9 3134
 +Rita 0FB4 of 5H11 Fullback

CW	I+15
MARB	I+.49
RE	I+.30
FAT	I-.008

CED	BEPD	WEPD	YEPD	MILK			
+2	.28	+3.7	.35	+58			
.26	I+102	.34	+29	.11			
\$W	+26.43	\$F	+38.18	\$G	+31.73	\$B	+57.08

• Top 3% WW, top 4% YW, top 3% \$B, top 15% Marbling. Individual WW ratio 109, YW 103. Dam's progeny ratio WW 2@109, YW 2@104, %IMF 1@165 (yes, this is correct), Ribeye 1@107.



SAWTOOTH LISA 93T - Lot 98

96 **SAWTOOTH BESS 47T**
 Birth Date: 8-14-2007 Cow 16042315 Tattoo: 47T

#SAF Focus of ER #SAF Fame
 GDAR Forever Lady 246
 #Sitz Alliance 6595
 Baldrige Countess 357

+BSS Limited Design #+SVF GDAR 216 LTD
 B/R Ruby of Tiffany 5113
 #Lemmon Impact
 4U Miches Ext Lass 371

CW	I+6
MARB	I+.35
RE	I+.15
FAT	I+.017

CED	BEPD	WEPD	YEPD	MILK			
+13	.29	-.7	.35	+47			
.26	I+85	.33	+25	.16			
\$W	+30.24	\$F	+25.38	\$G	+24.31	\$B	+39.37

• Individual WW ratio of 107, YW ratio 103. Notice the low birth EPD. Dam's production WW 1@107, YW 1@103. Dam sells as Lot 76.

98 **SAWTOOTH LISA 93T**
 Birth Date: 8-21-2007 Cow 16042344 Tattoo: 93T

#SAF Focus of ER #SAF Fame
 GDAR Forever Lady 246
 #Sitz Alliance 6595
 Baldrige Countess 357

#+B/R New Frontier 095 #B/R New Design 036
 White Fence Pride H1
 #Connealy Dateline
 Sawtooth Lisa 85H

CW	I+2
MARB	I+.47
RE	I+.06
FAT	I+.008

CED	BEPD	WEPD	YEPD	MILK			
+11	.30	+.9	.34	+51			
.25	I+93	.33	+25	.16			
\$W	+29.09	\$F	+31.77	\$G	+28.94	\$B	+41.73

• Top 15% YW. Individual WW ratio of 108, YW 104. Dam's progeny ratios WW 1@108, YW 1@104.

97 **SAWTOOTH CJP LISA 65T**
 Birth Date: 8-16-2007 Cow 16042326 Tattoo: 65T

#SAF Focus of ER #SAF Fame
 GDAR Forever Lady 246
 #Sitz Alliance 6595
 Baldrige Countess 357

Ironwood New Level Ironwood New Design 022 701
 Wardens Blackcap 6148 6309
 Grandview Womack Direct
 Sawtooth Lisa 68H

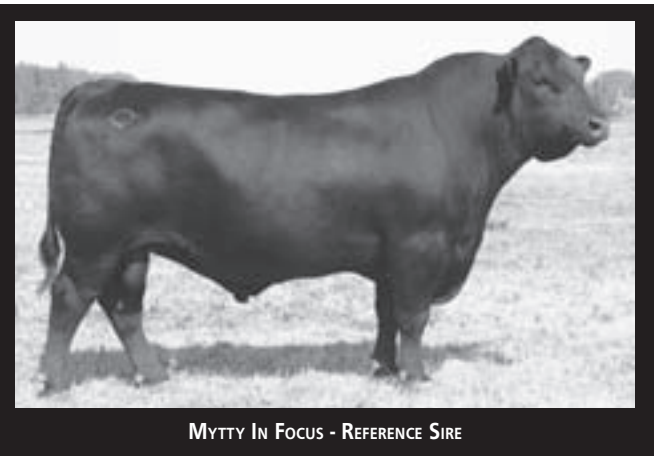
CW	I+11
MARB	I+.38
RE	I+.10
FAT	I+.036

CED	BEPD	WEPD	YEPD	MILK			
+13	.31	-.3	.35	+51			
.26	I+96	.33	+28	.16			
\$W	+29.75	\$F	+34.80	\$G	+21.14	\$B	+42.73

• Top 10% YW, top 10% \$W. Individual WW ratio 100, YW ratio 107.



SAWTOOTH PRIMROSE 81T - Lot 99



MYTTY IN FOCUS - REFERENCE SIRE

99 **SAWTOOTH PRIMROSE 81T**
 Birth Date: 8-18-2007 Cow 16042335 Tattoo: 81T

#Sitz Alliance 6595 #Sitz Traveler 8180
 #Sitz Barbamere Jet 2698
 #N Bar Emulation EXT
 Lady Enchantress of Conanga

#Bon View Bando 598 #Tehama Bando 155
 #Bon View Dora 56
 #+OSU 6T6 Ultra
 Basin Primrose Lady 6265

CW	I+5
MARB	I+.15
RE	I+.11
FAT	I+.033

CED	BEPD	WEPD	YEPD	MILK			
+7	.29	+1.0	.36	+41			
.27	I+78	.35	+20	.20			
\$W	+25.39	\$F	+20.86	\$G	+10.69	\$B	+23.78

• Individual WW 106, YW 104. Dam's progeny ratio WW 4@98, YW 4@101.

SAWTOOTH FALL YEARLING HEIFERS



SAWTOOTH PRIMROSE 91T - LOT 100

100 SAWTOOTH PRIMROSE 91T

Birth Date: 8-21-2007 Cow 16043957 Tattoo: 91T

#Bon View New Design 208 #B/R New Design 036
Rito 4L60 of 2536 BVND 208 #Bon View Erica 443
+14768728 GAR Precision 2536 #GAR Precision 1680
+GAR EXT 2104

+BSS Limited Design #+SVF GDAR 216 LTD
Sawtooth Primrose 77R B/R Ruby of Tiffany 5113
15322320 Sawtooth Primrose 91K #Connealy Dateline
Sawtooth Primrose 88H

CW	I+8
MARB	I+.57
RE	I+.22
FAT	I+.018

CED	BEPD		WEPD		YEPD		MILK		
+11	.27	+5	.35	+43	.25	I+81	.29	+26	.12
\$W	+27.65	\$F	+23.00	\$G	+31.46	\$B	+47.72		

• Dam's progeny ratio WW 1@99, YW 1@101. Dam sells as Lot 75.



SAWTOOTH LADY LASS 62T - LOT 103

103 SAWTOOTH LADY LASS 62T

Birth Date: 8-16-2007 Cow 16042324 Tattoo: 62T

#Sitz Traveler 8180 #GDAR Traveler 71
SAV 8180 Traveler 004 (FR) Sitz Everelda Entense 1137
13512009 +Boyd Forever Lady 8003 #AAR New Trend
SVF Forever Lady 57D

#SA Neutron 377 #+SAF Neutron
Sawtooth Lady Lass 94P #SA Queen Susan 102
14987209 Sawtooth Lady Lass 120 J #OGL Battle Cry 427 128
SCC Lady Lass 65D

CW	I+22
MARB	I+.11
RE	I+.21
FAT	I+.038

CED	BEPD		WEPD		YEPD		MILK		
+0	.29	+4.8	.35	+53	.26	I+103	.34	+17	.20
\$W	+17.72	\$F	+41.23	\$G	+9.44	\$B	+40.07		

• Top 14% WW, top 3% YW. Individual YW ratio of 106.
• Dam sells as Lot 67.

101 SAWTOOTH ANNIE 83T

Birth Date: 8-19-2007 Cow 16043956 Tattoo: 83T

#Bon View New Design 208 #B/R New Design 036
Rito 4L60 of 2536 BVND 208 #Bon View Erica 443
+14768728 GAR Precision 2536 #GAR Precision 1680
+GAR EXT 2104

+B/R BAAR Fast Forward1193 #B/R New Design 323
Sawtooth Annie 112R HR Wendy 618
15787168 Sawtooth Annie 102L #Bon View Bando 598
+SCC Annie 56F

CW	I+10
MARB	I+.50
RE	I+.28
FAT	I+.002

CED	BEPD		WEPD		YEPD		MILK		
+2	.27	+3.8	.35	+45	.25	I+81	.29	+27	.12
\$W	+23.37	\$F	+22.25	\$G	+31.74	\$B	+49.55		

• Top 14% \$B, Top 12% Marbling. Individual ratio WW 99, YW 101.



SAWTOOTH EFFIE 54T - LOT 104

102 SAWTOOTH ANNIE 146T

Birth Date: 9-20-2007 Cow 16042289 Tattoo: 146T

#Sitz Alliance 6595 #Sitz Traveler 8180
KCF Bennett Total #Sitz Barbaramere Jet 2698
13687063 Ext of Conanga 6790 #N Bar Emulation EXT
Lady Enchantress of Conanga

Grandview Womack Direct #B/R New Design 036
Sawtooth Annie 21N +Mengs Miss Skymere 78B
14678654 Sawtooth Annie 102K +Sawtooth Samuel 48H
+SCC Annie 56F

CW	I+5
MARB	I+.11
RE	I+.02
FAT	I+.014

CED	BEPD		WEPD		YEPD		MILK		
+4	.28	+3.4	.35	+47	.26	I+80	.34	+22	.19
\$W	+25.06	\$F	+20.55	\$G	+13.49	\$B	+26.52		

104 SAWTOOTH EFFIE 54T

Birth Date: 8-15-2007 Cow 16048692 Tattoo: 54T

BC Marathon 7022 OCC Kirby 633K
BC 7022 Raven 7965 Gibbet Hill Mignonne E37
15034593 OCC Blackbird 796F #OCC Bonanza 880B
OCC Blackbird 779A

+Lemmon Newsline C804 #B/R New Design 036
CMC 322 Effie 5502 White Fence Pride H1
15328991 +Hedgewood Effie 322 #+SAF 598 Bando 5175
+Maple Lane Effie 827

CW	I+13
MARB	I+.23
RE	I+.43
FAT	I+.020

CED	BEPD		WEPD		YEPD		MILK		
+1	.26	+3.8	.34	+52	.24	I+93	.15	+25	.09
\$W	+24.31	\$F	+31.38	\$G	+21.69	\$B	+43.90		

• Top 15% WW, top 15% YW. Individual WW ratio 104, YW 102.

SAWTOOTH FALL YEARLING HEIFERS

105

SAWTOOTH RITA 11T

Birth Date: 8-5-2007 Cow 16042278 Tattoo: 11T

#Bon View New Design 1407 Rito 2V1 of 2536 1407 +14088249 GAR Precision 2536	#B/R New Design 036 Bon View Pride 664 #GAR Precision 1680 +GAR EXT 2104	CW I+13 MARB I+.45 RE I+.36 FAT I+.006
#Rockn D Ambush 1531 Shermans Rita 237 +14325006 +EF Rita 793	#Paramont Ambush 2172 MS Blackcap Band of RD 1301 #DHD Traveler 6807 +GAR Scotch Cap 199	

CED	BEPD		WEPD		YEPD		MILK
+8	.28	+2.0	.34	+53	.25	I+.94	.34 +22 .19
\$W	+27.93	\$F	+31.99	\$G	+30.21	\$B	+52.59

• Top 12% WW, top 15% YW. Dam sells as Lot 58.

109

SAWTOOTH ELLEY 17T

Birth Date: 8-8-2007 Cow 16042296 Tattoo: 17T

Connealy Onward Sitz Upward 307R 14963730 Sitz Henrietta Pride 81M	#Connealy Lead On Altune of Conanga 6104 #Sitz Value 7097 Sitz Henrietta Pride 1370	CW I+17 MARB I+.26 RE I+.31 FAT I+.008
#+SAF Strategy 9015 Sawtooth CJP Elley 99P 14987212 Jacobs Elley H194	#SAF Focus of ER +SAF Royal Queen 5084 Jacobs Pure Gold D3J +Eleonora of Sandtown	

CED	BEPD		WEPD		YEPD		MILK
+9	.26	+1.1	.35	+56	.25	I+101	.32 +22 .10
\$W	+29.27	\$F	+37.94	\$G	+21.89	\$B	+48.58

• Notice the spread between Birth and Yearling. Top 5% WW, top 5% YW, top 15% \$B. Individual WW ratio 105, YW 99.

106

SAWTOOTH AMBER 63T

Birth Date: 8-16-2007 Cow 16042325 Tattoo: 63T

#Bon View New Design 1407 Rito 2V1 of 2536 1407 +14088249 GAR Precision 2536	#B/R New Design 036 Bon View Pride 664 #GAR Precision 1680 +GAR EXT 2104	CW I+7 MARB I+.52 RE I+.23 FAT I+.007
#Rockn D Ambush 1531 PS Cash Cow 335 +13832873 GAR 6807 Traveler 1664	#Paramont Ambush 2172 MS Blackcap Band of RD 1301 #DHD Traveler 6807 +GAR Scotch Cap 321	

CED	BEPD		WEPD		YEPD		MILK
+8	.29	+1.5	.35	+51	.26	I+.93	.37 +20 .20
\$W	+27.38	\$F	+31.77	\$G	+31.66	\$B	+49.03

• Top 15% WW, top 15% YW, top 15% \$B. Individual 103 YW.

110

SAWTOOTH ASHLEY 57T

Birth Date: 8-15-2007 Cow 16042321 Tattoo: 57T

Connealy Onward Sitz Upward 307R 14963730 Sitz Henrietta Pride 81M	#Connealy Lead On Altune of Conanga 6104 #Sitz Value 7097 Sitz Henrietta Pride 1370	CW I+19 MARB I+.35 RE I+.26 FAT I+.011
#+SAF Strategy 9015 Sawtooth Ashley 107P 14987138 Sawtooth Ashley 64M	#SAF Focus of ER +SAF Royal Queen 5084 #Bon View New Design 1407 +Davis Pride 8290	

CED	BEPD		WEPD		YEPD		MILK
+13	.28	-1.3	.35	+58	.25	I+106	.31 +27 .09
\$W	+32.22	\$F	+42.34	\$G	+23.99	\$B	+52.95

• A huge spread from Birth to Yearling. Top 2% Birth, top 3% WW, top 2% YW, top 1% \$W, top 2% \$F, top 10% \$B. Individual WW ratio 109. YW 102.

107

SAWTOOTH PRIMROSE 88T

Birth Date: 8-20-2007 Cow 16042339 Tattoo: 88T

#Bon View New Design 1407 Rito 2V1 of 2536 1407 +14088249 GAR Precision 2536	#B/R New Design 036 Bon View Pride 664 #GAR Precision 1680 +GAR EXT 2104	CW I+6 MARB I+.65 RE I+.15 FAT I+.012
#Rockn D Ambush 1531 Daltons Primrose 226 14192924 +PARB Primrose T 72	#Paramont Ambush 2172 MS Blackcap Band of RD 1301 #B/R New Design 036 PARB Primrose 5968	

CED	BEPD		WEPD		YEPD		MILK
+9	.29	+1.2	.35	+50	.27	I+.88	.33 +19 .19
\$W	+28.30	\$F	+27.18	\$G	+33.66	\$B	+49.18

• Top 15% \$B.

111

SAWTOOTH LASS 108T

Birth Date: 8-26-2007 Cow 16042270 Tattoo: 108T

Connealy Onward Sitz Upward 307R 14963730 Sitz Henrietta Pride 81M	#Connealy Lead On Altune of Conanga 6104 #Sitz Value 7097 Sitz Henrietta Pride 1370	CW I+17 MARB I+.10 RE I+.26 FAT I+.001
#Connealy Dateline R3 Lass L11 +13862356 +Leachman Lass 1109	#DHD Traveler 6807 #Eila Eila of Conanga #Rito 9J9 of B156 7T26 +Leachman Lass 400L	

CED	BEPD		WEPD		YEPD		MILK
+8	.26	+1.3	.34	+53	.25	I+.98	.33 +25 .11
\$W	+28.53	\$F	+36.05	\$G	+15.45	\$B	+41.57

• Top 12% WW, top 7% YW. Individual WW ratio 105, YW 100. Dam's progeny ratios WW 3@106, YW 3@102.

108

SAWTOOTH PRIDEMERE GAL 90T

Birth Date: 8-21-2007 Cow 16042342 Tattoo: 90T

#Bon View New Design 1407 Rito 2V1 of 2536 1407 +14088249 GAR Precision 2536	#B/R New Design 036 Bon View Pride 664 #GAR Precision 1680 +GAR EXT 2104	CW I+11 MARB I+.50 RE I+.26 FAT I+.003
#Rockn D Ambush 1531 Cliffsides Pridemere Gal 281 +14311110 Pridemere BAS 243	#Paramont Ambush 2172 MS Blackcap Band of RD 1301 #GAR Precision 1680 Pridemere BAS 225	

CED	BEPD		WEPD		YEPD		MILK
+3	.28	+4.0	.34	+46	.25	I+.89	.35 +20 .19
\$W	+19.80	\$F	+29.70	\$G	+31.18	\$B	+51.37

• Top 10% \$B.

112

SAWTOOTH ELVIRA 115T

Birth Date: 8-30-2007 Cow 16042275 Tattoo: 115T

Connealy Onward Sitz Upward 307R 14963730 Sitz Henrietta Pride 81M	#Connealy Lead On Altune of Conanga 6104 #Sitz Value 7097 Sitz Henrietta Pride 1370	CW I+21 MARB I+.29 RE I+.29 FAT I+.005
#B/R New Design 036 Sawtooth Elvira 28N 14678657 Sawtooth Elvira 61H	#VDAR New Trend 315 B/R Blackcap Empress 76 #RR Scotchcap 9440 +SCC Exquisite Lady 44E	

CED	BEPD		WEPD		YEPD		MILK
+7	.26	+2.2	.35	+55	.26	I+.99	.33 +25 .10
\$W	+27.94	\$F	+36.28	\$G	+22.37	\$B	+51.14

• Top 10% WW, top 7% YW, top 10% \$B. Dam's progeny ratio WW 3@101, YW 3@97, %IMF 2@118, Ribeye 2@103.

SAWTOOTH FALL YEARLING HEIFERS

113 SAWTOOTH CJP VIRGINIA 117T

Birth Date: 8-30-2007 Cow 16042276 Tattoo: 117T

Connealy Onward
Sitz Upward 307R
14963730 Sitz Henrietta Pride 81M

#B/R New Design 036
Sawtooth JJP Virginia 129J
#13512801 Spring Cove Bando Alta 559

#Connealy Lead On
Altune of Conanga 6104
#Sitz Value 7097
Sitz Henrietta Pride 1370

#VDAR New Trend 315
B/R Blackcap Empress 76
#+VDAR Bando 97
Springcove MS RR Traveler145

CW	I-18
MARB	I-39
RE	I-31
FAT	I-004

CED	BEPD			WEPD		YEPD		MILK	
+7	.26	+1.3	.35	+55	.25	I-103	.35	+24	.11
\$W	+28.16	\$F	+40.42	\$G	+26.88	\$B	+54.80		

• Top 7% WW, top 3% YW, top 15% \$W, top 3% \$F, top 5% \$B. Individual WW ratio 111, YW ratio 107. Dam's progeny ratios WW 7@103, YW 7@104, %IMF 4@106, Ribeye 4@107.

117 SAWTOOTH GEORGINA 77T

Birth Date: 8-18-2007 Cow 16042332 Tattoo: 77T

#Bon View New Design 1407
Riverbend Mile High 3718
14512407 #+GAR Precision 1919

#Twin Valley Precision E161 (FR)
Sawtooth Georgina 175M
14367758 WA Georgina 036 902

#B/R New Design 036
Bon View Pride 664
#GAR Precision 1680
+GAR EXT 544

#GAR Precision 1680
+WCC Blackcap C9 (R)
#B/R New Design 036
+Garrison 791 MS Georgina6807

CW	I-13
MARB	I-54
RE	I-32
FAT	I-003

CED	BEPD			WEPD		YEPD		MILK	
+8	.28	+2.1	.34	+45	.25	I-84	.34	+26	.13
\$W	+25.92	\$F	+25.16	\$G	+33.23	\$B	+54.07		

• Again a big spread in these 3718 daughters. Top 7% WW, top 3% YW, top 5% \$B. Individual WW ratio 111, YW 107. Dam's progeny ratios WW 7@103, YW 7@104, %IMF 4@106, Ribeye 4@107. Maternal sister sells as Lot 77.

114 RIVERBEND FOREVER LADY T1158

Birth Date: 9-15-2007 Cow 15801982 Tattoo: T1158

#B/R New Design 036
GAR New Design 5110
+13728515 GAR Precision 2536

#VDAR New Trend 315
B/R Blackcap Empress 76
#GAR Precision 1680
+GAR EXT 2104

#Tehama Bando 155
9J9 GAR 856
#Sitz Traveler 8180
+GDAR SVF Forever Lady 146D

CW	I-25
MARB	I-48
RE	I-24
FAT	I-014

CED	BEPD			WEPD		YEPD		MILK	
N/A	N/A	+2.3	.19	+50	.23	I-93	.26	+27	.15
\$W	+26.43	\$F	+32.16	\$G	+26.39	\$B	+56.68		

• Top 20% WW, top 15% YW, top 15% \$W, top 15% Marbling, top 4% \$B. Individual WW ratio 109, YW ratio 107. Dam sells as Lot 53.

118 SAWTOOTH CAROL 113T

Birth Date: 8-29-2007 Cow 16042273 Tattoo: 113T

#GAR Precision 1680
CA Future Direction 5321
#12493607 CA Miss Power Fix 308

#B/R New Design 036
Sawtooth Carol 78L
14053845 #+Sawtooth Famous Carol 81G

#Tehama Bando 155
9J9 GAR 856
#+SAF Power Fix
CA Lady Eight 1015

#VDAR New Trend 315
B/R Blackcap Empress 76
#SAF Fame
Spring Cove Miss Spade 073

CW	I-11
MARB	I-59
RE	I-31
FAT	I-011

CED	BEPD			WEPD		YEPD		MILK	
+4	.30	+3.1	.36	+40	.27	I-78	.36	+25	.22
\$W	+21.88	\$F	+21.23	\$G	+33.36	\$B	+51.87		

• Top 10% \$B. Individual WW ratio 105, YW 101. Dam is the mother of our herd sire, Sawtooth Future Direction 15N and has a progeny ratio of WW 5@104, YW 5@106, %IMF 3@101.

115 SAWTOOTH BECKY 89T

Birth Date: 8-20-2007 Cow 16042340 Tattoo: 89T

#SAF Focus of ER
SAF Strategy 9015
#+13334022 +SAF Royal Queen 5084

#SAF Fame
GDAR Forever Lady 246
#Bon View Bando 598
SAF Royal Queen 9022

#B/R New Design 036
Sawtooth Becky 108L
14053818 #Sawtooth Becky 123J

#B/R New Design 036
Bon View Gammer 85
#GDAR Traveler 71
Sawtooth Becky 87G

CW	I-11
MARB	I-31
RE	I-02
FAT	I-004

CED	BEPD			WEPD		YEPD		MILK	
+9	.30	+4	.36	+49	.27	I-90	.36	+24	.21
\$W	+28.91	\$F	+29.54	\$G	+21.58	\$B	+41.97		

• Individual WW ratio 102, YW 102. Dam's progeny ratios WW 5@103, YW 5@106, Ribeye 3@105. Dam sells as Lot 80.

119 SAWTOOTH CAROL 118T

Birth Date: 8-31-2007 Cow 16042277 Tattoo: 118T

#BR Midland
Schroeders Midland 4894
14782125 #Schroeders Elba 489

+Grandview Womack Security
Sawtooth Carol 24P
14987157 Sawtooth Carol 78L

#Twin Valley Precision E161 (FR)
BR Royal Lass 7036-19
Schroeders Millennium 57
Schroeders Elba 477

#+SAF 598 Bando 5175
+Womacks Primrose Lucy 147
#B/R New Design 036
#+Sawtooth Famous Carol 81G

CW	I-11
MARB	I-33
RE	I-07
FAT	I-008

CED	BEPD			WEPD		YEPD		MILK	
+2	.22	+4.4	.34	+47	.23	I-86	.26	+20	.10
\$W	+20.54	\$F	+26.36	\$G	+22.50	\$B	+42.05		

• Dam's progeny ratios WW 2@100, YW 2@96, %IMF 1@103. Dam sells as Lot 78.

116 SAWTOOTH OXAUNA 159T

Birth Date: 10-11-2007 Cow 16042293 Tattoo: 159T

#CA Future Direction 5321
Sawtooth Future Directin 15N
14678648 Sawtooth Carol 78L

#GAR Precision 1680
CA Miss Power Fix 308
#B/R New Design 036
#+Sawtooth Famous Carol 81G

#+SVF GDAR 216 LTD
Sawtooth Oxauna 89J
13512816 Sawtooth Oxauna 3D

#Traveler 124 GDAR
+GDAR Forever Lady 718
#GDAR Traveler 71
+SCC Miss Blackcap 6B

CW	I-14
MARB	I-35
RE	I-19
FAT	I-008

CED	BEPD			WEPD		YEPD		MILK	
+3	.23	+4.2	.34	+44	.22	I-87	.23	+16	.13
\$W	+17.39	\$F	+28.49	\$G	+24.32	\$B	+46.66		

• Individual WW ratio of 107, YW ratio 106.

120 SAWTOOTH CJP SHERRY 127T

Birth Date: 9-4-2007 Cow 16042280 Tattoo: 127T

#BR Midland
Schroeders Midland 4894
14782125 #Schroeders Elba 489

#B/R New Design 036
Sawtooth CJP Sherry 13P
14993353 #Sawtooth JJP Sherry 12K

#Twin Valley Precision E161 (FR)
BR Royal Lass 7036-19
Schroeders Millennium 57
Schroeders Elba 477

BF Rainman 9118 117
Bon View Gammer 1324
+TRA New Tron 552
#Sawtooth Sherry 45G

CW	I-12
MARB	I-42
RE	I-16
FAT	I-006

CED	BEPD			WEPD		YEPD		MILK	
-1	.23	+4.4	.34	+47	.23	I-81	.26	+18	.11
\$W	+21.53	\$F	+21.51	\$G	+26.91	\$B	+46.18		

SAWTOOTH FALL YEARLING HEIFERS

121

SAWTOOTH BLACKLASS 136T

Birth Date: 9-11-2007 Cow 16042286 Tattoo: 136T

#BR Midland
Schroeders Midland 4894
14782125 #Schroeders Elba 489

#Twin Valley Precision E161 (FR)
BR Royal Lass 7036-19
Schroeders Millennium 57
Schroeders Elba 477

CW
+1.10
MARB
+1.55
RE
+1.26
FAT
+1.005

#Summitcrest High Prime OH29
Western Rose Black Rose R425
+14927829 +GAR New Design C49

#Gardens Prime Time
Summitcrest Missie 2F55
#B/R New Design 036
+GAR Precision 303

CED	BEPD		WEPD		YEPD		MILK	
-7	.22	+7.2	.33	+51	.22	+1.93	.26	+21
\$W	+14.81	SF	+31.77	\$G	+33.51	\$B	+53.56	

• Top 20% WW, top 15% YW, top 10% \$B. Individual WW ratio 113, YW 112. Dam's progeny ratios WW 2@111, YW 2@112, %IMF 1@128, Ribeye 1@116. Maternal sister sells as Lot 48.

122

SAWTOOTH JANELL 157T

Birth Date: 10-9-2007 Cow 16042292 Tattoo: 157T

#BR Midland
Schroeders Midland 4894
14782125 #Schroeders Elba 489

#Twin Valley Precision E161 (FR)
BR Royal Lass 7036-19
Schroeders Millennium 57
Schroeders Elba 477

CW
+1.14
MARB
+1.30
RE
+1.15
FAT
+1.000

#JLB Exacto 416
PARB Primrose 0732
+13852475 +PARB Primrose T 7583

#GAR Precision 1680
+Brost Burgess 041
#B/R New Design 036
PARB Primrose 5968

CED	BEPD		WEPD		YEPD		MILK	
+3	.23	+4.2	.34	+50	.23	+1.88	.28	+18
\$W	+22.04	SF	+27.18	\$G	+22.79	\$B	+44.78	

• Individual WW ratio 103, YW 100. Dam's progeny ratios WW 5@102, YW 5@102.

REFERENCE SIRE

E

TC TOTAL 410

Birth Date: 1-16-2004 Bull 14844711 Tattoo: 410

#B/R New Design 036
Bon View New Design 208
#13044574 #Bon View Erica 443

#VDAR New Trend 315
B/R Blackcap Empress 76
#N Bar Emulation EXT
#Bon View Erica 1380

CW
+24
MARB
+6.2
RE
+4.6
FAT
+0.06

#Twin Valley Precision E161 (FR)
TC Erica Eileen 2047
+14270867 #+TC Erica Eileen 5116

#GAR Precision 1680
+WCC Blackcap C9 (R)
#+Leachman Right Time
TC Erica Eileen 6006

BEPD	WEPD		YEPD		SC		MILK	
+3.7	.93	+73	.89	+132	.84	+1.8	.84	+34
\$W	+27.03	SF	+64.46	\$G	+34.17	\$B	+71.90	



TC TOTAL 410 - REFERENCE SIRE E

F

SAWTOOTH FUTURE DIRECTIN 15N

Birth Date: 8-26-2003 Bull 14678648 Tattoo: 15N

#GAR Precision 1680
CA Future Direction 5321
#12493607 CA Miss Power Fix 308

#Tehama Bando 155
9J9 GAR 856
#+SAF Power Fix
CA Lady Eight 1015

CW
+12
MARB
+4.7
RE
+3.1
FAT
+0.24

#B/R New Design 036
Sawtooth Carol 78L
14053845 #+Sawtooth Famous Carol 81G

#VDAR New Trend 315
B/R Blackcap Empress 76
#SAF Fame
Spring Cove Miss Spade 073

BEPD	WEPD		YEPD		SC		MILK	
+3.6	.54	+36	.41	+82	.37	N/A	N/A	+25
\$W	+16.67	SF	+26.61	\$G	+28.46	\$B	+48.75	



SAWTOOTH FUTURE DIRECTION 15N - REFERENCE SIRE F

G

RITO 2V1 OF 2536 1407

Birth Date: 4-5-2002 Bull +14088249 Tattoo: 2V1

#B/R New Design 036
Bon View New Design 1407
#12783540 Bon View Pride 664

#VDAR New Trend 315
B/R Blackcap Empress 76
#+GAR Sleep Easy 1009
#Bon View Pride 1551

CW
+18
MARB
+7.0
RE
+3.8
FAT
+0.047

#GAR Precision 1680
GAR Precision 2536
12716656 +GAR EXT 2104

#Tehama Bando 155
9J9 GAR 856
#N Bar Emulation EXT
#GAR Scotch Cap 867

BEPD	WEPD		YEPD		SC		MILK	
+4.0	.95	+62	.93	+115	.90	+6.2	.90	+31
\$W	+26.60	SF	+50.29	\$G	+31.26	\$B	+61.92	



RITO 2V1 OF 2536 1407 - REFERENCE SIRE G



TL BLACKCAP EMPRESS 8104 - LOT 123

123

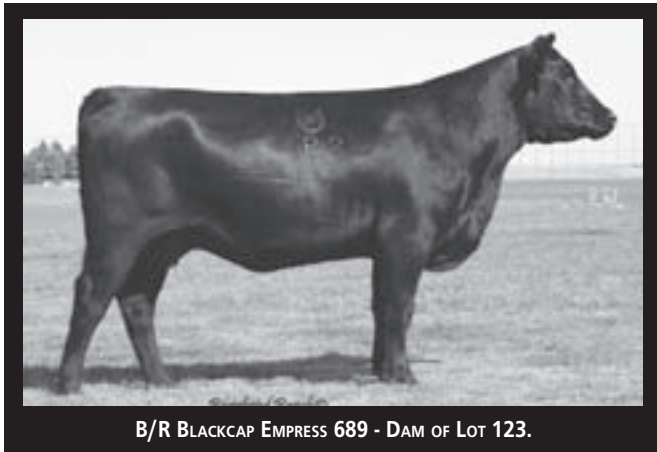
TL BLACKCAP EMPRESS 8104

Birth Date: 1-21-2008 Cow 16059093 Tattoo: 8104

#CA Future Direction 5321	#GAR Precision 1680	CW
B/R 65R Genesis 14385395	CA Miss Power Fix 308	I+24
B/R Blackcap Empress 127	#B/R Destination 727	MARB
	#B/R Blackcap Empress 8183	I+1.09
		RE
+B/R Ambush 28	#Rockn D Ambush 1531	I+.46
B/R Blackcap Empress 689	+B/R Ruby of Tiffany 8250	FAT
15343147	+B/R Blackcap Empress 4245	I+.023
	#B/R New Design 323	
	+B/R Blackcap Empress 1126	

	CED	BEPD	WEPD	YEPD	MILK
	I-5	.05	I+2.8	.05	I+54
	.05	I+2.8	.05	I+98	.05
	I+22	.05			.05
\$W	+25.71	\$F	+35.66	\$G	+39.79
				\$B	+70.32

- Selling one-half interest.
- First natural calf of the No. 1 non-parent female for marbling, B/R Blackcap Empress 689 who is now co-owned with Riverbend Ranch, Idaho Falls, Idaho.
- Dam was our selection of the Rishel Angus Consignment of the 2007 Denim and Diamonds Sale in Denver. She went on to be the high IMF heifer in her calf crop in the elite Rishel Angus herd.
- This female has a very unique pedigree combining both the Blackcap Empress and Tiffany Family sired by the elite Genesis the No. 5 Marbling bull in the breed and the No. 6 bull in the breed for \$Beef. Her dam is a direct daughter of the No. 1 \$Beef Bull in the breed B/R Ambush 28.
- Second dam, by 323, is a current donor in the Elite 44/Ankony program.
- Third dam is a full sister to ABS roster sire B/R Destination 727-928 and is now owned by 44/Ankony and MJB programs.
- Fourth dam is a maternal sister to B/R New Design 036.
- Fifth dam is the legendary mother to 036.
- 8104 goes back to B/R Ruby of Tiffany 155 "323's dam" four times and goes back to B/R Blackcap Empress 76 "036's dam" twice.
- What an opportunity here in 8104, to find these genetics in a program focused to serve the needs of commercial cattlemen in the western region. 8104 is an outstanding individual both genetically and visually and will make a great breed leading donor for our new partner.
- Also top 1% Marbling \$G, \$QG, and \$Beef.



B/R BLACKCAP EMPRESS 689 - DAM OF LOT 123.

124

TL BLACKCAP EMPRESS 8101

Birth Date: 1-12-2008 Cow 16075733 Tattoo: 8101

#Rockn D Ambush 1531	#Paramont Ambush 2172	CW
B/R Ambush 28 +14188956	MS Blackcap Band of RD 1301	I+18
+B/R Ruby of Tiffany 8250	#N Bar Emulation EXT	MARB
	B/R Ruby of Tiffany 5113	I+.92
		RE
#CA Future Direction 5321	#GAR Precision 1680	I+.55
B/R Blackcap Empress 611	CA Miss Power Fix 308	FAT
15343826	#VDAR New Trend 315	I+.015
	B/R Blackcap Empress 76	

	CED	BEPD	WEPD	YEPD	MILK
	I+8	.05	I+2.3	.05	I+48
	.05	I+2.3	.05	I+88	.05
	I+19	.05			.05
\$W	+24.91	\$F	+27.94	\$G	+41.00
				\$B	+66.07

- Selling one-half interest.
- Dam was purchased alongside of 689 at the Denim and Diamonds Sale in Denver.
- Sired by the No. 1 bull in the breed for \$Beef, B/R Ambush 28.
- Dam is the first natural calf of the 44/Ankony and MJB donor B/R Blackcap Empress 429.
- Second dam is a full sister to carcass leader B/R New Design 036.
- What a carcass and performance pedigree here, Ambush 28, Future Direction, then a full sister to 036.
- Remember that 8101 is from the same family that produced the No. 1 female in the breed for Marbling, as well as B/R 65R Genesis.
- A very high-performing, high-quality female with all the stats and pedigree to make her a donor in any program.
- Also, she is top 1% in the breed for Marbling, Ribeye, \$G, \$QG and \$Beef.



TL BLACKCAP EMPRESS 8101 - LOT 124

TL BRED COWS



SERVICE SIRE TO LOTS 132-136.

SPRING COVE J/M GENESIS 7154

130 TL PROMISE 117

Birth Date: 2-3-2007 Cow 15729835 Tattoo: 117

#SS Traveler 6807 T510		#DHD Traveler 6807		<table border="1"> <tr><td>CW</td><td>-2</td></tr> <tr><td>MARB</td><td>+41</td></tr> <tr><td>RE</td><td>+10</td></tr> <tr><td>FAT</td><td>-.006</td></tr> </table>	CW	-2	MARB	+41	RE	+10	FAT	-.006
CW	-2											
MARB	+41											
RE	+10											
FAT	-.006											
+GAR New Design 50		#SS Miss Hi Spade A114										
		#B/R New Design 036										
		GAR Precision 2536										
JD Daigger 901		#Sitz Alliance 6595										
Spring Cove Promise JM 422		JD Queen Eisa 7021										
14764678		#+VDAR Bando 97										
Spring Cove Promise JM 118		#Spring Cove Prairies Promise										

CED	BEPD		WEPD		YEPD		MILK	
+12	.29	-.2	.35	+40	.26	+76	.25	+25
\$W	+27.49	\$F	+19.32	\$G	+29.61	\$B	+35.31	

- Outstanding bred heifer sired by Solution out of an excellent Daigger daughter.
- Out of the Promise cow family that stems back to the elite Pathfinder Cow Prairie's Promise 765 cow.
- Due 1/10/09 to Genesis.

131 SPRING COVE CAROL 532

Birth Date: 2-8-2005 Cow 15121761 Tattoo: 532

#+Leachman Right Time		#N Bar Emulation EXT		<table border="1"> <tr><td>CW</td><td>+10</td></tr> <tr><td>MARB</td><td>+06</td></tr> <tr><td>RE</td><td>+17</td></tr> <tr><td>FAT</td><td>+019</td></tr> </table>	CW	+10	MARB	+06	RE	+17	FAT	+019
CW	+10											
MARB	+06											
RE	+17											
FAT	+019											
Hyline Right Time 338		Leachman Erica 0025										
#13058662		+Hyline SVF Traveler 0115										
Hyline Pride 265		Hyline Pride 870										
#PAPA Durabull 9805		#Scotch Cap										
Spring Cove Carol 9805 845		#Envious Blackbird DHD 3811										
+13080294		Schearbrook Classic										
Spring Cove Carol Y681		Spring Cove Carol 451										

CED	BEPD		WEPD		YEPD		MILK	
+3	.29	+3.2	.36	+43	.27	+75	.27	+22
\$W	+25.03	\$F	+17.28	\$G	+11.81	\$B	+28.68	

- From the great Carol cow family, with a performance pedigree. Right Time 338 x Durabull 9805 should add value to any program. One WW ratio at 103.
- AI bred 4/3/08 to Genesis, due 1/10/09.

132 J/M PRINCESS 5117

Birth Date: 3-1-2005 Cow +15254927 Tattoo: 5117

#Schurrtop Supreme		#VDAR New Trend 315		<table border="1"> <tr><td>CW</td><td>+6</td></tr> <tr><td>MARB</td><td>+14</td></tr> <tr><td>RE</td><td>+20</td></tr> <tr><td>FAT</td><td>+008</td></tr> </table>	CW	+6	MARB	+14	RE	+20	FAT	+008
CW	+6											
MARB	+14											
RE	+20											
FAT	+008											
Roth Holiday Paradox 1040		Schurrtop Pam 3449										
13848636		#Basin Ambush 3905 (FR)										
#Stevenson Pride Lady 6368		Stevenson Pride Lady 4066										
#Bon View Bando 598		#Tehama Bando 155										
Bon View Princess 135		#Bon View Dora 56										
#12346796		#GDAR Executive 727										
#Bon View Princess 653		#Bon View Princess 1369										

CED	BEPD		WEPD		YEPD		MILK	
+5	.19	+3.2	.28	+42	.23	+76	.20	+17
\$W	+22.71	\$F	+18.59	\$G	+12.11	\$B	+25.69	

- Full sister to the dam of Lot 125. Dam was a longtime donor for Bon View and Holiday. Two WW ratio at 102. Good young cow. Pasture bred from 4/7/08 to 5/6/08 to Spring Cove JM Genesis 7154, preg check indicates due mid-February 2009.

133 MISS FOREVER HOLIDAY 0093

Birth Date: 3-7-2000 Cow 13567509 Tattoo: 0093

#Bon View Bando 598		#Tehama Bando 155		<table border="1"> <tr><td>CW</td><td>+21</td></tr> <tr><td>MARB</td><td>+26</td></tr> <tr><td>RE</td><td>+10</td></tr> <tr><td>FAT</td><td>+003</td></tr> </table>	CW	+21	MARB	+26	RE	+10	FAT	+003
CW	+21											
MARB	+26											
RE	+10											
FAT	+003											
Bon View Bando 1394		#Bon View Dora 56										
12130262		Bon View Paragon 2108										
Bon View Erianna 131		Bon View Erianna 259										
+Hyline Travel Agent 1124		#Hyline Travel Agent										
Miss Forever Holiday 7121		Hyline Pride 112										
12814253		#+R&J Distinction										
+Holiday Forever 073H		GDAR Miss Forever 9268										

CED	BEPD		WEPD		YEPD		MILK	
+2	.30	+3.2	.43	+48	.31	+87	.30	+18
\$W	+25.57	\$F	+26.96	\$G	+18.89	\$B	+45.85	

- Right from the Holiday Ranch in Oregon. 0093 is an outstanding production individual, WW ratio 7@103, YW ratio 6@105, IMF ratio 6@102, REA ratio 6@104.
- Pasture bred 4/26/08 to Spring Cove JM Genesis 7154, due 2/2/09.

134 J/M FOXY LADY 6055

Birth Date: 1-30-2006 Cow 15529128 Tattoo: 6055

#B/R New Design 036		#VDAR New Trend 315		<table border="1"> <tr><td>CW</td><td>-4</td></tr> <tr><td>MARB</td><td>+23</td></tr> <tr><td>RE</td><td>+08</td></tr> <tr><td>FAT</td><td>-.018</td></tr> </table>	CW	-4	MARB	+23	RE	+08	FAT	-.018
CW	-4											
MARB	+23											
RE	+08											
FAT	-.018											
Lemmon Newline C804		B/R Blackcap Empress 76										
+13632776		White Fence Pride H1										
		#Connealy Dateline										
		#Pleasant Pill of Conanga										
+Hyline Traveler 1114		#Traveler 3173 GDAR										
Foxy Lady of Holiday 9063		+Hyline Lucy Pride 429										
13323821		#Foxy Lady of Holiday 7038										
		Hansen Rainmaker 416										
		Finks Lass 677										

CED	BEPD		WEPD		YEPD		MILK	
+3	.28	+2.5	.36	+36	.26	+59	.25	+27
\$W	+26.28	\$F	+5.19	\$G	+24.30	\$B	+25.01	

- Good young sire sired by the Genex herd sire Newline, and out of a very longtime production female for our program.
- Pasture bred from 5/12/08 to 8/6/08 to Spring Cove JM Genesis 7154, due mid-February 2009.

135 J/M GEM 519

Birth Date: 1-24-2005 Cow 15257383 Tattoo: 519

#Bon View New Design 1407		#B/R New Design 036		<table border="1"> <tr><td>CW</td><td>+11</td></tr> <tr><td>MARB</td><td>+26</td></tr> <tr><td>RE</td><td>+17</td></tr> <tr><td>FAT</td><td>-.005</td></tr> </table>	CW	+11	MARB	+26	RE	+17	FAT	-.005
CW	+11											
MARB	+26											
RE	+17											
FAT	-.005											
EXAR New Look 2971		Bon View Pride 664										
+14230122		N Bar Primrose 2424										
		#Emulation 31 (FX)										
		Primrose N Bar 9962										
#Alberda Traveler 416		#DHD Traveler 6807										
Spring Cove Gem JM 323		Alberda Queen Kimberly 222										
#14471786		+Spring Cove Prairies Gem 855										
		#Kruggerand of Donamere 490										
		+Spring Cove Prairie Star 361 (R)										

CED	BEPD		WEPD		YEPD		MILK	
+0	.31	+5.6	.37	+51	.27	+96	.22	+24
\$W	+20.21	\$F	+34.80	\$G	+22.58	\$B	+44.18	

- A highly productive young cow here who records progeny ratios of WW 110, YW 109 and IMF 110. Stemming from the Star family, this well-bred female will be a great addition to any program.
- Top 5% WW, YW and \$B.
- Pasture bred from 6/10/08 to 8/6/08 to Spring Cove JM Genesis 7154, due late March 2009.

136 J/M ELLUNA 6194

Birth Date: 2-20-2006 Cow 15511335 Tattoo: 6194

#+B/R New Frontier 095		#B/R New Design 036		<table border="1"> <tr><td>CW</td><td>+5</td></tr> <tr><td>MARB</td><td>+24</td></tr> <tr><td>RE</td><td>+20</td></tr> <tr><td>FAT</td><td>+002</td></tr> </table>	CW	+5	MARB	+24	RE	+20	FAT	+002
CW	+5											
MARB	+24											
RE	+20											
FAT	+002											
B/R 65R New Power 3195		White Fence Pride H1										
14385369		+B/R Beauty 031										
		#LF New Trend 4100										
		+B/R Beauty 520										
+BT Lucys Boy 681K		#+VDAR Lucys Boy										
Spring Cove Elluna JM 332		Sitz Everelda Entense 1905										
14462590		Cottonwood Ellunas Elite 81J										
		#PAPA Durabull 9805										
		Cottonwood Ellunas Elite 87E										

CED	BEPD		WEPD		YEPD		MILK	
+0	.24	+5.0	.33	+49	.21	+85	.20	+26
\$W	+22.13	\$F	+24.62	\$G	+22.66	\$B	+36.67	

- Sired by New Power, this good young cow will be a great addition to any herd. Top 15% YW and WW.
- Pasture bred from 5/12/08 to 8/6/08 to Spring Cove JM Genesis 7154, due approximately 4/1/09.



H SPRING COVE TL GENERAL 6338

Birth Date: 2-5-2006 Bull 15532054 Tattoo: 6338

#CA Future Direction 5321	#GAR Precision 1680	CW
B/R 65R Genesis 14385395	CA Miss Power Fix 308	+20
B/R Blackcap Empress 127	#B/R Destination 727	MARB
	#B/R Blackcap Empress 8183	+86
		RE
#Bon View New Design 878	#B/R New Design 036	+41
Spring Cove Josie 338	Bon View Gammer 85	FAT
14462592	+Spring Cove Josie 6807 734	+005
	Miss Independence of SCR 871	

BEPD		WEPD		YEPD		SC		MILK	
+3.3	.35	+51	.25	+94	.25	-.06	.30	+28	.13
\$W	+24.84	\$F	+32.78	\$G	+39.09	\$B	+66.43		

- Service sire to Lots 7, 12, 22, 23, 53, 54, 55, 56 and 140
- Spring Cove TL General 6338 was the high-selling bull at the 2006 Cattleman's Connection selling to a group of Idaho Angus Breeders: TL Angus, Twin Falls; Sawtooth Cattle Co., Gooding; Rimrock Angus, Blackfoot; Bell Key Angus, Nampa; and Sugar Top Angus, Jerome.

137 SPRING COVE ENCHANTRESS 6020

Birth Date: 1-21-2006 Cow +15765879 Tattoo: 6020

#B/R Destination 727	#GAR Traveler 1489	CW
B/R Destination 727-928	B/R Ruby of Tiffany 5113	+17
13286246	#Bon View Bando 598	MARB
B/R Blackcap Empress 558	B/R Blackcap Empress 76	+59
		RE
		+23
		FAT
		+016

#B/R New Design 323	#B/R New Design 036
B/R Enchantress Erica 74	B/R Ruby of Tiffany 155
12784213	#AAR New Trend
#B/R Enchantress T Erica 258	B/R Pride Lassie 56

CED		BEPD		WEPD		YEPD		MILK	
+17	.05	+1.5	.05	+44	.05	+85	.05	+23	.05
\$W	+29.67	\$F	+26.51	\$G	+30.63	\$B	+54.79		

- Pay attention here, this young cow's from the elite Enchantress Erica cow family from Rishel Angus in Nebraska. Sired by 928 and out of a longtime donor, Enchantress Erica 74. Top 15% WW, \$F, top 5% \$G and top 1% \$Beef.
- Pasture bred from 5/12/08 to 8/6/08 to Spring Cove JM Genesis 7154, due approximately 4/1/09.

138 LEACHMAN LASS 9027

Birth Date: 1-18-1999 Cow 13361321 Tattoo: 9027

#Connealy Dateline	#DHD Traveler 6807	CW
Connealy Frontline	#Eila Eila of Conanga	-2
#12693793	#Tehama Bando 155	MARB
#Pleasant Pill of Conanga	Pleasant Pride of Conanga	+23
		RE
		-06
		FAT
		+017

+Leachman Distinction	#N Bar Emulation EXT
Leachman Lass 7211	Leachman Erica 0025
+12765225	#Pine Drive Big Sky
+Leachman Lass 901L	Leachman Lass 1004

CED		BEPD		WEPD		YEPD		MILK	
+11	.32	+1.3	.44	+42	.33	+74	.31	+21	.33
\$W	+30.55	\$F	+16.71	\$G	+18.54	\$B	+23.70		

- 9027 descends back to the legendary Leachman Lass 1004 cow who is a legend in the Angus breed. Outstanding production ratios with eight progeny, she has 94 BW ratio, 105 WW ratio, 102 YW ratio and 104 IMF ratio.
- Top 3% \$W and CE.
- Pasture bred to SydGen Corona 6078 from 5/31/08 to 8/9/08, due approximately 3/5/09.

139 J/M CAROL 6323

Birth Date: 3-26-2006 Cow 15589570 Tattoo: 6323

Roth Holiday Paradox 1040	#Schurrtop Supreme	CW
Holiday Paradox 3128 (R)	#Stevenson Pride Lady 6368	-2
14386234	#PAPA Durabull 9805	MARB
+Cottonwood 9206 Rachel 59H	GDAR Shady Lady Rachel 9206	+31
		RE
		-18
		FAT
		+024

#RR Traveler 5204	#QAS Traveler 23-4
Spring Cove 5204 Carol 638	Eriskay of Rollin Rock 3302
12588711	Schearbrook Classic
Spring Cove Carol Y681	Spring Cove Carol 451

CED		BEPD		WEPD		YEPD		MILK	
+2	.23	+3.0	.35	+29	.24	+52	.21	+18	.13
\$W	+20.05	\$F	+1.46	\$G	+18.94	\$B	+21.31		

- From the Carol cow family, this young cow is sired by the Spring Cove herd sire 3128 and a great 5204 daughter who is now working for Goddard Show Cattle in Iowa. Top 15% SC.
- Pasture bred to SydGen Destination 5420 4/19/08 to 8/3/08, due 2/14/09.

140 J/M RACHEL 6040

Birth Date: 1-27-2006 Cow 15543725 Tattoo: 6040

#B/R New Design 323	#B/R New Design 036	CW
B/R BAAR Fast Forward1193	B/R Ruby of Tiffany 155	+10
+14084552	#Bon View Bando 598	MARB
HR Wendy 618	+HR Wendy 402	+13
		RE
		+29
		FAT
		-014

#Hyline Right Time 338	#+Leachman Right Time
Spring Cove Rachel JM 430	Hyline Pride 265
14765306	+Tehama Band 712
Cottonwood Rachel 61H	Cottonwood Rachel 73E

CED		BEPD		WEPD		YEPD		MILK	
+7	.27	+1.6	.35	+50	.25	+80	.24	+17	.17
\$W	+29.63	\$F	+19.44	\$G	+19.74	\$B	+37.11		

- Sired by the now-deceased Rishel herd sire Fast Forward and stems back to the Cottonwood Rachel cow family in Oregon. Top 5% WW and YW and \$W, as well as top 10% REA and \$YG.
- Bred to the new Triple L sensation, Spring Cove General 6338, due on 2/18/09.

141 CCC Ms DESIGN 6101

Birth Date: 1-23-2006 Cow 15433456 Tattoo: 6101

#B/R New Design 036	#VDAR New Trend 315	CW
Bon View New Design 878	B/R Blackcap Empress 76	+7
#13062750	#Bon View Bando 598	MARB
Bon View Gammer 85	Bon View Gammer 233	+20
		RE
		+04
		FAT
		+010

#+Leachman Right Time	#N Bar Emulation EXT
CCC MS Right Time 6051	Leachman Erica 0025
12579677	Schultz Dallas
Criss of PAR 626	Criss of PAR

CED		BEPD		WEPD		YEPD		MILK	
+6	.29	+1.5	.36	+42	.27	+79	.24	+23	.22
\$W	+25.96	\$F	+21.45	\$G	+16.53	\$B	+31.62		

- Sired by 878 out of a Right Time daughter, this young cow is bred to SydGen Corona 6078, due approximately 3/5/09.

142 CCC MIDLAND LADY 5002

Birth Date: 12-27-2004 Cow 15069122 Tattoo: 5002

#Twin Valley Precision E161 (FR)	#GAR Precision 1680	CW
BR Midland	+WCC Blackcap C9 (R)	+14
#13898124	#SAF Neutron	MARB
BR Royal Lass 7036-19	#SAF Royal Lass 7036	+65
		RE
		+23
		FAT
		+017

#B/R New Design 036	#VDAR New Trend 315
CCC Miss Design 0066	B/R Blackcap Empress 76
#13594814	Bando of PAR 599
CCC 599 MS Bando 5050	Bluebird of PAR 552

CED		BEPD		WEPD		YEPD		MILK	
+6	.25	+2.5	.27	+44	.28	+76	.21	+10	.26
\$W	+22.41	\$F	+17.86	\$G	+32.67	\$B	+52.94		

- 5002 is one of those magic matings in the Angus breed that always works, Midland x 036. Top 1% Marbling, top 2% \$B, top 3% \$G, top 15% YG.
- Due to the Stevenson/Basin herd sire CE Deluxe, who is a sire summary standout as he is negative for birth with big growth and carcass numbers. Due 1/31/09.

COMING TWO-YEAR-OLD SPRING COVE BULLS



SPRING COVE ON TIME SB 1008 - SIRE OF LOT 143.

143 SPRING COVE ON TIME 7075

Birth Date: 3-7-2007 Bull 15856495 Tattoo: 7075

#Hyline Right Time 338 #Leachman Right Time
Spring Cove OnTime SB 100B #Hyline Pride 265
+15191726 Spring Cove Sweet Sue SB 100 #VDAR Bando 97
Spring Cove Sweetie 914
Spring Cove Endurance 360 #Finks 5522-6148
Spring Cove Kindness 075 #Spring Cove Rebecca 360
13871203 Spring Cove ER Kindness 601 #GAR Sleep Easy 1009
+Spring Cove Kindness 420

Carcass	EPDs
CW	+10
Marb	+49
RE	+12
Fat	+0.33
\$Values	
\$W	+30.14
\$F	+28.55
\$G	+25.71
\$B	+44.89

BEPD	WEPD	YEPD	SC	MILK
+1	.33	+49	.22	+89
.21	.72	.28	+28	.12
BW	ADJ. WW	WWR	ADJ. YR	RATIO
82	796	113	1369	113
DAM'S PRODUCTION				
BR	WR	YR		
5-102	5-105	5-108		

• Excels in calving ease, growth and carcass merit. Note his fantastic weaning and yearling ratios of 113 and he also posted a 108 IMF ratio and 106 rib ratio.

144 SPRING COVE FORECAST 7827

Birth Date: 3-11-2007 Bull 15856533 Tattoo: 7827

#SAF Focus of ER #SAF Fame
Spring Cove Forecast 611A GDAR Forever Lady 246
+14155516 Spring Cove Blossom 611 #DHD Traveler 6807
Spring Cove Pioneer Pine 987
Spring Cove Endurance 360 #Finks 5522-6148
Spring Cove Belle 827 #Spring Cove Rebecca 360
#13252218 CCC Belle 71 #GDAR Traveler 71
DF Belle

Carcass	EPDs
CW	+6
Marb	+26
RE	+13
Fat	+0.01
\$Values	
\$W	+27.91
\$F	+21.23
\$G	+22.42
\$B	+36.62

BEPD	WEPD	YEPD	SC	MILK
-7	.36	+40	.25	+78
.24	.16	.33	+29	.14
BW	ADJ. WW	WWR	ADJ. YR	RATIO
78	687	98	1268	105
DAM'S PRODUCTION				
BR	WR	YR		
9-101	9-106	7-106		

• An excellent calving ease bull with a 102 rib ratio. His dam is another Pathfinder Endurance daughter.



SPRING COVE ENDURANCE 360 - MATERNAL GRANDSIRE TO LOTS 143 & 144.

145 SCR-TL TOTAL TL103

Birth Date: 1-15-2007 Bull 15935773 Tattoo: 103

#Sitz Alliance 6595 #Sitz Traveler 8180
KCF Bennett Total #Sitz Bararamere Jet 2698
13687063 EXT of Conanga 6790 #N Bar Emulation EXT
Lady Enchantress of Conanga
#Bon View New Design 1407 #B/R New Design 036
Riverbend Pride R352 Bon View Pride 664
+14988135 #Koupal Prospector Pride 5021 Beefland Rito 8E8 K378
Beefland Prospector PRIDE308

Carcass	EPDs
CW	-5
Marb	+23
RE	+07
Fat	+0.036
\$Values	
\$W	+29.85
\$F	+16.13
\$G	+18.58
\$B	+20.24

BEPD	WEPD	YEPD	SC	MILK
-6	.33	+41	.25	+73
.24	.77	.27	+24	.19
BW	ADJ. WW	WWR	ADJ. YR	RATIO
63	604	100	1044	95
DAM'S PRODUCTION				
BR	WR	YR		
2-90	2-103	1-95		

• Calving ease and positive \$EN.

146 TL PERCISION 122

Birth Date: 2-13-2007 Bull 16073442 Tattoo: 122

#GAR Precision 1680 #Tehama Bando 155
E&B 1680 Precision 1023 9J9 GAR 856
+13913492 E&B 6807 Lady Traveler 61 #DHD Traveler 6807
Lady 963 Dividend 404
ISU Imaging Q 8242 #Summitcrest Scotch Cap 0845
Riverbend Princess R234 Miss Traveler 183
+14999446 Bon View Princess 207 #Connealy Dateline
#Bon View Princess 134

Carcass	EPDs
CW	1+14
Marb	1+.55
RE	1+.28
Fat	1-.003
\$Values	
\$W	+25.19
\$F	+28.33
\$G	+32.92
\$B	+55.22

BEPD	WEPD	YEPD	SC	MILK
+9	.33	+47	.25	+88
.24	N/A	N/A	+14	.16
BW	ADJ. WW	WWR	ADJ. YR	RATIO
68	593	91	1079	95
DAM'S PRODUCTION				
BR	WR	YR		
2-99	2-88	1-95		

• Don't overlook this calving-ease, carcass maker. Note \$B is in the top 5% of the entire population of non-parent bulls and is positive +7.11 \$EN.



2008 SPRING COVE BULL CALF STANDING BEHIND HIS MOM JUST BEFORE WEANING.



2007 FEMALE SALE.

COMING TWO-YEAR-OLD SPRING COVE BULLS

147 SCR-TL RightTime TL155

Birth Date: 4-8-2007 Bull 15926371 Tattoo: 155
 +BT Right Time 24J #+Leachman Right Time
 Spring Cove Right Time 5716 Sitz Everda Entense 1905
 15121737 Spring Cove Eleanor 716 #SAF Fame
 Spring Cove Eleanor CB 513

#CA Future Direction 5321 #GAR Precision 1680
 CCC Ms Direction 5059 CA Miss Power Fix 308
 15069134 CCC VRD Lady 2043 #Vermilion Dateline 7078
 #CCC Miss Stockman 8001

BEPD	WEPD	YEPD	SC	MILK
+1.9	.32	+51	.21	+82
.12	N/A	N/A	N/A	+23
BW	ADJ. WW	WWR	ADJ. YR	RATIO
75	750	124	N/A	N/A

Carcass	EPDs
CW	N/A
Marb	N/A
RE	N/A
Fat	N/A
\$Values	
\$W	+30.64
\$F	+20.98
\$G	N/A
\$B	N/A

• Here is a moderate-framed, calving-ease bull that should sire calves that push the scale down at weaning.

148 SPRING COVE FORESIGHT 7479

Birth Date: 2-7-2007 Bull 15911881 Tattoo: 7479
 #PAPA Forte 1921 PAPA Optima 9818
 Woodhill Foresight PAPA Envious Blackbird 8832
 +13936986 Bon View Gammer 85 #Bon View Bando 598
 Bon View Gammer 233

+Holiday Precision 2054 #GAR Precision 1680
 Spring Cove Alice 479 Lukens 1148 Queen Mother 44
 14796779 +SCGEN Ms Twister 903 264 #Da Es Ro Twister 0627
 Spring Cove Alice 903

BEPD	WEPD	YEPD	SC	MILK
+2.8	.35	+47	.25	+91
.25	+89	.33	+23	.18
BW	ADJ. WW	WWR	ADJ. YR	RATIO
85	690	98	1236	102

Carcass	EPDs
CW	+7
Marb	+34
RE	+1.11
Fat	-.033
\$Values	
\$W	+23.19
\$F	+31.32
\$G	+28.30
\$B	+45.55

• Nice, muscular, "Foresight" son. 102 IMF ratio. Top 15% for \$B.

149 SPRING COVE JL AMBUSH 7539

Birth Date: 1-28-2007 Bull 15878619 Tattoo: 7539
 #Rockn D Ambush 1531 #Paramont Ambush 2172
 B/R Ambush 28 MS Blackcap Band of RD 1301
 +14188956 +B/R Ruby of Tiffany 8250 #N Bar Emulation EXT
 B/R Ruby of Tiffany 5113

B/R 65R Genesis #CA Future Direction 5321
 Spring Cove Rebecca 539 B/R Blackcap Empress 127
 15121762 #Spring Cove Rebecca 363 +SAF Durabull 7065
 #Spring Cove Rebecca 360

BEPD	WEPD	YEPD	SC	MILK
+4.8	.35	+54	.25	+100
.25	+89	.30	+21	.13
BW	ADJ. WW	WWR	ADJ. YR	RATIO
90	749	107	1339	111

Carcass	EPDs
CW	+13
Marb	+88
RE	+1.10
Fat	-.013
\$Values	
\$W	+20.45
\$F	+37.71
\$G	+38.84
\$B	+62.57

• This bull stacks in the best carcass sires in the breed. Note his outstanding weaning and yearling ratios.

150 SPRING COVE ALLIANCE 6540

Birth Date: 1-29-2007 Bull 15911884 Tattoo: 7540
 #Sitz Alliance 6595 #Sitz Traveler 8180
 HA Power Alliance 1025 #Sitz Barbamare Jet 2698
 +13992383 +HA Rito Lady 4167 #CH Stacker 7040
 H 96 Band Lady 3714

B/R 65R Genesis #CA Future Direction 5321
 Spring Cove Belle 540 B/R Blackcap Empress 127
 15121784 #Spring Cove Belle 827 Spring Cove Endurance 360
 CCC Belle 71

BEPD	WEPD	YEPD	SC	MILK
+4.5	.35	+54	.26	+100
.25	+89	.31	+25	.14
BW	ADJ. WW	WWR	ADJ. YR	RATIO
90	731	104	1329	110

Carcass	EPDs
CW	+15
Marb	+40
RE	+30
Fat	+0.014
\$Values	
\$W	+21.96
\$F	+37.71
\$G	+26.51
\$B	+51.71

• Top 10% \$B. 103 IMF and 105 rib ratios.



HA POWER ALLIANCE 1025 - SIRE OF LOTS 152 AND 153.

151 SPRING COVE ALLIANCE 7162

Birth Date: 2-7-2007 Bull 15911870 Tattoo: 7162
 #Sitz Alliance 6595 #Sitz Traveler 8180
 HA Power Alliance 1025 #Sitz Barbamare Jet 2698
 +13992383 +HA Rito Lady 4167 #CH Stacker 7040
 H 96 Band Lady 3714

#JLB Exacto 416 #GAR Precision 1680
 B/R Lantz Blackcap 0123 +Brost Burgess 041
 13556393 B/R Lantz Blackcap 570 #+GAR Sleep Easy 1009
 B/R Lantz Blackcap 765

BEPD	WEPD	YEPD	SC	MILK
+5.1	.36	+46	.27	+79
.26	+52	.31	+24	.17
BW	ADJ. WW	WWR	ADJ. YR	RATIO
100	711	101	1185	98

Carcass	EPDs
CW	+6
Marb	+0.09
RE	+2.23
Fat	-.010
\$Values	
\$W	+21.26
\$F	+19.96
\$G	+17.48
\$B	+31.38

• A powerful Alliance bull who will add pounds to your calf crop.

152 SPRING COVE J/M FORWARD 7169

Birth Date: 3-6-2007 Bull +15878571 Tattoo: 7169
 #B/R New Design 323 #B/R New Design 036
 B/R BAAR Fast Forward 1193 N Bar Ruby of Tiffany 155
 +14084552 HR Wendy 618 #Bon View Bando 598
 +HR Wendy 402

#N Bar Emulation EXT #Emulation N Bar 5522
 Spring Cove Kindness Ext 852 (R) N Bar Primrose 2424
 #+13080295 +Spring Cove Kindness 420 #VDAR New Trend 315
 Miss Independence of SCR 871

BEPD	WEPD	YEPD	SC	MILK
+2.7	.05	+47	.05	+78
.05	+44	.29	+17	.05
BW	ADJ. WW	WWR	ADJ. YR	RATIO
87	629	100	1120	100

Carcass	EPDs
CW	+12
Marb	+15
RE	+46
Fat	+0.004
\$Values	
\$W	+25.85
\$F	+18.65
\$G	+20.43
\$B	+39.28

• A rugged bull out of our EXT donor "852."

153 SPRING COVE J/M FORWARD 7171

Birth Date: 3-5-2007 Bull 15861496 Tattoo: 7171
 +B/R BAAR Fast Forward 1193 #B/R New Design 323
 Lafins Fast Forward 3063 HR Wendy 618
 14686041 Lafins Emulous Sunset 962 #Hoff Hi Flyer SC 7134
 +Lafins Galaxie 758 E

#+VDAR Bando 97 #Tehama Bando 155
 Spring Cove Prairie JM 135 VDAR Beauty 12
 13876892 +Spring Cove Prairies Gem 855 #Kruggerand of Donamere 490
 +Spring Cove Prairie Star 361 (R)

BEPD	WEPD	YEPD	SC	MILK
+3.2	.34	+40	.23	+73
.21	+69	.28	+14	.11
BW	ADJ. WW	WWR	ADJ. YR	RATIO
88	650	93	1164	96

Carcass	EPDs
CW	+9
Marb	+25
RE	+14
Fat	-.013
\$Values	
\$W	+20.28
\$F	+16.50
\$G	+23.08
\$B	+39.01

REFERENCE SIRES



SYDGEN CORONA 6078 - REFERENCE SIRE J

J **SYDGEN CORONA 6078**
 Birth Date: 1-9-2006 Bull 15330695 Tattoo: 6078

#Bon View New Design 1407 #B/R New Design 036
 SydGen 1407 Corona 2016 Bon View Pride 664
 14106303 VNAR Perfection 142F 180K #GAR Precision 1680
 VNAR Perfection 142F

#+SVF GDAR 216 LTD #Traveler 124 GDAR
 SAF Royal Queen 0105 +GDAR Forever Lady 718
 +13545925 +SAF Royal Queen 5084 #Bon View Bando 598
 SAF Royal Queen 9022

	BEPD	WEPD	YEPP	SC	MILK
	+2.5	.37	+51	.28	+97
	.27	+.74	.30	+24	.16
\$W	+25.10	\$F	+35.82	\$G	+29.21
		\$B	+56.11		

CW	+18
MARB	+.45
RE	+.17
FAT	-.016



SYDGEN 928 DESTINATION 5420 - REFERENCE SIRE K

K **SYDGEN 928 DESTINATION 5420**
 Birth Date: 2-12-2005 Bull +15030205 Tattoo: 5420

#B/R Destination 727 #GAR Traveler 1489
 B/R Destination 727-928 B/R Ruby of Tiffany 5113
 13286246 B/R Blackcap Empress 558 #Bon View Bando 598
 B/R Blackcap Empress 76

#Sitz Traveler 9929 #DHD Traveler 6807
 Shady Brook Entense 76D 29H Sitz Everelda Entense 1137
 +13178891 +BT Everelda Entense 76D #+Leachman Right Time
 Sitz Everelda Entense 1905

	BEPD	WEPD	YEPP	SC	MILK
	+3.1	.27	+54	.24	+99
	.23	+.95	.32	+28	.22
\$W	+27.34	\$F	+36.68	\$G	+23.72
		\$B	+58.52		

CW	+33
MARB	+.45
RE	+.44
FAT	+.036



WOODHILL FORESIGHT - REFERENCE SIRE L

L **WOODHILL FORESIGHT**
 Birth Date: 3-12-2001 Bull +13936986 Tattoo: 54L

PAPA Optima 9818 #Scotch Cap
 PAPA Forte 1921 Blackbird DHD 2816
 #11620690 PAPA Envious Blackbird 8832 PAPA Rito T Power DHD 6838
 Envious Blackbird of RR 7066

#Bon View Bando 598 #Tehama Bando 155
 Bon View Gammer 85 #Bon View Dora 56
 12346837 Bon View Gammer 233 #N Bar Emulation EXT
 Bon View Gammer 2409

	BEPD	WEPD	YEPP	SC	MILK
	+3.9	.96	+62	.93	+107
	.91	+1.66	.92	+28	.69
\$W	+28.15	\$F	+41.77	\$G	+29.33
		\$B	+51.10		

CW	+9
MARB	+.43
RE	-.01
FAT	-.029



SITZ UPWARD 307R - REFERENCE SIRE M

M **SITZ UPWARD 307R**
 Birth Date: 3-12-2005 Bull 14963730 Tattoo: 307R

#Connealy Lead On #Connealy Leadtime
 Connealy Onward Eligence Plus of Conanga
 14216491 Altune of Conanga 6104 #GAR Traveler 1489
 Avalon 1418 of Conanga 6276

#Sitz Value 7097 #Sitz Traveler 6802
 Sitz Henrietta Pride 81M #Sitz Eisa Evergreen 791
 14087650 Sitz Henrietta Pride 1370 #+OCC Great Plains 943G
 Sitz Henrietta Pride 2155

	BEPD	WEPD	YEPP	SC	MILK
	+1.5	.84	+66	.76	+128
	.72	+1.34	.73	+29	.16
\$W	+28.18	\$F	+62.99	\$G	+18.65
		\$B	+59.82		

CW	+33
MARB	+.16
RE	+.56
FAT	+.002



B/R AMBUSH 28 - REFERENCE SIRE N

N **B/R AMBUSH 28**
 Birth Date: 1-20-2002 Bull +14188956 Tattoo: 28

#Paramont Ambush 2172 #Bandolier Eston Durness 42B
 Rockn D Ambush 1531 EWS Miss Burgess 1720
 #12396365 MS Blackcap Band of RD 1301 #Tehama Bando 155
 Miss Blackcap of RD 1127

#N Bar Emulation EXT #Emulation N Bar 5522
 B/R Ruby of Tiffany 8250 N Bar Primrose 2424
 +13355447 B/R Ruby of Tiffany 5113 #B/R New Design 036
 B/R Ruby of Tiffany 155

	BEPD	WEPD	YEPP	SC	MILK
	+3.2	.87	+57	.81	+107
	.76	-.34	.69	+15	.42
\$W	+22.34	\$F	+43.81	\$G	+45.45
		\$B	+76.09		

CW	+21
MARB	+1.12
RE	+.54
FAT	-.016

Spring Cove Ranch/Sawtooth Cattle Co. Fall Female Sale

SALE DATE: Saturday, October 25, 2008 • LUNCH SERVED AT 12:00 p.m. • SALE TIME IS 1:00 p.m.



Coming from the East on I-84:
Take Exit 137 on Pioneer Rd. and travel west for 3.5 miles to Spring Cove Ranch Bull Sign. Turn right and drive one mile north to the sale barn on the right side of the road.

Coming from the West on I-84:
Take Exit 129. Turn left, go over the overpass and make an abrupt right on Allen Rd. Travel east for 5 miles until you reach Spring Cove Rd. and the Spring Cove Ranch bull sign. Turn left at the bull sign and drive 1 mile north to the green sale barn on the right side of the road.



Angus since 1919

269 E. Spring Cove Rd.
Bliss, Idaho 83314



ADDRESS SERVICE REQUESTED

