

Maxwell, New Mexico

TUESDAY • 1:00 PM (MT) • MAXWELL, NEW MEXICO

MARCH 13, 2018

Welcome to our Annual Bull Sale. A year has passed and the calf prices are a little better, the summer and fall for grass was excellent and the economy is surging. The beef fundamentals look to be in place for an excellent run in growth and profitability. Sometimes it feels like the challenges have never been greater but I would submit the challenges are the same but the expectations of reward are so much greater. That's the American way and how it should be.

It is no different in raising purebred Angus seedstock. The rewards to the commercial cattlemen for raising marbled meat that can survive and perform in any environment include elevation and big grass country are there. We hope to help position your program for those premiums.

The bull offering is designed to be phenotypically desired for its muscle and structure along with EPDS profiles that give you confidence in its documented performance, calving-ease and end product merit. There are multiple sets of embryo transplant brothers in this offering that will offer you an ability to bring consistency in your calf crop. Our ET program is expansive and growing especially with our new ranch east of Trinidad, CO. Take advantage there. We have been our best recommendations forward on bulls for elevation through our guidance from Dr. Tim Holt and we stand behind all bulls on our year guarantee.

Our sons Trent (Mgr) and Garrett (Herdsman) know every animal on the place and are dedicated to the honest husbandry and communication of our program. Tim Bower and our friend Bill Ell are great people along with talents that are rare and much needed. The team's effort on a daily basis make us very proud and excited about the future of the ranch.

If we can be of assistance please feel free to call, email or stop by. The bulls are ready to be seen at any time. We look forward to working you in the future and seeing you on sale day.

God Bless
Chris & Krista Earl



TUESDAY • 1:00 PM (MT) • 220 LAGUNA MADRE ROAD, MAXWELL, NEW MEXICO

MARCH 13, 2018

Selling 82 PAP Tested Purebred Angus Bulls

Sale Contacts

Chris Earl, Owner, svfchief@aol.com 630-675-6559
David Schumaker, Owner
Trent Earl, MGR, Jcacorner38@aol.com 719-557-9915
Garrett Earl, Herdsman 630-400-1225
Nick Nesson 406-579-1516

Website www.ck6consulting.com/reverse-rocking-r-ranch.html

Sale Location 220 Laguna Madre Rd., Maxwell, NM 87728

Auctioneer Wes Tiemann 816-244-4462

Livestock Press Representatives

Adam Conover, American Angus Association 816-676-8560
Cody Johnson, La Junta Sale Barn 970-630-1316

Food and Refreshments A meal will be served.

Accommodations

Holiday Inn Express, Raton, NM 877-859-5095
Best Western Plus, Raton, NM 800-568-8520

Supplemental Information

A sale supplement will be available with PAP scores, Frame Scores and YWTs upon request and on our website. EPDs are updated every Friday, so a supplement of the latest change will also be available.

Herd Health

All bulls selling are up to date on vaccinations including Bovishield Gold 5 VL 5 and pour on and wormed. All have been semen checked and fertility sheets are available. All bulls have been PAP tested and those scores are available upon request or on our website. All bulls will be BVD tested. All bulls requiring a Trichomoniasis test will be tested and ready for shipment on sale day.

Sight Unseen Guarantee

RRR will guarantee 100% satisfaction guaranteed on all sight unseen purchases through an RRR representative.

Retained Interest

RRR is selling 100% of all bulls. No interest will be retained.

Delivery

Free delivery anywhere in the country.

Volume Discounts

Volume discounts are available; starting at 3 bulls 3% discount up to 10 bulls 10% discount.

Terms and Conditions

Cattle will sell under the suggested Terms and Conditions of the American Angus Association (http://www.angus.org/Pub/suggested_sale_terms.pdf).

Online Bidding

Sale will be broadcast live online www.dvauction.com

DVAuction
Broadcasting Real-Time Auctions

ANGUS MEDIA Visit the *Angus Journal* Web site, www.angus.media and view this sale book online. *References: American Angus Association®, AHIR®, AngusSource®, CAB®, Pathfinder®.* EPDs current as of Feb. 15, 2018. Updated EPDs can be viewed online at www.angus.org.



BALDRIDGE ISABEL Y69 - The grandam of Lot 1. She is the dam of the \$580,000 Baldridge Colonel and one of the elite cows in the breed.

RRR ENGINEER E162 - Lot 1

1 RRR Engineer E162

Birth Date: 2-6-2017 Bull *18951464 Tattoo: E162
 # Connealy Confidence 0100 Connealy Tobin
 # Connealy Confidence Plus Becca Gala of Conanga 8281
 *17585576 Elbanna of Conanga 1209 # Connealy Consensus
 Elbasta of Conanga 9703

ACT BW
80
ADJ 205
663
ADJ 365
1300

*EF Commando 1366 # EF Complement 8088
 Baldridge Isabel C029 Riverbend Young Lucy W1470
 +*18229485 *Baldridge Isabel Y69 # Styles Upgrade J59
 +Baldridge Isabel T935

CED	BEPD	WEPD	YEPD	MILK
+10 20%	+8	+68 10%	+127 3%	+29 15%
CW	MARB	RE	\$WEAN	\$BEEF
+44 30%	+55	+67 20%	+72.89 4%	+147.57 15%

- Recommended for heifers or cows.
- E162's dam is a full sister to the \$155,000 Baldridge Bronc and \$100,000 Baldridge 38 Special. Both bulls are in major AI studs and have received wide use across the country with excellent success. She is currently in the donor pen at the ranch and is a prolific producer.
- The sire of E162 Connealy Confidence Plus is widely accepted for his ability to sire deep made moderate cattle with excellent fleshing ability and docility. He ranks in the top 25% for 15 different EPDs and \$Values including top 4% for CED, YW and \$B.
- He currently ranks in top 25% for 11 different EPDs or \$Values.



RRR EAGER E102 - Lot 2

BALDRIDGE BLACKCAP T163 - One of our featured donors and the dam of Baldridge Waylon and grandam of Lot 2.



BALDRIDGE ISABEL C029 - Dam of Lot 1 and full sister to the \$157,500 Baldridge Bronc and the \$100,000 Baldridge 38 Special.

2 RRR Eager E102

Birth Date: 1-18-2017 Bull *18837379 Tattoo: E102
 #Poss Total Impact 745 #TC Total 410
 Poss Easy Impact 0119 Poss Blackcap 5116
 16750909 Poss Elmaretta 736 #Hyline Right Time 338
 #Poss Elmaretta 025

ACT BW
80
ADJ 205
662
ADJ 365
1288

Connealy Confidence 0100 Connealy Tobin
 Baldridge Blackcap C716 Becca Gala of Conanga 8281
 +*18242581 *Baldridge Blackcap T163 #Woodhill Foresight
 Baldridge Blackcap P326

CED	BEPD	WEPD	YEPD	MILK
+10 20%	+2 25%	+65 10%	+99 30%	+15
CW	MARB	RE	\$WEAN	\$BEEF
+40	+68 30%	+71 20%	+65.09 10%	+131.86 30%

- Recommended for heifers or cows.
- PAP 36 qualifies for elevation.
- E102 posted a big 16.2 RE to ratio 111.
- E102's deceased sire recently sired the \$120,000 Baldridge Alternative E125 to top the 2018 Baldridge Bros Bull Sale. Poss Easy Impact ranks in the top 25% for 15 different EPDs and \$Values including top 3% for WW and CW and top 5% \$B.
- The dam of E102 is a maternal sister to Baldridge Waylon sired by breed legend Connealy Confidence 0100.
- E102 ranks in top 25% for 9 different EPDs or \$Values.



3 RRR Discovery R0267

Birth Date: 2-4-2017 Bull #*18841783 Tattoo: R0267
 # AAR Ten X 7008 SA # Mytty In Focus (RDF)
 # AAR Lady Kelton 5551
VAR Discovery 2240 #Sitz Upward 307R
 *17262835 +*Deer Valley Rita 0308 *GAR Objective 2345

#+GAR-EGL Protege #+Rito 112 of 2536 Rito 616
Baldrige Blackcap W70 LB 6807 Isabel 339
 16609438 +Baldrige Blackcap S964 #BR Midland
 +Baldrige Blackcap P811

ACT BW
78
ADJ 205
684
ADJ 365
1329



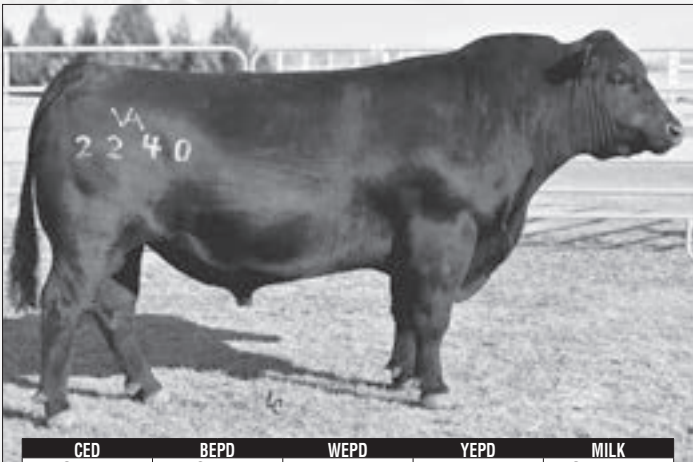
GED	BEPD	WEPD	YEPD	MILK
+7	+1.1	+70 5%	+121 5%	+26 30%
CW	MARB	RE	\$WEAN	\$BEEF
+48 20%	+1.14 4%	+60 30%	+74.14 3%	+155.35 10%

- Recommended for larger framed heifers or cows.
- R0267 posted excellent raw scores for carcass merit with a 16.1 RE and 7.15% Marbling.
- The dam of R0267 is owned by Triple D Genetics, IL and is top 25% for an excellent 17 different EPDs or \$Values including top 1% for \$B and 2% CW.
- The sire of R0267 is, without question, one of the most used sires in the country for the combination of end product merit and growth. As a proven sire he is top 1% for YW, 3% WW and 4% Marbling.
- R0267 is a long made, thick bull who ranks in top 25% for 12 different EPDs or \$Values with top 1% Scrotal and 4% for WW and Marbling.

RRR DISCOVERY R0267 - Lot 3



BALDRIDGE BLACKCAP W70 - The dam of Lot 3 and featured Triple D donor in IL.



GED	BEPD	WEPD	YEPD	MILK
+50	+1.6	+74 3%	+144 1%	+27 30%
CW	MARB	RE	\$WEAN	\$BEEF
+51 15%	+1.10 4%	+72 15%	+69.43 10%	+164.46 5%

VAR DISCOVERY 2240



1682 is one of the elite sires of the breed. He currently ranks in the top 25% for 9 different EPDs or \$Values. He consistently produces progeny that are deep and easy fleshing with excellent udder quality on the females. 1682 has been widely desired for the combination of multiple traits including end product merit. Nothing is more challenging in the breed today than to excel in desired traits but also to have replacement females be able to maintain themselves and perform in tough country. 1682 looks to be as close to that goal as any sire in the breed today.

BASIN PAYWEIGHT 1682



RRR PAYWEIGHT M0597 - Lot 4

4 RRR Payweight M0597

Birth Date: 3-12-2017 Bull #*18834834 Tattoo: M0597
 #+Basin Payweight 006S #Vermilion Payweight J847
 Basin Payweight 1682 +Basin Lucy 3829
 +*17038724 21AR O Lass 7017 #HARB Pendleton 765 JH
 21AR O Lass F24A

ACT BW	74
ADJ 205	586
ADJ 365	1199

Yon Future Focus T219 # Mytty In Focus (RDF)
 Yon Sarah B433 YON Hazel R133
 +*17849552 +*Yon Sarah U555 #GAR Retail Product
 Yon Sarah N170

CED	BEPD	WEPD	YEPD	MILK
+8	+0 20%	+65 10%	+125 4%	+29 15%
CW	MARB	RE	\$WEAN	\$BEEF
+51 15%	+1.12 4%	+60 30%	+71.80 4%	+166.25 4%

- Can be used on heifers or cows.
- M0597 recorded excellent carcass measures of 101 for RE ratio and 105 for Marbling.
- The dam of M0597 is a featured donor purchased from the Yon Family Farms program in South Carolina and is one of the top 5 programs in the breed for registrations. She is a deep sided, moderate and thick female who ranks in the top 25% for 16 different EPDs or \$Values including top 1% for Fat, \$G, \$YG and top 3% for \$B.
- M0597's sire Basin Payweight 1682 has taken the country by storm with his ability to dominate type. They are deep, moderate and thick. The commercial cattlemen have really found this sire group for all the important commercial traits.
- This flush of brothers are consistent and progressive.



RRR PAYWEIGHT E022 - Lot 5

5 RRR Payweight E022

Birth Date: 1-20-2017 Bull #*18833557 Tattoo: E022
 #+Basin Payweight 006S #Vermilion Payweight J847
 Basin Payweight 1682 +Basin Lucy 3829
 +*17038724 21AR O Lass 7017 #HARB Pendleton 765 JH
 21AR O Lass F24A

ACT BW	78
ADJ 205	638
ADJ 365	1145

Yon Future Focus T219 # Mytty In Focus (RDF)
 Yon Sarah B433 YON Hazel R133
 +*17849552 +*Yon Sarah U555 #GAR Retail Product
 Yon Sarah N170

CED	BEPD	WEPD	YEPD	MILK
+4	+2.6	+66 10%	+121 5%	+27 25%
CW	MARB	RE	\$WEAN	\$BEEF
+53 10%	+57	+71 20%	+67.19 10%	+157.62 10%

- Recommended for cows.
- PAP score 42 to qualify for elevation.
- E022 recorded a 111 RE ratio.



YON SARAH B433 - The donor dam of Lot 6.

6 RRR Payweight E708

Birth Date: 2-21-2017 Bull #*18834271 Tattoo: E708
 #+Basin Payweight 006S #Vermilion Payweight J847
 Basin Payweight 1682 +Basin Lucy 3829
 +*17038724 21AR O Lass 7017 #HARB Pendleton 765 JH
 21AR O Lass F24A

ACT BW	77
ADJ 205	614
ADJ 365	1128

Yon Future Focus T219 # Mytty In Focus (RDF)
 Yon Sarah B433 YON Hazel R133
 +*17849552 +*Yon Sarah U555 #GAR Retail Product
 Yon Sarah N170

CED	BEPD	WEPD	YEPD	MILK
+5	+1.5	+53	+107 20%	+28 20%
CW	MARB	RE	\$WEAN	\$BEEF
+43 30%	+93 10%	+63 25%	+59.05 20%	+137.62 20%

- Recommended for cows.



G A R 5050 NEW DESIGN A039 -
The deceased donor dam of Lots 7-9.



G A R 5050 NEW DESIGN A91 - The full sister to
the dam of Lots 7-9 and the dam of the \$100,000
G A R 100X.

7 RRR Payweight E019

Birth Date: 1-30-2017 Bull +*18849363 Tattoo: E019
 #+Basin Payweight 006S #Vermilion Payweight J847
 #Basin Lucy 3829 +Basin Lucy 3829
Basin Payweight 1682 #HARB Pendleton 765 JH
 #HARB Pendleton 765 JH
 +*17038724 21AR O Lass 7017 21AR O Lass F24A

ACT BW	75
ADJ 205	671
ADJ 365	1181

#+GAR New Design 5050 #B/R New Design 036
 GAR Precision 706
GAR 5050 New Design A039 #SS Objective T510 OT26
 *16763530 GAR Objective A706 +GAR Integrity T465

CED	BEPD	WEPD	YEPD	MILK
+13 5%	-2.2 3%	+56 30%	+117 10%	+36 2%
CW	MARB	RE	\$WEAN	\$BEEF
+45 25%	+1.07 5%	+53	+71.48 4%	+149.60 15%

- Recommended for heifers or cows.
- PAP score of 42 to qualify for elevation.
- E019 posted ratios of 104 for RE and an excellent 125 for Marbling.
- The deceased donor dam of this flush of bulls, G A R New Design A039, was the past \$43,000 top-selling female of the Hillside Production Sale, GA. She is a

- full sister to G A R 5050 New Design A91 who is the dam of the \$100,000 G A R 100X. A039 ranks in top 25% for 18 different EPDs or \$Values including top 1% for CED, RE, Fat, Docility, \$G and \$YG.
- This is an excellent complimentary mating of deep, thick made, side sire crossed on an added frame female with elite end product merit and calving-ease.

8 RRR Payweight E018

Birth Date: 1-30-2017 Bull +*18849361 Tattoo: E018
 #+Basin Payweight 006S #Vermilion Payweight J847
 #Basin Lucy 3829 +Basin Lucy 3829
Basin Payweight 1682 #HARB Pendleton 765 JH
 #HARB Pendleton 765 JH
 +*17038724 21AR O Lass 7017 21AR O Lass F24A

ACT BW	89
ADJ 205	543
ADJ 365	1061

#+GAR New Design 5050 #B/R New Design 036
 GAR Precision 706
GAR 5050 New Design A039 #SS Objective T510 OT26
 *16763530 GAR Objective A706 +GAR Integrity T465

CED	BEPD	WEPD	YEPD	MILK
+12 10%	-7 15%	+68 10%	+116 10%	+25
CW	MARB	RE	\$WEAN	\$BEEF
+42	+83 15%	+72 15%	+73.70 3%	+149.07 15%

- Recommended for heifers and cows.
- Fifteen EPDs in Top 20%.

9 RRR Payweight E035

Birth Date: 2-4-2017 Bull +*18833584 Tattoo: E035
 #+Basin Payweight 006S #Vermilion Payweight J847
 #Basin Lucy 3829 +Basin Lucy 3829
Basin Payweight 1682 #HARB Pendleton 765 JH
 #HARB Pendleton 765 JH
 +*17038724 21AR O Lass 7017 21AR O Lass F24A

ACT BW	72
ADJ 205	539
ADJ 365	1097

#+GAR New Design 5050 #B/R New Design 036
 GAR Precision 706
GAR 5050 New Design A039 #SS Objective T510 OT26
 *16763530 GAR Objective A706 +GAR Integrity T465

CED	BEPD	WEPD	YEPD	MILK
+11 15%	-5 15%	+61 20%	+109 15%	+33 4%
CW	MARB	RE	\$WEAN	\$BEEF
+40	+81 20%	+39	+75.88 2%	+138.42 20%

- Recommended for heifers and cows.
- PAP score 38 qualifies for elevation.

10 RRR Payweight E031

Birth Date: 2-3-2017 Bull +*18833555 Tattoo: E031
 #+Basin Payweight 006S #Vermilion Payweight J847
 #Basin Lucy 3829
 #HARB Pendleton 765 JH
 21AR O Lass F24A
 # Mytty In Focus (ROF)
 YON Hazel R133
 #+GAR New Design 5050
 +Yon Burgess T495

ACT BW	80
ADJ 205	605
ADJ 365	930

CED	BEPD	WEPD	YEPD	MILK
+9 25%	-1 20%	+59 25%	+101 30%	+28 20%
CW	MARB	RE	SWEAN	\$BEEF
+29	+84 15%	+30	+71.34 5%	+109.74

- Recommended for heifers or cows.
- PAP score 41 to qualify for elevation.
- E031's dam, Yon Burgess B437, is an exceptional donor owned with Raven Angus, SD. She ranks in top 25% for an exceptional 19 different EPDs or \$Values including top 1% for RE and 2% YG. She was the top-selling female of the 2015 Yon Family Production Sale.
- The bulls in this flush out of her are very similar in type and structure. Deep, moderate and docile. The maternal grandsire, Yon Future Focus T219, is one of the good female sires in the breed. His daughters are thick, deep and have tons of capacity. They are typically high nursing ratio cattle. He also ranks in top 25% for an exceptional 19 different EPDs or \$Values including top 1% for Fat and 2% for RE with over 1,000 calves on his data.



YON BURGESS B437 - One of our featured donors owned with Raven Angus, SD and dam of Lots 10-12.

11 RRR Payweight M0297

Birth Date: 2-6-2017 Bull +*18836618 Tattoo: M0297

ACT BW	66	ADJ 205	533	ADJ 365	1064
CED	BEPD	WEPD	YEPD	MILK	
+15 2%	-1.6 5%	+51	+90	+28 20%	
CW	MARB	RE	SWEAN	\$BEEF	
+24	+1.15 4%	+31	+65.02 10%	+96.61	

- Recommended for heifers and cows.
- 1682 has more than 4,000 genomically tested progeny, and sons are seeing heavy use around the country as they continue to fit the demand for commercial use.



CED	BEPD	WEPD	YEPD	MILK
+9 30%	+2.3	+68 10%	+115 15%	+23
CW	MARB	RE	SWEAN	\$BEEF
+42 30%	+7.3 20%	+9.5 2%	+70.26 10%	+153.97 10%

YON FUTURE FOCUS T219

12 RRR Payweight M0157

Birth Date: 1-31-2017 Bull +*18834683 Tattoo: M0157

ACT BW	61	ADJ 205	575	ADJ 365	1161
CED	BEPD	WEPD	YEPD	MILK	
I+9 25%	I+.6	I+62 15%	I+112 15%	I+26 30%	
CW	MARB	RE	SWEAN	\$BEEF	
I+36	I+.70 25%	I+.67 20%	+68.49 10%	+130.62 30%	

- Recommended for heifers and cows.
- M0157 posted a ratio of 102 for RE.
- M0157's dam, Yon Burgess B437, is a feature donor at Mountain View Ranch, TN and posts an outstanding 19 different EPDs or \$Values in the top 25%.
- M0157 will bring some muscle and a moderate frame with him.



CED	BEPD	WEPD	YEPD	MILK
+6	+7	+68 10%	+120 10%	+26
CW	MARB	RE	SWEAN	\$BEEF
+49 15%	+7.7 20%	+34	+73.31 4%	+144.52 20%

BASIN PAYWEIGHT 1682

13 RRR Payweight M0167

Birth Date: 2-1-2017 Bull +*19045744 Tattoo: M0167
 #+Basin Payweight 006S #Vermilion Payweight J847
 #Basin Lucy 3829
 #HARB Pendleton 765 JH
 21AR O Lass F24A
 #+GAR Progress # GAR Predestined
 *GAR Objective 2345
 #+GAR Yield Grade
 GAR 1407 New Design 1942

ACT BW	73
ADJ 205	661
ADJ 365	976

CED	BEPD	WEPD	YEPD	MILK
I+8	I+1.0	I+63 15%	I+111 15%	I+26 30%
CW	MARB	RE	SWEAN	\$BEEF
I+43 30%	I+.84 15%	I+.28	+68.54 10%	+134.00 25%

- Recommended for heifers and cows.
- M0167 has a tremendous genomic profile, he posts 7 genomic traits in the top 20% of animals tested including a top 3% ranking for CW.
- M0167's dam was a donor for Mountain View Angus, TN and is now owned by Albert Biggs, TN and posts an outstanding 13 different EPDs or \$Values in the top 15%.



RRR BRONC R0327 - Lot 14

14 RRR Bronc R0327

Birth Date: 2-10-2017 Bull +*18831941 Tattoo: R0327
 *EF Commando 1366 # EF Complement 8088
 Baldridge Bronc (ROF) Riverbend Young Lucy W1470
 +*18229425 *Baldridge Isabel Y69 +Baldridge Isabel T935

Connealy Consensus 7229 # Connealy Consensus
 McKellar Breesa 3442 Blue Lilly of Conanga 16
 +*17881804 *Breesha of Conanga 1251 #Connealy Deep Canyon 454
 #Breeta of Conanga 525

ACT BW
77
ADJ 205
691
ADJ 365
1465

CED	BEPD	WEPD	YEPD	MILK
+8	+3.3	+92 1%	+156 1%	+34 3%
CW	MARB	RE	\$WEAN	\$BEEF
+72 1%	+66 30%	+88 5%	+94.28 1%	+181.39 1%

- Recommended for cows.
- R0327 records 14 EPDs or \$Values in top 25% including an excellent \$B, WW, YW, \$W, \$F and CW in top 1%.
- R0327 posted a 104 RE ratio.
- The dam of R0327, McKellar Breesa 3442, was a featured top-selling lot of the McKellar Angus Sale, TX and is a daughter of one of the great power cows of the breed.
- Big time bull here with depth of body and power. Posts some of the elite EPDs in the breed for his lineage.

15 RRR Bronc M0227

Birth Date: 2-4-2017 Bull +*18834685 Tattoo: M0227
 *EF Commando 1366 # EF Complement 8088
 Baldridge Bronc (ROF) Riverbend Young Lucy W1470
 +*18229425 *Baldridge Isabel Y69 # Styles Upgrade J59
 +Baldridge Isabel T935

#+GAR Ingenuity #+GAR New Design 5050
 RWA Ingenuity W43 GAR Objective 1067
 +*17488806 GAR Objective A706 # SS Objective T510 OT26
 +GAR Integrity T465

ACT BW
78
ADJ 205
531
ADJ 365
1126

CED	BEPD	WEPD	YEPD	MILK
+15 2%	-5 15%	+70 5%	+120 10%	+25
CW	MARB	RE	\$WEAN	\$BEEF
+55 10%	+72 25%	+1.01 2%	+74.68 3%	+171.56 2%

- Recommended for heifers and cows.
- M0227 records 15 EPDs or \$Values in top 25% including top 2% for \$B.
- Excellent RE EPD of +1.01.
- The dam, RWA Ingenuity W43, boasts an impressive and rare EPD profile with 14 EPDs or \$Values in top 10%. His ability to consistently produce progeny with muscle and length is excellent. The sire of these brothers, Baldridge Bronc, was the \$157,500 top-selling bull of the 2016 Baldridge Bros NE Bull Sale. He is a featured member of Select Sires Coop. He continues to impress across the country with a combination of calving-ease and growth.

16 RRR Bronc M0257

Birth Date: 2-5-2017 Bull +*19027804 Tattoo: M0257
 ACT BW 66 ADJ 205 597 ADJ 365 1131

CED	BEPD	WEPD	YEPD	MILK
+13 5%	-1 20%	+81 1%	+136 1%	+29 15%
CW	MARB	RE	\$WEAN	\$BEEF
+57 10%	+87 15%	+1.00 2%	+90.15 1%	+180.07 1%

- Recommended for heifers and cows.
- PAP score 48, so has higher risk.
- Ultrasound scan data revealed a 15.5 square inch ribeye.

17 RRR Bronc M0377

Birth Date: 2-8-2017 Bull +18834686 Tattoo: M0377
 ACT BW 88 ADJ 205 590 ADJ 365 1240

CED	BEPD	WEPD	YEPD	MILK
+12 10%	-1 20%	+63 15%	+112 15%	+27 25%
CW	MARB	RE	\$WEAN	\$BEEF
+147 20%	+95 10%	+1.75 15%	+68.84 10%	+159.90 10%

- Recommended for heifers and cows.

18 RRR Bronc M0637

Birth Date: 3-12-2017 Bull +*18834687 Tattoo: M0637
 ACT BW 70 ADJ 205 583 ADJ 365 1097

CED	BEPD	WEPD	YEPD	MILK
+13 5%	+0 20%	+67 10%	+109 15%	+24
CW	MARB	RE	\$WEAN	\$BEEF
+45 25%	+88 15%	+56	+70.05 5%	+139.73 20%

- Recommended for heifers and cows.
- Eleven EPDs in top 20%.



CED	BEPD	WEPD	YEPD	MILK
+16 2%	-2.6 2%	+61 20%	+107 25%	+31 10%
CW	MARB	RE	\$WEAN	\$BEEF
+27	+7.5 20%	+6.5 20%	+73.98 4%	+117.39

BALDRIDGE BRONC



CED	BEPD	WEPD	YEPD	MILK
+8 25%	+2.4	+65 4%	+117 3%	+22
CW	MARB	RE	\$WEAN	\$BEEF
+52 4%	+1.05 3%	+91 2%	+55.92 15%	+172.73 1%

RWA INGENUITY W43 - Donor dam of Lots 15-18.



RRR BRONC E039 - Lot 19



19 RRR Bronc E039

Birth Date: 2-4-2017 Bull *18836126 Tattoo: E039
 *EF Commando 1366 # EF Complement 8088
Baldrige Bronc (ROF) Riverbend Young Lucy W1470
 +*18229425 *Baldrige Isabel Y69 # Styles Upgrade J59
 +Baldrige Isabel T935

#Woodhill Foresight #Papa Forte 1921
Baldrige Blackcap T163 Bon View Gammer 85
 *15732677 Baldrige Blackcap P326 +Baldrige Ledge L602
 Bar S BLACKCAP 1122

ACT BW
89
ADJ 205
680
ADJ 365
1232

CEP	BEPD	WEPD	YEPD	MILK
+2	+3.3	+75	2%	+114 10%
CW		MARB	RE	SWEAN \$BEEF
+38	+3.3	+7.4	15%	+72.91 4%

- Recommended for cows.
- PAP 45 to qualify with slight risk at elevation.
- Neat deal here out of the dam of Waylon, the North Platte, NE legend at Baldrige Bros. T163 currently has over 40 registered offspring with daughters finding homes in donor pens and becoming sale features across the country.
- A sister to E039 sired by Baldrige Xpand X743 recently sold for \$5,750 to Walkers Branch in Hamptonville, NC.
- E039 records a huge Weaning Weight EPD for cowboys who sell by pound.

BALDRIDGE BLACKCAP T163 - Dam of Lot 19.

20 RRR Bronc R0037

Birth Date: 1-26-2017 Bull *18877163 Tattoo: R0037
 *EF Commando 1366 # EF Complement 8088
Baldrige Bronc (ROF) Riverbend Young Lucy W1470
 +*18229425 *Baldrige Isabel Y69 # Styles Upgrade J59
 +Baldrige Isabel T935

EXAR Upshot 0562B #Sitz Upward 307R
STF Blackcap A380 #+EXAR Barbara T020
 +*17951102 +Pine View Blackcap T758 SVF Bandlerier
 +GAR Focus 1001

ACT BW
95
ADJ 205
652
ADJ 365
1287

CEP	BEPD	WEPD	YEPD	MILK
+11	15%	+2.6	+73	3%
CW		MARB	RE	SWEAN \$BEEF
+47	20%	+6.7	30%	+6.0 30%
				+81.98 1%
				+151.69 10%

- Recommended for cows.
- R0037 posted excellent carcass measurements by scanning a 16.6 RE to ratio a 112 as well as a 7.3 IMF to ratio a 117.
- Another deep and thick made Bronc son, this bull is sure to pack on the pounds you need.



RRR COMPASS 23 - Lot 22



PINE VIEW RUBY C023 - Owned with Lemert Angus, AZ and a featured donor at the ranch.

21 RRR Bronc R0047

Birth Date: 1-26-2017 Bull *18877164 Tattoo: R0047
 *EF Commando 1366 # EF Complement 8088
Baldrige Bronc (ROF) Riverbend Young Lucy W1470
 +*18229425 *Baldrige Isabel Y69 # Styles Upgrade J59
 +Baldrige Isabel T935

#LD Redirect 11 #CA Future Direction 5321
Goode Redirect 2312 +LD 6148 Pride 9112
 +*17476364 +* Goode 5050 New Design 8907 #+GAR New Design 5050
 Goode Objective 544

ACT BW
76
ADJ 205
518
ADJ 365
1180

CEP	BEPD	WEPD	YEPD	MILK
+12	10%	-1.0	10%	+43
CW		MARB	RE	SWEAN \$BEEF
+15		+8.4	15%	+5.5
				+55.56 25%
				+89.32

- Recommended for heifers or cows.

22 RRR Compass 23

Birth Date: 1-24-2017 Bull *18751647 Tattoo: 23
 *EF Commando 1366 # EF Complement 8088
Baldrige Compass C102 Riverbend Young Lucy W1470
 18219961 + Baldrige Maverick Z054 # Baldrige Waylon W34
 *Baldrige Maverick T43

+baldrige Xpand x743 # Hoover Dam
Pine View Ruby C023 Baldrige Queen S87
 +*18205333 +*44 Ruby 2225 #+Boyd New Day 8005
 B/R Ruby 1224

ACT BW
74
ADJ 205
732
ADJ 365
1260

CEP	BEPD	WEPD	YEPD	MILK
+7	+1.1	+50	+83	+30 10%
CW		MARB	RE	SWEAN \$BEEF
+34	+7.4	25%	+9.4 3%	+62.79 15%
				+131.52 30%

- Recommended for heifers or cows.
- PAP score 44 for slight risk at elevation.
- 23 posted raw scores of +16 in RE and over a 5 raw Marbling score.
- 23's dam, Pine View Ruby C023, is a featured donor at the ranch and is an excellent daughter of Baldrige Xpand X743 out of a full sister to B/R New Design 454 who was a \$50,000 top-selling lot at 44 Farms, TX.



CED	BEPD	WEPD	YEPD	MILK
+4	+4 30%	+70 10%	+137 2%	+16
CW	MARB	RE	\$WEAN	\$BEEF
+71 1%	+35	+78 10%	+53.62	+173.88 2%

HAYNES OUTRIGHT 452 - A featured sire at ABS Global and a rising genetic star in the breed.

23 RRR Outright R0157

Birth Date: 1-30-2017	Bull *18892274	Tattoo: R0157
*KCF Bennett Absolute	# SAV Final Answer 0035 (PDF)	
HAYNES Outright 452	Thomas Miss Lucy 5152	
*17925323	# B/R New Day 454	
	HAYNES Miss Infocus 984	
	#/B/R New Design 036	ACT BW
# GAR Predestined	#+GAR Ext 4206	68
MLC Blackcap 1065	# SS Objective T510 0T26	ADJ 205
16992928	GAR 616 Rito 2202	622
		ADJ 365
		1208

CED	BEPD	WEPD	YEPD	MILK
+10 20%	+8	+71 4%	+131 2%	+19
CW	MARB	RE	\$WEAN	\$BEEF
+64 2%	+62	+76 15%	+63.63 15%	+172.80 2%

- Recommended for heifers or cows.
- R0157 ranks in the top 25% for 11 different EPD values including top 10% in CED, BW, and \$B.
- R0157 posted a 105 RE ratio.
- The sire of R0157, Haynes Outright 452, is producing some of the best growth cattle in the breed with moderate birth weights. The cattle are long, thick and growthy.



RRR TITAN R0257 - Lot 24

24 RRR Titan R0257

Birth Date: 2-4-2017	Bull *18831935	Tattoo: R0257
*Baldrige Waylon W34	#+GAR-EGL Protege	
Baldrige Titan A139	*Baldrige Blackcap T163	
*17821946	Baldrige Rapid R31	
	Baldrige Forever Lady P164	
	#CA Future Direction 5321	ACT BW
*B/R Future Direction 4268	B/R Ruby 9114	100
DSA New Direction 1022	# Riverbend Mile High 3718	ADJ 205
*16703595	+Riverbend Rita 4701	678
		ADJ 365
		1233

CED	BEPD	WEPD	YEPD	MILK
+3	+2.6	+72 3%	+121 5%	+22
CW	MARB	RE	\$WEAN	\$BEEF
+58 5%	+1.11 4%	+60 30%	+66.15 10%	+175.99 2%

- Recommended for cows.
- R0257 ranks in top 25% for 12 different EPDs or \$Values.
- R0257 recorded 106 Marbling ratio.
- R0257's deceased dam is one of the elite EPD profile cows of the breed. She has dominated sales in Kansas, Colorado and Texas. Her progeny consistently show muscle and performance with genomic predictions in top percentiles of the breed.
- The sire, Baldrige Titan A139, was the \$100,000 top-selling bull of the 2015 Baldrige Bros Bull sale and is one of the good bulls used on the ranch. He ranks in the top 25% for 11 different EPDs or \$Values.



DSA NEW DIRECTION 1022 - The now-deceased donor dam and one of the great cows of the breed. She is the donor dam of Lots 24 and 25 and multiple other bulls in the offering. Owned with 7 Oaks Angus, IA.

25 RRR Titan R0277

Birth Date: 2-4-2017	Bull *18831946	Tattoo: R0277
*Baldrige Waylon W34	#+GAR-EGL Protege	
Baldrige Titan A139	*Baldrige Blackcap T163	
*17821946	Baldrige Rapid R31	
	Baldrige Forever Lady P164	
	#CA Future Direction 5321	ACT BW
*B/R Future Direction 4268	B/R Ruby 9114	92
DSA New Direction 1022	# Riverbend Mile High 3718	ADJ 205
*16703595	+Riverbend Rita 4701	637
		ADJ 365
		1283

CED	BEPD	WEPD	YEPD	MILK
+5	+3.4	+83 1%	+126 3%	+12
CW	MARB	RE	\$WEAN	\$BEEF
+55 10%	+89 15%	+96 3%	+67.86 10%	+182.97 1%

- Recommended for cows.
- Big \$B bull here.



CED	BEPD	WEPD	YEPD	MILK
+6	+3 30%	+73 4%	+130 3%	+13
CW	MARB	RE	\$WEAN	\$BEEF
+45 25%	+87 10%	+69 15%	+62.76 15%	+142.52 20%

BALDRIDGE TITAN A139 - One of the good sires ever used on the ranch.



RRR TITAN R605 - Lot 26

26 RRR Titan R605

Birth Date: 8-4-2016 Bull #**18792325 Tattoo: 605
 *Baldrige Waylon W34 #+GAR-EGL Protege
 Baldrige Titan A139 *Baldrige Blackcap T163
 +*17821946 Baldrige Forever Lady T269 Baldrige Rapid R31
 Baldrige Forever Lady P164

ACT BW	N/A
ADJ 205	645
ADJ 365	1309

Connealy Consensus 7229
 McKellar Black Cala 2325 Blue Lilly of Conanga 16
 +*17532380 Black Crane of Conanga 204 #Connealy Forefront
 #Black Cala of Conanga 5203

GED	BEPD	WEPD	YEPD	MILK
+5	+3 25%	+75 2%	+135 2%	+21
CW	MARB	RE	\$WEAN	\$BEEF
+51 15%	+86 15%	+56	+73.79 3%	+150.11 10%

- Can be used on heifers and cows.
- Ranks in the top 25% for 13 different EPDs or \$Values.
- R605's dam is a big time donor female with tremendous capacity and muscle.
- R605 maintains a huge BWT to YWT spread and is one of the reasons his sire is one of our heavily used sires.

27 RRR Titan R0287

Birth Date: 2-4-2017 Bull #**18841782 Tattoo: R0287
 *Baldrige Waylon W34 #+GAR-EGL Protege
 Baldrige Titan A139 *Baldrige Blackcap T163
 +*17821946 Baldrige Forever Lady T269 Baldrige Rapid R31
 Baldrige Forever Lady P164

ACT BW	81
ADJ 205	694
ADJ 365	1305

CB Block Party 156 [ROF] #+Werner War Party 2417
 Baldrige Isabel A018 CB 965 Mainline
 +*17770166 +Baldrige Isabel T935 #Baldrige Kaboom K243 KCF
 +Baldrige Isabel P4527

GED	BEPD	WEPD	YEPD	MILK
+1	+2.0	+72 3%	+126 3%	+18
CW	MARB	RE	\$WEAN	\$BEEF
+62 3%	+75 25%	+91 4%	+64.67 10%	+170.91 2%

- Recommended for cows.
- PAP score 48 higher risk for elevation.
- R0287 posts 11 EPDs or \$Values in top 25% of the breed.
- R0287's dam is a maternal sister to Baldrige Isabel Y69.



RRR TITAN R0287 - Lot 27

28 RRR Titan R0576

Birth Date: 10-11-2016 Bull #**18988007 Tattoo: R0576
 *Baldrige Waylon W34 #+GAR-EGL Protege
 Baldrige Titan A139 *Baldrige Blackcap T163
 +*17821946 Baldrige Forever Lady T269 Baldrige Rapid R31
 Baldrige Forever Lady P164

ACT BW	N/A
ADJ 205	666
ADJ 365	1159

Hoover Dam #SydGen CC&7
 Baldrige Isabel A020 #Erica of Ellston C124
 +*17770894 *Baldrige Isabel Y69 #Styles Upgrade J59
 +Baldrige Isabel T935

GED	BEPD	WEPD	YEPD	MILK
+0	+1.9	+66 10%	+114 10%	+20
CW	MARB	RE	\$WEAN	\$BEEF
+41	+1.01 10%	+86 10%	+61.75 15%	+152.34 10%

- Recommended for cows.
- R0576 records 11 EPDs or \$Values in top 25% of the breed.
- The dam of R0576 is a maternal sister to Baldrige Isabel Y69 sired by the breed legend Hoover Dam who drives many genetics for CW and muscle.
- The donor dam of this bull is as deep sided a female as we have seen and is a featured donor for Triple D Genetics, IL.



BALDRIDGE ISABEL Y69 - Grandam of Lots 28 and 29.



RRR TITAN R0376 - Lot 29



CED	BEPD	WEPD	YEPD	MILK
+7	+7	+75 3%	+133 2%	+26
CW	MARB	RE	SWEAN	\$BEEF
+60 4%	+81 15%	+1.13 1%	+80.05 2%	+182.72 1%

BALDRIDGE COLONEL C251 - The maternal brother to the dam of Lots 28 and 29.

29 RRR Titan R0376

Birth Date: 9-11-2016 Bull *18988006 Tattoo: R0376

*Baldrige Waylon W34

#+GAR-EGL Protege

*Baldrige Blackcap T163

Baldrige Rapid R31

Baldrige Forever Lady P164

Baldrige Titan A139

*17821946 Baldrige Forever Lady T269

Hoover Dam

SydGen CC&7

#Erica of Ellston C124

Styles Upgrade J59

+Baldrige Isabel T935

Baldrige Isabel A020

*17770894 *Baldrige Isabel Y69

CED	BEPD	WEPD	YEPD	MILK
+5	+6	+69 5%	+117 10%	+19
CW	MARB	RE	SWEAN	\$BEEF
+32	+1.10 5%	+37	+73.42 3%	+126.13

- Recommended for heifers or cows.
- R0376 ranks in top 25% for 9 different EPDs or \$Values including top 5% for WW and Marbling.
- The donor dam of Lots 28 and 29 ranks in top 25% for 13 different EPDs or \$Values including top 1% for WW and \$W.

ACT BW	73
ADJ 205	679
ADJ 365	1249

31 RRR Titan M0127

Birth Date: 1-28-2017 Bull +18834833 Tattoo: M0127

*Baldrige Waylon W34

#+GAR-EGL Protege

*Baldrige Blackcap T163

Baldrige Rapid R31

Baldrige Forever Lady P164

Baldrige Titan A139

*17821946 Baldrige Forever Lady T269

Yon Future Focus T219

Mytty In Focus ^{IRDF}

YON Hazel R133

#GAR Retail Product

Yon Sarah N170

Yon Sarah B433

*17849552 *Yon Sarah U555

CED	BEPD	WEPD	YEPD	MILK
+6	+2.2	+62 15%	+125 4%	+21
CW	MARB	RE	SWEAN	\$BEEF
+48 20%	+1.04 10%	+68 20%	+54.12 30%	+159.34 10%

- Recommended for larger heifers and cows.
- PAP score 46 for slight risk at elevation.
- Big Yearling Weight EPD with lots of carcass bred in.
- M0127's sire, Baldrige Titan A139, was the top-selling \$100,000 bull of the 2015 Baldrige Bull Sale. Offspring of Titan are turning out moderate, very thick, wide based, big topped and docile.
- B433 has found a solid place in the donor pen for her ability to transmit muscle and performance to her young. B433 was bred in the Yon program in SC and was an elite sale feature in 2015.
- Look to keep heifers here. Dam has excellent udder quality.

ACT BW	85
ADJ 205	594
ADJ 365	1279

30 RRR Titan H0206

Birth Date: 9-4-2016 Bull *18773473 Tattoo: 6020

*Baldrige Waylon W34

#+GAR-EGL Protege

*Baldrige Blackcap T163

Baldrige Rapid R31

Baldrige Forever Lady P164

Baldrige Titan A139

*17821946 Baldrige Forever Lady T269

#MCC Daybreak

#+Boyd New Day 8005

#MCC Miss Focus 134

#+GAR New Design 5050

GAR Objective 455S

HPCA Daybreak 223

*17844117 +GAR 5050 New Design 229S

CED	BEPD	WEPD	YEPD	MILK
+4	+1.4	+69 5%	+124 4%	+25
CW	MARB	RE	SWEAN	\$BEEF
+48 20%	+1.05 10%	+92 4%	+72.99 4%	+146.72 15%

- Recommended for cows.
- PAP score 46 for slight risk.
- H0206 is a moderate framed, thick, deep bodied son of Baldrige Titan A139, one of the more heavily used herd sires on the ranch.
- He posts outstanding ratios for growth and carcass with WWR 109, YWR 105, %IMF 107, and RE 109.
- H0206 is ranked in the top 5% for 6 EPD or \$Values.

ACT BW	75
ADJ 205	753
ADJ 365	1089



RRR TITAN H0206 - Lot 30

32 RRR Titan H0276

Birth Date: 9-13-2016 Bull *18773472 Tattoo: 6027
 *Baldrige Waylon W34 #+GAR-EGL Protege
 Baldrige Titan A139 *Baldrige Blackcap T163
 +*17821946 Baldrige Forever Lady T269 Baldrige Rapid R31
 Baldrige Forever Lady P164
 # Connealy Consensus 7229
 +McKellar Schofield #Executa of Conanga 939
 McKellar Executa Brit 3440 #+Connealy Sullivan 83A
 *17882197 +*JMc Executa Breeta 0371 3191 #Executa of Conanga 939

ACT BW	81
ADJ 205	691
ADJ 365	992

CED	BEPD	WEPD	YEPD	MILK
+6	+1.7	+63 15%	+123 5%	+20
CW	MARB	RE	\$WEAN	\$BEEF
+45 25%	+57	+73 15%	+56.68 25%	+140.14 20%

- Recommended for larger heifers and cows.
- PAP score 43 to qualify for elevation.
- H0276 has a good BWT to YWT spread and posts a YW EPD of 122 which is top 5%.
- H0276 posts a RE ratio of 102.



RRR TITAN R0796 - Lot 33

33 RRR Titan R0796

Birth Date: 12-28-2016 Bull *1887160 Tattoo: R0796
 *Baldrige Waylon W34 #+GAR-EGL Protege
 Baldrige Titan A139 *Baldrige Blackcap T163
 +*17821946 Baldrige Forever Lady T269 Baldrige Rapid R31
 Baldrige Forever Lady P164
 #GAR Objective 7125
 +Rock Creek 7125 1251 +RB Lady Focus 303-844
 SS Primrose B836 #GAR Predestined
 *18024236 +SH Primrose 8164 H397 +WCC Primrose H397

ACT BW	62
ADJ 205	724
ADJ 365	1284

CED	BEPD	WEPD	YEPD	MILK
+9 25%	+9	+65 10%	+121 5%	+27 25%
CW	MARB	RE	\$WEAN	\$BEEF
+45 25%	+1.06 10%	+43	+69.24 10%	+141.27 20%

- Recommended for heifers and cows.
- R0796 is an outstanding young herd sire that has performed well here at the ranch.
- R0796 has some impressive ratios posting a 109 WWR, 102 YWR, and 124 %IMF.
- If you're looking for Marbling, R0796 will do the trick scoring 7.85 for %IMF.
- R0796 will bring you both calving ease and growth being ranked in the top 10% for CED, BW, and YW and the top 15% for WW.

34 RRR Titan R0236

Birth Date: 9-6-2016 Bull *18831972 Tattoo: R0236
 *Baldrige Waylon W34 #+GAR-EGL Protege
 Baldrige Titan A139 *Baldrige Blackcap T163
 +*17821946 Baldrige Forever Lady T269 Baldrige Rapid R31
 Baldrige Forever Lady P164
 # SAV Final Answer 0035 (PDF)
 *PAR B Powerkat 610 #PAR B Primrose N 884
 SS Blackcap B842 #+Rito 4L60 of 2536 BVND 208
 *18024238 +Ogeechee Blackcap 7027 +Southern Blackcap 3686

ACT BW	80
ADJ 205	743
ADJ 365	1441

CED	BEPD	WEPD	YEPD	MILK
+6	+1.7	+65 10%	+124 4%	+17
CW	MARB	RE	\$WEAN	\$BEEF
+40	+58	+71 20%	+53.67 30%	+137.27 25%

- Recommended for cows.
- PAP score 49 for higher risk at elevation.
- R0236 ranks in the top 25% for 9 different EPDs or \$Values.
- R0236 posted ratios of 111 for WW and 100 for RE.

35 RRR Titan R0196

Birth Date: 9-2-2016 Bull 18831970 Tattoo: R0196
 *Baldrige Waylon W34 #+GAR-EGL Protege
 Baldrige Titan A139 *Baldrige Blackcap T163
 +*17821946 Baldrige Forever Lady T269 Baldrige Rapid R31
 Baldrige Forever Lady P164
 #GAR Predestined
 +GAR Prediction #GAR Precision 191
 RWA Prediction W272 #ALC Big Eye D09N
 17383595 +GAR Big Eye T199 +GAR 112 Rito 1095

ACT BW	76
ADJ 205	484
ADJ 365	900

CED	BEPD	WEPD	YEPD	MILK
+0	+2.9	+58 25%	+101 30%	+16
CW	MARB	RE	\$WEAN	\$BEEF
+33	+56	+81 10%	+43.68	+112.27

- Recommended for cows.



RRR TITAN R0236 - Lot 34

36 RRR Titan R0377

Birth Date: 2-19-2017 Bull *18877168 Tattoo: R0377
 *Baldrige Waylon W34 #+GAR-EGL Protege
 #Baldrige Blackcap T163
 Baldrige Rapid R31
 Baldrige Forever Lady P164
 # Connealy Consensus 7229
 Blue Lilly of Conanga 16
 SVF Bandolier
 +*GAR 1407 New Design 1552

Baldrige Titan A139
 +*17821946 Baldrige Forever Lady T269

STF Rita A384
 +*18003768 +*SVF Rita R080

CED	BEPD	WEPD	YEPD	MILK	
I+5	I+2.8	I+69 5%	I+113 15%	I+19	
CW		MARB	RE	\$WEAN	\$BEEF
I+48 20%	I+.74 25%	I+.59	+68.38 10%	+137.21 25%	

- Recommended for cows.
- PAP score 43 to qualify for elevation.
- R0377 posts a ratio of 102 for RE.

37 RRR Titan M6026 [OHP]

Birth Date: 3-14-2016 Bull 18729427 Tattoo: M6026
 *Baldrige Waylon W34 #+GAR-EGL Protege
 #Baldrige Blackcap T163
 Baldrige Rapid R31
 Baldrige Forever Lady P164
 #CRA Bextor 872 5205 608
 +GAR Objective 1885
 +baldrige Xceed x707
 #Raven Blackbird Blackie 63

Baldrige Titan A139
 +*17821946 Baldrige Forever Lady T269

#+GAR Prophet
 HBM Blackbird Blackie 401
 18287965 Raven Blackbird Blackie 2862

CED	BEPD	WEPD	YEPD	MILK	
+6	+1.0	+68 10%	+117 10%	+21	
CW		MARB	RE	\$WEAN	\$BEEF
N/A	N/A	N/A	N/A	+57.91 20%	N/A

- Recommended for cows.
- M6026 ranks in the top 10% for both YW and WW.
- M6026 is another moderately framed son of Baldrige Titan A139.



RRR 100X R0187 - Lot 38



DSA NEW DIRECTION 1022 - The donor dam of Lots 38-40.

38 RRR 100X R0187

Birth Date: 2-1-2017 Bull +*18831936 Tattoo: R0187
 # AAR Ten X 7008 SA # Mytty In Focus (ROF)
 #AAR Lady Kelton 5551
 #+GAR New Design 5050
 GAR Objective A706
 #CA Future Direction 5321
 B/R Ruby 9114
 # Riverbend Mile High 3718
 +Riverbend Rita 4701

GAR 100X
 +*17774305 *GAR 5050 New Design A91

*B/R Future Direction 4268
 DSA New Direction 1022
 +*16703595 Riverbend Rita S730

CED	BEPD	WEPD	YEPD	MILK	
+12 10%	-1.4 10%	+52	+93	+30 10%	
CW		MARB	RE	\$WEAN	\$BEEF
+44 30%	+82 20%	+47	+62.47 15%	+150.65 10%	

- Recommended for heifers or cows.
- PAP score of 44 to qualify for elevation.
- R0187 records 15 EPDs or \$Values in top 25% of the breed.
- R0187 posted a 101 RE ratio.
- The donor dam, DSA New Direction 1022, is one of the dominant cows on the ranch for progressive combination of performance genetics and elite end product merit. She adds muscle, a little added frame and elite EPD profiles.
- The sire, the \$100,000 G A R 100X, really nicked on 1022 and has left us progeny that work in our country.
- R0187 and his brothers are part of an excellent flush of calves. Full sisters to these bulls were highlights of the 2018 Denver Stock Show selling from Wyoming to Illinois.



RRR - 7 OAKS COLD BEER - The full brother to Lots 38-40 and owned with Zumbrunnen Angus, WY.

39 RRR 100X R0537

Birth Date: 3-9-2017		Bull **18831933		Tattoo: R0537		ACT BW	ADJ 205	ADJ 365
						89	695	1357
CEU	BEPD	WEPD	YEPD	MILK				
+9 25%	+1 25%	+57 30%	+98	+23				
CW	MARB	RE	\$WEAN	\$BEEF				
+41	+72 25%	+1.00 2%	+53.82 30%	+147.09 15%				

- Recommended for heifers or cows.
- PAP score 41 qualifies for elevation.
- R0537 posted a 113 RE ratio of 17.1 sq. in.



RRR - 7 OAKS RITA R0127 - Full sister to Lots 38-40 owned with Hott Farms, IL and a feature of the 2018 Foundation Female Sale, CO.

40 RRR 100X R0147

Birth Date: 1-29-2017		Bull **18831928		Tattoo: R0147				
# AAR Ten X 7008 SA		# Mytty In Focus ^(ROF)		# AAR Lady Kelton 5551				
*GAR 5050 New Design A91		#+GAR New Design 5050		GAR Objective A706				
*B/R Future Direction 4268		#CA Future Direction 5321		B/R Ruby 9114				
DSA New Direction 1022		#Riverbend Mile High 3718		+Riverbend Rita 4701				
+*16703595 Riverbend Rita S730						ACT BW	ADJ 205	ADJ 365
						80	716	1279

CEU	BEPD	WEPD	YEPD	MILK				
+6	+2.0	+68 10%	+118 10%	+24				
CW	MARB	RE	\$WEAN	\$BEEF				
+61 3%	+94 10%	+1.01 2%	+61.01 15%	+198.40 1%				

- Recommended for cows.
- One of the big \$B bulls in the offering.

41 RRR 100X R0077

Birth Date: 1-27-2017		Bull **18891012		Tattoo: R0077				
# AAR Ten X 7008 SA		# Mytty In Focus ^(ROF)		# AAR Lady Kelton 5551				
*GAR 5050 New Design A91		#+GAR New Design 5050		GAR Objective A706				
*Sitz Upward 307R		#VAR Primrose 6260		#+GAR New Design 5050				
SS Rita B021		#+GAR Objective H4006						
+*18024219 +GAR 5050 New Design N1840						ACT BW	ADJ 205	ADJ 365
						68	670	1230

CEU	BEPD	WEPD	YEPD	MILK				
+10 20%	+5 30%	+67 10%	+123 5%	+36 2%				
CW	MARB	RE	\$WEAN	\$BEEF				
+63 2%	+1.11 4%	+72 15%	+75.04 3%	+193.29 1%				

- Recommended for heifers or cows.
- R0077 ranks in top 25% for an excellent 17 different EPDs or \$Values.
- R0077 ranks in the top 3% for Marb and also posted an outstanding 8.45 IMF score for a 136 ratio.
- Excellent EPD profile here with elite end product merit on a calving-ease bull with good growth.



RRR - 7 OAKS RITA R0177 - Full sister to Lots 38-40 and owned with Zumbrunnen Angus, WY.

42 RRR 100X R0437 [DDP]

Birth Date: 2-28-2017		Bull **18891013		Tattoo: R0437				
# AAR Ten X 7008 SA		# Mytty In Focus ^(ROF)		# AAR Lady Kelton 5551				
*GAR 5050 New Design A91		#+GAR New Design 5050		GAR Objective A706				
# EF Complement 8088		#Basin Franchise P142		+EF Everelda Entense 6117				
STF Rita A390		SVF Bandoier		+*GAR 1407 New Design 1552				
+*18013675 +*SVF Rita R080						ACT BW	ADJ 205	ADJ 365
						75	646	1174

CEU	BEPD	WEPD	YEPD	MILK				
+10 20%	-1 20%	+58 25%	+107 20%	+24				
CW	MARB	RE	\$WEAN	\$BEEF				
+44 30%	+1.25 2%	+58	+57.46 25%	+165.67 4%				

- Recommended for heifers.
- R0437 is a deep bodied, calving-ease son of G A R 100X.
- R0437 ranks in the top 5% for 9 EPDs or \$Values including 5% for CED, 4% for BW, and 5% for DOC.

43 RRR 100X R0117

Birth Date: 1-28-2017		Bull 18891025		Tattoo: R0117				
# AAR Ten X 7008 SA		# Mytty In Focus ^(ROF)		# AAR Lady Kelton 5551				
*GAR 5050 New Design A91		#+GAR New Design 5050		GAR Objective A706				
#TC Aberdeen 759		#CRA Bextor 872 5205 608		#+TC Blackbird 4034				
Top Line Lassie 1155		#SAV Net Worth 4200		+EXG Lassie P686 R3				
+*16977149 +Top Line Lassie 0801						ACT BW	ADJ 205	ADJ 365
						80	640	1238

CEU	BEPD	WEPD	YEPD	MILK				
+9 25%	+2 25%	+42	+87	+27 25%				
CW	MARB	RE	\$WEAN	\$BEEF				
+29	+76 20%	+34	+38.71	+111.03				

- Recommended for heifers and cows.
- R0117 ranks in top 25% for 12 different EPDs or \$Values.
- R0117 boasts a 16.4 RE for a 111 ratio.



RRR GOLD RUSH H0116 - Lot 44

44 RRR Gold Rush H0116
 Birth Date: 8-9-2016 Bull *18817659 Tattoo: 6011
 # Connealy Consensus #KMK Alliance 6595 187
Connealy Gold Rush 026E Blinda of Conanga 004
 +*16969554 +*Brazilia of Conanga 3991 839A Connealy Tobin
 *Breesha of Conanga 1251

ACT BW	60
ADJ 205	682
ADJ 365	1047

AAR Ten X 7008 SA # Mytty In Focus (DFI)
 SCC Objective F189-413 #AAR Lady Kelton 5551
 +*18245293 GAR Objective F189 # SS Objective T510 0T26
 +GAR Predestined R385

CED	BEPD	WEPD	YEPD	MILK
+4	+3.2	+82 1%	+137 1%	+27 25%
CW	MARB	RE	SWEAN	\$BEEF
+64 2%	+66 30%	+63 25%	+79.84 1%	+164.33 4%

- Recommended for cows.
- PAP score 45 to have slight risk at elevation.
- H0116 is a long bodied, thick muscled son of Connealy Gold Rush 026E.
- Connealy Gold Rush 026E is owned by Raven Angus, Colome, SD and Pine View Angus, Edgewood, IA.
- H0116 has a ratio of 101 for YW.
- H0116 also posts a 107 for %IMF.

45 RRR Gold Rush H0136

Birth Date: 8-17-2016 Bull *18773399 Tattoo: 6013
 # Connealy Consensus #KMK Alliance 6595 187
Connealy Gold Rush 026E Blinda of Conanga 004
 +*16969554 +*Brazilia of Conanga 3991 839A Connealy Tobin
 *Breesha of Conanga 1251

ACT BW	71
ADJ 205	743
ADJ 365	1073

AAR Ten X 7008 SA # Mytty In Focus (DFI)
 SCC Objective F189-4507 #AAR Lady Kelton 5551
 +*18245303 GAR Objective F189 # SS Objective T510 0T26
 +GAR Predestined R385

CED	BEPD	WEPD	YEPD	MILK
+5	+3.2	+81 1%	+128 3%	+19
CW	MARB	RE	SWEAN	\$BEEF
+58 5%	+64	+90 4%	+70.82 5%	+157.16 10%

- Recommended for cows.
- H0136 is another thick muscled son of Connealy Gold Rush 026E.
- H0136 is a full brother to Lot 44.
- He posts some outstanding rankings for growth with a 1% for WW and 3% for YW.
- H0136 posts ratios of 101 for RE, 103 for YW, and 107 for WW.



RRR GOLD RUSH H0136 - Lot 45



RRR IMPACT R614 - Lot 46

46 RRR Impact R614 [DDF]
 Birth Date: 8-13-2016 Bull 18821110 Tattoo: 614
 #Poss Total Impact 745 #TC Total 410
PineView PositiveImpact P773 Poss Blackcap 5116
 *17582369 GAR Big Eye 2509 # ALC Big Eye D09N
 +GAR Objective 106

ACT BW	N/A
ADJ 205	537
ADJ 365	1055

+*PA Full Power 1208 #+PA Power Tool 9108
 Rock Creek Forever Lady 1442 *Pine View SQR Rita W091
 +*17874833 +SVF Forever Lady P122 #Bon View New Design 1407 (DFI)
 +Gdar SVF Forever Lady 214D

CED	BEPD	WEPD	YEPD	MILK
+12 10%	-.4 15%	+49	+91	+23
CW	MARB	RE	SWEAN	\$BEEF
+26	+7.0 25%	+7.4 15%	+50.77	+109.19

- Recommended for heifers and cows.
- PAP score 41 to qualify for elevation.
- If you're looking for some calving ease, R614 is your bull.
- He ranks in the top 10% for CED and 15% for BW.
- R614 also brings a ratio of 107 for RE.



RRR PATRIOT R6382 - Lot 47

47 RRR Patriot R6382

Birth Date: 8-22-2016 Bull +*18800266 Tattoo: 6382
 # Connealy Capitalist 028 # SAV Final Answer 0035 (ROF)
 Deer Valley Patriot 3222 Prides Pita of Conanga 8821
 +*17577916 +*Deer Valley Rita 0274 #Sitz Upward 307R
 *GAR Objective 2345

Connealy Consensus 7229 # Connealy Consensus
 McKellar Black Cala 2325 Blue Lilly of Conanga 16
 +*17532380 Black Crane of Conanga 204 #Connealy Forefront
 #Black Cala of Conanga 5203

ACT BW
46
ADJ 205
469
ADJ 365
1005

CED	BEPD	WEPD	YEPD	MILK
+12 10%	-1.6 5%	+62 15%	+114 10%	+34 3%
CW	MARB	RE	SWEAN	\$BEEF
+44 30%	+1.17 3%	+47	+72.11 4%	+138.30 20%

- Recommended for heifers and cows.
- PAP score 40 to qualify for elevation.
- Here is another calving-ease herd sire prospect.
- 6382 ranks in top 25% for an excellent 17 different EPDs or \$Values.
- 6382 ranks in the top 10% for CED and 5% for BW.
- To go with the calving ease, he also has a ranking of 3% for Marb and scored a ratio of 105 for %IMF.
- The donor dam of this lot is a deep sided, powerful female that ranks in top 25% for 12 different EPDs or \$Values.

48 RRR Patriot R6188

Birth Date: 8-30-2016 Bull +*18800267 Tattoo: 6188
 # Connealy Capitalist 028 # SAV Final Answer 0035 (ROF)
 Deer Valley Patriot 3222 Prides Pita of Conanga 8821
 +*17577916 +*Deer Valley Rita 0274 #Sitz Upward 307R
 *GAR Objective 2345

CED	BEPD	WEPD	YEPD	MILK
+8	+1.0	+68 10%	+122 5%	+30 10%
CW	MARB	RE	SWEAN	\$BEEF
+54 10%	+84 15%	+72 15%	+76.42 2%	+152.13 10%

- Recommended for heifers and cows.
- R6188 posted a 112 RE ratio.
- R6188 ranks in the top 25% for 13 different EPDs or \$Values.

49 RRR Patriot R613 [OHF]

Birth Date: 8-13-2016 Bull 18766655 Tattoo: 613
 # Connealy Capitalist 028 # SAV Final Answer 0035 (ROF)
 Deer Valley Patriot 3222 Prides Pita of Conanga 8821
 +*17577916 +*Deer Valley Rita 0274 #Sitz Upward 307R
 *GAR Objective 2345

#+PA Power Tool 9108 # GAR Predestined
 Raven Priscilla 3691 *Shamrocks Beebee Queen 3095
 17031085 #Raven Priscilla 2738 Woodhill Packer 19K-73N
 Raven Priscilla 1553

ACT BW
N/A
ADJ 205
583
ADJ 365
1252

CED	BEPD	WEPD	YEPD	MILK
+8	+1.6	+72 3%	+128 3%	+17
CW	MARB	RE	SWEAN	\$BEEF
+54 10%	+95 10%	+55	+63.24 15%	+156.19 10%

- Recommended for larger heifers and cows.
- R613 ranks in the top 10% for 10 different EPDs or \$Values.
- R613 posted a 106 WWR and 124 Marbling ratio.



CED	BEPD	WEPD	YEPD	MILK
+16 2%	-9 15%	+68 10%	+120 10%	+24
CW	MARB	RE	SWEAN	\$BEEF
+48 20%	+78 15%	+92 3%	+67.08 10%	+138.35 25%

DEER VALLEY PATRIOT 3222





50 RRR Escalade E106

Birth Date: 1-23-2017 Bull 18803990 Tattoo: E106
 # EF Complement 8088 #Basin Franchise P142
 #EF Everelda Entense 6117
 #+B/R Ambush 28
 #+Riverbend Young Lucy T1080
 *17082311 Riverbend Young Lucy W1470

*Baldrige Waylon W34
 Baldrige Duchess C740
 +18242596 Baldrige Duchess T69

#+GAR-EGL Protege
 *Baldrige Blackcap T163
 #Baldrige Navigator N5
 Baldrige Duchess R51

ACT BW
88
ADJ 205
692
ADJ 365
1434

GED	BEPD	WEPD	YEPD	MILK		
+5	+2.1	+60	20%	+103 25%	+23	
CW	MARB	RE	\$WEAN	\$BEEF		
+44	30%	+7.8	20%	+8.6 10%	+61.76 15%	+147.81 15%

- Recommended for cows.
- PAP 40 qualifies for elevation.
- E106 posted a 107 IMF ratio.
- The dam of E106, Baldrige Duchess C740, is a full sister to Baldrige Atlas A266, a featured herd sire of Koberstein Farms in CO.
- C740 ranks in the top 25% for 11 different EPD values.

RRR ESCALADE E106 - Lot 50

51 RRR Commando R0427

Birth Date: 2-27-2017 Bull +*18831939 Tattoo: R0427
 # EF Complement 8088 #Basin Franchise P142
 #EF Everelda Entense 6117
 #+B/R Ambush 28
 #+Riverbend Young Lucy T1080
 *17082311 Riverbend Young Lucy W1470

#B/R Future Direction 4268
 DSA New Direction 1022
 +*16703595 Riverbend Rita S730

#CA Future Direction 5321
 B/R Ruby 9114
 # Riverbend Mile High 3718
 +Riverbend Rita 4701

ACT BW
77
ADJ 205
676
ADJ 365
1247

GED	BEPD	WEPD	YEPD	MILK					
+11	15%	+1.7	+69	5%	+114	10%	+32	10%	
CW	MARB	RE	\$WEAN	\$BEEF					
+54	10%	+99	10%	+80	10%	+77.17	2%	+175.48	2%

- Recommended for large framed heifers and cows.
- R0427 ranks in top 25% for 17 different EPDs or \$Values.
- R0427 posted ratios of 101 for RE and 124 for Marbling with a +7 raw score.
- The deceased dam of R0427, DSA New Direction 1022, is one of the elite cows in the breed for across the board production and performance. She records 34@103 for Marbling and 34@10 for RE ratios. She currently ranks in top 25% for 18 different EPDs or \$Values including top 1% for WW, \$B and CW.
- The sire, EF Commando 1336, consistently produces moderate, thick progeny that are calving-ease and have elite carcass merit for marble meat. These flush brothers are a nice combination of the economically important traits.

52 RRR Commando R0457

Birth Date: 3-2-2017 Bull +*18831940 Tattoo: R0457
 ACT BW 87 ADJ 205 606 ADJ 365 1193

GED	BEPD	WEPD	YEPD	MILK					
+12	10%	+4	30%	+62	15%	+99	30%	+28	20%
CW	MARB	RE	\$WEAN	\$BEEF					
+42	+81	20%	+95	3%	+73.24	3%	+146.62	15%	

- Recommended for heifers or cows.
- PAP 40 qualifies for elevation.
- Posted 107 RE ratio.



GED	BEPD	WEPD	YEPD	MILK					
+3	+3.9	+71	1%	+116	3%	+27	25%		
CW	MARB	RE	\$WEAN	\$BEEF					
+63	1%	+94	10%	+87	2%	+64.83	5%	+192.68	1%

DSA NEW DIRECTION 1022 - The deceased donor dam of Lots 51 and 52.



GED	BEPD	WEPD	YEPD	MILK				
+5	-.1	25%	+65	15%	+115	15%	+14	
CW	MARB	RE	\$WEAN	\$BEEF				
+46	25%	+88	10%	+73	15%	+53.99	+157.01	10%

BALDRIDGE ATLAS A266 - Full brother to the dam of Lot 50.



GED	BEPD	WEPD	YEPD	MILK				
+14	4%	-.8	15%	+58	30%	+97	+28	20%
CW	MARB	RE	\$WEAN	\$BEEF				
+28	+86	15%	+77	10%	+67.42	10%	+115.34	

EF COMMANDO 1366



RRR COMMANDO M0767 - Lot 54



RRR COMMANDO M0247 - Lot 55

53 RRR Commando M0797
 Birth Date: 3-17-2017 Bull ****18834832** Tattoo: M0797
 # EF Complement 8088 #Basin Franchise P142
 #+GAR New Design 5050
 #+GAR Ingenuity #GAR Objective 1067
 #+GAR Integruity T465
 RFA Commando 1366 #B/R Ambush 28
 #SS Objective T510 OT26
 *17082311 Riverbend Young Lucy W1470 +Riverbend Young Lucy T1080
 RWA Ingenuity W43
 #17488806 GAR Objective A706

ACT BW	87
ADJ 205	662
ADJ 365	1142

GED	BEPD	WEPD	YEPD	MILK				
+12	10%	+0	20%	+64	15%	+114	10%	+25
CW	MARB	RE	SWEAN	SBEFF				
+41	+1.12	4%	+83	10%	+65.07	10%	+153.64	10%

- Recommended for heifers or cows.
- PAP score 39 to qualify for elevation.
- M0797 records 12 EPDs or \$Values in top 25%.
- Excellent flush of brothers here that performed and scanned excellent for RE and Marbling.
- RWA Ingenuity W43 is one of our good donors for elite end product merit and muscle.

54 RRR Commando M0767
 Birth Date: 3-17-2017 Bull ***19023086** Tattoo: M0767
 #+GAR New Design 5050
 #+GAR Integruity T465
 RFA Commando 1366 #B/R Ambush 28
 #SS Objective T510 OT26
 *17082311 Riverbend Young Lucy W1470 +Riverbend Young Lucy T1080
 RWA Ingenuity W43
 #17488806 GAR Objective A706

ACT BW	86
ADJ 205	649
ADJ 365	1204

GED	BEPD	WEPD	YEPD	MILK					
+0	+3.6	+85	1%	+143	1%	+26	30%		
CW	MARB	RE	SWEAN	SBEFF					
+62	3%	+83	15%	+98	2%	+75.96	2%	+183.26	1%

- Recommended for heifers and cows.
- PAP score 39 to qualify for elevation.

55 RRR Commando M0247
 Birth Date: 2-5-2017 Bull ***18834688** Tattoo: M0247
 #+GAR New Design 5050
 #+GAR Integruity T465
 RFA Commando 1366 #B/R Ambush 28
 #SS Objective T510 OT26
 *17082311 Riverbend Young Lucy W1470 +Riverbend Young Lucy T1080
 RWA Ingenuity W43
 #17488806 GAR Objective A706

ACT BW	80
ADJ 205	694
ADJ 365	1244

GED	BEPD	WEPD	YEPD	MILK				
+13	5%	-1.0	10%	+60	20%	+98	+38	1%
CW	MARB	RE	SWEAN	SBEFF				
+38	+1.31	2%	+69	20%	+84.29	1%	+143.11	15%

- Recommended for heifers and cows.
- PAP score 43 to qualify for elevation.
- Posted an excellent 149 Marbling ratio with raw score over an 8 and 103 RE ratio.

56 RRR Commando M0267
 Birth Date: 2-6-2017 Bull ***18834689** Tattoo: M0267
 #+GAR New Design 5050
 #+GAR Integruity T465
 RFA Commando 1366 #B/R Ambush 28
 #SS Objective T510 OT26
 *17082311 Riverbend Young Lucy W1470 +Riverbend Young Lucy T1080
 RWA Ingenuity W43
 #17488806 GAR Objective A706

ACT BW	77
ADJ 205	599
ADJ 365	1164

GED	BEPD	WEPD	YEPD	MILK			
+10	20%	+6	+56	30%	+95	+24	
CW	MARB	RE	SWEAN	SBEFF			
+35	+60	+69	20%	+58.78	20%	+128.72	30%

- Recommended for heifers and cows.
- PAP score 45 for slight risk at elevation.
- Posted a 102 RE ratio.

57 RRR Commando M0717
 Birth Date: 3-17-2017 Bull ***19039221** Tattoo: M0717
 #+GAR New Design 5050
 #+GAR Integruity T465
 RFA Commando 1366 #B/R Ambush 28
 #SS Objective T510 OT26
 *17082311 Riverbend Young Lucy W1470 +Riverbend Young Lucy T1080
 RWA Ingenuity W43
 #17488806 GAR Objective A706

ACT BW	86
ADJ 205	633
ADJ 365	1155

GED	BEPD	WEPD	YEPD	MILK				
+11	15%	+6	+62	15%	+107	20%	+31	10%
CW	MARB	RE	SWEAN	SBEFF				
+40	+1.07	5%	+59	+72.06	4%	+138.04	20%	

- Recommended for heifers and cows.
- PAP 49 higher risk for elevation.



RWA INGENUITY W43 - Donor dam of Lots 53-57.



58 RRR Commando R0356

Birth Date: 9-10-2016 Bull *18831968 Tattoo: R0356

EF Complement 8088

#Basin Franchise P142
+EF Everelda Entense 6117

EF Commando 1366

*17082311 Riverbend Young Lucy W1470

#+B/R Ambush 28
+Riverbend Young Lucy T1080

ACT BW
85
ADJ 205
594
ADJ 365
1098

#Poss Total Impact 745

#TC Total 410
Poss Blackcap 5116

SS Everelda Entense B110

*18026363 *SS SQR Everelda Entense Y833

+*Baldrige Goal S878
+SS SQR Everelda Entense U008

GED	BEPD	WEPD	YEPD	MILK
+2	+3.4	+68	10%	+117 10%
+21				
CW	MARB	RE	\$WEAN	\$BEEF
+47 20%	+92 10%	+88 5%	+57.33 25%	+163.88 4%

- Recommended for cows.
- R0356 is a prospective herd sire for growth and carcass.
- He ranks in the top 10% for WW, YW, and Marbling and the top 5% for RE.
- R0356 posts some impressive ratios of 102 for %IMF and 105 for RE.
- R0356 also has 12 EPDs or \$Values that rank in the top 20%.



RRR COMMANDO H0286 - Lot 60

60 RRR Commando H0286

Birth Date: 9-13-2016 Bull *18773433 Tattoo: 6028

EF Complement 8088

#Basin Franchise P142
+EF Everelda Entense 6117

EF Commando 1366

*17082311 Riverbend Young Lucy W1470

#+B/R Ambush 28
+Riverbend Young Lucy T1080

ACT BW
81
ADJ 205
695
ADJ 365
1053

Connealy Consensus 7229

Connealy Consensus
Blue Lilly of Conanga 16

McKellar Executa Deela 3362

*17881797 +*JMc Executa Deena 0381 3191

#+Connealy Sullivan 83A
#Executa of Conanga 939

GED	BEPD	WEPD	YEPD	MILK
+8	+1.4	+48	+84	+21
CW	MARB	RE	\$WEAN	\$BEEF
+30	+65 30%	+98 2%	+49.85	+123.27

- Recommended for larger heifers and cows.
- PAP 41 to qualify for elevation.
- H0286 is a moderate framed, deep bodied, prospective herd sire that is very standard here at the ranch.
- H0286 posts a YW ratio of 101.
- He follows that up with some good carcass numbers posting ratios of 110 for %IMF and 101 RE.

59 RRR Commando R0446

Birth Date: 9-13-2016 Bull *18831973 Tattoo: R0446

EF Complement 8088

#Basin Franchise P142
+EF Everelda Entense 6117

EF Commando 1366

*17082311 Riverbend Young Lucy W1470

#+B/R Ambush 28
+Riverbend Young Lucy T1080

ACT BW
89
ADJ 205
526
ADJ 365
1273

#Poss Total Impact 745

#TC Total 410
Poss Blackcap 5116

Bell Basha of Conga A017

*17593959 Basha of Conga 3150

SS Objective T510 0T26
#Bashfalla of Conanga 924

GED	BEPD	WEPD	YEPD	MILK
+6	+3.7	+70	5%	+120 10%
+15				
CW	MARB	RE	\$WEAN	\$BEEF
+33	+69 30%	+48	+56.70 25%	+129.67 30%

- Recommended for cows.
- PAP 46 for higher risk at elevation.
- R0446 ranks in the top 25% for 9 different EPDs or \$Values.
- R0446 posted a 107 RE ratio.



RRR COMMANDO R0446 - Lot 59

61 RRR Commando R0336

Birth Date: 9-9-2016 Bull *18831975 Tattoo: R0336

EF Complement 8088

#Basin Franchise P142
+EF Everelda Entense 6117

EF Commando 1366

*17082311 Riverbend Young Lucy W1470

#+B/R Ambush 28
+Riverbend Young Lucy T1080

ACT BW
76
ADJ 205
733
ADJ 365
1309

Connealy In Focus 4925

Mytty In Focus (REDI)
Black Cana of Conanga 206

SS Proud Formera B181

*18026289 SS Proud Formera Y298

+GAR 1407 New Design A554
NAR 276 S60A RK

GED	BEPD	WEPD	YEPD	MILK
+7	+1.1	+61	20%	+103 25%
+27 25%				
CW	MARB	RE	\$WEAN	\$BEEF
+36	+59	+91 4%	+63.75 15%	+136.34 25%

- Recommended for heifers and cows.
- PAP 46 for higher risk at elevation.
- R0336 ranks in top 25% for 15 different EPDs or \$Values.
- R0336 posted ratios of 110 for WW and 116 for RE.

62 RRR Commando R0346

Birth Date: 9-9-2016 Bull *18831967 Tattoo: R0346
 # EF Complement 8088 #Basin Franchise P142
 #EF Everelda Entense 6117
 #+B/R Ambush 28
 #Riverbend Young Lucy T1080
 #+GAR Cashflow
 #+GAR New Design 5050
 #*GAR Bextor 268
 Mytty Forethought
 SS Rita W625

ACT BW	83
ADJ 205	673
ADJ 365	1201

CED	BEPD	WEPD	YEPD	MILK
-1	+2.6	+55	+108 20%	+33 4%
CW	MARB	RE	\$WEAN	\$BEEF
+45 25%	+59	+1.20 1%	+55.72 25%	+136.27 25%

- Recommended for cows.
- PAP score 44 for slight risk at elevation.
- R0346 ranks in the top 25% for 7 different EPDs or \$Values.
- R0346 posted ratios of WWR 101, Marbling 102 and RE 108.

63 RRR Commando H0266

Birth Date: 9-10-2016 Bull *18773434 Tattoo: 6026
 # EF Complement 8088 #Basin Franchise P142
 #EF Everelda Entense 6117
 #+B/R Ambush 28
 #Riverbend Young Lucy T1080
 # Connealy Consensus 7229
 Blue Lilly of Conanga 16
 #Connealy Forefront
 #Black Cala of Conanga 5203

ACT BW	72
ADJ 205	599
ADJ 365	973

CED	BEPD	WEPD	YEPD	MILK
+12 10%	-1.1 10%	+50	+90	+28 20%
CW	MARB	RE	\$WEAN	\$BEEF
+24	+86 15%	+47	+63.90 15%	+100.83

- Recommended for heifers and cows.
- H0266 is a moderate framed and deep bodied son of EF Commando 1366.
- H0266 ranks in the top 10% for CED and BW EPDs.
- He also ratioed 108 for Marbling.
- H0266 has 9 different EPD or \$Value rankings in the top 25%.

64 RRR Commando M0107

Birth Date: 1-27-2017 Bull **19045743 Tattoo: M0107
 # EF Complement 8088 #Basin Franchise P142
 #EF Everelda Entense 6117
 #+B/R Ambush 28
 #Riverbend Young Lucy T1080
 # Mytty In Focus [PROF]
 YON Hazel R133
 #+GAR New Design 5050
 +Yon Burgess W361

ACT BW	77
ADJ 205	616
ADJ 365	1171

CED	BEPD	WEPD	YEPD	MILK
I+13 5%	I-2 20%	I+57 30%	I+101 30%	I+27 25%
CW	MARB	RE	\$WEAN	\$BEEF
I+37	I+.91 15%	I+1.01 2%	+65.23 10%	+139.45 20%

- Recommended for cows.
- M0107 posts actual scores of 16.6 in. for RE and 6.33 %IMF for Marbling.



RRR COMMANDO H0266 - Lot 63

65 RRR Commando N6226

Birth Date: 2-24-2016 Bull **18628432 Tattoo: N6226
 # EF Complement 8088 #Basin Franchise P142
 #EF Everelda Entense 6117
 #+B/R Ambush 28
 #Riverbend Young Lucy T1080
 #MCC Daybreak
 #+Boyd New Day 8005
 #MCC Miss Focus 134
 # Connealy All Around
 #Circle G Miss Wix 668

ACT BW	94
ADJ 205	574
ADJ 365	1094

CED	BEPD	WEPD	YEPD	MILK
+6	+1.4	+61 20%	+109 15%	+33 4%
CW	MARB	RE	\$WEAN	\$BEEF
+53 10%	+72 25%	+90 4%	+65.34 10%	+163.08 4%

- Recommended for cows.
- PAP 43 to qualify for elevation.
- Ranks in the top 25% for 15 different EPDs or \$Values.
- N6226's dam is Ogeechee Miss Wix 2119 who maintains an elite profile including 4 EPDs or \$Values in the top 1%.
- Good herd sire prospect here with added frame and muscle.
- N6226's grandam is the famous Ogeechee Miss Wix 0089 who sold for \$25,000 for Pine View Angus, IA.

66 RRR Eager E075

Birth Date: 1-12-2017 Bull 18837387 Tattoo: E075
 # EF Complement 8088 #Basin Franchise P142
 #EF Everelda Entense 6117
 #+B/R Ambush 28
 #Riverbend Young Lucy T1080
 Fortunes Conquest 224
 # Connealy Confidence 0100
 Fortunes 4412 Ethelda 742
 *Baldrige Waylon W34
 #Baldrige Treasure R256

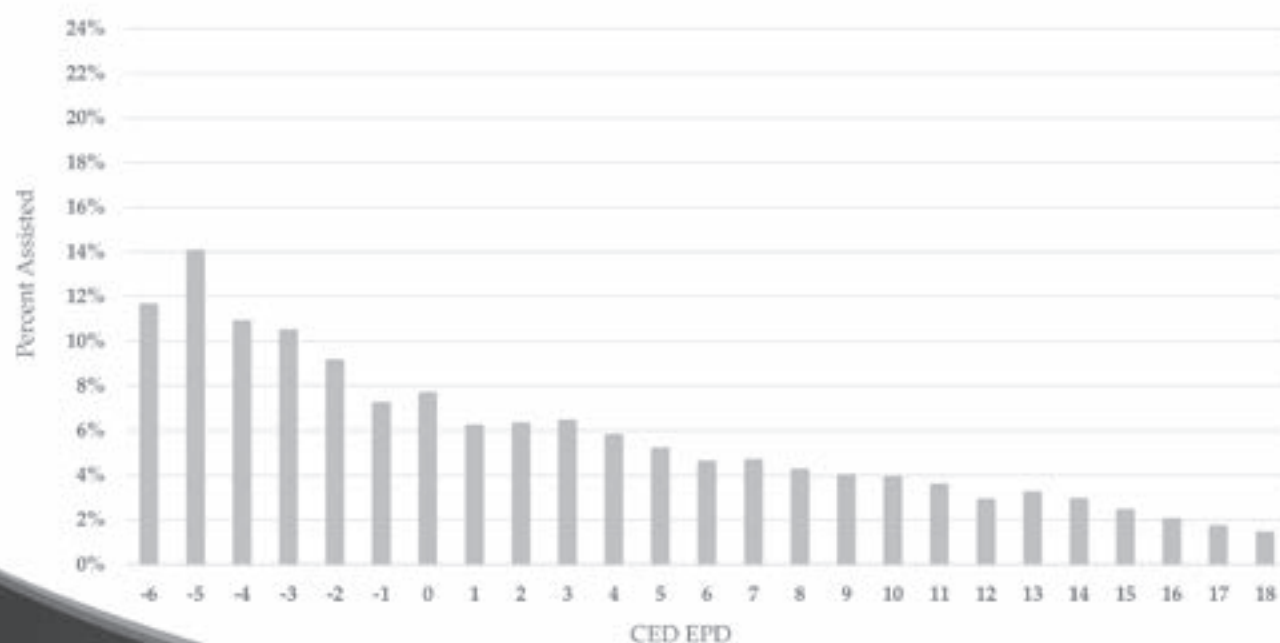
ACT BW	73
ADJ 205	661
ADJ 365	1165

CED	BEPD	WEPD	YEPD	MILK
I+8	I-2 20%	I+54	I+95	I+28 20%
CW	MARB	RE	\$WEAN	\$BEEF
I+24	I+.87 15%	I+.49	+64.49 10%	+105.10

- Recommended for cows.
- E075 ranks in top 25% for 8 different EPDs or \$Values.
- E075 is a thick muscled, deep bodied, EF Commando 1366 son.
- E075's dam goes back to the Treasure Cow family and is sired by Fortunes Conquest 224.
- E075 posted an actual score of 7.12 for %IMF which was good enough to earn a 108 ratio.

Incidence of Calving Difficulty

20 highest accuracy sires born since 1995 for each unit of CE EPD



ANGUS
THE BUSINESS BREED

Breed Averages

	PRODUCTION										MATERNAL				
	CED	BW	WW	YW	RADG	DMI	YH	SC	Doc	HP	CEM	Milk	MW	MH	SEN
Current Sires	+6	+1.3	+49	+86	+20	+18	+4	+71	+13	+10.0	+8	+23	+26	+3	-2.47
Main Sires	+7	+1.1	+52	+91	+20	+20	+4	+74	+14	+10.0	+8	+23	+25	+3	-3.06
Supplemental Sires	+7	+1.2	+54	+94	+21	+27	+4	+81	+15	+10.3	+8	+24	+29	+3	-6.11
Current Dams	+5	+1.6	+45	+78	+19	+10	+5	+65	+11	+10.0	+8	+23	+24	+3	+0.3
Non-Parent Bulls	+6	+1.4	+50	+88	+20	+28	+4	+74	+14	+10.3	+8	+24	+29	+3	-4.01
Non-Parent Cows	+6	+1.4	+50	+87	+20	+29	+4	+72	+14	+10.2	+8	+23	+30	+4	-4.10

	CARCASS				SVALUES			
	CW	Marb	RE	Fat	\$W	\$F	\$G	\$B
Current Sires	+33	+48	+42	+012	+45.37	+41.74	+30.58	+105.64
Main Sires	+33	+48	+42	+013	+48.76	+48.27	+29.95	+107.78
Supplemental Sires	+37	+50	+47	+013	+50.87	+51.30	+30.86	+115.22
Current Dams	+28	+47	+36	+011	+40.06	+30.58	+30.74	+95.61
Non-Parent Bulls	+35	+53	+47	+011	+45.75	+42.30	+32.53	+110.33
Non-Parent Cows	+35	+57	+48	+010	+44.76	+41.37	+32.91	+110.13

ANGUS
THE BUSINESS BREED



RRR CONSENT R0466 - Lot 70

70 RRR Consent R0466

Birth Date: 9-20-2016 Bull *18831958 Tattoo: R0466
 # Connealy Consensus #KMK Alliance 6595 187
 KCF Bennett Consent Y75 #Blinda of Conanga 004
 +*17121627 +KCF Miss Protege W148 #+GAR-EGL Protege
 Breea of Conanga 3991

*SS Progressive Y721 +*GAR Progression
 SS Beebe Queen B42 *SS Lass T504
 *18024224 +SVF Shamrock Bebe Queen E52S #Bon View New Design 1407 (PDF)
 +Shamrock Beebe Queen 460 E1L

ACT BW
71
ADJ 205
570
ADJ 365
1045

CED	BEPD	WEPD	YEPD	MILK
+7	+6	+50	+93	+21
CW	MARB	RE	\$WEAN	\$BEEF
+27	+1.09 5%	+39	+50.76	+116.71

- Recommended for heifers and cows.
- PAP 39 to qualify for elevation.
- R0466 is sired by K C F Bennet Consent Y75, owned by Knoll Crest Farm Inc., VA and Bartels Angus, NE, who was one of the featured herd sires for the ranch over the last year.
- R0466 posts a ratio of 124 for Marbling and ranks in the top 5% for the Marbling EPD.

71 RRR Abundance R0387

Birth Date: 2-24-2017 Bull *18891061 Tattoo: R0387

*Baldrige Waylon W34 #+GAR-EGL Protege
 Baldrige Abundance A085 *Baldrige Blackcap T163
 +*17821932 Baldrige Forever Lady T269 Baldrige Rapid R31
 Baldrige Forever Lady P164

ACT BW
78
ADJ 205
726
ADJ 365
N/A

+*Bar R SS Skyward 2029 #Sitz Upward 307R
 SS Blackcap B095 +VAR Primrose 6260
 *18024150 +*GAR Predestined N1410 #GAR Predestined
 +GAR Precision 1075

CED	BEPD	WEPD	YEPD	MILK
I+9 25%	I+1.9	I+59 25%	I+102 25%	I+23
CW	MARB	RE	\$WEAN	\$BEEF
I+38	I+.93 10%	I+.60 30%	+61.50 15%	+133.03 25%

- Recommended for cows.
- PAP 48 for higher risk at elevation.
- R0387's sire, Baldrige Abundance A085 owned by Triple D Genetics, IL, was a workhorse for the ranch.
- R0387 is moderate with some added length and muscle that can bring you some growth and carcass traits.
- R0387 posts a ratio of 109 for WW and 103 for RE.



BALDRIGE ABUNDANCE A085 - Sire of Lot 71.



72 RRR Bronc E038

Birth Date: 2-4-2017 Bull +*18830710 Tattoo: E038

SAV Final Answer 0035 (PDF) #Sitz Traveler 8180
 KCF Bennett Absolute #SAV Emulous 8145
 *16430795 Thomas Miss Lucy 5152 #+Wulffs Ext 6106
 Thomas Miss Lucy 3050

#+GAR Ingenuity #+GAR New Design 5050
 RWA Ingenuity W43 GAR Objective 1067
 +*17488806 GAR Objective A706 #SS Objective T510 0T26
 +GAR Integrity T465

ACT BW
56
ADJ 205
604
ADJ 365
1039

CED	BEPD	WEPD	YEPD	MILK
+11 15%	+4 30%	+62 15%	+107 20%	+15
CW	MARB	RE	\$WEAN	\$BEEF
+38	+0.78 20%	+92 4%	+58.07 20%	+139.94 20%

- Recommended for heifers and cows.
- PAP 39 to qualify for elevation.
- E038 lands 11 EPDs in top 20% making him an excellent choice for the discriminating cattleman who wants across the board performance.
- E038's sire, KCF Bennett Absolute, has records for nearly 4,000 offspring in St. Joseph, MO. These type of cattle are in high demand.
- His dam, W43, does it all--14 EPDs in top 5%. Look around, this is hard to do.

73 RRR Absolute R604 [DDF]

Birth Date: 8-2-2016 Bull 18793408 Tattoo: 604
 # SAV Final Answer 0035 (PDF) #Sitz Traveler 8180
 #+Wulffs Ext 6106 Thomas Miss Lucy 3050
 # B/R New Design 036 #+GAR Ext 4206
 SVF Bandolier +GAR Focus 1001

ACT BW
N/A
ADJ 205
611
ADJ 365
1160

GED	BEPD	WEPD	YEPD	MILK				
+10	20%	-1	20%	+55	+106	20%	+27	25%
CW	MARB	RE	\$WEAN	\$BEEF				
+38	+99	10%	+47	+61.49	15%	+140.48	20%	

- Recommended for heifers and cows.
- PAP 40 to qualify for elevation.
- R604 ranks in the top 25% for 11 EPDs or \$Values.
- R604 is the type of bull that will offer you some calving ease, some growth and some carcass merit.
- He posts a WW ratio of 107, a YW ratio of 101, and a Marbling ratio of 110.



RWA PROGRESS W222 - Donor dam of Lot 74.

74 RRR Absolute M0016

Birth Date: 1-6-2016 Bull **18415634 Tattoo: M0016
 # SAV Final Answer 0035 (PDF) #Sitz Traveler 8180
 #+Wulffs Ext 6106 Thomas Miss Lucy 3050
 # GAR Progress # GAR Predestined
 *GAR Objective 2345
 # B/R New Day 454 +GAR Retail Product 155

ACT BW
79
ADJ 205
625
ADJ 365
1030

GED	BEPD	WEPD	YEPD	MILK			
+13	5%	-8	10%	+48	+89	+27	25%
CW	MARB	RE	\$WEAN	\$BEEF			
+26	+1.20	3%	+38	+52.78	+110.54		

- PAP 40 to qualify for elevation.
- Recommended for heifers and cows.
- BW 79 lbs., Adj. 205 wt. 625 lbs.
- A top bull in the offering for Marbling EPD at 1.17, IMF ratio of 115.

75 RRR Branded M0827

Birth Date: 3-19-2017 Bull +*18841788 Tattoo: M0827
 *Baldrige Waylon W34 #+GAR-EGL Protege
 *Baldrige Blackcap T163
 # GAR Objective 7125 +SVF OA Rita U208
 # Mytty In Focus (PDF)
 YON Hazel R133
 #+GAR New Design 5050 +Yon Burgess T495

ACT BW
93
ADJ 205
665
ADJ 365
1239

GED	BEPD	WEPD	YEPD	MILK					
-2	+3.2	+80	1%	+135	2%	+25			
CW	MARB	RE	\$WEAN	\$BEEF					
+65	2%	+1.01	10%	+88	5%	+74.61	3%	+183.37	1%

- PAP 47 for higher risk at elevation.
- Recommended for cows.
- Big Time Growth Bull.
- Loads of Carcass-CW, Marb and RE.
- Top three bull for \$B in offering.



GED	BEPD	WEPD	YEPD	MILK					
+11	15%	-2	20%	+63	15%	+117	10%	+18	
CW	MARB	RE	\$WEAN	\$BEEF					
+49	15%	+7.0	25%	+7.1	15%	+64.59	15%	+155.66	10%

KCF BENNETT ABSOLUTE



GED	BEPD	WEPD	YEPD	MILK					
+3	+1.1	+64	15%	+108	20%	+22			
CW	MARB	RE	\$WEAN	\$BEEF					
+46	25%	+1.22	2%	+66	20%	+66.43	10%	+155.76	10%

PINE VIEW BRANDED P134



YON BURGESS B437 - Donor dam of Lots 76-77.

76 RRR Branded E704

Birth Date: 2-19-2017	Bull *18834263	Tattoo: E704
*Baldrige Waylon W34	#+GAR-EGL Protege	
Pine View Branded P134	*Baldrige Blackcap T163	
+*17878512 *Pine View Rita X049	#GAR Objective 7125	
	+SVF OA Rita U208	ACT BW
		84
	# Mytty In Focus ^{ROFI}	ADJ 205
Yon Burgess B437	YON Hazel R133	628
+*17849555 Yon Burgess W361	#+GAR New Design 5050	ADJ 365
	+Yon Burgess T495	1108

CED	BEPD	WEPD	YEPD	MILK
+15 2%	-1.4 10%	+48	+87	+27 25%
CW	MARB	RE	SWEAN	\$BEEF
+24	+1.21 3%	+75 15%	+57.78 20%	+115.51

- Recommended for heifers and cows.
- PAP score 48 for higher risk at elevation.
- One of the top bulls in the offering for CED.

77 RRR Branded E709

Birth Date: 2-22-2017	Bull *18834264	Tattoo: E709	ACT BW	ADJ 205	ADJ 365
			83	619	1155
CED	BEPD	WEPD	YEPD	MILK	
+14 3%	-4.1 1%	+38	+71	+28 20%	
CW	MARB	RE	SWEAN	\$BEEF	
+17	+1.10 5%	+47	+50.56	+91.37	

- Recommended for heifers and cows.
- PAP score 45 for slight risk at elevation.
- One of the top bulls in the offering for CED.

78 RRR Waylon H0376

Birth Date: 11-9-2016	Bull 18764555	Tattoo: 6037
*Baldrige Waylon W34	#+GAR-EGL Protege	
Pine View Waylon P194	*Baldrige Blackcap T163	
+*17878514 *Pine View Rita X049	#GAR Objective 7125	
	+SVF OA Rita U208	ACT BW
		100
	# Connealy Consensus	ADJ 205
Thomas Echo 3858	+*Brazila of Conanga 3991 839A	696
17739427 Diablo Echo 2045	#GAR Retail Product	ADJ 365
	+Diablo Echo 74	N/A

CED	BEPD	WEPD	YEPD	MILK
-4	+5.2	+74 2%	+130 2%	+30 10%
CW	MARB	RE	SWEAN	\$BEEF
+48 20%	+1.05 10%	+43	+65.77 10%	+148.01 15%

- Recommended for cows.
- H0376 ranks in the top 2% for WW and YW as well as top 10% for Marb and top 15% for %B.

79 RRR Waylon H0326

Birth Date: 10-27-2016	Bull *18764554	Tattoo: 6032
*Baldrige Waylon W34	#+GAR-EGL Protege	
Pine View Waylon P194	*Baldrige Blackcap T163	
+*17878514 *Pine View Rita X049	#GAR Objective 7125	
	+SVF OA Rita U208	ACT BW
		85
	#SS Cowboy X504	ADJ 205
SS Rita A072	SS SQR Tank T32	589
*17499901 *SQ Rita 135U	SS Queen Lass 504	ADJ 365
	+*SQ Patriot 103R	1018
	+*SQ Rita 1440 129S	

CED	BEPD	WEPD	YEPD	MILK
+7	+1.5	+42	+66	+23
CW	MARB	RE	SWEAN	\$BEEF
+4	+1.19 3%	+27	+44.57	+70.26

- Recommended for larger framed heifers or cows.
- PAP 40 qualifies for elevation.

80 RRR Abundance R0616

Birth Date: 10-23-2016	Bull *18831959	Tattoo: R0616
*Baldrige Waylon W34	#+GAR-EGL Protege	
Baldrige Abundance A085	*Baldrige Blackcap T163	
+*17821932 Baldrige Forever Lady T269	Baldrige Rapid R31	
	Baldrige Forever Lady P164	ACT BW
		69
	+*GAR Progression	ADJ 205
SS Beletta B581	*SS Lass T504	629
*18024230 Shamrocks Beletta 2785	Shamrocks Really Windy 0062	ADJ 365
	#Shamrocks Beletta 0882	1127

CED	BEPD	WEPD	YEPD	MILK
I+14 3%	I-1.0 10%	I+48	I+94	I+29 15%
CW	MARB	RE	SWEAN	\$BEEF
I+33	I+1.01 10%	I+37	+57.28 25%	+123.52

- Recommended for heifers and cows.
- PAP score 45 for slight risk at elevation.
- This prospective herd sire brings a moderate phenotype with some added length and muscle, which tends to be a common trend here on the ranch.
- R0616's dam has 7 different EPDs or \$Values in the top 4%.



CED	BEPD	WEPD	YEPD	MILK
-1	+4.1	+71 5%	+124 10%	+13
CW	MARB	RE	SWEAN	\$BEEF
+54 10%	+99 10%	+77 10%	+50.51	+170.27 3%

BALDRIDGE WAYLON W34

81 DDD Legend D018 [DDP]

Birth Date: 3-25-2016 Bull 18492263 Tattoo: D018

Connealy Consensus 7229
 # Connealy Consensus Blue Lilly of Conanga 16
 # Connealy Forward Queen Mia of Conanga 5983

ACT BW
77
ADJ 205
672
ADJ 365
1173

McKellar Legend 3320
 +*17847324 +*Mc Tara Queen 9098

SS Rita A047
 17868184 *PAR B Powerkat 610
 +*BJ Predestined 0047

SAV Final Answer 0035 (RDF)
 #PAR B Primrose N 884
 # GAR Predestined
 +GAR Retail Product H4054

GED	BEPD	WEPD	YEPD	MILK
+14 3%	-1.4 10%	+61 20%	+109 15%	+18
CW		MARB	RE	SWEAN
+39	+1.09 5%	+65 25%	+61.92 15%	+133.39 25%

- Recommended for heifers and cows.
- D018 ranks in the top 25% for 12 different EPDs or \$Values.
- D018's sire was the \$50,000 top-selling lot of the 2014 McKellar Angus, TX sale.

82 RRR Legend M6016 [OHP]

Birth Date: 3-12-2016 Bull 18729563 Tattoo: M6016

Connealy Consensus 7229
 # Connealy Consensus Blue Lilly of Conanga 16
 # Connealy Forward Queen Mia of Conanga 5983

ACT BW
68
ADJ 205
626
ADJ 365
N/A

McKellar Legend 3320
 +*17847324 +*Mc Tara Queen 9098

Raven Blackbird Blackie 2862
 17346019 #Raven Blackbird Blackie 63

+baldridge Xceed x707
 #+GAR-EGL Protege
 Baldridge Blackbird 34K
 #BCC Bushwacker 41-93
 Raven Blackbird Blackie Y60

GED	BEPD	WEPD	YEPD	MILK
+9 25%	-.1 20%	+42	+76	+26 30%
CW		MARB	RE	SWEAN
1+28	1+.84 15%	1+.44	+42.06	+105.71

- Recommended for heifers and cows.
- M6016 is another representation of the moderate phenotype we so often see at RRR.
- PAP 48.

Notes



358 Laguna Madre Road
Maxwell, NM 87728

PRSR
FIRST-CLASS
U.S. POSTAGE
PAID
St. Joseph, MO
Permit #2017

TUESDAY • 1:00 PM (MT) • MAXWELL, NEW MEXICO

MARCH 13, 2018

Selling 82 PAP Tested Purebred Angus Bulls

