



ANNUAL BULL SALE

MONDAY, MARCH 2, 2020

1:00 PM MT / AT THE RANCH / MAXWELL, NEW MEXICO

*Where the grasslands meet the Rockies*



# ANNUAL BULL SALE

**MONDAY, MARCH 2, 2020 - 1:00 PM (MT)**  
**AT THE RANCH - MAXWELL, NEW MEXICO**  
**SELLING 103 PAP TESTED ANGUS BULLS**

**Welcome** to the Spring Season and our Annual Bull Sale on behalf of the Reverse Rocking R Ranch. We'd like to thank you for taking interest in our program. Next, we would like to thank our partner David Shumacker for all of his support because without him none of the things we do would be possible. Here at Reverse Rocking R we dedicate ourselves to providing the best possible genetics for both the commercial and registered producer. We utilize science, hard work and common sense to produce the most cutting-edge genetics that can perform in the southwest and produce progeny that can receive premiums in the marketplace. Our goal is over time that focus can bring a phenotypically desired product that survives, performs and excels.

Artificial Insemination, Embryo Transfer, Genomic testing, Ultrasound technology for fetal sexing and product merit and PAP testing are all services and technologies we use to help bring a progressive bull offering to you the customer. All of that plus the environmental challenges we face being in New Mexico, allow us to sort the best possible bull to the marketplace. We understand your success is the only goal to insure the longevity of our business. The bulls will be PAP tested by Dr. Kelleen Koppenhafer and scores will be available upon request.

The Ranch is run by an outstanding crew with Garrett Earl as the herdsman making sure the cattle are attended to day in and day, and Jeff Earl who looks out for our operation in Springer, NM and soon to start looking over our Oasis Farms operation in Trinidad, CO. We would also like to thank Shawn Mitchell who runs out to the ranch tirelessly to make sure our fleet of vehicles stay running and allow us to service you in any way that we can. Our friend Bill Ell dedicates a lot of his time to coming out and helping us with anything we need help with on the ranch and we greatly appreciate it. In closing we stand behind our bulls 100% for an entire whether you buy in our sale or private treaty. If you have any issues don't be afraid to call us anytime and we will get you taken care of to the best of our ability. We do offer free delivery to anywhere in the Continental-48 as well as volume discounts and repeat buyer discounts. You can find us on facebook, call us anytime, or if your in the area drop on in We Always Have The Coffee ON! Here's to a wonderful start to the 2020 spring Season and if we can be of any help to you let us know.

**God Bless – The Earls**



**SALE LOCATION**  
Reverse Rocking R Ranch  
220 Laguna Madre Rd / Maxwell, NM 87728  
**SALE CONTACTS**  
David Schumaker, Owner  
Chris & Krista Earl, Owner  
630-675-6559 or svfchief@aol.com  
Trent & Emily Earl, Manager & Office  
719-557-9915 or jcacorner38@aol.com  
Garrett Earl, Herdsman  
630-400-1225  
Jeff Earl, Promotions and South Ranch

### AUCTIONEER

Wes Tiemann.....816-244-4462

### REPRESENTATIVES

Adam Conover, American Angus Association

Cody Johnson, Special Assignment

### ACCOMMODATIONS

Holiday Inn Express, Raton, NM.....877-859-5095

Best Western Plus, Raton, NM.....800-568-8520

**LUNCH** A meal will be served prior to the sale.

**DELIVERY** Free delivery to any where in the United States.

**RETAINED INTEREST** RRR is selling 100% of all bulls. No interest will be retained.

**VOLUME DISCOUNTS** Volume discounts are available; starting at 3 bulls 3% discounts up to 10 bulls 10% discount.

**HERD HEALTH** All bulls selling are up-to-date on vaccinations including with Virashield 6 VL5 and Vision 8 with Somus and Wormed. All have been semen checked and fertility sheets are available. All bulls have been PAP tested and those scores will be available on our website. All bulls will be BVD tested. All bulls requiring Trichomoniasis test will be tested and ready for shipment on sale day.

**SUPPLEMENTAL INFORMATION** A sale supplement will be available with PAP scores, Frame scores, and yearling weights upon request and on our website. EPDs are updated every Friday, so a supplement sheet with the latest information will be provided on sale day.

**SIGHT UNSEEN GUARANTEE** RRR will guarantee 100% satisfaction on all sight unseen purchases through a RRR representative.

**TERMS AND CONDITIONS** All cattle sell under the suggested Terms and Conditions of the American Angus Association, that can be found here: [www.angus.org/Pub/suggested\\_sale\\_terms.pdf](http://www.angus.org/Pub/suggested_sale_terms.pdf)

**ONLINE BIDDING AVAILABLE** **DVAuction**  
*Broadcasting Real-Time Auctions*

[www.CK6CONSULTING.COM/REVERSE-ROCKING-R-RANCH.HTML](http://www.CK6CONSULTING.COM/REVERSE-ROCKING-R-RANCH.HTML)

# Yearling & Fall Bulls

## LOT 1



### RRR Forecaster R0069

**1** REG: 19481606 | DOB: 01/18/19 | TAG: R0069

G A R Prophet  
**Baldrige Forecaster B160**  
 Baldrige Pratissa W165  
 baldrige Xpand x743  
**Pine View Ruby C023**  
 44 Ruby 2225

C R A Bextor 872 5205 608  
 G A R Objective 1885  
 GAR-EGL Protege  
 Baldrige Pratissia S4  
 Hoover Dam  
 Baldrige Queen S87  
 Boyd New Day 8005  
 B/R Ruby 1224

**Act BW**  
89  
**Adj WW**  
847  
**Adj YW**  
1234

ANGUSGS

CED	BW	WW	YW	MILK	CW	MARB	RE	\$M	\$B	\$C
9	0.0	73	130	28	71	1.30	0.92	70	194	322
%	25%	10%	5%	25%	2%	2%	10%	15%	1%	1%

- Both lots 1 and 2 are recommended for heifers or cows.
- Lot 1 ranks in the top 25% for 17 different EPDS or \$values. Lot 2 ranks in 14 top 25% EPDS or \$values
- Lot 1 posted a 116 marbling ratio and 111 RE ratio, lot 2 posted a 109 ratio for bot Marbling and RE.
- Their donor dam, Pine View Rita C023, is a direct daughter of the \$55,000 44 Ruby 2225 and ranks in top 25% for 16 different EPDS or \$values including top 1% for Doc, RE, Fat, \$F and \$B.
- The sire of these two bulls, Baldrige Forecaster, was the \$100,000 selection of Alta Genetics and maintains a 1.62 marbling EPD.
- Excellent herd sire prospects here in these two brothers.

### BALDRIDGE FORECASTER B160

### RRR Forecaster R0089

**2** REG: 19481602 | DOB: 01/19/19 | TAG: R0089

G A R Prophet  
**Baldrige Forecaster B160**  
 Baldrige Pratissa W165  
 baldrige Xpand x743  
**Pine View Ruby C023**  
 44 Ruby 2225

C R A Bextor 872 5205 608  
 G A R Objective 1885  
 GAR-EGL Protege  
 Baldrige Pratissia S4  
 Hoover Dam  
 Baldrige Queen S87  
 Boyd New Day 8005  
 B/R Ruby 1224

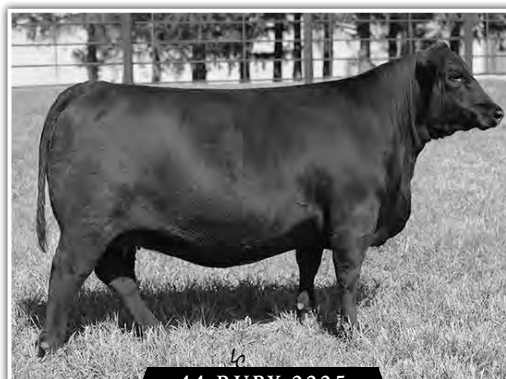
**Act BW**  
86  
**Adj WW**  
752  
**Adj YW**  
1168

ANGUSGS

CED	BW	WW	YW	MILK	CW	MARB	RE	\$M	\$B	\$C
11	0.4	62	116	27	50	1.39	0.65	59	181	294
15%	%	25%	20%	%	25%	1%	%	%	3%	3%



PINE VIEW RUBY C023



44 RUBY 2225


# LOT 3



## RRR Xpand R2938

3

REG: 19261973 | DOB: 09/22/18 | TAG: R2938

Hoover Dam  
**baldrige Xpand x743**  
 Baldrige Queen S87  
 Connealy Consensus 578B  
**Baldrige Pratissa C763**  
 Baldrige Pratissa W165

SydGen C C & 7  
 Erica of Ellston C124  
 Baldrige Navigator N5  
 Baldrige Queen N914  
 Connealy Consensus  
 Powsa of Conanga 687 7567  
 GAR-EGL Protege  
 Baldrige Pratissia S4

**Act BW**  
100  
**Adj WW**  
717  
**Adj YW**  
1232

**ANGUS**<sup>GS</sup>

CED	BW	WW	YW	MILK	CW	MARB	RE	\$M	\$B	\$C
5	1.7	87	157	30	78	0.75	0.84	52	200	311
%	%	1%	1%	15%	1%	25%	15%	%	1%	1%

- Recommended for heifers or cows.
- Ranks in top 25% for 18 different EPDS or \$values including top 1% for WW, YW, RADG, CW, \$F and \$B
- His dam is a featured donor owned with Baldrige Bros, NE and Spruce Mountain Ranch, CO.
- Baldrige Xpand X743 is one of the best sires we have ever used for his ability to perform in multiple areas of production.
- This bull's performance matches the paper.




BALDRIDGE XPAND X743

## RRR Xpand R0369

4

REG: 19481609 | DOB: 01/25/19 | TAG: R0369

Hoover Dam  
**baldrige Xpand x743**  
 Baldrige Queen S87  
 EF Commando 1366  
**Baldrige Isabel C029**  
 Baldrige Isabel Y69

SydGen C C & 7  
 Erica of Ellston C124  
 Baldrige Navigator N5  
 Baldrige Queen N914  
 EF Complement 8088  
 Riverbend Young Lucy W1470  
 Styles Upgrade J59  
 Baldrige Isabel T935

**Act BW**  
75  
**Adj WW**  
695  
**Adj YW**  
1177

**ANGUS**<sup>GS</sup>

CED	BW	WW	YW	MILK	CW	MARB	RE	\$M	\$B	\$C
11	-1.1	70	124	29	54	0.61	0.81	75	157	279
15%	10%	10%	10%	20%	20%	%	15%	10%	15%	10%

- Recommended for heifers or cows.
- Ranks in top 25% for 16 different EPDs or \$values.
- Recorded an impressive 114 RE ratio to post a impressive 1.39 sq in of RE per 100 lbs of scan wt.
- His dam, Baldrige Isabel C029, is one of the elite donors on the ranch and a direct daughter of Baldrige Isabel Y69.



BALDRIDGE ISABEL C029

# LOT 5



## RRR Xpand R0449

**5** REG: 19525206 | DOB: 01/27/19 | TAG: R0449

Hoover Dam  
**baldrige Xpand x743**  
 Baldrige Queen S87  
 LD Emblazon 999  
**Baldrige Isabel C273**  
 Baldrige Isabel T935

SydGen C C & 7  
 Erica of Ellston C124  
 Baldrige Navigator N5  
 Baldrige Queen N914  
 O C C Emblazon 854E  
 SH Forever Lady 3124 5118  
 Baldrige Kaboom K243 KCF  
 Baldrige Isabel P4527

Act BW  
**83**  
 Adj WW  
**683**  
 Adj YW  
**1070**

ANGUS<sup>GS</sup>

CED	BW	WW	YW	MILK	CW	MARB	RE	\$M	\$B	\$C
9	0.7	72	121	24	52	0.64	0.82	67	155	268
%	%	10%	15%	%	20%	%	15%	25%	20%	10%

## RRR Xpand R0499

**7** REG: 19481615 | DOB: 01/28/19 | TAG: R0499

Hoover Dam  
**baldrige Xpand x743**  
 Baldrige Queen S87  
 LD Emblazon 999  
**Baldrige Isabel C273**  
 Baldrige Isabel T935

SydGen C C & 7  
 Erica of Ellston C124  
 Baldrige Navigator N5  
 Baldrige Queen N914  
 O C C Emblazon 854E  
 SH Forever Lady 3124 5118  
 Baldrige Kaboom K243 KCF  
 Baldrige Isabel P4527

Act BW  
**86**  
 Adj WW  
**662**  
 Adj YW  
**1124**

ANGUS<sup>GS</sup>

CED	BW	WW	YW	MILK	CW	MARB	RE	\$M	\$B	\$C
5	0.9	74	133	27	56	0.35	1.08	55	150	250
%	%	5%	4%	%	15%	%	3%	%	25%	25%

- Recommended for heifers or cows.
- These full brothers on average rank in top 25% for 15 different EPDs or \$values.
- Their dam, Baldrige Isabel C273, is a maternal sister to Baldrige Isabel Y69 and owned with Zumbrunnen Angus, Lusk WY.
- Excellent combination of two elite lines of genetics developed at Baldrige Bros, NE.

## RRR Xpand R0539

**6** REG: 19481617 | DOB: 01/30/19 | TAG: R0539

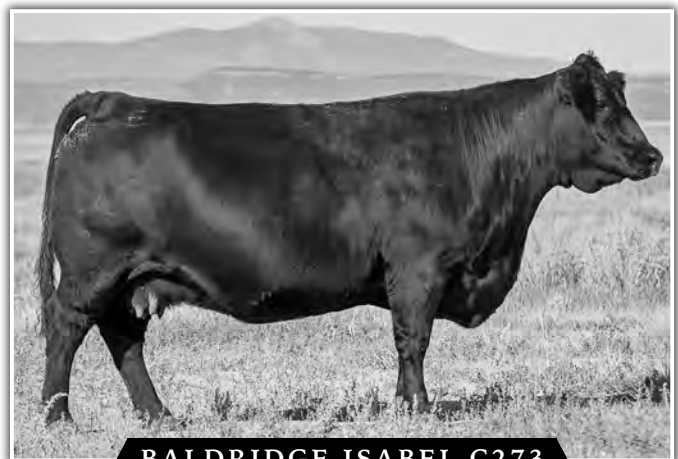
Hoover Dam  
**baldrige Xpand x743**  
 Baldrige Queen S87  
 LD Emblazon 999  
**Baldrige Isabel C273**  
 Baldrige Isabel T935

SydGen C C & 7  
 Erica of Ellston C124  
 Baldrige Navigator N5  
 Baldrige Queen N914  
 O C C Emblazon 854E  
 SH Forever Lady 3124 5118  
 Baldrige Kaboom K243 KCF  
 Baldrige Isabel P4527

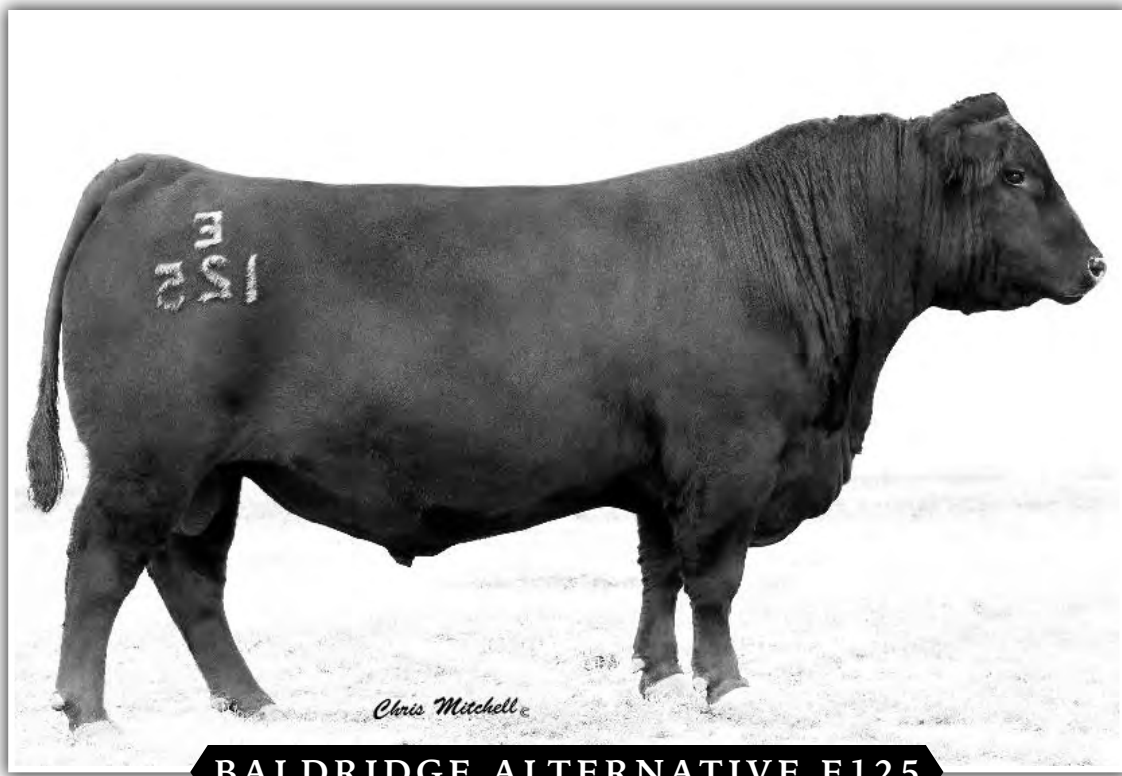
Act BW  
**88**  
 Adj WW  
**694**  
 Adj YW  
**1038**

ANGUS<sup>GS</sup>

CED	BW	WW	YW	MILK	CW	MARB	RE	\$M	\$B	\$C
5	0.8	66	114	28	43	0.51	0.93	67	151	263
%	%	20%	20%	25%	%	%	10%	25%	20%	15%



**BALDRIDGE ISABEL C273**



**BALDRIDGE ALTERNATIVE E125**


**LOT 8**



**RRR Alternative R0669**

**8**

REG: 19481649 | DOB: 02/02/19 | TAG: R0669

Poss Easy Impact 0119  
**Baldrige Alternative E125**  
 Baldrige Blackbird A030  
  
 G A R 100X  
**RRR Rita R0477**  
 DSA New Direction 1022

Poss Total Impact 745  
 Poss Elmaretta 736  
 Hoover Dam  
 Baldrige Blackbird X89  
 A A R Ten X 7008 S A  
 G A R 5050 New Design A91  
 B/R Future Direction 4268  
 Riverbend Rita S730

Act BW	76
Adj WW	794
Adj YW	1226

ANGUS<sup>GS</sup>

CED	BW	WW	YW	MILK	CW	MARB	RE	\$M	\$B	\$C
8	1.7	72	132	25	70	0.58	1.00	68	197	324
%	%	10%	4%	%	2%	%	5%	20%	1%	1%

- Recommended for heifers or cows.
- Ranks in top 25% for an excellent 18 different EPDS or \$values, including top 1% for RADG, \$F and \$B.
- Posted a 104 RE ratio with a 1.29 sq in of RE/100 lbs of scan wt.
- Dam is a sister to one of the best genetic crosses on the ranch, DSA New Direction 1022 daughters x Baldrige Alternative.
- Baldrige Alternative is our featured herd sire and has caught fire across the country for his ability to dominate type, add muscle and end product merit in a moderate, easy fleshing package.

**LOT 9**



**RRR Alternative R0889**

**9**

REG: 19487742 | DOB: 02/19/19 | TAG: R0889

Poss Easy Impact 0119  
**Baldrige Alternative E125**  
 Baldrige Blackbird A030  
  
 G A R 100X  
**RRR-7 Oaks Rita R0127**  
 DSA New Direction 1022

Poss Total Impact 745  
 Poss Elmaretta 736  
 Hoover Dam  
 Baldrige Blackbird X89  
 A A R Ten X 7008 S A  
 G A R 5050 New Design A91  
 B/R Future Direction 4268  
 Riverbend Rita S730

Act BW	67
Adj WW	708
Adj YW	1247

ANGUS<sup>GS</sup>

CED	BW	WW	YW	MILK	CW	MARB	RE	\$M	\$B	\$C
12	-1.2	69	124	28	60	0.95	1.03	50	187	293
10%	10%	15%	10%	25%	10%	15%	4%	%	2%	3%


- Recommended for heifers or cows.
- Ranks in top 25% for 16 different EPDS or \$values.
- Recorded a 107 RE ratio to post a 1.36 sq in of RE/100 Lbs of scan wt.
- His dam is in the RRR donor pen and owned with 7 Oaks Angus, IA and Hott Farms, IL.

**LOT 10**



**RRR Alternative R1419**

**10** REG: 19481583 | DOB: 03/25/19 | TAG: R1419

Poss Easy Impact 0119  
**Baldrige Alternative E125**  
 Baldrige Blackbird A030  
 G A R 100X  
**RRR Rita R0207**  
 DSA New Direction 1022

Poss Total Impact 745  
 Poss Elmaretta 736  
 Hoover Dam  
 Baldrige Blackbird X89  
 A A R Ten X 7008 S A  
 G A R 5050 New Design A91  
 B/R Future Direction 4268  
 Riverbend Rita S730

**Act BW**  
73  
**Adj WW**  
697  
**Adj YW**  
ANGUS<sup>GS</sup>

CED	BW	WW	YW	MILK	CW	MARB	RE	\$M	\$B	\$C
13	-1.4	54	108	22	49	0.87	0.48	58	172	281
10%	10%	%	%	%	%	15%	%	%	10%	5%


- Recommended for heifers or cows.
- Ranks in top 25% for 13 different EPDS or \$values.
- Dam ranks in top 25% for 18 different EPDS or \$values.
- Young bull that's worth the wait.

**LOT 12**



**RRR Alternative R0759**

**12** REG: 19487748 | DOB: 02/10/19 | TAG: R0759

Poss Easy Impact 0119  
**Baldrige Alternative E125**  
 Baldrige Blackbird A030  
 PA Valor 201  
**RRR Blackbird E200**  
 Baldrige Blackbird Z308

Poss Total Impact 745  
 Poss Elmaretta 736  
 Hoover Dam  
 Baldrige Blackbird X89  
 B/R New Day 454  
 COR Blackcap 6224 Z38 Midlnd  
 baldrige Xceed x704  
 Baldrige Blackbird W237

**Act BW**  
80  
**Adj WW**  
640  
**Adj YW**  
1232  
 ANGUS<sup>GS</sup>

CED	BW	WW	YW	MILK	CW	MARB	RE	\$M	\$B	\$C
1	3.5	75	138	16	66	0.97	1.13	27	197	283
%	%	4%	3%	%	3%	10%	2%	%	1%	5%


- Recommended for cows.
- Ranks in top 25% for 13 different EPDS or \$values.
- Posted a big 123 marbling ratio with a 6.27 marbling score with .19 BF.
- Dam is a nice daughter of PA Valor that ranks in the top 25% for 12 different EPDS or \$values.

**LOT 11**



**RRR Alternative R0659**

**11** REG: 19481648 | DOB: 02/02/19 | TAG: R0659

Poss Easy Impact 0119  
**Baldrige Alternative E125**  
 Baldrige Blackbird A030  
 EF Commando 1366  
**RRR Rita R0507**  
 DSA New Direction 1022

Poss Total Impact 745  
 Poss Elmaretta 736  
 Hoover Dam  
 Baldrige Blackbird X89  
 EF Complement 8088  
 Riverbend Young Lucy W1470  
 B/R Future Direction 4268  
 Riverbend Rita S730


**Act BW**  
70  
**Adj WW**  
708  
**Adj YW**  
1282  
 ANGUS<sup>GS</sup>

CED	BW	WW	YW	MILK	CW	MARB	RE	\$M	\$B	\$C
8	0.6	67	120	20	58	0.86	0.88	69	177	299
%	%	15%	15%	%	10%	15%	10%	20%	4%	2%

- Recommended for heifers or cows.
- Ranks in top 25% for 12 different EPDS or \$values.
- Recorded a 112 marbling and 104 RE ratio.
- Dam is nice uddered and big numbered daughter of the \$150,000 DSA New Direction 1022.

**RRR Alternative R0049**

**13** REG: 19624782 | DOB: 01/18/19 | TAG: R0049

Poss Easy Impact 0119  
**Baldrige Alternative E125**  
 Baldrige Blackbird A030  
 Baldrige Abundance A174  
**MVR Plattemere Queen E050**  
 Plattemere Queen W 993

Poss Total Impact 745  
 Poss Elmaretta 736  
 Hoover Dam  
 Baldrige Blackbird X89  
 Baldrige Waylon W34  
 Baldrige Princess T17  
 Connealy Impression  
 Plattemere Queen W 857


**Act BW**  
61  
**Adj WW**  
619  
**Adj YW**  
1251  
 ANGUS<sup>GS</sup>

CED	BW	WW	YW	MILK	CW	MARB	RE	\$M	\$B	\$C
13	-2.3	57	103	25	46	1.15	0.65	60	168	278
10%	3%	%	%	%	%	4%	%	%	10%	10%

- Recommended for heifers or cows.
- Ranks in top 25% for 11 different EPDS or \$values.
- Posted a 122 marbling ratio.

**RRR Alternative R0639**

**14** REG: 19646352 | DOB: 02/02/19 | TAG: R0639

Poss Easy Impact 0119  
**Baldrige Alternative E125**  
 Baldrige Blackbird A030  
 Connealy Amazing 0651  
**RRR Bonnie E143**  
 Baldrige Bonnie Y195

Poss Total Impact 745  
 Poss Elmaretta 736  
 Hoover Dam  
 Baldrige Blackbird X89  
 GDAR Game Day 449  
 Blue Lilly of Conanga 16  
 Styles Upgrade J59  
 Baldrige Bonnie W232

**Act BW**  
75  
**Adj WW**  
731  
**Adj YW**  
1201  
 ANGUS<sup>GS</sup>

CED	BW	WW	YW	MILK	CW	MARB	RE	\$M	\$B	\$C
5	2.3	70	134	19	65	0.77	0.71	41	191	289
%	%	10%	4%	%	4%	25%	25%	%	1%	4%

- Recommended for heifers or cows.
- Ranks in top 1% for genomic profiles on CW and YW
- Update EPDS prior to the sale.

## RRR Alternative R5019

**15**

REG: 19646016 | DOB: 02/16/19 | TAG: R5019

Poss Easy Impact 0119  
**Baldrige Alternative E125**  
 Baldrige Blackbird A030  
 Sitz Upward 307R  
**STF Forever Lady B407**  
 RCF Forever Lady U351

Poss Total Impact 745  
 Poss Elmaretta 736  
 Hoover Dam  
 Baldrige Blackbird X89  
 Connealy Onward  
 Sitz Henrietta Pride 81M  
 S S Objective T510 OT26  
 S V F Forever Lady P122

Act BW  
**78**  
 Adj WW  
**662**  
 Adj YW  
**1160**

ANGUS<sup>GS</sup>

CED	BW	WW	YW	MILK	CW	MARB	RE	\$M	\$B	\$C
9	1.0	72	131	24	58	0.86	0.69	49	171	271
%	%	10%	5%	%	10%	15%	%	%	10%	10%

- Recommended for heifers or cows.
- Dam ranks in top 25% for 14 different EPDS or \$values.
- Updated EPDS prior to sale.

## RRR Alternative 9029

**16**

REG: 19517377 | DOB: 02/11/19 | TAG: 9029

Poss Easy Impact 0119  
**Baldrige Alternative E125**  
 Baldrige Blackbird A030  
 McKellar Acton  
**McKellar Gigi Ann 4002**  
 Mc Gigi Anna 1115

Poss Total Impact 745  
 Poss Elmaretta 736  
 Hoover Dam  
 Baldrige Blackbird X89  
 KMK Alliance 6595 I87  
 Blinda of Conanga 004  
 Hoover Dam  
 Miss MCK Lead ON 5009

Act BW  
**86**  
 Adj WW  
**652**  
 Adj YW  
**1196**

ANGUS<sup>GS</sup>

CED	BW	WW	YW	MILK	CW	MARB	RE	\$M	\$B	\$C
5	2.5	65	117	17	54	0.54	0.66	36	164	249
%	%	20%	15%	%	20%	%	%	%	10%	25%

- Recommend for cows.
- Ranks in top 25% for 10 different EPDS or \$values.
- Dam ranks in top 10% for CW, RADG and \$B.



**SS SAMSON C4701**

## RR Samson R0739

**17**

REG: 19492152 | DOB: 02/08/19 | TAG: R0739

Plattemere Weigh Up K360  
**SS Samson C4701**  
 SS Isabel Z720  
 Baldrige Bronc  
**MVR Rita E717**  
 RWA Ingenuity W43

Sitz Upward 307R  
 Barbara of Plattemere 337  
 G A R Progression  
 SS Isabel T336  
 EF Commando 1366  
 Baldrige Isabel Y69  
 G A R Ingenuity  
 G A R Objective A706

Act BW  
**75**  
 Adj WW  
**790**  
 Adj YW  
**1115**

ANGUS<sup>GS</sup>

CED	BW	WW	YW	MILK	CW	MARB	RE	\$M	\$B	\$C
5	1.9	93	160	27	79	0.54	1.01	53	187	296
%	%	1%	1%	%	1%	%	4%	%	2%	2%

- Recommended for heifers or cows.
- Ranks in top 25% for 15 different EPDS or \$values, including top 1% WW, YW, CW, \$W and \$F.
- Posted a 104 RE ratio including a 1.38 sq in of RE/100 Lbs of scan wt.
- His sire is one of the good breeding bulls in the country for combination of multiple areas of production.
- His dam ranks in an incredible 20 different EPDS or \$values including top 1% for WW, YW, RADG and Docility.



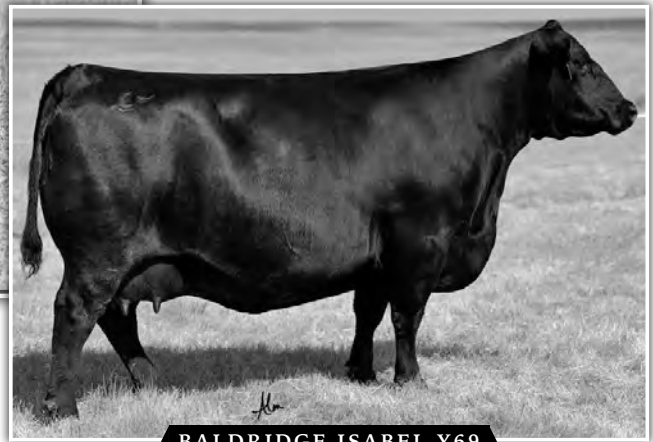




**LOT 18**



**PINE VIEW  
RUBY C031**



**BALDRIDGE ISABEL Y69**

**RRR Samson R2498**

**18** REG: 19507674 | DOB: 09/06/18 | TAG: R2498

Plattemere Weigh Up K360  
**SS Samson C4701**  
 SS Isabel Z720  
 baldridge Xpand x743  
**Pine View Ruby C031**  
 44 Ruby 2225

Sitz Upward 307R  
 Barbara of Plattemere 337  
 G A R Progression  
 SS Isabel T336  
 Hoover Dam  
 Baldridge Queen S87  
 Boyd New Day 8005  
 B/R Ruby 1224

<b>Act BW</b>	<b>75</b>
<b>Adj WW</b>	<b>796</b>
<b>Adj YW</b>	<b>1343</b>

ANGUS<sup>GS</sup>

CED	BW	WW	YW	MILK	CW	MARB	RE	\$M	\$B	\$C
9	0.6	67	118	23	52	0.74	0.85	62	170	282
%	%	15%	15%	%	20%	25%	15%	%	10%	5%

- Recommended for heifers or cows.
- Ranks in top 25% for 12 different EPDs or \$values.
- Dam sold as a fall pair in our Fall Sale
- A powerful, impressive bull with base width and muscle. Will be a sale day favorite!

**RRR Samson R2518**

**19** REG: 19612919 | DOB: 09/07/18 | TAG: R2518

Plattemere Weigh Up K360  
**SS Samson C4701**  
 SS Isabel Z720  
 EF Commando 1366  
**Baldridge Isabel C029**  
 Baldridge Isabel Y69

Sitz Upward 307R  
 Barbara of Plattemere 337  
 G A R Progression  
 SS Isabel T336  
 EF Complement 8088  
 Riverbend Young Lucy W1470  
 Styles Upgrade J59  
 Baldridge Isabel T935

<b>Act BW</b>	<b>70</b>
<b>Adj WW</b>	<b>745</b>
<b>Adj YW</b>	<b>1206</b>

ANGUS<sup>GS</sup>

CED	BW	WW	YW	MILK	CW	MARB	RE	\$M	\$B	\$C
4	0.9	73	123	23	48	0.82	0.33	43	147	234
%	%	10%	10%	%	%	20%	%	%	25%	%


- Recommended for heifers or cows.
- Ranks in top 25% for 10 different EPDS or \$values.
- Dam is full sister to the Great Eight including Baldridge Bronc, Baldridge 38 Special and Baldridge Compass.

**LOT 20**



**RRR Samson R0699**

**20** REG: 19487747 | DOB: 02/04/19 | TAG: R0699

Plattemere Weigh Up K360  
**SS Samson C4701**  
 SS Isabel Z720  
 Baldridge Bronc  
**RRR Forever Lady E035**  
 Baldridge Forever Lady B751

Sitz Upward 307R  
 Barbara of Plattemere 337  
 G A R Progression  
 SS Isabel T336  
 EF Commando 1366  
 Baldridge Isabel Y69  
 Baldridge Jennings Z064  
 Baldridge Forever Lady T930

Act BW	75
Adj WW	861
Adj YW	1288

**ANGUSGS**

CED	BW	WW	YW	MILK	CW	MARB	RE	\$M	\$B	\$C
9	1.8	86	145	26	72	0.67	0.67	60	172	283
%	%	1%	1%	%	1%	%	%	%	10%	5%


- Recommended for heifers or cows.
- Ranks in top 25% for 15 different EPDS or \$values, including top 1% for WW, YW, CW and \$W.
- Big RE with a 109 ratio to post a 1.27 sq in of RE per 100 lbs of scan wt.
- Big birth to yearling weight spread on this excellent calf.

**LOT 22**



**RRR Samson R0209**

**22** REG: 19492142 | DOB: 01/22/19 | TAG: R0209

Plattemere Weigh Up K360  
**SS Samson C4701**  
 SS Isabel Z720  
 G A R Ingenuity  
**RWA Ingenuity W43**  
 G A R Objective A706

Sitz Upward 307R  
 Barbara of Plattemere 337  
 G A R Progression  
 SS Isabel T336  
 G A R New Design 5050  
 G A R Objective 1067  
 S S Objective T510 OT26  
 G A R Integrity T465

Act BW	94
Adj WW	609
Adj YW	1035

**ANGUSGS**

CED	BW	WW	YW	MILK	CW	MARB	RE	\$M	\$B	\$C
4	2.7	80	133	17	74	0.49	0.98	36	178	267
%	%	2%	4%	%	1%	%	5%	%	4%	10%


- Recommended for cows.
- Ranks in top 25% for 13 different EPDS or \$values
- Dam is deceased but has left a tremendous set of daughters at the ranch.

**LOT 21**



**RRR Samson R0589**

**21** REG: 19521573 | DOB: 01/31/19 | TAG: R0589

Plattemere Weigh Up K360  
**SS Samson C4701**  
 SS Isabel Z720  
 baldridge Xpand x743  
**Pine View Rita D011**  
 Pine View Rita B017

Sitz Upward 307R  
 Barbara of Plattemere 337  
 G A R Progression  
 SS Isabel T336  
 Hoover Dam  
 Baldridge Queen S87  
 Baldridge Waylon W34  
 Pine View Rita X049

Act BW	89
Adj WW	738
Adj YW	1338


**ANGUSGS**

CED	BW	WW	YW	MILK	CW	MARB	RE	\$M	\$B	\$C
3	1.6	75	142	28	63	0.67	0.66	34	180	267
%	%	4%	2%	25%	5%	%	%	%	3%	10%

- Recommended for cows.
- Ranks in top 25% for 14 different EPDS or \$values.
- Dam is a featured donor for Pine View Angus and Mountain View Ranch, TN. She ranks in top 25% for 19 different EPDS or \$values and was a featured high seller at the Foundation Female Sale, CO.

**RRR Samson R0239**

**23** REG: 19492143 | DOB: 01/22/19 | TAG: R0239

Plattemere Weigh Up K360  
**SS Samson C4701**  
 SS Isabel Z720  
 G A R Ingenuity  
**RWA Ingenuity W43**  
 G A R Objective A706

Sitz Upward 307R  
 Barbara of Plattemere 337  
 G A R Progression  
 SS Isabel T336  
 G A R New Design 5050  
 G A R Objective 1067  
 S S Objective T510 OT26  
 G A R Integrity T465

Act BW	75
Adj WW	632
Adj YW	1018


**ANGUSGS**

CED	BW	WW	YW	MILK	CW	MARB	RE	\$M	\$B	\$C
15	-1.4	63	108	29	40	0.93	0.52	52	144	239
2%	10%	25%	%	20%	%	15%	%	%	%	%

- Recommended for heifers or cows.
- Ranks in to 25% for 12 different EPDS or \$values.
- One of the highest CEDs in offering with a 102 Marbling ratio.

**RRR Samson R0379**

**24** REG: 19492146 | DOB: 01/25/19 | TAG: R0379

Plattemere Weigh Up K360  
**SS Samson C4701**  
 SS Isabel Z720  
 Basin Payweight 1682  
**MVR Sarah E715**  
 Yon Sarah B433

Sitz Upward 307R  
 Barbara of Plattemere 337  
 G A R Progression  
 SS Isabel T336  
 Basin Payweight 006S  
 21AR O Lass 7017  
 Yon Future Focus T219  
 Yon Sarah U555

Act BW	80
Adj WW	769
Adj YW	1196

**ANGUSGS**

CED	BW	WW	YW	MILK	CW	MARB	RE	\$M	\$B	\$C
2	1.3	73	118	30	55	0.77	0.62	82	158	287
%	%	10%	15%	15%	15%	25%	%	2%	15%	4%

- Recommended for larger heifers or cows.
- Ranks in top 25% for 13 different EPDS or \$values.
- Posted an 104 RE ratio
- Dam is an easy fleshing daughter of Basin Payweight 1682.

## RRR Samson R0359

25

REG: 19520338 | DOB: 01/25/19 | TAG: R0359

Plattemere Weigh Up K360

Sitz Upward 307R  
Barbara of Plattemere 337  
G A R Progression  
SS Isabel T336  
Hoover Dam  
Baldrige Queen S87  
Baldrige Waylon W34  
Pine View Rita X049

Act BW  
79  
Adj WW  
767  
Adj YW  
1042

ANGUS<sup>GS</sup>

SS Samson C4701

SS Isabel Z720



baldrige Xpand x743

Pine View Rita D011

Pine View Rita B017

CED	BW	WW	YW	MILK	CW	MARB	RE	\$M	\$B	\$C
12	-0.1	73	132	25	63	0.86	0.52	49	181	284
10%	25%	10%	4%	%	5%	15%	%	%	3%	5%

- Recommended for heifers or cows.
- Ranks in top 25% for 18 different EPDS or \$values.
- Full brother to lot 21.

## RRR Samson R0139

28

REG: 19492139 | DOB: 01/20/19 | TAG: R0139

Plattemere Weigh Up K360

Sitz Upward 307R  
Barbara of Plattemere 337  
G A R Progression  
SS Isabel T336  
EF Commando 1366  
Baldrige Isabel Y69  
G A R Ingenuity  
G A R Objective A706

Act BW  
64  
Adj WW  
711  
Adj YW  
1113

ANGUS<sup>GS</sup>

SS Samson C4701

SS Isabel Z720



Baldrige Bronc

MVR Rita E775

RWA Ingenuity W43

CED	BW	WW	YW	MILK	CW	MARB	RE	\$M	\$B	\$C
9	0.0	70	111	14	39	0.55	0.64	60	132	231
%	25%	10%	25%	%	%	%	%	%	%	%

- Recommended for heifers or cows.

## RRR Samson R0509

26

REG: 19643818 | DOB: 01/28/19 | TAG: R0509

Plattemere Weigh Up K360

Sitz Upward 307R  
Barbara of Plattemere 337  
G A R Progression  
SS Isabel T336  
PA Safeguard 021  
Poss Eirca 8502  
EF Commando 1366  
Baldrige Rachel Y244

Act BW  
76  
Adj WW  
774  
Adj YW  
1251

ANGUS<sup>GS</sup>

SS Samson C4701

SS Isabel Z720



Poss Bodyguard

RRR Rachel E113

Baldrige Rachel C004

CED	BW	WW	YW	MILK	CW	MARB	RE	\$M	\$B	\$C
9	0.7	85	140	27	59	0.87	0.83	65	170	285
%	%	1%	2%	%	10%	15%	15%	%	10%	4%

- Recommended for heifers or cows.
- Posted a impressive 121 Marbling ratio.
- EPDS updated prior to sale.

## RRR Samson R2798

29

REG: 19218022 | DOB: 09/18/18 | TAG: R2798

Plattemere Weigh Up K360

Sitz Upward 307R  
Barbara of Plattemere 337  
G A R Progression  
SS Isabel T336  
Connealy Confidence 0100  
Fortunes 4412 Ethelda 742  
Baldrige Waylon W34  
Baldrige Treasure R256

Act BW  
93  
Adj WW  
690  
Adj YW  
1213

ANGUS<sup>GS</sup>

SS Samson C4701

SS Isabel Z720



Fortunes Conquest 224

Baldrige Treasure C066

Baldrige Treasure Z029

CED	BW	WW	YW	MILK	CW	MARB	RE	\$M	\$B	\$C
-2	3.4	80	128	24	61	0.63	0.50	57	150	252
%	%	2%	10%	%	10%	%	%	%	25%	20%

- Recommended for cows
- Posted ratios of 103 for marbling and 105 for RE.

## RRR Samson 9024

27

REG: 19643055 | DOB: 02/08/19 | TAG: 9024

Plattemere Weigh Up K360

Sitz Upward 307R  
Barbara of Plattemere 337  
G A R Progression  
SS Isabel T336  
Baldrige Waylon W34  
Baldrige Blossom U51  
Styles Upgrade J59  
Baldrige Isabel T935

Act BW  
82  
Adj WW  
609  
Adj YW  
1230

ANGUS<sup>GS</sup>

SS Samson C4701

SS Isabel Z720



Baldrige Download Z013

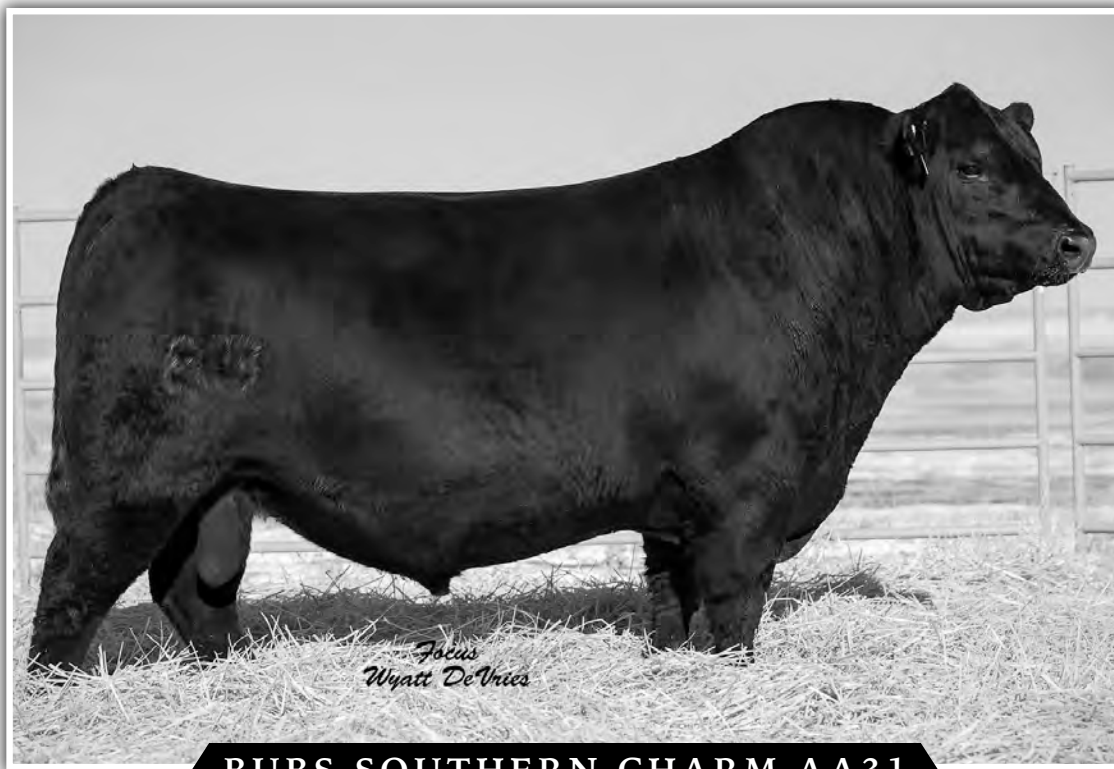
Baldrige ISABELC257

Baldrige Isabel Y69

CED	BW	WW	YW	MILK	CW	MARB	RE	\$M	\$B	\$C
15	-1.3	66	109	23	43	0.79	1.03	63	164	276
2%	10%	20%	%	%	%	20%	4%	%	10%	10%

- Recommended for heifers or cows.
- Ranks in top 25% for 11 different EPDS or \$values.
- His dam is past donor cow for RRR and currently is a donor cow for 2S Angus, MO. She is also a own daughter of Baldrige Isabel Y69.





**BUBS SOUTHERN CHARM AA31**

**LOT 30**



**30** REG: 19481624 | DOB: 03/23/19 | TAG: R1399

Silveiras Conversion 8064  
**BUBS Southern Charm AA31**  
 Hickory Hill Erica 009  
 G A R 100X  
**Chair Rock 100X 6017**  
 Chair Rock 5050 G A R 1131

BT Crossover 758N  
 EXG Saras Dream S609 R3  
 Connealy Stimulus 8419  
 Hickory Hill Erica TA32  
 A A R Ten X 7008 S A  
 G A R 5050 New Design A91  
 G A R New Design 5050  
 Chair Rock Objective 7042

**Act BW**  
75  
**Adj WW**  
716  
**Adj YW**  
ANGUS<sup>GS</sup>

CED	BW	WW	YW	MILK	CW	MARB	RE	\$M	\$B	\$C
8	1.8	65	124	44	63	1.18	0.90	61	201	322
%	%	20%	10%	1%	5%	4%	10%	%	1%	1%

- Recommended for heifers or cows.
- Ranks in top 25% for 18 different EPDS or \$values.
- Herd sire prospect here with an excellent EPD profile, but was to young to ratio but posted a 7.01 Marbling score.
- His dam is one of the good young cows on the ranch and is a maternal sister to G A R Prophet K263 and is also owned with Pine View Angus, IA.
- Bubs Southern Charm has received tremendous use across the country and dominates type. His end product merit is real and top end. Be a top set of sons of him across the country in 2020.

**LOT 31**



**31** REG: 19492145 | DOB: 01/22/19 | TAG: R0259

Silveiras Conversion 8064  
**BUBS Southern Charm AA31**  
 Hickory Hill Erica 009  
 Baldridge Bronc  
**MVR Rita E720**  
 RWA Ingenuity W43

BT Crossover 758N  
 EXG Saras Dream S609 R3  
 Connealy Stimulus 8419  
 Hickory Hill Erica TA32  
 EF Commando 1366  
 Baldridge Isabel Y69  
 G A R Ingenuity  
 G A R Objective A706

**Act BW**  
72  
**Adj WW**  
742  
**Adj YW**  
1179  
 ANGUS<sup>GS</sup>

CED	BW	WW	YW	MILK	CW	MARB	RE	\$M	\$B	\$C
8	0.9	76	124	26	54	1.13	1.05	47	178	278
%	%	4%	10%	%	20%	5%	3%	%	4%	10%

- Recommended for heifers or cows.
- Ranks in the top 25% for 12 different EPDs or \$Values, including top 5% or better WW, MARB, RE, and \$B.
- Posted ratios of 109 for IMF and 105 for RE.
- Very good bull that has marbled muscle.

### RRR Southern Charm R0649

**32**

REG: 19481652 | DOB: 02/02/19 | TAG: R0649

Silveiras Conversion 8064  
**BUBS Southern Charm AA31**  
 Hickory Hill Erica 009  
  
 EF Commando 1366  
**Baldrige Isabel D109**  
 Baldrige Isabel A041

BT Crossover 758N  
 EXG Saras Dream S609 R3  
 Connealy Stimulus 8419  
 Hickory Hill Erica TA32  
 EF Complement 8088  
 Riverbend Young Lucy W1470  
 Styles Upgrade J59  
 Baldrige Isabel T935

**Act BW**  
82  
**Adj WW**  
736  
**Adj YW**  
1234  
**ANGUS**<sup>GS</sup>

CED	BW	WW	YW	MILK	CW	MARB	RE	\$M	\$B	\$C
8	0.8	66	112	28	54	0.69	0.93	80	157	284
%	%	20%	25%	25%	20%	%	10%	3%	15%	5%

- Recommended for heifers or cows.
- Ranked in the top 25% for 13 different EPDs and \$Values.
- Posts an impressive RE ratio of 112.
- His dam is a Commando out of a full sister to the famous Baldrige Isabel Y69 making her a full sister in blood to two of our favorite donors, Baldrige Isabel C029 and Baldrige Isabel E040.

### RRR Southern Charm R0189

**34**

REG: 19492140 | DOB: 01/22/19 | TAG: R0189

Silveiras Conversion 8064  
**BUBS Southern Charm AA31**  
 Hickory Hill Erica 009  
  
 Baldrige Bronc  
**MVR Blackcap E016**  
 VAN New Design 9320

BT Crossover 758N  
 EXG Saras Dream S609 R3  
 Connealy Stimulus 8419  
 Hickory Hill Erica TA32  
 EF Commando 1366  
 Baldrige Isabel Y69  
 G A R New Design 5050  
 G A R Objective 3557

**Act BW**  
74  
**Adj WW**  
685  
**Adj YW**  
1173  
**ANGUS**<sup>GS</sup>


CED	BW	WW	YW	MILK	CW	MARB	RE	\$M	\$B	\$C
8	1.3	66	117	30	39	0.97	0.41	66	143	251
%	%	20%	15%	15%	%	10%	%	25%	%	25%

- Recommended for larger heifers and cows.
- Another Southern Charm son with an impressive EPD profile, ranking in the top 25% for 16 different EPDs or \$Values.
- Posted an outstanding ratio of 131 for IMF.

### RRR Southern Charm R0559

**33**

REG: 19492149 | DOB: 01/30/19 | TAG: R0559

Silveiras Conversion 8064  
**BUBS Southern Charm AA31**  
 Hickory Hill Erica 009  
  
 G A R Sunrise  
**Bridges Sunrise 533**  
 Bridges Prediction 269

BT Crossover 758N  
 EXG Saras Dream S609 R3  
 Connealy Stimulus 8419  
 Hickory Hill Erica TA32  
 MCC Daybreak  
 G A R Objective R227  
 G A R Prediction  
 G A R Objective 1885

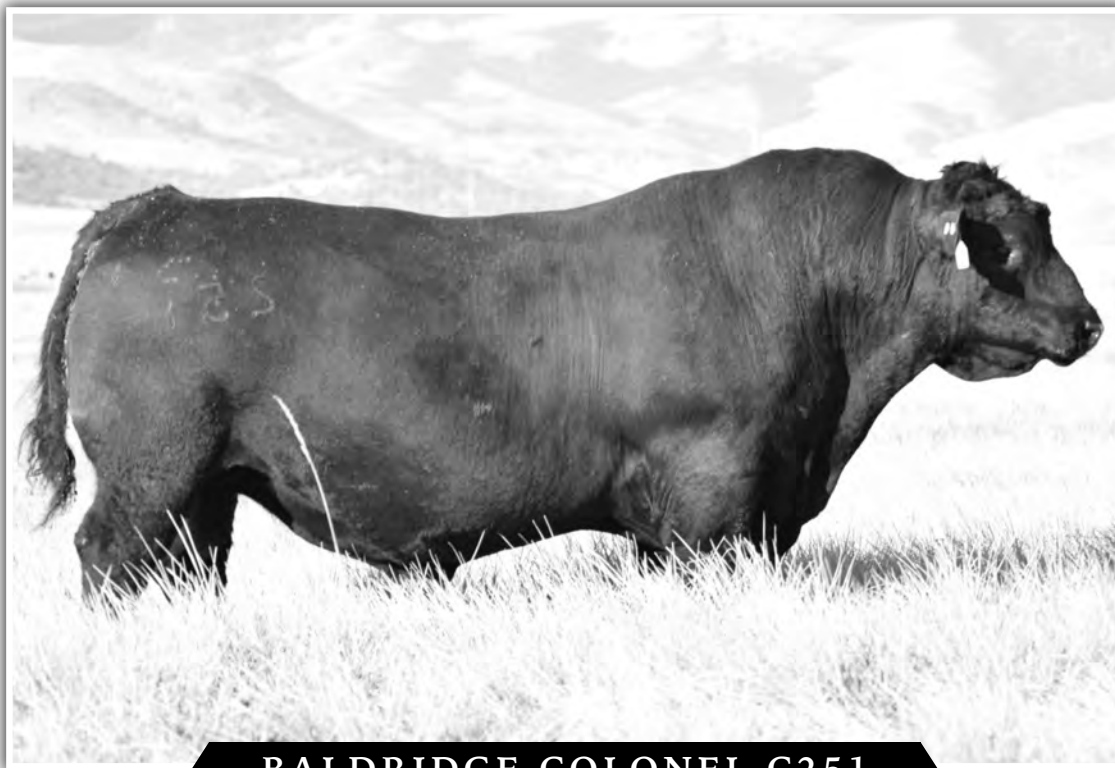
**Act BW**  
89  
**Adj WW**  
668  
**Adj YW**  
1124  
**ANGUS**<sup>GS</sup>

CED	BW	WW	YW	MILK	CW	MARB	RE	\$M	\$B	\$C
11	1.5	70	124	27	55	0.95	0.88	46	179	278
15%	%	10%	10%	%	15%	15%	10%	%	3%	10%

- Recommended for heifers and cows.
- Ranks in the top 15% or better for WW, YW, CW, MARB and RE, as well as top 3% in \$B.
- Donor dam is owned with Mountain View Ranch, TN.

*Where the  
 Grasslands meet  
 the Rockies!*





**BALDRIDGE COLONEL C251**



**35** **RRR Colonel R2038**  
 REG: 19499019 | DOB: 07/20/18 | TAG: R2038

baldrige Xpand x743  
**Baldrige Colonel C251**  
 Baldrige Isabel Y69  
 PA Valor 201  
**SCC Rita 6422**  
 SCC Rita 2810

Hoover Dam  
 Baldrige Queen S87  
 Styles Upgrade J59  
 Baldrige Isabel T935  
 B/R New Day 454  
 COR Blackcap 6224 Z38 MidInd  
 Sitz Upward 307R  
 LHR Rita 5369-0933

<b>Act BW</b>	<b>72</b>
<b>Adj WW</b>	<b>761</b>
<b>Adj YW</b>	<b>1196</b>

ANGUS<sup>GS</sup>

CED	BW	WW	YW	MILK	CW	MARB	RE	\$M	\$B	\$C
4	2.0	88	152	14	65	0.43	0.79	40	154	240
%	%	1%	1%	%	4%	%	20%	%	20%	%

- Recommended for cows.
- Moderate and thick Colonel son that ranks top 1% in both WW and YW.
- Colonel needs little introduction as the \$580,000 Baldrige Isabel Y69 son continues to impress across the country.
- Good bull that will really add some pounds, one of our favorites in the offering.



**36** **RRR Colonel F816**  
 REG: 19642552 | DOB: 08/12/18 | TAG: F816

baldrige Xpand x743  
**Baldrige Colonel C251**  
 Baldrige Isabel Y69  
 G A R QuanaH 687L  
**Ogeechee Miss Wix 3316**  
 Ogeechee Miss Wix 0089

Hoover Dam  
 Baldrige Queen S87  
 Styles Upgrade J59  
 Baldrige Isabel T935  
 G A R Predestined  
 G A R Objective 1885  
 Connealy All Around  
 Circle G Miss Wix 668

<b>Act BW</b>	<b>82</b>
<b>Act WW</b>	<b>735</b>
<b>Adj YW</b>	<b>960</b>

ANGUS<sup>GS</sup>

CED	BW	WW	YW	MILK	CW	MARB	RE	\$M	\$B	\$C
2	3.0	83	147	20	66	1.61	0.91	55	206	322
%	%	1%	1%	%	3%	1%	10%	%	1%	1%

- Recommended for cows.
- Another Colonel son here that has an extremely impressive EPD profile.
- Ranks in the 1% for WW, YW, MARB, \$G, and \$B along with elite \$C of 322.
- The #1 marbling Colonel son in the country with an EPD of 1.61.
- Sells with 5 full brothers, lots 37 and 42-45. Their dam, Ogeechee Miss Wix 0089, ranks in the top 3% for \$B, top 2% for CW, and top 1% for MARB.

**LOT 37**



**RRR Colonel F815**

**37** REG: 19642554 | DOB: 09/07/18 | TAG: F815

baldrige Xpand x743 Hoover Dam  
**Baldrige Colonel C251** Baldrige Queen S87  
 Baldrige Isabel Y69 Styles Upgrade J59  
 G A R Quanah 687L Baldrige Isabel T935  
**Ogeechee Miss Wix 3316** G A R Predestined  
 Ogeechee Miss Wix 0089 Connealy All Around  
 Circle G Miss Wix 668

**Act BW**  
79  
**Adj WW**  
607  
**Adj YW**  
1109  
**ANGUSGS**

CED	BW	WW	YW	MILK	CW	MARB	RE	\$M	\$B	\$C
4	2.7	78	133	22	67	0.94	1.00	67	178	298
%	%	3%	4%	%	3%	15%	5%	25%	4%	2%

- Recommended for cows.
- Full brother to lots 36 and 42-45.
- Ranks in the top 5% for 9 different EPDs or \$Values including WW, YW, and \$B.
- Another Colonel son that will pack on the pounds.

**RRR Colonel R2338**

**38** REG: 19224340 | DOB: 08/28/18 | TAG: R2338

baldrige Xpand x743 Hoover Dam  
**Baldrige Colonel C251** Baldrige Queen S87  
 Baldrige Isabel Y69 Styles Upgrade J59  
 Pine View 7125 P63 Baldrige Isabel T935  
**RRR Priscilla C13** G A R Objective 7125  
 Raven Priscilla 3231 S V F Woodlawn Rita U016  
 Raven Thunder 338  
 Raven Priscilla 4007

**Act BW**  
82  
**Act WW**  
838  
**Adj YW**  
1067  
**ANGUSGS**

CED	BW	WW	YW	MILK	CW	MARB	RE	\$M	\$B	\$C
8	-0.1	69	119	32	50	0.81	0.78	81	152	278
%	25%	15%	15%	10%	25%	20%	20%	2%	20%	10%

- Recommended for heifers and cows.
- Another Colonel son with a solid EPD profile ranking in the top 25% for 14 different EPDs or \$Values.

**RRR Colonel R5008**

**39** REG: 19645974 | DOB: 09/21/18 | TAG: R5008

baldrige Xpand x743 Hoover Dam  
**Baldrige Colonel C251** Baldrige Queen S87  
 Baldrige Isabel Y69 Styles Upgrade J59  
 G A R Prophet Baldrige Isabel T935  
**Bridges Prophet 445** C R A Bextor 872 5205 608  
 Bridges 5050 New Design 171 G A R Objective 1885  
 G A R New Design 5050  
 G A R Future Direction M85

**Act BW**  
72  
**Adj WW**  
580  
**Adj YW**  
1082  
**ANGUSGS**

CED	BW	WW	YW	MILK	CW	MARB	RE	\$M	\$B	\$C
7	0.8	66	117	27	43	0.89	0.68	62	154	262
%	%	20%	15%	%	%	15%	%	%	20%	15%

- Recommended for heifers or cows.
- Ranks in top 25% for 9 different EPDs or \$Values.

**RRR Colonel R2058**

**40** REG: 19499020 | DOB: 07/28/18 | TAG: R2058

baldrige Xpand x743 Hoover Dam  
**Baldrige Colonel C251** Baldrige Queen S87  
 Baldrige Isabel Y69 Styles Upgrade J59  
 PA Valor 201 Baldrige Isabel T935  
**SCC Forever Lady 6427** B/R New Day 454  
 LHR Forever Lady 0933 COR Blackcap 6224 Z38 MidInd  
 B/R Future Direction 4268  
 CCA Forever Lady 6493

**Act BW**  
87  
**Adj WW**  
782  
**Adj YW**  
1251  
**ANGUSGS**

CED	BW	WW	YW	MILK	CW	MARB	RE	\$M	\$B	\$C
-2	5.2	80	139	24	67	0.68	1.12	43	173	267
%	%	2%	2%	%	3%	%	2%	%	5%	10%

- Recommended for cows.
- Ranks in the top 5% for WW, YW, CW, RE, and \$B.
- Continues the trend of the Colonel sons combining both top level production and carcass value.

**LOT 41**



**RRR Colonel R0289**

**41** REG: 19481641 | DOB: 01/23/19 | TAG: R0289

baldrige Xpand x743 Hoover Dam  
**Baldrige Colonel C251** Baldrige Queen S87  
 Baldrige Isabel Y69 Styles Upgrade J59  
 G A R Objective 7125 Baldrige Isabel T935  
**MLC Forever Lady 1234** S S Objective T510 OT26  
 Callaways Forever Lady 1670 G A R 1407 New Design 1463  
 Riverbend Mile High 3718  
 Callaways Forever Lady 1126

**Act BW**  
78  
**Adj WW**  
722  
**Adj YW**  
1224  
**ANGUSGS**

CED	BW	WW	YW	MILK	CW	MARB	RE	\$M	\$B	\$C
8	0.0	61	105	22	41	0.80	0.82	54	144	241
%	25%	%	%	%	%	20%	15%	%	%	%

- Recommended for heifers and cows.
- Ranks in top 25% for 6 different EPDs or Values.
- Dam has been an excellent producer.

**RRR Colonel F84**

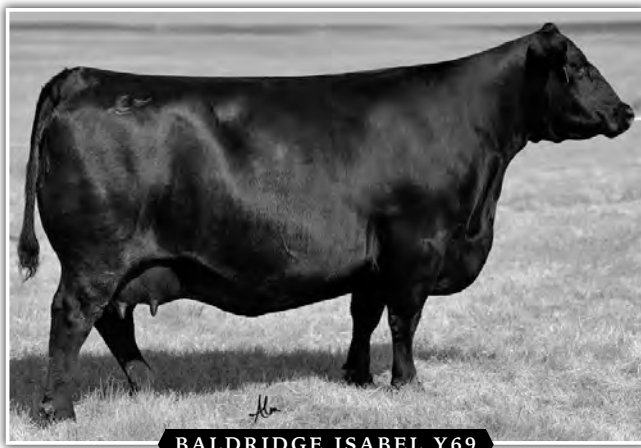
**42** REG: 19642553 | DOB: 08/24/18 | TAG: F84

baldrige Xpand x743 Hoover Dam  
**Baldrige Colonel C251** Baldrige Queen S87  
 Baldrige Isabel Y69 Styles Upgrade J59  
 G A R Prophet Baldrige Isabel T935  
**Ogeechee Miss Wix 3316** G A R Predestined  
 Ogeechee Miss Wix 0089 Connealy All Around  
 Circle G Miss Wix 668

**Act BW**  
76  
**Act WW**  
700  
**Adj YW**  
949  
**ANGUSGS**

CED	BW	WW	YW	MILK	CW	MARB	RE	\$M	\$B	\$C
6	1.3	75	129	21	62	0.81	0.88	56	155	257
%	%	4%	10%	%	10%	20%	10%	%	20%	20%

- Recommended for heifers or cows.
- Full brother to lots 36, 37, 43, 44, and 45.
- Ranks in the top 20% for 12 different EPDs and \$Values, highlighted by top 1% in docility.



**BALDRIDGE ISABEL Y69**

### RRR Colonel F89

**43** REG: 19642555 | DOB: 08/28/18 | TAG: F89

baldrige Xpand x743  
**Baldrige Colonel C251**  
 Baldrige Isabel Y69  
 G A R Quanah 687L  
**Ogeechee Miss Wix 3316**  
 Ogeechee Miss Wix 0089

Hoover Dam  
 Baldrige Queen S87  
 Styles Upgrade J59  
 Baldrige Isabel T935  
 G A R Predestined  
 G A R Objective 1885  
 Connealy All Around  
 Circle G Miss Wix 668

Act BW  
**80**  
 Act WW  
**685**  
 Adj YW  
**971**

ANGUSGS

CED	BW	WW	YW	MILK	CW	MARB	RE	\$M	\$B	\$C
2	2.7	71	118	5	50	1.18	0.68	43	157	247
%	%	10%	15%	%	25%	4%	%	%	15%	25%

- Recommended for cows.
- Full brother to lots 36, 37, 42, 44, and 45.
- Ranks in the top 25% for 8 different EPDs and \$Values.

### RRR Colonel F814

**44** REG: 19642551 | DOB: 09/01/18 | TAG: F814

baldrige Xpand x743  
**Baldrige Colonel C251**  
 Baldrige Isabel Y69  
 G A R Quanah 687L  
**Ogeechee Miss Wix 3316**  
 Ogeechee Miss Wix 0089

Hoover Dam  
 Baldrige Queen S87  
 Styles Upgrade J59  
 Baldrige Isabel T935  
 G A R Predestined  
 G A R Objective 1885  
 Connealy All Around  
 Circle G Miss Wix 668

Act BW  
**75**  
 Adj WW  
**598**  
 Adj YW  
**1142**

ANGUSGS

CED	BW	WW	YW	MILK	CW	MARB	RE	\$M	\$B	\$C
2	2.7	74	127	20	65	0.82	0.86	56	161	265
%	%	5%	10%	%	4%	20%	15%	%	15%	15%

- Recommended for cows.
- Full brother to lots 36, 37, 42, 43, and 45.
- Yet another Colonel ranking in at least top 20% for WW, YW, CW, MARB, and RE while also sporting a top 3% ranking in docility.

### RRR Colonel F810

**45** REG: 19642548 | DOB: 08/29/18 | TAG: F810

baldrige Xpand x743  
**Baldrige Colonel C251**  
 Baldrige Isabel Y69  
 G A R Quanah 687L  
**Ogeechee Miss Wix 3316**  
 Ogeechee Miss Wix 0089

Hoover Dam  
 Baldrige Queen S87  
 Styles Upgrade J59  
 Baldrige Isabel T935  
 G A R Predestined  
 G A R Objective 1885  
 Connealy All Around  
 Circle G Miss Wix 668

Act BW  
**86**  
 Act WW  
**695**  
 Adj YW  
**989**

ANGUSGS

CED	BW	WW	YW	MILK	CW	MARB	RE	\$M	\$B	\$C
4	2.0	69	115	14	48	1.25	0.78	52	166	267
%	%	15%	20%	%	%	3%	20%	%	10%	10%

- Recommended for cows.
- Full brother to lots 36, 37, 42, 43, and 44.
- F810 caps on an extremely consistent flush by ranking in the top 20% for 9 different EPDs or \$Values.

### RRR Colonel R0459

**46** REG: 19481645 | DOB: 01/27/19 | TAG: R0459

baldrige Xpand x743  
**Baldrige Colonel C251**  
 Baldrige Isabel Y69  
 Gaffney Upward 119  
**B/A Erica 119 B0120**  
 AppleErica 0911

Hoover Dam  
 Baldrige Queen S87  
 Styles Upgrade J59  
 Baldrige Isabel T935  
 Sitz Upward 307R  
 SVF Shamrock Bebe Queen 264T  
 SydGen Mandate 6079  
 MGR Erica 9156

Act BW  
**67**  
 Adj WW  
**661**  
 Adj YW  
**1043**

ANGUSGS

CED	BW	WW	YW	MILK	CW	MARB	RE	\$M	\$B	\$C
11	-0.3	60	110	29	38	0.92	0.66	64	137	242
15%	20%	%	25%	20%	%	15%	%	%	%	%

- Recommended for heifers and cows.
- Ranks in the top 15% for both CED and MARB and also posted an impressive 114 ratio for IMF.

### RRR Colonel R2048

**47** REG: 19499017 | DOB: 07/20/18 | TAG: R2048

baldrige Xpand x743  
**Baldrige Colonel C251**  
 Baldrige Isabel Y69  
 PA Valor 201  
**SCC Dakota W95-6408**  
 JD 50 Dakota W95

Hoover Dam  
 Baldrige Queen S87  
 Styles Upgrade J59  
 Baldrige Isabel T935  
 B/R New Day 454  
 COR Blackcap 6224 Z38 MidInd  
 J D Gold Mine R50  
 J D 982 Dakota P446

Act BW  
**77**  
 Adj WW  
**620**  
 Adj YW  
**978**

ANGUSGS

CED	BW	WW	YW	MILK	CW	MARB	RE	\$M	\$B	\$C
3	2.2	65	122	25	42	0.94	0.67	31	150	226
%	%	20%	10%	%	%	15%	%	%	25%	%

- Recommended for cows.
- Ranks in the top 25% for 12 different EPDs or \$Values.

### RRR Colonel R2308

**48** REG: 19224332 | DOB: 08/27/18 | TAG: R2308

baldrige Xpand x743  
**Baldrige Colonel C251**  
 Baldrige Isabel Y69  
 K C F Bennett Consent Y75  
**RRR Erica R0516**  
 2 Bar Objective 8204

Hoover Dam  
 Baldrige Queen S87  
 Styles Upgrade J59  
 Baldrige Isabel T935  
 Connealy Consensus  
 K C F Miss Protege W148  
 S S Objective T510 OT26  
 2 Bar Retail Product 896

Act BW  
**74**  
 Act WW  
**747**  
 Adj YW  
**1076**

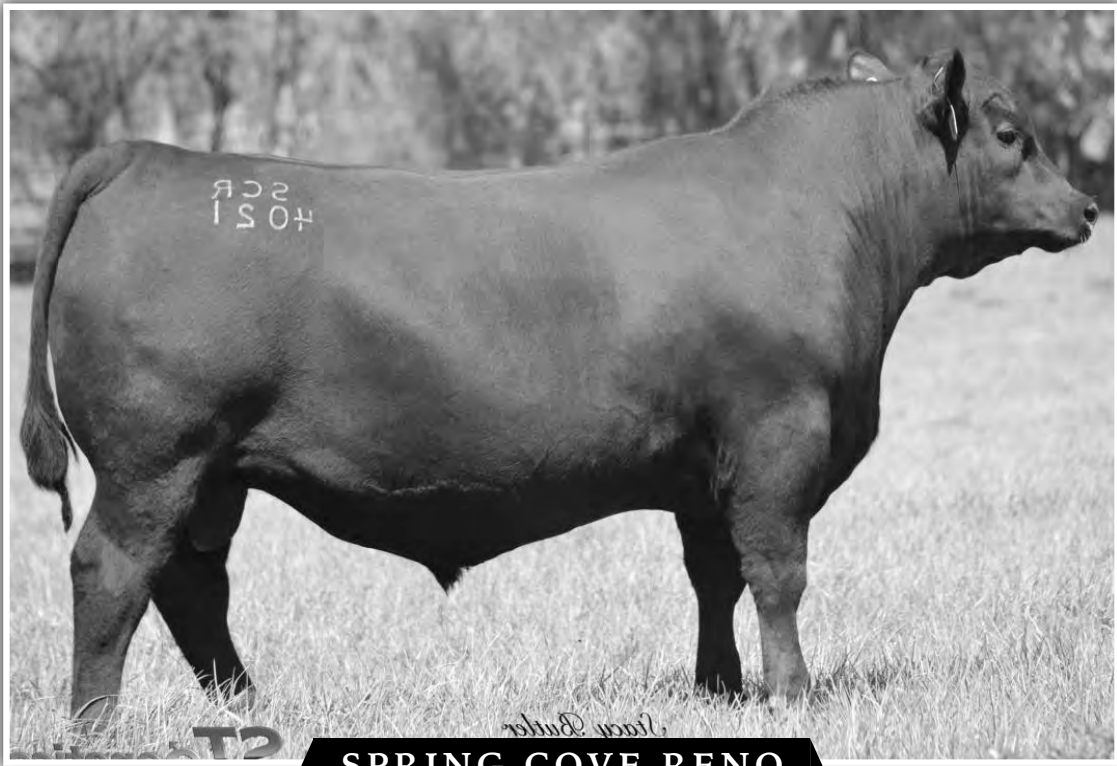
ANGUSGS

CED	BW	WW	YW	MILK	CW	MARB	RE	\$M	\$B	\$C
9	-0.1	62	104	27	45	0.61	0.71	50	135	225
%	25%	25%	%	%	%	%	25%	%	%	%

- Recommended for heifers and cows.
- Baldrige Colonel is producing progeny across the country with base width, muscle, docility and excellent feet. The influence of his great dam, Baldrige Isabel Y69, has never been more influential then through Colonel.







**SPRING COVE RENO**

**RRR Reno R0769**

**49**

REG: 19492117 | DOB: 02/09/19 | TAG: R0769

KM Broken Bow 002  
**Spring Cove Reno 4021**  
 Spring Cove Liza 021  
  
 Baldrige 38 Special  
**Baldrige Erica E167**  
 Erica of Ellston L5

Summitcrest Complete 1P55  
 Summitcrest Princess 0P12  
 C C A Emblazon 702  
 Spring Cove Liza 721  
 EF Commando 1366  
 Baldrige Isabel Y69  
 Connealy Counselor  
 Erica of Ellston G366

Act BW  
 76  
 Adj WW  
 900  
 Adj YW  
 N/A  
**ANGUS**<sup>GS</sup>

CED	BW	WW	YW	MILK	CW	MARB	RE	\$M	\$B	\$C
4	1.4	85	136	33	62	0.88	1.03	71	162	281
%	%	1%	3%	10%	10%	15%	4%	15%	15%	5%

- Recommended for larger framed heifers or cows.
- Ranks in the top 15% for 10 different EPDs or \$Values, including top 1% for WW and \$W.
- One of our favorites from the time he was a calf to now, real thick and moderate with excellent pedigree on the maternal side.
- His sire, Spring Cove Reno, is deceased but continues to build a database of explosive growth, muscle expression, and end product merit.
- His dam, Baldrige Erica E167, is one of our favorites in the donor pen and an own daughter of the great Erica of Ellston L5.



**BALDRIDGE ERICA E167**



**ERICA OF ELLSTON L5**

**LOT 50**



**BALDRIDGE ISABEL C773**

**RRR Reno R2898**

**50** REG: 19218030 | DOB: 09/19/18 | TAG: R2898

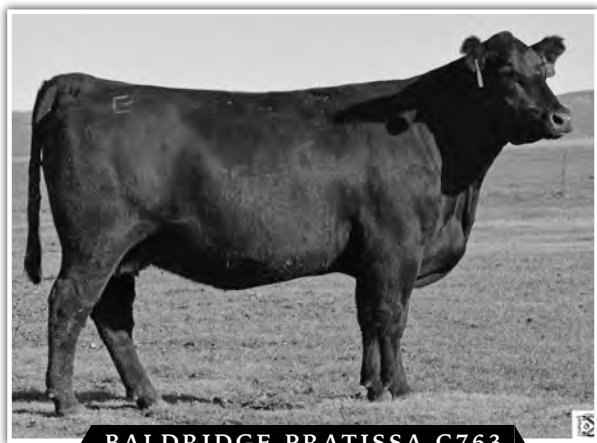
KM Broken Bow 002  
**Spring Cove Reno 4021**  
 Spring Cove Liza 021  
 baldrige Xpand x743  
**Baldrige Isabel C773**  
 Baldrige Isabel Y69

Summitcrest Complete 1P55  
 Summitcrest Princess 0P12  
 C C A Emblazon 702  
 Spring Cove Liza 721  
 Hoover Dam  
 Baldrige Queen S87  
 Styles Upgrade J59  
 Baldrige Isabel T935

Act BW	68
Adj WW	696
Adj YW	1061
ANGUS <sup>GS</sup>	

CED	BW	WW	YW	MILK	CW	MARB	RE	\$M	\$B	\$C
11	-2.4	65	111	31	35	0.75	0.74	79	132	250
15%	2%	20%	25%	15%	%	25%	25%	3%	%	25%

- Recommended for heifers and cows.
- Ranks in the top 25% for 13 different EPDs and \$Values.
- Also posts ratios of 114 for IMF and 107 for RE.
- His dam, Baldrige Isabel C773, is a full sister to Baldrige Colonel. She is the most physically impressive female we have ever seen.



**BALDRIDGE PRATISSA C763**

**RRR Reno R1239**

**51** REG: 19481635 | DOB: 03/15/19 | TAG: R1239

KM Broken Bow 002  
**Spring Cove Reno 4021**  
 Spring Cove Liza 021  
 Connealy Consensus 578B  
**Baldrige Pratissa C763**  
 Baldrige Pratissa W165

Summitcrest Complete 1P55  
 Summitcrest Princess 0P12  
 C C A Emblazon 702  
 Spring Cove Liza 721  
 Connealy Consensus  
 Powsa of Conanga 687 7567  
 GAR-EGL Protege  
 Baldrige Pratissia S4

Act BW	96
Adj WW	637
Adj YW	N/A
ANGUS <sup>GS</sup>	

CED	BW	WW	YW	MILK	CW	MARB	RE	\$M	\$B	\$C
6	2.0	74	133	33	50	0.99	0.38	63	144	250
%	%	5%	4%	10%	25%	10%	%	%	%	25%

- Recommended for cows.
- Ranks in the top 10% for 11 different EPDs or \$Values.
- Full brother to lot 54. Their dam, Baldrige Pratissa C763, owned with Baldrige Bros and Spruce Mountain, ranks in the top 5% or better in 8 different EPDs or \$Values.



**BALDRIDGE PRATISSA W165**

## RRR Reno R0199

52

REG: 19492141 | DOB: 01/22/19 | TAG: R0199

KM Broken Bow 002  
**Spring Cove Reno 4021**  
 Spring Cove Liza 021  
 G A R Progress  
**G A R Progress N1581**  
 G A R Yield Grade N76

Summitcrest Complete 1P55  
 Summitcrest Princess OP12  
 C C A Emblazon 702  
 Spring Cove Liza 721  
 G A R Predestined  
 G A R Objective 2345  
 G A R Yield Grade  
 G A R 1407 New Design 1942

Act BW  
86  
 Adj WW  
793  
 Adj YW  
1363

ANGUSGS

CED	BW	WW	YW	MILK	CW	MARB	RE	SM	\$B	\$C
4	1.9	72	123	35	53	1.2	0.48	63	169	282
%	%	10%	10%	4%	20	3%	%	%	10%	5%

- Recommended for cows.
- Ranks in the top 5% for MARB. He backs that up by posting an outstanding 150 IMF ratio with a raw score of 7.93.
- Also posted a 113 RE ratio.
- This bull is sure to add some pounds and carcass merit to his calves.



MISS BLACKCAP ELLSTON J2

## RRR Reno R1169

53

REG: 19481585 | DOB: 03/12/19 | TAG: R1169

KM Broken Bow 002  
**Spring Cove Reno 4021**  
 Spring Cove Liza 021  
 SydGen C C & 7  
**Miss Blackcap Ellston J2**  
 Miss Blackcap Ellston D154

Summitcrest Complete 1P55  
 Summitcrest Princess OP12  
 C C A Emblazon 702  
 Spring Cove Liza 721  
 S A F Connection  
 SydGen Forever Lady 4087  
 TC Gridiron 258  
 Miss Blackcap Ellston A269

Act BW  
66  
 Adj WW  
512  
 Adj YW  
N/A

ANGUSGS

CED	BW	WW	YW	MILK	CW	MARB	RE	SM	\$B	\$C
3	1.8	72	121	27	47	0.8	0.63	76	142	260
%	%	10%	15%	%	%	20%	%	10%	%	15%

- Recommended for cows.
- Ranks in the top 25% for 12 EPDs or \$Values including top 1% for HP.
- Check supplement sheet for his yearling weight.
- His dam, Miss Blackcap Ellston J2, ranks in top 25% for 17 EPDs or \$Values as a 10-year-old cow and is the dam of the legendary Hoover No Doubt.

## RRR Reno R1199

54

REG: 19481636 | DOB: 03/14/19 | TAG: R1199

KM Broken Bow 002  
**Spring Cove Reno 4021**  
 Spring Cove Liza 021  
 Connealy Consensus 578B  
**Baldrige Pratissa C763**  
 Baldrige Pratissa W165

Summitcrest Complete 1P55  
 Summitcrest Princess OP12  
 C C A Emblazon 702  
 Spring Cove Liza 721  
 Connealy Consensus  
 Powsa of Conanga 687 7567  
 GAR-EGL Protege  
 Baldrige Pratissa S4

Act BW  
82  
 Adj WW  
723  
 Adj YW  
N/A

ANGUSGS

CED	BW	WW	YW	MILK	CW	MARB	RE	SM	\$B	\$C
9	-0.2	80	134	27	49	0.80	0.44	52	156	254
%	20%	2%	4%	%	%	20%	%	%	15%	20%

- Recommended for heifers and cows.
- Full brother to lot 51.
- Ranks in the top 25% for 13 EPDs or \$Values, including top 4% or better for WW, YW, DOC, and \$W.

## RRR Reno R2408

55

REG: 19218016 | DOB: 08/31/18 | TAG: R2408

KM Broken Bow 002  
**Spring Cove Reno 4021**  
 Spring Cove Liza 021  
 Baldrige Waylon W34  
**Baldrige Lass B127**  
 CB 965 Mainline

Summitcrest Complete 1P55  
 Summitcrest Princess OP12  
 C C A Emblazon 702  
 Spring Cove Liza 721  
 GAR-EGL Protege  
 Baldrige Blackcap T163  
 Woodhill Mainline  
 742 CB Yield Grade

Act BW  
100  
 Adj WW  
622  
 Adj YW  
1288

ANGUSGS

CED	BW	WW	YW	MILK	CW	MARB	RE	SM	\$B	\$C
-3	5.2	78	134	32	60	0.58	0.56	66	158	271
%	%	3%	4%	10%	10%	%	%	25%	15%	10%

- Recommended for cows.
- Ranks in the top 25% for 14 different EPDs or \$Values, highlighted by top 3% for WW and top 4% YW.
- This thick Reno son's calves should have no problem putting on the weight.

## RRR Reno R2358

56

REG: 19218012 | DOB: 08/28/18 | TAG: R2358

KM Broken Bow 002  
**Spring Cove Reno 4021**  
 Spring Cove Liza 021  
 baldrige Xpand x743  
**Baldrige Blackbird B275**  
 Baldrige Blackbird U11

Summitcrest Complete 1P55  
 Summitcrest Princess OP12  
 C C A Emblazon 702  
 Spring Cove Liza 721  
 Hoover Dam  
 Baldrige Queen S87  
 Rito 112 of 2536 Rito 616  
 Baldrige Blackbird S254

Act BW  
81  
 Act WW  
788  
 Adj YW  
1023

ANGUSGS

CED	BW	WW	YW	MILK	CW	MARB	RE	SM	\$B	\$C
7	0.5	66	104	30	38	0.60	0.52	68	132	239
%	%	20%	%	15%	%	%	%	20%	%	%

- Recommended for heifers and cows.
- Ranks in the top 25% for 9 EPDs and \$Values.

## RRR Reno R2378

57

REG: 19218014 | DOB: 08/29/18 | TAG: R2378

KM Broken Bow 002  
**Spring Cove Reno 4021**  
 Spring Cove Liza 021  
 LD Emblazon 999  
**Baldrige Rita D257**  
 Baldrige Rita P60

Summitcrest Complete 1P55  
 Summitcrest Princess OP12  
 C C A Emblazon 702  
 Spring Cove Liza 721  
 O C C Emblazon 854E  
 SH Forever Lady 3124 5118  
 Woodhill Admiral 77K  
 Baldrige Rita K874

Act BW  
77  
 Act WW  
765  
 Adj YW  
991

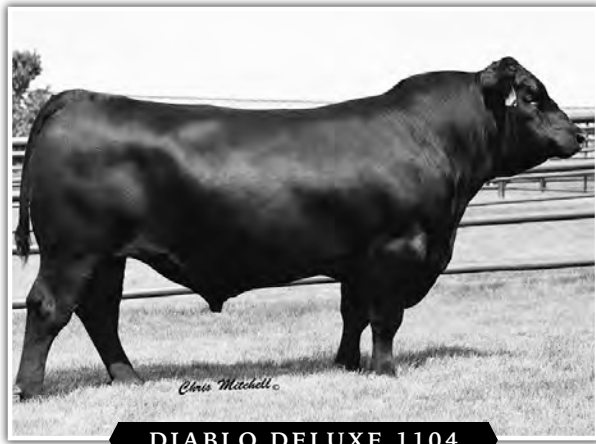
ANGUSGS

CED	BW	WW	YW	MILK	CW	MARB	RE	SM	\$B	\$C
8	0.6	73	122	42	36	1.09	0.47	71	132	242
%	%	10%	10%	1%	%	10%	%	15%	%	%

- Recommended for heifers and cows.
- Ranks in top 1% for Milk and \$W and top 10% for WW, YW, Marb, HP, and \$G.



BALDRIDGE ISABEL C273



**DIABLO DELUXE 1104**

**RRR Deluxe R2488**

**58**

REG: 19599015 | DOB: 09/06/18 | TAG: R2488

V A R Discovery 2240  
**Diablo Deluxe 1104**  
 Diablo Erica Dianna 9034  
 baldridge Xpand x743  
**MVR Blackcap D078**  
 Baldridge Blackcap T163

A A R Ten X 7008 S A  
 Deer Valley Rita 0308  
 G A R Prophet  
 Diablo Erica Dianna 5010  
 Hoover Dam  
 Baldridge Queen S87  
 Woodhill Foresight  
 Baldridge Blackcap P326

Act BW  
**56**  
 Adj WW  
**593**  
 Adj YW  
**1030**  
 ANGUSGS

CED	BW	WW	YW	MILK	CW	MARB	RE	\$M	\$B	\$C
8	0.8	74	139	24	70	0.81	0.54	64	180	297
%	%	5%	2%	%	2%	20%	%	%	3%	2%

- Recommended for heifers and cows.
- R2488 starts off our bulls sired by Diablo Deluxe, one of the good bulls in the country who continues to add marbled muscle in calves that are meeting phenotypical expectations.
- Ranks in top 3% or better for \$B, \$F, CW, YW, and Doc.

**RRR Deluxe R0329**

**59**

REG: 19481642 | DOB: 01/24/19 | TAG: R0329

V A R Discovery 2240  
**Diablo Deluxe 1104**  
 Diablo Erica Dianna 9034  
 Connealy Confidence 0100  
**Baldrige Blackcap C716**  
 Baldrige Blackcap T163

A A R Ten X 7008 S A  
 Deer Valley Rita 0308  
 G A R Prophet  
 Diablo Erica Dianna 5010  
 Connealy Tobin  
 Becka Gala of Conanga 8281  
 Woodhill Foresight  
 Baldrige Blackcap P326

Act BW  
**95**  
 Adj WW  
**760**  
 Adj YW  
**1030**  
 ANGUSGS

CED	BW	WW	YW	MILK	CW	MARB	RE	\$M	\$B	\$C
-2	4.5	85	156	29	84	1.07	0.54	48	202	310
%	%	1%	1%	20%	1%	10%	%	%	1%	1%

- Recommended for cows.
- Ranks in the top 1% for WW, YW, CW, \$F, and \$B. Also ranks in the top 10% for MARB, \$W, and \$G.

**RRR Deluxe R0119**

**60**

REG: 19492137 | DOB: 01/20/19 | TAG: R0119

V A R Discovery 2240  
**Diablo Deluxe 1104**  
 Diablo Erica Dianna 9034  
 Yon Future Focus T219  
**Yon Sarah B433**  
 Yon Sarah U555

A A R Ten X 7008 S A  
 Deer Valley Rita 0308  
 G A R Prophet  
 Diablo Erica Dianna 5010  
 Mytty In Focus  
 YON Hazel R133  
 G A R Retail Product  
 Yon Sarah N170

Act BW  
**86**  
 Adj WW  
**794**  
 Adj YW  
**1224**  
 ANGUSGS

CED	BW	WW	YW	MILK	CW	MARB	RE	\$M	\$B	\$C
7	2.2	74	136	24	61	1.01	0.68	74	180	307
%	%	5%	3%	%	10%	10%	%	10%	3%	1%

- Recommended for cows.
- Ranks in the top 15% for an impressive 15 different EPDs and \$Values.
- His dam, Yon Sarah B433, bought by Rock Wall Ranch in our 2018 female sale, ranks in the top 4% or better for RADG, HP, CEM, RE, FAT, \$G, and \$B.

**RRR Deluxe R0839**

**61**

REG: 19644317 | DOB: 02/15/19 | TAG: R0839

V A R Discovery 2240  
**Diablo Deluxe 1104**  
 Diablo Erica Dianna 9034  
 Baldridge Buckshot B002  
**RRR Martha E176**  
 Baldridge Martha C075

A A R Ten X 7008 S A  
 Deer Valley Rita 0308  
 G A R Prophet  
 Diablo Erica Dianna 5010  
 Baldridge Next Step Y108  
 Baldridge Blackcap Mary 2006  
 Fortunes Conquest 224  
 Baldridge Martha U67

Act BW  
**75**  
 Adj WW  
**763**  
 Adj YW  
**1278**  
 ANGUSGS

CED	BW	WW	YW	MILK	CW	MARB	RE	\$M	\$B	\$C
5	1.1	78	141	25	68	0.61	0.95	51	174	277
%	%	3%	2%	%	3%	%	10%	15%	5%	10%

- Recommended for heifers and cows.
- Posted exceptional weaning and yearling weight ratios coming in at 106 at weaning and 107 at a year.
- Genomics have him ranked in the Top 1% for Docility, 3% for WW, 4% for REA, 5% for IMF, and 7% for YW.

**RRR Deluxe R0969**

**62**

REG: 19481633 | DOB: 02/23/19 | TAG: R0969

V A R Discovery 2240  
**Diablo Deluxe 1104**  
 Diablo Erica Dianna 9034  
 LD Emblazon 999  
**Baldrige Isabel C273**  
 Baldrige Isabel T935

A A R Ten X 7008 S A  
 Deer Valley Rita 0308  
 G A R Prophet  
 Diablo Erica Dianna 5010  
 O C C Emblazon 854E  
 SH Forever Lady 3124 5118  
 Baldrige Kaboom K243 KCF  
 Baldrige Isabel P4527

Act BW  
**97**  
 Adj WW  
**672**  
 Adj YW  
**1083**  
 ANGUSGS

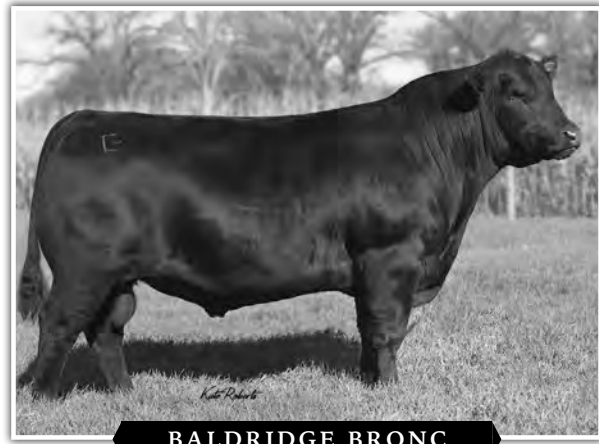
CED	BW	WW	YW	MILK	CW	MARB	RE	\$M	\$B	\$C
2	3.5	84	151	16	64	0.48	0.68	50	155	251
%	%	1%	1%	%	4%	%	%	%	20%	25%

- Recommended for cows.
- Ranks in the Top 1% for both WW and YW EPDs, top 15% for SC and top 25% for Docility.





**BALDRIDGE BEAST MODE B074**



**BALDRIDGE BRONC**

**RRR Beast Mode 9003**

**63**

REG: 19642550 | DOB: 02/01/19 | TAG: 9003

G A R Prophet  
**Baldridge Beast Mode B074**  
 Baldridge Isabel Y69  
 G A R Quanah 687L  
**Ogeechee Miss Wix 3316**  
 Ogeechee Miss Wix 0089

C R A Bextor 872 5205 608  
 G A R Objective 1885  
 Styles Upgrade J59  
 Baldridge Isabel T935  
 G A R Predestined  
 G A R Objective 1885  
 Connealy All Around  
 Circle G Miss Wix 668

**Act BW**  
76  
**Adj WW**  
547  
**Adj YW**  
981

**ANGUSGS**

CED	BW	WW	YW	MILK	CW	MARB	RE	\$M	\$B	\$C
10	0.7	69	118	23	45	1.15	0.64	79	138	258
20%	%	15%	15%	%	%	4%	%	3%	%	15%

- Recommended for heifers and cows.
- Baldridge Beast Mode is siring some of the easiest fleshing progeny in the breed with explosive end product merit.
- This is a moderate framed bull that will add marbling.
- Ranks in the top 25% for 11 different EPDs.

**RRR Bronc F801**

**66**

REG: 19643960 | DOB: 09/15/18 | TAG: F801

EF Commando 1366  
**Baldridge Bronc**  
 Baldridge Isabel Y69  
 baldridge Xpand x743  
**TBA Maverick 1573**  
 Baldridge Maverick Z058

EF Complement 8088  
 Riverbend Young Lucy W1470  
 Styles Upgrade J59  
 Baldridge Isabel T935  
 Hoover Dam  
 Baldridge Queen S87  
 Baldridge Waylon W34  
 Baldridge Maverick T43

**Act BW**  
68  
**Adj WW**  
606  
**Adj YW**  
1147

**ANGUSGS**

CED	BW	WW	YW	MILK	CW	MARB	RE	\$M	\$B	\$C
9	-0.7	68	117	34	49	0.98	0.80	59	180	292
%	15%	15%	15%	5%	%	10%	20%	%	3%	3%

- Recommended for heifers and cows.
- Moderate framed, thick muscled bull that brings growth and calving ease together.
- Ranks in the top 1% for docility, top 3% for \$Beef and top 15% for BW.

**RRR Beast Mode 9004**

**64**

REG: 19642557 | DOB: 02/01/19 | TAG: 9004

G A R Prophet  
**Baldridge Beast Mode B074**  
 Baldridge Isabel Y69  
 G A R Quanah 687L  
**Ogeechee Miss Wix 3316**  
 Ogeechee Miss Wix 0089

C R A Bextor 872 5205 608  
 G A R Objective 1885  
 Styles Upgrade J59  
 Baldridge Isabel T935  
 G A R Predestined  
 G A R Objective 1885  
 Connealy All Around  
 Circle G Miss Wix 668

**Act BW**  
88  
**Adj WW**  
665  
**Adj YW**  
1263

**ANGUSGS**

CED	BW	WW	YW	MILK	CW	MARB	RE	\$M	\$B	\$C
13	0.5	73	121	13	42	1.22	0.69	58	143	243
10%	%	10%	15%	%	%	3%	%	%	%	%

- Recommended for heifers and cows.
- Full brother to Lot 63 and is built very similarly.
- A herd sire that will add muscle to your calf crop.

**RRR Bronc F803**

**67**

REG: 19642556 | DOB: 09/18/18 | TAG: F803

EF Commando 1366  
**Baldridge Bronc**  
 Baldridge Isabel Y69  
 baldridge Xpand x743  
**TBA Maverick 1573**  
 Baldridge Maverick Z058

EF Complement 8088  
 Riverbend Young Lucy W1470  
 Styles Upgrade J59  
 Baldridge Isabel T935  
 Hoover Dam  
 Baldridge Queen S87  
 Baldridge Waylon W34  
 Baldridge Maverick T43

**Act BW**  
69  
**Adj WW**  
522  
**Adj YW**  
1130

**ANGUSGS**

CED	BW	WW	YW	MILK	CW	MARB	RE	\$M	\$B	\$C
6	0.0	68	128	38	51	0.83	0.64	50	158	255
%	25%	15%	10%	2%	25%	20%	%	%	15%	20%

- Recommended for heifers and cows.
- Powerhouse of a bull that has really come on strong since weaning.
- Full brother to Lot 66 and has a genomic profile that has 10 different traits ranked in the top 25% of animals tested.

**RRR Beast Mode F82**

**65**

REG: 19642549 | DOB: 08/23/18 | TAG: F82

G A R Prophet  
**Baldridge Beast Mode B074**  
 Baldridge Isabel Y69  
 G A R Quanah 687L  
**Ogeechee Miss Wix 3316**  
 Ogeechee Miss Wix 0089

C R A Bextor 872 5205 608  
 G A R Objective 1885  
 Styles Upgrade J59  
 Baldridge Isabel T935  
 G A R Predestined  
 G A R Objective 1885  
 Connealy All Around  
 Circle G Miss Wix 668

**Act BW**  
74  
**Act WW**  
710  
**Adj YW**  
971

**ANGUSGS**

CED	BW	WW	YW	MILK	CW	MARB	RE	\$M	\$B	\$C
7	2.5	91	148	17	59	1.31	0.36	62	149	255
%	%	1%	1%	%	10%	2%	%	%	25%	20%

- Recommended for cows.
- Full brother to lots 63 and 64 and another very good bull out of the Ogeechee Miss Wix 3316 donor cow.
- Ranks in the top 15% for 8 different EPDs, including top 1% for WW and YW.

**RRR 38 Special R0249**

**68**

REG: 19492144 | DOB: 01/22/19 | TAG: R0249

EF Commando 1366  
**Baldridge 38 Special**  
 Baldridge Isabel Y69  
 PA Valor 201  
**SCC Barbara 2814-6019**  
 Deer Valley Barbara 2814

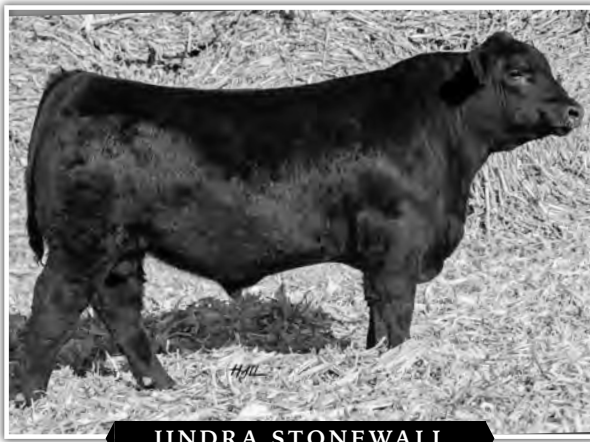
EF Complement 8088  
 Riverbend Young Lucy W1470  
 Styles Upgrade J59  
 Baldridge Isabel T935  
 B/R New Day 454  
 COR Blackcap 6224 Z38 MidInd  
 Connealy Capitalist 028  
 Barbara of Plattemere 337

**Act BW**  
74  
**Adj WW**  
759  
**Adj YW**  
1183

**ANGUSGS**

CED	BW	WW	YW	MILK	CW	MARB	RE	\$M	\$B	\$C
5	2.1	90	149	25	64	0.46	1.19	56	161	265
%	%	1%	1%	%	4%	%	1%	%	15%	15%

- Recommended for cows.
- Out of Baldridge 38 Special who has done well across the country as well as here on the ranch.
- An outstanding ribeye ratio of 107!



**JINDRA STONEWALL**

**RRR Stonewall R1019**

**69**

REG: 19487745 | DOB: 03/05/19 | TAG: R1019

Jindra Acclaim  
**Jindra Stonewall**  
 Jindra Ebony J 707 593  
 Baldridge Bronc  
**RRR Pratissa E063**  
 Baldridge Pratissa C763

Jindra 3rd Dimension  
 Jindra Blackbird Lassy 1111  
 Jindra Double Vision  
 Jindras Steel Magnolia J 506  
 EF Commando 1366  
 Baldridge Isabel Y69  
 Connealy Consensus 578B  
 Baldridge Pratissa W165

**Act BW**  
80  
**Adj WW**  
735  
**Adj YW**  
1197

**ANGUSGS**

CED	BW	WW	YW	MILK	CW	MARB	RE	\$M	\$B	\$C
12	-0.6	56	101	34	42	1.05	0.41	57	154	257
10%	15%	%	%	5%	%	10%	%	%	20%	20%

- Recommended for heifers and cows.
- Posts an outstanding 123 ratio on Marbling and a 102 ratio at Weaning.
- The sire, Jindra Stonewall, has been used as outcross calving-ease sire with explosive growth and mass. He is a featured sire for Dixie Valley Angus, CA.



**G A R SCALE HOUSE**

**RRR Scale House R0859**

**72**

REG: 19481626 | DOB: 02/18/19 | TAG: R0859

MCC Daybreak  
**G A R Scale House**  
 G A R 5050 New Design 1039  
 Styles Upgrade J59  
**Baldrige Isabel B759**  
 Baldrige Isabel T935

Boyd New Day 8005  
 MCC Miss Focus 134  
 G A R New Design 5050  
 G A R Objective 2345  
 Sitz Upward 307R  
 Plainview Lassie 71B  
 Baldrige Kaboom K243 KCF  
 Baldrige Isabel P4527

**Act BW**  
72  
**Adj WW**  
702  
**Adj YW**  
1091

**ANGUSGS**

CED	BW	WW	YW	MILK	CW	MARB	RE	\$M	\$B	\$C
10	0.0	73	120	25	44	0.60	0.72	67	127	232
20%	25%	10%	15%	%	%	%	25%	25%	%	%

- Recommended for heifers and cows.
- A well-rounded bull that will make a good herd sire.
- Ranks in the top 25% for 8 different genomic traits, including top 1% for Docility and Scrotal.

**RRR Stonewall R0999**

**70**

REG: 19487739 | DOB: 03/01/19 | TAG: R0999

Jindra Acclaim  
**Jindra Stonewall**  
 Jindra Ebony J 707 593  
 Baldridge Bronc  
**RRR Everelda R0367**  
 Poss Everelda 5172

Jindra 3rd Dimension  
 Jindra Blackbird Lassy 1111  
 Jindra Double Vision  
 Jindras Steel Magnolia J 506  
 EF Commando 1366  
 Baldridge Isabel Y69  
 Baldridge Willie Y34  
 Poss Everelda 371

**Act BW**  
67  
**Adj WW**  
617  
**Adj YW**  
1035

**ANGUSGS**

CED	BW	WW	YW	MILK	CW	MARB	RE	\$M	\$B	\$C
16	-1.6	58	114	34	44	0.82	0.56	49	161	258
1%	5%	%	20%	5%	%	20%	%	%	15%	15%

- Recommended for heifers and cows.
- Another Stonewall son that ranks in the top 1% for CED and top 5% for BW.

**RRR Scale House R1209**

**73**

REG: 19481620 | DOB: 03/14/19 | TAG: R1209

MCC Daybreak  
**G A R Scale House**  
 G A R 5050 New Design 1039  
 LD Emblazon 999  
**Baldrige Isabel C273**  
 Baldrige Isabel T935

Boyd New Day 8005  
 MCC Miss Focus 134  
 G A R New Design 5050  
 G A R Objective 2345  
 O C C Emblazon 854E  
 SH Forever Lady 3124 5118  
 Baldrige Kaboom K243 KCF  
 Baldrige Isabel P4527

**Act BW**  
82  
**Adj WW**  
703  
**Adj YW**  
N/A

**ANGUSGS**

CED	BW	WW	YW	MILK	CW	MARB	RE	\$M	\$B	\$C
9	0.3	77	123	24	49	0.65	0.83	70	137	248
%	%	3%	10%	%	%	%	15%	15%	%	25%

- Recommended for heifers and cows.
- Full brother to Lots 71 and 74.
- Ranks in the top 10% for 5 different EPDs, including top 2% \$W and 3% WW.

**RRR Scale House R0949**

**71**

REG: 19481618 | DOB: 02/22/19 | TAG: R0949

MCC Daybreak  
**G A R Scale House**  
 G A R 5050 New Design 1039  
 LD Emblazon 999  
**Baldrige Isabel C273**  
 Baldrige Isabel T935

Boyd New Day 8005  
 MCC Miss Focus 134  
 G A R New Design 5050  
 G A R Objective 2345  
 O C C Emblazon 854E  
 SH Forever Lady 3124 5118  
 Baldrige Kaboom K243 KCF  
 Baldrige Isabel P4527

**Act BW**  
90  
**Adj WW**  
780  
**Adj YW**  
1145

**ANGUSGS**

CED	BW	WW	YW	MILK	CW	MARB	RE	\$M	\$B	\$C
4	1.8	79	118	25	42	0.39	1.01	84	124	245
%	%	2%	15%	%	%	%	4%	1%	%	%

- Recommended for cows.
- Growth bull that will add pounds to your calf crop.
- Ranks in the top 2% for WW and top 15% for YW, as well as Top 1% for both \$Maternal and \$Weaning.
- The sire of lots 71-75, G A R Scalehouse, is siring above average frame with YWT and end product merit. Looks to sire excellent grass cattle for the commercial sector.

**RRR Scale House R1329**

**74**

REG: 19481631 | DOB: 03/18/19 | TAG: R1329

MCC Daybreak  
**G A R Scale House**  
 G A R 5050 New Design 1039  
 LD Emblazon 999  
**Baldrige Isabel C273**  
 Baldrige Isabel T935

Boyd New Day 8005  
 MCC Miss Focus 134  
 G A R New Design 5050  
 G A R Objective 2345  
 O C C Emblazon 854E  
 SH Forever Lady 3124 5118  
 Baldrige Kaboom K243 KCF  
 Baldrige Isabel P4527

**Act BW**  
115  
**Adj WW**  
672  
**Adj YW**  
N/A

**ANGUSGS**

CED	BW	WW	YW	MILK	CW	MARB	RE	\$M	\$B	\$C
2	3.3	86	143	20	48	0.75	0.85	45	136	221
%	%	1%	2%	%	%	25%	15%	%	%	%

- Recommended for cows.
- Full brother to Lots 71 and 73.
- Ranks in the top 2% for 4 different EPDs, including top 1% for WW, MW, MH and top 2% for YW.

## RRR Scale House R0389

75

REG: 19492147 | DOB: 01/26/19 | TAG: R0389

MCC Daybreak  
**G A R Scale House**  
 G A R 5050 New Design 1039  
 G A R Ingenuity  
**RWA Ingenuity W43**  
 G A R Objective A706

Boyd New Day 8005  
 MCC Miss Focus 134  
 G A R New Design 5050  
 G A R Objective 2345  
 G A R New Design 5050  
 G A R Objective 1067  
 S S Objective T510 OT26  
 G A R Integrity T465

Act BW  
90  
 Adj WW  
725  
 Adj YW  
1259

ANGUS<sup>GS</sup>

CED	BW	WW	YW	MILK	CW	MARB	RE	\$M	\$B	\$C
10	1.6	71	117	23	35	1.14	0.71	56	150	251
20%	%	10%	15%	%	%	4%	25%	%	25%	25%

- Recommended for heifers and cows.
- A very impressive Herd Sire prospect posting one of the best Marbling ratios on the ranch at 160 and an excellent 8.49 marbling raw score.
- A very balanced bull that will give you pounds or quality on the rail.



BAR R JET BLACK 5063

## RRR Jet Black F003

78

REG: 19643958 | DOB: 12/08/18 | TAG: F003

Connealy Black Granite  
**Bar R Jet Black 5063**  
 Bar R Iris Anita 0113  
 Plattermere Weigh Up K360  
**MGR Rita 6074**  
 SJH Impression of 6108 1614

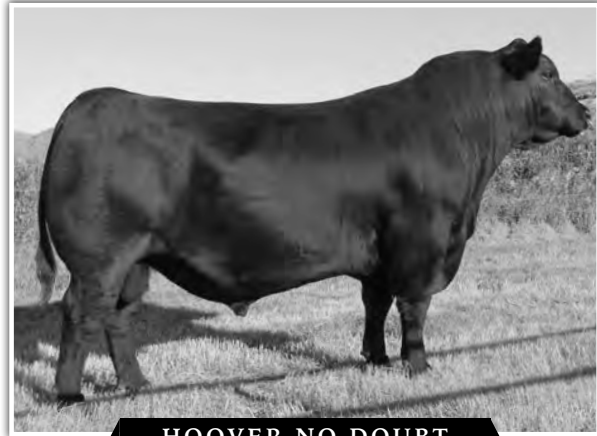
Connealy Consensus 7229  
 Eura Elga of Conanga 9109  
 Sitz Upward 307R  
 Bar R Anita 7081  
 Sitz Upward 307R  
 Barbara of Plattermere 337  
 Connealy Impression  
 DRMCRT 111 Rita 6108

Act BW  
70  
 Adj WW  
688  
 Adj YW  
927

ANGUS<sup>GS</sup>

CED	BW	WW	YW	MILK	CW	MARB	RE	\$M	\$B	\$C
5	1.9	84	145	19	65	0.54	0.68	37	183	274
%	%	1%	1%	%	4%	%	%	%	3%	10%

- Recommended for cows.
- Ranks in the top 5% for an outstanding 8 EPDs, including top 1% for WW, YW, RADG, and \$F.



HOOVER NO DOUBT

## RRR Jet Black R2778

76

REG: 19210704 | DOB: 09/17/18 | TAG: R2778

Connealy Black Granite  
**Bar R Jet Black 5063**  
 Bar R Iris Anita 0113  
 LD Emblazon 999  
**Baldrige Isabel C273**  
 Baldrige Isabel T935

Connealy Consensus 7229  
 Eura Elga of Conanga 9109  
 Sitz Upward 307R  
 Bar R Anita 7081  
 O C C Emblazon 854E  
 SH Forever Lady 3124 5118  
 Baldrige Kaboom K243 KCF  
 Baldrige Isabel P4527

Act BW  
83  
 Adj WW  
702  
 Adj YW  
1195

ANGUS<sup>GS</sup>

CED	BW	WW	YW	MILK	CW	MARB	RE	\$M	\$B	\$C
3	1.9	74	123	23	58	0.63	0.54	48	162	258
%	%	5%	10%	%	10%	%	%	%	15%	15%

- Recommended for cows.
- Ranks in the top 10% for 6 different EPDs.
- Posts a 108 IMF ratio and is another one of our herd sire prospects that add pounds to the calf crop.
- BAR R Jet Black has given excellent phenotype and muscle.

## RRR Jet Black R2928

77

REG: 19218031 | DOB: 09/20/18 | TAG: R2928

Connealy Black Granite  
**Bar R Jet Black 5063**  
 Bar R Iris Anita 0113  
 LD Emblazon 999  
**Baldrige Isabel C273**  
 Baldrige Isabel T935

Connealy Consensus 7229  
 Eura Elga of Conanga 9109  
 Sitz Upward 307R  
 Bar R Anita 7081  
 O C C Emblazon 854E  
 SH Forever Lady 3124 5118  
 Baldrige Kaboom K243 KCF  
 Baldrige Isabel P4527

Act BW  
80  
 Adj WW  
626  
 Adj YW  
1085

ANGUS<sup>GS</sup>

CED	BW	WW	YW	MILK	CW	MARB	RE	\$M	\$B	\$C
11	0.1	69	122	29	53	0.40	0.90	65	144	252
15%	25%	15%	10%	20%	20%	%	10%	%	%	20%

- Recommended for heifers and cows.
- Moderate framed bull that posts a 102 ratio for ribeye.
- Ranks in the top 15% for 6 different EPDs.

## RRR Playbook F004

80

REG: 19643959 | DOB: 12/09/18 | TAG: F004

Basin Payweight 1682  
**TEX Playbook 5437**  
 Rita 1C43 of 9M26 Complete  
 Plattermere Weigh Up K360  
**Deer Valley Lady 6096**  
 Deer Valley Lady 2116

Basin Payweight 006S  
 21AR O Lass 7017  
 Summitcrest Complete 1P55  
 Rita 9M26 of Rita 5F56 Pred  
 Sitz Upward 307R  
 Barbara of Plattermere 337  
 SydGen C C & 7  
 Werner Lady 919

Act BW  
80  
 Adj WW  
748  
 Adj YW  
1099

ANGUS<sup>GS</sup>

CED	BW	WW	YW	MILK	CW	MARB	RE	\$M	\$B	\$C
%	%	%	%	%	%	%	%	%	%	%

- Recommended for cows.
- Another moderate framed, thick muscled bull that has become a staple of the bulls on the ranch.
- Genomically ranks in the Top 1% for Docility.

## RRR Prospector R2068

**81**

REG: 19499018 | DOB: 08/01/18 | TAG: R2068

Connealy Gold Rush 026E  
**Raven Prospector 1715**  
 Raven Priscilla 531  
  
 PA Valor 201  
**SCC Rita 6424**  
 SCC Rita 359

Connealy Consensus  
 Brazila of Conanga 3991 839A  
 Sitz Upward 307R  
 Raven Perfection X60  
 B/R New Day 454  
 COR Blackcap 6224 Z38 Midland  
 Connealy Consensus 7229  
 G A R Predestined R385

**Act BW**  
48  
**Adj WW**  
739  
**Adj YW**  
1227  
**ANGUSGS**


CED	BW	WW	YW	MILK	CW	MARB	RE	SM	SB	SC
15	-1.3	62	111	24	40	0.66	0.77	59	133	232
2%	10%	25%	25%	%	%	%	20%	%	%	%

- Recommended for heifers and cows.
- A solid, all-around bull that looks good and will add pounds to the calf crop.
- He comes in as one of the heaviest 18-Month old bulls in the sale.

## RRR Valor R1049

**82**

REG: 19633878 | DOB: 03/06/19 | TAG: R1049

B/R New Day 454  
**PA Valor 201**  
 COR Blackcap 6224 Z38 Midland  
  
 G A R Sunrise  
**Bridges Sunrise 533**  
 Bridges Prediction 269

Boyd New Day 8005  
 B/R Ruby 1224  
 BR Midland  
 VT 1407 New Design Z38  
 MCC Daybreak  
 G A R Objective R227  
 G A R Prediction  
 G A R Objective 1885

**Act BW**  
82  
**Adj WW**  
750  
**Adj YW**  
N/A  
**ANGUSGS**

CED	BW	WW	YW	MILK	CW	MARB	RE	SM	SB	SC
9	1.4	73	135	16	60	0.57	0.84	39	154	239
%	%	10%	3%	%	10%	%	15%	%	20%	%

- Recommended for larger heifers and cows.
- R1049 is a very solid PA Valor 201 son
- Ranks in top 25% for 10 different EPDs.

## RRR Outright 9040

**83**

REG: 19646228 | DOB: 03/16/19 | TAG: 9040

HAYNES Outright 452  
**STF Outright 1606**  
 Chair Rock 5050 G A R 1131  
  
 RB Platinum 2142  
**STF Black Brigitte 1486**  
 Raven Black Brigitte 2462

K C F Bennett Absolute  
 HAYNES ND 454 Miss 179  
 G A R New Design 5050  
 Chair Rock Objective 7042  
 HAYNES Sterling 924  
 R B Lady Standard 305-890  
 Raven Admiral 1726  
 Raven Black Brigitte 2059

**Act BW**  
78  
**Adj WW**  
650  
**Adj YW**  
N/A  
**ANGUSGS**


CED	BW	WW	YW	MILK	CW	MARB	RE	SM	SB	SC
8	1.5	65	120	36	49	0.71	0.60	55	157	259
%	%	20%	15%	3%	%	%	%	%	15%	15%

- Recommended for heifers and cows.
- Ranks in top 25% for 12 different EPDs or \$Values.
- EPDS updated prior to sale.

## RRR Outright 9036

**84**

REG: 19646211 | DOB: 03/05/19 | TAG: 9036

HAYNES Outright 452  
**STF Outright 1606**  
 Chair Rock 5050 G A R 1131  
  
 Hoover Dam  
**Raven Edella 932**  
 Raven Edella 620

K C F Bennett Absolute  
 HAYNES ND 454 Miss 179  
 G A R New Design 5050  
 Chair Rock Objective 7042  
 SydGen C C & 7  
 Erica of Ellston C124  
 B C Matrix 4132  
 Raven Edella 1546

**Act BW**  
  
**Adj WW**  
630  
**Adj YW**  
1206  
**ANGUSGS**

CED	BW	WW	YW	MILK	CW	MARB	RE	SM	SB	SC
2	3.2	68	124	27	55	0.50	0.82	57	165	271
%	%	15%	10%	%	15%	%	15%	%	10%	10%

- Recommended for cows.
- Herd sire prospect that should add some length to your herd.

## RRR Outright 9042

**85**

REG: 19642558 | DOB: 03/17/19 | TAG: 9042

HAYNES Outright 452  
**STF Outright 1606**  
 Chair Rock 5050 G A R 1131  
  
 SydGen Contact 0714  
**Raven Blackbird Blackie 3673**  
 Raven Blackbird Blackie 4058

K C F Bennett Absolute  
 HAYNES ND 454 Miss 179  
 G A R New Design 5050  
 Chair Rock Objective 7042  
 SydGen Contact  
 SydGen Primrose 5273  
 Bluegrass Freightliner 632  
 Raven Blackbird Blackie Y53

**Act BW**  
83  
**Adj WW**  
629  
**Adj YW**  
N/A  
**ANGUSGS**


CED	BW	WW	YW	MILK	CW	MARB	RE	SM	SB	SC
8	1.7	60	118	29	52	0.79	0.54	53	168	271
%	%	%	15%	20%	20%	20%	%	%	10%	10%

- Recommended for heifers and cows.
- Half brother to Lots 83 and 84
- EPDs updated prior to sale.

## RRR Treasure R5018

**86**

REG: 19643417 | DOB: 09/08/18 | TAG: R5018

V A R Discovery 2240  
**MGR Treasure**  
 SJH Impression of 6108 1614  
  
 PA Power Tool 9108  
**Thomas Butter FLY 3705**  
 Diablo Butter Fly 1836

A A R Ten X 7008 S A  
 Deer Valley Rita 0308  
 Connealy Impression  
 DRMCTR 111 Rita 6108  
 G A R Predestined  
 Shamrocks Beebee Queen 3095  
 G A R Retail Product  
 Diablo Butter Fly 1662

**Act BW**  
73  
**Adj WW**  
525  
**Adj YW**  
1127  
**ANGUSGS**


CED	BW	WW	YW	MILK	CW	MARB	RE	SM	SB	SC
9	0.3	64	120	19	36	1.00	0.41	67	150	262
%	%	20%	15%	%	%	10%	%	25%	25%	15%

- Recommended for heifers and cows.
- R5019 is out of our AI sire Baldrige Alternative E125
- He is a solid bull that will go out and produce for you

## RRR Titan R2958

**87**

REG: 19487736 | DOB: 09/22/18 | TAG: R2958

Baldrige Titan A139  
**RRR Titan R0576**  
 Baldrige Isabel A020  
  
 PAR B Powerkat 610  
**SS Beletta B652**  
 SVF Shamrock Beletta 3506

Baldrige Waylon W34  
 Baldrige Forever Lady T269  
 Hoover Dam  
 Baldrige Isabel Y69  
 S A V Final Answer 0035  
 PAR B Primrose N 884  
 S A V 004 Traveler 4168  
 Shamrocks Beletta 8883

**Act BW**  
65  
**Adj WW**  
661  
**Adj YW**  
1093  
**ANGUSGS**

CED	BW	WW	YW	MILK	CW	MARB	RE	SM	SB	SC
1	1.5	65	112	16	42	0.60	0.71	46	147	237
%	%	20%	25%	%	%	%	25%	%	25%	%

- Recommended for cows.
- Very well put together and stout bull that will get out and get some cows covered.

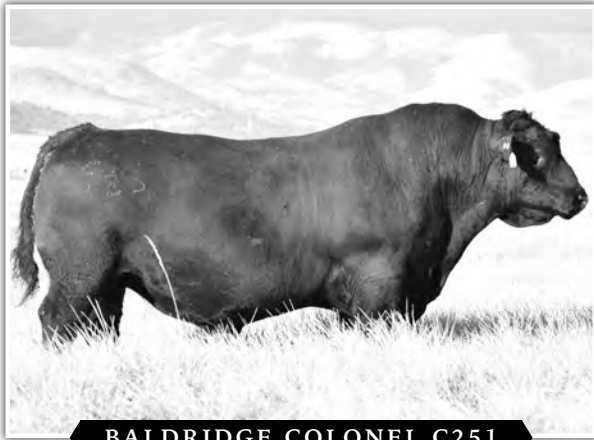
## VIDEOS AVAILABLE

The sale will be broadcast live online at [www.dvauction.com](http://www.dvauction.com) and videos will be available on DV or our website two weeks prior to the sale.

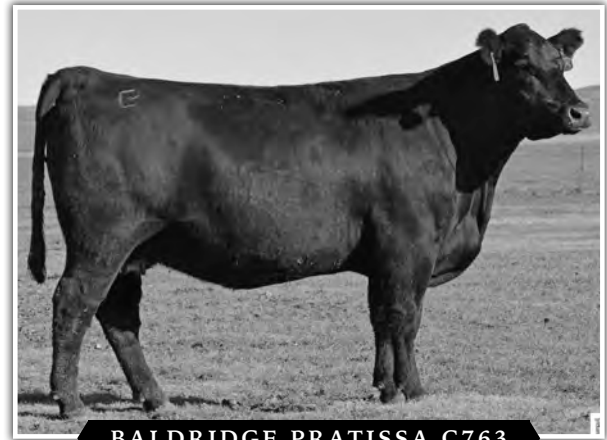
**DVAuction**  
 Broadcasting Real-Time Auctions



# Two-Year Old Bulls



**BALDRIDGE COLONEL C251**



**BALDRIDGE PRATISSA C763**

## RRR Colonel R0968

**88** REG: 19174320 | DOB: 03/12/18 | TAG: R0968

baldrige Xpand x743  
**Baldrige Colonel C251**  
 Baldrige Isabel Y69  
 Connealy Consensus 578B  
**Baldrige Pratisa C763**  
 Baldrige Pratisa W165

Hoover Dam  
 Baldrige Queen S87  
 Styles Upgrade J59  
 Baldrige Isabel T935  
 Connealy Consensus  
 Powsa of Conanga 687 7567  
 GAR-EGL Protege  
 Baldrige Pratisa S4

Act BW
93
Adj WW
637
Adj YW
1197

ANGUSGS

CED	BW	WW	YW	MILK	CW	MARB	RE	\$M	\$B	\$C
9	0.1	68	128	19	61	0.90	0.85	51	188	295
%	25%	15%	10%	%	10%	15%	15%	%	2%	3%

- Recommended for heifers and cows.
- His dam, Baldrige Pratisa C763, sold for \$14,000 half interest to Baldrige Bros, NE and Spruce Mountain Ranch, CO. Her dam, the deceased Baldrige Pratisa W165, has been a constant producer of pounds and growth. Her influence is growing at the ranch.
- This pedigree lines up two of the great cows, Baldrige Isabel Y69 and Baldrige Pratisa W165.
- Ranks in the top 25% for 16 different EPDs, including top 1% for Doc.

## RRR Colonel R1238

**89** REG: 19350656 | DOB: 03/19/18 | TAG: R1238

baldrige Xpand x743  
**Baldrige Colonel C251**  
 Baldrige Isabel Y69  
 Sitz Upward 307R  
**Deer Valley Barbara 2769**  
 Barbara of Plattemere 337

Hoover Dam  
 Baldrige Queen S87  
 Styles Upgrade J59  
 Baldrige Isabel T935  
 Connealy Onward  
 Sitz Henrietta Pride 81M  
 G A R Retail Product  
 Barbara of Plattemere 311

Act BW
78
Adj WW
710
Adj YW
1172

ANGUSGS

CED	BW	WW	YW	MILK	CW	MARB	RE	\$M	\$B	\$C
4	2.0	75	130	30	59	0.80	0.85	66	169	285
%	%	4%	5%	15%	10%	20%	15%	25%	10%	4%

- Recommended for cows.
- The Dam of R1238 is a full sister to Plattemere Weigh Up, who has received and fulfilled tremendous acclaim and praise across the country.
- Ranks in the top 25% for an excellent 16 different EPDs, highlighted by top 4% WW, \$W, and HP.

## RRR Colonel 8020

**90** REG: 19173554 | DOB: 02/25/18 | TAG: 8020

baldrige Xpand x743  
**Baldrige Colonel C251**  
 Baldrige Isabel Y69  
 A A R Ten X 7008 S A  
**Bridges Ten X 411**  
 Deer Valley Rita 0503

Hoover Dam  
 Baldrige Queen S87  
 Styles Upgrade J59  
 Baldrige Isabel T935  
 Mytty In Focus  
 A A R Lady Kelton 5551  
 S S Objective T510 0T26  
 G A R Ext 614

Act BW
71
Adj WW
616
Adj YW
1030

ANGUSGS

CED	BW	WW	YW	MILK	CW	MARB	RE	\$M	\$B	\$C
9	0.6	61	116	21	39	0.86	0.82	50	164	263
%	%	%	20%	%	%	15%	15%	%	10%	15%

- Recommended for heifers and cows.
- Ranks in the top 25% for 9 different EPDs.

## RRR Colonel 8004

**91** REG: 19171023 | DOB: 02/13/18 | TAG: 8004

baldrige Xpand x743  
**Baldrige Colonel C251**  
 Baldrige Isabel Y69  
 Connealy Black Granite  
**HF Rita 5015**  
 SS Rita Z060

Hoover Dam  
 Baldrige Queen S87  
 Styles Upgrade J59  
 Baldrige Isabel T935  
 Connealy Consensus 7229  
 Eura Elga of Conanga 9109  
 G A R Progress  
 G A R Objective N2300

Act BW
62
Adj WW
643
Adj YW
1062

ANGUSGS

CED	BW	WW	YW	MILK	CW	MARB	RE	\$M	\$B	\$C
13	-0.8	52	97	24	36	0.78	0.71	48	155	249
10%	15%	%	%	%	%	25%	25%	%	20%	25%

- Recommended for heifers and cows.
- Another Baldrige Colonel son here on the ranch that's ready to go to work!

## RRR Colonel F808

**92** REG: 19642560 | DOB: 02/15/18 | TAG: F808

baldrige Xpand x743  
**Baldrige Colonel C251**  
 Baldrige Isabel Y69  
 Connealy Gold Rush 026E  
**Raven Blackbird 2753**  
 Raven Blackbird 1218

Hoover Dam  
 Baldrige Queen S87  
 Styles Upgrade J59  
 Baldrige Isabel T935  
 Connealy Consensus  
 Brazila of Conanga 3991 839A  
 Connealy Thunder  
 Raven Blackbird 1246

Act BW
78
Adj WW
595
Adj YW
993

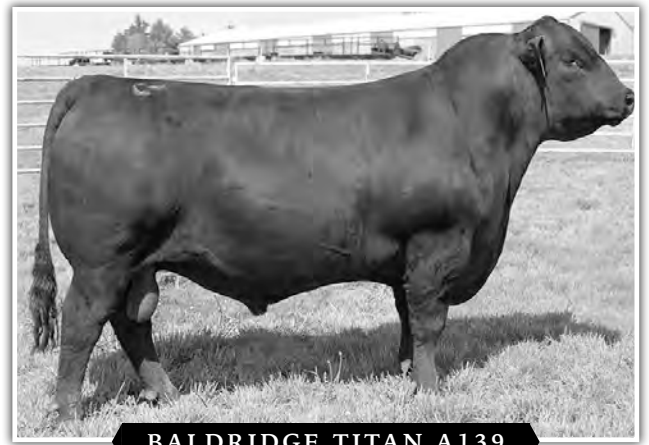
ANGUSGS

CED	BW	WW	YW	MILK	CW	MARB	RE	\$M	\$B	\$C
6	1.1	56	104	21	34	0.58	0.58	51	136	227
%	%	%	%	%	%	%	%	%	%	%

- Recommended for heifers and cows.



**DSA NEW DIRECTION 1022**




**BALDRIDGE TITAN A139**

**RRR Titan R0598**

**93**

REG: 19155653 | DOB: 02/11/18 | TAG: R0598

Baldrige Waylon W34  
**Baldrige Titan A139**  
 Baldrige Forever Lady T269  
 B/R Future Direction 4268  
**DSA New Direction 1022**  
 Riverbend Rita S730

GAR-EGL Protege  
 Baldrige Blackcap T163  
 Baldrige Rapid R31  
 Baldrige Forever Lady P164  
 C A Future Direction 5321  
 B/R Ruby 9114  
 Riverbend Mile High 3718  
 Riverbend Rita 4701

**Act BW**  
102  
**Adj WW**  
744  
**Adj YW**  
1269

**ANGUS<sup>GS</sup>**


CED	BW	WW	YW	MILK	CW	MARB	RE	\$M	\$B	\$C
2	2.9	65	121	29	63	1.08	0.70	66	188	310
%	%	20%	15%	20%	5%	10%	%	25%	2%	1%

- Recommended for cows.
- Posted ratios of 110 for marbling and 107 for RE.
- Ranks in the top 10% for 8 different EPDs, including top 2% for \$B, top 4% for \$F and HP.

**RRR Titan 8036**

**95**

REG: 19171030 | DOB: 03/19/18 | TAG: 8036

Baldrige Waylon W34  
**Baldrige Titan A139**  
 Baldrige Forever Lady T269  
 G A R Sunrise  
**SS Rita 2096**  
 G A R Predestined 2210

GAR-EGL Protege  
 Baldrige Blackcap T163  
 Baldrige Rapid R31  
 Baldrige Forever Lady P164  
 MCC Daybreak  
 G A R Objective R227  
 G A R Predestined  
 G A R Objective N147

**Act BW**  
80  
**Adj WW**  
660  
**Adj YW**  
1068

**ANGUS<sup>GS</sup>**


CED	BW	WW	YW	MILK	CW	MARB	RE	\$M	\$B	\$C
7	1.0	59	106	16	31	1.10	0.54	62	150	257
%	%	%	%	%	%	5%	%	%	25%	20%

- Recommended for cows.

**RRR Titan B512**

**94**

REG: 19349441 | DOB: 03/13/18 | TAG: B512

Baldrige Waylon W34  
**Baldrige Titan A139**  
 Baldrige Forever Lady T269  
 Ponca Creek Pepper  
**Ponca Creek Grace 512**  
 Ponca Creek Grace 217

GAR-EGL Protege  
 Baldrige Blackcap T163  
 Baldrige Rapid R31  
 Baldrige Forever Lady P164  
 A A R Ten X 7008 S A  
 Ponca Creek Blackbird 955  
 C R A Bextor 872 5205 608  
 Ponca Creek Grace 416

**Act BW**  
94  
**Adj WW**  
674  
**Adj YW**  
1247

**ANGUS<sup>GS</sup>**


CED	BW	WW	YW	MILK	CW	MARB	RE	\$M	\$B	\$C
9	-0.6	61	112	24	37	1.21	0.61	78	152	275
%	15%	%	25%	%	%	3%	%	4%	20%	10%

- Recommended for heifers and cows.
- Ranks in the top 25% for 9 different EPDs, highlighted by a top 2% Docility ranking and a top 3% Marbling ranking!

**RRR Titan 8025**

**96**

REG: 19171027 | DOB: 03/09/18 | TAG: 8025

Baldrige Waylon W34  
**Baldrige Titan A139**  
 Baldrige Forever Lady T269  
 Connealy Consensus 7229  
**McKellar Happy Tina 4185**  
 JMc Hippie Tina 8396 45121

GAR-EGL Protege  
 Baldrige Blackcap T163  
 Baldrige Rapid R31  
 Baldrige Forever Lady P164  
 Connealy Consensus  
 Blue Lilly of Conanga 16  
 Connealy All Around  
 JMc Hippies Bullseye 45121 65

**Act BW**  
80  
**Adj WW**  
675  
**Adj YW**  
1041

**ANGUS<sup>GS</sup>**

CED	BW	WW	YW	MILK	CW	MARB	RE	\$M	\$B	\$C
6	1.9	62	114	19	32	1.09	0.55	43	155	244
%	%	25%	20%	%	%	10%	%	%	20%	%

- Recommended for cows.
- Ranks in the top 25% for 5 different EPDs.




**BALDRIDGE XPAND X743**

**RRR Xpand R1188**

**97**

REG: 19160283 | DOB: 03/18/18 | TAG: R1188

Hoover Dam  
**baldrige Xpand x743**  
 Baldrige Queen S87  
 G A R Prophet  
**Baldrige Isabel B068**  
 Baldrige Isabel Y69

SydGen C C & 7  
 Erica of Ellston C124  
 Baldrige Navigator N5  
 Baldrige Queen N914  
 C R A Bextor 872 5205 608  
 G A R Objective 1885  
 Styles Upgrade J59  
 Baldrige Isabel T935

**Act BW**  
73  
**Adj WW**  
617  
**Adj YW**  
1188

**ANGUS<sup>GS</sup>**

CED	BW	WW	YW	MILK	CW	MARB	RE	\$M	\$B	\$C
11	-0.3	66	114	30	51	0.48	1.03	70	159	276
15%	20%	20%	20%	15%	25%	%	4%	15%	15%	10%

- Recommended for heifers and cows.
- Dam is owned with Pine View Angus, IA and out of all the daughters of Baldrige Isabel Y69, she resembles her the most.
- Might be one of the most outstanding set of EPDs in the sale, posting an amazing 18 different ones in the Top 25% of the breed!

## RRR Commando F806

**98**

REG: 19350341 | DOB: 02/21/18 | TAG: F806

EF Complement 8088

Basin Franchise P142  
EF Everelda Entense 6117

Act BW  
79

EF Commando 1366

Riverbend Young Lucy W1470

B/R Ambush 28  
Riverbend Young Lucy T1080

Adj WW  
673



Yon Future Focus T219

Mytty In Focus  
YON Hazel R133

Adj YW  
1292

Yon Sarah B433

Yon Sarah U555

G A R Retail Product  
Yon Sarah N170

ANGUS<sup>GS</sup>

CED	BW	WW	YW	MILK	CW	MARB	RE	\$M	\$B	\$C
0	2.2	64	115	20	49	0.73	0.81	59	155	260
%	%	20%	20%	%	%	%	15%	%	20%	15%

- Recommended for cows.
- A 115 marbling ratio to go with a 101 RE ratio!



G A R SUNRISE

## RRR Sunrise F825

**99**

REG: 19642561 | DOB: 02/25/18 | TAG: F825

MCC Daybreak

Boyd New Day 8005  
MCC Miss Focus 134

Act BW  
74

G A R Sunrise

G A R Objective R227

S S Objective T510 OT26  
G A R 1407 New Design 2983

Adj WW  
585



Sitz Summit 10609

Sitz Upward 307R  
Sitz Blackbird 2007

Adj YW  
993

Raven Erica 3443

Raven Erica 235

G A R Integrity  
Marcys Erica 3122

ANGUS<sup>GS</sup>

CED	BW	WW	YW	MILK	CW	MARB	RE	\$M	\$B	\$C
9	1.1	51	92	27	36	0.90	0.57	51	151	247
%	%	%	%	%	%	15%	%	%	20%	25%

- Recommended for cows.
- This G A R Sunrise son is ready to go to work.
- The G A R Sunrise calves have done very well for us.

## RRR Ten X F856

**100**

REG: 19642562 | DOB: 03/25/18 | TAG: F856

A A R Ten X 7008 S A

Mytty In Focus  
A A R Lady Kelton 5551

Act BW  
66

RRR Ten X S0084

STF Rita Y1122

G A R Progress  
Pine View SQR Rita T746

Adj WW  
705



HAYNES Sterling 924

S A V Legacy 5216  
HAYNES N D Forver Lady T709

Adj YW  
1115

STF Rita A396

S V F Rita R080

S V F Bandolier  
G A R 1407 New Design 1552

ANGUS<sup>GS</sup>

CED	BW	WW	YW	MILK	CW	MARB	RE	\$M	\$B	\$C
10	0.9	64	112	22	38	1.19	0.57	55	177	279
20%	%	20%	25%	%	%	3%	%	%	4%	4%

- Recommended for heifers and cows.
- His sire is a son of 10X that came through the first RRR bull sale.

## RRR Consent R0628

**101**

REG: 19135575 | DOB: 02/15/18 | TAG: R0628

Connealy Consensus

KMK Alliance 6595 187  
Blinda of Conanga 004

Act BW  
69

K C F Bennett Consent Y75

GAR-EGE Protege

Adj WW  
642



K C F Miss Protege W148

Breela of Conanga 3991

Adj YW  
1236

Baldrige Jennings Z064

Baldrige Waylon W34

RRR Miss Skymere R7065

Baldrige Maverick T43

Creekside Skymere Y14

PA Power Tool 9108

Gaffney Miss Skymere 7137

ANGUS<sup>GS</sup>

CED	BW	WW	YW	MILK	CW	MARB	RE	\$M	\$B	\$C
10	1.4	58	112	23	39	0.73	0.72	38	148	230
20%	%	%	25%	%	%	%	25%	%	25%	%

- Recommended for heifers and cows.
- Posts a YW ratio of 106!

## RRR Outright E004

**102**

REG: 19352243 | DOB: 01/14/17 | TAG: E004

K C F Bennett Absolute

S A V Final Answer 0035  
Thomas Miss Lucy 5152

Act BW  
82

HAYNES Outright 452

HAYNES ND 454 Miss 179

Adj WW  
702



Connealy Impression

HAYNES Miss Infocus 984

Adj YW  
N/A

Plattemere Queenie 938

Pearl Pammy of Conanga 194

Plattemere Queenie 891

S S Objective T510 OT26

Plattemere Queenie 749

ANGUS<sup>GS</sup>

CED	BW	WW	YW	MILK	CW	MARB	RE	\$M	\$B	\$C
6	1.2	76	133	33	69	0.49	0.9	80	182	316
%	%	4%	4%	10%	2%	%	10%	3%	13%	1%

- Recommended for cows.
- A very long and moderately framed bull that will be able to go out and cover ground for you.

## RRR Citation R0578

**103**

REG: 19236492 | DOB: 02/10/18 | TAG: R0578

K C F Bennett Consent Y75

Connealy Consensus  
K C F Miss Protege W148

Act BW  
70

K C F Bennett Citation

Thomas Patricia 9705

Adj WW  
558



HAYNES Outright 452

K C F Bennett Absolute

Adj YW  
1153

Baldrige Isabel D761

Baldrige Isabel T935

Baldrige Kaboom K243 KCF

Baldrige Isabel P4527

ANGUS<sup>GS</sup>

CED	BW	WW	YW	MILK	CW	MARB	RE	\$M	\$B	\$C
9	-1.0	54	91	20	35	1.17	0.58	71	144	258
%	10%	%	%	%	%	4%	%	15%	%	15%

- Recommended for heifers and cows.
- Brings a combination of calving ease with high level of marbling.
- Ranks in the Top 25% for 8 different EPDs.



Reverse Rocking R Ranch  
220 Laguna Madre Rd  
Maxwell, NM 87728

**FIRST CLASS  
MAIL**

**DO NOT DELAY**



**ANNUAL BULL SALE**

MONDAY - 1:00 PM MT

**MARCH 2, 2020**

AT THE RANCH / MAXWELL, NEW MEXICO

*Selling*

**103 ANGUS BULLS**

Over half of the offering aged bulls  
Two-thirds can be used on heifers or cows  
Many are full embryo transplant brothers

