

# RANCHERS CHOICE PRODUCTION SALE

SATURDAY, FEBRUARY 27, 2010

Bonina Sale Facility, Eltopia, WA



**LT Easy Blend 5125**

## SELLING

### 75

**Charolais  
and Angus  
Bulls**



**HA Image Maker 0145**



Alan and Leslie Alexander  
Pasco, WA  
(509) 545-8816  
E-mail: [hangna@owt.com](mailto:hangna@owt.com)  
[www.hangnacattle.com](http://www.hangnacattle.com)



Jon Cox  
Hay, WA  
(509) 549-3329  
[pioneerangus@pionnet.com](mailto:pioneerangus@pionnet.com)



Ron and Shelley Rosenberger  
4789 E Lancaster Rd.  
Hayden Lake, ID 83835  
Ranch (208) 772-6167  
E-mail: [rosenberger@hughes.net](mailto:rosenberger@hughes.net)  
[www.rockingrcattlecompany.com](http://www.rockingrcattlecompany.com)

# RANGHERS CHOICE

*To Our Cattlemen Friends:*

*Welcome to the 7th Annual Rancher's Choice Production Sale. We appreciate your continued interest in our sale and the confidence you've placed in our breeding programs over the years.*

*We're still "Working together to bring you the best" with the addition of the Rosenberger family of Rocking R Cattle Company, Hayden Lake, ID. We're pleased to have such a progressive, high quality program join our sales team. Be sure and look Ron and Shelley up on sale day and say hello.*

*As always, we're committed to bringing you a stout, performance based set of bulls to improve your next calf crop. All bulls going through our sale have been tested free of all known genetic defects.*

*Our glass is "half full" these days, and while we're all still looking for that big stack of cheap feeder hay just down the road...the best way to keep the banker happy is to top the market with good-looking, good-doing calves with known genetics. Whether you sell your calves at weaning time or retain ownership, we've got the bulls to fit your program.*

*We encourage you to study the sale book and take a close look at the data on the sale lots. You'll find only the top bloodlines from the Charolais and Angus breeds represented. Many of the bulls are products of an AI or embryo program and are good enough to go into anyone's seedstock program.*

*Thanks for your interest and we hope you can join us on February 27 for a complimentary lunch and a good bull buying experience. Bring your trailer along and load up on sale day and we'll take \$50 per head off your purchase price. If not, we'll feed them for free until April 1 and throw in free delivery to central points in the surrounding states. Give us a call for more information on the bulls or to arrange to look at them prior to sale day.*



Alan and Leslie Alexander  
5412 Birch Rd.  
Pasco, WA  
(509) 545-8816 • (509) 727-9151  
E-mail: [hangna@owt.com](mailto:hangna@owt.com)  
[www.hangnacattle.com](http://www.hangnacattle.com)



Jon Cox  
3401 Big Alkali Rd.  
Hay, WA  
(509) 549-3329  
[pioneerangus@pionnet.com](mailto:pioneerangus@pionnet.com)



Ron and Shelley Rosenberger  
4789 E Lancaster Rd.  
Hayden Lake, ID 83835  
(208) 772-6167  
E-mail: [rosenberger@hughes.net](mailto:rosenberger@hughes.net)  
[www.rockingrcattlecompany.com](http://www.rockingrcattlecompany.com)

# RANGHERS CHOICE PRODUCTION SALE

SATURDAY, FEBRUARY 27, 2010

Bonina Sale Facility, Eltopia, WA • Lunch at 11 a.m. • Sale at Noon

SALE DAY PHONES (509) 297-4480 or (509) 727-9151

#### DRIVING DIRECTIONS:

North from Pasco on Highway 395, for 14 miles. Turn left (west) at the Eltopia turnoff. Travel 1-1/2 miles and turn right on Langford. Turn right on Kent drive and go 1 mile to the Bonina sign. Follow lower road to sale barn and parking.

#### MOTEL ACCOMMODATIONS:

##### Pasco:

Holiday Inn Express (TRAC arena) (509) 543-7000

Red Lion (509) 547-0701

Sleep Inn (509) 545-9554

Budget Inn (509) 546-2010

#### AUCTIONEER:

Butch Booker, Colfax, WA (509) 989-2855

#### SALE DAY REPRESENTATIVES:

Rod Wesselman, American Angus Association, (509) 765-9219

Kristian Rennert, American International Charolais Assn., (308) 440-9463

Gary Kendall, *Western Livestock Reporter*, (208) 858-2163

Willard Wolf, Crossroads Cattle Co., (509) 994-8051

Buyers who wish to purchase cattle but can't attend the sale may contact Alan Alexander, Ron Rosenbeger, Jon Cox, Butch Booker or one of the sale representatives listed above. Phone bids will also be taken during the sale. Registration certificates will be transferred to the buyer on all eligible animals.

#### HEALTH & FERTILITY:

All bulls over one year of age have passed a semen test performed by Dr. Don Peters, Frontier Genetics, Hermiston, OR. All bulls, regardless of age, are guaranteed to be breeders. Health certificates will be issued to out of state buyers on sale day or prior to delivery. **If additional tests are required by the destination state (Trich, etc.) they will be performed at no cost to the buyer prior to delivery.** All lots will be brand inspected to their destination.

#### ADDITIONAL PERFORMANCE:

Scrotal measurements, additional performance data and ultrasound measurements will be available on sale day.

#### FEED AND DELIVERY:

Bulls may be left in our care free of charge until April 1 and at cost after that. SAVE \$50 per head if you take your bull home on sale day! Bulls will be delivered free to central locations in Washington, Oregon and Idaho. Deliveries to other states can be arranged and will be done at the least possible cost to the buyer. The buyer assumes all risk upon purchase.

#### TERMS AND CONDITIONS:

All cattle sell under the Terms and Conditions as recommended by the American Angus Association and the American International Charolais Association. All settlements are to be made with the clerk immediately following the conclusion of the sale. Terms of the sale shall be cash or bankable checks unless prior arrangements have been made. All supplements to the sale book or announcements made from the block take precedence over what is written in the sale book.

#### INSPECTION OF CATTLE:

Sale cattle will be in place and ready for viewing on Thursday and Friday, February 26 and 27. Please bring your sale book with you to the sale.

#### LIABILITY:

All persons attending the sale and related functions do so at their own risk. Hang'n A Cattle Company, Pioneer Angus, Rocking R Angus, Bonina, Inc., their staff or representatives assume no liability, legal or otherwise, for any accidents or injuries that may occur.

#### LIVESTOCK INSURANCE:

Available sale day through Harding & Harding, Gary Kendall.



Visit the *Angus Journal* Web site: [www.angusjournal.com](http://www.angusjournal.com), to view this sale book online. *References: American Angus Association®, AHIR®, AngusSource®, CAB®, Pathfinder®.* EPDs current as of January 27, 2010. Updated EPDs can be viewed online at [www.angus.org](http://www.angus.org).



Alan and Leslie Alexander • Hang'n A Cattle Company  
5412 Birch Rd. • Pasco, WA  
(509) 545-8816 • (509) 727-9151  
E-mail: [hangna@owt.com](mailto:hangna@owt.com) • Website: [www.hanginacattle.com](http://www.hanginacattle.com)

Jon Cox • Pioneer Angus  
3401 Big Alkali Rd. • Hay, WA  
(509) 549-3329  
E-mail: [pioneerangus@pionnet.com](mailto:pioneerangus@pionnet.com)

Ron and Shelley Rosenberger • Rocking R Cattle Company  
4789 E Lancaster Rd. • Hayden Lake, ID. 83835  
(208) 772-6167  
E-mail: [rosenberger@hughes.net](mailto:rosenberger@hughes.net)  
Website: [www.rockingrcattlecompany.com](http://www.rockingrcattlecompany.com)



Your Northwest Source for Quality Charolais Cattle

Dear Charolais Friends and Customers,

**Welcome to the 7th Annual Ranchers Choice Production Sale.**

As you look through the sale book this year, you'll see the last set of bulls sired by LT Wind Energy 3104. His sons have always been popular with many high sellers at the sale in the past. We hope to continue the bloodlines in our herd by using one of his sons.

Take a close look at the lots sired by the popular AI Charolais bulls, Easy Blend and Rio Bravo. This is the first time we've bred to these sires and we sure like the results. Both sires rank in the top 15% of the breed for performance EPD traits but maintain a below average for birth. These are the first Blend calves to sell in the Northwest and we think there are a couple prospects for a purebred program.



**William Keifer**

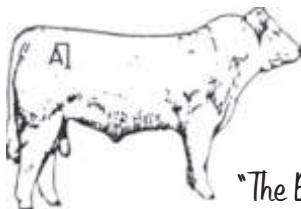
This winter, William Keifer from Pullman, WA helped us manage our bull test and sale as part of his senior project. He has a few Charolais cattle of his own and went with us to the Charolais Junior Nationals last summer. He's the type of kid you like to be around--he works hard and doesn't mind getting dirty. He'll be around on sale day so be sure to look him up and say hello.

The bulls will be at Beus Feedlot north of Pasco through February 20 and then moved to the ranch while we clean them up. The fall bulls completed a 120-day gain test last summer and the spring bulls will finish up in February. Progress reports can be found on our website at [www.hangnacattle.com](http://www.hangnacattle.com) and available at the feedlot.

All bulls have tested negative for PI-BVD, ultrasound scanned for carcass traits and have passed a semen test. Look for the Charolais supplement sheet on our display table on sale day. It will include scrotal measurements, final gain test report and complete ultrasound scan data.

We appreciate your continued support and look forward to seeing everyone at this year's sale. If you have any questions, please give us a call. Home (509) 545-8816, Alan's cell (509) 727-9151.

**Alan and Leslie Alexander**



"The Brand You Can Count On"



**Leslie and Alan Alexander**



**LT Easy Blend 5125 - Reference Sire A**



**LT EASY BLEND 5125 PLD**

Birth Date: 03/01/2005

M705113

POLLED

BCR POLLED UNLIMITED 003 FZ MIGHTY MAC POLLED 828  
 LT UNLIMITED EASE 9108 MISS CAMELOT  
 M301930 PP MISS SHANDY 214 R194 MR BONAPARTE 194 TWIN  
 PP SHANNAS 54 BLF  
 WCR PRIME CUT 764 PLD JWK IMPRESSIVE D040 ET  
 LT BRENDA 1014 PLD WCR MISS EASE 4314  
 F924572 LT BRENDA'S BREEZE 9207P LT WYOMING WIND 4020 PLD  
 LT UNLTD AIREY 4066 P

CW
43
REA
0.24
FAT
0.015
MARB
0.09

CEB	BW	WW	YW	MILK	MCE	MW	SC
4.8	1.3	47	77	5	0.3	28	0.9

• This homozygous polled bull was the second high seller at the 2006 Lindskov-Thiel Ranch sale at \$24,000. If great bulls truly come from great cows, Easy Blend has the genetics to be a breed leader. His dam is second-to-none at Lindskov-Thiel. The Blend sons are smooth, correct and will add pounds at weaning to your calf crop.

BW	ADJ. WW	RATIO	ADJ. YW	RATIO
95	880	108	1517	113

# CHAROLAIS BULLS



**HACC PRAIRIE BLEND 865 POL - Lot 1**



## HACC PRAIRIE BLEND 865 POL

Birth Date: 09/09/2008 M771803 POLLED

LT UNLIMITED EASE 9108 BCR POLLED UNLIMITED 003  
 LT EASY BLEND 5125 PLD PP MISS SHANDY 214 R194  
 M705113 LT BRENDA 1014 PLD WCR PRIME CUT 764 PLD  
 LT BRENDA'S BREEZE 9207P

SS MONTANA SILVER \$ CECILE COBB  
 LT RIANNA 4269 P \$ STAGE'S MISS DC BAR  
 F1003680 LT PRAIRIE MAID 4054 HCR SENATOR 9052 POLLED  
 LT PRAIRIE MAIDEN 8016

CW	36
REA	0.22
FAT	0.033
MARB	0.08

CEW	BW	WW	YW	MILK	MCE	MW	SC
3.8	0.6	42	78	4	0.7	25	0.8

- Fall bull.
- A smooth shouldered, long bodied bull with plenty of muscle.
- One of our favorite Blend sons.
- 120-day test index 117.
- EPD rank - Top 2% for Weaning, 1% for Yearling, 20% for Maternal and SC (scrotal), 1% for Hot Carcass Weight (HCW), 30% for Marbling.
- Selling 2/3 interest and full possession.

BW	ADJ. WW	RATIO	ADJ. YW	RATIO
79	575	105	1191	109



## HACC DOUBLE BLEND 874 POL TW

Birth Date: 09/19/2008 M771804 POLLED

LT UNLIMITED EASE 9108 BCR POLLED UNLIMITED 003  
 LT EASY BLEND 5125 PLD PP MISS SHANDY 214 R194  
 M705113 LT BRENDA 1014 PLD WCR PRIME CUT 764 PLD  
 LT BRENDA'S BREEZE 9207P

CW	31
REA	0.13
FAT	0.007
MARB	0.02

BIG SKY OUTBACK 2UP PEUGEOT ET  
 LA MISS OUTBACK 280 POL SKYMONT MISS 7005  
 F966918 LA MS BUD 773 PLD RC BUDSMYDAD 225 POLLED  
 FRC MISS FRANZ D236

CEW	BW	WW	YW	MILK	MCE	MW	SC
2.1	1.7	36	54	10	-0.4	28	0.7

BW	ADJ. WW	RATIO	ADJ. YW	RATIO
78	476	100	1023	100

- Fall bull. Twin.
- Two maternal sisters in our herd.
- Good front end, top line and nice hip.
- 120-day test index 97.
- EPD rank - Top 9% for Weaning, 25% for Yearling, 30% for Milk, 10% for Maternal, 30% for SC and 3% for HCW.



## HACC ON THE ROCKS 909 POL

Birth Date: 01/15/2009 M771937 POLLED

LT UNLIMITED EASE 9108 BCR POLLED UNLIMITED 003  
 LT EASY BLEND 5125 PLD PP MISS SHANDY 214 R194  
 M705113 LT BRENDA 1014 PLD WCR PRIME CUT 764 PLD  
 LT BRENDA'S BREEZE 9207P

CW	26
REA	0.17
FAT	0.008
MARB	0.14

LT BALMYLE 8106 PLD KD BALMYLE 12B  
 HACC MISS BALMYLE 359POL LT UNLIMITED GRACE 0124  
 F971955 FC MISS EASY DUKE 601D LT UNLIMITED EASE 9108  
 SKYMONT MISS DUKE 2022

CEW	BW	WW	YW	MILK	MCE	MW	SC
7.4	-0.2	32	48	8	2.7	24	0.9

BW	ADJ. WW	RATIO	ADJ. YW	RATIO
89	734	107	1083	93

- Long bodied with a good top line. Good muscling in a smooth package.
- EPD rank - Top 15% for CE, 35% for low BW, 20% for Weaning, 35% for Yearling, 25% for Maternal, 15% for SC, 9% for HCW and 15% for Marbling. Above average for Milk.



**HACC MOUNTAIN BLEND 913 POL - Lot 5**



## HACC FIRST BLEND 904 POL

Birth Date: 01/11/2009 M771800 POLLED

LT UNLIMITED EASE 9108 BCR POLLED UNLIMITED 003  
 LT EASY BLEND 5125 PLD PP MISS SHANDY 214 R194  
 M705113 LT BRENDA 1014 PLD WCR PRIME CUT 764 PLD  
 LT BRENDA'S BREEZE 9207P

BIG SKY OUTBACK 2UP PEUGEOT ET  
 HACC MISS OUTBACK 284TWN SKYMONT MISS 7005  
 F962546 LA MISS SAGE 369 HACC HIGHEXPECTATION1005  
 MISS DICTATION 7703

CW	27
REA	0.17
FAT	0.011
MARB	0.03

CEW	BW	WW	YW	MILK	MCE	MW	SC
7.3	-0.6	28	45	8	5.9	22	0.8

BW	ADJ. WW	RATIO	ADJ. YW	RATIO
77	714	104	1220	103

- Two maternal sisters in our herd and another in the 3G program.
- Long, deep, wide topped with a smooth front end.
- As of 1/1/09, overall gain on test was 4.4 lbs.
- EPD rank - Top 15% for CE, 25% for low BW, 35% for Weaning, 25% for MCE, 30% for Maternal, 20% for SC, 7% for HCW.



## HACC MOUNTAIN BLEND 913 POL

Birth Date: 01/25/2009 M771801 POLLED

LT UNLIMITED EASE 9108 BCR POLLED UNLIMITED 003  
 LT EASY BLEND 5125 PLD PP MISS SHANDY 214 R194  
 M705113 LT BRENDA 1014 PLD WCR PRIME CUT 764 PLD  
 LT BRENDA'S BREEZE 9207P

HACC MOUNTAIN TIME HACC RED MOUNTAIN 365 RF  
 HACC MS MOUNTAIN 164 HACC LORETTA 825  
 F926150 FC MS DOMINION 8011 SKYMONT DOMINION 5139  
 SKYMONT MISS 2358

CW	29
REA	0.19
FAT	0.007
MARB	0.04

CEW	BW	WW	YW	MILK	MCE	MW	SC
6.1	0.8	34	60	10	4.6	27	0.5

BW	ADJ. WW	RATIO	ADJ. YW	RATIO
86	757	106	1343	102

- Willard Wolf used him as Champion Charolais bull at the Spokane Interstate fair.
- Calf champion and reserve grand champion at the Charolais ROE A show in Yakima two weeks later. All at nine months of age.
- Maternal and paternal grandams are Dams of Distinction.
- Two maternal sisters in our herd.
- Gentle as a pup with the credentials to go to a registered herd.
- As of 1/1/09, overall gain on test was 3.8 lbs.
- EPD rank - Top 25% for CE, 15% for Weaning, 15% for Yearling, 30% for Milk, 15% for Maternal and 5% for HCW.
- Selling 2/3 interest and full possession.

# CHAROLAIS BULLS



**LT Wind Energy 3104 - Sire of Lots 6-13.**



## HACC MONTANA WIND 879 POL

Birth Date: 09/29/2008 M771902 POLLED

LT WYOMING WIND 4020 PLD  
LT WIND ENERGY 3104 P  
M665512 LT AVY'S PREDICTOR 9113P

SCHURRTOP 5627  
LT CHAP'S LADY 2170P  
EATONS PREDICTOR 9230  
LT UNLIMITED AVY 231P

HACC MR MONTANA0051POLTW  
LL MONTANA LACE  
F997622 LL MISS COTTON ROPE

LHD MONTANA NATIVE G221  
SNOWLINE BETSY 762  
GRO ROPEN BELAIRE F168  
B&G MS GOLDEN STAR 230

CW	18
REA	0.15
FAT	0.009
MARB	0.01

CED	BW	WW	YW	MILK	MCE	MW	SC
3.2	1.1	27	47	5	5.8	18	1.0

- Fall bull.
- Long as a freight train and very smooth.
- Gain test index 108.

BW	ADJ. WW	RATIO	ADJ. YW	RATIO
86	606	110	1185	108



## HACC PRIME ENERGY 882 POL

Birth Date: 10/03/2008 M771903 POLLED

LT WYOMING WIND 4020 PLD  
LT WIND ENERGY 3104 P  
M665512 LT AVY'S PREDICTOR 9113P

SCHURRTOP 5627  
LT CHAP'S LADY 2170P  
EATONS PREDICTOR 9230  
LT UNLIMITED AVY 231P

LT PRIME PROFIT 0157 P  
HACC MISS BEA 455 POL  
F997113 MC MISS MAC 104

WCR PRIME CUT 764 PLD  
BBCR MAXINE 572 PLD  
MORRISON'S HILLCREST MAC  
MC MISS DOMINO 701

CW	22
REA	0.34
FAT	0.026
MARB	0.05

CED	BW	WW	YW	MILK	MCE	MW	SC
0.3	2.8	37	60	-4	4.4	15	1.0

- Fall bull.
- A lot of power in this pedigree.
- Good hip, good muscle, good looking.
- Gain test index 102.
- EPD rank - Top 7% for Weaning, 15% for Yearling, 6% for SC, 20% for HCW and REA (Ribeye).

BW	ADJ. WW	RATIO	ADJ. YW	RATIO
90	582	106	1129	103



**HACC MS IMPACT 189 - Dam of Lot 9.**



## HACC BUD'S WIND 876 POL

Birth Date: 09/23/2008 M771901 POLLED

LT WYOMING WIND 4020 PLD  
LT WIND ENERGY 3104 P  
M665512 LT AVY'S PREDICTOR 9113P

SCHURRTOP 5627  
LT CHAP'S LADY 2170P  
EATONS PREDICTOR 9230  
LT UNLIMITED AVY 231P

LT PRIME PROFIT 0157 P  
LA PEARL 474 POL  
F1020084 LA MISS BUD H03

WCR PRIME CUT 764 PLD  
BBCR MAXINE 572 PLD  
RC BUDSMYDAD 225 POLLED  
FRC MISS FRANZ A045

CW	14
REA	-0.11
FAT	0.009
MARB	0.08

CED	BW	WW	YW	MILK	MCE	MW	SC
0.3	1.8	28	42	-2	4.0	12	0.9

- Fall bull.
- Our pick from the last calf crop of Wind Energy.
- He has "the look" and should sire some fancy calves.
- Wide top, good front, smooth shoulders with lots of muscle.
- Selling 2/3 interest and full possession.

BW	ADJ. WW	RATIO	ADJ. YW	RATIO
92	528	96	1026	94



**HACC BUD'S WIND 876 POL - Lot 6**



## HACC MR WIND 886 POL

Birth Date: 10/15/2008 M771904 POLLED

LT WYOMING WIND 4020 PLD  
LT WIND ENERGY 3104 P  
M665512 LT AVY'S PREDICTOR 9113P

SCHURRTOP 5627  
LT CHAP'S LADY 2170P  
EATONS PREDICTOR 9230  
LT UNLIMITED AVY 231P

HACC MAJOR IMPACT 630  
HACC MS IMPACT 189  
F930299 LA SHERRY 91/8

FR IMPACT C301 ET  
HACC MS YUKON 021  
UI VANDAL 520  
MISS ALGER A4

CW	10
REA	0.06
FAT	0.009
MARB	0.06

CED	BW	WW	YW	MILK	MCE	MW	SC
1.0	1.8	20	28	5	7.4	15	0.6

- Fall bull.
- Wide top with depth and a good hip.
- Maternal sister in the herd.
- Dam produced high sellers at previous sales.
- Gain test index 97.

BW	ADJ. WW	RATIO	ADJ. YW	RATIO
75	481	100	1011	100



## HACC PRAIRIE WIND 889 POL

Birth Date: 10/21/2008 M771905 POLLED

LT WYOMING WIND 4020 PLD  
LT WIND ENERGY 3104 P  
M665512 LT AVY'S PREDICTOR 9113P

SCHURRTOP 5627  
LT CHAP'S LADY 2170P  
EATONS PREDICTOR 9230  
LT UNLIMITED AVY 231P

EATONS PREDICTOR 9230  
LT PRAIRIE DEE 1075 P  
F924790 LT UNLMTD PRAIRIE 6027 P

EATONS PERFORMER 6709  
EATONS MISS BIG SANDY  
SCHURRTOP 5627  
LCR MISS LINDSKOV 7121

CW	5
REA	0.21
FAT	0.030
MARB	0.14

CED	BW	WW	YW	MILK	MCE	MW	SC
4.5	0.1	19	32	3	9.9	13	1.1

- Fall bull.
- Built to be a calving-ease bull.
- EPD rank - Top 2% for MCE, 3% for SC and 15% for Marbling.

BW	ADJ. WW	RATIO	ADJ. YW	RATIO
83	548	100	1034	95

# CHAROLAIS BULLS

**11**

## HACC DOUBLE WIND 890 POL

Birth Date: 11/05/2008 M771906 POLLED

LT WYOMING WIND 4020 PLD SCHURRTOP 5627  
 LT WIND ENERGY 3104 P LT CHAP'S LADY 2170P  
 M665512 LT AVY'S PREDICTOR 9113P EATONS PREDICTOR 9230  
 LT UNLIMITED AVY 231P

CW	13
REA	0.19
FAT	0.026
MARB	0.11

LT WYOMING WIND 4020 PLD SCHURRTOP 5627  
 LT WIND QUEEN 0167 P TW LT CHAP'S LADY 2170P  
 F873088 LT UNLIMITED MAIDEN 7194 LT UNLIMITED DUKE 1172 P  
 LT UNLIMITED LASS 3023 P

CED	BW	WW	YW	MILK	MCE	MW	SC
6.7	-0.7	22	28	4	7.7	14	1.3

BW	ADJ. WW	RATIO	ADJ. YW	RATIO
83	519	94	978	90

- Fall bull.
- Good front end--calving ease on paper and in person.
- EPD rank - Top 20% for CE, 25% for low BW, 10% for MCE, 1% for SC and 20% for Marbling.

**13**

## HACC WESTERN ENERGY 928 POL

Birth Date: 02/11/2009 M771934 POLLED

LT WYOMING WIND 4020 PLD SCHURRTOP 5627  
 LT WIND ENERGY 3104 P LT CHAP'S LADY 2170P  
 M665512 LT AVY'S PREDICTOR 9113P EATONS PREDICTOR 9230  
 LT UNLIMITED AVY 231P

CW	11
REA	0.12
FAT	0.020
MARB	-0.01

LA WYOMING WEST 04 PLD LT WYOMING WIND 4020 PLD  
 TR LIBERTY M260 P MISS THAIDA 7705  
 F956338 LA MISS VANDAL K28 POL UI VANDAL 520  
 HACC MISS DUSTER 530

CED	BW	WW	YW	MILK	MCE	MW	SC
1.3	1.9	23	34	1	6.1	12	0.9

BW	ADJ. WW	RATIO	ADJ. YW	RATIO
88	629	98	1157	105

- Thick, deep and nice to be around.
- He'll catch your eye in the pen.
- As of 1/1/09, overall gain on test was 4.4 lbs.
- EPD rank - Top 25% for MCE and 15% for SC.

**14**

## HACC MARKET PLACE 916 POL

Birth Date: 01/30/2009 M772015 POLLED

LT ASSERTION 1277 P EATONS ASSERT 9171  
 HACC MARKET REPORT S3 POL LT ALLI'S CLASS 9140 P  
 M723286 MCINTYRE LACEY MAY N6 WR BENEFIT 7418  
 MCINTYRE LACEY MAY 972

CW	10
REA	0.07
FAT	0.020
MARB	-0.13

FREDS HUSKER 7701 LT WYOMING WIND 4020 PLD  
 HACC MISS HUSKER 509 POL FREDS MISS TOMY 2143  
 F1022246 HACC MISS PROFIT 332 POL LT PRIME PROFIT 0157 P  
 FC MISS EASY 7005 PLD

CED	BW	WW	YW	MILK	MCE	MW	SC
2.2	1.2	25	47	-1	5.9	12	0.5

BW	ADJ. WW	RATIO	ADJ. YW	RATIO
83	673	105	1139	103

- Moderate framed dam.
- Long bodied and wide topped.
- As of 1/1/09, overall gain on test was 4.0 lbs.
- EPD rank - Top 25% for MCE.



HACC PROFIT REPORT 929 POL - Lot 16

**12**

## HACC BUDS WIND 925 POL

Birth Date: 02/06/2009 M775409 POLLED

LT WYOMING WIND 4020 PLD SCHURRTOP 5627  
 LT WIND ENERGY 3104 P LT CHAP'S LADY 2170P  
 M665512 LT AVY'S PREDICTOR 9113P EATONS PREDICTOR 9230  
 LT UNLIMITED AVY 231P

CW	21
REA	0.06
FAT	0.013
MARB	0.07

RC BUDSMYDAD 225 POLLED RC BUD 04 ET  
 LA MISS BUD 565 PLD MISS SHOWGUN RC 416  
 F730152 FRC MISS FRANZ U128 ABC HECTORO  
 FRC MISS FRANZ S100

CED	BW	WW	YW	MILK	MCE	MW	SC
-0.4	1.8	30	48	4	2.0	19	1.1

BW	ADJ. WW	RATIO	ADJ. YW	RATIO
72	675	100	1174	100

- This bull got off to a rough start when he lost his 14-year-old dam at two months of age.
- A gentle bull to be around - you can lead him anywhere with a bucket of rocks!
- As of 1/1/09, overall gain on test was 3.0 lbs.
- EPD rank - Top 30% for Weaning, 3% for SC, 25% for HCW and top 35% for Marbling.



HACC WESTERN ENERGY 928 POL - Lot 13

**15**

## HACC MARKET LINE 918 POL

Birth Date: 02/01/2009 M775408 POLLED

LT ASSERTION 1277 P EATONS ASSERT 9171  
 HACC MARKET REPORT S3 POL LT ALLI'S CLASS 9140 P  
 M723286 MCINTYRE LACEY MAY N6 WR BENEFIT 7418  
 MCINTYRE LACEY MAY 972

CW	11
REA	0.13
FAT	0.016
MARB	-0.07

HACC PROFIT LINE 459 POL LT PRIME PROFIT 0157 P  
 HACC MISS PROFIT LINE 6101 POL HACC MISS FLAME 0033 POL  
 F1064280 FRANZ MS F006 AAA POLLED PAUL 11C  
 FRC MISS FRANZ D145

CED	BW	WW	YW	MILK	MCE	MW	SC
3.6	0.9	23	40	5	3.3	16	0.3

BW	ADJ. WW	RATIO	ADJ. YW	RATIO
80	719	105	1154	98

- As of 1/1/09, overall gain on test was 3.2 lbs.
- Smaller framed, deep with a good hip.
- Out of a first calf heifer.

**16**

## HACC PROFIT REPORT 929 POL

Birth Date: 02/11/2009 M771925 POLLED

LT ASSERTION 1277 P EATONS ASSERT 9171  
 HACC MARKET REPORT S3 POL LT ALLI'S CLASS 9140 P  
 M723286 MCINTYRE LACEY MAY N6 WR BENEFIT 7418  
 MCINTYRE LACEY MAY 972

CW	13
REA	0.18
FAT	0.012
MARB	0.00

LT PRIME PROFIT 0157 P WCR PRIME CUT 764 PLD  
 HACC LADY PROFIT 425 POL BCR MAXINE 572 PLD  
 F1000908 HACC MISS MOUNTAIN 0058 HACC MOUNTAIN TIME  
 HACC TERRY 463 PLD

CED	BW	WW	YW	MILK	MCE	MW	SC
1.8	2.0	28	50	-1	4.3	13	0.5

BW	ADJ. WW	RATIO	ADJ. YW	RATIO
89	649	102	1124	102

- Long bodied and smooth up front.
- As of 1/1/09, overall gain on test was 4.0 lbs.
- EPD rank - Top 35% for Weaning and 30% for Yearling.

# CHAROLAIS BULLS



**HACC Market Report S3 - Sire of Lots 14-19.**

**17**

## HACC MARKET LINE 933 POL

Birth Date: 02/14/2009 M772020 POLLED

LT ASSERTION 1277 P  
HACC MARKET REPORT S3 POL  
M723286 MCINTYRE LACEY MAY N6

EATONS ASSERT 9171  
LT ALLI'S CLASS 9140 P  
WR BENEFIT 7418  
MCINTYRE LACEY MAY 972

HACC PROFIT LINE 459 POL  
HACC MISS SHERRY LINE 693 P/S  
F1064277 HACC MS IMPACT 189

LT PRIME PROFIT 0157 P  
HACC MISS FLAME 0033 POL  
HACC MAJOR IMPACT 630  
LA SHERRY 91/8

CW	10
REA	0.13
FAT	0.006
MARB	-0.04

CED	BW	WW	YW	MILK	MCE	MW	SC
4.3	0.9	22	38	6	5.9	17	0.3

- As of 1/1/09, overall gain on test was 3.9 lbs.
- Dam is maternal sister to Lot 9.
- Smaller framed, long hip and thick across the top.
- EPD rank - Top 25% for MCE.

BW	ADJ. WW	RATIO	ADJ. YW	RATIO
78	713	104	1172	99

**18**

## HACC MARKET SURGE 934 POL

Birth Date: 02/16/2009 M775410 POLLED

LT ASSERTION 1277 P  
HACC MARKET REPORT S3 POL  
M723286 MCINTYRE LACEY MAY N6

EATONS ASSERT 9171  
LT ALLI'S CLASS 9140 P  
WR BENEFIT 7418  
MCINTYRE LACEY MAY 972

HACC MAJOR IMPACT 630  
HACC SHAWNY 238 P/S  
F946538 HACC MS MOUNTAIN 7091

FR IMPACT C301 ET  
HACC MS YUKON 021  
HACC RED MOUNTAIN 365 RF  
HACC MISTRESS 809

CW	10
REA	0.14
FAT	0.003
MARB	-0.04

CED	BW	WW	YW	MILK	MCE	MW	SC
5.0	0.4	15	26	10	8.3	17	0.1

- Out of a real solid, good milking cow.
- As of 1/1/09, overall gain on test was 3.1 lbs.
- EPD rank - Top 35% for CE, 25% for Milk and 5% for MCE.

BW	ADJ. WW	RATIO	ADJ. YW	RATIO
79	678	106	1009	91

**20**

## HACC RIO SILVER 905 POL

Birth Date: 01/12/2009 M772017 POLLED

LT RIO BLANCO 1234 P  
LT RIO BRAVO 3181 P  
M665507 LT 7N OF DUKE 9083 PLD

WCR PRIME CUT 764 PLD  
LT PRAIRIE MAID 4054  
WCR SIR DUKE 611  
LT UNLIMITED PRO 1128

LT SILVER EDGE 2289 PLD  
HACC MS SILVER PROFIT 706 POL  
F1064849 HACC MISS PROFIT 334 POL

SS MONTANA SILVER  
LT DUCHESS OF MAC 7076 P  
LT PRIME PROFIT 0157 P  
HACC MISS EASY TIME 9023

CW	28
REA	0.33
FAT	0.035
MARB	0.10

CED	BW	WW	YW	MILK	MCE	MW	SC
1.7	1.3	32	62	7	2.4	23	1.1

- The sire of the next three lots, LT Rio Bravo 3181, has been called "the ultimate body builder" for his ability to sire calves with fleshing ability, extra rib and capacity, yet keep the birth weights low.
- Dam is a first calf heifer.
- Wide topped, deep bodied and good scrotal.
- As of 1/1/09, overall gain on test was 4.1 lbs.
- EPD rank - Top 20% for Weaning, 9% for Yearling, 30% for Maternal, 3% for SC, 5% for HCW, 25% for REA and Marbling.

BW	ADJ. WW	RATIO	ADJ. YW	RATIO
79	667	104	1152	104

**21**

## HACC MR BRAVO 906

Birth Date: 01/12/2009 M771924

LT RIO BLANCO 1234 P  
LT RIO BRAVO 3181 P  
M665507 LT 7N OF DUKE 9083 PLD

WCR PRIME CUT 764 PLD  
LT PRAIRIE MAID 4054  
WCR SIR DUKE 611  
LT UNLIMITED PRO 1128

LT PRIME PROFIT 0157 P  
HACC MISS PROFIT 728 POL  
F1068520 HACC MS MOUNTAIN 164

WCR PRIME CUT 764 PLD  
BBCR MAXINE 572 PLD  
HACC MOUNTAIN TIME  
FC MS DOMINION 8011

CW	31
REA	0.43
FAT	0.031
MARB	0.09

CED	BW	WW	YW	MILK	MCE	MW	SC
4.7	0.1	27	57	9	4.2	23	1.0

- Dam is a first calf heifer.
- Dam of Distinction on bottom side.
- As of 1/1/09, overall gain on test was 4.2 lbs.
- EPD rank - Top 35% for CE, 20% for Yearling, 35% for Milk, 30% for Maternal, 6% for SC, 3% for HCW, 10% for REA and 25% for Marbling.

BW	ADJ. WW	RATIO	ADJ. YW	RATIO
75	602	94	1154	104

**19**

## HACC UP MARKET 935 POL

Birth Date: 02/17/2009 M775912 POLLED

LT ASSERTION 1277 P  
HACC MARKET REPORT S3 POL  
M723286 MCINTYRE LACEY MAY N6

EATONS ASSERT 9171  
LT ALLI'S CLASS 9140 P  
WR BENEFIT 7418  
MCINTYRE LACEY MAY 972

LT WIND ENERGY 3104 P  
HACC PROFIT WIND 688 POL  
F1064672 LA MISS PROFIT N393 POL

LT WYOMING WIND 4020 PLD  
LT AVY'S PREDICTOR 9113P  
LT PRIME PROFIT 0157 P  
LA MS BUD 773 PLD

CW	14
REA	0.19
FAT	0.019
MARB	-0.01

CED	BW	WW	YW	MILK	MCE	MW	SC
1.2	2.0	36	59	3	3.3	21	0.8

- Dam is full sister to our high-selling bull last year at \$5,600 to Tennessee.
- Maternal grandmother is a Dam of Distinction.
- As of 1/1/09, overall gain on test was 4.0 lbs.
- EPD rank - Top 8% for Weaning, 15% for Yearling and 20% for SC.

BW	ADJ. WW	RATIO	ADJ. YW	RATIO
80	787	110	1289	98

**22**

## HACC BRAVO 912 POL

Birth Date: 01/18/2009 M775406 POLLED

LT RIO BLANCO 1234 P  
LT RIO BRAVO 3181 P  
M665507 LT 7N OF DUKE 9083 PLD

WCR PRIME CUT 764 PLD  
LT PRAIRIE MAID 4054  
WCR SIR DUKE 611  
LT UNLIMITED PRO 1128

LHD MONTANA NATIVE G221  
HACC MS MONTANA 9068  
F855857 FC MISS EASY MONTE 602F

LHD CIGAR E46  
LHD MS PERFECT HIT U348  
THE HHP MONTE CARLO 1ST  
FC MISS EASY MC 617D

CW	20
REA	0.35
FAT	0.015
MARB	0.06

CED	BW	WW	YW	MILK	MCE	MW	SC
4.5	-0.5	16	33	14	6.2	22	0.7

- Deep bull with a good hip.
- Dam is ten years old.
- As of 1/1/09, overall gain on test was 3.5 lbs.
- EPD rank - Top 30% for low BW, 10% for Milk, 25% for MCE, 35% for Maternal, 30% for SC, 25% for HCW, 20% for REA and above average for Marbling.

BW	ADJ. WW	RATIO	ADJ. YW	RATIO
83	606	95	1075	97



**HACC MR BRAVO 906 - Lot 21**

# CHAROLAIS BULLS

**23**

## HACC TREND 914 POL

Birth Date: 01/29/2009 M775407 POLLED

LT UNLIMITED EASE 9108  
LT EASY TREND 4015 P  
M686561 LT ASTA 2146 PLD

BCR POLLED UNLIMITED 003  
PP MISS SHANDY 214 R194  
SPARROWS ALLIANCE 513G  
LT UNLIMITED SUN 6117 P

CW
10
REA
0.12
FAT
0.017
MARB
0.05

LT WYOMING WIND 4020 PLD  
HACC SANTA ANNA 9021 PLD  
F835349 HACC MS MOUNTAIN 7087

SCHURRTOP 5627  
LT CHAP'S LADY 2170P  
HACC RED MOUNTAIN 365 RF  
HACC ESTER 847

CED	BW	WW	YW	MILK	MCE	MW	SC
5.7	0.9	20	39	5	5.7	15	0.4

BW	ADJ. WW	RATIO	ADJ. YW	RATIO
87	610	95	1045	94

- Very long bodied, smooth bull with a big top box.
- Gentle and easy to get along with.
- As of 1/1/09, overall gain on test was 3.4 lbs.
- EPD rank - Top 30% for CE and MCE.

**25**

## HACC EASY TREND 932 POL TW

Birth Date: 02/13/2009 M772019 POLLED

LT UNLIMITED EASE 9108  
LT EASY TREND 4015 P  
M686561 LT ASTA 2146 PLD

BCR POLLED UNLIMITED 003  
PP MISS SHANDY 214 R194  
SPARROWS ALLIANCE 513G  
LT UNLIMITED SUN 6117 P

CW
7
REA
-0.06
FAT
0.005
MARB
0.13

HACC FOUNDATION 201 PLD  
HACCMISSFOUNDATION545POL  
F1022284 JJ MEADOW 28 PLD

RC BUDSMYDAD 225 POLLED  
SKYMONT MISS EASE 2126  
LT BALMYLE 8106 PLD  
HACC MISS MOUNTAIN 9028

CED	BW	WW	YW	MILK	MCE	MW	SC
8.0	-0.2	17	33	9	3.1	17	0.4

BW	ADJ. WW	RATIO	ADJ. YW	RATIO
70	636	100	1025	100

- Twin to Lot 24--raised on natural dam.
- Buy one or take them both home, these guys won't disappoint you if you're looking for calving-ease with some muscle to boot.
- EPD rank - Top 15% for CE, 35% for low BW, 35% for Milk and 15% for Marbling.

**26**

## HACC BLUE ASPEN 945 POL

Birth Date: 03/18/2009 M771936 POLLED

LT ASSERTION 1277 P  
LT BLUEGRASS 4017 P  
M686569 LT PEARL'S BREEZE 2236 P

EATONS ASSERT 9171  
LT ALLI'S CLASS 9140 P  
LT WYOMING WIND 4020 PLD  
LT UNLIMITED PEARL 7053P

CW
5
REA
0.31
FAT
0.008
MARB
-0.05

LHD CIGAR E46  
DN ASPEN  
F976110 DN TOKWILA

LHD MR PERFECT Y416  
LHD MS CLASSIC BELL X613  
LHD PERFECT MARK C237  
MSF FRANCESCA M75

CED	BW	WW	YW	MILK	MCE	MW	SC
8.6	-2.4	16	28	6	7.8	14	0.6

BW	ADJ. WW	RATIO	ADJ. YW	RATIO
68	709	102	N/A	N/A

- Halter broken and gentle.
- The Bluegrass cattle are known for calving-ease.
- A shot of Cigar breeding on the bottom adds a little more performance to the package.
- Wide topped, thick and deep.
- As of 1/1/09, overall gain on test was 3.3 lbs.
- EPD rank - Top 9% for CE, 8% for low BW and 9% for MCE.



**HACC BLUE ASPEN 945 POL - Lot 26**

**24**

## HACC EASY TREND 931 POL TW

Birth Date: 02/13/2009 M772018 POLLED

LT UNLIMITED EASE 9108  
LT EASY TREND 4015 P  
M686561 LT ASTA 2146 PLD

BCR POLLED UNLIMITED 003  
PP MISS SHANDY 214 R194  
SPARROWS ALLIANCE 513G  
LT UNLIMITED SUN 6117 P

CW
7
REA
-0.06
FAT
0.005
MARB
0.13

HACC FOUNDATION 201 PLD  
HACCMISSFOUNDATION545POL  
F1022284 JJ MEADOW 28 PLD

RC BUDSMYDAD 225 POLLED  
SKYMONT MISS EASE 2126  
LT BALMYLE 8106 PLD  
HACC MISS MOUNTAIN 9028

CED	BW	WW	YW	MILK	MCE	MW	SC
12.2	-2.7	17	33	9	4.8	17	0.4

BW	ADJ. WW	RATIO	ADJ. YW	RATIO
59	625	100	963	100

- Twin to Lot 25--raised on foster dam.
- These bulls have been like peas in a pod since they hit the ground.
- Both have lots of muscle and depth.
- Maternal brother at last year's sale was a high seller.
- EPD rank - Top 2% for CE, 6% for low BW, 35% for Milk, 15% for Marbling.



**3G'S MR. TUFF ENOUGH - Lot 27**

**27**

## 3G'S MR. TUFF ENOUGH

Birth Date: 02/21/2009 M772737 POLLED

BALDRIDGE FASTTRACK 82F  
CRW MR INDIANAPOLIS 500  
M717129 CRW HAVANNAH

LT UNLIMITED EASE 9108  
BALDRIDGE SWEETHEART 53D  
LHD CIGAR E46  
DTC LUCKY GIRL

LT WIND ENERGY 3104 P  
3G'S IM TUFF ENOUGH  
F1065364 3G'S PHOEBE 483 POL

LT WYOMING WIND 4020 PLD  
LT AVY'S PREDICTOR 9113P  
LT PRIME PROFIT 0157 P  
HACC MISS OUTBACK 284TWN

CED	BW	WW	YW	MILK	MCE	MW	SC
3.1	2.0	30	47	5	5.9	20	N/A

BW	ADJ. WW	RATIO	ADJ. YW	RATIO
98	750	100	1305	100

- Tuffy comes from the Koller family-3G Farms in Pomeroy. We're partners on the sire and used him ourselves this summer.
- He's thick topped, good hipped and halter broke.
- His Wind Energy dam always has a good one, and this one is at the top of the pile.
- As of 1/1/09, overall gain on test was 3.8 lbs.
- EPD rank - Top 30% for Weaning and 25% for MCE.

**28**

## HACC MR PROFIT 947 POL

Birth Date: 03/23/2009 M775411 POLLED

WCR PRIME CUT 764 PLD  
LT PRIME PROFIT 0157 P  
M517028 BCCR MAXINE 572 PLD

JWK IMPRESSIVE D040 ET  
WCR MISS EASE 4314  
BCCR SIR MAC 133 PLD  
BCCR DIRECTRESS 172 PLD

CW
23
REA
0.13
FAT
0.011
MARB
-0.01

TC REATA L11  
HACC RITA 515 POL  
F1022251 LA HIGH SOCIETY 1097

GRO-RAC MR ROPER D103  
SNOWLINE MAC DEE 817  
UI YUKON 824  
LA SHERRY 91/8

CED	BW	WW	YW	MILK	MCE	MW	SC
5.0	0.1	22	40	-2	6.5	10	0.5

BW	ADJ. WW	RATIO	ADJ. YW	RATIO
77	724	106	N/A	N/A

- A late AI bull by LT Prime Profit, who sired many top-selling lots at past sales.
- He's younger than the rest but has been holding his own on test.
- Wide top, thick, deep, with a good hip--just like all his brothers that have topped the sale in years past.
- As of 1/1/09, overall gain on test was 3.9 lbs.
- EPD rank - Top 35% for CE, 20% for MCE and 15% for HCW.



Jon Cox  
 3401 Big Alkali Rd.  
 Hay, WA  
 (509) 549-3329  
 pioneerangus@pionnet.com



Jon Cox

Friends:

Welcome to the 7th Annual Rancher's Choice Production Sale. Our bulls this year are the stoutest, thickest and most impressive set of bulls we have ever offered for sale.

*The Yellowstones are coming !!!!!*

As you study the sale book and walk the pens on sale day, you'll find the Yellowstone bulls are outstanding in every way--thick topped, stout, top performance with good feed efficiency and IMF marbling. The sire group at the 2009 prestigious Midland Bull test really turned some heads. Out of 1,000+ bulls from all over the US, they were in the:

- Top 1% for IMF
- Top 1% for WDA (tied for 4th)
- Top 1% for ADG
- Top 3% for Feed Efficiency (-1.63) RFI

*Pioneer Bulls Don't Cost, They Pay!*

We're excited about having Rocking R Cattle Company join the Ranchers Choice sale this year. Ron and family have an outstanding program and brought a great set of bulls.

Remember to come in your car, free wintering and delivery are part of the sale. See you on February 27, 2010.

Jon Cox



Basin Yellowstone R178 - Reference Sire D



## BASIN YELLOWSTONE R178

Birth Date: 2-10-2005 Bull #14981157 Tattoo: R178

#Vermilion Dateline 7078 [AMF-NHF] #Connealy Dateline  
**Vermilion Yellowstone** [AMF-NHF] #Vermilion Blackbird 5044  
 #13305978 Vermilion B Jestress 3912 Vermilion George 7337  
 Vermilion CB Jestress 0229

#Rockn D Ambush 1531 [AMF-NHF] #Paramont Ambush 2172 [AMF-NHF]  
**Basin Camilla L868** MS Blackcap Band of RD 1301  
 13866069 Basin Camilla 661H Dalebanks Bando A 2166  
 #Basin Camilla 472F

CW	+10
MARB	+ .82
RE	+ .19
FAT	+ .024

CED	BEFD	WEPD	YEPD	CEM	MILK	SEN
+0	+3.6	+59	+109	+8	+17	-2.25

BW/RATIO	ADJ. WW/RATIO	ADJ. YW/RATIO	IMF/RATIO	RF/RATIO	RIB FAT/RATIO	RUMP FAT/RATIO							
92	107	745	105	1172	107	5.48	136	12.8	108	.27	123	.31	103

• Yellowstone is simply the best bull we've used here at Pioneer Angus, AI or natural.

SW	SF	SG	SB
+22.73	+45.10	+35.38	+58.88

# ANGUS BULLS

**29**

## GOLD BLOCK OF PAR

Birth Date: 12-10-2008 Bull 16451115 Tattoo: 864

#Vermilion Yellowstone (AMF-NHF) #Vermilion Dateline 7078 (AMF-NHF)  
**Basin Yellowstone R178** Vermilion B Jestress 3912  
 +14981157 Basin Camilla L868 #Rockn D Ambush 1531 (AMF-NHF)  
 Basin Camilla 661H

CW
+12
MARB
+46
RE
+06
FAT
-005

#B/R New Frontier 095 (AMF-NHF) #B/R New Design 036 (AMF-NHF)  
**Blackbird of Par 655** White Fence Pride H1  
 15525822 Blackbird of PAR64 #GDAR Traveler 9161 (AMF-NHF)  
 Lass of PAR 677

	CED	BE PD	WE PD	YE PD	CEM	MILK	SEN
	+1	+3.5	+56	1+99	+7	+19	-.94
BW	ADJ. WW	ADJ. YW	IMF	RE	RIB FAT	RUMP FAT	
88	844	1314	3.45	12.2	.19	.29	
	SW	SF	SG	SB			
	+24.54	+35.89	+28.13	+50.70			

- Stout and thick, a good one, a Yellowstone with extra go power.
- Yellowstones are outstanding as a group.

**30**

## YELLOWSTONE OF PAR 875

Birth Date: 12-12-2008 Bull 16451120 Tattoo: 875

#Vermilion Yellowstone (AMF-NHF) #Vermilion Dateline 7078 (AMF-NHF)  
**Basin Yellowstone R178** Vermilion B Jestress 3912  
 +14981157 Basin Camilla L868 #Rockn D Ambush 1531 (AMF-NHF)  
 Basin Camilla 661H

CW
+2
MARB
+55
RE
-.11
FAT
+004

New Designer 036 #B/R New Design 036 (AMF-NHF)  
**Blackbird of Par 536** Criss of PAR26  
 15178420 Blackbird of PAR69 #OCC Maternal Trend 725Y (AMF-NHF)  
 #Blackbird of PAR 788

	CED	BE PD	WE PD	YE PD	CEM	MILK	SEN
	+4	+2.9	+38	1+80	+7	+17	+6.68
BW	ADJ. WW	ADJ. YW	IMF	RE	RIB FAT	RUMP FAT	
85	651	1137	4.17	10.3	.21	.31	
	SW	SF	SG	SB			
	+18.34	+23.90	+29.36	+40.22			

- A complete and stout Yellowstone out of a good, young cow.
- Lots of carcass potential.
- Good disposition.

**31**

## YELLOWSTONE OF PAR 883

Birth Date: 12-14-2008 Bull 16437824 Tattoo: 883

#Vermilion Yellowstone (AMF-NHF) #Vermilion Dateline 7078 (AMF-NHF)  
**Basin Yellowstone R178** Vermilion B Jestress 3912  
 +14981157 Basin Camilla L868 #Rockn D Ambush 1531 (AMF-NHF)  
 Basin Camilla 661H

CW
+3
MARB
+28
RE
+02
FAT
+009

Silver Shadow Precision (NHF) #Twin Valley Precision E161 (NHC-AMF-RDF)  
**RB Transform 175-258** +Silver Shadow Liberty 3  
 15223932 Deep Creek Debutante DC 258 #Apex Transform 013  
 Deep Creek Debutante DC 289

	CED	BE PD	WE PD	YE PD	CEM	MILK	SEN
	+1	+2.9	+44	1+85	+6	+13	+8.61
BW	ADJ. WW	ADJ. YW	IMF	RE	RIB FAT	RUMP FAT	
84	672	1138	3.17	11.4	.24	.35	
	SW	SF	SG	SB			
	+19.81	+26.51	+21.60	+34.04			

- A complete Yellowstone, out of a good, young cow.



Gold Block OF Par - Lot 29

**32**

## GOLD BLOCK OF PAR 869

Birth Date: 12-19-2008 Bull 16437820 Tattoo: 869

#Vermilion Yellowstone (AMF-NHF) #Vermilion Dateline 7078 (AMF-NHF)  
**Basin Yellowstone R178** Vermilion B Jestress 3912  
 +14981157 Basin Camilla L868 #Rockn D Ambush 1531 (AMF-NHF)  
 Basin Camilla 661H

CW
+3
MARB
+57
RE
-.04
FAT
-.004

#White Oak Precise 6002 (AMC-NHC) #GAR Precision 1680 (AMC-NHC)  
**Erica of PAR 416 (AMF)** Stone Gate Jessie  
 14533399 Erica of PAR 329 #SAF Focus of ER (AMF-NHF)  
 Erica of PAR 782

	CED	BE PD	WE PD	YE PD	CEM	MILK	SEN
	+4	+2.8	+38	1+80	+8	+14	+9.28
BW	ADJ. WW	ADJ. YW	IMF	RE	RIB FAT	RUMP FAT	
85	663	1159	4.31	10.9	.22	.24	
	SW	SF	SG	SB			
	+17.57	+23.90	+31.50	+43.41			

- Another stout and thick Yellowstone.
- These Yellowstones are very consistent.
- Great disposition!

**33**

## YELLOWSTONE OF PAR 871

Birth Date: 12-22-2008 Bull 16437822 Tattoo: 871

#Vermilion Yellowstone (AMF-NHF) #Vermilion Dateline 7078 (AMF-NHF)  
**Basin Yellowstone R178** Vermilion B Jestress 3912  
 +14981157 Basin Camilla L868 #Rockn D Ambush 1531 (AMF-NHF)  
 Basin Camilla 661H

CW
+2
MARB
+60
RE
+16
FAT
+0

BPF Traveler 922 #JR Traveler 098F  
**Erica of PAR 423** BPF Daisy Power  
 14533411 Miss Erica Stockman V905 #TC Stockman 365  
 #Miss Erica Husker V410

	CED	BE PD	WE PD	YE PD	CEM	MILK	SEN
	+2	+2.8	+44	1+77	+8	+19	+5.83
BW	ADJ. WW	ADJ. YW	IMF	RE	RIB FAT	RUMP FAT	
85	730	1127	4.80	13.2	-.16	.32	
	SW	SF	SG	SB			
	+24.37	+18.80	+34.57	+44.33			

- Stout and thick with a big top.
- Look him up.

**34**

## YELLOWSTONE OF PAR 872

Birth Date: 12-22-2008 Bull 16437823 Tattoo: 872

#Vermilion Yellowstone (AMF-NHF) #Vermilion Dateline 7078 (AMF-NHF)  
**Basin Yellowstone R178** Vermilion B Jestress 3912  
 +14981157 Basin Camilla L868 #Rockn D Ambush 1531 (AMF-NHF)  
 Basin Camilla 661H

CW
+11
MARB
+69
RE
-.06
FAT
+001

TEA Something Special 85L #JR Something Special (AMF-NHF)  
**Lady of PAR 406** Triple E Stockman 813  
 #14533416 Mc Intosh Stocklady 004 (AMF) #TC Stockman 365  
 Mc Intosh New Lady 667

	CED	BE PD	WE PD	YE PD	CEM	MILK	SEN
	+1	+4.2	+46	1+91	+9	+17	+3.31
BW	ADJ. WW	ADJ. YW	IMF	RE	RIB FAT	RUMP FAT	
88	721	1286	4.97	11.3	.16	.34	
	SW	SF	SG	SB			
	+17.90	+31.71	+32.12	+52.84			

- Stout and thick on a smaller frame with a big top and butt.
- The dispositions on these Yellowstones are terrific.
- Look him up.
- A good one.

**35**

## YELLOWSTONE OF PAR 873

Birth Date: 12-25-2008 Bull 16451118 Tattoo: 873

#Vermilion Yellowstone (AMF-NHF) #Vermilion Dateline 7078 (AMF-NHF)  
**Basin Yellowstone R178** Vermilion B Jestress 3912  
 +14981157 Basin Camilla L868 #Rockn D Ambush 1531 (AMF-NHF)  
 Basin Camilla 661H

CW
+6
MARB
+58
RE
-.08
FAT
+020

Focus of PAR 302 #SAF Focus of ER (AMF-NHF)  
**Erica Pride of Par 511** Blackbird of PAR65  
 14849901 Erica Pride of Par 356 #Connealy Forefront (AMF-NHF)  
 Erica Pride of PAR 219

	CED	BE PD	WE PD	YE PD	CEM	MILK	SEN
	+4	+2.2	+51	1+93	+10	+19	+9.3
BW	ADJ. WW	ADJ. YW	IMF	RE	RIB FAT	RUMP FAT	
81	770	1261	4.83	11.6	.21	.45	
	SW	SF	SG	SB			
	+25.69	+31.77	+27.74	+44.31			

- Stout and thick.
- A favorite since birth, a good one.
- Great disposition!

# ANGUS BULLS

**36**

## YELLOWSTONE OF PAR 887

Birth Date: 12-26-2008 Bull 16437826 Tattoo: 887

#Vermilion Yellowstone [AMF-NHF] #Vermilion Dateline 7078 [AMF-NHF]  
**Basin Yellowstone R178** Vermilion B Jestress 3912  
**+14981157** Basin Camilla L868 #Rockn D Ambush 1531 [AMF-NHF]  
 Basin Camilla 661H

#GV Cornhusker 584 #Ankonian Cornhusker  
**Criss of PAR 664** #GV Perfection Y 7581  
**11725718** Criss of PAR Cashes Lad 430 HARB  
 Eshelman Five Ten 321

CW
+5
MARB
+4.0
RE
+12
FAT
+0.13

CED	BE PD	WE PD	YE PD	CEM	MILK	SEN
-2	+3.7	+37	1+80	+6	+14	+9.28

BW	ADJ. WW	ADJ. YW	IMF	RE	RIB FAT	RUMP FAT
87	692	1204	3.24	14.0	.19	.27

\$W	\$F	\$G	\$B
+14.90	+24.28	+26.17	+40.10

- Stout and thick on a moderate frame.
- Good disposition.
- A favorite.

**38**

## YELLOWSTONE OF PAR 874

Birth Date: 1-14-2009 Bull 16451119 Tattoo: 874

#Vermilion Yellowstone [AMF-NHF] #Vermilion Dateline 7078 [AMF-NHF]  
**Basin Yellowstone R178** Vermilion B Jestress 3912  
**+14981157** Basin Camilla L868 #Rockn D Ambush 1531 [AMF-NHF]  
 Basin Camilla 661H

#Westwind Rito 8503 DJH 019 [AMF-NHF] #WH 8704 Rito 8503 RR [AMF-NHF]  
**Pride of Par 500** #GV Lassie Pride 86 88  
**15872935** Pride of PAR 314 #SAF Fame [AMF-NHF]  
 +Pride of PAR71

CW
-2
MARB
+3.3
RE
+0.1
FAT
-.001

CED	BE PD	WE PD	YE PD	CEM	MILK	SEN
+9	+2	+45	1+81	+11	+17	+6.38

BW	ADJ. WW	ADJ. YW	IMF	RE	RIB FAT	RUMP FAT
70	701	1083	3.46	12.3	.15	.36

\$W	\$F	\$G	\$B
+27.29	+22.25	+25.19	+31.59

- A thick and stout Yellowstone, out of a good, young cow.
- Good disposition. Don't miss him.
- A little younger.



**41**

## NEW DIRECTION OF PAR 889 [AMF-NHF]

Birth Date: 12-12-2008 Bull 16450278 Tattoo: 889

#CA Future Direction 5321 [AMC-NHC] #GAR Precision 1680 [AMC-NHC]  
**BT Crossover 758N [AMC-NHC]** CA Miss Power Fix 308 [AMF]  
**+14509685** BT Royal Pride 237G #+OSU 6T6 Ultra  
 BT Royal Pride 326A

Overdrive #Connealy Freightliner [AMF-NHF]  
**Erica Pride of Par 761** Erica of PAR29  
**15850792** Erica Pride of PAR 269 On Time of PAR  
 +Erica Pride of PAR2

CW
+18
MARB
+3.0
RE
+4.1
FAT
+0.02

CED	BE PD	WE PD	YE PD	CEM	MILK	SEN
+7	+1.3	+50	1+92	+7	+27	-6.10

BW	ADJ. WW	ADJ. YW	IMF	RE	RIB FAT	RUMP FAT
75	798	1321	3.98	14.0	.21	.31

\$W	\$F	\$G	\$B
+28.61	+31.15	+25.09	+51.02

- Calving-ease from this wide-topped guy. A good one.
- DNA tested good. Good disposition.
- Look him up. One of our favorites!

**37**

## NUGET OF PAR 865

Birth Date: 1-4-2009 Bull 16437819 Tattoo: 865

#Vermilion Yellowstone [AMF-NHF] #Vermilion Dateline 7078 [AMF-NHF]  
**Basin Yellowstone R178** Vermilion B Jestress 3912  
**+14981157** Basin Camilla L868 #Rockn D Ambush 1531 [AMF-NHF]  
 Basin Camilla 661H

Equity of PAR [AMF-NHF] #Krugerrand of Donamere 490 [AMF-NHF]  
**Erica Pride of PAR** Juanada of PAR 790  
**13777058** Erica Pride of PAR 143 Jaynbee Rainmaker 11D  
 +Erica Pride of PAR41

CW
+5
MARB
+7.7
RE
+0.06
FAT
+0.012

CED	BE PD	WE PD	YE PD	CEM	MILK	SEN
+3	+2.8	+44	1+80	+7	+17	+6.68

BW	ADJ. WW	ADJ. YW	IMF	RE	RIB FAT	RUMP FAT
87	765	1210	6.12	12.4	.28	.38

\$W	\$F	\$G	\$B
+22.89	+21.66	+35.24	+48.53

- A Yellowstone out of a time-tested good cow, stout and thick.
- Good disposition.

**39**

## YELLOWSTONE OF PAR 885

Birth Date: 2-10-2009 Bull 16437825 Tattoo: 885

#Vermilion Yellowstone [AMF-NHF] #Vermilion Dateline 7078 [AMF-NHF]  
**Basin Yellowstone R178** Vermilion B Jestress 3912  
**+14981157** Basin Camilla L868 #Rockn D Ambush 1531 [AMF-NHF]  
 Basin Camilla 661H

Freightliner of Par 464 #Connealy Freightliner [AMF-NHF]  
**BAR Erica FP V603** Pride of PAR 279  
**15441080** Bar Erica SP V405 TEA Something Special 85L  
 BAR Erica Ultra V203

CW
+5
MARB
+4.4
RE
+2.0
FAT
+0.005

CED	BE PD	WE PD	YE PD	CEM	MILK	SEN
+0	+4.0	+53	1+89	+6	+21	+3.7

BW	ADJ. WW	ADJ. YW	IMF	RE	RIB FAT	RUMP FAT
90	821	1208	3.67	13.6	.20	.18

\$W	\$F	\$G	\$B
+24.98	+27.02	+29.51	+43.98

- A younger Yellowstone, don't miss him.
- His promising dam is out of our top-selling bull from the 2005 Ranchers Choice Sale, selling to Camas Prairie Angus and Brown Angus.
- Good disposition.

**40**

## COAL BANK OF PAR

Birth Date: 12-10-2008 Bull 16459418 Tattoo: 879

#Basin Max 602C [AMF-NHF] #GT Maximum [AMF-NHF]  
**21AR Coal Bank C014 [AMF-NHF]** #Basin Eline Erica 315U  
**14267926** #Leachman Lass 5014 #N Bar Emulation EXT [AMF-NHF]  
 Leachman Lass 3056

Focus of PAR 302 #SAF Focus of ER [AMF-NHF]  
**Erica of Par 575** Blackbird of PAR65  
**15155213** Erica of PAR 423 BPF Traveler 922  
 Miss Erica Stockman V905

CW
+8
MARB
+1.2
RE
+0.1
FAT
+0.011

CED	BE PD	WE PD	YE PD	CEM	MILK	SEN
+9	-4	+47	1+85	+10	+22	+6.9

BW	ADJ. WW	ADJ. YW	IMF	RE	RIB FAT	RUMP FAT
74	801	1267	3.32	13.1	.17	.22

\$W	\$F	\$G	\$B
+29.37	+25.38	+13.63	+30.49

- Calving-ease outcross. A new bloodline that impressed us.
- Low birth weights with great performance--a good one.
- Great disposition.

**42**

## NEW DIRECTION OF PAR 881 [AMF-NHF]

Birth Date: 12-25-2008 Bull 16476010 Tattoo: 881

#CA Future Direction 5321 [AMC-NHC] #GAR Precision 1680 [AMC-NHC]  
**BT Crossover 758N [AMC-NHC]** CA Miss Power Fix 308 [AMF]  
**+14509685** BT Royal Pride 237G #+OSU 6T6 Ultra  
 BT Royal Pride 326A

Silver Shadow Precision [NHF] #Twin Valley Precision E161 [NHC-AMF-RDF]  
**Erica of Par 573** +Silver Shadow Liberty 3  
**15197312** Erica of PAR 421 TEA Something Special 85L  
 Miss Erica Dividend V808

CW
+16
MARB
+3.2
RE
+3.6
FAT
-.011

CED	BE PD	WE PD	YE PD	CEM	MILK	SEN
+4	+2.3	+44	1+83	+6	+24	-.53

BW	ADJ. WW	ADJ. YW	IMF	RE	RIB FAT	RUMP FAT
85	716	1260	4.05	13.0	.22	.24

\$W	\$F	\$G	\$B
+24.75	+24.56	+26.81	+49.91

- Calving-ease with good performance, the best of both worlds.

# ANGUS BULLS

**43**

## NEW DIRECTION PAR 876 [AMF-NHF]

Birth Date: 12-26-2008 Bull 16479967 Tattoo: 876

#CA Future Direction 5321 [AMC-NHC] #GAR Precision 1680 [AMC-NHC]  
 CA Miss Power Fix 308 [AMF]  
 #+OSU 6T6 Ultra  
 BT Royal Pride 326A

BT Crossover 758N [AMC-NHC]  
 +14509685

#+B/R New Frontier 095 [AMF-NHF] #B/R New Design 036 [AMF-NHF]  
 White Fence Pride H1  
 WSU Rito 019 503  
 Ericas Golden Lassie 659

Lassie of Par 541  
 15165831

Wazzus Lassie 014

CW
+16
MARB
+54
RE
+43
FAT
+006

CED	BE PD	WE PD	YE PD	CEM	MILK	SEN
+8	+6	+46	1+84	+8	+24	-.84

BW	ADJ. WW	ADJ. YW	IMF	RE	RIB FAT	RUMP FAT
78	742	1208	4.46	13.7	.28	.42

SW	SF	SG	SB
+28.44	+24.78	+33.08	+56.24

- Calving-ease all the way.
- This group of Crossovers are outstanding. All have been DNA tested to be good.
- A favorite. Good disposition.



New Direction Par 893 - Lot 44

**44**

## NEW DIRECTION PAR 893 [AMF-NHF]

Birth Date: 12-27-2008 Bull 16450286 Tattoo: 893

#CA Future Direction 5321 [AMC-NHC] #GAR Precision 1680 [AMC-NHC]  
 CA Miss Power Fix 308 [AMF]  
 #+OSU 6T6 Ultra  
 BT Royal Pride 326A

BT Crossover 758N [AMC-NHC]  
 +14509685

#TC Stockman 365 #TC Stockman  
 TC Pride 0014  
 Glory B Cornhusker 726Y  
 Miss Erica Midnight V910

Miss Erica Stockman V905  
 13417285

#Miss Erica Husker V410

CW
+20
MARB
+40
RE
+47
FAT
-.005

CED	BE PD	WE PD	YE PD	CEM	MILK	SEN
+1	+4.3	+43	1+86	+5	+26	-2.36

BW	ADJ. WW	ADJ. YW	IMF	RE	RIB FAT	RUMP FAT
94	737	1359	3.79	14.1	.23	.42

SW	SF	SG	SB
+20.11	+27.88	+29.58	+55.96

- If you like them with a big top and a big butt, you will love this guy!
- He is a good one--DNA tested good.
- Great disposition. A real stud--look him up.

**45**

## COAL BANK OF PAR 896

Birth Date: 1-3-2009 Bull 16459419 Tattoo: 896

#Basin Max 602C [AMF-NHF] #GT Maximum [AMF-NHF]  
 #Basin Eline Erica 315U  
 #N Bar Emulation EXT [AMF-NHF]  
 Leachman Lass 3056

21AR Coal Bank CO14 [AMF-NHF]  
 14267926

Connealy Danny Boy [AMF-NHF] #Connealy Timeline  
 Energy of Conanga 4851  
 #Bon View Spectrum 1176 [AMF-NHF]  
 Cox Pride 9

Pride of Par 744  
 15852585

Pride of Par 33

CW
+9
MARB
+14
RE
+06
FAT
+023

CED	BE PD	WE PD	YE PD	CEM	MILK	SEN
+10	-5	+45	1+83	+7	+19	+4.01

BW	ADJ. WW	ADJ. YW	IMF	RE	RIB FAT	RUMP FAT
70	719	1143	3.11	11.1	.18	.33

SW	SF	SG	SB
+27.91	+24.18	+13.36	+30.68

- Calving-ease with a moderate frame.
- Three generations of calving-ease.

**46**

## ONWARD OF PAR

Birth Date: 12-21-2008 Bull 16450082 Tattoo: 895

#Connealy Lead On [AMF-NHF] #Connealy Leadtime [AMF-NHF]  
 Eligence Plus of Conanga  
 #GAR Traveler 1489 [AMF]  
 Avalon 1418 of Conanga 6276

Connealy Onward [AMF-NHF]  
 14216491

#TC Stockman 365 #TC Stockman  
 TC Pride 0014  
 #Traveler 3173 GDAR  
 Juanada of PAR 561

Juanada of PAR 239  
 +13401821

Juanada of PAR 790

CW
+22
MARB
+24
RE
+52
FAT
-.021

CED	BE PD	WE PD	YE PD	CEM	MILK	SEN
+3	+3.9	+53	1+101	+6	+24	-6.11

BW	ADJ. WW	ADJ. YW	IMF	RE	RIB FAT	RUMP FAT
95	842	1308	3.77	15.6	.23	.29

SW	SF	SG	SB
+22.11	+39.15	+25.50	+55.50

- The most complete bull in the sale. An eye-catcher from birth!
- Out of our strongest cow family.
- With his pedigree and performance, a herd bull prospect.



Onward Of Par - Lot 46

**47**

## ONWARD OF PAR 891

Birth Date: 12-27-2008 Bull 16450093 Tattoo: 891

#Connealy Lead On [AMF-NHF] #Connealy Leadtime [AMF-NHF]  
 Eligence Plus of Conanga  
 #GAR Traveler 1489 [AMF]  
 Avalon 1418 of Conanga 6276

Connealy Onward [AMF-NHF]  
 14216491

NEW Design 878 #Bon View New Design 878 [AMF-NHF]  
 +Erica Pride of PAR35  
 #Connealy Freightliner [AMF-NHF]  
 Juanada of PAR 273

Juanada of PAR768  
 15850797

Juanada of Par 499

CW
+15
MARB
+19
RE
+27
FAT
+005

CED	BE PD	WE PD	YE PD	CEM	MILK	SEN
+4	+4.0	+54	1+102	+5	+25	-7.35

BW	ADJ. WW	ADJ. YW	IMF	RE	RIB FAT	RUMP FAT
84	786	1178	3.18	12.3	.22	.27

SW	SF	SG	SB
+22.45	+39.78	+19.30	+45.13

- He has tremendous promise, a big spread between 54 WW and 108 YW.
- Out of a great, young cow. Look him up!

**48**

## GRIDIRON OF PAR 886

Birth Date: 12-15-2008 Bull 16448847 Tattoo: 886

#+GAR Grid Maker [AMF-NHF] #GDAR Traveler 044 [AMF-NHF]  
 GAR Precision 2536 [AMC-NHC]  
 #TC Dividend 494  
 OCC Blackbird 902D

TC Gridiron 258 [AMF-NHF]  
 14237017

TEA Something Special 85L #JR Something Special [AMF-NHF]  
 Triple E Stockman 813  
 Jaynbee Rainmaker 11D  
 Miss Erica Power V514

BAR Erica SP V607  
 15441074

BAR Erica Rainmaker V107

CW
+5
MARB
+22
RE
+31
FAT
+0

CED	BE PD	WE PD	YE PD	CEM	MILK	SEN
+3	+3.0	+48	1+83	+8	+19	+4.01

BW	ADJ. WW	ADJ. YW	IMF	RE	RIB FAT	RUMP FAT
85	790	1256	3.41	12.6	.29	.22

SW	SF	SG	SB
+24.97	+23.06	+23.17	+36.80

- Extra stretch here, a top performer with lots of eye appeal.
- A good one.
- Good disposition.

# ANGUS BULLS

**49**

## GRIDIRON OF PAR 868

Birth Date: 1-8-2009 Bull 16448845 Tattoo: 868

#+GAR Grid Maker [AMF-NHF] #GDAR Traveler 044 [AMF-NHF]  
 TC Gridiron 258 [AMF-NHF] GAR Precision 2536 [AMC-NHF]  
 14237017 #TC Blackbird 7049 #TC Dividend 494  
 OCC Blackbird 902D

CW  
+6  
MARB  
+.43  
RE  
+.21  
FAT  
+.004

#Alberda Traveler 416 [AMF-NHF] #DHD Traveler 6807 [AMF-NHF]  
 Blackbird of PAR 325 Alberda Queen Kimberly 222  
 14002161 Lass of PAR 677 Schultzs Dallas  
 #Blackbird of PAR

CED	BE PD	WE PD	YE PD	CEM	MILK	SEN
+9	+8	+50	1+92	+9	+14	+5.60

BW	ADJ. WW	ADJ. YW	IMF	RE	RIB FAT	RUMP FAT
70	756	1284	5.15	12.9	.24	.36

\$W	\$F	\$G	\$B
+25.90	+31.15	+29.22	+45.63

- Thick and stout, a good one.
- You will like this guy.
- Good disposition. A favorite!

**51**

## GRIDMAKER

Birth Date: 1-3-2009 Bull 16437821 Tattoo: 870

#GDAR Traveler 044 [AMF-NHF] #DHD Traveler 6807 [AMF-NHF]  
 GAR Grid Maker [AMF-NHF] #GDAR Blackcap Lady 840  
 #+13254554 GAR Precision 2536 [AMC-NHF] #GAR Precision 1680 [AMC-NHC]  
 +GAR Ext 2104

CW  
+9  
MARB  
+.14  
RE  
+.37  
FAT  
+.017

#Sitz Alliance 6595 [AMF-NHF] #Sitz Traveler 8180 [AMF-NHF]  
 Blackbird of PAR494 #Sitz Barbaramere Jet 2698  
 14836892 Blackbird of PAR64 #GDAR Traveler 9161 [AMF-NHF]  
 Lass of PAR 677

CED	BE PD	WE PD	YE PD	CEM	MILK	SEN
+7	+2.7	+56	1+101	+9	+18	-.68

BW	ADJ. WW	ADJ. YW	IMF	RE	RIB FAT	RUMP FAT
80	826	1317	3.91	15.0	.27	.30

\$W	\$F	\$G	\$B
+25.34	+37.94	+18.18	+38.81

- Out of the best we have raised.
- Out of a terrific young cow.
- Look him up!

**52**

## TRAVELER OF PAR897

Birth Date: 12-11-2008 Bull 16451122 Tattoo: 897

#SAV 8180 Traveler 004 [AMF-NHF-RDF] #Sitz Traveler 8180 [AMF-NHF]  
 DA Traveler 619 +Boyd Forever Lady 8003  
 15501765 #Mrs DA Lucy 151 MR Lucys Boy 5088  
 #DA Miss Beefmaker A68

CW  
+10  
MARB  
+.35  
RE  
-.10  
FAT  
+.045

NEW Design 878 #Bon View New Design 878 [AMF-NHF]  
 Pride of Par 674 +Erica Pride of PAR35  
 15525829 Pride of PAR 419 #Bon View Bando 1394  
 Pride of PAR 633

CED	BE PD	WE PD	YE PD	CEM	MILK	SEN
+0	+4.4	+53	1+83	+4	+21	+2.21

BW	ADJ. WW	ADJ. YW	IMF	RE	RIB FAT	RUMP FAT
90	833	1147	4.28	11.2	.32	.33

\$W	\$F	\$G	\$B
+25.92	+21.19	+15.72	+33.28

- More stretch and frame, out of a good, young cow.
- Don't miss him. Lots of performance.

**54**

## PENDLETON OF PAR

Birth Date: 12-15-2008 Bull 16448916 Tattoo: 882

SAV Final Answer 0035 [AMF-NHF] #Sitz Traveler 8180 [AMF-NHF]  
 HARB Pendleton 765 JH [AMF-NHF] SAV Emulous 8145  
 15313140 #HARB Black Lady 375 JH #HARB High Plains 975 JH [AMF-NHF]  
 #HARB Black Lady 073 JH

CW  
+9  
MARB  
+.30  
RE  
-.02  
FAT  
+.011

#Bon View New Design 1407 [AMF-NHF] #B/R New Design 036 [AMF-NHF]  
 Juanada of Par 580 Bon View Pride 664  
 15168582 Juanada of PAR 790 #Traveler 3173 GDAR  
 Juanada of PAR 561

CED	BE PD	WE PD	YE PD	CEM	MILK	SEN
+10	-.1	+50	1+89	+8	+27	-5.18

BW	ADJ. WW	ADJ. YW	IMF	RE	RIB FAT	RUMP FAT
86	789	1229	3.55	12.1	.17	.18

\$W	\$F	\$G	\$B
+30.89	+28.17	+20.23	+38.58

- Calving-ease outcross. A good one out of our top young cow.
- Four generations of low birth weights, look him up.
- Grandam is Equity of PAR's mother.

**50**

## GRIDMAKER OF PAR 867

Birth Date: 12-24-2008 Bull 16451315 Tattoo: 867

#GDAR Traveler 044 [AMF-NHF] #DHD Traveler 6807 [AMF-NHF]  
 GAR Grid Maker [AMF-NHF] #GDAR Blackcap Lady 840  
 #+13254554 GAR Precision 2536 [AMC-NHF] #GAR Precision 1680 [AMC-NHC]  
 +GAR Ext 2104

CW  
+4  
MARB  
+.06  
RE  
+.18  
FAT  
-.008

Jaynee Rainmaker 11D Glory B Rainmaker 810Y  
 Erica Pride of PAR 141 Jaynee Rose 269  
 13129214 +Erica Pride of PAR33 #+GDAR Oscar 711 [AMF-NHF]  
 Erica Pride of PAR 629

CED	BE PD	WE PD	YE PD	CEM	MILK	SEN
+2	+5.0	+43	1+83	+5	+18	+4.89

BW	ADJ. WW	ADJ. YW	IMF	RE	RIB FAT	RUMP FAT
86	749	1256	3.03	12.2	.19	.31

\$W	\$F	\$G	\$B
+16.69	+24.94	+15.88	+28.96

- Good performance out of our highest valued cow.
- A brother was a high seller at 2008 Midland Bull Test, selling to Schurrtp Angus, McCook, NE.
- Look him up.



Gridiron Of Par 868 - Lot 49

**53**

## NETWORTH OF PAR

Birth Date: 12-14-2008 Bull 16448877 Tattoo: 866

#SAV 8180 Traveler 004 [AMF-NHF-RDF] #Sitz Traveler 8180 [AMF-NHF]  
 SAV Net Worth 4200 [AMF-NHF] +Boyd Forever Lady 8003  
 14739204 +SAV May 2410 #+SAF 598 Bando 5175 [AMF]  
 #SAV May 6269

CW  
+15  
MARB  
+.33  
RE  
+.25  
FAT  
+.016

#B/R New Design 036 [AMF-NHF] #VDAR New Trend 315 [AMF-NHF]  
 Blackbird of PAR 316 B/R Blackcap Empress 76  
 13942205 Blackbird of PAR96 Time Out of PAR  
 #Blackbird of PAR 622

CED	BE PD	WE PD	YE PD	CEM	MILK	SEN
+1	+4.4	+42	1+82	+4	+30	-5.90

BW	ADJ. WW	ADJ. YW	IMF	RE	RIB FAT	RUMP FAT
96	710	1164	2.88	13.3	.16	.19

\$W	\$F	\$G	\$B
+19.92	+24.34	+23.27	+45.44

- A stout Net Worth, with a big top. Out of a powerful cow.
- He will add pounds.
- Good disposition.

**55**

## MIDLAND OF PAR 890

Birth Date: 1-3-2009 Bull 16451121 Tattoo: 890

#BR Midland [AMF-NHF] #Twin Valley Precision E161 [NHC-AMF-RDF]  
 Stevenson Midland 2456 BR Royal Lass 7036-19  
 #+15480913 Stevenson Estella M814 #Vermilion Yellowstone [AMF-NHF]  
 Stevenson Estella 6958

CW  
+11  
MARB  
+.41  
RE  
+.11  
FAT  
+.017

Overdrive #Connealy Freightliner [AMF-NHF]  
 Ackbird of Par 763 Erica of PAR29  
 15850793 Blackbird of PAR 316 #B/R New Design 036 [AMF-NHF]  
 Blackbird of PAR96

CED	BE PD	WE PD	YE PD	CEM	MILK	SEN
+2	+3.5	+52	1+90	+5	+21	+0.06

BW	ADJ. WW	ADJ. YW	IMF	RE	RIB FAT	RUMP FAT
87	807	1268	4.48	12.7	.21	.30

\$W	\$F	\$G	\$B
+25.07	+28.39	+24.90	+44.98

- More stretch and dimension.
- His sire was our pick of the 2007 Stevenson Basin Sale.
- He has all the credits.



Ron and Shelley Rosenberger  
 4789 E Lancaster Rd.  
 Hayden Lake, ID 83835  
 (208) 772-6167  
 E-mail: rosenberger@hughes.net  
 www.rockingrcattlecompany.com



**Rocking R homestead**

Joining the Rancher's Choice Production Sale is a milestone for our ranch and we thank Jon, Alan and Leslie for the invitation to be part of this great sale.

We are excited to present this strong set of bulls. Sons of HA Image Maker, Mytty In Focus, Nichol's Extra H-6 and our own Mytty Traveler S180 summered at our ranch in Hayden Lake, Idaho and then were expertly conditioned at Beus' Feedlot, Pasco, WA.

We've carefully selected this offering, bringing you the right kind of cattle to help you position your operation to take advantage of premiums in your marketplace. We know you have choices when looking for bulls, and we appreciate your consideration of the kind we raise. We look forward to seeing old friends and meeting new ones on sale day. And, as always, if your plans bring you to Hayden Lake, it would be our pleasure to join you for a tour of the ranch!

Ron and Shelley Rosenberger  
 www.rockingrcattle.com



**Rosenberger Family**



**HA IMAGE MAKER 0415 [AMF-NHF]**

Birth Date: 1-23-2000 Bull #: +13739532 Tattoo: 0415

#RR Hero 6267 #Highwood Hero LCH  
 #11808572 #Blackbird of RR 1204  
 RR Everelda Entense 0413 #QAS Traveler 23-4 [AMF-NHF]  
 RR Everelda Entense 8320 TPB

H 96 Rito 2100 7371 #Rito 2100 GDAR  
 HA Rito Blackcap 9038 Rito Eileenmere 378 of 96  
 11300669 H 96 Blackcap 3835 Band 105 of Hyline 2380  
 #H96 Blackcap Eileen 380

CW	+11
MARB	+10
RE	-050
FAT	3.63

CEU	BEPD	WEPD	YEPD	CEM	MILK	SEN
+10	+6	+66	+109	+7	+37	-13.35

BW	ADJ. WW	ADJ. YW	IMF	RE	RIB FAT	RUMP FAT
84	758	1313	3.63	13.6	.36	.38

\$W	\$F	\$G	\$B
+43.44	+42.24	+20.53	+39.77

• Image Maker is one of the top-selling AI Angus bulls at ABS Global based on calving-ease, growth and female making ability. He's also one of the top five bulls in the breed for \$W.



**HA Image Maker 0415 - Reference Sire E**

# ANGUS BULLS

•The following six bulls are full flush brothers out of the famous ER Blackbird J928 flushed to HA Image Maker 0415. Image Maker has taken the industry by storm, stamping his progeny with both low birth weights and high yearling weights. True curve-bender genetics!

## 56 ROCKING R IMAGEMAKER 9103

Birth Date: 2-3-2009 Bull: +16342458 Tattoo: 9103  
 #Hero 6267 of RR 2418 #RR Hero 6267  
**HA Image Maker 0415 [AMF-NHF]** RR Everelda Entense 0413  
 #+13739532 HA Rito Blackcap 9038 H 96 Rito 2100 7371  
 H 96 Blackcap 3835

CW	I+10
MARB	I+31
RE	I+24
FAT	I-.018
CED	I+7
BEPD	I+1.0
WEPD	I+60
YEPD	I+98
CEM	I+8
MILK	I+33
SEN	-9.34
BW	N/A
ADJ. WW	632
ADJ. YW	N/A
IMF	N/A
RE	N/A
RIB FAT	N/A
RUMP FAT	N/A
SW	+38.97
SF	+33.29
SG	+26.81
SB	+47.05

#SAF Focus of ER [AMF-NHF] #SAF Fame [AMF-NHF]  
 ER Blackbird J928 GDAR Forever Lady 246  
 #13626676 #T Elite Blackbird Y764 #Paramont Ambush 2172 [AMF-NHF]  
 #T Elite Blackbird W715

## 57 ROCKING R IMAGEMAKER 9107

Birth Date: 2-5-2009 Bull: +16342455 Tattoo: 9107  
 #Hero 6267 of RR 2418 #RR Hero 6267  
**HA Image Maker 0415 [AMF-NHF]** RR Everelda Entense 0413  
 #+13739532 HA Rito Blackcap 9038 H 96 Rito 2100 7371  
 H 96 Blackcap 3835

CW	I+10
MARB	I+31
RE	I+24
FAT	I-.018
CED	I+7
BEPD	I+1.0
WEPD	I+60
YEPD	I+98
CEM	I+8
MILK	I+33
SEN	-9.34
BW	N/A
ADJ. WW	631
ADJ. YW	N/A
IMF	N/A
RE	N/A
RIB FAT	N/A
RUMP FAT	N/A
SW	+38.97
SF	+33.29
SG	+26.81
SB	+47.05

#SAF Focus of ER [AMF-NHF] #SAF Fame [AMF-NHF]  
 ER Blackbird J928 GDAR Forever Lady 246  
 #13626676 #T Elite Blackbird Y764 #Paramont Ambush 2172 [AMF-NHF]  
 #T Elite Blackbird W715



Rocking R Imagemaker 9109 - Lot 58

## 58 ROCKING R IMAGEMAKER 9109

Birth Date: 2-8-2009 Bull: +16342453 Tattoo: 9109  
 #Hero 6267 of RR 2418 #RR Hero 6267  
**HA Image Maker 0415 [AMF-NHF]** RR Everelda Entense 0413  
 #+13739532 HA Rito Blackcap 9038 H 96 Rito 2100 7371  
 H 96 Blackcap 3835

CW	I+10
MARB	I+31
RE	I+24
FAT	I-.018
CED	I+7
BEPD	I+1.0
WEPD	I+60
YEPD	I+98
CEM	I+8
MILK	I+33
SEN	-9.34
BW	N/A
ADJ. WW	807
ADJ. YW	N/A
IMF	N/A
RE	N/A
RIB FAT	N/A
RUMP FAT	N/A
SW	+38.97
SF	+33.29
SG	+26.81
SB	+47.05

#SAF Focus of ER [AMF-NHF] #SAF Fame [AMF-NHF]  
 ER Blackbird J928 GDAR Forever Lady 246  
 #13626676 #T Elite Blackbird Y764 #Paramont Ambush 2172 [AMF-NHF]  
 #T Elite Blackbird W715

## 59 ROCKING R IMAGEMAKER 9111

Birth Date: 2-14-2009 Bull: +16342456 Tattoo: 9111  
 #Hero 6267 of RR 2418 #RR Hero 6267  
**HA Image Maker 0415 [AMF-NHF]** RR Everelda Entense 0413  
 #+13739532 HA Rito Blackcap 9038 H 96 Rito 2100 7371  
 H 96 Blackcap 3835

CW	I+10
MARB	I+31
RE	I+24
FAT	I-.018
CED	I+7
BEPD	I+1.0
WEPD	I+60
YEPD	I+98
CEM	I+8
MILK	I+33
SEN	-9.34
BW	N/A
ADJ. WW	715
ADJ. YW	N/A
IMF	N/A
RE	N/A
RIB FAT	N/A
RUMP FAT	N/A
SW	+38.97
SF	+33.29
SG	+26.81
SB	+47.05

#SAF Focus of ER [AMF-NHF] #SAF Fame [AMF-NHF]  
 ER Blackbird J928 GDAR Forever Lady 246  
 #13626676 #T Elite Blackbird Y764 #Paramont Ambush 2172 [AMF-NHF]  
 #T Elite Blackbird W715

## 60 ROCKING R IMAGEMAKER 9112

Birth Date: 2-14-2009 Bull: +16342459 Tattoo: 9112  
 #Hero 6267 of RR 2418 #RR Hero 6267  
**HA Image Maker 0415 [AMF-NHF]** RR Everelda Entense 0413  
 #+13739532 HA Rito Blackcap 9038 H 96 Rito 2100 7371  
 H 96 Blackcap 3835

CW	I+10
MARB	I+31
RE	I+24
FAT	I-.018
CED	I+7
BEPD	I+1.0
WEPD	I+60
YEPD	I+98
CEM	I+8
MILK	I+33
SEN	-9.34
BW	N/A
ADJ. WW	695
ADJ. YW	N/A
IMF	N/A
RE	N/A
RIB FAT	N/A
RUMP FAT	N/A
SW	+38.97
SF	+33.29
SG	+26.81
SB	+47.05

#SAF Focus of ER [AMF-NHF] #SAF Fame [AMF-NHF]  
 ER Blackbird J928 GDAR Forever Lady 246  
 #13626676 #T Elite Blackbird Y764 #Paramont Ambush 2172 [AMF-NHF]  
 #T Elite Blackbird W715



Rocking R Imagemaker 9112 - Lot 60

## 61 ROCKING R IMAGEMAKER 9113

Birth Date: 2-16-2009 Bull: +16342454 Tattoo: 9113  
 #Hero 6267 of RR 2418 #RR Hero 6267  
**HA Image Maker 0415 [AMF-NHF]** RR Everelda Entense 0413  
 #+13739532 HA Rito Blackcap 9038 H 96 Rito 2100 7371  
 H 96 Blackcap 3835

CW	I+10
MARB	I+31
RE	I+24
FAT	I-.018
CED	I+7
BEPD	I+1.0
WEPD	I+60
YEPD	I+98
CEM	I+8
MILK	I+33
SEN	-9.34
BW	N/A
ADJ. WW	708
ADJ. YW	N/A
IMF	N/A
RE	N/A
RIB FAT	N/A
RUMP FAT	N/A
SW	+38.97
SF	+33.29
SG	+26.81
SB	+47.05

#SAF Focus of ER [AMF-NHF] #SAF Fame [AMF-NHF]  
 ER Blackbird J928 GDAR Forever Lady 246  
 #13626676 #T Elite Blackbird Y764 #Paramont Ambush 2172 [AMF-NHF]  
 #T Elite Blackbird W715

# ANGUS BULLS



## MYTTY TRAVELER S180

Birth Date: 1-27-2006 Bull #15567265 Tattoo: S180

#QAS Traveler 23-4 [AMF-NHF]  
DHD Traveler 6807 [AMF-NHF]  
#10858958 #Bemindful Maid DHD 0807

#Band 234 of Ideal 3163  
QAS Blackbird Eve 601 1  
#PBC 707 1M F0203  
Bemindful Maid of RR 1079

CW
+12
MARB
+27
RE
+09
FAT
-010

#Bon View Bando 598 [AMF] #Thama Bando 155 [AMF-NHF]  
#Bon View Dora 56  
#Leachman Right Time  
Sitz Everelda Entense 1905

Coleman Mytty Everelda 239  
+14228629 +BT Everelda Entense 76D

	CED	BEPD	WEPD	YEPD	CEM	MILK	SEN
	+8	+1.4	+43	+84	+5	+25	-1.85
BW	ADJ. WW	ADJ. YW	IMF	RE	RIB FAT	RUMP FAT	
87	711	1233	4.99	12.1	.16	.24	
	\$W	\$F	\$G	\$B			
	+25.59	+25.91	+22.40	+42.77			



Mytty Traveler S180 - Reference Sire F. Sire of Lots 62-68.



## ROCKING R TRAVELER 924

Birth Date: 2-1-2009 Bull 16309607 Tattoo: 924

#DHD Traveler 6807 [AMF-NHF]  
Mytty Traveler S180  
+15567265 +Coleman Mytty Everelda 239

#QAS Traveler 23-4 [AMF-NHF]  
#Bemindful Maid DHD 0807  
#Bon View Bando 598 [AMF]  
+BT Everelda Entense 76D

CW
+8
MARB
+29
RE
+06
FAT
+013

#BR Midland [AMF-NHF] #Twin Valley Precision E161 [NHC-AMF-RDF]  
BR Royal Lass 7036-19  
#High Valley 4C6 Ambush [AMF]  
AOF Avis 21

JLM Lady Avis P006  
14778055 Davis Lady Avis Ambush 210

	CED	BEPD	WEPD	YEPD	CEM	MILK	SEN
	+5	+2.5	+43	+81	+4	+19	+4.62
BW	ADJ. WW	ADJ. YW	IMF	RE	RIB FAT	RUMP FAT	
86	677	N/A	N/A	N/A	N/A	N/A	
	\$W	\$F	\$G	\$B			
	+23.07	+23.00	+20.95	+37.22			

This impressive son is out of our JLM Lady Avis cow selected from the John Morgan Angus Ranch in Mystic, GA. His dam records a WR of 4@105 and a YR of 2@103.



## ROCKING R TRAVELER 926

Birth Date: 2-6-2009 Bull 16309618 Tattoo: 926

#DHD Traveler 6807 [AMF-NHF]  
Mytty Traveler S180  
+15567265 +Coleman Mytty Everelda 239

#QAS Traveler 23-4 [AMF-NHF]  
#Bemindful Maid DHD 0807  
#Bon View Bando 598 [AMF]  
+BT Everelda Entense 76D

CW
+8
MARB
+19
RE
+16
FAT
+005

+EXG Midland 706 N451 LS [AMF-NHF] #BR Midland [AMF-NHF]  
GAR Precision 706 [NHC-AMF]  
Leachman Patent  
Leachman Queen Mother 6028

Rocking R Classy Lady 0617  
15378645 Rocking R Queen

	CED	BEPD	WEPD	YEPD	CEM	MILK	SEN
	+7	+2.0	+40	+77	+7	+19	+5.83
BW	ADJ. WW	ADJ. YW	IMF	RE	RIB FAT	RUMP FAT	
78	648	N/A	N/A	N/A	N/A	N/A	
	\$W	\$F	\$G	\$B			
	+23.15	+20.27	+19.18	+34.99			

An eye-catching Mytty Traveler S180 son packing tons of natural muscling combined with proven calving-ease genetics.



## ROCKING R TRAVELER 927

Birth Date: 2-7-2009 Bull 16309603 Tattoo: 927

#DHD Traveler 6807 [AMF-NHF]  
Mytty Traveler S180  
+15567265 +Coleman Mytty Everelda 239

#QAS Traveler 23-4 [AMF-NHF]  
#Bemindful Maid DHD 0807  
#Bon View Bando 598 [AMF]  
+BT Everelda Entense 76D

CW
+11
MARB
+19
RE
+08
FAT
+003

#N Bar Emulation EXT [AMF-NHF] #Emulation N Bar 5522  
N Bar Primrose 2424  
#Woodhill Triple Threat [AMF]  
GPCC Blackbird Lass 2387

Rocking R Lass 9901  
13316823 GPCC Lass 5224 2387

	CED	BEPD	WEPD	YEPD	CEM	MILK	SEN
	+10	-1	+42	+78	+8	+20	+4.63
BW	ADJ. WW	ADJ. YW	IMF	RE	RIB FAT	RUMP FAT	
71	677	N/A	N/A	N/A	N/A	N/A	
	\$W	\$F	\$G	\$B			
	+27.17	+20.49	+18.42	+36.77			

His dam is a moderately framed "never-miss" producer with a great disposition. This thick, deep-bodied Mytty Traveler S180 son is an outstanding heifer bull choice.



Rocking R Traveler 924 - Lot 62



## ROCKING R TRAVELER 931

Birth Date: 2-7-2009 Bull 16309610 Tattoo: 931

#DHD Traveler 6807 [AMF-NHF]  
Mytty Traveler S180  
+15567265 +Coleman Mytty Everelda 239

#QAS Traveler 23-4 [AMF-NHF]  
#Bemindful Maid DHD 0807  
#Bon View Bando 598 [AMF]  
+BT Everelda Entense 76D

CW
+13
MARB
+27
RE
+08
FAT
+012

#Connealy Dateline #DHD Traveler 6807 [AMF-NHF]  
#Eila Eila of Conanga [AMF]  
#SAF Focus of ER [AMF-NHF]  
ER Forever 3218

ER Forever N048  
14492100 +ER Forever L079

	CED	BEPD	WEPD	YEPD	CEM	MILK	SEN
	+8	+2.0	+44	+84	+8	+22	+1.00
BW	ADJ. WW	ADJ. YW	IMF	RE	RIB FAT	RUMP FAT	
80	679	N/A	N/A	N/A	N/A	N/A	
	\$W	\$F	\$G	\$B			
	+24.65	+25.54	+19.59	+40.54			

You'll like this stout bull whose pedigree combines some of the best bloodlines in the breed.



## ROCKING R TRAVELER 932

Birth Date: 2-10-2009 Bull 16309604 Tattoo: 932

#DHD Traveler 6807 [AMF-NHF]  
Mytty Traveler S180  
+15567265 +Coleman Mytty Everelda 239

#QAS Traveler 23-4 [AMF-NHF]  
#Bemindful Maid DHD 0807  
#Bon View Bando 598 [AMF]  
+BT Everelda Entense 76D

CW
+9
MARB
+31
RE
+03
FAT
+021

#Sitz Alliance 6595 [AMF-NHF] #Sitz Traveler 8180 [AMF-NHF]  
#Sitz Barbaramere Jet 2698  
+Stevenson Maximum 42C  
Stevenson Beauty 61C

Rocking R Maximum 9908  
13316836 Stevenson Maximum 734F

	CED	BEPD	WEPD	YEPD	CEM	MILK	SEN
	+7	+1.6	+42	+81	+7	+23	+1.00
BW	ADJ. WW	ADJ. YW	IMF	RE	RIB FAT	RUMP FAT	
78	659	N/A	N/A	N/A	N/A	N/A	
	\$W	\$F	\$G	\$B			
	+25.16	+23.37	+20.06	+37.40			

Backed by one of our foundation cow families from the Stevenson Ranch in MT, this stout bull combines maternal cow power with balanced performance traits.

# ANGUS BULLS

**67**

## ROCKING R TRAVELER 934

Birth Date: 2-14-2009 Bull 16309602 Tattoo: 934

**Mytty Traveler S180**  
#15567265

#DHD Traveler 6807 [AMF-NHF] #QAS Traveler 23-4 [AMF-NHF]  
#Bemindful Maid DHD 0807  
+Coleman Mytty Everelda 239 #Bon View Bando 598 [AMF]  
+BT Everelda Entense 76D

CW
I+.8
MARB
I+.21
RE
I+.07
FAT
I-.006

**Rocking R Reba 9811 [AMF]**  
#13064473

#N Bar Emulation EXT [AMF-NHF] #Emulation N Bar 5522  
N Bar Primrose 2424  
GPCC Miss Rito 5360 9557 [AMF] Hoff Spade Flush SC 678 [AMF-NHF]  
GPCC 9557 Tawny R76 of C208

CED	BE PD	WE PD	YE PD	CE M	MILK	SE N
+7	+1.0	+36	+66	+8	+21	+7.32

BW	ADJ. WW	ADJ. YW	IMF	RE	RIB FAT	MILK	RUMP FAT
79	638	N/A	N/A	N/A	N/A	N/A	N/A

\$W	\$F	\$G	\$B
+25.59	+11.46	+20.11	+34.17

• Out of our Pathfinder, Rocking R Reba 9811, who posts a WR of 9@105, this bull is a complete package of proven performance and style!



**Nichols Extra H6 - Reference Sire G. Sire of Lots 69-71.**

**70**

## ROCKING R EXTRA H6 907

Birth Date: 1-9-2009 Bull 16310956 Tattoo: 907

**Nichols Extra H6 [AMF-NHF]**  
#13207590

#N Bar Emulation EXT [AMF-NHF] #Emulation N Bar 5522  
N Bar Primrose 2424  
Nichols Eileen May F261 Nichols Black Ink D220  
Nichols Eileen May B241

CW
I+.8
MARB
I+.31
RE
I+.07
FAT
I+.032

**Rocking R Kelly 0612**  
15378657

+EXG Midland 706 N451 LS [AMF-NHF] #BR Midland [AMF-NHF]  
GAR Precision 706 [NHC-AMF]  
Rocking R Maximum 9908 #Sitz Alliance 6595 [AMF-NHF]  
Stevenson Maximum 734F

CED	BE PD	WE PD	YE PD	CE M	MILK	SE N
+9	+1.2	+44	+87	+9	+22	+.08

BW	ADJ. WW	ADJ. YW	IMF	RE	RIB FAT	MILK	RUMP FAT
76	617	N/A	N/A	N/A	N/A	N/A	N/A

\$W	\$F	\$G	\$B
+25.09	+28.49	+19.47	+36.94

• Selected for his balanced performance traits, this calving-ease bull is backed by phenomenal maternal power.



**68**

## ROCKING R TRAVELER 935 [NHF]

Birth Date: 2-14-2009 Bull 16309613 Tattoo: 935

**Mytty Traveler S180**  
#15567265

#DHD Traveler 6807 [AMF-NHF] #QAS Traveler 23-4 [AMF-NHF]  
#Bemindful Maid DHD 0807  
+Coleman Mytty Everelda 239 #Bon View Bando 598 [AMF]  
+BT Everelda Entense 76D

**LS Precision 2167 P225 [AMF-NHF]**  
#14781848

#GAR Precision 1680 [AMC-NHC] #Tehama Bando 155 [AMF-NHF]  
9J9 GAR 856 [NHF]  
+GAR 6807 Traveler 2167 [AMF] #DHD Traveler 6807 [AMF-NHF]  
GAR Pierre 1322

CED	BE PD	WE PD	YE PD	CE M	MILK	SE N
+8	+1.3	+37	+74	+8	+25	+1.26

BW	ADJ. WW	ADJ. YW	IMF	RE	RIB FAT	MILK	RUMP FAT
81	680	N/A	N/A	N/A	N/A	N/A	N/A

\$W	\$F	\$G	\$B
+24.46	+18.53	N/A	N/A

• This bull is out of a gorgeous, easy-fleshing cow from Limestone in Perkins, OK. A low birth weight bull with a blueprint to be phenotypically outstanding!

**69**

## ROCKING R EXTRA H6 906

Birth Date: 1-8-2009 Bull 16310944 Tattoo: 906

**Nichols Extra H6 [AMF-NHF]**  
#13207590

#N Bar Emulation EXT [AMF-NHF] #Emulation N Bar 5522  
N Bar Primrose 2424  
Nichols Eileen May F261 Nichols Black Ink D220  
Nichols Eileen May B241

CW
I+.7
MARB
I+.33
RE
I+.03
FAT
I+.014

**LS Miss Ideal P274**  
14781876

#BR Midland [AMF-NHF] #Twin Valley Precision E161 [NHC-AMF-RDF]  
BR Royal Lass 7036-19  
EXG Limestone Ideal M086 #Bon View New Design 1407 [AMF-NHF]  
#ALC Miss Ideal 9114

CED	BE PD	WE PD	YE PD	CE M	MILK	SE N
+11	+.5	+46	+92	+11	+22	-1.46

BW	ADJ. WW	ADJ. YW	IMF	RE	RIB FAT	MILK	RUMP FAT
71	649	N/A	N/A	N/A	N/A	N/A	N/A

\$W	\$F	\$G	\$B
+25.66	+32.71	+22.10	+39.74

• Maternal half brother to our 2009 top-selling bull at Midland. His dam was our pick at the Limestone Female Sale in Perkins, OK.



**Rocking R Extra H6 906 - Lot 69**

**71**

## ROCKING R EXTRA H6 916

Birth Date: 1-14-2009 Bull 16310955 Tattoo: 916

**Nichols Extra H6 [AMF-NHF]**  
#13207590

#N Bar Emulation EXT [AMF-NHF] #Emulation N Bar 5522  
N Bar Primrose 2424  
Nichols Eileen May F261 Nichols Black Ink D220  
Nichols Eileen May B241

CW
I+.9
MARB
I+.22
RE
I+.07
FAT
I+.021

**Rocking R Sophia 0623**  
15378655

+EXG Midland 706 N451 LS [AMF-NHF] #BR Midland [AMF-NHF]  
GAR Precision 706 [NHC-AMF]  
Rocking R Rita 9810 Basin Rainmaker 394F  
Stevenson Maximum 734F

CED	BE PD	WE PD	YE PD	CE M	MILK	SE N
+7	+2.2	+43	+85	+7	+22	+.69

BW	ADJ. WW	ADJ. YW	IMF	RE	RIB FAT	MILK	RUMP FAT
78	631	N/A	N/A	N/A	N/A	N/A	N/A

\$W	\$F	\$G	\$B
+23.22	+26.90	+17.11	+35.12

• A Nichols Extra H6 son with solid performance traits from a strong cow family.

# ANGUS BULLS

**72**

## Rocking R In Focus 910

Birth Date: 1-10-2009 Bull 16312772 Tattoo: 910

**Mytty In Focus [AMF-NHF-RDF]**  
**13880818**

#SAF Focus of ER [AMF-NHF]  
Mytty Countess 906

#SAF Fame [AMF-NHF]  
GDAR Forever Lady 246  
#Sitz Alliance 6595 [AMF-NHF]  
Baldrige Countess 357

CW
+3
MARB
+1.50
RE
+1.06
FAT
+1.014

#TC Advantage [AMF-NHF] #Krugerrand of Donamere 490 [AMF-NHF]  
Rocking R Dream 7102 TC Pride 2010  
+15807255 SA Montana Dream 9814 AAR Rito 1686  
+SA Montana Dream

CED	BE PD	WE PD	YE PD	CEM	MILK	SEN
+14	-2.5	+49	+89	+12	+29	-7.08

BW	ADJ. WW	ADJ. YW	IMF	RE	RIB FAT	RUMP FAT
62	723	N/A	N/A	N/A	N/A	N/A

\$W	\$F	\$G	\$B
+32.55	+28.55	+28.96	+41.93

• This powerful Mytty In Focus son combines performance with gorgeous phenotype and an outstanding disposition!



**Rocking R In Focus 910 - Lot 72**



**73**

## Rocking R In Focus 923

Birth Date: 1-20-2009 Bull 16312770 Tattoo: 923

**Mytty In Focus [AMF-NHF-RDF]**  
**13880818**

#SAF Focus of ER [AMF-NHF]  
Mytty Countess 906

#SAF Fame [AMF-NHF]  
GDAR Forever Lady 246  
#Sitz Alliance 6595 [AMF-NHF]  
Baldrige Countess 357

CW
+7
MARB
+1.45
RE
-1.09
FAT
+1.009

**Rocking R Lisa 721**  
**15682242**

#WCC Special Design L309 [AMF-NHF]  
GPCC Lass 5004 3347

#Bon View New Design 878 [AMF-NHF]  
N Bar Primrose 2424  
#+Woodhill Triple Threat [AMF]  
Gulf Pacific Lass 3347 825

CED	BE PD	WE PD	YE PD	CEM	MILK	SEN
+11	+3	+47	+85	+9	+20	+2.50

BW	ADJ. WW	ADJ. YW	IMF	RE	RIB FAT	RUMP FAT
71	572	N/A	N/A	N/A	N/A	N/A

\$W	\$F	\$G	\$B
+28.24	+25.38	+25.08	+40.95

• This Mytty In Focus son out of a WCC Special Design cow offers calving-ease combined with balanced traits and a great disposition.

# SCENES FROM LAST YEAR'S SALE



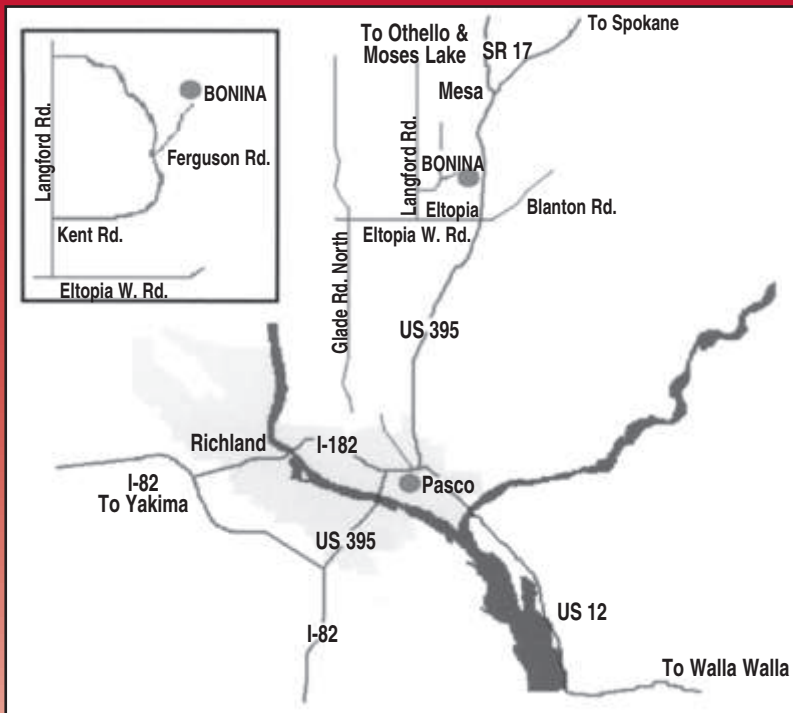
# RANCHERS CHOICE PRODUCTION SALE

5412 Birch Rd.  
Pasco, WA 99301

PRSR  
FIRST CLASS  
U.S. POSTAGE  
**PAID**  
St. Joseph, MO  
Permit #2017



# RANCHERS CHOICE PRODUCTION SALE



**SATURDAY,  
FEBRUARY 27, 2010**

Bonina Sale Facility, Eltopia, WA • Lunch  
at 11 a.m. • Sale at Noon

