



**PERFORMANCE TESTED
ANGUS BULL AND FEMALE SALE**

FRIDAY • APRIL 29, 2011 • LOUISA, VA



 *Quaker Hill Farm*

*Dinner at 5 p.m.
Bull Sale Begins at 5:30 p.m.*

WELCOME TO QUAKER HILL

FRIDAY • APRIL 29, 2011 • LOUISA, VA



PERFORMANCE TESTED ANGUS BULL AND FEMALE SALE

Bulls sell at 5:30 p.m.

Females sell immediately following the Bulls

AUCTIONEER:

Scott Crawford 816-804-1410

ASSOCIATION REPRESENTATIVES:

Dr. Jerry Lipsey, CEO American Simmental Association
James Young, VA Angus Association President
Jason Pratt, VA Angus Association President-Elect
Kevin Fleenor, VA Angus Association Secretary
Pete Henderson, VA Angus Association Treasurer
Felicia Roberts, VA Angus Association Office Manager

LIVESTOCK PUBLICATION REPRESENTATIVES AND RINGMEN:

Dave Mullins, *Angus Journal*, 540-869-6220
Jeremie Ruble, *SimTalk*, 406-581-7940
Scott Weller, Special Assignment, 540-294-0555
Marty Couch, Special Assignment, 660-349-9320

SALE MANAGER:



LARRY COTTON 517-294-0777
RYAN COTTON 706-206-8361
MIKE GOTHARD 540-894-1055
BERNIE SCHEER 859-421-5783
JERRY CRENSHAW 703-244-4767
ZACK HILEMAN 540-460-2776
DAN WELLS 740-505-3843

SALE CONSULTANTS:

Ernest Carter, 540-894-3392
Bill Buckner, 828-284-2614
Parker Friedrich, 254-413-2420
Mike Shanahan, 518-598-8869

SALE HEADQUARTERS:

- Best Western Crossroads Inn & Suites, 540-832-1700
135 Wood Ridge Terrace, Gordonsville, VA
5 miles from the farm
- Whistle Stop Bend and Breakfast, 540-967-0938
318 W Main Street, Louisa, VA
9 miles from the farm

Sale Guest: Wild Wind Angus

UPDATES:

Scrotal measurements will be available sale day on the update sheet.

INSURANCE:

Your cattle may be insured at the clerk's desk.

TRUCKING:

Reliable truckers will be available sale day to assist purchasers with their cattle.

HERD HEALTH:

All cattle will be accompanied by proper health certificates for immediate shipment.

SEMEN INTEREST:

A 50% semen revenue sharing interest will be retained in each bull selling, or the buyer will be able to double the bid and take 100% semen interest.

TERMS AND CONDITIONS:

All cattle are to be settled on sale day unless prior arrangements have been made. The cattle sell under the standard terms and conditions as suggested by the American Angus Association as well as outlined by the American Angus Association relating to genetic defects.

FOOD & REFRESHMENTS:

Dinner will be served at 5 p.m. on sale day.



Visit the *Angus Journal*® Web site, www.angusjournal.com, and view this sale book online.

References: American Angus Association®, AHIR®, AngusSource®, CAB®, Pathfinder®.

EPDs current as of March 30, 2011. Updated EPDs can be viewed online at www.angus.org.



Auction will be available on Superior audio internet.

SALE DAY PHONES:

- Charles Rosson 540-894-3523
- Charles S. Rosson 540-894-3500
- Lee Rosson 540-894-3386
- Sale Facility 540-967-5378 • 540-967-5379

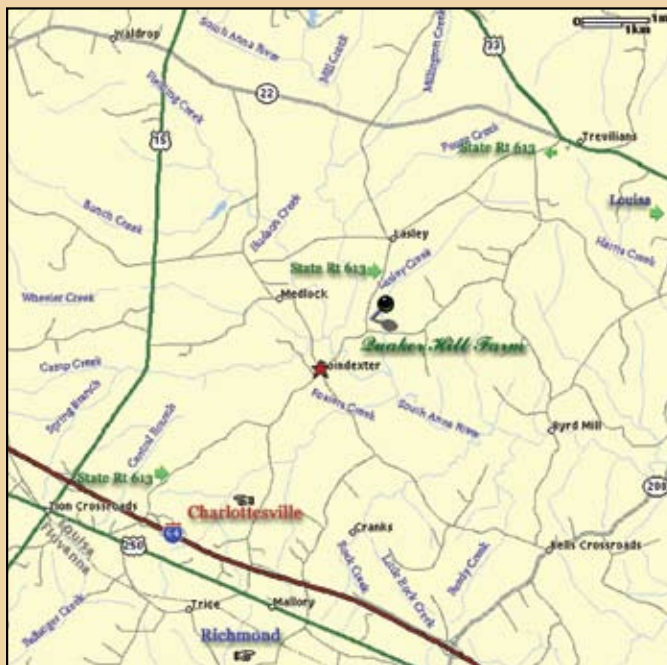
WELCOME TO QUAKER HILL

SALE LOCATION:

*The sale will be held at
5728 Poindexter Road, Louisa, Virginia.*

From northern Virginia take Route 15 south to the town of Gordonsville, VA, then take Route 33 East (left) 9 miles to stop sign. At Route 22, turn left on Route 33/22, go 50 yards and turn right on Poindexter Road. Go 4.5 miles and farm is on left.

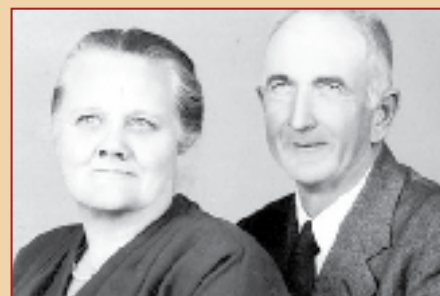
From Charlottesville or Richmond, Virginia take Exit 136 Zion Crossroads. From I-64 go south on Route 15 one mile to stoplight, turn left on Route 250. Go 1 mile then turn left on the first road to the left Poindexter Road. Go 5.7 miles and farm is on right.



Charles and Lee Rosson Families



**Charles S.
and Elizabeth
Rosson**



Charles and Ruth Rosson



Quaker Hill Farm • 5728 Poindexter Rd • Louisa, VA 23093
Farm 540.967.1674 • Fax 540.967.1497 • Charles cell 540-894-3523
E-mail: crosson@quakerhillfarm.com

QUAKER HILL REFERENCE SIRES



SS Objective T510 OT26

B Quaker Hill Objective 3J15 [AMF-CAF-NHF]

Birth Date: 8-24-2003 Bull 14660859 Tattoo: 3J15

#SS Traveler 6807 T510 [AMF-CAF-NHF] #DHD Traveler 6807 [AMF-NHF]
 #SS Objective T510 OT26 [AMF-CAF-NHF] #SS Miss Hi Spade A114
 #13776378 SS Miss Rita R011 7R8 [AMF-NHF] SS Rito Rito R76 R011
 SS Miss Ultrass U56

+BW/QHF Blackcap Lad #+SVF Gdar 216 LTD
 Quaker Hill Queen 1L4 [AMF-NHF] +OCC Blackcap 740C
 #14070908 Ankony Queen QHF R981 +Rito 2H12 of 2036 Rito 9J9
 Ankony Queen Y6251

CED	BW	WW	YW	SC	MILK
+6	.83	+2.5	.95	+72	.92
MRB	+29	RE	+88	\$B	+64.20

A S S Objective T510 OT26 [AMF-CAF-NHF]

Birth Date: 4-25-2000 Bull #13776378 Tattoo: OT26

#DHD Traveler 6807 [AMF-NHF] #OAS Traveler 23-4 [AMF-CAF-NHF]
 SS Traveler 6807 T510 [AMF-CAF-NHF] #Bemindful Maid DHD 0807
 #12502030 #SS Miss Hi Spade A114 #Hoff Hi Spade SC 491
 SS Miss Rito OH3 5H9

SS Rito Rito R76 R011 SS Rito Rito R76
 SS Miss Rita R011 7R8 [AMF-NHF] SS Miss Hoss H83
 12958951 SS Miss Ultrass U56 #+OSU 6T6 Ultra
 #SS Miss Rito Rito R76 R96

CED	BW	WW	YW	SC	MILK
+12	.95	+1.0	.98	+70	.97
MRB	+78	RE	+64	\$B	+68.48



Quaker Hill Objective OT26

C Ideal 4355 of OT26 2440 [AMF-CAF-NHF]

Birth Date: 2-3-2004 Bull 14779044 Tattoo: 4355

#SS Traveler 6807 T510 [AMF-CAF-NHF] #DHD Traveler 6807 [AMF-NHF]
 SS Objective T510 OT26 [AMF-CAF-NHF] #SS Miss Hi Spade A114
 #13776378 SS Miss Rita R011 7R8 [AMF-NHF] SS Rito Rito R76 R011
 SS Miss Ultrass U56

+Ideal 7407 of 1418 4465 #Ideal 1418 of 8103 4286 [AMF-CAF-NHF]
 Ideal 2440 of 7407 7275 [AMF] +Ideal 4465 of 6807 4286 [AMF-NHF]
 14331466 +Ideal 7275 of 809 1470 #Rito Excel 809
 +Ideal 1470 of 8103 4127

CED	BW	WW	YW	SC	MILK
+6	.61	+3.3	.86	+73	.79
MRB	+58	RE	+38	\$B	+68.14



Ideal 4355 of OT26 2440

D S S Rito Rito R011 2R12 [AMF-CAF-NHF]

Birth Date: 5-21-2002 Bull 14299352 Tattoo: 2R12

SS Rito Rito R76 #Rito 2H33 of J6210 9J9 [AMC]
 SS Rito Rito R76 R011 #SS Miss Rito OH3 3H10
 11494687 SS Miss Hoss H83 #Leachman Hoss
 SS Miss Rito X01 4X10

#SS Traveler 6807 T510 [AMF-CAF-NHF] #DHD Traveler 6807 [AMF-NHF]
 SS Miss Traveler T510 9T22 #SS Miss Hi Spade A114
 #113514187 #SS Miss New Trend 315 N56 #VDAR New Trend 315 [AMF-CAF-NHF]
 SS Miss Scotch Cap S28

CED	BW	WW	YW	SC	MILK
+10	.58	+7	.85	+55	.79
MRB	+56	RE	+35	\$B	+45.45



SS Rito Rito R011 2R12

QUAKER HILL REFERENCE SIRES



Quaker Hill Template 6J2 [AMF-CAF-NHF]

Birth Date: 2-9-2006 Bull 15290955 Tattoo: 6J2

#SS Traveler 6807 T510 [AMF-CAF-NHF] #DHD Traveler 6807 [AMF-NHF]
 SS Objective T510 OT26 [AMF-CAF-NHF] #SS Miss Hi Spade A114
 #13776378 SS Miss Rita R011 7R8 [AMF-NHF] SS Rito Rito R76 R011
 SS Miss Ultress U56

#N Bar Prime Time D806 [AMF-CAF-NHF] #Gardens Prime Time [AMF-CAF-NHF]
 Quaker Hill Flavia 4PT1 [AMF] N Bar Miss Emulous A404
 14639535 Quaker Hill Flavia 1P7 #Plowman 1627 of Millbrae SAR [AMF-CAF-NHF]
 #Wampler Flavia Traveler W815 [AMC-CAF-NHF]

	CED	BW		WW	YW		SC	MILK				
	+12	.53	+5	.73	+57	.62	+113	.56	+75	.63	+29	.27
MRB			+87		RE		+13		\$B		+63.43	



Quaker Hill Template 6J2



SAV Bruiser 9164



S A V Bruiser 9164 [AMF-CAF-D2F-NHF]

Birth Date: 3-5-2009 Bull 16396531 Tattoo: 9164

#+GAR Grid Maker [AMF-CAF-NHF] #GDAR Traveler 044 [AMF-CAF-NHF]
 SAV Bismarck 5682 [AMF-CAF-NHF] GAR Precision 2536 [AMC-NHF]
 +15109865 SAV Abigale 0451 #Schoenes Fix It 826 [AMF-CAF-NHF]
 SAV Abigale 6062

+SAV 004 Predominant 4438 [AMF-CAF-NHF] #SAV 8180 Traveler 004 [AMF-CAF-NHF-RDF]
 SAV Miss Bobbie 7463 [CAF-NHF] SAV Emblynette 1182
 15688404 SAV Miss Bobbie 4177 [CAF-NHF] #Bon View New Design 878 [AMF-CAF-NHF]
 SAV Miss Bobbie 2170

	CED	BW		WW	YW		SC	MILK				
	+9	.30	+1.2	.36	+68	.27	+112	.27	+39	.33	+25	.16
MRB			+29		RE		+50		\$B		+59.13	



S S Fast Track M719

Birth Date: 5-13-2007 Bull 2527300 Tattoo: M719

S A F Focus of E R S A F Fame
 Mytty In Focus G D A R Forever Lady 246
 2326312 Mytty Countess 906 Sitz Alliance 6595
 Baldrige Countess 357

S S Objective T510 OT26 S S Traveler 6807 T510
 SS MS Objective OT26 5J5 S S Miss Rita R011 7R8
 9686478 S S Miss Diane 1407 H310 Bon View New Design 1407
 S S Miss Ultralocks 1U9

CE	BW	WW	YW	MCE	MM	MWW	API	TI
N/A	-6.5	49.1	101.9	N/A	8.0	32.6	175.7	111.7



SS Fast Track M719



TNT Jump Start R238



TNT Jump Start R238

Birth Date: 2-24-2005 Bull 2321659 Tattoo: R238

WLE Power Stroke Burns Bull X339U
 HC Hummer 12M Nichols Joliette C75
 2174450 LBR Destinys Dream K830 Nichols BLK Destiny D12
 LBR Right Dream H830

Hooks Shear Force 38K Nichols Legacy G151
 TNT Miss Kayla M13 C&D Tracy
 2183826 TNT Miss Delila K103 Hart Mr E534 H323
 Camcatco Showtime G108

CE	BW	WW	YW	MCE	MM	MWW	API	TI
20.8	-2.4	25.6	51.7	2.3	5.9	18.6	152.5	71.0

ANGUS PERFORMANCE PROSPECTS



Quaker Hill Eureka 9E56
9E56 / This exciting prospect sells as Lot 1.



Quaker Hill Eureka 9E56

Birth Date: 11-10-2009 Bull +16716949 Tattoo: 9E56

#+OCC Backstop 888B
OCC Eureka 865E
#+12514352 #Blackbird of RR 1204

#DHD Traveler 6807 [AMF-NHF]
Revolution Rose of RR 9239
#PBC 707 1M F0203
Blackbird of RR 7023

#DHD Traveler 6807 [AMF-NHF]
Whitstone Miss Skymere J197
+12820527 +Whitstone Miss Skymere F007

#QAS Traveler 23-4 [AMF-CAF-NHF]
#Bemindful Maid DHD 0807
#Leachman Tonto [AMF-NHF]
+Mengs Miss Skymere 27S



Quaker Hill 5050 9M10

Birth Date: 10-3-2009 Bull 16714807 Tattoo: 9M10

#B/R New Design 036 [AMF-CAF-NHF]
GAR New Design 5050 [AMF-CAF-NHF]
+13728513 GAR Precision 706 [NHC-AMF]

#VDAR New Trend 315 [AMF-CAF-NHF]
B/R Blackcap Empress 76
#GAR Precision 1680 [AMC-NHC]
+GAR Ext 2114

#SS Objective T510 OT26 [AMF-CAF-NHF]
PR919S Objective of KCFP308
15573999 KCF Miss 338 P308

#SS Traveler 6807 T510 [AMF-CAF-NHF]
SS Miss Rita R011 7R8 [AMF-NHF]
#Hyline Right Time 338 [AMF-CAF-NHF]
KCF Miss Conveyor E27

CED	BW		WW		YW		SC		MILK		
I+8	.05	I+2.5	.05	I+36	.05	I+61	.05	I-.20	.05	I+14	.05
MRB	I-.06		RE		I+.31		SB		+25.59		
BW	Adj. 205	Adj. 365	IMF	IMF RATIO	RE	RE RATIO					
N/A	N/A	N/A	N/A	N/A	N/A	N/A					

CED	BW		WW		YW		SC		MILK		
+5	.31	+3.2	.36	+55	.27	+107	.26	N/A	N/A	+33	.19
MRB	+.58		RE		+.64		SB		+65.44		
BW	Adj. 205	Adj. 365	IMF	IMF RATIO	RE	RE RATIO					
83	615	1242	3.45	88	12.4	95					

- Act. BW 82; Act. WW 600; Act. YW 1050
- Eureka 9E56 is an outstanding son of the high maternal sire OCC Eureka while stemming from the legendary Miss Skymere J197 donor.
- Miss Skymere J197 posts a WR 4@104 and a YR 1@100 while showing a REA ratio 11@101.

- A powerful son of the ever popular Select Sires roster member, New Design 5050 while stemming from a high performing daughter of Objective.
- The dam of Lot 2 records a WR 1@104 and YR 1@106.



Quaker Hill 5050 9M10
9M10 / Lot 2

ANGUS PERFORMANCE PROSPECTS

3

Quaker Hill ND 5050 9M12

Birth Date: 10-5-2009 Bull 16695173 Tattoo: 9M12

#B/R New Design 036 [AMF-CAF-NHF] #VDAR New Trend 315 [AMF-CAF-NHF]
 GAR New Design 5050 [AMF-CAF-NHF] B/R Blackcap Empress 76
 +13728513 GAR Precision 706 [NHC-AMF] #GAR Precision 1680 [AMC-NHC]
 +GAR Ext 2114

#SS Objective T510 0T26 [AMF-CAF-NHF] #SS Traveler 6807 T510 [AMF-CAF-NHF]
Quaker Hill Burgess 6J19 SS Miss Rita R011 7R8 [AMF-NHF]
 15602937 #Quaker Hill Burgess 878 4D25 #Bon View New Design 878 [AMF-CAF-NHF]
 Clear View Burgess H400



GAR New Design 5050 / The sire of Lot 3.

CED	BW	WW	YW	SC	MILK						
+8	.30	+1.9	.36	+54	.27	+99	.27	+.07	.33	+32	.20
MRB	+.69		RE	+.50		SB	+64.29				
BW	Adj. 205	Adj. 365	IMF	IMF RATIO	RE	RE RATIO					
76	567	1109	5.66	117	11.1	86					

- A high performing bull offering a solid blend of the breed leaders New Design 5050, Objective and New Design 878.
- His dam, Burgess 6J19 records a WR 2@100 and a YR 2@102.



Quaker Hill Objective 9J3 / Lot 4



Quaker Hill Eureka 9E18 / He sells as Lot 5.

4

Quaker Hill Objective 9J3

Birth Date: 10-15-2009 Bull 16685905 Tattoo: 9J3

#SS Traveler 6807 T510 [AMF-CAF-NHF] #DHD Traveler 6807 [AMF-NHF]
SS Objective T510 0T26 [AMF-CAF-NHF] #SS Miss Hi Spade A114
 #13776378 SS Miss Rita R011 7R8 [AMF-NHF] SS Rito Rito R76 R011
 SS Miss Ultress U56

#Summitcrest High Prime 0H29 [AMF-CAF-NHF] #Gardens Prime Time [AMF-CAF-NHF]
Quaker Hill Rita 5HP [AMF-NHF] Summitcrest Missie 2F55
 +15395532 GAR New Design 2669 #B/R New Design 036 [AMF-CAF-NHF]
 GAR Precision 2606 [AMC-NHC]

CED	BW	WW	YW	SC	MILK						
+8	.30	+2.3	.35	+47	.27	+94	.26	-.01	.34	+29	.22
MRB	+.80		RE	+.46		SB	+62.16				
BW	Adj. 205	Adj. 365	IMF	IMF RATIO	RE	RE RATIO					
75	479	1098	6.02	125	12.7	98					

- Objective 9J3 is a high scanning bull stacked with breed leading carcass merit combining Objective, High Primer and New Design 036.
- His dam posts a YR 3@99, an IMF ratio 3@106 and a REA ratio 3@100.

5

Quaker Hill Eureka 9E18

Birth Date: 11-10-2010 Bull +16872222 Tattoo: 9E18

#+OCC Backstop 8888 #DHD Traveler 6807 [AMF-NHF]
OCC Eureka 865E Revolution Rose of RR 9239
 #+12514352 #Blackbird of RR 1204 #PBC 707 1M F0203
 Blackbird of RR 7023

#+WK Designers Pride 1612 [AMF-NHF] #Bon View New Design 1407 [AMF-CAF-NHF]
FAR Princess 188R +WK Arkdale Pride 255
 15140882 #FAR Princess 174M #FAR Kruggerrand 410H [AMF-CAF-NHF]
 FAR Princess 99F

CED	BW	WW	YW	SC	MILK						
+9	.05	+1.1	.05	+48	.05	+82	.05	N/A	N/A	+17	.05
MRB	+1.08		RE	+1.39		SB	+42.29				
BW	Adj. 205	Adj. 365	IMF	IMF RATIO	RE	RE RATIO					
N/A	N/A	N/A	N/A	N/A	N/A	N/A					

- Act. BW 80; Act. WW 610; Act. YW 1102
- Eureka 9E18 is an outstanding son of the high maternal sire OCC Eureka while stemming from the legendary Miss Skymere J197 donor.
- Miss Skymere J197 posts a WR 4@104 and YR 1@100 while showing a REA ratio 11@101.

ANGUS PERFORMANCE PROSPECTS



Quaker Hill Selective 0SV2 / Lot 7



Quaker Hill Fast Track 0Y1 /
This big spread bull sells as Lot 9.



Quaker Hill Catalyst 0B2

Birth Date: 1-5-2010 Bull 16726128 Tattoo: 0B2

#Wulffs Ext 6106
BCC Catalyst 6106 038-6031
+15603686 +BCC 1531 Eldorene 826-038

#N Bar Emulation EXT [AMF-CAF-NHF]
Wulffs Erica Dianna C116
#Rockn D Ambush 1531 [AMF-CAF-NHF]
#Kapp Eldorene Erica ND 826

SS Rito Rito R011 2R12 [AMF-CAF-NHF] SS Rito Rito R76 R011
Quaker Hill Flavia 6R6 [AMF] #SS Miss Traveler T510 9T22
15295967 Quaker Hill Flavia 1P7 #Plowman 1627 of Millbrae SAR [AMF-CAF-NHF]
#Wampler Flavia Traveler W815 [AMF-CAF-NHF]

CED	BW	WW	YW	SC	MILK	
+7	.22	+1.1	.32	+37	.21	
+76	.12	N/A	N/A	+18	.11	
MRB	+49	RE	+25	\$B	+49.39	
BW	Adj. 205	Adj. 365	IMF	IMF RATIO	RE	RE RATIO
78	584	1176	N/A	N/A	N/A	N/A

- The dam of Lot 6 is a direct daughter of the well-known Quaker Hill donor, Flavia 1P7.
- Maternal siblings to the dam of Lot 6 include Flavia 4PT1, the leadoff female of the Fall 2010 Sale and the dam of the resident herd sire Quaker Hill Template 6J2.



Quaker Hill Selective 0SV2

Birth Date: 1-6-2010 Bull 16726130 Tattoo: 0SV2

#SS Objective T510 0T26 [AMF-CAF-NHF]
GAR Selective [AMF-CAF-NHF]
15129617 +GAR 1407 New Design 803 [NHC-AMF]

#SS Traveler 6807 T510 [AMF-CAF-NHF]
SS Miss Rita R011 7R8 [AMF-NHF]
#Bon View New Design 1407 [AMF-CAF-NHF]
+GAR Precision 1639 [NHC-AMF]

+GAR New Design 5050 [AMF-CAF-NHF] #B/R New Design 036 [AMF-CAF-NHF]
GAR 5050 New Design 28U
+16330563 GAR 1407 New Design 1683 [AMF]
GAR Precision 706 [NHC-AMF]
#Bon View New Design 1407 [AMF-CAF-NHF]
+GAR 616 Rito 3561

CED	BW	WW	YW	SC	MILK	
+11	-.5	.34	+53	.26	+97	
+1.00	+50	+53.79	+1.81	+1.62	+71.32	
MRB	+67	RE	+66	\$B	+76.54	
BW	Adj. 205	Adj. 365	IMF	IMF RATIO	RE	RE RATIO
70	633	1161	N/A	N/A	N/A	N/A

- A top son of Fast Track M719 from the featured donor, Blackcap 6E2.
- The dam of Lot 9 records a BR 2@93, a WR 2@107 and a YR 1@111 while showing an ultrasound IMF ratio 2@103 and a REA 2@104.
- A maternal brother sells as Lot 8.



Wild Wind Daybreak of 6E2

Birth Date: 1-12-2010 Bull +16864258 Tattoo: 0D75

#Boyd New Day 8005 [AMF-CAF-NHF]
MCC Daybreak [AMF-CAF-NHF]
14777016 #MCC Miss Focus 134 [AMF-NHF]

#AAR New Trend
SVF Forever Lady 57D
#SAF Focus of ER [AMF-CAF-NHF]
+MCC Miss Chief 519

Ideal 4355 of 0T26 2440 [AMF-CAF-NHF] #SS Objective T510 0T26 [AMF-CAF-NHF]
QHF Blackcap 6E2 of 4V16 4355 Ideal 2440 of 7407 7275 [AMF]
+15601886 QHF Blackcap 4V16 of 1H8 [AMF] #+Rito 2V1 of 2536 1407 [AMC-CAF-NHF]
Quaker Hill Blackcap 1H8 [AMF-NHF]

CED	BW	WW	YW	SC	MILK	
+1.9	.05	+1.9	.05	+63	+1.14	
+1.63	.05	+1.14	.05	N/A	+1.23	
MRB	+54	RE	+71	\$B	+72.66	
BW	Adj. 205	Adj. 365	IMF	IMF RATIO	RE	RE RATIO
N/A	N/A	N/A	N/A	N/A	N/A	N/A

- Owned by Wild Wind Angus, Staunton, VA
- A powerful son of the ABS Global spread sire Daybreak that stems from the proven third generation Quaker Hill donor, Blackcap 6E2.
 - The dam of Lot 8 records a BR 2@93, a WR 2@107 and a YR 1@111 while showing an ultrasound IMF ratio 2@103 and a REA 2@104.
 - A maternal brother sells as Lot 9.



Quaker Hill Fast Track 0Y1

Birth Date: 1-20-2010 Bull 16726129 Tattoo: 0Y1

#Mytty In Focus [AMF-CAF-NHF-RDF]
SS Fast Track M719 [AMF-CAF-NHF]
15926857 SS Miss Objective 0T26 5J5

#SAF Focus of ER [AMF-CAF-NHF]
Myyty Countess 906
#SS Objective T510 0T26 [AMF-CAF-NHF]
SS Miss Diane 1407 H310

Ideal 4355 of 0T26 2440 [AMF-CAF-NHF] #SS Objective T510 0T26 [AMF-CAF-NHF]
QHF Blackcap 6E2 of 4V16 4355 Ideal 2440 of 7407 7275 [AMF]
+15601886 QHF Blackcap 4V16 of 1H8 [AMF] #+Rito 2V1 of 2536 1407 [AMC-CAF-NHF]
Quaker Hill Blackcap 1H8 [AMF-NHF]

CED	BW	WW	YW	SC	MILK	
+12	.23	-.6	.33	+68	+1.23	
+1.00	+50	+53.79	+1.81	+1.62	+71.32	
MRB	+67	RE	+66	\$B	+76.54	
BW	Adj. 205	Adj. 365	IMF	IMF RATIO	RE	RE RATIO
65	676	1364	6.22	106	14.2	112

- A top son of Fast Track M719 from the featured donor, Blackcap 6E2.
- The dam of Lot 9 records a BR 2@93, a WR 2@107 and a YR 1@111 while showing an ultrasound IMF ratio 2@103 and a REA 2@104.
- A maternal brother sells as Lot 8.

ANGUS PERFORMANCE PROSPECTS



Quaker Hill Flavia
4PT1 / The grandam of Lot 10.

10 Wild Wind Final Answer 8E52

Birth Date: 2-3-2010 Bull 16854499 Tattoo: 0F77

#Sitz Traveler 8180 [AMF-CAF-NHF] #GDAR Traveler 71 [AMF-CAF-NHF]
SAV Final Answer 0035 [AMF-CAF-NHF] Sitz Everelda Entense 1137
 #13592905 SAV Emulous 8145 [CAF] Bonny Bando 598 [CAC-AMF]
 #16405023 SAV Emulous 2124

OUT OF SALE

Ideal 4355 of OT26 2440 [AMF-CAF-NHF] #SS Objective T510 OT26 [AMF-CAF-NHF]
Quaker Hill Flavia 8E52 Ideal 2440 of 7407 7275 [AMF]
 16405023 Quaker Hill Flavia 4PT1 [AMF] #N Bar Prime Time D806 [AMF-CAF-NHF]
 Quaker Hill Flavia 1P7

CED	BW	WW	YW	SC	MILK						
I+11	.05	I-2	.05	I+61	.05	I+104	.05	N/A	N/A	I+24	.05
S-MRB	S-RE	S-SB	D-MRB	D-RE	D-SB						
+41	+32	+50.25	I+.66	I+.16	+56.70						
BW	Adj. 205	Adj. 365	IMF	IMF RATIO	RE	RE RATIO					
62	N/A	N/A	N/A	N/A	N/A	N/A					

• 8E52 is a direct son of the popular Genex/CRI roster member Final Answer while his dam stems from the well-known Flavia family.

12 Glen View Ext X05

Birth Date: 2-13-2010 Bull 16856781 Tattoo: X05

#N Bar Emulation EXT [AMF-CAF-NHF] #Emulation N Bar 5522
BAR Ext Traveler 205 [AMF-CAF-NHF] N Bar Primrose 2424
 #12452829 #BAR Queen Traveler 3015 #DHD Traveler 6807 [AMF-NHF]
 Magic Queen 963

Ideal 4355 of OT26 2440 [AMF-CAF-NHF] #SS Objective T510 OT26 [AMF-CAF-NHF]
Quaker Hill Blackcap 8E70 Ideal 2440 of 7407 7275 [AMF]
 16844340 Quaker Hill Blackcap 6R13 SS Rito Rito R011 2R12 [AMF-CAF-NHF]
 +BW/QHF Blackcap B4

CED	BW	WW	YW	SC	MILK						
I+9	.05	I+.9	.05	I+51	.05	I+88	.05	N/A	N/A	I+31	.05
S-MRB	S-RE	S-SB	D-MRB	D-RE	D-SB						
+19	+18	+34.18	I+.48	I+.26	+56.85						
BW	Adj. 205	Adj. 365	IMF	IMF RATIO	RE	RE RATIO					
70	617	966	3.03	100	9.7	100					

• A high maternal prospect that blends the great female sire BAR EXT with a descendant of the storied Blackcap B4 family.

11 Glen View Bextor X04

Birth Date: 2-12-2010 Bull 16851511 Tattoo: X04

#BAR Ext Traveler 205 [AMF-CAF-NHF] #N Bar Emulation EXT [AMF-CAF-NHF]
CRA Bextor 872 5205 608 [AMF-CAF-NHF] #BAR Queen Traveler 3015
 #13009379 Cra Lady Jaye 608 498 S Easy #+GAR Sleep Easy 1009 [AMF-CAF-NHF]
 HHF 917 Lady 975 498

#Mytty In Focus [AMF-CAF-NHF-RDF] #SAF Focus of ER [AMF-CAF-NHF]
Quaker Hill Flavia 8F53 Mytty Countess 906
 16417766 Quaker Hill Flavia 6R6 [AMF] SS Rito Rito R011 2R12 [AMF-CAF-NHF]
 Quaker Hill Flavia 1P7

CED	BW	WW	YW	SC	MILK						
+7	.30	+1.8	.31	+54	.24	+99	.21	N/A	N/A	+28	.19
S-MRB	S-RE	S-SB	D-MRB	D-RE	D-SB						
+65	+64	+63.83	I+.60	I+.08	+50.27						
BW	Adj. 205	Adj. 365	IMF	IMF RATIO	RE	RE RATIO					
72	670	1084	3.05	100	10.0	100					

• The dam of Lot 11, Flavia 8F53 records a WR 1@107.



CRA Bextor 872 5205 608 / The sire of Lot 11.

ANGUS PERFORMANCE PROSPECTS



Quaker Hill Final Answer 0M3 / Lot 14

13 Quaker Hill Bextor 0V1

Birth Date: 2-21-2010 Bull 16729271 Tattoo: 0V1

#BAR Ext Traveler 205 [AMF-CAF-NHF] #N Bar Emulation EXT [AMF-CAF-NHF]
CRA Bextor 872 5205 608 [AMF-CAF-NHF] #BAR Queen Traveler 3015
 #13009379 Cra Lady Jaye 608 498 S Easy #+GAR Sleep Easy 1009 [AMF-CAF-NHF]
 HHF 917 Lady 975 498

#GAR Predestined [AMF-CAF-NHF] #B/R New Design 036 [AMF-CAF-NHF]
GAR Predestined 747S #+GAR Ext 4206
 +16001872 GAR 1407 New Design 1683 [AMF] #Bon View New Design 1407 [AMF-CAF-NHF]
 +GAR 616 Rito 3561

CED	BW	WW	YW	SC	MILK						
+7	.30	+2.7	.34	+46	.26	+91	.20	N/A	N/A	+30	.20
MRB	I+.80	RE	I+.46	\$B	+62.33						
BW	Adj. 205	Adj. 365	IMF	IMF RATIO	RE	RE RATIO					
77	567	1156	6.03	103	12.2	96					

- Lot 13 is a powerful herd sire prospect by the balanced trait sire Bextor and from the Predestined maternal sister to the Select Sires roster member, Game On.
- His dam was a feature of the Fall 2010 Sale that sold to Ferry Acres.

14 Quaker Hill Final Answer 0M3

Birth Date: 2-25-2010 Bull 16728241 Tattoo: 0M3

#Sitz Traveler 8180 [AMF-CAF-NHF] #GDAR Traveler 71 [AMF-CAF-NHF]
SAV Final Answer 0035 [AMF-CAF-NHF] Sitz Everelda Entense 1137
 #13592905 SAV Emulous 8145 [CAF] #Bon View Bando 598 [CAC-AMF]
 SAV Sky Emulous 2124

#Rito 616 of 4B20 6807 [AMF-CAF-NHF] #DHD Traveler 6807 [AMF-NHF]
Quaker Hill Blackcap 8H5 +Rita 4B20 of 0FB1 Bando
 +16242493 Quaker Hill Blackcap W940 [AMF] #+Rito 3X25 of 5H11 EXT [AMF]
 Wampler Blackcap Shen W111

CED	BW	WW	YW	SC	MILK						
+9	.30	+6	.34	+52	.26	+96	.20	N/A	N/A	+24	.20
MRB	I+.09	RE	I+.16	\$B	+34.16						
BW	Adj. 205	Adj. 365	IMF	IMF RATIO	RE	RE RATIO					
68	655	1173	4.13	70	12.6	99					

- A high performing son of Final Answer from a flush sister to the \$130,000 valued Quaker Hill and Craigmore Farms foundation donor, Blackcap 1H8.
- The dam, Blackcap 8H5 records a BR 1@97 and a WR 1@103.



Quaker Hill 5050 0M1 / He sells as Lot 15.

15 Quaker Hill 5050 0M1

Birth Date: 2-25-2010 Bull 16729384 Tattoo: 0M1

#B/R New Design 036 [AMF-CAF-NHF] #VDAR New Trend 315 [AMF-CAF-NHF]
GAR New Design 5050 [AMF-CAF-NHF] B/R Blackcap Empress 76
 +13728513 GAR Precision 706 [NHC-AMF] #GAR Precision 1680 [AMC-NHC]
 +GAR Ext 2114

#GAR Retail Product [AMF-CAF-NHF] #GAR Precision 1680 [AMC-NHC]
Quaker Hill Queen 1L4 8RP1 +GAR Ext 4927
 +16011770 #Quaker Hill Queen 1L4 [AMF-NHF] +BW/QHF Blackcap Lad
 Ankony Queen QHF R981

CED	BW	WW	YW	SC	MILK						
+7	.30	+1.8	.34	+57	.26	+107	.20	N/A	N/A	+32	.20
MRB	I+.37	RE	I+.57	\$B	+60.31						
BW	Adj. 205	Adj. 365	IMF	IMF RATIO	RE	RE RATIO					
70	681	1278	5.30	90	13.6	107					

- 0M1 is a powerful herd sire prospect blending the high spread sire New Design 5050 with a maternal sister to the Genex/CRI standout and Quaker Hill herd sire, Objective 3J15.
- His dam, Queen 1L4 8RP1 records a WR 1@107. His grandam, Queen 1L4, is the \$100,000 valued cornerstone donor of the Quaker Hill and Southern Cattle Company programs.

ANGUS PERFORMANCE PROSPECTS



Quaker Hill 5050 8T2 / Lot 16

16 Quaker Hill 5050 8T2

Birth Date: 2-26-2010 Bull 16729382 Tattoo: 0M2

#B/R New Design 036 [AMF-CAF-NHF] #VDAR New Trend 315 [AMF-CAF-NHF]
GAR New Design 5050 [AMF-CAF-NHF] B/R Blackcap Empress 76
 +13728513 GAR Precision 706 [NHC-AMF] #GAR Precision 1680 [AMC-NHC]
 +GAR Ext 2114

#TC Total 410 [AMF-CAF-NHF] #Bon View New Design 208 [CAC-AMF-NHF]
Quaker Hill Erianna 8T2 +TC Erica Eileen 2047 [NHC-AMF]
 16140045 #Quaker Hill Erianna 2J3 [AMF-NHF] #SS Objective T510 0T26 [AMF-CAF-NHF]
 Quaker Hill Erianna 0A12



Quaker Hill Blackcap 8H1 / The well-known flush sister to the dam of Lot 18.

19 Quaker Hill Catalyst 0B1

Birth Date: 1-4-2010 Bull 16872220 Tattoo: 0B1

#Wulffs Ext 6106 #N Bar Emulation EXT [AMF-CAF-NHF]
BCC Catalyst 6106 038-6031 Wulffs Erica Dianna C116
 +15603686 +BCC 1531 Eldorene 826-038 #Rockn D Ambush 1531 [AMF-CAF-NHF]
 #Kapp Eldorene Erica ND 826

#Bon View New Design 1407 [AMF-CAF-NHF] #B/R New Design 036 [AMF-CAF-NHF]
Quaker Hill Burgess 5N1 Bon View Pride 664
 +15091111 Partisover Burgess 739 #DHD Traveler 6807 [AMF-NHF]
 +Partisover Burgess 048

CED	BW	WW	YW	SC	MILK						
+10	.22	+0	.32	+40	.21	+79	.12	N/A	N/A	+22	.12
MRB	I+.54		RE	I+.37		SB		+56.46			
BW	Adj. 205	Adj. 365	IMF	IMF RATIO	RE	RE RATIO					
70	669	1258	N/A	N/A	N/A	N/A					

- The dam of Lot 19 records a BR 3@99, a WR 3@102 and a YR 2@103 while showing ultrasound ratios of IMF 2@104 and REA 2@99.
- His dam, Burgess 5N1 posts a BR 3@99, a WR 3@102, a YR 2@103, an IMF ratio 2@104 and a REA ratio 2@99 while stemming from the legendary donor, Burgess 739.

17 Quaker Hill Matrix 0K1

Birth Date: 2-28-2010 Bull 16728144 Tattoo: 0K1

#+OCC Emblazon 854E [CAF] #DHD Traveler 6807 [AMF-NHF]
BC Matrix 4132 [AMF-CAF-NHF] Dixie Erica of CH 1019
 14159119 CAF Pure Pride Ext 99 #N Bar Emulation EXT [AMF-CAF-NHF]
 Gibbet Hill Pure Pride CF 90

#SS Objective T510 0T26 [AMF-CAF-NHF] #SS Traveler 6807 T510 [AMF-CAF-NHF]
Quaker Hill Pride 8J12 SS Miss Rita R011 7R8 [AMF-NHF]
 16698566 High Ridge Pride 8699 #Sitz Traveler 8180 [AMF-CAF-NHF]
 Annaleas Pride 699

CED	BW	WW	YW	SC	MILK						
+5	.30	+3.4	.35	+53	.27	+98	.21	N/A	N/A	+23	.20
MRB	I-.03		RE	I+.16		SB		+29.33			
BW	Adj. 205	Adj. 365	IMF	IMF RATIO	RE	RE RATIO					
77	604	1170	5.01	85	11.7	92					

18 Quaker Hill 5050 0M30

Birth Date: 2-28-2010 Bull 16729383 Tattoo: 0M30

#B/R New Design 036 [AMF-CAF-NHF] #VDAR New Trend 315 [AMF-CAF-NHF]
GAR New Design 5050 [AMF-CAF-NHF] B/R Blackcap Empress 76
 +13728513 GAR Precision 706 [NHC-AMF] #GAR Precision 1680 [AMC-NHC]
 +GAR Ext 2114

#Rito 616 of 4B20 6807 [AMF-CAF-NHF] #DHD Traveler 6807 [AMF-NHF]
Quaker Hill Blackcap 8H2 +Rita 4B20 of 0FB1 Bando
 +16011772 Quaker Hill Blackcap W940 [AMF] #+Rito 3X25 of 5H11 EXT [AMF]
 Wampler Blackcap Shen W111

CED	BW	WW	YW	SC	MILK						
+8	.30	+1.0	.34	+48	.26	+96	.20	N/A	N/A	+32	.20
MRB	I+.57		RE	I+.57		SB		+59.21			
BW	Adj. 205	Adj. 365	IMF	IMF RATIO	RE	RE RATIO					
66	628	1154	7.46	127	13.5	106					

- Another elite bred bull blending New Design 5050 with a flush sister to the great donor, Blackcap 8H1.

20 Quaker Hill Century 0419

Birth Date: 3-25-2010 Bull 16726127 Tattoo: 0419

#TC Total 410 [AMF-CAF-NHF] #Bon View New Design 208 [CAC-AMF-NHF]
Schafer 21st Century [AMF-CAF] +TC Erica Eileen 2047 [NHC-AMF]
 15462718 Tehama Echo P283 [AMF] #HARB High Plains 975 JH [AMF-CAF-NHF]
 Tehama Echo K931

#TC Advantage [AMF-CAF-NHF] #Kruggerand of Donamere 490 [AMF-NHF]
TK Blackcap Mc Henry 419 [AMF] TC Pride 2010
 #13425118 #TK Blackcap Mc Henry R466 #GT Maximum [AMF-CAF-NHF]
 Blackcap Mc Henry DHD 4810

CED	BW	WW	YW	SC	MILK						
+8	.24	+1.3	.34	+44	.24	+90	.16	I+.15	.05	+25	.13
MRB	I+.36		RE	I+.32		SB		+55.12			
BW	Adj. 205	Adj. 365	IMF	IMF RATIO	RE	RE RATIO					
75	583	1101	6.03	103	12.9	102					

- The dam of Lot 20, records a WR 7@106 and a YR 4@107 along with ultrasound ratios of IMF 18@99 and REA 18@101.

ANGUS / SIMMENTAL PERFORMANCE PROSPECTS



Schafer 21st Century /
The sire of Lots 20 through 22.

21 Quaker Hill Century 09A

Birth Date: 4-1-2010 Bull 16726126 Tattoo: 09A

#TC Total 410 [AMF-CAF-NHF]
Schafer 21st Century [AMF-CAF]
15462718 Tehama Echo P283 [AMF]

#Bon View New Design 208 [CAC-AMF-NHF]
+TC Erica Eileen 2047 [NHC-AMF]
#HARB High Plains 975 JH [AMF-CAF-NHF]
Tehama Echo K931

#+Leachman Right Time
Woodhill Evergreen 58-1566
+12841248 #GT Miss Traveler 58

#N Bar Emulation EXT [AMF-CAF-NHF]
Leachman Erica 0025
#QAS Traveler 23-4 [AMF-CAF-NHF]
GT Evergreen 312

CED	BW		WW		YW		SC		MILK		
+6	.25	+1.3	.34	+46	.24	+88	.16	I-.15	.05	+22	.14
MRB	I+.26		RE	I+.18		\$B		+50.48			
BW	Adj. 205	Adj. 365	IMF	IMF RATIO	RE	RE RATIO					
72	560	1066	5.70	100	12.6	100					

23 Quaker Hill Lucky Ace X6

Birth Date: 2-17-2010 Bull 2548000 Tattoo: X6

GW Lucky One 686K
GW Lucky Ace 076TS
2370575 GW Miss 1407 866P

GW Lucky Strike 147G
GS Miss El Wally
Bon View New Design 1407
GW Miss High Density 035

GW Lucky Strike 147G
GW Miss Lucky Strike 333
2190040 GW Miss Hi Density 907J

LCHMAN Lucky Buck 7049C
407D
GW High Density 022E
GW Miss Maternal 642F

CE	BW	WW	YW	MCE	MM	MWW	API	TI
N/A	0.3	26.9	57.9	N/A	0.3	13.8	123.1	72.0

22 Quaker Hill Catalyst 05J2

Birth Date: 4-1-2010 Bull 16872221 Tattoo: 05J2

#TC Total 410 [AMF-CAF-NHF]
Schafer 21st Century [AMF-CAF]
15462718 Tehama Echo P283 [AMF]

#Bon View New Design 208 [CAC-AMF-NHF]
+TC Erica Eileen 2047 [NHC-AMF]
#HARB High Plains 975 JH [AMF-CAF-NHF]
Tehama Echo K931

#SS Objective T510 0T26 [AMF-CAF-NHF]
Quaker Hill Erica Elba 5J22
15229636 Quaker Hill Erica Elba 1L6 [AMF]

#SS Traveler 6807 T510 [AMF-CAF-NHF]
SS Miss Rita R011 7R8 [AMF-NHF]
+BW/QHF Blackcap Lad
Tye Brook Erica Elba 9030

CED	BW		WW		YW		SC		MILK		
+5	.23	+2.8	.33	+50	.22	+98	.15	N/A	N/A	+28	.11
MRB	I+.41		RE	I+.38		\$B		+50.75			
BW	Adj. 205	Adj. 365	IMF	IMF RATIO	RE	RE RATIO					
78	537	990	5.19	88	11.8	93					

24 Quaker Hill Lucky Boy

Birth Date: 2-23-2010 Bull 2548021 Tattoo: X40

GW Lucky Man 644N
GW Lucky Boy 252U
2471391 GW Miss New Deal 814TS

GW Lucky Charm 665K
GW Miss 600U 964J
LCC New Deal G673L
GW Miss Maternal 523P

GW Lucky Strike 147G
GW Miss Lucky Strike 334
2190041 GW Miss Bodybuilder 016J

LCHMAN Lucky Buck 7049C
407D
LCHMAN Bodybuilder 7303F
GW Miss Red Light 738F

CE	BW	WW	YW	MCE	MM	MWW	API	TI
N/A	-0.2	45.3	80.5	N/A	2.6	25.2	123.7	78.1



Quaker Hill Lucky Boy / Lot 24

SIMMENTAL PERFORMANCE PROSPECTS



Quaker Hill Lucky Man X5 / This powerful Simmental herd sire prospect sells as Lot 25.



Quaker Hill Hollywood X1 / He sells as Lot 26.

25

Quaker Hill Lucky Man X5

Birth Date: 2-25-2010 Bull 2547999 Tattoo: X5

GW Lucky Charm 665K
GW Lucky Man 644N
2223338 GW Miss 600U 964J

LCHMAN Lucky Buck 7049C
GW Miss 600U 508C
Circle S Leachman 600U
GW Miss Lucky Buck 750G

GW Lucky Strike 147G
GW Miss Lucky Strike 295
2135503 GW Miss Red Light 470F

LCHMAN Lucky Buck 7049C
407D
MV Red Light 406
GW Miss Red Star B434

CE	BW	WW	YW	MCE	MM	MWW	API	TI
6.4	0.4	35.7	65.4	4.3	5.6	23.5	119.1	73.4

27

Quaker Hill J Start X24

Birth Date: 3-7-2010 Bull 2548010 Tattoo: X24

HC Hummer 12M
TNT Jump Start R238
2321659 TNT Miss Kayla M13

WLE Power Stroke
LBR Destinys Dream K830
Hooks Shear Force 38K
TNT Miss Delila K103

GW Lucky One 686K
GW Miss Lucky One 262M
2189985 GW Miss Maternal 834G

GW Lucky Strike 147G
GS Miss EL Wally
GW Mr. Maternal 057D
GW Miss Tailor Made 400C

CE	BW	WW	YW	MCE	MM	MWW	API	TI
12.6	-1.5	19.3	38.2	5.5	1.7	11.3	130.7	64.3

• A powerful son of the Select Sires roster member and Quaker Hill resident herd sire Jump Start while stemming from a Lucky One daughter.

26

Quaker Hill Hollywood X1

Birth Date: 2-25-2010 Bull 2547993 Tattoo: X1

Ellingson Legacy M229
Mr NLC Superior S6018
2372107 EBS Jokers Caren

Nichols Legacy G151
Ellingson MS Pstock K58
PVF-BF BF26 Black Joker
PVF Beefcakes 0713K

Hooks Shear Force 38K
TNT Miss Kayla M13
2183826 TNT Miss Delila K103

Nichols Legacy G151
C&D Tracy
Hart Mr E534 H323
Camcatco Showtime G108

CE	BW	WW	YW	MCE	MM	MWW	API	TI
8.7	0.1	41.2	72.6	0.7	5.2	25.7	127.6	71.9

28

Quaker Hill Lucky Ace X7

Birth Date: 3-15-2010 Bull 2548001 Tattoo: X7

GW Lucky One 686K
GW Lucky Ace 076TS
2370575 GW Miss 1407 866P

GW Lucky Strike 147G
GS Miss EL Wally
Bon View New Design 1407
GW Miss High Density 035

LCHMAN Lucky Buck 7049C
GW Miss Lucky Buck 308M
2190022 GW Miss Red Alert 412F

Irish Black Knight
Leachman BLK Baldy Z230
GW-CPL Red Alert
GW Miss Baron 8D

CE	BW	WW	YW	MCE	MM	MWW	API	TI
N/A	0.8	20.0	45.1	N/A	3.1	13.1	113.5	64.0

SIMMENTAL PERFORMANCE PROSPECTS



Quaker Hill Charmer X12 / Lot 29

29 Quaker Hill Charmer X12

Birth Date: 3-17-2010 Bull 2548003 Tattoo: X12

GW Lucky Charm 665K
GW Lucky Charm 182U
2462622 GW Miss Integrity 865R

LCHMAN Lucky Buck 7049C
GW Miss 600U 508C
GW Black Integrity 801K
GW Miss High Density434K

GW Lucky Strike 147G
GW Miss Lucky Strike 151
2135393 GW Miss Bodybuilder 669H

LCHMAN Lucky Buck 7049C
407D
LCHMAN Bodybuilder 7303F
GW Miss Jet Black 852D

CE	BW	WW	YW	MCE	MM	MWW	API	TI	
S	6.0	-1.5	31.0	69.4	4.3	6.6	22.0	129.0	76.0
D	4.4	-0.2	14.9	34.6	3.1	-2.2	5.3	104.1	55.2



Quaker Hill Fastrack X60 / Lot 31

31 Quaker Hill Fastrack X60

Birth Date: 2-15-2010 Bull 2547997 Tattoo: X60

Mytty In Focus
S S Fast Track M719
2527300 SS MS Objective 0T26 5J5

S A F Focus of E R
Mytty Countess 906
S S Objective T510 0T26
S S Miss Diane 1407 H310

Brink Sapp N313
Quaker Hill Karama R16
2298250 QuakerHillKarama9E8V862

Brink Sapp J958
Brg H801

CE	BW	WW	YW	MCE	MM	MWW	API	TI
N/A	-3.7	38.3	72.9	N/A	9.3	28.5	138.2	84.9

• An elite bred SimAngus prospect offering the growth and carcass merit of In Focus and Objective with a powerful Simmental female.

30 Quaker Hill Jumpstart

Birth Date: 4-15-2010 Bull 2548017 Tattoo: X36

HC Hummer 12M
TNT Jump Start R238
2321659 TNT Miss Kayla M13

WLE Power Stroke
LBR Destinys Dream K830
Hooks Shear Force 38K
TNT Miss Delila K103

GW Lucky Break 047G
GW Miss Lucky Break 158L
2135398 GW Miss Hi Density 994J

LCHMAN Lucky Buck 7049C
GW Miss 600U 1351C
GW High Density 106G
GW Miss Blend 538E

CE	BW	WW	YW	MCE	MM	MWW	API	TI	
	13.7	-1.3	31.0	60.8	2.1	5.0	20.5	141.4	72.0

32 Quaker Hill Pred 701 X20

Birth Date: 2-17-2010 Bull 2548031 Tattoo: X20

G A R Predestined
GW Predestined 701T
2414537 GW Miss Lucky Strike 363

B/R New Design 036
G A R Ext 4206
GW Lucky Strike 147G
Kappes Moses J213

GW Maternal Power 505J
GW Miss Power 205M
2189936 GW Miss Lucky Dice 162K

GW Mr. Maternal 057D
GW Miss Tailor Made 555E
GW Lucky Dice 187H
GW Miss 600U 1354C

CE	BW	WW	YW	MCE	MM	MWW	API	TI
N/A	-2.5	37.6	72.3	N/A	1.8	20.6	144.5	85.5



Quaker Hill PR 701T X21 / He sells as Lot 33.

33 Quaker Hill PR 701T X21

Birth Date: 2-25-2010 Bull 2548008 Tattoo: X21

G A R Predestined
GW Predestined 701T
2414537 GW Miss Lucky Strike 363

B/R New Design 036
G A R Ext 4206
GW Lucky Strike 147G
Kappes Moses J213

GW Lucky Strike 147G
GW Miss Lucky Strike 611
2190090 2003K

LCHMAN Lucky Buck 7049C
407D
S A F Fame
Landmark Rosebud 8847

CE	BW	WW	YW	MCE	MM	MWW	API	TI
N/A	-1.3	41.7	85.9	N/A	1.5	22.3	144.5	89.5

SIMMENTAL / ANGUS PERFORMANCE PROSPECTS



Quaker Hill SimAngus X19 / This high performing half-blood prospect sells as Lot 35.

34 **Quaker Hill Ace X43**
 Birth Date: 3-10-2010 Bull 2548024 Tattoo: X43

TC Total 410
Schafer 21st Century
 2527299 Tehama Echo P283

BRG Driver H880
 Brink N339
 2226985 Brink H844

Bon View New Design 208
 TC Erica Eileen 2047
 HARB High Plains 975 JH
 Tehama Echo K931

Siegfried
 Knight Shamu 163T
 Great Guns Bruno 21X
 Brink Clare D406

CE	BW	WW	YW	MCE	MM	MWW	API	TI
N/A	0.2	38.5	79.9	N/A	15.3	34.6	109.2	69.6

• A high performing son of the multi-trait sire 21st Century from a purebred Simmental daughter of Driver H880.

35 **Quaker Hill Simangus X19**
 Birth Date: 3-10-2010 Bull 2548007 Tattoo: X19

TC Total 410
Schafer 21st Century
 2527299 Tehama Echo P283

Brink Romeo N338
 Brink R518
 2336897 Brink N312

Bon View New Design 208
 TC Erica Eileen 2047
 HARB High Plains 975 JH
 Tehama Echo K931

Great Guns Koba 3K
 Brink Miss Moo H803
 Great Guns Conrad 12A
 BRG Sham F666

CE	BW	WW	YW	MCE	MM	MWW	API	TI
N/A	-1.4	31.4	75.8	N/A	19.1	34.8	118.5	71.5



Quaker Hill Bravo X200 / Lot 36

36 **Quaker Hill Bravo X200**
 Birth Date: 3-15-2010 Bull 2548028 Tattoo: X200

GW Lucky Man 644N
Kappes L. Man U291
 2455005 GSR MS Legacy 122N

HARB High Plains 975 JH
Destinys Bannerhazels22
 2527298 ACL Hazel L12L

GW Lucky Charm 665K
 GW Miss 600U 964J
 Nichols Legacy G151
 GSR MS Backfire 122L

Sitz Alliance 6595
 Juanada Erica 9024 HARB
 S V F Bandlerier
 ALC Hazel K144

CE	BW	WW	YW	MCE	MM	MWW	API	TI
N/A	-1.4	34.3	77.5	N/A	13.4	30.5	123.7	75.5

37 **BBF Heza Proficient W20**
 Birth Date: 9-2-2009 Bull 43048109 Tattoo: W20

BAR JZ Tradition 434V (SOD)
EFBeef SCHU-LAR Proficient N093 (CHB,DLF,HYF,IEF)
 42444860 Gerber 117F Dixie 009K

PW Victor Boomer P606 (SOD,DLF,IEF)
BBF Miss Bennett P606 R29 (DOD)
 42644122 OSF BBF MS Bennett 3008 M1

BT Mohican Tradition 530 (SOD,CHB)
 Bar JZ Banner LDY 693P (DOD)
 Gerber Watchfire 117F (SOD,CHB)
 Gerber 80X Dixie 106Z

Remittal Boomer 46B (SOD,CHB,DLF,HYF,IEF)
 PW Victoria 964 8114
 RRR Mr Felt 3008 (SOD,CHB,DLF,HYF,IEF)
 KCF Miss D217 G166

CE	BW	WW	YW	MCE	SC	FAT	REA	MARB
+1.3	+4.6	+59	+85	+3.3	+1.0	-0.021	+0.66	+0.01



SAV Final Answer 0035 / Sire of Lot 38.

38 **Quaker Hill Final Answer 9N6**
 Birth Date: 9-12-2009 Bull 16685237 Tattoo: 9N6

#Sitz Traveler 8180 [AMF-CAF-NHF] #GDAR Traveler 71 [AMF-CAF-NHF]
SAV Final Answer 0035 [AMF-CAF-NHF] Sitz Everelda Entense 1137
 #13592905 SAV Emulous 8145 [CAF] #Bon View Bando 598 [CAC-AMF]
 SAV Sky Emulous 2124

#SAV 8180 Traveler 004 [AMF-CAF-NHF-RDF] #Sitz Traveler 8180 [AMF-CAF-NHF]
Thomas Blackcap 71091 [NHF] +Boyd Forever Lady 8003
 15829245 Thomas Blackcap 2765 #Twin Valley Precision E161 [NHC-AMF-CAF-RDF]
 Thomas Blackcap 0521 [AMF-CAF]

CED	BW	WW	YW	SC	MILK	
+7	.31	+1.6	.36	+55	.27	
+96	.27	+37	.33	+20	.20	
MRB	+22		RE	+10		
			SB	+41.20		
BW	Adj. 205	Adj. 365	IMF	IMF RATIO	RE	RE RATIO
70	556	1068	3.11	65	11.2	87

• A high performing fall-yearling son of the Genex/CRI standout Final Answer whose dam combines Traveler 004 and Precision E161.

QUAKER HILL FLAVIA



**Wampler Flavia
Traveler W815 /**
Descendants of the top donor
sell as Lots 39 and 40.

39 Quaker Hill Flavia 6R6 [AMF]

Birth Date: 3-4-2006 Cow 15295967 Tattoo: 6R6

SS Rito Rito R76 R011
SS Rito Rito R011 2R12 [AMF-CAF-NHF]
14299352 #SS Miss Traveler T510 9T22

SS Rito Rito R76
SS Miss Hoss H83
#SS Traveler 6807 T510 [AMF-CAF-NHF]
#SS Miss New Trend 315 N56

#Plowman 1627 of Millbrae SAR [AMF-CAF-NHF] #DHD Traveler 6807 [AMF-NHF]
Quaker Hill Flavia 1P7 #MB Joanie 8E8 1627 [AMF]
13924213 #Wampler Flavia Traveler W815 [AMC-CAF-NHF] #California Traveler [AMF-NHF]
Wampler Flavia W532

CED	BW	WW	YW	MILK
+7	.27	+1.8	.39	+49
MRB	+48	RE	+22	SB +44.41

- Flavia 6R6 is a powerful and high performing daughter of the Quaker Hill herd sire Rito Revolution and from the standout donor, Flavia 1P7.
- Maternal sisters to Lot 39 include: Flavia 4PT1, a feature of the Fall 2010 Quaker Hill Sale; and the dam of the ABS Global roster member Template 6J2.
- Flavia 6R6 posts a progeny YR 2@99, while her dam Flavia 1P7 records a YR 1@101 and a REA ratio 2@99. Two daughters of Flavia 1P7 maintain a combined WR 5@103.
- Sells with a 3/29/11 heifer calf, Lot 39A, by HA Rainmaker 6780.

40 Quaker Hill Flavia 5R52

Birth Date: 5-1-2006 Cow 15888189 Tattoo: 5R52

SS Rito Rito R76 R011
SS Rito Rito R011 2R12 [AMF-CAF-NHF]
14299352 #SS Miss Traveler T510 9T22

SS Rito Rito R76
SS Miss Hoss H83
#SS Traveler 6807 T510 [AMF-CAF-NHF]
#SS Miss New Trend 315 N56

#California Traveler [AMF-NHF]
Wampler Flavia Traveler W815 [AMC-CAF-NHF]
#13041339 Wampler Flavia W532

#RR Traveler 5204 [AMF-CAF-NHF]
#Tehama Eisa Erica Y699
#GAR Precision 1680 [AMC-NHC]
Wampler Flavia W125

CED	BW	WW	YW	MILK
+13	.27	-.9	.38	+40
MRB	+57	RE	+20	SB +43.69

- Flavia 5R52 is another top daughter of Rito Revolution that stems from the storied Flavia family.
- Flavia 5R52 posts a BR 1@90 and a YR 1@100 while showing an IMF ratio 1@107.
- Her dam, Traveler W815, records a BR 9@96, a WR 9@108 and a YR 9@104 along with ultrasound ratios of IMF 20@110 and REA 20@100.
- Bred 12/14/10 to Sydgen CC&7. Pasture exposed 12/25/10 to 3/18/11 to HA Rainmaker 6780.



SS Rito Rito R011 2R12 / The sire of Lots 39 and 40.



Sydgen CC&7 / The service sire of Lot 40.

QUAKER HILL RITA



HA 4167 Lady 1014 / The former Quaker Hill donor and dam of Lot 41.

41 Quaker Hill Rito Lady 8J2

Birth Date: 2-11-2008 Cow #16006612 Tattoo: 8J2

#SS Traveler 6807 T510 [AMF-CAF-NHF] #DHD Traveler 6807 [AMF-NHF]
SS Objective T510 OT26 [AMF-CAF-NHF] #SS Miss Hi Spade A114
 #13776378 SS Miss Rita R011 7R8 [AMF-NHF] SS Rito Rito R76 R011
 SS Miss Ultrass U56

#Sitz Alliance 6595 [AMF-NHF] #Sitz Traveler 8180 [AMF-CAF-NHF]
HA 4167 Lady 1014 [AMF] #Sitz Barbaramere Jet 2698
 +13992380 +HA Rito Lady 4167 #CH Stacker 7040
 H 96 Band Lady 3714

	CED	BW	WW	YW	MILK
I+8	.05	I+2.1	.05	I+58	.05
MRB	I+.61	RE	I+.34	\$B	+58.95

- Rito Lady 8J2 is an elite donor prospect combining the high growth and carcass sire Objective with the former Quaker Hill donor, Lady 1014.
- Her dam, Lady 1014 blends Alliance 6595 with the featured Mindemann and NER Farms cornerstone donor, Rito Lady 4167, the flush sister to the ABS Global member Power Alliance.
- The dam, Lady 1014 records a BR 4@95, a WR 4@108 and a YR 4@107 while showing ultrasound ratios of IMF 6@122 and REA 6@101.
- Pasture exposed 12/25/10 to 3/18/11 to HA Rainmaker 6780.

43 Riverbend Rita 769

Birth Date: 12-30-2007 Cow 15937458 Tattoo: 769

#B/R New Design 036 [AMF-CAF-NHF] #VDAR New Trend 315 [AMF-CAF-NHF]
GAR Predestined [AMF-CAF-NHF] B/R Blackcap Empress 76
 #13395344 #+GAR Ext 4206 #N Bar Emulation EXT [AMF-CAF-NHF]
 +GAR 6807 Traveler 1432

#Summitcrest High Prime OH29 [AMF-CAF-NHF] #Gardens Prime Time [AMF-CAF-NHF]
Riverbend Rita 428 Summitcrest Missie 2F55
 +15013563 +Rita 6K20 of 2T6 EXT [AMF] #N Bar Emulation EXT [AMF-CAF-NHF]
 +Rita 2T6 of 5H11 Rito 149 [AMF]

	CED	BW	WW	YW	MILK
+3	.29	+3.0	.35	+44	.27
S-MRB	S-RE	S-\$B	D-MRB	D-RE	D-\$B
+1.21	+1.64	N/A	I+.47	I+.42	N/A

- Rita 769 is an elite bred young female combining the former breed leader for \$B, Predestined with High Prime daughter of the well-known donor, Rita 6K20.
- A maternal sibling to the dam of Lot 43 is Rito 2B94, the longtime ABS Global roster member.
- The grandam, Rita 6K20 is the featured donor in the Cedar Creek program and blends the legendary maternal sire EXT with the breed matriarch, Rita 5H11.
- Bred 12/13/10 to GAR New Design 5050. Pastured exposed 12/25/10 to 3/18/11 to HA Rainmaker 6780.

42 Quaker Hill Rita 5HP1 [AMF-NHF]

Birth Date: 9-5-2005 Cow #+15395530 Tattoo: 5HP1

#Gardens Prime Time [AMF-CAF-NHF] #RR Traveler 5204 [AMF-CAF-NHF]
Summitcrest High Prime OH29 [AMF-CAF-NHF] #Green Garden Susie 1246 S1
 #13122485 Summitcrest Missie 2F55 #Finks 5522-6148
 #Summitcrest Missie 1C24

#B/R New Design 036 [AMF-CAF-NHF] #VDAR New Trend 315 [AMF-CAF-NHF]
GAR New Design 2669 B/R Blackcap Empress 76
 13395237 GAR Precision 2606 [AMC-NHC] #GAR Precision 1680 [AMC-NHC]
 +GAR Ext 344 [AMF-NHF]

	CED	BW	WW	YW	MILK
+5	.28	+2.4	.34	+44	.28
MRB	+1.56	RE	+1.18	\$B	+59.24

- Rita 5HP1 is an own daughter of the \$90,000 valued high IMF sire High Prime that stems from the well-known \$26,000 foundation donor of the Bear Creek and Ogeechee programs.
- Rita 5HP1 posts a BR 3@96, WR 3@111 and YR 3@105 while showing an ultrasound IMF ratio 3@105.
- Her dam, New Design 2669 records a WR 2@117 and YR 2@109. Thirty-three daughters of New Design 2669 maintain a combined WR 62@103.
- Daughters of New Design 2669 include a \$12,500 full sister to Rita J1 to RayBar in 2005 and a \$10,000 daughter by Expectation to Shoulderbone Plantation in 2004.
- Sells with a 2/24/11 heifer calf, Lot 42A, by Baldrige Roustabout R871.



GAR New Design 2669 / The dam of Lot 42.

QUAKER HILL FEMALES

44 Quaker Hill Rita 7C30

Birth Date: 10-12-2007 Cow 15990180 Tattoo: 7C30

#Three Trees Prime Cut 0145 [AMF-CAF-NHF] #Summitcrest Prime Cut 1G42 [AMF-CAF-NHF]
 #Black Tooth Lady B 380
 #Basin Max 602C [AMF-CAF-NHF]
 #Basin Lucy 855A [CAF]

#Rito 112 of 2536 Rito 616 [AMF-CAF-NHF] #Rito 616 of 4B20 6807 [AMF-CAF-NHF]
 #Quaker Hill Rita 5R16 [AMF] GAR Precision 2536 [AMC-NHF]
 #N Bar Emulation EXT [AMF-CAF-NHF]
 GAR 9J9 757

GED	BW		WW		YW		MILK		
+0	.27	+3.2	.35	+46	.25	+91	.23	+18	.20
MRB	+.31		RE	+.12		\$B	+40.64		

- Rita 7C30 is an outstanding young daughter of the balanced trait sire Center Cut while stemming from a high performing daughter of Rito 112 and EXT.
- Rita 7C30 posts a progeny YR 1@109 while her dam shows an IMF ratio 2@104.
- Sells with a 3/12/11 bull calf, Lot 44A, by Quaker Hill Straw Boss 7A1.



ALC Hazel L12L / The well-known dam of Lot 46 and the Select Sires roster member Big Eye.

45 Quaker Hill Rita 8F52

Birth Date: 3-1-2008 Cow 16417767 Tattoo: 8F52

#SAF Focus of ER [AMF-CAF-NHF] #SAF Fame [AMF-CAF-NHF]
 #Mytty In Focus [AMF-CAF-NHF-RDF] GDAR Forever Lady 246
 #13880818 Mytty Countess 906 #Sitz Alliance 6595 [AMF-NHF]
 Baldridge Countess 357

SS Rito Rito R011 2R12 [AMF-CAF-NHF] SS Rito Rito R76 R011
 #QHF Rita 6R18 of 7152 2036 #SS Miss Traveler T510 9T22
 15339332 +Rita 7152 of 2036 6807 #DHD Traveler 6807 [AMF-NHF]
 #Leachman Blackbird 2036

GED	BW		WW		YW		MILK		
+7	.29	+2.1	.36	+51	.27	+92	.25	+24	.20
MRB	+1.48		RE	+1.12		\$B	+48.05		

- Owned by Wild Wind Angus, Staunton, VA
- Rita 8F52 offers an elite pedigree combining In Focus and Rito Revolution with the legendary foundation donor, Rita 7152.
- Her dam, Rita 6R18 posts a WR 1@100. The grandam of Lot 45, Rita 7152 combines the great maternal sire Traveler 6807 with the legendary Wehrmann Angus donor and dam of Rito 9M9.
- Has 2/10/11 heifer calf, Lot 45A, by Ideal 4355 of 0T26 2440.

46 Destinys Banner Hazel DS22

Birth Date: 4-1-2005 Cow +15077000 Tattoo: DS22

#Sitz Alliance 6595 [AMF-NHF] #Sitz Traveler 8180 [AMF-CAF-NHF]
 #HARB High Plains 975 JH [AMF-CAF-NHF] #Sitz Barbaramere Jet 2698
 #13324510 Juanada Erica 9024 HARB #Rito 054 GDAR
 #GH Juanada Erica 664

SVF Bandolier [CAF] #Bon View Bando 598 [CAC-AMF]
 #ALC Hazel L12L [AMF-CAF] SVF Primrose Lady 9446
 14096266 #Alc Hazel K14H #DHD Traveler 6807 [AMF-NHF]
 ALC Foxy Agent 61F

GED	BW		WW		YW		MILK		
+6	.26	+1.6	.30	+46	.27	+92	.25	+36	.25
MRB	+1.20		RE	+1.38		\$B	+46.52		

- Hazel DS22 is a powerful multi-trait donor combining the outcross sire, High Plains with the cornerstone donor in the Kiamichi Link Ranch program, Hazel L12L.
- Hazel DS22 is a maternal sister to the proven REA leader and Select Sires roster member, Big Eye and the top-selling bull of the 2009 44 Farms Bull Sale, Cowboy, now featured in the 44 Farms and Fairway Angus programs.
- Hazel DS22 has one daughter showing a WR 1@101. The dam of Lot 46 records a BR 4@97, a WR 4@103 and a YR 3@105 while carrying an ultrasound REA ratio 99@105. Twenty-five daughters of Hazel L12L maintain a combined WR 36@105.
- Flushed one time in the Quaker Hill program producing six embryos.
- Pasture exposed 2/1/11 to 4/1/11 to Ideal 4355 of 0T26 2440



Rita 7152 of 2036 6807 / The grandam of Lot 45.

47 Quaker Hill Ideal 047 8Q5

Birth Date: 2-16-2008 Cow +16002327 Tattoo: 8Q5

#SS Objective T510 0T26 [AMF-CAF-NHF] #SS Traveler 6807 T510 [AMF-CAF-NHF]
 #Quaker Hill Objective 3J15 [AMF-CAF-NHF] SS Miss Rita R011 7R8 [AMF-NHF]
 14660859 #Quaker Hill Queen 1L4 [AMF-NHF] +BW/QHF Blackcap Lad
 Ankony Queen QHF R981

#N Bar Prime Time D806 [AMF-CAF-NHF] #Gardens Prime Time [AMF-CAF-NHF]
 #Ideal 047 OF F506 2234 [AMF] N Bar Miss Emulous A404
 #+13662816 Ideal 2234 of 033 0292 Ideal 9256 of Eldo 630 214
 Ideal 0292 of EE30 1254 864

GED	BW		WW		YW		MILK		
+6	.05	+1.4	.05	+56	.05	+97	.05	+29	.05
MRB	+1.41		RE	+1.46		\$B	+51.51		

- Ideal 047 8Q5 is a high performing daughter of Objective 3J15 while her dam offers a solid blend of maternal genetics combining Prime Time D806 with Ideal 2234 bred in the Jorgenson program.
- Her dam, Ideal 047 posts a BR 5@87, a WR 5@106 and a YR 5@106 while showing ultrasound ratios of IMF 7@111 and REA 7@103.
- A maternal sister sells as Lot 48.
- Due 3/25/11 to 5/15/11 to HA Rainmaker 6780.

QUAKER HILL & WILD WIND FEMALES



Sugar Loaf First Lady K503 /
The \$7,300 valued maternal sister to the dam of Lot 50.

48 Quaker Hill Ideal IBC 29 7ID9

Birth Date: 11-10-2007 Cow +16018871 Tattoo: 7ID9

Ideal 2215 of 8296 026 [AMF] +Ideal 8296 of 1254 4465
Ideal 5470 of 2215 047 [AMF] Ideal 026 OF F506 8517
15127256 #+Ideal 047 OF F506 2234 [AMF] #N Bar Prime Time D806 [AMF-CAF-NHF]
Ideal 2234 of 033 0292

#N Bar Prime Time D806 [AMF-CAF-NHF] #Gardens Prime Time [AMF-CAF-NHF]
Ideal 047 OF F506 2234 [AMF] N Bar Miss Emulous A404
#+13662816 Ideal 2234 of 033 0292 Ideal 9256 of Eldo 630 214
Ideal 0292 of EE30 1254 864

50 Sugar Loaf First Lady R515

Birth Date: 9-24-2005 Cow 15414690 Tattoo: R515

#B/R New Design 036 [AMF-CAF-NHF] #VDAR New Trend 315 [AMF-CAF-NHF]
Bon View New Design 878 [AMF-CAF-NHF] B/R Blackcap Empress 76
#13062750 Bon View Gammer 85 [CAC] #Bon View Bando 598 [CAC-AMF]
Bon View Gammer 233

#Rockn D Ambush 1531 [AMF-CAF-NHF] #Paramont Ambush 2172 [AMF-CAF-NHF]
Sugar Loaf First Lady K501 MS Blackcap Band of RD 1301
#+14165279 KCF First Lady H3 #Krugerrand of Donamere 490 [AMF-NHF]
#Connealy 6807 647

CED	BW	WW	YW	MILK
I+2 .05	I+.9 .05	I+42 .05	I+82 .05	I+22 .05
MRB +.56	RE -.16	SB +38.52		

CED	BW	WW	YW	MILK
+9 .30	+1.5 .37	+46 .28	+81 .27	+19 .22
MRB +.47	RE -.07	SB +45.21		

- Ideal IBC 29 7ID9 is a unique female being double bred to the foundation Quaker Hill donor, Ideal 047 stacking the best of the breeds maternal and efficiency genetics.
- Ideal IBC 29 7ID9 posts an individual IMF ratio 109.
- Her dam, Ideal 047 posts a BR 5@87, WR 5@106 and a YR 5@106 while showing ultrasound ratios of IMF 7@111 and REA 7@103.
- A maternal sister sells as Lot 47.
- Sells with a 2/21/11 heifer calf, Lot 48A, by Quaker Hill Straw Boss 7A1.

- Owned by Wild Wind Angus, Staunton, VA
- The opportunity to select a descendant of the longtime foundation Sugar Loaf donor, First Lady H3 that blends the Pathfinder Sires New Design 878 and Ambush 1531.
 - Maternal siblings to the dam of Lot 50 have been features for many years in the Sugar Loaf production sales including: First Lady K503, the \$7,300 selection of WRB Angus in 2006; and First Lady S555, the \$6,000 choice of Creswell Farms in 2007.
 - First Lady R515 posts an individual BR 94 and a YR 99.
 - Sells with a 2/10/11 heifer calf, Lot 50A, by Ideal 4355 of 0T26 2440.

49 Quaker Hill Primrose 7162

Birth Date: 11-9-2007 Cow +16886404 Tattoo: 7162

#SS Objective T510 0T26 [AMF-CAF-NHF] #SS Traveler 6807 T510 [AMF-CAF-NHF]
Quaker Hill Objective 3J15 [AMF-CAF-NHF] SS Miss Rita R011 7R8 [AMF-NHF]
14660859 #Quaker Hill Queen 1L4 [AMF-NHF] +BW/QHF Blackcap Lad
Ankony Queen QHF R981

#Bon View New Design 1407 [AMF-CAF-NHF] #B/R New Design 036 [AMF-CAF-NHF]
Twin Valley Primrose 1154 [AMF] Bon View Pride 664
+14194264 +Twin Valley Primrose 1438 #Schoenes Fix It 826 [AMF-CAF-NHF]
N Bar Primrose 2424

CED	BW	WW	YW	MILK
I+7 .05	I+1.6 .05	I+55 .05	I+97 .05	I+30 .05
MRB +.48	RE +.39	SB +57.31		

- The exciting opportunity to select a direct daughter of the former Cool Springs and Pine Ridge donor Primrose 1154 and sired by the high growth stand-out, Objective 3J15.
- Her dam, Primrose 1154 is an elite bred female from the storied Primrose family as she combines New Design 1407 and Fix It with the matriarch Primrose 2424.
- Primrose 1154 posts a BR 1@97, a WR 1@112 and a YR 1@100 while showing ultrasound ratios of 1@100 for IMF and REA. The dam of Primrose 1154 has six daughters maintaining a combined WR 10@103.
- Primrose M64, a maternal sister to the dam of Lot 10, was the \$27,000 second high-selling donor of the 2006 Destiny Angus Sale selling to
- Shoulderbone Plantation in Georgia and Fox Run Farm in Missouri.
- Sells with a 3/1/11 heifer calf, Lot 49A, by Quaker Hill Straw Boss 7A1.



Twin Valley Primrose 1154 / The donor dam of Lot 49.

QUAKER HILL & WILD WIND FEMALES



Partiover Burgess 739 / A direct daughter from the legendary donor sells as Lot 51.



Quaker Hill Burgess 5N2

Birth Date: 3-20-2005 Cow +15091112 Tattoo: 5N2

#B/R New Design 036 [AMF-CAF-NHF]
Bon View New Design 1407 [AMF-CAF-NHF]
 #12783540 Bon View Pride 664

#VDAR New Trend 315 [AMF-CAF-NHF]
 B/R Blackcap Empress 76
 #+GAR Sleep Easy 1009 [AMF-CAF-NHF]
 #Bon View Pride 1551

#DHD Traveler 6807 [AMF-NHF]
Partiover Burgess 739
 12795700 +Partiover Burgess 048

#QAS Traveler 23-4 [AMF-CAF-NHF]
 #Bemindful Maid DHD 0807
 #Hoff Hi Spade SC 491
 Partiover Burgess 527

CED	BW		WW		YW		MILK		
I+7	.05	I+2.3	.05	I+44	.05	I+88	.05	I+27	.05
MRB	I+.64		RE	I+.43		\$B	+61.13		

Owned by Wild Wind Angus, Staunton, VA

- Burgess 5N2 is an elite bred female combining the multi-trait sire New Design 1407 with the well-known matron of the Burgess family, Burgess 739.
- Burgess 739, the dam of Lot 51, records a BR 3@98, a WR 3@107 and a YR 1@113 while showing an ultrasound REA ratio 18@102. Eighteen daughters of Burgess 739 maintain a combined WR 27@100.
- Maternal sisters to the dam of Lot 51 include: Burgess 9268, the \$19,000 female in the Brandy Rock Farm program; Burgess 0247 at Grandview Womack; and Burgess 926, the \$10,000 selection of Limestone, LLC through the Austin dispersal.
- Sells with a 3/8/11 bull calf, Lot 51A, by Ideal 4355 of 0T26 2440.



Quaker Hill Gina 8P52 [NHF]

Birth Date: 3-2-2008 Cow 16405024 Tattoo: 8P52

#B/R New Design 036 [AMF-CAF-NHF]
GAR Predestined [AMF-CAF-NHF]
 #13395344 #+GAR Ext 4206

#VDAR New Trend 315 [AMF-CAF-NHF]
 B/R Blackcap Empress 76
 #N Bar Emulation EXT [AMF-CAF-NHF]
 +GAR 6807 Traveler 1432

#Twin Valley Precision E161 [NHC-AMF-CAF-RDF]
Baldrige Gina P510
 +14730392 Green Garden Gina 2268 S2

#GAR Precision 1680 [AMC-NHC]
 +WCC Blackcap C9 [RDC]
 Gardens Transition 7205 S1
 Green Garden Gina 0261 S2

CED	BW		WW		YW		MILK		
+1	.30	+4.5	.35	+47	.27	+95	.26	+24	.22
MRB	I+.77		RE	I+.47		\$B	+64.74		

- Gina 8P52 is a powerful daughter of the former breed leader for \$B Predestined while her dam, Gina P510 is a maternal sister to the high maternal sire Gardens Expedition.
- Gina 8P52 posts an individual WR 105 and a YR 109.
- Her dam, Gina P510 records a WR 4@103 and a YR 2@106 while showing an ultrasound REA ratio 2@106.
- Due 3/25/11 to 5/15/11 to HA Rainmaker 6780.



Quaker Hill Polly 7Q30

Birth Date: 10-27-2007 Cow +16018874 Tattoo: 7Q30

#SS Objective T510 0T26 [AMF-CAF-NHF]
Quaker Hill Objective 3J15 [AMF-CAF-NHF]
 14660859 #Quaker Hill Queen 1L4 [AMF-NHF]

#SS Traveler 6807 T510 [AMF-CAF-NHF]
 SS Miss Rita R011 7R8 [AMF-NHF]
 +BW/QHF Blackcap Lad
 Ankony Queen QHF R981

#DHD Traveler 6807 [AMF-NHF]
Coleman Polly 225
 +14188129 +Coleman Polly 927

#QAS Traveler 23-4 [AMF-CAF-NHF]
 #Bemindful Maid DHD 0807
 #Sitz Traveler 9929
 +VDAR Polly 4021

CED	BW		WW		YW		MILK		
I+6	.05	I+2.7	.05	I+52	.05	I+94	.05	I+24	.05
MRB	+.21		RE	+.38		\$B	+46.48		

- Polly 7Q30 is a balanced-trait daughter of the Genex highlight, Objective 3J15 and she stems from a dam combining the foundation female sires, Traveler 6807 and Traveler 9929 while descending from one of the top families ever developed in the VDAR performance program.
- Polly 7Q30 posts an ultrasound REA ratio of 105. The dam of Lot 52 records a WR 2@99.
- Bred 12/18/10 to GAR New Design 5050. Pasture exposed 12/25/10 to 3/11/11 to HA Rainmaker 6780.



Coleman Polly 225 / A daughter sells as Lot 52.

QUAKER HILL & WILD WIND FEMALES



SVF Forever Lady 57D / A
descendant of this legendary donor sells as Lot 54.



54 Southern Forever Lady 71253

Birth Date: 2-2-2007 Cow #15931151 Tattoo: 71253

#Bon View New Design 1407 [AMF-CAF-NHF] #B/R New Design 036 [AMF-CAF-NHF]
Rito 2V1 of 2536 1407 [AMC-CAF-NHF] Bon View Pride 664
#+14088249 GAR Precision 2536 [AMC-NHF] #GAR Precision 1680 [AMC-NHC]
+GAR Ext 2104

#+SAF 598 Bando 5175 [CAC-AMF] #Bon View Bando 598 [CAC-AMF]
Southern Forever Lady 3062 [CAF] +SAF Royal Lass 1002
+14330759 SVF Forever Lady 57D #+Leachman Right Time
+SVF Forever Lady 1128

	CED	BW		WW		YW		MILK	
I+4	.05	I+3.8	.05	I+61	.05	I+113	.05	I+27	.05
MRB	+.54		RE	+.30		\$B	+62.16		

- The opportunity to select a descendant of the famous Sunset Valley donor and matron of the Forever Lady family, Forever Lady 57D.
- Forever Lady 71253 is a sired by Rito 2V1 while her dam, Forever Lady 3062 is a member of one of the top flushes ever produced at Sunset Valley combining Bando 5175 and Forever Lady 57D.
- Forever Lady 3062 posts a BR 1@96 and a WR 1@109 while showing an IMF ratio 2@99.
- A flush sister to the dam of Lot 54 is Lady 4307, a featured member of the Schaff Angus Valley and Sunset Valley Angus programs.
- Sells with a 12/25/10 bull calf, Lot 54A, by Shafer 21st Century.
- Pasture exposed 1/25/11 to 3/18/11 to Quaker Hill Determined 8P17.

55 HHF 878 Lady 664 635 [NHC-AMF]

Birth Date: 10-5-2005 Cow 15529460 Tattoo: 635

#B/R New Design 036 [AMF-CAF-NHF] #VDAR New Trend 315 [AMF-CAF-NHF]
Bon View New Design 878 [AMF-CAF-NHF] B/R Blackcap Empress 76
#13062750 Bon View Gammer 85 [CAF] #Bon View Bando 598 [CAC-AMF]
Bon View Gammer 233

#GAR Precision 1680 [AMC-NHC] #Tehama Bando 155 [AMF-CAF-NHF]
PC 664 of 1888 Precision 9J9 GAR 856 [NHF]
#12734876 +SVF Forever Lady 188B #Hoff Hi Spade SC 491
#Forever Lady 163 GDAR

	CED	BW		WW		YW		MILK	
+8	.30	+1.4	.37	+32	.29	+72	.27	+25	.23
MRB	+.42		RE	+.07		\$B	+47.02		

- Owned by Wild Wind Angus, Staunton, VA
- Lady 664 635 is a direct daughter of the former breed leader for registrations, New Design 878 while stemming from the Forever Lady family.
 - Lady 664 635 posts an individual BR 95, IMF ratio 103 and a REA ratio 100.
 - Her dam, PC 664 records a WR 9@103 and a YR 5@104 while showing ultrasound ratios of IMF 2@106 and REA 2@100. Four daughters of PC 664 maintain a combined WR 15@105.
 - Sells with a 3/4/11 bull calf, Lot 55A, by Ideal 4355 of 0T26 2440.

56 PR919S Objective of KCFP308

Birth Date: 10-13-2006 Cow 15573999 Tattoo: 919S

#SS Traveler 6807 T510 [AMF-CAF-NHF] #DHD Traveler 6807 [AMF-NHF]
SS Objective T510 0T26 [AMF-CAF-NHF] #SS Miss Hi Spade A114
#13776378 SS Miss Rita R011 7R8 [AMF-NHF] SS Rito Rito R76 R011
SS Miss Ultress U56

#Hyline Right Time 338 [AMF-CAF-NHF] #+Leachman Right Time
KCF Miss 338 P308 Hyline Pride 265
15030721 KCF Miss Conveyor E27 #Leachman Conveyor [AMF-CAF-NHF]
CSU Miss Rainmaker 1162

	CED	BW		WW		YW		MILK	
+5	.31	+2.9	.38	+53	.28	+99	.25	+28	.25
MRB	+.44		RE	+.31		\$B	+53.48		

- PR 919S offers a solid blend of the Pathfinder Sires Objective, Right Time 338 and Conveyor with the Colorado State Miss family.
- PR 919S posts a WR 1@104 and a YR 1@106.
- Her dam, Miss 338 P308 records a WR 3@99 and a YR 3@100 while showing an ultrasound REA ratio 2@100.
- Has a 3/15/11 heifer calf, Lot 56A, by Baldrige Rustabout R871.

57 Quaker Hill Clova Pride 5J91

Birth Date: 10-5-2005 Cow 15395519 Tattoo: 5J91

#SS Traveler 6807 T510 [AMF-CAF-NHF] #DHD Traveler 6807 [AMF-NHF]
SS Objective T510 0T26 [AMF-CAF-NHF] #SS Miss Hi Spade A114
#13776378 SS Miss Rita R011 7R8 [AMF-NHF] SS Rito Rito R76 R011
SS Miss Ultress U56

#SAF Easy Fortune [AMF-CAF-NHF] #Minerts Fortune 2000 [AMF-CAF-NHF]
Three Trees Clova Pride 0073 SAF Royal Queen 9022
13761839 Stevenson Clova Pride 6918 #Basin Rainmaker 654X
Stevenson Clova Pride 4046

	CED	BW		WW		YW		MILK	
+8	.26	+1.6	.27	+55	.27	+99	.21	+25	.24
MRB	+.52		RE	+.31		\$B	+54.77		

- Clova Pride 5J91 is another outstanding daughter of the high growth and carcass sire Objective whose dam, Clova Pride 0073 blends Easy Fortune and Rainmaker 654X.
- Clova Pride 5J91 posts a WR 1@102, while her dam records a BR 2@91, a WR 3@102 and a YR 2@99.
- Bred 1/6/11 to B/R Destination 727-928. Pasture exposed 1/7/11 to 3/18/11 to Quaker Hill Determined 8P17.

QUAKER HILL & WILD WIND FEMALES



BT Blackbird 883M /

The donor dam of Lot 58.



TK Blackcap McHenry 419 /

A daughter is featured as Lot 59.

58 Quaker Hill Blackbird 7F21

Birth Date: 3-1-2007 Cow 15977956 Tattoo: 7F21

Mytty In Focus [AMF-CAF-NHF-RDF]
#13880818 Mytty Countess 906

#SAF Fame [AMF-CAF-NHF]
GDAR Forever Lady 246
#Sitz Alliance 6595 [AMF-NHF]
Baldrige Countess 357

BT Blackbird 883M
#Summitcrest High Prime 0H29 [AMF-CAF-NHF]
#Gardens Prime Time [AMF-CAF-NHF]
Summitcrest Missie 2F55
#Sitz Traveler 6802
Sitz Blackbird 1660

CED	BW	WW	YW	MILK
+9	.30	+1	.36	+50
.27	.87	.22	+23	.25
MRB	+58	RE	+08	\$B +53.45

- Blackbird 7F21 is a top young female by the ABS Global standout In Focus that stems from the foundation Quaker Hill donor, Blackbird 883M.
- Blackbird 883M combines the \$90,000 high IMF sire High Prime 0H29 with the featured Pine Coulee donor, Blackbird 3317.
- Blackbird 7F21 posts a WR 1@103 and YR 1@103.
- Her dam, Blackbird 883M records a BR 2@97 while showing ultrasound ratios of IMF 1@104 and REA 1@102.
- Bred 1/6/11 to B/R Destination 727-928. Pasture exposed 1/7/11 to 3/18/11 to Quaker Hill Determined 8P17.

59 QHF Blackcap McHenry 7Q32

Birth Date: 10-17-2007 Cow 16138216 Tattoo: 7Q32

Quaker Hill Objective 3J15 [AMF-CAF-NHF]
#14660859 #Quaker Hill Queen 1L4 [AMF-NHF]

#SS Traveler 6807 T510 [AMF-CAF-NHF]
SS Miss Rita R011 7R8 [AMF-NHF]
+BW/QHF Blackcap Lad
Ankony Queen QHF R981

TK Blackcap Mc Henry 419 [AMF]
#13425118 #TK Blackcap Mc Henry R466

#Krugerrand of Donamere 490 [AMF-NHF]
TC Pride 2010
#GT Maximum [AMF-CAF-NHF]
Blackcap Mc Henry DHD 4810

CED	BW	WW	YW	MILK
+12	.31	-1.1	.39	+56
.30	+104	.27	+21	.26
MRB	+28	RE	+53	\$B +55.90

- Blackcap McHenry 7Q32 is a direct daughter of the standout Quaker Hill donor, Blackcap McHenry 419 by the high growth sire, Objective 3J15.
- Her dam, Blackcap McHenry 419 came to Quaker Hill through the T K Angus Ranch dispersal and offers a pedigree that's an outcross to many of today's lines.
- Blackcap McHenry 7Q32 records an individual BR 82, a WR 110 and a YR 118.
- Her dam, Blackcap McHenry 7Q32 posts a WR 7@106 and a YR 5@104 while showing ultrasound ratios of IMF 19@99 and REA 19@101.
- Sells with a 2/26/11 bull calf, Lot 59A, by Quaker Hill Straw Boss 7A1.

60 Thomas Lucy 4427 [CAC]

Birth Date: 2-6-2004 Cow 14705593 Tattoo: 4427

Bon View New Design 208 [CAC-AMF-NHF]
#13044574 #Bon View Erica 443

#VDAR New Trend 315 [AMF-CAF-NHF]
B/R Blackcap Empress 76
#N Bar Emulation EXT [AMF-CAF-NHF]
#Bon View Erica 1380

Thomas Lucy 2574 [AMF]
#14109830 #Thomas Lucy 6064

#Tehama Bando 155 [AMF-CAF-NHF]
#Bon View Dora 56
#RR Traveler 5204 [AMF-CAF-NHF]
Thomas Lucy 4637

CED	BW	WW	YW	MILK
+8	.31	+8	.38	+36
.29	+69	.27	+29	.26
MRB	+44	RE	-07	\$B +38.77

Owned by Wild Wind Angus, Staunton, VA

- Lucy 4427 is an elite female that combines New Design 208 and Bando 598 while stemming from the well-known Thomas Lucy family.
- Lucy 4427 posts a WR 1@99, a YR 1@100 and a REA ratio 1@99.
- Sells with a 2/18/11 bull calf, Lot 60A, by Ideal 4355 of 0T26 2440.

61 C STOCK Queen Lead 3246

Birth Date: 1-24-2006 Cow 15449960 Tattoo: 3246

Connealy Lead On [AMF-CAF-NHF]
#13447282 Eligence Plus of Conanga

#Connealy Dataline
#Ruths Rona of Conanga
#TC Dividend 963 [AMF-NHF-RDF]
Eura Cap of Conanga

C Stock Queen 878 of 9163
#1451110 C Stock Queen 6149

#B/R New Design 036 [AMF-CAF-NHF]
Bon View Gammer 85 [CAC]
+Mill Brae 6807 Trav 627D
PMC Queen 1976

CED	BW	WW	YW	MILK
+1	.29	+3.2	.37	+42
.28	+81	.20	+26	.22
MRB	+44	RE	+18	\$B +52.46

- Queen Lead 3246 is a top daughter of Lead On whose dam combines New Design 878 with a top son of Traveler 6807.
- The dam of Queen Lead 3246 records a REA ratio 1@101.
- Sells with a 3/11/11 bull calf, Lot 61A, by Ideal 4355 of 0T26 2440.

QUAKER HILL & WILD WIND FEMALES

62 Maymont Heather Bloom 5723

Birth Date: 3-14-2005 Cow 15939776 Tattoo: 5723

#BAR Ext Traveler 205 [AMF-CAF-NHF] #N Bar Emulation EXT [AMF-CAF-NHF]
 CRA Bextor 872 5205 608 [AMF-CAF-NHF] #BAR Queen Traveler 3015
 #13009379 Cra Lady Jaye 608 498 S Easy #+GAR Sleep Easy 1009 [AMF-CAF-NHF]
 HHF 917 Lady 975 498

+LLFGA Reference 831

#Ideal 1418 of 8103 4286 [AMF-CAF-NHF]
 MB Joanie Ext 3605
 Maymont Rito 0035
 Maymont Heather Bloom 0019

Maymont Heatherbloom 3780
 15980783 Maymont Heather Bloom 4043

CED	BW		WW		YW		MILK		
S +9	.92	+1.5	.97	+52	.95	+96	.93	+33	.86
D N/A	N/A	N/A	N/A	N/A	N/A	N/A	N/A	N/A	N/A
S-MRB	S-RE	S-SB	D-MRB	D-RE	D-SB				
+65	+64	+63.83	N/A	N/A	N/A				

Owned by Wild Wind Angus, Staunton, VA

- Heather Bloom 5723 is an own daughter of the balanced trait Select Sires roster member, Bextor.
- Her dam, Heatherblom 3780 is sired by a son of Ideal 1418.
- Sells with a 1/29/11 heifer calf, Lot 62A, by Ideal 4355 of 0T26 2440.

65 C R F ND 208 of NG 164 366

Birth Date: 10-29-2006 Cow 15731135 Tattoo: 366

#B/R New Design 036 [AMF-CAF-NHF] #VDAR New Trend 315 [AMF-CAF-NHF]
 Bon View New Design 208 [CAC-AMF-NHF] B/R Blackcap Empress 76
 #13044574 #Bon View Erica 443 #N Bar Emulation EXT [AMF-CAF-NHF]
 #Bon View Erica 1380

#Bon View New Design 878 [AMF-CAF-NHF] #B/R New Design 036 [AMF-CAF-NHF]
 CRF ND878 of NG722 164 Bon View Gammer 85 [CAC]
 15037079 Glenowen K3
 Glenowen Nosegay 621

CED	BW		WW		YW		MILK	
N/A	+5	.20	+40	.27	+74	.19	+31	.20
S-MRB	S-RE	S-SB	D-MRB	D-RE	D-SB			
+82	+11	N/A	N/A	N/A	N/A			

Owned by Wild Wind Angus, Staunton, VA

- The opportunity to select a direct daughter of New Design 208 while her dam is sired by New Design 878.
- Lot 65 posts an individual WR 101.
- Sells with a 2/8/11 heifer calf, Lot 65A, by Ideal 4355 of 0T26 2440.

63 Maymont Queen Mother 5709

Birth Date: 3-12-2005 Cow 15949188 Tattoo: 5709

#B/R New Design 036 [AMF-CAF-NHF] #VDAR New Trend 315 [AMF-CAF-NHF]
 Bon View New Design 878 [AMF-CAF-NHF] B/R Blackcap Empress 76
 #13062750 Bon View Gammer 85 [CAC] #Bon View Bando 598 [CAC-AMF]
 Bon View Gammer 233

+LLFGA Reference 831

#Ideal 1418 of 8103 4286 [AMF-CAF-NHF]
 MB Joanie Ext 3605
 Maymont Rito 0035
 Maymont Queen Mother 0007

Maymont Queen Mother 3796-28
 15939778 Maymont Queen Mother 2083

CED	BW		WW		YW		MILK		
S +9	.96	+1.4	.99	+43	.98	+82	.97	+30	.97
D N/A	N/A	N/A	N/A	N/A	N/A	N/A	N/A	N/A	N/A
S-MRB	S-RE	S-SB	D-MRB	D-RE	D-SB				
+46	-.06	+44.07	N/A	N/A	N/A				

Owned by Wild Wind Angus, Staunton, VA

- Queen Mother 5709 is a top daughter of Queen Mother 3796-28 and is sired by New Design 878.
- Sells with a 2/17/11 heifer calf, Lot 63A, by Ideal 4355 of 0T26 2440.



Bon View New Design 878 / A daughter of the former breed leader for registrations sells as Lot 63.

64 Quaker Hill Blackcap 5EX7

Birth Date: 9-13-2005 Cow 15226930 Tattoo: 5EX7

#N Bar Emulation EXT [AMF-CAF-NHF] #Emulation N Bar 5522
 GAR Exaltation 3144 [AMF-CAF-NHF] N Bar Primrose 2424
 #+12304052 +GAR Scotch Cap 309 #Scotch Cap [AMF-CAF-NHF]
 Rita 5H11 of 1B14 Rito 9J9

#Plowman 1627 of Millbrae SAR [AMF-CAF-NHF] #DHD Traveler 6807 [AMF-NHF]

Quaker Hill Blackcap 0P7 #MB Joanie 8E8 1627 [AMF]
 13881609 Wampler Blackcap W624 Nichols Traveler B169
 Wampler Blackcap SQ 538

CED	BW		WW		YW		MILK		
+1	.29	+3.6	.41	+48	.30	+92	.29	+21	.28
MRB	RE	RE	RE	RE	RE	RE	RE	RE	RE
+24			+29			\$B		+46.70	

- Blackcap 5EX7 is a high performing daughter of the Genex/CRI roster member Exaltation 3144, while her dam stems from the Wampler Blackcap family and blends Plowman 1627 and Traveler B169.
- Blackcap 5EX7 records a WR 3@103, a YR 3@105 and a REA ratio 2@111.
- Her dam, Blackcap 0P7 posts a WR 4@100 and a YR 4@102 in addition to a REA ratio 4@101.
- Sells with a 3/10/11 heifer calf, Lot 64A, by Baldrige Routabout R871.

66 MAF Pride 6094 5321 [NHC-AMF]

Birth Date: 10-25-2006 Cow +15790740 Tattoo: 6094

#GAR Precision 1680 [AMC-NHC] #Tehama Bando 155 [AMF-CAF-NHF]
 CA Future Direction 5321 [AMC-NHC-CAF] 9J9 GAR 856 [NHF]
 #12493607 CA Miss Power Fix 308 [AMF] #+SAF Power Fix [AMF-CAF-NHF]
 CA Lady Eight 1015

#Sitz Traveler 8180 [AMF-CAF-NHF] #GDAR Traveler 71 [AMF-CAF-NHF]

High Ridge Pride 8699 Sitz Everelda Entense 1137
 13259044 Annaleas Pride 699 #+Woodhill Centurion
 +Annaleas Pride 2222

CED	BW		WW		YW		MILK		
+7	.25	+2.2	.27	+37	.23	+74	.22	+23	.26
MRB	RE	RE	RE	RE	RE	RE	RE	RE	RE
+54			+38			\$B		+53.88	

- Pride 6094 5321 is a top daughter of Future Direction that posts a BR 1@97, a YR 1@101 and a REA ratio 1@99.
- Her dam, Pride 8699 blends Traveler 8180 and Centurion while recording a WR 7@108 and a YR 5@109 along with ultrasound ratios of IMF 8@101 and REA 8@103. Seven daughters of Pride 8699 maintain a combined WR 8@105.
- Sells with a 2/24/11 heifer calf, Lot 66A, by Quaker Hill Straw Boss 7A1.

QUAKER HILL & WILD WIND FEMALES

67

C STOCK 2V1 Blackcap 2146 [AMC]

Birth Date: 1-1-2006 Cow 15449941 Tattoo: 2146

#Bon View New Design 1407 [AMF-CAF-NHF] #B/R New Design 036 [AMF-CAF-NHF]
 Rito 2V1 of 2536 1407 [AMC-CAF-NHF] Bon View Pride 664
 #+14088249 GAR Precision 2536 [AMC-NHF] #GAR Precision 1680 [AMC-NHC]
 +GAR Ext 2104

#Bon View New Design 878 [AMF-CAF-NHF] #B/R New Design 036 [AMF-CAF-NHF]
C STOCK Blackcap ND878 7262 Bon View Gammer 85 [CAC]
 14268691 JWK Blackcap 7125 #+Ankonian Elixir DB
 Ankony Blackcap V278

CED	BW	WW	YW	MILK
+5	.29	+2.3	.37	+47
				.28
				+88
				.21
				+24
				.22
MRB	+1.53	RE	+1.36	\$B
				+58.07

Owned by Wild Wind Angus, Staunton, VA

- A top young female that combines Rito 2V1 and New Design 878.
- Her dam, Blackcap ND 878 7262 records a WR 7@105, a YR 4@105, an IMF ratio 2@102 and a REA ratio 2@108.
- Sells with a 2/23/11 bull calf, Lot 67A, by Ideal 4355 of 0T26 2440.

68

Blackbird of QHF 5V9 [AMF]

Birth Date: 9-6-2005 Cow 15090436 Tattoo: 5V9

#Bon View New Design 1407 [AMF-CAF-NHF] #B/R New Design 036 [AMF-CAF-NHF]
 Rito 2V1 of 2536 1407 [AMC-CAF-NHF] Bon View Pride 664
 #+14088249 GAR Precision 2536 [AMC-NHF] #GAR Precision 1680 [AMC-NHC]
 +GAR Ext 2104

#Plowman 1627 of Millbrae SAR [AMF-CAF-NHF] #DHD Traveler 6807 [AMF-NHF]
Blackbird of QHF 2P8 #MB Joanie 8E8 1627 [AMF]
 #14365266 +Blackbird of IRF 42B #N Bar Emulation EXT [AMF-CAF-NHF]
 #+Blackbird of SVF 421

CED	BW	WW	YW	MILK
-2	.30	+5.3	.39	+54
				.29
				+98
				.26
				+21
				.27
MRB	+5.54	RE	+4.1	\$B
				+59.35

- QHF 5V9 posts an individual WR 103, YR 107, IMF ratio 109 and a REA ratio 101 while showing a progeny WR 2@105.
- Her dam, QHF 2P8 shows a WR 3@109 and a YR 3@104 along with a REA ratio 3@101.
- Sells with a 3/8/11 bull calf, Lot 68A, by Baldrige Roustabout R871.

69

C STOCK Queen 4226 of 200D [AMF-NHF]

Birth Date: 1-9-2006 Cow 15450781 Tattoo: 4226

#Bon View New Design 1407 [AMF-CAF-NHF] #B/R New Design 036 [AMF-CAF-NHF]
C STOCK New Design 1407 200D Bon View Pride 664
 #+14796554 Davis Mac Burgess 109 of Pre #White Oak Precise 6002 [AMC-NHC-CAF]
 Davis Mac Burgess 907 FR 614

#C Stock 036 5210 #B/R New Design 036 [AMF-CAF-NHF]
C STOCK Queen 7164 of 5210 Ankony Pride R738
 14796538 C Stock Queen 5127 C Stock Bando 1704
 C Stock Queen 1975

CED	BW	WW	YW	MILK
+4	.25	+1.8	.35	+45
				.24
				+86
				.17
				+27
				.16
MRB	+1.60	RE	+1.10	\$B
				+52.23

Owned by Wild Wind Angus, Staunton, VA

- Queen 4226 of 200D posts an individual WR 110.
- Her dam, Queen 7164 of 5210 records a BR 5@98, a WR 5@100 and a YR 3@99.
- Sells with a 1/12/11 bull calf, Lot 69A, by Ideal 4355 of 0T26 2440.

70

Miss Touchstone 0291 4MFITN

Birth Date: 3-4-2001 Cow +14028597 Tattoo: 0291

#Emulation N Bar 5522 #Emulation 31 [DWF-RDF]
Finks 5522-6148 Ankony 8F78 Lass 8F275
 #11060295 Finks Proud Formera 614 #AAR New Trend
 Finks Proud Formera 34

#Lovana [RTF] #PS Power Play [RTF]
Ankony Ann 43W70 Tail N 2163
 11415628 Ankony Ann 13E28 +Ankonian Beacon
 Ankony Ann P1165

CED	BW	WW	YW	MILK
+0	.29	+3.3	.38	+38
				.31
				+66
				.29
				+19
				.34
MRB	+3.31	RE	+1.14	\$B
				+40.52

- Miss Touchstone 0291 is a high producing daughter of the Pathfinder stand-out Finks 6148 while stemming from the well-known Ankony Ann family.
- Miss Touchstone 0291 records a WR 5@104 and a YR 5@105 while showing a REA ratio 3@101. Her dam, Ann 43W70 posts a BR 4@93, a WR 4@113, a YR 3@115, an IMF ratio 16@100 and a REA ratio 16@101. Twelve daughters of Ann 43W70 maintain a combined WR 28@100.
- Sells with a 2/26/11 heifer calf, Lot 70A, by Quaker Hill Straw Boss 7A1.

71

ACCC In Focus 6145

Birth Date: 9-2-2006 Cow 15425663 Tattoo: 6145

#SAF Focus of ER [AMF-CAF-NHF] #SAF Fame [AMF-CAF-NHF]
Mytty In Focus [AMF-CAF-NHF-RDF] GDAR Forever Lady 246
 #13880818 Mytty Countess 906 #Sitz Alliance 6595 [AMF-NHF]
 Baldrige Countess 357

#Connealy Freightliner [AMF-CAF-NHF] #Bon View Bando 598 [CAC-AMF]
JMc Elisa 3359 Joana Erica of Conanga
 14748299 Ella Mam of Conanga 377 #Vermilion Dateline 7078 [AMF-CAF-NHF]
 Elle Miss of Conanga 376

CED	BW	WW	YW	MILK
+10	.32	+3	.38	+45
				.28
				+84
				.26
				+18
				.24
MRB	+3.38	RE	-.06	\$B
				+46.01

- In Focus 6145 offers a solid blend of the stand-out sires In Focus, Freightliner and Dateline 7078.
- In Focus 6145 posts an IMF ratio 1@102.
- Bred 1/6/11 to B/R Destination 727-928. Pasture exposed 1/7/11 to 3/18/11 to Quaker Hill Determined 8P17.

72

ACCC In Focus 6165

Birth Date: 9-7-2006 Cow 15446696 Tattoo: 6165

#SAF Focus of ER [AMF-CAF-NHF] #SAF Fame [AMF-CAF-NHF]
Mytty In Focus [AMF-CAF-NHF-RDF] GDAR Forever Lady 246
 #13880818 Mytty Countess 906 #Sitz Alliance 6595 [AMF-NHF]
 Baldrige Countess 357

#Bon View Bando 598 [CAC-AMF] #Tehama Bando 155 [AMF-CAF-NHF]
JMc Jackie 4356 #Bon View Dora 56
 #+14748334 Joana Erica of Conanga #Nichols Heavy Duty X100
 Jarne Erica of Conanga

CED	BW	WW	YW	MILK
+11	.32	+2	.39	+47
				.29
				+90
				.27
				+24
				.27
MRB	+3.35	RE	-.01	\$B
				+49.40

- In Focus 6165 is a high producing daughter of In Focus and records a BR 2@96, a WR 2@100 and a YR 1@104 while showing an IMF ratio 1@109 and a REA ratio 1@104. Her dam posts a BR 2@94 and a REA ratio 2@103.
- Bred 1/6/11 to B/R Destination 727-928. Pasture exposed 1/7/11 to 3/18/11 to Quaker Hill Determined 8P17.



Mytty In Focus / Daughters are featured as Lot 71 through 73.

QUAKER HILL FEMALES



Three Trees Elba H020 / The powerful donor dam of Lot 75.

73

ACCC In Focus 6154

Birth Date: 9-5-2006

Cow 15446687

Tattoo: 6154

Mytty In Focus [AMF-CAF-NHF-RDF]
#13880818 Mytty Countess 906

#SAF Fame [AMF-CAF-NHF]
GDAR Forever Lady 246
#Sitz Alliance 6595 [AMF-NHF]
Baldrige Countess 357

JMc Peggy 3350
14748292 Penchant of Conanga 022

#Connealy Freightliner [AMF-CAF-NHF] #Bon View Bando 598 [CAC-AMF]
Joana Erica of Conanga
#Connealy Forefront [AMF-CAF-NHF]
#Party of Conanga 6805

	CED	BW	WW	YW	MILK
	+10	-.6	.38	+52	.28
				+91	.26
					+27
					.24
MRB	+.41		RE	-.04	\$B
					+45.55

- In Focus 6154 offers a blend of In Focus, Freightliner and Forefront while posting a progeny WR 1@116.
- Her dam, Peggy 3350 records a BR 2@97 and a WR 2@100.
- Pasture exposed 2/20/11 to 4/1/11 to Ideal 4355 of 0T26 2440.

75

Quaker Hill Elba 7X1

Birth Date: 3-7-2007

Cow +15749244

Tattoo: 7X1

N Bar Emulation EXT [AMF-CAF-NHF]
#10776479 N Bar Primrose 2424

#Emulation N Bar 5522

#Emulation 31 [DWF-RDF]
Ankony 8F78 Lass 8F275
#Emulation 31 [DWF-RDF]
Primrose N Bar 9962

Three Trees Elba H020
+12854916 +Pack Power Elba 8190

#DHD Traveler 6807 [AMF-NHF]

#QAS Traveler 23-4 [AMF-CAF-NHF]
#Bemindful Maid DHD 0807
#Rito 9J9 of B156 7T26 [AMC]
+Sir Wms Elba 374

	CED	BW	WW	YW	MILK
	+2	.05	+3.1	.05	+1.70
					.05
					+1.13
					.05
MRB	+.11		RE	+.17	\$B
					+37.93

- Elba 7X1 is an exciting young female sired by the legendary maternal sire EXT while her dam combines the breed greats, Traveler 6807 and Rito 9J9.
- Elba 7X1 posts an individual REA ratio 108.
- Her dam, Elba H020 shows a YR 3@99 and a REA ratio 11@100.
- Bred 12/18/10 to GAR New Design 5050. Pasture exposed 12/25/10 to 3/18/11 to HA Rainmaker 6780.

74

Quaker Hill Ada 7J59

Birth Date: 9-4-2007

Cow 15990188

Tattoo: 7J59

SS Objective T510 0T26 [AMF-CAF-NHF]
#13776378 SS Miss Rita R011 7R8 [AMF-NHF]

#SS Traveler 6807 T510 [AMF-CAF-NHF] #DHD Traveler 6807 [AMF-NHF]
#SS Miss Hi Spade A114
SS Rito Rito R76 R011
SS Miss Ultrass U56

Quaker Hill Ada 5IN2 [NHF]
15231283 #Quaker Hill Ada 8T5 [AMF]

#+GAR Integrity [NHC-AMF-CAF] #Bon View New Design 1407 [AMF-CAF-NHF]
GAR Precision 1019 [AMC]
#GDAR Traveler 044 [AMF-CAF-NHF]
Ankony Ada QHF R999

	CED	BW	WW	YW	MILK
	+8	.31	+1.4	.36	+60
					.27
					+105
					.27
					+28
					.21
MRB	+.59		RE	+.79	\$B
					+63.79

- Ada 7J59 is a high performing daughter of Objective while her dam combines the well-known Integrity and Traveler 044.
- Ada 7J59 posts a WR 111 and a YR 110 along with ultrasound ratios of IMF 112 and REA 129.
- Her dam, Ada 5IN2 records a BR 2@99, a WR 2@115 and a YR 2@115 while showing an IMF ratio 2@101 and a REA 2@120.
- Bred 12/9/10 to GAR New Design 5050. Pasture exposed 12/25/10 to 3/18/11 to HA Rainmaker 6780.

76

Quaker Hill Burgess 5EX2

Birth Date: 8-31-2005

Cow 15226925

Tattoo: 5EX2

GAR Exaltation 3144 [AMF-CAF-NHF]
#+12304052 +GAR Scotch Cap 309

#N Bar Emulation EXT [AMF-CAF-NHF]

#Emulation N Bar 5522
N Bar Primrose 2424
#Scotch Cap [AMF-CAF-NHF]
Rito 5H11 of 1B14 Rito 9J9

Quaker Hill Burgess 2P10
14365255 Clear View Burgess H400

#Plowman 1627 of Millbrae SAR [AMF-CAF-NHF] #DHD Traveler 6807 [AMF-NHF]
#MB Joanie 8E8 1627 [AMF]
#Rito 3W3 of 0J2 Rito 9FB3 [AMF-CAF-NHF]
Ankony Burgess 96B0

	CED	BW	WW	YW	MILK
	-1	.28	+4.8	.39	+49
					.29
					+89
					.28
					+20
					.27
MRB	+.23		RE	+.14	\$B
					+42.70

- Burgess 5EX2 is another top performing daughter of Exaltation 3144 while her dam, a featured member of the Burgess family, combine Plowman 1627 and Rito 3W3.
- Burgess 5EX2 posts a WR 2@102 and a YR 2@103 while showing a REA ratio 2@102. Her dam, Burgess 2P10 shows two daughters in production maintain a combined WR 3@107.
- Bred 12/31/10 to GAR New Design 5050. Pasture exposed 1/1/11 to 3/18/11 to Quaker Hill Determined 8P17.

QUAKER HILL COMMERCIAL FEMALES



Commercial Female 3/4 AN x 1/4 SIMM

Birth Date: March 2008 Commercial Cow Tattoo: 8TX56



Commercial Female 3/4 AN x 1/4 SIMM

Birth Date: March 2008 Commercial Cow Tattoo: 8TX69



Commercial Female 3/4 AN x 1/4 SIMM

Birth Date: March 2008 Commercial Cow Tattoo: 8TX53



Commercial Angus Female

Birth Date: March 2008 Commercial Cow Tattoo:

A top set of yearling, Black-White Face Commercial Heifers sired by HA Rainmaker 6780, that will sell ready to breed. Selling choice with the option to take all six.



Yearling Commercial Heifer

Birth Date: Spring 2010



Yearling Commercial Heifer

Birth Date: Spring 2010



Yearling Commercial Heifer

Birth Date: Spring 2010



Yearling Commercial Heifer

Birth Date: Spring 2010



Yearling Commercial Heifer

Birth Date: Spring 2010



Yearling Commercial Heifer

Birth Date: Spring 2010

A top set of yearling, Black Commercial Heifers sired by HA Rainmaker 6780, that will sell ready to breed. Selling choice with the option to take all nine.



Yearling Commercial Heifer

Birth Date: Spring 2010



Yearling Commercial Heifer

Birth Date: Spring 2010



Yearling Commercial Heifer

Birth Date: Spring 2010



Yearling Commercial Heifer

Birth Date: Spring 2010



Yearling Commercial Heifer

Birth Date: Spring 2010



Yearling Commercial Heifer

Birth Date: Spring 2010



Yearling Commercial Heifer

Birth Date: Spring 2010



Yearling Commercial Heifer

Birth Date: Spring 2010



Yearling Commercial Heifer

Birth Date: Spring 2010

FRIDAY • APRIL 29, 2011 • LOUISA, VA



**PERFORMANCE TESTED
ANGUS BULL AND FEMALE SALE**

*Bulls sell at 5:30 p.m.
Females sell immediately following the Bulls*

Sale Guest: Wild Wind Angus



**Auction will be available on
Superior audio internet.**



LARRY COTTON 517-294-0777
RYAN COTTON 706-206-8361
MIKE GOTHARD 540-894-1055
BERNIE SCHEER 859-421-5783
JERRY CRENSHAW 703-244-4767
ZACK HILEMAN 540-460-2776
DAN WELLS 740-505-3843

**Quaker Hill Farm • 5728 Poindexter Rd • Louisa, VA 23093
Farm 540.967.1674 • Fax 540.967.1497 • Charles cell 540-894-3523
E-mail: crosson@quakerhillfarm.com**

**FIRST CLASS MAIL
REQUESTED IN-HOME DATE OF APRIL 18, 2011**

