

MEAD FARMS

Spring Performance-Tested

BULL SALE

Saturday • 6 p.m.

March 6, 2010

76 Service-Age

Angus • Charolais • Red Angus



MEAD FARMS

SPRING PERFORMANCE-TESTED BULL SALE

6 P.M. • March 6, 2010 • Versailles, MO

SALE DAY PHONES:

Office (573) 378-5545 • Alan Mead (573) 216-0210
Kevin O'Bryan (573) 216-3845
Daniel Fields (573) 216-5514
Rance Long (918) 510-3464



AUCTIONEER:

Jerry Lehmann (573) 999-4759

ASSOCIATION REPRESENTATIVES:

Wes Tiemann..... American Angus Association
Steve Birk..... President, Missouri Angus Association
Rick Washam..... President-Elect, Missouri Angus Association
Barbara McBride..... Secretary, Missouri Angus Association
Mary Ann Mauss..... Treasurer, Missouri Angus Association
Josh Worthington..... General Manager, Missouri Angus Association

LIVESTOCK PUBLICATION REPRESENTATIVES:

Wes Tiemann, *Angus Journal*
Marty Couch, *Midwest Marketer*
Justin Stout, *Stock Exchange*

Buyers unable to attend this sale may send their bids to the Sale Manager, Auctioneer or Livestock Publication Representatives.

SALE MANAGER:

American Angus Hall of Fame (816) 532-0811
Tom Burke Kurt Schaff Jeremy Haag Rance Long
(816) 853-2697 (816) 520-6447 (816) 516-1309 (918) 510-3464

SALE LOCATION: This sale will be held 4 miles west of Versailles, Missouri, on Highway 52. The Sale Headquarters is located on the North side of the road. Look for signs.

ACCOMMODATIONS:

Western Hills Motel • Versailles, MO (573) 378-4663
The Eldon Inn • Eldon, MO (573) 392-5664

HERD HEALTH: All cattle will be accompanied by proper health certificates for immediate shipment.

TRUCKING: Truckers believed to be reliable will be available to assist you in shipping your purchases.

TERMS AND CONDITIONS: Cattle will sell under the Terms and Conditions as recommended by the American Angus Association.

FOOD AND REFRESHMENTS: Will be available sale day.



Bulls that meet Show-Me-Select criteria have this symbol by their pedigree.



Visit the *Angus Journal* Web site, www.angusjournal.com, and view this sale book online.

References: *American Angus Association*®, *AHIR*®, *AngusSource*®, *CAB*®, *Pathfinder*®.

EPDs current as of January 20, 2010. Updated EPDs can be viewed online at www.angus.org.

MEAD FARMS BREEDING GUARANTEE:

We guarantee that all breeding cattle sold by Mead Farms, both bulls and females, are fertile to the best of our knowledge. If a bull is injured at any time during the first breeding season following the sale so to make them functionally infertile, we will provide you with a satisfactory replacement (if available), or issue you a credit equal to the bull's purchase price minus the salvage value received for that bull. We would simply ask you to contact us before you cull your infertile animal.

This is not a life insurance policy. We will not replace a dead animal if it is killed or dies for any reason. We would suggest that normal care needs to be exercised toward these animals and that particularly the yearling bulls not be allowed to get too thin.

This guarantee is in addition to the Sale Terms and Conditions of the American Angus Association which also apply.

February 1, 2010



Alan Mead
Kevin O'Bryan, Manager
21658 Quarry Lane • Barnett, MO 65011
(573) 378-5545 • (573) 392-2161 • Fax (573) 348-8325
Since 1942

Dear Friends:

Welcome back to Mead Farms for our annual spring bull sale.

We have developed an outstanding set of bulls from all three breeds represented in this offering. Every available tool has been used to evaluate this group from complete performance information, ultrasound data, and a complete Breeding Soundness Exam to help you make the important decision of selecting your next herd bull.

This entire group of bulls are the cream of the calf crop resulting in planned matings of the best genetics available.

Be sure and come early to enjoy a hot meal with us and take time to view the offering.

The bulls will be available any time prior to the sale for inspection, so give us a call.

Alan Mead

Kevin O'Bryan



Rito 12 of 2536 Rito 616 – Sire of Lots 1-6.



Mead Rito 1178 – Lot 3



Mead Rito 1096 – Lot 1

3 MEAD RITO 1178
 Birth Date: 1-23-2009 Bull 16415440 Tattoo: 1178

#Rito 616 of 4B20 6807 [AMF-NHF]	#DHD Traveler 6807 [AMF-NHF]	CW	\$W
Rito 112 of 2536 Rito 616 [AMF-NHF]	+Rita 4B20 of OFB1 Bando	+13	+30.93
#+13793826 GAR Precision 2536 [AMC-NHF]	#GAR Precision 1680 [AMC-NHC]	MARB	\$F
	+GAR Ext 2104	+1.33	+35.10
		RE	\$G
#+GAR Expectation 4915 [AMF-NHF]	#N Bar Emulation EXT [AMF-NHF]	+1.08	+23.95
Mead Pride F128	GAR Traveler 2421	FAT	\$B
15532004 MAF Pride C155	#Sitz Alliance 6595 [AMF-NHF]	-1.007	+47.20
	MAF Pride 8087		

CED	BEPD	WEPD	YEPD	SCROTAL	MILK						
+6	.29	+2.1	.35	+58	.26	+1.99	.33	-1.33	.24	+22	.20
%IMF	UREA	RIBFAT	RMPFAT	ADJ. HIP HT.	ACT SC	BW	ADJ. 205	ADJ. 365			
4.47	16.4	.31	.37	50.8	34.00	82	696	1245			
RATIO	82	108	82	82		101	110	104			

Dam's Production Record: BR 2-100, WR 2-103, YR 1-104, IMF 1-82, REA 1-108

1 MEAD RITO 1096
 Birth Date: 1-9-2009 Bull 16415435 Tattoo: 1096

#Rito 616 of 4B20 6807 [AMF-NHF]	#DHD Traveler 6807 [AMF-NHF]	CW	\$W
Rito 112 of 2536 Rito 616 [AMF-NHF]	+Rita 4B20 of OFB1 Bando	+17	+30.30
#+13793826 GAR Precision 2536 [AMC-NHF]	#GAR Precision 1680 [AMC-NHC]	MARB	\$F
	+GAR Ext 2104	+1.53	+41.06
		RE	\$G
#Bon View New Design 208 [AMF-NHF]	#B/R New Design 036 [AMF-NHF]	-1.05	+25.67
Mead Barbara F041	#Bon View Erica 443	FAT	\$B
15531972 MAF Barbara D093	#Basin Max 602C [AMF-NHF]	+1.011	+53.27
	MAF Barbara 3015		

CED	BEPD	WEPD	YEPD	SCROTAL	MILK					
+6	.30	+9	.35	+56	.26	+1.10	.24	+27	.20	
%IMF	UREA	RIBFAT	RMPFAT	ADJ. HIP HT.	ACT SC	BW	ADJ. 205	ADJ. 365		
5.65	15.8	.45	.53	52.4	38.00	76	704	1402		
RATIO	104	104	118	118		94	111	117		

Dam's Production Record: BR 1-94, WR 1-111, YR 1-117, IMF 1-104, REA 1-104
 1096 is the number 1 Yearling Weight bull in the entire offering!

4 MEAD RITO 1159
 Birth Date: 1-19-2009 Bull 16415437 Tattoo: 1159

#Rito 616 of 4B20 6807 [AMF-NHF]	#DHD Traveler 6807 [AMF-NHF]	CW	\$W
Rito 112 of 2536 Rito 616 [AMF-NHF]	+Rita 4B20 of OFB1 Bando	+9	+28.37
#+13793826 GAR Precision 2536 [AMC-NHF]	#GAR Precision 1680 [AMC-NHC]	MARB	\$F
	+GAR Ext 2104	+1.22	+37.08
		RE	\$G
+Wulfs Ext 6106	#N Bar Emulation EXT [AMF-NHF]	+1.0	+20.88
Mead Crown Erian F032	Wulfs Erica Dianna C116	FAT	\$B
15531970 MAF Crown Erian D015	#Bon View New Design 878 [AMF-NHF]	-1.021	+41.26
	MAF Crown Erian B118		

CED	BEPD	WEPD	YEPD	SCROTAL	MILK						
+5	.30	+1.7	.35	+53	.26	+1.99	.34	-1.47	.29	+22	.20
%IMF	UREA	RIBFAT	RMPFAT	ADJ. HIP HT.	ACT SC	BW	ADJ. 205	ADJ. 365			
4.42	16.3	.30	.44	51.1	32.50	82	629	1223			
RATIO	82	107	79	98		101	99	102			

Dam's Production Record: BR 2-100, WR 2-106, YR 2-107, IMF 2-80, REA 2-104

2 MEAD RITO 1113
 Birth Date: 1-11-2009 Bull 16415436 Tattoo: 1113

#Rito 616 of 4B20 6807 [AMF-NHF]	#DHD Traveler 6807 [AMF-NHF]	CW	\$W
Rito 112 of 2536 Rito 616 [AMF-NHF]	+Rita 4B20 of OFB1 Bando	+22	+28.73
#+13793826 GAR Precision 2536 [AMC-NHF]	#GAR Precision 1680 [AMC-NHC]	MARB	\$F
	+GAR Ext 2104	+1.29	+43.22
		RE	\$G
+Wulfs Ext 6106	#N Bar Emulation EXT [AMF-NHF]	-1.04	+18.85
Mead Barbara F069	Wulfs Erica Dianna C116	FAT	\$B
15531984 #MAF Barbara B018	#Sitz Traveler 9929	-1.005	+50.09
	Missouri Barbara 260 of Maf		

CED	BEPD	WEPD	YEPD	SCROTAL	MILK						
+1	.29	+2.8	.35	+61	.26	+1.08	.33	-1.13	.24	+23	.20
%IMF	UREA	RIBFAT	RMPFAT	ADJ. HIP HT.	ACT SC	BW	ADJ. 205	ADJ. 365			
4.97	15.2	.33	.43	52.4	36.00	85	716	1346			
RATIO	92	100	87	96		104	113	112			

Dam's Production Record: BR 1-104, WR 1-113, YR 1-112, IMF 1-92, REA 1-100

5 MEAD RITO 1227
 Birth Date: 1-29-2009 Bull 16415441 Tattoo: 1227

#Rito 616 of 4B20 6807 [AMF-NHF]	#DHD Traveler 6807 [AMF-NHF]	CW	\$W
Rito 112 of 2536 Rito 616 [AMF-NHF]	+Rita 4B20 of OFB1 Bando	-3	+25.66
#+13793826 GAR Precision 2536 [AMC-NHF]	#GAR Precision 1680 [AMC-NHC]	MARB	\$F
	+GAR Ext 2104	+1.42	+26.74
		RE	\$G
+GAR Integrity [NHC-AMF]	#Bon View New Design 1407 [AMF-NHF]	-1.22	+27.68
Mead Black Bourbon F130	GAR Precision 1019 [AMC]	FAT	\$B
15532005 #MAF Black Bourbon C024	#GDAR Traveler 044 [AMF-NHF]	-1.020	+34.02
	MAF Black Bourbon 0055		

CED	BEPD	WEPD	YEPD	SCROTAL	MILK						
+5	.29	+2.3	.35	+46	.26	+1.86	.33	-1.55	.24	+21	.20
%IMF	UREA	RIBFAT	RMPFAT	ADJ. HIP HT.	ACT SC	BW	ADJ. 205	ADJ. 365			
4.85	13.9	.26	.38	51.5	32.00	77	594	1146			
RATIO	89	91	68	84		95	94	96			

Dam's Production Record: BR 2-94, WR 2-93, YR 1-96, IMF 1-89, REA 1-91

6 MEAD RITO I160

Birth Date: 1-19-2009 Bull 16415438 Tattoo: I160

#Rito 616 of 4B20 6807 [AMF-NHF] #DHD Traveler 6807 [AMF-NHF]
 Rito 112 of 2536 Rito 616 [AMF-NHF] +Rita 4B20 of 0FB1 Bando
 #+13793826 GAR Precision 2536 [AMC-NHF] #GAR Precision 1680 [AMC-NHC]
 +GAR Ext 2104

CW	\$W
+9	+21.16
MARB	\$F
+37	+30.32
RE	\$G
-08	+23.97
FAT	\$B
-007	+42.67

#+GAR Expectation 4915 [AMF-NHF] #N Bar Emulation EXT [AMF-NHF]
 MAF Princess E400 GAR Traveler 2421
 15339471 #MAF Princess 0380 #GAR Consensus 3864 [AMF]
 MAF Princess 6002

CED	BEPD	WEPD	YEPD	SCROTAL	MILK						
+2	.29	+3.9	.35	+47	.26	+1.90	.34	-1.81	.24	+21	.20
%IMF	UREA	RIBFAT	RMPFAT	ADJ. HIP HT.	ACT SC	BW	ADJ. 205	ADJ. 365			
4.90	14.5	.42	.40	51.1	30.50	92	583	1180			
RATIO	90	95	111	89		111	92	99			

Dam's Production Record: BR 2-109, WR 2-102, YR 2-103, IMF 2-90, REA 2-102



SS Objective T510 oT26 – Sire of Lots 7-12.

8 MEAD OBJECTIVE I077

Birth Date: 1-6-2009 Bull 16408142 Tattoo: I077

#SS Traveler 6807 T510 [AMF-NHF] #DHD Traveler 6807 [AMF-NHF]
 SS Objective T510 OT26 [AMF-NHF] #SS Miss Hi Spade A114
 #13776378 SS Miss Rita R011 7R8 [AMF-NHF] SS Rito Rito R76 R011
 SS Miss Ultrass U56

CW	\$W
-7	+30.73
MARB	\$F
+50	+29.60
RE	\$G
+23	+36.96
FAT	\$B
-034	+39.58

+Daltons Precision 1259 [AMC] #GAR Precision 1680 [AMC-NHC]
 Mead Pride G278 OCC Blackbird 833E
 15797531 MAF Pride E033 #Bon View New Design 208 [AMF-NHF]
 MAF Pride C155

CED	BEPD	WEPD	YEPD	SCROTAL	MILK						
+8	.31	+2.2	.35	+54	.25	+1.92	.33	+1.06	.24	+27	.18
%IMF	UREA	RIBFAT	RMPFAT	ADJ. HIP HT.	ACT SC	BW	ADJ. 205	ADJ. 365			
5.36	12.2	.19	.20	50.3	36.00	78	675	1083			
RATIO	103	84	58	56		106	109	93			

Dam's Production Record: BR 1-106, WR 1-109, YR 1-93, IMF 1-103, REA 1-84

9 MEAD OBJECTIVE I104

Birth Date: 1-9-2009 Bull 16408143 Tattoo: I104

#SS Traveler 6807 T510 [AMF-NHF] #DHD Traveler 6807 [AMF-NHF]
 SS Objective T510 OT26 [AMF-NHF] #SS Miss Hi Spade A114
 #13776378 SS Miss Rita R011 7R8 [AMF-NHF] SS Rito Rito R76 R011
 SS Miss Ultrass U56

CW	\$W
+6	+29.32
MARB	\$F
+34	+41.77
RE	\$G
+36	+26.82
FAT	\$B
+014	+45.92

#SAV 8180 Traveler 004 [AMF-NHF-RDF] #Sitz Traveler 8180 [AMF-NHF]
 Mead Queen Lavilla G171 +Boyd Forever Lady 8003
 15813558 MAF Queen Lavilla D038 #+Leachman Right Time
 MAF Queen Lavilla 6011

CED	BEPD	WEPD	YEPD	SCROTAL	MILK						
+6	.31	+2.8	.35	+62	.26	+1.107	.33	+1.14	.24	+23	.20
%IMF	UREA	RIBFAT	RMPFAT	ADJ. HIP HT.	ACT SC	BW	ADJ. 205	ADJ. 365			
5.02	16.1	.24	.34	51.4	36.50	80	666	1183			
RATIO	96	110	73	94		108	107	101			

Dam's Production Record: BR 1-108, WR 1-107, YR 1-101, IMF 1-96, REA 1-110

7 MEAD OBJECTIVE I003

Birth Date: 12-25-2008 Bull 16408141 Tattoo: I003

#SS Traveler 6807 T510 [AMF-NHF] #DHD Traveler 6807 [AMF-NHF]
 SS Objective T510 OT26 [AMF-NHF] #SS Miss Hi Spade A114
 #13776378 SS Miss Rita R011 7R8 [AMF-NHF] SS Rito Rito R76 R011
 SS Miss Ultrass U56

CW	\$W
+6	+32.82
MARB	\$F
+38	+42.00
RE	\$G
+18	+26.50
FAT	\$B
+010	+45.67

#SAV 8180 Traveler 004 [AMF-NHF-RDF] #Sitz Traveler 8180 [AMF-NHF]
 Mead Barbara G097 +Boyd Forever Lady 8003
 15813547 MAF Barbara D093 #Basin Max 602C [AMF-NHF]
 MAF Barbara 3015

CED	BEPD	WEPD	YEPD	SCROTAL	MILK						
+7	.31	+1.8	.35	+64	.26	+1.108	.33	+1.14	.24	+26	.20
%IMF	UREA	RIBFAT	RMPFAT	ADJ. HIP HT.	ACT SC	BW	ADJ. 205	ADJ. 365			
4.91	14.5	.25	.26	51.5	37.00	74	724	1226			
RATIO	94	99	76	72		101	117	105			

Dam's Production Record: BR 1-101, WR 1-117, YR 1-105, IMF 1-94, REA 1-99



Mead Objective I003 – Lot 7

10 MEAD OBJECTIVE I175

Birth Date: 1-21-2009 Bull 16408144 Tattoo: I175

#SS Traveler 6807 T510 [AMF-NHF] #DHD Traveler 6807 [AMF-NHF]
 SS Objective T510 OT26 [AMF-NHF] #SS Miss Hi Spade A114
 #13776378 SS Miss Rita R011 7R8 [AMF-NHF] SS Rito Rito R76 R011
 SS Miss Ultrass U56

CW	\$W
+11	+29.80
MARB	\$F
+47	+42.34
RE	\$G
+39	+35.01
FAT	\$B
-033	+58.58

+Daltons Precision 1259 [AMC] #GAR Precision 1680 [AMC-NHC]
 Mead LeAnn G198 OCC Blackbird 833E
 15797520 MAF LeAnn E011 #Connealy Lead On [AMF-NHF]
 MAF LeAnn C179

CED	BEPD	WEPD	YEPD	SCROTAL	MILK						
+9	.31	+1.7	.35	+58	.25	+1.106	.33	+1.36	.24	+27	.18
%IMF	UREA	RIBFAT	RMPFAT	ADJ. HIP HT.	ACT SC	BW	ADJ. 205	ADJ. 365			
5.13	14.5	.20	.22	52.2	38.00	75	656	1246			
RATIO	98	99	61	61		102	106	107			

Dam's Production Record: BR 1-102, WR 1-106, YR 1-107, IMF 1-98, REA 1-99

11 MEAD OBJECTIVE I212

Birth Date: 1-26-2009 Bull 16408145 Tattoo: I212

#SS Traveler 6807 T510 [AMF-NHF] #DHD Traveler 6807 [AMF-NHF]
 SS Objective T510 OT26 [AMF-NHF] #SS Miss Hi Spade A114
 #13776378 SS Miss Rita R011 7R8 [AMF-NHF] SS Rito Rito R76 R011
 SS Miss Ultrass U56

CW	\$W
+8	+30.21
MARB	\$F
+39	+39.85
RE	\$G
+32	+28.92
FAT	\$B
+002	+49.38

#SAV 8180 Traveler 004 [AMF-NHF-RDF] #Sitz Traveler 8180 [AMF-NHF]
 Mead Queen Lass G230 +Boyd Forever Lady 8003
 15813562 MAF Queen Lass D163 +Daltons Precision 1259 [AMC]
 MAF Queen Lass A159

CED	BEPD	WEPD	YEPD	SCROTAL	MILK						
+8	.30	+2.1	.35	+59	.26	+1.104	.33	+1.04	.24	+25	.19
%IMF	UREA	RIBFAT	RMPFAT	ADJ. HIP HT.	ACT SC	BW	ADJ. 205	ADJ. 365			
4.90	14.8	.28	.25	51.9	34.50	75	670	1192			
RATIO	94	101	85	69		102	108	102			

Dam's Production Record: BR 1-102, WR 1-108, YR 1-102, IMF 1-94, REA 1-101



Mead Traveler I215 – Lot 23

23 MEAD TRAVELER I215
 Birth Date: 1-28-2009 Bull 16426118 Tattoo: I215

#DHD Traveler 6807 [AMF-NHF] #QAS Traveler 23-4 [AMF-NHF]
 Rito 616 of 4B20 6807 [AMF-NHF] #Bemindful Maid DHD 0807
 #12530601 +Rita 4B20 of 0FB1 Bando #Tehama Bando 155 [AMF-NHF]
 +Rita 0FB1 of 5H11 Fullback

MAF Precision D089 #Twin Valley Precision E161 [NHC-AMF-RDF]
 Mead Protet G249 #+Thomas Primrose 6628
 15797525 #MAF Protet C100 [AMF] #Bon View Bando 598 [AMF]
 +Circle A Protet 1064 [AMF]

CW	SW
I+18	+25.34
MARB	\$F
I+32	+25.91
RE	\$G
I+14	+22.82
FAT	\$B
I-.001	+47.37

CED	BEPD	WEPD	YEPD	SCROTAL	MILK						
+7	.29	+1.4	.35	+43	.25	I+84	.33	I+0	.24	+21	.18
%IMF	UREA	RIBFAT	RMPFAT	ADJ. HIP HT.	ACT SC	BW	ADJ. 205	ADJ. 365			
5.24	14.8	.36	.30	51.4	36.00	75	652	1225			
RATIO	101	101	109	83		102	105	105			

Dam's Production Record: BR 1-102, WR 1-105, YR 1-105, IMF 1-101, REA 1-101

25 MEAD TRAVELER I166
 Birth Date: 1-20-2009 Bull 16426116 Tattoo: I166

#DHD Traveler 6807 [AMF-NHF] #QAS Traveler 23-4 [AMF-NHF]
 Rito 616 of 4B20 6807 [AMF-NHF] #Bemindful Maid DHD 0807
 #12530601 +Rita 4B20 of 0FB1 Bando #Tehama Bando 155 [AMF-NHF]
 +Rita 0FB1 of 5H11 Fullback

Basin Expedition N189 #Gardens Expedition [AMF-NHF]
 Mead Forever Lady F663 #Basin Elmaretta 6271
 15687781 MAF Forever Lady D550 #Bon View New Design 208 [AMF-NHF]
 +MAF Forever Lady B261

CW	SW
I+8	+30.56
MARB	\$F
I+36	+26.36
RE	\$G
I+16	+25.41
FAT	\$B
I+.008	+42.52

CED	BEPD	WEPD	YEPD	SCROTAL	MILK						
+12	.31	-1.0	.35	+47	.26	I+86	.33	I-.09	.24	+20	.18
%IMF	UREA	RIBFAT	RMPFAT	ADJ. HIP HT.	ACT SC	BW	ADJ. 205	ADJ. 365			
4.16	14.9	.37	.42	50.2	36.00	60	633	1140			
RATIO	80	102	112	117		82	102	98			

Dam's Production Record: BR 1-82, WR 1-102, YR 1-98, IMF 1-80, REA 1-102



Mead Traveler I024 – Lot 26

26 MEAD TRAVELER I024
 Birth Date: 12-29-2008 Bull 16426112 Tattoo: I024

#DHD Traveler 6807 [AMF-NHF] #QAS Traveler 23-4 [AMF-NHF]
 Rito 616 of 4B20 6807 [AMF-NHF] #Bemindful Maid DHD 0807
 #12530601 +Rita 4B20 of 0FB1 Bando #Tehama Bando 155 [AMF-NHF]
 +Rita 0FB1 of 5H11 Fullback

Basin Expedition N189 #Gardens Expedition [AMF-NHF]
 Mead Lass G116 #Basin Elmaretta 6271
 15797507 MAF Lass C200 #+SAF Proton
 MAF Lass 3071

CW	SW
I+5	+28.53
MARB	\$F
I+40	+24.18
RE	\$G
I+04	+26.61
FAT	\$B
I+0	+40.52

CED	BEPD	WEPD	YEPD	SCROTAL	MILK						
+11	.30	-1.0	.35	+45	.26	I+83	.33	I-.60	.24	+16	.19
%IMF	UREA	RIBFAT	RMPFAT	ADJ. HIP HT.	ACT SC	BW	ADJ. 205	ADJ. 365			
5.63	13.8	.23	.38	49.6	32.00	60	618	1149			
RATIO	108	95	70	106		83	100	99			

Dam's Production Record: BR 1-83, WR 1-100, YR 1-99, IMF 1-108, REA 1-95



Mead Rito I395 – Lot 24

24 MEAD RITO I395
 Birth Date: 1-10-2009 Bull 16426119 Tattoo: I395

#DHD Traveler 6807 [AMF-NHF] #QAS Traveler 23-4 [AMF-NHF]
 Rito 616 of 4B20 6807 [AMF-NHF] #Bemindful Maid DHD 0807
 #12530601 +Rita 4B20 of 0FB1 Bando #Tehama Bando 155 [AMF-NHF]
 +Rita 0FB1 of 5H11 Fullback

#Bon View New Design 878 [AMF-NHF] #B/R New Design 036 [AMF-NHF]
 Mead Lass G132 #Bon View Gammer 85
 15810032 MAF Lass C212 #+SAF Proton
 MAF Lass 5036

CW	SW
I+10	+23.21
MARB	\$F
I+36	+25.47
RE	\$G
I+14	+26.86
FAT	\$B
I-.012	+45.47

CED	BEPD	WEPD	YEPD	SCROTAL	MILK						
+8	.31	+1.3	.35	+39	.26	I+82	.33	I-.01	.24	+19	.20
%IMF	UREA	RIBFAT	RMPFAT	ADJ. HIP HT.	ACT SC	BW	ADJ. 205	ADJ. 365			
5.06	15.0	.21	.32	50.9	36.50	71	637	1210			
RATIO	97	103	64	89		97	103	104			

Dam's Production Record: BR 1-97, WR 1-103, YR 1-104, IMF 1-97, REA 1-103

27 MEAD TRAVELER I078
 Birth Date: 1-6-2009 Bull 16426114 Tattoo: I078

#DHD Traveler 6807 [AMF-NHF] #QAS Traveler 23-4 [AMF-NHF]
 Rito 616 of 4B20 6807 [AMF-NHF] #Bemindful Maid DHD 0807
 #12530601 +Rita 4B20 of 0FB1 Bando #Tehama Bando 155 [AMF-NHF]
 +Rita 0FB1 of 5H11 Fullback

+GAR Integrity [NHC-AMF] #Bon View New Design 1407 [AMF-NHF]
 Mead Pride F442 #GAR Precision 1019 [AMC]
 15695072 Finks Pride 4030 1583 RT #+Leachman Right Time
 +Finks Pride 1583 786 036

CW	SW
I+9	+22.28
MARB	\$F
I+44	+25.25
RE	\$G
I+15	+28.79
FAT	\$B
I-.001	+46.38

CED	BEPD	WEPD	YEPD	SCROTAL	MILK						
+8	.31	+1.1	.35	+37	.26	I+81	.33	I-.03	.24	+19	.20
%IMF	UREA	RIBFAT	RMPFAT	ADJ. HIP HT.	ACT SC	BW	ADJ. 205	ADJ. 365			
5.23	15.0	.40	.46	49.8	37.00	74	606	1212			
RATIO	100	103	121	128		99	98	104			

Dam's Production Record: BR 1-99, WR 1-98, YR 1-104, IMF 1-100, REA 1-103



Mead Foresight I170 – Lot 28

28 MEAD FORESIGHT I170
 Birth Date: 1-20-2009 Bull 16402700 Tattoo: I170

#Papa Forte 1921 Papa Optima 9818
 Woodhill Foresight [AMF-NHF] Papa Envious Blackbird 8832
 #13936986 Bon View Gammer 85 #Bon View Bando 598 [AMF]
 Bon View Gammer 233

CW	SW
+18	+26.47
MARB	\$F
+1.54	+32.38
RE	\$G
+1.15	+30.17
FAT	\$B
-1.002	+56.10

#GAR Expectation 4915 [AMF-NHF] #N Bar Emulation EXT [AMF-NHF]
 MAF Lass E379 GAR Traveler 2421
 15339466 MAF Lass C089 #Alberda Traveler 416 [AMF-NHF]
 RRR Lindas Lass 99

CED	BE PD	WE PD	YE PD	SCROTAL	MILK						
+4	.30	+3.3	.35	+52	.26	+1.94	.34	+1.95	.29	+27	.20
%IMF	UREA	RIBFAT	RMPFAT	ADJ. HIP HT.	ACT SC	BW	ADJ. 205	ADJ. 365			
6.64	14.4	.30	.29	51.2	38.00	84	632	1200			
RATIO	123	95	79	64		102	100	100			

Dam's Production Record: BR 2-109, WR 2-117, YR 2-106, IMF 2-119, REA 2-97



Gardens Expedition – Sire of Lots 30-37.

30 MEAD EXPEDITION I232
 Birth Date: 1-30-2009 Bull 16419851 Tattoo: I232

#N Bar Emulation EXT [AMF-NHF] #Emulation N Bar 5522
 Gardens Expedition [AMF-NHF] N Bar Primrose 2424
 #12689078 Green Garden Gina 2268 S2 Gardens Transition 7205 S1
 Green Garden Gina 0261 S2

CW	SW
+12	+21.37
MARB	\$F
+1.26	+36.22
RE	\$G
-1.05	+12.34
FAT	\$B
+1.047	+35.02

#Basin Max 602C [AMF-NHF] #GT Maximum [AMF-NHF]
 Mead Lass F109 #Basin Eline Erica 315U
 15531998 #MAF Lass C081 #SAF Proton
 Indian Creek Lindas Lass 954

CED	BE PD	WE PD	YE PD	SCROTAL	MILK						
+2	.28	+3.7	.35	+50	.26	+1.97	.32	+1.51	.22	+20	.19
%IMF	UREA	RIBFAT	RMPFAT	ADJ. HIP HT.	ACT SC	BW	ADJ. 205	ADJ. 365			
4.41	14.2	.48	.52	52.5	38.00	90	708	1226			
RATIO	81	93	126	116		110	112	103			

Dam's Production Record: BR 1-110, WR 1-112, YR 1-103, IMF 1-81, REA 1-93

29 MEAD FORESIGHT I217
 Birth Date: 1-28-2009 Bull 16407979 Tattoo: I217

#Papa Forte 1921 Papa Optima 9818
 Woodhill Foresight [AMF-NHF] Papa Envious Blackbird 8832
 #13936986 Bon View Gammer 85 #Bon View Bando 598 [AMF]
 Bon View Gammer 233

CW	SW
+22	+28.45
MARB	\$F
+1.57	+31.15
RE	\$G
+1.14	+26.32
FAT	\$B
+1.027	+54.44

#Schoenes Fix It 826 [AMF-NHF] #AAR New Trend
 Thomas Ester 1536 Sky High Blackbird 4119
 13824200 #Thomas Ester 4245 [AMF-NHF] #Rito 8E8 of 5H11 Traveler [AMF-NHF]
 Thomas Trendy Ester 7446

CED	BE PD	WE PD	YE PD	SCROTAL	MILK						
+5	.29	+2.0	.36	+50	.27	+1.92	.37	+1.06	.31	+25	.22
%IMF	UREA	RIBFAT	RMPFAT	ADJ. HIP HT.	ACT SC	BW	ADJ. 205	ADJ. 365			
7.03	15.4	.56	.41	51.9	37.50	80	649	1247			
RATIO	134	104	151	103		98	104	107			

Dam's Production Record: BR 7-97, WR 7-104, YR 6-104, IMF 5-118, REA 5-96

31 MEAD EXPEDITION I120
 Birth Date: 1-12-2009 Bull 16419836 Tattoo: I120

#N Bar Emulation EXT [AMF-NHF] #Emulation N Bar 5522
 Gardens Expedition [AMF-NHF] N Bar Primrose 2424
 #12689078 Green Garden Gina 2268 S2 Gardens Transition 7205 S1
 Green Garden Gina 0261 S2

CW	SW
+6	+26.29
MARB	\$F
+1.43	+24.94
RE	\$G
+1.10	+25.03
FAT	\$B
+1.028	+39.98

#Bon View New Design 208 [AMF-NHF] #B/R New Design 036 [AMF-NHF]
 MAF Lady Ann E385 #Bon View Erica 443
 15339467 MAF Lady Ann 0373 [AMF] +GAR Consensus 3864 [AMF]
 MAF Lady Ann 6148

CED	BE PD	WE PD	YE PD	SCROTAL	MILK						
+6	.28	+1.9	.35	+43	.26	+1.83	.32	+1.57	.22	+26	.20
%IMF	UREA	RIBFAT	RMPFAT	ADJ. HIP HT.	ACT SC	BW	ADJ. 205	ADJ. 365			
5.46	17.2	.47	.59	51.9	30.00	83	693	1232			
RATIO	101	113	124	131		101	109	103			

Dam's Production Record: BR 2-99, WR 2-105, YR 1-103, IMF 1-101, REA 1-113

THE VALUE OF A REGISTERED ANGUS BULL

Buying a registered Angus bulls has several advantages that ultimately will lead to your success in the cattle business. A registration paper provides the following information:

- 1) **TITLE OF OWNERSHIP** – Owning an Angus is something to be proud of and something of value. ANGUS has become a household name and Certified Angus Beef continues to set record sales each year!
- 2) **ANGUS SOURCE ELIGIBILITY** – Utilizing a registered Angus bull allows producers the opportunity to become enrolled in AngusSource – The fastest growing Age and Source program in the world!
- 3) **VERIFIED PERFORMANCE DATA** – Over 300,000 Angus calves are registered annually with birth, weaning, yearling and ultrasound data submitted into the Angus database. All of these weights maximize the accuracy of EPDs.
- 4) **NON-STOP GENETIC ASSURANCE** – Through the Angus Association Web site, a bull's EPDs can be checked round the clock - 365 days a year, always allowing for genetic selection within your breeding program!
- 5) **BREEDER'S NAME** – Every paper includes the breeder's name and address – a stamp of approval allowing you to select genetics from reputation programs that stand behind their product!

32 MEAD EXPEDITION I044
 Birth Date: 12-31-2008 Bull 16419834 Tattoo: I044

#N Bar Emulation EXT [AMF-NHF] #Emulation N Bar 5522
 Gardens Expedition [AMF-NHF] N Bar Primrose 2424
 #12689078 Green Garden Gina 2268 S2 Gardens Transition 7205 S1
 Green Garden Gina 0261 S2

CW	SW
-1	+29.59
MARB	\$F
+1.50	+26.96
RE	\$G
+1.09	+28.35
FAT	\$B
+1.029	+36.88

#BCC Bushwacker 41-93 [AMF-NHF] #Paramont Ambush 2172 [AMF-NHF]
 Mead Pride F059 RC Anita T Bando 918903
 15531978 MAF Pride C039 #Sitz Alliance 6595 [AMF-NHF]
 MAF Pride 4009

CED	BE PD	WE PD	YE PD	SCROTAL	MILK						
+9	.29	+7	.35	+48	.26	+1.87	.34	+1.53	.27	+23	.20
%IMF	UREA	RIBFAT	RMPFAT	ADJ. HIP HT.	ACT SC	BW	ADJ. 205	ADJ. 365			
7.65	14.7	.33	.45	49.1	37.00	68	633	1140			
RATIO	141	97	87	100		84	100	95			

Dam's Production Record: BR 2-93, WR 2-107, YR 2-103, IMF 2-111, REA 2-102



Mead Expediiton I203 – Lot 33

33 **MEAD EXPEDITON I203**
 Birth Date: 1-24-2009 Bull 16419850 Tattoo: I203

#N Bar Emulation EXT [AMF-NHF]	#Emulation N Bar 5522	CW	\$W
Gardens Expedition [AMF-NHF]	N Bar Primrose 2424	+1	+26.46
#12689078 Green Garden Gina 2268 S2	Gardens Transition 7205 S1	MARB	\$F
	Green Garden Gina 0261 S2	+1.60	+26.90
		RE	\$G
#Bon View New Design 1407 [AMF-NHF]	#B/R New Design 036 [AMF-NHF]	-1.05	+26.81
Mead Princess F003	Bon View Pride 664	FAT	\$B
15531958 MAF Princess D119	#SAF Proton	+1.042	+37.37
	MAF Princess 6054		

CED	BEPD	WEPD	YEPD	SCROTAL	MILK						
+8	.29	+1.4	.35	+43	.26	+1.85	.32	+1.61	.22	+22	.20
%IMF	UREA	RIBFAT	RMPFAT	ADJ. HIP HT.	ACT SC	BW	ADJ. 205	ADJ. 365			
6.50	13.9	.41	.70	50.8	39.00	77	645	1162			
RATIO	120	91	108	156		95	102	97			

Dam's Production Record: BR 2-95, WR 2-102, YR 1-97, IMF 1-120, REA 1-91

36 **MEAD EXPEDITION I240**
 Birth Date: 1-31-2009 Bull 16419861 Tattoo: I240

#N Bar Emulation EXT [AMF-NHF]	#Emulation N Bar 5522	CW	\$W
Gardens Expedition [AMF-NHF]	N Bar Primrose 2424	+8	+21.52
#12689078 Green Garden Gina 2268 S2	Gardens Transition 7205 S1	MARB	\$F
	Green Garden Gina 0261 S2	+1.29	+30.25
		RE	\$G
#Connealy Lead On [AMF-NHF]	#Connealy Leadtime [AMF-NHF]	+1.20	+23.30
Mead Eisa Erica F117	Eligence Plus of Conanga	FAT	\$B
+15532001 Circle S Eisa Erica 6073	#N Bar Emulation EXT [AMF-NHF]	+1.009	+41.23
	Circle S Eisa Erica 067		

CED	BEPD	WEPD	YEPD	SCROTAL	MILK						
+5	.29	+2.9	.34	+42	.26	+1.88	.32	+1.39	.22	+22	.21
%IMF	UREA	RIBFAT	RMPFAT	ADJ. HIP HT.	ACT SC	BW	ADJ. 205	ADJ. 365			
4.56	14.4	.34	.39	51.5	37.00	85	618	1180			
RATIO	84	95	89	87		104	97	98			

Dam's Production Record: BR 2-102, WR 2-97, YR 1-98, IMF 1-84, REA 1-95

37 **MEAD EXPEDITION I046**
 Birth Date: 1-1-2009 Bull 16419835 Tattoo: I046

#N Bar Emulation EXT [AMF-NHF]	#Emulation N Bar 5522	CW	\$W
Gardens Expedition [AMF-NHF]	N Bar Primrose 2424	+5	+20.25
#12689078 Green Garden Gina 2268 S2	Gardens Transition 7205 S1	MARB	\$F
	Green Garden Gina 0261 S2	+1.49	+28.81
		RE	\$G
#Bon View New Design 1407 [AMF-NHF]	#B/R New Design 036 [AMF-NHF]	+1.06	+25.76
Mead Lass F011	N Bon View Pride 664	FAT	\$B
15531964 MAF Lass D114	Rito 904 of 1H1 Sasquatch [AMF]	+1.034	+40.70
	MAF Lass A157		

CED	BEPD	WEPD	YEPD	SCROTAL	MILK						
+5	.29	+2.6	.35	+38	.26	+1.85	.34	+1.0	.27	+24	.20
%IMF	UREA	RIBFAT	RMPFAT	ADJ. HIP HT.	ACT SC	BW	ADJ. 205	ADJ. 365			
5.32	14.3	.43	.61	50.7	35.00	85	618	1234			
RATIO	98	94	113	136		104	97	103			

Dam's Production Record: BR 2-101, WR 2-105, YR 2-104, IMF 1-98, REA 1-94

34 **MEAD EXPEDITION I169**
 Birth Date: 1-20-2009 Bull 16419837 Tattoo: I169

#N Bar Emulation EXT [AMF-NHF]	#Emulation N Bar 5522	CW	\$W
Gardens Expedition [AMF-NHF]	N Bar Primrose 2424	+6	+22.83
#12689078 Green Garden Gina 2268 S2	Gardens Transition 7205 S1	MARB	\$F
	Green Garden Gina 0261 S2	+1.41	+31.09
		RE	\$G
#Bon View New Design 208 [AMF-NHF]	#B/R New Design 036 [AMF-NHF]	+1.19	+24.21
Mead Toreby Evalena F086	#Bon View Erica 443	FAT	\$B
15531992 MAF Toreby Evalena B462	#SAF Proton	+1.039	+40.60
	#Maf Toreby Evalena 7165		

CED	BEPD	WEPD	YEPD	SCROTAL	MILK						
+4	.29	+2.9	.35	+45	.26	+1.90	.34	+1.01	.22	+23	.20
%IMF	UREA	RIBFAT	RMPFAT	ADJ. HIP HT.	ACT SC	BW	ADJ. 205	ADJ. 365			
5.01	16.0	.47	.56	51.7	34.00	87	656	1200			
RATIO	92	105	124	124		107	103	100			

Dam's Production Record: BR 2-107, WR 2-105, YR 2-108, IMF 2-87, REA 2-111



GAR Predestined N5905 – Sire of Lots 38-41.

35 **MEAD EXPEDITION I176**
 Birth Date: 1-22-2009 Bull 16419849 Tattoo: I176

#N Bar Emulation EXT [AMF-NHF]	#Emulation N Bar 5522	CW	\$W
Gardens Expedition [AMF-NHF]	N Bar Primrose 2424	+10	+19.92
#12689078 Green Garden Gina 2268 S2	Gardens Transition 7205 S1	MARB	\$F
	Green Garden Gina 0261 S2	+1.25	+32.26
		RE	\$G
#Bon View New Design 878 [AMF-NHF]	#B/R New Design 036 [AMF-NHF]	-1.05	+14.18
Mead Juanda F173	Bon View Gammer 85	FAT	\$B
15532021 MAF Juanda C263	#SAF Proton	+1.036	+34.37
	MAF Juanda 5018		

CED	BEPD	WEPD	YEPD	SCROTAL	MILK						
+4	.29	+3.4	.35	+42	.26	+1.90	.34	+1.48	.22	+21	.20
%IMF	UREA	RIBFAT	RMPFAT	ADJ. HIP HT.	ACT SC	BW	ADJ. 205	ADJ. 365			
4.47	14.7	.48	.47	50.2	38.00	90	629	1232			
RATIO	82	97	126	104		110	99	103			

Dam's Production Record: BR 2-108, WR 2-107, YR 2-111, IMF 2-83, REA 2-105

38 **MEAD PREDESTINED I244**
 Birth Date: 2-1-2009 Bull 16419423 Tattoo: I244

#GAR Predestined [AMF-NHF]	#B/R New Design 036 [AMF-NHF]	CW	\$W
GAR Predestined N5905 [AMF-NHF]	#GAR Ext 4206	+132	+30.85
+15283299 GAR Precision 81 [AMF-NHF]	#GAR Precision 1680 [AMC-NHC]	MARB	\$F
	GAR Prime Time 2409 [AMF-NHF]	+1.54	+40.25
		RE	\$G
#Bon View New Design 878 [AMF-NHF]	#B/R New Design 036 [AMF-NHF]	+1.33	+23.52
MAF Empress E044	Bon View Gammer 85	FAT	\$B
15079437 MAF Empress C043	#Ginger Hill 6807 Traveler 23 [RTF]	+1.045	+58.73
	Indian Creek Empress 532		

CED	BEPD	WEPD	YEPD	SCROTAL	MILK						
+9	.24	+1.2	.34	+58	.24	+1.04	.20	+1.81	.16	+29	.12
%IMF	UREA	RIBFAT	RMPFAT	ADJ. HIP HT.	ACT SC	BW	ADJ. 205	ADJ. 365			
5.18	15.9	.47	.59	51.6	40.50	80	734	1337			
RATIO	99	107	127	148		98	118	115			

Dam's Production Record: BR 2-97, WR 2-115, YR 2-107, IMF 2-116, REA 2-105
 He records the number 1 Weaning Weight in the sale!

39 MEAD PREDESTINED I325

Birth Date: 2-21-2009 Bull 16413755 Tattoo: I325

#GAR Predestined [AMF-NHF]	#B/R New Design 036 [AMF-NHF]	CW	\$W
GAR Predestined N5905 [AMF-NHF]	#+GAR Ext 4206	I+31	+29.25
+15283299	GAR Precision 81 [AMF-NHF]	MARB	\$F
	#GAR Precision 1680 [AMC-NHC]	I+.69	+39.44
	GAR Prime Time 2409 [AMF-NHF]	RE	\$G
		I+.47	+28.80
#BCC Bushwacker 41-93 [AMF-NHF]	#Paramont Ambush 2172 [AMF-NHF]	FAT	\$B
MAF Miss Marshall E094	RC Anita T Bando 918903	I+.052	+63.10
15097594	#Bon View New Design 878 [AMF-NHF]		
	MAF Miss Marshall C142		
	MAF Miss Marshall A125		

CED	BEPD	WEPD	YEPD	SCROTAL	MILK						
+7	.25	+2.5	.34	+60	.24	I+104	.20	I+.45	.11	+26	.12
%IMF	UREA	RIBFAT	RMPFAT	ADJ. HIP HT.	ACT SC	BW	ADJ. 205	ADJ. 365			
8.09	17.5	.48	.47	52.7	39.00	78	658	1304			
RATIO	148	114	126	121		98	111	110			

Dam's Production Record: BR 3-100, WR 3-104, YR 2-112, IMF 2-118, REA 2-117
A breed changer, recording the highest %IMF and UREA measurements of all Angus bulls!

40 MEAD PREDESTINED I321

Birth Date: 2-19-2009 Bull 16413753 Tattoo: I321

#GAR Predestined [AMF-NHF]	#B/R New Design 036 [AMF-NHF]	CW	\$W
GAR Predestined N5905 [AMF-NHF]	#+GAR Ext 4206	I+24	+31.23
+15283299	GAR Precision 81 [AMF-NHF]	MARB	\$F
	#GAR Precision 1680 [AMC-NHC]	I+.51	+38.41
	GAR Prime Time 2409 [AMF-NHF]	RE	\$G
		I+.35	+26.37
#Bon View New Design 208 [AMF-NHF]	#B/R New Design 036 [AMF-NHF]	FAT	\$B
MAF Bourbon E084	#Bon View Erica 443	I+.035	+57.28
15095679	#MAF Black Bourbon C024		
	#GDAR Traveler 044 [AMF-NHF]		
	MAF Black Bourbon 0055		

CED	BEPD	WEPD	YEPD	SCROTAL	MILK						
+8	.24	+2.1	.34	+60	.24	I+103	.20	I+.20	.11	+32	.12
%IMF	UREA	RIBFAT	RMPFAT	ADJ. HIP HT.	ACT SC	BW	ADJ. 205	ADJ. 365			
5.64	16.5	.48	.43	51.2	37.00	78	707	1289			
RATIO	103	108	126	110		98	119	108			

Dam's Production Record: BR 2-96, WR 2-114, YR 2-107, IMF 2-101, REA 2-100

41 MEAD PREDESTINED I250

Birth Date: 2-5-2009 Bull 16413751 Tattoo: I250

#GAR Predestined [AMF-NHF]	#B/R New Design 036 [AMF-NHF]	CW	\$W
GAR Predestined N5905 [AMF-NHF]	#+GAR Ext 4206	I+29	+27.92
+15283299	GAR Precision 81 [AMF-NHF]	MARB	\$F
	#GAR Precision 1680 [AMC-NHC]	I+.74	+37.31
	GAR Prime Time 2409 [AMF-NHF]	RE	\$G
		I+.29	+29.15
+Wulfs Ext 6106	#N Bar Emulation EXT [AMF-NHF]	FAT	\$B
MAF Rito E179	Wulfs Erica Dianna C116	I+.040	+62.46
+15094514	#+Double Creek Reto 908G		
	#B/R New Design 036 [AMF-NHF]		
	+DAR Rito Bandolier 6100		

CED	BEPD	WEPD	YEPD	SCROTAL	MILK						
+7	.24	+2.1	.34	+55	.24	I+100	.20	I+.11	.18	+25	.12
%IMF	UREA	RIBFAT	RMPFAT	ADJ. HIP HT.	ACT SC	BW	ADJ. 205	ADJ. 365			
6.74	15.2	.34	.50	51.7	36.00	87	680	1270			
RATIO	129	103	92	125		107	109	109			

Dam's Production Record: BR 2-104, WR 2-104, YR 2-103, IMF 2-129, REA 2-98



Sitz Alliance 6595 – Sire of Lots 42-46.

42 MEAD ALLIANCE I210

Birth Date: 1-26-2009 Bull 16414417 Tattoo: I210

#Sitz Traveler 8180 [AMF-NHF]	#GDAR Traveler 71 [AMF-NHF]	CW	\$W
Sitz Alliance 6595 [AMF-NHF]	Sitz Everelda Entense 1137	I+8	+26.56
#12310707	3 Bar Spike 1766	MARB	\$F
	#Sitz Bararamere Jet 2698	I+.17	+30.76
		RE	\$G
		I-.03	+8.53
#+Boyd New Day 8005 [AMF-NHF]	#AAR New Trend	FAT	\$B
Finks Beauty 4026 1145 ND	SVF Forever Lady 57D	I+.056	+26.61
15051204	#Finks 5522-6148		
	+Finks Beauty 1145 781 6148		
	+Finks Beauty 781 253 71		

CED	BEPD	WEPD	YEPD	SCROTAL	MILK						
+4	.29	+3.2	.34	+51	.26	I+92	.35	I+1.06	.24	+27	.21
%IMF	UREA	RIBFAT	RMPFAT	ADJ. HIP HT.	ACT SC	BW	ADJ. 205	ADJ. 365			
4.30	13.8	.47	.42	51.9	40.00	85	662	1214			
RATIO	82	93	127	105		105	106	104			

Dam's Production Record: BR 3-101, WR 3-102, YR 3-99, IMF 3-91, REA 3-92

43 MEAD ALLIANCE I091

Birth Date: 1-8-2009 Bull 16414415 Tattoo: I091

#Sitz Traveler 8180 [AMF-NHF]	#GDAR Traveler 71 [AMF-NHF]	CW	\$W
Sitz Alliance 6595 [AMF-NHF]	Sitz Everelda Entense 1137	I+0	+26.23
#12310707	3 Bar Spike 1766	MARB	\$F
	#Sitz Bararamere Jet 2698	I+.32	+27.56
		RE	\$G
		I-.09	+17.37
Basin Expedition N189	#Gardens Expedition [AMF-NHF]	FAT	\$B
MAF Lass E159	+Basin Elmaretta 6271	I+.044	+27.13
15079071	#B/R New Design 036 [AMF-NHF]		
	#MAF Lass C128		
	#MAF Lass 3013		

CED	BEPD	WEPD	YEPD	SCROTAL	MILK						
+3	.30	+3.3	.35	+49	.26	I+88	.34	I+.90	.24	+25	.20
%IMF	UREA	RIBFAT	RMPFAT	ADJ. HIP HT.	ACT SC	BW	ADJ. 205	ADJ. 365			
4.35	15.2	.38	.43	51.8	39.50	85	621	1191			
RATIO	80	99	100	110		107	105	100			

Dam's Production Record: BR 2-106, WR 2-106, YR 2-104, IMF 2-93, REA 2-97

44 MEAD ALLIANCE I218

Birth Date: 1-28-2009 Bull 16414418 Tattoo: I218

#Sitz Traveler 8180 [AMF-NHF]	#GDAR Traveler 71 [AMF-NHF]	CW	\$W
Sitz Alliance 6595 [AMF-NHF]	Sitz Everelda Entense 1137	I+2	+26.16
#12310707	3 Bar Spike 1766	MARB	\$F
	#Sitz Bararamere Jet 155	I+.10	+21.29
		RE	\$G
		I-.06	+10.51
#White Oak Precise 6002 [AMC-NHC]	#GAR Precision 1680 [AMC-NHC]	FAT	\$B
MAF Blueblood Lady C020	Stone Gate Jessie	I+.030	+20.85
14489203	#+SAF Proton		
	MAF Blueblood Lady A015		
	DBCS Blueblood Lady C047		

CED	BEPD	WEPD	YEPD	SCROTAL	MILK						
+5	.30	+2.3	.35	+45	.26	I+80	.33	I+1.07	.24	+19	.20
%IMF	UREA	RIBFAT	RMPFAT	ADJ. HIP HT.	ACT SC	BW	ADJ. 205	ADJ. 365			
3.58	14.5	.34	.38	51.4	40.00	80	655	1140			
RATIO	68	98	92	95		98	105	98			

Dam's Production Record: BR 2-96, WR 2-86, YR 1-98, IMF 1-68, REA 1-98

45 MEAD ALLIANCE I184

Birth Date: 1-23-2009 Bull 16414416 Tattoo: I184

#Sitz Traveler 8180 [AMF-NHF]	#GDAR Traveler 71 [AMF-NHF]	CW	\$W
Sitz Alliance 6595 [AMF-NHF]	Sitz Everelda Entense 1137	I-5	+22.43
#12310707	3 Bar Spike 1766	MARB	\$F
	#Sitz Bararamere Jet 2698	I+.27	+27.06
		RE	\$G
		I-.11	+20.49
#B/R New Design 323	#B/R New Design 036 [AMF-NHF]	FAT	\$B
Finks Pride 4388 786 323	B/R Ruby of Tiffany 155	I+.013	+24.72
+15067570	#+Ideal 692 of 9J9 3134 [AMF]		
	+Finks Pride 3109 04 NT		

CED	BEPD	WEPD	YEPD	SCROTAL	MILK						
+5	.29	+2.4	.34	+40	.26	I+84	.35	I+.26	.30	+25	.22
%IMF	UREA	RIBFAT	RMPFAT	ADJ. HIP HT.	ACT SC	BW	ADJ. 205	ADJ. 365			
4.33	13.5	.28	.35	50.8	34.00	80	599	1231			
RATIO	83	91	76	88		98	96	106			

Dam's Production Record: BR 3-96, WR 3-94, YR 3-103, IMF 3-88, REA 3-88

46 MEAD ALLIANCE I075

Birth Date: 1-5-2009 Bull 16414414 Tattoo: I075

#Sitz Traveler 8180 [AMF-NHF]	#GDAR Traveler 71 [AMF-NHF]	CW	SW
Sitz Alliance 6595 [AMF-NHF]	Sitz Everelda Entense 1137	+3	+19.38
#14210707	#Sitz Barbaramere Jet 2698	MARB	\$F
	3 Bar Spike 1766	+1.10	+28.49
	#Sitz Baramere Jet 155	RE	\$G
		-0.09	+7.30
#BCC Bushwacker 41-93 [AMF-NHF]	#Paramont Ambush 2172 [AMF-NHF]	FAT	\$B
Thomas Miss Lucy 2381	RC Anita T Bando 918903	+0.047	+20.25
#14107678	#Thomas Miss Lucy 5482		
	#Rito 1B1 of 5H11 Bando [AMF-NHF]		
	Thomas Miss Lucy 1223		

CED	BEPD	WEPD	YEPD	SCROTAL	MILK						
-2	.29	+5.1	.36	+44	.27	+1.87	.36	+1.34	.29	+3.0	.22
%IMF	UREA	RIBFAT	RMPFAT	ADJ. HIP HT.	ACT SC	BW	ADJ. 205	ADJ. 365			
4.03	14.3	.29	.33	51.3	42.00	90	553	1206			
RATIO	74	93	76	85		113	93	101			

Dam's Production Record: BR 5-98, WR 5-106, YR 5-104, IMF 5-92, REA 5-98

50 MEAD PREDESTINED I079

Birth Date: 1-6-2009 Bull 16415560 Tattoo: I079

#B/R New Design 036 [AMF-NHF]	#VDAR New Trend 315 [AMF-NHF]	CW	SW
GAR Predestined [AMF-NHF]	B/R Blackcap Empress 76	+3	+23.82
#13395344	#N Bar Emulation EXT [AMF-NHF]	MARB	\$F
	+GAR 6807 Traveler 1432	+1.53	+24.78
		RE	\$G
		+1.26	+31.52
#WCC Special Design L309 [AMF-NHF]	#Bon View New Design 878 [AMF-NHF]	FAT	\$B
MAF Ballot E137	N Bar Primrose 2424	+0.022	+43.65
#15094511	Rito 904 of 1H1 Sasquatch [AMF]		
	MAF Ballot 4025		

CED	BEPD	WEPD	YEPD	SCROTAL	MILK						
+4	.29	+3.9	.35	+46	.26	+1.84	.34	+1.59	.30	+2.6	.21
%IMF	UREA	RIBFAT	RMPFAT	ADJ. HIP HT.	ACT SC	BW	ADJ. 205	ADJ. 365			
4.58	13.9	.32	.31	50.3	39.50	87	582	1030			
RATIO	87	94	86	78		107	93	88			

Dam's Production Record: BR 3-103, WR 3-98, YR 2-97, IMF 2-84, REA 2-100

47 MEAD RIGHT TIME IIII

Birth Date: 1-17-2009 Bull 16414401 Tattoo: I111

#Leachman Right Time	#N Bar Emulation EXT [AMF-NHF]	CW	SW
Hyline Right Time 338 [AMF-NHF]	Leachman Erica 0025	+23	+20.49
#13058662	Hyline Pride 265	MARB	\$F
	+Hyline SVF Traveler 0115	+1.22	+36.39
	Hyline Pride 870	RE	\$G
		+1.23	+16.44
#Bon View New Design 878 [AMF-NHF]	#B/R New Design 036 [AMF-NHF]	FAT	\$B
MAF Barbara D106	Bon View Gammer 85	+0.021	+46.41
#14755317	#MAF Barbara B018		
	#Sitz Traveler 9929		
	Missouri Barbara 260 of Maf		

CED	BEPD	WEPD	YEPD	SCROTAL	MILK						
+3	.30	+4.1	.36	+47	.26	+1.96	.36	+1.73	.32	+2.7	.21
%IMF	UREA	RIBFAT	RMPFAT	ADJ. HIP HT.	ACT SC	BW	ADJ. 205	ADJ. 365			
5.05	17.0	.33	.28	51.1	37.00	85	564	1228			
RATIO	93	112	87	62		101	89	103			

Dam's Production Record: BR 3-103, WR 3-103, YR 3-109, IMF 10-92, REA 10-99
His full brother serves as a Mead herd sire!



Boyd Pay Day 7011 – Sire of Lots 51-54.

48 MEAD RIGHT TIME II55

Birth Date: 1-18-2009 Bull 16414402 Tattoo: I155

#Leachman Right Time	#N Bar Emulation EXT [AMF-NHF]	CW	SW
Hyline Right Time 338 [AMF-NHF]	Leachman Erica 0025	+22	+28.43
#13058662	Hyline Pride 265	MARB	\$F
	+Hyline SVF Traveler 0115	+1.22	+25.60
	Hyline Pride 870	RE	\$G
		+1.18	+15.85
+Daltons Precision 1259 [AMC]	#GAR Precision 1680 [AMC-NHC]	FAT	\$B
MAF Queen Lavilla D167	OCC Blackbird 833E	+0.022	+42.89
#14755345	+GAR Consensus 3864 [AMF]		
	MAF Queen Lavilla 6029		

CED	BEPD	WEPD	YEPD	SCROTAL	MILK						
+6	.28	+2.4	.35	+49	.26	+1.86	.34	+1.26	.24	+2.4	.20
%IMF	UREA	RIBFAT	RMPFAT	ADJ. HIP HT.	ACT SC	BW	ADJ. 205	ADJ. 365			
4.81	15.8	.48	.46	52.1	41.50	81	659	1235			
RATIO	89	104	126	102		96	104	103			

Dam's Production Record: BR 2-101, WR 2-104, YR 2-100, IMF 2-103, REA 2-92

51 MEAD PAY DAY I238

Birth Date: 1-23-2009 Bull 16402702 Tattoo: I238

#Boyd New Day 8005 [AMF-NHF]	#AAR New Trend	CW	SW
Boyd Pay Day 7011 [AMF]	SVF Forever Lady 57D	+12	+22.77
#15738998	Boyd Heiress 3036 [AMF-NHF]	MARB	\$F
	#CA Future Direction 5321 [AMC-NHC]	+1.24	+27.50
	Boyd Heiress 1086	RE	\$G
		+1.15	+19.76
#Bon View New Design 878 [AMF-NHF]	#B/R New Design 036 [AMF-NHF]	FAT	\$B
MAF Pride E131	Bon View Gammer 85	+0.011	+40.29
#15079450	#BCC Bushwacker 41-93 [AMF-NHF]		
	MAF Pride B384		
	Indian Creek Pride 3100		

CED	BEPD	WEPD	YEPD	SCROTAL	MILK						
+5	.23	+3.2	.34	+44	.22	+1.86	.15	+1.07	.09	+2.9	.12
%IMF	UREA	RIBFAT	RMPFAT	ADJ. HIP HT.	ACT SC	BW	ADJ. 205	ADJ. 365			
5.55	14.1	.35	.33	50.8	34.50	85	611	1173			
RATIO	102	92	92	85		107	103	99			

Dam's Production Record: BR 3-99, WR 3-113, YR 1-99, IMF 1-102, REA 1-92

49 MEAD PREDESTINED I071

Birth Date: 1-5-2009 Bull 16415559 Tattoo: I071

#B/R New Design 036 [AMF-NHF]	#VDAR New Trend 315 [AMF-NHF]	CW	SW
GAR Predestined [AMF-NHF]	B/R Blackcap Empress 76	+1	+28.91
#13395344	#N Bar Emulation EXT [AMF-NHF]	MARB	\$F
	+GAR 6807 Traveler 1432	+1.80	+15.47
		RE	\$G
		+1.22	+39.56
SVA New Frontier 3001	#B/R New Frontier 095 [AMF-NHF]	FAT	\$B
MAF Pride E239	SVA Heiress 1103 [AMC]	+0.001	+47.61
#15084247	#SAF Proton		
	Indian Creek Pride 15Y		

CED	BEPD	WEPD	YEPD	SCROTAL	MILK						
+5	.28	+3.6	.35	+48	.25	+1.75	.34	+1.16	.24	+2.4	.19
%IMF	UREA	RIBFAT	RMPFAT	ADJ. HIP HT.	ACT SC	BW	ADJ. 205	ADJ. 365			
6.81	12.8	.21	.20	50.8	37.50	87	651	1025			
RATIO	130	86	57	50		107	104	88			

Dam's Production Record: BR 2-105, WR 2-103, YR 2-94, IMF 2-119, REA 2-100

52 MEAD PAY DAY II89

Birth Date: 1-23-2009 Bull 16402701 Tattoo: I189

#Boyd New Day 8005 [AMF-NHF]	#AAR New Trend	CW	SW
Boyd Pay Day 7011 [AMF]	SVF Forever Lady 57D	+10	+23.87
#15738998	Boyd Heiress 3036 [AMF-NHF]	MARB	\$F
	#CA Future Direction 5321 [AMC-NHC]	+1.24	+27.06
	Boyd Heiress 1086	RE	\$G
		+1.26	+21.69
#Bon View New Design 878 [AMF-NHF]	#B/R New Design 036 [AMF-NHF]	FAT	\$B
MAF Emma E040	Bon View Gammer 85	+0.009	+40.48
#15079436	#GDAR Traveler 044 [AMF-NHF]		
	MAF Emma C056		
	#ICA Miss Right Design 825		

CED	BEPD	WEPD	YEPD	SCROTAL	MILK						
+9	.23	+1.3	.33	+40	.22	+1.84	.15	+1.41	.09	+2.6	.11
%IMF	UREA	RIBFAT	RMPFAT	ADJ. HIP HT.	ACT SC	BW	ADJ. 205	ADJ. 365			
5.26	16.5	.36	.42	51.3	38.00	83	623	1172			
RATIO	100	111	97	105		102	100	101			

Dam's Production Record: BR 2-100, WR 2-103, YR 2-103, IMF 2-100, REA 2-106

53

MEAD PAY DAY I288

Birth Date: 2-10-2009

Bull 16402707

Tattoo: I288

Boyd Pay Day 7011 [AMF] 15738998	#Boyd New Day 8005 [AMF-NHF]	#AAR New Trend	CW	SW
	SVF Forever Lady 57D		+17	+24.00
MAF Protet E068 15095678	Boyd Heiress 3036 [AMF-NHF]	#CA Future Direction 5321 [AMC-NHC] Boyd Heiress 1086	MARB	SF
			+38	+30.25
	#DHD Traveler 6807 [AMF-NHF]	#QAS Traveler 23-4 [AMF-NHF]	RE	SG
	#MAF Protet C100 [AMF]	#Bemindful Maid DHD 0807	+10	+24.83
		#Bon View Bando 598 [AMF] +Circle A Protet 1064 [AMF]	FAT	SB
			-003	+49.67

CED	BEPD	WEPD	YEPD	SCROTAL	MILK						
+9	.24	+1.3	.34	+42	.22	+1.88	.16	+1.52	.14	+26	.12
%IMF	UREA	RIBFAT	RMPFAT	ADJ. HIP HT.	ACT SC	BW	ADJ. 205	ADJ. 365			
6.82	14.4	.36	.31	51.9	39.00	78	601	1219			
RATIO	125	94	95	79		98	101	102			

Dam's Production Record: BR 3-100, WR 3-105, YR 3-105, IMF 3-107, REA 3-98

54

MEAD PAY DAY I268

Birth Date: 2-5-2009

Bull 16402705

Tattoo: I268

Boyd Pay Day 7011 [AMF] 15738998	#Boyd New Day 8005 [AMF-NHF]	#AAR New Trend	CW	SW
	SVF Forever Lady 57D		+15	+23.66
Thomas Miss Liberty 2589 #14119218	Boyd Heiress 3036 [AMF-NHF]	#CA Future Direction 5321 [AMC-NHC] Boyd Heiress 1086	MARB	SF
			+30	+25.85
	#Papa Durabull 9805	#Scotch Cap [AMF-NHF]	RE	SG
	Thomas Miss Liberty 5052	#Envious Blackbird DHD 3811	+12	+18.39
		#Emulation N Bar 5522	FAT	SB
		Thomas Miss Liberty 3415	+031	+40.94

CED	BEPD	WEPD	YEPD	SCROTAL	MILK						
+11	.22	+4	.33	+38	.22	+1.82	.17	+1.51	.16	+24	.13
%IMF	UREA	RIBFAT	RMPFAT	ADJ. HIP HT.	ACT SC	BW	ADJ. 205	ADJ. 365			
5.55	14.5	.35	.53	50.7	37.00	70	554	1183			
RATIO	102	95	92	136		88	93	99			

Dam's Production Record: BR 6-99, WR 6-106, YR 6-106, IMF 6-96, REA 6-101

55

MEAD RIGHT ON I348

Birth Date: 2-23-2009

Bull 16402709

Tattoo: I348

Circle S Right On 4074 15073163	#Hyline Right Time 338 [AMF-NHF]	#Leachman Right Time	CW	SW
	Hyline Pride 265		+13	+31.63
Finks Beauty 4037 1144 ND 15051213	Circle S Eisa Erica 2072	#Rito 616 of 4B20 6807 [AMF-NHF] Circle S Eisa Erica 6073	MARB	SF
			+34	+22.31
	#Boyd New Day 8005 [AMF-NHF]	#AAR New Trend	RE	SG
	+Finks Beauty 1144 781 6148	SVF Forever Lady 57D	+13	+22.61
		#Finks 5522-6148	FAT	SB
		+Finks Beauty 781 253 71	+014	+43.01

CED	BEPD	WEPD	YEPD	SCROTAL	MILK						
+8	.23	+1.4	.33	+50	.24	+1.83	.24	+1.23	.16	+30	.12
%IMF	UREA	RIBFAT	RMPFAT	ADJ. HIP HT.	ACT SC	BW	ADJ. 205	ADJ. 365			
6.20	15.6	.39	.44	51.3	34.50	80	704	1163			
RATIO	114	103	103	98		96	111	97			

Dam's Production Record: BR 3-98, WR 3-115, YR 2-103, IMF 2-112, REA 2-108



Basin Expedition N189 — Sire of Lots 56-59.

56

MEAD EXPEDITION I276

Birth Date: 2-7-2009

Bull 16402706

Tattoo: I276

Basin Expedition N189 14385172	#Gardens Expedition [AMF-NHF]	#N Bar Emulation EXT [AMF-NHF]	CW	SW
	+Basin Elmaretta 6271	Green Garden Gina 2268 S2	+7	+25.39
Mead Princess F062 15531979		#Basin Rainmaker 814Z [AMF] #Basin Elmaretta 1377	MARB	SF
			+33	+26.20
	#OCC Great Plains 943G [AMF-NHF]	#N Bar Emulation EXT [AMF-NHF]	RE	SG
	MAF Princess D120	Dixie Erica of CH 1019	+11	+23.62
		TC Foreman 016	FAT	SB
		Weikers Princess L21	+010	+39.71

CED	BEPD	WEPD	YEPD	SCROTAL	MILK						
+2	.27	+3.5	.35	+50	.25	+1.87	.29	+1.53	.14	+16	.14
%IMF	UREA	RIBFAT	RMPFAT	ADJ. HIP HT.	ACT SC	BW	ADJ. 205	ADJ. 365			
5.24	15.2	.35	.41	50.8	39.00	93	684	1188			
RATIO	97	100	92	91		114	108	99			

Dam's Production Record: BR 1-114, WR 1-108, YR 1-99, IMF 1-97, REA 1-100

57

MEAD EXPEDITION I292

Birth Date: 2-12-2009

Bull 16402708

Tattoo: I292

Basin Expedition N189 14385172	#Gardens Expedition [AMF-NHF]	#N Bar Emulation EXT [AMF-NHF]	CW	SW
	+Basin Elmaretta 6271	Green Garden Gina 2268 S2	+18	+23.86
Mead Queen Lavilla F105 15531996		#Basin Rainmaker 814Z [AMF] #Basin Elmaretta 1377	MARB	SF
			+74	+30.93
	#Bon View New Design 208 [AMF-NHF]	#B/R New Design 036 [AMF-NHF]	RE	SG
	MAF Queen Lavilla C131	#Bon View Erica 443	-02	+30.51
		#Ginger Hill 6807 Traveler 23 [RTF] MAF Queen Lavilla A059	FAT	SB
			+014	+56.37

CED	BEPD	WEPD	YEPD	SCROTAL	MILK						
+1	.27	+3.7	.35	+48	.25	+1.91	.31	+1.21	.20	+23	.14
%IMF	UREA	RIBFAT	RMPFAT	ADJ. HIP HT.	ACT SC	BW	ADJ. 205	ADJ. 365			
7.52	15.1	.34	.39	52.4	40.00	95	688	1304			
RATIO	139	99	89	87		116	109	109			

Dam's Production Record: BR 2-110, WR 2-112, YR 2-108, IMF 2-117, REA 2-97

58

MEAD EXPEDITION I261

Birth Date: 2-4-2009

Bull 16402704

Tattoo: I261

Basin Expedition N189 14385172	#Gardens Expedition [AMF-NHF]	#N Bar Emulation EXT [AMF-NHF]	CW	SW
	+Basin Elmaretta 6271	Green Garden Gina 2268 S2	+2	+30.10
Mead Miss Marshall F122 15532002		#Basin Rainmaker 814Z [AMF] #Basin Elmaretta 1377	MARB	SF
			+41	+19.60
	#GAR Expectation 4915 [AMF-NHF]	#N Bar Emulation EXT [AMF-NHF]	RE	SG
	MAF Miss Marshall C142	GAR Traveler 2421	+01	+24.59
		#Bon View New Design 878 [AMF-NHF] MAF Miss Marshall A125	FAT	SB
			+023	+34.52

CED	BEPD	WEPD	YEPD	SCROTAL	MILK						
+8	.27	+1.5	.35	+47	.25	+1.79	.31	+1.23	.20	+19	.14
%IMF	UREA	RIBFAT	RMPFAT	ADJ. HIP HT.	ACT SC	BW	ADJ. 205	ADJ. 365			
5.67	14.1	.36	.48	49.7	32.00	76	623	1050			
RATIO	105	93	95	107		94	98	88			

Dam's Production Record: BR 2-99, WR 2-104, YR 2-94, IMF 2-99, REA 2-94

59

MEAD EXPEDITION I251

Birth Date: 2-2-2009

Bull 16402703

Tattoo: I251

Basin Expedition N189 14385172	#Gardens Expedition [AMF-NHF]	#N Bar Emulation EXT [AMF-NHF]	CW	SW
	+Basin Elmaretta 6271	Green Garden Gina 2268 S2	+5	+22.52
MAF Toreby Queen E305 15363259		#Basin Rainmaker 814Z [AMF] #Basin Elmaretta 1377	MARB	SF
			+25	+24.78
	#OCC Emblazon 854E	#DHD Traveler 6807 [AMF-NHF]	RE	SG
	MAF Toreby Queen A335	Dixie Erica of CH 1019	-01	+20.45
		#Basin Max 602C [AMF-NHF] #Maf Toreby Queen	FAT	SB
			+001	+34.36

CED	BEPD	WEPD	YEPD	SCROTAL	MILK						
+3	.26	+3.2	.33	+46	.24	+1.84	.29	+1.01	.14	+12	.13
%IMF	UREA	RIBFAT	RMPFAT	ADJ. HIP HT.	ACT SC	BW	ADJ. 205	ADJ. 365			
5.37	14.7	.31	.30	50.6	35.00	89	616	1152			
RATIO	99	97	82	67		108	97	96			

Dam's Production Record: BR 1-108, WR 1-97, YR 1-96, IMF 1-97, REA 1-97

Charolais

64 MEAD GRIDMAKER I048
 Birth Date: 1-1-2009 Bull M774880 Tattoo: I048

M6 Grid Maker 104 PET M633377	WCR Sir Tradition 066 VCR Miss Mac IV 317	WCR Sir Tradition 4402 Ideal 809 45 Of 25 WCR Sir FA Mac 2244 VCR Miss Duchess 113 PLD	%IMF 3.7 99
			UREA 18.55 112
			RIBFAT .27 106
			RMPFAT .25 104
PF MF Esmirelda 1131 P F930526	PF Impressed 620 P ET PF Esmirelda 607 P	JWK Impressive D040 ET Miss KC Crocus 904 Poll LDL Blanco L379 P JF Esmirelda 607	

CED	BEPD	WEPD	YEPD	SCROTAL	MILK					
-1.8 BK	4.4 BK	35 BK	64 BK	0.7 PE	10 BK					
BW	ADJ 205 RATIO	ADJ 365 RATIO	HIP HT	ADJ. SC	CW	REA	FAT	MARB		
109	728	107	1325	107	54.5	38.49	17	0.52	-0.015	0.07

He records the number 1 UREA of the entire bull sale!

68 MEAD WYOMING WIND I018
 Birth Date: 12-29-2008 Bull EM775753 Tattoo: I018

LT Wyoming Wind 4020 PLD M411450	Schurrtop 5627 LT Chap's Lady 2170P	WCR Sir Duke 783 Miss Sugar Valley 908 LT Unlimited Chaps 0109 LT Prairie Maiden 8095	%IMF 4.1 100
			UREA 16.57 100
			RIBFAT .38 100
			RMPFAT .29 100
JWK Pamela J041 ET F841822	ASC Eliminator 032 JWK Pamela E167 ET	HCR Exonerator Polled Miss HCR Mac 2308 LHD Ali Mark T214 HBR Lady Performer 934 P	

CED	BEPD	WEPD	YEPD	SCROTAL	MILK					
6.0 PE	0.0 BK	27 BK	42 BK	1.3 PE	5 BK					
BW	ADJ 205 RATIO	ADJ 365 RATIO	HIP HT	ADJ. SC	CW	REA	FAT	MARB		
78	611	100	1201	100	52	38.68	10	0.34	0.009	-0.10

He is a full brother to the 2008 Missouri State Fair Reserve Heifer Calf Champion.

65 MEAD GRIDMAKER I087
 Birth Date: 1-7-2009 Bull M774881 Tattoo: I087

M6 Grid Maker 104 PET M633377	WCR Sir Tradition 066 VCR Miss Mac IV 317	WCR Sir Tradition 4402 Ideal 809 45 Of 25 WCR Sir FA Mac 2244 VCR Miss Duchess 113 PLD	%IMF 3.7 101
			UREA 16.81 101
			RIBFAT .24 94
			RMPFAT .23 95
MF MS Impressive B221 F951677	LHD Cigar E46 Orr's MS Impressive Twin	LHD Mr Perfect Y416 LHD MS Classic Bell X613 JWK Impressive D040 ET Orr's Lady Summit 17P	

CED	BEPD	WEPD	YEPD	SCROTAL	MILK					
9.4 BK	-1.9 BK	20 BK	40 BK	0.6 PE	14 BK					
BW	ADJ 205 RATIO	ADJ 365 RATIO	HIP HT	ADJ. SC	CW	REA	FAT	MARB		
80	591	87	1185	96	52	32.71	19	0.53	-0.018	-0.01

69 MEAD KOJACK I328
 Birth Date: 2-19-2009 Bull M774884 Tattoo: I328

Baldridge Kojack 29K M602060	Baldridge Fasttrack 82F Baldridge Elvira 95H	LT Unlimited Ease 9108 Baldridge Sweetheart 53D VCR Sir Duke 914 PLD Baldridge Elvira 81D	%IMF 3.6 98
			UREA 15.26 92
			RIBFAT .28 110
			RMPFAT .26 108
JWK Pamela J041 ET F841822	ASC Eliminator 032 JWK Pamela E167 ET	HCR Exonerator Polled Miss HCR Mac 2308 LHD Ali Mark T214 HBR Lady Performer 934 P	

CED	BEPD	WEPD	YEPD	SCROTAL	MILK					
9.1 BK	-1.5 BK	30 BK	46 BK	0.2 PE	17 BK					
BW	ADJ 205 RATIO	ADJ 365 RATIO	HIP HT	ADJ. SC	CW	REA	FAT	MARB		
94	678	100	1228	99	51	38.07	10	0.16	-0.006	-0.11

66 MEAD ELIXIR I201
 Birth Date: 1-24-2009 Bull M774878 Tattoo: I201

JWK Elixir H011 ET M482808	ASC Eliminator 032 WCR Miss Duke 8714	HCR Exonerator Polled Miss HCR Mac 2308 BR Duke 261 Miss LW Paul 707	%IMF 3.5 94
			UREA 17.22 104
			RIBFAT .28 110
			RMPFAT .25 104
Mead Ashlee F560 P F1064310	RC Budsmiydad 225 Polled OW Ashlee 0063 P ET	RC Bud 04 ET Miss Showgun RC 416 VCR Sir Duke 914 PLD Lemmon Actress X140	

CED	BEPD	WEPD	YEPD	SCROTAL	MILK					
7.4 BK	-0.7 BK	24 BK	43 BK	0.5 PE	17 BK					
BW	ADJ 205 RATIO	ADJ 365 RATIO	HIP HT	ADJ. SC	CW	REA	FAT	MARB		
83	707	104	1310	106	51	38.59	15	0.10	-0.007	-0.06

His grandam is the dam of Mead RF X Factor.

70 MEAD ELIMINATOR I357
 Birth Date: 3-2-2009 Bull M774885 Tattoo: I357

Mead Eliminator G162 P M745815	ASC Eliminator 032 HPF MS Exlir 202 P	HCR Exonerator Polled Miss HCR Mac 2308 JWK Elixir H011 ET Mann's MS Ease 001	%IMF N/A N/A
			UREA N/A N/A
			RIBFAT N/A N/A
			RMPFAT N/A N/A
MR Miss FA Mac D135 F1005085	PF MF Powerball 1113 PLD JSM Miss FA Mac 920 P	PF Impressed 620 P ET PF Miss Crocus 8065 P WCR Sir Tradition 5271P JH Sabrina 909 P	

CED	BEPD	WEPD	YEPD	SCROTAL	MILK					
2.4 BK	1.0 BK	23 BK	31 BK	N/A N/A	7 BK					
BW	ADJ 205 RATIO	ADJ 365 RATIO	HIP HT	ADJ. SC	CW	REA	FAT	MARB		
98	637	94	1074	87	51	35.85	6	0.19	-0.002	-0.01

67 MEAD ELIXIR I204
 Birth Date: 1-24-2009 Bull M774882 Tattoo: I204

JWK Elixir H011 ET M482808	ASC Eliminator 032 WCR Miss Duke 8714	HCR Exonerator Polled Miss HCR Mac 2308 BR Duke 261 Miss LW Paul 707	%IMF 3.7 101
			UREA 15.36 92
			RIBFAT .25 98
			RMPFAT .25 104
Morrison's MS YL13 042 P F914134	4-L Unlimited YL13 Polled Morrison's MS Mac 842 PLD	BCR Polled Unlimited 003 HAW Charissa P465 Polled Rac Mac's Factor 171A Morrison's MS Camelot415	

CED	BEPD	WEPD	YEPD	SCROTAL	MILK					
9.5 BK	-3.1 BK	16 BK	32 BK	0.2 PE	17 BK					
BW	ADJ 205 RATIO	ADJ 365 RATIO	HIP HT	ADJ. SC	CW	REA	FAT	MARB		
83	686	101	1217	98	52	38.33	7	0.16	-0.001	-0.10



Mead RF X Factor – This many-time champion was selected through the 2008 Mead Angus Farm Performance-Tested Bull Sale.

Red Angus



5L Norseman King 2291 – Sire of Lots 71-74.



Mead Norsman King 1030 – Lot 71

73 MEAD NORSMAN KING I200

Birth Date: 1-24-2009 Bull 1312176 Tattoo: I200

VGW King Of The West VGW Ace 613
5L Norseman King 2291 VGW MT Tabitha 9633
806707 Norseman 1312 PJM 376 P J M 141
P J M Powerpoint 2009

LSF Glacier Rock A339M Glacier Logan 210
PRLP Little Rock P621 LSF Robin Hood H1369
1028246 MS NSF BLJ K384 Bieber Little John 5954
MS NEO-SHO EducatorZ797

REA
0.14 P+
MARB
0.09 P+
FAT
-0.01 P

CED	BW			WW			YW			MILK	
0	20	2.4	36	35	27	70	22	20	21		
BW	RATIO	ADJ 205	RATIO	ADJ 365	RATIO	HIP HT.	ACT. SC	ADJ IMF	RATIO	ADJ REA	RATIO
85	111	690	116	1023	104	50	37	4.01	87	12.81	87

74 MEAD NORSMAN KING I013

Birth Date: 12-28-2008 Bull 1312180 Tattoo: I013

VGW King Of The West VGW Ace 613
5L Norseman King 2291 VGW MT Tabitha 9633
806707 Norseman 1312 PJM 376 P J M 141
P J M Powerpoint 2009

BJR JR 107 LMB Johny Reb 091
JRA James 4144 BJR Tidy Bee 677-6186
972626 LSF Victoria C233 MA305 LCHMN Bullseye 1379G
Park Victoria C233

REA
0.21 P+
MARB
0.06 P+
FAT
-0.01 P

CED	BW			WW			YW			MILK	
6	20	-0.0	34	30	27	47	22	24	22		
BW	RATIO	ADJ 205	RATIO	ADJ 365	RATIO	HIP HT.	ACT. SC	ADJ IMF	RATIO	ADJ REA	RATIO
74	91	643	96	1064	95	50	37	4.24	101	14.30	99

75 MEAD DAKOTA COPPER

Birth Date: 1-12-2009 Bull 1312182 Tattoo: I124

LCHMAN Copper Rob 1204D LMAN King Rob 8621
OHRR Dakota Copper 29K Copper Lass 2392
709597 Messmer Ophelia 9502 LCC Heaven Or Bust 1000B
Nodak Lady Licorice

UBAR Grand Prix 102 LCHMN Grandcanyon 1244G
Mead Lakota F677 Forster Copprqueen 7168
1146971 Circle A Lakota 2488 BJR Monu 4X-303
BJR Lakota 677-829

REA
0.03 P
MARB
-0.16 P
FAT
0.01 P

CED	BW			WW			YW			MILK	
0	20	0.2	22	35	22	63	21	18	20		
BW	RATIO	ADJ 205	RATIO	ADJ 365	RATIO	HIP HT.	ACT. SC	ADJ IMF	RATIO	ADJ REA	RATIO
70	100	661	100	1133	100	49.5	36	4.05	N/A	15.17	N/A

- Every bull selling has been tested AMF or NHF, or their pedigree insures their status!
- All bulls have passed a Breeding Soundness Exam (BSE)!
- BVD and PI Tested FREE!
- All of the cattle selling have been through a complete vaccination program and have been treated for parasites!

71 MEAD NORSMAN KING I030

Birth Date: 12-30-2008 Bull 1312178 Tattoo: I030

VGW King Of The West VGW Ace 613
5L Norseman King 2291 VGW MT Tabitha 9633
806707 Norseman 1312 PJM 376 P J M 141
P J M Powerpoint 2009

LSF Combination A301M LCHMN Top Brass 1049H
PRLP Easybrew Combo R084 WHF Lass 27G-29J
1045197 Lone Rock Easybrew 002 FEL Heavenly Brew 7124
FEL Bitterroot 6058

REA
0.26 P+
MARB
0.08 P+
FAT
0.01 P

CED	BW			WW			YW			MILK	
1	21	2.6	36	44	28	75	23	15	22		
BW	RATIO	ADJ 205	RATIO	ADJ 365	RATIO	HIP HT.	ACT. SC	ADJ IMF	RATIO	ADJ REA	RATIO
87	109	694	104	1182	105	51	38	4.16	99	14.55	101

Daughters of Norsman King are making top young females.

72 MEAD NORSMAN KING I191

Birth Date: 1-23-2009 Bull 1312175 Tattoo: I191

VGW King Of The West VGW Ace 613
5L Norseman King 2291 VGW MT Tabitha 9633
806707 Norseman 1312 PJM 376 P J M 141
P J M Powerpoint 2009

Parkers Pride Of Rob LMAN King Rob 8621
PRLP Lolos Pride R283 JRA James 2000
1045258 LCC Lola K1096 LCHMN Bandito Tres178H
Larson Lola 376

REA
0.36 P+
MARB
0.13 P+
FAT
0.00 P

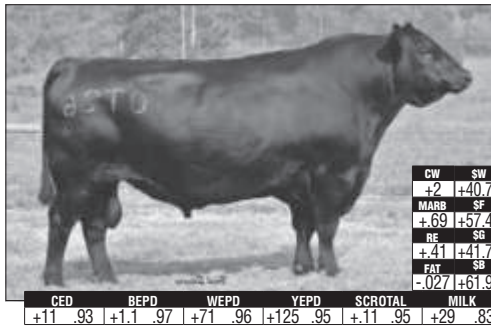
CED	BW			WW			YW			MILK	
3	20	-0.1	36	32	27	75	22	23	22		
BW	RATIO	ADJ 205	RATIO	ADJ 365	RATIO	HIP HT.	ACT. SC	ADJ IMF	RATIO	ADJ REA	RATIO
75	98	711	119	1149	117	50	37	5.22	113	16.66	113

MEAD FARMS

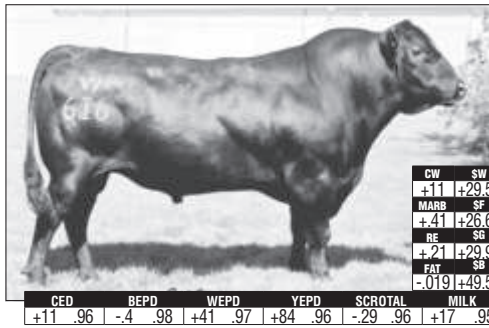
SPRING PERFORMANCE-TESTED BULL SALE

Saturday • 6 p.m. • **March 6, 2010** • Versailles, MO

76 Service-Age Bulls Sell Angus • Charolais • Red Angus



SS OBJECTIVE T510 oT26
Sons Sell!



RITO 616 of 4B20 6807
Several Sons and Grandsons Sell!



MEAD RF X FACTOR
11 Powerful Charolais Bulls Sell!



21658 Quarry Lane
Barnett, MO 65011

