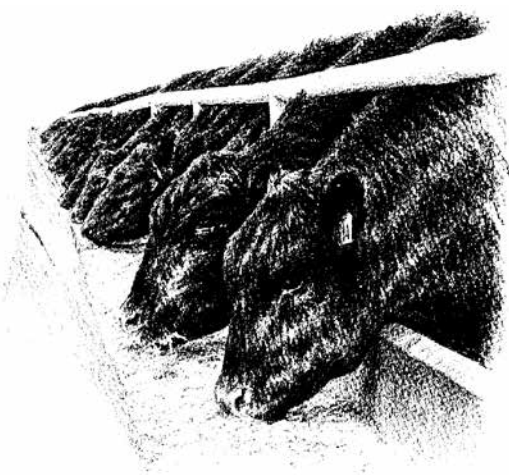
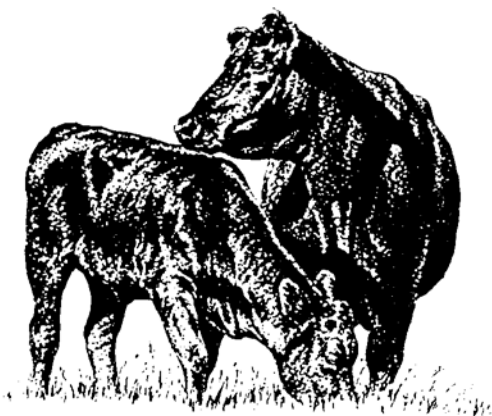


HOBBS ANGUS



Eathington Angus

Bull & Female Sale



Hobbs Angus

Saturday, March 7, 2020 • 1 P.M.
Fairview Sale Barn, Fairview, IL

HOBBS ANGUS



Thank God it's a New Year! We are excited to celebrate our Annual Bull & Female Sale with all of you. It has to be a better year and a little easier. All of the cattle came through looking very good. Cow weights are excellent with weaning and yearling weights adequate. All Bulls are sound and we plan to start using the hoof and foot EPDs in the future.

The bulls have been semen tested by Huston Vet Service and are 100 % guaranteed breeders. We will still keep any yearling bull that brings \$4,000 free of charge until May 1 and \$50 refund if you take the bull home sale day. We will keep other bulls for \$5 @ day until May 1. We will not be liable for injury or death of your purchased bull and recommend you purchase insurance. An insurance agent will be available. The fall bulls are a very stout group.

We have an excellent set of females. Yearling heifers and cows are vaccinated and ready to breed. Our cows are the right kind, many with calves. All vaccinations are up to date with Huston Vet Service. All cattle have been tested for BVD and we are a Johne's free herd.

We again like to thank our friends at the Fairview Sale Barn & IMS, Bob, Jake, Laura, Bob Garber and Ray Johnson. Proud is an understatement of how we feel to have World Champion auctioneer Brian Curless cry our sale.

I would like to thank Marcy & Juan (our dedicated help) and our family at home.

Please take time to check out the sale book and review EPDs. We give you the most accurate EPDs we can produce with the genomic test & AHIR records. Hobbs Angus and Eathington Family have done their best to provide the numbers you need for your herd.

Thank you to Kevin Eathington and his entire family for joining us in our 9th sale together.

*Yours for Better Beef,
Bud & Deb Hobbs*

As always, we are very appreciative to be a part of the Hobbs Angus annual bull and female sale. Thank you for taking the time to review this sale book and we look forward to seeing you on sale day.

At Eathington Angus, we focus on genetics that will go and work for the producer. Cattle on this operation work for us and are not pampered. As input expenses keep increasing, we decided not to offer creep feed to our calves because we wanted to see how our cattle will perform without added protein. We were extremely pleased with how our calves weaned this year, especially after the tough winter and spring that we all experienced. We feel these bulls will go and work in anyone's operation. This year we will be offering full brothers in the sale as we have started to increase our embryo work.

If you are looking to create a more consistent feeder calf crop, then you may want to consider purchasing a set of brothers.

This year we are offering the best set of bred heifers that Eathington Angus has ever offered for sale. A select few of the bred heifers are AI. However, with the spring of 2019 being so awful, we ended up using our Barstow Cash calving ease bull to finish breeding the heifers. This bull has been used by us for 5 years and has worked great as a heifer bull. You can be assured that these heifers are bred to calving ease genetics.

This year we will also be offering a few select cows, some with calves on the side. We decided to part with some of our children's past show heifers, as we have daughters in the heard to carry on the genetics.

We will be offering 4 show heifers this year. We feel that these heifers will compete in the show ring but in the long run, will make great additions to the herd and be the front pasture type of cows.

Our vaccination program is the recommendation of the Huston Vet Clinic. If you have any questions prior to the sale, please contact the Hobbs or us.

Kevin & Patty Eathington

HOBBS ANGUS



Eathington Angus Bull & Female Sale

Saturday, March 7, 2020 • 1 P.M.
Fairview Sale Barn, Fairview, IL 61432

SALE DAY PHONE: (309) 778-2225

AUCTIONEER: Brian Curless (217) 242-1665
World Champion Auctioneer



SALE CONSULTANTS:

Casey Jentz (608) 234-1998 - Jake Fidler (309) 224-2226

SALE SITE:

Fairview Sale Barn, Fairview, Il.

Take Rt. 116 to Rt. 97

From Galesburg: Approximately 36-40 miles southeast on Rt. 97.

For assistance with travel arrangements and accommodation, contact Bud or Deb at 309-772-3747 or 309-221-0063

HOBBS ANGUS and **EATHINGTON ANGUS** will retain one-third interest in all bulls selling.

TERMS & CONDITIONS: Cattle will sell under the suggested Terms & Conditions of the American Angus Association (http://www.angus.org/Pub/suggested_sale_terms.pdf). Visit the Angus Journal® Web site, www.angus.org, and view this sale book online.

SALE DAY MEAL WILL BE PROVIDED

HOBBS ANGUS

22330 E. 1700th Street

Good Hope, IL 61438

309-772-3747

budhobbs@outlook.com

EATHINGTON ANGUS

6707 E. Hart Lane

Avon, IL 61415

309-231-3384

eathingtonangus@gmail.com

ANGUS MEDIA Visit the *Angus Journal* Web site, www.angus.org and view this sale book online. References: American Angus Association®, AHIR®, AngusSource®, CAB®, Pathfinder®. EPDs current as of Jan. 29, 2020. Updated EPDs can be viewed online at www.angus.org.

BULLS

Hobbs Acclaim 5208-2G



Birth Date: 1-13-2019

Bull 19553254

Tattoo: 2G

Jindra Acclaim
*17972810

*Jindra 3rd Dimension

+Jindra Blackbird Lassy 1111

#* Jindra Double Vision

Jindras Sapphire J 417

#* Connealy Impression

Jindras Enchantress J 102

ANGUS
Powered by Neogen GenScan

MCATL By-Product 269-1394

#* Connealy Final Product

MA Blackcap Missie 1394-936

EXG RS First Rate S903 R3

Dameron Northern Miss 3114

Dameron Northern Miss 5208

19210824

+Dameron Northern Miss 39119

CW	SW
+78	+79
MARB	\$F
+ .40	+138
RE	\$G
+ .81	+48
FAT	\$B
-.030	+187

CED		BEPD		WEPD		YEPD		MILK	
-2	.31	+4.1	.45	+82	.39	+153	.35	+34	.28
BW		WW		YW					
64	87	574	98	1243	105				



Hobbs Acclaim 5208-3G



Hobbs Acclaim 5208-3G

Birth Date: 1-13-2019

Bull 19553253

Tattoo: 3G

Jindra Acclaim
*17972810

*Jindra 3rd Dimension

+Jindra Blackbird Lassy 1111

#* Jindra Double Vision

Jindras Sapphire J 417

#* Connealy Impression

Jindras Enchantress J 102

ANGUS
Powered by Neogen GenScan

MCATL By-Product 269-1394

#* Connealy Final Product

MA Blackcap Missie 1394-936

EXG RS First Rate S903 R3

Dameron Northern Miss 3114

Dameron Northern Miss 5208

19210824

+Dameron Northern Miss 39119

CW	SW
+53	+77
MARB	\$F
+ .41	+96
RE	\$G
+ .38	+40
FAT	\$B
-.004	+137

CED		BEPD		WEPD		YEPD		MILK	
+3	.32	+2.4	.46	+61	.40	+107	.36	+39	.29
BW		WW		YW					
72	96	N/A	N/A	1169	100				



Erin Curley at the 2019 National Junior Angus Show.



Hobbs Acclaim SSD-16G



Hobbs Acclaim 55D-16G

Birth Date: 1-22-2019

Bull 19552065

Tattoo: 16G

*Jindra 3rd Dimension

#* Jindra Double Vision

Jindras Sapphire J 417

#* Connealy Impression

Jindras Enchantress J 102

#* Koupals B&B Identity

#Moore Bando 1961 509

Connealy Impression 6133

#Hobbs Edella Ann 55u-50Y

CW	\$W
+43	+70
MARB	\$F
+.77	+103
RE	\$G
+.36	+57
FAT	\$B
+.007	+160

Jindra Acclaim
*17972810

+Jindra Blackbird Lassy 1111



Moore ID 709

Hobbs Edella Ann 10A-55D

Hobbs Edella Ann 50Y-10A

18608397

CED		BEPD		WEPD		YEPD		MILK	
+12	.34	-2.0	.53	+58	.46	+110	.41	+32	.30
BW		WW		YW					
70	88	599	102	1124	95				



Hobbs Wake Up 48E-18G

Birth Date: 1-23-2019

Bull 19552066

Tattoo: 18G

#SydGen Contact

#+SAF Connection

+SAF Forever Lady 0020

#* SydGen 1407 Corona 2016

+SAF Forever Lady 8292

CW	\$W
+36	+74
MARB	\$F
+.83	+63
RE	\$G
+.53	+64
FAT	\$B
-.012	+127

SydGen Wake Up Call 9446
+*16388600

SydGen Forever Lady 4087



Moore ID 709

Hobbs Izzy 1Y-48E

Hobbs Izzy 6009-1Y

18941631

CED		BEPD		WEPD		YEPD		MILK	
+13	.34	-.2	.52	+56	.45	+103	.40	+37	.29
BW		WW		YW					
70	94	637	104	1250	102				



Anna Curley at the 2019 National Junior Angus Show.



Hobbs Boulder 96E-104G [MIF]

Birth Date: 3-16-2019

Bull 19575559

Tattoo: 104G

Hobbs Boulder
*18941430

Connealy Boulder 5600
28B-96E
McEwen Edella Ann 55U-28B

#*Musgrave Boulder
Happy Mae of Conanga 225
#*Connealy Final Product
Hobbs Edella Ann104S-H55U

Hobbs Bala Bell
+17064701

#*Connealy Onward
577-49Y
#Bala Bell 577 TM

#Connealy Lead On
Altune of Conanga 6104
MA Marriott 205
Wilt DC Bala Bell 113

CW	\$W
I-36	+63
MARB	\$F
I+.31	+81
RE	\$G
I+.45	+35
FAT	\$B
I+.008	+117

CED		BEPD		WEPD		YEPD		MILK	
I+4	.05	I+2.7	.05	I+58	.05	I+103	.05	I+31	.05
BW		WW		YW					
N/A	N/A	N/A	N/A	N/A	N/A	N/A	N/A	N/A	N/A



Hobbs Dameron 3460-101G [OHF]

Birth Date: 3-10-2019

Bull 19575578

Tattoo: 101G

Hobbs Boulder
*18941430

Connealy Boulder 5600
28B-96E
McEwen Edella Ann 55U-28B

#*Musgrave Boulder
Happy Mae of Conanga 225
#*Connealy Final Product
Hobbs Edella Ann104S-H55U

ANGUS
Powered by Angus Genetics

*Dameron First Class

EXG RS First Rate S903 R3
Dameron Northern Miss 3114
#Connealy Danny Boy
#BT Blackbird 352L

Dameron Blackbird
+17658912

*BT Blackbird 194R

CW	\$W
+62	+69
MARB	\$F
+32	+116
RE	\$G
+68	+39
FAT	\$B
+004	+155

CED		BEPD		WEPD		YEPD		MILK	
-3	.29	+6.1	.51	+72	.43	+122	.34	+29	.27
BW		WW		YW					
100	120	633	108	N/A	N/A	N/A	N/A	N/A	N/A



Hobbs Acclaim 184-28G



Hobbs Acclaim 184-28G [DDF]

Birth Date: 1-27-2019

Bull *19552067

Tattoo: 28G

Jindra Acclaim
*17972810

*Jindra 3rd Dimension
+Jindra Blackbird Lassy 1111

#*Jindra Double Vision
Jindras Sapphire J 417
#*Connealy Impression
Jindras Enchantress J 102

ANGUS
Powered by Angus Genetics

#PVF ALL PAYDAY 729

SAV Payroll 5281
PVF Blackbird 201
#Leachman Saugahatchee 3000C
Star Diva Bardot 488

Dameron Bardot 184
+*17017578

+Dameron Bardot 689

CW	\$W
+66	+63
MARB	\$F
+57	+137
RE	\$G
+61	+53
FAT	\$B
-.023	+191

CED		BEPD		WEPD		YEPD		MILK	
+3	.32	+1.5	.51	+63	.44	+128	.39	+32	.30
BW		WW		YW					
90	108	669	114	1295	109	N/A	N/A	N/A	N/A



Hobbs Prime Cut 89E - 31G



Hobbs Prime Cut 89E-31G

Birth Date: 1-28-2019

Bull 19564819

Tattoo: 31G

Vermilion Sirloin

#+*TC Franklin 619

#Vermilion Lass 8482

#HA Program 5652

#+HA Miss Blackcap 1250

HA Prime Cut 4493

*17943466

+HA Miss Blackcap 9127

ANGUS
GS
Powered by Neogen GenCoast

Connealy Boulder 5600

#*Musgrave Boulder

Happy Mae of Conanga 225

#*Connealy Final Product

Hobbs Blackcap Mary 45N-20Z

Hobbs Boulder str89E

18941647

*Hobbs Blackcap Mary 20Z-5B

CW	\$W
+53	+88
MARB	\$F
+63	+104
RE	\$G
+53	+49
FAT	\$B
+.037	+153

CED		BEPD		WEPD		YEPD		MILK	
+7	.35	+1.7	.52	+69	.45	+116	.40	+37	.29
BW			WW			YW			
77	102	709	116	1304	107				



Hobbs Top Notch 62E-32G

Birth Date: 1-28-2019

Bull 19552068

Tattoo: 32G

#SydGen Contact

#+SAF Connection

+SAF Forever Lady 0020

#*SydGen 1407 Corona 2016

+SAF Forever Lady 8292

SydGen Wake Up Call 9446

+*16388600

SydGen Forever Lady 4087

ANGUS
GS
Powered by Neogen GenCoast

Moore ID 709

#*Koupals B&B Identity

#Moore Bando 1961 509

+*Riverbend Peerless 0016

#Hobbs Maid 64P-129U

Hobbs Maid 28A-62E

18941637

Hobbs PeerlessMaid129U-28A

CW	\$W
+57	+72
MARB	\$F
+58	+108
RE	\$G
+52	+53
FAT	\$B
-.027	+161

CED		BEPD		WEPD		YEPD		MILK	
+0	.31	+4.5	.52	+64	.45	+126	.40	+46	.29
BW			WW			YW			
94	123	628	103	1297	106				



Hobbs Wake Up 130D-34G

Birth Date: 1-29-2019

Bull 19552069

Tattoo: 34G

#*Connealy Capitalist 028

#*SAV Final Answer 0035

Prides Pita of Conanga 8821

#*BC Matrix 4132

PVF All Proven Queen 503

EATHINGTON SUB-ZERO

*17379591

KP Miss Proven Queen 21

ANGUS
GS
Powered by Neogen GenCoast

Connealy Right Answer 4517

#Connealy Right Answer 746

Endora of Conanga 6358

#BCC Bushwacker 41-93

Woodhill Erica 1175-147

Hobbs Wood Erica 64L-130D

18610434

#Woodhill Erica 147-64L

CW	\$W
+17	+56
MARB	\$F
+66	+54
RE	\$G
+40	+51
FAT	\$B
+.015	+105

CED		BEPD		WEPD		YEPD		MILK	
+10	.33	-.1	.52	+46	.45	+77	.40	+28	.30
BW			WW			YW			
76	95	599	102	1087	98				



Hobbs Wake Up 31C-38G [OHF]

Birth Date: 1-30-2019

Bull 19552070

Tattoo: 38G

SydGen Wake Up
+*16388600

#SydGen Contact
Call 9446
SydGen Forever Lady 4087

#+SAF Connection
+SAF Forever Lady 0020
#*SydGen 1407 Corona 2016
+SAF Forever Lady 8292

CW	\$W
+29	+70
MARB	\$F
+76	+63
RE	\$G
+80	+65
FAT	\$B
-.023	+128

ANGUSGS
Powered by Neogen GenQuest

McEwen Edella Ann 50Y-31C
18201692

+*PA Full Power 1208
#Hobbs Edella Ann 55u-50Y

#+*PA Power Tool 9108
*Pine View SQR Rita W091
Connealy Right Answer 4517
Hobbs Edella Ann104S-H55U

CED		BEPD		WEPD		YEPD		MILK	
+15	.33	-2.4	.53	+45	.46	+82	.41	+41	.31
BW		WW		YW					
65	80	614	105	1152	104				



Hobbs Monumental 98D-40G - Lot 11



Hobbs Monumetal 98D-40G

Birth Date: 1-31-2019

Bull 19552071

Tattoo: 40G

Moore ID 709
17308146

#*Koupals B&B Identity
#Moore Bando 1961 509

#Sitz Upward 307R
#B&B Erica 605
#+*HSAF Bando 1961
#Moore Connealy VRD 869 99

CW	\$W
+46	+62
MARB	\$F
+42	+102
RE	\$G
+51	+41
FAT	\$B
+.013	+143

ANGUSGS
Powered by Neogen GenQuest

Hobbs Imperial Queen 93B-98D
18608420

Connealy Boulder 5600
+*Hobbs Imperial Queen 30M-93B

#*Musgrave Boulder
Happy Mae of Conanga 225
#Sitz Upward 307R
#Hobbs Imperial Queen290-302

CED		BEPD		WEPD		YEPD		MILK	
+12	.31	-.2	.49	+55	.42	+106	.37	+30	.28
BW		WW		YW					
65	88	633	108	1299	110				



Hobbs Moumental135U-41G

Birth Date: 1-31-2019

Bull 19552072

Tattoo: 41G

EXAR Monumental 6056B
*18379347

3F Epic 4631
*FWY 7008 of C085 4029

*Varilek Product 2010 04
Zebo Queen 1072
#*AAR Ten X 7008 SA
+*FWY Rita C085

CW	\$W
+35	+45
MARB	\$F
+34	+65
RE	\$G
+18	+32
FAT	\$B
+.015	+97

ANGUSGS
Powered by Neogen GenQuest

H&H Blackbird 8962-135U
#16200382

TC Total 634
#RH Blackbird 8962

#TC Total 410
+TC Ruby 4044
Woodhill Adjuster 307-800
Bolsens Blackbird of 0370 89

CED		BEPD		WEPD		YEPD		MILK	
+4	.33	+3.8	.54	+59	.47	+97	.42	+21	.29
BW		WW		YW					
98	119	592	101	1099	93				



Hobbs Acclaim 1654-42G

Birth Date: 2-1-2019

Bull 19552073

Tattoo: 42G

Jindra Acclaim
*17972810

*Jindra 3rd Dimension
+Jindra Blackbird Lassy 1111

#*Jindra Double Vision
Jindras Sapphire J 417
#*Connealy Impression
Jindras Enchantress J 102

CW	\$W
+35	+68
MARB	\$F
+41	+90
RE	\$G
+43	+38
FAT	\$B
+023	+129

ANGUSGS
Powered by Neogen GenCoast

MCATL By-Product 269-1394
RF SSSC Lassie Star 1654
18599653 +SSCC RF Lassie's Star 9914

#*Connealy Final Product
MA Blackcap Missie 1394-936
#Exar Lutton 1831
RF Lassie's Star 199

CED		BEPD		WEPD		YEPD		MILK	
+6	.33	+6	.51	+49	.44	+87	.36	+38	.30
BW		WW		YW					
69	87	587	96	1120	96				



Hobbs Stunner 53E-47G

Birth Date: 2-2-2019

Bull 19564820

Tattoo: 47G

Musgrave 316 Stunner
*18467508

+*LD Capitalist 316
#MCATL Blackbird 831-1378

#*Connealy Capitalist 028
LD Dixie Erica 2053
#MCATL Pure Product 903-55
MCATL Blackbird 1378-573

CW	\$W
+46	+66
MARB	\$F
+36	+101
RE	\$G
+28	+31
FAT	\$B
+048	+133

ANGUSGS
Powered by Neogen GenCoast

Hobbs Erica 33Z-53E
18941633

Moore ID 709
Hobbs Erica 64L-33Z

#*Koupals B&B Identity
#Moore Bando 1961 509
#+*Werner War Party 2417
#Woodhill Erica 147-64L

CED		BEPD		WEPD		YEPD		MILK	
+10	.36	-1.4	.53	+46	.46	+87	.40	+43	.26
BW		WW		YW					
78	104	620	101	1182	97				



Hobbs Invi1nsion 5141-54G

Birth Date: 2-6-2019

Bull 19552074

Tattoo: 54G

Panther Cr Invision 5109
*18346497

Musgrave Invision
#Rockin M Countess 936

#MCATL Pure Product 903-55
MCATL Evergreen 619-K27T
#Connealy Reflection
Rockin M Countess 718

CW	\$W
+37	+74
MARB	\$F
+59	+77
RE	\$G
+57	+51
FAT	\$B
+007	+128

ANGUSGS
Powered by Neogen GenCoast

Dameron Royal Queen 5141
+18267969

*Dameron First Class
+CL&C Royal Queen 2308

EXG RS First Rate S903 R3
Dameron Northern Miss 3114
+*Silveiras Style 9303
+Blue Ston Royal Queen 7004

CED		BEPD		WEPD		YEPD		MILK	
+2	.30	+3.2	.48	+65	.40	+109	.34	+37	.28
BW		WW		YW					
80	106	542	89	1115	96				



Hobbs I D 92S-58G [OHF]

Birth Date: 2-7-2019

Bull 19552075

Tattoo: 58G

Moore ID 709
17308146

#*Koupals B&B Identity
#Moore Bando 1961 509

#Sitz Upward 307R
#B&B Erica 605
#+*HSAF Bando 1961
#Moore Connealy VRD 869 99

CW	\$W
+22	+57
MARB	\$F
+57	+53
RE	\$G
+31	+44
FAT	\$B
+032	+97

ANGUSGS
Powered by Neogen GenCoast

Hobbs ERICA 569-92S
#15466781

#WAR Alliance 9126 6006
Hobbs Erica 569

#Sitz Alliance 6595
WAR Bando 6006 598 4053
#TC Stockman 365
Hobbs Erica H843

CED		BEPD		WEPD		YEPD		MILK	
+3	.32	+1.4	.53	+44	.46	+72	.41	+33	.31
BW		WW		YW					
80	98	620	106	1156	105				



Hobbs I D 127Y-61G [OHF]

Birth Date: 2-9-2019

Bull 19552125

Tattoo: 61G

SydGen Wake Up Call 9446
+*16388600 SydGen Forever Lady 4087

#+SAF Connection
+SAF Forever Lady 0020
#*SydGen 1407 Corona 2016
+SAF Forever Lady 8292



Connealy Impression 6133
Hobbs Blackbird 43W-127Y
16992556 Hobbs Blackbird 43S-43W

#*Connealy Impression
#Eltrine of Conanga 3832
TC Total 634
Hobbs BLACKBIRD 37N-43S

CW	SW
+49	+64
MARB	\$F
+48	+96
RE	\$G
+90	+56
FAT	\$B
-.057	+152

CED		BEPD		WEPD		YEPD		MILK	
+4	.32	+2.7	.52	+60	.46	+111	.41	+31	.31
BW			WW			YW			
90	108	536	91	1142	96				



Hobbs Invision 4196-63G

Birth Date: 2-11-2019

Bull 19552076

Tattoo: 63G

Musgrave Invision
Panther Cr Invision 5109
*18346497 #Rockin M Countess 936

#MCATL Pure Product 903-55
MCATL Evergreen 619-K27T
#Connealy Reflection
Rockin M Countess 718



+*PVF Windfall SCC 9005

#PVF ALL PAYDAY 729
Dameron PVF Proven Queen010
SAV New Year 5320
+Davis Ellen 9505

PVF Ellen 4196
18072199 +PVF Ellen 8074

CW	SW
+55	+85
MARB	\$F
+27	+95
RE	\$G
+62	+34
FAT	\$B
+0.029	+128

CED		BEPD		WEPD		YEPD		MILK	
+10	.33	+5	.55	+76	.46	+121	.39	+26	.30
BW			WW			YW			
65	80	684	112	1124	103				



Hollands I D 12E-65G

Birth Date: 2-11-2019

Bull 19552077

Tattoo: 65G

#*Connealy Black Granite
Musgrave Black Granite 316
+*18619016 +MCATL Blackcap 070-4132

#*Connealy Consensus 7229
#Eura Elga of Conanga 9109
#+*HSAF Bando 1961
+Hoff Miss Traveler 73S



Moore ID 709
Hollands ID 47A-12E
18941620 Hobbs Ruby 125X-47A

#*Koupals B&B Identity
#Moore Bando 1961 509
Connealy Impression 6133
H&H Ruby 449-125X

CW	SW
+30	+45
MARB	\$F
+59	+89
RE	\$G
+14	+45
FAT	\$B
+0.003	+134

CED		BEPD		WEPD		YEPD		MILK	
+12	.34	+2	.53	+48	.45	+86	.38	+21	.28
BW			WW			YW			
70	94	628	103	1154	106				



Hobbs I D 45X-78G

Birth Date: 2-18-2019

Bull 19552079

Tattoo: 78G

Musgrave Invision
Panther Cr Invision 5109
*18346497 #Rockin M Countess 936

#MCATL Pure Product 903-55
MCATL Evergreen 619-K27T
#Connealy Reflection
Rockin M Countess 718



#TC Total 410
Hobbs Lady 33R-45X
16781130 Hobbs Lady 371-33R

#Bon View New Design 208
+TC Erica Eileen 2047
#WAR Alliance 9126 6006
Hobbs Lady Fame 179

CW	SW
+47	+69
MARB	\$F
+75	+89
RE	\$G
+37	+54
FAT	\$B
+0.019	+143

CED		BEPD		WEPD		YEPD		MILK	
-5	.30	+4.5	.51	+71	.43	+119	.38	+30	.27
BW			WW			YW			
93	112	655	112	1226	102				



Hobbs ID 18X-80G

Birth Date: 2-18-2019

Bull 19552080

Tattoo: 80G

Moore ID 709
17308146

#*Koupals B&B Identity

#Moore Bando 1961 509

#Sitz Upward 307R

#B&B Erica 605

#*HSAF Bando 1961

#Moore Connealy VRD 869 99

Hobbs Eldorene 61N- 18X
16649014

#*TC Grid Topper 355

H&H Eldorene 218-61N

#*GAR Grid Maker

#TC Pride 8067

Gdar Russ 8346

#Hobbs Eldorene 218

CW	\$W
+18	+40
MARB	\$F
+46	+73
RE	\$G
+27	+38
FAT	\$B
+034	+111

CED		BEPD		WEPD		YEPD		MILK	
+7	.19	+2.0	.36	+43	.32	+86	.29	+27	.18
BW		WW		YW					
90	108	504	86	1158	96				



Hobbs Boulder 42D 88G



Hobbs Boulder 42D-88G

Birth Date: 2-23-2019

Bull 19552127

Tattoo: 88G

Connealy Boulder 5600
17588093

#*Musgrave Boulder

Happy Mae of Conanga 225

#*Hoover Dam

Mill Brae SA Jaunty 3079

#*Connealy Onward

#Happy Mel of Conanga 6226

ANGUSGS
Powered by Neogen GenScan

Moore ID 709

Hobbs Dawn 3712-42D

18608391

+Dameron Dawn 3712

#*Koupals B&B Identity

#Moore Bando 1961 509

*Dameron First Class

#Thomas Dawn 5455

CW	\$W
+43	+71
MARB	\$F
+83	+93
RE	\$G
+90	+69
FAT	\$B
-.016	+162

CED		BEPD		WEPD		YEPD		MILK	
+9	.32	+5	.53	+52	.45	+103	.37	+45	.28
BW		WW		YW					
77	96	609	104	1292	100				



Hobbs ID 117M-91G

Birth Date: 2-23-2019

Bull 19552081

Tattoo: 91G

Moore ID 709
17308146

#*Koupals B&B Identity

#Moore Bando 1961 509

#Sitz Upward 307R

#B&B Erica 605

#*HSAF Bando 1961

#Moore Connealy VRD 869 99

ANGUSGS
Powered by Neogen GenScan

Mc Gill Creek 9FB3 0547

Hobbs Tessie 115-1172

14264665

Hobbs Hillarys Tessie H115

#*Rito 9FB3 of 5H11 Fullback

Shawnee Teban G29-308

#DHD Traveler 6807

Hobbs Hillary H413

CW	\$W
+20	+53
MARB	\$F
+83	+53
RE	\$G
+31	+56
FAT	\$B
+037	+109

CED		BEPD		WEPD		YEPD		MILK	
+5	.31	+1.2	.53	+36	.46	+62	.41	+39	.32
BW		WW		YW					
89	108	514	88	1124	93				



Eathington Product 226F

24

Eathington Product 226F

Birth Date: 8-13-2018

Bull +*19649184

Tattoo: 226F

MCATL By-Product 269-1394
16482081

#*Connealy Final Product
MA Blackcap Missie 1394-936

*Connealy Product 568
#Ebonista of Conanga 471
#*HSAF Bando 1961
Hinds Hills Darbys 569-936

CW	\$W
+16	+47
MARB	\$F
+.49	+56
RE	\$G
+.26	+39
FAT	\$B
+.028	+95

ANGUSGS
Powered by Neogen GenesSeek

RF Barbara 1526
*18255258

+*Dameron Second Chance
+DDA Barbara 1111

EXG RS First Rate S903 R3
Dameron Northern Miss 3114
#*SAV Brilliance 8077
WCC Barbara M84

CED		BEPD		WEPD		YEPD		MILK	
+0	.28	+2.3	.45	+39	.38	+61	.33	+27	.28
BW		WW		YW					
56	100	655	100	1169	100				



Eathington Hazel Primo 238F

25

Eathington Hazel Primo 238F

Birth Date: 9-7-2018

Bull +*19623367

Tattoo: 238F

Colburn Primo 5153
+*18217480

*Dameron First Class
+*Silveiras Saras Dream 1339

EXG RS First Rate S903 R3
Dameron Northern Miss 3114
+*Silveiras Style 9303
+EXG Saras Dream S609 R3

CW	\$W
+48	+48
MARB	\$F
+.44	+105
RE	\$G
+.73	+44
FAT	\$B
+.024	+148

ANGUSGS
Powered by Neogen GenesSeek

PVF Hazel 5010
+*18248711

+*PVF Insight 0129
Yon Hazel T154

#*SAV Brilliance 8077
+*PVF Missie 790
#*GAR Grid Maker
#YON Hazel N296

CED		BEPD		WEPD		YEPD		MILK	
+3	.32	+3.5	.49	+61	.42	+101	.37	+21	.29
BW		WW		YW					
78	100	730	100	1318	100				

26

Eathington Blackbird 244F

Birth Date: 9-7-2018

Bull +19415470

Tattoo: 244F

*Dameron First Class

EXG RS First Rate S903 R3
Dameron Northern Miss 3114
#+*PVF New Horizon 001
PVF Miss Raptor 024

PVF Inauguration 6174

+*18606539 +*PVF Missie 790

+*PVF Surveillance 4129

#+BC Lookout 7024
*PVF Ellen 9100
*Dameron First Class
+PVF ALL Blackbird 8091

FCF Blackbird 662

+*18674443 +*FCF Blackbird 108

CW	\$W
I+47	+52
MARB	\$F
I+.39	+103
RE	\$G
I+.72	+44
FAT	\$B
I+.001	+147

CED		BEPD		WEPD		YEPD		MILK	
I+3	.05	I+4.5	.05	I+61	.05	I+106	.05	I+26	.05
BW		WW		YW					
87	100	N/A	N/A	1154	100				

**Eathington Blackbird 245F****27**

Eathington Blackbird 245F

Birth Date: 9-11-2018

Bull +19415471

Tattoo: 245F

*Dameron First Class

EXG RS First Rate S903 R3
Dameron Northern Miss 3114
#+*PVF New Horizon 001
PVF Miss Raptor 024

PVF Inauguration 6174

+*18606539 +*PVF Missie 790

+*PVF Surveillance 4129

#+BC Lookout 7024
*PVF Ellen 9100
*Dameron First Class
+PVF ALL Blackbird 8091

FCF Blackbird 662

+*18674443 +*FCF Blackbird 108

CW	\$W
I+47	+52
MARB	\$F
I+.39	+103
RE	\$G
I+.72	+44
FAT	\$B
I+.001	+147

CED		BEPD		WEPD		YEPD		MILK	
I+3	.05	I+4.5	.05	I+61	.05	I+106	.05	I+26	.05
BW		WW		YW					
89	100	N/A	N/A	1282	100				

28

Eathington Gal Acclaim 236F

Birth Date: 12-16-2018

Bull +*19623354

Tattoo: 236F

*Jindra 3rd Dimension

#*Jindra Double Vision
Jindras Sapphire J 417
#*Connealy Impression
Jindras Enchantress J 102

Jindra Acclaim

*17972810 +Jindra Blackbird Lassy 1111

ANGUS
Powered by Neogen GenScan

Styles Cashed In S8

#*Barstow Cash
+Styles Pride P302
*Dameron First Class
WCC Frontier Gal 39

PVF Frontier Gal 6244

+*18609251 +*EXAR Frontier Gal 1447

CW	\$W
+48	+69
MARB	\$F
+89	+112
RE	\$G
+44	+63
FAT	\$B
+016	+175

CED		BEPD		WEPD		YEPD		MILK	
+10	.33	+8	.48	+64	.41	+114	.37	+26	.30
BW		WW		YW					
78	100	N/A	N/A	1129	100				



Eathington Gal Acclaim 235F

29

Eathington Gal Acclaim 235F

Birth Date: 12-21-2018

Bull +*19623352

Tattoo: 235F

Jindra Acclaim
*17972810

*Jindra 3rd Dimension

+Jindra Blackbird Lassy 1111

ANGUSGS
Powered by Neogen GenQuest

Styles Cashed In S8

PVF Frontier Gal 6244

+*18609251

+*EXAR Frontier Gal 1447

#*Jindra Double Vision

Jindras Sapphire J 417

#*Connealy Impression

Jindras Enchantress J 102

#*Barstow Cash

+Styles Pride P302

*Dameron First Class

WCC Frontier Gal 39

CW	\$W
+79	+63
MARB	\$F
+.65	+150
RE	\$G
+.91	+61
FAT	\$B
-.023	+211

CED		BEPD		WEPD		YEPD		MILK	
+4	.34	+4.1	.49	+75	.42	+144	.38	+25	.31
BW		WW		YW					
77	100	N/A	N/A	1311	100				



Eathington Rough 211G

30

Eathington Rough 211G

Birth Date: 1-1-2019

Bull 19623173

Tattoo: 211G

Diamond in the Rough

*16608684

#Diamond Justice 901S

#Diamond Black Lady 7206

ANGUSGS
Powered by Neogen GenQuest

#TC Total 410

Dameron Bardot 0448

+17025139

Star Diva Bardot 488

#ER Justice N013

#+Eriskay of Er J238

Diamond Payweight 738N

+Diamond Black Lady M281

#Bon View New Design 208

+TC Erica Eileen 2047

#TC Dividend 963

#Star Windy Bardot 459

CW	\$W
+37	+47
MARB	\$F
+.39	+86
RE	\$G
+.53	+41
FAT	\$B
-.003	+128

CED		BEPD		WEPD		YEPD		MILK	
+2	.35	+2.4	.53	+58	.46	+99	.42	+15	.34
BW		WW		YW					
72	99	611	96	1163	97				



Eathington Primo Zero 228G

Birth Date: 1-1-2019

Bull *19621431

Tattoo: 228G

EATHINGTON SUB-ZERO

*17379591

#*Connealy Capitalist 028

KP Miss Proven Queen 21



+*Colburn Primo 5153

Eathington Miss Primo 909E

19073396

CCF Miss Blackbird 7249

#*SAV Final Answer 0035
Prides Pita of Conanga 8821
#*BC Matrix 4132
PVF All Proven Queen 503

*Dameron First Class
+*Silveiras Saras Dream 1339
#*+GAR Grid Maker
Miss Blackbird M41

CW	\$W
+26	+54
MARB	\$F
+.14	+70
RE	\$G
+.56	+26
FAT	\$B
+.037	+95

CED		BEPD		WEPD		YEPD		MILK	
+12	.36	-.2	.53	+46	.46	+82	.41	+29	.30
BW		WW		YW					
71	108	579	91	1169	98				



Eathington Turning Pt. 232G



Eathington Turning PT 232G

Birth Date: 1-1-2019

Bull *19619642

Tattoo: 232G

Stevenson Turning Point

*18434747

#*Plattermere Weigh Up K360

#*Stevenson Pride I167x



*EATHINGTON SUB-ZERO

Eathington Evas 936E

19082337

+Dameron Evas 49510

#Sitz Upward 307R
#Barbara of Plattermere 337
#+SAV Bismarck 5682
#*FSHK Pride 180

#*Connealy Capitalist 028
KP Miss Proven Queen 21
#EXAR Titlelist T011
+Exar Evas 71555

CW	\$W
+46	+58
MARB	\$F
+.42	+94
RE	\$G
+.68	+41
FAT	\$B
+.040	+134

CED		BEPD		WEPD		YEPD		MILK	
+14	.38	-1.8	.54	+55	.47	+99	.42	+21	.28
BW		WW		YW					
57	89	636	100	1161	97				



Eathington Acclaim 217G [DDF]

Birth Date: 1-1-2019

Bull 19619633

Tattoo: 217G

Jindra Acclaim

*17972810

*Jindra 3rd Dimension

+Jindra Blackbird Lassy 1111



#TC Aberdeen 759

Eathington Proven Queen 105Y

#17002806

#+PVF Proven Queen 9083

#*Jindra Double Vision
Jindras Sapphire J 417
#*Connealy Impression
Jindras Enchantress J 102

#CRA Bextor 872 5205 608
#+TC Blackbird 4034
#PVF ALL PAYDAY 729
Dameron PVF Proven Queen 907

CW	\$W
+68	+68
MARB	\$F
+.62	+124
RE	\$G
+.68	+56
FAT	\$B
-.020	+180

CED		BEPD		WEPD		YEPD		MILK	
+1	.35	+3.0	.53	+66	.46	+129	.41	+36	.32
BW		WW		YW					
80	110	762	120	1304	109				



Eathington Queen Zero 214G

34

Eathington Queen Zero 214G

Birth Date: 1-2-2019

Bull 19621429

Tattoo: 214G

EATHINGTON SUB-ZERO
*17379591

#*Connealy Capitalist 028
KP Miss Proven Queen 21

#*SAV Final Answer 0035
Prides Pita of Conanga 8821
#*BC Matrix 4132
PVF All Proven Queen 503

CW	\$W
+28	+66
MARB	\$F
+1.16	+67
RE	\$G
+40	+20
FAT	\$B
+0.080	+87

ANGUSGS
Powered by Neogen GenScan

PVF Proven Queen 6255
+18722209

+*PVF Visionary 3082
+*HOTZ Proven Queen 1328

+*PVF Insight 0129
Thomas Lucy 7360
*Dameron First Class
Dameron PVF Proven Queen 010

CED		BEPD		WEPD		YEPD		MILK	
+15	.36	-1.6	.52	+49	.45	+85	.40	+36	.30
BW		WW		YW					
71	107	752	118	1205	101				

35

Eathington Sub-zero 215G

Birth Date: 1-2-2019

Bull 19623235

Tattoo: 215G

EATHINGTON SUB-ZERO
*17379591

#*Connealy Capitalist 028
KP Miss Proven Queen 21

#*SAV Final Answer 0035
Prides Pita of Conanga 8821
#*BC Matrix 4132
PVF All Proven Queen 503

CW	\$W
+43	+67
MARB	\$F
-.34	+99
RE	\$G
+93	+9
FAT	\$B
+0.019	+109

ANGUSGS
Powered by Neogen GenScan

Eathington Erica INSIGHT926E
19074032

+*PVF Insight 0129
Eathington Erica Lookout119y

#*SAV Brilliance 8077
+*PVF Missie 790
#*BC Lookout 7024
#KP Focus ON Erica 201

CED		BEPD		WEPD		YEPD		MILK	
+17	.37	-3.3	.53	+51	.46	+90	.42	+30	.31
BW		WW		YW					
51	81	597	94	1203	101				

36

Eathington Front View 227G

Birth Date: 1-2-2019

Bull *19621430

Tattoo: 227G

EATHINGTON SUB-ZERO
*17379591

#*Connealy Capitalist 028
KP Miss Proven Queen 21

#*SAV Final Answer 0035
Prides Pita of Conanga 8821
#*BC Matrix 4132
PVF All Proven Queen 503

CW	\$W
+31	+70
MARB	\$F
+55	+69
RE	\$G
+46	+42
FAT	\$B
+0.057	+112

ANGUSGS
Powered by Neogen GenScan

PVF Frontier Gal 6244
+*18609251

Styles Cashed In S8
+*EXAR Frontier Gal 1447

#*Barstow Cash
+Styles Pride P302
*Dameron First Class
WCC Frontier Gal 39

CED		BEPD		WEPD		YEPD		MILK	
+15	.37	-1.0	.54	+60	.47	+101	.42	+29	.32
BW		WW		YW					
58	89	635	100	1262	106				



Eathington Miss Halo 230G

37

Eathington Miss Halo 230G

Birth Date: 1-3-2019

Bull *19619606

Tattoo: 230G

PVF WB Halo 5177
*18335899

+*PVF Radiance 0126
Thomas Lucy 7360

#*SAV Brilliance 8077
+*PVF Missie 790
#SAV 8180 Traveler 004
Thomas Lucy 4440

CW	\$W
+39	+76
MARB	\$F
+.29	+80
RE	\$G
+.80	+39
FAT	\$B
+.007	+120

ANGUSGS
Powered by Neogen Genoside

DDA Northern Miss 1611
*18524876

#*Barstow Cash
Barstow Queen W16
EXG RS First Rate S903 R3
Dameron Northern Miss 0109
Dameron Northern Miss 3114

CED		BEPD		WEPD		YEPD		MILK	
+16	.32	-2.3	.53	+63	.45	+108	.40	+28	.28
BW		WW		YW					
55	79	664	105	1222	103				

38

Eathington Elation Zero 233G [DDF]

Birth Date: 1-3-2019

Bull *19623233

Tattoo: 233G

EATHINGTON SUB-ZERO
*17379591

#*Connealy Capitalist 028
KP Miss Proven Queen 21

#*SAV Final Answer 0035
Prides Pita of Conanga 8821
#*BC Matrix 4132
PVF All Proven Queen 503

CW	\$W
+46	+73
MARB	\$F
+.19	+82
RE	\$G
+.41	+27
FAT	\$B
+.032	+108

ANGUSGS
Powered by Neogen Genoside

Eathington Elation 910E
*19074114

*Hoover Elation M123
#Eathington Erica Lookout 720

#*Basin Excitement
#+Pride of Ellston K68
#+BC Lookout 7024
#Eathington Erica 54v

CED		BEPD		WEPD		YEPD		MILK	
+11	.37	-.5	.54	+63	.47	+121	.42	+33	.31
BW		WW		YW					
62	96	711	112	1241	104				



Cathy Eathington as co-winner of the old-timers show-manship class at the Fulton County Fair. Also pictured are two of her grandchildren, Emma and Kyle.



Eathington Rainfall 229G

39

Eathington Rainfall 229G [DDP]

Birth Date: 1-3-2019

Bull 19623441

Tattoo: 229G

#+*Coleman Charlo 0256
SAV Rainfall 6846
 +*18578963 *SAV Blackcap May 4136

*OCC Paxton 730P
 +Bohi Abigale 6014
 #SAV 8180 Traveler 004
 #+SAV May 2397

CW	\$W
+31	+68
MARB	\$F
+22	+64
RE	\$G
+79	+35
FAT	\$B
+014	+99

ANGUSGS
Powered by Neogen GenScan

+*SCC First-N-Goal GAF 114
Dameron Bardot 49575
 +18273471 +*Dameron Bardot 9179

*Dameron First Class
 +SCC Royal Blackbird 502
 #PVF ALL PAYDAY 729
 +Dameron Bardot 689

CED		BEPD		WEPD		YEPD		MILK	
+9	.33	+1.4	.52	+60	.45	+102	.40	+28	.28
BW		WW		YW					
74	103	611	96	1201	101				

40

Eathington Donna Zero 231G

Birth Date: 1-8-2019

Bull *19623237

Tattoo: 231G

#*Connealy Capitalist 028
EATHINGTON SUB-ZERO
 +*17379591 KP Miss Proven Queen 21

*SAV Final Answer 0035
 Prides Pita of Conanga 8821
 #*BC Matrix 4132
 PVF All Proven Queen 503

CW	\$W
+34	+63
MARB	\$F
+0	+82
RE	\$G
+53	+18
FAT	\$B
+041	+100

ANGUSGS
Powered by Neogen GenScan

*EATHINGTON SUB-ZERO
Eathington Donna 915E
 19073407 Eathington Donna INSIGHT419C

#*Connealy Capitalist 028
 KP Miss Proven Queen 21
 +*PVF Insight 0129
 +*Banners Elkhorn Donna 861

CED		BEPD		WEPD		YEPD		MILK	
+18	.31	-2.6	.44	+52	.38	+95	.35	+31	.21
BW		WW		YW					
50	79	648	102	1184	99				

41

Eathington Halo 218G [DDF]

Birth Date: 1-11-2019

Bull 19619611

Tattoo: 218G

+*PVF Radiance 0126
PVF WB Halo 5177
 +*18335899 Thomas Lucy 7360

*SAV Brilliance 8077
 +*PVF Missie 790
 #SAV 8180 Traveler 004
 Thomas Lucy 4440

CW	\$W
+29	+47
MARB	\$F
+10	+71
RE	\$G
+51	+23
FAT	\$B
+037	+94

ANGUSGS
Powered by Neogen GenScan

#TC Aberdeen 759
Eathington Forever Lady 127Y
 17002771 LC RG Forever Lady

#CRA Bextor 872 5205 608
 #+TC Blackbird 4034
 #Leachman Saugahatchee 3000C
 LC CLA Forever Lady 631

CED		BEPD		WEPD		YEPD		MILK	
+8	.31	+1.0	.52	+51	.44	+83	.39	+18	.28
BW		WW		YW					
80	110	610	96	1098	92				

42

Eathington Payweight 1906

Birth Date: 1-11-2019

Bull 19416997

Tattoo: 1906

#+*Basin Payweight 006S
Basin Payweight 1682
 +*17038724 21AR O Lass 7017

#Vermilion Payweight J847
 +Basin Lucy 3829
 #HARB Pendleton 765 JH
 21AR O Lass F24A

CW	\$W
+45	+72
MARB	\$F
+60	+84
RE	\$G
+35	+42
FAT	\$B
+070	+126

ANGUSGS
Powered by Neogen GenCoast

#+*SAV Angus Valley 1867
York Farms Lucy 1355
 18018524 Voyager Lucy 310

#*SAV Iron Mountain 8066
 #+SAV May 2397
 #SAV 8180 Traveler 004
 +Champion Hill Lucy 4963

CED		BEPD		WEPD		YEPD		MILK	
+6	.34	+8	.49	+60	.42	+108	.38	+31	.33
BW		WW		YW					
78	100	621	100	1205	100				

43

Eathington Rainfall 223G

Birth Date: 1-12-2019

Bull *19619662

Tattoo: 223G

#+*Coleman Charlo 0256
SAV Rainfall 6846
 +*18578963 *SAV Blackcap May 4136

#*OCC Paxton 730P
 +Bohi Abigale 6014
 #SAV 8180 Traveler 004
 #+SAV May 2397

CW	\$W
+9	+59
MARB	\$F
+66	+40
RE	\$G
+62	+51
FAT	\$B
+041	+91

ANGUSGS
Powered by Neogen GenCoast

#+*SAV Angus Valley 1867
Eathington Maid Valley 217B
 18019097 #Eathington Maid 126Y

#*SAV Iron Mountain 8066
 #+SAV May 2397
 #*Alcoa New Standard 427
 Panther Cr P Maid 910

CED		BEPD		WEPD		YEPD		MILK	
+13	.33	-1.3	.52	+42	.45	+79	.40	+29	.27
BW		WW		YW					
77	105	597	94	1095	92				

44

Eathington Turning PT 213G

Birth Date: 1-19-2019

Bull *19619644

Tattoo: 213G

#*Plattermere Weigh Up K360
Stevenson Turning Point
 +*18434747 #+*Stevenson Pride I167x

#Sitz Upward 307R
 #Barbara of Plattermere 337
 #+SAV Bismarck 5682
 #*FSHK Pride 180

CW	\$W
+32	+67
MARB	\$F
+29	+77
RE	\$G
+70	+37
FAT	\$B
+011	+115

ANGUSGS
Powered by Neogen GenCoast

#*Connealy Final Product
Eathington Maid 806a
 17690273 #Eathington Maid 126Y

*Connealy Product 568
 #Ebonista of Conanga 471
 #*Alcoa New Standard 427
 Panther Cr P Maid 910

CED		BEPD		WEPD		YEPD		MILK	
+13	.36	-2.0	.55	+46	.48	+77	.43	+33	.31
BW		WW		YW					
77	105	656	103	1059	89				

45

Eathington Gal Acclaim 234G

Birth Date: 1-21-2019

Bull +*19623355

Tattoo: 234G

*Jindra 3rd Dimension
Jindra Acclaim
 *17972810 +Jindra Blackbird Lassy 1111

#*Jindra Double Vision
 Jindras Sapphire J 417
 #*Connealy Impression
 Jindras Enchantress J 102

CW	\$W
+60	+53
MARB	\$F
+1.05	+123
RE	\$G
+54	+72
FAT	\$B
+013	+195

ANGUSGS
Powered by Neogen GenCoast

Styles Cashed In S8
PVF Frontier Gal 6244
 +*18609251 +*EXAR Frontier Gal 1447

#*Barstow Cash
 +Styles Pride P302
 *Dameron First Class
 WCC Frontier Gal 39

CED		BEPD		WEPD		YEPD		MILK	
+8	.31	+2.2	.45	+67	.39	+127	.35	+19	.28
BW		WW		YW					
78	100	587	100	987	100				



Eathington Halo 219G

46

Eathington Halo 219G [DDF]

Birth Date: 1-30-2019

Bull 19619612

Tattoo: 219G

PVF WB Halo 5177
*18335899

+*PVF Radiance 0126
Thomas Lucy 7360

#*SAV Brilliance 8077
+*PVF Missie 790
#SAV 8180 Traveler 004
Thomas Lucy 4440

CW	\$W
+36	+47
MARB	\$F
+.07	+75
RE	\$G
+.80	+27
FAT	\$B
+.020	+103

ANGUSGS
Powered by Neogen GenScan

#PVF ALL PAYDAY 729

SAV Payroll 5281
PVF Blackbird 201
#*VDAR Lucys Boy
+PVF Proven Queen 601

PVF Proven Queen 9083

#*16416679 Dameron PVF Proven Queen 907

CED		BEPD		WEPD		YEPD		MILK	
+6	.30	+1.7	.51	+56	.44	+108	.38	+21	.28
BW		WW		YW					
77	107	677	107	1405	118				

47

Eathington Bronc 210G

Birth Date: 2-4-2019

Bull *19619587

Tattoo: 210G

Baldrige Bronc
+*18229425

*EF Commando 1366
*Baldrige Isabel Y69

#*EF Complement 8088
Riverbend Young Lucy W1470
#*Styles Upgrade J59
+Baldrige Isabel T935

CW	\$W
+38	+90
MARB	\$F
+.37	+55
RE	\$G
+.55	+38
FAT	\$B
+.024	+93

ANGUSGS
Powered by Neogen GenScan

Plainview Lutton E102

#Exar Lutton 1831
Plainview Pride C123
TC Forefront 1205
KF Evergreen Erica 1100

KA Evergreen Erica 216

+17315986 KF Evergreen Erica 4402

CED		BEPD		WEPD		YEPD		MILK	
+18	.36	-2.6	.55	+68	.48	+120	.43	+36	.34
BW		WW		YW					
60	82	601	95	1278	107				

48

Eathington Halo 220G

Birth Date: 2-4-2019

Bull *19623381

Tattoo: 220G

PVF WB Halo 5177
*18335899

+*PVF Radiance 0126
Thomas Lucy 7360

#*SAV Brilliance 8077
+*PVF Missie 790
#SAV 8180 Traveler 004
Thomas Lucy 4440

CW	\$W
+22	+45
MARB	\$F
-.05	+73
RE	\$G
+.56	+20
FAT	\$B
-.002	+94

ANGUSGS
Powered by Neogen GenScan

#SAV Prosperity 9131

#*SAV Providence 6922
#SAV Emblynette 3123
#BR Midland
VAR Forever Lady 4304

Dameron Forever Lady 298

+*17675925 +EXAR Forever Lady 9136

CED		BEPD		WEPD		YEPD		MILK	
+8	.30	+1.3	.51	+48	.44	+83	.38	+21	.27
BW		WW		YW					
80	110	559	88	1119	94				



Eathington Turning Pt. 221G - Lot 49

49

Eathington Turning PT 221G

Birth Date: 2-5-2019

Bull *19623391

Tattoo: 221G

Stevenson Turning Point
 #*Plattemere Weigh Up K360
 #*SAV Bismarck 5682
 #*FSHK Pride 180

#Sitz Upward 307R
 #Barbara of Plattemere 337
 #*SAV Final Answer 0035
 Granger Pride 275
 #+OCC Emblazon 854E
 DCC Miss Evergreen 441

CW	\$W
+56	+62
MARB	\$F
+1.16	+113
RE	\$G
+89	+38
FAT	\$B
-.035	+151

ANGUSGS
 Powered by Neogen GenCoast

Dameron Miss Evergreen 296
 #*Granger Great Falls 053
 #Dameron Evergreen 890

CED		BEPD		WEPD		YEPD		MILK	
+5	.35	+2.3	.54	+71	.47	+125	.42	+17	.30
BW		WW		YW					
81	111	654	103	1260	106				

50

Eathington Rainfall 237G

Birth Date: 2-12-2019

Bull +*19619660

Tattoo: 237G

SAV Rainfall 6846
 #*Coleman Charlo 0256
 #*SAV Blackcap May 4136

#*OCC Paxton 730P
 +Bohi Abigale 6014
 #SAV 8180 Traveler 004
 #+SAV May 2397

CW	\$W
+31	+73
MARB	\$F
+53	+76
RE	\$G
+91	+50
FAT	\$B
+0.027	+127

ANGUSGS
 Powered by Neogen GenCoast

FCF Blackbird 662
 #*PVF Surveillance 4129
 #*FCF Blackbird 108

#+BC Lookout 7024
 *PVF Ellen 9100
 *Dameron First Class
 +PVF ALL Blackbird 8091

CED		BEPD		WEPD		YEPD		MILK	
+16	.31	-.8	.46	+55	.39	+100	.34	+30	.25
BW		WW		YW					
85	100	654	100	1118	100				

BRED HEIFERS

51

Eathington Traction 209F [DDP]

Birth Date: 1-1-2018

Cow 19330430

Tattoo: 209F

JMB Traction 292
 #*Sitz Top Game 561X
 #*JMB Emulota 013

#+GDAR Game Day 449
 #Sitz Pride 88T
 #+SAV 004 Predominant 4438
 #BAR S Emulota 5426

CW	\$W
1+35	+57
MARB	\$F
1+.49	+81
RE	\$G
1+.83	+51
FAT	\$B
1-.007	+132

Eathington Powerplay 51V
 #+GAR New Design 5050
 #16479619 KP MissPower Play 15

#B/R New Design 036
 GAR Precision 706
 #+GAR Integrity
 EAF Miss Power Direction

CED		BEPD		WEPD		YEPD		MILK	
+9	.26	-.2	.37	+46	.32	+88	.23	+35	.23
BW		WW		YW					
78	100	598	97	N/A	N/A				

A.I. to 18-Million on 6/21/19



Eathington Power Sub-zero

Birth Date: 1-1-2018

Cow 19415468

Tattoo: 240F

#*Connealy Capitalist 028
EATHINGTON SUB-ZERO
*17379591 KP Miss Proven Queen 21

#*SAV Final Answer 0035
Prides Pita of Conanga 8821
#*BC Matrix 4132
PVF All Proven Queen 503

CW	\$W
I+34	+57
MARB	\$F
I+.19	+91
RE	\$G
I+.76	+34
FAT	\$B
I+.006	+125

+*Connealy Courage 25L
Eathington Powerplay 741D
18718383 #Eathington Powerplay 51V

#*Connealy Confidence 0100
Pearl Pammy of Conanga 194
#+GAR New Design 5050
KP MissPower Play 15

CED		BEPD		WEPD		YEPD		MILK	
+16	.28	-2.3	.36	+49	.31	+89	.21	+28	.18
BW		WW		YW		N/A		N/A	
61	88	609	99	N/A	N/A				

Pasture Exposed to PVF Cash 5062 from 6/23/19 until 11/1/19



Eathington Blackcap 222F [DDP]

Birth Date: 1-1-2018

Cow 19330490

Tattoo: 222F

#Connealy Thunder
CTS Remedy 1T01
*17331233 CTS 7V03 Bellemere Maid 9T02

#Baldridge Kaboom K243 KCF
#Parka of Conanga 241
#LT 598 Bando 9074
SVA Rita 7V03 of 1407 502

CW	\$W
I+50	+46
MARB	\$F
I+.29	+106
RE	\$G
I+.68	+39
FAT	\$B
I-.002	+145

#+SAV Bismarck 5682
Eathington Blackcap 125Y
17001988 #ALL Blackcap 9043

#*GAR Grid Maker
SAV Abigale 0451
SAV Payroll 5281
LL LC Day Break 301

CED		BEPD		WEPD		YEPD		MILK	
+7	.26	-1.1	.37	+47	.32	+94	.22	+25	.22
BW		WW		YW		N/A		N/A	
65	83	531	86	N/A	N/A				

Pasture exposed to PVF Cash 5062 from 6/23/19 until 11/1/19



Eathington Niagara 223F

Birth Date: 1-2-2018

Cow 19330456

Tattoo: 223F

#*Hoover Dam
SS Niagara Z29
*17287387 Jet SS X144

#*SydGen CC&7
#Erica of Ellston C124
#*B/R New Day 454
JET SS T151

CW	\$W
I+34	+49
MARB	\$F
I+.56	+85
RE	\$G
I+.72	+51
FAT	\$B
I+.007	+136

#+BC Lookout 7024
Eathington Erica Lookout119y
17001998 #KP Focus ON Erica 201

OCC Legend 616L
Gibbet Hill Mignonne E37
JBC Focus 910
#EB Fullback of Erica

CED		BEPD		WEPD		YEPD		MILK	
+1	.24	+3.0	.36	+56	.31	+104	.23	+25	.21
BW		WW		YW		N/A		N/A	
87	112	612	100	N/A	N/A				

Pasture exposed to PVF Cash 5062 from 6/23/19 until 11/1/19



Eathington Bronc 230F

Birth Date: 1-2-2018

Cow 19330779

Tattoo: 230F

*EF Commando 1366
Baldridge Bronc
+*18229425 *Baldridge Isabel Y69

#*EF Complement 8088
Riverbend Young Lucy W1470
#*Styles Upgrade J59
+Baldridge Isabel T935

CW	\$W
I+24	+52
MARB	\$F
I+.15	+70
RE	\$G
I+.37	+24
FAT	\$B
I+.032	+94

+PVF Priority 4057
Eathington Blackclass 735D
18718215 +Hoffman Blackclass 022

+*C&C Priority 1428B EXAR
+ALL PVF Blackbird 645
#SAV 8180 Traveler 004
+Twin Valley Blackclass 5230

CED		BEPD		WEPD		YEPD		MILK	
+15	.26	-1.7	.35	+46	.30	+85	.20	+28	.15
BW		WW		YW		N/A		N/A	
56	82	566	92	N/A	N/A				

A.I. to Stevenson Turning Point on 6/21/19



Eathington Missie 208F [DDP]

Birth Date: 1-4-2018

Cow 19342876

Tattoo: 208F

Eathington Ice Cap 305C
*18263759

*EATHINGTON SUB-ZERO
Eathington Lucy 3006

*Connealy Capitalist 028
KP Miss Proven Queen 21
+*Dameron First Impression
Blue Ston Lucy 1029

CW	\$W
I+.37	+54
MARB	\$F
I-.03	+79
RE	\$G
I+.64	+21
FAT	\$B
I+.017	+99

All Missie 592
+18312119

*#SAV Brilliance 8077
ALL PVF Missie 1646

*#SAV Bismarck 5682
SAV Blackcap May 5270
*TC Freedom 104
PVF Missie 430

CED		BEPD		WEPD		YEPD		MILK	
+12	.24	-1.5	.33	+41	.28	+77	.18	+34	.10
BW		WW		YW					
65	92	589	96	N/A	N/A				

A.I. to SAV Rainfall 6/21/19



Eathington Erica 216F

Birth Date: 1-8-2018

Cow 19330421

Tattoo: 216F

JMB Traction 292
*17262374

*#Sitz Top Game 561X
*JMB Emulota 013

*#GDAR Game Day 449
#Sitz Pride 88T
*#SAV 004 Predominant 4438
#BAR S Emulota 5426

CW	\$W
I+.25	+55
MARB	\$F
I+.26	+80
RE	\$G
I+.66	+38
FAT	\$B
I-.014	+118

KA Evergreen Erica 216
+17315986

Plainview Lutton E102
KF Evergreen Erica 4402

*#Exar Lutton 1831
Plainview Pride C123
TC Forefront 1205
KF Evergreen Erica 1100

CED		BEPD		WEPD		YEPD		MILK	
-1	.24	+3.4	.36	+57	.31	+98	.22	+28	.23
BW		WW		YW					
87	112	630	102	N/A	N/A				

Pasture exposed to PVF Cash 5062 from 6/23/19 until 11/1/19



Eathington Erica Zero 211F

Birth Date: 1-24-2018

Cow 19329196

Tattoo: 211F

EATHINGTON SUB-ZERO
*17379591

*#Connealy Capitalist 028
KP Miss Proven Queen 21

*#SAV Final Answer 0035
Prides Pita of Conanga 8821
*#BC Matrix 4132
PVF All Proven Queen 503

CW	\$W
N/A	+55
MARB	\$F
N/A	N/A
RE	\$G
N/A	N/A
FAT	\$B
N/A	N/A

Eathington Erica 414C
18377198

+*Connealy Courage 25L
Eathington Erica Lookout119y

*#Connealy Confidence 0100
Pearl Pammy of Conanga 194
*#BC Lookout 7024
*#KP Focus ON Erica 201

CED		BEPD		WEPD		YEPD		MILK	
+15	.24	-1.1	.36	+50	.31	+87	.22	+26	.18
BW		WW		YW					
70	94	592	96	N/A	N/A				

A.I. to Turning Point 6/20/19



Eathington Katie 213F [DDP]

Birth Date: 1-28-2018

Cow 19329197

Tattoo: 213C

EATHINGTON SUB-ZERO
*17379591

*#Connealy Capitalist 028
KP Miss Proven Queen 21

*#SAV Final Answer 0035
Prides Pita of Conanga 8821
*#BC Matrix 4132
PVF All Proven Queen 503

CW	\$W
I+.35	+54
MARB	\$F
I+.25	+86
RE	\$G
I+.62	+32
FAT	\$B
I+.035	+118

Eathington Katie 409C
18378678

+*Connealy Courage 25L
#Eathington Katie 123Y

*#Connealy Confidence 0100
Pearl Pammy of Conanga 194
*#TC Aberdeen 759
Eathington Katie 85V

CED		BEPD		WEPD		YEPD		MILK	
+17	.25	-2.4	.36	+46	.31	+88	.22	+29	.18
BW		WW		YW					
62	83	598	97	N/A	N/A				

Pasture exposed to PVF Cash 5062 from 6/23/19 until 11/1/19



Eathington Blossom 214F

Birth Date: 1-31-2018

Cow 19329198

Tattoo: 214F

#*Connealy Capitalist 028
EATHINGTON SUB-ZERO
*17379591 KP Miss Proven Queen 21

#*SAV Final Answer 0035
Prides Pita of Conanga 8821
#*BC Matrix 4132
PVF All Proven Queen 503

CW	\$W
I+36	+55
MARB	\$F
I+.09	+89
RE	\$G
I+.50	+26
FAT	\$B
I+.002	+115

+*RB Tour Of Duty 177
Eathington Blossom 403C
18380219 +*Dameron Blossom 265

#+*Werner War Party 2417
+*BA Lady 6807 305
+Exar Totally Tuned 71281
+SH Blossom 9138

CED		BEPD		WEPD		YEPD		MILK	
+16	.24	-2.6	.36	+47	.31	+87	.22	+29	.18
BW		WW		YW					
61	82	603	98	N/A	N/A				

Pasture exposed to PVF Cash 5062 from 6/23/19 until 11/1/19



Eathington Surveillance 224F

[DDP-MIP-OHP]

Birth Date: 2-1-2018

Cow 19330658

Tattoo: 224F

#*BC Lookout 7024
PVF Surveillance 4129
+*17954726 *PVF Ellen 9100

OCC Legend 616L
Gibbet Hill Mignonne E37
#PVF ALL PAYDAY 729
Hyline Ellen 410

CW	\$W
I+31	+49
MARB	\$F
I+.11	+70
RE	\$G
I+.45	+27
FAT	\$B
I-.003	+97

Limestone Great Divide U254
Bewleys Go Babe 1112 649
16989070 Panther Cr Babe 649

#BC Marathon 7022
Stevenson Waterback 462J
Raven VRD 1054
Panther CR Babe 449

CED		BEPD		WEPD		YEPD		MILK	
I+1	.05	I+2.6	.05	I+52	.05	I+80	.05	I+20	.05
BW		WW		YW					
56	82	534	87	N/A	N/A				

Pasture exposed to PVF Cash 5062 from 6/23/19 until 11/1/19



Eathington Surveillance 225F

[DDP-MIP-OHP]

Birth Date: 2-1-2018

Cow 19330659

Tattoo: 225F

#*BC Lookout 7024
PVF Surveillance 4129
+*17954726 *PVF Ellen 9100

OCC Legend 616L
Gibbet Hill Mignonne E37
#PVF ALL PAYDAY 729
Hyline Ellen 410

CW	\$W
I+31	+49
MARB	\$F
I+.11	+70
RE	\$G
I+.45	+27
FAT	\$B
I-.003	+97

Limestone Great Divide U254
Bewleys Go Babe 1112 649
16989070 Panther Cr Babe 649

#BC Marathon 7022
Stevenson Waterback 462J
Raven VRD 1054
Panther CR Babe 449

CED		BEPD		WEPD		YEPD		MILK	
I+1	.05	I+2.6	.05	I+52	.05	I+80	.05	I+20	.05
BW		WW		YW					
59	86	639	104	N/A	N/A				

A.I. to Turning Point 6/21/19



Eathington Lady Niagara 215F

Birth Date: 2-5-2018

Cow 19330431

Tattoo: 215F

#*Hoover Dam
SS Niagara Z29
*17287387 Jet SS X144

#*SydGen CC&7
#Erica of Ellston C124
#*B/R New Day 454
JET SS T151

CW	\$W
N/A	+60
MARB	\$F
N/A	N/A
RE	\$G
N/A	N/A
FAT	\$B
N/A	N/A

+*PVF Insight 0129
Eathington Lady Insight 407C
18377203 +*Werner Lady 3327

#*SAV Brilliance 8077
+*PVF Missie 790
Connealy Imprint 8317
+*SandPoint Lady 7869

CED		BEPD		WEPD		YEPD		MILK	
+6	.26	+8	.36	+65	.31	+122	.22	+24	.18
BW		WW		YW					
68	91	631	103	N/A	N/A				

Pasture exposed to PVF Cash 5062 from 6/23/19 until 11/1/19



Eathington Traction 207F

Birth Date: 2-5-2018

Cow 19330420

Tattoo: 207F

JMB Traction 292
*17262374

*Sitz Top Game 561X
*JMB Emulota 013

#GDAR Game Day 449
#Sitz Pride 88T
#SAV 004 Predominant 4438
#BAR S Emulota 5426

CW	\$W
I+.30	+58
MARB	\$F
I+.30	+70
RE	\$G
I+.57	+35
FAT	\$B
I+.022	+105

Eathington Marlamaemere 716Z
17379587 HA Marlamaemere 307

*Connealy Product 568
#Ebonista of Conanga 471
#Bushs Grand Design
HA Marlamaemere 007

CED		BEPD		WEPD		YEPD		MILK	
+8	.25	+3	.37	+52	.32	+90	.22	+28	.22
BW		WW		YW					
67	86	555	90	N/A	N/A				

Pasture exposed to PVF Cash 5062 from 6/23/19 until 11/1/19



Eathington Queen 202F

[DDP]

Birth Date: 2-21-2018

Cow 19342874

Tattoo: 202F

PVF Inauguration 6174
+*18606539

*Dameron First Class
*PVF Missie 790

EXG RS First Rate S903 R3
Dameron Northern Miss 3114
#*PVF New Horizon 001
PVF Miss Raptor 024

CW	\$W
I+.38	+47
MARB	\$F
I+.12	+107
RE	\$G
I+.64	+32
FAT	\$B
I-.022	+138

Eathington Queen 860A
17795836 PVF Proven Queen 1190

+OSU Currency 8173
PVF Proven Queen 1190

#Stevenson Moneymaker R185
+OSU Empress 4123
#PVF ALL PAYDAY 729
+PVF Proven Queen 9103

CED		BEPD		WEPD		YEPD		MILK	
-5	.16	+4.6	.33	+62	.27	+110	.15	+23	.13
BW		WW		YW					
96	124	725	118	N/A	N/A				

A.I. to Sub-Zero 6/20/19



Eathington Erica 229F

Birth Date: 4-1-2018

Cow 19329195

Tattoo: 229F

PVF Inauguration 6174
+*18606539

*Dameron First Class
*PVF Missie 790

EXG RS First Rate S903 R3
Dameron Northern Miss 3114
#*PVF New Horizon 001
PVF Miss Raptor 024

CW	\$W
I+.29	+39
MARB	\$F
I+.41	+92
RE	\$G
I+.72	+46
FAT	\$B
I-.010	+138

Eathington Erica 850a
17690274 Eathington Erica 21U

#Coleman Regis 904

#*SAV Final Answer 0035
*Coleman Donna 714
*WCC Precision E161 J239
#EB Fullback of Erica

CED		BEPD		WEPD		YEPD		MILK	
+7	.17	+2.0	.33	+46	.17	+80	.13	+22	.12
BW		WW		YW					
76	97	N/A	N/A	N/A	N/A				

A.I. to Sub-Zero 6/20/19

BRED COWS



RF Barbara 1526

Birth Date: 3-28-2015

Cow *18255258

Tattoo: 1526

Dameron Second Chance
+*17766091

EXG RS First Rate S903 R3
Dameron Northern Miss 3114

#Exar Lutton 1831
Rafter S Blackcap P909
+Dameron PVF Raptor 702
#Dameron Miss 550

CW	\$W
+22	+38
MARB	\$F
+35	+75
RE	\$G
+28	+31
FAT	\$B
+044	+106

ANGUSGS
Powered by Neogen GenCoast

DDA Barbara 1111
+16981765

#*SAV Brilliance 8077
WCC Barbara M84

#SAV Bismarck 5682
SAV Blackcap May 5270
#*Twin Valley Precision E161
WCC Barbara H293

CED		BEPD		WEPD		YEPD		MILK	
+2	.14	+3.2	.23	+40	.20	+69	.16	+27	.17
BW		WW		YW					
74	N/A	N/A	N/A	N/A	N/A				

Pasture exposed to PVF Inauguration



Dameron Northern Miss 367

Birth Date: 2-24-2013

Cow +17630499

Tattoo: 367

#+EXAR Spartan 6225
EXAR Worldwide 9600B
*16271937 #Dixie Erica of RR 6289

#Exar Lutton 1831
WK Winnie 7305
+EXAR Merit 216
Dixie Erica of RR 9769

CW	SW
I+33	+22
MARB	\$F
I+.09	+76
RE	\$G
I+.49	+25
FAT	\$B
I+.007	+102

+Dameron PVF Raptor 702
Dameron Northern Miss 3114
14489054 #+Dameron Miss 550

#+Rito 9FB3 of 5H11 Fullback
Davis Proven Queen 3026
#*N Bar Emulation EXT
Finks 8130 of 678-549

CED		BEPD		WEPD		YEPD		MILK	
+5	.22	+2.1	.38	+40	.34	+73	.28	+14	.29
BW		WW		YW					
82	102	656	97	N/A	N/A				

Pasture exposed to PVF Cash 5062



Hoffman Peg

Birth Date: 9-9-2013

Cow 17801233

Tattoo: H323

#Famous 7001
Gambles Hot Rod
13897812 +Champion Hill Lady 703

#SAF Fame
TK Karen 1369
#Leachman Saugahatchee 3000C
+Champion Hill Lady Stone 731

CW	SW
+31	+42
MARB	\$F
+1.18	+93
RE	\$G
+1.65	+36
FAT	\$B
-.032	+129

Boyd Next Day 6010
Hoffman Peg 807
+16213402 SLF Peg 444

#+Boyd New Day 8005
Boyd Heiress 3036
#SAV 8180 Traveler 004
+WGA Peg J420

CED		BEPD		WEPD		YEPD		MILK	
+2	.22	+2.7	.37	+52	.32	+93	.23	+20	.26
BW		WW		YW					
65	89	851	106	N/A	N/A				

Bull calf at side out of Stevenson Turning Point born 1/3/20



Hobbs Tessie 43Z-78E

Birth Date: 1-29-2017

Cow 18941641

Tattoo: 78E

#*Koupals B&B Identity
Moore ID 709
17308146 #Moore Bando 1961 509

#Sitz Upward 307R
#B&B Erica 605
#+*HSAF Bando 1961
#Moore Connealy VRD 869 99

CW	SW
I+38	+54
MARB	\$F
I+.49	+94
RE	\$G
I+.65	+46
FAT	\$B
I+.018	+139

#*Werner War Party 2417
Hobbs Tessie 117M-43Z
17337110 Hobbs Tessie 115-1172

#*Connealy Onward
+BAAR USA Lady Jaye 489
Mc Gill Creek 9FB3 0547
Hobbs Hillarys Tessie H115

CED		BEPD		WEPD		YEPD		MILK	
+6	.19	+4	.36	+43	.32	+86	.30	+36	.16
BW		WW		YW					
78	103	565	96	925	101				

3-year-old bred for early calf.



Hobbs Wood Erica 64L-130D

Birth Date: 4-14-2016

Cow 18610434

Tattoo: 130D

#Connealy Right Answer 746
Connealy Right Answer 4517
16448832 Endora of Conanga 6358

#*SAV Final Answer 0035
Happy Dell of Conanga 262
#Bon View New Design 1407
Envy 6807 of Conanga 6205

CW	SW
+10	+47
MARB	\$F
+1.67	+49
RE	\$G
+1.30	+51
FAT	\$B
+1.007	+100

#BCC Bushwacker 41-93
Woodhill Erica 147-64L
#13936994 Woodhill Erica 1175-147

#Paramont Ambush 2172
RC Anita T Bando 918903
#+Woodhill Triple Threat
Woodhill E Erica 291-1175

CED		BEPD		WEPD		YEPD		MILK	
+1	.22	+2.4	.40	+39	.35	+66	.25	+31	.27
BW		WW		YW					
87	117	595	104	N/A	N/A				

Bred for March calf to BOULDER.

72 Hobbs Imperial Queen 93B-98D

Birth Date: 2-24-2016

Cow 18608420

Tattoo: 98D

#*Musgrave Boulder
Connealy Boulder 5600
 17588093 Happy Mae of Conanga 225

#*Hoover Dam
 Mill Brae SA Jaunty 3079
 #*Connealy Onward
 #Happy Mel of Conanga 6226

CW	\$W
+49	+67
MARB	\$F
+51	+96
RE	\$G
+36	+42
FAT	\$B
+028	+138

#Sitz Upward 307R
Hobbs Imperial Queen 30M-93B
 +*17909530 #Hobbs Imperial Queen290-302
 #*Connealy Onward
 Sitz Henrietta Pride 81M
 +Woodhill Stagecoach H445
 Hobbs Imperial Queen 97-290

CED		BEPD		WEPD		YEPD		MILK	
+9	.23	+1.2	.33	+55	.29	+100	.27	+36	.13
BW			WW			YW			
67	104	621	102	869	97				

Bred for early calf.

73 Hobbs PrimLassie 81X-66D

Birth Date: 2-3-2016

Cow 18608401

Tattoo: 66D

#*Connealy Consensus 7229
Connealy Black Granite
 #*17028963 #Eura Elga of Conanga 9109

#*Connealy Consensus
 Blue Lilly of Conanga 16
 #+SAV Bismarck 5682
 Eura Cal of Conanga 56B

CW	\$W
+29	+49
MARB	\$F
+48	+89
RE	\$G
+41	+44
FAT	\$B
+0	+133

Connealy Danny 4444
Hobbs Prim Lassie 37S-81X
 16769149 Hobbs PRIM LASSIE 396-37S

#Connealy Danny Boy
 Boka Blast of Conanga 909
 #+SAF Connection
 Prim Lassie 396

CED		BEPD		WEPD		YEPD		MILK	
+13	.24	+2	.39	+43	.34	+74	.32	+23	.26
BW			WW			YW			
70	94	590	97	816	92				

Bred for early calf to BOULDER.

74 Hobbs Wood Blackbird 64P-53D

Birth Date: 1-29-2016

Cow 18667446

Tattoo: 53D

#*Connealy Consensus 7229
Connealy Black Granite
 #*17028963 #Eura Elga of Conanga 9109

#*Connealy Consensus
 Blue Lilly of Conanga 16
 #+SAV Bismarck 5682
 Eura Cal of Conanga 56B

CW	\$W
+31	+49
MARB	\$F
+41	+89
RE	\$G
+47	+41
FAT	\$B
-.002	+130

#Connealy Danny Boy
Woodhill Blackbird 20L-64P
 14793706 Woodhill Blackbird 889-20L

#Connealy Timeline
 Energy of Conanga 4851
 #Rito 616 of 4B20 6807
 +Woodhill Blackbird 542-889

CED		BEPD		WEPD		YEPD		MILK	
+13	.27	+2	.40	+50	.35	+84	.33	+18	.28
BW			WW			YW			
70	95	574	95	835	95				

Bred for early calf to BOULDER.

75 Hobbs Imperial Queen 51B-33D

Birth Date: 1-19-2016

Cow 18674166

Tattoo: 33D

#*Connealy Capitalist 028
EATHINGTON SUB-ZERO
 *17379591 KP Miss Proven Queen 21

#*SAV Final Answer 0035
 Prides Pita of Conanga 8821
 #*BC Matrix 4132
 PVF All Proven Queen 503

CW	\$W
+48	+70
MARB	\$F
+05	+102
RE	\$G
+57	+24
FAT	\$B
+013	+126

#Sitz Upward 307R
Hobbs Imperial Queen 30M-51B
 +17909528 #Hobbs Imperial Queen290-302

#*Connealy Onward
 Sitz Henrietta Pride 81M
 +Woodhill Stagecoach H445
 Hobbs Imperial Queen 97-290

CED		BEPD		WEPD		YEPD		MILK	
+12	.29	-.6	.38	+57	.33	+108	.30	+34	.25
BW			WW			YW			
67	104	613	101	935	105				

Bred for early calf to ENHANCE.



Hobbs Blackbird 127Y-24D [OHF]

Birth Date: 1-18-2016

Cow 18608384

Tattoo: 24D

#*Werner War Party 2417
RB Tour Of Duty 177
+*16984170 +*BA Lady 6807 305

#*Connealy Onward
+BAAR USA Lady Jaye 489
#Vermilion Dateline 7078
+GD Lady Hi Flyer 302

CW	\$W
I+42	+57
MARB	\$F
I+.35	+83
RE	\$G
I+.75	+47
FAT	\$B
I-.044	+130

Connealy Impression 6133
Hobbs Blackbird 43W-127Y
16992556 Hobbs Blackbird 43S-43W

#*Connealy Impression
#Eltrine of Conanga 3832
TC Total 634
Hobbs BLACKBIRD 37N-43S

CED		BEPD		WEPD		YEPD		MILK	
+6	.24	+2.2	.37	+58	.33	+101	.31	+27	.23
BW		WW		YW					
79	105	630	104	884	100				

Bred for early calf to BOULDER.



Hobbs Izzy 6009-105C

Birth Date: 3-19-2015

Cow 18201683

Tattoo: 105C

#Connealy Right Answer 746
Connealy Right Answer 4517
16448832 Endora of Conanga 6358

#*SAV Final Answer 0035
Happy Dell of Conanga 262
#Bon View New Design 1407
Envy 6807 of Conanga 6205

CW	\$W
I+20	+44
MARB	\$F
I+.54	+64
RE	\$G
I+.24	+41
FAT	\$B
I+.034	+105

#SAV 8180 Traveler 004
Heritage 114 004 Izzy 6009
15817271 +PVF Sophie 115

#Sitz Traveler 8180
+Boyd Forever Lady 8003
#Alberda Traveler 416
#Illini Dividend Miss C015

CED		BEPD		WEPD		YEPD		MILK	
+6	.20	+1.0	.39	+40	.32	+74	.21	+29	.22
BW		WW		YW					
80	108	538	95	N/A	N/A				

A.I. calf to WAKE UP.



Hobbs Miss 69Z-54C

Birth Date: 2-1-2015

Cow 18201697

Tattoo: 54C

#*Koupals B&B Identity
Moore ID 709
17308146 #Moore Bando 1961 509

#Sitz Upward 307R
#B&B Erica 605
#+*HSAF Bando 1961
#Moore Connealy VRD 869 99

CW	\$W
I+22	+36
MARB	\$F
I+.74	+76
RE	\$G
I+.57	+57
FAT	\$B
I+.015	+133

Connealy Impression 6133
Hobbs Miss 145X-69Z
17337260 Hobbs Miss 100R-145X

#*Connealy Impression
#Eltrine of Conanga 3832
Connealy Danny 4444
#Hobbs 1407 Miss N036-100R

CED		BEPD		WEPD		YEPD		MILK	
+13	.15	-2.3	.26	+30	.31	+67	.29	+29	.15
BW		WW		YW					
N/A	N/A	489	86	905	95				

Bred for early calf.



Hobbs Blackbird 31T-22C

Birth Date: 1-18-2015

Cow 18201690

Tattoo: 22C

#*Werner War Party 2417
RB Tour Of Duty 177
+*16984170 +*BA Lady 6807 305

#*Connealy Onward
+BAAR USA Lady Jaye 489
#Vermilion Dateline 7078
+GD Lady Hi Flyer 302

CW	\$W
+47	+63
MARB	\$F
+27	+86
RE	\$G
+71	+42
FAT	\$B
-.044	+128

#TC Total 410
Hobbs Blackbird 1122-31T
#15777919 Hobbs Black Beauty 1008-1122

#Bon View New Design 208
+TC Erica Eileen 2047
Mc Gill Creek 9FB3 0547
Hobbs Black Beauty 1008

CED		BEPD		WEPD		YEPD		MILK	
-3	.26	+4.4	.40	+58	.36	+100	.33	+36	.30
BW		WW		YW					
93	126	555	98	950	100				

A.I. calf to ACCLAIM.



Hobbs Queen Ruth 24Z-11C

Birth Date: 1-14-2015

Cow 18201687

Tattoo: 11C

Moore ID 709
17308146

#*Koupals B&B Identity

#Moore Bando 1961 509

#Sitz Upward 307R
#B&B Erica 605
#*HSAF Bando 1961
#Moore Connealy VRD 869 99

CW	\$W
+17	+56
MARB	\$F
+77	+44
RE	\$G
+32	+52
FAT	\$B
+050	+96

Hobbs Queen Ruth 20S-24Z
17337098 Hobbs QUEEN RUTH 46P-20S

#*Werner War Party 2417

#*Connealy Onward
+BAAR USA Lady Jaye 489
Woodhill Alliance 116L-46P
Hobbs Queen Ruth 251-46P

CED		BEPD		WEPD		YEPD		MILK	
+17	.21	-3.8	.39	+33	.34	+60	.32	+40	.23
BW		WW		YW					
60	85	566	100	912	96				

Bred for early calf.



Hobbs Cheyenne 32Z-57B

Birth Date: 1-28-2014

Cow *17909537

Tattoo: 57B

Connealy Final Product
#*15848422

*Connealy Product 568

#Ebonista of Conanga 471

#GAR Retail Product
Pride Fine of Conanga 566
#Connealy Deep Canyon 454
Ebonisa of Conanga 5469

CW	\$W
+12	+33
MARB	\$F
+71	+62
RE	\$G
+49	+54
FAT	\$B
+018	+116



Hobbs Cheyenne 42U-32Z
17337068 Hobbs Cheyenne 28R-42U

#*Connealy Mentor 7374

#GAR Retail Product
#Executa of Conanga 939
#*HSAF Bando 1961
Hobbs Miss Cheyenne56N-28R

CED		BEPD		WEPD		YEPD		MILK	
+3	.38	+3	.53	+39	.47	+72	.39	+17	.35
BW		WW		YW					
59	92	543	83	N/A	N/A				

AI calf to ACCLAIM.



Hobbs Imperial Queen 30M-50B

Birth Date: 1-24-2014

Cow +17909527

Tattoo: 50B

Sitz Upward 307R
#14963730

#*Connealy Onward

Sitz Henrietta Pride 81M

#Connealy Lead On
Altune of Conanga 6104
#Sitz Value 7097
Sitz Henrietta Pride 1370

CW	\$W
+37	+43
MARB	\$F
+35	+79
RE	\$G
+30	+35
FAT	\$B
+009	+114

Hobbs Imperial Queen 290-30Z
#14181270 Hobbs Imperial Queen 97-290

+Woodhill Stagecoach H445

#VDAR Traveler 722
#GT Miss Traveler 58
Woodhill Adjuster 307-800
H&H Imperial Queen 97

CED		BEPD		WEPD		YEPD		MILK	
+7	.23	+6	.32	+42	.32	+86	.28	+28	.35
BW		WW		YW					
80	100	662	100	N/A	N/A				

Bred for March calf to BOULDER.



Hobbs Erica 134W-34B [OHP]

Birth Date: 1-13-2014

Cow 17909661

Tattoo: 34B

Koupals B&B Identity
#*16710463

#Sitz Upward 307R

#B&B Erica 605

#*Connealy Onward
Sitz Henrietta Pride 81M
#+GAR Exaltation 3144
B&B Erica 4064

CW	\$W
+56	+73
MARB	\$F
+49	+119
RE	\$G
+65	+48
FAT	\$B
+001	+167

Hobbs Erica 5S-134W
16497578 Hobbs ERICA 74P-5S

TC Total 634

#TC Total 410
+TC Ruby 4044
#Connealy Lead On
Hobbs Erica 569-74P

CED		BEPD		WEPD		YEPD		MILK	
-6	.24	+4.8	.41	+75	.35	+131	.25	+35	.30
BW		WW		YW					
95	124	799	128	N/A	N/A				

Bred for early calf.

84

Hobbs Imperial Queen 85Z-2B

Birth Date: 1-1-2014

Cow 17909540

Tattoo: 2B

Connealy Final Product

#*15848422

#Connealy Product 568

#Ebonista of Conanga 471

#GAR Retail Product

Pride Fine of Conanga 566

#Connealy Deep Canyon 454

Ebonista of Conanga 5469

#Sitz Upward 307R

Hobbs Imperial Queen 30M-85Z

+*17337045

#Hobbs Imperial Queen290-302

#*Connealy Onward

Sitz Henrietta Pride 81M

+Woodhill Stagecoach H445

Hobbs Imperial Queen 97-290

CW	\$W
+43	+69
MARB	\$F
+46	+79
RE	\$G
+51	+40
FAT	\$B
+043	+119

CED		BEPD		WEPD		YEPD		MILK	
+3	.25	+1.0	.40	+61	.35	+108	.26	+26	.31
BW		WW		YW					
68	104	757	116	N/A	N/A				

AI calf to ACCLAIM.**85**

Hobbs Edella Sue 371-9Z [OHP]

Birth Date: 1-11-2012

Cow #17337115

Tattoo: 9Z

Werner War Party 2417

#*16004857

#*Connealy Onward

+BAAR USA Lady Jaye 489

#Connealy Lead On

Altune of Conanga 6104

#BAR Ext Traveler 205

Cra Lady Jaye 608 498 S Easy



#Leachman Saugahatchee 3000C

Hobbs Edella Sue 104-371

#*13909983

Hobbs Edella 104

#*N Bar Emulation EXT

Leachman BC 7100

#TC Dividend 963

WG Edella H398

CW	\$W
+31	+59
MARB	\$F
+20	+69
RE	\$G
+80	+40
FAT	\$B
-.039	+108

CED		BEPD		WEPD		YEPD		MILK	
+7	.39	+2	.59	+44	.52	+77	.46	+34	.43
BW		WW		YW					
70	94	619	95	918	95				

Bred for a March calf to BOULDER.**86**

Hobbs Blackbird 43W-127Y [OHP]

Birth Date: 3-15-2011

Cow 16992556

Tattoo: 127Y

Connealy Impression 6133

16450125

#*Connealy Impression

#Eltrine of Conanga 3832

#Connealy Reflection

Pearl Pammy of Conanga 194

#+Baldridge Mullen M528

+Eltina of Conanga 5382 2511

TC Total 634

Hobbs Blackbird 43S-43W

16497587

Hobbs BLACKBIRD 37N-43S

#TC Total 410

+TC Ruby 4044

Connealy FD 660

Hobbs Blackbird 670-37N

CW	\$W
+29	+50
MARB	\$F
+30	+68
RE	\$G
+61	+41
FAT	\$B
-.031	+109

CED		BEPD		WEPD		YEPD		MILK	
+9	.23	+3	.46	+48	.40	+84	.35	+21	.37
BW		WW		YW					
63	89	616	96	917	99				

Has a bull calf, born 1/10/20 to ACCLAIM.**87**

Hobbs Bala Bell 577-49Y [MIP]

Birth Date: 2-3-2011

Cow +17064701

Tattoo: 49Y

Connealy Onward

#*14216491

#Connealy Lead On

Altune of Conanga 6104

#Connealy Leadtime

Eligence Plus of Conanga

#GAR Traveler 1489

Avalon 1418 of Conanga 6276

MA Marriott 205

Bala Bell 577 TM

#12930569

Wilt DC Bala Bell 113

#Marriott of WR Bar 8055

Lady Barbara 213 MM

#Hoff Balancer SC 7109

Wilt DC Hi Bell 151

CW	\$W
+29	+49
MARB	\$F
+32	+72
RE	\$G
+53	+38
FAT	\$B
-.005	+110

CED		BEPD		WEPD		YEPD		MILK	
+8	.24	+1.3	.32	+45	.30	+84	.27	+29	.31
BW		WW		YW					
60	100	672	100	973	100				

Bred for 3/26/20 calf to BOULDER.

88

H&H Blackbird 8962-135U

Birth Date: 5-11-2008

Cow #16200382

Tattoo: 135U

TC Total 634
15462688#TC Total 410
+TC Ruby 4044#Bon View New Design 208
+TC Erica Eileen 2047
#+*GAR Grid Maker
#TC Ruby 9095

CW	\$W
+11	+33
MARB	\$F
+.12	+49
RE	\$G
+.17	+26
FAT	\$B
-.025	+74

RH Blackbird 8962
#11806997Woodhill Adjuster 307-800
Bolsens Blackbird of 0370 89Woodhill Adjuster 416-468
Woodhill Maiden 1666-307
+Nelson Nulook
+Blackbird of SVF 7603

CED		BEPD		WEPD		YEPD		MILK	
+1	.22	+4.0	.48	+41	.42	+67	.33	+26	.40
BW		WW		YW					
75	94	472	73	802	82				

All calf to ACCLAIM.

SHOW HEIFERS

Eathington Compton 603E

89

Birth Date: 5-11-2019

Cow 19626813

Tattoo: 603E

TGM Compton 1738
*18427650+*Silveiras Style 9303
+*Dameron Northern Miss 3198Gambles Hot Rod
+Silveiras Elba 2520
EXG RS First Rate S903 R3
Dameron Northern Miss 3114

CW	\$W
I+20	+44
MARB	\$F
I+.34	+81
RE	\$G
I+.26	+31
FAT	\$B
I+.042	+112

Eathington Sophie 225B
*17916208#*SAV Bismarck 5682
#PVF Sophie 2071#+*GAR Grid Maker
SAV Abigale 0451
+*PVF Radiance 0126
+PVF Sophie 0005

CED		BEPD		WEPD		YEPD		MILK	
I+9	.05	I-3	.05	I+42	.05	I+72	.05	I+23	.05
BW		WW		YW					
68	N/A	N/A	N/A	N/A	N/A				

*Eathington Compton 603E**Eathington Compton 601E***90**

Eathington Compt 601E

Birth Date: 3-17-2019

Cow 19626816

Tattoo: 601E

TGM Compton 1738
*18427650+*Silveiras Style 9303
+*Dameron Northern Miss 3198Gambles Hot Rod
+Silveiras Elba 2520
EXG RS First Rate S903 R3
Dameron Northern Miss 3114

CW	\$W
I+27	+53
MARB	\$F
I+.53	+78
RE	\$G
I+.28	+41
FAT	\$B
I+.031	+119

Eathington Maid 126Y
#17010087#*Alcoa New Standard 427
Panther Cr P Maid 910#*LCC New Standard
ALC 5427 of 5346-Objective
MA Magnum 35-53
#Pridette Maid DB

CED		BEPD		WEPD		YEPD		MILK	
I+4	.05	I+2.1	.05	I+49	.05	I+81	.05	I+28	.05
BW		WW		YW					
71	N/A	N/A	N/A	N/A	N/A				



Eathington Halo 602E



Eathington Halo 602E [DDP]

Birth Date: 2-12-2019

Cow 19625632

Tattoo: 602E

PVF WB Halo 5177
*18335899

+*PVF Radiance 0126
Thomas Lucy 7360

#*SAV Brilliance 8077
+*PVF Missie 790
#SAV 8180 Traveler 004
Thomas Lucy 4440

CW	\$W
I+40	+74
MARB	\$F
I+.21	+84
RE	\$G
I+.67	+34
FAT	\$B
I+.005	+118

Eathington Royal Queen 424C
18392855 #Eathington Royal Queen 1084

+*RB Tour Of Duty 177

#+*Werner War Party 2417
+*BA Lady 6807 305
#*Connealy Final Product
#+Blue Ston Royal Queen 9029

CED		BEPD		WEPD		YEPD		MILK	
I+9	.05	I+.7	.05	I+64	.05	I+107	.05	I+28	.05
BW		WW		YW					
81	N/A	N/A	N/A	N/A	N/A	N/A	N/A	N/A	N/A



Eathington Fortress 604E



Eathington Fortress 604E [DDP]

Birth Date: 2-9-2019

Cow 19626926

Tattoo: 604E

KCF Bennett Fortress
+*17259012

#*Connealy Consensus
*Thomas Patricia 9705

#KMK Alliance 6595 187
Blinda of Conanga 004
#*SS Objective T510 0T26
+Thomas Patricia 71138

CW	\$W
I+45	+69
MARB	\$F
I+.36	+102
RE	\$G
I+.88	+46
FAT	\$B
I-.014	+148

Eathington Forever Lady 412C
18377202 Eathington Forever Lady 127Y

+*PVF Insight 0129

#*SAV Brilliance 8077
+*PVF Missie 790
#TC Aberdeen 759
LC RG Forever Lady

CED		BEPD		WEPD		YEPD		MILK	
I+5	.05	I+1.9	.05	I+68	.05	I+118	.05	I+24	.05
BW		WW		YW					
81	N/A	N/A	N/A	N/A	N/A	N/A	N/A	N/A	N/A

OPEN HEIFERS

All heifers are vaccinated and ready to breed.

93

Hobbs Queen Ruth11C-22G

Birth Date: 1-24-2019

Cow 19556210

Tattoo: 22G

Vermilion Sirloin
HA Prime Cut 4493
 *17943466 +HA Miss Blackcap 9127

#+*TC Franklin 619
 #Vermilion Lass 8482
 #HA Program 5652
 #+HA Miss Blackcap 1250

CW	\$W
I-30	+58
MARB	\$F
I+.57	+81
RE	\$G
I+.61	+49
FAT	\$B
I+.015	+130

Moore ID 709
Hobbs Queen Ruth 24Z-11C
 18201687 Hobbs Queen Ruth 20S-24Z

#*Koupals B&B Identity
 #Moore Bando 1961 509
 #+*Werner War Party 2417
 Hobbs QUEEN RUTH 46P-20S

CED		BEPD		WEPD		YEPD		MILK	
+14	.23	-1.4	.36	+48	.32	+87	.30	+31	.17
BW			WW			YW			
70	92	499	93	853	99				

94

Hobbs Blackbird 63E-49G [OHP]

Birth Date: 2-2-2019

Cow 19564818

Tattoo: 49G

+*LD Capitalist 316
Musgrave 316 Stunner
 *18467508 #MCATL Blackbird 831-1378

#*Connealy Capitalist 028
 LD Dixie Erica 2053
 #MCATL Pure Product 903-55
 MCATL Blackbird 1378-573

CW	\$W
N/A	+61
MARB	\$F
N/A	N/A
RE	\$G
N/A	N/A
FAT	\$B
N/A	N/A

Moore ID 709
Hobbs Blackbird 127Y-63E
 18943747 Hobbs Blackbird 43W-127Y

#*Koupals B&B Identity
 #Moore Bando 1961 509
 Connealy Impression 6133
 Hobbs Blackbird 43S-43W

CED		BEPD		WEPD		YEPD		MILK	
+8	.26	+2	.36	+59	.31	+106	.29	+26	.09
BW			WW			YW			
67	97	577	99	820	101				

95

Hobbs Maid 48D-52G

Birth Date: 2-5-2019

Cow 19552850

Tattoo: 52G

#*Musgrave Boulder
Connealy Boulder 5600
 17588093 Happy Mae of Conanga 225

#*Hoover Dam
 Mill Brae SA Jaunty 3079
 #*Connealy Onward
 #Happy Mel of Conanga 6226

CW	\$W
I-34	+61
MARB	\$F
I+.82	+83
RE	\$G
I+.46	+57
FAT	\$B
I+.044	+140

Moore ID 709
Hobbs Maid 6A-140S
 18608394 Hobbs Maid 140S-6A

#*Koupals B&B Identity
 #Moore Bando 1961 509
 #TC Aberdeen 759
 Hobbs Maid 280-140S

CED		BEPD		WEPD		YEPD		MILK	
+6	.18	+1.6	.34	+48	.30	+83	.26	+36	.12
BW			WW			YW			
78	105	490	91	647	87				

96

Hobbs Blackbird 95Y-44G

Birth Date: 2-1-2019

Cow 19552848

Tattoo: 44G

#SydGen Contact
SydGen Wake Up Call 9446
 +*16388600 SydGen Forever Lady 4087

#+SAF Connection
 +SAF Forever Lady 0020
 #*SydGen 1407 Corona 2016
 +SAF Forever Lady 8292

CW	\$W
I-32	+56
MARB	\$F
I+.69	+90
RE	\$G
I+.51	+56
FAT	\$B
I-.003	+146

Connealy Reflection 4141
Hobbs Blackbird 31T-95Y
 16992897 #Hobbs Blackbird1122-31T

#Connealy Reflection
 Pasha of Conanga 187
 #TC Total 410
 Hobbs Black Beauty 1008-1122

CED		BEPD		WEPD		YEPD		MILK	
+8	.20	+1.4	.36	+53	.31	+99	.29	+30	.18
BW			WW			YW			
78	101	498	93	792	97				

97 Hobbs Imperial Queen 49E-64G

Birth Date: 2-11-2019

Cow 19552854

Tattoo: 64G

Musgrave Black Granite 316
 +*18619016 +MCATL Blackcap 070-4132

#*Connealy Black Granite
 #Eura Elga of Conanga 9109
 #+*HSAF Bando 1961
 +Hoff Miss Traveler 73S

CW	\$W
N/A	+56
MARB	\$F
N/A	N/A
RE	\$G
N/A	N/A
FAT	\$B
N/A	N/A

Hobbs Imperial Queen 88C-49E
 18941632 Hobbs Imperial Queen11AA-88C

Musgrave Invision
 #Rockin M Countess 936
 *Woodhill Bismarck W310-Y2
 Hobbs Imperial Queen 48W-11A

CED		BEPD		WEPD		YEPD		MILK	
I+12	.05	-1.2	.20	+48	.27	+82	.23	+27	.09
BW		WW		YW					
N/A	N/A	558	96	742	91				

98 Hobbs Ruby 86E-79G

Birth Date: 2-14-2019

Cow 19617630

Tattoo: 71G

Musgrave Black Granite 316
 +*18619016 +MCATL Blackcap 070-4132

#*Connealy Black Granite
 #Eura Elga of Conanga 9109
 #+*HSAF Bando 1961
 +Hoff Miss Traveler 73S

CW	\$W
N/A	+49
MARB	\$F
N/A	N/A
RE	\$G
N/A	N/A
FAT	\$B
N/A	N/A

Hobbs Ruby 8C-86E
 19611045 Hobbs Ruby 10X-8C

Musgrave Invision
 #Rockin M Countess 936
 +*RB Tour Of Duty 177
 H&H Ruby 91U-10X

CED		BEPD		WEPD		YEPD		MILK	
I+11	.05	I-1.0	.05	I+43	.05	I+73	.05	I+27	.05
BW		WW		YW					
N/A	N/A	506	100	696	100				

99 Hobbs Blackbird 16B-76G

Birth Date: 2-17-2019

Cow 19552856

Tattoo: 76G

Moore ID 709
 17308146 #Moore Bando 1961 509

#Sitz Upward 307R
 #B&B Erica 605
 #+*HSAF Bando 1961
 #Moore Connealy VRD 869 99

CW	\$W
N/A	+45
MARB	\$F
N/A	N/A
RE	\$G
N/A	N/A
FAT	\$B
N/A	N/A

Holland Blackbird 48Z-16B
 17902365 Holland Blackbird 95N-48Z

*Connealy Product 568
 #Ebonista of Conanga 471
 #+*Werner War Party 2417
 H&H Blackbird 8962-95N

CED		BEPD		WEPD		YEPD		MILK	
+6	.18	+3	.35	+41	.30	+83	.26	+30	.15
BW		WW		YW					
76	99	454	85	644	87				

100 Hobbs Prim Lassie 66D-48G

Birth Date: 2-2-2019

Cow 19564824

Tattoo: 48G

SydGen Wake Up Call 9446
 +*16388600 SydGen Forever Lady 4087

#+SAF Connection
 +SAF Forever Lady 0020
 #*SydGen 1407 Corona 2016
 +SAF Forever Lady 8292

CW	\$W
N/A	+57
MARB	\$F
N/A	N/A
RE	\$G
N/A	N/A
FAT	\$B
N/A	N/A

Hobbs PrimLassie 81X-66D
 18608401 Hobbs Prim Lassie 37S-81X

#*Connealy Black Granite
 #Eura Elga of Conanga 9109
 Connealy Danny 4444
 Hobbs PRIM LASSIE 396-37S

CED		BEPD		WEPD		YEPD		MILK	
+11	.21	+9	.36	+53	.31	+99	.29	+30	.17
BW		WW		YW					
75	101	511	95	831	101				

101 Hobbs Forever Lady 112E-82G

Birth Date: 2-19-2019

Cow 19552859

Tattoo: 82G

#*Connealy Black Granite
Musgrave Black Granite 316
 +*18619016 +MCATL Blackcap 070-4132

#*Connealy Consensus 7229
 #Eura Elga of Conanga 9109
 #+*HSAF Bando 1961
 +Hoff Miss Traveler 73S

CW	\$W
N/A	+39
MARB	\$F
N/A	N/A
RE	\$G
N/A	N/A
FAT	\$B
N/A	N/A

Moore ID 709
Hobbs Forever Lady 130-112E
 18941609 Birks Forever Lady 130

#*Koupals B&B Identity
 #Moore Bando 1961 509
 #+SAV Bismarck 5682
 +Birks Forever Lady 396

CED		BEPD		WEPD		YEPD		MILK	
+17	.22	-3.8	.34	+34	.28	+66	.24	+25	.10
BW		WW		YW					
50	75	500	86	759	93				

102 Hobbs Erica 113E-83G

Birth Date: 2-19-2019

Cow 19552860

Tattoo: 83G

#*Connealy Black Granite
Musgrave Black Granite 316
 +*18619016 +MCATL Blackcap 070-4132

#*Connealy Consensus 7229
 #Eura Elga of Conanga 9109
 #+*HSAF Bando 1961
 +Hoff Miss Traveler 73S

CW	\$W
N/A	+56
MARB	\$F
N/A	N/A
RE	\$G
N/A	N/A
FAT	\$B
N/A	N/A

Connealy Boulder 5600
Hobbs Erica 198-113E
 18941610 Hobbs Erica 92S-19B

#*Musgrave Boulder
 Happy Mae of Conanga 225
 #*Connealy Final Product
 #Hobbs ERICA 569-92S

CED		BEPD		WEPD		YEPD		MILK	
+14	.22	-2.4	.34	+43	.28	+76	.24	+31	.10
BW		WW		YW					
57	84	568	98	787	97				

103 Hobbs Edella Ann 80E-97G

Birth Date: 2-28-2019

Cow 19552862

Tattoo: 97G

#*Connealy Black Granite
Musgrave Black Granite 316
 +*18619016 +MCATL Blackcap 070-4132

#*Connealy Consensus 7229
 #Eura Elga of Conanga 9109
 #+*HSAF Bando 1961
 +Hoff Miss Traveler 73S

CW	\$W
N/A	+54
MARB	\$F
N/A	N/A
RE	\$G
N/A	N/A
FAT	\$B
N/A	N/A

*Panther Cr Invision 5109
Hobbs Edella Ann 96C-80E
 18941643 Hobbs Edella Ann 10A-96C

Musgrave Invision
 #Rockin M Countess 936
 *Woodhill Bismarck W310-Y2
 Hobbs Edella Ann 50Y-10A

CED		BEPD		WEPD		YEPD		MILK	
I+9	.05	+1	.19	+49	.27	+87	.22	+27	.09
BW		WW		YW					
N/A	N/A	529	91	780	96				

104 Hobbs Forever Lady 5396-99G

Birth Date: 3-1-2019

Cow 19552863

Tattoo: 99G

#*Koupals B&B Identity
 Moore ID 709
 17308146 #Moore Bando 1961 509

#Sitz Upward 307R
 #B&B Erica 605
 #+*HSAF Bando 1961
 #Moore Connealy VRD 869 99

CW	\$W
N/A	+40
MARB	\$F
N/A	N/A
RE	\$G
N/A	N/A
FAT	\$B
N/A	N/A

+*Dameron Second Chance
Dameron Forever Lady 53961
 19210823 +Dameron Forever Lady 3961

EXG RS First Rate S903 R3
 Dameron Northern Miss 3114
 Gambles Hot Rod
 APS Forever Lady Tash

CED		BEPD		WEPD		YEPD		MILK	
-2	.17	+4.6	.34	+51	.29	+99	.25	+28	.12
BW		WW		YW					
90	121	524	98	786	106				

105 Hobbs Northern Miss 5010-10

Birth Date: 3-6-2019

Cow 19632044

Tattoo: 100G

#*Musgrave Boulder
Connealy Boulder 5600
 17588093 Happy Mae of Conanga 225

#*Hoover Dam
 Mill Brae SA Jaunty 3079
 #*Connealy Onward
 #Happy Mel of Conanga 6226

CW	\$W
N/A	+56
MARB	\$F
N/A	N/A
RE	\$G
N/A	N/A
FAT	\$B
N/A	N/A

MCATL By-Product 269-1394
Dameron Northern Miss 5010
 19221905 +Dameron Northern Miss 0106

#*Connealy Final Product
 MA Blackcap Missie 1394-936
 EXG RS First Rate S903 R3
 Dameron Northern Miss 3114

CED		BEPD		WEPD		YEPD		MILK	
-1	.18	+3.7	.34	+54	.28	+97	.18	+34	.12
BW		WW		YW					
85	114	495	92	N/A	N/A				

106 Hobbs Eldorene 29C-115G

Birth Date: 4-13-2019

Cow 19552840

Tattoo: 115G

#*Musgrave Boulder
Connealy Boulder 5600
 17588093 Happy Mae of Conanga 225

#*Hoover Dam
 Mill Brae SA Jaunty 3079
 #*Connealy Onward
 #Happy Mel of Conanga 6226

CW	\$W
N/A	+77
MARB	\$F
N/A	N/A
RE	\$G
N/A	N/A
FAT	\$B
N/A	N/A

*EATHINGTON SUB-ZERO
Hobbs Eldorene 31A-29C
 18206590 #Hobbs Eldorene 18X-31A

#*Connealy Capitalist 028
 KP Miss Proven Queen 21
 Connealy Impression 6133
 Hobbs Eldorene 61N- 18X

CED		BEPD		WEPD		YEPD		MILK	
I+11	.05	I+.5	.05	I+59	.05	I+104	.05	I+35	.05
BW		WW		YW					
N/A	N/A	584	100	N/A	N/A				

107 Hobbs Barbara 37Y-108G [DDF]

Birth Date: 4-24-2019

Cow 19552839

Tattoo: 108G

Connealy Boulder 5600
Hobbs Boulder 28B-96E
 *18941430 McEwen Edella Ann 55U-28B

#*Musgrave Boulder
 Happy Mae of Conanga 225
 #*Connealy Final Product
 Hobbs Edella Ann104S-H55U

CW	\$W
I+43	+55
MARB	\$F
I+.15	+92
RE	\$G
I+.37	+26
FAT	\$B
I+.010	+118

#PVF ALL PAYDAY 729
Ashley Barbara 6207-37Y
 16935189 TC Barbara 6207

SAV Payroll 5281
 PVF Blackbird 201
 Connealy Freight 964
 +TC Barbara 1150

CED		BEPD		WEPD		YEPD		MILK	
+3	.13	+2.4	.26	+55	.16	+98	.14	+27	.10
BW		WW		YW					
80	90	N/A	N/A	N/A	N/A				



Katelyn Eathington at the National Western Stock Show in Denver with the next future donor cow for Eathington Angus.

REFERENCE SIRES



Jindra Acclaim



Jindra Acclaim [AMF-CAF-DDF-MIF-NHF-OHF-OSF-RDF]

Birth Date: 1-13-2014

Bull *17972810

Tattoo: 134

Jindra 3rd Dimension
*17365830

#*Jindra Double Vision
Jindras Sapphire J 417

#Connealy Reflection
+Hoff Rachel 8312 405
#*Hoff First Edition 058 242
Jindras Emerald J 704

CW	\$W
+73	+71
MARB	\$F
+62	+160
RE	\$G
+69	+58
FAT	\$B
-.038	+219

Jindra Blackbird Lassy 1111
+17970373

#*Connealy Impression
Jindras Enchantress J 102

#Connealy Reflection
Pearl Pammy of Conanga 194
A&B Yukon 0103
Jindras Classy Lady J 8314

CED		BEPD		WEPD		YEPD		MILK	
+6	.86	+9	.96	+72	.94	+146	.89	+31	.57



Stevenson Turning Point



Stevenson Turning Point [AMF-CAF-D2F-DDF-MIF-NHF-OHF-OSF]

Birth Date: 1-21-2016

Bull +*18434747

Tattoo: 60558

Plattemere Weigh Up K360
*16692552

#Sitz Upward 307R
#Barbara of Plattemere 337

#*Connealy Onward
Sitz Henrietta Pride 81M
#GAR Retail Product
Barbara of Plattemere 311

CW	\$W
+32	+60
MARB	\$F
+44	+85
RE	\$G
+69	+44
FAT	\$B
+.015	+129

Stevenson Pride 1167x
*+*16607377

#+SAV Bismarck 5682
#*FSHK Pride 180

#*GAR Grid Maker
SAV Abigale 0451
#Sitz Alliance 6595
+FSHK Pride 725

CED		BEPD		WEPD		YEPD		MILK	
+17	.71	-2.0	.88	+57	.84	+93	.74	+17	.36



Connealy Boulder 5600 [OSF]

Birth Date: 3-9-2013

Bull 17588093

Tattoo: 367T

Musgrave Boulder
#*16899059

#*Hoover Dam
Mill Brae SA Jaunty 3079

#*SydGen CC&7
#Erica of Ellston C124
#Sitz Alliance 6595
#Mill Brae EXT Jaunty 8068

CW	\$W
+43	+82
MARB	\$F
+93	+86
RE	\$G
+46	+63
FAT	\$B
+031	+149

Happy Mae of Conanga 225
15147091

#*Connealy Onward
#Happy Mel of Conanga 6226

#Connealy Lead On
Altune of Conanga 6104
#Tehama Bando 155
Happy Heartland Conanga 6103

CED		BEPD		WEPD		YEPD		MILK	
+6	.46	+1.5	.72	+58	.66	+102	.58	+44	.39



Panther Cr Invision 5109

Birth Date: 1-14-2015

Bull *18346497

Tattoo: 5109

Musgrave Invision
17257723

#MCATL Pure Product 903-55
MCATL Evergreen 619-K27T

#*Connealy Final Product
MA Esta 55-252
#*Mytty In Focus
ALC Evergreen K27T

CW	\$W
+46	+70
MARB	\$F
+74	+101
RE	\$G
+38	+52
FAT	\$B
+043	+152

Rockin M Countess 936
#16557151

#Connealy Reflection
Rockin M Countess 718

#Bon View New Design 878
Happy Grill of Conanga 6260
MA Magnum 35-53
MAF Countess 3121

CED		BEPD		WEPD		YEPD		MILK	
+3	.31	+1.8	.52	+63	.43	+113	.31	+31	.22



Musgrave Black Granite 316

Birth Date: 1-12-2016

Bull +*18619016

Tattoo: 316

Connealy Black Granite
#*17028963

#*Connealy Consensus 7229
#Eura Elga of Conanga 9109

#*Connealy Consensus
Blue Lilly of Conanga 16
#+SAV Bismarck 5682
Eura Cal of Conanga 56B

CW	\$W
+16	+46
MARB	\$F
+47	+67
RE	\$G
+30	+40
FAT	\$B
+018	+107

MCATL Blackcap 070-4132
+15818610

#*HSAF Bando 1961
+Hoff Miss Traveler 73S

#+SAF 598 Bando 5175
+JKS Miss Cheyenne 196
#DHD Traveler 6807
Blackcap MG 73 84

CED		BEPD		WEPD		YEPD		MILK	
+16	.46	-2.5	.62	+36	.54	+63	.42	+26	.36



SAV Rainfall 6846 [AMF-CAF-D2F-DDF-M1F-NHF-OHF-OSF-RDF]

Birth Date: 1-9-2016

Bull +*18578963

Tattoo: 6846

Coleman Charlo 0256
#+*16879074

#*OCC Paxton 730P
+Bohi Abigale 6014

+OCC Focus 813F
OCC Blackbird 736K
#Sitz Traveler 8180
SAV Abigale 6062

CW	\$W
+29	+77
MARB	\$F
+70	+68
RE	\$G
+67	+55
FAT	\$B
+032	+123

SAV Blackcap May 4136
*14739095

#SAV 8180 Traveler 004
#+SAV May 2397

#Sitz Traveler 8180
+Boyd Forever Lady 8003
#+SAF 598 Bando 5175
SAV May 7238

CED		BEPD		WEPD		YEPD		MILK	
+15	.66	-.6	.88	+61	.84	+115	.69	+32	.28



PVF WB Halo 5177

Birth Date: 4-14-2015

Bull *18335899

Tattoo: 5177

PVF Radiance 0126
+*16798330

#*SAV Brilliance 8077

+*PVF Missie 790

#+SAV Bismarck 5682
SAV Blackcap May 5270
#+*PVF New Horizon 001
PVF Miss Raptor 024

CW	\$W
+29	+70
MARB	\$F
+08	+63
RE	\$G
+53	+22
FAT	\$B
+039	+85

Thomas Lucy 7360
15702868

#SAV 8180 Traveler 004

Thomas Lucy 4440

#Sitz Traveler 8180
+Boyd Forever Lady 8003
#+SAF 598 Bando 5175
#Thomas Lucy 1022

CED		BEPD		WEPD		YEPD		MILK	
+11	.34	-5	.56	+59	.47	+93	.38	+25	.28



HA Prime Cut 4493

[AMF-CAF-D2F-DDF-M1F-NHF-OHF-OSF]

Birth Date: 2-17-2014

Bull *17943466

Tattoo: 4493

Vermilion Sirloin
16957718

#+*TC Franklin 619

#Vermilion Lass 8482

#TC Total 410
#TC Marcia 1069
Vermilion 7078 Dateline N539
Vermilion Lass 5289

CW	\$W
+44	+71
MARB	\$F
+36	+99
RE	\$G
+90	+47
FAT	\$B
-.021	+146

HA Miss Blackcap 9127
+16463045

#HA Program 5652

#+HA Miss Blackcap 1250

*HA Future Direction 3540
+HA Blackcap Lady 2782
#TC Trademark 987
#HA Miss Blackcap 5087

CED		BEPD		WEPD		YEPD		MILK	
+9	.75	+1.9	.92	+73	.90	+121	.84	+23	.59



EXAR Monumental 6056B

[AMF-CAF-D2F-DDF-M1F-NHF-OHF-OSF]

Birth Date: 1-11-2016

Bull *18379347

Tattoo: 6056B

3F Epic 4631
17950219

*Varilek Product 2010 04

Zebo Queen 1072

*Connealy Final Product
Varilek Pearl 0006 014
*EF Complement 8088
EXG Blackcap 6247 PPC

CW	\$W
+58	+77
MARB	\$F
+1.31	+92
RE	\$G
+59	+83
FAT	\$B
+034	+176

FWY 7008 of C085 4029
*17799315

#*AAR Ten X 7008 SA

+*FWY Rita C085

*Mytty In Focus
#AAR Lady Kelton 5551
*Summitcrest Complete 1P55
+Bohi Rita 8291

CED		BEPD		WEPD		YEPD		MILK	
+10	.80	+0	.93	+73	.90	+129	.80	+27	.33



Hoover Top Notch P409

[AMF-CAF-D2F-DDF-M1F-NHF-OHF-OSF-RDF]

Birth Date: 8-9-2015

Bull +*18470330

Tattoo: P409

Bruns Top Cut 373
*17680548

*Bruns Uppercut 610

#Dakota Miss 669 Baf

#Sitz Upward 307R
Dakota Ann 565 BAF
*Mohnen Brushpopper 295
#Dakota Miss 1785 Baf

CW	\$W
+58	+84
MARB	\$F
+43	+114
RE	\$G
+1.02	+54
FAT	\$B
-.040	+168

Erica of Ellston L5
*17312733

#*Connealy Counselor

#Erica of Ellston G366

*Connealy Mentor 7374
Jaze of Conanga 234
*SydGen CC&7
Erica of Ellston D184

CED		BEPD		WEPD		YEPD		MILK	
+11	.50	-5	.77	+71	.70	+126	.57	+32	.33



SydGen Wake Up Call 9446

[AMF-CAF-D2F-DDF-M1F-NHF-OHF-OSF-RDF]

Birth Date: 1-31-2009

Bull +*16388600

Tattoo: 9446

SydGen Contact
#14088423

#+SAF Connection
+SAF Forever Lady 0020

#+SVF Gdar 216 LTD
+SAF Royal Queen 5084
SAF Hi Choice
GDAR Forever Lady 246

CW	\$W
+45	+76
MARB	\$F
+1.12	+103
RE	\$G
+72	+82
FAT	\$B
-.024	+185

SydGen Forever Lady 4087
14664721

#*SydGen 1407 Corona 2016
+SAF Forever Lady 8292

#Bon View New Design 1407
VNAR Perfection 142F 180K
#+SAF Neutron
+SAF Forever Lady 5138

CED		BEPD		WEPD		YEPD		MILK	
+9	.55	+1.1	.85	+63	.80	+117	.72	+38	.54



Musgrave 316 Stunner

[AMF-CAF-D2F-DDF-M1F-NHF-OHF-OSF]

Birth Date: 2-19-2016

Bull *18467508

Tattoo: 1676

LD Capitalist 316
+*17666102

#*Connealy Capitalist 028
LD Dixie Erica 2053

#*SAV Final Answer 0035
Prides Pita of Conanga 8821
#CA Future Direction 5321
LD Dixie Erica Oar 0853

CW	\$W
+55	+73
MARB	\$F
+5.56	+118
RE	\$G
+3.38	+40
FAT	\$B
+0.071	+158

MCATL Blackbird 831-1378
#16896985

#MCATL Pure Product 903-55
MCATL Blackbird 1378-573

#*Connealy Final Product
MA Esta 55-252
#Connealy Reflection
MA Blackbird 573

CED		BEPD		WEPD		YEPD		MILK	
+9	.83	+1	.94	+71	.92	+126	.80	+25	.32



PVF Inauguration 6174

[AMF-CAF-D2F-DDF-M1F-NHF-OHF-OSF]

Birth Date: 3-14-2016

Bull +*18606539

Tattoo: 6174

Dameron First Class
*16175085

EXG RS First Rate S903 R3
Dameron Northern Miss 3114

#Exar Lutton 1831
Rafter S Blackcap P909
+Dameron PVF Raptor 702
#+Dameron Miss 550

CW	\$W
+45	+34
MARB	\$F
+35	+105
RE	\$G
+92	+48
FAT	\$B
-.032	+153

PVF Missie 790
+*15746654

#+*PVF New Horizon 001
PVF Miss Raptor 024

#B/R New Design 323
Hyline Ellen 410
+Dameron PVF Raptor 702
PVF Miss Stockman 812

CED		BEPD		WEPD		YEPD		MILK	
-2	.36	+5.2	.63	+56	.53	+100	.40	+22	.34



Baldrige Bronc

[AMF-CAF-D2F-DDF-M1F-NHF-OHF-OSF-RDF]

Birth Date: 1-6-2015

Bull +*18229425

Tattoo: C010

EF Commando 1366
*17082311

#*EF Complement 8088
Riverbend Young Lucy W1470

#Basin Franchise P142
+EF Everelda Entense 6117
#+B/R Ambush 28
+Riverbend Young Lucy T1080

CW	\$W
+34	+78
MARB	\$F
+4.2	+69
RE	\$G
+5.55	+38
FAT	\$B
+0.046	+107

Baldrige Isabel Y69
*17149410

#*Styles Upgrade J59
+Baldrige Isabel T935

#Sitz Upward 307R
Plainview Lassie 71B
#Baldrige Kaboom K243 KCF
+Baldrige Isabel P4527

CED		BEPD		WEPD		YEPD		MILK	
+16	.87	-2.5	.95	+64	.94	+117	.91	+32	.55



PVF Surveillance 4129

[AMF-CAF-D2F-DDF-M1F-NHF-OHF-OSF-RDF]

Birth Date: 4-12-2014

Bull +*17954726

Tattoo: 4129

BC Lookout 7024
#+14791623

OCC Legend 616L
Gibbet Hill Mignonne E37

#+OCC Emblazon 854E
OCC Blackbird 632J
#Papa Equator 2928
Gibbet Hill Mignonne TR 29

CW	\$W
+20	+49
MARB	\$F
+2.1	+40
RE	\$G
+1.17	+23
FAT	\$B
+0.044	+63

PVF Ellen 9100
*16416672

#PVF ALL PAYDAY 729
Hyline Ellen 410

SAV Payroll 5281
PVF Blackbird 201
#Hyline Travel Agent
#Hyline Ellen 9062

CED		BEPD		WEPD		YEPD		MILK	
+3	.49	+2.7	.83	+52	.75	+75	.55	+18	.39

EARLYBIRD



Nutrition

Drew Stollard: 309.208.5650
Chuck Lemenager: 815.867.7011
Grant Bedel: 309.212.2493
Mark Tol: 815.343.2404

LIKE US ON FACEBOOK



BAG & BULK DELIVERIES / CUSTOM RATIONS / COMPLETE FEEDS
COMMERCIAL - SHOW / TOP DRESS PRODUCTS / GRAIN BANK OPTIONS
RATON BALANCING / WIDE VARIETY OF PRODUCT LINES
GREAT SUPPORT

Many Mineral Options + Custom Minerals To Fit Your Operation!

www.earlybirdgoodfield.com

VITAFERM



SHOW-RITE

SUNGLO

KENT



Goodfield Info:
381 State Route 117
Goodfield, IL 61742

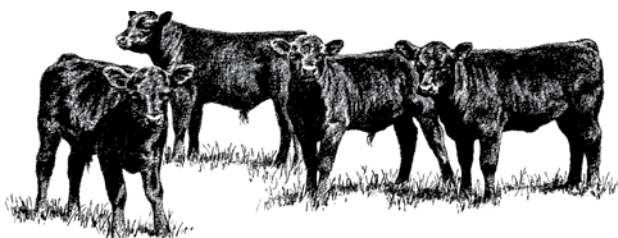
Roseville Info:
300 E. Broadway St
Roseville, IL 61473

Roseville - 309.705.3010
Goodfield - 309.965.2555

A BIG THANK YOU TO Fairview Sale Barn

1120 Carter Street

Fairview, IL 61432



Fed cattle and butcher cows every Tuesday 10:00

Special cow sales 1st Tuesday of month 5:00

Special feeder sales as announced

Regular sale every Thursday 12:00

If you can't attend, watch the sales
online at www.lmauctions.com

CAB Sales with the Lamoine Valley Angus
Association will be held in
November 2019 & January 2020

2020 Sales



March 5th Breeding Stock Sale, 5 p.m.

March 14th Feeder Special Wean/Vacc.

March 28th Feeder Special, 12 p.m.

April 2nd Breeding Stock, 5 p.m.

April 11th Back to Grass Wean/vacc.

Feeder Special

April 25th Feeder Special, 12 p.m.

**For more Sale Information and Sale Updates
go to: www.fairviewsalebarn.com**

FAIRVIEW SALE BARN, INC.

Jacob Fidler 309-224-2226

Bob Garber 309-696-9798

Ray Johnson 309-337-6029

Bob Fidler 309-224-2327

Laura Fidler/Office 309-778-2225

Fax 309-778-2014



Thank You

for choosing
Dearwester Grain Services
to be a part of your cattle
operation.
We are proud to serve you
and appreciate your loyal
business!

**Enjoy the meal furnished by
Dearwester Grain,
Jake Patterson, Salesman**

Visit us on the web: www.dearwestergrain.com

Social Media @dearwestergrain





NOTES



Bud and Deb Hobbs



Tim, Aiden, Collin and Missy Egan



John, Brian, Cherish and Ashley McEwen



Erin, Dean, Tessa and Anna Curley

HOBBS ANGUS

22330 E. 1700th St.
Good Hope, IL 61438

(309) 772-3747

