

Grassy Valley Farm

*17th Annual Performance
Bull and Female Sale*

**Saturday • April 3, 2010 • Noon
Greeneville, TN**

Grassy Valley Farm

Performance Bull and Female Sale

Noon, Saturday, April 3, 2010
Greeneville, TN

SALE DAY PHONES:

(423) 638-5382 • (423) 552-5405
(423) 552-5404

AUCTIONEER:

Scott Crawford
(816) 858-5586
TFL #4613

SALE DAY REPRESENTATIVE:

Kurt Schaff, American Angus Hall of Fame
(816) 532-0811 • (816) 520-6447

ACCOMMODATIONS:

Hampton Inn
Hwy 11E • Greeneville, TN • (423) 638-3735

Jameson Inn

Hwy 11E • Greeneville, TN • (423) 638-7511

SUPPLEMENTAL INFORMATION:

Current weights, scrotal measurements, and ultrasound data will be available on all bulls prior to the sale. Current EPDs and Adj. 205-day weights will be available on all eligible calves prior to the sale.

UPDATED BREEDING INFORMATION:

Every effort has been made to be as accurate as possible in determining breeding information. An updated breeding and calving sheet will be available prior to the sale.

HERD HEALTH:

All cows have been vaccinated with Grand Labs Virashield 5+VL5 and dewormed with Cydectin. All calves have been vaccinated with Covexin 8 clostridial vaccine twice, Express 5 PMH, and dewormed with Cydectin. In addition all eligible heifers are brucellosis vaccinated. All adult females and bulls have been tested Johne's negative (ELISA test).

TRUCKING:

Truckers believed to be reliable will be on hand to assist with transportation.

TERMS AND CONDITIONS OF SALE:

All animals sell under the Terms and Conditions of the American Angus Association. A copy is available upon request.

INSURANCE:

A representative of American Livestock Insurance Company will be available to assist you with mortality insurance for you purchases.

LIABILITY:

All persons attend this sale at their own risk.

LOAD OUT AVAILABLE

Due to the size of this offering, staff will be on hand to assist you in loading out while the sale is in progress should you need to depart early.

SIGHT UNSEEN PURCHASING OPTION

If you are unable to attend the sale but are interested in purchasing an animal, please contact us as soon as possible to discuss your particular interests and needs. We will then represent you on sale day and provide transportation to your farm at a reasonable cost. If you are then not 100% satisfied with your purchase, you do not own it, it's as simple as that.

SCHEDULE OF EVENTS

Friday, April 2
Preview sale cattle

Saturday, April 3, Noon
Grassy Valley Performance-Tested Bull Sale

Saturday, April 3, 1 P.M.
Grassy Valley Female Production Sale

BULL GUARANTEE

As a service, Grassy Valley will insure for you, free of charge, all service-age bulls selling for \$2,000 or more against death or loss of use for six months from the date of sale. This insurance will be for 100% of the first \$1,000 and for 50% of the next \$2,000 for a maximum benefit of \$2,000. The purchaser agrees to have the bull examined by a licensed Veterinarian at their expense and contact Grassy Valley immediately. Grassy Valley will receive any salvage value of the bull. This insurance is to be redeemed in the form of a mutually agreeable replacement bull or credit in any future Grassy Valley sale.



Visit the *Angus Journal*® Web site,
www.angusjournal.com,
and view this sale book online.

References: American Angus Association®, AHIR®, Angus Source®, CAB®, Pathfinder®
EPDs current as of February 23, 2010.
Updated EPDs can be viewed online at www.angus.org

Grassy Valley Farm

A.L. & Nancy Duckworth Jr., DVM
(423) 638-5882 Home
Lee, Lori, Ashley, Andrew and Alexandra Duckworth
(423) 234-0506
P.O. Box 695
Greeneville, TN 37744
(423) 638-5382 Office

Dear Cattlemen,

On behalf of our family, I would like to welcome you to the 2010 Grassy Valley Production Sale. If we can assist you in any way, please feel free to call on us at any time. It is our goal to provide you as much information as possible about our cattle so you can select the individuals most beneficial to you.

Grassy Valley Angus is a no-frills performance program. The cattle are managed in a very practical manner. Accurate performance data is collected and used in our breeding decisions for generations. This offering is our best and deepest yet as a result of our efforts to make every generation better than the last. We invite you to study this bull offering, you will find some of the best EPDs available and cattle that match the numbers. These bulls will add performance and pounds in a moderate birth weight package. The females selling represent a strong cross-section of our herd. We believe in selling production you can see; therefore, most females sell with a calf at side. We have included a powerful set of fall and spring calving proven females as well as select bred and open heifers. A group of special two-year-old females sell as a highlight of this event.

We would like to thank all our past customers for their support. Your business is sincerely appreciated.

You are welcome anytime to see the sale cattle. Again, if we can help in any way or answer any questions, please give us a call. We look forward to visiting with you.

Sincerely,

*Lee Duckworth
Grassy Valley Farm*

Attention Tennessee Producers

All bulls selling in this event qualify for the Tennessee Beef Cattle Improvement Initiative Program. For questions involving this program or to obtain a date of purchase extension please call the Tennessee Department of Agriculture at (615) 837-5160 or contact Grassy Valley directly.

Expected Progeny Differences (EPDs) – Definitions and How to Use Them

By The American Angus Association

Expected Progeny Difference (EPD) is the prediction of how future progeny of each animal are expected to perform relative to the progeny of other animals listed in the database. EPDs are expressed in units of measure for the trait, plus or minus.

Calving Ease Direct (CED) is expressed as a difference in percentage of unassisted births, with a higher value indicating greater calving ease in first-calf heifers. It predicts the average difference in ease with which a sire's calves will be born when he is bred to first-calf heifers.

Birth Weight EPD (BW), expressed in pounds, is a predictor of a sire's ability to transmit birth weight to his progeny compared to that of other sires.

Weaning Weight EPD (WW), expressed in pounds, is a predictor of a sire's ability to transmit weaning growth to his progeny compared to that of other sires.

Yearling Weight EPD (YW), expressed in pounds, is a predictor of a sire's ability to transmit yearling growth to his progeny compared to that of other sires.

Maternal Milk EPD (MILK) is a predictor of a sire's genetic merit for milk and mothering ability as expressed in his daughters compared to daughters of other sires. In other words, it is that part of a calf's weaning weight attributed to milk and mothering ability.

Marbling EPD (MARB) is a predictor of the difference in USDA marbling score of a sire's progeny compared to the progeny of other sires.

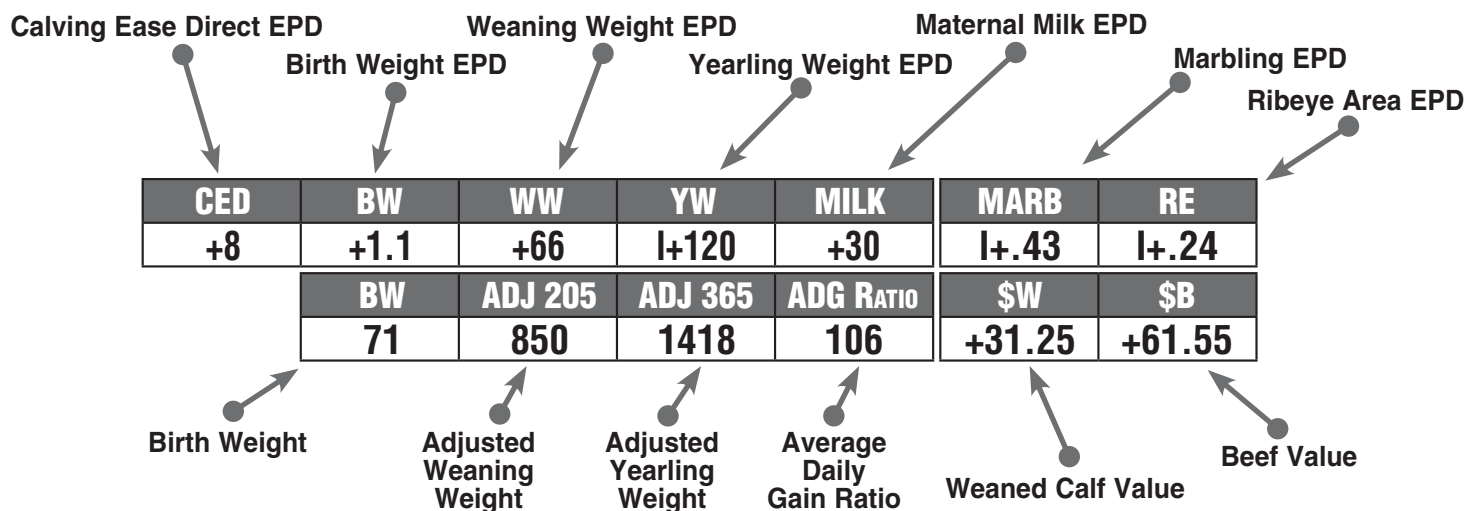
Ribeye Area EPD (RE) is a predictor of the difference in square inches of ribeye area of a sire's progeny compared to the progeny of other sires.

\$Value Indexes

\$Value indexes are multi-trait selection indexes, expressed in dollars per head, to assist beef producers by adding simplicity to genetic selection decision. The \$Value is an estimate of how future progeny of each sire are expected to perform, on average, compared to progeny of other sires in the database if the sires were randomly mated to cows and if calves were exposed to the same environment.

Weaned Calf Value (\$W), an index valued expressed in dollars per head, is the expected average difference in future progeny performance for preweaning merit. \$W includes both revenue and cost adjustments associated with differences in birth weight, weaning direct growth, maternal milk and mature cow size.

Beef Value (\$B), an index value expressed in dollars per head, is the expected average difference in future progeny performance for postweaning and carcass value compared to progeny of other sires.



Breed Average EPD and \$Values - Spring 2010

Non-Parent Bulls

| CED | BW | WW | YW | MILK | MARB | RE | \$W | \$B |
|-----|------|-----|-----|------|-------|-------|--------|--------|
| +5 | +2.1 | +45 | +82 | +21 | +0.33 | +0.17 | +24.87 | +41.10 |

So which EPDs are most important?

A question we are often asked along with the question: "What is the best bull." The answer is entirely dependant on what you want the bull to do for you. We are including some examples of different scenarios that may be of some help.

Example 1 - I am breeding a group of heifers and don't have a lot of time to watch them calve. The calves will be sold at weaning.

We would suggest buying a bull well below the breed average Birth Weight EPD with as much Weaning Weight EPD as possible since that is when calves will be sold.

Example 2 - I am breeding mature cows and will sell the calves at weaning or as yearlings.

We would suggest buying a bull with a higher Weaning and Yearling Weight EPD, and that the Birth EPD is of lower importance. Angus bulls are known for calving ease, and often times calves that are a little bigger at birth will be a little bigger when sold. Interestingly, if across breed EPDs are applied to the heaviest Birth EPD bull in this offering he would rank as a calving ease bull in many breeds.

Example 3 - I am breeding mature cows and heifers and will sell the calves at weaning or as yearlings depending on the market.

We would suggest a bull that is around breed average (+2.1) on Birth EPD with as much Weaning and Yearling Weight EPD as possible.

Example 4 - I am breeding mature cows and will be sending the calves to the feedlot and selling them on a grade yield basis.

This is the situation when the \$B Value EPD is of use. This EPD combines performance and carcass values into one number, expressed in dollars, estimating end product value. We would therefore suggest higher \$B Value bulls for this customer and pay less attention to Birth Weight EPD.

Points to keep in mind:

- 1) EPDs do work, and while not perfect, are the very best selection tool available to add value to our calf crop.
- 2) EPDs are expressed in pounds or dollars. Those pounds or dollars do influence your bottom line. There is a difference in bulls.
- 3) EPDs are subject to change and will vary over time. Therefore, small differences between bulls (example 2 pounds of Yearling Weight EPD) may not be significant while larger differences (example 15 pounds of Weaning Weight EPD) will be.
- 4) If you have any questions on EPDs or how to best use them in your situation, feel free to call anytime, we will gladly help all we can.

Grassy Valley Reference Sires



Boyd Forward 6025 - Reference Sire A

A Boyd Forward 6025

Birth Date: 1-29-2006 Bull 15347916 Tattoo: 6025

Connealy Onward 14216491 #Connealy Lead On [AMF-NHF] Altune of Conanga 6104
Sitz RLS Eisa Evergreen 30P 14707923 Sitz New Design 349M [AMF-NHF] #Sitz RLS Eisa Evergreen 39M
 #Connealy Leadtime [AMF-NHF] Eligence Plus of Conanga #GAR Traveler 1489 [AMF] Avalon 1418 of Conanga 6276 #Bon View New Design 1407 [AMF-NHF] +Sitz Pride 166K #Sitz Value 7097 [AMF-NHF] #Sitz RLS Eisa Evergreen 1380

| BW | WW | YW | MILK | MARB | RE |
|--------|-----|--------|------|------|-----|
| +1 | +62 | +128 | +26 | +14 | +51 |
| \$W | | \$B | | | |
| +26.24 | | +55.42 | | | |

Boyd Forward 6025 has exceeded all expectations as a consistent sire of low birth weight cattle with extra muscle, performance, stunning good looks, and great dispositions. His first calf crop included the top-selling sire group in the 2009 Grassy Valley Production Sale and the top-selling Junior Bull in the University of Tennessee Bull Testing program. The first daughters in production are excellent young females. "6025" was produced by a first calf heifer that is backed by three generations of Pathfinder Dams. He offers top EPDs and an outcross pedigree for many.



TC Total 6516 - Reference Sire B

B TC Total 6516

Birth Date: 9-16-2006 Bull 15703148 Tattoo: 6516

TC Total 410 14844711 #Bon View New Design 208 [AMF-NHF] +TC Erica Eileen 2047 [NHC-AMF]
J BarJ Bextor Lass DW 475 14955292 #CRA Bextor 872 5205 608 [AMF-NHF] +Stevenson Lass 793J
 #B/R New Design 036 [AMF-NHF] #Bon View Erica 443 #Twin Valley Precision E161 [NHC-AMF-RDF] #+TC Erica Eileen 5116 #BAR Ext Traveler 205 [AMF-NHF] Cra Lady Jaye 608 498 S Easy #Basin Max 602C [AMF-NHF] #JRS Lass 207A

| BW | WW | YW | MILK | MARB | RE |
|--------|-----|--------|------|------|-----|
| +5.2 | +61 | +116 | +28 | +65 | +42 |
| \$W | | \$B | | | |
| +20.51 | | +68.44 | | | |

TC Total 6516 is an exceptional growth and performance sire. Progeny exhibit extra depth of rib, chest floor, muscle thickness, and body mass. This is as good a growth sire as we have used in a while. While not recommended for heifers, all births have been alive and unassisted here. The first progeny scanned by ultrasound ratio 108 for IMF giving him tremendous carcass potential. We will use this bull more this Spring. He is the right kind.



G V F Admiral 6006 - Reference Sire C

C G V F Admiral 6006

Birth Date: 12-23-2005 Bull 15400500 Tattoo: 6006

Woodhill Admiral 77K #13712447 #SAF Focus of ER [AMF-NHF] +Woodhill Lass 344-1178
G V F Ruby 4008 +14731214 #Bon View New Design 878 [AMF-NHF] #+TC Ruby 4068
 #SAF Fame [AMF-NHF] GDAR Forever Lady 246 #RR Scotchcap 9440 [AMF-NHF] Woodhill Lass 1172-344 #B/R New Design 036 [AMF-NHF] Bon View Gammer 85 #+Leachman Right Time TC Ruby 5087

| BW | WW | YW | MILK | MARB | RE |
|--------|-----|--------|------|------|-----|
| +4.2 | +67 | +123 | +25 | +22 | +12 |
| \$W | | \$B | | | |
| +23.84 | | +49.57 | | | |

G V F Admiral 6006 was our top-selling bull in 2007. He sires moderate framed, exceptionally thick, high performance progeny with great dispositions. His first sons were very well received in last year's sale, offering extra muscle expression and performance. His first daughters in production here include one of our top two-year-olds. Dam is an outstanding female from the TC Ruby cow family. We will continue to use this bull in our program. He is the right kind wherever the efficient production of beef is valued.



TC Total 410 - Reference Sire D

D TC Total 410 [AMF-NHF]

Birth Date: 1-16-2004 Bull 14844711 Tattoo: 410

Bon View New Design 208 #13044574 #B/R New Design 036 [AMF-NHF] #Bon View Erica 443
TC Erica Eileen 2047 #14270867 #Twin Valley Precision E161 [NHC-AMF-RDF] #+TC Erica Eileen 5116
 #VDAR New Trend 315 [AMF-NHF] B/R Blackcap Empress 76 #N Bar Emulation EXT [AMF-NHF] #Bon View Erica 1380 #GAR Precision 1680 [AMC-NKC] +WCC Blackcap C9 [RDC] #+Leachman Right Time TC Erica Eileen 6006

| BW | WW | YW | MILK | MARB | RE |
|--------|-----|--------|------|------|-----|
| +3.6 | +71 | +129 | +30 | +64 | +56 |
| \$W | | \$B | | | |
| +33.27 | | +74.80 | | | |

TC Total 410 was used in our program for his top across-the-board EPD profile. He satisfies every segment of the beef industry. He has proven to be an excellent growth and performance sire with great carcass data. Daughters in production here have good udders and are raising excellent calves.

Grassy Valley Reference Sires

E S S Objective T510 0T26 [AMF-NHF]

Birth Date: 4-25-2000 Bull #13776378 Tattoo: 0T26

SS Traveler 6807 T510 [AMF-NHF]
#12502030 #SS Miss Hi Spade A114

SS Rito Rito R76 R011
SS Miss Rita R011 7R8 [AMF-NHF]
12958951 SS Miss Ultrass U56

#QAS Traveler 23-4 [AMF-NHF]
#Bernindful Maid DHD 0807
#Hoff Hi Spade SC 491
SS Miss Rito 0H3 5H9
SS Rito Rito R76
SS Miss Hoss H83
#+OSU 6T6 Ultra
#SS Miss Rito Rito R76 R96

| BW | WW | YW | MILK | MARB | RE |
|--------|--------|------|------|-------|-------|
| +1.1 | +71 | +125 | +29 | + .69 | + .42 |
| \$W | \$B | | | | |
| +40.73 | +62.15 | | | | |

SS Objective was used in our program for his multi-trait EPD superiority. He offers breed-leading calving-ease, performance, and carcass quality in one package. He is one of the most highly used sires in the Angus breed.



SS Objective T510 0T26 - Reference Sire E

F C R A Bextor 872 5205 608 [AMF-NHF]

Birth Date: 2-8-1998 Bull #13009379 Tattoo: 872

BAR Ext Traveler 205 [AMF-NHF]
#12452829 #BAR Queen Traveler 3015

#+GAR Sleep Easy 1009 [AMF-NHF]
Cra Lady Jaye 608 498 S Easy
12559297 HHF 917 Lady 975 498

#Emulation N Bar 5522
N Bar Primrose 2424
#DHD Traveler 6807 [AMF-NHF]
Magic Queen 963
#Tehama Bando 155 [AMF-NHF]
Blacklass GAR 103
HHF Traveler 688 917
HHF Esso Lady 650 975

| BW | WW | YW | MILK | MARB | RE |
|--------|--------|-----|------|-------|-------|
| +1.6 | +51 | +96 | +33 | + .58 | + .48 |
| \$W | \$B | | | | |
| +37.17 | +55.29 | | | | |

CRA Bextor is a "no holes" complete sire. He offers calving-ease, good performance, carcass quality, and his daughters are some of the best females in the breed. He is the kind of bull that will keep you in the cattle business.



CRA Bextor 872 5205 608 - Reference Sire F

G Nichols Extra K205 [AMF-NHF]

Birth Date: 4-2-2000 Bull #13752642 Tattoo: K205

Nichols Extra H6 [AMF-NHF]
#13207590 Nichols Eileen May F261

+Nichols Heavy Duty D20
Nichols Black Heiress F346
12701216 Nichols Black Heiress B3

#Emulation N Bar 5522
N Bar Primrose 2424
Nichols Black Ink D220
Nichols Eileen May B241
#Nichols Heavy Duty X100
Nichols Heiress A221
#Nichols Formula U193
#Nichols Black Heiress Z28

| BW | WW | YW | MILK | MARB | RE |
|--------|--------|------|------|-------|-------|
| +1.9 | +56 | +109 | +24 | + .18 | + .24 |
| \$W | \$B | | | | |
| +32.27 | +45.58 | | | | |

Nichols Extra K205 was used as an outcross sire to reintroduce the EXT influence in our program. Progeny have exceeded our expectations for calving-ease, muscle expression, and performance. We will continue to use this bull.



Nichols Extra K205 - Reference Sire G

H Woodhill Mainline S168-U25

Birth Date: 2-12-2008 Bull 16156692 Tattoo: U25

Woodhill Mainline [AMF-NHF]
14793708 #Woodhill Blackbird 1288-138K

#Woodhill Admiral 77K [AMF-NHF]
Woodhill Evergreen 74M-S168
15478082 #Woodhill Evergreen 559-74M

#Connealy Timeline
Energy of Conanga 4851
N Bar Bando 598 Y2587
#Woodhill Blackbird 463-1288
#SAF Focus of ER [AMF-NHF]
+Woodhill Lass 344-1178
#Sitz Reliant 8898 [AMF-NHF]
Woodhill Evergreen 400-559

| BW | WW | YW | MILK | MARB | RE |
|--------|--------|------|------|-------|-------|
| +2.4 | +61 | +108 | +21 | + .40 | + .31 |
| \$W | \$B | | | | |
| +28.06 | +54.04 | | | | |

U25 was added to our program as a Mainline son with extra marbling and performance. He offers a complete outcross pedigree for many combined with moderate birth weight and excellent growth EPDs.



Woodhill Mainline - Sire of Reference Sire H

Grassy Valley Bulls



G V F Forward 9042 - Lot 1

1 G V F Forward 9042

Birth Date: 1-25-2009 Bull 16337346 Tattoo: 9042

Connealy Onward (AMF-NHF)
Boyd Forward 6025
 15347916 Sitz RLS Eisa Evergreen 30P

#Connealy Lead On (AMF-NHF)
 Altune of Conanga 6104
 Sitz New Design 349M (AMF-NHF)
 #Sitz RLS Eisa Evergreen 39M

#Bon View New Design 878 (AMF-NHF)
GVF Georgina 5073
 15048333 +GVF Georgina 3051 (AMF)

#B/R New Design 036 (AMF-NHF)
 Bon View Gammer 85
 TC Forefront 105
 #TC Georgina 7073

| CED | BW | WW | YW | MILK | MARB | RE |
|-----|---------|---------|-----------|--------|--------|-----|
| +7 | +1.1 | +65 | I+123 | +28 | +26 | +37 |
| BW | ADJ 205 | ADJ 365 | ADG RATIO | \$W | \$B | |
| 78 | 809 | 1465 | 115 | +29.30 | +55.32 | |

An individual standout since a calf, this is a top herd bull prospect. Uniformly thick, with extra depth, spring of rib and performance best describe this bull. Note the breed-leading EPD profile ranking easily in the top 1% for weaning and yearling growth. Dam has weaned 3@109, is moderate framed, extra deep and has a perfect udder. We will use this bull in our program. Genomic profile available.

2 G V F Forward 904

Birth Date: 2-26-2009 Bull +16435226 Tattoo: 904

Connealy Onward (AMF-NHF)
Boyd Forward 6025
 15347916 Sitz RLS Eisa Evergreen 30P

#Connealy Lead On (AMF-NHF)
 Altune of Conanga 6104
 Sitz New Design 349M (AMF-NHF)
 #Sitz RLS Eisa Evergreen 39M

TC Forefront 105
GVF Georgina 3051 (AMF)
 +14413087 #TC Georgina 7073

#Connealy Forefront (AMF-NHF)
 #+TC Flower 9023 (AMC)
 #+Woodhill Supreme (AMF-NHF)
 TC Georgina 3186

| CED | BW | WW | YW | MILK | MARB | RE |
|-----|---------|---------|-----------|--------|--------|-------|
| I+6 | I+1.4 | I+56 | I+111 | I+22 | I+.43 | I+.31 |
| BW | ADJ 205 | ADJ 365 | ADG RATIO | \$W | \$B | |
| 80 | 762 | 1487 | 100 | +25.80 | +57.55 | |

3 G V F Forward 9141

Birth Date: 3-11-2009 Bull +16365904 Tattoo: 9141

| CED | BW | WW | YW | MILK | MARB | RE |
|-----|---------|---------|-----------|--------|--------|-----|
| I+6 | I+1.4 | I+56 | I+111 | I+22 | +26 | +38 |
| BW | ADJ 205 | ADJ 365 | ADG RATIO | \$W | \$B | |
| 82 | 552 | 1146 | 107 | +25.80 | +54.49 | |

4 G V F Forward 9147

Birth Date: 3-15-2009 Bull +16365905 Tattoo: 9147

| CED | BW | WW | YW | MILK | MARB | RE |
|-----|---------|---------|-----------|--------|--------|-----|
| I+6 | I+1.4 | I+56 | I+111 | I+22 | +43 | +32 |
| BW | ADJ 205 | ADJ 365 | ADG RATIO | \$W | \$B | |
| 78 | 675 | 1245 | 126 | +25.71 | +58.44 | |

5 G V F Forward 9152

Birth Date: 3-15-2009 Bull +16365908 Tattoo: 9152

Connealy Onward (AMF-NHF)
Boyd Forward 6025
 15347916 Sitz RLS Eisa Evergreen 30P

#Connealy Lead On (AMF-NHF)
 Altune of Conanga 6104
 Sitz New Design 349M (AMF-NHF)
 #Sitz RLS Eisa Evergreen 39M

TC Forefront 105
GVF Georgina 3051 (AMF)
 +14413087 #TC Georgina 7073

#Connealy Forefront (AMF-NHF)
 #+TC Flower 9023 (AMC)
 #+Woodhill Supreme (AMF-NHF)
 TC Georgina 3186

| CED | BW | WW | YW | MILK | MARB | RE |
|-----|---------|---------|-----------|--------|--------|-------|
| I+6 | I+1.4 | I+56 | I+111 | I+22 | I+.24 | I+.28 |
| BW | ADJ 205 | ADJ 365 | ADG RATIO | \$W | \$B | |
| 79 | 774 | 1499 | 100 | +25.80 | +51.06 | |

Four large framed, high performance flush brothers that can work on cows or heifers. These bulls offer calving-ease, growth, marbling, and muscle. Their sisters in production are top two-year-olds. A full brother was the top-selling bull in the 2009 University of Tennessee Junior Bull Test sale. Another full brother is working in the BGS program.

Lots 2 and 5 were fed in a separate contemporary group.

Grassy Valley Bulls



G V F Forward 9041 - Lot 6

6 G V F Forward 9041

Birth Date: 1-25-2009 Bull 16337345 Tattoo: 9041

Connealy Onward (AMF-NHF)
Boyd Forward 6025
 15347916 Sitz RLS Eisa Evergreen 30P

#Connealy Lead On (AMF-NHF)
 Altune of Conanga 6104
 Sitz New Design 349M (AMF-NHF)
 #Sitz RLS Eisa Evergreen 39M

#+SAF 598 Bando 5175 (AMF)
GVF Elba 3056
 14394845 #+GVF Elba 9042

#Bon View Bando 598 (AMF)
 +SAF Royal Lass 1002
 #+Woodhill Checkmate
 GVF Elba 3019

| CED | BW | WW | YW | MILK | MARB | RE |
|-----|---------|---------|-----------|--------|--------|-----|
| +6 | +1.8 | +66 | 1+124 | +23 | +25 | +51 |
| BW | ADJ 205 | ADJ 365 | ADG RATIO | \$W | \$B | |
| 80 | 747 | 1357 | 107 | +27.32 | +57.18 | |

A performance leader in this big framed, heavy muscled, high performing bull. Notice the exceptional EPDs, ranking in the top 1% of the breed for weaning and yearling growth, combined with a sound athletic structure and backed by a top cow that raised a featured bull in our 2007 sale. This bull can stand a lot of competition.

Genomic profile available.

7 G V F Forward 9077

Birth Date: 2-5-2009 Bull 16372164 Tattoo: 9077

Connealy Onward (AMF-NHF)
Boyd Forward 6025
 15347916 Sitz RLS Eisa Evergreen 30P

#Connealy Lead On (AMF-NHF)
 Altune of Conanga 6104
 Sitz New Design 349M (AMF-NHF)
 #Sitz RLS Eisa Evergreen 39M

#Bon View New Design 878 (AMF-NHF)
GVF Erica 707
 +16275496 +GVF Erica 4055 (NHF)

#B/R New Design 036 (AMF-NHF)
 Bon View Gammer 85
 #Twin Valley Precision E161 (INC-AMF-RDF)
 Woodhill Erica 854-1167

| CED | BW | WW | YW | MILK | MARB | RE |
|-----|---------|---------|-----------|--------|--------|-----|
| +7 | +1.6 | +49 | 1+109 | +25 | +29 | +24 |
| BW | ADJ 205 | ADJ 365 | ADG RATIO | \$W | \$B | |
| 74 | 627 | 1305 | 119 | +21.90 | +51.14 | |

A very complete and balanced bull who can work on cows or heifers. Notice the tremendous gain on test. Produced by a two-year-old dam, this bull excels in every measurable trait, is super good looking, and is backed by the herd bull producing Erica cow family.

8 G V F Forward 9099

Birth Date: 2-12-2009 Bull 16337354 Tattoo: 9099

Connealy Onward (AMF-NHF)
Boyd Forward 6025
 15347916 Sitz RLS Eisa Evergreen 30P

#Connealy Lead On (AMF-NHF)
 Altune of Conanga 6104
 Sitz New Design 349M (AMF-NHF)
 #Sitz RLS Eisa Evergreen 39M

#Woodhill Admiral 77K (AMF-NHF)
GVF Evergreen 6056
 15400552 GVF Evergreen 4026

#SAF Focus of ER (AMF-NHF)
 +Woodhill Lass 344-1178
 #BCC Bushwacker 41-93 (AMF-NHF)
 +GVF Evergreen 1174

| CED | BW | WW | YW | MILK | MARB | RE |
|-----|---------|---------|-----------|--------|--------|-----|
| +8 | +1.2 | +57 | 1+109 | +24 | +26 | +45 |
| BW | ADJ 205 | ADJ 365 | ADG RATIO | \$W | \$B | |
| 70 | 623 | 1204 | 102 | +27.83 | +52.75 | |

A thick made, very complete bull with top EPDs across the board that will work on cows or heifers. Solid individual here you can use however you like.

9 G V F Forward 9165

Birth Date: 4-20-2009 Bull 16365913 Tattoo: 9165

Connealy Onward (AMF-NHF)
Boyd Forward 6025
 15347916 Sitz RLS Eisa Evergreen 30P

#Connealy Lead On (AMF-NHF)
 Altune of Conanga 6104
 Sitz New Design 349M (AMF-NHF)
 #Sitz RLS Eisa Evergreen 39M

#Hyline Right Time 338 (AMF-NHF)
GVF Pride 4223
 +14928010 Prides of Conanga 64568

#+Leachman Right Time
 Hyline Pride 265
 #Connealy Forefront (AMF-NHF)
 Prides Venture of Conanga 62

| CED | BW | WW | YW | MILK | MARB | RE |
|-----|---------|---------|-----------|--------|--------|-------|
| +8 | +1.3 | +60 | +114 | +28 | 1+.19 | 1+.33 |
| BW | ADJ 205 | ADJ 365 | ADG RATIO | \$W | \$B | |
| 74 | 667 | N/A | N/A | +28.72 | +49.27 | |

The youngest bull in the sale produced by a donor dam who has weaned 3@109. This good looking bull offers breed leading EPDs and performance. He will work on cows or heifers.

Grassy Valley Bulls

10 G V F Forward 9018

Birth Date: 1-18-2009 Bull 16337341 Tattoo: 9018



G V F Forward 9018 - Lot 10

Connealy Onward (AMF-NHF) #Connealy Lead On (AMF-NHF)
 Altune of Conanga 6104
 Boyd Forward 6025 Sitz RLS Eisa Evergreen 30P Sitz New Design 349M (AMF-NHF)
 15347916 #Sitz RLS Eisa Evergreen 39M

#+Lemmon Newsline C804 (AMF-NHF) #B/R New Design 036 (AMF-NHF)
 White Fence Pride H1
 GVF Ruby 7047 (NHF) #Twin Valley Precision E161 (NHC-AMF-RDF)
 15776232 +GVF Ruby 3102 (NHC-AMF) #+TC Ruby 4068

| CED | BW | WW | YW | MILK | MARB | RE |
|-----|---------|---------|-----------|--------|--------|-----|
| +2 | +2.9 | +65 | I+119 | +29 | +21 | +66 |
| BW | ADJ 205 | ADJ 365 | ADG RATIO | \$W | \$B | |
| 76 | 775 | 1351 | 101 | +27.56 | +58.11 | |

A standout individual produced by a top two-year-old dam from the herd sire producing Ruby cow family. This bull will add pounds and performance in a good looking docile package. Weaning and Yearling EPDs are in the top 1% of the Angus breed. Retained females should make top cows. One of the top bulls to sell.
 Genomic profile available.

11 G V F Forward 9131

Birth Date: 2-28-2009 Bull 16338794 Tattoo: 9131



G V F Forward 9131 - Lot 11

Connealy Onward (AMF-NHF) #Connealy Lead On (AMF-NHF)
 Altune of Conanga 6104
 Boyd Forward 6025 Sitz RLS Eisa Evergreen 30P Sitz New Design 349M (AMF-NHF)
 15347916 #Sitz RLS Eisa Evergreen 39M

#SAV 8180 Traveler 004 (AMF-NHF-RDF) #Sitz Traveler 8180 (AMF-NHF)
 +Boyd Forever Lady 8003
 Lemmon Pleasant Pride S57 #B/R New Design 036 (AMF-NHF)
 +15238363 +Lemmon Pride G804 (AMF-NHF) White Fence Pride H1

| CED | BW | WW | YW | MILK | MARB | RE |
|-----|---------|---------|-----------|--------|--------|-----|
| +6 | +1.8 | +54 | I+108 | +27 | +29 | +48 |
| BW | ADJ 205 | ADJ 365 | ADG RATIO | \$W | \$B | |
| 74 | 638 | 1243 | 106 | +25.62 | +52.66 | |

A complete bull in every aspect who descends from the dam of B/R New Frontier 095 and Lemmon Newsline C804. Excellent performance, phenotype, and balance of all economically important traits here. This is a good bull.

12 G V F Forward 9094

Birth Date: 2-9-2009 Bull 16337353 Tattoo: 9094



G V F Forward 9094 - Lot 12

| CED | BW | WW | YW | MILK | MARB | RE |
|-----|---------|---------|-----------|--------|--------|-----|
| +8 | -.2 | +58 | I+108 | +24 | +17 | +15 |
| BW | ADJ 205 | ADJ 365 | ADG RATIO | \$W | \$B | |
| 71 | 678 | 1243 | 99 | +30.00 | +42.18 | |

13 G V F Forward 9105

Birth Date: 2-14-2009 Bull +16435228 Tattoo: 9105

Connealy Onward (AMF-NHF) #Connealy Lead On (AMF-NHF)
 Altune of Conanga 6104
 Boyd Forward 6025 Sitz RLS Eisa Evergreen 30P Sitz New Design 349M (AMF-NHF)
 15347916 #Sitz RLS Eisa Evergreen 39M

+Woodhill Delta #+Leachman Right Time
 #GT Miss Traveler 58
 GVF Blackbird 0061 #N Bar Emulation EXT (AMF-NHF)
 13584217 +GVF Blackbird 5173 GVF Blackbird 7002

| CED | BW | WW | YW | MILK | MARB | RE |
|-----|---------|---------|-----------|--------|--------|-----|
| I+7 | I+.8 | I+55 | I+106 | I+24 | +19 | +22 |
| BW | ADJ 205 | ADJ 365 | ADG RATIO | \$W | \$B | |
| 70 | 463 | 1021 | 101 | +27.89 | +42.29 | |

Two full brothers produced by an older donor dam who had stood the test of time. These bulls offer calving-ease and balance in every economically important trait with Yearling Weight EPDs ranking in the top 4% of the breed. Count on retained daughters to be excellent cows. Lot 13 was raised as an orphan, but as expected has really come on while on test.

Grassy Valley Bulls

14 G V F Forward 9039

Birth Date: 1-25-2009 Bull 16337344 Tattoo: 9039

Boyd Forward 6025
15347916
Connealy Onward (AMF-NHF)
Sitz RLS Eisa Evergreen 30P

#Connealy Lead On (AMF-NHF)
Altune of Conanga 6104
Sitz New Design 349M (AMF-NHF)
#Sitz RLS Eisa Evergreen 39M

GVF Pride 6076
+15400564
#Woodhill Admiral 77K (AMF-NHF)
Prides of Conanga 64568

#SAF Focus of ER (AMF-NHF)
+Woodhill Lass 344-1178
#Connealy Forefront (AMF-NHF)
Prides Venture of Conanga 62

| CED | BW | WW | YW | MILK | MARB | RE |
|-----|---------|---------|-----------|--------|--------|-----|
| +2 | +3.6 | +62 | I+122 | +26 | +26 | +28 |
| BW | ADJ 205 | ADJ 365 | ADG RATIO | \$W | \$B | |
| 85 | 679 | 1341 | 116 | +22.48 | +54.77 | |

This really complete, high-performing growth bull will add pounds and pay weight to any situation. Note the Yearling Weight EPD easily in the top 1% of the breed. You will like his super good looks as well. Dam has weaned 2@107 and descends from the Connealy program in Nebraska. Recommended for cows.



G V F Forward 9039 - Lot 14

15 G V F Forward 9024

Birth Date: 1-19-2009 Bull 16337342 Tattoo: 9024

Boyd Forward 6025
15347916
Connealy Onward (AMF-NHF)
Sitz RLS Eisa Evergreen 30P

#Connealy Lead On (AMF-NHF)
Altune of Conanga 6104
Sitz New Design 349M (AMF-NHF)
#Sitz RLS Eisa Evergreen 39M

GVF Pride 5145
+15957411
#Bon View New Design 878 (AMF-NHF)
Prides of Conanga 64568

#B/R New Design 036 (AMF-NHF)
Bon View Gammer 85
#Connealy Forefront (AMF-NHF)
Prides Venture of Conanga 62

| CED | BW | WW | YW | MILK | MARB | RE |
|-----|---------|---------|-----------|--------|--------|-----|
| +13 | -1.4 | +55 | I+106 | +26 | +24 | +25 |
| BW | ADJ 205 | ADJ 365 | ADG RATIO | \$W | \$B | |
| 61 | 631 | 1201 | 100 | +30.36 | +47.24 | |

If you are looking for a sure bet calving-ease bull that is moderate framed and super thick, here he is. This top calving-ease bull offers a hard to find EPD spread ranking in the top 1% of the Angus breed for CED and the top 4% for yearling growth. You will really like his thick top and powerful quarter as well.



G V F Forward 9024 - Lot 15

16 G V F Forward 9138

Birth Date: 3-7-2009 Bull 16365902 Tattoo: 9138

Boyd Forward 6025
15347916
Connealy Onward (AMF-NHF)
Sitz RLS Eisa Evergreen 30P

#Connealy Lead On (AMF-NHF)
Altune of Conanga 6104
Sitz New Design 349M (AMF-NHF)
#Sitz RLS Eisa Evergreen 39M

GVF Pride 5103
+15048630
#B/R New Design 036 (AMF-NHF)
Prides of Conanga 64568

#VDAR New Trend 315 (AMF-NHF)
B/R Blackcap Empress 76
#Connealy Forefront (AMF-NHF)
Prides Venture of Conanga 62

| CED | BW | WW | YW | MILK | MARB | RE |
|-----|---------|---------|-----------|--------|--------|-----|
| +9 | +7 | +55 | I+106 | +26 | +30 | +34 |
| BW | ADJ 205 | ADJ 365 | ADG RATIO | \$W | \$B | |
| 74 | 658 | 1223 | 99 | +28.15 | +52.37 | |

Great calving-ease, extra muscle, super disposition, sound athletic structure, unbeatable EPDs, and backed by proven cows is the rule in these "6025" sons. This bull is no exception; bred to work in any situation, this bull is the right kind.

17 G V F Forward 9108 [AMF]

Birth Date: 2-15-2009 Bull 16338792 Tattoo: 9108

Boyd Forward 6025
15347916
Connealy Onward (AMF-NHF)
Sitz RLS Eisa Evergreen 30P


#Connealy Lead On (AMF-NHF)
Altune of Conanga 6104
Sitz New Design 349M (AMF-NHF)
#Sitz RLS Eisa Evergreen 39M

GVF Ruby 7144
15776284
TC Forefront 105
+GVF Ruby 4008

#Connealy Forefront (AMF-NHF)
#TC Flower 9023 (AMC)
#Bon View New Design 878 (AMF-NHF)
#TC Ruby 4068

| CED | BW | WW | YW | MILK | MARB | RE |
|-----|---------|---------|-----------|--------|--------|-----|
| +7 | +1.0 | +53 | I+116 | +22 | +11 | +29 |
| BW | ADJ 205 | ADJ 365 | ADG RATIO | \$W | \$B | |
| 68 | 590 | 1332 | 130 | +22.60 | +48.65 | |



This bull, produced by a two-year-old dam, was the top-gaining bull on test. He has extra spring of rib and thickness. He will work on cows or heifers. Notice the Birth to Yearling EPD spread in these "6025" sons.



Don't let 'em leave home without one!

If you have calves to market, don't let them leave home without an AngusSource® tag. AngusSource adds value to your Angus-sired feeder cattle and replacement heifers by:

- Guaranteeing Angus genetics
- Verifying source and age
- Opportunity to qualify for Certified Angus Beef® regardless of hide color.

Visit www.angussource.com
or call 816-383-5100 for more information.

9/07

Grassy Valley Bulls

18 G V F Forward 9049

Birth Date: 1-27-2009 Bull 16277228 Tattoo: 9049

Connealy Onward (AMF-NHF)
Boyd Forward 6025
15347916 Sitz RLS Elsa Evergreen 30P

#Connealy Lead On (AMF-NHF)
Altune of Conanga 6104
Sitz New Design 349M (AMF-NHF)
#Sitz RLS Elsa Evergreen 39M

HKAR New Design N601
Hkar Miss Emulous R234
15051867 #HKAR Miss Emulous M827

#Bon View New Design 878 (AMF-NHF)
#+GVF Miss Burgess 8091
Stevenson Emulation 287F
Heart K Miss Emulous 9513

| CED | BW | WW | YW | MILK | MARB | RE |
|-----|---------|---------|-----------|--------|--------|-----|
| +6 | +1.1 | +45 | I+92 | +24 | +28 | +32 |
| BW | ADJ 205 | ADJ 365 | ADG RATIO | \$W | \$B | |
| 73 | 559 | 1060 | 88 | +24.95 | +45.94 | |

A sure bet calving-ease bull produced by a proven dam. This bull is balanced in his structure and EPD profile.

19 G V F Forward 9075

Birth Date: 2-5-2009 Bull 16337350 Tattoo: 9075

Connealy Onward (AMF-NHF)
Boyd Forward 6025
15347916 Sitz RLS Elsa Evergreen 30P

#Connealy Lead On (AMF-NHF)
Altune of Conanga 6104
Sitz New Design 349M (AMF-NHF)
#Sitz RLS Elsa Evergreen 39M

TC Forefront 105
GVF Flower 6170 (AMF)
15610076 #TC Flower 4056

#Connealy Forefront (AMF-NHF)
#+TC Flower 9023 (AMC)
#+GAR Sleep Easy 1009 (AMF-NHF)
TC Flower 2112

| CED | BW | WW | YW | MILK | MARB | RE |
|-----|---------|---------|-----------|--------|--------|-----|
| +9 | +0 | +52 | I+98 | +21 | +40 | +22 |
| BW | ADJ 205 | ADJ 365 | ADG RATIO | \$W | \$B | |
| 60 | 593 | 1071 | 84 | +28.54 | +49.57 | |

Recommended for heifers, this bull was produced by a two-year-old dam.

20 G V F Forward 9146

Birth Date: 3-15-2009 Bull 16365906 Tattoo: 9146

Connealy Onward (AMF-NHF)
Boyd Forward 6025
15347916 Sitz RLS Elsa Evergreen 30P

#Connealy Lead On (AMF-NHF)
Altune of Conanga 6104
Sitz New Design 349M (AMF-NHF)
#Sitz RLS Elsa Evergreen 39M

#Bon View New Design 1407 (AMF-NHF)
GVF Black Miss 6142
+15432441 #GVF Black Miss 2021

#B/R New Design 036 (AMF-NHF)
Bon View Pride 664
#Connealy Dateline
+GVF Black Miss 9202

| CED | BW | WW | YW | MILK | MARB | RE |
|-----|---------|---------|-----------|--------|--------|-----|
| +9 | +4 | +52 | I+101 | +28 | +43 | +28 |
| BW | ADJ 205 | ADJ 365 | ADG RATIO | \$W | \$B | |
| 72 | 639 | 1157 | 91 | +28.40 | +52.93 | |

A moderate framed, extra thick, calving-ease bull with excellent Birth to Yearling EPD spread and high \$Value projections. You will like the extra muscle and thickness in these true calving-ease bulls.

21 G V F Forward 9148

Birth Date: 3-15-2009 Bull 16365907 Tattoo: 9148

Connealy Onward (AMF-NHF)
Boyd Forward 6025
15347916 Sitz RLS Elsa Evergreen 30P

#Connealy Lead On (AMF-NHF)
Altune of Conanga 6104
Sitz New Design 349M (AMF-NHF)
#Sitz RLS Elsa Evergreen 39M

TC Forefront 105
GVF Evergreen 6123 (AMF)
15400585 +Woodhill Evergreen 58-57

#Connealy Forefront (AMF-NHF)
#+TC Flower 9023 (AMC)
#RR 9440 Scotch Cap 1483 (AMF-NHF)
#GT Miss Traveler 58

| CED | BW | WW | YW | MILK | MARB | RE |
|-----|---------|---------|-----------|--------|--------|-----|
| +5 | +1.7 | +53 | I+105 | +21 | +22 | +23 |
| BW | ADJ 205 | ADJ 365 | ADG RATIO | \$W | \$B | |
| 78 | 613 | 1125 | 90 | +24.86 | +47.66 | |

A really well made, thick topped, eye-appealing "6025" son here. The "6025" cattle have really worked, with the rare combination of true calving-ease, extra thickness, and excellent performance all combined with great dispositions.

22 G V F Objective 9091

Birth Date: 2-7-2009 Bull +16484202 Tattoo: 9091

| CED | BW | WW | YW | MILK | MARB | RE |
|-----|---------|---------|-----------|--------|--------|-----|
| I+8 | I+2.1 | I+66 | I+115 | I+30 | +54 | +27 |
| BW | ADJ 205 | ADJ 365 | ADG RATIO | \$W | \$B | |
| 67 | 578 | 1136 | 101 | +31.38 | +56.11 | |

23 G V F Objective 9106

Birth Date: 2-14-2009 Bull +16484096 Tattoo: 9106

| CED | BW | WW | YW | MILK | MARB | RE |
|-----|---------|---------|-----------|--------|--------|-----|
| I+8 | I+2.1 | I+66 | I+115 | I+30 | +35 | +26 |
| BW | ADJ 205 | ADJ 365 | ADG RATIO | \$W | \$B | |
| 80 | 632 | 1162 | 96 | +31.20 | +53.20 | |

24 G V F Objective 9124

Birth Date: 2-22-2009 Bull +16484201 Tattoo: 9124

#SS Traveler 6807 T510 (AMF-NHF)
SS Objective T510 OT26 (AMF-NHF)
#13776378 SS Miss Rita R011 7R8 (AMF-NHF)

#DHD Traveler 6807 (AMF-NHF)
#SS Miss Hi Spade A114
SS Rito Rito R76 R011
SS Miss Ultrass U56

#Hyline Right Time 338 (AMF-NHF)
GVF Pride 4223
+14928010 Prides of Conanga 64568

#+Leachman Right Time
Hyline Pride 265
#Connealy Forefront (AMF-NHF)
Prides Venture of Conanga 62

| CED | BW | WW | YW | MILK | MARB | RE |
|-----|---------|---------|-----------|--------|--------|-----|
| I+8 | I+2.1 | I+66 | I+115 | I+30 | +41 | +18 |
| BW | ADJ 205 | ADJ 365 | ADG RATIO | \$W | \$B | |
| 70 | 575 | 1036 | 83 | +31.47 | +49.98 | |

Three flush brothers by the popular ABS sire, Objective, produced by a proven donor dam who has weaned 3@109 and has 13@106 %IMF. These bulls rank in the top 1% of the Angus breed for Weaning and Yearling Weight EPD with a breed average Birth EPD. Use them for growth, performance, and carcass quality. They can work on larger heifers.

25 G V F Objective 9048

Birth Date: 1-27-2009 Bull 16437644 Tattoo: 9048

#SS Traveler 6807 T510 (AMF-NHF)
SS Objective T510 OT26 (AMF-NHF)
#13776378 SS Miss Rita R011 7R8 (AMF-NHF)

#DHD Traveler 6807 (AMF-NHF)
#SS Miss Hi Spade A114
SS Rito Rito R76 R011
SS Miss Ultrass U56

#Bon View New Design 878 (AMF-NHF)
GVF Ruby 5205
+15273252 #+TC Ruby 4068

#B/R New Design 036 (AMF-NHF)
Bon View Gammer 85
#+Leachman Right Time
TC Ruby 5087

| CED | BW | WW | YW | MILK | MARB | RE |
|-----|---------|---------|-----------|--------|--------|-----|
| +5 | +3.4 | +51 | I+93 | +26 | +29 | +15 |
| BW | ADJ 205 | ADJ 365 | ADG RATIO | \$W | \$B | |
| 84 | 595 | 1078 | 85 | +24.92 | +37.28 | |

A balanced trait, structurally sound Objective son from a proven cow family.

26 G V F Objective 9140

Birth Date: 3-9-2009 Bull +16484204 Tattoo: 9140

#SS Traveler 6807 T510 (AMF-NHF)
SS Objective T510 OT26 (AMF-NHF)
#13776378 SS Miss Rita R011 7R8 (AMF-NHF)

#DHD Traveler 6807 (AMF-NHF)
#SS Miss Hi Spade A114
SS Rito Rito R76 R011
SS Miss Ultrass U56

#+GAR Expectation 4915 (AMF-NHF)
GVF Black Miss 4057
14731256 +GVF Black Miss 2061

#N Bar Emulation EXT (AMF-NHF)
GAR Traveler 2421
#B/R New Design 036 (AMF-NHF)
#GVF Lassie 2004

| CED | BW | WW | YW | MILK | MARB | RE |
|------|---------|---------|-----------|--------|--------|-----|
| I+10 | I+1.4 | I+59 | I+104 | I+30 | +51 | +32 |
| BW | ADJ 205 | ADJ 365 | ADG RATIO | \$W | \$B | |
| 61 | 579 | 1057 | 86 | +31.52 | +55.81 | |

Exceptional balance and great EPDs in every trait in this bull. Dam is a favorite cow in our program. Use this bull for calving-ease and to add long term carcass quality to your herd.

Grassy Valley Bulls



G V F Objective 9021 - Lot 27

27 G V F Objective 9021

Birth Date: 1-18-2009 Bull 16437645 Tattoo: 9021

#SS Traveler 6807 T510 (AMF-NHF) #DHD Traveler 6807 (AMF-NHF)
SS Objective T510 OT26 (AMF-NHF) #SS Miss Hi Spade A114
 #13776378 SS Miss Rita R011 7R8 (AMF-NHF) SS Rito R76 R011
 SS Miss Ultress U56

#+Lemmon Newline C804 (AMF-NHF) #B/R New Design 036 (AMF-NHF)
GVF Erica 7009 White Fence Pride H1
 +15956069 +GVF Erica 4132 #+SAF 598 Bando 5175 (AMF)
 Woodhill Erica 854-1167

| CED | BW | WW | YW | MILK | MARB | RE |
|-----|---------|---------|-----------|--------|--------|-----|
| +4 | +2.9 | +61 | I+112 | +28 | +52 | +38 |
| BW | ADJ 205 | ADJ 365 | ADG RATIO | \$W | \$B | |
| 77 | 697 | 1335 | 113 | +27.09 | +59.66 | |

This phenotypic standout Objective son was produced by a two-year-old dam. Great performance, extra thickness and top Carcass EPDs complete this package. Notice the high carcass projections and \$Value indexes combined with a Yearling Weight EPD in the top 1% of non-parent Angus bulls.

28 G V F Objective 9032

Birth Date: 1-22-2009 Bull 16438797 Tattoo: 9032

#SS Traveler 6807 T510 (AMF-NHF) #DHD Traveler 6807 (AMF-NHF)
SS Objective T510 OT26 (AMF-NHF) #SS Miss Hi Spade A114
 #13776378 SS Miss Rita R011 7R8 (AMF-NHF) SS Rito R76 R011
 SS Miss Ultress U56

#GAR Retail Product (AMF-NHF) #GAR Precision 1680 (AMC-NHF)
GVF Georgina 7071 +GAR Ext 4927
 15646846 GVF Georgina 2042 #Connealy Forefront (AMF-NHF)
 #TC Georgina 7073

| CED | BW | WW | YW | MILK | MARB | RE |
|-----|---------|---------|-----------|--------|--------|-----|
| +9 | +1.6 | +57 | I+100 | +24 | +51 | +25 |
| BW | ADJ 205 | ADJ 365 | ADG RATIO | \$W | \$B | |
| 64 | 609 | 1116 | 89 | +30.41 | +49.40 | |

A moderate framed, thick made, well balanced Objective son produced by a top two-year-old female. This bull can work on cows or heifers.

29 G V F Objective 9063 [AMF]

Birth Date: 1-31-2009 Bull 16437643 Tattoo: 9063

#SS Traveler 6807 T510 (AMF-NHF) #DHD Traveler 6807 (AMF-NHF)
SS Objective T510 OT26 (AMF-NHF) #SS Miss Hi Spade A114
 #13776378 SS Miss Rita R011 7R8 (AMF-NHF) SS Rito R76 R011
 SS Miss Ultress U56

TC Forefront 105 #Connealy Forefront (AMF-NHF)
GVF Black Miss 7108 (AMC) #+TC Flower 9023 (AMC)
 15779307 #GVF Black Miss 2021 #Connealy Dateline
 +GVF Black Miss 9202

| CED | BW | WW | YW | MILK | MARB | RE |
|-----|---------|---------|-----------|--------|--------|-----|
| +12 | -.3 | +67 | I+113 | +26 | +68 | +26 |
| BW | ADJ 205 | ADJ 365 | ADG RATIO | \$W | \$B | |
| 58 | 731 | 1267 | 94 | +35.20 | +62.50 | |

Excellent performance and a statistical outlier here. This bull has performed in every measurable aspect combining a CED EPD in the top 2% of the Angus breed with Weaning and Yearling EPDs in the top 1%, and a \$B value in the top 3%. Produced by a two-year-old dam that descends from one of the most productive cow families at Grassy Valley.

30 G V F Objective 9101

Birth Date: 2-12-2009 Bull 16437647 Tattoo: 9101

#SS Traveler 6807 T510 (AMF-NHF) #DHD Traveler 6807 (AMF-NHF)
SS Objective T510 OT26 (AMF-NHF) #SS Miss Hi Spade A114
 #13776378 SS Miss Rita R011 7R8 (AMF-NHF) SS Rito R76 R011
 SS Miss Ultress U56

#Bon View New Design 878 (AMF-NHF) #B/R New Design 036 (AMF-NHF)
GVF Erica 708 Bon View Gammer 85
 +16275497 +GVF Erica 4055 (NHF) #Twin Valley Precision E161 (NHC-AMF-RDF)
 Woodhill Erica 854-1167

| CED | BW | WW | YW | MILK | MARB | RE |
|-----|---------|---------|-----------|--------|--------|-----|
| +14 | -.9 | +50 | I+96 | +25 | +46 | +37 |
| BW | ADJ 205 | ADJ 365 | ADG RATIO | \$W | \$B | |
| 55 | 571 | 1136 | 99 | +29.41 | +46.28 | |

This bull is moderate framed, muscular and a sure thing for calving-ease. Produced by a two-year-old dam.

Grassy Valley Bulls



G V F Total 9057 - Lot 31

31 G V F Total 9057

Birth Date: 1-29-2009 Bull 16435222 Tattoo: 9057

TC Total 410 14844711
[AMF-NHF]
 #Bon View New Design 208 [AMF-NHF]
 +TC Erica Eileen 2047 [NHIC-AMF]
 #B/R New Design 036 [AMF-NHF]
 #Bon View Erica 443
 #Twin Valley Precision E161 [NHIC-AMF-RDF]
 #+TC Erica Eileen 5116

GVF Flower 6050 15400548
 #Connealy Danny Boy [AMF-NHF]
 +GVF Flower 4094
 #Connealy Timeline
 Energy of Conanga 4851
 #B/R New Design 036 [AMF-NHF]
 #TC Flower 4056

| CED | BW | WW | YW | MILK | MARB | RE |
|-----|------|---------|---------|-----------|--------|--------|
| +5 | +2.5 | +60 | I+110 | +23 | +59 | +37 |
| | BW | ADJ 205 | ADJ 365 | ADG RATIO | \$W | \$B |
| | 78 | 671 | 1276 | 106 | +26.89 | +65.97 |

A top bull here bringing together good looks, performance, carcass quality, and great EPDs from a highly proven cow family tracing to the Pathfinder Dam TC Flower 4056. Study and compare these EPDs.

33 G V F Total 9149

Birth Date: 3-18-2009 Bull 16366436 Tattoo: 9149

TC Total 6516 15703148
[AMF-NHF]
 J BarJ Bextor Lass DW 475
 #Bon View New Design 208 [AMF-NHF]
 +TC Erica Eileen 2047 [NHIC-AMF]
 #GRA Bextor 872 5205 608 [AMF-NHF]
 +Stevenson Lass 793J

TC Moonshine 9002 13444222
 #Sitz Alliance 6595 [AMF-NHF]
 TC Moonshine 7002
 #Sitz Traveler 8180 [AMF-NHF]
 #Sitz Barabamere Jet 2698
 #Bon View Bando 598 [AMF]
 TC Moonshine 5018

| CED | BW | WW | YW | MILK | MARB | RE |
|-----|-------|---------|---------|-----------|--------|--------|
| I+4 | I+2.8 | I+52 | I+97 | I+28 | I+.42 | I+.14 |
| | BW | ADJ 205 | ADJ 365 | ADG RATIO | \$W | \$B |
| | 80 | 592 | 1277 | 100 | +25.67 | +47.60 |

A high-performing and stunningly attractive "6516" son from the donor dam, TC Moonshine 9002. These bulls are wide based, muscular, and really perform well. Count on pounds, performance, carcass quality, and excellent replacement females.

32 G V F Total 9069

Birth Date: 2-2-2009 Bull +16435223 Tattoo: 9069

TC Total 410 14844711
[AMF-NHF]
 #Bon View New Design 208 [AMF-NHF]
 +TC Erica Eileen 2047 [NHIC-AMF]
 #B/R New Design 036 [AMF-NHF]
 #Bon View Erica 443
 #Twin Valley Precision E161 [NHIC-AMF-RDF]
 #+TC Erica Eileen 5116

TC Moonshine 9002 13444222
 #Sitz Alliance 6595 [AMF-NHF]
 TC Moonshine 7002
 #Sitz Traveler 8180 [AMF-NHF]
 #Sitz Barabamere Jet 2698
 #Bon View Bando 598 [AMF]
 TC Moonshine 5018

| CED | BW | WW | YW | MILK | MARB | RE |
|-----|-------|---------|---------|-----------|--------|--------|
| I+6 | I+2.0 | I+57 | I+104 | I+29 | +37 | +25 |
| | BW | ADJ 205 | ADJ 365 | ADG RATIO | \$W | \$B |
| | N/A | 618 | 1165 | 99 | +28.36 | +50.04 |

A well-made and attractive Total son from the donor dam, TC Moonshine 9002. This bull is well balanced in his structure and EPDs. He will add performance and quality to a set of calves while siring a super set of replacement females.

The Total Bulls

Cattlemen take note as the name "Total" implies these bulls bring all economically important traits together. This is the strongest group of growth bulls we have ever sold. We really like the exceptional muscle thickness, spring of rib, structural soundness, and carcass quality they display. While many are not recommended for heifers, in reality, if across breed EPDs are applied they would be considered calving-ease bulls in many other breeds.

Grassy Valley Bulls

34 G V F Total 9068

Birth Date: 2-1-2009 Bull 16366426 Tattoo: 9068

TC Total 6516
15703148

TC Total 410 (AMF-NHF)
J BarJ Bextor Lass DW 475

#Bon View New Design 208 (AMF-NHF)
+TC Erica Eileen 2047 (NHC-AMF)
#CRA Bextor 872 5205 608 (AMF-NHF)
+Stevenson Lass 793J

#Bon View New Design 878 (AMF-NHF)
GVF Evergreen 4142
+14731334 +Woodhill Evergreen 58-57

#B/R New Design 036 (AMF-NHF)
Bon View Gammer 85
#RR 9440 Scotch Cap 1483 (AMF-NHF)
#GT Miss Traveler 58

| CED | BW | WW | YW | MILK | MARB | RE |
|-----|---------|---------|-----------|--------|--------|-----|
| +1 | +4.0 | +53 | I+101 | +28 | +47 | +19 |
| BW | ADJ 205 | ADJ 365 | ADG RATIO | \$W | \$B | |
| 86 | 679 | 1260 | 102 | +22.78 | +55.26 | |

An impressive individual from a proven dam who has weaned 3@108. This bull is super thick, athletic in his structure, and has excellent performance and carcass data. A top beef bull across the board.

35 G V F Total 8086

Birth Date: 2-7-2009 Bull 16366427 Tattoo: 9086

TC Total 6516
15703148

TC Total 410 (AMF-NHF)
J BarJ Bextor Lass DW 475

#Bon View New Design 208 (AMF-NHF)
+TC Erica Eileen 2047 (NHC-AMF)
#CRA Bextor 872 5205 608 (AMF-NHF)
+Stevenson Lass 793J

#+GAR Expectation 4915 (AMF-NHF)
GVF Black Miss 4057
14731256 +GVF Black Miss 2061

#N Bar Emulation EXT (AMF-NHF)
GAR Traveler 2421
#B/R New Design 036 (AMF-NHF)
#GVF Lassie 2004

| CED | BW | WW | YW | MILK | MARB | RE |
|-----|---------|---------|-----------|--------|--------|-----|
| +2 | +4.3 | +54 | I+96 | +29 | +46 | +36 |
| BW | ADJ 205 | ADJ 365 | ADG RATIO | \$W | \$B | |
| 88 | 680 | 1181 | 88 | +24.58 | +57.81 | |

An extra deep-bodied "6516" son produced by a donor dam who has weaned 3@105. These bulls will add pounds and dollars to a set of calves.

36 G V F Total 9132 [NHF]

Birth Date: 2-28-2009 Bull 16366432 Tattoo: 9132

TC Total 6516
15703148

TC Total 410 (AMF-NHF)
J BarJ Bextor Lass DW 475

#Bon View New Design 208 (AMF-NHF)
+TC Erica Eileen 2047 (NHC-AMF)
#CRA Bextor 872 5205 608 (AMF-NHF)
+Stevenson Lass 793J

TC Forefront 105
GVF Ruby 5138 (NHC-AMF)
15048366 +GVF Ruby 3102 (NHC-AMF)

#Connealy Forefront (AMF-NHF)
#+TC Flower 9023 (AMC)
#Twin Valley Precision E161 (NHC-AMF-ROF)
#+TC Ruby 4068

| CED | BW | WW | YW | MILK | MARB | RE |
|-----|---------|---------|-----------|--------|--------|-----|
| -2 | +4.8 | +62 | I+115 | +23 | +50 | +48 |
| BW | ADJ 205 | ADJ 365 | ADG RATIO | \$W | \$B | |
| 88 | 707 | 1288 | 102 | +21.88 | +66.23 | |

One of the favorite "6516" sons, this bull has done everything combining exceptional performance data in every category with the phenotype of a true beef bull. He records a Yearling Weight EPD and \$B Value EPD in the top 1% of the Angus breed. For those wanting to put muscle and value into a set of calves, look these bulls up.

37 G V F Total 9134

Birth Date: 3-3-2009 Bull 16366433 Tattoo: 9134

TC Total 6516
15703148

TC Total 410 (AMF-NHF)
J BarJ Bextor Lass DW 475

#Bon View New Design 208 (AMF-NHF)
+TC Erica Eileen 2047 (NHC-AMF)
#CRA Bextor 872 5205 608 (AMF-NHF)
+Stevenson Lass 793J

#Connealy Dateline
GVF Black Miss 2021
#14129478 +GVF Black Miss 9202

#DHD Traveler 6807 (AMF-NHF)
#Eila Eila of Conanga (AMF)
#B/R New Design 036 (AMF-NHF)
#GVF Lassie 2004

| CED | BW | WW | YW | MILK | MARB | RE |
|-----|---------|---------|-----------|--------|--------|-----|
| +2 | +4.4 | +52 | I+95 | +28 | +47 | +22 |
| BW | ADJ 205 | ADJ 365 | ADG RATIO | \$W | \$B | |
| 87 | 651 | 1181 | 93 | +22.98 | +53.49 | |

A well-balanced bull from end to end produced by one of the all-time top donor and Pathfinder females in our program who records a progeny birth weight ratio of 6@99, weaning ratio of 6@109 and %IMF ratio of 17@106. A good beef bull here who should also sire top replacement females.

38 G V F Total 9137

Birth Date: 3-7-2009 Bull 16435227 Tattoo: 9137

TC Total 6516
15703148

TC Total 410 (AMF-NHF)
J BarJ Bextor Lass DW 475

#Bon View New Design 208 (AMF-NHF)
+TC Erica Eileen 2047 (NHC-AMF)
#CRA Bextor 872 5205 608 (AMF-NHF)
+Stevenson Lass 793J

+Woodhill Delta
GVF Evergreen 3011
+14413086 +Woodhill Evergreen 58-67

#+Leachman Right Time
#GT Miss Traveler 58
#RR 9440 Scotch Cap 1483 (AMF-NHF)
#GT Miss Traveler 58

| CED | BW | WW | YW | MILK | MARB | RE |
|-----|---------|---------|-----------|--------|--------|-----|
| +4 | +2.2 | +60 | +111 | +22 | +46 | +31 |
| BW | ADJ 205 | ADJ 365 | ADG RATIO | \$W | \$B | |
| 76 | 575 | 1053 | 100 | +26.98 | +60.68 | |

A balanced "6516" son from an excellent cow family. This bull can work on heifers as well as cows. Great EPDs across the board. You can add value in every trait with these "6516" sons.

39 G V F Total 9154

Birth Date: 3-24-2009 Bull 16366437 Tattoo: 9054

TC Total 6516
15703148

TC Total 410 (AMF-NHF)
J BarJ Bextor Lass DW 475

#Bon View New Design 208 (AMF-NHF)
+TC Erica Eileen 2047 (NHC-AMF)
#CRA Bextor 872 5205 608 (AMF-NHF)
+Stevenson Lass 793J

#Sitz Alliance 6595 (AMF-NHF)
GVF Black Miss 5043
15049892 #GVF Black Miss 2021

#Sitz Traveler 8180 (AMF-NHF)
#Sitz Barbamere Jet 2698
#Connealy Dateline
+GVF Black Miss 9202

| CED | BW | WW | YW | MILK | MARB | RE |
|-----|---------|---------|-----------|--------|--------|-----|
| +3 | +3.5 | +52 | I+102 | +28 | +51 | +30 |
| BW | ADJ 205 | ADJ 365 | ADG RATIO | \$W | \$B | |
| 78 | 604 | 1225 | 109 | +22.87 | +57.17 | |

A top "6516" son with extra spring of rib, body mass, and performance combined with great carcass EPDs. Note the dam is a daughter of the Pathfinder Dam GVF Black Miss 2021. You will love the stoutness and function in these bulls.

40 G V F Total 9156

Birth Date: 3-28-2009 Bull 16366435 Tattoo: 9156

TC Total 6516
15703148

TC Total 410 (AMF-NHF)
J BarJ Bextor Lass DW 475

#Bon View New Design 208 (AMF-NHF)
+TC Erica Eileen 2047 (NHC-AMF)
#CRA Bextor 872 5205 608 (AMF-NHF)
+Stevenson Lass 793J

TC Forefront 105
GVF Georgina 3051 (AMF)
+14413087 #TC Georgina 7073

#Connealy Forefront (AMF-NHF)
#+TC Flower 9023 (AMC)
#+Woodhill Supreme (AMF-NHF)
TC Georgina 3186

| CED | BW | WW | YW | MILK | MARB | RE |
|-----|---------|---------|-----------|--------|--------|------|
| -1 | +4.7 | +54 | I+105 | +22 | I+55 | I+22 |
| BW | ADJ 205 | ADJ 365 | ADG RATIO | \$W | \$B | |
| 86 | 623 | 1217 | 104 | +19.42 | +59.67 | |

A little more frame and extension in this high-performing bull from a donor dam who produced the top-selling bull in last year's University of Tennessee Junior Bull Test.

41 G V F Total 9159

Birth Date: 4-12-2009 Bull 16372166 Tattoo: 9159

TC Total 6516
15703148

TC Total 410 (AMF-NHF)
J BarJ Bextor Lass DW 475

#Bon View New Design 208 (AMF-NHF)
+TC Erica Eileen 2047 (NHC-AMF)
#CRA Bextor 872 5205 608 (AMF-NHF)
+Stevenson Lass 793J

#+SAF 598 Bando 5175 (AMF)
GVF Evergreen 3003
+14394828 +Woodhill Evergreen 58-57

#Bon View Bando 598 (AMF)
#+SAF Royal Lass 1002 (NHC-AMF)
#RR 9440 Scotch Cap 1483 (AMF-NHF)
#GT Miss Traveler 58

| CED | BW | WW | YW | MILK | MARB | RE |
|-----|---------|---------|-----------|--------|--------|------|
| +3 | +3.5 | +62 | I+112 | +27 | I+43 | I+17 |
| BW | ADJ 205 | ADJ 365 | ADG RATIO | \$W | \$B | |
| 80 | 741 | 1303 | 102 | +26.17 | +54.63 | |

A favorite "6516" son for those who want to add pounds, muscle, and function to a set of calves. This bull is high performing, moderate framed, and super thick. We really like this kind.

Grassy Valley Bulls



G V F Bextor 9062 - Lot 44

42 G V F Bextor 9035

Birth Date: 1-25-2009 Bull 16563256 Tattoo: 9035

#BAR Ext Traveler 205 [AMF-NHF]
CRA Bextor 872 5205 608 [AMF-NHF]
 #13009379 Cra Lady Jaye 608 498 S Easy

#N Bar Emulation EXT [AMF-NHF]
 #BAR Queen Traveler 3015
 #+GAR Sleep Easy 1009 [AMF-NHF]
 HHF 917 Lady 975 498

#GAR Retail Product [AMF-NHF]
GVF Blackbird 7052
 15776235 GVF Blackbird 0061

#GAR Precision 1680 [AMC-NHC]
 +GAR Ext 4927
 +Woodhill Delta
 +GVF Blackbird 5173

| CED | BW | WW | YW | MILK | MARB | RE |
|-----|---------|---------|-----------|--------|--------|-------|
| +5 | +2.9 | +50 | +93 | +28 | +0.36 | +0.33 |
| BW | ADJ 205 | ADJ 365 | ADG RATIO | \$W | \$B | |
| 79 | 548 | 1106 | 100 | +25.30 | +45.63 | |

A moderate framed calving-ease bull by the complete performance sire Bextor.

44 G V F Bextor 9062 [AMF]

Birth Date: 1-30-2009 Bull 16369306 Tattoo: 9062

#BAR Ext Traveler 205 [AMF-NHF]
CRA Bextor 872 5205 608 [AMF-NHF]
 #13009379 Cra Lady Jaye 608 498 S Easy

#N Bar Emulation EXT [AMF-NHF]
 #BAR Queen Traveler 3015
 #+GAR Sleep Easy 1009 [AMF-NHF]
 HHF 917 Lady 975 498

TC Forefront 105
GVF Miss Burgess 3026
 #14394292 GVF Miss Burgess 1049

#Connealy Forefront [AMF-NHF]
 #+TC Flower 9023 [AMC]
 +Woodhill Delta
 #+GVF Miss Burgess 8091

| CED | BW | WW | YW | MILK | MARB | RE |
|-----|---------|---------|-----------|--------|--------|-------|
| +7 | +1.7 | +50 | +95 | +28 | +0.29 | +0.39 |
| BW | ADJ 205 | ADJ 365 | ADG RATIO | \$W | \$B | |
| 76 | 643 | 1230 | 103 | +27.44 | +49.59 | |

A super complete standout Bextor son produced by a Pathfinder Dam. This bull is thick and deep with a great set of balanced EPDs across the board. He can work on cows or heifers and should add value to any situation. A full brother was featured in our 2008 sale and is working in the Reynolds Brothers herd.

43 G V F Bextor 9047

Birth Date: 1-27-2009 Bull 16369305 Tattoo: 9047

#BAR Ext Traveler 205 [AMF-NHF]
CRA Bextor 872 5205 608 [AMF-NHF]
 #13009379 Cra Lady Jaye 608 498 S Easy

#N Bar Emulation EXT [AMF-NHF]
 #BAR Queen Traveler 3015
 #+GAR Sleep Easy 1009 [AMF-NHF]
 HHF 917 Lady 975 498

#B/R New Design 036 [AMF-NHF]
Lemmon Blackbird 160R
 +15211341 Lemmon Blackbird 3287 [AMF-NHF]

#VDAR New Trend 315 [AMF-NHF]
 B/R Blackcap Empress 76
 #N Bar Emulation EXT [AMF-NHF]
 Lemmon Blackbird 1193

| CED | BW | WW | YW | MILK | MARB | RE |
|-----|---------|---------|-----------|--------|--------|-------|
| +1 | +4.8 | +44 | +84 | +30 | +0.48 | +0.31 |
| BW | ADJ 205 | ADJ 365 | ADG RATIO | \$W | \$B | |
| 92 | 667 | 1197 | 93 | +20.12 | +51.59 | |

Extra power and performance in this Bextor son whose pedigree is stacked with maternal excellence. Recommended for cows.

45 G V F Bextor 9102

Birth Date: 2-13-2009 Bull 16369308 Tattoo: 9102

#BAR Ext Traveler 205 [AMF-NHF]
CRA Bextor 872 5205 608 [AMF-NHF]
 #13009379 Cra Lady Jaye 608 498 S Easy

#N Bar Emulation EXT [AMF-NHF]
 #BAR Queen Traveler 3015
 #+GAR Sleep Easy 1009 [AMF-NHF]
 HHF 917 Lady 975 498

#+GAR Expectation 4915 [AMF-NHF]
GVF Flower 6063
 15400555 GVF Flower 4071

#N Bar Emulation EXT [AMF-NHF]
 GAR Traveler 2421
 #Bon View New Design 878 [AMF-NHF]
 GVF Flower 2028

| CED | BW | WW | YW | MILK | MARB | RE |
|-----|---------|---------|-----------|--------|--------|-------|
| +5 | +3.6 | +54 | +102 | +32 | +0.39 | +0.47 |
| BW | ADJ 205 | ADJ 365 | ADG RATIO | \$W | \$B | |
| 85 | 701 | 1277 | 101 | +24.32 | +58.03 | |

A powerfully made Bextor son with excellent carcass and maternal EPDs. Dam is a favorite four-year-old female who has weaned 2@110. This bull will add value in multiple areas.

Grassy Valley Bulls

46

G V F Bextor 9117

Birth Date: 3-1-2009 Bull +16565765 Tattoo: 9117

| CED | BW | WW | YW | MILK | MARB | RE |
|-----|---------|---------|-----------|--------|--------|-------|
| I+7 | I+2.0 | I+47 | I+84 | I+32 | I+.49 | I+.36 |
| BW | ADJ 205 | ADJ 365 | ADG RATIO | \$W | \$B | |
| 76 | 524 | 1007 | 92 | +28.20 | +50.55 | |

47

G V F Bextor 9118

Birth Date: 3-1-2009 Bull +16565766 Tattoo: 9118

CRA Bextor 872 5205 608 (AMF-NHF)
#13009379 Cra Lady Jaye 608 498 S Easy

#N Bar Emulation EXT (AMF-NHF)
#BAR Queen Traveler 3015
#+GAR Sleep Easy 1009 (AMF-NHF)
HHF 917 Lady 975 498

#B/R New Design 036 (AMF-NHF)
GVF Black Miss 2061
+14125879 #GVF Lassie 2004

#VDAR New Trend 315 (AMF-NHF)
B/R Blackcap Empress 76
#+Woodhill Resolution
GVF Lassie 5087

| CED | BW | WW | YW | MILK | MARB | RE |
|-----|---------|---------|-----------|--------|--------|-------|
| I+7 | I+2.0 | I+47 | I+84 | I+32 | I+.49 | I+.36 |
| BW | ADJ 205 | ADJ 365 | ADG RATIO | \$W | \$B | |
| 75 | 543 | 1113 | 108 | +28.20 | +50.55 | |

Two flush brothers from the featured donor female G V F Black Miss 2061. They combine two high maternal and carcass sires in Bextor and B/R New Design 036 offering balanced EPDs in every category. These bulls should leave an excellent set of replacement females as well as siring a top set of feeder calves.

48

G V F Extra 9064

Birth Date: 1-31-2009 Bull 16277239 Tattoo: 9064

#Nichols Extra H6 (AMF-NHF)
Nichols Extra K205 (AMF-NHF)
#13752642 Nichols Black Heiress F346

#N Bar Emulation EXT (AMF-NHF)
Nichols Eileen May F261
+Nichols Heavy Duty D20
Nichols Black Heiress B3

#SAV 8180 Traveler 004 (AMF-NHF-RDF)
GVF Black Miss 727
+16274571 +GVF Black Miss 9202

#Sitz Traveler 8180 (AMF-NHF)
+Boyd Forever Lady 8003
#B/R New Design 036 (AMF-NHF)
#GVF Lassie 2004

| CED | BW | WW | YW | MILK | MARB | RE |
|-----|---------|---------|-----------|--------|--------|------|
| +5 | +2.9 | +55 | I+98 | +27 | +.29 | +.28 |
| BW | ADJ 205 | ADJ 365 | ADG RATIO | \$W | \$B | |
| 75 | 684 | 1207 | 92 | +27.37 | +44.97 | |

An easy-fleshing and thick made son of K205 produced by a two-year-old dam. The K205 cattle have performed well for us and display extra thickness and function. Daughters should make excellent cows.

49

G V F Extra 9133

Birth Date: 3-1-2009 Bull 16368160 Tattoo: 9133

#Nichols Extra H6 (AMF-NHF)
Nichols Extra K205 (AMF-NHF)
#13752642 Nichols Black Heiress F346

#N Bar Emulation EXT (AMF-NHF)
Nichols Eileen May F261
+Nichols Heavy Duty D20
Nichols Black Heiress B3

TC Forefront 105
GVF Elba 5119 (AMF)
15048296 GVF Elba 3056

#Connealy Forefront (AMF-NHF)
#+TC Flower 9023 (AMC)
#+SAF 598 Bando 5175 (AMF)
#+GVF Elba 9042

| CED | BW | WW | YW | MILK | MARB | RE |
|-----|---------|---------|-----------|--------|--------|------|
| +3 | +3.5 | +54 | I+110 | +19 | +.22 | +.15 |
| BW | ADJ 205 | ADJ 365 | ADG RATIO | \$W | \$B | |
| 83 | 625 | 1275 | 114 | +19.67 | +49.90 | |

A large framed, high-performing, heavy muscled son of K205 produced by a maternal sister to the Lot 6 bull. This bull will add pounds and performance to any situation.

50

G V F Whitman 9014

Birth Date: 1-17-2009 Bull 16554115 Tattoo: 9014

Connealy Whitman 14845068 (AMF-NHF)
#Bon View New Design 208 (AMF-NHF)
Ella Tina of Conanga 989

#B/R New Design 036 (AMF-NHF)
#Bon View Erica 443
#Tehama Bando 155 (AMF-NHF)
#Ella Lilly of Conanga 5989

+E&B 1680 Precision 1023 (NHK-AMF)
GVF Ruby 7102 (NHF)
+15825151 +GVF Ruby 4008

#GAR Precision 1680 (AMC-NHF)
E&b 6807 Lady Traveler 61
#Bon View New Design 878 (AMF-NHF)
#+TC Ruby 4068

| CED | BW | WW | YW | MILK | MARB | RE |
|-----|---------|---------|-----------|--------|--------|------|
| +7 | +1.0 | +49 | I+90 | +26 | +.42 | +.31 |
| BW | ADJ 205 | ADJ 365 | ADG RATIO | \$W | \$B | |
| 63 | 607 | 1154 | 96 | +29.31 | +50.05 | |

A moderate framed, extra deep, calving-ease bull backed by the herd sire producing Ruby cow family. Excellent carcass projections here.

51

G V F Whitman 9031

Birth Date: 1-21-2009 Bull 16550417 Tattoo: 9031

Connealy Whitman 14845068 (AMF-NHF)
#Bon View New Design 208 (AMF-NHF)
Ella Tina of Conanga 989

#B/R New Design 036 (AMF-NHF)
#Bon View Erica 443
#Tehama Bando 155 (AMF-NHF)
#Ella Lilly of Conanga 5989

+Woodhill Encore
GVF Georgina 15400591 (AMF)
+GVF Georgina 3057

#BCC Bushwacker 41-93 (AMF-NHF)
Bon View Gammer 85
TC Forefront 105
#TC Georgina 7073

| CED | BW | WW | YW | MILK | MARB | RE |
|-----|---------|---------|-----------|--------|--------|------|
| +2 | +3.0 | +55 | I+98 | +28 | +.32 | +.14 |
| BW | ADJ 205 | ADJ 365 | ADG RATIO | \$W | \$B | |
| 77 | 673 | 1267 | 104 | +27.29 | +44.57 | |

A stout made, uniformly thick bull produced by an excellent young female. This bull is full of balance and function.

52

G V F New Design 9160

Birth Date: 4-12-2009 Bull 16372169 Tattoo: 9160

GVF New Design 5148 (AMF-NHF)
+15260451 Prides of Conanga 64568

#B/R New Design 036 (AMF-NHF)
Bon View Gammer 85
#Connealy Forefront (AMF-NHF)
Prides Venture of Conanga 62

#Bon View New Design 878 (AMF-NHF)
MF Erica 637
+15405895 Woodhill Erica 854-1167

#B/R New Design 036 (AMF-NHF)
Bon View Gammer 85
#VF Venture Forward (AMF-NHF)
Woodhill Erica 497-854

| CED | BW | WW | YW | MILK | MARB | RE |
|-----|---------|---------|-----------|--------|------|-----|
| +10 | +.1 | +44 | I+83 | +27 | N/A | N/A |
| BW | ADJ 205 | ADJ 365 | ADG RATIO | \$W | \$B | |
| 66 | 624 | 1165 | 98 | +28.29 | N/A | |

A super deep-bodied and thick made calving-ease bull produced by an excellent young female.

Thanks for Coming!

Grassy Valley Fall Bulls

53 G V F Total 8191

Birth Date: 9-16-2008 Bull 16346532 Tattoo: 8191

TC Total 410 14844711
 #Bon View New Design 208 (AMF-NHF) #B/R New Design 036 (AMF-NHF)
 #TC Erica Eileen 2047 (NHC-AMF) #Bon View Erica 443
 #Twin Valley Precision E161 (NHC-AMF-RDF) #+TC Erica Eileen 5116

GVF Erica 4189 +14926031
 #Bon View New Design 878 (AMF-NHF) #B/R New Design 036 (AMF-NHF)
 Woodhill Erica 854-1167 Bon View Gammer 85
 #VF Venture Forward (AMF-NHF)
 Woodhill Erica 497-854

| CED | BW | WW | YW | MILK | MARB | RE |
|-----|---------|---------|-----------|--------|--------|------|
| +7 | +1.7 | +55 | +104 | +32 | +.51 | +.07 |
| BW | ADJ 205 | ADJ 365 | ADG RATIO | \$W | \$B | |
| 72 | 674 | 1200 | 102 | +30.05 | +52.96 | |

A powerfully made, high-performing bull with extra frame and extension. Excellent EPDs across the board and produced by a maternal sister to the Accelerated Genetics sire, Woodhill Confidence.

57 G V F Foresight 8225^[NHF]

Birth Date: 10-25-2008 Bull +16564635 Tattoo: 8225

Woodhill Foresight #+13936986
 #Papa Forte 1921 Papa Optima 9818
 #Woodhill Foresight (AMF-NHF) Papa Envious Blackbird 8832
 Bon View Gammer 85 #Bon View Bando 598 (AMF)
 Bon View Gammer 233

Lemmon Pride N187 +14591942
 #CA Future Direction 5321 (AMC-NHC) #GAR Precision 1680 (AMC-NHC)
 #Lemmon Pride G804 (AMF-NHF) CA Miss Power Fix 308 (AMF)
 #B/R New Design 036 (AMF-NHF)
 White Fence Pride H1

| CED | BW | WW | YW | MILK | MARB | RE |
|-----|---------|---------|-----------|--------|--------|------|
| I+5 | I+3.0 | I+50 | I+88 | I+29 | +.47 | +.41 |
| BW | ADJ 205 | ADJ 365 | ADG RATIO | \$W | \$B | |
| 79 | 626 | 1188 | 109 | +26.75 | +58.62 | |

A really well-made and muscular Foresight son. If you need to add muscle, stoutness, and carcass quality to a set of calves be sure and look this bull up.

54 G V F Forward 8215

Birth Date: 10-13-2008 Bull 16346541 Tattoo: 8215

Boyd Forward 15347916
 Connealy Onward (AMF-NHF) #Connealy Lead On (AMF-NHF)
 6025 Altune of Conanga 6104
 Sitz RLS Eisa Evergreen 30P Sitz New Design 349M (AMF-NHF)
 #Sitz RLS Eisa Evergreen 39M

GVF Petal 4192 +14926040
 #Connealy Forefront (AMF-NHF) #Connealy Frontline (AMF-NHF)
 Petal of Conanga 671 Eileen Heartland Conanga6443
 #BAR Ext Traveler 205 (AMF-NHF)
 #Power of Conanga 6677

| CED | BW | WW | YW | MILK | MARB | RE |
|-----|---------|---------|-----------|--------|--------|------|
| +10 | -.5 | +55 | +105 | +23 | +.16 | +.31 |
| BW | ADJ 205 | ADJ 365 | ADG RATIO | \$W | \$B | |
| 67 | 665 | 1177 | 99 | +29.06 | +45.42 | |

An extra long-bodied and super attractive sure-bet calving-ease "6025" son produced by a female that never misses. Take note of the Birth to Yearling EPD spread here.

58 G V F Objective 8210

Birth Date: 10-6-2008 Bull +16346540 Tattoo: 8210

| CED | BW | WW | YW | MILK | MARB | RE |
|------|---------|---------|-----------|--------|--------|-------|
| I+10 | +1.9 | +56 | +100 | +29 | I+.49 | I+.28 |
| BW | ADJ 205 | ADJ 365 | ADG RATIO | \$W | \$B | |
| 78 | 586 | 1084 | 94 | +29.49 | +53.24 | |

59 G V F Objective 8228

Birth Date: 11-2-2008 Bull +16347071 Tattoo: 8228

| CED | BW | WW | YW | MILK | MARB | RE |
|------|---------|---------|-----------|--------|--------|-------|
| I+10 | +.7 | +57 | +102 | +29 | I+.53 | I+.49 |
| BW | ADJ 205 | ADJ 365 | ADG RATIO | \$W | \$B | |
| 70 | 593 | 1163 | 108 | +31.20 | +60.95 | |

55 G V F Total 8218

Birth Date: 10-18-2008 Bull 16346543 Tattoo: 8218

TC Total 410 14844711
 #Bon View New Design 208 (AMF-NHF) #B/R New Design 036 (AMF-NHF)
 #TC Erica Eileen 2047 (NHC-AMF) #Bon View Erica 443
 #Twin Valley Precision E161 (NHC-AMF-RDF) #+TC Erica Eileen 5116

GVF Euthalla 4198 +14932250
 #+GAR Grid Maker (AMF-NHF) #GDAR Traveler 044 (AMF-NHF)
 KAF Euthalla 901 GAR Precision 2536 (AMC-NHF)
 +Woodhill Explorer
 KAF Euthalla 703

| CED | BW | WW | YW | MILK | MARB | RE |
|-----|---------|---------|-----------|--------|--------|------|
| +5 | +3.2 | +58 | +112 | +22 | +.32 | +.37 |
| BW | ADJ 205 | ADJ 365 | ADG RATIO | \$W | \$B | |
| 75 | 610 | 1151 | 105 | +23.18 | +56.40 | |

A heavy muscled and thick made Total son produced by a favorite Grid Maker daughter. This is a true beef bull with great EPDs across the board. These fall yearlings are ready for service.

60 G V F Objective 8232

Birth Date: 11-10-2008 Bull +16347072 Tattoo: 8232

SS Objective T510 0T26 #13776378
 #SS Traveler 6807 T510 (AMF-NHF) #DHD Traveler 6807 (AMF-NHF)
 SS Miss Rita R011 7R8 (AMF-NHF) #SS Miss Hi Spade A114
 SS Rito Rito R76 R011
 SS Miss Ultress U56

GVF Black Miss 4057 14731256
 #+GAR Expectation 4915 (AMF-NHF) #N Bar Emulation EXT (AMF-NHF)
 +GVF Black Miss 2061 GAR Traveler 2421
 #B/R New Design 036 (AMF-NHF)
 #GVF Lassie 2004

| CED | BW | WW | YW | MILK | MARB | RE |
|------|---------|---------|-----------|--------|--------|------|
| I+10 | I+1.4 | I+59 | I+104 | I+30 | +.52 | +.35 |
| BW | ADJ 205 | ADJ 365 | ADG RATIO | \$W | \$B | |
| 72 | 617 | 1086 | 91 | +31.34 | +56.24 | |

Breed leading calving-ease, performance, and carcass quality in these Objective sons from a favorite donor dam. Be sure to study and compare these EPDs, they are the fastest way to make change. These bulls display extra thickness and stoutness of hip as compared to many calving-ease bulls.

56 G V F Mainline 8214^[NHF]

Birth Date: 10-11-2008 Bull 16564640 Tattoo: 8214

Woodhill Mainline 14793708
 #Connealy Danny Boy (AMF-NHF) #Connealy Timeline
 Energy of Conanga 4851
 N Bar Bando 598 Y2587
 #Woodhill Blackbird 463-1288

GVF Ruby 3103 +14394851
 #Twin Valley Precision E161 (NHC-AMF-RDF) #GAR Precision 1680 (AMC-NHC)
 #+TC Ruby 4068 +WCC Blackcap C9 (RDC)
 #+Leachman Right Time
 TC Ruby 5087

| CED | BW | WW | YW | MILK | MARB | RE |
|-----|---------|---------|-----------|--------|--------|------|
| +5 | +1.4 | +46 | +91 | +15 | +.13 | +.55 |
| BW | ADJ 205 | ADJ 365 | ADG RATIO | \$W | \$B | |
| 73 | 565 | 1063 | 97 | +23.13 | +45.39 | |

A thick made Mainline son who offers calving-ease with extra muscle expression and thickness.

The Fall Bulls

The fall yearling bulls came off test in early fall, performance and ultrasound data were collected, then they were managed on a high roughage silage based ration. They are big, strong, athletic, and hard enough for service. We really like power, soundness, and excellent EPDs in this group of bulls.

Grassy Valley Bulls - Ultrasound Data

| Lot No. | Adj. | | Adj. | | Adj. | | Adj. | |
|---------|------|-------|------|-------|---------|-------|----------|-------|
| | IMF | Ratio | RE | Ratio | Rib Fat | Ratio | Rump Fat | Ratio |
| 1 | 2.93 | 73 | 15.1 | 117 | .32 | 133 | .64 | 206 |
| 2 | 5.70 | 119 | 13.4 | 101 | .56 | 86 | .73 | 107 |
| 3 | 3.59 | 79 | 13.5 | 114 | .26 | 96 | .24 | 80 |
| 4 | 5.18 | 114 | 13.3 | 113 | .39 | 144 | .32 | 107 |
| 5 | 3.90 | 81 | 13.1 | 98 | .73 | 112 | .62 | 91 |
| 6 | 3.13 | 78 | 15.4 | 119 | .25 | 104 | .40 | 129 |
| 7 | 4.09 | 103 | 12.5 | 97 | .25 | 104 | .31 | 100 |
| 8 | 3.58 | 90 | 14.8 | 115 | .20 | 83 | .24 | 77 |
| 9 | | | | | | | | |
| 10 | 3.03 | 76 | 13.7 | 106 | .29 | 121 | .34 | 110 |
| 11 | 3.93 | 98 | 13.8 | 107 | .29 | 121 | .34 | 110 |
| 12 | 3.51 | 88 | 11.6 | 90 | .32 | 133 | .40 | 129 |
| 13 | 4.06 | 90 | 10.9 | 92 | .23 | 85 | .24 | 80 |
| 14 | 3.99 | 100 | 13.2 | 102 | .26 | 108 | .34 | 110 |
| 15 | 4.00 | 100 | 13.1 | 102 | .29 | 121 | .25 | 81 |
| 16 | 3.76 | 94 | 13.4 | 104 | .32 | 133 | .33 | 106 |
| 17 | 3.07 | 77 | 12.7 | 98 | .23 | 96 | .23 | 74 |
| 18 | 4.29 | 108 | 12.3 | 95 | .15 | 63 | .22 | 71 |
| 19 | 4.46 | 112 | 11.4 | 88 | .24 | 100 | .44 | 142 |
| 20 | 3.68 | 92 | 12.0 | 93 | .29 | 121 | .29 | 94 |
| 21 | 3.95 | 99 | 11.7 | 91 | .20 | 83 | .28 | 90 |
| 22 | 5.81 | 128 | 11.7 | 99 | .31 | 115 | .43 | 143 |
| 23 | 4.03 | 89 | 11.9 | 101 | .26 | 96 | .28 | 93 |
| 24 | 4.60 | 102 | 10.0 | 85 | .24 | 89 | .26 | 87 |
| 25 | 3.31 | 83 | 11.4 | 88 | .19 | 79 | .36 | 116 |
| 26 | 4.87 | 108 | 10.8 | 92 | .20 | 74 | .23 | 77 |
| 27 | 4.57 | 115 | 13.4 | 104 | .17 | 71 | .25 | 81 |
| 28 | 4.75 | 119 | 11.0 | 85 | .13 | 54 | .24 | 77 |
| 29 | 5.75 | 144 | 12.1 | 94 | .29 | 121 | .21 | 68 |
| 30 | 4.20 | 105 | 14.0 | 109 | .24 | 100 | .33 | 106 |
| 31 | 4.92 | 123 | 12.7 | 98 | .22 | 92 | .26 | 84 |
| 32 | 4.13 | 91 | 12.5 | 106 | .29 | 107 | .38 | 127 |
| 33 | 2.90 | 100 | 12.9 | 100 | .31 | 100 | .46 | 100 |
| 34 | 4.50 | 113 | 13.1 | 102 | .28 | 117 | .24 | 77 |
| 35 | 4.00 | 100 | 12.7 | 98 | .24 | 100 | .27 | 87 |
| 36 | 4.83 | 121 | 14.8 | 115 | .22 | 92 | .29 | 94 |
| 37 | 3.64 | 91 | 11.9 | 92 | .25 | 104 | .32 | 103 |
| 38 | 5.18 | 114 | 12.9 | 102 | .15 | 94 | .14 | 78 |
| 39 | 4.48 | 112 | 13.5 | 105 | .22 | 92 | .30 | 97 |
| 40 | | | | | | | | |
| 41 | | | | | | | | |
| 42 | 3.88 | 86 | 12.5 | 98 | .16 | 100 | .21 | 117 |
| 43 | 3.81 | 95 | 12.3 | 95 | .15 | 63 | .31 | 100 |
| 44 | 3.12 | 78 | 14.1 | 109 | .23 | 96 | .27 | 87 |
| 45 | 4.00 | 100 | 14.1 | 109 | .21 | 88 | .24 | 77 |
| 46 | | | | | | | | |
| 47 | | | | | | | | |
| 48 | 4.20 | 105 | 13.5 | 105 | .25 | 104 | .37 | 119 |
| 49 | 3.95 | 99 | 12.6 | 98 | .25 | 104 | .30 | 97 |
| 50 | 4.11 | 103 | 12.8 | 99 | .21 | 88 | .24 | 77 |
| 51 | 3.57 | 89 | 12.5 | 97 | .35 | 146 | .33 | 106 |
| 52 | | | | | | | | |
| 53 | 2.96 | 127 | 9.6 | 88 | .16 | 100 | .31 | 135 |
| 54 | 1.97 | 85 | 10.5 | 96 | .23 | 144 | .28 | 122 |
| 55 | 2.23 | 96 | 10.6 | 97 | .13 | 81 | .12 | 52 |
| 56 | 2.15 | 92 | 11.7 | 107 | .11 | 69 | .25 | 109 |
| 57 | 3.63 | 95 | 11.5 | 106 | .12 | 86 | .26 | 100 |
| 58 | 3.64 | 102 | 8.3 | 86 | .11 | 79 | .16 | 67 |
| 59 | 4.02 | 112 | 11.3 | 118 | .13 | 93 | .26 | 108 |
| 60 | 4.03 | 105 | 10.3 | 94 | .15 | 107 | .25 | 96 |

The Ruby Family



GVF Ruby 3063 - Lot 61

61 G V F Ruby 3063

Birth Date: 2-12-2003 Cow #+14394343 Tattoo: 3063

#VDAR New Trend 315 (AMF-NHF)
B/R New Design 036 (AMF-NHF)
 #11418151 B/R Blackcap Empress 76

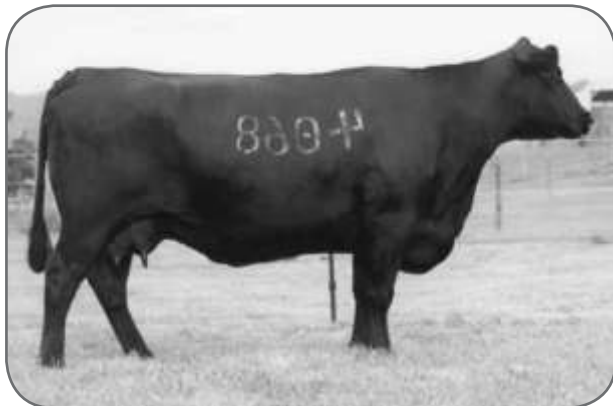
#AAR New Trend
 #VDAR Lucy 704
 #K&K Top Gun
 +QLC A70 Blkcp Empress E43T

#+Leachman Right Time
TC Ruby 4068
 #+12132014 TC Ruby 5087

#N Bar Emulation EXT (AMF-NHF)
 Leachman Erica 0025
 #Premier Independence KN
 #TC Ruby 1010

| BW | WW | YW | MILK | MARB | RE |
|------|-----|-----|------|-------|-------|
| +2.4 | +42 | +76 | +26 | + .19 | + .02 |

This sale feature is one of the all-time favorite females in the Grassy Valley program. She is a second generation Pathfinder Dam who records an average progeny birth ratio of 5@96 combined with a weaning weight ratio of 5@105. More importantly than just numbers, she is moderate framed, easy-fleshing, and structurally sound with a perfect udder. These convenience traits and added longevity have enjoyed renewed prominence in recent times. This female is backed by the highly proven Ruby cow family and is a maternal sister to the \$38,000 TC Ruby 9095 who produced the ever popular TC Freedom. Quality genetics you can count on here. Bred to calve 4/30/10 to Woodhill Mainline S168-U25 then PE to Boyd Forward 6025 until 8/15/10. Examined safe.



TC Ruby 4068 - Dam of Lots 1 and 2.

62 G V F Ruby 3103

Birth Date: 3-19-2003 Cow #+14394851 Tattoo: 3103

#GAR Precision 1680 (AMC-NHC)
Twin Valley Precision E161 (NHC-AMF-RDF)
 #12346200 +WCC Blackcap C9 (RDC)

#Tehama Bando 155 (AMF-NHF)
 9J9 GAR 856 (NHF)
 #SS Traveler 6T6 (AMF-NHF)
 Premier Blackcap 6276A (RDC)

#+Leachman Right Time
TC Ruby 4068
 #+12132014 TC Ruby 5087

#N Bar Emulation EXT (AMF-NHF)
 Leachman Erica 0025
 #Premier Independence KN
 #TC Ruby 1010

| BW | WW | YW | MILK | MARB | RE |
|------|-----|-----|------|-------|-------|
| +4.0 | +39 | +81 | +15 | + .03 | + .23 |

A powerfully made member of the famed Ruby cow family who records progeny ratios of birth 2@103 and weaning 2@91. Produced by the foundation Ruby female in the Grassy Valley program, maternal sisters include the \$38,000 TC Ruby 9095 and the Pathfinder female that sells as Lot 61. Sells with a bull calf at side born 10/15/09 sired by Boyd Forward 6025. Bred to calve 10/5/10 to Boyd Forward 6025 then pasture exposed to Woodhill Mainline S168-U25 from 1/15/10 until 3/15/10.



TC Ruby 9095 - Maternal sister to Lots 61 and 62.

The Black Miss Family



GVF Black Miss 2061 - Lot 63

63 G V F Black Miss 2061

Birth Date: 3-6-2002 Cow +14125879 Tattoo: 2061

#VDAR New Trend 315 [AMF-NHF] #AAR New Trend
B/R New Design 036 [AMF-NHF] #VDAR Lucy 704
 #11418151 B/R Blackcap Empress 76 #K&K Top Gun
 +QLC A70 Blkcp Empress E43T

#+Woodhill Resolution #+Leachman Prompter [AMF-NHF]
GVF Lassie 2004 #GT Miss Traveler 58
 #11699054 GVF Lassie 5087 Lemmon Power Play 0653
 Black Miss 034M of Sayre

| BW | WW | YW | MILK | MARB | RE |
|------|-----|-----|------|-------|-------|
| +2.4 | +42 | +71 | +30 | + .41 | + .23 |

A powerfully made and highly productive daughter of B/R New Design 036 produced by the Pathfinder Dam GVF Lassie 2004. Progeny ratios include birth 4@99 and weaning 4@109. This cow family has been one of the most productive at Grassy Valley producing numerous donor females and top individuals. The Black Miss Family can be counted on for moderate birth weights, abundant milk and mothering ability, excellent dispositions, and longevity. This female has served as a donor in the Grassy Valley program with eight daughters retained. Bred to calve 3/28/10 to TC Aberdeen then PE to Boyd Forward 6025 from 6/20/09 until 8/15/09. Examined safe.

| \$W | \$B |
|--------|--------|
| +26.86 | +47.02 |

64 G V F Black Miss 3039

Birth Date: 1-16-2003 Cow 14395708 Tattoo: 3039

#Bon View Bando 598 [AMF] #Tehama Bando 155 [AMF-NHF]
SAF 598 Bando 5175 [AMF] #Bon View Dora 56
 #+12350821 +SAF Royal Lass 1002 #VDAR New Trend 315 [AMF-NHF]
 +SAF Royal Lass 6089 +SAF Royal Lass 6089

#B/R New Design 036 [AMF-NHF] #VDAR New Trend 315 [AMF-NHF]
GVF Black Miss 9177 B/R Blackcap Empress 76
 13471540 GVF Black Miss 6009 #GT Maximum [AMF-NHF]
 #GVF Lassie 2004

| BW | WW | YW | MILK | MARB | RE |
|------|-----|-----|------|-------|-------|
| +4.5 | +50 | +88 | +28 | + .69 | + .11 |

A high Marbling and high \$Value index female from the Black Miss family. This female records average progeny ratios of birth 5@98, weaning 5@103, and an impressive %IMF ratio of 4@127. A very productive and unique individual here. Safe to calve this spring to Boyd Forward 6025.

| \$W | \$B |
|--------|--------|
| +22.98 | +53.11 |

65 G V F Black Miss 6075

Birth Date: 2-9-2006 Cow 15400563 Tattoo: 6075

#N Bar Emulation EXT [AMF-NHF] #Emulation N Bar 5522
GAR Expectation 4915 [AMF-NHF] N Bar Primrose 2424
 #+12548568 GAR Traveler 2421 #QAS Traveler 23-4 [AMF-NHF]
 +GAR Scotch Cap 209

+Woodhill Delta #+Leachman Right Time
GVF Black Miss 2056 #GT Miss Traveler 58
 14125872 +GVF Black Miss 0008 #+Woodhill Checkmate
 #GVF Lassie 2004

| BW | WW | YW | MILK | MARB | RE |
|------|-----|-----|------|-------|-------|
| +2.2 | +45 | +87 | +24 | + .23 | + .12 |

A really nicely uddered and productive G A R Expectation daughter who records progeny ratios of birth 2@110 and weaning 2@106. Excellent EPDs and production record here from a proven cow family. Sells with a heifer calf at side born 1/20/10 sired by C R A Bextor.

| \$W | \$B |
|--------|--------|
| +24.45 | +45.89 |

66 G V F Black Miss 5027 [AMF]

Birth Date: 1-24-2005 Cow 14984978 Tattoo: 5027

#B/R New Design 036 [AMF-NHF] #VDAR New Trend 315 [AMF-NHF]
Bon View New Design 878 [AMF-NHF] B/R Blackcap Empress 76
 #13062750 Bon View Gammer 85 #Bon View Bando 598 [AMF]
 Bon View Gammer 233

TC Forefront 105 #Connealy Forefront [AMF-NHF]
GVF Black Miss 3090 [AMF] #+TC Flower 9023 [AMC]
 14394385 #+GVF Black Miss 0139 #+Woodhill Checkmate
 +GVF Black Miss 6145

| BW | WW | YW | MILK | MARB | RE |
|-------|------|------|------|------|-----|
| I+2.0 | I+47 | I+92 | I+22 | N/A | N/A |

A super easy-fleshing and productive daughter of the highly proven Pathfinder Sire Bon View New Design 878. Take advantage of the quality females and excellent EPDs contained in this offering. Bred to calve 3/16/10 to G V F Forward 8149 then PE to Boyd Forward 6025 until 8/15/10. Examined safe.

| \$W | \$B |
|--------|-----|
| +24.33 | N/A |

Black Miss Females

67 G V F Black Miss 5168 [AMF]

Birth Date: 9-9-2005 Cow 15273219 Tattoo: 5168

TC Forefront 105
#13957475
#Connealy Forefront [AMF-NHF]
#+TC Flower 9023 [AMC]

#Connealy Frontline [AMF-NHF]
Eileen Heartland Conanga6443
#Connealy Kincaid
#TC Flower 2014

G V F Black Miss 2001
#14129473
#Connealy Dateline
G V F Black Miss 9177

#DHD Traveler 6807 [AMF-NHF]
#Eila Eila of Conanga [AMF]
#B/R New Design 036 [AMF-NHF]
G V F Black Miss 6009

| BW | WW | YW | MILK | MARB | RE |
|--------|--------|-----|------|-------|-------|
| +1.7 | +53 | +97 | +17 | I+.38 | I+.16 |
| \$W | \$B | | | | |
| +26.02 | +51.45 | | | | |

Great Birth to Yearling EPD spread in this good, sound and productive female. Notice the balanced Carcass and \$Value indexes as well. Progeny ratios are birth 2@100 and weaning 2@98. These are no-holes performance females. Sells with a bull calf at side born 11/17/09 sired by Boyd Forward 6025. Bred 2/4/10 to Woodhill Mainline S168-U25.

68 G V F Black Miss 727

Birth Date: 4-24-2007 Cow +16274571 Tattoo: 727

SAV 8180 Traveler 004
#13512009
#Sitz Traveler 8180 [AMF-NHF]
+Boyd Forever Lady 8003

#GDAR Traveler 71 [AMF-NHF]
Sitz Everelda Entense 1137
#AAR New Trend
SVF Forever Lady 57D

G V F Black Miss 9202
+13471471
#B/R New Design 036 [AMF-NHF]
#G V F Lassie 2004

#VDAR New Trend 315 [AMF-NHF]
B/R Blackcap Empress 76
#+Woodhill Resolution
G V F Lassie 5087

| BW | WW | YW | MILK | MARB | RE |
|--------|--------|-----|------|------|-----|
| +3.0 | +52 | +89 | +29 | +33 | +14 |
| \$W | \$B | | | | |
| +27.57 | +40.89 | | | | |

Excellent EPD profile from this young daughter of the popular S A V 8180 Traveler 004 from the Black Miss cow family. Progeny ratios for this three-year-old are birth 1@105 and weaning 1@104. Safe to calve this spring to G V F Objective 8103.

69 MW Black Miss 486

Birth Date: 9-19-2004 Cow +15236270 Tattoo: 486

Connealy Lead On
#13447282
#Connealy Leadtime [AMF-NHF]
Eligence Plus of Conanga

#Connealy Dateline
#Ruths Rona of Conanga
#TC Dividend 963 [AMF-NHF-RDF]
Eura Cap of Conanga

G V F Black Miss 9204
+13471478
#B/R New Design 036 [AMF-NHF]
#G V F Lassie 2004

#VDAR New Trend 315 [AMF-NHF]
B/R Blackcap Empress 76
#+Woodhill Resolution
G V F Lassie 5087

| BW | WW | YW | MILK | MARB | RE |
|--------|--------|-----|------|-------|-------|
| +1.5 | +45 | +84 | +26 | I+.41 | I+.20 |
| \$W | \$B | | | | |
| +26.96 | +48.39 | | | | |

A well-made and easy-fleshing daughter of the popular ABS Global sire Connealy Lead On. Look at the solid EPD profile in every category. Sells with a bull calf at side born 2/8/10 sired by Nichols Extra K205.

70 G V F Black Miss 6142

Birth Date: 3-1-2006 Cow +15432441 Tattoo: 6142

Bon View New Design 1407
#12783540
#B/R New Design 036 [AMF-NHF]
Bon View Pride 664

#VDAR New Trend 315 [AMF-NHF]
B/R Blackcap Empress 76
#+GAR Sleep Easy 1009 [AMF-NHF]
#Bon View Pride 1551

G V F Black Miss 2021
#14129478
#Connealy Dateline
+G V F Black Miss 9202

#DHD Traveler 6807 [AMF-NHF]
#Eila Eila of Conanga [AMF]
#B/R New Design 036 [AMF-NHF]
#G V F Lassie 2004

| BW | WW | YW | MILK | MARB | RE |
|--------|--------|-----|------|------|-----|
| +9 | +45 | +84 | +29 | +72 | +12 |
| \$W | \$B | | | | |
| +28.18 | +49.00 | | | | |

An extremely low Birth Weight, high Marbling young female here who was produced by the Pathfinder donor dam, G V F Black Miss 2021. Progeny ratios are birth 2@101 and weaning 2@99 combined with an impressive %IMF of 2@122. This female stacks three generations of highly proven performance sires in her pedigree. Sells with a heifer calf born 3/1/10 by Boyd Forward 6025.

The Connealy Petal Family

71 G V F Petal 4192

Birth Date: 9-13-2004 Cow +14926040 Tattoo: 4192

Connealy Forefront
#13169229
#Connealy Frontline [AMF-NHF]
Eileen Heartland Conanga6443

#Connealy Dateline
#Pleasant Pill of Conanga
#Hoff Heartland SC 456
Eileen May of Conanga

Petal of Conanga 671
#13679284
#BAR Ext Traveler 205 [AMF-NHF]
#Power of Conanga 6677

#N Bar Emulation EXT [AMF-NHF]
#BAR Queen Traveler 3015
#California Traveler [AMF-NHF]
#Connealy RT 677

| BW | WW | YW | MILK | MARB | RE |
|--------|--------|-----|------|------|-----|
| +5 | +40 | +75 | +21 | +12 | +12 |
| \$W | \$B | | | | |
| +26.40 | +33.40 | | | | |

A super well-balanced and productive female which descends from the Connealy Petal cow family. This female is moderate framed, deep bodied, and has a great udder. Count on moderate birth weights, good performance, and extreme structural soundness. Progeny ratios are birth 3@92 and weaning 3@94. This is a solid female. Sells with a heifer calf at side born 11/16/09 sired by Boyd Forward 6025.

71A G V F Petal 9201

Birth Date: 11-16-2009 Cow 16540843 Tattoo: 9201

Boyd Forward 15347916
#Connealy Onward [AMF-NHF]
Sitz RLS Eisa Evergreen 30P

#Connealy Lead On [AMF-NHF]
Altune of Conanga 6104
Sitz New Design 349M [AMF-NHF]
#Sitz RLS Eisa Evergreen 39M

G V F Petal 4192
+14926040
#Connealy Forefront [AMF-NHF]
Petal of Conanga 671

#Connealy Frontline [AMF-NHF]
Eileen Heartland Conanga6443
#BAR Ext Traveler 205 [AMF-NHF]
#Power of Conanga 6677

| BW | WW | YW | MILK | MARB | RE |
|--------|--------|--------|-------|-------|-------|
| I+.3 | I+.51 | I+.102 | I+.24 | I+.13 | I+.32 |
| \$W | \$B | | | | |
| +26.67 | +44.59 | | | | |

A really well-made and attractive daughter of Boyd Forward 6025. Show heifer potential here as well as a great brood cow prospect. Note the Birth to Yearling EPD spread in this female. This is a solid cow family.

72 P J Petal of Conanga 401

Birth Date: 9-28-2004 Cow +15097168 Tattoo: 401

Bon View New Design 878
#13062750
#B/R New Design 036 [AMF-NHF]
Bon View Gammer 85

#VDAR New Trend 315 [AMF-NHF]
B/R Blackcap Empress 76
#Bon View Bando 598 [AMF]
Bon View Gammer 233

Petal of Conanga 671
#13679284
#BAR Ext Traveler 205 [AMF-NHF]
#Power of Conanga 6677

#N Bar Emulation EXT [AMF-NHF]
#BAR Queen Traveler 3015
#California Traveler [AMF-NHF]
#Connealy RT 677

| BW | WW | YW | MILK | MARB | RE |
|--------|--------|-----|------|------|------|
| +1.0 | +35 | +68 | +28 | +26 | -.01 |
| \$W | \$B | | | | |
| +25.62 | +31.78 | | | | |

A moderate framed, heavy milking and productive Bon View New Design 878 daughter produced by the donor dam Petal on Conanga 671. This female records progeny ratios of birth 2@106 and weaning 2@96. Sells with a heifer calf at side born 9/15/09 sired by C R A Bextor. Bred to calve 9/6/10 to TC Total 410. PE to Woodhill Mainline S168-U25 from 1/15/10 until 3/15/10.

72A G V F Petal 9181

Birth Date: 9-15-2009 Cow 16544880 Tattoo: 9181

CRA Bextor 872 5205 608
#13009379
#BAR Ext Traveler 205 [AMF-NHF]
Cra Lady Jaye 608 498 S Easy

#N Bar Emulation EXT [AMF-NHF]
#BAR Queen Traveler 3015
#+GAR Sleep Easy 1009 [AMF-NHF]
HHF 917 Lady 975 498

PJ Petal of Conanga 401
+15097168
#Bon View New Design 878 [AMF-NHF]
Petal of Conanga 671

#B/R New Design 036 [AMF-NHF]
Bon View Gammer 85
#BAR Ext Traveler 205 [AMF-NHF]
#Power of Conanga 6677

| BW | WW | YW | MILK | MARB | RE |
|--------|--------|-------|-------|-------|-------|
| I+.3 | I+.43 | I+.82 | I+.31 | I+.42 | I+.24 |
| \$W | \$B | | | | |
| +27.14 | +43.50 | | | | |

An extra wide sprung and deep-bodied C R A Bextor daughter produced by a proven dam. This is excellent brood cow potential here. Take advantage of these quality young females with solid EPDs in every category.

The Georgina Family



GVF Georgina 3051 - Lot 73

73 G V F Georgina 3051 [AMF]

Birth Date: 2-1-2003 Cow +14413087 Tattoo: 3051

TC Forefront 105 #Connealy Forefront [AMF-NHF] #Connealy Frontline [AMF-NHF]
 13957475 #+TC Flower 9023 [AMC] Eileen Heartland Conanga6443
 #Connealy Kincaid
 #TC Flower 2014

TC Georgina 7073 #+Woodhill Supreme [AMF-NHF] #+GDAR Oscar 711 [AMF-NHF]
 #12782780 TC Georgina 3186 +Woodhill Evergreen 120
 TC Bridger
 TC Georgina 9002

| BW | WW | YW | MILK | MARB | RE |
|------|-----|-----|------|------|------|
| +2.6 | +50 | +93 | +17 | +.44 | +.01 |

A performance outlier in this donor female. For those looking for a little larger frame and wanting to push performance to the maximum, this female will do that. Progeny consistently display added frame size and tremendous post-weaning gain. A son was the top-selling bull in last year's University of Tennessee Junior Bull Test. While two sons in that test this year have an average yearling weight of 1,470 pounds to ratio 110. Natural progeny record average ratios of birth 4@100 and weaning 4@97, while embryo progeny record an average %IMF 12@104 and REA 12@100. Produced by a Pathfinder Dam. Sells with a bull calf born 3/1/10 by Boyd Forward 6025.

| \$W | \$B |
|--------|--------|
| +24.95 | +47.80 |

74 MF Georgina 619

Birth Date: 12-24-2005 Cow +15402630 Tattoo: 619

Lemmon Newsline C804 #B/R New Design 036 [AMF-NHF] #VDAR New Trend 315 [AMF-NHF]
 #13632776 White Fence Pride H1 B/R Blackcap Empress 76
 #Connealy Dateline
 #Pleasant Pill of Conanga

TC Georgina 7073 #+Woodhill Supreme [AMF-NHF] #+GDAR Oscar 711 [AMF-NHF]
 #12782780 TC Georgina 3186 +Woodhill Evergreen 120
 TC Bridger
 TC Georgina 9002

| BW | WW | YW | MILK | MARB | RE |
|-------|------|------|------|-------|-------|
| l+3.2 | l+46 | l+81 | l+23 | l+.30 | l+.22 |

An easy-fleshing daughter of the Pathfinder Dam TC Georgina 7073, sired by Lemmon Newsline C804. You will like the power and eye appeal in this female. Bred to calve this spring to Boyd Forward 6025. Examined safe.

| \$W | \$B |
|--------|--------|
| +28.86 | +39.31 |



TC Georgina 7073 - Pathfinder Dam of Lots 73-75.

75 MF Georgina 629

Birth Date: 3-1-2006 Cow 15399705 Tattoo: 629

Bon View New Design 878 #B/R New Design 036 [AMF-NHF] #VDAR New Trend 315 [AMF-NHF]
 #13062750 Bon View Gammer 85 B/R Blackcap Empress 76
 #Bon View Bando 598 [AMF]
 Bon View Gammer 233

GVF Georgina 4054 #+SAF 598 Bando 5175 [AMF] #Bon View Bando 598 [AMF]
 #14671292 #TC Georgina 7073 +SAF Royal Lass 1002
 #+Woodhill Supreme [AMF-NHF]
 TC Georgina 3186

| BW | WW | YW | MILK | MARB | RE |
|------|-----|-----|------|------|-----|
| +2.9 | +47 | +88 | +26 | N/A | N/A |

A really attractive, high-performance female who recorded ratios of 101 for birth weight and 96 for weaning weight on her first calf. This is a solid cow family. Sells with a heifer calf at side born 1/28/10 sired by Boyd Forward 6025.

| \$W | \$B |
|--------|-----|
| +24.45 | N/A |

75B G V F Georgina 9073

Birth Date: 2-4-2009 Cow 16368133 Tattoo: 9073

Nichols Extra K205 #Nichols Extra H6 [AMF-NHF] #N Bar Emulation EXT [AMF-NHF]
 #13752642 Nichols Black Heiress F346 Nichols Eileen May F261
 +Nichols Heavy Duty D20
 Nichols Black Heiress B3

MF Georgina 629 #Bon View New Design 878 [AMF-NHF] #B/R New Design 036 [AMF-NHF]
 #15399705 GVF Georgina 4054 Bon View Gammer 85
 #+SAF 598 Bando 5175 [AMF]
 #TC Georgina 7073

| BW | WW | YW | MILK | MARB | RE |
|------|-----|-----|------|------|-----|
| +2.4 | +50 | +97 | +25 | N/A | N/A |

A quality replacement heifer sired by the popular Nichols Extra K205. Count on balance and all-around performance from this female. Note the excellent EPDs.

| \$W | \$B |
|--------|-----|
| +24.66 | N/A |

The Featured Marcia Female

76 G V F Marcia 4228

Birth Date: 9-17-2004 Cow +15048631 Tattoo: 4228

Bon View New Design 878 #B/R New Design 036 [AMF-NHF] #VDAR New Trend 315 [AMF-NHF]
 #13062750 Bon View Gammer 85 B/R Blackcap Empress 76
 #Bon View Bando 598 [AMF]
 Bon View Gammer 233

TC Marcia 8021 #Sitz Alliance 6595 [AMF-NHF] #Sitz Traveler 8180 [AMF-NHF]
 #13136371 #TC Marcia 6171 #Sitz Barbaramere Jet 2698
 TC Traveler 105
 #TC Marcia 1083

| BW | WW | YW | MILK | MARB | RE |
|------|-----|-----|------|------|------|
| +1.8 | +42 | +76 | +30 | +.45 | -.05 |

A featured female from the donor dam, TC Marcia 8021. This female is extremely sound in her structure, has superior udder quality, and is one of the easiest fleshing females in the herd. For those looking for moderation with superior fleshing ability and longevity, look this female up. Progeny production ratios are birth 4@108 and weaning 4@100. Sells with a bull calf at side born 11/3/09 sired by Boyd Forward 6025. Bred to calve 10/13/10 to Boyd Forward 6025 then PE to Woodhill Mainline S168-U25 until 3/15/10.

| \$W | \$B |
|--------|--------|
| +27.13 | +35.21 |



GVF Marcia 4228 - Lot 76

Grassy Valley Two-Year-Old Females



Lemmon Pride P271 - Donor dam of Lots 77 and 78.

77 G V F Pleasant Pride 8006

Birth Date: 11-25-2007 Cow +16550419 Tattoo: 8006

SAV Net Worth 4200 (AMF-NHF) 14739204
 #SAV 8180 Traveler 004 (AMF-NHF-RDF) +SAV May 2410
 #Sitz Traveler 8180 (AMF-NHF) +Boyd Forever Lady 8003
 #+SAF 598 Bando 5175 (AMF) #SAV May 6269

Lemmon Pride P271 14867991
 #Bon View New Design 878 (AMF-NHF) White Fence Pride H1
 #B/R New Design 036 (AMF-NHF) Bon View Gammer 85
 #Connealy Dateline #Pleasant Pill of Conanga

| BW | WW | YW | MILK | MARB | RE |
|-------|------|------|------|--------|--------|
| I+4.0 | I+50 | I+94 | I+31 | I+.35 | I+.29 |
| | | | | \$W | \$B |
| | | | | +22.90 | +48.01 |

A featured two-year-old female sired by the highly popular S A V Net Worth and produced by the donor dam Lemmon Pride P271 who is an own daughter of White Fence Pride H-1. Sells with a bull calf at side born 1/31/10 sired by CRA Bextor.

78 G V F Pleasant Pride 7204

Birth Date: 10-7-2007 Cow +15956209 Tattoo: 7204

SAV 8180 Traveler 004 (AMF-NHF-RDF) #13512009
 #Sitz Traveler 8180 (AMF-NHF) +Boyd Forever Lady 8003
 #GDAR Traveler 71 (AMF-NHF) Sitz Everelda Entense 1137
 #AAR New Trend SVF Forever Lady 57D

Lemmon Pride P271 14867991
 #Bon View New Design 878 (AMF-NHF) White Fence Pride H1
 #B/R New Design 036 (AMF-NHF) Bon View Gammer 85
 #Connealy Dateline #Pleasant Pill of Conanga

| BW | WW | YW | MILK | MARB | RE |
|-------|------|------|------|--------|--------|
| I+3.3 | I+49 | I+90 | I+27 | I+.23 | I+.15 |
| | | | | \$W | \$B |
| | | | | +24.54 | +35.97 |

A special feature female sired by the growth and performance sire S A V 8180 Traveler 004 from the donor dam, Lemmon Pride P271. Notable maternal siblings to the dam of this female include B/R New Frontier 095, Lemmon Newline C804, and Lemmon Pride G804. Bred to calve this spring to Boyd Forward 6025. Examined safe.



GVF Evergreen 3001 - Full sister to the grandam of Lot 79.

79 G V F Evergreen 8130

Birth Date: 2-29-2008 Cow 16015157 Tattoo: 8130

SS Objective T510 OT26 (AMF-NHF) #13776378
 #SS Traveler 6807 T510 (AMF-NHF) #DHD Traveler 6807 (AMF-NHF)
 SS Miss Rita R011 7R8 (AMF-NHF) SS Miss Hi Spade A114
 SS Rito Rito R76 R011 SS Miss Ultress U56

GVF Evergreen 6035 15400538
 #+GAR Expectation 4915 (AMF-NHF) #N Bar Emulation EXT (AMF-NHF)
 +GVF Evergreen 3006 GAR Traveler 2421
 #+SAF 598 Bando 5175 (AMF) +Woodhill Evergreen 58-57

| BW | WW | YW | MILK | MARB | RE |
|------|-----|------|------|--------|--------|
| +3.6 | +63 | +112 | +28 | +55 | +27 |
| | | | | \$W | \$B |
| | | | | +26.76 | +58.46 |

A top two-year-old female selling as a feature of this sale. Some of the best EPDs to be found backed up by superior individual performance and a cow family known industry wide. Study and compare these EPDs. Sells with a bull calf at side born 2/3/10 sired by Boyd Forward 6025.

80 G V F Evergreen 8021

Birth Date: 1-16-2008 Cow 16011531 Tattoo: 8021

TC Total 410 (AMF-NHF) 14844711
 #Bon View New Design 208 (AMF-NHF) #B/R New Design 036 (AMF-NHF)
 +TC Erica Eileen 2047 (NHC-AMF) #GAR Traveler 2421
 #Twin Valley Precision E161 (NHC-AMF-RDF) #+TC Erica Eileen 5116

GVF Evergreen 2135 +14217172
 #+GDAR SVF Traveler 234D (AMF-NHF) #Traveler 124 GDAR
 +Woodhill Evergreen 58-825 +GDAR Forever Lady 718
 #+VDAR Traveler 722 (AMF-NHF) #GT Miss Traveler 58

| BW | WW | YW | MILK | MARB | RE |
|------|-----|------|------|--------|--------|
| +2.1 | +58 | +102 | +25 | +40 | +36 |
| | | | | \$W | \$B |
| | | | | +29.27 | +55.33 |

A fancy two-year-old sired by TC Total 410. Excellent EPDs and individual performance combined with a great phenotype. Note the maternal influence of GT Miss Traveler 58, one of the all-time most highly recognized Angus females. Bred to calve this spring to Boyd Forward 6025. Examined safe.



White Fence Pride H1 - Grandam of Lots 77 and 78.



Woodhill Evergreen 58-825 - Second dam of Lot 80.

Grassy Valley Two-Year-Old Females

Grassy Valley Females

As you study this sale book, you will notice every effort has been made to supply all pertinent information to aid in your selection process. We firmly believe in selling performance and production; therefore, the females have production records included in the sale book and most sell with a calf at side. We manage our cow herd in a no-frills practical manner so these females will be ready to go to work for you. Performance data is accurate and maintained in proper contemporary groups. Take advantage of the large number of proven females and elite EPDs that are offered through this event.

81 G V F Euthalla 8001

Birth Date: 11-10-2007 Cow 15954884 Tattoo: 8001

#Sitz Traveler 8180 (AMF-NHF)
SAV 8180 Traveler 004 (AMF-NHF-RDF)
 #13512009 +Boyd Forever Lady 8003

#+GAR Grid Maker (AMF-NHF)
G V F Euthalla 4198
 #14932250 KAF Euthalla 901

#GDAR Traveler 71 (AMF-NHF)
 Sitz Everelda Entense 1137
 #AAR New Trend
 SVF Forever Lady 57D

#GDAR Traveler 044 (AMF-NHF)
 GAR Precision 2536 (AMC-NHF)
 +Woodhill Explorer
 KAF Euthalla 703

| BW | WW | YW | MILK | MARB | RE |
|-------|------|-------|------|--------|--------|
| I+3.1 | I+54 | I+101 | I+19 | I+.11 | I+.17 |
| | | | | \$W | \$B |
| | | | | +23.39 | +33.53 |

A stout made two-year-old daughter of S A V 8180 Traveler 004 produced by the Euthalla cow family. A really nice female with great EPDs here. Sells with a heifer calf at side born 1/20/10 sired by Boyd Forward 6025.

84 G V F Flower 8090

Birth Date: 2-3-2008 Cow 16008686 Tattoo: 8090

Connealy Onward (AMF-NHF)
Boyd Forward 6025
 15347916 Sitz RLS Eisa Evergreen 30P

#Connealy Danny Boy (AMF-NHF)
G V F Flower 6039
 15400541 +G V F Flower 4113

#Connealy Lead On (AMF-NHF)
 Altune of Conanga 6104
 Sitz New Design 349M (AMF-NHF)
 #Sitz RLS Eisa Evergreen 39M

#Connealy Timeline
 Energy of Conanga 4851
 #Sitz Alliance 6595 (AMF-NHF)
 #TC Flower 4056

| BW | WW | YW | MILK | MARB | RE |
|------|-----|------|------|--------|--------|
| +2.4 | +60 | +114 | +24 | +23 | +42 |
| | | | | \$W | \$B |
| | | | | +26.01 | +52.98 |

A phenotypic standout with a great set of EPDs across the board. A really nice two-year-old. Bred to calve this spring to G V F Objective 8103. Examined safe.

82 G V F Erica 8069

Birth Date: 1-27-2008 Cow +16046625 Tattoo: 8069

#B/R New Design 036 (AMF-NHF)
Bon View New Design 878 (AMF-NHF)
 #13062750 Bon View Gammer 85

#Twin Valley Precision E161 (NHC-AMF-RDF)
G V F Erica 4070 (NHF)
 #14811054 Woodhill Erica 854-1167

#VDAR New Trend 315 (AMF-NHF)
 B/R Blackcap Empress 76
 #Bon View Bando 598 (AMF)
 Bon View Gammer 233

#GAR Precision 1680 (AMC-NHC)
 +WCC Blackcap C9 (RDC)
 #VF Venture Forward (AMF-NHF)
 Woodhill Erica 497-854

| BW | WW | YW | MILK | MARB | RE |
|-------|------|------|------|--------|--------|
| I+1.9 | I+42 | I+84 | I+28 | +28 | -.02 |
| | | | | \$W | \$B |
| | | | | +24.46 | +36.90 |

An attractive young female produced by the donor dam G V F Erica 4070. These Bon View New Design 878 females make really nice cows. Bred to calve this spring to Boyd Forward 6025. Examined safe.

85 G V F Black Miss 8138

Birth Date: 3-9-2008 Cow 16021315 Tattoo: 8138

Connealy Onward (AMF-NHF)
Boyd Forward 6025
 15347916 Sitz RLS Eisa Evergreen 30P

TC Forefront 105
G V F Black Miss 5013 (AMF)
 15059866 G V F Black Miss 3039

#Connealy Lead On (AMF-NHF)
 Altune of Conanga 6104
 Sitz New Design 349M (AMF-NHF)
 #Sitz RLS Eisa Evergreen 39M

#Connealy Forefront (AMF-NHF)
 #+TC Flower 9023 (AMC)
 #+SAF 598 Bando 5175 (AMF)
 G V F Black Miss 9177

| BW | WW | YW | MILK | MARB | RE |
|-----|-----|------|------|--------|--------|
| -.2 | +57 | +112 | +23 | +36 | +32 |
| | | | | \$W | \$B |
| | | | | +27.93 | +55.59 |

Calving-ease combined with breed-leading growth EPDs in this young female. Study and compare this EPD profile anywhere. Bred to calve this spring to G V F Objective 8103. Examined safe.

83 G V F Black Miss 7184

Birth Date: 9-10-2007 Cow 15957417 Tattoo: 7184

#SAF Focus of ER (AMF-NHF)
Mytty In Focus (AMF-NHF-RDF)
 13880818 Mytty Countess 906

TC Forefront 105
G V F Black Miss 5165 (AMF)
 #15273216 +G V F Black Miss 9204

#SAF Fame (AMF-NHF)
 GDAR Forever Lady 246
 #Sitz Alliance 6595 (AMF-NHF)
 Baldrige Countess 357

#Connealy Forefront (AMF-NHF)
 #+TC Flower 9023 (AMC)
 #B/R New Design 036 (AMF-NHF)
 #G V F Lassie 2004

| BW | WW | YW | MILK | MARB | RE |
|------|------|------|------|--------|-----|
| I-.2 | I+52 | I+96 | I+24 | N/A | N/A |
| | | | | \$W | \$B |
| | | | | +29.72 | N/A |

A super good uddered daughter of Mytty In Focus. Notice the Birth to Yearling EPD spread in this female. Sells with a heifer calf at side born 2/11/10 sired by Boyd Forward 6025.



Dad received the J.W. Masengill Distinguished Service to Agriculture Award this year.

The Grassy Valley Evergreen Females



G V F Evergreen 4142 - Lot 86

86 G V F Evergreen 4142

Birth Date: 3-11-2004 Cow +14731334 Tattoo: 4142

Bon View New Design 878 [AMF-NHF] #13062750
 #B/R New Design 036 [AMF-NHF] Bon View Gammer 85
 #VDAR New Trend 315 [AMF-NHF] B/R Blackcap Empress 76
 #Bon View Bando 598 [AMF] Bon View Gammer 233

Woodhill Evergreen 58-57 +12893672
 #RR 9440 Scotch Cap 1483 [AMF-NHF] #RR Scotchcap 9440 [AMF-NHF]
 Eriskay of Rollin Rock 8211 #QAS Traveler 23-4 [AMF-NHF]
 #GT Miss Traveler 58 GT Evergreen 312

| BW | WW | YW | MILK | MARB | RE |
|------|-----|-----|------|------|------|
| +1.9 | +45 | +84 | +29 | +.24 | -.02 |

This highly proven and productive featured female records progeny ratios of birth 3@105 and weaning 3@108. Notice the sire is one of the most highly proven bulls in the history of the Angus breed while the donor dam is a direct daughter of the prolific donor GT Miss Traveler 58. You can bet on excellent production across the board here. Sells with a heifer calf born 2/24/10 by Woodhill Mainline S168-U25.

| \$W | \$B |
|--------|--------|
| +27.63 | +35.44 |

88 G V F Evergreen 6123 [AMF]

Birth Date: 2-28-2006 Cow 15400585 Tattoo: 6123

TC Forefront 105 13957475
 #Connealy Forefront [AMF-NHF] #TC Flower 9023 [AMC]
 #Connealy Frontline [AMF-NHF] Eileen Heartland Conanga6443
 #Connealy Kincaid #TC Flower 2014

Woodhill Evergreen 58-57 +12893672
 #RR 9440 Scotch Cap 1483 [AMF-NHF] #RR Scotchcap 9440 [AMF-NHF]
 Eriskay of Rollin Rock 8211 #QAS Traveler 23-4 [AMF-NHF]
 #GT Miss Traveler 58 GT Evergreen 312

| BW | WW | YW | MILK | MARB | RE |
|------|-----|-----|------|------|------|
| +1.8 | +47 | +93 | +15 | +.18 | +.03 |

A larger framed, high performance daughter of the donor dam Woodhill Evergreen 58-57, sired by the high performance sire TC Forefront 105. Sells with a bull calf at side born 2/14/10 sired by Boyd Forward 6025.

| \$W | \$B |
|--------|--------|
| +23.06 | +39.06 |

87 G V F Evergreen 3003

Birth Date: 10-24-2002 Cow +14394828 Tattoo: 3003

SAF 598 Bando 5175 [AMF] #12350821
 #Bon View Bando 598 [AMF] +SAF Royal Lass 1002
 #Tehama Bando 155 [AMF-NHF] #Bon View Dora 56
 #VDAR New Trend 315 [AMF-NHF] +SAF Royal Lass 6089

Woodhill Evergreen 58-57 +12893672
 #RR 9440 Scotch Cap 1483 [AMF-NHF] #RR Scotchcap 9440 [AMF-NHF]
 Eriskay of Rollin Rock 8211 #QAS Traveler 23-4 [AMF-NHF]
 #GT Miss Traveler 58 GT Evergreen 312

| BW | WW | YW | MILK | MARB | RE |
|------|-----|-----|------|------|------|
| +3.5 | +52 | +97 | +26 | +.21 | -.10 |

A moderate framed, and wide sprung daughter of the high performance sire S A F 598 Bando 5175 from the donor dam Woodhill Evergreen 58-57. Progeny ratios are birth 4@102 and weaning 4@103. Elite, proven performance genetics here. Sells with a bull calf at side born 2/16/10 sired by Boyd Forward 6025.

| \$W | \$B |
|--------|--------|
| +24.42 | +35.04 |

89 G V F Evergreen 6056

Birth Date: 2-1-2006 Cow 15400552 Tattoo: 6056

Woodhill Admiral 77K [AMF-NHF] #13712447
 #SAF Focus of ER [AMF-NHF] +Woodhill Lass 344-1178
 #SAF Fame [AMF-NHF] GDAR Forever Lady 246
 #RR Scotchcap 9440 [AMF-NHF] Woodhill Lass 1172-344

G V F Evergreen 4026 14733969
 #BCC Bushwacker 41-93 [AMF-NHF] #Paramont Ambush 2172 [AMF-NHF]
 +G V F Evergreen 1174 RC Anita T Bando 918903
 #QAS Focus of ER [AMF-NHF] +Woodhill Evergreen 58-825

| BW | WW | YW | MILK | MARB | RE |
|------|-----|-----|------|------|------|
| +2.5 | +56 | +94 | +22 | +.35 | +.07 |

A moderate framed and highly productive female with a super correct udder. Progeny ratios are birth 1@93 and weaning 1@95. A solid young female here. Sells with a bull calf at side born 1/22/10 sired by Boyd Forward 6025.

| \$W | \$B |
|--------|--------|
| +28.97 | +42.26 |

The Grassy Valley Evergreen Family

90 G V F Evergreen 6212

Birth Date: 10-30-2006 Cow 15610093 Tattoo: 6212

#Papa Forte 1921
Woodhill Foresight (AMF-NHF)
#+13936986 Bon View Gammer 85

Papa Optima 9818
Papa Envious Blackbird 8832
#Bon View Bando 598 (AMF)
Bon View Gammer 233

#SAF Focus of ER (AMF-NHF)
GVF Evergreen 1175
+14220355 +Woodhill Evergreen 58-825

#SAF Fame (AMF-NHF)
GDAR Forever Lady 246
#+VDAR Traveler 722 (AMF-NHF)
#GT Miss Traveler 58

| BW | WW | YW | MILK | MARB | RE |
|--------|--------|-----|------|-------|-------|
| +2.0 | +49 | +90 | +23 | I+.33 | I+.09 |
| \$W | \$B | | | | |
| +26.58 | +45.93 | | | | |

A hard-working young female who recorded progeny ratios of 97 for birth weight and 95 for weaning weight on her first calf. Solid EPDs across the board provide for multiple mating options in this female. Wait until you see this big heifer calf she is nursing this year. PE to Boyd Forward from 12/15/09 until 1/15/10, then PE from 1/16/10 until 3/15/10 to Woodhill Mainline S168-U25.



Woodhill Evergreen 58-57 - Dam of Lots 86-88.

90A G V F Evergreen 9184

Birth Date: 9-19-2009 Cow 16540834 Tattoo: 9184

Connealy Onward (AMF-NHF)
Boyd Forward 6025
15347916 Sitz RLS Eisa Evergreen 30P

#Connealy Lead On (AMF-NHF)
Altune of Conanga 6104
Sitz New Design 349M (AMF-NHF)
#Sitz RLS Eisa Evergreen 39M

#+Woodhill Foresight (AMF-NHF)
GVF Evergreen 6212
15610093 +GVF Evergreen 1175

#Papa Forte 1921
Bon View Gammer 85
#SAF Focus of ER (AMF-NHF)
+Woodhill Evergreen 58-825

| BW | WW | YW | MILK | MARB | RE |
|--------|------|-------|------|------|-----|
| I+1.1 | I+56 | I+109 | I+25 | N/A | N/A |
| \$W | \$B | | | | |
| +27.33 | N/A | | | | |

A really powerfully made and attractive daughter of Boyd Forward 6025. Take a look at the EPDs in this good looking and stylish female.

92 G V F Evergreen 7130

Birth Date: 2-26-2007 Cow 15776276 Tattoo: 7130

#BCC Bushwacker 41-93 (AMF-NHF)
Woodhill Encore
+13937091 Bon View Gammer 85

#Paramont Ambush 2172 (AMF-NHF)
RC Anita T Bando 918903
#Bon View Bando 598 (AMF)
Bon View Gammer 233

#Bon View New Design 1407 (AMF-NHF)
GVF Evergreen 2157
+14395969 +Woodhill Evergreen 58-57

#B/R New Design 036 (AMF-NHF)
#RR 9440 Scotch Cap 1483 (AMF-NHF)
#GT Miss Traveler 58

| BW | WW | YW | MILK | MARB | RE |
|--------|--------|-----|------|------|-----|
| +1.2 | +47 | +81 | +23 | +26 | +13 |
| \$W | \$B | | | | |
| +29.27 | +38.53 | | | | |

A three-year-old daughter of the total performance sire Woodhill Encore who descends from the Evergreen cow family. A quality young female here. Sells with a bull calf at side born 1/19/10 sired by Boyd Forward 6025.

91 G V F Evergreen 5006 [AMF]

Birth Date: 12-21-2004 Cow 15048324 Tattoo: 5006

#Connealy Forefront (AMF-NHF)
TC Forefront 105
13957475 #+TC Flower 9023 (AMC)

#Connealy Frontline (AMF-NHF)
Eileen Heartland Conanga6443
#Connealy Kincaid
#TC Flower 2014

#+SAF 598 Bando 5175 (AMF)
GVF Evergreen 3006
+14394830 +Woodhill Evergreen 58-57

#Bon View Bando 598 (AMF)
+SAF Royal Lass 1002
#RR 9440 Scotch Cap 1483 (AMF-NHF)
#GT Miss Traveler 58

| BW | WW | YW | MILK | MARB | RE |
|--------|--------|------|------|------|-----|
| +2.4 | +55 | +108 | +22 | +42 | +11 |
| \$W | \$B | | | | |
| +24.09 | +53.40 | | | | |

Extra power, performance, and extension in this high growth female with breed leading growth EPDs. Progeny ratios are birth 3@99 and weaning 3@102. Sells with a bull calf born 2/24/10 by Woodhill Mainline S168-U25.

92B G V F Evergreen 9015

Birth Date: 1-17-2009 Cow 16365917 Tattoo: 9015

#SS Traveler 6807 T510 (AMF-NHF)
SS Objective T510 OT26 (AMF-NHF)
#13776378 SS Miss Rita R011 7R8 (AMF-NHF)

#DHD Traveler 6807 (AMF-NHF)
#SS Miss Hi Spade A114
SS Rito Rito R76 R011
SS Miss Ultress U56

+Woodhill Encore
GVF Evergreen 7130
15776276 +GVF Evergreen 2157

#BCC Bushwacker 41-93 (AMF-NHF)
Bon View Gammer 85
#Bon View New Design 1407 (AMF-NHF)
+Woodhill Evergreen 58-57

| BW | WW | YW | MILK | MARB | RE |
|--------|--------|------|------|-------|-------|
| +1 | +57 | +100 | +26 | I+.48 | I+.28 |
| \$W | \$B | | | | |
| +32.00 | +51.09 | | | | |

A well-balanced yearling heifer by the highly popular ABS Global sire SS Objective. Take a look at the Birth to Yearling EPD spread here. The fastest way to get there is to use the good EPDs.

91B G V F Evergreen 9093

Birth Date: 2-8-2009 Cow 16337351 Tattoo: 9093

Connealy Onward (AMF-NHF)
Boyd Forward 6025
15347916 Sitz RLS Eisa Evergreen 30P

#Connealy Lead On (AMF-NHF)
Altune of Conanga 6104
Sitz New Design 349M (AMF-NHF)
#Sitz RLS Eisa Evergreen 39M

TC Forefront 105
GVF Evergreen 5006 (AMF)
15048324 +GVF Evergreen 3006

#Connealy Forefront (AMF-NHF)
#+TC Flower 9023 (AMC)
#+SAF 598 Bando 5175 (AMF)
+Woodhill Evergreen 58-57

| BW | WW | YW | MILK | MARB | RE |
|--------|--------|------|------|-------|-------|
| +1.4 | +60 | +119 | +24 | I+.28 | I+.31 |
| \$W | \$B | | | | |
| +26.38 | +55.11 | | | | |

A super attractive featured yearling heifer with an elite EPD profile and backed by a proven cow family. Take a good look at this top group of productive yearling heifers managed under practical conditions.



GT Miss Traveler 58 - The Foundation Evergreen Female.

The Grassy Valley Erica Family



Woodhill Erica 854-1167 - Dam of Lots 93-98.

93 G V F Erica 4188

Birth Date: 9-12-2004 Cow +14926030 Tattoo: 4188

Bon View New Design 878 [AMF-NHF] #13062750
 #B/R New Design 036 [AMF-NHF]
 Bon View Gammer 85

Woodhill Erica 854-1167 12889304
 #VF Venture Forward [AMF-NHF]
 Woodhill Erica 497-854

#VDAR New Trend 315 [AMF-NHF]
 B/R Blackcap Empress 76
 #Bon View Bando 598 [AMF]
 Bon View Gammer 233

#+VDAR Traveler 722 [AMF-NHF]
 Landmark Freda 911
 #Woodhill Alliance
 Woodhill Erica 279-497

| BW | WW | YW | MILK | MARB | RE |
|----|-----|-----|------|-------|-------|
| +5 | +36 | +75 | +24 | I+.30 | I-.21 |

A moderate framed productive daughter of the featured donor female, Woodhill Erica 854-1167, who provides calving-ease, marbling, and performance. Maternal brothers to this female include the Accelerated Genetics sire Woodhill Confidence, and the ORigen sire Woodhill Advance. Bred to calve prior to 3/28/10 to G V F Forward 8149 then PE to Boyd Forward 6025. Examined safe.

| \$W | \$B |
|--------|--------|
| +24.60 | +26.29 |

94B G V F Erica 9036

Birth Date: 1-25-2009 Cow 16437637 Tattoo: 9036

Nichols Extra K205 #13752642
 #Nichols Extra H6 [AMF-NHF]
 Nichols Black Heiress F346

G V F Erica 6088 +15400571
 #SAV 8180 Traveler 004 [AMF-NHF-RDF]
 Woodhill Erica 854-1167

#N Bar Emulation EXT [AMF-NHF]
 Nichols Eileen May F261
 +Nichols Heavy Duty D20
 Nichols Black Heiress B3

#Sitz Traveler 8180 [AMF-NHF]
 +Boyd Forever Lady 8003
 #VF Venture Forward [AMF-NHF]
 Woodhill Erica 497-854

| BW | WW | YW | MILK | MARB | RE |
|----|-----|-----|------|-------|-------|
| +8 | +46 | +93 | +22 | I+.19 | I+.03 |

A well-balanced replacement female by the popular Nichols Extra K205. Super calving-ease here.

| \$W | \$B |
|--------|--------|
| +25.06 | +32.98 |

94 G V F Erica 6088

Birth Date: 2-12-2006 Cow +15400571 Tattoo: 6088

SAV 8180 Traveler 004 #13512009
 #Sitz Traveler 8180 [AMF-NHF]
 +Boyd Forever Lady 8003

Woodhill Erica 854-1167 12889304
 #VF Venture Forward [AMF-NHF]
 Woodhill Erica 497-854

#GDAR Traveler 71 [AMF-NHF]
 Sitz Everelda Entense 1137
 #AAR New Trend
 SVF Forever Lady 57D

#+VDAR Traveler 722 [AMF-NHF]
 Landmark Freda 911
 #Woodhill Alliance
 Woodhill Erica 279-497

| BW | WW | YW | MILK | MARB | RE |
|----|-----|-----|------|------|------|
| +8 | +42 | +84 | +19 | +20 | -.18 |

A super low birth weight daughter of S A V 8180 Traveler 004 who records progeny ratios of birth 2@82 and weaning 2@86. Sells with a bull calf at side born 1/22/10 sired by G V F Admiral 6006.

| \$W | \$B |
|--------|--------|
| +24.38 | +19.49 |

95 G V F Erica 4070 [NHF]

Birth Date: 2-3-2004 Cow +14811054 Tattoo: 4070

Twin Valley Precision E161 #12346200
 #GAR Precision 1680 [AMC-NHC]
 +WCC Blackcap C9 [RDC]

Woodhill Erica 854-1167 12889304
 #VF Venture Forward [AMF-NHF]
 Woodhill Erica 497-854

#Tehama Bando 155 [AMF-NHF]
 9J9 GAR 856 [NHF]
 #SS Traveler 6T6 [AMF-NHF]
 Premier Blackcap 6276A [RDC]

#+VDAR Traveler 722 [AMF-NHF]
 Landmark Freda 911
 #Woodhill Alliance
 Woodhill Erica 279-497

| BW | WW | YW | MILK | MARB | RE |
|------|-----|-----|------|------|------|
| +2.3 | +40 | +83 | +25 | +18 | -.07 |

An attractive female with extra spring of rib and a perfect udder. Progeny ratios are birth 3@106 and weaning 3@106. This female has served as a donor at Grassy Valley. Excellent opportunity to own a proven female with a top production record. Sells with a bull calf at side born 10/1/09 sired by SS Objective. Bred to calve 9/23/10 to the TC Ranch and Genex sire Connealy Right Answer 746. PE from 1/15/10 until 3/15/10 to Woodhill Mainline S168-U25.

| \$W | \$B |
|--------|--------|
| +21.83 | +31.30 |

The Grassy Valley Erica Family

96 G V F Erica 5122

Birth Date: 3-24-2005 Cow +15048298 Tattoo: 5122

#Connealy Leadtime [AMF-NHF]
Connealy Lead On [AMF-NHF]
 #13447282 Eligence Plus of Conanga

#Connealy Dateline
 #Ruths Rona of Conanga
 #TC Dividend 963 [AMF-NHF-RDF]
 Eura Cap of Conanga

#VF Venture Forward [AMF-NHF]
Woodhill Erica 854-1167
 12889304 Woodhill Erica 497-854

#+VDAR Traveler 722 [AMF-NHF]
 Landmark Freda 911
 #Woodhill Alliance
 Woodhill Erica 279-497

| BW | WW | YW | MILK | MARB | RE |
|--------|--------|-----|------|------|-----|
| +4 | +42 | +87 | +25 | +30 | -18 |
| \$W | \$B | | | | |
| +26.18 | +29.49 | | | | |

A hard-working and productive daughter of the ABS Global sire Connealy Lead On from the donor female Woodhill Erica 854-1167. Progeny ratios are birth 1@80 and weaning 1@92. Take a good look at this stout bull calf at side born 10/7/09 sired by G V F Admiral 6006. Bred to calve 9/22/09 to S A V Bismarck then PE from 1/15/10 until 3/15/10 to Woodhill Mainline S168-U25.



Woodhill Confidence - This Accelerated Genetics sire is a maternal brother to Lots 93-98.

97 G V F Erica 5030 [AMF]

Birth Date: 1-25-2005 Cow +15048350 Tattoo: 5030

#Connealy Forefront [AMF-NHF]
TC Forefront 105
 13957475 #+TC Flower 9023 [AMC]

#Connealy Frontline [AMF-NHF]
 Eileen Heartland Conanga6443
 #Connealy Kincaid
 #TC Flower 2014

#VF Venture Forward [AMF-NHF]
Woodhill Erica 854-1167
 12889304 Woodhill Erica 497-854

#+VDAR Traveler 722 [AMF-NHF]
 Landmark Freda 911
 #Woodhill Alliance
 Woodhill Erica 279-497

| BW | WW | YW | MILK | MARB | RE |
|--------|--------|-----|------|------|-----|
| +5 | +43 | +88 | +18 | +28 | -14 |
| \$W | \$B | | | | |
| +24.05 | +33.41 | | | | |

A functional and highly productive female from a proven donor dam. Progeny ratios are birth 2@97 and weaning 2@96. You can count on calving-ease and marbling from this cow family. Notice this powerful heifer calf she is nursing. Bred to calve 9/20/10 to S A V Bismarck. PE from 1/15/10 until 3/15/10 to Woodhill Mainline S168-U25.

99 G V F Erica 6198

Birth Date: 9-22-2006 Cow +15725625 Tattoo: 6198

#B/R New Design 036 [AMF-NHF]
Lemmon Newsline C804 [AMF-NHF]
 #+13632776 White Fence Pride H1

#VDAR New Trend 315 [AMF-NHF]
 B/R Blackcap Empress 76
 #Connealy Dateline
 #Pleasant Pill of Conanga

#+SAF 598 Bando 5175 [AMF]
G V F Erica 4132
 +14731325 Woodhill Erica 854-1167

#Bon View Bando 598 [AMF]
 +SAF Royal Lass 1002
 #VF Venture Forward [AMF-NHF]
 Woodhill Erica 497-854

| BW | WW | YW | MILK | MARB | RE |
|--------|--------|-----|------|------|-----|
| +2.2 | +49 | +89 | +31 | +28 | +10 |
| \$W | \$B | | | | |
| +27.60 | +39.89 | | | | |

A super fancy three-year-old who combined a birth weight ratio of 91 with a weaning weight ratio of 117 on her first calf which sells as a featured yearling heifer in this event. Safe to calve this spring to Boyd Forward 6025.

97A G V F Erica 9180

Birth Date: 9-13-2009 Cow 16540832 Tattoo: 9180

#Woodhill Admiral 77K [AMF-NHF]
G V F Admiral 6006
 15400500 +G V F Ruby 4008

#SAF Focus of ER [AMF-NHF]
 +Woodhill Lass 344-1178
 #Bon View New Design 878 [AMF-NHF]
 #+TC Ruby 4068

TC Forefront 105
G V F Erica 5030 [AMF]
 +15048350 Woodhill Erica 854-1167

#Connealy Forefront [AMF-NHF]
 #+TC Flower 9023 [AMC]
 #VF Venture Forward [AMF-NHF]
 Woodhill Erica 497-854

| BW | WW | YW | MILK | MARB | RE |
|--------|--------|------|------|------|------|
| +2.4 | +55 | +106 | +22 | +25 | -.01 |
| \$W | \$B | | | | |
| +24.72 | +41.23 | | | | |

A powerfully made and attractive daughter of the featured herd sire G V F Admiral 6006. The "6006" two-year-olds have been very impressive in production. Excellent brood cow potential.

99B G V F Erica 9020

Birth Date: 1-18-2009 Cow 16365918 Tattoo: 9020

#SS Traveler 6807 T510 [AMF-NHF]
SS Objective T510 OT26 [AMF-NHF]
 #13776378 SS Miss Rita R011 7R8 [AMF-NHF]

#DHD Traveler 6807 [AMF-NHF]
 #SS Miss Hi Spade A114
 SS Rito Rito R76 R011
 SS Miss Ultrass U56

#+Lemmon Newsline C804 [AMF-NHF]
G V F Erica 6198
 +15725625 +G V F Erica 4132

#B/R New Design 036 [AMF-NHF]
 White Fence Pride H1
 #+SAF 598 Bando 5175 [AMF]
 Woodhill Erica 854-1167

| BW | WW | YW | MILK | MARB | RE |
|--------|-----|------|------|------|-----|
| +8 | +65 | +113 | +30 | N/A | N/A |
| \$W | \$B | | | | |
| +33.13 | N/A | | | | |

A fancy yearling female that combines an individual birth weight ratio of 91 with a weaning weight ratio of 117 to earn an impressive and hard to beat EPD profile. Excellent phenotype in this Objective daughter as well. Take advantage of these elite females.

98 G V F Erica 6215 [NHF]

Birth Date: 11-10-2006 Cow +15776310 Tattoo: 6215

#GAR Precision 1680 [AMC-NHC]
Twin Valley Precision E161 [NHC-AMF-RDF]
 #12346200 +WCC Blackcap C9 [RDC]

#Tehama Bando 155 [AMF-NHF]
 9J9 GAR 856 [NHF]
 #SS Traveler 6T6 [AMF-NHF]
 Premier Blackcap 6276A [RDC]

#VF Venture Forward [AMF-NHF]
Woodhill Erica 854-1167
 12889304 Woodhill Erica 497-854

#+VDAR Traveler 722 [AMF-NHF]
 Landmark Freda 911
 #Woodhill Alliance
 Woodhill Erica 279-497

| BW | WW | YW | MILK | MARB | RE |
|--------|--------|-----|------|------|-----|
| +1.4 | +38 | +82 | +21 | +23 | +01 |
| \$W | \$B | | | | |
| +20.98 | +33.12 | | | | |

A powerful and heavy milking daughter of the proven donor dam Woodhill Erica 854-1167. Take advantage of these quality young females from a highly proven dam. Sells with a heifer calf at side born 1/29/10 sired by G V F Admiral 6006.

100 G V F Erica 6211

Birth Date: 10-30-2006 Cow 15610094 Tattoo: 6211

#BCC Bushwacker 41-93 [AMF-NHF]
Woodhill Encore
 +13937091 Bon View Gammer 85

#Paramont Ambush 2172 [AMF-NHF]
 RC Anita T Bando 918903
 #Bon View Bando 598 [AMF]
 Bon View Gammer 233

#+SAF 598 Bando 5175 [AMF]
G V F Erica 4132
 +14731325 Woodhill Erica 854-1167

#Bon View Bando 598 [AMF]
 +SAF Royal Lass 1002
 #VF Venture Forward [AMF-NHF]
 Woodhill Erica 497-854

| BW | WW | YW | MILK | MARB | RE |
|--------|--------|-----|------|------|------|
| +2.9 | +47 | +84 | +24 | +20 | -.02 |
| \$W | \$B | | | | |
| +25.33 | +34.20 | | | | |

A hard-working young female who weaned her first calf with a weaning weight ratio of 94. There is a lot of balance and longevity in females like this. Sells with a heifer calf at side born 2/4/10 sired by Boyd Forward 6025.

Grassy Valley Females

101 Bricton Beauty 3065 [AMF]

Birth Date: 3-10-2003 Cow 14472041 Tattoo: 3065

#B/R New Design 036 [AMF-NHF]
Bon View New Design 878 [AMF-NHF]
 #13062750 Bon View Gammer 85

#VDAR New Trend 315 [AMF-NHF]
 B/R Blackcap Empress 76
 #Bon View Bando 598 [AMF]
 Bon View Gammer 233

#JLB Exacto 416 [AMF-NHF]
Bricton Beauty L55 1055
 +13835480 +Finks Beauty 6172 250 71 [AMC]

#GAR Precision 1680 [AMC-NHC]
 +Brost Burgess 041
 #GDAR Traveler 71 [AMF-NHF]
 +Finks Beauty 250 63 9J9

| BW | WW | YW | MILK | MARB | RE |
|--------|--------|-----|------|------|-----|
| +3.7 | +45 | +83 | +36 | +25 | +09 |
| \$W | \$B | | | | |
| +23.59 | +43.05 | | | | |

A powerful proven female who records a progeny production record of birth 2@107 and weaning 3@111. Proven production here. Sells with a bull calf at side born 2/7/10 sired by Nichols Extra K205.

102 GVF Euthalla 4198

Birth Date: 9-15-2004 Cow +14932250 Tattoo: 4198

#GDAR Traveler 044 [AMF-NHF]
GAR Grid Maker [AMF-NHF]
 #+13254554 GAR Precision 2536 [AMC-NHF]

#DHD Traveler 6807 [AMF-NHF]
 #GDAR Blackcap Lady 840
 #GAR Precision 1680 [AMC-NHC]
 +GAR Ext 2104

+Woodhill Explorer
KAF Euthalla 901
 13352369 KAF Euthalla 703

#+VDAR Traveler 722 [AMF-NHF]
 #GT Miss Traveler 58
 #N Bar Emulation EXT [AMF-NHF]
 KAF Euthalla 514

| BW | WW | YW | MILK | MARB | RE |
|--------|--------|-----|------|------|-----|
| +2.7 | +50 | +98 | +14 | +07 | +24 |
| \$W | \$B | | | | |
| +20.65 | +36.89 | | | | |

A super thick made female we really admire for her moderate frame and natural thickness. Progeny ratios are birth 2@100 and weaning 2@93. Safe to calve this spring to Woodhill Mainline S168-U25.

103 Hkar Miss Emulous R234

Birth Date: 3-5-2005 Cow 15051867 Tattoo: R234

#Bon View New Design 878 [AMF-NHF]
HKAR New Design N601
 14578453 #+GVF Miss Burgess 8091

#B/R New Design 036 [AMF-NHF]
 Bon View Gammer 85
 #+Woodhill Resolution
 Lemmon Miss Burgess 4447

Stevenson Emulation 287F
HKAR Miss Emulous M827
 #13140880 Heart K Miss Emulous 9513

#Basin Emulation 178C
 JRS Clova Pride 619X
 #+Woodhill Resolution
 GVF Miss Emulous 2136

| BW | WW | YW | MILK | MARB | RE |
|--------|--------|-----|------|------|-----|
| +2.4 | +41 | +78 | +22 | +21 | +06 |
| \$W | \$B | | | | |
| +23.49 | +35.76 | | | | |

A sound and super productive high performance female who records progeny ratios of birth 3@96 and weaning 3@99. There are no holes in these productive females. Sells with a heifer calf at side born 1/21/10 sired by Nichols Extra K205.

104 G V F Flower 6038

Birth Date: 1-26-2006 Cow 15400540 Tattoo: 6038

#Connealy Timeline
Connealy Danny Boy [AMF-NHF]
 #1396936 Energy of Conanga 4851

#Connealy Dateline
 #Enchants Fortune Conanga6127
 #Hoff Heartland SC 456
 #Dividends Envy of Conanga

#+GAR Expectation 4915 [AMF-NHF]
GVF Flower 4023
 +14731225 #TC Flower 4056

#N Bar Emulation EXT [AMF-NHF]
 GAR Traveler 2421
 #+GAR Sleep Easy 1009 [AMF-NHF]
 TC Flower 2112

| BW | WW | YW | MILK | MARB | RE |
|--------|--------|-----|------|------|-----|
| +5.1 | +52 | +95 | +21 | +33 | +45 |
| \$W | \$B | | | | |
| +19.93 | +56.68 | | | | |

A really powerful Danny Boy daughter from the Flower family with high carcass values. Progeny ratios are birth 2@116 and weaning 2@109. Safe to calve this spring to G V F Objective 8103.

104B G V F Flower 9025

Birth Date: 1-20-2009 Cow 16550416 Tattoo: 9025

#Bon View New Design 208 [AMF-NHF]
Connealy Whitman [AMF-NHF]
 14845068 Ella Tina of Conanga 989

#B/R New Design 036 [AMF-NHF]
 #Bon View Erica 443
 #Tehama Bando 155 [AMF-NHF]
 #Ella Lilly of Conanga 5989

#Connealy Danny Boy [AMF-NHF]
GVF Flower 6038
 15400540 +GVF Flower 4023

#Connealy Timeline
 Energy of Conanga 4851
 #+GAR Expectation 4915 [AMF-NHF]
 #TC Flower 4056

| BW | WW | YW | MILK | MARB | RE |
|--------|--------|-----|------|-------|-------|
| +5.7 | +53 | +96 | +27 | I+.47 | I+.32 |
| \$W | \$B | | | | |
| +20.05 | +54.95 | | | | |

A powerful replacement heifer who should work in any situation. Excellent combination of growth and end product merit.

105 MW Blackbird 567

Birth Date: 9-17-2005 Cow +15279448 Tattoo: 567

#N Bar Emulation EXT [AMF-NHF]
GAR Expectation 4915 [AMF-NHF]
 #+12548568 GAR Traveler 2421

#Emulation N Bar 5522
 N Bar Primrose 2424
 #QAS Traveler 23-4 [AMF-NHF]
 +GAR Scotch Cap 209

#+Woodhill Resolution
GVF Blackbird 7015
 #12790146 GVF Blackbird 3090

#+Leachman Prompter [AMF-NHF]
 #GT Miss Traveler 58
 Lemmon Lovana 0573
 GVF Blackbird 0075

| BW | WW | YW | MILK | MARB | RE |
|--------|--------|-------|-------|-------|-------|
| I+.24 | I+.43 | I+.78 | I+.24 | I+.21 | I+.16 |
| \$W | \$B | | | | |
| +25.16 | +42.40 | | | | |

A nicely uddered and uniformly thick daughter of the heralded female sire G A R Expectation produced by a Pathfinder Dam. Sells with a heifer calf at side born 12/28/09 sired by Boyd Forward 6025.

Featured Blackbird Females

106 G V F Blackbird 7051

Birth Date: 1-25-2007 Cow 15776234 Tattoo: 7051

#GAR Precision 1680 [AMC-NHC]
GAR Retail Product [AMF-NHF]
 #13395329 +GAR Ext 4927

#Tehama Bando 155 [AMF-NHF]
 9J9 GAR 856 [NHF]
 #N Bar Emulation EXT [AMF-NHF]
 GAR Traveler 641

+Woodhill Delta
GVF Blackbird 0061
 13584217 +GVF Blackbird 5173

#+Leachman Right Time
 #GT Miss Traveler 58
 #N Bar Emulation EXT [AMF-NHF]
 GVF Blackbird 7002

| BW | WW | YW | MILK | MARB | RE |
|--------|--------|-----|------|------|-----|
| +1.3 | +51 | +93 | +29 | +38 | +09 |
| \$W | \$B | | | | |
| +29.34 | +41.57 | | | | |

A special feature three-year-old who combined a birth weight ratio of 80 with a weaning weight ratio of 125 on her first calf recorded in the AHIR program. This individual is moderate framed, easy-fleshing, and descends from one of the most reliable cow families at Grassy Valley. Safe to calve this spring to Boyd Forward 6025.

106B G V F Blackbird 9033

Birth Date: 1-22-2009 Cow 16365919 Tattoo: 9033

#SS Traveler 6807 T510 [AMF-NHF]
SS Objective T510 OT26 [AMF-NHF]
 #13776378 SS Miss Rita R011 7R8 [AMF-NHF]

#DHD Traveler 6807 [AMF-NHF]
 #SS Miss Hi Spade A114
 SS Rito Rito R76 R011
 SS Miss Ultress U56

#GAR Retail Product [AMF-NHF]
GVF Blackbird 7051
 15776234 GVF Blackbird 0061

#GAR Precision 1680 [AMC-NHC]
 +GAR Ext 4927
 +Woodhill Delta
 +GVF Blackbird 5173

| BW | WW | YW | MILK | MARB | RE |
|--------|--------|------|------|-------|-------|
| -1.0 | +69 | +118 | +29 | I+.54 | I+.26 |
| \$W | \$B | | | | |
| +35.77 | +54.47 | | | | |

This super thick made and easy-fleshing daughter of the featured ABS Global sire SS Objective combined an individual birth weight ratio of 80 with a weaning weight ratio of 125 to earn a remarkable EPD profile with a Birth EPD in the top 3% of non-parent females in the Angus breed while Weaning and Yearling Weight EPDs rank in the top 1% of that population. A featured elite female here.

Grassy Valley Fall Heifers



Lemmon Blackbird 3287 - Second dam of Lot 107.



TC Georgina 7073 - Pathfinder second dam of Lot 110.

107 G V F Blackbird 8180

Birth Date: 9-5-2008 Cow 16369186 Tattoo: 8180

TC Total 410
14844711
#Bon View New Design 208 (AMF-NHF)
+TC Erica Eileen 2047 (NHC-AMF)

Lemmon Blackbird S218 (AMF-NHF)
+15478702
#CA Future Direction 5321 (AMC-NHC)
Lemmon Blackbird 3287 (AMF-NHF)

| BW | WW | YW | MILK | MARB | RE |
|------|-----|-----|------|------|-----|
| +3.8 | +51 | +96 | +29 | N/A | N/A |

This attractive fall yearling heifer by the popular Select Sires member TC Total 410, descends from the famous Lemmon Blackbird 3287. The quality runs deep in this offering. Bred 2/26/10 to CRA Bextor.

| \$W | \$B |
|--------|-----|
| +23.24 | N/A |

110 G V F Georgina 8196

Birth Date: 9-20-2008 Cow +16346536 Tattoo: 8196

Boyd Forward
15347916
Connealy Onward (AMF-NHF)
6025
Sitz RLS Eisa Evergreen 30P

GVF Georgina
+14413087
TC Forefront 105
#TC Georgina 7073

#Connealy Lead On (AMF-NHF)
Altune of Conanga 6104
Sitz New Design 349M (AMF-NHF)
#Sitz RLS Eisa Evergreen 39M

#Connealy Forefront (AMF-NHF)
#+TC Flower 9023 (AMC)
#+Woodhill Supreme (AMF-NHF)
TC Georgina 3186

| BW | WW | YW | MILK | MARB | RE |
|-------|------|-------|------|-------|-------|
| I+1.4 | I+56 | I+111 | I+22 | I+.29 | I+.26 |

Elite EPDs in this attractive fall yearling whose full brother was the top-selling bull in the 2009 University of Tennessee Junior Bull Test. Take this opportunity to select these unique replacement females. Bred 2/26/10 to TC Aberdeen.

| \$W | \$B |
|--------|--------|
| +25.80 | +51.99 |

108 G V F Evergreen 8182

Birth Date: 9-9-2008 Cow 16266142 Tattoo: 8182

TC Total 410
14844711
#Bon View New Design 208 (AMF-NHF)
+TC Erica Eileen 2047 (NHC-AMF)

GVF Evergreen
15539578
#BCC Bushwacker 41-93 (AMF-NHF)
+GVF Evergreen 1158

| BW | WW | YW | MILK | MARB | RE |
|------|-----|------|------|-------|-------|
| +3.6 | +60 | +107 | +25 | I+.39 | I+.31 |

A powerful and attractive female sired by TC Total 410 from the herd sire producing Evergreen cow family. Bred 2/26/10 to TC Aberdeen.

| \$W | \$B |
|--------|--------|
| +25.87 | +53.84 |

111 G V F Evergreen 8192

Birth Date: 9-18-2008 Cow 16346533 Tattoo: 8192

GVF Admiral
15400500
#Woodhill Admiral 77K (AMF-NHF)
6006
+GVF Ruby 4008

GVF Evergreen
+14387386
#SAF Focus of ER (AMF-NHF)
+Woodhill Evergreen 58-825

#SAF Focus of ER (AMF-NHF)
+Woodhill Lass 344-1178
#Bon View New Design 878 (AMF-NHF)
#+TC Ruby 4068

#SAF Fame (AMF-NHF)
GDAR Forever Lady 246
#+VDAR Traveler 722 (AMF-NHF)
#GT Miss Traveler 58

| BW | WW | YW | MILK | MARB | RE |
|------|-----|------|------|-------|-------|
| +1.8 | +57 | +103 | +23 | I+.28 | I-.02 |

An excellent daughter of the high performance sire G V F Admiral 6006 from the highly regarded Evergreen cow family. Excellent EPDs and quality females to match them. Bred 2/14/10 to Connealy Right Answer.

| \$W | \$B |
|--------|--------|
| +28.50 | +40.81 |

109 G V F Evergreen 8189

Birth Date: 9-15-2008 Cow 16437475 Tattoo: 8189

Woodhill Mainline
14793708
#Connealy Danny Boy (AMF-NHF)
#Woodhill Blackbird 1288-138K

GVF Evergreen
15610093
#+Woodhill Foresight (AMF-NHF)
+GVF Evergreen 1175

| BW | WW | YW | MILK | MARB | RE |
|----|-----|------|------|------|-----|
| +8 | +54 | +100 | +19 | N/A | N/A |

A unique daughter of the ABS Global calving-ease sire Woodhill Mainline who combines extreme calving-ease with extra thickness and muscle expression. Bred 2/26/10 to CRA Bextor.

| \$W | \$B |
|--------|-----|
| +27.76 | N/A |

112 G V F Black Miss 8229

Birth Date: 11-1-2008 Cow 16369187 Tattoo: 8229

Boyd Forward
15347916
Connealy Onward (AMF-NHF)
6025
Sitz RLS Eisa Evergreen 30P

GVF Black Miss
15273219
TC Forefront 105
GVF Black Miss 2001

#Connealy Lead On (AMF-NHF)
Altune of Conanga 6104
Sitz New Design 349M (AMF-NHF)
#Sitz RLS Eisa Evergreen 39M

#Connealy Forefront (AMF-NHF)
#+TC Flower 9023 (AMC)
#Connealy Dateline
GVF Black Miss 9177

| BW | WW | YW | MILK | MARB | RE |
|----|-----|------|------|------|-----|
| +8 | +58 | +113 | +21 | N/A | N/A |

Great Birth to Yearling EPD spread in this fall yearling heifer. Excellent brood cow potential. Bred 2/26/10 to CRA Bextor.

| \$W | \$B |
|--------|-----|
| +26.90 | N/A |

Grassy Valley Farm

PRSRT FIRST CLASS
MAIL
U.S. POSTAGE
PAID
Minster, OH
Permit #1

A.L. & Nancy Duckworth Jr., DVM
Home (423) 638-5882

Lee, Lori, Ashley and Andrew Duckworth III, DVM
(423) 234-0506

P.O. Box 695
Greeneville, TN 37744
Office (423) 638-5382
Day (423) 638-3950

17th Annual Performance Bull and Female Sale

Saturday • April 3, 2010 • Noon
Greeneville, TN

