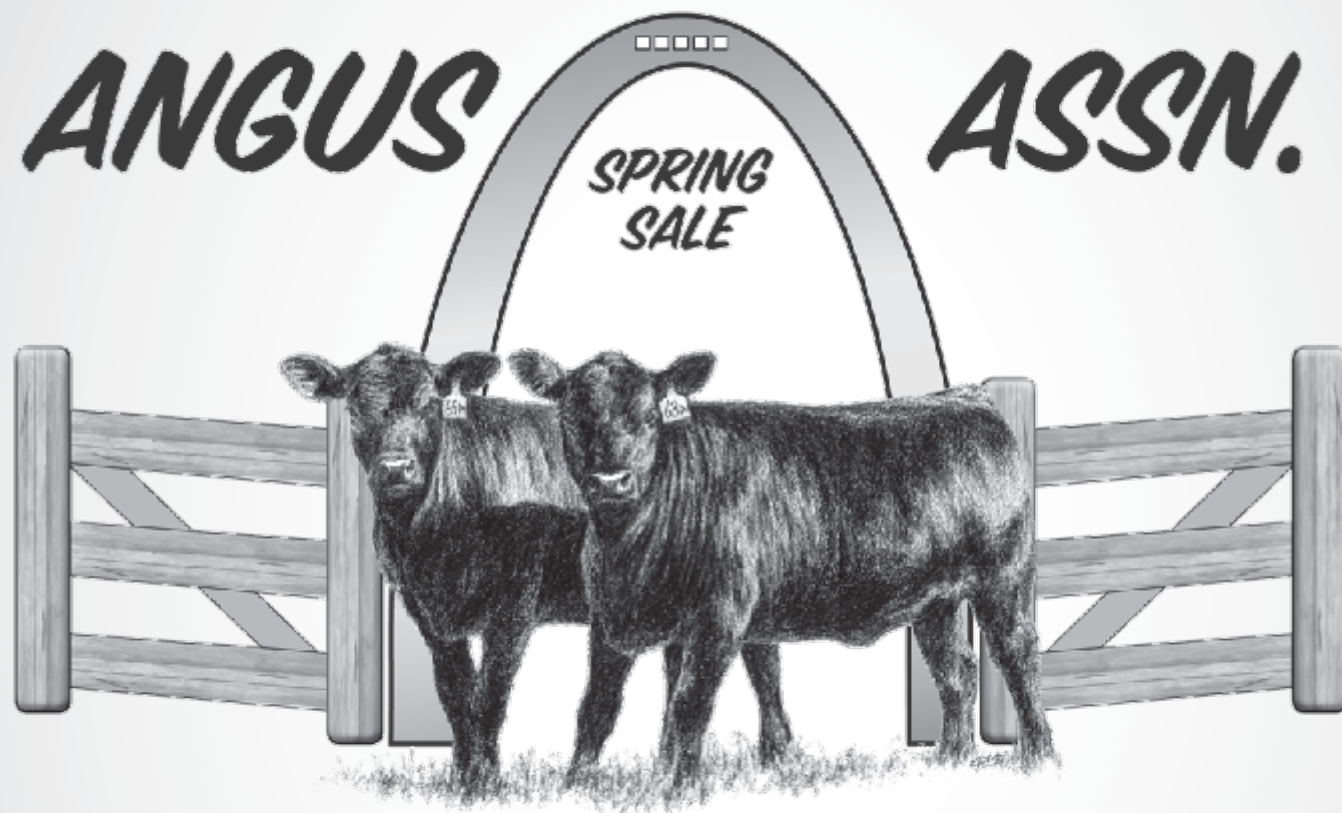


EAST CENTRAL MO ANGUS ASSN.



"Your Gateway to Angus Excellence"

SATURDAY • APRIL 17, 2010 • NOON

EAST CENTRAL MISSOURI ANGUS ASSOCIATION SPRING SALE

Saturday, April 17, 2010, Noon
Held at Interstate Regional Stockyards, Cuba, Missouri

Auctioneer

Scott Crawford (816) 804-1410

Ringmen

Bill Mareli (573) 885-3888
Josh Worthington (417) 844-2601

Sale Manager:

Tim Gutermuth (314) 393-2885

Sale Day Phones

Tim Gutermuth: (314) 393-2885
Sale Barn: (573) 885-7431

Herd Health

Proper health certificates for interstate shipment will accompany all cattle.

Sale Terms and Conditions

All cattle sell guaranteed under the Terms and Conditions of the American Angus Association.

There will be a minimum bid of \$1,250 on all bulls.
All cattle selling are free of the AM and NH genetic defects.
All cattle must be paid for on sale day, prior to their release, unless prior arrangements with the consignor have been made.

Update Information

A supplement sheet will be available sale day with updated breeding and calving information. This sheet and any announcements made from the auction block will take precedence over the sale book.

Inspection of Cattle

The cattle will be available for viewing at the sale barn beginning at 5 P.M. Friday, April 16 up until sale time.

Junior Discount

All juniors are eligible to receive a 5% discount on one female in this sale

Absentee Bids:

If you would like to place a bid on any lot but will not be able to attend the sale, please contact the consignor or sale staff to place your bids.

Liability

All persons attending the sale and related functions do so at their own risk. East Central Missouri Angus Association, the sale staff, nor any other person connected with the sale assume no liability, legal or otherwise, for accidents or loss of property.

Annual Meeting and Banquet - RSVP by April 6

Make plans to join us for our annual meeting and banquet. It is being held on Friday, April 16 at 7:30 p.m. at Matt's Steakhouse in Rolla, MO. To make reservations contact Tim Gutermuth (314) 393-2885 or Email: gute05@tds.net



Visit the *Angus Journal* Web site,
www.angusjournal.com,
and view this sale book online.

References: American Angus Association®, AHIR®, Angus Source®, CAB®, Pathfinder®

EPDs current as of March 2, 2010. Updated EPDs can be viewed online at www.angus.org.

East Central Missouri Angus Association

Directors for 2010

Barry Reynolds, President (573) 674-3526
Roger Borgmeyer, Vice President (573) 229-4433
Robert Jordan, Treasurer (636) 394-6933
Tim Gutermuth, Secretary (314) 393-2885
Richard Coates, (636) 987-2227
Craig Dozier, (573) 646-3529
Randy Raef, (573) 764-2548
Don Schaefer, (573) 395-4281
Don Schoene, (573) 744-5315
Blaine Shetley, Jr., (573) 732-3145
Bill Wehmeier, (573) 265-3619
Vernon Yager, (573) 687-3889

2010 EAST CENTRAL MISSOURI ANGUS ASSOCIATION SALE
BULLS

1 DFA ALLIANCE 881

Birth Date: 2-2-2008 Bull #16549202 Tattoo: 881
 #Sitz Traveler 8180 (AMF-NHF) #GDAR Traveler 71 (AMF-NHF)
 Sitz Alliance 6595 (AMF-NHF) Sitz Everelda Entense 1137
 #12310707 #Sitz Barbaramere Jet 2698
 #3 Bar Spike 1766
 #Sitz Baramere Jet 155
 #+SAF 598 Bando 5175 (AMF) #Bon View Bando 598 (AMF)
 Jay Cat Diamond Pride 5312 +SAF Royal Lass 1002
 14451027 Jay Cat Diamond Pride S012
 Jay Cat Diamond Pride 8520

CW	
I+5	
MARB	
I+30	
RE	
I-11	
FAT	
I+048	

CED	BEPD	WEPD	YEPD	SC	MILK
I+3	I+4.0	I+49	I+95	N/A	I+27
\$W	+24.58	\$F	+34.57	\$G	+14.43
				\$B	+30.78

Owned by Dry Fork Angus
 Two-year-old bull sired by Alliance 6595. 881 has a unique blend of maternal and performance traits. An ET son out of the top donor cow at Meng Cattle Co in Troy, Kansas and sired by Sitz Alliance 6595, the deceased Pathfinder, and a maternal giant of the breed. I used this bull in the fall of 2009.

4 S H A F CLASS ACT 294

Birth Date: 9-29-2008 Bull 16387724 Tattoo: 294
 +Amdahls First Class 12 #GDAR Traveler 71 (AMF-NHF)
 Hoff Head of The Class SC534 BAF Rito Blackcap 1468
 #12871213 Hoff Ultrass SC 716 #+OSU 6T6 Ultra
 Hoff Miss DJ of SC 519
 #+SAF Connection (AMF-NHF) #+SVF Gdar 216 LTD
 SHAF Miss TC Jewel 252 +SAF Royal Queen 5084
 15618311 SAF Miss TC Jewel #GAR Commitment (AMF)
 TC Jewel

CED	BEPD	WEPD	YEPD	SC	MILK
I+8	I+.7	I+45	I+82	N/A	I+27
\$W	+28.73	\$F	+23.21	\$G	N/A
				\$B	N/A

Owned by Shetley Angus Farm
 The sire of this bull is Hoff Head of the Class SC534. He will add frame size and thickness to you calves. His dam's sire is a SAF Connection. He is the second highest bull in breed for docility with a low birth and a high growth. Birth weight 58 lbs., adj. weaning weight 607 lbs., and adj. yearling weight 1,100 lbs.

2 ROYAL FLUSH NOBLEMAN 851

Birth Date: 9-8-2008 Bull 16320402 Tattoo: 851
 #+B/R New Frontier 095 (AMF-NHF) #B/R New Design 036 (AMF-NHF)
 ALC Nobleman N01N (AMF-NHF) White Fence Pride H1
 14448891 ALC LYN T03L (AMF) #Connealy Leadtime (AMF-NHF)
 ALC Janice F17J
 GAF New Design 213 #Bon View New Design 878 (AMF-NHF)
 GAF Elustra 480 GAF Elustra 07
 15241719 GAF Elustra 384 GAF Maxima 801
 GAF Elustra 673

CW	
+13	
MARB	
+39	
RE	
+10	
FAT	
-033	

CED	BEPD	WEPD	YEPD	SC	MILK
+1	+3.7	+56	+98	N/A	+21
\$W	+26.14	\$F	+34.87	\$G	+28.84
				\$B	+52.03

Owned by Royal Flush Angus Farm
 This bull is sired by ALC Nobleman N01N. This bull has a little more frame. He is in the top 10% of the breed for WW and \$B. Semen tested. Weaning weight 690 lbs., ratio 104 and yearling weight 1,200 lbs., ratio 102.

5 C LAZY A OBJECTIVE FORECAST

Birth Date: 10-10-2008 Bull 16314789 Tattoo: 70
 #SS Objective T510 0T26 (AMF-NHF) #SS Traveler 6807 T510 (AMF-NHF)
 Quaker Hill Objective 3J15 (AMF-NHF) SS Miss Rita R011 7R8 (AMF-NHF)
 14660859 #Quaker Hill Queen 1L4 (AMF-NHF) +BW/QHF Blackcap Lad
 Ankony Queen QHF R981
 #Connealy Forecast (AMF-NHF) #Connealy Forefront (AMF-NHF)
 TA Miss Fly Forecast R19 #Pow of Conanga 677 (AMF)
 15377169 #TA Miss Fly Spade C27 #+Whitestone Fly Traveler 3006 (AMF-NHF)
 Triplets Miss EXT Spade A7

CED	BEPD	WEPD	YEPD	SC	MILK
+1	+3.5	+62	+102	-17	+27
\$W	+29.16	\$F	+36.58	\$G	N/A
				\$B	N/A

Owned by C Lazy A Angus
 Look at his pedigree, look at his numbers, look at him. Top 2% WW, 10% YW and Milk, 15% \$F, 20% \$W. Birth weight 84 lbs., adj. weaning weight 802, ratio 117, and adj. yearling weight 1,271, ratio 107.



HOFF HEAD OF THE CLASS SC534 - Sire of Lots 3 and 4.



HSAF BANDO 1961 - Sire of Lot 6.

3 SHAF HOFFS COMMITMENT 290

Birth Date: 9-13-2008 Bull 16251568 Tattoo: 290
 +Amdahls First Class 12 #GDAR Traveler 71 (AMF-NHF)
 Hoff Head of The Class SC534 BAF Rito Blackcap 1468
 #12871213 Hoff Ultrass SC 716 #+OSU 6T6 Ultra
 Hoff Miss DJ of SC 519
 #GAR Commitment (AMF) #DHD Traveler 6807 (AMF-NHF)
 SAF Miss TC Jewel +GAR Bando 102
 14075185 TC Jewel #TC Stockman 365
 +DAR Queen Jewel 4098

CED	BEPD	WEPD	YEPD	SC	MILK
+7	+1.5	+50	+78	N/A	+27
\$W	+32.66	\$F	+17.55	\$G	N/A
				\$B	N/A

Owned by Shetley Angus Farm
 The sire of this bull is Hoff Head of the Class SC534. He adds frame and muscle to your calves and a low birth weight. His dam is loaded with pedigree; she has GAR Commitment, TC Stockman, and Leachman Right Time. Birth weight 76 lbs., adj. weaning weight 755 lbs., and adj. yearling weight 1,273 lbs.

6 C LAZY A ROUND HOUSE

Birth Date: 10-17-2008 Bull 16314785 Tattoo: 74
 #+SAF 598 Bando 5175 (AMF) #Bon View Bando 598 (AMF)
 HSAF Bando 1961 (AMF-NHF) +SAF Royal Lass 1002
 +13896250 +JKS Miss Cheyenne 196 #N Bar Emulation EXT (AMF-NHF)
 +Magic Meadow Miss Cheyenne
 #Bon View New Design 1407 (AMF-NHF) #B/R New Design 036 (AMF-NHF)
 Hi Line Miss New Design K28 Bon View Pride 664
 14947321 #RR Witch 6390 #+Leachman Right Time
 RR Witch 4323

CED	BEPD	WEPD	YEPD	SC	MILK
+6	+.8	+45	+84	+47	+26
\$W	+27.97	\$F	+25.16	\$G	N/A
				\$B	N/A

Owned by C Lazy A Angus
 Here's your heifer bull. Top 25% BW and \$W, 15% Milk. The right choice for feedlot steers or retained heifers. Birth weight 79 lbs., adj. weaning weight 723 lbs., ratio 106, and adj. yearling weight 1,209, ratio 102.

2010 EAST CENTRAL MISSOURI ANGUS ASSOCIATION SALE
BULLS

7 SHAWNEE WINDS RITO 416 9P03

Birth Date: 1-11-2009 Bull 16302764 Tattoo: 9P03
 #Rito 112 of 2536 Rito 616 (AMF-NHF) #Rito 616 of 4B20 6807 (AMF-NHF) GAR Precision 2536 (AMC-NHF)
 TC Rito 416 (AMF-NHF) #+TC Chloe 2056 #Connealy Forefront (AMF-NHF) #+TC Chloe 6010

#Perry Power Design 715 (AMF-NHF) #B/R New Design 036 (AMF-NHF)
 SW Blackcap Design 4P01 #EP Maximum Lady 221
 14710100 FA Blackcap Lassie 905 #Schoenes Fix It 826 (AMF-NHF) JLL Miss Ext 107 310

CW	+14
MARB	+38
RE	+17
FAT	+014

CED	BEPD	WEPD	YEPD	SC	MILK
+4	+3.5	+56	I+97	I+.18	+28
\$W	\$F	\$G	\$B		
+26.67	+33.85	+24.28	+47.80		

Owned by Shawnee Winds Angus Farm
 A thick, seven frame bull. He ranks in the top 10% of the breed for WW, YH, and Milk, top 15% for YW, and top 20% for \$F. Birth weight 84 lbs., adj. weaning weight 689 lbs., ratio 109, adj. yearling weight 1,205 lbs., ratio 105, and yearling scrotal 39.5 cm.



SAV BISMARCK 5682 - Sire of Lot 11.

8 BDM SAINT JAMES 911

Birth Date: 2-13-2009 Bull 16434410 Tattoo: 911
 #+EXAR New Look 2971 (AMF-NHF) #Bon View New Design 1407 (AMF-NHF)
 DFA Saint James 581 (AMF) N Bar Primrose 2424
 +15210241 +DAF Queens Precision 330 (AMF-NHF) #GAR Precision 1680 (AMC-NHC) BSA Queen 195

+FAF Saratoga 355 #+Skarship Saratoga
 BDM Priderosa Lady 126 Power Plays Eileenmere C220
 13996594 Priderosa Matador 851 Schoenes Matador 5122 KO Hi Priderosa KU14

CW	+12
MARB	+24
RE	+01
FAT	-010

CED	BEPD	WEPD	YEPD	SC	MILK
I+0	+4.0	+37	I+65	N/A	+17
\$W	\$F	\$G	\$B		
+19.53	+10.20	+20.19	+37.49		

Owned by McBride Angus Farm
 This bull is sired by DFA Saint James 581. Semen tested. Weaning weight 693 lbs., ratio 101 and yearling weight 1,080 lbs.

11 BDM BISMARCK 918

Birth Date: 2-18-2009 Bull 16330116 Tattoo: 918
 #+GAR Grid Maker (AMF-NHF) #GDAR Traveler 044 (AMF-NHF)
 SAV Bismarck 5682 (AMF-NHF) GAR Precision 2536 (AMC-NHF)
 +15109865 SAV Abigale 0451 #Schoenes Fix It 826 (AMF-NHF) SAV Abigale 6062

Raps Ext of MAR 819 #N Bar Emulation EXT (AMF-NHF)
 BDM Emerald Lottie 422 JAM Sisal 678-209
 14783364 Lo Lottie BDM 718 CAF Magnifico 7781 Lo Lottie BDM 842

CW	I+5
MARB	I-.02
RE	I+.21
FAT	I+.006

CED	BEPD	WEPD	YEPD	SC	MILK
I+6	I+1.3	I+49	I+87	N/A	I+21
\$W	\$F	\$G	\$B		
+28.13	+26.58	+10.31	+27.48		

Owned by Triple L Ranch
 This bull's sire, SAV Bismarck 5682, has achieved wide spread popularity for his impressive low birth weight progeny that display exceptional muscle, structure and phenotype. This bull will be great for heifers or cows. Birth weight 78 lbs.

9 ZZ HIGH TOTAL 410 0803

Birth Date: 9-28-2008 Bull 16268884 Tattoo: 0803
 #Bon View New Design 208 (AMF-NHF) #B/R New Design 036 (AMF-NHF)
 TC Total 410 (AMF-NHF) #Bon View Erica 443
 14844711 +TC Erica Eileen 2047 (NHC-AMF) #Twin Valley Precision E161 (NHC-AMF-RDF) #+TC Erica Eileen 5116

#Summitcrest High Prime 0H29 (AMF-NHF) #Gardens Prime Time (AMF-NHF)
 Turner Farms High Beauty 366 Summitcrest Missie 2F55
 14664391 #Circle A Beauty 9081 #+SVF Gdar 216 LTD V DAR Beauty 951

CW	+18
MARB	+57
RE	+38
FAT	-008

CED	BEPD	WEPD	YEPD	SC	MILK
+3	+3.5	+50	+96	-.48	+23
\$W	\$F	\$G	\$B		
+22.25	+35.20	+35.19	+58.47		

A TC Total son out of Summitcrest High Prime daughter. He offers good growth and carcass EPDs. He was not creep fed. YW: 1018.

12 BCC NEW DESIGN 941

Birth Date: 3-16-2009 Bull 16477439 Tattoo: 941
 #B/R New Design 036 (AMF-NHF) #VDAR New Trend 315 (AMF-NHF)
 Bon View New Design 878 (AMF-NHF) B/R Blackcap Empress 76
 #13062750 Bon View Gammer 85 #Bon View Bando 598 (AMF) Bon View Gammer 233

KF Precision 361 (NHF) #Twin Valley Precision E161 (NHC-AMF-RDF)
 Meisner Miss Countess 414 KF Evergreen Erica 1069
 14800675 +Grubbs Miss Countess 194 #CH 054 Rito 0100 DG Miss Countess

CW	I+8
MARB	I+.25
RE	I+.05
FAT	I+.009

CED	BEPD	WEPD	YEPD	SC	MILK
I+5	I+3.6	I+32	I+75	N/A	I+21
\$W	\$F	\$G	\$B		
+15.01	+21.33	+19.74	+35.61		

Owned by Beatty Cattle Company
 Sired by the breed legend, Bon View New Design 878. A long-bodied, thick bull with performance, backed by a good cow family tracing to Banjo. Birth weight 89 lbs. and adj. weaning weight 753 lbs.



TC TOTAL 410 - Sire of Lot 9.



BON VIEW NEW DESIGN 878 - Sire of Lot 12.

**2010 EAST CENTRAL MISSOURI ANGUS ASSOCIATION SALE
FALL COWS**



GAR GRID MAKER - Sire of Lot 13 and grandsire of Lot 14.

16 SCHUMER RACHEL 541

Birth Date: 9-11-2005 Cow 15369265 Tattoo: 541
 #+PVF New Horizon 001 (AMF-NHF) #B/R New Design 323
 PVF Horizon 202 Hyline Ellen 410
 14279703 +VDAR Queen 5150 #+VDAR New Trend 933
 VDAC Queen 125

CED	BEPD	WEPD	YEPD	SC	MILK
+3	+4.1	+45	+80	+33	+20
\$W	+21.44	\$F	+21.29	\$G	+21.15
				\$B	+38.73

Owned by Schumer Angus
 A granddaughter of SAF Rachel 5140 who was one of SydGen's top donor cows. Bred AI to HA Image Maker 0415, due to calve 9/1/10.

CW
+10
MARB
+19
RE
+18
FAT
+016

13 BDM BLACKBIRD ELAINE 761

Birth Date: 10-1-2007 Cow 16003648 Tattoo: 761
 #GDAR Traveler 044 (AMF-NHF) #DHD Traveler 6807 (AMF-NHF)
 GAR Grid Maker (AMF-NHF) #GDAR Blackcap Lady 840
 #+13254554 GAR Precision 2536 (AMC-NHC) #GAR Precision 1680 (AMC-NHC)
 +GAR Ext 2104

+Gdar SVF Traveler 228D #Traveler 124 GDAR
 BDM Blackbird 01 +GDAR Forever Lady 718
 13616268 Ankony Blackbird N426 Ankonian Titleist (AMF-NHF)
 Ankony Blackbird T417

CED	BEPD	WEPD	YEPD	SC	MILK
+4	+4.3	+52	+87	N/A	+15
\$W	+21.96	\$F	+25.44	\$G	+18.31
				\$B	+35.96

Owned by McBride Angus Farm
 This Grid Maker daughter was bred AI to SAV Final Answer on 12/27/09 and pasture exposed to Birks Net Worth 307 after 1/15/10. Has a 9/13/09 heifer calf sired by Casino Objective B135. He is sired by Objective and his dam is by 1407.

CW
+9
MARB
+11
RE
+38
FAT
+004

17 ROYAL FLUSH QUEEN ABBY 537

Birth Date: 6-24-2005 Cow 15259069 Tattoo: 537
 #Twin Valley Precision E161 (NH-CAMF-RDF) #GAR Precision 1680 (AMC-NHC)
 Royal Flush Precision 27 (AMF-NHF) +WCC Blackcap C9 (RDC)
 14200842 BDM Pride Rosa Rebar 79 Sedgwicks Rebar
 Priderosa Matador 851

#OGL Battle Cry 427 128 #Nichols Eureka W57
 DAR 7582 Queen 7025 #OGL Dusty Rose 128 902
 12813947 #Schurrtp Ex 7582 #+Leachman Express
 Schurrtp 4460

CED	BEPD	WEPD	YEPD	SC	MILK
-1	+3.7	+35	+63	N/A	+17
\$W	+18.85	\$F	+9.10	\$G	+6.98
				\$B	+23.33

Owned by Royal Flush Angus Farm
 This cow has a 9/13/09 heifer calf by Mogck Whispering Wind 584, an outcross pedigree to most of today's heavily used sires. She was bred AI to SydGen CC&7 on 12/5/09 and pasture exposed to Birks Net Worth 307 after 1/16/10.

CW
+11
MARB
+01
RE
+08
FAT
+008

14 S B F 355 KARAMA 714

Birth Date: 9-29-2007 Cow 16109705 Tattoo: 714
 #+GAR Grid Maker (AMF-NHF) #GDAR Traveler 044 (AMF-NHF)
 TC Grid Topper 355 (AMF-NHF) GAR Precision 2536 (AMC-NHC)
 +14526645 #TC Pride 8067 #TC Dividend 963 (AMF-NHF-RDF)
 TC Pride 6093

#+GAR Expectation 4915 (AMF-NHF) #N Bar Emulation EXT (AMF-NHF)
 SBF 4915 Karama 413 (AMF) GAR Traveler 2421
 14996696 Karama of Schoenes 875 +Finks 330 of 63 9J9
 Schoenes Karama 439

CED	BEPD	WEPD	YEPD	SC	MILK
N/A	+3.6	+50	+92	N/A	+16
\$W	+21.44	\$F	+31.15	\$G	N/A
				\$B	N/A

Owned by Schaefer Beef Farm
 Has a bull calf born 11/12/09, by SBF New Level 609, BW 73 lbs. This heifer is out of a very good Expectation daughter. Breeding information will be available sale day.

18 V H S BUSHY BLACKBIRD 069

Birth Date: 4-23-2005 Cow 15184110 Tattoo: B805
 #RP Bushwacker 3 944 (AMF-NHF) #RP 3RD Bushwacker
 GAF Bushwacker 32 #RP New Design Miss Juice
 14574898 GAF Barbara 6638 #Leachman Saughatchee 3000C (AMF-NHF)
 GAF Barbara 846

Bakers Executive 727-1 #GDAR Executive 727 (AMF-NHF)
 GSK Lass K695 Bakers Blackbird 232
 12496888 Mc Kinley Lass of FL 316 Koolspring Prompter 239
 Viewlawn Power 1619

CED	BEPD	WEPD	YEPD	SC	MILK
+6	+1.4	+33	+57	N/A	+18
\$W	+24.74	\$F	+4.46	\$G	N/A
				\$B	N/A

Owned by Schaefer Beef Farm
 Has a heifer calf born 11/13/09, by SBF Grid Topper 711, BW 72 lbs. One daughter is being retained. This cow is out of a top cow line. Breeding information will be available sale day.

15 S B F 512 JOY 708 (AMF)

Birth Date: 8-27-2007 Cow 16000840 Tattoo: 708
 #Boyd Captain 2067 (AMF-NHF) #Sitz Alliance 6595 (AMF-NHF)
 SBF Captain 512 +Boyd Forever Lady 7120
 15329915 VHS Trans Power Lass WCC Transformer 235
 GSK Lass K695

#+Rito 2V1 of 2536 1407 (AMC-NHF) #Bon View New Design 1407 (AMF-NHF)
 SBF 2V1 Joy 514 (AMC) GAR Precision 2536 (AMC-NHF)
 15329914 Joy TL 751 #+Rito 9FB3 of 5H11 Fullback (AMF-NHF)
 Shawnee Joy 4071

CED	BEPD	WEPD	YEPD	SC	MILK
N/A	+3.7	+47	+83	N/A	+23
\$W	+23.71	\$F	+23.43	\$G	N/A
				\$B	N/A

Owned by Schaefer Beef Farm
 Has a heifer calf born 12/13/09, by SBF New Level 609, BW 64 lbs. 708 is AM Free. Very good cows on both sides of her pedigree. Breeding information will be available sale day.

19 S B F 4915 MARIA 409

Birth Date: 9-7-2004 Cow 14961008 Tattoo: 409
 #N Bar Emulation EXT (AMF-NHF) #Emulation N Bar 5522
 GAR Expectation 4915 (AMF-NHF) N Bar Primrose 2424
 #+12548568 GAR Traveler 2421 #QAS Traveler 23-4 (AMF-NHF)
 +GAR Scotch Cap 209

+Three Trees Everready C55D (AMF-NHF) #Sitz Traveler 8180 (AMF-NHF)
 RS&F 55D Maria 35K +BT Everelda Entense 55D
 13733599 Blackwind Maria 297-03 #GDAR Rainmaker 340
 Blackwind Lady 297-0

CED	BEPD	WEPD	YEPD	SC	MILK
N/A	+1.7	+36	+70	N/A	+23
\$W	+24.41	\$F	+15.15	\$G	N/A
				\$B	N/A

Owned by Schaefer Beef Farm
 Has a heifer calf born 12/21/09, by SBF New Level 609, BW 70 lbs. A very nice, good uddered Expectation daughter. Breeding information will be available sale day.

**2010 EAST CENTRAL MISSOURI ANGUS ASSOCIATION SALE
FALL COWS**

20 TURNER FARMS HIGH BEAUTY 366

Birth Date: 12-13-2003 Cow 14664391 Tattoo: 366
 #Gardens Prime Time (AMF-NHF) #RR Traveler 5204 (AMF-NHF)
 Summitcrest High Prime 0H29 (AMF-NHF) #Green Garden Susie 1246 S1
 #13122485 Summitcrest Missie 2F55 #Finks 5522-6148
 #Summitcrest Missie 1C24
 #+SVF Gdar 216 LTD #Traveler 124 GDAR
 Circle A Beauty 9081 +GDAR Forever Lady 718
 #13269792 VDAR Beauty 951 #Baldrige Oscar
 Beauty 219 of VDAR

CW	+6
MARB	+49
RE	+19
FAT	-022

CED	BEPD	WEPD	YEPD	SC	MILK
+3	+3.1	+39	+73	-.65	+15
\$W	+20.11	\$F	+16.86	\$G	+33.36
\$B				\$B	+46.55

Owned by Restful Acres
 Sired by the Pathfinder Sire, Summitcrest High Prime 0H29; ranks in the top 10% of the breed for Marb and top 3% \$G. Bred to SydGen 2467 Precision 7652 (reg. #15904054) after 9/4/09.

21 WEIKERS FOREVER LADY 3W73

Birth Date: 5-25-2003 Cow +14593808 Tattoo: 3W73
 #Paramont Ambush 2172 (AMF-NHF) #Bandolier Eston Durness 42B
 Rockn D Ambush 1531 (AMF-NHF) EWS Miss Burgess 1720
 #12396365 MS Blackcap Band of RD 1301 #Tehama Bando 155 (AMF-NHF)
 #12396365 MS Blackcap Band of RD 1301 Miss Blackcap of RD 1127
 #AAR New Trend #VDAR Shoshone 548
 Triple J Forever Lady 952 Donna AAR74
 +13530736 +SVF Forever Lady 189 #+Skarship Saratoga
 #Forever Lady 163 GDAR

CW	+0
MARB	+28
RE	+06
FAT	-.009

CED	BEPD	WEPD	YEPD	SC	MILK
+3	+4.3	+40	+73	N/A	+15
\$W	+18.30	\$F	+16.50	\$G	+24.52
\$B				\$B	+31.79

Owned by Snelson Angus Farm
 Forever Lady 3W73 is a big-framed Ambush daughter with lots of length. Combining Ambush, AAR New Trend, and Forever Lady 189. She should be a donor. Maternal sisters have sold for \$5,500, \$4,750, and \$3,900. Sells bred AI on 12/1/09 to BG 7022 Raven 7965 and pasture exposed to AMS New Design until 1/15/10. Sells with a heifer calf at side by our senior herd sire, AMS New Design 1006 036 558H, born 10/4/09.

23 L S W MISS PRIDE 0239

Birth Date: 6-30-2002 Cow 14265172 Tattoo: 0239
 #TC Stockman 365 #TC Stockman
 Northern Improvement 4480 GF (AMF-NHF) TC Pride 0014
 #+13054003 Blackcap of RR 5367 RR Vantage 3352
 Blackcap of RR 0238
 #TC Dividend 963 (AMF-NHF-RDF) #+Leachman Prompter (AMF-NHF)
 GWF Miss Pride 239 TC Erica Eileen 6006
 13328455 GWF Pride 287 #Transformer 100 EAR
 Ascent Pride 29

CW	+12
MARB	+14
RE	+03
FAT	-011

CED	BEPD	WEPD	YEPD	SC	MILK
+9	-.3	+38	+63	+15	+24
\$W	+35.46	\$F	+8.05	\$G	+16.33
\$B				\$B	+33.43

Owned by Koenigsfeld Angus
 0239 is a moderate-framed female with a thick top and plenty of muscle. She is an easy doing cow that maintains her body condition throughout the year very well while raising a nice calf each year. 0239 was AI bred to SAF Focus 0050, an own son of SAF Focus of ER, on 12/8/09 and was then pastured exposed to GSK Max Design from 12/14/09 to 3/1/10.

24 BIRKS FOREVER LADY 42

Birth Date: 3-20-2002 Cow 14167672 Tattoo: 42
 #B/R New Design 036 (AMF-NHF) #VDAR New Trend 315 (AMF-NHF)
 Bon View New Design 1407 (AMF-NHF) B/R Blackcap Empress 76
 #12783540 Bon View Pride 664 #+GAR Sleep Easy 1009 (AMF-NHF)
 #Bon View Pride 1551
 #+GDAR SVF Traveler 234D (AMF-NHF) #Traveler 124 GDAR
 Birks Forever Lady 100 +GDAR Forever Lady 718
 +13580703 B&M Forever Lady 294 (AMF-NHF) #GAR Precision 1680 (AMF-NHF)
 +B&M Forever Lady 92

CW	+12
MARB	+60
RE	+36
FAT	+023

CED	BEPD	WEPD	YEPD	SC	MILK
+10	+1.2	+48	+94	N/A	+31
\$W	+26.90	\$F	+33.95	\$G	+32.80
\$B				\$B	+54.82

Owned by Koenigsfeld Angus
 Don't miss this chance to own a Forever Lady female packed with loads of growth and carcass traits. Birks Forever Lady 42 is from the famed B&M Forever Lady 294 cow family, whose progeny has and continues to top many sales around the state. Forever Lady 42 progeny has recorded an ultrasound IMF ratio of 117. She ranks in the top 2% of the breed for current dams for \$B, the top 3% for Marbling, Milk and \$QG and the top 5% for YW EPD, \$F and \$G just to name a few. Forever Lady 42 was pastured exposed to GSK Max Design from 12/14/09 to 3/1/10. Observed natural service on 12/17/09.



GAR EXT 2104 - Grandam of Lot 22.

22 LCR NEW DESIGN 1407 3021

Birth Date: 4-30-2003 Cow 14459905 Tattoo: 3021
 #B/R New Design 036 (AMF-NHF) #VDAR New Trend 315 (AMF-NHF)
 Bon View New Design 1407 (AMF-NHF) B/R Blackcap Empress 76
 #12783540 Bon View Pride 664 #+GAR Sleep Easy 1009 (AMF-NHF)
 #Bon View Pride 1551
 #Plowman 1627 of Millbrae SAR (AMF-NHF) #DHD Traveler 6807 (AMF-NHF)
 LCR Plowman 105 (AMF) #MB Joanie 8E8 1627 (AMF)
 +13929292 +GAR Ext 2104 #N Bar Emulation EXT (AMF-NHF)
 #GAR Scotch Cap 867

CW	+3
MARB	+60
RE	+0
FAT	+034

CED	BEPD	WEPD	YEPD	SC	MILK
+7	+1.9	+44	+82	1+.46	+15
\$W	+23.69	\$F	+23.59	\$G	+28.28
\$B				\$B	+40.11

Owned by Snelson Angus Farm
 New Design 1407 3021 is one of the thickest 1407 daughters you will find in existence. Her grandam is the \$300,000 breed legend, GAR Ext 2104. Her dam, LCR Plowman 105, is a maternal sister to GAR Precision 2536, who has created over \$7.5 million in progeny sales. 3021 should be a donor for her new owners, because of her combination of pedigree, numbers, and overall performance. Sells with a heifer calf at side by our senior herd sire AMS New Design 1006 036 558H, born 8/30/09. She is safe in calf to BC 7022 Raven 7965 due 8/28/10.

**2010 EAST CENTRAL MISSOURI ANGUS ASSOCIATION SALE
SPRING COWS**

25 BDM KOVERGIRL 827

Birth Date: 4-1-2008 Cow 16495902 Tattoo: 827
 #Twin Valley Precision E161 (NHCA:AMF:RDF) #GAR Precision 1680 (AMC:NHC)
 Royal Flush Precision 27 (AMF:NHF) +WCC Blackcap C9 (RDC)
 14200842 BDM Pride Rosa Rebar 79 Sedgwicks Rebar
 Priderosa Matador 851
 #Whitestone Fly Traveler 3006 (AMF:NHF) #Hoff Hi Flyer SC 7134 (AMF:NHF)
 Lvaf Kovergirl 716 #TC Jestress 6004
 13114448 LVAF Kovergirl 138 Timber Ridge Lone Ranger
 LVA Kovergirl 710

CW	I-6
MARB	I+.06
RE	I-.06
FAT	I-.006

CED	BEPD	WEPD	YEPD	SC	MILK
+4	+2.2	+32	+59	N/A	+16
\$W	+21.06	\$F	+6.56	\$G	+12.39
\$B					+23.82

Owned by McBride Angus Farm
 This Precision daughter was AI bred to Mytty In Focus on 6/12/09 and pasture exposed to RFA Endeavor 813 after 6/29/09.

28 BDM PRIZEMERE 812

Birth Date: 2-17-2008 Cow 16137646 Tattoo: 812
 #SS Traveler 6807 T510 (AMF:NHF) #DHD Traveler 6807 (AMF:NHF)
 SS Objective T510 OT26 (AMF:NHF) #SS Miss Hi Spade A114
 #13776378 SS Miss Rita R011 7R8 (AMF:NHF) SS Rito Rito R76 R011
 SS Miss Ultress U56
 SAF Cash 0185 SAF Cash 7203 (AMF)
 BDM Prizemere Leona 464 J&J Lucy 971
 15036639 BDM Eonda Max 83 #GT Maximum (AMF:NHF)
 #LDM Prizemere Eonda 192

CW	+1
MARB	+41
RE	+01
FAT	-025

CED	BEPD	WEPD	YEPD	SC	MILK
+5	+3.2	+53	+93	N/A	+20
\$W	+25.24	\$F	+30.99	\$G	+29.86
\$B					+41.50

Owned by McBride Angus Farm
 This Objective daughter was AI bred to Connealy Thunder on 6/12/09 and pasture exposed to RFA Endeavor 813 after 6/29/09. Should calve before sale day.



N BAR PRIMROSE 2424 - Great-grandam of Lot 26.

29 AMS BLACKCAP OT26 976

Birth Date: 11-4-2007 Cow 16141400 Tattoo: 976
 #SS Traveler 6807 T510 (AMF:NHF) #DHD Traveler 6807 (AMF:NHF)
 SS Objective T510 OT26 (AMF:NHF) #SS Miss Hi Spade A114
 #13776378 SS Miss Rita R011 7R8 (AMF:NHF) SS Rito Rito R76 R011
 SS Miss Ultress U56
 #B/R New Dimension 7127 #B/R New Design 036 (AMF:NHF)
 AMS Blackcap of 7127 171 B/R Ruby of Tiffany A117
 14481841 DAF Miss Scotch 177 #Scotch Cap (AMF:NHF)
 DAF Blackcap Emma 610

CED	BEPD	WEPD	YEPD	SC	MILK
I+6	I+3.0	I+52	I+95	N/A	I+24
\$W	+25.24	\$F	+33.39	\$G	N/A
\$B					N/A

Owned by Nelson Angus Farm
 Blackcap OT26 976 is an explosive and eye catching female that will not disappoint her new owners, especially if she's like her dam and maternal sister. She's also a paternal sister to numerous AI sires and sale-toppers across the country. Sells safe in calf to the high growth and carcass sire GAR New Design 5050, due 5/17/10.

26 W C C PRIMROSE U98

Birth Date: 3-10-2008 Cow 16044757 Tattoo: U98
 #Bon View New Design 1407 (AMF:NHF) #B/R New Design 036 (AMF:NHF)
 EXAR New Look 2971 (AMF:NHF) Bon View Pride 664
 #+14230122 N Bar Primrose 2424 #Emulation 31 (DMF:RDF)
 Primrose N Bar 9962
 #B/R New Design 036 (AMF:NHF) #VDAR New Trend 315 (AMF:NHF)
 WCC Primrose R85 B/R Blackcap Empress 76
 +15184566 +WCC Primrose I500 #Kruggerand of Donamere 490 (AMF:NHF)
 N Bar Primrose 2424

CW	I+14
MARB	I+.38
RE	I+.31
FAT	I+.010

CED	BEPD	WEPD	YEPD	SC	MILK
+5	+3.1	+48	+90	N/A	+24
\$W	+23.76	\$F	+29.93	\$G	+28.65
\$B					+51.37

Owned by Dry Fork Angus
 U98 is a double bred Primrose 2424 and B/R New Design 036 with a flawless pedigree. She was purchased from Wilson Cattle Co in Cloverdale, Indiana. Sells with a January bull calf by SAV Bismarck 5682, birth weight 62 lbs. A Bismarck son SAV Brand Name 9115 was the high selling bull at Schaff Angus Valley Annual Bull Sale in North Dakota for \$156,000.

30 B C T MISS MIDLAND 706

Birth Date: 9-30-2007 Cow 15937996 Tattoo: 706
 #BR Midland (AMF:NHF) #Twin Valley Precision E161 (NHCA:AMF:RDF)
 SydGen Midland 5803 BR Royal Lass 7036-19
 +15214068 +SAF Royal Queen 5084 #Bon View Bando 598 (AMF)
 SAF Royal Queen 9022
 Mytty In Focus (AMF:NHF:RDF) #SAF Focus of ER (AMF:NHF)
 Hickory Hill Missy RA50 Mytty Countess 906
 15237860 Hickory Hill Missy NA33 #Connealy Leadtime (AMF:NHF)
 Hickory Hill Missy 008

CW	I+2
MARB	I+.40
RE	I-.06
FAT	I+.019

CED	BEPD	WEPD	YEPD	SC	MILK
I+12	I-.4	I+47	I+86	N/A	I+21
\$W	+28.84	\$F	+26.36	\$G	+23.63
\$B					+35.11

Owned by Taylor Angus Farm
 706 is a very nice deep bodied, high volume, moderate framed heifer, sired by one of the last sons of the great bull-producing dam SAF Royal Queen 5084. She is bred to an outstanding easy calving, fast growing son of SydGen CC & 7. Should be a fantastic cross.

27 BDM BLACKCAP 818

Birth Date: 3-5-2008 Cow 16495903 Tattoo: 818
 SAF Cash 7203 (AMF) #Stevenson Fortune 425C (AMF:NHF)
 SAF Cash 0185 +SAF Royal Lass 1002
 13569350 J&J Lucy 971 #RR Traveler 5204 (AMF:NHF)
 J&J Lucy 956
 Sedgwicks Rebar #TC Dividend 963 (AMF:NHF:RDF)
 BDM Blackcap Rebar 015 Sedgwicks Barbara 4171
 13718921 #BDM Blackcap Fix It 82 612 BDM Fix It 103
 Maxima Blackcap 43

CW	+10
MARB	+21
RE	-.03
FAT	+001

CED	BEPD	WEPD	YEPD	SC	MILK
I+1	I+3.3	I+39	I+65	N/A	I+15
\$W	+21.88	\$F	+9.50	\$G	+17.60
\$B					+33.06

Owned by McBride Angus Farm
 This Cash daughter out of a Sedgwicks Rebar's dam was AI bred to RAPS Ext of MAR 819 on 6/11/09 and pasture exposed to RFA Endeavor 813 after 6/29/09.

31 SCHOENES BLACK FAVOUR 723 (NHF)

Birth Date: 3-23-2007 Cow 15835570 Tattoo: 723
 #Twin Valley Precision E161 (NHCA:AMF:RDF) #GAR Precision 1680 (AMC:NHC)
 Woodhill Precision 245K-261P (NHG) +WCC Blackcap C9 (RDC)
 +14791244 +Woodhill Lass 344-245K #Finks 5522-6148
 Woodhill Lass 1172-344
 +Woodhill VHF Matson #Bon View New Design 878 (AMF:NHF)
 Schoenes Black Favour 513 Woodhill Evergreen I20-823
 15180034 Schoenes Black Favour 923 Schoenes Benchmark 712
 Black Favour Missie 051

CED	BEPD	WEPD	YEPD	SC	MILK
+9	+-.9	+35	+62	N/A	+17
\$W	+25.41	\$F	+8.20	\$G	N/A
\$B					N/A

Owned by Schoene Angus Farm
 Will calve by sale day to Schoenes Lead On 754. Calfhood vaccinated.

2010 EAST CENTRAL MISSOURI ANGUS ASSOCIATION SALE
SPRING COWS

32 SCHOENES BLACK FAVOUR 63

Birth Date: 2-14-2006 Cow 15616535 Tattoo: 63
 #Bon View New Design 878 (AMF-NHF) #B/R New Design 036 (AMF-NHF)
 Woodhill VHF Augusta #Bon View Gammer 85
 +13898538 Woodhill Evergreen 120-823 #DHD Traveler 6807 (AMF-NHF)
 +Woodhill Evergreen 120

CW	I-0
MARB	I-13
RE	I-08
FAT	I-003

Schoenes Benchmark 712
 Schoenes Black Favour 923
 13380990 Black Favour Missie 051
 #+Whitestone Fly Traveler 3006 (AMF-NHF)
 Pride of Schoenes 035
 #Shoshone Viking GD60 (RF)
 Black Favour Missie 73

CED	BEPD	WEPD	YEPD	SC	MILK
+5	+1.4	+38	+64	N/A	+21
\$W	+27.24	\$F	+8.95	\$G	+15.32
\$B					+21.12

Owned by Schoene Angus Farm
 Sells with a bull calf at side, born 2/7/10, sired by Schoenes Lead On 754, birth weight 74 lbs.



GAR PRIME TIME 2409 - Grandam of Lot 33.

33 BOHI RITA 6457 (AMF-NHF)

Birth Date: 10-22-2006 Cow +15709130 Tattoo: 6457
 Schurrtop MC #Papa Equator 2928 (AMF-NHF)
 Schurrtop MC 2500 (AMF) Schurrtop 1483 9024
 14840227 Schurrtop RS 1413 2153 Brooks Schurr Trend
 Ryans Schurrtop 2125

CW	I-8
MARB	I-32
RE	I-13
FAT	I-011

#GAR Precision 1680 (AMC-NHC) #Tehama Bando 155 (AMF-NHF)
 GAR Precision G313 9J9 GAR 856 (NHF)
 +14577498 GAR Prime Time 2409 (AMF-NHF) #Gardens Prime Time (AMF-NHF)
 +GAR Ext 327 (AMF)

CED	BEPD	WEPD	YEPD	SC	MILK
I+7	+1.6	+41	+81	I+11	+27
\$W	+25.13	\$F	+23.75	\$G	+25.58
\$B					+42.03

Owned by Snelson Angus Farm
 Where do I begin on Rita 6457? She is an outstanding MC 2500 out of a dam that sold to Limestone LLC in Oklahoma for \$190,000 for half interest. Her grandam, GAR Prime Time 2409, sold for \$430,000 in 2005. GAR Precision G283, a flush sister to the dam of Rita 6457, sold for \$250,000. Other flush sisters to Precision G313 are, Precision G193 that sold for \$150,000, Precision G143 sold for \$90,000, and Precision G93 sold for \$60,000. Rita 6457 sells due to calve on 3/27/10 to GAR Grid Maker. One word comes to mind, DONOR.



GAR PRECISION G313 - Dam of Lot 33.

34 VHF BANDO FAVOR PRIDE 601

Birth Date: 9-7-2006 Cow 15618909 Tattoo: 601
 #+SAF 598 Bando 5175 (AMF) #Bon View Bando 598 (AMF)
 SAV 5175 Bando 0699 (AMF-NHF) +SAF Royal Lass 1002
 #+13875838 LLA Georgina 419 #+GAR Sleep Easy 1009 (AMF-NHF)
 Lyons Georgina 2165

CW	I-8
MARB	+31
RE	+19
FAT	+005

+Woodhill VHF Matson #Bon View New Design 878 (AMF-NHF)
 VHF Favor Pride Matson 2 Woodhill Evergreen 120-823
 14420698 VHF Favor Pride 592 New Trend Favour 6136
 Schoenes Pride 5147

CED	BEPD	WEPD	YEPD	SC	MILK
+3	+3.0	+38	+75	N/A	+19
\$W	+20.21	\$F	+19.11	\$G	+24.30
\$B					+39.83

Owned by Kamphoefner Angus
 A good young cow out of the ABS sire, SAV 5175 Bando 0699. Did a good job with her first calf, a heifer, ratioing 97. She got a bit behind our fall-calving herd, but should be a good productive cow for a spring herd. Sells with a 2/5/10 heifer calf at side, (BW 73 lbs., Reg. #16550415), sired by Schoenes Main Stream 516.

35 SCHOENES MISSIE 61

Birth Date: 2-13-2006 Cow 15616533 Tattoo: 61
 #Bon View New Design 878 (AMF-NHF) #B/R New Design 036 (AMF-NHF)
 Woodhill VHF Augusta #Bon View Gammer 85
 +13898538 Woodhill Evergreen 120-823 #DHD Traveler 6807 (AMF-NHF)
 +Woodhill Evergreen 120

CW	I-17
MARB	I-03
RE	I-03
FAT	I-002

#Schoenes Fix It 826 (AMF-NHF) #AAR New Trend
 Black Missie of Schoenes 861 Sky High Blackbird 4119
 13287781 Black Missie 961 #Ankonian Cornhusker
 Black Favour Missie 051

CED	BEPD	WEPD	YEPD	SC	MILK
+5	+2.5	+36	+69	N/A	+22
\$W	+22.43	\$F	+14.22	\$G	+17.44
\$B					+25.23

Owned by Schoene Angus Farm
 Sells with a bull calf at side, born 2/1/10, sired by Schoenes Lead On 754, BW 72 lbs. Calfhood vaccinated.

36 RCC DUCHESS 621

Birth Date: 1-23-2006 Cow 15754291 Tattoo: 621
 Ironwood New Design 022 701 #B/R New Design 036 (AMF-NHF)
 Ironwood New Level (AMF-NHF) Wardens Lady 022 5410
 #13320150 Wardens Blackcap 6148 6309 #Finks 5522-6148
 Wardens Blackcap SC 025

CW	+22
MARB	+37
RE	+16
FAT	+036

#Leachman Boom Time (AMF-NHF) #+Leachman Right Time
 RCC Duchess 805-435 Leachman Burgess 5004
 +15278330 RCC Duchess 805 #Bon View Bando 598 (AMF)
 +R&J Duchess 2530

CED	BEPD	WEPD	YEPD	SC	MILK
+5	+2.5	+57	+99	N/A	+31
\$W	+28.90	\$F	+35.49	\$G	+19.10
\$B					+48.43

Owned by McBride Angus Farm
 This cow was AI bred to SAV Final Answer on 5/11/09 and will calve by sale day. Her 2009 heifer sells as Lot 36B.

36B BDM DUCHESS 913

Birth Date: 2-13-2009 Cow 16419829 Tattoo: 913
 #+GAR Grid Maker (AMF-NHF) #GDAR Traveler 044 (AMF-NHF)
 SAV Bismarck 5682 (AMF-NHF) GAR Precision 2536 (AMC-NHF)
 +15109865 SAV Abigale 0451 #Schoenes Fix It 826 (AMF-NHF)
 SAV Abigale 6062

CW	+16
MARB	+22
RE	+38
FAT	+021

#Ironwood New Level (AMF-NHF) Ironwood New Design 022 701
 RCC Duchess 621 Wardens Blackcap 6148 6309
 15754291 +RCC Duchess 805-435 #Leachman Boom Time (AMF-NHF)
 RCC Duchess 805

CED	BEPD	WEPD	YEPD	SC	MILK
+7	+1.8	+58	I+102	N/A	+28
\$W	+29.97	\$F	+38.18	\$G	+19.89
\$B					+46.11

Owned by McBride Angus Farm
 This heifer is sired by SAV Bismarck 5682. She ranks in the top 4% of the breed for WW and top 8% for YW. Weaning weight 651 lbs., ratio 104, yearling weight 901 lbs., ratio 105, and a ribeye ratio of 111. Sells open.

2010 EAST CENTRAL MISSOURI ANGUS ASSOCIATION SALE
SPRING COWS



SAF ROYAL QUEEN 5084

- Grandam of Lots 37 and 44 and great-grandam of Lot 39.

37 SYDGEN ROYAL QUEEN 5998 (NHF)

Birth Date: 12-31-2005 Cow #15339410 Tattoo: 5998
 #B/R New Design 036 (AMF/NHF) #VDAR New Trend 315 (AMF/NHF)
 B/R New Design 323 B/R Blackcap Empress 76
 #11928774 B/R Ruby of Tiffany 155

CW	+3
MARB	+0.38
RE	+0.27
FAT	-0.24

#Twin Valley Precision E161 (NHCA/NHF/DF) #GAR Precision 1680 (AMC/NHC)
 SydGen Royal Queen 2468 (NH) +WCC Blackcap C9 (RO)
 #14284744 +SAF Royal Queen 5084 #Bon View Bando 598 (AMF)
 SAF Royal Queen 9022

CED	BEPD	WEPD	YEPD	SC	MILK		
+7	-1.1	+39	+75	1+.61	+22		
\$W	+26.47	\$F	+18.74	\$G	+31.19	\$B	+42.00

Owned by Guterth Angus Farm

Combines the legendary carcass sire B/R New Design 323 and the Royal Queen cow family. A flush sister sold for \$10,500 at Sydenstrickers. Dam is a flushmate to SydGen Eclipse and SydGen Bouncer. Has an average weaning ratio of 101 on 2 calves and a sub 365-day calving interval over 3 calves. Sell with a GAR Retail Product heifer calf at side, born 1/31/10 (BW 84 lbs., tattoo 0011).



GAR RETAIL PRODUCT - Sire of Lot 38.

38 DAF MISS ELBAN 2465

Birth Date: 9-11-2005 Cow 16551514 Tattoo: D305
 #GAR Precision 1680 (AMC/NHC) #Tehama Bando 155 (AMF/NHF)
 GAR Retail Product (AMF/NHF) 9J9 GAR 856 (NH)
 #13395329 +GAR Ext 4927 #N Bar Emulation EXT (AMF/NHF)
 GAR Traveler 641

DAF Max 1407 #GT Maximum (AMF/NHF)
 Miss Elban 1465 Erica of DAF 1153
 13657950 DAF Miss Elban 1328 #+GAR Sleep Easy 1009 (AMF/NHF)
 DAF Miss Elban 1232

CED	BEPD	WEPD	YEPD	SC	MILK		
+6	+1.9	+38	+77	N/A	+21		
\$W	+22.41	\$F	+21.01	\$G	N/A	\$B	N/A

Owned by Dozier Angus Farm

This moderated-framed, well-balanced female has an excellent set of EPDs and should make a solid foundation cow in anyone's herd. She was bred A.I. on 6/17/09 to New Level and was pasture exposed to our son of TC Freedom 104 after 6/30/09, should calve by sale day.

39 G A A ROYAL QUEEN 508

Birth Date: 9-9-2005 Cow 15219536 Tattoo: 508
 #Bon View New Design 1407 (AMF/NHF) #B/R New Design 036 (AMF/NHF)
 GAA New Design 302 Bon View Pride 664
 14720128 Finks Pride 153 9337 LB #+VDAR Lucys Boy (AMF/NHF)
 +Finks Pride 9337 575 315

#Bon View New Design 1407 (AMF/NHF) #B/R New Design 036 (AMF/NHF)
 FAF Royal Queen 252 Bon View Pride 664
 +14231428 +SAF Royal Queen 0102 #+SVF Gdar 216 LTD
 +SAF Royal Queen 5084

CED	BEPD	WEPD	YEPD	SC	MILK		
+11	+2	+43	+84	N/A	+25		
\$W	+26.86	\$F	+25.91	\$G	N/A	\$B	N/A

Owned by Greiman Acres Angus

Another Royal Queen female that is a direct daughter of our other cow consignment. Her first calf was the high-selling bull in the 2009 fall sale. Al'd 6/12/09 to SAV Mandan.

40 MISS ELBAN OF DAF 1422

Birth Date: 9-3-2005 Cow 16560079 Tattoo: D215
 #B/R New Design 323 #B/R New Design 036 (AMF/NHF)
 B/R New Design 323-8212 B/R Ruby of Tiffany 155
 13043866 B/R Elsa Trojan Erica 518 #B/R New Design 036 (AMF/NHF)
 B/R Elsa Trojan Erica 9147

Doziers Rito 1367 #Rito 2100 GDAR
 DAF Miss Elban 1421 DAF Erica Pat 928
 13186862 DAF Miss Elban 1128 #Leachman Hoss
 DAF Miss Elban 828

CED	BEPD	WEPD	YEPD	SC	MILK		
+5	+1.6	+36	+66	N/A	+10		
\$W	+20.96	\$F	+11.46	\$G	N/A	\$B	N/A

Owned by Dozier Angus Farm

This is a moderate-framed, well-balanced cow that would make an excellent addition to anyone's cow herd. This young female was bred to our own son of TC Freedom 104 and should calve by sale day.

41 SCHOENES BLACK FAVOUR 513

Birth Date: 2-12-2005 Cow 15180034 Tattoo: 513
 #Bon View New Design 878 (AMF/NHF) #B/R New Design 036 (AMF/NHF)
 Woodhill VHF Matson Bon View Gammer 85
 +13898539 Woodhill Evergreen 120-823 #DHD Traveler 6807 (AMF/NHF)
 +Woodhill Evergreen 120

Schoenes Benchmark 712 #+Whitestone Fly Traveler 3006 (AMF/NHF)
 Schoenes Black Favour 923 Pride of Schoenes 035
 13380990 Black Favour Missie 051 #Shoshone Viking GD60 (RTF)
 Black Favour Missie 73

CW	+2
MARB	1+.13
RE	1+.16
FAT	1+.003

CED	BEPD	WEPD	YEPD	SC	MILK		
+7	+1.2	+26	+49	N/A	+15		
\$W	+21.26	\$F	-1.12	\$G	+13.81	\$B	+20.28

Owned by Schoene Angus Farm

Will calve by sale day by Schoenes Lead On 754. Calfhood vaccinated.

42 A M S ERICA LASS 126

Birth Date: 9-8-2004 Cow +15041885 Tattoo: 126
 #Connealy Leadtime (AMF/NHF) #Connealy Dateline
 Connealy Lead On (AMF/NHF) #Ruths Rona of Conanga
 #13447282 Eligence Plus of Conanga #DHD Traveler 6807 (AMF/NHF)
 +Finks Pride 9337 575 315

#+SVF Gdar 216 LTD #Traveler 124 GDAR
 PA Erica Lass 319 +GDAR Forever Lady 718
 +13511047 +HBR Erica Lassie 3000 #DHD Traveler 6807 (AMF/NHF)
 Erica Lassie KMA 2003

CW	+3
MARB	1+.35
RE	1+.18
FAT	1-.033

CED	BEPD	WEPD	YEPD	SC	MILK		
+6	+2.6	+48	+90	1+.08	+25		
\$W	+25.01	\$F	+29.93	\$G	+29.22	\$B	+47.07

Owned by Snelson Angus Farm

Erica Lass 126 is an outstanding daughter of Connealy Lead On. Stemming from the Erica Lassie cow family, the possibilities are endless for this cow. Lass 126's first three calves have weaned off at an average weight of 621 lbs. This is a picture-perfect cow with an excellent udder and great disposition. Sells with a heifer calf at side sired by Gardens Prime Star, born 1/2/10 and will sell bred back to ALC Big Eye prior to sale day. Don't miss this pair.

**2010 EAST CENTRAL MISSOURI ANGUS ASSOCIATION SALE
SPRING COWS**

43

V H F BLACK MISSIE 409

Birth Date: 8-28-2004 Cow 14964006 Tattoo: 409
 #Bon View New Design 878 (AMF-NHF) #B/R New Design 036 (AMF-NHF)
 Woodhill VHF Matson #B/R New Design 036 (AMF-NHF)
 +13898539 Woodhill Evergreen 120-823 #DHD Traveler 6807 (AMF-NHF)
 +Woodhill Evergreen 120

CW	+6
MARB	+26
RE	-17
FAT	-.002

GAR Bando 1521
 Schoenes Black Missie 831
 13226027 Black Missie 2521

#Tehama Bando 155 (AMF-NHF)
 GAR Scotch Cap 029
 Black Fix It of Schoenes 052
 Black Favour Missie 051

CED	BEPD	WEPD	YEPD	SC	MILK
+3	+3.3	+35	+66	N/A	+25
\$W	+21.48	\$F	+11.82	\$G	+18.76
\$B				\$B	+31.05

Owned by Kamphoefner Angus
 409 has been a good productive cow weaning 3 calves ratiating 103. Maternal ancestry comes from the Don Schoene farm, from a cow line that has excelled in stayability. Sells with a heifer calf by Schoenes Main Stream 516, calved 12/18/09 (reg. #16549111), BW 74 lbs.

44

F A F ROYAL QUEEN 252

Birth Date: 2-5-2002 Cow +14231428 Tattoo: 252
 #B/R New Design 036 (AMF-NHF) #VDAR New Trend 315 (AMF-NHF)
 Bon View New Design 1407 (AMF-NHF) B/R Blackcap Empress 76
 #12783540 Bon View Pride 664 #+GAR Sleep Easy 1009 (AMF-NHF)
 #Bon View Pride 1551

CW	+12
MARB	+51
RE	+09
FAT	+028

#+SVF Gdar 216 LTD
 SAF Royal Queen 0102
 +13545922 +SAF Royal Queen 5084

#Traveler 124 GDAR
 +GDAR Forever Lady 718
 #Bon View Bando 598 (AMF)
 SAF Royal Queen 9022

CED	BEPD	WEPD	YEPD	SC	MILK
+11	+8	+46	+86	+42	+23
\$W	+27.25	\$F	+26.74	\$G	+26.11
\$B				\$B	+46.44

Owned by Greiman Acres Angus
 A truly royally bred female that combines the immortal New Design 1407 and the Royal Queen cow family from SydGen. The dam of the female is a flush sister to the \$50,000 SAF Connection and sold for \$14,000 in the 2003 Fretwell Angus Sale. Al'd 5/26/09 to SAV Mandan and exposed to GAA 2000 Plus 702 from 6/09 to 8/09.

BRED HEIFERS



SUMMICREST HI FLYER 3B18 - Sire of Lot 45.



SAF DIRECTIVE - Service sire of Lots 47, 48, and 49.

45

ALMOST PFRED ERICA 8471

Birth Date: 3-16-2008 Cow 16173625 Tattoo: 8471
 #Hoff Hi Flyer SC 7134 (AMF-NHF) #Scotch Cap (AMF-NHF)
 Summitcrest Hi Flyer 3B18 (AMF-NHF) Hoff Miss Spade of SC 147
 #11783725 #Summitcrest Lass 229Y #QAS Traveler 23-4 (AMF-NHF)
 Summitcrest Lass 044W

#R&J Maternal Power 270 (AMF-NHF)
 Almost Maternal Erica 4R71
 12990380 Anky Erica T2044

+R&J Milky Way 1406
 +R&J Duchess 1997
 #Lovana (AMF)
 Anky Erica P8622

CED	BEPD	WEPD	YEPD	SC	MILK
+3	+1.1	+39	+69	N/A	+18
\$W	+26.00	\$F	+13.15	\$G	N/A
\$B				\$B	N/A

Owned by Barry Reynolds
 This Pfred daughter stems from T2044, the matron of about one-third of our herd. She was A.I. bred on 12/5/09 to SAF Focus 9095 and exposed to SydGen CC&7 8177 (Reg. #16016620) after 12/17/09. Brucellosis Free Herd #1336.

47

JORDANS LINDA LASS 33908

Birth Date: 5-1-2008 Cow 16129280 Tattoo: 23J8
 #Schoenes Fix It 826 (AMF-NHF) #AAR New Trend
 Schoenes Mission 218 Sky High Blackbird 4119
 14389810 Schoenes High Fashion 859 #+Whitestone Fly Traveler 3006 (AMF-NHF)
 Schoenes High Fashion 813

#GT Maximum (AMF-NHF)
 Steelmans GT Maximum 13125
 12495319 Steelmans Spade 1312

#Scotch Cap (AMF-NHF)
 #GT Miss Traveler 58
 Steelmans R&J Spade 1080
 Steelmans MS Spade 970

CED	BEPD	WEPD	YEPD	SC	MILK
+2	+3.9	+43	+87	+43	+17
\$W	+17.02	\$F	+28.87	\$G	N/A
\$B				\$B	N/A

Owned by Jordan Angus Farm
 Jordans Linda Lass 33908 is another half sister to our other heifers in this sale and is by a daughter of GT Maximum. This performance-packed heifer was bred to SAF Directive on 12/17/09.

46

JORDANS LINDA LASS 8208

Birth Date: 4-28-2008 Cow 16129279 Tattoo: 22J8
 #Schoenes Fix It 826 (AMF-NHF) #AAR New Trend
 Schoenes Mission 218 Sky High Blackbird 4119
 14389810 Schoenes High Fashion 859 #+Whitestone Fly Traveler 3006 (AMF-NHF)
 Schoenes High Fashion 813

#+B/R New Frontier 095 (AMF-NHF)
 Jordans Linda Lass 22004
 14781516 Jordans Linda Lass 16200

#B/R New Design 036 (AMF-NHF)
 White Fence Pride H1
 Jordans Power Boy 3698
 Jordans Linda Lass 9198

CED	BEPD	WEPD	YEPD	SC	MILK
+3	+3.4	+50	+91	N/A	+22
\$W	+23.17	\$F	+30.15	\$G	N/A
\$B				\$B	N/A

Owned by Jordan Angus Farm
 Jordans Linda Lass 8208 is another Schoenes Mission 218 daughter out of an excellent dam by B/R New Frontier 095. This heifer is pasture bred to Jordans Alliance 12807, a powerful WAR Alliance son. Her dam averaged 103 weaning ratio on 3 calves.

48

JORDANS SARA BELLE 7108

Birth Date: 5-4-2008 Cow 16129281 Tattoo: 24J8
 #Schoenes Fix It 826 (AMF-NHF) #AAR New Trend
 Schoenes Mission 218 Sky High Blackbird 4119
 14389810 Schoenes High Fashion 859 #+Whitestone Fly Traveler 3006 (AMF-NHF)
 Schoenes High Fashion 813

#WAR Alliance 9126 6006 (AMF-NHF)
 Jordans Sara Belle 22404
 14781500 Jordans Sara Belle 13501

#Sitz Alliance 6595 (AMF-NHF)
 WAR Bando 6006 598 4053
 Pohlman Judge 4705
 Black Diamond Blossom

CED	BEPD	WEPD	YEPD	SC	MILK
+5	+2.0	+49	+92	+74	+22
\$W	+25.20	\$F	+31.54	\$G	N/A
\$B				\$B	N/A

Owned by Jordan Angus Farm
 Jordans Sara Belle 7108 is another half sister and is out of a WAR Alliance 9126 6006 daughter. She was bred to SAF Directive on 11/20/09 and should make a great cow. Her dam averaged 101 weaning ratio on 4 calves.

**2010 EAST CENTRAL MISSOURI ANGUS ASSOCIATION SALE
BRED HEIFERS**

49 JORDANS MARTHAS FLOWER 6508

Birth Date: 5-14-2008 Cow 16129283 Tattoo: 26J8
 #Schoenes Fix It 826 (AMF-NHF) #AAR New Trend
 Schoenes Mission 218 Sky High Blackbird 4119
 14389810 Schoenes High Fashion 859 #Whitestone Fly Traveler 3006 (AMF-NHF)
 Schoenes High Fashion 813
 #WAR Alliance 9126 6006 (AMF-NHF) #Sitz Alliance 6595 (AMF-NHF)
 Marthas Flower J&G 406 WAR Bando 6006 598 4053
 14675846 Marthas Valentine of J&G 202 Illinis Tanner of J&G 001
 +RF Explorer 033 1553

CED	BEPD	WEPD	YEPD	SC	MILK
+5	+2.8	+52	+100	I+.78	+28
\$W	+24.10	\$F	+38.51	\$G	N/A
				\$B	N/A

Owned by Jordan Angus Farm
 Jordans Marthas Flower 6508 is another Mission daughter by a WAR Alliance dam. This is one of the best performance heifers you will find anywhere. Her dam has averaged 118 weaning ratio on 4 calves. The dam was purchased from Roy and Karen Jones and is one of our most productive cows. This heifer will make a great cow as well. Bred to SAF Directive on 12/4/09.

50 ROL LUCY 49A (AMF-NHF)

Birth Date: 8-23-2008 Cow 16173551 Tattoo: 49A
 #SS Traveler 6807 T510 (AMF-NHF) #DHD Traveler 6807 (AMF-NHF)
 GAR Solution (AMC-NHF) #SS Miss Hi Spade A114
 14222615 +GAR New Design 50 #B/R New Design 036 (AMF-NHF)
 GAR Precision 2536 (AMC-NHF)
 +SydGen 323 New Design 1363 #B/R New Design 323
 Matthews 323 Syd 63978 (AMF) +SAF Royal Queen 5084
 15751869 Matthews 3978 Queen of 616 #Rito 616 of 4B20 6807 (AMF-NHF)
 Matthews Marriot Queen 978

CW	+3
MARB	+49
RE	+31
FAT	+004

CED	BEPD	WEPD	YEPD	SC	MILK
+11	+5	+45	+83	N/A	+23
\$W	+27.97	\$F	+24.18	\$G	+32.71
				\$B	+44.69

Owned by Rolling Fields Cattle Company
 A heifer with lots of calving-ease potential. Birth weight 61 lbs., adj. weaning weight 543 lbs., ratio 100, adj. yearling weight 868 lbs., ratio 99, IMF 6.18%, ratio 101, and Ribeye: 11.6 sq. in., ratio 114.
 Pasture exposed to Birks New Design 163 from 12/5/09 to 3/1/10 then to Fox Run Gridiron 8317 after 3/1/10. Fox Run Gridiron 8317 was the 2010 Futurity Reserve Grand Champion Bull.



MYTTY IN FOCUS - Sire of Lot 51.

51 ROL BEAUTY 51 (AMF)

Birth Date: 8-29-2008 Cow 16171579 Tattoo: 51
 #SAF Focus of ER (AMF-NHF) #SAF Fame (AMF-NHF)
 Mytty In Focus (AMF-NHF) GDAR Forever Lady 246
 13880818 Mytty Countess 906 #Sitz Alliance 6595 (AMF-NHF)
 Baldridge Countess 357
 #Summitcrest High Prime 0H29 (AMF-NHF) #Gardens Prime Time (AMF-NHF)
 Elkhorn Beauty 4M23 (AMF) Summitcrest Missie 2F55
 14920098 Circle A Beauty 0014 Circle A 2000 Plus (AMF)
 MGSA Beauty 812

CW	+4
MARB	+54
RE	+0
FAT	+011

CED	BEPD	WEPD	YEPD	SC	MILK
+6	+1.8	+54	+92	I+.79	+24
\$W	+30.42	\$F	+29.60	\$G	+29.37
				\$B	+43.51

Owned by Rolling Fields Cattle Company
 A larger-framed female that we had consigned to the Missouri Angus Breeders' Futurity, but came up open. Bred AI to Connealy Forward on 2/15/10 and pasture exposed to Fox Run Gridiron 8317 after 3/1/10. Weaning ratio 117, yearling ratio 101, and ribeye ratio 101.

52 SHAF MISS TC JEWEL 293

Birth Date: 8-31-2008 Cow 16278752 Tattoo: 293
 #B/R New Design 036 (AMF-NHF) #VDAR New Trend 315 (AMF-NHF)
 Lemmon Newsline C804 (AMF-NHF) B/R Blackcap Empress 76
 #13632776 White Fence Pride H1 #Connealy Datinel
 #Pleasant Pill of Conanga
 #BR Midland (AMF-NHF) #Twin Valley Precision E161 (NKC-AMF-ROF)
 SHAF Miss TC Jewel 231 BR Royal Lass 7036-19
 15143374 SAF Miss TC Jewel #GAR Commitment (AMF)
 TC Jewel

CED	BEPD	WEPD	YEPD	SC	MILK
+7	+1.6	+40	+84	N/A	+21
\$W	+22.35	\$F	+27.06	\$G	N/A
				\$B	N/A

Owned by Shetley Angus Farm
 This heifer's sire is Lemmon Newsline C804. He provides balanced-performance cattle and adds extra muscle to his sons. Her dam is a BR Midland daughter who improves carcass quality and offers calving-ease. We will provide calving information at the time of the sale.



R/M IRONSTONE 4047 - Service Sire of Lot 53.

53 SCHUMER FANCY GEORGINA 601

Birth Date: 9-12-2008 Cow 16382727 Tattoo: 601
 #+GAR Grid Maker (AMF-NHF) #GDAR Traveler 044 (AMF-NHF)
 SAV Bismarck 5682 (AMF-NHF) GAR Precision 2536 (AMC-NHF)
 +15109865 SAV Abigale 0451 #Schoenes Fix It 826 (AMF-NHF)
 SAV Abigale 6062
 Boyd On Target 1083 (AMF-NHF) #+SAF 598 Bando 5175 (AMF)
 Schumer Fancy Georgina 555 +Boyd Forever Lady 7095
 15731959 Schumer Fancy Georgina 501 HSAF EXT 1029
 Schumer Fancy Georgina 466

CW	+4
MARB	+05
RE	+14
FAT	+006

CED	BEPD	WEPD	YEPD	SC	MILK
+8	+1.3	+46	+90	N/A	+20
\$W	+25.01	\$F	+30.70	\$G	+13.56
				\$B	+27.99

Owned by Schumer Angus
 A direct daughter of SAV Bismarck 5682 going back the oldest and best cow family in my herd. Bred AI to R/M Ironstone 4047, due to calve 10/9/10.

54 ROL HOPE 56 (AMF-NHF)

Birth Date: 9-16-2008 Cow 16171584 Tattoo: 56
 #Bon View New Design 1407 (AMF-NHF) #B/R New Design 036 (AMF-NHF)
 Birks New Design 163 (AMF-NHF) Bon View Pride 664
 +14646713 B&M Forever Lady 294 (AMF-NHF) #GAR Precision 1680 (AMC-NHF)
 +B&M Forever Lady 92
 #+SAF Connection (AMF-NHF) #+SVF Gdar 216 LTD
 ROL Hope P010 (AMF-NHF) +SAF Royal Queen 5084
 14782345 ESF Lady Emulous J313 (AMF) ESF Choice Plus J231
 ESF Lady Emulous J164

CW	+10
MARB	+44
RE	+18
FAT	+003

CED	BEPD	WEPD	YEPD	SC	MILK
+5	+2.3	+45	+86	N/A	+28
\$W	+25.18	\$F	+27.12	\$G	+28.58
				\$B	+47.38

Owned by Rolling Fields Cattle Company
 This is our favorite heifer in this group of bred heifers. She is a moderate-framed heifer with lots of depth. Birth weight 78 lbs., adj. weaning weight 622 lbs., ratio 114, adj. yearling weight 956, ratio 109, IMF 6.22%, ratio 104, and Ribeye 11.1 sq. in., ratio 110. Bred AI to MCC Daybreak on 11/11/09 for an 8/21/10 due date. Pasture exposed to Fox Run Gridiron 8317 after 3/1/10.

**2010 EAST CENTRAL MISSOURI ANGUS ASSOCIATION SALE
BRED HEIFERS**



MCC DAYBREAK - Service sire of Lots 55 and 57.

58 ROL ERICAMERE 61A [AMF-NHF] Tattoo: 61A

Birth Date: 10-8-2008 Cow 16171588

#Bon View New Design 1407 [AMF-NHF] #B/R New Design 036 [AMF-NHF]
 Birks New Design 163 [AMF-NHF] Bon View Pride 664
 +14646713 B&M Forever Lady 294 [AMF-NHF] #GAR Precision 1680 [AMC-NHC]
 +B&M Forever Lady 92

#SAF Connection [AMF-NHF] #SVF Gdar 216 LTD
 Elkhorn Ericamere 434 [AMF] +SAF Royal Queen 5084
 15026168 Bakers Ericamere 1143 #+GDAR SVF Traveler 234D [AMF-NHF]
 #Bakers Ericamere 8176

CW	+5
MARB	+46
RE	+02
FAT	-013

CED	BEPD	WEPD	YEPD	SC	MILK
+7	+2.4	+35	+78	I+.43	+25
\$W	+19.89	\$F	+23.09	\$G	+29.72
\$B		\$B		\$B	+43.36

Owned by Rolling Fields Cattle Company
 We are offering another Ericamere out of the same dam as in years past. Previous heifers out of this dam have gone on to produce keepers for their new owners. Birth weight 78 lbs., adj. weaning weight 449 lbs., ratio 83, adj. yearling weight 883 lbs., ratio 96, IMF 5.51%, ratio 94, and Ribeye 8.4 sq. in., ratio 86. Pasture exposed to Fox Run Gridiron 8317 after 3/1/10.

55 ROL LADY EMULOUS 57 [AMF-NHF] Tattoo: 57

Birth Date: 9-19-2008 Cow 16171585

#Bon View New Design 1407 [AMF-NHF] #B/R New Design 036 [AMF-NHF]
 Birks New Design 163 [AMF-NHF] Bon View Pride 664
 +14646713 B&M Forever Lady 294 [AMF-NHF] #GAR Precision 1680 [AMC-NHC]
 +B&M Forever Lady 92

ESF Choice Plus J231 #SAF Choice Plus [AMF-NHF]
 ESF Lady Emulous J313 [AMF] #ESF Lady Emulous J87
 14445523 ESF Lady Emulous J164 #RR 9440 Scotch Cap 1483 [AMF-NHF]
 ESF Lady Emulous J108

CW	+8
MARB	+31
RE	+13
FAT	+016

CED	BEPD	WEPD	YEPD	SC	MILK
+5	+2.2	+39	+78	I+.21	+26
\$W	+23.03	\$F	+21.60	\$G	+22.34
\$B		\$B		\$B	+38.27

Owned by Rolling Fields Cattle Company
 We have a mother, daughter, and granddaughter in our herd with this pedigree, all are deep-bodied females that raise thick calves. Birth weight 73 lbs., adj. weaning weight 592 lbs., ratio 109, adj. yearling weight 906 lbs., ratio 104, IMF 5.53%, ratio 93, and Ribeye 11.2 sq. in., ratio 111. Bred AI to MCC Daybreak on 11/11/09 for an 8/21/10 due date. Pasture exposed to Fox Run Gridiron 8317 after 3/1/10.

59 ROL FOREVERLADY 62 [AMF-NHF] Tattoo: 62

Birth Date: 10-29-2008 Cow 16171589

#Bon View New Design 1407 [AMF-NHF] #B/R New Design 036 [AMF-NHF]
 Birks New Design 163 [AMF-NHF] Bon View Pride 664
 +14646713 B&M Forever Lady 294 [AMF-NHF] #GAR Precision 1680 [AMC-NHC]
 +B&M Forever Lady 92

#WCC Special Design L309 [AMF-NHF] #Bon View New Design 878 [AMF-NHF]
 Birks Forever Lady 424 [AMF-NHF] N Bar Primrose 2424
 15080418 +Birks Forever Lady 100 #+GDAR SVF Traveler 234D [AMF-NHF]
 B&M Forever Lady 294 [AMF-NHF]

CW	+8
MARB	+53
RE	+0
FAT	-006

CED	BEPD	WEPD	YEPD	SC	MILK
+8	+2.5	+41	+87	N/A	+28
\$W	+21.49	\$F	+29.64	\$G	+30.30
\$B		\$B		\$B	+48.07

Owned by Rolling Fields Cattle Company
 This heifer does have some scarring from a bad case of pinkeye last summer. Birth weight 77 lbs., adj. weaning weight 482 lbs., ratio 89, IMF 7.00%, ratio 121, and Ribeye 7.6 sq. in., ratio 80. Bred AI to Connealy Forward on 12/5/09. Pasture exposed to Fox Run Gridiron 8317 after 3/1/10.

56 ROL ELUSTRA 59 [AMF-NHF] Tattoo: 59

Birth Date: 9-25-2008 Cow 16171587

#Bon View New Design 1407 [AMF-NHF] #B/R New Design 036 [AMF-NHF]
 Birks New Design 163 [AMF-NHF] Bon View Pride 664
 +14646713 B&M Forever Lady 294 [AMF-NHF] #GAR Precision 1680 [AMC-NHC]
 +B&M Forever Lady 92

Plattermere Database [AMF-NHF] #Connealy Dateline
 GAF Elustra 268 [AMF] #Plattermere Reva 109
 14618697 GAF Elustra 681 #GDAR Rainmaker 340
 GAF Elustra 819

CW	+4
MARB	+26
RE	+15
FAT	+013

CED	BEPD	WEPD	YEPD	SC	MILK
+7	+1.0	+30	+70	I+.23	+25
\$W	+20.78	\$F	+17.32	\$G	+21.78
\$B		\$B		\$B	+33.19

Owned by Rolling Fields Cattle Company
 The dam of this heifer was a long, deep-bodied female and it looks like this heifer will follow suit. Birth weight 78 lbs., adj. weaning weight 503 lbs., ratio 92, adj. yearling weight 844 lbs., ratio 96, IMF 4.57%, ratio 77, and Ribeye 9.5 sq. in., ratio 95. Pasture exposed to Fox Run Gridiron 8317 after 3/1/10.



CONNELLY FORWARD - Service sire of Lot 60.

57 TARTERS BESS IN FOCUS Tattoo: T75

Birth Date: 10-7-2008 Cow 16136650

#SAF Focus of ER [AMF-NHF] #SAF Fame [AMF-NHF]
 Mytty In Focus [AMF-NHF] GDAR Forever Lady 246
 13880818 Mytty Countess 906 #Sitz Alliance 6595 [AMF-NHF]
 Baldridge Countess 357

#SAF Strategy 9015 [AMF-NHF] #SAF Focus of ER [AMF-NHF]
 Tarters Strategy Bess T48 +SAF Royal Queen 5084
 15277298 Tarters Mc Bess T22 SSR Meat Case
 CCC Navigators Bess 142

CED	I+11
BEPD	I+.6
WEPD	I+50
YEPD	I+92
SC	N/A
MILK	I+19
\$W	+27.65
\$F	+31.15
\$G	N/A
\$B	N/A

Owned by Restful Acres
 Sired by Mytty In Focus. Ranks in the 3% of the breed for CED and top 10% for WW and YW. Bred AI to MCC Daybreak on 11/11/09 and pasture exposed to Birks New Design 163 after 12/5/09.

60 ROL ELVIRA 63 [AMF-NHF] Tattoo: 63

Birth Date: 10-31-2008 Cow 16266117

#GAR Precision 1680 [AMC-NHC] #Tehama Bando 155 [AMF-NHF]
 GAR Retail Product [AMF-NHF] 9J9 GAR 856 [NHF]
 #13395329 +GAR Ext 4927 #N Bar Emulation EXT [AMF-NHF]
 +Basin Ambush 2826 GAR Traveler 641

Rubles Lady 15A [NHC-AMF] #Rockn D Ambush 1531 [AMF-NHF]
 15474555 Basin Lady 2344 Basin Ruby 383E
 #CA Future Direction 5321 [AMC-NHC]
 Basin Lady 738M

CW	+13
MARB	+54
RE	+42
FAT	+013

CED	BEPD	WEPD	YEPD	SC	MILK
+5	+2.3	+43	+81	N/A	+24
\$W	+26.67	\$F	+23.00	\$G	+32.84
\$B		\$B		\$B	+53.41

Owned by Rolling Fields Cattle Company
 A smaller-framed Retail Product daughter with lots of carcass potential. Birth weight 72 lbs., adj. weaning weight 525 lbs., ratio 96, IMF 7.18%, ratio 125, and Ribeye 9.9 sq. in., ratio 105. Bred to Connealy Forward on 12/5/09. Pasture exposed to Fox Run Gridiron 8317 after 3/1/10.

2010 EAST CENTRAL MISSOURI ANGUS ASSOCIATION SALE
OPEN HEIFERS



QUAKER HILL OBJECTIVE 3J15 - Sire of Lot 61.

61 C LAZY A OBJECT GIRL

Birth Date: 10-16-2008 Cow 16314786 Tattoo: 69
 #SS Objective T510 OT26 (AMF-NHF) #SS Traveler 6807 T510 (AMF-NHF)
 Quaker Hill Objective 3J15 (AMF-NHF) SS Miss Rita R011 7R8 (AMF-NHF)
 14660859 #Quaker Hill Queen 1L4 (AMF-NHF) +BW/QHF Blackcap Lad
 Ankony Queen QHF R981
 #FAR Krugerrand 410H (AMF-NHF) #Krugerrand of Donamere 490 (AMF-NHF)
 C Lazy A Money Girl Z4 #FAR Erianna 286F
 14976927 Lady of C Lazy A95 Lady of Grayling 2745 (RF)

CED	BEPD	WEPD	YEPD	SC	MILK
+10	+2	+56	+100	N/A	+21
\$W	+30.32	\$F	+36.91	\$G	N/A

Owned by C Lazy A Angus
 We reached deep into our replacements to bring this moderate-framed heifer. Her 3J15 X 410H pedigree produces curve-bending EPDs from a low 15% for Birth to 10% for WW and YW without sacrificing milk. Put a check mark beside this one.

62 BAKER'S WITCH 8193

Birth Date: 11-3-2008 Cow 16185213 Tattoo: 8193
 #B/R Destination 727-928 (AMF-NHF) #B/R Destination 727 (AMF-NHF)
 Baker's Destination 6156 (AMF) B/R Blackcap Empress 558 (AMF)
 15759241 Baker's Miss Lassie 3100 (AMF) #Bon View New Design 878 (AMF-NHF)
 Bakers Miss Lassie 0192
 #Bon View New Design 878 (AMF-NHF) #B/R New Design 036 (AMF-NHF)
 Bakers Witch 3049 Bon View Gammer 85
 14566650 Bakers Witch 4095 #GT Maximum (AMF-NHF)
 Bakers Witch 182

CW
I+24
MARB
I+.39
RE
I+.26
FAT
I+.019

CED	BEPD	WEPD	YEPD	SC	MILK
I+9	+1.0	+49	+85	I+.09	+25
\$W	+29.77	\$F	+24.62	\$G	+23.24

Owned by Kamphoefner Angus
 This heifer was purchased with her dam from Jack Baker Angus, one of Missouri's top Angus breeders. Has excellent EPDs across the board. Has been developed on a high roughage diet, no grain. Has been given all vaccinations, including two rounds of leptos.

63 MC D DESTINATION BLKBIRD 488

Birth Date: 11-16-2008 Cow 16312742 Tattoo: M488
 #B/R Destination 727-928 (AMF-NHF) #B/R Destination 727 (AMF-NHF)
 Baker's Destination 5084 B/R Blackcap Empress 558 (AMF)
 15087349 Bakers Ericamere 9194 #Basin Max 602C (AMF-NHF)
 Bakers Ericamere 249
 Bakers Design 8079 #B/R New Design 036 (AMF-NHF)
 Mc D Designer Blackbird 205 Bakers Blackbird 5125
 15036986 Mc D Blackbird Design 158 Bakers Design 8079
 Mc D Playfull Maxine 79

CED	BEPD	WEPD	YEPD	SC	MILK
I+2	I+4.7	I+46	I+81	N/A	I+24
\$W	+21.57	\$F	+21.88	\$G	N/A

Owned by McDowell Angus Farm
 Posted an adj. weaning weight of 519 and an adj. yearling weight of 1,070. She combines the known tenderness genes of B/R Destination 727-928 and the high carcass traits of 036. Sells calfhood vaccinated. Sells open.

64 AMS BLACKCAP 1349

Birth Date: 11-24-2008 Cow 16468596 Tattoo: 1349
 #Papa Forte 1921 Papa Optima 9818
 Woodhill Foresight (AMF-NHF) Papa Envious Blackbird 8832
 #+13936986 Bon View Gammer 85 #Bon View Bando 598 (AMF)
 Bon View Gammer 233
 #B/R New Dimension 7127 #B/R New Design 036 (AMF-NHF)
 AMS Blackcap of 7127 171 B/R Ruby of Tiffany 4117
 14481841 DAF Miss Scotch 177 #Scotch Cap (AMF-NHF)
 DAF Blackcap Emma 610

CED	BEPD	WEPD	YEPD	SC	MILK
I+1	I+4.4	I+47	I+86	N/A	I+23
\$W	+21.23	\$F	+26.36	\$G	N/A

Owned by Snelson Angus Farm
 Blackcap 1349 is a stout and feminine daughter of the highly maternal sire, Woodhill Foresight. She posts ratios for birth at 101, weaning at 107, and yearling at 108. Sells open.

65 MC D TRAVELER BLACKBIRD 528

Birth Date: 12-5-2008 Cow 16312743 Tattoo: M528
 +Birks 234D Traveler 90 #+GDAR SVF Traveler 234D (AMF-NHF)
 Mc D Traveler Trend 454 B&M Forever Lady 294 (AMF-NHF)
 15036971 Mc D New Trend Playmate 712 Byergo New Trend 59
 Mc D Sasquatch Playmate 21-2
 Bakers Design 8079 #B/R New Design 036 (AMF-NHF)
 Mc D Blackbird Design 158 Bakers Blackbird 5125
 13927776 Mc D Playfull Maxine 79 Bakers Max 22
 Mc D Playfull New TREND27-10

CED	BEPD	WEPD	YEPD	SC	MILK
I+3	I+2.6	I+37	I+65	N/A	I+19
\$W	+23.31	\$F	+10.20	\$G	N/A

Owned by McDowell Angus Farm
 Posted an adj. weaning weight of 545 and an adj. yearling weight of 935. She combines the strong ribeye traits of 234D and the high carcass traits of 036. Sells calfhood vaccinated. Sells open.

66 MC D DESTINY PLAYMATE 538

Birth Date: 12-14-2008 Cow 16312744 Tattoo: M538
 #B/R Destination 727-928 (AMF-NHF) #B/R Destination 727 (AMF-NHF)
 Baker's Destination 5084 B/R Blackcap Empress 558 (AMF)
 15087349 Bakers Ericamere 9194 #Basin Max 602C (AMF-NHF)
 Bakers Ericamere 249
 Bakers Design 8079 #B/R New Design 036 (AMF-NHF)
 Designer Playmate 583 Bakers Blackbird 5125
 14903447 Mc D New Trend Playmate 712 Byergo New Trend 59
 Mc D Sasquatch Playmate 21-2

CED	BEPD	WEPD	YEPD	SC	MILK
I+1	+3.8	+48	+84	N/A	+24
\$W	+24.09	\$F	+24.03	\$G	N/A

Owned by McDowell Angus Farm
 Posted an adj. weaning weight of 595 and an adj. yearling weight of 1,075. She combines the known tenderness genes of B/R Destination 727-928 and the high carcass traits of 036. Sells calfhood vaccinated. Sells open.

67 HINSONGEORGINA 504

Birth Date: 1-31-2009 Cow 16382179 Tattoo: 504
 Schurrtop MC Schurrtop MC 2500 (AMF)
 OSU Mc 2500 7133 Schurrtop RS 1413 2153
 +15758447 +OSU Empress 3116 Exar Sudden Impact 1537 (AMF-NHF)
 +OSU Empress 1111
 #Connealy Dateline #DHD Traveler 6807 (AMF-NHF)
 WK Georgina 5216 #Eila Eila of Conanga (AMF)
 12442547 Georgina WK 8032 #Shamrock HK
 Georgina HK K162

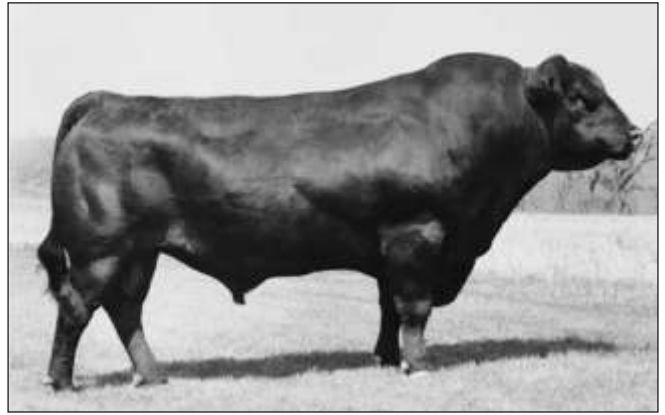
CED	BEPD	WEPD	YEPD	SC	MILK
-3	+5.8	+36	+77	N/A	+18
\$W	+11.56	\$F	+21.76	\$G	N/A

Owned by Brandon Plank
 A very nice show prospect, already halter broke, and ready for the ring.

2010 EAST CENTRAL MISSOURI ANGUS ASSOCIATION SALE
OPEN HEIFERS



SYDGEN BOLERO 5072 - Sire of Lots 74 and 78.



CONNELY LEAD ON - Sire of Lot 77.

74 SHAWNEE WINDS CARAWAY 9P20

Birth Date: 3-29-2009 Cow 16315140 Tattoo: 9P20
 #KCF Bennett Coalition SCC (AMF-NHF) #Sitz Alliance 6595 (AMF-NHF)
 SydGen Bolero 5072 (AMF-NHF) #Pleasant Pill of Conanga
 14980845 SAF Millcreek Blossom #White Oak Precise 6002 (AMC-NHC)
 #Millcreek SUF Blossom
 #Perry Power Design 715 (AMF-NHF) #B/R New Design 036 (AMF-NHF)
 SW Evergreen Desiree 2P59 #EP Maximum Lady 221
 14205724 +FA Evergreen 813 #+VDAR Traveler 722 (AMF-NHF)
 #GT Valletta 91

CW
I+4
MARB
I+.41
RE
I-.02
FAT
I+.016

CED	BEPD	WEPD	YEPD	SC	MILK
+8	+4	+41	+81	I+.25	+21
\$W	+25.13	\$F	+23.75	\$G	+24.63
				\$B	+37.39

Owned by Shawnee Wind Angus Farm
 Birth weight 76 lbs., ratio 104 and weaning weight 571 lbs., ratio 99. We will have yearling and ultrasound data by sale day. Sells open. Calfhood vaccinated.

77 SIEDHOFF GEORGIA ALEXIS 902

Birth Date: 5-27-2009 Cow 16557249 Tattoo: 902
 #Connealy Leadtime (AMF-NHF) #Connealy Dateline
 Connealy Lead On (AMF-NHF) #Ruths Rona of Conanga
 #13447282 Eligence Plus of Conanga #TC Dividend 963 (AMF-NHF-ROF)
 Eura Cap of Conanga
 #+VDAR Ambush 1465 SAF (AMF) #Paramont Ambush 2172 (AMF-NHF)
 RCC Missy 041 +VDAR Hyalite 830
 14011941 S&R Miss Traveler 602 #DHD Traveler 6807 (AMF-NHF)
 Inniway MS Power Fix

CW
I+.5
MARB
I+.29
RE
I+.11
FAT
I-.045

CED	BEPD	WEPD	YEPD	SC	MILK
I-1	I+4.2	I+46	I+89	N/A	I+25
\$W	+20.16	\$F	+29.70	\$G	+27.73
				\$B	+42.91

Owned by Siedhoff Angus
 A 5/27/09 heifer calf sired by Connealy Lead On. With proven maternal and beef value, Lead On ranks among the top 20 bulls in the breed for \$W and is one of only 7 bulls that exceeds +40.00 for both \$W and \$B. He is one of an elite group of "Time-Tested" curve-benders that combines a +2.5 to +100 spread with at least .90 accuracy. A maternal sister sold in the 2009 spring sale for \$1,300.

75 AMS EFFIE P209

Birth Date: 5-11-2009 Cow 16549342 Tattoo: P209
 #B/R New Design 036 (AMF-NHF) #VDAR New Trend 315 (AMF-NHF)
 GAR Predestined (AMF-NHF) B/R Blackcap Empress 76
 #13395344 #+GAR Ext 4206 #N Bar Emulation EXT (AMF-NHF)
 +GAR 6807 Traveler 1432
 #+B/R New Frontier 095 (AMF-NHF) #B/R New Design 036 (AMF-NHF)
 Clearwater Effie J 1914 White Fence Pride H1
 15024209 Clearwater Effie J 1649 #Hero 6267 of RR 2418
 Clearwater Effie J33

CW
I+.18
MARB
I+.74
RE
I+.36
FAT
I+.013

CED	BEPD	WEPD	YEPD	SC	MILK
I+5	I+4.0	I+50	I+90	N/A	I+23
\$W	+23.11	\$F	+29.16	\$G	+35.99
				\$B	+61.38

Owned by Snelson Angus Farm
 Effie P209 will make an excellent brood cow for her new owners. P209's Marbling EPD of I+.74, ranks in the top 1% of the breed, ranks in the top 5% for \$B and \$G, and the 10% for WW, YW, and Ribeye. Her dam, Clearwater Effie J 1914, was the Grand Champion Female at the 2006 Missouri Angus Futurity. Don't miss this one.

78 GSK MISS WITCH K609

Birth Date: 5-30-2009 Cow 16546101 Tattoo: K609
 #KCF Bennett Coalition SCC (AMF-NHF) #Sitz Alliance 6595 (AMF-NHF)
 SydGen Bolero 5072 (AMF-NHF) #Pleasant Pill of Conanga
 14980845 SAF Millcreek Blossom #White Oak Precise 6002 (AMC-NHC)
 #Millcreek SUF Blossom
 #Connealy Lead On (AMF-NHF) #Connealy Leadtime (AMF-NHF)
 GSK Rachel K605 of Leadon Eligence Plus of Conanga
 15131208 GSK Miss Witch K603 SAF Focus 0050
 Bakers Witch 4120

CW
I+.3
MARB
I+.40
RE
I+.07
FAT
I-.011

CED	BEPD	WEPD	YEPD	SC	MILK
I+7	I+1.0	I+47	I+89	N/A	I+26
\$W	+27.39	\$F	+29.32	\$G	+28.51
				\$B	+41.68

Owned by Koenigsfeld Angus
 Attention juniors. K609 is an attractive May heifer that should do really well at the local county fairs and then will make an even better cow. She descends from SydGen Bolero, who is one of the main herd sires at the Shawnee Winds Angus Farm. K609 has a great birth to yearling EPD spread. She had an actual weaning weight of 715. Sells open.

76 KA BLACK MISSIE 711-900 (NHF)

Birth Date: 5-25-2009 Cow 16565681 Tattoo: 900
 +Woodhill VHF Matson #Bon View New Design 878 (AMF-NHF)
 Schoenes Main Stream 516 Woodhill Evergreen 120-823
 15180059 Schoenes Black Mist Schoenes Traveler 020
 Black Missie 961
 +Woodhill Precision 245K-261P (NH) #Twin Valley Precision E161 (NH) (AMF-NHF)
 Schoenes Precision 711 (NH) +Woodhill Lass 344-245K
 15835555 Schoenes Black Missie 21 GAR Bando 1521
 Black Missie 2521

CED	BEPD	WEPD	YEPD	SC	MILK
I+5	I+2.1	I+37	I+69	N/A	I+21
\$W	+23.67	\$F	+13.86	\$G	N/A
				\$B	N/A

Owned by Kamphoefner Angus
 A deep-bodied show heifer prospect with a good disposition. Developed on a low starch diet, no creep. Two rounds of vaccinations, including leptos.

79 AMS LUCY P108

Birth Date: 6-2-2009 Cow 16544305 Tattoo: P108
 #SAF Focus of ER (AMF-NHF) #SAF Fame (AMF-NHF)
 Mytty In Focus (AMF-NHF-ROF) GDAR Forever Lady 246
 13880818 Mytty Countess 906 #Sitz Alliance 6595 (AMF-NHF)
 Baldridge Countess 357
 #Bon View New Design 1407 (AMF-NHF) #B/R New Design 036 (AMF-NHF)
 Creswell Lucy S607 Bon View Pride 664
 +15382972 +Thomas Lucy 3729 (AMF-NHF) #Twin Valley Precision E161 (NH) (AMF-NHF)
 +Thomas Lucy 9638 (AMF)

CW
I+.8
MARB
I+.62
RE
I+.21
FAT
I+.026

CED	BEPD	WEPD	YEPD	SC	MILK
I+9	I+1.0	I+47	I+90	N/A	I+27
\$W	+27.59	\$F	+30.32	\$G	+31.83
				\$B	+49.78

Owned by Snelson Angus Farm
 Talk about a show heifer prospect, this heifer will compete at any show. Being from the Thomas Lucy cow family, she will go on to be an excellent brood cow and a potential donor. P108 is stacked with pedigree, having three generations of breed giants, In Focus, 1407 and Precision E161. Make sure to check her out sale day.

2010 EAST CENTRAL MISSOURI ANGUS ASSOCIATION SALE
OPEN HEIFERS

80 SHAF MISS TC JEWEL 300

Birth Date: 6-30-2009 Cow 16382113 Tattoo: 300
 #SA Neutron 377 (AMF-NHF) #+SAF Neutron (AMF-NHF)
 SHAF Neutron 249 #SA Queen Susan 102
 15617766 SAF Ericas Miss Hi Road SAF Hi Road 7090
 LAR Erica 4002
 #BR Midland (AMF-NHF) #Twin Valley Precision E161 (NHC-AMF-RDF)
 SHAF Miss TC Jewel 231 BR Royal Lass 7036-19
 15143374 SAF Miss TC Jewel #GAR Commitment (AMF)
 TC Jewel

CEB	BEPD	WEPD	YEPD	SC	MILK
I+7	I+2.3	I+45	I+85	N/A	I+13
\$W	+21.78	\$F	+26.13	\$G	N/A
				\$B	N/A

Owned by Shetley Angus Farm
 This heifer's sire was our herd sire. He is a son of SA Neutron 377, who adds increased frame and muscle. Her dam is a BR Midland daughter. BR Midland is known for his carcass traits and low birth weights. Sells open.



SA NEUTRON 377 – Grandsire of Lot 80.

ATTENTION JUNIORS

The East Central Missouri Angus Association wants to help young people acquire high quality Angus females to start their breeding programs. To accomplish this, we offer the:

JUNIOR JACKPOT PROGRAM

The East Central Missouri Angus Association recently revised its Junior Jackpot Program. Purchased females to be shown during the 2010 show season will be eligible for prize money in the following shows:

- | | |
|-----------------------------|---------------------|
| Any County or District Fair | Missouri State Fair |
| National Junior Heifer Show | Ozark Empire Fair |
| Missouri Preview Show | American Royal |

To be eligible, the heifer must meet the following criteria:

- She must have been purchased during the Fall 2009 Sale or the Spring 2010 Sale.
- The heifer can be any open or bred heifer or calf selling with her dam.

Prize money will be awarded for any one show. For example, if your heifer wins her class, you receive \$50. If she is Reserve Grand Champion, you receive another \$50, or if she is the Grand Champion, you receive \$100. Your heifer could win a total of \$150. Prize money is offered for the show season following purchase of the heifer.

NOTES:

2010 EAST CENTRAL MISSOURI ANGUS ASSOCIATION SALE
CONSIGNORS

Almost in the Black Angus	
Barry and Ellen Reynolds..... 14235 Hwy. 32..... Licking, MO 65542..... (573) 674-3526..... barry_reynolds@hotmail.com	45
Beatty Cattle Company	
Bruce Beatty..... 30728 Bowman Station Rd. Jerseyville, IL 62052..... (618) 535-1172..... beatty@gtec.com.....	12, 68
Brandan Plank	
..... 34 Whispering Woods Rd. Cuba, MO 65453..... (573) 885-6743..... mplank@centurytel.net.....	67
C Lazy A Angus	
Allen Bliss..... 11550 Huggins Rd..... Huggins, MO 65484..... (417) 967-2148..... clazya@earthlink.net.....	5, 6, 61
Dozier Angus Farm	
Craig Dozier..... 1391 Hwy. CC..... Bland, MO 65014..... (573) 646-3529.....	38, 40
Dry Fork Angus	
Dale Edwards..... 1204 Beamer Ln..... Cuba, MO 65453..... (573) 263-3253..... sedwards@centurytel.net.....	1, 26
Greiman Acres Angus	
Heath & Tiffany Greiman..... 400 Stoddard St..... Monroe City, MO 63456..... (573) 231-2695..... heathgreiman@yahoo.com.....	39, 44
Gutermuth Angus Farm	
Ken and Tim Gutermuth..... 5250 Washeon Rd. St. Charles, MO 63301..... (314) 393-2885..... gute05@tds.net.....	37
Hinson Angus Farm	
Roger Hinson..... 803 Shoemaker..... Owensville, MO 65066..... (573) 437-2657.....	69, 70, 72
Jordan Angus Farm	
Robert Jordan..... 3285 E. Highway 32..... Salem, MO 65560..... (573) 729-7552..... rmlsj@yahoo.com	A, 46, 47, 48, 49
Kamphoefner Angus	
Paul & Joe Kamphoefner..... 339 S. Hwy. 94..... Defiance, MO 63341..... (314) 520-7847..... paulkamphoefner@yahoo.com.....	34, 43, 62, 76
Koenigsfeld Angus	
George Koenigsfeld..... 404 County Road 431..... Bonnots Mill, MO 65016..... George: (573) 763-5707, Pete: (573) 897-3491.....	23, 24, 78
McBride Angus Farm	
Bobby Dale McBride..... 9292 Audrain Road 140..... Centralia, MO 65240..... (573) 682-7175.....	8, 13, 25, 27, 28, 36, 36B
McDowell Angus Farms	
William S. McDowell, DVM..... 514 N. Main..... Vandalia, MO 63382..... (573) 594-3660..... williamcd1933@windstream.net.....	63, 65, 66
Restful Acres	
Mike & Pattie Pleimann..... 11757 Flatwoods Rd. Caledonia, MO 63631..... (314) 574-3764..... mpleimann@crmechanical.com.....	9, 20, 57
Rolling Fields Cattle Company	
Bob and Sharon Daugherty..... 13550 State Hwy P..... Potosi, MO 63664..... (573) 436-2110..... rollingcattle@yahoo.com.....	50, 51, 54, 55, 56, 58, 59, 60
Royal Flush Angus Farm	
John Schneider..... 61052 Union Ford Rd..... California, MO 65018..... (573) 680-1841.....	2, 17, 71
Schaefer Beef Farm	
Robert Schaefer Jr..... 37 Springwood Dr..... St. Peters, MO 63376..... (636) 447-2526.....	14, 15, 18, 19
Schoene Angus Farm	
Don W. Schoene..... 35031 Hwy. 63N..... Vienna, MO 65582..... (573) 744-5315.....	31, 32, 35, 41
Schumer Angus	
John Schumer..... 3882 Hwy. M..... St. Mary, MO 63673..... (573) 547-2091.....	16, 53
Shawnee Winds Angus	
Don Schaefer & Pam Walther..... 8500 Wildlife Dr. Jefferson City, MO 65101..... (573) 619-6141..... shawneewindsangus@embarqmail.com....	7, 74
Shetley Angus Farm	
Blaine and Julie Shetley..... 846 Bluebird Meadows Ln. Sullivan, MO 63080..... (573) 457-8319..... shetley@fidnet.com.....	3, 4, 52, 73, 80
Siedhoff Angus	
Alan Siedhoff..... 185 Woodlawn Dr. New Haven, MO 63068..... (636) 288-2798..... siedhoff@fidnet.com.....	77
Snelson Angus Farm	
Alvin and Matt Snelson..... 11550 Co. Rd. 3575..... Cook Station, MO 65449..... (573) 265-3525.....	21, 22, 29, 33, 42, 64, 75, 79
Taylor Angus Farm	
Bernard & Carla Taylor..... 7502 Lonestar Dr. Houston, MO 65483..... (417) 217-1100..... btaylor@centurytel.net.....	30
Triple L Ranch	
Jerry Lattimore Jr..... 2821 Essman Dunn Rd. Bourbon, MO 65441..... (573) 627-2311..... lattimorematt@yahoo.com.....	11

DONATION LOT

Selling Saturday at the auction



SCHOANES FIX IT 826 - Grandsire of Lot A.

A

JORDANS ENCHANTRESS 5308

Birth Date: 10-10-2008 Cow 16329570 Tattoo: 61J8
 #Schoenes Fix It 826 (AMF-NHF) #AAR New Trend
 Schoenes Mission 218 Sky High Blackbird 4119
 14389810 Schoenes High Fashion 859 #+Whitestone Fly Traveler 3006 (AMF-NHF)
 Schoenes High Fashion 813
 #+B/R New Frontier 095 (AMF-NHF) #B/R New Design 036 (AMF-NHF)
 Pieper Enchantress 303 White Fence Pride H1
 14610238 J&D Enchantress 7111 704 G #GDAR Traveler 7111
 +DAR Enchantress 357

CED	BEPD	WEPD	YEPD	SC	MILK
+4	+2.6	+53	+97	1+1.01	+22
\$W	+25.21	\$F	+35.03	\$G	N/A
				\$B	N/A

Owned by Jordan Angus Farm

Jordans Enchantress 5308 is a heifer we are donating to the East Central Missouri Angus Association's junior program. All proceeds will go to that program to fund activities for juniors. She is a very nice daughter of Schoenes Mission 218 out of an extremely productive daughter of B/R New Frontier 095 we purchased from Doug Pieper in this sale. Look at her own numbers and note that she is +2.6 for Birth, +53 for Weaning, +97 for Yearling Weight and +22 for Milk. This heifer will produce. Her dam has produced 4 calves with weaning ratios averaging 112 with 3 yearling ratios of 105. The heifer is open and ready to breed. If you are looking for an investment that will make you money for a long time, check this heifer out. And remember, this purchase will benefit all the juniors.

2010 JUNIOR BENEFIT AUCTION

Semen Auction will be held at our Annual Meeting and Banquet, Friday, April 16 at Matt's Steakhouse in Rolla.

All proceeds go towards East Central Missouri Angus Associations Junior Programs.

ABS Representative, John Ridder

Two 5 Straw packages of your choice of 29 code bulls. Excluding: Objective, Ironstone, Extra H6, Highmark, and Sandy.

ABS Representative, Shea Gentszsch

5 Straws of R/M Ironstone 4047
 5 Straws of Garrets Nationwide 8001

Accelerated Genetics Representative, Larry Thompson

2 \$100 certificates towards the purchase of any 014 code bull

Circle A Angus Ranch

10 Straws of Circle A Endurance 6679

Fox Run Farms

10 Straws of 44 Stimulus 8523

Genex Representative, Dale Edwards

5 Straws of S A V Bismarck 5682
 5 Straws of S A V 8180 Traveler 004

Gutermuth Angus Farm

3 Straws of Summitcrest High Prime 0H29

McBride Angus Farm

10 Straws of Birks Net Worth 307

Select Sires Representative, Cliff Stricker

5 Straws GAR Predestined
 5 Straws ALC Big Eye D09N
 A certificate will be given that will be redeemable with your local Select Sires Rep.

Shawnee Winds Angus

5 Straws of K C F Bennett Coalition SCC
 5 Straws of SydGen OJ98 Pfred 5244
 4 Straws of Three Trees Prime Cut 0145

Shetley Angus Farm

5 Straws of BR Midland

Snelson Angus Farm

5 Straws of TC Foreman 016

Sydenstricker Genetics

5 Straws of SydGen Turbo 6684
 5 Straws of Sydgen Mandate 6079

For more information contact:

Tim Gutermuth (314) 393-2885 • Don Schaefer (573) 619-6141

Thank You for your support

Bring your tanks, some of the semen will be available on sale day.

American Angus Association Selection Tools

Expected Progeny Difference (EPD), is the prediction of how future progeny of each animal are expected to perform relative to the progeny of other animals listed in the database. EPDs are expressed in units of measure for the trait, plus or minus. Interim EPDs may appear on young animals when their performance has yet to be incorporated into the American Angus Association National Cattle Evaluation (NCE) procedures. This EPD will be preceded by an "I", and may or may not include the animal's own performance record for a particular trait, depending on its availability, appropriate contemporary grouping, or data edits needed for NCE.

Accuracy (ACC), is the reliability that can be placed on the EPD. An accuracy of close to 1.0 indicates higher reliability. Accuracy is impacted by the number of progeny and ancestral records included in the analysis.

PRODUCTION

Calving Ease Direct (CED), is expressed as a difference in percentage of unassisted births, with a higher value indicating greater calving ease in first-calf heifers. It predicts the average difference in ease with which a sire's calves will be born when he is bred to first-calf heifers.

Birth Weight EPD (BW), expressed in pounds, is a predictor of a sire's ability to transmit birth weight to his progeny compared to that of other sires.

Weaning Weight EPD (WW), expressed in pounds, is a predictor of a sire's ability to transmit weaning growth to his progeny compared to that of other sires.

Yearling Weight EPD (YW), expressed in pounds, is a predictor of a sire's ability to transmit yearling growth to his progeny compared to that of other sires.

Yearling Height EPD (YH), is a predictor of a sire's ability to transmit yearling height, expressed in inches, compared to the that of other sires.

Scrotal Circumference EPD (SC), expressed in centimeters, is a predictor of the difference in transmitting ability for scrotal size compared to that of other sires.

CARCASS

Carcass Weight EPD (CW), expressed in pounds, is a predictor of the differences in hot carcass weight of a sire's progeny compared to progeny of other sires.

Marbling EPD (Marb), expressed as a fraction of the difference in USDA marbling score of a sire's progeny compared to progeny of other sires.

Ribeye Area EPD (RE), expressed in square inches, is a predictor of the difference in ribeye area of a sire's progeny compared to progeny of other sires.

Fat Thickness EPD (Fat), expressed in inches, is a predictor of the differences in external fat thickness at the 12th rib (as measured between the 12th and 13th ribs) of a sire's progeny compared to progeny of other sires.

MATERNAL

Calving Ease Maternal (CEM), is expressed as a difference in percentage of unassisted births with a higher value indicating greater calving ease in first-calf daughters. It predicts the average ease with which a sire's daughters will calve as first-calf heifers when compared to daughters of other sires.

Maternal Milk EPD (Milk), is a predictor of a sire's genetic merit for milk and mothering ability as expressed in his daughters compared to daughters of other sires. In other words, it is that part of a calf's weaning weight attributed to milk and mothering ability.

Mature Weight EPD (MW), expressed in pounds, is a predictor of the difference in mature weight of daughters of a sire compared to the daughters of other sires.

Mature Height EPD (MH), expressed in inches, is a predictor of the difference in mature height of a sire's daughters compared to daughters of other sires.

Cow Energy Value (\$EN), expressed in dollars savings per cow per year, assesses differences in cow energy requirements as an expected dollar savings difference in daughters of sires. A larger value is more favorable when comparing two animals (more dollars saved on feed energy expenses). Components for computing the cow \$EN savings difference include lactation energy requirements and energy costs associated with differences in mature cow size.

\$VALUE INDEXES

\$Value indexes are multi-trait selection indexes, expressed in dollars per head, to assist beef producers by adding simplicity to genetic selection decisions. The \$Value is an estimate of how future progeny of each sire are expected to perform, on average, compared to progeny of other sires in the database if the sires were randomly mated to cows and if calves were exposed to the same environment.

Weaned Calf Value (\$W), an index value expressed in dollars per head, is the expected average difference in future progeny performance for preweaning merit. \$W includes both revenue and cost adjustments associated with differences in birth weight, weaning direct growth, maternal milk, and mature cow size.

Feedlot Value (\$F), an index value expressed in dollars per head, is the expected average difference in future progeny performance for postweaning merit compared to progeny of other sires.

Grid Value (\$G), an index value expressed in dollars per head, is the expected average difference in future progeny performance for carcass grid merit compared to progeny of other sires.

Quality Grade (\$QG) represents the quality grade segment of the economic advantage found in \$G. \$QG is intended for the specialized user wanting to place more emphasis on improving quality grade. The carcass marbling (Marb) EPD contributes to \$QG.

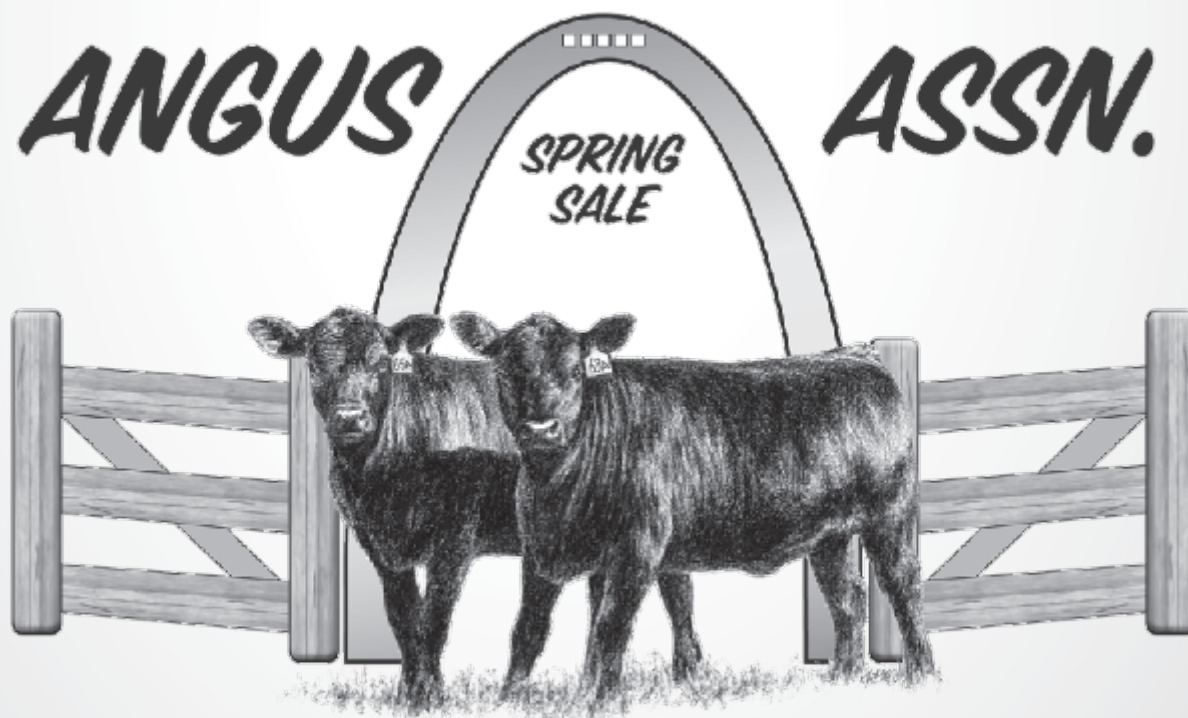
Yield Grade (\$YG) represents the yield grade segment of the economic advantage found in \$G. \$YG is intended for the specialized user wanting to place more emphasis on red meat yield. It provides a multi-trait approach to encompass ribeye, fat thickness and weight into an economic value for red meat yield.

Beef Value (\$B), an index value expressed in dollars per head, is the expected average difference in future progeny performance for postweaning and carcass value compared to progeny of other sires.

Tim Gutermuth
5250 Washeon Rd.
St. Charles, MO 63301

PRSR FIRST CLASS
MAIL
U.S. POSTAGE
PAID
Springfield, MO
Permit #176

***EAST CENTRAL MO
ANGUS ASSN.***



"Your Gateway to Angus Excellence"
SATURDAY • APRIL 17, 2010 • NOON