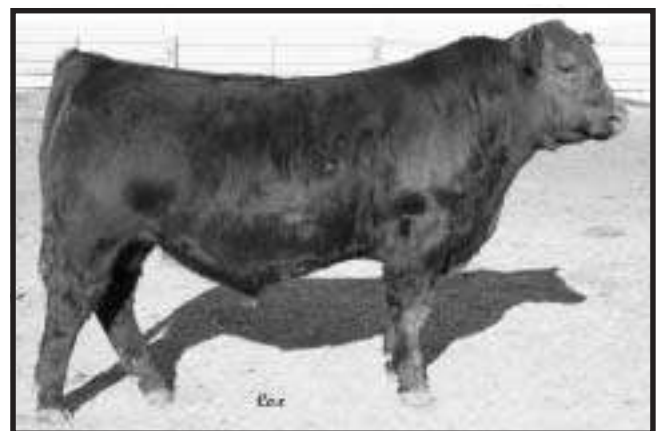


Doug Booth Family Angus Annual Bull Sale

100 YEARLING ANGUS SELL
TUESDAY, FEBRUARY 16, 2010
NEW LOCATION! AT THE RANCH
TORRINGTON, WYOMING



“THE KIND THAT BUILD A COWMAN’S REPUTATION”



NATIONAL WESTERN STOCK SHOW 2010



Doug Booth Family Angus Annual Bull Sale

**TUESDAY, FEBRUARY 16, 2010
1:00 PM**

NEW LOCATION: AT THE RANCH

TORRINGTON, WYOMING

(located 5 miles west of Torrington on Hwy 26. Turn north at Rock Shop,
go 4 1/2 miles until T in road. Turn right (east), go 1/2 mile, first place on north.)

Selling 100 Yearling Angus

RECOMMENDED CALVING EASE CHART

- ***** Bull is recommended **Highly** for use on heifers to sire light birth weight calves.
 - **** Bull is designated to work on heifers that are larger framed with more management.
 - *** Bull is recommended **Highly** for use on all cows.
-

Auctioneer: Lex Madden

Sale Day Phones: 307-532-6207 • 307-532-0494 • 307-575-3876

MOTELS:

Best Value Inn ~ 307-532-7118

Holiday Inn Express ~ 307-532-7600

~ FIELD REPRESENTATIVES ~

Jim Gies, Western Livestock Journal ~ 970-454-3836

Curt Cox, Wyoming Livestock Roundup ~ 307-630-4604

Randy Rasby, Livestock Plus ~ 308-539-6195

Andy Rest, American Angus Association ~ 406-254-7576

Allan Sears, Western Ag Reporter ~ 970-396-7521

Doug & Carolyn Booth
7618 Road 41
Torrington, WY 82240
307-532-5830
www.boothfamilyangus.com

Dudley & Jennifer Booth
4156 Rd. 82
Torrington, WY 82240
Home ~ 307-532-7179
Cell ~ 307-532-6207
e-mail: dbooth@scottsbuff.net

~ GENERAL INFORMATION ~

Identification of Bulls: Ear tags on bulls will correspond to the Lot Number in this sale book.

Health: Bulls will be accompanied by proper health papers for interstate shipment.

All bulls were vaccinated at branding with Ultrabac 7 (7 Way), Bovishield Gold 5 (IBR-BVD-PI3-BRSV), and One Shot (Pasteurella). Booster vaccinations two weeks prior to weaning were the same as the above except Haemophilus sominus was included. Poured with Dectomax in fall. A Haemophilus booster was given mid-November. They were also given 2 rounds of foot-rot vaccine.

Supplement Sheet: A supplement sheet will be available sale day with all updated performance information. This sheet and all announcements from the block will take precedence over information in the catalog.

Wintering: Booths will winter bulls free until around April 1, 2010, but at buyer's risk. Buyer is encouraged to insure their bulls. Buyer is responsible for delivery costs on wintered bulls.

Delivery: Free delivery on all bulls up to 250 miles. Delivery beyond 250 miles at cost. If you haul your purchases sale day we will deduct \$50 per bull per buyer.

Terms & Conditions: All cattle are to be settled for sale day unless prior arrangements have been made. The cattle sell under the standard terms and conditions as recommended by the American Angus Association.

Sight Unseen Purchase Guarantee: If you are unable to attend the sale you may call or send bids to any of the representatives, auctioneer or owners. *We guarantee that you will like the bulls or you don't own them.*

Announcements: Announcements made from the auction block on sale day take precedence over printed material in this catalog.

Retaining Interest: We are retaining a 1/3 semen interest or revenue interest on all bulls selling, unless announced differently from the auction block.

Breeding Guarantee: All bulls in this sale are guaranteed to be breeders. If deemed not a breeder, the buyer will be able to exchange the boughten bull for a bull of similar value. If a satisfactory replacement is not available the buyer will be given credit that is to be used within one year of sale. If the bull or bulls are not able to perform due to human error, this guarantee is null and void.

Liabilities: All persons attending the sale do so at their own risk.

Lunch: A complimentary lunch will be served sale day.



HOW TO PARTICIPATE AS AN ABSENTEE BUYER

We prefer for each of you to be in attendance on sale day. Realistically, we know there will some scheduling conflicts and distance limitations. In these cases, we have arranged for you to be able to participate in the sale on an absentee basis.

If possible you can come by and evaluate the cattle prior to sale day. If distance is a problem, we can also provide you with a DVD of all the cattle for home viewing. **All of the lots in the sale will be available for viewing online prior to sale day at**

www.boothfamilyangus.com

www.superiorlive.com and

www.superiorlivestock.com

HERE'S HOW IT WORKS

Please call Superior Productions at **800-431-4452** and pre-register for your buyer's number. A registration form needs to be filled out and returned to Superior Productions with a signature on it. This registration form can be found by clicking on the "REGISTER FOR YOUR BUYER'S NUMBER" link online at www.superiorlive.com. The registration form can be printed, completed and either faxed or mailed in at the number or address provided on the form. Upon receipt of this information Superior will call you with a buyer's number and the bid line phone number that you will use on sale day to place bids over the phone.

The sale will be broadcast on the internet at www.superiorlivestock.com and www.superiorlive.com. Simply go to either website and on the home page click on the link titled "**To watch today's Auction - click here**". Regardless of internet connection, you will be able to view and listen to the video and audio feed. For the bidding process - follow the auction on the internet and call the bid line number to place your bids. Your computer must have Flash Media Player installed to view the auction.

Bidders who are successful in making purchases via the internet will be contacted by the ranch after the sale to settle payment and make shipping arrangements.

Doug Booth Family Annual Bull Sale

Doug & Carolyn Booth
307-532-5830

Dudley & Jennifer Booth
Home ~ 307-532-7179
Cell ~ 307-532-6207

Happy New Year from all of us at Doug Booth Family Angus. We hope that 2010 brings a year of joy and success for you in all that you do.

Let this letter be your personal invitation to the Annual Doug Booth Family Angus Performance Bull Sale on February 16, 2010 at "The Ranch" west of Torrington, WY. We believe that this group of bulls are as good as ever, which they should be if we are doing our job correctly. We're certain that this is the deepest, strongest, and most complete set of bulls we have ever offered. Study their EPD's and you will see that they are very complete from birth to yearling, maternally and going on to carcass traits. We are very pleased with the genetic make-up and the phenotype that these bulls possess. As you can see by their EPD's, we don't sacrifice any area as these bulls excel in most.

As I sit down to write this letter, the weather has finally turned more positive. After a long cold fall and start to winter it is nice to have warm weather. It seems, that as the weather turned, the cattle market has been rising along with it. Hopefully, it will continue into the future.

We exhibited and displayed bulls at the Annual National Western Stock Show in Denver. These bulls impressed many by their muscularity and thickness, yet being very smooth shouldered and exhibiting overall eye appeal, stoutness, and EPD package. We made a strong showing and received many compliments on the quality of our pen of bulls that we displayed. There are many bulls that did not go to Denver that were in contention with the ones that went, so don't overlook any of the bulls in the offering.

As many of you know in the last year there has been two recessive genetics diseases found in some Angus pedigrees. Not all Angus cattle have these diseases and only a small percent carry it. A test is now available through DNA. All bulls of ours, which are from known carrier parentage, have been tested, and only the AMF and NHF (free) ones will be sold.

You are invited to see the bulls in person. Words and pictures only tell part of the story. The bulls will speak for themselves. Feel free to stop by and view these bulls at the ranch if you are in the area. We hope to see you on February 16 at the ranch, and set your cowherd up for the future with bulls from our sale. Some of you know what kind of bulls that we raise, but for you that don't, you should come find out for yourself. As one prominent Angus person has said, "Buyers get more value in our sale then any sale around." I think that speaks for itself.

As most of you know, there is no more Stockman's Livestock so that is why the sale will be held at our place. In doing so, the bulls will be in the normal environment. Since we don't have a sale barn, the bulls will not come in the ring. A video will be playing of the bulls as they are sold. Come early so that you have time to look at them completely. If you can't be there, you can call us to bid, or bid at www.superiorlivestock.com. All bulls videoed will be on the superior website and our website at www.boothfamilyangus.com. Lastly, we would like to express a sincere thank you to all of our past customers and invite anyone that has not been a customer to come to the sale.



Douglas and Carolyn Booth

See you at the sale February 16, 2010
at the Ranch!!!!

*Douglas and Carolyn Booth
Dudley, Jennifer,
Connor and Kaleb Booth*



*Dudley, Jennifer,
Connor and Kaleb Booth*

LOT 1 DB Mainlineman 91 ***

Born: 1-18-09 Reg. #: 620614642 Tattoo: 91 Bull
 Connealy Danny Boy #Connealy Timeline
WOODHILL MAINLINE Energy of Conanga 4851
14793708 #Woodhill Blackbird 1288-138K +N Bar Bando 598 Y2587
 #Woodhill Blackbird 463-1288
 +ALC Nobleman N01N #+B/R New Frontier 095
DB MS TVP NOBELMAN 776 +ALC LYN T03L
15996563 D B Ms T V Precision 239 #+Twin Valley Precision E161
 +D B Ms Katie 02

| CED | BW | WW | YW | Milk | U IMF | U REA | U Fat | \$B |
|-----|-------|------|-------|------|--------|--------|---------|-------|
| I+7 | I-0.9 | I+58 | I+105 | I+18 | I+0.33 | I+0.33 | I+0.010 | 52.61 |

- BW: 60 lbs., Adj. WW: 704 lbs.
- Dam posts BW 1-81; WW 1-101.

LOT 2 DB Whitman 95 ***

Born: 1-23-09 Reg. #: 62061443 Tattoo: 95 Bull
 #Bon View New Design 208 #B/R New Design 036
CONNEALY WHITMAN #Bon View Erica 443
+14845068 +Ella Tina of Conanga 989 #+Tehama Bando 155
 #Ella Lilly of Conanga 5989
 #+Rito 112 of 2536 Rito 616 #Rito 616 of 4B20 6807
DB MS RITO 112 781 G A R Precision 2536
+15962887 #D B Ms 036 Flyeasy 958 #B/R New Design 036
 D B MS Flyeasy 637

| CED | BW | WW | YW | Milk | U IMF | U REA | U Fat | \$B |
|-----|-------|------|----|------|--------|--------|---------|-------|
| | I+1.3 | I+51 | 97 | I+31 | I+0.59 | I+0.11 | I-0.012 | 53.11 |

- BW: 74 lbs., Adj. WW: 642 lbs.

LOT 3 DB Pendleton 96 ***

Born: 1-24-09 Reg. #: 620614644 Tattoo: 96 Bull
 S A V Final Answer 0035 #Sitz Traveler 8180
HARB PENDLETON 765 J H S A V Emulous 8145
15313140 #H A R B Black Lady 375 J H +H A R B High Plains 975 JH
 #H A R B Black Lady 073 J H
 +Connealy Black Baron of SCAR #C A Future Direction 5321
DB MS BLACK BARON 732 #Pow of Conanga 677
15957272 D B Ms Fly Agent 61 #+Whitstone Fly Traveler 3006
 MS Travel Agent of D V M D32

| CED | BW | WW | YW | Milk | U IMF | U REA | U Fat | \$B |
|------|-------|------|-------|------|--------|--------|---------|-------|
| I+13 | I-2.0 | I+69 | I+107 | I+24 | I+0.23 | I+0.14 | I+0.026 | 42.28 |

- BW: 71 lbs., Adj. WW: 770 lbs.
- Dam posts BW 1-95, WW 1-110

LOT 4 DB Right Answer 97 ***

Born: 1-24-09 Reg. #: 620614645 Tattoo: 97 Bull
 S A V Final Answer 0035 #Sitz Traveler 8180
CONNEALY RIGHT ANSWER 746 S A V Emulous 8145
15832750 Happy Dell of Conanga 262 +Hyline Right Time 338
 Happy Daze of Conanga 6260
 +Core Value DDB QBF 53 #Bon View New Design 1407
DB MS EXT OF CORE VALUE 772 D D B Ms Preciselander 154
15986680 D B Ms EXT Northlander 947 #N Bar Emulation EXT
 MS Northlander of D V M D315

| CED | BW | WW | YW | Milk | U IMF | U REA | U Fat | \$B |
|-----|-------|------|------|------|--------|--------|---------|-------|
| I+8 | I+1.2 | I+47 | I+92 | I+24 | I+0.34 | I+0.01 | I+0.038 | 40.37 |

- BW: 76 lbs., Adj. WW: 659 lbs.

LOT 5 DDB DeReflection 91I ***

Born: 1-25-09 Reg. #: 620614647 Tattoo: 911 Bull
 #Bon View New Design 878 #B/R New Design 036
CONNEALY REFLECTION Bon View Gammer 85
14528330 Happy Grill of Conanga 6260 #+N Bar Emulation EXT
 Happy Date of Conanga
 #+BR Midland #+Twin Valley Precision E161
DDB MS DESIGNLAND 755 BR Royal Lass 7036-19
16477015 DDB Ms Ext Design 341 #Bon View New Design 1407
 D D B MS Ext Lander 829

| CED | BW | WW | YW | Milk | U IMF | U REA | U Fat | \$B |
|-----|----|----|----|------|-------|-------|-------|-------|
| | .8 | 50 | 98 | 22 | .49 | .25 | | 50.64 |

- BW: 75 lbs., Adj. WW: 657 lbs.



DB C PERFORMER 914 • LOT 6

LOT 6 DB C Performer 914 **

Born: 1-26-09 Reg. #: 16422918 Tattoo: 914 Bull
 K C F Bennett Performer #Hyline Right Time 338
CONNEALY PERFORMER 313 K C F Miss 589 L182
15832641 #+Eileena of Conanga 329 #+Connealy Forefront
 #+Eileen of Conanga 986
 #+BR Midland #+Twin Valley Precision E161
DB MS MIDLAND EXT 614 BR Royal Lass 7036-19
15631885 #D B Ms EXT 323 07 #N Bar Emulation EXT
 D B MS Nena 323 810

| CED | BW | WW | YW | Milk | U IMF | U REA | U Fat | \$B |
|-----|-------|------|------|------|--------|--------|---------|-------|
| I+8 | I+1.4 | I+54 | I+97 | I+21 | I+0.24 | I+0.37 | I+0.017 | 45.15 |

- BW: 83 lbs., Adj. WW: 786 lbs.
- Dam posts WW 1-108

DOUG BOOTH FAMILY BULLS OFFER:

- Free Wintering Until April 1
- All Bulls have Ultrasound Carcass Data
- All Bulls are Negative for PI-BVD
- All Bulls have Performance Data
- All Necessary Bulls are AM & NH Tested

LOT 7 DB Pendleton 915 ***

Born: 1-26-09 Reg. #: 620614649 Tattoo: 915 Bull
 S A V Final Answer 0035 #Sitz Traveler 8180
HARB PENDLETON 765 J H S A V Emulous 8145
 15313140 #H A R B Black Lady 375 J H +H A R B High Plains 975 JH
 #H A R B Black Lady 073 J H
 #+BR Midland #+Twin Valley Precision E161
DB MS MIDLAND 710 BR Royal Lass 7036-19
 15955003 +D B Ms Bushwacker 21 #R P 3RD Bushwacker
 D B MS Flyeasy 637

| CED | BW | WW | YW | Milk | U IMF | U REA | U Fat | \$B |
|------|-------|------|-------|------|--------|--------|---------|-------|
| I+11 | I-2.2 | I+61 | I+107 | I+23 | I+0.29 | I-0.01 | I+0.023 | 40.85 |

- BW: 64 lbs., Adj. WW: 637 lbs.

LOT 8 DDB Whitman 917 ***

Born: 1-27-09 Reg. #: 620614650 Tattoo: 917 Bull
 #Bon View New Design 208 #B/R New Design 036
CONNEALY WHITMAN #Bon View Erica 443
 +14845068 +Ella Tina of Conanga 989 +Tehama Bando 155
 #Ella Lilly of Conanga 5989
 +Baldridge Navigator N5 +Baldridge Kaboom K243 KCF
DDB MS NAVIGATOR MIDLAND 748 +Baldridge Forever Lady K856
 16015660 DDB Ms Midland Design 521 #+BR Midland
 #DDB Ms Exact Design 394

| CED | BW | WW | YW | Milk | U IMF | U REA | U Fat | \$B |
|-----|-------|------|------|------|--------|--------|---------|-------|
| I+5 | I+1.5 | I+55 | I+96 | I+26 | I+0.52 | I+0.18 | I-0.007 | 51.71 |

- BW: 77 lbs., Adj. WW: 740 lbs.
- Dam posts WW 1-106

LOT 9 DB Pendleton 918 ***

Born: 1-27-09 Reg. #: 620614651 Tattoo: 918 Bull
 S A V Final Answer 0035 #Sitz Traveler 8180
HARB PENDLETON 765 J H S A V Emulous 8145
 15313140 #H A R B Black Lady 375 J H +H A R B High Plains 975 JH
 #H A R B Black Lady 073 J H
 +Connealy Black Baron of SCAR #C A Future Direction 5321
DB MS TOTAL BARON 762 #Pow of Conanga 677
 15957274 D B Ms Total Heather 4107 #+K C F Bennett Total
 +DB Ms Heather 122

| CED | BW | WW | YW | Milk | U IMF | U REA | U Fat | \$B |
|------|-------|------|-------|------|--------|--------|---------|-------|
| I+10 | I+0.3 | I+69 | I+110 | I+25 | I+0.31 | I+0.24 | I+0.042 | 46.19 |

- BW: 79 lbs., Adj. WW: 738 lbs.
- Dam posts WW 1-106

LOT 10 DB All Around 920 **

Born: 1-28-09 Reg. #: 620614652 Tattoo: 920 Bull
 +Connealy Whitman #Bon View New Design 208
CONNEALY ALL AROUND +Ella Tina of Conanga 989
 15490811 Entrust of Conanga 894 +C R A Bextor 872 5205 608
 Endalla of Conanga 4860
 +B/R Ambush 28 #+Rockn D Ambush 1531
DB MS AMBUSH DESIGN 711 +B/R Ruby of Tiffany 8250
 15962868 +D B Miss Burgess 1407 31 #Bon View New Design 1407
 36 Ar Kaj Miss Burgess 3090

| CED | BW | WW | YW | Milk | U IMF | U REA | U Fat | \$B |
|-----|-------|------|------|------|--------|--------|---------|-------|
| I+5 | I+2.5 | I+50 | I+94 | I+24 | I+0.80 | I+0.28 | I+0.003 | 59.52 |

- BW: 81 lbs., Adj. WW: 654 lbs.

LOT 11 DB Ambush 28 921 *

Born: 1-28-09 Reg. #: 620614653 Tattoo: 921 Bull
 #+Rockn D Ambush 1531 #Paramont Ambush 2172
B/R AMBUSH 28 Ms Blackcap Band of R D 1301
 +14188956 +B/R Ruby of Tiffany 8250 #+N Bar Emulation EXT
 #+B/R Ruby of Tiffany 5113
 #+Twin Valley Precision E161 #G A R Precision 1680
D B MS T V PRECISION 239 +W C C Blackcap C9
 14235041 +D B Ms Katie 02 #B/R New Design 036
 Heather 850

| CED | BW | WW | YW | Milk | U IMF | U REA | U Fat | \$B |
|-----|-------|------|------|------|--------|--------|---------|-------|
| I+5 | I+4.4 | I+61 | I+93 | I+16 | I+0.69 | I+0.40 | I-0.022 | 63.88 |

- BW: 93 lbs., Adj. WW: 871 lbs.
- Dam posts WW 6-102, YW 4-101, %IMF 4-01

LOT 12 DB Mainline 925 ***

Born: 1-29-09 Reg. #: 620614654 Tattoo: 925 Bull
 Connealy Danny Boy #Connealy Timeline
WOODHILL MAINLINE Energy of Conanga 4851
 14793708 #Woodhill Blackbird 1288-138K #+N Bar Bando 598 Y2587
 #Woodhill Blackbird 463-1288
 #A A R New Trend
DB MS NEW DAY 448 +S V F Forever Lady 57D
 14856467 #G H Y Eileen 124 #TC Influence
 #G H Y Eileen Rita 100

| CED | BW | WW | YW | Milk | U IMF | U REA | U Fat | \$B |
|-----|-------|------|------|------|--------|--------|---------|-------|
| I+8 | I+0.2 | I+50 | I+94 | I+20 | I-0.04 | I+0.41 | I+0.020 | 33.66 |

- BW: 78 lbs., Adj. WW: 721 lbs.
- Dam posts BW 4-93, WW 4-102

LOT 13 DB Future One Way 929 **

Born: 1-30-09 Reg. #: 620614655 Tattoo: 929 Bull
 #+Rito 112 of 2536 Rito 616 #Rito 616 of 4B20 6807
TC ONE WAY 618 G A R Precision 2536
 +15469774 +TC Quality 7122 #Rito 2RT2 of 0B5 RR Traveler
 Landmark Quality 9248
 #C A Future Direction 5321 #G A R Precision 1680
DB MS FUTURE DESIGN 572 C A Miss Power Fix 308
 +15194070 #D B Ms 036 Flyeasy 958 #B/R New Design 036
 D B MS Flyeasy 637

| CED | BW | WW | YW | Milk | U IMF | U REA | U Fat | \$B |
|-----|-------|------|------|------|--------|--------|---------|-------|
| I+6 | I+1.0 | I+48 | I+95 | I+25 | I+0.58 | I+0.20 | I+0.014 | 55.99 |

- BW: 78 lbs., Adj. WW: 699 lbs.

LOT 14 DB Mainline 930 ***

Born: 1-30-09 Reg. #: 620614656 Tattoo: 930 Bull
 Connealy Danny Boy #Connealy Timeline
WOODHILL MAINLINE Energy of Conanga 4851
 14793708 #Woodhill Blackbird 1288-138K #+N Bar Bando 598 Y2587
 #Woodhill Blackbird 463-1288
 #Connealy Leadtime
DB MS NENA LEAD ON 648 Eligence Plus of Conanga
 15631891 D B MS Nena 323 810 #B/R New Design 323
 M S C C R Nena D111

| CED | BW | WW | YW | Milk | U IMF | U REA | U Fat | \$B |
|-----|-------|------|-------|------|--------|--------|---------|-------|
| I+6 | I+1.2 | I+54 | I+100 | I+22 | I+0.17 | I+0.46 | I+0.006 | 44.56 |

- BW: 60 lbs., Adj. WW: 681 lbs.

LOT 15 DDB Total Aberdeen 931 ***

Born: 1-31-09 Reg. #: 620614657 Tattoo: 931 Bull
 #C R A Bextor 872 5205 608 #+B A R Ext Traveler 205
TC ABERDEEN 759 +Cra Lady Jaye 608 498 S Easy
15840414 #+TC Blackbird 4034 #+Bon View New Design 208
 #+BR Midland TC Blackbird 1013
DDB MS TOTAL MIDLAND 746 #+Twin Valley Precision E161
15955006 DDB Ms Total Blackbird 441 BR Royal Lass 7036-19
 #+K C F Bennett Total
 DDB Ms Merging Blackbird 720

| CED | BW | WW | YW | Milk | U IMF | U REA | U Fat | \$B |
|-----|-------|------|------|------|--------|--------|---------|-------|
| I+8 | I+1.2 | I+49 | I+90 | I+23 | I+0.52 | I+0.42 | I+0.015 | 51.42 |

• BW: 76 lbs., Adj. WW: 672 lbs.

LOT 16 DB Right Answer 935 ***

Born: 1-31-09 Reg. #: 620614660 Tattoo: 935 Bull
 S A V Final Answer 0035 #Sitz Traveler 8180
CONNEALY RIGHT ANSWER 746 S A V Emulous 8145
15832750 Happy Dell of Conanga 262 +Hyline Right Time 338
 #S A V 8180 Traveler 004 Happy Daze of Conanga 6260
DB MS TOURIST TRAVELER 5143 #Sitz Traveler 8180
15194061 DB Ms Tourist Lady 392 +Boyd Forever Lady 8003
 +LCC Tourist H157L
 +DB Ms T V P Blackcap Lady 11

| CED | BW | WW | YW | Milk | U IMF | U REA | U Fat | \$B |
|-----|-------|------|-------|------|--------|--------|---------|-------|
| I+9 | I+0.2 | I+54 | I+102 | I+24 | I+0.25 | I+0.13 | I+0.053 | 42.33 |

• BW: 75 lbs., Adj. WW: 742 lbs.

LOT 17 DB Ben Aberdeen 937 ***

Born: 1-31-09 Reg. #: 620614662 Tattoo: 937 Bull
 #C R A Bextor 872 5205 608 #+B A R Ext Traveler 205
TC ABERDEEN 759 +Cra Lady Jaye 608 498 S Easy
15840414 #+TC Blackbird 4034 #+Bon View New Design 208
 #+K C F Bennett Total TC Blackbird 1013
DB MS KATLYN'S BENNETT 52 #Sitz Alliance 6595
+15194065 +D B Ms Katlyn 03 Ext of Conanga 6790
 #B/R New Design 036
 Heather 850

| CED | BW | WW | YW | Milk | U IMF | U REA | U Fat | \$B |
|------|-------|------|------|------|--------|--------|---------|-------|
| I+10 | I+0.2 | I+45 | I+86 | I+24 | I+0.54 | I+0.26 | I+0.025 | 47.72 |

• BW: 78 lbs., Adj. WW: 695 lbs.

LOT 18 DB Ambush Design 941 **

BornQ 2-01-09 Reg. #Q 16481202 TattooQ 941 Bull
 +B/R Ambush 28 #+Rockn D Ambush 1531
DDB AMBUSH 28 741 OF SCAR +B/R Ruby of Tiffany 8250
15842608 DDB Ms Freightdesign 415 #+Bon View New Design 1407
 D D B Ms Freightlander 129
 #+Rito 112 of 2536 Rito 616 #Rito 616 of 4B20 6807
DB MS LADY RITO 112 7169 G A R Precision 2536
15962874 D B Ms Lady Freightner 142 #Connealy Freightliner
 D B MS West Lady 621

| CED | BW | WW | YW | Milk | U IMF | U REA | U Fat | \$B |
|-----|------|-----|-----|------|--------|--------|---------|-------|
| +7 | +1.0 | +54 | +97 | +22 | I+0.56 | I+0.14 | I-0.016 | 56.53 |

• BW: 76 lbs., Adj. WW: 721 lbs.
 • Dam posts WW 1-103

LOT 19 DB Bextor 952 *

Born: 2-02-09 Reg. #: 16470437 Tattoo: 952 Bull
 #C R A Bextor 872 5205 608 #+B A R Ext Traveler 205
CONNEALY BEXTOR 779 +Cra Lady Jaye 608 498 S Easy
14845093 +Becka of Conanga 779 #S A F Fame
 #Beckys Fortune Conanga 6363
 #B/R New Design 036
DB MS FERD DESIGN 4113 Bon View Pride 664
14872299 D B Ms Ferd Travelander 954 #R R Ferdinand 758D
 D B MS Travelander 57

| CED | BW | WW | YW | Milk | U IMF | U REA | U Fat | \$B |
|-----|-------|------|------|------|--------|--------|---------|-------|
| I+9 | I+0.8 | I+48 | I+87 | I+26 | I+0.51 | I+0.13 | I+0.018 | 45.97 |

• BW: 87 lbs., Adj. WW: 666 lbs.
 • Dam posts WW 3-101

LOT 20 DB Ambush Design 956 ***

Born: 2-02-09 Reg. #: 16481203 Tattoo: 956 Bull
 +B/R Ambush 28 #+Rockn D Ambush 1531
DDB AMBUSH 28 741 OF SCAR +B/R Ruby of Tiffany 8250
15842608 DDB Ms Freightdesign 415 +Bon View New Design 1407
 D D B Ms Freightlander 129
 #Bon View New Design 878
DB MS TOURIST LINER 3110 Leachman Annie B3003
14538094 D B Ms Travel F Liner 164 #Connealy Freightliner
 D B MS Travelander 57

| CED | BW | WW | YW | Milk | U IMF | U REA | U Fat | \$B |
|-----|------|-----|-----|------|--------|--------|---------|-------|
| +10 | +0.3 | +33 | +73 | +23 | I+0.66 | I+0.04 | I+0.010 | 49.23 |

• BW: 76 lbs., Adj. WW: 626 lbs.
 • Dam posts BW 5-100, WW 5-99, YW 3-102, %IMF 3-109,
 REA 3-103

LOT 21 DDB Extra Design 957 *

Born: 2-02-09 Reg. #: 620614669 Tattoo: 957 Bull
 #+Nichols Extra H6 #N Bar Emulation EXT
NICHOLS EXTRA K205 Nichols Eileen May F261
#13752642 Nichols Black Heiress F346 #Nichols Heavy Duty D20
 Nichols Black Heiress B3
 #B/R New Design 036
DDB MS EXT DESIGN 341 Bon View Pride 664
14545839 D D B MS Ext Lander 829 #N Bar Emulation EXT
 MS D D B Hi Lander 535

| CED | BW | WW | YW | Milk | U IMF | U REA | U Fat | \$B |
|------|-------|------|------|------|--------|--------|---------|-------|
| I+10 | I+2.3 | I+41 | I+94 | I+27 | I+0.40 | I+0.22 | I+0.013 | 47.75 |

• BW: 92 lbs., Adj. WW: 666 lbs.
 • Dam posts BW 5-99, WW 5-95, %IMF 4-117, REA 4-105

LOT 22 DB Aberdeen 958 *

Born: 2-02-09 Reg. #: 620614670 Tattoo: 958 Bull
 #C R A Bextor 872 5205 608 #+B A R Ext Traveler 205
TC ABERDEEN 759 +Cra Lady Jaye 608 498 S Easy
15840414 #+TC Blackbird 4034 #+Bon View New Design 208
 TC Blackbird 1013
 #+Nichols Extra H6 #N Bar Emulation EXT
DB MS BLACKCAP EXTRA 5100 Nichols Eileen May F261
15199050 +DB Ms T V P Blackcap Lady 15 #+Twin Valley Precision E161
 T A R Blackcap Lady 930C

| CED | BW | WW | YW | Milk | U IMF | U REA | U Fat | \$B |
|-----|-------|------|------|------|--------|--------|---------|-------|
| I+9 | I+1.7 | I+52 | I+96 | I+27 | I+0.45 | I+0.24 | I+0.014 | 50.87 |

• BW: 85 lbs., Adj. WW: 761 lbs.
 • Dam posts BW 3-101, YW 3-104, YW 2-102, %IMF 2-118

LOT 23 DB Ambush 28 959 *

Born: 2-02-09 Reg. #: 620614671 Tattoo: 959 Bull
 #+Rockn D Ambush 1531 #Paramont Ambush 2172
B/R AMBUSH 28 MS Blackcap Band of R D 1301
 #14188956 +B/R Ruby of Tiffany 8250 #N Bar Emulation EXT
 +B/R Ruby of Tiffany 5113
 #Alberda Traveler 416 #D H D Traveler 6807
D B NENA TRAVELER 113 Alberda Queen Kimberly 222
 13996750 D B Ms Nena Ext 710 #N Bar Emulation EXT
 +D B MS Nena Flyer D426

| CED | BW | WW | YW | Milk | U IMF | U REA | U Fat | \$B |
|-----|-------|------|------|------|--------|--------|---------|-------|
| I+5 | I+4.5 | I+47 | I+91 | I+17 | I+0.75 | I+0.21 | I+0.003 | 58.01 |

- BW: 97 lbs., Adj. WW: 714 lbs.
- Dam posts WW 6-100, YW 5-99, %IMF 5-113



DDB NEW EXTRA 962 • LOT 24

LOT 24 DB New Extra 962 **

Born: 2-03-09 Reg. #: 16434502 Tattoo: 962 Bull
 #+Nichols Extra H6 #N Bar Emulation EXT
NICHOLS EXTRA K205 Nichols Eileen May F261
 #13752642 Nichols Black Heiress F346 #Nichols Heavy Duty D20
 Nichols Black Heiress B3
 #Bon View New Design 1407 #B/R New Design 036
DDB MS NEW PRECISION 7125 Bon View Pride 664
 15937179 DDB Ms Precise Blackbird 16 #+Twin Valley Precision E161
 D D B Ms Fame Blackbird 911

| CED | BW | WW | YW | Milk | U IMF | U REA | U Fat | \$B |
|------|-------|------|-------|------|--------|--------|---------|-------|
| I+11 | I+2.2 | I+57 | I+107 | I+26 | I+0.36 | I+0.25 | I+0.004 | 48.92 |

- BW: 86 lbs., Adj. WW: 807 lbs.
- Dam posts WW 1-116

LOT 25 DB Pendleton 963 **

Born: 2-03-09 Reg. #: 620614673 Tattoo: 963 Bull
 S A V Final Answer 0035 #Sitz Traveler 8180
HARB PENDLETON 765 J H S A V Emulous 8145
 15313140 #H A R B Black Lady 375 J H +H A R B High Plains 975 JH
 #H A R B Black Lady 073 J H
 +B/R Ambush 28 #+Rockn D Ambush 1531
DB MS NEW AMBUSH 7197 +B/R Ruby of Tiffany 8250
 15962877 DB Ms New Design 548 #Bon View New Design 1407
 #DB Ms New Horizon 318

| CED | BW | WW | YW | Milk | U IMF | U REA | U Fat | \$B |
|------|-------|------|-------|------|--------|--------|---------|-------|
| I+10 | I+0.2 | I+69 | I+126 | I+25 | I+0.55 | I+0.10 | I+0.033 | 57.19 |

- BW: 75 lbs., Adj. WW: 670 lbs.

LOT 26 DB New Extra 965 *

Born: 2-03-09 Reg. #: 620614674 Tattoo: 965 Bull
 #+Nichols Extra H6 #N Bar Emulation EXT
NICHOLS EXTRA K205 Nichols Eileen May F261
 #13752642 Nichols Black Heiress F346 Nichols Heavy Duty D20
 Nichols Black Heiress B3
 K M Next Chapter 1211 #Bon View New Design 1407
DB MS NEW CHAPTER 5139 K M Princess 879
 15189787 DB Ms New Horizon 322 #D B New Horizon 020
 D B MS Bar Fly 713

| CED | BW | WW | YW | Milk | U IMF | U REA | U Fat | \$B |
|-----|-------|------|------|------|--------|--------|---------|-------|
| I+7 | I+3.5 | I+54 | I+99 | I+29 | I+0.38 | I+0.05 | I+0.021 | 44.29 |

- BW: 93 lbs., Adj. WW: 790 lbs.
- Dam posts WW 3-104, YW 1-102, %IMF 1-140

LOT 27 DB Ambush 966 ***

Born: 2-03-09 Reg. #: 16481204 Tattoo: 966 Bull
 +B/R Ambush 28 #+Rockn D Ambush 1531
DDB AMBUSH 28 741 OF SCAR +B/R Ruby of Tiffany 8250
 15842608 DDB Ms Freightdesign 415 +Bon View New Design 1407
 D D B Ms Freightlander 129
 +Connealy Leader #+Connealy Lead On
DB MS LEADER 6161 +Black Crane of Conanga 204
 16207073 D B Ms Bushlander 177 #R P 3RD Bushwacker
 D B Ms Moneasylander 747

| CED | BW | WW | YW | Milk | U IMF | U REA | U Fat | \$B |
|-----|------|-----|-----|------|--------|--------|---------|-------|
| +10 | -0.3 | +45 | +90 | +28 | I+0.57 | I+0.28 | I-0.021 | 58.17 |

- BW: 71 lbs., Adj. WW: 718 lbs.
- Dam posts BW 2-87, WW 2-104, YW 1-110

LOT 28 DDB Reflection 971 ***

Born: 2-03-09 Reg. #: 620614676 Tattoo: 971 Bull
 #Bon View New Design 878 #B/R New Design 036
CONNELY REFLECTION Bon View Gammer 85
 14528330 Happy Grill of Conanga 6260 #N Bar Emulation EXT
 Happy Date of Conanga
 #Connealy Freightliner #Bon View Bando 598
D D B MS FREIGHTLINER 290 Joana Erica of Conanga
 14237285 D D B MS Flybird 624 #+Whitstone Fly Traveler 3006
 M S C C R Annie Blackbird D28

| CED | BW | WW | YW | Milk | U IMF | U REA | U Fat | \$B |
|------|-------|------|------|------|--------|--------|---------|-------|
| I+10 | I-2.2 | I+48 | I+91 | I+22 | I+0.31 | I+0.08 | I+0.022 | 41.90 |

- BW: 69 lbs., Adj. WW: 732 lbs.
- Dam posts BW 6-94, WW 6-101, YW 5-101, %IMF 5-111

LOT 29 DB Focus Design 975 ***

Born: 2-03-09 Reg. #: 16481205 Tattoo: 975 Bull
 +B/R Ambush 28 #+Rockn D Ambush 1531
DDB AMBUSH 28 741 OF SCAR +B/R Ruby of Tiffany 8250
 15842608 DDB Ms Freightdesign 415 +Bon View New Design 1407
 D D B Ms Freightlander 129
 +Mytty In Focus #S A F Focus of E R
DB MS IN FOCUS HORIZON 6189 +Mytty Countess 906
 16210986 DB Ms Lady Horizon 374 #D B New Horizon 020
 +D B Ms Blackcap Lady 216 936

| CED | BW | WW | YW | Milk | U IMF | U REA | U Fat | \$B |
|-----|------|-----|------|------|--------|--------|---------|-------|
| +12 | -0.6 | +54 | +100 | +23 | I+0.72 | I+0.05 | I+0.007 | 56.42 |

- BW: 79 lbs., Adj. WW: 790 lbs.
- Dam posts BW 2-92, WW 2-105, YW 1-109, %IMF 1-114



**DB MIDADEEN 977
LOT 30**

LOT 30 DB Midadeen 977 ***

Born: 2-04-09 Reg. #: 16422919 Tattoo: 977 Bull
 #C R A Bextor 872 5205 608 #+B A R Ext Traveler 205
TC ABERDEEN 759 +Cra Lady Jaye 608 498 S Easy
15840414 #+TC Blackbird 4034 #+Bon View New Design 208
 #+B/R Midland TC Blackbird 1013
DB MS MIDLAND 036 655 #+Twin Valley Precision E161
+15631892 #D B Ms 036 Flyeasy 958 BR Royal Lass 7036-19
 #B/R New Design 036
 D B MS Flyeasy 637

| CED | BW | WW | YW | Milk | U IMF | U REA | U Fat | \$B |
|------|------|------|-------|------|--------|--------|---------|-------|
| I+11 | I-.1 | I+60 | I+105 | I+26 | I+0.73 | I+0.45 | I+0.012 | 59.74 |

- BW: 76 lbs., Adj. WW: 842 lbs.
- Dam posts BW 2-98, WW 2-107, YW 1-101, %IMF 1-159, REA 1-107
- Granddam is the mother to Lot 37. Look at her production record!

LOT 31 DB Mainline 978 **

Born: 2-04-09 Reg. #: 620614679 Tattoo: 978 Bull
 Connealy Danny Boy #Connealy Timeline
WOODHILL MAINLINE Energy of Conanga 4851
14793708 #Woodhill Blackbird 1288-138K #+N Bar Bando 598 Y2587
 #+BR Midland Woodhill Blackbird 463-1288
DB MS LADY MIDLAND 798 #+Twin Valley Precision E161
15955009 DB Ms Lady Horizon 374 BR Royal Lass 7036-19
 #D B New Horizon 020
 +D B Ms Blackcap Lady 216 936

| CED | BW | WW | YW | Milk | U IMF | U REA | U Fat | \$B |
|-----|-------|------|------|------|--------|--------|---------|-------|
| I+7 | I+2.8 | I+56 | I+99 | I+17 | I+0.26 | I+0.28 | I+0.035 | 42.32 |

- BW: 84 lbs., Adj. WW: 725 lbs.
- Dam posts WW 1-104

LOT 32 DB Mainline 979 ***

Born: 2-04-09 Reg. #: 620614680 Tattoo: 979 Bull
 Connealy Danny Boy #Connealy Timeline
WOODHILL MAINLINE Energy of Conanga 4851
14793708 #Woodhill Blackbird 1288-138K #+N Bar Bando 598 Y2587
 #+B/R New Frontier 095
 +ALC Nobelman N01N #ALC LYNN T03L
DB MS ALBERTA NOBLEMAN 765 #Alberda Traveler 416
15996561 D B Nena Traveler 113 D B MS Nena Ext 710

| CED | BW | WW | YW | Milk | U IMF | U REA | U Fat | \$B |
|-----|-------|------|-------|------|--------|--------|---------|-------|
| I+6 | I+1.2 | I+56 | I+105 | I+18 | I+0.35 | I+0.27 | I+0.033 | 49.05 |

- BW: 74 lbs., Adj. WW: 684 lbs.

LOT 33 DB Rito Bennett 983 **

Born: 2-04-09 Reg. #: 620614681 Tattoo: 983 Bull
 #Rito 616 of 4B20 6807 #D H D Traveler 6807
RITO 112 OF 2536 RITO 616 +Rita 4B20 of 0FB1 Bando
+13793826 G A R Precision 2536 #+G A R Precision 1680
 #+K C F Bennett Total +G A R Ext 2104
DB MS KATHLYN'S BENNETT 58 #Sitz Alliance 6595
+15194072 +D B Ms Katlyn 03 Ext of Conanga 6790
 #B/R New Design 036
 Heather 850

| CED | BW | WW | YW | Milk | U IMF | U REA | U Fat | \$B |
|-----|-------|------|------|------|--------|--------|---------|-------|
| I+7 | I+1.6 | I+57 | I+94 | I+21 | I+0.52 | I+0.07 | I+0.026 | 45.38 |

- BW: 82 lbs., Adj. WW: 768 lbs.
- Dam posts BW 3-95, WW 3-103, YW 2-98, %IMF 2-103, REA 2-101

LOT 34 DB Right Answer 984 ***

Born: 2-04-09 Reg. #: 620614682 Tattoo: 984 Bull
 S A V Final Answer 0035 #Sitz Traveler 8180
CONNELLY RIGHT ANSWER 746 S A V Emulous 8145
15832750 Happy Dell of Conanga 262 +Hyline Right Time 338
 +Dalebanks Centennial 2526 Happy Daze of Conanga 6260
DB MS CENTENNIAL 7119 #Bon View New Design 878
15953772 +D B Ms Heachter 19 #Witch of Dalebanks 9067
 #Stevenson Bruno 561G
 Heather 850

| CED | BW | WW | YW | Milk | U IMF | U REA | U Fat | \$B |
|-----|-------|------|------|------|--------|--------|---------|-------|
| I+6 | I+1.6 | I+56 | I+96 | I+27 | I+0.29 | I+0.16 | I+0.022 | 46.17 |

- BW: 75 lbs., Adj. WW: 751 lbs.
- Dam posts BW 1-100, WW 1-108



**DB BLAST OFF 987
LOT 35**



E&B LADY EXT 858 • DAM OF LOT 35

LOT 35 DB Blast Off 987 **

Born: 2-05-09 Reg. #: +16424219 Tattoo: 987 Bull
 Connealy Onward
CONNEALY FORWARD
 15491633 Becky Lee of Conanga 74
 #N Bar Emulation EXT
E&B LADY EXT 858
 +13121405 Lady Scotch Traveler 320
 #+Connealy Lead On
 Altune of Conanga 6104
 #G A R Grid Maker
 Beckon Lee of Conanga 73
 #Emulation N Bar 5522
 N Bar Primrose 2424
 #R R 9440 Scotch Cap 1483
 Lady Stacker 1082

| CED | BW | WW | YW | Milk | U IMF | U REA | U Fat | \$B |
|------|-------|------|------|------|--------|--------|---------|-------|
| I+10 | I+0.9 | I+47 | I+89 | I+19 | I+0.31 | I+0.45 | I+0.024 | 47.87 |

- BW: 92 lbs., Adj. WW: 823 lbs.
- Dam posts BW 6-100, WW 7-105, YW 4-104, %IMF 21-112, REA 21-108

LOT 36 DDB Right Answer 994 ***

Born: 2-05-09 Reg. #: 620614688 Tattoo: 994 Bull
 S A V Final Answer 0035
CONNEALY RIGHT ANSWER 746
 15832750 Happy Dell of Conanga 262
 +G A R Integrity
DDB MS EXT INTEGRITY 686
 +15629819 D D B MS Ext Lander 829
 #Sitz Traveler 8180
 S A V Emulous 8145
 +Hyline Right Time 338
 Happy Daze of Conanga 6260
 #Bon View New Design 1407
 G A R Precision 1019
 #N Bar Emulation EXT
 MS D D B Hi Lander 535

| CED | BW | WW | YW | Milk | U IMF | U REA | U Fat | \$B |
|-----|-------|------|------|------|--------|--------|---------|-------|
| I+8 | I-0.4 | I+45 | I+94 | I+26 | I+0.36 | I+0.05 | I+0.016 | 46.26 |

- BW: 69 lbs., Adj. WW: 681 lbs.
- Dam posts BW 2-90, WW 2-101, YW 1-103

LOT 37 DB Aberdeen 996 *

Born: 2-06-09 Reg. #: 620614689 Tattoo: 996 Bull
 #C R A Bextor 872 5205 608
TC ABERDEEN 759
 15840414 #+TC Blackbird 4034
 #B/R New Design 036
D B MS 036 Flyeasy 958
 #13316186 D B MS Flyeasy 637
 #+B A R Ext Traveler 205
 +Cra Lady Jaye 608 498 S Easy
 #Bon View New Design 208
 TC Blackbird 1013
 #V D A R New Trend 315
 B/R Blackcap Empress 76
 #+Whitestone Fly Traveler 3006
 D B MS Easylander D43

| CED | BW | WW | YW | Milk | U IMF | U REA | U Fat | \$B |
|-----|-------|------|------|------|--------|--------|---------|-------|
| I+9 | I+1.6 | I+45 | I+94 | I+29 | I+0.64 | I+0.42 | I-0.001 | 59.34 |

- BW: 89 lbs., Adj. WW: 679 lbs.
- Dam posts WW 7-106, YW 6-111, %IMF 38-104, REA 38-103

LOT 38 DB Extra Burgess 999 ***

Born: 2-06-09 Reg. #: 620614690 Tattoo: 999 Bull
 #+Nichols Extra H6
NICHOLS EXTRA K205
 #13752642 Nichols Black Heiress F346
 #Bon View New Design 1407
D B MISS BURGESS 1407 31
 +14441139 36 Ar Kaj Miss Burgess 3090
 #N Bar Emulation EXT
 Nichols Eileen May F261
 #Nichols Heavy Duty D20
 Nichols Black Heiress B3
 #B/R New Design 036
 Bon View Pride 664
 #Traveler 124 G D A R
 Sitz Miss Burgess 1683

| CED | BW | WW | YW | Milk | U IMF | U REA | U Fat | \$B |
|-----|-------|------|------|------|--------|--------|---------|-------|
| I+8 | I+0.1 | I+42 | I+89 | I+26 | I+0.29 | I+0.27 | I+0.017 | 40.06 |

- BW: 75 lbs., Adj. WW: 691 lbs.
- Dam posts BW 5-99, WW 5-99, YW 4-100, %IMF 4-110, REA 4-106

LOT 39 DB Aberdeen 9100 ***

Born: 2-06-09 Reg. #: 620614691 Tattoo: 9100 Bull
 #C R A Bextor 872 5205 608
TC ABERDEEN 759
 15840414 #+TC Blackbird 4034
 #+Rito 112 of 2536 Rito 616
DB MS BLACKCAP RITO 576
 15199063 DB Ms Blackcap Dateliner 111
 #+B A R Ext Traveler 205
 +Cra Lady Jaye 608 498 S Easy
 #+Bon View New Design 208
 TC Blackbird 1013
 #Rito 616 of 4B20 6807
 G A R Precision 2536
 #Connealy Dateline
 D B Ms Blackcap EXT 859

| CED | BW | WW | YW | Milk | U IMF | U REA | U Fat | \$B |
|------|-------|------|------|------|--------|--------|---------|-------|
| I+10 | I-1.7 | I+39 | I+89 | I+24 | I+0.51 | I+0.25 | I+0.019 | 49.98 |

- BW: 69 lbs., Adj. WW: 613 lbs.

LOT 40 DB All Around 9102 *

Born: 2-06-09 Reg. #: 620614692 Tattoo: 9102 Bull
 +Connealy Whitman #Bon View New Design 208
CONNEALY ALL AROUND +Ella Tina of Conanga 989
15490811 Entrust of Conanga 894 #+C R A Bextor 872 5205 608
 Endalla of Conanga 4860
 #+Nichols Extra H6 #N Bar Emulation EXT
DB MS EXTRA DESIGN 6150 Nichols Eileen May F261
15631886 DB Ms Lady Design 344 #Bon View New Design 1407
 D B Ms Lady Freighter 142

| CED | BW | WW | YW | Milk | U IMF | U REA | U Fat | \$B |
|-----|-------|------|------|------|--------|--------|---------|-------|
| I+6 | I+2.7 | I+53 | I+95 | I+29 | I+0.53 | I+0.16 | I-0.003 | 51.23 |

- BW: 88 lbs., Adj. WW: 757 lbs.
- Dam posts BW 2-98, WW 2-106

LOT 41 DDB Reflection 9105 **

Born: 2-07-09 Reg. #: 620614693 Tattoo: 9105 Bull
 #Bon View New Design 878 #B/R New Design 036
CONNEALY REFLECTION Bon View Gammer 85
14528330 Happy Grill of Conanga 6260 #N Bar Emulation EXT
 Happy Date of Conanga
 #+Rito 112 of 2536 Rito 616 #Rito 616 of 4B20 6807
DDB MS RITO DIRECTION 567 G A R Precision 2536
15199059 DDB Ms New Direction 334 #C A Future Direction 5321
 D D B Ms New Bird 144

| CED | BW | WW | YW | Milk | U IMF | U REA | U Fat | \$B |
|------|-------|------|------|------|--------|--------|---------|-------|
| I+10 | I+1.4 | I+49 | I+95 | I+20 | I+0.40 | I+0.14 | I+0.010 | 49.82 |

- BW: 86 lbs., Adj. WW: 691 lbs.

LOT 42 DB Reflection 9108 **

Born: 2-07-09 Reg. #: 620614694 Tattoo: 9108 Bull
 #Bon View New Design 878 #B/R New Design 036
CONNEALY REFLECTION Bon View Gammer 85
14528330 Happy Grill of Conanga 6260 #+N Bar Emulation EXT
 Happy Date of Conanga
 #+K C F Bennett Total #Sitz Alliance 6595
DB MS FUTURE TOTAL 6156 Ext of Conanga 6790
619296584 +DB Ms Future 036 488 #C A Future Direction 5321
 D B MS Trendlander 036 83

| CED | BW | WW | YW | Milk | U IMF | U REA | U Fat | \$B |
|-----|----|----|----|------|-------|-------|-------|-----|
| | | | | | | | | |

- BW: 74 lbs., Adj. WW: 760 lbs.
- Dam posts BW 1-99, WW 1-100

LOT 43 DB Ambush 9109 *

Born: 2-07-09 Reg. #: 620614695 Tattoo: 9109 Bull
 #+Rockn D Ambush 1531 #Paramont Ambush 2172
B/R AMBUSH 28 MS Blackcap Band of R D 1301
+14188956 +B/R Ruby of Tiffany 8250 #N Bar Emulation EXT
 +B/R Ruby of Tiffany 5113
 #D B New Horizon 020 #S A F Focus of E R
DB MS LADY HORIZON 374 #D B MS Trendlander 036 83
14538097 +D B Ms Blackcap lady 216 936 #+SVF Gdar 216 LTD
 T A R Blackcap Lady 930C

| CED | BW | WW | YW | Milk | U IMF | U REA | U Fat | \$B |
|-----|-------|------|-------|------|--------|--------|---------|-------|
| I+7 | I+3.0 | I+46 | I+100 | I+18 | I+0.68 | I+0.22 | I-0.006 | 64.02 |

- BW: 86 lbs., Adj. WW: 661 lbs.
- Dam posts BW 5-96, YW 4-102, %IMF 4-101

LOT 44 DB Extra 9113 **

Born: 2-08-09 Reg. #: 620614697 Tattoo: 9113 Bull
 #N Bar Emulation EXT #Emulation N Bar 5522
SINCLAIR EXTRA 4X13 N Bar Primrose 2424
14774030 N Bar Lady Ida S C C 2P37 #N Bar Prime Time D806
 N Bar Lady Ida F1080
 #B/R New Design 036 #V D A R New Trend 315
D B MS 036 EXTLANDER 082 B/R Blackcap Empress 76
13587139 D B Ms Extlander 753 #N Bar Emulation EXT
 MS D11 of D V M D33

| CED | BW | WW | YW | Milk | U IMF | U REA | U Fat | \$B |
|-----|-------|------|------|------|--------|--------|---------|-------|
| I+9 | I-0.4 | I+45 | I+71 | I+19 | I+0.49 | I-0.01 | I+0.016 | 42.13 |

- BW: 81 lbs., Adj. WW: 775 lbs.
- Dam posts BW 8-99, YW 8-101

LOT 45 DB Thunder 9115 ***

Born: 2-08-09 Reg. #: 620614698 Tattoo: 9115 Bull
 +Baldrige Kaboom K243 KCF #+Jauer 353 Traveler 589 27
CONNEALY THUNDER Pleasanta of Conanga 736
+15148659 #Parka of Conanga 241 +Bon View Bando 598
 +Partina of Conanga 6237
 +Dalebanks Centennial 2526 #Bon View New Design 878
DB MS CENTENNIAL 7152 #Witch of Dalebanks 9067
15953773 D B Ms Bushlander 177 #R P 3RD Bushwacker
 D B MS Moneasylander 747

| CED | BW | WW | YW | Milk | U IMF | U REA | U Fat | \$B |
|-----|-------|------|------|------|--------|--------|---------|-------|
| I+6 | I+0.1 | I+37 | I+82 | I+21 | I+0.17 | I+0.29 | I-0.018 | 40.54 |

- BW: 70 lbs., Adj. WW: 650 lbs.

LOT 46 DB Analyst 9116 *

Born: 2-08-09 Reg. #: 620614699 Tattoo: 9116 Bull
 #B C C Bushwacker 41-93 #Paramont Ambush 2172
DR J ANALYST M250 R C Anita T Bando 918903
+14292649 G A R Precision 706 G A R Precision 1680
 K M Next Chapter 1211 +G A R Ext 2114
DB MS TVP NEXT CHAPTER 7193 #Bon View New Design 1407
15937185 +DB Ms TVP Blackcap Lady 128 K M Princess 879
 #+Twin Valley Precision E161
 T A R Blackcap Lady 930C

| CED | BW | WW | YW | Milk | U IMF | U REA | U Fat | \$B |
|-----|-------|------|------|------|--------|--------|---------|-------|
| I+5 | I+3.5 | I+51 | I+90 | I+23 | I+0.41 | I+0.24 | I+0.039 | 43.35 |

- BW: 85 lbs., Adj. WW: 674 lbs.

LOT 47 DB Right Answer 9117 ***

Born: 2-08-09 Reg. #: 620614700 Tattoo: 9117 Bull
 S A V Final Answer 0035 #Sitz Traveler 8180
CONNEALY RIGHT ANSWER 746 S A V Emulous 8145
15832750 Happy Dell of Conanga 262 #Hyline Right Time 338
 Happy Daze of Conanga 6260
 #Bon View New Design 1407 #B/R New Design 036
DB MS H6 DESIGN 716 Bon View Pride 664
15962872 DB Ms Freight H6 545 #+Nichols Extra H6
 D B Ms Neva Freightliner 133

| CED | BW | WW | YW | Milk | U IMF | U REA | U Fat | \$B |
|------|-------|------|-------|------|--------|--------|---------|-------|
| I+11 | I-1.9 | I+59 | I+105 | I+28 | I+0.41 | I+0.10 | I+0.030 | 48.62 |

- BW: 62 lbs., Adj. WW: 749 lbs.
- Dam posts BW 1-84, WW 1-107

LOT 48 DB Ambush Traveler 9120 *

Born: 2-09-09 Reg. #: 620614702 Tattoo: 9120 Bull
 #+Rockn D Ambush 1531 #Paramont Ambush 2172
B/R AMBUSH 28 MS Blackcap Band of R D 1301
 +14188956 +B/R Ruby of Tiffany 8250 #N Bar Emulation EXT
 #Alberda Traveler 416 +B/R Ruby of Tiffany 5113
DB MS TRAVELER 416 316 #D H D Traveler 6807
 14541678 D B MS Designed Sleeper 745 Alberda Queen Kimberly 222
 #B/R New Design 036
 D B Easylander 544

| CED | BW | WW | YW | Milk | U IMF | U REA | U Fat | \$B |
|-----|-------|------|------|------|--------|--------|---------|-------|
| I+7 | I+1.9 | I+48 | I+88 | I+20 | I+0.75 | I+0.16 | I-0.018 | 58.06 |

- BW: 84 lbs., Adj. WW: 733 lbs.
- Dam posts WW 4-102, YW 3-102, REA 3-102

LOT 49 DB Extra 9122 *

Born: 2-09-09 Reg. #: 620614703 Tattoo: 9122 Bull
 #N Bar Emulation EXT #Emulation N Bar 5522
SINCLAIR EXTRA 4X13 N Bar Primrose 2424
 14774030 N Bar Lady Ida S C C 2P37 #N Bar Prime Time D806
 N Bar Lady Ida F1080
 #Connealy Forefront #Connealy Frontline
D B MS FOREFRONT 224 Eileen Heartland Conanga6443
 #14235557 D B MS Easylander D44 #+G A R Sleep Easy 1009
 MS Northlander of D V M D24

| CED | BW | WW | YW | Milk | U IMF | U REA | U Fat | \$B |
|-----|-------|------|------|------|--------|--------|---------|-------|
| I+6 | I+1.3 | I+45 | I+78 | I+20 | I+0.40 | I-0.06 | I+0.037 | 38.24 |

- BW: 86 lbs., Adj. WW: 694 lbs.
- Dam posts WW 6-101, YW 5-103, %IMF 5-111, REA 5-101

LOT 50 DB Mainline 9123 *

Born: 2-09-09 Reg. #: 620614704 Tattoo: 9123 Bull
 Connealy Danny Boy #Connealy Timeline
WOODHILL MAINLINE Energy of Conanga 4851
 14793708 #Woodhill Blackbird 1288-138K #+N Bar Bando 598 Y2587
 #Woodhill Blackbird 463-1288
 #+Twin Valley Precision E161 #G A R Precision 1680
DB MS NEW PRECISION 5140 +W C C Blackcap C9
 15194060 #D B Ms New Horizon 270 #D B New Horizon 020
 D B Ms Ferdinella 94

| CED | BW | WW | YW | Milk | U IMF | U REA | U Fat | \$B |
|-----|-------|------|-------|------|--------|--------|---------|-------|
| I+5 | I+1.8 | I+52 | I+105 | I+20 | I+0.11 | I+0.38 | I+0.023 | 43.94 |

- BW: 83 lbs., Adj. WW: 717 lbs.
- Dam posts WW 3-102, YW 2-105, %IMF 2-115, REA 2-102

LOT 51 DB Aberdeen 9125 **

Born: 2-09-09 Reg. #: 620614705 Tattoo: 9125 Bull
 #C R A Bextor 872 5205 608 #+B A R Ext Traveler 205
TC ABERDEEN 759 +Cra Lady Jaye 608 498 S Easy
 15840414 #+TC Blackbird 4034 #+Bon View New Design 208
 TC Blackbird 1013
 #+K C F Bennett Total #Sitz Alliance 6595
DB MS TOTAL LADY 654 Ext of Conanga 6790
 15629817 #D B Ms Blackcap Lady 036 929 #B/R New Design 036
 +D B MS Blackcap Lady 736

| CED | BW | WW | YW | Milk | U IMF | U REA | U Fat | \$B |
|-----|-------|------|------|------|--------|--------|---------|-------|
| I+5 | I+0.6 | I+51 | I+90 | I+29 | I+0.56 | I+0.29 | I+0.020 | 51.56 |

- BW: 76 lbs., Adj. WW: 765 lbs.
- Dam posts WW 2-108, YW 2-107, %IMF 1-107, REA 1-106

LOT 52 DB New Frontier 9130 *

Born: 2-10-09 Reg. #: 16470425 Tattoo: 9130 Bull
 #+B/R New Frontier 095 #B/R New Design 036
4G NEW FRONTIER 6511 White Fence Pride H1
 +15497130 +E&b Lady Ext 858 #N Bar Emulation EXT
 Lady Scotch Traveler 320
 #C A Future Direction 5321 #G A R Precision 1680
D B MS FUTURE DIRECTION 240 C A Miss Power Fix 308
 14261428 #D B MS Easy 036 835 #B/R New Design 036
 D B MS Rain Easy 525

| CED | BW | WW | YW | Milk | U IMF | U REA | U Fat | \$B |
|------|-------|------|------|------|--------|--------|---------|-------|
| I+10 | I+1.9 | I+36 | I+66 | I+22 | I+0.58 | I+0.28 | I+0.010 | 49.73 |

- BW: 91 lbs., Adj. WW: 750 lbs.
- Dam posts WW 6-100, YW 5-99, %IMF 5-100, REA 5-100

LOT 53 DB All Around 9133 **

Born: 2-11-09 Reg. #: 620614708 Tattoo: 9133 Bull
 +Connealy Whitman #Bon View New Design 208
CONNEALY ALL AROUND +Ella Tina of Conanga 989
 15490811 Entrust of Conanga 894 #+C R A Bextor 872 5205 608
 Endalla of Conanga 4860
 #+K C F Bennett Total #Sitz Alliance 6595
D B MS BENNET TOTAL 475 Ext of Conanga 6790
 #+14727137 +D B Ms Katlyn 03 #B/R New Design 036
 Heather 850

| CED | BW | WW | YW | Milk | U IMF | U REA | U Fat | \$B |
|-----|-------|------|------|------|--------|--------|---------|-------|
| I+5 | I+1.3 | I+47 | I+90 | I+26 | I+0.57 | I+0.10 | I+0.023 | 48.51 |

- BW: 81 lbs., Adj. WW: 687 lbs.
- Dam posts BW 4-96, WW 4-105, YW 2-106, %IMF 2-102, REA 2-106

LOT 54 DB New Objective 9136 **

Born: 2-11-09 Reg. #: 620614709 Tattoo: 9136 Bull
 #S S Objective T510 0T26 #S S Traveler 6807 T510
QUAKER HILL OBJECTIVE 3J15 S S Miss Rita R011 7R8
 +14660859 #+Quaker Hill Queen 1L4 +BW/QHF Blackcap Lad
 Ankony Queen Q H F R981
 +LCC Tourist H157L #Bon View New Design 878
DB MS NEW TOURIST 5158 Leachman Annie B3003
 15189789 D B Ms New Horizon 257 #D B New Horizon 020
 D B Ms Easyvantage 323 035

| CED | BW | WW | YW | Milk | U IMF | U REA | U Fat | \$B |
|-----|-------|------|-------|------|--------|--------|---------|-------|
| I+7 | I+1.6 | I+50 | I+101 | I+30 | I+0.35 | I+0.10 | I+0.003 | 49.81 |

- BW: 80 lbs., Adj. WW: 695 lbs.

LOT 55 DDB Total Aberdeen 9137 ***

Born: 2-11-09 Reg. #: 620614710 Tattoo: 9137 Bull
 #C R A Bextor 872 5205 608 #+B A R Ext Traveler 205
TC ABERDEEN 759 +Cra Lady Jaye 608 498 S Easy
 15840414 #+TC Blackbird 4034 #+Bon View New Design 208
 TC Blackbird 1013
 #+K C F Bennett Total #Sitz Alliance 6595
DDB MS TOTAL BLACKBIRD 441 Ext of Conanga 6790
 14856466 DDB MS Merging Blackbird 720 #+Krugerrand Merger 34
 MS D D B Hi Lander 535

| CED | BW | WW | YW | Milk | U IMF | U REA | U Fat | \$B |
|-----|-------|------|------|------|--------|--------|---------|-------|
| I+7 | I+0.2 | I+48 | I+90 | I+26 | I+0.35 | I+0.44 | I+0.018 | 47.97 |

- BW: 78 lbs., Adj. WW: 712 lbs.
- Dam posts BW 4-98, WW 4-100, YW 3-100, REA 3-110

LOT 56 DB All Around 9142 *

Born: 2-12-09 Reg. #: 620614713 Tattoo: 9142 Bull
 +Connealy Whitman #Bon View New Design 208
CONNEALY ALL AROUND #Ella Tina of Conanga 989
 15490811 Entrust of Conanga 894 #+C R A Bextor 872 5205 608
 Endalla of Conanga 4860
 D B Precision 136 #+Twin Valley Precision E161
DB MS PRECISION 44 D B MS Blackcap Lady 733
 14845470 #D B Ms Neva 036 153 #B/R New Design 036
 MS C C R Nena D111

| CED | BW | WW | YW | Milk | U IMF | U REA | U Fat | \$B |
|-----|-------|------|------|------|--------|--------|---------|-------|
| I+2 | I+4.2 | I+46 | I+83 | I+27 | I+0.51 | I+0.14 | I-0.006 | 49.84 |

- BW: 97 lbs., Adj. WW: 751 lbs.
- Dam posts WW 4-103, YW 3-104, REA 3-103



DB EXTRA RITO 9143 • LOT 57

LOT 57 DB Extra Rito 9143 *

Born: 2-12-09 Reg. #: 16434501 Tattoo: 9143 Bull
 #+Nichols Extra H6 #N Bar Emulation EXT
NICHOLS EXTRA K205 Nichols Eileen May F261
 #13752642 Nichols Black Heiress F346 #+Nichols Heavy Duty D20
 Nichols Black Heiress B3
 #+Rito 112 of 2536 Rito 616 #Rito 616 orf 4B20 6807
DB MS NEW RITO 112 632 G A R Precision 2536
 15636276 #D B Ms New D Influence 172 #B/R New Dimension 7127
 D B MS Triple Influence 82

| CED | BW | WW | YW | Milk | U IMF | U REA | U Fat | \$B |
|-----|-------|------|-------|------|--------|--------|---------|-------|
| I+4 | I+4.0 | I+65 | I+116 | I+30 | I+0.28 | I+0.27 | I+0.006 | 52.20 |

- BW: 95 lbs., Adj. WW: 884 lbs.
- Dam posts WW 2-124, YW 1-115, REA 1-108

LOT 58 DB All Around 9147 *

Born: 2-12-09 Reg. #: 620614715 Tattoo: 9147 Bull
 +Connealy Whitman #Bon View New Design 208
CONNEALY ALL AROUND #Ella Tina of Conanga 989
 15490811 Entrust of Conanga 894 #+C R A Bextor 872 5205 608
 Endalla of Conanga 4860
 #Connealy Forefront #Connealy Frontline
D B MS FOREFRONT 228 Eileen Heartland Conganga6443
 #14235551 +D B Ms Katlyn 03 #B/R New Design 036
 Heather 850

| CED | BW | WW | YW | Milk | U IMF | U REA | U Fat | \$B |
|-----|-------|------|------|------|--------|--------|---------|-------|
| I+5 | I+3.0 | I+49 | I+90 | I+25 | I+0.60 | I+0.16 | I-0.001 | 53.49 |

- BW: 91 lbs., Adj. WW: 708 lbs.
- Dam posts WW 6-105, YW 5-101, %IMF 5-110, REA 5-104

LOT 59 DB Witman 9150 ***

Born: 2-12-09 Reg. #: 620614716 Tattoo: 9150 Bull
 #Bon View New Design 208 #B/R New Design 036
CONNEALY WHITMAN #Bon View Erica 443
 +14845068 +Ella Tina of Conanga 989 +Tehama Bando 155
 #Ella Lilly of Conanga 5989
 +Connealy Black Baron of SCAR #C A Future Direction 5321
DB MS LADY BARON 754 #Pow of Conanga 677
 15957273 DB Ms Lady Extra 594 #+Nichols Extra H6
 DB Ms Lady Tourist 3108

| CED | BW | WW | YW | Milk | U IMF | U REA | U Fat | \$B |
|-----|-------|------|------|------|--------|--------|---------|-------|
| I+5 | I+0.4 | I+43 | I+95 | I+32 | I+0.50 | I+0.27 | I-0.003 | 55.10 |

- BW: 71 lbs., Adj. WW: 621 lbs.

LOT 60 DB Reflection 9151 ***

Born: 2-13-09 Reg. #: 620614717 Tattoo: 9151 Bull
 #Bon View New Design 878 #B/R New Design 036
CONNEALY REFLECTION Bon View Gammer 85
 14528330 Happy Grill of Conanga 6260 #N Bar Emulation EXT
 Happy Date of Conanga
 #D H D Traveler 6807
 #S S Traveler 6807 T510 #+S S Miss Hi Spade A114
JLE LADY SS TRAV 213 +Jle Black Transfer 866
 #+14375007 +JLE Maxie Lady 049 +Jle MS Maxed Effecta 642

| CED | BW | WW | YW | Milk | U IMF | U REA | U Fat | \$B |
|------|-------|------|------|------|--------|--------|---------|-------|
| I+10 | I-0.3 | I+46 | I+94 | I+21 | I+0.33 | I+0.14 | I+0.007 | 45.67 |

- BW: 81 lbs., Adj. WW: 616 lbs.
- Dam posts BW 6-95

LOT 61 DDB Reflection 9155 ***

Born: 2-13-09 Reg. #: 620614718 Tattoo: 9155 Bull
 #Bon View New Design 878 #B/R New Design 036
CONNEALY REFLECTION Bon View Gammer 85
 14528330 Happy Grill of Conanga 6260 #+N Bar Emulation EXT
 Happy Date of Conanga
 #Sitz Alliance 6595
 #+K C F Bennett Total Ext of Conanga 6790
DDB MS BENNETT TOUR 528 +LCC Tourist H157L
 15194066 DDB Ms Fly Tourist 3102 D D B Ms Flybird Ferd 934

| CED | BW | WW | YW | Milk | U IMF | U REA | U Fat | \$B |
|------|-------|------|------|------|--------|--------|---------|-------|
| I+12 | I-0.3 | I+47 | I+88 | I+18 | I+0.33 | I+0.09 | I+0.028 | 40.92 |

- BW: 82 lbs., Adj. WW: 731 lbs.

LOT 62 DB Reflection 9157 **

Born: 2-13-09 Reg. #: 620614719 Tattoo: 9157 Bull
 #Bon View New Design 878 #B/R New Design 036
CONNEALY REFLECTION Bon View Gammer 85
 14528330 Happy Grill of Conanga 6260 #+N Bar Emulation EXT
 Happy Date of Conanga
 #N Bar Emulation EXT
 #+Nichols Extra H6 Nichols Eileen May F261
DB MS EXTRA PRECISION 5149 #+Twin Valley Precision E161
 15199053 D B Ms T V Precision 230 D B MS Blackcap Lady 733

| CED | BW | WW | YW | Milk | U IMF | U REA | U Fat | \$B |
|------|-------|------|------|------|--------|--------|---------|-------|
| I+10 | I+0.8 | I+48 | I+99 | I+24 | I+0.24 | I+0.14 | I+0.015 | 45.36 |

- BW: 81 lbs., Adj. WW: 715 lbs.
- Dam posts BW 3-94

LOT 63 DB Aberdeen 9162 ***

Born: 2-14-09 Reg. #: 620614720 Tattoo: 9162 Bull
 #C R A Bextor 872 5205 608 #+B A R Ext Traveler 205
TC ABERDEEN 759 #+Cra Lady Jaye 608 498 S Easy
 15840414 #+TC Blackbird 4034 #+Bon View New Design 208
 #+Twin Valley Precision E161 TC Blackbird 1013
DB MS PRECISION 315 #G A R Precision 1680
 +14644239 #D B MS Trendlander 036 83 #W C C Blackcap C9
 #B/R New Design 036
 D B MS Trendlander 11 D429

| CED | BW | WW | YW | Milk | U IMF | U REA | U Fat | \$B |
|------|-------|------|------|------|--------|--------|---------|-------|
| I+10 | I-0.7 | I+43 | I+91 | I+24 | I+0.52 | I+0.24 | I-0.006 | 55.82 |

- BW: 71 lbs., Adj. WW: 702 lbs.

LOT 64 DB New Frontier 9163 **

Born: 2-15-09 Reg. #: 16470426 Tattoo: 9163 Bull
 #+B/R New Frontier 095 #B/R New Design 036
4G NEW FRONTIER 6511 White Fence Pride H1
 +15497130 +E&b Lady Ext 858 #N Bar Emulation EXT
 Lady Scotch Traveler 320
 Connealy Bextor 779 #C R A Bextor 872 5205 608
DB MS FUTURE DESIGN 611 +Becka of Conanga 779
 15558502 DB Ms Future Design 3111 #C A Future Direction 5321
 D B MS Easy 323 830

| CED | BW | WW | YW | Milk | U IMF | U REA | U Fat | \$B |
|------|-------|------|------|------|--------|--------|---------|-------|
| I+13 | I+0.2 | I+40 | I+68 | I+21 | I+0.66 | I+0.39 | I+0.016 | 50.24 |

- BW: 86 lbs., Adj. WW: 681 lbs.
- Dam posts BW 2-97, WW 2-106, YW 1-100, REA 1-116

LOT 65 DB Whitman 9164 **

Born: 2-16-09 Reg. #: 620614722 Tattoo: 9164 Bull
 #Bon View New Design 208 #B/R New Design 036
CONNEALY WHITMAN #Bon View Erica 443
 +14845068 +Ella Tina of Conanga 989 #Tehama Bando 155
 #Ella Lilly of Conanga 5989
 +K G Power Design D B New Fly Design 730
DB MS POWEREXT 325 Power Fix K G 3
 14557174 D B MS Extlander 753 #N Bar Emulation EXT
 MS D11 of D V M D33

| CED | BW | WW | YW | Milk | U IMF | U REA | U Fat | \$B |
|-----|-------|------|------|------|--------|--------|---------|-------|
| I+4 | I-0.3 | I+47 | I+90 | I+26 | I+0.40 | I+0.11 | I-0.013 | 44.08 |

- BW: 80 lbs., Adj. WW: 621 lbs.

LOT 66 DDB Forward 9166 *

Born: 2-17-09 Reg. #: 620614723 Tattoo: 9166 Bull
 Connealy Onward #+Connealy Lead On
CONNEALY FORWARD Altune of Conanga 6104
 15491633 Becky Lee of Conanga 74 #G A R Grid Maker
 Beckon Lee of Conanga 73
 #TC Advantage #Kruggerand of Donamere 490
D D B MS ADVANTAGE HAND 062 TC Pride 2010
 13588625 MS Hi Hand of D V M D226 #Hoff Hi Hand S C 654
 MS C C R Hi Voltage D73

| CED | BW | WW | YW | Milk | U IMF | U REA | U Fat | \$B |
|-----|-------|------|------|------|--------|--------|---------|-------|
| I+8 | I+2.6 | I+48 | I+89 | I+19 | I+0.35 | I+0.13 | I-0.018 | 46.31 |

- BW: 94 lbs., Adj. WW: 698 lbs.
- Dam posts WW 6-101, YW 1-101, %IMF 5-110

LOT 67 DB Whitman 9167 *

Born: 2-17-09 Reg. #: 620614724 Tattoo: 9167 Bull
 #Bon View New Design 208 #B/R New Design 036
CONNEALY WHITMAN #Bon View Erica 443
 +14845068 +Ella Tina of Conanga 989 #+Tehama Bando 155
 #Ella Lilly of Conanga 5989
 #+Boyd New Day 8005 #A A R New Trend
DB MS NEW 036 474 +S V F Forever Lady 57D
 14856473 D B MS 722 036 832 #B/R New Design 036
 D B MS Lass Traveler 537

| CED | BW | WW | YW | Milk | U IMF | U REA | U Fat | \$B |
|-----|-------|------|------|------|--------|--------|---------|-------|
| I+3 | I+2.2 | I+44 | I+93 | I+29 | I+0.47 | I+0.21 | I+0.002 | 51.33 |

- BW: 79 lbs., Adj. WW: 674 lbs.

LOT 68 DB Pendleton 9171 **

Born: 2-20-09 Reg. #: 620614725 Tattoo: 9171 Bull
 S A V Final Answer 0035 #Sitz Traveler 8180
HARB PENDLETON 765 J H S A V Emulous 8145
 15313140 #H A R B Black Lady 375 J H #+H A R B High Plains 975 JH
 #H A R B Black Lady 073 J H
 #+Twin Valley Precision E161 #G A R Precision 1680
DB MS T V P BLACKCAP LADY 15 +W C C Blackcap C9
 +14004296 T A R Blackcap Lady 930C #+Baldridge Alfalfa 951
 #R R 711 Blackcap Lady 9124

| CED | BW | WW | YW | Milk | U IMF | U REA | U Fat | \$B |
|------|-------|------|-------|------|--------|--------|---------|-------|
| I+11 | I-0.8 | I+61 | I+107 | I+21 | I+0.13 | I-0.04 | I+0.023 | 36.95 |

- BW: 79 lbs., Adj. WW: 703 lbs.
- Dam posts BW 7-98, WW 5-100

LOT 69 DB Ambush 741 ***

Born: 2-20-09 Reg. #: 16476664 Tattoo: 9173 Bull
 +B/R Ambush 28 #+Rockn D Ambush 1531
DDB AMBUSH 28 741 OF SCAR +B/R Ruby of Tiffany 8250
 15842608 DDB Ms Freightdesign 415 #Bon View New Design 1407
 D D B Ms Freightlander 129
 #Sitz Traveler 8180
DB MS BUSHWACKER 004 5160 +Boyd Forever Lady 8003
 15194064 +D B Ms Bushwacker 24 #R P 3RD Bushwacker
 D B MS Flyeasy 637

| CED | BW | WW | YW | Milk | U IMF | U REA | U Fat | \$B |
|-----|-------|------|------|------|--------|--------|---------|-------|
| I+6 | I-0.6 | I+47 | I+87 | I+24 | I+0.52 | I+0.21 | I+0.003 | 53.30 |

- BW: 69 lbs., Adj. WW: 690 lbs.

LOT 70 DB New Frontier 9176 *

Born: 2-21-09 Reg. #: 16470427 Tattoo: 9176 Bull
 #+B/R New Frontier 095 #B/R New Design 036
4G NEW FRONTIER 6511 White Fence Pride H1
 +15497130 +E&b Lady Ext 858 #N Bar Emulation EXT
 Lady Scotch Traveler 320
 C S U Optimum Traveler 7123 #G A R Traveler 1489
D B MS O TRAVELER D11 053 C S U Miss Rainmaker 1109
 13587129 #MS D11 of D V M D328 C C R Northlander D11
 MS C C R Valedictorian D028

| CED | BW | WW | YW | Milk | U IMF | U REA | U Fat | \$B |
|------|-------|------|------|------|--------|--------|---------|-------|
| I+11 | I+1.2 | I+39 | I+70 | I+22 | I+0.30 | I+0.15 | I+0.013 | 37.11 |

- BW: 92 lbs., Adj. WW: 783 lbs.
- Dam posts BW 7-100, WW 7-103, YW 4-104, REA 6-104

LOT 71 DB All Around 9180 ***

Born: 2-23-09 Reg. #: 620614728 Tattoo: 9180 Bull
 +Connealy Whitman #Bon View New Design 208
CONNEALY ALL AROUND #Ella Tina of Conanga 989
15490811 Entrust of Conanga 894 #+C R A Bextor 872 5205 608
 Endalla of Conanga 4860
 #+Twin Valley Precision E161 #G A R Precision 1680
DB MS T V P BLACKCAP LADY 12 +W C C Blackcap C9
+14004295 T A R Blackcap Lady 930C #+Baldridge Alfalfa 951
 #R R 711 Blackcap Lady 9124

| CED | BW | WW | YW | Milk | U IMF | U REA | U Fat | \$B |
|-----|-------|------|------|------|--------|--------|---------|-------|
| I+3 | I+3.9 | I+44 | I+84 | I+22 | I+0.43 | I+0.16 | I-0.004 | 48.66 |

• BW: 96 lbs., Adj. WW: 689 lbs.

LOT 72 DB Extra Front 9182 **

Born: 2-24-09 Reg. #: 620614729 Tattoo: 9182 Bull
 #N Bar Emulation EXT #Emulation N Bar 5522
SINCLAIR EXTRA 4X13 N Bar Primrose 2424
14774030 N Bar Lady Ida S C C 2P37 N Bar Prime Time D806
 N Bar Lady Ida F1080
 DB Future Front 412 #C A Future Direction 5321
DB MS FUTURE FRONT 7178 #D B Ms Forefront 224
15937184 +DB Ms Katlyn Total 494 #+K C F Bennett Total
 +D B Ms Katlyn 03

| CED | BW | WW | YW | Milk | U IMF | U REA | U Fat | \$B |
|-----|-------|------|------|------|--------|--------|---------|-------|
| I+6 | I+1.4 | I+49 | I+79 | I+20 | I+0.55 | I-0.08 | I+0.046 | 41.02 |

• BW: 75 lbs., Adj. WW: 749 lbs.
 • Dam posts BW 1-100, WW 1-107

LOT 73 DB Right Answer 9184 ***

Born: 2-24-09 Reg. #: 620614731 Tattoo: 9184 Bull
 S A V Final Answer 0035 #Sitz Traveler 8180
CONNEALY RIGHT ANSWER 746 S A V Emulous 8145
15832750 Happy Dell of Conanga 252 #Sitz Right Time 338
 Happy Daze of Conanga 6260
 +Connealy Black Baron of SCAR #C A Future Direction 5321
DB MS HEATHER BALON 1161 #Pow of Conanga 677
15957270 Heather 850 #Krugerrand of Donamere 490
 +Cherry Creeks Heather 4407

| CED | BW | WW | YW | Milk | U IMF | U REA | U Fat | \$B |
|-----|-------|------|------|------|--------|--------|---------|-------|
| I+9 | I+1.9 | I+51 | I+97 | I+24 | I+0.33 | I+0.34 | I+0.026 | 50.74 |

• BW: 79 lbs., Adj. WW: 666 lbs.

LOT 74 DB New Ambush 9188 *

Born: 2-25-09 Reg. #: 16470428 Tattoo: 9188 Bull
 +B/R Ambush 28 #+Rockn D Ambush 1531
DDB AMBUSH 28 741 OF SCAR +B/R Ruby of Tiffany 8250
15842608 DDB Ms Freightdesign 415 +Bon View New Design 1407
 D D B Ms Freightlander 129
 +Cooley Laredo 163P14 #C A Future Direction 5321
DB MS NEW LAREDO 7121 +Wellington Forever Lady 72W2
15962869 DB Ms New Lady 411 #D B New Horizon 020
 +D B Ms Blackcap Lady 216

| CED | BW | WW | YW | Milk | U IMF | U REA | U Fat | \$B |
|-----|-------|------|------|------|--------|--------|---------|-------|
| I+4 | I+2.8 | I+51 | I+91 | I+25 | I+0.64 | I+0.13 | I-0.008 | 58.45 |

• BW: 78 lbs., Adj. WW: 693 lbs.

LOT 75 DB Pendleton 9189 ***

Born: 2-25-09 Reg. #: 620614733 Tattoo: 9189 Bull
 S A V Final Answer 0035 #Sitz Traveler 8180
HARB PENDLETON 765 J H #H A R B High Plains 975 JH
15313140 #H A R B Black Lady 375 J H #H A R B Black Lady 073 J H
 #B/R New Design 036
 #Bon View New Design 1407 Bon View Pride 664
DB MS NEWSDESIGN 760 +Lemmon Newsline C804
15962884 +DB Ms Heather Newsline 5121 +DB Ms Heather 122

| CED | BW | WW | YW | Milk | U IMF | U REA | U Fat | \$B |
|------|-------|------|-------|------|--------|--------|---------|-------|
| I+11 | I-1.4 | I+64 | I+116 | I+29 | I+0.42 | I+0.16 | I+0.033 | 51.24 |

• BW: 68 lbs., Adj. WW: 656 lbs.

LOT 76 DB Next Day 9190 *

Born: 2-25-09 Reg. #: 620614734 Tattoo: 9190 Bull
 #+Boyd New Day 8005 #A A R New Trend
BOYD NEXT DAY 6010 +S V F Forever Lady 57D
+15347911 +Boyd Heiress 3036 #+C A Future Direction 5321
 Boyd Heiress 1086
 #+Twin Valley Precision E161 #G A R Precision 1680
DB MS TVP BLACKCAP LADY 11 +W C C Blackcap C9
+13877234 T A R Blackcap lady 930C #+Baldridge Alfalfa 951
 #R R 711 Blackcap Lady 9124

| CED | BW | WW | YW | Milk | U IMF | U REA | U Fat | \$B |
|-----|-------|------|------|------|--------|--------|---------|-------|
| I+7 | I+4.1 | I+43 | I+85 | I+24 | I+0.30 | I+0.38 | I+0.014 | 48.97 |

• BW: 96 lbs., Adj. WW: 701 lbs.
 • Dam posts WW 7-102, YW 5-105, %IMF 5-103, REA 5-100

LOT 77 DB Analyst 9195 *

Born: 2-26-09 Reg. #: 620614735 Tattoo: 9195 Bull
 #B C C Bushwacker 41-93 #Paramont Ambush 2172
DR J ANALYST M250 R C Anita T Bando 918903
+14292649 G A R Precision 706 #G A R Precision 1680
 +G A R Ext 2114
 #Bon View New Design 1407 #B/R New Design 036
DB MS NEW DESIGN 548 Bon View Pride 664
15189797 #DB Ms New Horizon 318 #D B New Horizon 020
 D B Ms Traveler 096

| CED | BW | WW | YW | Milk | U IMF | U REA | U Fat | \$B |
|-----|-------|------|-------|------|--------|--------|---------|-------|
| I+7 | I+3.7 | I+68 | I+105 | I+28 | I+0.63 | I+0.13 | I+0.032 | 51.11 |

• BW: 98 lbs., Adj. WW: 883 lbs.
 • Dam posts WW 3-114, YW 2-117, %IMF 2-115, REA 2-106

LOT 78 DB Extra 9196 *

Born: 2-26-09 Reg. #: 620614736 Tattoo: 9196 Bull
 #N Bar Emulation EXT #Emulation N Bar 5522
SINCLAIR EXTRA 4X13 N Bar Primrose 2424
14774030 N Bar Lady Ida S C C 2P37 #+N Bar Prime Time D806
 N Bar Lady Ida F1080
 #+S A F 598 Bando 5175 #Bon View Bando 598
D B MS 5175 2104 +S A F Royal Lass 1002
14237273 D B MS Flyer 530 #Hoff Hi Flyer S C 7134
 MS C C R Hoss D88

| CED | BW | WW | YW | Milk | U IMF | U REA | U Fat | \$B |
|-----|-------|------|------|------|--------|--------|---------|-------|
| I+6 | I+1.3 | I+45 | I+74 | I+22 | I+0.51 | I-0.12 | I+0.033 | 39.65 |

• BW: 88 lbs., Adj. WW: 699 lbs.
 • Dam posts BW 6-100, WW 6-101, YW 4-100, %IMF 4-104

LOT 79 DB Navigator 9199 **

Born: 2-27-09 Reg. #: 16481199 Tattoo: 9199 Bull
 +Baldridge Navigator N5 +Baldridge Kaboom K234 KCF
DDB NAVIGATOR 725 +Baldridge Forever Lady K856
 15846690 DDB Ms New Design 3138 Bon View New Design 1407
 MS D D B Hi Lander 535
 DB Future Front 412 #C A Future Direction 5321
DB MS FUTURE 036 622 #D B Ms Forefront 224
 15559513 D B Ms 036 Extlander 082 #B/R New Design 036
 D B MS Extlander 753

| CED | BW | WW | YW | Milk | U IMF | U REA | U Fat | \$B |
|-----|------|-----|-----|------|--------|--------|---------|-------|
| +6 | +1.9 | +47 | +93 | +21 | I+0.49 | I+0.23 | I-0.002 | 53.85 |

- BW: 81 lbs., Adj. WW: 749 lbs.
- Dam posts WW 2-103

LOT 80 DB Right Answer 9202 ***

Born: 2-28-09 Reg. #: 620614739 Tattoo: 9202 Bull
 S A V Final Answer 0035 #Sitz Traveler 8180
CONNEALY RIGHT ANSWER 746 S A V Emulous 8145
 15832750 Happy Dell of Conanga 262 #+Hyline Right Time 338
 Happy Daze of Conanga 6260
 #S A V 8180 Traveler 004 #Sitz Traveler 8180
DB MS TOURIST TRAVELER 511 +Boyd Forever Lady 8003
 15194057 DB Ms Fly Tourist 386 +LCC Tourist H157L
 D B Ms Fly Lady 123

| CED | BW | WW | YW | Milk | U IMF | U REA | U Fat | \$B |
|-----|-------|------|-------|------|--------|--------|---------|-------|
| I+9 | I-1.1 | I+55 | I+100 | I+26 | I+0.28 | I+0.11 | I+0.039 | 44.06 |

- BW: 66 lbs., Adj. WW: 756 lbs.
- Dam posts BW 3-88, WW 3-99, %IMF 2-108, REA 2-101

LOT 81 DB Right Answer 9204 *

Born: 3-01-09 Reg. #: 620614740 Tattoo: 9204 Bull
 S A V Final Answer 0035 #Sitz Traveler 8180
CONNEALY RIGHT ANSWER 746 S A V Emulous 8145
 15832750 Happy Dell of Conanga 262 #+Hyline Right Time 338
 Happy Daze of Conanga 6260
 #+Rito 112 of 2536 Rito 616 #Rito 616 of 4B20 6807
DB MS RITO 112 NEWSLINE 7103 G A R Precision 2536
 15962867 +DB Ms Heather Newsline 5103 +Lemmon Newsline C804
 +DB Ms Heather 122

| CED | BW | WW | YW | Milk | U IMF | U REA | U Fat | \$B |
|-----|-------|------|-------|------|--------|--------|---------|-------|
| I+8 | I+2.8 | I+64 | I+108 | I+25 | I+0.36 | I+0.16 | I+0.016 | 51.88 |

- BW: 87 lbs., Adj. WW: 762 lbs.
- Dam posts WW 1-109

LOT 82 DB Aberdeen 9206 **

Born: 3-01-09 Reg. #: 620614741 Tattoo: 9206 Bull
 #C R A Bextor 872 5205 608 #+B A R Ext Traveler 205
TC ABERDEEN 759 +Cra Lady Jaye 608 498 S Easy
 15840414 #+TC Blackbird 4034 #+Bon View New Design 208
 TC Blackbird 1013
 #C A Future Direction 5321 #G A R Precision 1680
DB MS FUTURE 036 490 C A Miss Power Fix 308
 #+14856476 #D B MS Trendlander 036 83 #B/R New Design 036
 D B MS Trendlander 11 D429

| CED | BW | WW | YW | Milk | U IMF | U REA | U Fat | \$B |
|-----|-------|------|------|------|--------|--------|---------|-------|
| I+9 | I+1.6 | I+49 | I+89 | I+31 | I+0.65 | I+0.38 | I+0.000 | 59.73 |

- BW: 86 lbs., Adj. WW: 782 lbs.
- Dam posts WW 4-110, YW 3-111, %IMF 3-106, REA 3-106

LOT 83 DB All Around 9207 *

Born: 3-01-09 Reg. #: 620614742 Tattoo: 9207 Bull
 +Connealy Whitman #Bon View New Design 208
CONNEALY ALL AROUND +Ella Tina of Conanga 989
 15490811 Entrust of Conanga 894 #+C R A Bextor 872 5205 608
 Endalla of Conanga 4860
 #D B New Horizon 020 #S A F Focus of E R
D B MS NEW HORIZON 257 #D B MS Trendlander 036 83
 14235061 D B Ms Easyvantage 323 035 #TC Advantage
 D B MS Easy 323 830

| CED | BW | WW | YW | Milk | U IMF | U REA | U Fat | \$B |
|-----|-------|------|-------|------|--------|--------|---------|-------|
| I+4 | I+2.9 | I+57 | I+103 | I+28 | I+0.69 | I-0.10 | I-0.013 | 56.38 |

- BW: 91 lbs., Adj. WW: 788 lbs.
- Dam posts BW 6-101, WW 6-104, YW 5-106, %IMF 5-122

LOT 84 DB Bextor 9209 **

Born: 3-02-09 Reg. #: 16470429 Tattoo: 9209 Bull
 #C R A Bextor 872 5205 608 #+B A R Ext Traveler 205
CONNEALY BEXTOR 779 +Cra Lady Jaye 608 498 S Easy
 14845093 +Becka of Conanga 779 S A F Fame
 +Beckys Fortune Conanga 6363
 Ironwood New Level Ironwood New Design 022 701
DB MS CALCULATOR LEVEL 657 +Wardens Blackcap 6148 6309
 16210987 D B Ms Calculator 255 #Hunts Calculator 2720
 D B MS Moneasylander 747

| CED | BW | WW | YW | Milk | U IMF | U REA | U Fat | \$B |
|------|-------|------|------|------|--------|--------|---------|-------|
| I+12 | I-0.2 | I+56 | I+85 | I+25 | I+0.51 | I+0.20 | I+0.041 | 44.89 |

- BW: 80 lbs., Adj. WW: 834 lbs.
- Dam posts BW 2-95, WW 2-108

LOT 85 DB Next Day 9210 *

Born: 3-03-09 Reg. #: 620614744 Tattoo: 9210 Bull
 #+Boyd New Day 8005 #A A R New Trend
BOYD NEXT DAY 6010 +S V F Forever Lady 57D
 +15347911 +Boyd Heiress 3036 #+C A Future Direction 5321
 Boyd Heiress 1086
 #D B New Horizon 020 #S A F Focus of E R
D B MS NEW HORIZON 270 #D B MS Trendlander 036 83
 #14235054 D B Ms Ferdinella 94 #R R Ferdinand 758D
 #MS C C R Express D91

| CED | BW | WW | YW | Milk | U IMF | U REA | U Fat | \$B |
|-----|-------|------|------|------|--------|--------|---------|-------|
| I+6 | I+3.9 | I+46 | I+95 | I+25 | I+0.25 | I+0.17 | I-0.008 | 46.53 |

- BW: 93 lbs., Adj. WW: 709 lbs.
- Dam posts WW 6-100, YW 5-104

LOT 86 DB Performer 9211 **

Born: 3-03-09 Reg. #: 16470430 Tattoo: 9211 Bull
 K C F Bennett Performer #Hyline Right Time 338
CONNEALY PERFORMER 313 K C F Miss 589 L182
 15832641 #+Eileena of Conanga 329 #Connealy Forefront
 +Eileen of Conanga 986
 #Bon View New Design 1407 #B/R New Design 036
DB MS BLACKCAP DESIGN 442 Bon View Pride 664
 #14872303 DB Ms Blackcap Dateliner 111 #Connealy Dateline
 D B Ms Blackcap EXT 859

| CED | BW | WW | YW | Milk | U IMF | U REA | U Fat | \$B |
|-----|-------|------|------|------|--------|--------|---------|-------|
| I+8 | I+0.5 | I+50 | I+93 | I+25 | I+0.31 | I+0.41 | I+0.022 | 47.82 |

- BW: 80 lbs., Adj. WW: 765 lbs.
- Dam posts BW 4-100, WW 4-106, YW 3-108, %IMF 3-136 REA 3-101

LOT 87 DB Navigator 9212 *

Born: 3-03-09 Reg. #: 16481200 Tattoo: 9212 Bull
 +Baldridge Navigator N5 +Baldridge Kaboom K234 KCF
DDB NAVIGATOR 725 +Baldridge Forever Lady K856
 15846690 DDB Ms New Design 3138 Bon View New Design 1407
 DB Future Front 412 MS D D B Hi Lander 535
DB MS FUTURE RITO 67 #C A Future Direction 5321
 15558519 D B Ms Rito 132 #D B Ms Forefront 224
 #Krugerrand of Donamere 490
 MS C C R Hoss D88

| CED | BW | WW | YW | Milk | U IMF | U REA | U Fat | \$B |
|-----|------|-----|-----|------|--------|--------|---------|-------|
| +0 | +4.2 | +49 | +96 | +20 | I+0.45 | I+0.14 | I+0.007 | 52.12 |

- BW: 92 lbs., Adj. WW: 771 lbs.
- Dam posts WW 2-100, YW 1-101, %IMF 1-99, REA 1-103

LOT 88 DB Bexter 9218 *

Born: 3-06-09 Reg. #: 16470431 Tattoo: 9218 Bull
 #C R A Bextor 872 5205 608 #+B A R Ext Traveler 205
CONNELY BEXTOR 779 +Cra Lady Jaye 608 498 S Easy
 14845093 +Becka of Conanga 779 #S A F Fame
 #S A V 8180 Traveler 004 +Beckys Fortune Conanga 6363
DB DESIGN TRAVELER 6137 #Sitz Traveler 8180
 15629809 D B MS Easy 323 830 +Boyd Forever Lady 8003
 #B/R New Design 323
 D B MS Easy Blackbird 513

| CED | BW | WW | YW | Milk | U IMF | U REA | U Fat | \$B |
|-----|------|------|------|------|--------|--------|---------|-------|
| I+5 | I+38 | I+54 | I+93 | I+23 | I+0.44 | I+0.26 | I+0.030 | 47.92 |

- BW: 94 lbs., Adj. WW: 717 lbs.
- Dam posts WW 2-104

LOT 89 DB New Frontier 9220 ***

Born: 3-07-09 Reg. #: 16470432 Tattoo: 9220 Bull
 #+B/R New Frontier 095 #B/R New Design 036
4G NEW FRONTIER 6511 White Fence Pride H1
 +15497130 +E&b Lady Ext 858 #N Bar Emulation EXT
 Lady Scotch Traveler 320
 +Mytty In Focus #S A F Focus of E R
DB MS EASY IN FOCUS 758 +Mytty Countess 906
 15972183 D B MS Easy 323 830 #B/R New Design 323
 D B MS Easy Blackbird 513

| CED | BW | WW | YW | Milk | U IMF | U REA | U Fat | \$B |
|------|-------|------|------|------|--------|--------|---------|-------|
| I+14 | I-1.4 | I+36 | I+68 | I+17 | I+0.55 | I+0.32 | I+0.001 | 46.85 |

- BW: 72 lbs., Adj. WW: 632 lbs.
- Dam posts BW 2-95, WW 2-99, REA 1-118

LOT 90 DB New Frontier 9221 ***

Born: 3-07-09 Reg. #: 16470433 Tattoo: 9221 Bull
 #+B/R New Frontier 095 #B/R New Design 036
4G NEW FRONTIER 6511 White Fence Pride H1
 +15497130 +E&b Lady Ext 858 #N Bar Emulation EXT
 Lady Scotch Traveler 320
 #+Twin Valley Precision E161 #G A R Precision 1680
DB MS FORE PRECISION 43 +W C C Blackcap C9
 14856465 #D B Ms Forefront 228 #Connealy Forefront
 +D B Ms Katlyn 03

| CED | BW | WW | YW | Milk | U IMF | U REA | U Fat | \$B |
|------|-------|------|------|------|--------|--------|---------|-------|
| I+12 | I-0.6 | I+41 | I+76 | I+18 | I+0.51 | I+0.40 | I+0.013 | 50.93 |

- BW: 78 lbs., Adj. WW: 674 lbs.
- Dam posts BW 4-94, WW 4-98, %IMF 3-116, REA 3-101

LOT 91 DB Tourist 9223 *

Born: 2-01-09 Reg. #: 16470434 Tattoo: 9223 Bull
 #Bon View New Design 878 #B/R New Design 036
LCC TOURIST H157L Bon View Gammer 85
 +13953292 Leachman Annie B3003 #R R Traveler 5204
 Landmark Annie 005
 #N Bar Emulation EXT #Emulation N Bar 5522
D B MS NENA EXT 710 N Bar Primrose 2424
 12800420 +D B MS Nena Flyer D426 #Hoff Hi Flyer S C 7134
 +MS D D B Nena Blackbird D05

| CED | BW | WW | YW | Milk | U IMF | U REA | U Fat | \$B |
|-----|-------|------|------|------|--------|--------|---------|-------|
| I+7 | I+2.6 | I+27 | I+62 | I+21 | I+0.35 | I-0.19 | I+0.039 | 30.40 |

- BW: 89 lbs., Adj. WW: 626 lbs.
- Dam posts BW 11-102, WW 11-99, YW 9-99, %IMF 8-101, REA 8-99

LOT 92 DB Ambush 9224 *

Born: 3-09-09 Reg. #: 620614752 Tattoo: 9224 Bull
 #+Rockn D Ambush 1531 #Paramont Ambush 2172
B/R AMBUSH 28 MS Blackcap Band of R D 1301
 +14188956 +B/R Ruby of Tiffany 8250 #N Bar Emulation EXT
 #Sitz Traveler 6802
 #Sitz Value 7097 +B/R Ruby of Tiffany 5113
D B MS VALUE 263 #Sitz Eisa Evergreen 791
 14237277 D B MS Fly Traveler 735 #+Whitestone Fly Traveler 3006
 MS C C R Thunderella D720

| CED | BW | WW | YW | Milk | U IMF | U REA | U Fat | \$B |
|-----|-------|------|------|------|--------|--------|---------|-------|
| I+6 | I+2.5 | I+50 | I+88 | I+14 | I+0.45 | I+0.24 | I-0.015 | 50.90 |

- BW: 90 lbs., Adj. WW: 678 lbs.

LOT 93 DB Whitman 9226 **

Born: 3-12-09 Reg. #: 620614753 Tattoo: 9226 Bull
 #Bon View New Design 208 #B/R New Design 036
CONNELY WHITMAN #Bon View Erica 443
 +14845068 +Ella Tina of Conanga 989 #Tehama Bando 155
 #Ella Lilly of Conanga 5989
 #L T 598 Bando 9074 #+S A F 598 Bando 5175
DB MS BLACKCAP BANDO 4154 #Mill Coulee Barbara K 323
 14856464 +D B MS Blackcap Lady 71 +O S U Panama 4178
 T A R Blackcap Lady 930C

| CED | BW | WW | YW | Milk | U IMF | U REA | U Fat | \$B |
|-----|-------|------|------|------|--------|--------|---------|-------|
| I+2 | I+1.9 | I+47 | I+92 | I+29 | I+0.55 | I+0.09 | I-0.008 | 52.51 |

- BW: 84 lbs., Adj. WW: 684 lbs.
- Dam posts BW 3-100, WW 3-96, YW 1-100, %IMF 1-120

LOT 94 DB Pendleton 9228 **

Born: 3-15-09 Reg. #: 620614754 Tattoo: 9228 Bull
 S A V Final Answer 0035 #Sitz Traveler 8180
HARB PENDLETON 765 J H S A V Emulous 8145
 15313140 #H A R B Black Lady 375 J H #+H A R B High Plains 975 JH
 #H A R B Black Lady 073 J H
 #+Twin Valley Precision E161 #G A R Precision 1680
DB MS PRECISION 036 4131 +W C C Blackcap C9
 +14856461 #D B MS Trendlander 036 83 #B/R New Design 036
 D B MS Trendlander 11 D429

| CED | BW | WW | YW | Milk | U IMF | U REA | U Fat | \$B |
|-----|-------|------|------|------|--------|--------|---------|-------|
| | I+0.1 | I+50 | I+95 | I+23 | I+0.27 | I+0.04 | I+0.020 | 41.92 |

- BW: 87 lbs., Adj. WW: 629 lbs.

LOT 95 DB Navigator 9235 **

Born: 3-25-09 Reg. #: 620614756 Tattoo: 9235 Bull
 +Baldrige Navigator N5 +Baldrige Kaboom K234 KCF
DDB NAVIGATOR 725 +Baldrige Forever Lady K856
 15846690 DDB Ms New Design 3138 Bon View New Design 1407
 #C A Future Direction 5321 MS D D B Hi Lander 535
DB MS FUTURE 036 4125 #G A R Precision 1680
 +14856460 #D B MS Trendlander 036 83 C A Miss Power Fix 308
 #B/R New Design 036
 D B MS Trendlander 11 D429

| CED | BW | WW | YW | Milk | U IMF | U REA | U Fat | \$B |
|-----|-------|------|------|------|--------|--------|---------|-------|
| I+8 | I+1.1 | I+39 | I+86 | I+21 | I+0.58 | I+0.19 | I-0.012 | 56.10 |

- BW: 84 lbs., Adj. WW: 666 lbs.
- Dam posts BW 4-96

LOT 96 DDB Next Day 9236 **

Born: 3-25-09 Reg. #: 620614757 Tattoo: 9236 Bull
 #+Boyd New Day 8005 #A A R New Trend
BOYD NEXT DAY 6010 +S V F Forever Lady 57D
 +15347911 +Boyd Heiress 3036 #+C A Future Direction 5321
 #C A Future Direction 5321 Boyd Heiress 1086
DDB MS FUTURELINE 49 #G A R Precision 1680
 14856475 D D B Ms Dateline 234 C A Miss Power Fix 308
 #Connealy Dateline
 D D B Ms Exact Lander 042

| CED | BW | WW | YW | Milk | U IMF | U REA | U Fat | \$B |
|------|-------|------|------|------|--------|--------|---------|-------|
| I+11 | I+1.1 | I+38 | I+86 | I+24 | I+0.32 | I+0.31 | I+0.003 | 49.41 |

- BW: 85 lbs., Adj. WW: 592 lbs.

LOT 97 DDB New Frontier 9239 ***

Born: 3-29-09 Reg. #: 16481201 Tattoo: 9239 Bull
 #+B/R New Frontier 095 #B/R New Design 036
4G NEW FRONTIER 6511 White Fence Pride H1
 +15497130 +E&b Lady Ext 858 #N Bar Emulation EXT
 #L T 598 Bando 9074 Lady Scotch Traveler 320
DDB MS FREIGHTLINER 5152 #+S A F 598 Bando 5175
 15194063 D D B Ms Freightliner 290 #Mill Coulee Barbara K 323
 #Connealy Freightliner
 D D B MS Flybird 624

| CED | BW | WW | YW | Milk | U IMF | U REA | U Fat | \$B |
|-----|------|-----|-----|------|--------|--------|---------|-------|
| +13 | -2.6 | +37 | +69 | +20 | I+0.61 | I+0.12 | I+0.023 | 45.25 |

- BW: 70 lbs., Adj. WW: 635 lbs.
- Dam posts BW 3-100, WW 3-100, YW 1-102, %IMF 1-113

LOT 98 DB Performer 9244 **

Born: 4-11-09 Reg. #: 16470435 Tattoo: 9244 Bull
 K C F Bennett Performer #Hyline Right Time 338
CONNEALY PERFORMER 313 K C F Miss 589 L182
 15832641 #+Eileena of Conanga 329 #Connealy Forefront
 #Stevenson Bruno 561G +Eileen of Conanga 986
DB MS HEATHER 122 #+Stevenson Royce 741C
 +14004298 Heather 850 JRS Enchantress 16A
 #Kruggerand of Donamere 490
 +Cherry Creeks Heather 4407

| CED | BW | WW | YW | Milk | U IMF | U REA | U Fat | \$B |
|-----|-------|------|------|------|--------|--------|---------|-------|
| I+5 | I+1.4 | I+50 | I+93 | I+22 | I+0.23 | I+0.28 | I+0.011 | 47.44 |

- BW: 80 lbs, Adj. WW: 677 lbs.
- Dam posts BW 7-103, WW 7-101, YW 6-102

LOT 99 DB Performer 9245 **

Born: 4-12-09 Reg. #: 16470436 Tattoo: 9245 Bull
 K C F Bennett Performer #Hyline Right Time 338
CONNEALY PERFORMER 313 K C F Miss 589 L182
 15832641 #+Eileena of Conanga 329 #Connealy Forefront
 #Eileen of Conanga 986
 K M Next Chapter 1211 #Bon View New Design 1407
DB MS FUTURE CHAPTER 6171 K M Princess 879
 15558510 D B Ms Future Direction 240 #C A Future Direction 5321
 #D B MS Easy 036 835

| CED | BW | WW | YW | Milk | U IMF | U REA | U Fat | \$B |
|-----|-------|------|------|------|--------|--------|---------|-------|
| I+5 | I+1.9 | I+50 | I+88 | I+27 | I+0.27 | I+0.38 | I+0.024 | 45.05 |

- BW: 82 lbs, Adj. WW: 713 lbs.
- Dam posts BW 1-101, WW 1-106



DDB NEW PENDLETON 9931 • LOT 100

LOT 100 DDB New Pendleton 9931 **

Born: 2-02-09 Reg. #: 16422920 Tattoo: 9931 Bull
 S A V Final Answer 0035 #Sitz Traveler 8180
HARB PENDLETON 765 J H S A V Emulous 8145
 15313140 #H A R B Black Lady 375 J H #+H A R B High Plains 975 JH
 #Bon View New Design 1407 #H A R B Black Lady 073 J H
DDB MS NEW DESIGN 3138 #B/R New Design 036
 14545842 MS D D B Hi Lander 535 Bon View Pride 664
 C C R Northlander D11
 M S C C R Hi Hand D123

| CED | BW | WW | YW | Milk | U IMF | U REA | U Fat | \$B |
|------|-------|------|------|------|--------|--------|---------|-------|
| I+12 | I-0.8 | I+55 | I+99 | I+27 | I+0.34 | I+0.01 | I+0.017 | 42.50 |

- BW: 80 lbs, Adj. WW: 812 lbs.
- Dam posts WW 5-102, YW 4-104, %IMF 3-107, REA 3-103

**Doug Booth Family Angus
Annual Bull Sale**

**BULLS WITH CALVING EASE,
EXPLOSIVE GROWTH AND
CARCASS MERIT TO
IMPROVE AND COMPLEMENT
ANY HERD!**

~ REFERENCE SIRE ~

REF. SIRE **A** TC Aberdeen 759

Reg. #: 15840414

#C R A Bextor 875 5205 608 #B A R Ext Traveler 205
TC ABERDEEN 759 Cra Lady Jaye 608 498 S Easy
15840414 #TC Blackbird 4034 #Bon View New Design 208
 TC Blackbird 1013

| CED | BW | WW | YW | Milk | U IMF | U REA | \$B | SC |
|-----|----|-----|------|------|-------|-------|-------|-----|
| +10 | +2 | +56 | +101 | +31 | +78 | +49 | 60.37 | +58 |

REF. SIRE **B** Connealy Reflection

Reg. #: 14528330

#Bon View New Design 878 #B/R New Design 036
CONNELY REFLECTION Bon View Gammer 85
14528330 Happy Grill of Conanga 6260 #N Bar Emulation EXT
 Happy Date of Conanga

| CED | BW | WW | YW | Milk | U IMF | U REA | \$B | SC |
|-----|----|-----|------|------|-------|-------|-------|-----|
| +9 | +6 | +56 | +111 | +27 | +39 | +14 | 53.59 | +41 |

REF. SIRE **C** Woodhill Mainline

Reg. #: 14793708

Connealy Danny Boy #Connealy Timeline
WOODHILL MAINLINE Energy of Conanga 4851
14793708 #Woodhill Blackbird 1288-138K N Bar Bando 598 Y2587
 #Woodhill Blackbird 463-1288

| CED | BW | WW | YW | Milk | U IMF | U REA | \$B | SC |
|-----|------|-----|------|------|-------|-------|-------|-----|
| +8 | -1.0 | +60 | +111 | +14 | +20 | +75 | 52.70 | +05 |

REF. SIRE **D** HARB Pendleton 765 J H

Reg. #: 15313140

S A V Final Answer 0035 #Sitz Traveler 8180
HARB PENDLETON 765 J H S A V Emulous 8145
15313140 #H A R B Black Lady 375 J H #H A R B High Plains 975 JH
 #H A R B Black Lady 073 J H

| CED | BW | WW | YW | Milk | U IMF | U REA | \$B | SC |
|-----|-----|-----|------|------|-------|-------|-------|-------|
| +11 | -.4 | +60 | +104 | +24 | +21 | -.01 | 36.81 | +1.43 |

REF. SIRE **E** Boyd Next Day 6010

Reg. #: +15347911

#+Boyd New Day 8005 #A A R New Trend
BOYD NEXT DAY 6010 +S V F Forever Lady 57D
+15347911 +Boyd Heiress 3036 #+C A Future Direction 5321
 Boyd Heiress 1086

| CED | BW | WW | YW | Milk | U IMF | U REA | \$B | SC |
|-----|------|-----|-----|------|-------|-------|-------|-----|
| +6 | +2.5 | +48 | +97 | +27 | +34 | +40 | 51.19 | +51 |

REF. SIRE **F** Connealy Right Answer 746

Reg. #: 15832750

S A V Final Answer 0035 #Sitz Traveler 8180
CONNELY RIGHT ANSWER 746 S A V Emulous 8145
15832750 Happy Dell of Conanga 262 #Hyline Right Time 338
 Happy Daze of Conanga 6260

| CED | BW | WW | YW | Milk | U IMF | U REA | \$B | SC |
|-----|-----|-----|------|------|-------|-------|-------|-------|
| +11 | -.3 | +62 | +113 | +27 | +27 | +19 | 50.83 | +1.06 |

REF. SIRE **G** B/R Ambush 28

Reg. #: +14188956

#Rockn D Ambush 1531 #Paramont Ambush 2172
B/R AMBUSH 28 MS Blackcap Band of R D 1301
+14188956 +B/R Ruby of Tiffany 8250 #N Bar Emulation EXT
 B/R Ruby of Tiffany 5113

| CED | BW | WW | YW | Milk | U IMF | U REA | \$B | SC |
|-----|------|-----|------|------|-------|-------|-------|------|
| +5 | +3.4 | +59 | +109 | +13 | +1.06 | +58 | 78.35 | -.30 |

REF. SIRE **H** Nichols Extra K205

Reg. #: #13752642

#Nichols Extra H6 #N Bar Emulation EXT
NICHOLS EXTRA K205 Nichols Eileen May F261
#13752642 Nichols Black Heiress F346 +Nichols Heavy Duty D20
 Nichols Black Heiress B3

| CED | BW | WW | YW | Milk | U IMF | U REA | \$B | SC |
|-----|------|-----|------|------|-------|-------|-------|-----|
| +8 | +1.9 | +56 | +109 | +24 | +22 | +23 | 46.01 | +87 |

REF. SIRE **I** Connealy Whitman

Reg. #: +14845068

#Bon View New Design 208 #B/R New Design 036
CONNELY WHITMAN #Bon View Erica 443
+14845068 +Ella Tina of Conanga 989 +Tehama Bando 155
 #Ella Lilly of Conanga 5989

| CED | BW | WW | YW | Milk | U IMF | U REA | \$B | SC |
|-----|------|-----|------|------|-------|-------|-------|-------|
| +2 | +2.1 | +59 | +108 | +36 | +58 | +22 | 55.63 | +1.03 |

REF. SIRE **J** Rito II of 2536 Rito 616

Reg. #: +13793826

#Rito 616 of 4B20 6807 #D H D Traveler 6807
RITO II OF 2536 RITO 616 +Rita 4B20 of 0FB1 Bando
+13793826 G A R Precision 2536 #G A R Precision 1680
 +G A R Ext 2104

| CED | BW | WW | YW | Milk | U IMF | U REA | \$B | SC |
|-----|------|-----|------|------|-------|-------|-------|------|
| +3 | +2.3 | +65 | +113 | +23 | +63 | -.22 | 55.02 | -.45 |

REF. SIRE **K** Quaker Hill Objective 3J15

Reg. #: +14660859

S S Objective T510 0T26 #S S Traveler 6807 T510
QUAKER HILL OBJECTIVE 3J15 S S Miss Rita R011 7R8
+14660859 #+Quaker Hill Queen 1L4 +BW/QHF Blackcap Lad
 Ankony Queen Q H F R981

| CED | BW | WW | YW | Milk | U IMF | U REA | \$B | SC |
|-----|------|-----|------|------|-------|-------|-------|-----|
| +4 | +2.6 | +77 | +126 | +25 | +28 | +59 | 61.04 | +02 |

REF. SIRE **L** Sinclair Extra 4X13

Reg. #: 14774030

#N Bar Emulation EXT #Emulation N Bar 5522
SINCLAIR EXTRA 4X13 N Bar Primrose 2424
14774030 N Bar Lady Ida S C C 2P37 #N Bar Prime Time D806
 N Bar Lady Ida F1080

| CED | BW | WW | YW | Milk | U IMF | U REA | \$B | SC |
|-----|------|-----|-----|------|-------|-------|-------|------|
| +9 | -1.2 | +42 | +72 | +26 | +65 | -.21 | 40.94 | -.74 |

~ REFERENCE SIRES ~

REF. SIRE **M** Connealy Performer 313

Reg. #: 15832641

K C F Bennett Performer
CONNEALY PERFORMER 313
15832641 #+Eileena of Conanga 329

#Hyline Right Time 338
 K C F Miss 589 L182
 #Connealy Forefront
 +Eileen of Conanga 986

| CED | BW | WW | YW | Milk | U IMF | U REA | \$B | SC |
|-----|----|-----|-----|------|-------|-------|-------|-----|
| +8 | +7 | +55 | +97 | +25 | +06 | +50 | 44.04 | +69 |

REF. SIRE **P** Connealy All Around

Reg. #: 15490811

Connealy Whitman
CONNEALY ALL AROUND
15490811 Entrust of Conanga 894

#Bon View New Design 208
 Ella Tina of Conanga 989
 #C R A Bextor 872 5205 608
 Endalla of Conanga 4860

| CED | BW | WW | YW | Milk | U IMF | U REA | \$B | SC |
|-----|------|-----|------|------|-------|-------|-------|-----|
| +1 | +3.0 | +63 | +107 | +27 | +78 | -.01 | 55.78 | +61 |

REF. SIRE **N** Connealy Forward

Reg. #: 15491633

Connealy Onward
CONNEALY FORWARD
15491633 Becky Lee of Conanga 74

#Connealy Lead On
 Altune of Conanga 6104
 #+G A R Grid Maker
 Beckon Lee of Conanga 73

| CED | BW | WW | YW | Milk | U IMF | U REA | \$B | SC |
|-----|------|-----|------|------|-------|-------|-------|-----|
| +10 | +1.6 | +57 | +112 | +23 | +21 | +63 | 54.68 | +57 |

REF. SIRE **Q** 4G New Frontier 651I

Reg. #: +15497130

#B/R New Frontier 095
4G NEW FRONTIER 651I
+15497130 +E&b Lady Ext 858

#B/R New Design 036
 White Fence Pride H1
 #+N Bar Emulation EXT
 Lady Scotch Traveler 320

| CED | BW | WW | YW | Milk | U IMF | U REA | \$B | SC |
|-----|------|-----|-----|------|-------|-------|-------|-----|
| +14 | -2.6 | +36 | +73 | +18 | +59 | +35 | 57.19 | +38 |

REF. SIRE **O** Connealy Bextor 779

Reg. #: 14845093

C R A Bextor 872 5205 608
CONNEALY BEXTOR 779
14845093 +Becka of Conanga 779

#+B A R Ext Traveler 205
 +Cra Lady Jaye 608 498 S Easy
 +S A F Fame
 +Beckys Fortune Conanga 6363

| CED | BW | WW | YW | Milk | U IMF | U REA | \$B | SC |
|-----|-----|-----|-----|------|-------|-------|-------|------|
| +11 | -.4 | +54 | +95 | +23 | +63 | +34 | 55.20 | -.10 |

**THANKS
 FOR YOUR
 INTEREST!**

**We Hope to See
 You on Sale Day**



SIRES
REPRESENTED

Sale Day Phone:
307-532-6207

HARB PENDLETON
RIGHT ANSWER

Auctioneer: Lex Madden
Phone: 307-532-3333

FREE
Wintering Available

NEXT DAY

3J15

112

Carcass Data
Available

Delivery Available
\$50 Discount
If You Take Your Bulls
Sale Day.

K205
TC ABERDEEN
B/R AMBUSH 28

Performance Data
Available

CONNELY REFLECTION

*BULLS WITH CALVING EASE, EXPLOSIVE GROWTH
AND CARCASS MERIT
TO IMPROVE AND COMPLEMENT ANY HERD*

Douglas Booth
7618 Road 41
Torrington, WY 82240

FIRST CLASS - DATED MATERIAL

TO: