



DIECKMANN CATTLE
inaugural production sale

DECEMBER 1ST, 2019 • 1 P.M. EST • GREENSBURG, INDIANA



DECEMBER 1ST 1 PM EST GREENSBURG, IN

SALE DAY TELEPHONES

Quentin Dieckmann (812) 614-7083 • Cody Heavin (417) 861-4339
Bill Dieckmann (812) 614-3006 • Seth Smoot (765) 748-6451
Jeremy Haag (816) 516-1309

AUCTIONEER

Dustin Layton • (405) 464-2455
IN License #AU11900043

LIVESTOCK PUBLICATIONS REPRESENTATIVES

Casey Jentz (608) 234-1998 *Angus Journal*
Alex Tolbert (706) 338-8733 *Angus Journal*
Dick Carmichael (615) 584-0997 *Special Assignment*
Delvin Heldermon (405) 205-1116 *Special Assignment*

SALE CONSULTANTS

Kyle Conley • (580) 618-4533 • Luke Doris • (620) 353-4114
Barry Reimann • (605) 870-1444

SALE BOOK PREPARED

TOM BURKE, KURT SCHAFF, JEREMY HAAG
AMERICAN ANGUS HALL OF FAME, at the WORLD HEADQUARTERS
Box 660, Smithville, MO 64089-0060
Phone 816- 532-0811 • Fax 816- 532-0851
eMail: angushall@angushall.com • www.angushall.com

LIABILITY

All persons who attend the sale do so at their own risk, legal or otherwise, for their safety or for behavior of the animals. The owners, sale management firm, and the sale stall assume no liability for property loss or any accident that may occur.

LIVESTOCK MORTALITY INSURANCE

To properly insure your investments, James F. Bessler, Inc 815-762-264

SUPPLEMENTAL INFORMATION

A supplemental sheet will be available sale day with complete and up to date calving information. Announcements from the auction block regarding the cattle selling in this sale take precedence over information listed in the catalog. Up-to-date genetic ressesive status can be viewed online at www.angus.org.

TERMS AND CONDITIONS:

Terms of the sale are cash or check on sale day or payment wired on the next business day. Cattle will sell under the suggested Terms and Conditions of the American Angus Association (http://www.angus.org/Pub/suggested_sale_terms.pdf).

HERD HEALTH

All cattle will be accompanied by proper health certificated for immediate shipment.

TRUCKING

Truckers believed to be reliable will be available to assist in shipping your purchases.

SALE ACCOMMODATIONS

Hampton Inn & Suites – (812) 663-5000
2075 N Michigan Ave, Greensburg, IN 47240

Holiday Inn Express & Suites – (812) 663-5500
915 Ann Blvd, Greensburg, IN 47240

ONLINE BIDDING INFORMATION

View the sale from your phone, tablet, or desktop computer and bid with confidence! Visit www.LiveAuctions.TV for complete sale information and online registration.



AMERICAN ANGUS HALL OF FAME

PO BOX 660, SMITHVILLE, MISSOURI 64089
816-532-0811 • WWW.ANGUSHALL.COM

Dieckmann Cattle Co. – Inaugural Event Loaded With Quality!

On behalf of the American Angus Hall of Fame, it is a pleasure to be working with the Dieckmann family on this Inaugural Event in Greensburg, Indiana. Quentin has been dedicated to building one of the most dominant show heifer outlets in the country. He has traveled all over the country and found some of the very best cow families and show heifers and, as a result, he has dominated the show ring. Last fall, Dieckmann Cattle had the Heifer Calf Champion at the North American, the Indiana State Fair Champion Angus Female and won multiple breeds with his composite sector of his business.

As you flip through this catalog, you will find an array of some of the

most competitive show heifer prospect you can find anywhere in the country. His passion for helping young people is second to none and not only will you find your next junior project here but, more importantly, you are buying service that will continue to help you all show season long.

I urge all of you to come view the cattle at any time and please plan to be with us on Sunday December 1, 2019 in Greensburg, Indiana. If you have any questions, feel free to contact the farm or the American Angus Hall of Fame at 816/532-0811.



TOM BURKE - 816-853-2697



KURT SCHAFF - 816-520-6447



JEREMY HAAG - 816-516-1309

WE

elcome! We are excited to invite you to Greensburg, Indiana for the inaugural Dieckmann Cattle Angus Production Sale. We welcome you to stop by and view our offering any time before the sale, but especially hope that you can join us on

Saturday, November 30th for our social open house and Sunday, December 1st for the sale.

Our main focus is producing, good functional cattle that will excel in the show ring and that will also go and perform for the cattleman. We have been able to do this through breeding the best cow families and genetics in the business. With a passion for future and the junior show industry, along with the character traits it develops in our youth, we strive to build attractive looking cattle that are balanced and sound, but yet offer added body and power that can compete at all levels.

As they say, it takes a village to put an event like this so we would like to thank everyone who has had a hand in organizing this sale. We would also like to thank all of the breeders and the programs who have offered their support to helped make all of this possible.

Thank you for taking the time to view our offering and we look forward to seeing you at our show barn on November 30th for our open house that will include drinks, a complementary dinner at 5:30, followed by a live band at 7:00. The cattle will also be available for viewing the morning of December 1st, with a complementary pre-sale meal served at 11:30, followed by the sale starting at 1:00. All times are eastern.

If you have any questions, please don't hesitate to give us a call.
-Quentin



DIECKMANN FAMILY
QUENTIN, BILL,
BECKY, EMILY, ERIN



CODY HEAVIN,
HERDSMAN

SCHEDULE OF EVENTS

SATURDAY, NOVEMBER 30TH

ALL DAY. - CATTLE AVAILABLE FOR VIEWING

(Lights available for night viewing)

5:30 P.M. - COMPLIMENTARY DRINKS & DINNER

7 P.M. - MUSIC & SOCIAL

SUNDAY, DECEMBER 1ST

8 A.M. - CATTLE AVAILABLE FOR VIEWING

11:30 A.M. - LUNCH SERVED

1 P.M. DIECKMANN CATTLE INAUGURAL PRODUCTION SALE

SALE LOCATION

4399 S COUNTY ROAD 850 EAST - GREENSBURG, INDIANA 47240

DIRECTIONS

Take Interstate 74 to exit 143 (New Point). From the exit head south on county road 850 E for approximately 2.6 miles. 850 E will take a jog at county road 400 S. Turn west on 400 S and then immediately turn back south on 850 E. The show barn will be approximately a half mile south on the west side of the road.

VIDEOS WILL BE POSTED ON OUR WEBSITE

WWW.DIECKMANNCATTLE.COM



DIECKMANN CATTLE

QUENTIN DIECKMANN & FAMILY

Quentin: 812-614-7083

Bill: 812-614-3006

Seth Smoot: 765-748-6451

WWW.DIECKMANNCATTLE.COM





EXAR FOREVER LADY 1414 –
The 2013 Res. Grand Champion Cow-Calf Pair of the NJAS and granddam of Lot 1.



EXAR FOREVER LADY 1414 –
The 2012 Res. Grand Champion owned female of the NJAS and granddam of Lot 1.

LOT 1 DIECKMANN FOREVER LADY 9260

calved **3/13/19** cow **+*19537629** tattoo **9260**

ANGUS

	Sma Watchout 482	Silveiras Watchout 0514 2K Beauty 961
CONLEY EXPRESS 7211		
+*18941522	DPL Sandy 3040	Silveiras Style 9303 KNC Cabin Creek Sandy 804
	PVF Insight 0129	SAV Brilliance 8077 PVF Missie 790
EXAR FOREVER LADY 4851		
+*17834159	EXAR Forever Lady 1414	Dameron First Class EXG Forever Lady 5309

CED	BW	WW	YW	MILK	CW	MARB	REA	\$W	\$B
I+3	I+2.3	I+63	I+103	I+16	I+38	I+.38	I+.55	50	143

• RETAINING 1/2 EMBRYO INTEREST.

- This special sale attraction is an elite March show heifer prospect by the \$400,000 valued Conley Express 7211 who was the 2018 Res. Grand Champion Bull at the Fort Worth Stock Show and one of the hottest sires in the industry; he is also a son of the 2016 National Western Stock Show Grand Champion, SMA Watchout 482.
- She stems back to the ever popular Forever Lady family and her dam was the \$33,000 selection and the eighth top-selling heifer calf of the 2015 Honor Roll Sale to Tanner Howey of Texas.
- EXAR Forever Lady 1414, the granddam, was one of the top show heifer prospects of the 2012-2013 show season as she was the 2012 Res. Grand Champion Owned Female of the National Junior Angus Show and Res. Grand Champion Owned Female of the Western National Angus Futurity Regional Preview and the 2012 Grand Champion Female of the Western National Angus Futurity ROV Angus Sale; in 2013 she went on to be the Res. Grand Champion Owned Cow-Calf Pair of the National Junior Angus Show.
- Her third-generation dam, EXG Forever Lady 5309, was the \$95,000 top-selling heifer of the 2015 Express sale and followed in her dam's tradition as the Res. Grand Champion as a heifer calf at the National Western when she won that honor in 2006; she also went on to be the 2006 Fort Worth Res. Grand Champion and the 2006 Western National Grand Champion then produced the \$75,000 featured flush in the 2007 Express Sale. Her flush sister, EXAR Forever Lady 5823, was the \$85,000 top seller of the 2006 Express Honor Roll Sale.
- EXAR Forever Lady 5680, was the \$37,500 selection of the Cox family of Oregon and she is a maternal sister to the dam of this featured heifer calf who was the Res. Junior Champion Div. VI at the 2016 National Junior Angus Show, Grand Champion Cow/Calf Pair of the Northwest Regional Preview Show and the Res. Grand Champion Owned Female of the Northwest Regional Preview Show.



**LOT 2 | DIECKMANN
FOREVER LADY 9429**



EXAR FOREVER LADY 1414 –
The 2012 Res. Grand Champion
owned female of the NJAS and
granddam of Lots 1-6.



**LOT 3 | DIECKMANN
FOREVER LADY 9078**



LOT 4 | DIECKMANN FOREVER LADY 9200



EXAR FOREVER LADY 1414 –
The 2013 Res. Grand Champion
Cow-Calf Pair of the NJAS and
granddam of Lots 1-6.



LOT 5 | DIECKMANN FOREVER LADY 9211



LOT 6 | DIECKMANN FOREVER LADY 9326

LOT 2 calved **4/22/19** cow **+*19537627** tattoo **9429**
ANGUS

CONLEY EXPRESS 7211
 +*18941522 Sma Watchout 482 DPL Sandy 3040
EXAR FOREVER LADY 4851
 +*17834159 PVF Insight 0129 EXAR Forever Lady 1414
 Silveiras Watchout 0514 2K Beauty 961
 Silveiras Style 9303 KNC Cabin Creek Sandy 804
 SAV Brilliance 8077 PVF Missie 790
 Dameron First Class EXG Forever Lady 5309

CED	BW	WW	YW	MILK	CW	MARB	REA	\$W	\$B
I+3	I+2.3	I+63	I+103	I+16	I+38	I+.38	I+.55	50	143

- This beautiful late April heifer calf is a full sister to the Lot 1 lead off female of the Inaugural Dieckmann event and a direct daughter of the \$400,000 Conley Express 7211 back to the featured EXAR Forever Lady 4851, a daughter of the 2012 Res. Grand Champion Owned Female of the National Junior Show, the 2012 Res. Grand Champion Owned Female of the Western National Angus Futurity Regional Preview and Grand Champion Female of the 2012 Western National Angus Futurity ROV Angus Show and went on to be named the 2013 Res. Grand Champion Owned Cow-Calf Pair of the National Junior Angus Show.
- She stems from the legendary VAR Forever Lady 4304, who is a past Res. Grand Champion Female of the National Western Stock Show as a heifer calf.

LOT 3 calved **4/4/19** cow **+*19537624** tattoo **9078**
ANGUS

LOT 4 calved **4/17/19** cow **+*19537625** tattoo **9200**
ANGUS

•RETAINING 1/2 EMBRYO INTEREST.

LOT 5 calved **4/13/19** cow **+*19537626** tattoo **9211**
ANGUS

LOT 6 calved **5/10/19** cow **+*19537628** tattoo **9326**
ANGUS

5T POWER CHIP 4790
 *17956297 EXAR Blue Chip 1877B 5T Miss Wix 8002
EXAR FOREVER LADY 4851
 +*17834159 PVF Insight 0129 EXAR Forever Lady 1414
 Dameron First Class Greens Princess 1012
 BC Matrix 4132 Circle Oak Miss Wix 4014
 SAV Brilliance 8077 PVF Missie 790
 Dameron First Class EXG Forever Lady 5309

CED	BW	WW	YW	MILK	CW	MARB	REA	\$W	\$B
I+10	I+.8	I+62	I+96	I+15	I+40	I+.38	I+.82	55	131

•RETAINING 1/2 EMBRYO INTEREST.

- These beautiful flush sisters are daughters of 5T Power Chip 4790, the 2016 Fort Worth Stock Show Res. Grand Champion, the Grand Champion Bull of the Canadian Royal Winter Fair and the Texas State Fair Grand Champion.
- They stem back to the legendary Forever Lady family. Granddam was the 2012 Res. Grand Champion Owned Female of the National Junior Angus Show, Grand Champion Female of the Western National Angus Futurity ROV Angus Show, the Res. Grand Champion Owned Female of the 2012 Western National Angus Futurity Regional Preview and went on to be the 2013 Res. Grand Champion Cow-Calf Pair of the National Junior Angus Show and stems from the legendary VAR Forever Lady 4304 cow family.



LOT 7 | DIECKMANN SANDY 9400



CONLEY SANDY 7271
Full sister to the Dam of Lots 7-9.

LOT 7
ANGUS
calved **1/26/19** cow **+*19537621** tattoo **9400**

5T POWER CHIP 4790
*17956297
EXAR Blue Chip 1877B
5T Miss Wix 8002
Sma Watchout 482
CONLEY SANDY 7250
+*18850666
DPL Sandy 3040
Dameron First Class Greens Princess 1012
BC Matrix 4132
Circle Oak Miss Wix 4014
Silveiras Watchout 0514
2K Beauty 961
Silveiras Style 9303
KNC Cabin Creek Sandy 804

CED	BW	WW	YW	MILK	CW	MARB	REA	\$W	\$B
I+6	I+2.2	I+50	I+81	I+17	I+23	I+.64	I+.33	41	117

- These beautiful flush sisters are daughters of 5T Power Chip 4790, the 2016 Fort Worth Stock Show Res. Grand Champion, the Grand Champion Bull of the Canadian Royal Winter Fair and the Texas State Fair Grand Champion.
- They stem back to the legendary Forever Lady family. Granddam was the 2012 Res. Grand Champion Owned Female of the National Junior Angus Show, Grand Champion Female of the Western National Angus Futurity ROV Angus Show, the Res. Grand Champion Owned Female of the 2012 Western National Angus Futurity Regional Preview and went on to be the 2013 Res. Grand Champion Cow-Calf Pair of the National Junior Angus Show and stems from the legendary VAR Forever Lady 4304 cow family.

LOT A
ANGUS
calved **3/27/17** bull **+*18941522** tattoo **7211**

SMA WATCHOUT 482
*17836525
Silveiras Watchout 0514
2K Beauty 961
Silveiras Style 9303
DPL SANDY 3040
+*17592949
KNC Cabin Creek Sandy 804
BC Lookout 7024
Silveiras Elba 6546
SAV Brilliance 8077
2K Beauty 2004
Gambles Hot Rod
Silveiras Elba 2520
BC Lookout 7024
KNC Cabin Creek Sandy

CED	BW	WW	YW	MILK	CW	MARB	REA	\$W	\$B
-4	3.8	61	101	17	30	0.67	0.06	42	126



• FOR REFERENCE ONLY



LOT 8 | DIECKMANN SANDY 9591



CONLEY EXPRESS 7211
Full brother to dam of Lots 7, 8 & 9.



DPL SANDY 3040
Granddam of Lots 7, 8 & 9.



LOT 9 | DIECKMANN SANDY 9127

LOT 8
DIECKMANN SANDY 9591
calved **2/28/19** cow **+*19537622** tattoo **9591**
ANGUS

LOT 9
DIECKMANN SANDY 9127
calved **5/26/19** cow **+*19537623** tattoo **9127**
ANGUS

5T POWER CHIP 4790 *17956297	EXAR Blue Chip 1877B 5T Miss Wix 8002 Sma Watchout 482	Dameron First Class Greens Princess 1012 BC Matrix 4132 Circle Oak Miss Wix 4014 Silveiras Watchout 0514 2K Beauty 961 Silveiras Style 9303 KNC Cabin Creek Sandy 804
CONLEY SANDY 7250 +*18850666	DPL Sandy 3040	

CED	BW	WW	YW	MILK	CW	MARB	REA	\$W	\$B
I+6	I+2.2	I+50	I+81	I+17	I+23	I+.64	I+.33	41	117

- Elite show heifer prospects by the 2016 Fort Worth Stock Show Res. Grand Champion, the Grand Champion Bull of the Canadian Royal Winter Fair and the Texas State Fair Grand Champion, 5T Power Chip 4790, back to the featured full sister to the \$400,000 record-selling Conley Express 7211 and blends for a powerful pedigree.
- Dam is a full sister to the \$24,000 feature through the 2017 Conley sale, Conley Sandy 728, selected by the Wheeler family of Paris, Missouri.
- DPL Sandy 3040, the granddam, was the 2015 Res. Grand Champion Owned Female of the National Junior Angus Show and the Grand Champion Female of the 2014 Western National Angus Futurity Junior Show.
- Third-generation dam is a past American Royal Grand Champion, KNC Cabin Creek Sandy 804.

CONLEY SANDY



LOT 10 | CONLEY SANDY 8412



SILVEIRAS S SIS SANDY 2355
Dam of Lot 10.

• SELLING 1/2 INTEREST, SELLING CHOICE OF LOTS 10&11.

- This special sale attraction is by a past ROV Show Bull of the Year, EXAR Blue Chip 1877B, back to the featured Silveiras S Sis Sandy 2355, who is one of the top income-producing females in the Conley Cattle program.
- Maternal sister to this female is a Dieckmann Cattle donor and the top-selling heifer calf of the 2018 Fall Conley Cattle Sale, Conley Sandy 8522, who went on to be named the 2018 North American Spring Heifer Calf Champion and another maternal sister was the \$80,000 feature through the fall Conley Cattle Sale, Conley Sandy 8900, who was the 2018 American Royal Late Jr. Heifer Calf Champion and the 2019 Grand Champion Female of the Arizona National.
- Another maternal sister, Conley Sandy 7084, was the \$80,000 selection of Sullivan Farms of Dunlap, Iowa and went on to be named the Res. Early Jr. Heifer Calf Champion of the 2019 National Western Stock Show and she was the 2018 North American Res. Grand Champion Female.
- A full sister to the dam was the second top-selling cow of the 2019 Conley Cattle Fall Production Sale at \$27,000 going to Sunrise Sunset Farms of Indiana and a maternal sister was the third top-selling cow of that same event at \$25,000 going to Kiner Family of Illinois.

LOT 10 calved **3/25/18** cow **+*19180560** tattoo **8412**
ANGUS

CONLEY SANDY 8412

EXAR BLUE CHIP 1877B
+*16980412
Dameron First Class
Greens Princess 1012

SILVEIRAS S SIS SANDY 2355
+*17286745
Silveiras Style 9303
KNC Cabin Creek Sandy 804

EXG RS First Rate S903 R3
Dameron Northern Miss 3114
Greens Premium 7578
Greens Princess 7418
Gambles Hot Rod
Silveiras Elba 2520
BC Lookout 7024
KNC Cabin Creek Sandy

CED	BW	WW	YW	MILK	CW	MARB	REA	\$W	\$B
-5	5.3	57	94	13	26	0.51	0.37	28	116

LOT 11 calved **3/6/18** cow **+*19181135** tattoo **8520**
ANGUS

CONLEY SANDY 8520

STEVENSON TURNING POINT
+*18434747
Plattemere Weigh Up K360
Stevenson Pride I167x

SILVEIRAS S SIS SANDY 2355
+*17286745
Silveiras Style 9303
KNC Cabin Creek Sandy 804

Sitz Upward 307R
Barbara of Plattemere 337
SAV Bismarck 5682
FSHK Pride 180 [NHF]
Gambles Hot Rod
Silveiras Elba 2520
BC Lookout 7024
KNC Cabin Creek Sandy

CED	BW	WW	YW	MILK	CW	MARB	REA	\$W	\$B
7	1.8	65	114	20	47	0.42	0.73	63	153



LOT 11 | CONLEY SANDY 8520



• SELLING 1/2 INTEREST, SELLING CHOICE OF LOTS 10&11.

- A full sister to the \$130,000 top-selling heifer of the 2018 Fall Conley Cattle Sale, Conley Sandy 8522, who went on to be named the 2018 Spring Heifer Calf Champion of the North American and is a direct daughter of Stevenson Turning Point, the \$70,000 featured GENEX Beef AI sire, back to one of the all-time high income-producing females in the Conley program, Silveiras S Sis Sandy 2355, back to the 2009 American Royal Grand Champion, KNC Cabin Creek Sandy 804.
- Maternal sisters include the \$80,000 Conley Sandy 7084, who was Res. Early Jr. Heifer Calf Champion of the 2019 National Western and the 2018 North American Res. Grand Champion Female.
- Another maternal sister, Conley Sandy 8900, was the 2019 Grand Champion Female of the Arizona National and Heifer Calf Champion of the 2018 American Royal.
- BRED TO CALVE JANUARY 15, 2020 TO 5T POWER CHIP 4790. EXAMINED SAFE

CONLEY SANDY 8522
The NAILE Spring Heifer Calf Champion and full sister to Lot 11.



LOT 12 | DIECKMANN MULBEN PRIDE 9782



PR 3921 BF 909
The \$113,500 American Royal Grand Champion 2014 Female and maternal sister to Lot 12.

LOT
12

DIECKMANN MULBEN PRIDE 9782

calved **4/18/19** cow **+*19538735** tattoo **9782**

ANGUS

SILVEIRAS STYLE 9303 +*16427563	Gambles Hot Rod Silveiras Elba 2520	Famous 7001 Champion Hill Lady 703
PR LADY 909 4200-587 *16676486	SAV Net Worth 4200 PR 587 205-537	Twin Valley Precision E161 DAR Elba 55 SAV 8180 Traveler 004 SAV May 2410 BAR Ext Traveler 205 PR 537 380-398

CED	BW	WW	YW	MILK	CW	MARB	REA	\$W	\$B
I+7	I+2.8	I+44	I+73	I+21	I+15	I+.33	I+.40	39	105



PR LADY 909 4200-587
Dam of Lot 12.

- A beautiful show heifer prospect by Silveiras Style 9303 back to the featured PR Lady 909 4200-587, who has a progeny production record of BR 1@96, WR 1@102 with 17 daughters in production with an average nursing ratio of 101.
- A full sister to this female was the \$20,000 one-half interest for a \$40,000 valuation through the 2018 Conley sale, Conley Mulben Pride 8163.
- Maternal sisters include the \$113,500 top-selling Lot 1 female of the 2013 Conley sale who was the 2014 Grand Champion Female of the American Royal for the Nowatzke family of Michigan City, Indiana.
- Penners Mulben Pride 528, a maternal sister, was the \$30,000 top-selling cow of the 2019 Fall Conley Cattle Sale going to Saucer 5 Ranches. She was also the 2019 Mature Cow-Calf Champion at the National Junior Angus Show, the 2016 Champion Angus and the Res. Supreme Champion of the Tulsa State Fair and went on to produce the top-selling bred heifer of the 2019 Conley Production Sale at \$16,000 going to Buck Cattle Company of Oklahoma.
- Penners Mulben Pride 4172, a maternal sister, was the \$30,000 feature and the 2015 Supreme Champion of the Iowa Beef Expo. Another maternal sister was the \$20,000 selection of the Wheeler family of Missouri, Conley PR Mulben Pride 7118, and named Res. Champion Owned Female of the 2018 Missouri Junior Angus Preview Show.



LOT 13 | DIECKMANN AMELIA 9310

LOT 13 calved **3/24/19** cow **+*19553406** tattoo **9310**
ANGUS

DIECKMANN AMELIA 9310

SILVEIRAS S SIS GQ 2353

+*17322546

Silveiras Style 9303

KNC Cabin Creek Sandy 804

Gambles Hot Rod
Silveiras Elba 2520

BC Lookout 7024
KNC Cabin Creek Sandy

PVF Insight 0129

PF Miss First Class of 414

SAV Brilliance 8077
PVF Missie 790

Dameron First Class
J&J Queen 414

PC/DCC INSIGHTS AMELIA E351

+*19002939

CED	BW	WW	YW	MILK	CW	MARB	REA	\$W	\$B
n/a	n/a	n/a	n/a	n/a	n/a	n/a	n/a	n/a	n/a

• RETAINING 1/2 EMBRYO INTEREST.

- This beautiful late-March show heifer prospect by Silveiras S Sis GQ 2353 stems back to a daughter of PVF Insight 0129 and the legendary J&J Queen 414 family.
- Third-generation dam is a featured top-selling Lot 1 cow of the 2010 J&J Cattle Company Annual Production Sale and brought \$22,750 to Price Farms of Elks City, Oklahoma and proclaimed by many as one of the greatest daughters of the \$75,000 Northern Improvement to ever be born, PF Miss First Class of 414, who was the Champion Angus Female of the 2015 OJCA Summer Preview Show and a four-time Reserve Division Champion and ten-time class winner.
- A full sister to the dam was the Supreme Champion Heifer of the 2015 OYE and a 7-time Grand Champion Overall, 5-time Res. Grand Champion Overall, 17-time Breed Champion, 9-time Res. Breed Champion, 8-time division winner and 34-time class winner, PF First Class Dolly A351.
- Dam is a maternal sister to the Res. National Champion Percentage Simmental Heifer, WLTR Lydia, and WLTR Renegade, the 2010 National Western Res. Grand Champion Percentage Simmental Bull.



PF FIRST CLASS DOLLAY A351
Full sister to the grandam of Lot 13.

DIECKMANN AMELIA



LOT 14 | DIECKMANN AMELIA 9155



J&J Queen 414
Dam of Lots 13, 14 & 15 stem from this cow family.



LOT 15 | DIECKMANN AMELIA 9791

LOT 14 **DIECKMANN AMELIA 9155**
 calved **2/21/19** cow **+*19553355** tattoo **9155**
ANGUS

LOT 15 **DIECKMANN AMELIA 9791**
 calved **1/28/19** cow **+*19553646** tattoo **9791**
ANGUS

CONLEY EXPRESS 7211	Sma Watchout 482	Silveiras Watchout 0514 2K Beauty 961
+*18941522	DPL Sandy 3040	Silveiras Style 9303 KNC Cabin Creek Sandy 804
PC/DCC INSIGHTS AMELIA E351	PVF Insight 0129	SAV Brilliance 8077 PVF Missie 790
+*19002939	PF Miss First Class of 414	Dameron First Class J&J Queen 414

CED	BW	WW	YW	MILK	CW	MARB	REA	\$W	\$B
n/a	n/a	n/a	n/a	n/a	n/a	n/a	n/a	n/a	n/a

- These featured flush sisters by the \$400,000 Res. Grand Champion Bull at the Fort Worth Stock Show, Conley Express 7211, stem back to a daughter of PVF Insight 0129 and the legendary J&J Queen 414 family.
- Third-generation dam is a featured top-selling Lot 1 cow of the 2010 J&J Cattle Company Annual Production Sale and brought \$22,750 to Price Farms of Elks City, Oklahoma and proclaimed by many as one of the greatest daughters of the \$75,000 Northern Improvement to ever be born, PF Miss First Class of 414, who was the Champion Angus Female of the 2015 OJCA Summer Preview Show and a four-time Reserve Division Champion and ten-time class winner.
- A maternal sister to the dam was the Supreme Champion Heifer of the 2015 OYE and a 7-time Grand Champion Overall, 5-time Res. Grand Champion Overall, 17-time Breed Champion, 9-time Res. Breed Champion, 8-time division winner and 34-time class winner, PF First Class Dolly A351.
- Dam is a maternal sister to the Res. National Champion Percentage Simmental Heifer, WLTR Lydia, and WLTR Renegade, the 2010 National Western Res. Grand Champion Percentage Simmental Bull.



LOT 16 | DIECKMANN LUCY 9888

- This direct daughter of the 2016 Fort Worth Stock Show Res. Grand Champion and Grand Champion Bull of the Canadian Royal Winter Fair and Texas State Fair stems back to a daughter of OCC Rear End 751R back to the featured Womack Miss Lucy 011.
- A maternal sister to the dam was the \$16,000 feature through the 2018 Conley Fall Sale and went on to be named the 2019 West Virginia State Fair Grand Champion Female at the ROV Angus Show.



WOMACK MISS LUCY 011
Graddam of Lot 16.

LOT 16 calved **1/21/19** cow **19538733** tattoo **9888**
ANGUS

DIECKMANN LUCY 9888

5T POWER CHIP 4790
*17956297
EXAR Blue Chip 1877B
5T Miss Wix 8002
Dameron First Class
Greens Princess 1012
BC Matrix 4132
Circle Oak Miss Wix 4014
OCC Rear End 751R
OCC Homer 650H
FCC Revolution Rose 995N
CONLEY LUCY 7988
+*18872471
Womack Miss Lucy 011
BC Lookout 7024
Womack Miss Lucy 6780

CED	BW	WW	YW	MILK	CW	MARB	REA	\$W	\$B
I+7	I+1.1	I+47	I+73	I+17	I+19	I+4.6	I+5.0	44	97

LOT 17 calved **4/3/19** cow **19538892** tattoo **9881**
ANGUS

DIECKMANN GEORGINA 9881

5T POWER CHIP 4790
*17956297
EXAR Blue Chip 1877B
5T Miss Wix 8002
Dameron First Class
Greens Princess 1012
BC Matrix 4132
Circle Oak Miss Wix 4014
SAV Brave 8320
SAV Mandan 5664
SAV May 2397
CHAMPION HILL GEORGINA 8815
18162001
Champion Hill Georgina 7229
Leachman Saughatchee 3000C
LLA Georgina 419

CED	BW	WW	YW	MILK	CW	MARB	REA	\$W	\$B
I+5	I+1.7	I+49	I+79	I+19	I+23	I+4.6	I+5.4	45	107



LOT 17 | DIECKMANN GEORGINA 9881

- A direct daughter of 5T Power Chip 4790 back to a daughter of the \$92,000 ABS Global AI sire, SAV Brave 8320, back to one of the all-time great females of the breed, LLA Georgina 419.
- Grandam was the \$21,000 one-half interest feature through a past Champion Hill sale for a \$42,000 valuation going to the Quintin Smith family of Tennessee. Dam is a full sister to the one-half interest and \$105,000 top-selling heifer of the 2011 Champion Hill Fall Sale for a \$210,000 valuation, Champion Hill Georgina 7945, who was the 2011 North American International Res. Grand Champion as a heifer calf and the 2012 Atlantic National Res. Late Spring Heifer Calf Champion.



CHAMPION HILL GEORGINA 7945
A full sister to the dam of Lot 17.

- A direct daughter of McCabe Bismarck 7016 back to a daughter of SAC Conversation and the featured Arkdale Pride family.
- This beautiful female has the ability to follow in her mother's footsteps. She was the 2016 Heifer Calf Champion at the American Royal ROV Angus Show, the 2017 Fort Worth Res. Heifer Calf Champion and the top-selling open heifer calf of the 2016 Sankey's 6N Ranch Fall Production Sale at \$14,500.
- Her granddam, Limestone Arkdale Pride X209, was the \$13,500 second top-selling cow of the 2016 Sankey's sale and grandam is a maternal sister to the \$20,500 top-selling heifer calf of the 2014 Sankey's sale, Sankeys Arkdale Pride 4000, who went on to be the Res. Junior Champion of the 2015 Kansas State Fair.



SANKEY'S ARKDALE PRIDE 606
Dam of Lot 18.

LOT 18 | DIECKMANN ARKDALE PRIDE 9606

LOT 18 calved **6/4/19** cow ***19538736** tattoo **9606**
ANGUS

MCCABE BISMARCK 7016
*18444994 SAV Bismarck 5682
Womack Classic Lucy 412 Dameron First Class
Womack PLC Lucy 67S

SANKEYS ARKDALEPRIDE 606
+*18505552 SAC Conversation
Limestone Arkdalepride X209 Silveiras Conversion 8064
Lafllins Farrah 0252

Limestone Emulation U605
Limestone ArkdalePride U1847

CED	BW	WW	YW	MILK	CW	MARB	REA	\$W	\$B
I+6	I+2.2	I+51	I+86	I+21	I+30	I+30	I+.61	50	121

- A beautiful daughter of SAC Bismarck 5682 back to the top-selling heifer calf in the Conley Cattle Fall Online Production Sale, Conley WCC Frontier Gal 7776, who was the Fourth Overall Champion and Champion Angus Female of the 2018 Winter Warm Up for Carter Hoge of Illinois.
- WCC Frontier Gal 893, her granddam, is a many-time popular champion for the Wallace Family in Missouri and has stamped herself as an outstanding donor in the popular Frontier Gal family and was the 2009 American Royal Sr. Heifer Calf Champion and a Champion at the Missouri Preview and Missouri State Fair.
- Dam is a maternal sister to the \$100,000 Lot 1 and top-selling female of the 2015 Conley sale, Conley PR Frontier Gal 541, going to Double G Ranch of Oklahoma.
- This female stems back to a third-generation dam who is a past National Western Stock Show Grand Champion and also selected as Grand Champion Female of the National Junior Angus Show, Ozark State Fair and the Iowa State Fair, WCC Frontier Gal 39.



CONLEY WCC FRONTIER GAL 7776
Dam of Lot 19.

LOT 19 calved **3/3/19** cow **19544677** tattoo **9776**
ANGUS

SAV BISMARCK 5682
#+15109865 GAR Grid Maker
SAV Abigale 0451 GDAR Traveler 044
GAR Precision 2536

CONLEY WCC FRONTIER GAL 7776
18943617 5T Power Chip 4790
WCC Frontier Gal 893 Schoenes Fix It 826
SAV Abigale 6062
EXAR Blue Chip 1877B
5T Miss Wix 8002
Exar Lutton 1831
WCC Frontier Gal 39

CED	BW	WW	YW	MILK	CW	MARB	REA	\$W	\$B
n/a	n/a	n/a	n/a	n/a	n/a	n/a	n/a	n/a	n/a



LOT 19 | DIECKMANN FRONTIER GAL 9776



LOT 20 | DIECKMANN CHEYENNE 9320

LOT 20 calved **1/9/19** cow **19538734** tattoo **9320**
ANGUS

Plattemere Weigh Up K360 Sitz Upward 307R
 Barbara of Plattemere 337

STEVENSON TURNING POINT
 +*18434747 Stevenson Pride I167x SAV Bismarck 5682
 FSHK Pride 180

Plum Creek Refresh 561A Gambles Hot Rod
 SH Miss Annie Lu 6087

UDE CHEYENNE 32E
 18869057 Conley Cheyenne 5028 Penners-CC Double Black 2257
 Craft Cheyenne 1397-028

CED	BW	WW	YW	MILK	CW	MARB	REA	\$W	\$B
I+10	I+.3	I+52	I+81	I+19	I+24	I+.51	I+.61	55	126

- This direct daughter of the \$70,000 GENEX Beef AI sire, Stevenson Turning Point, stems back to the featured Cheyenne family.
- This beautiful-patterned, January heifer reads with extremely low birthweight and a solid set of numbers across the board. She has the ability to make a tremendous cow down the road.



LOT 21 | DIECKMANN LADY JAYE 9614

LOT 21 calved **5/19/19** cow ***19538737** tattoo **9614**
ANGUS

SAV Bismarck 5682 GAR Grid Maker
 SAV Abigale 0451

MCCABE BISMARCK 7016
 *18444994 Womack Classic Lucy 412 Dameron First Class
 Womack PLC Lucy 67S

Bruin Uproar 0070 Sitz Upward 307R
 Falcon Blackbird 6071

CONLEY LADY JAYE 6145
 18608532 VLK Z207 BC Eagle Eye 110-7
 BAAR USA Lady Jaye 6025

CED	BW	WW	YW	MILK	CW	MARB	REA	\$W	\$B
I+5	I+2.2	I+62	I+102	I+22	I+41	I+.37	I+.59	64	135

- A daughter of McCabe Bismarck 7016 back to a daughter of Bruin Uproar 0070 and the featured Lady Jaye family.
- This female stems back to the mother of CRA Bextor 872 5205 608 and the same family as the 2017-2018 ROV Intermediate Show Heifer of the Year, Dameron Lady Jaye 6153.



LOT 22 | DIECKMANN BLACKCAP 9713

LOT 22 calved **5/7/19** cow ***19540133** tattoo **9713**
ANGUS

BC Balance 516-7 BC Matrix 4132
 BC 112 JR E Belle 7022 516

CONLEY BALANCE 7546
 *18973849 Penners Mulben Pride 546 Penners-CC Double Black 2257
 PR Lady 909 4200-587

Dal Porto Dillinger S60 74-51 Changing Time 060
 DPL Sandy 3040

PENNERS-CC BLACKCAP 7318
 18928761 Penners Blackcap 2206 PR 07 5682-840
 PR 065 101-854

CED	BW	WW	YW	MILK	CW	MARB	REA	\$W	\$B
I+4	I+2.6	I+63	I+99	I+17	I+34	I-.20	I+.60	54	96

- A direct daughter of Conley Balance 7546 back to a daughter of Dal Porto Dillinger S60 and the featured Blackcap family.
- This beautiful-fronted, deep-bodied, stout-made May heifer calf reads with tremendous show potential and offers any junior a fun 2020 show season.



LOT 23 | DIECKMANN/BCR QUEEN 9024



FCF PROVEN QUEEN 419
Maternal sister to the dam of Lots 23 & 24.



FCF SCC PVF Proven Queen 615
Granddam of Lots 23 & 24.



LOT 24 | DIECKMANN PROVEN QUEEN 9357

LOT 23 **DIECKMANN/BCR QUEEN 9024**
ANGUS

calved **4/2/19** cow **19544676** tattoo **9024**

Plainview Lutton E102 Exar Lutton 1831
Plainview Pride C123
S&R ROUNDTABLE J328
17573679 PVF Proven Queen 786 BR Midland
PVF Proven Queen 419
Dameron First Class EXG RS First Rate S903 R3
Dameron Northern Miss 3114
BCR QUEEN 515
+*19247715 FCF SCC PVF Proven Queen 615 PVF New Horizon 001
Dameron PVF Proven Queen 010

CED	BW	WW	YW	MILK	CW	MARB	REA	\$W	\$B
n/a	n/a	n/a	n/a	n/a	n/a	n/a	n/a	n/a	n/a

- A direct daughter of S&R Roundtable J328 back to a daughter of the Triple Crown Winner and \$306,000 valued Dameron First Class.
- Grandmother, FCF SCC PVF Proven Queen 615, was the Illinois State Fair Res. Grand Champion, National Junior Angus Show Division Res. Champion, Illinois Preview Show Grand Champion and went on to produce FCF Proven Queen 419, who was the 2016 National Western Stock Show Grand Champion Female; she also produced FCF Proven Queen 022, a featured donor female in the Four Corner and Top Line programs who was the 2011 Illinois Junior Show Res. Supreme Champion and went on to produce the past North American Res. Grand Champion.

LOT 24 **DIECKMANN PROVEN QUEEN 9357**
ANGUS

calved **1/6/19** cow **19544674** tattoo **9357**

Silveiras Style 9303 Gambles Hot Rod
Silveiras Elba 2520
SILVEIRAS S SIS GQ 2353
+*17322546 KNC Cabin Creek Sandy 804 BC Lookout 7024
KNC Cabin Creek Sandy
Dameron First Class EXG RS First Rate S903 R3
Dameron Northern Miss 3114
BCR QUEEN 515
+*19247715 FCF SCC PVF Proven Queen 615 PVF New Horizon 001
Dameron PVF Proven Queen 010

CED	BW	WW	YW	MILK	CW	MARB	REA	\$W	\$B
n/a	n/a	n/a	n/a	n/a	n/a	n/a	n/a	n/a	n/a

- A direct daughter of Silveiras S Sis GQ 2353 back to a daughter of the Triple Crown Winner and \$306,000 valued Dameron First Class.
- Grandmother, FCF SCC PVF Proven Queen 615, was the Illinois State Fair Res. Grand Champion, National Junior Angus Show Division Res. Champion, Illinois Preview Show Grand Champion and went on to produce FCF Proven Queen 419, who was the 2016 National Western Stock Show Grand Champion Female; she also produced FCF Proven Queen 022, a featured donor female in the Four Corner and Top Line programs who was the 2011 Illinois Junior Show Res. Supreme Champion and went on to produce the past North American Res. Grand Champion.



LOT 25 | DIECKMANN TIME TO SHINE 781G



CMFM TIME TO SHINE 99D
Dam of Lot 25.

LOT 25 calved **5/2/19** cow **3631664** tattoo **781G**
PB SIM

DIECKMANN TIME TO SHINE

SC PAY THE PRICE C11

2988788

CNS Pays to Dream T759

LLSF Urababydoll U194

CNS Dream On L186
MLF BL Jessie K336

CWS Ebonys Trademark 6N
JBS Rockin Robin R194

HPF Quantum Leap Z952

Miss Time to Shine Y251

HTP/SVF Duracell T52
RP/MP Right to Love 015U

HTP SVF In Dew Time
JJ Black Obsession

CMFM TIME TO SHINE 99D

3138089

CED	BW	WW	YW	MILK	CW	MARB	REA	API	TI
11	1.9	69.3	99	19.1	28.6	0.13	0.78	119	71.8

- This beautiful purebred heifer reads with tremendous eye appeal, balance and quality and is a daughter of SC Pay the Price C11 back to a daughter of Quantum Leap and the featured CMFM Time to Shine 99D, the 2017 Simmental Breeders Sweepstakes Grand Champion Female, 2017 Res. Grand Champion Simmental Female at the North American, Division V Champion at the 2017 North American and a foundation donor female in the Dieckmann Cattle program.
- A maternal sister to the dam, CMFM Time to Shine 400C, was the Grand Champion Female of the American Royal Jr. Show, the Champion Simmental Female at the Tulsa State Fair Jr. Show and Supreme Champion. Another maternal sister, CMFM Time to Shine 508D, was the Grand Champion Female at the Houston Livestock Show and Rodeo, Res. Grand Champion Female at the San Antonio Livestock Show and Calf Champion at the National Western.
- This outstanding heifer offers unlimited genetic potential and has the ability to compete at every level.



SC PAY THE PRICE C11
Sire of Lot 25.



CMFM TIME TO SHINE 99D
Grand Champion Female, '17
NAILE Simmental Show



LOT 26 | DIECKMANN AMELIA 043G



NMR MATERNAL MADE
Sire of Lots 26 & 27.



J&J Queen 414
Dam of Lots 26 & 27 stem from this cow family.



LOT 27 | DIECKMANN AMELIA 269G

LOT 26 **DIECKMANN AMELIA 043G ET**
 calved **3/1/19** cow **504562** tattoo **043G**
MA.TAINER

LOT 27 **DIECKMANN AMELIA 269G ET**
 calved **3/19/19** cow **504563** tattoo **269G**
MA.TAINER

NMR MATERNAL MADE
 459900 BPF Mercedes Benz 131U Cowan's Ali 4M DCC Mercedes 701P
 NMR 0-04X Irish Whiskey Unregistered
 PVF Insight 0129 SAV Brilliance 8077 PVF Missie 790
PC/DCC INSIGHTS AMELIA E351
 +*19002939 PF Miss First Class of 414 Dameron First Class J&J Queen 414

CED	BW	WW	YW	MILK	CW	MARB	REA	\$W	\$B
n/a	n/a	n/a	n/a	n/a	n/a	n/a	n/a	n/a	n/a

- These featured flush sisters by Maternal Made stem back to the featured J&J Queen 414 family on the bottom side.
- These females are maternal sisters to Lots 13, 14 and 15 and stem back to a daughter of PVF Insight 0129 and the legendary J&J Queen 414 family.
- Third-generation dam is a featured top-selling Lot 1 cow of the 2010 J&J Cattle Company Annual Production Sale and brought \$22,750 to Price Farms of Elks City, Oklahoma and proclaimed by many as one of the greatest daughters of the \$75,000 Northern Improvement to ever be born, PF Miss First Class of 414, who was the Champion Angus Female of the 2015 OJCA Summer Preview Show and a four-time Reserve Division Champion and ten-time class winner.
- A full sister to the dam was the Supreme Champion Heifer of the 2015 OYE and a 7-time Grand Champion Overall, 5-time Res. Grand Champion Overall, 17-time Breed Champion, 9-time Res. Breed Champion, 8-time division winner and 34-time class winner, PF First Class Dolly A351.
- Dam is a maternal sister to the Res. National Champion Percentage Simmental Heifer, WLTR Lydia, and WLTR Renegade, the 2010 National Western Res. Grand Champion Percentage Simmental Bull.



- A direct daughter of Maternal Made back to the Proven Queen family on the bottom side.
- Grandmother, FCF SCC PVF Proven Queen 615, was the Illinois State Fair Res. Grand Champion, National Junior Angus Show Division Res. Champion, Illinois Preview Show Grand Champion and went on to produce FCF Proven Queen 419, who was the 2016 National Western Stock Show Grand Champion Female; she also produced FCF Proven Queen 022, a featured donor female in the Four Corner and Top Line programs who was the 2011 Illinois Junior Show Res. Supreme Champion and went on to produce the past North American Res. Grand Champion.



FCF SCC PVF PROVEN QUEEN 615
Grandam of Lot 28.

LOT 28 | DIECKMANN PROVEN QUEEN 028G

LOT 28 DIECKMANN PROVEN QUEEN 028G ET
 calved **3/19/19** cow **504487** tattoo **028G**
MA.TAINER

NMR MATERNAL MADE

459900

BPF Mercedes Benz 131U

NMR 0-04X

Cowan's Ali 4M
DCC Mercedes 701P

Irish Whiskey
Unregistered

Dameron First Class

EXG RS First Rate S903 R3
Dameron Northern Miss 3114

BCR QUEEN 515

+*19247715

FCF SCC PVF Proven Queen 615
PVF New Horizon 001
Dameron PVF Proven Queen 010

CED	BW	WW	YW	MILK	CW	MARB	REA	\$W	\$B
n/a	n/a	n/a	n/a	n/a	n/a	n/a	n/a	n/a	n/a

LOT 29 DIECKMANN KELLY 846G
 calved **6/21/19** cow **504620** tattoo **846G**
PB MAINE

GOET DRIVING 80

443334

Goet 180

BPF Destiny 110W

Irish Whiskey

Cowan's Ali 4M
BPF Mile 80T

DCC Hard Drive 138R
DCC Destiny 516N

BK Ice Pick 472J
NTC 615 Ever Ready

NMR WHISKEY KELLY ET

473526

JSUL Dreams Come True 846U
ASHW Who Da Man
JSUL Dream Maker HS46

CED	BW	WW	YW	MILK	CW	MARB	REA	\$W	\$B
n/a	n/a	n/a	n/a	n/a	n/a	n/a	n/a	n/a	n/a



- This featured Driving 80 show heifer prospect stems back to the featured Kelly who has produced numerous champions and top sellers across the country.
- This beautiful-patterned, deep-bodied, eye-appealing Maine Anjou show heifer prospect reads with tremendous potential across the board.



NMR WHISKEY KELLY ET
Dam of Lot 29.

LOT 29 | DIECKMANN KELLY 846G

- This featured March steer calf by Conley Express 7211, the \$400,000 Fort Worth Stock Show Res. Grand Champion, stems back to a daughter of PVF Insight 0129 and the featured Forever Lady family.
- Granddam was the 2012 Res. Grand Champion Female at the National Junior Angus Show, the 2012 Western National Angus Futurity ROV Grand Champion and the 2012 Grand Champion Owned Female at the Western National Angus Futurity. She went on to be the 2013 Res. Grand Champion Owned Cow-Calf Pair at the National Junior Angus Show.



EXAR FOREVER LADY 1414
The 2012 NJAS Res. Grand Champion Female

LOT 30 | DIECKMANN EXPRESS 9807

CONLEY BLACK SAND 6322

LOT 30 calved **3/7/19** steer **+*19538494** tattoo **9807**
ANGUS

LOT 31 calved **4/26/16** bull **18552276** tattoo **6322**
ANGUS

CONLEY EXPRESS 7211		Sma Watchout 482		Silveiras Watchout 0514					
+*18941522		DPL Sandy 3040		2K Beauty 961					
		PVF Insight 0129		Silveiras Style 9303					
EXAR FOREVER LADY 4851		EXAR Forever Lady 1414		KNC Cabin Creek Sandy 804					
+*17834159				SAV Brilliance 8077					
				PVF Missie 790					
				Dameron First Class					
				EXG Forever Lady 5309					
CED	BW	WW	YW	MILK	CW	MARB	REA	\$W	\$B
I+3	I+2.3	I+63	I+103	I+16	I+38	I+38	I+55	50	143

PENNERS-CC DOUBLE BLACK 2257		PR Black Friday 0244		Duff New Edition 6108					
*17311160		PR 629 205-554		PR Mona Lisa 529					
		BC Lookout 7024		BAR Ext Traveler 205					
KNC CABIN CREEK SANDY 804		KNC Cabin Creek Sandy		PR Lisa 554					
*16107852				OCC Legend 616L					
				Gibbet Hill Mignonne E37					
				Roth Regulator 0405					
				Cabin Creek Sher 3425					
CED	BW	WW	YW	MILK	CW	MARB	REA	\$W	\$B
I-4	I+4.9	I+56	I+88	I+23	I+28	I+26	I+36	47	98

- **SELLING 2/3 INTEREST, FULL POSSESSION**
- A special individual is this featured three-year-old son of the \$140,000 Select Sires AI sire, Penners-CC Double Black 2257, back to the 2009 Grand Champion Female of the American Royal, KNC Cabin Creek Sandy 804, who has gone on to produce numerous top sellers and past champions as well as being one of the hottest cows in the breed.
- This bull is a maternal brother to S Sis Sandy 104, who went on to produce the 2016-2017 ROV Show Heifer of the Year, which included wins at the Fort Worth Stock Show, Grand Champion Female of the American Royal, Grand Champion Female at the Tennessee State Fair ROV Angus Show, the West Virginia State Fair ROV Angus Show and the Res. Grand Champion Female of the North American.
- Other maternal sisters include the \$27,000 second top-selling cow of the 2019 Conley sale going to Sunrise Sunset Farms of Indiana where a maternal sister was the \$25,000 feature through the same event going to the Kiner family of Illinois; another maternal sister went on to produce the featured Dieckmann foundation Sandy, Conley Sandy 8522, who was the \$130,000 top-selling heifer of the 2018 Conley sale and went on to be the 2018 NAILE Spring Heifer Calf Champion.



KNC CABIN CREEK SANDY 804
Dam of Lot 31.

LOT 31 | CONLEY BLACK SAND 6322

REFERENCE SIRES



REF. B | **5T POWER CHIP 4790**

REF **B** calved **2/13/14** bull **17956297** tattoo **4790**
ANGUS

5T MISS WIX 8002 *16215091	BC Matrix 4132 Circle Oak Miss Wix 4014	EXG RS First Rate S903 R3 Dameron Northern Miss 3114 Greens Premium 7578 Greens Princess 7418 OCC Emblazon 854E CAF Pure Pride Ext.99 BR Midland Circle Oak Miss Wix 2050
--------------------------------------	--	--

• FOR REFERENCE ONLY



REF. C | **STEVENSON TURNING POINT**

REF **C** calved **1/21/16** bull **18434747** tattoo **60558**
ANGUS

PLATTEMERE WEIGH UP K360 *16692552	Sitz Upward 307R Barbara of Plattermere 337 SAV Bismarck 5682 FSHK Pride 180	Connealy Onward Sitz Henrietta Pride 81M GAR Retail Product Barbara of Plattermere 311 GAR Grid Maker SAV Abigale 0451 Sitz Alliance 6595 FSHK Pride 725
--	---	---

• FOR REFERENCE ONLY

REF **D** calved **8/4/11** bull **16980412** tattoo **1877B**
ANGUS

DAMERON FIRST CLASS 16175085	EXG RS First Rate S903 R3 Dameron Northern Miss 3114 Greens Premium 7578 Greens Princess 7418	Exar Lutton 1831 Rafter S Blackcap P909 Dameron PVF Raptor 702 Dameron Miss 550 WK Ultimatum Greens Lori 5078 OGL Battle Cry 427 128 Greens Bethany 3511
--	--	---

• FOR REFERENCE ONLY

REF **E** calved **4/14/13** bull **17573679** tattoo **J328**
ANGUS

PLAINVIEW LUTTON E102 14819576	Exar Lutton 1831 Plainview Pride C123 BR Midland PVF Proven Queen 786 15765962	Northern Improvement 4480 GF Exar Saras Dream 9809 Roth Famous 051 Plainview Pride 2T Twin Valley Precision E161 BR Royal Lass 7036-19 PVF New Horizon 001 PVF Proven Queen 005
--	--	--

• FOR REFERENCE ONLY



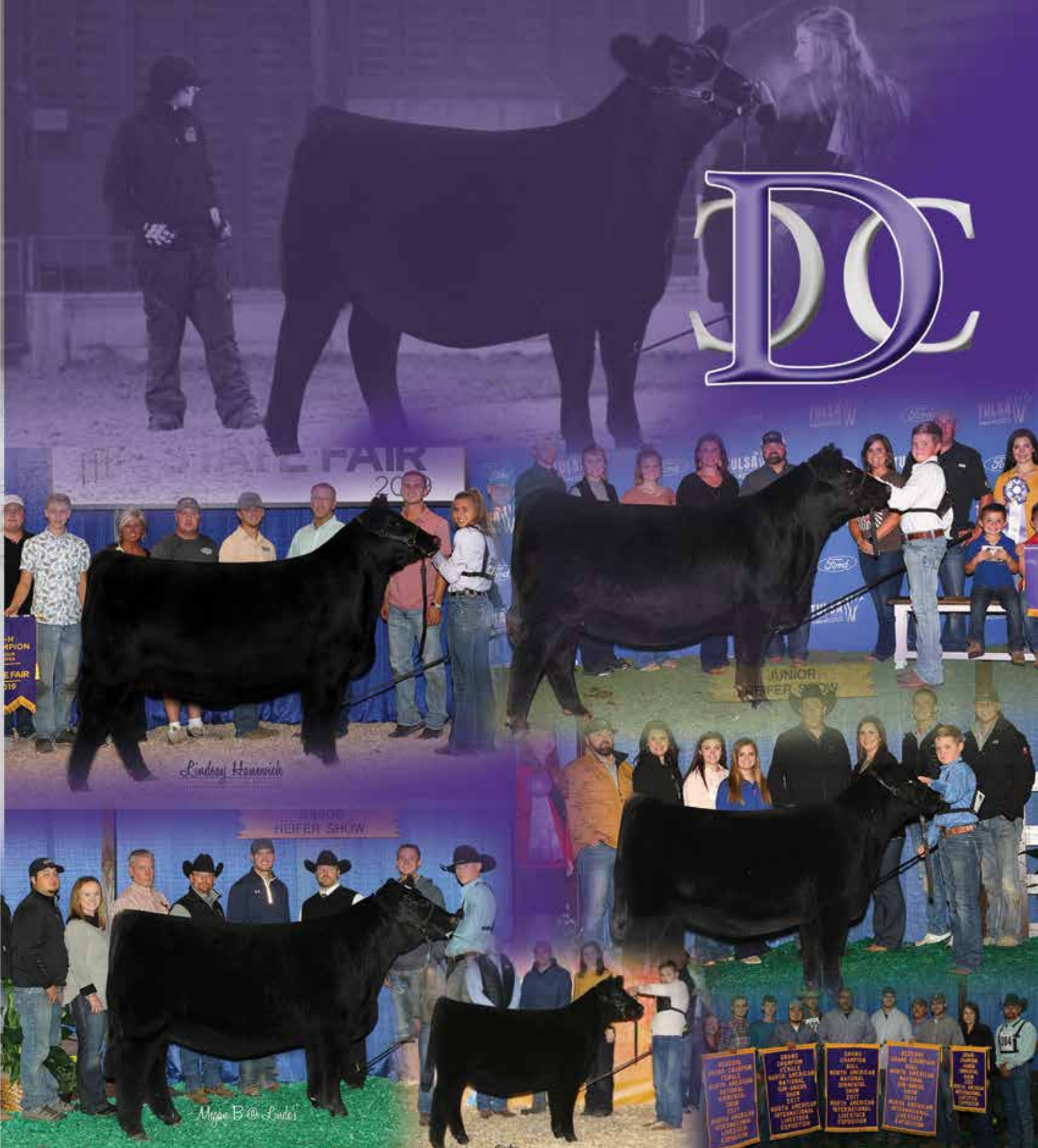
REF. D | **EXAR BLUE CHIP 1877B**



REF. E | **S&R ROUND TABLE J328**

SUCCESS WITH A BRAND.

DC





PO BOX 660
SMITHVILLE, MO 64089

DECEMBER 1ST, 2019 • 1 P.M. EST • GREENSBURG, INDIANA


proudly designed by



DC

DIECKMANN CATTLE
inaugural production sale

