

C/S Cattle 2nd Annual Sale



CSC Pride S17



CSC Forever Lady T19



CSC OH29 Midland 702



CSC 2V1 Rito 734

March 30, 2008 • Pomona, MO • 1 p.m.

WELCOME TO C/S

C/S Cattle

Shirley Jautz, Owner • 417-257-7926
Cindy Ulm, Manager • 417-293-6087
5983 US Hwy 63 • Pomona, MO 65789
E-mail: cindycattle@yahoo.com

It is with great pleasure that we welcome you to our Second Annual Production Sale. We appreciate all of our past customers as well as our new ones. We have worked to bring you what we believe is an excellent offering of quality genetics, from potential show heifer and donor prospects to powerful herd bulls that are sound and ready to go to work for you.

Our goal is to produce cattle that thrive in the southern Ozarks on fescue. We believe that cattle that can tolerate this environment can thrive anywhere. Traits that are important to us are fertility, disposition, structural soundness and longevity as well as growth and carcass traits.

We look forward to seeing you Sunday, March 30th. For more information on any of the cattle, please call Cindy at (417) 293-6087 or Shirley at (417) 257-7926.

Sincerely,

Shirley Jautz & Cindy Ulm

C/S Cattle 2nd Annual Sale SCHEDULE OF EVENTS

Saturday, March 29
Viewing of Cattle, all day

Sunday, March 30
Viewing of Cattle 8:00 A.M.
Lunch 11:30 A.M.
C/S Cattle Second Annual
Production Sale 1:00 P.M.

Dear Angus Breeders and Fellow Cattlemen,

Once again I am excited to be working with Shirley Jautz and Cindy Ulm on their high quality production sale. As you begin to study this sale book it is obvious that Shirley and Cindy have worked very diligently to put together what can only be described as one of the finest offerings of Angus Genetics to sell this spring.

At C/S Cattle there is a great deal of time devoted to their herd and their operation and they expect nothing but the best performance possible from this great set of cattle. That is why it is easy for them to build strong long lasting relationships with their customers, because they are devoted to them just like they are their program. You can rest assured that Shirley and Cindy will only offer sale cattle that are bred to be profitable. They are dedicated to their breeding program of using proven A.I. sires that provide predictable and proven genetics that they and their customers can rely on.

As people gathered for last year's sale it was evident that new and old customers alike were impressed with the high quality offering that sold and this year is certainly no exception. This year's sale offering is outstanding from the top to the bottom. There is an impressive set of high quality young females to sell, highlighted by a choice of Barbara heifers that sell as Lots 1A & 1B, as well as the Lot 2 donor SAF Miss Mix 0402 and heifer pregnancies from some of the most sought after cow families in the breed. The bulls are stout and ready to go to work; there are several full and half brothers being offered that are sure to provide consistent and powerful genetics.

I am confident that you will be impressed with this elite offering of cattle. There is no doubt in my mind that the cattle that sell in this sale can add value to even the most discerning program. It will be worth your while on March 30th to join Shirley and Cindy at their Second Annual Production Sale and see some of the finest Angus genetics in the business. If I can be of assistance to you in any way, please do not hesitate to let me know.

Respectfully,

Josh Worthington, General Manager, Missouri Angus Association

WELCOME TO

C/S Cattle

2nd Annual

Sale

March 30, 2008 • Pomona, MO • 1 p.m.

SALE DAY PHONES:

(417) 844-2601
 (816) 387-3807 • (417) 293-6087

Auctioneer: Clint Hunter • (417) 860-1624

Association Representatives:

Don Laughlin, Regional Manager, American Angus Association
 Vernon Yager, President, Missouri Angus Association
 Max Creason, President Elect, Missouri Angus Association
 Steve Birk, Vice President, Missouri Angus Association
 Barbara McBride, Secretary, Missouri Angus Association
 Mary Anne Mauss, Treasurer, Missouri Angus Association
 Dr. Noman Garton, Director, American Angus Association
 Josh Worthington, General Manager, Missouri Angus Association

Livestock Publication Representatives & Ringmen:

Don Laughlin, *Angus Journal*, (816) 387-3807
 Don Birk, Birk Photography and Ring Service, (417) 860-8595
 Wade Cunningham, Special Assignment, (918) 557-7662

Photography by: Don Birk

Sale Coordinated By:

The Missouri Angus Association
 Josh Worthington, General Manager
 Cell: (417) 844-2601 • Office: (417) 995-3000
 worthington@missouriangus.org

Buyers unable to attend the sale may send their bids to the Sale Coordinator, Regional Manager, Publication Representatives or Auctioneer.

Sale Updates:

Any additional information or updates will be available on a sale update sheet. Announcements made from the auction block regarding cattle selling in this sale take precedence over information listed in this sale book.

Directions to the Sale:

Detailed map and directions are available on the inside back cover.

Hotel Accommodations:

Holiday Inn Express: 417-257-3000
 Super 8 Motel: 417-256-8088

Liability:

All persons who attend the sale do so at their own risk and C/S Cattle assumes no liability legal or otherwise for any accidents which may occur.

Terms and Conditions:

All purchases are to be settled on sale day unless prior arrangements have been made. The cattle sell under the terms and conditions for production sales as recommended by the American Angus Association.

Insurance:

Insurance will be available for your purchases on sale day.

Herd Health:

All cattle will be accompanied by proper health certificates for immediate shipment. All bred females will be pregnancy checked. All bulls will be semen tested.

Trucking:

Truckers believed to be reliable will be available to assist you in shipping your purchases.

Lot Numbers:

The tags on animals will correspond with the lot numbers in the sale book. Ear tags on calves at the side of their dam correspond with the dam's number.



Visit the *Angus Journal*® Web site, www.angusjournal.com, and view this sale book online.

References: American Angus Association®, AHIR®, AngusSource®, CAB®, Pathfinder®.

Bull Guarantee

We guarantee that all bulls are fertile. If a fertility problem should arise within the first breeding season, C/S Cattle will replace the bull with a bull of equal value, or credit for the purchase price minus the salvage value of the bull will be given in a future C/S Sale. We do ask that you contact us before you cull the bull.

C/S BARBARA



CSC Barbara S18

Lot 1A

SELLING CHOICE IN LOTS 1A & 1B

1A CSC Barbara S18

C/S Details		Birth Date: 9-1-2006	Cow +15760227	Tattoo: S18
Parents		#Twin Valley Precision E161 (FR)	#GAR Precision 1680	
Sire		BR Midland #13898124	+WCC Blackcap C9 (R)	
Dam		BR Royal Lass 7036-19	#+SAF Neutron	
Grandparents		#Bon View New Design 1407	#SAF Royal Lass 7036	
Other Relatives		RR Barbara 2394	#B/R New Design 036	
		+14346312	Bon View Pride 664	
			#N Bar Emulation EXT	
			RR Barbara 3268	
Performance				
	%IMF	+49	SW	+24.66
	UREA	+43	SF	+23.90
	UFAT	+009	SG	+27.54
			SB	+46.59
Health & Production				
CEM	BEPD	WEPD	YEPD	SC
I+7	I+1.8	I+42	I+81	N/A
MILK				
I+7				I+21

1B CSC Barbara S16

C/S Details		Birth Date: 9-1-2006	Cow +15760225	Tattoo: S16
Parents		#Twin Valley Precision E161 (FR)	#GAR Precision 1680	
Sire		BR Midland #13898124	+WCC Blackcap C9 (R)	
Dam		BR Royal Lass 7036-19	#+SAF Neutron	
Grandparents		#Bon View New Design 1407	#SAF Royal Lass 7036	
Other Relatives		RR Barbara 2394	#B/R New Design 036	
		+14346312	Bon View Pride 664	
			#N Bar Emulation EXT	
			RR Barbara 3268	
Performance				
	%IMF	+50	SW	+24.66
	UREA	+23	SF	+23.90
	UFAT	+004	SG	+26.85
			SB	+45.89
Health & Production				
CEM	BEPD	WEPD	YEPD	SC
I+7	I+1.8	I+42	I+81	N/A
MILK				
I+7				I+21

These two outstanding flush sisters from the legendary Barbara cow family made famous at Ratcliff Ranch in OK are sired by the \$202,000 BR Midland who is the Number 10 %IMF sire in the breed. Their great donor dam blends Bon View New Design 1407 with N Bar Emulation EXT and the longtime donor in the Ratcliff program, RR Barbara 6050. 2394 records a BR 4@106, WR 4@106, YR 3@101, IMF 20@106 and UREA 20@100. Full sisters to these great females include the \$4,000 CSC Barbara 606, the \$4,000 CSC Barbara 607 and the \$32,000 RR Barbara 4042. A maternal sister by SAV

8180 Traveler 004 sold for \$4,900 in the Inaugural C/S Sale as a heifer pregnancy to Day Cattle Co. Lot 1A places in the top 10% for %IMF, \$G and \$B and top 25% for UREA; in addition, she records a UREA ratio of 111. Bred to SS Objective T510 OT26 and due to calve 9/13/2008. Lot 1B ranks in the top 10% for %IMF and \$G and top 15% for \$B. Bred to SS Objective T510 OT26 and due to calve 9/15/2008.



Days CSC Barbara 607

The \$4,000 full sister to Lots 1A and 1B.



RR Barbara 4042

The \$32,000 full sister to Lots 1A and 1B.



Birk
CSC Midland S22

Lot 1C

1C CSC Midland S22

Birth Date: 9-4-2006 Bull +15887047 Tattoo: S22

CEB	BEPD	WEPD	YEPD	SC	CEM	MILK	%IMF	UREA	UFAT	SW	SF	\$G	\$B
I+7	I+1.8	I+42	I+81	N/A	I+7	I+21	+56	+30	+015	+24.66	+23.90	+27.55	+46.60

1D CSC Midland S1

Birth Date: 8-21-2006 Bull +15760229 Tattoo: S1

CEB	BEPD	WEPD	YEPD	SC	CEM	MILK	%IMF	UREA	UFAT	SW	SF	\$G	\$B
I+7	I+1.8	I+42	I+81	N/A	I+7	I+21	I+54	I+29	I+012	+24.66	+23.90	+26.82	+42.09

1E CSC Midland S27

Birth Date: 9-6-2006 Bull +15760231 Tattoo: S27

CEB	BEPD	WEPD	YEPD	SC	CEM	MILK	%IMF	UREA	UFAT	SW	SF	\$G	\$B
I+7	I+1.8	I+42	I+81	N/A	I+7	I+21	+53	+28	+010	+24.66	+23.90	+27.26	+46.31

1F CSC Midland S23

Birth Date: 9-3-2006 Bull +15760232 Tattoo: S23

BR Midland #13898124	#Twin Valley Precision E161 (FR)	#GAR Precision 1680 +WCC Blackcap C9 (R)	SW +24.66
	BR Royal Lass 7036-19	#+SAF Neutron	
RR Barbara 2394 +14346312	#Bon View New Design 1407	#SAF Royal Lass 7036 #B/R New Design 036	%IMF +52
	#RR Barbara 6050	Bon View Pride 664 #N Bar Emulation EXT	SF +23.90
		RR Barbara 3268	UREA +05
			\$G +25.82
			UFAT +005
			\$B +44.88

Four full brothers, all are qualified for the Show-Me-Select and Missouri

Angus Advantage +Plus heifer programs.

These outstanding high carcass, calving-ease bulls blend the popular mating of BR Midland with the donor dam RR Barbara 2394.

Lot 1C records an individual IMF ratio of 116, UREA ratio of 101 and ranks in the top 3% for %IMF and 10% for \$G and \$B. Lot 1D places in the top 4% for %IMF, 10% for \$G and 25% for \$B. Lot 1E records an individual IMF ratio of 103, UREA ratio of 100 and places in the top 4% for %IMF and 10% for \$G and \$B. Lot 1F records an individual IMF ratio of 107 and ranks in the top 5% for %IMF, 10% for \$G and 15% for \$B.

This is an extremely impressive set of flushmates that consistently provide great calving-ease with tremendous end-product merit value.



CSC Midland 565

Full brother to Lots 1C-1F.



RR Barbara 2394

Donor dam of Lots 1C - 1F.



SAF Miss Wix 0402

Lot 2

2 SAF Miss Wix 0402

Birth Date: 9-12-2000 Cow +13712176 Tattoo: 0402

#GAR Precision 1680	#Tehama Bando 155	SW
JLB Exacto 416	9J9 GAR 856	+26.32
#12223258 +Brost Burgess 041	#Hoff Hi Spade SC 491	%IMF
	Partisover Burgess 527	SF
	#QAS Traveler 23-4	-0.02
	Forever Lady 626 GDAR	UREA
	#GDAR Executive 727	SG
	GDAR Miss Wix 7240	+5.9
		+13.96
		UFAT
		S8
		-0.13
		+33.35

CED	BEPD	WEPD	YEPD	SC	CEM	MILK
+7	+3.8	+47	+78	+0.1	+4	+33

This proven donor dam by JLB Exacto 416 has been a mainstay in the C/S and SydGen donor herds, and she has produced top-selling feature lots in both programs. She has an impressive progeny record and records a BR 3@95, WR 3@110, YR 3@108, IMF 15@95 and UREA 15@105. She, without question, has the ability to produce cattle with extra muscle in all the right places as is proven by her impressive UREA EPD which ranks in the top 3% of current dams and matches her great ratio of 15@105. In addition, she places in the top 1% for Milk, 10% for WW, 20% for CED and \$W and 25% for YW. Her dam was a feature in the 2000 SydGen sale selling to Riverbend Ranch in ID for \$14,000. A daughter, SydGen Miss Wix 5741, was a \$10,000 feature in the 2008 Missouri Angus Breeders' Futurity from SydGen, selling to Wayne Wilde in MN, while many sons have sold through the SydGen sale including the top fall yearling bull in their 2004 sale at \$10,600 and a top-selling bull in their 2005 sale at \$8,000. SAF Miss Wix 0402 has been flushed four times and averaged 12 embryos per flush. This great breeding piece sells in her entirety, open and ready to flush.

2A CSC Miss Wix Heifer Pregnancy

Due Date: 8-24-2008

#Sitz Traveler 8180	#GDAR Traveler 71	SW	SW
SAV 8180 Traveler 004	Sitz Everelda Entense 1137	+32.10	+26.32
13512009 +Boyd Forever Lady 8003	#AAR New Trend	%IMF	%IMF
	SVF Forever Lady 57D	SF	SF
	#GAR Precision 1680	-14	-0.2
	+Brost Burgess 041	UREA	SG
	#Traveler 3173 GDAR	+3.8	+5.9
	GDAR Miss Wix 1122	UFAT	S8
		+0.13	-0.13
		+34.59	+33.35

An exciting heifer pregnancy mating by the Number 1 bull in registrations, SAV 8180 Traveler 004, from the featured donor SAF Miss Wix 0402.

CED	BEPD	WEPD	YEPD	SC	CEM	MILK
S +4	+3.4	+58	+106	+99	+7	+21
D +7	+3.8	+47	+78	+0.1	+4	+33

This mating will provide high growth and big UREA genetics with loads of maternal traits. The resulting heifer calf will be a maternal sister to some of the most exciting females in the C/S and SydGen program including their featured lots in the 2008 Missouri Angus Breeders' Futurity. This is a "can't miss" mating that has great earning potential.



SydGen Miss Wix 5741

Daughter of Lot 2.



CSC Miss Wix T3

Daughter of Lot 2.



VAR Forever Trendy 1032

The dam of Lot 4.

3A CSC OH29 High Prime 733

Birth Date: 2-2-2007 Bull +15882126 Tattoo: 733

CED	BEPD	WEPD	YEPD	SC	CEM	MILK	%IMF	UREA	UFAT	SW	SF	SG	SB
+5	+2.5	+45	+76	-32	+7	+29	+1.22	+63	-0.18	+30.42	+17.81	+22.18	+39.59

3B CSC OH29 High Prime 791

Birth Date: 2-1-2007 Bull +15882122 Tattoo: 791

CED	BEPD	WEPD	YEPD	SC	CEM	MILK	%IMF	UREA	UFAT	SW	SF	SG	SB
+5	+2.5	+45	+76	-32	+7	+29	+1.22	+63	-0.09	+30.42	+17.81	+23.85	+41.26

3C CSC OH29 High Prime 758

Birth Date: 2-8-2007 Bull +15882142 Tattoo: 758

CED	BEPD	WEPD	YEPD	SC	CEM	MILK	%IMF	UREA	UFAT	SW	SF	SG	SB
+5	+2.5	+45	+76	-32	+7	+29	+1.13	+55	-0.27	+30.42	+17.81	+22.80	+40.21

Three excellent flush brothers by the Number 10 \$G sire in the breed, Summitcrest High Prime OH29, from the donor SAF Miss Wix 0402 who records a BR of 3@95, WR 3@110, YR 3@108, IMF 15@95 and UREA 15@105. These herd sire prospects are balanced trait bulls and rank in the top 4% for Milk and 10% for \$W. In addition Lot 3A places in the top 10% for UREA and 20% for \$G; Lot 3B ranks in the top 20% for UREA, 15% for \$G and 25% for \$B; Lot 3C places in the top 15% for UREA and 20% for \$G. These bulls do a great job of blending high maternal and carcass genetics with moderate birth in a uniform and balanced package.

4 CSC Forever Trendy Heifer Pregnancy

Due Date: 2-12-2008

SS Objective	T510 OT26	13776378	SS Rito R011	7R8	#DHD Traveler	6807	#SS Miss Hi Spade	A114	SS Rito Rito	R76 R011	SS Miss Ultress	U56	#Tehama Bando	155	9J9 GAR	856	#AAR New Trend	+SVF Forever Lady	1120	%IMF	%IMF	SF	SF
+56	+24	+59.77	+17.47	+51	+73	+29.04	+24.36	+008	-004	+62.06	+39.63	+38.28	+17.07										

A great opportunity in this heifer pregnancy mating. The donor dam, VAR Forever Trendy 1032, was a \$10,000 feature of the 2006 Circle A Sale and is a full sister to the \$12,000, Trendy 1096 who sold through the 2005 Vintage Angus Ranch Sale to Blue Q Ranch in NC. Their dam is the \$66,000 anchor of the Forever Lady family at Vintage Angus Ranch in CA; she, in turn, is an own daughter of the \$1.5-million-producing SVF Forever Lady 1120. Forever Trendy 1032 places in the uppermost 1% of current dams for UREA, 5% for \$G, 10% for \$B and 15% for Milk and %IMF. This outstanding mating with the Number 8 \$B sire in the breed, SS Objective T510 OT26, is one with tremendous earning potential. The possibilities of this Forever Lady heifer calf are astounding.



CSC OH29 High Prime 758

Lot 3C

C/S Forever Lady



B&M Forever Lady 131

Dam of Lot 5 Pregnancy.



B&M Forever Lady 294

Full sister to the dam of Lot 5 and grandam of Lot 6.

5 CSC Forever Lady Heifer Pregnancy

Due Date: 10-12-2008

#+SAF 598 Bando 5175
Boyd On Target 1083
13828202 +Boyd Forever Lady 7095

#GAR Precision 1680
B&M Forever Lady 131
+13946233 +B&M Forever Lady 92

#Bon View Bando 598
+SAF Royal Lass 1002
#DHD Traveler 6807
SVF Forever Lady 57D
#Tehama Bando 155
9J9 GAR 856
#GDAR Executive 727
GDAR Forever Lady 680

	SW	SW
	+24.03	+20.25
%IMF	+37	+13.38
UREA	+10.25	+26.41
UFAT	+0.029	+38.55

	CEM	MILK
S	+2	+18
D	+10	+23

Truly one of the most exciting features of the entire spring sale season, the opportunity to purchase a heifer calf by the popular Boyd

On Target 1083 from one of the great donors in the Angus breed, B&M Forever Lady 131, who topped the B&M Angus and Ragsdale Sale at \$15,500 and who records a BR 3@94, WR 3@100, YR 3@100, IMF 11@108 and UREA 11@102 while placing in the top 4% for CED and %IMF, 5% for \$G, 10% for \$B, 15% for UREA and 20% for Milk.

131 is a full sister to B&M Forever Lady 294 who has generated more than \$500,000 in progeny sales in the Birk Beef Cattle program. She is sired by GAR Precision 1680, and her dam is the legendary B&M Forever Lady 92 who in just one day at the B&M Angus and Ragsdale Sale generated along with her daughters nearly \$75,000 in progeny sales.

Maternal sisters to this heifer pregnancy include a \$12,500 daughter that sold to Valley View Angus as well as the \$4,250 B&M Forever Lady 145, the \$3,750 B&M Forever Lady 126 who sold to SydGen, the \$3,500 B&M Forever Lady 056 who sold to Clearwater and Birk Beef Cattle and yet another daughter who sold to Lazy P Ranch for \$3,600.

It is not every day that an opportunity with this kind of limitless earning potential comes along. This is a mating that can take your program to the next level and one that has proven to be of tremendous value in countless programs throughout the country.



6 CSC Forever Lady T19

Birth Date: 8-23-2007

Cow +15913050

Tattoo: T19

#SAF Focus of ER
Mytty In Focus
13880818 Mytty Countess 906

#Bon View Bando 598
Birks Forever Lady 353
+14745640 B&M Forever Lady 294

#SAF Fame
GDAR Forever Lady 246
#Sitz Alliance 6595
Baldrige Countess 357
#Tehama Bando 155
#Bon View Dora 56
#GAR Precision 1680
+B&M Forever Lady 92

	SW
	+30.79
%IMF	+28
UREA	+32
UFAT	+18.98
	+0.022

	CEM	MILK
S	+10	+30
D	+1	+30

This incredible show heifer prospect is extremely eye-appealing and balanced and has a sensational pedigree as well.

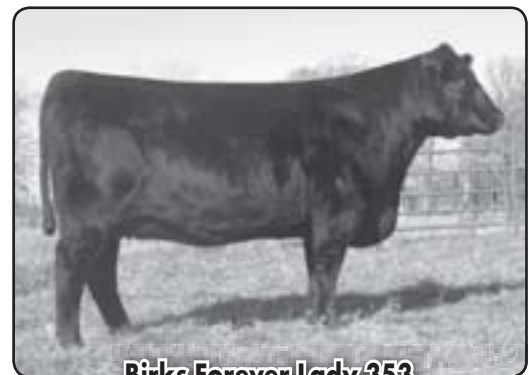
She is an own daughter of the \$10,000 Birks Forever Lady 353 who, in turn, is an own daughter of B&M Forever Lady 294 who has amassed over \$500,000 in progeny sales. Her sire, the popular ABS Global roster member Mytty In Focus, is a big spread sire with great maternal traits.

She ranks in the top 2% for Milk, 5% for CEM and \$W, 10% for CED and BW, 15% for YW and \$F and 20% for WW and \$B. Her dam records a BR 1@106, WR 1@108, IMF 2@107 and UREA 2@101.

This young heifer will not only make an excellent prospect for the National Junior Heifer Show in 1A, but she carries the proven genetics of one of the most sought after cow families in the breed and will certainly go on to make a great producing female.

CSC Forever Lady T19

Lot 6



Birks Forever Lady 353

Dam of Lot 6.



Birk

CSC Design Blackbird 566

Lot 9

7 CSC Blackbird 737

Birth Date: 2-1-2007	Cow 15873976	Tattoo: 737
#B/R New Design 036	#VDAR New Trend 315	SW
B/R New Frontier 095	B/R Blackcap Empress 76	+25.57
#+13588640 White Fence Pride H1	#Connealy Dateline	SF
	#Pleasant Pill of Conanga	+1.14
	#TC Dividend 963	+22.35
#Bubs Direct Deposit 200	#Nichols Lula N9	UREA
CSC Blackbird 39	#Minerts Fortune 2000	+1.10
13612634 CSC Fortune Blackbird F109	Gleonda Blackbird 4226	UFAT
		-1.006
		+36.34

An excellent show heifer prospect by the all-time sales leader at Accelerated Genetics, B/R New Frontier 095. Her dam who records a BR 6@101, WR 6@105, YR 4@104 and UREA 2@104 descends from the very productive Blackbird cow family. This balanced trait female records an individual BR of 100 and WR of 103 in a very powerful contemporary group of 50 high-performing individuals.

CED	BEPD	WEPD	YEPD	SC	CEM	MILK
+6	+2.5	+46	+81	+1.11	+6	+18

9 CSC Design Blackbird 566

Birth Date: 2-24-2005	Cow 15066681	Tattoo: 566
#B/R New Design 036	#VDAR New Trend 315	SW
Bon View New Design 878	B/R Blackcap Empress 76	+26.73
#13062750 Bon View Gammer 85	#Bon View Bando 598	SF
	Bon View Gammer 233	+1.06
	#Bubs Direct Deposit 200	+10.43
Bubs Direct Deposit H810	Bakers Witch 240	UREA
CSC Blackbird 121	Stevenson Maximum 540E	+1.14
13965845 CSC Maximum Blackbird 945	#JRS Blackbird	+13.26
		UFAT
		-1.002
		+24.83

CSC Design Blackbird 566 is an impressive female and is extremely eye-appealing and balanced. She blends the Number 1 bull in registrations for the previous four years, Bon View New Design 878, with the great CSC Blackbird family. 566 ranks in the top 15% for \$W and 20% for Milk. This young female has a great future ahead of her and the ability to produce many high quality individuals. Sells with a heifer calf (Lot 9A) born 2/8/2008 by SAV 8180 Traveler 004.

CED	BEPD	WEPD	YEPD	SC	CEM	MILK
+6	+2.2	+39	+66	+1.37	+7	+23

8 CSC Blackbird 638

Birth Date: 1-28-2006	Cow 15458853	Tattoo: 638
#B/R New Design 036	#VDAR New Trend 315	SW
B/R New Frontier 095	B/R Blackcap Empress 76	+23.20
#+13588640 White Fence Pride H1	#Connealy Dateline	SF
	#Pleasant Pill of Conanga	+1.13
	#TC Dividend 963	+27.20
#Bubs Direct Deposit 200	#Nichols Lula N9	UREA
CSC Blackbird 39	#Minerts Fortune 2000	+1.15
13612634 CSC Fortune Blackbird F109	Gleonda Blackbird 4226	UFAT
		-1.007
		+40.28

This full sister to Lot 7 is an excellent two-year-old who places in the top 20% for YW and 25% for \$F. She records an individual BR of 107 and WR of 113. Her dam records a BR 6@101, WR 6@105, YR 4@104, UREA 2@104 and blends the Pathfinder Sires Bubs Direct Deposit 200 and Minerts Fortune 2000. Sells with a heifer calf (Lot 8A) born 1/26/2008 by SS Objective T510 OT26.

CED	BEPD	WEPD	YEPD	SC	CEM	MILK
+5	+3.8	+49	+87	+1.11	+5	+17

10 CSC Blackbird 617

Birth Date: 1-19-2006	Cow 15452592	Tattoo: 617
#Bon View Bando 598	#Thama Bando 155	SW
Connealy Freightliner	#Bon View Dara 56	+28.10
#13026916 Joana Erica of Conanga	#Nichols Heavy Duty X100	SF
	Jarne Erica of Conanga	+1.01
	#Bubs Direct Deposit 200	+16.62
Bubs Direct Deposit H810	Bakers Witch 240	UREA
CSC Blackbird 121	Stevenson Maximum 540E	-1.03
13965845 CSC Maximum Blackbird 945	#JRS Blackbird	+8.95
		UFAT
		-1.001
		+25.49

CSC Blackbird 617 is a maternal sister to Lot 9 and is sired by the Number 9 Scrotal circumference EPD bull in the breed, Connealy Freightliner. Her dam records a BR 3@97, WR 3@102 and IMF 1@104. She places in the top 20% for CED, BW and \$W and records an individual BR of 94 and WR of 104. Sells with a bull calf (Lot 10A) born 2/13/2008 by Dr J Analyst M250.

CED	BEPD	WEPD	YEPD	SC	CEM	MILK
+8	+8	+43	+74	+1.23	+7	+17

C/S Open Heifers



CSC Pride 768

Lot 11

11 CSC Pride 768

Birth Date: 2-16-2007

Cow 15873981

Tattoo: 768

#+VDAR Lucys Boy
CSC Lucy Boy 040
+13725189 VDAR Beauty 4047

+Bubs Crown Prince
CSC Crown Pride 239
14210006 #Ankony Pride N468

#Traveler 1148 GDAR
+VDAR Pine Drive Lucy 5
#+VDAR Traveler 722
#+VDAR Beauty 900
#Bubs Direct Deposit 200
Bubs Good Formula E189
Ankonian Union
Ankony Pride T725

SW	+21.79
SF	
%IMF	1-.06
UREA	+27.37
SG	
UFAT	1-.02
SB	+3.70
	1+.006
	+26.51

This fantastic show heifer prospect is extremely angular with a very feminine front, long level hip and plenty of capacity and volume.

She blends Lucy Boy with the famous Ankony Pride cow family, and in addition, she records an individual WR of 111.

This young female will certainly be competitive at several summer shows including the National Junior Angus Show in IA.

CEM	MILK
1+4	1+3
1+3.2	1+16
1+46	
1+86	
N/A	

13 CSC Royal Queen 717

Birth Date: 1-24-2007

Cow 15873969

Tattoo: 717

#Connealy Leadtime
Connealy Lead On
#13447282 Eligence Plus of Conanga

KCF Bennett Coalition SCC
SydGen Royal Queen 5188
+14980031 +SAF Royal Queen 5084

#Connealy Dateline
#Ruths Rona of Conanga
#TC Divident 963
Eura Cap of Conanga
#Sitz Alliance 6595
#Pleasant Pill of Conanga
#Bon View Bando 598
SAF Royal Queen 9022

SW	+30.56
SF	
%IMF	1+.05
UREA	+34.21
SG	
UFAT	1+.18
SB	+13.42
	1-.007
	+38.94

A very special and exciting sale highlight, CSC Royal Queen 717 descends from one of the most legendary cows in the Angus breed.

Her dam is a maternal sister to the \$50,000 SAF Connection as well as SAF Directive, SAF Focus 9095, SAF Strategy 9015 and SydGen Bouncer 2458.

Her grandam, the great SAF Royal Queen 5084, has not only produced some of the most influential sires in the breed today, but also has produced more than \$520,000 in progeny sales.

717 has a sensational EPD tabulation and places in the top 3% for Milk, 4% for \$W, 10% for WW and YW, 15% for \$F and \$G and 20% for \$B. In addition, she records an individual BR of 97 and WR of 108.

CEM	MILK
N/A	N/A
1+1.6	1+29
1+52	
1+95	
N/A	

12 CSC Lady Mae T22

Birth Date: 8-27-2007

Cow 15913205

Tattoo: T22

#B/R New Design 036
B/R New Frontier 095
#+13588640 White Fence Pride H1

#Dalebanks Extender 6012
CSC Lady Mae 339
14456910 #TAR Lady Mae 9114

#VDAR New Trend 315
B/R Blackcap Empress 76
#Connealy Dateline
#Pleasant Pill of Conanga
#N Bar Emulation EXT
Princess 4007 of Dalebanks
Thomas Cutting Edge
TAR Lady Mae 5519

SW	+27.50
SF	
%IMF	1+.19
UREA	+23.35
SG	
UFAT	1+.18
SB	+20.36
	1-.003
	+38.66

This powerful female by the popular Accelerated Genetics sire B/R New Frontier 095 is from a dam who combines Dalebanks Extender 6102 with the Pathfinder Dam TAR Lady Mae 9114.

She is a very balanced trait female and places in the top 25% for \$W.

CEM	MILK
1+6	1+23
1+2.8	
1+46	
1+82	
N/A	



CSC Royal Queen 717

Lot 13



Birk

CSC Pride S17

Lot 16

14 CSC F Traveler 798

Birth Date: 3-3-2007 Cow 15873988 Tattoo: 798

#Connealy Freightliner
Circle A Freightliner 2578
14366976 +Circle A Forever Lady 1092

#Whitstone Fly Traveler 3006
CSC Scotch Traveler 89
13612632 GAR 9440 Scotch Cap 537

#Bon View Bando 598
Joana Erica of Conanga
#+Leachman Right Time
+Circle A Forever Lady 7427
#Hoff Hi Flyer SC 7134
#TC Jestress 6004
#RR Scotchcap 9440
+GAR 6807 Traveler 964

SW	+28.58
SF	+28.84
%IMF	1-.02
UREA	1+.01
UFAT	1+.003
SB	+29.98

The first of two half sisters by Circle A Freightliner 2578.

CSC F Traveler 798 places in the top 15% for WW, CEM and \$W and 20% for CED, YW and \$F. She records an individual BR of 100 and WR of 113.

Her dam is by the Pathfinder Sire Whitstone Fly Traveler 3006 and descends from the Gardiner donor GAR 6807 Traveler 964.

CED	BEPD	WEPD	YEPD	SC	CEM	MILK
1+8	1+1.9	1+50	1+89	1+.68	1+9	1+22

16 CSC Pride S17

Birth Date: 9-1-2006 Cow 15750992 Tattoo: S17

#+SAF 598 Bando 5175
SAV 5175 Bando 0699
+13875838 LLA Georgina 419

+Basin Max DS B14A
CSC Pride F122
12653107 #Basin Pride 7097

#Bon View Bando 598
+SAF Royal Lass 1002
#+GAR Sleep Easy 1009
Lyons Georgina 2165
#GT Maximum
DS Enchantress 2137
#Tomwall S Shoshone 4933
Basin Pride 892

SW	+19.15
SF	+23.12
%IMF	+20
UREA	+34
UFAT	+0.12
SB	+37.02

This is an attractive female with a great deal of style and loads of volume

and rib shape. She is sired by the popular ABS Global sire SAV 5175 Bando 0699 and her dam blends GT Maximum with the Basin Pride cow family and records an IMF ratio of 4@104; note her Pathfinder Granddam, Basin Pride 7097.

S17 records an individual UREA ratio of 101.

Bred to SS Objective T510 OT26 and due to calve 9/4/2008.

CED	BEPD	WEPD	YEPD	SC	CEM	MILK
+1	+4.2	+44	+81	1+.60	+4	+15

15 CSC Polly 788

Birth Date: 2-28-2007 Cow 15873991 Tattoo: 788

#Connealy Freightliner
Circle A Freightliner 2578
14366976 +Circle A Forever Lady 1092

#Sitz Traveler 9929
CSC Polly 042
+13725216 +VDAR Polly 4004

#Bon View Bando 598
Joana Erica of Conanga
#+Leachman Right Time
+Circle A Forever Lady 7427
#DHD Traveler 6807
Sitz Everelda Entense 1137
#VDAR Rito 953
VDAR Polly 215

SW	+25.31
SF	+26.42
%IMF	1+.08
UREA	1-.05
UFAT	1+.023
SB	+30.11

CSC Polly 788 descends from the Polly family made famous at Van Dykes Angus Ranch.

She is a high growth female and records an impressive WR of 115 to rank in the top 10% for WW EPD; she also places in the top 25% for \$W.

CED	BEPD	WEPD	YEPD	SC	CEM	MILK
1+4	1+3.9	1+51	1+87	1+.95	1+6	1+21

17 CSC Miss Reva T25

Birth Date: 8-30-2007 Cow 15913206 Tattoo: T25

#+GAR Grid Maker
TC Gridiron 258
14237017 #TC Blackbird 7049

+Bubs Bonanza BB G53
CSC Miss Reva N16
14668530 #Bubs Miss Reva

#GDAR Traveler 044
GAR Precision 2536
#TC Dividend 494
OCC Blackbird 902D
#RR 9440 Scotch Cap 1483
Sedgwicks Lucy 8033
#Paramont Ambush 2172
Nichols Blackcap Y189

SW	+28.33
SF	+25.80
%IMF	1-.03
UREA	1+.32
UFAT	1+.008
SB	+30.91

This daughter of the rising star in the

Genex line-up, TC Gridiron 258, is an excellent young female, and she descends from the Reva cow family which has been very productive not only in the C/S program but at the BUB Ranch as well.

She has the ability to add extra growth with a WW EPD in the top 15% and YW in the top 25%; she also ranks in the top 20% for \$W.

This female has a bright future ahead of her and would also make a very nice show heifer prospect.

CED	BEPD	WEPD	YEPD	SC	CEM	MILK
1+2	1+3.8	1+50	1+86	N/A	1+6	1+19



Birk

CSC Blackcap Bando S30

Lot 18

18 CSC Blackcap Bando S30

Birth Date: 9-9-2006 Cow 15750990 Tattoo: S30

#+SAF 598 Bando 5175	#Bon View Bando 598						
LT 598 Bando 9074	+SAF Royal Lass 1002						
13448453 #Mill Coulee Barbara K 323	+Mill Coulee Time Traveler 02						
	+Mill Coulee Barbara K 018						
	#Sitz Alliance 6595						
WAR Alliance 9126 6006	WAR Bando 6006 598 4053						
CSC Blackcap Alliance 406	+Bubs Bonanza BB G53						
14710818 CSC Blackcap Bonanza	CSC Blackcap Maximum 887						

A stout, high-performing daughter of LT 598 Bando 9074 from a dam by WAR Alliance 9126 6006.

She has a great EPD profile and places in the top 15% for YW, \$F and \$B, 20% for Milk and 25% for %IMF and \$W. In addition, she records an individual BR of 97, WR of 94, YR of 101, IMF of 130 and UREA of 107.

Bred to Dr J Analyst M250 and due to calve 9/8/2008.

CEM	MILK	CEM	MILK	CEM	MILK	CEM	MILK
+6	+1.3	+46	+90	N/A	+7	+24	

20 CSC Jet of 9440 111

Birth Date: 2-8-2001 Cow 13967386 Tattoo: 111

#Scotch Cap	#PS Power Play (GDF)						
RR Scotchcap 9440	#Hoff Band 07 of SC 509						
#11293310 Blackcap of RR 5367	RR Vantage 3352						
	Blackcap of RR 0238						
	#+GDAR Oscar 711						
GDAR Seven Eleven 9105	#Blackcap Lady 3187 GDAR						
TAR Barbaramere Jet 5784	#Traveler 124 GDAR						
#12213251 Sitz Barbaramere Jet 4005	Sitz Barbaramere Jet 520						

CSC Jet of 9440 111 records an IMF ratio of 1@124; she ranks in the top 10% for CEM and 20% for CED.

Both her sire and dam are Pathfinders, and she descends from the Barbaramere Jet cow family made famous at Sitz Angus Ranch in MT.

Bred to Rito 112 of 2536 Rito 616 and due to calve 9/8/2008. Pasture exposed to Circle A Freightliner 2578 from 12/2/2007 to 3/15/2008.

CEM	MILK	CEM	MILK	CEM	MILK	CEM	MILK
+7	+3.6	+32	+65	-09	+10	+15	

19 CSC Blackcap Alliance 406

Birth Date: 2-6-2004 Cow 14710818 Tattoo: 406

#Sitz Alliance 6595	#Sitz Traveler 8180						
WAR Alliance 9126 6006	#Sitz Barbaramere Jet 2698						
13433023 WAR Bando 6006 598 4053	#Bon View Bando 598						
	War Ext 4053 22 2107						
	#RR 9440 Scotch Cap 1483						
+Bubs Bonanza BB G53	Sedgwicks Lucy 8033						
CSC Blackcap Bonanza	Stevenson Maximum 540E						
13965835 CSC Blackcap Maximum 887	#Gleonda Blackcap L107						

This young female by the high growth sire WAR Alliance 9126 6006 has an excellent EPD tabulation and ranks in the top 2% for YW and \$F, 10% for WW and 15% for Milk, \$W and \$B.

She has the ability to bring some big time growth genetics to a program without sacrificing positive carcass and maternal genetics as well.

Bred to Woodhill Foresight and due to calve 9/7/2008. Pasture exposed to Circle A Freightliner 2578 from 12/2/2007 to 3/15/2008.

CEM	MILK	CEM	MILK	CEM	MILK	CEM	MILK
+6	+1.8	+49	+95	N/A	+6	+24	

21 CSC Freightler Ann S42

Birth Date: 10-8-2006 Cow 15873959 Tattoo: S42

#Connealy Freightliner	#Bon View Bando 598						
Circle A Freightliner 2578	Joana Erica of Conanga						
14366976 +Circle A Forever Lady 1092	#+Leachman Right Time						
	+Circle A Forever Lady 7427						
	Ambush Bando 01						
BC Beauty Ambush Bando 246	+BC Beautys Barbie 204						
Thieme Bando Ann	+Bear MTN Ranchers Choice 516						
13601905 FAA Bemindful Maid	#Blades Pride SLB 9024						

This bred heifer by Circle A Freightliner 2578 records an individual BR of 100, WR of 98, YR of 102 and IMF ratio of 109.

Her dam blends Ambush with her Pathfinder third dam, Blades Pride SLB 9024. Bred to HSAF Bando 1961 and due to calve 9/11/2008.

CEM	MILK	CEM	MILK	CEM	MILK	CEM	MILK
+2	+3.4	+43	+76	N/A	+6	+17	



CSC Designer Girl 151

Lot 22

22 CSC Designer Girl 151

Birth Date: 2-25-2001	Cow 13965859	Tattoo: 151							
#VDAR New Trend 315	#AAR New Trend								
B/R New Design 036	#VDAR Lucy 704								
#11418151	B/R Blackcap Empress 76								
	#K&K Top Gun								
	+QLC A70 Blkcp Empress E43T	%IMF	SW						
#TAR Paycheck 8271	Paycheck 876W of JRS	+0.05	+23.00						
CSC Pay Girl E100	GDAR Blackcap Lady 8162	UREA	SF						
12654350	Line 3 Ranger 8701	-0.11	+18.12						
	Spruce Hill Jay 1033	UFAT	SB						
		-0.01	+27.24						

151 is an own daughter of the carcass king, B/R New Design 036. This is a very stout, deep-sided, big topped, level hipped female that is impressive to see. She places in the top 25% for \$G and records an IMF ratio of 4@102. CSC Designer Girl 151 is a true power cow by one of the all-time breed greats. Bred to Rito 112 of 2536 Rito 616 and due to calve 1/24/2008. Pasture exposed to Circle A Freightliner 2578 from 5/1/2007 to 8/15/2007.

24 CSC Black Beauty 657

Birth Date: 2-6-2006	Cow 15452615	Tattoo: 657							
#+SAF 598 Bando 5175	#Bon View Bando 598								
LT 598 Bando 9074	+SAF Royal Lass 1002								
13448453	+Mill Coulee Time Traveler 02								
	+Mill Coulee Barbara K 018								
	#Nichols Formula B42	%IMF	SW						
+Bubs Hulio H834	#Nichols Lula W211	N/A	+25.71						
CSC Black Beauty 425	#N Bar Emulation EXT	UREA	SG						
14761978	#JRS Black Beauty 908W	N/A	N/A						
		UFAT	SB						
		N/A	N/A						

Just a two-year-old by the popular Genex calving-ease sire LT 598 Bando 9074. Her dam blends Nichols Formula B42 with the great N Bar Emulation EXT; note her third dam is a Pathfinder. CSC Black Beauty 657 places in the top 25% for \$F and records an individual BR of 101 and WR of 100. Pasture exposed to CSC Lead On 611 from 5/1/2007 to 8/1/2007.

23 CSC Karens Katie 693

Birth Date: 2-27-2006	Cow 15452599	Tattoo: 693							
#+B/R New Frontier 095	#B/R New Design 036								
CSC New Frontier 432	White Fence Pride H1								
14860194	#TC Dividend 963								
	Lurvey's Maxie 359	%IMF	SW						
+Bubs Hulio H834	#Nichols Formula B42	N/A	+18.59						
CSC Karens Katie 224	#Nichols Lula W211	UREA	SF						
14210008	#QAS Traveler 23-4	N/A	N/A						
	Karens Katie of J&G 07	UFAT	SB						
		N/A	N/A						

CSC Karens Katie 693 descends from a very productive line of females from the Jones & Gilliam herd in Gainesville. She blends B/R New Frontier 095 with the Pathfinder Sires Nichols Formula B42 and QAS Traveler 23-4. Bred to HA Image Maker 0415 and due to calve 3/10/2008. Pasture exposed to CSC Lead On 611 from 6/1/2007 to 8/1/2007.

25 CSC Lady Mae 513

Birth Date: 1-21-2005	Cow 15066677	Tattoo: 513							
#B/R New Design 036	#VDAR New Trend 315								
Genetics by Design 049	B/R Blackcap Empress 76								
13791489	#+JR Juice 2005								
	GG Clara 200	%IMF	SW						
Stevenson Maximum 540E	+Stevenson Maximum 42C	+1.15	+22.19						
CSC Lady Mae 064	JRS Kay Kelton 137A	UREA	SG						
13725287	Thomas Cutting Edge	-1.05	+11.99						
	TAR Lady Mae 5519	UFAT	SB						
		+0.10	+33.07						

Another awesome young female who has a great pedigree and superb EPDs. CSC Lady Mae 513 ranks in the top 2% for \$W, 10% for WW, 15% for CED, BW and YW, 20% for \$F and 25% for %IMF. She records one progeny record with a BR of 96 and WR of 103. The Genetics By Design 049 daughters have been very popular and are making excellent producing females—513 is certainly no exception. Bred to SS Objective T510 OT26 and due to calve 2/9/2008. Pasture exposed from 5/8/2007 to 8/18/2007 to CSC New Frontier 432.

C/S Traveler & Ruby

26 CSC 8005 Traveler 613

Birth Date: 1-18-2006	Cow 15452608	Tattoo: 613
#AAR New Trend	#VDAR Shoshone 548	
Boyd New Day 8005	Donna AAR 74	SW
#+13050780 SVF Forever Lady 57D	#+Leachman Right Time	+25.62
	+SVF Forever Lady 1128	%IMF
	#RR 9440 Scotch Cap 1483	N/A
+Bubs Bonanza BB G53	Sedgwicks Lucy 8033	UREA
CSC Bonanza Traveler 359	Stevenson Maximum 540E	N/A
14522757 CSC Maximum Traveler 199	+GAR 6807 Traveler 964	UFAT
		N/A

CSC 8005 Traveler 613 is sired by Boyd New Day 8005 who has sired several show champions, and his daughters are working well in production as well. 613 places in the top 1.5% for YW and \$F and 20% for CED and WW; in addition, she records an individual BR of 99 and WR of 103. Sells with a heifer calf (Lot 26A) born 2/1/2008 by Dr J Analyst M250.

CED	BEPD	WEPD	YEPD	SC	CEM	MILK
+8	+2.3	+48	+92	N/A	+4	+19

30 CSC 901 Traveler 610

Birth Date: 1-17-2006	Cow 15452614	Tattoo: 610
#Sitz Alliance 6595	#Sitz Traveler 8180	
JD Daigger 901	#Sitz Barbaramere Jet 2698	SW
13414518 JD Queen Eisa 7021	#Bon View Bando 598	+27.04
	JD Queen Eisa 5921	%IMF
+Bubs Bonanza BB G53	#RR 9440 Scotch Cap 1483	N/A
CSC Bon Traveler 4004	Sedgwicks Lucy 8033	UREA
14753455 CSC Top Hand Traveler 972	CSC Top Hand 710	N/A
	+GAR 6807 Traveler 7128	UFAT
		N/A

This high maternal trait two-year-old ranks in the top 1.5% for Milk EPD and top 25% for \$W. She blends JD Daigger 901 with another member of the Traveler cow family by Bubs Bonanza BB G53. Sells with a heifer calf (Lot 30A) born 1/25/2008 by GAR Integrity.

CED	BEPD	WEPD	YEPD	SC	CEM	MILK
+6	+1.5	+41	+77	N/A	+6	+25

27 CSC Bonanza Traveler 359

Birth Date: 2-18-2003	Cow 14522757	Tattoo: 359
#RR 9440 Scotch Cap 1483	#RR Scotchcap 9440	
Bubs Bonanza BB G53	Eriskay of Rollin Rock 8211	SW
+12824444 Sedgwicks Lucy 8033	#Marriott of WR Bar 8055	+26.11
	#Sedgwicks Lucy 4941	%IMF
	+Stevenson Maximum 42C	+1.11
Stevenson Maximum 540E	JRS Kay Kelton 137A	UREA
CSC Maximum Traveler 199	#DHD Traveler 6807	+1.16
13612631 +GAR 6807 Traveler 964	+GAR Bando 10	UFAT
		+0.30
		+24.28

This young female by Bubs Bonanza BB G53 provides calving-ease with well above breed average growth and ranks in the top 20% for \$W. A daughter sells as Lot 26. Her dam has a very impressive progeny record and records a BR of 6@96, WR 6@104, YR 5@100, IMF 3@111 and UREA 3@94. Bred to the \$255,000 GAR Integrity and due to calve 2/25/2008. Pasture exposed to CSC Lucy Boy 040 from 5/20/2007 to 8/21/2007.

CED	BEPD	WEPD	YEPD	SC	CEM	MILK
+5	+1.8	+38	+75	N/A	+4	+15

31 CSC FD Traveler 592

Birth Date: 3-22-2005	Cow 15066693	Tattoo: 592
#CA Future Direction 5321	#GAR Precision 1680	
Clearwater Ftr Direction 393	CA Miss Power Fix 308	SW
14496480 Clearwater Black Lady M 630	#Connealy Frontline	+22.27
	Clearwater Black Lady M 148	%IMF
#DHD Traveler 6807	#QAS Traveler 23-4	+1.20
GAR 6807 Traveler 7128	#Bemindful Maid DHD 0807	UREA
+12920952 GAR Bando 1463	#Tehama Bando 155	+1.38
	GAR Pierre 2511	UFAT
		-1.004
		+37.22

An outstanding granddaughter of the great carcass sire CA Future Direction 5321 from a dam with a sterling pedigree and an outstanding progeny record. 592's dam blends the great maternal Pathfinder Sires DHD Traveler 6807 and Tehama Bando 155 with an excellent cow family bred in the Gardiner program. She places in the top 10% for Milk, 15% for UREA and \$B, 20% for CED and %IMF and 25% for BW and \$F. Her dam records a BR of 8@102, WR 8@107, YR 7@102, IMF 3@106 and UREA 3@97. Sells with a heifer calf (Lot 31A) born 2/28/2008 by CSC New Frontier 432.

CED	BEPD	WEPD	YEPD	SC	CEM	MILK
+7	+1.3	+33	+75	N/A	+7	+26

28 CSC Bonanza Traveler 270

Birth Date: 3-2-2002	Cow 14210012	Tattoo: 270
#RR 9440 Scotch Cap 1483	#RR Scotchcap 9440	
Bubs Bonanza BB G53	Eriskay of Rollin Rock 8211	SW
+12824444 Sedgwicks Lucy 8033	#Marriott of WR Bar 8055	+26.46
	#Sedgwicks Lucy 4941	%IMF
#+Whitstone Fly Traveler 3006	#Hoff Hi Flyer SC 7134	-0.01
CSC Scotch Traveler 89	#TC Jestress 6004	UREA
13612632 GAR 9440 Scotch Cap 537	#RR Scotchcap 9440	+0.03
	+GAR 6807 Traveler 964	UFAT
		+0.023
		+27.43

This sister to Lot 27 is also by Bubs Bonanza BB G53, and her dam blends the Pathfinder Sire Whitstone Fly Traveler 3006 with Gardiner donor GAR 6807 Traveler 964. 270 is line-bred to the Pathfinder Sire RR Scotchcap 9440. She has a very solid EPD tabulation and ranks in the top 10% for YW and \$F, 15% for WW and 20% for CED and \$W. She records a BR of 4@103, WR 4@101, YR 3@108, IMF 1@86 and UREA 1@113. Sells with twin bull calves (Lots 28A & 28B) born 2/24/2008 by B/R New Frontier 095.

CED	BEPD	WEPD	YEPD	SC	CEM	MILK
+7	+2.2	+45	+88	-1.14	+7	+20

32 CSC Ruby 658

Birth Date: 2-8-2006	Cow 15452605	Tattoo: 658
#Bon View New Design 878	#B/R New Design 036	
CSC Design Foreman 406	Bon View Gammer 85	SW
14802357 Clearwater Eriskay J 902	TC Foreman 016	+20.91
	#Clearwater Eriskay J 227	%IMF
#+GDAR SVF Traveler 234D	#Traveler 124 GDAR	N/A
CSC Ruby 234D- 313	+GDAR Forever Lady 718	UREA
14456911 CSC Krugerrand Ruby 010	#Krugerrand of Donamere 490	N/A
	Gleonda Ruby L127	UFAT
		N/A

The first of two young females from the Ruby cow family at C/S, this granddaughter of Bon View New Design 878 is from a dam by the Angus Sire Alliance Winner, GDAR SVF Traveler 234D. Pasture exposed to CSC Lead On 611 from 5/1/2007 to 8/1/2007.

CED	BEPD	WEPD	YEPD	SC	CEM	MILK
+7	+2.5	+35	+68	N/A	+7	+18

29 CSC Direct Traveler 639

Birth Date: 1-28-2006	Cow 15452588	Tattoo: 639
#CA Future Direction 5321	#GAR Precision 1680	
Morgans Direction 111 9901	CA Miss Power Fix 308	SW
14021056 MCC Barbie 9901 5205 797	#BAR Ext Traveler 205	+31.24
	Partisover Burgess 797	%IMF
#+Whitstone Fly Traveler 3006	#Hoff Hi Flyer SC 7134	+0.06
CSC Scotch Traveler 89	#TC Jestress 6004	UREA
13612632 GAR 9440 Scotch Cap 537	#RR Scotchcap 9440	+1.37
	+GAR 6807 Traveler 964	UFAT
		+1.004
		+38.51

This daughter of Morgans Direction 111 9901 is a maternal sister to Lot 28 and descends again from the outstanding GAR 6807 Traveler 964. 639 has a great set of numbers and ranks in the top 1% for CED, 4% for \$W, 5% for CEM and Milk, 10% for BW and 25% for YW and \$F. She recorded an individual BR of 91 and WR of 107; her dam records a BR of 6@95, WR 6@111 and YR 4@107. Sells with a heifer calf (Lot 29A) born 3/1/2008 by Connealy Lead On.

CED	BEPD	WEPD	YEPD	SC	CEM	MILK
+13	-4	+46	+86	-1.32	+10	+28

33 CSC Ruby 667

Birth Date: 2-14-2006	Cow 15452609	Tattoo: 667
#CA Future Direction 5321	#GAR Precision 1680	
Morgans Direction 111 9901	CA Miss Power Fix 308	SW
14021056 MCC Barbie 9901 5205 797	#BAR Ext Traveler 205	+31.48
	Partisover Burgess 797	%IMF
WAR Alliance 9126 6006	#Sitz Alliance 6595	N/A
CSC Alliance Ruby 434	WAR Bando 6006 598 4053	UREA
14753447 Gleonda Ruby L127	Longview Big Sky	N/A
	Gleonda Ruby G443	UFAT
		N/A

Another excellent two-year-old by the ABS Global sire Morgans Direction 111 9901. Her dam is sired by the high growth Accelerated Genetics sire WAR Alliance 9126 6006 and records a BR of 2@102 and WR 2@100. CSC Ruby 667 places in the top 4% for \$W, 5% for Milk, 10% for BW, 15% for CED and 20% for \$G and \$B. Sells with a heifer calf (Lot 33A) born 2/14/2008 by HSAF Bando 1961.

CED	BEPD	WEPD	YEPD	SC	CEM	MILK
+9	-2	+45	+80	N/A	+7	+28



CSC Elba Tweeny 810

Dam of Lot 34.

34 CSC Elba Tweeny 347

Birth Date: 2-15-2003 Cow 14456343 Tattoo: 347

#Bubs Direct Deposit 200
Bubs Direct Withdrawal G30
13000281 RCT Miss Fix It B6

#N Bar Emulation EXT
CSC Elba Tweeny 810
13148277 Gleonda Elba Tweeny L113

#TC Dividend 963
#Nichols Lula N9
#Schoenes Fix It 826
H&H Elaine 3535
#Emulation N Bar 5522
N Bar Primrose 2424
#Rito 2100 GDAR
Gleonda Elba Tweeny G829

%IMF	-07	+13.81
UREA	+22	+7.15
UFAT	+009	+19.99
SW	+20.80	
SF		
CEM	+9	+11
MILK		

This daughter of CSC Elba Tweeny 810, who was a feature in last year's sale selling to Cork Cattle Co., is sired by Bubs Direct Withdrawal G30. Her dam blends N Bar Emulation EXT with Rito 2100 GDAR and is one of the deepest bodied, stoutest made females that you will find. 347 ranks in the top 15% for CED and CEM and top 20% for BW. Sells with a heifer calf (Lot 34A) born 2/19/2008 by SAV 8180 Traveler 004.

CED	BEPD	WEPD	YEPD	SC	CEM	MILK
+8	+1.0	+35	+68	+57	+9	+11

36 CSC Barbaramere Jet 664

Birth Date: 2-13-2006 Cow 15452613 Tattoo: 664

#Connealy Leadtime
Connealy Lead On
#13447282 Eligence Plus of Cononga

KCF Bennett Total
CSC Barbaramere Jet 435
14753452 CSC Jet of Fame 883

#Connealy Dateline
#Ruths Rona of Cononga
#TC Dividend 963
Eura Cap of Cononga
#Sitz Alliance 6595
Ext of Cononga 6790
#SAF Fame
#TAR Barbaramere Jet 5784

%IMF	N/A	+32.22
UREA	N/A	+30.09
UFAT	N/A	+21.70
SW	N/A	+41.87
SF		
CEM	+7	+26
MILK		

The first of two females from the Barbaramere Jet cow family which was made famous at Sitz Angus Ranch. This daughter of Connealy Lead On has a great EPD tabulation and places in the top 2% for \$W, 10% for WW, 15% for BW, YW, Milk, and \$F and 25% for \$G and \$B. She records an individual BR of 100 and WR of 112. Sells with a heifer calf (Lot 36A) born 2/17/2008 by SAV Final Answer 0035.

CED	BEPD	WEPD	YEPD	SC	CEM	MILK
+6	+6	+52	+91	N/A	+7	+26

35 RR Barbara 0167

Birth Date: 1-19-2000 Cow 13592688 Tattoo: 0167

#Basin Rainmaker DS 380U
Basin Rainmaker 814Z
#11424642 #Basin Pamella 676X

#N Bar Emulation EXT
RR Barbara 8192
13195314 +RR Barbara 6072

#GDAR Rainmaker 340
+Shady Lady Rachel 3233
Basin Rainmaker DS 450U
Basin Pamella 6806
#Emulation N Bar 5522
N Bar Primrose 2424
#QAS Traveler 23-4
B&R Emulous Barbara 9272

%IMF	-10	+12.05
UREA	+49	+10.10
UFAT	+009	+20.35
SW	+25.22	
SF		
CEM	+8	+24
MILK		

RR Barbara 0167 is a proven producer and descends from the same Barbara cow family at Ratcliff Ranch as the impressive Lot 1 features in this sale. A daughter in last year's sale sold for \$2,100. She has seven Pathfinders in her pedigree including her sire, Basin Rainmaker 814Z; her dam combines two other great Pathfinders, N Bar Emulation EXT and QAS Traveler 23-4. 0167 ranks in the top 4% for BW, 5% for UREA, 15% for Milk, 20% for CEM and 25% for \$W. A daughter produced the Reserve Grand Champion Female at the 2008 Missouri Angus Breeders' Futurity for Cork Cattle Co. and went on to sell for \$4,000. Sells with a bull calf (Lot 35A) born 2/1/2008 by SS Objective T510 OT26.

CED	BEPD	WEPD	YEPD	SC	CEM	MILK
+5	-6	+32	+65	N/A	+8	+24

37 CSC Barbaramere Jet 435

Birth Date: 2-11-2004 Cow 14753452 Tattoo: 435

#Sitz Alliance 6595
KCF Bennett Total
13687063 Ext of Cononga 6790

#SAF Fame
CSC Jet of Fame 883
13183792 #TAR Barbaramere Jet 5784

#Sitz Traveler 8180
#Sitz Barbaramere Jet 2698
#N Bar Emulation EXT
Lady Enchantress of Cononga
#Minerts Fortune 2000
#+SAF Royal Lass 1027
GDAR Seven Eleven 9105
Sitz Barbaramere Jet 4005

%IMF	+1.02	+15.86
UREA	+1.18	+11.51
UFAT	+0.17	+27.17
SW	+33.23	
SF		
CEM	+11	+21
MILK		

This young female by KCF Bennett Total records a BR 2@101, WR 2@102 and ranks in the top 1% of current dams for \$W, 3% for BW and CEM, 4% for CED and 15% for WW. Her dam blends the legendary SAF Fame with the Pathfinder Dam TAR Barbaramere Jet 5784. A daughter sells as Lot 36. Sells with a heifer calf (Lot 37A) born 2/1/2008 by Connealy Lead On.

CED	BEPD	WEPD	YEPD	SC	CEM	MILK
+10	-1.0	+45	+74	+31	+11	+21

C/S Spring Calving Females

38 CSC 004 Blackcap 628

Birth Date: 1-26-2006	Cow 15452581	Tattoo: 628
#Sitz Traveler 8180	#GDAR Traveler 71	
SAV 8180 Traveler 004	Sitz Everelda Entense 1137	SW +28.77
13512009 +Boyd Forever Lady 8003	#AAR New Trend	%IMF -1.10
	SVF Forever Lady 57D	SF +21.20
	#Bon View Emulation Ext 473	UREA +1.31
Bon View Ext 665	Bon View Erica 69	SG +6.20
CSC Blackcap 801 Ext 665	#+SAF Power Fix	UFAT +0
13148269 +SAF Blackcap 1028	GK Beautiful Lassie 333R	SB +26.82

An own daughter of the Number 1 bull in registrations, SAV 8180 Traveler 004, from a dam who blends Bon View EXT 665 with SAF Power Fix and the Blackcap cow family.

628 ranks in the top 15% for \$W and 20% for WW; she records an individual BR of 104 and WR of 115.

Sells with a bull calf (Lot 38A) born 2/16/2008 by SS Objective T510 OT26.

CED	BEPD	WEPD	YEPD	SC	CEM	MILK
+1	+3.1	+49	+81	+35	+5	+23

39 CSC Blackcap 203

Birth Date: 1-24-2002	Cow 14210014	Tattoo: 203
#Bubs Direct Deposit 200	#TC Dividend 963	
Bubs Direct Withdrawal G30	#Nichols Lula N9	SW +24.34
13000281 RCT Miss Fix It B6	#Schoenes Fix It 826	%IMF -0.09
	H&H Elaine 3535	SF +8.06
	#Traveler 1148 GDAR	UREA +0.32
CSC Blackcap Lucy 009	+VDAR Pine Drive Lucy 5	SG +9.18
13725265 CSC Blackcap 801 Ext 665	Bon View Ext 665	UFAT -0.001
	+SAF Blackcap 1028	SB +16.17

Another member of the Blackcap family, this daughter of Bubs Direct Withdrawal G30 places in the top 20% for UREA.

Her dam blends the Pathfinder Sire VDAR Lucys Boy with Bon View EXT 665; 203 herself records a BR 4@95, WR 4@101, YR 2@98, IMF 1@92 and UREA 1@107.

Bred to Boyd On Target 1083 and due to calve 2/23/2008. Pasture exposed to CSC Lucy Boy 040 from 5/20/2007 to 8/21/2007.

CED	BEPD	WEPD	YEPD	SC	CEM	MILK
+3	+3.0	+30	+60	N/A	+5	+18

40 CSC Lady Crown 417

Birth Date: 2-3-2004	Cow 14753454	Tattoo: 417
#Bubs Direct Deposit 200	#TC Dividend 963	
Bubs Crown Prince	#Nichols Lula N9	SW +15.60
+13514213 Bubs Good Formula E189	#Nichols Formula B42	%IMF -1.05
	Bubs Good Friday	SF +18.13
	+Stevenson Maximum 42C	UREA -1.26
Stevenson Maximum 540E	JRS Kay Kelton 137A	SG +2.98
CSC Lady Mag 931	Trzos Mac Kenzie T94	UFAT +1.008
#13424788 Bar P Lady Mac 0271	Bar P Miss Governor 287	SB +19.50

The first of two half sisters by Bubs Crown Prince, this young female's dam is by Stevenson Maximum.

She is a balanced trait female with above breed average WW and YW EPDs. Sells with a bull calf (Lot 40A) born 3/1/2008 by CSC New Frontier 432.

CED	BEPD	WEPD	YEPD	SC	CEM	MILK
+4	+2.2	+39	+74	+0.6	+4	+3

41 CSC Crown Pride 239

Birth Date: 2-11-2002	Cow 14210006	Tattoo: 239
#Bubs Direct Deposit 200	#TC Dividend 963	
Bubs Crown Prince	#Nichols Lula N9	SW +11.98
+13514213 Bubs Good Formula E189	#Nichols Formula B42	%IMF -1.14
	Bubs Good Friday	SF +28.09
	#GT Maximum	UREA -1.11
Ankonyon Union	Ankony Miss Mona T6125	SG +2.76
Ankony Pride N468	#GDAR Traveler 71	UFAT -0.003
#12535949 Ankony Pride T725	Ankony Pride F6059	SB +23.85

An impressive female from a long line of Ankony Pride females, 239 places in the top 10% for \$F, 15% for YW and records a BR 4@112, WR 4@100, YR 3@102 and UREA 3@100.

Bred to Mytty In Focus and due to calve 2/24/2008. Pasture exposed to CSC Lucy Boy 040 from 5/20/2007 to 8/21/2007.

CED	BEPD	WEPD	YEPD	SC	CEM	MILK
+0	+4.1	+39	+84	+3.4	-1	+10

42 CSC Rachel 503

Birth Date: 1-9-2005	Cow +15221384	Tattoo: 503
#GAR Precision 1680	#Tehama Bando 155	
Twin Valley Precision E161 (FR)	919 GAR 856	SW +23.02
#12346200 +WCC Blackcap C9 (R)	#SS Traveler 6T6	%IMF -1.14
	Premier Blackcap 6276A (R)	SF +9.63
	#Emulation 31 (FX)	UREA -1.39
+Leachman Pressman	+Leachman Lass 400L	SG +19.73
TAR Rachel 2594	#+R&J Maxima	UFAT -1.008
12213464 TAR Rachel 8862	GDAR Rachel 857	SB +29.87

An own daughter of Twin Valley Precision E161 from the donor dam TAR Rachel 2594. This mating has been very successful in the C/S program, three full brothers sold for an average of \$1,935 in last year's sale.

CSC Rachel 503 places in the top 15% for UREA while maintaining a %IMF in the top one-third of the breed. In addition, she ranks in the top 20% for CED, CEM and \$G and records a BR of 1@108 and WR 1@111.

Sells with heifer calf (Lot 42A) born 2/4/2008 by Woodhill Foresight.

CED	BEPD	WEPD	YEPD	SC	CEM	MILK
+7	+2.1	+36	+64	+0.9	+8	+21

43 CSC Rachel 466

Birth Date: 2-22-2004	Cow 14800673	Tattoo: 466
#Nichols Formula B42	#Nichols Formula U193	
Bubs Hulio H834	#Nichols Queen Mother Z27	SW +25.05
+13046573 #Nichols Lula W211	+Nichols Landmark T20	%IMF -1.04
	#Nichols Lula S2	SF +7.81
	#Scotch Cap	UREA -1.16
CSC Rachel 916	Blackcap of RR 5367	SG +5.40
#13519695 TAR Rachel 2594	+Leachman Pressman	UFAT +1.011
	TAR Rachel 8862	SB +15.64

Another member of the Rachel cow family which has been very productive in the C/S program. 466 places in the top 15% for CEM and 25% for \$W.

Her Pathfinder Dam is sired by RR Scotchcap 9440 and is a proven example of the production power that the TAR Rachel 2594 cow transmits to her progeny.

Sells with a bull calf (Lot 43A) born 2/21/2008 by CSC New Frontier 432.

CED	BEPD	WEPD	YEPD	SC	CEM	MILK
+5	+3.5	+41	+64	+3.4	+9	+21

44 CSC Black Beauty 425

Birth Date: 2-16-2004	Cow 14761978	Tattoo: 425
#Nichols Formula B42	#Nichols Formula U193	
Bubs Hulio H834	#Nichols Queen Mother Z27	SW +18.99
+13046573 #Nichols Lula W211	+Nichols Landmark T20	%IMF -1.05
	#Nichols Lula S2	SF +13.66
	#Emulation N Bar 5522	UREA -1.01
CSC Black Beauty Ext 709	N Bar Primrose 2424	SG +9.12
12965646 #JRS Black Beauty 908W	#Basin Q Bar 163	UFAT +1.019
	JRS Black Beauty 534T	SB +22.64

CSC Black Beauty 425 is a solid young female by Bubs Hulio H834; she is a half sister to Lot 43, and her dam is by one of the most widely-used sires in the Angus breed, N Bar Emulation EXT.

Her dam records an impressive IMF ratio of 2@111 and UREA ratio of 2@112. Bred to SS Objective T510 OT26 and due to calve 2/9/2008. Pasture exposed to CSC New Frontier 432 from 5/8/2007 to 8/18/2007.

CED	BEPD	WEPD	YEPD	SC	CEM	MILK
-1	+3.9	+38	+69	+3.7	+4	+16

45 Stone Briar 068T

Birth Date: 3-7-2006	Cow 15373656	Tattoo: 068T
#VDAR New Trend 315	#AAR New Trend	
FAF New Trend 300	#VDAR Lucy 704	SW +24.12
+13702921 SAF Forever Lady 4123	#Bon View Bando 598	%IMF +1.15
	GDAR Forever Lady 178	N/A +3.47
	#SAF Easy Fortune	UREA -0.01
	CAR Hobess Maxy 231	SG +8.69
	Hickory Hill Harley	N/A +18.45
	Stone Briar Pine Drive 0086	UFAT -0.005
		N/A +25.55
		N/A N/A

Just a two-year-old, this young female blends FAF New Trend 300 who was bred in the Fretwell program with SAF Easy Fortune. She has several years of quality production in her future. Sells with a bull calf (Lot 45A) born 1/22/2008 by Mytty In Focus.

CED	BEPD	WEPD	YEPD	SC	CEM	MILK
+5	+2.7	+35	+57	+5.0	+4	+20



Birk

CSC 0699 Bando S9

Lot 46

46 CSC 0699 Bando S9

Birth Date: 8-28-2006	Bull 15750994	Tattoo: S9												
#+SAF 598 Bando 5175 SAV 5175 Bando 0699 +13875838 LLA Georgina 419	#Bon View Bando 598 +SAF Royal Lass 1002 #+GAR Sleep Easy 1009 Lyons Georgina 2165 #+GMAR Hi Spade 039 Green Garden Protet 252 S1 #GAR Precision 1680 Ankony Karama E6789	<table border="1"> <tr><td>SW</td><td>+24.92</td></tr> <tr><td>SF</td><td>+43.52</td></tr> <tr><td>%IMF</td><td>+21</td></tr> <tr><td>UREA</td><td>+67</td></tr> <tr><td>UFAT</td><td>-003</td></tr> <tr><td>SB</td><td>+50.62</td></tr> </table>	SW	+24.92	SF	+43.52	%IMF	+21	UREA	+67	UFAT	-003	SB	+50.62
SW	+24.92													
SF	+43.52													
%IMF	+21													
UREA	+67													
UFAT	-003													
SB	+50.62													
+Bubs Don Carlo J76 CSC Don Karama 119 14066264 +Ankony Karama 1N02														

An outstanding high growth bull by SAV 5175 Bando 0699, S9 places in the top 2% for YW and \$F, 4% for \$B, 5% for WW and UREA and 25% for CEM. This eye-appealing, stout herd sire prospect simply does everything right with an outstanding EPD profile, and he also records an individual BR of 86, WR of 100, YR of 102, IMF of 100 and UREA of 105. He will put pounds on your calf crop with the added value of tremendous end-product merit.

CEM	MILK	CEM	MILK	SC	YEPD	WEPD	BEPD	CEM
+8	+21	+8	+21	N/A	+105	+55	+3.0	+4

48 CSC Lead On S10

Birth Date: 8-28-2006	Bull 15760661	Tattoo: S10												
#Connealy Leadtime Connealy Lead On #13447282 Eligence Plus of Conanga	#Connealy Dateline #Ruths Rona of Conanga #TC Dividend 963 Eura Cap of Conanga #Tehama Bando 155 9J9 GAR 856 #Nelson Bold Ruler (R) Ankony Karama A3285	<table border="1"> <tr><td>SW</td><td>+27.43</td></tr> <tr><td>SF</td><td>+31.22</td></tr> <tr><td>%IMF</td><td>+13</td></tr> <tr><td>UREA</td><td>+48</td></tr> <tr><td>UFAT</td><td>-010</td></tr> <tr><td>SB</td><td>+43.36</td></tr> </table>	SW	+27.43	SF	+31.22	%IMF	+13	UREA	+48	UFAT	-010	SB	+43.36
SW	+27.43													
SF	+31.22													
%IMF	+13													
UREA	+48													
UFAT	-010													
SB	+43.36													
#GAR Precision 1680 Ankony Karama 1N02 +12664731 Ankony Karama E6789														

This well-balanced son of Connealy Lead On also descends from the Ankony Karama cow family as does Lot 46. He ranks in the top 20% for YW, UREA, \$F and \$B and 25% for Milk. His dam by the great carcass bull GAR Precision 1680 records a BR of 8@100, WR 8@102, YR 6@103, IMF 2@100 and UREA 2@106. S10 records an individual IMF ratio of 100 and UREA ratio of 111.

CEM	MILK	CEM	MILK	SC	YEPD	WEPD	BEPD	CEM
+5	+24	+5	+24	+06	+89	+44	+3.3	+3

47 CSC 0699 Bando S20

Birth Date: 9-4-2006	Bull 15750995	Tattoo: S20												
#+SAF 598 Bando 5175 SAV 5175 Bando 0699 +13875838 LLA Georgina 419	#Bon View Bando 598 +SAF Royal Lass 1002 #+GAR Sleep Easy 1009 Lyons Georgina 2165 #Nichols Formula U193 #Nichols Queen Mother Z27 +Leachman Mentor #GDAR Primrose Lady 8210	<table border="1"> <tr><td>SW</td><td>+22.96</td></tr> <tr><td>SF</td><td>+28.61</td></tr> <tr><td>%IMF</td><td>+15</td></tr> <tr><td>UREA</td><td>+31</td></tr> <tr><td>UFAT</td><td>+003</td></tr> <tr><td>SB</td><td>+38.41</td></tr> </table>	SW	+22.96	SF	+28.61	%IMF	+15	UREA	+31	UFAT	+003	SB	+38.41
SW	+22.96													
SF	+28.61													
%IMF	+15													
UREA	+31													
UFAT	+003													
SB	+38.41													
#Nichols Formula B42 CSC Primrose Lady 116 14070091 TAR Primrose Lady 8894														

CSC 0699 Bando S20 is a half brother to Lot 46, and he also maintains excellent growth with a YW in the top 20% and WW and \$F in the top 25%; in addition, he records an individual IMF ratio of 106. His dam who descends from the Primrose family is sired by Nichols Formula B42, and she records a BR of 4@98, WR 4@103 and YR 3@104.

CEM	MILK	CEM	MILK	SC	YEPD	WEPD	BEPD	CEM
+6	+22	+6	+22	N/A	+88	+48	+4.0	+3

49 Circle A Alliance 6367

Birth Date: 9-1-2006	Bull 15445911	Tattoo: 6367												
#Sitz Alliance 6595 KMK Alliance 6595 187 13346328 #+GAR Ext 916	#Sitz Traveler 8180 #Sitz Barbamere Jet 2698 #N Bar Emulation EXT GAR Bando 338 #GAR Precision 1680 +Brost Burgess 041 #Baldrige Oscar #LT Forever Lady 395 GDAR	<table border="1"> <tr><td>SW</td><td>+25.99</td></tr> <tr><td>SF</td><td>+27.20</td></tr> <tr><td>%IMF</td><td>+05</td></tr> <tr><td>UREA</td><td>+43</td></tr> <tr><td>UFAT</td><td>-007</td></tr> <tr><td>SB</td><td>+37.89</td></tr> </table>	SW	+25.99	SF	+27.20	%IMF	+05	UREA	+43	UFAT	-007	SB	+37.89
SW	+25.99													
SF	+27.20													
%IMF	+05													
UREA	+43													
UFAT	-007													
SB	+37.89													
#JLB Exacto 416 Circle A Forever Lady 0350 +13551263 +GDAR Forever Lady 718														

A well-bred son of the ABS Global sire KMK Alliance 6595 187, his dam Circle A Forever Lady 0350 is the product of mating JLB Exacto 416 with the popular donor GDAR Forever Lady 718. 6367 ranks in the top 20% for WW and 25% for YW and UREA; he records a BR of 101, WR of 94, YR of 100 and UREA of 103.

CEM	MILK	CEM	MILK	SC	YEPD	WEPD	BEPD	CEM
+6	+20	+6	+20	+29	+87	+49	+3.2	+3

C/S High Prime Bulls



GAR Commitment 1629

Donor dam of Lots 50A - 50E.

50A CSC High Prime S26

Birth Date: 9-6-2006		Bull +15772129		Tattoo: S26	
#Gardens Prime Time	#RR Traveler 5204				
Summitcrest High Prime 0H29	#Green Garden Susie 1246 S1				
#13122485	Summitcrest Missie 2F55	#Finks 5522-6148			
		#Summitcrest Missie 1C24	%IMF	+26.42	SW
		#DHD Traveler 6807	+25	+19.33	SF
		+GAR Bando 102	UREA	\$6	
		#N Bar Emulation EXT	+41	+22.93	SG
		GAR Pierre 1322	UFAT	\$8	
			+005	+40.03	SB

This excellent set of flush brothers sired by the Number 10 \$G sire in the breed, Summitcrest High Prime 0H29, provide excellent carcass traits with added maternal genetics as well.

Their donor dam, the \$11,500 GAR Commitment 1629, blends the \$50,000 GAR Commitment with N Bar Emulation EXT. She is a double-bred Rita female and traces to the immortal GAR Scotch Cap 309 twice. She records a BR 3@111, WR 4@102, YR 2@109, IMF 27@98 and UREA 27@101.

S26 ranks in the top 15% for Milk, 20% for \$G and 25% for CEM. He records an individual IMF ratio of 101 and UREA ratio of 109.

50B CSC High Prime S28

Birth Date: 9-7-2006		Bull Reg. No. Pdg.		Tattoo: S28	
#Gardens Prime Time	#RR Traveler 5204				
Summitcrest High Prime 0H29	#Green Garden Susie 1246 S1				
#13122485	Summitcrest Missie 2F55	#Finks 5522-6148			
		#Summitcrest Missie 1C24	%IMF	+26.42	SW
		#DHD Traveler 6807	+34	+19.33	SF
		+GAR Bando 102	UREA	\$6	
		#N Bar Emulation EXT	+07	+24.09	SG
		GAR Pierre 1322	UFAT	\$8	
			-005	+41.19	SB

CSC High Prime S28 has an astonishing IMF ratio of 130; in addition, he places in the top 15% for Milk and \$G, 20% for CEM and %IMF and 25% for \$B.

50C CSC 0H29 High Prime S13

Birth Date: 8-29-2006		Bull +15893390		Tattoo: S13	
#Gardens Prime Time	#RR Traveler 5204				
Summitcrest High Prime 0H29	#Green Garden Susie 1246 S1				
#13122485	Summitcrest Missie 2F55	#Finks 5522-6148			
		#Summitcrest Missie 1C24	%IMF	+26.42	SW
		#DHD Traveler 6807	+19	+19.33	SF
		+GAR Bando 102	UREA	\$6	
		#N Bar Emulation EXT	+25	+20.94	SG
		GAR Pierre 1322	UFAT	\$8	
			-005	+38.04	SB

S13 ranks in the top 15% for Milk and 25% for CEM and \$G.

50D CSC 0H29 High Prime S21

Birth Date: 9-3-2006		Bull +15893389		Tattoo: S21	
#Gardens Prime Time	#RR Traveler 5204				
Summitcrest High Prime 0H29	#Green Garden Susie 1246 S1				
#13122485	Summitcrest Missie 2F55	#Finks 5522-6148			
		#Summitcrest Missie 1C24	%IMF	+26.42	SW
		#DHD Traveler 6807	+20	+19.33	SF
		+GAR Bando 102	UREA	\$6	
		#N Bar Emulation EXT	+29	+21.70	SG
		GAR Pierre 1322	UFAT	\$8	
			-007	+38.79	SB

CSC 0H29 High Prime S21 places in the top 15% for Milk and 25% for CEM and \$G.

CED	BEPD	WEPD	YEPD	SC	CEM	MILK
1+3	1+2.1	1+4.1	1+7.6	1-3.5	1+8	1+26

50E CSC High Prime S24

Birth Date: 9-2-2006		Bull +15772130		Tattoo: S24	
#Gardens Prime Time	#RR Traveler 5204				
Summitcrest High Prime 0H29	#Green Garden Susie 1246 S1				
#13122485	Summitcrest Missie 2F55	#Finks 5522-6148			
		#Summitcrest Missie 1C24	%IMF	+26.42	SW
		#DHD Traveler 6807	+19	+19.33	SF
		+GAR Bando 102	UREA	\$6	
		#N Bar Emulation EXT	+41	+22.75	SG
		GAR Pierre 1322	UFAT	\$8	
			-013	+39.84	SB

S24 ranks in the top 15% for Milk, 20% for \$G, 25% for CEM and he maintains a UREA in the top one-third of the breed. He records an individual UREA ratio of 107.

CED	BEPD	WEPD	YEPD	SC	CEM	MILK
1+3	1+2.1	1+4.1	1+7.6	1-3.5	1+8	1+26

51 CSC 426 Foundation S34

Birth Date: 11-14-2006		Bull 15873992		Tattoo: S34	
#CA Future Direction 5321	#GAR Precision 1680				
Connealy Foundation 426	CA Miss Power Fix 308				
14843192	Ruby Red of Conanga 436	#Bon View New Design 878			
		#Ruby of Conanga 430	%IMF	+24.70	SW
		#Sitz Traveler 8180	+27	+30.09	SF
		#Sitz Barbaramere Jet 2698	UREA	\$6	
		#JLB Exacto 416	+07	+16.23	SG
		GDAR Forever Lady 178	UFAT	\$8	
			+012	+41.47	SB

This outstanding herd sire prospect by Connealy Foundation 426 is from the same family that produced the \$62,000 SAF Forever Lady 0020, the \$68,000 SAF Focus of ER and the \$100,000 SydGen Refocus.

His dam blends Sitz Alliance 6595 with the \$12,000 BPAR Forever Lady 416-E14. S34 records a WR of 109, YR of 100 and IMF of 115.

He places in the top 2% for Milk, 10% for WW, 15% for YW, 20% for \$F and 25% for \$B.



BPAR Forever Lady 416-E14

Grandam of Lot 51.



Birk

CSC OH29 Midland 702

Lot 54

52 CSC 112 Rito S14

Birth Date: 8-30-2006 Bull 15750996 Tattoo: S14
 #Rito 616 of 4B20 6807 #DHD Traveler 6807
 Rito 112 of 2536 Rito 616 +Rita 4B20 of 0FB1 Bando
 +13793826 GAR Precision 2536 #GAR Precision 1680
 #Paramont Ambush 2172 +GAR Ext 2104
 Bubs Miss Reva #Bandolier Eston Durness 42B
 #12330092 Nichols Blackcap Y189 EWS Miss Burgess 1720
 Nichols Trademark W129
 #Nichols Blackcap H18

CED	BEPD	WEPD	YEPD	SC	CEM	MILK
-2	+3.5	+45	+81	1.27	+2	+21

This balanced trait son of Rito 112 of 2536 Rito 616 descends from a highly productive Pathfinder Dam who is a daughter of the Pathfinder Sire Paramont Ambush 2172. She records a WR 11@103, YR 10@103, IMF 7@101 and UREA 8@101. He maintains a WW, %IMF and \$B in the top one-third of the breed.

SW	SF	%IMF	UREA	UFAT	\$B
+23.85	+22.74	+22	+09	-010	+38.79

54 CSC OH29 Midland 702

Birth Date: 1-8-2007 Bull 15887045 Tattoo: 702
 #Twin Valley Precision E161 (FR) #GAR Precision 1680
 BR Midland +WCC Blackcap C9 (R)
 #13898124 BR Royal Lass 7036-19 #+SAF Neutron
 #Summitcrest High Prime OH29 #SAF Royal Lass 7036
 Day's High Prime 1123 #Gardens Prime Time
 14643717 Circle A Pride 1044 Summitcrest Missie 2F55
 #JLB Exacto 416
 +Finks Pride 6200 282 71

CED	BEPD	WEPD	YEPD	SC	CEM	MILK
1+8	1+1.2	1+39	1+77	N/A	1+9	1+20

An extremely eye-appealing, well-balanced son of the \$202,000.

Number 10 %IMF sire, BR Midland.

This top herd sire prospect has a great EPD profile and places in the top 3% for \$G, 10% for %IMF, 15% for CEM, 20% for CED, UREA and \$B and 25% for BW.

His dam blends Summitcrest High Prime OH29 with JLB Exacto 416 and the Finks Pride cow family; she records a BR 2@89, WR 2@102, YR 1@100, IMF 1@99 and UREA 1@112.

This calving-ease bull qualifies for both the Show-Me-Select and Missouri Angus Advantage +Plus heifer programs.

SW	SF	%IMF	UREA	UFAT	\$B
+24.48	+21.08	1+39	1+38	1+015	+25.37

53 CSC Special Design S8

Birth Date: 8-26-2006 Bull 15750993 Tattoo: S8
 #Bon View New Design 878 #B/R New Design 036
 WCC Special Design L309 Bon View Gammer 85
 +13846942 N Bar Primrose 2424 #Emulation 31 (FX)
 Primrose N Bar 9962
 +Bubs Don Carlo J76 #+GMAR Hi Spade 039
 CSC Miss Reva M03 Green Garden Protet 252 S1
 #14327272 #Bubs Miss Reva #Paramont Ambush 2172
 Nichols Blackcap Y189

CED	BEPD	WEPD	YEPD	SC	CEM	MILK
+1	+4.1	+44	+82	N/A	+3	+23

CSC Special Design S8 is produced from a maternal sister to Lot 52. His sire, WCC Special Design L309, is one of the most popular brothers to N Bar Emulation EXT.

S8 records a Milk EPD and UREA in the top one-third of the breed and has a UREA ratio of 107.

His dam by Bubs Don Carlo J76 records a WR 3@105, YR 3@102, IMF 2@101 and UREA 2@108.

SW	SF	%IMF	UREA	UFAT	\$B
+22.33	+24.12	+07	+40	+020	+32.79



CSC Miss Reva 112

Maternal sister to Lot 52 and the dam of Lot 53.

C/S Spring Yearling Bulls



Davis Blackbird 2216

Dam of Lot 55.

55 CSC Midland 718

Birth Date: 2-2-2007		Bull +15893425		Tattoo: 718	
#Twin Valley Precision E161 (FR)		#GAR Precision 1680			
BR Midland	BR Royal Lass 7036-19	+WCC Blackcap C9 (R)		SW	
#13898124		#+SAF Neutron		+23.63	
		#SAF Royal Lass 7036		%IMF	SF
		#VDAR New Trend 315		I+52	+22.90
		B/R Blackcap Empress 76		UREA	SG
		#+VDAR Lucys Boy		I+57	+28.58
		Davis Yr Blackbird 558H		UFAT	SB
				I+019	+47.39

CSC Midland 718's dam blends B/R New Design 036 with Davis Blackbird 9189 who is a full sister to the \$21,000 ACF Blackbird 9195. His third dam is the \$520,000 valued Davis YR Blackbird 558H.

This outstanding herd sire prospect places in the top 4% for %IMF, 5% for \$G, 15% for \$B and 20% for CED and UREA. His donor dam records a BR 2@101, WR 2@111, YR 1@109, IMF 4@102 and UREA 4@99.

718 qualifies for both the Show-Me-Select and Missouri Angus Advantage +Plus heifer programs.

56 CSC Midland 754

Birth Date: 2-9-2007		Bull 15893429		Tattoo: 754	
#Twin Valley Precision E161 (FR)		#GAR Precision 1680			
BR Midland	BR Royal Lass 7036-19	+WCC Blackcap C9 (R)		SW	
#13898124		#+SAF Neutron		+25.35	
		#SAF Royal Lass 7036		%IMF	SF
		#Emulation 31 (FX)		I+39	+7.03
		+Leachman Lass 400L		UREA	SG
		#+R&J Maxima		I+30	+26.01
		GDAR Rachel 857		UFAT	SB
				I+009	+34.76

Another son of BR Midland from the long-time donor at C/S, TAR Rachel 2594, who records a BR 11@104, WR 11@108, YR 9@102, IMF 8@101, and UREA 8@101.

754 records a BR of 106, WR of 102 and places in the top 10% for \$G and 20% for CED. He is another calving-ease bull who qualifies for both the Show-Me-Select and Missouri Angus Advantage +Plus heifer programs.

57 CSC 004 Traveler 728

Birth Date: 2-1-2007		Bull 15873975		Tattoo: 728	
#Sitz Traveler 8180		#GDAR Traveler 71			
SAV 8180 Traveler 004	+Boyd Forever Lady 8003	Sitz Everelda Entense 1137		SW	
13512009		#AAR New Trend		+25.77	
		SVF Forever Lady 57D		%IMF	SF
		#GAR Precision 1680		I+03	+40.57
		+WCC Blackcap C9 (R)		UREA	SG
		#+SVF Gdar 216 LTD		I+34	+8.17
		SVF Forever Lady 112D		UFAT	SB
				I+011	+37.76

A high growth bull with powerful growth EPDs. 728 ranks in the top 3% for WW and 5% for YW; in addition, he places in the top 10% for \$F, 15% for \$B, 20% for \$W and records a BR of 103 and WR of 111.

His dam blends Twin Valley Precision E161 with the \$75,000 SVF GDAR 216 LTD.

58 CSC Lead Design 7006

Birth Date: 12-26-2006		Bull 15873960		Tattoo: 7006	
#Connealy Leadtime		#Connealy Dateline			
Connealy Lead On	#13447282	Eligence Plus of Conanga		SW	
		#Ruths Rona of Conanga		+27.10	
		#TC Dividend 963		%IMF	SF
		Eura Cap of Conanga		I+08	+31.28
		#B/R New Design 036		UREA	SG
		Bon View Pride 664		I+27	+16.82
		#+VDAR Lucys Boy		UFAT	SB
		+GDAR Forever Lady 718		I-014	+40.93

This calving-ease herd bull prospect by Connealy Lead On qualifies for both the Show-Me-Select and Missouri Angus Advantage +Plus heifer programs.

He ranks in the top 15% for Milk and \$B, 20% for WW, \$F and \$G and 25% for \$W; he records a WR of 109.

His dam blends the great carcass sire Bon View New Design 1407 with the Forever Lady cow family and VDAR Lucys Boy.

59 CSC Direct Lead 760

Birth Date: 2-14-2007		Bull 15918460		Tattoo: 760	
#Connealy Leadtime		#Connealy Dateline			
Connealy Lead On	#13447282	Eligence Plus of Conanga		SW	
		#Ruths Rona of Conanga		+28.89	
		#TC Dividend 963		%IMF	SF
		Eura Cap of Conanga		I-08	+23.96
		#Bubs Direct Deposit 200		UREA	SG
		Bakers Witch 240		I+19	+7.03
		#GAR Traveler 1489		UFAT	SB
		+GAR Bando 452		I-010	+28.56

This half brother to Lots 58 and 60 is also sired by Connealy Lead On. He maintains a low BW with solid growth and maternal genetics.

760 places in the top 5% for \$W, 25% for WW and Milk and records an individual BR of 99 and WR of 107.

His dam traces to the donor GAR Bando 452 and records a BR 5@100, WR 5@100 and YR 4@100.

60 CSC Precision Lead 7003

Birth Date: 1-19-2007		Bull 15873965		Tattoo: 7003	
#Connealy Leadtime		#Connealy Dateline			
Connealy Lead On	#13447282	Eligence Plus of Conanga		SW	
		#Ruths Rona of Conanga		+26.53	
		#TC Dividend 963		%IMF	SF
		Eura Cap of Conanga		I+06	+26.58
		#GAR Precision 1680		UREA	SG
		+WCC Blackcap C9 (R)		I+29	+15.04
		+Leachman Pressman		UFAT	SB
		TAR Rachel 8862		I-007	+37.78

These three half brothers by Connealy Lead On would make an excellent set of bulls and provide a great deal of uniformity in a calf crop.

CSC Precision Lead 7003's dam blends Twin Valley Precision E161 with the donor dam TAR Rachel 2594, she sells as Lot 42.

He records a BR of 108 and WR of 111; in addition, he places in the top 15% for Milk.

61 CSC 112 Rito 707

Birth Date: 1-12-2007		Bull 15882121		Tattoo: 707	
#Rito 616 of 4B20 6807		#DHD Traveler 6807			
Rito 112 of 2536 Rito 616	+13793826	+Rita 4B20 of OFB1 Bando		SW	
		#GAR Precision 1680		+24.05	
		+GAR Ext 2104		%IMF	SF
		#Nichols Formula B42		I+26	+29.01
		#Nichols Lula W211		UREA	SG
		#RR Scotchcap 9440		I-02	+16.98
		TAR Rachel 2594		UFAT	SB
				I+0	+40.87

Another excellent growth bull by Rito 112 of 2536 Rito 616 from the same Rachel cow family as Lot 60.

CSC 112 Rito 707 has a very balanced EPD tabulation and places in the top 20% for YW, 25% for WW and \$F and maintains a Milk EPD in the top one-third of the breed.

His dam by Bubs Hulio H834 also sells as Lot 43.

C/S Spring Yearling Bulls

62 CSC Preference 7670

Birth Date: 2-16-2007 Bull 15931965 Tattoo: 7670

#Summitcrest Hi Flyer 3B18 #Hoff Hi Flyer SC 7134
 RCC Preference #Summitcrest Lass 229Y
 13645514 WAFJ Band Elbadina 97 +Cdown Fortunefinder 362 5523
 WAF Eona Esso Rito Band 93
 #+GDAR SVF Traveler 234D #Traveler 124 GDAR
 CSC Ruby 234D- 313 +GDAR Forever Lady 718
 14456911 CSC Krugerrand Ruby 010 #Krugerrand of Donamere 490
 Gleonda Ruby L127

SW	+26.02
%IMF	I-.08
UREA	I-.21
UFAT	I+.003
SF	+30.19
SG	+4.99
SB	+28.91

This son of the ABS Global sire RCC Preference qualifies for both the Show-Me-Select and Missouri Angus Advantage +Plus heifer programs. He ranks in the top 15% for CED, Milk and \$F and 20% for YW. His dam blends the Angus Sire Alliance Winner GDAR SVF Traveler 234D with the Pathfinder Sire Krugerrand of Donamere 490.

CED	BEPD	WEPD	YEPD	SC	CEM	MILK
I+9	I+1.6	I+44	I+88	N/A	I+7	I+25



CSC E161 Precision 738

Lot 66

63 CSC New Level 742

Birth Date: 2-2-2007 Bull 15882129 Tattoo: 742

Ironwood New Design 022 701 #B/R New Design 036
 Ironwood New Level Wardsens Lady 022 5410
 13320150 Wardsens Blackcap 6148 6309 #Finks 5522-6148
 Wardsens Blackcap SC 025
 Bubs Direct Withdrawal G30 #Bubs Direct Deposit 200
 CSC Blackcap 203 RCT Miss Fix It B6
 14210014 CSC Blackcap Lucy 009 #+VDAR Lucys Boy
 CSC Blackcap 801 Ext 665

SW	+27.56
%IMF	I+.03
UREA	I+.40
UFAT	I+.008
SF	+16.34
SG	+12.68
SB	+27.42

Another calving-ease bull who qualifies for both the Show-Me-Select and Missouri Angus Advantage +Plus heifer programs. CSC New Level 742 ranks in the top 10% for \$W, 15% for BW and Milk and 20% for CED. He provides very good maternal genetics with low birth weight and well above breed average growth.

CED	BEPD	WEPD	YEPD	SC	CEM	MILK
I+8	I+.5	I+36	I+71	N/A	I+5	I+26

66 CSC E161 Precision 738

Birth Date: 2-2-2007 Bull +15882131 Tattoo: 738

#GAR Precision 1680 #Tehama Bando 155
 Twin Valley Precision E161 (FR) 9J9 GAR 856
 #12346200 +WCC Blackcap C9 (R) #SS Traveler 6T6
 +Leachman Pressman Premier Blackcap 6276A (R)
 TAR Rachel 2594 #Emulation 31 (FX)
 12213464 TAR Rachel 8862 +Leachman Lass 400L
 #+R&J Maxima
 GDAR Rachel 857

SW	+23.02
%IMF	I+.25
UREA	I+.45
UFAT	I-.006
SF	+9.63
SG	+23.99
SB	+34.13

Another ET son of TAR Rachel 2594 by Twin Valley Precision E161. He places in the top 25% for CEM, and his donor dam records a BR of 11@104, WR 11@108, YR 9@102, IMF 8@101 and UREA 8@101. CSC E161 Precision 738 qualifies for both the Show-Me-Select and Missouri Angus Advantage +Plus heifer programs.

CED	BEPD	WEPD	YEPD	SC	CEM	MILK
I+7	I+2.1	I+36	I+64	I-.09	I+8	I+21

64 CSC 258 Gridiron 794

Birth Date: 1-30-2007 Bull 15873971 Tattoo: 794

#+GAR Grid Maker #GDAR Traveler 044
 TC Gridiron 258 GAR Precision 2536
 14237017 #TC Blackbird 7049 #TC Dividend 494
 OCC Blackbird 902D
 Stevenson Maximum 540E +Stevenson Maximum 42C
 CSC Maximum Traveler 199 JRS Kay Kelton 137A
 13612631 +GAR 6807 Traveler 964 #DHD Traveler 6807
 +GAR Bando 10

SW	+31.96
%IMF	I+0
UREA	I+.09
UFAT	I+.014
SF	+29.53
SG	+5.50
SB	+31.02

A great combination bull sired by the Genex sire TC Gridiron 258. This big spread herd bull prospect has just a I+1.6 BW all the way to I+92 YW. He ranks in the top 1% for \$W, 4% for WW, 20% for YW and 25% for CEM. 794 records an individual BR of 95 and WR of 112; his dam who descends from the Gardiner donor GAR Bando 10 records a BR of 6@96, WR 6@104, YR 5@100 and IMF 3@111. He qualifies for both the Show-Me-Select and Missouri Angus Advantage +Plus heifer programs.

CED	BEPD	WEPD	YEPD	SC	CEM	MILK
I+7	I+1.6	I+56	I+92	N/A	I+8	I+17

67 CSC Freightliner 782

Birth Date: 3-1-2007 Bull 15873990 Tattoo: 782

#Connealy Freightliner #Bon View Bando 598
 Circle A Freightliner 2578 Joana Erica of Conanga
 14366976 +Circle A Forever Lady 1092 #+Leachman Right Time
 +Circle A Forever Lady 7427
 #DHD Traveler 6807 #QAS Traveler 23-4
 CSC 6807 Pridemere 802 #Bemindful Maid DHD 0807
 13148270 HAF Pridemere 6024 SAF Solution
 SAF Pridemere 3140

SW	+21.86
%IMF	I+.05
UREA	I+.30
UFAT	I+.006
SF	+36.70
SG	+10.27
SB	+38.07

The first of two half brothers by Circle A Freightliner 2578 who is a son of the Number 9 SC EPD bull in the breed, Connealy Freightliner. 782 ranks in the top 15% for WW, 20% for YW and SC and records an individual BR of 95 and WR of 108. His dam blends DHD Traveler 6807 with SAF Solution.

CED	BEPD	WEPD	YEPD	SC	CEM	MILK
I+4	I+3.0	I+51	I+97	I+.83	I+6	I+14

65 Days Mr Blackcap 759

Birth Date: 4-1-2007 Bull 15780975 Tattoo: 759

Schurrtop MC Schurrtop MC
 14840227 Schurrtop RS 1413 2153 #Papa Equator 2928
 Schurrtop 1483 9024
 Brooks Schurr Trend
 Ryans Schurrtop 2125
 #B/R New Design 036
 Bon View Pride 664
 #Connealy Dateline
 Leachman Blackcap 4010

SW	+25.72
%IMF	I-.03
UREA	I+.48
UFAT	I-.008
SF	+31.68
SG	+10.55
SB	+35.84

Sired by the outcross sire Schurrtop MC 2500, this herd bull prospect ranks in the top 15% for YW, Milk and \$F, 20% for UREA, 25% for CEM and records a BR of 100 and WR of 106. His donor dam by the carcass sire Bon View New Design 1407 records an impressive progeny record and has a BR of 2@101, WR 2@108, YR 1@106, IMF 15@103 and UREA 15@101. An excellent bull with proven performance in his pedigree.

CED	BEPD	WEPD	YEPD	SC	CEM	MILK
I+6	I+2.7	I+48	I+91	N/A	I+8	I+25

68 CSC Freightliner 777

Birth Date: 2-22-2007 Bull 15913210 Tattoo: 777

#Connealy Freightliner #Bon View Bando 598
 Circle A Freightliner 2578 Joana Erica of Conanga
 14366976 +Circle A Forever Lady 1092 #+Leachman Right Time
 +Circle A Forever Lady 7427
 #RR 9440 Scotch Cap 1483
 Sedgwicks Lucy 8033
 +International Bandolier 155
 BA Princess 363

SW	+20.05
%IMF	I+.10
UREA	I+.02
UFAT	I+.006
SF	+20.09
SG	+12.00
SB	+29.61

This balanced-trait herd bull prospect blends Circle A Freightliner 2578 with Bubs Bonanza BB G53. He maintains an above breed average WW and YW with a moderate BW EPD. Like his half brother, Lot 67, he has the ability to sire cattle with good growth and added SC.

CED	BEPD	WEPD	YEPD	SC	CEM	MILK
I+3	I+3.1	I+39	I+76	I+.65	I+6	I+17

C/S Spring Yearling Bulls



Birk
CSC 2V1 Rito 734

Lot 69

69 CSC 2V1 Rito 734

Birth Date: 2-2-2007	Bull +15882128	Tattoo: 734																
#Bon View New Design 1407 Rito 2V1 of 2536 1407 +14088249 GAR Precision 2536	#B/R New Design 036 Bon View Pride 664 #GAR Precision 1680 +GAR Ext 2104 #Traveler 1148 GDAR GDAR Miss Blackcap 567 #GDAR Rainmaker 340 Sitz Everelda Entense 2335	<table border="1"> <tr><td>SW</td><td>+27.59</td></tr> <tr><td>SF</td><td>+29.01</td></tr> <tr><td>%IMF</td><td>1+.34</td></tr> <tr><td>UREA</td><td>SG</td></tr> <tr><td>UFAT</td><td>1+.33</td></tr> <tr><td>SB</td><td>+21.24</td></tr> <tr><td>CEM</td><td>1+.027</td></tr> <tr><td>MILK</td><td>+38.02</td></tr> </table>	SW	+27.59	SF	+29.01	%IMF	1+.34	UREA	SG	UFAT	1+.33	SB	+21.24	CEM	1+.027	MILK	+38.02
SW	+27.59																	
SF	+29.01																	
%IMF	1+.34																	
UREA	SG																	
UFAT	1+.33																	
SB	+21.24																	
CEM	1+.027																	
MILK	+38.02																	

This superb herd sire prospect has an extraordinary pedigree and the credentials to stand behind it. His dam is a maternal sister to the \$320,000 Shadybrook Ever Entense 491G, the \$300,000 Sitz Everelda Entense 023, the \$150,000 half interest Sitz Everelda Entense 2636 and the \$150,000 Shadybrook Ever Entense 495G.

His grandam is the \$200,000 Sitz Everelda Entense 1137 who was the first cow in the Angus breed to generate \$4 million in progeny sales.

CSC 2V1 Rito 734 places in the top 2% for Milk, 20% for YW and %IMF and 25% for CEM, \$W, \$F and \$G. His donor dam records a BR 1@92, WR 1@111, YR 1@108, IMF 4@108 and UREA 4@110.

CED	BEPD	WEPD	YEPD	SC	CEM	MILK
1+.5	1+.24	1+.47	1+.88	1+.80	1+.8	1+.31

70 CSC Hulio Frontier 755

Birth Date: 2-10-2007	Bull 15913211	Tattoo: 755																
#B/R New Frontier 095 CSC New Frontier 432 14860194 Kissees Eriskay 22F	#B/R New Design 036 White Fence Pride H1 #TC Dividend 963 Lurveys Maxie 359 #Nichols Formula B42 #Nichols Lula W211 #N Bar Emulation EXT Gleonda Elba Tweeny L113	<table border="1"> <tr><td>SW</td><td>+25.68</td></tr> <tr><td>SF</td><td>+16.46</td></tr> <tr><td>%IMF</td><td>1+.16</td></tr> <tr><td>UREA</td><td>SG</td></tr> <tr><td>UFAT</td><td>1+.14</td></tr> <tr><td>SB</td><td>+14.80</td></tr> <tr><td>CEM</td><td>1+.012</td></tr> <tr><td>MILK</td><td>+32.12</td></tr> </table>	SW	+25.68	SF	+16.46	%IMF	1+.16	UREA	SG	UFAT	1+.14	SB	+14.80	CEM	1+.012	MILK	+32.12
SW	+25.68																	
SF	+16.46																	
%IMF	1+.16																	
UREA	SG																	
UFAT	1+.14																	
SB	+14.80																	
CEM	1+.012																	
MILK	+32.12																	

This grandson of B/R New Frontier 095 traces to a very productive cow family at C/S. His dam blends Bubs Hulio H834 with N Bar Emulation EXT and CSC Elba Tweeny 810 who was a feature in the inaugural C/S Sale.

His dam records a BR 2@105, WR 2@113, YR 1@104 and IMF 1@117.

CED	BEPD	WEPD	YEPD	SC	CEM	MILK
1+.6	1+.3.0	1+.46	1+.75	N/A	1+.7	1+.17

71 CSC Lucys Precision 773

Birth Date: 2-20-2007	Bull 15913208	Tattoo: 773																
#+VDAR Lucys Boy CSC Lucy Boy 040 +13725189 VDAR Beauty 4047	#Traveler 1148 GDAR +VDAR Pine Drive Lucy 5 #+VDAR Traveler 722 #+VDAR Beauty 900 #GAR Precision 1680 +WCC Blackcap C9 (R) Leachman Conveyor 3025E Leachman Blackcap 6065	<table border="1"> <tr><td>SW</td><td>+24.86</td></tr> <tr><td>SF</td><td>+15.59</td></tr> <tr><td>%IMF</td><td>1+.23</td></tr> <tr><td>UREA</td><td>SG</td></tr> <tr><td>UFAT</td><td>1+.14</td></tr> <tr><td>SB</td><td>+17.36</td></tr> <tr><td>CEM</td><td>1+.016</td></tr> <tr><td>MILK</td><td>+32.11</td></tr> </table>	SW	+24.86	SF	+15.59	%IMF	1+.23	UREA	SG	UFAT	1+.14	SB	+17.36	CEM	1+.016	MILK	+32.11
SW	+24.86																	
SF	+15.59																	
%IMF	1+.23																	
UREA	SG																	
UFAT	1+.14																	
SB	+17.36																	
CEM	1+.016																	
MILK	+32.11																	

CSC Lucys Precision 773 blends VDAR Lucys Boy with Twin Valley Precision E161 and the famous Leachman Blackcap family.

He places in the top 25% for CEM and records an individual BR of 97 and WR of 103. His dam records a BR 3@100, WR 3@108 and YR 1@105.

773 qualifies for both the Show-Me-Select and Missouri Angus Advantage +Plus heifer programs.

CED	BEPD	WEPD	YEPD	SC	CEM	MILK
1+.7	1+.1.9	1+.38	1+.71	N/A	1+.8	1+.22

72 CSC Lucys Traveler 780

Birth Date: 2-24-2007	Bull 15913209	Tattoo: 780																
#+VDAR Lucys Boy CSC Lucy Boy 040 +13725189 VDAR Beauty 4047	#Traveler 1148 GDAR +VDAR Pine Drive Lucy 5 #+VDAR Traveler 722 #+VDAR Beauty 900 #RR 9440 Scotch Cap 1483 Sedgwicks Lucy 8033 #+Whitstone Fly Traveler 3006 GAR 9440 Scotch Cap 537	<table border="1"> <tr><td>SW</td><td>+23.49</td></tr> <tr><td>SF</td><td>+21.68</td></tr> <tr><td>%IMF</td><td>1+.08</td></tr> <tr><td>UREA</td><td>SG</td></tr> <tr><td>UFAT</td><td>1+.03</td></tr> <tr><td>SB</td><td>+8.59</td></tr> <tr><td>CEM</td><td>1+.024</td></tr> <tr><td>MILK</td><td>+27.48</td></tr> </table>	SW	+23.49	SF	+21.68	%IMF	1+.08	UREA	SG	UFAT	1+.03	SB	+8.59	CEM	1+.024	MILK	+27.48
SW	+23.49																	
SF	+21.68																	
%IMF	1+.08																	
UREA	SG																	
UFAT	1+.03																	
SB	+8.59																	
CEM	1+.024																	
MILK	+27.48																	

A half brother to Lot 71, this calving-ease bull descends from a dam by Bubs Bonanza BB G53 who records a BR 4@103, WR 4@101, YR 3@108 and UREA 1@113.

CSC Lucys Traveler 780 qualifies for both the Show-Me-Select and Missouri Angus Advantage +Plus heifer programs.

CED	BEPD	WEPD	YEPD	SC	CEM	MILK
1+.7	1+.2.2	1+.40	1+.78	N/A	1+.7	1+.21



Now **Genetics, Source** and **Group Age** can all be documented with **ONE Tag**.

Step 1 Become a Producer Participant

To be eligible to supply cattle to the AngusSource® program, producers must have Angus-sired cattle that originate on their operation, use registered Angus bulls, have management practices which allow for the identification of cattle that are Angus-sired, and keep calving records that document the birth date of the oldest calf.

Complete the AngusSource® Producer Participant Enrollment form and Agreement. Download forms at www.angussource.com or request by calling AngusSource®.

This information must be submitted prior to enrolling cattle.

Step 2 Enroll Calves/Order Tags

Enroll calves by calling AngusSource®. Provide enrollment information to AngusSource® and submit any required records. Enrollment fee: \$1 per head for visual tags, \$3.25 for RFID matched pair tags.

Step 3 Print/Customize Documents

Print or customize AngusSource® Document for feeder cattle or replacement females. To customize, enter information about the health, management and sale date/location. Market cattle through an auction, video or direct by using the printed AngusSource® Document(s) to convey valuable information to potential buyers.



RFID matched pair tag shown.

For more information, contact AngusSource® at 816-383-5100 or angussource@angus.org or visit www.angussource.com

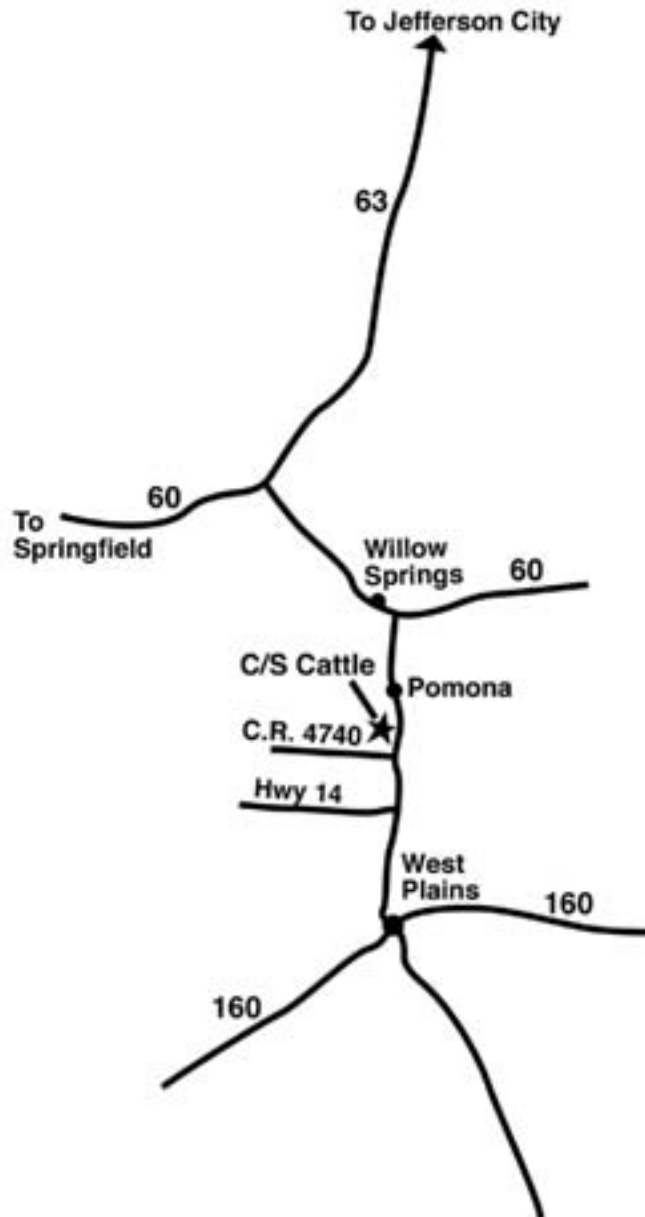


AngusSource® is a USDA Process Verified Program for Angus-sired calves that documents source, group age and a minimum of 50% Angus genetics.

For specific claims visit <http://processverified.usda.gov> or www.angussource.com

Map

C/S Cattle is on Hwy 63 south of Pomona. You will turn west on County Road 4740 to enter the C/S facility, look for signs marking your turn off of Hwy 63.





CSC Designer Girl 151



CSC 0699 Bando S9



SAF Miss Wix 0402



CSC Blackcap Bando S30



VAR Forever Trendy 1032



CSC Pride 768



CSC Design Blackbird 566



CSC Barbara S18

PRST First Class
US Postage
PAID
Boelte-Hall, Inc.
66205

Missouri Angus Association
P.O. Box 246
Dadeville, MO 65635
Josh Worthington, General Manager
Phone (417) 844-2601
E-mail: worthington@missouriangus.org