



The Power  
of Prediction  
Leads to  
**CONCRETE  
RESULTS**

**CHAIR ROCK RANCH**  
**3<sup>rd</sup> Annual**  
**Angus Female Sale**  
**SATURDAY, MAY 22, 2010**  
At the Ranch • Greeley, KS • 12 Noon





Bill and Carr Kline  
33400 NE 2500th Rd. • Greeley, KS 66033-9160 (Ranch)  
7301 Mission Rd., Ste. 309 • Prairie Village, KS 66208 (Office)  
Office: (913) 722-6100 • Cell: (913) 645-3558  
[www.chairrock.com](http://www.chairrock.com)  
Email: [chairrock@kc.rr.com](mailto:chairrock@kc.rr.com)

Welcome to our Third Annual Angus Female Sale! We continue to focus on creating and offering you superior cattle. Our target for more efficient growth and better grid quality is constantly moving higher.

The power of “Prediction” leads to “Concrete” results. The use of the American Angus Association database provides an unparalleled ability to create profitable cattle for you, our customer.

By using the “best bulls” in the Angus breed with the best females in our herd over succeeding generations, we are achieving “Targeted Performance using Proven Genetics.”

We utilize Embryo Transfers and Artificial Insemination exclusively. High accuracy bulls and former Gardiner Angus Ranch donors are the foundation and building blocks of our herd.

Our bulls are sent to Gardiner Angus Ranch to compete for a chance in their sale. We feel very fortunate to once again have more than 50 lots in their 2010 sale book.

The cows in this offering are descendants from Gardiner Angus Ranch and Chair Rock donors with several generations of stacked genetics. Our dams are bred to AI sires which have proven their ability to sire cattle that will grow quickly and scan well.

Our sale this year includes full sisters to both G A R Concrete and to G A R Prediction. Each has contributed nicely to the genetics within our herd. With the exception of N105, all cows were born after July 1, 2006. The genetics being offered are young, powerful and predictable.

It is our hope that you find a selection of cows you can utilize in your herd to achieve Concrete results.

We thank everyone who has made this sale possible.

We welcome this opportunity to assist you in your selection of future genetics for your herd. Your interest is very much appreciated. We look forward to meeting your needs.

Sincerely,

Bill and Carr Kline

# CHAIR ROCK RANCH

## THIRD ANGUS PRODUCTION SALE

SATURDAY, MAY 22, 2010 • NOON

At the Ranch • Greeley, KS

SELLING 110 HEAD IN 87 LOTS

23 Donors  
4 Cow Calf Pairs

55 Bred Cows  
21 Bred Heifers

8 Open Heifers



**AUCTIONEER:**  
Jim Birdwell

### Regional Manager, American Angus Association

Matt Caldwell Home: (913) 898-3303 • Cell: (913) 755-1105  
Matt has seen most of the cattle and can take phone bids or advise about the cattle.

### Marketing Agents:



Parker Friedrich  
(254) 413-2420



Roger West  
(254) 434-1095

### Livestock Press Representatives:

Matt Caldwell – *Angus Journal*  
John Andras – *Weekly Livestock Reporter*  
Guy Peverly – *High Plains Journal*  
Andrew Sylvester – *Kansas Stockman*  
Justin Stout – *Stock Exchange*

### Sale Book Prepared By:



Parker Friedrich Marketing and Consulting  
566 Hillcrest Dr.  
Stephenville, TX 76401  
(254) 413-2420 cell  
(254) 968-8162 fax/home  
parkerfriedrich@earthlink.net

### Sale Location:

Our ranch is approximately 55 miles southwest of Kansas City, Missouri, on Hwy. 169. South from Kansas City on I-35 to Hwy. 169 south, 39 miles south on Hwy. 169, then south (left) on Virginia (first left past mile marker 111); ½ mile east on Allen. The road dead ends at our headquarters. See map on page 27.



## CHAIR ROCK RANCH

Bill and Carr Kline  
33400 NE 2500th Rd. • Greeley, KS 66033-9160  
Office: (913) 722-6100 • Cell: (913) 645-3558  
Email: chairrock@kc.rr.com

### Accommodations:

Best Western Paola • (913) 294-3700  
1600 Hedge Lane Ct. • Paola, KS 66071-9508

Best Western Ottawa Inn • (785) 242-2224  
606 E. 23rd St. • Ottawa, KS 66067-8608

Best Western Lawrence • (785) 843-9100  
2309 Iowa St. • Lawrence, KS 66046-3939

**Air Transportation:** Major airlines serve the Kansas City airport. Approximately 1 hour and 30 minutes to the ranch.

**Terms & Conditions:** All cattle are to be settled for sale day unless prior arrangements have been made. All cattle will sell according to the Terms and Conditions of the American Angus Association.

**Herd Health:** Cattle will be accompanied with proper health certificates for immediate interstate shipment.

### Announcements:

A supplemental update sheet will be available sale day with up-to-date breeding, calving, and performance information. All announcements made from the auction block take precedence over printed matter in the sale book.

**Loadout:** Loadout will commence at the conclusion of the sale.

**Trucking:** Truckers believed to be reliable will be available to assist you in shipping your purchases.

**Sale Order:** The sale order in this year's sale will be the same as the lot number sequence. In other words, Lot 1 sells first, Lot 2 sells second, Lot 3 sells third, and so on.

### SALE DAY PHONE NUMBERS:

**(913) 645-3558 OR (979) 255-9922**

Buyers unable to attend the sale may send their bids to the Sale Manager, Regional Manager, Auctioneer, or Ringmen.



Visit the *Angus Journal* Web site, [www.angusjournal.com](http://www.angusjournal.com), and view this sale book online. *References: American Angus Association®, AHIR®, AngusSource®, CAB®, Pathfinder®.* EPDs current as of March 31, 2010. Updated EPDs can be viewed online at [www.angus.org](http://www.angus.org).



Chair Rock Objective 7074 - Lot 1

Act BW		CHAIR ROCK OBJECTIVE 7074											
N/A	1	Birth Date: 8-17-2007		Cow +16046691				Tattoo: 7074					
BWR		CED	BEPD	WEPD	YEPD	YH	SC						
N/A		I+10 .05	I+2.5 .05	I+69 .05	I+122 .05	I+.1 .39	I+.09 .05						
WWR		CEM	MILK	MMK	MMV	MH	SEN						
N/A		I+10 .05	I+26 .05	N/A	N/A	N/A	N/A					-14.43	
YWR		CW	MARB	REA	FAT								
N/A		+6	.21	+.48	.24	+.41	.31	-.018	.24			\$Weaning	
												\$Feedlot	
												\$Grid	
												\$Beef	
												\$OG	
												\$YG	
												\$Beef	
												\$Weaning	
												\$Feedlot	
												\$Grid	
												\$Beef	
												\$OG	
												\$YG	
												\$Beef	
												\$Weaning	
												\$Feedlot	
												\$Grid	
												\$Beef	
												\$OG	
												\$YG	
												\$Beef	
												\$Weaning	
												\$Feedlot	
												\$Grid	
												\$Beef	
												\$OG	
												\$YG	
												\$Beef	
												\$Weaning	
												\$Feedlot	
												\$Grid	
												\$Beef	
												\$OG	
												\$YG	
												\$Beef	
												\$Weaning	
												\$Feedlot	
												\$Grid	
												\$Beef	
												\$OG	
												\$YG	
												\$Beef	
												\$Weaning	
												\$Feedlot	
												\$Grid	
												\$Beef	
												\$OG	
												\$YG	
												\$Beef	
												\$Weaning	
												\$Feedlot	
												\$Grid	
												\$Beef	
												\$OG	
												\$YG	
												\$Beef	
												\$Weaning	
												\$Feedlot	
												\$Grid	
												\$Beef	
												\$OG	
												\$YG	
												\$Beef	
												\$Weaning	
												\$Feedlot	
												\$Grid	
												\$Beef	
												\$OG	
												\$YG	
												\$Beef	
												\$Weaning	
												\$Feedlot	
												\$Grid	
												\$Beef	
												\$OG	
												\$YG	
												\$Beef	
												\$Weaning	
												\$Feedlot	
												\$Grid	
												\$Beef	
												\$OG	
												\$YG	
												\$Beef	
												\$Weaning	
												\$Feedlot	
												\$Grid	
												\$Beef	
												\$OG	
												\$YG	
												\$Beef	
												\$Weaning	
												\$Feedlot	
												\$Grid	
												\$Beef	
												\$OG	
												\$YG	
												\$Beef	
												\$Weaning	
												\$Feedlot	
												\$Grid	
												\$Beef	
												\$OG	
												\$YG	
												\$Beef	
												\$Weaning	
												\$Feedlot	
												\$Grid	
												\$Beef	
												\$OG	
												\$YG	
												\$Beef	
												\$Weaning	
												\$Feedlot	
												\$Grid	
												\$Beef	
												\$OG	
												\$YG	
												\$Beef	
												\$Weaning	
												\$Feedlot	
												\$Grid	
												\$Beef	
												\$OG	
												\$YG	
												\$Beef	
												\$Weaning	
												\$Feedlot	
												\$Grid	
												\$Beef	
												\$OG	
												\$YG	
												\$Beef	
												\$Weaning	
												\$Feedlot	
												\$Grid	
												\$Beef	
												\$OG	
												\$YG	
												\$Beef	
												\$Weaning	
												\$Feedlot	
												\$Grid	
												\$Beef	
												\$OG	
												\$YG	
												\$Beef	
												\$Weaning	
												\$Feedlot	
												\$Grid	
												\$Beef	
												\$OG	
												\$YG	
												\$Beef	
												\$Weaning	
												\$Feedlot	
												\$Grid	
												\$Beef	
												\$OG	
												\$YG	
												\$Beef	
												\$Weaning	
												\$Feedlot	
												\$Grid	
												\$Beef	
												\$OG	
												\$YG	
												\$Beef	
												\$Weaning	
												\$Feedlot	
												\$Grid	
												\$Beef	
												\$OG	
												\$YG	
												\$Beef	
												\$Weaning	
												\$Feedlot	
												\$Grid	
												\$Beef	
												\$OG	
												\$YG	
												\$Beef	
												\$Weaning	
												\$Feedlot	
												\$Grid	
												\$Beef	
												\$OG	
												\$YG	
												\$Beef	
												\$Weaning	
												\$Feedlot	
												\$Grid	
												\$Beef	
												\$OG	
												\$YG	
												\$Beef	
												\$Weaning	
												\$Feedlot	
												\$Grid	
												\$Beef	
												\$OG	
												\$YG	
												\$Beef	
												\$Weaning	
												\$Feedlot	
												\$Grid	
												\$Beef	
												\$OG	
												\$YG	
												\$Beef	
												\$Weaning	
												\$Feedlot	
												\$Grid	
												\$Beef	
												\$OG	
												\$YG	
												\$Beef	
												\$Weaning	
												\$Feedlot	
												\$Grid	
												\$Beef	
												\$OG	
												\$YG	
												\$Beef	
												\$Weaning	
												\$Feedlot	
												\$Grid	
												\$Beef	
												\$OG	
												\$YG	
												\$Beef	
												\$Weaning	
												\$Feedlot	
												\$Grid	
												\$Beef	
												\$OG	
												\$YG	
												\$Beef	
												\$Weaning	
												\$Feedlot	
												\$Grid	
												\$Beef	
												\$OG	
												\$YG	
												\$Beef	
												\$Weaning	
												\$Feedlot	
												\$Grid	
												\$Beef	
												\$OG	
												\$YG	
												\$Beef	
												\$Weaning	
												\$Feedlot	
												\$Grid	
												\$Beef	
												\$OG	
												\$YG	
												\$Beef	
												\$Weaning	
												\$Feedlot	
												\$Grid	
												\$Beef	
												\$OG	
												\$YG	
												\$Beef	
												\$Weaning	
												\$Feedlot	
												\$Grid	
												\$Beef	
												\$OG	
												\$YG	
												\$Beef	
												\$Weaning	
												\$Feedlot	
												\$Grid	
												\$Beef	
												\$OG	
												\$YG	
												\$Beef	
												\$Weaning	
												\$Feedlot	
												\$Grid	
												\$Beef	
												\$OG	
												\$YG	
												\$Beef	
												\$Weaning	
												\$Feedlot	
												\$Grid	
												\$Beef	
												\$OG	
												\$YG	
												\$Beef	
												\$Weaning	
												\$Feedlot	
												\$Grid	
												\$Beef	
												\$OG	
												\$YG	
												\$Beef	
												\$Weaning	
												\$Feedlot	
												\$Grid	
												\$Beef	
												\$OG	
												\$YG	
												\$Beef	
												\$Weaning	
												\$Feedlot	
												\$Grid	
												\$Beef	
												\$OG	
												\$YG	
												\$Beef	
												\$Weaning	
												\$Feedlot	
												\$Grid	
												\$Beef	
												\$OG	
												\$YG	
												\$Beef	
												\$Weaning	
												\$Feedlot	
												\$Grid	
												\$Beef	
												\$OG	
												\$YG	
												\$Beef	
												\$Weaning	
												\$Feedlot	
												\$Grid	
												\$Beef	
												\$OG	
												\$YG	
												\$Beef	
												\$Weaning	
												\$Feedlot	
												\$Grid	
												\$Beef	
												\$OG	
												\$YG	
												\$Beef	
												\$Weaning	
												\$Feedlot	
												\$Grid	
												\$Beef	
												\$OG	
												\$YG	
												\$Beef	
												\$Weaning	
												\$Feedlot	
												\$Grid	
												\$Beef	
												\$OG	
												\$YG	
												\$Beef	
												\$Weaning	
												\$Feedlot	
												\$Grid	
												\$Beef	
												\$OG	
												\$YG	
												\$Beef	
												\$Weaning	
												\$Feedlot	
												\$Grid	
												\$Beef	
												\$OG	
												\$YG	
												\$Beef	
												\$Weaning	
												\$Feedlot	
												\$Grid	
												\$Beef	
												\$OG	
												\$YG	
												\$Beef	
												\$Weaning	
												\$Feedlot	
												\$Grid	
												\$Beef	
												\$OG	
												\$YG	
												\$Beef	
												\$Weaning	
												\$Feedlot	
												\$Grid	
												\$Beef	
												\$OG	
												\$YG	
												\$Beef	
												\$Weaning	
												\$Feedlot	
												\$Grid	
												\$Beef	
												\$OG	
												\$YG	
												\$Beef	
												\$Weaning	
												\$Feedlot	
												\$Grid	
												\$Beef	
												\$OG	
												\$YG	



GAR Predestined N105 - Lot 2



G A R Prediction - Full brother to Lot 2.



G A R Predestined N35 - The \$22,000 flush sister to Lot 2.

Act BW		LOT 2										G A R PREDESTINED N105 [AMF-NHF]	
33-72	2	Birth Date: 6-9-2005		Cow +15283205				Tattoo: N105					
BWR	1-103	CE	BEPD	WEPD	YEPD	YH	SC						
		+8	.24	+2.4	.27	+47	.24	+92	.23	+5	.56	+0.04	.41
WWR	1-117	CEM	MILK	MMK	MMW	MH	SEN						
		+7	.21	+28	.25	N/A	+58	.43	+1.5	.55			-5.93
YWR	1-112	CW	MARB	REA	FAT						\$Weaning		
		+26	.25	+81	.29	+51	.36	+019	.28				
											\$Feedlot		
													+25.67
Ultrasound													
Prod													
Record													
%IMF													
23-103													
REA													
23-98													
FAT													
23-103													
RU FAT													
23-98													

A full sister to the private treaty selection of Select Sires from the Gardiners, GAR Prediction. N105 earned an individual IMF and RE ratio of 110 and ranks in the top 1% of the breed for Marb and \$Beef, 2% for CW, RE and \$Grid as well as top 10% for Milk and \$Feedlot. She has been flushed five times for an average of 14 high quality embryos per flush. This donor is still active in the Chair Rock embryo program and sells open, ready to flush.

Act BW	<b>3</b>											<b>CHAIR ROCK 5050 G A R 6066 [NHF]</b>			
1-81	Birth Date: 8-20-2006											Cow +15773539		Tattoo: 6066	
BWR	CED	BEPD	WEPD	YEPD	YH	SC									
1-100	+9	.24	+0	.27	+51	.22	+98	.22	+1	.39	-.34	.26			
WWR	CEM	MILK	MKH	MW	MH	SEN									
1-121	+7	.21	+35	.23	N/A	N/A	N/A	N/A	N/A	N/A	N/A	-15.50			
YWR	CW	MARB	REA	FAT						\$Weaning					
1-112	+17	.16	+82	.20	+42	.26	+023	.19						+29.59	
Ultrasound Prod Record	#B/R New Design 036 [AMF-NHF] #VDAR New Trend 315 [AMF-NHF]											\$Feedlot			
%IMF	GAR New Design 5050 [AMF-NHF] B/R Blackcap Empress 76											+36.85			
1-101	+13728513 GAR Precision 706 [NHC-AMF] #GAR Precision 1680 [AMC-NHC]											\$Grid			
REA	#SS Traveler 6807 T510 [AMF-NHF] #DHD Traveler 6807 [AMF-NHF]											\$QG			
1-110	Chair Rock T510 Trv 2110 [NHC-AMF] #SS Miss Hi Spade A114											+31.78			
FAT	+14407142 +GAR Pinnacle 280 #+GAR Pinnacle [NHC-AMF]											\$YG			
1-93												+5.47			
RU FAT												\$Beef			
1-118												+63.60			

An outstanding 5050 daughter that has started an impressive production record. She earned individual ultrasound ratios of 117 for IMF and 108 for RE and ranks in the top 1% of the breed for Milk, Marb, \$Grid and \$Beef. This female is the dam of the \$6,000 Lot 41 bull in this year's GAR sale and has been flushed six times for an average of seven high quality embryos per flush. She is due to calve December 23, 2010 to GAR Predestined.



Chair Rock 5050 G A R 6066 - Lot 3



Chair Rock Predestined 6120 - Lot 4

Act BW	<b>4</b>											<b>CHAIR ROCK PREDESTINED 6120 [AMF-NHF]</b>			
1-82	Birth Date: 9-13-2006											Cow +15773569		Tattoo: 6120	
BWR	CED	BEPD	WEPD	YEPD	YH	SC									
1-110	+4	.25	+4.2	.35	+50	.28	+93	.27	+4	.37	+4.41	.05			
WWR	CEM	MILK	MKH	MW	MH	SEN									
1-128	+5	.25	+37	.28	N/A	I+40	.05	I+.6	.05			-15.19			
YWR	CW	MARB	REA	FAT						\$Weaning					
1-109	+28	.22	+82	.25	+62	.32	+045	.25						+23.97	
Ultrasound Prod Record	#B/R New Design 036 [AMF-NHF] #VDAR New Trend 315 [AMF-NHF]											\$Feedlot			
%IMF	GAR Predestined [AMF-NHF] B/R Blackcap Empress 76											+32.16			
1-103	#13395344 #+GAR Ext 4206 #N Bar Emulation EXT [AMF-NHF]											\$Grid			
REA	#+GAR 6807 Traveler 1432											\$QG			
1-126	#+GAR Pinnacle [NHC-AMF] #GAR Precision 1680 [AMC-NHC]											+31.78			
FAT	GAR Pinnacle 1630 +GAR Ext 2114											\$YG			
1-91	+13724152 +GAR 6807 Traveler 2167 [AMF] #DHD Traveler 6807 [AMF-NHF]											+3.30			
RU FAT	GAR Pierre 1322											\$Beef			
1-100												+66.70			

A high-ranking female that stems from the \$30,000 GAR Pierre 1322. This female earned individual ultrasound ratios of 104 for IMF and 107 for RE and ranks in the top 1% of the breed for Milk, CW, Marb, RE and \$Beef. She has been flushed six times for an average of three high quality embryos and is bred to calve January 10, 2011 to GAR Concrete.

Act BW	<b>5</b>											<b>CHAIR ROCK PREDESTINED 6113 [AMF-NHF]</b>			
1-81	Birth Date: 9-11-2006											Cow +15773564		Tattoo: 6113	
BWR	CED	BEPD	WEPD	YEPD	YH	SC									
1-100	+7	.26	+3.6	.29	+50	.24	+89	.23	+2	.41	+17	.30			
WWR	CEM	MILK	MKH	MW	MH	SEN									
1-112	+7	.25	+26	.27	N/A	I+18	.05	I+.6	.05			-2.32			
YWR	CW	MARB	REA	FAT						\$Weaning					
1-99	+29	.23	+77	.26	+79	.33	+046	.25						+26.67	
Ultrasound Prod Record	#B/R New Design 036 [AMF-NHF] #VDAR New Trend 315 [AMF-NHF]											\$Feedlot			
%IMF	GAR Predestined [AMF-NHF] B/R Blackcap Empress 76											+28.17			
1-107	#13395344 #+GAR Ext 4206 #N Bar Emulation EXT [AMF-NHF]											\$Grid			
REA	#+GAR 6807 Traveler 1432											\$QG			
1-119	#GAR Precision 1680 [AMC-NHC] #Tehama Bando 155 [AMF-NHF]											+30.90			
FAT	GAR Precision 4590 9J9 GAR 856 [NHF]											\$YG			
1-170	+13884246 +GAR 6148 Emulation 108 #Finks 5522-6148											+5.20			
RU FAT	+GAR 6807 Traveler 93 [AMF-NHF]											\$Beef			
1-136												+67.35			

This female scanned off the chart, earning impressive ratios of 120 for IMF and 143 for RE to place her in the top 1% of the breed for CW, Marb, RE and \$Beef. She comes from a former GAR donor that has 110 progeny that ratio 101 for RE. 6113 has been flushed three times for an average of seven high quality embryos per flush. She is currently working in the Chair Rock embryo program and sells open, ready to flush.

Act BW	<b>6</b>											<b>CHAIR ROCK PREDESTINED 7103 [NHF]</b>			
N/A	Birth Date: 8-21-2007											Cow +16046715		Tattoo: 7103	
BWR	CED	BEPD	WEPD	YEPD	YH	SC									
N/A	I+8	.05	+2.7	.34	+61	.26	+97	.25	+3	.37	I+.03	.05			
WWR	CEM	MILK	MKH	MW	MH	SEN									
N/A	I+9	.05	+28	.20	N/A	N/A	N/A	N/A	N/A	N/A	N/A	-8.52			
YWR	CW	MARB	REA	FAT						\$Weaning					
N/A	+24	.22	+71	.25	+49	.31	+030	.25						+32.17	
Ultrasound Prod Record	#B/R New Design 036 [AMF-NHF] #VDAR New Trend 315 [AMF-NHF]											\$Feedlot			
%IMF	GAR Predestined [AMF-NHF] B/R Blackcap Empress 76											+31.89			
N/A	#13395344 #+GAR Ext 4206 #N Bar Emulation EXT [AMF-NHF]											\$Grid			
REA	#+GAR 6807 Traveler 1432											\$QG			
N/A	#CA Future Direction 5321 [AMC-NHC] #GAR Precision 1680 [AMC-NHC]											+29.81			
N/A	Chair Rock Future Dir 4050 [AMF] CA Miss Power Fix 308 [AMF]											\$YG			
N/A	+15005942 Chair Rock Grid Maker 2107 [AMF] #+GAR Grid Maker [AMF-NHF]											+4.23			
N/A												\$Beef			
N/A												+63.51			

A female that earned an individual RE ratio of 105 to be part of her dam's production record of 15 at 101 for that valuable trait. She ranks in the top 1% of the breed for WW and \$Beef, 2% for CW, Marb, RE and \$Wean and 4% for YW and \$Grid. This donor has been flushed twice for an average of seven high quality embryos per flush and sells due to calve October 30, 2010 to GAR Concrete.



Chair Rock 5050 G A R 6043 - Lot 7

**LOT**

Act BW	<b>7</b>											<b>CHAIR ROCK 5050 G A R 6043 [NHF]</b>			
1-76	Birth Date: 8-16-2006											Cow +15773532		Tattoo: 6043	
BWR	CE	BEPD	WEPD	YEPD	YH	SC									
1-103	+8	.24	+2	.27	+51	.22	+96	.22	+4	.39	1-.12	.05			
WWR	CEM	MILK	MKH	MW	MH	SEN									
1-115	+6	.21	+33	.23	N/A	N/A	N/A	N/A	N/A	N/A	-13.15				
YWR	CW	MARB	REA	FAT								\$Weaning			
1-106	+14	.15	+72	.19	+45	.26	+023	.19		+29.70					
Ultrasound Prod Record	#B/R New Design 036 [AMF-NHF] #VDAR New Trend 315 [AMF-NHF]											\$Feedlot			
%IMF	GAR New Design 5050 [AMF-NHF] B/R Blackcap Empress 76											+34.80			
REA	+13728513 GAR Precision 706 [NHC-AMF] #GAR Precision 1680 [AMC-NHC]											\$Grid			
N/A												+36.28			
FAT	#SS Traveler 6807 T510 [AMF-NHF] #DHD Traveler 6807 [AMF-NHF]											\$QG			
N/A	Chair Rock T510 Trv 2110 [NHC-AMF] #SS Miss Hi Spade A114											+29.97			
RU FAT	+14407142 +GAR Pinnacle 280 #+GAR Pinnacle [NHC-AMF]											\$YG			
N/A												+6.31			
												\$Beef			
												+60.07			

The mating of New Design 5050 to a female that has 19 at 103 for IMF adds the potential for ribeye production. This female earned an individual RE ratio of 117 and ranks in the top 1% of the breed for Milk and \$Beef, as well as top 3% for Marb, RE and \$Grid. She has been flushed six times for an average of six high quality embryos per flush. This donor is bred to calve December 21, 2010 to GAR Concrete.

Act BW	<b>8</b>											<b>CHAIR ROCK OBJECTIVE 6144 [AMF]</b>			
5-88	Birth Date: 10-4-2006											Cow +15770269		Tattoo: 6144	
BWR	CE	BEPD	WEPD	YEPD	YH	SC									
1-104	+7	.25	+3.5	.33	+70	.26	+120	.25	+7	.43	+17	.24			
WWR	CEM	MILK	MKH	MW	MH	SEN									
1-115	+7	.22	+26	.24	N/A	N/A	N/A	N/A	N/A	N/A	-14.31				
YWR	CW	MARB	REA	FAT								\$Weaning			
1-114	+11	.21	+67	.24	+31	.32	-.014	.24		+28.51					
Ultrasound Prod Record	#SS Traveler 6807 T510 [AMF-NHF] #DHD Traveler 6807 [AMF-NHF]											\$Feedlot			
%IMF	SS Objective T510 OT26 [AMF-NHF] #SS Miss Hi Spade A114											+52.36			
5-110	#13776378 SS Miss Rita R011 7R8 [AMF-NHF] SS Rito Rito R76 R011											\$Grid			
REA												+37.88			
5-100	#+GAR Grid Maker [AMF-NHF] #GDAR Traveler 044 [AMF-NHF]											\$QG			
FAT	Chair Rock Grid Maker 3124 GAR Precision 2536 [AMC-NHF]											+28.95			
5-99	14548067 #+GAR Commitment 669 [AMC] #GAR Commitment [AMF]											\$YG			
RU FAT												+8.93			
5-91												\$Beef			
												+64.13			

This female earned individual ultrasound ratios of 132 for IMF and 114 for RE while her dam has 7 at 101 for IMF. She ranks in the top 1% of the breed for WW, YW, \$Feedlot, \$Grid and \$Beef, as well as top 2% for IMF. This donor produced the \$5,000 Lot 31 bull in the GAR sale and was flushed eight times for an average of seven high quality embryos. She is due to calve October 31, 2010 to GAR Predestined.



Chair Rock Objective 6144 - Lot 8



Chair Rock Objective 6027 - Lot 9

**LOT**

Act BW	<b>9</b>											<b>CHAIR ROCK OBJECTIVE 6027 [AMF]</b>			
1-85	Birth Date: 8-2-2006											Cow 15770215		Tattoo: 6027	
BWR	CE	BEPD	WEPD	YEPD	YH	SC									
1-114	+8	.32	+1.7	.37	+62	.27	+114	.27	+4	.38	N/A	N/A			
WWR	CEM	MILK	MKH	MW	MH	SEN									
1-109	+6	.22	+29	.24	N/A	N/A	N/A	N/A	N/A	N/A	-14.95				
YWR	CW	MARB	REA	FAT								\$Weaning			
1-109	+11	.21	+59	.24	+48	.31	+003	.24		+29.55					
Ultrasound Prod Record	#SS Traveler 6807 T510 [AMF-NHF] #DHD Traveler 6807 [AMF-NHF]											\$Feedlot			
%IMF	SS Objective T510 OT26 [AMF-NHF] #SS Miss Hi Spade A114											+49.21			
1-94	#13776378 SS Miss Rita R011 7R8 [AMF-NHF] SS Rito Rito R76 R011											\$Grid			
REA												+36.20			
1-124	#Bon View New Design 1407 [AMF-NHF] #B/R New Design 036 [AMF-NHF]											\$QG			
FAT	Chair Rock 1407 ND 4001 Bon View Pride 664											+26.96			
1-100	15006845 Chair Rock 616 Rito 2102 #Rito 616 of 4B20 6807 [AMF-NHF]											\$YG			
RU FAT												+9.24			
1-77												\$Beef			
												+61.68			

A female that earned an individual RE ratio of 112 and comes from a dam with 2 at 106 for RE as well. Couple that with her own production record and you can see why she ranks in the top 2% of the breed for that valuable trait. She also ranks in the top 1% of the breed for WW, YW, \$Feedlot and \$Beef. This valuable donor has been flushed five times for an average of 2 high quality embryos per flush. She is due to have a heifer calf October 12, 2010 to GAR Predestined.

LOT 10 CHAIR ROCK OBJECTIVE 6036 [AMF-NHF]													
Act BW		Birth Date: 8-14-2006 Cow 15770219 Tattoo: 6036											
N/A	1-80	CED	BEPD	WEPD	YEPD	YH	SC						
N/A	1-99	+12	.31	+.8	.36	+.55	.26	+102	.26	+.6	.38	+27	.25
N/A	1-118	CEM	MILK	MKH	MW	MH	SEN						
N/A	1-112	+10	.22	+.33	.24	N/A	N/A	N/A	N/A	N/A	N/A	-15.21	
Ultrasound Prod Record		CW	MARB	REA	FAT	\$Weaning							
%IMF	1-87	+8	.21	+.72	.24	+.31	.31	-.016	.24				+29.84
REA	1-123	#SS Traveler 6807 T510 [AMF-NHF] #DHD Traveler 6807 [AMF-NHF]										\$Feedlot	
FAT	1-97	SS Objective T510 OT26 [AMF-NHF] #SS Miss Hi Spade A114										+39.38	
RU FAT	1-105	#13776378 SS Miss Rita R011 7R8 [AMF-NHF] SS Rito Rito R76 R011										\$Grid	
		SS Miss Ultress U56										+39.50	
		#CA Future Direction 5321 [AMC-NHC] #GAR Precision 1680 [AMC-NHC]										\$QG	
		Chair Rock Future Dir 4110 CA Miss Power Fix 308 [AMF]										+29.97	
		+15005963 GAR New Design 3339 #B/R New Design 036 [AMF-NHF]										\$YG	
		GAR Sleep Easy 1655										+9.53	
												\$Beef	
												+59.81	

Check out the spread this female offers, +.8 all the way to +102. She is in the top 1% of the breed for CED, 2% for YW and 3% for WW, now that's rare! She also ranks in the top 10% for ten other traits including \$Beef. 6036 is the dam of the \$14,000 Lot 18 bull in the GAR sale and has been flushed three times for an average of 13 embryos per flush. She is currently working in the Chair Rock ET program and will sell open, ready to flush.

LOT 13 CHAIR ROCK OBJECTIVE 7070													
Act BW		Birth Date: 8-16-2007 Cow 16046689 Tattoo: 7070											
N/A	1-79	CED	BEPD	WEPD	YEPD	YH	SC						
N/A	1-97	+11	.30	+.5	.34	+.57	.25	+105	.25	+.3	.35	N/A	N/A
N/A	1-114	CEM	MILK	MKH	MW	MH	SEN						
N/A	1-112	+9	.19	+.26	.20	N/A	N/A	N/A	N/A	N/A	N/A	-9.14	
Ultrasound Prod Record		CW	MARB	REA	FAT	\$Weaning							
%IMF	1-89	+4	.21	+.65	.24	+.37	.30	-.011	.24				+30.13
REA	1-100	#SS Traveler 6807 T510 [AMF-NHF] #DHD Traveler 6807 [AMF-NHF]										\$Feedlot	
FAT	1-93	SS Objective T510 OT26 [AMF-NHF] #SS Miss Hi Spade A114										+41.70	
RU FAT	1-141	#13776378 SS Miss Rita R011 7R8 [AMF-NHF] SS Rito Rito R76 R011										\$Grid	
		SS Miss Ultress U56										+38.76	
		#Bon View New Design 1407 [AMF-NHF] #B/R New Design 036 [AMF-NHF]										\$QG	
		Chair Rock 1407 ND 5096 Bon View Pride 664										+28.41	
		+15445090 GAR Commitment 979 #GAR Commitment [AMF]										\$YG	
		+GAR Max 264										+10.35	
												\$Beef	
												+56.04	

Another big spread female that ranks in the top 2% of the breed for CED, WW and YW. She also ranks in the top 3% for Marb and 5% for RE, as well as all of the dollar values including top 3% for \$Beef. This female was flushed once and produced six high quality embryos. She is due to calve October 22, 2010 to GAR Prediction.

LOT 11 CHAIR ROCK OBJECTIVE 7151													
Act BW		Birth Date: 10-3-2007 Cow +16046754 Tattoo: 7151											
N/A	1-97	CED	BEPD	WEPD	YEPD	YH	SC						
N/A	1-114	+9	.05	+2.1	.05	+62	.05	+107	.05	+1.5	.41	+1.01	.05
N/A	1-112	CEM	MILK	MKH	MW	MH	SEN						
N/A	1-112	+10	.05	+22	.05	N/A	N/A	+59	.05	+1.7	.05	-2.69	
Ultrasound Prod Record		CW	MARB	REA	FAT	\$Weaning							
%IMF	1-89	+11	.21	+.52	.24	+.41	.31	-.001	.24				+33.30
REA	1-100	#SS Traveler 6807 T510 [AMF-NHF] #DHD Traveler 6807 [AMF-NHF]										\$Feedlot	
FAT	1-93	SS Objective T510 OT26 [AMF-NHF] #SS Miss Hi Spade A114										+41.77	
RU FAT	1-141	#13776378 SS Miss Rita R011 7R8 [AMF-NHF] SS Rito Rito R76 R011										\$Grid	
		SS Miss Ultress U56										+33.86	
		#+GAR Grid Maker [AMF-NHF] #GDAR Traveler 044 [AMF-NHF]										\$QG	
		Chair Rock Grid Maker 2107 [AMF]										+25.05	
		14396175 +GAR Sleep Easy 2207 [AMF]										\$YG	
		+GAR Sleep Easy 1009 [AMF-NHF]										+8.81	
		+GAR Ext 604 [AMF-NHF]										\$Beef	
												+57.26	

Another high growth Objective daughter that earned individual ultrasound ratios of 100 for IMF and 120 for RE, she comes from a dam that has 55 at 101 for RE. She ranks in the top 1% of the breed for WW, YW and \$Feedlot, as well as top 3% for RE, \$Wean, \$Grid and \$Beef. This donor produced nine high quality embryos in one flush and is due to calve October 31, 2010 to GAR Prediction.

LOT 14 CHAIR ROCK PINNACLE 6047 [AMF-NHF]													
Act BW		Birth Date: 8-16-2006 Cow 15773533 Tattoo: 6047											
N/A	1-79	CED	BEPD	WEPD	YEPD	YH	SC						
N/A	1-97	+8	.28	+2.0	.36	+42	.26	+92	.26	+.4	.34	+20	.23
N/A	1-114	CEM	MILK	MKH	MW	MH	SEN						
N/A	1-112	+9	.22	+.29	.24	N/A	N/A	N/A	N/A	N/A	N/A	-8.01	
Ultrasound Prod Record		CW	MARB	REA	FAT	\$Weaning							
%IMF	1-89	+23	.20	+.66	.23	+.28	.29	+0.21	.23				+21.91
REA	1-100	#GAR Precision 1680 [AMC-NHC] #Tehama Bando 155 [AMF-NHF]										\$Feedlot	
FAT	1-93	GAR Pinnacle [NHC-AMF] 9J9 GAR 856 [NHF]										+34.28	
RU FAT	1-141	#+13200618+GAR Ext 2114 #N Bar Emulation EXT [AMF-NHF]										\$Grid	
		#GAR Scotch Cap 867										+31.25	
		#Bon View New Design 1407 [AMF-NHF] #B/R New Design 036 [AMF-NHF]										\$QG	
		Chair Rock 1407 ND 3145 Bon View Pride 664										+28.68	
		14673420 GAR Commitment 2599 #GAR Commitment [AMF]										\$YG	
		+GAR Evas Ext 1045										+2.57	
												\$Beef	
												+60.63	

A high marbling Pinnacle daughter that produced the \$5,000 Lot 95 bull in the GAR sale. She comes from a dam that has 2 at 101 for yearling and 3 at 101 for RE. 6047 ranks in the top 1% of the breed for \$Beef, 3% for CW and Marb to go along with top 10% for YW, \$Feedlot and \$Grid. This donor was flushed twice for an average of 12 high quality embryos and is bred to calve December 21, 2010 to GAR Concrete.

LOT 12 CHAIR ROCK OBJECTIVE 7067													
Act BW		Birth Date: 8-16-2007 Cow +16046686 Tattoo: 7067											
N/A	1-97	CED	BEPD	WEPD	YEPD	YH	SC						
N/A	1-114	+10	.05	+1.3	.05	+64	.05	+113	.05	+1.4	.36	+1.21	.05
N/A	1-112	CEM	MILK	MKH	MW	MH	SEN						
N/A	1-112	+10	.05	+24	.05	N/A	N/A	N/A	N/A	N/A	N/A	-9.92	
Ultrasound Prod Record		CW	MARB	REA	FAT	\$Weaning							
%IMF	1-89	+9	.21	+.43	.24	+.40	.30	-.014	.24				+31.12
REA	1-100	#SS Traveler 6807 T510 [AMF-NHF] #DHD Traveler 6807 [AMF-NHF]										\$Feedlot	
FAT	1-93	SS Objective T510 OT26 [AMF-NHF] #SS Miss Hi Spade A114										+47.30	
RU FAT	1-141	#13776378 SS Miss Rita R011 7R8 [AMF-NHF] SS Rito Rito R76 R011										\$Grid	
		SS Miss Ultress U56										+32.49	
		#+GAR Grid Maker [AMF-NHF] #GDAR Traveler 044 [AMF-NHF]										\$QG	
		Chair Rock Grid Maker 4028 [AMF]										+22.33	
		+15008985 +GAR Focus 1990 [AMF]										\$YG	
		#SAF Focus of ER [AMF-NHF]										+10.16	
		+GAR Ext 1427 [AMF]										\$Beef	
												+55.76	

A full sister-in-blood to the \$60,000 GAR Concrete. She earned an individual RE ratio of 110 to be part of her dam's production record of 1 at 84 for birth and 2 at 105 for weaning and 104 for yearling with 10 at 103 for RE. This valuable female ranks in the top 1% of the breed for WW, YW and \$Feedlot, as well as top 2% for \$Beef and 4% for CED, RE and \$Wean. She was flushed one time and produced ten high quality embryos. This donor is bred to calve October 28, 2010 to GAR Predestined.



Chair Rock Grid Maker 4028 - Dam of Lot 12.

Act BW		LOT 15 CHAIR ROCK FUTURE DIR 6074 [AMF-NHF]										Tattoo: 6074		
1-74		Birth Date: 8-23-2006 Cow +15772648												
BWR	1-100	CED	BEPD	WEPD	YEPD	YH	SC							
+10	.27	+3	.28	+39	.24	+77	.24	+4	.41	1	36	.05		
WWR	1-84	CEM	MILK	MKH	MW	MH	SEN							
+11	.26	+20	.27	N/A	+36	.05	+6	.05						+5.38
YWR	1-96	CW	MARB	REA	FAT							\$Weaning		
+15	.23	+67	.26	+70	.33	+013	.26							+25.37
Ultrasound Prod Record												\$Feedlot		
#GAR Precision 1680 [AMC-NHC] #Tehama Bando 155 [AMF-NHF]												+20.64		
CA Future Direction 5321 [AMC-NHC] 9J9 GAR 856 [NHF]												\$Grid		
#12493607 CA Miss Power Fix 308 [AMF] #+SAF Power Fix [AMF-NHF]												+38.92		
												\$OG		
%IMF												+28.95		
1-104 REA #SAF Focus of ER [AMF-NHF] #SAF Fame [AMF-NHF]												\$YG		
1-104 GAR Focus 501 [AMF-NHF] GDAR Forever Lady 246												+9.97		
1-130 FAT +14116251 GAR Precision 2536 [AMC-NHF] #GAR Precision 1680 [AMC-NHC]												\$Beef		
1-123 RU FAT +GAR Ext 2104												+60.47		

Here we have a granddaughter of the legendary GAR Precision 2536. This female earned individual ultrasound ratios of 124 for IMF and 123 for RE, she comes from a dam that has 96 at 101 for both IMF and RE. This donor ranks in the top 1% of the breed for RE, \$Grid and \$Beef, as well as top 3% for Marb. She was flushed twice for an average of two high quality embryos per flush and sells due to calve January 10, 2011 to GAR Predestined.



G A R Focus 501 - Dam of Lot 15.

Act BW		LOT 17 CHAIR ROCK 1407 ND 6026										Tattoo: 6026		
2-97		Birth Date: 8-1-2006 Cow +15770214												
BWR	1-108	CED	BEPD	WEPD	YEPD	YH	SC							
+8	.25	+2.2	.28	+59	.23	+107	.23	+8	.37	+33	.30			
WWR	1-121	CEM	MILK	MKH	MW	MH	SEN							
+10	.23	+32	.24	N/A	N/A	N/A	N/A	N/A						+15.99
YWR	1-114	CW	MARB	REA	FAT							\$Weaning		
+13	.21	+67	.25	+27	.30	+018	.24							+28.62
Ultrasound Prod Record												\$Feedlot		
#B/R New Design 036 [AMF-NHF] #VDAR New Trend 315 [AMF-NHF]												+42.99		
Bon View New Design 1407 [AMF-NHF] B/R Blackcap Empress 76												\$Grid		
#12783540 Bon View Pride 664 #+GAR Sleep Easy 1009 [AMF-NHF]												+33.74		
												\$OG		
%IMF												+28.95		
2-105 REA #+GAR Grid Maker [AMF-NHF] #GDAR Traveler 044 [AMF-NHF]												\$YG		
2-96 Chair Rock Grid Maker 4047 [AMF] GAR Precision 2536 [AMC-NHF]												+4.79		
2-90 FAT +15008992 +GAR Focus 1990 [AMF] #SAF Focus of ER [AMF-NHF]												\$Beef		
2-114 RU FAT +GAR Ext 1427 [AMF]												+58.78		

This is quite possibly the most powerful New Design 1407 daughter that you will ever see. She is a maternal sister to the \$60,000 GAR Concrete and has two sons selling as Lots 39 and 127 in the GAR sale that brought \$8,000 and \$4,250, respectively. This female ranks in the top 1% of the breed for WW and YW, 2% for Milk, \$Feedlot and \$Beef, as well as 3% for Marb. This donor was flushed seven times for an average of six high quality embryos while averaging ten in her last three flushes. She is due to have a bull calf September 11, 2010 sired by Objective.



Chair Rock 1407 ND 6026 - Lot 17

Act BW		LOT 16 CHAIR ROCK III RITO 6022										Tattoo: 6022		
1-84		Birth Date: 7-24-2006 Cow 15771741												
BWR	1-113	CED	BEPD	WEPD	YEPD	YH	SC							
+4	.30	+3.6	.36	+61	.27	+102	.26	+1	.38	+48	.05			
WWR	1-113	CEM	MILK	MKH	MW	MH	SEN							
+3	.20	+26	.23	N/A	N/A	N/A	N/A	N/A						-8.02
YWR	1-108	CW	MARB	REA	FAT							\$Weaning		
+14	.15	+67	.18	+25	.25	+009	.18							+28.57
Ultrasound Prod Record												\$Feedlot		
#Rito 616 of 4B20 6807 [AMF-NHF] #DHD Traveler 6807 [AMF-NHF]												+36.98		
Rito 111 of 2536 Rito 616 [AMF-NHF] +Rita 4B20 of 0FB1 Bando												\$Grid		
#+13793825 GAR Precision 2536 [AMC-NHF] #GAR Precision 1680 [AMC-NHC]												+34.34		
												\$OG		
%IMF												+28.95		
1-112 REA #Bon View New Design 208 [AMF-NHF] #B/R New Design 036 [AMF-NHF]												\$YG		
1-89 Chair Rock 208 ND 4088 #Bon View Erica 443												+5.39		
1-87 FAT 15009001 Chair Rock T510 Trv 2122 #SS Traveler 6807 T510 [AMF-NHF]												\$Beef		
1-65 RU FAT Chair Rock Trav C036												+58.75		

A powerfully-made 111 daughter that earned individual ultrasound ratios of 135 for IMF and 115 for RE to rank in the top 1% of the breed for WW and \$Beef, as well as top 3% for YW, Marb, \$Feedlot and \$Grid. She produced five embryos in one flush and is due to have a heifer calf August 24, 2010 sired by GAR Concrete.

Act BW		LOT 17A CHAIR ROCK 1407 ND 6059										Tattoo: 6059		
1-75		Birth Date: 8-18-2006 Cow 15770231												
BWR	1-101	CED	BEPD	WEPD	YEPD	YH	SC							
+11	.31	+8	.38	+60	.28	+108	.28	+8	.40	+07	.05			
WWR	1-117	CEM	MILK	MKH	MW	MH	SEN							
+11	.23	+31	.24	N/A	N/A	N/A	N/A	N/A						-15.33
YWR	1-108	CW	MARB	REA	FAT							\$Weaning		
+12	.21	+50	.24	+51	.31	+010	.24							+31.08
Ultrasound Prod Record												\$Feedlot		
#B/R New Design 036 [AMF-NHF] #VDAR New Trend 315 [AMF-NHF]												+43.63		
Bon View New Design 1407 [AMF-NHF] B/R Blackcap Empress 76												\$Grid		
#12783540 Bon View Pride 664 #+GAR Sleep Easy 1009 [AMF-NHF]												+33.25		
												\$OG		
%IMF												+24.50		
1-76 REA #+GAR Grid Maker [AMF-NHF] #GDAR Traveler 044 [AMF-NHF]												\$YG		
1-114 Chair Rock Grid Maker 4047 [AMF] GAR Precision 2536 [AMC-NHF]												+8.75		
1-100 FAT +15008992 +GAR Focus 1990 [AMF] #SAF Focus of ER [AMF-NHF]												\$Beef		
1-100 RU FAT +GAR Ext 1427 [AMF]												+57.87		

Another maternal sister to the \$60,000 GAR Concrete. This female ranks in the top 1% of the breed for WW and YW to go along with top 2% for CED. She also ranks in the top 3% for CEM, Milk and RE and 10% for Marb and all six of the dollar values including top 2% for \$Beef. This donor earned an individual RE ratio of 124 and produced six embryos in one flush. 6059 is due to have a bull calf October 8, 2010 sired by GAR New Design 5050.



Chair Rock 1407 ND 6098 - Lot 18

Act BW		LOT 18B CHAIR ROCK 1407 ND 6058 [AMF-NHF]										Tattoo: 6058	
N/A		Birth Date: 8-18-2006 Cow +15770230											
BWR	N/A	CED	BEPD	WEPD	YEPD	YH	SC						
		+7	.26	+1.4	.05	+43	.05	+84	.05	+6	.44	+29	.05
WWR	N/A	CEM	MILK	MKH	MW	MH	SEN						
		+8	.05	+33	.05	N/A	+55	.05	+9	.05			-9.28
YWR	N/A	CW	MARB	REA	FAT					\$Weaning			
		+19	.21	+68	.25	+32	.32	+035	.24	+26.72			
Ultrasound Prod Record	N/A	#B/R New Design 036 [AMF-NHF] #VDAR New Trend 315 [AMF-NHF]										\$Feedlot	
		Bon View New Design 1407 [AMF-NHF] B/R Blackcap Empress 76										+25.91	
		#12783540 Bon View Pride 664 #+GAR Sleep Easy 1009 [AMF-NHF]										\$Grid	
		#Bon View Pride 1551										+31.31	
%IMF	N/A	#+GAR Pinnacle [NHC-AMF] #GAR Precision 1680 [AMC-NHC]										\$QG	
		GAR Pinnacle 1630 +GAR Ext 2114										+29.14	
REA	N/A	+13724152 +GAR 6807 Traveler 2167 [AMF] #DHD Traveler 6807 [AMF-NHF]										\$YG	
		GAR Pierre 1322										+2.17	
FAT	N/A											\$Beef	
												+56.70	

Another flush sister out of the former GAR donor that has 142 at 100 for IMF and 101 for RE. This female earned an individual RE ratio of 106 and ranks in the top 2% of the breed for Milk, Marb and \$Beef, as well as top 10% for CW, RE and \$Grid. She produced 11 embryos in one flush and is due to have a bull calf September 15, 2010 sired by GAR Concrete.

Act BW		LOT 18 CHAIR ROCK 1407 ND 6098 [AMF-NHF]										Tattoo: 6098	
1-80		Birth Date: 9-9-2006 Cow +15770246											
BWR	1-99	CED	BEPD	WEPD	YEPD	YH	SC						
		+7	.26	+1.3	.30	+46	.26	+92	.24	+7	.41	+28	.31
WWR	1-121	CEM	MILK	MKH	MW	MH	SEN						
		+8	.26	+37	.28	N/A	+55	.05	+9	.05			-15.63
YWR	1-121	CW	MARB	REA	FAT					\$Weaning			
		+15	.22	+81	.25	+41	.32	+025	.25	+26.67			
Ultrasound Prod Record	1-117	#B/R New Design 036 [AMF-NHF] #VDAR New Trend 315 [AMF-NHF]										\$Feedlot	
		Bon View New Design 1407 [AMF-NHF] B/R Blackcap Empress 76										+32.71	
		#12783540 Bon View Pride 664 #+GAR Sleep Easy 1009 [AMF-NHF]										\$Grid	
		#Bon View Pride 1551										+37.10	
%IMF	1-117	#+GAR Pinnacle [NHC-AMF] #GAR Precision 1680 [AMC-NHC]										\$QG	
		GAR Pinnacle 1630 +GAR Ext 2114										+31.62	
REA	1-116	+13724152 +GAR 6807 Traveler 2167 [AMF] #DHD Traveler 6807 [AMF-NHF]										\$YG	
		GAR Pierre 1322										+5.48	
FAT	1-97											\$Beef	
												+61.18	

A top-producing daughter of the former GAR donor that has 142 at 100 for IMF and 101 for RE. This female ranks in the top 1% of the breed for Milk, Marb, \$Grid and \$Beef, as well as 5% for RE and 10% for YW and \$Feedlot. This valuable donor produced the \$15,000 Lot 7 bull in the 2010 GAR sale who sold to Sexing Technologies and was the 3rd high selling bull. This powerful donor was flushed six times for an average of 11 high quality embryos per flush. 6098 is due to calve October 31, 2010 to Objective.

Act BW		LOT 18C CHAIR ROCK 1407 ND 6056 [AMF-NHF]										Tattoo: 6056	
1-75		Birth Date: 8-18-2006 Cow +15770228											
BWR	1-93	CED	BEPD	WEPD	YEPD	YH	SC						
		+8	.26	+1.0	.30	+46	.26	+88	.24	+6	.41	+29	.31
WWR	1-122	CEM	MILK	MKH	MW	MH	SEN						
		+9	.26	+38	.28	N/A	+55	.05	+9	.05			-15.55
YWR	1-112	CW	MARB	REA	FAT					\$Weaning			
		+19	.22	+72	.25	+35	.32	+047	.25	+28.03			
Ultrasound Prod Record	1-98	#B/R New Design 036 [AMF-NHF] #VDAR New Trend 315 [AMF-NHF]										\$Feedlot	
		Bon View New Design 1407 [AMF-NHF] B/R Blackcap Empress 76										+28.71	
		#12783540 Bon View Pride 664 #+GAR Sleep Easy 1009 [AMF-NHF]										\$Grid	
		#Bon View Pride 1551										+30.98	
%IMF	1-98	#+GAR Pinnacle [NHC-AMF] #GAR Precision 1680 [AMC-NHC]										\$QG	
		GAR Pinnacle 1630 +GAR Ext 2114										+29.97	
REA	1-106	+13724152 +GAR 6807 Traveler 2167 [AMF] #DHD Traveler 6807 [AMF-NHF]										\$YG	
		GAR Pierre 1322										+1.01	
FAT	1-90											\$Beef	
												+56.74	

Yet another flush sister out of the former GAR donor that has 142 at 100 for IMF and 101 for RE. This donor earned an individual ratio of 104 for both IMF and RE to rank in the top 2% of the breed for Milk, Marb and \$Beef, as well as top 10% for CW, RE and \$Grid. She is the dam of the \$5,000 Lot 80 bull in the GAR sale and produced six high quality embryos in one flush. 6056 is due to have a heifer calf August 25, 2010 sired by Objective.

Act BW		LOT 18A CHAIR ROCK 1407 ND 6044 [AMF-NHF]										Tattoo: 6044	
1-89		Birth Date: 8-16-2006 Cow +15770223											
BWR	1-109	CED	BEPD	WEPD	YEPD	YH	SC						
		+6	.26	+1.7	.30	+46	.26	+88	.23	+8	.40	+29	.05
WWR	1-121	CEM	MILK	MKH	MW	MH	SEN						
		+7	.26	+37	.28	N/A	+55	.05	+9	.05			-14.67
YWR	N/A	CW	MARB	REA	FAT					\$Weaning			
		+17	.21	+71	.25	+32	.32	+030	.24	+26.98			
Ultrasound Prod Record	N/A	#B/R New Design 036 [AMF-NHF] #VDAR New Trend 315 [AMF-NHF]										\$Feedlot	
		Bon View New Design 1407 [AMF-NHF] B/R Blackcap Empress 76										+28.71	
		#12783540 Bon View Pride 664 #+GAR Sleep Easy 1009 [AMF-NHF]										\$Grid	
		#Bon View Pride 1551										+33.10	
%IMF	N/A	#+GAR Pinnacle [NHC-AMF] #GAR Precision 1680 [AMC-NHC]										\$QG	
		GAR Pinnacle 1630 +GAR Ext 2114										+29.81	
REA	N/A	+13724152 +GAR 6807 Traveler 2167 [AMF] #DHD Traveler 6807 [AMF-NHF]										\$YG	
		GAR Pierre 1322										+3.29	
FAT	N/A											\$Beef	
												+57.52	

These four flush sisters out of the former GAR donor, Pinnacle 1630, stem from the \$30,000 GAR Pierre 1322. This female earned an individual ratio of 104 for both IMF and RE to rank in the top 2% of the breed for Milk, Marb and \$Beef, as well as top 10% for RE and \$Grid. She produced nine embryos in one flush and is due to have a heifer calf August 24, 2010 sired by Objective.



G A R 6807 Traveler 2167 - Grandam of Lots 18-18C.

**LOT 19 CHAIR ROCK 5050 GAR 8194**  
 Birth Date: 1-1-2009 Cow +16544914 Tattoo: 8194

Adj. Yrld Hip Ht	50.0	Adj. %IMF	6.72	Adj. REA Ratio	95	Adj. REA	12.0	REA Ratio	110	Adj. Rib Fat	.27	Rib Fat Ratio	104	Adj. Rump Fat	.49	Rump Fat Ratio	136	
CED		BEPD		WEPD		YEPD		YH		SC								
I+9	.05	I+2	.05	I+50	.05	I+98	.05	I+6	.41	I-32	.05							
CEM		MILK		MKH		MW		MH		SEN								
I+9	.05	I+27	.05	N/A	I+64	.05	I+1.0	.05										
CW		MARB		REA		FAT												
+18	.17	+65	.22	+62	.28	+021	.21											
												\$Weaning						
												+29.18						
												\$Feedlot						
												+37.25						
												\$Grid						
												+36.25						
												\$QG						
												+28.41						
												\$YG						
												+7.84						
												\$Beef						
												+63.57						

#B/R New Design 036 [AMF-NHF] #VDAR New Trend 315 [AMF-NHF]  
 GAR New Design 5050 [AMF-NHF] B/R Blackcap Empress 76  
 +13728513 GAR Precision 706 [NHC-AMF] #GAR Precision 1680 [AMC-NHC]  
 +GAR Ext 2114

#SAF Focus of ER [AMF-NHF] #SAF Fame [AMF-NHF]  
 GAR Focus 501 [AMF-NHF] GDAR Forever Lady 246  
 +14116251 GAR Precision 2536 [AMC-NHF] #GAR Precision 1680 [AMC-NHC]  
 +GAR Ext 2104

BW	CALV EASE	BWR	ADJ WW	WWR	ADJ YW	YWR
86	1	100	634	100	944	100

Dam's Production Record: Act BW 111-75, BWR 1-110, WWR 1-99, YWR 1-102  
 Dam's Ultrasound Production Record: %IMF 96-101, REA 97-101, FAT 97-95, RU FAT 97-93



Chair Rock 5050 GAR 8194 - Lot 19

We lead off the yearling heifers with a granddaughter of the \$7 million producer, GAR Precision 2536. She offers a balanced, breed-leading EPD profile that ranks in the top 3% of the non-parent population for RE and \$Beef, as well as top 10% for YW, Milk, \$Feedlot and \$Grid.

**LOT 20 CHAIR ROCK 5050 G A R 9000 [NHF]**  
 Birth Date: 2-9-2009 Cow 16544916 Tattoo: 9000

Adj. Yrld Hip Ht	48.0	Adj. %IMF	8.21	Adj. REA Ratio	102	Adj. REA	9.5	REA Ratio	89	Adj. Rib Fat	.23	Rib Fat Ratio	85	Adj. Rump Fat	.42	Rump Fat Ratio	95	
CED		BEPD		WEPD		YEPD		YH		SC								
N/A	N/A	I+1.3	.36	I+50	.34	I+96	.33	I+2	.23	N/A	N/A							
CEM		MILK		MKH		MW		MH		SEN								
N/A	N/A	I+34	.22	N/A	N/A	N/A	N/A	N/A										
CW		MARB		REA		FAT												
+14	.15	+93	.18	+36	.24	+023	.18											
												\$Weaning						
												+28.14						
												\$Feedlot						
												+35.20						
												\$Grid						
												+38.65						
												\$QG						
												+33.46						
												\$YG						
												+5.19						
												\$Beef						
												+62.55						

#B/R New Design 036 [AMF-NHF] #VDAR New Trend 315 [AMF-NHF]  
 GAR New Design 5050 [AMF-NHF] B/R Blackcap Empress 76  
 +13728513 GAR Precision 706 [NHC-AMF] #GAR Precision 1680 [AMC-NHC]  
 +GAR Ext 2114

#Bon View New Design 1407 [AMF-NHF] #B/R New Design 036 [AMF-NHF]  
 Chair Rock 1407 ND 7008 Bon View Pride 664  
 +15958466 +Chair Rock Future Dir 4092 [AMF] #CA Future Direction 5321 [AMC-NHC]  
 GAR New Design 3339

BW	CALV EASE	BWR	ADJ WW	WWR	ADJ YW	YWR
721	1-99	99	587	100	870	98

Dam's Production Record: Act BW 1-72, BWR 1-99, WWR 1-100, YWR 1-98  
 Dam's Ultrasound Production Record: %IMF 1-102, REA 1-89, FAT 1-85, RU FAT 1-95

This heifer's sire stack is like a Who's Who for marbling production, which explains her residing in the top 2% of the non-parent population for that valuable trait. She also ranks in the top 3% for Milk, \$Grid and \$Beef.



Chair Rock 5050 G A R 9000 - Lot 20

**LOT 21 CHAIR ROCK 5050 G A R 9012 [AMF-NHF]**  
 Birth Date: 2-16-2009 Cow +16544918 Tattoo: 9012

Adj. Yrld Hip Ht	47.7	Adj. %IMF	7.50	Adj. REA Ratio	105	Adj. REA	10.1	REA Ratio	93	Adj. Rib Fat	.19	Rib Fat Ratio	73	Adj. Rump Fat	.38	Rump Fat Ratio	106	
CED		BEPD		WEPD		YEPD		YH		SC								
I+9	.05	I+9	.05	I+49	.05	I+94	.05	I+1	.30	N/A	N/A							
CEM		MILK		MKH		MW		MH		SEN								
I+9	.05	I+33	.05	N/A	N/A	N/A	N/A	N/A										
CW		MARB		REA		FAT												
+13	.15	+85	.19	+42	.26	+015	.19											
												\$Weaning						
												+28.51						
												\$Feedlot						
												+33.56						
												\$Grid						
												+39.30						
												\$QG						
												+32.25						
												\$YG						
												+7.05						
												\$Beef						
												+62.12						

#B/R New Design 036 [AMF-NHF] #VDAR New Trend 315 [AMF-NHF]  
 GAR New Design 5050 [AMF-NHF] B/R Blackcap Empress 76  
 +13728513 GAR Precision 706 [NHC-AMF] #GAR Precision 1680 [AMC-NHC]  
 +GAR Ext 2114

#CA Future Direction 5321 [AMC-NHC] #GAR Precision 1680 [AMC-NHC]  
 Chair Rock FutureDir 5106 [AMC] CA Miss Power Fix 308 [AMF]  
 +15443835 +Chair Rock T510 Trv 2113 [AMC] #SS Traveler 6807 T510 [AMF-NHF]  
 +GAR Focus 880 [AMC]

BW	CALV EASE	BWR	ADJ WW	WWR	ADJ YW	YWR
92	1	100	531	100	830	100

Dam's Production Record: Act BW 3-84, BWR 1-108, WWR 1-117, YWR 1-108  
 Dam's Ultrasound Production Record: %IMF 3-102, REA 3-99, FAT 3-94, RU FAT 3-105

GAR New Design 5050 and Future Direction make a great combination to produce complete progeny that excel in carcass traits. This heifer ranks in the top 2% of the non-parent population for Milk and \$Grid to go along with top 4% for Marb and \$Beef.

**LOT 22 CHAIR ROCK PREDESTINED 9004 [NHF]**  
 Birth Date: 2-13-2009 Cow +16544941 Tattoo: 9004

Adj. Yrld Hip Ht	47.1	Adj. %IMF	7.15	Adj. REA Ratio	101	Adj. REA	9.8	REA Ratio	90	Adj. Rib Fat	.27	Rib Fat Ratio	104	Adj. Rump Fat	.38	Rump Fat Ratio	106	
CED		BEPD		WEPD		YEPD		YH		SC								
I+7	.05	I+4.4	.05	I+49	.05	I+89	.05	I-1	.33	I+16	.05							
CEM		MILK		MKH		MW		MH		SEN								
I+7	.05	I+28	.05	N/A	N/A	N/A	N/A	N/A										
CW		MARB		REA		FAT												
+18	.22	+97	.24	+44	.31	+030	.25											
												\$Weaning						
												+23.01						
												\$Feedlot						
												+28.55						
												\$Grid						
												+38.64						
												\$QG						
												+33.97						
												\$YG						
												+4.67						
												\$Beef						
												+63.87						

#B/R New Design 036 [AMF-NHF] #VDAR New Trend 315 [AMF-NHF]  
 GAR Predestined [AMF-NHF] B/R Blackcap Empress 76  
 #13395344 #+GAR Ext 4206 #N Bar Emulation EXT [AMF-NHF]  
 +GAR 6807 Traveler 1432

#CA Future Direction 5321 [AMC-NHC] #GAR Precision 1680 [AMC-NHC]  
 Chair Rock Future Dir 5031 [AMF] CA Miss Power Fix 308 [AMF]  
 +15443811 GAR New Design 3339 #B/R New Design 036 [AMF-NHF]  
 GAR Sleep Easy 1655

BW	CALV EASE	BWR	ADJ WW	WWR	ADJ YW	YWR
68	1	100	454	100	772	100

Dam's Production Record: Act BW 11-78, BWR 1-105, WWR 1-100, YWR 1-98  
 Dam's Ultrasound Production Record: %IMF 10-109, REA 10-98, FAT 10-97, RU FAT 9-102

An extremely high marbling female that ranks in the top 1% of the non-parent population for that valuable trait, as well as top 3% for \$Grid and \$Beef as well as 10% for Milk.

# OPEN HEIFERS

**LOT 23 CHAIR ROCK 1407 ND 9021 [NHF]**  
 Birth Date: 3-15-2009 Cow +16544850 Tattoo: 9021

Adj. Yrkg	49.8	Adj. REA	9.9	Adj. Rib Fat	37	Adj. Rump Fat	36	Adj. Fat Ratio	100		
CED	1+7	BEPD	0.05	WEPD	0.05	YEPD	0.05	YH	0.05	SC	0.05
CEM	1+8	MILK	0.05	MKH	N/A	MW	1+55	MH	0.05	SEN	0.28
CW	1+14	MARB	0.05	REA	0.31	FAT	0.032				
\$Weaning											
\$Feedlot											
\$Grid											
\$OG											
\$YG											
\$Beef											

Dam's Production Record: BWR 100, WWR 100, YWR 100  
 Dam's Ultrasound Production Record: %IMF 100, REA 554, FAT 850, RU FAT 100

A full sister to the four donors that sell in Lot 18. She stems from the \$30,000 GAR Pierre 1322, a female long known for her ability to pass marbling potential to generations that follow her. She ranks in the top 1% of the non-parent population for Milk and 10% for Marb.

**LOT 25A CHAIR ROCK OBJECTIVE 8193**  
 Birth Date: 12-26-2008 Cow +16542397 Tattoo: 8193

Adj. Yrkg	46.4	Adj. REA	10.1	Adj. Rib Fat	21	Adj. Rump Fat	24	Adj. Fat Ratio	67		
CED	1+11	BEPD	0.05	WEPD	0.05	YEPD	0.05	YH	0.43	SC	0.05
CEM	1+10	MILK	0.05	MKH	N/A	MW	1+75	MH	0.05	SEN	0.96
CW	+0	MARB	0.23	REA	0.36	FAT	0.33		0.036		0.25
\$Weaning											
\$Feedlot											
\$Grid											
\$OG											
\$YG											
\$Beef											

Dam's Production Record: BWR 65, WWR 100, YWR 573  
 Dam's Ultrasound Production Record: %IMF 100, REA 743, FAT 100

The second heifer in a choice lot of two full sisters that stem from the \$7 million producer, GAR Precision 2536. They offer a huge spread and rank in the top 4% of the non-parent population for CED, WW, YW, \$Wean, \$Feedlot and \$Grid.

**LOT 24 CHAIR ROCK 1407 ND 9009 [NHF]**  
 Birth Date: 2-15-2009 Cow +16544849 Tattoo: 9009

Adj. Yrkg	48.6	Adj. REA	8.6	Adj. Rib Fat	22	Adj. Rump Fat	26	Adj. Fat Ratio	78		
CED	1+9	BEPD	0.05	WEPD	1+45	YEPD	0.05	YH	0.36	SC	0.05
CEM	1+10	MILK	0.05	MKH	N/A	MW	N/A	MH	N/A	SEN	10.44
CW	+8	MARB	0.21	REA	0.24	FAT	0.31		0.010		0.24
\$Weaning											
\$Feedlot											
\$Grid											
\$OG											
\$YG											
\$Beef											

Dam's Production Record: BWR 75, WWR 100, YWR 428  
 Dam's Ultrasound Production Record: %IMF 100, REA 9-112, FAT 9-101, RU FAT 9-103

Eight of the 14 animals in her three-generation pedigree have qualified for Pathfinder status. This heifer ranks in the top 1% of the non-parent population for Milk, 3% for Marb and 5% for \$Grid.

**LOT 26 CHAIR ROCK OBJECTIVE 8061**  
 Birth Date: 7-26-2008 Cow 16428355 Tattoo: 8061

Adj. Yrkg	47.7	Adj. REA	4.33	Adj. Rib Fat	11.8	Adj. Rump Fat	20	Adj. Fat Ratio	87		
CED	+5	BEPD	0.30	WEPD	+3.3	YEPD	0.34	YH	+6.0	SC	+0.26
CEM	+5	MILK	0.19	MKH	+3.2	MW	0.20	MH	N/A	SEN	N/A
CW	+11	MARB	0.21	REA	0.62	FAT	0.24		0.40		0.31
\$Weaning											
\$Feedlot											
\$Grid											
\$OG											
\$YG											
\$Beef											

Dam's Production Record: BWR 88, WWR 118, YWR 668  
 Dam's Ultrasound Production Record: %IMF 100, REA 1-82, FAT 1-108, RU FAT 1-84

We lead off the bred heifers with a beautifully designed Objective daughter that stems from the former GAR donor, Pinnacle 1630. Her dam sells as Lot 50A and she ranks in the top 1% of the non-parent population for YW, Milk and \$Feedlot, 3% for WW and \$Beef, 4% for \$Grid and 10% for RE, \$Quality Grade and \$Yield Grade. This donor prospect is bred to calve October 7, 2010 to GAR New Design 5050.

**LOT 25 CHAIR ROCK OBJECTIVE 8192**  
 Birth Date: 12-26-2008 Cow +16542396 Tattoo: 8192

Adj. Yrkg	48.9	Adj. REA	9.9	Adj. Rib Fat	19	Adj. Rump Fat	23	Adj. Fat Ratio	78		
CED	1+11	BEPD	0.05	WEPD	1+58	YEPD	0.05	YH	0.43	SC	0.05
CEM	1+10	MILK	0.05	MKH	N/A	MW	1+75	MH	0.05	SEN	6.09
CW	+3	MARB	0.23	REA	0.49	FAT	0.33		0.035		0.25
\$Weaning											
\$Feedlot											
\$Grid											
\$OG											
\$YG											
\$Beef											

Dam's Production Record: BWR 88, WWR 100, YWR 499  
 Dam's Ultrasound Production Record: %IMF 100, REA 9-110, FAT 9-99, RU FAT 9-93

Offering two full sisters that stem from the \$7 million producer, GAR Precision 2536. They offer a huge spread and rank in the top 4% of the non-parent population for CED, WW, YW, \$Wean, \$Feedlot and \$Grid.



Chair Rock Objective 8061 - Lot 26

# BRED HEIFERS

**LOT 27 CHAIR ROCK OBJECTIVE 8022 [AMF-NHF]**  
 Birth Date: 2-5-2008 Cow +16046920 Tattoo: 8022

Adj. Yrld Htg Ht	46.6	Adj. %IMF	7.86
Adj. %IMF Ratio	11.9	Adj. REA	9.9
Adj. REA Ratio	97	Adj. Rib Fat	23
Adj. Rib Fat Ratio	100	Adj. Rump Fat	36
Adj. Rump Fat Ratio	115	BW	72
Calv Ease	1	BWR	100
Adj WW	493	WWR	100
Adj YW	826	YWR	100

Dam's Production Record: Act BW 4-72, BWR 1-89, WWR 1-119, YWR 1-111  
 Dam's Ultrasound Production Record: %IMF 4-102, REA 4-96, FAT 4-108, RU FAT 4-124

A full sister-in-blood to Lot 26, from the famous Blackcap family. This female ranks in the top 5% of the non-parent population for WW, YW, Milk, Marb, \$Wean, \$Feedlot and \$Grid, as well as top 10% for \$Beef. She is bred to calve October 1, 2010 to GAR New Design 5050.

**LOT 28 CHAIR ROCK PREDESTINED 8118**  
 Birth Date: 8-23-2008 Cow +16431854 Tattoo: 8118

Adj. Yrld Htg Ht	46.9	Adj. %IMF	4.90
Adj. %IMF Ratio	88	Adj. REA	10.3
Adj. REA Ratio	100	Adj. Rib Fat	16
Adj. Rib Fat Ratio	64	Adj. Rump Fat	23
Adj. Rump Fat Ratio	72	BW	87
Calv Ease	1	BWR	109
Adj WW	608	WWR	113
Adj YW	866	YWR	105

Dam's Production Record: Act BW 2-87, BWR N/A-N/A, WWR N/A-N/A, YWR N/A-N/A  
 Dam's Ultrasound Production Record: %IMF 2-95, REA 2-102, FAT 2-115, RU FAT 2-95

This heifer stems from the famous GAR Precision 2536 and has a full brother selling as Lot 174 in the GAR sale. She ranks in the top 2% of the non-parent population for \$Beef, 3% for RE and \$Grid and 10% for Marb and \$Yield Grade. This intriguing female is bred to calve November 2, 2010 to Objective.

**LOT 29 CHAIR ROCK PREDESTINED 8113 [AMF]**  
 Birth Date: 8-20-2008 Cow +16431853 Tattoo: 8113

Adj. Yrld Htg Ht	46.3	Adj. %IMF	6.14
Adj. %IMF Ratio	106	Adj. REA	10.7
Adj. REA Ratio	104	Adj. Rib Fat	15
Adj. Rib Fat Ratio	68	Adj. Rump Fat	31
Adj. Rump Fat Ratio	56	BW	96
Calv Ease	1	BWR	100
Adj WW	579	WWR	100
Adj YW	845	YWR	100

Dam's Production Record: Act BW 26-80, BWR 2-92, WWR 2-110, YWR 1-109  
 Dam's Ultrasound Production Record: %IMF 21-107, REA 21-102, FAT 21-101, RU FAT 21-96

The first of two outstanding full sisters that stem from the famous Rita 5H11. This female ranks in the top 1% of the non-parent population for Milk, Marb and \$Grid, 2% for \$Beef and 10% for RE. She is bred to calve December 22, 2010 to Objective.

**LOT 29A CHAIR ROCK PREDESTINED 8107 [AMF]**  
 Birth Date: 8-17-2008 Cow %16431850 Tattoo: 8107

Adj. Yrld Htg Ht	48.3	Adj. %IMF	5.59
Adj. %IMF Ratio	97	Adj. REA	10.5
Adj. REA Ratio	102	Adj. Rib Fat	21
Adj. Rib Fat Ratio	95	Adj. Rump Fat	19
Adj. Rump Fat Ratio	59	BW	74
Calv Ease	1	BWR	100
Adj WW	550	WWR	100
Adj YW	806	YWR	100

Dam's Production Record: Act BW 26-80, BWR 2-92, WWR 2-110, YWR 1-109  
 Dam's Ultrasound Production Record: %IMF 21-107, REA 21-102, FAT 21-101, RU FAT 21-96

The second of two flush sisters that stem from the famous Rita 5H11. This female ranks in the top 1% of the non-parent population for Milk and \$Grid, 3% for Marb and \$Beef and 10% for YW and RE. She is bred to calve January 13, 2011 to GAR Concrete.

**LOT 30 CHAIR ROCK PREDESTINED 8177 [AMF-NHF]**  
 Birth Date: 9-27-2008 Cow 16431871 Tattoo: 8177

Adj. Yrld Htg Ht	48.3	Adj. %IMF	5.36
Adj. %IMF Ratio	91	Adj. REA	10.5
Adj. REA Ratio	96	Adj. Rib Fat	16
Adj. Rib Fat Ratio	33	Adj. Rump Fat	42
Adj. Rump Fat Ratio	135	BW	70
Calv Ease	1	BWR	90
Adj WW	522	WWR	87
Adj YW	943	YWR	96

Dam's Production Record: Act BW 2-66, BWR 2-96, WWR 2-90, YWR 2-90  
 Dam's Ultrasound Production Record: %IMF 2-97, REA 2-88, FAT 2-114, RU FAT 2-103

A calving-ease specialist that ranks in the top 5% of the non-parent population for CED, CEM, CW and Marb to go along with top 10% for \$Beef. This female is bred to calve November 1, 2010 to Objective.

**LOT 31 CHAIR ROCK PREDESTINED 8165 [NHF]**  
 Birth Date: 9-13-2008 Cow +16431868 Tattoo: 8165

Adj. Yrld Htg Ht	46.9	Adj. %IMF	5.01
Adj. %IMF Ratio	87	Adj. REA	11.2
Adj. REA Ratio	109	Adj. Rib Fat	29
Adj. Rib Fat Ratio	132	Adj. Rump Fat	40
Adj. Rump Fat Ratio	125	BW	92
Calv Ease	1	BWR	100
Adj WW	526	WWR	100
Adj YW	932	YWR	100

Dam's Production Record: Act BW 15-75, BWR 2-94, WWR 2-113, YWR 2-101  
 Dam's Ultrasound Production Record: %IMF 15-96, REA 15-101, FAT 15-104, RU FAT 15-107

A female bred for strong carcass potential and power. She ranks in the top 5% of the non-parent population for CW, RE, \$Quality Grade and \$Beef to go along with top 10% for Milk and Marb. This female was bred to calve January 8, 2011 to GAR New Design 5050.

LOT 32 CHAIR ROCK PREDESTINED 8108 [AMF-NHF]													
Adj. Yrld Hip Ht		Birth Date: 8-17-2008 Cow +16431851 Tattoo: 8108											
46.3	Adi. REA	CED	BEPD	WEPD	YEPD	YH	SC						
6.32	%IMF	I+10	.05	I+1.5	.05	I+40	.05	I+78	.05	I-2	.42	I-16	.05
109	%IMF Ratio	CEM	MILK	MKH	MW	MH	SEN						
10.9	Adi. REA	I+10	.05	I+26	.05	N/A	I+15	.05	I+2	.05			+3.19
106	REA Ratio	CW	MARB	REA	FAT							\$Weaning	
145	Adi. Rib Fat	+20	.23	+71	.26	+57	.32	+028	.25				+29.43
26	Rump Fat Ratio	#B/R New Design 036 [AMF-NHF] #VDAR New Trend 315 [AMF-NHF]										\$Feedlot	
81	Adi. Rump Fat	GAR Predestined [AMF-NHF] B/R Blackcap Empress 76										+21.23	
		#13395344 #+GAR Ext 4206 #N Bar Emulation EXT [AMF-NHF]										\$Grid	
		+GAR 6807 Traveler 1432										+36.00	
		#GAR Precision 1680 [AMC-NHC] #Tehama Bando 155 [AMF-NHF]										\$QG	
		GAR Precision 2011 [AMC] 9J9 GAR 856 [NHF]										+29.81	
		+14011174 +GAR 6807 Traveler 2167 [AMF] #DHD Traveler 6807 [AMF-NHF]										\$YG	
		GAR Pierre 1322										+6.19	
												\$Beef	
												+61.06	

BW	CALV EASE	BWR	ADJ WW	WWR	ADJ YW	YWR
75	1	100	515	100	875	100
Dam's Production Record						
Act BW	BWR	WWR	YWR	%IMF	REA	FAT
78-75	2-81	2-105	2-99	71-100	71-101	71-102

Another high marbling female that stems from the famous GAR Pierre 1322. This female ranks in the top 3% of the non-parent population for RE, 5% for CEM, \$Grid, \$Quality Grade and \$Beef to go along with top 10% for CED and Marb. She is bred to calve November 1, 2010 to GAR Concrete.

LOT 34 CHAIR ROCK 1407 ND 8058													
Adj. Yrld Hip Ht		Birth Date: 7-25-2008 Cow +16431785 Tattoo: 8058											
49.7	Adi. REA	CED	BEPD	WEPD	YEPD	YH	SC						
5.69	%IMF	I+10	.05	+1.9	.36	+59	.27	+107	.27	+7	.38	I+07	.05
102	%IMF Ratio	CEM	MILK	MKH	MW	MH	SEN						
8.8	Adi. REA	I+11	.05	+28	.21	N/A	N/A	N/A	N/A	N/A			-12.03
81	REA Ratio	CW	MARB	REA	FAT							\$Weaning	
81	Adi. Rib Fat	+7	.21	+63	.24	+16	.31	+001	.24				+28.96
21	Rib Fat Ratio	#B/R New Design 036 [AMF-NHF] #VDAR New Trend 315 [AMF-NHF]										\$Feedlot	
80	Adi. Rump Fat	Bon View New Design 1407 [AMF-NHF] B/R Blackcap Empress 76										+42.99	
28	Rump Fat Ratio	#12783540 Bon View Pride 664 #GAR Sleep Easy 1009 [AMF-NHF]										\$Grid	
83	Adi. Rump Fat	+15008992 +GAR Focus 1990 [AMF] #Bon View Pride 1551										+34.34	
		#+GAR Grid Maker [AMF-NHF] #GDAR Traveler 044 [AMF-NHF]										\$QG	
		Chair Rock Grid Maker 4047 [AMF] GAR Precision 2536 [AMC-NHC]										+27.98	
		+15008992 +GAR Focus 1990 [AMF] #SAF Focus of ER [AMF-NHF]										\$YG	
		+GAR Ext 1427 [AMF]										+6.36	
												\$Beef	
												+54.79	

BW	CALV EASE	BWR	ADJ WW	WWR	ADJ YW	YWR
77	1	99	630	117	918	112
Dam's Production Record						
Act BW	BWR	WWR	YWR	%IMF	REA	FAT
27-80	2-93	2-104	1-107	26-96	26-102	26-99

Here we have a maternal sister to the \$60,000 GAR Concrete. She is a full sister to the donors selling as Lots 17 and 17A and ranks in the top 3% of the non-parent population for WW, YW, CEM and \$Feedlot, as well as top 10% for CED, Milk and \$Grid. This female is due to calve October 1, 2010 to Objective.

LOT 33 CHAIR ROCK PREDESTINED 8147													
Adj. Yrld Hip Ht		Birth Date: 9-6-2008 Cow +16431858 Tattoo: 8147											
49.3	Adi. REA	CED	BEPD	WEPD	YEPD	YH	SC						
4.96	%IMF	I+7	.05	I+3.6	.05	I+53	.05	I+94	.05	I+6	.41	I+11	.05
86	%IMF Ratio	CEM	MILK	MKH	MW	MH	SEN						
10.3	Adi. REA	I+9	.05	I+22	.05	N/A	I+26	.05	I+4	.05			+2.83
100	REA Ratio	CW	MARB	REA	FAT							\$Weaning	
22	Adi. Rib Fat	+25	.22	+66	.25	+40	.32	+035	.25				+29.47
100	Rib Fat Ratio	#B/R New Design 036 [AMF-NHF] #VDAR New Trend 315 [AMF-NHF]										\$Feedlot	
34	Adi. Rump Fat	GAR Predestined [AMF-NHF] B/R Blackcap Empress 76										+31.99	
105	Rump Fat Ratio	#13395344 #+GAR Ext 4206 #N Bar Emulation EXT [AMF-NHF]										+30.74	
		+GAR 6807 Traveler 1432										\$QG	
		#+GAR Grid Maker [AMF-NHF] #GDAR Traveler 044 [AMF-NHF]										+28.68	
		Chair Rock Grid Maker 2107 [AMF] GAR Precision 2536 [AMC-NHC]										\$YG	
		14396175 +GAR Sleep Easy 2207 [AMF] #+GAR Sleep Easy 1009 [AMF-NHF]										+2.06	
		+GAR Ext 604 [AMF-NHF]										\$Beef	
												+61.00	

BW	CALV EASE	BWR	ADJ WW	WWR	ADJ YW	YWR
90	1	100	528	100	995	100
Dam's Production Record						
Act BW	BWR	WWR	YWR	%IMF	REA	FAT
58-80	1-85	1-64	N/A-N/A	56-98	56-101	56-107

The first of two flush sisters that stem from the famous Rita 5H11 through GAR EXT 604. This female ranks in the top 5% of the non-parent population for CW and \$Beef, as well as top 10% for Marb. She is bred to calve December 21, 2010 to Objective.

LOT 35 CHAIR ROCK 5050 G A R 8127 [NHF]													
Adj. Yrld Hip Ht		Birth Date: 8-30-2008 Cow 16431937 Tattoo: 8127											
48.1	Adi. REA	CED	BEPD	WEPD	YEPD	YH	SC						
5.58	%IMF	+5	.31	+2.7	.35	+49	.26	+99	.25	+5	.37	N/A	N/A
95	%IMF Ratio	CEM	MILK	MKH	MW	MH	SEN						
10.9	Adi. REA	+5	.17	+29	.18	N/A	N/A	N/A	N/A	N/A			-10.28
100	REA Ratio	CW	MARB	REA	FAT							\$Weaning	
15	Adi. Rib Fat	+13	.15	+75	.19	+31	.25	-001	.19				+23.18
65	Rib Fat Ratio	#B/R New Design 036 [AMF-NHF] #VDAR New Trend 315 [AMF-NHF]										\$Feedlot	
22	Adi. Rump Fat	GAR New Design 5050 [AMF-NHF] B/R Blackcap Empress 76										+38.68	
71	Rump Fat Ratio	#13728513 GAR Precision 706 [NHC-AMC] #GAR Precision 1680 [AMC-NHC]										\$Grid	
		+GAR Ext 2114										+37.88	
		#Rito 112 of 2536 Rito 616 [AMF-NHF] #Rito 616 of 4B20 6807 [AMF-NHF]										\$QG	
		Chair Rock 112 Rito 6081 GAR Precision 2536 [AMC-NHC]										+30.54	
		15773545 +Chair Rock 1407 ND 4091 [NHF] #Bon View New Design 1407 [AMF-NHF]										\$YG	
		+GARLD Precision 8204 [AMF]										+7.34	
												\$Beef	
												+61.90	

BW	CALV EASE	BWR	ADJ WW	WWR	ADJ YW	YWR
78	1	105	566	94	964	99
Dam's Production Record						
Act BW	BWR	WWR	YWR	%IMF	REA	FAT
1-78	1-105	1-94	1-99	1-95	1-100	1-65

An extremely complete New Design 5050 daughter that offers a balanced set of EPDs that rank in the top 3% of the non-parent population for \$Grid and \$Beef to go along with top 10% for Marb and \$Feedlot. She is bred to calve December 23, 2010 to GAR Concrete.

LOT 33A CHAIR ROCK PREDESTINED 8157													
Adj. Yrld Hip Ht		Birth Date: 9-9-2008 Cow +16431863 Tattoo: 8157											
47.3	Adi. REA	CED	BEPD	WEPD	YEPD	YH	SC						
4.46	%IMF	I+7	.05	+5.3	.37	+49	.28	+89	.28	+1	.39	I+11	.05
80	%IMF Ratio	CEM	MILK	MKH	MW	MH	SEN						
11.1	Adi. REA	I+9	.05	+22	.21	N/A	I+26	.05	I+4	.05			+98
105	REA Ratio	CW	MARB	REA	FAT							\$Weaning	
28	Adi. Rib Fat	+20	.22	+64	.25	+46	.32	+035	.25				+20.97
112	Rib Fat Ratio	#B/R New Design 036 [AMF-NHF] #VDAR New Trend 315 [AMF-NHF]										\$Feedlot	
31	Adi. Rump Fat	GAR Predestined [AMF-NHF] B/R Blackcap Empress 76										+28.55	
97	Rump Fat Ratio	#13395344 #+GAR Ext 4206 #N Bar Emulation EXT [AMF-NHF]										\$Grid	
		+GAR 6807 Traveler 1432										+32.18	
		#+GAR Grid Maker [AMF-NHF] #GDAR Traveler 044 [AMF-NHF]										\$QG	
		Chair Rock Grid Maker 2107 [AMF] GAR Precision 2536 [AMC-NHC]										+28.20	
		14396175 +GAR Sleep Easy 2207 [AMF] #+GAR Sleep Easy 1009 [AMF-NHF]										\$YG	
		+GAR Ext 604 [AMF-NHF]										+3.98	
												\$Beef	
												+58.74	

BW	CALV EASE	BWR	ADJ WW	WWR	ADJ YW	YWR
94	1	120	529	98	911	96
Dam's Production Record						
Act BW	BWR	WWR	YWR	%IMF	REA	FAT
58-80	1-85	1-64	N/A-N/A	56-98	56-101	56-107

The second of two flush sisters that stem from the famous Rita 5H11 through GAR EXT 604. This female ranks in the top 10% of the non-parent population for CW, RE, \$Quality Grade and \$Beef. She is due to calve December 21, 2010 to Objective.



Chair Rock Predestined 8157 - Lot 33A

# BRED HEIFERS

Lot 36 CHAIR ROCK 5050 G A R 8138														
Adj. Yrld Hip Ht		Birth Date: 9-4-2008		Cow 16431942		Tattoo: 8138								
Adj. %IMF	Adj. %IMF Ratio	CED	BEPD	WEPD	YEPD	YH	SC							
44.7	5.59	+12	-.30	-.9	.34	+44	.25	+89	.24	+1	.35	N/A	N/A	
CEM		MILK		MKH		MW		MH		SEN				
+10		.17		+.27		N/A		N/A		N/A		-4.91		
CW		MARB		REA		FAT								
+13		.16		+.62		.20		+.86		.26		+.010 .19		
#B/R New Design 036 [AMF-NHF] #VDAR New Trend 315 [AMF-NHF] GAR New Design 5050 [AMF-NHF] B/R Blackcap Empress 76 +13728513 GAR Precision 706 [NHC-AMF] #GAR Precision 1680 [AMC-NHC] +GAR Ext 2114														
#GAR Retail Product [AMF-NHF] #GAR Precision 1680 [AMC-NHC] ChairRock RetailProduct 6109 +GAR Ext 4927 +15773561 +GAR Focus 501 [AMF-NHF] #SAF Focus of ER [AMF-NHF] GAR Precision 2536 [AMC-NHF]														
\$Weaning		\$Feedlot		\$Grid		\$QG		\$YG		\$Beef				
+27.64		+30.48		+39.93		+27.72		+12.21		+61.90				

BW	CALV EASE	BWR	ADJ WW	WWR	ADJ YW	YWR	
60	1	83	503	84	844	86	
Dam's Production Record			Dam's Ultrasound Production Record				
Act BW	BWR	WWR	YWR	%IMF	REA	FAT	RU FAT
1-60	1-83	1-84	1-86	1-95	1-121	1-96	1-81

The dam of this heifer, who stems from the famous GAR Precision 2536, sells as Lot 53C. This female ranks in the top 1% of the non-parent population for RE and \$Yield Grade, 2% for CED and \$Grid, 5% for CEM and \$Beef and 10% for BW. She is bred to calve December 22, 2010 to Objective.

Lot 39 CHAIR ROCK 5050 G A R 8134														
Adj. Yrld Hip Ht		Birth Date: 9-2-2008		Cow +16431941		Tattoo: 8134								
Adj. %IMF	Adj. %IMF Ratio	CED	BEPD	WEPD	YEPD	YH	SC							
48.7	5.34	+8	.05	+.3	.36	+44	.27	+92	.26	+2	.38	-	.54	.05
CEM		MILK		MKH		MW		MH		SEN				
+10		.05		+.36		N/A		N/A		N/A		-14.72		
CW		MARB		REA		FAT								
+8		.16		+.80		.20		+.41		.27		+.021 .20		
#B/R New Design 036 [AMF-NHF] #VDAR New Trend 315 [AMF-NHF] GAR New Design 5050 [AMF-NHF] B/R Blackcap Empress 76 +13728513 GAR Precision 706 [NHC-AMF] #GAR Precision 1680 [AMC-NHC] +GAR Ext 2114														
#Bon View New Design 1407 [AMF-NHF] #B/R New Design 036 [AMF-NHF] Chair Rock 1407 ND 2106 [AMF] Bon View Pride 664 +14405744 +GAR Sleep Easy 1328 #+GAR Sleep Easy 1009 [AMF-NHF] +GAR 6807 Traveler 504														
\$Weaning		\$Feedlot		\$Grid		\$QG		\$YG		\$Beef				
+26.12		+33.50		+38.64		+31.44		+7.20		+57.47				

BW	CALV EASE	BWR	ADJ WW	WWR	ADJ YW	YWR	
71	1	91	506	94	980	103	
Dam's Production Record			Dam's Ultrasound Production Record				
Act BW	BWR	WWR	YWR	%IMF	REA	FAT	RU FAT
28-76	2-109	2-115	2-105	23-102	23-99	23-95	22-98

The first of two flush sisters produced in the Chair Rock ET program. This female ranks in the top 5% of the non-parent population for Milk, Marb and \$Grid, as well as top 10% for \$Beef. She is bred to calve October 2, 2010 to Objective.



Chair Rock 5050 G A R 8134 - Lot 39

Lot 37 CHAIR ROCK 5050 G A R 8182 [NHF]														
Adj. Yrld Hip Ht		Birth Date: 9-29-2008		Cow 16431952		Tattoo: 8182								
Adj. %IMF	Adj. %IMF Ratio	CED	BEPD	WEPD	YEPD	YH	SC							
46.8	5.66	+14	.31	-1.2	.35	+53	.26	+97	.25	+2	.37	N/A	N/A	
CEM		MILK		MKH		MW		MH		SEN				
+10		.17		+.32		N/A		N/A		N/A		-12.30		
CW		MARB		REA		FAT								
+12		.15		+.76		.19		+.57		.26		+.022 .19		
#B/R New Design 036 [AMF-NHF] #VDAR New Trend 315 [AMF-NHF] GAR New Design 5050 [AMF-NHF] B/R Blackcap Empress 76 +13728513 GAR Precision 706 [NHC-AMF] #GAR Precision 1680 [AMC-NHC] +GAR Ext 2114														
#SS Objective T510 OT26 [AMF-NHF] #SS Traveler 6807 T510 [AMF-NHF] Chair Rock Objective 6133 [AMF] SS Miss Rita R011 7R8 [AMF-NHF] 15770259 Chair Rock Future Dir 4105 [AMC] #CA Future Direction 5321 [AMC-NHC] #+GAR New Design 2600														
\$Weaning		\$Feedlot		\$Grid		\$QG		\$YG		\$Beef				
+32.19		+35.03		+38.92		+30.74		+8.18		+61.25				

BW	CALV EASE	BWR	ADJ WW	WWR	ADJ YW	YWR	
61	1	84	614	102	918	95	
Dam's Production Record			Dam's Ultrasound Production Record				
Act BW	BWR	WWR	YWR	%IMF	REA	FAT	RU FAT
1-61	1-84	1-102	1-95	1-96	1-111	1-135	1-106

A female that leads the breed for calving-ease yet still remains in the top 15% for WW and YW. She ranks in the top 3% of the non-parent population for CED, BW, Milk, \$Wean and \$Grid, 5% for CEM, RE and \$Beef, as well as top 10% for Marb. This interesting heifer is bred to calve January 8, 2011 to GAR Prediction.

Lot 38 CHAIR ROCK 5050 G A R 8056														
Adj. Yrld Hip Ht		Birth Date: 7-25-2008		Cow 16431925		Tattoo: 8056								
Adj. %IMF	Adj. %IMF Ratio	CED	BEPD	WEPD	YEPD	YH	SC							
46.7	4.88	+7	.30	+1.3	.34	+48	.25	+96	.25	+2	.36	N/A	N/A	
CEM		MILK		MKH		MW		MH		SEN				
+7		.17		+.34		N/A		N/A		N/A		-13.96		
CW		MARB		REA		FAT								
+12		.16		+.72		.19		+.34		.26		+.023 .19		
#B/R New Design 036 [AMF-NHF] #VDAR New Trend 315 [AMF-NHF] GAR New Design 5050 [AMF-NHF] B/R Blackcap Empress 76 +13728513 GAR Precision 706 [NHC-AMF] #GAR Precision 1680 [AMC-NHC] +GAR Ext 2114														
#Bon View New Design 1407 [AMF-NHF] #B/R New Design 036 [AMF-NHF] Chair Rock 1407 ND 6099 [AMF-NHF] Bon View Pride 664 +15770247 +GAR Pinnacle 2000 #+GAR Pinnacle [NHC-AMF] +GAR 6807 Traveler 2167 [AMF]														
\$Weaning		\$Feedlot		\$Grid		\$QG		\$YG		\$Beef				
+26.73		+35.99		+35.29		+29.97		+5.32		+57.89				

BW	CALV EASE	BWR	ADJ WW	WWR	ADJ YW	YWR	
75	1	101	605	101	899	101	
Dam's Production Record			Dam's Ultrasound Production Record				
Act BW	BWR	WWR	YWR	%IMF	REA	FAT	RU FAT
1-75	1-101	1-101	1-101	1-83	1-88	1-87	1-90

The dam of this heifer sells as Lot 58B. This female ranks in the top 1% of the non-parent population for Milk and 10% for Marb, \$Grid and \$Beef. 8056 is bred to calve January 10, 2011 to GAR Concrete.

Lot 39A CHAIR ROCK 5050 G A R 8129														
Adj. Yrld Hip Ht		Birth Date: 8-30-2008		Cow +16431938		Tattoo: 8129								
Adj. %IMF	Adj. %IMF Ratio	CED	BEPD	WEPD	YEPD	YH	SC							
47.1	5.36	+8	.05	+.2	.36	+35	.27	+80	.25	+2	.35	-	.54	.05
CEM		MILK		MKH		MW		MH		SEN				
+10		.05		+.36		N/A		N/A		N/A		-11.04		
CW		MARB		REA		FAT								
+4		.16		+.80		.20		+.46		.27		+.036 .20		
#B/R New Design 036 [AMF-NHF] #VDAR New Trend 315 [AMF-NHF] GAR New Design 5050 [AMF-NHF] B/R Blackcap Empress 76 +13728513 GAR Precision 706 [NHC-AMF] #GAR Precision 1680 [AMC-NHC] +GAR Ext 2114														
#Bon View New Design 1407 [AMF-NHF] #B/R New Design 036 [AMF-NHF] Chair Rock 1407 ND 2106 [AMF] Bon View Pride 664 +14405744 +GAR Sleep Easy 1328 #+GAR Sleep Easy 1009 [AMF-NHF] +GAR 6807 Traveler 504														
\$Weaning		\$Feedlot		\$Grid		\$QG		\$YG		\$Beef				
+23.36		+25.04		+38.30		+31.44		+6.86		+51.40				

BW	CALV EASE	BWR	ADJ WW	WWR	ADJ YW	YWR	
70	1	88	407	76	860	88	
Dam's Production Record			Dam's Ultrasound Production Record				
Act BW	BWR	WWR	YWR	%IMF	REA	FAT	RU FAT
28-76	2-109	2-115	2-105	23-102	23-99	23-95	22-98

The second of two flush sisters produced in the Chair Rock ET program. This female ranks in the top 3% of the non-parent population for Milk, \$Grid and \$Quality Grade, as well as top 10% for Marb and RE. She is bred to calve August 4, 2010 to GAR Concrete.

# BRED HEIFERS

**LOT 40 CHAIR ROCK OBJECTIVE 8072**  
 Birth Date: 8-9-2008 Cow 16428359 Tattoo: 8072

Adj. Yrld Hip Ht	47.5	Adj. REA Ratio	10.3
Adj. %IMF Ratio	5.92	Adj. Rib Fat	99
Adj. REA Ratio	10.3	Adj. Rib Fat	99
Adj. Rump Fat	37	Adj. Fat Ratio	119

CED	BEPD	WEPD	YEPD	YH	SC
+13	.31	-.5	+.52	.26	+98
.25	+.5	.35	N/A	N/A	N/A
CEM	MILK	MKH	MW	MH	SEN
+.8	-.18	+.27	-.19	N/A	N/A
N/A	N/A	N/A	N/A	N/A	N/A
-.8	.06				
CW	MARB	REA	FAT		
+.1	.21	+.65	.23	+.37	.30
-.012					.24

**\$Weaning** +29.78  
**\$Feedlot** +36.45  
**\$Grid** +39.35  
**\$QG** +28.41  
**\$YG** +10.94  
**\$Beef** +52.42

#SS Traveler 6807 T510 [AMF-NHF] #DHD Traveler 6807 [AMF-NHF]  
 SS Objective T510 OT26 [AMF-NHF] #SS Miss Hi Spade A114  
 #13776378 SS Miss Rita R011 7R8 [AMF-NHF] SS Rito Rito R76 R011  
 SS Miss Ultrass U56

GAR Solution [AMC-NHF] #SS Traveler 6807 T510 [AMF-NHF]  
 GAR Solution 586 [AMF-NHF] +GAR New Design 50  
 15478551 +GAR 1407 New Design 143 [AMC-NHF] #Bon View New Design 1407 [AMF-NHF]  
 +GAR Precision 1660 [AMC-NHC]

BW	CALV EASE	BWR	ADJ WW	WWR	ADJ YW	YWR
70	1	95	559	93	908	94

Dam's Production Record: Act BW 2-66, BWR 1-95, WWR 1-93, YWR 1-94  
 Dam's Ultrasound Production Record: %IMF 2-105, REA 2-93, FAT 2-84, RU FAT 2-110

A big spread female stems from the famous GAR Precision 1660. Her dam sells as Lot 63 today and she ranks in the top 1% of the non-parent population for CED and \$Grid, 2% for \$Yield Grade and 10% for BW, YW, Milk, Marb and \$Feedlot. She is bred to calve November 1, 2010 to GAR Prediction.

**LOT 41 CHAIR ROCK OBJECTIVE 8146 [AMF-NHF]**  
 Birth Date: 9-6-2008 Cow +16570069 Tattoo: 8146

Adj. Yrld Hip Ht	45.8	Adj. REA Ratio	9.7
Adj. %IMF Ratio	7.22	Adj. Rib Fat	94
Adj. REA Ratio	9.7	Adj. Rib Fat	94
Adj. Rump Fat	44	Adj. Fat Ratio	138

CED	BEPD	WEPD	YEPD	YH	SC
I+9	.05	I+1.8	.05	I+58	.05
I+102	.05	I-2	.32	I-23	.05
CEM	MILK	MKH	MW	MH	SEN
I+9	.05	I+24	.05	N/A	N/A
N/A	N/A	N/A	N/A	N/A	N/A
-.5	.88				
CW	MARB	REA	FAT		
-.1	.21	+.75	.24	+.37	.30
+.002					.24

**\$Weaning** +30.24  
**\$Feedlot** +38.18  
**\$Grid** +40.51  
**\$QG** +30.54  
**\$YG** +9.97  
**\$Beef** +52.05

#SS Traveler 6807 T510 [AMF-NHF] #DHD Traveler 6807 [AMF-NHF]  
 SS Objective T510 OT26 [AMF-NHF] #SS Miss Hi Spade A114  
 #13776378 SS Miss Rita R011 7R8 [AMF-NHF] SS Rito Rito R76 R011  
 SS Miss Ultrass U56

#CA Future Direction 5321 [AMC-NHC] #GAR Precision 1680 [AMC-NHC]  
 Chair Rock Future Dir 5014 CA Miss Power Fix 308 [AMF]  
 +15443806 GAR Grid Maker 2662 [AMF] #+GAR Grid Maker [AMF-NHF]  
 #+GAR 6148 Emulation 678 [AMF]

BW	CALV EASE	BWR	ADJ WW	WWR	ADJ YW	YWR
78	1	100	441	100	795	100

Dam's Production Record: Act BW 3-75, BWR 1-108, WWR 1-107, YWR 1-107  
 Dam's Ultrasound Production Record: %IMF 3-114, REA 3-107, FAT 3-103, RU FAT 3-115

A full sister to the Lot 192 bull is the GAR sale. She ranks in the top 5% of the non-parent population for WW, YW, Marb and \$Grid, as well as top 10% for \$Wean, \$Feedlot and \$Yield Grade. This female is bred to calve October 23, 2010 to GAR Prediction.

**LOT 42 CHAIR ROCK OBJECTIVE 8071 [NHF]**  
 Birth Date: 8-9-2008 Cow 16428358 Tattoo: 8071

Adj. Yrld Hip Ht	47.1	Adj. REA Ratio	9.7
Adj. %IMF Ratio	5.20	Adj. Rib Fat	89
Adj. REA Ratio	9.7	Adj. Rib Fat	89
Adj. Rump Fat	34	Adj. Fat Ratio	110

CED	BEPD	WEPD	YEPD	YH	SC
+10	.30	+.6	+.34	+.54	.25
+.99	.25	+.3	.36	N/A	N/A
CEM	MILK	MKH	MW	MH	SEN
+.9	.19	+.30	.20	N/A	N/A
N/A	N/A	N/A	N/A	N/A	N/A
-11	.07				
CW	MARB	REA	FAT		
+.0	.21	+.64	.24	+.18	.30
-.010					.24

**\$Weaning** +30.35  
**\$Feedlot** +36.68  
**\$Grid** +37.12  
**\$QG** +28.20  
**\$YG** +8.92  
**\$Beef** +49.19

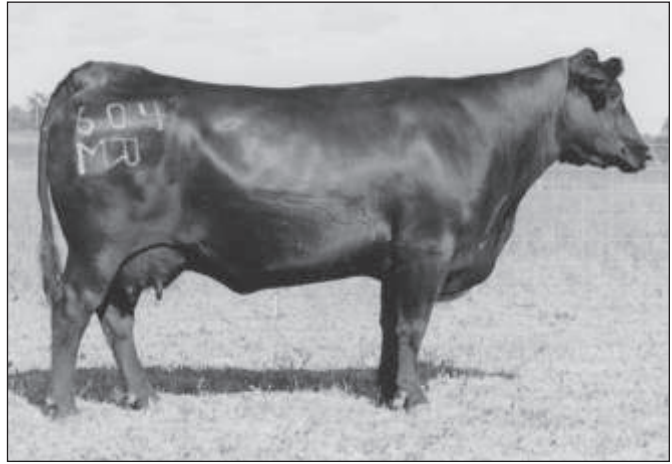
#SS Traveler 6807 T510 [AMF-NHF] #DHD Traveler 6807 [AMF-NHF]  
 SS Objective T510 OT26 [AMF-NHF] #SS Miss Hi Spade A114  
 #13776378 SS Miss Rita R011 7R8 [AMF-NHF] SS Rito Rito R76 R011  
 SS Miss Ultrass U56

#Bon View New Design 1407 [AMF-NHF] #B/R New Design 036 [AMF-NHF]  
 Chair Rock 1407 ND 6106 [AMF] Bon View Pride 664  
 +15770249 +GAR Pinnacle 2000 #+GAR Pinnacle [NHC-AMF]  
 +GAR 6807 Traveler 2167 [AMF]

BW	CALV EASE	BWR	ADJ WW	WWR	ADJ YW	YWR
70	1	95	583	97	858	96

Dam's Production Record: Act BW 1-70, BWR 1-95, WWR 1-97, YWR 1-96  
 Dam's Ultrasound Production Record: %IMF 1-88, REA 1-89, FAT 1-78, RU FAT 1-110

It is interesting to note that this female ranks in the top 10% of the non-parent population for both CED and YW. She also ranks in the top 2% for Milk, 4% for \$Grid and 10% for \$Wean, \$Feedlot, \$Quality Grade and \$Yield Grade. This female is bred to calve September 14, 2010 to GAR Prediction.



G A R Ext 604 - Great-grandam of Lot 43.

**LOT 43 CHAIR ROCK OBJECTIVE 8054**  
 Birth Date: 7-23-2008 Cow +16428351 Tattoo: 8054

Adj. Yrld Hip Ht	48.1	Adj. REA Ratio	9.3
Adj. %IMF Ratio	5.37	Adj. Rib Fat	19
Adj. REA Ratio	9.3	Adj. Rib Fat	19
Adj. Rump Fat	34	Adj. Fat Ratio	106

CED	BEPD	WEPD	YEPD	YH	SC
I+10	.05	+.2.3	.36	+.64	.27
+.110	.26	+.4	.37	+.18	.05
CEM	MILK	MKH	MW	MH	SEN
I+11	.05	+.24	.21	N/A	N/A
N/A	N/A	N/A	N/A	N/A	N/A
-8	.96				
CW	MARB	REA	FAT		
+.1	.21	+.50	.24	+.15	.30
-.020					.24

**\$Weaning** +30.21  
**\$Feedlot** +44.11  
**\$Grid** +33.79  
**\$QG** +24.50  
**\$YG** +9.29  
**\$Beef** +49.03

#SS Traveler 6807 T510 [AMF-NHF] #DHD Traveler 6807 [AMF-NHF]  
 SS Objective T510 OT26 [AMF-NHF] #SS Miss Hi Spade A114  
 #13776378 SS Miss Rita R011 7R8 [AMF-NHF] SS Rito Rito R76 R011  
 SS Miss Ultrass U56

#+GAR Grid Maker [AMF-NHF] #GDAR Traveler 044 [AMF-NHF]  
 Chair Rock Grid Maker 4125 GAR Precision 2536 [AMC-NHF]  
 15009008 +GAR Steep Easy 2207 [AMF] #+GAR Sleep Easy 1009 [AMF-NHF]  
 +GAR Ext 604 [AMF-NHF]

BW	CALV EASE	BWR	ADJ WW	WWR	ADJ YW	YWR
80	1	100	607	113	903	110

Dam's Production Record: Act BW 7-71, BWR 2-73, WWR 2-94, YWR 2-93  
 Dam's Ultrasound Production Record: %IMF 9-91, REA 9-96, FAT 9-84, RU FAT 9-89

A female that has the rare ability to excel at calving-ease and growth. This female ranks in the top 1% of the non-parent population for WW and YW, 2% for CEM and \$Feedlot and 10% for CED, \$Wean, \$Grid and \$Yield Grade. She is bred to calve August 6, 2010 to GAR Prediction.



Chair Rock Objective 8071 - Lot 42



# BRED HEIFERS

**LOT 44 CHAIR ROCK OBJECTIVE 8183**  
 Birth Date: 9-29-2008 Cow 16428379 Tattoo: 8183

Act BW	47.3											
BWR	1-106											
WWR	1-100											
YWR	1-97											
Ultrasound Prod Record	1-87											
%IMF	5.35											
REA	9.9											
Rib Fat	91											
Rump Fat	78											
Rump Fat Ratio	115											

CED	BEPD	WEPD	YEPD	YH	SC						
+9	.30	+1.5	.34	+56	.25	+102	.25	+5	.36	N/A	N/A
CEM	MILK	MKH	MW	MH	SEN						
+8	.19	+24	.20	N/A	N/A	N/A	N/A	N/A	N/A	-6.51	
CW	MARB	REA	FAT								
+6	.21	+41	.24	+12	.30	-.013	.24				

#SS Traveler 6807 T510 [AMF-NHF] #DHD Traveler 6807 [AMF-NHF]  
 SS Objective T510 OT26 [AMF-NHF] #SS Miss Hi Spade A114  
 #13776378 SS Miss Rita R011 7R8 [AMF-NHF] SS Rito Rito R76 R011  
 SS Miss Ultrass U56

#GAR Retail Product [AMF-NHF] #GAR Precision 1680 [AMC-NHC]  
 ChairRock RetailProduct 6126 +GAR Ext 4927  
 +15773572 GAR Commitment 979 #GAR Commitment [AMF]  
 +GAR Max 264

\$Weaning	+28.84
\$Feedlot	+38.98
\$Grid	+29.15
\$QG	+21.69
\$YG	+7.46
\$Beef	+47.60

BW	74	CALV EASE	1	BWR	100	ADJ WW	586	WWR	98	ADJ YW	927	YWR	96
----	----	-----------	---	-----	-----	--------	-----	-----	----	--------	-----	-----	----

Dam's Production Record: BWR 1-100, WWR 1-98, YWR 1-96  
 Dam's Ultrasound Production Record: %IMF 1-91, REA 1-91, FAT 1-78, RU FAT 1-113

This heifer offers a nice spread from birth to yearling and a pedigree loaded with maternal strength. She ranks in the top 5% of the non-parent population for YW and 10% for WW and \$Feedlot. This female is bred to calve January 10, 2011 to GAR Prediction.



GAR Focus 501 - One of our great foundation donors whose influence is spread all through this event.



# BRED COWS

**LOT 45 CHAIR ROCK 5050 G A R 6053 [AMF]**  
 Birth Date: 8-18-2006 Cow +15773536 Tattoo: 6053

Act BW	1-90											
BWR	1-110											
WWR	1-116											
YWR	1-107											
Ultrasound Prod Record	1-89											
%IMF	1-89											
REA	1-97											
FAT	1-103											
RU FAT	1-79											

CED	BEPD	WEPD	YEPD	YH	SC						
+5	.25	+2.9	.27	+51	.23	+90	.22	+6	.40	-.06	.27
CEM	MILK	MKH	MW	MH	SEN						
+7	.22	+28	.25	N/A	I+54	.05	I+.8	.05		-6.09	
CW	MARB	REA	FAT								
+17	.16	+62	.21	+39	.27	+015	.20				

#B/R New Design 036 [AMF-NHF] #VDAR New Trend 315 [AMF-NHF]  
 GAR New Design 5050 [AMF-NHF] B/R Blackcap Empress 76  
 +13728513 GAR Precision 706 [NHC-AMF] #GAR Precision 1680 [AMC-NHC]  
 +GAR Ext 2114

#Finks 5522-6148 #Emulation N Bar 5522  
 GAR 6148 Emulation 678 [AMF] Finks Proud Formera 614  
 #+13259102 +GAR Sleep Easy 1074 #+GAR Sleep Easy 1009 [AMF-NHF]  
 +GAR Scotch Cap 199 [AMF]

\$Weaning	+27.28
\$Feedlot	+28.77
\$Grid	+33.68
\$QG	+27.72
\$YG	+5.96
\$Beef	+58.12

Leading off the bred cow division we have a female that earned an individual RE ratio of 104 to be part of her dam's production record of 19 at 104 for RE. This female ranks in the top 2% of the breed for \$Beef and 10% for WW, YW, Milk, CW, Marb, RE, \$Feedlot and \$Grid. She is due to have a heifer calf September 15, 2010 sired by GAR Concrete.

**LOT 45A CHAIR ROCK 5050 G A R 6039 [AMF]**  
 Birth Date: 8-14-2006 Cow +15773530 Tattoo: 6039

Act BW	1-87											
BWR	1-106											
WWR	1-100											
YWR	1-97											
Ultrasound Prod Record	1-85											
%IMF	1-100											
REA	1-85											
FAT	1-87											
RU FAT	1-64											

CED	BEPD	WEPD	YEPD	YH	SC						
+5	.25	+2.8	.27	+47	.23	+85	.22	+2	.40	-.08	.27
CEM	MILK	MKH	MW	MH	SEN						
+7	.22	+23	.25	N/A	I+54	.05	I+.8	.05		+1.14	
CW	MARB	REA	FAT								
+11	.16	+68	.21	+34	.27	+006	.20				

#B/R New Design 036 [AMF-NHF] #VDAR New Trend 315 [AMF-NHF]  
 GAR New Design 5050 [AMF-NHF] B/R Blackcap Empress 76  
 +13728513 GAR Precision 706 [NHC-AMF] #GAR Precision 1680 [AMC-NHC]  
 +GAR Ext 2114

#Finks 5522-6148 #Emulation N Bar 5522  
 GAR 6148 Emulation 678 [AMF] Finks Proud Formera 614  
 #+13259102 +GAR Sleep Easy 1074 #+GAR Sleep Easy 1009 [AMF-NHF]  
 +GAR Scotch Cap 199 [AMF]

\$Weaning	+25.39
\$Feedlot	+25.38
\$Grid	+36.48
\$QG	+29.14
\$YG	+7.34
\$Beef	+55.78

A flush sister to the lead-off bred cow. She is the dam of the \$3,250 Lot 285 bull in the GAR sale and comes from a dam that has 19 at 104 for RE. This female ranks in the top 3% of the breed for Marb, \$Grid and \$Beef, as well as top 10% for RE. She is due to have a bull calf September 15, 2010 sired by Objective.

**LOT 46 CHAIR ROCK 5050 G A R 6021 [AMF-NHF]**  
 Birth Date: 7-24-2006 Cow 15773525 Tattoo: 6021

Act BW	1-84											
BWR	1-102											
WWR	1-106											
YWR	1-106											
Ultrasound Prod Record	1-83											
%IMF	1-83											
REA	1-104											
FAT	1-97											
RU FAT	1-103											

CED	BEPD	WEPD	YEPD	YH	SC						
+10	.31	+6	.35	+46	.26	+93	.26	+4	.38	+10	.23
CEM	MILK	MKH	MW	MH	SEN						
+9	.20	+33	.23	N/A	N/A	N/A	N/A	N/A	N/A	-12.22	
CW	MARB	REA	FAT								
+22	.16	+53	.20	+46	.26	+027	.19				

#B/R New Design 036 [AMF-NHF] #VDAR New Trend 315 [AMF-NHF]  
 GAR New Design 5050 [AMF-NHF] B/R Blackcap Empress 76  
 +13728513 GAR Precision 706 [NHC-AMF] #GAR Precision 1680 [AMC-NHC]  
 +GAR Ext 2114

#CA Future Direction 5321 [AMC-NHC] #GAR Precision 1680 [AMC-NHC]  
 Chair Rock Future Dir 4010 CA Miss Power Fix 308 [AMF]  
 +15005922 +GAR Neutron 1189 [AMF] #+GAR Neutron [AMF-NHF]  
 +GAR Ext 344 [AMF-NHF]

\$Weaning	+26.72
\$Feedlot	+33.72
\$Grid	+29.93
\$QG	+25.40
\$YG	+4.53
\$Beef	+58.76

Check out the spread this female offers; she is a breed leader for CED and YW. 6021 is the dam of the \$5,000 Lot 150 bull in the GAR sale and ranks in the top 2% of the breed for Milk and \$Beef, 5% for CED, CW, RE and \$Feedlot to go along with top 10% for YW. She is due to have a heifer calf September 15, 2010 sired by GAR Predestined.



Chair Rock 5050 G A R 6053 - Lot 45

Act BW		LOT 47 CHAIR ROCK 111 RITO 6093											Tattoo: 6093	
1-76		Birth Date: 9-6-2006 Cow 15771745												
BWR	1-94	CED	BEPD	WEPD	YEPD	YH	SC							
+4	.30	+2.5	.33	+52	.25	+101	.25	+1	.34	-.09	.25			
WWR	1-107	CEM	MILK	MKH	MW	MH	SEN							
+4	.22	+24	.25	N/A	N/A	N/A	N/A					-5.84		
YWR	1-109	CW	MARB	REA	FAT							\$Weaning		
+15	.15	+.44	.19	+.20	.24	-.023	.18						+24.69	
Ultrasound Prod Record	%IMF	REA											\$Feedlot	
	1-92												+39.55	
RE	1-104	FAT											\$Grid	
													+30.46	
RU FAT	1-92	\$Beef											\$QG	
													+22.66	
													+7.80	
													+56.21	

A high growth 111 daughter. This female comes from a dam that has 13 at 100 for IMF and 103 for RE and ranks in the top 5% of the breed for WW, YW and \$Feedlot as well as top 10% for \$Grid and \$Beef. She is due to have a bull calf October 2, 2010 sired by GAR New Design 5050.

Act BW		LOT 49 CHAIR ROCK 1407 ND 6086 [AMF-NHF]											Tattoo: 6086	
1-81		Birth Date: 9-5-2006 Cow +15770240												
BWR	1-100	CED	BEPD	WEPD	YEPD	YH	SC							
+9	.26	+1.9	.36	+45	.28	+88	.27	+6	.39	+.30	.30			
WWR	1-97	CEM	MILK	MKH	MW	MH	SEN							
+9	.25	+24	.28	N/A	I+33	.05	I+.8	.05					-1.23	
YWR	1-106	CW	MARB	REA	FAT							\$Weaning		
+16	.22	+.64	.25	+.37	.32	+.024	.24						+25.60	
Ultrasound Prod Record	%IMF	REA											\$Feedlot	
	1-116												+29.09	
RE	1-108	FAT											\$Grid	
													+33.04	
RU FAT	1-123	\$Beef											\$QG	
													+28.20	
													+4.84	
													+57.01	

A female that earned individual ratios of 108 for IMF and 113 for RE, while her dam, a former GAR donor, has an astounding 110 at 101 for RE. This female produced the \$4,500 Lot 146 bull in the GAR sale and ranks in the top 2% of the breed for \$Beef, 4% for Marb and 10% for RE and \$Grid. She is due to have a bull calf August 23, 2010 sired by GAR Concrete.

Act BW		LOT 48 CHAIR ROCK 111 RITO 6045											Tattoo: 6045	
1-77		Birth Date: 8-16-2006 Cow +15771742												
BWR	1-94	CED	BEPD	WEPD	YEPD	YH	SC							
+7	.24	+3.0	.28	+.44	.24	+83	.22	+2	.40	-72	.28			
WWR	1-86	CEM	MILK	MKH	MW	MH	SEN							
+9	.23	+19	.26	N/A	I+65	.05	I+.3	.05					+3.92	
YWR	1-91	CW	MARB	REA	FAT							\$Weaning		
+21	.16	+.43	.20	+.32	.27	-.002	.19						+22.04	
Ultrasound Prod Record	%IMF	REA											\$Feedlot	
	1-79												+24.56	
RE	1-93	FAT											\$Grid	
													+28.47	
RU FAT	1-90	\$Beef											\$QG	
													+22.33	
													+6.14	
													+54.81	

This is a powerfully-made 111 daughter that earned individual ultrasound ratios of 109 for IMF and 113 for RE to be part of her dam's production record of 21 at 104 for IMF and 105 for RE. This female ranks in the top 3% of the breed for \$Beef, 5% for CW and 10% for RE. She is due to have a heifer calf August 24, 2010 sired by GAR Concrete.

Act BW		LOT 50 CHAIR ROCK 1407 ND 6035 [AMF-NHF]											Tattoo: 6035	
1-80		Birth Date: 8-14-2006 Cow +15770218												
BWR	1-97	CED	BEPD	WEPD	YEPD	YH	SC							
+7	.26	+1.3	.30	+.41	.26	+83	.24	+.4	.41	+.25	.31			
WWR	1-94	CEM	MILK	MKH	MW	MH	SEN							
+8	.26	+31	.28	N/A	I+55	.05	I+.9	.05					-7.14	
YWR	1-98	CW	MARB	REA	FAT							\$Weaning		
+16	.22	+.73	.25	+.52	.32	+.039	.25						+25.43	
Ultrasound Prod Record	%IMF	REA											\$Feedlot	
	1-117												+25.69	
RE	1-115	FAT											\$Grid	
													+35.14	
RU FAT	1-100	\$Beef											\$QG	
													+30.15	
													+4.99	
													+58.23	

The first of five full sisters out of the former GAR donor, Pinnacle 1630, who has 142 at 100 for IMF and 101 for RE. This female produced the \$4,250 Lot 243 bull in the GAR sale and earned an individual RE ratio of 124 to rank in the top 1% of the breed for RE, 2% for Marb and \$Beef and 3% for \$Grid. She is due to calve November 2, 2010 to Objective.



Chair Rock 111 Rito 6045 - Lot 48

Act BW		LOT 50A CHAIR ROCK 1407 ND 6061 [AMF-NHF]											Tattoo: 6061	
1-83		Birth Date: 8-19-2006 Cow +15770233												
BWR	1-118	CED	BEPD	WEPD	YEPD	YH	SC							
+5	.26	+2.0	.30	+.44	.26	+87	.24	+5	.41	I+.29	.05			
WWR	1-111	CEM	MILK	MKH	MW	MH	SEN							
+6	.26	+34	.28	N/A	I+55	.05	I+.9	.05					-11.18	
YWR	1-115	CW	MARB	REA	FAT							\$Weaning		
+17	.22	+.68	.25	+.34	.32	+.033	.25						+25.40	
Ultrasound Prod Record	%IMF	REA											\$Feedlot	
	1-82												+28.49	
RE	1-108	FAT											\$Grid	
													+32.34	
RU FAT	1-84	\$Beef											\$QG	
													+29.14	
													+3.20	
													+56.71	

If you want to see the producing power of this female be sure to check out her daughter who sells as Lot 26 in this event. 6061 earned individual ultrasound ratios of 101 for IMF and 102 for RE to rank in the top 2% of the breed for Milk and \$Beef, 3% for Marb and 10% for CW, RE and \$Grid. She is due to have a heifer calf August 25, 2010 sired by GAR Concrete.

LOT 50B CHAIR ROCK 1407 ND 6057 [AMF-NHF]													
Act BW		1-71		Birth Date: 8-18-2006		Cow +15770229		Tattoo: 6057					
BWR	1-96	CED	.26	BEPD	+1.2	WEPD	.30	YEPD	.26	YH	.41	SC	.05
WWR	1-106	CEM	.26	MILK	+33	MKH	N/A	MW	+55	MH	.05	SEN	-9.58
YWR	1-103	CW	.22	MARB	+.65	REA	+.33	FAT	+.32			\$Weaning	+26.61
Ultrasound Prod Record												\$Feedlot	+25.91
%IMF	1-99											\$Grid	+30.66
REA	1-106											\$QG	+28.41
FAT	1-93											\$YG	+2.25
RU FAT	1-97											\$Beef	+55.21

A female that earned an individual RE ratio of 102 to be part of her dam's production record of 142 at 100 for IMF and 101 for RE. 6057 ranks in the top 1% of the breed for Milk, 3% for \$Beef, 4% for Marb and 10% for CW, RE and \$Grid. She is bred to calve October 31, 2010 to GAR Concrete.

LOT 51 CHAIR ROCK FUTURE DIR 6031 [AMF-NHF]													
Act BW		1-68		Birth Date: 8-11-2006		Cow +15772642		Tattoo: 6031					
BWR	1-91	CED	.27	BEPD	-.1	WEPD	.36	YEPD	.28	YH	.31	SC	.05
WWR	1-107	CEM	.26	MILK	+26	MKH	N/A	MW	+36	MH	.05	SEN	+3.34
YWR	1-97	CW	.23	MARB	+.64	REA	+.26	FAT	+.47			\$Weaning	+28.91
Ultrasound Prod Record												\$Feedlot	+18.96
%IMF	1-114											\$Grid	+38.35
REA	1-106											\$QG	+28.20
FAT	1-100											\$YG	+10.15
RU FAT	1-106											\$Beef	+56.33

Now we have two full sisters that are sired by the carcass legend, Future Direction, and descend from the famous GAR Precision 2536. This female is off to a good start with an impressive production record and ranks in the top 2% of the breed for CED, \$Grid and \$Beef, 4% for RE and \$Yield Grade, as well as 10% for CED and \$Wean. She is due to have a heifer calf September 12, 2010 to GAR Predestined.

LOT 50C CHAIR ROCK 1407 ND 6148 [AMF-NHF]													
Act BW		N/A		Birth Date: 10-5-2006		Cow +15770273		Tattoo: 6148					
BWR	N/A	CED	.05	BEPD	+1.5	WEPD	.27	YEPD	.25	YH	.39	SC	.05
WWR	N/A	CEM	.05	MILK	+37	MKH	N/A	MW	+55	MH	.05	SEN	-13.59
YWR	N/A	CW	.21	MARB	+.69	REA	+.25	FAT	+.32			\$Weaning	+25.60
Ultrasound Prod Record												\$Feedlot	+26.29
%IMF	N/A											\$Grid	+32.88
REA	N/A											\$QG	+29.40
FAT	N/A											\$YG	+3.48
RU FAT	N/A											\$Beef	+55.53

This female earned individual ultrasound ratios of 100 for IMF and 116 for RE to be part of her dam's production record of 142 at 100 for IMF and 101 for RE. 6148 ranks in the top 3% of the breed for Milk, Marb and \$Beef, as well as top 5% for RE and \$Grid. She is due to have a bull calf August 25, 2010 sired by Objective.

LOT 51A CHAIR ROCK FUTURE DIR 6037 [AMF-NHF]													
Act BW		1-60		Birth Date: 8-14-2006		Cow +15772643		Tattoo: 6037					
BWR	1-81	CED	.27	BEPD	-.4	WEPD	.36	YEPD	.28	YH	.37	SC	.05
WWR	1-95	CEM	.26	MILK	+24	MKH	N/A	MW	+36	MH	.05	SEN	+2.69
YWR	1-94	CW	.23	MARB	+.52	REA	+.26	FAT	+.50			\$Weaning	+29.32
Ultrasound Prod Record												\$Feedlot	+17.07
%IMF	1-108											\$Grid	+34.68
REA	1-87											\$QG	+25.05
FAT	1-109											\$YG	+9.63
RU FAT	1-100											\$Beef	+54.77

This female earned an individual RE ratio of 102 to be part of her dam's production record of 96 at 101 for both IMF and RE. She ranks in the top 1% of the breed for CED and CEM, 2% for \$Beef, 5% for BW, RE and \$Grid, as well as 10% for \$Wean. 6037 is bred to calve November 3, 2010 to GAR Predestined.

LOT 50D CHAIR ROCK 1407 ND 6151 [AMF-NHF]													
Act BW		N/A		Birth Date: 10-5-2006		Cow +15770275		Tattoo: 6151					
BWR	N/A	CED	.05	BEPD	+1.4	WEPD	.05	YEPD	.05	YH	.44	SC	.05
WWR	N/A	CEM	.05	MILK	+33	MKH	N/A	MW	+55	MH	.05	SEN	-9.32
YWR	N/A	CW	.21	MARB	+.70	REA	+.25	FAT	+.32			\$Weaning	+26.67
Ultrasound Prod Record												\$Feedlot	+25.91
%IMF	N/A											\$Grid	+32.90
REA	N/A											\$QG	+29.58
FAT	N/A											\$YG	+3.32
RU FAT	N/A											\$Beef	+54.57

These five full sisters really show the consistency of the Chair Rock breeding program. This female earned an individual IMF ratio of 101 to be part of her dam's production record of 142 at 100 for IMF and 101 for RE. She ranks in the top 3% of the breed for Milk, Marb and \$Beef, as well as top 10% for \$Grid. 6151 is due to have a bull calf September 16, 2010 sired by GAR Concrete.

LOT 52 CHAIR ROCK YIELD GRADE 6091													
Act BW		1-66		Birth Date: 9-5-2006		Cow +15773552		Tattoo: 6091					
BWR	1-90	CED	.27	BEPD	+0	WEPD	.28	YEPD	.24	YH	.41	SC	.05
WWR	1-90	CEM	.24	MILK	+15	MKH	N/A	MW	+46	MH	.05	SEN	+5.16
YWR	1-92	CW	.21	MARB	+.23	REA	+.25	FAT	+.35			\$Weaning	+25.32
Ultrasound Prod Record												\$Feedlot	+34.35
%IMF	1-97											\$Grid	+20.34
REA	1-91											\$QG	+15.10
FAT	1-104											\$YG	+5.24
RU FAT	1-148											\$Beef	+52.80

A big spread female that leads the breed for calving-ease and growth. This female stems from the famous GAR Precision 2536 and comes from a dam that has a production record of 96 at 101 for both IMF and RE. She ranks in the top 1% of the breed for CED and CW, 5% for YW, \$Feedlot and \$Beef and 10% for BW and RE. 6091 is due to have a heifer calf August 25, 2010 sired by Objective.



Act BW		LOT 53E CHAIRROCK RETAILPRODUCT 6118										Tattoo: 6118	
N/A		Birth Date: 9-12-2006 Cow +15773568											
BWR	N/A	CED	BEPD	WEPD	YEPD	YH	SC						
WWR	N/A	I+8	.05	I+1.0	.05	I+46	.05	I+90	.05	I+.4	.43	I+.24	.05
YWR	N/A	CEM	MILK	MKH	MW	MH	SEN						
		I+9	.05	I+22	.05	N/A	I+39	.05	I+.7	.05			+2.07
		CW	MARB	REA	FAT								\$Weaning
		+14	.23	+30	.26	+49	.33	-.014	.25				+28.70
													\$Feedlot
													+30.70
													\$Grid
													+28.09
													\$QG
													+17.75
													\$YG
													+10.34
													\$Beef
													+51.02

A female that earned an individual RE ratio of 105 to be part of her dam's production record of 96 at 101 for both IMF and RE. 6118 ranks in the top 3% of the breed for RE and \$Yield Grade, as well as top 10% for YW, \$Wean, \$Feedlot and \$Beef. She was bred to calve December 21, 2010 to GAR Concrete.



Chair Rock Objective 6075 - Lot 55

Act BW		LOT 53F CHAIRROCK RETAILPRODUCT 6097										Tattoo: 6097	
1-70		Birth Date: 9-9-2006 Cow +15773553											
BWR	1-95	CED	BEPD	WEPD	YEPD	YH	SC						
WWR	1-85	+9	.27	+9	.28	+43	.24	+87	.24	+3	.41	I+.24	.05
YWR	1-91	CEM	MILK	MKH	MW	MH	SEN						
		+10	.25	+18	.27	N/A	I+39	.05	I+.7	.05			+4.59
		CW	MARB	REA	FAT								\$Weaning
		+9	.23	+34	.26	+39	.33	-.023	.26				+24.57
													\$Feedlot
													+28.87
													\$Grid
													+30.07
													\$QG
													+19.22
													\$YG
													+10.85
													\$Beef
													+48.61

You will love this flush of Retail Product daughters out of a female that has 96 at 101 for both IMF and RE. This female ranks in the top 2% of the breed for \$Yield Grade and 10% for RE, \$Grid and \$Beef. She was bred to calve January 10, 2011 to Objective.

Act BW		LOT 55 CHAIR ROCK OBJECTIVE 6075 [AMF]										Tattoo: 6075	
1-77		Birth Date: 8-24-2006 Cow 15770236											
BWR	1-95	CED	BEPD	WEPD	YEPD	YH	SC						
WWR	1-85	+9	.31	+1.9	.36	+58	.26	+104	.26	+1	.38	I+.06	.23
YWR	1-91	CEM	MILK	MKH	MW	MH	SEN						
		+10	.22	+17	.24	N/A	N/A	N/A	N/A	N/A			-4.48
		CW	MARB	REA	FAT								\$Weaning
		+0	.21	+57	.24	+37	.30	-.006	.23				+27.41
													\$Feedlot
													+40.25
													\$Grid
													+36.94
													\$QG
													+26.38
													\$YG
													+10.56
													\$Beef
													+50.07

A high growth Objective daughter that earned individual ultrasound ratios of 101 for IMF and 103 for RE while her dam has 3 at 114 for IMF. This female ranks in the top 1% of the breed for WW and YW, 5% for RE, \$Grid and \$Yield Grade and 10% for CED, CEM, Marb and \$Beef. She was bred to calve January 13, 2011 to GAR New Design 5050.

Act BW		LOT 54 CHAIR ROCK OBJECTIVE 6025 [NHF]										Tattoo: 6025	
1-82		Birth Date: 7-26-2006 Cow 15770213											
BWR	1-101	CED	BEPD	WEPD	YEPD	YH	SC						
WWR	1-119	+11	.31	+8	.36	+61	.26	+106	.26	+5	.38	I+.08	.23
YWR	1-106	CEM	MILK	MKH	MW	MH	SEN						
		+9	.22	+32	.24	N/A	N/A	N/A	N/A	N/A			-15.40
		CW	MARB	REA	FAT								\$Weaning
		+5	.21	+59	.24	+36	.31	+.002	.24				+32.73
													\$Feedlot
													+41.12
													\$Grid
													+35.93
													\$QG
													+26.96
													\$YG
													+8.97
													\$Beef
													+54.02

Another big spread female that comes from a dam that has 2 at 102 for IMF and 101 for RE. She is the dam of the \$4,250 Lot 131 bull in the GAR sale and ranks in the top 2% for CED, WW, YW and Milk, 4% for RE and 10% for Marb, as well as top 5% for all six dollar values including top 3% for \$Beef. This female is due to have a heifer calf September 12, 2010 sired by GAR New Design 5050.

Act BW		LOT 56 CHAIR ROCK OBJECTIVE 6123										Tattoo: 6123	
1-72		Birth Date: 9-13-2006 Cow 15770253											
BWR	1-89	CED	BEPD	WEPD	YEPD	YH	SC						
WWR	1-108	+10	.32	+1.8	.37	+60	.27	+104	.26	+2	.38	I+.31	.23
YWR	1-95	CEM	MILK	MKH	MW	MH	SEN						
		+11	.22	+21	.24	N/A	N/A	N/A	N/A	N/A			-4.13
		CW	MARB	REA	FAT								\$Weaning
		-4	.21	+54	.24	+16	.30	-.024	.23				+29.97
													\$Feedlot
													+39.44
													\$Grid
													+36.14
													\$QG
													+25.60
													\$YG
													+10.54
													\$Beef
													+44.85

A female uniquely bred for growth and power that earned an individual IMF ratio of 117 to rank in the top 1% of the breed for WW and YW, 4% for CED, CEM, \$Feedlot, \$Grid and \$Yield Grade and 10% for Marb and \$Wean. She is due to have a bull calf August 25, 2010 sired by Objective.

LOT 57 CHAIR ROCK 1407 ND 6094 [AMF-NHF]													
Act BW		Birth Date: 9-6-2006 Cow +15770243 Tattoo: 6094											
BWR	1-72	CED	BEPD	WEPD	YEPD	YH	SC						
BWR	1-98	+9	.26	+1.4	.29	+42	.24	+80	.23	+7	.41	+1.12	.05
WWR	1-93	CEM		MILK		MKH		MW		MH		SEN	
YWR	1-90	+10	.25	+23	.28	N/A	+33	.05	+1.8	.05	+1.78		
		CW		MARB		REA		FAT		\$Weaning			
		+14	.22	+56	.25	+38	.32	+0.11	.25	+26.27			
		#B/R New Design 036 [AMF-NHF] #VDAR New Trend 315 [AMF-NHF]									\$Feedlot		
		Bon View New Design 1407 [AMF-NHF] B/R Blackcap Empress 76									+22.41		
		#12783540 Bon View Pride 664 #+GAR Sleep Easy 1009 [AMF-NHF]									\$Grid		
		#Bon View Pride 1551									+32.99		
		#+GAR Pinnacle [NHC-AMF] #GAR Precision 1680 [AMC-NHC]									\$QG		
		GAR Pinnacle 2000 9J9 GAR 856 [NHF]									+26.18		
		+13884246 +GAR 6148 Emulation 108 #Finks 5522-6148									\$YG		
		+GAR 6807 Traveler 93 [AMF-NHF]									+6.80		
											\$Beef		
											+54.05		

Here we have a daughter of a former GAR donor that has 97 at 101 for RE. This female ranks in the top 5% of the breed for RE and \$Beef, as well as top 10% for CED, CEM, Marb and \$Grid. She is due to have a heifer calf August 24, 2010 sired by GAR New Design 5050.

LOT 58B CHAIR ROCK 1407 ND 6099 [AMF-NHF]													
Act BW		Birth Date: 9-9-2006 Cow +15770247 Tattoo: 6099											
BWR	1-75	CED	BEPD	WEPD	YEPD	YH	SC						
BWR	1-101	+7	.25	+1.3	.28	+41	.24	+81	.23	+4	.40	+1.34	.05
WWR	1-101	CEM		MILK		MKH		MW		MH		SEN	
YWR	1-101	+8	.24	+32	.26	N/A	+32	.05	+1.6	.05	-6.73		
		CW		MARB		REA		FAT		\$Weaning			
		+6	.21	+65	.25	+23	.31	+0.17	.24	+26.90			
		#B/R New Design 036 [AMF-NHF] #VDAR New Trend 315 [AMF-NHF]									\$Feedlot		
		Bon View New Design 1407 [AMF-NHF] B/R Blackcap Empress 76									+23.75		
		#12783540 Bon View Pride 664 #+GAR Sleep Easy 1009 [AMF-NHF]									\$Grid		
		#Bon View Pride 1551									+34.14		
		#+GAR Pinnacle [NHC-AMF] #GAR Precision 1680 [AMC-NHC]									\$QG		
		GAR Pinnacle 2000 +GAR Ext 2114									+28.41		
		+13724186 +GAR 6807 Traveler 2167 [AMF] #DHD Traveler 6807 [AMF-NHF]									\$YG		
		GAR Pierre 1322									+5.73		
											\$Beef		
											+48.79		

To see the producing power of this female be sure to check out her daughter who sells as Lot 38. 6099 ranks in the top 4% of the breed for Milk, Marb and \$Grid, as well as top 10% for \$Beef. She was bred to calve October 31, 2010 to Objective.

LOT 58 CHAIR ROCK 1407 ND 6115 [AMF-NHF]													
Act BW		Birth Date: 9-12-2006 Cow +15770250 Tattoo: 6115											
BWR	1-75	CED	BEPD	WEPD	YEPD	YH	SC						
BWR	1-93	+8	.25	+1.1	.28	+40	.24	+80	.23	+7	.40	+2.6	.28
WWR	1-92	CEM		MILK		MKH		MW		MH		SEN	
YWR	1-100	+9	.24	+30	.26	N/A	+32	.05	+1.6	.05	-4.75		
		CW		MARB		REA		FAT		\$Weaning			
		+12	.21	+73	.25	+33	.31	+0.35	.24	+26.24			
		#B/R New Design 036 [AMF-NHF] #VDAR New Trend 315 [AMF-NHF]									\$Feedlot		
		Bon View New Design 1407 [AMF-NHF] B/R Blackcap Empress 76									+23.15		
		#12783540 Bon View Pride 664 #+GAR Sleep Easy 1009 [AMF-NHF]									\$Grid		
		#Bon View Pride 1551									+33.87		
		#+GAR Pinnacle [NHC-AMF] #GAR Precision 1680 [AMC-NHC]									\$QG		
		GAR Pinnacle 2000 +GAR Ext 2114									+30.15		
		+13724186 +GAR 6807 Traveler 2167 [AMF] #DHD Traveler 6807 [AMF-NHF]									\$YG		
		GAR Pierre 1322									+3.72		
											\$Beef		
											+53.55		

The first of three flush sisters that stem from the \$30,000 GAR Pierre 1322. This female earned individual ultrasound ratios of 105 for IMF and 117 for RE to rank in the top 2% of the breed for Marb, 4% for Milk, \$Grid and \$Beef and 10% for RE. She is due to have a heifer calf October 2, 2010 sired by GAR Concrete.

LOT 59 CHAIR ROCK 1407 ND 6140													
Act BW		Birth Date: 10-3-2006 Cow +15770265 Tattoo: 6140											
BWR	1-85	CED	BEPD	WEPD	YEPD	YH	SC						
BWR	1-114	+7	.25	+2.0	.29	+51	.24	+92	.24	+6	.40	-1.02	.05
WWR	1-116	CEM		MILK		MKH		MW		MH		SEN	
YWR	1-113	+9	.23	+28	.25	N/A	+41	.05	+1.7	.05	-6.17		
		CW		MARB		REA		FAT		\$Weaning			
		+13	.21	+62	.25	+27	.32	+0.30	.24	+29.08			
		#B/R New Design 036 [AMF-NHF] #VDAR New Trend 315 [AMF-NHF]									\$Feedlot		
		Bon View New Design 1407 [AMF-NHF] B/R Blackcap Empress 76									+30.76		
		#12783540 Bon View Pride 664 #+GAR Sleep Easy 1009 [AMF-NHF]									\$Grid		
		#Bon View Pride 1551									+31.09		
		#+GAR Grid Maker [AMF-NHF] #GDAR Traveler 044 [AMF-NHF]									\$QG		
		Chair Rock Grid Maker 2107 [AMF] GAR Precision 2536 [AMC-NHF]									+27.72		
		14396175 +GAR Sleep Easy 2207 [AMF] #+GAR Sleep Easy 1009 [AMF-NHF]									\$YG		
											+3.37		
											\$Beef		
											+53.13		

A high marbling 1407 daughter that earned individual ultrasound ratios of 106 for IMF and 118 for RE to be part of her dam's production record of 55 at 99 for IMF and 101 for RE. This female ranks in the top 4% of the breed for Marb and \$Beef, as well as top 10% for WW, YW, Milk, \$Wean, \$Feedlot and \$Grid. She is due to have a bull calf August 24, 2010 sired by GAR Concrete.

LOT 58A CHAIR ROCK 1407 ND 6052 [AMF-NHF]													
Act BW		Birth Date: 8-17-2006 Cow +15770225 Tattoo: 6052											
BWR	1-78	CED	BEPD	WEPD	YEPD	YH	SC						
BWR	1-96	+7	.25	+1.1	.28	+41	.24	+77	.23	+5	.40	+4.5	.28
WWR	1-103	CEM		MILK		MKH		MW		MH		SEN	
YWR	1-91	+8	.24	+33	.26	N/A	+32	.05	+1.6	.05	-6.79		
		CW		MARB		REA		FAT		\$Weaning			
		+13	.21	+72	.25	+30	.31	+0.36	.24	+28.07			
		#B/R New Design 036 [AMF-NHF] #VDAR New Trend 315 [AMF-NHF]									\$Feedlot		
		Bon View New Design 1407 [AMF-NHF] B/R Blackcap Empress 76									+19.91		
		#12783540 Bon View Pride 664 #+GAR Sleep Easy 1009 [AMF-NHF]									\$Grid		
		#Bon View Pride 1551									+32.99		
		#+GAR Pinnacle [NHC-AMF] #GAR Precision 1680 [AMC-NHC]									\$QG		
		GAR Pinnacle 2000 +GAR Ext 2114									+29.97		
		+13724186 +GAR 6807 Traveler 2167 [AMF] #DHD Traveler 6807 [AMF-NHF]									\$YG		
		GAR Pierre 1322									+3.02		
											\$Beef		
											+52.81		

This female earned an individual ultrasound ratio of 113 for both IMF and RE to be part of her dam's production record of 32 at 99 for IMF and 100 for RE. She ranks in the top 2% of the breed for Marb, 5% for \$Beef and 10% for RE and \$Grid. 6052 is due to have a heifer calf September 15, 2010 sired by GAR Concrete.

LOT 60 CHAIR ROCK 1407 ND 6017 [NHF]													
Act BW		Birth Date: 7-11-2006 Cow +15770210 Tattoo: 6017											
BWR	1-78	CED	BEPD	WEPD	YEPD	YH	SC						
BWR	1-105	+9	.24	+3	.34	+41	.26	+80	.21	+4	.27	-1.20	.05
WWR	1-97	CEM		MILK		MKH		MW		MH		SEN	
YWR	1-100	+11	.23	+27	.24	N/A	N/A	N/A	N/A	N/A	-2.42		
		CW		MARB		REA		FAT		\$Weaning			
		+8	.21	+80	.24	+28	.30	+0.28	.24	+26.85			
		#B/R New Design 036 [AMF-NHF] #VDAR New Trend 315 [AMF-NHF]									\$Feedlot		
		Bon View New Design 1407 [AMF-NHF] B/R Blackcap Empress 76									+22.78		
		#12783540 Bon View Pride 664 #+GAR Sleep Easy 1009 [AMF-NHF]									\$Grid		
		#Bon View Pride 1551									+36.16		
		#CA Future Direction 5321 [AMC-NHC] #GAR Precision 1680 [AMC-NHC]									\$QG		
		Chair Rock Future Dir 4066 [AMF] CA Miss Power Fix 308 [AMF]									+31.44		
		+15005949 Chair Rock Grid Maker 2107 [AMF] #+GAR Grid Maker [AMF-NHF]									\$YG		
											+4.72		
											\$Beef		
											+52.38		

This female earned individual ultrasound ratios of 105 for IMF and 104 for RE while her dam has 6 at 110 for IMF. She ranks in the top 1% of the breed for \$Quality Grade, 5% for CEM and \$Beef and 10% for CED, Milk, Marb and \$Grid. 6017 was bred to calve October 31, 2010 to GAR New Design 5050.

**LOT 61** **CHAIR ROCK 1407 ND 6083 [AMF-NHF]**  
 Birth Date: 9-4-2006 Cow +15770239 Tattoo: 6083

Act BW	CED										BEPD										WEPD										YEPD										YH										SC																																																																					
N/A	+9										.05										+1.4										.34										+42										.27										+82										.26										+5										.37										+1.12										.05									
WWR	CEM										MILK										MKH										MW										MH										SEN																																																																					
N/A	+9										.05										+25										.28										N/A										+33										.05										+1.8										.05										-50																													
YWR	CW										MARB										REA										FAT										\$Weaning																																																																															
N/A	+15										.22										+.50										.25										+.21										.31										+.014										.24										+26.22																																							
Ultrasound Prod Record	#B/R New Design 036 [AMF-NHF]										#VDAR New Trend 315 [AMF-NHF]										\$Feedlot																																																																																																			
N/A	Bon View New Design 1407 [AMF-NHF]										B/R Blackcap Empress 76										+24.34																																																																																																			
N/A	#12783540 Bon View Pride 664										#+GAR Sleep Easy 1009 [AMF-NHF]										\$Grid																																																																																																			
N/A											#Bon View Pride 1551										+28.65																																																																																																			
N/A	#GAR Precision 1680 [AMC-NHC]										#Tehama Bando 155 [AMF-NHF]										\$QG																																																																																																			
N/A	GAR Precision 4590										9J9 GAR 856 [NHF]										+24.50																																																																																																			
N/A	+13884246 +GAR 6148 Emulation 108										#Finks 5522-6148										\$YG																																																																																																			
N/A											+GAR 6807 Traveler 93 [AMF-NHF]										+4.15																																																																																																			
N/A																					\$Beef																																																																																																			
N/A																					+50.81																																																																																																			

A daughter of a former GAR donor that has 97 at 101 for RE. She ranks in the top 10% of the breed for CED, \$Quality Grade and \$Beef. This female was bred to calve December 22, 2010 to GAR Concrete.



G A R Solution 586 - Lot 63

**LOT 62** **CHAIR ROCK PINNACLE 6077 [NHF]**  
 Birth Date: 8-25-2006 Cow +15773543 Tattoo: 6077

Act BW	CED										BEPD										WEPD										YEPD										YH										SC																																																																					
1-72	+6										.22										+3.8										.25										+40										.22										+80										.21										+2										.40										+1.10										.05									
WWR	CEM										MILK										MKH										MW										MH										SEN																																																																					
1-96	+7										.22										+23										.25										N/A										N/A										N/A										N/A										N/A										+1.49																													
YWR	CW										MARB										REA										FAT										\$Weaning																																																																															
1-99	+15										.21										+.65										.24										+.18										.31										+.029										.24										+19.56																																							
Ultrasound Prod Record	#GAR Precision 1680 [AMC-NHC]										#Tehama Bando 155 [AMF-NHF]										\$Feedlot																																																																																																			
N/A	GAR Pinnacle [NHC-AMF]										9J9 GAR 856 [NHF]										+23.15																																																																																																			
N/A	#+13200618+GAR Ext 2114										#N Bar Emulation EXT [AMF-NHF]										\$Grid																																																																																																			
N/A											#GAR Scotch Cap 867										+30.22																																																																																																			
N/A	#Bon View New Design 1407 [AMF-NHF]										#B/R New Design 036 [AMF-NHF]										\$QG																																																																																																			
N/A	Chair Rock 1407 ND 2109 [AMF]										Bon View Pride 664										+28.41																																																																																																			
N/A	+14405745 GAR Precision 748 [AMC]										#GAR Precision 1680 [AMC-NHC]										\$YG																																																																																																			
N/A											#+GAR 6807 Traveler 836										+1.81																																																																																																			
N/A																					\$Beef																																																																																																			
N/A																					+52.09																																																																																																			

The first of two flush sisters that come from the famous Blackcap family through the powerful Limestone donor, GAR New Trend 780. This female ranks in the top 3% of the breed for Marb and 5% for \$Beef. She is due to have a bull calf September 12, 2010 sired by Objective.

**LOT 63** **G A R SOLUTION 586 [AMF-NHF]**  
 Birth Date: 8-13-2006 Cow 15478551 Tattoo: 586

Act BW	CED										BEPD										WEPD										YEPD										YH										SC																																																																					
2-66	+12										.30										-1.0										.38										+37										.28										+79										.22										+.5										.29										+1.29										.05									
WWR	CEM										MILK										MKH										MW										MH										SEN																																																																					
1-95	+6										.21										+24										.24										N/A										N/A										N/A										N/A										N/A										+59																													
YWR	CW										MARB										REA										FAT										\$Weaning																																																																															
1-94	+5										.21										+.62										.23										+.41										.29										+.007										.22										+24.86																																							
Ultrasound Prod Record	#SS Traveler 6807 T510 [AMF-NHF]										#DHD Traveler 6807 [AMF-NHF]										\$Feedlot																																																																																																			
N/A	GAR Solution [AMC-NHF]										#SS Miss Hi Spade A114										+23.31																																																																																																			
N/A	14222615 +GAR New Design 50										#B/R New Design 036 [AMF-NHF]										\$Grid																																																																																																			
N/A											GAR Precision 2536 [AMC-NHC]										+36.79																																																																																																			
N/A	#Bon View New Design 1407 [AMF-NHF]										#B/R New Design 036 [AMF-NHF]										\$QG																																																																																																			
N/A	GAR 1407 New Design 143 [AMC-NHC]										Bon View Pride 664										+27.72																																																																																																			
N/A	+14506136 +GAR Precision 1660 [AMC-NHC]										#GAR Precision 1680 [AMC-NHC]										\$YG																																																																																																			
N/A											+GAR Ext 614 [AMF]										+9.07																																																																																																			
N/A																					\$Beef																																																																																																			
N/A																					+50.48																																																																																																			

A beautifully designed female that stems from the \$400,000 GAR EXT 614. She is the dam of the Lot 40 bred heifer in this event and ranks in the top 4% of the breed for CED, BW, Marb, RE and \$Grid, as well as top 10% for \$Yield Grade and \$Beef. This female is due to have a heifer calf September 22, 2010 sired by GAR Concrete.

**LOT 62A** **CHAIR ROCK PINNACLE 6072 [NHF]**  
 Birth Date: 8-21-2006 Cow +15773541 Tattoo: 6072

Act BW	CED										BEPD										WEPD										YEPD										YH										SC																																																																					
1-91	+4										.22										+4.4										.25										+39										.22										+79										.21										+0										.40										+0.1										.26									
WWR	CEM										MILK										MKH										MW										MH										SEN																																																																					
1-96	+5										.22										+22										.25										N/A										N/A										N/A										N/A										N/A										+2.88																													
YWR	CW										MARB										REA										FAT										\$Weaning																																																																															
1-98	+14										.21										+.64										.24										+.10										.31										+.018										.24										+17.77																																							
Ultrasound Prod Record	#GAR Precision 1680 [AMC-NHC]										#Tehama Bando 155 [AMF-NHF]										\$Feedlot																																																																																																			
N/A	GAR Pinnacle [NHC-AMF]										9J9 GAR 856 [NHF]										+22.56																																																																																																			
N/A	#+13200618+GAR Ext 2114										#N Bar Emulation EXT [AMF-NHF]										\$Grid																																																																																																			
N/A											#GAR Scotch Cap 867										+30.43																																																																																																			
N/A	#Bon View New Design 1407 [AMF-NHF]										#B/R New Design 036 [AMF-NHF]										\$QG																																																																																																			
N/A	Chair Rock 1407 ND 2109 [AMF]										Bon View Pride 664										+28.20																																																																																																			
N/A	+14405745 GAR Precision 748 [AMC]										#GAR Precision 1680 [AMC-NHC]										\$YG																																																																																																			
N/A											#+GAR 6807 Traveler 836										+2.23																																																																																																			
N/A																					\$Beef																																																																																																			
N/A																					+51.54																																																																																																			

Another member of the famous Blackcap family that descends from the powerful Limestone donor, GAR New Trend 780. This female ranks in the top 3% of the breed for Marb, 5% for \$Beef and 10% for \$Grid. She is due to have a bull calf August 25, 2010 sired by GAR New Design 5050.

**LOT 64** **CHAIR ROCK PREDESTINED 7111**  
 Birth Date: 9-5-2007 Cow +16046722 Tattoo: 7111

Act BW	CED										BEPD										WEPD										YEPD										YH										SC																																																																					
N/A	+9										.05										-4										.36										+45										.28										+91										.27										+.3										.39										+1.03										.05									
WWR	CEM										MILK										MKH										MW										MH										SEN																																																																					
N/A	+9										.05										+23										.23										N/A										+42										.05										+1.7										.05										-1.13																													
YWR	CW										MARB										REA										FAT										\$Weaning																																																																															
N/A	+18										.24										+.78										.27										+.61										.33										+.017										.26										+27.26																																							
Ultrasound Prod Record	#B/R New Design 036 [AMF-NHF]										#VDAR New Trend 315 [AMF-NHF]										\$Feedlot																																																																																																			
N/A	GAR Predestined [AMF-NHF]										B/R Blackcap Empress 76										+32.09																																																																																																			
N/A	#13395344 +GAR Ext 4206										#N Bar Emulation EXT [AMF-NHF]										\$Grid																																																																																																			
N/A											#GAR 6807 Traveler 1432										+39.18																																																																																																			
N/A	#SAF Focus of ER [AMF-NHF]										#SAF Fame [AMF-NHF]										\$QG																																																																																																			
N/A	GAR Focus 501 [AMF-NHF]										GDAR Forever Lady 246										+31.04																																																																																																			
N/A	+14116251 GAR Precision 2536 [AMC-NHF]										#GAR Precision 1680 [AMC-NHC]										\$YG																																																																																																			
N/A											+GAR Ext 2104										+8.14																																																																																																			
N/A																					\$Beef																																																																																																			
N/A																					+65.03																																																																																																			

A high marbling, bigger ribeye granddaughter of the famous GAR Precision 2536 that earned individual ultrasound ratios of 110 for IMF and 117 for RE while her dam has 96 at 101 for both IMF and RE. This female ranks in the top 1% of the breed for Marb, RE, \$Grid and \$Beef, 5% for BW and 10% for CED, CW and \$Feedlot. She was bred to calve November 1, 2010 to GAR Concrete.

Act BW		LOT 65 CHAIR ROCK PREDESTINED 7087 [NH]										Tattoo: 7087	
N/A		Birth Date: 8-21-2007 Cow +16046702										N/A	
BWR		CED		BEPD		WEPD		YEPD		YH		SC	
N/A		I+8	.05	I+2.9	.05	I+5.3	.05	I+9.1	.05	I+.4	.38	I+.03	.05
WWR		CEM		MILK		MKH		MW		MH		SEN	
N/A		I+9	.05	I+2.8	.05	N/A	N/A	N/A	N/A	N/A	N/A	N/A	-6.74
YWR		CW		MARB		REA		FAT				\$Weaning	
N/A		+20	.22	+85	.25	+51	.31	+0.30	.25			+28.02	
Ultrasound Prod Record												\$Feedlot	
N/A		#B/R New Design 036 [AMF-NHF]		#VDAR New Trend 315 [AMF-NHF]								+29.00	
N/A		GAR Predestined [AMF-NHF]		B/R Blackcap Express 76								\$Grid	
N/A		#13395344 #+GAR Ext 4206		#N Bar Emulation EXT [AMF-NHF]								+37.43	
N/A				+GAR 6807 Traveler 1432								\$QG	
N/A												+32.25	
N/A		#CA Future Direction 5321 [AMC-NHC]		#GAR Precision 1680 [AMC-NHC]								\$YG	
N/A		Chair Rock Future Dir 4050 [AMF]		CA Miss Power Fix 308 [AMF]								+5.18	
N/A		+15005942 Chair Rock Grid Maker 2107 [AMF]		#+GAR Grid Maker [AMF-NHF]								\$Beef	
N/A				+GAR Sleep Easy 2207 [AMF]								+64.11	

A high marbling Predestined daughter that earned individual ultrasound ratios of 131 for IMF and 104 for RE while her dam has 15 at 101 for RE. This female ranks in the top 1% of the breed for Marb, \$Grid and \$Beef, 2% for RE, 4% for WW and 10% for YW, Milk and CW. She was bred to calve January 12, 2011 to GAR Concrete.

Act BW		LOT 68 CHAIR ROCK OBJECTIVE 7031										Tattoo: 7031	
N/A		Birth Date: 7-30-2007 Cow 16046651										N/A	
BWR		CED		BEPD		WEPD		YEPD		YH		SC	
N/A		+6	.30	+3.2	.34	+65	.25	+115	.25	+5	.35	N/A	N/A
WWR		CEM		MILK		MKH		MW		MH		SEN	
N/A		+7	.19	+24	.20	N/A	N/A	N/A	N/A	N/A	N/A	N/A	-10.65
YWR		CW		MARB		REA		FAT				\$Weaning	
N/A		+5	.20	+57	.23	+28	.30	-0.23	.23			+27.28	
Ultrasound Prod Record												\$Feedlot	
N/A		#SS Traveler 6807 T510 [AMF-NHF]		#DHD Traveler 6807 [AMF-NHF]								+49.04	
N/A		SS Objective T510 OT26 [AMF-NHF]		#SS Miss Hi Spade A114								\$Grid	
N/A		#13776378 SS Miss Rita R011 7R8 [AMF-NHF]		SS Rito Rito R76 R011								+36.66	
N/A				SS Miss Ultress U56								\$QG	
N/A												+26.38	
N/A		#+GAR Grid Maker [AMF-NHF]		#GDAR Traveler 044 [AMF-NHF]								\$YG	
N/A		Chair Rock Grid Maker 5004		GAR Precision 2536 [AMC-NHF]								+10.28	
N/A		+15447167 GAR 616 Rito 2491		#Rito 616 of 4B20 6807 [AMF-NHF]								\$Beef	
N/A				+GAR Sleep Easy 2207 [AMF]								+57.05	

With Objective and Grid Maker in her sire stack this female is at the forefront of the breed for growth numbers. She earned individual ultrasound ratios of 110 for IMF and 102 for yearling and ranks in the top 1% of the breed for WW, YW, \$Feedlot and \$Grid, 2% for \$Beef, 5% for Marb and 10% for RE. 7031 was bred to calve October 8, 2010 to GAR New Design 5050.

Act BW		LOT 66 CHAIR ROCK OBJECTIVE 7054 [AMF-NHF]										Tattoo: 7054	
N/A		Birth Date: 8-14-2007 Cow +16046674										N/A	
BWR		CED		BEPD		WEPD		YEPD		YH		SC	
N/A		I+7	.05	I+1.9	.05	I+5.6	.05	I+10.3	.05	I+.5	.44	I+.31	.05
WWR		CEM		MILK		MKH		MW		MH		SEN	
N/A		I+7	.05	I+3.1	.05	N/A	N/A	I+7.3	.05	I+.9	.05	N/A	-12.06
YWR		CW		MARB		REA		FAT				\$Weaning	
N/A		+12	.21	+60	.25	+44	.32	+0.06	.24			+30.06	
Ultrasound Prod Record												\$Feedlot	
N/A		#SS Traveler 6807 T510 [AMF-NHF]		#DHD Traveler 6807 [AMF-NHF]								+40.02	
N/A		SS Objective T510 OT26 [AMF-NHF]		#SS Miss Hi Spade A114								\$Grid	
N/A		#13776378 SS Miss Rita R011 7R8 [AMF-NHF]		SS Rito Rito R76 R011								+35.49	
N/A				SS Miss Ultress U56								\$QG	
N/A												+27.19	
N/A		#+GAR Pinnacle [NHIC-AMF]		#GAR Precision 1680 [AMC-NHC]								\$YG	
N/A		GAR Pinnacle 1630		+GAR Ext 2114								+8.30	
N/A		+13724152 +GAR 6807 Traveler 2167 [AMF]		#DHD Traveler 6807 [AMF-NHF]								\$Beef	
N/A				GAR Pierre 1322								+59.00	

Here we have a top-performing daughter of a former GAR donor that has 142 at 100 for IMF and 101 for RE. This female earned individual ultrasound ratios of 100 for IMF and 107 for RE to rank in the top 2% of the breed for WW, YW and RE and 4% for Milk and Marb to go along with top 10% for all six dollar values including top 1% for \$Beef. She is due to have a heifer calf October 7, 2010 sired by GAR Prediction.

Act BW		LOT 69 CHAIR ROCK OBJECTIVE 7116										Tattoo: 7116	
N/A		Birth Date: 9-7-2007 Cow 16046726										N/A	
BWR		CED		BEPD		WEPD		YEPD		YH		SC	
N/A		+10	.30	+1.5	.34	+59	.25	+112	.25	+3	.35	N/A	N/A
WWR		CEM		MILK		MKH		MW		MH		SEN	
N/A		+9	.19	+22	.20	N/A	N/A	N/A	N/A	N/A	N/A	N/A	-7.67
YWR		CW		MARB		REA		FAT				\$Weaning	
N/A		+5	.20	+49	.23	+26	.30	-0.17	.23			+27.49	
Ultrasound Prod Record												\$Feedlot	
N/A		#SS Traveler 6807 T510 [AMF-NHF]		#DHD Traveler 6807 [AMF-NHF]								+48.31	
N/A		SS Objective T510 OT26 [AMF-NHF]		#SS Miss Hi Spade A114								\$Grid	
N/A		#13776378 SS Miss Rita R011 7R8 [AMF-NHF]		SS Rito Rito R76 R011								+33.75	
N/A				SS Miss Ultress U56								\$QG	
N/A												+24.20	
N/A		#+GAR Grid Maker [AMF-NHF]		#GDAR Traveler 044 [AMF-NHF]								\$YG	
N/A		Chair Rock Grid Maker 5019		GAR Precision 2536 [AMC-NHF]								+9.55	
N/A		+15447170 GAR 616 Rito 2491		#Rito 616 of 4B20 6807 [AMF-NHF]								\$Beef	
N/A				+GAR Sleep Easy 2207 [AMF]								+53.92	

Another high growth Objective daughter with breed-leading calving-ease. This female ranks in the top 1% of the breed for WW, YW and \$Feedlot, 3% for \$Beef, 4% for CED and \$Grid and 10% for Marb and \$Yield Grade. She was bred to calve August 24, 2010 to GAR Predestined.

Act BW		LOT 67 CHAIR ROCK OBJECTIVE 7152										Tattoo: 7152	
N/A		Birth Date: 10-3-2007 Cow +16046755										N/A	
BWR		CED		BEPD		WEPD		YEPD		YH		SC	
N/A		I+9	.05	I+2.1	.05	I+6.2	.05	I+10.7	.05	I+.7	.41	I+.01	.05
WWR		CEM		MILK		MKH		MW		MH		SEN	
N/A		I+10	.05	I+2.2	.05	N/A	N/A	I+5.9	.05	I+.7	.05	N/A	-2.78
YWR		CW		MARB		REA		FAT				\$Weaning	
N/A		+9	.21	+58	.24	+39	.31	+0.02	.24			+33.21	
Ultrasound Prod Record												\$Feedlot	
N/A		#SS Traveler 6807 T510 [AMF-NHF]		#DHD Traveler 6807 [AMF-NHF]								+41.77	
N/A		SS Objective T510 OT26 [AMF-NHF]		#SS Miss Hi Spade A114								\$Grid	
N/A		#13776378 SS Miss Rita R011 7R8 [AMF-NHF]		SS Rito Rito R76 R011								+35.28	
N/A				SS Miss Ultress U56								\$QG	
N/A												+26.64	
N/A		#+GAR Grid Maker [AMF-NHF]		#GDAR Traveler 044 [AMF-NHF]								\$YG	
N/A		Chair Rock Grid Maker 2107 [AMF]		GAR Precision 2536 [AMC-NHF]								+8.64	
N/A		14396175 +GAR Sleep Easy 2207 [AMF]		#+GAR Sleep Easy 1009 [AMF-NHF]								\$Beef	
N/A				+GAR Ext 604 [AMF-NHF]								+57.06	

A high growth, calving-ease female that earned individual ultrasound ratios of 117 for IMF and 115 for RE while her dam has 56 at 101 for RE. This female ranks in the top 1% of the breed for WW and YW, 5% for IMF and RE and 10% for CED and CEM to go along with top 10% for all six dollar values including \$Beef. She was bred to calve December 10, 2010 to GAR Predestined.

Act BW		LOT 70 CHAIR ROCK OBJECTIVE 7147										Tattoo: 7147	
N/A		Birth Date: 9-30-2007 Cow 16046750										N/A	
BWR		CED		BEPD		WEPD		YEPD		YH		SC	
N/A		+10	.30	+7	.34	+52	.25	+101	.25	+4	.35	N/A	N/A
WWR		CEM		MILK		MKH		MW		MH		SEN	
N/A		+9	.19	+27	.20	N/A	N/A	N/A	N/A	N/A	N/A	N/A	-8.91
YWR		CW		MARB		REA		FAT				\$Weaning	
N/A		+7	.21	+63	.24	+27	.30	-0.01	.24			+27.80	
Ultrasound Prod Record												\$Feedlot	
N/A		#SS Traveler 6807 T510 [AMF-NHF]		#DHD Traveler 6807 [AMF-NHF]								+39.55	
N/A		SS Objective T510 OT26 [AMF-NHF]		#SS Miss Hi Spade A114								\$Grid	
N/A		#13776378 SS Miss Rita R011 7R8 [AMF-NHF]		SS Rito Rito R76 R011								+35.85	
N/A				SS Miss Ultress U56								\$QG	
N/A												+27.98	
N/A		#Bon View New Design 1407 [AMF-NHF]		#B/R New Design 036 [AMF-NHF]								\$YG	
N/A		Chair Rock 1407 ND 5029		Bon View Pride 664								+7.87	
N/A		+15445052 +GAR Commitment 1939 [AMF]		#GAR Commitment [AMF]								\$Beef	
N/A				+GAR Ext 2426								+55.25	

Yet another female that offers the valuable combination of calving-ease with growth. This female earned an individual RE ratio of 102 and ranks in the top 3% of the breed for YW, \$Feedlot, \$Grid and \$Beef, 5% for CED, WW and Marb and 10% for Milk and RE. She is due to have twins, a bull and a heifer, October 7, 2010 sired by GAR Predestined.

Act BW		LOT 71 CHAIR ROCK 111 RITO 7089 [AMF]											Tattoo: 7089		
N/A		Birth Date: 8-21-2007 Cow 16086734													
BWR	N/A	CED	BEPD	WEPD	YEPD	YH	SC								
N/A	N/A	+7	.28	+2.6	.35	+5.4	.26	+1.01	.25	+ .8	.37	- .07	.05		
WWR	N/A	CEM	MILK	MKH	MW	MH	SEN								
N/A	N/A	+6	.17	+2.3	.19	N/A	N/A	N/A	N/A	N/A	N/A	N/A	-5.55		
YWR	N/A	CW	MARB	REA	FAT						\$Weaning				
N/A	N/A	+17	.15	+4.6	.18	+1.3	.25	-.010	.18						+25.04
Ultrasound Prod Record	N/A	#Rito 616 of 4B20 6807 [AMF-NHF] #DHD Traveler 6807 [AMF-NHF]											\$Feedlot		
N/A	N/A	Rito 111 of 2536 Rito 616 [AMF-NHF] +Rita 4B20 of 0FB1 Bando											+38.74		
N/A	N/A	#+13793825 GAR Precision 2536 [AMC-NHF] #GAR Precision 1680 [AMC-NHC]											\$Grid		
N/A	N/A												+28.63		
N/A	N/A												\$QG		
N/A	N/A	#Bon View New Design 1407 [AMF-NHF] #B/R New Design 036 [AMF-NHF]											+23.30		
N/A	N/A	Chair Rock 1407 ND 4035 [AMF] Bon View Pride 664											\$YG		
N/A	N/A	15006847 Chair Rock T510 Trv 2131 #SS Traveler 6807 T510 [AMF-NHF]											+5.33		
N/A	N/A												\$Beef		
N/A	N/A												+55.54		

A powerfully-made 111 daughter that ranks in the top 3% of the breed for WW, YW, \$Feedlot and \$Beef. She is due to have a heifer calf October 2, 2010 sired by GAR Concrete.

Act BW		LOT 74 CHAIR ROCK OBJECTIVE 7139 [AMF-NHF]											Tattoo: 7139		
N/A		Birth Date: 9-26-2007 Cow 16046745													
BWR	N/A	CED	BEPD	WEPD	YEPD	YH	SC								
N/A	N/A	+10	.30	+ .7	.34	+5.0	.26	+9.9	.25	+ .5	.36	N/A	N/A		
WWR	N/A	CEM	MILK	MKH	MW	MH	SEN								
N/A	N/A	+9	.19	+2.9	.20	N/A	N/A	N/A	N/A	N/A	N/A	N/A	-10.28		
YWR	N/A	CW	MARB	REA	FAT						\$Weaning				
N/A	N/A	+4	.21	+6.9	.24	+2.8	.31	-.002	.24						+27.18
Ultrasound Prod Record	N/A	#SS Traveler 6807 T510 [AMF-NHF] #DHD Traveler 6807 [AMF-NHF]											\$Feedlot		
N/A	N/A	SS Objective T510 OT26 [AMF-NHF] #SS Miss Hi Spade A114											+38.28		
N/A	N/A	#13776378 SS Miss Rita R011 7R8 [AMF-NHF] SS Rito Rito R76 R011											\$Grid		
N/A	N/A												+38.00		
N/A	N/A												\$QG		
N/A	N/A	#Bon View New Design 1407 [AMF-NHF] #B/R New Design 036 [AMF-NHF]											+29.40		
N/A	N/A	Chair Rock 1407 ND 5023 [AMF] Bon View Pride 664											\$YG		
N/A	N/A	+15445050 +GAR Pinnacle 1630 #+GAR Pinnacle [NHC-AMF]											+8.60		
N/A	N/A												\$Beef		
N/A	N/A												+54.42		

A high marbling female that is a granddaughter of the former GAR donor, Pinnacle 1630. This female ranks in the top 3% for YW, Marb, \$Feedlot, \$Grid and \$Beef, 5% for CED and Milk and 10% for WW, RE and \$Yield Grade. She was bred to calve August 24, 2010 to GAR Predestined.

Act BW		LOT 72 CHAIR ROCK 1407 ND 7126 [AMF-NHF]											Tattoo: 7126		
N/A		Birth Date: 9-12-2007 Cow +16046734													
BWR	N/A	CED	BEPD	WEPD	YEPD	YH	SC								
N/A	N/A	+9	.05	+1.7	.05	+4.3	.05	+1.83	.05	+ .6	.44	+ .12	.05		
WWR	N/A	CEM	MILK	MKH	MW	MH	SEN								
N/A	N/A	+9	.05	+2.4	.05	N/A	+3.3	.05	+ .8	.05			+1.78		
YWR	N/A	CW	MARB	REA	FAT						\$Weaning				
N/A	N/A	+16	.22	+5.7	.25	+1.6	.32	+ .012	.25						+27.58
Ultrasound Prod Record	N/A	#B/R New Design 036 [AMF-NHF] #VDAR New Trend 315 [AMF-NHF]											\$Feedlot		
N/A	N/A	Bon View New Design 1407 [AMF-NHF] B/R Blackcap Empress 76											+24.94		
N/A	N/A	#12783540 Bon View Pride 664 #+GAR Sleep Easy 1009 [AMF-NHF]											\$Grid		
N/A	N/A												+29.80		
N/A	N/A												\$QG		
N/A	N/A	#GAR Precision 1680 [AMC-NHC] #Tehama Bando 155 [AMF-NHF]											+26.38		
N/A	N/A	GAR Precision 4590 9J9 GAR 856 [NHF]											\$YG		
N/A	N/A	+13884246 +GAR 6148 Emulation 108 #Finks 5522-6148											+3.42		
N/A	N/A												\$Beef		
N/A	N/A												+53.00		

Here we have a daughter of a former GAR donor that has 110 at 101 for RE. This female ranks in the top 5% of the breed for \$Beef and 10% for Marb. She is due to have a heifer calf October 2, 2010 sired by GAR Concrete.

Act BW		LOT 75 CHAIR ROCK OBJECTIVE 7029											Tattoo: 7029		
N/A		Birth Date: 7-26-2007 Cow 16046649													
BWR	N/A	CED	BEPD	WEPD	YEPD	YH	SC								
N/A	N/A	+8	.30	+1.2	.34	+6.0	.25	+1.07	.25	+ .5	.35	N/A	N/A		
WWR	N/A	CEM	MILK	MKH	MW	MH	SEN								
N/A	N/A	+8	.19	+2.7	.20	N/A	N/A	N/A	N/A	N/A	N/A	N/A	-10.90		
YWR	N/A	CW	MARB	REA	FAT						\$Weaning				
N/A	N/A	+6	.21	+5.0	.24	+3.5	.30	-.004	.24						+30.84
Ultrasound Prod Record	N/A	#SS Traveler 6807 T510 [AMF-NHF] #DHD Traveler 6807 [AMF-NHF]											\$Feedlot		
N/A	N/A	SS Objective T510 OT26 [AMF-NHF] #SS Miss Hi Spade A114											+42.58		
N/A	N/A	#13776378 SS Miss Rita R011 7R8 [AMF-NHF] SS Rito Rito R76 R011											\$Grid		
N/A	N/A												+33.75		
N/A	N/A												\$QG		
N/A	N/A	#Bon View New Design 1407 [AMF-NHF] #B/R New Design 036 [AMF-NHF]											+24.50		
N/A	N/A	Chair Rock 1407 ND 5050 Bon View Pride 664											\$YG		
N/A	N/A	+15445063 +GAR Commitment 1939 [AMF] #GAR Commitment [AMF]											+9.25		
N/A	N/A												\$Beef		
N/A	N/A												+53.09		

Here we have a big spread female that earned an individual RE ratio of 105 and ranks in the top 1% of the breed for WW and YW, 5% for RE and 10% for Milk, as well as top 10% for all six dollar values including top 4% for \$Beef. She was bred to calve August 24, 2010 to GAR Predestined.

Act BW		LOT 73 CHAIR ROCK OBJECTIVE 7127 [NHF]											Tattoo: 7127		
N/A		Birth Date: 9-12-2007 Cow 16046735													
BWR	N/A	CED	BEPD	WEPD	YEPD	YH	SC								
N/A	N/A	+9	.29	+1.8	.34	+5.6	.25	+1.03	.25	+ .5	.37	- .19	.05		
WWR	N/A	CEM	MILK	MKH	MW	MH	SEN								
N/A	N/A	+9	.19	+2.8	.20	N/A	N/A	N/A	N/A	N/A	N/A	N/A	-10.58		
YWR	N/A	CW	MARB	REA	FAT						\$Weaning				
N/A	N/A	+6	.21	+6.0	.24	+3.0	.30	-.004	.24						+28.55
Ultrasound Prod Record	N/A	#SS Traveler 6807 T510 [AMF-NHF] #DHD Traveler 6807 [AMF-NHF]											\$Feedlot		
N/A	N/A	SS Objective T510 OT26 [AMF-NHF] #SS Miss Hi Spade A114											+40.02		
N/A	N/A	#13776378 SS Miss Rita R011 7R8 [AMF-NHF] SS Rito Rito R76 R011											\$Grid		
N/A	N/A												+35.91		
N/A	N/A												\$QG		
N/A	N/A	#Bon View New Design 1407 [AMF-NHF] #B/R New Design 036 [AMF-NHF]											+27.19		
N/A	N/A	Chair Rock 1407 ND 4087 Bon View Pride 664											\$YG		
N/A	N/A	+15006860 +GARLD Precision 8204 [AMF] #GAR Precision 1680 [AMC-NHC]											+8.72		
N/A	N/A												\$Beef		
N/A	N/A												+54.67		

A high growth, high marbling Objective daughter that earned an individual RE ratio of 105. This female ranks in the top 2% of the breed for WW and YW, 5% for Marb and 10% for RE, as well as top 10% for all six dollar values including top 3% for \$Beef. She was bred to calve August 25, 2010 to GAR Predestined.

Act BW		LOT 76 CHAIR ROCK OBJECTIVE 7069											Tattoo: 7069		
N/A		Birth Date: 8-16-2007 Cow 16046688													
BWR	N/A	CED	BEPD	WEPD	YEPD	YH	SC								
N/A	N/A	+10	.31	+1.0	.34	+4.9	.25	+9.7	.24	+ .3	.34	N/A	N/A		
WWR	N/A	CEM	MILK	MKH	MW	MH	SEN								
N/A	N/A	+8	.19	+2.9	.20	N/A	N/A	N/A	N/A	N/A	N/A	N/A	-9.48		
YWR	N/A	CW	MARB	REA	FAT						\$Weaning				
N/A	N/A	-2	.21	+7.7	.23	+3.6	.30	-.006	.24						+26.99
Ultrasound Prod Record	N/A	#SS Traveler 6807 T510 [AMF-NHF] #DHD Traveler 6807 [AMF-NHF]											\$Feedlot		
N/A	N/A	SS Objective T510 OT26 [AMF-NHF] #SS Miss Hi Spade A114											+36.62		
N/A	N/A	#13776378 SS Miss Rita R011 7R8 [AMF-NHF] SS Rito Rito R76 R011											\$Grid		
N/A	N/A												+41.66		
N/A	N/A												\$QG		
N/A	N/A	#Bon View New Design 1407 [AMF-NHF] #B/R New Design 036 [AMF-NHF]											+30.90		
N/A	N/A	Chair Rock 1407 ND 5015 Bon View Pride 664											\$YG		
N/A	N/A	+15445046 Chair Rock GAR2569/T510 C158 #SS Traveler 6807 T510 [AMF-NHF]											+10.76		
N/A	N/A												\$Beef		
N/A	N/A												+51.67		

This female offers a nice spread from birth to yearling and breed-leading marbling. She earned individual ultrasound ratios of 115 for IMF and 108 for RE and ranks in the top 1% of the breed for Marb and \$Grid, 5% for CED, YW, Milk, RE, \$Feedlot and \$Beef. 7069 is due to have a bull calf October 1, 2010 sired by GAR Predestined.

Act BW		CHAIR ROCK OBJECTIVE 7080										Tattoo: 7080	
N/A	N/A	Birth Date: 8-20-2007 Cow 16046696											
N/A	N/A	CED	BEPD	WEPD	YEPD	YH	SC						
N/A	N/A	+9	.30	+1.5	.34	+61	.25	+107	.25	+4	.35	N/A	N/A
N/A	N/A	CEM	MILK	MKH	MW	MH	SEN						
N/A	N/A	+8	.19	+26	.20	N/A	N/A	N/A	N/A	N/A	N/A	N/A	-9.87
N/A	N/A	CW	MARB	REA	FAT								\$Weaning
N/A	N/A	+1	.21	+66	.23	+08	.30	-005	.24				+31.12
Ultrasound	Prod	#SS Traveler 6807 T510 [AMF-NHF] #DHD Traveler 6807 [AMF-NHF]										\$Feedlot	
Record		SS Objective T510 OT26 [AMF-NHF] #SS Miss Hi Spade A114										+42.17	
		#13776378 SS Miss Rita R011 7R8 [AMF-NHF] SS Rito Rito R76 R011										\$Grid	
		SS Miss Ultress U56										+35.84	
		#Bon View New Design 1407 [AMF-NHF] #B/R New Design 036 [AMF-NHF]										\$QG	
		Chair Rock 1407 ND 5008 Bon View Pride 664										+28.68	
		+15445044 Chair Rock Grid Maker 2119 #+GAR Grid Maker [AMF-NHF]										\$YG	
		+GAR 1489 Traveler 1438										+7.16	
												\$Beef	
												+50.48	

When you study this female's sire stack you see high potential for explosive growth and marbling, which is exactly what she offers. This female earned an individual IMF ratio of 103 and ranks in the top 1% of the breed for WW, YW and \$Feedlot, 4% for Marb, \$Wean and \$Grid and 10% for \$Beef. She was bred to calve August 20, 2010 to GAR Predestined.



S S Objective T510 OT26 - Sire of Lots 74 through 82.

Act BW		CHAIR ROCK OBJECTIVE 7148										Tattoo: 7148	
N/A	N/A	Birth Date: 10-2-2007 Cow +16046751											
N/A	N/A	CED	BEPD	WEPD	YEPD	YH	SC						
N/A	N/A	+9	.05	+2.1	.05	+62	.05	+107	.05	+4	.41	+01	.05
N/A	N/A	CEM	MILK	MKH	MW	MH	SEN						
N/A	N/A	+10	.05	+22	.05	N/A	+59	.05	+7	.05			-2.65
N/A	N/A	CW	MARB	REA	FAT								\$Weaning
N/A	N/A	+7	.21	+48	.24	+25	.31	+002	.24				+33.34
Ultrasound	Prod	#SS Traveler 6807 T510 [AMF-NHF] #DHD Traveler 6807 [AMF-NHF]										\$Feedlot	
Record		SS Objective T510 OT26 [AMF-NHF] #SS Miss Hi Spade A114										+41.77	
		#13776378 SS Miss Rita R011 7R8 [AMF-NHF] SS Rito Rito R76 R011										\$Grid	
		SS Miss Ultress U56										+31.28	
		#+GAR Grid Maker [AMF-NHF] #GDAR Traveler 044 [AMF-NHF]										\$QG	
		Chair Rock Grid Maker 2107 [AMF] GAR Precision 2536 [AMC-NHF]										+23.91	
		14396175 +GAR Sleep Easy 2207 [AMF] #+GAR Sleep Easy 1009 [AMF-NHF]										\$YG	
		+GAR Ext 604 [AMF-NHF]										+7.37	
												\$Beef	
												+51.35	

The first of two full sisters that are daughters of a donor cow that has 56 at 101 for RE. This female ranks in the top 1% of the breed for WW, YW and \$Feedlot, 5% for \$Wean and \$Beef and 10% for CED, CEM, Marb and \$Grid. She is due to have a bull calf October 1, 2010 sired by GAR Predestined.

Act BW		CHAIR ROCK OBJECTIVE 7088										Tattoo: 7088	
N/A	N/A	Birth Date: 8-21-2007 Cow 16046703											
N/A	N/A	CED	BEPD	WEPD	YEPD	YH	SC						
N/A	N/A	+7	.29	+3.4	.33	+62	.25	+108	.25	+6	.36	N/A	N/A
N/A	N/A	CEM	MILK	MKH	MW	MH	SEN						
N/A	N/A	+7	.18	+22	.20	N/A	N/A	N/A	N/A	N/A	N/A	N/A	-6.67
N/A	N/A	CW	MARB	REA	FAT								\$Weaning
N/A	N/A	+3	.20	+41	.23	+26	.30	-012	.23				+26.57
Ultrasound	Prod	#SS Traveler 6807 T510 [AMF-NHF] #DHD Traveler 6807 [AMF-NHF]										\$Feedlot	
Record		SS Objective T510 OT26 [AMF-NHF] #SS Miss Hi Spade A114										+42.82	
		#13776378 SS Miss Rita R011 7R8 [AMF-NHF] SS Rito Rito R76 R011										\$Grid	
		SS Miss Ultress U56										+31.11	
		#+GAR Grid Maker [AMF-NHF] #GDAR Traveler 044 [AMF-NHF]										\$QG	
		Chair Rock Grid Maker 4019 [AMF] GAR Precision 2536 [AMC-NHF]										+21.69	
		+15008981 +GAR Raider 1870 [AMF] #Traveler 436B of JRS										\$YG	
		+GAR Ext 2416										+9.42	
												\$Beef	
												+47.87	

A power female bred for explosive growth. She ranks in the top 1% for WW, YW and \$Feedlot, as well as top 10% for \$Grid and \$Beef. 7088 is due to have a heifer calf September 16, 2010 sired by GAR Prediction.

Act BW		CHAIR ROCK OBJECTIVE 7149										Tattoo: 7149	
N/A	N/A	Birth Date: 10-2-2007 Cow +16046752											
N/A	N/A	CED	BEPD	WEPD	YEPD	YH	SC						
N/A	N/A	+9	.05	+2.1	.05	+62	.05	+107	.05	+7	.41	+01	.05
N/A	N/A	CEM	MILK	MKH	MW	MH	SEN						
N/A	N/A	+10	.05	+22	.05	N/A	+59	.05	+7	.05			-2.78
N/A	N/A	CW	MARB	REA	FAT								\$Weaning
N/A	N/A	+4	.21	+51	.24	+23	.31	-006	.24				+33.21
Ultrasound	Prod	#SS Traveler 6807 T510 [AMF-NHF] #DHD Traveler 6807 [AMF-NHF]										\$Feedlot	
Record		SS Objective T510 OT26 [AMF-NHF] #SS Miss Hi Spade A114										+41.77	
		#13776378 SS Miss Rita R011 7R8 [AMF-NHF] SS Rito Rito R76 R011										\$Grid	
		SS Miss Ultress U56										+33.15	
		#+GAR Grid Maker [AMF-NHF] #GDAR Traveler 044 [AMF-NHF]										\$QG	
		Chair Rock Grid Maker 2107 [AMF] GAR Precision 2536 [AMC-NHF]										+24.79	
		14396175 +GAR Sleep Easy 2207 [AMF] #+GAR Sleep Easy 1009 [AMF-NHF]										\$YG	
		+GAR Ext 604 [AMF-NHF]										+8.36	
												\$Beef	
												+50.45	

Another big spread female that is out of a donor that has 56 at 101 for RE. This female ranks in the top 1% of the breed for WW, YW and \$Feedlot, 5% for \$Wean, \$Grid and \$Beef and 10% for CED, CEM and Marb. She was bred to calve August 24, 2010 to GAR Predestined.

Act BW		CHAIR ROCK OBJECTIVE 7057 [AMF]										Tattoo: 7057	
N/A	N/A	Birth Date: 8-15-2007 Cow 16046677											
N/A	N/A	CED	BEPD	WEPD	YEPD	YH	SC						
N/A	N/A	+12	.29	+9	.33	+58	.25	+110	.25	+2	.36	N/A	N/A
N/A	N/A	CEM	MILK	MKH	MW	MH	SEN						
N/A	N/A	+11	.18	+20	.20	N/A	N/A	N/A	N/A	N/A	N/A	N/A	-5.14
N/A	N/A	CW	MARB	REA	FAT								\$Weaning
N/A	N/A	-2	.20	+46	.23	+19	.30	-022	.23				+27.69
Ultrasound	Prod	#SS Traveler 6807 T510 [AMF-NHF] #DHD Traveler 6807 [AMF-NHF]										\$Feedlot	
Record		SS Objective T510 OT26 [AMF-NHF] #SS Miss Hi Spade A114										+46.58	
		#13776378 SS Miss Rita R011 7R8 [AMF-NHF] SS Rito Rito R76 R011										\$Grid	
		SS Miss Ultress U56										+33.64	
		#+GAR Grid Maker [AMF-NHF] #GDAR Traveler 044 [AMF-NHF]										\$QG	
		Chair Rock Grid Maker 4005 GAR Precision 2536 [AMC-NHF]										+23.30	
		+15008977 +GAR Focus 2820 #SAF Focus of ER [AMF-NHF]										\$YG	
		+GAR Ext 2107										+10.34	
												\$Beef	
												+46.58	

This female has the rare distinction of ranking in the top 1% of the breed for CED, WW and YW. She also ranks in the top 1% for \$Feedlot, 3% for CEM, \$Grid and \$Yield Grade, as well as top 10% for \$Beef. 7057 was bred to calve August 24, 2010 to GAR Predestined.

**LOT 81 CHAIR ROCK OBJECTIVE 7135**

Birth Date: 9-16-2007 Cow 16046742 Tattoo: 7135

Act BW	N/A	CED	BEPD	WEPD	YEPD	YH	SC
BWR	N/A	+7	.30	+1.7	.35	+51	.26
WWR	N/A	+7	.20	+23	.23	N/A	+55
YWR	N/A	+8	.21	+51	.24	+23	.31
							+0
							.24

CEM	MILK	MKH	MW	MH	SEN
+7	.20	+23	.23	N/A	+55
					.05
					.05
					-3.31

CW	MARB	REA	FAT
+8	.21	+51	.24
			+23
			.31
			+0
			.24

Ultrasound Prod Record

#SS Traveler 6807 T510 [AMF-NHF]	#DHD Traveler 6807 [AMF-NHF]
SS Objective T510 OT26 [AMF-NHF]	#SS Miss Hi Spade A114
#13776378 SS Miss Rita R011 7R8 [AMF-NHF]	SS Rito Rito R76 R011
	SS Miss Ultress U56

#GAR Commitment [AMF]	#DHD Traveler 6807 [AMF-NHF]
GAR Commitment 1939 [AMF]	+GAR Bando 102
+13397343 +GAR Ext 2426	#N Bar Emulation EXT [AMF-NHF]
	GAR Bando 338

\$Weaning	+27.05
\$Feedlot	+35.82
\$Grid	+32.01
\$QG	+24.79
\$YG	+7.22
\$Beef	+51.28

The dam of this female has 20 at 103 for RE and stems from the same family that produced the longtime feature at ABS Global, Alliance 187. She ranks in the top 5% of the breed for YW, \$Feedlot and \$Beef, as well as top 10% for WW, Marb and \$Grid. 7135 was bred to calve August 24, 2010 to GAR Predestined.



Chair Rock Objective 7084 - Lot 82



A new spring born calf finally getting to enjoy a sunny day.

**LOT 82 CHAIR ROCK OBJECTIVE 7084**

Birth Date: 8-20-2007 Cow 16046699 Tattoo: 7084

Act BW	N/A	CED	BEPD	WEPD	YEPD	YH	SC
BWR	N/A	+14	.30	-1.5	.34	+60	.25
WWR	N/A	+12	.19	+27	.20	N/A	N/A
YWR	N/A	+1	.21	+59	.24	+08	.30
							-.010
							.24

CEM	MILK	MKH	MW	MH	SEN
+14	.30	-1.5	.34	+60	.25
					+.4
					.35
					N/A
					N/A

CW	MARB	REA	FAT
+14	.30	-1.5	.34
			+60
			.25
			+.4
			.35

Ultrasound Prod Record

#SS Traveler 6807 T510 [AMF-NHF]	#DHD Traveler 6807 [AMF-NHF]
SS Objective T510 OT26 [AMF-NHF]	#SS Miss Hi Spade A114
#13776378 SS Miss Rita R011 7R8 [AMF-NHF]	SS Rito Rito R76 R011
	SS Miss Ultress U56

#Bon View New Design 1407 [AMF-NHF]	#B/R New Design 036 [AMF-NHF]
Chair Rock 1407 ND 5107	Bon View Pride 664
+15481116 GAR Commitment 979	#GAR Commitment [AMF]
	+GAR Max 264

\$Weaning	+35.34
\$Feedlot	+36.35
\$Grid	+34.54
\$QG	+26.96
\$YG	+7.58
\$Beef	+47.57

Check out the spread this female offers, from -1.5 for Birth all the way to +101 for Yearling. She ranks in the top 2% of the breed for CED, BW, WW, YW, CEM and \$Wean. 3% for \$Feedlot and \$Grid and 10% for Milk, Marb and \$Beef. 7084 was bred to calve August 25, 2010 to GAR Predestined.

**CR SPRING PAIRS**

**LOT 83 CHAIR ROCK 1407 ND 6054 [AMF-NHF]**

Birth Date: 8-18-2006 Cow +15770226 Tattoo: 6054

Act BW	3-82	CED	BEPD	WEPD	YEPD	YH	SC
BWR	1-96	+7	.05	+1.2	.32	+48	.27
WWR	1-101	+8	.05	+33	.25	N/A	+55
YWR	N/A	+14	.22	+76	.26	+38	.32
							+.032
							.25

CEM	MILK	MKH	MW	MH	SEN
+7	.05	+1.2	.32	+48	.27
					+.90
					.25
					+.5
					.43

CW	MARB	REA	FAT
+14	.22	+76	.26
			+38
			.32
			+.032
			.25

Ultrasound Prod Record

#B/R New Design 036 [AMF-NHF]	#VDAR New Trend 315 [AMF-NHF]
Bon View New Design 1407 [AMF-NHF]	B/R Blackcap Empress 76
#12783540 Bon View Pride 664	#+GAR Sleep Easy 1009 [AMF-NHF]
	#Bon View Pride 1551

#+GAR Pinnacle [NHC-AMF]	#GAR Precision 1680 [AMC-NHC]
GAR Pinnacle 1630	+GAR Ext 2114
+13724152 +GAR 6807 Traveler 2167 [AMF]	#DHD Traveler 6807 [AMF-NHF]
	GAR Pierre 1322

\$Weaning	+28.79
\$Feedlot	+29.93
\$Grid	+35.17
\$QG	+30.74
\$YG	+4.43
\$Beef	+57.89

We lead off the spring pairs with a female that produced the \$4,750 Lot 217 in the GAR sale. She ranks in the top 2% of the breed for Milk, Marb and \$Beef, 5% for RE and \$Grid and 10% for YW, \$Wean and \$Feedlot. 6054 produced 15 embryos in one flush and sells with Lot 83A, a February 26, 2010 bull calf (0513) sired by GAR Concrete that weighed 100 lbs.

**LOT 84 CHAIR ROCK OBJECTIVE 7081**

Birth Date: 8-20-2007 Cow +16046697 Tattoo: 7081

Act BW	N/A	CED	BEPD	WEPD	YEPD	YH	SC
BWR	N/A	+10	.05	+1.3	.05	+64	.05
WWR	N/A	+10	.05	+24	.05	N/A	N/A
YWR	N/A	+6	.21	+48	.24	+28	.30
							-.020
							.24

CEM	MILK	MKH	MW	MH	SEN
+10	.05	+1.3	.05	+64	.05
					+.36
					+.21
					.05
					-9.83

CW	MARB	REA	FAT
+10	.05	+1.3	.05
			+64
			.05
			+.36
			+.21

Ultrasound Prod Record

#SS Traveler 6807 T510 [AMF-NHF]	#DHD Traveler 6807 [AMF-NHF]
SS Objective T510 OT26 [AMF-NHF]	#SS Miss Hi Spade A114
#13776378 SS Miss Rita R011 7R8 [AMF-NHF]	SS Rito Rito R76 R011
	SS Miss Ultress U56

#+GAR Grid Maker [AMF-NHF]	#GDAR Traveler 044 [AMF-NHF]
Chair Rock Grid Maker 4028 [AMF]	GAR Precision 2536 [AMC-NHF]
+15008985 +GAR Focus 1990 [AMF]	#SAF Focus of ER [AMF-NHF]
	+GAR Ext 1427 [AMF]

\$Weaning	+31.21
\$Feedlot	+47.30
\$Grid	+33.78
\$QG	+23.91
\$YG	+9.87
\$Beef	+54.40

A full sister-in-blood to the \$60,000 GAR Concrete out of a donor cow that has 10 at 103 for RE. This female ranks in the top 1% of the breed for WW, YW and \$Feedlot, 3% for \$Beef, 4% for CED and 10% for CEM, RE and \$Grid. She sells with Lot 84A, a March 1, 2010 bull calf (0517) sired by GAR New Design 5050 that weighed 87 lbs.



# CHAIR ROCK Vaccination Program

## Calves (45 - 60 days after birth)

1. Titanium 5 - Modified Live (IBR, BVD, PI3, BRSV) - Diamond AgriLabs
2. Vision 7 Somnus with Spur - Intervet
3. Repro Star VL5 HB - Novartis
4. Ivermectin - pour on
5. Once PMHSQ - (*Mannheimia haemolytica*-*Pasteurella multocida* Vaccine) - Intervet
6. Creep Feed with Bovitech

## Calves (205 days)

1. Titanium 5 - Modified Live (IBR, BVD, PI3, BRSV) - Diamond AgriLabs
2. Vision 7 Somnus with Spur - Intervet
3. Repro Star VL5 HB - Novartis
4. Once PMHSQ - Intervet
5. Calfhood Vaccinate Heifers (4 to 12 Months)
6. Ear Notch calves for PI BVD
7. Weight

## Bull Calves (10 days before shipping to Gardiner)

1. Titanium 5 - Modified Live (IBR, BVD, PI3, BRSV) - Diamond AgriLabs
2. Vision 7 Somnus with Spur - Intervet
3. Ivermectin - pour on
4. Must have been ear notched for PI BVD

## Heifer Calves (first two weeks of June)

1. Titanium 5 - Modified Live - Diamond AgriLabs
2. Vision 7 Somnus with Spur - Intervet
3. Ivermectin - pour on (mid June most effective)
4. Calfhood Vaccinate

## Yearling Heifers - (September 1 - 30+ days prior to breeding)

1. Titanium 5 - Modified Live - Diamond AgriLabs
2. Repro Star VL5 HB - Novartis
3. Hip Height and Weight on Ultrasound Date

## Cow Herd Third Week of July (to control flies and just prior to calving)

1. Spray Flies every 3 weeks or as needed.
2. CTC in Feed or Mineral All Year

## Bulls (12 to 14 Months)

1. Titanium 5 - Modified Live (IBR, BVD, PI2, BRSV) - Diamond AgriLabs
2. Pinkeye
3. Vibrio/Lepto (@BSE)

## Steers (prior to going to feedlot)

1. Titanium 5 - Modified Live (IBR, BVD, PI3, BRSV) - Diamond AgriLabs
2. Vision 7 Somnus with Spur - Intervet
3. Ivermectin - pour on

## Cows (30+ days prior to breeding first half of September for November transfers)

1. Titanium 5 - Modified Live (IBR, BVD, PI3, BRSV) - Diamond AgriLabs
2. Repro Star VL5 HB - Novartis
3. Ivermectin - pour on

## Cows (June)

1. Ivermectin - pour on (June will affect most larvae)
2. Mineral with Tetracyclin (to kill pink eye bacteria)
3. Oilers and Fly Bags (to inhibit flies)

## Registered Cows (Weaning)

1. Weight
2. Body Condition Score

## Spring Cow Herd (30 Days prior to calving)

1. Scour Guard

Chair Rock Vaccination Program 32409



## Directions to Sale Site

Our ranch is approximately 55 miles southwest of Kansas City, Missouri, on Hwy. 169. South from Kansas City on I-35 to Hwy. 169 south, 39 miles south on Hwy. 169, then south (left) on Virginia (first left past mile marker 111); ½ mile east on Allen. The road dead ends at our headquarters.



# GLOSSARY OF TERMS AND ABBREVIATIONS

**Expected Progeny Differences (EPD)**, is the prediction of how future progeny of each animal are expected to perform relative to the progeny of other animals listed in the database. EPDs are expressed in units of measure for the trait, plus or minus. Interim EPDs may appear on young animals when their performance has yet to be incorporated into the American Angus Association National Cattle Evaluation (NCE) procedures. This EPD will be preceded by an "I", and may or may not include the animal's own performance record for a particular trait, depending on its availability, appropriate contemporary grouping, or data edits needed for NCE.

**ACC:** Accuracy is the reliability that can be placed on the EPD. An accuracy of close to 1.0 indicates higher reliability.

## Growth

**Calving Ease Direct (CED)**, is expressed as a difference in percentage of unassisted births, with a higher value indicating greater calving ease in first-calf heifers. It predicts the average difference in ease with which a sire's calves will be born when he is bred to first-calf heifers.

**Birth Weight EPD (BW)**, expressed in pounds, is a predictor of a sire's ability to transmit birth weight to his progeny compared to that of other sires.

**Weaning Weight EPD (WW)**, expressed in pounds, is a predictor of a sire's ability to transmit weaning growth to his progeny compared to that of other sires.

**Yearling Weight EPD (YW)**, expressed in pounds, is a predictor of a sire's ability to transmit yearling growth to his progeny compared to that of other sires.

**Yearling Height EPD (YH)**, is a predictor of a sire's ability to transmit yearling height, expressed in inches, compared to that of other sires.

**Scrotal Circumference EPD (SC)**, expressed in centimeters, is a predictor of the difference in transmitting ability for scrotal size compared to that of other sires.

## Maternal

**Calving Ease Maternal (CEM)**, is expressed as a difference in percentage of unassisted births with a higher value indicating greater calving ease in first-calf daughters. It predicts the average ease with which a sire's daughters will calve as first-calf heifers when compared to daughters of other sires.

**Maternal Milk EPD (Milk)**, is a predictor of a sire's genetic merit for milk and mothering ability as expressed in his daughters compared to daughters of other sires. In other words, it is that part of a calf's weaning weight attributed to milk and mothering ability.

**Mature Weight EPD (MW)**, expressed in pounds, is a predictor of the difference in mature weight of daughters of a sire compared to the daughters of other sires.

**Mature Height EPD (MH)**, expressed in inches, is a predictor of the difference in mature height of a sire's daughters compared to daughters of other sires.

**Cow Energy Value (\$EN)**, expressed in dollar savings per cow per year, assesses differences in cow energy requirements as an expected dollar savings difference in daughters of sires. A larger value is more favorable when comparing two animals (more dol-

lars saved on feed energy expenses). Components for computing the cow \$EN savings difference include lactation energy requirements and energy costs associated with differences in mature cow size.

## Carcass

**Carcass Weight EPD (CW)**, expressed in pounds, is a predictor of the differences in hot carcass weight of a sire's progeny compared to progeny of other sires.

**Marbling EPD (Marb)**, expressed as a fraction of the difference in USDA marbling score of a sire's progeny compared to a progeny of other sires.

**Ribeye Area EPD (RE)**, expressed in square inches, is a predictor of the difference in ribeye area of a sire's progeny compared to progeny of other sires.

**Fat Thickness EPD (Fat)**, expressed in inches, is a predictor of the differences in external fat thickness at the 12th rib (as measured between the 12th and 13th ribs) of a sire's progeny compared to progeny of other sires.

## Ultrasound Adjusted Measurements

**Adj. Yrlg. Scrotal Circ:** Adjusted yearling scrotal circumference, the bull's scrotal circumference measured in centimeters adjusted to one year of age.

**Adj. Yrlg. Hip Ht.:** Each bull's hip height measured in inches and adjusted to one year of age.

**Adj. %IMF:** The percent intramuscular fat (marbling) adjusted to 365 days of age. Heritability for marbling is in the moderate range.

**%IMF Ratio:** The percent above or below average (100 = average) a bull or female is for its marbling scan within its contemporary group.

**Adj. Yrlg. Ribeye Area:** Each bull's ribeye area measured in square inches and adjusted to one year of age.

**REA Ratio:** The percent above or below average (100 = average) a bull is for his adjusted ribeye area.

**Adj. Rib Fat:** This is the off-test backfat measured in inches adjusted to 365 days of age.

**Rib Fat Ratio:** The percent above or below average (100 = average) a bull or female is for its backfat scan within its contemporary group.

**Adj. Rump Fat:** This is the off-test rump fat measured in inches adjusted to 365 days of age.

**Rump Fat Ratio:** The percent above or below average (100 = average) a bull or female is for its rump fat scan within its contemporary group.

## \$Value Indexes

**Weaned Calf Value (\$W)**, an index value expressed in dollars per head, is the expected average difference in future progeny performance for preweaning merit. \$W includes both revenue and cost adjustments associated with differences in birth weight, weaning direct growth, maternal milk, and mature cow size.

# GLOSSARY OF TERMS AND ABBREVIATIONS

**Feedlot Value (\$F)**, an index value expressed in dollars per head, is the expected average difference in future progeny performance for postweaning merit compared to progeny of other sires.

**QG & YG**, The \$Grid Value (\$G) is composed of two index parts. These indexes are called yield grade value (\$YG) and quality grade value (\$QG), and are reported in dollars per head, with a higher value being more favorable.

The \$YG, the yield grade portion of \$G, is influenced by yield grade premiums and discounts along with EPDs from carcass and ultrasound databases for ribeye, fat thickness and weight. Based on these traits, \$YG has similarities to the percent retail product (%RP) EPD, but \$YG is expressed in dollars per head and reflects industry-driven economic weightings.

The quality grade component is \$QG, which accounts for contributions from the marbling EPD and the %IMF EPD in conjunction with the base industry quality grade schedules. As with \$YG, a three-year rolling average is used in \$QG to establish typical industry economic values in the index. Quality grade premiums are specified for Prime, CAB® and Choice carcasses, as well as Select and Standard discounts.

As a reminder, the \$Grid Value (\$G) combines both \$QG and \$YG, and may be the best carcass decision tool for focusing on quality and red meat yield simultaneously. The use of \$QG and \$YG separately is intended for specialized emphasis in a particular carcass value area.

**Grid Value (\$G)**, an index value expressed in dollars per head, is the expected average difference in future progeny performance for carcass grid merit compared to progeny of other sires.

**Beef Value (\$B)**, an index value expressed in dollars per head, is the expected average difference in future progeny performance for post-weaning and carcass value compared to progeny of other sires.

## **Dam's Production Record:**

**Act. BW - Actual Birth Weight Ratio:** The number of calves each dam has had and the average actual birth weight of those calves. Example: 3-81 means the dam has had 3 calves with an average actual birth weight of 81 pounds.

**BWR - Birth weight ratio:** The number of calves a dam has had and their average birth weight ratio. Example: 2-98 means the dam has had 2 calves with an average BWR of 98.

**WWR - Weaning weight ratio:** The number of calves a dam has had and their average weaning weight ratio. Example: 2-102 means the dam has had 2 calves with an average WWR of 102.

**YWR - Yearling weight ratio:** The number of calves a dam has had and their average yearling weight ratio. Example: 2-103 means the dam has had 2 calves with an average YWR of 103.

## **Dam's Ultrasound Production Record**

**%IMF:** The number of calves that each dam has had, and the average %IMF ratio on those calves. Example: 11-112 means that the dam of this animal has had 11 progeny ultrasounded for IMF with an average ratio of 112.

**REA:** The number of calves that each dam has had, and the average ribeye area ratio on those calves. Example: 11-112 means that the dam of this animal has had 11 progeny ultrasounded for REA with an average ratio of 112.

**Fat:** The number of calves that each dam has had, and the average rib fat ratio on those calves. Example: 11-112 means that the dam of this animal has had 11 progeny ultrasounded for rib fat with an average ratio of 112. A ratio above 100 would mean that this animal has above average rib fat (more fat) and a ratio of less than 100 means that the animal has less rib fat (less fat) within the animal's contemporary group.

**RU Fat:** The number of calves that each dam has had, and the average rump fat ratio on those calves. Example: 11-112 means that the dam of this animal has had 11 progeny ultrasounded for rump fat with an average ratio of 112. A ratio above 100 would mean that this animal has above average rump fat (more fat) and a ratio of less than 100 means that the animal has less rump fat (less fat) within the animal's contemporary group.

**BW - Birth Weight:** The actual weight in pounds at birth.

**Calving-Ease Score:** 1=unassisted; 2=some assistance; 3=mechanical assistance.

**Weight Ratio:** A direct comparison of one calf to all other calves in his contemporary group for adjusted birth, weaning and yearling weight. A 100 weight ratio is average for the group, 105 means that the calf performed 5% above group average for that trait, and a 95 ratio indicates that the calf is 5% below group average for that trait.

**Contemporary Group:** A group of cattle about the same age and given equal treatment.

**84-Day Average Daily Gain:** The average in pounds per day that the bulls gained for an 84-day feed test.

## **CHAIR ROCK RANCH BREEDING GUARANTEE**

We guarantee that all breeding cattle sold by Chair Rock Ranch, both bulls and females, are fertile to the best of our knowledge. If a bull is injured at any time in the 12 months following the sale so as to make them functionally infertile, we will provide you with a satisfactory replacement (if available), or issue you a credit equal to the bull's purchase price minus the salvage value received for that bull. If a female is determined to be a non-breeder, then we would ask you to sell her and would offer you the difference of her purchase price minus the salvage value as a credit in any future Chair Rock Ranch sale. All credit is good until it is used and does not expire. We would simply ask you to contact us before you cull your infertile animal.

This is not a life insurance policy, however. We will not replace a dead animal if it is killed or dies for any reason. We would suggest that normal care still needs to be exercised toward these animals and that particularly the yearling bulls not be allowed to get too thin.

This guarantee is in addition to the Sale Terms and Conditions of the American Angus Association, which also apply.



Parker Friedrich • Marketing & Consulting  
566 Hillcrest • Stephenville, TX 76401

PRESORTED  
FIRST CLASS  
U.S. POSTAGE  
**P A I D**  
St. Joseph, MO  
Permit #2017



**CHAIR ROCK RANCH**  
**3<sup>rd</sup> Annual Angus Female Sale**  
**SATURDAY, MAY 22, 2010**

At the Ranch • Greeley, KS • 12 Noon



**CHAIR  
ROCK  
RANCH**

Office: 913.722.6100 • Bill Kline, Cell: 913.645.5351 • Carr Kline, Cell: 913.645.3558  
Mailing Address: 7301 Mission Road, Suite 309 • Prairie Village, KS 66208  
Ranch Headquarters: 33400 NE 2500<sup>th</sup> Rd. • Greeley, KS 66033-9160  
Mail will not be delivered to ranch headquarters.  
ChairRock@kc.rr.com • www.ChairRock.com