

The 38th Carolina Angus Futurity

Noon • Saturday • March 21, 2009

Held at the T. Ed Garrison Livestock Arena

Clemson University, Clemson, SC



Featuring These Elite Genetics!



CEDAR CREEK 6K20 RITA 2510 - She sells as Lot 1.



DB QUEEN MOTHER 181A - She sells as Lot 19.



YON MIGNONNE P253 - She sells as Lot 52.



STILLWATER TRAVELER 004 U06 - She sells as Lot 44.

38th Annual Carolina Angus Futurity

Dedicated to Gene Pruitt of Glendale Angus

“Gene will do anything you ask him to do for the juniors,” Ted Bourne offered as a reason that Gene Pruitt should receive the Carolina Angus Futurity dedication. Each year the South Carolina Angus Association dedicates the Carolina Angus Futurity to one of their members who has given time and effort to the Angus breed, the South Carolina Angus Association and the South Carolina Junior Angus Association. Gene Pruitt has been elected by the leadership to receive this honor for the 2009 Carolina Angus Futurity.

Gene and Glenda Pruitt have raised three children and their Angus on their Glendale Farm in Abbeville, SC. Their three children, Leigh, Rob and Katie have all been active South Carolina Juniors and junior members of the American Angus Association. In the process Gene has hauled juniors and their cows all over the United States for them to show their Angus heifers. When asked about his years of taking the SC Juniors to shows all over the country, Gene enthusiastically replied, “Our children have had a wonderful experience showing Angus cattle. I’ve tried to teach them that they won’t remember for long where their heifer placed in the show, but they will always treasure the friends they make. In my view, this is what the show circuit is all about. When Leigh got married, two of her bridesmaids were friends she made showing cattle. On her wedding day, she thanked me for the opportunities she had because of her show career.”

Gene has expanded his herd from those first show animals by purchasing prize cows from other well-known breeders. He continues to improve his herd’s genetics by using artificial insemination and embryo transplants.

Gene is actively involved in several associations.



Gene Pruitt

Gene has served as president of the South Carolina Angus Association (SCAA) twice. The first time he was elected in 1995 for a two-year term. He became president again in 2003. He and Glenda have unselfishly helped the South Carolina Juniors as their advisors. He continues to assist them anyway he can. He is also a member of the Cattleman’s Association.

In addition to his Angus leadership, Gene has been active as a leader in his community. Gene has served as legal advisor for the Abbeville County School District for 22 years and 10 years for Abbeville County until his retirement. He is still serving as the attorney for the Little River Co-op Board and the Abbeville Hospital. He has his law office on West Pickens Street in Abbeville, SC.

The South Carolina Angus Association is proud to dedicate the Carolina Angus Futurity to Gene Pruitt. This year the honor will be conferred during the SCAA banquet and annual meeting at Tucker’s Restaurant at 7 P.M. on Friday, March 20, 2009.

38th Annual Carolina Angus Breeders Futurity

NOON • SATURDAY • MARCH 21, 2009

Held at the T. Ed Garrison Livestock Arena, Clemson University, Clemson, SC

AUCTIONEER:

Mike Jones
SC#774R
(706) 773-3612



SALE DAY PHONES:

(864) 910-1361 (816) 516-1309

ASSOCIATION REPRESENTATIVES:

Steve McPhail President
Lewis Smith Vice President
Windy Barteo Secretary
Mike Johnson Treasurer

LIVESTOCK PUBLICATION REPRESENTATIVES:

David Gazda *Angus Journal*
Alex Williams Special Assignment
Shirley Meyers Special Assignment

SALE MANAGER:

American Angus Hall of Fame (816) 532-0811
Tom Burke (816) 853-2697
Kurt Schaff (816) 520-6447
Jeremy Haag (816) 516-1309
Rance Long (816) 510-3464

SALE CHAIRMAN:

Lewis Smith (864) 261-6982

BUYERS:

Unable to attend the sale may send their bids to the Sale Manager, Livestock Publication Representative or Auctioneer.

SALE HEADQUARTERS:

Comfort Suites (864) 622-1200
118 Interstate Blvd, Anderson, SC 29621 • (I-85 at Exit 19)
Ask for SCAA rate.
Ramada Inn (864) 654-7501
1310 Tiger Blvd, Clemson, SC
Ask for SCAA rate.

SALE LOCATION:

The sale will be held at the T. Ed Garrison Livestock Arena on the campus of Clemson University.
1101 W. Queen Street, Pendleton, SC 29670 (see map on back cover)

SUPPLEMENTAL INFORMATION:

A supplemental sheet will be available sale day with complete and up to date calving information. Announcements from auction block regarding the cattle selling in this sale take precedence over information listed in this sale book.

LOT NUMBERS:

The tags on animals will correspond with the lot numbers in the sale book. Ear tags on calves at the side of dam correspond with the dam's number.

HERD HEALTH:

All cattle will be accompanied by proper health certificates for immediate shipment.

TRUCKING:

Truckers believed to be reliable will be available to assist you in shipping your purchases.

TERMS AND CONDITIONS:

The cattle will sell under the Terms and Conditions as recommended by the American Angus Association.

LIVESTOCK MORTALITY INSURANCE:

A representative from American Live Stock Insurance Company will be available to assist you with mortality insurance for your purchases.

FOOD AND REFRESHMENTS:

Available sale day.

SCHEDULE OF EVENTS:

Friday, March 20, 2009

Noon Cattle may be in place.
7 p.m. Meeting and Banquet will be at the Tuckers Restaurant
3501 Clemson Blvd, Anderson SC, (864) 844-2453
(Directions: Take Exit 19A from I-85 onto Clemson Blvd (Hwy 76).
Tuckers will be a few miles down on your right).
Banquet Tickets: Adults \$25; Children 10 and under \$10.
Please let Windy Barteo know if you can attend the banquet (803) 222-7533 or tumblet8@bellsouth.net.

Saturday, March 21, 2009

9 a.m. Silent Auction benefiting the
South Carolina Junior Angus Association
Noon The 36th Annual Carolina Angus Breeders Futurity Sale.

Visit the *Angus Journal*® Web site, www.angusjournal.com, and view this sale book online.

References: *American Angus Association*®, *AHIR*®, *AngusSource*®, *CAB*®, *Pathfinder*®.

More information and catalog available at www.scangus.org

COMMENTS FROM THE SALE MANAGERS:



Tom Burke
(816) 853-2697



Kurt Schaff
(816) 520-6447



Jeremy Haag
(816) 516-1309



Rance Long
(816) 510-3464

Welcome to the 38th annual presentation of the Carolina Angus Breeders Futurity, a premier Angus event in the Southeast that features the very best in performance Angus genetics from South Carolina's finest breeders. These consignors are truly dedicated Angus enthusiasts that have dug deep into their herds to bring you a sound set of productive females.

This, without question, is one of the finest sets ever offered in South Carolina. Note the influence of today's breed-leading A.I. sires throughout this offering. Each and every lot is rich in performance, pedigree, carcass traits and maternal genetics. This year's offering is indeed an outstanding set of young show heifer prospects with the 2009 National Junior Angus Show in Perry, GA close to home along with a tremendous set of powerful bred heifers and outstanding pairs that will sell in South Carolina's main event.

We thank the folks who have donated semen and other items for the silent auction to support this year's Junior program and we also want to send out a special congratulations to Mr. Gene Pruitt and his family on having the 38th Annual Carolina Angus Futurity dedicated to them. If you have any questions, please feel free to contact the American Angus Hall of Fame at (816) 532-0811 and be sure to plan to be with us both on Friday, March 20 for the annual banquet and Saturday, March 21 for the 38th Annual South Carolina Futurity.

Sincerely,

Tom Burke

Kurt Schaff

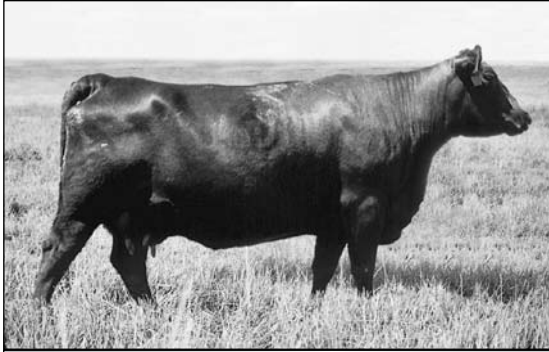
Jeremy Haag

Rance Long



At the WORLD ANGUS HEADQUARTERS, Box 660, Smithville, MO 64089-0660.
Phone: (816) 532-0811. Fax: (816) 532-0851. E-Mail: angushall@earthlink.net - www.angushall.com

ALEXANDER ANGUS, BLACKCREST & BRITT FARMS



VDAR BEAUTY 228 - Stems from the same family as Lots 3 and 4.

3 Alexis Beauty 246

Birth Date: 11-29-2004 Cow 15051291 Tattoo: 246

#B/R New Design 036 (AMF) #VDAR New Trend 315 (AMF)
 Bon View New Design 878 (AMF) B/R Blackcap Empress 76
 #13062750 Bon View Gammer 85 #Bon View Bando 598
 Bon View Gammer 233

#Vermilion Dateline 7078 (AMF) #Connealy Dateline
 Alexis Beauty 217 #Vermilion Blackbird 5044
 14114393 +Alexis Beauty 174 #RR Scotchcap 9440 (AMF)
 VDAR Beauty 611

- Owned by Alexander Angus Farm of Six Mile, SC.
- This direct daughter of Bon View New Design 878 goes back to the famous VDAR Beauty family on the bottom side.
- She has an individual weaning ratio of 101, yearling ratio of 103 and stems from a dam that records WR 2@108, YR 2@107.
- Sells with a bull calf at side (Lot 3A) born September 14, 2008, by BC MARATHON 7022. Birth weight: 70 lbs.
- Bred to calve September 23, 2009, to BCC BUSHWACKER 41-93.

BEPD	WEPD	YEPD	MILK
+2.5	.32	+46	.24
		+89	.24
			+25
			.20

4 Alexis Beauty 242

Birth Date: 10-6-2004 Cow 14905321 Tattoo: 242

#B/R New Design 036 (AMF) #VDAR New Trend 315 (AMF)
 B/R New Frontier 095 (AMF) B/R Blackcap Empress 76
 #+13588640 White Fence Pride H1 #Connealy Dateline
 #Pleasant Pill of Conanga

#+Leachman Right Time #N Bar Emulation EXT (AMF)
 Alexis Beauty 209 Leachman Erica 0025
 13802983 +Alexis Beauty 174 #RR Scotchcap 9440 (AMF)
 VDAR Beauty 611

- Owned by Alexander Angus Farm of Six Mile, SC.
- This direct daughter of B/R New Frontier 095 goes back to the \$160,000 Pathfinder Sire, Leachman Right Time, on the bottom side.
- She has an individual weaning ratio of 113, yearling ratio of 115, progeny production record of WR 2@112. She stems from a dam that records WR 4@108, YR 2@111, U%IMF 7@103 and has one daughter in production with an average nursing ratio of 112.
- Sells with a heifer calf at side (Lot 4A) born September 7, 2008, by MYTTY IN FOCUS. Birth weight: 83 lbs.
- Bred to calve September 23, 2009, to SS OBJECTIVE T510 0T26.

BEPD	WEPD	YEPD	MILK
+4.5	.33	+53	.25
		+97	.24
			+26
			.23

5 Alexis Burgess 241

Birth Date: 9-13-2004 Cow +15001540 Tattoo: 241

#Gardens Prime Time (AMF) #RR Traveler 5204 (AMF)
 Summitcrest High Prime OH29 (AMF) #Green Garden Susie 1246 S1
 #13122485 Summitcrest Missie 2F55 #Finks 5522-6148
 #Summitcrest Missie 1C24

#Schoenes Fix It 826 (AMF) #AAR New Trend
 Partisover Burgess 153 Sky High Blackbird 4119
 +13816199 Partisover Burgess 637 #N Bar Emulation EXT (AMF)
 Partisover Burgess 466

- Owned by Alexander Angus Farm of Six Mile, SC.
- This direct daughter of Summitcrest High Prime OH29 goes back to the legendary Partisover Burgess 637 on the bottom side.
- This featured female stems from a dam that records BR 2@98, WR 2@103, YR 1@103, and has one daughter in production with an average nursing ratio of 107.
- She reads positive for carcass genetics without sacrificing maternal.
- Sells with a heifer calf at side (Lot 5A) born September 2, 2008, by BC MARATHON 7022. Birth weight: 79 lbs.
- Bred to calve October 21, 2009, to GAR PREDESTINED.

BEPD	WEPD	YEPD	MILK
+2.8	.05	+44	.05
		+77	.05
			+27
			.05

6 BCF 111 Ideal S257 ET

Birth Date: 10-27-2006 Cow +15694010 Tattoo: S257

#Rito 616 of 4B20 6807 (AMF) #DHD Traveler 6807 (AMF)
 Rito 111 of 2536 Rito 616 (AMF) +Rita 4B20 of OFB1 Bando
 +13793825 GAR Precision 2536 (AMC) #GAR Precision 1680 (AMC)
 +GAR Ext 2104

#N Bar Emulation EXT (AMF) #Emulation N Bar 5522
 Back Creek Ext Ideal E289 (AMF) N Bar Primrose 2424
 +12603995 Back Creek Bando Ideal A88 #Tehama Bando 155 (AMF)
 Windabrae Miss Algoma 9905

- Owned by Black Crest Farm of Sumter, SC.
- This direct daughter of Rito 111 of 2536 Rito 616 goes back to the featured N Bar Emulation EXT and Tehama Bando 155 on the bottom side.
- She has an individual IMF ratio of 101 and stems from a dam that records WR 9@108, YR 6@103, U%IMF 15@104, UREA 15@103 while reading with a tremendous set of numbers across the board, particularly reading positive for Marbling and Ribeye.
- Sells with a heifer calf at side (Lot 6A) born September 15, 2008, by TC TOTAL 410. Tattoo: U239. Birth weight: 68 lbs.
- Bred to calve October 16, 2009, to SITZ ONWARD 8337. Examined safe.

BEPD	WEPD	YEPD	MILK
+3.2	.05	+48	.05
		+86	.05
			+22
			.05

MARB
+25
RE
+11
SB
+44.70

7 NER Blackbird 6321

Birth Date: 3-17-2006 Cow +15395457 Tattoo: 6321

#Sitz Traveler 8180 (AMF) #GDAR Traveler 71 (AMF)
 SAV 8180 Traveler 004 (AMF) Sitz Everelda Entense 1137
 #13512009 +Boyd Forever Lady 8003 #AAR New Trend
 SVF Forever Lady 57D

#Bon View Bando 598 #Tehama Bando 155 (AMF)
 Triple E Blackbird 1025 (AMF) #Bon View Dora 56
 +13879211 Davis Yr Blackbird 558H (AMC) #GAR Precision 1680 (AMC)
 GAR Traveler 760

- Owned by Britt Farm of Jefferson, GA.
- This direct daughter of SAV 8180 Traveler 004 goes back to the \$520,000 world record-valued Davis Yr Blackbird 558H on the bottom side and the featured Triple E Blackbird 1025.
- This featured female has an individual UREA ratio of 104 and stems from a dam that records U%IMF 22@103 and has six daughters in production with an average nursing ratio of 101.
- Sells with a heifer calf at side (Lot 7A) born January 28, 2009, by TC TOTAL 410.

BEPD	WEPD	YEPD	MILK
+2.6	.05	+51	.05
		+91	.05
			+24
			.05

MARB
+26
RE
+15
SB
+42.40

8 BV Blackbird 6007

Birth Date: 1-6-2006 Cow +15242289 Tattoo: 6007

#Sitz Traveler 8180 (AMF) #GDAR Traveler 71 (AMF)
 SAV 8180 Traveler 004 (AMF) Sitz Everelda Entense 1137
 #13512009 +Boyd Forever Lady 8003 #AAR New Trend
 SVF Forever Lady 57D

#B/R New Design 323 #B/R New Design 036 (AMF)
 BSS Blackbird 81L (AMF) B/R Ruby of Tiffany 155
 13892497 +Ac Blackbird 9102 #+Gdar SVF Russ 184B
 Davis Yr Blackbird 558H (AMC)

- Owned by Britt Farm of Jefferson, GA.
- This direct daughter of SAV 8180 Traveler 004 goes back to the \$520,000 featured Davis Yr Blackbird 558H, the world record-valued female and blends B/R New Design 323 into a powerful genetic package.
- This female stems from a dam that records WR 3@103, YR 2@108, U%IMF 5@119, UREA 5@105 and has two daughters in production with an average nursing ratio of 103.
- Bred to calve February 18, 2009, to TC TOTAL 410.

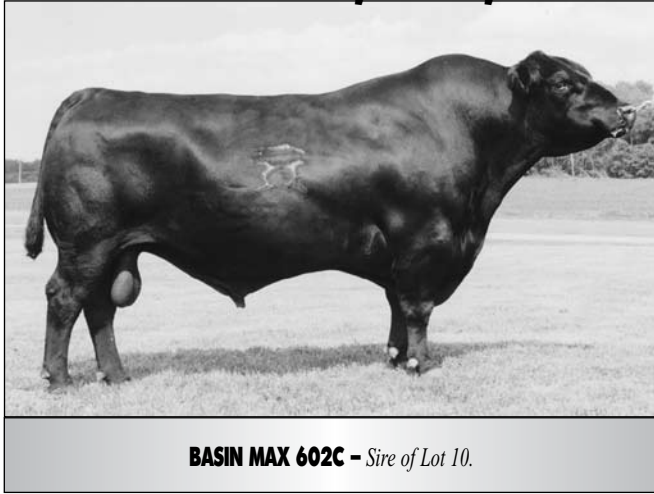
BEPD	WEPD	YEPD	MILK
+3.3	.05	+46	.05
		+90	.05
			+21
			.05

MARB
+44
RE
+30
SB
+47.40



Davis Yr Blackbird 558H - The \$520,000 featured granddam of Lot 7 and great-granddam of Lot 8.

BRITT, COX, CWF & DIAMOND L FARMS



BASIN MAX 602C - Sire of Lot 10.



SAF STRATEGY 9015 - Sire of Lots 13 and 14.

10 | BAF Burgess 3001

Birth Date: 9-23-2002 Cow 14437287 Tattoo: 3001

#GT Maximum (AMF) #Scotch Cap (AMF)
Basin Max 602C (AMF) #GT Miss Traveler 58
#11951654 #Basin Eline Erica 315U #GDAR Rainmaker 340
Basin Eline Erica 1313

#Rockn D Ambush 1531 (AMF) #Paramont Ambush 2172 (AMF)
YON Burgess L113 MS Blackcap Band of RD 1301
13899462 +Yon Burgess J135 #N Bar Emulation EXT (AMF)
#Congaree Burgess C05

MARB
+40
RE
+03
SB
+41.33

BEPD	WEPD	YEPD	MILK
+1.8	.42	+43	.31
+83	.29	+14	.31

- Owned by Britt Farm of Jefferson, GA.
- This direct daughter of Basin Max 602C goes back to the famous Pathfinder great-grandam, Congaree Burgess C05, on the bottom side.
- She has an individual birth ratio of 98, weaning ratio of 109, yearling ratio of 110, U%IMF of 103, UREA of 105, progeny production record of BR 4@90, U%IMF 4@112, UREA 4@102 and stems from a dam that records BR 1@98, WR 1@109, YR 1@110, U%IMF 10@104.
- Sells with a heifer calf at side (Lot 10A) born December 14, 2008, by TC TOTAL 410.
- Bred to calve to SAV FINAL ANSWER 0035.

11 | Cox's Miss T510 190

Birth Date: 9-30-2007 Cow 16068513 Tattoo: C190

#DHD Traveler 6807 (AMF) #QAS Traveler 23-4 (AMF)
SS Traveler 6807 T510 (AMF) #Bemindful Maid DHD 0807
#12502030 #SS Miss Hi Spade A114 #Hoff Hi Spade SC 491
SS Miss Rito 0H3 5H9

#BR Midland (AMF) #Twin Valley Precision E161 (AMF)
Cox' Miss Midland 163 BR Royal Lass 7036-19
15345027 Coxs Miss Fly Maker #Whitestone Fly Traveler 3006 (AMF)
Famoda Rainbird 1641

BEPD	WEPD	YEPD	MILK
-2	.33	+41	.25
+81	.20	+18	.20

- Owned by Cox Angus Farm of Pelzer, SC.
- This direct daughter of SS Traveler 6807 T510 goes back to the \$202,000 Pathfinder Sire, BR Midland.
- She has an individual birth ratio of 91 and a weaning ratio of 102 and stems from a dam that records BR 1@91, WR 1@102. She ranks below breed average for Birth Weight EPD without sacrificing maternal genetics.
- Bred to calve September 26, 2009, to MYTTY IN FOCUS.

12 | CWF Miss L Power 095 U103

Birth Date: 2-22-2008 Cow 16090648 Tattoo: U103

#B/R New Design 036 (AMF) #VDAR New Trend 315 (AMF)
B/R New Frontier 095 (AMF) B/R Blackcap Empress 76
#+13588640 White Fence Pride H1 #Connealy Dateline
#Pleasant Pill of Conanga

#Twin Valley Precision E161 (AMF) #GAR Precision 1680 (AMC)
Whitestone LLA Lady Power102 +WCC Blackcap C9 (R)
13828268 Maple Lane Lady Power 915 #GDAR Traveler 9161 (AMF)
TRA Ext Power 651

BEPD	WEPD	YEPD	MILK
+2.8	.05	+44	.05
+87	.05	+20	.05

- Owned by CWF Farm of Iva, SC.
- This direct daughter of B/R New Frontier 095 goes back to the featured Maple Lane Lady Power 915 on the bottom side.
- She stems from a dam that records WR 2@103, YR 2@103, and offers fault-free genetics.
- This powerful, young female offers tremendous show heifer potential without sacrificing pedigree.

13 | DLF Miss Strategy L006

Birth Date: 11-11-2007 Cow 16099144 Tattoo: L006

#SAF Focus of ER (AMF) #SAF Fame (AMF)
SAF Strategy 9015 (AMF) GDAR Forever Lady 246
#+13334022 +SAF Royal Queen 5084 #Bon View Bando 598
SAF Royal Queen 9022

#Rito 616 of 4B20 6807 (AMF) #DHD Traveler 6807 (AMF)
Vaquita 108 +Rita 4B20 of 0FB1 Bando
14259673 CC Tontos Blackberry 618 #Leachman Tonto (AMF)
Turnpike Blackberry 006 527

BEPD	WEPD	YEPD	MILK
+4.0	.30	+47	.23
+85	.18	+19	.20

- Owned by Diamond L Farm of Simpsonville, SC.
- This direct daughter of SAF Strategy 9015 goes back to the famous Rito 616 of 4B20 6807 on the bottom side.
- This featured female stems from a dam that records WR 3@105 and offers unlimited genetic potential.
- Bred to calve October 7, 2009, to BON VIEW NEW DESIGN 878.

14 | DLF Rita L005

Birth Date: 10-18-2007 Cow 16099142 Tattoo: L005

#SAF Focus of ER (AMF) #SAF Fame (AMF)
SAF Strategy 9015 (AMF) GDAR Forever Lady 246
#+13334022 +SAF Royal Queen 5084 #Bon View Bando 598
SAF Royal Queen 9022

#Bon View New Design 878 (AMF) #B/R New Design 036 (AMF)
KR Rita New Design 878 R9 Bon View Gammer 85
14968873 +Rita 9F76 of 5M16 Rito 3S3 #+Rito 3S3 of Rita 5H11 1656 (AMC)
Rita 5M16 of 2036 GT Max

BEPD	WEPD	YEPD	MILK
+2.4	.29	+52	.23
+96	.19	+21	.19

- Owned by Diamond L Farm of Simpsonville, SC.
- This direct daughter of SAF Strategy 9015 goes back to the famous ABS Global AI Sire and breed leader for registrations for four consecutive years, Bon View New Design 878, back to the famous Rita 5M16 on the bottom side.
- She has an individual birth ratio of 86 and stems from a dam that records BR 1@86.
- She reads with tremendous growth genetics without sacrificing maternal.
- Bred to calve September 23, 2009, to DR J ANALYST M250.

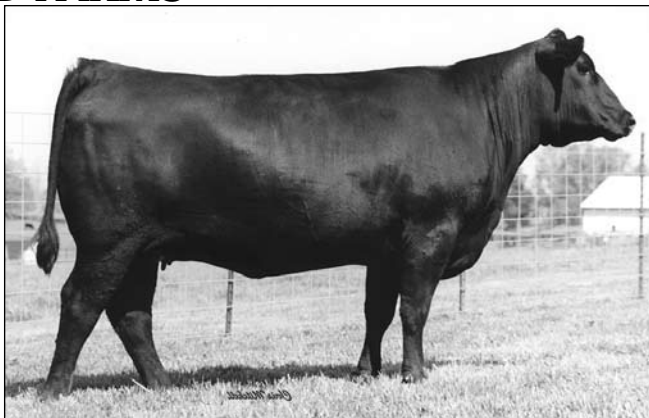


B/R NEW FRONTIER 095 - Sire of Lot 12.

DOUBLE B FARMS



GAR 1407 NEW DESIGN X53 - Dam of Lot 15.



ECHO RIDGE ERISKAY Q9 - Grandam of Lot 18.

15 DB Rita 204

Birth Date: 10-29-2007 Cow +16045506 Tattoo: 204

#GAR Precision 1680 (AMC) #Tehama Bando 155 (AMF)
GAR Retail Product (AMF) 9J9 GAR 856
#13395329 +GAR Ext 4927 #N Bar Emulation EXT (AMF)
GAR Traveler 641

#Bon View New Design 1407 (AMF) #B/R New Design 036 (AMF)
GAR 1407 New Design X53 (AMF) Bon View Pride 664
+14595206 +GAR Precision 1979 (AMC) #GAR Precision 1680 (AMC)
+GAR 6807 Traveler 734

MARB
+48
RE
+38
SB
+54.77

- Owned by Double B Farms of Bambug, SC.
- This direct daughter of GAR Retail Product goes back to the famous Pathfinder Sire and balanced trait leader, Bon View New Design 1407.
- This female stems from a dam that records WR 2@107, U%IMF 5@102 and has one daughter in production with an average nursing ratio of 118.
- Bred to calve October 1, 2009, to SS OBJECTIVE T510 OT26.

BEPD	WEPD	YEPD	MILK
+2.3	.42	+43	.40
		+87	.34
			+27
			.29

18 DB Eriskay 186

Birth Date: 10-3-2007 Cow 16045514 Tattoo: 186

#Hero 6267 of RR 2418 #RR Hero 6267
HA Image Maker 0415 (AMF) RR Everelda Entense 0413
#13739532 HA Rito Blackcap 9038 H 96 Rito 2100 7371
H 96 Blackcap 3835

#SAF 598 Bando 5175 #Bon View Bando 598
DB Eriskay 5B60 +SAF Royal Lass 1002
+15368176 Echo Ridge Eriskay Q9 #Paramont Ambush 2172 (AMF)
+VT Traveler 6807 Q9

MARB
+10
RE
+13
SB
+44.12

- Owned by Double B Farms of Bambug, SC.
- This direct daughter of HA Image Maker 0415 goes back to the Pathfinder Sire and performance leader, SAF 598 Bando 5175, on the bottom side.
- This powerful bred heifer has an individual weaning ratio of 109, yearling ratio of 108, UREA of 103, and stems from a dam that records WR 1@109, YR 1@108, UREA 1@103 without sacrificing growth genetics.
- She reads with an outstanding EPD profile.
- Bred to calve September 12, 2009, to BC LOOKOUT 7024.

BEPD	WEPD	YEPD	MILK
+2.6	.34	+64	.25
		+107	.20
			+33
			.19

16 DB Rita 202

Birth Date: 10-28-2007 Cow 16045494 Tattoo: 202

#Connealy Leadtime (AMF) #Connealy Dateline
Connealy Lead On (AMF) #Ruths Rona of Conanga
#13447282 Eligence Plus of Conanga #TC Dividend 963 (AMF)
Eura Cap of Conanga

#N Bar Emulation EXT (AMF) #Emulation N Bar 5522
Paws Up 0065 Rita U23 N Bar Primrose 2424
13667274 SR Miss Ideal 234 #Rito 8E8 of 5H11 Traveler (AMC)
Sunrise Ideal Girl 230

MARB
+27
RE
+00
SB
+37.57

- Owned by Double B Farms of Bambug, SC.
- This direct daughter of Connealy Lead On goes back to the famous N Bar Emulation EXT on the bottom side.
- She stems from a dam that records U%IMF 4@104 and has two daughters in production with an average nursing ratio of 102.
- She reads positive for carcass genetics without sacrificing growth.
- Bred to calve September 21, 2009, to SAV FINAL ANSWER 0035.

BEPD	WEPD	YEPD	MILK
+3.2	.35	+44	.26
		+87	.20
			+23
			.22

19 DB Queen Mother 181A

Birth Date: 9-19-2007 Cow +16061448 Tattoo: 181A

#Connealy Lead On (AMF) #Connealy Leadtime (AMF)
Connealy Onward (AMF) Eligence Plus of Conanga
14216491 Altune of Conanga 6104 #GAR Traveler 1489 (AMF)
Avalon 1418 of Conanga 6276

#SAF 598 Bando 5175 #Bon View Bando 598
A&B Queen Mother 1177 +SAF Royal Lass 1002
#13932853 Lukens 6807 Queen Mother 444 #DHD Traveler 6807 (AMF)
Leachman Queen Mother 7044

MARB
+26
RE
+29
SB
+58.21

- Owned by Double B Farms of Bambug, SC.
- This featured Queen Mother female is a direct daughter of Connealy Onward back to the Pathfinder Sire and one of the all-time high Weaning and Yearling Weight females of the breed, A&B Queen Mother 1177.
- This featured female has an individual UREA ratio of 103 and stems from a dam that records WR 4@115 and she reads with an outstanding EPD profile ranking in the top 1% for both Weaning and Yearling Weight without sacrificing carcass genetics.
- Bred to calve November 18, 2009, to MYTTY IN FOCUS.

BEPD	WEPD	YEPD	MILK
+4.1	.05	+67	.05
		+125	.05
			+27
			.05

17 DB Barbara 191

Birth Date: 10-20-2007 Cow 16045498 Tattoo: 191

#GAR Precision 1680 (AMC) #Tehama Bando 155 (AMF)
GAR Retail Product (AMF) 9J9 GAR 856
#13395329 +GAR Ext 4927 #N Bar Emulation EXT (AMF)
GAR Traveler 641

Leachman Frontline 3042J #Connealy Frontline (AMF)
Paws Up 1191 Barbara 3042 Leachman BC Elba C3226
14017091 Paws Up 9069 Connection CA Connection 8E8 225
#SR Barbara 674

MARB
+22
RE
+36
SB
+41.82

- Owned by Double B Farms of Bambug, SC.
- The combination of Pathfinder Sire GAR Retail Product, and the featured Connealy Frontline offers fault-free genetics.
- This female has an individual IMF ratio of 101, UREA of 101 and stems from a dam that records WR 5@106, U%IMF 3@105, UREA 3@104 without sacrificing carcass genetics.
- Bred to calve October 1, 2009, to MYTTY IN FOCUS.

BEPD	WEPD	YEPD	MILK
+6.1	.35	+46	.26
		+84	.20
			+24
			.21



DB QUEEN MOTHER 181A - She sells as Lot 19.

DOUBLE D ANGUS & HAWKINS ANGUS

20 DD Finks Rito 1

Birth Date: 5-23-2007 Cow 15722986 Tattoo: D9

#CA Future Direction 5321 (AMC) #GAR Precision 1680 (AMC)
Yon JMK Future DirectionP502 CA Miss Power Fix 308 (AMF)
14723472 YON Witch M30 #B/R New Design 036 (AMF)
#+Yon Witch J64

#+GDAR SVF Traveler 234D (AMF) #Traveler 124 GDAR
Three Trees Miss 1973 +GDAR Forever Lady 718
+14154140 +Finks Miss 783 383 6148 #Finks 5522-6148
+Finks Miss 383 8130 Bando

MARB
+39
RE
+43
SB
+46.45

BEPD	WEPD	YEPD	MILK
+3.3	.23	+41	.15
		+74	.11
		.11	+28
			.11

- Owned by Double D Angus of Abbeville, SC.
- The combination of CA Future Direction 5321 and the featured Finks Northern Miss family offers fault-free genetics.
- This female has an individual weaning ratio of 102 and stems from a dam that records WR 2@109, YR 2@107, and has one daughter in production with an average nursing ratio of 111.
- Bred to calve September 24, 2009, to SS OBJECTIVE T510 OT26.

24 DA Torbey Queen 501 ET

Birth Date: 1-2-2005 Cow +15034581 Tattoo: 501

#B/R New Design 036 (AMF) #VDAR New Trend 315 (AMF)
Bon View New Design 878 (AMF) B/R Blackcap Empress 76
#13062750 Bon View Gammer 85 #Bon View Bando 598
Bon View Gammer 233

#+Sitz Traveler 043 #Traveler 124 GDAR
DA Torbey Queen 9105 Sitz Everelda Entense 1137
+13381380 DBCS Toreby Queen Z391 DBCS Powergizer X929
DBCS Toreby Queen X985

BEPD	WEPD	YEPD	MILK
+1.8	.05	+45	.05
		+83	.05
		.05	+28
			.05

- Owned by Hawkins Angus of Belton, SC.
- The combination of Bon View New Design 878 goes back to the famous Toreby Queen family on the bottom side.
- She stems from a dam that records BR 3@95, WR 3@107, YR 1@105.

21 CDD Pride Lady 2

Birth Date: 5-19-2007 Cow 15722984 Tattoo: D8

#CA Future Direction 5321 (AMC) #GAR Precision 1680 (AMC)
Yon JMK Future DirectionP502 CA Miss Power Fix 308 (AMF)
14723472 YON Witch M30 #B/R New Design 036 (AMF)
#+Yon Witch J64

Double D Vanderbilt #Paramont Ambush 2172 (AMF)
Double D Anna Bell Biltmore Belle Pride 73C
13020247 DK Princess Famoda Clout
Elite of Wilkes

BEPD	WEPD	YEPD	MILK
+1.9	.23	+31	.14
		+57	.08
		.08	+20
			.09

- Owned by Double D Angus of Abbeville, SC.
- The combination of CA Future Direction 5321 along with Paramont Ambush 2172 offers calving-ease genetics as this female ranks below breed average for Birth Weight EPD, has an individual birth ratio of 97 and stems from a dam that records BR 5@97.
- Bred to calve October 3, 2009, to HA IMAGE MAKER 0415.

24A AE Jackson 010

Birth Date: 12-4-2008 Bull 16230235 Tattoo: 010

#Bon View New Design 878 (AMF) #B/R New Design 036 (AMF)
AE Chipper Jones 878 Bon View Gammer 85
15754382 +AE Cookie 01 #+SAF 598 Bando 5175
+Cedar Springs Roseanna 404G

#Bon View New Design 878 (AMF) #B/R New Design 036 (AMF)
DA Torbey Queen 501 ET Bon View Gammer 85
+15034581 +DA Toreby Queen 9105 #+Sitz Traveler 043
DBCS Toreby Queen Z391

BEPD	WEPD	YEPD	MILK
+1.8	.05	+45	.05
		+83	.05
		.05	+28
			.05

- Owned by Hawkins Angus of Belton, SC.
- This featured herd sire is a double-bred Bon View New Design 878 son and stems from a dam that ranks below breed average for Birth Weight EPD without sacrificing maternal and growth genetics.

22 Miss Stockman of Rice Farms

Birth Date: 2-1-2007 Cow 15784101 Tattoo: 20

#TC Stockman #+Leachman Prompter (AMF)
TC Stockman 365 #TC Jestress 6004
#11994601 TC Pride 0014 #VDAR New Trend 315 (AMF)
#TC Pride 8013

+Lemmon Seven Plus (AMF) #+GDAR SVF Traveler 234D (AMF)
Miss Seven Plus of Rice Farm Lemmon Blackbird 3287
14403805 Miss Blackcap of Rice Farms Rainmaker 2 of Rice Farm
Blackcap of Rice Farms

BEPD	WEPD	YEPD	MILK
+2.0	.30	+36	.23
		+65	.17
		.17	+20
			.20

- Owned by Hawkins Angus of Belton, SC.
- This direct daughter of TC Stockman 365 goes back to the famous Lemmon Seven Plus on the bottom side.
- She has an individual birth ratio of 93, weaning ratio of 101 and stems from a dam that records BR 3@95.
- Bred to calve November 24, 2009, to BON VIEW NEW DESIGN 878.

25 AE Miss Traveler 57

Birth Date: 1-2-1999 Cow 13364036 Tattoo: 57

#GDAR Traveler 71 (AMF) #Traveler 1148 GDAR
Sitz Traveler 8180 (AMF) GDAR Miss Blackcap 567
#11367940 Sitz Everelda Entense 1137 Sitz Everelda Entense 2335

WCS Traveler M11 GDAR Traveler 844
WCS Miss U56 of M101 Bridges Emulous Hope 9154
12805890 WCS K69 M101 WCS Scotch Cap K69
WCS Hoss K44

BEPD	WEPD	YEPD	MILK
+2.1	.05	+41	.05
		+74	.05
		.05	+19
			.05

- Owned by Hawkins Angus of Belton, SC.
- This direct daughter of Sitz Traveler 8180 goes back to the featured WCS Miss female on the bottom side. This female ranks below breed average for Birth Weight EPD and has been a long-time proven producer in the Hawkins program.

23 AE Emma 418

Birth Date: 12-16-2007 Cow 16033221 Tattoo: 418

#Sitz Traveler 8180 (AMF) #GDAR Traveler 71 (AMF)
SAV 8180 Traveler 004 (AMF) Sitz Everelda Entense 1137
#13512009 +Boyd Forever Lady 8003 #AAR New Trend
SVF Forever Lady 57D

#Krugerrand of Donamere 490 #CH Stacker 7040
PF Lady Krugerrand Donamere Bachel Beauty 288
13635701 PF Blackbird 712 of 111 Excl #+Circle A Exclusive 3186
PF Blackbird 922

BEPD	WEPD	YEPD	MILK
+2.6	.05	+50	.05
		+92	.05
		.05	+21
			.05

- Owned by Hawkins Angus of Belton, SC.
- This direct daughter of SAV 8180 Traveler 004 goes back to the famous Krugerrand of Donamere 490 on the bottom side.
- This big, stout, powerful female offers fault-free genetics without sacrificing growth.

25A AE Miss Karen 5780

Birth Date: 5-25-2008 Cow 16121286 Tattoo: 57

#B/R New Design 036 (AMF) #VDAR New Trend 315 (AMF)
Bon View New Design 878 (AMF) B/R Blackcap Empress 76
#13062750 Bon View Gammer 85 #Bon View Bando 598
Bon View Gammer 233

#Sitz Traveler 8180 (AMF) #GDAR Traveler 71 (AMF)
AE Miss Traveler 57 Sitz Everelda Entense 1137
13364036 WCS Miss U56 of M101 WCS Traveler M11
WCS K69 M101

S	D
MARB	MARB
+38	N/A
RE	RE
+02	N/A
SB	SB
+40.56	N/A

BEPD	WEPD	YEPD	MILK
+1.5	.99	+44	.98
		+85	.97
		.97	+31
			.96

- Owned by Hawkins Angus of Belton, SC.
- This featured May heifer calf is a past show heifer and is extremely docile. She is a direct daughter of Bon View New Design 878 and stems from an extremely productive family.

HI VIEW ANGUS, HOLLY BERRY FARM & MULL MEADOW FARMS



IRONWOOD NEW LEVEL - *His influence sells.*

27 HBF Miss Regal F05

Birth Date: 10-10-2005 Cow 15272722 Tattoo: F05

#B/R New Design 036 (AMF) #VDAR New Trend 315 (AMF)
 Bon View New Design 1407 (AMF) B/R Blackcap Empress 76
 #12783540 Bon View Pride 664 #+GAR Sleep Easy 1009 (AMF)
 #Bon View Pride 1551

#Gardens Prime Time (AMF) #RR Traveler 5204 (AMF)
 HBF Miss Regal B02 #Green Garden Susie 1246 S1
 14111252 HBF Miss Regal 083 #GAR Precision 1680 (AMC)
 Vintage Miss Regal 1925

S		D	
MARB	MARB	RE	RE
+85	N/A	+20	N/A
SB	SB		
+48.30	N/A		

- Owned by Holly Berry Farm of Pelzer, SC.
- The combination of Bon View New Design 1407 and the featured Gardens Prime Time offers a tremendous fault-free pedigree.
- This female stems from an extremely productive dam and a featured family that has been extremely productive in the Holly Berry Farm program.
- Sells with a heifer calf at side (Lot 27A) born December 13, 2008, by HBF PRECISION G01.
- Bred to calve back to CONNEALY LEAD ON.

	BEPD	WEPD	YEPD	MILK				
S	+1	.98	+44	.97	+89	.97	+33	.96
D	+1.4	.05	+28	.05	+62	.05	+13	.05

26A Hi Views Ak Molly

Birth Date: 6-17-2008 Cow 16220827 Tattoo: T1

Ironwood New Level (AMF) Ironwood New Design 022 701
 Round Oaks Plain Dealer Wardens Blackcap 6148 6309
 15103087 Miss Exacto of Rice Farms #JLB Exacto 416 (AMF)
 Miss EXT of Rice Farms

#+Woodhill Resolution #+Leachman Prompter (AMF)
 Round Oaks Yankee Babe H2 #GT Miss Traveler 58
 13011491 Congaree Witch E87 Congaree Hi Spade A06
 Congaree Witch A50

- Owned by Hi View Angus of Winnsboro, SC.
- These featured paternal sisters blend Ironwood New Level and Woodhill Resolution into a powerful genetic package and go back to the featured Witch family.
- They stem from a calving-ease sire that ranks below breed average for Birth Weight EPD without sacrificing maternal genetics and stem from a dam that records BR 1@99.

	BEPD	WEPD	YEPD	MILK				
S	+1.4	.05	+43	.05	+80	.05	+26	.05
D	+4.7	.05	+38	.05	+71	.05	+13	.05

28 HBF Witch E05

Birth Date: 9-29-2004 Cow 15272717 Tattoo: E05

#RR Traveler 5204 (AMF) #QAS Traveler 23-4 (AMF)
 Gardens Prime Time (AMF) Eriskay of Rollin Rock 3302
 #12007667 #Green Garden Susie 1246 S1 Gardens Transition 7205 S1
 Green Garden Susie 9118 S2

#B/R New Design 036 (AMF) #VDAR New Trend 315 (AMF)
 Yon Witch L33 B/R Blackcap Empress 76
 13747366 Yon Witch F26 #QAS Traveler 23-4 (AMF)
 Congaree Witch D38

- Owned by Holly Berry Farm of Pelzer, SC.
- This direct daughter of Gardens Prime Time stems back to the featured Yon Witch family on the bottom side.
- This three-generation AI female stems from a dam that records WR 1@105. She ranks below breed average for Birth Weight EPD without sacrificing maternal genetics.
- Sells with a heifer calf at side (Lot 28A) born December 14, 2008, by HBF PRECISION G01.
- Bred to calve back to CONNEALY LEAD ON.

	BEPD	WEPD	YEPD	MILK				
S	+8	.05	+31	.05	+67	.05	+19	.05

26B Hi Views Abigale

Birth Date: 2-8-2008 Cow 16220823 Tattoo: S4

Ironwood New Level (AMF) Ironwood New Design 022 701
 Round Oaks Plain Dealer Wardens Blackcap 6148 6309
 15103087 Miss Exacto of Rice Farms #JLB Exacto 416 (AMF)
 Miss EXT of Rice Farms

Round Oaks Tripleplay #Schurrtop Supreme
 Round Oaks WD Miss Band Leader of 4H8
 14627998 Congaree Erroline D94 Congaree Hi Spade A06
 Southolm Errolline 10T

- Owned by Hi View Angus of Winnsboro, SC.
- The combination of Ironwood New Level and the featured Erroline family offers some of the most prominent Angus genetics in the business and stem from one of the most powerful cow families at the Hi View Angus program.

	BEPD	WEPD	YEPD	MILK				
S	+1.4	.05	+43	.05	+80	.05	+26	.05
D	N/A	N/A	N/A	N/A	N/A	N/A	N/A	N/A

29 Mull Meadow Elba 1733

Birth Date: 12-3-2003 Cow 14761322 Tattoo: 1733

#Finks 5522-6148 #Emulation N Bar 5522
 Feltons Meat Packer 62 (AMF) Finks Proud Formera 614
 #13221587 Graham N Mistress 8 Big Elban of Graham 26445
 Graham N Mistress 6

#+Leachman Right Time #N Bar Emulation EXT (AMF)
 Baf Elba 8134 Leachman Erica 0025
 +13071466 +Pack Power Elba 489 #Scotch Cap (AMF)
 +Sir Wms Elba 374

- Owned by Mull Meadow Farm of Pendleton, SC.
- This direct daughter of Feltons Meat Packer 62 goes back to the \$160,000 Pathfinder Sire, Leachman Right Time, back to the ever popular Elba family on the bottom side.
- This female has an individual birth ratio of 99, weaning ratio of 103 and a progeny production record of BR 2@98 and stems from a dam that has been extremely productive in the Mull Meadow program.
- Sells with a heifer calf at side (Lot 29A) born October 5, 2008, by GAR RIGHT DIRECTION.

	BEPD	WEPD	YEPD	MILK				
S	+3.0	.37	+45	.27	+81	.20	+13	.27

26C Hi Views Bella

Birth Date: 10-30-2007 Cow 16220814 Tattoo: S1

Ironwood New Level (AMF) Ironwood New Design 022 701
 Round Oaks Plain Dealer Wardens Blackcap 6148 6309
 15103087 Miss Exacto of Rice Farms #JLB Exacto 416 (AMF)
 Miss EXT of Rice Farms

Round Oaks Tripleplay #Schurrtop Supreme
 Round Oaks Miss Anna WD Miss Band Leader of 4H8
 15092171 Tokeenas Bandy B Scotch 513 #Hoff Bold Scotch SC 491 (AMF)
 LAF Bandy Pine 0018

- Owned by Hi View Angus of Winnsboro, SC.
- The combination of Round Oaks Plain Dealer along with the featured Hoff Bold Scotch SC 491 offers tremendous growth genetics.
- This female stems from a calving-ease sire without sacrificing growth.

	BEPD	WEPD	YEPD	MILK				
S	+1.4	.05	+43	.05	+80	.05	+26	.05
D	N/A	N/A	N/A	N/A	N/A	N/A	N/A	N/A

30 Mull Meadow 2RT6 1743

Birth Date: 10-14-2003 Cow 14761324 Tattoo: 1743

#Connealy Leadtime (AMF) #Connealy Dateline
 Connealy Lead On (AMF) EE 4286 of Ideal 2240 1254
 #13447282 Eligence Plus of Conanga #TC Dividend 963 (AMF)
 Eura Cap of Conanga

#Ideal 1418 of 8103 4286 (AMF) Ideal 8103 of Eldo 5110 5213
 Rita 8179 of 2RT6 1418 EE 4286 of Ideal 2240 1254
 +13071491 Rita 2RT6 of 0G15 Rrtraveler #RR Traveler 5204 (AMF)
 +Rita 0G15 of 9W54 Rita 8E8

- Owned by Mull Meadow Farm of Pendleton, SC.
- This direct daughter of Connealy Lead On goes back to the featured Ideal 1418 of 8103 4286 on the bottom side.
- This featured female has an individual weaning ratio of 108 and has a progeny production record of WR 1@110. She stems from a dam that records WR 5@106 and has one daughter in production with an average nursing ratio of 110.
- Sells with a heifer calf at side (Lot 30A) born September 24, 2008, by SS OBJECTIVE T510 OT26.

	BEPD	WEPD	YEPD	MILK				
S	+3.9	.36	+50	.26	+92	.20	+28	.25

OAK HILL & RIVERHILL FARMS

31 Oak Hill Miss Objective 72

Birth Date: 10-13-2008 Cow 16214945 Tattoo: 72

#SS Traveler 6807 T510 (AMF) #DHD Traveler 6807 (AMF)
 SS Objective T510 OT26 (AMF) #SS Miss Hi Spade A114
 #13776378 SS Miss Rita R011 7R8 SS Rito Rito R76 R011
 SS Miss Ultrass U56

MARB
+40
RE
+29
SB
+53.80

#+Leachman Right Time #N Bar Emulation EXT (AMF)
 Sweetwater Pride 4163-M1 Leachman Erica 0025
 +14413320 +Finks Pride 4163 81 NT #AAR New Trend
 Finks Pride 81

BEPD	WEPD	YEPD	MILK
+2.7	.05	+56	.05
+99	.05	+25	.05

- Owned by Oak Hill Farm of Six Mile, SC.
- This direct daughter of SS Objective T510 OT26 goes back to the featured Finks Pride family on the bottom side.
- This powerful young show heifer prospect stems from an extremely productive family and reads with an outstanding EPD profile and stems from a dam that records WR 4@101, YR 2@102, U%IMF 2@109. She has one daughter in production with an average nursing ratio of 106.



FINKS PRIDE 4163 81 NT - Grandam of Lot 31.

32 Oak Hill Miss Alliance 68

Birth Date: 9-16-2008 Cow 16214943 Tattoo: 68

#Sitz Traveler 8180 (AMF) #GDAR Traveler 71 (AMF)
 Sitz Alliance 6595 (AMF) Sitz Everelda Entense 1137
 #12310707 #Sitz Barbaramere Jet 2698 3 Bar Spike 1766
 #Sitz Baramere Jet 155

MARB
+14
RE
-13
SB
+20.96

#Connealy Frontline (AMF) #Connealy Dateline
 Oak Hill Frontline 31K #Pleasant Pill of Conanga
 13727355 Black Crest Blackbird 23E #+Leachman Right Time
 #Black Crest Blackbird 13A

BEPD	WEPD	YEPD	MILK
+3.0	.05	+49	.05
+88	.05	+24	.05

- Owned by Oak Hill Farm of Six Mile, SC.
- The combination of Sitz Alliance 6595 and Connealy Frontline offers a fault-free pedigree.
- This female stems from a dam that records BR 5@97 and she offers tremendous show ring potential.

34 Riverhill Rita 8295

Birth Date: 1-30-2008 Cow Reg.No.Pdg. Tattoo: 8295

#SS Traveler 6807 T510 (AMF) #DHD Traveler 6807 (AMF)
 SS Objective T510 OT26 (AMF) #SS Miss Hi Spade A114
 #13776378 SS Miss Rita R011 7R8 SS Rito Rito R76 R011
 SS Miss Ultrass U56

S	D
MARB	MARB
+76	+57
RE	RE
+53	+16
SB	SB
+75.20	+41.11

+GAR Integrity (AMF) #Bon View New Design 1407 (AMF)
 SVF Rita P424 GAR Precision 1019 (AMC)
 +16068887 +KMK Rita K357 #+GAR Expectation 4915 (AMF)
 GAR Bando 338

BEPD	WEPD	YEPD	MILK
+1.1	.97	+72	.95
+127	.92	+27	.74
+1.6	.26	+35	.23
+70	.21	+25	.25

- Owned by Riverhill Farm of Fountain Inn, SC.
- This direct daughter of SS Objective T510 OT26 goes back to the legendary GAR Bando 338 on the bottom side.
- This featured show heifer prospect from the Riverhill program stems from a dam that has a progeny production record of BR 1@91, WR 1@108, and stems from a grandam that records BR 2@99, WR 2@105, YR 2@104, with seven daughters in production with an average nursing ratio of 101.
- She has what it takes to compete at all levels.

33 Oak Hill Elluna Alliance 71

Birth Date: 9-12-2008 Cow +16214948 Tattoo: 71

#Sitz Traveler 8180 (AMF) #GDAR Traveler 71 (AMF)
 Sitz Alliance 6595 (AMF) Sitz Everelda Entense 1137
 #12310707 #Sitz Barbaramere Jet 2698 3 Bar Spike 1766
 #Sitz Baramere Jet 155

MARB
+29
RE
-07
SB
+21.18

#+VDAR Lucys Boy (AMF) #Traveler 1148 GDAR
 VDAR Elluna 6204 +VDAR Pine Drive Lucy 5
 +12584916 #+VDAR Elluna 4167 #+VDAR New Trend 933
 #VDAR Elluna 97

BEPD	WEPD	YEPD	MILK
+2.5	.05	+42	.05
+82	.05	+26	.05

- Owned by Oak Hill Farm of Six Mile, SC.
- This featured Elluna female is a direct daughter of Sitz Alliance 6595 and stems from the famous VDAR Elluna 6204.
- This female is a maternal sister to the \$10,000 featured female in the Fox Run program in Missouri, a \$5,000 598 daughter in the Big Rock Angus program in Minnesota and a \$4,500 yearling bull to Diamond D Ranch.
- This female stems from a dam that records BR 1@95, WR 3@104, YR 2@104, U%IMF 32@102.

35 Riverhill Formera 7272

Birth Date: 11-23-2007 Cow Reg.No.Pdg. Tattoo: 7272

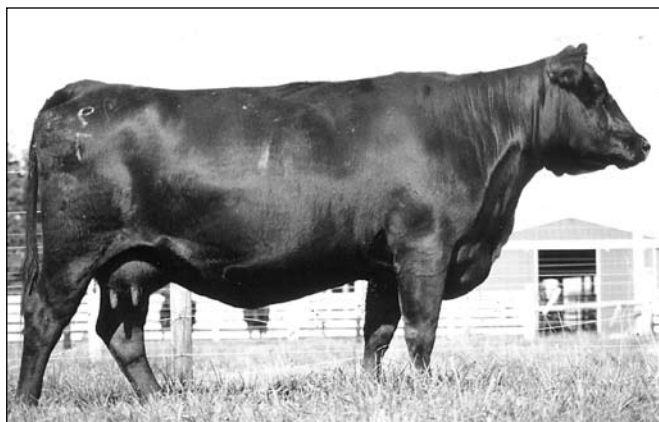
#Rockn D Ambush 1531 (AMF) #Paramont Ambush 2172 (AMF)
 B/R Ambush 28 (AMF) MS Blackcap Band of RD 1301
 +14188956 +B/R Ruby of Tiffany 8250 (AMF) #N Bar Emulation EXT (AMF)
 B/R Ruby of Tiffany 5113

MARB
+57
RE
+42
SB
+64.04

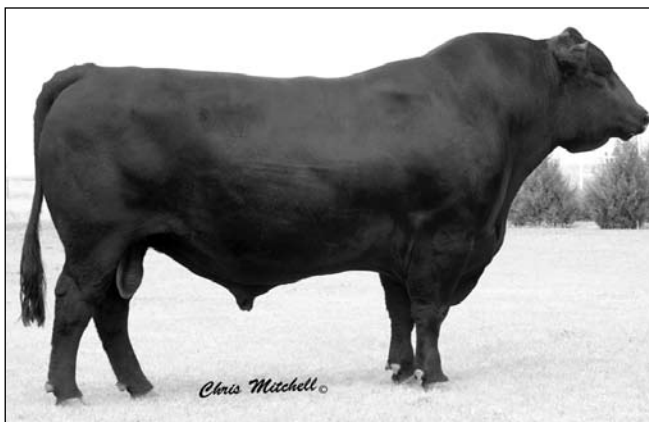
#+GAR Expectation 4915 (AMF) #N Bar Emulation EXT (AMF)
 Ogeechee Formera 133 GAR Traveler 2421
 +14123561 OAF Formera 8001 #GDAR Traveler 71 (AMF)
 +Finks Formera 5260 245 692 (AMF)

BEPD	WEPD	YEPD	MILK
+5.2	.33	+53	.24
+94	.18	+22	.17

- Owned by Riverhill Farm of Fountain Inn, SC.
- This Formera family female is by the high \$Beef BR Ambush 28 back to the great Finks Formera family on the bottom side.
- This featured female stems from a dam that records WR 4@108, YR 2@106, U%IMF 2@108, UREA 2@108 and a grandam that records BR 4@99, YR 2@101; six daughters in production with an average nursing ratio of 103.



VDAR Elluna 97 - Great-grandam of Lot 33.



B/R AMBUSH 28 - The high \$Beef sire of Lot 35.

RIVERHILL, SARRATT & SPRING HILL FARMS



CONNELY ONWARD - Sire of Lot 36.

38 Riverhill Hot Rod Rita

Birth Date: 11-2-2006 Cow 15683523 Tattoo: 6237

#Famous 7001 #SAF Fame (AMF)
 Gambles Hot Rod TK Karen 1369
 13897812 +Champion Hill Lady 703 #Leachman Saugahatchee 3000C (AMF)
 +Champion Hill Lady Stone 731

#Ankonian Elixir 100 #+Ankonian Elixir DB
 Riverhill Rita of Elixir 100 Ankony Lass 206T
 13276110 +Rita 5E9 of 9M8 Rito 3B17 #Rito 3B17 of 0G10 Bando (AMC)
 #+Rita 9M8 of 2036 Scotch Cap

MARB
+03
RE
+32
SB
+44.73

- Owned by Riverhill Farm of Fountain Inn, SC.
- This direct daughter of a past National Western Stock Show Grand Champion, Gambles Hot Rod, and the featured Ankonian Elixir 100 offers fault-free genetics.
- This featured female has an individual weaning ratio of 113, yearling ratio of 113, UREA of 111 and stems from a dam that records WR 7@104, YR 4@108 and UREA 2@109. She reads with tremendous growth genetics without sacrificing Ribeye and Marbling.
- Sells with a heifer calf at side (Lot 38A) born November 1, 2008, by CONNEALY THUNDER.

BEPD	WEPD	YEPD	MILK
+6.0	.32	+56	.25
		+102	.23
			+24
			.18

36 Riverhill Miss Starly 7261

Birth Date: 11-2-2007 Cow 16025132 Tattoo: 7261

#Connealy Lead On (AMF) #Connealy Leadtime (AMF)
 Connealy Onward (AMF) Eligence Plus of Conanga
 14216491 Altune of Conanga 6104 #GAR Traveler 1489 (AMF)
 Avalon 1418 of Conanga 6276

MARB
+35
RE
+19
SB
+49.64

#Finks 5522-6148 #Emulation N Bar 5522
 Riverhill Miss Bando 692 Finks Proud Formera 614
 +13893869 +Finks Protect 5145 357 692 #+Ideal 692 of 9J9 3134 (AMF)
 +Finks Protet 357 710 9J9

- Owned by Riverhill Farm of Fountain Inn, SC.
- This direct daughter of Connealy Onward goes back to the Finks Protet family on the bottom side.
- She has an individual birth ratio of 87, yearling ratio of 103, U%IMF of 111 and stems from a dam that records BR 3@94, YR 2@103, U%IMF 2@102 and reads with a strong set of numbers across the board ranking below breed average for Birth Weight EPD without sacrificing growth and carcass genetics.
- Bred to calve September 29, 2009, to SS OBJECTIVE T510 0T26.

BEPD	WEPD	YEPD	MILK
+1.4	.31	+47	.23
		+95	.19
			+24
			.19

37 Riverhill Stella 208 7259

Birth Date: 9-2-2007 Cow 16025133 Tattoo: 7259

#B/R New Design 036 (AMF) #VDAR New Trend 315 (AMF)
 GAR Predestined (AMF) B/R Blackcap Empress 76
 #13395344 #+GAR Ext 4206 #N Bar Emulation EXT (AMF)
 +GAR 6807 Traveler 1432

MARB
+70
RE
+45
SB
+63.73

#Bon View New Design 208 (AMF) #B/R New Design 036 (AMF)
 GAR 208 New Design 2203 #Bon View Erica 443
 14504653 +GAR Precision 4001 #GAR Precision 1680 (AMC)
 SF Miss Dora 632

- Owned by Riverhill Farm of Fountain Inn, SC.
- This direct daughter of the Pathfinder Sire and high \$Beef GAR Predestined goes back to the legendary GAR Precision 4001 on the bottom side.
- This featured Dora female has an individual weaning ratio of 104, yearling ratio of 102, U%IMF of 116, UREA of 104 and stems from a dam that records WR 3@103, YR 3@104, U%IMF 2@105 and reads with tremendous growth genetics coupled with the fact of an outstanding Marbling EPD and over 63 \$Beef.
- Breeding information will be available sale day.

BEPD	WEPD	YEPD	MILK
+5.3	.32	+50	.25
		+93	.20
			+29
			.20



SVF FOREVER LADY 1120 -

39 SAR Rita 7806

Birth Date: 8-23-2007 Cow +16109639 Tattoo: 7806

#SS Traveler 6807 T510 (AMF) #DHD Traveler 6807 (AMF)
 SS Objective T510 0T26 (AMF) #SS Miss Hi Spade A114
 #13776378 SS Miss Rita R011 7R8 SS Rito Rito R76 R011
 SS Miss Ultress U56

MARB
+65
RE
+47
SB
+68.35

#B/R New Frontier 095 (AMF) #B/R New Design 036 (AMF)
 Southern Rita 3161 White Fence Pride H1
 +14333163 +GAR 6807 Traveler 827 #DHD Traveler 6807 (AMF)
 +GAR Bando 102

- Owned by Sarratt Farms of Gaffney, SC.
- This direct daughter of SS Objective T510 0T26 goes back to the featured GAR Bando 102 on the bottom side.
- This featured female reads with an outstanding EPD profile particularly in the carcass genetics and reads with a 68.35 \$Beef. She has an individual IMF ratio of 117, UREA of 103 and stems from a dam that records WR 3@101, YR 2@106, U%IMF 25@104, UREA 25@102.
- Bred to calve August 30, 2009, to CAR EFFICIENT 534. Exposed to SAR NEW DESIGN 878 5102 from December 23, 2008, through February 6, 2008.

BEPD	WEPD	YEPD	MILK
+1.8	.05	+61	.05
		+113	.05
			+25
			.05

40 SAR Barbara 7605

Birth Date: 9-20-2007 Cow 16033442 Tattoo: 7605

OCC Kirby 633K #+OCC Emblazon 854E
 BC Marathon 7022 (AMF) #OCC Blackbird 785H
 14187839 Gibbet Hill Mignonne E37 #Papa Equator 2928 (AMF)
 Gibbet Hill Mignonne TR 29

MARB
+19
RE
+28
SB
+35.77

#+Pine Creek Traveler 124-1107 #Traveler 124 GDAR
 Jacs Barbara 0589 Sitz Everelda Entense 1137
 13839194 Jacs Barbara 6731 #Bon View Emulation Ext 473 (AMF)
 Latlin Ranch Barbara 3012

- Owned by Sarratt Farms of Gaffney, SC.
- This direct daughter of BC Marathon 7022 goes back to Bon View Emulation EXT 473 on the bottom side. She stems from the ever popular Barbara family and has an individual weaning ratio of 110 and stems from a dam that records WR 4@105 while reading with tremendous growth genetics.
- Bred to calve August 29, 2009, to CAR EFFICIENT 534. Exposed to YON RIGHT TIME M27 from January 9, 2009, through February 6, 2009.

BEPD	WEPD	YEPD	MILK
+4.1	.34	+51	.26
		+83	.25
			+28
			.16

41 SHA Forever Lady 801

Birth Date: 3-14-2008 Cow 16001342 Tattoo: 801

#B/R New Design 036 (AMF) #VDAR New Trend 315 (AMF)
 Bon View New Design 878 (AMF) B/R Blackcap Empress 76
 #13062750 Bon View Gammer 85 #Bon View Bando 598
 Bon View Gammer 233

#B/R New Dimension 7127 #B/R New Design 036 (AMF)
 Riverhill Forever Lady 1121 B/R Ruby of Tiffany 4117
 15447648 YR Forever Lady 114B #Tehama Bando 155 (AMF)
 +SVF Forever Lady 1121

- Owned by Spring Hill Farms of Chapin, SC.
- This direct daughter of Bon View New Design 878 goes back to the SVF Forever Lady 1121 on the bottom side, who is a full sister to the famous SVF Forever Lady 1120 who has produced over \$2 million in progeny sales to date.
- This female ranks below breed average for Birth Weight EPD without sacrificing maternal genetics.

BEPD	WEPD	YEPD	MILK
+1.6	.05	+40	.05
		+78	.05
			+27
			.05

SPRING HILL FARM, SPRING VALLEY FARM & STILLWATER CATTLE CO.

42 | SHA Alliance In Focus Maid

Birth Date: 12-6-2007 Cow 16001341 Tattoo: 789

#SAF Focus of ER (AMF) #SAF Fame (AMF)
Mytty In Focus (AMF) GDAR Forever Lady 246
13880818 Mytty Countess 906 #Sitz Alliance 6595 (AMF)
Baldrige Countess 357

Reliant of Rice Farms #Sitz Reliant 8898 (AMF)
Reliant of Rice Farms 4 Miss Winchester of Rice Farm
15537689 Edmunds Alliance Maid 421 #Sitz Alliance 6595 (AMF)
Edmunds Precise Maid 4256

- Owned by Spring Hill Farms of Chapin, SC.
- This direct daughter of Mytty In Focus goes back to the famous Sitz Alliance 6595 on the bottom side.
- This female ranks below breed average for Birth Weight EPD without sacrificing growth.

BEPD	WEPD	YEPD	MILK
+1.7	.05	+1.49	.05



STILLWATER TRAVELER 004 U06

- She sells as Lot 44.



STILLWATER RETAIL PRODUCT T43 - She

sells as Lot 45.

43 | Yon Witch L33

Birth Date: 10-1-2000 Cow 13747366 Tattoo: L33

#VDAR New Trend 315 (AMF) #AAR New Trend
B/R New Design 036 (AMF) #VDAR Lucy 704
#11418151 B/R Blackcap Empress 76 #K&K Top Gun
+QLC A70 Blkcp Empress E43T

#QAS Traveler 23-4 (AMF) #Band 234 of Ideal 3163
Yon Witch F26 QAS Blackbird Eye 601 1
12532386 Congaree Witch D38 #N Bar Emulation EXT (AMF)
Partisover Witch 602

- Owned by Spring Valley Farm of Anderson, SC.
- This direct daughter of B/R New Design 036 goes back to the famous Partisover Witch family on the bottom side.
- She stems back to the legendary N Bar Emulation EXT and has a progeny production record of WR 1@105 and stems from a dam that records WR 4@102, UREA 1@110.
- Sells with a calf at side or close to calving before sale date by HOLIDAY FAME 230.

BEPD	WEPD	YEPD	MILK
+1.0	.26	+1.33	.22

MARB	RE	SB
+1.42	+1.03	+38.33

45 | Stillwater RetailProduct T43

Birth Date: 10-30-2007 Cow 15871537 Tattoo: T43

#GAR Precision 1680 (AMC) #Tehama Bando 155 (AMF)
GAR Retail Product (AMF) 9J9 GAR 856
#13395329 +GAR Ext 4927 #N Bar Emulation EXT (AMF)
GAR Traveler 641

#Bon View New Design 1407 (AMF) #B/R New Design 036 (AMF)
GAR 1407 New Design 322 (AMC) Bon View Pride 664
+14222257 +GAR Precision 4659 #GAR Precision 1680 (AMC)
+GAR Max 174

- Owned by Stillwater Cattle Company of Seneca, SC.
- This direct daughter of GAR Retail Product goes back to the featured Bon View New Design 1407 on the bottom side.
- This featured female stems from a dam that records YR 2@105, U%IMF 2@112, UREA 2@105.
- She ranks below breed average for Birth Weight EPD without sacrificing carcass genetics.
- Bred to calve to SINCLAIR NET PRESENT VALUE.

BEPD	WEPD	YEPD	MILK
+2.1	.31	+4.3	.24

MARB	RE	SB
+1.47	+1.37	+53.23

44 | Stillwater Traveler 004 U06

Birth Date: 9-1-2008 Cow 16236640 Tattoo: U06

#Sitz Traveler 8180 (AMF) #GDAR Traveler 71 (AMF)
SAV 8180 Traveler 004 (AMF) Sitz Everelda Entense 1137
#13512009 +Boyd Forever Lady 8003 #AAR New Trend
SVF Forever Lady 57D

+GAR Evas Exceptional (AMF) #N Bar Emulation EXT (AMF)
LLF 699 Exceptional 196 GAR Evas RR Traveler 511
14215429 GAR Prime Time 699 #Gardens Prime Time (AMF)
+GAR Ext 1967

- Owned by Stillwater Cattle Company of Seneca, SC.
- Birth weight: 70 lbs.
- This fancy heifer calf is bred by the breed leader for registrations over the past two years, SAV 8180 Traveler 004, who stamps his progeny with exceptional growth and moderate frame and makes tremendous uddered females.
- This featured show heifer prospect is a breed leader for calving-ease and growth genetics while being positive in \$Energy EPD. A full sister had an adjusted IMF of 7.22% with a ratio of 127 and here is an outstanding SAV 8180 Traveler 004 daughter that will do as predicted and outperform her contemporaries in carcass quality.
- This female stems from a dam that records BR 3@98, YR 2@102, UREA 2@103. She ranks below breed average for Birth Weight EPD without sacrificing carcass and growth genetics.
- Here is a powerhouse young female that has tremendous potential to compete at all levels.

BEPD	WEPD	YEPD	MILK
+1.6	.05	+1.48	.05

MARB	RE	SB
+1.21	+1.06	+36.00

46 | GAR Yield Grade 115S

Birth Date: 8-17-2005 Cow 15293661 Tattoo: 115S

#GAR Precision 1680 (AMC) #Tehama Bando 155 (AMF)
GAR Yield Grade (AMF) 9J9 GAR 856
+13724351 +GAR Ext 4526 #N Bar Emulation EXT (AMF)
+GAR 6807 Traveler 93

#Rito 616 of 4B20 6807 (AMF) #DHD Traveler 6807 (AMF)
GAR 616 Rito S361 #Rita 4B20 of 0Fb1 Bando
14081510 +GAR New Design 1009 #B/R New Design 036 (AMF)
GAR Precision 2606

- Owned by Stillwater Cattle Company of Seneca, SC.
- This direct daughter of GAR Yield Grade ranks in the top 1% for Calving-Ease Direct EPD of +14 while being in the top 3% of the breed for Yearling Weight EPD, top 2% of the breed for \$Beef while being positive in \$Energy value. This female offers the best in calving-ease genetics without sacrificing carcass. A maternal brother was the co-top seller at the 2008 Clemson Bull Sale at \$3,600.
- This female is double-bred for carcass genetics with calving-ease built in without sacrificing growth. She has an individual weaning ratio of 105, yearling ratio of 108, U%IMF of 105, UREA of 103, progeny production record of BR 1@78, U%IMF 1@139, and stems from a dam that records BR 5@97, WR 5@103, YR 4@103.
- Bred to calve September 19, 2009, to SAV PREDOMINANT. Examined safe.

BEPD	WEPD	YEPD	MILK
+6	.37	+45	.27

MARB	RE	SB
+3.1	+2.0	+54.40



GAR YIELD GRADE 115S - She sells as Lot 46.

46A | Stillwater Predestined U34

Birth Date: 10-2-2008 Cow 16236641 Tattoo: U34

#B/R New Design 036 (AMF) #VDAR New Trend 315 (AMF)
GAR Predestined (AMF) B/R Blackcap Empress 76
#13395344 #+GAR Ext 4206 #N Bar Emulation EXT (AMF)
+GAR 6807 Traveler 1432

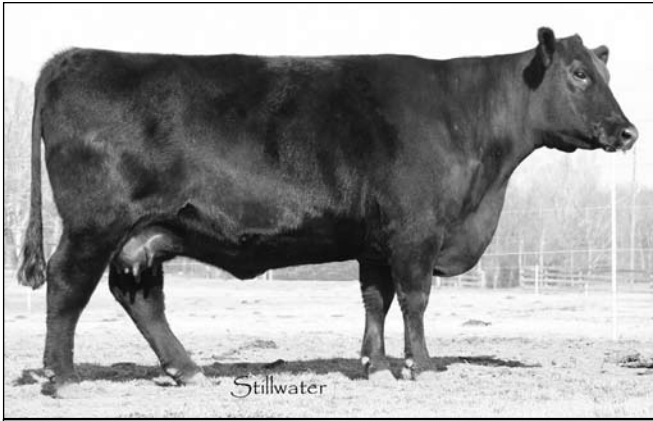
+GAR Yield Grade (AMF) #GAR Precision 1680 (AMC)
GAR Yield Grade 115S +GAR Ext 4526
15293661 GAR 616 Rito S361 #Rito 616 of 4B20 6807 (AMF)
+GAR New Design 1009

- Owned by Stillwater Cattle Company of Seneca, SC.
- Birth weight: 75 lbs.
- This direct daughter of the Pathfinder Sire and high \$Beef, GAR Predestined, stems back to the Rito 616 of 4B20 6807 on the bottom side.
- This young heifer ranks in the top 1% for the entire breed among non-parent females in \$Beef at +66.08. Her sire, GAR Predestined, has become the great sire of the breed for outstanding carcass quality while doing it in a low input manner.
- She reads with tremendous marbling and growth genetics.
- She stems from a dam that records BR 1@78, U%IMF 1@139.

BEPD	WEPD	YEPD	MILK
+2.5	.05	+1.49	.05

MARB	RE	SB
+1.65	+1.45	+66.08

STILLWATER CATTLE CO. & TOKEENA ANGUS



STILLWATER BLACKBIRD N14 - She sells as Lot 47.



SAF 598 BANDO 5175 - Sire of Lots 47 and 48.

47 Stillwater Blackbird N14

Birth Date: 10-2-2003 Cow 14733191 Tattoo: N14

#Bon View Bando 598
SAF 598 Bando 5175
#+12350821+SAF Royal Lass 1002

#Tehama Bando 155 (AMF)
#Bon View Dora 56
#VDAR New Trend 315 (AMF)
+SAF Royal Lass 6089

MARB	+50
RE	
SB	-07
SB	+42.30

#RR Traveler 5204 (AMF)
EF Blackbird 9102
13343121 +Shady Brook Blackbird 91G

#QAS Traveler 23-4 (AMF)
Eriskay of Rollin Rock 3302
#+Woodhill Checkmate
Hunts 1148 Blackbird 087

BEPD	WEPD	YEPD	MILK
+2.7	.34 +47	.26 +93	.22 +22 .27

- Owned by Stillwater Cattle Company of Seneca, SC.
- This direct daughter of SAF 598 Bando 5175, the performance and Pathfinder Sire, goes back to the famous Shady Brook Blackbird family on the bottom side.
- A maternal sister sold for \$2,000 as a heifer calf in a previous Carolina Futurity.
- She has an individual birth ratio of 99, weaning ratio of 107, yearling ratio of 114, U%IMF of 117, UREA of 107. She stems from a dam that records WR 4@104, YR 2@106, U%IMF 2@110.
- Bred to calve September 10, 2009, to SITZ UPWARD.

47A Stillwater Blackbird U14

Birth Date: 9-5-2008 Cow Reg.No.Pdg. Tattoo: U14

#Bon View New Design 208 (AMF)
Rito 4L60 of 2536 BVND 208 (AMC)
+14768728 GAR Precision 2536 (AMC)

#B/R New Design 036 (AMF)
#Bon View Erica 443
#GAR Precision 1680 (AMC)
+GAR Ext 2104

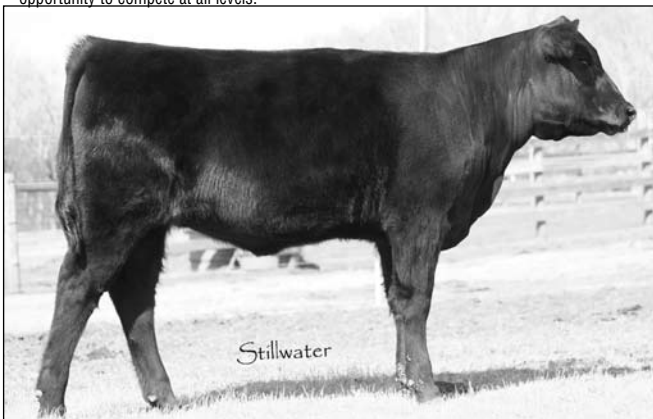
S	D
MARB	MARB
+37	+50
RE	RE
+08	-07
SB	SB
+29.93	+42.30

#+SAF 598 Bando 5175
Stillwater Blackbird N14
14733191 EF Blackbird 9102

#Bon View Bando 598
+SAF Royal Lass 1002
#RR Traveler 5204 (AMF)
+Shady Brook Blackbird 91G

BEPD	WEPD	YEPD	MILK
S +1.5	.91 +46	.86 +83	.72 +36 .28
D +2.7	.34 +47	.26 +93	.22 +22 .27

- Owned by Stillwater Cattle Company of Seneca, SC.
- Birth weight: 85 lbs.
- This powerful young female, Stillwater Blackbird U14, offers tremendous breeding genetics and stems from the Pathfinder Sire and performance leader and daughter of SAF 598 Bando 5175 back to the Pathfinder Sire, RR Traveler 5204, and the famous Blackbird family.
- Her dam reads with an outstanding set of numbers across the board and she reads with tremendous growth without sacrificing marbling.
- Here is a powerful, young show heifer prospect that offers unlimited potential and has the opportunity to compete at all levels.



Stillwater Blackbird U14 - She sells as Lot 47A.

48 Tokeenas Eileen 3A1 5175

Birth Date: 10-29-2002 Cow 14469404 Tattoo: 3A1

#Bon View Bando 598
SAF 598 Bando 5175
#+12350821+SAF Royal Lass 1002

#Tehama Bando 155 (AMF)
#Bon View Dora 56
#VDAR New Trend 315 (AMF)
+SAF Royal Lass 6089

MARB	+13
RE	
SB	+05
SB	+37.41

#Ideal 1418 of 8103 4286 (AMF)
Tokeenas Eileen 9J9 1418
13271872 Tokeenas Eileen 127

Ideal 8103 of Eldo 5110 5213
EE 4286 of Ideal 2240 1254
SS Eldorado 156 E49
Tokeenas Eileen M 276

BEPD	WEPD	YEPD	MILK
+4.6	.41 +52	.30 +93	.28 +27 .29

- Owned by Tokeena Angus of Seneca, SC.
- This female stems from the Pathfinder and performance leader, SAF 598 Bando 5175, back to the featured Pathfinder Sire, Ideal 1418 of 8103 4286.
- This female has an individual weaning ratio of 117, yearling ratio of 103, progeny production record of WR 3@114, YR 2@119 and stems from a dam that records WR 7@103, YR 5@108, UREA 2@104, and has two daughters in production with an average nursing ratio of 110.
- This female traces to the Eileen cow family back to the Eileen of Rabuncroft, born to the Eileen of Rosemere 21 on April 15, 1935 and registered to McPhail Angus Farm. He had a SEN value of +42.81 and stems from one of the all-time long proven cow families in the Tokeena program.
- Bred to calve November 17, 2009, to BASIN RAINMAKER 747L.

48A Tokeenas Eileen 9H5 973P

Birth Date: 11-12-2008 Cow Reg.No.Pdg. Tattoo: 9H5

#Basin Max 602C (AMF)
Diamond Max 973P
14685573 Diamond Blackcap 747J

#GT Maximum (AMF)
#Basin Eline Erica 315U
#Basin Ambush 3905 (AMF)
+Diamond Blackcap 217G

S	D
MARB	MARB
+19	+13
RE	RE
+06	+05
SB	SB
+31.50	+37.41

#+SAF 598 Bando 5175
Tokeenas Eileen 3A1 5175
14469404 Tokeenas Eileen 9J9 1418

#Bon View Bando 598
+SAF Royal Lass 1002
#Ideal 1418 of 8103 4286 (AMF)
Tokeenas Eileen 127

BEPD	WEPD	YEPD	MILK
S +2.1	.73 +50	.62 +88	.50 +21 .27
D +4.6	.41 +52	.30 +93	.28 +27 .29

- Owned by Tokeena Angus of Seneca, SC.
- This direct daughter of Diamond Max 973P goes back to the featured Tokeena Eileen family on the bottom side.
- This featured female stems from the same family as Eileen of Rosemere 21, who was registered on April 15, 1935, in the McPhail Angus program and stems from an extremely productive family.
- She stems from a dam that has a progeny production record of WR 3@114, YR 2@119 and a granddam that records WR 7@103, YR 5@108, UREA 2@104. She is a powerful young female that offers unlimited genetic potential.



EE 4286 of IDEAL 2240 1254 - Her influence sells.

YON FAMILY FARMS



CONGAREE BURGESS D63 - Grandam of Lot 49.



SAV FINAL ANSWER 0035 - His influence sells.

49 Yon Burgess U151

Birth Date: 9-28-2007 Cow 16079429 Tattoo: U151

#SAF Focus of ER (AMF)
Mytty In Focus (AMF)
13880818 Mytty Countess 906

#SAF Fame (AMF)
GDAR Forever Lady 246
#Sitz Alliance 6595 (AMF)
Baldrige Countess 357

#Schoenes Fix It 826 (AMF)
Yon Burgess K235
13620903 +Congaree Burgess D63

#AAR New Trend
Sky High Blackbird 4119
#Tehama Bando 155 (AMF)
Partisover Burgess 901

MARB
+43
RE
-.02
SB
+36.04

BEPD	WEPD	YEPD	MILK
+3.8	.32 +44	.25 +79	.23 +24 .21

- Owned by Yon Family Farms of Ridge Spring, SC.
- This sale highlight by Mytty In Focus goes back to the featured Congaree Burgess D63, a proven donor female in the Yon program, and stems from the legendary Partisover Burgess 901 on the bottom side.
- This featured female has an individual IMF ratio of 111 and stems from a dam that records WR 6@102, U%IMF 5@114, and a grandam that records WR 4@107, YR 4@108, U%IMF 19@104 and UREA 19@103.
- This powerful bred heifer has what it takes to become a donor female in any program.
- Bred to calve October 12, 2009, to HARBS PENDLETON 765JH.

50 Yon Witch U95

Birth Date: 9-20-2007 Cow 16081054 Tattoo: U95

#GAR Precision 1680 (AMC)
GAR Retail Product (AMF)
#13395329 +GAR Ext 4927

#Tehama Bando 155 (AMF)
9J9 GAR 856
#N Bar Emulation EXT (AMF)
GAR Traveler 641

#Hyline Right Time 338 (AMF)
YON Witch S510
+15413077 +Yon Witch G97

#+Leachman Right Time
Hyline Pride 265
#Tehama Bando 155 (AMF)
+Prtisover Witch 382

MARB
+22
RE
+27
SB
+43.67

BEPD	WEPD	YEPD	MILK
+0	.34 +42	.25 +84	.25 +23 .21

- Owned by Yon Family Farms of Ridge Spring, SC.
- This direct daughter of GAR Retail Product goes back to the legendary Yon Witch G97 on the bottom side.
- This female has an individual birth ratio of 83, UREA of 101 and stems from a dam that records BR 1@83, UREA 1@101.
- The featured donor dam is an ET daughter of Yon Witch G97 who records over 120 progeny in the Yon Family program and has 4@105 for weaning, 4@105 for yearling, 98@121 for IMF and 100@122 for RE. She ranks below breed average for Birth Weight EPD without sacrificing carcass genetics.
- Bred to calve October 8, 2009, to MYTTY IN FOCUS.



YON WITCH G97 - Grandam of Lot 50.

51 Yon Bonnie Lass U198

Birth Date: 10-3-2007 Cow 16102471 Tattoo: U198

#B/R New Design 036 (AMF)
GAR Predestined (AMF)
#13395344 #+GAR Ext 4206

#VDAR New Trend 315 (AMF)
B/R Blackcap Empress 76
#N Bar Emulation EXT (AMF)
+GAR 6807 Traveler 1432

+Yon Bando G99
JMK Bonnie Lass N502
14495362 Congaree Bonnie Lass D19

#Tehama Bando 155 (AMF)
Congaree Hazel A08
#Tehama Bando 155 (AMF)
Congaree Bonnie Lass Z28

MARB
+46
RE
+14
SB
+50.80

BEPD	WEPD	YEPD	MILK
+4.1	.35 +41	.25 +83	.25 +20 .19

- Owned by Yon Family Farms of Ridge Spring, SC.
- This direct daughter of Pathfinder Sire and high \$Beef GAR Predestined goes back to the featured double-bred Tehama Bando 155 on the bottom side.
- This female has tremendous eye appeal and a world of potential to become a powerful donor female in any program. She reads with tremendous carcass genetics without sacrificing growth.
- Bred to calve October 11, 2009, to SAV FINAL ANSWER 0035.

52 YON MIGNONNE P253

Birth Date: 12-16-2003 Cow #14759870 Tattoo: P253

#B/R New Design 036 (AMF)
Yon New Design 036 K57
13620902 +Yon Burgess G05

#VDAR New Trend 315 (AMF)
B/R Blackcap Empress 76
#N Bar Emulation EXT (AMF)
+Partisover Burgess 444

#GDAR Traveler 044 (AMF)
YON Mignonne L65
13891929 +Yon Mignonne H113

#DHD Traveler 6807 (AMF)
#GDAR Blackcap Lady 840
#Tehama Bando 155 (AMF)
#Bridges Mignonne 8167

MARB
+15
RE
+12
SB
+31.76

BEPD	WEPD	YEPD	MILK
+2.8	.39 +42	.28 +76	.27 +24 .26

- Owned by Yon Family Farms of Ridge Spring, SC.
- The combination of B/R New Design 036 and the featured Mignonne family offers fault-free genetics.
- She has an individual birth ratio of 97, yearling ratio of 101, and progeny production record of WR 2@108, YR 2@105, U%IMF 4@101, UREA 4@106 with one daughter in production and an average nursing ratio of 101. She stems from a dam that has three daughters in production with an average nursing ratio of 103.
- This female last year nursed twin heifers with no creep and weaned over 1,100 pounds worth of calves.
- This female was flushed January 2009 and made 11 Grade 1 Embryos.
- Sells with a heifer calf at side (Lot 52A) born September 27, 2008, by CRA BEXTOR 872 5205 608. Birth weight: 76 lbs. Tattoo W92.
- Bred to calve November 15, 2009, to SAV NET WORTH 4200.



YON MIGNONNE P253 - She sells as Lot 52.

YON FAMILY FARMS

NOTES



YON GAMMER P155 – She sells as Lot 53.

53 YON Gammer P155

Birth Date: 11-14-2003 Cow 14752004 Tattoo: P155

#B/R New Design 036 (AMF) #VDAR New Trend 315 (AMF)
 Bon View New Design 208 (AMF) B/R Blackcap Empress 76
 #13044574 #Bon View Erica 443 #N Bar Emulation EXT (AMF)
 #Bon View Erica 1380

#BCC Bushwacker 41-93 (AMF) #Paramont Ambush 2172 (AMF)
 YON Miss Bushwacker M49 RC Anita T Bando 918903
 14160364 CAR Miss Scotch Cap 040 #Scotch Cap (AMF)
 Tokeenas Gammer 1001

MARB
+ .30
RE
+ .05
SB
+29.62

	BEPD	WEPD	YEPD	MILK
	+ .9	.39 +39	.29 +73	.29 +28 .27

- Owned by Yon Family Farms of Ridge Spring, SC.
- This direct daughter of Bon View New Design 208 goes back to the featured Gammer family on the bottom side.
- She has an individual birth ratio of 88 and a progeny production record of WR 2@106, YR 2@102, UREA 2@102 and has a dam that records BR 3@97 with two daughters in production with an average nursing ratio of 105.
- Sells with a heifer calf at side (Lot 53A) born November 2, 2008, by SAV 8180 TRAVELER 004. Birth weight: 88 lbs. Tattoo: W240
- Bred to calve September 26, 2009, to SAV NET WORTH 4200.

54 YON Lass P133

Birth Date: 11-1-2003 Cow 14751989 Tattoo: P133

#N Bar Emulation EXT (AMF) #Emulation N Bar 5522
 GAR Expectation 4915 (AMF) N Bar Primrose 2424
 #+12548568 GAR Traveler 2421 #QAS Traveler 23-4 (AMF)
 +GAR Scotch Cap 209

#SS Traveler 6T6 (AMF) #QAS Traveler 23-4 (AMF)
 CAR Miss Traveler 6T6 324 #SS Miss Power Play 4A4
 11942355 CAR Miss Traveler 060 #QAS Traveler 23-4 (AMF)
 CAR Tokeena Linebacker 737

MARB
+ .23
RE
+ .16
SB
+38.41

	BEPD	WEPD	YEPD	MILK
	+ .2	.40 +41	.30 +75	.29 +21 .29

- Owned by Yon Family Farms of Ridge Spring, SC.
- This tremendous pair is a direct daughter of the Pathfinder Sire, GAR Expectation 4915, back to the famous QAS Traveler 23-4.
- This female has an individual birth ratio of 93, weaning ratio of 103, yearling ratio of 101 and progeny production record of WR 2@101, YR 1@102. She has one daughter in production with an average nursing ratio of 102 and UREA 1@113. She stems from an extremely productive dam that records WR 10@101, YR 9@102, U%IMF 6@106, UREA 6@105.
- Sells with a heifer calf at side (Lot 54A) born November 26, 2008, by GAR PREDESTINED. Birth weight: 88 lbs. Tattoo: W313.
- Bred to calve October 17, 2009, to SAV NET WORTH 4200.



YON LASS P133 – She sells as Lot 54.

REFERENCE SIRES

A SAV Net Worth 4200 (AMF)

Birth Date: 3-6-2004 Bull 14739204 Tattoo: 4200



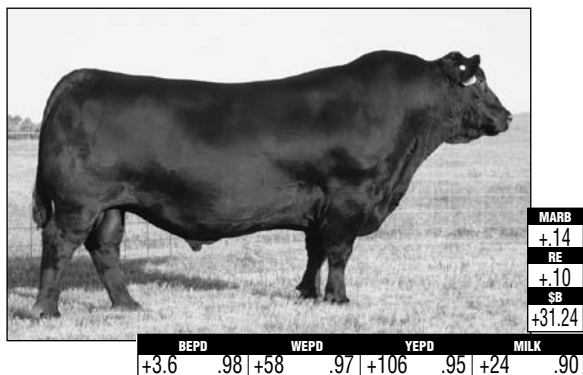
E SS Objective T510 OT26 (AMF)

Birth Date: 4-25-2000 Bull #13776378 Tattoo: OT26



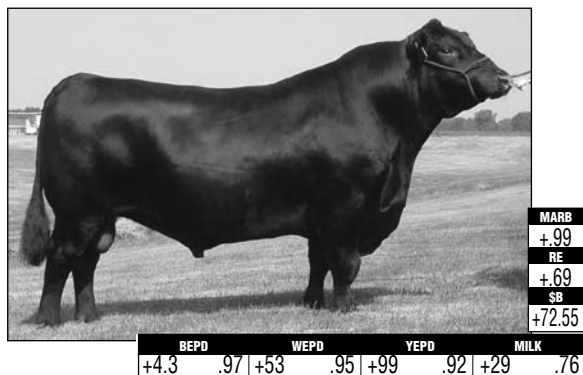
B SAV 8180 Traveler 004 (AMF)

Birth Date: 1-1-2000 Bull #13512009 Tattoo: 004



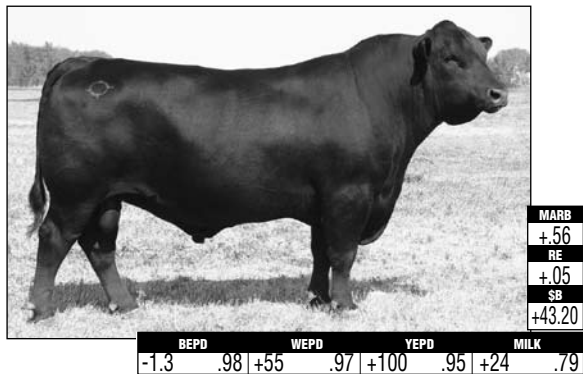
F GAR Predestined (AMF)

Birth Date: 8-16-1999 Bull #13395344 Tattoo: 5899



C Mytty In Focus (AMF)

Birth Date: 2-18-2001 Bull 13880818 Tattoo: 109



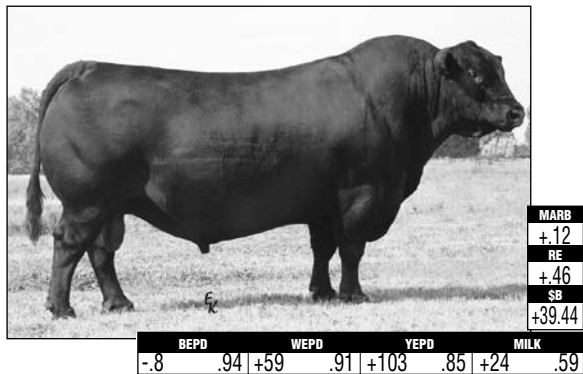
G HARB Pendleton 765 JH (AMF)

Birth Date: 2-7-2005 Bull 15313140 Tattoo: 765



D SAV Final Answer 0035 (AMF)

Birth Date: 2-22-2000 Bull 13592905 Tattoo: 0035



H Connealy Onward (AMF)

Birth Date: 3-31-2002 Bull 14216491 Tattoo: 2743



Suggested* Sale Terms and Conditions (American Angus Association – June 10, 2005)

UNLESS OTHERWISE EXPRESSLY STATED IN THESE SALE TERMS AND CONDITIONS OR ANY OTHER WRITTEN AGREEMENT BETWEEN THE PARTIES RELATING TO THE SALE OF ANGUS CATTLE UNDER THESE SALE TERMS AND CONDITIONS, SELLER MAKES NO OTHER WARRANTIES, EXPRESS OR IMPLIED, INCLUDING ANY IMPLIED WARRANTY OF MERCHANTABILITY OR FITNESS FOR A PARTICULAR PURPOSE, EVEN IF SUCH PURPOSE IS KNOWN TO THE PARTIES.

THE REMEDIES PROVIDED IN THESE SALE TERMS AND CONDITIONS ARE THE EXCLUSIVE REMEDIES OF THE BUYER, OR ANY PARTY CLAIMING THROUGH THE BUYER, AND UNDER NO CIRCUMSTANCES WILL THE SELLER BE LIABLE FOR ANY INCIDENTAL, INDIRECT, SPECIAL, CONSEQUENTIAL, PUNITIVE OR EXEMPLARY DAMAGES UNDER ANY INDEMNITY PROVISION OR OTHERWISE.

TERMS OF SALE

Bidding

1. Each animal will be sold to the highest bidder. The person in charge will settle any disputes as to bids, and his decision on such matters will be final.

Announcements

1. If there is any inconsistency in the terms of any sale book, supplement sheet or day-of-sale announcement, (i) the day-of-sale announcement will control over both the supplement sheet and the sale book, and (ii) the supplement sheet will control over the sale book.

Cash Sale

1. All sales are for cash unless satisfactory credit arrangements, including any possible reservation of security interest by the vendor, have been made with the vendor prior to sale.

Buyer's risk

1. The risk of loss and injury of each animal passes to the buyer as soon as it is sold; but it is the obligation of the seller to ensure that animals are fed and cared for free of charge to the buyer until loaded for shipment or until the expiration of 48 hours after the sale, whichever occurs sooner.

Identification

1. The seller must ensure that each animal has a readable permanent identification mark (e.g., tattoo, hot-iron brand or freeze brand) corresponding to its registration.
2. The buyer must check all permanent identification marks for accuracy.
3. In those cases where a nickname is used by the seller, the nickname must also be accompanied by the official registered name and number of the animal.

Certificate of registration

1. A transferred certificate of registration must be furnished by the seller free of charge to the buyer for each animal within 45 days following the later of the date of sale and receipt of full payment.

Artificial insemination (AI) service certificates

1. Upon the buyer's request, AI Service Certificates must be furnished by the seller free of charge to the buyer for all females bred artificially to bulls not owned by the seller.

GUARANTEES

Health

1. Unless otherwise announced, the seller guarantees that all animals are eligible for interstate shipment as required by federal regulations.

Conformance with registration

1. The seller guarantees that all animals are registered under the rules of the American Angus Association.
2. The seller guarantees to the buyer that all animals conform to the registration certificate as entered in the Herd Book of the American Angus Association.

Pedigree

1. The seller guarantees to the buyer that the pedigree and performance data of all animals, as represented in any sales materials (including any sale book, supplement sheet or day-of-sale announcement), is accurate.
2. In those cases where a commonly understood nickname is used by the seller, the seller guarantees the pedigree of the animal based on the commonly understood nickname.

Sex

1. Unless otherwise represented by the seller, there are no guarantees that offspring will be of a particular sex.

Breeding guarantees

1. The seller guarantees that all bulls are breeders, but only if such bulls are at least 12 months old at the time of sale and have not been allowed to run with the herd until at least 14 months of age. A bull that settles a cow by natural service and passes a fertility test made by competent veterinarians mutually agreed upon by the buyer and the seller, during any six-month period of trial (provided for in paragraph 2 of the section entitled "Options and privileges of return or adjustment") will be considered a breeder. Unless otherwise agreed by the buyer and the seller, the seller makes no guarantees with respect to the ability to freeze semen.
2. The seller guarantees that all animals are breeders, with the exception of: (a) calves under 12 months of age at the time of the sale; (b) animals shown after the sale has occurred (in such cases, the breeding guarantees, if any, will be those guarantees as are agreed upon between the seller and the buyer); (c) injury or disease occurring after the sale; and (d) gross negligence or willful misconduct on the part of the buyer.
3. "Safe-in-calf" females are guaranteed by the seller to have been examined by a competent veterinarian and determined to be in calf.
4. "Served" females are not guaranteed to be in calf.
5. "Pasture-bred" females have been exposed but are not guaranteed to be in calf.
6. "Open" females have not been served and are guaranteed by the seller to be without calf.
7. Donor females:
 - a. Unless otherwise agreed by the buyer and the seller, a female that has been used in an embryo transfer program is not guaranteed to be a breeder after the date of the sale.
 - b. Unless otherwise agreed by the buyer and the seller, a female is not guaranteed to be a breeder after the date of the sale, when that female is to be used, or attempted to be used, in an embryo transfer program.
8. The seller makes the following guarantees with respect to all "pregnant recipients": (i) that the female is pregnant, (ii) that the resulting calf is of the pedigree represented, and (iii) that the resulting calf is of the sex represented (if so represented).

Genetic defect guarantee

1. All animals are guaranteed by the seller not to produce a calf with the following defects for a period of two years after the date of sale: Dwarfism, Osteopetrosis (marble bone disease), Double Muscling, Syndactyly (mule foot) and Heterochromia Irides (White Eye).
2. The buyer must notify the seller in writing immediately upon the birth of a calf suspected of being defective or immediately after determination is made that such calf is defective.
3. The seller at his expense will be permitted, and provided with reasonable opportunity, to obtain DNA material of an alleged defective calf and its sire and dam for the purpose of DNA-marker analysis to establish parent-hood.
4. The animals will be returned by the buyer to the seller at the buyer's expense (unless prohibited by the health requirements of the seller's state).
5. The return of the purchase price in connection with a defect-producing animal will be deemed full satisfaction and settlement.

6. The buyer and seller agree to fully and promptly comply with all rules of the American Angus Association relating to genetic defects.
7. If there is a dispute as to whether or not a calf is defective, the American Angus Association will make the final determination.
8. Registration certificates issued after January 30, 1979, for animals that, prior to issuance of the certificate, had been reported and verified as carriers of recessive genetic defects or genetic factor or had tested free of certain genetic defects or genetic factors contain the following codes relative to such defect.
 - S - Syndactyly
 - H - Double muscling
 - D - Dwarfism
 - M - Osteopetrosis
 - HI - Heterochromia Irides
 - HG - Horn gene
 - R - Red
 - X - Multiple defects, check list for kind
 - F - Tested for defect printed without producing abnormal calves
 - GDF - Produced 35 or more calves from daughters without a genetic defect or genetic factor
 - WT - Wild Type Color Gene

The absence of any such notation on a pedigree of an animal, in a sale book, does not establish that the animal in question is not a carrier of any such genetic defect or genetic factor.

Semen

1. Unless otherwise agreed by the buyer and the seller, with respect to the sale of semen the seller makes no guarantees with respect to the performance or characteristics of such semen and buyer is purchasing such semen "as is."

Embryos

Unless otherwise agreed by the buyer and the seller, with respect to the sale of embryos the seller makes no guarantees with respect to the performance or characteristics of such embryos and buyer is purchasing such embryos "as is."

Options and privileges of return or adjustment

1. Except as provided in paragraphs 2 and 3 of this section, all claims for adjustment or refund must be made in writing on or before the later of (i) six months after the sale date and (ii) the date on which the animal reaches 30 months of age.
2. All claims relating to genetic defects will be handled in accordance with the section "Genetic defect guarantee."
3. All claims relating to the misrepresentation of service sire and all claims relating to paragraphs 10 and 11 of this section must be made in writing on or before the second anniversary of the date of sale.
4. If an animal is claimed to be a non-breeder, the animal may be returned to the seller if in good condition and complying with the health requirements of the seller's state. The seller is entitled to six months trial following the return of the animal in which to prove that the animal is a breeder. If at the end of the six-month period the seller is unable to prove the animal is a breeder, the seller must, at the option of the buyer, replace the animal with another of equal value or refund the purchase price. The return of the full purchase price will be deemed full satisfaction and settlement. Any expense incurred for transporting an animal claimed to be a non-breeder will be the responsibility of the buyer, except that the seller will be responsible for transportation costs in excess of the distance between the buyer's farm and the location where the sale took place. If the seller proves the animal to be a breeder, it will be the obligation of the buyer to take delivery of the animal and pay all transportation expenses.
5. If a female sold as "safe in calf" proves not to be in calf, the buyer may receive service from the bull previously used, if available. If the bull is not available, the seller must make a satisfactory adjustment on the purchase price to the buyer or, at the buyer's option, refund the purchase price upon return of the animal to the farm of the seller. Any adjustment provided for in this paragraph 6 will absolve the seller from further liability, except in if such female proves to be a non-breeder. If a female represented as "safe in calf" to a certain bull at the time of sale proves to have been bred to a different bull, the seller must make a satisfactory adjustment on the purchase price to the buyer or, at the buyer's option, refund the purchase price upon return of the animal to the farm of the seller (adjustments will not be considered to be a breeding fee or an allocation of the purchase price to any unborn calf).
6. If a female sold as "open" proves to be with calf, the buyer may return the animal to the farm of the seller prior to calving for a refund of the full purchase price or for another animal of equal value, whichever is acceptable to the buyer. The Seller is responsible for all transportation expenses.
7. Cows with calves at their side are presumed to be breeders with no further fertility guarantee.
8. White skin or hair must not be painted or altered. If such painting or alteration has occurred, the buyer may return the animal to the farm of the seller for a refund of the full purchase price or for another animal of equal value, whichever is acceptable to the buyer.
9. If an animal (including the offspring of a pregnant recipient) is sold and at a later date proves not to have been eligible for registration under the rules of the American Angus Association, the seller must make a satisfactory adjustment on the purchase price to the buyer, or at the option of the buyer, refund the purchase price upon the return of the animal to the farm of the seller.
10. If (i) an animal is sold (including the offspring of a pregnant recipient) and through DNA-marker-typing is proven to have incorrect parentage, as represented by the certificate of registration, and for which parentage can be determined, or (ii) the resulting calf of a pregnant recipient is not of the sex represented, the seller is obligated to make a satisfactory adjustment on the purchase price to the buyer or, at the buyer's option, refund the purchase price upon the return of the animal to the farm of the seller.
11. Except as provided in paragraphs 4 and 6 of this section, all transportation expenses incurred will be the responsibility of the buyer, except that the seller will be responsible for transportation costs in excess of the distance between the buyer's farm and the location where the sale took place.

Retention of genetic material

1. Unless otherwise agreed in writing by the seller and the buyer, the seller will not retain any genetic material of any animal (including embryos and semen) for the purpose of cloning.

Miscellaneous

1. The above terms and conditions of sale constitute a contract between the buyer and the seller of each animal and are equally binding upon both parties. Each sale or resale of an animal constitutes a separate transaction.
2. Neither the sponsor or sponsors, the sale manager, nor any other person connected with the management of the sale, assumes any liability, legal or otherwise.
3. These sale terms and conditions and all rights, obligations and duties arising hereunder and all disputes arising hereunder will be construed in accordance with, and governed by, the laws of the state in which the sale of the animal or animals occurs, without giving effect to such state's choice of law rules.

* For voluntary consideration and use by sellers in their independent business judgment.

38th Annual Carolina Angus Futurity

Consignors

Alexander Angus Farm

Milton (Sac) Alexander
(864) 868-2280
(864) 506-4456
LOTS 3-5

Black Crest Farm

W.R. "Billy" McLeod
Shawn Gray, Cattle Mgr.
(803) 968-9658 - Shawn
LOT 6

Britt Farm

Stacy Britt, Owner
Brian Federspiel, Mgr.
(678) 794-2644 - Brian
LOTS 7-10

Cedar Creek Farm

Ted Bourne
(864) 910-1361
LOT 1

Cox Angus

Charles Cox
(864) 243-3302
LOT 11

CWF Farm

Cory Watt
(864) 352-6522
LOT 12

Diamond L Farm

Terry Landreth
(864) 243-3655
LOTS 13-14

Double B Farms

Henry "Bubba" Bamberg
(803) 793-7216 Cell
LOTS 2A-2B, 15-19

Double D Angus

Dale Wilson
(864) 446-8452
(864) 993-8324 Cell
LOTS 20-21

Hawkins Angus

Eddie/Alleen Hawkins
(864) 243-5421
LOTS 22-25A

Hi View Angus

Clyde Wade
(803) 633-2125
LOTS 26A-26C

Holly Berry Farm

Ray Patrick
(864) 907-1120
LOTS 27-28

Mull Meadow Farms

Frankie & Bobby Mullikin
(864) 261-6232 - Bobby
(864) 224-0280 - Frankie
LOTS 29-30

Oak Hill Farm

Danny Winchester
(864) 360-4130
LOTS 31-33

Riverhill Farm

Stephanie Clark
(864) 243-2214
LOTS 34-38

Sarratt Farms

WM G Sarratt
Cody Bright
(864) 706-0697
LOTS 39-40

Spring Hill Farms

Lynn Shealy
(803) 345-9196
LOTS 41-42

Spring Valley Farm

Timothy L. Vickery
(864) 296-5317
(864) 940-1285
LOT 43

Stillwater Cattle Co.

Steve McPhail
(864) 978-6358
LOTS 44-47A

Tokeena Angus

Neil and Daniel McPhail
(864) 247-0000 - Neil
(864) 903-5833 - Daniel
LOTS 48-48A

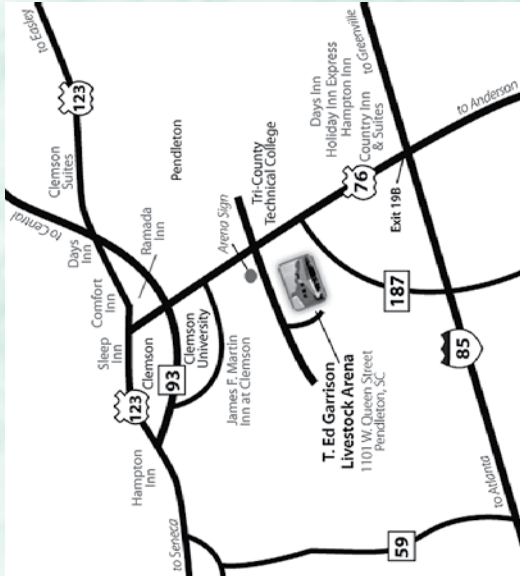
Yon Family Angus

Kevin and Lydia Yon
(803) 685-5048
LOTS 49-54

The 38th Carolina Angus Futurity

Noon • Saturday
March 21, 2009
Held at the *T. Ed Garrison Livestock Arena*
Clemson University, Clemson, SC

SELLING CAROLINA'S BEST!



Sale Managers
TOM BURKE, KURT SCHAFF, JEREMY HAAG

AMERICAN ANGUS HALL OF FAME
at the WORLD ANGUS HEADQUARTERS
Box 660, Smithville, MO 64089-0660.

Phone: (816) 532-0811

Fax: (816) 532-0851

E-mail: angushall@earthlink.net

- www.angushall.com

FIRST CLASS
U.S. POSTAGE
PAID
Minster, OH
Permit # 2