

The 39th Carolina Angus Futurity

Noon • Saturday • March 20, 2010

***Held at the T. Ed Garrison Livestock Arena
Clemson University, Clemson, SC***



Featuring These Elite Genetics!



BASIN LUCY 372R - Her daughters sell.



YON BURGESS R323 - She sells as Lot 28.



STILLWATER PREDOMINANT V19 - She sells as Lot 22A.



YON BLACKCAP R105 - She sells as Lot 29.

39th Annual Carolina Angus Breeders Futurity

NOON • SATURDAY • MARCH 20, 2010

Held at the T. Ed Garrison Livestock Arena, Clemson University, Clemson, SC

AUCTIONEER:

Mike Jones
SC#774R
(706) 773-3612



SALE DAY PHONES:

(864) 910-1361..... (816) 516-1309

ASSOCIATION REPRESENTATIVES:

Steve McPhail President
Lewis Smith Vice President
Windy Barte Secretary
Mike Johnson Treasurer

LIVESTOCK PUBLICATION REPRESENTATIVES:

David Gazda *Angus Journal*
Alex Williams Special Assignment
G. Shirley Meyers Special Assignment

SALE MANAGER:

American Angus Hall of Fame (816) 532-0811
Tom Burke (816) 853-2697
Kurt Schaff (816) 520-6447
Jeremy Haag (816) 516-1309
Rance Long (918) 510-3464

SALE CHAIRMAN:

Lewis Smith (864) 261-6982 • (864) 617-7771

BUYERS:

Unable to attend the sale may send their bids to the Sale Manager, Livestock Publication Representative or Auctioneer.

SALE HEADQUARTERS:

Ramada Inn (864) 654-7501
1310 Tiger Blvd, Clemson, SC
(*call by March 11). Complimentary breakfast available.
Comfort Suites (864) 622-1200
118 Interstate Blvd, Anderson, SC 29621
(*call by March 1). Complimentary breakfast available.

(*Mention the South Carolina Angus Association for special rates)

SALE LOCATION:

The sale will be held at the T. Ed Garrison Livestock Arena on the campus of Clemson University.

Directions:

(1101 W. Queen Street, Pendleton, SC 29670)
From I-85: Merge onto US-76 W/SC-28W via Exit 19B toward Clemson. Go 8 miles and turn left onto W. Queen Street (you will see red roof of the arena). Arena will be on your left-hand side (see Map on back cover).

SUPPLEMENTAL INFORMATION:

A supplemental sheet will be available sale day with complete and up to date calving information. Announcements from auction block regarding the cattle selling in this sale take precedence over information listed in this sale book.

LOT NUMBERS:

The tags on animals will correspond with the lot numbers in the sale book. Ear tags on calves at the side of dam correspond with the dam's number.

HERD HEALTH:

All cattle will be accompanied by proper health certificates for immediate shipment.

TRUCKING:

Truckers believed to be reliable will be available to assist you in shipping your purchases.

TERMS AND CONDITIONS:

The cattle will sell under the Terms and Conditions as recommended by the American Angus Association.

LIVESTOCK MORTALITY INSURANCE:

A representative from American Live Stock Insurance Company will be available to assist you with mortality insurance for your purchases.

FOOD AND REFRESHMENTS:

Available sale day.

SCHEDULE OF EVENTS:

Friday, March 19, 2010

Noon Cattle may be in place.
6 p.m. Social hour at Tucker's Restaurant.
7 p.m. Meeting & Banquet

Tucker's Restaurant: 3501 Clemson Blvd., Anderson, SC (864) 844-2453
(Directions: Take Exit 19A from I-85 onto Clemson Blvd. (Hwy. 76). Tuckers will be a few miles down on your right). Notify Windy at (803) 222-7533 or tumblet8@bellsouth.net to reserve a spot for dinner. Cost is \$25 per person.

Saturday, March 20, 2010

9 a.m. Silent Auction benefiting the South Carolina Junior Angus Association
Noon The 39th Annual Carolina Angus Breeders Futurity Sale.

Visit the *Angus Journal*® Web site, www.angusjournal.com, and view this sale book online.

References: *American Angus Association*®, *AHIR*®, *AngusSource*®, *CAB*®, *Pathfinder*®.

EPDs are current as of February 18, 2010. Updated EPDs can be viewed at www.angus.org

COMMENTS FROM THE SALE MANAGERS:



Tom Burke
(816) 853-2697



Kurt Schaff
(816) 520-6447



Jeremy Haag
(816) 516-1309



Rance Long
(918) 510-3464

Welcome to the 39th annual presentation of the Carolina Angus Breeders Futurity, a premier Angus event in the Southeast that features the very best in performance Angus genetics from South Carolina's finest breeders. These consignors are truly dedicated Angus enthusiasts that have dug deep into their herds to bring you a sound set of productive females.

This year, without question, is one of the finest sets ever offered at the South Carolina Futurity. Note the influence of today's breed-leading A.I. sires throughout this offering along with a rich bottom side pedigree noted from prominent cow families across the country, rich in performance, pedigree, carcass traits, and maternal genetics. This year's offering is indeed an outstanding set of young show heifer prospects, powerful bred heifers and elite cow/calf pairs.

We thank the folks who have donated semen and other items for the silent auction to support this year's Junior program and we also wanted to send out a special congratulations to Charles Cox on having the 39th Annual Carolina Angus Futurity dedicated to him. If you have any questions, please feel free to contact the American Angus Hall of Fame at (816) 532-0811 and be sure to plan to be with us both on Friday, March 19 for the annual banquet and Saturday, March 20 for the 39th Annual South Carolina Futurity.

Sincerely,

Tom Burke

Kurt Schaff

Jeremy Haag

Rance Long



Sale book prepared by the Sale Managers, TOM BURKE, KURT SCHAFF, JEREMY HAAG, RANCE LONG, AMERICAN ANGUS HALL OF FAME,
At the WORLD ANGUS HEADQUARTERS, Box 660, Smithville, MO 64089-0660.
Phone: (816) 532-0811. Fax: (816) 532-0851. E-Mail: angushall@earthlink.net - www.angushall.com

The 39th Carolina Angus Futurity

Dedicated to Charles Cox

Sitting at his window by the fire, Charles Cox can see the wildlife pass by in his woods—the wildlife that he once hunted before he became an Angus producer. Charlie Cox raises Angus cattle in Pelzer, SC on Cox Angus Farm with his wife Faye and within sight of some of his family members.

Charlie and Faye moved to the country so Charlie could hunt and fish. Then Charlie switched. About twenty years ago, Charlie Cox bought an Angus bull from Shirley Brown for his commercial cattle. He liked that bull so well he started buying Angus heifers. He had a hard time getting his neighbors to turn loose of their heifers but his herd got a start from Bob Rice and Shirley Brown. He has been going great guns ever since.

When the grandchildren were younger Charlie hauled them and their heifers to shows and fairs all over the country. His daughter Susan McCall lived in view of his window just across the pasture. The grandchildren could come and work the cattle each day. Helping them show has been the highlight of his life. He praised the experience saying, “The kids were good and the heifers were good.”

All the Angus cattle that he showed with his grandchildren were raised on the farm. Charlie halter-breaks each of his twenty Angus cows. Granddaughter Hannah Childress said, “The halter breaking makes them easier to sell.” “And easier to handle to breed,” Charlie added. “Raising and showing Angus is hard work.”

Charlie breeds them by artificial insemination to various Angus bulls. He said, “Sometimes I don’t have two calves with the same daddy. If I see a picture of a bull I like, I just order it.”

Charlie Cox uses progressive methods on his farm. In his breeding he looks for the best bull to use with his Angus to improve the breed. He screens his animals for curly calf and water head by testing for genetic flaws. He sends a hair from each Angus in question to a lab to determine if they are carriers.



Faye and Charles Cox

Wanting to keep up with the latest about cattle, Charlie Cox attends two cattlemen associations, the Laurens County Cattlemen and the Greenville County Cattlemen. Presently, Charlie is serving on the Board of Directors for the South Carolina Angus Association. A few years ago in June 2001 the Greenville magazine featured him in an article about cattlemen in Greenville County.

Charlie Cox says, “Very few people do what an old man like me does. It gives you a reason to get up. I’ve enjoyed the Black Angus and the people. It’s been a high point in my life.”

As a high point of the Carolina Angus Futurity annual meeting and banquet, the officers and directors of the South Carolina Angus Association will dedicate the Futurity to Charles Cox to recognize him for the work he has done with Angus and with the youth in South Carolina.

39TH ANNUAL CAROLINA ANGUS FUTURITY



CALIFORNIA TRAVELER - Paternal grandsire of Lot 1.



SS OBJECTIVE T510 OT26 - His service sells.

1 BCF 7Z24 Lucy S148 [AMF]

Birth Date: 2-14-2006 Cow 15458024 Tattoo: S148

#California Traveler [AMF-NHF] #RR Traveler 5204 [AMF-NHF]
Rito 7Z24 of 4M8 Cal T #Tehama Eisa Erica Y699
+12889453 +Rita 4M8 of 5H11 GT Maximum #GT Maximum [AMF-NHF]
Rita 5H11 of 1B14 Rito 9J9

#N Bar Emulation EXT [AMF-NHF] #Emulation N Bar 5522
Black Crest Lucy 89M N Bar Primrose 2424
14178006 Black Crest Lucy 105C #GDAR Wham 021 [AMF-NHF]
+Premier Lucy 2036E

MARB	+25
RE	-16
SB	+30.41

BEPD	WEPD	YEPD	MILK
+2.9	.36	+49	.26
			+77
			.24
			+16
			.21

- Owned by Black Crest Farm, Sumter, SC.
- The combination of the Genex/CRI AI Sire California Traveler and N Bar Emulation EXT blends for a tremendous maternal package. This female reads with outstanding maternal genetics without sacrificing Marbling.
- This female reads with an individual weaning ratio of 104, yearling ratio of 104 and U%IMF of 103 and stems from a dam that records U%IMF 1@103.
- Sells with a heifer calf at side (Lot 1A) born November 3, 2009 by SITZ FORESIGHT 7897.

2 LB Miss924 of In Focus

Birth Date: 9-22-2008 Cow 16272688 Tattoo: 9624

#SAF Focus of ER [AMF-NHF] #SAF Fame [AMF-NHF]
Mytty In Focus [AMF-NHF-RDF] GDAR Forever Lady 246
13880818 Mytty Countess 906 #Sitz Alliance 6595 [AMF-NHF]
Baldrige Countess 357

#N Bar Emulation EXT [AMF-NHF] #Emulation N Bar 5522
LB Burgess 624 N Bar Primrose 2424
+15328830 Partisover Burgess 739 #DHD Traveler 6807 [AMF-NHF]
+Partisover Burgess 048

BEPD	WEPD	YEPD	MILK
+1.4	.31	+52	.24
			+96
			.19
			+23
			.20

- Owned by Bramblett Angus, Elberton, GA.
- This direct daughter of Mytty In Focus stems back to the featured Partisover Burgess 739 on the bottom side.
- This powerhouse individual has an individual birth ratio of 99 and stems from a dam that records BR 1@99. She is a powerhouse young female that reads with outstanding EPDs and ranks below breed average for Birth Weight EPD without sacrificing maternal and growth genetics.
- Her dam, L B Burgess 624, was the No. 1 Weaning Weight heifer for the 2006 calf crop.
- Bred to calve September 18, 2010 to SAV PIONEER 7301. Exposed to SA7 OF 112 on January 22, 2010.



PARTISOVER BURGESS 739 - Grandam of Lot 2.

3 LB T819 9333 7022

Birth Date: 9-5-2007 Cow +16080801 Tattoo: T819

OCC Kirby 633K #+OCC Emblazon 854E
BC Marathon 7022 [AMF-NHF] +OCC Blackbird 785H
14187839 Gibbet Hill Mignonne E37 #Papa Equator 2928 [AMF-NHF]
Gibbet Hill Mignonne TR 29

#AAR New Trend #VDAR Shoshone 548
Davis Burgess 9333 Donna AAR74
+13430651 +Partisover Burgess 659 #+GAR Sleep Easy 1009 [AMF-NHF]
Partisover Burgess 527

MARB	+17
RE	+25
SB	+40.24

BEPD	WEPD	YEPD	MILK
+5.0	.05	+49	.05
			+84
			.05
			+26
			.05

- Owned by Bramblett Angus, Elberton, GA.
- This special sale attraction is a direct daughter by BC Marathon 7022 back to the featured AAR New Trend and Partisover Burgess 527 on the bottom side.
- This female stems from a dam that records WR 4@108, YR 4@105, UREA 23@101 with three daughters in production with an average nursing ratio of 106.
- Sells with a heifer calf at side (Lot 3A) born September 24, 2009 by MYTTY IN FOCUS.
- Bred to calve October 2, 2010 to SS OBJECTIVE T510 OT26. Exposed to S1381 on January 20, 2010.

4 Cox's Miss Directive 202

Birth Date: 9-21-2008 Cow 16471483 Tattoo: C202

#Millcreek Diversity [AMF-NHF] #+GAR Sleep Easy 1009 [AMF-NHF]
SAF Directive [AMF-NHF] Millcreek Travel Lass
#13574137 +SAF Royal Queen 5084 #Bon View Bando 598 [AMF]
SAF Royal Queen 9022

#BR Midland [AMF-NHF] #Twin Valley Precision E161 [NHC-AMF-RDF]
Cox' Miss Midland 163 BR Royal Lass 7036-19
15345027 Cox's Miss Fly Maker #+Whitestone Fly Traveler 3006 [AMF-NHF]
Famoda Rainbird 1641

BEPD	WEPD	YEPD	MILK
+1.7	.34	+49	.25
			+91
			.25
			+24
			.20

- Owned by Cox Angus, Pelzer, SC.
- The combination of SA Directive and the \$202,000 BR Midland along with Whitestone Fly Traveler 3006 blends for a unique genetic package.
- This powerhouse young individual reads with tremendous spread from birth to yearling ranking below breed average for Birth Weight EPD. She has an individual birth ratio of 94, weaning ratio of 105, yearling ratio of 105 and stems from a dam that records BR 2@93, WR 2@104, YR 2@105.
- Bred to calve September 7, 2010 to HARB PENDLETON 765 JH.



HARB PENDLETON 765 JH - His service sells.

39TH ANNUAL CAROLINA ANGUS FUTURITY

5A Cox's Bev's 6595 201

Birth Date: 9-19-2008 Cow 16462896 Tattoo: C201

#Sitz Traveler 8180 [AMF-NHF] #GDAR Traveler 71 [AMF-NHF]
Sitz Alliance 6595 [AMF-NHF] Sitz Everelda Entense 1137
#12310707 #Sitz Barbaramere Jet 2698 3 Bar Spike 1766
#Sitz Baramere Jet 155

#Leachman Saughatchee 3000C [AMF-NHF] #N Bar Emulation EXT [AMF-NHF]
Coxs Beverly Leachman BC 7100
13818971 Coxs Miss Tri Maker #Hoff Triumph SC 927 [AMF-NHF]
DG Miss Rainmaker 8

- Owned by Cox Angus, Pelzer, SC.
- This direct daughter of the Pathfinder Sire Sitz Alliance 6595, goes back to the ten-time, All-American Sire of the Year and Pathfinder Sire Leachman Saughatchee 3000C.
- She has an individual birth ratio of 94 and stems from a dam that records BR 6@99, YR 4@102 and ranks below breed average for Birth Weight EPD.
- Bred to calve October 8, 2010 to BON VIEW NEW DESIGN 878.

BEPD	WEPD	YEPD	MILK
+2.0	.34	+46	.26
		+89	.25
			+22
			.21

5B Cox's Miss 6595 199

Birth Date: 9-13-2008 Cow 16469411 Tattoo: C199

#Sitz Traveler 8180 [AMF-NHF] #GDAR Traveler 71 [AMF-NHF]
Sitz Alliance 6595 [AMF-NHF] Sitz Everelda Entense 1137
#12310707 #Sitz Barbaramere Jet 2698 3 Bar Spike 1766
#Sitz Baramere Jet 155

#Leachman Saughatchee 3000C [AMF-NHF] #N Bar Emulation EXT [AMF-NHF]
Cox's Miss Saughatchee 102 Leachman BC 7100
14085652 Coxs Miss P Fred 154 #Summitcrest Hi Flyer 3B18 [AMF-NHF]
Famoda Erica 1542

- Owned by Cox Angus, Pelzer, SC.
- This three-quarter sister to Lot 5A blends Sitz Alliance 6595 and the ten-time, All-American Sire of the Year and Pathfinder Sire Leachman Saughatchee 3000C, into a powerful genetic package.
- This female reads with tremendous growth and maternal genetics.
- Bred to calve August 30, 2010 to BON VIEW NEW DESIGN 878.

BEPD	WEPD	YEPD	MILK
+4.4	.34	+45	.25
		+86	.25
			+27
			.21

6 SBP Rita 7083 [AMF-NHF]

Birth Date: 3-6-2007 Cow 15730340 Tattoo: 7083

#AAR New Trend #VDAR Shoshone 548
Boyd New Day 8005 [AMF-NHF] Donna AAR74
#+13050780 SVF Forever Lady 57D #+Leachman Right Time
+SVF Forever Lady 1128

#CA Future Direction 5321 [AMC-NHC] #GAR Precision 1680 [AMC-NHC]
CSP Rita R028 [AMF] CA Miss Power Fix 308 [AMF]
15081315 GAR Explosion 568 [AMF] #N Bar Explosion
#+GAR Ext 2146

- Owned by Cypress Bay Farms, Bamberg, SC.
- The combination of Boyd New Day 8005 and the featured GAR EXT 2146 Pathfinder great-grandam blend for a unique pedigree.
- This female had an individual birth ratio of 96 and stems from a dam that records BR 1@96.
- Sells with a heifer calf at side (Lot 6A) born September 27, 2009 by KCF BENNETT TOTAL. Tattoo 932.
- Bred to calve September 9, 2010 to CONNEALY LEAD ON.

BEPD	WEPD	YEPD	MILK
+2.3	.35	+46	.26
		+89	.26
			+24
			.20

MARB
+23
RE
+29
SB
+46.43

7 Bridges Hazel 5028

Birth Date: 10-14-2004 Cow 15046403 Tattoo: 5028

#B/R New Design 036 [AMF-NHF] #VDAR New Trend 315 [AMF-NHF]
GAR Prime Design [AMF-NHF] B/R Blackcap Empress 76
#+14011547 +GAR Precision 1928 #GAR Precision 1680 [AMC-NHC]
+GAR Ext 614 [AMF]

#+Leachman Right Time #N Bar Emulation EXT [AMF-NHF]
Zobel Hazel 221 Leachman Erica 0025
14066689 +Zobel Hazel K150 #Papa Durabull 9805
Congaree Hazel A08

- Owned by Cypress Bay Farms, Bamberg, SC.
- The combination of GAR Prime Design and the \$160,000 Pathfinder Sire Leachman Right Time, stems from the featured Zobel Hazel family on the bottom side.
- This female reads with a solid set of numbers across the board. She has an individual IMF ratio of 111, UREA of 101, progeny production record of WR 2@107, YR 2@108, U%IMF 2@119, UREA 2@104 and stems from a dam that records YR 4@102, UREA 4@111 with two daughters in production with an average nursing ratio of 107.
- Sells with a heifer calf at side (Lot 7A) born August 9, 2009 by GAR SELECTIVE.
- Bred to calve September 15, 2010 to SAF CONNECTION.

BEPD	WEPD	YEPD	MILK
+2.7	.39	+43	.29
		+85	.28
			+29
			.27

MARB
+43
RE
+33
SB
+53.71

8 Bridges Royal Lass 4045

Birth Date: 11-29-2003 Cow 14735474 Tattoo: 4045

#Rito 616 of 4B20 6807 [AMF-NHF] #DHD Traveler 6807 [AMF-NHF]
Rito 112 of 2536 Rito 616 [AMF-NHF] +Rita 4B20 of OFB1 Bando
#+13793826 GAR Precision 2536 [AMC-NHC] #GAR Precision 1680 [AMC-NHC]
+GAR Ext 2104

#+Leachman Right Time #N Bar Emulation EXT [AMF-NHF]
BAF Lass 9111 710 Right Time Leachman Erica 0025
+13837734 +International Lass 710 #Ginger Hill Duster 89 [AMF-NHF]
+SAF Royal Lass 6089

- Owned by Cypress Bay Farms, Bamberg, SC.
- This direct daughter of Rito 112 of 2536 Rito 616 stems back to the \$160,000 Pathfinder Sire Leachman Right Time.
- This female had an individual weaning ratio of 108, yearling ratio of 109, UREA of 100 and progeny production record of U%IMF 2@105 and stems from a dam that records WR 2@108, YR 2@106, UREA 2@105.
- Sells with a heifer calf at side (Lot 8A) born September 16, 2009 by GAR SELECTIVE.
- Bred to calve September 15, 2010 to MYTTY IN FOCUS.

BEPD	WEPD	YEPD	MILK
+4.9	.38	+50	.29
		+90	.27
			+19
			.29

MARB
+23
RE
-.05
SB
+38.72

9 DLF Miss Ribeye L012 [AMF]

Birth Date: 12-14-2008 Cow Reg. No. Pdg. Tattoo: L012

#CA Future Direction 5321 [AMC-NHC] #GAR Precision 1680 [AMC-NHC]
Hales Big Ribeye 4102 [AMC-NHC] CA Miss Power Fix 308 [AMF]
14748556 #Hales Fly Lady 9067 [AMF-NHF] #+Whitstone Fly Traveler 3006 [AMF-NHF]
Hales New Lady 124 7089

CAR Triumph 906 #Hoff Triumph SC 927 [AMF-NHF]
CLF Tri 5204 R172 CAR Miss Maximum 608
14721284 Gentry Homeplace Alexis 630 #TC Dividend 963 [AMF-NHF-RDF]
Gentry Homeplace Alexis 406G

- Owned by Diamond "L" Farm, Simpsonville, SC.
- This featured December female by Hales Big Ribeye 4102 goes back to the featured Alexis family.
- This female stems from a dam that has a progeny production record of WR 3@102 and a grand-dam that records BR 3@98, WR 3@101, YR 3@101.
- Breeding information available sale day.

BEPD	WEPD	YEPD	MILK
S +4.2	.85	+63	.78
D +1.1	.29	+29	.19
		+108	.75
			+33
			.37
			+14
			.18

MARB
+23
RE
+1.04
SB
N/A

10 DB Blackbird 253

Birth Date: 8-22-2008 Cow 16287990 Tattoo: 253

#BAR Ext Traveler 205 [AMF-NHF] #N Bar Emulation EXT [AMF-NHF]
CRA Bextor 872 5205 608 [AMF-NHF] #BAR Queen Traveler 3015
#13009379 Cra Lady Jaye 608 498 S Easy #+GAR Sleep Easy 1009 [AMF-NHF]
HHF 917 Lady 975 498

#+GAR Grid Maker [AMF-NHF] #GDAR Traveler 044 [AMF-NHF]
DB Blackbird 119 GAR Precision 2536 [AMC-NHC]
15735418 Bricton Blackbird 8037 #Sitz Traveler 8180 [AMF-NHF]
Bricton Blackbird 578

- Owned by Double B Farms, Bamberg, SC.
- The combination of CRA Bextor 872 5205 608 stems back to the famous Bricton Blackbird family.
- This female reads with tremendous growth without sacrificing carcass genetics and has the opportunity to become a powerful breeding female.
- Bred to calve September 8, 2010 to MYTTY IN FOCUS.

BEPD	WEPD	YEPD	MILK
+3.5	.05	+55	.05
		+98	.05
			+24
			.05

MARB
+34
RE
+37
SB
+48.17



MYTTY IN FOCUS - His service sells.

39TH ANNUAL CAROLINA ANGUS FUTURITY



BASIN LUCY 372R - The \$30,000 valued donor dam of Lots 11A through 11C.

11A: DB Lucy 309

Birth Date: 10-26-2008 Cow +16287981 Tattoo: 309

Individual Records:	BEPD	WEPD	YEPD	MILK	MARB				
BR 96.	+2.1	.36	+48	.27	+100	.37	+23	.18	+24
Bred to calve					RE				+18
October 11, 2010 to SAV BISMARCK 5682. Examined safe.					SB				+46.41

11B: DB Lucy 308

Birth Date: 10-26-2008 Cow +16287991 Tattoo: 308

Bred to calve	BEPD	WEPD	YEPD	MILK	MARB				
September 18, 2010 to SAV BISMARCK 5682.	+2.4	.05	+50	.05	+101	.05	+24	.05	+27
					RE				+26
					SB				+48.64

11C: DB Lucy 301

Birth Date: 10-21-2008 Cow +16287980 Tattoo: 301

#Connealy Lead On [AMF-NHF] Connealy Onward [AMF-NHF] 14216491 Altune of Conanga 6104	#Connealy Leadtime [AMF-NHF] Eligence Plus of Conanga #GAR Traveler 1489 [AMF] Avalon 1418 of Conanga 6276	#Basin Max 602C [AMF-NHF] Basin Lucy 372R 14973268 #Basin Lucy 166N	#GT Maximum [AMF-NHF] #Basin Eline Erica 315U #Leachman Fundamental [AMF-NHF] Basin Lucy 9771	MARB
				+18
				RE
				+31
				SB
				+46.43

- Owned by Double B Farms, Bamberg, SC.
- Individual Records: YR 101, UREA 105.
- Bred to calve September 23, 2010 to SAV BISMARCK 5682.
- These featured pen-of-three flushmates by Connealy Onward blend the \$30,000 valued top-selling female of a past South Carolina Futurity sale, Basin Lucy 372R, going to Rolling Acres in Georgia. They are a powerhouse set of bred heifers.
- These female read with tremendous EPD profiles and stem from a dam who has been extremely productive in the Double B and Rolling Acres programs. They stem from the same family that went on to produce the \$410,000 featured Basin Lucy 178E, who has made her mark as one of the all-time great high income-producing cows of the breed and has no equal in terms of producing growth, performance and carcass genetics.



BASIN LUCY 178E - The \$410,000 female who stems from the same family as Lots 11A through 11C.

12: HTF Witch 914

Birth Date: 10-23-2008 Cow 16382428 Tattoo: 914

#Nichols Extra H6 [AMF-NHF] #N Bar Emulation EXT [AMF-NHF]
Nichols Extra K205 [AMF-NHF] Nichols Eileen May F261
#13752642 Nichols Black Heiress F346 +Nichols Heavy Duty D20
Nichols Black Heiress B3

#Sitz Alliance 6595 [AMF-NHF] #Sitz Traveler 8180 [AMF-NHF]
HTF Alliance Witch 227 #Sitz Barbaramere Jet 2698
14158640 Yon Witch J111 #RR Scotchcap 9440 [AMF-NHF]
Congaree Witch E74

- Owned by Happy Trails Farm, Johnston, SC.
- This direct daughter of Nichols Extra K205 stems back to the featured Yon Witch J111 on the bottom side.
- This female had an individual weaning ratio of 111, yearling ratio of 105 and stems from a dam that records WR 6@102, YR 2@102.
- Bred to calve October 9, 2010 to MYTTY IN FOCUS.

BEPD	WEPD	YEPD	MILK
+4.1	.35	+55	.26
+98	.24	+24	.20

13: HTF Burgess 901

Birth Date: 10-1-2008 Cow 16382441 Tattoo: 901

#SS Traveler 6807 T510 [AMF-NHF] #DHD Traveler 6807 [AMF-NHF]
SS Objective T510 OT26 [AMF-NHF] #SS Miss Hi Spade A114
#13776378 SS Miss Rita R011 7R8 [AMF-NHF] SS Rito Rito R76 R011
SS Miss Ultrass U56

#Bon View New Design 878 [AMF-NHF] #B/R New Design 036 [AMF-NHF]
HTF Burgess 711 Bon View Gammer 85
15764685 HTF Burgess 518 #Sitz Alliance 6595 [AMF-NHF]
HTF Burgess 902

- Owned by Happy Trails Farm, Johnston, SC.
- This direct daughter of SS Objective T510 OT26 stems back to the featured 878 and 6595.
- She has an individual birth ratio of 98, weaning ratio of 116, yearling ratio of 111 and stems from a dam that records BR 1@98, WR 1@116, YR 1@111. She reads with an outstanding EPD profile from birth to yearling without sacrificing maternal genetics.
- Bred to calve October 10, 2010 to MYTTY IN FOCUS.

BEPD	WEPD	YEPD	MILK
+1.5	.35	+63	.26
+109	.24	+30	.19

14: Mull Meadow Lass 1645

Birth Date: 1-15-2005 Cow 15212354 Tattoo: 1645

#Sitz Alliance 6595 [AMF-NHF] #Sitz Traveler 8180 [AMF-NHF]
Connealy Alliance 995 [AMF-NHF] #Sitz Barbaramere Jet 2698
14216456 Ella Tina of Conanga 989 #Tehama Bando 155 [AMF-NHF]
#Ella Lilly of Conanga 5989

Sedgwicks Rebar #TC Dividend 963 [AMF-NHF-RDF]
Mull Meadow Lass 717 Sedgwicks Barbara 4171
13071276 Mull Meadows Lass 153 #Hoff Hi Hand SC 654 [AMF-NHF]
Beauty Queen of Mull

- Owned by Mull Meadow Farms, Pendleton, SC.
- The combination of Sitz Alliance 6595 and the triple crown winner, Sedgwicks Rebar, blends for a powerful pedigree.
- This female had an individual birth ratio of 96, weaning ratio of 105, progeny production record of BR 2@98 and stems from a dam that records BR 4@98, WR 4@102.
- Sells with a heifer calf at side (Lot 14A) born December 2, 2009 by SITZ RAINMAKER 9723.
- Bred to calve November 20, 2010 to BON VIEW NEW DESIGN 878.

BEPD	WEPD	YEPD	MILK
+1.9	.37	+41	.26
+75	.18	+25	.22

15: Mull Meadow Laura 1913

Birth Date: 11-22-2003 Cow 14761316 Tattoo: 1913

#Connealy Leadtime [AMF-NHF] #Connealy Dateline
Connealy Lead On [AMF-NHF] #Ruths Rona of Conanga
#13447282 Eligence Plus of Conanga #TC Dividend 963 [AMF-NHF-RDF]
Eura Cap of Conanga

#RR Traveler 5204 [AMF-NHF] #QAS Traveler 23-4 [AMF-NHF]
Mull Meadows Laural 1509 Eriskay of Rollin Rock 3302
13350809 Mull Meadows Laura 386 #GAR Precision 1680 [AMC-NHC]
Mull Meadows Laura 279

- Owned by Mull Meadow Farms, Pendleton, SC.
- This direct daughter of Connealy Lead On goes back to the famous RR Traveler 5204.
- She had an individual birth ratio of 99, weaning ratio of 101 and progeny production record of WR 3@101, YR 1@105 with one daughter in production with an average nursing ratio of 110.
- This female stems from a dam that records BR 3@97 with one daughter in production with an average nursing ratio of 101.
- Sells with a heifer calf at side (Lot 15A) born October 20, 2009 by CONNEALY ALL AROUND.
- Bred to calve to CONNEALY ALL AROUND.

BEPD	WEPD	YEPD	MILK
+1.5	.39	+39	.29
+77	.20	+24	.29

39TH ANNUAL CAROLINA ANGUS FUTURITY

16 Oak Hill Miss Focus 73

Birth Date: 11-21-2008 Cow 16214946 Tattoo: 73

#SAF Focus of ER [AMF-NHF] #SAF Fame [AMF-NHF] #GDAR Precision 1680 [AMC-NHC]
 Mytty In Focus [AMF-NHF-RDF] GDAR Forever Lady 246 +WCC Blackcap C9 [RDC]
 13880818 Mytty Countess 906 #Sitz Alliance 6595 [AMF-NHF] #SAF Neutron [AMF-NHF]
 Baldridge Countess 357 BR Royal Lass 7036-19 #SAF Royal Lass 7036

#Bon View New Design 208 [AMF-NHF] #B/R New Design 036 [AMF-NHF] #Emulation N Bar 5522
 RMR Elbas Design 208 GA08 #Bon View Erica 443 N Bar Primrose 2424
 14737185 +Baf Elba Rita 8031 489 3X25 #+Rito 3X25 of 5H11 EXT [AMF] #Tehama Bando 155 [AMF-NHF]
 +Pack Power Elba 489 #Pack Power Elba 489 GAR Traveler 888

MARB	+1.57
RE	+1.07
SB	+46.53

- Owned by Oak Hill Farm, Six Mile, SC.
- This direct daughter of Mytty In Focus stems back to the featured Bon View New Design 208, a high Milk bull of the breed.
- She has an individual weaning ratio of 106 and stems from a dam that records BR 2@98, YR 2@106, YR 1@108, U%IMF 2@102, UREA 2@101.
- Bred to calve to SS OBJECTIVE T510 0T26.

BEPD	WEPD	YEPD	MILK
+1.4	.05	+53	.05
+95	.05	+29	.05

17 RMR Elbas Design 208 GA08

Birth Date: 1-23-2004 Cow 14737185 Tattoo: GA08

#B/R New Design 036 [AMF-NHF] #VDAR New Trend 315 [AMF-NHF] #GDAR Traveler 044 [AMF-NHF]
 Bon View New Design 208 [AMF-NHF] B/R Blackcap Empress 76 GAR Precision 2536 [AMC-NHF]
 #13044574 #Bon View Erica 443 #N Bar Emulation EXT [AMF-NHF] #Schoenes Fix It 826 [AMF-NHF]
 #Bon View Erica 1380

#+Rito 3X25 of 5H11 EXT [AMF] #N Bar Emulation EXT [AMF-NHF] #Twin Valley Precision E161 [NHC-AMF-RDF]
 Baf Elba Rita 8031 489 3X25 Rita 5H11 of 1B14 Rito 9J9 BR Royal Lass 7036-19
 +13073236 +Pack Power Elba 489 #Scotch Cap [AMF-NHF] #N Bar Emulation EXT [AMF-NHF]
 +Sir Wms Elba 374

MARB	+1.51
RE	+1.12
SB	+47.59

- Owned by Oak Hill Farm, Six Mile, SC.
- The combination of Bon View New Design 208 and the featured N Bar Emulation EXT and the featured Elba family blends for powerhouse genetics.
- This female had an individual weaning ratio of 128, progeny production record of BR 2@98, YR 2@106, YR 1@108, U%IMF 2@102, UREA 2@101.
- Dam Records: WR 2@109 with three daughters in production with an average nursing ratio of 102.
- Sells with a bull calf at side (Lot 17A) born October 9, 2009 by HARB PENDLETON 765 JH. Tattoo 45. Reg. No. 16462490.
- Bred to calve September 3, 2010 to HARB PENDLETON 765 JH. Examined safe.

BEPD	WEPD	YEPD	MILK
+4.1	.35	+52	.26
+89	.20	+32	.24

18 Champion Hill Dora 6353

Birth Date: 9-17-2007 Cow 15824268 Tattoo: 6353

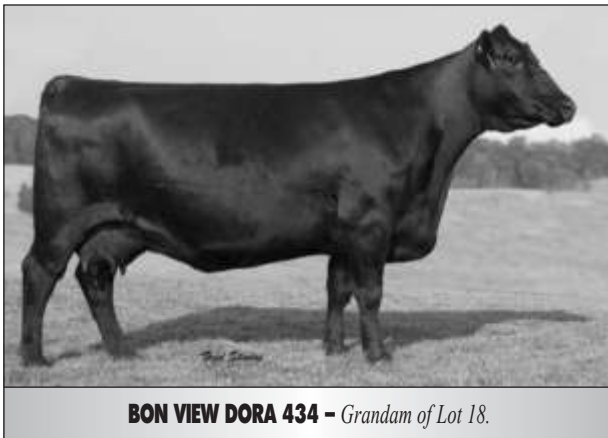
#+GAR Grid Maker [AMF-NHF] #GDAR Traveler 044 [AMF-NHF] #GAR Precision 1680 [AMC-NHC]
 SAV Bismarck 5682 [AMF-NHF] GAR Precision 2536 [AMC-NHF] CA Miss Power Fix 308 [AMF]
 +15109865 SAV Abigale 0451 #Schoenes Fix It 826 [AMF-NHF] #BAR Ext Traveler 205 [AMF-NHF]
 SAV Abigale 6062

#+SAF 598 Bando 5175 [AMF] #Bon View Bando 598 [AMF] #Leachman Right Time
 Champion Hill Dora 3930 +SAF Royal Lass 1002 Hyline Pride 265
 +14954931 Bon View Dora 434 #Schoenes Fix It 826 [AMF-NHF] +Gdar SVF Scotch Cap 33G
 #Bon View Dora 1930

MARB	+1.14
RE	+1.26
SB	+36.19

- Owned by Rolling Acres Farm, Jefferson, GA.
- This direct daughter of SAV Bismarck 5682 stems back to the Pathfinder Sire and performance leader SAF 598 Bando 5175, and the featured Bon View Dora family on the bottom side.
- This female reads with tremendous growth and maternal genetics without sacrificing carcass. She stems from a dam that records WR 1@101.
- Sells with a heifer calf at side (Lot 18A) born November 3, 2009 by SAV FINAL ANSWER 0035.
- Bred to calve November 3, 2010 to SAV NET WORTH 4200.

BEPD	WEPD	YEPD	MILK
+3.0	.05	+55	.05
+96	.05	+26	.05



BON VIEW DORA 434 - Grandam of Lot 18.

19 Ellis Miss Ext 634

Birth Date: 2-25-2004 Cow 14654739 Tattoo: 634

#Twin Valley Precision E161 [NHC-AMF-RDF] #GAR Precision 1680 [AMC-NHC]
 BR Midland [AMF-NHF] +WCC Blackcap C9 [RDC]
 #13898124 BR Royal Lass 7036-19 #+SAF Neutron [AMF-NHF]
 #SAF Royal Lass 7036

#N Bar Emulation EXT [AMF-NHF] #Emulation N Bar 5522
 GAR Ext 813 N Bar Primrose 2424
 12079784 GAR Bando 870 #Tehama Bando 155 [AMF-NHF]
 GAR Traveler 888

MARB	+1.40
RE	+1.05
SB	+33.65

- Owned by Rolling Acres Farm, Jefferson, GA.
- This direct daughter of the \$202,000 BR Midland stems back to the featured N Bar Emulation EXT.
- She had an individual weaning ratio of 101 and stems from a dam that records WR 5@104, YR 3@105, U%IMF 53@104. She ranks below breed average for Birth Weight EPD.
- Sells with a heifer calf at side (Lot 19A) born November 2, 2009 by SAV NET WORTH 4200.
- Bred to calve September 29, 2010 to SAV BISMARCK 5682. Examined safe.

BEPD	WEPD	YEPD	MILK
+1.1	.05	+36	.05
+74	.05	+14	.05

19B RAF Miss EXT of Bismarck 368

Birth Date: 11-3-2008 Cow 16548953 Tattoo: 368

#+GAR Grid Maker [AMF-NHF] #GDAR Traveler 044 [AMF-NHF] #GDAR Precision 1680 [AMC-NHC]
 SAV Bismarck 5682 [AMF-NHF] GAR Precision 2536 [AMC-NHF] CA Miss Power Fix 308 [AMF]
 +15109865 SAV Abigale 0451 #Schoenes Fix It 826 [AMF-NHF] #BAR Ext Traveler 205 [AMF-NHF]
 SAV Abigale 6062

#BR Midland [AMF-NHF] #Twin Valley Precision E161 [NHC-AMF-RDF] #N Bar Emulation EXT [AMF-NHF]
 Ellis Miss Ext 634 BR Royal Lass 7036-19 #N Bar Emulation EXT [AMF-NHF]
 14654739 GAR Ext 813 GAR Bando 870

MARB	+0.03
RE	+1.40
SB	+47.05
SB	+37.34
SB	+32.82

- Owned by Rolling Acres Farm, Jefferson, GA.
- This powerhouse bred heifer by SAV Bismarck 5682 stems back to the featured N Bar Emulation EXT on the bottom side and the \$202,000 Midland Bull Test topper, BR Midland.
- This female stems from a grandam that records WR 5@104, YR 3@105, U%IMF 53@104.
- Bred to calve September 5, 2010 to SAV PIONEER 7301. Examined safe.

BEPD	WEPD	YEPD	MILK
S +1	.91	+57	.87
D +1.1	.05	+36	.05
+101	.54	+25	.26
+174	.05	+14	.05

20 South Starr Duchess S418

Birth Date: 10-11-2008 Cow 16322234 Tattoo: S418

#CA Future Direction 5321 [AMC-NHC] #GAR Precision 1680 [AMC-NHC]
 Morgans Direction 111 9901 [NHC-AMF-RDF] CA Miss Power Fix 308 [AMF]
 14021056 MCC Barbie 9901 5205 797 #BAR Ext Traveler 205 [AMF-NHF]
 Partisover Burgess 797

#Hyline Right Time 338 [AMF-NHF] #+Leachman Right Time
 South Starr Duchess S390 Hyline Pride 265
 15645806 Bto 33G Diamond Duchess B56 +Gdar SVF Scotch Cap 33G
 Bto Diamond Duchess B207

BEPD	WEPD	YEPD	MILK
+1.6	.05	+51	.05
+88	.05	+27	.05

- Owned by South Starr Farm, Iva, SC.
- This direct daughter of Morgans Direction 111 9901 stems back to the featured Hyline Right Time 338 on the bottom side.
- This female is what South Star Farm considers as one of their best young females. She reads below breed average for Birth Weight EPD without sacrificing maternal genetics.
- Bred to calve to SAV FINAL ANSWER 0035.

21 South Starr Blackbird S333

Birth Date: 10-29-2003 Cow 14674645 Tattoo: S333

#B/R New Design 036 [AMF-NHF] #VDAR New Trend 315 [AMF-NHF] #GDAR Precision 1680 [AMC-NHC]
 B/R New Frontier 095 [AMF-NHF] B/R Blackcap Empress 76 GAR Precision 2536 [AMC-NHF]
 #+13588640 White Fence Pride H1 #Connealy Dateline #Pleasant Pill of Conanga

#RR Ferdinand 758D [AMF-NHF] #RR 9440 Scotch Cap 1483 [AMF-NHF] #RR 9440 Scotch Cap 1483 [AMF-NHF]
 Black Crest Pride 197H Blackcap of RR 5367 Blackcap of RR 5367
 #13338021 #Black Crest Pride 103C #TC Dividend 963 [AMF-NHF-RDF]
 Black Crest Pride 204Z

MARB	+1.31
RE	+1.11
SB	+46.63

- Owned by South Starr Farm, Iva, SC.
- The combination of B/R New Frontier 095 and the featured Black Crest Pride family blends for a unique combination of performance and maternal.
- This female has a progeny production record of WR 1@128 and stems from a dam that records WR 6@104, YR 2@107, UREA 2@114 with two daughters in production with an average nursing ratio of 119.
- Sells with a bull calf at side (Lot 21A) born November 27, 2009 by SAV 8180 TRAVELER 004.
- Bred to calve to SAV FINAL ANSWER 0035.

BEPD	WEPD	YEPD	MILK
+4.2	.36	+44	.27
+80	.20	+25	.25

39TH ANNUAL CAROLINA ANGUS FUTURITY



GAR 616 RITO G52 - She sells as Lot 22.

22 GAR 616 Rito G52

Birth Date: 1-26-2002 Cow +14304230 Tattoo: G52

#DHD Traveler 6807 [AMF-NHF] #QAS Traveler 23-4 [AMF-NHF]
Rito 616 of 4B20 6807 [AMF-NHF] #Bemindful Maid DHD 0807
#12530601 +Rita 4B20 of OFB1 Bando #Tehama Bando 155 [AMF-NHF]
+Rita OFB1 of 5H11 Fullback

#B/R New Design 036 [AMF-NHF] #VDAR New Trend 315 [AMF-NHF]
GAR New Design 2808 B/R Blackcap Empress 76
+13254940 +GAR 6807 Traveler 105 #DHD Traveler 6807 [AMF-NHF]
+GAR Ext 103

MARB
+44
RE
+06
SB
+48.32

- Owned by Stillwater Cattle Co., Seneca, SC.
- This special sale attraction is a direct daughter of Rito 616 of 4B20 6807 back to the featured Blacklass family on the bottom side.
- This powerful, young female has an individual UREA ratio of 103, progeny production record of BR 5@97, UREA 4@102 with one daughter in production with an average nursing ratio of 103 and stems from a dam that records WR 7@104, YR 5@105, U%IMF 37@109.
- This female has been extremely successful in the Stillwater program as she was a featured donor and was flushed one time with 12 Grade 1 embryos. She traces more than 20 times to one of the greatest foundation sires, Rito N Bar.
- Bred to calve October 22, 2010 to SAV PIONEER 7301. Examined safe.

BE PD	WE PD	YE PD	MILK
+4	.36	+41	.28
+85	.25	+21	.33

22A Stillwater Predominant V19

Birth Date: 9-7-2009 Cow 16495905 Tattoo: V19

#SAV 8180 Traveler 004 [AMF-NHF-RDF] #Sitz Traveler 8180 [AMF-NHF]
SAV 004 Predominant 4438 [AMF-NHF] +Boyd Forever Lady 8003
+14823655 SAV Emblynette 1182 #SAF 598 Bando 5175 [AMF]
#SAV Emblynette 7319

#Rito 616 of 4B20 6807 [AMF-NHF] #DHD Traveler 6807 [AMF-NHF]
GAR 616 Rito G52 +Rita 4B20 of OFB1 Bando
+14304230 +GAR New Design 2808 #B/R New Design 036 [AMF-NHF]
+GAR 6807 Traveler 105

MARB
+40
RE
+17
SB
+46.35

- Owned by Stillwater Cattle Co., Seneca, SC.
- A powerhouse show heifer prospect by SAV 004 Predominant 4438 back to the featured Blacklass family.
- This female reads with an outstanding EPD profile and is a fancy show heifer prospect with calving-ease growth and maternal genetics. She has what it takes to become a great cow prospect, blending Rito 616 and the Emblynette family into a powerhouse package.
- She stems from a dam that records BR 5@97, UREA 4@102 with one daughter in production with an average nursing ratio of 103.

BE PD	WE PD	YE PD	MILK
+1.1	.05	+49	.05
+91	.05	+23	.05



STILLWATER PREDOMINANT V19 - She sells as Lot 22A.

23 Tokenass Louise 5B9 9126

Birth Date: 11-18-2004 Cow 15088566 Tattoo: 5B9

#Sitz Alliance 6595 [AMF-NHF] #Sitz Traveler 8180 [AMF-NHF]
WAR Alliance 9126 6006 [AMF-NHF] #Sitz Barbaramere Jet 2698
#13433023 WAR Bando 6006 598 4053 #Bon View Bando 598 [AMF]
War Ext 4053 22 2107 [AMF]

#Ideal 1418 of 8103 4286 [AMF-NHF] Ideal 8103 of Eldo 5110 5213
Tokenass Louise 1J5 of 1418 EE 4286 of Ideal 2240 1254
13902691 +Tokenass Louise 7L9 3S3 #+Rito 3S3 of Rita 5H11 1656 [AMC]
Tokenass Louise 993

MARB
+03
RE
+10
SB
+41.08

- Owned by Tokeena Angus, Seneca, SC.
- This direct daughter of War Alliance 9126 6006 stems back to the Ideal 1418 8103 4286 on the bottom side, who is a maternal brother to the feed efficiency queen, the \$110,000 feature Ideal 4465.
- This female has an individual weaning ratio of 110, yearling ratio of 106, progeny production record of BR 2@93, YR 1@106 and stems from a dam that records WR 6@106, YR 4@104 and reads with an outstanding EPD profile.
- Sells with a heifer calf at side (Lot 23A) born November 2, 2009 by SS Traveler T510 2T22 (full brother to SS Objective T510 0T26). Tattoo: OJ2. Birth weight: 78 lbs.
- Bred to calve October 23, 2010 to BASIN PAYOUT 025S. Exposed to IDEAL 8735 OF 4608 6038 on February 2, 2010.

BE PD	WE PD	YE PD	MILK
+3.1	.39	+55	.29
+101	.27	+23	.27

24 Tokenass Lassie 5L1 1172

Birth Date: 10-27-2004 Cow 15088625 Tattoo: 5L1

#BCC Bushwacker 41-93 [AMF-NHF] #Paramount Ambush 2172 [AMF-NHF]
Springfield Bushwacker 1172 RC Anita T Bando 918903
14112481 Springfield Pride 8086 #Schoenes Fix It 826 [AMF-NHF]
Harmony Hill Ark Pride 423

#RR Traveler 5204 [AMF-NHF] #QAS Traveler 23-4 [AMF-NHF]
Tokenass Lassie 9H5 5204 Eriskay of Rollin Rock 3302
13358524 Tokenass Lassie 7T6 174 Tokenass Traveler GD60 174
Turnpike Lassie 469

- Owned by Tokeena Angus, Seneca, SC.
- The combination of BCC Bushwacker 41-93 and the featured Tokenass Lassie family blends for calving-ease genetics without sacrificing maternal.
- This female ranks below breed average for Birth Weight EPD. She had an individual weaning ratio of 115, yearling ratio of 111, progeny production record of BR 2@91, YR 1@105 and stems from a dam that records BR 4@94, WR 4@101, YR 3@102.
- Sells with a heifer calf at side (Lot 24A) born November 5, 2009 by GARDENS PRIMESTAR. Tattoo: OG5. Birth weight: 69 lbs.
- Bred to calve October 15, 2010 to BASIN PAYOUT 025S. Exposed to IDEAL 8735 OF 4608 6038 on February 2, 2010.

BE PD	WE PD	YE PD	MILK
+1.5	.36	+40	.24
+72	.21	+19	.21

25 YON Witch S513

Birth Date: 10-20-2005 Cow +15413080 Tattoo: S513

#+Leachman Right Time #N Bar Emulation EXT [AMF-NHF]
Hyline Right Time 338 [AMF-NHF] Leachman Erica 0025
#13058662 Hyline Pride 265 +Hyline SVF Traveler 0115
Hyline Pride 870

#Tehama Bando 155 [AMF-NHF] #Band 234 of Ideal 3163
Yon Witch G87 Tehama Blackcap G373
+12829858 +Prtisover Witch 382 #Lovana [RTF]
Partisover Witch 010

MARB
+07
RE
+18
SB
+29.69

- Owned by Yon Family Farms, Ridge Spring, SC.
- This powerhouse Yon Witch female is a direct daughter of the Pathfinder Sire Hyline Right Time 338 and a full sister-in-blood to Lot 26.
- She had an individual UREA ratio of 116, progeny production record of BR 2@98, YR 2@101 and stems from a dam with 20 daughters in production with an average nursing ratio of 102.
- Sells with a heifer calf at side (Lot 25A) born November 21, 2009 by BC MATRIX 4132. Tattoo X331.

BE PD	WE PD	YE PD	MILK
+2.2	.31	+42	.25
+75	.25	+22	.30

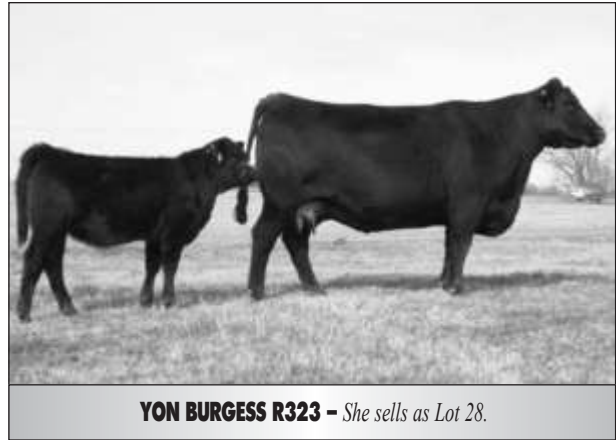


YON WITCH S513 - She sells as Lot 25.

39TH ANNUAL CAROLINA ANGUS FUTURITY



YON WITCH S508 - She sells as Lot 26.



YON BURGESS R323 - She sells as Lot 28.

26 YON Witch S508

Birth Date: 10-18-2005 Cow +15413075 Tattoo: S508

#+Leachman Right Time
Hyline Right Time 338 [AMF-NHF]
#13058662 Hyline Pride 265

#N Bar Emulation EXT [AMF-NHF]
Leachman Erica 0025
+Hyline SVF Traveler 0115
Hyline Pride 870

MARB	+01
RE	
SB	+40
SB	+33.03

#Tehama Bando 155 [AMF-NHF]
Yon Witch G88
+12829859 +Prtisover Witch 382

#Band 234 of Ideal 3163
Tehama Blackcap G373
#Lovana [RTF]
Partisover Witch 010

	BEPD	WEPD	YEPD	MILK
	+1.5	.30	+40	.25
			+73	.23
				+21
				.30

- Owned by Yon Family Farms, Ridge Spring, SC.
- This full sister-in-blood to Lot 25 is a direct daughter of the Pathfinder Sire Hyline Right Time 338, back to the featured Pathfinder Sire Tehama Bando 155.
- This female had an individual UREA ratio of 148, progeny production record of BR 2@97, WR 2@103, YR 1@101 and stems from a dam that records BR 7@96.
- Her first bull calf sold for \$3,000 in the 2009 Yon Bull Sale.
- Sells with a heifer calf at side (Lot 26A) born November 19, 2009 by YON FUTURE FOCUS T219 (the ABS Global AI Sire bred at Yons). Tattoo X324.

27 YON Queen S70

Birth Date: 9-27-2005 Cow 15390331 Tattoo: S70

#+Leachman Right Time
Hyline Right Time 338 [AMF-NHF]
#13058662 Hyline Pride 265

#N Bar Emulation EXT [AMF-NHF]
Leachman Erica 0025
+Hyline SVF Traveler 0115
Hyline Pride 870

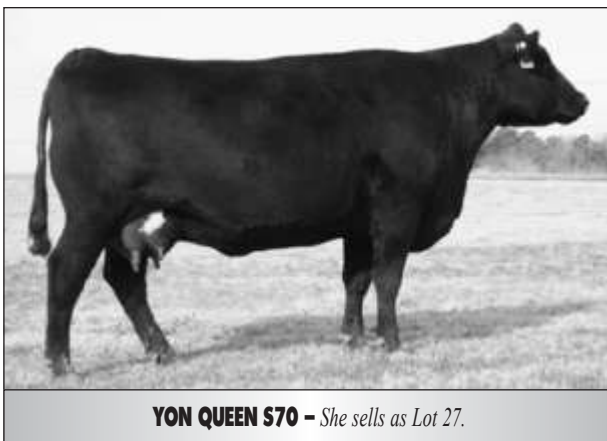
MARB	+18
RE	
SB	+0
SB	+35.68

#Bon View New Design 878 [AMF-NHF]
YON Queen N45
14442228 CAR Miss Scotch Cap 529

#B/R New Design 036 [AMF-NHF]
Bon View Gammer 85
CAR Scotch Cap 309
CAR Miss Sasquatch 072

	BEPD	WEPD	YEPD	MILK
	+0.8	.39	+47	.29
			+83	.28
				+24
				.27

- Owned by Yon Family Farms, Ridge Spring, SC & Crapps Angus Ranch.
- This direct daughter of Hyline Right Time 338 stems back to the featured Bon View New Design 878, the Pathfinder Sire who led breed registrations for four consecutive years.
- She has an individual birth ratio of 91 and a progeny production record of BR 2@91, WR 2@106, YR 2@102.
- Her first bull calf sold through the 2009 Yon Bull Sale for \$3,200.
- Sells with a heifer calf at side (Lot 27A) born December 13, 2009 by BC MATRIX 4132. Tattoo X406.



YON QUEEN S70 - She sells as Lot 27.

28 YON Burgess R323 [NHF]

Birth Date: 1-1-2005 Cow 15209813 Tattoo: R323

#Twin Valley Precision E161 [NHC-AMF-RDF]
YON Precision N01
+14328304 Congaree Hazel A08

#GAR Precision 1680 [AMC-NHC]
+WCC Blackcap C9 [RDC]
#+Leachman Prompter [AMF-NHF]
#Partisover Emulous Hazel 857

MARB	+26
RE	
SB	+37
SB	+48.10

#B/R New Design 036 [AMF-NHF]
YON Burgess M202
+14205192 +Yon Burgess G05

#VDAR New Trend 315 [AMF-NHF]
B/R Blackcap Empress 76
#N Bar Emulation EXT [AMF-NHF]
+Partisover Burgess 444

	BEPD	WEPD	YEPD	MILK
	+4.8	.39	+48	.27
			+91	.26
				+17
				.24

- Owned by Yon Family Farms, Ridge Spring, SC.
- This special sale attraction is a powerhouse daughter from the Burgess family that blends on the bottom the Pathfinder Sire B/R New Design 036 and N Bar Emulation EXT.
- This female had an individual weaning ratio of 120, yearling ratio of 116, U%IMF of 114, UREA of 116, progeny production record of WR 3@104, YR 3@105, UREA 3@103. She stems from a dam that records U%IMF 6@112, UREA 6@104.
- This is a tremendous pair that offers unlimited potential.
- Sells with a heifer calf at side (Lot 28A) born October 16, 2009 by CRA BEXTOR 872 5205 608. Tattoo: X231.

29 YON Blackcap R105

Birth Date: 10-8-2004 Cow 15079923 Tattoo: R105

#Connealy Leadtime [AMF-NHF]
Connealy Lead On [AMF-NHF]
#13447282 Eligence Plus of Conanga

#Connealy Dateline
#Ruths Rona of Conanga
#TC Dividend 963 [AMF-NHF-RDF]
Eura Cap of Conanga

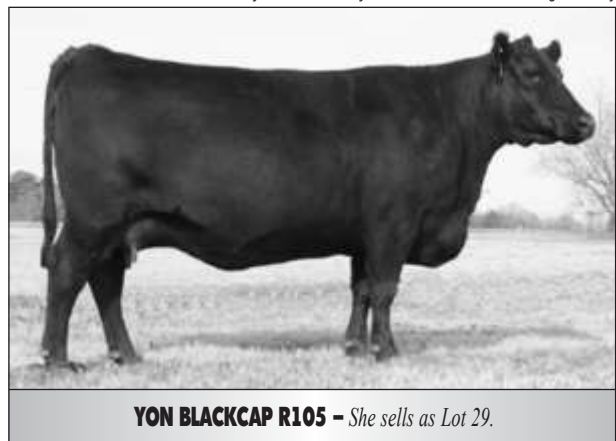
MARB	+59
RE	
SB	+23
SB	+57.54

#B/R New Design 036 [AMF-NHF]
YON Miss New Design M59
#14160370 Yon CAR Blackcap H24

#VDAR New Trend 315 [AMF-NHF]
B/R Blackcap Empress 76
#N Bar Emulation EXT [AMF-NHF]
CAR Miss Traveler 71 519

	BEPD	WEPD	YEPD	MILK
	+4.3	.41	+48	.30
			+90	.30
				+30
				.30

- Owned by Yon Family Farms, Ridge Spring, SC & Crapps Angus Ranch.
- This direct daughter of Connealy Lead On stems back to B/R New Design 036 and N Bar Emulation EXT, a golden cross on the bottom side.
- This female has an individual weaning ratio of 110, yearling ratio of 107, U%IMF of 129, UREA of 116, progeny production record of WR 3@103, YR 3@103, U%IMF 3@106 with one daughter in production with an average nursing ratio of 113.
- She stems from a dam that records WR 6@102, YR 4@105, U%IMF 4@113, UREA 4@103 with two daughters in production with an average nursing ratio of 104.
- This cow's heifer calf was shown last year successfully and she has shown once again this year.



YON BLACKCAP R105 - She sells as Lot 29.

39TH ANNUAL CAROLINA ANGUS FUTURITY



KAHN BLACKCAP B044 – Dam of Lot 31.

33 Riverhill Forever Lady 9314

Birth Date: 2-23-2009 Cow Reg.No.Pdg. Tattoo: 9314

#SAV 8180 Traveler 004 [AMF-NHF-RDF] #Sitz Traveler 8180 [AMF-NHF]
 SAV Mandan 5664 [AMF-NHF] +Boyd Forever Lady 8003
 +15107825 SAV Abigale 0451 #Schoenes Fix It 826 [AMF-NHF]
 SAV Abigale 6062

S		D	
MARB	MARB	MARB	MARB
+26	+67		
RE	RE	RE	RE
+64	+41		
SB	SB	SB	SB
+48.14	+46.24		

#+GAR Integrity [NHC-AMF] #Bon View New Design 1407 [AMF-NHF]
 Riverhill Forever Lady 5188 GAR Precision 1019 [AMC]
 15366161 BSS Forever Lady 20L #B/R New Design 323
 +Shermans Forever Lady 900

BEPD		WEPD		YEPD		MILK	
S	+4.1	.83	+57	.75	+106	.39	+33
D	-.1	.35	+40	.26	+75	.19	+23
							.24

- Owned by Riverhill Farm, Fountain Inn, SC.
- This direct daughter of a past high seller at the SAV annual bull sale stems back to the ever popular Forever Lady family.
- This female stems from a dam that records BR 90, WR 107, UREA 118 and a grandam that records BR 4@93, WR 4@102, YR 1@103, UREA 3@106.

30 Riverhill Forever Lady 9334

Birth Date: 11-1-2009 Cow Reg.No.Pdg. Tattoo: 9334

#Emulation N Bar 5522 #Emulation 31 [DWF-RDF]
 Finks 5522-6148 Ankony 8F78 Lass 8F275
 #11060295 Finks Proud Formera 614 #AAR New Trend
 Finks Proud Formera 34

S		D	
MARB	MARB	MARB	MARB
+56	+14		
RE	RE	RE	RE
+20	-.37		
SB	SB	SB	SB
+47.55	+16.95		

#Tehama Bando 155 [AMF-NHF] #Band 234 of Ideal 3163
 YR Forever Lady 114B [AMF] Tehama Blackcap G373
 13867084 +SVF Forever Lady 1121 #+Skarship Saratoga
 #Forever Lady 163 GDAR

BEPD		WEPD		YEPD		MILK	
S	+2.8	.85	+43	.85	+75	.85	+18
D	+3	.39	+29	.32	+59	.26	+15
							.30

- Owned by Riverhill Farm, Fountain Inn, SC.
- This direct daughter of 6148 back to the most dominant family in the Angus breed, the Forever Lady family, blends for a great package.
- This powerful female stems from a grandam that records BR 4@94, WR 4@101, YR 1@106, U%IMF 9@101 and has been extremely productive. Here is an outstanding young female with tremendous potential.

34 Oleo Unspoken 804

Birth Date: 3-16-2008 Cow +16098672 Tattoo: 804

#+Northern Improvement 4480 GF [AMF-NHF] #TC Stockman 365
 Exar Lutton 1831 [AMF-NHF] Blackcap of RR 5367
 14035047 Exar Saras Dream 9809 #+A&B Yukon 7150 [AMF-NHF]
 +Saras Dream

MARB	
+23	
RE	RE
-.02	
SB	SB
+46.33	

BT Alliance 528N Sitz Alliance 8199
 PCC Miss Barbara 132R Er Barbara G030
 15083133 #LCC Barbara MG100 #Bon View New Design 878 [AMF-NHF]
 +LCHMN Barbara J3230

BEPD		WEPD		YEPD		MILK	
S	+1.9	.05	+54	.05	+99	.05	+30
D							.05

- Owned by Riverhill Farm, Fountain Inn, SC.
- This direct daughter of EXAR Lutton 1831 was a past show heifer in the Riverhill program and stems back to the ever popular Sitz Alliance 6595 on the bottom side along with the breed leader that led the breed for four consecutive years for registrations, Bon View New Design 878.
- This female stems from a dam that records BR 1@83, WR 1@105, YR 1@102 and UREA 1@106.
- Bred to calve April 21, 2010 to SITZ NEW DESIGN 458N. Examined safe.

31 Riverhill Blackcap 9337

Birth Date: 10-27-2009 Cow Reg.No.Pdg. Tattoo: 9337

#GAR Precision 1680 [AMC-NHC] #Tehama Bando 155 [AMF-NHF]
 Twin Valley Precision E161 [NHC-AMF-RDF] 9J9 GAR 856 [NHF]
 #12346200 +WCC Blackcap C9 [RDC] #SS Traveler 6T6 [AMF-NHF]
 Premier Blackcap 6276A [RDC]

S		D	
MARB	MARB	MARB	MARB
+25	+26		
RE	RE	RE	RE
+46	-.22		
SB	SB	SB	SB
+50.48	+27.36		

#Sitz Traveler 8180 [AMF-NHF] #GDAR Traveler 71 [AMF-NHF]
 Kahn Blackcap B044 [AMF] Sitz Everelda Entense 1137
 +13895236 GAR Precision 706 [NHC-AMF] #GAR Precision 1680 [AMC-NHC]
 +GAR Ext 2114

BEPD		WEPD		YEPD		MILK	
S	+3.1	.97	+42	.96	+91	.95	+17
D	+1.4	.38	+39	.32	+76	.29	+23
							.35

- Owned by Riverhill Farm, Fountain Inn, SC.
- This direct daughter of the carcass leader stems back to the great Blackcap family. This female's grandam was the \$75,000 feature in the Kahn dispersal that has produced over \$2 million. The great grandam was the \$120,000 top seller and has become a breed legend.
- This young prospect stems from a dam that records BR 3@96, U%IMF 7@102 and a grandam that records BR 2@96, WR 2@106, YR 3@104, U%IMF 146@103, UREA 143@103.

35 Riverhill Formera 7272

Birth Date: 11-23-2007 Cow 16279857 Tattoo: 7272

#Rockn D Ambush 1531 [AMF-NHF] #Paramont Ambush 2172 [AMF-NHF]
 B/R Ambush 28 [AMF-NHF] MS Blackcap Band of RD 1301
 +14188956+B/R Ruby of Tiffany 8250 [AMF-NHF] #N Bar Emulation EXT [AMF-NHF]
 B/R Ruby of Tiffany 5113

MARB	
+59	
RE	RE
+39	
SB	SB
+64.39	

#+GAR Expectation 4915 [AMF-NHF] #N Bar Emulation EXT [AMF-NHF]
 Ogeechee Formera 133 GAR Traveler 2421
 +14123561OAF Formera 8001 #GDAR Traveler 71 [AMF-NHF]
 +Finks Formera 5260 245 692 [AMF]

BEPD		WEPD		YEPD		MILK	
S	+5.3	.33	+53	.25	+96	.23	+23
D							.19

- Owned by Riverhill Farm, Fountain Inn, SC.
- This direct daughter of the high \$Beef and carcass leader, B/R Ambush 28, stems back to the Fink Formera family.
- This female had an individual WR 111, YR 114 and UREA 117. She stems from a dam that records WR 4@108, YR 2@106, U%IMF 2@108 and UREA 2@108.
- She sells with a bull calf at side (Lot 35A) born November 22, 2010 by BASIN MAX 602C. BW: 63. Tattoo: 9335.
- Bred to calve October 28, 2010 to BC BIG DADDY.

32 Riverhill Rita 51N 9328

Birth Date: 3-9-2009 Cow Reg.No.Pdg. Tattoo: 9328

#B/R New Design 036 [AMF-NHF] #VDAR New Trend 315 [AMF-NHF]
 GAR Predestined [AMF-NHF] B/R Blackcap Empress 76
 #13395344 #+GAR Ext 4206 #N Bar Emulation EXT [AMF-NHF]
 +GAR 6807 Traveler 1432

S		D	
MARB	MARB	MARB	MARB
+1.06	+46		
RE	RE	RE	RE
+58	+70		
SB	SB	SB	SB
+68.66	+57.43		

#B/R New Dimension 7127 #B/R New Design 036 [AMF-NHF]
 SVF Rita 51N [AMC] B/R Ruby of Tiffany 4117
 +14746373 +GAR Precision 939 [AMC] #GAR Precision 1680 [AMC-NHC]
 +GAR Ext 614 [AMF]

BEPD		WEPD		YEPD		MILK	
S	+4.1	.97	+53	.96	+99	.94	+28
D	+8	.36	+41	.31	+80	.28	+28
							.30

- Owned by Riverhill Farm, Fountain Inn, SC.
- A combination of two of the most proven carcass families blend in this pedigree, Erica and Rita. This direct daughter of the proven Pathfinder and high \$Beef sire goes back to the greatest daughter of the world record valued GAR EXT 614, GAR Precision 939.
- This powerful female stems from a dam that records BR 2@97, WR 2@104, YR 1@107, UREA 18@105 and a grandam that records BR 2@91, WR 2@101, YR 2@101, U%IMF 91@102, UREA 91@101.

36 Riverhill Stella 208 7259

Birth Date: 9-2-2007 Cow 16025133 Tattoo: 7259

#B/R New Design 036 [AMF-NHF] #VDAR New Trend 315 [AMF-NHF]
 GAR Predestined [AMF-NHF] B/R Blackcap Empress 76
 #13395344 #+GAR Ext 4206 #N Bar Emulation EXT [AMF-NHF]
 +GAR 6807 Traveler 1432

MARB	
+75	
RE	RE
+42	
SB	SB
+62.44	

#Bon View New Design 208 [AMF-NHF] #B/R New Design 036 [AMF-NHF]
 GAR 208 New Design 2203 #Bon View Erica 443
 14504653 +GAR Precision 4001 #GAR Precision 1680 [AMC-NHC]
 SF Miss Dora 632

BEPD		WEPD		YEPD		MILK	
S	+5.3	.32	+52	.25	+94	.24	+28
D							.21

- Owned by Riverhill Farm, Fountain Inn, SC.
- This young productive female is sired by the high \$Beef GAR Predestined back to the Dora family.
- She has an individual WR 104, YR 102, IMF 116 and REA 104 while stemming from a dam that records WR 3@103, YR 3@104, U%IMF 2@105.
- Bred to calve February 20, 2010 to RIVERHILL PATTY 8126. Examined safe.

39TH ANNUAL CAROLINA ANGUS FUTURITY



SVF FOREVER LADY P215 - She sells as Lot 37. (Pictured as a heifer)

38A Riverhill Forever Lady 9313

Birth Date: 1-31-2009	Cow Reg. No. Pdg.	Tattoo: 9313
#Bon View New Design 208 [AMF-NHF] Rito 4L60 of 2536 BVND 208 [AMC-NHF] +14768728 GAR Precision 2536 [AMC-NHF]	#B/R New Design 036 [AMF-NHF] #Bon View Erica 443 #GAR Precision 1680 [AMC-NHC] +GAR Ext 2104	S D MARB MARB +46 +19 RE RE +05 +02 SB SB +36.03 +36.41
G 13 Steel Riverhill Forever Lady G13 15803541 +SVF Forever Lady 98K [AMF]	#G 13 Structure [AMF-NHF] +G 13 Lassy 9492 Baldrige Bob +SVF Forever Lady 127G	

- Owned by Riverhill Farm, Fountain Inn, SC.
- BW 59 lbs.
- Here is a nice, moderate-framed heifer.

	BEPD	WEPD	YEPD	MILK				
S	+1.3	.93	+45	.90	+83	.83	+27	.44
D	+2.8	.33	+45	.24	+81	.23	+18	.15

37 SVF Forever Lady P215

Birth Date: 1-25-2005	Cow +15077037	Tattoo: P215
#Bon View New Design 878 [AMF-NHF] WCC Special Design L309 [AMF-NHF] #+13846942 N Bar Primrose 2424	#B/R New Design 036 [AMF-NHF] Bon View Gammer 85 #Emulation 31 [DWF-RDF] Primrose N Bar 9962	MARB +41 RE -05 SB +44.30
#Finks 5522-6148 SVF Shady Forever Lady 172J +13812588 +Gdar SVF Forever Lady 214D	#Emulation N Bar 5522 Finks Proud Formera 614 #Traveler 124 GDAR +GDAR Forever Lady 718	

- Owned by Riverhill Farm, Fountain Inn, SC.
- This direct daughter of the \$30,000 WCC Special Design L309 back to the great GDAR Forever Lady 718 and her dam had a production record that read WR 1@101. Here is a special attraction that has tremendous breeding potential.
- Bred to calve February 10, 2010 to GAR PREDESTINED. Exposed to RIVERHILL PATTY 6182.

	BEPD	WEPD	YEPD	MILK				
S	+3.9	.24	+48	.21	+88	.20	+18	.24

39 GAR 208 New Design 2203

Birth Date: 8-25-2003	Cow 14504653	Tattoo: 2203
#B/R New Design 036 [AMF-NHF] Bon View New Design 208 [AMF-NHF] #13044574 #Bon View Erica 443	#VDAR New Trend 315 [AMF-NHF] B/R Blackcap Express 76 #N Bar Emulation EXT [AMF-NHF] #Bon View Erica 1380	MARB +45 RE +22 SB +49.56
#GAR Precision 1680 [AMC-NHC] GAR Precision 4001 +14155520 SF Miss Dora 632	#Tehama Bando 155 [AMF-NHF] 9J9 GAR 856 [NHF] #Bon View Emulation Ext 473 [AMF-NHF] #Bon View Dora 56	

- Owned by Riverhill Farm, Fountain Inn, SC.
- This direct daughter of the high milk sire, Bon View New Design 208, stems back to the breed power Bon View Dora family. She has an individual BR 98, WR 106 and a progeny production record of WR 3@103, YR 3@104, U%IMF 2@105 and stems from a dam that records UREA 2@103 with two daughters in production with a nursing ratio of 103.
- Sells with a heifer calf at side (Lot 39A) born November 13, 2009 by RIVERHILL PATTY 6182. BW: 81. Tattoo: 9336.
- Bred January 9, 2010 to SAV PIONEER 7301.

	BEPD	WEPD	YEPD	MILK				
S	+1.8	.40	+50	.29	+88	.27	+27	.29

38 SVF Forever Lady 98K [AMF]

Birth Date: 3-14-2001	Cow +13895060	Tattoo: 98K
#Bon View Bando 598 [AMF] Baldrige Bob 12226246 JB Queen Peggy 5B	#Tehama Bando 155 [AMF-NHF] #Bon View Dora 56 #Traveler 124 GDAR JB Queen Peggy 7Z	MARB +16 RE -17 SB +16.42
#Leachman Right Time SVF Forever Lady 127G +12891173 #Forever Lady 163 GDAR	#N Bar Emulation EXT [AMF-NHF] Leachman Erica 0025 #QAS Traveler 23-4 [AMF-NHF] Forever Lady 65 GDAR	

- Owned by Riverhill Farm, Fountain Inn, SC.
- This special Forever Lady female that blends Baldrige Bob and the \$160,000 Leachman Right Time and QAS Traveler 23-4 offers tremendous breeding potential.
- This female stems from a dam that records BR 3@94, WR 3@104. This female has been a past donor that has averaged 12 grade one eggs per flush.
- Bred January 9, 2010 to GAR ULTIMATE.

	BEPD	WEPD	YEPD	MILK				
S	+1.0	.34	+33	.26	+63	.22	+16	.32

39B Riverhill Miss Mytty 8296

Birth Date: 9-3-2008	Cow Reg. No. Pdg.	Tattoo: 8296
#SAF Focus of ER [AMF-NHF] Mytty In Focus [AMF-NHF-RDF] 13880818 Mytty Countess 906	#SAF Fame [AMF-NHF] GDAR Forever Lady 246 #Sitz Alliance 6595 [AMF-NHF] Baldrige Countess 357	S D MARB MARB +62 +44 RE RE +01 +22 SB SB +44.55 +49.37
#Rito 616 of 4B20 6807 [AMF-NHF] GAR 616 Rito 1756 15463738 GAR 208 New Design 2203	#DHD Traveler 6807 [AMF-NHF] +Rita 4B20 of OFB1 Bando #Bon View New Design 208 [AMF-NHF] +GAR Precision 4001	

- Owned by Riverhill Farm, Fountain Inn, SC.
- This direct daughter of the bull that has led breed registrations, Mytty In Focus, stems from a great family and offers tremendous breeding potential. She stems from a dam that records WR 3@103, YR 3@104 and IMF 2@105.
- Bred January 9, 2010 to GAR ULTIMATE.

	BEPD	WEPD	YEPD	MILK				
S	-1.3	.98	+54	.97	+100	.96	+25	.90
D	+0	.36	+46	.26	+87	.21	+22	.21

Consignors

Black Crest Farm	Cypress Bay Farms	Happy Trails Farm	Riverhill Farm	Stillwater Cattle Co.
Billy McLeod (803) 491-6798 LOT 1	Bill Dennis (843) 521-9773 LOTS 6-8	William Rushton, Jr. (803) 275-3323 LOTS 12-13	Stephanie Clark (864) 243-2214 LOTS 30-39B	Steve McPhail, II (864) 978-6358 LOTS 22-22A
Bramblett Angus	Diamond "L" Farm	Mull Meadow Farms	Rolling Acres Farm	Tokeena Angus
Larry Bramblett (706) 654-8272 LOTS 2-3	Terry Landreth (864) 243-3655 LOT 9	Frankie & Bobby Mullikin (864) 261-6232 — Bobby (864) 224-0280 — Frankie LOTS 14-15	Phil Page (770) 616-6232 LOTS 18-19A	Neil McPhail (864) 247-0000 — Neil LOTS 23-24
Cox Angus	Double B Farms	Oak Hill Farm	South Starr Farm	Yon Family Angus
Charles Cox (864) 243-3302 LOTS 4-5B	Henry "Bubba" Bamberg (803) 793-7216 Cell LOTS 10-11C	Danny Winchester (864) 637-8592 LOTS 16-17	Steve McGill (864) 348-3737 LOTS 20-21	Kevin and Lydia Yon (803) 685-5048 LOTS 25-29



PRSR
FIRST CLASS MAIL
U.S. POSTAGE
PAID
Minster, OH
Permit #1

Sale Managers
TOM BURKE, KURT SCHAFF,
JEREMY HAAG, RANCE LONG

AMERICAN ANGUS HALL OF FAME
at the WORLD ANGUS HEADQUARTERS
Box 660, Smithville, MO 64089-0660.
Phone: (816) 532-0811
Fax: (816) 532-0851
E-mail angushall@earthlink.net
www.angushall.com

The 39th Carolina Angus Futurity

Noon • Saturday
March 20, 2010
Held at the *T. Ed Garrison Livestock Arena*
Clemson University, Clemson, SC

SELLING CAROLINA'S BEST!



Directions:

1101 W. Queen Street, Pendleton, SC 29670
From I-85: Merge onto US-76 W/SC-28W via Exit 19B toward
Clemson. Go 8 miles and turn left onto W. Queen Street
(you will see red roof of the arena).
Arena will be on your left-hand side.