



PRODUCTION
Sale

Saturday • 12:30 p.m.

MAY 15, 2010

*At the ranch
Malden, Missouri*



Sam Powell
 Box 704 • Malden, MO 63863
 (573) 276-3992 Home • (573) 276-6416 Barn
 (573) 276-6367 Fax
 E-mail: bustedp@riddlehill.net

PRODUCTION
Sale
 Saturday • 12:30 p.m.
MAY 15, 2010
At the ranch
 Malden, Missouri

SALE DAY PHONES:

(417) 844-2601 Josh Worthington
 (573) 276-6416 Office

SALE MARKETING STAFF:

Clint Hunter, Auctioneer (417) 860-1624
 Bill Maerli, Special Assignment..... (573) 885-3888
 Tim Lackey, Special Assignment..... (660) 676-2193

SALE COORDINATED BY:

The Missouri Angus Association
 Josh Worthington, General Manager
 P.O. Box 246 • Dadeville, MO 65635
 Mobile (417) 844-2601 • Office (417) 995-3000
 Fax (417) 995-3003
 E-mail worthington@missouriangus.org

Buyers unable to attend the sale may send their confidential bids to the Sale Coordinator or any member of the sale marketing staff.

SALE GUEST:

JM Angus, Wayne Marquis
 Poplar Bluff, MO • (573) 686-5235
 Rolling Ridge Angus, Gerald & Margaret Shackelford
 Poplar Bluff, MO • (573) 785-7509

SALE LOCATION: The Busted P Ranch is located west of Malden on J Hwy., approximately three miles to MM Hwy. Go north on MM approximately two miles to Road 110. Then go west on 110 approximately one mile. Busted P is located on the north side of the road. Please refer to the map on the back cover of this sale book.

HOTEL ACCOMMODATIONS:

Malden Airport Inn • Malden, MO
 (573) 276-5144
 Please contact Busted P for assistance.

TERMS & CONDITIONS: The cattle sell under the Terms and Conditions as recommended by the American Angus Association. All cattle are to be settled for sale day unless prior arrangements have been made.

HERD HEALTH: Busted P Ranch is a Certified Brucellosis free herd. All cattle will be accompanied with proper health certificates for immediate shipment.

SUPPLEMENT INFORMATION: A supplement sheet will be available sale day with updated breeding and calving information. All announcements made from the auction block take precedence over printed information in the sale book.

TRUCKING: Truckers believed to be reliable will be available sale day to assist purchasers with shipping arrangements.

FOOD & REFRESHMENTS: For your convenience dinner will be served on Friday evening before the sale and again on sale day for lunch.

LIABILITY: Busted P Angus Ranch, the sale staff and any other person connected with the sale assumes no liability, legal or otherwise, for accidents or property loss.



Visit the *Angus Journal* Web site, www.angusjournal.com, and view this sale book online. *References: American Angus Association®, AHIR®, AngusSource®, CAB®, Pathfinder®.* EPDs current as of April 5, 2010. Updated EPDs can be viewed online at www.angus.org.

Dear Angus Friends and Fellow Cattlemen,

I am excited to be working with Sam Powell and the Busted P Angus Ranch on this great sale offering. Sam has worked diligently to put together a tremendous set of cattle for this sale and his perseverance in breeding and presenting this extraordinary line up will be evident on sale day.

Sam along with his guests at JM Angus and Rolling Ridge Angus have assembled an outstanding set of females highlighted by two proven donors that sells as Lots 1 & 2. In addition you will find a terrific set of fall splits, spring pairs and bred and open heifers that will advance any breeding program. There is also a select group of herd sire prospects with outstanding EPDs and many calving ease bulls ready for the spring breeding season.

Some of the most influential cow families in the Angus breed are represented throughout this sale book and I encourage you to study every lot and then join us on sale day to evaluate the offering for yourself and select the genetic pieces that will advance your breeding program. If I can be of service to you in any way please do not hesitate to contact me. I look forward to seeing you on May 15th at the Busted P Angus Ranch.

Sincerely,

Josh Worthington, General Manager, Missouri Angus Association



B P A R FOREVER LADY 416-E14 • Lot 1

1 B P A R FOREVER LADY 416-E14

Birth Date: 9-5-2002 Cow +14231693 Tattoo: E14

JLB Exacto 416 [AMF-NHF] #GAR Precision 1680 [AMC-NHC] #Tehama Bando 155 [AMF-NHF]
 #12223258 +Brost Burgess 041 #9J9 GAR 856 [NHF] #Hoff Hi Spade SC 491
 Partisover Burgess 527

CW	\$W
+16	+23.17
MARB	\$F
-.03	+9.30
RE	\$G
+.08	+9.15
FAT	\$B
-.016	+29.45

#Traveler 3173 GDAR #QAS Traveler 23-4 [AMF-NHF]
GDAR Forever Lady 178 Forever Lady 626 GDAR
 #11598393 #GDAR Forever Lady 98 #GDAR Rainmaker 340
 +GDAR Forever Lady 719

CED	BEPD	WEPD	YEPD	SC	CEM	MILK
+3	+3.3	+37	+64	-1.11	+1	+32

This proven donor is from the same family that produced GDAR Forever Lady 718 and her flush sister GDAR Forever Lady 719, who has produced many high-selling females at Sydenstricker Genetics and Monarch Farm.

The \$62,000 all-time record-selling female at SydGen, SAF Forever Lady 0020 who joined the Three Trees donor program, the \$68,000 SAF Focus of ER who is the famous sire of Mytty In Focus and the \$100,000 SydGen Refocus are just some of the famous progeny from this great cow family. E14's dam, GDAR Forever Lady 178 produced over 100 progeny resulting in excess of \$300,000 in progeny sales. A maternal sister topped a past Missouri Angus Breeders' Futurity at \$15,000. She records a WR of 105 on 3 head and places in the top 10% of the breed for Milk EPD. In her last flush she produced seven grade one embryos. Bred to Nichols Extra K205 and due to calve 10/10/2010.



G D A R FOREVER LADY 178 • Dam of Lot 1.

1A BPAR FOREVER LADY E14 1029

Birth Date: 10-2-2009 Cow 16496018 Tattoo: 1029

Nichols Extra K205 [AMF-NHF] #Nichols Extra H6 [AMF-NHF]
 #13752642 Nichols Black Heiress F346

#N Bar Emulation EXT [AMF-NHF] Nichols Eileen May F261
 +Nichols Heavy Duty D20 Nichols Black Heiress B3

CW	\$W
1+14	+28.69
MARB	\$F
1+.09	+27.34
RE	\$G
1+.13	+15.43
FAT	\$B
1-.015	+37.47

#JLB Exacto 416 [AMF-NHF] #GAR Precision 1680 [AMC-NHC]
BPAR Forever Lady 416-E14 +Brost Burgess 041
 #14231693 GDAR Forever Lady 178 #Traveler 3173 GDAR
 #GDAR Forever Lady 98

CED	BEPD	WEPD	YEPD	SC	CEM	MILK
1+6	1+2.6	1+47	1+87	N/A	1+5	1+28

This daughter of E14 by Nichols Extra K205 is certainly a sale feature with excellent phenotype and a Milk EPD in the top 10% and \$W top 20%.

This Forever Lady cow family has written history time and time again and 1029 has the ability to continue that outstanding legacy.

Her proven sire is producing functional cattle with the EXT influence and he records the second highest Heifer Pregnancy EPD in the breed.



BPAR FOREVER LADY E14 1029 • Lot 1A



BT EVERELDA ENTENSE 567H - Dam of Lot 2.

2 S V F EVERELDA ENTENSE 29L

Birth Date: 2-11-2002 Cow #14159117 Tattoo: 29L

#Traveler 124 GDAR
GDAR SVF Traveler 234D [AMF-NHF]
 #+12309327 +GDAR Forever Lady 718

#QAS Traveler 23-4 [AMF-NHF]
 Rachel Rito 813 GDAR
 #Baldrige Oscar
 #LT Forever Lady 395 GDAR

CW	\$W
+14	+23.50
MARB	\$F
+09	+19.02
RE	\$G
+33	+15.75
FAT	\$B
+006	+36.28

#+Leachman Right Time
BT Everelda Entense 567H
 #13161580 Sitz Everelda Entense 1905

#N Bar Emulation EXT [AMF-NHF]
 Leachman Erica 0025
 #Traveler 124 GDAR
 #Sitz Everelda Entense 1791

CED	BEPD	WEPD	YEPD	SC	CEM	MILK
+5	+3.8	+46	+78	+48	+0	+28

29L is a true breed matron and superior donor female. Her dam 567H, who commanded \$50,000 for one-half interest, is a full sister to the \$190,000 half interest BT Everelda Entense 57D, the \$90,000 BT Everelda Entense 76D, the \$60,000 BT Everelda Entense 526M, the \$50,000 BT Everelda Entense 566H, the \$44,000 BT Everelda Entense 55D, as well as the popular AI sires BT Right Time 24J who sold for \$29,000 and the Pathfinder Sire BT Direction 65D.

Her sire is a past winner of the Angus Sire Alliance and continues to sire cattle with growth and excellent carcass traits. 29L places in the top 10% for Milk and RE and 20% for WW and CW. She records a WR of 4@109.

In her last flush she produced 12 grade one embryos. Bred to WAR Alliance 9126 6006 and due to calve 11/14/2010.



BT EVERELDA ENTENSE 57D - Full sister to the dam of Lot 2.

2A BPAR MYTTY ENTENSE 29L 1011

Birth Date: 10-11-2009 Bull 16580066 Tattoo: 1011

#SAF Focus of ER [AMF-NHF]
Mytty In Focus [AMF-NHF-RDF]
 13880818 Mytty Countess 906

#SAF Fame [AMF-NHF]
 GDAR Forever Lady 246
 #Sitz Alliance 6595 [AMF-NHF]
 Baldrige Countess 357

CW	\$W
I+8	+30.45
MARB	\$F
I+36	+28.17
RE	\$G
I+13	+24.53
FAT	\$B
I+012	+41.91

#+GDAR SVF Traveler 234D [AMF-NHF]
SVF Everelda Entense 29L
 #14159117 +BT Everelda Entense 567H

#Traveler 124 GDAR
 +GDAR Forever Lady 718
 #+Leachman Right Time
 Sitz Everelda Entense 1905

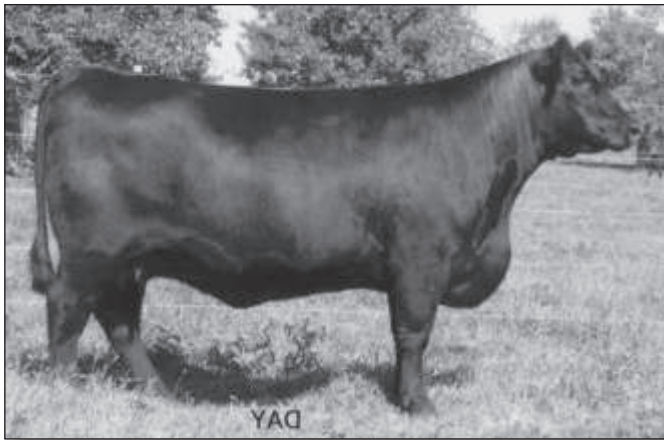
CED	BEPD	WEPD	YEPD	SC	CEM	MILK
I+10	I+1.3	I+50	I+89	I+1.11	I+6	I+27

This well bred herd sire prospect by the ABS Global sire Mytty In Focus places in the top 10% for CED, Milk and \$W.

He is a Show-Me-Select and Missouri Angus Advantage +Plus qualified bull.



BT EVERELDA ENTENSE 76D - Full sister to the dam of Lot 2.



CIRCLE A PRIDE 1044 - Grandam of Lot 3.



S A F ROYAL LASS 1027 - Grandam of Lot 5.

3 BPAR PRIDE 049 2287 [AMF]
 Birth Date: 2-28-2007 Cow 15731924 Tattoo: 2287

Genetics by Design 049 [AMF-NHF] #B/R New Design 036 [AMF-NHF] #VDAR New Trend 315 [AMF-NHF]
 #13791489 GG Clara 859 B/R Blackcap Empress 76 #+JR Juice 2005
 GG Clara 200

CW	\$W
+18	+33.67
MARB	\$F
+30	+35.72
RE	\$G
+18	+22.99
FAT	\$B
-.005	+49.86

#WAR Alliance 9126 6006 [AMF-NHF] #Sitz Alliance 6595 [AMF-NHF]
BPAR Pride 9126 2185 [AMF] WAR Bando 6006 598 4053
+15054981 Circle A Pride 1044 #JLB Exacto 416 [AMF-NHF]
 +Finks Pride 6200 282 71

One of the highest growth, biggest spread females in the sale offering, this impressive daughter of the Accelerate Genetics sire, Genetics by Design 049 has a tremendous EPD profile and places in the top 1% for WW and \$W, 2% for YW, 3% for Milk and \$F, 5% for CED, 10% for CW and \$B, 15% for BW and CEM and 25% for RE.
 A maternal sister to her dam sold to C/S Cattle for \$3,300 and her grandam sold for \$3,400 in the 2006 Busted P Sale.
 Bred to SS Objective T510 0T26 and due to calve 10/10/2010.

CED	BE PD	WE PD	YE PD	SC	CEM	MILK
+10	+4	+59	+100	N/A	+9	+31

5 BPAR FAME 1407 9176
 Birth Date: 9-17-2006 Cow +15510833 Tattoo: 9176

Genetics by Design 049 [AMF-NHF] #B/R New Design 036 [AMF-NHF] #VDAR New Trend 315 [AMF-NHF]
 #12783540 Bon View New Design 1407 [AMF-NHF] B/R Blackcap Empress 76 #+GAR Sleep Easy 1009 [AMF-NHF]
 Bon View Pride 664 #Bon View Pride 1551

CW	\$W
+5	+27.90
MARB	\$F
+58	+21.29
RE	\$G
+28	+33.93
FAT	\$B
+010	+47.13

#+GDAR SVF Traveler 234D [AMF-NHF] #Traveler 124 GDAR
BPAR Fame 234D E25 +GDAR Forever Lady 718
+14376511 #+SAF Royal Lass 1027 #VDAR New Trend 315 [AMF-NHF]
 +SAF Royal Lass 6089

Headlining the Royal Lass family, 9176's dam is a maternal sister to SAF Fame. Her grandam is a flush sister to SAF Royal Lass 1002 who is the dam of SAF 598 Bando 5175, as well as the \$47,500 SydGen Triumph.
 9176 provides calving-ease and excellent end product merit with a solid EPD tabulation placing in the top 4% for CED and \$G, 5% for Marb, 10% for CEM, Milk and \$B, 15% for RE and \$W and 25% for WW.
 Bred to WAR Alliance 9126 6006 and due to calve 12/14/2010. Pasture exposed from 4/8/2010 to 5/14/2010 to BPAR Objective 3349 1209.

CED	BE PD	WE PD	YE PD	SC	CEM	MILK
+10	+1.8	+45	+80	+4.8	+10	+27

3A BPAR NEW FRONTIER 095 1309
 Birth Date: 10-3-2009 Bull 16580068 Tattoo: 1309

Genetics by Design 049 [AMF-NHF] #B/R New Design 036 [AMF-NHF] #VDAR New Trend 315 [AMF-NHF]
B/R New Frontier 095 [AMF-NHF] B/R Blackcap Empress 76
#+13588640 White Fence Pride H1 #Connealy Dateline
 #Pleasant Pill of Conanga

CW	\$W
+20	+29.17
MARB	\$F
+51	+33.62
RE	\$G
+18	+30.52
FAT	\$B
-013	+58.10

#Genetics by Design 049 [AMF-NHF] #B/R New Design 036 [AMF-NHF]
Bpar Pride 049 2287 [AMF] GG Clara 859
15731924 +BPAR Pride 9126 2185 [AMF] #WAR Alliance 9126 6006 [AMF-NHF]
 Circle A Pride 1044

Another Show-Me-Select and Missouri Angus Advantage +Plus heifer qualified herd bull prospect with some big-time EPDs and pedigree.
 1309 ranks in the top 10% for Fat and \$B, 15% for WW, YW, CEM, Milk, CW, \$W and \$G and 20% for CED, Marb and \$F.

CED	BE PD	WE PD	YE PD	SC	CEM	MILK
+8	+1.8	+54	+96	N/A	+9	+26

5A BPAR NEW DESIGN 9176 119
 Birth Date: 11-21-2009 Bull 16582624 Tattoo: 119

Genetics by Design 049 [AMF-NHF] #B/R New Design 036 [AMF-NHF] #VDAR New Trend 315 [AMF-NHF]
 #13791489 GG Clara 859 B/R Blackcap Empress 76 #+JR Juice 2005
 GG Clara 200

CW	\$W
+7	+30.58
MARB	\$F
+64	+26.80
RE	\$G
+20	+34.60
FAT	\$B
+005	+50.84

#Bon View New Design 1407 [AMF-NHF] #B/R New Design 036 [AMF-NHF]
Bpar Fame 1407 9176 Bon View Pride 664
+15510833 +BPAR Fame 234D E25 #+GDAR SVF Traveler 234D [AMF-NHF]
 #+SAF Royal Lass 1027

This Genetics by Design 049 herd bull prospect has an outstanding pedigree with calving-ease and great maternal strength as well.
 He qualifies for the Show-Me-Select and Missouri Angus Advantage +Plus heifer programs and ranks in the top 10% for CED, Milk, Marb, \$W and \$G, 20% for \$B and 25% for WW.

CED	BE PD	WE PD	YE PD	SC	CEM	MILK
+10	+1.4	+51	+88	N/A	+8	+28

4 BPAR MYTTY WENDY 117
 Birth Date: 11-2-2007 Cow 16059850 Tattoo: 117

Genetics by Design 049 [AMF-NHF-RDF] #SAF Focus of ER [AMF-NHF] #SAF Fame [AMF-NHF]
Mytty In Focus [AMF-NHF-RDF] Mytty Countess 906 GDAR Forever Lady 246
13880818 Mytty Countess 906 #Sitz Alliance 6595 [AMF-NHF]
 Baldridge Countess 357

CW	\$W
+3	+30.50
MARB	\$F
+55	+26.80
RE	\$G
+05	+30.82
FAT	\$B
+008	+43.34

#Bon View New Design 1407 [AMF-NHF] #B/R New Design 036 [AMF-NHF]
Double creek wendy g543 Bon View Pride 664
15340272 Double Creek Wendy G010 #Famous 7001 [AMF]
 DAR Wendy 7112

117 is an excellent young female by Mytty In Focus and her dam descends from the popular Wendy cow family and is sired by the great growth and carcass sire Bon View New Design 1407.
 She ranks in the top 5% for \$W, 10% for CED, WW, CEM, Marb and \$G, 15% for YW, Milk and \$F and 20% for \$B.
 Bred to Mytty In Focus and due to calve 12/4/2010. Pasture exposed from 3/21/2010 to sale time to Bpar Rito 3628 4048.

CED	BE PD	WE PD	YE PD	SC	CEM	MILK
+9	+1.6	+51	+88	N/A	+10	+26

4A BPAR MYTTY WENDY 1290
 Birth Date: 12-10-2009 Bull 16584644 Tattoo: 1290

Genetics by Design 049 [AMF-NHF-RDF] #SS Objective T510 0T26 [AMF-NHF] #DHD Traveler 6807 [AMF-NHF]
 #13776378 SS Miss Rita R011 7R8 [AMF-NHF] SS Miss Ultress U56

CW	\$W
+1	+31.72
MARB	\$F
+63	+42.17
RE	\$G
+20	+37.16
FAT	\$B
-012	+51.80

Mytty In Focus [AMF-NHF-RDF] #SAF Focus of ER [AMF-NHF]
Bpar MYTTY Wendy 117 Mytty Countess 906
16059850 Double creek wendy g543 #Bon View New Design 1407 [AMF-NHF]
 Double Creek Wendy G010

This powerful herd sire prospect by SS Objective T510 0T26 records an outstanding EPD profile ranking in the top 2% for WW, 3% for YW and \$G, 4% for \$F, 5% for \$W, 10% for CED, Milk, Marb and Fat and 20% for \$B.
 He is Show-Me-Select and Missouri Angus Advantage +Plus qualified.

CED	BE PD	WE PD	YE PD	SC	CEM	MILK
+10	+1.4	+61	+107	N/A	+9	+28



CIRCLE A FOREVER LADY 8657 - Maternal sister to the dam of Lot 6.

CIRCLE A FOREVER LADY 5375

Birth Date: 9-12-2005 Cow 15096549 Tattoo: 5375

6 #GAR Precision 1680 [AMC-NHC] #Tehama Bando 155 [AMF-NHF]
JLB Exacto 416 [AMF-NHF] 9J9 GAR 856 [NHF]
#12223258 +Brost Burgess 041

CW	\$W
+18	+20.97
MARB	\$F
+27	+17.43
RE	\$G
+21	+22.39
FAT	\$B
-.006	+45.54

#High Valley 4C6 Ambush [AMF] #Paramont Ambush 2172 [AMF-NHF]
Circle A Forever Lady 9393 High Valley Gloria 1Q2
+13269877 +GDAR Forever Lady 718 #Baldridge Oscar
 #LT Forever Lady 395 GDAR

Forever Lady 5375's dam is a powerful donor. A flush sister to 9393 sold for \$4,500 in the Circle A Sale to Circle G Ranches where she produced a \$7,200 heifer calf. Maternal siblings to her dam include the \$50,000 Circle A Forever Lady 8652 and the \$75,000 SVF Gdar 216 LTD.

CED	BEPD	WEPD	YEPD	SC	CEM	MILK
+4	+3.8	+40	+74	-1.03	+5	+22

5375 ranks in the top 10% for CW, 15% for \$B and 25% for RE. Bred to WAR Alliance 9126 6006 and due to calve 10/23/2010.

BPBAR EXACT IMAGE 5375 1099

Birth Date: 10-19-2009 Bull 16580067 Tattoo: 1099

6A #Hero 6267 of RR 2418 #RR Hero 6267
HA Image Maker 0415 [AMF-NHF] RR Everelda Entense 0413
#+13739532 HA Rito Blackcap 9038 H 96 Rito 2100 7371
 H 96 Blackcap 3835

CW	\$W
I+13	+29.40
MARB	\$F
I+17	+29.99
RE	\$G
I+13	+20.11
FAT	\$B
I-.026	+41.96

#JLB Exacto 416 [AMF-NHF] #GAR Precision 1680 [AMC-NHC]
Circle A Forever Lady 5375 +Brost Burgess 041
15096549 +Circle A Forever Lady 9393 #High Valley 4C6 Ambush [AMF]
 +GDAR Forever Lady 718

CED	BEPD	WEPD	YEPD	SC	CEM	MILK
I+7	I+2.2	I+53	I+92	N/A	I+6	I+30

Another calving-ease herd bull prospect that qualifies for the Show-Me-Select and Missouri Angus Advantage +Plus heifer programs. He places in the top 2% for Milk, 3% for Fat, 15% for WW and \$W and 25% for YW. Keep the females out of this young bull.



HA IMAGE MAKER 0415 - Sire of Lots 6A, 7A and 8A.

7 HICKORY HILL MISSY SA27

Birth Date: 9-11-2006 Cow 15654686 Tattoo: SA27

#Paramont Ambush 2172 [AMF-NHF] #Bandolier Eston Durness 42B
BCC Bushwacker 41-93 [AMF-NHF] EWS Miss Burgess 1720
#12048084 RC Anita T Bando 918903 #Tehama Bando 155 [AMF-NHF]
 RC Traveling Ann 8903

CW	\$W
I+4	+31.27
MARB	\$F
I+11	+23.12
RE	\$G
I+0	+14.50
FAT	\$B
I+.005	+27.12

#Sitz Traveler 8180 [AMF-NHF] #GDAR Traveler 71 [AMF-NHF]
Hickory Hill Missy 008 Sitz Everelda Entense 1137
14438199 Hickory Hill Missy 806 #Hoff Triumph SC 927 [AMF-NHF]
 Hickory Hill Trisha

CED	BEPD	WEPD	YEPD	SC	CEM	MILK
+4	+2.3	+53	+85	I+21	+6	+22

BCC Bushwacker 41-93 daughters make excellent females and this product of the Hickory Hill Missy cow family is certainly no exception.

Her dam blends the Pathfinder Sires Sitz Traveler 8180 and Hoff Triumph SC 927. She is a high growth female and ranks in the top 4% for WW, 5% for \$W, 20% for YW and 25% for \$F. Pasture exposed from 3/21/2010 to sale time to Bpar Rito 3628 4048.

7A BPAR WACKER SA27 129

Birth Date: 12-1-2009 Bull 16584735 Tattoo: 129

#Hero 6267 of RR 2418 #RR Hero 6267
HA Image Maker 0415 [AMF-NHF] RR Everelda Entense 0413
#+13739532 HA Rito Blackcap 9038 H 96 Rito 2100 7371
 H 96 Blackcap 3835

\$W	\$F
+34.09	+32.28
\$G	N/A
\$B	N/A
\$B	N/A

#BCC Bushwacker 41-93 [AMF-NHF] #Paramont Ambush 2172 [AMF-NHF]
Hickory Hill Missy SA27 RC Anita T Bando 918903
15654686 Hickory Hill Missy 008 #Sitz Traveler 8180 [AMF-NHF]
 Hickory Hill Missy 806

CED	BEPD	WEPD	YEPD	SC	CEM	MILK
I+7	I+1.5	I+60	I+97	N/A	I+7	I+30

The HA Image Maker 0415 calves are impressive breeders from coast to coast and this young herd sire prospect that qualifies for the Show-Me-Select and Missouri Angus Advantage +Plus heifer programs is certainly no exception.

He ranks in the top 1% for \$W, 2% for Milk, 3% for WW, 15% for YW and 25% for \$F.

8 BPAR MISS WIX 143 462P

Birth Date: 4-1-2006 Cow 15398507 Tattoo: 462P

#Sitz Traveler 8180 [AMF-NHF] #GDAR Traveler 71 [AMF-NHF]
Sitz Alliance 6595 [AMF-NHF] Sitz Everelda Entense 1137
#12310707 #Sitz Barabamere Jet 2698 3 Bar Spike 1766
 #Sitz Barabamere Jet 155

CW	\$W
+6	+26.22
MARB	\$F
+33	+27.56
RE	\$G
+01	+19.96
FAT	\$B
+030	+35.59

#Summitcrest High Prime 0H29 [AMF-NHF] #Gardens Prime Time [AMF-NHF]
FAF Miss Wix 143 555J 0H29 Summitcrest Missie 2F55
14447770 +Shady Brook Miss Wix 555J #+SVF Gdar 216 LTD
 Miss Wix 918 of Mc Cumber

CED	BEPD	WEPD	YEPD	SC	CEM	MILK
+4	+2.8	+49	+88	N/A	+7	+27

From the legendary Miss Wix cow family, 462P blends the Pathfinder Sires Sitz Alliance 6595, Summitcrest High Prime 0H29 and the \$75,000 SVF Gdar 216 LTD.

This young female maintains excellent growth, while keeping birth weight in check and ranks in the top 10% for WW and Milk, 15% for YW and \$F and 25% for \$W. Bred to Connealy Power One and due to calve 12/11/2010. Pasture exposed from 3/30/2010 to 5/14/2010 to Bpar Rito 3628 4048.

8A BPAR MISS WIX 462P 1109

Birth Date: 11-9-2009 Cow 16496011 Tattoo: 1109

#Hero 6267 of RR 2418 #RR Hero 6267
HA Image Maker 0415 [AMF-NHF] RR Everelda Entense 0413
#+13739532 HA Rito Blackcap 9038 H 96 Rito 2100 7371
 H 96 Blackcap 3835

CW	\$W
I+7	+31.84
MARB	\$F
I+20	+35.10
RE	\$G
I+03	+19.51
FAT	\$B
I-.008	+37.82

#Sitz Alliance 6595 [AMF-NHF] #Sitz Traveler 8180 [AMF-NHF]
Bpar Miss Wix 143 462P #Sitz Barabamere Jet 2698
15398507 FAF Miss Wix 143 555J 0H29 #Summitcrest High Prime 0H29 [AMF-NHF]
 +Shady Brook Miss Wix 555J

CED	BEPD	WEPD	YEPD	SC	CEM	MILK
I+7	I+1.7	I+58	I+99	N/A	I+7	I+32

An impressive heifer calf by the popular HA Image Maker 0415, this high maternal female places in the top 1% of the breed for Milk EPD, as well as the top 4% for WW and \$W, 10% for YW and 15% for \$F.

9 BUTCHS JOY R014

Birth Date: 10-8-2005

Cow 15453779

Tattoo: R014

#N Bar Emulation EXT [AMF-NHF] #Emulation N Bar 5522
GAR Exaltation 3144 [AMF-NHF] N Bar Primrose 2424
 #+12304052 +GAR Scotch Cap 309 #Scotch Cap [AMF-NHF]
 Rita 5H11 of 1B14 Rito 9J9

CW	\$W
+15	+28.03
MARB	\$F
+38	+24.62
RE	\$G
+27	+25.55
FAT	\$B
+0.13	+47.79

#Summitcrest High Prime 0H29 [AMF-NHF] #Gardens Prime Time [AMF-NHF]
Butchs Joy N818 Summitcrest Missie 2F55
 14759926 Butchs Joy L035 SAF Choice Plus 8275 [AMF-NHF]
 Butchs Joy J948

CED	BEPD	WEPD	YEPD	SC	CEM	MILK
+4	+1.7	+49	+85	N/A	+10	+20

A balanced-trait daughter of GAR Exaltation 3144 with a solid set of numbers. She ranks in the top 10% for WW and CEM, 15% for RE, \$W and \$B, 20% for YW, CW and \$G and 25% for Marb and \$F.
 Bred to Mytty In Focus and due to calve 10/21/2010.



BPAR LADY P 426 8216 - Daughter of Lot 11 and maternal sister to Lot 11A.

9A BPAR EMMA LOU 109 1009

Birth Date: 10-9-2009

Cow 16563929

Tattoo: 1009

#SAF Focus of ER [AMF-NHF] #SAF Fame [AMF-NHF]
Mytty In Focus [AMF-NHF-RDF] GDAR Forever Lady 246
 13880818 Mytty Countess 906 #Sitz Alliance 6595 [AMF-NHF]
 Baldrige Countess 357

CW	\$W
I+8	+30.08
MARB	\$F
I+50	+31.38
RE	\$G
I+10	+28.20
FAT	\$B
I+0.16	+46.44

#+GAR Exaltation 3144 [AMF-NHF] #N Bar Emulation EXT [AMF-NHF]
Butchs Joy R014 +GAR Scotch Cap 309
 15453779 Butchs Joy N818 #Summitcrest High Prime 0H29 [AMF-NHF]
 Butchs Joy L035

CED	BEPD	WEPD	YEPD	SC	CEM	MILK
I+9	I+2	I+52	I+93	N/A	I+11	I+23

A stout heifer calf by the ABS Global sire Mytty In Focus. 1009 places in the top 2% for CEM, 10% for \$W, 15% for CED and BW, 20% for WW and YW and 25% for Marb, \$F and \$G.

11 ELKHORN LADY 430

Birth Date: 9-24-2004

Cow 15030575

Tattoo: 430

#Emulation N Bar 5522 #Emulation 31 [DWF-RDF]
N Bar Emulation EXT [AMF-NHF] Ankony 8F78 Lass 8F275
 #10776479 N Bar Primrose 2424 #Emulation 31 [DWF-RDF]
 Primrose N Bar 9962

CW	\$W
I+14	+30.27
MARB	\$F
I+15	+21.72
RE	\$G
I+18	+15.06
FAT	\$B
I+0.18	+35.97

#BCC Bushwacker 41-93 [AMF-NHF] #Paramb Ambush 2172 [AMF-NHF]
Edgewood Lady 126 RC Anita T Bando 918903
 14093038 Edgewood Lady 215 Edgewood Black Hudson 001
 #Edgewood Lady 306

CED	BEPD	WEPD	YEPD	SC	CEM	MILK
+5	+1.4	+49	+82	N/A	+7	+23

An own daughter of N Bar Emulation EXT, the daughters of EXT are always popular and for good reason as he has produced some of the nicest females in the breed. This blending with BCC Bushwacker 41-93 only adds to the value of this female in the prime of her production years.
 430 places in the top 5% for \$W, 10% for WW, 20% for CW and 25% for YW and RE.
 Bred to Connealy Lead On and due to calve 12/14/2010. Pasture exposed from 3/21/2010 to sale time to Bpar Rito 3628 4048.

10 BPAR TENA 1110 1807

Birth Date: 11-18-2007

Cow 15997948

Tattoo: 1807

#BR Midland [AMF-NHF] #Twin Valley Precision E161 [NHC-AMF-RDF]
Bpar Midland 7594 1110 BR Royal Lass 7036-19
 15317901 +SAF Vixon 7594 +SVF Gdar 216 LTD
 Finks Vixon 764

CW	\$W
+7	+18.35
MARB	\$F
+41	+18.59
RE	\$G
+12	+27.30
FAT	\$B
+0.04	+41.72

+BPAR Pine Sisken M32 #Bon View New Design 1407 [AMF-NHF]
Bpar Tena 1407 2075 Circle A Pine Sisken 0559
 15252593 RBR Miss Tena 601 +WAF Mister Perfect 129
 Weikers Excite Tina EW

CED	BEPD	WEPD	YEPD	SC	CEM	MILK
+1	+4.3	+42	+76	N/A	+3	+16

Just a two and half year old female that blends the \$202,000 BR Midland with Bon View New Design 1407.
 1807 has very good marbling genetics placing in the top 20% as well as the top 15% for \$G.
 Bred to Mytty In Focus and due to calve 11/26/2010.

11A BPAR EMULATION 430 1201

Birth Date: 12-1-2009

Bull 16582623

Tattoo: 1201

#SAF Focus of ER [AMF-NHF] #SAF Fame [AMF-NHF]
Mytty In Focus [AMF-NHF-RDF] GDAR Forever Lady 246
 13880818 Mytty Countess 906 #Sitz Alliance 6595 [AMF-NHF]
 Baldrige Countess 357

CW	\$W
I+8	+31.27
MARB	\$F
I+39	+29.38
RE	\$G
I+05	+23.73
FAT	\$B
I+0.18	+41.43

#N Bar Emulation EXT [AMF-NHF] #Emulation N Bar 5522
Elkhorn Lady 430 N Bar Primrose 2424
 15030575 Edgewood Lady 126 #BCC Bushwacker 41-93 [AMF-NHF]
 Edgewood Lady 215

CED	BEPD	WEPD	YEPD	SC	CEM	MILK
I+10	I+1	I+52	I+91	N/A	I+10	I+24

1201 is a nice calving ease herd bull prospect with an excellent pedigree. He ranks in the top 10% for CED, CEM and \$W, 20% for WW and 25% for BW and YW.
 He is Show-Me-Select and Missouri Angus Advantage +Plus qualified.

10A BPAR TENA 1807 1239

Birth Date: 12-13-2009

Cow 16496015

Tattoo: 1239

#B/R New Design 036 [AMF-NHF] #V/DAR New Trend 315 [AMF-NHF]
Bon View New Design 878 [AMF-NHF] B/R Blackcap Empress 76
 #13062750 Bon View Gammer 85 #Bon View Bando 598 [AMF]
 Bon View Gammer 233

CW	\$W
I+7	+23.13
MARB	\$F
I+40	+22.03
RE	\$G
I+07	+25.55
FAT	\$B
I+0.10	+40.78

Bpar Midland 7594 1110 #BR Midland [AMF-NHF]
Bpar Tena 1110 1807 +SAF Vixon 7594
 15997948 Bpar Tena 1407 2075 +BPAR Pine Sisken M32
 RBR Miss Tena 601

CED	BEPD	WEPD	YEPD	SC	CEM	MILK
I+5	I+2.9	I+43	I+80	N/A	I+7	I+23

A daughter of the number one bull in registrations for four consecutive years, Bon View New Design 878, this heifer calf should make an excellent brood cow.



MYTTY IN FOCUS - Sire of Lots 9A and 11A.

12 ELKHORN KATINKA 555 [AMF-NHF]

Birth Date: 11-20-2005 Cow 15344191 Tattoo: 555

#+SAF Connection [AMF-NHF]
SydGen Connection 2438
 14284724 +SAF Eisa Erica 9010

#+SVF Gdar 216 LTD
 +SAF Royal Queen 5084
 #+SAF Neutron [AMF-NHF]
 #Tehama Eisa Erica Y699

CW	\$W
+7	+18.35
MARB	SF
+34	+14.01
RE	SG
+06	+24.90
FAT	\$B
-004	+38.49

#Millcreek Premium [AMC]
Hilltop Miss Katinka 383
 14744535 Blackcap Katinka MA44

#White Oak Precise 6002 [AMC-NHF]
 #Millcreek SUF Blossom
 #QAS Traveler 23-4 [AMF-NHF]
 Blackcap Katinka MA52

CED	BEPD	WEPD	YEPD	SC	CEM	MILK
+2	+3.3	+34	+68	N/A	+7	+18

From the Katinka family, 555 combines the \$50,000 SAF Connection with Millcreek Premium and QAS Traveler 23-4.

She places in the top 25% for \$G and maintains a Marb EPD in the top one-third of the breed. Bred to Mytty In Focus and due to calve 12/4/2010. Pasture exposed from 3/22/2010 to sale time to Bpar Rito 3628 4048.

12A BPAR KATINKA 109 1259

Birth Date: 12-5-2009 Cow 16496016 Tattoo: 1259

#SAF Focus of ER [AMF-NHF]
Mytty In Focus [AMF-NHF-RDF]
 13880818 Mytty Countess 906

#SAF Fame [AMF-NHF]
 GDAR Forever Lady 246
 #Sitz Alliance 6595 [AMF-NHF]
 Baldrige Countess 357

CW	\$W
+4	+26.39
MARB	SF
+48	+25.54
RE	SG
-01	+28.11
FAT	\$B
+007	+41.33

SydGen Connection 2438
Elkhorn Katinka 555 [AMF-NHF]
 1344191 Hilltop Miss Katinka 383

#+SAF Connection [AMF-NHF]
 +SAF Eisa Erica 9010
 #Millcreek Premium [AMC]
 Blackcap Katinka MA44

CED	BEPD	WEPD	YEPD	SC	CEM	MILK
+8	+1.0	+44	+84	N/A	+10	+22

This brood cow prospect by Mytty In Focus will add excellent calving-ease genetics in a balanced EPD package.

14 WEIKERS PRIDE 20M

Birth Date: 3-19-2002 Cow 14455438 Tattoo: 20M

#Connealy Dateline
Roth Dateline 9068
 13283512 Bon View Pride 316

#DHD Traveler 6807 [AMF-NHF]
 #Eila Eila of Cononga [AMF]
 #Bon View Emulation Ext 873 [AMF-NHF]
 Bon View Pride 664

CW	\$W
+7	+25.18
MARB	SF
+27	+20.86
RE	SG
-09	+19.04
FAT	\$B
+007	+33.99

#+BT Direction 65D [AMF-NHF]
ALC Pride D04K
 14182533 ALC Max Factor M04F

#+Leachman Right Time
 Sitz Everelda Entense 1905
 #GT Maximum [AMF-NHF]
 Twin Oaks Pride 7201

CED	BEPD	WEPD	YEPD	SC	CEM	MILK
+12	-.9	+41	+78	N/A	+10	+14

If you want to make some calving-ease herd bulls this female can do it with a CED of +12 ranking in the top 1% of the breed, in addition she places in the top 3% for BW and 10% for CEM.

Bred to Bon View New Design 878 and due to calve 12/11/2010. Pasture exposed from 3/22/2010 to sale time to Bpar Rito 3628 4048.

14A BPAR LEADER 103 1159

Birth Date: 11-5-2009 Bull 16582621 Tattoo: 1159

#Connealy Leadtime [AMF-NHF]
Connealy Lead On [AMF-NHF]
 #13447282 Eligence Plus of Cononga

#Connealy Dateline
 #Ruths Rona of Cononga
 #TC Dividend 963 [AMF-NHF-RDF]
 Eura Cap of Cononga

CW	\$W
+7	+26.70
MARB	SF
+34	+30.32
RE	SG
+01	+26.59
FAT	\$B
-027	+43.76

Roth Dateline 9068
Weikers Pride 20M
 14455438 ALC Pride D04K

#Connealy Dateline
 Bon View Pride 316
 #+BT Direction 65D [AMF-NHF]
 ALC Max Factor M04F

CED	BEPD	WEPD	YEPD	SC	CEM	MILK
+8	+1.7	+47	+90	N/A	+8	+22

This herd bull prospect by Connealy Lead On is Show-Me-Select and Missouri Angus Advantage +Plus qualified. He places in the top 20% for both CED and BW.

13 CSC BLACKCAP 044-336 [AMF]

Birth Date: 2-13-2003 Cow 14460389 Tattoo: 336

#DHD Traveler 6807 [AMF-NHF]
GDAR Traveler 044 [AMF-NHF]
 #11447335 #GDAR Blackcap Lady 840

#QAS Traveler 23-4 [AMF-NHF]
 #Bemindful Maid DHD 0807
 #+Skarship Saratoga
 GDAR Lady 369 GDAR

CW	\$W
-5	+17.36
MARB	SF
-08	+10.50
RE	SG
-18	+8.00
FAT	\$B
-023	+8.51

Stevenson Maximum 540E
CSC Blackcap Maximum 887 [AMC]
 13148279 #Gleonda Blackcap L107

+Stevenson Maximum 42C
 JRS Kay Kelton 137A
 #QAS Traveler 23-4 [AMF-NHF]
 Gleonda Blackcap G857

CED	BEPD	WEPD	YEPD	SC	CEM	MILK
+6	+1.7	+31	+63	+23	+6	+10

An own daughter of the Pathfinder GDAR Traveler 044 from a dam by Stevenson Maximum 540E and the Pathfinder Dam Gleonda Blackcap L107.

Pasture exposed from 3/22/2010 to sale time to Bpar Rito 3628 4048.

15 FINKS MISS 0566 7116 036 [AMF]

Birth Date: 8-25-2000 Cow +13847947 Tattoo: 0566

#VDAR New Trend 315 [AMF-NHF]
B/R New Design 036 [AMF-NHF]
 #11418151 B/R Blackcap Empress 76

#AAR New Trend
 #VDAR Lucy 704
 #K&K Top Gun
 +QLC A70 Bkcp Empress E43T

CW	\$W
+3	+23.20
MARB	SF
+50	+12.17
RE	SG
-14	+27.17
FAT	\$B
+006	+36.67

#GDAR Traveler 71 [AMF-NHF]
Finks Miss 7114 4116 71 [AMF]
 +13072744 +Finks Miss 4116 8130 Bando

#Traveler 1148 GDAR
 GDAR Miss Blackcap 567
 #Tehama Bando 155 [AMF-NHF]
 Finks 8130 of 678-549

CED	BEPD	WEPD	YEPD	SC	CEM	MILK
+5	+2.2	+34	+66	+14	+5	+27

An own daughter of the great carcass sire B/R New Design 036 from the famous Finks Miss cow family, her dam blends the Pathfinder Sires GDAR Traveler 71 and Tehama Bando 155.

0566 places in the top 10% for Milk and Marb and 20% for \$G. Bred to Mytty In Focus and due to calve 12/4/2010. Pasture exposed from 3/22/2010 to sale time to Bpar Rito 3628 4048.

13A BPAR BLACKCAP 036 1199

Birth Date: 11-9-2009 Cow 16582626 Tattoo: 1199

#VDAR New Trend 315 [AMF-NHF]
B/R New Design 036 [AMF-NHF]
 #11418151 B/R Blackcap Empress 76

#AAR New Trend
 #VDAR Lucy 704
 #K&K Top Gun
 +QLC A70 Bkcp Empress E43T

CW	\$W
+4	+21.39
MARB	SF
+32	+16.08
RE	SG
-01	+25.49
FAT	\$B
-020	+36.61

#GDAR Traveler 044 [AMF-NHF]
CSC Blackcap 044-336 [AMF]
 14460389 CSC Blackcap Maximum 887 [AMC]

#DHD Traveler 6807 [AMF-NHF]
 #GDAR Blackcap Lady 840
 Stevenson Maximum 540E
 #Gleonda Blackcap L107

CED	BEPD	WEPD	YEPD	SC	CEM	MILK
+7	+1.9	+36	+71	N/A	+7	+18

An own daughter of the great Pathfinder and high carcass sire B/R New Design 036.

This is a great opportunity to purchase a young female out of one of the breed's iconic sires.

15A BPAR NEW DESIGN 0566 1213

Birth Date: 12-13-2009 Bull Reg.No.Pdg. Tattoo: 1213

#SAF Focus of ER [AMF-NHF]
Mytty In Focus [AMF-NHF-RDF]
 13880818 Mytty Countess 906

#SAF Fame [AMF-NHF]
 GDAR Forever Lady 246
 #Sitz Alliance 6595 [AMF-NHF]
 Baldrige Countess 357

#B/R New Design 036 [AMF-NHF]
Finks Miss 0566 7116 036 [AMF]
 +13847947 +Finks Miss 7114 4116 71 [AMF]

#VDAR New Trend 315 [AMF-NHF]
 B/R Blackcap Empress 76
 #GDAR Traveler 71 [AMF-NHF]
 +Finks Miss 4116 8130 Bando

CED	BEPD	WEPD	YEPD	SC	CEM	MILK
+14	-1.3	+54	+100	+1.73	+12	+25
+5	+2.2	+34	+66	+14	+5	+27

A high-marbling calving-ease son of the ABS Global sire Mytty In Focus from a dam that descends from the Finks Miss cow family.

CW	MARB	RE	FAT	\$W	SF	\$G	\$B
+2	+62	-08	+018	+38.43	+37.71	+29.92	+44.26
+3	+50	-14	+006	+23.20	+12.17	+27.17	+36.67



RR BLACKCLASS 4119 - Pathfinder grandam of Lot 16.

16 BPAR BLACKCLASS 4216 3306 [AMF]
 Birth Date: 3-30-2006 Cow 15468166 Tattoo: 3306

#Rockn D Ambush 1531 [AMF-NHF] #Paramont Ambush 2172 [AMF-NHF]
BPAR Ambush 1052 4216 MS Blackcap Band of RD 1301
+14708210 Circle A Rita 1052 [AMF] #B/R New Design 036 [AMF-NHF]
 +Circle A Rita 5H11 4222

CW	\$W
I+8	+30.11
MARB	\$F
I+.46	+17.49
RE	\$G
I+.21	+30.71
FAT	\$B
I-.005	+45.87

#Bon View Spectrum 1176 [AMF-NHF] BF Rainman 9118 117 [AMF-NHF]
Weikers Blackclass W133 Bon View Gammer 1324
+14046760 #RR Blackclass 4119 #DHD Traveler 6807 [AMF-NHF]
 B&R Blackclass 2111 of 0082

This granddaughter of the legendary Pathfinder and donor dam RR Blackclass 4119 is a great calving-ease female with added end product merit as well. Her grandam served in the Ratcliff and Weiker Angus Ranch donor programs before joining the donor arsenal at Limestone LLC. 3306 places in the top 2% for BW, 4% for CED, 5% for \$W, 10% for CEM and \$G, 15% for Marb and \$B, 20% for RE and 25% for WW. Bred to Mytty In Focus and due to calve 10/4/2010.

CED	BEPD	WEPD	YEPD	SC	CEM	MILK
+10	-1.3	+45	+76	N/A	+10	+16

16A BPAR AMBUSH 878 9289
 Birth Date: 9-28-2009 Bull 16580069 Tattoo: 9289

#B/R New Design 036 [AMF-NHF] #VDAR New Trend 315 [AMF-NHF]
Bon View New Design 878 [AMF-NHF] B/R Blackcap Empress 76
#13062750 Bon View Gammer 85 #Bon View Bando 598 [AMF]
 Bon View Gammer 233

\$W
+28.32
\$F
+21.66
\$G
N/A
\$B
N/A

+BPAR Ambush 1052 4216 #Rockn D Ambush 1531 [AMF-NHF]
Bpar Blackclass 4216 3306 [AMF] Circle A Rita 1052 [AMF]
15468166 +Weikers Blackclass W133 #Bon View Spectrum 1176 [AMF-NHF]
 #RR Blackclass 4119

This calving-ease herd sire prospect by Bon View New Design 878 qualifies for the Show-Me-Select and Missouri Angus Advantage +Plus heifer programs and he ranks in the top 10% for CED and CEM, 15% for BW and 25% for \$W.

CED	BEPD	WEPD	YEPD	SC	CEM	MILK
I+10	I+.1	I+.44	I+80	N/A	I+10	I+23

17 MA FAWN 70 [AMF]
 Birth Date: 1-28-2000 Cow 13556734 Tattoo: 70

#Traveler 124 GDAR #QAS Traveler 23-4 [AMF-NHF]
GDAR SVF Traveler 234D [AMF-NHF] Rachel Rito 813 GDAR
#+12309327 +GDAR Forever Lady 718 #Baldrige Oscar
 #LT Forever Lady 395 GDAR

CW	\$W
+13	+19.51
MARB	\$F
+14	+20.12
RE	\$G
+37	+22.05
FAT	\$B
I-.032	+41.92

#Krugerrand of Donamere 490 [AMF-NHF] #CH Stacker 7040
Davids Fawn 68 Donamere Bachel Beauty 288
12994634 4W Fawn Bando #Rito OB3 of 8E24 Bando
 Thomas Fawn 2368

This powerful female is sired by the Angus Sire Alliance Winner GDAR SVF Traveler 234D. Her dam blends the Pathfinder Sires Krugerrand of Donamere 490 and Rito OB3 of 8E24 Bando. She ranks in the top 3% for Fat, 10% for RE and 25% for CW and \$B, certainly a female that can add true muscle to her progeny. Bred to TC Rito 416 and due to calve 11/26/2010.

CED	BEPD	WEPD	YEPD	SC	CEM	MILK
+4	+4.7	+43	+78	+53	+3	+20

17A BPAR KATIE 0415 1228
 Birth Date: 12-28-2009 Cow 1658770 Tattoo: 1228

#Hero 6267 of RR 2418 #RR Hero 6267
HA Image Maker 0415 [AMF-NHF] RR Everelda Entense 0413
#+13739532 HA Rito Blackcap 9038 H 96 Rito 2100 7371
 H 96 Blackcap 3835

CW	\$W
I+10	+29.11
MARB	\$F
I+.10	+31.22
RE	\$G
I+.21	+19.73
FAT	\$B
I-.039	+39.62

+GDAR SVF Traveler 234D [AMF-NHF] #Traveler 124 GDAR
MA Fawn 70 [AMF] +GDAR Forever Lady 718
13556734 Davids Fawn 68 #Krugerrand of Donamere 490 [AMF-NHF]
 4W Fawn Bando

The Image Maker daughters are doing very well and this female with a Milk EPD in the top 4%, WW top 10%, \$W top 15%, YW top 20% and \$F top 25% certainly has the EPD credentials to make a great impact on any breeding program.

CED	BEPD	WEPD	YEPD	SC	CEM	MILK
I+7	I+2.7	I+55	I+94	I+.34	I+5	I+29



ELKHORN BLACKCAP 658 - Lot 18

18 ELKHORN BLACKCAP 658
 Birth Date: 8-31-2006 Cow +15742889 Tattoo: 658

#Sitz Traveler 8180 [AMF-NHF]
SAV 8180 Traveler 004 [AMF-NHF-RDF]
 #13512009 +Boyd Forever Lady 8003

#GDAR Traveler 71 [AMF-NHF]
 Sitz Everelda Entense 1137
 #AAR New Trend
 SVF Forever Lady 57D

CW	\$W
+9	+23.19
MARB	\$F
+05	+25.76
RE	\$G
+07	+4.53
FAT	\$B
+058	+22.25

#Papa Durabull 9805
Blackcap Lady 869
 +13480300 GAR New Trend 780

#Scotch Cap [AMF-NHF]
 #Envious Blackbird DHD 3811
 #AAR New Trend
 #GAR Scotch Cap 867

CED	BEPD	WEPD	YEPD	SC	CEM	MILK
+4	+3.8	+46	+85	1+1.12	+4	+24

This featured member of the Blackcap cow family is produced from the Elkhorn

Valley Farms donor Blackcap Lady 869 who is a daughter of the Limestone LLC donor GAR New Trend 780, who in turn is an own daughter of the \$120,000 GAR Scotch Cap 867. 867 also produced the \$250,000 GAR EXT 2104 and the \$120,000 GAR EXT 2114.

Maternal sisters to this great female have sold for \$10,750 in the Weiker Angus Ranch sale, \$5,100 in the Missouri Angus Breeders' Futurity and \$4,100 in the 2007 Busted P Sale. Sells with a heifer calf (Lot 18A) born 1/20/2010 by CSC Predestined 407.



G A R NEW TREND 780 - Grandam of Lot 18.

19 BPAR KATINKA 426 1177 [AMF-NHF]
 Birth Date: 11-17-2007 Cow 16014639 Tattoo: 1177

#CA Future Direction 5321 [AMC-NHC]
Connealy Foundation 426 [AMC-NHF]
 14843192 Ruby Red of Conanga 436

#GAR Precision 1680 [AMC-NHC]
 CA Miss Power Fix 308 [AMF]
 #Bon View New Design 878 [AMF-NHF]
 #Ruby of Conanga 430

CW	\$W
+15	+21.77
MARB	\$F
+47	+27.50
RE	\$G
+09	+26.95
FAT	\$B
+007	+49.92

SydGen Connection 2438
Elkhorn Katinka 555 [AMF-NHF]
 15344191 Hilltop Miss Katinka 383

#+SAF Connection [AMF-NHF]
 +SAF Eisa Erica 9010
 #Millcreek Premium [AMC]
 Blackcap Katinka MA44

This young female by the Accelerated Genetics sire Connealy Foundation 426,

CED	BEPD	WEPD	YEPD	SC	CEM	MILK
+4	+3.4	+44	+86	N/A	+8	+25

descends from the Katinka cow family and traces to the \$50,000 SAF Connection. She places in the top 20% for Milk and 25% for CEM and \$B. Bred to Mytty In Focus and due to calve 3/19/2010. Pasture exposed from 6/25/2009 to 7/15/2009 to BPAR Mytty 537 3048.



G A R SCOTCH CAP 867 - Third dam of Lot 18.



BIRKS FOREVER LADY 110 -
*Flush sister to the dam of Lots 20
 and 21.*



B&M FOREVER LADY 294 -
Grandam of Lots 20 and 21.

20 BPAR FOREVER LADY 095 E311
 Birth Date: 3-12-2007 Cow +15838397 Tattoo: E311

#B/R New Design 036 [AMF-NHF] #VDAR New Trend 315 [AMF-NHF]
 B/R New Frontier 095 [AMF-NHF] B/R Blackcap Empress 76
 #+13588640 White Fence Pride H1 #Connealy Dateline
 #Pleasant Pill of Conanga

CW	\$W
+17	+24.18
MARB	SF
+46	+29.93
RE	\$G
+26	+32.23
FAT	\$B
-.031	+56.97

#+GDAR SVF Traveler 234D [AMF-NHF] #Traveler 124 GDAR
 Birks Forever Lady 210 [AMF] +GDAR Forever Lady 718
 #13766980 B&M Forever Lady 294 [AMF-NHF] #GAR Precision 1680 [AMC-NHC]
 +B&M Forever Lady 92

CED	BEPD	WEPD	YEPD	SC	CEM	MILK
I+7	+2.6	+48	+90	N/A	I+7	+21

The first of two half sisters from the impressive donor Birks Forever Lady 210 who is a flush sister to the \$250,000 producing Birks Forever Lady 110 who produced both top-selling females at the Missouri and Illinois Futurities at \$15,000 each. 210 is also a maternal sister to the \$72,000 SAF Forever Lady 260 selected by B&M Angus through a past SydGen sale. She ranks in the top 2% for \$B, 4% for Fat, 10% for YW, \$F and \$G, 15% for WW, CW, Marb and RE and 20% for CED. This daughter of B/R New Frontier 095 has the credentials to enter the donor pen. Sells with a bull calf (Lot 20A) born 1/2/2010 by HA Image Maker 0415. Bred back to HA Image Maker 0415 and due to calve 11/25/2010.

21 BPAR FOREVER LADY 4403
 Birth Date: 3-11-2004 Cow 14693657 Tattoo: 4403

#GAR Precision 1680 [AMC-NHC] #Tehama Bando 155 [AMF-NHF]
 JLB Exacto 416 [AMF-NHF] 9J9 GAR 856 [NHF]
 #12223258 +Brost Burgess 041 #Hoff Hi Spade SC 491
 Partisover Burgess 527

CW	\$W
+21	+20.09
MARB	SF
+11	+21.23
RE	\$G
+52	+19.26
FAT	\$B
-.010	+45.15

#+GDAR SVF Traveler 234D [AMF-NHF] #Traveler 124 GDAR
 Birks Forever Lady 210 [AMF] +GDAR Forever Lady 718
 #13766980 B&M Forever Lady 294 [AMF-NHF] #GAR Precision 1680 [AMC-NHC]
 +B&M Forever Lady 92

CED	BEPD	WEPD	YEPD	SC	CEM	MILK
+5	+4.0	+40	+78	N/A	+6	+26

This maternal sister to Lot 20 by JLB Exacto 416 shares the same great pedigree with the \$750,000 producing B&M Forever Lady 294 as the grandam. This female has incredible genetic merit for muscling with a RE EPD in the top 2% of the breed and a RE ratio of 2@110. She also records a YR of 2@108 and ranks in the top 5% for CW and 15% for Milk and \$B. Sells with a bull calf (Lot 21A) born 1/2/2010 by Mytty In Focus, he is a Show-Me-Select and Missouri Angus Advantage +Plus qualified herd sire prospect. Bred back to Mytty In Focus and due to calve 12/4/2010.

22 BPAR FOREVER LADY 4318 2258
 Birth Date: 2-25-2008 Cow 16050367 Tattoo: 2258

#Bon View New Design 1407 [AMF-NHF] #B/R New Design 036 [AMF-NHF]
 BPAR Andy's Ideal 4318 Bon View Pride 664
 14667139 +BPAR Phantastics Ideal E10 #Ideal 1418 of 8103 4286 [AMF-NHF]
 +Circle A Phantastic 4057

CW	\$W
+15	+22.93
MARB	SF
+61	+34.91
RE	\$G
+30	+31.94
FAT	\$B
+021	+56.64

#B/R New Design 036 [AMF-NHF] #VDAR New Trend 315 [AMF-NHF]
 Day Forever Lady 9424 BPAR B/R Blackcap Empress 76
 #14950653 +SydGen BPAR Forever Lady #+SAF 598 Bando 5175 [AMF]
 GDAR Forever Lady 246

CED	BEPD	WEPD	YEPD	SC	CEM	MILK
+10	+1.2	+43	+93	N/A	+9	+25

Another member of the Forever Lady cow family, 2258's grandam is a maternal sister to two of the great curve-bender sires, the \$68,000 SAF Focus of ER and the \$100,000 SydGen Refocus, as well as the \$62,000 all-time record-selling female in a SydGen sale, SAF Forever Lady 0020. A maternal sister to her dam, BPAR Forever Lady E22 SF1 commanded \$8,500 in the 2007 Circle A Sale selling to Sydenstricker Genetics. Her sire has done a tremendous job in the Busted P program and blends Bon View New Design 1407 with the donor dam BPAR Phantastics Ideal E10. She ranks in the top 10% for CED, 15% for CEM, Marb, \$F, \$G and \$B and 20% for YW and Milk. Sells with a bull calf (Lot 22A) born 1/21/2010. Bred back to TC Rito 416 and due to calve 12/4/2010.



SYDGEN BPAR FOREVER LADY - Grandam of Lot 22.



CIRCLE A ENTENSE 3349 - Dam of Lot 23.

23 BPAR ENTENSE 3349 1247

Birth Date: 12-4-2007 Cow 16278096 Tattoo: 1247
 #Papa Forte 1921 Papa Optima 9818
Woodhill Foresight [AMF-NHF] Papa Envious Blackbird 8832
 #13936986 Bon View Gammer 85 #Bon View Bando 598 [AMF]
 Bon View Gammer 233
 #B/R New Design 323-9150 [AMF-NHF] #B/R New Design 323
Circle A Entense 3349 B/R Ruby of Tiffany 4117
 #14594480 +BT Everelda Entense 57D #+Leachman Right Time
 Sitz Everelda Entense 1905

This sale highlight is a granddaughter of the \$380,000 valued BT Everelda Entense 57D. A flush sister to her dam sold for \$11,500 in a past Circle A sale and other maternal sisters include the \$31,000 Everelda Entense 206K, as well as the \$20,000 Everelda Entense 113K. This Woodhill Foresight daughter places in the top 4% for Milk, 15% for \$W, \$G and \$B and 20% for CED and Marb. Pasture exposed from 6/28/2009 to 7/15/2009 to BPAR Mytty 537 3048.

24 WEIKERS BLACKCAP W144 [NHF]

Birth Date: 3-23-2006 Cow 15597334 Tattoo: W144
 #Twin Valley Precision E161 [NHC-AMF-RDF] #GAR Precision 1680 [AMC-NHC]
Assman Midway T75N [NHC-AMF] +WCC Blackcap C9 [RDC]
 #14447064 BR Royal Lass 7036-19 #+SAF Neutron [AMF-NHF]
 #SAF Royal Lass 7036
 +Weikers Creekstone 9056 #+VDAR Ambush 1465 SAF [AMF]
Weikers Blackcap W233 OCC Blackbird 833E
 #14903343 Alc Heidi J13H +Woodhill Journey
 ALC Foxy Agent S23F

A high growth four-year-old daughter of Assman Midway T75N, the full brother to the \$202,000 BR Midland, note her Pathfinder Dam as well. She has explosive growth traits placing in the top 2% for WW and 3% for YW, as well as the top 5% for \$F, 10% for RE and 15% for Milk, CW and \$B. Sells with a heifer calf (Lot 24A) born 3/4/2010 by CSC Predestined 407.

25 WCC LUCY 537

Birth Date: 2-3-2005 Cow 15043788 Tattoo: 537
 #B/R Destination 727 [AMF-NHF] #GAR Traveler 1489 [AMF]
B/R Destination 727-928 [AMF-NHF] B/R Ruby of Tiffany 5113
 #13286246 B/R Blackcap Empress 558 [AMF] #Bon View Bando 598 [AMF]
 B/R Blackcap Empress 76
 #N Bar Emulation EXT [AMF-NHF] #Emulation N Bar 5522
PAF Lucy 5011 N Bar Primrose 2424
 #12476943 #PAF New Wave 8062 #AAR New Trend
 Emulous Lucy 319 of PAF

This extremely well bred female blends the high CW sire B/R Destination 727-928 with the Pathfinder Sire N Bar Emulation EXT. 537 is a balanced-trait individual with excellent end product merit as she places in the top 2% for CW, 3% for \$B, 5% for RE, 10% for Marb and \$W, 20% for CED and \$G and 25% for WW and Milk while recording a WR of 2@105. Sells with a bull calf (Lot 25A) born 3/12/2010 by Mytty In Focus.

26 SYDGEN ROYAL LADY 5025

Birth Date: 1-3-2005 Cow 14980062 Tattoo: 5025
 #+SVF Gdar 216 LTD #Traveler 124 GDAR
SAF Connection [AMF-NHF] +GDAR Forever Lady 718
 #13544928 +SAF Royal Queen 5084 #Bon View Bando 598 [AMF]
 SAF Royal Queen 9022
 #N Bar Emulation EXT [AMF-NHF] #Emulation N Bar 5522
SAF Royal Lady 0255 N Bar Primrose 2424
 #13584194 CAF Royal Lady 76 #Bon View Bando 598 [AMF]
 #Bon View Royal Lady 1689

From the Royal Lady family this daughter of the \$50,000 SAF Connection is from a dam who blends the Pathfinder Sires N Bar Emulation EXT and Bon View Bando 598. She places in the top 25% for YW while maintaining a CED, WW, \$W and \$B in the top one-third of the breed. Sells with a heifer calf (Lot 26A) born 1/12/2010 by Mytty In Focus. Bred back to Nichols Extra K205 and due to calve 12/4/2010. Pasture exposed from 3/22/2010 to sale time to Bpar Rito 3628 4048.

27 WEIKERS EMMA TARKIO 11W5 [AMF-NHF]

Birth Date: 11-23-2005 Cow 15392339 Tattoo: 11W5
 #Rockn D Ambush 1531 [AMF-NHF] #Paramont Ambush 2172 [AMF-NHF]
Twin Hills Ambush 1032 MS Blackcap Band of RD 1301
 #14068033 +Twin Valley Blackcap 1505 #GAR Precision 1680 [AMC-NHC]
 +WCC Blackcap C9 [RDC]
 +Determination Stone Gate Eurlloch
Alc Determined Emulous D27E +Mengs Royal Lucy 47W
 #12445247 ALC North Emulous Lady 013 #Hills Prime Rate 018
 K Plus Black Miss 3225

Another young female by Twin Hills Ambush 1032 who places in the top 10% for Fat and 20% for \$G. Sells with a heifer calf (Lot 27A) born 3/12/2010 by CSC Predestined 407.

28 BPAR JOANIE E107

Birth Date: 10-13-2008 Cow +16151644 Tattoo: E107
 #SAF Focus of ER [AMF-NHF] #SAF Fame [AMF-NHF]
Mytty In Focus [AMF-NHF-RDF] GDAR Forever Lady 246
 #13880818 Mytty Countess 906 #Sitz Alliance 6595 [AMF-NHF]
 Baldridge Countess 357
 #B/R New Design 036 [AMF-NHF] #VDAR New Trend 315 [AMF-NHF]
SFI Joanie L42 [AMF] B/R Blackcap Empress 76
 #13898867 MB Joanie Ext 3605 #N Bar Emulation EXT [AMF-NHF]
 #MB Joanie 8E8 1627 [AMF]

From the donor dam bred in the Smith Flooring program, this ET daughter of SFI Joanie L42 has great calving-ease credentials and places in the top 10% for CED and 20% for BW. This is an excellent blending of Mytty In Focus, B/R New Design 036 and N Bar Emulation EXT. Bred to SS Objective T510 OT26 and due to calve 10/10/2010.



BPAR JOANIE E107 - Lot 28



BPAR PRIDE 5044 1038 • Lot 29

29 **BPAR PRIDE 5044 1038**
 Birth Date: 10-13-2008 Cow 16274046 Tattoo: 1038

#SAF Focus of ER [AMF-NHF] #SAF Fame [AMF-NHF]
Mytty In Focus [AMF-NHF-RDF] GDAR Forever Lady 246
13880818 Mytty Countess 906 #Sitz Alliance 6595 [AMF-NHF]
 Baldridge Countess 357

CW	\$W
+7	+31.74
MARB	\$F
+37	+34.87
RE	\$G
-.02	+22.89
FAT	\$B
+.013	+41.13

+Big Elban of Sydgen 3023 [AMF-NHF] Big Elban of Graham 38425
SydGen Pride 5044 +SAF Royal Queen 5084
14979998 SydGen Pride 3355 #Bon View New Design 878 [AMF-NHF]
 +Snells Pride 1021

This paternal sister to Lot 28 comes from the SydGen Pride cow family and is also sired by the ABS Global sire, Mytty In Focus. She blends the Forever Lady and Royal Queen cow families which have both written miles of history in the SydGen program. This powerful mating has produced an outstanding EPD profile and 1038 ranks in the top 4% for \$W, 10% for WW and YW and 15% for CED, BW and \$F. She had an individual BW of just 65 lbs., a WR of 107 and YR of 102. Bred to SS Objective T510 OT26 and due to calve 10/8/2010.

CED	BEPD	WEPD	YEPD	SC	CEM	MILK
+9	+5	+56	+98	N/A	+9	+26

31 **BPAR PRIDE S17 918**
 Birth Date: 9-1-2008 Cow 16274048 Tattoo: 918

#SS Traveler 6807 T510 [AMF-NHF] #DHD Traveler 6807 [AMF-NHF]
SS Objective T510 OT26 [AMF-NHF] #SS Miss Hi Spade A114
13776378 SS Miss Rita R011 7R8 [AMF-NHF] SS Rito Rito R76 R011
 SS Miss Ultress U56

CW	\$W
+0	+28.53
MARB	\$F
+47	+36.05
RE	\$G
+16	+32.53
FAT	\$B
-.012	+44.42

#+SAV 5175 Bando 0699 [AMF-NHF] #+SAF 598 Bando 5175 [AMF]
CSC Pride S17 LLA Georgina 419
15750992 CSC Pride F122 +Basin Max DS B14A
 #Basin Pride 7097

One of the biggest spread females in the entire sale offering, 918 goes from a +.1 BW to a +98 YW EPD. Her dam is a flawless daughter of SAV 5175 Bando 0699 that sold as a feature in the 2008 C/S State Sale. 918 has an incredible EPD tabulation and places in the top 4% for CED, 10% for YW, 15% for BW, WW, CEM, Fat, \$F and \$G and 20% for \$W. Bred to HA Image Maker 0415 and due to calve 9/17/2010.

CED	BEPD	WEPD	YEPD	SC	CEM	MILK
+11	+1	+53	+98	N/A	+9	+18

30 **JILLCO SCHURRTOP 8111**
 Birth Date: 9-3-2008 Cow 16178660 Tattoo: 8111

#+GAR Grid Maker [AMF-NHF] #GDAR Traveler 044 [AMF-NHF]
TC Gridiron 258 [AMF-NHF] GAR Precision 2536 [AMC-NHF]
14237017 #TC Blackbird 7049 #TC Dividend 494
 OCC Blackbird 902D

CW	\$W
+1	+21.92
MARB	\$F
+14	+26.36
RE	\$G
+27	+20.53
FAT	\$B
-.005	+30.95

+Exar Foundation 1806 [AMF-NHF] #Bon View New Design 1407 [AMF-NHF]
Jillco Schurrtop 4042 N Bar Primrose 2424
14810513 Jillco Schurrtop J38 #Leachman Saugahatchee 3000C [AMF-NHF]
 Schurrtop 7511

8111 is sired by the Genex/CRI sire TC Gridiron 258 who has been siring extremely eye-appealing cattle that excel for growth. Her dam is by the Express bred sire Exar Foundation 1806 who is known for producing females with excellent udders. She ranks in the top 25% for CEM and Fat. Bred to HA Image Maker 0415 and due to calve 9/17/2010.

CED	BEPD	WEPD	YEPD	SC	CEM	MILK
+4	+3.7	+47	+86	N/A	+8	+19



CSC PRIDE S17 • Dam of Lot 31.



BPAR EVANGEL 13W6 1008 • Lot 32

32 BPAR EVANGEL 13W6 1008
 Birth Date: 10-1-2008 Cow 16274043 Tattoo: 1008

#B/R New Design 036 [AMF-NHF] #VDAR New Trend 315 [AMF-NHF]
 #B/R Blackcap Empress 76
 #GAR Sleep Easy 1009 [AMF-NHF]
 #Bon View Pride 1551

CW	\$W
+0	+24.24
MARB	\$F
+0.62	+22.41
RE	\$G
+0.03	+33.29
FAT	\$B
+0.006	+41.85

#BR Midland [AMF-NHF] #Twin Valley Precision E161 [NHC-AMF-RDF]
 BR Royal Lass 7036-19
 #Finks 5522-6148
 +GAR Sleep Easy 1304

This high marbling female is the result of one of the great crosses in the breed with Bon View New Design 1407 and BR Midland. She descends from four generations of donor dams including GAR Sleep Easy 1304 who is an own daughter of the \$60,000 GAR Scotch Cap 199. 1008 ranks in the top 15% for Marb and \$G and records an individual BW of just 69 lbs. Bred to HA Image Maker 0415 and due to calve 10/21/2010.

CED	BEPD	WEPD	YEPD	SC	CEM	MILK
+7	+2.2	+42	+80	N/A	+9	+23

33 BPAR WEIKERS BLACKCAP 744
 Birth Date: 9-28-2008 Cow 16220609 Tattoo: 744

#B/R New Design 036 [AMF-NHF] #VDAR New Trend 315 [AMF-NHF]
 B/R Blackcap Empress 76
 #+JR Juice 2005
 GG Clara 200

CW	\$W
+13	+28.12
MARB	\$F
+0.47	+33.46
RE	\$G
+0.21	+28.78
FAT	\$B
+0.008	+51.56

+Assman Midway T75N [NHC-AMF] #Twin Valley Precision E161 [NHC-AMF-RDF]
 BR Royal Lass 7036-19
 +Weikers Creekstone 9056
 Alc Heidi J13H

An impressive high growth female who recorded an individual WR of 105 and YR of 104. In addition she ranks in the top 5% for WW, 10% for Milk, 15% for YW, 20% for \$F and \$B and 25% for \$W and \$G. Her dam is sired by a full brother to BR Midland. Bred to HA Image Maker 0415 and due to calve 9/27/2010.

CED	BEPD	WEPD	YEPD	SC	CEM	MILK
+5	+3.4	+57	+97	N/A	+5	+28

34 BPAR MISS WIX 462P 9138
 Birth Date: 9-13-2008 Cow 16274047 Tattoo: 9138

#B/R New Design 036 [AMF-NHF] #VDAR New Trend 315 [AMF-NHF]
 B/R Blackcap Empress 76
 #+JR Juice 2005
 GG Clara 200

CW	\$W
+11	+28.75
MARB	\$F
+0.49	+30.99
RE	\$G
+0.10	+27.81
FAT	\$B
+0.012	+48.35

#Sitz Alliance 6595 [AMF-NHF] #Sitz Traveler 8180 [AMF-NHF]
 #Sitz Barbaramere Jet 2698
 #Summitcrest High Prime 0H29 [AMF-NHF]
 +Shady Brook Miss Wix 555J

This paternal sister to Lot 33 also exhibits the excellent growth traits that their Accelerated Genetics sire, Genetics by Design 049 is known for. She records an individual BW of just 70 lbs., WR of 106, YR of 110, ribeye ratio of 103 and places in the top 10% for Milk, 15% for WW, 20% for YW and \$W and 25% for \$F and \$G. Bred to Myty In Focus and due to calve 9/17/2010.

CED	BEPD	WEPD	YEPD	SC	CEM	MILK
+6	+2.3	+53	+93	N/A	+6	+28

35 BPAR JOY U027 [AMF-NHF]
 Birth Date: 10-13-2008 Cow 16215892 Tattoo: U027

#CA Future Direction 5321 [AMC-NHC] #GAR Precision 1680 [AMC-NHC]
 SydGen OnStar 3217 [AMC-NHC] CA Miss Power Fix 308 [AMF]
 #+SAF Forever Lady 0182

CW	\$W
+22	+22.60
MARB	\$F
+0.42	+22.03
RE	\$G
+0.24	+26.43
FAT	\$B
+0.003	+52.96

#+GAR Exaltation 3144 [AMF-NHF] #N Bar Emulation EXT [AMF-NHF]
 +GAR Scotch Cap 309
 #Summitcrest High Prime 0H29 [AMF-NHF]
 Butchs Joy L035

An excellent bred heifer by the SydGen and Butch's Angus Sire SydGen OnStar 3217 from the Butch's Joy cow family. U027 ranks in the top 10% for CW, 15% for CEM and 20% for \$B. This female will add solid carcass traits to her progeny. Bred to TC Rito 416 and due to calve 12/11/2010.

CED	BEPD	WEPD	YEPD	SC	CEM	MILK
+4	+3.4	+43	+80	N/A	+9	+23

36 BPAR WEIKERS QUEENIE 80 [AMF-NHF]
 Birth Date: 9-15-2008 Cow 16187695 Tattoo: 80

#B/R New Design 323 #B/R New Design 036 [AMF-NHF]
 B/R Ruby of Tiffany 155
 #DHD Traveler 6807 [AMF-NHF]
 +SVF Forever Lady 1121

CW	\$W
+11	+19.82
MARB	\$F
+0.57	+19.91
RE	\$G
+0.17	+32.89
FAT	\$B
-0.006	+51.09

#+GAR Pinnacle [NHC-AMF] #GAR Precision 1680 [AMC-NHC]
 +GAR Ext 2114
 #B/R New Design 036 [AMF-NHF]
 +GAR Sleep Easy 7169

A high marbling, big \$B female by Weikers Designer W711 from a dam by the high growth sire, GAR Pinnacle. 80 ranks in the top 10% for \$G and 20% for Marb, Fat and \$B. Bred to TC Rito 416 and due to calve 12/11/2010.

CED	BEPD	WEPD	YEPD	SC	CEM	MILK
+3	+4.2	+41	+77	N/A	+4	+22

37 BPAR BLACKCAP 658 128 [AMF]
 Birth Date: 11-2-2008 Cow 16272872 Tattoo: 128

Connealy Foundation 426 [AMC-NHF] #CA Future Direction 5321 [AMC-NHC]
 Ruby Red of Conanga 436
 #+B/R New Frontier 095 [AMF-NHF]
 NRAR Blackcap Beauty 1010

CW	\$W
+9	+22.29
MARB	\$F
+0.30	+26.74
RE	\$G
-0.13	+16.79
FAT	\$B
+0.024	+44.76

#SAV 8180 Traveler 004 [AMF-NHF-RDF] #Sitz Traveler 8180 [AMF-NHF]
 +Boyd Forever Lady 8003
 #Papa Durabull 9805
 #GAR New Trend 780

This open heifer descends from the Limestone LLC donor GAR New Trend 780 who is an own daughter of the \$120,000 GAR Scotch Cap 867. She is sired by Rocky 426 J&G 612 who was the Reserve Grand Champion Bull at the Missouri Angus Preview Show for Jones & Gilliam Angus. She places in the top 20% for Milk EPD and maintains a WW and YW well above breed average.

CED	BEPD	WEPD	YEPD	SC	CEM	MILK
+4	+3.9	+46	+86	N/A	+7	+25

38 BPAR PRIDE 608 1021
 Birth Date: 10-19-2009 Cow 16563930 Tattoo: 1021

#BAR Ext Traveler 205 [AMF-NHF] #N Bar Emulation EXT [AMF-NHF]
 #BAR Queen Traveler 3015
 #+GAR Sleep Easy 1009 [AMF-NHF]
 HHF 917 Lady 975 498

CW	\$W
+11	+27.17
MARB	\$F
+0.32	+33.00
RE	\$G
+0.20	+23.65
FAT	\$B
+0.010	+44.74

+Big Elban of Sydgen 3023 [AMF-NHF] Big Elban of Graham 38425
 +SAF Royal Queen 5084
 #Bon View New Design 878 [AMF-NHF]
 +Snells Pride 1021

An impressive daughter of the Select Sires roster member CRA Bextor 872 5205 608 from a dam bred in the SydGen program who blends the outcross sire Big Elban of SydGen 3023 with Bon View New Design 878 who led the breed in registrations for four consecutive years. She has tremendous maternal strength with a Milk EPD that places in the top 1% of the breed, as well as ranking in the top 15% for WW and YW and 20% for \$F.

CED	BEPD	WEPD	YEPD	SC	CEM	MILK
+4	+2.9	+53	+95	N/A	+7	+31



BP&R EMMA LOU 9176 1138 - Lot 39

39 BPAR EMMA LOU 9176 1138

Birth Date: 11-2-2008 Cow 16274044 Tattoo: 1138

Genetics by Design 049 [AMF-NHF] #V&DAR New Trend 315 [AMF-NHF]
 #13791489 GG Clara 859 #B/R Blackcap Empress 76
 #+JR Juice 2005
 GG Clara 200

CW	\$W
+11	+32.11
MARB	\$F
+63	+29.00
RE	\$G
+25	+34.12
FAT	\$B
+007	+54.36

#Bon View New Design 1407 [AMF-NHF] #B/R New Design 036 [AMF-NHF]
Bpar Fame 1407 9176 Bon View Pride 664
 #15510833 +BPAR Fame 234D E25 #+GDAR SVF Traveler 234D [AMF-NHF]
 #+SAF Royal Lass 1027

1138 is an extremely solid brood cow prospect with nine traits placing in the top 25% or higher including top 3% for \$W, 4% for CED, 10% for Milk and \$G, 15% for WW, Marb and \$B, 20% for BW and 25% for YW.

CED	BEPD	WEPD	YEPD	SC	CEM	MILK
+11	+6	+53	+91	N/A	+9	+28

Her dam traces to the immortal SAF Royal Lass 1027, the dam of SAF Fame and she is a maternal sister to SAF Royal Lass 1002 who produced SAF 598 Bando 5175 and the \$47,500 SydGen Triumph.

She posted an impressive BW of just 61 lbs. with a WR of 107 and YR of 101.



BP&R BEAUTY 0T26 4039 - Lot 42

42 BPAR BEAUTY 0T26 4039

Birth Date: 4-3-2009 Cow 16397713 Tattoo: 4039

SS Objective T510 0T26 [AMF-NHF] #SS Traveler 6807 T510 [AMF-NHF]
 #13776378 SS Miss Rita R011 7R8 [AMF-NHF] #SS Miss Hi Spade A114
 SS Miss Ultress U56 SS Rito Rito R76 R011

CW	\$W
I+8	+21.46
MARB	\$F
I+60	+43.91
RE	\$G
I+19	+33.17
FAT	\$B
I+007	+54.65

SydGen Substance 3450 [AMF-NHF] #+SAF 598 Bando 5175 [AMF]
SydGen Beauty 5610 SAF Blackbird 0200
 15204329 SydGen Beauty 2409 #Vermilion Yellowstone [AMF-NHF]
 SAF Beauty 8347

This well bred show heifer and brood cow prospect places in the top 2% for \$F, 4% for YW, 15% for Marb, \$G and \$B, 20% for CED and 25% for Milk.

CED	BEPD	WEPD	YEPD	SC	CEM	MILK
I+8	I+2.5	I+49	I+104	N/A	I+8	I+24

This heifer is also an outcross to many AI sires today and offers multiple mating options, truly a breeding piece with a big-time look and a great set of EPDs.

The SS Objective T510 0T26 females are good uddered and doing an excellent job in production.

40 CSC LADY MAE 901

Birth Date: 1-10-2009 Cow 16303448 Tattoo: 901

HSAF Bando 1961 [AMF-NHF] #Bon View Bando 598 [AMF]
 #13896250 +JKS Miss Cheyenne 196 +SAF Royal Lass 1002
 #N Bar Emulation EXT [AMF-NHF]
 +Magic Meadow Miss Cheyenne

\$W
+25.30
\$F
+32.38
\$G
N/A
\$B
N/A

#Connealy Lead On [AMF-NHF] #Connealy Leadtime [AMF-NHF]
CSC Lady Mae 715 [AMF] Eligence Plus of Conanga
 15873967 CSC Lady Mae 541 [AMF] #+B/R New Frontier 095 [AMF-NHF]
 #TAR Lady Mae 9114

This high growth daughter of the Accelerated Genetics sire HSAF Bando 1961 puts together a solid pedigree of popular AI sires with her dam blending Connealy Lead On and B/R New Frontier 095.

CED	BEPD	WEPD	YEPD	SC	CEM	MILK
I+2	I+3.2	I+52	I+94	N/A	I+6	I+25

She ranks in the top 20% for WW, YW, Milk and \$F. 901 will make an excellent brood cow prospect and is ready to take home and move right into the spring breeding program.

43 BPAR ROYAL OBJECTIVE 2019

Birth Date: 2-1-2009 Bull 16368367 Tattoo: 2019

Quaker Hill Objective 3J15 [AMF-NHF] #SS Objective T510 0T26 [AMF-NHF]
 14660859 #Quaker Hill Queen 1L4 [AMF-NHF] #SS Traveler 6807 T510 [AMF-NHF]
 +BW/QHF Blackcap Lad SS Miss Rita R011 7R8 [AMF-NHF]
 Ankony Queen QHF R981

CW	\$W
+13	+29.23
MARB	\$F
+22	+37.78
RE	\$G
+27	+22.40
FAT	\$B
-011	+46.16

#+SAF Connection [AMF-NHF] #+SVF Gdar 216 LTD
SydGen Royal Lady 5025 +SAF Royal Queen 5084
 14980062 SAF Royal Lady 0255 #N Bar Emulation EXT [AMF-NHF]
 CAF Royal Lady 76

The first of two half brothers by the high growth sire Quaker Hill Objective 3J15. His dam blends the Pathfinder Sires SAF Connection and N Bar Emulation EXT with the Royal Lady cow family from Sydenstrickers.

CED	BEPD	WEPD	YEPD	SC	CEM	MILK
I+5	I+2.6	I+59	I+102	N/A	I+7	I+27

If you are looking for a herd sire prospect with an incredible pedigree and EPD profile, then 2019 should be high on the list. He places in the top 4% for WW, 10% for YW, Milk and \$F and 15% for Fat and \$W.

41 BPAR FOREVERLADY 1806 2169

Birth Date: 2-16-2009 Cow 16305681 Tattoo: 2169

Exar Foundation 1806 [AMF-NHF] #Bon View New Design 1407 [AMF-NHF] #B/R New Design 036 [AMF-NHF]
 #13961547 N Bar Primrose 2424 Bon View Pride 664
 #Emulation 31 [DWF-RDF]
 Primrose N Bar 9962

CW	\$W
+7	+23.40
MARB	\$F
+37	+27.88
RE	\$G
-02	+26.82
FAT	\$B
-023	+43.34

#+B/R New Frontier 095 [AMF-NHF] #B/R New Design 036 [AMF-NHF]
Bpar Forever Lady 095 E311 White Fence Pride H1
 #15838397 +Birks Forever Lady 210 [AMF] #+GDAR SVF Traveler 234D [AMF-NHF]
 B&M Forever Lady 294 [AMF-NHF]

2169 is a member of the famous Forever Lady cow family tracing to the \$750,000 producing B&M Forever Lady 294. Her grandam is a flush sister to Birks Forever Lady 110 who has amassed more than \$250,000 in progeny sales.

CED	BEPD	WEPD	YEPD	SC	CEM	MILK
N/A	I+2.4	I+43	I+86	N/A	N/A	I+27

Her sire bred in the Express Ranches program is a maternal brother to the popular Pathfinder Sire N Bar Emulation EXT and he too is known for producing excellent uddered females.

This spring open heifer places in the top 5% for Fat and top 10% for Milk.

44 BPAR OBJECTIVE 3349 1209

Birth Date: 1-20-2009 Bull 16305683 Tattoo: 1209

Quaker Hill Objective 3J15 [AMF-NHF] #SS Objective T510 0T26 [AMF-NHF] #SS Traveler 6807 T510 [AMF-NHF]
 14660859 #Quaker Hill Queen 1L4 [AMF-NHF] SS Miss Rita R011 7R8 [AMF-NHF]
 +BW/QHF Blackcap Lad Ankony Queen QHF R981

CW	\$W
+11	+31.02
MARB	\$F
+43	+33.00
RE	\$G
+43	+31.40
FAT	\$B
-001	+52.49

#B/R New Design 323-9150 [AMF-NHF] #B/R New Design 323
Circle A Entense 3349 B/R Ruby of Tiffany 4117
 #14594480 +BT Everelda Entense 57D #+Leachman Right Time
 Sitz Everelda Entense 1905

Another excellent bred bull from a dam who is an own daughter of the \$380,000 BT Everelda Entense 57D. This high maternal son of Quaker Hill Objective 3J15 ranks in the top 1% for Milk, 10% for RE, 15% for WW, \$W and \$G, 20% for YW, \$F and \$B and 25% for CED.

CED	BEPD	WEPD	YEPD	SC	CEM	MILK
I+8	I+6	I+53	I+95	I-37	I+7	I+33

1209 is a Show-Me-Select and Missouri Angus Advantage +Plus qualified sire with excellent calving-ease genetics, yet he does not sacrifice growth.

Lots 45-55 sell as guest consignments from our friends at JM Angus.

JM ANGUS

Wayne Marquis

5671 M Hwy, Poplar Bluff, MO 63901

(573) 686-5235 • (573) 785-6338

Fax: (573) 785-5413

E-mail wmarquis@mycitycable.com

45 JM OBJECTIVE 9325

Birth Date: 3-25-2009 Bull 16315344 Tattoo: 9325

#SS Objective T510 OT26 [AMF-NHF] #SS Traveler 6807 T510 [AMF-NHF]
BirkGen Objective 6804 SS Miss Rita R011 7R8 [AMF-NHF]
+15740992 +BirkGen Blackbird 2634 #Bon View New Design 878 [AMF-NHF]
 +HF Blackbird 60H

#Bon View New Design 1407 [AMF-NHF] #B/R New Design 036 [AMF-NHF]
BirkGen Rita 4428 [AMF-NHF] Bon View Pride 664
+14966790 +GAR Pinnacle 1740 #+GAR Pinnacle [NHC-AMF]
 +GAR 6807 Traveler 2167 [AMF]

CW	\$W
I+11	+29.58
MARB	\$F
I+57	+31.54
RE	\$G
I+21	+29.80
FAT	\$B
I+026	+50.48

This excellent calving-ease herd bull prospect, has a CED in the top 1% and places in the top 15% for Milk, Marb and \$W, 20% for BW and 25% for YW, \$F, \$G and \$B. He blends SS Objective T510 OT26 with Bon View New Design 1407 and GAR Pinnacle and descends from the donor dam GAR 6807 Traveler 2167. He is a Show-Me-Select and Missouri Angus Advantage +Plus qualified sire.

CED	BEPD	WEPD	YEPD	SC	CEM	MILK
+13	-0.8	+49	+92	I+40	+11	+26

47 JM NEW DESIGN 9324 [NHF]

Birth Date: 3-24-2009 Bull 16315345 Tattoo: 9324

#Bon View New Design 1407 [AMF-NHF] #B/R New Design 036 [AMF-NHF]
BirkGen 1407 New Design 6775 Bon View Pride 664
+15740966 +GAR Precision 870 [AMF-NHF] #GAR Precision 1680 [AMC-NHC]
 +GAR Ext 327 [AMF]

#Connealy Lead On [AMF-NHF] #Connealy Leadtime [AMF-NHF]
Rubles Aleta 6101 Eligence Plus of Conanga
15411548 MAF Aleta B101 MAF Forte 0054
 Indian Creek Aleta 559

9324 is a heavy-muscled bull with a RE EPD in the top 15% of the breed. In addition he balances a Fat EPD in the top 10%, \$G top 15% and \$B top 25%. This blending of Bon View New Design 1407 and Connealy Lead On should make for some excellent muscled cattle and solid producing replacement females.

CED	BEPD	WEPD	YEPD	SC	CEM	MILK
+6	+2.4	+30	+71	N/A	+6	+22

46 JM NEW DESIGN 9326 [NHF]

Birth Date: 3-26-2009 Bull 16315343 Tattoo: 9326

#Bon View New Design 1407 [AMF-NHF] #B/R New Design 036 [AMF-NHF]
BirkGen 1407 New Design 6775 Bon View Pride 664
+15740966 +GAR Precision 870 [AMF-NHF] #GAR Precision 1680 [AMC-NHC]
 +GAR Ext 327 [AMF]

#+GAR Integrity [NHC-AMF] #Bon View New Design 1407 [AMF-NHF]
WCC Travel Gal 623 [NHF] GAR Precision 1019 [AMC]
+15386363 #PAF Travel Gal 8712 #+OCC Backstop 888B
 #PAF Lady Emulation 6528

CW	\$W
I+8	+26.24
MARB	\$F
I+45	+16.44
RE	\$G
I+44	+32.15
FAT	\$B
I+004	+47.08

Another top 1% CED bull that qualifies for Show-Me-Select and Missouri Angus Advantage +Plus heifer programs. This calving-ease bull blends Bon View New Design 1407 with the \$255,000 GAR Integrity and his dam is a maternal sister to WCC Frontier Gal 39 who was selected at the 2005 National Western Grand Champion Female. Both his grandam and third dam are Pathfinder females. 9326 also ranks in the top 4% for BW, 10% for RE and 15% for Milk and \$G.

CED	BEPD	WEPD	YEPD	SC	CEM	MILK
+13	-1.0	+35	+71	N/A	+11	+26

48 MTNMEADOW BLACKBIRD 4054

Birth Date: 2-6-2004 Cow 14888729 Tattoo: 4054

#+Leachman Right Time #N Bar Emulation EXT [AMF-NHF]
Hyline Right Time 338 [AMF-NHF] Leachman Erica 0025
#13058662 Hyline Pride 265 +Hyline SVF Traveler 0115
 Hyline Pride 870

#Basin Sensational Gardens Sensation 039 S1 [RDC]
Shamrocks Blackbird LADY2347 +Jolly R Lady 2012
12882916 TAR Blackbird Lady 9902 Basin Montana Power DS 149
 GDAR Blackbird Lady 952

This daughter of Hyline Right Time 338, who is one of the great cow makers in the breed, places in the top 2% for \$W, 10% for WW and 20% for CED and Milk. Sells with a bull calf (Lot 48A) born 3/24/2010 by Bpar Midland 7594 1110.

CED	BEPD	WEPD	YEPD	SC	CEM	MILK
+7	+1.7	+49	+78	I+66	+5	+28



PAF TRAVEL GAL 8712 - Grandam of Lot 46.

49 BLACKCAP 5G83 OF GAR

Birth Date: 9-25-2005 Cow 15098929 Tattoo: 5G83

#+Leachman Right Time #N Bar Emulation EXT [AMF-NHF]
Hyline Right Time 338 [AMF-NHF] Leachman Erica 0025
#13058662 Hyline Pride 265 +Hyline SVF Traveler 0115
 Hyline Pride 870

Widespread MB 0G8 of GAR #Whitstone Widespread MB [AMF-NHF]
Blackcap 2G55 of GAR #Traveler Erica 3G6 of GAR
14129133 Blackcap 8G12 of GAR #Rito 9FB3 of 5H11 Fullback [AMF-NHF]
 #Blackcap 3G36 of GAR

A paternal sister to Lot 48 and another excellent candidate for adding early growth genetics to a program. This Blackcap female excels to the top 2% of the breed for WW and Milk, while placing in the top 4% for CW, 5% for YW and 10% for \$W and \$F. Note her Pathfinder third dam bred in the Garton Angus program as well. Pasture exposed from 5/22/2009 to 8/1/2009 to BirkGen Objective 6804.

CW	\$W
+21	+29.16
MARB	\$F
+05	+30.44
RE	\$G
+02	+5.71
FAT	\$B
+026	+33.22

CED	BEPD	WEPD	YEPD	SC	CEM	MILK
+4	+3.4	+57	+94	N/A	+5	+32

50 XX RITA 6525 N50

Birth Date: 9-5-2003 Cow +14635387 Tattoo: N50

#Paramont Ambush 2172 [AMF-NHF] #Bandolier Eston Durness 42B
Rockn D Ambush 1531 [AMF-NHF] EWS Miss Burgess 1720
#12396365 MS Blackcap Band of RD 1301 #Tehama Bando 155 [AMF-NHF]
 Miss Blackcap of RD 1127

#+SVF Gdar 216 LTD #Traveler 124 GDAR
Circle A Rita 9D3-6525 +GDAR Forever Lady 718
+14635385 +Rita 9D3 of 9525 Power Point #PJM Powerpoint
 Leachman Band Lass 9525

CW	\$W
+9	+26.81
MARB	\$F
+4.45	+11.93
RE	\$G
+3.32	+32.52
FAT	\$B
-0.17	+47.48

This excellent female has great end product merit and places in the top 5% for \$G.

CED	BEPD	WEPD	YEPD	SC	CEM	MILK
+4	+2.0	+4.5	+7.0	-3.4	+6	+14

10% for RE, 15% for Marb, Fat and \$B, 20% for \$W and 25% for WW.
 She is a member of the Rita tribe and is sired by the Pathfinder Sire Rockn D Ambush 1531.
 Pasture exposed from 11/7/2009 to 1/16/2010 to BirkGen Predestined 8212.

52 BOOTHEEL BLACKCAP 624 [AMF]

Birth Date: 5-22-2004 Cow 14876635 Tattoo: 624

#B/R New Design 036 [AMF-NHF] #VDAR New Trend 315 [AMF-NHF]
Finks 182 of 9355 036 [AMF] B/R Blackcap Empress 76
13905273 +Finks Miss 9355 4202 NT #AAR New Trend
 +Finks Miss 4202 8130 Ext [AMF]

GT Maxwell #GT Maximum [AMF-NHF]
Bootheel Blackcap 107 #GT Blackbird 103
12815474 Bootheel Blackcap 19 R&J Rolex 2895
 Bootheel Blackcap 195

CW	\$W
+7	+19.47
MARB	\$F
+2.29	+6.02
RE	\$G
-0.06	+17.92
FAT	\$B
+0.025	+30.29

A high maternal daughter of Finks 182 of 9355 036 from a dam who traces to the Pathfinder Sire GT Maximum.

CED	BEPD	WEPD	YEPD	SC	CEM	MILK
+0	+3.9	+3.1	+5.8	N/A	+0	+25

She ranks in the top 20% for Milk EPD.
 Pasture exposed from 11/7/2009 to 1/16/2010 to BirkGen In Focus 8314.

50A JM RITA 9103

Birth Date: 10-13-2009 Cow 16426641 Tattoo: 9103

#+Rito 112 of 2536 Rito 616 [AMF-NHF] #Rito 616 of 4B20 6807 [AMF-NHF]
XX Rito 112 S48 GAR Precision 2536 [AMC-NHF]
15713701 XX Enchantress N53 #Summitcrest High Prime 0H29 [AMF-NHF]
 Sfi Enchantress K155

#Rockn D Ambush 1531 [AMF-NHF] #Paramont Ambush 2172 [AMF-NHF]
XX Rita 6525 N50 MS Blackcap Band of RD 1301
+14635387 +Circle A Rita 9D3-6525 #+SVF Gdar 216 LTD
 +Rita 9D3 of 9525 Power Point

CW	\$W
+7	+25.90
MARB	\$F
+4.49	+20.39
RE	\$G
+1.19	+33.09
FAT	\$B
-0.021	+47.93

A granddaughter of Rito 112 of 2536 Rito 616 with excellent early growth and marbling traits. She places in the top 10% for Fat and \$G and 25% for WW and Marb.

CED	BEPD	WEPD	YEPD	SC	CEM	MILK
+2	+3.2	+5.0	+8.1	-1.26	+4	+17

52A JM MIDLAND 9826

Birth Date: 8-26-2009 Bull 16426633 Tattoo: 9826

#BR Midland [AMF-NHF] #Twin Valley Precision E161 [NHC-AMF-RDF]
Bpar Midland 7594 1110 BR Royal Lass 7036-19
15317901 +SAF Vixon 7594 #+SVF Gdar 216 LTD
 Finks Vixon 764

Finks 182 of 9355 036 [AMF] #B/R New Design 036 [AMF-NHF]
Bootheel Blackcap 624 [AMF] +Finks Miss 9355 4202 NT
14876635 Bootheel Blackcap 107 GT Maxwell
 Bootheel Blackcap 19

CW	\$W
+5	+19.95
MARB	\$F
+1.38	+14.22
RE	\$G
+1.02	+23.78
FAT	\$B
+1.017	+35.54

A great herd bull prospect that is a grandson of the \$202,000 BR Midland, he maintains above breed average Marb and \$G.

CED	BEPD	WEPD	YEPD	SC	CEM	MILK
+4	+3.4	+3.6	+6.9	N/A	+4	+20

51 CRYSTAL PRIDELLA 305

Birth Date: 11-10-2003 Cow 14915396 Tattoo: 305

#Bon View Bando 598 [AMF] #Tehama Bando 155 [AMF-NHF]
Baldrige Notch AC #Bon View Dora 56
#+12389525 +SVF Blackbird 1620 #+GDAR Oscar 711 [AMF-NHF]
 #Cedar Hills Blackbird 2011

#Krugerrand of Donamere 490 [AMF-NHF] #CH Stacker 7040
VAR Pridella 9049 Donamere Bachel Beauty 288
+13256582 +VDAR Pridella 437 #Traveler 1148 GDAR
 VDAR Pridella 164

CW	\$W
+16	+16.77
MARB	\$F
+3.31	+29.48
RE	\$G
-0.07	+21.35
FAT	\$B
-0.013	+45.43

This member of the Pridella cow family made famous at Van Dyke's in Montana is from a dam by the Pathfinder Sire Krugerrand of Donamere 490 and she is sired by the popular outcross bull Baldrige Notch AC.

CED	BEPD	WEPD	YEPD	SC	CEM	MILK
+3	+4.3	+4.4	+8.8	N/A	+0	+16

She ranks in the top 10% for \$F, 15% for YW, CW and \$B and 20% for Fat.
 Pasture exposed from 11/7/2009 to 1/16/2010 to BirkGen Predestined 8212.

53 BOOTHEEL RITO QUEEN 793 [AMF]

Birth Date: 9-8-2003 Cow 14743577 Tattoo: 793

#Vermilion Dateline 7078 [AMF-NHF] #Connealy Dateline
Vermilion Yellowstone [AMF-NHF] #Vermilion Blackbird 5044
#13305978 Vermilion B Jestress 3912 Vermilion George 7337
 Vermilion CB Jestress 0229

+Shady Brook Quest 100E +Finks Stepahead
Bootheel Queen 487 +Finks Beauty 249 63 9J9
#12992316 BSF Rito Queen 524 #Rito 2100 GDAR
 PCR Pam 120

CW	\$W
+13	+19.90
MARB	\$F
+4.47	+27.94
RE	\$G
-1.11	+24.32
FAT	\$B
+0.008	+45.88

This productive cow is a high growth female with added marbling genetics. She blends the Pathfinder Sires Vermilion Yellowstone and Rito 2100 GDAR and places in the top 10% for CW and 15% for WW, YW, Marb, \$G and \$B.

CED	BEPD	WEPD	YEPD	SC	CEM	MILK
-3	+4.8	+4.8	+8.8	+1.51	+6	+16

Pasture exposed from 11/7/2009 to 1/16/2010 to BirkGen Predestined 8212.

51A JM PRIDE 9822

Birth Date: 8-22-2009 Cow 16426648 Tattoo: 9822

#SS Objective T510 0T26 [AMF-NHF] #SS Traveler 6807 T510 [AMF-NHF]
BirkGen Objective 6804 SS Miss Rita R011 7R8 [AMF-NHF]
+15740992 +BirkGen Blackbird 2634 #Bon View New Design 878 [AMF-NHF]
 +HF Blackbird 60H

#+Baldrige Notch AC #Bon View Bando 598 [AMF]
Crystal Pridella 305 +SVF Blackbird 1620
14915396 +VAR Pridella 9049 #Krugerrand of Donamere 490 [AMF-NHF]
 +VDAR Pridella 437

CW	\$W
+13	+24.72
MARB	\$F
+4.42	+36.05
RE	\$G
+1.10	+26.35
FAT	\$B
+0.003	+49.60

This heifer calf by BirkGen Objective 6804 ranks in the top 10% for YW and 15% for WW and \$F, she will add growth to her progeny.

CED	BEPD	WEPD	YEPD	SC	CEM	MILK
+7	+2.5	+5.3	+9.8	N/A	+5	+19

53A JM OBJECTIVE 9810

Birth Date: 8-10-2009 Bull 16426651 Tattoo: 9810

#SS Objective T510 0T26 [AMF-NHF] #SS Traveler 6807 T510 [AMF-NHF]
BirkGen Objective 6804 SS Miss Rita R011 7R8 [AMF-NHF]
+15740992 +BirkGen Blackbird 2634 #Bon View New Design 878 [AMF-NHF]
 +HF Blackbird 60H

#Vermilion Yellowstone [AMF-NHF] #Vermilion Dateline 7078 [AMF-NHF]
Bootheel Rito Queen 793 [AMF] Vermilion B Jestress 3912
14743577 #Bootheel Queen 487 +Shady Brook Quest 100E
 BSF Rito Queen 524

CW	\$W
+11	+25.87
MARB	\$F
+1.50	+35.26
RE	\$G
+1.08	+27.75
FAT	\$B
+1.013	+49.48

If you want to add growth to your calf crop, take a look at this powerful grandson of SS Objective T510 0T26, he records a top 10% WW EPD, 15% for YW and \$F and 25% for CEM, Marb and \$B.

CED	BEPD	WEPD	YEPD	SC	CEM	MILK
+4	+2.7	+5.5	+9.8	N/A	+8	+19

54 W R R LADY POWER 99P3

Birth Date: 4-13-2003 Cow 14387559 Tattoo: 993

SA Double Power 1002 [AMF-NHF] #R&J Maternal Power 270 [AMF-NHF]
WRR Power #SA Blackcap Lady 1290
13022597 Double TT Princess 455 Double TT Easy Rider 149
 Double TT MS E Rider 445B

CW	\$W
+6	+19.26
MARB	\$F
-03	+8.55
RE	\$G
+01	+9.34
FAT	\$B
-009	+21.14

+DF Easy Rider Ok 6010 #+Ken Caryl Overdrive 304H
Double TT MS E Rider 1924 Patriots Eline of Verola
12376325 Double TT Prime Time LADY254 PS Prime Time
 TLW Winnie Lassie 54 W6

Bred in the Walnut Ridge Ranch program at Willow Springs, this daughter of WRR Power places in the top 25% for Fat.

CED	BEPD	WEPD	YEPD	SC	CEM	MILK
-2	+2.4	+34	+62	N/A	+2	+11

Pasture exposed from 11/14/2009 to 1/16/2010 to BirkGen Objective 6804.

56 R R FOREVER LADY 512

Birth Date: 3-13-2009 Cow 16295086 Tattoo: 512

#GAR Precision 1680 [AMC-NHC] #Tehama Bando 155 [AMF-NHF]
GAR Yield Grade [AMF-NHF] 9J9 GAR 856 [NHF]
#+13724351 +GAR Ext 4526 [AMF] #N Bar Emulation EXT [AMF-NHF]
 +GAR 6807 Traveler 93 [AMF-NHF]

CW	\$W
+32	+22.16
MARB	\$F
+15	+34.97
RE	\$G
+34	+16.25
FAT	\$B
-004	+49.90

+BPAR New Design 1407 4211 #Bon View New Design 1407 [AMF-NHF]
RR Forever Lady 511 +Circle A Forever Lady 7045
15608326 Circle A Forever Lady 2445 +Circle A Fame 9493 [AMF]
 Three Trees Foreverlady 0431

This impressive open heifer by GAR Yield Grade ranks in the top 1% for CW, 15% for \$F and 25% for RE, Fat and \$B.

CED	BEPD	WEPD	YEPD	SC	CEM	MILK
+6	+3.3	+48	+95	N/A	+7	+20

Her third dam, Three Trees Foreverlady 0431, is an own daughter of GDAR Forever Lady 71.

54A JM MIDLAND 999

Birth Date: 8-9-2009 Bull 16426657 Tattoo: 999

#BR Midland [AMF-NHF] #Twin Valley Precision E161 [NHC-AMF-RDF]
Bpar Midland 7594 1110 BR Royal Lass 7036-19
15317901 +SAF Vixon 7594 #+SVF Gdar 216 LTD
 Finks Vixon 764

CW	\$W
+5	+19.33
MARB	\$F
+22	+15.71
RE	\$G
+06	+20.22
FAT	\$B
+0	+32.30

WRR Power SA Double Power 1002 [AMF-NHF]
WRR Lady Power 99P3 Double TT Princess 455
14317559 Double TT MS E Rider 1924 +DF Easy Rider Ok 6010
 Double TT Prime Time LADY254

A solid herd bull prospect with balanced EPDs by the \$202,000 BR Midland son Bpar Midland 7594 1110.

CED	BEPD	WEPD	YEPD	SC	CEM	MILK
+3	+2.6	+37	+71	N/A	+5	+13

57 RUBLES EXT T252

Birth Date: 9-13-2007 Cow 15815396 Tattoo: T252

#CA Future Direction 5321 [AMC-NHC] #GAR Precision 1680 [AMC-NHC]
Stevenson Benchmark N190 [NHC-AMF] CA Miss Power Fix 308 [AMF]
14368434 Stevenson Elga L706 [AMF] +Stevenson Comstock 345J
 +Stevenson Elga 644G

CW	\$W
+16	+26.23
MARB	\$F
+60	+16.86
RE	\$G
+33	+29.90
FAT	\$B
+037	+51.46

#N Bar Emulation EXT [AMF-NHF] #Emulation N Bar 5522
Circle W EXT A163 N Bar Primrose 2424
13852167 Morgan 420 Lass D63 WSF Hoss 420
 Morgan Lass Z39

This powerful daughter of the number three marbling sire in the breed, Stevenson Benchmark N190 is from a dam by N Bar Emulation EXT.

CED	BEPD	WEPD	YEPD	SC	CEM	MILK
+9	+1.0	+39	+73	+1.21	+10	+23

She places in the top 10% for CEM, 15% for CED and Marb, 20% for \$G and \$B and 25% for BW. Pasture exposed from 6/19/2009 to 7/31/2009 to Rolling Fame In Focus.

55 BIRKGEN BARBARA 3619

Birth Date: 8-21-2003 Cow +14716071 Tattoo: 3619

#Connealy Dateline #DHD Traveler 6807 [AMF-NHF]
Vermilion Dateline 7078 [AMF-NHF] #Eila Eila of Conanga [AMF]
#18210693 #Vermilion Blackbird 5044 #+Leachman Right Time
 Vermilion Blackbird 3525

CW	\$W
+7	+18.88
MARB	\$F
+26	+26.74
RE	\$G
+08	+21.83
FAT	\$B
-001	+38.06

#+GAR Sleep Easy 1009 [AMF-NHF] #Tehama Bando 155 [AMF-NHF]
Summitcrest Barbara 0E91 Blacklass GAR 103
12411693 #Summitcrest Barbara 0B74 #Hyline Nickel
 Summitcrest Barbara 0X60

A daughter of the high growth and Pathfinder Sire Vermilion Dateline 7078.

CED	BEPD	WEPD	YEPD	SC	CEM	MILK
+3	+4.0	+46	+86	-53	+5	+14

This female is right out of the ET program at Birk Genetics and is from a donor dam by GAR Sleep Easy 1009 who descends from the Summitcrest Barbara cow family. She ranks in the top 15% for YW and 20% for WW and \$F. Pasture exposed from 11/7/2009 to 1/16/2010 to BirkGen Predestined 8212.

58 R R FOREVER LADY 511

Birth Date: 1-13-2007 Cow 15608326 Tattoo: R511

#Bon View New Design 1407 [AMF-NHF] #B/R New Design 036 [AMF-NHF]
BPAR New Design 1407 4211 Bon View Pride 664
+14690695 +Circle A Forever Lady 7045 #B/R New Design 036 [AMF-NHF]
 SVF Forever Lady 4B

CW	\$W
+13	+21.77
MARB	\$F
+29	+28.33
RE	\$G
+15	+21.51
FAT	\$B
+011	+43.18

+Circle A Fame 9493 [AMF] #SAF Fame [AMF-NHF]
Circle A Forever Lady 2445 +Circle A Rita 5H11-6524
14779793 Three Trees Foreverlady 0431 #JLB Exacto 416 [AMF-NHF]
 GAR Forever Lady 71

A granddaughter of the high carcass sire Bon View New Design 1407 from the Forever Lady cow family.

CED	BEPD	WEPD	YEPD	SC	CEM	MILK
+5	+2.8	+47	+88	N/A	+5	+23

511 ranks in the top 15% for WW, YW and \$F, 20% for \$B and 25% for CW. Pasture exposed from 6/19/2009 to 7/31/2009 to Rolling Fame In Focus.

55A JM BARBARA 989

Birth Date: 8-9-2009 Cow 16426652 Tattoo: 989

#SS Objective T510 OT26 [AMF-NHF] #SS Traveler 6807 T510 [AMF-NHF]
BirkGen Objective 6804 SS Miss Rita R011 7R8 [AMF-NHF]
+15740992 +BirkGen Blackbird 2634 #Bon View New Design 878 [AMF-NHF]
 +HF Blackbird 60H

CW	\$W
+8	+25.96
MARB	\$F
+40	+34.64
RE	\$G
+17	+26.77
FAT	\$B
+009	+45.71

#Vermilion Dateline 7078 [AMF-NHF] #Connealy Dateline
BirkGen Barbara 3619 #Vermilion Blackbird 5044
+14716071 Summitcrest Barbara 0E91 #+GAR Sleep Easy 1009 [AMF-NHF]
 #Summitcrest Barbara 0B74

Another high growth daughter of BirkGen Objective 6804, this brood cow prospect places in the top 15% for WW, YW and \$F.

CED	BEPD	WEPD	YEPD	SC	CEM	MILK
+7	+2.3	+54	+97	+07	+7	+18

59 ROLLING BLACKCAP ANNIE

Birth Date: 11-10-2008 Cow 16170265 Tattoo: 403

Mytty In Focus [AMF-NHF-RDF] #SAF Focus of ER [AMF-NHF]
Rolling In Focus 2020 Mytty Countess 906
15667722 Corks Ann 5108 #Bon View New Design 1407 [AMF-NHF]
 #Corks Anns Royce 331

CW	\$W
+6	+27.04
MARB	\$F
+48	+16.13
RE	\$G
-02	+27.48
FAT	\$B
+007	+40.51

#B/R New Design 036 [AMF-NHF] #VDAR New Trend 315 [AMF-NHF]
GAF Blackcap 169 B/R Blackcap Empress 76
13997382 GAF Blackcap 940 #Hoff Power Pounder of SC 579
 GAF Blackcap 720

A low birth weight female with just a I+1.1 BW EPD to place in the top 25% of the breed. Blackcap Annie blends Mytty In Focus with the Pathfinder Sires B/R New Design 036 and Hoff Power Pounder of SC 579.

CED	BEPD	WEPD	YEPD	SC	CEM	MILK
+5	+1.1	+41	+73	N/A	+6	+21

Bred to GAR Selective and due to calve 12/1/2010.

Lots 56-63 sell as guest consignments from our friends at Rolling Ridge Angus.

ROLLING RIDGE ANGUS

Gerald & Margaret Shackelford

1285 County Rd. 321

Poplar Bluff, MO 63901

(573) 785-7509

E-mail mshackelford@semo.net

60 ROLLING BONNIE BLACKLASS

Birth Date: 10-13-2008 Cow 16140081 Tattoo: 382

#GAR Precision 1680 [AMC-NHF] #Tehama Bando 155 [AMF-NHF]
GAR Retail Product [AMF-NHF] 9J9 GAR 856 [NHF]
#13395329 +GAR Ext 4927 #N Bar Emulation EXT [AMF-NHF]
 GAR Traveler 641

CW	\$W
I+12	+28.84
MARB	\$F
I+.39	+21.07
RE	\$G
I+.46	+30.54
FAT	\$B
I-.006	+49.71

#GDAR SVF Traveler 234D [AMF-NHF] #Traveler 124 GDAR
BP&R Weikers Blacklass 38 +GDAR Forever Lady 718
14802643 +Weikers Blacklass W133 #Bon View Spectrum 1176 [AMF-NHF]
 #RR Blacklass 4119

A big ribeye female by the Select Sires bull GAR Retail Product from a dam by another great carcass sire GDAR SVF Traveler 234D. Note her Pathfinder third dam, RR Blacklass 4119, who worked in the Weiker and Ratcliff donor program before joining the Limestone LLC donor pen.

CED	BEPD	WEPD	YEPD	SC	CEM	MILK
I+6	I+2.8	I+43	I+79	N/A	I+6	I+24

Bonnie Blacklass places in the top 10% for RE, 20% for Fat, \$W and \$G and 25% for Milk and \$B. Bred to GAR Selective and due to calve 12/19/2010.

61 ROLLING FAME IN FOCUS

Birth Date: 3-14-2008 Bull 15988905 Tattoo: R142

#SAF Focus of ER [AMF-NHF] #SAF Fame [AMF-NHF]
Mytty In Focus [AMF-NHF-RDF] GDAR Forever Lady 246
13880818 Mytty Countess 906 #Sitz Alliance 6595 [AMF-NHF]
 Baldrige Countess 357

CW	\$W
+9	+31.37
MARB	\$F
+37	+33.23
RE	\$G
-.03	+22.41
FAT	\$B
+0.012	+41.91

+Circle A Fame 9493 [AMF] #SAF Fame [AMF-NHF]
Circle A Forever Lady 2445 +Circle A Rita 5H11-6524
14779793 Three Trees Foreverlady 0431 #JLB Exacto 416 [AMF-NHF]
 Gdar Forever Lady 71

CED	BEPD	WEPD	YEPD	SC	CEM	MILK
+10	+4	+55	+96	+1.08	+9	+23

This is a tremendous herd sire prospect that has been used in the Rolling Ridge program by the ABS Global sire Mytty In Focus. From a dam bred in the Circle A program by the SydGen and Circle A sire Circle A Fame 9493.

This Show-Me-Select and Missouri Angus Advantage +Plus qualified sire ranks in the top 10% for CED, WW and \$F, 15% for BW and YW and 25% for \$W.



GDAR FOREVER LADY 71 - Third dam of Lot 61.

62 ROLLING RITO IN FOCUS [AMF]

Birth Date: 1-9-2009 Bull 16243053 Tattoo: 161

Mytty In Focus [AMF-NHF-RDF] #SAF Focus of ER [AMF-NHF]
Rolling In Focus 2020 Mytty Countess 906
15667722 Corks Ann 5108 #Bon View New Design 1407 [AMF-NHF]
 #Corks Anns Royce 331

CW	\$W
+8	+31.11
MARB	\$F
+51	+26.42
RE	\$G
+01	+27.52
FAT	\$B
+014	+44.64

#Rito 2V1 of 2536 1407 [AMC-NHF] #Bon View New Design 1407 [AMF-NHF]
Bpar Blackcap 9916 [AMC] GAR Precision 2536 [AMC-NHF]
15449110 GAF Blackcap 169 #B/R New Design 036 [AMF-NHF]
 GAF Blackcap 940

This grandson of Mytty In Focus is from a dam who blends Rito 2V1 of 2536 1407 with another great Pathfinder Sire B/R New Design 036.

CED	BEPD	WEPD	YEPD	SC	CEM	MILK
+6	+1.2	+52	I+88	I+.01	+7	+23

He records a very balanced EPD profile and places in the top 10% for \$W, 20% for WW and Marb and 25% for \$G.

63 R R EVER READY IN FOCUS [AMF]

Birth Date: 12-4-2008 Bull 16211495 Tattoo: 231

Mytty In Focus [AMF-NHF-RDF] #SAF Focus of ER [AMF-NHF]
Rolling In Focus 2020 Mytty Countess 906
15667722 Corks Ann 5108 #Bon View New Design 1407 [AMF-NHF]
 #Corks Anns Royce 331

CW	\$W
+7	+25.77
MARB	\$F
+50	+26.90
RE	\$G
+06	+26.27
FAT	\$B
+029	+42.54

#Rito 2V1 of 2536 1407 [AMC-NHF] #Bon View New Design 1407 [AMF-NHF]
AMS Everelda Entense 320 [AMC] GAR Precision 2536 [AMC-NHF]
+15733996 +Everelda Entense Gal 1114 #GDAR Traveler 71 [AMF-NHF]
 Sitz Everelda Entense 1137

This high marbling herd sire prospect is a three quarter brother to Lot 62 and he ranks in the top 20% for Marb EPD.

CED	BEPD	WEPD	YEPD	SC	CEM	MILK
+7	+1.1	+43	I+85	I-.01	+8	+24

His grandam is a full sister to the Pathfinder Sire Sitz Traveler 8180 and was a \$15,000 feature of the 2007 James Ruble Farms Sale selling to Summerfield Farms. Maternal sisters to his grandam include the \$300,000 Sitz Everelda Entense 023 and the \$320,000 Shady Brook Ever Entense 491G. His third dam, Sitz Everelda Entense 1137 sold half interest at 14 years of age for \$200,000 and was the first cow in the Angus breed to generate \$4 million in progeny sales. He is a Show-Me-Select and Missouri Angus Advantage +Plus qualified sire.



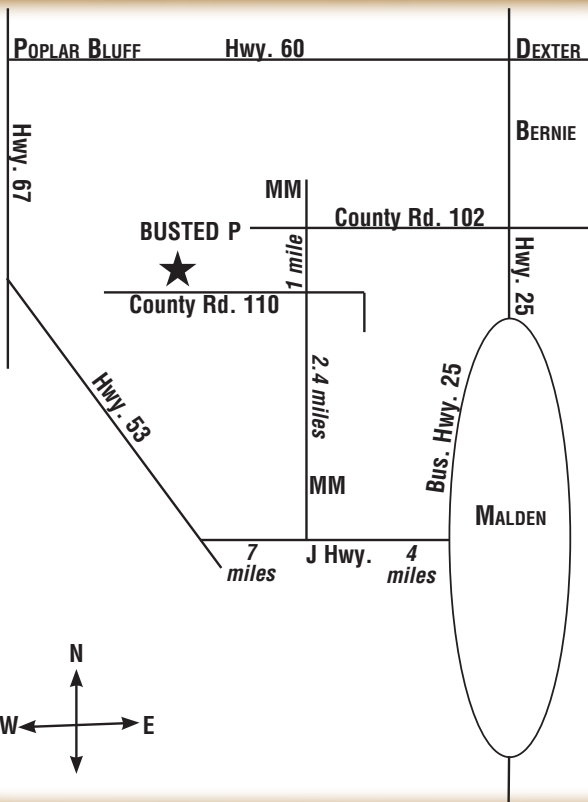
EVERELDA ENTENSE GAL 1114 - Grandam of Lot 63.

Missouri Angus Association
P.O. Box 246
Dadeville, MO 65635
Josh Worthington, General Manager
Phone (417) 844-2601
E-mail: Worthington@missouriangus.org

PRSR
FIRST CLASS
U.S. POSTAGE
PAID
Springfield, MO
Permit #176



PRODUCTION *Sale*



Saturday • 12:30 p.m.

MAY 15, 2010

*At the ranch
Malden, Missouri*