



Passion for Progress

FEMALE & BULL SALE

October 3, 2020 • 12:00PM est • Bridges Angus Farm Sale Facility • Lexington, Georgia

Bridges Angus Farm, LLC

Alan & Phillip Bridges

415 Paradise Hogan Road | Lexington, GA 30648

Alan Bridges (706) 340-1421 | Phillip Bridges (706) 255-8494



Alan & Melissa Bridges



Phillip, Leigh Anne, Callie & Wyatt Bridges

Dear Friends,

Thank you for taking your time to inspect the sale offering for our 76th anniversary "Passion for Progress" production sale. In the female offering we will be selling daughters of the elite marbling matron G A R Progress 1103, by Enhance and Growth Fund. Most of the females will have heifer calves at side by sale day, and they're sired by Bridges Foretold, Bridges Rare Air, Bridges Rise Up, G A R Quantum, G A R Inertia, EWA Peyton, SydGen Enhance, KCF Bennett Boulder, SAV Rainfall, and LD Capitalist 316. Be sure to look at the Bridges reference sires, we believe they are as good as you will find, and we're excited to use them. Foretold is unmatched for his combination of calving ease and growth, Bridges Rare Air is a breed leader for marbling, and Rise Up is stacked for growth, quality, and yield.

This year we are offering 30 two year old bulls that are athletic and ready for heavy service, as well as an elite selection of yearling bulls. All of the two year olds will be semen and trich tested before the sale. The yearlings will be semen tested and all the bulls are negative for PI-BVD.

If you are looking for elite herd sires, replacement heifers, donors, or cattle that will keep you profitable, this offering has something for you. We have always taken pride in the fact that our cattle have gone out and made money for their new owners no matter the investment.

Please join us in our "Passion for Progress" and help celebrate our 76th year in the Angus business. Please join us for lunch at eleven and for the sale at noon Saturday October 3, 2020 at our new sale facility, at the farm near Lexington, Ga. As always, the cattle sell 100% guaranteed and will be available for viewing anytime at the farm and again Friday evening and Saturday morning before the sale. LiveAuctions.tv will broadcast the sale live and bidders can bid in real time via the Internet. If you have any questions, please do not hesitate to call us, our marketing agent Dick Beck, or any of the sale staff, we will be happy to assist you in any way possible.

Sincerely,
Alan & Phillip

"If my people, who are called by my name, will humble themselves and pray and seek my face and turn from their wicked ways, then I will hear from heaven, and I will forgive their sin and will heal their land."
2 Chronicles 7:14

Schedule of Events

Friday, October 2ND

Cattle available for viewing all day

Saturday, October 3RD

8:00am Cattle available for viewing

11:00am Lunch

12:00pm Sale begins



Videos of sale cattle will be available at WWW.BRIDGESANGUSFARMLLC.COM



Passion for Progress

FEMALE & BULL SALE

Saturday, October 3, 2020

12:00PM est at the new Bridges Angus Farm Sale Facility in Lexington, Georgia



SALE LOCATION (GPS Address)

Bridges Angus Farm Sale Facility • 288 Salem Church Rd. • Lexington, GA 30648

DIRECTIONS

From Athens, travel southeast on US Hwy 78 approximately 23 miles to Salem Church Rd. turn right, travel 1.5 miles and the sale facility will be on your right.

From Washington, travel northwest on US Hwy 78 approximately 19 miles to Salem Church Rd. turn left, travel 1.5 miles and the sale facility will be on your right.

SALE DAY PHONES

Alan (706) 340-1421 • Phillip (706) 255-8494 • Dick Beck (770) 846-0046

SALE STAFF

Col. Joel Birdwell | *Auctioneer* | (580) 695-2352
 David Gazda | *American Angus Association* | (706) 296-7846
 Deron Heldermon | *Heldermon Marketing* | (405) 850-5102
 Steve Sellers | *Georgia Cattleman's Association* | (770) 546-1307

MARKETING AGENT

Dick Beck (770) 846-0046

SALE CONSULTANTS

Matt Myers | *Myers Cattle Services* | (405) 315-7258
 Todd Alford (706) 207-9454 | Holly Alford (706) 270-3994
Buyers unable to attend the sale may turn in their bids to any of the sales staff at any time prior to sale day or call the sale day phones.

The Females BREEDING & CALVING INFORMATION

A supplemental update sheet will be available sale day with up to date breeding and calving information. All announcements made from the auction block take precedence over printed material.

The Bulls BREEDING SOUNDNESS

All sale bulls have passed a Breeding Soundness Exam and are Negative Trich Tested.

EPDS

The EPDs printed in this book are current as of July 31, 2020.

TERMS & CONDITIONS

Cattle will sell under the standard Terms and Conditions as recommended by the American Angus Association. A 2.5% monthly finance charge will be added to all purchases 30 days past due. See page 16 for more details.

SETTLEMENT

Settlement is expected sale day and cattle will not be picked up or delivered until payment is received in full; Unless prior arrangements have been made.

LIABILITY

All persons attending the sale do so at their own risk. Bridges Angus Farm, LLC, will assume no liability, legal, or otherwise, for any accidents or injuries that may occur.

HERD HEALTH

All cattle have been inspected by a licensed Veterinarian and will be accompanied by proper health certificates for immediate shipment.

LIVESTOCK MORTALITY INSURANCE

James Bessler | *Great American Insurance Group* | (815) 762-2641

TRUCKING

FREE DELIVERY ON ALL PURCHASES!

Henry Stockdale | *Will be available to help transport cattle.* | (931) 626-6080

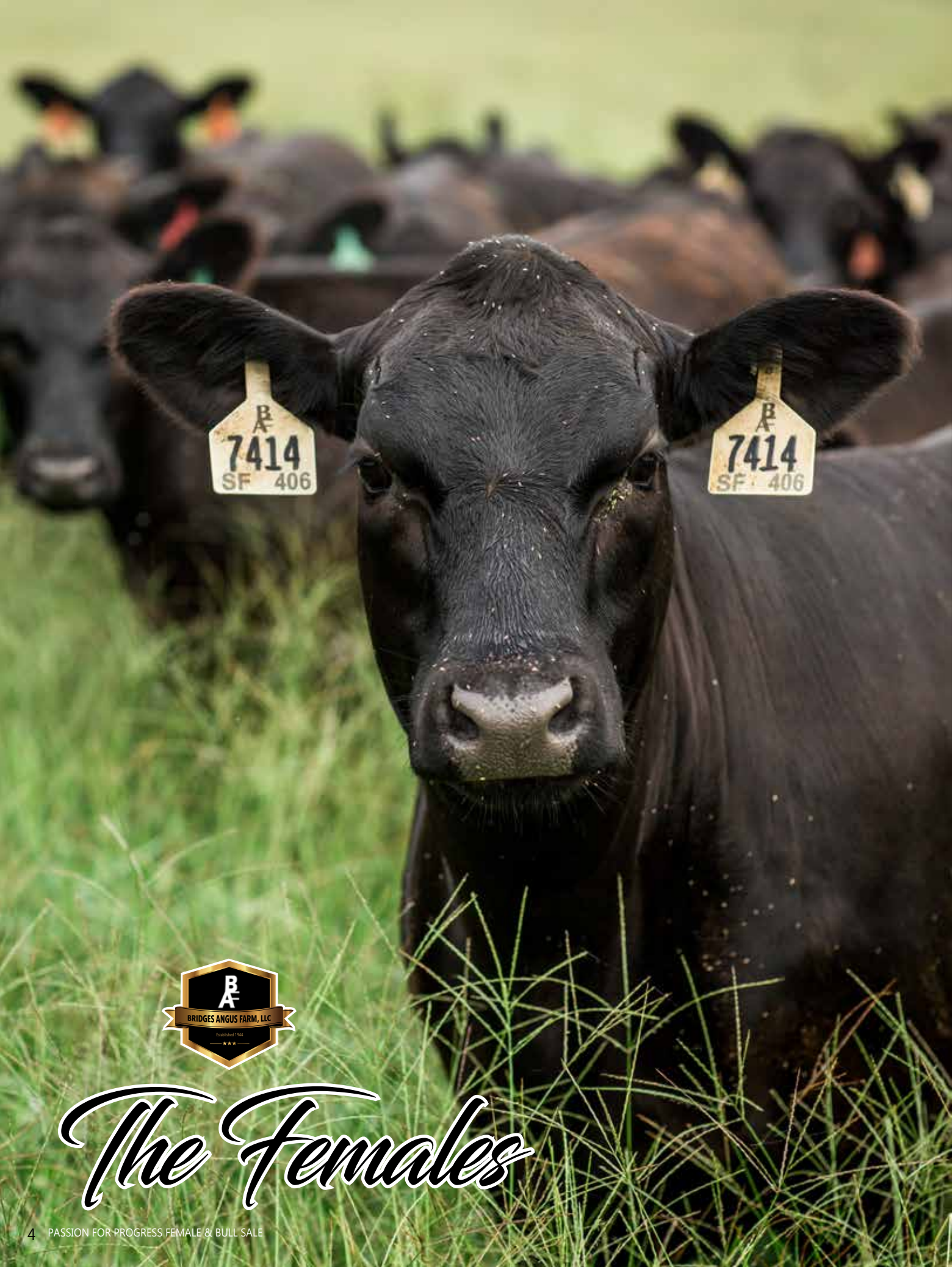
ACCOMMODATIONS

Best Western | *I-20 at Exit 172, Thompson, GA* | (706) 595-8000
 Hilton Garden Inn | *Downtown Athens, GA* | (706) 353-6807
 Jamison Inn | *Hwy 78 Bypass, Washington, GA* | (706) 678-7925

INTERNET BIDDING

Internet bidding will be available through LiveAuctions.tv. Buyers must register at least 2 days prior to the sale.





B
A
7414
SF 406

B
A
7414
SF 406



The Females

Still the #1 Marbling *Angus* Female of All Time!



Chris Mitchell

GAR Progress 1103

Donor dam of Lot 1A, 1B, 1C, 1D, & 1E

| Lot 1 | | | | | | | | | | | | | | | | | |
|----------------------------------|-----|-------|----------------------|------|-----|----------------------------|------|-------|-------------------------|------|-----|----------------------------|-----|----|-----|-----|-----|
| G A R Progress 1103 | | | | | | | | | | | | | | | | | |
| Birth Date: 8/12/13 | | | Cow | | | 17623200 | | | Tattoo: 1103 | | | | | | | | |
| EPDs | CED | BW | WW | YW | SC | DOC | Milk | CW | MARB | REA | FAT | TND | | | | | |
| +13 | 4% | +2.5 | 75% | +75 | 2% | +124 | 4% | +0.29 | 80% | +26 | 10% | +17 | 95% | | | | |
| +42 | 30% | +2.05 | 1% | +0.6 | 25% | +50 | 70% | +64 | 20% | +193 | 1% | +300 | 1% | | | | |
| G A R Progress 16290873 | | | G A R Predestined | | | B/R New Design 036 | | | G A R Ext 4206 | | | S S Objective T510 OT26 | | | | | |
| G A R 28 Ambush 1759 16496761 | | | G A R Objective 2345 | | | G A R 1407 New Design 2413 | | | Rockn D Ambush 1531 | | | B/R Ruby of Tiffany 8250 | | | | | |
| | | | B/R Ambush 28 | | | G A R 1407 New Design 2232 | | | S S Objective T510 OT26 | | | G A R 1407 New Design 2232 | | | | | |
| CED | BW | WW | YW | DMI | YH | SC | DOC | HP | CEM | Milk | MW | MH | CW | MB | REA | FAT | TND |
| 24 | 68 | 32 | 61 | 58 | 60 | 75 | 31 | 57 | 93 | 95 | 30 | 29 | 67 | 1 | 61 | 59 | 98 |

Selling the right to Flush.
 The first active Angus dam to record a Marbling score EPD of +2.00 or greater in the history of the Angus breed, this foundation Bridges donor ranks NUMBER 1 among 300,272 active dams in the AAA database as of this writing.
 This embryo donor's EPD profile ranks NUMBER 1 for \$Grid value index and Marbling score EPD, Number 4 for Calving Ease Direct EPD and top 10 for \$Beef value index and Docility score EPD among the females presented here.
 An opportunity to create the next great outlier for the trait that has made the Angus breed the dominant beef breed in the world and the undisputed source of the genetics that make beef the most valuable animal protein in the world marketplace.
Guarantee of 6 high quality embryos.

| Lot 1A | | | | | | | | | | | | | | | | | |
|---------------------------------|-----|-------|--------------------|-------|-----|-------------------|------|-------|--------------------------|------|-----|------------------------|-----|----|-----|-----|-----|
| Bridges Enhance 9005 | | | | | | | | | | | | | | | | | |
| Birth Date: 10/8/19 | | | Cow | | | 19756842 | | | Tattoo: 9005 | | | | | | | | |
| EPDs | CED | BW | WW | YW | SC | DOC | Milk | CW | MARB | REA | FAT | TND | | | | | |
| +10 | 20% | +1.7 | 60% | +80 | 2% | +136 | 4% | +0.86 | 45% | +25 | 15% | +18 | 95% | | | | |
| +62 | 10% | +1.43 | 1% | +0.80 | 20% | +76 | 10% | +77 | 10% | +196 | 1% | +330 | 1% | | | | |
| SydGen Enhance 18170041 | | | SydGen Exceed 3223 | | | SydGen Googol | | | SydGen Forever Lady 1255 | | | SydGen Liberty GA 8627 | | | | | |
| G A R Progress 1103 17623200 | | | SydGen Rita 2618 | | | Fox Run Rita 9308 | | | G A R Predestined | | | G A R Objective 2345 | | | | | |
| | | | G A R Progress | | | G A R Ambush 28 | | | G A R Objective 1885 | | | | | | | | |
| CED | BW | WW | YW | DMI | YH | SC | DOC | HP | CEM | Milk | MW | MH | CW | MB | REA | FAT | TND |
| 27 | 51 | 2 | 12 | 93 | 4 | 58 | 28 | 19 | 59 | 80 | 18 | 8 | 2 | 2 | 13 | 51 | 17 |

Open
 Number 2 for Docility score EPD, Number 3 for \$Beef value index, \$Grid value index and Marbling score EPD, Number 5 for \$Combined value index, Residual Average Daily Gain EPD, Calving Ease Maternal EPD and Calving Ease Direct EPD and top 10 for \$Feedlot value index.
 Dam was the first active Angus dam to record a Marbling score EPD of +2.00 or greater, this foundation Bridges donor ranks NUMBER 1 among 300,272 active dams in the AAA database as of this writing.
 Sire is the gold standard on \$Combined value index and was among the industry leaders for A.I. usage with more than \$2,000,000 in semen sales in the ORigen-ABS joint marketing program over the past four years.

Bridges Purpose #137

Lot 1D



Holly Alford

Selling Choice of Lot 1B & 1C

Lot 1B Bridges Growth Fund 9006

Birth Date: 11/8/19 Cow 19755884 Tattoo: 9006

| EPDs | CED | BW | WW | YW | SC | DOC | Milk | | | | | | |
|------|------|-------|-----|-------|-----|------|------|-------|-----|------|-----|------|-----|
| +12 | 10% | +8 | 40% | +83 | 1% | +151 | 1% | +0.55 | 65% | +26 | 15% | +19 | 90% |
| CW | MARB | REA | SM | SW | SB | SC | | | | | | | |
| +60 | 10% | +1.26 | 3% | +0.49 | 65% | +51 | 75% | +77 | 10% | +175 | 3% | +278 | 10% |

Basin Payweight 1682
Deer Valley Growth Fund
 18827828 Deer Valley Rita 36113

G A R Progress
G A R Progress 1103
 17623200 G A R 28 Ambush 1759

Basin Payweight 0065
 21AR O Lass 7017
 Plattemere Weigh Up K360
 Deer Valley Rita 9457

G A R Predestined
 G A R Objective 2345
 B/R Ambush 28
 G A R Objective 1885

| CEM | Milk | MW | MH | CW | MB | REA | FAT | TND | | | | | | | | | |
|-----|------|----|----|-----|----|-----|-----|-----|---|----|---|---|---|---|----|----|----|
| 19 | 54 | 2 | 2 | 100 | 29 | 65 | 42 | 73 | 3 | 86 | 3 | 4 | 8 | 3 | 62 | 98 | 70 |

Open
 Number 4 for Docility score EPD and Calving Ease Maternal EPD and top 10 for \$Beef value index, \$Feedlot value index, \$Grid value index and hot Carcass Weight EPD.
 Dam was the first active Angus dam to record a Marbling score EPD of +2.00 or greater, this foundation Bridges donor ranks NUMBER 1 among 300,272 active dams in the AAA database as of this writing.
 First calf crop by her sire earned him the Number 1 Weaning Weight EPD and the Number 2 Yearling Weight EPD among proven sires in the Main Report of the Fall 2020 National Cattle Evaluation.

Lot 1C Bridges Growth Fund 9008

Birth Date: 12/23/19 Cow 19755888 Tattoo: 9008

| EPDs | CED | BW | WW | YW | SC | DOC | Milk | | | | | | |
|------|------|-------|-----|-------|-----|------|------|-------|-----|------|-----|------|-----|
| +10 | 20% | +3.7 | 95% | +100 | 1% | +164 | 1% | +1.17 | 25% | +23 | 25% | +17 | 95% |
| CW | MARB | REA | SM | SW | SB | SC | | | | | | | |
| +69 | 3% | +1.17 | 5% | +0.56 | 50% | +52 | 75% | +83 | 3% | +180 | 2% | +285 | 4% |

Basin Payweight 1682
Deer Valley Growth Fund
 18827828 Deer Valley Rita 36113

G A R Progress
G A R Progress 1103
 17623200 G A R 28 Ambush 1759

Basin Payweight 0065
 21AR O Lass 7017
 Plattemere Weigh Up K360
 Deer Valley Rita 9457

G A R Predestined
 G A R Objective 2345
 B/R Ambush 28
 G A R Objective 1885

| CEM | Milk | MW | MH | CW | MB | REA | FAT | TND | | | | | | | | | |
|-----|------|----|----|----|----|-----|-----|-----|----|----|---|---|---|---|----|----|----|
| 18 | 78 | 1 | 10 | 96 | 11 | 17 | 35 | 76 | 32 | 91 | 1 | 2 | 8 | 2 | 58 | 70 | 98 |

Open
 Number 4 for Docility score EPD and Calving Ease Maternal EPD and top 10 for \$Beef value index, \$Feedlot value index, \$Grid value index and hot Carcass Weight EPD.
 Dam was the first active Angus dam to record a Marbling score EPD of +2.00 or greater, this foundation Bridges donor ranks NUMBER 1 among 300,272 active dams in the AAA database as of this writing.
 First calf crop by her sire earned him the Number 1 Weaning Weight EPD and the Number 2 Yearling Weight EPD among proven sires in the Main Report of the Fall 2020 National Cattle Evaluation.



Deer Valley Growth Fund

Sire of Lot 1B & 1C Fall Yearling heifers.
 Number 1 for Weaning Weight EPD and Number
 2 for Yearling Weight in the Fall 2020 Main Report
 of the National Cattle Evaluation

Lot 1D Bridges Purpose 7137

Birth Date: 8/27/17 Cow 19087919 Tattoo: 7137

| EPDs | CED | BW | WW | YW | SC | DOC | Milk |
|-------|------|------|-----|------|-----|------|------|
| +7 | 45% | +2.8 | 85% | +76 | 4% | +124 | 10% |
| +0.44 | 75% | +28 | 10% | +16 | 95% | | |
| CW | MARB | REA | SM | SW | SB | SC | |
| +40 | 55% | +1.6 | 1% | +0.7 | 30% | +63 | 40% |
| +67 | 20% | +171 | 4% | +285 | 4% | | |

G A R Prophet
 C R A Bextor 872 5205 608
Bridges Purpose
 17814461 Bridges Predestined 143
 G A R Objective 1885
 G A R Predestined
 Bridges Evergreen Erica 4139
 G A R Progress
 G A R Predestined
G A R Progress 1103
 17623200 G A R 28 Ambush 1759
 G A R Objective 2345
 B/R Ambush 28
 G A R Objective 1885

| CEM | Milk | MW | MH | CW | MB | REA | FAT | TND |
|-----|------|----|----|----|----|-----|-----|-----|
| 94 | 99 | 13 | 51 | 70 | 55 | 50 | 16 | 41 |
| 92 | 98 | 47 | 44 | 53 | 1 | 33 | 49 | 72 |

Parent Average EPD's on the mating listed below..

| CED | BW | WW | YW | Milk | CW | Marb | RE | SB | SC |
|-----|------|-----|------|------|-----|-------|-------|------|------|
| +10 | +1.5 | +69 | +120 | +23 | +34 | +1.16 | +0.70 | +147 | +267 |

Due 9/20/2020 to SAV Rainfall with bull calf.
 Number 3 for \$Grid value index and Number 4 for Marbling score EPD and Docility score EPD. Dam was the first active Angus dam to record a Marbling score EPD of +2.00 or greater, this foundation Bridges donor ranks NUMBER 1 among 300,272 active dams in the AAA database as of this writing.
 Third dam is the foundation Bridges Rita 1885 donor best known as the dam of G A R Prophet and G A R Quannah that later sold half interest for \$185,000 and spent her final days at Crazy K.

Lot 1E Bridges Scale House 8005

Birth Date: 12/3/18 Cow 19287708 Tattoo: 8005

| EPDs | CED | BW | WW | YW | SC | DOC | Milk |
|-------|------|-------|-----|-------|-----|------|------|
| +10 | 20% | +2.8 | 85% | +88 | 1% | +138 | 3% |
| +1.11 | 30% | +15 | 60% | +23 | 65% | | |
| CW | MARB | REA | SM | SW | SB | SC | |
| +57 | 15% | +0.93 | 15% | +0.97 | 10% | +59 | 50% |
| +87 | 2% | +165 | 10% | +273 | 10% | | |

MCC Daybreak
 Boyd New Day 8005
G A R Scale House
 17354047 G A R 5050 New Design 1039
 MCC Miss Focus 134
 G A R New Design 5050
 G A R Objective 2345
 G A R Progress
 G A R Predestined
G A R Progress 1103
 17623200 G A R 28 Ambush 1759
 G A R Objective 2345
 B/R Ambush 28
 G A R Objective 1885

| CEM | Milk | MW | MH | CW | MB | REA | FAT | TND |
|-----|------|----|----|----|----|-----|-----|-----|
| 29 | 60 | 4 | 55 | 45 | 6 | 18 | 77 | 56 |
| 65 | 60 | 24 | 7 | 14 | 13 | 14 | 82 | 34 |

Parent Average EPD's on the mating listed below..

| CED | BW | WW | YW | Milk | CW | Marb | RE | SB | SC |
|-----|------|-----|------|------|-----|-------|-------|------|------|
| +9 | +2.7 | +90 | +146 | +21 | +61 | +1.22 | +0.93 | +182 | +300 |

Due 11/19/2020 to Bridges Rise Up.
 Top 10 for Rib Eye area measure EPD and Weaning Weight EPD. Dam was the first active Angus dam to record a Marbling score EPD of +2.00 or greater, this foundation Bridges donor ranks NUMBER 1 among 300,272 active dams in the AAA database as of this writing.
 Third dam is the foundation Bridges Rita 1885 donor best known as the dam of G A R Prophet and G A R Quannah that later sold half interest for \$185,000 and spent her final days at Crazy K.

Bridges Acclaim 8424

Lot 2



Holly Alford

Selling Choice of Lot 3A & 3B

Lot 2 Bridges Acclaim 8424

Birth Date: 9/5/18 Cow 19286756 Tattoo: 8424

| EPDs | CED | BW | WW | YW | SC | DOC | Milk | | | | | | |
|------|------|-------|-----|-------|-----|------|------|-------|-----|------|-----|------|-----|
| +11 | 15% | +1 | 45% | +76 | 4% | +138 | 3% | +0.29 | 80% | +15 | 60% | +33 | 10% |
| CW | MARB | REA | SM | SW | SB | SC | | | | | | | |
| +72 | 2% | +1.08 | 10% | +0.74 | 25% | +73 | 15% | +88 | 2% | +195 | 1% | +326 | 1% |

Jindra Acclaim
17972810
Jindra 3rd Dimension
Jindra Blackbird Lassy 1111

Bridges Prophet 5404
18471948
G A R Prophet
G A R Daybreak G192

Jindra Double Vision
Jindras Sapphire J 417
Connealy Impression
Jindras Enchantress J 102
C R A Bextor 872 5205 608
G A R Objective 1885
MCC Daybreak
G A R Predestined 3479

| CEI | CED | BW | WW | YW | DMI | YH | SC | DOC | HP | CEM | Milk | MW | MH | CW | MB | REA | FAT | TND |
|-----|-----|----|----|----|-----|----|----|-----|----|-----|------|----|----|----|----|-----|-----|-----|
| 48 | 61 | 3 | 3 | 94 | 4 | 70 | 53 | 27 | 78 | 7 | 10 | 12 | 1 | 8 | 17 | 60 | 32 | |

Parent Average EPD's on the mating listed below..

| CED | BW | WW | YW | Milk | CW | Marb | RE | SB | SC |
|-----|------|-----|------|------|-----|-------|-------|------|------|
| +13 | +0.7 | +73 | +131 | +34 | +69 | +1.11 | +0.63 | +196 | +324 |

Due 9/19/2020 to GAR Quantum with bull calf.
Number 2 for \$Feedlot value index, Number 3 for Residual Average Daily Gain EPD, Number 4 for \$Combined value index, Number 5 for \$Beef value index, hot Carcass Weight EPD and Calving Ease Maternal EPD and top 10 for maternal Milk EPD.

Lot 3A Bridges Enhance 9550

Birth Date: 9/2/19 Cow 19717314 Tattoo: 9550

| EPDs | CED | BW | WW | YW | SC | DOC | Milk | | | | | | |
|------|------|------|-----|-------|-----|------|------|-------|-----|------|----|------|-----|
| +7 | 45% | +3.2 | 90% | +80 | 2% | +146 | 1% | +1.04 | 35% | +32 | 2% | +28 | 25% |
| CW | MARB | REA | SM | SW | SB | SC | | | | | | | |
| +69 | 3% | +154 | 1% | +0.66 | 35% | +89 | 1% | +83 | 3% | +207 | 1% | +357 | 1% |

SydGen Enhance
18170041
SydGen Exceed 3223
SydGen Rita 2618

Bridges Prophet 5404
18471948
G A R Prophet
G A R Daybreak G192

SydGen Googol
SydGen Forever Lady 1255
SydGen Liberty GA 8627
Fox Run Rita 9308
C R A Bextor 872 5205 608
G A R Objective 1885
MCC Daybreak
G A R Predestined 3479

| CEI | CED | BW | WW | YW | DMI | YH | SC | DOC | HP | CEM | Milk | MW | MH | CW | MB | REA | FAT | TND | |
|-----|-----|----|----|----|-----|----|----|-----|----|-----|------|----|----|----|----|-----|-----|-----|----|
| 49 | 69 | 3 | 3 | 99 | 5 | 99 | 6 | 36 | 2 | 3 | 50 | 26 | 32 | 21 | 3 | 2 | 35 | 42 | 67 |

Open
NUMBER 2 for \$Combined value index, Number 2 for \$Beef value index, Number 3 for Docility score EPD, Number 4 for \$Feedlot value index, Number 5 for Calving Ease Maternal EPD and Residual Average Daily Gain EPD and top 10 for \$Grid value index and Marbling score EPD.



Selling Choice of Lot 3A & 3B

Lot 3B Bridges Enhance 9400

Birth Date: 8/25/19 Cow 19759245 Tattoo: 9400

| EPDs | CED | BW | WW | YW | SC | DOC | Milk |
|-------|------|-------|-----|-------|-----|------|------|
| +14 | 3% | -1.0 | 10% | +73 | 10% | +133 | 5% |
| +0.13 | 90% | +25 | 15% | +38 | 1% | | |
| CW | MARB | REA | SM | SW | SB | SC | |
| +69 | 3% | +1.58 | 1% | +0.74 | 25% | +89 | 1% |
| +96 | 1% | +211 | 1% | +363 | 1% | | |

SydGen Googol
 SydGen Exceed 3223
 SydGen Forever Lady 1255
 SydGen Liberty GA 8627
 Fox Run Rita 9308
 C R A Bextor 872 5205 608
 G A R Objective 1885
 MCC Daybreak
 G A R Predestined 3479

SydGen Enhance
 18170041
 SydGen Rita 2618

G A R Prophet
Bridges Prophet 5404
 18471948
 G A R Daybreak G192

| CEM | Milk | MW | MH | CW | MB | REA | FAT | TND |
|-----|------|----|----|----|----|-----|-----|-----|
| 2 | 3 | 6 | 12 | 95 | 4 | 77 | 18 | 7 |
| 24 | 3 | 39 | 15 | 2 | 1 | 33 | 88 | 39 |

Open
 Number 1 for \$Combined value index, Number 3 for Docility score EPD, Number 4 for \$Beef value index, Number 5 for \$Feedlot value index, Residual Average Daily Gain EPD and Calving Ease Maternal EPD and top 10 for \$Grid value index and Marbling score EPD.

Lot 4 Bridges Ashland 9579

Birth Date: 9/1/19 Cow 19716553 Tattoo: 9579

| EPDs | CED | BW | WW | YW | SC | DOC | Milk |
|-------|------|-------|-----|-------|-----|------|------|
| +13 | 5% | +1.1 | 45% | +76 | 4% | +131 | 5% |
| +0.89 | 45% | +26 | 15% | +29 | 20% | | |
| CW | MARB | REA | SM | SW | SB | SC | |
| +55 | 20% | +1.53 | 1% | +0.87 | 15% | +83 | 3% |
| +90 | 1% | +186 | 1% | +324 | 1% | | |

G A R Early Bird
 G A R Daylight
 G A R Progress 830
 B/R Ambush 28
 G A R Yield Grade N366
 C R A Bextor 872 5205 608
 G A R Objective 1885
 MCC Daybreak
 G A R Predestined 3479

G A R Ashland
 18217198
 Chair Rock Ambush 1018

G A R Prophet
Bridges Prophet 5404
 18471948
 G A R Daybreak G192

| CEM | Milk | MW | MH | CW | MB | REA | FAT | TND |
|-----|------|----|----|----|----|-----|-----|-----|
| 18 | 41 | 10 | 36 | 90 | 11 | 33 | 24 | 64 |
| 79 | 19 | 67 | 43 | 12 | 1 | 7 | 63 | 93 |

Open
 Number 3 for Calving Ease Direct EPD, Number 5 for \$Grid value index, Docility score EPD and Calving Ease Maternal EPD and top 10 for \$Combined value index, Marbling score EPD and Birth Weight EPD.

Lot 5A Bridges Sure Fire 9581

Birth Date: 8/31/19 Cow 19715581 Tattoo: 9581

| EPDs | CED | BW | WW | YW | SC | DOC | Milk |
|-------|------|-------|-----|-------|-----|------|------|
| +13 | 5% | +2 | 25% | +63 | 25% | +110 | 30% |
| +1.22 | 45% | +26 | 15% | +37 | 2% | | |
| CW | MARB | REA | SM | SW | SB | SC | |
| +44 | 45% | +1.44 | 1% | +0.55 | 55% | +81 | 4% |
| +87 | 2% | +168 | 5% | +299 | 2% | | |

Mytty In Focus
 Entreena of Conanga 657
 G A R New Design 5050
 Chair Rock Grid Maker 2107
 C R A Bextor 872 5205 608
 G A R Objective 1885
 MCC Daybreak
 G A R Predestined 3479

Connealy In Sure 8524
G A R Sure Fire
 17328461
 Chair Rock 5050 G A R 8086

G A R Prophet
Bridges Prophet 5404
 18471948
 G A R Daybreak G192

| CEM | Milk | MW | MH | CW | MB | REA | FAT | TND |
|-----|------|----|----|----|----|-----|-----|-----|
| 4 | 7 | 31 | 73 | 61 | 46 | 20 | 19 | 33 |
| 90 | 4 | 84 | 83 | 23 | 2 | 35 | 19 | 97 |

Open
 Number 4 for Calving Ease Direct EPD, Number 5 for Marbling score EPD and Docility score EPD and top 10 for \$Combined value index, \$Grid value index and maternal Milk EPD.

Lot 5B Bridges Sure Fire 9582

Birth Date: 9/6/19 Cow 19715583 Tattoo: 9582

| EPDs | CED | BW | WW | YW | SC | DOC | Milk |
|-------|------|-------|-----|-------|-----|------|------|
| +16 | 1% | +0 | 25% | +59 | 40% | +102 | 45% |
| +2.00 | 2% | +22 | 25% | +33 | 10% | | |
| CW | MARB | REA | SM | SW | SB | SC | |
| +44 | 45% | +1.45 | 45% | +0.62 | 40% | +88 | 1% |
| +79 | 5% | +175 | 3% | +315 | 1% | | |

Mytty In Focus
 Entreena of Conanga 657
 G A R New Design 5050
 Chair Rock Grid Maker 2107
 C R A Bextor 872 5205 608
 G A R Objective 1885
 MCC Daybreak
 G A R Predestined 3479

Connealy In Sure 8524
G A R Sure Fire
 17328461
 Chair Rock 5050 G A R 8086

G A R Prophet
Bridges Prophet 5404
 18471948
 G A R Daybreak G192

| CEM | Milk | MW | MH | CW | MB | REA | FAT | TND |
|-----|------|----|----|----|----|-----|-----|-----|
| 1 | 4 | 43 | 70 | 64 | 25 | 5 | 36 | 6 |
| 92 | 12 | 83 | 49 | 42 | 1 | 50 | 78 | 83 |

Open
 Number 4 for Calving Ease Direct EPD, Number 5 for Marbling score EPD and Docility score EPD and top 10 for \$Combined value index, \$Grid value index and maternal Milk EPD.

Lot 6 Bridges Colonel 9609

Birth Date: 8/20/19 Cow 19759244 Tattoo: 9609

| EPDs | CED | BW | WW | YW | SC | DOC | Milk |
|-------|------|-------|-----|-------|-----|------|------|
| +9 | 25% | -0.8 | 15% | +68 | 15% | +130 | 10% |
| +0.57 | 65% | +24 | 20% | +38 | 1% | | |
| CW | MARB | REA | SM | SW | SB | SC | |
| +61 | 10% | +1.10 | 10% | +0.91 | 10% | +65 | 35% |
| +89 | 1% | +183 | 2% | +302 | 2% | | |

Hoover Dam
 Baldrige Queen S87
 Styles Upgrade J59
 Baldrige Isabel T935
 C R A Bextor 872 5205 608
 G A R Objective 1885
 MCC Daybreak
 G A R Predestined 3479

Baldrige Xpand X743
Baldrige Colonel C251
 18493773
 Baldrige Isabel Y69

G A R Prophet
Bridges Prophet 5404
 18471948
 G A R Daybreak G192

| CEM | Milk | MW | MH | CW | MB | REA | FAT | TND |
|-----|------|----|----|----|----|-----|-----|-----|
| 65 | 35 | 17 | 4 | 98 | 23 | 30 | 30 | 87 |
| 99 | 6 | 36 | 39 | 5 | 5 | 5 | 18 | 74 |

Open
 Top 10 for \$Grid value index and Docility score EPD.

Bridges Momentum 7142

Lot 7



Holly Alford



Bridges Daybreak 297 / Dam of Lot 8

Lot 7 Bridges Momentum 7142

Birth Date: 8/29/17 Cow 19100851 Tattoo: 7142

| EPDs | CED | BW | WW | YW | SC | DOC | Milk |
|-------|------|-------|-----|-------|-----|------|------|
| +12 | 10% | +0.4 | 25% | +74 | 2% | +131 | 2% |
| -0.22 | 95% | +23 | 15% | +24 | 60% | | |
| CW | MARB | REA | \$M | \$W | \$B | \$C | |
| +58 | 4% | +1.24 | 2% | +1.28 | 1% | +57 | 45% |
| +75 | 5% | +199 | 1% | +315 | 1% | | |

G A R Progress
G A R Momentum
 17354145 G A R Big Eye 1770
 MCC Daybreak
G A R Daybreak 422
 17353675 G A R 5050 New Design 1779
 G A R Predestined
 G A R Objective 2345
 ALC Big Eye D09N
 G A R Objective 3387
 Boyd New Day 8005
 MCC Miss Focus 134
 G A R New Design 5050
 G A R Objective 1067

| EPDs | CED | BW | WW | YW | DMI | YH | SC | DOC | HP | CEM | Milk | MW | MH | CW | MB | REA | FAT | TND |
|------|-----|----|----|----|-----|----|----|-----|----|-----|------|----|----|----|----|-----|-----|-----|
| 24 | 36 | 12 | 19 | 72 | 20 | 90 | 36 | 14 | 49 | 46 | 13 | 14 | 10 | 5 | 1 | 26 | 51 | |

Parent Average EPD's on the mating listed below..

| EPDs | CED | BW | WW | YW | Milk | CW | Marb | RE | \$B | \$C |
|------|------|-----|------|-----|------|-------|-------|------|------|-----|
| +10 | +1.9 | +74 | +130 | +23 | +52 | +1.66 | +0.97 | +203 | +319 | |

Due 10/1/20 to Bridges Rare Air with bull calf.
 NUMBER 1 for Rib Eye area measure EPD, Number 3 for \$Beef value index, Residual Average Daily Gain EPD and percent Heifer Pregnancy EPD, Number 5 for Calving Ease Maternal EPD and Calving Ease Direct EPD and top 10 for \$Combined value index, \$Feedlot value index, \$Grid value index, Docility score EPD and Birth Weight EPD.

Lot 8 Bridges Momentum 7141

Birth Date: 9/6/17 Cow 19100847 Tattoo: 7141

| EPDs | CED | BW | WW | YW | SC | DOC | Milk |
|------|------|-------|-----|-------|-----|------|------|
| +19 | 1% | -1.6 | 4% | +71 | 4% | +131 | 2% |
| -0.1 | 95% | +24 | 10% | +32 | 10% | | |
| CW | MARB | REA | \$M | \$W | \$B | \$C | |
| +61 | 3% | +1.77 | 1% | +0.88 | 4% | +56 | 50% |
| +82 | 2% | +215 | 1% | +335 | 1% | | |

G A R Progress
G A R Momentum
 17354145 G A R Big Eye 1770
 MCC Daybreak
Bridges Daybreak 297
 17459484 Bridges 5050 New Design 9108
 G A R Predestined
 G A R Objective 2345
 ALC Big Eye D09N
 G A R Objective 3387
 Boyd New Day 8005
 MCC Miss Focus 134
 G A R New Design 5050
 G A R Objective 1127

| EPDs | CED | BW | WW | YW | DMI | YH | SC | DOC | HP | CEM | Milk | MW | MH | CW | MB | REA | FAT | TND |
|------|-----|----|----|----|-----|----|----|-----|----|-----|------|----|----|----|----|-----|-----|-----|
| 2 | 4 | 34 | 27 | 75 | 31 | 93 | 38 | 56 | 79 | 9 | 22 | 23 | 27 | 1 | 15 | 88 | 92 | |

Parent Average EPD's on the mating listed below..

| EPDs | CED | BW | WW | YW | Milk | CW | Marb | RE | \$B | \$C |
|------|------|-----|------|-----|------|-------|-------|------|------|-----|
| +13 | +0.9 | +73 | +130 | +27 | +54 | +1.92 | +0.77 | +211 | +329 | |

Due 12/8/20 to Bridges Rare Air.
 NUMBER 1 for \$Beef value index and Calving Ease Direct EPD, Number 2 for \$Grid value index and Marbling score EPD, Number 3 for \$Combined value index, Residual Average Daily Gain EPD and Birth Weight EPD, Number 4 for Calving Ease Maternal EPD and top 10 for \$Feedlot value index, Docility score EPD and maternal Milk EPD.



Bridges Sure Fire 7120

Lot 9



Holly Alford

Lot 9 Bridges Sure Fire 7120

Birth Date: 9/9/17 Cow 19100828 Tattoo: 7120

| EPDs | CED | BW | WW | YW | SC | DOC | Milk |
|-------|------|-------|-----|-------|-----|------|------|
| +10 | 15% | +0.7 | 35% | +87 | 1% | +153 | 1% |
| +1.43 | 10% | +31 | 1% | +36 | 3% | | |
| CW | MARB | REA | \$M | \$W | \$B | \$C | |
| +67 | 1% | +1.04 | 4% | +0.71 | 15% | +92 | 1% |
| +107 | 1% | +168 | 3% | +310 | 1% | | |

Connealy In Sure 8524
G A R Sure Fire 17328461
 Chair Rock 5050 G A R 8086
 G A R Prophet
Bridges Prophet 431 17963333
 Bridges 5050 New Design 255
 Mytty In Focus
 Entreena of Conanga 657
 G A R New Design 5050
 Chair Rock Grid Maker 2107
 C R A Bextor 872 5205 608
 G A R Objective 1885
 G A R New Design 5050
 Bridges Objective 8095

| CED | BW | WW | YW | DMI | YH | SC | DOC | HP | CEM | Milk | MW | MH | CW | MB | REA | FAT | TND |
|-----|----|----|----|-----|----|----|-----|----|-----|------|----|----|----|----|-----|-----|-----|
| 60 | 64 | 3 | 8 | 97 | 12 | 20 | 4 | 13 | 93 | 8 | 38 | 31 | 7 | 10 | 28 | 87 | 77 |

Parent Average EPD's on the mating listed below..

| CED | BW | WW | YW | Milk | CW | Marb | RE | \$B | \$C |
|-----|------|-----|------|------|-----|-------|-------|------|------|
| +9 | +2.1 | +81 | +141 | +29 | +57 | +1.56 | +0.68 | +188 | +316 |

Due 12/8/20 to Bridges Rare Air.
 NUMBER 1 for \$Weaned calf value index, Number 2 for Docility score EPD and percent Heifer Pregnancy EPD, Number 5 for Yearling Weight EPD and maternal Milk EPD and top 10 for \$Combined value index, Weaning Weight EPD and hot Carcass Weight EPD.



G A R Sure Fire / Sire of Lot 9



FREE DELIVERY ON ALL PURCHASES!





Bridges Fortress 8532 / Lot 11A



Bridges Fortress 8573 / Lot 11B

Lot 11A Bridges Fortress 8532

Birth Date: 9/4/18 Cow 19547191 Tattoo: 8532

| EPDs | CED | BW | WW | YW | SC | DOC | Milk | | | | | | |
|------|------|-------|-----|-------|----|------|------|-------|-----|------|-----|------|-----|
| +8 | 35% | +3.3 | 90% | +91 | 1% | +153 | 1% | +1.25 | 25% | +21 | 30% | +20 | 85% |
| CW | MARB | REA | SM | SW | SB | SC | | | | | | | |
| +64 | 10% | +0.91 | 15% | +1.07 | 3% | +49 | 80% | +81 | 4% | +169 | 5% | +268 | 10% |

Connealy Consensus
K C F Bennett Fortress
 17259012 Thomas Patricia 9705
 G A R Prophet
BJ Prophet 4212
 18189491 BJ Complete 1165
 KMK Alliance 6595 187
 Blinda of Conanga 004
 S S Objective T510 OT26
 Thomas Patricia 71138
 C R A Bextor 872 5205 608
 G A R Objective 1885
 Summitcrest Complete 1P55
 BJ 5050 New Design 9164

| CED | BW | WW | YW | DMI | YH | SC | DOC | HP | CEM | Milk | MW | MH | CW | MB | REA | FAT | TND |
|-----|----|----|----|-----|----|----|-----|----|-----|------|----|----|----|----|-----|-----|-----|
| 48 | 83 | 4 | 9 | 94 | 9 | 23 | 48 | 42 | 16 | 89 | 11 | 4 | 14 | 24 | 4 | 28 | 82 |

Parent Average EPD's on the mating listed below...

| CED | BW | WW | YW | Milk | CW | Marb | RE | SB | SC |
|-----|------|-----|------|------|-----|-------|-------|------|------|
| +8 | +2.9 | +92 | +153 | +19 | +64 | +1.21 | +0.99 | +184 | +298 |

Due 10/11/20 to Bridges Rise Up.
 Number 3 for Calving Ease Maternal EPD, Number 4 for Rib Eye area measure EPD, Number 5 for Weaning Weight EPD and Yearling Weight EPD and top 10 for hot Carcass Weight EPD. After a very productive donor career at Bridges, the dam of this female sold for \$13,000 as the Lot 1 top-selling female of the 2018 Bridges Passion for Progress Sale.

Lot 11B Bridges Fortress 8573

Birth Date: 9/8/18 Cow 19549657 Tattoo: 8573

| EPDs | CED | BW | WW | YW | SC | DOC | Milk | | | | | | |
|------|------|-------|-----|-------|-----|------|------|-------|-----|------|-----|------|-----|
| +8 | 35% | +1.9 | 65% | +76 | 4% | +137 | 3% | +0.41 | 75% | +19 | 40% | +34 | 4% |
| CW | MARB | REA | SM | SW | SB | SC | | | | | | | |
| +48 | 35% | +1.36 | 2% | +0.57 | 50% | +48 | 80% | +86 | 2% | +160 | 10% | +256 | 20% |

Connealy Consensus
K C F Bennett Fortress
 17259012 Thomas Patricia 9705
 G A R Prophet
BJ Prophet 4212
 18189491 BJ Complete 1165
 KMK Alliance 6595 187
 Blinda of Conanga 004
 S S Objective T510 OT26
 Thomas Patricia 71138
 C R A Bextor 872 5205 608
 G A R Objective 1885
 Summitcrest Complete 1P55
 BJ 5050 New Design 9164

| CED | BW | WW | YW | DMI | YH | SC | DOC | HP | CEM | Milk | MW | MH | CW | MB | REA | FAT | TND |
|-----|----|----|----|-----|----|----|-----|----|-----|------|----|----|----|----|-----|-----|-----|
| 41 | 66 | 16 | 10 | 95 | 40 | 77 | 53 | 48 | 47 | 17 | 22 | 33 | 39 | 2 | 51 | 67 | 93 |

Parent Average EPD's on the mating listed below...

| CED | BW | WW | YW | Milk | CW | Marb | RE | SB | SC |
|-----|----|-----|------|------|-----|-------|-------|------|------|
| +10 | +1 | +75 | +127 | +32 | +38 | +1.04 | +0.63 | +142 | +252 |

Due 9/9/20 to SAV Rainfall with bull calf.
 Number 5 for Calving Ease Maternal EPD and top 10 for \$Grid value index, Marbling score EPD and maternal Milk EPD. After a very productive donor career at Bridges, the dam of this female sold for \$13,000 as the Lot 1 top-selling female of the 2018 Bridges Passion for Progress Sale.

Lot 12A Bridges Scale House 8200

Birth Date: 8/29/18 Cow 19548457 Tattoo: 8200

| EPDs | CED | BW | WW | YW | SC | DOC | Milk | | | | | | |
|------|------|-------|-----|-------|-----|------|------|-------|-----|------|-----|------|-----|
| +7 | 45% | +2.3 | 75% | +83 | 1% | +138 | 3% | +1.01 | 35% | +25 | 15% | +26 | 40% |
| CW | MARB | REA | SM | SW | SB | SC | | | | | | | |
| +53 | 20% | +0.69 | 35% | +0.94 | 10% | +46 | 85% | +85 | 2% | +151 | 20% | +242 | 30% |

MCC Daybreak
G A R Scale House
 17354047 G A R 5050 New Design 1039
 G A R Prophet
BJ Prophet 4212
 18189491 BJ Complete 1165
 Boyd New Day 8005
 MCC Miss Focus 134
 G A R New Design 5050
 G A R Objective 2345
 C R A Bextor 872 5205 608
 G A R Objective 1885
 Summitcrest Complete 1P55
 BJ 5050 New Design 9164

| CED | BW | WW | YW | DMI | YH | SC | DOC | HP | CEM | Milk | MW | MH | CW | MB | REA | FAT | TND |
|-----|----|----|----|-----|----|----|-----|----|-----|------|----|----|----|----|-----|-----|-----|
| 57 | 73 | 9 | 19 | 62 | 43 | 21 | 30 | 75 | 68 | 71 | 18 | 27 | 30 | 45 | 4 | 57 | 42 |

Parent Average EPD's on the mating listed below...

| CED | BW | WW | YW | Milk | CW | Marb | RE | SB | SC |
|-----|------|-----|------|------|-----|------|-------|------|------|
| +8 | +2.4 | +88 | +146 | +22 | +59 | +1.1 | +0.92 | +175 | +285 |

Due 11/21/20 to Bridges Rise Up.
 Top 10 for Rib Eye area measure EPD and Docility score EPD. After a very productive donor career at Bridges, the dam of this female sold for \$13,000 as the Lot 1 top-selling female of the 2018 Bridges Passion for Progress Sale.

Lot 12B Bridges Scale House 8201

Birth Date: 8/28/18 Cow 19548460 Tattoo: 8201

| EPDs | CED | BW | WW | YW | SC | DOC | Milk | | | | | | |
|------|------|-------|-----|-------|-----|------|------|-------|-----|------|-----|------|-----|
| +10 | 20% | +2 | 70% | +78 | 3% | +131 | 5% | +1.19 | 25% | +22 | 25% | +31 | 10% |
| CW | MARB | REA | SM | SW | SB | SC | | | | | | | |
| +54 | 20% | +0.89 | 20% | +0.89 | 15% | +61 | 45% | +87 | 2% | +158 | 10% | +266 | 10% |

MCC Daybreak
G A R Scale House
 17354047 G A R 5050 New Design 1039
 G A R Prophet
BJ Prophet 4212
 18189491 BJ Complete 1165
 Boyd New Day 8005
 MCC Miss Focus 134
 G A R New Design 5050
 G A R Objective 2345
 C R A Bextor 872 5205 608
 G A R Objective 1885
 Summitcrest Complete 1P55
 BJ 5050 New Design 9164

| CED | BW | WW | YW | DMI | YH | SC | DOC | HP | CEM | Milk | MW | MH | CW | MB | REA | FAT | TND |
|-----|----|----|----|-----|----|----|-----|----|-----|------|----|----|----|----|-----|-----|-----|
| 72 | 91 | 19 | 27 | 69 | 21 | 23 | 36 | 29 | 49 | 43 | 29 | 8 | 32 | 16 | 11 | 14 | 31 |

Parent Average EPD's on the mating listed below...

| CED | BW | WW | YW | Milk | CW | Marb | RE | SB | SC |
|-----|------|-----|------|------|-----|------|-------|------|------|
| +11 | +1.1 | +70 | +124 | +30 | +41 | +0.8 | +0.74 | +141 | +257 |

Due 9/9/20 to SAV Rainfall with bull calf.
 Number 4 for Calving Ease Maternal EPD and top 10 for Docility score EPD and maternal Milk EPD. After a very productive donor career at Bridges, the dam of this female sold for \$13,000 as the Lot 1 top-selling female of the 2018 Bridges Passion for Progress Sale.



Bridges Scale House 8441 / Lot 14A

Lot 13A Bridges Foretold 8429

Birth Date: 9/2/18 Cow 19281570 Tattoo: 8429
 EPDs CED BW WW YW SC DOC Milk
 +9 25% +2.3 75% +99 1% +181 1% -0.18 95% +24 20% +34 4%
 CW MARB REA \$M \$W \$B \$C
 +90 1% +1.04 10% +0.67 35% +58 55% +103 1% +195 1% +311 1%

G A R Prophet
Bridges Foretold
 18794324 Bridges Weigh Up 459

K C F Bennett Absolute
Bridges Absolute 616
 18878826 Bridges Daybreak 297

C R A Bextor 872 5205 608
 G A R Objective 1885
 Plattermere Weigh Up K360
 Deer Valley Blackcap 1122
 S A V Final Answer 0035
 Thomas Miss Lucy 5152
 MCC Daybreak
 Bridges 5050 New Design 9108

| CED | BW | WW | YW | DMI | YH | SC | DOC | HP | CEM | Milk | MW | MH | CW | MB | REA | FAT | TND |
|-----|----|----|----|-----|----|----|-----|----|-----|------|----|----|----|----|-----|-----|-----|
| 42 | 67 | 1 | 1 | 100 | 5 | 97 | 36 | 44 | 66 | 10 | 8 | 3 | 2 | 12 | 39 | 96 | 62 |

Parent Average EPD's on the mating listed below..

| CED | BW | WW | YW | Milk | CW | Marb | RE | \$B | \$C |
|-----|------|-----|------|------|-----|-------|-------|------|------|
| +9 | +2.4 | +96 | +167 | +26 | +77 | +1.27 | +0.79 | +197 | +319 |

Due 10/16/20 to Bridges Rise Up.
 NUMBER 1 for \$Feedlot value index, Weaning Weight EPD, Yearling Weight EPD, hot Carcass Weight EPD and Residual Average Daily Gain EPD, Number 3 for \$Weaned calf value index, Number 5 for \$Beef value index and Calving Ease Maternal EPD and top 10 for \$Combined value index, Docility score EPD and maternal Milk EPD.

Lot 14A Bridges Scale House 8441

Birth Date: 9/8/18 Cow 19314809 Tattoo: 8441
 EPDs CED BW WW YW SC DOC Milk
 +11 15% +1.8 65% +94 1% +148 1% +1.46 15% +18 45% +30 15%
 CW MARB REA \$M \$W \$B \$C
 +65 5% +1.39 2% +0.93 10% +80 5% +106 1% +182 2% +316 1%

MCC Daybreak
G A R Scale House
 17354047 G A R 5050 New Design 1039

G A R Prophet
Bridges Prophet 6605
 18842068 Bridges All In 4106

Boyd New Day 8005
 MCC Miss Focus 134
 G A R New Design 5050
 G A R Objective 2345
 C R A Bextor 872 5205 608
 G A R Objective 1885
 Deer Valley All In
 Bridges Ingenuity 254

| CED | BW | WW | YW | DMI | YH | SC | DOC | HP | CEM | Milk | MW | MH | CW | MB | REA | FAT | TND |
|-----|----|----|----|-----|----|----|-----|----|-----|------|----|----|----|----|-----|-----|-----|
| 56 | 85 | 2 | 32 | 91 | 13 | 10 | 54 | 51 | 29 | 30 | 31 | 8 | 13 | 2 | 12 | 53 | 95 |

Parent Average EPD's on the mating listed below..

| CED | BW | WW | YW | Milk | CW | Marb | RE | \$B | \$C |
|-----|------|-----|------|------|-----|-------|-------|------|------|
| +13 | +1.1 | +82 | +136 | +33 | +67 | +1.27 | +1.09 | +189 | +319 |

Due 9/19/19 to GAR Quantum with bull calf.
 Number 2 for \$Weaned calf value index, Weaning Weight EPD and Calving Ease Maternal EPD, Number 5 for \$Grid value index and top 10 for \$Combined value index, Marbling score EPD, Yearling Weight EPD and hot Carcass Weight EPD.

Lot 13B Bridges Foretold 8430

Birth Date: 9/1/18 Cow 19281571 Tattoo: 8430
 EPDs CED BW WW YW SC DOC Milk
 +9 25% +1.6 60% +92 1% +157 1% +0.22 85% +18 45% +29 20%
 CW MARB REA \$M \$W \$B \$C
 +79 1% +0.96 15% +0.63 40% +53 70% +99 1% +183 2% +290 3%

G A R Prophet
Bridges Foretold
 18794324 Bridges Weigh Up 459

K C F Bennett Absolute
Bridges Absolute 616
 18878826 Bridges Daybreak 297

C R A Bextor 872 5205 608
 G A R Objective 1885
 Plattermere Weigh Up K360
 Deer Valley Blackcap 1122
 S A V Final Answer 0035
 Thomas Miss Lucy 5152
 MCC Daybreak
 Bridges 5050 New Design 9108

| CED | BW | WW | YW | DMI | YH | SC | DOC | HP | CEM | Milk | MW | MH | CW | MB | REA | FAT | TND |
|-----|----|----|----|-----|----|----|-----|----|-----|------|----|----|----|----|-----|-----|-----|
| 47 | 48 | 2 | 10 | 94 | 14 | 90 | 55 | 78 | 62 | 30 | 11 | 11 | 5 | 18 | 43 | 93 | 87 |

Parent Average EPD's on the mating listed below..

| CED | BW | WW | YW | Milk | CW | Marb | RE | \$B | \$C |
|-----|------|-----|------|------|-----|-------|-------|------|------|
| +9 | +2.1 | +92 | +155 | +24 | +72 | +1.23 | +0.77 | +191 | +309 |

Due 10/21/20 to Bridges Rise Up.
 Number 2 for Yearling Weight EPD and hot Carcass Weight EPD, Number 3 for \$Feedlot value index, Number 4 for \$Weaned calf value index, Weaning Weight EPD and Calving Ease Maternal EPD and Number 5 for Residual Average Daily Gain EPD.

Lot 14B Bridges Scale House 8431

Birth Date: 9/7/18 Cow 19285757 Tattoo: 8431
 EPDs CED BW WW YW SC DOC Milk
 +10 20% +2.4 75% +88 1% +139 3% +0.38 75% +24 20% +15 95%
 CW MARB REA \$M \$W \$B \$C
 +58 15% +0.77 30% +1.06 3% +56 60% +77 10% +166 10% +271 10%

MCC Daybreak
G A R Scale House
 17354047 G A R 5050 New Design 1039

G A R Prophet
Bridges Prophet 6605
 18842068 Bridges All In 4106

Boyd New Day 8005
 MCC Miss Focus 134
 G A R New Design 5050
 G A R Objective 2345
 C R A Bextor 872 5205 608
 G A R Objective 1885
 Deer Valley All In
 Bridges Ingenuity 254

| CED | BW | WW | YW | DMI | YH | SC | DOC | HP | CEM | Milk | MW | MH | CW | MB | REA | FAT | TND |
|-----|----|----|----|-----|----|----|-----|----|-----|------|----|----|----|----|-----|-----|-----|
| 46 | 65 | 7 | 53 | 55 | 20 | 66 | 22 | 80 | 38 | 93 | 20 | 8 | 17 | 34 | 2 | 8 | 67 |

Parent Average EPD's on the mating listed below..

| CED | BW | WW | YW | Milk | CW | Marb | RE | \$B | \$C |
|-----|------|-----|------|------|-----|-------|-------|------|------|
| +12 | +1.4 | +79 | +131 | +25 | +62 | +0.96 | +1.15 | +181 | +297 |

Due 9/9/20 to GAR Quantum with heifer calf.
 Number 3 for Calving Ease Maternal EPD, Number 5 for Rib Eye area measure EPD and top 10 for Weaning Weight EPD and Docility score EPD.

WWW.BRIDGESANGUSFARM.LLC.COM



Bridges Ashland 8548 / Lot 15

Lot 15 Bridges Ashland 8548
 Birth Date: 9/17/18 Cow 19548570 Tattoo: 8548

| EPDs | CED | BW | WW | YW | SC | DOC | Milk | | | | | | |
|------|------|-------|-----|-------|-----|------|------|-------|-----|------|-----|------|-----|
| +5 | 60% | +3 | 85% | +89 | 1% | +150 | 1% | +0.89 | 45% | +28 | 10% | +31 | 10% |
| CW | MARB | REA | SM | SW | SB | SC | | | | | | | |
| +73 | 2% | +1.17 | 5% | +0.84 | 15% | +57 | 60% | +93 | 1% | +185 | 1% | +297 | 2% |

G A R Ashland 18217198
 G A R Early Bird
 Chair Rock Ambush 1018

Bridges Prophet 63 18877727
 G A R Prophet
 Bridges Progress 417

G A R Daylight
 G A R Progress 830
 B/R Ambush 28
 G A R Yield Grade N366
 C R A Bextor 872 5205 608
 G A R Objective 1885
 G A R Progress
 Bridges Evergreen Erica 4139

Lot 16 Bridges Ashland 8549
 Birth Date: 9/1/18 Cow 19548571 Tattoo: 8549

| EPDs | CED | BW | WW | YW | SC | DOC | Milk | | | | | | |
|------|------|-------|-----|-------|-----|------|------|------|-----|------|-----|------|-----|
| +12 | 10% | -0.1 | 20% | +64 | 25% | +111 | 25% | +0.9 | 45% | +11 | 75% | +29 | 20% |
| CW | MARB | REA | SM | SW | SB | SC | | | | | | | |
| +52 | 25% | +0.97 | 15% | +1.02 | 5% | +54 | 65% | +75 | 10% | +169 | 5% | +273 | 10% |

G A R Ashland 18217198
 G A R Early Bird
 Chair Rock Ambush 1018

Bridges 9Q13 Rito 482 17991394
 Rito 9Q13 of Rita 5F56 GHM
 Deer Valley Rita 0274

G A R Daylight
 G A R Progress 830
 B/R Ambush 28
 G A R Yield Grade N366
 Gardens Highmark
 Rita 5F56 of 1198 FD
 Sitz Upward 307R
 G A R Objective 2345

| CEI | CED | BW | WW | YW | DMI | YH | SC | DOC | HP | CEM | Milk | MW | MH | CW | MB | REA | FAT | TND |
|-----|-----|----|----|----|-----|----|----|-----|----|-----|------|----|----|----|----|-----|-----|-----|
| 61 | 71 | 8 | 27 | 84 | 25 | 63 | 12 | 75 | 9 | 29 | 16 | 7 | 8 | 11 | 11 | 93 | 97 | |

Parent Average EPD's on the mating listed below..

| CED | BW | WW | YW | Milk | CW | Marb | RE | SB | SC |
|-----|------|-----|------|------|-----|-------|-------|------|------|
| +9 | +1.6 | +75 | +133 | +30 | +51 | +0.94 | +0.77 | +154 | +273 |

| CEI | CED | BW | WW | YW | DMI | YH | SC | DOC | HP | CEM | Milk | MW | MH | CW | MB | REA | FAT | TND |
|-----|-----|----|----|----|-----|----|----|-----|----|-----|------|----|----|----|----|-----|-----|-----|
| 19 | 24 | 53 | 54 | 37 | 55 | 50 | 79 | 77 | 65 | 33 | 65 | 51 | 39 | 12 | 2 | 16 | 96 | |

Parent Average EPD's on the mating listed below..

| CED | BW | WW | YW | Milk | CW | Marb | RE | SB | SC |
|-----|------|-----|------|------|-----|-------|-------|------|------|
| +13 | +0.2 | +67 | +117 | +32 | +59 | +1.06 | +1.13 | +183 | +298 |

Due 9/19/20 to SAV Rainfall with bull calf.
 NUMBER 1 for Calving Ease Maternal EPD, Number 4 for hot Carcass Weight EPD and Docility score EPD and top 10 for \$Beef value index, \$Weaned calf value index, \$Feedlot value index, Weaning Weight EPD, Yearling Weight EPD and maternal Milk EPD.

Due 9/7/20 to GAR Quantum with heifer calf.
 Number 4 for Calving Ease Maternal EPD, Number 5 for Calving Ease Direct EPD and Birth Weight EPD and top 10 for Rib Eye area measure EPD.

I have enjoyed the honor and privilege of presenting Angus sales for three generations of the Bridges family and each time they offer a new round of production, the genetics are more current and cutting edge as Alan and Phillip have used all of the genomic and advance reproductive tools available to the beef industry to advance the legacy of their grandfather who served as a President of the American Angus Association and contributed immeasurably to both the Georgia Angus Association and the Georgia Cattleman's Association.

As the famous Oldsmobile commercial on television says, "this is not your grandfather's" Angus herd! Mr. Ralph would have loved to have the tools that his grandsons have used to advance the Angus breed in both their herd and across the nation. His diligent efforts collecting performance data and guiding the ship at the American Angus Association provided the foundation upon which the largest database in the beef industry has been built allowing Angus breeder to access the most advanced and accurate selection and mating tools in the beef industry.

This 2020 sale presentation begins with the opportunity to mate the Number 1 Marbling score EPD active dam among more than 300,000 Angus cows to the bull of your choice to make your very own outlier for the trait upon which the success of the Certified Angus Beef brand and the international reputation of the Angus breed are based. Study her daughters that sell by the \$C leader SydGen Enhance and the Weaning Weight and Yearling Weight leader Deer Valley Growth Fund carefully as they offer a glimpse of what can be done with this cow. Her sons by Enhance and G A R Scale House that sell here do EVERYTHING that the beef industry expects from an Angus bull!

While COVID-19 has posed many challenges to our nation and our world for most of the year 2020 that will be long remembered, it has also presented the human race with the opportunity to learn about "new normal" and I believe that Angus cattle with the data profile and selection pressure that are represented in this catalog are a preview of what the "new normal" of the Angus breed will look like!

If I can assist you in any way with selections from this offering or interpretation of the information presented about these cattle, please call or email and I will be happy to serve you,

Dick Beck
 Dick Beck
 Vice President of Sales & Marketing
 ORigen, Inc., Huntley, Montana

Lot 17 Bridges Absolute 7440
 Birth Date: 8/22/17 Cow 19069140 Tattoo: 7440

| EPDs | CED | BW | WW | YW | SC | DOC | Milk | | | | | | |
|------|------|-------|-----|-------|-----|------|------|-------|-----|------|-----|------|-----|
| +5 | 60% | +2 | 70% | +80 | 2% | +142 | 2% | +0.13 | 90% | +28 | 10% | +31 | 10% |
| CW | MARB | REA | SM | SW | SB | SC | | | | | | | |
| +64 | 10% | +0.81 | 25% | +0.79 | 20% | +72 | 20% | +88 | 2% | +159 | 10% | +278 | 10% |

S A V Final Answer 0035
K C F Bennett Absolute
 16430795 Thomas Miss Lucy 5152

G A R Prophet
Bridges Prophet 431
 17963333 Bridges 5050 New Design 255

Sitz Traveler 8180
 S A V Emulous 8145
 Wulffs Ext 6106
 Thomas Miss Lucy 3050
 C R A Bextor 872 5205 608
 G A R Objective 1885
 G A R New Design 5050
 Bridges Objective 8095

| CED | BW | WW | YW | DMI | YH | SC | DOC | HP | CEM | Milk | MW | MH | CW | MB | REA | FAT | TND |
|-----|----|----|----|-----|----|----|-----|----|-----|------|----|----|----|----|-----|-----|-----|
| 72 | 69 | 7 | 7 | 96 | 8 | 89 | 7 | 26 | 50 | 21 | 19 | 15 | 6 | 32 | 16 | 77 | 22 |

Parent Average EPD's on the mating listed below...

| CED | BW | WW | YW | Milk | CW | Marb | RE | SB | SC |
|-----|------|-----|------|------|-----|-------|-------|------|------|
| +6 | +2.7 | +77 | +135 | +26 | +55 | +1.44 | +0.72 | +183 | +300 |

Due 11/1/20 to Bridges Rare Air.
 Number 4 for Docility score EPD and top 10 for hot Carcass Weight EPD and maternal Milk EPD.

Lot 18B Bridges Sunrise 7123
 Birth Date: 9/13/17 Cow 19100696 Tattoo: 7123

| EPDs | CED | BW | WW | YW | SC | DOC | Milk | | | | | | |
|------|------|------|-----|-------|-----|------|------|-------|-----|------|-----|------|-----|
| +7 | 45% | +2.5 | 80% | +84 | 1% | +150 | 1% | -0.44 | 95% | +31 | 3% | +25 | 50% |
| CW | MARB | REA | SM | SW | SB | SC | | | | | | | |
| +65 | 5% | +0.9 | 20% | +0.69 | 30% | +72 | 20% | +82 | 3% | +165 | 10% | +286 | 4% |

MCC Daybreak
G A R Sunrise
 16933958 G A R Objective R227

G A R Prophet
Bridges Prophet 431
 17963333 Bridges 5050 New Design 255

Boyd New Day 8005
 MCC Miss Focus 134
 S S Objective T510 0T26
 G A R 1407 New Design 2983
 C R A Bextor 872 5205 608
 G A R Objective 1885
 G A R New Design 5050
 Bridges Objective 8095

| CED | BW | WW | YW | DMI | YH | SC | DOC | HP | CEM | Milk | MW | MH | CW | MB | REA | FAT | TND |
|-----|----|----|----|-----|----|----|-----|----|-----|------|----|----|----|----|-----|-----|-----|
| 65 | 63 | 6 | 11 | 98 | 10 | 95 | 5 | 32 | 94 | 72 | 12 | 21 | 15 | 18 | 31 | 32 | 33 |

Parent Average EPD's on the mating listed below...

| CED | BW | WW | YW | Milk | CW | Marb | RE | SB | SC |
|-----|------|-----|------|------|-----|-------|-------|------|------|
| +9 | +1.3 | +75 | +141 | +27 | +65 | +1.04 | +0.69 | +185 | +313 |

Due 9/20/20 to Sydgen Enhance with bull calf.
 Number 2 for Docility score EPD, Number 5 for percent Heifer Pregnancy EPD and top 10 for Weaning Weight EPD, Yearling Weight EPD and hot Carcass Weight EPD.

Lot 18A Bridges Sunrise 7527
 Birth Date: 10/12/17 Cow 19142480 Tattoo: 7527

| EPDs | CED | BW | WW | YW | SC | DOC | Milk | | | | | | |
|------|------|-------|-----|-------|-----|------|------|-------|-----|------|-----|------|-----|
| +9 | 20% | +1.6 | 55% | +94 | 1% | +154 | 1% | +0.27 | 80% | +31 | 1% | +31 | 15% |
| CW | MARB | REA | SM | SW | SB | SC | | | | | | | |
| +50 | 15% | +0.89 | 10% | +0.43 | 50% | +78 | 4% | +107 | 1% | +130 | 35% | +247 | 15% |

MCC Daybreak
G A R Sunrise
 16933958 G A R Objective R227

G A R Prophet
Bridges Prophet 431
 17963333 Bridges 5050 New Design 255

Boyd New Day 8005
 MCC Miss Focus 134
 S S Objective T510 0T26
 G A R 1407 New Design 2983
 C R A Bextor 872 5205 608
 G A R Objective 1885
 G A R New Design 5050
 Bridges Objective 8095

| CED | BW | WW | YW | DMI | YH | SC | DOC | HP | CEM | Milk | MW | MH | CW | MB | REA | FAT | TND |
|-----|----|----|----|-----|----|----|-----|----|-----|------|----|----|----|----|-----|-----|-----|
| 69 | 70 | 3 | 24 | 98 | 13 | 63 | 7 | 36 | 96 | 25 | 22 | 20 | 30 | 20 | 70 | 40 | 33 |

Parent Average EPD's on the mating listed below...

| CED | BW | WW | YW | Milk | CW | Marb | RE | SB | SC |
|-----|------|-----|------|------|-----|-------|-------|------|------|
| +8 | +2.5 | +84 | +141 | +26 | +48 | +1.48 | +0.54 | +169 | +285 |

Due 10/21/20 to Bridges Rare Air.
 NUMBER 1 for \$Weaned calf value index, Number 2 for Weaning Weight EPD and Docility score EPD, Number 4 for Yearling Weight EPD and top 10 for maternal Milk EPD.

Lot 19 Bridges Weigh Up AB752
 Birth Date: 9/10/17 Cow 19113763 Tattoo: 752

| EPDs | CED | BW | WW | YW | SC | DOC | Milk | | | | | | |
|------|------|-------|-----|-------|-----|------|------|-------|-----|------|-----|------|-----|
| +7 | 45% | +2.1 | 70% | +70 | 10% | +119 | 15% | -0.15 | 95% | +13 | 70% | +30 | 15% |
| CW | MARB | REA | SM | SW | SB | SC | | | | | | | |
| +53 | 20% | +0.94 | 15% | +1.02 | 5% | +79 | 10% | +81 | 4% | +165 | 10% | +293 | 2% |

Sitz Upward 307R
Plattemere Weigh Up K360
 16692552 Barbara of Plattemere 337

MCC Daybreak
Bridges Daybreak 297
 17459484 Bridges 5050 New Design 9108

Connealy Onward
 Sitz Henrietta Pride 81M
 G A R Retail Product
 Barbara of Plattemere 311
 Boyd New Day 8005
 MCC Miss Focus 134
 G A R New Design 5050
 G A R Objective L127

| CED | BW | WW | YW | DMI | YH | SC | DOC | HP | CEM | Milk | MW | MH | CW | MB | REA | FAT | TND |
|-----|----|----|----|-----|----|----|-----|----|-----|------|----|----|----|----|-----|-----|-----|
| 74 | 85 | 19 | 32 | 74 | 9 | 96 | 75 | 17 | 79 | 18 | 57 | 27 | 29 | 14 | 3 | 6 | 85 |

Parent Average EPD's on the mating listed below...

| CED | BW | WW | YW | Milk | CW | Marb | RE | SB | SC |
|-----|------|-----|------|------|-----|-------|-------|------|------|
| +7 | +2.8 | +72 | +124 | +26 | +50 | +1.51 | +0.84 | +186 | +308 |

Due 12/8/20 to Bridges Rare Air.
 Number 4 for percent Heifer Pregnancy EPD and top 10 for Rib Eye area measure EPD.



We guarantee that all breeding cattle sold by Bridges Angus Farm, both bulls and females, are fertile to the best of our knowledge. If a bull is injured at any time in the 12 months following the sale so as to make them functionally infertile, we will provide you with a satisfactory replacement (if available), or issue you a credit equal to the bull's purchase price minus an assigned salvage value of \$1,200.00 for that bull. If a female is determined to be a non-breeder, then we would ask you to sell her and would offer you the difference of her purchase price minus an assigned salvage value of \$1,200.00 credit in any future Bridges Angus Farm Production sale. All credit is good until it is used and does not expire. We would simply ask you to contact us before you cull your infertile animal. All claims for credit must be documented and certified by a licensed veterinarian as proof of injury. This is not a life insurance policy, however. We will not replace a dead animal if it is killed or dies for any reason. We would suggest that normal care still needs to be exercised toward these animals and that particularly the yearling bulls not be allowed to get too thin.

THIS GUARANTEE IS IN ADDITION TO THE SUGGESTED SALE TERMS AND CONDITIONS OF THE AMERICAN ANGUS ASSOCIATION, WHICH ALSO APPLY.

TO QUALIFY for the 12 month Bridges Brand Guarantee the average purchase price must meet a minimum of \$3000.

Purchases made at auction that do not meet the minimum threshold of \$3000 will be covered under a 30 day warranty. At any time during the 30 day warranty period, the customer may choose to upgrade to the 12 month warranty by paying the difference between \$3000 and the purchase price.

SIGHT UNSEEN GUARANTEE

We offer a sight unseen guarantee which means we pick out the best bull available based on your needs and guarantee your satisfaction on phenotype.

REPEAT CUSTOMER DISCOUNT

We offer a 5% discount to our loyal bull customers that purchase bulls annually. To be eligible, at least one bull must be purchased every 12 months.

VOLUME DISCOUNT

We offer a 5% discount to our volume bull customers that purchase at least 10 bulls per transaction.

FREE DELIVERY

We offer free delivery on all purchases females and bulls or a \$100 discount if the animal is picked up at the time of purchase. Common sense applies here! We will NOT ship one \$3000-\$5000 animal to the west coast for free. The total purchase price must justify the shipping expense!

BOARDING AVAILABLE

We offer 90 days free board on YEARLING BULLS. The Bridges Brand Guarantee begins at the time of sale.



G A R Scale House / Sire of Lots 20A - 20E

Flushmates
Lots 20A thru 20F
G A R Scale House
X
Bridges Prophet 663

MCC Daybreak
G A R Scale House
17354047
G A R 5050 New Design 1039
Bridges Prophet 663
1887734
Bridges Weigh Up 459

Boyd New Day 8005
MCC Miss Focus 134
G A R New Design 5050
G A R Objective 2345
C R A Bextor 872 5205 608
G A R Objective 1885
Plattemere Weigh Up K360
Deer Valley Blackcap 1122

Lot 20A Bridges Scale House 8433
Birth Date: 9/10/18 Cow 19286920 Tattoo: 8433

| EPDs | CED | BW | WW | YW | SC | DOC | Milk | | | | | | | | | | |
|------|------|-------|-----|------|-----|------|------|-------|-----|------|-----|------|-----|----|-----|-----|-----|
| +1 | 90% | +4.2 | 95% | +91 | 1% | +151 | 1% | +0.81 | 50% | +31 | 3% | +34 | 4% | | | | |
| CW | MARB | REA | SM | SW | SB | SC | | | | | | | | | | | |
| +62 | 10% | +0.83 | 25% | +0.9 | 10% | +60 | 50% | +97 | 1% | +160 | 10% | +268 | 10% | | | | |
| CED | BW | WW | YW | DMI | YH | SC | DOC | HP | CEM | Milk | MW | MH | CW | MB | REA | FAT | TND |
| 98 | 98 | 2 | 9 | 80 | 17 | 36 | 7 | 80 | 52 | 11 | 12 | 8 | 7 | 27 | 8 | 32 | 27 |

Parent Average EPD's on the mating listed below.

| CED | BW | WW | YW | Milk | CW | Marb | RE | SB | SC |
|-----|------|-----|------|------|-----|-------|------|------|------|
| +5 | +3.4 | +92 | +152 | +26 | +63 | +1.17 | +0.9 | +179 | +298 |

Due 10/11/20 to Bridges Rise Up.
Number 2 for Docility score EPD, Number 4 for Residual Average Daily Gain EPD, Number 5 for \$Weaned calf value index and Weaning Weight EPD and top 10 for Yearling Weight EPD, hot Carcass Weight EPD and maternal Milk EPD.

Lot 20B Bridges Scale House 8439
Birth Date: 9/3/18 Cow 19287785 Tattoo: 8439

| EPDs | CED | BW | WW | YW | SC | DOC | Milk | | | | | | | | | | |
|------|------|-------|-----|-------|-----|------|------|-------|-----|------|-----|------|-----|----|-----|-----|-----|
| +7 | 45% | +2.9 | 85% | +89 | 1% | +156 | 1% | +1.57 | 10% | +22 | 25% | +28 | 25% | | | | |
| CW | MARB | REA | SM | SW | SB | SC | | | | | | | | | | | |
| +74 | 2% | +1.09 | 10% | +0.74 | 25% | +73 | 15% | +89 | 1% | +183 | 2% | +310 | 1% | | | | |
| CED | BW | WW | YW | DMI | YH | SC | DOC | HP | CEM | Milk | MW | MH | CW | MB | REA | FAT | TND |
| 77 | 94 | 3 | 7 | 97 | 6 | 8 | 29 | 6 | 61 | 28 | 14 | 5 | 4 | 6 | 30 | 99 | 50 |

Parent Average EPD's on the mating listed below.

| CED | BW | WW | YW | Milk | CW | Marb | RE | SB | SC |
|-----|------|-----|------|------|-----|-------|-------|------|------|
| +11 | +1.7 | +79 | +140 | +32 | +70 | +1.12 | +0.99 | +190 | +316 |

Due 9/11/20 to GAR Quantum with heifer calf.
NUMBER 1 for percent Heifer Pregnancy EPD, Number 3 for Yearling Weight EPD and hot Carcass Weight EPD, Number 4 for \$Feedlot value index and Residual Average Daily Gain EPD and top 10 for \$Combined value index, \$Weaned calf value index, Weaning Weight EPD and Docility score EPD

Lot 20C Bridges Scale House 8434
Birth Date: 9/9/18 Cow 19286922 Tattoo: 8434

| EPDs | CED | BW | WW | YW | SC | DOC | Milk | | | | | | | | | | |
|------|------|-------|-----|-------|-----|------|------|-------|-----|------|-----|------|-----|----|-----|-----|-----|
| +7 | 45% | +3.7 | 95% | +93 | 1% | +143 | 2% | +0.06 | 90% | +17 | 50% | +20 | 85% | | | | |
| CW | MARB | REA | SM | SW | SB | SC | | | | | | | | | | | |
| +57 | 15% | +0.99 | 15% | +0.67 | 35% | +59 | 50% | +86 | 2% | +154 | 15% | +259 | 15% | | | | |
| CED | BW | WW | YW | DMI | YH | SC | DOC | HP | CEM | Milk | MW | MH | CW | MB | REA | FAT | TND |
| 87 | 99 | 2 | 41 | 69 | 9 | 76 | 56 | 46 | 21 | 88 | 12 | 5 | 24 | 15 | 40 | 80 | 29 |

Parent Average EPD's on the mating listed below.

| CED | BW | WW | YW | Milk | CW | Marb | RE | SB | SC |
|-----|------|-----|------|------|-----|-------|-------|------|------|
| +10 | +1.9 | +77 | +130 | +25 | +62 | +1.07 | +0.96 | +175 | +254 |

Due 9/19/20 to SAV Rainfall with heifer calf.
Number 3 for Weaning Weight EPD and Number 4 for Calving Ease Maternal EPD.

Lot 20D Bridges Scale House 8435
Birth Date: 9/7/18 Cow 19286925 Tattoo: 8435

| EPDs | CED | BW | WW | YW | SC | DOC | Milk | | | | | | | | | | |
|------|------|-------|-----|-------|-----|------|------|-------|-----|------|-----|------|-----|----|-----|-----|-----|
| +8 | 35% | +2 | 70% | +91 | 1% | +156 | 1% | +0.45 | 70% | +25 | 15% | +36 | 2% | | | | |
| CW | MARB | REA | SM | SW | SB | SC | | | | | | | | | | | |
| +60 | 10% | +1.15 | 5% | +0.92 | 10% | +65 | 35% | +103 | 1% | +164 | 10% | +278 | 10% | | | | |
| CED | BW | WW | YW | DMI | YH | SC | DOC | HP | CEM | Milk | MW | MH | CW | MB | REA | FAT | TND |
| 77 | 84 | 2 | 6 | 95 | 6 | 73 | 19 | 44 | 81 | 4 | 14 | 2 | 12 | 5 | 8 | 48 | 9 |

Parent Average EPD's on the mating listed below.

| CED | BW | WW | YW | Milk | CW | Marb | RE | SB | SC |
|-----|------|-----|------|------|-----|-------|-------|------|------|
| +11 | +1.2 | +80 | +140 | +36 | +63 | +1.15 | +1.08 | +180 | +300 |

Due 10/21/20 to GAR Quantum with heifer calf.
Number 3 for \$Weaned calf value index and Yearling Weight EPD, Number 4 for Residual Average Daily Gain EPD, Number 5 for Weaning Weight EPD and maternal Milk EPD and top 10 for Docility score EPD.

Lot 20E Bridges Scale House 8436
Birth Date: 9/5/18 Cow 19286927 Tattoo: 8436

| EPDs | CED | BW | WW | YW | SC | DOC | Milk | | | | | | | | | | |
|------|------|-------|-----|-------|----|------|------|-------|-----|------|-----|------|-----|----|-----|-----|-----|
| +5 | 60% | +3.1 | 90% | +86 | 1% | +149 | 1% | +1.14 | 30% | +7 | 85% | +39 | 1% | | | | |
| CW | MARB | REA | SM | SW | SB | SC | | | | | | | | | | | |
| +65 | 5% | +0.73 | 30% | +1.05 | 4% | +49 | 80% | +99 | 1% | +162 | 10% | +259 | 15% | | | | |
| CED | BW | WW | YW | DMI | YH | SC | DOC | HP | CEM | Milk | MW | MH | CW | MB | REA | FAT | TND |
| 94 | 90 | 3 | 9 | 71 | 3 | 17 | 93 | 78 | 81 | 4 | 24 | 2 | 7 | 39 | 2 | 25 | 23 |

Parent Average EPD's on the mating listed below.

| CED | BW | WW | YW | Milk | CW | Marb | RE | SB | SC |
|-----|------|-----|------|------|-----|-------|-------|------|------|
| +9 | +1.6 | +74 | +133 | +34 | +47 | +0.72 | +0.87 | +143 | +254 |

Due 9/22/20 to SAV Rainfall with heifer calf.
Number 2 for maternal Milk EPD, Number 3 for Residual Average Daily Gain EPD, Number 4 for \$Weaned calf value index and top 10 for Rib Eye area measure EPD, Weaning Weight EPD, Yearling Weight EPD and hot Carcass Weight EPD.

Lot 20F Bridges Scale House 8437
Birth Date: 9/4/18 Cow 19286930 Tattoo: 8437

| EPDs | CED | BW | WW | YW | SC | DOC | Milk | | | | | | | | | | |
|------|------|-------|-----|-------|----|------|------|-------|-----|------|-----|------|-----|----|-----|-----|-----|
| +12 | 10% | +1.6 | 60% | +86 | 1% | +143 | 2% | +0.68 | 55% | +17 | 50% | +31 | 10% | | | | |
| CW | MARB | REA | SM | SW | SB | SC | | | | | | | | | | | |
| +64 | 10% | +0.83 | 25% | +1.17 | 2% | +64 | 40% | +99 | 1% | +169 | 5% | +283 | 4% | | | | |
| CED | BW | WW | YW | DMI | YH | SC | DOC | HP | CEM | Milk | MW | MH | CW | MB | REA | FAT | TND |
| 42 | 77 | 2 | 16 | 88 | 10 | 46 | 57 | 87 | 57 | 33 | 28 | 4 | 6 | 29 | 1 | 9 | 35 |

Parent Average EPD's on the mating listed below.

| CED | BW | WW | YW | Milk | CW | Marb | RE | SB | SC |
|-----|------|-----|------|------|-----|-------|-------|------|------|
| +12 | +0.9 | +74 | +130 | +30 | +46 | +0.77 | +0.93 | +146 | +266 |

Due 9/10/20 to SAV Rainfall with bull calf.
Number 3 for Rib Eye area measure EPD and Calving Ease Maternal EPD, Number 4 for \$Weaned calf value index, Number 5 for Calving Ease Direct EPD and top 10 for Weaning Weight EPD, hot Carcass Weight EPD and maternal Milk EPD.

Lot 21A Bridges Scale House 8205
 Birth Date: 8/28/18 Cow 19548454 Tattoo: 8205
 EPDs CED BW WW YW SC DOC Milk
 +14 3% +0.2 25% +76 4% +129 10% +1.13 30% +22 25% +32 10%
 CW MARB REA SM SW SB SC
 +52 25% +0.73 30% +1.25 1% +64 40% +91 1% +162 10% +274 10%

MCC Daybreak
G A R Scale House
 17354047 G A R 5050 New Design 1039

G A R 100X
Bridges 100X 632
 18848661 Bridges Prophet 422

Boyd New Day 8005
 MCC Miss Focus 134
 G A R New Design 5050
 G A R Objective 2345
 A A R Ten X 7008 S A
 G A R 5050 New Design A91
 G A R Prophet
 Barbara of Plattemere 337

| CED | BW | WW | YW | DMI | YH | SC | DOC | HP | CEM | Milk | MW | MH | CW | MB | REA | FAT | TND |
|-----|----|----|----|-----|----|----|-----|----|-----|------|----|----|----|----|-----|-----|-----|
| 10 | 33 | 44 | 52 | 47 | 87 | 16 | 29 | 76 | 19 | 24 | 77 | 79 | 52 | 36 | 2 | 32 | 90 |

Lot 23 Bridges Proactive 8553
 Birth Date: 9/1/18 Cow 19546705 Tattoo: 8553
 EPDs CED BW WW YW SC DOC Milk
 +13 5% +0 25% +80 2% +143 2% +1.79 4% +17 50% +33 10%
 CW MARB REA SM SW SB SC
 +67 4% +0.96 15% +0.74 25% +60 50% +95 1% +172 4% +283 4%

G A R Prophet
G A R Proactive
 18333424 G A R Daybreak 1521

G A R Sure Fire
Bridges Sure Fire 659
 18877949 Deer Valley Rita 0274

C R A Bextor 872 5205 608
 G A R Objective 1885
 MCC Daybreak
 G A R 5050 New Design 1039
 Connealy In Sure 8524
 Chair Rock 5050 G A R 8086
 Sitz Upward 307R
 G A R Objective 2345

| CED | BW | WW | YW | DMI | YH | SC | DOC | HP | CEM | Milk | MW | MH | CW | MB | REA | FAT | TND |
|-----|----|----|----|-----|----|----|-----|----|-----|------|----|----|----|----|-----|-----|-----|
| 9 | 27 | 26 | 20 | 86 | 40 | 4 | 52 | 63 | 74 | 23 | 46 | 19 | 27 | 11 | 33 | 36 | 31 |

Parent Average EPD's on the mating listed below...

| CED | BW | WW | YW | Milk | CW | Marb | RE | SB | SC |
|-----|------|-----|------|------|-----|-------|-------|------|------|
| +14 | +0.3 | +73 | +126 | +34 | +59 | +0.94 | +1.25 | +179 | +298 |

Parent Average EPD's on the mating listed below...

| CED | BW | WW | YW | Milk | CW | Marb | RE | SB | SC |
|-----|------|-----|------|------|-----|-------|-------|------|------|
| +11 | +1.3 | +86 | +148 | +26 | +66 | +1.23 | +0.82 | +185 | +305 |

Due 9/21/20 to GAR Quantum with heifer calf.
 Number 2 for Rib Eye area measure EPD and Calving Ease Maternal EPD, Number 3 for Calving Ease Direct EPD and top 10 for \$Weaned calf value index, Docility score EPD, maternal Milk EPD and Birth Weight EPD.

Due 10/11/20 to Bridges Rise Up.
 Number 4 for Calving Ease Direct EPD, Number 5 for Calving Ease Maternal EPD and top 10 for \$Weaned calf value index, \$Feedlot value index, hot Carcass Weight EPD, maternal Milk EPD and Birth Weight EPD.

Lot 21B Bridges Scale House 8206
 Birth Date: 9/3/18 Cow 19548455 Tattoo: 8206
 EPDs CED BW WW YW SC DOC Milk
 +5 60% +3 85% +88 1% +150 1% +0.91 40% +27 10% +24 55%
 CW MARB REA SM SW SB SC
 +54 20% +0.97 15% +0.98 10% +56 60% +85 2% +165 10% +270 10%

MCC Daybreak
G A R Scale House
 17354047 G A R 5050 New Design 1039

G A R 100X
Bridges 100X 632
 18848661 Bridges Prophet 422

Boyd New Day 8005
 MCC Miss Focus 134
 G A R New Design 5050
 G A R Objective 2345
 A A R Ten X 7008 S A
 G A R 5050 New Design A91
 G A R Prophet
 Barbara of Plattemere 337

| CED | BW | WW | YW | DMI | YH | SC | DOC | HP | CEM | Milk | MW | MH | CW | MB | REA | FAT | TND |
|-----|----|----|----|-----|----|----|-----|----|-----|------|----|----|----|----|-----|-----|-----|
| 60 | 76 | 11 | 14 | 81 | 52 | 31 | 11 | 95 | 10 | 82 | 29 | 16 | 43 | 10 | 13 | 25 | 78 |

Lot 24 Bridges Proactive 8555
 Birth Date: 9/2/18 Cow 19546708 Tattoo: 8555
 EPDs CED BW WW YW SC DOC Milk
 +11 15% +0.3 30% +75 5% +120 15% -0.23 95% +28 10% +26 40%
 CW MARB REA SM SW SB SC
 +49 30% +1.21 4% +0.58 50% +94 1% +90 1% +157 15% +298 2%

G A R Prophet
G A R Proactive
 18333424 G A R Daybreak 1521

G A R Sunrise
Bridges Sunrise 6516
 18877776 Bridges 9M25 Rito 4791

C R A Bextor 872 5205 608
 G A R Objective 1885
 MCC Daybreak
 G A R 5050 New Design 1039
 MCC Daybreak
 G A R Objective R227
 Rito 9M25 of Rita 5F56 Pred
 Deer Valley Rita 0274

| CED | BW | WW | YW | DMI | YH | SC | DOC | HP | CEM | Milk | MW | MH | CW | MB | REA | FAT | TND |
|-----|----|----|----|-----|----|----|-----|----|-----|------|----|----|----|----|-----|-----|-----|
| 27 | 31 | 30 | 84 | 44 | 69 | 85 | 11 | 49 | 72 | 60 | 95 | 82 | 63 | 3 | 57 | 63 | 8 |

Parent Average EPD's on the mating listed below...

| CED | BW | WW | YW | Milk | CW | Marb | RE | SB | SC |
|-----|------|-----|------|------|-----|-------|-------|------|------|
| +7 | +2.8 | +90 | +152 | +21 | +59 | +1.24 | +0.94 | +182 | +299 |

Parent Average EPD's on the mating listed below...

| CED | BW | WW | YW | Milk | CW | Marb | RE | SB | SC |
|-----|------|-----|------|------|-----|-------|-------|------|------|
| +13 | +0.4 | +72 | +122 | +31 | +58 | +1.18 | +0.91 | +177 | +310 |

Due 10/26/20 to Bridges Rise Up.
 Number 4 for Calving Ease Maternal EPD, Number 5 for Docility score EPD and top 10 for Rib Eye area measure EPD, Weaning Weight EPD and Yearling Weight EPD.

Due 9/18/20 to GAR Quantum with heifer calf.
 Number 4 for Docility score EPD, Number 5 for Calving Ease Maternal EPD and top 10 for \$Weaned calf value index and Birth Weight EPD.

Lot 22 Bridges Scale House 8558
 Birth Date: 9/12/18 Cow 19548456 Tattoo: 8558
 EPDs CED BW WW YW SC DOC Milk
 +9 25% +2.1 70% +75 5% +129 10% +1.86 4% +21 30% +23 65%
 CW MARB REA SM SW SB SC
 +41 55% +0.66 40% +0.67 35% +47 85% +74 10% +131 45% +217 60%

MCC Daybreak
G A R Scale House
 17354047 G A R 5050 New Design 1039

Bridges Purpose
Bridges Purpose 6518 [DDF]
 18828073 Bridges Ten X 43

Boyd New Day 8005
 MCC Miss Focus 134
 G A R New Design 5050
 G A R Objective 2345
 G A R Prophet
 Bridges Predestined 143
 A A R Ten X 7008 S A
 Deer Valley Rita 0274

| CED | BW | WW | YW | DMI | YH | SC | DOC | HP | CEM | Milk | MW | MH | CW | MB | REA | FAT | TND |
|-----|----|----|----|-----|----|----|-----|----|-----|------|----|----|----|----|-----|-----|-----|
| 45 | 64 | 42 | 38 | 66 | 75 | 3 | 53 | 90 | 3 | 84 | 46 | 32 | 77 | 38 | 36 | 13 | 12 |

Lot 25 Bridges Manning 836
 Birth Date: 9/1/18 Cow 19547180 Tattoo: 836
 EPDs CED BW WW YW SC DOC Milk
 +11 15% +0.8 40% +67 15% +116 20% +0.21 85% +24 20% +37 2%
 CW MARB REA SM SW SB SC
 +47 35% +0.8 25% +0.62 40% +69 25% +84 3% +144 25% +256 20%

EXAR Denver 2002B
Quaker Hill Manning 4EX9
 17831034 Quaker Hill Blackcap 0A32

G A R Prophet
G A R Prophet F54
 17842452 G A R New Day 1540

EXAR Upshot 0562B
 Exar Royal Lass 1067
 MCC Daybreak
 QHF Blackcap 6E2 of 4V16 4355
 C R A Bextor 872 5205 608
 G A R Objective 1885
 B/R New Day 454
 G A R Predestined 2358

| CED | BW | WW | YW | DMI | YH | SC | DOC | HP | CEM | Milk | MW | MH | CW | MB | REA | FAT | TND |
|-----|----|----|----|-----|----|----|-----|----|-----|------|----|----|----|----|-----|-----|-----|
| 23 | 35 | 65 | 74 | 45 | 88 | 74 | 20 | 27 | 10 | 18 | 77 | 86 | 71 | 26 | 51 | 31 | 86 |

Parent Average EPD's on the mating listed below...

| CED | BW | WW | YW | Milk | CW | Marb | RE | SB | SC |
|-----|------|-----|------|------|-----|-------|-------|------|------|
| +9 | +2.3 | +84 | +141 | +21 | +53 | +1.08 | +0.79 | +165 | +272 |

Parent Average EPD's on the mating listed below...

| CED | BW | WW | YW | Milk | CW | Marb | RE | SB | SC |
|-----|------|-----|------|------|-----|-------|-------|------|------|
| +10 | +1.7 | +80 | +135 | +28 | +56 | +1.15 | +0.76 | +171 | +292 |

Due 11/5/20 to Bridges Rise Up.
 NUMBER 1 for Calving Ease Maternal EPD.

Due 11/7/20 to Bridges Rise Up.
 NUMBER 1 for Calving Ease Maternal EPD, Number 4 for maternal Milk EPD, Number 5 for percent Heifer Pregnancy EPD and top 10 for Docility score EPD.

Video Sale Format

Starting this year, at our new sale facility, we will host an in person sale via video. The cattle will be displayed directly beside the sale barn prior to and during the auction for your appraisal. Videos of the sale cattle will be available on our website WWW.BRIDGESANGUSFARM.LLC.COM



Bridges Fortress 8559 / Lot 27



Bridges Fortress 8561 / Lot 28

Lot 26 Bridges Manning 8531

Birth Date: 9/2/18 Cow 19546609 Tattoo: 8531

| EPDs | CED | BW | WW | YW | SC | DOC | Milk | | | | | | |
|------|------|-------|-----|-------|-----|-------|------|-------|-----|------|-----|------|-----|
| +9 | 25% | +2.7 | 80% | +80 | 2% | +1.33 | 5% | +0.61 | 60% | +24 | 20% | +27 | 30% |
| CW | MARB | REA | SM | SW | SB | SC | | | | | | | |
| +61 | 10% | +0.94 | 15% | +0.57 | 50% | +76 | 10% | +84 | 3% | +158 | 10% | +281 | 5% |

EXAR Denver 2002B
Quaker Hill Manning 4EX9
 17831034 Quaker Hill Blackcap 0A32
 G A R Prophet
Bridges Evergreen Erica 4134
 18012050 Bridges Evergreen Erica 4139

EXAR Upshot 0562B
 Exar Royal Lass 1067
 MCC Daybreak
 QHF Blackcap 6E2 of4V16 4355
 C R A Bextor 872 5205 608
 G A R Objective 1885
 G A R Yield Grade
 RMR Evergreen Time C113

| CED | BW | WW | YW | DMI | YH | SC | DOC | HP | CEM | Milk | MW | MH | CW | MB | REA | FAT | TND |
|-----|----|----|----|-----|----|----|-----|----|-----|------|----|----|----|----|-----|-----|-----|
| 18 | 51 | 27 | 56 | 86 | 64 | 51 | 26 | 44 | 44 | 69 | 53 | 85 | 48 | 13 | 77 | 83 | 42 |

Parent Average EPD's on the mating listed below...

| CED | BW | WW | YW | Milk | CW | Marb | RE | SB | SC |
|-----|------|-----|------|------|-----|-------|-------|------|------|
| +10 | +1.1 | +74 | +124 | +29 | +57 | +0.79 | +0.56 | +151 | +266 |

Due 9/21/20 to LD Capitalist 316 with heifer calf.
 Number 5 for Calving Ease Maternal EPD and top 10 for Docility score EPD.

Lot 27 Bridges Fortress 8559

Birth Date: 9/3/18 Cow 19546569 Tattoo: 8559

| EPDs | CED | BW | WW | YW | SC | DOC | Milk | | | | | | |
|------|------|-------|-----|-------|-----|------|------|-------|-----|------|-----|------|-----|
| +13 | 5% | -1 | 10% | +62 | 30% | +111 | 25% | +0.42 | 75% | +1 | 95% | +20 | 85% |
| CW | MARB | REA | SM | SW | SB | SC | | | | | | | |
| +33 | 75% | +0.73 | 30% | +0.63 | 40% | +29 | 95% | +62 | 30% | +131 | 45% | +199 | 80% |

Connealy Consensus
K C F Bennett Fortress
 17259012 Thomas Patricia 9705
 G A R Prophet
Bridges Prophet 470
 17963403 Deer Valley Blackcap 8843

KMK Alliance 6595 187
 Blinda of Conanga 004
 S S Objective T510 0T26
 Thomas Patricia 71138
 C R A Bextor 872 5205 608
 G A R Objective 1885
 G A R Grid Maker
 Rita 1198 of 2536 Rito 616

| CED | BW | WW | YW | DMI | YH | SC | DOC | HP | CEM | Milk | MW | MH | CW | MB | REA | FAT | TND |
|-----|----|----|----|-----|----|----|-----|----|-----|------|----|----|----|----|-----|-----|-----|
| 7 | 7 | 80 | 79 | 47 | 98 | 68 | 100 | 94 | 15 | 87 | 85 | 91 | 95 | 47 | 65 | 50 | 72 |

Parent Average EPD's on the mating listed below...

| CED | BW | WW | YW | Milk | CW | Marb | RE | SB | SC |
|-----|------|-----|------|-------|-------|-------|-------|------|------|
| +12 | -0.8 | +65 | +113 | +25.5 | +42.5 | +0.68 | +0.58 | +138 | +225 |

Due 9/9/20 to LD Capitalist 316 with heifer calf.
 NUMBER 1 for Calving Ease Maternal EPD and Number 4 for Calving Ease Direct EPD and Birth Weight EPD.

Lot 28 Bridges Fortress 8561

Birth Date: 9/3/18 Cow 19546570 Tattoo: 8561

| EPDs | CED | BW | WW | YW | SC | DOC | Milk | | | | | | |
|------|------|-------|-----|-------|-----|------|------|-------|-----|------|-----|------|-----|
| +4 | 70% | +1.5 | 55% | +61 | 30% | +107 | 35% | +1.26 | 20% | +20 | 35% | +21 | 80% |
| CW | MARB | REA | SM | SW | SB | SC | | | | | | | |
| +37 | 65% | +1.03 | 10% | +0.76 | 25% | +55 | 65% | +63 | 30% | +155 | 15% | +256 | 20% |

Connealy Consensus
K C F Bennett Fortress
 17259012 Thomas Patricia 9705
 Baldridge Waylon W34
Bridges Waylon 476
 17930337 G A R Predestined 4665

KMK Alliance 6595 187
 Blinda of Conanga 004
 S S Objective T510 0T26
 Thomas Patricia 71138
 GAR- EGL Protege
 Baldridge Blackcap T163
 G A R Predestined
 G A R T510 Traveler 4592

| CED | BW | WW | YW | DMI | YH | SC | DOC | HP | CEM | Milk | MW | MH | CW | MB | REA | FAT | TND |
|-----|----|----|----|-----|----|----|-----|----|-----|------|----|----|----|----|-----|-----|-----|
| 29 | 14 | 85 | 82 | 18 | 99 | 20 | 50 | 89 | 27 | 78 | 98 | 95 | 93 | 10 | 56 | 10 | 98 |

Parent Average EPD's on the mating listed below...

| CED | BW | WW | YW | Milk | CW | Marb | RE | SB | SC |
|-----|----|-----|------|------|-----|-------|-------|------|------|
| +6 | +2 | +77 | +130 | +20 | +51 | +1.27 | +0.83 | +177 | +292 |

Due 11/1/20 to Bridges Rise Up.

Lot 29 Hillside Momentum T75

Birth Date: 8/30/14 Cow 18099013 Tattoo: T75

| EPDs | CED | BW | WW | YW | SC | DOC | Milk | | | | | | |
|------|------|------|----|-------|-----|-----|------|-------|-----|------|----|------|-----|
| +15 | 2% | -1.8 | 3% | +50 | 50% | +99 | 35% | +0.01 | 95% | +33 | 1% | +33 | 10% |
| CW | MARB | REA | SM | SW | SB | SC | | | | | | | |
| +37 | 40% | +1.3 | 1% | +0.84 | 10% | +69 | 15% | +65 | 20% | +176 | 2% | +297 | 1% |

G A R Progress
G A R Momentum
 17354145 G A R Big Eye 1770
 G A R New Design 5050
G A R 5050 New Design A039
 16763530 G A R Objective A706

G A R Predestined
 G A R Objective 2345
 ALC Big Eye D09N
 G A R Objective 3387
 B/R New Design 036
 G A R Precision 706
 S S Objective T510 0T26
 G A R Integrity T465

| CED | BW | WW | YW | DMI | YH | SC | DOC | HP | CEM | Milk | MW | MH | CW | MB | REA | FAT | TND |
|-----|----|----|----|-----|----|----|-----|----|-----|------|----|----|----|----|-----|-----|-----|
| 8 | 6 | 92 | 57 | 24 | 44 | 87 | 7 | 61 | 92 | 36 | 87 | 70 | 71 | 4 | 31 | 36 | 91 |

Parent Average EPD's on the mating listed below...

| CED | BW | WW | YW | Milk | CW | Marb | RE | SB | SC |
|-----|------|-----|------|------|-----|-------|-------|------|------|
| +13 | +0.2 | +75 | +134 | +33 | +58 | +1.11 | +0.78 | +172 | +295 |

Due 9/20/20 to Bridges Foretold with bull calf.
 NUMBER 1 for Docility score EPD, Number 2 for Calving Ease Direct EPD and Birth Weight EPD and top 10 for \$Grid value index and maternal Milk EPD.

K A Miss Cowboy Up 827

Lot 30



Lot 30 K A Miss Cowboy Up 827

Birth Date: 2/21/18 Cow 19350671 Tattoo: 827

| EPDs | CED | BW | WW | YW | SC | DOC | Milk | | | | | | |
|------|------|-------|-----|-------|-----|------|------|-------|-----|------|-----|------|-----|
| +10 | 20% | +3.1 | 90% | +79 | 3% | +141 | 2% | +1.06 | 35% | +14 | 65% | +15 | 95% |
| CW | MARB | REA | \$M | \$W | \$B | SC | 60% | | | | | | |
| +52 | 25% | +0.41 | 70% | +0.31 | 85% | +46 | 85% | +60 | 35% | +131 | 45% | +216 | 60% |

HA Outside 3008
HA Cowboy Up 5405
 18286467 HA Blackcap Lady 1602

S A V Final Answer 0035
Stucky Eisa Erica 1694
 17258645 Stucky Eisa Erica 7432

KG Solution 0018
 HA Ever Lady 1575
 Sitz Upward 307R
 HA Blackcap Lady 5515
 Sitz Traveler 8180
 S A V Emulous 8145
 G A R Predestined
 Circle S Eisa Erica 4079

| CED | BW | WW | YW | DMI | YH | SC | DOC | HP | CEM | Milk | MW | MH | CW | MB | REA | FAT | TND |
|-----|----|----|----|-----|----|----|-----|----|-----|------|----|----|----|----|-----|-----|-----|
| 71 | 97 | 3 | 2 | 93 | 14 | 19 | 53 | 45 | 33 | 90 | 2 | 11 | 8 | 47 | 53 | 13 | 1 |

Parent Average EPD's on the mating listed below.

| CED | BW | WW | YW | Milk | CW | Marb | RE | \$B | \$C |
|-----|------|-----|------|------|-----|-------|-------|------|------|
| +9 | +2.8 | +86 | +147 | +17 | +58 | +0.96 | +0.61 | +165 | +272 |

Due 10/31/20 to Bridges Rise Up.
 Number 2 for Residual Average Daily Gain EPD and Number 4 for Calving Ease Maternal EPD.

Lot 32 Bridges In Sure 404

Birth Date: 8/25/14 Cow 17963275 Tattoo: 404

| EPDs | CED | BW | WW | YW | SC | DOC | Milk | | | | | | |
|------|------|-------|-----|-------|-----|-----|------|-------|-----|------|-----|------|----|
| +19 | 1% | -2.6 | 1% | +43 | 75% | +86 | 60% | +1.33 | 15% | +23 | 15% | +44 | 1% |
| CW | MARB | REA | \$M | \$W | \$B | SC | 5% | | | | | | |
| +49 | 15% | +0.88 | 10% | +0.81 | 10% | +53 | 60% | +68 | 15% | +165 | 4% | +267 | 5% |

Mytty In Focus
Connealy In Sure 8524
 16205036 Entreena of Conanga 657

S A F Focus of E R
 Mytty Countess 906
 Connealy Onward
 Enty of Conanga 5657
 Connealy Onward
 Sitz Upward 307R
Deer Valley Rita 0274
 16659290 G A R Objective 2345

S A F Focus of E R
 Mytty Countess 906
 Connealy Onward
 Enty of Conanga 5657
 Connealy Onward
 Sitz Henrietta Pride 81M
 S S Objective T510 OT26
 G A R 1407 New Design 2413

| CED | BW | WW | YW | DMI | YH | SC | DOC | HP | CEM | Milk | MW | MH | CW | MB | REA | FAT | TND |
|-----|----|-----|----|-----|----|----|-----|----|-----|------|----|----|----|----|-----|-----|-----|
| 1 | 2 | 100 | 82 | 36 | 38 | 22 | 22 | 75 | 96 | 4 | 96 | 56 | 61 | 30 | 32 | 14 | 45 |

Parent Average EPD's on the mating listed below.

| CED | BW | WW | YW | Milk | CW | Marb | RE | \$B | \$C |
|-----|------|-----|------|------|-----|------|-------|------|------|
| +15 | -0.2 | +72 | +127 | +38 | +64 | +0.9 | +0.76 | +166 | +280 |

Due 9/21/20 to Bridges Foretold with heifer calf.
 NUMBER 1 for maternal Milk EPD, Calving Ease Direct EPD and Birth Weight EPD and top 10 for Docility score EPD.

Lot 31 Bridges Double Down 643

Birth Date: 8/27/16 Cow 18828059 Tattoo: 643

| EPDs | CED | BW | WW | YW | SC | DOC | Milk | | | | | | |
|------|------|-------|-----|-------|-----|-----|------|-------|-----|------|-----|------|-----|
| +12 | 10% | +0.7 | 35% | +52 | 45% | +92 | 45% | -0.08 | 95% | -2 | 95% | +38 | 2% |
| CW | MARB | REA | \$M | \$W | \$B | SC | 2% | | | | | | |
| +46 | 20% | +0.88 | 10% | +0.29 | 75% | +36 | 95% | +70 | 10% | +153 | 10% | +234 | 25% |

A A R Ten X 7008 S A
Bridges Double Down
 17741161 Deer Valley Rita 0274

B/R Future Direction 4268
Bridges 4268 FD 128
 16859305 G A R Retail Product A7000

Mytty In Focus
 A A R Lady Kelton 5551
 Sitz Upward 307R
 G A R Objective 2345
 C A Future Direction 5321
 B/R Ruby 9114
 G A R Retail Product
 G A R 1407 New Design 2413

| CED | BW | WW | YW | DMI | YH | SC | DOC | HP | CEM | Milk | MW | MH | CW | MB | REA | FAT | TND |
|-----|----|----|----|-----|----|----|-----|----|-----|------|----|----|----|----|-----|-----|-----|
| 17 | 38 | 66 | 72 | 16 | 54 | 82 | 96 | 73 | 49 | 4 | 61 | 57 | 30 | 16 | 90 | 73 | 17 |

Parent Average EPD's on the mating listed below.

| CED | BW | WW | YW | Milk | CW | Marb | RE | \$B | \$C |
|-----|------|-----|------|------|-----|-------|-------|------|------|
| +10 | +2.1 | +63 | +110 | +30 | +46 | +1.48 | +0.47 | +180 | +278 |

Due 10/11/20 to Bridges Rare Air.
 Number 3 for maternal Milk EPD and Number 5 for Calving Ease Maternal EPD and Calving Ease Direct EPD.

Lot 33 Bridges Sure Fire 6502

Birth Date: 9/25/2016 Cow 18877957 Tattoo: 6502

| EPDs | CED | BW | WW | YW | SC | DOC | Milk | | | | | | |
|------|------|-------|-----|-------|-----|------|------|-------|----|------|----|------|----|
| +11 | 10% | +0.1 | 20% | +57 | 30% | +107 | 15% | +1.70 | 3% | +32 | 1% | +40 | 1% |
| CW | MARB | REA | \$M | \$W | \$B | SC | 1% | | | | | | |
| +53 | 10% | +0.96 | 10% | +0.57 | 30% | +57 | 45% | +76 | 4% | +161 | 5% | +266 | 5% |

Connealy In Sure 8524
G A R Sure Fire
 17328461 Chair Rock 5050 G A R 8086

Sitz Upward 307R
Deer Valley Rita 0274
 16659290 G A R Objective 2345

Mytty In Focus
 Entreena of Conanga 657
 G A R New Design 5050
 Chair Rock Grid Maker 2107
 Connealy Onward
 Sitz Henrietta Pride 81M
 S S Objective T510 OT26
 G A R 1407 New Design 2413

| CED | BW | WW | YW | DMI | YH | SC | DOC | HP | CEM | Milk | MW | MH | CW | MB | REA | FAT | TND |
|-----|----|----|----|-----|----|----|-----|----|-----|------|----|----|----|----|-----|-----|-----|
| 13 | 16 | 81 | 41 | 52 | 43 | 15 | 4 | 40 | 98 | 4 | 52 | 49 | 37 | 9 | 66 | 37 | 93 |

Parent Average EPD's on the mating listed below.

| CED | BW | WW | YW | Milk | CW | Marb | RE | \$B | \$C |
|-----|------|-----|------|------|-----|-------|-----|------|------|
| +8 | +1.8 | +75 | +118 | +30 | +50 | +1.01 | +62 | +185 | +295 |

Due 12/09/20 to Bridges Rare Air.
 Top 1% for Docility EPD and Milk EPD, Top 3% for Scrotal EPD, Top 4% for \$Weaning value index, Top 5% for \$Combined value index and Top 10% for Calving Ease EPD, hot Carcass Weigh EPD and Marbling EPD.



Two-Year-Old *Bulls*

LOTS 34-52

OUR SERVICE

Sight Unseen Guarantee

1st Year Breeding Guarantee

5% Volume Discount

5% Repeat Customer Discount

Free Delivery or \$100/head Pickup Credit

Negative PI-BVD Tested



Developed on Forage & Ready to Work



Lot 34 Bridges Scale House AB8410

Birth Date: 9/9/2018 Bull 19286934 Tattoo: 8410

| EPDs | CED | BW | WW | YW | SC | DOC | Milk | | | | | | |
|------|------|-------|-----|-------|-----|------|------|-------|-----|------|-----|------|-----|
| +8 | 35% | +3.1 | 90% | +89 | 1% | +140 | 3% | +0.84 | 50% | +22 | 30% | +16 | 95% |
| CW | MARB | REA | \$M | \$W | \$B | SC | | | | | | | |
| +57 | 15% | +0.59 | 45% | +0.83 | 15% | +55 | 65% | +81 | 5% | +143 | 30% | +240 | 35% |

MCC Daybreak
G A R Scale House
 17354047 G A R 5050 New Design 1039
Bridges Prophet 6605
 18842068 Bridges All In 4106

Boyd New Day 8005
 MCC Miss Focus 134
 G A R New Design 5050
 G A R Objective 2345
 C R A Bextor 872 5205 608
 G A R Objective 1885
 Deer Valley All In
 Bridges Ingenuity 254

| CEP | BW | WW | YW | DMI | YH | SC | DOC | HP | CEM | Milk | MW | MH | CW | MB | REA | FAT | TND |
|-----|----|----|----|-----|----|----|-----|----|-----|------|----|----|----|----|-----|-----|-----|
| 75 | 92 | 2 | 30 | 83 | 7 | 30 | 34 | 95 | 80 | 85 | 23 | 17 | 11 | 47 | 10 | 54 | 51 |

Number 5 for Weaning Weight EPD and top 10 for Rib Eye area measure EPD, Yearling Weight EPD and Docility score EPD.

Lot 37 Bridges Arsenal AB812

Birth Date: 9/2/2018 Bull 19466121 Tattoo: 812

| EPDs | CED | BW | WW | YW | SC | DOC | Milk | | | | | | |
|------|------|-------|-----|-------|-----|------|------|-------|-----|------|-----|------|-----|
| +9 | 30% | +0.9 | 40% | +74 | 10% | +131 | 10% | -0.49 | 95% | +21 | 30% | +24 | 55% |
| CW | MARB | REA | \$M | \$W | \$B | SC | | | | | | | |
| +46 | 40% | +0.91 | 15% | +0.67 | 35% | +41 | 95% | +75 | 10% | +143 | 30% | +226 | 50% |

Baldrige Waylon W34
44 Arsenal 4W07
 17857587 DZ ND 5050 0F15
Bridges Prophet 406
 17963312 Bridges Daybreak 297

Gar-EGl Protege
 Baldrige Blackcap T163
 G A R New Design 5050
 DZ Total 8705
 C R A Bextor 872 5205 608
 G A R Objective 1885
 MCC Daybreak
 Bridges 5050 New Design 9108

| CEP | BW | WW | YW | DMI | YH | SC | DOC | HP | CEM | Milk | MW | MH | CW | MB | REA | FAT | TND |
|-----|----|----|----|-----|----|----|-----|----|-----|------|----|----|----|----|-----|-----|-----|
| 57 | 64 | 29 | 28 | 75 | 60 | 93 | 49 | 98 | 91 | 72 | 34 | 41 | 56 | 27 | 65 | 84 | 21 |

Number 5 for Residual Average Daily Gain EPD.

Lot 35 Bridges Scale House AB8107

Birth Date: 9/4/2018 Bull 19439007 Tattoo: 8107

| EPDs | CED | BW | WW | YW | SC | DOC | Milk | | | | | | |
|------|------|-------|-----|-------|-----|------|------|-----|-----|------|-----|------|-----|
| +4 | 70% | +2.7 | 80% | +79 | 3% | +119 | 20% | +1 | 40% | +26 | 15% | +22 | 70% |
| CW | MARB | REA | \$M | \$W | \$B | SC | | | | | | | |
| +36 | 70% | +0.82 | 20% | +0.97 | 10% | +74 | 15% | +80 | 5% | +135 | 40% | +249 | 25% |

MCC Daybreak
G A R Scale House
 17354047 G A R 5050 New Design 1039
Bridges Composure 4102
 17963382 Bridges Prediction 268

Boyd New Day 8005
 MCC Miss Focus 134
 G A R New Design 5050
 G A R Objective 2345
 G A R New Design 5050
 G A R Objective 2345
 G A R Prediction
 G A R Objective 1885

| CEP | BW | WW | YW | DMI | YH | SC | DOC | HP | CEM | Milk | MW | MH | CW | MB | REA | FAT | TND |
|-----|----|----|----|-----|----|----|-----|----|-----|------|----|----|----|----|-----|-----|-----|
| 82 | 78 | 27 | 74 | 24 | 48 | 28 | 29 | 19 | 84 | 86 | 58 | 30 | 76 | 25 | 11 | 7 | 34 |

Number 3 for Rib Eye area measure EPD, Number 4 for percent Heifer Pregnancy EPD and top 10 for Docility score EPD.

Lot 38 Bridges Ten X AB815

Birth Date: 9/3/2018 Bull 19466000 Tattoo: 815

| EPDs | CED | BW | WW | YW | SC | DOC | Milk | | | | | | |
|------|------|-------|-----|-------|-----|------|------|-------|-----|------|-----|------|-----|
| +11 | 15% | +0.2 | 30% | +73 | 10% | +127 | 10% | +0.91 | 45% | +20 | 35% | +37 | 2% |
| CW | MARB | REA | \$M | \$W | \$B | SC | | | | | | | |
| +52 | 25% | +1.01 | 10% | +0.34 | 85% | +62 | 45% | +93 | 1% | +143 | 30% | +247 | 25% |

Mytty In Focus
A A R Ten X 7008 S A
 15719841 A A R Lady Kelton 5551
Bridges Prophet 406
 17963312 Bridges Daybreak 297

S A F Focus of E R
 Mytty Countess 906
 S A V Adaptor 2213
 H S A F Lady Kelton 5048
 C R A Bextor 872 5205 608
 G A R Objective 1885
 MCC Daybreak
 Bridges 5050 New Design 9108

| CEP | BW | WW | YW | DMI | YH | SC | DOC | HP | CEM | Milk | MW | MH | CW | MB | REA | FAT | TND |
|-----|----|----|----|-----|----|----|-----|----|-----|------|----|----|----|----|-----|-----|-----|
| 21 | 41 | 29 | 32 | 90 | 41 | 23 | 28 | 85 | 66 | 5 | 53 | 55 | 37 | 20 | 84 | 97 | 81 |

NUMBER 1 for maternal Milk EPD, Number 5 for \$Weaned calf value index and Calving Ease Direct EPD and top 10 for Birth Weight EPD.

Lot 36 Bridges Scale House AB801

Birth Date: 9/13/2018 Bull 19212613 Tattoo: 801

| EPDs | CED | BW | WW | YW | SC | DOC | Milk | | | | | | |
|------|------|-------|-----|-------|-----|------|------|-------|-----|------|-----|------|-----|
| +12 | 10% | +1.1 | 45% | +77 | 4% | +124 | 15% | +0.84 | 50% | +24 | 20% | +22 | 70% |
| CW | MARB | REA | \$M | \$W | \$B | SC | | | | | | | |
| +42 | 50% | +1.45 | 1% | +0.81 | 20% | +60 | 50% | +80 | 5% | +166 | 10% | +275 | 10% |

MCC Daybreak
G A R Scale House
 17354047 G A R 5050 New Design 1039
G A R Progress 1103
 17623200 G A R 28 Ambush 1759

Boyd New Day 8005
 MCC Miss Focus 134
 G A R New Design 5050
 G A R Objective 2345
 G A R Predestined
 G A R Objective 2345
 B/R Ambush 28
 G A R Objective 1885

| CEP | BW | WW | YW | DMI | YH | SC | DOC | HP | CEM | Milk | MW | MH | CW | MB | REA | FAT | TND |
|-----|----|----|----|-----|----|----|-----|----|-----|------|----|----|----|----|-----|-----|-----|
| 46 | 62 | 20 | 52 | 61 | 53 | 37 | 34 | 73 | 93 | 71 | 44 | 20 | 50 | 1 | 24 | 62 | 92 |

Number 2 for \$Grid value index and Marbling score EPD, Number 4 for Calving Ease Direct EPD and top 10 for Docility score EPD. Dam was the first active Angus dam to record a Marbling score EPD of +2.00 or greater, this foundation Bridges donor ranks NUMBER 1 among 300,272 active dams in the AAA database as of this writing.

Lot 39 Bridges Ten X AB818

Birth Date: 9/4/2018 Bull 19466003 Tattoo: 818

| EPDs | CED | BW | WW | YW | SC | DOC | Milk | | | | | | |
|------|------|-------|-----|-------|-----|------|------|-------|-----|------|-----|------|-----|
| +11 | 15% | -0.4 | 20% | +77 | 4% | +144 | 2% | +1.26 | 25% | +22 | 30% | +28 | 30% |
| CW | MARB | REA | \$M | \$W | \$B | SC | | | | | | | |
| +49 | 30% | +0.89 | 15% | +0.52 | 55% | +73 | 15% | +88 | 2% | +146 | 25% | +262 | 15% |

Mytty In Focus
A A R Ten X 7008 S A
 15719841 A A R Lady Kelton 5551
Bridges Prophet 406
 17963312 Bridges Daybreak 297

S A F Focus of E R
 Mytty Countess 906
 S A V Adaptor 2213
 H S A F Lady Kelton 5048
 C R A Bextor 872 5205 608
 G A R Objective 1885
 MCC Daybreak
 Bridges 5050 New Design 9108

| CEP | BW | WW | YW | DMI | YH | SC | DOC | HP | CEM | Milk | MW | MH | CW | MB | REA | FAT | TND |
|-----|----|----|----|-----|----|----|-----|----|-----|------|----|----|----|----|-----|-----|-----|
| 24 | 30 | 25 | 8 | 85 | 58 | 22 | 24 | 91 | 39 | 41 | 51 | 61 | 50 | 31 | 64 | 96 | 32 |

Number 2 for Residual Average Daily Gain EPD, Number 4 for Calving Ease Maternal EPD, Number 5 for Calving Ease Direct EPD and top 10 for \$Weaned calf value index, Yearling Weight EPD, Scrotal Circumference measure EPD, Docility score EPD, maternal Milk EPD and Birth Weight EPD.

Lot 40 Bridges Scale House AB826
 Birth Date: 9/1/2018 Bull 19466844 Tattoo: 826

| EPDs | CED | BW | WW | YW | SC | DOC | Milk |
|------|-----|-------|-----|-------|-----|------|------|
| +4 | 70% | +4.6 | 95% | +89 | 1% | +143 | 2% |
| +7 | 10% | +1.11 | 5% | +0.98 | 5% | +50 | 80% |
| +86 | 2% | +1.73 | 4% | +274 | 10% | | |

MCC Daybreak
G A R Scale House
 17354047 G A R 5050 New Design 1039

G A R Prophet
BJ Prophet 4212
 18189491 BJ Complete 1165

Boyd New Day 8005
 MCC Miss Focus 134
 G A R New Design 5050
 G A R Objective 2345

C R A Bextor 872 5205 608
 G A R Objective 1885
 Summitcrest Complete 1P55
 BJ 5050 New Design 9164

| CED | BW | WW | YW | DMI | YH | SC | DOC | HP | CEM | Milk | MW | MH | CW | MB | REA | FAT | TND |
|-----|----|----|----|-----|----|----|-----|----|-----|------|----|----|----|----|-----|-----|-----|
| 89 | 97 | 10 | 31 | 66 | 14 | 21 | 32 | 65 | 19 | 51 | 19 | 4 | 26 | 5 | 11 | 38 | 6 |

Number 2 for Rib Eye area measure EPD, Number 4 for Calving Ease Maternal EPD, Number 5 for Weaning Weight EPD and hot Carcass Weight EPD and top 10 for \$Beef value index, \$Weaned calf value index, \$Grid value index, Marbling score EPD, Yearling Weight EPD, Scrotal Circumference measure EPD, Docility score EPD and maternal Milk EPD.

Lot 44 Bridges Scale House AB8420
 Birth Date: 9/13/2018 Bull 19286932 Tattoo: 8420

| EPDs | CED | BW | WW | YW | SC | DOC | Milk |
|------|-----|-------|-----|-------|-----|------|------|
| +7 | 45% | +3.1 | 90% | +91 | 1% | +148 | 1% |
| +62 | 10% | +0.73 | 30% | +0.94 | 10% | +63 | 40% |
| +104 | 1% | +155 | 15% | +264 | 15% | | |

MCC Daybreak
G A R Scale House
 17354047 G A R 5050 New Design 1039

G A R Prophet
Bridges Prophet 663
 18877734 Bridges Weigh Up 459

Boyd New Day 8005
 MCC Miss Focus 134
 G A R New Design 5050
 G A R Objective 2345

C R A Bextor 872 5205 608
 G A R Objective 1885
 Plattemere Weigh Up K360
 Deer Valley Blackcap 1122

| CED | BW | WW | YW | DMI | YH | SC | DOC | HP | CEM | Milk | MW | MH | CW | MB | REA | FAT | TND |
|-----|----|----|----|-----|----|----|-----|----|-----|------|----|----|----|----|-----|-----|-----|
| 73 | 86 | 2 | 17 | 83 | 7 | 59 | 48 | 61 | 71 | 5 | 16 | 4 | 5 | 33 | 4 | 32 | 33 |

NUMBER 1 for \$Weaned calf value index and maternal Milk EPD, Number 3 for Weaning Weight EPD and Yearling Weight EPD, Number 4 for hot Carcass Weight EPD, Number 5 for Rib Eye area measure EPD and Residual Average Daily Gain EPD and top 10 for \$Feedlot value index.

Lot 41 Bridges Scale House AB833
 Birth Date: 9/4/2018 Bull 19466857 Tattoo: 833

| EPDs | CED | BW | WW | YW | SC | DOC | Milk |
|------|-----|-------|-----|-------|-----|------|------|
| +7 | 45% | +2 | 70% | +76 | 5% | +131 | 10% |
| +47 | 35% | +0.95 | 15% | +0.66 | 35% | +55 | 65% |
| +91 | 1% | +151 | 20% | +251 | 25% | | |

MCC Daybreak
G A R Scale House
 17354047 G A R 5050 New Design 1039

G A R Composure
Bridges Composure 447
 17963372 Bridges Prophet 245

Boyd New Day 8005
 MCC Miss Focus 134
 G A R New Design 5050
 G A R Objective 2345

G A R New Design 5050
 G A R Objective 2345
 G A R Prophet
 Bridges Predestined 984

| CED | BW | WW | YW | DMI | YH | SC | DOC | HP | CEM | Milk | MW | MH | CW | MB | REA | FAT | TND |
|-----|----|----|----|-----|----|----|-----|----|-----|------|----|----|----|----|-----|-----|-----|
| 64 | 70 | 20 | 28 | 53 | 28 | 3 | 47 | 98 | 70 | 19 | 52 | 19 | 48 | 18 | 45 | 45 | 49 |

NUMBER 1 for Scrotal Circumference measure EPD, Number 2 for maternal Milk EPD, Number 4 for Residual Average Daily Gain EPD and top 10 for \$Weaned calf value index.

Lot 45 Bridges Foretold AB871
 Birth Date: 10/19/2018 Bull 19243958 Tattoo: 871

| EPDs | CED | BW | WW | YW | SC | DOC | Milk |
|------|-----|-------|-----|-------|-----|------|------|
| +13 | 10% | +0.4 | 30% | +81 | 2% | +138 | 3% |
| +49 | 30% | +1.23 | 3% | +0.64 | 40% | +69 | 25% |
| +99 | 1% | +156 | 15% | +271 | 10% | | |

G A R Prophet
Bridges Foretold
 18794324 Bridges Weigh Up 459

G A R Composure
Bridges Composure 447
 17963372 Bridges Prophet 245

C R A Bextor 872 5205 608
 G A R Objective 1885
 Plattemere Weigh Up K360
 Deer Valley Blackcap 1122

G A R New Design 5050
 G A R Objective 2345
 G A R Prophet
 Bridges Predestined 984

| CED | BW | WW | YW | DMI | YH | SC | DOC | HP | CEM | Milk | MW | MH | CW | MB | REA | FAT | TND |
|-----|----|----|----|-----|----|----|-----|----|-----|------|----|----|----|----|-----|-----|-----|
| 32 | 65 | 5 | 14 | 93 | 29 | 63 | 49 | 68 | 66 | 21 | 36 | 45 | 17 | 3 | 24 | 84 | 90 |

Number 2 for \$Weaned calf value index, Number 3 for maternal Milk EPD, Calving Ease Maternal EPD, Calving Ease Direct EPD and top 10 for \$Grid value index, Marbling score EPD, Weaning Weight EPD and Yearling Weight EPD.

Lot 42 Bridges Scale House AB8417
 Birth Date: 9/12/2018 Bull 19287783 Tattoo: 8417

| EPDs | CED | BW | WW | YW | SC | DOC | Milk |
|------|-----|-------|-----|-------|----|------|------|
| +4 | 70% | +4.4 | 95% | +93 | 1% | +148 | 1% |
| +63 | 10% | +0.93 | 15% | +0.98 | 5% | +69 | 25% |
| +93 | 1% | +168 | 5% | +287 | 4% | | |

MCC Daybreak
G A R Scale House
 17354047 G A R 5050 New Design 1039

G A R Prophet
Bridges Prophet 663
 18877734 Bridges Weigh Up 459

Boyd New Day 8005
 MCC Miss Focus 134
 G A R New Design 5050
 G A R Objective 2345

C R A Bextor 872 5205 608
 G A R Objective 1885
 Plattemere Weigh Up K360
 Deer Valley Blackcap 1122

| CED | BW | WW | YW | DMI | YH | SC | DOC | HP | CEM | Milk | MW | MH | CW | MB | REA | FAT | TND |
|-----|----|----|----|-----|----|----|-----|----|-----|------|----|----|----|----|-----|-----|-----|
| 90 | 97 | 2 | 25 | 70 | 5 | 38 | 29 | 31 | 33 | 47 | 19 | 3 | 10 | 20 | 6 | 37 | 26 |

Number 2 for Rib Eye area measure EPD and Weaning Weight EPD, Number 3 for Yearling Weight EPD and hot Carcass Weight EPD, Number 5 for \$Weaned calf value index, Residual Average Daily Gain EPD and Calving Ease Maternal EPD and top 10 for \$Combined value index, \$Feedlot value index, Docility score EPD and maternal Milk EPD.

Lot 46 Bridges Acclaim AB822
 Birth Date: 9/2/2018 Bull 19466150 Tattoo: 822

| EPDs | CED | BW | WW | YW | SC | DOC | Milk |
|------|-----|-------|-----|------|-----|------|------|
| +16 | 1% | -2.8 | 2% | +56 | 50% | +116 | 25% |
| +52 | 25% | +0.83 | 20% | +0.5 | 60% | +27 | 95% |
| +70 | 20% | +162 | 10% | +237 | 35% | | |

Jindra 3rd Dimension
Jindra Acclaim
 17972810 Jindra Blackbird Lassy 1111

G A R Prophet
Bridges Prophet 406
 17963312 Bridges Daybreak 297

Jindra Double Vision
 Jindras Sapphire J 417
 Connealy Impression
 Jindras Enchantress J 102

C R A Bextor 872 5205 608
 G A R Objective 1885
 MCC Daybreak
 Bridges 5050 New Design 9108

| CED | BW | WW | YW | DMI | YH | SC | DOC | HP | CEM | Milk | MW | MH | CW | MB | REA | FAT | TND |
|-----|----|----|----|-----|----|----|-----|----|-----|------|----|----|----|----|-----|-----|-----|
| 22 | 16 | 61 | 14 | 48 | 7 | 99 | 89 | 92 | 94 | 3 | 27 | 19 | 32 | 52 | 58 | 36 | 70 |

NUMBER 1 for maternal Milk EPD, Calving Ease Direct EPD and Birth Weight EPD, Number 3 for Residual Average Daily Gain EPD and top 10 for \$Feedlot value index.

Lot 43 Bridges Scale House AB8418
 Birth Date: 9/5/2018 Bull 19287784 Tattoo: 8418

| EPDs | CED | BW | WW | YW | SC | DOC | Milk |
|------|-----|------|-----|------|-----|------|------|
| +13 | 10% | +0.5 | 35% | +83 | 2% | +129 | 10% |
| +51 | 25% | +1.1 | 10% | +0.7 | 30% | +56 | 60% |
| +95 | 1% | +157 | 15% | +260 | 15% | | |

MCC Daybreak
G A R Scale House
 17354047 G A R 5050 New Design 1039

G A R Prophet
Bridges Prophet 663
 18877734 Bridges Weigh Up 459

Boyd New Day 8005
 MCC Miss Focus 134
 G A R New Design 5050
 G A R Objective 2345

C R A Bextor 872 5205 608
 G A R Objective 1885
 Plattemere Weigh Up K360
 Deer Valley Blackcap 1122

| CED | BW | WW | YW | DMI | YH | SC | DOC | HP | CEM | Milk | MW | MH | CW | MB | REA | FAT | TND |
|-----|----|----|----|-----|----|----|-----|----|-----|------|----|----|----|----|-----|-----|-----|
| 20 | 46 | 5 | 38 | 55 | 24 | 32 | 27 | 89 | 42 | 48 | 21 | 12 | 30 | 6 | 36 | 83 | 34 |

Number 3 for \$Weaned calf value index, Calving Ease Maternal EPD and Calving Ease Direct EPD and top 10 for Weaning Weight EPD, Docility score EPD and maternal Milk EPD.

Lot 47 Bridges Scale House AB8502
 Birth Date: 9/1/2018 Bull 19441845 Tattoo: 8502

| EPDs | CED | BW | WW | YW | SC | DOC | Milk |
|------|-----|-------|-----|-------|-----|------|------|
| +11 | 15% | -0.6 | 15% | +68 | 15% | +105 | 40% |
| +25 | 90% | +0.79 | 25% | +0.75 | 25% | +74 | 15% |
| +83 | 4% | +121 | 65% | +231 | 45% | | |

MCC Daybreak
G A R Scale House
 17354047 G A R 5050 New Design 1039

G A R Composure
Bridges Composure 447
 17963372 Bridges Prophet 245

Boyd New Day 8005
 MCC Miss Focus 134
 G A R New Design 5050
 G A R Objective 2345

G A R New Design 5050
 G A R Objective 2345
 G A R Prophet
 Bridges Predestined 984

| CED | BW | WW | YW | DMI | YH | SC | DOC | HP | CEM | Milk | MW | MH | CW | MB | REA | FAT | TND |
|-----|----|----|----|-----|----|----|-----|----|-----|------|----|----|----|----|-----|-----|-----|
| 35 | 26 | 55 | 86 | 5 | 95 | 21 | 33 | 43 | 61 | 71 | 86 | 93 | 95 | 35 | 31 | 33 | 66 |

Number 4 for Calving Ease Maternal EPD, Number 5 for Calving Ease Direct EPD and top 10 for Docility score EPD, maternal Milk EPD and Birth Weight EPD.

View Videos

Videos of the entire sale offering will be available online mid September.

www.BridgesAngusFarmLLC.com



Lot 50 Bridges Proactive AB8517
 Birth Date: 9/1/2018 Bull 19466171 Tattoo: 8517

| EPDs | CED | BW | WW | YW | SC | DOC | Milk |
|-------|------|-------|-----|------|-----|------|------|
| +13 | 10% | -0.9 | 15% | +59 | 40% | +108 | 35% |
| +0.41 | 75% | +20 | 35% | +33 | 10% | | |
| CW | MARB | REA | SM | SW | SB | SC | |
| +37 | 65% | +1.15 | 4% | +0.5 | 60% | +81 | 5% |
| +77 | 10% | +151 | 20% | +277 | 10% | | |

G A R Prophet
 G A R Proactive 18333424
 G A R Daybreak 1521
 G A R Sure Fire
 Bridges Sure Fire 658 18877946
 Deer Valley Rita 0274

C R A Bextor 872 5205 608
 G A R Objective 1885
 MCC Daybreak
 G A R 5050 New Design 1039
 Connealy In Sure 8524
 Chair Rock 5050 G A R 8086
 Sitz Upward 307R
 G A R Objective 2345

| CED | BW | WW | YW | DMI | YH | SC | DOC | HP | CEM | Milk | MW | MH | CW | MB | REA | FAT | TND |
|-----|----|----|----|-----|----|----|-----|----|-----|------|----|----|----|----|-----|-----|-----|
| 15 | 15 | 59 | 48 | 61 | 63 | 67 | 67 | 58 | 9 | 25 | 92 | 70 | 79 | 9 | 72 | 64 | 19 |

NUMBER 1 for Calving Ease Maternal EPD, Number 3 for maternal Milk EPD and Calving Ease Direct EPD, Number 4 for Birth Weight EPD and top 10 for Marbling score EPD.

Lot 48 Bridges Upstage AB8528
 Birth Date: 9/3/2018 Bull 19462868 Tattoo: 8528

| EPDs | CED | BW | WW | YW | SC | DOC | Milk |
|-------|------|-------|-----|-------|-----|------|------|
| +16 | 1% | -2.5 | 2% | +53 | 60% | +102 | 45% |
| +0.21 | 85% | +12 | 75% | +35 | 4% | | |
| CW | MARB | REA | SM | SW | SB | SC | |
| +35 | 70% | +0.41 | 65% | +0.71 | 30% | +45 | 90% |
| +70 | 20% | +116 | 70% | +195 | 85% | | |

Plattemere Weigh Up K360
 Bridges Upstage 18829320
 Bridges Daybreak 297
 Deer Valley All In
 Bridges All In 472 17930339
 Deer Valley Rita 9457

Sitz Upward 307R
 Barbara of Plattemere 337
 MCC Daybreak
 Bridges 5050 New Design 9108
 A A R Ten X 7008 S A
 Deer Valley Rita 0274
 G A R New Design 5050
 G A R Ext 614

| CED | BW | WW | YW | DMI | YH | SC | DOC | HP | CEM | Milk | MW | MH | CW | MB | REA | FAT | TND |
|-----|----|----|----|-----|----|----|-----|----|-----|------|----|----|----|----|-----|-----|-----|
| 2 | 2 | 74 | 39 | 67 | 50 | 86 | 65 | 80 | 81 | 10 | 52 | 26 | 57 | 61 | 44 | 46 | 91 |

NUMBER 1 for Calving Ease Direct EPD and Number 2 for maternal Milk EPD and Birth Weight EPD.

Lot 51 Bridges Scale House AB842
 Birth Date: 9/6/2018 Bull 19286940 Tattoo: 842

| EPDs | CED | BW | WW | YW | SC | DOC | Milk |
|-------|------|------|-----|-------|-----|------|------|
| +8 | 35% | +3.8 | 95% | +98 | 1% | +169 | 1% |
| +1.39 | 15% | +22 | 30% | +23 | 65% | | |
| CW | MARB | REA | SM | SW | SB | SC | |
| +78 | 1% | +0.6 | 40% | +1.12 | 2% | +63 | 40% |
| +85 | 3% | +184 | 2% | +302 | 2% | | |

MCC Daybreak
 G A R Scale House 17354047
 G A R 5050 New Design 1039
 Deer Valley All In
 Bridges All In 52 18479545
 Bridges Prediction 268

Boyd New Day 8005
 MCC Miss Focus 134
 G A R New Design 5050
 G A R Objective 2345
 A A R Ten X 7008 S A
 Deer Valley Rita 0274
 G A R Prediction
 G A R Objective 1885

| CED | BW | WW | YW | DMI | YH | SC | DOC | HP | CEM | Milk | MW | MH | CW | MB | REA | FAT | TND |
|-----|----|----|----|-----|----|----|-----|----|-----|------|----|----|----|----|-----|-----|-----|
| 51 | 85 | 2 | 2 | 85 | 2 | 24 | 33 | 2 | 32 | 71 | 1 | 1 | 4 | 38 | 2 | 1 | 45 |

NUMBER 1 for \$Feedlot value index, Rib Eye area measure EPD, Weaning Weight EPD, Yearling Weight EPD, hot Carcass Weight EPD, Residual Average Daily Gain EPD and percent Heifer Pregnancy EPD, Number 4 for Calving Ease Maternal EPD, Number 5 for \$Beef value index and top 10 for \$Combined value index, \$Weaned calf value index, Scrotal Circumference measure EPD and Docility score EPD.

Lot 49 Bridges Fortress 897
 Birth Date: 9/13/2018 Bull 19314837 Tattoo: 897

| EPDs | CED | BW | WW | YW | SC | DOC | Milk |
|-------|------|-------|-----|-------|-----|------|------|
| +6 | 55% | +2.5 | 80% | +64 | 25% | +116 | 25% |
| +1.65 | 10% | +12 | 75% | +22 | 70% | | |
| CW | MARB | REA | SM | SW | SB | SC | |
| +43 | 50% | +0.84 | 20% | +0.65 | 35% | +41 | 95% |
| +56 | 50% | +143 | 30% | +226 | 50% | | |

Connealy Consensus
 K C F Bennett Fortress 17259012
 Thomas Patricia 9705
 G A R Prediction
 Bridges Prediction 294 17459481
 G A R Objective A7001

KMK Alliance 6595 187
 Blinda of Conanga 004
 S S Objective T510 OT26
 Thomas Patricia 71138
 G A R Predestined
 G A R Precision 191
 S S Objective T510 OT26
 G A R 208 New Design 2573

| CED | BW | WW | YW | DMI | YH | SC | DOC | HP | CEM | Milk | MW | MH | CW | MB | REA | FAT | TND |
|-----|----|----|----|-----|----|----|-----|----|-----|------|----|----|----|----|-----|-----|-----|
| 45 | 61 | 36 | 35 | 88 | 23 | 9 | 75 | 44 | 55 | 65 | 27 | 16 | 55 | 20 | 59 | 22 | 94 |

Number 3 for Scrotal Circumference measure EPD.

Lot 52 Bridges Rampage AB804
 Birth Date: 11/28/2018 Bull 19284857 Tattoo: 804

| EPDs | CED | BW | WW | YW | SC | DOC | Milk |
|-------|------|------|-----|-------|-----|------|------|
| +10 | 20% | +0.8 | 40% | +74 | 10% | +127 | 10% |
| +0.55 | 70% | +10 | 80% | +35 | 4% | | |
| CW | MARB | REA | SM | SW | SB | SC | |
| +43 | 50% | +1.2 | 3% | +0.84 | 15% | +76 | 10% |
| +94 | 1% | +153 | 15% | +274 | 10% | | |

MCC Daybreak
 Quaker Hill Rampage 0A36 16925771
 QHF Blackcap 6E2 of4V16 4355
 G A R Prophet
 Bridges Prophet 621 1887730
 Bridges Ten X 416

Boyd New Day 8005
 MCC Miss Focus 134
 Ideal 4355 of OT26 2440
 QHF Blackcap 4V16 of 1H8
 C R A Bextor 872 5205 608
 G A R Objective 1885
 A A R Ten X 7008 S A
 Deer Valley Rita 1112

| CED | BW | WW | YW | DMI | YH | SC | DOC | HP | CEM | Milk | MW | MH | CW | MB | REA | FAT | TND |
|-----|----|----|----|-----|----|----|-----|----|-----|------|----|----|----|----|-----|-----|-----|
| 29 | 40 | 11 | 24 | 88 | 39 | 55 | 62 | 13 | 46 | 5 | 50 | 59 | 39 | 2 | 11 | 57 | 69 |

Number 2 for maternal Milk EPD, Number 3 for Calving Ease Maternal EPD and percent Heifer Pregnancy EPD, Number 4 for \$Weaned calf value index and top 10 for \$Grid value index, Marbling score EPD and Rib Eye area measure EPD.



THE BRIDGES BRAND *Guarantee*

Visit page 16 to see full details.

SIGHT UNSEEN GUARANTEE

We offer a sight unseen guarantee which means we pick out the best bull available based on your needs and guarantee your satisfaction on phenotype.

REPEAT CUSTOMER DISCOUNT

We offer a 5% discount to our loyal bull customers that purchase bulls annually. To be eligible, at least one bull must be purchased every 12 months.

VOLUME DISCOUNT

We offer a 5% discount to our volume bull customers that purchase at least 10 bulls per transaction.

FREE DELIVERY

We offer free delivery on all purchases females and bulls or a \$100 discount if the animal is picked up at the time of purchase. Common sense applies here!
 We will NOT ship one \$3000-\$5000 animal to the west coast for free. The total purchase price must justify the shipping expense!

BOARDING AVAILABLE

We offer 90 days free board on YEARLING BULLS. The Bridges Brand Guarantee begins at the time of sale.



The Yearling *Bulls*

LOTS 53-75

OUR SERVICE

Sight Unseen Guarantee

1st Year Breeding Guarantee

5% Volume Discount • 5% Repeat Customer Discount

Free Delivery or \$100/head Pickup Credit

Negative PI-BVD Tested

GE-EPDs available sale day

Free 90day Boarding Available on The Yearling Bulls

Developed on Forage and Ready to Work





SydGen Enhance / Sire of Lot 53-59

Lot 56 **Bridges Enhance 9551**

Birth Date: 9/1/2019 Bull 19717332 Tattoo: 9551

| EPDs | CED | BW | WW | YW | SC | DOC | Milk |
|-------|------|-------|-----|-------|-----|------|------|
| +12 | 10% | +1.3 | 50% | +70 | 15% | +128 | 10% |
| +0.94 | 40% | +31 | 3% | +23 | 65% | | |
| CW | MARB | REA | SM | SW | SB | SC | |
| +53 | 20% | +1.62 | 1% | +0.64 | 40% | +64 | 40% |
| +70 | 20% | +199 | 1% | +322 | 1% | | |

SydGen Googol
 SydGen Exceed 3223
 SydGen Forever Lady 1255
 SydGen Liberty GA 8627
 Fox Run Rita 9308

SydGen Enhance
 18170041 SydGen Rita 2618

G A R Progress
 G A R Progress 1103
 17623200 G A R 28 Ambush 1759

G A R Predestined
 G A R Objective 2345
 B/R Ambush 28
 G A R Objective 1885

NUMBER 1 for \$Grid value index and Marbling score EPD, Number 2 for \$Beef value index and Docility score EPD, Number 3 for \$Combined value index, Number 4 for Residual Average Daily Gain EPD and Calving Ease Direct EPD, Number 5 for Calving Ease Maternal EPD and top 10 for \$Feedlot value index.
 Dam was the first active Angus dam to record a Marbling score EPD of +2.00 or greater, this foundation Bridges donor ranks NUMBER 1 among 300,272 active dams in the AAA database as of this writing.

Lot 53 **Bridges Enhance 949**

Birth Date: 9/7/2019 Bull 19759247 Tattoo: 949

| EPDs | CED | BW | WW | YW | SC | DOC | Milk |
|-------|------|------|-----|-------|-----|------|------|
| +11 | 15% | +0.8 | 40% | +71 | 10% | +131 | 10% |
| +0.95 | 40% | +30 | 4% | +30 | 20% | | |
| CW | MARB | REA | SM | SW | SB | SC | |
| +60 | 10% | +1.4 | 1% | +0.69 | 30% | +81 | 5% |
| +84 | 3% | +198 | 1% | +338 | 1% | | |

SydGen Googol
 SydGen Exceed 3223
 SydGen Forever Lady 1255
 SydGen Liberty GA 8627
 Fox Run Rita 9308

SydGen Enhance
 18170041 SydGen Rita 2618

G A R Prophet
 Bridges Prophet 5404
 18471948 G A R Daybreak G192

C R A Bextor 872 5205 608
 G A R Objective 1885
 MCC Daybreak
 G A R Predestined 3479

NUMBER 1 for \$Combined value index, Number 3 for \$Beef value index, \$Feedlot value index, Marbling score EPD and Docility score EPD, Number 4 for Residual Average Daily Gain EPD, Number 5 for \$Grid value index, Calving Ease Maternal EPD and Calving Ease Direct EPD and top 10 for \$Weaned calf value index and maternal Milk EPD.

Lot 57 **Bridges Enhance 9405**

Birth Date: 9/1/2019 Bull 19759219 Tattoo: 9405

| EPDs | CED | BW | WW | YW | SC | DOC | Milk |
|-------|------|-------|-----|-------|-----|------|------|
| +13 | 10% | -0.1 | 25% | +67 | 20% | +126 | 10% |
| +0.94 | 40% | +28 | 10% | +27 | 35% | | |
| CW | MARB | REA | SM | SW | SB | SC | |
| +55 | 20% | +1.25 | 3% | +0.82 | 15% | +68 | 30% |
| +75 | 10% | +190 | 1% | +314 | 1% | | |

SydGen Googol
 SydGen Exceed 3223
 SydGen Forever Lady 1255
 SydGen Liberty GA 8627
 Fox Run Rita 9308

SydGen Enhance
 18170041 SydGen Rita 2618

G A R Sunrise
 Bridges Sunrise 7548
 19142438 Bridges 100X 542

MCC Daybreak
 G A R Objective R227
 G A R 100X
 Deer Valley Rita 0274

Number 3 for Residual Average Daily Gain EPD, Calving Ease Maternal EPD and Calving Ease Direct EPD, Number 4 for \$Beef value index and Docility score EPD, Number 5 for \$Combined value index and \$Feedlot value index and top 10 for \$Grid value index, Marbling score EPD, maternal Milk EPD and Birth Weight EPD.

Lot 54 **Bridges Enhance 9401**

Birth Date: 9/5/2019 Bull 19759246 Tattoo: 9401

| EPDs | CED | BW | WW | YW | SC | DOC | Milk |
|-------|------|------|-----|-------|-----|------|------|
| +11 | 15% | +0.8 | 40% | +71 | 10% | +131 | 10% |
| +0.95 | 40% | +30 | 4% | +30 | 20% | | |
| CW | MARB | REA | SM | SW | SB | SC | |
| +60 | 10% | +1.4 | 1% | +0.69 | 30% | +81 | 5% |
| +84 | 3% | +198 | 1% | +338 | 1% | | |

SydGen Googol
 SydGen Exceed 3223
 SydGen Forever Lady 1255
 SydGen Liberty GA 8627
 Fox Run Rita 9308

SydGen Enhance
 18170041 SydGen Rita 2618

G A R Prophet
 Bridges Prophet 5404
 18471948 G A R Daybreak G192

C R A Bextor 872 5205 608
 G A R Objective 1885
 MCC Daybreak
 G A R Predestined 3479

NUMBER 1 for \$Combined value index, Number 3 for \$Beef value index, \$Feedlot value index, Marbling score EPD and Docility score EPD, Number 4 for Residual Average Daily Gain EPD, Number 5 for \$Grid value index, Calving Ease Maternal EPD and Calving Ease Direct EPD and top 10 for \$Weaned calf value index and maternal Milk EPD.

Lot 58 **Bridges Enhance 9406**

Birth Date: 9/1/2019 Bull 19759220 Tattoo: 9406

| EPDs | CED | BW | WW | YW | SC | DOC | Milk |
|-------|------|-------|-----|-------|-----|------|------|
| +13 | 10% | -0.1 | 25% | +67 | 20% | +126 | 10% |
| +0.94 | 40% | +28 | 10% | +27 | 35% | | |
| CW | MARB | REA | SM | SW | SB | SC | |
| +55 | 20% | +1.25 | 3% | +0.82 | 15% | +68 | 30% |
| +75 | 10% | +190 | 1% | +314 | 1% | | |

SydGen Googol
 SydGen Exceed 3223
 SydGen Forever Lady 1255
 SydGen Liberty GA 8627
 Fox Run Rita 9308

SydGen Enhance
 18170041 SydGen Rita 2618

G A R Sunrise
 Bridges Sunrise 7548
 19142438 Bridges 100X 542

MCC Daybreak
 G A R Objective R227
 G A R 100X
 Deer Valley Rita 0274

Number 3 for Calving Ease Maternal EPD, Calving Ease Direct EPD and Residual Average Daily Gain EPD, Number 4 for \$Beef value index and Docility score EPD, Number 5 for \$Combined value index and \$Feedlot value index and top 10 for \$Grid value index, Marbling score EPD, maternal Milk EPD and Birth Weight EPD.

Lot 55 **Bridges Enhance 9547**

Birth Date: 9/1/2019 Bull 19717330 Tattoo: 9547

| EPDs | CED | BW | WW | YW | SC | DOC | Milk |
|-------|------|-------|-----|-------|-----|------|------|
| +12 | 10% | +2.9 | 85% | +67 | 20% | +125 | 15% |
| +0.94 | 40% | +31 | 3% | +23 | 65% | | |
| CW | MARB | REA | SM | SW | SB | SC | |
| +53 | 20% | +1.62 | 1% | +0.64 | 40% | +64 | 40% |
| +57 | 50% | +200 | 1% | +323 | 1% | | |

SydGen Googol
 SydGen Exceed 3223
 SydGen Forever Lady 1255
 SydGen Liberty GA 8627
 Fox Run Rita 9308

SydGen Enhance
 18170041 SydGen Rita 2618

G A R Progress
 G A R Progress 1103
 17623200 G A R 28 Ambush 1759

G A R Predestined
 G A R Objective 2345
 B/R Ambush 28
 G A R Objective 1885

NUMBER 1 for \$Beef value index, \$Grid value index and Marbling score EPD, Number 2 for \$Combined value index and Docility score EPD, Number 4 for Residual Average Daily Gain EPD and Calving Ease Direct EPD, Number 5 for Calving Ease Maternal EPD and top 10 for \$Feedlot value index.
 Dam was the first active Angus dam to record a Marbling score EPD of +2.00 or greater, this foundation Bridges donor ranks NUMBER 1 among 300,272 active dams in the AAA database as of this writing.

Lot 59 **Bridges Enhance 9613**

Birth Date: 9/6/2019 Bull 19759249 Tattoo: 9613

| EPDs | CED | BW | WW | YW | SC | DOC | Milk |
|-------|------|-------|-----|-------|-----|------|------|
| +10 | 20% | +0.5 | 35% | +66 | 20% | +121 | 15% |
| +1.61 | 10% | +31 | 3% | +31 | 15% | | |
| CW | MARB | REA | SM | SW | SB | SC | |
| +46 | 40% | +1.36 | 2% | +0.69 | 30% | +79 | 1% |
| +82 | 4% | +179 | 2% | +311 | 1% | | |

SydGen Googol
 SydGen Exceed 3223
 SydGen Forever Lady 1255
 SydGen Liberty GA 8627
 Fox Run Rita 9308

SydGen Enhance
 18170041 SydGen Rita 2618

G A R Composure
 Bridges Composure 447
 17963372 Bridges Prophet 245

G A R New Design 5050
 G A R Objective 2345
 G A R Prophet
 Bridges Predestined 984

Number 2 for Docility score EPD, Number 4 for Marbling score EPD, Residual Average Daily Gain EPD and Scrotal Circumference measure EPD, Number 5 for maternal Milk EPD and Calving Ease Maternal EPD and top 10 for \$Combined value index, \$Beef value index and \$Grid value index.

Lot 60 Bridges Boulder 964

Birth Date: 9/2/2019 Bull 19758719 Tattoo: 964

| EPDs | CED | BW | WW | YW | SC | DOC | Milk | | | | | | |
|------|------|-------|-----|-------|-----|------|------|-------|-----|------|-----|------|-----|
| +10 | 20% | +2 | 70% | +82 | 2% | +147 | 2% | +1.71 | 10% | +23 | 25% | +24 | 55% |
| CW | MARB | REA | SM | SW | SB | SC | | | | | | | |
| +67 | 4% | +0.88 | 15% | +0.63 | 40% | +63 | 40% | +80 | 5% | +176 | 3% | +291 | 3% |

K C F Bennett TheRock A473
K C F Bennett Boulder
 18491439 K C F Miss 534 U431

Deer Valley All In
Bridges All In 52
 18479545 Bridges Prediction 268

K C F Bennett Southside
 K C F Miss Protege W148
 CAR Efficient 534
 K C F Miss 6106 R309
 A A R Ten X 7008 S A
 Deer Valley Rita 0274
 G A R Prediction
 G A R Objective 1885

Number 2 for \$Feedlot value index, hot Carcass Weight EPD and Scrotal Circumference measure EPD, Number 3 for percent Heifer Pregnancy EPD and Calving Ease Maternal EPD, Number 4 for Yearling Weight EPD and Residual Average Daily Gain EPD and top 10 for \$Combined value index, \$Beef value index, Weaning Weight EPD and Docility score EPD.

Lot 64 Bridges Scale House 9562

Birth Date: 9/2/2019 Bull 19716522 Tattoo: 9562

| EPDs | CED | BW | WW | YW | SC | DOC | Milk | | | | | | |
|------|------|-------|-----|-------|-----|------|------|-------|-----|------|-----|------|-----|
| +11 | 15% | +2.7 | 80% | +81 | 2% | +133 | 5% | +0.69 | 60% | +25 | 15% | +22 | 70% |
| CW | MARB | REA | SM | SW | SB | SC | | | | | | | |
| +49 | 30% | +1.35 | 2% | +0.87 | 15% | +57 | 60% | +77 | 10% | +174 | 3% | +283 | 4% |

MCC Daybreak
G A R Scale House
 17354047 G A R 5050 New Design 1039

G A R Progress
G A R Progress 1103
 17623200 G A R 28 Ambush 1759

Boyd New Day 8005
 MCC Miss Focus 134
 G A R New Design 1039
 G A R Objective 2345
 G A R Predestined
 G A R Objective 2345
 B/R Ambush 28
 G A R Objective 1885

Number 4 for \$Grid value index, Number 5 for Marbling score EPD, Residual Average Daily Gain EPD and Calving Ease Direct EPD and top 10 for \$Combined value index, \$Beef value index, Rib Eye area measure EPD, Weaning Weight EPD, Yearling Weight EPD and Docility score EPD.

Dam was the first active Angus dam to record a Marbling score EPD of +2.00 or greater, this foundation Bridges donor ranks NUMBER 1 among 300,272 active dams in the AAA database as of this writing.

Lot 61 Bridges Boulder 965

Birth Date: 9/4/2019 Bull 19758723 Tattoo: 965

| EPDs | CED | BW | WW | YW | SC | DOC | Milk | | | | | | |
|------|------|-------|-----|-------|-----|------|------|-------|-----|------|-----|------|-----|
| +10 | 20% | +2 | 70% | +82 | 2% | +147 | 2% | +1.71 | 10% | +23 | 25% | +24 | 55% |
| CW | MARB | REA | SM | SW | SB | SC | | | | | | | |
| +67 | 4% | +0.88 | 15% | +0.63 | 40% | +63 | 40% | +80 | 5% | +176 | 3% | +291 | 3% |

K C F Bennett TheRock A473
K C F Bennett Boulder
 18491439 K C F Miss 534 U431

Deer Valley All In
Bridges All In 52
 18479545 Bridges Prediction 268

K C F Bennett Southside
 K C F Miss Protege W148
 CAR Efficient 534
 K C F Miss 6106 R309
 A A R Ten X 7008 S A
 Deer Valley Rita 0274
 G A R Prediction
 G A R Objective 1885

Number 2 for \$Feedlot value index, hot Carcass Weight EPD and Scrotal Circumference measure EPD, Number 3 for percent Heifer Pregnancy EPD and Calving Ease Maternal EPD, Number 4 for Yearling Weight EPD and Residual Average Daily Gain EPD and top 10 for \$Combined value index, \$Beef value index, Weaning Weight EPD and Docility score EPD.

Lot 65 Bridges Scale House 9563

Birth Date: 9/9/2019 Bull 19716523 Tattoo: 9563

| EPDs | CED | BW | WW | YW | SC | DOC | Milk | | | | | | |
|------|------|-------|-----|-------|-----|------|------|-------|-----|------|-----|------|-----|
| +11 | 15% | +2.7 | 80% | +81 | 2% | +133 | 5% | +0.69 | 60% | +25 | 15% | +22 | 70% |
| CW | MARB | REA | SM | SW | SB | SC | | | | | | | |
| +49 | 30% | +1.35 | 2% | +0.87 | 15% | +57 | 60% | +77 | 10% | +174 | 3% | +283 | 4% |

MCC Daybreak
G A R Scale House
 17354047 G A R 5050 New Design 1039

G A R Progress
G A R Progress 1103
 17623200 G A R 28 Ambush 1759

Boyd New Day 8005
 MCC Miss Focus 134
 G A R New Design 5050
 G A R Objective 2345
 G A R Predestined
 G A R Objective 2345
 B/R Ambush 28
 G A R Objective 1885

Number 4 for \$Grid value index, Number 5 for Marbling score EPD, Residual Average Daily Gain EPD and Calving Ease Direct EPD and top 10 for \$Combined value index, \$Beef value index, Rib Eye area measure EPD, Weaning Weight EPD, Yearling Weight EPD and Docility score EPD.

Dam was the first active Angus dam to record a Marbling score EPD of +2.00 or greater, this foundation Bridges donor ranks NUMBER 1 among 300,272 active dams in the AAA database as of this writing.

Lot 62 Bridges Boulder 966

Birth Date: 9/1/2019 Bull 19758725 Tattoo: 966

| EPDs | CED | BW | WW | YW | SC | DOC | Milk | | | | | | |
|------|------|-------|-----|-------|-----|------|------|-------|-----|------|-----|------|-----|
| +10 | 20% | +2 | 70% | +82 | 2% | +147 | 2% | +1.71 | 10% | +23 | 25% | +24 | 55% |
| CW | MARB | REA | SM | SW | SB | SC | | | | | | | |
| +67 | 4% | +0.88 | 15% | +0.63 | 40% | +63 | 40% | +80 | 5% | +176 | 3% | +291 | 3% |

K C F Bennett TheRock A473
K C F Bennett Boulder
 18491439 K C F Miss 534 U431

Deer Valley All In
Bridges All In 52
 18479545 Bridges Prediction 268

K C F Bennett Southside
 K C F Miss Protege W148
 CAR Efficient 534
 K C F Miss 6106 R309
 A A R Ten X 7008 S A
 Deer Valley Rita 0274
 G A R Prediction
 G A R Objective 1885

Number 2 for \$Feedlot value index, hot Carcass Weight EPD and Scrotal Circumference measure EPD, Number 3 for percent Heifer Pregnancy EPD and Calving Ease Maternal EPD, Number 4 for Yearling Weight EPD and Residual Average Daily Gain EPD and top 10 for \$Combined value index, \$Beef value index, Weaning Weight EPD and Docility score EPD.

Lot 66 Bridges Scale House 9601

Birth Date: 8/20/2019 Bull 19758577 Tattoo: 9601

| EPDs | CED | BW | WW | YW | SC | DOC | Milk | | | | | | |
|------|------|-------|-----|-------|-----|------|------|-------|-----|------|-----|------|-----|
| +9 | 30% | +1.9 | 65% | +78 | 4% | +130 | 10% | +1.34 | 20% | +24 | 20% | +32 | 10% |
| CW | MARB | REA | SM | SW | SB | SC | | | | | | | |
| +49 | 30% | +0.78 | 25% | +0.96 | 10% | +74 | 15% | +91 | 1% | +150 | 20% | +269 | 10% |

MCC Daybreak
G A R Scale House
 17354047 G A R 5050 New Design 1039

G A R Composure
Bridges Composure 4102
 17963382 Bridges Prediction 268

Boyd New Day 8005
 MCC Miss Focus 134
 G A R New Design 5050
 G A R Objective 2345
 G A R New Design 5050
 G A R Objective 2345
 G A R Prediction
 G A R Objective 1885

Number 4 for Rib Eye area measure EPD and maternal Milk EPD and top 10 for \$Weaned calf value index, Scrotal Circumference measure EPD and Docility score EPD.

Lot 63 Bridges Scale House 9554

Birth Date: 9/3/2019 Bull 19716520 Tattoo: 9554

| EPDs | CED | BW | WW | YW | SC | DOC | Milk | | | | | | |
|------|------|-------|-----|-------|-----|------|------|-------|-----|------|-----|------|-----|
| +11 | 15% | +3.6 | 95% | +86 | 1% | +140 | 3% | +0.69 | 60% | +25 | 15% | +21 | 80% |
| CW | MARB | REA | SM | SW | SB | SC | | | | | | | |
| +49 | 30% | +1.35 | 2% | +0.87 | 15% | +57 | 55% | +75 | 10% | +176 | 3% | +287 | 4% |

MCC Daybreak
G A R Scale House
 17354047 G A R 5050 New Design 1039

G A R Progress
G A R Progress 1103
 17623200 G A R 28 Ambush 1759

Boyd New Day 8005
 MCC Miss Focus 134
 G A R New Design 5050
 G A R Objective 2345
 G A R Predestined
 G A R Objective 2345
 B/R Ambush 28
 G A R Objective 1885

Number 4 for \$Grid value index, Number 5 for Marbling score EPD, Residual Average Daily Gain EPD and Calving Ease Direct EPD and top 10 for \$Combined value index, \$Beef value index, Rib Eye area measure EPD, Weaning Weight EPD, Yearling Weight EPD and Docility score EPD. Dam was the first active Angus dam to record a Marbling score EPD of +2.00 or greater, this foundation Bridges donor ranks NUMBER 1 among 300,272 active dams in the AAA database as of this writing.

Lot 67 Bridges Scale House 9552

Birth Date: 9/8/2019 Bull 19716513 Tattoo: 9552

| EPDs | CED | BW | WW | YW | SC | DOC | Milk | | | | | | |
|------|------|-------|-----|-------|-----|------|------|-------|-----|------|-----|------|-----|
| +11 | 15% | +2.3 | 75% | +90 | 1% | +151 | 1% | +0.56 | 65% | +27 | 10% | +31 | 15% |
| CW | MARB | REA | SM | SW | SB | SC | | | | | | | |
| +52 | 25% | +0.73 | 30% | +0.81 | 20% | +73 | 15% | +94 | 1% | +148 | 20% | +265 | 15% |

MCC Daybreak
G A R Scale House
 17354047 G A R 5050 New Design 1039

G A R Prophet
Bridges Prophet 431
 17963333 Bridges 5050 New Design 255

Boyd New Day 8005
 MCC Miss Focus 134
 G A R New Design 5050
 G A R Objective 2345
 C R A Bextor 872 5205 608
 G A R Objective 1885
 G A R New Design 5050
 Bridges Objective 8095

Number 2 for Yearling Weight EPD, Number 4 for \$Weaned calf value index and Weaning Weight EPD and Number 5 for Docility score EPD, maternal Milk EPD and Calving Ease Direct EPD.

Lot 68 Bridges Scale House 9555

Birth Date: 9/5/2019 Bull 19716514 Tattoo: 9555

| EPDs | CED | BW | WW | YW | SC | DOC | Milk |
|-------|------|-------|-----|-------|-----|------|------|
| +11 | 15% | +1.8 | 65% | +87 | 1% | +146 | 2% |
| +0.56 | 65% | +27 | 10% | +31 | 15% | | |
| CW | MARB | REA | SM | SW | SB | SC | |
| +52 | 25% | +0.73 | 30% | +0.81 | 20% | +76 | 10% |
| +93 | 1% | +146 | 25% | +265 | 15% | | |

MCC Daybreak
G A R Scale House
 17354047 G A R 5050 New Design 1039

G A R Prophet
Bridges Prophet 431
 17963333 Bridges 5050 New Design 255

Boyd New Day 8005
 MCC Miss Focus 134
 G A R New Design 5050
 G A R Objective 2345

C R A Bextor 872 5205 608
 G A R Objective 1885
 G A R New Design 5050
 Bridges Objective 8095

Number 5 for \$Weaned calf value index, Yearling Weight EPD, Docility score EPD, maternal Milk EPD, Calving Ease Direct EPD and top 10 for Weaning Weight EPD.

Lot 72 Bridges Scale House 9603

Birth Date: 9/1/2019 Bull 19758573 Tattoo: 9603

| EPDs | CED | BW | WW | YW | SC | DOC | Milk |
|-------|------|-------|-----|-------|-----|------|------|
| +12 | 10% | +1.5 | 55% | +73 | 10% | +125 | 15% |
| +0.99 | 40% | +17 | 50% | +31 | 15% | | |
| CW | MARB | REA | SM | SW | SB | SC | |
| +49 | 30% | +0.82 | 20% | +0.77 | 20% | +55 | 65% |
| +83 | 4% | +148 | 20% | +247 | 25% | | |

MCC Daybreak
G A R Scale House
 17354047 G A R 5050 New Design 1039

G A R Prophet
Bridges Evergreen Erica 4134
 18012050 Bridges Evergreen Erica 4139

Boyd New Day 8005
 MCC Miss Focus 134
 G A R New Design 5050
 G A R Objective 2345

C R A Bextor 872 5205 608
 G A R Objective 1885
 G A R Yield Grade
 RMR Evergreen Time C113

Number 4 for Calving Ease Direct EPD and Number 5 for maternal Milk EPD.

Lot 69 Bridges Scale House 9558

Birth Date: 9/2/2019 Bull 19716516 Tattoo: 9558

| EPDs | CED | BW | WW | YW | SC | DOC | Milk |
|-------|------|-------|-----|-------|-----|------|------|
| +11 | 15% | +0.8 | 40% | +83 | 2% | +140 | 3% |
| +0.56 | 65% | +27 | 10% | +31 | 15% | | |
| CW | MARB | REA | SM | SW | SB | SC | |
| +52 | 25% | +0.73 | 30% | +0.81 | 20% | +73 | 15% |
| +91 | 1% | +144 | 25% | +260 | 15% | | |

MCC Daybreak
G A R Scale House
 17354047 G A R 5050 New Design 1039

G A R Prophet
Bridges Prophet 431
 17963333 Bridges 5050 New Design 255

Boyd New Day 8005
 MCC Miss Focus 134
 G A R New Design 5050
 G A R Objective 2345

C R A Bextor 872 5205 608
 G A R Objective 1885
 G A R New Design 5050
 Bridges Objective 8095

Number 5 for Docility score EPD, maternal Milk EPD and Calving Ease Direct EPD and top 10 for \$Weaned calf value index, Weaning Weight EPD and Yearling Weight EPD.

Lot 73 Bridges Scale House 9604

Birth Date: 9/1/2019 Bull 19758574 Tattoo: 9604

| EPDs | CED | BW | WW | YW | SC | DOC | Milk |
|-------|------|-------|-----|-------|-----|------|------|
| +12 | 10% | +1.5 | 55% | +73 | 10% | +125 | 15% |
| +0.99 | 40% | +17 | 50% | +31 | 15% | | |
| CW | MARB | REA | SM | SW | SB | SC | |
| +49 | 30% | +0.82 | 20% | +0.77 | 20% | +55 | 65% |
| +83 | 4% | +148 | 20% | +247 | 25% | | |

MCC Daybreak
G A R Scale House
 17354047 G A R 5050 New Design 1039

G A R Prophet
Bridges Evergreen Erica 4134
 18012050 Bridges Evergreen Erica 4139

Boyd New Day 8005
 MCC Miss Focus 134
 G A R New Design 5050
 G A R Objective 2345

C R A Bextor 872 5205 608
 G A R Objective 1885
 G A R Yield Grade
 RMR Evergreen Time C113

Number 4 for Calving Ease Direct EPD and Number 5 for mat.

Lot 70 Bridges Scale House 942

Birth Date: 9/3/2019 Bull 19758580 Tattoo: 942

| EPDs | CED | BW | WW | YW | SC | DOC | Milk |
|-------|------|-------|-----|-------|-----|------|------|
| +11 | 15% | +1.2 | 50% | +81 | 2% | +138 | 3% |
| +0.56 | 65% | +27 | 10% | +31 | 15% | | |
| CW | MARB | REA | SM | SW | SB | SC | |
| +52 | 25% | +0.73 | 30% | +0.81 | 20% | +73 | 15% |
| +93 | 1% | +144 | 25% | +260 | 15% | | |

MCC Daybreak
G A R Scale House
 17354047 G A R 5050 New Design 1039

G A R Prophet
Bridges Prophet 431
 17963333 Bridges 5050 New Design 255

Boyd New Day 8005
 MCC Miss Focus 134
 G A R New Design 5050
 G A R Objective 2345

C R A Bextor 872 5205 608
 G A R Objective 1885
 G A R New Design 5050
 Bridges Objective 8095

Number 5 for \$Weaned calf value index, Docility score EPD, maternal Milk EPD and Calving Ease Direct EPD and top 10 for Weaning Weight EPD and Yearling Weight EPD.

Lot 74 Bridges Sure Fire 944

Birth Date: 9/1/2019 Bull 19758589 Tattoo: 944

| EPDs | CED | BW | WW | YW | SC | DOC | Milk |
|-------|------|-------|-----|-------|-----|------|------|
| +13 | 10% | -0.4 | 20% | +66 | 20% | +120 | 20% |
| +1.21 | 25% | +30 | 4% | +34 | 5% | | |
| CW | MARB | REA | SM | SW | SB | SC | |
| +48 | 35% | +1.06 | 10% | +0.58 | 45% | +78 | 10% |
| +84 | 3% | +153 | 15% | +276 | 10% | | |

Connealy In Sure 8524
G A R Sure Fire
 17328461 Chair Rock 5050 G A R 8086

G A R Prophet
Bridges Prophet 431
 17963333 Bridges 5050 New Design 255

Mytty In Focus
 Entreena of Conanga 657
 G A R New Design 5050
 Chair Rock Grid Maker 2107

C R A Bextor 872 5205 608
 G A R Objective 1885
 G A R New Design 5050
 Bridges Objective 8095

Top 10% for Calving Ease EPD, Marbling EPD, \$Maternal value index, and \$Combined value index.

Lot 71 Bridges Scale House 9556

Birth Date: 9/1/2019 Bull 19716515 Tattoo: 9556

| EPDs | CED | BW | WW | YW | SC | DOC | Milk |
|-------|------|-------|-----|-------|-----|------|------|
| +11 | 15% | -2.2 | 3% | +66 | 20% | +113 | 25% |
| +0.56 | 65% | +27 | 10% | +31 | 15% | | |
| CW | MARB | REA | SM | SW | SB | SC | |
| +52 | 25% | +0.73 | 30% | +0.81 | 20% | +69 | 25% |
| +78 | 10% | +134 | 40% | +243 | 30% | | |

MCC Daybreak
G A R Scale House
 17354047 G A R 5050 New Design 1039

G A R Prophet
Bridges Prophet 431
 17963333 Bridges 5050 New Design 255

Boyd New Day 8005
 MCC Miss Focus 134
 G A R New Design 5050
 G A R Objective 2345

C R A Bextor 872 5205 608
 G A R Objective 1885
 G A R New Design 5050
 Bridges Objective 8095

Number 3 for Birth Weight EPD and Number 5 for Docility score EPD, maternal Milk EPD and Calving Ease Direct EPD.

Lot 75 Bridges Broken Bow 9544

Birth Date: 9/1/2019 Bull 19717214 Tattoo: 9544

| EPDs | CED | BW | WW | YW | SC | DOC | Milk |
|-------|------|-------|-----|-------|-----|------|------|
| +11 | 15% | +0 | 25% | +76 | 5% | +129 | 10% |
| +0.86 | 45% | +14 | 65% | +24 | 55% | | |
| CW | MARB | REA | SM | SW | SB | SC | |
| +52 | 25% | +0.76 | 25% | +0.71 | 30% | +59 | 55% |
| +77 | 10% | +152 | 20% | +256 | 20% | | |

Summitcrest Complete 1P55
KM Broken Bow
 16764044 Summitcrest Princess 0P12

Deer Valley All In
Bridges All In 52
 18479545 Bridges Prediction 268

C F Right Design 1802
 Summitcrest Elba 1M17
 Basin Ambush 8161
 Summitcrest Princess 2J10

A A R Ten X 7008 S A
 Deer Valley Rita 0274
 G A R Prediction
 G A R Objective 1885

Top 10% for Yearling Weight EPD.

Thank you for checking out our sale offering!

Visit our website for update information and videos of the sale offering.

WWW.BRIDGESANGUSFARM.LLC.COM

American Angus Association Glossary of Terms and Abbreviations

| Lot | | 2 Bridges Acclaim 8424 | | | | | | | | | | | | | | | |
|---|------|------------------------|------|---|-----|----------|-------|--|------|--------------|-----|------|-----|----|-----|-----|-----|
| Birth Date: 9/5/18 | | Cow | | | | 19286756 | | | | Tattoo: 8424 | | | | | | | |
| EPDs | CED | BW | WW | YW | SC | DOC | Milk | | | | | | | | | | |
| +11 | 15% | +1 | 45% | +76 | 4% | +138 | 3% | +0.29 | 80% | +15 | 60% | +33 | 10% | | | | |
| CW | MARB | REA | SM | SW | SB | SC | | | | | | | | | | | |
| +72 | 2% | +1.08 | 10% | +0.74 | 25% | +73 | 15% | +88 | 2% | +195 | 1% | +326 | 1% | | | | |
| Jindra Acclaim 17972810 | | | | Jindra 3rd Dimension Jindra Blackbird Lassy 1111 | | | | Jindra Double Vision Jindras Sapphire J 417 Connealy Impression Jindras Enchantress J 102 | | | | | | | | | |
| Bridges Prophet 5404 18471948 | | | | G A R Prophet G A R Daybreak G192 | | | | C R A Bextor 872 5205 608 G A R Objective 1885 MCC Daybreak G A R Predestined 3479 | | | | | | | | | |
| CED | BW | WW | YW | DMI | YH | SC | DOC | HP | CEM | Milk | MW | MH | CW | MB | REA | FAT | TND |
| 48% | 61% | 3% | 3% | 94% | 4% | 70% | 53% | 27% | 78% | 7% | 10% | 12% | 1% | 8% | 17% | 60% | 32% |
| Parent Average EPD's on the mating listed below.. | | | | | | | | | | | | | | | | | |
| CED | BW | WW | YW | Milk | CW | Marb | RE | SB | SC | | | | | | | | |
| +13 | +0.7 | +73 | +131 | +34 | +69 | +1.11 | +0.63 | +196 | +324 | | | | | | | | |

Expected Progeny Differences (EPD), is the prediction of how future progeny of each animal are expected to perform relative to the progeny of other animals listed in the database. EPDs are expressed in units of measure for the trait, plus or minus. Interim EPDs may appear on young animals when their performance has yet to be incorporated into the American Angus Association National Cattle Evaluation (NCE) procedures. This EPD will be preceded by an "I", and may or may not include the animal's own performance record for a particular trait, depending on its availability, appropriate contemporary grouping, or data edits needed for NCE.

GROWTH

Calving Ease Direct (CED), is expressed as a difference in percentage of unassisted births, with a higher value indicating greater calving ease in first-calf heifers. It predicts the average difference in ease with which a sire's calves will be born when he is bred to first-calf heifers.

Birth Weight EPD (BW), expressed in pounds, is a predictor of a sire's ability to transmit birth weight to his progeny compared to that of other sires. **Weaning Weight EPD (WW)**, expressed in pounds, is a predictor of a sire's ability to transmit weaning growth to his progeny compared to that of other sires.

Yearling Weight EPD (YW), expressed in pounds, is a predictor of a sire's ability to transmit yearling growth to his progeny compared to that of other sires.

Scrotal Circumference EPD (SC), expressed in centimeters, is a predictor of the difference in transmitting ability for scrotal size compared to that of other sires.

Docility (DOC), is expressed as a difference in yearling cattle temperament, with a higher value indicating more favorable docility. It predicts the average difference of progeny from a sire in comparison with another sire's calves. In herds where temperament problems are not an issue, this expected difference would not be realized.

MATERNAL

Maternal Milk EPD (Milk), is a predictor of a sire's genetic merit for milk and mothering ability as expressed in his daughters compared to daughters of other sires. In other words, it is that part of a calf's weaning weight attributed to milk and mothering ability.

CARCASS

Carcass Weight EPD (CW), expressed in pounds, is a predictor of the differences in hot carcass weight of a sire's progeny compared to progeny of other sires.

Marbling EPD (Marb), expressed as a fraction of the difference in USDA marbling score of a sire's progeny compared to progeny of other sires.

Ribeye Area EPD (RE), expressed in square inches, is a predictor of the difference in ribeye area of a sire's progeny compared to progeny of other sires.

\$VALUE INDEXES

Maternal Weaned Calf Value (\$M), an index, expressed in dollars per head, predicts profitability differences from conception to weaning with the underlying breeding objective assuming that individuals retain their own replacement females within herd and sell the rest of the cull female and all male progeny as feeder calves. The model assumes commercial producers will replace 25% of their breeding females in the first generation and 20% of their breeding females in each subsequent generation. Traits included are as follows: calving ease direct, calving ease maternal, weaning weight, milk, heifer pregnancy, docility, mature cow weight, claw set and foot angle.

Weaned Calf Value (\$W), an index value expressed in dollars per head, is the expected average difference in future progeny performance for pre-weaning merit. \$W includes both revenue and cost adjustments associated with differences in birth weight, weaning direct growth, maternal milk, and mature cow size.

Beef Value (\$B), an index value expressed in dollars per head, is the expected average difference in future progeny performance for post-weaning and carcass value compared to progeny of other sires.

Combined Value (\$C), an index, expressed in dollars per head, which includes all traits that make up both Maternal Weaned Calf Value (\$M) and Beef Value (\$B) with the objective that commercial producers will replace 20% of their breeding females per year with replacement heifers retained within their own herd. The remaining cull heifer and steer progeny are then assumed to be sent to the feedlot where the producers retain ownership of those cattle and sell them on a quality-based carcass merit grid. Expected progeny differences (EPDs) directly influencing a combined index: calving ease direct (CED) and maternal (CEM), weaning weight (WW), yearling weight (YW), maternal milk (Milk), heifer pregnancy (HP), docility (DOC), mature cow weight (MW), foot angle (Angle), claw set (Claw), dry matter intake (DMI), marbling (Marb), carcass weight (CW), ribeye area (RE) and fat thickness (Fat).

Parent Average EPD's The EPDs are resulted from the average of the sire and dam EPD's. They are intended to give the buyer an idea of the resulting EPD's from the planned mating. After these calves are born, their individual genomic evaluation will be combined with the parent averages at that point in time and their individual ratios that are weighted and used based upon the size and the level of competition of the contemporary group they are compared to for birth, weaning, yearling and ultrasound measures.

How do you know if EPDs are genomic-enhanced?

Ask your breeder, refer to the registration paper, or look for the AGI GE-EPD logo or those of partnering labs Zoetis (HD50K, i50K) or GeneSeek (GGP-HD, GGP-LD). These images indicate animals for which low-density or high-density genomic testing has been conducted and incorporated by AGI into GE-EPDs.



www.angus.org



Bridges Broad Weigh / Reference Sire C



Bridges Velocity / Reference Sire D



Bridges Foretold / Reference Sire F

Reference A **Bridges Rise Up**

Birth Date: 9/4/2017 Bull 19054970 Tattoo: 744

| EPDs | CED | BW | WW | YW | SC | DOC | Milk |
|-------|------|-------|-----|-------|-----|------|------|
| +8 | 35% | +2.5 | 80% | +93 | 1% | +153 | 1% |
| +0.52 | 70% | +28 | 10% | +18 | 90% | | |
| CW | MARB | REA | \$M | \$W | \$B | SC | |
| +64 | 5% | +1.50 | 1% | +0.89 | 10% | +70 | 15% |
| +84 | 3% | +197 | 1% | +326 | 1% | | |

MCC Daybreak
 Boyd New Day 8005
 MCC Miss Focus 134
 S S Objective T510 OT26
 G A R 1407 New Design 2232

G A R Sunrise
 16933958
 G A R Objective R227

G A R Progress
 17623200
 G A R 28 Ambush 1759

G A R Predestined
 G A R Objective 2345
 B/R Ambush 28
 G A R Objective 1885

| CED | BW | WW | YW | DMI | YH | SC | DOC | HP | CEM | Milk | MW | MH | CW | MB | REA | FAT | TND |
|-----|----|----|----|-----|----|----|-----|----|-----|------|----|----|----|----|-----|-----|-----|
| 59 | 69 | 8 | 31 | 83 | 24 | 55 | 12 | 5 | 85 | 92 | 12 | 32 | 20 | 1 | 17 | 22 | 97 |

Reference D **Bridges Velocity**

Birth Date: 9/18/2014 Bull 18096237 Tattoo: 4133

| EPDs | CED | BW | WW | YW | SC | DOC | Milk |
|-------|------|-------|-----|-------|-----|------|------|
| +14 | 4% | +0.4 | 30% | +61 | 35% | +115 | 25% |
| -0.23 | 95% | +25 | 15% | +37 | 3% | | |
| CW | MARB | REA | \$M | \$W | \$B | SC | |
| +61 | 10% | +1.17 | 3% | +1.32 | 1% | +60 | 40% |
| +75 | 15% | +193 | 1% | +310 | 1% | | |

G A R Predestined
 B/R New Design 036
 G A R Ext 4206
 S S Objective T510 OT26
 G A R 1407 New Design 2232

G A R Momentum
 #*16290873
 G A R Objective 2345

MCC Daybreak
 Bridges 5050 New Design 9108

Boyd New Day 8005
 MCC Miss Focus 134
 G A R New Design 5050
 G A R Objective L127

| CED | BW | WW | YW | DMI | YH | SC | DOC | HP | CEM | Milk | MW | MH | CW | MB | REA | FAT | TND |
|-----|----|----|----|-----|----|----|-----|----|-----|------|----|----|----|----|-----|-----|-----|
| 20 | 45 | 48 | 29 | 78 | 27 | 94 | 25 | 31 | 81 | 4 | 37 | 23 | 21 | 7 | 2 | 36 | 89 |

Reference B **Bridges Rare Air**

Birth Date: 9/3/2017 Bull 19068095 Tattoo: 743

| EPDs | CED | BW | WW | YW | SC | DOC | Milk |
|-------|------|-------|-----|-------|-----|------|------|
| +7 | 45% | +3.4 | 90% | +128 | 10% | +128 | 10% |
| +0.93 | 40% | +29 | 5% | +21 | 80% | | |
| CW | MARB | REA | \$M | \$W | \$B | SC | |
| +46 | 40% | +2.07 | 1% | +0.65 | 35% | +54 | 65% |
| +62 | 35% | +206 | 1% | +321 | 1% | | |

MCC Daybreak
 Boyd New Day 8005
 MCC Miss Focus 134
 S S Objective T510 OT26
 G A R 1407 New Design 2232

G A R Sunrise
 16933958
 G A R Objective R227

G A R Progress
 17623200
 G A R 28 Ambush 1759

G A R Predestined
 G A R Objective 2345
 B/R Ambush 28
 G A R Objective 1885

| CED | BW | WW | YW | DMI | YH | SC | DOC | HP | CEM | Milk | MW | MH | CW | MB | REA | FAT | TND |
|-----|----|----|----|-----|----|----|-----|----|-----|------|----|----|----|----|-----|-----|-----|
| 68 | 91 | 20 | 31 | 68 | 38 | 18 | 17 | 13 | 99 | 70 | 7 | 12 | 38 | 1 | 38 | 17 | 83 |

Reference E **Bridges Prime Plus**

Birth Date: 9/01/2018 Bull 19439022 Tattoo: 859

| EPDs | CED | BW | WW | YW | SC | DOC | Milk |
|-------|------|-------|-----|-------|-----|------|------|
| +8 | 35% | +2.2 | 75% | +62 | 30% | +121 | 15% |
| +2.20 | 1% | +26 | 15% | +37 | 2% | | |
| CW | MARB | REA | \$M | \$W | \$B | SC | |
| +52 | 25% | +1.63 | 1% | +0.74 | 25% | +58 | 55% |
| +73 | 15% | +194 | 1% | +310 | 1% | | |

Connealy In Sure 8524
 Mytty In Focus
 Entreena of Conanga 657
 G A R New Design 5050
 Chair Rock Grid Maker 2107

G A R Sure Fire
 17328461
 Chair Rock 5050 G A R 8086

G A R Prophet
 BJ Prophet 4212
 18189491
 BJ Complete 1165

C R A Bextor 872 5205 608
 G A R Objective 1885
 Summitcrest Complete 1P55
 BJ 5050 New Design 9164

| CED | BW | WW | YW | DMI | YH | SC | DOC | HP | CEM | Milk | MW | MH | CW | MB | REA | FAT | TND |
|-----|----|----|----|-----|----|----|-----|----|-----|------|----|----|----|----|-----|-----|-----|
| 48 | 67 | 74 | 30 | 51 | 82 | 2 | 28 | 62 | 81 | 16 | 65 | 80 | 50 | 1 | 23 | 33 | 52 |

Reference C **Bridges Broad Weigh**

Birth Date: 9/3/2017 Bull +*19113674 Tattoo: 753

| EPDs | CED | BW | WW | YW | SC | DOC | Milk |
|-------|------|-------|-----|-------|-----|------|------|
| +18 | 1% | -1.4 | 10% | +76 | 10% | +141 | 3% |
| -0.05 | 95% | +21 | 30% | +29 | 25% | | |
| CW | MARB | REA | \$M | \$W | \$B | SC | |
| +59 | 10% | +1.16 | 3% | +0.66 | 30% | +63 | 30% |
| +84 | 3% | +177 | 4% | +293 | 3% | | |

Sitz Upward 307R
 Connealy Onward
 Sitz Henrietta Pride 81M
 G A R Retail Product
 Barbara of Plattemere 311

Plattemere Weigh Up K360
 #*16692552
 Barbara of Plattemere 337

MCC Daybreak
 Boyd New Day 8005
 MCC Miss Focus 134
 G A R New Design 5050
 G A R Objective L127

Bridges Daybreak 297
 +*17459484
 Bridges 5050 New Design 9108

| CED | BW | WW | YW | DMI | YH | SC | DOC | HP | CEM | Milk | MW | MH | CW | MB | REA | FAT | TND |
|-----|----|----|----|-----|----|----|-----|----|-----|------|----|----|----|----|-----|-----|-----|
| 1 | 4 | 28 | 15 | 91 | 31 | 92 | 28 | 10 | 78 | 44 | 28 | 21 | 36 | 13 | 58 | 46 | 96 |

Reference F **Bridges Foretold**

Birth Date: 9/12/2016 Bull 18794324 Tattoo: AB669

| EPDs | CED | BW | WW | YW | SC | DOC | Milk |
|-------|------|-------|-----|-------|-----|------|------|
| +10 | 25% | +2.2 | 75% | +100 | 1% | +168 | 1% |
| +0.34 | 80% | +26 | 15% | +32 | 15% | | |
| CW | MARB | REA | \$M | \$W | \$B | SC | |
| +80 | 1% | +0.90 | 15% | +0.70 | 25% | +76 | 10% |
| +109 | 1% | +168 | 10% | +294 | 3% | | |

C R A Bextor 872 5205 608
 B A R Ext Traveler 205
 Cra Lady Jaye 608 498 S Easy
 S S Objective T510 OT26
 G A R 1407 New Design 2232

G A R Prophet
 16295688
 G A R Objective 1885

Plattemere Weigh Up K360
 Bridges Weigh Up 459
 18012050
 Deer Valley Blackcap 1122

Sitz Upward 307R
 Barbara of Plattemere 337
 SAV Bismarck 5682
 Springfield Blackcap 7217

| CED | BW | WW | YW | DMI | YH | SC | DOC | HP | CEM | Milk | MW | MH | CW | MB | REA | FAT | TND |
|-----|----|----|----|-----|----|----|-----|----|-----|------|----|----|----|----|-----|-----|-----|
| 49 | 80 | 1 | 4 | 100 | 6 | 88 | 24 | 44 | 22 | 26 | 9 | 4 | 3 | 19 | 20 | 91 | 58 |

Semen Available on Bridges Bulls

We have semen available on these Bridges herd sires as well as several more.

WWW.BRIDGESANGUSFARMLLC.COM



K C F Bennett Boulder / Reference Sire G



G A R Quantum / Reference Sire H



G A R Inertia / Reference Sire I

Reference G **K C F Bennett Boulder**

Birth Date: 10/17/2015 Bull 18491439 Tattoo: C696

| EPDs | CED | BW | WW | YW | SC | DOC | Milk |
|-------|------|-------|-----|-------|-----|------|------|
| +10 | 25% | +1.2 | 50% | +74 | 10% | +137 | 4% |
| +2.08 | 2% | +34 | 1% | +26 | 40% | | |
| CW | MARB | REA | SM | SW | SB | SC | |
| +68 | 3% | +1.08 | 5% | +0.52 | 50% | +69 | 20% |
| +74 | 15% | +185 | 2% | +309 | 1% | | |

K C F Bennett Southside
K C F Bennett TheRock A473
 17849954 K C F Miss Protege W148

CAR Efficient 534
K C F Miss 534 U431
 16382214 K C F Miss 6106 R309

Nichols Extra K205
 K C F Miss 208 S11
 GAR-EGL Protege
 Breela of Conanga 3991

KCF Bennett Efficient
 CAR Miss Susie 308
 Wulffs Ext 6106
 Pleasana of Conanga 736

Reference J **SydGen Enhance**

Birth Date: 1/27/2015 Bull 18170041 Tattoo: 5209

| EPDs | CED | BW | WW | YW | SC | DOC | Milk |
|-------|------|-------|-----|-------|-----|------|------|
| +11 | 15% | +0.2 | 30% | +65 | 25% | +131 | 10% |
| +1.61 | 10% | +35 | 1% | +28 | 30% | | |
| CW | MARB | REA | SM | SW | SB | SC | |
| +65 | 5% | +1.19 | 3% | +0.67 | 30% | +74 | 10% |
| +69 | 20% | +206 | 1% | +341 | 1% | | |

SydGen Googol
SydGen Exceed 3223
 17501893 SydGen Forever Lady 1255

SydGen Liberty GA 8627
SydGen Rita 2618
 17405676 Fox Run Rita 9308

D A R Infinity 313
 SydGen Forever Lady 4087
 SydGen 928 Destination 5420
 SydGen Forever Lady 8114

Connealy Forward
 SydGen Blackbird GA 051
 G T Shear Force
 Limestone Rita U0004

Reference H **G A R Quantum**

Birth Date: 8/18/2016 Bull 18636059 Tattoo: 5526

| EPDs | CED | BW | WW | YW | SC | DOC | Milk |
|-------|------|-------|-----|-------|-----|------|------|
| +14 | 4% | +0.3 | 30% | +69 | 15% | +122 | 15% |
| +1.78 | 5% | +28 | 10% | +35 | 5% | | |
| CW | MARB | REA | SM | SW | SB | SC | |
| +67 | 4% | +1.13 | 4% | +1.24 | 1% | +68 | 20% |
| +85 | 3% | +196 | 1% | +322 | 1% | | |

G A R Progress
G A R Momentum
 17354145 G A R Big Eye 1770

Connealy In Sure 8524
G A R In Sure 1524
 17965254 G A R Complete 3011

G A R Predestined
 G A R Objective 2345
 ALC Big Eye D09N
 G A R Objective 3387

Mytty In Focus
 Entreana of Conanga 657
 Summitcrest Complete 1P55
 G A R Objective 277L

Reference K **S A V Rainfall 6846**

Birth Date: 1/09/2015 Bull 18578963 Tattoo: 6846

| EPDs | CED | BW | WW | YW | SC | DOC | Milk |
|-------|------|------|-----|-------|-----|------|------|
| +12 | 10% | +0.1 | 25% | +61 | 35% | +116 | 25% |
| +0.97 | 40% | +22 | 25% | +29 | 25% | | |
| CW | MARB | REA | SM | SW | SB | SC | |
| +29 | 75% | +6.3 | 35% | +0.60 | 40% | +88 | 1% |
| +71 | 20% | +120 | 65% | +244 | 30% | | |

O C C Paxton 730P
Coleman Charlo 0256
 16879074 Bohi Abigale 6014

S A V 8180 Traveler 004
S A V Blackcap May 4136
 14739095 S A V May 2397

O C C Focus 813F
 O C C Blackbird 736K
 Sitz Traveler 8180
 S A V Abigale 6062

Sitz Traveler 8180
 Boyd Forever Lady 8003
 S A V 598 Bando 5175
 S A V May 7238

Reference I **G A R Inertia**

Birth Date: 8/09/2016 Bull 18636043 Tattoo: 1187

| EPDs | CED | BW | WW | YW | SC | DOC | Milk |
|-------|------|-------|-----|-------|-----|------|------|
| +10 | 25% | +0.9 | 45% | +71 | 15% | +130 | 10% |
| +0.82 | 50% | +33 | 2% | +31 | 15% | | |
| CW | MARB | REA | SM | SW | SB | SC | |
| +56 | 15% | +1.33 | 2% | +0.85 | 10% | +66 | 25% |
| +82 | 5% | +192 | 1% | +315 | 1% | | |

G A R Progress
G A R Momentum
 17354145 G A R Big Eye 1770

G A R Prophet
G A R Prophet 2984
 17965352 G A R Daybreak 1521

G A R Predestined
 G A R Objective 2345
 ALC Big Eye D09N
 G A R Objective 3387

C R A Bextor 872 5205 608
 G A R Objective 1885
 MCC Daybreak
 G A R 5050 New Design 1039

Reference L **LD Capitalist 316**

Birth Date: 1/26/2013 Bull 17666102 Tattoo: 316

| EPDs | CED | BW | WW | YW | SC | DOC | Milk |
|-------|------|-------|-----|-------|-----|------|------|
| +10 | 25% | -0.6 | 15% | +67 | 20% | +114 | 25% |
| +0.48 | 70% | +11 | 75% | +31 | 15% | | |
| CW | MARB | REA | SM | SW | SB | SC | |
| +52 | 20% | +0.63 | 35% | +0.53 | 50% | +63 | 30% |
| +79 | 10% | +144 | 30% | +250 | 25% | | |

S A V Final Answer 0035
Connealy Capitalist 028
 16752262 Prides Pita of Conanga 8821

C A Future Direction 5321
LD Dixie Erica 2053
 14407230 LD Dixie Erica Oar 0853

Sitz Traveler 8180
 S A V Emulous 8145
 C R A Bextor 872 5205 608
 Prides Trav of Conanga 6499

G A R Precision 1680
 C A Miss Power Fix 308
 LD Royce Onaroll 810
 Dixie Erica of R 8553



Sydgen Enhance / Reference Sire J



S A V Rainfall 6846 / Reference Sire K



LD Capitalist 316 / Reference Sire L



Bridges Angus Farm, LLC
Alan & Phillip Bridges
415 Paradise Hogan Road
Lexington, GA 30648



Passion for Progress

FEMALE & BULL SALE

October 3, 2020 • 12:00PM est • Bridges Angus Farm Sale Facility • Lexington, Georgia



WWW.BRIDGESANGUSFARM.LLC.COM

REQUEST A SALE BOOK • LIKE US ON FACEBOOK!

