



Performance Report

► Bull test reports and other performance-related items. Compiled by **Linda Robbins**.

► IBEP Summer Test

**Feldun-Purdue Ag Center, Bedford, Ind.
125-day final report (Sept. 19)**

The 75th Indiana Beef Evaluation Program (IBEP) Summer Test entry deadline was April 4, with bulls and get-of-sire groups delivered April 26 for the 2016 test. The test started May 17. A total mixed ration (TMR) composed of 55% corn silage, 22% corn grain, 20% dried distillers' grains with solubles (DDGS) and 3% balancer was fed.

Bulls eligible for the test were born May 1-Oct. 31, 2015.

High-ADG Angus—Lot 45; owner: Home Acres Farm Inc., Lebanon, Ohio; sire: GAR Prophet; ADG: 4.98 lb.; ADG ratio: 131; WDA: 3.15 lb.; WDA ratio: 98; wt.: 1,595 lb.; test index: 118; frame: 5.2.

High-WDA and high-indexing Angus—Lot 219; owner: Willer Timber Ridge, Greencastle, Ind.; sire: WTR 9403 Right Answer 305; ADG: 4.56 lb.; ADG ratio: 120; WDA: 3.81 lb.; WDA ratio: 118; wt.: 1,330 lb.; index: 120; frame: 5.8.

High-indexing Angus sire group—three bulls; owner: Home Acres Farm Inc.; sire: Home Acres CC&7 7118; avg. ADG: 4.52 lb.; ADG ratio: 119; avg. WDA: 3.01 lb.; WDA ratio: 94; avg. wt.: 1,470 lb.; test index: 109; avg. frame: 4.7.

Angus averages (61 head)—ADG: 3.79 lb.; WDA: 3.22 lb.; wt.: 1,276 lb.

Overall averages (81 head)—ADG: 3.66 lb.; WDA: 3.20 lb.; wt.: 1,259 lb.

Bulls sold Oct. 15 in the 75th IBEP Bull Sale and Springville Feeder Auction Association Bred Heifer Sale.

For more information contact Terry Stewart at tstewart@purdue.edu or 765-494-0138; fax: 765-494-9346; Brad Shelton, test station manager, at 812-279-8554 or sheltonb@purdue.edu; or Donna Lofgren, performance

To access a state-by-state listing of current central bull tests, visit our Virtual Library online at www.api-virtuallibrary.com/CentralBullTests.htm. The listing includes contact information, links to test websites, current test schedules and dates of upcoming tests.

records and website, at dlofgren@purdue.edu. Information is available on the test's website at www.ansc.purdue.edu/ibep.

► Virginia BCIA Culpeper Sr. Bull Test Blacksburg, Va. 56-day report (Sept. 6)

The Culpeper Sr. Bull Test began July 12 with starting weights taken on 85 bulls. The average on-test weight for all bulls was 856 lb. There are 74 Angus bulls on test. The test is a 112-day test for bulls born Aug. 15-Nov. 30, 2015. The next interim weight was scheduled for Oct. 4, with final weights taken Nov. 1.

High-ADG Angus—Lot 31; owner: Lucas Farm, Joe and Timmy Lucas, Blacksburg; sire: Connealy Comrade 1385; ADG: 4.64 lb.; ADG ratio: 171; WDA: 2.88 lb.; WDA ratio: 101; wt.: 1,040 lb.

High-WDA Angus—Lot 12; owner: Quaker Hill Farm, Charles Rosson, Louisa; sire: EF Upshot 3213; ADG: 2.59 lb.; ADG ratio: 95; WDA: 3.42 lb.; WDA ratio: 120; wt.: 1,010 lb.

Angus averages (71 head)—ADG: 2.72 lb.; WDA: 2.86 lb.; wt.: 1,003 lb.

Overall averages (82 head)—ADG: 2.72 lb.; WDA: 2.88 lb.; wt.: 1,003 lb.

The test sale is scheduled for Dec. 10 at Glenmary Farm, Rapidan, Va.

For more information contact Scott Greiner,

extension beef specialist, at 540-231-9159; fax: 540-231-3713 or sgreiner@vt.edu; or Tom & Kim Nixon, owner/manager, Glenmary Farm, at 540-672-7396; fax: 540-672-3579 or glenmaryfarm@vabb.com. Information is also available on the test website, <http://bcia.apsc.vt.edu>.

► Connors State College All Breeds Bull Test Warner, Okla. 56-day report (Sept. 15)

The Connors State College (CSC) Bull Test was initiated by agriculture instructor Robert Hodges in 1961. The cattle market crash in the early 1970s led to the test being discontinued in 1974. In 1977, Gary Harding was hired to lead the ag department and restart the bull test. Both fall and spring tests are 112 days in length. The bulls are fed a complete growing/finishing ration free choice designed to allow for maximum growth.

Nominations for the test were due June 10, 2016. Bulls were received July 4-8 for a start date of July 21. The 84-day weight was scheduled for Oct. 13, with off-test weights taken Nov. 10.

High-ADG Angus—Lot 6; owner: Christ Family Partnership, John Christ, Bixby, Okla.; sire: SAV Resource 1441; ADG: 5.23 lb.; WDA: 2.92 lb.; wt.: 1,255 lb.

High-WDA Angus—Lot 101; owner: Kinnett Farms, Shane Kinnett, Council Hill, Okla.; sire: RB Tour of Duty 177; ADG: 4.46 lb.; WDA: 3.53 lb.; wt.: 285 lb.

The sale is scheduled for Dec. 1, 2016.

For more information contact Todd Trennepohl, bull test oversight, at 918-463-6279 or todd.trennepohl@okstate.edu; Ron Ramming at 918-869-7573 or rronald@connorsstate.edu; or Roger Morton, farm manager, at 918-557-4560 or roger.morton@connorsstate.edu. For more information visit the test website at <http://connorsstate.edu/agri/reports/>.

► Calhoun Bull Evaluation Northwest Georgia Research and Education Center, Calhoun, Ga. 56-day report (Sept. 13)

The 47th Calhoun Bull Evaluation Program

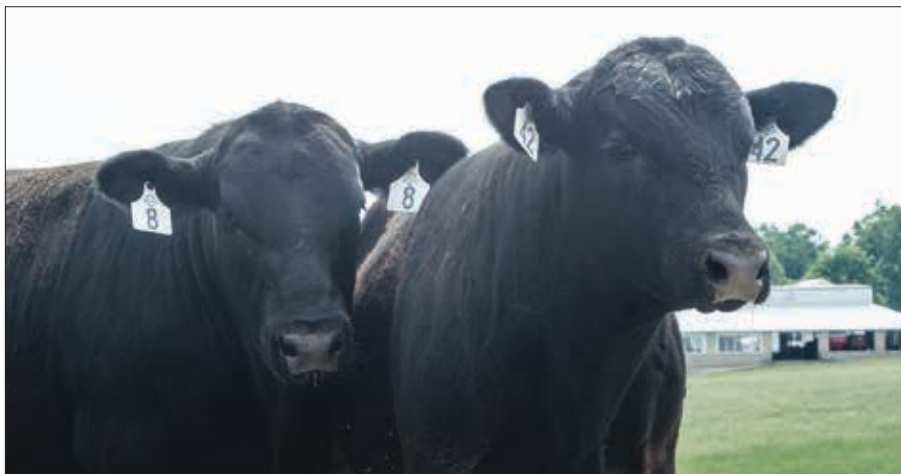


PHOTO BY KASEY BROWN

began June 27-28 with the delivery of 150 bulls representing seven breeds. The average on-test weight for the 84 Angus bulls was 904 lb., with overall on-test weights at 885 lb. Eligible bulls were born Sept. 1-Nov. 30, 2015. The next weigh date was scheduled for Oct. 11, with off-test weights scheduled for Nov. 7-8.

High-ADG Angus—Lot 53; owner: Emilan Angus Farm, Lanny Benson, Lafayette, Ga.; sire: GAR Prophet; ADG: 5.13 lb.; ADG ratio: 134; WDA: 2.80 lb.; WDA ratio: 84; wt.: 994 lb.

High-WDA Angus—Lot 44; owner: Williams Angus Farm, Gene and Michael Williams, Calhoun, Ga.; sire: Quaker Hill Rampage 0A36; ADG: 4.39 lb.; ADG ratio: 115; WDA: 3.90 lb.; WDA ratio: 117; wt.: 1,140 lb.

Angus averages (83 head)—ADG: 3.83 lb.; WDA: 3.33 lb.; wt.: 1,118 lb.

Overall averages (148 head)—ADG: 3.81 lb.; WDA: 3.26 lb.; wt.: 1,099 lb.

The sale is set for Dec. 2.

For more information contact Jason Duggin, Extension beef animal scientist, phone: 706-624-1403; fax: 706-629-8686; jduggin@uga.edu; or visit the website at www.caes.uga.edu/commodities/animals/beef/stations/index.html.

▣ Florida Bull Test Marianna, Fla.

28-day report (Sept. 14)

The North Florida Research and Education Center (NFREC) Bull Test in Marianna, Fla., has reported 28-day test results. Bulls were accepted for delivery June 27-28 with on-test weights taken July 18 and 19. The test is for bulls born Sept. 1-Nov. 7-8, 2015. Purebred animals must be registered, and composites must be out of registered parents.

All Angus and Angus derivatives must be tested for AM status or must be accompanied by a letter from the breed association to indicate they are not a carrier. The diet is a grain-and-forage-based diet formulated to target 3.5 lb. of gain per day, with *ad libitum* access to hay, adequate for allowing expression of growth potential and development without overconditioning the bulls.

Interim weights were scheduled for Oct. 11 with final weights taken Nov. 7-8.

High-ADG and high-indexing (tie) Angus—Lot 1557; owner: Gizmo Angus Farm, Molino; sire: SAV Resource 1441; ADG: 4.68 lb.; WDA: 3.42 lb.; wt.: 1,195 lb.; test index: 128.

High-indexing (tie) Angus—Lot 1559; owner: Gizmo Angus Farm, Molino; sire: Connealy Consensus 7229; ADG: 4.38 lb.; WDA: 3.08 lb.; wt.: 1,090 lb.; test index: 128.

High-WDA Angus—Lot 1551; owner:

Hubert Hightower, Monticello; ADG: 3.57 lb.; WDA: 3.63 lb.; wt.: 1,220 lb.; test index: 119.

Best Angus RFI—Lot 1545; owner: Williams Angus Farm, Newton, Ala.; ADG: 2.32 lb.; WDA: 2.77 lb.; wt.: 1,070 lb.; RFI: -6.36; test index: 84.

Overall averages—ADG: 3.17 lb.; WDA: 2.91 lb.; wt.: 995 lb.

The test sale is scheduled for Dec. 2.

For more information contact Cliff Lamb, bull test coordinator, University of Florida-NFREC, 3925 Hwy. 71, Marianna, FL 32446; phone: 850-394-9124, ext. 106, or visit the test website at http://nfrec.ifas.ufl.edu/fl_bull_test/index.shtml.

▣ 2017 Clemson Bull Test Clemson, S.C.

28-day report (Sept. 20)

Seventy bulls were delivered to the 2017 Clemson Bull Test at the Clemson Beef Cattle Farm near Pendleton Aug. 9. There are 26 senior Angus bulls and 17 junior Angus bulls on test. Steve Meadows, extension animal scientist, says the health of the bulls has been good and the weather has been very hot and dry.

The bulls were weighed on test Aug. 23 following a 14-day warm-up period. Interim weights were scheduled for Oct. 18 and Nov. 15. Off-test weights are to be taken Dec. 13.

High-ADG and high-WDA senior Angus—Lot 10; owner: Collins Cattle Co., Heather Collins, Taylors, S.C.; sire: SAV Bruiser; ADG: 6.52 lb.; ADG ratio: 147; WDA: 3.79 lb.; WDA ratio: 121; wt.: 1,345 lb.

High-ADG and high-WDA junior Angus—Lot 78; owner: Chimney Top Angus, Steve Johnson, Johnson, Tenn.; sire: GAR Prophet; ADG: 6.34 lb.; ADG ratio: 144; WDA: 3.74 lb.; WDA ratio: 122; wt.: 1,205 lb.

Senior Angus averages (26 head)—ADG: 4.42 lb.; WDA: 3.12 lb.; wt.: 1,111 lb.

Junior Angus averages (17 head)—ADG: 4.39 lb.; WDA: 3.07 lb.; wt.: 920 lb.

Overall averages (70 head)—ADG: 4.14 lb.; WDA: 3.09 lb.; wt.: 1,040 lb.

The sale is scheduled for Feb. 7, 2017.

For additional information contact Meadows at smdws@clemson.edu or at 864-633-9970 (cell) or Gary Burns, Clemson Bull Test manager at gurns@clemson.edu or at 864-617-3402 (cell). Information is also available on the test website at www.clemson.edu/extension/livestock/beef/bulltests-cubt/.

▣ University of Tennessee Senior Bull Test Middle Tennessee Research and Education Center, Spring Hill, Tenn. 28-day report (Sept. 27)

The University of Tennessee Bull Testing Program accepted delivery of bulls for the senior bull test Aug. 16 and weighed a total of 109 bulls on test Aug. 30-31. The 84-day test is being conducted at the Middle Tennessee Research and Education Center, Spring Hill, Tenn. Senior bulls must have been born Sept. 1-Nov. 30, 2015. There are 100 Angus bulls on test. The next interim test was scheduled for Oct. 24.

High-ADG (tie) Angus—Lot 38; owner: JRS Farms, Lawrenceburg, Ky.; sire: JRS Confidence Focus 127 300; ADG: 5.46 lb.; WDA: 3.57 lb.; wt.: 1,385 lb.

High-ADG (tie) Angus—Lot 86; owner: Richview Angus Farm, Lancing; sire: Boyd Forward 6025; ADG: 5.46 lb.; WDA: 3.42 lb.; wt.: 1,320 lb.

High-WDA Angus—Lot 97; owner: RX Angus, Blountville; sire: SAV Brilliance 8077; ADG: 4.82 lb.; WDA: 3.62 lb.; wt.: 1,190 lb.

Angus averages (100 head)—ADG: 3.52 lb.

Overall averages (109 head)—ADG: 3.56 lb.

The sale is scheduled for Jan. 19, 2017. For more information contact David Kirkpatrick, professor of animal science, University of Tennessee, at 865-974-7294; fax: 865-974-0429 or fkirkpat@utk.edu; or Kevin Thompson, station manager, at 931-486-2129; fax: 931-486-0142. Test information is also available at <http://animalscience.ag.utk.edu/Beef/BullTestingProgram.html>.

▣ WIU Bull Test Macomb, Ill.

The 45th Western Illinois University (WIU) Bull Test received 63 bulls from five states, representing the Angus, Simmental, Polled Hereford, Red Angus and Charolais breeds, plus a number of Simmental composites and a Barzona composite, according to WIU School of Agriculture Bull Test Director John Carlson. The bulls officially began the test Oct. 19. Off-test weights will be taken Feb. 8, 2017.

The bulls will be weighed every 28 days throughout the test, and the test website will be updated after each weigh date. The WIU bull test station is open daily for those who want to view the bulls during the test period.

The test sale is scheduled for March 10, 2017.

For more information about the test and to follow the progress of the bulls, contact Carlson at 309-298-1288 or JP-Carlson@wiu.edu. The test website is www.wiu.edu/bulltest.

