



# Performance Report

► Bull test reports and other performance-related items. Compiled by *Linda Robbins*.

## ■ Green Springs Summer Bull Test Nevada, Mo.

### 54-day report (Aug. 7)

The Green Springs Summer Bull Test at Nevada, Mo., weighed bulls on test June 14. The test is a 112-day performance test with bulls grouped by breed and size, as much as possible, offering an optimum growth environment. Bulls must be weaned and vaccinated. The summer test is for bulls born in September-November 2012.

Bulls were fed for a 14-day warm-up period before the official test began. Bulls were fed a high-quality ration formulated by a qualified nutritionist and adequate for a targeted gain of 3.5 pounds (lb.) per day.

**High-ADG Angus**—Lot 13133; owner: Locust Hill, Middleburg, Va.; sire: Boyd Resume 9008; ADG: 5.46 lb.; wt.: 1,170 lb.

For more information contact Kent Abele, owner, at 417-465-2240 or 417-448-7416; email him at [gsgbulltest@gmail.com](mailto:gsgbulltest@gmail.com) or visit the test website at [www.greenspringsbulltest.com](http://www.greenspringsbulltest.com).

## ■ Virginia BCIA Culpeper Senior Test Glenmary Farm, Rapidan, Va.

### 56-day report (Sept. 10)

The 56th Culpeper Senior Test conducted by the Virginia Beef Cattle Improvement Association (BCIA) began with the delivery of 90 bulls July 2. The bulls were weighed on test July 16. The test is conducted at Glenmary Farm, Rapidan, Va., and is a 112-day test for bulls born Aug. 15-Nov. 30, 2012. There are 81 Angus bulls on test.

**High-ADG Angus**—Lot 44; owner: Quaker Hill Farm, Charles Rosson, Louisa; sire: Summitcrest Complete 1P55; ADG: 5.09 lb.; ADG ratio: 143; WDA: 2.47 lb.; WDA ratio: 86; wt.: 895 lb.

**High-WDA Angus (tie)**—Lot 59; owner: Edgewood Angus, Pete & Peter Henderson, Williamsburg; sire: Rito 9M25 of Rita 5F56 Pred; ADG: 4.20 lb.; ADG ratio: 118; WDA: 3.70 lb.; WDA ratio: 129; wt.: 1,285 lb.

**High-WDA Angus (tie)**—Lot 62; owner: Edgewood Angus; sire: GAR New Design 5050; ADG: 4.64 lb.; ADG ratio: 131; WDA: 3.70 lb.; WDA ratio: 129; wt.: 1,270 lb.

**Angus averages (81 head)**—ADG: 3.56 lb.; WDA: 2.87 lb.; wt.: 1,028 lb.

**Overall averages (90 head)**—ADG: 3.58 lb.; WDA: 2.88 lb.; wt.: 1,028 lb.

The next interim weight was to be collected Oct. 8, with off-test weights scheduled for Nov. 4-5. The test sale is scheduled to be Dec. 14 at Glenmary Farm.

For more information contact Scott Greiner, extension beef specialist, at 540-231-9159; fax: 540-231-3713 or [sgreiner@vt.edu](mailto:sgreiner@vt.edu); or

To access a state-by-state listing of current central bull tests, visit our virtual library online at [www.api-virtuallibrary.com/CentralBullTests.htm](http://www.api-virtuallibrary.com/CentralBullTests.htm).

The listing includes contact information, links to test websites, current test schedules and dates of upcoming tests.

Tom & Kim Nixon, owner/manager, Glenmary Farm, at 540-672-7396; fax: 540-672-3579 or [glenmaryfarm@vabb.com](mailto:glenmaryfarm@vabb.com). Information is also available on the test website, <http://bcia.apsc.vt.edu>.

## ■ Calhoun Bull Evaluation Northwest Georgia Research and Education Center, Calhoun, Ga.

### 56-day report (Sept. 17)

The 44th Calhoun Bull Evaluation Program began July 1-2 with the delivery of 152 bulls representing eight breeds. Eligible bulls were born Sept. 1-Nov. 30, 2012. Ronnie Silcox, extension animal scientist, says the drier weather has been helping, but they continue to treat eye and feet problems.

**High-ADG Angus**—Lot 83; owner: Gafnea Angus, Whitesburg, Ga.; sire: LCC Standard; ADG: 5.02 lb.; ADG ratio: 145; WDA: 2.83 lb.; WDA ratio: 94; wt.: 1,080 lb.

**High-WDA Angus**—Lot 156; owner: Meldon Farm, Jefferson, Ga.; sire: SAV Pioneer 7301; ADG: 3.93 lb.; ADG ratio: 114; WDA: 3.60 lb.; WDA ratio: 120; wt.: 1,120 lb.

**Angus averages (91 head)**—ADG: 3.46 lb.; WDA: 3.00 lb.; wt.: 1,008 lb.

**Overall averages (148 head)**—ADG: 3.46 lb.; WDA: 3.04 lb.; wt.: 1,032 lb.

All 152 bulls tested negative for PI-BVD. The next interim weigh date was scheduled for Oct. 15, with off-test weights to be taken Nov. 11-12. The sale is set for Dec. 6.

For more information contact Silcox, associate professor, Edgar L. Rhodes Center for Animal and Dairy Science (ADS), University of Georgia, Athens, GA 30602-2771; 706-542-9102 or [rsilcox@uga.edu](mailto:rsilcox@uga.edu); or Patsie Cannon, program coordinator III, 2360 Rainwater Rd., Tifton, GA 31793; 229-386-3683 or [ptcannon@uga.edu](mailto:ptcannon@uga.edu); or visit the website at [www.caes.uga.edu/commodities/animals/beef/stations/index.html](http://www.caes.uga.edu/commodities/animals/beef/stations/index.html).

## ■ Clemson Bull Test Clemson, S.C.

### 28-day report (Sept. 17)

The 2014 Clemson University Bull Test has a total of 78 bulls on test for the 2014 test. Senior bulls must be born Sept. 1-Oct. 31, 2012, and junior bulls must be born Nov.

1-Dec. 31, 2012, to be eligible for the test.

Bulls were delivered Aug. 7 and went on test Aug. 20. Matthew Burns, extension animal scientist and Clemson Bull Test coordinator, says health of the bulls has been excellent.

**High-ADG senior Angus**—Lot 61; owner: Stillwater Cattle Co., Inman, S.C.; sire: Basin Payweight 107S; ADG: 6.25 lb.; ADG ratio: 151; WDA: 2.94 lb.; WDA ratio: 100; wt.: 978 lb.

**High-WDA senior Angus**—Lot 53; owner: MPAC Angus, Bamberg, S.C.; sire: Nichols Quiet Lad T9; ADG: 6.14 lb.; ADG ratio: 149; WDA: 3.69 lb.; WDA ratio: 126; wt.: 1,375 lb.

**High-ADG junior Angus**—Lot 9; owner: Rice Farms, Fountain Inn, S.C.; sire: Connealy Final Product; ADG: 5.00 lb.; ADG ratio: 142; WDA: 3.06 lb.; WDA ratio: 101; wt.: 824 lb.

**High-WDA junior Angus**—Lot 13; owner: Trax Cattle, Saint George, S.C.; sire: SAV Final Answer 0035; ADG: 4.43 lb.; ADG ratio: 126; WDA: 3.41 lb.; WDA ratio: 112; wt.: 920 lb.

**Senior Angus averages (38 head)**—ADG: 4.14 lb.; WDA: 2.93 lb.; wt.: 1,036 lb.

**Junior Angus averages (20 head)**—ADG: 3.52 lb.; WDA: 3.03 lb.; wt.: 890 lb.

**Overall averages (78 head)**—ADG: 4.19 lb.; WDA: 3.04 lb.; wt.: 1,013 lb.

Interim weights were scheduled for Oct. 15 and Nov. 12, with final weights to be taken Dec. 10. The sale is scheduled for Feb. 1, 2014.

For additional information contact Matthew Burns at [burns5@clemson.edu](mailto:burns5@clemson.edu) or at 864-940-2428 (cell) or Gary Burns, Clemson University Beef Farm manager and Clemson Bull Test manager at [gurns@clemson.edu](mailto:gurns@clemson.edu) or at 864-617-3402 (cell). Information is also available on the test website at [www.clemson.edu/extension/livestock/beef/bulltests-cubt](http://www.clemson.edu/extension/livestock/beef/bulltests-cubt).

## ■ IBEP 2013 Summer Test Feldun-Purdue Ag Center, Bedford, Ind. 125-day final report (Sept. 23)

The Indiana Bull Evaluation Program (IBEP) 2013 Summer Test began with the delivery April 30 of 64 bulls. Eligible bulls were born May 1-Oct. 1, 2012, and were weighed on test May 21. Interim weights were taken at 28-day intervals.

**High-ADG Angus**—Lot 49; owner: Dolph Angus, Walkerton, Ind.; sire: Connealy Lead On; ADG: 4.88 lb.; ADG ratio: 124; WDA: 3.74 lb.; WDA ratio: 112; wt.: 1,690 lb.; test index: 119

**High-WDA and high-indexing Angus**—Lot 44; owner: Kiata Farms, Hamilton, Ohio; sire: GAR Ingenuity; ADG: 4.71 lb.; ADG ratio: 120; WDA: 4.07 lb.; WDA ratio: 122; wt.: 1,575 lb.; test index: 121

**High-ADG Angus sire group**—three bulls; owner: Jarvis' Angus Farm, Bremen, Ky.; sire: TC Total 410; avg. ADG: 4.14 lb.; ADG ratio: 105; avg. WDA: 2.99 lb.; WDA ratio: 90; avg. wt.: 1,217 lb.; test index: 99

**High-WDA and high-indexing Angus sire group**—three bulls; owner: Kiata Farms; sire: GAR Ingenuity; avg. ADG: 4.08 lb.; ADG ratio: 104; avg. WDA: 3.68 lb.; WDA ratio: 110; avg. wt.: 1,337 lb.; test index: 106

**Angus averages (50 head)**—ADG: 3.94 lb.; WDA: 3.34 lb.; wt.: 1,309 lb.

**Overall averages (64 head)**—ADG: 3.96 lb.; WDA: 3.38 lb.; wt.: 1,319 lb.

The test sale was scheduled for Oct. 20 at the Springville Feeder Auction, Springville, Ind., and took place in conjunction with the Springville Feeder Auction Association's Bred Heifer Sale.

For more information contact Terry Stewart at [tstewart@purdue.edu](mailto:tstewart@purdue.edu) or 765-494-0138; fax: 765-494-9346; Brad Shelton, test station manager, at 812-279-8554 or [sheltonb@purdue.edu](mailto:sheltonb@purdue.edu); or Donna Lofgren, performance records and website, at [dlofgren@purdue.edu](mailto:dlofgren@purdue.edu). Information is available on the website at [www.ansc.purdue.edu/ibep](http://www.ansc.purdue.edu/ibep).

#### ▣ Butner BCIP Bull Test

##### **Bahama, N.C.**

##### **56-day report (Sept. 24)**

The Butner BCIP Bull Test reported 68 bulls weighed on test July 30. The 112-day test is for bulls born Aug. 15-Nov. 15, 2012, and has 62 Angus bulls on test. Bulls were delivered to the test station July 17. The next interim weight was to be collected Oct. 21. Final weights will be taken Nov. 18-19. The test sale is scheduled for Dec. 20 at the Granville County Livestock Arena, Oxford, N.C.

**High-ADG Angus (tie)**—Lot 4; owner: Oakview Farms, Bobby Aldridge, Yanceyville, N.C.; sire: Connealy Impression; ADG: 4.45 lb.; ADG ratio: 125; WDA: 2.93 lb.; WDA ratio: 100; wt.: 1,068 lb.

**High-ADG Angus (tie)**—Lot 61; owner: Williams Angus, George Williams, Gray, Tenn.; sire: Sitz Upward 307R; ADG: 4.45 lb.; ADG ratio: 125; WDA: 3.25 lb.; WDA ratio: 111; wt.: 1,248 lb.

CONTINUED ON PAGE 98

## Angus reaches milestone in genetic improvement

The American Angus Association and its subsidiary Angus Genetics Inc. (AGI) announce record numbers of Angus cattle being tested with high-density genomic trait tests. That number recently surpassed 40,000 tests, and it is only expected to grow.

“We are fortunate to see the rapid adoption of this technology by our Angus breeders to drive the genomic-enhanced EPDs (GE-EPDs), thanks to research collaboration, improved genomic technology and increased test volume,” says Bill Bowman, AGI president and Association COO.

Genomic technology uptake by Angus breeders provides the opportunity to better characterize the genetics of registered-Angus herds, to make breed improvements for generations to come, and to offer commercial cattlemen access to the most dependable genetic selection tools available.

The expansion of the collaborative partnership between AGI and Zoetis Animal Genetics research scientists has allowed for a more streamlined approach to GE-EPD computation. Now, the high-density 50K SNP

genotypes delivered by AGI partner laboratories will be characterized in-house with a Zoetis-generated algorithm for use in the Association’s weekly national cattle evaluation (NCE) efforts.

AGI and the Association currently offer comprehensive updates of the entire NCE every week — including genomic results incorporated into genomic-enhanced expected progeny differences — providing the most rapid genetic feedback available in the beef cattle industry. For more details, visit AGI online at [www.angus.org/AGI/default.aspx](http://www.angus.org/AGI/default.aspx) or access AAA Login at [www.angusonline.org/logon.aspx](http://www.angusonline.org/logon.aspx).

— by American Angus Association staff

**Angus breeders  
exceed 40,000  
high-density  
tests for use in  
GE-EPDs.**

**High-WDA Angus**—Lot 60; owner: Williams Angus; sire: Sitz Upward 307R; ADG: 3.63 lb.; ADG ratio: 102; WDA: 3.36 lb.; WDA ratio: 115; wt.: 1,290 lb.

**Angus averages (62 head)**—ADG: 3.54 lb.; WDA: 2.93 lb.; wt.: 1,077 lb.

**Overall averages (67 bulls)**—ADG: 3.52 lb.; WDA: 2.88 lb.; wt.: 1,062 lb.

For more information contact Gary Gregory at 919-515-4027, fax: 919-515-6884 or [gary\\_gregory@ncsu.edu](mailto:gary_gregory@ncsu.edu); or Dean Askew at 919-471-6872. Information is available on the test website, [www.cals.ncsu.edu/an\\_sci/extension/animal/bcip/Ahbcip.html](http://www.cals.ncsu.edu/an_sci/extension/animal/bcip/Ahbcip.html).

### ▶ University of Tennessee Senior Bull Test on test report

The University of Tennessee Bull Testing Program weighed a total of 103 bulls on test Sept. 10. The 84-day test is being conducted at the Middle Tennessee Research and Education Center, Spring Hill, Tenn. Senior bulls must be born Sept. 1-Dec. 15, 2012. The nomination deadline for senior bulls was July 25, 2013, with delivery Aug. 27. There are 92 Angus bulls on test. Interim weights were to be taken Oct. 8 and Nov. 5. Off-test weights are scheduled for Dec. 2-3, with the sale Jan. 23, 2014.

For more information contact David Kirkpatrick, professor of animal science, University of Tennessee, at 865-974-7294; fax: 865-974-0429 or [fkirkpat@utk.edu](mailto:fkirkpat@utk.edu); or Kevin Thompson, station manager, at 931-486-2129; fax: 931-486-0142. Test information is also available at <http://animalscience.ag.utk.edu/Beef/BullTestingProgram.html>.

### ▶ Minnesota BCIA announces bull test

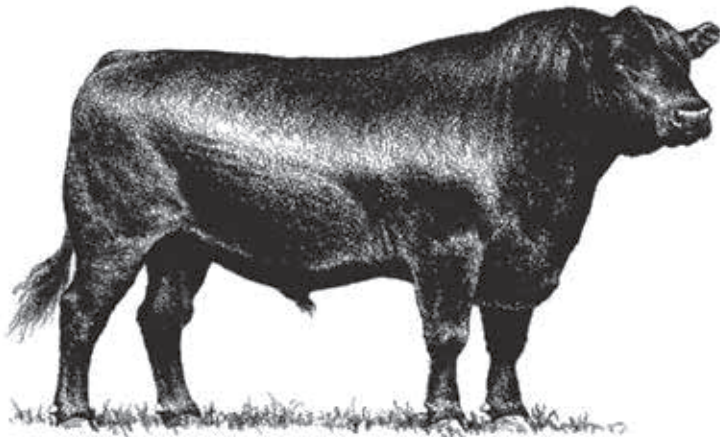
The Minnesota Beef Cattle Improvement Association (BCIA) has announced its 2013-2014 test dates. To be eligible for the test, bulls must be born between Jan. 1-May 15, 2013. Application forms were due Oct. 10, 2013. Bulls were to be delivered Oct. 26, 2013, with the test weigh-in Nov. 8-9.

Bulls will be fed in two lots with 250 feet of bunk space per pen. Bulls are assigned to lots depending on size and weight. Good-quality forages consisting of corn silage, alfalfa haylage, corn, distillers’ grains, mineral mix and vitamins are fed.

Interim weights are scheduled for Jan. 3, 2014, and Feb. 20, with off-test weights taken March 20, 2014. The sale will be April 7.

For more information contact Ron Holty, test station manager, at 21685 South View Rd., Spring Grove, MN 55974; 507-498-5839; cell: 507-429-7963 or [ronholty@gmail.com](mailto:ronholty@gmail.com).

# Top In Its Class



The *Angus Beef Bulletin EXTRA* was judged to be the No. 1 Newsletter in the livestock industry at the 2013 Livestock Publications Council Critique Contest.

To subscribe to this free award-winning newsletter today, go to [www.angusbeefbulletin.com](http://www.angusbeefbulletin.com) and use the subscription form in the upper left-hand corner of the page.

