



New Products

► Introducing products, services for cattlemen; compiled by **Linda Robbins**, assistant editor

Low-dose horn fly and lice control

Elanco and Eli Lilly and Co. have introduced StandGuard® Pour-on, a horn-fly- and lice- control solution that the company says is powerful, effective with a low dosage and is easy to use. The company's research suggests it is the most potent pyrethroid on the market, offering effective quick-kill action to manage horn flies and lice on all classes of beef cattle. The product contains gamma-cyhalothrin, the latest technology in the pyrethroid class, one that has not been used previously in beef cattle.

No dilution is necessary, and StandGuard is available in 30-fluid-ounce (fl. oz.) bottles with an easy squeeze-and-pour design ideal for smaller treatment groups. It is also available in a 4.5-liter (L) size, which is more convenient for large operations. According to the release, season-long control of horn flies and lice on beef cattle is possible with a single application.

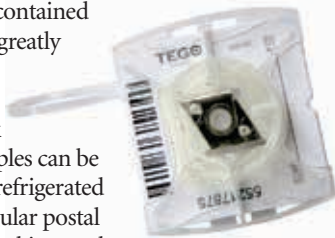
For cattle weighing less than 600 pounds (lb.), the company recommends ½ fl. oz. of the product be applied along the backline, with ½ fl. oz. for cattle weighing more than 600 lb.

The company suggests that one 30-oz. bottle will treat 90 head weighing less than 600 lb., and 60 head weighing more than 600 lb.

For more information, including guidelines and label instructions, visit www.elanco.us/products-services/beef/.

Simple, safe blood collection

ITL BioMedical has introduced its Tego™ Bovine blood collection kit that it says is convenient, fast and reliable. The kit has self-contained sharps that greatly reduce the risk of needle-stick injury. Samples can be shipped unrefrigerated through regular postal mail, and the kit samples are compatible with existing lab processes. The samples obtained can be used for testing for genetic defects, trait selection, parentage, animal ID, pregnancy and diseases such as bovine viral diarrhea (BVD) and pestivirus. According to the release, the samples can be stored for years at room temperature without affecting DNA sample integrity.



Users begin the process by inserting the Tego adapter pin into ear-tagging applicators, a step that is performed only once. (Note: The kit is compatible with Allflex® Total Tagger and Retract-O-Matic™ ear-tagging applicators, but requires use of the Tego adapter pin.)

For more information visit www.itlbiomedical.com.

Cordless detachable-blade clipper

Andis has introduced the Pulse ZR™ cordless, detachable-blade clipper. This heavy-duty, lithium-ion clipper provides the power of a corded tool but in a convenient, cord-free design and delivers up to two hours of continuous cutting without losing clipping power. The clipper also features a precision-engineered rotary motor that can be easily set to five speeds, from 2,500 to 4,500 strokes per minute, for improved cutting control.

In addition, a textured grip offers sure handling to make trimming around sensitive areas a cinch. The clippers deliver a two-hour run time on a two-hour charge. The new clipper comes with the UltraEdge® super blocking blade 64340 for livestock grooming and is compatible with all UltraEdge, CeramicEdge® and ShowEdge® livestock blades.

For more information call 1-800-558-9441 or visit www.andis.com.



Enhanced sprayer

John Deere has introduced the all-new R4023 Sprayer with 600-gallon (gal.) tank and spraying widths of 60 feet (ft.) or 80 ft.

According to the release, the new sprayer has one of the most comfortable seats in the business. The all-leather,

heated, ventilated seat features nine vertical and lateral adjustments, back support and a larger seat cushion than before. In addition, the all-new sound suppression enhancements include a noise-reducing hydro-drive plate, cab insulation, gaskets and isolators and a deluxe sound system with 4-inch (in.) × 6-in. speakers and a subwoofer.

Operators will enjoy the crisp clarity of the high-resolution GreenStar™ 3 CommandCenter™ display that provides key machine information at a glance, along with the smart sprayer-specific CommandARM™ that provides fingertip control of important sprayer functions.

Other enhancements include integrated BlueTooth® connectivity, a 12-volt power port for devices, an electronic adjustable right-side mirror for clear view to the rear of the sprayer, a front pull-down sunshade, plus three cupholders for a favorite beverage.

For spraying in rougher terrain, such as no-till or strip-tilled fields, the new sprayer has a solution — the Soft Shock option, built to absorb the forces these rough terrains can generate, ensuring a smooth ride and accurate spray patterns up to 20 mph.

The compact size allows for easy trailer loading and storage in smaller buildings.

The John Deere PowerTech™ P.S.S. engine meets Final Tier IV emission requirements, with the new 4.5L engine rated at 173 horsepower (hp), delivering 5% more hp compared with the previous model.

For more information visit a local dealer or visit www.deere.com/en_US/products/equipment/self_propelled_sprayers/.



▲