



# New Products

► Introducing products, services for cattlemen; compiled by **Linda Robbins**, assistant editor

## Respiratory protection in one dose

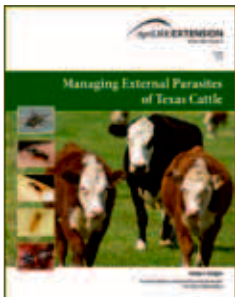
Boehringer Ingelheim Vetmedica Inc. has introduced Pyramid® 3 + Presponse® SQ, a vaccine that features respiratory protection in a single dose. The new vaccine aids in the prevention of disease caused by infectious bovine rhinotracheitis (IBR) and bovine viral diarrhea (BVD) Types 1 and 2 and aids in the reduction of severity of pneumonic pasteurellosis (mannheimiosis) caused by *Mannheimia haemolytica*.

It protects against persistently infected (PI) calves when used subcutaneously (sub-Q) in the cow or heifer 30-60 days prebreeding and can be used in pregnant cows or calves nursing pregnant cows if cows were vaccinated with Pyramid 5, Pyramid 10, Pyramid 3, Pyramid 3 + Presponse SQ or Pyramid 5 + Presponse SQ prebreeding.

For more information contact your herd veterinarian or Rene Ward, associate director, public relations and internal communications, at 816-236-8276; or Wayne Cole, brand manager at 816-236-2763; or visit [www.bivipreventionworks.com](http://www.bivipreventionworks.com).

## Updated pest control reference

Texas A&M AgriLife Extension Service's old standby livestock pest control reference



publications have been updated, revamped and split in two. The first installment is now available to the public.

The original publication, known as *Managing External Parasites of Texas Livestock and Poultry B-1306*, is being released as two separate publications. The first, *Managing External Parasites of Texas Cattle (E-570)*, is now available electronically on the AgriLife Bookstore (<http://agrilifebookstore.org>) and emphasizes pastured beef cattle. The second, *Managing External Parasites of Horses, Pigs, Sheep and Goats*, will follow next year. The poultry component was redone previously and released as *Poultry Pest Management (E-445)*.

The original work was written a decade or two ago and addressed external parasites that attack all livestock. In the new publications, more in-depth information is provided on the

insect species involved, along with pictures for visual identification so producers will know without a doubt what they are dealing with. With all the added information, some of the livestock species had to be dropped to keep the publication size manageable.

The new publication stresses the integrated pest management approach that uses the most effective, environmentally safe strategies available.

For more information contact Sonja Swiger, AgriLife Extension entomologist, at 254-968-4144 or [slswiger@ag.tamu.edu](mailto:slswiger@ag.tamu.edu).

## Cost-saving automatic bale wrapping

Tanco Autowrap, a company based in Bagenalstown, County Carlow, Ireland, and marketing through Hamilton Equipment, Ephrata, Pa., has introduced the 580A round bale wrapper that offers three operator cycle modes; automatic wrapping; load and cycle; and automatic load, wrap and tip cycle, which can all be selected on the attachment's digital control panel.

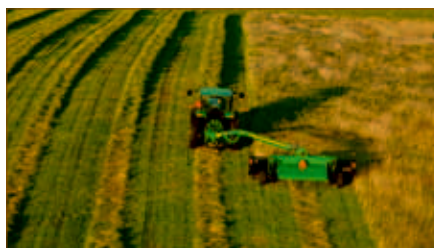
Standard features include dual stretch dispenser, full-width belt, hydraulic cut and start, support rollers, road lights, self-loading arm and extendable axle. A hydraulic bale ramp or end tip ramp is available.

For more information call 717-733-7951 or visit [www.haminc.com](http://www.haminc.com).

## Double-knife sickle cutterbars

John Deere has added two sickle cutterbar mower conditioners, the M160A and M180A, both center-pivot, pull-type machines, to its product lineup. The new models feature double-knife sickle cutterbar platforms, are available in 16-foot (ft.) and 18-ft. cutting widths, and provide the widest conditioning rolls on the market today for machines of this type, according to the release.

The center-mounted pivot hitch and drive system allows for a shorter turn radius and the convenience of left- or right-side operation. For improved crop conditioning



and faster dry down with less field loss, the new mower-conditioners have steel-roll conditioning systems. The two models can be matched with 125 hp or higher tractors for optimal harvesting performance.

For more information visit [www.johndeere.com](http://www.johndeere.com).

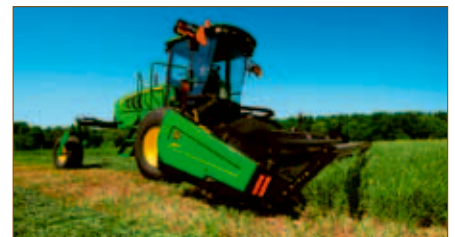
## Agritourism safety guide

Because agritourism is more popular than ever, with millions of people visiting corn mazes, pumpkin patches, pick-your-own operations and other agricultural attractions every year, a new web guide has been developed to help farmers keep visitors safe. Farmers can select virtual walk-throughs that are most appropriate for their operations that identify health and safety hazards and provide resources to fix the hazards.

The guide, provided by the National Farm Medicine Center and the Marshfield Clinic, is available at [www.safeagritourism.com](http://www.safeagritourism.com).

## Replacement windrowers

John Deere has introduced the W110 and W150 self-propelled windrowers (SPW) for 2013. The two new windrowers replace the



140 engine hp A400 SPW and complement the existing 200 hp R450 and D450 models.

The new 110 hp W110 and 148 hp W150 traction units can be matched with six new draper heads (15-, 20-, 25-, 30-, 35-, and 40-ft. lengths) and three new auger heads (14-, 16- and 18-ft. lengths) that are interchangeable, giving customers the flexibility to switch heads on a single traction unit to match different crops and harvest conditions.

The new SPW models have been designed to provide increased visibility to the cutting platform, superior crop cutting and conditioning with auger and draper platforms, and more consistent windrow performance for all types of hay and small grain crops.

For more information visit [www.johndeere.com](http://www.johndeere.com).