



# New Products

► Introducing products, services for cattlemen

## New web site

Dynamik Group Marketing and Web Technologies has launched [www.farmersshowcase.com](http://www.farmersshowcase.com), which will focus on showcasing new and existing agricultural products in a web store format. Through specific category listings, the site will feature pictures, product details, complete informational awareness and demonstrations for consumers.

Product lines that can be found on the site include animal health, feed, cattle, corn, soybeans, wheat, swine, poultry, forage, dairy, equipment, real estate and finance.

The site also features product videos, general news, new product releases and technical announcements. It can be accessed for free to all users, and companies can post content and relevant information. The overall objective of the site, according to the release, is to market and showcase the store listings to help provide the end user with more efficiency and information for profitability on the farm.

Visit [www.farmersshowcase.com](http://www.farmersshowcase.com) for more information.

## New waterers

Ritchie Industries has announced the release of the Omni 1 waterer, the fourth member of the OmniFount product family featuring a blend of stainless steel and polyethylene construction.

The new product can water up to 20 head of horses or cattle. It features a large access panel and offers overall heat coverage with heat elements located under the trough and around the waterline.

The body of the OmniFount is made from the company's heavy-duty polyethylene construction. The fountain is insulated with highly energy-efficient polyurethane foam, providing an R-factor of 7 per inch (in.), according to the release.

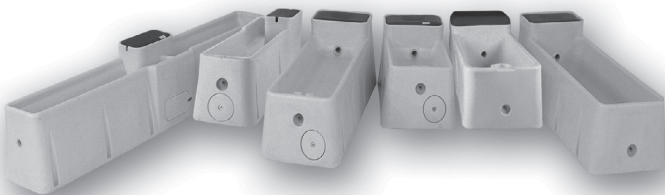
The trough carries a 10-year, 100% warranty against manufacturing defects or corrosion. The polyethylene casing carries a 10-year limited warranty (100% for the first five years and prorated for the next five years against manufacturing defects).

For more information call 1-800-747-0222 or visit [www.ritchiefount.com](http://www.ritchiefount.com).

Ritchie Industries has released a new waterer in its WaterMaster series, the Deep 54. The new waterer offers a deeper trough, allowing for a greater water capacity of 54 gallons (gal.), or 204 liters. It has an animal capacity of 200 beef or 100 dairy animals.

The new product also features a larger front access panel, two overflow levels and a domed valve cover, which helps keep the water clear free of dirt and debris. Each of the six models in the series has a heavy-duty, one-piece polyethylene body that holds up even under the weight of cattle. In each model, the trough slopes to a large drain and can be emptied, cleaned and refilled in a fraction of the time other fountains take to empty, according to the company.

Requiring 75% less energy in the winter than concrete units,



the waterer won't pit or cause cleaning problems, according to the release. The waterers are built for rugged feedlot, pasture and dairy conditions. The solid polyurethane foam insulation keeps water ice-free longer in the winter and cooler in the summer.

For more information call 1-800-747-0222 or visit [www.ritchiefount.com](http://www.ritchiefount.com).

## Compact tractors introduced

New Holland has announced the new three-cylinder, 30-horsepower (hp) T1510 compact tractor. Part of the company's Lean and Mean™ series of tractors, the T1510 can be customized with a choice of transmissions, two-wheel drive or front-wheel drive axle and other features.

Standard features for the new model tractor include a foldable rollover protective structure (ROPS) for height restrictions or special work, a two-position extendable drawbar and a fender-mounted cup holder.

The tractor can be equipped with a three-range hydrostatic transmission or a 9×3 gear transmission. The tractor has a three-point hitch lifting capacity of 1,635 pounds (lb.), and a generous hydraulic flow to operate a loader, blade or other hydraulically powered implements. A wide range of implements is available.

For more information visit [www.newholland.com](http://www.newholland.com).



New Holland has introduced the 28-hp T1110 Boomer™ compact tractor. It is larger than a subcompact tractor, with a longer wheelbase, a taller profile and higher performance specifications that allow it to do more than just mow.

Larger tires provide stability, ground clearance and traction, while the longer wheelbase increases the stability of the tractor while giving operators a smoother ride. A two-range hydrostatic transmission with two separate direction pedals makes it easy for any operator to feel comfortable and in control, according to the release.

All routine service points are located on the right side of the engine so there is no need to raise the hood to add fuel or check the engine oil.

For more information visit [www.newholland.com](http://www.newholland.com).

New Holland has introduced the new 40-50 hp T2300 Series Boomer™ compact tractors for homeowners, landscapers, farmers, golf courses and municipalities.

Available on the T2310 and T2320 models, a hydrostatic transmission allows the operator to adjust speed and change from forward to reverse with dual foot pedals, without the need to clutch to change speeds. For loader work, the 12×12 Synchronized Shuffle Shift (SSS) manual gear transmission, available on all models, provides a broad range of speed choices.

With 60 cubic feet (cu. ft.) of interior space, the SuperSuite™ cab, available on the T2310 and T2320 models, protects the operator from the elements and provides a comfortable work environment,

according to the release. Large, tall windows provide all-direction visibility, and a high-visibility roof panel allows the operator to watch the loader through its full range of operation.

For more information visit [www.newholland.com](http://www.newholland.com).

## Welding news

Hobart Bros. now offers a new way to stay current on health and safety issues related to the welding industry and filler metal usage. An optional e-mail notification system provides alerts that updates have been posted to the Health and Safety section of the company's web site.

Updates include the availability of new product Material Safety Data Sheets (MSDS), recent safety bulletins from the Occupational Safety and Health Administration (OSHA) and Hobart Bros., and new safety guides provided by the American Welding Society (AWS). Other pertinent information is posted as it becomes available.

Visit [www.hobartbrothers.com/safetyemail](http://www.hobartbrothers.com/safetyemail) to automatically receive e-mail updates when the company has added a new resource to its web site.

Hobart Welding Products now offers its new Handler® 125 EZ, a gasless (self-shielded) flux-cored wire welder for home hobby, farm and ranch, and light fabrication applications. It is the first welder of its kind, according to the release, to feature a single control knob — a patent-pending metal thickness selector — offering a quicker and easier set-up.



The single control knob sets both volts and wire feed speed to match the thickness of metal to be welded. The machine comes with a guide on the front panel showing different metal thicknesses. Once users determine the correct thickness, they select that thickness on the control knob, pull the trigger and begin to weld.

The unit weighs 50 lb. and plugs into a typical 120-volt (V) outlet. To prevent unintentional arcing, the contact tip and wire remain electrically cold until the trigger is pressed.

It comes complete with a welding gun, extra contact tips, a 10-ft. work cable and clamp, thermal overload and short-circuit protection, and a sample spool of flux-cored wire.

For more information visit [www.hobartwelders.com](http://www.hobartwelders.com).

Hobart Welding Products has released its “FFA Forever Blue” XFS auto-darkening, fixed-shade helmet to honor the 80th anniversary of the National FFA Organization.

The design features the FFA logo, the “Forever Blue” motto and eagle wings against a deep, royal blue background. Intended for farmers, ranchers and hobbyists, the FFA helmet features two independent arc sensors and a solar-assisted lens, which auto-darkens from the light state (No. 3 shade) to a No. 10 shade in  $\frac{1}{3,000}$  of a second after detecting an arc start.

The XFS series is covered by a two-year warranty and meets all American National Standards Institute (ANSI) Z87.1-2003, Canadian Standards Association (CSA) and CE marking safety standards.

For more information visit [www.hobartwelders.com](http://www.hobartwelders.com) or call 1-877-462-2781.

Miller Electric Manufacturing Co. has introduced its MP-10 line in passive (non-auto-darkening) welding helmets. MP-10 stands for Miller Passive-shade No. 10 filter, which is a standard shade for general welding applications.

The new helmet is available in the “Inferno” graphic design or in a

basic black design. The new line of helmets uses the same shell as the company's Elite Series of auto-darkening helmets, but uses a passive lens. The helmet weighs 18 oz., features a 16-square-inch viewing area and a magnifying lens holder for “Cheater” lenses, which can provide a better view of the weld puddle.

The helmets use industry standard-sized filter plates so users can purchase shades such as No. 9, No. 11, No. 12 or No. 13 from their welding supply distributor, with the option to upgrade to auto-darkening technology by purchasing a Miller lens.

For more information visit [www.millerwelds.com](http://www.millerwelds.com) or call 1-800-426-4553.

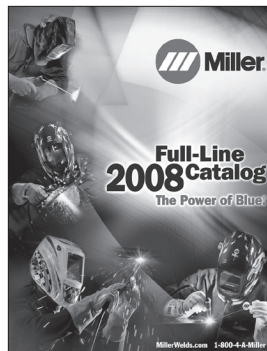
Miller Electric Manufacturing Co. has introduced the Millermatic 180 with Auto-Set, a 230-V machine that gives the user the capability to weld from 24-gauge up to a  $\frac{3}{16}$ -in. mild steel in a single pass.

All the user has to do is select the wire diameter, set the machine to the material thickness being welded and start welding since the machine is set to the proper voltage and wire feed speed for the job.

In those instances where Auto-Set cannot be used, the manual mode still exists. In manual mode, the new welder is set up like any other MIG (metal inert gas) machine. The user sets the voltage and wire feed speed according to the provided parameter chart.

For more information visit [www.millerwelds.com](http://www.millerwelds.com).

Miller Electric Manufacturing Co. has released its 2008 full-line catalog. The full-color, 100-page catalog provides specifications on



the company's MIG welders, TIG (tungsten inert gas) welders, stick welders, plasma cutters, welding generators, welding helmets, safety gear and more.

New features this year include a quick index of new products, new product guides and more guidance for selecting TIG products, MIG welders and plasma cutters. The catalog also includes product information from the company's recommended industry leaders.

To order, visit the company's literature request page online or call 1-800-426-4553.

Lincoln Electric Co. has introduced its Vista® auto-darkening helmets, which include a full-featured cartridge, including four arc sensors, variable shade, variable sensitivity and variable delay.

The helmets are solar-powered so there are no batteries to charge and no alkaline corrosion, and no power switch is needed to turn it on and off during or between jobs. They include variable shade adjustment from shade 9 up to 13 and variable sensitivity, including a grind mode that fixes the shade at 3 for grinding.

Four independent arc sensors help ensure the auto-darkening lens reliably and safely darkens in any application, moving from light to dark in  $\frac{1}{10,000}$  of a second. The line also includes a cover/spatter plate that can be changed in seconds from the front of the helmet.

In addition to basic black, the new line comes in the Patriot, NASCAR® or Heavy Metal graphic designs.

For more information visit [www.lincolnelectric.com](http://www.lincolnelectric.com) or call 888-355-3213 to obtain Bulletin E12.206.