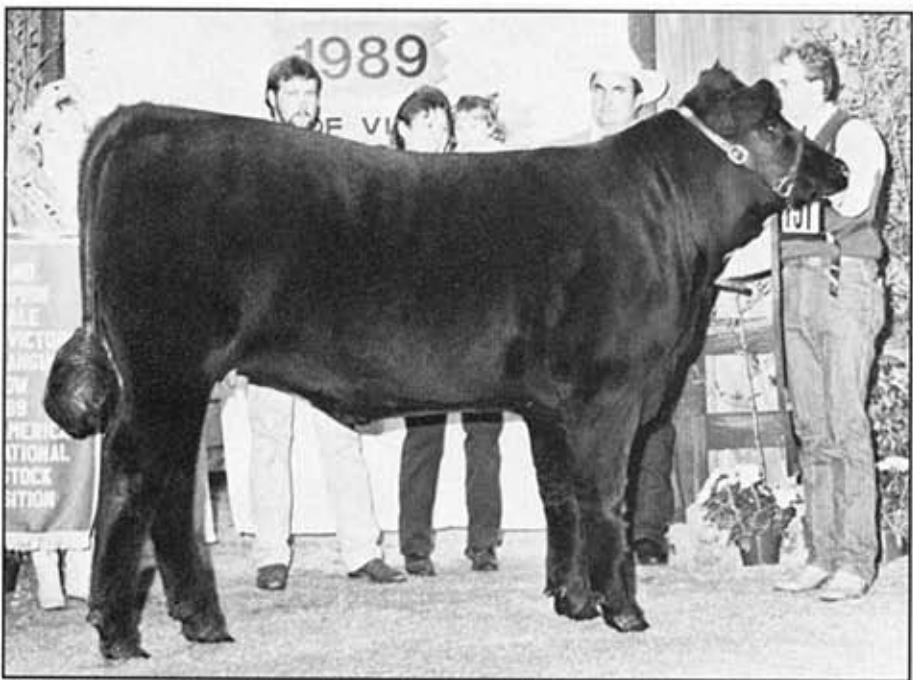


## Right for the '90s



NAILE junior and grand champion bull *Premier Granada*.



NAILE intermediate and grand champion female *Antietams Elba 800*.

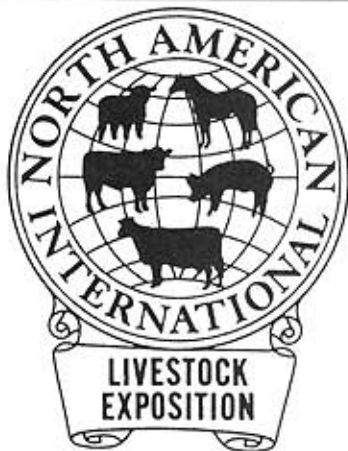
The championship drive for the 1989 North American International Livestock Exposition ROV Angus Show was as strong as ever. A total of 181 entries were shown at Louisville's Freedom Hall by breeders from across the country.

This Super ROV show, the second of the 1990 season, introduced a new generation of Angus breeding. It's a generation of beefy, production-oriented cattle with less emphasis on frame.

Judge Eldon Krebs of Gordon, Neb. selected both his grand champion female and bull on their balance of muscle, correctness and easy movement. "They are breeding cattle right for the '90s," Krebs said.

Grand champion female was awarded to Antietams Elba 800, a May 1988 heifer exhibited by Allen and Linda Taylor of Marshall, Va., along with Roger Seelye.

Junior bull calf winner, Premier Granada, captured the grand champion bull title. This January 1989 bull is owned by Premier Angus Inc., Cloverdale, Ind., Goshen Angus, Paris, Ky., and Glenwood Farms, Carrollton, Mo.





## North American International Livestock Expo

### ROV Angus Show

Louisville, Ky., Nov. 13-14, 1989

Judge: Eldon Krebs, Gordon, Neb.

181 Shown

### Female Champions

**GRAND:** Antietams Elba 800, by Allen & Linda Taylor, Marshall, Va.

**RESERVE GRAND:** CSC Primrose 9673D, by Chad Wilson, Cloverdale, Ind.

**JUNIOR CALF:** Fairfield Jesseca J19, by H.B. Walters, Versailles, Ky.; Fairfield Farms, Lakeville, Conn.; & Ward Brothers, Midway, Ky.

**RESERVE JR. CALF:** Eagle's Peggy MacKenzie, by Del River Farm Inc., New Iberia, La.

**SENIOR CALF:** Kiata Jeanne, by Kiata Farms Inc., Hamilton, Ohio.

**RESERVE SR. CALF:** RA Duchess Libra, by Matt Richardson, Milton, Ind.

**INTERMEDIATE:** Antietams Elba 800.

**RESERVE INTER.:** CSC Primrose 9673D.

**JUNIOR:** WAF Annie 832, by Rachelle Whitfield, Gillespie, Ill.  
**RESERVE JR.:** Jestress Gal 802, by Weldon Brady, Knob Noster, Mo.

**SENIOR:** Bear Creek Rose of JACs by JAC's Ranch, Bentonville, Ark., & Bear Creek Angus, Cameron, Mt.

**RESERVE SR.:** Annalea Marchesa, by Annalea Farms, Healdsburg, Calif.; Fox Hill Angus, Kennett Square, Pa.; & Belle Point Ranch, Lavaca, Ark.

### Bull Champions

**GRAND:** Premier Granada, by Premier Angus Inc., Goshen Angus Farm, & Glenwood Farm.

**RESERVE GRAND:** Patton Enticer, by Weaver Angus, Peoria, Ill., & Susan Patton, Crawfordsville, Ind.

**JUNIOR CALF:** Premier Granada.

**RESERVE JR. CALF:** Bradys Booker 918, by Weldon Brady.



NAILE junior and reserve grand champion bull **Patton Enticer**.



NAILE reserve intermediate and reserve grand champion female **CSC Primrose 9673D**.



NAILE reserve junior bull calf champion **Bradys Booker 918**.



NAILE senior bull calf champion **Cedarcrest Rhodes Scholar**.

**SENIOR CALF:** Cedarcrest Rhodes Scholar, by Cedarcrest Farm, Palmyra, Wis.

**RESERVE SR. CALF:** HBW Linard, by H. B. Walters, Versailles, Ky.

**INTERMEDIATE:** Hilmes Linebacker of 1806, by Henry Hilmes, Flora, Ill.

**RESERVE INTER.:** HBW Windfield, by H. B. Walters.

**JUNIOR:** Patton Enticer, by Weaver Angus & Susan Patton.

**RESERVE JR.:** FF Starstruck, by Annalea Farms; Freeman Farms, Cumberland, Va.; & Zeuswyn Farms, Culpeper, Va.

**SENIOR:** Brost Dan Patch, by Premier Angus, Brost Angus Farm & Engelbrecht Angus Farm.

**RESERVE SR.:** Manhattan of Indian Creek, by R&J Ranch, Indian Creek Farm, Foote Acres Angus, Hoff's Scotch Cap, Roell Angus, Engelbrecht Angus Farm & Weaver Angus Farm.

## Group Champions

**GET-OF-SIRE:** Rachele Whitfield on SCR Lone Star 411 progeny.

**JR. GET-OF-SIRE:** Fairfield Farms, H.B. Walters & Son, Ward Bros. on Brost Dan Patch progeny.

**BEST SIX HEAD:** Premier Angus Inc.

## Females, by classes

**Class 1** — (May 1989) 2 shown. 1. CVF Prim Lassie 230, by As-

cent Angus, Oakland, Ill. 2. R&W Matika 26Y, by Jennifer Geil, Stuart, Iowa.

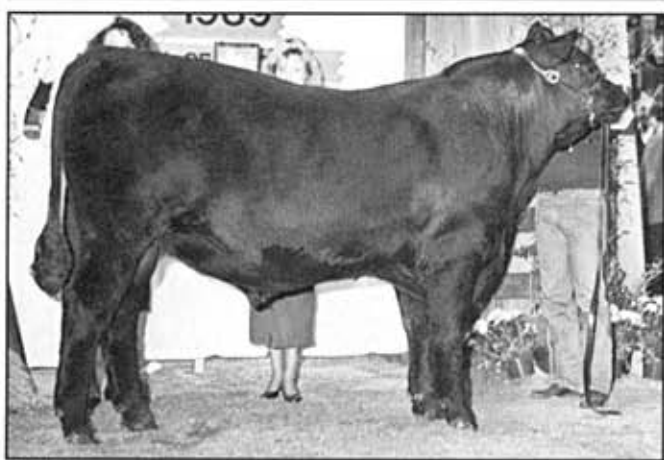
**Class 2** — (April 1989) 7 shown. 1. GF Monique 948, by Goshen Farm, Paris, Ky. 2. Patton Beatrice 935, by Beth Patton, Crawfordsville, Ind. 3. Carmin Alarming Elba 916, by Christian Carmin, Logansport, Ind.

**Class 3** — (March 10-25, 1989) 5 shown. 1. Fairfield Jesseca J19, by H.B. Walters, Fairfield Farms & Ward Brothers. 2. Briarwood Brittany, by Briarwood Genetics, West Bend, Wis. 3. Waldeck Queen 8915, by Waldeck Farms, Crestwood, Ky.; BLC Ranch, Tecumseh, Okla.; & Premier Angus.

**Class 4** — (March 2-6, 1989) 6 shown. 1. Patton Rose Anne 910, by Beth Patton. 2. Waldeck Christine 8194, by JAC's Ranch & Waldeck Farm. 3. L&C Blackbird 3289, by Lori Anne Curtin, Stonington, Ill.

**Class 5** — (Feb. 8-24, 1989) 7 shown. 1. Fairfield Starshine 219, by Fairfield Farms. 2. SAF Rachel 935, by Weaver Angus & S Star Land & Livestock; Sillers Ponderosa, Yuba City, Calif. 3. Still Blackcap Emily 924, by Mark Still, Harrison, Ark.

**Class 6** — (Feb. 1-2, 1989) 6 shown. 1. Brady's Whitney 91, by Weldon Brady. 2. Blackbird SS 25Y, by Stewart Seeds Inc.,



NAILE reserve senior bull calf champion **HBW Linard**.



NAILE intermediate bull champion **Hilmes Linebacker of 1806**.



NAILE reserve intermediate bull champion **HBW Windfield**.



NAILE reserve junior bull champion **FF Starstruck**.

Greensburg, Ind., Premier Angus & Brost Angus, Oxford, Ind. 3. B&J Queen Susie 209C, by H.B. Walters; B&J Angus, Mt. Sterling, Ky.; & Hicks & Yearly, Midway, Ky.

**Class 7** — (Jan. 10-24, 1989) 6 shown. 1. Eagle's Peggy MacKenzie, by Del River Farm Inc., New Iberia, La. 2. MM Celeste, by Double M Farms, Dublin, Va. 3. Indian Creek Terry, by Indian Creek Farm, Stahlstown, Pa.

**Class 8** — (Jan. 1-8, 1989) 7 shown. 1. Premier Tess 2003E, by Premier Angus & Vintage Angus, Modesto, Calif. 2. Briarwood Miss MacKenzie 389, by Briarwood Genetics, West Bend, Wisc. & Weaver Angus. 3. Lucy's Heather 53YCK, by Fairfield Farms.

**Class 9** — (Nov. 2-Dec. 1, 1988) 5 shown. 1. R&J Irene 2908, by R&J Ranch, Briggs, Texas. 2. Lucy's Mabel 64X, by Greg Krueger & Family, Coatesville, Pa. 3. Kaye of Glenkerry, by Glenkerry Farms, Greenwood, S.C.

**Class 10** — (Sept. 6-20, 1988) 7 shown. 1. RA Duchess Libra, by Matt Richardson. 2. Premier Lass 1285D, by Premier Angus & Forsythe Cattle Co. 3. Faith, by JAC's Ranch.

**Class 11** — (Sept. 1-4, 1988) 7 shown. 1. Kiata Jeanne, by Kiata Farms, Hamilton, Ohio. 2. Brady's Dream Girl 864, by

Weldon Brady. 3. R&J Kristen 2358, by R&J Ranch.

**Class 12** — (July 1- Aug. 8, 1988) 6 shown. 1. GF Petunia 871, by Jason Jasper, Nicholasville, Ky. 2. Piper Petunia P849, by Goshen Farm & Piper Angus, Kansas City, Kan. 3. Stewarts Miss Emma 857, by Stewarts Angus, Indianapolis, Ind.

**Class 13** — (June 1-9, 1988) 7 shown. 1. CSC Primrose 9673D. 2. GF India, by Goshen Farm. 3. R&J Stacy 1908, by R&J Ranch & Pinnacle Farms, Decatur, Ga.

**Class 14** — (May 9-16, 1988) 4 shown. 1. Antietams Elba 800. 2. Wayview Erica 210, by Masterfare, Johnstown, Ohio, & Wayview Inc., Hebron, Ohio. 3. JACs Sonia, by JAC's Ranch.

**Class 15** — (May 1-6, 1988) 4 shown. 1. Brost Elba 880, by Goshen Farm. 2. RA Tory Duchess, by Shane Snyder, Milton, Ind. 3. R&J Patricia 1598, by R&J Ranch.

**Class 16** — (April 3-24, 1988) 7 shown. 1. Mengs New Jestress 53X, by H.B. Walters & Richardo Orazi, Buenos Aires, Argentina. 2. Bolsens Valene, by Toby Bolsen, Lovington, Ill. 3. Stewarts Rose 837, by Stewarts Angus & Weaver Angus.



NAILE senior bull champion **Brost Dan Patch**.



NAILE reserve senior bull champion **Manhattan of Indian Creek**.



NAILE junior heifer calf champion **Fairfield Jesseca J19**.



NAILE reserve junior heifer calf champion **Eagle's Peggy MacKenzie**.

**Class 17** — (March 10-27, 1988) 6 shown. 1. WAF Annie 832, by Rachell Whitfield. 2. Patton Top Girl 821, by Susan & Beth Patton. 3. B&L Jilt 8128, by JAC's Ranch.

**Class 18** — (March 1-7, 1988) 5 shown. 1. Jestress Gal 802, by Weldon Brady. 2. R&J Allie 868, by R&J Ranch & Weise Brothers. 3. Premier Prissy 9225D, by Premier Angus & Erdmann Angus Farm, Wetonka, S.D.

**Class 19** — (Feb. 6-27, 1988) 9 shown. 1. Premier Elba 9106D, by Chad Wilson, Cloverdale, Ind. 2. R&J Jill 668, by R&J Ranch. 3. Lucky W Dawn 932X, by H.B. Walters & Ricardo Orazi.

**Class 20** — (Jan. 1-29, 1988) 7 shown. 1. First Lady of Grayling, by JAC's Ranch. 2. 4S Star Lady 528, by Sydenstricker Angus, Mexico, Mo., & Four Sum Angus Farm, Wilder, Idaho. 3. Bear Creek Lassie 8015, by Henry Smith, Russell Springs, Ky.

**Class 21** — (Dec. 7, 1987) 1 shown. 1. Annalea Marchesa.

**Class 22** — (Sept. 22- Nov. 1, 1987) 3 shown. 1. Annalea Classic Example, by Annalea Farms, Fox Hill Angus & Belle Point Ranch. 2. Northcote Unique World, by Goshen Farm & Northcote Farm, Forest, Va. 3. BLC Duchess 7231, by BLC Angus Ranch.

**Class 23** — (Sept. 2-20, 1987) 3 shown. 1. Bear Creek Rose of JACs by JAC's Ranch & Bear Creek Angus Ranch. 2. Waldeck Bobbie, by Waldeck Farm & Premier Angus. 3. B&L Queen Mother 7369, by 3-D Ranch, Newberry, Fla.

#### **Bulls, by classes**

**Class 1** — (April 3- May 2, 1989) 4 shown. 1. Maplecrest Boardwalk, by David Grimes, Decatur, Ohio. 2. Ascent North Star, by Ascent Angus, Oakland, Ill. 3. FB Showtime, by Paul Gerald Pickrell, Augusta, Ky.

**Class 2** — (March 12-28, 1989) 4 shown. 1. Briarwood Brandy Patch, by Briarwood Genetics. 2. Entre 29, by Bethany Hill Farms & Windgrove Farm, Waynesboro, Va. 3. Waldeck Tradition, by Waldeck Farm.

**Class 3** — (March 2-9, 1989) 5 shown. 1. Brady's Booker 918, by Weldon Brady. 2. Waldeck Roadway, by Waldeck Farm. 3. Premier Clyde, by Premier Angus.

**Class 4** — (Jan 15- Feb. 28, 1989) 5 shown. 1. Haines Trideca, by Haines Angus Farm, Park City, Ky. 2. Ascent Light Star 239, by Ascent Angus. 3. Wingo of Indian Creek, by Indian Creek Farms.

**Class 5** — (Jan 2-5, 1989) 6 shown. 1. Premier Granada. 2.



*NAILE senior heifer calf champion Kiata Jeanne.*



*NAILE reserve senior heifer calf champion RA Duchess Libra.*



*NAILE junior female champion WAF Annie 832.*



*NAILE reserve junior female champion Jestress Gal 802.*

Premier Premier by Premier Angus & Goshen Angus. 3. WAF Nugget, by Weaver Angus Farm.

**Class 6** — (Sept. 5- Oct. 6, 1988) 5 shown. 1. Cedarcrest Rhodes Scholar. 2. HBW Linard. 3. Premier Testarossa, by Premier Angus.

**Class 7** — (July 1-16, 1988) 4 shown. 1. HBW Windfield. 2. Starburst, by Annalea Farms, Fox Hill Angus & Windabrae Farms. 3. R&J Turbo 2145, by R&J Ranch & Oakridge Angus, Calistoga, Calif.

**Class 8** — (May 2-21, 1988) 2 shown. 1. Hilmes Linebacker of 1806. 2. E&W Black Jack, by Premier Angus, E&W Cattle Co. & Irish Oaks Farm.

**Class 9** — (April 1-25, 1988) 4 shown. 1. Bolsens Boldrito Bullseye, by Bolsens Angus Farm, Lovington, Ill. 2. Premier Scholar, by Premier Angus. 3. McClarnons Ripper, by Jamie Brown & McClarnons Stock Farm, Greenfield, Ind.

**Class 10** — (March 2-15, 1988) 6 shown. 1. Patton Enticer, by Weaver Angus & Susan Patton. 2. SAF Napoleon, by Weaver Angus, Steve Silbernagel, Napoleon, N.D.; Cedarcrest; & H.B. Walters. 3. R&J Starstruck 958, by Masterfare, R&J

Ranch & Grunewaldt Angus, Orient, S.D.

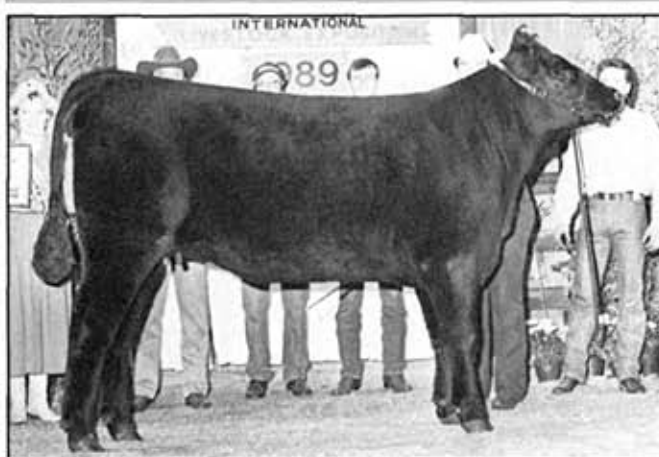
**Class 11** — (Jan. 19-Feb. 18, 1988) 5 shown. 1. FF Starstruck, by Annalea Farms, Freeman Farms & Zeuswyn Farms. 2. JACs Hudson, by JAC's Ranch. 3. B&L Black Shadow 8043, by Shady Brook, Leoma, Tenn.; Northcote Angus; & B&L Properties, Shawnee, Okla.

**Class 12** — (Sept. 14-Nov. 1, 1987) 2 shown. 1. Star Dust Valley 978, by William Reeder, Sunbright, Tenn. 2. R&S William Henry 7196, by McIntosh Angus Farm & D.B. Griffith, Clarksville, Mo.

**Class 13** — (May 7-July 14, 1987) 4 shown. 1. Shady Brook Linedrive 707, by Richardson Cattle Co.; 4G Angus, North Platte, Neb.; & Aztec Angus. 2. BLC Line Up 7010, by BLC Angus Ranch & Watts Angus Farm. 3. GF Justus, by Goshen Farm & Davis on the Highlands, Springfield, Ky.

**Class 14** — (Jan. 9-April 5, 1987) 4 shown. 1. Brost Dan Patch. 2. Manhattan of Indian Creek. 3. Bear Creek Harvard 7062, by Neil Parr, Ric-Carol Angus, Double Bar & Grimsley, Mason City, Ill.

AJ



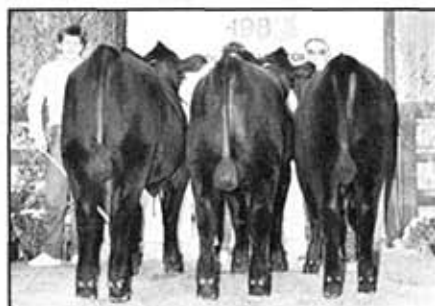
NAILE senior female champion *Bear Creek Rose of JACs*.



NAILE reserve senior female champion *Annalea Marchesa*.



NAILE get-of-sire champion by *SCR Lone Star 411*.



NAILE reserve junior get-of-sire champion by *Brost Dan Patch*.



NAILE best six head exhibited by *Premier Angus Inc.*