



World Beef Expo ROV Angus Show

► **World Beef Expo ROV Angus Show**, Milwaukee, Wis.
Sept. 25 • Judge: Scott Bush, Britton, S.D.

Angus champions named at World Beef Expo ROV

Angus exhibitors competed for top honors at the 2003 World Beef Expo Roll of Victory (ROV) Angus Show Sept. 25 in Milwaukee, Wis. Scott Bush, Britton, S.D., evaluated the 154 entries, which included 111 females, 40 bulls and three cow-calf pairs.

KF Precision 361 captured grand champion bull and senior champion bull honors. Ryan Long, Blue Mound, Ill.; Wilson Cattle Co., Cloverdale, Ind.; and Grandview Womack, Pembroke, Ky., own the January 2001 son of Twin Valley Precision E161. The

bull later won supreme champion over all breeds.

Rosewood Apache 1084 won reserve grand champion bull for Kevin Rose, Salem, Ill., and Andy Headley, Alma, Ill. The November 2001 son of Leachman Saugahatchee 3000C first won reserve senior champion bull.

WAF Special Bonny 2014 captured grand champion female honors and was later named supreme champion over all breeds. Tyler Gruhn, Lanark, Ill., owns the January 2002 daughter of GDAR Russ 8346 that first topped the junior division.

CF Blackcap 1503 won reserve grand champion female. Ashlyn Carter, Upland, Ind., owns the February 2003 daughter of Twin Valley Precision E161 that first won junior heifer calf champion.

Mill Coulee Barbara 104-719 won grand champion cow-calf pair. Ryan Goehring, Fredonia, Wis., owns the January 2001 daughter of Mill Coulee Supreme 753 and her April 2003 son of SCF Ace 011.

KCJ Peggy 7001 captured reserve grand champion cow-calf pair. Jaclyn Zimmerman, Platteville, Wis., owns the April 2001 daughter of Famous 7001,

along with her January 2003 daughter of Bon-View New Design 1407. Pictures of the grand and reserve grand cow-calf pair champions were not available.

Winning first-place get-of-sire were progeny of Twin Valley Precision E161 exhibited by Wilson Cattle Co., who also exhibited the winning best-six-head entry.

Winning first-place junior-get-of-sire were progeny of G13 Structure shown by Greg Smith, Elida, N.M.

A complete list of winners follows.

GRAND & RESERVE GRAND CHAMPIONS

► Grand champion, senior champion and supreme champion bull, **KF Precision 361**, by Ryan Long, Blue Mound, Ill.; Wilson Cattle Co., Cloverdale, Ind.; and Grandview Womack, Pembroke, Ky. He's a Jan. 2001 son of Twin Valley Precision E161.



► Grand champion, junior champion and supreme champion female, **WAF Special Bonny 2014**, by Tyler Gruhn, Lanark, Ill. She's a Jan. 2002 daughter of GDAR Russ 8346.



► Reserve grand champion and reserve senior champion bull, **Rosewood Apache 1084**, by Kevin Rose, Salem, Ill., and Andy Headley, Alma, Ill. He's a Nov. 2001 son of Leachman Saugahatchee 3000C.



► Reserve grand champion female and junior heifer calf champion, **CF Blackcap 1503**, by Ashlyn Carter, Upland, Ind. She's a Feb. 2003 daughter of Twin Valley Precision E161.



FEMALE DIVISION WINNERS

► Reserve junior heifer calf champion, **WCC Blackcap N9**, by Wilson Cattle Co., Cloverdale, Ind., and Express Angus Ranches, Shawnee, Okla. She's a Jan. 2003 daughter of WCC Special Design L309.



► Senior heifer calf champion, **Champion Hill Shadoc 3136**, by Jennifer Ringwelski, Marengo, Ill. She's a Sept. 2002 daughter of Leachman Saugahatchee 3000C.



▣ FEMALE DIVISION WINNERS



► Reserve senior heifer calf champion, **Rosewood Erica 2080**, by Danny Headley, Alma, Ill. She's a Nov. 2002 daughter of SAV Champion Hill Cherokee.



► Intermediate champion heifer, **Fernvale Plowess 203**, by Dana May, Mineral Point, Wis. She's a May 2002 daughter of Leachman Saughatchee 3000C.



► Reserve intermediate champion heifer, **B Miss Packer M06**, by Blake Bloomberg, Berwick, Ill. She's a May 2002 daughter of KWCC Packer 9062.



► Reserve junior champion heifer, **WCC Miss Rowena M57**, by Wilson Cattle Co., Cloverdale, Ind., and Wilstem Cattle Co., French Lick, Ind. She's a Feb. 2002 daughter of Twin Valley Precision E161.

► **Right:** Senior champion female, **GAF Princess Danielle**, by Jeremy Armstrong, Unionville, Tenn. She's a Dec. 2001 daughter of Ankonian Elixir 100.



► **NOT PICTURED:** Reserve senior champion female, **Westward JB Queen Glenda 11W**, by Lindsey Weber, Dousman, Wis. She's a Sept. 2001 daughter of JLB Exacto 416.

▣ BULL DIVISION WINNERS



► Junior bull calf champion, **WF MP Exactly Right 373**, by L.B. Pierce & Sons Inc., Creston, Ill. He's a Feb. 2003 son of JLB Exacto 416.



► Reserve junior bull calf champion, **WCC Extra Stout N7**, by Wilson Cattle Co., Cloverdale, Ind. He's a Jan. 2003 son of TC Extra 9140.



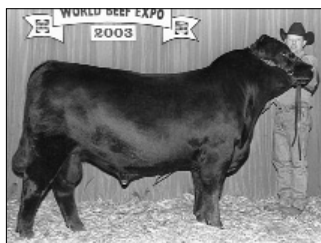
► Senior bull calf champion, **G13 Stockman 2244**, by Greg Smith, Elida, N.M. He's a Sept. 2002 son of TC Stockman 365.



► Reserve senior bull calf champion, **Gamble's Box Car 867**, by Holly Gamble, Clinton, Tenn. He's a Sept. 2002 son of Famous 7001.



► Intermediate champion bull, **BC Marathon 7022**, by Kyle Conley, Clarksdale, Mo., and Holly Gamble, Clinton, Tenn. He's a July 2002 son of OCC Kirby 633K.



► Reserve intermediate champion bull, **G13 Structure 2149**, by Greg Smith, Elida, N.M. He's a May 2002 son of G13 Structure.



► Junior champion bull, **SLF Avalanche 592**, by Springlake Farm, Kingston, Ill., and Wilson Cattle Co., Cloverdale, Ind. He's a Jan. 2002 son of SAF 598 Bando 5175.



► Reserve junior champion bull, **WCC Big Daddy M145**, by Wilson Cattle Co., Cloverdale, Ind. He's an April 2002 son of TC Extra 9140. **AJ**

SHOWRING



Show Schedule

► Information about **ANGUS** shows through **February 2004**

▣ DECEMBER ARIZONA NAT'L STOCK SHOW

Location: Phoenix
Date: Dec. 31
Time: 8 a.m.
Entry Deadline: Nov. 15
Judge: Arlo Janssen

▣ JANUARY 2004 NAT'L WESTERN STOCK SHOW (NWSS)**

Location: Denver, Colo.
Date: Jan. 13-16
Time: 8 a.m.
Entry Deadline: Nov. 15
Judge: Jack Ward

NWSS PEN & CARLOAD SHOW

Location: Denver, Colo.
Date: Jan. 17
Time: 9 a.m.
Entry Deadline: Nov. 15
Judges: Henry Bergfeld, Dick Burns, Jim Pipkin

SOUTHWEST EXPO & LIVESTOCK SHOW

Location: Fort Worth, Texas
Date: Jan. 31
Time: 10 a.m.
Entry Deadline: Dec. 1
Judge: Gary Dameron

▣ FEBRUARY DIXIE NAT'L LIVESTOCK SHOW

Location: Jackson, Miss.
Date: Feb. 15
Time: 7:30 a.m.
Entry Deadline: Jan. 9
Judge: Brian Barragree

* Denotes ROV shows
** Denotes Super ROV shows

AJ