

SHOW SCENE

CONTINUED FROM PAGE 125

■ New York State Fair Angus Show, Syracuse Judge: Dave Kohler, Cayuga, Ontario, Canada



Grand champion bull, **Keifer's Fullback**, by J.H. Keifer Farm, Bangor, Pa. He's a Jan. 1999 son of Rito 9FB3 of 5H11 Fullback.



Grand champion female, **Bippert's Labomba 6839**, by Bippert's Farms, Alden. She's a Feb. 1999 daughter of Woodhill Checkmate.



Grand champion cow-calf pair, **Fairfield Lady Rachel 809**, by Austin Mort, Ghent. She's a Jan. 1998 daughter of Sitz Traveler 8180. Her calf is an April 2000 daughter of Sitz Traveler 043.



Reserve grand champion bull, **Sir Wms. Universe 50X9**, by Justin Conover, Craryville; and Golden Chute Ranch, Walker, Iowa. He's a Nov. 1999 son of GDA Universe 726G.



Reserve grand champion female, **Bell's Everelda Gal 003**, by Amy Trowbridge, Ghent. She's a Jan. 2000 daughter of Sitz Traveler 043.



Reserve grand champion cow-calf pair, **Rally Tibbie 5177**, by Susan Sutton, Truxton. She's a Jan. 1997 daughter of Krugerrand Merger 34. Her calf is an April 2000 daughter of TC Stockman 365.

■ Maryland State Fair Angus Show, Timonium Judge: Dave Hawkins, East Lansing, Mich.



Grand champion bull, **Clear View Wide Spread 990**, by Mandy Richardson, Louisa, Va. He's a Sept. 1999 son of Whitestone Widespread MB.



Grand champion female, **Champion Hill Georgina 1693**, by Mandy Richardson, Louisa, Va. She's a July 1999 daughter of Leachman Saughatchee 3000C.



Grand champion cow-calf pair, **Champion Hill Georgina 1138**, by Jeff Covell, Frederick. She's a March 1998 daughter of RR Scotchcap 9440. Her calf is a May 2000 son of Rito 9FB3 of 5H11 Fullback.



Reserve grand champion bull, **Brandston 9FB3 Hawk**, by Jodi Carpenter, Mount Airy. He's a March 2000 son of Rito 9FB3 of 5H11 Fullback.



Reserve grand champion female, **Champion Hill Mayflower 1503**, by Will Iager, Fulton. She's a March 1999 daughter of VDAR Lucy's Boy.



Reserve grand champion cow-calf pair, **Whitestone Rita H024 of 5H27**, by Whitestone Farm, Aldie, Va.; and Mandy Richardson, Louisa, Va. She's a Jan. 1996 daughter of Whitestone Traveler 2149. Her calf is an April 2000 daughter of Whitestone Treasury J187.

■ California State Fair Performance Angus Bull Show, Sacramento

Judges: Bill Couch, Yukon, Okla.; Mitch Thomas, Raymondville, Texas; and Jackie Davis, Lincoln, Calif.



Grand champion and supreme champion performance bull, **G13 Fame 9239**, by Greg Smith, Eilda, N.M.; and Watts Land and Cattle Co., Carlsbad, N.M. He's a Feb. 1999 son of SAF Fame.



Reserve grand champion performance bull, **MCAR Fame**, by Meadow Creek Angus, Keene. He's a Sept. 1999 son of SAF Fame.



Reserve carcass-trait bull, **Bear Mtn. VAR New Design 9342**, by Bear Mountain Angus Ranch, Angels Camp. He's a Sept. 1999 son of B/R New Design 323.

■ Montgomery County Agricultural Fair's Maryland Angus Show, Gaithersburg

Judge: Brad McCurry, Mount Hope, Kan.



Grand champion bull, **Brandston 9FB3 Hawk**, by Jodi Carpenter, Mount Airy. He's a March 2000 son of Rito 9FB3 of 5H11 Fullback.



Grand champion female, **Covell's Alexis 9901**, by Jay Covell, Frederick. She's a Jan. 1999 daughter of TC Dividend 963.



Grand champion cow-calf pair, **Champion Hill Georgina 1138**, by Jeff Covell, Frederick. She's a March 1998 daughter of RR Scotchcap 9440. Her calf is a May 2000 son of Rito 9FB3 of 5H11 Fullback.



Grand champion steer, **Covell's Half Nelson**, by Jay Covell, Frederick. He's a June 1999 son of Rito 9FB3 of 5H11 Fullback.



Reserve grand champion bull, **Covell's Seminole 9917**, by Diana Covell, Frederick. He's a June 1999 son of Forever Raymond.



Reserve grand champion female, **Covell's Blackbird 9910**, by Jeff Covell, Frederick. She's a May 1999 daughter of Rito 9FB3 of 5H11 Fullback.



(l) Reserve grand champion cow-calf pair, **Sedgwick's Erica 6332**, by Jodi Carpenter, Mount Airy. She's a Nov. 1992 daughter of TC Dividend 963. Her calf is a July 2000 daughter of Rito 9FB3 of 5H11 Fullback.

(r) Reserve grand champion steer, **Champion Hill Travlin' Boy**, by Mark Butler Jr., Emmitsburg. He's a May 1999 son of GDAR Traveler 044.



CONTINUED ON PAGE 128

SHOW SCENE

CONTINUED FROM PAGE 127

■ Minnesota State Fair Angus Show, Saint Paul Judge: Dee Woody, Carbondale, Ill.



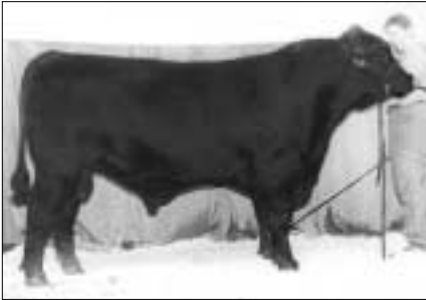
Grand champion bull, **S&R Royce 20J9**, by Renee Radcliffe, Schofield, Wis. He's an April 1999 son of GDAR Royce 131.



Grand champion cow-calf pair, **UW Brost Elba 420-6002**, by the University of Wisconsin, Arlington, Wis.; and NER Farms, Oconto, Wis. She's a Feb. 1996 daughter of VDAR Lucy's Boy. Her calf is a March 2000 daughter of SVF Siebring's Forever Russ.



Reserve grand champion cow-calf pair, **Riverside Diva**, by Alison Johnston, Houston. She's an April 1998 daughter of TC Dividend 963. Her calf is a Feb. 2000 son of SAF Focus of ER.



Grand champion female, **Homedale Karama S** (photo not available), by Angela Kaehler, Saint Charles. She's a May 1999 daughter of Leachman Saugahatchee 3000C.

(l) Reserve grand champion bull, **MPA One Hundred Grand**, by Melissa Johnston, Houston. He's a Feb. 1999 son of SAF Banker.

(r) Reserve grand champion female, **S&R Candy Ann 4J9**, by Renee Radcliffe, Schofield, Wis. She's a March 1999 daughter of GDAR Royce 131.



■ Eastern National Livestock Angus Show, Timonium, Md.
 Judge: Tim Loudon, Creston, Iowa



Grand champion bull, **Keifer's Fullback**, by J.H. Keifer Farm, Bangor, Pa. He's a Jan. 1999 son of Rito 9FB3 of 5H11 Fullback.



Grand champion female, **Champion Hill Georgina 1693**, by Mandy Richardson, Louisa, Va. She's a July 1999 daughter of Leachman Saughatchee 3000C.



Grand champion cow-calf pair, **Hill Crest Rachel 1918**, by Courtenay Rucker, Delaplane, Va. She's a March 1998 daughter of Hill Crest Ideal 692-925. Her calf is a March 2000 daughter of PAPA Forte 1921.



(l) Reserve grand champion bull, **Clear View Wide Spread 990**, by Mandy Richardson, Louisa, Va. He's a Sept. 1999 son of Whitestone Widespread MB.

(r) Reserve grand champion female, **RHM Kelly of R9H 2K**, by Patrick Mullinix, Woodbine, Md. She's a Jan. 2000 daughter of Krugerrand of Donamere 490.

CONTINUED ON PAGE 130



SHOW SCENE

CONTINUED FROM PAGE 129

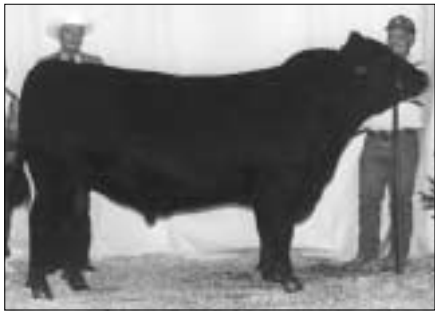


■ **Western Washington Fair Angus Show,
Puyallup**
**Judge: Jim Bradford, Guthrie Center,
Iowa**

(l) Grand champion bull, **Circle A Russ 8595**,
by Hi Tor Black Angus, Prineville, Ore. He's a
Sept. 1998 son of GDAR SVF Russ 184B.

(r) Grand champion female, **Sun Ms. Elite 917**,
by Hi Tor Black Angus, Prineville, Ore. She's a
Feb. 1999 daughter of Krugerrand of Donamere
490.





(l) Reserve grand champion bull, **Foote Acres Fame 21J**, by Dr. and Mrs. E.G. Foote Jr., Melba, Idaho. He's a Jan. 1999 son of SAF Fame.

(r) Reserve grand champion female, **Roadrunner Lass 4728**, by Roadrunner Angus, Turlock, Calif. She's a Nov. 1998 daughter of Wulff's Tracer 5209.

CONTINUED ON PAGE 132



SHOW SCENE

CONTINUED FROM PAGE 131



■ **Tennessee State Fair Angus Show,
Nashville**
Judge: **Bruce Kiesewetter, Maquon, Ill.**

(l) Grand champion bull, **SAV Right One 8265**, by Briggs and Beth Cunningham, Lancaster, Ky.; and Schaff's Angus Valley, Saint Anthony, N.D. He's a March 1998 son of Leachman Right Time.

(r) Grand champion female, **WAF Blanche 9097**, by Robbie Smith, Lebanon. She's a March 1999 daughter of AJ North Star.





(l) Reserve grand champion bull, **JKS Mr. Fullback EXT 1099**, by Jamie Smith, Lebanon. He's an Oct. 1999 son of Rito 9FB3 of 5H11 Fullback.

(r) Reserve grand champion female, **SRS Lucy's Quality 8110**, by Sonya Smith, Lebanon; and Clark Farms, Hustontown, Pa. She's a Feb. 2000 daughter of VDAR Lucy's Boy.

CONTINUED ON PAGE 136



SHOW SCENE

CONTINUED FROM PAGE 133



■ **New Mexico State Fair Angus Show,
Albuquerque**
Judge: **Greg Briney, Sanger, Texas**

(l) Grand champion bull, **G13 Stockman 8144**,
by Greg Smith, Elida. He's a March 1998 son of
TC Stockman 365.

(r) Grand champion female, **WK Belladonna
9064**, by Britney Creamer, Montrose, Colo. She's
a Feb. 1999 daughter of WK Online.





(l) Reserve grand champion bull, **AA Traveling Stockman 018**, by Richardson Cattle Co., Douglas, Wyo.; and Luke Arnold and Traveling Stockman Syndicate, both of Sedalia, Colo. He's a Jan. 1998 son of NAF Stockman 4224.



(r) Reserve grand champion female, **Lafin's Eraline 916**, by Robert Lafin II, Olsburg, Kan. She's a March 1999 daughter of Circle A Western Hauler 4018.



■ **World Beef Expo Angus Show, Milwaukee, Wis.**
Judge: Tim Fitzgerald, Alderson, W.Va.

(l) Grand champion bull, **WAF Fortune 9041**, by Weaver Angus Farm, Peoria, Ill. He's a Jan. 1999 son of SAF Fame.

(r) Grand champion female, **BAF GAF Sara 9168-981**, by Adam May, Mineral Point, Wis. She's an April 1999 daughter of Leachman Saugahatchee 3000C.



(l) Grand champion cow-calf pair, **Oakmere Primrose 0711 501**, by Emily Beere, Burlington, Wis. She's an Oct. 1995 daughter of GDAR Oscar 711. Her calf is a Jan. 2000 son of DHD Traveler 6807.

(r) Reserve grand champion bull, **ZA Sunset 79**, by Zeedyk Angus Inc., Rolling Prairie, Ind.; and Lakeland Farm, Palmyra, Wis. He's a Feb. 1999 son of SVF GDAR 216 LTD.



Reserve grand champion female, **G&J 1359 Ransom's Power**, by Joshua Moritz, Piper City, Ill. She's an April 1999 daughter of Dameron OSU Ransom.



Reserve grand champion cow-calf pair, **Fernvale Ereisa 523**, by Richard Rathke, Fredonia, Wis. She's an Oct. 1995 daughter of R&J Prospector 341. Her calf is an Aug. 2000 son of Sandwood Winchester 15.

CONTINUED ON PAGE 138

SHOW SCENE

CONTINUED FROM PAGE 137

■ Eastern States Exposition Angus Show, West Springfield, Mass. Judge: Greg McCurry, Sedgwick, Kan.



Grand champion bull, **AJC HAF Universe 47J**, by Adam Conover, Baxter, Iowa; and Randall Schuring, Andover, S.D. He's a March 1999 son of GDA Universe 726G.



Grand champion female, **AJC HAF Kirsten 45J**, by Adam Conover, Baxter, Iowa. She's a Feb. 1999 daughter of GDA Universe 726G.



Reserve grand champion bull, **Keifer's Fullback**, by J.H. Keifer Farm, Bangor, Pa. He's a Jan. 1999 son of Rito 9FB3 of 5H11 Fullback.



Reserve grand champion female, **Sir Wms. Jestress 809D**, by Justin Conover, Craryville, N.Y. She's a Sept. 1998 daughter of Leachman Explorer.



Grand champion cow-calf pair, **Rally Queen 558**, by D&R Farm, Barton, Vt. She's a Jan. 1998 daughter of GAR Precision 1680. Her calf is a Jan. 2000 son of DRF Traveler 3218.



Reserve grand champion cow-calf pair, **L&S 8180 Hyalite**, by Steven and Lou Ann Wilson, Brentwood, N.H. She's a March 1998 daughter of Sitz Traveler 8180. Her calf is a May 2000 daughter of GDAR Traveler 044.

SHOW SCHEDULE

DATE	TIME	SHOW	ENTRY DEADLINE	JUDGE
Dec. 30	8 a.m.	Arizona National Stock Show 1826 W. McDowell Rd., Phoenix, AZ (602) 258-8568; info@anls.org	Dec. 1	Andy Bailey
2001				
Jan. 10-12	8 a.m.	National Western Stock Show** 4655 Humboldt St., Denver, CO 80216-2818 (303) 297-1166	Nov. 15	Ernie Wallace
Jan. 11		National Western Bull Sale		
Jan. 13	9 a.m.	National Western Pen & Carload Show	Nov. 15	Jim Sitz, Lynn Frey, Dick Hubman
Jan. 27	10 a.m.	Southwest Exposition & Livestock Show* PO Box 150, Fort Worth, TX 76101 (817) 877-2400; danaa@fwssr.com	Dec. 10	Dean Janssen
Feb. 11	7:30 a.m.	Dixie National Livestock Show* PO Box 892, Jackson, MS 39205 (601) 961-4000; webmaster@mdac.state.ms.us	Jan. 10	Jim Pipkin
Feb. 17	8 a.m.	Houston Livestock Show PO Box 20070, Houston, TX 77225-0070 (713) 791-9000	Dec. 1	David Allen



*Denotes ROV Recognized Shows **Denotes Super ROV Shows

SHOW SCENE



■ **Mississippi State Fair Angus Show, Jackson**
Judge: **Wayde Womack, Pembroke, Ky.**

(l) Grand champion bull, **SWF Elixir Futura 9901**, by Jennifer Wigginton, Corinth. He's a Jan. 1999 son of Ankonian Elixir 100.

(r) Grand champion female, **GVP Lucy's Maid 9517**, by Grandview Plantations, Como. She's a Sept. 1999 daughter of VDAR Lucy's Boy.



(l) Reserve grand champion bull, **Grandview Womack 4100 2279**, by Karen Woods, Benton. He's an Oct. 1999 son of LF New Trend 4100.

(r) Reserve grand champion female, **BF Black-cap Lady 185**, by Zachery Brower, Water Valley. She's a Nov. 1999 daughter of BF Traveler 99.



CONTINUED ON PAGE 142

SHOW SCENE

CONTINUED FROM PAGE 139

■ **Tri-State Fair Angus Show, Amarillo, Texas**
Judge: Jeff Brandenberger, Claunch, N.M.



Grand champion bull, **SAR Luke 608**, by Sandhill Angus Ranch, Holly, Colo.; and Richard Stotts, Clarendon, Texas. He's a March 1998 son of SAR High Flyer 308.



Grand champion female, **Laffin's Sweet Geneva 871**, by Robert Laffin II, Olsburg, Kan.; and Laffin Trust, Crab Orchard, Neb. She's a Sept. 1998 daughter of CRR Emulous 26 17.



Reserve grand champion bull, **G13 Stockman 9122**, by Greg Smith, Elida, N.M. He's a March 1999 son of TC Stockman 365.



Reserve grand champion female, **Laffin's Century Lady 986**, by Karen Laffin, Olsburg, Kan. She's an Aug. 1999 daughter of Laffin's Power Cat 393.

■ **Oklahoma State Fair Angus Show, Oklahoma City**
Judge: Fred Rayfield, Tifton, Ga.



Grand champion bull, **EXAR Kodiak 9470**, by Express Angus Ranches, Shawnee; Jack and Nancy Henderson, Rough and Ready, Calif.; and Rolling RRR Ranch LLC, Edmond. He's a March 1999 son of A&B Yukon 7150.



Grand champion female, **EXAR Oakleaf 9650**, by Monarch Farm, Folsom, La. She's a March 1999 daughter of A&B Yukon 7150.



Reserve grand champion bull, **EXAR Improvement 0424**, by Express Angus Ranches, Shawnee. He's a Feb. 2000 son of Northern Improvement 4480 GF.



Reserve grand champion female, **EXR Heiress 509J**, by Dirk Lenaburg, Tecumseh. She's a Jan. 1999 daughter of OSU 9FB3 Tailback 6159.

■ **Tulsa State Fair Angus Show, Tulsa, Okla.**
Judge: Gary Dameron, Lexington, Ill.



Grand champion bull, **OSU J&J Yukon 9202**, by Oklahoma State University, Stillwater, Okla. He's a Sept. 1999 son of A&B Yukon 7150.



Grand champion female, **DAJS Faline J902**, by Doug Satree Angus, Montague, Texas. She's a Feb. 1999 daughter of N-Bar Emulation EXT.



Reserve grand champion bull, **DAJS Explorer J95**, by Doug Satree Angus, Montague, Texas. He's an April 1999 son of Leachman Explorer.



Reserve grand champion female, **PF 365 Miss Wix 9202**, by Preston Pollard, Enid, Okla. She's a Sept. 1999 daughter of TC Stockman 365.

