

# 43rd Annual Production Sale

# November 20, 2021

10 am • Bull Sale at Noon • At the farm

Selling 189 Bulls! Selling: 99 Fall Yearling Bulls — expect to see a lot of powerful, deep-ribbed bulls that will add performance and quality to your program 90 January Bull Calves — Multi-trait superiority is what we strive for and every bull selling will have genomically enhanced EPDs, along with current weights and frame scores. Wintering program available. About 260 head of females sell, including spring bred cows, spring bred heifers, spring heifer calves, fall bred heifers and fall pairs.



\*20092931  
9/9/20

SM +77  
SF +123  
SB +198  
SC +334

## SydGen Peyton GA 0442

CED	BW	WW	YW	RADG	SC	Doc	HP	CEM	MILK	Marb	RE
+10	+2.0	+75	+135	+30	+78	+23	+16.9	+13	+36	+1.12	+82

We were able to just get one group of bulls pictured in time for this ad. Many more will have photos in the sale book and all will have videos available at [www.sydgen.com](http://www.sydgen.com). Although we are proud of Enhance and his Number 1 ranking for sire registrations, you will find this offering strong for genetic diversity. Of the 17 January Bull Calves that rank in the top 1% for \$C, 12 different sires are represented. In our January Bull Calf crop, the Number 1 adj. weaning weight natural calf and ET calf were both sired by SydGen KCF Gavel 8361, whose dam is a featured donor in this offering.

For 69 years, the Sydenstricker family has been involved in the production of top Angus cattle. The history here, the track record of AI sires that have graduated from this sale offering, the countless generations of selection on fescue, and our history of providing ALL the data ALL the time are keys to our longevity. We have been serious about multi-trait selection for

many years, and the success of our herd sires is a testament to that commitment.

Recipient of the 1997 Certified Angus Beef® "Commitment to Excellence" Award.

Recipient of the 2001 Beef Improvement Federation Seedstock Producer of the Year Award.



+\*20013485  
9/4/20

SM +90  
SF +117  
SB +186  
SC +331

## SydGen Enhance GA 0813

CED	BW	WW	YW	RADG	SC	Doc	HP	CEM	MILK	Marb	RE
+8	+6	+84	+152	+33	+55	+28	+15.5	+14	+25	+92	+87



+\*20027367  
9/14/20

SM +93  
SF +110  
SB +182  
SC +329

## SydGen Enhance 0834

CED	BW	WW	YW	RADG	SC	Doc	HP	CEM	MILK	Marb	RE
+5	+3.5	+87	+153	+29	+62	+30	+12.9	+9	+29	+1.16	+48

Founding partner in ORigen.

We plan on having about 150 top commercial bred heifers in this year's 24th Annual SydGen Influence Sale. Check our sale book for a final update and watch our website for updates on both sales as we get closer to sale time.

Sale book should be included with your November *Angus Journal*®, or call 573-581-1225, to get on our mailing list.

EPDs as of 9/9/21



+\*20013484  
8/30/20

SM +64  
SF +95  
SB +159  
SC +270

## SydGen FATE 0806

CED	BW	WW	YW	RADG	SC	Doc	HP	CEM	MILK	Marb	RE
+8	+2.0	+61	+101	+20	+1.20	+14	+14.5	+11	+26	+89	+81

Registered Angus Cattle Since 1952

# Sydenstricker Genetics

Visitors always welcome!

Eddie Sydenstricker  
EddieI@snpartners.com  
Fax (573) 581-5991

Sydenstricker John Deere  
Office (573) 581-5900  
Kim Sydenstricker-Monte

PO Box 280  
Mexico, MO 65265  
[www.sydgen.com](http://www.sydgen.com)

Ben Eggers (573) 473-9202  
Ben@SydGen.com  
Farm Office (573) 581-1225  
Bub Raithe (573) 253-1664  
Blake McDonald (573) 205-7914

Kyle Vukadin  
Kenneth Roberts  
Kyle Tate  
Darla Eggers  
Brad Slavens





Performance

# HERD of the HEARTLAND Sale

## October 22, 2021

Friday • 1 pm • At the ranch • 15 miles west of Vinita, OK

**121** Registered Bulls  
120 Registered Angus Bulls  
1 Registered Red Angus Bull

**200** Fall Calving Commercial  
Angus and BWF First Calf Heifers

**50** Fall Calving Commercial  
Angus Cows



Sample of females selling.



\*19628616  
9/30/19

### Spur Dividend 9390 [RDC]

Sire: \*Spur Dividend 4270 [RDC-AMF-XF]

CED	BW	WW	YW	MK	MB	RE	\$B	\$C
+7	+2.7	+69	+136	+30	+81	+89	+191	+307



\*19624134  
9/15/19

### Spur Mainstay 9308

Sire: \*Connealy Mainstay [AMF-CAF-XF]

CED	BW	WW	YW	MK	MB	RE	\$B	\$C
+6	+2.1	+75	+134	+25	+83	+82	+175	+311



\*19795860  
12/18/19

### Spur Southside 9532 [DDF]

Sire: Connealy Southside 0483 [AMF-CAF-XF]

CED	BW	WW	YW	MK	MB	RE	\$B	\$C
-2	+3.9	+87	+157	+30	+68	+1.32	+193	+322



\*19611462  
9/30/19

### Spur Glory 9146 [DDF]

Sire: \*Connealy Glory 413C

CED	BW	WW	YW	MK	MB	RE	\$B	\$C
+1	+4.0	+92	+151	+20	+89	+79	+181	+293



\*19611275  
11/1/19

### Spur Surety 9120

Sire: \*Thomas Surety 6726

CED	BW	WW	YW	MK	MB	RE	\$B	\$C
+9	-1	+73	+123	+30	+76	+66	+160	+277



\*19628625  
11/13/19

### Spur Silver Phoenix 9402

Sire: \*Spur Silver Phoenix 7532 [AMF-CAF-XF]

CED	BW	WW	YW	MK	MB	RE	\$B	\$C
+7	+2.2	+62	+123	+26	+94	+69	+185	+288



\*19611265  
10/25/19

### Spur Surety 9134

Sire: \*Thomas Surety 6726

CED	BW	WW	YW	MK	MB	RE	\$B	\$C
+8	+8	+64	+117	+30	+1.12	+76	+192	+290



\*19644602  
9/19/19

### Spur Playbook 9208 [DDF]

Sire: \*TEX Playbook 5437 [AMF-CAF-XF]

CED	BW	WW	YW	MK	MB	RE	\$B	\$C
+12	+1.1	+66	+122	+37	+49	+44	+149	+275



9/9/19  
4210012

### Spur Franchise 9354

CED	BW	WN	YW	Milk	MB	RE	ProS	HB	GM
+14	-1.1	+65	+109	+21	+71	+52	128	47	+81



Find us on Facebook

### Vinita Office

918.256.5850 • Fax 918.256.6638  
PO Box 307 • Vinita, OK 74301

Clay Hartley, Owner  
Cell 918.633.2580  
Jeff Owen, Ranch Manager  
Cell 918.244.2118  
Office 918.256.9910

EPDs as of 8/18/21



PO Box 1219 • Edmond, OK 73083  
405.641.6061  
matt@mcsauction.com  
www.mcsauction.com

Offering cattle that Grow, Gain & Grade!

SPURRANCH.COM



# Thank you

2 Bar Angus, TX  
2 Bar C Cattle Co., TX  
2 L Enterprises, KS  
4 Sons Investments, KY  
AAA Farms, TN  
Alexis Koelling, MO  
Allison Family Rev Trust, OK  
Audley Farm, VA  
Baldrige Performance Angus, NE  
Bar K J Angus, CA  
Basin Angus Ranch, MT  
Beartooth Angus, MT  
Belle Point Ranch, AR  
Biggs Angus Farms, MO  
Blackjack Farms, OK  
Blessed S Ranch, TX  
Boyd Beef Cattle, KY  
Brad Grady, TX  
Burns Farms, TN  
Busch Cattle Co., MO  
C Willyard Cattle, OK  
C-4 Land & Cattle, OK  
C-Cross Cattle Co., NC  
Callahan Cattle Co., OK  
Calvin Oyster, OK  
Calvin Pareo, NM  
Carson Waters, AL  
CB Genetics, TX  
Chapman Angus Ranch, OK  
Charles Bowers, TX  
Chris Cox, OK  
Christensen Angus Ranch, OK  
Cigar City Cattle Co., FL  
Circle G Angus Ranches, GA  
Circle M Farms, MO  
Circle R Ranch, FL  
Clearwater Farm, MO  
Clifford Joines, VA  
Clint Mundell, CO  
Cody Todd, TN  
Cox Ranch, TX  
Crazy K Ranch, TN  
Dal Porto Livestock, CA

Dale Acres Angus, TX  
Dameron Angus Farm, IL  
Deer Valley Farm, TN  
Denney Farms, AL  
Dennis & Lisa Chapman, OK  
Dennis Huck, KS  
Denny Machin, IA  
Derek Gray, OK  
Diamond G Cattle, OK  
Dixie Valley Ranch, CA  
Double Barrel Angus, TN  
Double Creek Farms, TX  
Double L Black Angus Ranch, OK  
Double RL Cattle Co., CO  
E&S Cattle Company, IL  
Edisto Pines Farm, SC  
Elm Creek Cattle Co., TX  
EZ Angus Ranch, CA  
FB Genetics, TX  
FCC Angus, TX  
Fitzgerald Cattle Co., TX  
Flickinger Show Cattle, IL  
Flying R Farms, KS  
Foushee Farms, TX  
Frey Angus, OK  
Friendship Farms, GA  
Frontier Acres Farm, KY  
Gabriel Ranch, TX  
Gaisford Angus, OK  
Gene Source, TX  
Gilbert Angus, TX  
Gilliland Livestock Inc., CA  
Gobbell Farms, TN  
Gould Angus, IA  
Ground Zero Farms, AR  
Hannah Faubion, MO  
Harris Cattle Co., TX  
High Roller Angus, TX  
Hillhouse Angus, TX  
Hilton Farms, OK  
Hoffman Ranch, NE  
Horseshoe Oaks Ranch, TX  
HR Ranch, OK

Hughes & Hughes Farm, OK  
Ingram Angus, TN  
Ivins Farms & Ranches, OK  
J&J Beef Genetics, OK  
J&L Land & Cattle, KS  
Jacs Ranch, AR  
Jensen Farms, OK  
Jerry Demoss, TX  
Jessica Ann Sawyer, NE  
JJ Angus, PA  
Jo Mar Farms, AR  
Johnson Angus Ranch, CT  
Jones Show Cattle, OH  
Jordan Cattle Auction, TX  
Justamere Ranch LTD, SK  
K-C Cattle Co., IL  
Katie Colin Farm, GA  
Katy Tunstill, AR  
Kelm Angus, TX  
KL3 Farms, MO  
Koch Angus Farm, IA  
Kye Murray, OK  
Kyle Ruzicka, OK  
L C Land & Cattle, OK  
Lakeville Farms, KY  
Leaders Angus, IA  
Limousin Ridge Farm, MD  
Linz Heritage Angus, IN  
Little Windy Hill Farm, VA  
Loran B Wilson & Family, IN  
Lylester Ranch, NE  
Lyndon Manor Farm, ON  
Maple Lane Farm, IN  
Marty & Clayton Bloodworth, GA  
Matt Turley, KS  
Matthew Neuman, MT

McDonald Cattle Co., MO  
Montgomery Farms, AR  
Mt Hope Farm, PA  
Nealis Farms, OK  
Neil Slater, OR  
New Farm, TX  
No Name Angus, TX  
Optum Angus, OH  
Ostler Family Farms Inc., IN  
Pastime Ranch, TX  
Paul Vandeberghe, ND  
Pearcy Angus Ranch, TX  
Pedro Macias, CA  
Pfeiffer Angus Ranch, OK  
Pine Tree Ranch, LA  
Plantation Farms, AL  
Pollard Farms, OK  
Porter Family Partnership  
Trust, TN  
Rafter 5 Ranch, TX  
Ragged Edge Ranch, OK  
Randy Byrne, TX  
Raspotnik Ranch, OK  
Rassy Acres, TX  
Ratliff Cattle Co., KY  
RC Ranch, TX  
Red Barn Angus, OK  
Red Plains Ranch, OK  
Richburg Angus, TX  
River Styx Ranch, OR  
Riverbend Ranch, ID  
Rocking F Holding Co., KS  
Rowh Angus, KS  
RS Angus, KS  
Ryan Hopson, OK

Ryan Hulse, MO  
Sam Harris, MO  
Sanders Skylight Ranch, OH  
Sarah Sullivan, IA  
Seth Bell, KS  
Shaw Cattle Co., ID  
Shawn Grunewald, OK  
Smarr Angus, TX  
Smith Farm & Livestock, UT  
Soaring Eagle Farms, MO  
Sparks Farms, OK  
Springfield Angus Farm, NC  
Spruce Mountain Ranch, CO  
ST Genetics, TX  
Steve Shriver, OK  
Stonewall Ridge Farm, TN  
Sydenstricker Genetics, MO  
Talon Crest Farms, IA  
Tatsch Angus Ranch, TX  
TC Ranch Inc., NE  
Tim & Trudy Hartley, OK  
TK Cattle Co., TX  
TLC Vetsch Angus Ranch, ND  
Todd & Craig Angus, IN  
Traynham Ranch, OR  
Turner Meadow Ranch, TX  
Tyler Norvell, OK  
Tymanjer Ministries, TX  
V 5 Angus, OK  
Vin-Mar Cattle Co., NE  
Vintage Angus, CA  
Wall Street Cattle Co., MO  
Ward Bros., MO  
Waters Farm, AL  
Wauconda Ranch, WA  
Wells Family Ranch, KS  
Westwind Angus Ranch, CA  
Wilks Ranch Texas, TX  
William Litman, PA  
Windy Hill Meadows, IL  
Winter Brook Cattle Co., OR  
Wirth Farms, IN  
Zybach Angus, TX

**A BIG THANK YOU**  
to everyone who supported the  
Express Ranches Big Event Sale.



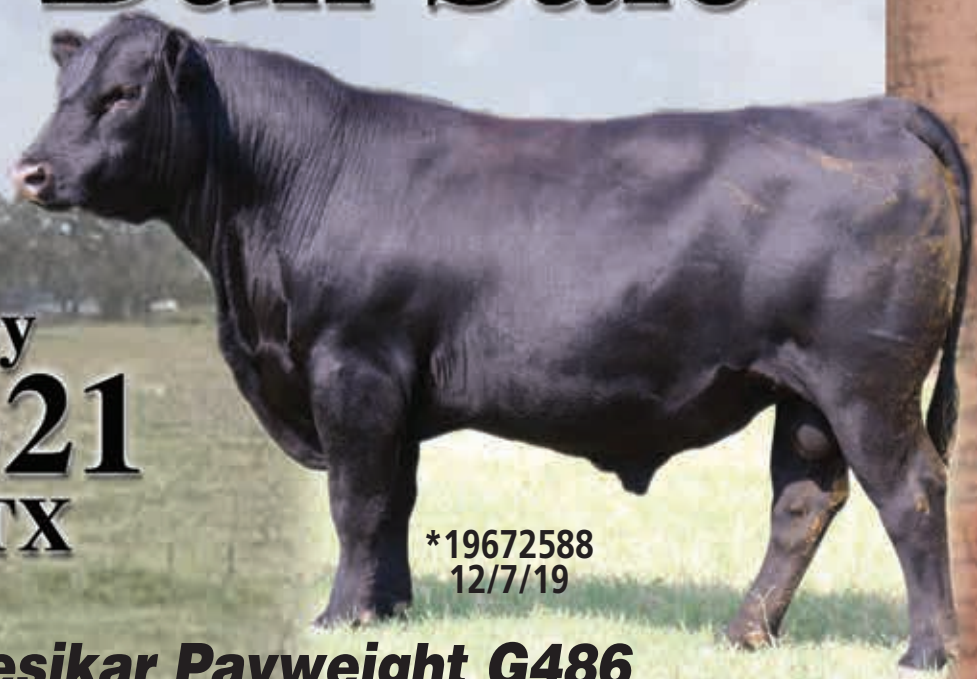
Bob Funk, Owner • Jarold Callahan, President  
2202 N. 11th Street, Yukon, OK 73099  
800-664-3977 • 405-350-0044

[WWW.EXPRESSRANCHES.COM](http://WWW.EXPRESSRANCHES.COM)



# BIG BUTTS Bull Sale

Saturday  
**11-13-21**  
Athens, TX



\*19672588  
12/7/19

## **Lesikar Payweight G486**

#+\*Basin Payweight 1682 [AMF-CAF-XF] x Lesikar Queenie D772 [DDF]

CED	BW	WW	YW	SC	Marb	RE	\$W	\$F	\$B	\$C
+8	+1	+70	+126	+61	+81	+40	+90	+90	+144	+275



**LESIKAR RANCH**  
Registered Angus

Office (817) 738-2177  
Jason Lesikar (817) 726-7998  
Ranches located in Poolville  
and Athens, Texas  
[www.LesikarRanch.com](http://www.LesikarRanch.com)

*At Lesikar Angus, we are striving to raise Angus cattle that excel in all of the maternal traits that made the Angus cow one of the most desired females in the US. We hope that you will give us a call or come by and visit to see the powerful genetics that we are putting together.*

**PRIVATE TREATY FEMALES AND BULLS AVAILABLE**



# BRED TO MAKE COWS BUILD A FIRM FOUNDATION

# Genetically!

*Playbook*



**7AN463 TEX PLAYBOOK 5437** 18414912 | Payweight x Complete

- One of our best for customer satisfaction! PLAYBOOK consistently sires high-quality cattle that are quiet, deep bodied, and structurally correct.
- Highly-proven calving ease sire that builds phenomenal replacement females!
- At the top of the breed for \$M and \$W with \$C in the Top 10 percent.

From Teixeira Cattle Co., CA; Deer Valley Farms and Crazy K Ranch, TN; Rishel Angus, NE; Black Gold Genetics, IL; Valley Oak Angus, MO and Spruce Mountain Ranch, CO

	CED	BW	WW	YW	YH	DOC	CW	Marb	RE	\$M	\$W	\$B	\$C
EPD	13	-0.2	61	106	.1	29	49	.49	.38	110	91	134	284
% Rank	10	20	40	45	85	5	30	50	75	1	2	45	10

*Silverado*



**7AN589 MYERS SILVERADO M109** 19418336 | TAHOE X NIAGARA

- Moderately sized, thick and attractive, SILVERADO is loaded with maternal strength from good cows throughout his pedigree.
- If Claw, Angle and high \$Maternal are on your list, add SILVERADO.
- Offers extraordinary soundness, along with plenty of muscle and pounds with an under-control frame size.

From Myers Angus Farm, KY

	CED	BW	WW	YW	YH	DOC	CW	Marb	RE	\$M	\$W	\$B	\$C
EPD	10	0.6	81	147	.5	17	60	.96	.67	99	97	160	307
% Rank	25	35	3	2	50	50	10	10	30	1	1	15	2

*Compound*



**7AN525 SPRING COVE COMPOUND 12E** 18875915 | Crossbow x Payweight

- COMPOUND is an elite Calving Ease sire ranking in the top 1 percent of the breed for CED and BW EPDs.
- Tons of mating flexibility with his outcross pedigree.
- Expect his progeny to deliver plenty of performance and gain in an attractive, moderate framed package.

From Spring Cove Ranch, ID

	CED	BW	WW	YW	YH	DOC	CW	Marb	RE	\$M	\$W	\$B	\$C
EPD	18	-2.4	63	117	0	24	48	.81	.65	71	73	154	271
% Rank	1	3	35	25	90	20	30	20	35	15	15	20	10

**DELIVERING MORE GENETICS TO IMPROVE YOUR COW HERD**



Conception. Calving Ease. Carcass. Cows.

**YOUR SUCCESS** *Our Passion.*

Phone: (614) 873-4683 ♦ www.selectsiresbeef.com

™Your Success Our Passion. is a registered trademark of Select Sires Inc.

EPDs as of 09/03/21

# WHAT'S INSIDE

October Issue | *Quality Counts*



## 62 FERTILITY IN THE FUTURE

Understanding and predicting fertility in bulls is helping achieve reproductive efficiency.

## 63 APPLYING PRECISION TECHNOLOGIES

Panelists share experiences in using smart feeder, individual animal monitoring and virtual fencing technologies.

## 68 CATTLEFAX OUTLOOK

Annual CattleFax Outlook Seminar showcases the strength of cattle prices and demand, allowing producers optimism.

## 104 ANGUS FOUNDATION RAISES

MORE THAN \$11,300 AT NJAS

The annual silent auction brings in unrestricted funds to be used throughout the year.

## 118 ANGUS CONVENTION EDUCATIONAL

SESSIONS PLANNED

Speakers, education promise valuable content at Angus Convention.



[www.AngusJournal.net](http://www.AngusJournal.net)

 @ANGUSJOURNAL

 @ANGUS\_JOURNAL

 @AJEDITOR

The official publication of the  
American Angus Association®

## THE IDEA THAT WORKED

**28** USPB earns CAB Progressive Partner honors.

## THE PRIME OF HIS LIFE

**34** Arizona commercial cattleman awarded for commitment to excellence.

## 120 VYING FOR A SEAT

Eight members announce candidacies for American Angus Association Board of Directors.

## 130 DELEGATES SELECTED

Elections will be hosted at the Angus Convention Nov. 8 in Fort Worth, Texas.

## 136 TEHAMA ANGUS OFFERS 2022 ANGUS FOUNDATION HEIFER PICK

A California ranch demonstrates their dedication to the next generation of Angus breeders with a generous donation.

## 140 LIFE IN THE ANGUS LANE

Angus juniors spent a week in Indianapolis learning how to lead the industry in the future.

## 168 THE FUTURE OF ANTIBIOTIC USE

More scrutiny for antibiotics given to groups of cattle.

## 212 TACKLING TOUGH DECISIONS

Identifying essential decision-making information.



## ON THE COVER

*Photo by Megan Silveira,*  
Angus Journal assistant editor

*Continued on page 8*





# INGRAM ANGUS FALL PRODUCTION *Sale*



JOIN US

**NOVEMBER 12, 2021 • AT THE RANCH • NOON**

Selling 100 Elite Females and 50 Stout Angus Bulls

INGRAM



ANGUS LLC

**INGRAM ANGUS LLC**

480 Harris Road  
Pulaski, TN 38478

**JASON UPCHURCH**

256-239-8540  
jason@ingramangus.com

**DAVID CAGLE**

256-616-6446  
david@ingramangus.com

**WWW.INGRAMANGUS.COM**



## 82 TARGETING EXCELLENCE

Yon Family Farms recognized for contributions to *Certified Angus Beef*® brand supply.



## 94 COMMITTED TO CONSISTENCY

Kansas feedyard awarded for commitment to excellence.

## 88 MORE WITH LESS

Texas grass farmers win CAB Sustainability Award.

## 98 THE CATTLE CALLING

Telling their story one tour at a time earns the Pfeiffer family the Ambassador Award.

---

### YOUR HERD

- 39 By the Numbers
- 44 Veterinary Call
- 46 Repro Tracks
- 50 Angus Advisor
- 58 Performance Report

---

### YOUR BUSINESS

- 65 New Products
- 74 Market Advisor
- 78 Sale Summary

---

### YOUR ASSOCIATION

- 110 Association Highlights
- 114 Membership Tips
- 148 New Members
- 156 Foundation in Focus
- 164 Auxiliary Notes
- 174 Open Shows
- 184 Junior Shows

---

### YOUR LIFE

- 198 Your View
- 202 Newsmakers
- 206 Outside the Box
- 208 Cattle Culture
- 214 Next Generation

---

### IN EVERY ISSUE

- 12 Angus Angle
- 16 Common Ground
- 18 Angus Staff
- 108 Regional Managers
- 180 Angus Classifieds
- 200 Advertising Rates
- 219 Angus Almanac
- 254 Advertising Index

---

### THE NEXT ISSUE

*Fruits of Labor:* Features and tips on the business side of the breed.



[www.AngusJournal.net](http://www.AngusJournal.net)

-  @ANGUSJOURNAL
-  @ANGUS\_JOURNAL
-  @AJEDITOR

*The official publication of the American Angus Association®*



# ATTENTION GETTERS!

RAINFALL AND BLUEPRINT – ADD MUSCLE, IMPROVE FEET AND CONTROL FRAME SIZE



7AN466S A V **RAINFALL** 6846  
18578963 // Charlo x Traveler

- Ranks in the elite 1 percent of Angus for \$M and his daughters support it. Consistently sires deep ribbed, easy-fleshing females with the look of longevity.
- Sons are deep bodied and wide based with extra muscle and a bolder rib cage. They have commanded top prices nationally.
- One of the best footed bulls in our lineup; validated by his top ranking for Claw and Angle EPDs.
- Top 25% WW, Top 20% YW and Bottom 10% for YH

From Schaff Angus Valley, ND and Square B Ranch and Cattle Co., MO

	CED	BW	WW	YW	YH	DOC	CW	Marb	RE	SM	SW	SB	SC
EPD	8	0.1	59	112	-0.3	24	21	0.66	0.58	92	69	114	240
% Rank	35	25	45	35	100	20	90	30	45	1	25	70	35



7AN521 WOODHILL **BLUEPRINT**  
18876777 // Confidence Plus x Sierra Cut

- One of the most unique bulls we've seen in recent times, BLUEPRINT is the kind cattlemen desire.
- He will add dimension, moderate mature size, and improve muscle shape while improving foot quality.
- His first calf crop is outstanding. There is no doubt this bull will add muscle, depth of body and spring of rib while stamping his progeny with added eye-appeal.
- Top 25% WW, Top 20% YW and Bottom 10% for YH

From Woodhill Farms, WI

	CED	BW	WW	YW	YH	DOC	CW	Marb	RE	SM	SW	SB	SC
EPD	8	0.7	67	126	0	20	50	0.7	1.07	71	70	160	279
% Rank	35	40	25	15	90	35	30	30	3	15	20	15	10

DELIVERING MORE GENETICS TO IMPROVE YOUR COW HERD



Conception. Calving Ease. Carcass. Cows.

EPDs as of 09/03/21

**YOUR SUCCESS** Our Passion.

Phone: (614) 873-4683 ♦ www.selectsiresbeef.com

™Your Success Our Passion. is a registered trademark of Select Sires Inc.

# Big Time Quality

## STELLAR

29AN2025



MOHNEN SUBSTANTIAL 272 x CONNEALY FINAL PRODUCT

18397542

### STELLAR PERFORMANCE AND DESIGN

- Powerhouse individual that combines an outcross, proven pedigree with added substance, fleshing ability and muscle shape
- Great maternal design and a proven foot quality improver that ranks at the very top of the Main Sire list for combined Foot Score EPDs
- +6 CED, -0.5 BW, +131 YW, +.19 Claw, +.21 Angle, -1.88 PAP, +14.3 HP, +90 \$M and +139 \$B

## MILESTONE

29AN2217



SITZ ACCOMPLISHMENT 720F x SITZ UPWARD 307R

19677875

### MILESTONE GENETICS FOR PERFORMANCE & LONGEVITY

- ACCOMPLISHMENT sons were among the most in demand bulls in the Spring 2021 Sitz Angus Sale due to their consistent type & performance
- MILESTONE crushed the scales outperforming them all with an 839 lb. WW & 114 ratio
- +11 CED, +144 YW, +18.1 HP, +18 CEM, +.36 Claw, +95 \$M & +172 \$B

## SAFE DEPOSIT

29AN2157



BASIN DEPOSIT 6249 x SUMMITCREST COMPLETE 1P55

19461028

### PROTECT YOUR GENETICS RESOURCES

- 2020 Montana Performance Bull Co-op top seller
- Offers a unique combination of foot quality, carcass merit and curve bender spread with outstanding phenotype
- +16 CED, +125 YW, +.30 Claw, -.31 PAP, +1.16 MB, +78 \$M & +183 \$B

For full data set, progeny photos, and more visit Bull Search at [absbeef.com](http://absbeef.com).



# and Balance



29AN2093

## PATRIARCH



S S NIAGARA Z29 x CONNEALY THUNDER

18981191

### FAMILY STRENGTH AND DIRECTION

- Tehama record setter that impresses due to his sound structure, foot quality and massive appearance but also just so happens to offer a +15 CED
- Maternal pedigree backed by a program that has relentlessly pursued and been focused on maternal output coupled with end product merit
- +14 CED, +138 YW, +18.1 HP, +16 CEM, -1.01 PAP, +.86 MB, +.95 RE, +93 \$M and +166 \$B

## TRUE NORTH

29AN2144



S A V RAINFALL 6846 x CONNEALY CONSENSUS

19405246

### TRUE MATERNAL DIRECTION

- Phenotypic standout with an unbeatable maternal data profile
- Maternal brother to Confidence Plus that combines elite \$W and \$M indexes with reduced mature size
- +17 CED, +109 YW, +36 DOC, +.45 Claw, +14.1 HP, +.90 MB, +94 \$M & +122 \$B

## COMSTOCK

29AN2221



SPRING COVE RENO 4021 x CONNEALY CONFIDENCE PLUS

19674083

### MOTHER LOAD OF GENETIC OPPORTUNITY

- Powerful individual with a stacked, proven pedigree and an impressive combination of muscle, substance and fleshing ability
- His degree of calving ease, muscle, marbling and mature size is unmatched
- +14 CED, +121 YW, +31 DOC, +15.1 HP, +1.30 MARB, +.98 RE, +99 \$M, +165 \$B