

Open Shows

► Open Angus shows featured this month

- Indiana State Fair
- Missouri State Fair
- Ozark Empire Fair
- Pennsylvania Angus Breeders' Show
- South Dakota State Fair
- Virginia Angus Breeders' Show
- Wisconsin State Fair

► Ozark Empire Fair, Springfield, Mo. July 26 • Judge: Doug Satree, Montague, Texas



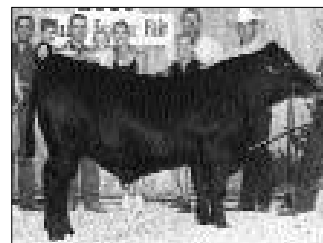
► Grand champion bull, **Ryan's Luther 1243**, by Jean and Jeff Ryan, Willard, Mo. He's a Sept. 2001 son of Vermilion Dateline 7078.



► Grand champion female, **JAC's Beauty 2564**, by JAC's Ranch, Bentonville, Ark. She's a Sept. 2002 daughter of Vermilion Dateline 7078.



► Grand champion cow-calf pair, **PAF 5071 NI E061**, by Tawnia Misenmer, Mount Vernon, Mo. She's a Dec. 2000 daughter of Northern Improvement 4480 GF. Her calf is a Jan. 2003 son of N-Bar Emulation EXT.



► Reserve grand champion bull, **BVF Collard Seville 2019**, by Collard Farms, Lebanon, Mo., and Nau Angus Farm, Republic, Mo. He's a Sept. 2002 son of Clearwater PAF Seville 1977.

► Reserve grand champion female, **HAF Blackcap 219**, by Jordan Hunter, Fair Grove, Mo. She's a July 2002 daughter of Curtis Mile High 8120.



► Reserve grand champion cow-calf pair, **BUB's Lucy BB G41**, by Middle Fork Farms Inc., West Plains, Mo. She's a Feb. 1997 daughter of B/R New Design 036. Her calf is a March 2003 daughter of GDAR SVF Traveler 234D.



► Wisconsin State Fair, Milwaukee Aug. 2 • Judge: Doug Satree, Montague, Texas



► Grand champion bull, **Dameron Monumental 156**, by Dameron Angus Farm, Lexington, Ill.; Mark Kollmann, Martinton, Ill.; and T Bar L Angus, Watseka, Ill. He's a March 2001 son of Dameron Monumental.



► Grand champion female, **BAF Best Girl 2027 WAF**, by Steve Hillman, Morton, Ill., and Weaver Angus Farm, Peoria, Ill. She's a March 2002 daughter of Leachman Saughatchee 3000C.



► Grand champion cow-calf pair, **KCJ Peggy 7001**, by Jaclyn Zimmerman, Platteville. She's an April 2001 daughter of Famous 7001. Her calf is a Jan. 2003 daughter of Bon-View New Design 1407.



► Reserve grand champion bull, **SLF Avalanche 592**, by Springlake Farm, Kingston, Ill. He's a Jan. 2002 son of SAF 598 Bando 5175.

Open Shows online

To see the latest results of open Angus shows, visit the American Angus Association home page at www.angus.org. There you'll find a link to show results and events.



► Reserve grand champion female, **Dameron Rose 209**, by Callie Rickard, Heyworth, Ill. She's a Jan. 2002 daughter of Vermilion Dateline 7078.



► Reserve grand champion cow-calf pair, **Mill Coulee Barbara 104-719**, by Ryan Goehring, Fredonia. She's a Jan. 2001 daughter of Mill Coulee Supreme 753. Her calf is an April 2003 son of SCF Ace 011.



► **Springlake Farm, Kingston, Ill.**, exhibited the winning best-six-head entry.

► **Virginia Angus Breeders' Show**, Harrisonburg
July 27 • Judge: John Hausner, Dover, Pa.



► Grand champion bull, **SWH-BCE Northern Star**, by Randall Updike, Washington; Buchanan Cattle Enterprises, Aldie; and Fox Cross Farm, Alderson, WVa. He's an April 2002 son of Northern Improvement 4480 GF.



► Grand champion female, **JLT Rockin' Bonnie L44**, by T&J Cattle Co., Raphine, and JL Farms, Raphine. She's an Oct. 2001 daughter of Rockn' D Ambush 1531.



► Grand champion cow-calf pair, **Skyway Hills Lady Rose**, by Katie Updike, Washington. She's a June 1999 daughter of Skyway Hills Bando. Her calf is a Jan. 2003 son of Skyway Hills Power Design.



► Grand champion cow-calf pair with embryo calf, **Burberry's Proud Lass 801**, by Joseph Epperly, Moneta. She's a Jan. 1998 daughter of Sitz Traveler 043. Her calf is a March 2003 daughter of Vermilion Dateline 7078.



► Reserve grand champion bull, **DR Barbarian 036**, by Joseph Epperly, Moneta. He's an April 2001 son of B/R New Design 036.



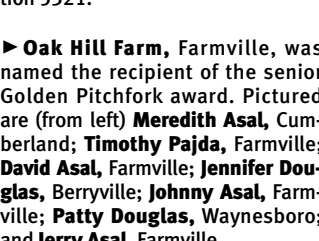
► Reserve grand champion female, **MC 1344 Blackcap 2010**, by Chance Snyder, Raphine. She's a Feb. 2002 daughter of Leachman Saugahatchee 3000C.



► Reserve grand champion cow-calf pair, **Dalton's Belle Domineer 271 SC**, by Seth Buckley, White Post. She's an April 2001 daughter of GDAR Traveler 044. Her calf is a June 2003 daughter of CA Future Direction 5321.



► The recipient of the junior Golden Pitchfork award is **Katie Updike** (left), Washington. Also pictured are Jennifer Douglas (center), Berryville; and Patty Douglas, Waynesboro.



► **Oak Hill Farm**, Farmville, was named the recipient of the senior Golden Pitchfork award. Pictured are (from left) **Meredith Asal**, Cumberland; **Timothy Pajda**, Farmville; **David Asal**, Farmville; **Jennifer Douglas**, Berryville; **Johnny Asal**, Farmville; **Patty Douglas**, Waynesboro; and **Jerry Asal**, Farmville.



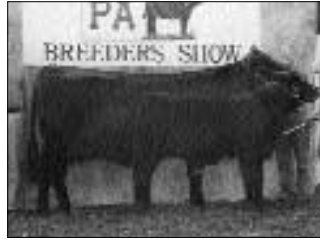
► **Pennsylvania Angus Breeders' Show**, Huntingdon
July 5 • Judge: Willard Lemaster, College Park, Md.



► Grand champion bull, **Kreuger's 20 Belles of DCC**, by Bill Dean, New Castle. He's a Sept. 2002 son of BC Sasquatch 20-20 4139.



► Grand champion female, **Rains Skylight Pizazz NIFPN**, by Dale Rains, Mercer. She's a Feb. 2002 daughter of Northern Improvement 4480 GF.



► Grand champion cow-calf pair, **JEA Widespread Mascara**, by Jennifer Hower, Bethlehem. She's an Aug. 1998 daughter of Whitestone Widespread MB. Her calf is a Feb. 2003 daughter of Bush's Flashback 880.



► Reserve grand champion bull, **Rains Charles in Charge RFRT**, by Dale Rains, Mercer. He's an April 2002 son of GDAR Russ 8346.



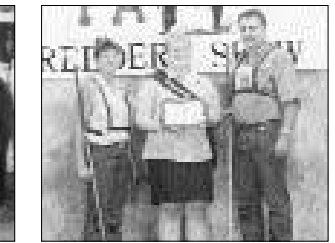
► Reserve grand champion female, **Gamble's Famous Lady 859**, by Holly Gamble, Clinton, Tenn., and Mountain Valley Angus, Lititz. She's an Oct. 2002 daughter of Famous 7001.



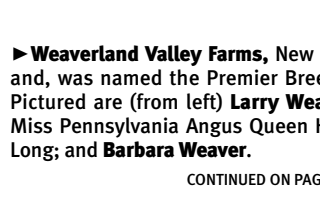
► Reserve grand champion cow-calf pair, **Weaverland Scaara Charley**, by Herman Hake, Etters. She's a Jan. 2001 daughter of Sitz Traveler 8180. Her calf is a Jan. 2003 daughter of WVF HB Atlantic Nat'l Merit.



► **Weaverland Valley Farms**, New Holland, won best six head.



► **Dale** (right) and **Brenda Rains** (left), Mercer, were named the Premier Exhibitors. Also pictured is Miss Pennsylvania Angus Queen Hope Long.



► **Weaverland Valley Farms**, New Holland, was named the Premier Breeder. Pictured are (from left) **Larry Weaver**; Miss Pennsylvania Angus Queen Hope Long; and **Barbara Weaver**.

CONTINUED ON PAGE 222

OPEN SHOWS

CONTINUED FROM PAGE 221

Indiana State Fair Angus Show, Indianapolis Aug. 10 • Judge: Vance Uden, Franklin, Neb.



► Grand champion bull, **KF Precision 361**, by Ryan Long, Blue Mound, Ill., and Wilson Cattle Co., Cloverdale. He's a Jan. 2001 son of Twin Valley Precision E161.



► Grand champion female, **Roth Forever Lady 2610**, by Kylee Carr, Elwood. She's a Jan. 2002 daughter of Famous 7001.



► Reserve grand champion bull, **WCC Big Daddy M145**, by Wilson Cattle Co., Cloverdale. He's an April 2002 son of TC Extra 9140.



► Reserve grand champion female, **Magic Meadow Cheyenne 502**, by Leslie Craft, La Porte, and Wilson Cattle Co., Cloverdale. She's a May 2002 daughter of Champion Hill Tecumseh 2382.



► The Indiana Angus Auxiliary presented **Chad Haag** (left), Plymouth, with a silver tray for his outstanding accomplishments as a junior Angus member. Natalie Barker, Avon, presents the award.



► Wilson Cattle Co., Cloverdale, was named Premier Breeder and Premier Exhibitor. Pictured are (from left) **Bill** and **Priscilla Wilson, Kara Claeys,** and **Chad Wilson.**

South Dakota State Fair, Huron July 29 • Judge: Randy Daniel, Colbert, Ga.

► Grand champion bull, **WK Wacker**, by Chestnut Angus Farm, Verdi, Minn.; Whitestone-Krebs and Wacker Associates, both of Gordon, Neb. He's a Jan. 2002 son of RP 3RD Bushwacker.

► Grand champion female, **Roth Forever Lady 2706**, by Craig Moffitt, Colfax, Iowa. She's a Jan. 2002 daughter of N-Bar Emulation EXT.

► Grand champion cow-calf pair, **Roth Elba 1017**, by Amy Bussmus, Mitchell. She's a Jan. 2001 daughter of Famous 7001. Her calf is a March 2003 son of BA New Design Gravedigger.

► Reserve grand champion bull, **LaGrand Roth Bandolier 2642**, by Styles Plainview Angus Farm, Brentford, and LaGrand Angus Ranch, Freeman. He's a Jan. 2002 son of SVF Bandolier.

► Reserve grand champion female, **AA Erica 2954**, by Brittany Bruns, Willow Lake. She's an April 2002 daughter of Vermilion Dateline 7078.

► Reserve grand champion cow-calf pair, **Roth Wendy 1917**, by Andrew Roggen, Brandon. She's an April 2001 daughter of SVF GDAR 216 LTD. Her calf is a Feb. 2003 son of CA Future Direction 5321.

► First-place get-of-sire, progeny of **C&M Sterling Precision**, by C&M Cattle, Clark.

► **C&M Cattle**, Clark, exhibited the winning best-six-head entry.

Missouri State Fair Open Angus Show, Sedalia Aug. 8 • Judge: James Gillooly, Washington, Ind.



► Grand champion bull, **Circle A Endeavor 2058**, by Circle A Ranch, Iberia; Salt Fork Angus, Napton; and Question Mark Angus, Monte Vista, Colo. He's a Jan. 2002 son of Bon-View New Design 1407.



► Grand champion female, **WCC Blackbird 244**, by Paige Wallace, Mount Vernon. She's an Oct. 2002 daughter of Vermilion Dateline 7078.



► Grand champion cow-calf pair, **BC Dr. Blackbird Girl 031**, by Lucas Harpster, Kidder. She's a March 2000 daughter of OCC Doctor 940D. Her calf is an April 2003 son of OCC Kiplinger 756K.



► Reserve grand champion bull, **BC Marathon 7022**, by Kyle Conley, Clarksdale, and Holly Gamble, Clinton, Tenn. He's a July 2002 son of OCC Kirby 633K.



► Reserve grand champion female, **Cork's Blackcap 216**, by Krista Wilcoxson, Harrisburg. She's a Feb. 2002 daughter of EXAR N Sync 9264.



► Reserve grand champion cow-calf pair, **Brockmere Zenobig Jeanette**, by Jacob Lutes, Brookfield. She's a Nov. 1998 daughter of Leachman Saugahatchee 3000C. Her calf is a Jan. 2003 daughter of Famous 7001.



► First-place junior get-of-sire, progeny of **Bon-View New Design 1407**, by Justin Byergo, Nevada.



► First-place get-of-sire, progeny of **OCC Emblazon 854E**, by Kyle Conley, Clarksdale.

► **Clearwater Farm**, Springfield, showed the winning breeder's-six-head entry.

