

Open Shows

► 2002 Open Angus shows featured this month

Indiana State Fair Angus Show
 Missouri State Fair Angus Show
 Montana Fair Open Angus Show
 Montana State Fair Angus Show
 Ohio State Fair Angus Show
 Ozark Empire Fair Angus Show
 Pennsylvania Angus Breeders' Show
 South Dakota State Fair Angus Show
 Virginia Angus Breeders' Show
 Wisconsin State Fair Angus Show

► 2002 Indiana State Fair Angus Show, Indianapolis Aug. 11 • Judge: Jarold Callahan, Oklahoma City, Okla.



► Grand champion bull, **WCC Stocky J162**, by Wilson Cattle Co., Cloverdale. He's an April 2000 son of TC Stockman 365.



► Grand champion female, **WCC Lady L449**, by Wilson Cattle Co., Cloverdale, and Fort Angus Farm, Knightstown. She's a March 2001 daughter of Twin Valley Precision E161.



► Grand champion cow-calf pair, **Patton Lady Agnes 913**, by Beth Patton, Crawfordsville; MCM Farms, Whitestown; and Roth Angus, Freeman, S.D. She's a Sept. 1999 daughter of Famous 7001. Her calf is a Dec. 2001 daughter of Koupal's B&B Precision 0068.



► Reserve grand champion bull, **Maple Leaf Long Branch**, by Phil Howell & Family, Winchester. He's a March 2001 son of WK Appeal.

► Reserve grand champion female, **Maple Lane Ever Lady 2095**, by Caitlin Davis, Michigantown. She's an Oct. 2000 daughter of Maple Lane Forever Ready 850.



► **Wilson Cattle Co.**, Cloverdale, was named the premier exhibitor and premier breeder. Pictured (from left) are Bill and Priscilla Wilson, Kara Claeys, and Chad Wilson.



► 2002 Montana Fair Open Angus Show, Billings Aug. 11 • Judge: Dick Hubman, Central Point, Ore.



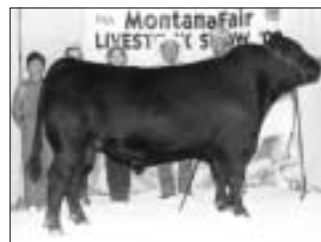
► Grand champion bull, **TJ Black Jack W625**, by TJ Cattle Co., Columbus. He's a Feb. 2000 son of OGL Battle Cry 427 128.



► Grand champion female, **Green's Princess 1012**, by Andrew Rogen, Brandon, S.D. She's a March 2001 daughter of Green's Premium 7578.



► Grand champion cow-calf pair, **DL Lass 9310**, by Kaleigh Mikkelsen, Hobson. She's a Feb. 1999 daughter of SAF Fame. Her calf is a March 2002 son of North Fork Prostock 9061.



► Reserve grand champion bull, **Roadrunner Tracer 5418**, by Roadrunner Angus, Turlock, Calif. He's an Oct. 2000 son of Wulff's Tracer 5209.

► Reserve grand champion female, **NA Miss Bridget 1209**, by Nissen Angus, Chinook. She's a Sept. 2001 daughter of Whitestone Battalion L136.



► Reserve grand champion cow-calf pair, **TJ Blackbird Hanna W730**, by TJ Cattle Co., Columbus. She's a Feb. 2000 daughter of OGL Battle Cry 427 128. Her calf is a March 2002 daughter of TJ Rawhide T512.



2002 Missouri State Fair Angus Show, Sedalia
Aug. 9 • Judge: Dr. David Nichols, Manhattan, Kan.



► Grand champion bull, **Clearwater Chism 0216**, by Clearwater Farm, Springfield, and Steven Schmalenberger, Vincent, Iowa. He's a Sept. 2000 son of GDAR SVF Traveler 234D.



► Grand champion female, **GWF Arkdale Pride 11**, by Paige Wallace, Mount Vernon. She's a Jan. 2001 daughter of Twin Valley Precision E161.



► Reserve grand champion bull, **PAF Famous Force 105**, by Larrick Farms, Shelbina. He's a Jan. 2001 son of Famous 7001.



► Reserve grand champion female, **Circle A Forever Lady 2033**, by Circle A Ranch, Iberia. She's a Jan. 2002 daughter of SAF Focus of ER.

2002 Montana State Fair Angus Show, Great Falls
Aug. 2 • Judge: Kyle Colyer, Bruneau, Idaho



► Grand champion bull, **TJ Black Jack W625**, by TJ Cattle Co., Columbus. He's a Feb. 2000 son of OGL Battle Cry 427 128.



► Grand champion female, **TJ Blkbd Diamond Lil Y110**, by TJ Cattle Co., Columbus. She's a Feb. 2001 daughter of OGL Battle Cry 427 128.



► Reserve grand champion bull, **BTR Uptown 246**, by Nancy Dear, Simms. He's a Feb. 2002 son of Vermillion Yellowstone.



► Reserve grand champion female, **ML Pearl Enechor 99 01**, by Mardi Linhardt, Lewistown. She's a Feb. 2001 daughter of Sitz Alliance 6595.

CONTINUED ON PAGE 274

SHOW SCENE

CONTINUED FROM 273

2002 Ohio State Fair Angus Show, Columbus Aug. 11 • Judge: Bill Rishel, North Platte, Neb.



► Grand champion bull, **Advance Special Design 14L**, by Advance Cattle Co., Nashport. He's a Jan. 2001 son of Bon-View New Design 1407.



► Grand champion female, **Champion Hill Georgina 2608**, by Eric King, Tiffin. She's a July 2001 daughter of Maple Lane Forever Ready 850.



► Grand champion cow-calf pair, **Champion Hill Phyllis 1868**, by Fairlane Farm, Louisville. She's a Jan. 2000 daughter of Famous 7001. Her calf is a March 2002 daughter of PVF New Horizon 001.



► Reserve grand champion bull, **Paradise Famous 127**, by James & Sharon Winter, Ashville. He's a Feb. 2001 son of Famous 7001.

► Reserve grand champion female, **Fisher Elegant Elaine**, by Justin Brosey, Hamilton. She's a Feb. 2001 daughter of Leachman Explorer.



► Reserve grand champion cow-calf pair, **Wayview Blackie 23**, by Clark Angus Farm, Johnstown, and Kyle Penick, Hebron. She's a May 1997 daughter of Krugerrand Merger 34. Her calf is a 2002 daughter of Millcreek Diversity.



2002 Ozark Empire Fair Angus Show, Springfield, Mo. July 27 • Judge: H.D. Woody, Carbondale, Ill.



► Grand champion bull, **EXAR Sudden Impact 1537**, by Express Angus Ranches, Shawnee, Okla.; Rolling RRR Ranch LLC, Edmond, Okla.; and Monarch Farm, Folsom, La. He's a Jan. 2001 son of Northern Improvement 4480 GF.



► Grand champion female, **GWF Arkdale Pride 11**, by Paige Wallace, Mount Vernon, Mo. She's a Jan. 2001 daughter of Twin Valley Precision E161.



► Grand champion cow-calf pair, **Cork's Elga Erica 950**, by Cork Cattle Co., Wentworth, Mo. She's an Oct. 1999 daughter of Connealy Dateline. Her calf is a March 2002 daughter of GDAR SVF Traveler 234D.



► Reserve grand champion bull, **EXAR Asset 0653**, by Express Angus Ranches, Shawnee, Okla.; Hays Bros. Angus Ranch, Arcadia, La.; and Rocking CK Angus Ranch, Cypress, Texas. He's a March 2000 son of Northern Improvement 4480 GF.

► Reserve grand champion female, **EXAR Queen 1574**, by Monarch Farm, Folsom, La. She's a Jan. 2001 daughter of A&B Yukon 7150.



► Reserve grand champion cow-calf pair, **Cork's Elga Erica 006**, by Cork Cattle Co., Wentworth, Mo. She's a Feb. 2000 daughter of N-Bar Emulation EXT. Her calf is a March 2002 daughter of Twin Valley Precision E161.



Open Shows online

To see the latest results of open Angus shows, visit the American Angus Association home page at www.angus.org. There you'll find a link to show results and events.

SHOW SCENE

2002 Pennsylvania Angus Breeders' Show, Huntingdon July 6 • Judge: Terri McCoy, Franklin, W.Va.



► Grand champion bull, **JDH Key Heir 0451**, by JDH Cattle Co., Dover. He's an April 2001 son of JDH Keystone EXT.



► Grand champion female, **Taggart Chic Marley 114**, by Taggart Cattle Co., Waynesburg. She's a March 2001 daughter of N-Bar Emulation EXT.



► Grand champion cow-calf pair, **Weaverland HF Sunflowr 033**, by Weaverland Valley Farms, New Holland, and Hawthorn Farm, McVeytown. She's a June 2000 daughter of Leachman Explorer. Her calf is a Jan. 2002 daughter of VDAR Lucy's Boy.



► Reserve grand champion bull, **CM Jeremiah 2125**, by Cody McKean, Mercer. He's a Feb. 2002 son of Baldrige Jethro 75J.

► Reserve grand champion female, **Rains Forever Barbie FRD381**, by Dale Rains, Mercer, and Mountain Valley Angus, Lititz. She's a March 2001 daughter of SVF Siebring's Forever Russ.



► Reserve grand champion cow-calf pair, **JDH Bran Barbara 0706**, by JDH Cattle Co., Dover. She's a May 1996 daughter of JDH Branson 0642. Her calf is an April 2002 daughter of JDH Keystone EXT.



CONTINUED ON PAGE 276

SHOWRING

Show Schedule

► Information about **ANGUS** shows through April 2003

OCTOBER KEYSTONE INT'L

Date: Oct. 7
Time: 8 a.m.
Entry Deadline: Aug. 31
Judge: Doug Gerber

GEORGIA NAT'L FAIR

Date: Oct. 8
Time: 5:30 p.m.
Entry Deadline: Sept. 1
Judge: Jeff Gooden

ARKANSAS STATE FAIR

Date: Oct. 14
Time: 8 a.m.
Entry Deadline: Aug. 26
Judge: Jeff Gooden

NORTHERN INT'L LIVESTOCK EXPO*

Date: Oct. 16-18
Time: 8 a.m.
Entry Deadline: Sept. 15
Judge: Quintin Smith

GRAND NAT'L

Date: Oct. 26
Time: 8 a.m.
Entry Deadline: Sept. 19
Judge: Arlo Janssen

AMERICAN ROYAL**

Date: Oct. 28
Time: 9 a.m.
Entry Deadline: Sept. 20
Judge: Rex Harl

NOVEMBER NORTH AMERICAN INT'L LIVESTOCK EXPO**

Date: Nov. 18-19
Time: 8 a.m.
Entry Deadline: Oct. 1
Judge: Randy Daniel

DECEMBER ARIZONA NAT'L STOCK SHOW

Date: Dec. 30
Time: 8 a.m.
Entry Deadline: Nov. 15
Judge: Chris Skaggs

JANUARY 2003 NAT'L WESTERN STOCK SHOW**

Date: Jan. 14-17
Time: 8 a.m.
Entry Deadline: Nov. 15
Judge: Bill Conley

NAT'L WESTERN STOCK SHOW PEN & CARLOAD SHOW

Date: Jan. 18
Time: 9 a.m.
Entry Deadline: Nov. 15
Judge: Charlie Boyd II, Dick Burns & Seth Leachman

SOUTHWEST EXPO & LIVESTOCK SHOW*

Date: Jan. 25
Time: 10 a.m.
Entry Deadline: Dec. 1
Judge: Randy Perry

MARCH HOUSTON LIVESTOCK SHOW

Date: March 3
Time: 4 p.m.
Entry Deadline: Dec. 1
Judge: Jeff Rhode

APRIL WESTERN NAT'L FUTURITY

Date: April 27
Time: 8 a.m.
Entry Deadline: March 15
Judge: Vance Uden



*Denotes ROV shows

**Denotes Super ROV shows

SHOW SCENE

CONTINUED FROM 275

2002 Wisconsin State Fair Angus Show, Milwaukee Aug. 3 • Judge: Bill Conley, Clarksdale, Mo.



► Grand champion bull, **LLA Forever Ready 115**, by Lakeland Farm, Palmyra. He's a May 2001 son of Maple Lane Forever Ready 850.



► Grand champion female, **C-5 Dameron Elluna 128**, by Kyle Cassidy, Ancona, Ill. She's a Feb. 2001 daughter of Dameron Monumental.



► Grand champion cow-calf pair, **AON Lilly**, by Amber O'Neal, Wanahtah, Ind. She's a March 2000 daughter of TRA Forever And Ever 608. Her calf is a March 2002 daughter of Bon-View New Design 878.



► Reserve grand champion bull, **Royal Dimension**, by Royal Angus Farms, Wales. He's a Jan. 2001 son of LF New Trend 4100.



► Reserve grand champion female, **Dameron Bardot 102**, by Callie Rickard, Heyworth, Ill. She's a Jan. 2001 daughter of Bon-View Krugerrand of Donamere 490.

NOT PICTURED

► Reserve champion cow-calf pair, **PAF Kristina 11K**, by Zach Terry, Sheridan, Ill. She's an April 2000 daughter of TC Stockman 365. Her calf is a Feb. 2002 son of Sitz Alliance 6575.

2002 South Dakota State Fair Angus Show, Huron July 30 • Judge: Joel Cowley, East Lansing, Mich.



► Grand champion bull, **Roth CAF United 3481**, by Roth Angus, Freeman; DeWayne Costin, Greencastle, Ind.; and Beth Patton, Crawfordsville, Ind. He's a March 2001 son of Roth's Millcreek Unique.



► Grand champion female, **Roth Wendy 1917**, by Andrew Rogen, Brandon. She's an April 2001 daughter of SVF GDAR 216 LTD.



► Grand champion cow-calf pair, **B&B Zara 009**, by Derek Koupal, Dante. She's a Jan. 2000 daughter of Bon-View Merger 2108. Her calf is a Jan. 2002 daughter of Whitestone Precision H141.



► Reserve grand champion bull, **Three Trees Ribeye 0545**, by Triple H, Pierz, Minn., and Three Trees Ranch Inc., Sharpsburg, Ga. He's a Nov. 2000 son of GDAR SVF Traveler 234D.

► Reserve grand champion female, **WK Tillie 1094**, by Karla Delaney, Gordon, Neb. She's a Jan. 2001 daughter of Bon-View New Design 1407.



► Reserve grand champion cow-calf pair, **Goldies Miss Galaxy**, by Jodi Goldammer, Mitchell. She's a Jan. 1999 daughter of Bush's Flashback 880. Her calf is a Jan. 2002 daughter of Bon-View New Design 878.

AT

2002 Virginia Angus Breeders' Show, Harrisonburg July 20 • Judge: Jim Gillooly, Washington, Ind.



► Grand champion bull, **Whitestone Treasury 343M**, by Whitestone Farm and Cattleman for Christ, both from Aldie. He's a Jan. 2000 son of Whitestone Treasury J187.



► Grand champion female and supreme champion, **JATH Miss Skymere 2131 of PH**, by Chelsea Wieben, Leesburg. She's a March 2001 daughter of Twin Valley Precision E161.



► Grand champion cow-calf pair, **HSAF Armstrong Mayflower 1**, by Waterford Angus, Leesburg. She's a Jan. 2000 daughter of TC Stockman 365. Her calf is a Feb. 2002 daughter of AAR Rambler 1488.



► Reserve grand champion bull, **Clear View Cavalier 133**, by Mandy Richardson, Louisa. He's a March 2001 son of Famous 7001.



► Reserve grand champion female, **Dalton's Northern Miss 119**, by Douglas Dalton Jr., Sycamore, and Mirapaso Farms, Lewisburg, W.Va. She's a Feb. 2001 daughter of OCC Backstop 888B.



► Reserve grand champion cow-calf pair, **Whitestone Rita 411M**, by Mandy Richardson, Louisa. She's a Feb. 2000 daughter of Famous 7001. Her calf is a Feb. 2002 daughter of Leachman Right Time.