



GEORGIA JUNIORS PROVIDE

Southern Hospitality

WOW! What an experience! Southern hospitality at its finest, some of the best facilities in the country and the beautiful pageantry of the opening ceremonies, set the stage for the 1997 National Junior Angus Show to go into the Angus history books as one of the best ever.

When the first trailer rolled into the Georgia National Fairgrounds the Georgia juniors were ready. The stalls and the tie-outs were made into beds for the cattle arrival and as each trailer pulled in for the show a group of Georgia juniors appeared to assist in unloading. This was the type of hospitality and enthusiasm which was displayed by the Georgia Juniors all week long.

Hosting the National Junior Angus Show is a task that takes a large commitment of time, money and organization. It literally takes hours and hours of planning, on the part of the host state, to make sure each detail of their part of the show is complete.

Georgia was definitely on the minds of juniors from throughout the country with representatives from more than 35 states competing in the cattle show, showmanship contest and other contests. The National Junior Show is an event that teaches personal skills, cooperation, responsibility and leadership. The contests, competitions, cattle show, as well as

the special events held throughout the show continue to make this week long event a "must attend" for all active members of the National Junior Angus Association (NJAA).

An event of this magnitude is only made possible by the cooperation and work of a lot of people. They include the Georgia Junior Angus Association members, advisors, parents and supporters, many generous financial contributors, plus the Georgia Angus Association, as well as other state junior associations. Also included in this list are the NJAA Board of Directors, the American Angus Association Board of Directors, the American Angus Auxiliary, and the staff of the Association and *Angus Journal* who helped to coordinate the activities and events.

This does not begin to name all of those people at home and across the country who work, encourage and support the young people as they become involved in these programs and the NJAA.

My thanks and gratitude go out to all of those who had a part in making this National Junior Angus Show a truly successful and memorable event — one that has allowed the NJAA members to learn and grow.

-James Fisher, director junior activities



Awards, Recognitions Abound at the National Junior Angus Show



NJAA Gold Pin winners at the National Junior Angus Show in Perry, Ga., pictured front row (l to r) are: Robin McCall, Waterford, Va.; Christy Bell, Good Hope, Ga.; Neenah Hill, Bidwell, Ohio; Lisa Bloom, Westville, Ind.; Monica Feeser, Taneytown, Md.; and Shannon Grote, Bryan, Texas. Pictured back row (l to r) are: Melissa Sanders, Harrod, Ohio; Heather Blackmon, Tigerville, S.C.; Jennifer Hawkins, Mason, Mich.; Brent Scarlett, Snow Camp, N.C.; Jarrod Gillig, Odessa, Mo.; Tyler Byrd, Red Bluff, Calif.; and John Dickinson, Congerville, Ill. Gold Pin winners not pictured are: Tracey Bowen, Rogers, Ark.; Ty Krebs, Gordon, Neb.; Sean Sharma, Williamsport, Ind.; and Jamie Smith, Lebanon, Tenn.



Pete and Barb Sweeney, Mason, Mich., were named the National Junior Angus Association's advisors of the year. Pictured (l to r) are: Jennifer Hawkins, National Junior Angus Board director; Pete Sweeney, Barb Sweeney and Ryan Sweeney, Mason, Mich.; and James Fisher, American Angus Association director of junior activities.



Myron Fuerst, Rhinebeck, N.Y., right, was presented the Honorary Angus Foundation award. Pictured presenting the award is Monica Feeser, National Junior Angus Board director. Other recipients of the award were Wayne "Doc" Smith, Winigan, Mo., and Bob & Gloria Thomas, Baker City, Ore.



The Kansas Junior Angus Association placed first in the sweepstakes competition.



Wesley Womack, was named premier breeder at the National Junior Angus Show.

Beth Patton, Crawfordsville, Ind., left, and **Wesley Womack**, Pembroke, Ky., center, were presented the girl and boy silver pitcher awards. The award is given to the girl and boy who place highest with their cattle in the show. Also pictured is **Susan Quam**, American Angus Auxiliary president.



Shannon Grote, right, was named the 1997 winner of the Certified Angus Beef Program/National Junior Angus Association scholarship. Pictured presenting the award is Jarrod Gillig, National Junior Angus Board director.



Angus queens, princesses, ambassadors and their chaperones enjoyed Southern hospitality while dining at the Home of American Camellia Society.

Junior Angus Breeders Exhibit 659 Head at National Junior Angus Show

Junior Angus breeders from across the United States made their way to Perry, Ga., for the 1997 National Junior Angus Show. The event, held July 14-19, recorded 659 entries.

David Hawkins, Mason, Mich., evaluated the 430 owned heifers. Champions were selected from the 420 bred-and-owned heifers, 23 cows-calf pairs and 38 bred-and-owned bulls by Mark Squires, Nobel, Okla. Jarold Callahan, Shawnee, Okla., evaluated 20 steers. There were also 18 steers entered in the carcass competition.

Three (1147) were crowned grand champion owned female. She's a Sept. '95 daughter of VDAR High Profile 22 and owned by Cindi Parr, Mason City, Ill. She was first named senior yearling champion female.

Beth Patton, Crawfordsville, Ind., exhibited the reserve grand champion owned female. QLC B51 Blackbird A476G is a March '96 daughter of Krugerrand's Moneyline and was first named late junior champion heifer.

Bell's Heidi Heiress walked away with grand champion bred-and-owned female honors. Christy Bell, Good Hope, Ga., exhibited the Oct. '95 daughter of Bon-View Emulation EXT 473 who was first named senior yearling champion.

Wesley Womack, Pembroke, Ky., exhibited the reserve grand champion bred-and-owned



Grand and senior champion owned female
Davis Elba 5250



Grand and senior champion bred-and-owned female
Bell's Heidi Heiress

female, Womack's Primrose Pride 1776 is a Nov. '96 daughter of N Bar Emulation EXT and first won heifer calf champion honors.

Womack's Mr. Bando, an

Oct. '96 son of N Bar Emulation EXT, claimed grand champion bred-and-owned bull honors. Katrina Womack, Pembroke, Ky., showed the entry which earlier won bull calf champion.

Car Don Frisco 407 won reserve grand champion bred-and-owned bull honors for Deanna Bloom, Westville, Ind. The Sept. '96 son of Traveler 124 GDAR was first named

reserve bull calf champion.

Champion Hill Stone Shadoo and her May '97 bull calf walked away with grand champion cow-calf honors. Neenah Hill, Bidwell, Ohio, exhibited the cow, which is a Jan. '94 daughter of Century Touchstone 131 and the calf is sired by Leachman Saugahatchee 3000C.

Reserve grand champion cow-calf honors went to Chickasaw Pointe Blackcap and her Feb. '97 bull calf. Jordan Britt, Loganville, Ga., exhibited the cow, which is a Sept. '93 daughter of Circle C Liberty 138. The calf is sired by Rito 2RT2 of 0B5 RR Traveler.

Jay Covell, Frederick, Md., captured grand champion steer honors with Covell's Annihilator. He's an April '96 son of Rito 9FB3 of 5H11 Fullback.

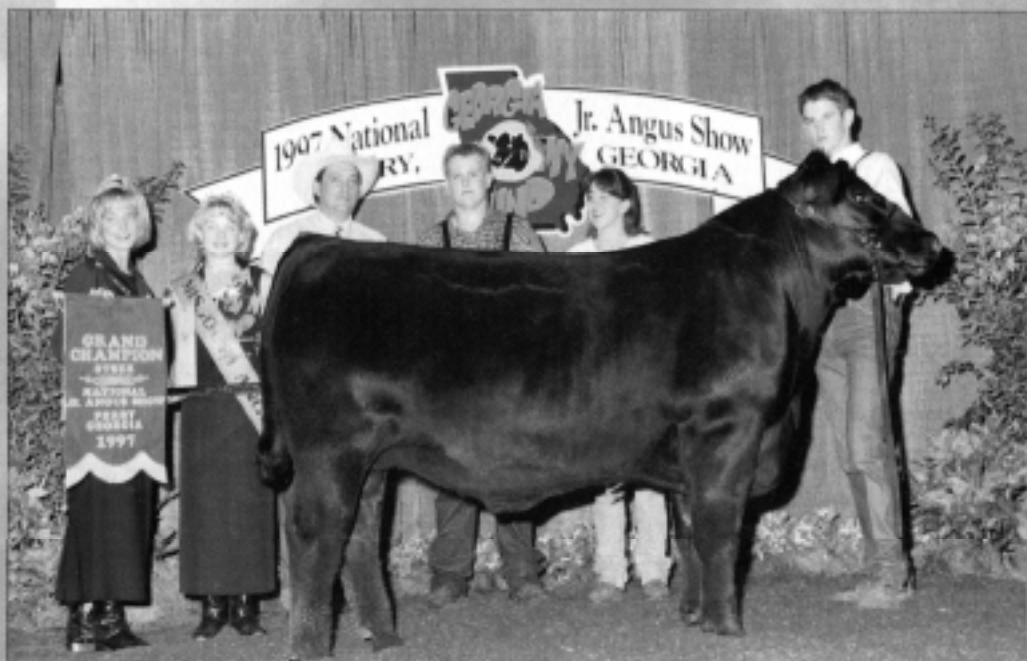
Sedgwick's Strut captured reserve grand champion steer honors for J.W. McCurry, Mt. Hope, Kan. He's a Feb. '96 son of HA Quantum 4100.

Melissa Sanders, Harrod, Ohio, had the grand champion carcass steer. Her entry had a live weight of 1,300 pounds and a carcass weight of 791 pounds. The carcass had a fat thickness of .20 inches and a ribeye area of 14.3 square inches. The steer graded Choice with a 1.93 yield grade.

The reserve grand champion carcass steer was entered by Kristina Conley, Olivet, Mich. It had a live weight of 1,295 pounds and a carcass weight of 763 pounds. The carcass had a fat thickness of .30 inches, a ribeye area of 12.6 square inches, and graded Choice with a yield grade of 2.42.



Grand and calf champion bred-and-owned bull
Womack's Mr. Bando



Grand champion steer
Covell's Annihilator

1997 NATIONAL JUNIOR ANGUS SHOW

July 14-19 — Perry, Ga.

Judges: Mark Squires, Nobel, Okla.; David Hawkins, Mason, Mich.;
Jarold Callahan, Shawnee, Okla.

Total Entries: 659

BRED-AND-OWNED CHAMPIONS 130 shown)

CALF

Womack's Primrose Pride 1776

RESERVE CALF

DR Kindness Princess 714, by *Christopher Donati, Oroville, Calif.*

INTERMEDIATE

NPF Tiffany 6P31, by *Cindi Parr*

RESERVE INTERMEDIATE

Dalton's Rita Belle 6133, by *Judson Dalton, Altavista, Va.*

LATE JUNIOR

Champion Hill Sunshine 534, by *Neenah Hill*

RESERVE LATE JUNIOR

A&B Queen 6203, by *Jessica Sawyer, Bassett, Neb.*

EARLY JUNIOR

Blackjack Blackcap 615, by *Miranda Grissom, Prague, Okla.*

RESERVE EARLY JUNIOR

Champion Hill Lady 391, by *Neenah Hill*

SENIOR YEARLING

Bell's Heidi Heiress

RESERVE SENIOR YEARLING

OCC Louann 5729, by *Sy Olson, Hereford, Texas*

OWNED HEIFER CHAMPIONS (430 shown)

CALF

PVF Proven Queen 602, by *Catherine Miller, Gridley, Ill.*

RESERVE CALF

JWK Bummer Maid 6054, by *Robin McCall, Waterford, Va.*

INTERMEDIATE

JW Princess Jade 6319, by *Andrew Foster, Niles, Mich.*

RESERVE INTERMEDIATE

Sedgwick's Rebarbara 4646, by *J W McCurry*

LATE JUNIOR

QLC B51 Blackbird A476G

RESERVE LATE JUNIOR

WAF Black Fawn 6105, by *Rhonda Nida, Red Rock, Okla.*

EARLY JUNIOR

SK Patton Elite 601, by *Beth Patton*

RESERVE EARLY JUNIOR

Champion Hill Full Shadoe, by *Jamie Smith, Lebanon, Tenn.*

SENIOR

Davis Elba 5250

RESERVE SENIOR

Clear View Maid, by *Wesley Marshall, Weyers Cave, Va.*

BRED-AND-OWNED BULL CHAMPIONS (38 shown)

CALF

Womack's Mr. Bando

RESERVE CALF

Car Don Frisco 407

INTERMEDIATE

Patton Dazzler 642, by *Beth Patton*

RESERVE INTERMEDIATE

Car Don Fargo B391 by *Deanna Bloom*

JUNIOR

Gamble's Fullback 175, by *Holly Gamble, Clinton, Tenn.*



Reserve grand and calf champion female
Womack's Primrose Pride 1776



Reserve heifer calf champion
DR Kindness Princess 714



Intermediate champion heifer
NPF Tiffany 6P31

RESERVE JUNIOR

DR Fortune 620, by *Daniel Donati, Oroville, Calif.*

COW-CALF PAIR CHAMPIONS (23 shown)

GRAND

Champion Hill Stone Shadoe

RESERVE GRAND

Chickasaw Pointe Blackcap



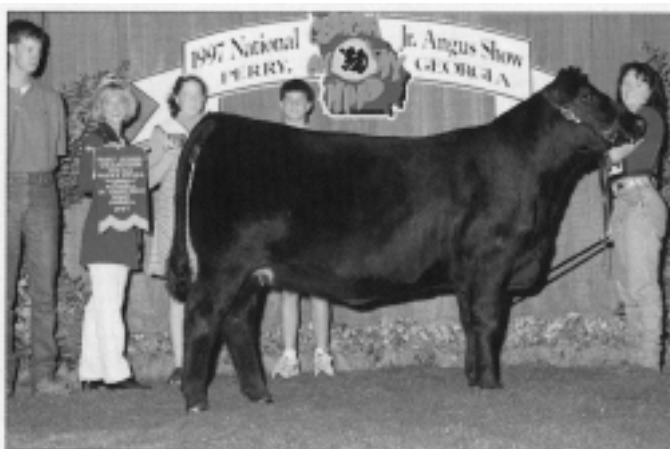
Reserve intermediate champion heifer
Dalton's Rita Belle 6133



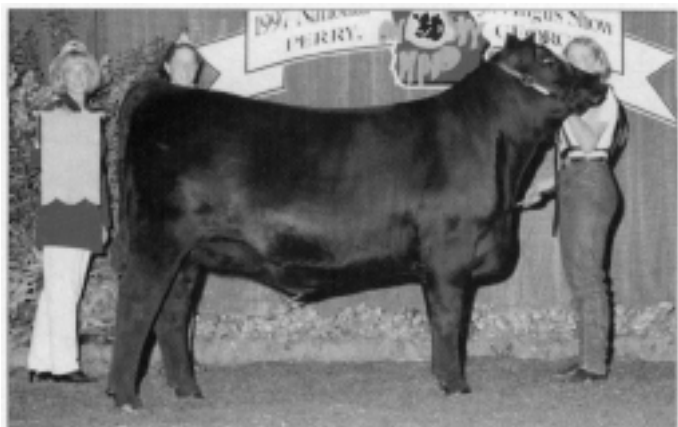
Late junior champion heifer
Champion Hill Sunshine 534



Reserve late junior champion heifer
A&B Queen 6203



Early junior champion heifer
Blackjack Blackcap 615



Reserve early junior champion heifer
Champion Hill Lady 391



Reserve senior yearling champion female
OCC Louann 5729

STEER CHAMPIONS (20 shown)

GRAND

Covell's Annihilator

RESERVE GRAND

Sedgwick's Strut

CARCASS STEERS (18 shown)

GRAND

Melissa Sanders

RESERVE GRAND

Kristina Conley

STATE GROUP BEST FIVEHEAD

Illinois Junior Angus Association

BEST STATE HERDSMANSHIP AWARD—15 HEAD AND UNDER

Michigan Junior Angus Association

16 HEAD AND OVER

Mississippi Junior Angus Association

SCRAPBOOK AWARD
Kansas Junior Angus Association

PREMIER BREEDER AWARD
Wesley Womack

WINNERS, by classes

STEERS

Class 1 (5-2-96 to 12-22-96) 1. EXAR Fullback 6185, by Kristin Bucholz, Bardwell, Texas. 2. Walridge DDS Little Earl, by Dawn Rene DeSmith, Atkinson, Ill. 3. Black Wave Oscar M 9136, by Michael P. Considine, Middletown, Md.

Class 2 (4-5-96 to 4-25-96) 1. Covell's Annihilator. 2. Champion Hill Jack 531, by Jeff Covell, Frederick, Md. 3. JP Dividend Brat 6393, by Jason R.W. Johnson, Durand, Ill.

Class 3 (3-1-96 to 3-30-96) 1. RSE Roll On, by Rachel Postin Stephens, Ga. 2. Whitestone Rito H183, by Bradley Ernest Lutz, Mt. Jackson, Va. 3. Gray's 9618, by Bobbe Leigh Gray, Cameron, Mo.

Class 4 (1-22-96 to 2-28-96) 1. Sedgwick's Strut. 2. DJJ Mr. Blackcap, by Joshua Michael Taylor, Weston, W.Va. 3. Longaberger Fullback 586, by Jennifer Lynn Luli, Suffield, Ohio.



Judge Jarold Callahan

COW-CALF PAIRS

Class 1 (3-3-95 to 6-13-95) 1. WF Sweet Sara 175, by Cara Harrison, Woodbine, Md. 2. Boyd Catie 5085, by Meghan Michelle Hill, Holly Pond, Ala. 3. Miss Lark 364 of Circle D, by Leslie M. Davis, Council Hill, Okla.

Class 2 (1-13-95 to 2-20-95) 1. Lemmon Susan E506 by Jonathan Ernest Lemmon, Woodbury, Ga. 2. BRR Extraordinary Erie9501 by Rebecca Nida, Red Rock, Okla. 3. Miss Stockman of OAF 823, by Jennifer Lynn Grappe, Springhill, La.

Class 3 (9-2-94 to 11-14-94) 1. Cedar Creek Rita 401-177 by Ted S. Bourne Jr., Donalds SC. 2. Twin Valley Lass 4211, by Christine Anne Simmer, Montevallo, Ala. 3. Dalton's Beauty 231 D, by Kathryn McCarter Jones, West Point, Ga.

Class 4 (1-1-94 to 1-30-94) 1. Champion Hill Stone Shadde. 2. Luken's Juanada 424, by Julie Etta Scarlett Snow Camp, N.C. 3. Bettymere Juanita of Cquin by Jonathan Perret, Edgard, La.

Class 5 (1-9-92 to 9-27-93) 1. Chickasaw Pointe Blackcap. 2. Dameron Blackbird 204, by Julie Ann Dameron Lexington, Ill. 3. Weining Brittany, by Joshua Nunn, Upton, Ky.

BRED-AND-OWNED BULLS

Class 1 (11-10-96 to 12-16-96) 1. Womack's Top Cut 1856, by Wesley Womack. 2. TMF Right Time Alaska, by Michael Edward Dawson, Lost Creek, W.Va. 3. JA Weedwacker, by Jessica L. Ash, Jane Lew, W.Va.

Class 2 (10-5-96 to 10-16-96) 1. Womack's Mr. Bando. 2. Riverchase Oscar 620, by Ashley Williams, Kinston, N.C. 3. Brockmere Expectation 50, by Amy Brockmere Brookfield, Mo.

Class 3 (9-1-96 to 9-28-96) 1. Car Don Frisco 407. 2. Lemmon Prompter H603 by Jonathan Ernest Lemmon. 3. DR 6807 Traveler 722, by Christopher Donati, Oroville, Calif.

Class 4 (7-2-96 to 8-27-96) 1. Patton Dazzler 642. 2. Car Don Fargo B391. 3. SCF Max Power JG, by Jarrod Gillig, Odessa, Mo.

Class 5 (5-22-96 to 6-18-96) 1. Womack's Black Dimension, by Wesley Womack. 2. Windy Hill Tacoma B60 by Holly Marie Irvin, Hamilton, Ohio. 3. WA 6063, by Nick Wagner, Wolcott, Ind.

Class 6 (3-9-96 to 4-18-96) 1. Gamble's Fullback 175. 2. Womack's Black Hawk 1066, by Wesley Womack. 3. Wayview Fair Play 907, by Kyle Frederick Penick, Hebron, Ohio.

Class 7 (1-12-96 to 2-13-96) 1. DR Fortune 620. 2. Touchstone EXT 396, by Jamie Smith. 3. Wayview Lucky Boy 930, by Kyle Frederick Penick.

BRED-AND-OWNED HEIFERS

Class 1 (12-11-96 to 12-26-96) 1. Meldon's Erica 70, by Allison Porter, Jefferson, Ga. 2. Oakwood EXT Lass 4201, by Christine Anne Simmer, Montevallo, Ala. 3. Womack's Miss Evergreen 1876, by Katrina Kay Womack.

Class 2 (1-11-96 to 11-24-96) 1. Dalton's Belle Moneek 6183, by Douglas Dalton, Altavista, Va. 2. Gamble's Miss Fullback 2, by Holly Gamble. 3. Meldon's Beauty 700, by Hutch Porter, Jefferson, Ga.

Class 3 (1-11-96 to 11-7-96) 1. Womack's Primrose Pride 1776. 2. Rainbow Impact 228, by Tyler King, Ashford, Ala. 3. Cedar Grove Edella 2746, by Lawrence B. Narehood, Forest, Va.

Class 4 (10-15-96 to 10-30-96) 1. Big D Georginas Gal, by Kevin A. Stith Brandenburg, Ky. 2. RPF Miss 9FB3 236, by Marc Price Slocumb, Ala. 3. BPS Miss Emulous, by Billy P. Stuckey, Sherman, Texas.

Class 5 (10-1-96 to 10-9-96) 1. Tick Ridge Vidalia 648, by Adam Thacker, Sumner, Ill. 2. SCC Polly Pride 6113, by Jonathan Andrews Dos Palos, Calif. 3. Banner Keymura Kelly, by Michael Banner, College Grove, Tenn.

Class 6 (9-16-96 to 9-28-96) 1. Lemmon Pride L603 by Jonathan Ernest Lemmon. 2. DKL Erroline 8306, by Kristopher Lynn, Springfield, Ky. 3. FB Kayla 9 96, by Paul Michael Pickrell Augusta, Ky.

Class 7 (9-1-96 to 9-12-96) 1. DR Kindness Princess 714. 2. Covell's Emu-



**Reserve grand and late junior champion female
QLC B51 Blackbird A476G**



**Heifer calf champion
PVF Proven Queen 602**



**Reserve heifer calf champion
JWK Bummer Maid 6054**

lation Lassy, by Jay Covell. 3. TW Beauty 536 Vo, by Tony Ward, Oak Grove, Mo.

Class 8 (7-10-96 to 8-2-96) 1. SEB Beonka 601, by Thomas Allen Carper, White Post, Va. 2. Car Don Miss Traveler B387, by Lisa Ann Bloom, West-vine, Ind. 3. Womack's Monique 1398, by Wesley Womack.

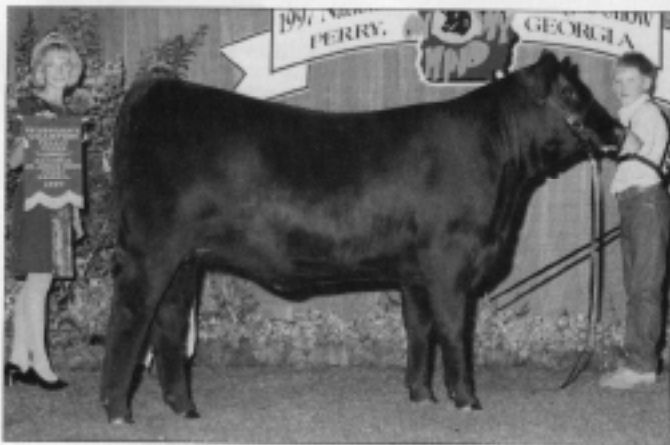
Class 9 (6-1-96 to 8-24-96) 1. J&S Ms. Queen 9FB3 9648, by Trevor Jones, Harrod, Ohio. 2. RF Blossum, by Alana L.

Burdette, Boyds, Md. 3. Cedar Creek TBS Skymere 9615, by Ted S. Bourne Jr.

Class 10 (5-2-96 to 5-20-96) 1. NPF Tiffany 6P31. 2. Dalton's Rita Belle 6133. 3. A&B Jessie 6165, by Jessica Ann Sawyer.

Class 11 (4-10-96 to 4-27-96) 1. Champion Hill Sunshine 534. 2. BK Blossom, by Miranda Harris, Cullman, Ala. 3. Patton Abbie 628, by Beth Ellen Patton.

Class 12 (4-3-96 to 4-10-96) 1. Patton



Intermediate champion heifer
JW Princess Jade 6319



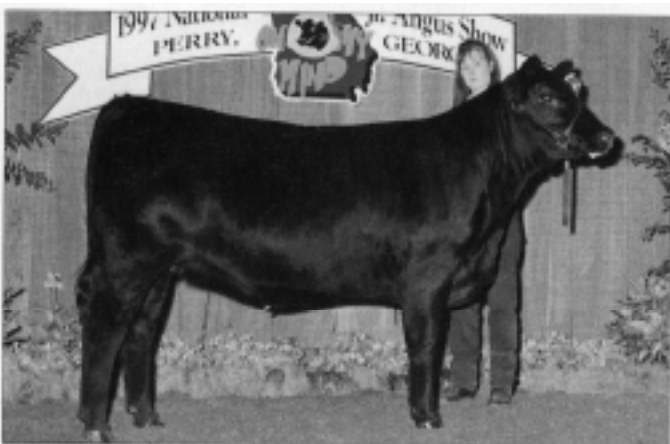
Reserve intermediate champion heifer
Sedgwick's Rebarbara 4646



'Reserve late junior champion heifer
WAF Black Fawn 6105



Early junior champion heifer
SK Patton Elite 601



'Reserve early junior champion heifer
Champion Hill Full Shadoc



Reserve senior champion female
Clear View Maid

Cher 624 of YAF by Beth Ellen Patton. 2. Dalton's Monet of Halo 6108, by Douglas Dalton. 3. AMB Black Ruby, by Amy Brockman

Class 13 (3-18-96 to 3-28-96) 1. Car Don Miss Traveler B363 by Deanna Lea Bloom. 2. MCC Miss Ruby 3246, by Jamie Meyer, Douglass, Kan. 3. DKL Lucy's Pride 6184, by Kristopher Lynn.

Class 14 (3-1-96 to 3-17-96) 1. A&B Queen 6203 2. Patton Forever Lady 619,

by Beth Ellen Patton. 3. Daltons Anna Belle, by Douglas Dalton.

Class 15 (2-14-96 to 2-26-96) 1. Bell's Valentine Jestress by Christy Bell. 2. B&J Miss Phoebe Lynn, by Jason D. Michael, Mt. Solon, Va. 3. CW Miss Elba 116, by Clayton Ward, Oak Grove, Mo.

Class 16 (2-3-96 to 2-10-96) 1. Cedar Creek Skymere 9607, by Ted S. Bourne Jr. 2. Sedgwick's Wendy 3856, by Grady Alan McCurry Mt. Hope, Kan. 3. Dameron

Bardot 631, by Julie Dameron.

Class 17 (1-24-96 to 2-1-96) 1. Black-jack Blackcap 615. 2. Bishard's Princess G 0 6301, by Suzanne E. Bishard, York, Pa. 3. KG Marvel, by Kyle Gillooly, Washington, Ind.

Class 18 (1-4-96 to 1-21-96) 1. Champion Hill Lady 391. 2. Womack's Pride 56, by Wesley Womack. 2. Lemmon Pride 4476, by Jonathan Ernest Lemmon

Class 19 (11-26-95 to 12-15-95) 1.

OCC Louann 5729. 2. LCL Spirit, by Lana G. Myers, Jennings, La. 3. Meldon's Merri Kaye 52, by Allison Porter, Jefferson, Ga.

Class 20 (1 0-1 -95 to 11-2-95) 1. Bell's Heidi Heifress. 2. Oakmere Primrose 0711 501, by Emily Beere, Burlington, Wis. 3. DKL Sassy Lass 5270, by Kristopher Lynn.

Class 21 (g-1-95 to 9-18-95) 1. Beck Pride 5196, by Jennifer Diane Beck,

CONTINUED ON NEXT PAGE

Louisburg, N.C. 2. Geeslin Murphy Burgess, by Lindsey Geeslin, Lorena, Texas. 3. Greenstar Katinkas Gal 504, by Adam Taylor Duke, kinston, N.C.



Judge Mark Squires

OWNEO HEIFERS

Class 1 (12-15-96 to 12-31-96) 1. DA Enchantress 213 633, by Amy Lynn Dyar, Crossville, Ala. 2. FB Klassy Kate 96, by Kalisha Pickrell, Augusta, Ky. 3. DP Real Skymere 614, by Stephanie Langford, Pendergrass, Ga.

Class 2 (11-23-96 to 12-7-96) 1. Womack's Playmate 1866, by John M. Hadden, Gibson, Ga. 2. TMF Excel Adriana, by Julie Dawn Dawson, Lost Creek, W.Va. 3. Glendale Black Pride 618, by Robert E. Pruitt III, Abbeville, S.C.

Class 3 (1-I-I-96 to 11-20-96) 1. Dalton's Elba 6181, by Tanya Cole Peebles, Lawrenceville, Va. 2. HSAF Miss Pride 113L by Robbie Smith, Lebanon, Tenn.



Judge Dave Hawkins

3. Womack's Playmate 1846, by Trey Gunn, Tiptersville, Miss.

Class 4 (11-1-96 to 11-9-96) 1. Sedgwicks Verity 6116, by Diana L. Covell, Frederick, Md. 2. HSAF Miss Pride 1131, by Jamie Smith, 2. EXAR Miss Emulous 6405, by Brandon Copeland, Ennis, Texas.

Class 5 (10-18-96 to 10-28-96) 1P artiso-ver Blackbird 728, by Rachel Postin, Stephens, Ga. 2. Magnolia Skymere 614, by Cody Knop, Ida Grove, Iowa. 3. Womack's Southern Lady 1726, by Jimmy E. Hadden, Gibson, Ga.

Class 6 (10-9-96 to 10-14-96) 1. JSA R 210F by Jansen Churchwell, Plainview Texas. 2. Sarah of Swan 146, by Michael J. Owen, Ripley, Miss. 3. Boyett Turnpike Emulous 658, by Shanna E. Boyett, Reidsville, Ga.

Class 7 (1 O-I -96 to 10-8-96) 1. Lemmon Krivinia 3587, by Miranda Grissom

2. Dak Hill Erica Lady 1696, by Amanda Faith Asal, Farmville, Va. 3. OSU Miss Indy 6185, by Eric Carlson, Thayer, Kan.

Class 8 (9-23-96 to 9-29-96) 1. AVF Erica Evalina 366, by Megan M. Theis, Leavenworth, Kan. 2. Waldeck Eriskay 9684, by Jennifer Stamey, Statesville, N.C. 3. Boyd Elba 6145, by Addie Hawkins, Magnolia, Ky.

Class 9 (9-15-96 to 9-21-96) 1. PVF Proven Queen 602. 2. PVF Proven Queen 601, by Catherine Dora Miller. 3. Womack's Lady Princess 1576, by Cole E. Brown, Portal, Ga.

Class 10 (9-10-96 to 9-14-96) 1. Davis Peggy Sue 6303, by Rebecca Nida. 2. Krueger's Belle 6554, by Betsie Jane Ebert Lexington, NC. 3. Ankony Blackcap 50N0 by Tom Griffin, Bainbridge, Ga.

Class 11 (9-6-96 to 9-9-96) 1. Champion Hill Skymere 599, by Holly Gamble. 2. Champion Hill Phyllis 602, by Jenna Leigh Gilbert, Greenville, Ohio. 3. EXAR Pine Gal 6311, by Dixie Berry, Ardmore, Ala.

Class 12 (9-1-96 to 9-5-96) 1. JWK Bummer Maid 6054 2. WF Pollyanna, by Cara Harrison. 3. Hilmes Frances Rito 6506, by Jenny M. Davis, Creal Springs, Ill.

Class 13 (8-2-96 to 8-31-96) 1. Lovely Rita by Katie Cravens, Van Buren, Ark. 2. E&D Lady Krugerrand 6001, by Kyle Bannon, Ladoga, Ind. 3. Five Star Suzy Q FB 607, by Emily Grace Tennant, Greensboro, N C

Class 14 (7-1-96 to 7-10-96) 1. Champion Hill Phyllis 580, by Holly Gamble. 2. BK Lady Cornhusker, by Miranda Harris, Cullman, Ala. 3. Wayview Erica 293, by Kyle Frederick Penick.

Class 15 (6-1-96 to 6-26-96) 1. EJJ Queen Elba 6099, by Emily Hartzell, Shawano, Wis. 2. Bolsen's Cattleman Ginger, by Carl Detwiler, Roaring Spring, Pa. 3. SAV Mayflower 6401, by Robert Johnson, Tompkinsville, Ky.

Class 18 (5-10-96 to 5-30-96) 1. Circle G Lass 20E by Stephanie Isaacs, Horse Cave, Ky. 2. Enslow Dell 316 J P D, by John Paul Dickinson, Congerville, Ill. 3. Davis Lady 6242, by Phillip Thomason, Big Sandy, Texas.

Class 17 (5-4-96 to 5-8-96) 1. Champion Hill Phyllis 551, by Holly Gamble. 2. Champion Hill Phyllis 561, by Diana L. Covell. 3. Davis Twinkle Twinkle 6229, by Kristopher Lynn.

Class 16 (5-1-96 to 5-3-96) 1. JW Princess Jade 6319 2. Sedgwick's Rebarbara 4646. 3. Bolsen's Shania, by Daniel Lee Clark, Oblong, Ill.

Class 19 (4-14-96 to 4-24-96) 1. C&C Casey 677, by Mary Susan Eckhoff, Shawnee, Okla. 2. JAF Empress Crown J 63, by Jason R.W. Johnson. 3. Waybiew Erica 280, by Michael C. Painter, Hebron, Ohio.

Class 20 (4-6-96 to 4-12-96) 1. Fernvale Mabel 6426. by Clayton J. Lampe, Scott City, Kan. 2. R&R Pride 635F, by Cliff ourso Jr., Donaldsonville, La. 3. CCF Virtue 6T4 by Clay Moncrief, Lizella, Ga.

Class 21 (4-1-96 to 4-3-96) 1. Boondocks Black Lass 6304, by Clayton M. Wieben, Waterford, Va. 2. A&B Susetta 6110, by Jessica Ann Sawyer. 3. Grabb's Miss Eileen, by Michael Banner, College Grove, Tenn.

Class 22 (3-24-96 to 3-30-96) 1. Ankony Lass N310 by Melissa Parreira, Los Banos, Calif. 2. Bolsen's Cheyenne 6275, by Carl Detwiler. 3. A&B Erica 6079, by Jessica Ann Sawyer.

Class 23 (3-18-96 to 3-23-96) 1. WAF Elga 6124, by Beth Ellen Patton. 2. WAF Oakleaf 6131, by Addie Hawkins. 3.



Reserve grand and reserve calf champion bull
Car Don Frisco 407



Intermediate champion bull
Patton Dazzler 642

Knops Miss Traveler 616-216 by Kara M. Clays, Garner, NC.

Class 24 (3-10-96 to 3-17-96) 1. WAF Black Fawn 6105. 2. Lchmn BC Elba F3289, by Janelle Lynn Sommers, Silver Lake, Ind. 3. CAR AF Blackbird 6, by Kayla Gunn Tiptersville, Miss.

Class 25 (3-4-96 to 3-9-96) 1. SVF Victoria 605, by Morgan C. Woodward, Galipolis, Ohio. 2. AVF Miss Fortune 9666, by Matthew E. Theis, Leavenworth, Kan. 3. MM Cheyenne 596, by Jamie Smith.

Class 26 (3-1-96 to 3-3-96) 1. QLC B51 Blackbird A476G 2. R&R Duchess 616F by Jennifer Ourso, Donaldsonville, La. 3. Chamoion Hill Miss 457 by Jenna Leigh Gilbert.

Class 27 (2-21-96 to 2-27-96) 1. JP Miss Shamrock 6410, by Ryan Wock, Jerseyville, Ill. 2. Miss Emulation K 680, by Eric Carlson, Thayer, Kan. 3. OCC maddie Erica of EXT by Joanna Olson, Hereford, Texas.

Class 28 (2-13-96 to 2-19-96) 1. Dalton's Monique 625, by John L. Smallwood, Dickerson, Md. 2. Dixie's Blackbird Lassie FT26 by Tara Ayres, Lancaster, Ky. 3. SS Erica 186, by Whitney Trosper Hamilton, Mo.

Class 29 (2-8-96 to 2-12-96) 1. WK Sandy 6375, by Kyle Jackson, Anderson, Ind. 2. Circle A Blackcap 6164, by Nikki Beth Arbogast, Jane Lew, W.Va. 3. KMR Bernice 1976, by Julia M. Wagner, Wolcott, Ind.

Class 30 (2-2-96 to 2-7-96) 1. Circle A Queen Ruth 6125, by Lindsey B. Trosper Hamilton, Mo. 2. Sedgwick's Erica 3806, by Amy nilhas, WaKeeney, Kan. 3. Barbara 306 of Sunny Side, by Matthew R. Parks, Versailles, Ky.

Class 31 (1-22-96 to 1-30-96) 1. Ankony Blackcap 0N35, by Thomas Allen Carper. 2. Circle A Western Lady 6105, by Jennifer Lynn Lui, Suffield, Ohio. 3. Whitestone Beauty H033, by Kyle Jackson.

Class 32 (1-4-96 to 1-21-96) 1. VAR Lucy 6128, by Andrew Scott Foster, Niles, Mich. 2. Deer Creek Jaclyn 18F by Melissa Pickrell, Paris, Ky. 3. Forsythe Lucy 6028, by Emily Hartzell

Class 33 (1-B-96 to 1-I 2-96) 1. Jarrell Princess 1056, by Jill Cassidy, Dacula, Ga. 2. DCB Blackberry 63F by Dixie Berry. 3. BC Blackbird Girl B 166, by Jason D. Michael.

Class 34 (1-4-96 to 1-7-96) 1. Davis Dance To Remember 6019, by Jessica L. Maxwell. Ponder. Texas. 2. ABS Princess 52F by Benjamin Geeslin, Lorena, Texas. 3. KF Lady Angel 1013, by Adam Thacker, Sumner, Ill.

Class 35 (1-I -96 to 1-3-96) 1. SK Patton Elite 601. 2. Champion Hill Full Shadowe, 3. Red Fox Erica 63, by Heath Johnson.

Class 36 (1 2-1-95 to 12-31-95) 1. Irvington 680 Vin 2275, by George Richburg, Auburn, Ala. 2. CP Blackcap Eve 1015, by



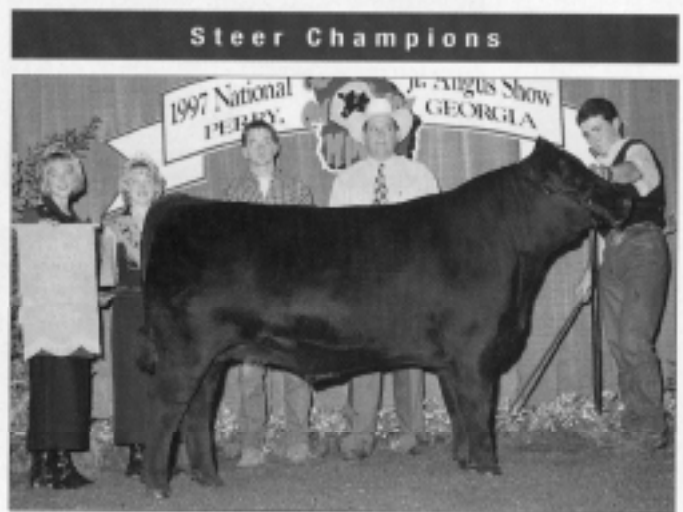
Reserve intermediate champion bull
Car Don Fargo B391



Reserve junior champion bull
DR Fortune 620



Junior champion bull
Gamble's Fullback 175



Reserve grand champion steer
Seclgwick's Strut

Cow-Calf Pair Champions



Grand champion cow-calf
Champion Hill Stone Shadoe



Reserve grand champion cow-calf
Chickasaw Pointe Blackcap

Jordan Brita. 3. Three Trees Sally 603, by Joe Porter, Jefferson, Ga.

Class 37 (11-6-95 to 11-23-95) 1. Clear View Maid. 2. Meldon's Eileen 51, by Hutch Porter. 3. SHF Prompt Blackbird 620, by Jonathan Barnes, Dolphin, Va.

Class 38 (10-1-95 to 11-2-95) 1. Pine Hill Zarette 9715, by Lawrence B. Narehood, Forest, Va. 2. BP M&M Miss Skymere 42, by Kacie Pennington, Russell Springs Ky. 3. Britton Jody 548, by Katie Huddleston, Bushnell, Fla.

Class 39 (9-22-95 to 10-4-95) 1. KMR Sara 875, by Betsie Jane Ebert. 2. Bell's Hailey Heiress, by Phil Page, Winder, Ga. 3. Twin Valley Lassie 2285, by Marc Price, Slocomb, Ala.

Class 40 (9-1-95 to 9-21-95) 1. Davis Elba 5250. 2. Twin Valley Missie 156A 1745, by Jamie L. Beck, Louisburg, N.C. 3. Twin Valley Barbara 1925, by Amy Lynn Dyar.

Carcass Competition Winners

Grand
Champion
carcass steer
**Melissa
Sanders**



Reserve grand
champion
carcass steer
**Kristina
Conley**



1997 National Junior Angus Show Carcass Results

RANK ENTRY	EXHIBITOR	LIVE WT	LIVE WDA	CARC WT	CARC WDA	DRESS %	FAT	KPH	REA	REA CWT	OG	YG	MARBLING
22 1	Melissa J. Sanders, Harrod, Ohio	1,300	2.45	791	1.49	60.8	0.20	2.5	14.3	1.81	CH-	1.93	SM ⁸⁰
3 2	Kristina Marie Conley, Olivet, Mich.	1,295	3.30	783	1.94	58.9	0.30	1.5	12.6	1.85	CH-	2.42	SM ¹⁰
21* 3	Cody Quam, Lodi, Wis.	1,080	2.06	642	1.25	60.5	0.30	2.0	10.8	1.65	CH ⁰	2.70	MT ⁸⁰
15 4	Brandon New, Leavenworth, Kan.	1,135	2.33	671	1.38	59.1	0.30	1.5	10.8	1.61	CH-	2.64	SM ⁰⁰
12* 5	Suzanne E. Bishard, York, Pa.	1,100	2.30	663	1.39	60.2	0.60	1.5	11.8	1.78	CH+	3.04	MD ⁰⁰
20* 6	Melissa J. Sanders, Harrod, Ohio	1,155	2.31	714	1.43	61.8	0.70	1.5	11.9	1.67	CH ⁰	3.46	MT ¹⁰
2 7	Jamie Smith, Lebanon, Tenn.	1,030	2.63	619	1.58	60.1	0.60	2.5	11.7	1.89	CH-	3.11	SM ⁴⁰
6 8	Jessica Ann Sawyer, Bassett, Neb.	1,150	2.58	714	1.60	62.0	0.60	2.5	11.7	1.84	CH-	3.47	SM ³⁰

* Indicates carcasses qualifying for CAB

The following carcasses did not qualify for placing and premiums.

ENTRY	EXHIBITOR	LIVE WT	LIVE WDA	CARC WT	CARC WDA	DRESS %	FAT	KPH	REA	REA CWT	OG	YG	MARBLING
23	Flinton McCabe, Elk City, Kan.	1,310	2.40	793	1.45	60.5	0.20	1.0	10.9	1.37	SE+	2.73	SL ⁸⁰
14	Cindy Lou Rezac, St. Marys, Kan.	1,245	2.58	717	1.48	57.5	0.70	1.5	12.9	1.80	SE+	3.15	SL ⁸⁰
17	Justin Drew Rinkes, Hoyt, Kan.	1,275	2.58	741	1.50	58.1	0.30	1.5	11.0	1.48	SE-	2.85	SL ¹⁰
5	Patrick X. Driscoll, Williamsburg, Iowa	1,250	2.82	846	1.91	67.6	0.60	1.5	16.0	1.89	SE ⁰	2.39	SL ⁶⁰
16	Brandon Tyler Rinkes, Hoyt, Kan.	1,130	2.31	718	1.47	63.5	0.50	2.0	11.6	1.62	SE ⁰	3.17	SL ⁴⁰
10	Doug Simms, Butler, Mo.	1,235	2.64	787	1.68	63.7	0.20	1.5	13.5	1.72	SE-	1.97	SL ¹⁰
9	Shannon Marie Grote, Bryan, Texas	1,265	2.78	782	1.72	61.8	0.30	2.0	16.6	2.12	SE-	1.31	SL ⁰⁰
8	Jamie Smith, Lebanon, Tenn.	1,115	2.46	708	1.56	63.5	0.60	3.0	12.3	1.74	SE ⁰	3.35	SL ⁵⁰
1	Ben Wheeler, Flat Rock, Ala.	900	2.37	538	1.42	59.7	0.20	1.5	9.6	1.78	ST+	2.27	TR ⁸⁰
19	Sheldon Lee Rinkes, Hoyt, Kan.	1,110	2.22	627	1.25	56.4	0.30	2.0	10.4	1.66	SE+	2.70	SL ⁸⁰

* Indicates carcasses qualifying for CAB