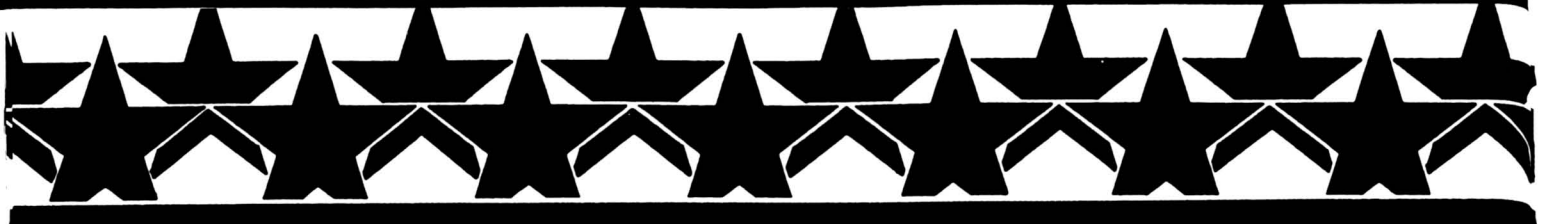


Dr. Bob Kropp of Oklahoma State University put the placings on the 158-head show and named the first major show champions of the fall season.

Another Futurity. Another year of different, new and better. This All-American Show is the season opener and also was the grand entry for the first Super Point Show of the American Angus Assn. Show Program.

Just one year ago, Herman Purdy judged this event. This year and in memory of him, Purdy was named *Master Breeder of the Year*. Official show dedication was given to Myron Fuerst, a long-time Angus breeder from New York and a past director of the American Angus Assn.

Dr. Bob Kropp, Oklahoma State University, Stillwater, sorted through and lined up 158 head to arrive at the new supreme champion. Brost Power Drive received Kropp's final nomination and tied up the senior and grand champion bull honors and then the 1985 supreme title. The January 1983 Pine Drive Big Sky son is out of Brost Elba 916 and measured 63 1/4 inches at the hip and pushed the weights on the scale to 2,220 lb. Extra loud cheers came from owners Premier Angus, Cloverdale, Ind.; Brost Angus Farm, Oxford, Ind.; B&L Ranch, Shawnee, Okla. and Wrightson Stock Stud, Palmerston North, New Zealand.



Another R&J Austin 13 daughter and from R&J Ranch, Briggs, Texas, was crowned champion heifer. Last year R&J Sybil 2003 took the silver cup. R&J June 1694, a June 1984 female was first awarded the intermediate title for owners R&J and Cobble Pond Farm, Sharon, Conn.

Once Bob Kropp named all his division winners and went back to look again for the champion titles, the intermediate pair of heifers and the senior and reserve senior champion bulls were just too attractive to split up. Wrangler followed Power Drive to the winner's circle for reserve senior and reserve grand champion bull. Haas Angus, LeRoy, Ill., and R&J led in the July 1983 Progression son that registered 61 inches at the hip.

Reserve grand champion female HF Duchess 451, is definitely no stranger to any show ring, be it junior or an open class show. Owned by Susan Moxley, West Friendship, Md., Duchess brags of being the Denver spring calf champion and most recently, the National Junior Angus Show champion heifer. She is a May 1984 daughter of QLC Winchester and was first awarded the reserve intermediate ribbon.

Vance Uden of TC Ranch, Franklin, Neb., was glad he could get away from the cornfields and bring his "Peggy" cows and their calves to Louisville. TC Peggy Lee 3001 and TC Peggy Sue 2135 and their natural calves walked away with their division



The winning junior get-of-sire group was the trio Director, Premier Thor and Primrose Charm 7584, all progeny of Greenbrae Chairman.

honors and on to the grand and reserve grand overall cow-calf pair titles, respectively. Northcote Angus Farm, Forest, Va., shares in the ownership of these two pairs.

A new award this year was the manager of the year, which went to Bill Wilson of Premier Angus.

Guest speaker Baxter Black, entertained folks one evening and the auc-

BULLS

Junior Calf Champion: Garney Cattle Co. on Garney Bolero.
Reserve Junior Calf Champion: Greg Krueger and Family and George Parker on Kruegers Saint Pride.
Senior Calf Champion: Rolling Oaks Ranch and Meng Farms Inc. on ROR Royalty 108T.
Reserve Senior Calf Champion: Premier Angus on Premier Firecracker.
Intermediate Champion: Premier Angus on Premier Thor.
Reserve Intermediate Champion: Genetics Unlimited Inc. and Indy Genetics Inc. on Genetics Yukon Jack.
Late Junior Champion: Weaver Angus Farm and Morris Angus Farm on MA Rising Star.
Reserve Late Junior Champion: Premier Angus, E&W Cattle Co., Riverside Farms and Wrightson Stock Stud on Director.
Early Junior Champion: Genetics Unlimited and Stewart and Sons on Genetics Proton.
Reserve Early Junior Champion: Premier Beef Cattle and Haines Angus Farm on Premier Regent.
Senior Champion: Premier Angus, Brost Angus Farm, B&L Ranch and Wrightson Stock Stud on Brost Power Drive.
Reserve Senior Champion: Haas Angus and R&J Ranch on Wrangler.
Grand Champion: Premier Angus, Brost Angus Farm, B&L Ranch and Wrightson Stock Stud on Brost Power Drive.
Reserve Grand Champion: Haas Angus and R&J Ranch on Wrangler.

FEMALES

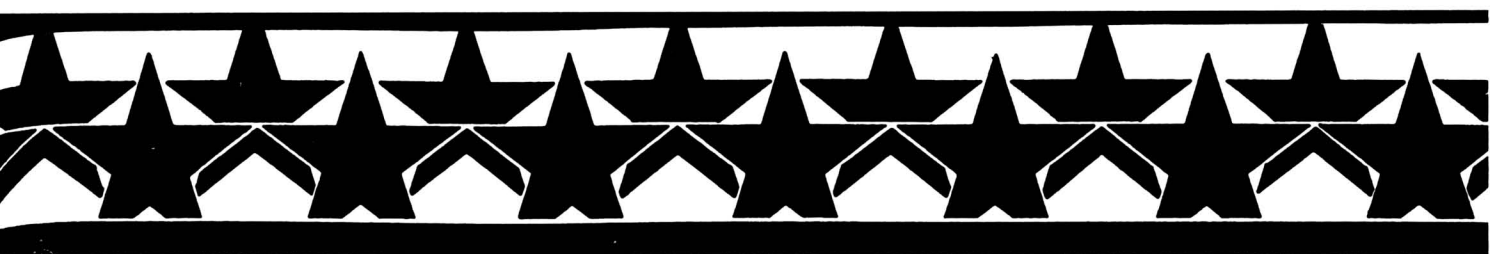
Junior Calf Champion: Fairfield Farms and Barbara Hoxie on Fairfield Jestress F15.
Reserve Junior Calf Champion: Greg Krueger and Family, LaVern Krueger and Family and Warren Angus on Kruegers Blackbird Madonna.
Senior Calf Champion: R&J Ranch and Dixon and Cook on R&J Janette 2324.
Reserve Senior Calf Champion: R&J Ranch on R&J Suzette 2394.
Intermediate Champion: R&J Ranch and Cobble Pond Farm on R&J June 1694.
Reserve Intermediate Champion: Susan Moxley and Huntingdon Farm on HF Duchess 451.
Late Junior Champion: R&J Ranch and Premier Angus on R&J Alexis 464.
Reserve Late Junior Champion: Springfield Farm on Premier Sahara 047H.
Early Junior Champion: Premier Beef Cattle, Goshen Farm and Gallagher's Farm Inc. on Manhattan Gals Pearl.
Reserve Early Junior Champion: Ryan Cotton on Premier Venus.
Grand Champion: R&J Ranch and Cobble Pond Farm on R&J June 1694.
Reserve Grand Champion: Susan Moxley and Huntingdon Farm on HF Duchess 451.

COWS

Champion Cow with Natural Calf: TC Ranch and Northcote Farm on TC Peggy Lee 3001 and Northcote Miss Peggy Lee.
Reserve Champion Cow with Natural Calf and Reserve Champion Best Udder: TC Ranch, Ty Uden, and Northcote Farm on TC Peggy Sue 2135 and her Prairie Pride Slick heifer calf.
Champion Cow with Embryo Calf: R&J Ranch and Strouds Creek Ranch on R&J Miss Esso 1842 and her QLC Winchester bull calf.
Reserve Champion Cow with Embryo Calf and Champion Best Udder: Greg Krueger and Family, LaVern Krueger and Family, and Warren Angus on Parkers Miss Blackbird 503 and her Kruegers Foolish Pride heifer calf.

GROUPS

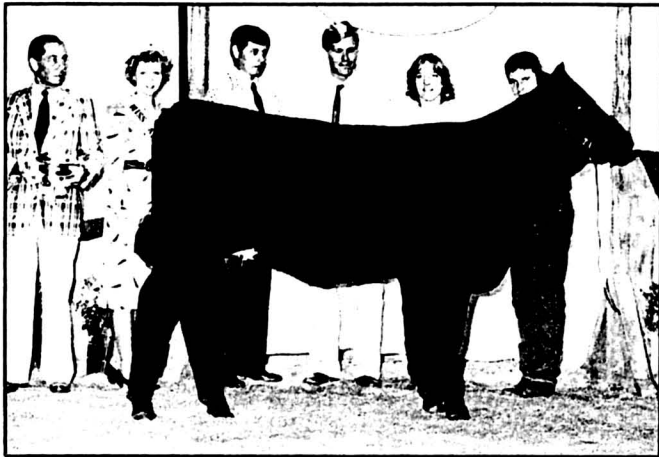
Get-of-Sire: Pine Drive Big Sky progeny, exhibited by Premier Angus, Pine Tar Associates, Brost Angus Farm, Weaver Angus, Morris Angus Farm and R&J Ranch.
Junior Get-of-Sire: Greenbrae Chairman progeny, exhibited by Premier Angus, Genetics Unlimited, Riverside Farms, E&W Cattle Co. and Wrightson Stock Stud.
Calf Get-of-Sire: Premier Independence KN progeny, exhibited by Ascent Angus.



RESERVE GRAND CHAMPION BULL

Wrangler

The 7-20-83 son of Progression is owned and exhibited by Haas Angus and R&J Ranch. Selected reserve senior champion, he measured 61 inches at the hip and weighed 2,030 lb.



RESERVE GRAND CHAMPION HEIFER

HF Duchess 451

The 5-4-84 daughter of QLC Winchester was exhibited by Susan Moxley and Huntingdon Farm. She stood 55 1/4 inches at the hip and also earned reserve intermediate champion honors.

tion of embryos and the Auxiliary scholarship heifer highlighted Monday afternoon's events.

FEMALES

Class 1—calved 3-11-85 to 3-20-85 (3 shown): 1, Northcote Miss Peggy Lee, by Premier Independence KN, exhibited by Northcote Angus Farm, Forest, Va. 2, Ascent Camilla Anne 15E, by Premier Independence KN, exhibited by Ascent Angus, Oakland, Ill.

Class 2—calved 2-27-85 to 3-9-85 (4 shown): 1, Ascent Camilla Anne 15D, by Premier Independence KN, exhibited by Ascent Angus. 2, Pearces Prim Lassie 537, by Pine Drive Big Sky, exhibited by Stacy L. Pearce, Clay City, Ill.



R&J Ranch exhibited the best six head to win the Premier Breeder award.



R&J Ranch won the produce of dam award with the offspring of R&J Miss Esso 1842.



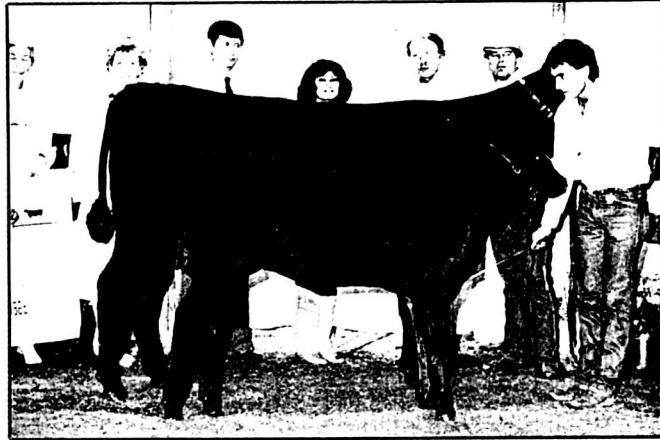
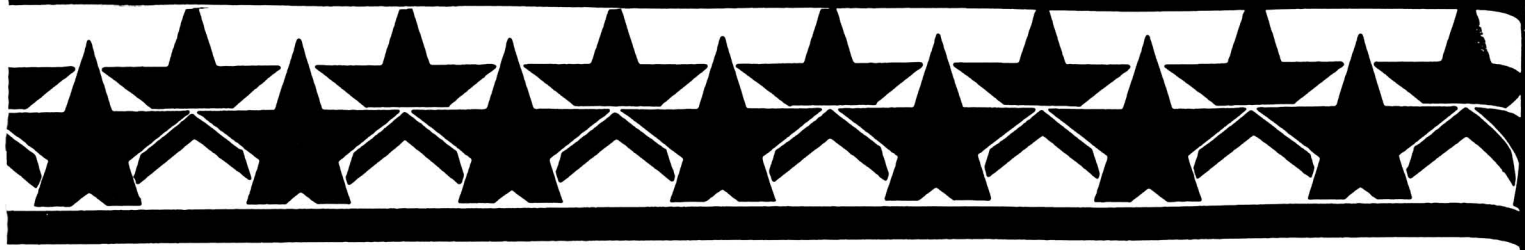
Premier Independence KN progeny topped the calf get-of-sire class for the second year running for Ascent Angus.



Pine Drive Big Sky progeny won the get-of-sire division.

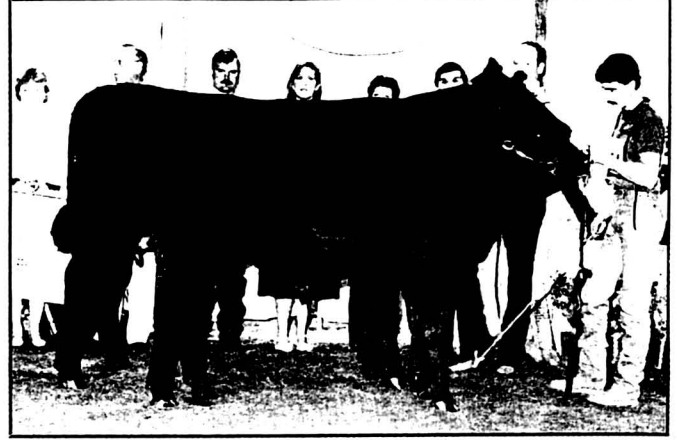


R&J Ranch claimed the McCorkle Challenge Trophy for best pair.



CHAMPION COW WITH NATURAL CALF

*TC Peggy Lee 3001 and Northcote Miss Peggy Lee
The 1-17-83 Dr Spock daughter and her 3-20-85 daughter of Premier
Independence KN were exhibited by TC Ranch and Northcote Farm.*



CHAMPION COW WITH EMBRYO CALF

*R&J Miss Esso 1842 and her QLC Winchester bull calf
The 6-5-82 Perryville Esso Extra 17M daughter and her 9-13-84 son
of QLC Winchester were exhibited by R&J Ranch and Strouds Creek
Ranch.*

Class 3—calved 1-20-85 to 1-30-85 (3 shown): **1, Miss New Yorker**, by Cobble Pond New Yorker, exhibited by Circle G Angus Farm, Hampton, Ga. **2, KW Coral Pride 501**, by QLC Target, exhibited by Kelly Wagoner, Paris, Ky.

Class 4—calved 1-8-85 to 1-16-85 (3 shown): **1, Fairfield Jestress F15**, by Pine Drive Big Sky, exhibited by Fairfield Farms, Lakeville, Conn., and Barbara Hoxie, Millbrook, N.Y. **2, TOF Princess Jessemere**, by Premier Celebration, exhibited by Twin Oak Farms, Quarryville, Pa.

Class 5—calved 1-1-85 to 1-5-85 (4 shown): **1, Kruegers Blackbird Madonna**, by Kruegers Foolish Pride, exhibited by Greg Krueger & Family, Coatesville, Pa.; LaVern Krueger & Family, LaCrosse, Ind.; and Warren Angus Furlong, Pa. **2, Lady Charmaine IA 1185 SQ**, by Greenbrae Chairman, exhibited by Price Irving, Greenfield, Ind.

Class 6—calved 11-5-84 to 12-10-84 (5 shown): **1, Garney Blackcap Rose**, by Pine Drive Big Sky, exhibited by Garney Cattle Co., Afton, Okla. **2, Melco Leading Lady**, by Premier Celebration, exhibited by Melco Cattle Co., Lancaster, S.C.

Class 7—calved 10-1-84 to 10-15-84 (3 shown): **1, Queen of Shady Brook 145S**, by Perryville Esso Extra 17M, exhibited by Shady Brook Farm, Leoma, Tenn., and Rattle & Snap Farms, Columbia, Tenn. **2, Rally ET Erica 5324**, by Prince of Wildwood 1075, exhibited by Rally Farms, Millbrook, N.Y., and Ballantrae Farm, Westfield, N.Y.

Class 8—calved 9-13-84 to 9-23-84 (4 shown): **1, R&J Suzette 2394**, by R&J Austin 13, exhibited by R&J Ranch, Briggs, Texas. **2, Blossom First Lady of RCA**, by Perryville Esso Extra 17M, exhibited by Huckfeldt-Krebs, Gordon, Neb., and Rocking Chair Angus, Rapid City, S.D.

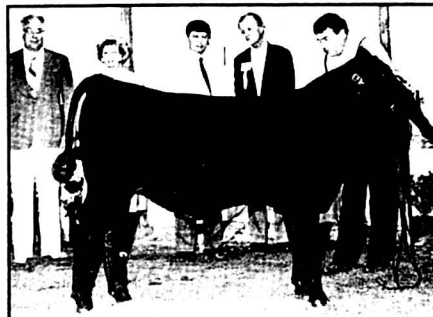
Class 9—calved 9-3-84 to 9-11-84 (4 shown): **1, R&J Janette 2324**, by R&J Austin 13, exhibited by R&J Ranch and Dixon and Cook, Birmingham, Ala. **2, Destination Chair Lady 259**, by Greenbrae Chairman, exhibited by Destination Angus, Andrews, Ind.

Class 10—calved 7-14-84 to 8-5-84 (4 shown): **1, Springfield Peggy Jo**, by Dr Spock, exhibited by Springfield Angus, Louisburg.

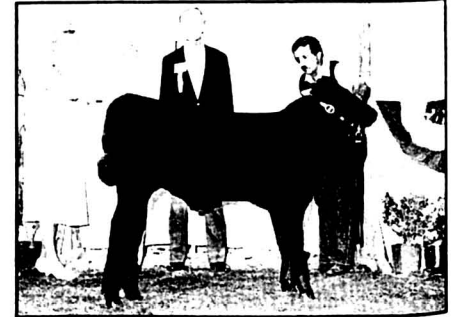
N.C. 2, Strouds Crk Ms Emmy Lou 1804, by Premier Celebration, exhibited by Strouds Creek Ranch, Tolar, Texas, and Rolling Oaks Ranch, Burkett, Texas.

Class 11—calved 7-3-84 to 7-8-84 (5 shown): **1, Primrose Charm 7584**, by Greenbrae Chairman, exhibited by Riverside Farms, Hamilton, Texas; I&N Angus, Greenfield, Ind.; and Genetics Unlimited, West Grove, Pa. **2, R&J Blackcap 1914**, by QLC Winchester, exhibited by R&J Ranch.

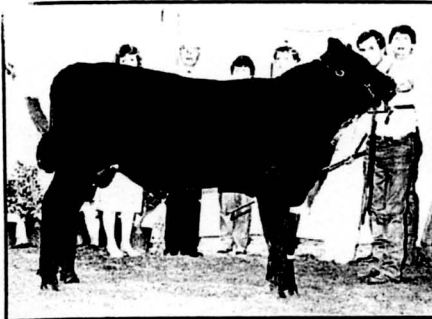
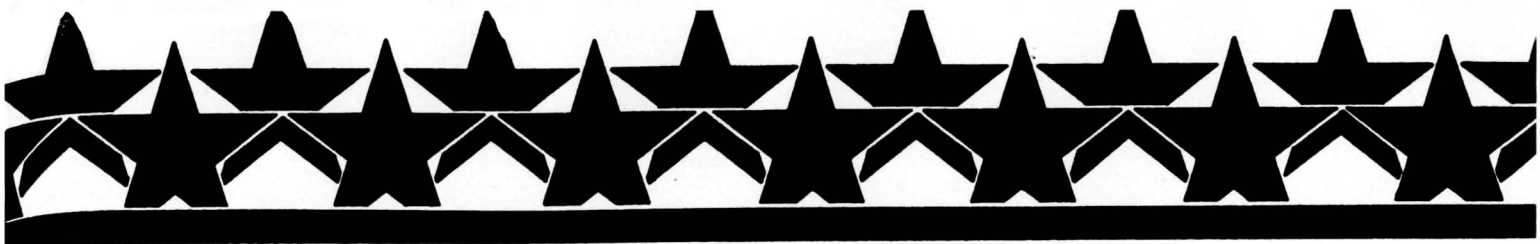
Class 12—calved 6-1-84 to 6-20-84 (6 shown): **1, R&J June 1694**, by R&J Austin 13, exhibited by R&J Ranch and Cobble Pond Farm, Sharon, Conn. **2, E&W Dolly**, by Greenbrae Chairman, exhibited by Premier Angus.



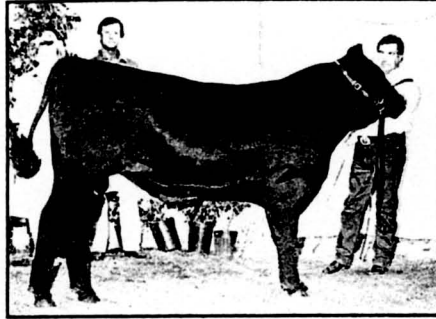
*Junior calf champion **Garney Bolero**, a son of Gunston Hombre exhibited by Garney Cattle Co.*



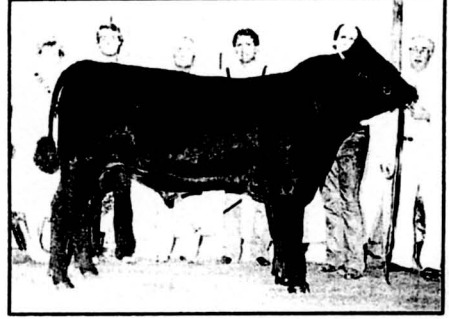
*Reserve junior calf champion **Kruegers Saint Pride**, a son of Kruegers Foolish Pride exhibited by Greg Krueger and Family, and George Parker.*



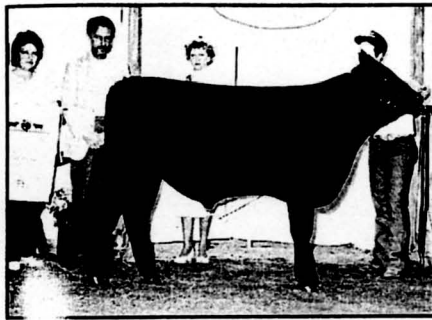
Senior calf champion **ROR Royalty 108T**, a son of Pine Drive Big Sky exhibited by Rolling Oaks Ranch and Meng Farms Inc.



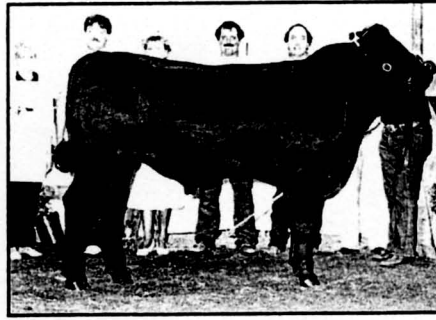
Intermediate champion **Premier Thor**, a son of Greenbrae Chairman exhibited by Premier Angus.



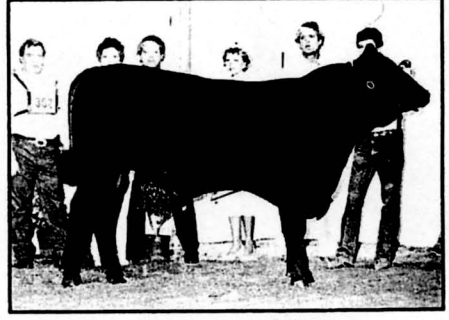
Late junior champion **MA Rising Star**, a son of Pine Drive Big Sky exhibited by Weaver Angus Farm and Morris Angus Farm.



Reserve senior calf champion **Premier Firecracker**, a son of Premier Celebration exhibited by Premier Angus.



Reserve intermediate champion **Genetics Yukon Jack**, a son of Premier Independence KN exhibited by Genetics Unlimited Inc. and Indy Genetics Inc.



Reserve late junior champion **Director**, a son of Greenbrae Chairman exhibited by Premier Angus, E&W Cattle Co., Riverside Farms and Wrightson Stock Stud.

Cloverdale, Ind.; B&L Properties, Shawnee, Okla.; and Stacia Ellis, Greentown, Ind.

Class 13—calved 5-5-84 to 5-21-84 (5 shown): 1, **R&J Ginger 1494**, by R&J Austin 13, exhibited by R&J Ranch. 2, **K&K Classy Lady**, by QLC Winchester, exhibited by Huckfeldt-Krebs, Gordon, Neb., and K&K Angus, Kearney, Neb.

Class 14—calved 5-2-84 to 5-4-84 (6 shown): 1, **HF Duchess 451**, by QLC Winchester, exhibited by Susan D. Moxley, W. Friendship, Md. 2, **Shady Brook Monique**, by Premier Independence KN, exhibited by Shady Brook Farm and Circle G Angus Farm.

Class 15—calved 4-6-84 to 4-24-84 (6 shown): 1, **PV Phantasia**, by Pine Drive Big Sky, exhibited by Rolling Oaks Ranch, and Pat Verbout, LeGrand, Ore. 2, **HA Fantasia 2284**, by Dr Spock, exhibited by Hartley Angus, Chalk Mountain, Texas.

Class 16—calved 4-1-84 to 4-3-84 (5 shown): 1, **R&J Elisa 854**, by Pine Drive Big Sky, exhibited by R&J Ranch and Premier Angus. 2, **MSU Miss Educator 8439**, by Skanship Educator, exhibited by Michigan State University, East Lansing, Mich.

Class 17—calved 3-15-84 to 3-25-84 (4 shown): 1, **Summitcrest Fair Lea S211**, by QLC Winchester, exhibited by Moxley. 2, **HA Eborea 1384**, by Fairfield Hi Guy, exhibited by Hartley Angus and Jinks Garrett.

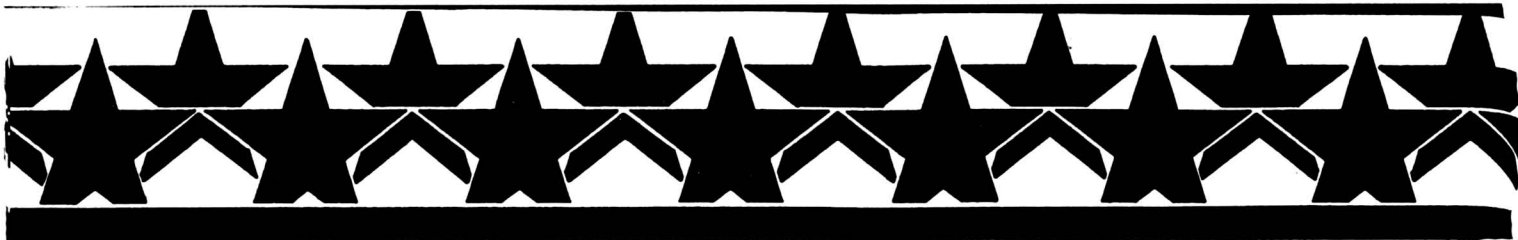
Class 18—calved 3-1-84 to 3-5-84 (5 shown): 1, **R&J Alexis 464**, by Pine Drive Big Sky, exhibited by R&J Ranch and Premier An-

gus. 2, **Premier Sahara 047H**, by Dr Spock, exhibited by Springfield Angus Farm, Garner, N.C.



PREMIER SIRE

Pine Drive Big Sky won the premier sire award for the second consecutive year. Presenting the award is Mrs. Bob Kropp (left), Stillwater, Okla., to Pine Drive owners and representatives (from left), Mr. and Mrs. Leroy Billman, Bill Wilson, Tim Russell, Roy Wallace, and show judge Dr. Bob Kropp.



OUTSTANDING HERDSMAN

Melvin Porter (center), Jefferson, Ga., won the outstanding herdsman's award at the 38th Futurity. Presenting the Robert L. Asher memorial traveling trophy is Ed Horton (right), Madison, Ala. Assisting in the presentation are Dr. and Mrs. James Asher (left), parents of the late Robert Asher in whose honor the award is named.

Class 19—calved 2-5-84 to 2-28-84 (4 shown): 1, Premier Miss Regal 5045Z, by Pine Drive Big Sky, exhibited by Premier Angus and Riverside Farms, Hamilton, Texas. 2,

EAF Nanette, by Fairfield Hi Guy, exhibited by Pearce.

Class 20—calved 2-1-84 to 2-4-84 (3 shown): 1, Manhattan Gals Pearl, by Pine

Drive Big Sky, exhibited by Premier Beef Cattle, Howell, Mich.; Goshen Farm, Paris, Ky.; and Gallagher's Farm Inc., Ghent, N.Y. 2, Mengs Miss Skymere 20S, by Pine Drive Big Sky, exhibited by Greg Jenkins, Rineyville, Ky.

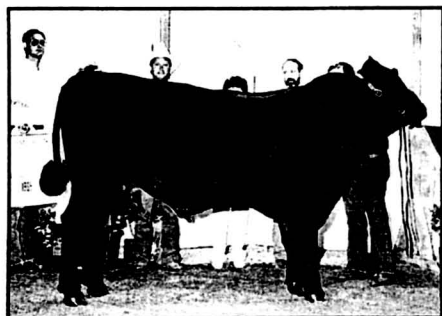
Class 21—calved 1-3-84 to 1-5-84 (3 shown): 1, Premier Venus, by Premier Independence KN, exhibited by Ryan Cotton, Howell, Mich. 2, Fairfield Euthalla 401, by Progression, exhibited by Fairfield Farms.

COWS WITH NATURAL CALVES

Class 1—calved 1-17-83 to 1-30-83 (2 shown): 1, TC Peggy Lee 3001, by Dr Spock, and her heifer calf by Premier Independence KN, exhibited by TC Ranch, Franklin, Neb., and Northcote. 2, Gore Miss Tennessee TCT, by Fairfield Hi Guy, and her bull calf by Lovana, exhibited by Gore Farm.

Class 2—calved 1-1-82 to 10-5-82 (2 shown): 1, TC Peggy Sue 2135, by Dr Spock, and her heifer calf by Prairie Pride Slick, exhibited by TC Ranch; Ty Uden, Franklin, Neb.; and Northcote. 2, Ascent Camilla Anne 1B, by Premier Ascent, and her bull calf by Ken Caryl Overdrive, exhibited by Ascent Angus.

Class 3—calved 4-26-81 (1 shown): 1, Thomas Miss Lucy 2491, by Thomas Chaps, and her heifer calf by High Voltage, exhibited by Select Angus, Versailles, Ky.



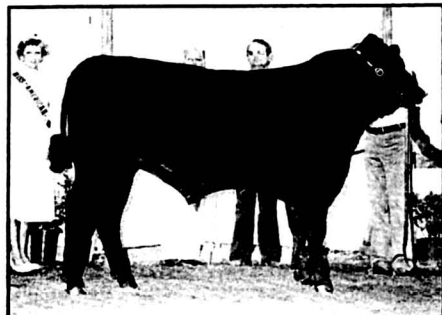
Early junior champion **Genetics Proton**, a son of Progression exhibited by Genetics Unlimited, and Stewart and Sons.



Junior calf champion **Fairfield Jestress F15**, a daughter of Pine Drive Big Sky exhibited by Fairfield Farms and Barbara Hoxie.



Senior calf champion **R&J Janette 2324**, a daughter of R&J Austin 13 exhibited by R&J Ranch, and Dixon and Cook.



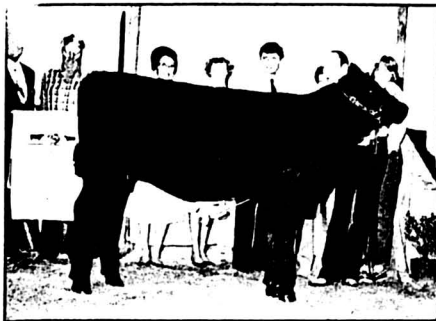
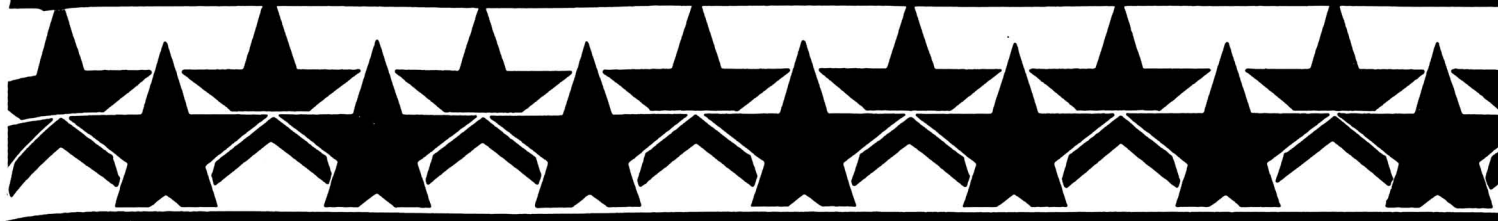
Reserve early junior champion **Premier Regent**, a son of Fairfield Hi Guy exhibited by Premier Beef Cattle and Haines Angus Farm.



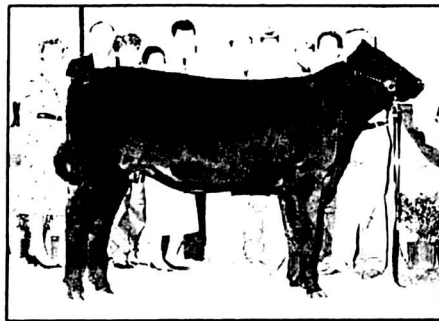
Reserve junior calf champion **Kruegers Blackbird Madonna**, a daughter of Kruegers Foolish Pride exhibited by Greg Krueger and Family, LaVern Krueger and Family, and Warren Angus.



Reserve senior calf champion **R&J Suzette 2394**, a daughter of R&J Austin 13 exhibited by R&J Ranch.



Early junior champion **R&J Alexis 464**, a daughter of Pine Drive Big Sky exhibited by R&J Ranch and Premier Angus.



Early junior champion **Manhattan Gals Pearl**, a daughter of Pine Drive Big Sky exhibited by Premier Beef Cattle, Goshen Farm and Gallagher's Farm Inc.



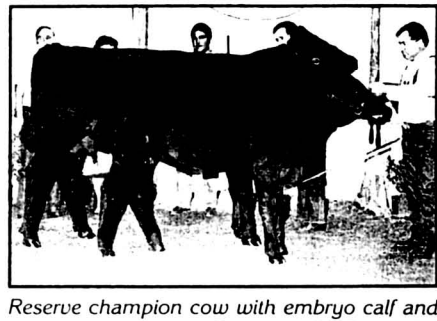
Reserve champion cow with natural calf, **TC Peggy Sue 2135** and her 5-3-85 heifer calf by Prairie Pride Slick, exhibited by TC Ranch, Ty Uden and Northcote Angus Farm.



Reserve late junior champion **Premier Sahara 047H**, a daughter of Dr Spock exhibited by Springfield Angus Farm.



Reserve early junior champion **Premier Venus**, a daughter of Premier Independence KN exhibited by Ryan Cotton.



Reserve champion cow with embryo calf and champion best udder, **Parkers Miss Blackbird 503** and her heifer calf by Kruegers Foolish Pride, exhibited by Greg and LaVern Krueger and Warren Angus.

COWS WITH EMBRYO CALVES

Class 1—calved 1-15-83 to 7-19-83 (3 shown): 1, **Parkers Miss Blackbird 503**, by Pine Drive Big Sky, and her heifer calf by Kruegers Foolish Pride, exhibited by Greg Krueger and Family; LaVern Krueger and Family; and Warren Angus. 2, **HAF Miss Magic 13**, by Ken Caryl Mr Angus 8017, and her bull calf by ZAF Administrator 131, exhibited by Ascent Angus and Mark Hill, Rockford, Ill.

Class 2—calved 6-5-82 (1 shown): 1, **R&J Miss Esso 1842**, by Perryville Esso Extra 17M, and her bull calf by QLC Winchester, exhibited by R&J Ranch and Strouds Creek Ranch.

Class 3—calved 5-2-80 to 11-2-80 (2 shown): 1, **Fleetwood Blackcap 1880**, by Ken Caryl Mr Angus 8017, and her bull calf by Pine Drive Big Sky, exhibited by Rolling Oaks Ranch. 2, **Oakland Barbara 1310**, by Early Sunset Emulous 60E, and her heifer calf by Fairfield Hi Guy, exhibited by John Pryor, Versailles, Ky.

BULLS

Class 1—calved 2-27-85 to 3-17-85 (3 shown): 1, **Kruegers Saint Pride**, by Kruegers Foolish Pride, exhibited by Greg Krueger and Family and George Parker, Boyds, Md. 2, **Ascent Northern Dancer 15B**, by Premier Independence KN, exhibited by Ascent Angus.



HEIFER BENEFITS SCHOLARSHIP FUND

The sale of Premier Enchantress 5214Z at the 38th Futurity added \$3,200 to the scholarship fund of the American Angus Auxiliary. The heifer was donated to the Auxiliary by Premier Angus and was purchased by New Horizon Farm, Stuyvesant, N.Y., and Northcote Angus Farm, Forest, Va.

Class 2—calved 2-9-85 to 2-12-85 (3 shown): **1, ROR Classic 30V**, by Greenbrae Chairman, exhibited by Rolling Oaks Ranch. **2, Gore Dyno**, by Lovana, exhibited by Gore Farm, Carthage, Tenn.

Class 3—calved 1-3-85 to 1-17-85 (5 shown): **1, Garney Bolero**, by Gunston Hombre, exhibited by Garney Cattle Co. **2, ROR Discovery 03V**, by Gunston Hombre, exhibited by Rolling Oaks Ranch.

Class 4—calved 11-13-84 to 12-3-84 (2 shown): **1, Retherfords Big Iron**, by QLC Winchester, exhibited by Dean M. Retherford, Indianapolis, Ind. **2, Honey Haven Chief Executive**, by Fairfield Hi Guy, exhibited by Honey Haven Farms, Shelby, N.C.

Class 5—calved 9-21-84 to 10-6-84 (4 shown): **1, ROR Royalty 108T**, by Pine Drive Big Sky, exhibited by Rolling Oaks Ranch and Meng Farm Inc., Bowling Green, Ky. **2, Premier Firecracker**, by Premier Celebration, exhibited by Premier Angus.

Class 6—calved 9-2-84 to 9-17-84 (4 shown): **1, HF Trendsetter**, by Premier Celebration, exhibited by Huntingdon Farm, Alexandria, Pa.; Bill Fletcher, Pine Plains, N.Y.; Safico, Buenos Aires, Argentina. **2, HK Immortal RF**, by Premier Celebration, exhibited by Huckfeldt-Krebs and Riverside Farms.

Class 7—calved 7-2-84 to 7-21-84 (4 shown): **1, Premier Governor**, by Greenbrae Chairman, exhibited by Premier Angus. **2, Hi Tech**, by Pine Drive Big Sky, exhibited by Weaver Angus Farm, Peoria, Ill., and Hi Tech Investments, Stockport, Iowa.

Class 8—calved 6-5-84 to 6-18-84 (3 shown): **1, Genetics Yukon Jack**, by Premier

Independence KN, exhibited by Genetics Unlimited Inc., and Indy Genetics Inc., Greenfield, Ind. **2, Waldeck Shocker**, by High Voltage, exhibited by Waldeck, Crestwood, Ky.; Weining's Angus Farm, Shelbyville, Ky.; Hurricane Hill, Nicholasville, Ky.; Gallagher's Farm Inc.; Riverside Farms; and New Horizon Farm, Stuyvesant, N.Y.

Class 9—calved 5-3-84 to 5-30-84 (4 shown): **1, Premier Thor**, by Greenbrae Chairman, exhibited by Premier Angus. **2, McFarlands Spectacular**, by Fairfield Hi Guy, exhibited by McFarland's Angus, Lewisville, Ind.

Class 10—calved 3-28-84 to 4-19-84 (4 shown): **1, HF Mainstream**, by QLC Winchester, exhibited by Huntington Farm; Summitcrest Farm, Summitville, Ohio; and Radar Farm, Bridgewater, Conn. **2, EAF Blacksmith**, by E&W Bravo, exhibited by Premier Angus; Engelbrecht Angus Farm, Henry, Ill.; and Adair Angus, Adair, Ill.

Class 11—calved 3-1-84 to 3-4-84 (4 shown): **1, MA Rising Star**, by Pine Drive Big Sky, exhibited by Weaver Angus Farm and Morris Angus, Champaign, Ill. **2, Director**, by Greenbrae Chairman, exhibited by Premier Angus; E&W Cattle Co., Greentown, Ind.; Riverside Farms; and Wrightson Stock Stud, Palmerston North, New Zealand.

Class 12—calved 2-10-84 to 2-26-84 (2 shown): **1, Premier Regent**, by Fairfield Hi Guy, exhibited by Premier Beef Cattle and Haines Angus Farm, Park City, Ky. **2, Recovery HK**, by QLC Winchester, exhibited by Huckfeldt-Krebs.

Class 13—calved 1-3-84 to 1-17-84 (3

shown): **1, Genetics Proton**, by Progression, exhibited by Genetics Unlimited and Stewart and Sons, Greensburg, Ind. **2, Prince of Shiloh**, by Fairfield Hi Guy, exhibited by Shiloh Farms, Loganville, Ga.

Class 14—calved 10-1-83 to 10-22-83 (4 shown): **1, R&J Third Dimension 2343**, by Fairfield Hi Guy, exhibited by R&J Ranch; Jack Thorpe, Selby, La.; and L.G. Morris, Selby, La. **2, Premier Prelude**, by Premier Independence KN, exhibited by Premier Beef Cattle and K&D Farms, Ada, Mich.

Class 15—calved 7-20-83 (1 shown): **1, Wrangler**, by Progression, exhibited by Richard Haas, LeRoy, Ill., and R&J Ranch.

Class 16—calved 5-20-83 to 5-30-83 (3 shown): **1, JK Pine Tar**, by Pine Drive Big Sky, exhibited by Premier Angus; Pine Tar Associates, Lockney, Texas; and Jerry D. Williams, Lockney, Texas. **2, R&J Bullet 1783**, by R&J Austin 13, exhibited by Paul Dick, Monticello, Ky.; Meng Farms Inc.; and Shady Brook Farm.

Class 17—calved 5-1-83 to 5-6-83 (2 shown): **1, Waldeck Captain**, by Pine Drive Big Sky, exhibited by Waldeck Farm, Crestwood, Ky. **2, TM Fool Proof 3X1**, by Kruegers Foolish Pride, exhibited by Huckfeldt-Krebs; Twin Mills, Ansley, Neb.; and S/2 Angus, Pt. Reyes, Calif.

Class 18—calved 1-4-83 to 1-20-83 (2 shown): **1, Brost Power Drive**, by Pine Drive Big Sky, exhibited by Premier Angus; Brost Angus Farm, Oxford, Ind.; B&L Properties; and Wrightson Stock Stud. **2, Prince of Wildwood 1075**, by Rosebank 69, exhibited by Rally Farms; Two Bills Farm, Abbeyville, S.C.; and Wildwood Acres, Rome, Ga.

Bill Wilson of Premier Angus, Cloverdale, Ind., was named manager of the year by the Futurity committee. Presenting the award is Bill Conley, president of the American Angus Assn.



R&J Ranch received the premier exhibitor award at the 38th Futurity. Presenting the banner to ranch owners Mr. and Mrs. Ray Plumb (center), and ranch manager Ken Conway (right), are Mr. and Mrs. Jerry Helgren (left), of Grayslake, Ill.

Embryo Auction Averages \$11,705

The annual embryo auction at the Futurity has become quite a spectacular event and sets the mood for the fall sales to follow. Realizing a total of \$111,200 on 9½ lots, the featured matings were each one-of-a-kind.

An embryo out of Gunston Senorita, sired by Harrison and consigned by Cobble Pond Farm, Sharon, Conn., was the result of much-heated bidding and David McMahon won as Belle Point Ranch, Lavaca, Ark., paid the top price of \$20,000. Equally exciting was a Windac Tiara-Cobble Pond New Yorker embryo, consigned by B&L Ranch, Shawnee, Okla. Northcote Angus Farm, Forest, Va., obtained half interest at \$15,000.

An embryo out of the newly-crowned grand champion cow-calf pair cow TC Peggy Lee 3001, and sired by New Yorker commanded first-class attention. R&J Ranch, Briggs, Texas, put down \$12,000 for this lot consigned by Northcote.

A mating of R&J Miss Esso 1842 (champion cow with embryo calf) and the reserve grand champion bull Wrangler, a consignment of R&J, was purchased for \$11,000 by Circle G Ranch, Hampton, Ga. Also at \$11,000 was an embryo out of Brost Elba 916 (dam of supreme champion Brost Power Drive) and sired by Ken Caryl Overdrive 304H, went to Riverside Farms, Hamilton, Texas. Consignors were Brost Angus Farm, Oxford, Ind., and Premier Angus, Cloverdale, Ind.