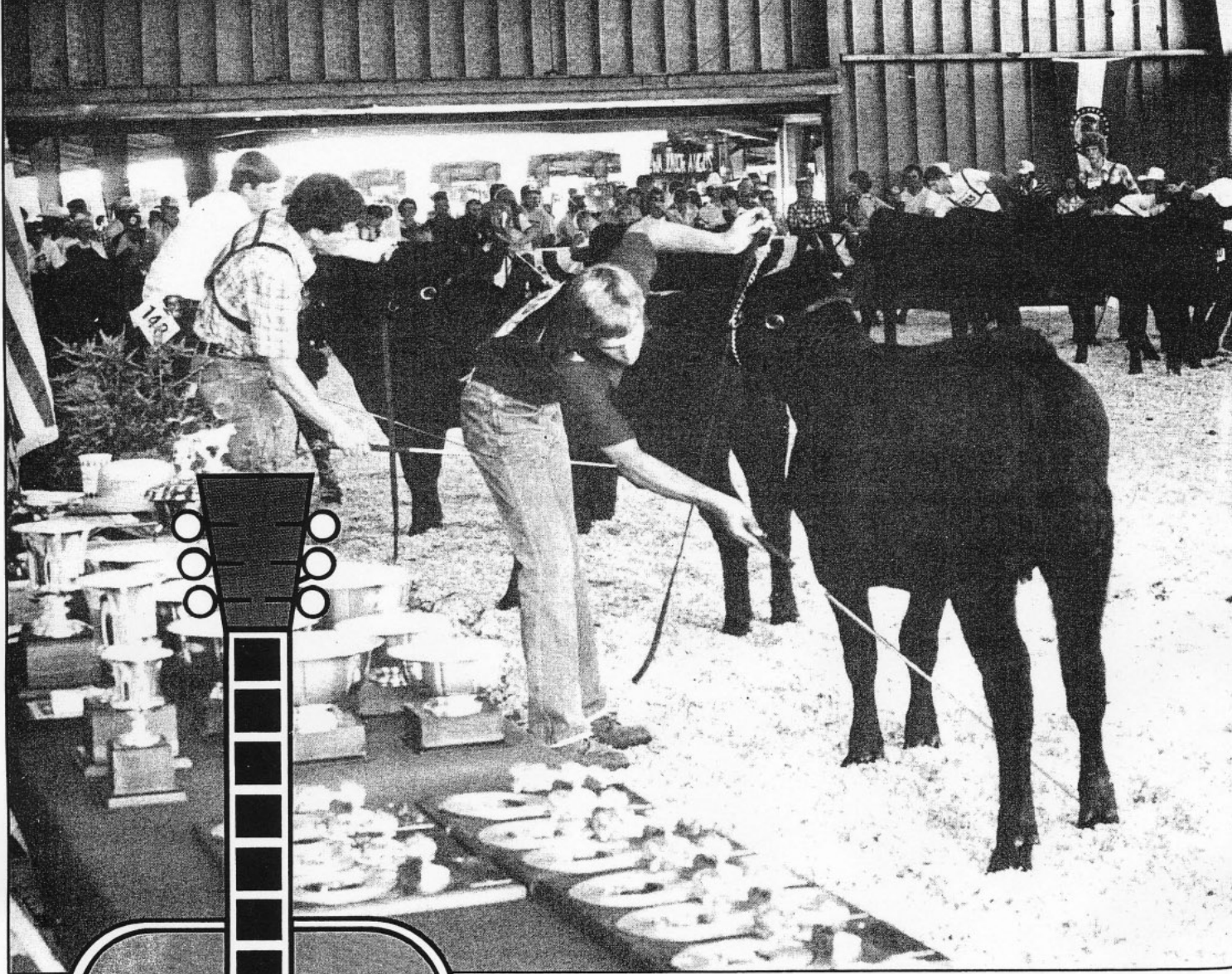


TENNESSEE 13TH NATIONAL JR. ANGUS HEIFER SHOW



A record-breaking 604 head in this year's National Junior Angus Heifer Show made it the largest Angus show ever held in this country. One thing is certain, exhibitors from 29 states all the way from California to New York had their sights set on Nashville July 9-10. So far as numbers go, Tennessee had the largest number of entries with 94 head. Illinois was second in line with 61 head, Indiana had 52 heifers, Missouri 37 and Kentucky 31. But no matter how far these youngsters traveled, no matter where they placed or even whether they showed—each one attending the 13th National Junior Angus Heifer Show was a winner.

The Biggest Ever-604

The 13th Annual National Junior Angus Heifer Show



Not only was this year's event with its 604 head the biggest Angus show ever, it very possibly could have been the largest show ever held by any beef breed anywhere.

And for the first time in the show's 13-year history, the bred-and-owned division champion stepped up to claim the over-all grand championship. It wasn't the first time this particular heifer, Ricks Juanadabury 3000, had made that sort of history, though. She had done the same thing in the junior show during last spring's Western National Angus Futurity in Reno. The popular March yearling by Sayre Patriot was bred, raised and shown by Rick Blanchard, 18-year-old son of Darrell and Carol Silveira, Mendota, Calif., who also represented his state in the National Showmanship Contest and had the distinction of traveling 2,000 miles to pick up his trophies.

Judge Bill Jacobs, San Luis Obispo, Calif., who worked the 40 classes in two days, went to owned division champion KAF Miss Wampum 037-643 (a Sir Wms Wampum daughter) for reserve grand. At her halter was Dennis Knop, Ida Grove, Iowa, who only two weeks earlier had led a paternal half sister to grand championship

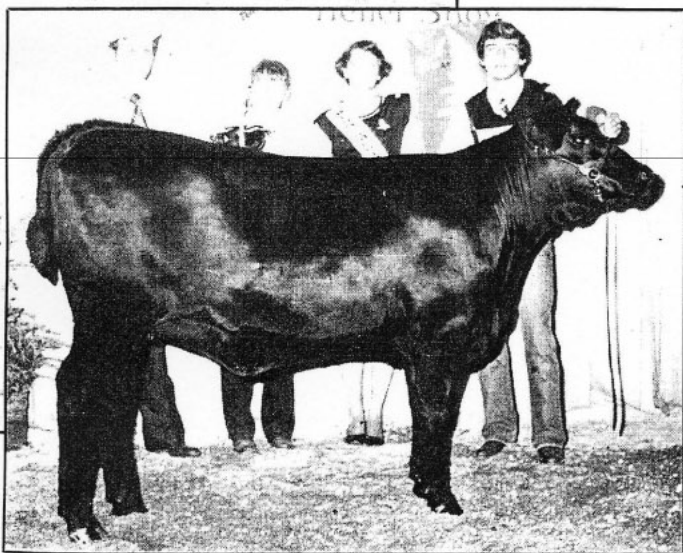
in the 171-head Great Plains Regional Junior Angus Heifer Show.

Stacia Ellis, Greentown, Ind., who led out the reserve champion bred-and-owned heifer, was named the show's outstanding girl participant by the American Angus Auxiliary and received that group's annual silver pitcher award. Her heifer, Stewarts Miss Emulous 650M, is a daughter of LEMAR Eileenmere Lad 549.

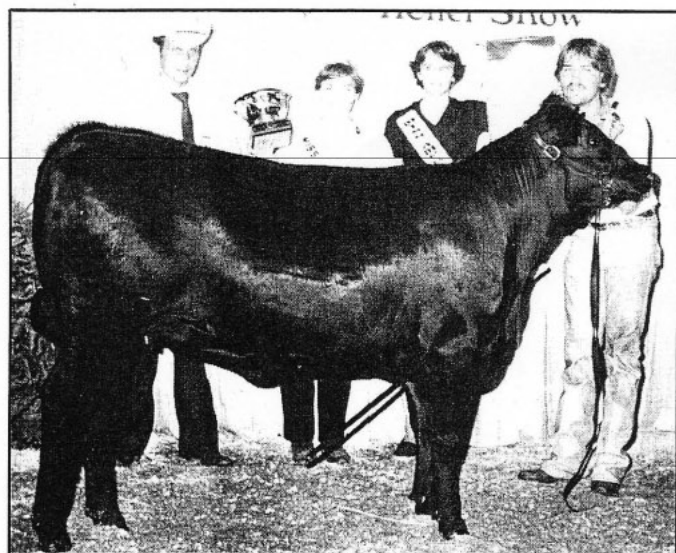
Owned division championship went to an Illinois entry, Power Lady 033, a PS Power Play daughter exhibited by Kevin Reeser, LeRoy, Ill.

Cattle weren't the only order of business. As might be expected, there was interest in the Nashville sound—so much so, in fact, that 10 busloads of show participants went to Opryland on Wednesday and more than 400 took in the Grand Ole Opry Friday night.

The Tennessee juniors worked long and hard to make their show a success; their money-raising efforts enabled them to sponsor a dance, refreshments and the trip to Opryland. And it was courtesy of this hard-working group that each exhibitor left with his or her own plaque and pin and stall card—mementos of the 13th annual National Junior Heifer Show.



Bred-and-owned division champion and grand champion overall Ricks Juanadabury 3000, 3-3-80 daughter of Sayre Patriot out of Ricks Juanadabury 2006. Exhibited by Rick Blanchard, Mendota, Calif.



Reserve grand overall and owned division champion KAF Miss Wampum 037-643, 3-5-80 daughter of Sir Wms Wampum out of KAF Miss Jelliner 643 100R. Exhibited by Dennis Knop, Ida Grove, Iowa.

BRED-AND-OWNED

Head

Class 1—calved 1-2-80 to 2-15-80 (14 shown):
1, Dana Latel Starr, Sunbright, on Star Dust Erica Latel 025, by Stone Gate Eileenmere 240. 2, Linda Kroeker, Hutchinson, Kan., on Black Gold Georgina K07, by LEMAR Eileenmere Lad 549. 3, Bruce Kroeker, Hutchinson, Kan., on Black Gold Sky Erica, by LEMAR Eileenmere Lad 549. 4, Wendell Berry Jr., Chico, Texas, on Berry Miss Bingo Princess 15. 5, Timothy Kinsley, York, Pa., on SBF Burgess Lady.

Class 2—calved 2-17-80 to 3-10-80 (16 shown):
1, Rick Blanchard on Ricks Juanadabury 3000, by Sayre Patriot. 2, Deborah Rishel, McCordsville, Ind., on Evelyn Marie 001 of RAF, by PS Power Play. 3, Kim Sydenstricker, Mexico, Mo., on SAF Wendy 0055, by Sir Wms Warrant. 4, Dennis Laughlin, Guil-

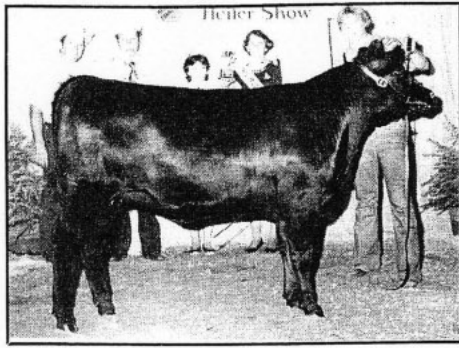
ford, Mo., on LA Chaps Marycrest. 5, Peggy Merrill, Pipestone, Minn., on CM Mothers Pride 08M.

Class 3—calved 3-18-80 to 4-4-80 (16 shown):
1, Ty Williams, Lockney, Texas, on JK Queen 815, by Sayre Patriot. 2, Karen Laffin, Olsburg, Kan., on Lady Mervin 0107, by Briarhill Yankee. 3, Shauna Coon, Bethel, Mo., on CAR Snickers, by CAR Majestic. 4, Peggy Merrill on CM Marshall Pride 054M. 5, Timothy Kinsley on SBF Emulous Lady 040.

Class 4—calved 4-6-80 to 4-26-80 (16 shown):
1, Stacia Ellis on Stewarts Miss Emulous 650M, by LEMAR Eileenmere Lad 549. 2, Alan McDonald, Huntsville, Ala., on MS Brucene Skyhigh B&H FRM, by LEMAR Eileenmere Lad 549. 3, Dawn Lee Bipert, Alden, N.Y., on BF Carolines Play Girl, by PS Power Play. 4, Mary Wagner, Harlan, Kan., on Susanna MCW. 5, Barbara Baylor, Hanna City, Ill., on Barbs Legg Legend.



Bred-and-owned reserve champion *Stewarts Miss Emulous 650M*, 4-10-80 daughter of *LEMAR Eileenmere Lad 549* out of *Miss Emulous 620J* of *Stewarts*. Exhibited by *Stacia Ellis, Greentown, Ind.*



Owned division reserve champion *Power Lady 033*, 6-6-80 daughter of *PS Power Play* out of *Miss 33* of *KR*. Exhibited by *Kevin Reeser, LeRoy, Ill.*



It was huge show—with 604 heifers quite possibly the biggest of its kind ever—and it went off without a hitch. At least part of the credit for that goes to American Angus Assn. regional manager Chuck Grove, whose territory includes Tennessee.

Class 5—calved 5-1-80 to 5-19-80 (12 shown): 1, Scott Lickteig, Lawrence, Kan., on *VL Lady Masterpiece 022*, by *Eileenmere Masterpiece JAO*. 2, Christy Dameron, Lexington, Ill., on *Dameron Lass 093*, by *Ken Caryl Mr. Angus 8017*. 3, Kevin Resser on *Power Lady 043*, by *PS Power Play*. 4, Lauren Novak, Newark, Ohio, on *Novak Fair Queen M101*. 5, Balynda Brewster, Marietta, Okla., on *Brewsters Elban Lass K7*.

Class 6—calved 5-24-80 to 6-27-80 (12 shown): 1, Balynda Brewster on *Brewsters Power Playmate K2*, by *PS Power Play*. 2, Jay Pfeiffer, Orlando, Okla., on *Lady's Pride 022* of *PAF*, by *Parish Emulous Pride 95*. 3, Shauna Coon on *CAR Miss Regal* by *CAR Majestic Hobo*. 4, Lane Edmunds, Clover, S.C., on *Edmunds Erica Lady 120*. 5, Russell Coon, Bethel, Mo., on *CAR Sweets*.

Class 7—calved 7-2-80 to 8-12-80 (16 shown): 1, Johnna Edmunds, Clover, S.C., on *E Blackbird Queen 160*, by *C&S Emulous King 36*. 2, Kent Stehno, Billings, Okla., on *KAS Miss Goldspur 0114*, by *Sayre Goldspur*. 3, Dean Schrock, Washburn, Ill., on *MS Colossal Blackcap S070*, by *Happyvale Stud*. 4, Todd Dawes, Urbana, Ind., on *DD Miss Evergreen 410*. 5, Thomas Molitor, Fayetteville, Ohio, on *Miss Emulous of 60E*.

Class 8—calved 9-2-80 to 9-25-80 (16 shown): 1, Katy Pat Dunn, Somerville, on *Day Dream Esthonia 190*, by *Monarch Alexander 20E*. 2, Thomas Molitor on *Miss Hopeful of Freestate*, by *Walbridge Main Event*. 3, Wendell Berry Jr., on *Berry Miss Queen*, by *Hales Emulous 386*. 4, Debra O'Neill, Logan, Iowa, on *Eastern Erica 06*. 5, Patricia Ruyle, Roodhouse, Ill., on *Queenston Georgina*.

Class 9—calved 10-2-80 to 11-3-80 (12 shown): 1, Todd Dawes on *DD Miss Karama 650*, by *Superstud*. 2, Jackie Pfeiffer, Orlando, Okla., on *Revolution Lady 060 PAF*, by *Sequoia Revolution 5180*. 3, J. Wesley Edmunds Jr., Clover, S.C., on *Edmunds Blackbird 230*, by *C&S Emulous King 36*. 4, Karen Pittman, Billings, Mo., on *PAF Aman Jet Maid*. 5, Ronald Hopkins, Auxvasse, Mo., on *Edgewood Missie 28*.

Class 10—calved 11-9-80 to 12-10-80 (12 shown): 1, Vic Grissom, Stillwater, Okla., on *Blackjacks Rose 1110*, by *Sayre Patriot*. 2, Randall Preuss, Monticello, Miss., on *River Road Pride RW 5080*, by *Byergos Black Revolution 36*. 3, Kent Englekens, Chadwick, Ill., on *Engelkens Miss Emulous 160*, by *Engelkens Emulous 38*. 4, Karen Meier, Jackson, Mo., on *MAF Miss Power 80*. 5, John Griswold, Livingston, Wis., on *JGG Miss Jingle Bell 082*.

Heifer Calf Champion: Todd Dawes on *DD Miss Karama 650*.

Reserve Heifer Calf Champion: Katy Dunn on *Day Dream Miss Esthonia 190*.

Intermediate Champion: Scott Lickteig on *VL Lady Masterpiece 022*.

Reserve Intermediate Champion: Christy Dameron on *Dameron Lass 093*.

Yearling Champion: Rick Blanchard on *Ricks Juanadabury 3000*.

Reserve Yearling Champion: Stacia Ellis on *Stewarts Miss Emulous 650M*.

Champion: Blanchard on *Ricks Juanadabury 3000*.

Reserve Champion: Ellis on *Stewarts Miss Emulous 650M*.

OWNED

Class 1—calved 1-1-80 to 1-9-80 (17 shown): 1, Julie McMahon, Ft. Smith, Ark., on *Withers Emulous Pride*, by *Ankonian Dynamo*. 2, Kelly Wagoner, Paris, Ky., on *Salems Pride 021*, by *Thomas Chaps*. 3, Janice Wheeler, Wynnewood, Okla., on *DF Blackbird Miss 0058*, by *Thomas Chaps*. 4, Jay King Jr., Rock Falls, Ill., on *Miss Jestress BCF*. 5, Tommye Ann Best, Dayton, on *CF Enchantress 3590*.

Class 2—calved 1-10-80 to 1-18-80 (18 shown): 1, Sheryl Knop, Ida Grove, Iowa, on *KAF Miss Wampum 015-801*, by *Sir Wms Wampum*. 2, Dean Retherford, Indianapolis, on *Harmon Black Lady 1173*, by *L&A Hyster O McHenry 137*. 3, Sherry Johnston, Decatur, Ill., on *Bock Electra Lady 01B*, by *Sir Wm Elector*. 4, Hilary Nemir, Sweetwater, Texas, on *Wilson Miss Viking W390*. 5, Robert Mills, Cookeville, on *TCT Dealerette 005*.

Class 3—calved 1-22-80 to 2-1-80 (16 shown): 1, D'Nece Foster, Niles, Mich., on *Eugenics First Lady*, by *Thomas Chaps*. 2, Dee Knop, Ida Grove, Iowa, on *KAF Miss Wampum 020-160*, by *Sir Wms Wampum*. 3, Darla Sprake, Faucett, Mo., on *H&B Gay Isabella 4460*, by *Emulous 441 BKF*. 4, Cynthia Kelm, Houston, on *Browns Sara Jean*. 5, Price Irving, Greenfield, Ind., on *GV Pride 10M*.



First place prize of \$100 went to the Iowa Junior Angus Assn. for leading out the best group of five heifers. The Indiana juniors led out the second best group of five, winning \$50 for their state association's treasury. Michigan won third place. Illinois fourth. In another group competition, Illinois juniors took first place for their display in the 16 head or more division. Iowa was second in that category, Kansas and Kentucky tied for third. The display of 15 head or fewer competition was won by Louisiana, with Michigan second and Arkansas third.



Bred-and-owned calf champion *DD Miss Karama 650*, 11-1-80 daughter of *Superstud* out of *DD Miss Karama 516*. Exhibited by *Todd Dawes, Urbana, Ind.*



Bred-and-owned reserve calf champion *Day Dream Esthonia 190*, 9-6-80 daughter of *Monarch Alexander 20E* out of *Dun Dunit Esthonia 56*. Exhibited by *Katy Pat Dunn, Somerville, Tenn.*



Stacia Ellis of Greentown, Ind., was named outstanding girl participant in this year's junior show by the American Angus Auxiliary. Auxiliary President Pattie Rae, Onondaga, Mich., presents Stacia with the organization's traditional silver pitcher award for the girl tallying the most wins.

Class 4—calved 2-2-80 to 2-16-80 (19 shown): 1, Jeff Johnson, Summitville, Ohio, on Summitcrest Ester M010, by Sayre Patriot. 2, Beth McDonald, Ardmore, Ala., on HF Plowess, by PS Power Play. 3, Valerie Fesler, Galesburg, Ill., on Hi-Way Blackbird 140, by Earl Marshall Legend. 4, Kathy King, Rock Falls, Ill., on Cudlobe Blackcap 11M. 5, Troy Morris, Balko, Okla., on Sedgwicks Georgina 93.

Class 5—calved 2-17-80 to 3-2-80 (19 shown): 1, Guy Laflin, Olsburg, Kan., on C&S MS Impressive Lady 001, by Thomas Chaps. 2, Bonnie Swanson, Durant, Iowa, on Bon View Barbara 1140, by Bon View Long Distance. 3, Denise Rapp, Gibsonburg, Ohio, on WW Queen 155A, by Early Sunset Emulous 60E. 4, Glenda Brost, Oxford, Ind., on Brost Missy Queen 022. 5, Ronald Hopkins, Auxvasse, Mo., on 272 Candolier Rita 045.

Class 6—calved 3-3-80 to 3-6-80 (16 shown): 1, Dennis Knop on KAF Miss Wampum 037-643, by Sir Wms Wampum. 2, Nancy Flemming, Davison, Mich., on FFF Miss Blackbird, by PS Power Play. 3, Linda Kroeker on Black Gold Miss Georgina K10, by Briarhill Bartman. 4, Kelley Jordan, Hurricane Mills, on Garney Barbara 0054. 5, Rick Petow, Kensington, Conn., on R&J Blackcap 730.

Class 7—calved 3-7-80 to 3-11-80 (15 shown): 1, Price Irving, Greenfield, Ind., on ZAF Miss Sky Lady 90, by LEMAR Eileenmere Lad 549. 2, Amy Younts, New Castle, Ind., on GV Black Gold 548, by PS Power Play. 3, Kathy McGee, Pulaski, on E&W Lass 001, by Bandolier Eston Durness 42B. 4, Kirk Hoffman, Colfax, Ill., on Marlamaemere 017. 5, George Caviness, Blue Mountain, Miss., on Caviness Lady Patriot 025.

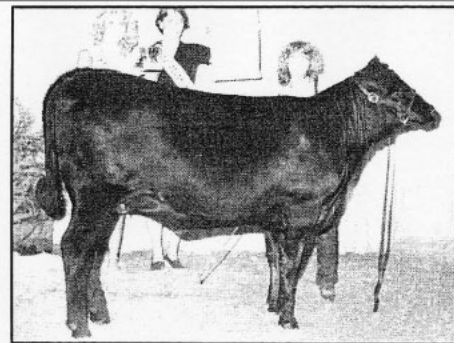
Class 8—calved 3-12-80 to 3-16-80 (15 shown): 1, Jeff Johnson on Summitcrest Jilt M113, by PS Power Play. 2, Jay Dameron, Lexington, Ill., on Dameron Coteau Lady 035, by Schearbrook Sensation. 3, Nancy Brost, Oxford, Ind., on Brost Miss Revolution 05, by Thomas Chaps. 4, Kathy King on Queen of Wetonka 84M. 5, George Frankenstein, Shandon, Ohio, on Kiata Lady Queen 900.

Class 9—calved 3-17-80 to 3-24-80 (17 shown): 1, Michael Brost, Oxford, Ind., on Brost Erica 01, by Thomas Chaps. 2, Russell Cronk, Lewisville, Ind., on Heritage Sky Princess, by LEMAR Eileenmere Lad 549. 3, Jeffrey Baxter, Osawatomie, Kan., on TCF Blackbird 011, by General JJ Patton. 4, Deborah Hoffman, Dover, Pa., on Summitcrest Blackcap M139, by PS Power Play. 5, Dawn Lee Bippert, on Stone Gate Matilda J 4190.

Class 10—calved 3-26-80 to 4-1-80 (16 shown): 1, Lee Ann Sydenstricker, Mexico, Mo., on Sir Wms Wannina, by Sir William. 2, Scott Bohlen, Howell, Mich., on Premier Primrose 061S, by PS Power Play. 3, Kenley Conner, Buffalo, Ky., on Warrant Jilt 2028SC, by Sir Wms Warrant. 4, Debbie Lyons, Manhattan, Kan., on Triumph Blacky CJ 35. 5, Scott Morris, Balko, Okla., on Black Gold Queen Dolly K18.



Bred-and-owned intermediate champion VL Lady Masterpiece 022, 5-4-80 daughter of Eileenmere Masterpiece JAO out of KA Blackcap Coquette 640. Exhibited by Scott Lickteig, Lawrence, Kan.



Bred-and-owned reserve intermediate champion Dameron Lass 093, 5-10-80 daughter of Ken Caryl Mr. Angus 8017 out of Ankony B048 Lass 1B193. Exhibited by Christy Dameron, Lexington, Ill.

Class 11—calved 4-2-80 to 4-4-80 (19 shown): 1, Eric Zehr, Flanagan, Ill., on ZAF Miss Marshall 36 120, by Byergos Black Revolution 36. 2, Christopher Holtkamp, Salem, Iowa, on MK Lady Eline 057, by Sayre Patriot. 3, Marsha Borron, Winigan, Mo., on Beeline Blackcap 0744, by BL Emulous Master 200. 4, Fred Sprout, Roseville, Ill., on SED Blackbird Lady 660, by PS Power Play. 5, Debra O'Neill, on O'Neills Queen 3.

Class 12—calved 4-5-80 to 4-9-80 (17 shown): 1, Frederick Johnson III, Summitville, Ohio, on Summitcrest Miss Angus M252, by Ken Caryl Mr. Angus 8017. 2, Danny Knop, Ida Grove, Iowa, on KAF Miss Wampum 0100-5-2-5, by Sir Wms Wampum. 3, Edward Block, Yorkville, Ill., on Blackbird of SVF 0370, by PS Power Play. 4, Susan Moxley, West Friendship, Md., on Annewood Blackbird

A250. 5, Philip Burnett, Deer Lodge, on Roanokes Barbara 064.

Class 13—calved 4-10-80 to 4-15-80 (18 shown): 1, Clifford Simmons II, Williamston, Mich., on Omega Queen OX07, by Thomas Chaps. 2, James O'Neill, Logan, Iowa, on O'Neills Delia 300, by Thomas Chaps. 3, Kim Sydenstricker on Proud Lassie 229M, by Dakota Poundmaker 2626. 4, Glenda Sue Swanson, Durant, Iowa, on Maas Blackbird 660. 5, Lisa Siefker, Columbus, Ind., on Briarmere Ann 60.

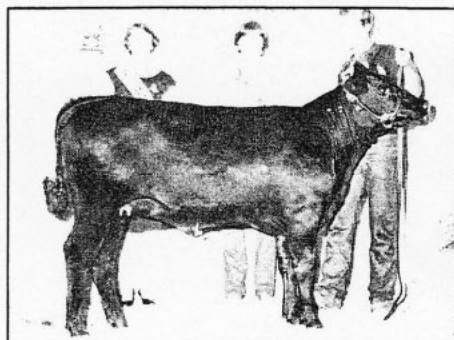
Class 14—calved 4-16-80 to 4-29-80 (17 shown): 1, Reba Lynn George, Westfield, N.C., on Summitcrest Katinka 363M, by Summitcrest Emulous K140. 2, Marc Wolrab, Mt. Vernon, Iowa, on Empress of Wayside 290, by Brads Marshall Pride 1980. 3, Stacy Hamm, Adair, Ill., on Rockin H



Summitcrest Farms of Summitville, Ohio, were premier breeders of the 13th National Junior Angus Heifer Show. Summitcrest owners Fred and Betty Johnson (center) receive their award from Jerry Lipsey (left), director of junior activities for the American Angus Assn., and Cary Ann Smith (right), Miss American Angus from Nicholasville, Ky.



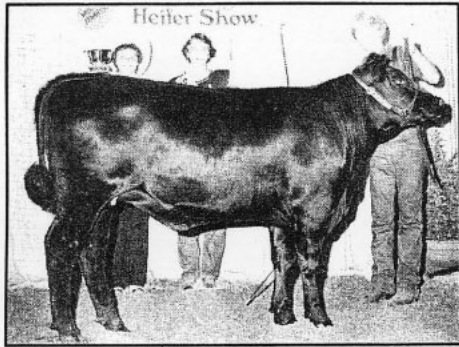
Owned division calf champion Black Gold Blueblood K068, 9-5-80 daughter of Sir Wms Elector out of Premier Blueblood Lady 498R. Exhibited by Bruce Kroeker, Hutchinson, Kan.



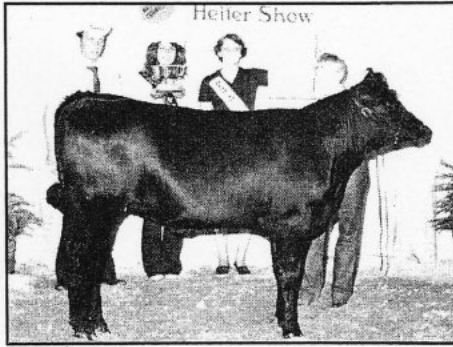
Owned division reserve calf champion DD Lady Taurus 620, 10-4-80 daughter of Sir Williams Excursion out of Bolsens Lady Taurus 119. Exhibited by Todd Dawes, Urbana, Ind.



Tennessee Commissioner of Agriculture Bill Walker (right) presents a \$10,000 check to George McDonald, Riddleton, chairman of the Tennessee committee to co-sponsor the 13th National Junior Angus Heifer Show. Looking on is Tom Burnett, Jamestown, Angus breeder and majority leader of the Tennessee House of Representatives. The money was given to support the show.



Owned division reserve intermediate champion Premier Karama 096S, 5-2-80 daughter of PS Power Play out of BB Karama 755. Exhibited by Scott Bohlen, Howell, Mich.



Owned division reserve champion yearling ZAF Miss Marshall 36 120, 4-2-80 daughter of Byergos Black Revolution 36 out of Frosty No Marshall 1187. Exhibited by Eric Zehr, Flanagan, Ill.

Michael Brost, Oxford, Ind., won class 9 with his Thomas Chaps daughter Brost Erica 01.



Blueblood Lady 164, by Hamms Keyban R50. 4, Forrest Weaver, Stuarts Draft, Va., on Eileenmere Lass EB046. 5, Guy Frankenstein on Stewarts Miss Emulous 401M.

Class 15—calved 5-1-80 to 5-2-80 (17 shown): 1, Scott Bohlen on Premier Karama 096S, by PS Power Play. 2, Janine Hunt, Bonner Springs, Kan., on EGW Blaze J17, by LEMAR Eileenmere Lad 549. 3, Marc Wolrab, Mt. Vernon, Iowa, on Escortina of Wayside B830, by LEMAR Eileenmere Lad 549. 4, Beth Anne Cooper, Zanesville, Ohio, on Pride Parade M 57M. 5, Dana Latel Starr on Star Dust First Lady.

Class 16—calved 5-4-80 to 5-8-80 (18 shown): 1, Jennifer Doran, New Albany, Ohio, on Way-View Erica 95, by General JJ Patton. 2, Andrew Starr III, Sunbright, on Double Bar Pride, by Nelsons Thunderbolt. 3, Shannon Salts, Gray, on LDS Princess Aberdeen 016, by Ken Caryl Mr. Angus 8017. 4, Angela Smith, Russell Springs, Ky., on Hi-Way Ellen Erica 800. 5, Troy Carroll, Elmwood, Ill., on Hi-Way Eline 950.

Class 17—calved 5-9-80 to 5-15-80 (19 shown): 1, Monique Sweigard, Halifax, Pa., on Miss Eden Croft Byergos 002, by Byergos Black Revolution 36. 2, Beth McDonald, Ardmore, Ala., on EC Blackbird of Bo Bo 034, by Byergos Black Revolution 36. 3, Miriam Smalling, Alcoa, on Aberlea Heatherbloom 200, by Aberlea Big Elban 118. 4, Kent Dye II, Shelbina, Mo., on Santa Fe Charmer 901. 5, Margaret Hood, Arrington, on BLA Emulation Lass 107.

Class 18—calved 5-16-80 to 6-2-80 (19 shown): 1, Ivan Kiani, Terry, Miss., on Monogram Mary Jane 1630, by Emulous of Meadowbrook 174. 2, Tim Lemons, Danvers, Ill., on Generals Blackcap Miss, by General JJ Patton. 3, Brigitte Hilmes, Florida, Ill.,

on Bobs Miss Taurus 81, by Dakota Taurus 558. 4, Lee Ann Sydenstricker on Queen of Wetonka 280M. 5, Bruce Kiesewetter, Farmington, Ill., on KC Frosty Marshall 013.

Class 19—calved 6-3-80 to 6-16-80 (20 shown): 1, Kevin Reeser on Power Lady 033, by PS Power Play. 2, Kenley Conner, Buffalo, Ky., on BHF Pride C 300, by Thomas Chaps. 3, Stacia Ellis on E&W Pride J35, by LEMAR Eileenmere Lad 549. 4, Marsha Borron, Winigan, Mo., on Beeline Endella 0783. 5, Kevin Ostrom, Loganville, Ga., on Miss Power Play 802.

Class 20—calved 6-20-80 to 7-5-80 (17 shown): 1, Christopher Holtkamp, Salem, Iowa, on Legends Proud Lass 82, by Earl Marshall Legend. 2, Jill Frisbee, Clarence, Mo., on Leeside Blackcap Lass L120, by BL Emulous Master 263. 3, James Eisenhower Jr., Wellsville, Pa., on Rally Elba 1980, by Byergos Black Revolution 36. 4, Julie Macauley, Oregon, Ill., on Andree Looking Good. 5, Cary Ann Smith, Nicholasville, Ky., on CHF Miss Sunset Emulous 30.

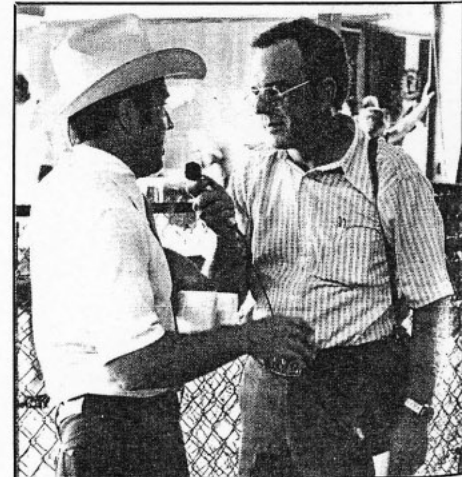
Class 21—calved 7-6-80 to 8-17-80 (16 shown): 1, Jackie Ellis, Greentown, Ind., on E&W Enchantress J46, by LEMAR Eileenmere Lad 549. 2, Todd Dawes on DD Miss Elluna Erica 460, by Superstud. 3, John Franklin, Mt. Vernon, Iowa, on Blackcap of Wayside C290, by Schearbrook Shoshone. 4, Libby Williams, Lockney, Texas, on JK Elba 8440. 5, Russell Cronk, Lewisville, Ind., on MC Farlands Erica.

Class 22—calved 9-1-80 to 9-7-80 (12 shown): 1, Bruce Kroeker on Black Gold Blueblood K068, by Sir Wms Elector. 2, Le Ann Thomas, Corsicana, Texas, on Stonebroke Queen 9217, by Emulous Monarch 7312. 3, Nicole Fesler, Galesburg, Ill., on Hi-Way Bluebird Lass 1350, by Hi-Way Sensation. 4, Kelli Crossland, El Dorado, Ark., on DayBrake Snocrest 061. 5, Paul Pinyan, Holly Pond, Ala., on Richwood Patriot NH Heidi.

Class 23—calved 9-8-80 to 9-17-80 (15 shown): 1, Troy Carroll, Elmwood, Ill., on Sensations First Lady, by Hi-Way Sensation. 2, Balynda Brewster on September Gal of BAF, by Bones Big Elban Bardolier 3. 3, Beth Ann Smith, Jackson, Mo., on MAF Robins Playmate, by PS Power Play. 4, Phil Flemming, Davison, Mich., on FFF Erica M405. 5, Karen Kay Meier, Jackson, Mo., on MAF Power Lady.

Class 24—calved 9-18-80 to 9-27-80 (15 shown): 1, Rick Petow, on R&J Miss Ellie 2050, by General JJ Patton. 2, Dean Retherford on Retherfords Basin of Q Bar, by Basin Q Bar 2547. 3, Monique Sweigard on HF Enchantress 77, by PS Power Play. 4, Reba Lynn George on Emulous Belle of R Nol D 068. 5, Karen Utrecht, Jet, Okla., on Miss Power Play 0273.

Class 25—calved 10-1-80 to 10-22-80 (12 shown): 1, Todd Dawes on DD Lady Taurus 620, by Sir Williams Excursion. 2, Keith Grissom, Shawnee, Okla., on Blackjacks Princess 1090, by Sayre Patriot. 3, Kent Stehno on Meadowbrook Miss Patriot 252, by Sayre Patriot. 4, Cindy Dabbs, Humphrey, Ark., on Dabbs Enchantress 760. 5, Lisa Siefker on WV Miss Edda 803W.



American Angus Assn. Executive Vice President Dick Spader takes time out to answer a few questions for E.W. "Buddy" Sanders with station WMC, Memphis.

Class 26—calved 11-1-80 to 11-10-80 (14 shown): 1, Michael Langford, Livingston, on Nosegay Bradley B560, by MSU Headliner. 2, Erik Griswold, Collinsville, Okla., on Goldspur Princess 0207, by Goldspur 8001. 3, Mariana Mayfield, Pulaski, on GVA Isabel Lea 17A, by LEMAR Eileenmere Lad 549. 4, Kerry Becker, Jones, Okla., on Meadowbrook Miss Newsbreak. 5, Kent Stehno on B&R Eileenmere Erica 8010.

Class 27—calved 11-14-80 to 12-1-80 (12 shown): 1, Anne Mason, Lampasas, Texas, on Fairfield Rowena 501, by Ken Caryl Mr. Angus 8017. 2, Kevin Brewer, Allen, Texas, on MS Broken Arrow Emulous 851, by Broken Arrows Emulous 129. 3, Mike McGuire, Athens, Ga., on Honeysuckle Rose, by Shoshone Titan FD60. 4, Mike McGuire on Unchained Melody. 5, Donna Becker, Jones, Okla., on B&R Eileenmere Erie 8011.

Class 28—calved 12-3-80 to 12-29-80 (10 shown): 1, Steve McCannon, Hull, Ga., on Georgia, by Shoshone Titan FD60. 2, Jenny Baker, Auburn, Ala., on GF Emulous 541, by Tail N Emulous 1456. 3, Sonya Smith, Cullman, Ala., on Johnnys Daisy, by Johnnys Erving. 4, Linda McCannon, Hull, Ga., on Lucille. 5, R.A. Woods III, Hurricane Mills, on DRS Big Elba.

COW/CALF ENTRIES

Class 1—calved 9-6-75 to 5-1-78 (5 shown): 1, Guy Laffin, Olsburg, Kan., on Guys Miss Sunset 704, by Early Sunset Emulous 44D. 2, Price Irving on IA Blackbird Pride 437, by Marshall of Canada 74 4. 3, Melissa Jo Hobbs, Good Hope, Ill., on Edella Pride 107, by Marshall Pride 254. 4, James Pipkin, Springfield, Mo., on Clearwater PH Edella E56. 5, Carrie Prox, Macomb, Ill., on Eileen Violet 3045.

Class 2—calved 5-4-78 to 5-1-79 (3 shown): 1, James Pipkin on Clearwater Sporty Eriskay J, by Black Marshall 482. 2, John Wagner, Harlan, Kan., on Bandomere of JHW, by Sayre Patriot. 3, Michael Elliott, Mocksville, N.C., on Dominators Erica of RMR, by MSU Freestate 343.

Calf Champion: Bruce Kroeker on Black Gold Blueblood K068.

Reserve Calf Champion: Todd Dawes on DD Lady Taurus 620.

Intermediate Champion: Kevin Reeser on Power Lady 033.

Reserve Intermediate Champion: Scott Bohlen on Premier Karama 096S.

Yearling Champion: Dennis Knop on KAF Miss Wampum 037-643.

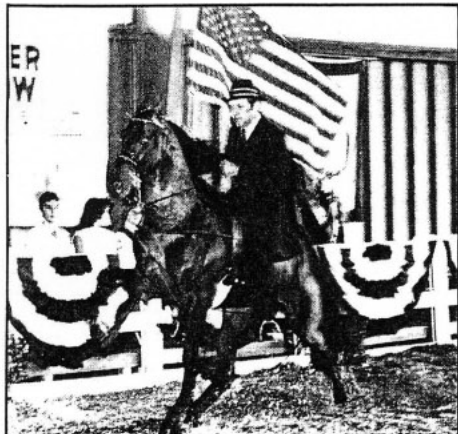
Reserve Yearling Champion: Eric Zehr on ZAF Miss Marshall 36 120.

Champion: Dennis Knop on KAF Miss Wampum 037-643.

Reserve Champion: Reeser on Power Lady 033.

Grand Champion: Blanchard on Ricks Juanadabury 3000.

Reserve Grand Champion: Dennis Knop on KAF Miss Wampum 037-643.



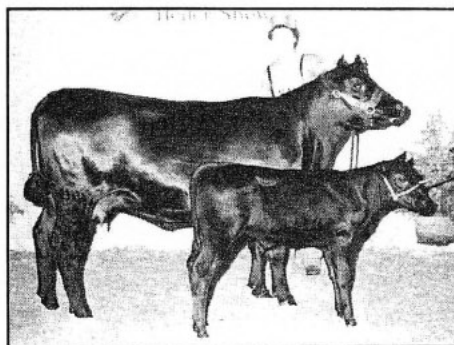
This Tennessee Walking Horse brought in the American flag during opening ceremonies of the 1981 National Junior Angus Heifer Show and Showmanship Contest while Leroy Van Dyke sang the national anthem.



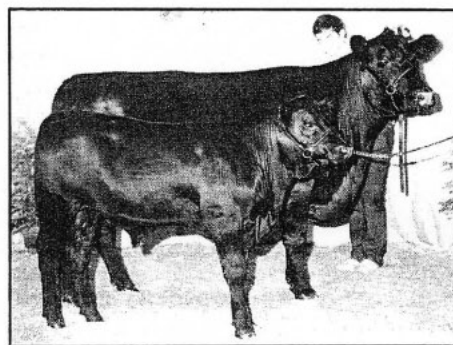
Steve Simmons, Williamston, Mich., keeps a watchful eye on son Clifford as he exhibits his Thomas Chaps heifer to first place in class 13.



People at ringside suffered heat and humidity to watch the placing of the heifer show's 40 classes.



Champion cow-calf pair Clearwater Sporty Eriskay J, 5-1-79 daughter of Black Marshall 482 out of Clearwater Eriskay. Exhibited by James Pipkin, Springfield, Mo.



Reserve champion cow-calf pair Guys Miss Sunset 704, 2-10-77 daughter of Early Sunset Emulous 44D out of Guys Emulous Burgess 382. Exhibited by Guy Laffin, Olsburg, Kan.



Among those on the sidelines were (from left) Bob Laffin, Olsburg, Kan.; Bill Conley, Groton, Mass.; Fred Brown, Groom, Texas; Ray Adams, Tahoka, Texas; Joe Neely, Franklin, Ky.; and Joe Meng, Bowling Green, Ky.



Cody Sankee, 1 1/2-year-old son of Angus breeders Chris and Sharee Sankee of Topeka, Kan., comments on the show.