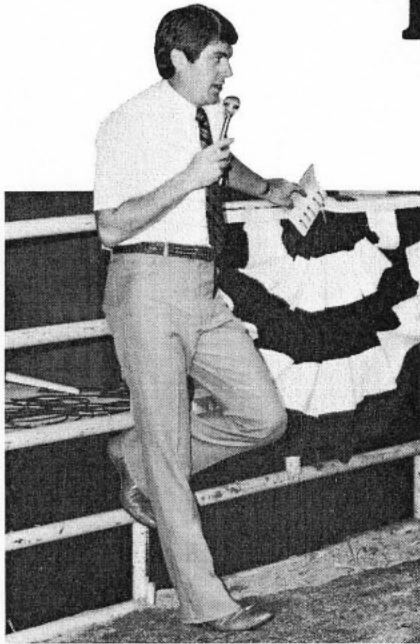


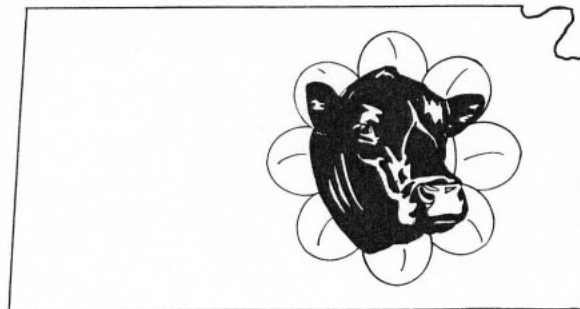
# National Junior Angus Heifer Show



Judge Jim Gillooly makes a few comments about the show...



Owned and grand champion over-all Nelson Betty Lue 9030



Bred-and-owned grand champion Herb Lou Miss Patriot 07

by Linda Kiger



Bred-and-owned reserve calf MAF Karen Pride



Bred-and-owned calf champion DD Miss Super Lady 939

Each year the National Junior Angus Heifer Show and Showmanship Contest keeps getting bigger and better. This year was no exception. Quality ran high throughout the heifer show even though entries were down slightly (only 47 fewer) from last year. But with addition of several new events to the agenda, this 12th annual gathering proved to be one of the most successful yet.

Junior candidates and delegates from across the nation combined forces to elect a National Junior Angus Assn. Board of Directors—the first national board of its kind for junior Angus members.

Another new activity was the Angus Bowl. Heated question-and-answer debates took place between state junior Angus teams testing their knowledge about cattle, the Angus and livestock industries, their people and current events.

A real sleeper among the events turned out to be the talent show. People of all ages met in the coliseum the night before the show to sit back and watch youngsters of all ages perform dance routines, duets, solos and skits. It was an event that offered laughs, appraisals and a basically good time for everyone.



Owned and reserve grand over-all Windac Pride 9422



...then slaps the grand champion.

Wonderful facilities, good ole Kansas hospitality and an enthusiastic array of junior Angus exhibitors made this year's National Junior Angus Heifer Show one of the strongest in its 12-year history. Juniors from 22 states gathered in Wichita's Kansas Coliseum July 21-22 for an event that attracted 419 entries. Sponsored by the Kansas Angus Assn., the Kansas Junior Angus Assn. and the American Angus Assn., the heifer display was lauded by most in attendance for its high quality throughout.

A break in the weather Sunday night brought relief to those who had suffered from high temperatures days earlier. But the air-conditioned coliseum provided a welcome spot for Angus breeders of all ages to mingle with friends and watch one of the traditionally soundest heifer shows in the United States.

Faced with the tough job of placing the 36 heifer and two cow-calf classes was Jim Gillooly of Washington, Ind. And when the show finally narrowed down to the end, sifting through the champions for a grand champion over-all was still no easy task.

Young Stephanie Nelson and her heifer Nelson Betty Lue 9030 won the grand champion trophy. Stephanie, daughter of Mr. & Mrs. Clyde Nelson, traveled all the



Bred-and-owned reserve grand Clearwater Sporty Eriskay J

way from Salmon, Idaho, with her Feb. 2, 1979, entry by Nelson Breakthru to claim the grand and yearling division championships. Named reserve grand champion was Windac Pride 9422, the intermediate division winner. She is a May 1, 1979, daughter of Columbus Adventure 2057 and was exhibited by Tim Fitzgerald, the son of Mr. & Mrs. Jerry Fitzgerald, Harrison, Neb. Both heifers were shown in the owned division.

In the bred-and-owned champion line-up, Sharon Duble from Ann Arbor, Mich., pre-

vailed when judge Gillooly selected Herb Lou Miss Patriot 07 for champion heifer honors. Sharon's April 5, 1979, heifer by Sayre Patriot was champion of the yearling division. And at the conclusion of the show, Sharon won the premier breeder award for exhibiting the three highest placing heifers bred by one breeder.

Reserve champion of the bred-and-owned division was exhibited by James Pipkin, Springfield, Mo. His intermediate division winner named Clearwater Sporty Eris-



Bob Laflin, Olsburg, played an important role in this year's show as chairman of the Kansas National Heifer Show Committee.

kay J is a Black Marshall 482 daughter calved May 1, 1979.

The top group of five heifers exhibited by members of a state junior Angus association came from Idaho. They took home the first place prize of \$100. The first place award given to a junior group for the best display of 16 head or more went to the Illinois Junior Angus Assn. Louisiana juniors presented the best display of 15 or fewer cattle and earned \$75 in prize money.

#### BRED-AND-OWNED DIVISION

**Class 1 (calved 1-7-79 to 2-17-79):** 1, Sharon Diuble, Ann Arbor, Mich., on Miss Chaparral Herb Lou 8539, by Mon Reposa Chaparral. 2, Dana Latel Starr, Sunbright, Tenn., on Star Dust Erica C84. 3, Todd Dawes, Urbana, Ind., on DD Miss Barbara Kate 159. 4, Jason Lynn Smith, Cullman, Ala., on Jasons Emulous Claudia. 5, Jeffrey Baxter, Osawatomie, on Baxters Sporty Lassy. 6, Matt Wineinger, Marion, on Wineinger Emulous Sparkle. 7, David Wise, Spring Grove, Pa., on Miss Wix W229.

**Class 2 (calved 3-1-79 to 3-17-79):** 1, Judson Baldrige, North Platte, Neb., on JB Queen Peggy 159, by Loma Lanes Cracker Jack 12J. 2, Kevin Kestler, Mexico, Mo., on KK Miss Marshall 3104. 3, Wendell Berry Jr., Chico, Texas, on Berry Miss Bingo 1. 4, Cyle Merrill, Pipestone, Minn., on CM Marshall Lass 9M6. 5, Cyle Merrill on CM Queen Pride 9M8. 6, Mary Anne Pipkin, Springfield, Mo., on Clearwater PH Beauty M155. 7, Tonia Lynn Dye, Shelbina, Mo., on Double Dye Eva 49.

**Class 3 (calved 3-20-79 to 3-31-79):** 1, John Wagner, Harlan, on Bandomere of JHW, by Sayre Patriot. 2, Chad Allaman, Monmouth, Ill., on Pride of Emulous CHA 906. 3, James O'Neill, Logan, Iowa, on Blackbird Elsie O80. 4, Laurie Ann Bush, Britton, S.D., on Lauries Classic Poundmaker. 5, Tom Baum, Waterloo, Ill., on Maid of Rito Connection. 6, David Retherford, Indianapolis, Ind., on ARF Shoshone of 135 469. 7, Clay Rusk, Sun City, on RR Connection Bee 9707. 8, Jill Frisbee, Clarence, Mo., on Leeside Lass 9L67. 9, Loy Coon, Bethel, Mo., on CAR Hobess 909. 10, David Borkowski, Elliott, Iowa, on Marshalls Joy BAF.

**Class 4 (calved 4-2-79 to 4-8-79):** 1, Sharon Diuble on Herb Lou Miss Patriot 07, by Sayre Patriot. 2, James Pipkin, Springfield, Mo., on Clearwater Legend Queen J. 3, Tammy Sattler, Emporia, on Premier Black Gold 402. 4, Bradley Hart, Frederick, S.D., on Lady Revolution CH 9759. 5, Jill Frisbee on Leeside Juana 9L70. 6, Lonnie Benson, Irwin, Iowa, on Black Marshall BAF 920. 7, Bart Adams, Penrose, Colo., on Duchess of Lone Pinon.

**Class 5 (calved 4-12-79 to 4-22-79):** 1, William Canby, Brookeville, Md., on Moreland Miss Burgess 9C4, by Walbridge Main Event. 2, James O'Neill on O'Neills Eraline 61. 3, Karen Laflin, Olsburg, on Miss Sunset 9111. 4, Darla Sprake, Faucett, Mo., on

Darlas Pride & Joy 79. 5, Ty Williams, Lockney, Texas, on JK Primrose 913. 6, Jon Teague, Nixa, Mo., on Jons Queen Bee. 7, Barbara Baylor, Hanna City, Ill., on Barbs Burgess Lady.

**Class 6 (calved 5-1-79 to 5-8-79):** 1, James Pipkin on Clearwater Sporty Eriskay J, by Black Marshall 482. 2, Lee Ann Sydenstricker, Mexico, Mo., on SAF Queen Peggy 9222, by Happyvale Marshall Pride 013G. 3, Scott Sloan, Cameron, Mo., on JS Miss Connection 09S. 4, Debby Herndon, Adair, Ill., on HAF Miss Emulous 15. 5, Kurt Borgelt, Wisner, Neb., on KB Bee Alicia B309. 6, Guy Laflin, Olsburg, on Miss Sunset 962. 7, Tonia Dye on Double Dye Pollyanna 79. 8, Karen Laflin on 027 Miss Sunset 954. 9, Andrew Starr III, Sunbright, Tenn., on Star Dust Lady Marshal C88.

**Class 7 (calved 5-13-79 to 6-9-79):** 1, Katy Pat Dunn, Somerville, Tenn., on Daydream Smokey Esthonia 109, by Dakota Poundmaker 55. 2, Brian Tummons, Fairview, on T6 Erica Destiny 912. 3, Shauna Rose Coon, Bethel, Mo., on CAR Firefly. 4, Peggy Merrill, Pipestone, Minn., on CM Miss Marshall 9M25. 5, Ronald Ringland II, Bennet, Neb., on RRR Blackcap Joy 531. 6, Dennis Knop, Ida Grove, Iowa, on KAF Miss King 760. 7, Kent Stehno, Billings, Okla., on KAS Miss Tra La La. 8, Sandra McDowell, Lebanon, on Sandra Pride 479. 9, Cynthia Mitchell, Ft. Collins, Colo., on Cynthias Miss Bandolina. 10, Lisa Jo Lutchka, Grass Lake, Mich., on LLA Revolution Bobette 429. 11, David Cole, Franklin, La., on DC Miss Edena.

**Class 8 (calved 6-29-79 to 7-15-79):** 1, Bobbi Ann Millikan, Sedgwickville, Mo., on Midnite Angel, by Skyscrapers Image. 2, Todd Dawes on DD Miss

Black Ancher 749. 3, Jill Frisbee on Rolling J Hobo Gal 9F15. 4, Balynda Brewster, Marietta, Okla., on Lady Elban of BAFK1. 5, Pamela Neumann, Monroe, Wis., on Stone Arc Northern Gale. 6, Johnny Smith, Cullman, Ala., on Johnny Roselida of 1342.

**Class 9 (calved 7-26-79 to 8-23-79):** 1, Sharon Diuble on Miss Progressor Herb Lou 859, by Premier Progressor. 2, Karen Laflin on Farrah 981. 3, Kurt Olson, Grand Mound, Iowa, on Edella L27. 4, Paula Anstaett, Carbondale, on Paulas Miss Burgess A379. 5, Penny Anstaett, Carbondale, on Pennys Queen Mother.

**Class 10 (calved 9-2-79 to 9-6-79):** 1, Todd Dawes on DD Miss Super Lady 939, by Superstud. 2, Karen Meier, Jackson, Mo., on MAF Karen Pride, by Black Marshall 482. 3, Guy Laflin on Yankees Lady Burgess 938. 4, Russell Loy Coon, Bethel, Mo., on CAR Hids Corine. 5, Douglas Spooner, Evansville, Wis., on DHS Queenmere Pride 939. 6, Shawn Wyble, Opelousas, La., on Rito 36 of WE 7377 79.

**Class 11 (calved 9-18-79 to 10-28-79):** 1, William Miller, Middletown, Ill., on Golden Nuggets Suzie, by Burgess Lad of KAM 64. 2, Edward Miller Jr., Middletown, Ill., on Golden Nuggets Rose. 3, Richard Chapman, Manchester, Ga., on RDC Eline of Bar 1. 4, Johnny Smith, Cullman, Ala., on Johnny Family Tradition. 5, Mike McGuire, Auburn, Ala., on MM Empress 904. 6, Michael Frey, Mulhall, Okla., on Miss Emulous Blackcap of MF.

**Class 12 (calved 11-1-79 to 12-8-79):** 1, Marsha Borron, Winigan, Mo., on Beeline Gamamer 9696, by Beeline Fifth Dimension. 2, Jerry Pfeiffer, Orlando, Okla., on PAF Lady Revolution. 3, Karen Pittman, Billings, Mo., on PAF Explorers Foxy Gal. 4,



Amy Baldrige of North Platte, Neb., positions her class winner for the judge's appraisal.



Owned intermediate reserve Miss Juanerra 11 of CW



Owned reserve yearling Rose GV of Creston 5L



Karen Pittman on PAF Explorers Barbara 179. 5, R.A. Woods III, Hurricane Mills, Tenn., on Big Elba 20 of DRS. 6, Kenny Pittman, Billings, Mo., on PAF Explorers Prissy Miss. 7, Karen Meier on MAR Karen Lassie. 8, Michael Elliott, Mocksville, N.C., on Erica RMR2. 9, Paula Anstaett on Paulas Cordelia.

**Calf Champion:** Todd Dawes on DD Miss Super Lady 939.

**Reserve Calf Champion:** Karen Meier on MAF Karen Pride.

**Intermediate Champion:** James Pipkin on Clearwater Sporty Eriskay J.

**Reserve Intermediate Champion:** Lee Ann Sydenstricker on SAF Queen Peggy 9222.

**Yearling Champion:** Sharon Diuble on Herb Lou Miss Patriot 07.

**Reserve Yearling Champion:** John Wagner on Bandomere of JHW.

**Grand Champion:** Sharon Diuble on Herb Lou Miss Patriot 07.

**Reserve Grand Champion:** James Pipkin on Clearwater Sporty Eriskay J.

#### OWNED DIVISION

**Class 1 (calved 1-2-79 to 1-31-79):** 1, Brad Worthington, Dunlap, Ill., on Rose GV of Creston 5L, by Black Marshall 482. 2, Andrew Starr III on CF Dressy Queen 3359. 3, Gayle Ellen Hunt, Milton, Ind., on BF Miss Caresse B101. 4, Dean Retherford, Indianapolis, Ind., on Harmon Black Lady 1050. 5, George Fincher, Auburn, Ala., on Miss Bass 556-13-79. 6, Nancy Flemming, Davison, Mich., on FFF Miss Headliner 924. 7, Greg Stehr, Willow, Okla., on Stewarts Miss Emulous 612L. 8, Debra O'Neill, Logan, Iowa, on Energice Erica 012. 9, Van Swanson, Longmont, Colo., on AEW Gertie W19. 10, Kathryn Bickham, Shreveport, La., on Pine Hills Bluebird 911. 11, Anita Conley, Gypsum, on Pride-mere M2. 12, Kim Stehr, Willow, Okla., on Stewarts Princess 643L. 13, Dianna Hunt, South Haven, on Miss Poundmaker 2 of ZAF. 14, Kristi Erdmann, Wetona, S.D., on Queen Alice 3019. 15, Lisa Allen, Belle Plaine, on Black Gold Caline 9K1. 16, Gregory Kimzey, Elk City, on Kim Mac Burgess 19.

**Class 2 (calved 2-1-79 to 2-11-79):** 1, Stephanie Nelson, Salmon, Idaho, on Nelson Betty Lue 9030, by Nelson Breakthru. 2, Kimberly Sydenstricker, Mexico, Mo., on Sir Wms Miss 6319. 3, Cynthia Kelm, Houston, Texas, on R&J Queen 119. 4, Julie Lesback, Sterling, Colo., on TB Patriot Annie 905. 5, Jill Rishel, North Platte, Neb., on Limelight Queen of PR2. 6, Troy Morris, Balko, Okla., on Miss Bummer Wendy of ET. 7, Joy Rishel, North Platte, Neb., on BR Magnet 963. 8, Danielle Wykoff, New Carlisle, Ind., on SAF Miss Chaps 903. 9, Dennis Eastin, Tuscola, Ill., on Revolutions Blackcap 4679. 10, Wendell Berry Jr., Chico, Texas, on R&J Miss Burgess 269. 11, Mary Jo Eck, Pierce City, Mo., on Emulous Enchantress 29 DE. 12, Cindy Lou Dunn, Somerville, Tenn., on Day Dream Esthonia 19. 13, Shannon McDowell, Lebanon, on White Rock Pride 149. 14, Wade Baxter, Osawatomie, on Miss Poundmaker 4 of ZAF. 15, Cindy Houck, Bushong, on Primona of Dalebanks 9007. 16, Jacqueline Russ, Plainville, on Miss Burgess 6311.

**Class 3 (calved 2-12-79 to 2-20-79):** 1, Ronald Hopkins, Auxvasse, Mo., on 632 Dandolier 936 Fara, by Farasan of Wye. 2, Matt Williams, Lockney, Texas, on JK Blackcap 912. 3, Alan Smith, Gallatin, Mo., on Black Missie of SAF 953. 4, Jay Pfeiffer,



Owned calf champion Briarhill Blackcap 969

## National Junior Angus Assn. Elects Board of Directors

July 20, 1980, is etched in history as the day the National Junior Angus Assn. was established. On that date, young delegates representing 40 states gathered in the Kansas Coliseum to elect the first national junior Board of Directors from a field of 31 state candidates.

Flyers, posters and signs of all shapes and sizes filled the barn and covered the coliseum walls as candidates campaigned for the prestigious board.

John Kieseewetter, Farmington, Ill., turned up as the favored candidate when he was elected chairman of the 12-member board. Vice chairman is George McDonald of Riddleton, Tenn., who also will coordinate the Activities Committee.

Mark Wyble, Opelousas, La., was named coordinator of the Achievement Committee. Coordinating the Finance Committee is Brad Staley, Hampton, Iowa. Tracey Chapman, Manchester, Ga., will head the Communications Committee and Dale Rains, Mercer, Pa., the Rules Committee.

Other members of the board working with these coordinators are Bruce Kroeker, Hutchinson; Jodie Wallace, Ripley, W.Va.; Sharon Diuble, Ann Arbor, Mich.; Julie McMahon, Ft. Smith, Ark.; Angie Hunt, Milton, Ind.; and Tracy Crose, Napa, Calif.

Next meeting of the national junior board is set for Nov. 16 in Louisville in conjunction with the North American International Livestock Exposition, National Angus Show and annual meeting.



Pictured with Dr. Jerry Lipsey (back row, left), American Angus Assn. director of junior activities, are board members (from left, standing) George McDonald, Mark Wyble, Dale Rains, Brad Staley, Bruce Kroeker and John Kieseewetter. Seated are Julie McMahon, Tracy Crose, Angie Hunt, Tracey Chapman, Jodie Wallace and Sharon Diuble.

Orlando, Okla., on PAF Lady Revolution 921. 5, Katy Pat Dunn on Taylor Oaks Bondy 910. 6, Bruce Lockhart, Wellington, Ill., on Edella 4 of LA 4849. 7, Janice Conley, Gypsum, on Black Gold Eulima 9543H. 8, Travis Mindemann, Apache, Okla., on Empirette Queen 55. 9, Julie McMahon, Ft. Smith, Ark., on GCAF Emulous Rev 9570. 10, Jackie Pfeiffer, Orlando, Okla., on PAF Lady Revolution 930. 11, Carol Loenneke, Jackson, Mo., on Bootheels Blackcap Deb 179. 12, James Houck, Bushong, on Eota of Dalebanks 9010. 13, Penny Anstaett on Briarwood Duchess F381. 14, Daniel Morgan, Gree-

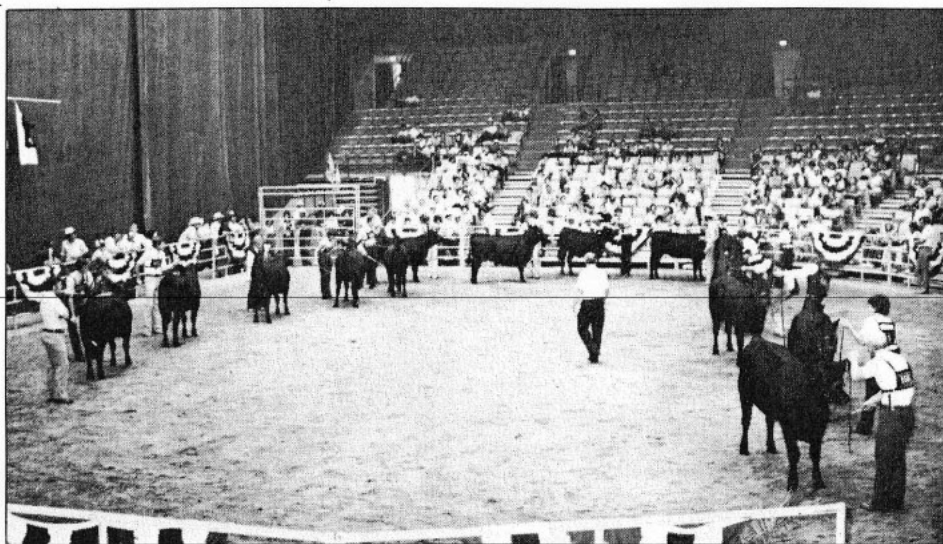
ley, on GK Rosebud Eileen 902L. 15, Tammy Inman, Nash, Okla., on R&J Pride 519.

**Class 4 (calved 2-21-79 to 3-2-79):** 1, Janna Nelson, Salmon, Idaho, on Nelson Protet 9072, by Nelson Headstart. 2, Christy Dameron, Lexington, Ill., on GD Black Princes 903. 3, Linda Kroeker, Hutchinson, on Rally Pinkie Pride 409. 4, Sandra Andrews, Gill, Colo., on AJS Blackbird 926. 5, Phil Flemming, Davison, Mich., on FFF Bluebird 679. 6, Glenda Swanson, Durant, Iowa, on Bon View Gammer 1059. 7, Tammy Bitner, Casper, Wyo., on KCH Lass C912. 8, Malcolm Landry, Jeanerette, La., on Sedgwicks Mina 2. 9, Tammy Bitner on AM Maxs Bandl A130. 10, Paula Anstaette on Briarwood Witch F402. 11, James Morgan, Greeley, on H&M Blackcap Empress 103. 12, Trigg Stanley, Jet, Okla., on R&J Lass 659. 13, Troy Skaggs, Nash, Okla., on R&J Eulima 609. 14, Justin Russ, Plainville, on Princess of TCF 901.

**Class 5 (calved 3-3-79 to 3-8-79):** 1, Carrie Worthington, Dunlap, Ill., on Rose Ever 94JV, by CSU Rito 4114. 2, Janna Nelson on Nelson Blueblood Lady 9084. 3, Stephanie Nelson on Nelson Pride 9083. 4, Douglas Anderson, Longmont, Colo., on Mignonne of Black Gold 923. 5, Tiffany Sewell, Pery, Okla., on Biffles Elba 8111. 6, Cynthia Kelm, Houston, Texas, on DayBrake Snocrest 970. 7, Hal Sankey, Sterling, on Sterling Jilt 79L43. 8, Kent Dye II, Shelbina, Mo., on HAF Elluna Lady 709. 9, Tina McKinnon, Bedford, Texas, on DayBrake 994. 10, Amy Lyons, Manhattan, on Blackcap of LR.



Owned reserve calf Black Gold Royal Pride K963



This class illustrates the depth of quality and the keen competition throughout the 12th junior heifer show.

11, Scott Lickteig, Lawrence, on Queen of Cheyenne. 12, Johnny Smith, Cullman, Ala., on MAF Miss Carolina 7L. 13, Mike Little, Yale, Okla., on Black Diamond FF8. 14, Lyle Hagenbuch, Lawrence, on Blackcap Revolution 039. 15, Allen Thornburg, Utica, on Blackcap Queen 129.

**Class 6 (calved 3-9-79 to 3-14-79):** 1, Brian Fitzgerald, Harrison, Neb., on Windac Blackcap 9629, by Dakota Poundmaker 1816. 2, Lee Ann Sydenstricker on Blackbird Freda 279. 3, Julie Smith, Gallatin, Mo., on Wrights Marshall Erica 79. 4, Judson Baldrige on Pleasant Mary 129. 5, Keith Grissom, Shawnee, Okla., on Aces Bando Supreme 59. 6, Terrie Erdmann, Wetonka, S.D., on Queen Idelette 3069. 7, Shawn Brezgiel, Leavenworth, on Erica Gem Timeliness. 8, Miles Groseth, North Platte, Neb., on Elbarica of 4G K058. 9, Barbara Tummons, Fairview, on Jay Cat Ruby S92. 10, Shawn Wyble on HG 916 of Ideal 7250. 11, Kristin Sue Ringland, Bennet, Neb., on Triple RRR Erica Edwina 96. 12, Dan Imthurn, Maple Hill, on Ele Lady Jean RR. 13, Tony Kroll, Fairmont, Okla., on FJ Blossom 49. 14, Tammy Inman, Nash, Okla., on R&J Rosebud 949. 15, Randall Gates, Coldwater, on Summitcrest Blackbird 151L. 16, Eric Thompson, Osawatomie, on ET Huldah Lady. 17, Penny Anstaett on Briarwood Grace F413.

**Class 7 (calved 3-15-79 to 3-20-79):** 1, Laura Erdmann, Wetonka, S.D., on Queen Eva 739, by Loma Lanes Cracker Jack 12J. 2, Kathy McGee, Pulaske, Tenn., on Springview Elene 677A. 3, Fritz Frey, Quarryville, Pa., on Twin Oaks Revolution Barb. 4, Christopher Holtkamp, Salem, Iowa, on WF Queen 929. 5, Dennis Knop, Ida Grove, Iowa, on KAF Miss King 978-641. 6, Debra O'Neill, Logan, Iowa, on O'Neills Delia 255. 7, Daniel Erdmann, Wetonka, S.D., on Queen Alice 3269. 8, Libby Williams, Lockney, Texas, on JK Queen 911. 9, Joseph Erdmann, Wetonka, S.D., on Queen Idelette 3229. 10, Kent Stehno on Goldspur Tralala 930. 11, John Myers, Marshfield, Mo., on Miss Anne 30325 of SS Z5M2. 12, Scott Bush, Britton, S.D., on Lady 414 Shoshone 103. 13, Ryan Schultis, Fairbury, Neb., on Erica Elley of Ken Caryl 0089. 14, Jeff Houck, Bushong, on Hillhouse Eborea 9031. 15, Sylvia Lee, Greenwood, La., on Split Rail Lassie 379. 16, Shelia Frey, Mulhall, Okla., on CF Blackcap Revolution 1F9.

**Class 8 (calved 3-21-79 to 3-24-79):** 1, Jeff Baldrige, North Platte, Neb., on Queen Eva 1109, by Dakota Poundmaker 2626. 2, Balynda Brewster, Marietta, Okla., on SL Chance Blackbird 9612. 3, Donald Callison, Blackfoot, Idaho, on Nonpareil Blackbird 1239. 4, Jennifer Biella, Louisville, Colo., on Radiant Emulous B Elate VR. 5, Camie Jackson, Macomb, Ill., on Shilo Blackbird 2059. 6, Laurie Ann Bush, Britton, S.D., on Lady 414 Delightful. 7, Elizabeth Erdmann, Wetonka, S.D., on Emblems Erica 3429. 8, Gregory Kimzey, Elk City, on Miss Barbara 159 of K2. 9, Nancy Gray, Slayton, Minn., on Jet Lass 6222-9. 10, Janine Hunt, Bonner



American Angus Assn. Executive Vice President Dr. C.K. Allen congratulates the winners, Tim Fitzgerald and Stephanie Nelson.

Springs, on Fleetwood Bold Iris 929. 11, Kelley Woods, Hurricane Mills, Tenn., on SAF Burgess 9088. 12, Robert Smith, Wabash, Ind., on Lovanas Blackcap 2539. 13, Daniel Vaassen, Dubuque, Iowa, on KAF Ms Northern Jet 982-1B4. 14, Belinda Tummons, Fairview, on Jay Cat Diamond Ballou S96. 15, Clifford Rowlett III, Medina, Tenn., on Triple S Antelope 379.

**Class 9 (calved 3-25-79 to 3-29-79):** 1, Troy Carroll, Elmwood, Ill., on Hi Way Evening Tinge 559, by Earl Marshall Legend. 2, Kathy King, Rock Falls, Ill., on Wetonkas Erica 1759. 3, Julie McMahon on Ankony B999 Pride 5B569. 4, Berry Skaggs, Eureka, on GCC Patriot Lady 449. 5, Dena Godsey, Gaylord, on Black Lily CW 32211. 6, Laura Erdmann on Queen Ruth 3529. 7, Chad Holtkamp on Summitcrest Juana 231L. 8, Cindy Houck, Bushong, on Dalebanks Promptitude 9145. 9, Karen Rueber, Arlington, Iowa, on Light Dolly Marie ADD 69L. 10, Kathleen Bradford, Guthrie Center, Iowa, on Brads Evergreen 922. 11, Mark Boller, Mankato, on Premier Blackbird 2183T. 12, Glenda Swanson, Durant, Iowa, on Swanson Barbara 39. 13, James O'Neill on Blackbird Elsie 079. 14, Gerald Loftin, Pomona, on R&J Eisa Erica 1079. 15, Lynn Benson, Irwin, Iowa, on Rosendale Mischief BAF 919. 16, Kurt Olson, Grand Mound, Iowa, on Northern HHW 3259.

**Class 10 (calved 3-30-79 to 4-2-79):** 1, James O'Neill on O'Neills Delia 264, by Eileenmere Masterpiece JAO. 2, John Kiesewetter, Farmington, Ill., on GD Coteau Lady 954. 3, Bradley Tummons, Fairview, on Jay Cat Diamond Belle S97. 4, Teresa Spi-



American Angus Assn. Director of Activities Dean Hurlbut presents premier breeder trophy to Sharon Diuble, Ann Arbor, Mich.



Bred-and-owned reserve intermediate SAF Queen Peggy 9222



Champion cow-calf pair Miss Michigan Herb Lou 078 and her March 27 bull calf

vey, New Windsor, Ill., on SAF Blackbird Lady 1709. 5, Jackie Pfeiffer on M5 Emulous Pride 924 PAF. 6, Guy Laflin on Stewarts Princess 640L. 7, Lamar Crossland, El Dorado, Ark., on TBF Elba Elite 1079. 8, Kurt Borgelt, Wisner, Neb., on Susan of Colorow. 9, Michelle Bradford, Guthrie Center, Iowa, on Brads Blue Lady 930. 10, Carolann Jensen, Plainfield, Iowa, on Light Gay Burbell ADD 74L. 11, Karen Rueber, Arlington, Iowa, on Light Errianna ADD 48L. 12, Gid Wakefield, Pulaski, Tenn., on Stewarts Erica 406L. 13, Debbie Lyons, Manhattan, on Bon View Barbara 3079. 14, David Lutchka, Grass Lake, Mich., on LAA Lady Marshall 99. 15, Troy Skaggs, Nash, Okla., on R&J Barbetta 1109. 16, Dwight Conley, Gypsum, on Marie of WH 497.

**Class 11 (calved 4-3-79 to 4-7-79):** 1, Jennifer Biella, Louisville, Colo., on E Pride T 1309, by Toynes Powerline 1810. 2, Jon Teague, Nixa, Mo., on SDR Sky Princess 18. 3, Chip Huckfeldt, Gering, Neb., on Miss Primrose HK 99. 4, Curtis Snyder, Prague, Okla., on C7G Miss Emulous 79. 5, Kirk Olson, Hershey, Neb., on K&K Miss Pride 930. 6, Jeffrey Lickteig, Lawrence, on Miss Barbara 229 of K2. 7, William Bickham, Shreveport, La., on Stewarts Rose 135L. 8, Bonnie Swanson, Durant, Iowa, on Swanson Erica 29. 9, Marsha Borron, Winigan, Mo., on Hobo Pride 9607 BL. 10, Mark Sleiter, Pipestone, Minn., on CM Pride Lass 9M20. 11, Douglas Borkowski, Elliott, Iowa, on Ideals Erica M157. 12, Lisa Schultis, Fairbury, Neb., on Randys Blackbird 2 of TM. 13, Carig Allaman, Monmouth, Ill., on Emulous Lass AAF 915. 14, R.A. Woods III on Bo Elba N 29.



# National Junior Talent Show Offers a Good Time for All

On July 20, the night before the National Junior Angus Heifer Show, junior Angus association members proved they were talented in other ways than showing and grooming cattle. People of all ages gathered in the Kansas Coliseum to watch youngsters from 13 states perform dance routines, duets, piano solos and skits before a full-house crowd.

Master of ceremonies Rich McKee from the WIBW Farm Dept. in Topeka kept everyone entertained between acts so judges Nancy Scriven, assistant professor of music at Wichita State University; Edyth Lakin, Wichita State University's dance instructor; and American Angus Assn. board member Don Greiman of Garner, Iowa, could mark their score cards.

For first place the judges chose a dance routine performed by Julie Lynn Conrad, Issaquah, Wash. Kanan Chan Gates, Coldwater, placed second on a piano solo. Third place went to a twirling routine performed by Michelle McBride, St. James, Mo., whose accompanist was Todd Wiley of Calhoun, Mo. Geri and Julie Grieb, Lexington, Ore., placed fourth with their dance, and fifth went to Karin Olson, Grand Mound, Iowa, who also performed a dance.



Dean Huribut presents a belt buckle to Mary Anne Pipkin, Springfield, Mo., for being the only exhibitor at all 12 junior nationals.



Bred-and-owned reserve yearling Bandomere of JHW



Reserve cow-calf pair Clearwater PH Edella E56 and her May 16 bull calf

**Class 12 (calved 4-8-79 to 4-14-79):** 1, Shawn Fitzgerald, Harrison, Neb., on Windac Countess 932R, by Columbus Adventure 2057. 2, Rhonda Gestring, Blue Hill, Neb., on QLC A30 Miss Burgess A472L. 3, D'Nece Foster, Niles, Mich., on ZA Eileenmere 459. 4, Jeff Baldrige on Baldrige Miss Streamline 439. 5, Andrew Kapp, Clarksdale, Mo., on Blackcap Empress of Ida 189. 6, John Walsh, Kinsman, Ill., on RIC Carol Black Judy. 7, Vic Grissom, Prague, Okla., on Stewarts Erica Pride 632L. 8, Rick Gestring, Red Cloud, Neb., on QLC A30 Blubird A366L. 9, Van Swanson, Longmont, Colo., on QLC A20 Jestress B925L. 10, Raymond Hammarlund, St. Marys, on Ann 189 of SL. 11, Jo Ann Landry, Jeanerette, La., on Sedgwicks Georgina 89. 12, Balynda Brewster on Brewsters Pretty Lass 70. 13, Debra Spooner, Evansville, Wis., on Garney Juana 9065. 14, Annette Wells, Sparta, Wis., on Viewlawn Barb 219.

**Class 13 (calved 4-16-79 to 4-28-79):** 1, Melissa Huckfeldt, Gering, Neb., on Ken Caryl Marg 199, by Ken Caryl Mr. Angus 8017. 2, Daniel Erdmann, Wetonka, S.D., on Queen Lori 3629. 3, Lee Ann Sydenstricker on SAF Katidid 9207. 4, Peggy Merrill, Pipestone, Minn., on Eileenmere Lass EB 977. 5, Kenneth West, McKinney, Texas, on Brewsters Elban Linda. 6, Susan McMahon, Ft. Smith, Ark., on Anky 8F78 G Lady 8F619. 7, Cherish Hobbs, Good Hope, Ill., on Black Evergreenmere 931. 8, Lynn Benson, Irwin, Iowa, on Blackbird BAF 944. 9, Michael Elliott on Premier Ida 2402T. 10, O.W. Miller Jr., Arcadia, Texas, on Bella Rena of MCF. 11, Debrah Hunt, Milton, Ind., on Heritage Georgina



Shelley Weaver of Brimfield, Ill., leads off one of the classes in the owned division of the junior show.

9H40. 12, Jamie Clover, Ionia, Mich., on Premier MS Pride 0075N. 13, Greg Gibson, Bridgeport, Texas, on Berry Miss Bingo 2. 14, Karin Olson, Grand Mound, Iowa, on Maid of Bummies L107. 15, Tracy Bitner, Casper, Wyo., on Miss VB Top Choice 36B.

**Class 14 (calved 5-1-79 to 5-4-79):** 1, Tim Fitzgerald, Harrison, Neb., on Windac Pride 9422, by Columbus Adventure 2057. 2, Mary Wagner, Harlan, on Miss Juanerra 11 of CW. 3, Kerry Hart, Frederick, S.D., on Lady Winton CH 9624. 4, Kim Ellison, Rogersville, Mo., on DayBrake Blackette 9616. 5, Kristine Woody, Willard, Mo., on ZAF Magnitude Lady 149. 6, Andrew Starr III on Way View Erica. 7, Nancy Flemming on FFF Tree Lane Zera 109. 8, Dean Schrock, Washburn, Ill., on Moffitt Camilia Patriot 911. 10, Darla Thornburg, Utica, on Scotts Sunshine Lass 906. 11, Fletcher Nichols, Anita, Iowa, on Nichols Lula Blackcap L131. 12, Alan Kapp, Clarksdale, Mo., on Blackbird Elsie O82. 13, Mark Wells, Sparta, Wis., on Viewlawn Happyvale 1079. 14, Amy Anderson, Longmont, Colo., on CJ Blackbird 249.

**Class 15 (calved 5-5-79 to 5-10-79):** 1, Shelley Weaver, Brimfield, Ill., on ZAF Miss Masterpiece 169, by Eileenmere Masterpiece JAO. 2, Kim Olson, Hershey, Neb., on Garney Annie 9084. 3, Clay Rusk on RR Georgina BV 980. 4, Jill Frisbee on Leaside Lass 9L86. 5, Troy Carroll, Elmwood, Ill., on Hi Way Blackcap Velvet 1009. 6, Kent Dye II on KG Sky Gal. 7, Angela Hunt on ERA Miss Transformer 9758. 8, Chad Holtkamp, Salem, Iowa, on Windac Pride 9524. 9, Sheryl Knop, Ida Grove, Iowa, on KAF

Miss Spider 9121. 10, Dennis Knop on KAF Miss Jetliner 9133-355. 11, Melissa Huckfeldt on Blackcap Bess HK 6909. 12, Mark Hill, Rockford, Ill., on ZAF Barbara Revolution 189. 13, Kathy McGee, Pulaski, Tenn., on Premier Blackbird 2296T. 14, Todd Dawes on Fleetwood Pudd 1029. 15, David Wise, Spring Grove, Pa., on PS Blackbird 136 929. 16, Shawn Brezgieel, Leavenworth, on Legend Black Enchantress. 17, William Wise, Spring Grove, Pa., on Eline G 3579.

**Class 16 (calved 5-11-79 to 5-31-79):** 1, Amy Baldrige, North Platte, Neb., on Proud Lassie 2779, by Happyvale Marshall Pride 013G. 2, Jay Dameron, Lexington, Ill., on GD Black Maid 9108. 3, Vironka Riggsby, Tecumseh, on Miss Blackman 409 of HW. 4, Russell Loy Coon, Bethel, Mo., on CAR Soogar. 5, Scott Morris, Balko, Okla., on Garden Bandolier 639. 6, Lonnie Benson, Irwin, Iowa, on Rosendale B Mischief BAF 955. 7, Janice Hammarlund on Ann 3169 of SL. 8, Robin Meier, Jackson, Mo., on Miss Karama of SAF 965. 9, Allen Thornburg, Utica, on Miss Pride 127 of HW. 10, Sharon Wyble on Rito 281 of Ideal 3203 111. 11, Melissa Jo Hobbs, Good Hope, Ill., on WG Edella Pride 932. 12, William Sprake, Faucett, Mo., on Mystic Lady of 684. 13, John Troutman, Logansport, Ind., on Arrowhead Georgina 77. 14, Melanie St. Blanc, Charenton, La., on Happy Hills Vye Burgess 975. 15, Elizabeth Erdmann on Queen Alice 3689.

**Class 17 (calved 6-1-79 to 6-30-79):** 1, Christy Dameron, Lexington, Ill., on GD Blackcap Susie 9110, by Black Marshall 6196. 2, John Walsh on Esquire Northern Blackbird 10. 3, Jason Sewell, Perry, Okla., on Codys Patriota of UT. 4, Bruce Kroeker, Hutchinson, on Black Gold Enchantress 946. 5, Beth Ann Smith, Jackson, Mo., on Essex Elba Star E589. 6, Russell Cronk, Lewisville, Ind., on Eulima MC 1342. 7, LeAnn Thomas, Corsicana, Texas, on Blackcap of Stonebroke 9143. 8, D'Nece Foster on Errolline of Wayside 719. 9, Chan Gates, Coldwater, on Stonebroke Erianna 9123. 10, Mary Anne Pipkin, Springfield, Mo., on Hi Way Lucy 1129. 11, Anne Marie St. Blanc, Charenton, La., on Sedgwicks Lucy 160. 12, Danny Moser, Effingham, on Jul Ran Erica 749.

**Class 18 (calved 7-2-79 to 7-5-79):** 1, Tracy Harl, Hastings, Neb., on QLC A22 Blackcap A279L, by Beeline Fifth Dimension. 2, William Corbin, Winona, Texas, on Stewarts Princess. 3, Alan Smith, Gallatin, Mo., on Leaside Hobo Gal 9L8. 4, Scott Foster, Niles, Mich., on ZA Pin Up Gal 939. 5, Fred Sprout, Roseville, Ill., on Double HH Beatrice 9504. 6, John Godsey, Gaylord, on Pride B of CW 322. 7, Mary Anne Pipkin on Clearwater Legend Lass M. 8, James Pipkin on Hi Way Blackbird 1259. 9, Patricia Neumann, Monroe, Wis., on Stone Arc Maverick Pride.

**Class 19 (calved 7-11-79 to 8-19-79):** 1, Phil Flemming, Davison, Mich., on FFF Blackcap 585L,

by Premier Big Time. 2, Ronald Ringland II, Bennet, Neb., on Triple RRR Erica Edwina 936. 3, Carrie Prox, Macomb, Ill., on Weirs Big Erica E972. 4, Barbara Baylor, Hanna City, Ill., on Camilla Lady R79. 5, Steven Dawson, Auburn, Ala., on PHF Pride Lady 945. 6, Hilary Nemir, Sweetwater, Texas, on RA Queen Mother 249. 7, David Garrison, Statesville, N.C., on Big Time Erica 69.

**Class 20 (calved 9-1-79 to 9-14-79):** 1, Linda Kroeker on Black Gold Royal Pride K963, by Premier Bankroll. 2, Jon White, Vici, Okla., on Whites Cara Ann 9873. 3, Carrie Prox on Weirs Annuity 953. 4, Mike McGuire on Briarhill Barbara 1369. 5, Kerry Hart, Frederick, S.D., on Atomic Zara 769. 6, Kara Millikan, Sedgwickville, Mo., on Skys Bardella. 7, Michael Elliott on Blackbird GAR 139. 8, Jo Ann Landry, Jeanerette, La., on Silver Gates Pride 77. 9, Wade Mindemann, Apache, Okla., on Empirette Fancy 2. 10, Roxanne Hunt, Strawberry Point, Iowa, on LHR Patriot Summitcrest 70. 11, Doug Blanks, Chico, Texas, on Berry Miss Bingo Princess 1. 12, Greg Gibson, Bridgeport, Texas, on Berry Miss Bingo Princess 2.

**Class 21 (calved 9-15-79 to 9-28-79):** 1, Susan McMahon on Summitcrest Blackcap 404L, by Ken

Caryl Mr. Angus 8017. 2, Wendy Millikan, Sedgwickville, Mo., on Skys Empirette. 3, Ronald Hopkins on DayBrake Empress 02. 4, Scott Morris, Balko, Okla., on Queen GAR 589. 5, Lyle Hagenbuch on Rito Bandy Maid 913. 6, Heather Hesson, Yale, Okla., on RGJ Estamere 1499. 7, Kelli Crossland, El Dorado, Ark., on UT Emulous Pride 81. 8, Mary Jo Eck, Pierce City, Mo., on Emulous Burgess 499 DE. 9, Janice Hammerlund on Blackman Pride of HAF 997. 10, Teresa Simmons, Shreveport, La., on Split Rail Northern 979 149. 11, Lisa Allen, Belle Plaine, on QLC A20 Blackbird A109L. 12, Christopher Loftin, Pomona, on Black Gold Karama K965. 13, Raymond Hammarlund, St. Marys, on Blackman Pride of HAF 976.

**Class 22 (calved 10-4-79 to 10-22-79):** 1, Scott Lickteig on Aces Bando Princess 319, by Sayre Patriot. 2, Ernest Frey II, Quarryville, Pa., on Twin Oaks Princess Grace. 3, John Wagner on Miss Beauty of CW. 4, William Bickham, Shreveport, La., on BL Princess 942. 5, Tina Lonnon, Decatur, Texas, on Lady Mina 92 of LML. 6, Catherine Myers, Marshfield, Mo., on Ideals Marshall Georgina. 7, Jimmy Dale Franks, Lenox, Ga., on Briarhill Miss Burgess 5879.

**Class 23 (calved 11-3-79 to 11-22-79):** 1, George Fincher, Auburn, Ala., on Briarhill Blackcap 969, by Briarhill Bartman. 2, Wade Mindemann on Empirette Queen 60. 3, Kenny Pittman, Billings, Mo., on Explores Miss Eston 29. 4, Keith Grissom on Blackjacks Velvet 1129. 5, Travis Mindemann, Apache, Okla., on Empirette Evergreen 47. 6, Jimmy Franks, Lenox, Ga., on Briarhill Belinda 1729. 7, LeAnn Thomas on Heather of Stonebroke 1919. 8, David Garrison on Miss Ruby Garner 22. 9, Steven Dawson, Auburn, Ala., on Southside Emulous Velvet 927. 10, Carol Loenneke, Jackson, Mo., on MAF Northern Goldy.

**Class 24 (calved 12-9-79 to 12-22-79):** 1, Jana Buckingham, Chico, Texas, on Berry Miss Bingo

Gammer 149, by Hales Emulous 386. 2, Sheila Frey, Mulhall, Okla., on CF Eileen 6F9.

**COW-CALF PAIRS**

**Class 1 (calved 9-6-75 to 7-28-77):** 1, Carrie Prox on Eileen Violet 3045, by Twin Islands Jumbo 22B. 2, Bruce Kroeker on Black Gold Queen Rae B706. 3, Ronald Ringland II on RR Dundyhill Blkdb Forever. 4, John Godsey, Gaylord, Kan., on Columbus Pride 1.

**Class 2 (calved 1-22-78 to 5-1-78):** 1, Sharon Diuble on Miss Michigan Herb Lou 078, by Black Marshall 482. 2, James Pipkin on Clearwater PH Edella E 56. 3, Karen Laflin on Miss Sunset 8004.

**Calf Champion:** George Fincher on Briarhill Blackcap 969.

**Reserve Calf Champion:** Linda Kroeker on Black Gold Royal Pride K963.

**Intermediate Champion:** Tim Fitzgerald on Windac Pride 9422.

**Reserve Intermediate Champion:** Mary Wagner on Miss Juanerra 11 of CW.

**Yearling Champion:** Stephanie Nelson on Nelson Betty Lue 9030.

**Reserve Yearling Champion:** Brad Worthington on Rose GV of Creston 5L.

**Grand Champion:** Stephanie Nelson on Nelson Betty Lue 9030.

**Reserve Grand Champion:** Tim Fitzgerald on Windac Pride 9422.


**Grand Champion Over-all:** Stephanie Nelson on Nelson Betty Lue 9030.

**Reserve Grand Champion Over-all:** Tim Fitzgerald on Windac Pride 9422.

**Group of Five:** 1, Idaho Junior Angus Assn. 2, Illinois Junior Angus Assn. 3, Nebraska Junior Angus Assn. 4, Michigan Junior Angus Assn.

**Best Display of 16 Head or More:** 1, Illinois Junior Angus Assn. 2, Nebraska Junior Angus Assn.

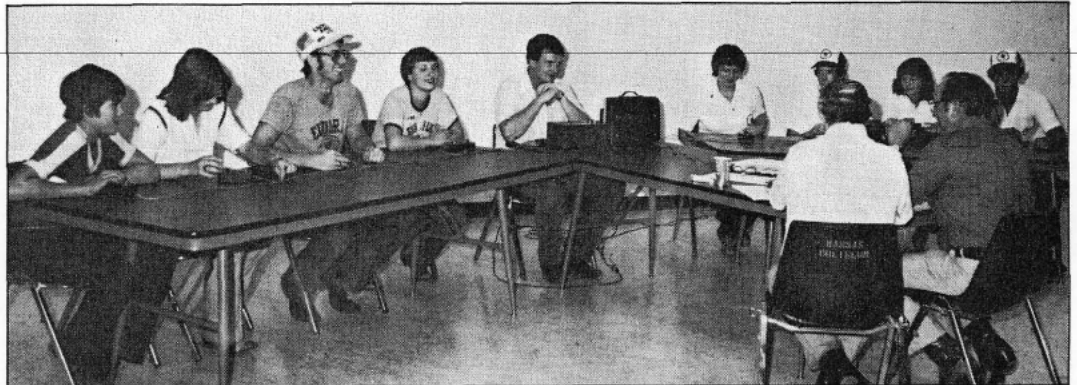
**Best Display of 15 Head or Fewer:** 1, Louisiana Junior Angus Assn. 2, Michigan Junior Angus Assn.

**Premiere Breeder:** Sharon Diuble. 

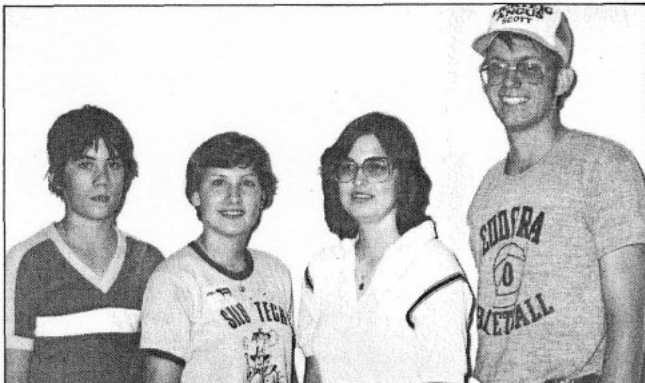


Idaho Junior Angus Assn.'s winning group of five

# Angus Bowl



A capacity crowd filled the room in the Kansas Coliseum to watch Kansas and Texas battle it out in the final round of national Angus Bowl competition July 19-20 in Wichita. The Kansas team (the four seated at left) proved most knowledgeable about questions regarding the Angus and livestock industries, their people and current events. Coordinating the contest were regional managers Lyle Haring (the commentator) and Waymon Ashley, both seated with backs to camera. Also helping out was regional manager trainee Don Laughlin (fifth from left).



The four winning Kansas team members are (from left) Matt Wineinger, Marion; team captain Brenda Ericson, Ft. Scott; Janice Hammarlund, St. Marys; and Scott Lickteig, Lawrence.



Runner-up team in Angus Bowl competition consisted of Texans (from left) Robert Delk, Houston; Susan Shollar, Houston; Tina Lonnon, Decatur; and Alford Echols, Cooper.