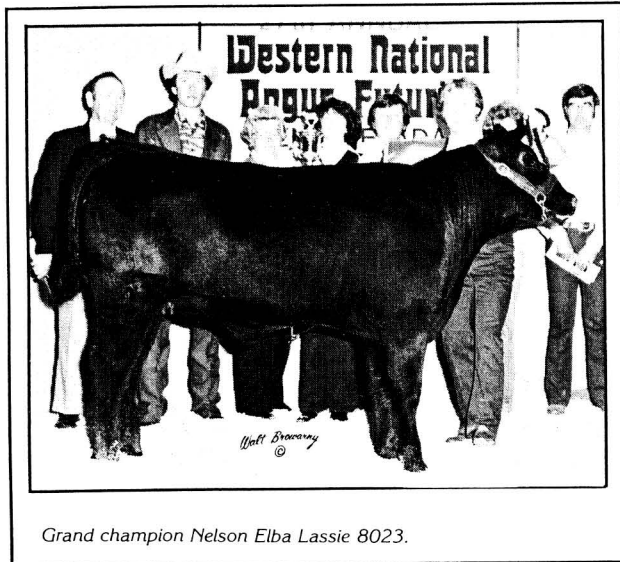
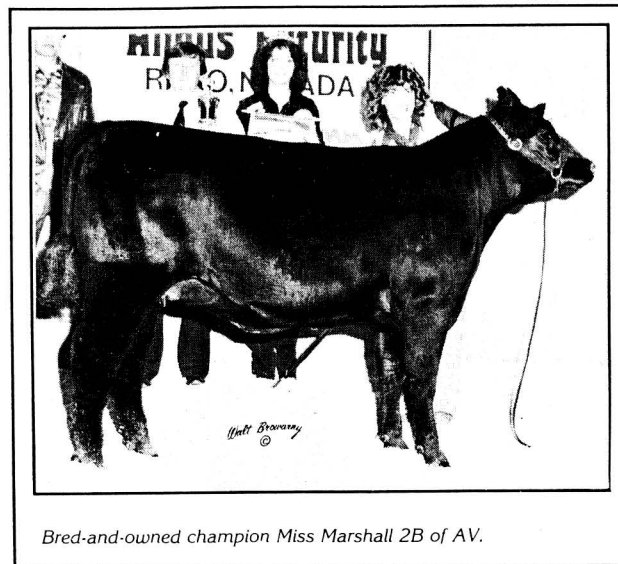


WESTERN REGIONAL SHOW



Grand champion Nelson Elba Lassie 8023.



Bred-and-owned champion Miss Marshall 2B of AV.

The Western Regional Junior Angus Heifer Show held April 29 in Reno, Nev., which was highlighted in the July ANGUS JOURNAL "Youth" section, featured 78 entries exhibited by 58 juniors from 10 states and Canada.

To reiterate, judge Vern Suhn, Scottsbluff, Neb., chose as grand champion Nelson Elba Lassie 8023, a January yearling daughter of Happyvale Marshall Pride 013G entered by Leon Mecham, Firth, Idaho. Standing in reserve grand spot was another January yearling, Nelson Miss K 8020, sired by Nelson Headstart and shown by Janna Nelson, Salmon, Idaho. These two heifers stood first and second in their class and were intermediate and reserve in-

termediate champions.

In the bred-and-owned division, a brother and sister from Mulino, Ore., took top honors. Anne Verbout had champion Miss Marshall 2B of AV, an October daughter of Marshall C496. Anne's brother Patrick stood reserve with his January 1978 Stilty Barbara 1C of PV, also by Marshall C496.

John Wagner, Harlan, Kan., showed calf champion in the owned division, Pride Duchess of CW, an April 1978 daughter of Black Marshall 482. Standing reserve was John Peterson, Tranquillity, Calif., with GV Barbaramere 78, a March 1978 daughter of Prospect Bandolier 16F.

Roslynn Wells, Dover, Okla., showed Bifles Lucy 733, an October 1977 daughter of

Black Marshall 482, to the junior champion spot. Following her was Samuel Martin, Winters, Calif., whose reserve junior champion Berryessa Maid Z2 is a September 1977 daughter of Mon Repos King 904.

The Idaho Junior Angus Assn. won top honors in the group of five heifers competition. Oregon Junior Angus Assn. was second, and the California juniors placed third.

The show's premier breeder award went to Nelson Angus Ranch, Salmon, Idaho, breeder of the three highest placing heifers.

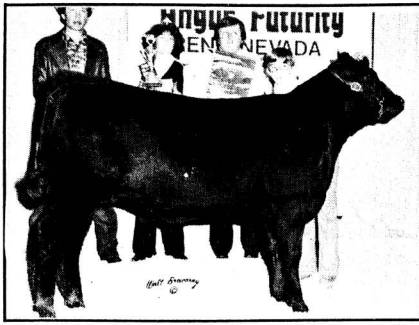
During the junior show, Cheryl LaFranchi of Calistoga, Calif., was chosen 1979 Western States Angus Assn. Queen. She is the daughter of Henry LaFranchi. First runner up was Merridee Smith, Beaver Creek, Ore.



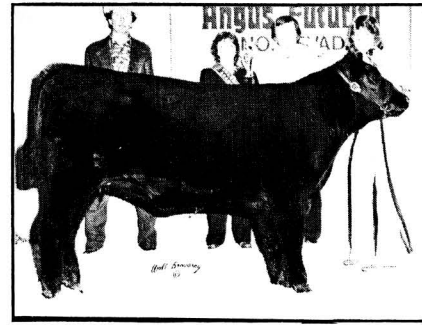
Reserve grand champion Nelson Miss Kay 8020.



Bred-and-owned reserve champion Stilty Barbara 1C of PV.



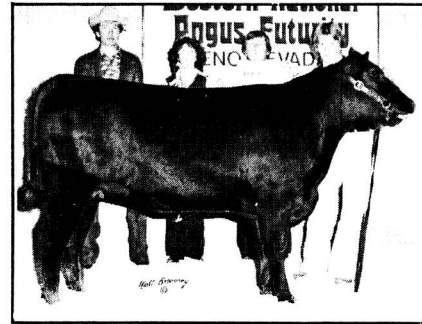
Calf champion *Pride Duchess of CW.*



Junior champion *Biffles Lucy 733.*



Reserve calf champion *GV Barbaramere 78.*



Reserve junior champion *Berryessa Maid Z2.*

EXHIBITORS

Joanne Allender, Auburn, Calif.; Laura Allender, Auburn, Calif.; Dawn M. Anderson, Orland, Calif.; Dale S. Arnold, Sebastopol, Calif.; Andrea Avilla, Napa, Calif.; Teresa Barker, Beavercreek, Ore.; William J. Barcellos, Dos Palos, Calif.; Jennifer L. Biella, Louisville, Colo.; Ricky Blanchard, Mendota, Calif.; Nancy Boos, Montague, Calif.; Karen Brandon, Santa Rosa, Calif.; Arnold Callison, Blackfoot, Idaho; Donald Callison, Blackfoot, Idaho; Ronald Callison, Blackfoot, Idaho; Leo N. Chronis, Galt, Calif.; Lisa Ann Coleman, Turner, Ore.; Laura Crose, Napa, Calif.; Tracy R. Crose, Napa, Calif.; Kathleen Day, Layton, Utah; Brian Fitzgerald, Harrison, Neb.; Angela Giovannoni, Napa, Calif.; John Giovannoni, Napa, Calif.; Tony Giovannoni, Napa, Calif.; Geri Grieb, Lexington, Ore.; Julie Grieb, Lexington, Ore.; Ken Grieb, Lexington, Ore.; Mike Harris, Blackfoot, Idaho; John S. Knapp, Sandy, Ore.; William D. Knapp, Sandy, Ore.; Cheryl LaFranchi, Calistoga, Calif.; Eric LaFranchi, Calistoga, Calif.; Scot Lenhard, Deer Park, Wash.; Shawn Edith Manhire, Fallon; Samuel A. Martin, Winters, Calif.; Kathleen E. Matthews, Newcastle, Calif.; Leon C. Mecham, Firth, Idaho; Janna Nelson, Salmon, Idaho; Stephanie Nelson, Salmon, Idaho; Jean Neumeyer, Bonners Ferry, Idaho; Jeffrey Neumeyer, Bonners Ferry, Idaho; Tom W. Nitschman, Auburn, Calif.; Jeff Olivera, Tranquillity, Calif.; Lisa Kay Parsons, Payette, Idaho; Diane C. Paver, Templeton, Calif.; John Peterson, Tranquillity, Calif.; Donald R. Pollard, Prineville, Ore.; Cathy A. Putzel, Cottonwood, Calif.; Wendy Ruff, Marysville, Calif.; John Skrabo Jr., Auburn, Calif.; Lonnie Slezina, Coaldale, Alta.; Anne Verbout, Mulino, Ore.; Patrick Verbout, Mulino, Ore.; John H. Wagner, Harlan, Kan.; Mary C. Wagner, Harlan, Kan.; Roslynn K. Wells, Dover, Okla.; Cathy L. Wiser, Monroe, Ore.; Julie Wiser, Monroe, Ore.; Mark A. Wiser, Monroe, Ore.

BRED-AND-OWNED DIVISION

Class 1—calved 7-1-78 to 8-5-78: 1, L. Chronis on Eleanor by Night. 2, T. Nitschman on Erica Starhaven Delia 78.
Class 2—calved 5-30-78 to 6-12-78: 1, R. Callison on Zara Lass 18 of RC. 2, G. Grieb on GG Gemini Gal 1848. 3, N. Boos on Queen Ankony of Cold Creek.
Class 3—calved 4-1-78 to 5-2-78: 1, M. Harris on Lady Celebrity of MH. 2, J. Skrabo Jr. on Skrabo

Kolonels First Lady. 3, K. Day on IL Flaming Star 803. 4, J. Skrabo Jr. on Kolonels Foxy Babe. 5, M. Wiser on 5W Princess Joleen. 6, S. Manhire on Shardona Lady Ida. 7, C. Putzel on CAPS Blackbird Dot-tie.

Class 4—calved 2-17-78 to 3-15-78: 1, J. Giovannoni on Sky High Foxy Terri 806. 2, J. Nelson on Nelson Marlene 8066. 3, J. Grieb on JG Miss Angel 1108. 4, R. Blanchard on Ricks Juanada Rosette 1008. 5, Jeffrey Neumeyer on Princess of Jaynbee. 6, D. Pollard on Bonnie 832 of DRP.

Class 5—calved 1-2-78 to 2-1-78: 1, P. Verbout on Stilty Barbara 1C of PV. 2, L. Parsons on Star Lass Errolline 18. 3, J. Knapp on Knapp Colonial Kay. 4, J. Wiser on 5W Princess Pride J21.

Class 6—calved 11-24-77 to 12-7-77: 1, K. Grieb on KG Erica Eldorene 1428. 2, S. Lenhard on Meadowbird Tall Magnet 712. 3, D. Anderson on AA Elsie Star 57. 4, K. Day on Kathys Annie Humongous 800.

Class 7—calved 10-5-77 to 10-31-77: 1, A. Verbout on Miss Marshall 2B of AV. 2, K. Brandon on KB Miss Emulous Rica. 3, K. Brandon on KB Green Valley Promise.

Class 8—calved 6-1-77: 1, A. Callison on Prideolier 157 of AC.

Champion: A. Verbout on Miss Marshall 2B of AV.
Reserve Champion: P. Verbout on Stilty Barbara 1C of PV.

OWNED DIVISION

Class 1—calved 5-2-78 to 5-12-78: 1, B. Fitzgerald on Windac Pride 8409. 2, J. Giovannoni on Sky High Foxy Erica 830. 3, E. LaFranchi on Oak Ridge Heather Bloom 21C. 4, Jean Neumeyer on Jaynbee Alice 175. 5, W. Barcellos on Colleen Queen 810.

Class 2—calved 3-28-78 to 4-12-78: 1, J. Wagner on Pride Duchess of CW. 2, A. Avilla on CRS Etta 75. 3, C. LaFranchi on Oak Ridge Eisa Erica 14C. 4, T. Giovannoni on Mon Repos Chaparel 5 985. 5, S. Lenhard on FV Missie 118. 6, D. Callison on Prideolier 48 of B&D. 7, L. Allender on Sir Wms Queen 4118.

Class 3—calved 3-1-78 to 3-18-78: 1, J. Peterson on GV Barbaramere 78. 2, L. Crose on Packard Barbara 58. 3, G. Grieb on Gribs Elba 1058. 4, J. Biella on Radiant Eisa Pride of VR. 5, M. Wagner on Susanna CW. 6, J. Allender on Sir Wms Barbara 6448. 7, T. Crose on HR Pride 821. 8, T. Barker on Burtons Erelite Lass 1028. 9, D. Arnold

on DSA Georgianamere 302. 10, S. Lenhard on FV Erica 234. 11, W. Ruff on Sequoia Pride Freestate 8062.

Class 4—calved 2-1-78 to 2-23-78: 1, S. Nelson on Nelson Elbina 8034. 2, L. Coleman on Oxbow Blackbird 456 of HAF. 3, E. LaFranchi on Oak Ridge Queenmere 05C. 4, K. Matthews on Silveiras Barbara 8010. 5, C. Wiser on Tehama Blackcap J803. 6, C. Putzel on Diamond D Reached 38.

Class 5—calved 1-4-78 to 1-31-78: 1, L. Mecham on Nelson Elba Lassie 8023. 2, J. Nelson on Nelson Miss Kay 8020. 3, K. Grieb on Angel of 5G 1968. 4, S. Nelson on Nelson Princess 8008. 5, J. Biella on E Blackcap T 4228. 6, J. Knapp on Nelson Blackcap 8027.

Class 6—calved 10-28-77 to 12-9-77: 1, C. LaFranchi on Oak Ridge Lady 105Z. 2, D. Paver on Annie K of Creston 58J. 3, W. Ruff on Dunipace Erica L74.

Class 7—calved 9-5-77 to 10-8-77: 1, R. Wells on Biffles Lucy 733. 2, S. Martin on Berryessa Maid Z2. 3, T. Barker on Burtons Pride Lass 557. 4, J. Olivera on Silveiras September Lady 7065.

Class 8—calved 5-7-77 to 6-22-77: 1, A. Giovannoni on Sky High Foxy Erica. 2, A. Giovannoni on Skyhigh Foxy Dena 723. 3, L. Slezina on Southolm Errolline 70J. 4, J. Knapp on Knapp Port Lucy 22K7. 5, W. Knapp on Nelson Eldorene 7086. 6, D. Paver on Four Oaks Suprema Ariel.

Calf Champion: J. Wagner on Pride Duchess of CW.

Reserve Calf Champion: J. Peterson on GV Barbaramere 78.

Intermediate Champion: L. Mecham on Nelson Elba Lassie 8023.

Reserve Intermediate Champion: J. Nelson on Nelson Miss Kay 8020.

Junior Champion: R. Wells on Biffles Lucy 733.

Reserve Junior Champion: S. Martin on Berryessa Maid Z2.

Grand Champion: L. Mecham on Nelson Elba Lassie 8023.

Reserve Grand Champion: J. Nelson on Nelson Miss Kay 8020.

Premier Breeder: Nelson Angus Ranch, Salmon, Idaho.

Group of Five: 1, Idaho Junior Angus Assn. 2, Oregon Junior Angus Assn. 3, California Junior Angus Assn.