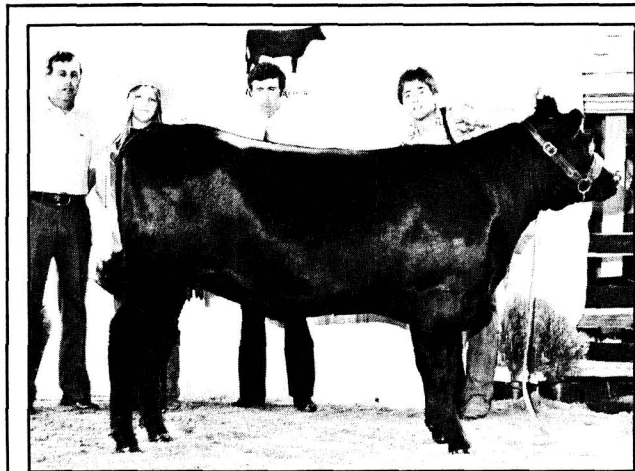


EASTERN REGIONAL SHOW

Photos by Robert S. Kiger



Grand champion Black Lady 883 of HAR



Bred-and-owned champion Sir Wms Black Gold 6688

The 1979 Eastern Regional Angus Heifer Show attracted 138 young Angus breeders who exhibited 203 heifers at the Keystone Classic June 30 in York, Pa.

Grand champion heifer was junior champion Black Lady 883 of HAR, shown by David Retherford, Indianapolis, Ind. The Jan. 3, 1978, heifer is a Black Marshall 482 ("Sport") daughter and out of a Gay Revolution 160 of HAR dam. David is the son of Mr. & Mrs. Alan Retherford.

For reserve grand champion, judge Gary Dameron of Lexington, Ill., selected the Premier Stardom daughter Benlock Blackcap 108K, shown by Leroy Billman, Ostrander, Ohio. This March 6, 1978, heifer is out of a Blackcap of Benlock 8H dam and had earlier been named reserve junior champion of the show.

In the bred-and-owned division, champion heifer was Sir Wms Black Gold 6688, exhibited by Sonya Boggs, Hillsdale, N.Y. Sonya's Feb. 13, 1978, heifer was sired by Wetonka 2446. Reserve bred-and-owned champion was Miss Michigan Herb Lou 078, a Jan. 22, 1978, Black Marshall 482 daughter exhibited by Sharon Diuble, Ann Arbor, Mich.

Thomas Cronk, New Castle, Ind., showed intermediate champion heifer Heritage Blackbird 8H15, a May 12 Eileenmere Lad 1834 yearling. Cronk also exhibited reserve calf champion Heritage Energetta 8H67, a Sept. 12 calf also sired by 1834.

Lee Ann King, Mt. Perry, Ohio, had the reserve intermediate champion, Black Oak Eline 579K. The July 7, 1978, heifer is a

daughter of Premier Big Time.

Heifer calf champion was a Sayre Patriot daughter, Summitcrest Irene K388. Calved Sept. 20, 1978, she was entered by Jeffery Johnson, Summitville, Ohio.

Named premier breeder of the show was the M.L. Haggard & Sons firm, Losantville, Ind. This award is given to the breeder who has the highest placing heifers in class.

The Ohio Junior Angus Assn. won first place and \$100 in the group of five heifers class. Second place and winner of \$75 was the Indiana Junior Angus Assn. Pennsylvania juniors won third and \$50, with the Maryland junior association taking fourth place and \$25. The remaining three entries in the class, Central-Western New York, Virginia and North Carolina, won \$15 each.



Reserve grand champion Benlock Blackcap 108K



Bred-and-owned reserve champion Miss Michigan Herb Lou 078



Intermediate champion Heritage Blackbird 8H15



Reserve intermediate champion Black Oak Eline 579K

EXHIBITORS

Cleveland W. Adamson, Troutville, Va.; Jeffrey T. Bailey, Linn, W.Va.; Scott Paul Bair, Shelocta; Cat Baird, Aldie, Va.; Cynthia L. Baird, Washington Court House, Ohio; Sharon L. Baird, Washington Court House, Ohio; Thomas A. Baum, Elizabethtown; Kim Beyeler, Waynesboro, Va.; Brent A. Billman, Ostrander, Ohio; Leroy E. Billman, Ostrander, Ohio; Dawn Lee Bippert, Elma, N.Y.; Sonya L. Boggs, Hillsdale, N.Y.; J. Sloan Bonar Jr., Burlington, W.Va.; Sarah Parker Bonar, Burlington, W.Va.; Donald Cairns, Sadsburyville; Nancy Lee Canby, Brookeville, Md.; William Canby, Brookeville, Md.; Cathy Cannon, Spotsylvania, Va.; Tracey Chapman, Manchester, Ga.; Nancy Kay Clark, Akron, N.Y.; Noelle Lynn Clark, Akron, N.Y.; Elizabeth J. Cohron, Stuarts Draft, Va.; Scott J. Colvin, West Salem, Ohio; Beth Anne Cooper, Zanesville, Ohio; Molly Jane Cooper, Zanesville, Ohio; William L. Cooper II, Zanesville, Ohio; Russell McFarland Cronk, Lewisville, Ind.; Thomas Jay Cronk, New Castle, Ind.; Todd Dawes, Urbana, Ind.; Sharon Diable, Ann Arbor, Mich.; Elizabeth C. Dixon, York; Ralph V. Dixon Jr., York; David P. Doran, New Albany, Ohio; Twila Doran, New Albany, Ohio; Sandra Jean Dunkle, Franklin, W.Va.; Tammy Eisenhour, Wellsville; Michael K. Elliott, Mocksville, N.C.; Mary Ferguson, East Liverpool, Ohio; Ernst R. Frey II, Quarryville; Fritz C. Frey, Quarryville; Douglas J. Full, Mt. Airy, Md.;

David Walling Garrison, Conover, N.C.; Cheryl Grubbs, Hillsboro, Ind.; Joy Hayes, Kingwood, W.Va.; Barbara A. Hilty, Mt. Pleasant; William J. Hilty, Mt. Pleasant; Timothy J. Hoffman, Dover; Susan C. Holston, Derwood, Md.; Mary Frances Hoskins, Liberty, Ky.; David J. Huff, Lafayette Hill; Angela Lynn Hunt, Milton, Ind.; Deborah Ann Hunt, Milton, Ind.; Gayle Ellen Hunt, Milton, Ind.; Jeffrey W. Janney, Westminster, Md.; Susan Lynne Janney, Westminster, Md.; Frederick H. Johnson III, Summitville, Ohio; Jeffrey S. Johnson, Summitville, Ohio; Anne C. Keys, Olney, Md.; Gordon Chandler Keys III, Olney, Md.; Le Ann King, Mt. Perry, Ohio; Ronald King II, Mt. Perry, Ohio; Christopher Kinsley, York; Robert A. Kinsley, York; Timothy Kinsley, York; Julie Klingenschmitt, Akron, N.Y.; Carol L. Krause, Slatington; Diane S. Krause, Slatington; Jeffrey A. Lamphere, Lahmansville, W.Va.; Kathy Lou McCormick, Cameron, W.Va.; Ann Marie McCullough, North Scituate, R.I.; Christian S. Mayer, Glen Gardner, N.J.; Glen R. Mayer, Glen Gardner, N.J.; Jeffrey W. Mayer, Glen Gardner, N.J.; Robert Mehlman, Chester, N.J.; Alvin D. Mick, Horner, W.Va.; Kevin R. Mick, Horner, W.Va.; Ronald S. Mick, Horner, W.Va.; Joseph R. Miller III, Normalville; Robert Jay Miller, Woodsboro, Md.; Diane C. Molitor, Fayetteville, Ohio; Jennifer Z. Molitor, Fayetteville, Ohio; Lucy R. Molitor, Fayetteville, Ohio; Mary Helen Molitor, Fayetteville, Ohio; Thomas A. Molitor, Fayetteville, Ohio; Lori D.

Moxley, West Friendship, Md.; Mark G. Moxley, West Friendship, Md.; Susan D. Moxley, West Friendship, Md.; Linda C. Mrotek, Brightwood, Va.; Todd A. Mrotek, Brightwood, Va.; Lisa Neal, Glenwood, Md.; Lauren Novak, Newark, Ohio; Nancy Jane Ogle, Austinville, Va.; Dean A. Petow Jr., Kensington, Conn.; Rick Petow, Kensington, Conn.; Charles H. Piersall III, Charlotte Hall, Md.; Marbeth L. Piersall, Charlotte Hall, Md.; Michele L. Piersall, Charlotte Hall, Md.; James E. Pruitt, Upperville, Va.; Judy Lynn Pruitt, Upperville, Va.; Dale Rains, Mercer; David Retherford, Indianapolis, Ind.; Deborah M. Rishel, Indianapolis, Ind.; Susan A. Rishel, Indianapolis, Ind.; Tom S. Russell, Sevensburg, Va.; Ned Sayre, Churchville, Md.; Robin Schibler, Corfu, N.Y.; Russell Schibler, Corfu, N.Y.; Roger B. Sears, Keymar, Md.; David K. Severns, Glenmont, Ohio; Douglas B. Severns, Glenmont, Ohio; Christine Shive, Seven Valleys; Jennifer Smalstig, Millbrook, N.Y.; Carol Sue Smith, Bucyrus, Ohio; Diane Somerville, Cocks Mill, W.Va.; Rodney Somerville, Cocks Mill, W.Va.; Pamela M. Stabler, Brookeville, Md.; Randy Stabler, Brookeville, Md.; Robin L. Stabler, Brookeville, Md.; Chris A. Sullivan, Cooksville, Md.; Kay D. Sweigard, Halifax; Monique R. Sweigard, Halifax; Cecil Teets, Freedom; John M. Thurman, Rocky Mount, Va.; David A. Tracy, Farmington, Maine; John H. Treadway Jr., Ashton, Md.; Laura L. Treadway, Ashton, Md.; Karen Uetrecht, Oregonia, Ohio; Douglas A. Velisek, Woodbine, Md.; Peter A. Velisek, Woodbine, Md.; Gary P. Walker, West Chester; Kenneth W. Walker, West Chester; Jodie Wallace, Ripley, W.Va.; Jans A. Wayne, Sanford, Maine; Anita Weaver, Stuarts Draft, Va.; Forrest Weaver, Stuarts Draft, Va.; S. David Wise, Spring Grove; William A. Wise, Spring Grove; Carrie L. Worthington, Bridgewater, Conn.

BRED-AND-OWNED HEIFERS

Class 1—calved 12-6-78: Cat Baird on Tantara Linchester Sandy T33.

Class 2—calved 9-3-78 to 11-3-78: 1, T. Dawes on DD Miss Heiress 808. 2, D. Retherford on ARF Corvallis Legend 818. 3, D. Molitor on Miss Blackdot Emulous M878. 4, T. Dawes on DD Miss Bradley 898. 5, D. Rains on Little Acres Bell ND 43. 6, L. Mrotek on Runnymead Rito Bell.

Class 3—calved 7-1-78 to 8-10-78: 1, G. Keys III on Oatland Elba Erica 115. 2, S. Diuble on Herb Lou Miss Chaparral 738. 3, C. Grubbs on Mignonette CG 538. 4, E. Cohron on Jones CB Evergreen 81. 5, L. Treadway on Wyndcrest Anya. 6, Judy Pruitt on Judys Colossal Jilt 1018. 7, C. Piersall III on Brierwood Miss Burgess 38. 8, David Severns on HF Miss Georgina 168.

Class 4—calved 6-4-78 to 6-23-78: 1, T. Cronk on Queen Alice 98. 2, D. Rains on Little Acres Pocket A27. 3, L. Novak on Novak Evergreen K80. 4, K. Walker on KW Katinka 168. 5, R. Sears on Panacea Blkcap Kent of BAR. 6, Marbeth Piersall on Brierwood Blackcap 28.

Class 5—calved 5-2-78 to 6-3-78: 1, S. Diuble on Herb Lou Miss Chaparral 7928. 2, T. Dawes on DD Miss Gaybird 548. 3, B. Cooper on MSU Eline CF 578. 4, M. Elliott on Dominators Erica of RMR. 5, D. Rains on Little Acres Gracious A 88. 6, N. Ogle

on Ogles Missy of Eric Gordon. 7, L. Mrotek on Lady Bandit of Runnymede. 8, T. Kinsley on South Branch Burgess 817. 9, N. Canby on Moreland Blackcap 8C5. 10, D. Hunt on DAH Ann of Blackgold 1102. 11, N. Canby on Moreland Blackcap 8C10. 12, J. Thurman on Miss LA Blackbird 852.

Class 6—calved 4-2-78 to 4-29-78: 1, C. Grubbs on Georgia CG. 2, L. Novak on Novak Gaybird K77. 3, R. Miller on Marlee Princess Linette 1948. 4, T. Mrotek on Runnymede Flodisa. 5, J. Janney on J Mar Lyn Juana Erica. 6, E. Dixon on Druck Valley Eliza.

Class 7—calved 2-24-78 to 3-26-78: 1, M. Sweigard on MVAF Princess 804. 2, S. Boggs on Sir Wms Elba 4278. 3, T. Mrotek on Runnymede Zara. 4, J. Treadway Jr. on Wyndcrest Lady Mabel. 5, G. Walker on GW Queen 138. 6, S. Bair on Miss Rito 149 Rolling Acres.

Class 8—calved 1-4-78 to 2-13-78: 1, S. Boggs on Sir Wms Black Gold 6688. 2, S. Diuble on Miss Michigan Herb Lou 078. 3, T. Dawes on DD Miss Black Lass 128. 4, C. Grubbs on Blackbird DG 808. 5, J. Wayne on Walnut Brook Highlawn B. 6, J. Thurman on Miss Seminole Blkbd of LA822. 7, N. Sayre on WH Proud Kathy 228-7850. 8, Michele Piersall on Brierwood Blackbird 18.

Champion: S. Boggs on Sir Wms Black Gold 6688.

Reserve Champion: S. Diuble on Miss Michigan Herb Lou 078.

OWNED HEIFERS

Class 1—calved 11-23-78 to 12-25-78: 1, N. Ogle on EWS Georginas Lily 169. 2, M. Cooper on Eulima Lady GB 1478. 3, Noelle Clark on Eline 61 of Dancote.

Class 2—calved 9-12-78 to 10-12-78: 1, J. Johnson on Summitcrest Irene K388. 2, T. Cronk on Heritage Energetta 8H67. 3, D. Garrison on Koeta Bradley TA. 4, J. Klingenschmitt on BF Miss Montana 418. 5, R. Mehlman on Black Rivers Linda John.

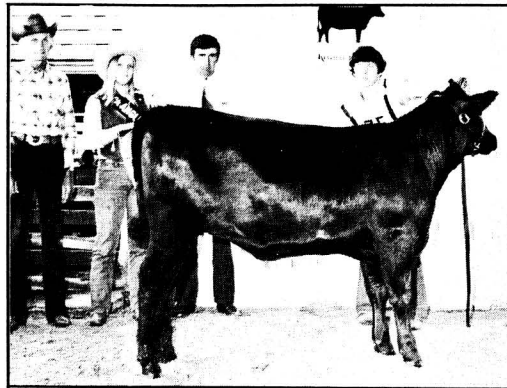
Class 3—calved 9-1-78 to 9-8-78: 1, G. Hunt on Heritage Blackcap 8H56. 2, M. Sweigard on HF Carrie Lass 854. 3, J. Wallace on Erica Bradley TA 9. 4, A. Keys on Oatland Blackbird 130. 5, James Pruitt on Dakota Rose. 6, B. Hilty on Little Acres Pride R 40.

Class 4—calved 7-15-78 to 8-12-78: 1, T. Dawes on DD Miss Black Bessie 668. 2, W. Cooper II on Barbaramere GB 1278. 3, S. Bonar on Pitz Phrances of Fort Hill. 4, W. Canby on Moreland Pride C815. 5, K. McCormick on Irvs Eileen 13 of Fort Hill. 6, S. Bonar Jr. on Eileens Hillless Ft Hill. 7, D. Somerville on RP Emulous XX Blacklass.

Class 5—calved 6-15-78 to 7-7-78: 1, L. King on Black Oak Eline 579K. 2, J. Molitor on Miss Northern Emulous M478. 3, L. Molitor on Fruhling Miss Emulous F68. 4, D. Bippert on Jewel 255J of Sayre. 5, L. Novak on Novak Fair Queen K83. 6, Douglas Severns on Legend Trim Lass 894. 7, S. Diuble on Herb Lou Miss Chaparral 858. 8, D. Full on Elba 3 of Back Acres 8A18. 9, W. Wise on Powells Miss Excursion Star. 10, J. Lamphere on Apex Barbara Rose 828.

Class 6—calved 5-25-78 to 6-12-78: 1, P. Velisek on Edlyns Ellen Erica 8117. 2, Cynthia Baird on Northern Emulous Barbara. 3, S. Rishel on Edlyns Bernadette 8E2. 4, A. Hunt on Heritage Eisa 7H18. 5, S. Colvin on 4C Erica Energy 0148. 6, R. King II on KMH Legends Lady 811. 7, N. Clark on Powells Miss Burgess. 8, Russell Schibler on Summitcrest Blackcap K376. 9, S. Wise on HL Eline. 10, W. Hilty on Emulous Juana of Prospect 78.

Class 7—calved 5-6-78 to 5-16-78: 1, T. Cronk on Heritage Blackbird 8H15. 2, C. Teets on Seldom Seen Queen Mother 5. 3, M. Molitor on Miss Freestate Moneychanger. 4, D. Hunt on Bonnie Blackbird MSF 8187. 5, D. Tracy on Fleetwood Nan-



Heifer calf champion Summitcrest Irene K388

cy 798. 6, C. Krause on ZA Lucky Charm 4948. 7, S. Janney on Oatland Duchess 126. 8, A. Mick on RP Chips Black Elba. 9, J. Miller III on Indian Head Marshall Barb. 10, R. Sears on Panacea Blkcp EMP D Eston 2.

Class 8—calved 5-1-78 to 5-4-78: 1, K. Utrecht on Kiata Gold 58. 2, D. Doran on Erica 100K. 3, S. Baird on Turkey Run Lady Behave 218. 4, S. Holston on Fleetwood Barbara 838. 5, M. Ferguson on Windac Ivy 8289. 6, A. Weaver on Frosty Black Marshall 1268. 7, D. Velisek on Bannockburn Northern Favor. 8, R. Petow on Sir Wms Lass 1908. 9, R. King II on Summitcrest Echo 364K.

Class 9—calved 4-17-78 to 4-27-78: 1, D. Rishel on Edlyns Evelyn Marie 8E57. 2, J. Smalstig on Rally Timberlee Missie 548. 3, E. Frey II on Twin Oaks Princess 3668. 4, K. Sweigard on HF Blackbird 840. 5, L. Moxley on Blackbird SL 794. 6, Randy Stabler on Twin Oak Ruth 6338. 7, C. Cannon on Amans Cathy 120B. 8, D. Somerville on E&W Pride G10. 9, R. Dixon Jr. on Druck Valley Ebony Doxy. 10, Robin Stabler on Twin Oaks Bell 2668. 11, J. Miller III on Twin Oaks Elbamere 2128.

Class 10—calved 4-6-78 to 4-16-78: 1, F. Johnson III on Summitcrest Bernadette 281K. 2, R. Miller on Marlee Bluebird Linette 168. 3, B. Billman on Blackbird 142J of Sayre. 4, F. Weaver on Marshall Lass EB 818. 5, C. Teets on Walbridge Edwina 818. 6, C. Adamson on Tartans Heather 057. 7, L. King on Premier Aquarius 44S. 8, G. Keys III on Oatland Dubarry Lady 117. 9, J. Wallace on Devotion Bradley 40. 10, C. Cannon on Dutchess of Skyway Hills. 11, S. Bair on Manor Elban of Rolling Acres.

Class 11—calved 4-1-78 to 4-5-78: 1, D. Bippert on Rally Timb Euthalla 1658. 2, D. Velisek on Edlyns Marie Lassie 849. 3, E. Frey II on PS Nittany Gal 268. 4, R. Kinsley on South Branch Erica 811. 5, J. Hayes on Twin Oaks Blackbird 178. 6, S. Wise on Gisela Erica 778. 7, J. Thurman on Eye Delight BAF 832. 8, M. Ferguson on KA Blackbird Pride 676. 9, J. Bailey on RP Black Chips Princess. 10, D. Petow Jr. on Lady Russ 822J of Sayre. 11, W. Wise on HL Blackcap. 12, W. Hilty on Gonaways Erica.

Class 12—calved 3-19-78 to 3-26-78: 1, T. Molitor on Freestate Lady M378. 2, M. Sweigard on Keenland Elba 638. 3, Cat Baird on Flora SL 784. 4, K. Mick on RP Emulous 06 Ruthie. 5, C. Sullivan on Miss B of Back Acres 8L11. 6, F. Frey on Twin Oaks Edella 2238. 7, A. McCullough on Sir Wms Annie 1358. 8, T. Baum on Walbridge Jill Erica 1978. 9, D. Cairns on Edlyns Baker Quey 841A. 10, P. Stabler on Twin Oaks Lucy 2578.

Class 13—calved 3-11-78 to 3-17-78: 1, C. Worthington on Torro Negro Lucy 25K. 2, Diane Krause on ABF Grand Erica E58. 3, S. Dunkle on Meadows Flavia 534. 4, L. Neal on Lisa Oatland Pride. 5, T. Doran on

Blackcap of Carlsway 3K. 6, M. Elliott on Guppie of Glenkerry. 7, D. Huff on Gibbet Hill Blackbird 112. 8, J. Bonar Jr. on J. Prides Eileen of Fort Hill. 9, Robin Schibler on Rally Elba 338. 10, S. Bonar on Ft Hill Eileen.

Class 14—calved 3-1-78 to 3-9-78: 1, L. Billman on Benlock Blackcap 108K. 2, J. Johnson on Summitcrest Blackbird K105. 3, C. Kinsley on South Branch Mayflower 807. 4, T. Dawes on Hi Way Iba 288. 5, J. Thurman on Miss BF 72 Rito Fern 833. 6, C. Shive on Rally Lass 1068. 7, K. Sweigard on HF Carrie Plowess. 8, T. Eisenhour on Rally Elba 1358. 9, B. Hilty on DS Barbara 808. 10, R. Somerville on Seldom Seen Pure Pride S28. 11, T. Hoffman on PS Bessie 118. 12, C. Smith on Wayview Annie 31. 13, K. McCormick on Eileen Princess of Fort Hill.

Class 15—calved 1-30-78 to 3-1-78: 1, R. Cronk on HA Elba 6488. 2, R. Mick on Meadows Eline 505. 3, K. Beyeler on Ginger Hill Margaret 168. 4, D. Severns on E&W Blaze G3. 5, S. Moxley on Glenfield Erica 18. 6, F. Frey on Twin Oaks Edwina 6278. 7, T. Chapman on Broadview Blackcap 804. 8, J. Mayer on Waltz Enchanted Lady 2968. 9, G. Mayer on Waltz Grand Blackcap 958. 10, S. Dunkle on Meadows Alexoxe 504. 11, C. Mayer on Waltz Grand Pride 1338.

Class 16—calved 1-2-78 to 1-28-78: 1, D. Retherford on Black Lady 883 of HAR. 2, M. Hoskins on Walbridge Juana Erica 588. 3, N. Sayre on WH Proud Kathy 131-7828. 4, T. Russell on Ginger Hill Rosella 148. 5, D. Garrison on Georgina Bradley 38. 6, C. Shive on Miss Burgess 332 D1 DGS. 7, A. Hunt on Eisa Erica MSF 786. 8, M. Elliott on Emaline of Glenkerry. 9, J. Bailey on PS Pride 028. 10, C. Sullivan on WH Lad Edella 64-78. 11, M. Moxley on Ideals Bohanus Glenda 2. 12, A. Mick on Barbara 749J of Sayre.

Calf Champion: J. Johnson on Summitcrest Irene K388.

Reserve Calf Champion: T. Cronk on Heritage Energetta 8H67.

Intermediate Champion: T. Cronk on Heritage Blackbird 8H15.

Reserve Intermediate Champion: L. King on Black Oak Eline 579K.

Junior Champion: D. Retherford on Black Lady 883 of HAR.

Reserve Junior Champion: L. Billman on Benlock Blackcap 108K.

Grand Champion: D. Retherford on Black Lady 883 of HAR.

Reserve Grand Champion: L. Billman on Benlock Blackcap 108K.

Premier Breeder: M.L. Haggard & Sons, Losantville, Ind.

Group of Five: 1, Ohio. 2, Indiana. 3, Pennsylvania. 4, Maryland.