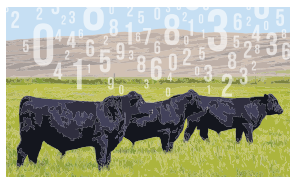


# BY THE NUMBERS



by AGI staff

## Structured Sire Evaluation update

*The American Angus Association manages and promotes participation of several different performance programs every year. These programs elevate the Association's database for more accurate predictions of genetic merit.*

One of the most important programs the Association manages for its membership is the Structured Sire Evaluation.

Starting in fall 2015, the

Association-sponsored Structured Sire Evaluation aims to collect carcass data on highly used bulls in the Angus population that have little to no actual carcass data collected on

them. Highly used bulls are individuals who have landed on the Top 200 Registration Sires for the previous fiscal year, and in most cases

*Continued on page 50*

**Table 1: Accuracy changes with inclusion of carcass records**

Sire Evaluation Report	Name	Reg. No.	Carcass Progeny	CW Acc	Marb Acc	RE Acc	Fat Acc
Spring 2018	Connealy Capitalist 028	16752262	20	0.67	0.63	0.60	0.64
Fall 2018			44	0.73	0.70	0.67	0.70
Spring 2018	EF Commando 1366	17082311	1	0.48	0.49	0.49	0.49
Fall 2018			29	0.68	0.65	0.62	0.65
Spring 2018	Hoover Elation M123	17603620	0	0.49	0.44	0.44	0.43
Fall 2018			28	0.65	0.62	0.58	0.59
Spring 2018	PA Full Power 1208	16981588	15	0.63	0.59	0.56	0.59
Fall 2018			63	0.75	0.73	0.69	0.72
Spring 2018	VAR Index 3282	17513381	0	0.54	0.48	0.49	0.49
Fall 2018			36	0.70	0.67	0.64	0.67
Spring 2018	Vintage Legacy 4409	17906918	0	0.44	0.39	0.39	0.36
Fall 2018			35	0.64	0.62	0.58	0.56
Spring 2018	Pine View Rock Solid P234	17880784	0	0.48	0.44	0.43	0.42
Fall 2018			26	0.62	0.60	0.56	0.55
Spring 2018	Koupals B&B Identity	16710463	3	0.58	0.52	0.52	0.53
Fall 2018			23	0.68	0.64	0.61	0.65
Spring 2018	Bruin Uproar 0070	16858775	2	0.54	0.48	0.49	0.49
Fall 2018			22	0.65	0.62	0.59	0.62
Spring 2018	Connealy Earnan 076E	16969555	3	0.56	0.50	0.50	0.51
Fall 2018			16	0.64	0.60	0.58	0.61
Spring 2018	Vision Unanimous 1418	16992096	0	0.51	0.46	0.47	0.46
Fall 2018			13	0.61	0.57	0.55	0.57
Spring 2018	SAV Resource 1441	17016597	2	0.53	0.47	0.48	0.48
Fall 2018			15	0.64	0.60	0.58	0.60
Spring 2018	Connealy Guinness	17031279	2	0.52	0.47	0.47	0.47
Fall 2018			21	0.64	0.61	0.58	0.60
Spring 2018	Rito 12E7 of 5F56 Rito 5M2	17131890	5	0.58	0.52	0.52	0.53
Fall 2018			14	0.63	0.59	0.56	0.59
Spring 2018	EXAR Denver 2002B	17160560	2	0.56	0.50	0.51	0.51
Fall 2018			22	0.67	0.64	0.61	0.65
Spring 2018	Connealy Greeley	17302235	0	0.52	0.46	0.46	0.47
Fall 2018			15	0.62	0.58	0.55	0.57

are proven for growth traits and may even have hundreds of ultrasound records reported. Targeted

commercial participants then choose which bulls they would like to use in their operation, breed cows and then

are given a premium for every carcass record returned to the Association on selected sires.

Since its inception, the program has enrolled multiple commercial herds who have bred more than 5,700 females and the first groups of carcass data have started to make their way into the weekly genetic evaluation. The data enters the weekly genetic evaluation in the same manner as every other data point, subject to contemporary group guidelines and supports the evaluation in the same capacity. It increases accuracies on heavily used sires which grows prediction accuracies of genomic evaluations, adds data to the ever-growing Angus database and allows for an opportunity to continue to validate the selection tools available to the membership. In Table 1, members can see the carcass expected progeny difference (EPD) accuracy changes as progeny records from the Structured Sire Evaluation have entered the evaluation.

To date several breeding cohorts have taken place including fall 2015, spring 2016, fall 2016, summer 2017 and spring 2018. Sires used in the project consist of both test and reference sires. Test sires are those described above and are represented in Table 2; whereas, reference sires are highly proven bulls for carcass traits, meaning they are already well described with harvest data in the evaluation. These reference sires are important to include in the project design as they allow for the new data to be tied into the current database making the data much more valuable.

Moving forward, the Association will continue to support the Structured Sire Evaluation to not only collect carcass data but also foot scoring data and other data points where available. For more information on the Structured Sire Evaluation, contact the Performance Programs department. [A](#)

**Table 2: Test Sires utilized in the Structured Sire Evaluation Project spring 2015 to spring 2018**

Name	Reg. No.	Name	Reg. No.
3F Epic 4631	17950219	Koupal Advance 28	17314326
44 Envision	17448751	Koupals B&B Extra 0011	16710494
AAR Ten Gauge 1501	17049149	Koupals B&B Identity	16710463
AAR Ten X 7008 S A	15719841	Koupals B&B Titan 3013	17608631
Baldrige Breakthrough A091	17822045	Mill Bar Hickok	17351674
Baldrige Download Z013	17314910	Mogck Bullseye	17102085
Baldrige Jennings Z064	17314954	Mohnen South Dakota 402	17250190
Baldrige Willie Y34	17074451	Musgrave Big Sky	17614813
baldrige Xpand x743	16762739	OCC Unmistakable 946U	16294218
Basin Advance 3134	17597915	PA Full Power 1208	16981588
Basin Payweight 107S	15332022	Pine View Rock Solid P234	17880784
Basin Yuma 4286	17905508	Poss Element 215	17383988
Boyd Signature 1014	16916267	Quaker Hill Rampage	16925771
Bruin Uproar 0070	16858775	Rito 12E7 of 5F56 Rito 5M2	17131890
BSF Hot Lotto 1401	17919726	Rito 9Q20 of Rita 5F56 GHM	16408445
CCA Emblazon 702	15980098	SAV Angus Valley 1867	17016630
Connealy Arsenal 2174	17314528	SAV Hesston 2217	17318946
Connealy Capitalist 028	16752262	SAV Iron Mountain 8066	16115617
Connealy Confidence Plus	17585576	SAV Momentum 9274	16396574
Connealy Conquest	17888696	SAV Platinum 0010	16687592
Connealy Consensus 7229	16447771	SAV Priority 7283	15688351
Connealy Contractor	16448662	SAV Prosperity 9131	16396523
Connealy Countdown	17585522	SAV Recharge 3436	17633838
Connealy Courage 25L	17302304	SAV Renown 3439	17633839
Connealy Earnan 076E	16969555	SAV Resource 1441	17016597
Connealy Gold Rush 026E	16969554	SAV Ten Speed 3022	17633563
Connealy Greeley	17302235	SAV Thunderbird 9061	16396499
Connealy Guinness	17031279	S Whitlock 179	17007891
Connealy Intrinsic	17888848	Shipwheel Montana 2600	17524723
Connealy Power Surge 3115	17585502	Sitz Dollar Up 489Z	17175957
Connealy Shrek 4242	16204949	Sitz Investment 660Z	17179119
Connealy Spur	17304082	Sitz Lightning 659Z	17176063
Connealy Uptown 098E	16896296	SITZ Logo 12964	17746620
Connealy Western Cut	17304232	Sitz Rainmaker 11127	15734469
CTS Remedy 1T01	17331233	Sitz Reinvested 636a	17467126
Dameron C-5 American Classic	17471320	Sitz Sensation 693A	17470735
Deer Valley Old Hickory	17873660	Sitz Top Game 561X	16559105
EF Commando 1366	17082311	Sitz Wisdom 481T	15636992
EXAR Denver 2002B	17160560	Stevenson Rockmount RX933	16647203
EXAR EZX 3772B	17479034	Still in the Rough 201	17246314
EXAR Resistol 3710B	17434366	SydGen Black Pearl 2006	17236055
EXAR Stetson 3704B	17434364	SydGen FATE 2800	17521423
EXAR Stud 4658B	17908266	V A R Confirmed CKR 1269	17001883
GAR Prophet	16295688	VAR Empire 3037	17455111
HA Cowboy Up 5405	18286467	VAR Index 3282	17513381
Hoover Elation M123	17603620	VAR Ranger 3008	17455083
JVC Cavalry V3326	17784803	Vermilion Sirloin	16957718
K Bar D Joe Canada 18Y	17011364	Vintage Legacy 4409	17906918
KCF Bennett Homestead	16771888	Vision Unanimous 1418	16992096
KCF Bennett Southside	16430862	WR Journey-1X74	16924332