

Open Shows

► **Open shows featured this month**
 Central Illinois Angus Preview Show
 Indiana Angus Ass'n Preview Show
 Missouri Angus Breeders Preview Show
 Ohio Angus Preview Show
 Pennsylvania Angus Breeders' Show
 Southern National Angus Show
 Tennessee Angus Ass'n Preview Show
 Wisconsin Supreme Angus Show

► **Central Illinois Angus Preview Show, Peoria**
 Judge: Bill Conley, Clarksdale, Mo.



► Grand champion bull, **Silveira's Russ 0307**, by Silveira Bros., Mendota, Calif.; and James Devore, Mulberry Grove. He's a Jan. 2000 son of GDAR SVF Russ 184B.



► Grand champion female, **QLC B79 Eva Pride J151L**, by Colby Horsley, Galva. She's a Jan. 2000 daughter of Famous 7001.



► Reserve grand champion bull, **Ransom's 0552**, by Joshua Moritz, Piper City. He's a March 2000 son of Dameron OSU Ransom.



► Reserve grand champion female, **WAF Elba 9166**, by Cody Bock, Hanna City. She's a Sept. 1999 daughter of WAF Fullback 6169.

► **Missouri Angus Breeders Preview Show, Sedalia**
 Judge: Marvin Kramer, Farina, Ill.



► Grand champion bull, **Clearwater Rock 1439**, by Clearwater Farm, Springfield. He's a Sept. 1999 son of SVF GDAR 216 LTD.



► Grand champion female, **Roth Blackbird Progress 080**, by Laura Main, Macon. She's a Jan. 2000 daughter of Famous 7001.



► Grand champion cow-calf pair, **WAR Blackbird Lady 9001**, by Laura Main, Macon. She's a Jan. 1999 daughter of Prodigy 5001 of BCAR. Her calf is a Jan. 2001 daughter of Sitz SLS Rainmaker 7596.



► Reserve grand champion bull, **Circle A 216 LTD 0019**, by Circle A Ranch, Iberia. He's a Jan. 2000 son of SVF GDAR 216 LTD.

► Reserve grand champion female, **KWCC Isabell 0119**, by Kissee & Wallace Cattle Co., Mount Vernon. She's a Sept. 2000 daughter of GDAR SVF Traveler 234D.



► Reserve grand champion cow-calf pair, **Brockmere Burgess 6**, by Rachel McGilvray, Mendon. She's a Jan. 1999 daughter of Woodhill Resolution. Her calf is a Feb. 2001 daughter of Famous 7001.



► Reserve grand champion female, **Cabin Creek Beauty 072**, by Kyle Riggs, Anderson. She's an April 2000 daughter of WK Timex.

► **Indiana Angus Ass'n Preview Show, Lebanon**
 Judge: Tyler Cates, Modoc, Ind.



► Grand champion bull, **TC Extra 9140**, by Wilson Cattle Co., Cloverdale; TC Ranch Inc., Franklin, Neb.; and Kiowa Creek Ranch, Elbert, Colo. He's a Feb. 1999 son of TC Stockman 365.



► Grand champion female, **Patton Lady Agnes 913**, by Beth Patton, Crawfordsville; Mark Smith, Whites-town; and Roth Angus, Freeman, S.D. She's a Sept. 1999 daughter of Famous 7001.



► Reserve grand champion bull, **APS Triple Forever**, by Anne Patton-Schubert, Taylorsville, Ky.; and Wilson Cattle Co., Cloverdale. He's a July 2000 son of SVF Siebring's Forever Russ.

CONTINUED ON PAGE 346

OPEN SHOWS

CONTINUED FROM PAGE 345

Southern National Angus Show, Perry, Ga.

Judge: Phil Trowbridge, Ghent, N.Y.



► Grand champion bull, **Twin Hills 9174**, by Twin Hills Farm, Covington, Ga. He's a Nov. 1999 son of Famous 7001.



► Grand champion female, **Champion Hill Miss 1749**, by Hayley Shepard, Sylvania, Ga. She's a Sept. 1999 daughter of Whitestone Widespread MB.



► Grand champion cow-calf pair, **Bell's Patty Duchess**, by Jeremy Britt, Loganville, Ga. She's a March 1999 daughter of RR Scotchcap 9440. Her calf is a Jan. 2001 daughter of N-Bar Emulation EXT.



► Reserve grand champion bull, **Lemmon Krugerrand S603**, by Jonathan Lemmon, Woodbury, Ga. He's a July 1999 son of Krugerrand of Donamere 490.

► Reserve grand champion female, **B/R Lemmon Pride K42**, by Rachel Evers, Alvaton, Ga. She's a Sept. 2000 daughter of B/R New Design 036.



► Reserve grand champion cow-calf pair, **GAF Elena 806 E606 EXT**, by Kathleen Gazda, Athens, Ga. She's a Nov. 1998 daughter of N-Bar Emulation EXT. Her calf is an Oct. 2000 daughter of VDAR Lucy's Boy.



Tennessee Angus Ass'n Preview Show, Murfreesboro

Judge: John Davis Jr., Blue Mountain, Miss.



► Grand champion bull, **Maple Valley Saughatchee 99**, by Maple Valley Ranch, Cumberland Furnace. He's a Jan. 1999 son of Leachman Saughatchee 3000C.



► Grand champion female, **Champion Hill Peg 2137**, by Callie Smith, Lebanon. She's a July 2000 daughter of Leachman Saughatchee 3000C.



► Grand champion cow-calf pair, **DF Rita 811 of F278**, by Heath Dunivan, Petersburg. She's an Oct. 1998 daughter of Sitz Traveler 9929. Her calf is a June 2001 daughter of DF Widespread of Skymere 806.



► Reserve grand champion bull, **POF Festus 0423**, by Macey Patrick, Fayetteville. He's a Feb. 2000 son of WK Gunsmoke.

► Reserve grand champion female, **ZZ Lucy 3188 91**, by Will Zarecor, Newbern. She's a Sept. 1999 daughter of VDAR Traveler 275.



► Reserve grand champion cow-calf pair, **Champion Hill Lady 1629**, by Robbie Smith, Lebanon. She's a May 1999 daughter of Champion Hill Tecumseh. Her calf is a March 2001 son of AAR Forward 2138.



Pennsylvania Angus Breeders' Show, Huntingdon

Judge: Doug Slattery, Brenham, Texas

► Grand champion bull, **Krueger's Backstop 628**, by Amy Krueger, Coatesville. He's a May 1999 son of OCC Backstop 888B.



► Grand champion female, **Krueger's Scaara 408J**, by Amy Krueger, Coatesville. She's a Nov. 1999 daughter of Krueger's Back Stop 304G.



► Grand champion cow-calf pair, **Weaverland Erica Jada**, by Jamie Hower, Bethlehem. She's a June 1997 daughter of GDAR Executive 727. Her calf is a Feb. 2001 daughter of Leachman Saughatchee 3000C.

OPEN SHOWS

Wisconsin Supreme Angus Show, Beaver Dam

Judge: Jerry Helgren, Lake Villa, Ill.



► Grand champion bull, **SVF GBAR Limited 511**, by Rick and Leslie Mindemann, Sullivan; G Bar Angus, Lodi, Calif.; and Sunny Valley Farm LLC, Yorkville, Ill. He's a Feb. 1999 son of SVF GDAR 216 LTD.



► Grand champion female, **DMH Duchess 041**, by Thomas Kegley, Burlington. She's a March 2000 daughter of SVF Siebring's Forever Russ.



► Grand champion cow-calf pair, **EJ Hartz Lass 9911**, by Emily Hartzell, Shawano. She's a July 1999 daughter of Sitz Traveler 043. Her calf is a March 2001 son of VDAR Lucy's Boy.



► Reserve grand champion bull, **Sunnyside Stockman 310**, by Melvin Mason & Sons, Glen Haven. He's a May 2000 son of Sunnyside TC Stockman.

► Reserve grand champion female, **Oakmere Erica C 016**, by Emily Beere, Burlington. She's a Sept. 2000 daughter of TC Stockman 365.



► Reserve grand champion cow-calf pair, **Sunnybrook Meg 62**, by Christopher Willis, Belvidere, Ill. She's an Oct. 1996 daughter of Dameron Swoosh. Her calf is a Feb. 2001 son of Dameron Krugerrand 705.



Ohio Angus Preview Show, Old Washington

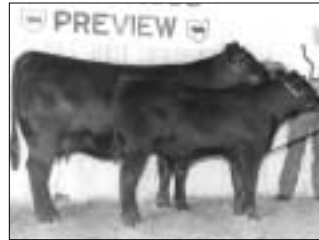
Judge: John Hausner, Dover, Pa.



► Grand champion bull, **Maplecrest Gladiator**, by L&L Angus and Charles Deitrick and Family, both of Zanesville. He's a Jan. 2000 son of Famous 7001.



► Grand champion female, **Champion Hill Phyllis 1868**, by Fairlane Farm, Louisville. She's a Jan. 2000 daughter of Famous 7001.



► Grand champion cow-calf pair, **Champion Hill Shadoe 1422**, by Champion Hill, Bidwell; and Dobson Pulpwood Farm, Campti, La. She's a Jan. 1999 daughter of Leachman Saugahatchee 3000C. Her calf is a Jan. 2001 son of Generation Band 505.



► Reserve grand champion bull, **Kiata Hunter 0614**, by Kiata Farms Inc., Hamilton. He's a Feb. 2000 son of Rito 9FB3 of 5H11 Fullback.

► Reserve grand champion female, **Sunset Valley Cheyenne 943**, by Kimberly Evans, Gallipolis. She's a Sept. 1999 daughter of Leachman Saugahatchee 3000C.



► Reserve grand champion cow-calf pair, **DAF Queen 294**, by KK Duncan & Son, Zanesville. She's an April 1994 daughter of TC Dividend 963. Her calf is a March 2001 son of Da-Es-Ro Twister 0627.



► Reserve grand champion bull, **Premium Star Show Stopper**, by Premium Star, Conroe, Texas. He's an April 2000 son of OCC Backstop 888B.



► Reserve grand champion female, **Rain's CowGirl Sunlight 36501**, by Dale Rains, Mercer. She's a March 2000 daughter of TC Stockman 365.

► Reserve grand champion cow-calf pair, **Weaverland Erica Jina**, by Jamie Hower, Bethlehem. She's a June 1999 daughter of GDAR Executive 727. Her calf is a May 2001 daughter of Twin Valley Precision E161.

