

**T**he 1993-94 Roll of Victory Point Show Program will begin with the American Angus Breeders' Futurity in August. The 14 designated annual shows are as follows:

**SUPER POINT SHOWS**

American Angus Breeders' Futurity  
North American International Livestock Exposition  
National Western Stock Show  
Western National Angus Futurity

**RECOGNIZED POINT SHOWS**

Oregon State Fair, Salem, Ore.  
Mid-South Fair, Memphis, Tenn.  
Georgia National Fair, Perry, Ga.

Northern International Livestock Exposition,  
Billings, Mont.  
Grand National, San Francisco, Calif.  
American Royal, Kansas City, Mo.  
Arizona National, Phoenix, Ariz.  
Southwestern Stock Show, Fort Worth, Texas  
Dixie National, Jackson, Miss.  
Atlantic National, Timonium, Md.

Points awarded for winning at these shows are graduated according to placings and are accumulated throughout the course of the show year which begins June 1 and ends May 31 of the following year. Points are allowed from the top two Super and top two Recognized Shows for division champions.

Shows are permitted to add only early and late championships to the standard division champions of the American Angus Association classifications. If a show splits a championship division, championship points will be split accordingly.

The ROV Program gives attention to the individual show-winning animals, rather than entirely to their sires and dams. Sires of major award winners receive continued recognition. The program also gives attention to the winners, plus sires and dams of winners, on an annual, current year basis, instead of an accumulation of points over many years.

Listed on the following pages are the tabulations for the show year just concluded. The 1992-93 ROV circuit began with the American Angus Breeders' Futurity in Louisville in August 1992.

# Roll of Victory

# Roll of Victory

## SHOW BULL OF THE YEAR

| RANK | NAME                  | POINTS |
|------|-----------------------|--------|
| 1.   | WK Future             | 87.0   |
| 2.   | JACs Lombardi 1335    | 82.0   |
| 3.   | WK Expectation        | 72.0   |
| 4.   | RA Beartooth Aberdeen | 65.0   |
| 5.   | R&J Innovator 180     | 59.0   |
| 6.   | Whitestone Tonto      | 57.0   |
| 7.   | Algoma Rustle         | 56.0   |
| 7.   | B&M Roper 091         | 56.0   |
| 7.   | JACs Kodiak 1336      | 56.0   |
| 8.   | ONeills Exon          | 51.0   |
| 9.   | RSR Midnight Star 111 | 49.0   |
| 10.  | WK Husky              | 46.5   |

## SIRE OF THE YEAR

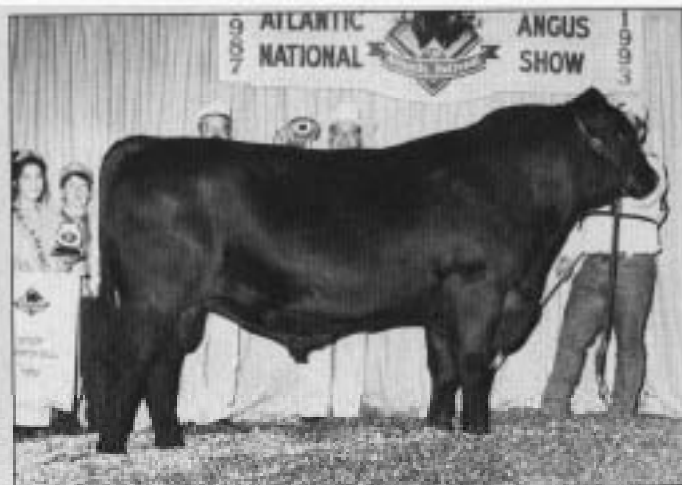
| RANK | NAME                   | POINTS |
|------|------------------------|--------|
| 1.   | R&J Maxima             | 1050.0 |
| 2.   | TC Stockman            | 1010.5 |
| 3.   | Leachman Prompter      | 839.0  |
| 4.   | R&J Extraordinary 1345 | 780.0  |
| 5.   | Da Es Ro Casey 629     | 660.5  |
| 6.   | FF Starstruck          | 406.0  |
| 7.   | Grubbs MacKenzie       | 319.0  |
| 8.   | LA Magic               | 311.0  |
| 9.   | PF Hamilton 9H24       | 265.5  |
| 10.  | Brost Power Drive      | 216.0  |

## SHOW HEIFER OF THE YEAR

| RANK | NAME                     | POINTS |
|------|--------------------------|--------|
| 1.   | WK Kokomo                | 89.0   |
| 2.   | R&J Carrolline 241       | 69.0   |
| 3.   | JACs Luxura 0310         | 60.0   |
| 4.   | AF Pineys Laurette       | 56.0   |
| 5.   | Vintage Shiana 1217      | 53.0   |
| 6.   | Forsythe Suzie Q 1039    | 52.0   |
| 7.   | VAR Sierra 2202          | 51.5   |
| 8.   | Vintage FFF Diablo Libby | 51.0   |
| 8.   | WK Georgina              | 51.0   |
| 9.   | BC Beauty Juice 248      | 49.5   |
| 10.  | CF Maxie Lady 166        | 47.0   |

## DAM OF THE YEAR

| RANK | NAME                    | POINTS |
|------|-------------------------|--------|
| 1.   | First Lady HK 2665      | 213.5  |
| 2.   | Algoma Golden Emerald   | 67.0   |
| 3.   | Leachman Blueblood 6010 | 63.0   |
| 4.   | Molly WK 8800           | 61.0   |
| 5.   | B&L Miss Emulous 7205   | 57.5   |
| 6.   | Miss Angus WK 8500      | 55.5   |
| 7.   | CW Ruby 215             | 54.0   |
| 8.   | Erica Edith WK 109K     | 53.0   |
| 9.   | Georgina WK 8032        | 51.0   |
| 10.  | Jolly R Beauty 0048     | 49.5   |



SHOW BULL OF THE YEAR  
WK Future



SHOW HEIFER OF THE YEAR  
WK Kokomo

# Roll of Victory

## DAM OF THE YEAR (EMBRYO TRANSPLANT)

| RANK | NAME                                  | POINTS       | RANK |
|------|---------------------------------------|--------------|------|
| 1.   | R&J Lady 1427                         | 261.0        | 1.   |
| 2.   | JACS Windchime 0207                   | <b>218.0</b> | 2.   |
| 3.   | LEACHMAN Lass 9079                    | <b>iao.5</b> | 3.   |
| 4.   | Miss Supreme Pine 8405                | 175.0        | 4.   |
| 5.   | Miss Angus HK 0793                    | 121.0        | 5.   |
| 6.   | R&J R&J Miss Errol line Esso 475 1a42 | 121.0145     |      |
| 7.   | Queen Jewel WK                        | 106.5        |      |
| 8.   | ONeills Lady Eraline                  | <b>89.0</b>  |      |
| 9.   | Kruegers Belladonna                   | <b>82.0</b>  |      |
| 10.  | Perryville Raggedy Nessie 1 R         | 79.0         |      |
| 10.  | Premier Blackcap 6276A                | 79.0         |      |

## BREEDER OF THE YEAR

| RANK | NAME                 | POINTS       |
|------|----------------------|--------------|
| 1.   | Whitstone Krebs      | 97a.5        |
| 2.   | R&J Ranch            | 683.5        |
| 3.   | JACs Ranch           | 347.5        |
| 4.   | Premier Angus Inc.   | <b>289.0</b> |
| 5.   | Covey & Davidson     | 214.0        |
| 6.   | Circle G Angus Farm  | 212.0        |
| 7.   | Richardson, Rachael  | <b>iao.5</b> |
| a.   | C-1 Ranch            | 157.0        |
| 9.   | Schaffs Angus Valley | 147.0        |
| 100  | Forsythe Cattle Co.  | 140.0        |

## JUNIOR HEIFER CALF CHAMPION OF THE YEAR

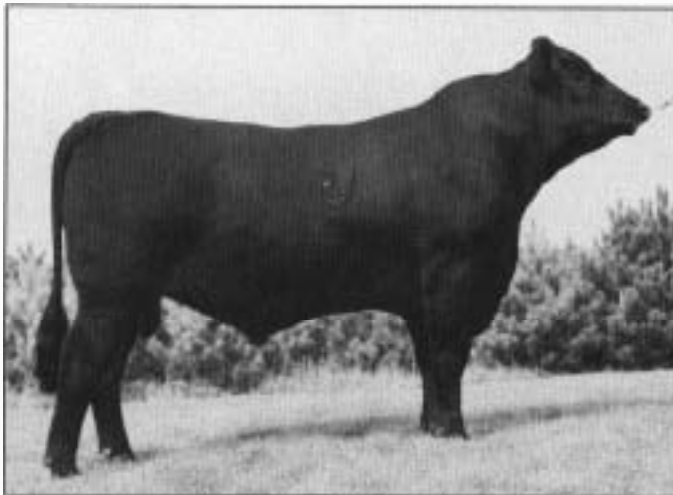
| RANK | NAME                                   | POINTS  |
|------|--|---------|
| 1.   | Selebration BC Beauty Dithia Juice 244 | 155.130 |
| 2.   | VAR Sierra 2202                        | 12.5    |
| 3.   | Thornclyff Katie 104                   | 11.0    |
| 4.   | Whitstone Carley                       | 9.0     |

## SENIOR HEIFER CALF CHAMPION OF THE YEAR

| RANK | NAME                      | POINTS      |
|------|---------------------------|-------------|
| 1.   | CF Maxie Lady 166         | 20.0        |
| 2.   | WK Georgina               | <b>18.0</b> |
| 2.   | Vintage FFF Diablo        | <b>18.0</b> |
| 3.   | Five Star Kind Janice 571 | 11.0        |
| 4.   | Miss Ruby 2 MCW           |             |
| 5.   | Lemmon Georgina 6192      | 9.0         |

## INTERMEDIATE CHAMPION FEMALE OF THE YEAR

| RANK | NAME                  | POINTS |
|------|-----------------------|--------|
| 1.   | AF Pineys Laurette    | 17.0   |
| 2.   | RA Foundation Lass    | 15.0   |
| 3.   | Forsythe Suzie Q 1039 | 14.0   |
| 4.   | RLA Classic Bess 7041 | 12.0   |
| 5.   | R&J Michelle 1601     | 11.0   |



SIRE OF THE YEAR  
**R&J Maxima**



BREEDER OF THE YEAR  
**Whitstone Krebs**  
Eldon, Kami, Louisa & Ty Krebs

# Roll of Victory

## JUNIOR CHAMPION FEMALE OF THE YEAR

| RANK | NAME                | POINTS |
|------|---------------------|--------|
| 1.   | WK Kokomo           | 26.0   |
| 2.   | R&J Carrolline 241  | 23.0   |
| 3.   | SMA Elie Mae        | 13.0   |
| 4.   | Vintage Shiana 1217 | 10.0   |
| 5.   | Y R Fantasy 1040    | 8.5    |

## SENIOR HELPER CALF CHAMPION OF THE YEAR

| RANK | NAME                        | POINTS |
|------|-----------------------------|--------|
| 1.   | JACs Luxura 0310            | 26.0   |
| 2.   | WK Sugar                    | 19.0   |
| 3.   | BJF Elite Erroline 075      | 11.0   |
| 4.   | Foote Acres Blackbird 2327  | 9.0    |
| 5.   | Blevins Phantasia of Yarkin | 8.0    |

## JUNIOR BULL CALF CHAMPION OF THE YEAR

| RANK | NAME                | POINTS |
|------|---------------------|--------|
| 1.   | WK Fillet           | 17.0   |
| 2.   | Five Star Cowboy 22 | 12.0   |
| 3.   | EF Carlisle 202     | 11.0   |
| 4.   | Whitstone Accuracy  | 10.5   |
| 5.   | GLC BCC Polo 237    | 10.0   |

## SENIOR BULL CALF CHAMPION OF THE YEAR

| RANK | NAME                | POINTS |
|------|---------------------|--------|
| 1.   | JACs Lom bardi 1335 | 26.0   |
| 2.   | JACs Kodiak 1336    | 23.0   |
| 3.   | CF Standing Ovation | 16.0   |
| 4.   | Vintage Westin 1907 | 9.0    |
| 4.   | R&J Protege 2731    | 9.0    |
| 4.   | BJF Explorer 111    | 9.0    |
| 5.   | C-I Bear Naked 120  | 5.0    |
| 5.   | Lemmon Leader 7212  | 5.0    |
| 5.   | EF Thoben 107       | 5.0    |

## INTERMEDIATE BULL CALF CHAMPION OF THE YEAR

| RANK | NAME                      | POINTS |
|------|---------------------------|--------|
| 1.   | RA Bear-tooth Aberdeen    | 21.0   |
| 2.   | RSR Midnight Star 111     | 17.0   |
| 3.   | OSU Precision 679B        | 14.0   |
| 4.   | WK Husky                  | 13.5   |
| 5.   | Pascalar Hocus Pocus C301 | 9.0    |

## JUNIOR CHAMPION BULL OF THE YEAR

| RANK | NAME              | POINTS |
|------|-------------------|--------|
| 2.   | WK Expectation    | 26.0   |
| 2.   | Premier Optima    | 11.0   |
| 2.   | Tee Jay Laredo    | 11.0   |
| 4.   | B&M Roper 091     | 10.0   |
| 4.   | Foote Acres Expo  | 9.0    |
| 5.   | Sandtowns WYSIWYG | 9.0    |
| 5.   | GMAR Ryegate 115  | 8.0    |
| 5.   | R&J Majestic 1121 | 8.0    |

## SENIOR CHAMPION BULL OF THE YEAR

| RANK | NAME              | POINTS |
|------|-------------------|--------|
| 1.   | WK Future         | 26.0   |
| 2.   | R&J Innovator 180 | 19.0   |
| 3.   | Whitstone Tonto   | 17.0   |
| 4.   | Algoma Rustle     | 16.0   |
| 5.   | CAF Gryphon 3200  | 15.0   |

## GET OF SIRE CHAMPION OF THE YEAR

| RANK | NAME                   | POINTS |
|------|------------------------|--------|
| 2.   | R&J Extraordinary 1345 | 30.0   |
| 3.   | R&J Maxima             | 26.0   |
| 3.   | TC Stockman            | 19.0   |
| 4.   | Da Es Ro Casey 629     | 14.0   |
| 5.   | Circle H Patch         | 8.0    |

## JUNIOR GET OF SIRE CHAMPION OF THE YEAR

| RANK | NAME               | POINTS |
|------|--------------------|--------|
| 1.   | Da Es Ro Casey 629 | 33.0   |
| 2.   | R&J Maxima         | 28.0   |
| 3.   | TC Stockman        | 24.0   |
| 4.   | Circle H Patch     | 8.0    |
| 5.   | PF Hamilton 9H24   | 7.0    |

## BREEDER SIX HEAD CHAMPION OF THE YEAR

| RANK | NAME                        | POINTS |
|------|-----------------------------|--------|
| 1.   | Whitstone Krebs             | 30.0   |
| 2.   | Circle H Patch              | 26.0   |
| 4.   | C-I Ranch                   | 18.0   |
| 4.   | Green Angus Ranch           | 5.0    |
| 4.   | McCurry Bros.               | 5.0    |
| 4.   | Foote, Dr. & Mrs. E.G. Jr.  | 5.0    |
| 4.   | Lemmon Mr. & Mrs. A. Harvey | 5.0    |
| 4.   | Toledo, John                | 5.0    |
| 5.   | Medeiros, Steven            | 4.0    |
| 5.   | Circle G Angus Farm         | 4.0    |
| 5.   | Valley Oaks & Brady         | 4.0    |
| 5.   | Rollin L Angus              | 4.0    |