

# Looking forward to November 21!

## 42<sup>nd</sup> Annual Production Sale At the farm • Mexico, MO

This eye-appealing daughter of SydGen Dealer 9883 is out of a CC & 7 daughter of the 1059 cow that produced three sons used in the program here: Aim, Journey and Survivor. She stems from one of the "pick" heifers from the 2003 Gartner-Denowh heifer calf crop and ranks in the top 5% of current dams for Docility, \$B and \$C. She also records exceptional breeding values for RADG, HP and Marbling. She sells, along with her March 4 heifer calf by SydGen Appeal 7212. She has two nice daughters retained to take her place in the herd and sells due to SydGen Enhance to calve about January 23, 2021. About 20 of these spring bred cows will sell, along with their 2020 spring daughters, as several of the highlights of the Spring division. About 50 spring bred heifers will also be offered.



### SydGen Blackbird Lady 3041

CE	BW	WW	YW	RADG	YH	SC	Doc	HP	CEM	MILK	CW	Marb	RE	Fat
+2	+1.8	+62	+114	+27	+1.0	-.09	+27	+15.4	+4	+30	+51	+98	+47	+017

SM	+59
SF	+97
\$B	+162
\$C	+269

In the Fall division, we will offer about 60 fall pairs, including 10 two-year-olds, and more than 90 fall yearling heifers. The bull division will feature about 110 fall yearlings and 70 bull calves born in January of 2020. Progeny from thirteen different SydGen sires that rank in the top 1% of the new \$Combination (\$C) index will be offered, making this offering one of the most unique and futuristic ever.



### SydGen S Pride 5377

CE	BW	WW	YW	RADG	YH	SC	Doc	HP	CEM	MILK	CW	Marb	RE	Fat
+6	+6	+64	+112	+34	+9	+56	+7	+11.3	+14	+29	+56	+1.02	+61	-.011

SM	+56
SF	+113
\$B	+184
\$C	+295

One of the oldest daughters of SydGen Express 3487B who was slated to be the feature of our 2014 sale before his untimely death. This top young female has produced sons at \$4,250 and \$5,000, as well as a replacement daughter in the keeper pen. Her Pathfinder® dam was a feature of our 2016 Sale at \$7,750 to Alford Cattle Co., Caldwell, TX, where she quickly re-sold to Dave Eversole, Rocheport, MO; after a successful flush. She ranks in the top 1% of proven dams for \$C, \$B and RADG; the top 5% for CEM, CW and Marbling; and the top 15% for DMI, WW and YW. From a proven cow base developed at Sitz Angus Ranch, she should calve in October to SydGen Exceed 3223.

EPDs as of 7/7/20

Registered  
Angus Cattle  
Since 1952

# Sydenstricker Genetics

Visitors  
always  
welcome!

Eddie Sydenstricker  
eddiel@sydenstrickers.com  
Fax (573) 581-5991

Sydenstricker John Deere  
Office (573) 581-5900  
Kim Sydenstricker-Monte

P.O. Box 280  
Mexico, MO 65265  
www.sydgen.com

Ben Eggers (573) 473-9202  
eggers@socket.net  
Bub Raithe (573) 253-1664  
Farm Office (573) 581-1225

Kyle Vukadin  
Joe Strauss  
Kenneth Roberts  
Darla Eggers

SPUR RANCH

# Performance Herd of the Heartland Sale

Friday, October 23, 2020

1 p.m. at the ranch... 15 miles west of Vinita, Oklahoma

Approximately 400 Head Sell...

150 Registered Angus 18-month to 2-year-old Performance Tested Bulls

200 Commercial Fall Pairs plus a select group of Commercial Replacement Females



**SPUR LEGACY 8578**

19371049 • 9/28/2018

V A R Legend 5019 × EXAR Consensus 3006B

CED	BW	WW	YW	SC	Milk	CW	Marb	RE
+6	+0.7	+72	+137	+86	+31	+60	+1.57	+63
SM	SW	SF	SG	SB	SC			
+63	+79	+99	+93	+192	+312			



**SPUR HIGH WEIGH 8358**

19371015 • 9/26/2018

E W A High Weigh 3123 × EXAR Upshot 2818B

CED	BW	WW	YW	SC	Milk	CW	Marb	RE
+8	+2.1	+64	+110	+1.00	+30	+47	+1.09	+88
SM	SW	SF	SG	SB	SC			
+85	+74	+93	+80	+172	+308			



**SPUR MAINSTAY 8270**

19458222 • 9/23/2018

Connealy Mainstay × A A R Ten X 7008 S A

CED	BW	WW	YW	SC	Milk	CW	Marb	RE
+14	-0.5	+65	+117	+14	+31	+51	+0.87	+1.01
SM	SW	SF	SG	SB	SC			
+78	+78	+96	+71	+167	+295			



**SPUR MAINSTAY 8384**

19368719 • 9/24/2018

Connealy Mainstay × EXAR Consensus 2825B

CED	BW	WW	YW	SC	Milk	CW	Marb	RE
+4	+0.7	+69	+128	+31	+34	+52	+1.04	+92
SM	SW	SF	SG	SB	SC			
+55	+81	+101	+76	+177	+285			



**SPUR ALL IN 8222**

19368152 • 9/5/2018

Deer Valley All In × Spur Franchise 7070

CED	BW	WW	YW	SC	Milk	CW	Marb	RE
+11	0.0	+64	+120	+78	+19	+45	+0.80	+87
SM	SW	SF	SG	SB	SC			
+64	+59	+89	+64	+153	+262			

Spur Ranch — Grow, Gain & Grade Since 1930



CLAY HARTLEY OWNER  
(918) 633-2580 cell  
chartley@spurranch.com

JEFF OWEN RANCH MANAGER  
(918) 244-2118 cell  
jowen@spurranch.com

RANCH OFFICE (918) 256-5850

Mailing address:  
P.O. Box 307  
Vinita, OK 74301

[spurranch.com](http://spurranch.com)

LiveAuctionsTV

Sale book will be available for viewing on our website and at [mcsauction.com](http://mcsauction.com). To request your mailed copy, please contact the ranch or the sale manager.



Matt C. Sims, Sale Mgr.  
(405) 641-6081, cell/text  
[matt@mcsauction.com](http://matt@mcsauction.com)  
[www.mcsauction.com](http://www.mcsauction.com)





INGRAM ANGUS  
PRODUCTION *Sale*

**NOVEMBER 13, 2020**

Selling 100 Elite Females! 45 Two-Year Old Bulls  
and 15 Supreme Yearling Bulls!



**INGRAM ANGUS LLC**  
480 Harris Road  
Pulaski, TN 38478

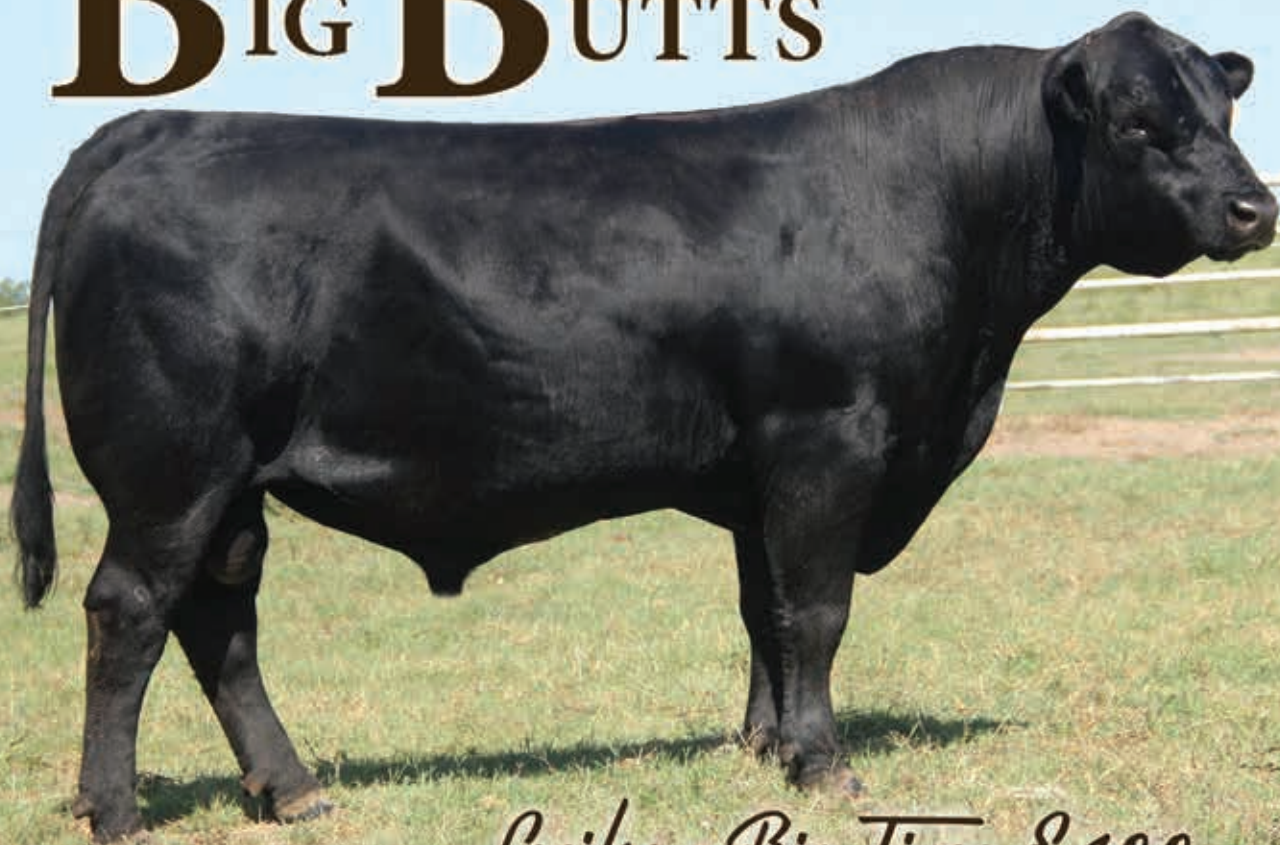
**JASON UPCHURCH**  
256-239-8540  
jason@ingramangus.com

**DAVID CAGLE**  
256-616-6446  
david@ingramangus.com

[WWW.INGRAMANGUS.COM](http://WWW.INGRAMANGUS.COM)



# “BIG BUTTS”



*Lesikar Big Time E400*

19183564 • OCC Big Time 746Z X Lesikar Blackbird X134

***Bulls like this will sell in our November bull sale!***

E400 was retained to be a herd bull at Lesikar Angus Ranch due to his striking phenotype, correct feet, stout design and the powerful genetics that fill up his three generation pedigree. Bulls like E400 are available year round at Lesikar Angus Ranch.



## LESIKAR RANCH

Registered Angus

Office (817) 738-2177

Jason Lesikar (817) 726-7998

Ranches located in Poolville

and Athens, Texas

[www.LesikarRanch.com](http://www.LesikarRanch.com)

*At Lesikar Angus, we are striving to raise Angus cattle that excel in all of the maternal traits that made the Angus cow one of the most desired females in the US. We hope that you will give us a call or come by and visit to see the powerful genetics that we are putting together.*

**PRIVATE TREATY FEMALES AND BULLS AVAILABLE**

# ESTABLISHED

*When in doubt, use known quantities!*



From Smoky Valley Angus, KS

## New Addition

14AN497 E&B NEW ADDITION 608

AAA 18548853 | Confidence Plus x Dash

- Moderate-sized Calving Ease and minus Birth Weight sire
- Exceptional carcass merit predictions – top 15 percent for both Marbling and Ribeye
- His figures for SMaternal and SCombined are impressive.
- Earning a solid reputation in both commercial and purebred outfits

CED	BW	WW	YW	YH	SC	DOC	Claw	Angle	PAP	HP	CEM	Milk	MW	MH	\$EN	CW	Marb	RE	Fat	\$M	\$W	\$F	\$G	\$B	\$C
15	-1.8	49	92	-.2	.40	34	.44	.51	2.45	15.9	13	34	29	-.3	-8	37	.91	.83	.043	83	66	83	64	147	274
.61	.78	.69	.56	.66	.58	.35	.27	.27	.23	.25	.32	.33	.43	.43		.55	.51	.48	.48						
3	5	70	68	95	75	1	20	55	90	5	10	10	75	90	40	60	15	15	90	2	30	50	15	25	10



From Coleman Angus Ranch, Sitz Angus and Jocko Valley Cattle, MI and Schaff Angus Valley, ND

## Charlo

14AN426 COLEMAN CHARLO 0256

AAA 16879074 | Paxton x Traveler 8180

- Proven to add muscle, capacity and to reduce frame size
- Possesses extraordinary foot score EPDs
- Offers fleshing ability, great udders and high SEN – ideal for low input environments
- An icon in the Angus breed for his ability to truly change cattle.

CED	BW	WW	YW	YH	SC	DOC	Claw	Angle	PAP	HP	CEM	Milk	MW	MH	\$EN	CW	Marb	RE	Fat	\$M	\$W	\$F	\$G	\$B	\$C
10	-0.1	51	91	-.9	1.46	4	.41	.44	.85	7.4	-4	26	-36	-1.4	14	21	.36	.56	.060	61	79	58	34	92	180
.88	.96	.95	.92	.87	.91	.90	.62	.63	.40	.65	.84	.83	.75	.62		.59	.54	.53	.54						
25	25	65	65	95	15	90	15	20	45	90	95	40	95	95	5	90	65	45	95	35	10	90	70	90	85

**CONTACT YOUR LOCAL REPRESENTATIVE TO ORDER TODAY!**

Accelerated Genetics®

# WHAT'S INSIDE

August Issue | *Feeding Success*



## 38 NUTRITION 101

Extension specialists give insights on beef cattle nutrition.

## 52 BRICK OR SPONGE?

Strategies to enhance soil health.

## 56 FALL FORAGE PLANNING

Options to consider for pastures at season's end.

## 60 THE REAL MAGIC

The process of feeding a calf at home to become a success in the show ring isn't magic — raising a champion takes a great nutrition program.

## 62 A SCOURS CHANGE?

Plan to prevent, prepare to treat calf scours.

## CULTIVATED CURIOSITY

22 Matsushima's "good things" a lasting legacy for cattle feeding.

## PROGRESS BY PERSISTENCE

28 Jones Ranch, Telephone, Texas, maintains a family tradition while pushing forward to reach new heights in their registered Angus business.

## 81 MEETING THE NEED

*Certified Angus Beef*® restaurant partners spread joy in the midst of adversity.

## 84 TREK WITH TECHNOLOGY

Today's cattle producer needs to incorporate technology into their operation to succeed rather than shying away from it.

## 88 SUSTAINABILITY: NOT ONE SOLUTION; WE NEED THEM ALL

Food futurist shares insights into creating a sustainable future for food and agriculture.



 [ANGUS JOURNAL](#)

 [@ANGUS\\_JOURNAL](#)

 [@AJEDITOR](#)

*The official publication of the American Angus Association®*

*Continued on page 8*



Progeny from this prominent family will sell in our

*Inaugural Production Sale!*  
**October 25, 2020**



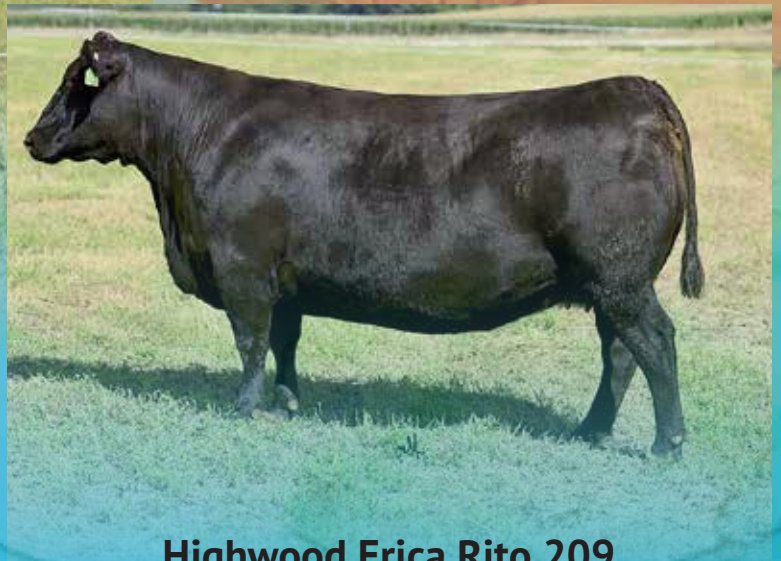
**MAR Erica Rito 1402**  
 18047956

Sire: **AAR Ten X 7008 SA**

Dam: **Highwood Erica Rito 209**

MGS: **S Chisum 6175**

CED	BW	WW	YW	CW	Marb	RE	\$M	\$W	\$B	\$C
+4	+1.7	+74	+132	+55	+70	+89	+60	+77	+164	+273



**Highwood Erica Rito 209**  
 17344851

Sire: **S Chisum 6175**

Dam: **Blevins Erica Rito 5453**

MGS: **Rito 112 of 2536 Rito 616**

CED	BW	WW	YW	CW	Marb	RE	\$M	\$W	\$B	\$C
-5	+4.1	+72	+120	+61	+66	+71	+48	+62	+161	+257

**FOUR SONS FARM**

**Steve Judy**, Owner 859-221-5198

[sjudy@judyconstructionco.com](mailto:sjudy@judyconstructionco.com)

**Ray Apple**, General Manager 770-546-8477

**Richard Midden**,  
 Herd Manager

**Newell Pollit**,  
 ET Herd Manager



EPDs as of 6/25/20

**FORM FUNCTION BALANCE**



## 64 THE YON LEGACY

The work of the primarily Angus operation in South Carolina gained the attention of the Beef Improvement Federation for their dedication towards genetically improving the seedstock of the beef industry.

## 67 MILLS HONORED WITH BIF AMBASSADOR AWARD

Field Editor Beck Mills recognized with 2020 Beef Improvement Federation Ambassador Award.

## 70 SYSTEMS FOR SUSTAINABILITY

A systems approach looks at the big picture of the beef industry sustainability and how producers play a role.

## 71 MAYBE ENOUGH IS ENOUGH

Range specialists questions profitability of selecting for heavier-milking cows.

## 72 RELATIONSHIP BETWEEN PAP AND PERFORMANCE

Research discovers relationship between PAP scores and feedyard performance.

## 73 WHAT CONSUMERS WANT

Research shows areas of concern for consumers regarding beef production.

### YOUR HERD

- 34 By the Numbers
- 44 Vet Call
- 46 Repro Tracks
- 50 Performance Report

### YOUR BUSINESS

- 76 Beef Business
- 91 Market Advisor
- 94 Sale Summary

### YOUR ASSOCIATION

- 98 Association Highlights
- 102 Membership Tips
- 104 Board Action
- 110 New Members
- 114 Open Shows
- 116 Junior Shows

### YOUR LIFE

- 122 Newsmakers
- 125 Next Generation
- 132 Cattle Culture

### YOUR RESOURCES

- 134 Ultrasound Technicians

### IN EVERY ISSUE

- 12 Angus Angle
- 16 Common Ground
- 18 Angus Staff
- 96 Regional Managers
- 97 Advertising Rates
- 140 Angus Classifieds
- 148 Angus Almanac
- 174 Advertising Index

### THE NEXT ISSUE

*What's Next?:* Junior members and young Angus breeders taking the next step in industry involvement.





# POWER UP FROM THE GROUND UP!

Use these good-footed, muscular bulls to inject more power into your next set of calves.



## Know How

7AN550 HOOVER KNOW HOW

AAA 18543644 | No Doubt x Storm 8504

Tired of flat, narrow cattle? Here is a true beef-type bull with more bone, foot and 'oomph' than average - with the ability to truly change cattle. Sired by No Doubt, KNOW HOW puts together a long list of high figures including SC, incredible foot EPDs, HP, CEM and finishes with remarkable carcass stats. You'll see the difference in big-topped, wide-based and thick quartered calves sired by this impressive physical specimen. There's plenty of Angus cows who need some power. Do you have any?

From Hoover Angus, IA and Teixeira Cattle Co., CA

CED	BW	WW	YW	YH	SC	DOC	Claw	Angle	PAP	HP	CEM	Milk	MW	MH	SEN	CW	Marb	RE	Fat	\$M	\$W	\$F	\$G	\$B	\$C
1	3.0	63	130	.6	2.03	20	.40	.27	.67	18	12	22	112	1.1	-41	64	.84	1.03	.002	58	46	126	67	194	310
.45	.78	.68	.56	.60	.60	.50	.36	.32	.19	.24	.30	.32	.38	.40		.43	.37	.38	.36						
85	85	30	10	35	2	35	10	1	40	2	15	70	3	2	95	5	15	3	35	45	75	1	10	1	1



## Bonanza

7AN480 TEHAMA BONANZA E410

AAA 18624785 | TAHOE x Earnan

What's not to like? Here's a beefed-up bull combining balance from his sire and power from his dam with a genetic offering few can compete with. Add in thick, muscular progeny with under control size, solid rankings for PAP, HP, CEM and FOOT EPDs and you've found one to tie to! BONANZA has enough progeny records to back up is below average birth and above average growth claims and his high SMaternal is just icing on the cake. If you like thick, fast-growing, moderate-sized cattle, use him!

From Tehama Angus, CA; Boyd Beef Cattle, KY; Prairie View Farm, IL and Trowbridge Angus, NY

CED	BW	WW	YW	YH	SC	DOC	Claw	Angle	PAP	HP	CEM	Milk	MW	MH	SEN	CW	Marb	RE	Fat	\$M	\$W	\$F	\$G	\$B	\$C
8	1.1	79	132	.3	-.05	11	.49	.43	-.03	16.8	9	31	67	-.1	-25	42	.66	.69	.009	83	91	75	54	128	249
.63	.85	.78	.69	.73	.69	.69	.40	.40	.23	.26	.31	.32	.44	.45		.47	.41	.42	.40						
35	50	3	10	70	95	75	45	15	20	3	45	15	30	80	85	45	30	25	50	2	1	65	25	50	25

CONTACT YOUR LOCAL REPRESENTATIVE TODAY TO ORDER!



YOUR SUCCESS *Our Passion.*

Phone: (614) 873-4683 • [www.selectsiresbeef.com](http://www.selectsiresbeef.com)

EPDs as of 7/6/20

# Elite Combined Value and

## ENHANCE

237AN2869



## ENHANCE AND IMPROVE

- The definition of high accuracy, multi-trait superiority ranking #1 on the Main Sire list for \$Combined Index
- Progeny are in high demand dominating in the sale ring and elite index lists
- +11 CED, +132 YW, +1.59 SC, +34 DOC, +1.16 MARB, +.72 RE, +74 \$M +205 \$B

## FIREBALL

29AN2099



## INERTIA

29AN2077



## SURE FIRE WINNER

- Sure fire calving ease and carcass quality with significant sire line advantages for foot quality, muscle and \$Beef
- Unmatched Marbling and Rib Eye Area EPD combination
- +11 CED, +132 YW, +1.68 MARB, +1.17 RE, +66 \$M, +212 \$B

## UNWAVERING GENETIC DIRECTION AND VELOCITY

- Breed leading genotypic velocity and incredible body mass
- Wide based with an unprecedented degree of Marbling & phenotypic muscle
- +9 CED, +135 YW, +32 DOC, +1.37 MARB, +86 \$W, +197 \$B

For full data set, progeny photos, and more visit Bull Search at [absbeef.com](http://absbeef.com).

# Impeccable Maternal Design



29AN2025

## STELLAR



MOHNEN SUBSTANTIAL 272 x CONNEALY FINAL PRODUCT

18397542

**+89 \$M**

### STELLAR PERFORMANCE AND DESIGN

- Powerhouse individual with a great maternal design and ranks #1 on the Main Sire list for combined Foot Score EPDs
- All the characteristics of a cow making legend including disciplined mature size, enhanced fertility, sound structure and great docility
- +8 CED, +133 YW, +.23 Claw, +.14 Angle, +13.5 HP, +124 \$B

## BROADVIEW

29AN2151



VERMILION SPUR E119 x SITZ LOGO 12964

19421003

**+70 \$M**

## TRUE NORTH

29AN2144



S A V RAINFALL 6846 x CONNEALY CONSENSUS

19405246

**+95 \$M**

### BROADVIEW GENETICS FOR BIG PICTURE SUCCESS

- Outcross pedigree, fault free phenotype and a herd sire look
- Calving ease with performance, combining a 65 lb BW with a 788 (110 ratio) WW and 1394 (123 ratio) YW
- +10 CED, +143 YW, +2.55 SC, +12.8 HP, +.86 MARB, +166 \$B

### TRUE MATERNAL DIRECTION

- Phenotypic standout with an unbeatable maternal data profile
- Maternal brother to Confidence Plus that combines elite \$W and \$M indexes with reduced mature size
- +15 CED, +121 YW, +36 DOC, +.44 Claw, +.41 Angle