

Show Scene



Grand champion cow-calf pair, **Sweeney's Erica 6760**, by Sweeney Angus, Alden. She's a Feb. 1996 daughter of Rito 9FB3 of 5H11 Fullback. Her calf is a Feb. 2000 daughter of Mill Coulee Supreme 753.

■ **Iowa Angus Summer Show, Eldora**
Judge: Gregg May, Mineral Point, Wis.



Grand champion bull, **Deah's Black Canyon Rebar**, by Deah Schulte, Watkins. He's a March 1999 son of Sedgwick's Rebar.



Grand champion female, **Greiman's Royal Jewel**, by Kyle Greiman, Garner. She's a Jan. 1999 daughter of Krugerrand of Donamere 490.



Reserve grand champion bull, **Walridge Remedy 8484**, by Patrick Driscoll, Williamsburg, and Golden Chute Ranch, Walker. He's an Aug. 1998 son of Hilmes Rito Remedy 2706.



Reserve grand champion female, **SF Blackcap Tommy Girl 9901**, by Amanda Hensley, Dow City. She's a Dec. 1998 daughter of Emulation 473.



Reserve grand champion cow-calf pair, **Mag-nolia Macey 729**, by Autumn Knop, Ida Grove. She's a Sept. 1997 daughter of Leachman Saugahatchee 3000C. Her calf is a Jan. 2000 daughter of Knop's Discovery 530-210.



Top produce of dam, progeny of **Greiman's Royal Touch**, by Kyle Greiman, Garner.

■ **Southwestern Wisconsin Angus Classic, Lancaster**
Judge: Mark Hoge, East Lansing, Mich.



Grand champion bull, **Schroeder's Maker 389**, by Jensen Angus Farms Inc., Plainfield, Iowa; and Doug and Glenda Schroeder, Clarence, Iowa. He's a Feb. 1999 son of Schroeder's Millennium 57.



Grand champion female, **Schroeder's Barbara 169**, by Drew Schroeder, Clarence, Iowa. She's a March 1999 daughter of Connealy Dateline.



Grand champion steer, **CC Baxter 9002**, by Cara Claussen, Stockton, Iowa. He's an April 1999 son of EXAR King Air 7561.

■ Southern National Angus Show, Perry, Ga.
 Judge: Greg McCurry, Sedgwick, Kan.



(l) Grand champion bull, **Lemmon EXT 7350**, by Jonathan Lemmon, Woodbury, Ga. He's an Oct. 1999 son of N-Bar Emulation EXT.



(r) Grand champion female, **G13 Delia 8339**, by Michael Banner, College Grove, Tenn., She's a Nov. 1998 daughter of TC Stockman 365.



(l) Grand champion cow-calf pair, **Lemmon Lassie B445**, by Jonathan Lemmon, Woodbury, Ga., and Sugar Hill Farm Inc., Yatesville, Ga. She's a June 1997 daughter of DHD Traveler 6807. Her calf is an Oct. 1999 son of N-Bar Emulation EXT.



(r) Reserve grand champion bull, **Cedar Creek Explorer 9943**, by Scott Bourne, Donalds, S.C. He's a Dec. 1999 son of Leachman Explorer.



(l) Reserve grand champion female, **Cedar Creek Rita 9842**, by Scott Bourne, Donalds, S.C. She's a Nov. 1999 daughter of N-Bar Emulation EXT.



(r) Reserve grand champion cow-calf pair, **Whitestone Queen Ann K087**, by Jett's One Cow Ponderosa, Palmetto, Ga. She's a Jan. 1998 daughter of RR Scotchcap 9440. Her calf is a Jan. 2000 son of Garden's Prime Time.



Reserve grand champion bull, **Sunnyside Widespread QM**, by Melvin Mason and Sons, Glen Haven. He's a May 1999 son of Whitestone Widespread MB.



Reserve grand champion female, **BAF GAF Sara 9168-983**, by Stacey Luety, Clinton. She's an April 1999 daughter of Woodhill Supreme.



Reserve grand champion steer, **JAF Redeye Express JRWJ 90**, by Jason Johnson, Du-rand, Ill. He's an April 1999 son of Prodigy 5001 of BCAR.

CONTINUED ON PAGE 258

CONTINUED FROM PAGE 255



■ **Central Illinois Angus Preview Show, Congerville**
Judge: **Dan Hoge, Kewanee, Ill.**

(l) Grand champion female, **Dameron Lass 909**, by Callie Rickard, Heyworth. She's a Jan. 1999 daughter of Dameron Krugerrand 705.

(r) Reserve grand champion female, **Dameron Effie 9116**, by Kyle Cassidy, Ancona. She's a March 1999 daughter of OGL Battle Cry 427 128.





(l) Grand champion bull, **SLF Lightning 598**, by Springlake Farm, Kingston. He's a March 1998 son of RR Traveler 5204.

(r) Reserve grand champion bull, **Shilo Drover 218**, by Shilo Farms, Macomb, and TR4 Farm and Twin Creek Acres, both of Trivoli. He's a Sept. 1998 son of Sedgwick's 1483.

CONTINUED ON PAGE 260



CONTINUED FROM PAGE 259

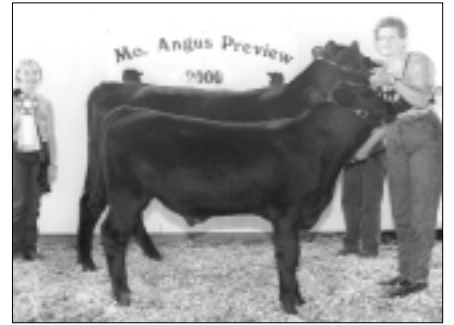
■ Missouri Angus Breeders Show, Sedalia
 Judge: Rex Harl, Hollister, Mo.



Grand champion bull, **Clearwater Rock 1439**, by Clearwater Farm, Springfield. He's a Sept. 1999 son of SVF GDAR 216 LTD.



Grand champion female, **KWCC Lucy 8156**, by Whitney Trospen, Hamilton. She's a Nov. 1998 daughter of KWCC Packer 386 MCC.



Grand champion cow-calf pair, **Weiker's PD Bertha 8W13**, by Wintergreen Farm, Columbia. She's a Feb. 1998 daughter of Pine Drive Big Sky. Her calf is a Jan. 2000 son of SAF Focus of ER.



Reserve grand champion bull, **Raps EXT of MAR 819**, by Minnie Roberts, Sturgeon; Bobby McBride, Centralia; and Hilltop Angus, Sarcocixie. He's an April 1998 son of N-Bar Emulation EXT.



Reserve grand champion female, **Circle A Miss Pride Ever 9076**, by Circle A Ranch, Iberia. She's a Jan. 1999 daughter of SVF GDAR 216.



Reserve grand champion cow-calf pair, **JP Krugerrand Eileen 865**, by Edward Creason, Cowgill. She's an April 1998 daughter of Krugerrand of Donamere 490. Her calf is a March 2000 daughter of Creason Stockman 365-6H.

■ Wisconsin Supreme Angus Show, Richland Center
 Judge: Frank Kaehler, Saint Charles, Minn.



Grand champion bull, **S&R Royce 20J9**, by Renee Radcliffe, Shofield. He's an April 1999 son of GDAR Royce 131.



Grand champion female, **Green's Dawn 9933**, by Keela Retallick, Glen Haven. She's an April 1999 daughter of A&B Yukon 7150.



Grand champion cow-calf pair, **Cedarcrest Erica 518**, by Royal Angus Farms, Wales. She's an April 1995 daughter of Tee Jay Bingo. Her calf is a Jan. 2000 son of Sedgwick's Workman 3706.



Reserve grand champion bull, **ZA Sunset 79**, by Lakeland Farm, Palmrya, and Zeedyk Angus Inc., Rolling Prairie, Ind. He's a Feb. 1999 son of SVF GDAR 216 LTD.



Reserve grand champion female, **BAF GAF Sara 9168-981**, by Adam May, Mineral Point. She's an April 1999 daughter of Leachman Saughatchee 3000C.



Reserve grand champion cow-calf pair, **Oakmere Primrose 0711 501**, by Emily Beere, Burlington. She's an Oct. 1995 daughter of GDAR Oscar 711. Her calf is a Jan. 2000 son of DHD Traveler 6807.