

A Continuing Education

Stuck in a rut? Tired of hammering away at problems with the same tired solutions? What about new technology — does the very idea make you want to run for cover?

Try a short course. Well-known, out-of-state speakers import ideas that could be just the spark you and your seedstock operation need. Plus, you can rub shoulders with other producers who may have already discovered solutions to common problems. And, there is always the chance you'll end up sitting next to a potential customer.

Here's a sampling of highly recommended courses offered in the United States today,

ALABAMA

Conferences sponsored by Auburn University include: *Beef quality assurance meetings, Stockman's School, Master Cattle Producer's Program and various other meetings and conferences*

For dates, locations and more information, contact:
Lisa Kriese, Extension animal scientist
Auburn University
209 Animal Science Building
Auburn University, AL 36849-5415
(334) 844-1561
FAX: (334) 844-1519
E-mail: lkriese@ag.auburn.edu

CALIFORNIA California Cattlemen's Association Cow-Calf Quality Assurance Program

Basic Course (on demand)
Advanced Animal Health (on demand)
Advanced Genetics and Value-Based Marketing (on demand)

**California Cattlemen's
Association
Feeder Council Feedlot
Quality Certification Program**
Feed Handling (on demand)
Animal Health (on demand)
Refresher Videos (available from UC Cooperative Extension)

California Beef Cattle Improvement Association Annual Field Day

For more information, contact:
Dan Drake
(916) 842-2711

Oakdale Livestock Forum

Topics range from genetics to weed control. Held the 4th Tuesday of February each year the 1998 conference will be Feb. 24 at the Oakdale Community Center in Oakdale, Calif.

For more information, contact:
Franz Rulofson
2 South Green St.
Sonora, CA 95370
(209) 533-5695

COLORADO Nebraska-Kansas-Colorado Cow-Calf College

Nebraska Technical College
Curtis, Neb.
A week-long school in June that covers, production costs, range and pasture, nutrition, genetics and herd health. For more information, contact:

Dave Smith, NCTA
Rt. 3, Box 23A
Curtis, NE 69025
or Gene Deutscher
(308) 532-3611

Colorado Beef University

Ft. Collins
June 5-7, 1997
Learn beef evaluation from live animal to carcass. For more information, contact:
Keith Belk
(970) 491-5826

Range Beef Cow Symposium

Rapid City, SD.
Dec. 9-11, 1997
A two and a half day update on all aspects of beef production. Sponsored by South Dakota, Wyoming, Nebraska and Colorado Extension Services. For more information, contact
Doug Zalesky
(605) 394-2236

FLORIDA Florida Cattlemen's Institute & Allied Trade Show

Third Thursday in January
Kissimmee Valley Agricultural Center
Kissimmee, Fla.
This will mark the 15th year of the popular short course and trade show.

Producers pack the bleachers for the educational short course, while industry exhibitors fill the halls and outside spaces with product and equipment displays. Best of all, the day in Kissimmee is a bargain by any standard. The whole deal's on the house. The Osceola County Cattlewomen ask for a dollar

donation for the iced tea that accompanies the barbecue dinner but that's it. For more information, contact:

Bob Sand, Extension livestock specialist
University of Florida
PO Box 110910
Gainesville, FL 32611-0910
Office: (352) 392-7529
FAX: (352) 392-7652
E-mail: SAND@ANIMAL.UFL.EDU

University of Florida Beef Cattle Short Course

First Wednesday thru Friday, May 1998
Gainesville, Fla.
For 47 years producers have gathered here for an information-packed annual short course. Normally headquartered at the Radisson Hotel in Gainesville, sessions are also held on the nearby University campus. Early registration fee for the three-day course is typically \$60, which includes a copy of the proceedings and a ticket to the popular steak-out on Thursday night. For more information, contact:

Bob Sand, Extension livestock specialist
University of Florida
PO Box 110910
Gainesville, FL 32611-0910
Office: (352) 392-7529
FAX: (352) 392-7652
E-mail: SAND@ANIMAL.UFL.EDU

GEORGIA University of Georgia Cow College

Athens, Ga.

CONTINUED ON NEXT PAGE

A Continuing Education

During the three-day course each November, participants evaluate cattle all the way from the pen through the cooler. Held in the classrooms, meat lab and beef cattle unit of the University. Cow College also lets producers learn practical selection techniques and hone their skills on body condition scoring. Cost of the course is \$100.

For more information, contact:
Mark McCann, Extension animal scientist
Coliseum, University of Georgia
Athens, GA 30602
Office: (706) 542-2875
FAX: (706) 542-9316
E-mail: mmcann@uga.cc.uga.edu

ILLINOIS

Each year the Illinois Extension facilitates 15 or more educational programs, including cow-calf field days held on producer's farms and winter meetings located throughout Illinois. In December Illinois along with Missouri host the Bi-State Beef Program

Beef 2000

A three-day short course on market cattle evaluation and carcass and retail product development held in January and June each year

For more information about these or other Illinois events, contact:

Doug Parrett
Professor, animal sciences
University of Illinois
184 Animal Sciences Laboratory
1207 W. Gregory Drive
Urbana, IL 61801
E-mail: dparrett@uiuc.edu

MAINE

New England Beef Expo

Programs and seminars for youth and producers held the last weekend of April each year.

Maine Beef Conference

A one-day conference held the first Saturday of December each year. The topics vary from year to year. For more information, contact:

Dee Potter, Extension educator
13 Hall St.
Fort Kent, ME 04743
(207) 834-3905
FAX: (207) 834-3906
E-mail: dpott@umce.umaine.edu

MICHIGAN National Beef Cattle Symposium

Michigan State University, East Lansing
Dec. 17-20
Sponsors: American Shorthorn Association and M SU
For more information, contact:
Roger Hunsley
American Shorthorn Association
8288 Hassall St.
Omaha, NE 68124
(402) 393-7200

Cattle Feeder Short Course

Offered in August and February. For more information, contact:

Steven Rust
Animal Science Department
113 Anthony Hall
Michigan State University
East Lansing, MI 48824
(517) 432-1390

Cow-calf Producer Short Course

Held each March. For more information, contact:

Daniel Buskirk
Animal Science Department
Anthony Hall
Michigan State University
East Lansing, MI 48824
(517) 432-0400

MINNESOTA

For information on upcoming events, contact:

Leon Meger
Community Program Assistant for
Extension Special Programs
(612) 625-1214
or the Animal Science Department
(612) 625-4995

MISSOURI

Cow-calf Workshop

Three days of classes and hands-on labs that cover mostly new and evolving research. For more information, contact:

William Herring
University of Missouri
S-132 Animal Sciences Center
Columbia, MO 65211
(573) 884-6860
E-mail: anscbeef@showm.edu

NEBRASKA

Beef 706 Course

University of Nebraska-Lincoln
Animal Science Complex
Aug. 12-14 & Jan. 1998
Participants gain valuable insight on quality control, new technologies and new products within the beef industry. For more information, contact:
Nebraska Cattlemen's Association
(402) 475-2333

NORTH DAKOTA

Integrated Resource Management (IRM)

This is a seven-step, on-going educational program designed to take beef cow producers through one complete cattle cycle. It focuses on the economic and cash flow analysis of the beef cow profit center. Producers prepare an economic cost and return for each participating herd and then compare each herd's economic performance to the average of the participants. This program has been going on since 1990 and will continue through the rest of this decade.

Annual Beef Cow-Calf Conference

This early December conference focuses on applied research conducted in North Dakota that might be applicable to North Dakota cow-calf producers.

Cow Herd Analysis & Performance System (CHAPS)

An on-going Beef Cattle Improvement Association educational program designed around using production records to manage a beef cow herd. CHAPS is certified as a National SPA management system and is used in 28-plus states. CHAPS is designed for the commercial beef cow producer who wants to fully

manage his herd into the next century.

For more information, contact:
Harlan Hughes
Extension livestock economist
North Dakota State University
(701) 231-7380

OHIO Hay Day

June 7
For more information, contact:
Wayne Shriver, farm manager
Eastern Ohio Resource & Development Center
(614) 732-2682

Beef Day

Oct. 11
Eastern Ohio Resource & Development Center
For more information, contact:
Wayne Shriver, farm manager
Eastern Ohio Resource & Development Center
(614) 732-2682

Beef 509 Carcass Evaluation Course

Dec. 1-3
Dec. 15-17
For more information, contact:
Elizabeth Harsh or Tadd Nicholson
Ohio Beef Council
(614) 873-6736

OKLAHOMA

For information about upcoming conferences and dates, contact:
Carla Chlouber
114 PIO Building
Oklahoma State University
Stillwater, OK 74078-0222
(405) 744-4184
E-mail: carlac@okway.okstate.edu

OREGON Calving Schools

Oregon State University sponsors calving schools in different locations around the state in January, February and March. These are one-day (9 a.m. to 3:30 p.m.) events offering hands-on experience. For dates and locations nearest you, contact your local Extension agent.

PENNSYLVANIA
Eastern Cattleman's Symposium

The symposium is held every year during the last week of March. For more information, contact:

John Comelford
324 Henning Building
University Park, PA 16802
(814) 863-3661

SOUTH DAKOTA
Beef 2000

Follow cattle from on the hoof to the retail case. This conference fosters interaction between the cow-calf producer, feeder and retailers. For more information about Beef 2000 and other producer meetings, contact:

Don Boggs
Extension beef specialist
South Dakota State University
PO Box 2170
Brookings, SD 57007-0392
(605) 688-5488
FAX: (605) 688-6170
E-mail: BoggsD@mg.sdstate.edu

Range Beef Cow Symposium
Rapid City, SD.
Dec. 9-11

This symposium sponsored by the University of Nebraska, University of Wyoming, Colorado State University and South Dakota State University is held every two years. For more information, contact:

Ivan Rush
(308) 632-1230
E-mail: phrc016@unlvm.unl.edu

TEXAS
Beef 101 Program

Beef 101 is a general beef seminar held in May and June each year. It's for people in the cattle industry who are trained in communications, public relations, sales or marketing, but do not have training in the food side of the beef industry.

Beef 708 Program

July 16-18 Regular Beef 706,
College Station
Aug. 4-6 TCFAPanhandle 706,
Lubbock
Aug. 6-8 Beef 706 for Stocker
Operators, Lubbock

Aug. 11-13 Texas Beef Cattle
Short Course, College Station
Aug. 25-27 Regular Beef 706,
College Station
Aug. 27-29 Regular Beef 706,
College Station

For information, contact:

Joe Harris
Texas Beef Council
(512) 335-2333
FAX: (512) 335-0582
E-mail: jharris@txbeef.org

Beef 808 Program

July 14-16
College Station, Texas
A program for Beef 706 graduates to learn about the retail and food service side of the industry.

For more information about

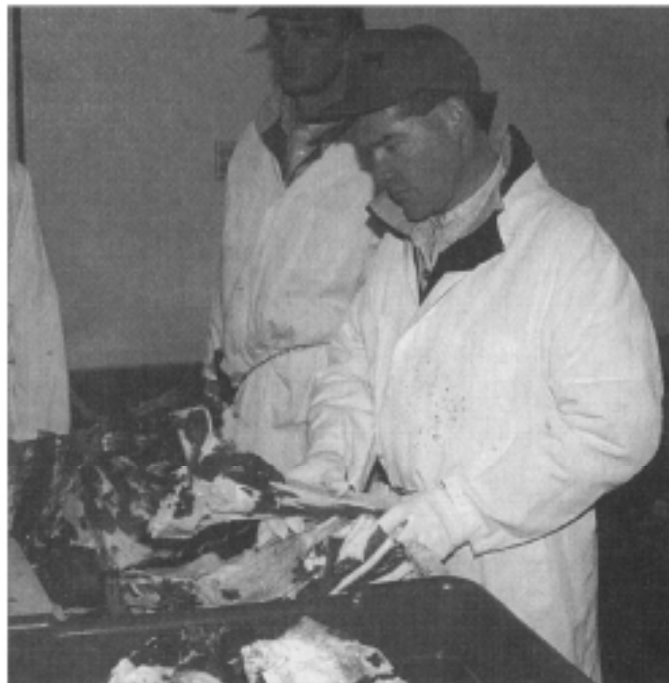
Texas programs, contact:
Dan Hale
348 Kleberg Center
Texas A&M University System
College Station, Texas 77843-2471
(409) 845-0435
FAX: (409) 845-9454
E-mail: dsh0668@acs.tamu.edu

Ranching for Profit School
Wichita Falls, Texas
July 16-23

This school, developed by consultant Stan Parsons, is a practical and concentrated course in range management and the economics of ranching. It's set up to show producers how to make their operations profitable and how to weather and overcome adverse conditions. Conducted for more than 20 years by Parsons, who manages a ranch in Africa and holds a Ph.D in animal science and a M.S. in agricultural economics. For more information, contact:

Elaine Kelly
Ranch Management Consultants
Inc.
7719 Rio Grande Blvd. N.W.
Albuquerque, NM 87107
(505) 898-7417 or 821-4214

Editor's note: *To find out more about educational programs offered in your area, contact your local Extension agent or land grant University.*



Illinois BEEF 2000 — A total of 105 beef producers have graduated from this two-day program. Beef 2000 provides beef industry leaders with in-depth training on market cattle evaluation, grading and carcass fabrication to enhance the quality and consistency shortfalls of the industry. Pictured here is Jerry Cassidy, American Angus Association regional manager, Mahomet, Ill., who attended the course in January at the University of Illinois-Champaign. Sponsors include the University of Illinois, Illinois Beef Association, Cooperative Extension Service and C-FAR.



Nebraska Beef 706 participants gain valuable insight on quality control within the beef industry. Pictured here, Becca Ross, University of Nebraska meat graduate student, explains quality and yield grading process to Beef 706 participants. Lowell Minert, Angus breeder from Dunning, Neb., attended the first conference. He says the course exposed participants to new technologies used in the industry in regards to tenderness and new product development. Held at the University's animal science complex in Lincoln, it's conducted by UNL, the Nebraska Beef Council and the Nebraska Cattlemen. Another session is scheduled for this August.