

# More from your ATV

In case you've pondered assigning additional jobs to your all-terrain vehicle, take note of these attachments and implements especially designed for the handy helpers.

Major ATV manufacturers call what's pictured here the "aftermarket" market. Suppliers of this segment are often small, family-owned machine shops located in such diverse places as Cottonwood, Idaho, and Grainfield, Kan. However, major companies such as Yamaha and Polaris are very aware their customers wring all kinds of tasks and utility out of their machines. In response, they've subcontracted with suppliers so outlets could offer mowers, sprayers, wagons; and seeders/spreaders.

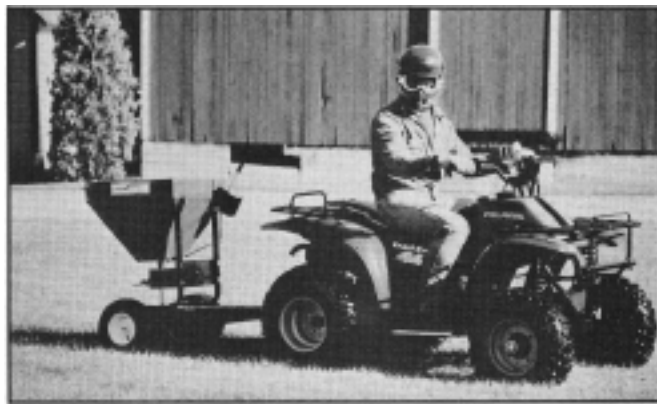
"Ninety percent of the people who buy ATVs are farmers," says Joe Kunzman, district manager for Masek Distributing, a Gering, Neb., Polaris dealership. ATVs have emerged as a pretty successful compromise between the pickup and saddle horse in many cattle operations. Plus irrigators, fence fixers, and weed fighters have found them to be just the ticket around small ranchettes or expansive estates. Featured are some tools available for making your ATV investment all the wiser.



Polaris offers two mowers



*The Minneapolis, Minn., headquarters of Polaris has announced its ATV accessories include a two-bushel capacity spreader/seeder and two front-mounted mowing machines. One is a 10-hp electric-start model with a 48-inch cut, and the*



*second is a manual-start, seven-horsepower, 40-inch cut. Both are powered by Tecumseh.*

*Polaris also offers a snow and dirt blade plus a heavy-duty hitch, power winch, and tire chains.*



### Nebraska firm builds mister, hitch

The familiar Automatic Equipment Mfg. Co., of Pender, Neb., places two ATV-related items on the market with its mist sprayer and a transport hitch for three-wheelers.

The mist sprayer comes available in tank capacities of 25 to 60 gallons. Swaths covering up to 100 feet are possible. The ATV-TOTE fits on a two-inch ball and the adjustable peg bracket is adaptable to most foot pedals. The firm is located at Pender, Neb. 68047; phone (402) 385-3051.

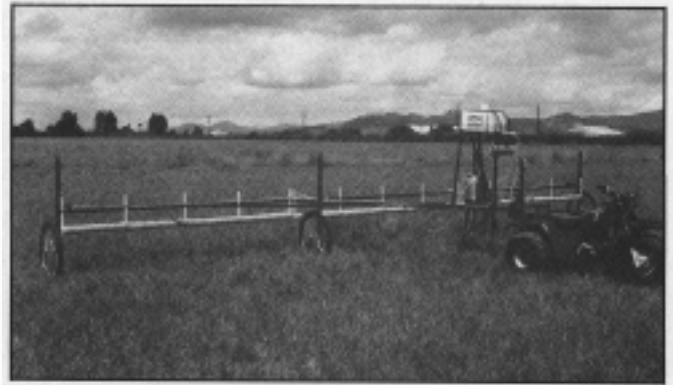


### Sponge applicator and ATV make weed-eating team

Smucker Manufacturing has devoted a considerable engineering effort toward what it calls "a landmark improvement in weed control." A number of accessories and modifications are available for its Super Sponge Weed Wiper. It uses industrial grade sponge, a patented back pressure feed system, and precise flow metering to produce even saturation with little or no dripping even on hillsides, claims the company.

The Super Sponge Weed Wiper was designed and tested on more than 250,000 acres before being marketed. The crusted sponge heart of the machine stays extremely wet without dripping and has a large reservoir for thick weed patches. A four- to five-inch wiping surface can be achieved at speeds of 5-7 mph for effective results in most cases. As little as two ounces of herbicides per acre can be applied or as much as 10 ounces for heavy wiping. It is the only alternative to expensive hand weeding or spot spraying," says the firm, when one is applying non-selective herbicides such as "Roundup."

Models come in widths from ten feet through 30 feet plus a 50-footer that's a 30-foot model with two 10-foot trailing wings. It is not recommended for small ATVs on hillsides, how-



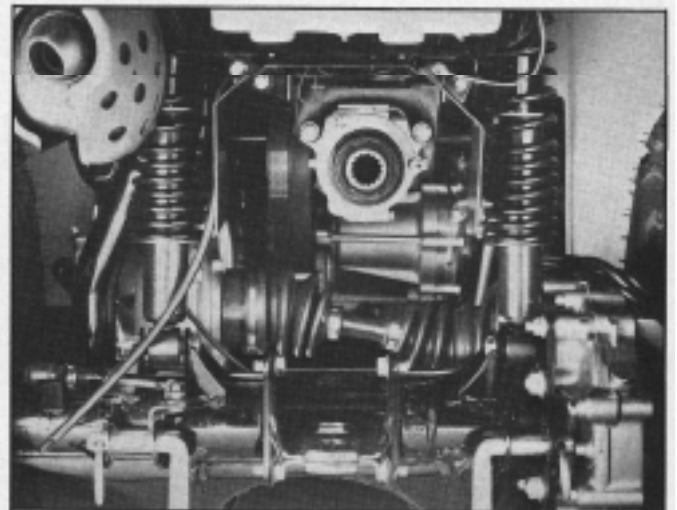
ever. Custom designs are offered for Christmas tree plantations, vineyards, orchards, and berry farms. Prices range from \$395 through \$3,195. Kit, 3-point hitch, and pull-type options are available including a front-mounted 15-foot wiper for 4-wheel ATVs at \$695.

Smucker can be reached at 229 19 N. Coburg Road, Harisburg, Ore. 97446. Phone (503) 995-8000 or 1-800-331-2778 if out-of-state.

### Yamaha comes forth with PTO machine

Claimed as the world's first ATV with PTO, the Yamaha Terrapro made its debut April, 1987. It's powered by a four-stroke, 348cc engine developing 14.5 horsepower. A dual-range transmission allows this machine to develop full PTO power at 1.5 mph. Heavy-duty fan cooling prevents overheating at very slow speeds.

Terrapro's is a "live PTO"-that is, the PTO continues to work even if the operator is changing speeds, shifting gears, or maneuvering. Ten horsepower is delivered at the PTO.





The sprayer can deliver 5.5 gallons per minute at 1,500 psi. The rough-cut mower covers a 42-inch swath, the finish cut a 48-inch path. Both are rear-mounted. Available May, 1988, will be a hydraulic power unit capable of driving hydraulic tools such as a chain saw and posthole digger.

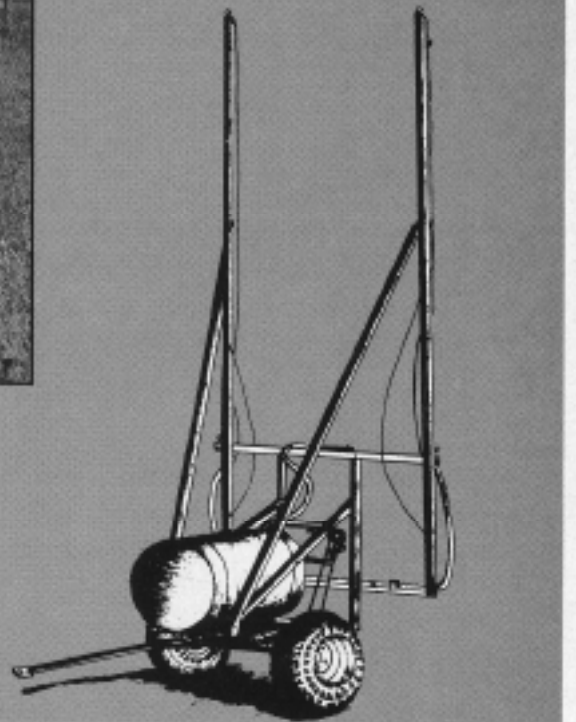


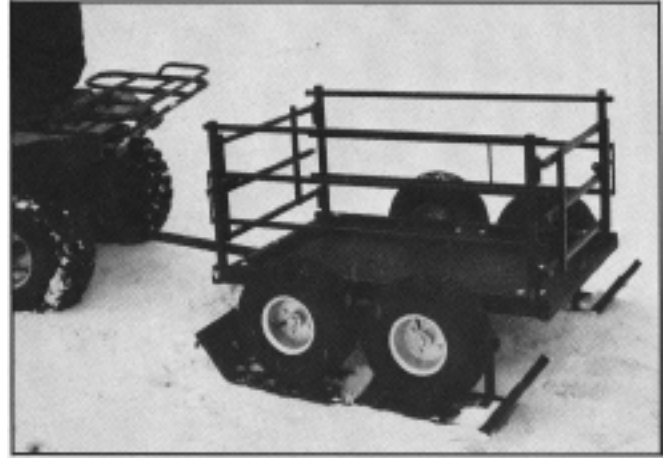
### “Little Big Rigs” challenge larger units

A spin spreader and tank sprayer marketed by Wimer Machine Works, Inc., are capable of covering as much ground as larger, conventional rigs, says this firm located at Cottonwood, Idaho. Its SS-60 spin spreader can cover as much as 150 acres per day with its 13 cubic foot bulker. It has a 700-pound capacity, stainless steel gates, and comes available with dual-wheel or heavy-duty axle options. Because of its light weight, an ATV and Little Big Rig can enter soft fields earlier in the season. The basic spreader price is currently quoted at \$1,095. Forty-foot swaths are said possible.

The “Little Big Rig” sprayer is available in either a ground-driven or motor drive unit. The trailer-chassis can convert to a utility trailer when not in use as a sprayer. Three years of testing under field conditions went into the unit’s development.

Contact Wimer Machine Works, Inc. at P.O. Box 445, Cottonwood, Idaho 83522. Phone (208) 962-3271.





Ag-Enterprises of Grainfield, Kan., concentrates on a variety of sprayers for the ATV market. Auxiliary tanks that can be mounted on the front and/or rear of the vehicle are a specialty. Tank capacities are stated to be 10, 20, 30, and 40 gallons. Safety and weight distribution is considered in the design. Boom lengths are typically 10- and 14-foot lengths; the 10-footer is spring-loaded to flex around obstacles. An exclusive by-pass system circulates contents from bottom to top of tank.

Keeping the ATV machine and operator in mind means features like locating the inlet valve, pump switch, and pressure gauge on the left side of the sprayer, leaving the throttle hand free. Sprayers come with a handgun encompassing a variety of tips for altering spray patterns. A throttle-mounted switch kit is also an option as pulling type conversions.

One unique and thoughtful option is the dual-wheel cart for carrying two 25-gallon tanks. It can be used as a year-round cart of 1,000 pound capacity or to haul up to 20 cubic feet of bulky cargo. A fender option allows the cart to be operated in snow as the fenders can be flipped down and re-attached to function as two independent pivoting skis. The twin axles are independent and can "walk" over obstacles. Ag-Enterprises can be contacted at Rt. 1, Box 69, Grainfield, Kan. 67737. Phone (913) 673-4728.

Sprayers are  
focus of firm

Versions of the ATV theme emphasize utility



*The Mule 1000 by Kawasaki has been highlighted before in the AJ. Its target is wide. Farming applications remain one of the main markets, but company literature suggests manufacturing, lumber yards, orchards, nurseries, and the turf management industry can find the vehicle indispensable. Its optional differential rear end allows it to operate on delicate surfaces such as golf greens.*

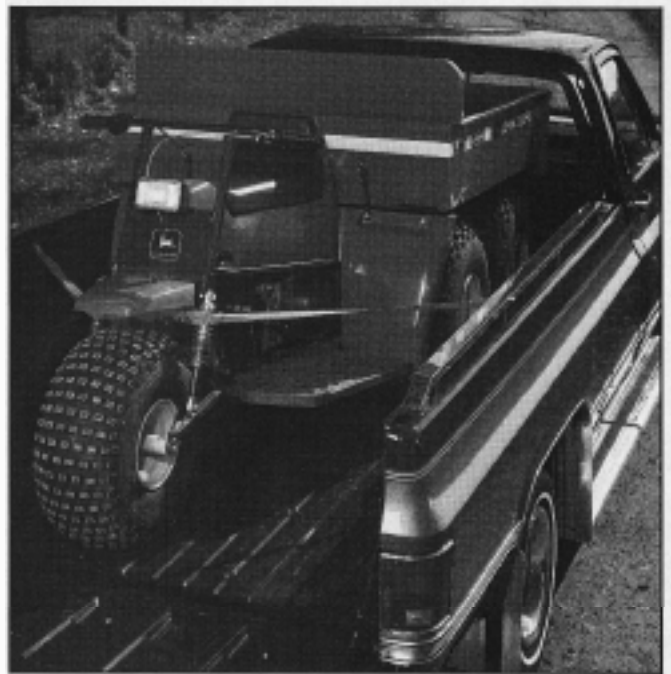
*It has full off-road capabilities, seating capacity for two*

*persons, and can carry a 1,000-pound payload. It weighs nearly 1,100 pounds and can be transported in the bed of a standard long-box pickup. Eighteen horses from a two-cycle engine and an automatic transmission form the power train. Four-wheel independent suspension is a standard item, and the bed is tiltable. Price for the base model is \$4,895. Add \$300 for the dual-mode differential.*



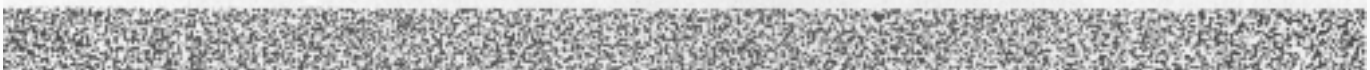
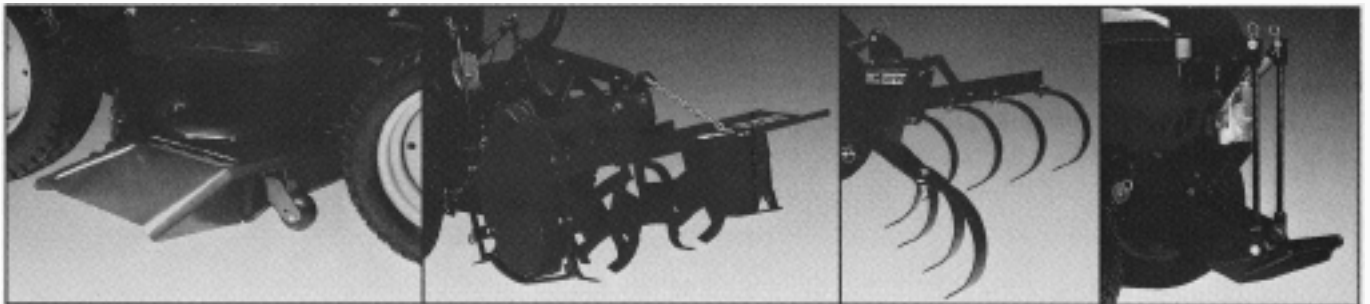
John Deere nicknames its AMT 600 "Almost a Truck" (AMT). It features a four-wheel tandem drive with a standard feature differential lock for hard-going. Transmission is no-shift with a torque converter that provides a 62-to-1 conversion from the 8.5 hp Kawasaki engine. Two ten-inch disc brakes provide 9,000 inch-pounds of stopping force. Top speed is said to be 20 mph.

Unit can haul 600 pounds in the dumpable bed. An optional electro-hydraulic dump kit is available as is a two-wheeled cart capable of toting 800 pounds. Suggested retail is around \$3,400.



Honda enters the utility field with its RT5000 a four-wheel drive, four-wheel steering tractor with shaft-drive, hydraulics, front and rear PTO, and optional 3-point Category III hitch. It weighs nearly 1,000 pounds and is a 12-speed unit with eight forward gears and four reverse.

Implements include a mid-mounted mower, rear-mounted rotating and chain-driven tine tiller, spring tooth cultivator, disc harrow, moldboard plow, dozer blade, and snowblower. Price has not been announced.



## Calf carrier comes in two models



*Tom and Dale Heinrichs, T&D Enterprises, Bruning, Neb., offer their Kalf Kart in a light- and heavy-duty model. The heavy-duty version is supplied with highway-type hubs and tapered roller bearings. Heavier framing is used throughout, plus the axle is a half-inch larger supporting larger tires and wheels.*

*Both models are designed so the calf's body is supported its entire length with vinyl-coated material. The calf's head is held erect so, to the mother, it appears the calf is walking away. The cow can see and smell her calf at all times but is kept*



*toward the rear of the Kart by the offset carrier frame. The rear of the frame is lower to permit easier loading. The carrier can also be used as a nursing platform supporting a sick calf needing medications or electrolytes.*

*Kalf Kart has been shown at several farm machinery and equipment shows throughout the Midwest and can be shipped by UPS. Contact T&D at R.R. 1, Box 4, Bruning, Neb. 68322. Phone (402) 353-3115 or 2865.*