

Dick Burns, Brimfield, Ill., lined up 117 head during Fort Worth's open show. He looked for growthy, correct cattle that would be easy to sell, complimenting the breeders on the strong showing.

R&J Ranch Dominates Fort Worth Stock Show

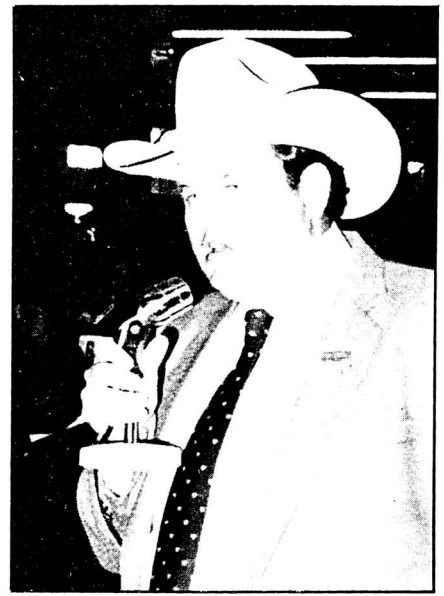
The home-state team captured both grand champion Angus banners of the 88th Annual Southwestern Exposition and Fat Stock Show, Jan. 29, but competition in the 117-head lineup represented a broad cross-section of the country.

R&J Ranch of Briggs, seldom far from the purple, joined forces with Strouds Creek Ranch, Tolar, as co-owners of grand champion female R&J Miss Esso 1842. R&J's manager Ken Conway then led out top pick of the bulls, R&J Dallas 752, for partners Ridgecrest Angus Farm of Fort Worth, and Cherry Angus Farm of Dallas. (Two-thirds interest in the popular Perryville Esso Extra 17M son recently sold to Scotch Cap Angus, Bison, S.D.) R&J collected much of the day's purple, rounding out the event with top get-of-sire and best six head.

Cobble Pond Farm, Sharon, Conn., gave R&J a run for their money in the female show, capturing several class blues and divi-

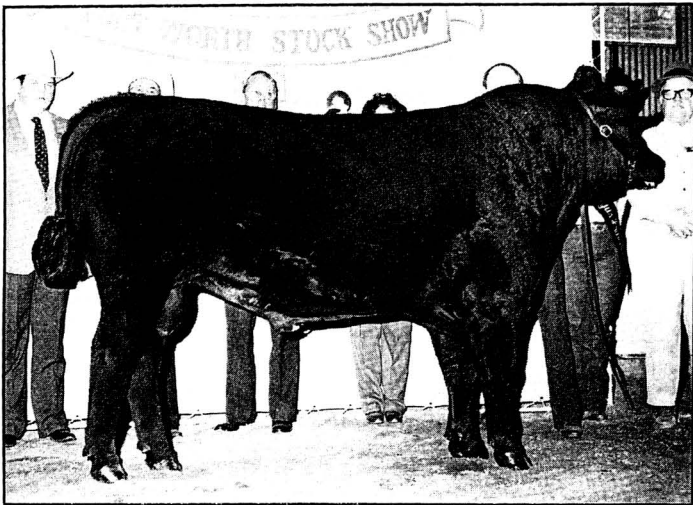
sional titles before stepping into reserve grand champion spot with junior heifer calf champion Cobble Pond Miss Zara, jointly owned by Northcote Farm, Forest, Va. Cobble Pond and Rolling Oaks Ranch, Burkett, later grouped the Pine Drive Big Sky daughter with a pair of half-sibs to take the junior get blue.

Competition ran deep among the 51 bulls, but Omegan Royal earned his ticket from Williamston, Mich., by claiming the reserve grand champion rosette for owners Clifford Simmons II and Omega Cattle Corp. Judge Dick Burns, Brimfield, Ill., chose the intermediate winner over senior champion Whitehall Walhallo 371, senior calf champion Laflins Royal High, and junior bull calf champion JK Pine Tar. Half interest in the youngest contender for final purple had been valued at \$60,000 the day before; bred and owned by Libby Williams of JK Angus, Lockney, he topped the Texas Angus Futuri-

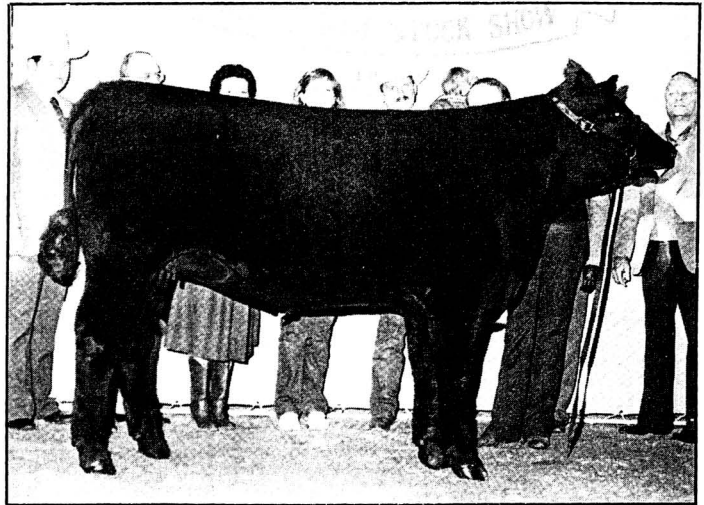


ty show and then earned the day's top bid on a nod from Ray Adams, Tahoka, and Pine Tar Breeders.

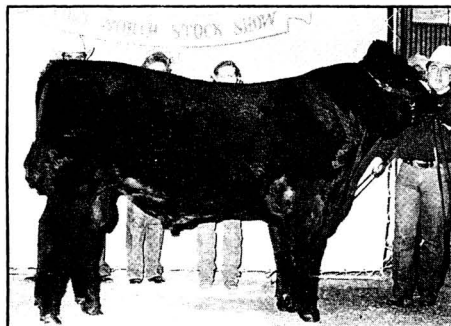
Champion honors of the junior show were also distributed the day before open competition. Burns slapped an entry of Jeff Chaffin, Duncanville, junior and grand champion of the strong 137-head show. Lexie Reeves, Fort Worth, led her calf champion to the reserve grand champion spot. Kellie Reeves, Keller, and Matt Williams, Lockney, exhibited reserve calf and junior champions.



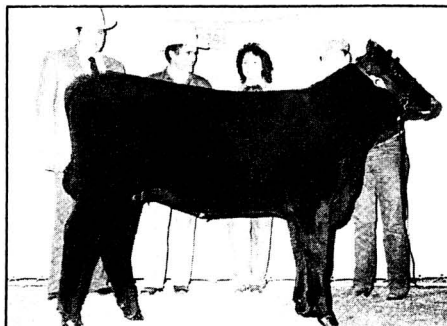
Fort Worth grand champion bull R&J Dallas 752.



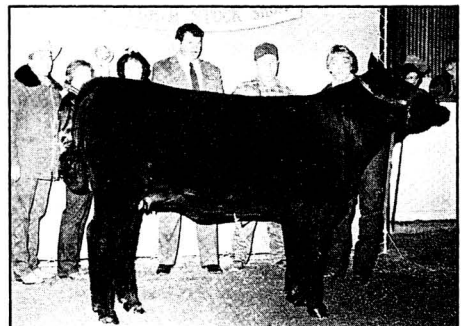
Fort Worth grand champion female R&J Miss Esso 1842.



Fort Worth reserve grand champion bull Omegan Royal.

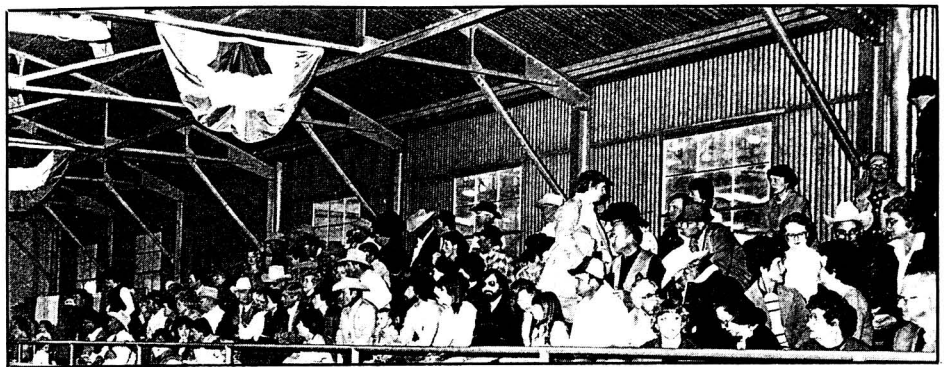


Fort Worth reserve grand champion female Cobble Pond Miss Zara.



Fort Worth junior show grand champion R&J Bo 1442.

As usual, a good crowd graced Fort Worth sidelines for the nation's oldest running stock show.



FEMALES

Class 1—calved 4-4-83 to 6-1-83 (16 shown): 1, Rolling Oaks on ROR Lady Bartman, by Kruegers Foolish Pride.

Class 2—calved 3-1-83 to 3-15-83 (9 shown): 1, R&J on R&J Nicole 1003, by Pine Drive Big Sky.

Class 3—calved 1-4-83 to 2-18-83 (11 shown): 1, Cobble Pond and Northcote on Cobble Pond Miss Zara, by Pine Drive Big Sky.

Class 4—calved 11-1-82 to 12-7-82 (5 shown): 1, R&J on R&J Lilly 2392, by Progression.

Class 5—calved 9-2-82 to 10-16-82 (7 shown): 1, Cobble Pond on Gunston Sweet Sioux, by Ken Caryl Mr. Angus 8017.

Class 6—calved 7-2-82 to 7-4-82 (4 shown): 1, Cobble Pond and Windy Acres Angus, Harrison, Neb., on Cobble Pond Bonnie Kay, by Progression.

Class 7—calved 5-1-82 to 6-2-82 (3 shown): 1, Strouds Creek and R&J on R&J Miss Esso 1842, by Perryville Esso Extra 17M.

Class 8—calved 4-3-82 to 4-8-82 (2 shown): 1, Christine Simmons, Williamston, Mich., on Omega Valentine 2627, by Ken Caryl Mr. Angus 8017.

Class 9—calved 3-2-82 to 3-10-82 (3 shown): 1, Cobble Pond on Cobble Pond Tall Rosanna, by Progression.

Class 10—calved 1-3-82 to 2-8-82 (6 shown): 1, Canfield Angus Ranch, Union, Mo., and R&J on R&J Dawn 102, by Ken Caryl Mr. Angus 8017.

Junior Calf Champion: Cobble Pond and Northcote on Cobble Pond Miss Zara.

Reserve Junior Calf Champion: R&J on R&J Nicole 1003.

Senior Calf Champion: R&J on R&J Lilly 2392.

Reserve Senior Calf Champion: Cobble Pond on Gunston Sweet Sioux.

Intermediate Champion: Strouds Creek and R&J on R&J Miss Esso 1842.

Reserve Intermediate Champion: Cobble Pond and Windy Acres on Cobble Pond Bonnie Kay.

Junior Champion: Cobble Pond on Cobble Pond Tall Rosanna.

Reserve Junior Champion: Canfield and R&J on R&J Dawn 102.

Grand Champion: Strouds Creek and R&J on R&J Miss Esso 1842.

Reserve Grand Champion: Cobble Pond and Northcote on Cobble Pond Miss Zara.

BULLS

Class 1—calved 3-4-83 to 5-30-83 (17 shown): 1, Libby Williams on JK Pine Tar, by Pine Drive Big Sky.

Class 2—calved 1-3-83 to 2-17-83 (10 shown): 1, Rolling Oaks on Gunston Hombre, by Pine Drive Big Sky.

Class 3—calved 11-8-82 to 11-29-82 (4 shown): 1, Laflin Ranch, Olsburg, Kan., on Laflins Royal High, by LEMAR Eileenmere Lad 549.

Class 4—calved 9-23-82 to 10-10-82 (2 shown): 1, Ankony Shadow Isle, Minatare, Neb., on Ankonian Barrier Breaker, by Ankonian Atomic.

Class 5—calved 7-22-82 (1 shown): 1, Harold Dickinson and Richardson Cattle Service, Clarence, Mo., on Sky Blazer HD, by OBC Sky High 19.

Class 6—calved 5-2-82 to 5-15-82 (4 shown): 1, Omega and Simmons on Omega Royal, by Ken Caryl Mr. Angus 8017. 2, O'Neills Angus, Logan,

Iowa; and William B. Wilson, Midland, on O'Neills Camelot, by Thomas Chaps.

Class 7—calved 4-2-82 to 4-6-82 (3 shown): 1, 77 Ranch, Wichita Falls, on Castle Acres Pyramid, by Ken Caryl Mr. Angus 8017.

Class 8—calved 3-4-82 to 3-12-82 (3 shown): 1, Cherry, Ridgecrest and R&J on R&J Dallas 752, by Perryville Esso Extra 17M.

Class 9—calved 9-1-81 to 10-20-81 (3 shown): 1, Snider Bros. Angus Farm, Gerald, Mo.; Dozier Angus Farm, Bland, Mo.; and R&J on R&J Transformer 2371, by R&J Ike.

Class 10—calved 5-3-81 (1 shown): 1, White Hall Farm, North Garden, Va., on Whitehall Walhallo 371, by Sir Wms Warrant.

Class 11—calved 3-1-81 to 4-20-81 (3 shown): 1, Price Angus Farms, Edmond, Okla.; and Lone Mountain Farm, Hico, on Prices Aztek 123, by Sir Wms Warrant.

Junior Calf Champion: Williams on JK Pine Tar.

Reserve Junior Calf Champion: Rolling Oaks on Gunston Hombre.

Senior Calf Champion: Laflin on Laflins Royal High.

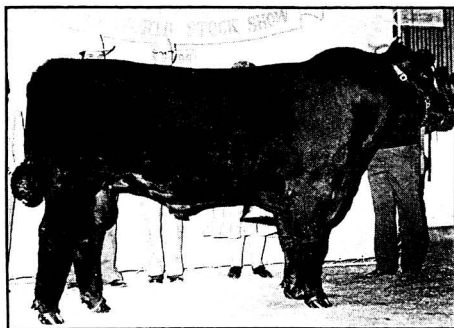
Reserve Senior Calf Champion: Ankony on Ankonian Barrier Breaker.

Intermediate Champion: Omega and Simmons on Omega Royal.

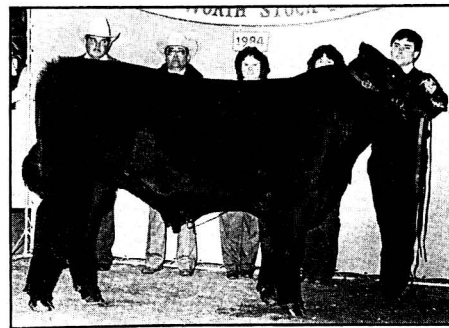
Reserve Intermediate Champion: O'Neill and Wilson on O'Neills Camelot.

Junior Champion: Cherry, Ridgecrest and R&J on R&J Dallas 752.

Reserve Junior Champion: 77 Ranch on Castle Acres Pyramid.



Fort Worth senior champion bull Whitehall Walhallo 371.



Fort Worth senior bull calf champion Laflins Royal High.



Fort Worth junior bull calf champion and Texas Futurity high seller JK Pine Tar.



Fort Worth junior champion Cobble Pond Tall Rosanna.



Fort Worth senior heifer calf champion R&J Lilly 2392.



Fort Worth junior show reserve grand champion R&J Errolline 773.

Senior Champion: White Hall on Whitehall Walhallo 371.

Reserve Senior Champion: Snider Bros., Dozier and R&J on R&J Transformer 2371.

Grand Champion: Cherry, Ridgecrest and R&J on R&J Dallas.

Reserve Grand Champion: Omega and Simmons on Omegan Royal.

Get-of-Sire: R&J on Perryville Esso Extra 17M.

Junior Get-of-Sire: Cobble Pond and Rolling Oaks on Pine Drive Big Sky.

Best Six Head: R&J.

JUNIOR SHOW FEMALES

Class 1—calved 4-3-83 to 6-20-83 (25 shown): 1, Todd Parish, Aledo, on Triple T Erin, by R&J Ike.

Class 2—calved 3-1-83 to 3-26-83 (16 shown): 1, Lexie Reeves on R&J Errolline 773, by Perryville Esso Extra 17M.

Class 3—calved 2-1-83 to 2-22-83 (9 shown): 1, Charles Hale Jr., Iraan, on Clements Elba SBW 1425, by Sir Black William 1425.

Class 4—calved 1-1-83 to 1-28-83 (12 shown): 1, Kellie Reeves on R&J Cary 123, by Pine Drive Big Sky.

Class 5—calved 11-1-82 to 12-3-82 (10 shown): 1, Lee Ann Haning, Allen, on Ridgecrest Blackbird

192, by SVF Power Pack.

Class 6—calved 9-2-82 to 10-23-82 (11 shown): 1, Julie Schermerhorn, Cypress, on R&J Duchess, by Perryville Esso Extra 17M.

Class 7—calved 7-3-82 to 8-10-82 (6 shown): 1, Jimmy John Mayo, Mineral Wells, on Ida 1, by R&J Ike.

Class 8—calved 5-1-82 to 6-20-82 (15 shown): 1, Jeff Chaffin on R&J Bo 1442, by Rosebank Connection 69. 2, Matt Williams on JK Princess 220, by PS Power Play.

Class 9—calved 3-1-82 to 4-16-82 (15 shown): 1, Hilary Nemir, Sweetwater, on Nelson Blackcap 2218, by Nelson Deputy.

Class 10—calved 1-3-82 to 2-24-82 (9 shown): 1, Mark Brandenberger, Clifton, on Deep Down Lady Georgina 214, by Angus Acres Bandolier 78K.

Calf Champion: Lexie Reeves on R&J Errolline 773, by Perryville Esso Extra 17M.

Reserve Calf Champion: Kellie Reeves on R&J Cary 123, by Pine Drive Big Sky.

Junior Champion: Jeff Chaffin on R&J Bo 1442, by Rosebank Connection 69.

Reserve Junior Champion: Matt Williams on JK Princess 220, by PS Power Play.

Grand Champion: Jeff Chaffin on R&J Bo 1442.

Reserve Grand Champion: Lexie Reeves on R&J Errolline 773.

AJ



George Graham, Wichita Falls, and Jesse Reeves, Keller, take care of some high financing matters between classes.

JK Angus's young herdsman Matt Williams applies a few last minute touches to junior bull calf champion JK Pine Tar. Jerry Williams and Ray Adams, new partner in the calf, do the supervising.



Cattlemen young and old took in the Angus events—some watched more closely than others, though.