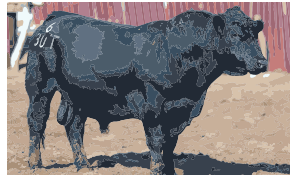


PERFORMANCE REPORT



Compiled by Linda Evans, assistant editor

This column features the performance leaders in central bull tests hosted across the country. To access a state-by-state listing of central bull tests, visit our Virtual Library online at www.api-virtuallibrary.com/CentralBullTests.htm. The listing includes contact information, links to test websites, current test schedules and dates of upcoming tests.

Nebraska Bull Test

90-day report (Jan. 10)

The Nebraska Bull Test, conducted at Rohde Farms, Mason City, Neb., reported that consignors delivered 125 Angus bulls, including 51 calving-ease bulls, that were weighed on test Oct. 13-14 for the start of the 2017-2018 test.

HIGH-ADG CALVING-EASE ANGUS Lot 71CE; owner: Reiter Angus, Chris and Amber Reiter, Miller; sire: Western Cut; ADG: 5.52 lb.; ADG ratio: 135; WDA: 3.76 lb.; WDA ratio: 110; wt.: 1,368 lb.

HIGH-WDA CALVING-EASE ANGUS Lot 46CE; owner: Pope Farms, Jeff Pope, Ravenna; sire: Connealy Final Solution; ADG: 5.00 lb.; ADG ratio: 123; WDA: 3.97 lb.; WDA ratio: 116; wt.: 1,194 lb.

HIGH-ADG AND HIGH-WDA ANGUS Lot 89; owner: Double D Angus, Linwood; sire: O'Neill's Black Bardolier; ADG: 6.24 lb.; ADG ratio: 146; WDA: 4.33 lb.; WDA ratio: 120; wt.: 1,536 lb.

ANGUS CALVING-EASE AVERAGES (52 HEAD) ADG: 4.08 lb.; WDA: 3.41 lb.; wt.: 1,158 lb.

ANGUS AVERAGES (72 HEAD) ADG: 4.27 lb.; WDA: 3.60 lb.; wt.: 1,244 lb.

Final weights were scheduled for Feb. 9-10. The test sale will be March 28 at Broken Bow Livestock, Broken Bow, Neb.

For more information contact Mick Phillips, test manager, at

308-764-2378 or on sale day 308-764-7255 or Shane Rohde at 308-212-0157; or visit the test website at www.nebraskabulltest.com.

UBIA Bull Test

84-day report (Jan. 9)

The Utah Beef Improvement Association (UBIA) received junior and senior bulls Oct. 2 at Kenison Farm and Feedlot, Levan. Bulls entered in the senior test must have been born Sept. 1-Dec. 31, 2016. Bulls entered in the junior test must have been born Jan. 1-March 15, 2017. There are 159 junior Angus bulls and 10 senior Angus bulls on test.

Bulls are being fed by breed. Breeds that did not have adequate numbers to fill a pen (typically 50 head) are commingled with other breeds and fed together. There are two divisions within the junior Angus breed test: the traditional growth division and a low-birth-weight (LBW) division.

HIGH-ADG AND HIGH-INDEXING JUNIOR ANGUS Lot 93; owner: Larsen Angus, Holden; sire: Sitz Investment 660Z; ADG: 4.94 lb.; ADG ratio: 153; WDA: 3.55 lb.; wt.: 1,300 lb.; sale ratio: 146

HIGH-WDA JUNIOR ANGUS Lot 99; owner: Lisonbee Angus Ranch, Roosevelt; sire: Basin Payweight 1682; ADG: 4.05 lb.; ADG ratio: 126; WDA: 3.92

lb.; wt.: 1,245 lb.; sale ratio: 125

HIGH-ADG AND HIGH-INDEXING SENIOR ANGUS Lot 232; owner: 5C Livestock, Redmond; sire: Coleman Charlo 0256; ADG: 4.20 lb.; ADG ratio: 131; WDA: 2.92 lb.; wt.: 1,140 lb.; sale ratio: 123

HIGH-WDA SENIOR ANGUS Lot 239; owner: Lowe Livestock, Toquerville; sire: SAV Thunderbird 9061; ADG: 3.24 lb.; ADG ratio: 101; WDA: 3.20 lb.; wt.: 1,200 lb.; sale ratio: 103

JUNIOR ANGUS AVERAGES (169 HEAD) ADG: 3.22 lb.

OVERALL JUNIOR AVERAGES (230 HEAD) ADG: 3.02 lb.

OVERALL SENIOR BULL AVERAGES (20 HEAD) ADG: 3.18 lb.

Bulls were to be weighed off test Feb. 6. The test sale is scheduled for March 17, 2018.

For more information contact Kim Chapman, Utah State University Extension area animal scientist, at 435-892-0474 or kimc@ext.usu.edu; or Dale Kenison at 435-250-0090; or visit the test website, www.ubiabulls.com.

OPUS Bull Test

84-day report (Dec. 30)

The 85 beef bulls consigned to the 66th annual Oklahoma Panhandle State University (OPUS) Beef Bull Performance Test in Goodwell, Okla., were weighed on test Oct. 7.

Consigned by 17 breeders, breeds represented were Angus, Hereford, Maine-Anjou and Red Angus.

HIGH-ADG SENIOR ANGUS owner: B&M Angus, Edmond, Okla.; sire: B&M Upshot 304; ADG: 7.73 lb.

HIGH-ADG JUNIOR ANGUS owner: William Gilmore, Canyon, Texas; sire: JAF 545 Tradition; ADG: 6.21 lb.

ANGUS SENIOR PEN owner: B&M Angus; avg. ADG: 6.11 lb.

ANGUS JUNIOR PEN owner: B&M Angus; avg. ADG: 4.99 lb.

OVERALL ADG (85 HEAD) ADG: 4.58 lb.

The 112-day test was scheduled to conclude Jan. 27, 2018. The sale is scheduled for Feb. 19. For more information about the bulls, contact Gwen Martin at 580-349-1500 or gwen@opsu.edu.

SW Virginia Bull Test

84-day report (Jan. 16)

The junior and senior tests of the Southwest Virginia Beef Cattle Improvement Association (BCIA) Bull Test, are conducted simultaneously at Hillwinds Farm, Dublin, Va. Senior bulls must have been born Sept. 1-Dec. 31, 2016. Junior bulls must have been born Jan. 1-March 31, 2017. Entries for both divisions were due Sept. 4. Delivery was accepted Oct. 3 at Hillwinds Farm. A total of 92 senior bulls and 143 junior bulls went on test Oct. 24.

The senior Angus bulls began the test with an average weight of 1,012 lb. The junior Angus bulls weighed on test with an average weight of 746 lb.

HIGH-ADG AND HIGH-WDA SENIOR ANGUS Lot 17; owner: J&M Windy Acres, Mike Connatser, Maryville, Tenn.; sire: VAR Discovery 2240; ADG: 4.90 lb.; ADG ratio: 127; WDA: 3.42 lb.; WDA ratio: 117; wt.: 1,405 lb.

HIGH-ADG JUNIOR ANGUS Lot 105; owner: Pratt Cattle Co., Atkins, Va.; sire: Barstow 44 Teammate; ADG: 4.39 lb.; ADG ratio: 147; WDA: 3.31 lb.; WDA ratio: 114; wt.: 1,195 lb.

HIGH-WDA JUNIOR ANGUS Lot 124; owner: Black Creek Farm, Rural Retreat, Va.; sire: KCF Bennett Fortress; ADG: 3.58 lb.; ADG ratio: 120; WDA: 3.44 lb.; WDA ratio: 118; wt.: 1,065 lb.

ANGUS SENIOR AVERAGES (54 HEAD) ADG: 3.86 lb.; WDA: 2.91 lb.; wt.: 1,324 lb.

OVERALL SENIOR AVERAGES (91 HEAD) ADG: 3.68 lb.; WDA: 2.85 lb.; wt.: 1,320 lb.

ANGUS JUNIOR AVERAGES (91 HEAD) ADG: 2.99 lb.; WDA: 2.90 lb.; wt.: 992 lb.

OVERALL JUNIOR AVERAGES (142 HEAD) ADG: 2.96 lb.; WDA: 2.92 lb.; wt.: 994 lb.

The bulls will be weighed off test with an average of weights collected Feb. 13 and 14. The test sale will be at the farm March 25.

For more information contact Scott Greiner, extension beef specialist, 366 Litton-Reaves Hall, Virginia Tech, Blacksburg, VA 24061; phone: 540-231-9159; fax: 540-231-3010; Joi Saville, extension associate, phone: 540-231-2257; Tim Sutphin, owner/manager, Hillwinds Farm,

Continued on page 116

KNOX BROTHERS
Angus & Hereford

BULL SALE
Jordan Livestock Auction - San Saba, Tx.
April 5, 2018

30 Registered Angus Bulls
Sire - Connealy Comrade 1585 Sire - AAR Tex 7008 SA
Sire - Connealy Consensus 7229

50 Registered Hereford Bulls
Sire - Wildcat 4248 Sire - Kickstart 501C

Quinten Holik
325-656-8784

Scott Knox
325-213-4790

Mark McClintock
325-650-4223

Dan Knox
325-234-0028

>13

5660 Thornspring Church Rd.,
Dublin, VA 24084; 540-980-5848; or
visit the test website at
<http://bcia.apsc.vt.edu>.

Manitoba Bull Test

84-day report (Jan. 24)

The Manitoba Beef Cattle Performance Association Bull & Heifer Development Test took delivery Oct. 2-5 of 125 bulls, 67 of them Angus* for the 2017-2018 test at its Douglas Bull Test Station in Carberry, Man., Canada. Consignors must be members of the Manitoba Beef Cattle Association, and bulls must have been born Jan. 1-April 30, 2017, to be eligible for the 112-day test.

HIGH-ADG ANGUS (TIE) Lot 66; owner: Squirrel Creek Angus, Chris Moore, MacGregor, Man.; sire: Vision Unanimous 1418; ADG: 4.54 lb.; WDA: 3.19 lb.; wt.: 1,199 lb.

HIGH-ADG ANGUS (TIE) Lot 45; owner: Blue Gentain, Norman Bednar, Vita, Man.; sire: Blue Gentian Objective 9516A; ADG: 4.54 lb.; WDA: 3.69 lb.; wt.: 1,175 lb.

HIGH-WDA ANGUS Lot 21; owner: Black Creek Cattle Co., Carroll, Man.; sire: Peak Dot Bold 469B; ADG: 4.46 lb.; WDA: 3.88 lb.; wt.: 1,334 lb.

ANGUS AVERAGES (67 HEAD) ADG: 3.40 lb.; WDA: 3.23 lb.; wt.: 1,108 lb.

OVERALL AVERAGES (125 HEAD) ADG: 3.42 lb.; WDA: 3.18 lb.

Bulls are scheduled to be weighed off test Feb. 19-20. The sale is to take place March 31, 2018.

For more information contact Ivan Ahnholz, station manager, office phone: 204-763-4696; cell: 204-724-6271; or Bev Walker, office manager, office phone: 204-763-4696; fax: 204-763-4102; bulltest@mynetset.ca; or visit the test website at www.manitobabulltest.com.

**Editor's Note: Both red and black Angus are tested as Angus in Canada.*

Michigan Bull Test

84-day report (Jan. 19)

The Michigan Cattlemen's Association (MCA) and Michigan State University (MSU) announced the beginning of the MCA/MSU Bull Evaluation Program, with 79 bulls weighing an average of 821 lb. Consignors must be paid members of the MCA and have their 2017 dues paid in advance. To be eligible for the test, bulls must have been born Sept. 1, 2016-March 31, 2017. There are 35 junior Angus bulls and 14 senior Angus bulls on test.

All bulls will be evaluated at the MCA/MSU Bull Evaluation Program Station located at Plank Farm, Crystal, Mich.

HIGH-ADG SENIOR ANGUS Lot 11; owner: Rietberg Farms, Hudsonville; sire: VAR Index 3282; ADG: 4.91 lb.; ADG ratio: 110; WDA: 3.00 lb.; WDA ratio: 93; wt.: 1,100 lb.

HIGH-WDA SENIOR ANGUS Lot 1; owner: Grand River Angus Farm, Grand Rapids; sire: Baldrige Download Z013; ADG: 4.58 lb.; ADG ratio: 102; WDA: 3.87 lb.; WDA ratio: 121; wt.: 1,540 lb.

HIGH-ADG JUNIOR ANGUS Lot 22; owner: KB Angus, Merritt; sire: Deer Valley All In; ADG: 4.82 lb.; ADG ratio: 138; WDA: 3.32 lb.; WDA ratio: 106; wt.: 1,140 lb.

HIGH-WDA JUNIOR ANGUS Lot 30; owner: Dawson Farms, Concord; sire: SAV Pedigree 4384; ADG: 3.81 lb.; ADG ratio: 109; WDA: 3.75 lb.; WDA ratio: 120; wt.: 1,340 lb.

OVERALL JUNIOR AVERAGES ADG: 3.51 lb.; WDA: 3.14 lb.

OVERALL SENIOR AVERAGES ADG: 4.48 lb.; WDA: 3.21 lb.

OVERALL AVERAGES (79 HEAD) ADG: 3.70 lb.; WDA: 3.16 lb.; wt.: 1,129 lb.

Final weights are to be taken Feb. 15-16. The sale is scheduled for March 18.

For more information contact Dan Buskirk, extension beef specialist;

buskirk@msu.edu; 2265 Anthony Hall, Michigan State University, East Lansing, MI 48824; 517-432-0400; Brian Plank, manager, brianplank@rocketmail.com; 325 Mount Hope Rd., Crystal, MI 48818; phone: 989-235-6253 (office) or 989-506-2061 (cell); Michigan Cattlemen's Association, micattlemen@aol.com; 2145 University Park Dr., Ste. 300, Okemos, MI 48864; phone: 517-347-8117. Additional information can be found on the test website at <http://beef.msu.edu/bulleval>.

IBEP Winter Test

63-day report (Jan. 23)

A total of 173 bulls and 17 get-of-sire groups were delivered to the Feldun-Perdue Ag Center near Bedford, Ind., for the 2017 Indiana Beef Evaluation Program (IBEP) Winter Test. Angus, Hereford, Red Angus, SimAngus, Simmental, Maine-Anjou, Lim-Flex and Charolais are represented in the test.

HIGH-ADG AND HIGH-INDEXING ANGUS Lot 5; owner: Bill Washburn, Olney, Ill.; sire: Quaker Hill Rampage 0A36; ADG: 5.32 lb.; ADG ratio: 138; WDA: 3.94 lb.; WDA ratio: 121; wt.: 1,465 lb.; test index: 131

HIGH-WDA ANGUS Lot 29; owner: von Leer Farm, Mitchell, Ind.; sire: MW 964 Hoover Dam 11; ADG: 4.37 lb.; ADG ratio: 113; WDA: 4.03 lb.; WDA ratio: 124; wt.: 1,290 lb.; test index: 118

ANGUS AVERAGES (130 HEAD) ADG: 3.86 lb.; WDA: 3.25 lb.; wt.: 1,103 lb.

OVERALL AVERAGES (183 HEAD) ADG: 3.83 lb.; WDA: 3.24 lb.; wt.: 1,094 lb.

The bulls were scheduled to be weighed for another interim weight Feb. 20, 2018. The bulls will be weighed off test March 26. Bulls will sell April 20 in the 76th IBEP Bull Sale and Springville Feeder Auction Association Bred Heifer Sale.

For more information contact Terry Stewart at tstewart@purdue.edu or 765-494-0138; fax:

765-494-9346; Brad Shelton, test station manager, at 812-279-8554 or sheltonb@purdue.edu; or Donna Lofgren, performance records and website, at dlofgren@purdue.edu. Information is available on the website at www.ansc.purdue.edu/ibep.

WCA All-Breed Bull Test

60-day report (Dec. 30, 2017)

The 25th annual Washington Cattlemen's Association (WCA) All-Breed Bull Test began Nov. 2 with the initial weigh-in of 107 bulls consisting of 74 Angus, 17 Hereford, three Red Angus, six Angus composites, and eight Simmental. The Angus bulls had an average weight of 817 lb. The bulls will be fed under the supervision of Bob and Nina Lundgren at their Bonina Feed Facility at Eltopia.

Bulls eligible for the 120-day test were born Jan. 1-March 31, 2017.

HIGH-ADG ANGUS Lot 124; owner: Dutch Flat Angus, Pomeroy; sire: Kesslers Mondarch 5048; ADG: 5.25 lb.; WDA: 3.13 lb.; wt.: 1,060 lb.

HIGH-WDA ANGUS Lot 95; owner: Unruh Angus Ranch, Warden; sire: Quaker Hill Rampage 0A36; ADG: 1.53 lb.; WDA: 3.72 lb.; wt.: 1,270 lb.

HIGH-ADG CE ANGUS Lot 97; owner: Weidenbach Farms LLC, Mount Vernon; sire: Kesslers Final Answer 2814; ADG: 4.32 lb.; WDA: 3.42 lb.; wt.: 1,075 lb.

HIGH-WDA CE ANGUS Lot 141; owner: Eshelman Angus; sire: SandPoint Butkus X797; ADG: 3.98 lb.; WDA: 3.58 lb.; wt.: 1,200 lb.

ANGUS AVERAGES (71 HEAD) ADG: 3.13 lb.; WDA: 3.01 lb.; wt.: 1,014 lb.

The test sale is scheduled for March 22, 2018.

When the bulls are weighed off test Feb. 28 and March 1, 2018, breeding soundness exams, semen tests and ultrasound data will be compiled. Genetic profile enhancement through DNA samples will be used on many of the bulls selling.

The bulls can be viewed at any time at the Bonina facility. Interim reports and sale information are available by contacting the WCA office at 509-925-9871, at wacattle@kvalley.com; on the WCA website at www.washingtoncattlemen.org; or via sale manager Kendall Cattle Sales at 208-858-2163, kendall@potlatch.com.

Tucumcari Bull Test

60-day report (Dec. 26, 2017)

New Mexico State University's Agricultural Science Center at Tucumcari is benefiting from a public/private partnership to evaluate beef cattle feed efficiency genetics. Since 1961, the New Mexico Beef Cattle Performance Association (now the Tucumcari Feed Efficiency Test LLC) has tested bulls to estimate feedlot performance of their progeny based on pen feed efficiency as the average of up to four animals. In


Continued on page 118

For Sale!

Two Really Nice Bull Calves!

Selling One-half Interest in this Really Nice Straight Backed, Very Thick Large Scrotal, Young Stud Prospect!

Double W Super Duty



CW	+51	CED	+8
Marb	+24	BW	+2.0
RE	+51	WW	+65
Fat	+0.24	YW	+111
SW	+58.37	SC	+1.18
SF	+73.49	Doc	+24
SG	+17.99	HP	+8.9
SB	+133.61	CEM	+9
		MILK	+24

Reg. No. 18999383 • DOB: 8/29/16
Sire: RB Active Duty 010 • Dam: SAV May 2397
True Angus Breed Character • Exceptional Disposition

Also Selling Young Cutting Edge Son

Double W Super Cut

Reg. No. 18999387 • DOB: 1/4/17 • Sire: SAV Cutting Edge 4837 • Dam: SAV May 2397

CED	BW	WW	YW	SC	Doc	HP	CEM	MILK	CW	Marb	RE	Fat	SW	SF	SG	SB
-2	+4.9	+51	+89	+36	+18	+7.0	+4	+33	+41	+36	+27	+0.31	+46.71	+54.12	+21.21	+125.33

Selling Full Possession • Full Interest

For more information contact:
W. F. Wagner
357 800 North Ave • Timewell, IL 62375
217-779-1821

EPDs as of 2/13/18

Performance Report *continued from page 117*

2015, facilities were upgraded with GrowSafe® technology, allowing measurement of individual animal feed efficiency with planned expansions to allow for a concurrent testing capacity of 160 head. The concept behind genetic testing for feed efficiency is herd improvement at the farm/ranch level, which should translate into either higher feeder-cattle prices or reduced feed costs at the feedlot level. Improved beef cattle feed efficiency also will help increase global food production, particularly protein, without having to increase crop production acreage or yield per acre.

There are now separate contemporary groups vs. one complete test group as in years past. Bulls in the large pens are the bulls tested for feed-to-gain efficiency (F/G). Group A includes older bulls that were placed in the feed-efficiency testing pen to measure intake for the first 60 days of the test. Group B consists of the younger calves scheduled to be evaluated for efficiency during the last 60 days of the overall test. Group C is considered the individually tested bulls.

HIGH-ADG GROUP A ANGUS Lot 11-3; owner: Salazar Ranches, Espanola, N.M.; sire: WMR Infinity 141; ADG: 6.17 lb.; ADG ratio: 158; RFI: -1.36; wt.: 1,120 lb.

HIGH-WDA GROUP A ANGUS Lot 18-2; owner: Sanchez Angus, Belen, N.M.; sire: PS Emblazon 1478; WDA: 3.47 lb.; WDA ratio: 128; RFI: 1.44; wt.: 1,150 lb.

BEST RFI GROUP A ANGUS Lot 6-6; owner: Riverside Angus, Alex and JoEllen Netherton, Las Animas, Colo.; sire: Sitz Onward 3775; ADG: 4.87 lb.; ADG ratio: 125; RFI: -6.00; wt.: 1,173 lb.

HIGH-ADG GROUP B ANGUS Lot 14-2; owner: Cody Drager, Las Animas, Colo.; sire: OCC Unmistakable 946U; ADG: 5.11 lb.; ADG ratio: 131; wt.: 1,008 lb.

HIGH-WDA GROUP B ANGUS Lot 4-6; owner: McCall Land & Cattle, Albuquerque,

N.M.; sire: RAB JR Absolute 3211Z; WDA: 3.19 lb.; WDA ratio: 118; wt.: 942 lb.

HIGH-ADG GROUP C ANGUS Lot 18-10; owner: Sanchez Angus; sire: WMR Infinity 141; ADG: 6.17 lb.; ADG ratio: 158; wt.: 1,120 lb.

BEST RFI GROUP C ANGUS Lot: 18-12; owner: Sanchez Angus; sire: Bartels Consent T426 574; ADG: 4.85 lb.; RFI: 3.51; wt.: 736 lb.

ANGUS AVERAGES (126 HEAD) ADG: 3.89 lb.; WDA: 2.73 lb.; wt.: 924 lb.

OVERALL AVERAGES (158 HEAD) ADG: 3.92 lb.; WDA: 2.64 lb.; wt.: 803 lb.

The test sale is scheduled for March 10.

For more information contact Marcy Ward, extension livestock specialist, New Mexico State University, Las Cruces, NM 88003; office phone: 575-646-5947 or cell: 575-644-3379; or visit the test website at <http://tucbulltest.nmsu.edu>.

Kansas Angus Ass'n Bull Test

Mid-test report (Dec. 28, 2017)

There were 68 Angus bulls delivered to Kansas Bull Development LLC, Wamego, Oct. 13-14 for the Kansas Angus Association Bull Test. Nominations were due Oct. 2, 2017. The test will be conducted and managed at Kansas Bull Development LLC by Brian and Megan Hagedorn.

To be eligible for the 112-day test, bulls must have been born Jan. 1-April 15, 2017.

HIGH-ADG AND HIGH-INDEXING ANGUS Lot 222; owner: Barta Farms, Ryan Barta, Little River; sire: VAR Discovery 2240; ADG: 5.32 lb.; ADG ratio: 156; WDA: 3.34 lb.; WDA ratio: 115; wt.: 1,100 lb.; test index: 136

HIGH-WDA ANGUS Lot 242; owner: VanDerVeen Farms, Curtis VanDerVeen, Prairie View; sire: Tehama Tahoe B767; ADG: 3.40 lb.; ADG ratio: 99; WDA: 3.53 lb.; WDA ratio: 121; wt.: 1,090 lb.; test index: 111

Final weights were scheduled for Feb. 22, 2018. The test sale will take place March 28 at the Mitchell County Fairgrounds, Beloit, Kan.

Test results will be posted on the test website at www.kansasbulltest.com.

ICA Bull Evaluation Program

Interim 1 reports (Dec. 29, 2017)

Bulls were delivered to the Bloomfield and Dunlap test stations for the Iowa Cattlemen's Association (ICA) 2018 Bull Evaluation Program. The Bloomfield test has 35 Angus bulls. The Dunlap test has 11 Angus spring-born bulls. There were 26 Angus bulls delivered for the private group test.

The bulls were to complete a 21-day warm-up period following their respective delivery dates. Bulls were to be weighed twice going on test. The first two weights were to be averaged and mark the start of the 112-day test. The top three-quarters of each breed meeting test requirements will be offered for sale.

HIGH-ADG DUNLAP ANGUS Lot 168; owner: Raasch Bros. Performance Cattle, Bridgewater; ADG: 4.47 lb.; ADG ratio: 143; wt.: 1,130 lb.

HIGH-WDA DUNLAP ANGUS Lot 159; owner: G.N. Neumeyer, Golden Chute Ranch, Walker; sire: GG Total Impact 388; ADG: 4.25 lb.; ADG ratio: 136; WDA: 4.00 lb.; WDA ratio: 124; wt.: 1,035 lb.

HIGH-ADG BLOOMFIELD ANGUS Lot 51; owner: Jaden Deppe, Waverly; sire: AAR Ten X 7008 SA; ADG: 5.76 lb.; ADG ratio: 160; WDA: 3.72 lb.; WDA ratio: 114; wt.: 1,235 lb.

HIGH-WDA BLOOMFIELD ANGUS Lot 63; owner: R&C Angus, Ruhl and Cheryl Barker, Monticello; ADG: 3.53 lb.; ADG ratio: 98; WDA: 3.87 lb.; WDA ratio: 118; wt.: 1,060 lb.

DUNLAP ANGUS AVERAGES ADG: 3.14 lb.; WDA: 3.22 lb.; wt.: 981 lb.

BLOOMFIELD ANGUS AVERAGES ADG: 3.60 lb.; WDA: 3.27 lb.; wt.: 1,039 lb.

Bloomfield bulls will be sold March 19 at the Bloomfield Livestock Auction Market. Dunlap bulls will be sold at the Dunlap Livestock Auction Market March 28.

For more information contact Matt Deppe, seedstock manager, Iowa Cattlemen's Ass'n, PO Box 1490, Ames, IA 50014; ICA phone: 515-296-2266; Matt's cell: 515-468-7785; fax: 515-296-2261; www.iacattlemen.org.

WIU Bull Test

56-day report (Dec. 13, 2017)

The 45th Western Illinois University (WIU) Bull Test, Macomb, Ill., received 72 bulls, representing the Angus, Simmental, Red Angus, Hereford, SimAngus and Charolais breeds, according to Keela Trennepohl, WIU School of Agriculture bull test station supervisor. The bulls officially began the test Oct. 19, 2017. Off-test weights were scheduled to be taken Feb. 7 and 8, 2018.

The bulls will be weighed every 28 days throughout the test, and the test website will be updated after each weigh date. The WIU bull test station is open daily for those who want to view the bulls during the test period.

HIGH-ADG ANGUS Lot 306; owner: Eagle River Angus, Dunlap, Ill.; sire: VAR Discovery 2240; ADG: 5.28 lb.; ADG ratio: 121; WDA: 3.52 lb.; wt.: 1,298 lb.

HIGH-WDA ANGUS Lot 303; owner: Kevin Washburn, Olney, Ill.; sire: Whitestone Widespread MB; ADG: 5.10 lb.; ADG ratio: 116; WDA: 4.20 lb.; wt.: 1,320 lb.

84-day report (Jan. 10, 2017)

HIGH-ADG ANGUS Lot 306; owner: Eagle River Angus, Dunlap, Ill.; sire: VAR Discovery 2240; ADG: 5.28 lb.; ADG ratio: 121; WDA: 3.52 lb.; wt.: 1,298 lb.

HIGH-WDA ANGUS Lot 303; owner: Kevin Washburn, Olney, Ill.; sire: Whitestone Widespread MB; ADG:

5.10 lb.; ADG ratio: 116; WDA: 4.20 lb.; wt.: 1,320 lb.

The bulls will be weighed every 28 days throughout the test, and the test website will be updated after each weigh date. Off-test weights are scheduled to be taken Feb. 7 and 8, 2018. The test sale is scheduled for March 9, 2018.

The WIU bull test station is open daily for those who want to view the bulls during the test period. For more information about the test and to follow the progress of the bulls, contact Trennepohl at 309-298-1288. The test website is www.wiu.edu/bulltest.

The test sale is scheduled for March 9, 2018.

For more information about the test and to follow the progress of the bulls, contact Trennepohl at 309-298-1288. The test website is www.wiu.edu/bulltest.

MBCIA Bull Test

56-day report (Jan. 4)

The 2017-2018 Minnesota Beef Cattle Improvement Association (MBCIA) bull test received 99 bulls, 71 of them Angus, Oct. 28 to go on test Nov. 12, 2017. The 99 bulls averaged a 2.94 lb. ADG and had an average weight of 818 lb. The 112-day test is taking place in Spring Grove, Minn. Foundation Feeders Inc. has hosted the MBCIA Bull Test since 1999. The bulls are being fed a high-protein total mixed ration (TMR) to enhance rumen stretch, ADG and fertility. Bulls eligible for the 133-day test must have been born between Jan. 1-May 15, 2017.

HIGH-ADG AND HIGH-INDEXING ANGUS Lot 42; owner: Dustin Martin, Shady Hill Farms, Blue Earth, Minn.; sire: K Bar D Joe Canada 18Y; ADG: 5.36 lb.; WDA: 3.72 lb.; wt.: 1,350 lb.; test index: 130

HIGH-WDA ANGUS Lot 51; owner: Riley Bros. Farms, Darlington, Wis.; sire: RB World Wide 167-31; ADG: 4.41 lb.;

WDA: 4.15 lb.; wt.: 1,250 lb.; test index: 123

OVERALL AVERAGES (92 HEAD) ADG: 3.75 lb.; WDA: 3.24 lb.; wt.: 1,031 lb.

Off-test weights were to take place Jan. 19. The sale is scheduled for March 17 in Jackson, Minn.

For more information contact Ron Holty, test station manager, at 507-498-5839; cell: 507-429-7963 or ronholty@gmail.com.

Wardensville Bull Test

29-day report (Dec. 20, 2017)

The West Virginia Young Sire Evaluation Program, sponsored by the West Virginia University (WVU) Cooperative Extension, the WVU Division of Animal and Nutritional Sciences, the West Virginia Department of Agriculture and the West Virginia Cattlemen's Association received delivery of bulls Oct. 26, 2016, for the Wardensville Bull Test at the WVU Reymann Memorial Farm in Wardensville.

A maximum of 160 bulls were to be accepted for evaluation. To be eligible, bulls must have been born Jan. 20-March 26, 2017. The enrollment deadline was Sept. 15, 2017. The next interim weight was scheduled for Jan. 17, 2018.

The bulls are being fed a ration ($NE_m=0.68$, $NE_g=0.41$) that includes 20% ground mixed hay, 24% wheat midds, 23% soybean hulls, 8% distillers' grains, 4% cottonseed hulls, 4% corn, 10% hominy feed, and 7% miscellaneous ingredients.

HIGH-ADG ANGUS Lot 112; owner: Kinsey's Oak Front Farm, Flemington; sire: The West Virginian X134; ADG: 5.38 lb.; ADG ratio: 158; WDA: 3.28 lb.; wt.: 988 lb.

HIGH-WDA ANGUS Lot 229; owner: Pritt Angus Farm, Beverly; sire: Sitz Wisdom 481T; ADG: 5.14 lb.; ADG ratio: 151; WDA: 3.57 lb.; wt.: 1,141 lb.

ANGUS AVERAGES (136 HEAD) ADG: 3.40 lb.; WDA: 3.00 lb.; wt.: 929 lb.

Continued on page 120

43-day report (Jan. 3)

HIGH-ADG ANGUS Lot 120; owner: Kinsey's Oak Front Farm, Flemington; sire: Coleman Venture 403; ADG: 5.33 lb.; ADG ratio: 148; WDA: 3.24 lb.; wt.: 1,115 lb.

HIGH-WDA ANGUS Lot 138; owner: Poling Angus Farm, Phillippi, W.Va.; sire: Connealy Western Cut 240C; ADG: 4.51 lb.; ADG ratio: 125; WDA: 3.56 lb.; wt.: 1,126 lb.

HIGH-ADG ANGUS PEN 12 bulls; owner: Poling Angus Farm; sire: multiple; avg. ADG: 4.12 lb.; ADG ratio: 115; WDA: 3.21 lb.; wt.: 889 lb.

HIGH-WDA ANGUS PEN Six bulls; owner: Pritt Angus Farm, Beverly, W.Va.; sire: multiple; avg. ADG: 3.83 lb.; ADG ratio: 107; WDA: 3.34 lb.; wt.: 1,120 lb.

ANGUS AVERAGES (136 HEAD) ADG: 3.60 lb.; WDA: 3.04 lb.; wt.: 985 lb.

The test sale is scheduled for March 22 at the WVU Reymann Memorial Farm at Wardensville.

Test information is available from Kevin Shaffer, program coordinator, WVU Extension Service, 2084 Agricultural Sciences Bldg., PO Box 6108, Morgantown, WV 26505; phone: 304-293-2669; Kevin. Shaffer@mail.wvu.edu; or Jerry Yates, WVU Reymann Memorial Farm, phone: 304-874-3561; or on the test website, www.wvbeef.org/bulltest/.

Midland Bull Test

Group 1 second intermediate report (Jan. 9)

Group 2 first intermediate report (Jan. 8)

The Midland Bull test in Columbus, Mont., is a 120-day gain test with a 70-day efficiency test. Bulls are fed a 44-Mcal diet that is high in roughage for targeted gains of about 3 lb. per day. Group 1 bulls were received Sept. 13-23, 2017. Group 2 bulls were received Oct. 14-23, 2017. Bulls qualifying for the

test must be born Dec. 15, 2016-April 15, 2017.

HIGH-ADG GROUP 1 ANGUS Lot 7; owner: Flying AJ Ranch, Stevensville, Mont.; sire: 44 Ten-Gallon Z418; ADG: 4.78 lb.; WDA: 3.28 lb.; wt.: 1,145 lb.

HIGH-WDA GROUP 1 ANGUS Lot 282; owner: Olson Cattle Co., Saint Ignatius, Mont.; sire: HA Cowboy Up 5405; ADG: 3.39 lb.; WDA: 4.17 lb.; wt.: 1,180 lb.

HIGH-ADG (TIE) GROUP 2 ANGUS Lot 428; owner: Wheeler Mountain Ranch, Whitehall, Mont.; sire: WMR Timeless 081; ADG: 4.49 lb.; WDA: 3.58 lb.; wt.: 1,265 lb.

HIGH-ADG (TIE) GROUP 2 ANGUS Lot 468; owner: Double D Angus, Linwood, Neb.; sire: S Chisum 6175; ADG: 4.49 lb.; WDA: 3.40 lb.; wt.: 1,150 lb.

HIGH-WDA GROUP 2 ANGUS Lot 630; owner: Fraser Ranch, Paxico, Kan.; sire: McD SF Total Package 1337; ADG: 3.25 lb.; WDA: 3.83 lb.; wt.: 1,125 lb.

Final weights for both groups are to be taken Feb. 2-9. The Angus sale is scheduled for April 6.

For more information contact Steve & Lindsay Williams; 5 Bull Dr., Columbus, MT 59019; phone: 406-322-5597 (office), 406-322-9044; 406-321-7046 (to text Steve) or 406-322-9044 (Lindsay's cell); fax: 406-322-5210; www.midlandbulltest.com.

Tifton Bull Test

112-day final report (Jan. 31)

The 60th Tifton Bull Evaluation Program at Tifton, Ga., began Oct. 9-10 with the delivery of 146 bulls representing eight different breeds and averaging 843 lb. The 112-day test features bulls born Dec. 1, 2016-Feb. 28, 2017. All bulls tested negative for persistent infection with bovine viral diarrhea (PI-BVD).

Going on test Oct. 10, the 76 Angus bulls averaged 855 lb. for a WDA of 3.14 lb., while all 146 bulls averaged 843 lb. with a WDA of 3.06 lb.

HIGH-ADG ANGUS Lot 78; owner: Gillis Angus Farm, Eastman, Ga.; sire: Connealy Consensus 7229; ADG: 5.24 lb.; ADG ratio: 127; WDA: 3.80 lb.; WDA ratio: 111; wt.: 1,520 lb.; SC: 40.0 cm

HIGH-WDA ANGUS Lot 109; owner: Spring Ridge Farm, Aragon, Ga.; sire: Quaker Hill Rampage 0A36; ADG: 4.50 lb.; ADG ratio: 109; WDA: 3.84 lb.; WDA ratio: 112; wt.: 1,335 lb.; SC: 37.5 cm

ANGUS AVERAGES (70 HEAD) ADG: 4.13 lb.; WDA: 3.42 lb.; wt.: 1,318 lb.

OVERALL AVERAGES (136 HEAD) ADG: 4.07 lb.; WDA: 3.36 lb.; wt.: 1,300 lb.

Qualifying bulls will sell in the test sale March 7, 2018.

Visitors are welcome at the station 8 a.m. to 5 p.m., Monday through Friday. Contact Jacob Segers for more information at 2360 Rainwater Rd., Tifton, GA 31793; phone: 229-386-3683 or at jacobs@uga.edu. If weekend visits are desired, please call Mike Keeler at 229-831-5416. Bull and heifer reports can be accessed through the test website at www.ugabeef.com/programs.

Southern West Virginia Bull Test

55-day report (Jan. 3)

The 2018 Southern West Virginia Bull Test at Green Mesa Farm in Henderson accepted delivery of 88 bulls that went on test Nov. 8-9, 2017, with Angus bulls averaging 789 lb. Off-test weights for the 100-day test were to be taken Feb. 8-9.

The test utilizes a forage-based ration. Bulls are fed to achieve a target ADG of approximately 3.25 lb. The program stresses a total performance approach, not only measuring gain on test, but also reporting indicators of reproductive and carcass performance. Consignors are required to be active participants in the herd improvement program of their respective breeds.

HIGH-ADG ANGUS Lot 162; owner: Rocking P Farm, Horner; sire: GVF Limelight of PD 606; ADG: 4.76 lb.;

Performance report index

IBEP Winter Test 63-day report _____	116	Southern West Virginia Bull Test 55-day report _____	120
ICA Bull Evaluation interim report _____	118	Southwest Virginia Bull Test 84-day report _____	115
Kansas Angus Ass'n Bull Test mid-test report _____	118	Tifton Bull Test 112-day final report _____	120
Manitoba Bull Test 84-day report _____	116	Tucumcari Bull Test 60-day report _____	117
MBCIA Bull Test 56-day report _____	119	UBIA Bull Test 84-day report _____	114
Michigan Bull Test 84-day report _____	116	Wardensville Bull Test 29-day report _____	119
Midland Bull Test Group 1 intermediate report _____	120	Wardensville Bull Test 43-day report _____	120
Midland Bull Test Group 2 intermediate report _____	120	WCA All-Breed Bull Test 60-day report _____	117
Nebraska Bull Test 90-day report _____	114	WIU Bull Test 56-day report _____	119
OPSU Bull Test 84-day report _____	114	WIU Bull Test 84-day report _____	119

ADG ratio: 132; WDA: 3.23 lb.; wt.: 1,121 lb.

HIGH-WDA ANGUS (TIE) Lot 167; owner: River Front Cattle Co., Buckhannon, W.Va.; sire: Connealy Black Granite; ADG: 4.24 lb.; ADG ratio: 117; WDA: 3.48 lb.; wt.: 1,143 lb.


HIGH-WDA ANGUS (TIE) Lot 186; owner: Circle J Angus, Buckhannon; sire: Riverfront Ten X 5TX6; ADG: 4.45 lb.; ADG ratio: 123; WDA: 3.48 lb.; wt.: 1,113 lb.

HIGH-ADG ANGUS PEN 10 bulls; owner: Rocking P Farm; sire: multiple; avg. ADG: 4.12 lb.; ADG ratio: 114; WDA: 2.83 lb.; wt.: 1,011 lb.

HIGH-WDA ANGUS PEN Five bulls; owner: Circle J Angus; sire: multiple; avg. ADG: 3.77 lb.; ADG ratio: 104; WDA: 3.16 lb.; wt.: 1,065 lb.

OVERALL AVERAGES (85 HEAD) ADG: 3.61 lb.; WDA: 2.91 lb.; wt.: 988 lb.


The test sale is scheduled for March 24.


For more information contact Kevin Shaffer, program coordinator, Kevin.Shaffer@mail.wvu.edu; West Virginia University Extension Service, 2084 Agriculture Science Bldg., PO Box 6108, Morgantown, WV 26506; phone: 304-293-2669; or visit the test website at <http://southernsires.ext.wvu.edu>. 

ESTROTECT™ HEAT DETECTOR




BREAKING THROUGH TO HIGHER PREGNANCY RATES

For more than a decade, ESTROTECT™ Heat Detectors have established a legacy as the proven rub-off heat detector that best determines when cows are at the Maximum Opportunity for Pregnancy. This is a fact that has been verified on more farms and in more university trials than any product of its kind.






BREED

DON'T BREED

As Good as a BULL™
www.estroprotect.com



©2018 Rockway, Inc. ESTROTECT and As Good As A Bull are trademarks of Rockway, Inc.