

ROV Winners Named on the Hill

Angus champions selected at 2002 National Western super-point ROV show.

National Western Stock Show Super-Point Roll of Victory (ROV) Show • Jan. 16 and 18, Denver, Colo.

Angus exhibitors paraded 336 entries at the 2002 National Western Stock Show (NWSS) Super-Point Roll of Victory (ROV) Angus Show Jan. 16 and 18 in Denver, Colo. Lead judge Quintin Smith, Lebanon, Tenn., and associate judge Tim Fitzgerald, Alderson, W.Va., evaluated the 245 females and 91 bulls.

FAR Krugerrand 410H claimed grand champion honors in the bull show. Frey Angus Ranch, Granville, N.D.; B&B Bruner Bros., Drake, N.D.; and Roth Angus, Freeman, S.D., own the bull, which first won senior champion. He's a January 1999 son of Krugerrand of Donamere 490.

Triple E Special Addition captured reserve grand champion bull after first topping the junior division. Whitestone-Krebs, Gordon, Neb., and Triple E Angus, Valleyford, Wash., own the March 2000 son of JR Something Special.

In the female show, Champion Hill Georgina 2121 strolled to the winner's circle as grand champion female. Champion Hill, Bidwell, Ohio, and Dobson Pulpwood Farm, Campiti, La., own the July 2000 daughter of SAF 598 Bando 5175. She first won intermediate champion.

Sedgwick's Lass 5810 won reserve grand champion female honors. Casey Blew, Mount Hope, Kan., owns the February 2000 daughter of McCumber 124 Traveler 212 that first topped the junior division.

The winning get-of-sire and the winning junior get-of-sire were sired by Leachman Saugahatchee 3000C. Champion Hill, Bidwell, Ohio, exhibited both groups. The winning breeder's-best-six-head entry was also shown by Champion Hill, Bidwell, Ohio.



► Grand and senior champion bull, **FAR Krugerrand 410H**, by Frey Angus Ranch, Granville, N.D.; B&B Bruner Bros., Drake, N.D.; and Roth Angus, Freeman, S.D. He's a Jan. 1999 son of Krugerrand of Donamere 490.



► Grand and intermediate champion female, **Champion Hill Georgina 2121**, by Champion Hill, Bidwell, Ohio; and Dobson Pulpwood Farm, Campiti, La. She's a July 2000 daughter of SAF 598 Bando 5175.

Judge: Quintin Smith, Lebanon, Tenn. • **Associate Judge:** Tim Fitzgerald, Alderson, W.Va.



► Reserve grand and junior champion bull, **Triple E Special Addition**, by Whitestone-Krebs, Gordon, Neb.; and Triple E Angus, Valleyford, Wash. He's a March 2000 son of JR Something Special.



► Reserve grand champion female, **Sedgwick's Lass 5810**, by Casey Blew, Mount Hope, Kan. She's a Feb. 2000 daughter of McCumber 124 Traveler 212.

FEMALES, by classes

Class 1H (5-18-01 to 5-6-01)

1. Dameron Evergreen 1155, by Dameron Angus Farm, Lexington, Ill.
2. DAJS Beulah L110, by Katy Satree, Montague, Texas.
3. Dameron PVF Proven Queen 1144, by Gary Dameron, Lexington, Ill.

Class 2H (5-5-01 to 5-1-01)

1. WAF Miss Kelly 1125, by Weaver Angus Farm, Peoria, Ill.; and Mercedes Danekas, Wilton, Calif.
2. WCC Lady L489, by Jeremy Armstrong, Unionville, Tenn.
3. Gamble's Lady 634, by Holly Gamble, Clinton, Tenn.

Class 3H (4-30-01 to 4-7-01)

1. RSFF Natilee 1021, by Fairlane Farm, Louisville, Ohio.
2. ALSA Twister's Ashley 011L, by Alan Shelton, Bloomington, Ill.
3. Roth Wendy 1917, by Andrew Rogen, Brandon, S.D.

Class 4H (4-6-01 to 4-1-01)

1. Roth TC Pride 1318, by Craig Moffitt, Colfax, Iowa.
2. Sunset Valley Forever 1402, by Sunset Valley Angus, Gallipolis, Ohio.
3. Dameron Annie 1104, by Dameron Angus Farm, Lexington, Ill.

Class 5H (3-28-01 to 3-20-01)

1. DJ Lila 109, by Kelsie De Jong, Box Elder, S.D.
2. G13 Ruby 1075, by Greg Smith, Elida, N.M.
3. Bear Mtn Lady Eraline 110, by Kylie Jo Lax, Atwater, Calif.

Class 6H (3-19-01 to 3-10-01)

1. Laflin's Jilt 135, by R.D. Laflin II, Olsburg, Kan.
2. WAF Essie 1088, by Megan Weisel, Louisville, Ohio.
3. WK New Date 1243, by Whitestone-Krebs, Gordon, Neb.

Class 7H (3-8-01 to 3-5-01)

1. Champion Hill Sioux 2444, by Damon Cunningham, Ardmore, Tenn.; and Champion Hill, Bidwell, Ohio.
2. EXAR Tillie 1120, by Lindsey Morgan, Canby, Ore.
3. SCC Georgina 1097, by Southern Cattle Co, Campbellton, Fla.; and Doug Satree Angus, Montague, Texas.

Class 8H (3-4-01 to 3-1-01)

1. Green's Princess 1012, by Andrew

CONTINUED ON PAGE 108

Rogen, Brandon, S.D.; and Larry Green, Hardin, Mont. 2. Champion Hill Heidi 2403, by Champion Hill, Bidwell, Ohio. 3. Green's Beth 1012, by Larry Green, Hardin, Mont.

Class 9H (2-28-01 to 2-21-01)

1. WK Miss 1458, by Kami Krebs, Gordon, Neb. 2. Boyd B/R Ruby of Tiffany1074, by Kahn Cattle Co. LLC, Rydal, Ga.; Boyd Beef Cattle, Mays Lick, Ky.; and Bill & Barbara Rishel, North Platte, Neb. 3. JAC's Miss Tra-

veler 1229, by JAC's Ranch, Bentonville, Ark.

Class 10H (2-20-01 to 2-14-01)

1. RBC Lass 1201, by Jennifer Bauer, Urbana, Ohio. 2. WK Tillie 1036, by Kami Krebs, Gordon, Neb. 3. BT Queen Mother 494L, by Beartooth Ranch, Columbus, Mont.

Class 11H (2-13-01 to 2-10-01)

1. Woodlawn Lady Kenzie B111, by L.B. Pierce & Sons Inc., Creston, Ill. 2. C-5 Dameron Elluna 128, by Gary

Dameron, Lexington, Ill. 3. KCR Ideal Pride L355, by Kiowa Creek Ranch, Elbert, Colo.

Class 12H (2-8-01 to 2-4-01)

1. Sedgwick's Pride 3661, by Pamela & Greg McCurry, Sedgwick, Kan. 2. Roth Blackbird 1133, by Roth Angus, Freeman, S.D. 3. Pohlman's Barbara 331 1, by Pohlman Angus Farm, Norfolk, Neb.

Class 13H (2-3-01 to 1-31-01)

1. Champion Hill Bell 2379, by

Laura Main, Macon, Mo. 2. Laflin's Galaxies Lady 101, by Laflin Trust, Crab Orchard, Neb. 3. Dew Drop 391 of Woodlawn, by L.B. Pierce & Sons Inc., Creston, Ill.

Class 14H (1-30-01 to 1-25-01)

1. BT Evergreen 187L, by Beartooth Ranch, Columbus, Mont. 2. WK Princess 1010, by Whitestone-Krebs, Gordon, Neb. 3. ACF Pride 1056, by Shane Anderson, Chrisman, Ill.

♀ FEMALE DIVISION CHAMPIONS



► Spring calf champion, **Green's Princess 1012**, by Andrew Rogen, Brandon, S.D.; and Larry Green, Hardin, Mont. She's a March 2001 daughter of Green's Premium 7578.



► Reserve spring calf champion, **Dameron Evergreen 1155**, by Dameron Angus Farm, Lexington, Ill. She's a May 2001 daughter of Dameron PVF Raptor 702.



► Winter calf champion, **WK Miss 1458**, by Kami Krebs, Gordon, Neb. She's a Feb. 2001 daughter of WK Appeal.



► Reserve winter calf champion, **Boyd Forever Kem 1028**, by Sandpoint Cattle Co., Kenesaw, Neb.; and Roth Angus, Freeman, S.D. She's a Jan. 2001 daughter of Bon-View Bando 598.



► Senior calf champion, **Champion Hill Lady 2182**, by Kahn Cattle Co. LLC, Rydal, Ga.; and Champion Hill, Bidwell, Ohio. She's a Sept. 2000 daughter of Leachman Saughatchee 3000C.



► Reserve senior calf champion, **Sunset Valley Skymere 037**, by Rolling RRR Ranch LLC, Edmond, Okla. She's a Sept. 2000 daughter of SAF 598 Bando 5175.



► Reserve intermediate champion, **BAAR Wendy 051**, by EXLR, Yukon, Okla.; and Dynasty Farms Inc., Langley, British Columbia, Canada. She's an Aug. 2000 daughter of GDAR SVF Russ 184B.



► Reserve junior champion, **Boyd Forever Lady 0115**, by John and Linda Crace, Lancaster, Ky. She's an April 2000 daughter of B/R New Design 036.

► Senior champion, **WAF Elba 9166**, by Cody Bock, Hanna City, Ill. She's a Sept. 1999 daughter of WAF Fullback 6169.



► Reserve senior champion, **KWCC Queen 9139**, by Jillco Farms, Salem, Mo. She's a Sept. 1999 daughter of Pine Creek Traveler 124-1107.



Class 15H (1-25-01 to 1-21-01)

1. Boyd Forever Kem 1028, by Sandpoint Cattle Co, Kenesaw, Neb.; and Roth Angus, Freeman, S.D. 2. EXAR Queen 1574, by Monarch Farm, Folsom, La. 3. GWF Arkdale Pride 11, by Paige Wallace, Mount Vernon, Mo.

Class 16H (1-20-01 to 1-13-01)

1. CC Forever Jilt 1013, by Cameron Ward, Lagrange, Ind. 2. BT Everelda Entense 58L, by Beartooth Ranch,

Columbus, Mont. 3. R&R Lady 107 112, by Kristen Oaks, Calhoun, La.

Class 17H (1-11-01 to 1-5-01)

1. Roth Elba 1017, by Amy Bussumus, Mitchell, S.D. 2. KWCC Blackbird 1139, by Ann Ewald, Waldorf, Minn. 3. Ankony Blackcap 0E78, by Holly Gamble, Clinton, Tenn.

Class 18H (1-4-01 to 1-1-01)

1. WAF Bonny 1007, by Weaver Angus Farm, Peoria, Ill., and Michael Banner, College Grove,

Tenn. 2. Double Bar Wendy 9A, by K Bar D, Redmond, Ore.; and Double Bar, Mason City, Ill. 3. RAF Betty 101, by Eric Ramsey, Frankfort, Ind.

Class 19H (12-28-00 to 11-5-00)

1. Champion Hill Georgina 2261, by Kahn Cattle Co. LLC, Rydal, Ga.; and Champion Hill, Bidwell, Ohio. 2. AVF Blackcap 4160, by Megan Theis, Leavenworth, Kan. 3. Twin Valley Blackclass 5230, by Wilson Cattle Co., Cloverdale, Ind.

Class 20H (10-20-00 to 9-17-00)

1. Gamble's Miss Famous 621, by Kristen Oaks, Calhoun, La. 2. GW Miss Improvement 1730, by Katrina Womack, Pembroke, Ky. 3. WAF Burgess 0151, by Connor Cattle Co., Edwards, Ill.; and Weaver Angus Farm, Peoria, Ill.

Class 21H (9-12-00 to 9-1-00)

1. Champion Hill Lady 2182, by Kahn Cattle Co. LLC, Rydal, Ga.; and

CONTINUED ON PAGE 110

■ BULL DIVISION CHAMPIONS



► Spring calf champion, **DAJS Drover L111**, by Katy Satee, Montague, Texas. He's an April 2001 son of Leachman Saughatchee 3000C.



► Reserve spring calf champion, **BT Venture 667L**, by Beartooth Ranch, Columbus, Mont. He's a March 2001 son of R&R Venture 702.



► Winter calf champion, **EXAR Sudden Impact 1537**, by Rolling RRR Ranch LLC, Edmond, Okla.; Express Angus Ranches, Shawnee, Okla.; and Monarch Farm, Folsom, La. He's a Jan. 2001 son of Northern Improvement 4480 GF.



► Reserve winter calf champion, **Dameron PVF Liberty 104**, by Weaver Angus Farm, Peoria, Ill.; Dameron Angus Farm, Lexington, Ill.; and Prairie View Farm, Gridley, Ill. He's a Jan. 2001 son of Leachman Saughatchee 3000C.



► Senior calf champion, **EXAR Improvement 0913**, by Express Angus Ranches, Shawnee, Okla. He's a Nov. 2000 son of Northern Improvement 4480 GF.



► Reserve senior calf champion, **Sedgwick's Vancer 2640**, by McCurry Bros., Sedgwick, Kan. He's an Oct. 2000 son of Sedgwick's 1483 6335.



► Intermediate champion, **Roth Famous 0289**, by Roth Angus, Freeman, S.D. He's an Aug. 2000 son of Famous 7001.



► Reserve intermediate champion, **PAF Thrice 000**, by Whitestone-Krebs, Gordon, Neb.; and Jerry Pfeiffer, Orlando, Okla. He's a May 2000 son of Bon-View New Design 1407.

► Reserve junior champion, **WC Northern Edge 0C04**, by Hamilton Farms, Cochrane, Alberta, Canada; Laflin Ranch, Olsburg, Kan.; and Willy Couch, Yukon, Okla. He's a Jan. 2000 son of Northern Improvement 4480 GF.



► Reserve senior champion, **TJ Amigo V615**, by TJ Cattle Co., Columbus, Mont.; and Suburban Home Farm, Spencer, Ind. He's a Feb. 1999 son of TC Stockman 365.



Champion Hill, Bidwell, Ohio. 2. Sunset Valley Skymere 037, by Rolling RRR Ranch LLC, Edmond, Okla. 3. EXAR Halo 35, by Lauren Hale, Columbus, Kan.

Class 22H (8-26-00 to 7-1-00)

1. Champion Hill Georgina 2121, by Dobson Pulpwood Farm, Campti, La.; and Champion Hill, Bidwell, Ohio. 2. BAAR Wendy 051, by Dynasty Farms Inc., Langley, British Columbia, Canada, and EXLR, Yukon, Okla. 3. Triple 3 Blackbird Girl 042, by Clayton Lampe, Scott City, Kan.

Class 23H (6-9-00 to 5-2-00)

1. Champion Hill Shadoc 2062, by Holly Gamble, Clinton, Tenn. 2. Broken Arrow Wendy 040, by Ochiltree Angus Ranch, Cool, Calif.; and Broken Arrow Angus Ranch, Lincoln, Calif. 3. Green's Miss Kitty, by Larry Green, Hardin, Mont.

Class 24H (4-25-00 to 4-2-00)

1. Boyd Forever Lady 0115, by John & Linda Crace, Lancaster, Ky. 2. Roth Ms. Famous 0279, by Craig Moffitt, Colfax, Iowa. 3. WAF Queen Mother 0131, by R&R Cattle Co., Keithville, La.

Class 25H (3-31-00 to 3-14-00)

1. WK Miss Rowena 0505, by Whitestone-Krebs, Gordon, Neb.; El Cuyum Andino, Argentina; and James & Elsie Covey, Snohomish, Wash. 2. G Bar H Enchantress K287, by Doug Sattree Angus, Montague, Texas. 3. PF 7215 Dagney Lass 0287, by Preston Pollard, Enid, Okla.

Class 26H (3-13-00 to 3-1-00)

1. Champion Hill Blackbird 1943, by

Roth Angus, Freeman, S.D.; Sterzbach Cattle Co., Louisville, Ohio; and Champion Hill, Bidwell, Ohio. 2. WAF Missie 0089, by Jenna Gilbert, Greenville, Ohio. 3. G13 Delia 0175, by Cali Emberson, Nowata, Okla.

Class 27H (2-28-00 to 2-12-00)

1. Twin Hills Duchess 2053, by Saannah Tallent, Covington, Ga. 2. BT Bararamere Nelle 278K, by Beartooth Ranch, Columbus, Mont. 3. DAJS Elgaine K006, by Doug Sattree Angus, Montague, Texas.

Class 28H (2-11-00 to 2-1-00)

1. Sedgwick's Lass 5810, by Casey Blew, Mount Hope, Kan. 2. WK Queen Peggy 0028, by Whitestone-Krebs, Gordon, Neb. 3. EXAR R3 Miss Forever 0423, by Monarch Farm, Folsom, La.; and Express Angus Ranches, Shawnee, Okla.

Class 29H (1-29-00 to 1-4-00)

1. VAR Forever Lady 0091, by Ashley Bauer, Urbana, Ohio. 2. Champion Hill Phyllis 1868, by Fairlane Farm, Louisville, Ohio. 3. JAC's Blackcap 0012, by JAC's Ranch, Bentonville, Ark.

Class 30H (12-19-99 to 11-10-99)

1. Boyd Forever Lady 9145, by Hancock Angus Cattle, Crossville, Tenn.; and Boyd Beef Cattle, Mays Lick, Ky. 2. Ayres Emmy Eva 10, by Amber Barker, Haines, Ore.

Class 31H (9-19-99 to 9-13-99)

1. WAF Elba 9166, by Cody Bock, Hanna City, Ill. 2. KWCC Queen 9139, by Jillco Farms, Salem, Mo. 3. Twin Valley Blackcap 2819, by Dorrell Farms, Martinsville, Ind.; and Wilson Cattle Co., Cloverdale, Ind.

BULLS, by classes

Class 1B (6-18-01 to 5-1-01)

1. LLA Forever Ready 115, by Lakeland Farm, Palmyra, Wis. 2. Gamble's Hot Rod, by Holly Gamble, Clinton, Tenn. 3. MF Commander, by Middlefield Farms, Fort Collins, Colo.

Class 2B (4-20-01 to 4-1-01)

1. DAJS Drover L111, by Katy Sattree, Montague, Texas. 2. Moffitt Freedom M08L, by Craig Moffitt, Colfax, Iowa. 3. Bush's Big Gun 94, by Clifford Bush & Sons, Britton, S.D.

Class 3B (3-30-01 to 3-11-01)

1. BT Venture 667L, by Beartooth Ranch, Columbus, Mont. 2. Roth CAF United 3481, by Beth Ellen Patton, Crawfordsville, Ind.; Roth Angus, Freeman, S.D.; and DeWayne Costin, Greencastle, Ind. 3. Bush's Big Time 452, by Melissa Bush, Marion, S.D.

Class 4B (3-10-01 to 3-1-01)

1. G13 Stockbroker 1006, by Greg Smith, Elida, N.M. 2. Green's Real Design 1004, by Savannah Green, Hardin, Mont. 3. Bell Key Proclamation 481, by Bell Key Angus, Nampa, Idaho.

Class 5B (2-28-01 to 2-11-01)

1. Woodlawn Exact Replica 611, by L.B. Pierce & Sons Inc., Creston, Ill. 2. PT Roth Famous Addiction 101, by Mercedes Danekas, Wilton, Calif. 3. Baine's Power Design, by Bill Baine, Sedalia, Colo.

Class 6B (2-9-01 to 2-1-01)

1. WC 4480 Improvement 1C10, by Willy Couch, Yukon, Okla. 2. Woodlawn Supreme Royce 461, by L.B. Pierce & Sons Inc., Creston, Ill.

3. Double G Expert 047, by George Swenka & Family, Tiffin, Iowa; and Roth Angus, Freeman, S.D.

Class 7B (1-30-01 to 1-21-01)

1. Dameron PVF Liberty 104, by Weaver Angus Farm, Peoria, Ill.; Dameron Angus Farm, Lexington, Ill.; and Prairie View Farm, Gridley, Ill. 2. WC 4480 Improvement 1C09, by Willy Couch, Yukon, Okla. 3. Roth Dakota Poundmaker 1090, by Roth Angus, Freeman, S.D.; and Larry Green, Hardin, Mont.

Class 8B (1-19-01 to 1-1-01)

1. EXAR Sudden Impact 1537, by Rolling RRR Ranch LLC, Edmond, Okla.; Monarch Farm, Folsom, La.; and Express Angus Ranches, Shawnee, Okla. 2. WCC Classified L316, by Craig & Shaney Bender, Albion, Ind.; and Wilson Cattle Co., Cloverdale, Ind. 3. KWCC Blaze 1001, by Wallace Cattle Co., Mount Vernon, Mo.; and Murphy Cattle Co., Houstonia, Mo.

Class 9B (12-1-00 to 11-1-00)

1. EXAR Improvement 0913, by Express Angus Ranches, Shawnee, Okla. 2. GW Stockman 1970, by Wesley Womack, Pembroke, Ky.; and Maple Valley Ranch, Cumberland Furnace, Tenn. 3. Diamond D Extender 30, by Wilson Cattle Co., Cloverdale, Ind.; and Dorrell Farms, Martinsville, Ind.

Class 10B (10-17-00 to 9-2-00)

1. Sedgwick's Vancer 2640, by McCurry Bros., Sedgwick, Kan. 2. DAJS Frontline K033, by Doug Sattree Angus, Montague, Texas. 3. CW 738 Gunsmoke 1740, by Keystone

GROUP WINNERS



► First place get-of-sire by **Leachman Saughatchee 3000C**, exhibited by Champion Hill, Bidwell, Ohio.



► First place junior get-of-sire by **Leachman Saughatchee 3000C**, exhibited by Champion Hill, Bidwell, Ohio.



► **Champion Hill**, Bidwell, Ohio, exhibited the winning breeder's best six head.

Angus Farm, Milaca, Minn.; and Cottonwood Angus Farms, Pipestone, Minn.

Class 11B (8-17-00 to 7-14-00)

1. Roth Famous 0289, by Roth Angus, Freeman, S.D. 2. BAAR Wintun E46, by Broken Arrow Angus Ranch, Lincoln, Calif. 3. Litfin's Traveler Russ 1838, by Ryan Litfin, La Salle, Colo.

Class 12B (6-29-00 to 5-1-00)

1. PAF Thrice 000, by Whitestone-Krebs, Gordon, Neb.; and Jerry Pfeiffer, Orlando, Okla. 2. Moffitt Stocker 0030 of PF, by Pollard Farms LLC, Waukomis, Okla.; and Moffitt Angus Farms, Colfax, Iowa. 3. Green's Sheriff 0081, by Larry Green, Hardin, Mont.

Class 13B (4-23-00 to 4-2-00)

1. WCC Stocky J162, by Wilson Cattle Co., Cloverdale, Ind. 2. 2TM E100 Excaliber 036, by Ted & Terri Morgan, Greeley, Colo. 3. G13 Style, by Greg Smith, Elida, N.M.

Class 14B (3-24-00 to 3-1-00)

1. Triple E Special Addition, by Whitestone-Krebs, Gordon, Neb.; and Triple E Angus, Valleyford, Wash. 2. EXAR Asset 0653, by Hays Bros. Angus Ranch, Homer, La.; Rocking CK Angus Ranch, Houston, Texas; and Express Angus Ranches, Shawnee, Okla. 3. EXAR Image 0661, by Winter Brook Cattle Co., Canby, Ore.; Opperman Cattle Co., Sandy, Ore.; and Express Angus Ranches, Shawnee, Okla.

Class 15B (2-22-00 to 2-3-00)

1. EXAR Thunder 0426, by Express Angus Ranches, Shawnee, Okla. 2. Lazy JB Santana 610, by Brandon Creamer, Montrose, Colo. 3. PF 7215 Avenger 0232, by Canadian Connection, Killarney, Manitoba, Canada; and Pollard Farms LLC, Waukomis, Okla.

Class 16B (2-1-00 to 1-1-00)

1. WC Northern Edge 0C04, by Hamilton Farms, Cochrane, Alberta, Canada; Laffin Ranch, Olsburg, Kan.; and Willy Couch, Yukon, Okla. 2. Heartland Herdsman 020, by Wilson Cattle Co., Cloverdale, Ind.; and Glen Swanson, Durant, Iowa. 3. Royal Workhorse 001, by Royal Angus Farms, Wales, Wis.

Class 17B (11-11-99 to 11-2-99)

1. Maple Lane Energizer 996, by

Weaver Angus, Peoria, Ill.; Steve Hillman, Morton, Ill.; and Maple Lane Angus, Lagrange, Ind. 2. Green's Titanium 9477, by Larry Green, Hardin, Mont.

Class 18B (9-10-99 to 9-1-99)

1. LCC Big River 3499, by Roth Angus, Freeman, S.D.; Weaver Angus Farm, Peoria, Ill.; and Leachman Cattle Co, Billings, Mont. 2. Champion Hill 4100 1757, by Archie Hamilton, Ava, Ill.; and Champion Hill, Bidwell, Ohio. 3.

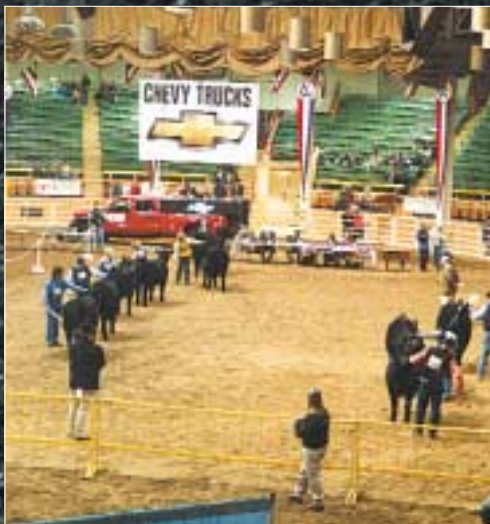
OSU J&J Yukon 9202, by Oklahoma State University, Stillwater, Okla.; Jackson & Johnson Cattle Co., Mulhall, Okla.; and JR Angus Farms, Apache, Okla.

Class 19B (8-9-99 to 8-9-99)

1. Broken Arrow Russ 602D, by Richie Dickinson, Congerville, Ill.; and Broken Arrow Angus Ranch, Lincoln, Calif.

Class 20B (4-10-99 to 1-19-99)

1. FAR Krugerrand 410H, by Frey Angus Ranch, Granville, N.D.; and B&B Bruner Bros., Drake, N.D. 2. TJ Amigo V615, by TJ Cattle Co., Columbus, Mont.; and Suburban Home Farm, Spencer, Ind. 3. TC Extra 9140, by TC Ranch Inc., Franklin, Neb.; Wilson Cattle Co., Cloverdale, Ind.; and Kiowa Creek Ranch, Elbert, Colo.



► Angus exhibitors paraded 245 entries before the judges in the 2002 ROV female show.



► Lead judge Quintin Smith and associate judge Tim Fitzgerald discuss their class.



► Judges Quintin Smith and Tim Fitzgerald congratulate Paul Hill, naming Champion Hill Georgina 2121 grand champion female of the ROV Angus Show. Champion Hill and Dobson Pulpwood Farm own the winner.