

DENVER NATIONAL WESTERN STOCK SHOW

Whitestone Krebs T&es Triple Crown

A January snowstorm slowed down many travelers on their way to the 1992 National Western Stock Show in Denver. It closed the Denver airport, several highways in the Rocky Mountain states and western Kansas area, and created interesting comparisons of who had the worst "stranded in the snowstorm" experience.

No force of nature, however, could keep Angus enthusiasts from attending their favorite event of the year. By Wednesday, the sun was shining and Angus breeders and fans were out in full force to witness another super stock show.

Angus exhibitors also came in full force this year. A total of 256 head were entered in the Super Roll of Victory Angus Show on "The Hill," and seven carloads and 27 pens were exhibited down in "The Yards."

Whitestone Krebs, Gordon, Neb., proved they are a major force in today's Angus industry by winning Denver's triple crown — grand champion carload, grand champion bull and grand champion female. For Whitestone Krebs, and partners Gretchen Hilmes and Eric Schlutz, years of hard work, perseverance and breeding selection paid off royally.

Judge Doug Parrett of the University of Illinois, Urbana, said the competition in this year's Super ROV Angus Show was intense, especially in the heifer show. He selected his grand champion female, Honey Bears Sophie, and grand champion bull, Da Es Ro Casey 629, for their balance, muscling and correctness. "Cattle like this are good for any breeding program," Parrett said.

Whitestone Krebs' carload of 10 junior bull calves also excelled in balance, muscling and uniformity. This grand champion carload recorded an average weight of 1,137 pounds, 3.84-pounds WDA, 7.4 frame, .32 inch backfat and 37.9 cm scrotal circumference.

A complete report of events and winners at the 1992 National Western Stock Show follows in our 12-page feature.

— Jerilyn Johnson



*Grand and senior champion bull
Da Es Ro Casey 629*



*Grand and intermediate champion female
Honey Bears Sophie*

DENVER

NATIONAL WESTERN STOCK SHOW



Reserve grand and junior champion bull
CAF Gryphon 3200



Reserve grand and junior champion female
WAR Sara 0209 7142



National Western Super ROV Angus Show

January 10-11 1, 1992 Denver

Judge: Doug Parrett, University of Illinois, Urbana

Associate Judge: Dick Jurgens, Peoria, Ill.

256 shown

FEMALE CHAMPIONS (168 shown)

GRAND: Honey Bears Sophie, by Gretchen Hilmes, Flora, Ill., and Whitestone Krebs, Gordon, Neb.

RESERVE GRAND: WAR Sara 0209 7142, by Champion Farms, Gallipolis, Ohio, and Sara Schmalenberger, Vincent, Iowa.

SPRING CALF: WK Queen of Diamonds, by Whitestone Krebs.

RESERVE SPRING CALF: Forsythe Suzie Q 1039, by Forsythe Cattle Co., Marshall, Ill.

WINTER CALF: WK Dusty Karen, by Whitestone Krebs

RESERVE WINTER CALF: SAV Dakota Erica 1898, by Frank & Mary Jean Hilavac, McFarland, Wis.

SENIOR CALF: Kruegers Kinannie Riannon, by Erin Krueger, Coatesville, Pa.

RESERVE SENIOR CALF: Blevins Phantasia of Yadkin, by Blevins Angus Farms, Allensville, Ky., and Yadkin River Angus Farm, Clemmons, N.C.

INTERMEDIATE: Honey Bears Sophie.

RESERVE INTERMEDIATE: Bolsens Miss Rito 707, by Wes Bolsen, Lovington, Ill.

JUNIOR WAR Sara 0209 7142.

RESERVE JUNIOR: Nelson Elba Lassie 0357, by Toby Bolsen, Lovington, Ill.

SENIOR: Thunder Hill Tanya X32, by Thunder Hill Ranch, Willows, Calif., and Forsythe Cattle Co.

RESERVE SENIOR: Mengs Lucy 107Y, by Whitestone Farm, Aldie, Va., Will Meng, Bowling Green, Ky., and Phillip Trowbridge Jr., Ghent, N.Y.



Spring heifer calf champion
WK Queen of Diamonds



Spring heifer calf reserve champion
Forsythe Suzie Q 1039

DENVER

NATIONAL WESTERN STOCK SHOW



*Winter heifer calf champion
WK Dusty Karen*



*Winter heifer calf reserve champion
SAV Dakota Erica 1898*

BULL CHAMPIONS (88 shown)

GRAND: Da Es Ro Casey 629, by Whitestone Krebs and Eric Schlutz, Letts, Iowa.

RESERVE GRAND: CAF Gryphon 3200, by DeWayne Costin, Greencastle, Ind., and Wilson Cattle Co., Cloverdale, Ind.

SPRING CALF: WK Exodus, by Whitestone Krebs

RESERVE SPRING CALF: Hi Way Terminator, by Hi Way Angus Farm, Elmwood, Ill. and Weaver Angus Farm.

WINTER CALF: WK Reflection, by Whitestone Krebs.

RESERVE WINTER CALF: R&J Prestige, by R&J Ranch and Davids Angus Ranch, Grandview, Texas.

SENIOR CALF: WAF Enchanter 083, by Weaver Angus Farm.

RESERVE SENIOR CALF: O'Neills Duke, by O'Neill Angus Farm, Logan, Iowa.

INTERMEDIATE: O'Neills Exon, by O'Neill Angus Farm and Forsythe Cattle Co.

RESERVE INTERMEDIATE: WSF Grand Slam, by Dr. and Mrs. Gary Priest, Versailles, Ky.

JUNIOR: CAF Gryphon 3200.

RESERVE JUNIOR: R&J Espresso, by R&J Ranch, Whitestone Farm and Espresso Associates, Briggs, Texas.

SENIOR: Da Es Ro Casey 629.

RESERVE SENIOR: 4S Pioneer, by Four Sum Cattle Co., Wilder, Idaho; Pioneer Genetics, Bowling Green, Ky.; and Bippert's Farms, Alden, N.Y.

FEMALES, by classes

Class 1 (5-23 to 6-12-91)

1. Ramseys Rosella 9180, by Beth Patton, Crawfordsville, Ind.
2. Bolsens Blackbird 603, by Bolsen's Angus Farm, Lovington, Ill.
3. Kruegers Reba Belle, by Erin Krueger.

Class 2 (5-1 to 5-13-91)

1. Forsythe Suzie Q 1039.
2. WK Molly 1266, by Whitestone Krebs
3. Bolsens Golden Lass 97, by Toby Bolsen

Class 3 (4-9 to 4-27-91)

1. Bolsens Golden Lass 96, by Toby Bolsen.
2. Patton Elaines Emma 120, by Beth Patton.
3. R&J Heather 1451, by R&J Ranch.

Class 4 (4-1 to 4-7-91)

1. WK Queen of Diamonds.
2. Premier Candice A6430, by Wilson Cattle Co., and Yadkin River Angus Farm.
3. T&T Zara Leigh 136, by T&T Cattle Co. Inc., Fairview, Ill.



*Senior heifer calf champion
Kruegers Kinannie Riannon*



*Senior heifer calf reserve champion
Blevins Phantaisia of Yadkin*

DENVER

NATIONAL WESTERN STOCK SHOW



Intermediate heifer reserve champion
Bolsens Miss Rito 707



Junior female reserve champion
Nelson Elba Lassie 0357

Class 5 (3-19 to 3-28-91)

1. WAF Camilla 178, by Weaver Angus Farm.
2. TAF Miss Magic 115, by Dennis Thomas, Mabank, Texas.
3. SW Moxie 176, by Shelley Weaver, Brimfield, Ill.

Class 6 (3-5 to 3-17-91)

1. A&B Flights Rose 111, by Arlen & Becky Sawyer, Bassett, Neb.
2. Kruegers Scaara Jen GS, by Greg Krueger & Family.
3. Vintage Diablo Litty, by Vintage Angus, Modesto, Calif., and Dennis Lopez, Byron, Calif.

Class 7 (3-1 to 3-3-91)

1. WK Dusty Karen.
2. WAF Juanetta 141, by Weaver Angus Farm.
3. WK Kokomo, by Kami Krebs, Gordon, Neb.

Class 8 (2-16 to 2-27-91)

1. Dameron Queen Susie 125, by Jay Dameron, Lexington, Ill.
2. Vintage Shiana 1217, by Vintage Angus.
3. Bon View Elba 381, by Sydenstricker Angus Farms, Mexico, Mo.

Class 9 (2-3 to 2-14-91)

1. SAV Dark Lucy 911, by Sarah Hill, Bidwell, Ohio.
2. JAR Entoria Erica 12, by Kami Krebs.
3. Dameron Lass 117, by Jeff Dameron, Lexington, Ill.

Class 10 (1-17 to 1-29-91)

1. R&J Carrolline 241, by R&J Ranch.
2. Shilo Elaine 81, by Melissa Harrison, Woodbine, Md.
3. Hansen Magic Firefly 110, by Forysthe Cattle Co. and Pete Hansen & Sons, Springfield, Ore.

Class 11 (1-7 to 1-16-91)

1. SAV Precious Primrose 1902, by Frank & Mary Jean Hlavac
2. Cedarcrest Marsha 15, by Cedarcrest Farms, Palmyra, Wis.
3. Twin Valley Queen 005A, by Eaglestone Farm, Carlisle, Ky.

Class 12 (1-1 to 1-6-91)

1. SAV Dakota Erica 1898.
2. R&J Burgundy 41, by R&J Ranch.
3. Blackcap Kenzie Minx of WWF, by Greg Krueger & Family and Weaverland Valley Farms.

Class 13 (11-16 to 12-4-90)

1. BCC Shining Star 90-90, by Tyler Byrd, Red Bluff, Calif.
2. Annaleas Ashley 0529, by Annalea Farms Ltd., Coatesville, Pa.
3. Northcote Jessies Gal 1379, by Weldon Brady, Knob Nester, MO.

Class 14 (10-2 to 11-6-90)

1. Blevins Phantasia of Yadkin.
2. Ankony Emulous Elira 06E90-1, by Ankony Shadow Isle Ranch, Minatare, Neb.
3. Laffins Blackbird 9015, by Robert Laffin, Olsburg, Kan.



Senior female champion
Thunder Hill Tanya X32



Senior female reserve champion
Mengs Lucy 107Y

DENVER

NATIONAL WESTERN STOCK SHOW



Spring bull calf champion
WK Exodus



Spring bull calf reserve champion
Hi Way Terminator

Class 15 (9-1to9-12-90)

1. Kruegers Kinannie Riannon
2. WK Sugar, by Ty Krebs
3. JAC's Luxura 0310, by JAC's Ranch, Bentonville, Ark., and Hale O Farms Inc., Bland, Va.

Class 16 (6-2 to 7-9-90)

1. Bolsens Miss Rite 707, by Wes Bolsen.
2. R&J Margaret 2020, by R&J Ranch.
3. Ridgecrofts Ms JAC Evera, by C.C. Lamond III, Blumont, Va.

Class 17 (5-1 to 5-21-90)

1. HoneyBears Sophie.
2. FF Starlite Belle 690, by Ty Krebs.
3. R&J Jesse 1370, by Alora Foster, Swan Angus and Forsythe Cattle Co.

Class 18 (3-30 to 4-17-90)

1. WAR Sara 0209 7142.
2. Futurama Julie 110, by Lindsey Trospen, Hamilton, MO.
3. CSC Elba 20, by Chad Wilson, Cloverdale, Ind., and Jorge A. Fullonz, Argentina.

Class 19 (3-2 to 3-15-90)

1. JAC's Black Rose 0245, by JAC's Ranch.
2. Patton Beatrice Audrey 08, by Beth Patton, Lenard Skaley and Dale Grubbs.
3. LW Suzie Mae, by Lazy W, Peyton, Colo.

Class 20 (1-27 to 2-21-90)

1. Nelson Elba Lassie 0357.
2. R&J Lindsey 510, by R&J Ranch and Davids Angus Ranch, Grandview, Texas.
3. SAV Mac Jestress 1761, by Champion Farms, Sarah Hill and Whitestone Farm.

Class 21 (1-4 to 1-23-90)

1. MB Burgess 0007, by JAC's Ranch, Clearwater Farm and Jamie Beck.
2. BT Ophelia 2Z, by Brost Angus Farm, Oxford, Ind., and Beartooth Ranch, Columbus, Mont.
3. Bipperts Rose Ann 900, by Warren Bippert Jr., Alden, N.Y.

Class 22 (10-13 to 11-7-89)

1. R&J Lassy 2469, by R&J Ranch and Pinnacle Farms, Decatur, Ga.
2. Laflins Classy Jet 9007, by Robert Laflin
3. Circle G Jodie 2IIX, by George Young, Earl Duckworth and Melvin Jordan.

Class 23 (9-1 to 10-6-89)

1. Thunder Hill Tanya X32.
2. Mengs Lucy 107Y.
3. DA Brittany 7693, by Angela Johnson, Mt. Airy, Md.



Winter bull calf champion
WK Reflection



Winter bull calf reserve champion
R&J Prestige

DENVER

NATIONAL WESTERN STOCK SHOW



Senior bull calf champion
WAF Enchanter 083



Senior bull calf reserve champion
O'Neills Duke

BULLS, by classes

Class 1 (5-10 to 6-5-91)

1. WK Max, by Whitestone Krebs.
2. Patton Clarence, by Beth Ellen Patton and Charles Cosentino, Winfield, Ill.
3. WK Husky, by Whitestone Krebs.

Class 2 (4-1 to 4-28-91)

1. WK Exodus.
2. Hi Way Terminator.
3. Bolsens Bold Bullseye, by Wes Bolsen.

Class 3 (3-16 to 3-25-91)

1. WK Expectation, by Whitestone Krebs and TS Farms, Holdrege, Neb.
2. Beattooth Alaska 525A, by Beattooth Ranch and GN & NSA Wertheim, Buenos Aires, Argentina.
3. GLC Strait 1029, by Larry Green, Volborg, Mont.

Class 4 (3-1 to 3-11-91)

1. R&J Prestige.
2. Car Don Richmond, by Donald Bloom & Family, Westville, Ind., and Forsythe Cattle Co.
3. Yahara, by Frank & Mary Jean Hlavac and Weaver Angus Farm.

Class 5 (2-15 to 2-28-91)

1. WK Reflection.
2. WK Specialty, by Whitestone Krebs.
3. Premier Optima, by Wilson Cattle Co.

Class 6 (1-25 to 2-4-91)

1. Columbus, by Yadkin River Angus Farm,
2. Dameron Legacy, by Jeff Dameron.
3. Beat-tooth Icon 310A, by Beat-tooth Ranch.

Class 7 (1-1 to 1-19-91)

1. Northcote Storm, by JAC's Ranch.
2. Nelson Frontier, by Clyde Nelson, Randel Nelson and Bolsen's Angus Farm.
3. Yadkin River Tanglewood, by Yadkin River Angus Farm.

Class 8 (11-10 to 11-28-90)

1. GCC Protege, by Joe Griswold, Miami, Okla.
2. JAC's Blue Chip 0326, by JAC's Ranch and Ozark Angus, Canehill, Ark.
3. Westwind Slick 067, by John & Linda Holden, Valier, Mont

Class 9 (10-2 to 10-9-90)

1. Valleywood, by Valleywood Farm, Ayr, Ont., Canada.
2. Neon, by Ross & Carolyn Bennett, Roseburg, Ore.

Class 10 (9-2 to 9-17-90)

1. WAF Enchanter 083.
2. O'Neills Duke,
3. B&L Renaissance, by B&L Properties, Shawnee, Okla., and Austin Land & Cattle Co., Seminole, Okla.



Intermediate bull champion
O'Neills Exon



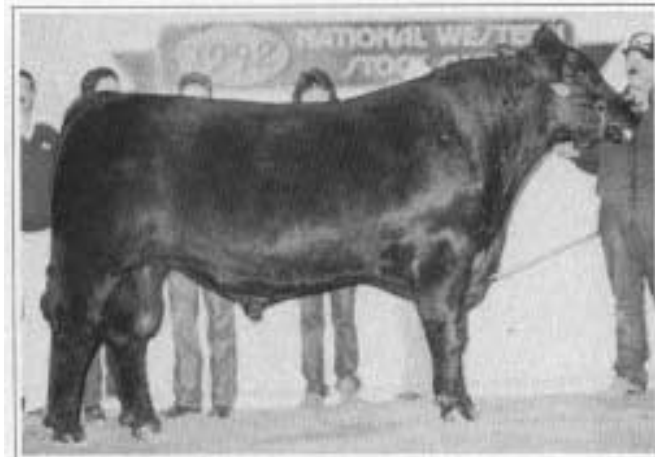
Intermediate bull reserve champion
WSF Grand Slam

DENVER

NATIONAL WESTERN STOCK SHOW



*Junior bull reserve champion
R&J Expresso*



*Reserve senior champion bull
4S Pioneer*

Class II (6-15 to 7-3-90)

1. WSF Grand Slam.
2. CF Signature, by Signature Associates, Bidwell, Ohio, and Champion Farms.
3. Cedarcrest, by Cedarcrest Farms and Greenestar Angus, Snow Hill, NC

Class 12 (5-2 to 5-31-90)

1. O'Neills Exon.
2. Ramseys Lonesome, by Wilson Cattle Co., William Ramsey & Sons and Rocky Forge Farm.
3. Kruegers Ever Ready, by Greg Krueger & Family.

Class 13 (3-15 to 3-21-90)

1. CAF Gryphon 3200.
2. WK Future, by WK Future Associates and Whitestone Krebs.
3. WK Thunder, by WK Thunder Partnership and Whitestone Krebs

Class 14 (2-1 to 3-8-90)

1. R&J Expresso.
2. Vantage Wizard 0201, by Vintage Angus and BLC Angus Ranch, Tecumseh, Okla.
3. TC World Champion N, by TC Ranch Inc., Franklin, Neb., and Belle Point Ranch, Lavaca, Ark.

Class 15 (1-1 to 1-18-90)

1. SAF Batman, by Adams Angus Ranch, Thompson Cattle Co. and Sydenstricker Angus Farms.
2. Bear Creek Crown Royal 0001, by Bear Creek Angus Ranch, Crown Royal Breeders and Curraghdale Farms.
3. R&J Innovator 180, by R&J Ranch, Albert Maurer and Woodstone Ranch.

Class 16 (9-4 to 11-3-89)

1. RSR Pioneer 0080, by Rising Sun Ranch, Marquez, Texas.
2. Absolut, by Vintage Angus and Dennis G. Lopez.

Class 17 (5-16-89)

1. Heritage MT Man 976, by M.L. Haggard & Sons, Losantville, Ind.

Class 18 (2-20 to 4-14-89)

1. Da Es Ro Casey 629.
2. 4S Pioneer.
3. Landmark MacKenzie 9107, by Landmark Cattle Co., Whitehall, Mont.

AJ



*Get of Sire Champion
R&J Extraordinary progeny by Whitestone Krebs*



*Best Six Head
Whitestone Krebs*

DENVER

NATIONAL WESTERN STOCK SHOW



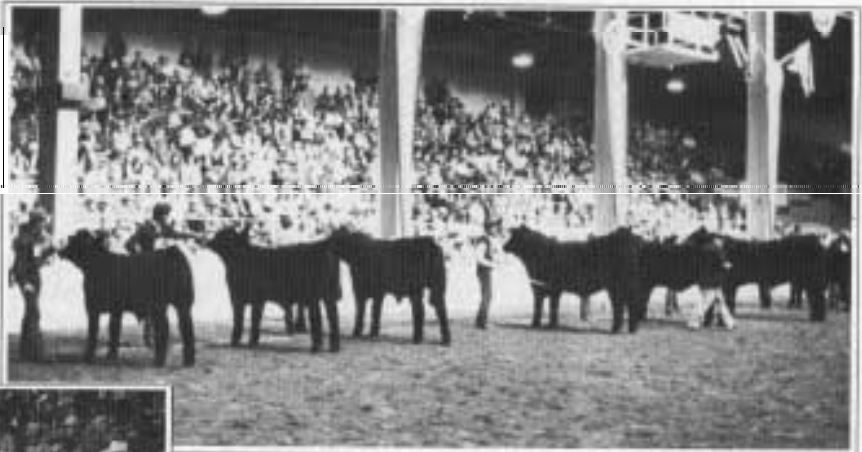
Associate judge Dick Jurgens, Peoria, Ill., shared his cattle buyer perspective before helping judge Doug Parrett select a grand champion bull.

Judgment Call

"We've got to remember to look at our cattle's genetic package, environment and market demand — then put it all together."

— Doug Parrett

Championship drive. . .
Division champions in the Super ROV Angus Bull Show are lined up for the judges' final decision of grand champion.



A packed house . . .
Angus breeders and fans gathered in the National Western's Stadium Arena to watch the show and record class placings.



Donnie Robertson, left, of Wilson Cattle Company, Cloverdale, Ind., was named the 1992 Angus Herdsman of the year, Robertson was elected to the honor by fellow herdsmen and was awarded a silver belt buckle by Dean Hurlbut, director of activities for the American Angus Association.

National Western Carload & Pen Show

January 8, 1992 Denver

Judges: Chris Sankey, Council Grove, Kan.; Richard McClung, New Market, Va.; and Steve Reimer, Chamberlain, S.D.

7 Carloads shown • 27 Pens shown

GRAND CHAMPION CARLOAD: Pen #1411, by Whitestone Krebs, Gordon, Neb.

RESERVE GRAND CARLOAD: Pen #1412, by Summitcrest Farms, Summitville, Ohio.

Class 1-10 Junior Bull Calves, calved after I-I-91

1. Pen #1411, by Whitestone Krebs.
2. Pen #1412, by Summitcrest Farms.
3. Pen #1313, by Reid Angus Ranch, Akron, Colo.

Class 3 - 8 Yearling Bulls, calved 9-1-89 to 8-31-90

1. Pen #1203, by Ankony Angus Inc., Minatare, Neb.
2. Pen #1210, by Wagon Wheel Ranch, Yuma, Colo.

GRAND CHAMPION PEN: #1207A, by Ankony Angus Inc.

RESERVE GRAND PEN: #1402, by A&B Cattle, Bassett, Neb.

CALF CHAMPION PEN: #1207A, by Ankony Angus Inc.

RESERVE CALF PEN: #1402, by A&B Cattle.

YEARLING CHAMPION PEN: #1207B, by Ankony Angus Inc.

RESERVE YEARLING PEN: #1502, by Homestead Farms, Minden, Neb.

Class 121A - Pen of Three Bulls, calved after I-I-91

1. Pen #1207A, by Ankony Angus Inc.
2. Pen #1506, by Oklahoma State University, Stillwater.
3. Pen #1311 A, by Ted Morgan, Sedgwick, Colo.

Class 121 B-Pen of Three Bulls, calved after I-I-91

1. Pen #1402, by A&B Cattle.
2. Pen #1400, by Premier Angus, Cloverdale, Ind.
3. Pen #1507, by Connealy Angus, Whitman, Neb.

Class 122A - Pen of Three Bulls, calved after 1-1-91

1. Pen #1307B, by White Angus Ranch, Bowman, N.D.
2. Pen #1408, by Engelbrecht Angus Farm, Henry, Ill.
3. Pen #1312B, by Sunny Valley Farm, Yorkville, Ill.

Class 122B - Pen of Three Bulls, calved after I-I-91

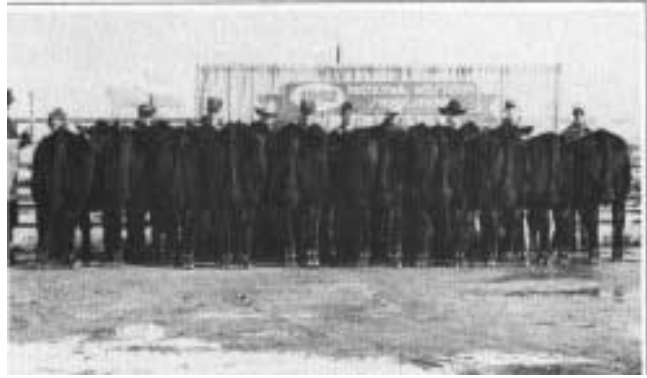
1. Pen #1204, by The Baldrige Place, North Platte, Neb.
2. Pen #1308A, by Frey Angus Ranch, Granville, N.D.
3. Pen #1314B, by O'Neil Angus Farm, Logan, Iowa.

Class 123 - Pen of Three Bulls, calved 9-1 to 12-31-90

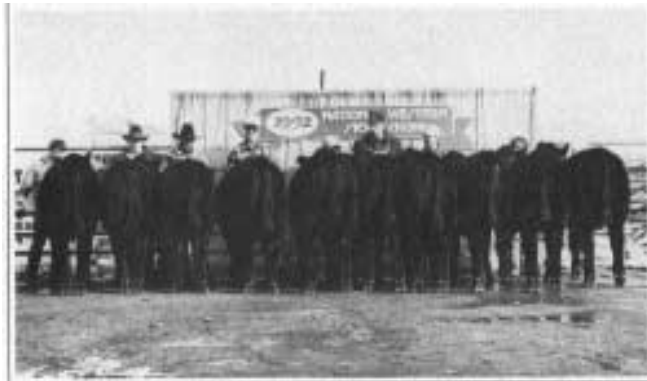
1. Pen #1207B, by Ankony Angus Inc.

Class 125 - Pen of Three Bulls, calved 1-1 to 4-30-90

1. Pen #1502, by Homestead Farms.



*Grand champion carload
Whitestone Krebs, Gordon, Neb.*



*Reserve grand champion carload
Summitcrest Farms, Summitville, Ohio*



*Grand champion pen of three
Ankony Angus Inc., Minatare, Neb.*



*Reserve grand champion pen of three
A&B Cattle, Bassett, Neb.*

DENVER

NATIONAL WESTERN STOCK SHOW

1992 Foundation Heifer

The Angus Foundation with supports the National Junior Angus associatio (NJAA) and it's youth activities received a \$11,000 gift from the sale of "Your Pick of the Henry Gardiner Calf corp." The auction was held during the National Western. Henry Gardiner Ashland, Kan., donated the buyer's choice heifer from his herd. Buyer of the pick was Dave McMahon of Belle Point Ranch, Ft. Smith, Ark. Pictured with Gardiners and McMahon are NJAA directors (l to r): Dianne McGiveron, Lori Franklin, Tim Jeffries, McMahon, Nan and Henry Gardiner, Jeff Dameron, and Bryan Bouldin. In addition to the heifer, Harding & Harding, Geneva, Ill., provided insurance for the heifer and Lathrop Livestock Transporation, Dundee Ill., provided transporation to the buyer's farm.



Grand champion Angus steer was exhibited by Melissa Woolldridge, Carrollton, Mo. Her entry weighed 1,309 pounds.



Grand champion market steer was this 1,289-pound Angus cross-bred exhibited by Jerry Tucker, Lindsay, Okla.



Junior Angus Show grand champion heifer, FF Starlight Belle 690, by Ty Krebs, Gordon, Neb.



Junior Angus show reserve grand champion heifer, Dameron Lass 117, by Heff Dameron, Lexington, Ill.

DENVER

NATIONAL WESTERN STOCK SHOW

National Western Measurements ROV SHOW HEIFERS

		Frame	Fat	Weight
Class 1	Avg.	7.2	.23	733
(5-23 to 6-12-91)	Range	6.4-7.7	.11-.34	651-889
Class 2	Avg.	7.3	.23	785
(5-01 to 5-13-91)	Range	6.5-8.0	.04-.41	613-892
Class 3	Avg.	7.2	.17	784
(4-09 to 4-27-91)	Range	6.9-7.5	.11-.30	710-884
Class 4	Avg.	7.6	.24	861
(4-01 to 4-07-91)	Range	6.7-8.4	.16-.34	736-980
Class 5	Avg.	7.7	.23	852
(3-19 to 3-28-91)	Range	6.9-8.3	.11-.38	803-894
Class 6	Avg.	7.7	.25	917
(3-05 to 3-17-91)	Range	6.9-8.9	.11-.49	707-1079
Class 7	Avg.	7.4	.33	913
(3-01 to 3-03-91)	Range	6.5-8.9	.15-.45	832-983
Class 8	Avg.	7.3	.31	935
(2-16 to 2-27-91)	Range	6.6-8.0	.22-.45	804-998
Class 9	Avg.	7.4	.28	976
(2-03 to 2-14-91)	Range	5.4-8.9	.15-.41	806-1118
Class 10	Avg.	7.8	.27	1033
(1-17 to 1-29-91)	Range	6.7-9.5	.15-.38	868-1207
Class 11	Avg.	7.3	.27	990
(1-07 to 1-16-91)	Range	6.2-8.1	.11-.41	915-1135
Class 12	Avg.	7.8	.29	1064
(1-01 to 1-06-91)	Range	6.5-9.2	.16-.41	946-1271
Class 13	Avg.	7.8	.34	1182
(11-16 to 12-04-90)	Range	7.2-8.7	.26-.45	1053-1391
Class 14	Avg.	8.1	.42	1233
(10-02 to 11-06-90)	Range	7.9-8.2	.38-.49	1068-1373
Class 15	Avg.	7.6	.42	1236
(9-01 to 9-12-90)	Range	7.0-8.8	.22-.68	1126-1354
Class 16	Avg.	8.2	.51	1447
(6-02 to 7-09-90)	Range	7.5-8.9	.30-.79	1309-1684
Class 17	Avg.	8.6	.52	1552
(5-01 to 5-21-90)	Range	7.6-9.3	.26-.75	1482-1629
Class 18	Avg.	9.0	.63	1628
(3-30 to 4-17-90)	Range	8.1-10.1	.45-.79	1500-1751
Class 19	Avg.	8.6	.53	1668
(3-02 to 3-15-90)	Range	7.2-9.5	.41-.61	1470-1760
Class 20	Avg.	8.8	.60	1710
(1-27 to 2-21-90)	Range	7.9-8.6	.38-.75	1628-1835
Class 21	Avg.	8.7	.60	1721
(1-04 to 1-23-90)	Range	7.3-9.8	.41-.79	1458-1900
Class 22	Avg.	8.5	.53	1809
(10-13 to 11-07-89)	Range	8.3-8.8	.45-.61	1735-1852
Class 23	Avg.	8.8	.65	1843
(9-01 to 10-06-89)	Range	8.1-9.2	.37-.86	1763-1880

National Western Measurements ROV SHOW BULLS

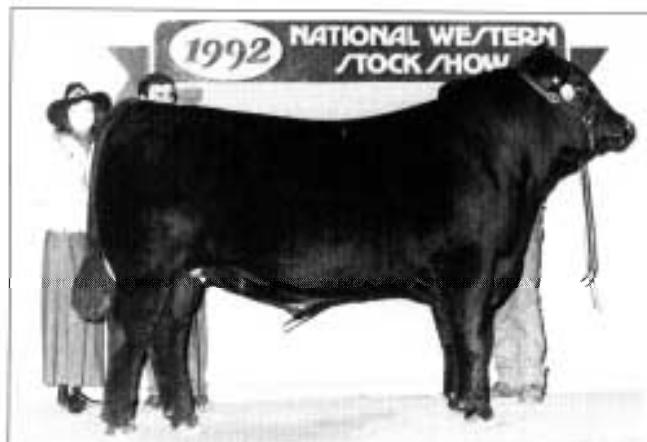
		Frame	Fat	Weight
Class 1	Avg.	8.1	.13	923
(5-10 to 6-06-91)	Range	8.0-8.4	.11-.15	824-1028
Class 2	Avg.	7.6	.21	1014
(4-01 to 4-28-91)	Range	7.3-8.4	.11-.38	937-1159
Class 3	Avg.	6.9	.24	964
(3-16 to 3-25-91)	Range	5.5-8.0	.09-.45	780-1161
Class 4	Avg.	7.7	.19	1173
(3-01 to 3-11-91)	Range	7.1-8.9	.15-.22	1026-1261
Class 5	Avg.	7.9	.27	1261
(2-15 to 2-28-91)	Range	7.4-8.4	.19-.30	1226-1332
Class 6	Avg.	7.0	.32	1243
(1-25 to 2-04-91)	Range	6.7-7.8	.26-.45	1187-1356
Class 7	Avg.	7.6	.29	1307
(1-01 to 1-19-91)	Range	7.3-8.1	.16-.49	1149-1437
Class 8	Avg.	7.4	.35	1483
(11-10 to 11-28-90)	Range	6.9-7.8	.26-.45	1370-1617
Class 9	Avg.	7.7	.43	1620
(10-02 to 10-09-90)	Range	7.6-7.8	.41-.45	1612-1628
Class 10	Avg.	8.1	.45	1747
(9-02 to 9-17-90)	Range	7.3-9.1	.30-.79	1538-1876
Class 11	Avg.	8.5	.46	1903
(8-15 to 7-03-90)	Range	7.8-9.2	.30-.72	1830-1958
Class 12	Avg.	8.0	.44	2062
(5-02 to 5-31-90)	Range	7.2-8.7	.34-.52	1908-2279
Class 13	Avg.	8.2	.38	2081
(3-15 to 3-21-90)	Range	7.5-9.4	.23-.56	1868-2320
Class 14	Avg.	8.1	.54	2107
(2-01 to 3-08-90)	Range	7.2-9.5	.30-.71	1878-2256
Class 15	Avg.	8.3	.48	2323
(1-01 to 1-18-90)	Range	7.2-9.4	.27-.67	2180-2522
Class 16	Avg.	7.6	.49	2189
(9-04 to 11-03-89)	Range	7.2-8.0	.46-.52	2017-2360
Class 17	Avg.	9.2	.45	2630
(5-16-89)	Range	9.2	.45	2630
Class 18	Avg.	8.9	.76	2719
(2-20 to 4-14-89)	Range	8.2-9.8	.60-.98	2618-2814

DENVER

NATIONAL WESTERN STOCK SHOW



*Grand champion sale bull
Whitestone Tonto 0133*



*Reserve grand champion sale bull
AF Wader*

Angus Sale Bull Show Jan. 9, 1992

Judges: Bob Cook, Billings, Mont.; Ben Eggers, Mexico, Mo.; Miles Groseth, North Platte, Neb.; Dale Grubbs, Hillsboro, Ind.; & Bill Marsden, Highmore, S.D.
41 shown

GRAND: Whitestone Tonto 0133, by Whitestone Farm, Aldie, Va.
RESERVE GRAND: AF Wader, by Forsythe Cattle Co., Marshall, Ill.
LATE SPRING CALF: Ascent Limelight of DR 461, by Ascent Angus Farms, Oakland, Ill.
RESERVE LATE SPRING CALF: Premier Blade, by Premier Angus Inc., Cloverdale, Ind.
EARLY SPRING CALF: Ken Caryl Double Shot 9091, by Ken Caryl Cattle Co., Red Lodge, Mont.
RESERVE EARLY SPRING CALF: GB Montana Traveler 1378, by Gold Block Angus, Boyd, Mont.
WINTER CALF: 4S Budman, by Four Sum Cattle Co., Wilder, Idaho.
RESERVE WINTER CALF: Yadkin River Bermuda, by Yadkin River Angus Farm, Clemmons, NC.
SENIOR CALF: Whitestone Tonto 0133.
RESERVE SENIOR CALF: TT Basic 047, by B&L Ranches, Shawnee, Okla.
SUMMER YEARLING: LD Capital Gain of GU, by Bill Dean, Coatesville, Pa., and Eric Ligo, Greenville, Pa.
RESERVE SUMMER YEARLING: DaltonsMacGregor, by Doug Dalton, Altavista, Va., and Greg Krueger & Family, Coatesville, Pa.
JUNIOR: AF Wader.
RESERVE JUNIOR: Walls Prompter 034, by Wall Angus Farm, Prairie Du Chien, Wis.
SENIOR: Landmark MacKenzie 9107, by Landmark Cattle Co., Whitehall, Mont.
RESERVE SENIOR: Hardins New Standard, by Kirk Hardin, Glencoe, Okla.

National Western Sale

Jan. 9, 1992

Lots: 48

Gross: \$211,450 Average: \$4,405

Top Bull: Lot 33 — Thomas Reality, from Thomas Angus Ranch, Baker, Ore., to Reality Syndicate — \$20,500 — 2/3 interest, 2/3 possession.

Other Top Lots:

Lot 26 — Whitestone Tonto 0133, from Whitestone Farm, Aldie, Va., to Flying A Angus Ranch, Lompoc, Calif., — \$12,600.

Lot 38 — Walls Prompter 034, from Wall Angus Farm, Prairie Du Chien, Wis., to Mt. Rushmore Angus, Rapid City, S.D. — \$10,000 — 2/3 interest, full possession.

Lot 4 — Premier Smash, from Premier Angus Inc., Cloverdale, Ind., to Smash Associates, Cloverdale, Ind., — \$10,000.

Lot 53 — Landmark MacKenzie 9107, from Landmark Cattle Co., Whitehall, Mont., to Bill Clark, Houston, Texas, — \$8,500.

Lot 0 — Ankonian Asteroid 235A, from Ankony Shadow Isle Ranch, Minatare, Neb., to Cottonwood Angus Farm, Pipestone, Minn., — \$8,000.

Lot 20 — 4S Budman, from Four Sum Cattle Co., Wilder, Idaho, to Slagle Angus, Sargent, Neb., — \$7,300.

Lot 28 — RF Navajo 081A, from Rasweiler Farm, Craryville, N.Y., to Batt Land & Cattle Co., Lisco, Neb., — \$7,000.