

---

# Super Stock Show

*The 1991 National Western Stock Show drew record entries and reinforced the move towards more functional Angus cattle in our industry.*

*by Jerilyn Johnson*



John Edwards has a knack for making a big important event more enjoyable. He just adds a little fun and humor.

Judging the Super Roll of Victory Angus Show at the National Western was serious business for this Texas A&M University livestock judging team coach and his associate judge, Knic Overpeck, a cattleman from Clinton, Ind.

The two judges spent two days evaluating, scratching their heads over, sorting, placing and giving reasons on 246 head of Angus female and bull entries.

Their goal was to find modern, functional cattle that were outstanding representatives of the Angus breed.

"I commend Angus breeders for bringing back more functionality to their cattle," Edwards said. "I was impressed with the bulls. They were modern with more moderate frame size. I believe commercial producers in the audience will be pleased with their power and thickness."

Edwards and Overpeck went for function in the female show, as well. They found a few heifers that "could do it on their own," but were bothered by the variations in frame size. They saw a positive change in the '90 crop of heifers, however, where more moderate frame scores could be found.

Along the way, Edwards couldn't resist poking fun at himself, an occasional exhibitor and his role as judge. It helped entertain the large Stock Show audience during the long morning classes and put the hard-working exhibitors at ease.

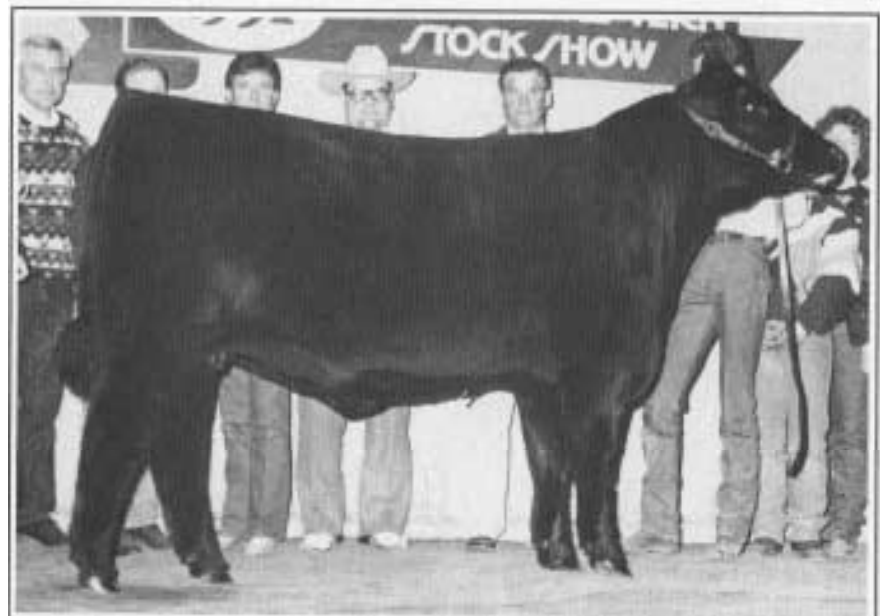
You shouldn't make decisions on your breeding program based on two judges' opinions, especially one with a sinus headache, he said.

Another quip he made that got a hearty laugh at the conclusion of the female show was, "A few of my judging team members are here in the audience. I'll get a complete review from them when I get home, so it's not necessary from you all."

Receiving judge Edward's nod for grand champion bull was Patton Enticer, a bull Edwards called, "square and sound with good testicles and some meat in



*Grand and senior champion bull  
Patton Enticer*



*Grand and junior champion female  
WK Queen 9303*



***“Breed cattle that will work for you and that you can sell. Produce genetics that will improve our beef industry.”***

***-Judge John Edwards***

him.” This March ‘88 bull, owned by Susan Patton, Crawfordsville, Ind.; Weaver Angus Farm, Peoria, Ill.; American Breeders Service, DeForest, Wis.; and Sue Easley, Hilmar, Calif., weighed in at 2,623 pounds. It had a 9.0 frame score, .52 backfat and 50.5 scrotal circumference.

Reserve grand champion honors went to WK Thunder, a March ‘90 bull exhibited by Whitestone Krebs, Gordon, Neb. This 1,316-pound bull recorded a 9.0 frame, .20 backfat and 37.5 scrotal circumference.

Whitestone Krebs also exhibited the grand champion female, WK Queen 9303. This March ‘89 heifer weighed in at 1,764 pounds and had a 9.9 frame score with .48 backfat.

Reserve grand champion female went to R&J Kellie 2418, a September ‘88 cow exhibited by Alora Foster, Wichita Falls, Texas. She weighed in at 1,712 pounds with a 9.0 frame score and .36 backfat.

A total of 57 bulls were exhibited in the Angus Sale Bull Show on Jan. 10. Selected grand champion bull by a five-man judging committee was Northern Prospector 558. This March ‘88 son of Premier Top Gun was consigned by Scott Morris, Balko, Okla. Weighing in at 2,570 pounds with an 8.1 frame score, it had a weight per day of age (WDA) of 2.58 pounds, backfat of .56 and scrotal circumference of 45.0.

Entries in the Angus Carload and Pen Show set a new Denver record, according to show officials. There were 34 pens and seven carloads representing herds from across the country.

Grand champion carload went to Summitcrest Farms, Summitville, Ohio. Their carload of 10 yearling bulls averaged 1,137 pounds with an average WDA of 3.60 pounds.

TC Ranch, Franklin, Neb., topped a very competitive pen show with three March ‘90 bulls sired by Leachman Prompter. Their average weight was 1,027 pounds with a 3.39-pound WDA average.

## **National Western Stock Show ROV National Angus Show**

**Denver, Colo. Jan. 11-12, 1991**  
**Judges. John Edwards, Knic Overpeck**  
**246 Shown**

### **Female Champions (156 shown)**

**GRAND:** WK Queen 9303, by Ty Krebs, Gordon, Neb.; Yadkin River Angus, Clemmons, N.C.; and Goshen Angus, Paris, Ky.  
**RESERVE GRAND:** R&J Kellie 2418, by Alora Foster, Wichita Falls, Texas.

**SPRING CALF:** McIntosh Kazy M40, by Kari Elliott, Greenview, Ill.

**RESERVE SPRING CALF:** FF Starlite Belle 690, by William Freeman, Cumberland, Va.

**WINTER CALF:** Blackcap Class 60, by Sydenstricker Angus Farms, Mexico, Mo.



*Reserve grand and winter bull calf champion  
**WK Thunder***



*Reserve grand and senior champion female  
**R&J Kellie 2418***



*Spring heifer calf champion*  
**McIntosh Kazzy M40**



*Spring heifer calf reserve champion*  
**FF Starlite Belle 690**

RESERVE WINTER CALF: URQ Marci 006, by Stephanie Nelson, Salmon, Idaho.

SENIOR CALF: Mengs Lucy 107Y, by Will Meng, Bowling Green, Ky., and Whitestone Farms, Aldie, Va.

RESERVE SENIOR CALF: SAF Harmonys Lass, by Syde P-stricker Angus Farms.

INTERMEDIATE: Annaleas First Star, by Annalea Farms Ltd., Coatesville, Pa.

RESERVE INTER: Premier Empress 2557E, by Premier Angus Inc., Cloverdale, Ind.; and Forsythe Cattle Co., Marshall, Ill.

JUNIOR WK: Queen 9303.

RESERVE JUNIOR FFF Diablo Suzie, by Lori Franklin, LaSalle, Colo.; Dennis Lopez, Byron, Calif.; and Forsythe Cattle Co.

SENIOR: R&J Kellie 2418.

RESERVE SENIOR: F&J Ilene 2908, by R&J Ranch Briggs, Texas.

### **Bull Champions (90 shown)**

GRAND: Patton Enticer, by Susan Patton, Crawfordsville, Ind.; Weaver Angus Farm, Peoria, Ill.; American Breeders Service, DeForest, Wis.; and Sue Easley, Hilmar, Calif.

RESERVE GRAND: WK Thunder, by Whitestone Krebs and



WK Thunder Partnership, Gordon, Neb.

SPRING CALF: Premier Double Down, by Premier Angus Inc.

RESERVE SPRING CALF: Ankonian Measowbrook Heisman, by Earl Beaver, Tishomingo, Okla., and Ankony Shadow Isle Ranch, Minatare, Neb.

WINTER CALF: WK Thunder.

RESERVE WINTER CALF: WCC Duke 03, by Yadkin River Angus, Clemmons, N.C.

SENIOR CALF: Ankonian Astro A7259, by Ankony Shadow Isle Ranch.

RESERVE SENIOR CALF: R&J Franchise 2279, by JAC's Ranch, Bentonville, Ark.

INTERMEDIATE: Hilmes TCB of 1806, by Gretchen Hilmes, Flora, Ill., and Whitestone Krebs.

RESERVE INTER: Bradys Express 944, by Mrs. Douglass Campbell, Groton, Mass.; Weldon Brady, Knob Noster, Mo.; and Fallen Ash Farm, Yellville, Ark.

JUNIOR: Da Es Ro Casey 629, by Whitestone Krebs and Eric Schlutz, Letts, Iowa.

RESERVE JUNIOR: PF Hamilton 9H24, by Dawn Henley, Oakdale, Calif.; Premier Angus Inc.; and International Breeding Centers Inc., Spencer, Ind.

SENIOR: Patton Enticer.



*Winter heifer calf champion*  
**Blackcap Class 60**



*Winter heifer calf reserve champion*  
**URQ Marci 006**



*Senior heifer calf-champion*  
**Mengs Lucy 107Y**



*Senior heifer calf reserve champion*  
**SAF Harmonys Lass**

RESERVE SENIOR Elmdales Top Flight 428, by William & Kathy Marsden, Highmore, SD.; Arlen & Becky Sawyer, Bassett, Neb.; and Gary Eikmeier, Pipestone, Minn.

### Group Champions

GET-OF-SIRE: Nelson Bold Ruler progeny, by Ankony Shadow Isle Ranch.  
BEST SIX HEAD: Whitestone Krebs.

### Females, by classes

Class 1 (6-3 to 6-21-90)

1. R&J Bess 1640, by R&J Ranch.
2. CF Ashley, by Neenah Hill, Bidwell, Ohio.
3. FFF Diablo Sapphire, by Matthew Franklin, LaSalle, Colo.

Class 2 (5-2 to 5-22-90)

1. FF Starlite Belle 690.
2. HBW Seduction, by Dr. & Mrs. Gary Priest, Warren Lyster and Three Rivers Angus Farm.
3. Black Stone Chantel 521, by Four Sum Cattle Co., Wilder, Idaho and Black Stone Angus, Gait, Calif.

Class 3 (4-1 to 4-10-90)

1. McIntosh Kazy M40.
2. White&one Junjeta Erica 062, by Whitestone Farm.
3. KK Extra Star, by Kami Krebs, Gordon, Neb.

Class 4 (3-12 to 3-30-90)



1. GF Allegra, by Goshen Angus and Ashley Davis, Springfield, Ky
2. JAC's Black Rose 0245, by Vintage Angus, Modesto, Calif.
3. Bradys Sally 027, by Weldon Brady.

Class 5 (3-1 to 3-11-90)

1. R&J Lacey 550, by R&J Ranch.
2. Patton Beatrice Audrey 08, by Beth Patton, Crawfordsville, Ind.
3. WAF Barbara Rose 5, by Shelley Weaver, Brimfield, Ill.

Class 6 (2-1 to 2-23-90)

1. Patton Elaine Celia 01, by Beth Patton.
2. R&J Lindsey 510, by R&J Ranch.
3. LLB Ruby Senta 72Z, by Glenwood Angus Inc., Carrollton, Mo. and Ray Woodworth, Melton, Iowa.

Class 7 (1-8 to 1-24-90)

1. Blackcap Class 60.
2. URQ Marci 006.
3. Waldeck Carla, by Waldeck Farm, Crestwood, Ky. and Kamaro Angus Aldie, Va.

Class 8 (1-1 to 1-5-90)

1. Vintage Queen Elba 0103, by Vintage Angus.
2. R&J Lady 70, by R&J Ranch.
3. WAF Tiptop 001, by Weaver Angus Farm.

Class 9 (11-2 to 11-7-89)

1. Laffins Classy Jet 9007, by Robert Laffin, Olsburg, Kan.
2. Circle G Jodie 211X, by Circle G Angus Farm, Hartley Angus Ranch and George Young.

Class 10 (11-2 to 10-13-39)

1. SAF Harmonys Lass.
2. HY Delia 1759, by Judith Lyster, Versailles, Ky.
3. R&J Lassy 2469, by R&J Ranch and Pinnacle Farms, Decatur, Ga.



*Intermediate heifer champion*  
**Annaleas First Star**



*Intermediate heifer reserve champion*  
**Premier Empress 2557E**



*Junior female reserve champion*  
**FFF Diablo Suzie**



*Senior female reserve champion*  
**R&J Ilene 2908**

**Class 11 (9-1 to 9-1489)**

1. Mengers Lucy 107Y
2. DA Brittany 7693, by Angela Johnson, Mt. Airy, Md.
3. Northcote B&a, by Sarah Hill, Bidwell, Ohio.

**Class 12 (8-2 to 8-3-89)**

1. Annaleas First Star.
2. Liandras Cassieopia, by Annalea Farms Ltd.

**Class 13 (6-20 to 7-12-89)**

1. Co Boss Exquisite Lady 133Y by Goshen Angus and River Farm, Mount Forest, Ontario, Can.
2. Black Eva, by Robin Domer, Vinton, Iowa.

3. Ankony Barbara A6699, by Ankony Shadow Isle Ranch.

**Class 14 (5-15 to 65-89)**

1. Springfeld Angela 9208, by Whitestone Farm, Springfield Angus Farm and Hale O Farms Inc.
2. B&L Karin 9267, by Carrie Sullivan, West Des Moines, Iowa.
3. Double Dye Queen Mother 249, by Kent Dye, Holliday Mo.

**Class 15 (5-1 to 5-2-89)**

1. Premier Empress 2557E.
2. LAF Felicia 8905, by Ty Krebs.
3. Ankony Karin 5220, by Ankony Shadow Isle Ranch.

**Class 16 (41 to 4-21-89)**

1. Premier Karen 2536E, by Whitestone Krebs.
2. KW Coral 9100, by Bradley Watts, W.I. Watts and Goshen Angus.
3. MM Jessica, by Double M Farms, Dublin, Va.

**Class 17 (3-14 to 3-27-89)**

1. Spur Celeste 9026, by Sydenstricker Angus Farms and Clear-water Farm, Springfield, Mo.



2. Knapp Moxie, by Shelley Weaver.
3. Knapp Chelsea, by John Knapp, Sandy, Ore.

**Class 18 (3-1 to 3-8-89)**

1. WK Queen 9303.
2. Queen Eva 119, by Travis Pembroke, Fair-view, Okla.
3. GJ Nicky 958, by Gary Jessen, Bear Creek Angus Ranch and Timber Creek Ranch.

**Class 19 (1-23 to 2-17-89)**

1. JLC Personality Preference, by Champion Farms, Gallipolis, Ohio.
2. Blackbird SS 25Y by Chad Wilson, Cloverdale, Ind.

3. WK Dakota Miss, by White&one Krebs and Annalea Farms Ltd.

**Class 20 (1-2 to 1-13-89)**

1. FFF Diablo Suzie.
2. BT Schmunk Fire Fly, by Bear-tooth Ranch, Columbus, Mont.
3. JACs Lady Blackbird 9231, by JAC's Ranch and Hartley Angus Ranch, Stephenville, Texas.

**Class 21 (11-2 to 11&3!3)**

1. R&J Ilene 2908.
2. TNT Dominique, by Thomas Buchanan III, Fayetteville, Ark. and Brett Smith, Bentonville, Ark.

**Class 22 (9-3 to 9-6-88)**

1. R&J Kellie 2418.
2. Barbara Star 8826, by Karen Laffin, Olsburg, Kan.
3. Bradys Dream Girl 864, by George Young, Paluxy, Texas and Weldon Brady



*Spring bull calf champion*  
**Premier Double Down**



*Spring bull calf reserve champion*  
**Ankonian Meadowbrook Heisman**



*Winter bull calf reserve champion*  
**WCC Duke 03**



*Senior bull calf champion*  
**Ankonian Astro A7259**

### Bulls, by classes

#### Class 1 (6-26-90)

1. Cedarcrest, by Cedarcrest Farms, Palmyra, Wis.

#### Class 2 (4-29 to 5-19-90)

1. Premier Double Down.
2. Ascent Astro 2, by Ascent Angus Farms, Oakland, Ill.
3. O'Neills Exon, by James O'Neill, Logan, Iowa.

#### Class 3 (4-2 to 4-14-90)

1. Ankonian Meadowbrook Heisman.
2. HBW Stealth, by Nit Nelson, Stealth Associates and H.B. Walters 8 Son.
3. Waldeck BMW, by Waldeck Farm.

#### Class 4 (2-24 to 3-18-90)

1. WK Thunder.
2. WK Limerick, by Whitestone Krebs.
3. FG Sterling, by Fox Hill Farm, Unionville, Pa.

#### Class 5 (2-1 to 2-17-90)

1. HBW John Henry of Novak, by Nicole Novak, JGA Corp. and H.B. Walters & Son.
2. Petrys Chase Manhattan P29, by David Petw, Minot, N.D.
3. R&J Columbia 390, by R&J Ranch.

#### Class 6 (1-14 to 1-24-90)

1. WCC Duke 03.
2. SAV Dakota Star 130, by Schaff's Angus Valley, St. Anthony, N.D.
3. Premier Lotto, by Premier Angus Inc. and Lotto Associates, Cloverdale, Ind.

#### Class 7 (1-1 to 1-10-90)

1. Bear Creek Crown Royal 0001, by Bear Creek Angus Ranch, Cameron, Mont.



2. Northcote Excitor, by North&e Farm, Forest, Va. and Oklahoma State University, Stillwater.
3. Whitestone Dealer 002, by Whitestone Farm.

#### Class 8 (11-1 to 11-8-89)

1. 4S Overpower, by Four Sum Cattle Co.
2. Grayling Wizard 2055, by Wintergreen Farm, Columbia, Mo.
3. Glenwood Moon Shadow 8993, by Glenwood Angus Inc., Carrollton, MO.

#### Class 9 (10-11 to 10-12-89)

1. Ankonian Astro A72.59, by Ankony Shadow Isle Ranch.
2. BAF Cosby 409, by Francis Rogers, Yuma, Colo. and Alan Bruhn, Mapleton, Iowa.

#### Class 10 (9-2 to 9-20-89)

1. R&J Franchise 2279.
2. R&J King 2129, by R&J Ranch and Swan Angus, Wichita Falls, Texas.

3. 4S Jasper, by Four Sum Cattle Co.

#### Class 11 (8-15-89)

1. WK Repeat, by Mobley Angus, Sioux City, Iowa and Whitestone Krebs.

#### Class 12 (6-2-89)

1. Hilmes TCB of 1806.

#### Class 13 (5-1 to 5-16-89)

1. Bradys Express 944.
2. Heritage MT Man 976, by M.L. Haggard & Sons, Losantville, Ind.
3. Bradys Hillsboro 951, by Fallen Ash Farm, Thomas McKenny and Weldon Brady.

#### Class 14 (4-5 to 4-30-89)

1. Da Es RQ Casey 629.



*Senior bull calf reserve champion*  
**R&J Franchise 2279**



*Intermediate bull champion*  
**Hilmes TBC of 1806**





*Intermediate bull reserve champion  
**Bradys Express 944***



*Junior bull champion  
**Da Es Ro Casey 629***



*Junior bull reserve champion  
**PF Hamilton 9H24***



*Senior bull reserve champion  
**Elmdales Top Flight 428***

2. Dameron Challenge, by Whitestone Farm and Gary Dameron, Lexington, Ill.
3. S&R Dantar 9407, by Lindsay Swartz, LeRoy, Ill.

Class 15 (3-2 to 3-12-89)

1. PF Hamilton 9H24.
2. Grubbs Matlock 199, by Dale Grubbs, Crafton & Marjorie Palmer and D.E. Schlutz & Son.
3. WK Replay, by Ty Krebs and S/2 Angus Ranch, Point Reyes Station, Calif.

Class 16 (2-1 to 2-23-89)

1. HA JACs McClinmck 89, by JAC's Ranch.
2. Hoff Hi Flyer SC 7134, by Doug Hoff, Bison, SD. and Jim Baldrige, North Platte, Neb.
3. Hilmes Dark Rito of 3806, by Gretchen Hilmes.

Class 17 1-1 to 1-13-69)

1. B&J Eclipse of HY 209B, by Billy Hawkins, Hicks & Yeary and H.B. Walters & Son.
2. R&J Cruz 109, by R&J Ranch, Schaff's Angus Ranch and 21st Century Genetics.
3. CF Alternative, by H.L. Colbert & Sons, Washington, Ind.

Class 18 (9-10-89)

1. Premier Testarossa, by Premier Angus Inc. and Bear Creek Angus Ranch.
2. Cedarcrest Rhodes Scholar, by Cedarcrest Farms.

Class 19 (7-3 to 7-16-86)

1. Starburst, by Fox Hill Angus, Kennetts Square, Pa. and Annalea Farms Ltd.



*Breeder Six Head champion  
**Whitestone Krebs***

2. Circle G Tmminator, by Circle G Angus Farm, Hampton, Ga. and John Silbernagel, Napoleon, N.D.

Class 20 (2-14 to 41-68)

1. Patton Enticer.
2. Elmdales Top Flight 428.
3. Northern Prospector 558, Scott Morris, Balko, Okla.

---

# Pen Show Entries Break All-Time Record

GRAND CARLOAD: Summitcrest Farms, Summitville, Ohio.

RESERVE CARLOAD: Whitestone Krebs, Gordon, Neb.

GRAND PEN OF THREE: TC Ranch, Franklin, Neb.

RESERVE PEN OF THREE: Frey Angus Ranch, Granville, N.D.

## Class Winners

Carload of 10 Junior Bull Calves

Class 1 (calved after 1-1-90) 5 shown.

1. Pen #1410, Summitcrest Farms.
2. Pen #1413A, Whitestone Krebs
3. Pen #1412A, TC Ranch.

**Carload of 8 Yearling Bull Calves**

Class 3 (calved 9-1-89 to 8-31-89) 2 shown.

1. Pen #1206B, Ankony Shadow Isle, Minatare, Neb.
2. Pen #1210, Wagon Wheel Ranch, Yuma, Colo.

Pen of Three Bulls

Class 121 (calved 2-14-90 to 5-5-90) 15 shown.

1. Pen #1412B, TC Ranch.
2. Pen #1314A, Erdmann Angus Ranch, Wetonka, S.D.
3. Pen #1312, Four Sum Cattle Co., Wilder, Idaho.

Class 122 (calved 1-1-90 to 3-27-90) 15 shown

1. Pen #1308B, Frey Angus Ranch
2. Pen #1311A, O'Neill Angus Farm, Logan, Iowa.
3. Pen #1311B, O'Neill Angus Farm.

Class 123 (calved 9-1 to 12-31-89) 1 shown

1. Pen #1402B, Goshen Angus, Paris, Ky.

Class 125 (calved 1-1-89 to 4-30-89) 1 shown

1. Pen #1206A, Ankony Shadow Isle.



*Grand champion carload  
Summitcrest Farms, Summitville, Ohio*



*Reserve grand champion carload  
Whitestone Krebs, Gordon, Neb.*



*Grand champion pen of three  
TC Ranch, Franklin, Neb.*



*Reserve grand champion pen of three  
Frey Angus Ranch, Granville, N.D.*



## Foundation Heifer Sells for \$10,500

### Foundation Heifer Sells for \$10,500

The Angus Foundation, which supports the National Junior Angus Association (NJAA), received a \$10,500 gift from the sale of this Angus heifer during the National Western. Leachman Blackcap 0027, a February '90 daughter of Leachman Tonto, was donated by Jay Leachman (back row, far left) of Leachman Angus Ranch, Bozeman, Mont. The heifer was purchased by Stockman Syndication. Representing the buying team are (front row, from left): Dave McMahon of Belle Point Ranch Fort Smith, Ark.; Vance Uden of TC Ranch, Franklin, Neb.; and Billy Yorrough of B&L Ranches, Shawnee, Okla. NJAA Board members are also pictured with the buyers. In addition to the heifer, the sale package included insurance coverage by Harding & Harding Livestock Insurance, Geneva, Ill.; transportation to the buyer's farm from Lathrop Livestock Transportation, Dundee, Ill.; and breeding privileges on a line-up of leading Angus sires.



Grand champion Angus steer, **Wild Thing**, by Heather Herring, Encampment, Wyo. Her entry weighed 1,257-pounds.



Reserve grand champion Angus steer was this 1,329-pound steer exhibited by Ron Elliott, Greenview, Ill.



Junior Show grand champion heifer, **Tys Kathy**, by Ty Krebs, Gordon, Neb.



Junior Show reserve grand champion heifer, **Nelson Jessica 9109**, by Stephanie Nelson, Salmon, Idaho.



*A winning smile and congratulatory handshake are shared by Angus Show exhibitors Dean Janssen and Eldon Krebs after earning grand and reserve grand champion bull honors.*



*Dean Schrock, right, of Whitestone Krebs, Gordon, Neb., was named 1991 Herdsman of the Year during the Angus Herdsmen Banquet at the National Western Stock Show. Schrock was elected by fellow herdsmen and was awarded a silver belt buckle by Dean Hurlbut, director of activities for the American Angus Association.*



## Angus Sale Bull Show

Jan. 10, 1991

Judges: Jim Bush, Britton, S.D.; Lynn Frey, Granville, N.D.; Richard McClung, New Market, Va.; Joe Schaff, St. Anthony, N.D.; Gale Todd, Ryegate, Mont.  
57 Shown



*Cattlemen and women gather in the Stock Show arena to inspect Angus sale bulls. A total of 58 lots were offered in this year's sale.*

GRAND: Northern Prospector 558, by Scott Morris, Balko, Okla.  
RESERVE GRAND: WK Limmerick, by Whitestone Krebs, Gordon, Neb.

LATE SPRING CALF: **WK** Limmerick.

RESERVE LATE SPRING **CALF** Cosmos 3540, by Four Sum Cattle Co., Wilder, Idaho.

EARLY SPRING CALF: Harmony Hill Hi Index, by Harmony Hill Farm, Northwood, N.H.

RESERVE EARLY SPRING CALF Ascents Gapn Out 90, by Ascent Angus Farms, Oakland, Ill.

WINTER CALF: Northcote Excitor, by Northcote Farm, Forest, Va., and Oklahoma State University, Stillwater.

RESERVE WINTER CALF: Whitestone Dealer 002, by Whitestone Farm, Aldie, Va.

SENIOR CALF: 4S Jasper, by Four Sum Cattle Co.

RESERVE SR. **CALF** Kruegers Taj Mahal, by Greg Krueger & Family, Coatesville, Pa.

INTERMEDIATE: 2K Packer, by 2K Cattle Enterprises, Glen Haven, Wis.

RESERVE INTER: Bipperts Sarg, by Bipperts Farms, Alden, N.Y.

JUNIOR: Lodi MF, by Marda Angus Farm, Lodi Wis.

RESERVE JUNIOR: 3 Bar Statesman 1509, by 3 Bar Ranch, Berthoud, Colo.

SENIOR: Northern Prospector.

RESERVE SENIOR: Bear Creek Hennessy 8324, by Bear Creek Angus Ranch, Cameron, Mont.

Lot 56 — Hilmes Dark Rito of 3806 from Hilmes Angus Farm, Flora, Ill., to Olson Cattle Co., Hereford, Texas, and JK Angus, Lockney, Texas, — \$9,300 — 2/3 interest and full possession.

Lot 54 — Lodi MF from Marda Angus Farm, Lodi, Wis., to Howard Juhler, Marne, Iowa, — \$8,700.

Lot 8 — WK Limmerick from Whitestone Krebs, Gordon, Neb., to North Line Angus, Alberta, Canada, — \$7,400 — 2/3 interest and full possession.

**AJ**

## 1991 NATIONAL WESTERN SALE

Jan. 11, 1991

**Lots: 58**

**Gross: \$246,300 Average: \$4,247**

**Top Bulls:** Lots L, K and N— TC Prompter bulls (pen of three) from TC Ranch, Franklin, Neb., to Belle Point Angus Ranch, Fort Smith, Ark., — \$12,250 each — 2/3 interest; full possession.

### Other Top Lots:

Lot 51- 3 Bar Statesman 1509 from 3 Bar Ranch, Berthoud, Colo., to Glenkerry Angus, Greenwood, S.C., — \$10,000 — 2/3 interest; full possession.

Lot 34 — GF Renovator 0018 from Goshen Angus, Paris, Ky., to Flesch Farms Inc., Shelby, Mont., — \$10,000.